

Population

POPULATION

- Historically, midyear population estimates have been used as the basis for various rate calculations. Although some U.S. Census Bureau data were available from the April 1, 2000 enumeration, midyear estimates based on the 2000 Census were not available. Midyear estimates for 2000 were obtained from the Florida Consensus Estimating Conference (Winter Demographic Estimating session) prepared January 2000 and were used for rate calculations in this annual report.
- In 2000, Florida's population rose to a record high of 15,658,227. This represents a 1.0 percent increase from the 1999 population of 15,394,988.
- The population has risen 18.4 percent since 1990 and 59.2 percent since 1980. It has more than doubled since 1970.
- In 2000, whites accounted for 84.2 percent of the population, blacks accounted for 14.0 percent of the population, and other races accounted for 1.8 percent of the population.
- Increases in the population occurred for all race/gender groups. White males increased by 1.7 percent and white females increased by 1.6 percent. Nonwhite males increased by 2.2 percent and nonwhite females increased by 2.0 percent.
- Floridians aged 65 years and older made up 18.3 percent of the population. Those aged 14 years and younger comprised 18.9 percent.
- The number of persons 75 years and older was 1,423,468 or 9.1 percent of the population.
- All 67 counties revealed an increase in resident population from 1999 to 2000.
- A person born in Florida in 2000 can expect to live 77.8 years. This value increased slightly from 77.6 in 1999.
- Although the life expectancy remained constant for white males, it increased for white females, nonwhite males, and nonwhite females. However, white females still have the highest life expectancy of the four groups and nonwhite males have the lowest life expectancy.

CHART P-1: YEARS OF LIFE EXPECTANCY AT BIRTH, BY RACE AND GENDER, FOR FLORIDA RESIDENTS AND UNITED STATES TOTAL, SELECTED YEARS, 1919-1991 AND 1995-2000						
YEAR	FLORIDA					U.S.
	TOTAL	WHITE		NONWHITE		TOTAL
		MALE	FEMALE	MALE	FEMALE	
1919-1921	55.3	57.3	60.6	NA	NA	56.4
1929-1931	56.6	59.3	64.2	45.4	48.9	59.2
1939-1941	61.2	62.4	68.8	49.4	54.4	63.6
1949-1951	67.7	66.7	74.0	56.5	62.2	68.1
1959-1961	69.8	68.4	76.2	60.4	65.9	69.9
1969-1971	71.0	68.4	76.8	59.3	67.9	70.8
1979-1981	74.0	71.1	78.9	63.8	72.4	73.9
1989-1991	76.3	73.6	81.0	65.8	74.9	75.3
1995	76.8	74.1	81.5	66.6	75.2	75.8
1996	77.1	74.7	81.2	68.1	75.4	76.1
1997	77.5	75.2	81.6	68.2	75.3	76.5
1998	77.5	75.3	81.5	68.4	75.0	76.7
1999	77.6	75.5	81.5	68.2	74.9	76.7 ¹
2000	77.8	75.5	81.9	68.6	75.2	NA

¹ Preliminary Data.

GRAPH P-1: YEARS OF LIFE EXPECTANCY AT BIRTH, FLORIDA AND UNITED STATES, 1919-1991

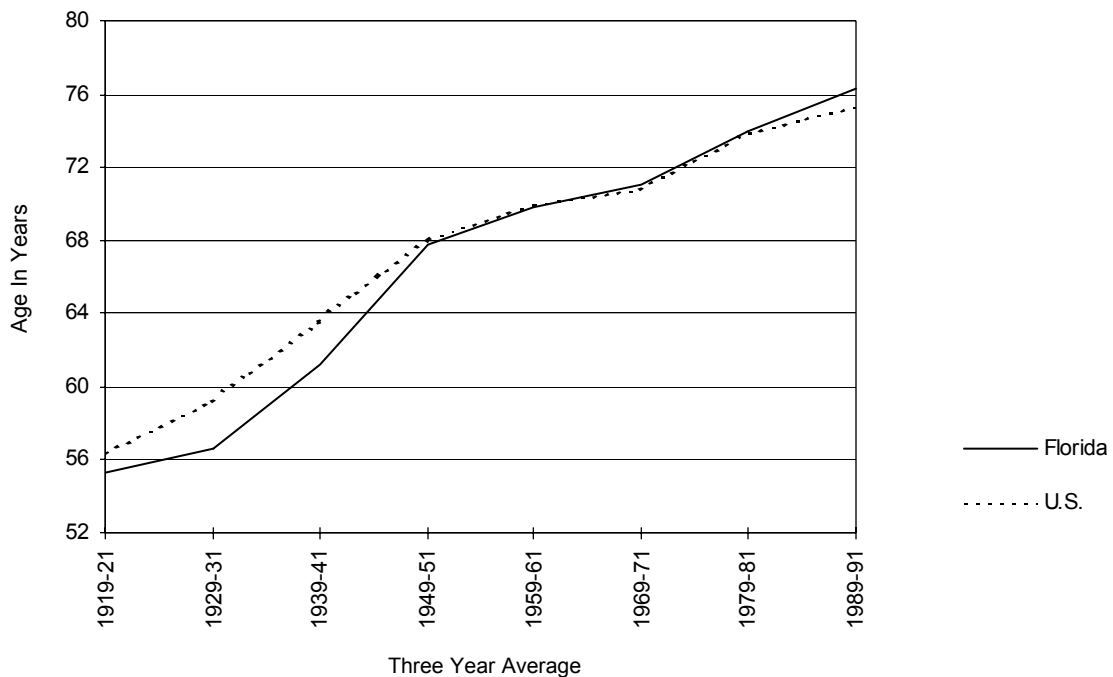


CHART P-2: NATURAL INCREASE* IN POPULATION, BY RACE, FLORIDA, 1990-2000			
YEAR	TOTAL	WHITE	NONWHITE
1990	65,852	29,315	36,463
1991	58,729	22,760	36,079
1992	52,916	17,359	35,635
1993	47,388	12,622	34,843
1994	43,677	12,945	30,858
1995	36,916	7,616	29,199
1996	36,640	6,617	29,990
1997	38,474	6,867	31,701
1998	38,404	5,928	32,493
1999	34,841	2,026	32,824
2000	41,191	5,341	35,882

* Resident Live Births minus Resident Deaths

GRAPH P-2: PERCENT DISTRIBUTION OF RACE-SPECIFIC POPULATION, BY AGE GROUPS, FLORIDA, 2000

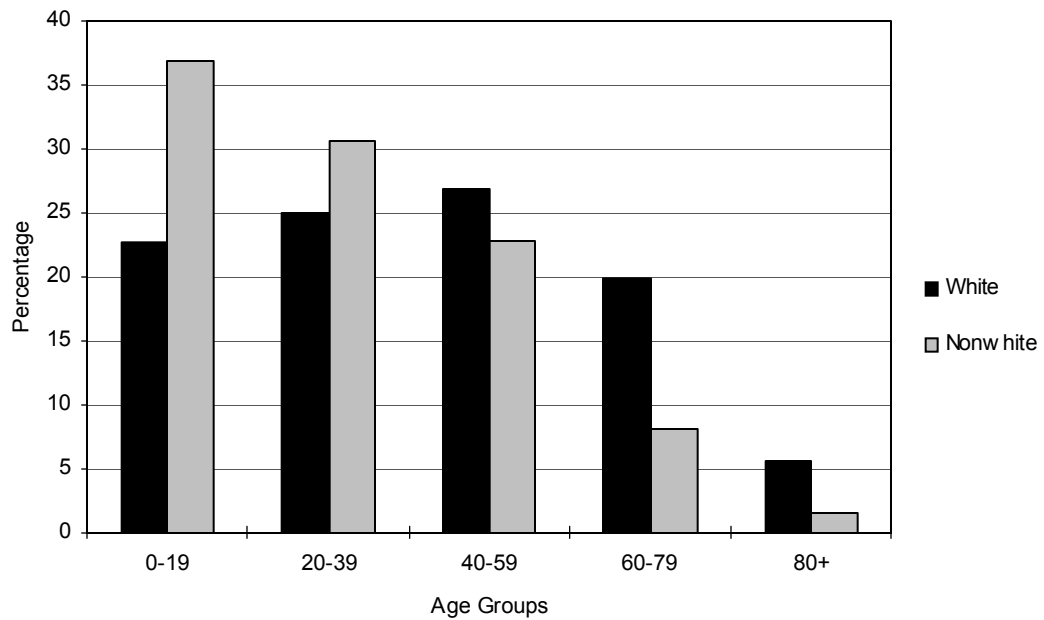


CHART P-3: RESIDENT MIDYEAR POPULATION ESTIMATES, BY AGE, RACE AND GENDER, FLORIDA, 2000

AGE GROUP	TOTAL	WHITE			NONWHITE		
		TOTAL	MALE	FEMALE	TOTAL	MALE	FEMALE
TOTAL	15,658,227	13,177,026	6,408,302	6,768,724	2,481,201	1,205,821	1,275,380
<1*	202,609	149,305	72,886	76,419	53,304	27,011	26,293
1-4**	751,176	572,892	295,110	277,782	178,284	90,927	87,357
5-9	1,010,965	766,827	390,951	375,876	244,138	124,130	120,008
10-14	986,970	762,454	391,268	371,186	224,516	113,606	110,910
15-19	957,537	742,680	380,610	362,070	214,857	109,093	105,764
20-24	927,477	729,967	376,822	353,145	197,510	102,481	95,029
25-29	955,857	767,094	396,054	371,040	188,763	97,645	91,118
30-34	1,001,716	821,116	419,104	402,012	180,600	90,348	90,252
35-39	1,160,992	966,825	488,540	478,285	194,167	94,178	99,989
40-44	1,195,657	1,007,112	505,003	502,109	188,545	88,601	99,944
45-49	1,098,601	937,582	465,746	471,836	161,019	73,893	87,126
50-54	989,399	864,022	424,981	439,041	125,377	56,970	68,407
55-59	820,957	730,707	353,296	377,411	90,250	40,418	49,832
60-64	727,414	656,772	310,568	346,204	70,642	31,251	39,391
65-69	718,564	663,367	305,960	357,407	55,197	23,347	31,850
70-74	728,868	684,746	301,069	383,677	44,122	17,624	26,498
75-79	644,434	612,230	257,709	354,521	32,204	12,081	20,123
80-84	443,090	423,291	168,707	254,584	19,799	6,864	12,935
85+	335,944	318,037	103,918	214,119	17,907	5,353	12,554

Source: Florida Consensus Estimating Conference, July 1 estimate prepared January 2000.

*Age group <1 estimated by Office of Vital Statistics using Resident Live Births minus Resident Infant Deaths.

**Age group 1-4 estimated by Office of Vital Statistics using the age group 0-4 population minus the age group <1 estimate.

CHART P-4: RESIDENT MIDYEAR POPULATION ESTIMATES, BY RACE AND GENDER,
FLORIDA, 1950, 1960, 1970, 1980 AND 1981-2000

YEAR	TOTAL	WHITE			NONWHITE		
		TOTAL	MALE	FEMALE	TOTAL	MALE	FEMALE
1950	2,821,000	2,208,200	1,093,400	1,114,800	612,800	298,100	314,700
1960	5,003,200	4,109,000	2,021,861	2,087,139	894,200	439,117	455,083
1970	6,888,178	5,806,952	2,804,954	3,001,998	1,081,226	517,784	563,442
1980	9,836,232	8,258,349	3,966,610	4,291,739	1,577,883	751,479	826,404
1981	10,195,865	8,556,777	4,107,623	4,449,154	1,639,088	780,198	858,890
1982	10,442,676	8,760,311	4,202,945	4,557,366	1,682,365	800,356	882,009
1983	10,645,793	8,927,055	4,276,119	4,650,936	1,718,738	821,606	897,132
1984	11,015,061	9,232,929	4,419,755	4,813,174	1,782,132	851,799	930,333
1985	11,377,318	9,532,665	4,565,109	4,967,556	1,844,653	879,813	964,840
1986	11,744,900	10,021,877	4,833,244	5,188,633	1,723,023	820,748	902,275
1987	12,136,000	10,327,223	4,980,711	5,346,512	1,808,777	863,084	945,693
1988	12,503,800	10,614,705	5,122,774	5,491,931	1,889,095	903,966	985,129
1989	12,838,700	10,875,303	5,260,341	5,614,962	1,963,397	943,752	1,019,645
1990	13,230,200	11,198,850	5,419,226	5,779,624	2,031,350	978,220	1,053,130
1991	13,256,200	11,178,615	5,423,325	5,755,290	2,077,585	993,760	1,083,825
1992	13,478,250	11,391,421	5,524,804	5,866,617	2,086,829	998,090	1,088,739
1993	13,712,990	11,578,364	5,618,961	5,959,403	2,134,626	1,021,491	1,113,135
1994	13,949,220	11,760,794	5,708,491	6,052,302	2,188,416	1,048,631	1,139,796
1995	14,209,530	11,853,933	5,755,595	6,098,338	2,355,597	1,128,798	1,266,799
1996	14,477,888	12,070,986	5,872,201	6,198,785	2,406,902	1,164,982	1,241,920
1997	14,783,236	12,450,188	6,050,644	6,399,544	2,333,048	1,132,916	1,200,132
1998	15,068,387	12,694,230	6,169,851	6,524,379	2,374,157	1,153,041	1,221,116
1999	15,394,988	12,964,077	6,302,229	6,661,848	2,430,911	1,180,371	1,250,540
2000*	15,658,227	13,177,026	6,408,302	6,768,724	2,481,201	1,205,821	1,275,380

*Source: Florida Consensus Estimating Conference, July 1 estimate prepared January 2000.

CHART P-5: RESIDENT MIDYEAR POPULATION ESTIMATES, BY AGE GROUPS, FLORIDA, 1950, 1960, 1970, 1980 AND 1981-2000

YEAR	AGE GROUP											
	TOTAL	<1**	1-4***	5-14	15-24	25-34	35-44	45-54	55-64	65-74	75-84	85+
1950	2,821,000	57,300	238,500	442,700	402,100	448,500	419,600	330,100	240,400	170,200	63,137	8,463
1960	5,003,200	110,882	431,405	935,118	644,065	630,714	656,774	562,536	468,696	395,413	142,581	25,016
1970	6,888,178	107,767	398,368	1,259,283	1,091,069	778,948	757,652	771,769	718,929	658,887	290,401	55,105
1980	9,836,232	130,414	441,294	1,306,304	1,639,780	1,432,434	1,047,500	995,623	1,132,847	1,072,207	518,739	119,090
1981	10,195,865	132,471	444,482	1,303,074	1,708,208	1,517,987	1,082,231	1,020,991	1,185,278	1,125,021	549,681	126,441
1982	10,442,676	123,519	451,362	1,282,392	1,758,238	1,588,716	1,104,774	1,034,405	1,225,249	1,166,196	572,063	135,761
1983	10,645,793	125,505	444,213	1,254,091	1,801,284	1,654,264	1,122,539	1,043,004	1,260,575	1,203,093	594,277	142,948
1984	11,015,061	126,765	445,800	1,242,502	1,872,919	1,747,493	1,157,622	1,067,260	1,316,196	1,259,531	626,362	152,611
1985	11,377,318	127,700	446,224	1,226,464	1,943,970	1,841,988	1,191,712	1,090,047	1,371,768	1,316,143	658,812	162,490
1986	11,744,900	163,542	609,745	1,401,745	1,672,982	1,783,791	1,476,819	1,125,387	1,296,307	1,311,901	727,426	175,254
1987	12,136,000	168,667	651,665	1,464,236	1,687,164	1,857,724	1,578,774	1,190,106	1,328,075	1,311,607	722,012	175,970
1988	12,503,800	177,691	679,235	1,519,503	1,692,733	1,933,717	1,673,519	1,245,086	1,353,724	1,294,476	745,018	189,099
1989	12,838,700	185,045	698,397	1,570,372	1,695,777	2,002,372	1,761,740	1,295,467	1,370,268	1,338,929	731,277	189,056
1990	13,230,200	197,109	712,305	1,626,311	1,702,015	2,054,732	1,849,863	1,357,567	1,392,886	1,383,436	754,585	199,391
1991	13,256,200	197,613	748,794	1,621,893	1,654,718	2,074,555	1,880,846	1,370,447	1,274,186	1,389,548	818,708	224,892
1992	13,478,250	189,751	730,518	1,657,016	1,667,057	2,063,989	1,949,616	1,444,873	1,287,212	1,409,434	845,031	233,703
1993	13,712,990	190,802	750,060	1,700,322	1,658,733	2,038,932	2,013,637	1,521,088	1,294,718	1,426,897	871,081	246,720
1994	13,949,220	188,881	772,364	1,744,463	1,652,775	2,016,052	2,078,143	1,595,481	1,301,575	1,443,742	896,259	259,483
1995	14,209,530	187,133	796,119	1,807,028	1,694,530	1,973,906	2,151,645	1,676,921	1,254,478	1,413,628	953,489	300,654
1996	14,477,888	187,933	785,646	1,826,257	1,727,709	1,922,666	2,173,030	1,781,456	1,376,242	1,439,820	978,707	278,424
1997	14,783,236	190,946	748,719	1,881,771	1,767,077	1,940,024	2,225,754	1,885,564	1,423,384	1,418,356	1,004,186	297,455
1998	15,068,387	194,149	762,748	1,920,336	1,804,230	1,987,617	2,273,595	1,916,598	1,438,524	1,442,955	1,022,564	305,071
1999	15,394,988	195,364	757,765	1,964,215	1,848,017	1,974,888	2,324,106	2,008,267	1,494,947	1,447,687	1,058,387	321,345
2000*	15,658,227	202,609	751,176	1,997,935	1,885,014	1,957,573	2,356,649	2,088,000	1,548,371	1,447,432	1,087,524	335,944

*Source: Florida Consensus Estimating Conference, July 1 estimate prepared January 2000.

**Age group <1 estimated by Office of Vital Statistics using Resident Live Births minus Resident Infant Deaths.

***Age group 1-4 estimated by Office of Vital Statistics using the age group 0-4 population minus the age group <1 estimate.

TABLE P-1: RESIDENT MIDYEAR POPULATION ESTIMATES, BY RACE, BY COUNTY, FLORIDA, 2000

	TOTAL	WHITE	BLACK	OTHER
FLORIDA	15,658,227	13,177,026	2,188,493	292,708
ALACHUA	220,833	172,012	41,726	7,095
BAKER	22,674	19,606	2,921	147
BAY	152,924	132,724	15,961	4,239
BRADFORD	25,830	20,554	5,025	251
BREVARD	486,148	439,510	37,535	9,103
BROWARD	1,518,135	1,199,707	282,708	35,720
CALHOUN	14,449	11,927	2,299	223
CHARLOTTE	141,631	134,151	6,020	1,460
CITRUS	118,219	114,717	2,618	884
CLAY	142,901	131,601	7,858	3,442
COLLIER	227,305	215,969	9,652	1,684
COLUMBIA	58,691	46,796	11,113	782
MIAMI-DADE	2,159,597	1,619,499	492,712	47,386
DESOTO	29,187	23,913	4,966	308
DIXIE	13,962	12,665	1,215	82
DUVAL	774,704	564,068	188,543	22,093
ESCAMBIA	309,872	235,378	63,421	11,073
FLAGLER	48,122	43,839	3,670	613
FRANKLIN	11,089	9,791	1,210	88
GADSDEN	52,859	21,599	30,698	562
GILCHRIST	13,955	12,718	1,146	91
GLADES	10,258	8,027	1,482	749
GULF	14,959	11,683	3,086	190
HAMILTON	15,223	9,101	5,978	144
HARDEE	22,739	20,447	2,030	262
HENDRY	31,561	26,115	4,647	799
HERNANDO	131,825	126,395	4,529	901
HIGHLANDS	83,403	75,572	7,016	815
HILLSBOROUGH	984,881	832,888	132,089	19,904
HOLMES	19,151	17,478	1,320	353
INDIAN RIVER	112,422	104,239	7,419	764
JACKSON	50,453	35,844	14,013	596
JEFFERSON	14,697	8,639	5,934	124
LAFAYETTE	7,344	6,220	1,083	41
LAKE	209,684	192,329	15,896	1,459
LEE	428,269	397,574	26,813	3,882
LEON	244,117	179,015	59,661	5,441
LEVY	34,409	30,492	3,539	378
LIBERTY	8,481	6,976	1,428	77
MADISON	20,049	11,960	7,929	160
MANATEE	258,665	237,101	19,053	2,511
MARION	257,459	225,453	29,365	2,641
MARTIN	124,621	116,521	6,961	1,139
MONROE	88,263	82,754	4,478	1,031
NASSAU	58,751	53,536	4,815	400
OKALOOSA	184,020	159,386	17,851	6,783
OKEECHOBEE	36,513	32,984	2,962	567
ORANGE	869,838	705,580	138,884	25,374
OSCEOLA	163,720	151,006	9,223	3,491
PALM BEACH	1,069,154	922,811	130,937	15,406
PASCO	333,410	323,613	6,702	3,095
PINELLAS	907,326	818,370	73,818	15,138
POLK	483,624	417,545	60,509	5,570
PUTNAM	73,746	60,268	12,737	741
ST JOHNS	117,803	109,346	7,545	912
ST LUCIE	192,651	161,823	28,569	2,259
SANTA ROSA	115,900	107,864	5,321	2,715
SARASOTA	327,504	311,721	13,311	2,472
SEMINOLE	364,274	326,635	29,682	7,957
SUMTER	51,994	42,112	9,410	472
SUWANNEE	35,588	30,957	4,383	248
TAYLOR	20,703	16,201	4,186	316
UNION	14,382	10,929	3,275	178
VOLUSIA	435,938	394,334	36,457	5,147
WAKULLA	21,532	18,566	2,720	246
WALTON	41,521	37,921	2,710	890
WASHINGTON	22,315	17,951	3,720	644