

Population

POPULATION

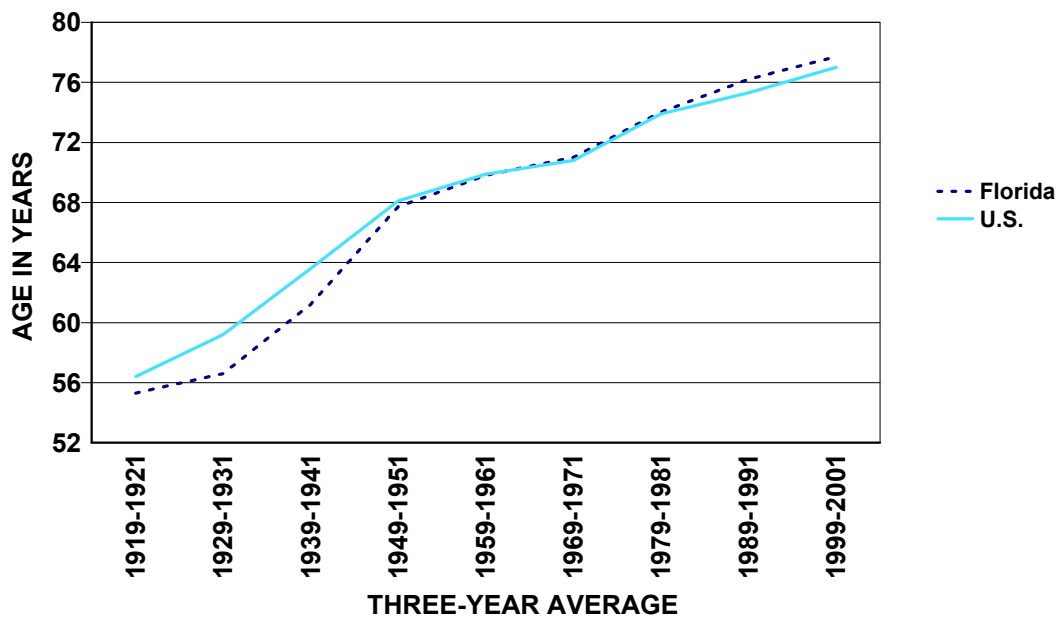
- Historically, midyear population projections have been used as the basis for various rate calculations. Based on the 2000 Census, population estimates for 1991 through 2002 underestimated the nonwhite population and have been adjusted accordingly. Further, race questions on the 2000 Census permitted multiple responses rather than just a single response as in past decennial censuses. As a result, shifts occurred from the traditional white-only and black-only categories to a multiple-race category. The National Center for Health Statistics developed a “bridging” methodology allowing for the re-assignment of multiple-race responses so present population estimates could be compared with previous estimates. The midyear estimates for 2003 through 2005 reflect the adjustments described previously. These estimates were used for rate calculations in this Annual Report.
- In 2005, Florida’s population rose to a record high of 18,018,497. This represents a 2.3 percent increase from the 2004 population of 17,613,367.
- The population has risen 38.3 percent since 1990 and 83.1 percent since 1980. It has more than doubled (263 percent) since 1970 and more than tripled (360 percent) since 1960.
- In 2005, whites accounted for 80.9 percent of the population, and nonwhites accounted for 19.1 percent of the population.
- Increases in the population occurred for both whites and nonwhites. White males increased by 1.3 percent and white females increased by 1.4 percent. Nonwhite males increased by 6.3 percent and nonwhite females increased by 6.9 percent.
- Floridians aged 65 years and older made up 17.0 percent of the population. Those aged 14 years and younger comprised 18.6 percent.
- The number of persons 75 years old or older was 1,580,678 or 8.8 percent of the population.
- A person born in Florida in 2005 can expect to live 78.9 years. This value decreased slightly from 79.0 in 2004.
- Life expectancy increased for white females and for nonwhite females, but decreased for white males and nonwhite males. However, white females still have the highest life expectancy of the four groups and nonwhite males have the lowest life expectancy.

**CHART P-1: YEARS OF LIFE EXPECTANCY AT BIRTH, BY RACE AND GENDER,
FOR FLORIDA RESIDENTS AND UNITED STATES TOTAL,
SELECTED YEARS 1919-1991 AND 2000-2005**

YEAR	FLORIDA					U.S. TOTAL
	TOTAL	WHITE		NONWHITE		
		MALE	FEMALE	MALE	FEMALE	
1919-1921	55.3	57.3	60.6	NA	NA	56.4
1929-1931	56.6	59.3	64.2	45.4	48.9	59.2
1939-1941	61.2	62.4	68.8	49.4	54.4	63.6
1949-1951	67.7	66.7	74.0	56.5	62.2	68.1
1959-1961	69.8	68.4	76.2	60.4	65.9	69.9
1969-1971	71.0	68.4	76.8	59.3	67.9	70.8
1979-1981	74.0	71.1	78.9	63.8	72.4	73.9
1989-1991	76.2	73.5	80.9	66.2	75.3	75.3
2000	77.8	75.5	81.5	71.2	77.3	77.0
2001	77.8	75.4	81.4	71.5	77.0	77.2
2002	78.2	75.9	81.7	71.9	77.7	77.3
2003	78.3	75.9	81.9	72.0	77.8	77.5
2004	79.0	76.9	82.4	73.0	78.5	77.9 ¹
2005	78.9	76.5	82.5	72.8	78.9	NA

1. Preliminary data.

**GRAPH P-1: YEARS OF LIFE EXPECTANCY AT BIRTH, FLORIDA AND
UNITED STATES, 1919-2001**



**CHART P-2: NATURAL INCREASE* IN POPULATION,
BY RACE, FLORIDA 1995-2005**

YEAR	TOTAL	WHITE	NONWHITE
1995	36,916	7,616	29,199
1996	36,641	6,618	29,990
1997	38,474	6,867	31,701
1998	38,404	5,928	32,493
1999	34,841	2,026	32,824
2000	41,191	5,341	35,882
2001	38,619	2,909	35,402
2002	37,878	3,182	34,377
2003	43,784	7,879	35,674
2004	49,681	10,917	38,391
2005	55,919	16,079	39,505

*Resident Live Births minus Resident Deaths.

**GRAPH P-2: PERCENT DISTRIBUTION OF RACE-SPECIFIC POPULATION
BY AGE GROUPS, FLORIDA, 2005**

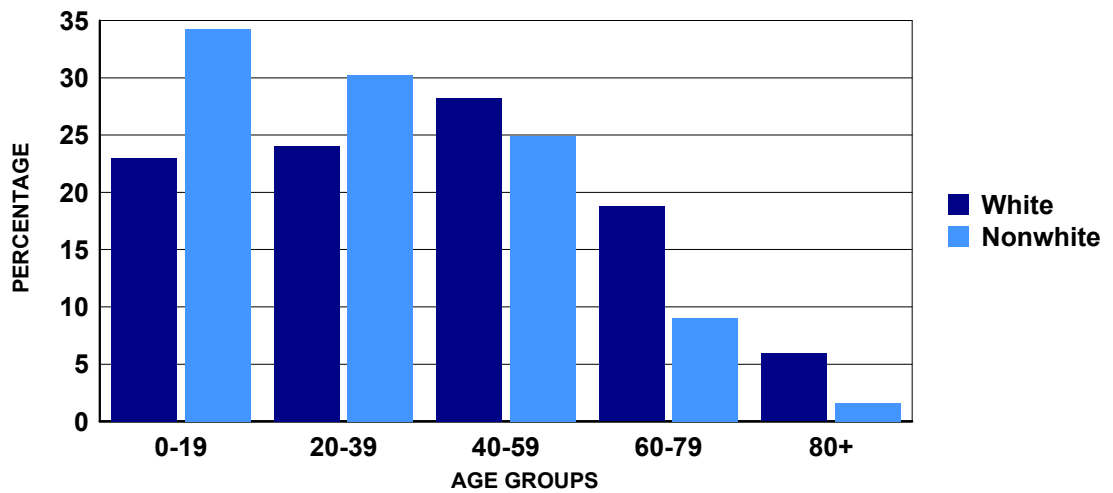


CHART P-3: RESIDENT MIDYEAR POPULATION ESTIMATES, BY AGE, RACE AND GENDER, FLORIDA, 2005

AGE GROUP	TOTAL	WHITE			NONWHITE		
		TOTAL	MALE	FEMALE	TOTAL	MALE	FEMALE
TOTAL	18,018,497	14,581,665	7,159,531	7,422,134	3,436,832	1,656,097	1,780,735
<1 ¹	224,553	165,271	84,337	80,934	59,282	30,217	29,065
1-4 ²	852,314	622,852	316,769	306,083	229,462	116,514	112,948
5-9	1,107,144	827,816	424,903	402,913	279,328	141,791	137,537
10-14	1,168,628	865,425	444,829	420,596	303,203	154,278	148,925
15-19	1,177,427	872,132	446,491	425,641	305,295	154,671	150,624
20-24	1,157,165	861,051	442,374	418,677	296,114	151,031	145,083
25-29	1,057,814	810,182	420,277	389,905	247,632	120,924	126,708
30-34	1,119,110	870,546	447,953	422,593	248,564	117,684	130,880
35-39	1,209,213	962,801	491,471	471,330	246,412	118,232	128,180
40-44	1,365,939	1,105,248	557,251	547,997	260,691	123,400	137,291
45-49	1,323,802	1,081,575	538,405	543,170	242,227	112,782	129,445
50-54	1,190,115	990,905	484,681	506,224	199,210	91,081	108,129
55-59	1,098,338	944,998	455,973	489,025	153,340	69,892	83,448
60-64	904,534	794,712	373,331	421,381	109,822	49,378	60,444
65-69	768,299	682,200	316,538	365,662	86,099	38,510	47,589
70-74	713,424	647,201	298,172	349,029	66,223	28,177	38,046
75-79	658,797	611,021	272,273	338,748	47,776	18,717	29,059
80-84	504,089	474,042	199,814	274,228	30,047	10,982	19,065
85+	417,792	391,687	143,689	247,998	26,105	7,836	18,269

Source: The Florida Legislature, Office of Economic and Demographic Research, July 1st estimates.
 1. Age group <1 estimated by the Office of Vital Statistics using Resident Live Births minus Resident Infant Deaths.
 2. Age group 1-4 estimated by the Office of Vital Statistics using the age group 0-4 minus the age group <1 estimate.

**CHART P-4: RESIDENT MIDYEAR POPULATION ESTIMATES, BY RACE AND GENDER,
FLORIDA, 1950, 1960, 1970, 1980, AND 1986 - 2005**

YEAR	TOTAL	WHITE			NONWHITE		
		TOTAL	MALE	FEMALE	TOTAL	MALE	FEMALE
1950	2,821,000	2,208,200	1,093,400	1,114,800	612,800	298,100	314,700
1960	5,003,200	4,109,000	2,021,861	2,087,139	894,200	439,117	455,083
1970	6,851,168	5,775,400	2,791,845	2,983,555	1,075,768	515,580	560,188
1980	9,840,309	8,389,968	4,031,868	4,358,100	1,450,341	688,173	762,168
1986	11,667,609	9,933,327	4,801,909	5,131,418	1,734,282	826,037	908,245
1987	11,997,568	10,206,137	4,938,832	5,267,305	1,791,431	853,647	937,784
1988	12,307,006	10,457,575	5,065,283	5,392,292	1,849,431	881,528	967,903
1989	12,638,537	10,727,690	5,201,481	5,526,209	1,910,847	911,336	999,511
1990	13,028,995	11,040,436	5,358,366	5,682,070	1,988,559	949,381	1,039,178
1991	13,323,537	11,241,619	5,464,814	5,776,805	2,081,918	995,538	1,086,380
1992	13,551,240	11,394,887	5,544,527	5,850,360	2,156,353	1,032,848	1,123,505
1993	13,803,005	11,566,432	5,628,837	5,937,595	2,236,573	1,071,579	1,164,994
1994	14,120,488	11,791,929	5,741,676	6,050,253	2,328,559	1,116,739	1,211,820
1995	14,405,455	11,995,367	5,846,164	6,149,203	2,410,088	1,156,288	1,253,800
1996	14,701,288	12,205,330	5,957,258	6,248,072	2,495,958	1,198,212	1,297,746
1997	15,011,692	12,422,254	6,070,358	6,351,896	2,589,438	1,243,061	1,346,377
1998	15,309,939	12,633,341	6,177,496	6,455,845	2,676,598	1,284,870	1,391,728
1999	15,679,603	12,903,840	6,313,637	6,590,203	2,775,763	1,333,783	1,441,980
2000	16,074,763	13,200,518	6,461,066	6,739,452	2,874,245	1,382,504	1,491,741
2001	16,412,225	13,448,485	6,583,357	6,865,128	2,963,740	1,426,611	1,537,129
2002	16,772,046	13,728,022	6,716,136	7,011,886	3,044,024	1,465,491	1,578,533
2003	17,164,199	14,053,405	6,876,867	7,176,537	3,110,793	1,497,840	1,612,952
2004	17,613,368	14,390,040	7,067,458	7,322,582	3,223,328	1,557,668	1,665,660
2005	18,018,497	14,581,665	7,159,531	7,422,134	3,436,832	1,656,097	1,780,735

Source: The Florida Legislature, Office of Economic and Demographic Research, July 1, estimate.

**CHART P-5: RESIDENT MIDYEAR POPULATION ESTIMATES, BY AGE GROUPS,
FLORIDA, 1950, 1960, 1970, 1980, AND 1986 - 2005**

YEAR	AGE GROUP											
	TOTAL	<1 ¹	1-4 ²	5-14	15-24	25-34	35-44	45-54	55-64	65-74	75-84	85+
1950	2,821,000	57,300	238,500	442,700	402,100	448,500	419,600	330,100	240,400	170,200	63,137	8,463
1960	5,003,200	110,882	431,405	935,118	644,065	630,714	656,774	562,536	468,696	395,413	142,581	25,016
1970	6,888,178	107,767	398,368	1,259,283	1,091,069	778,948	757,652	771,769	718,929	658,887	290,401	55,105
1980	9,836,232	130,414	441,294	1,306,304	1,639,780	1,432,434	1,047,500	995,623	1,132,847	1,072,207	518,739	119,090
1986	11,744,900	163,542	609,745	1,401,745	1,672,982	1,783,791	1,476,819	1,125,387	1,296,307	1,311,901	727,426	175,254
1987	12,136,000	168,667	651,665	1,464,236	1,687,164	1,857,724	1,578,774	1,190,106	1,328,075	1,311,607	722,012	175,970
1988	12,503,800	177,691	679,235	1,519,503	1,692,733	1,933,717	1,673,519	1,245,086	1,353,724	1,294,476	745,018	189,099
1989	12,838,700	185,045	698,397	1,570,372	1,695,777	2,002,372	1,761,740	1,295,467	1,370,268	1,338,929	731,277	189,056
1990	13,028,835	197,109	684,333	1,569,198	1,686,731	2,126,572	1,826,084	1,295,736	1,270,382	1,372,432	792,492	207,766
1991	13,323,601	197,613	707,121	1,620,217	1,697,664	2,147,353	1,907,965	1,347,846	1,276,049	1,390,555	814,565	216,653
1992	13,551,275	189,751	725,499	1,668,671	1,703,579	2,149,338	1,979,576	1,401,722	1,277,986	1,397,624	831,864	225,665
1993	13,803,114	190,802	730,290	1,723,407	1,715,962	2,148,508	2,052,870	1,465,276	1,285,818	1,403,702	850,443	236,036
1994	14,120,674	188,881	738,297	1,788,317	1,740,340	2,151,886	2,133,156	1,542,533	1,304,299	1,412,283	872,394	248,288
1995	14,405,661	187,133	741,078	1,848,159	1,763,627	2,144,345	2,204,473	1,621,488	1,325,433	1,416,139	893,149	260,637
1996	14,701,520	187,933	741,204	1,906,866	1,792,473	2,134,072	2,272,380	1,706,066	1,354,042	1,418,476	914,575	273,433
1997	15,011,969	190,946	740,783	1,962,205	1,826,090	2,121,383	2,335,606	1,795,169	1,392,121	1,422,460	938,453	286,753
1998	15,310,309	194,149	741,855	2,008,338	1,861,926	2,103,103	2,388,407	1,884,630	1,438,543	1,426,152	963,345	299,861
1999	15,679,636	195,364	753,784	2,054,209	1,911,069	2,092,283	2,442,450	1,983,298	1,501,892	1,437,224	994,088	313,975
2000	16,075,747	202,609	767,566	2,091,131	1,967,849	2,083,122	2,489,105	2,084,698	1,579,797	1,452,901	1,028,779	328,190
2001	16,410,669	203,952	790,052	2,106,977	2,020,383	2,065,296	2,513,586	2,176,649	1,664,079	1,467,252	1,061,753	340,690
2002	16,706,027	203,647	815,856	2,109,036	2,069,572	2,044,805	2,520,378	2,261,455	1,753,347	1,482,846	1,092,605	352,480
2003	17,164,199	210,910	808,880	2,169,089	2,142,348	2,126,715	2,553,743	2,320,209	1,807,740	1,535,939	1,118,895	369,727
2004	17,613,368	216,414	838,415	2,214,881	2,287,106	2,110,238	2,529,264	2,452,003	1,963,416	1,466,073	1,101,325	434,233
2005	18,018,497	224,553	852,314	2,275,772	2,334,592	2,176,924	2,575,152	2,513,917	2,002,872	1,481,723	1,162,886	417,792

*Source: The Florida Legislature, Office of Economic and Demographic Research, July 1 estimates.

1. Age group <1 estimated by the Office of Vital Statistics using Resident Live Births minus Resident Infant Deaths.

2. Age group 1-4 estimated by the Office of Vital Statistics using the age group 0-4 minus the age group <1 estimate.

TABLE P-1: RESIDENT MIDYEAR POPULATION ESTIMATES, BY RACE AND COUNTY, FLORIDA, 2005

	TOTAL	WHITE	NONWHITE
FLORIDA	18,018,497	14,581,665	3,436,832
ALACHUA	241,858	179,729	62,129
BAKER	23,980	20,399	3,581
BAY	162,499	138,587	23,912
BRADFORD	28,195	21,592	6,603
BREVARD	534,596	469,696	64,900
BROWARD	1,746,603	1,252,926	493,677
CALHOUN	14,011	11,288	2,723
CHARLOTTE	153,788	142,659	11,129
CITRUS	133,472	127,616	5,856
CLAY	171,118	150,713	20,405
COLLIER	320,859	296,195	24,664
COLUMBIA	61,744	50,253	11,491
MIAMI-DADE	2,432,276	1,843,604	588,672
DESOTO	32,391	27,520	4,871
DIXIE	15,482	13,942	1,540
DUVAL	865,965	564,459	301,506
ESCAMBIA	303,240	222,984	80,256
FLAGLER	80,559	70,294	10,265
FRANKLIN	10,909	9,616	1,293
GADSDEN	47,883	19,947	27,936
GILCHRIST	16,303	15,086	1,217
GLADES	10,743	9,032	1,711
GULF	16,543	12,890	3,653
HAMILTON	14,319	8,812	5,507
HARDEE	27,277	24,411	2,866
HENDRY	38,610	32,446	6,164
HERNANDO	152,049	142,386	9,663
HIGHLANDS	93,807	82,923	10,884
HILLSBOROUGH	1,137,583	900,175	237,408
HOLMES	19,189	17,354	1,835
INDIAN RIVER	130,849	117,585	13,264
JACKSON	49,883	35,560	14,323
JEFFERSON	14,265	8,999	5,266
LAFAYETTE	8,064	6,792	1,272
LAKE	265,716	239,192	26,524
LEE	555,874	504,816	51,058
LEON	272,749	175,865	96,884
LEVY	38,136	33,608	4,528
LIBERTY	7,623	5,832	1,791
MADISON	19,738	11,669	8,069
MANATEE	306,557	273,528	33,029
MARION	307,646	267,278	40,368
MARTIN	141,871	131,867	10,004
MONROE	82,628	76,846	5,782
NASSAU	66,019	60,587	5,432
OKALOOSA	189,766	161,677	28,089
OKEECHOBEE	37,752	33,786	3,966
ORANGE	1,050,939	766,116	284,823
OSCEOLA	237,659	203,972	33,687
PALM BEACH	1,272,335	1,033,245	239,090
PASCO	410,758	390,894	19,864
PINELLAS	948,925	818,540	130,385
POLK	545,064	454,629	90,435
PUTNAM	73,897	60,467	13,430
SAINT JOHNS	159,168	147,030	12,138
SAINT LUCIE	243,061	198,699	44,362
SANTA ROSA	137,245	126,369	10,876
SARASOTA	370,123	348,855	21,268
SEMINOLE	413,937	351,863	62,074
SUMTER	75,660	65,083	10,577
SUWANNEE	38,319	33,513	4,806
TAYLOR	21,395	16,592	4,803
UNION	15,135	11,391	3,744
VOLUSIA	497,224	437,276	59,948
WAKULLA	27,193	23,678	3,515
WALTON	54,218	48,990	5,228
WASHINGTON	23,255	19,442	3,813