

Fetal and Infant Deaths

FETAL DEATHS AND INFANT DEATHS

- The number of resident fetal deaths (stillbirths occurring at 20 or more weeks of gestation) decreased from 1,569 in 2009 to 1,551 in 2010. While this number decreased, the rate increased from 7.0 per 1,000 live births and fetal deaths to 7.2 per 1,000 live births and fetal deaths in 2010.
- Between 2009 and 2010, resident fetal deaths decreased among Whites from 904 to 822, and increased among Black and Other Races from 655 to 724.
- Of all resident fetal deaths in 2010, 65.8 percent were to mothers of Non-Hispanic and Non-Haitian origin, 22.2 percent were to mothers of Hispanic origin, 6.5 percent were to mothers of Haitian origin and 3.5 percent were to mothers whose ethnicity was unknown.
- The neonatal death rate decreased from 4.5 per 1,000 live births in 2009 to 4.3 per 1,000 live births in 2010. This rate has fluctuated very little from 4.9 per 1,000 live births in 1999. The 2010 rate represents less than half the rate of 1980 (9.7 per 1,000 live births).
- In 2010, the Black and Other Race neonatal death rate (7.2 per 1,000 live births) is more than twice the White rate (3.2 per 1,000 live births). The rate for Black and Other Race decreased from 7.8 per 1,000 live births in 2009, while the White rate was unchanged from 3.2 per 1,000 live births in 2009.
- Florida's 2010 infant mortality rate is 6.5 per 1,000 live births. This is a record low for the state rate. From 2000 to 2008, the resident infant mortality rate has only slightly fluctuated between a low of 7.0 per 1,000 live births to a high of 7.5 per 1,000 live births. The 2010 resident infant mortality rate has dropped 32.3 percent since 1990 and is currently about half the rate of 1980.
- The resident infant mortality rate decreased slightly from 6.9 per 1,000 live births in 2009 to 6.5 per 1,000 live births in 2010. Further analysis shows this slight decrease in the total rate is due to a decrease in the Black and Other Race infant mortality rate from 12.1 per 1,000 live births in 2009 to 10.8 per 1,000 live births in 2010. The infant mortality rate among Whites remained unchanged at 4.9 per 1,000 live births in 2010.
- In 2010, resident infant deaths among Non-Hispanic and Non-Haitian origin accounted for 71.3 percent of all resident infant deaths. Among other ethnic groups, infants of Hispanic origin represented 21.9 percent, infants of Haitian origin represented 5.4 percent and 1.4 percent occurred to infants whose ethnicity was unknown.
- Among all resident infant deaths during 2010, 66.4 percent were neonatal deaths (occurring before infants were 28 days old). Furthermore, 41.2 percent of infant deaths occurred to infants who were less than one day old.
- The top four leading causes of resident infant deaths in 2010 were: 1) Perinatal Period Conditions, 2) Congenital Malformations, 3) Unintentional Injuries (Accidents), and 4) Sudden Infant Death Syndrome (SIDS). These causes accounted for 80.8 percent of all resident infant deaths.

CHART F-1: RESIDENT FETAL DEATHS AND RATES PER 1,000 LIVE BIRTHS AND FETAL DEATHS, BY RACE, FLORIDA AND UNITED STATES TOTAL, CENSUS YEARS 1920-1990 AND 2000-2010

YEAR	NUMBER OF FETAL DEATHS - FL ²			RATES PER 1,000 - FL			RATE - U.S.
	TOTAL	WHITE	BLACK & OTHER	TOTAL	WHITE	BLACK & OTHER	TOTAL
1920 ¹	1,287	595	692	61.8	42.1	103.4	NA
1930 ¹	1,754	746	1,008	61.0	38.6	107.2	NA
1940	1,415	683	732	40.3	27.9	68.9	NA
1950	1,443	757	868	21.9	16.3	44.4	18.4 ³
1960	1,846	1,043	803	15.7	12.2	25.1	15.8 ³
1970	1,701	1,034	615	14.6	11.8	21.4	14.0
1980	1,355	847	491	10.2	8.6	14.1	9.1
1990	1,811	1,071	720	9.0	7.1	14.4	7.5
2000	1,675	954	704	8.1	6.3	13.0	6.6
2001	1,668	972	678	8.0	6.4	12.4	6.5
2002	1,591	920	657	7.7	6.0	12.2	6.4
2003	1,604	912	678	7.5	5.8	12.3	6.3
2004	1,701	966	723	7.7	6.0	12.4	6.3
2005	1,650	938	688	7.2	5.6	11.4	6.2
2006	1,756	1,020	733	7.3	5.8	11.6	NA
2007	1,840	1,042	792	7.6	5.9	12.2	NA
2008	1,688	951	725	7.2	5.6	11.3	NA
2009	1,569	904	655	7.0	5.6	10.5	NA
2010	1,551	822	724	7.2	5.3	11.9	NA

1. Only recorded data are available.
2. Data from 1920-1960 are based on the race of the child. Data from 1970 to present are based on the race of the mother.
3. Includes births and fetal deaths of persons who were not residents of the 50 states and the District of Columbia.

GRAPH F-1: RESIDENT FETAL DEATH RATES PER 1,000 LIVE BIRTHS AND FETAL DEATHS, BY RACE OF MOTHER, FLORIDA, AND UNITED STATES TOTAL, 2000-2010

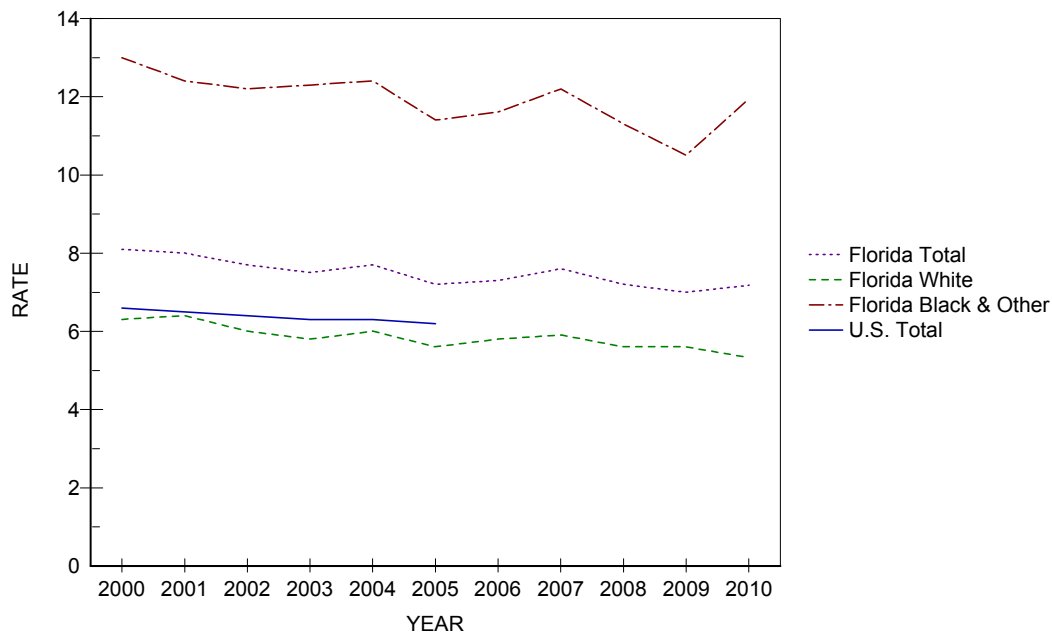


CHART F-2: RESIDENT NEONATAL DEATHS AND RATES PER 1,000 LIVE BIRTHS, BY RACE, FLORIDA AND UNITED STATES TOTAL, CENSUS YEARS 1940-1990 AND 2000-2010

YEAR	NUMBER OF NEONATAL DEATHS - FL			RATES - FL ¹			RATE - U.S.
	TOTAL	WHITE	BLACK & OTHER	TOTAL	WHITE	BLACK & OTHER	TOTAL
1940	1,142	662	480	33.9	27.8	48.5	28.8
1950	1,551	975	576	24.1	21.3	30.8	20.5
1960	2,404	1,531	873	20.8	18.1	28.0	18.7
1970	1,848	1,198	648	16.1	13.8	23.0	15.1
1980	1,282	791	490	9.7	8.1	14.2	8.5
1990	1,227	742	484	6.2	5.0	9.8	5.8
2000	925	526	397	4.5	3.5	7.4	4.6
2001	980	539	440	4.8	3.6	8.2	4.5
2002	1,032	596	436	5.0	3.9	8.2	4.7
2003	1,025	584	438	4.8	3.7	8.0	4.6
2004	989	563	425	4.5	3.5	7.4	4.5
2005	1,024	544	479	4.5	3.3	8.0	4.5
2006	1,122	630	490	4.7	3.6	7.8	4.5
2007	1,062	573	487	4.4	3.3	7.6	4.4
2008	1,061	592	467	4.6	3.5	7.4	4.3
2009	995	512	480	4.5	3.2	7.8	4.2 ²
2010	929	497	431	4.3	3.2	7.2	NA

1. Rates based on neonatal deaths by race of decedent, 1940-1960 live births based on race of child, 1970 to present live births based on race of mother.

GRAPH F-2: RESIDENT NEONATAL DEATH RATES PER 1,000 LIVE BIRTHS, BY RACE, FLORIDA AND UNITED STATES TOTAL, 2000-2010

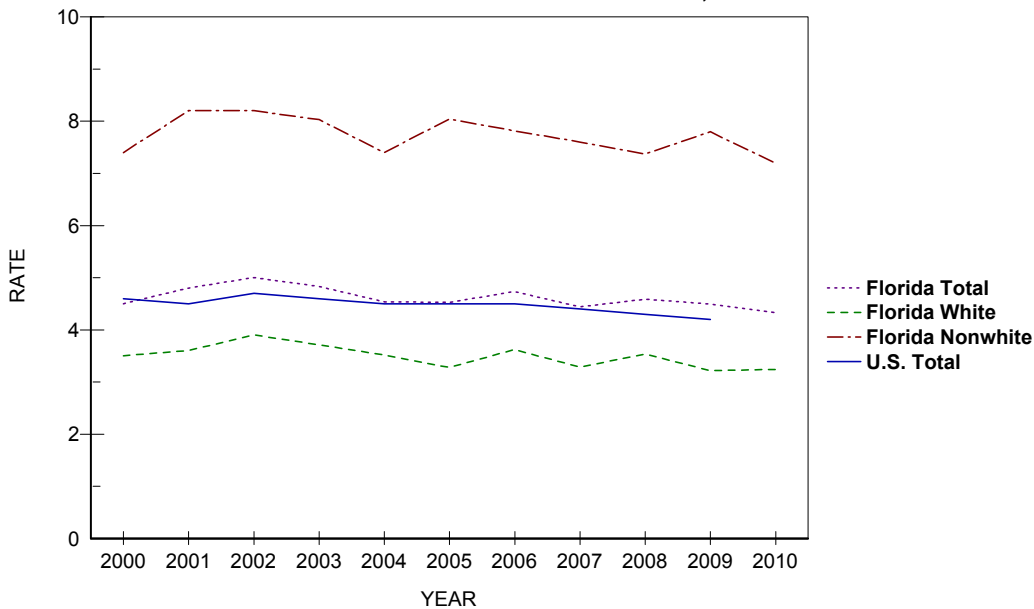


CHART F-3: RESIDENT INFANT DEATHS AND RATES PER 1,000 LIVE BIRTHS, BY RACE, FLORIDA AND UNITED STATES TOTAL, CENSUS YEARS 1920-1990 AND 2000-2010

YEAR	NUMBER OF INFANT DEATHS - FL			RATES - FL ²			RATE - U.S.
	TOTAL	WHITE	BLACK & OTHER	TOTAL	WHITE	BLACK & OTHER	TOTAL
1920 ¹	1,835	1,031	804	93.9	76.1	134.0	NA
1930 ¹	1,729	928	801	64.1	49.9	95.4	NA
1940	1,812	1,052	760	53.8	44.2	76.8	47.0
1950	2,078	1,225	853	32.3	26.8	45.7	29.2
1960	3,431	1,992	1,439	29.7	23.6	46.1	26.0
1970	2,470	1,538	930	21.5	17.7	33.0	20.0
1980	1,918	1,137	780	14.6	11.7	22.7	12.6
1990	1,912	1,123	787	9.6	7.5	16.0	9.2
2000	1,423	810	611	7.0	5.4	11.4	6.9
2001	1,495	839	655	7.3	5.5	12.3	6.8
2002	1,548	892	656	7.5	5.9	12.4	7.0
2003	1,584	907	674	7.5	5.8	12.4	6.9
2004	1,536	876	659	7.0	5.5	11.5	6.8
2005	1,626	882	743	7.2	5.3	12.5	6.9
2006	1,713	974	737	7.2	5.6	11.8	6.7
2007	1,689	906	781	7.1	5.2	12.2	6.8
2008	1,667	914	751	7.2	5.5	11.8	6.6
2009	1,525	780	742	6.9	4.9	12.1	6.4 ³
2010	1,400	750	649	6.5	4.9	10.8	6.1 ⁴

1. Only recorded data are available.

2. Rates based on neonatal deaths by race of decedent, 1920-1960 live births based on race of child, 1970 to present live births based on race of mother.

3. Preliminary data.

4. Provisional data.

GRAPH F-3: RESIDENT INFANT DEATH RATES PER 1,000 LIVE BIRTHS, BY RACE, FLORIDA AND UNITED STATES TOTAL, 2000-2010

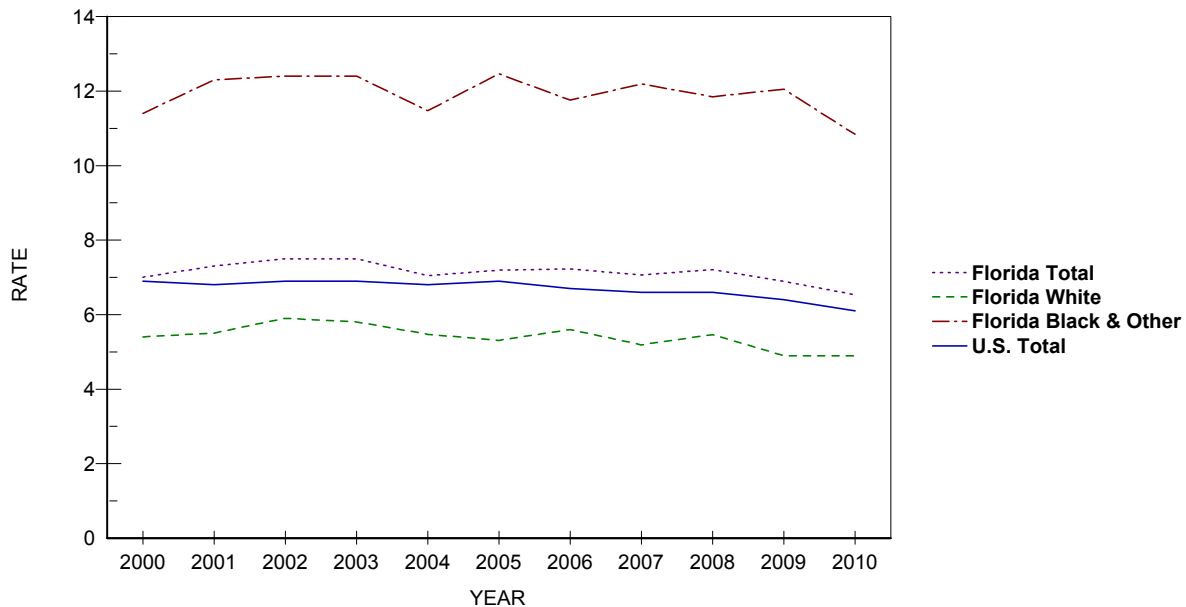


TABLE F-1: RESIDENT AND RECORDED FETAL DEATHS (OF 20 OR MORE WEEKS GESTATION) AND RATES PER 1,000 LIVE BIRTHS AND FETAL DEATHS, BY RACE OF MOTHER, BY COUNTY, FLORIDA, 2010

	RESIDENT FETAL DEATHS						RATES		
	NUMBERS								
	TOTAL	WHITE	BLACK AND OTHER			UNK	TOTAL	WHITE	BLACK & OTHER
		TOTAL	BLACK	OTHER					
FLORIDA	1,551	822	724	645	79	5	7.2	5.3	11.9
ALACHUA	21	7	14	13	1	0	7.3	4.0	12.5
BAKER	1	1	0	0	0	0	2.8	3.2	0.0
BAY	17	11	5	4	1	1	7.6	6.5	10.0
BRADFORD	1	1	0	0	0	0	2.9	4.0	0.0
BREVARD	33	19	14	12	2	0	6.6	4.7	14.2
BROWARD	183	56	125	112	13	2	8.5	4.9	13.1
CALHOUN	0	0	0	0	0	0	0.0	0.0	0.0
CHARLOTTE	7	4	3	2	1	0	6.9	4.5	21.9
CITRUS	7	7	0	0	0	0	6.7	7.2	0.0
CLAY	7	3	4	3	1	0	3.3	1.7	10.4
COLLIER	30	17	13	9	4	0	8.9	5.9	25.9
COLUMBIA	5	4	1	1	0	0	6.1	6.1	5.9
MIAMI-DADE	223	118	105	95	10	0	7.1	5.2	12.3
DESOTO	1	0	1	1	0	0	2.3	0.0	20.4
DIXIE	0	0	0	0	0	0	0.0	0.0	0.0
DUVAL	102	45	56	51	5	1	8.0	6.3	10.2
ESCAMBIA	22	9	13	13	0	0	5.6	3.6	9.0
FLAGLER	6	4	2	2	0	0	6.8	5.6	12.0
FRANKLIN	1	0	1	1	0	0	8.8	0.0	83.3
GADSDEN	4	2	2	2	0	0	5.9	8.3	4.6
GILCHRIST	0	0	0	0	0	0	0.0	0.0	0.0
GLADES	1	1	0	0	0	0	13.2	17.5	0.0
GULF	2	2	0	0	0	0	17.1	20.2	0.0
HAMILTON	0	0	0	0	0	0	0.0	0.0	0.0
HARDEE	2	2	0	0	0	0	4.6	4.9	0.0
HENDRY	4	2	2	1	1	0	6.5	3.8	22.0
HERNANDO	11	8	3	2	1	0	7.5	6.0	20.7
HIGHLANDS	9	5	4	3	1	0	9.5	6.6	21.5
HILLSBOROUGH	126	72	53	46	7	1	7.6	6.0	11.6
HOLMES	1	1	0	0	0	0	4.8	5.1	0.0
INDIAN RIVER	5	3	2	2	0	0	3.8	3.4	6.9
JACKSON	5	2	3	3	0	0	10.0	5.6	20.5
JEFFERSON	0	0	0	0	0	0	0.0	0.0	0.0
LAFAYETTE	2	2	0	0	0	0	21.7	23.3	0.0
LAKE	31	19	12	11	1	0	9.8	7.4	20.3
LEE	41	27	14	14	0	0	6.4	5.2	12.2
LEON	28	10	18	16	2	0	9.0	6.2	12.0
LEVY	3	2	1	1	0	0	6.9	5.4	14.9
LIBERTY	0	0	0	0	0	0	0.0	0.0	0.0
MADISON	4	0	4	4	0	0	18.6	0.0	47.1
MANATEE	14	11	3	3	0	0	4.2	4.0	5.0
MARION	16	7	9	7	2	0	4.7	2.7	11.4
MARTIN	7	3	4	4	0	0	5.7	2.8	25.6
MONROE	8	4	4	3	1	0	11.4	6.6	42.1
NASSAU	6	5	1	1	0	0	7.7	6.9	16.4
OKALOOSA	10	7	3	2	1	0	3.9	3.4	6.6
OKEECHOBEE	3	3	0	0	0	0	5.4	6.0	0.0
ORANGE	117	58	59	54	5	0	7.6	5.9	10.9
OSCEOLA	24	18	6	3	3	0	6.4	5.7	10.1
PALM BEACH	93	36	57	49	8	0	6.7	3.9	12.0
PASCO	32	28	4	3	1	0	6.6	6.5	8.1
PINELLAS	60	34	26	23	3	0	7.0	5.3	12.0
POLK	54	36	18	17	1	0	7.2	6.3	10.1
PUTNAM	5	3	2	2	0	0	5.5	4.5	8.4
SAINT JOHN'S	9	5	4	4	0	0	4.9	3.2	14.9
SAINT LUCIE	24	11	13	12	1	0	7.7	5.2	13.4
SANTA ROSA	12	12	0	0	0	0	7.0	7.8	0.0
SARASOTA	21	18	3	3	0	0	7.4	7.4	7.7
SEMINOLE	29	21	8	6	2	0	6.6	6.2	7.9
SUMTER	6	5	1	1	0	0	13.3	13.9	10.9
SUWANNEE	1	1	0	0	0	0	2.0	2.3	0.0
TAYLOR	2	1	1	1	0	0	7.3	4.9	14.3
UNION	1	0	1	1	0	0	5.7	0.0	45.5
VOLUSIA	44	25	19	19	0	0	9.2	6.6	19.2
WAKULLA	3	1	2	2	0	0	9.1	3.6	38.5
WALTON	3	2	1	1	0	0	4.8	3.5	20.4
WASHINGTON	1	1	0	0	0	0	4.1	5.0	0.0

TABLE F-1 (Cont.): RESIDENT AND RECORDED FETAL DEATHS (OF 20 OR MORE WEEKS GESTATION) AND RATES PER 1,000 LIVE BIRTHS AND FETAL DEATHS, BY RACE OF MOTHER, BY COUNTY, FLORIDA, 2010

	RECORDED FETAL DEATHS						RATES		
	NUMBERS						TOTAL	WHITE	BLACK & OTHER
	TOTAL	WHITE	BLACK AND OTHER			UNK			
		TOTAL	BLACK	OTHER					
FLORIDA	1,586	844	737	658	79	5	7.3	5.5	12.1
ALACHUA	40	22	18	17	1	0	6.7	5.1	10.9
BAKER	0	0	0	0	0	0	0.0	0.0	----
BAY	21	14	6	5	1	1	7.8	6.8	10.5
BRADFORD	1	1	0	0	0	0	333.3	333.3	----
BREVARD	29	18	11	10	1	0	5.9	4.5	11.4
BROWARD	220	71	147	133	14	2	9.4	5.8	13.8
CALHOUN	0	0	0	0	0	0	0.0	----	0.0
CHARLOTTE	6	3	3	2	1	0	5.1	3.0	18.8
CITRUS	6	6	0	0	0	0	6.8	7.3	0.0
CLAY	6	2	4	3	1	0	2.7	1.1	7.9
COLLIER	27	16	11	8	3	0	7.4	5.1	21.1
COLUMBIA	3	3	0	0	0	0	4.3	5.8	0.0
MIAMI-DADE	210	118	92	82	10	0	7.3	5.4	12.9
DESOTO	3	2	1	1	0	0	5.2	3.8	18.9
DIXIE	0	0	0	0	0	0	0.0	0.0	----
DUVAL	114	51	62	56	6	1	7.8	5.7	11.1
ESCAMBIA	36	21	15	15	0	0	6.5	5.3	9.5
FLAGLER	0	0	0	0	0	0	0.0	0.0	0.0
FRANKLIN	0	0	0	0	0	0	----	----	----
GADSDEN	1	0	1	1	0	0	200.0	0.0	250.0
GILCHRIST	0	0	0	0	0	0	0.0	0.0	----
GLADES	0	0	0	0	0	0	0.0	0.0	0.0
GULF	0	0	0	0	0	0	0.0	0.0	0.0
HAMILTON	0	0	0	0	0	0	----	----	----
HARDEE	0	0	0	0	0	0	0.0	0.0	0.0
HENDRY	0	0	0	0	0	0	0.0	0.0	----
HERNANDO	11	9	2	2	0	0	6.3	5.6	14.1
HIGHLANDS	6	3	3	3	0	0	4.8	2.9	13.8
HILLSBOROUGH	145	90	54	45	9	1	7.7	6.5	11.0
HOLMES	0	0	0	0	0	0	0.0	0.0	----
INDIAN RIVER	5	3	2	2	0	0	4.3	4.0	7.9
JACKSON	4	1	3	3	0	0	7.7	2.7	19.7
JEFFERSON	0	0	0	0	0	0	0.0	0.0	----
LAFAYETTE	0	0	0	0	0	0	----	----	----
LAKE	20	12	8	7	1	0	7.0	5.1	14.8
LEE	46	31	15	15	0	0	7.0	5.7	12.9
LEON	41	15	26	24	2	0	8.3	5.6	11.6
LEVY	0	0	0	0	0	0	0.0	0.0	----
LIBERTY	0	0	0	0	0	0	----	----	----
MADISON	0	0	0	0	0	0	----	----	----
MANATEE	17	13	4	4	0	0	6.0	5.6	7.7
MARION	12	4	8	6	2	0	4.5	1.9	12.7
MARTIN	12	7	5	5	0	0	6.3	4.3	18.7
MONROE	3	2	1	0	1	0	5.8	4.5	12.7
NASSAU	5	4	1	1	0	0	10.5	9.6	17.5
OKALOOSA	9	7	2	2	0	0	3.6	3.5	4.3
OKEECHOBEE	1	1	0	0	0	0	100.0	100.0	----
ORANGE	167	92	75	65	10	0	8.6	6.9	12.2
OSCEOLA	23	20	3	2	1	0	6.4	6.7	5.1
PALM BEACH	105	37	68	60	8	0	6.5	3.4	12.7
PASCO	14	10	4	3	1	0	8.9	7.2	22.7
PINELLAS	66	35	31	27	4	0	6.5	4.5	13.6
POLK	39	27	12	12	0	0	6.2	5.6	7.9
PUTNAM	1	1	0	0	0	0	2.5	4.0	0.0
SAINT JOHNS	6	4	2	2	0	0	5.3	4.3	9.8
SAINT LUCIE	12	7	5	4	1	0	5.7	5.2	6.6
SANTA ROSA	3	2	1	0	1	0	11.1	8.4	32.3
SARASOTA	23	20	3	3	0	0	7.4	7.6	6.8
SEMINOLE	20	11	9	9	0	0	6.3	4.5	11.8
SUMTER	0	0	0	0	0	0	0.0	0.0	----
SUWANNEE	0	0	0	0	0	0	0.0	0.0	----
TAYLOR	0	0	0	0	0	0	0.0	0.0	0.0
UNION	0	0	0	0	0	0	----	----	----
VOLUSIA	42	24	18	18	0	0	9.9	7.3	18.6
WAKULLA	0	0	0	0	0	0	0.0	0.0	----
WALTON	5	4	1	1	0	0	6.6	5.8	16.1
WASHINGTON	0	0	0	0	0	0	----	----	----

TABLE F-2: RESIDENT FETAL DEATHS BY HISPANIC OR HAITIAN ORIGIN OF MOTHER, BY COUNTY, FLORIDA, 2010

	TOTAL	HISPANIC ORIGIN								NON-HISPANIC/HAITIAN	UNK
		TOTAL HISPANIC	MEXICAN	PUERTO RICAN	CUBAN	CENTRAL/SOUTH AMERICAN	OTHER/UNK HISPANIC	HAITIAN			
FLORIDA	1,551	345	78	73	62	113	19	101	1,050	55	
ALACHUA	21	1	0	0	0	1	0	0	20	0	
BAKER	1	0	0	0	0	0	0	0	1	0	
BAY	17	1	1	0	0	0	0	0	15	1	
BRADFORD	1	0	0	0	0	0	0	0	1	0	
BREVARD	33	4	0	1	1	1	1	0	28	1	
BROWARD	183	31	1	3	4	22	1	34	112	6	
CALHOUN	0	0	0	0	0	0	0	0	0	0	
CHARLOTTE	7	1	0	0	1	0	0	0	6	0	
CITRUS	7	0	0	0	0	0	0	0	7	0	
CLAY	7	2	0	2	0	0	0	0	5	0	
COLLIER	30	13	7	0	2	3	1	7	10	0	
COLUMBIA	5	0	0	0	0	0	0	0	5	0	
MIAMI-DADE	223	101	4	7	45	40	5	17	80	25	
DESOTO	1	0	0	0	0	0	0	0	1	0	
DIXIE	0	0	0	0	0	0	0	0	0	0	
DUVAL	102	11	4	2	0	4	1	0	89	2	
ESCAMBIA	22	0	0	0	0	0	0	0	22	0	
FLAGLER	6	0	0	0	0	0	0	0	6	0	
FRANKLIN	1	0	0	0	0	0	0	0	1	0	
GADSDEN	4	1	0	0	0	1	0	0	3	0	
GILCHRIST	0	0	0	0	0	0	0	0	0	0	
GLADES	1	1	1	0	0	0	0	0	0	0	
GULF	2	0	0	0	0	0	0	0	2	0	
HAMILTON	0	0	0	0	0	0	0	0	0	0	
HARDEE	2	2	2	0	0	0	0	0	0	0	
HENDRY	4	2	2	0	0	0	0	0	1	1	
HERNANDO	11	2	0	2	0	0	0	0	8	1	
HIGHLANDS	9	0	0	0	0	0	0	0	9	0	
HILLSBOROUGH	126	34	12	10	3	7	2	1	85	6	
HOLMES	1	0	0	0	0	0	0	0	1	0	
INDIAN RIVER	5	1	1	0	0	0	0	0	4	0	
JACKSON	5	0	0	0	0	0	0	0	5	0	
JEFFERSON	0	0	0	0	0	0	0	0	0	0	
LAFAYETTE	2	0	0	0	0	0	0	0	2	0	
LAKE	31	9	4	3	0	2	0	0	22	0	
LEE	41	10	3	3	2	0	2	2	29	0	
LEON	28	0	0	0	0	0	0	0	28	0	
LEVY	3	0	0	0	0	0	0	0	3	0	
LIBERTY	0	0	0	0	0	0	0	0	0	0	
MADISON	4	0	0	0	0	0	0	0	4	0	
MANATEE	14	5	4	0	1	0	0	1	8	0	
MARION	16	1	0	0	0	1	0	0	15	0	
MARTIN	7	2	2	0	0	0	0	0	5	0	
MONROE	8	2	0	0	0	2	0	3	3	0	
NASSAU	6	0	0	0	0	0	0	0	6	0	
OKALOOSA	10	0	0	0	0	0	0	0	10	0	
OKEECHOBEE	3	1	1	0	0	0	0	0	1	1	
ORANGE	117	30	7	14	2	6	1	9	73	5	
OSCEOLA	24	15	4	6	1	3	1	1	8	0	
PALM BEACH	93	22	5	4	0	12	1	21	46	4	
PASCO	32	4	0	3	0	0	1	0	28	0	
PINELLAS	60	3	1	1	0	1	0	0	56	1	
POLK	54	9	5	4	0	0	0	2	43	0	
PUTNAM	5	1	0	1	0	0	0	0	4	0	
SAINT JOHNS	9	0	0	0	0	0	0	0	9	0	
SAINT LUCIE	24	8	4	2	0	2	0	3	13	0	
SANTA ROSA	12	2	1	0	0	0	1	0	10	0	
SARASOTA	21	1	1	0	0	0	0	0	20	0	
SEMINOLE	29	7	1	1	0	4	1	0	21	1	
SUMTER	6	0	0	0	0	0	0	0	6	0	
SUWANNEE	1	0	0	0	0	0	0	0	1	0	
TAYLOR	2	0	0	0	0	0	0	0	2	0	
UNION	1	0	0	0	0	0	0	0	1	0	
VOLUSIA	44	5	0	4	0	1	0	0	39	0	
WAKULLA	3	0	0	0	0	0	0	0	3	0	
WALTON	3	0	0	0	0	0	0	0	3	0	
WASHINGTON	1	0	0	0	0	0	0	0	1	0	

TABLE F-3: RESIDENT FETAL DEATHS BY AGE OF MOTHER, BY COUNTY, FLORIDA, 2010

	AGE OF MOTHER														
	TOTAL	<13	13	14	15	16	17	18	19	20-24	25-29	30-34	35-44	45+	UNK
FLORIDA	1,551	0	0	1	9	13	29	53	52	336	405	327	295	9	22
ALACHUA	21	0	0	0	0	0	0	0	0	8	7	1	5	0	0
BAKER	1	0	0	0	0	0	0	0	0	0	1	0	0	0	0
BAY	17	0	0	0	0	0	1	1	1	4	3	2	5	0	0
BRADFORD	1	0	0	0	0	0	0	0	0	0	0	1	0	0	0
BREVARD	33	0	0	0	1	0	0	4	0	6	13	3	5	1	0
BROWARD	183	0	0	0	1	1	4	2	6	25	48	39	47	0	10
CALHOUN	0	0	0	0	0	0	0	0	0	0	0	0	0	0	0
CHARLOTTE	7	0	0	0	0	0	1	0	0	1	2	1	2	0	0
CITRUS	7	0	0	0	0	0	1	0	0	2	1	2	1	0	0
CLAY	7	0	0	0	0	0	1	0	0	2	1	1	2	0	0
COLLIER	30	0	0	0	1	1	0	0	0	6	7	11	4	0	0
COLUMBIA	5	0	0	0	0	0	1	1	0	0	0	3	0	0	0
MIAMI-DADE	223	0	0	0	1	1	5	4	3	44	59	57	42	4	3
DESOTO	1	0	0	0	0	0	0	0	0	1	0	0	0	0	0
DIXIE	0	0	0	0	0	0	0	0	0	0	0	0	0	0	0
DUVAL	102	0	0	0	1	1	1	6	2	34	30	11	16	0	0
ESCAMBIA	22	0	0	0	0	0	2	0	1	5	8	1	5	0	0
FLAGLER	6	0	0	0	0	0	0	1	0	1	2	0	2	0	0
FRANKLIN	1	0	0	0	0	0	0	0	1	0	0	0	0	0	0
GADSDEN	4	0	0	0	0	0	0	0	0	1	3	0	0	0	0
GILCHRIST	0	0	0	0	0	0	0	0	0	0	0	0	0	0	0
GLADES	1	0	0	0	0	0	0	0	1	0	0	0	0	0	0
GULF	2	0	0	0	0	0	0	0	0	1	1	0	0	0	0
HAMILTON	0	0	0	0	0	0	0	0	0	0	0	0	0	0	0
HARDEE	2	0	0	0	0	0	0	1	0	1	0	0	0	0	0
HENDRY	4	0	0	0	0	0	1	1	0	0	1	1	0	0	0
HERNANDO	11	0	0	0	0	0	0	1	0	3	3	2	2	0	0
HIGHLANDS	9	0	0	0	0	0	0	0	1	1	3	2	2	0	0
HILLSBOROUGH	126	0	0	0	0	2	1	3	9	19	30	35	26	1	0
HOLMES	1	0	0	0	0	0	0	0	0	1	0	0	0	0	0
INDIAN RIVER	5	0	0	0	0	0	0	2	0	1	0	2	0	0	0
JACKSON	5	0	0	0	0	0	1	0	0	1	0	3	0	0	0
JEFFERSON	0	0	0	0	0	0	0	0	0	0	0	0	0	0	0
LAFAYETTE	2	0	0	0	0	0	0	0	0	1	0	1	0	0	0
LAKE	31	0	0	0	0	0	0	1	1	6	11	5	6	0	1
LEE	41	0	0	0	0	0	0	0	1	13	12	9	6	0	0
LEON	28	0	0	1	0	0	0	1	1	8	7	5	4	1	0
LEVY	3	0	0	0	0	0	0	0	0	2	1	0	0	0	0
LIBERTY	0	0	0	0	0	0	0	0	0	0	0	0	0	0	0
MADISON	4	0	0	0	0	1	0	1	0	0	2	0	0	0	0
MANATEE	14	0	0	0	0	0	0	0	2	4	5	2	0	1	0
MARION	16	0	0	0	0	0	1	0	0	4	3	5	2	0	1
MARTIN	7	0	0	0	0	0	0	1	0	2	1	2	1	0	0
MONROE	8	0	0	0	0	0	0	0	0	1	1	3	2	0	1
NASSAU	6	0	0	0	0	0	0	0	0	1	2	1	2	0	0
OKALOOSA	10	0	0	0	0	1	0	0	0	4	5	0	0	0	0
OKEECHOBEE	3	0	0	0	0	0	0	0	0	1	0	1	0	0	1
ORANGE	117	0	0	0	1	1	3	8	4	25	25	22	26	0	2
OSCEOLA	24	0	0	0	0	0	1	0	1	4	8	6	4	0	0
PALM BEACH	93	0	0	0	0	2	1	3	2	21	22	18	21	1	2
PASCO	32	0	0	0	0	0	1	1	1	9	8	6	6	0	0
PINELLAS	60	0	0	0	0	0	0	5	3	11	17	12	12	0	0
POLK	54	0	0	0	0	0	0	4	1	13	14	11	11	0	0
PUTNAM	5	0	0	0	0	0	1	0	0	2	1	1	0	0	0
SAINT JOHNS	9	0	0	0	0	0	0	0	1	2	4	0	2	0	0
SAINT LUCIE	24	0	0	0	1	1	0	0	3	4	3	11	1	0	0
SANTA ROSA	12	0	0	0	1	0	0	0	0	2	3	4	2	0	0
SARASOTA	21	0	0	0	0	0	0	1	1	5	5	6	3	0	0
SEMINOLE	29	0	0	0	0	1	0	0	1	5	9	6	6	0	1
SUMTER	6	0	0	0	0	0	0	0	0	3	1	1	1	0	0
SUWANNEE	1	0	0	0	0	0	0	0	0	0	0	0	1	0	0
TAYLOR	2	0	0	0	0	0	0	0	0	0	0	0	2	0	0
UNION	1	0	0	0	0	0	0	0	0	0	0	1	0	0	0
VOLUSIA	44	0	0	0	1	0	1	0	4	12	8	10	8	0	0
WAKULLA	3	0	0	0	0	0	0	0	0	2	1	0	0	0	0
WALTON	3	0	0	0	0	0	0	0	0	1	2	0	0	0	0
WASHINGTON	1	0	0	0	0	0	0	0	0	0	1	0	0	0	0

TABLE F-4: RESIDENT AND RECORDED NEONATAL DEATHS (UNDER 28 DAYS) AND RATES PER 1,000 LIVE BIRTHS, BY RACE, BY COUNTY, FLORIDA, 2010

	RESIDENT NEONATAL DEATHS						RATES*		
	TOTAL	WHITE	NUMBERS			UNK	TOTAL	WHITE	BLACK & OTHER
			TOTAL	BLACK	OTHER				
FLORIDA	929	497	431	385	46	1	4.3	3.2	7.2
ALACHUA	23	11	12	12	0	0	8.0	6.2	10.9
BAKER	2	2	0	0	0	0	5.7	6.5	0.0
BAY	5	5	0	0	0	0	2.3	3.0	0.0
BRADFORD	0	0	0	0	0	0	0.0	0.0	0.0
BREVARD	18	12	6	5	1	0	3.6	3.0	6.2
BROWARD	88	25	63	56	7	0	4.1	2.2	6.7
CALHOUN	0	0	0	0	0	0	0.0	0.0	0.0
CHARLOTTE	3	2	1	1	0	0	3.0	2.3	7.5
CITRUS	5	5	0	0	0	0	4.8	5.2	0.0
CLAY	5	4	1	1	0	0	2.3	2.3	2.6
COLLIER	13	7	6	6	0	0	3.9	2.5	12.3
COLUMBIA	3	3	0	0	0	0	3.7	4.6	0.0
MIAMI-DADE	90	49	41	40	1	0	2.9	2.2	4.9
DESOTO	2	2	0	0	0	0	4.6	5.2	0.0
DIXIE	0	0	0	0	0	0	0.0	0.0	0.0
DUVAL	71	28	43	36	7	0	5.6	3.9	7.9
ESCAMBIA	26	13	13	12	1	0	6.6	5.2	9.1
FLAGLER	5	4	1	1	0	0	5.7	5.6	6.1
FRANKLIN	0	0	0	0	0	0	0.0	0.0	0.0
GADSDEN	4	0	4	4	0	0	6.0	0.0	9.2
GILCHRIST	1	1	0	0	0	0	5.3	5.5	0.0
GLADES	1	1	0	0	0	0	13.3	17.9	0.0
GULF	0	0	0	0	0	0	0.0	0.0	0.0
HAMILTON	0	0	0	0	0	0	0.0	0.0	0.0
HARDEE	5	5	0	0	0	0	11.5	12.3	0.0
HENDRY	0	0	0	0	0	0	0.0	0.0	0.0
HERNANDO	5	4	1	1	0	0	3.4	3.0	7.0
HIGHLANDS	5	2	3	3	0	0	5.3	2.6	16.5
HILLSBOROUGH	91	47	44	39	5	0	5.5	4.0	9.8
HOLMES	1	1	0	0	0	0	4.9	5.2	0.0
INDIAN RIVER	7	3	4	3	1	0	5.4	3.5	13.8
JACKSON	2	0	2	2	0	0	4.0	0.0	14.0
JEFFERSON	1	1	0	0	0	0	7.9	15.2	0.0
LAFAYETTE	0	0	0	0	0	0	0.0	0.0	0.0
LAKE	9	4	5	5	0	0	2.9	1.6	8.7
LEE	14	9	5	5	0	0	2.2	1.7	4.4
LEON	16	2	14	14	0	0	5.2	1.3	9.4
LEVY	2	1	1	1	0	0	4.6	2.7	15.2
LIBERTY	0	0	0	0	0	0	0.0	0.0	0.0
MADISON	2	0	2	2	0	0	9.5	0.0	24.7
MANATEE	17	13	4	3	1	0	5.1	4.7	6.6
MARION	25	16	9	8	1	0	7.4	6.1	11.5
MARTIN	1	1	0	0	0	0	0.8	0.9	0.0
MONROE	3	3	0	0	0	0	4.3	5.0	0.0
NASSAU	4	4	0	0	0	0	5.2	5.6	0.0
OKALOOSA	4	3	1	1	0	0	1.6	1.4	2.2
OKEECHOBEE	5	5	0	0	0	0	9.1	10.1	0.0
ORANGE	89	34	54	45	9	1	5.9	3.5	10.0
OSCEOLA	17	10	7	5	2	0	4.6	3.2	11.9
PALM BEACH	46	27	19	19	0	0	3.3	3.0	4.0
PASCO	17	14	3	2	1	0	3.5	3.3	6.2
PINELLAS	51	30	21	17	4	0	6.0	4.7	9.8
POLK	37	29	8	8	0	0	5.0	5.1	4.5
PUTNAM	4	2	2	1	1	0	4.5	3.0	8.5
SAINT JOHNS	5	4	1	0	1	0	2.8	2.6	3.8
SAINT LUCIE	10	4	6	6	0	0	3.3	1.9	6.3
SANTA ROSA	7	6	1	1	0	0	4.1	3.9	5.7
SARASOTA	8	4	4	3	1	0	2.8	1.7	10.3
SEMINOLE	21	12	9	9	0	0	4.8	3.6	9.0
SUMTER	0	0	0	0	0	0	0.0	0.0	0.0
SUWANNEE	3	3	0	0	0	0	5.9	6.9	0.0
TAYLOR	5	3	2	2	0	0	18.5	14.9	29.0
UNION	0	0	0	0	0	0	0.0	0.0	0.0
VOLUSIA	22	15	7	6	1	0	4.7	4.0	7.2
WAKULLA	1	1	0	0	0	0	3.1	3.6	0.0
WALTON	2	1	1	0	1	0	3.2	1.8	20.8
WASHINGTON	0	0	0	0	0	0	0.0	0.0	0.0

*Rates based on neonatal deaths by race of decedent, live births by race of mother.

TABLE F-4 (Cont.): RESIDENT AND RECORDED NEONATAL DEATHS (UNDER 28 DAYS) AND RATES PER 1,000 LIVE BIRTHS, BY RACE, BY COUNTY, FLORIDA, 2010

	RECORDED NEONATAL DEATHS						RATES*		
	TOTAL	WHITE	NUMBERS			UNK	TOTAL	WHITE	BLACK & OTHER
			TOTAL	BLACK	OTHER				
FLORIDA	955	514	440	395	45	1	4.4	3.3	7.3
ALACHUA	65	43	22	22	0	0	11.0	10.0	13.5
BAKER	0	0	0	0	0	0	0.0	0.0	----
BAY	4	4	0	0	0	0	1.5	2.0	0.0
BRADFORD	0	0	0	0	0	0	0.0	0.0	----
BREVARD	6	4	2	1	1	0	1.2	1.0	2.1
BROWARD	99	31	68	61	7	0	4.3	2.6	6.5
CALHOUN	0	0	0	0	0	0	0.0	----	0.0
CHARLOTTE	2	0	2	2	0	0	1.7	0.0	12.7
CITRUS	1	1	0	0	0	0	1.1	1.2	0.0
CLAY	2	2	0	0	0	0	0.9	1.1	0.0
COLLIER	9	3	6	6	0	0	2.5	1.0	11.8
COLUMBIA	1	1	0	0	0	0	1.4	1.9	0.0
MIAMI-DADE	99	56	43	42	1	0	3.5	2.6	6.1
DESOTO	3	3	0	0	0	0	5.2	5.7	0.0
DIXIE	0	0	0	0	0	0	0.0	0.0	----
DUVAL	89	42	47	38	9	0	6.2	4.7	8.5
ESCAMBIA	38	24	14	13	1	0	6.9	6.1	9.0
FLAGLER	0	0	0	0	0	0	0.0	0.0	0.0
FRANKLIN	0	0	0	0	0	0	----	----	----
GADSDEN	0	0	0	0	0	0	0.0	0.0	0.0
GILCHRIST	0	0	0	0	0	0	0.0	0.0	----
GLADES	0	0	0	0	0	0	0.0	0.0	0.0
GULF	0	0	0	0	0	0	0.0	0.0	0.0
HAMILTON	0	0	0	0	0	0	----	----	----
HARDEE	0	0	0	0	0	0	0.0	0.0	0.0
HENDRY	0	0	0	0	0	0	0.0	0.0	----
HERNANDO	1	1	0	0	0	0	0.6	0.6	0.0
HIGHLANDS	6	5	1	1	0	0	4.8	4.8	4.7
HILLSBOROUGH	125	71	54	47	7	0	6.7	5.2	11.1
HOLMES	0	0	0	0	0	0	0.0	0.0	----
INDIAN RIVER	2	1	1	1	0	0	1.7	1.3	4.0
JACKSON	1	0	1	1	0	0	1.9	0.0	6.7
JEFFERSON	0	0	0	0	0	0	0.0	0.0	----
LAFAYETTE	0	0	0	0	0	0	----	----	----
LAKE	2	1	1	1	0	0	0.7	0.4	1.9
LEE	19	14	5	5	0	0	2.9	2.6	4.4
LEON	25	3	22	22	0	0	5.1	1.1	10.0
LEVY	0	0	0	0	0	0	0.0	0.0	----
LIBERTY	0	0	0	0	0	0	----	----	----
MADISON	0	0	0	0	0	0	----	----	----
MANATEE	5	4	1	1	0	0	1.8	1.7	1.9
MARION	5	2	3	2	1	0	1.9	1.0	4.8
MARTIN	0	0	0	0	0	0	0.0	0.0	0.0
MONROE	1	1	0	0	0	0	1.9	2.3	0.0
NASSAU	1	1	0	0	0	0	2.1	2.4	0.0
OKALOOSA	2	2	0	0	0	0	0.8	1.0	0.0
OKEECHOBEE	1	1	0	0	0	0	111.1	111.1	----
ORANGE	170	87	82	71	11	1	8.8	6.6	13.5
OSCEOLA	4	2	2	2	0	0	1.1	0.7	3.4
PALM BEACH	56	31	25	25	0	0	3.5	2.9	4.7
PASCO	3	2	1	1	0	0	1.9	1.4	5.8
PINELLAS	67	41	26	21	5	0	6.7	5.3	11.6
POLK	10	8	2	2	0	0	1.6	1.7	1.3
PUTNAM	3	1	2	1	1	0	7.4	4.0	13.0
SAINT JOHNS	0	0	0	0	0	0	0.0	0.0	0.0
SAINT LUCIE	2	2	0	0	0	0	1.0	1.5	0.0
SANTA ROSA	1	1	0	0	0	0	3.7	4.2	0.0
SARASOTA	8	7	1	0	1	0	2.6	2.7	2.3
SEMINOLE	3	0	3	3	0	0	0.9	0.0	4.0
SUMTER	1	1	0	0	0	0	250.0	250.0	----
SUWANNEE	0	0	0	0	0	0	0.0	0.0	----
TAYLOR	1	1	0	0	0	0	500.0	1,000.0	0.0
UNION	0	0	0	0	0	0	----	----	----
VOLUSIA	8	6	2	2	0	0	1.9	1.8	2.1
WAKULLA	0	0	0	0	0	0	0.0	0.0	----
WALTON	4	3	1	1	0	0	5.3	4.4	16.4
WASHINGTON	0	0	0	0	0	0	----	----	----

*Rates based on neonatal deaths by race of decedent, live births by race of mother.

TABLE F-5: RESIDENT AND RECORDED INFANT DEATHS (UNDER 1 YEAR) AND RATES PER 1,000 LIVE BIRTHS, BY RACE, BY COUNTY, FLORIDA, 2010

	RESIDENT INFANT DEATHS						RATES*		
	NUMBERS						TOTAL	WHITE	BLACK & OTHER
	TOTAL	WHITE	BLACK AND OTHER			UNK			
		TOTAL	BLACK	OTHER					
FLORIDA	1,400	750	649	580	69	1	6.5	4.9	10.8
ALACHUA	29	15	14	14	0	0	10.1	8.5	12.7
BAKER	4	3	1	0	1	0	11.4	9.8	23.3
BAY	8	8	0	0	0	0	3.6	4.8	0.0
BRADFORD	0	0	0	0	0	0	0.0	0.0	0.0
BREVARD	32	19	13	12	1	0	6.4	4.8	13.4
BROWARD	135	42	93	82	11	0	6.3	3.7	9.9
CALHOUN	1	1	0	0	0	0	6.4	7.6	0.0
CHARLOTTE	5	3	2	2	0	0	4.9	3.4	14.9
CITRUS	7	7	0	0	0	0	6.7	7.2	0.0
CLAY	8	6	2	1	1	0	3.7	3.4	5.2
COLLIER	20	14	6	6	0	0	6.0	4.9	12.3
COLUMBIA	6	5	1	1	0	0	7.3	7.7	6.0
MIAMI-DADE	138	71	67	65	2	0	4.4	3.1	7.9
DESOTO	2	2	0	0	0	0	4.6	5.2	0.0
DIXIE	0	0	0	0	0	0	0.0	0.0	0.0
DUVAL	102	41	61	52	9	0	8.1	5.8	11.3
ESCAMBIA	40	17	23	22	1	0	10.2	6.8	16.1
FLAGLER	6	5	1	1	0	0	6.9	7.0	6.1
FRANKLIN	1	1	0	0	0	0	8.9	10.1	0.0
GADSDEN	7	1	6	6	0	0	10.4	4.2	13.8
GILCHRIST	1	1	0	0	0	0	5.3	5.5	0.0
GLADES	2	1	1	1	0	0	26.7	17.9	52.6
GULF	1	1	0	0	0	0	8.7	10.3	0.0
HAMILTON	1	1	0	0	0	0	5.6	8.0	0.0
HARDEE	6	6	0	0	0	0	13.8	14.8	0.0
HENDRY	0	0	0	0	0	0	0.0	0.0	0.0
HERNANDO	9	8	1	1	0	0	6.2	6.1	7.0
HIGHLANDS	8	4	4	4	0	0	8.5	5.3	22.0
HILLSBOROUGH	122	65	57	51	6	0	7.4	5.5	12.6
HOLMES	2	2	0	0	0	0	9.7	10.3	0.0
INDIAN RIVER	11	4	7	6	1	0	8.4	4.6	24.2
JACKSON	2	0	2	2	0	0	4.0	0.0	14.0
JEFFERSON	1	1	0	0	0	0	7.9	15.2	0.0
LAFAYETTE	0	0	0	0	0	0	0.0	0.0	0.0
LAKE	16	8	8	8	0	0	5.1	3.1	13.8
LEE	27	17	10	10	0	0	4.3	3.3	8.8
LEON	29	5	24	24	0	0	9.4	3.1	16.1
LEVY	2	1	1	1	0	0	4.6	2.7	15.2
LIBERTY	0	0	0	0	0	0	0.0	0.0	0.0
MADISON	4	0	4	4	0	0	19.0	0.0	49.4
MANATEE	23	17	6	5	1	0	6.9	6.2	10.0
MARION	33	19	14	11	3	0	9.7	7.3	17.9
MARTIN	2	2	0	0	0	0	1.6	1.9	0.0
MONROE	3	3	0	0	0	0	4.3	5.0	0.0
NASSAU	7	7	0	0	0	0	9.0	9.8	0.0
OKALOOSA	17	11	6	3	3	0	6.7	5.3	13.3
OKEECHOBEE	6	5	1	0	1	0	10.9	10.1	19.2
ORANGE	117	50	66	55	11	1	7.7	5.1	12.3
OSCEOLA	22	14	8	6	2	0	5.9	4.5	13.7
PALM BEACH	77	43	34	34	0	0	5.6	4.7	7.2
PASCO	30	24	6	5	1	0	6.2	5.6	12.3
PINELLAS	73	42	31	27	4	0	8.6	6.6	14.5
POLK	55	43	12	11	1	0	7.4	7.6	6.8
PUTNAM	4	2	2	1	1	0	4.5	3.0	8.5
SAINT JOHNS	8	7	1	0	1	0	4.4	4.6	3.8
SAINT LUCIE	22	9	13	13	0	0	7.2	4.3	13.6
SANTA ROSA	8	7	1	1	0	0	4.7	4.6	5.7
SARASOTA	14	9	5	4	1	0	5.0	3.8	12.9
SEMINOLE	34	16	18	15	3	0	7.8	4.8	17.9
SUMTER	2	2	0	0	0	0	4.5	5.6	0.0
SUWANNEE	5	5	0	0	0	0	9.9	11.4	0.0
TAYLOR	5	3	2	2	0	0	18.5	14.9	29.0
UNION	0	0	0	0	0	0	0.0	0.0	0.0
VOLUSIA	31	20	11	10	1	0	6.6	5.3	11.4
WAKULLA	2	1	1	0	1	0	6.1	3.6	20.0
WALTON	4	3	1	0	1	0	6.4	5.3	20.8
WASHINGTON	1	0	1	1	0	0	4.1	0.0	21.3

*Rates based on infant deaths by race of decedent, live births by race of mother.

TABLE F-5 (Cont.): RESIDENT AND RECORDED INFANT DEATHS (UNDER 1 YEAR) AND RATES PER 1,000 LIVE BIRTHS, BY RACE, BY COUNTY, FLORIDA, 2010

	RECORDED INFANT DEATHS						RATES*		
	TOTAL	WHITE	NUMBERS			UNK	TOTAL	WHITE	BLACK & OTHER
			TOTAL	BLACK	OTHER				
FLORIDA	1,436	770	665	594	71	1	6.7	5.0	11.1
ALACHUA	83	54	29	28	1	0	14.0	12.6	17.8
BAKER	2	1	1	0	1	0	400.0	200.0	----
BAY	7	7	0	0	0	0	2.6	3.4	0.0
BRADFORD	1	1	0	0	0	0	500.0	500.0	----
BREVARD	11	7	4	3	1	0	2.2	1.8	4.2
BROWARD	149	48	101	91	10	0	6.4	4.0	9.6
CALHOUN	1	1	0	0	0	0	1,000.0	----	0.0
CHARLOTTE	4	1	3	3	0	0	3.4	1.0	19.1
CITRUS	2	2	0	0	0	0	2.3	2.5	0.0
CLAY	4	3	1	0	1	0	1.8	1.7	2.0
COLLIER	14	8	6	6	0	0	3.9	2.6	11.8
COLUMBIA	4	2	2	2	0	0	5.8	3.9	11.2
MIAMI-DADE	162	89	73	69	4	0	5.7	4.1	10.4
DESOTO	3	3	0	0	0	0	5.2	5.7	0.0
DIXIE	0	0	0	0	0	0	0.0	0.0	----
DUVAL	123	59	64	53	11	0	8.5	6.7	11.6
ESCAMBIA	56	29	27	25	2	0	10.1	7.3	17.3
FLAGLER	1	1	0	0	0	0	111.1	125.0	0.0
FRANKLIN	1	1	0	0	0	0	----	----	----
GADSDEN	1	1	0	0	0	0	250.0	1,000.0	0.0
GILCHRIST	0	0	0	0	0	0	0.0	0.0	----
GLADES	0	0	0	0	0	0	0.0	0.0	0.0
GULF	1	1	0	0	0	0	500.0	1,000.0	0.0
HAMILTON	0	0	0	0	0	0	----	----	----
HARDEE	1	1	0	0	0	0	250.0	333.3	0.0
HENDRY	0	0	0	0	0	0	0.0	0.0	----
HERNANDO	3	3	0	0	0	0	1.7	1.9	0.0
HIGHLANDS	8	6	2	2	0	0	6.4	5.8	9.3
HILLSBOROUGH	167	96	71	63	8	0	9.0	7.0	14.6
HOLMES	1	1	0	0	0	0	1,000.0	1,000.0	----
INDIAN RIVER	5	1	4	4	0	0	4.4	1.3	15.9
JACKSON	1	0	1	1	0	0	1.9	0.0	6.7
JEFFERSON	0	0	0	0	0	0	0.0	0.0	----
LAFAYETTE	0	0	0	0	0	0	----	----	----
LAKE	7	3	4	4	0	0	2.5	1.3	7.5
LEE	33	23	10	10	0	0	5.0	4.2	8.7
LEON	38	5	33	33	0	0	7.8	1.9	14.9
LEVY	0	0	0	0	0	0	0.0	0.0	----
LIBERTY	0	0	0	0	0	0	----	----	----
MADISON	0	0	0	0	0	0	----	----	----
MANATEE	9	6	3	3	0	0	3.2	2.6	5.8
MARION	11	3	8	5	3	0	4.1	1.5	12.9
MARTIN	1	1	0	0	0	0	0.5	0.6	0.0
MONROE	1	1	0	0	0	0	1.9	2.3	0.0
NASSAU	3	3	0	0	0	0	6.4	7.3	0.0
OKALOOSA	9	6	3	1	2	0	3.7	3.0	6.6
OKEECHOBEE	2	1	1	0	1	0	222.2	111.1	----
ORANGE	216	113	102	87	15	1	11.2	8.6	16.7
OSCEOLA	7	4	3	3	0	0	2.0	1.3	5.1
PALM BEACH	87	47	40	40	0	0	5.4	4.4	7.5
PASCO	11	9	2	2	0	0	7.1	6.5	11.6
PINELLAS	102	65	37	32	5	0	10.2	8.4	16.5
POLK	19	14	5	3	2	0	3.0	2.9	3.3
PUTNAM	3	1	2	1	1	0	7.4	4.0	13.0
SAINT JOHNS	1	1	0	0	0	0	0.9	1.1	0.0
SAINT LUCIE	10	5	5	5	0	0	4.8	3.7	6.7
SANTA ROSA	3	3	0	0	0	0	11.2	12.7	0.0
SARASOTA	11	10	1	0	1	0	3.6	3.8	2.3
SEMINOLE	9	1	8	7	1	0	2.8	0.4	10.6
SUMTER	2	2	0	0	0	0	500.0	500.0	----
SUWANNEE	2	2	0	0	0	0	666.7	666.7	----
TAYLOR	1	1	0	0	0	0	500.0	1,000.0	0.0
UNION	0	0	0	0	0	0	----	----	----
VOLUSIA	15	9	6	6	0	0	3.6	2.8	6.3
WAKULLA	1	0	1	0	1	0	500.0	0.0	----
WALTON	5	4	1	1	0	0	6.7	5.8	16.4
WASHINGTON	1	0	1	1	0	0	----	----	----

*Rates based on infant deaths by race of decedent, live births by race of mother.

TABLE F-6: RESIDENT INFANT DEATHS BY HISPANIC OR HAITIAN ORIGIN, BY COUNTY, FLORIDA, 2010

	TOTAL	HISPANIC ORIGIN							HAITIAN	NON-HISPANIC/HAITIAN UNK	
		TOTAL HISPANIC	MEXICAN	PUERTO RICAN	CUBAN	CENTRAL/SOUTH AMERICAN	OTHER/UNK HISPANIC	HAITIAN		HAITIAN	UNK
FLORIDA	1,400	307	80	84	51	52	40	76	998	19	
ALACHUA	29	1	0	1	0	0	0	0	28	0	
BAKER	4	0	0	0	0	0	0	0	4	0	
BAY	8	1	1	0	0	0	0	0	7	0	
BRADFORD	0	0	0	0	0	0	0	0	0	0	
BREVARD	32	2	1	1	0	0	0	0	30	0	
BROWARD	135	26	2	8	7	5	4	27	80	2	
CALHOUN	1	0	0	0	0	0	0	0	1	0	
CHARLOTTE	5	0	0	0	0	0	0	1	4	0	
CITRUS	7	0	0	0	0	0	0	0	7	0	
CLAY	8	1	0	1	0	0	0	0	7	0	
COLLIER	20	5	4	1	0	0	0	4	11	0	
COLUMBIA	6	0	0	0	0	0	0	0	6	0	
MIAMI-DADE	138	60	3	5	21	20	11	13	57	8	
DESOTO	2	2	2	0	0	0	0	0	0	0	
DIXIE	0	0	0	0	0	0	0	0	0	0	
DUVAL	102	10	3	5	1	0	1	1	91	0	
ESCAMBIA	40	4	2	0	0	0	2	0	36	0	
FLAGLER	6	1	0	0	0	1	0	0	5	0	
FRANKLIN	1	0	0	0	0	0	0	0	1	0	
GADSDEN	7	0	0	0	0	0	0	0	7	0	
GILCHRIST	1	0	0	0	0	0	0	0	1	0	
GLADES	2	0	0	0	0	0	0	0	2	0	
GULF	1	0	0	0	0	0	0	0	1	0	
HAMILTON	1	1	1	0	0	0	0	0	0	0	
HARDEE	6	4	3	0	0	0	1	0	2	0	
HENDRY	0	0	0	0	0	0	0	0	0	0	
HERNANDO	9	2	1	1	0	0	0	0	7	0	
HIGHLANDS	8	1	0	1	0	0	0	0	7	0	
HILLSBOROUGH	122	32	13	8	6	3	2	2	86	2	
HOLMES	2	0	0	0	0	0	0	0	2	0	
INDIAN RIVER	11	2	1	0	0	0	1	1	8	0	
JACKSON	2	0	0	0	0	0	0	0	2	0	
JEFFERSON	1	0	0	0	0	0	0	0	1	0	
LAFAYETTE	0	0	0	0	0	0	0	0	0	0	
LAKE	16	4	2	1	0	0	1	0	12	0	
LEE	27	11	2	2	3	2	2	3	13	0	
LEON	29	1	1	0	0	0	0	0	28	0	
LEVY	2	0	0	0	0	0	0	0	2	0	
LIBERTY	0	0	0	0	0	0	0	0	0	0	
MADISON	4	0	0	0	0	0	0	0	4	0	
MANATEE	23	8	5	0	0	1	2	1	14	0	
MARION	33	10	2	4	2	2	0	0	23	0	
MARTIN	2	0	0	0	0	0	0	0	2	0	
MONROE	3	2	0	1	1	0	0	0	1	0	
NASSAU	7	0	0	0	0	0	0	0	7	0	
OKALOOSA	17	0	0	0	0	0	0	0	17	0	
OKEECHOBEE	6	0	0	0	0	0	0	0	6	0	
ORANGE	117	32	8	15	0	5	4	12	69	4	
OSCEOLA	22	12	0	8	1	1	2	0	10	0	
PALM BEACH	77	21	6	2	3	7	3	6	48	2	
PASCO	30	7	2	4	1	0	0	0	23	0	
PINELLAS	73	14	3	4	3	1	3	1	58	0	
POLK	55	17	9	6	1	1	0	2	36	0	
PUTNAM	4	1	0	1	0	0	0	0	3	0	
SAINT JOHNS	8	0	0	0	0	0	0	0	8	0	
SAINT LUCIE	22	3	2	1	0	0	0	2	17	0	
SANTA ROSA	8	1	1	0	0	0	0	0	7	0	
SARASOTA	14	0	0	0	0	0	0	0	14	0	
SEMINOLE	34	7	0	2	1	3	1	0	26	1	
SUMTER	2	0	0	0	0	0	0	0	2	0	
SUWANNEE	5	0	0	0	0	0	0	0	5	0	
TAYLOR	5	0	0	0	0	0	0	0	5	0	
UNION	0	0	0	0	0	0	0	0	0	0	
VOLUSIA	31	1	0	1	0	0	0	0	30	0	
WAKULLA	2	0	0	0	0	0	0	0	2	0	
WALTON	4	0	0	0	0	0	0	0	4	0	
WASHINGTON	1	0	0	0	0	0	0	0	1	0	

TABLE F-7: RESIDENT INFANT, NEONATAL AND POST-NEONATAL DEATHS FROM SELECTED CAUSES* BY RACE, FLORIDA, 2010

	TOTAL			POST NEO- NATAL	WHITE			POST NEO- NATAL
	NEONATAL		INFANT		NEONATAL		INFANT	
	<1 DAY	1-27 DAYS			<1 DAY	1-27 DAYS		
TOTAL	1,400	577	352	471	750	303	194	253
Intestinal Infectious Disease	1	0	0	1	0	0	0	0
Diarrhea & Gastroenteritis--Infectious Origin	21	0	1	20	5	0	0	5
Tuberculosis	0	0	0	0	0	0	0	0
Tetanus	0	0	0	0	0	0	0	0
Diphtheria	0	0	0	0	0	0	0	0
Whooping Cough	2	0	0	2	1	0	0	1
Meningococcal Infection	0	0	0	0	0	0	0	0
Septicemia	17	0	0	17	9	0	0	9
Congenital Syphilis	0	0	0	0	0	0	0	0
Gonococcal Infection	0	0	0	0	0	0	0	0
Acute Poliomyelitis	0	0	0	0	0	0	0	0
Varicella (Chicken Pox)	0	0	0	0	0	0	0	0
Measles	0	0	0	0	0	0	0	0
HIV Disease	0	0	0	0	0	0	0	0
Mumps	0	0	0	0	0	0	0	0
Other & Unspec Viral Diseases	4	0	2	2	1	0	0	1
Candidiasis	0	0	0	0	0	0	0	0
Malaria	0	0	0	0	0	0	0	0
Pneumocystosis	0	0	0	0	0	0	0	0
Other & Unspecified Infectious & Parasitic Diseases	2	0	0	2	1	0	0	1
Hodgkins Disease & Non-Hodgkins Lymphomas	0	0	0	0	0	0	0	0
Leukemia	1	0	0	1	1	0	0	1
Other & Unspecified Malignant Neoplasm	1	0	0	1	1	0	0	1
In Situ/Benign/Malignant Neoplasms Uncert/Unk Behavior	3	0	1	2	3	0	1	2
Anemias	0	0	0	0	0	0	0	0
Blood, Blood-Forming, Hemorrhagic Diseases	3	0	0	3	3	0	0	3
Disorders Involving Immune Mechanism	1	0	1	0	1	0	1	0
Short Stature	0	0	0	0	0	0	0	0
Nutritional Deficiencies	0	0	0	0	0	0	0	0
Cystic Fibrosis	1	0	0	1	1	0	0	1
Fluid/Electrolyte/Acid-Base/Volume Depletion Disorders	3	0	0	3	1	0	0	1
Other Endocrine, Nutritional, Metabolic Diseases	7	0	4	3	4	0	3	1
Meningitis	2	0	0	2	0	0	0	0
Infantile Spinal Muscular Atrophy, Type 1 (Werdnig-Hoffman)	0	0	0	0	0	0	0	0
Infantile Cerebral Palsy	1	0	0	1	1	0	0	1
Anoxic Brain Damage	0	0	0	0	0	0	0	0
Other Nervous System Diseases	13	0	2	11	10	0	1	9
Ear & Mastoid Process Diseases	1	0	0	1	1	0	0	1
Pulmonary Heart/Circulation Diseases	4	0	1	3	1	0	0	1
Pericarditis, Endocarditis, Myocarditis	1	0	0	1	0	0	0	0
Cardiomyopathy	5	0	3	2	4	0	3	1
Cardiac Arrest	0	0	0	0	0	0	0	0
Cerebrovascular Diseases	9	0	0	9	5	0	0	5
Other Circulatory System Diseases	7	0	0	7	6	0	0	6
Acute Upper Respiratory Infections	1	0	0	1	1	0	0	1
Influenza	0	0	0	0	0	0	0	0
Pneumonia	8	0	0	8	3	0	0	3

TABLE F-7 (Cont.): RESIDENT INFANT, NEONATAL AND POST-NEONATAL DEATHS FROM SELECTED CAUSES*, BY RACE, FLORIDA, 2010

	TOTAL			POST NEO- NATAL	WHITE			POST NEO- NATAL
	NEONATAL		INFANT		NEONATAL		INFANT	
	<1 DAY	1-27 DAYS			<1 DAY	1-27 DAYS		
Acute Bronchitis & Acute Bronchiolitis	0	0	0	0	0	0	0	0
Bronchitis, Chronic & Unspecified	2	0	0	2	0	0	0	0
Asthma	0	0	0	0	0	0	0	0
Pneumonitis Due to Solids & Liquids	3	0	0	3	0	0	0	0
Other & Unspecified Respiratory System Diseases	20	0	0	20	8	0	0	8
Gastritis, Duodenitis, Noninfective Enteritis/Colitis	0	0	0	0	0	0	0	0
Hernia Abdom Cavity & Intestinal Obstruct W/O Hernia	4	1	0	3	1	0	0	1
Other & Unspec Digestive System Disease	11	0	3	8	7	0	1	6
Renal Failure & Other Kidney Disorders	6	0	5	1	1	0	1	0
Other & Unspec Genitourinary System Dis	1	0	0	1	0	0	0	0
PERINATAL PERIOD CONDITIONS	727	489	218	20	373	249	114	10
Maternal Hypertensive Disorders	4	3	1	0	2	1	1	0
Maternal Conditions Unrelated Present Pregnancy	1	1	0	0	1	1	0	0
Incompetent Cervix	31	31	0	0	11	11	0	0
Premature Rupture of Membranes	40	38	2	0	21	20	1	0
Multiple Pregnancy	37	34	2	1	23	20	2	1
Maternal Complications of Pregnancy	11	10	1	0	5	5	0	0
Placenta Complications	19	15	4	0	7	7	0	0
Cord Complications	6	5	1	0	3	2	1	0
Chorioamnionitis	31	30	1	0	15	15	0	0
Other & Unspecified Membrane Abnormalities	0	0	0	0	0	0	0	0
Other Complications of Labor & Delivery	12	9	3	0	7	6	1	0
Noxious Influences Via Placenta or Breast Milk	2	1	1	0	0	0	0	0
Slow Fetal Growth & Fetal Malnutrition	9	4	4	1	3	1	2	0
Extreme Low Birth Weight or Extreme Immaturity	176	150	22	4	84	73	9	2
Other Low Birth Weight or Preterm	80	76	2	2	39	38	1	0
Long Gestation & High Birth Weight	0	0	0	0	0	0	0	0
Birth Trauma	1	0	1	0	1	0	1	0
Intrauterine Hypoxia	14	4	9	1	8	2	5	1
Birth Asphyxia	11	6	4	1	6	4	2	0
Respiratory Distress	21	11	10	0	10	4	6	0
Congenital Pneumonia	6	1	5	0	1	1	0	0
Neonatal Aspiration Syndromes	2	1	1	0	2	1	1	0
Interstitial Emphysema & Related Conditions	11	3	8	0	7	2	5	0
Pulmonary Hemorrhage	8	0	8	0	4	0	4	0
Chronic Respiratory Disease	4	0	0	4	2	0	0	2
Atelectasis	13	6	5	2	9	4	4	1
Other Respiratory Conditions	5	3	2	0	3	2	1	0
Bacterial Sepsis	39	9	29	1	18	5	12	1
Omphalitis With or Without Hemorrhage	0	0	0	0	0	0	0	0
All Other Infections	6	3	3	0	3	1	2	0
Neonatal Hemorrhage	32	2	29	1	23	1	21	1
Hemorrhagic Disease of Newborn	0	0	0	0	0	0	0	0
Hemolytic Dis Due to Isoimmunization/Perinat Jaundice	2	1	1	0	1	1	0	0
Hematological Disorders	6	2	4	0	4	2	2	0
Diabetes Mellitus, Maternal or Neonatal	0	0	0	0	0	0	0	0
Necrotizing Enterocolitis	23	0	23	0	10	0	10	0
Hydrops Fetalis Not Due To Hemolytic Dis	6	1	5	0	5	1	4	0

TABLE F-7 (Cont.): RESIDENT INFANT, NEONATAL AND POST-NEONATAL DEATHS FROM SELECTED CAUSES*, BY RACE, FLORIDA, 2010

	TOTAL			POST NEO- NATAL	WHITE			POST NEO- NATAL
	NEONATAL		INFANT		NEONATAL		INFANT	
	<1 DAY	1-27 DAYS			<1 DAY	1-27 DAYS		
Other Perinatal Conditions	58	29	27	2	35	18	16	1
CONGENITAL / CHROMOSOMAL ANOMALIES	247	81	80	86	150	52	49	49
Anencephaly & Similar Anomalies	13	10	3	0	9	7	2	0
Congenital Hydrocephalus	6	0	2	4	4	0	1	3
Spina Bifida	2	1	1	0	2	1	1	0
Other Cong Malf Nervous System	10	3	0	7	6	2	0	4
Congenital Malf of Heart	49	3	21	25	28	0	16	12
Other Congenital Malf of Circulatory Sys	13	0	5	8	8	0	3	5
Congenital Malf of Respiratory Sys	22	10	9	3	16	8	6	2
Congenital Anomalies of Digestive Sys	5	0	2	3	2	0	1	1
Congenital Malf of Genitourinary Sys	23	18	3	2	13	11	2	0
Congenital Malf of Musculoskeletal Sys	22	9	8	5	13	7	4	2
Downs Syndrome	3	0	0	3	2	0	0	2
Edwards Syndrome	33	9	12	12	19	6	5	8
Pataus Syndrome	10	2	7	1	7	2	4	1
Other Congenital Malf	25	12	6	7	15	6	4	5
Other Chromosomal Abnorm	11	4	1	6	6	2	0	4
Sudden Infant Death Syndrome	63	0	6	57	34	0	2	32
Symptoms, Signs, Abn Clinical/Lab Findings	76	6	10	60	38	2	6	30
All Other Diseases	0	0	0	0	0	0	0	0
Unint Inj: Motor Vehicle	2	0	0	2	2	0	0	2
Unint Inj: Other & Unspecified Transport	0	0	0	0	0	0	0	0
Unint Inj: Falls	0	0	0	0	0	0	0	0
Unint Inj: Firearms Discharge	0	0	0	0	0	0	0	0
Unint Inj: Drowning & Submersion	4	0	0	4	3	0	0	3
Unint Inj: Suffocation & Strangulation in Bed	54	0	8	46	29	0	5	24
Unint Inj: Other Suffocation & Strangulation	21	0	2	19	12	0	2	10
Unint Inj: Inhale/Ingest--Respiratory Tract Obstruction	7	0	1	6	4	0	1	3
Unint Inj: Smoke, Fire, Flames Exposure	1	0	0	1	0	0	0	0
Unint Inj: Poisoning & Noxious Substance Exposure	0	0	0	0	0	0	0	0
Unint Inj: Other & Unspecified	5	0	2	3	3	0	2	1
Homicide: Hanging, Strangulation, Suffocation	2	0	1	1	1	0	1	0
Homicide: Firearms Discharge	0	0	0	0	0	0	0	0
Homicide: Neglect, Abandonment, Maltreatment	6	0	0	6	5	0	0	5
Homicide: Other & Unspecified Means	15	0	0	15	12	0	0	12
Medical & Surgical Care Complications	3	0	1	2	3	0	1	2
Other External Causes	1	0	0	1	0	0	0	0

* ICD-10 codes associated with each cause of death group are presented on pages (xiv-xvi).

TABLE F-7 (Cont.): RESIDENT INFANT, NEONATAL AND POST-NEONATAL DEATHS FROM SELECTED CAUSES*, BY RACE, FLORIDA, 2010

	BLACK			POST NEO- NATAL	OTHER			POST NEO- NATAL
	NEONATAL		INFANT		NEONATAL		INFANT	
	<1 DAY	1-27 DAYS			<1 DAY	1-27 DAYS		
TOTAL	580	245	140	195	69	28	18	23
Intestinal Infectious Disease	1	0	0	1	0	0	0	0
Diarrhea & Gastroenteritis--Infectious Origin	16	0	1	15	0	0	0	0
Tuberculosis	0	0	0	0	0	0	0	0
Tetanus	0	0	0	0	0	0	0	0
Diphtheria	0	0	0	0	0	0	0	0
Whooping Cough	1	0	0	1	0	0	0	0
Meningococcal Infection	0	0	0	0	0	0	0	0
Septicemia	7	0	0	7	1	0	0	1
Congenital Syphilis	0	0	0	0	0	0	0	0
Gonococcal Infection	0	0	0	0	0	0	0	0
Acute Poliomyelitis	0	0	0	0	0	0	0	0
Varicella (Chicken Pox)	0	0	0	0	0	0	0	0
Measles	0	0	0	0	0	0	0	0
HIV Disease	0	0	0	0	0	0	0	0
Mumps	0	0	0	0	0	0	0	0
Other & Unspec Viral Diseases	2	0	2	0	1	0	0	1
Candidiasis	0	0	0	0	0	0	0	0
Malaria	0	0	0	0	0	0	0	0
Pneumocystosis	0	0	0	0	0	0	0	0
Other & Unspecified Infectious & Parasitic Diseases	1	0	0	1	0	0	0	0
Hodgkins Disease & Non-Hodgkins Lymphomas	0	0	0	0	0	0	0	0
Leukemia	0	0	0	0	0	0	0	0
Other & Unspecified Malignant Neoplasm	0	0	0	0	0	0	0	0
In Situ/Benign/Malignant Neoplasms Uncert/Unk Behavior	0	0	0	0	0	0	0	0
Anemias	0	0	0	0	0	0	0	0
Blood, Blood-Forming, Hemorrhagic Diseases	0	0	0	0	0	0	0	0
Disorders Involving Immune Mechanism	0	0	0	0	0	0	0	0
Short Stature	0	0	0	0	0	0	0	0
Nutritional Deficiencies	0	0	0	0	0	0	0	0
Cystic Fibrosis	0	0	0	0	0	0	0	0
Fluid/Electrolyte/Acid-Base/Volume Depletion Disorders	1	0	0	1	1	0	0	1
Other Endocrine, Nutritional, Metabolic Diseases	2	0	1	1	1	0	0	1
Meningitis	2	0	0	2	0	0	0	0
Infantile Spinal Muscular Atrophy, Type 1 (Werdnig-Hoffman)	0	0	0	0	0	0	0	0
Infantile Cerebral Palsy	0	0	0	0	0	0	0	0
Anoxic Brain Damage	0	0	0	0	0	0	0	0
Other Nervous System Diseases	3	0	1	2	0	0	0	0
Ear & Mastoid Process Diseases	0	0	0	0	0	0	0	0
Pulmonary Heart/Circulation Diseases	3	0	1	2	0	0	0	0
Pericarditis, Endocarditis, Myocarditis	1	0	0	1	0	0	0	0
Cardiomyopathy	1	0	0	1	0	0	0	0
Cardiac Arrest	0	0	0	0	0	0	0	0
Cerebrovascular Diseases	4	0	0	4	0	0	0	0
Other Circulatory System Diseases	1	0	0	1	0	0	0	0
Acute Upper Respiratory Infections	0	0	0	0	0	0	0	0
Influenza	0	0	0	0	0	0	0	0
Pneumonia	5	0	0	5	0	0	0	0

TABLE F-7 (Cont.): RESIDENT INFANT, NEONATAL AND POST-NEONATAL DEATHS FROM SELECTED CAUSES*, BY RACE, FLORIDA, 2010

	BLACK			POST NEO-	OTHER			POST NEO-
	NEONATAL		INFANT		NEONATAL		INFANT	
	<1 DAY	1-27 DAYS			<1 DAY	1-27 DAYS		
Acute Bronchitis & Acute Bronchiolitis	0	0	0	0	0	0	0	0
Bronchitis, Chronic & Unspecified	2	0	0	2	0	0	0	0
Asthma	0	0	0	0	0	0	0	0
Pneumonitis Due to Solids & Liquids	2	0	0	2	1	0	0	1
Other & Unspecified Respiratory System Diseases	11	0	0	11	1	0	0	1
Gastritis, Duodenitis, Noninfective Enteritis/Colitis	0	0	0	0	0	0	0	0
Hernia Abdom Cavity & Intestinal Obstruct W/O Hernia	2	0	0	2	1	1	0	0
Other & Unspec Digestive System Disease	4	0	2	2	0	0	0	0
Renal Failure & Other Kidney Disorders	5	0	4	1	0	0	0	0
Other & Unspec Genitourinary System Dis	1	0	0	1	0	0	0	0
PERINATAL PERIOD CONDITIONS	319	215	94	10	34	24	10	0
Maternal Hypertensive Disorders	2	2	0	0	0	0	0	0
Maternal Conditions Unrelated Present Pregnancy	0	0	0	0	0	0	0	0
Incompetent Cervix	20	20	0	0	0	0	0	0
Premature Rupture of Membranes	16	15	1	0	3	3	0	0
Multiple Pregnancy	14	14	0	0	0	0	0	0
Maternal Complications of Pregnancy	4	3	1	0	2	2	0	0
Placenta Complications	12	8	4	0	0	0	0	0
Cord Complications	2	2	0	0	1	1	0	0
Chorioamnionitis	15	14	1	0	1	1	0	0
Other & Unspecified Membrane Abnormalities	0	0	0	0	0	0	0	0
Other Complications of Labor & Delivery	3	2	1	0	2	1	1	0
Noxious Influences Via Placenta or Breast Milk	2	1	1	0	0	0	0	0
Slow Fetal Growth & Fetal Malnutrition	6	3	2	1	0	0	0	0
Extreme Low Birth Weight or Extreme Immaturity	84	70	12	2	8	7	1	0
Other Low Birth Weight or Preterm	33	30	1	2	7	7	0	0
Long Gestation & High Birth Weight	0	0	0	0	0	0	0	0
Birth Trauma	0	0	0	0	0	0	0	0
Intrauterine Hypoxia	6	2	4	0	0	0	0	0
Birth Asphyxia	4	1	2	1	1	1	0	0
Respiratory Distress	11	7	4	0	0	0	0	0
Congenital Pneumonia	5	0	5	0	0	0	0	0
Neonatal Aspiration Syndromes	0	0	0	0	0	0	0	0
Interstitial Emphysema & Related Conditions	4	1	3	0	0	0	0	0
Pulmonary Hemorrhage	3	0	3	0	1	0	1	0
Chronic Respiratory Disease	2	0	0	2	0	0	0	0
Atelectasis	4	2	1	1	0	0	0	0
Other Respiratory Conditions	2	1	1	0	0	0	0	0
Bacterial Sepsis	17	4	13	0	4	0	4	0
Omphalitis With or Without Hemorrhage	0	0	0	0	0	0	0	0
All Other Infections	2	1	1	0	1	1	0	0
Neonatal Hemorrhage	8	1	7	0	1	0	1	0
Hemorrhagic Disease of Newborn	0	0	0	0	0	0	0	0
Hemolytic Dis Due to Isoimmunization/Perinat Jaundice	0	0	0	0	1	0	1	0
Hematological Disorders	2	0	2	0	0	0	0	0
Diabetes Mellitus, Maternal or Neonatal	0	0	0	0	0	0	0	0
Necrotizing Enterocolitis	12	0	12	0	1	0	1	0
Hydrops Fetalis Not Due To Hemolytic Dis	1	0	1	0	0	0	0	0

TABLE F-7 (Cont.): RESIDENT INFANT, NEONATAL AND POST-NEONATAL DEATHS FROM SELECTED CAUSES*, BY RACE, FLORIDA, 2010

	BLACK			POST NEO-	OTHER			POST NEO-
	NEONATAL		INFANT		NEONATAL		INFANT	
	<1 DAY	1-27 DAYS			<1 DAY	1-27 DAYS		
Other Perinatal Conditions	23	11	11	1	0	0	0	0
CONGENITAL / CHROMOSOMAL ANOMALIES	85	26	27	32	12	3	4	5
Anencephaly & Similar Anomalies	4	3	1	0	0	0	0	0
Congenital Hydrocephalus	1	0	0	1	1	0	1	0
Spina Bifida	0	0	0	0	0	0	0	0
Other Cong Malf Nervous System	4	1	0	3	0	0	0	0
Congenital Malf of Heart	18	2	4	12	3	1	1	1
Other Congenital Malf of Circulatory Sys	5	0	2	3	0	0	0	0
Congenital Malf of Respiratory Sys	5	2	3	0	1	0	0	1
Congenital Anomalies of Digestive Sys	2	0	1	1	1	0	0	1
Congenital Malf of Genitourinary Sys	10	7	1	2	0	0	0	0
Congenital Malf of Musculoskeletal Sys	7	2	3	2	2	0	1	1
Downs Syndrome	1	0	0	1	0	0	0	0
Edwards Syndrome	12	2	7	3	2	1	0	1
Patau Syndrome	2	0	2	0	1	0	1	0
Other Congenital Malf	10	6	2	2	0	0	0	0
Other Chromosomal Abnorm	4	1	1	2	1	1	0	0
Sudden Infant Death Syndrome	22	0	2	20	7	0	2	5
Symptoms, Signs, Abn Clinical/Lab Findings	35	4	3	28	3	0	1	2
All Other Diseases	0	0	0	0	0	0	0	0
Unint Inj: Motor Vehicle	0	0	0	0	0	0	0	0
Unint Inj: Other & Unspecified Transport	0	0	0	0	0	0	0	0
Unint Inj: Falls	0	0	0	0	0	0	0	0
Unint Inj: Firearms Discharge	0	0	0	0	0	0	0	0
Unint Inj: Drowning & Submersion	1	0	0	1	0	0	0	0
Unint Inj: Suffocation & Strangulation in Bed	21	0	2	19	4	0	1	3
Unint Inj: Other Suffocation & Strangulation	8	0	0	8	1	0	0	1
Unint Inj: Inhale/Ingest--Respiratory Tract Obstruction	3	0	0	3	0	0	0	0
Unint Inj: Smoke, Fire, Flames Exposure	1	0	0	1	0	0	0	0
Unint Inj: Poisoning & Noxious Substance Exposure	0	0	0	0	0	0	0	0
Unint Inj: Other & Unspecified	2	0	0	2	0	0	0	0
Homicide: Hanging, Strangulation, Suffocation	1	0	0	1	0	0	0	0
Homicide: Firearms Discharge	0	0	0	0	0	0	0	0
Homicide: Neglect, Abandonment, Maltreatment	1	0	0	1	0	0	0	0
Homicide: Other & Unspecified Means	2	0	0	2	1	0	0	1
Medical & Surgical Care Complications	0	0	0	0	0	0	0	0
Other External Causes	1	0	0	1	0	0	0	0

* ICD-10 codes associated with each cause of death group are presented on pages (xiv-xvi).