

Marriages and Dissolutions of Marriage

MARRIAGES AND DISSOLUTIONS OF MARRIAGE

- **The number of marriages decreased between 2011 (140,900 marriages) and 2012 (140,467 marriages). This represents a 0.31 percent decrease in the number of marriages.**
- **The marriage rate per 1,000 population has increased since 2010 to 7.4 in 2012.**
- **March was the most popular month for marriage with 14,058 marriages performed. The most popular date of marriage in 2012 was 12/12/2012 (2,061 marriages performed) and the second most popular date was 10/20/2012 (1,467 marriages performed).**
- **The 2012 marriage rate (7.4 per 1,000 population) in Florida is 1.7 times the 2012 dissolution rate (4.3 per 1,000 population).**
- **Of the 81,490 dissolutions of marriage in 2012, over half (55.8 percent) did not affect any minor children.**
- **The mean duration of marriage resulting in a 2012 dissolution was 10 years.**

**CHART M-1: MARRIAGES AND DISSOLUTIONS OF MARRIAGE,
AND RATES PER 1,000 POPULATION, FLORIDA AND UNITED
STATES, CENSUS YEARS 1920-1990 AND 2002-2012**

YEAR	MARRIAGES			DISSOLUTIONS ¹		
	FLORIDA		U.S.	FLORIDA		U.S.
	NUMBER	RATE	RATE	NUMBER	RATE	RATE
1920	NA	NA	12.0	NA	NA	1.6
1930	17,147	11.7	9.2	3,262	2.5	1.6
1940	32,709	17.1	12.1	11,061	5.8	2.0
1950	27,588	9.8	11.1	17,845	6.3	2.6
1960	39,315	7.9	8.5	19,326	3.9	2.2
1970	69,249	10.1	10.6	37,506	5.5	3.5
1980	108,344	11.0	10.6	71,578	7.3	5.2
1990	141,816	10.9	9.8	81,119	6.2	4.7
2000	145,300	9.0	8.7 ²	81,439	5.1	4.2 ²
2002	157,554	9.4	7.8 ²	85,181	5.1	4.0 ²
2003	153,023	9.0	7.7 ²	85,367	5.0	3.8 ²
2004	154,453	8.8	7.8 ²	83,306	4.8	3.7 ²
2005	158,192	8.8	7.6 ²	81,287	4.5	3.6 ²
2006	158,167	8.7	7.4 ²	85,955	4.7	3.7 ²
2007	155,998	8.4	7.3 ²	84,386	4.6	3.6 ²
2008	147,888	7.9	7.1 ²	79,868	4.3	3.5 ²
2009	139,127	7.4	6.8 ²	78,752	4.2	3.4 ²
2010	137,250	7.3	NA	83,342	4.4	NA
2011	140,900	7.4	NA	84,785	4.5	NA
2012	140,467	7.4	NA	81,490	4.3	NA

¹ Includes divorces and annulments.
² Provisional data.

**GRAPH M-1: MARRIAGES AND DISSOLUTIONS OF MARRIAGE RATES PER 1,000 POPULATION,
FLORIDA AND UNITED STATES, 2002-2012**

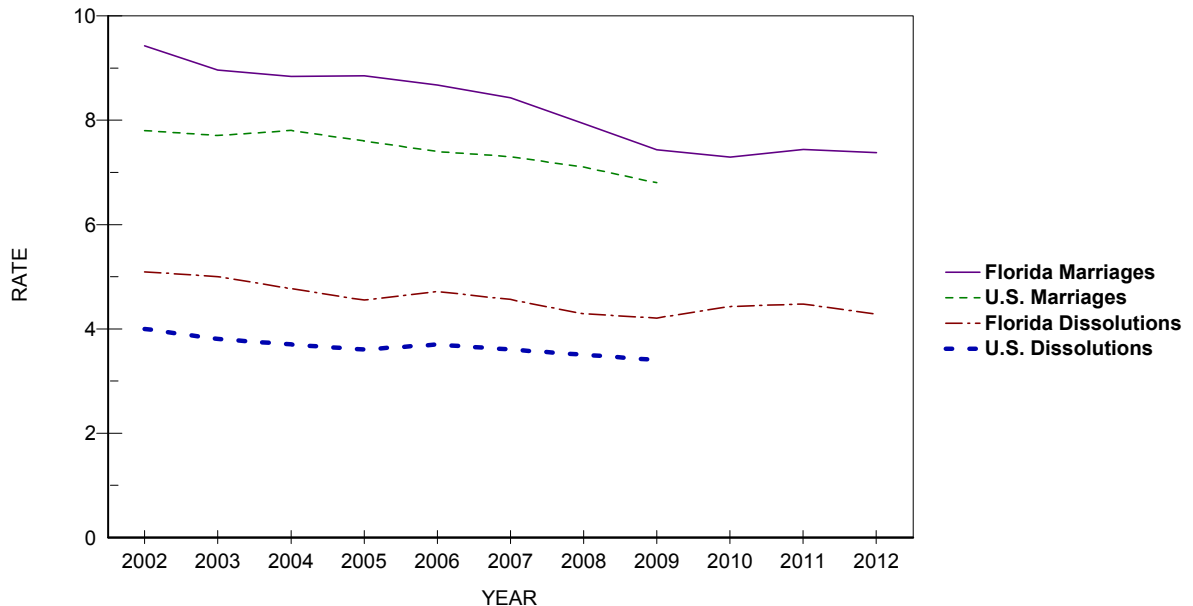


TABLE M-1: MARRIAGES PERFORMED BY MONTH, BY COUNTY OF ISSUANCE, FLORIDA, 2012

	TOTAL	JAN	FEB	MAR	APR	MAY	JUN	JUL	AUG	SEP	OCT	NOV	DEC
FLORIDA	140,467	7,515	10,866	14,058	13,071	12,819	13,205	11,194	9,744	10,269	12,873	11,140	13,713
ALACHUA	1,665	63	135	176	157	179	154	145	129	109	126	116	176
BAKER	241	16	15	27	19	29	29	17	17	22	17	17	16
BAY	2,465	70	158	174	219	276	271	299	234	211	268	129	156
BRADFORD	216	7	19	26	16	13	13	25	23	14	18	20	22
BREVARD	4,412	239	340	421	435	391	394	338	304	282	397	363	508
BROWARD	12,766	818	1,106	1,328	1,113	1,103	1,105	1,043	902	876	983	1,032	1,357
CALHOUN	95	4	5	20	7	11	9	5	6	6	11	3	8
CHARLOTTE	944	50	69	118	100	62	84	74	56	51	85	89	106
CITRUS	766	51	64	77	80	77	70	51	50	54	62	50	80
CLAY	1,361	74	93	128	135	126	135	121	101	108	121	92	127
COLLIER	2,767	168	215	278	246	278	273	211	146	184	253	230	285
COLUMBIA	484	34	34	50	41	39	55	34	30	50	44	31	42
MIAMI-DADE	20,009	1,363	1,774	1,925	1,775	1,647	1,700	1,598	1,457	1,415	1,563	1,693	2,099
DESOTO	179	10	14	19	15	19	13	14	10	15	18	19	13
DIXIE	102	6	11	10	9	7	11	7	4	12	9	6	10
DUVAL	5,497	254	439	559	543	503	479	415	418	438	533	411	505
ESCAMBIA	3,304	124	224	313	334	359	376	286	268	286	292	210	232
FLAGLER	577	31	34	47	54	54	57	59	42	38	63	43	55
FRANKLIN	181	5	4	11	20	30	30	16	20	21	13	7	4
GADSDEN	187	14	11	22	18	17	23	13	13	19	13	10	14
GILCHRIST	231	5	16	17	26	21	24	25	15	21	26	15	20
GLADES	50	2	4	5	4	4	2	3	3	6	4	5	8
GULF	217	5	6	17	29	33	30	25	7	25	20	9	11
HAMILTON	125	5	7	14	11	16	14	9	6	9	12	10	12
HARDEE	169	7	14	23	18	19	15	8	9	12	12	15	17
HENDRY	209	13	15	21	23	19	21	14	15	6	15	25	22
HERNANDO	905	48	63	90	92	68	88	67	51	65	101	74	98
HIGHLANDS	531	24	51	62	48	41	50	34	41	37	44	43	56
HILLSBOROUGH	8,588	449	650	898	828	697	823	636	572	554	800	782	899
HOLMES	148	5	13	20	21	15	10	11	9	13	14	12	5
INDIAN RIVER	858	48	72	79	79	85	90	68	51	53	65	60	108
JACKSON	354	9	28	36	34	31	46	23	26	35	34	26	26
JEFFERSON	93	6	4	13	8	10	8	9	5	6	17	7	0
LAFAYETTE	41	2	3	3	5	5	5	3	5	3	1	0	6
LAKE	2,623	116	195	246	242	233	267	201	171	209	298	188	257
LEE	4,266	228	325	403	411	387	393	329	243	292	422	376	457
LEON	1,797	85	135	191	174	183	173	137	113	137	165	149	155
LEVY	227	12	10	31	22	15	33	13	11	19	20	18	23
LIBERTY	49	1	8	5	4	3	3	6	3	6	6	0	4
MADISON	129	5	10	13	15	11	20	4	9	8	11	12	11
MANATEE	1,909	90	130	198	196	168	187	144	116	120	211	170	179
MARION	1,934	103	160	222	187	164	160	137	148	146	186	127	194
MARTIN	889	47	82	103	82	88	71	61	56	56	79	76	88
MONROE	3,039	198	242	277	297	317	331	209	183	202	264	232	287
NASSAU	730	18	39	76	60	74	78	64	65	65	78	62	51
OKALOOSA	3,253	101	145	259	285	367	435	367	299	321	345	155	174
OKEECHOBEE	201	13	18	22	17	25	24	12	9	11	13	18	19
ORANGE	9,275	497	721	987	849	808	833	712	635	660	890	779	904
OSCEOLA	3,437	172	280	347	325	309	286	258	267	268	364	251	310
PALM BEACH	7,870	479	632	836	729	711	701	565	484	558	696	623	856
PASCO	2,279	120	183	244	204	198	182	171	131	157	215	204	270
PINELLAS	6,776	316	514	696	659	639	640	540	381	521	706	524	640
POLK	3,420	169	303	352	313	300	310	273	245	237	319	264	335
PUTNAM	420	19	38	44	39	38	31	43	30	30	35	30	43
SAINT JOHNS	1,443	63	82	157	119	152	143	89	109	98	150	115	166
SAINT LUCIE	1,372	85	103	146	115	118	116	131	92	105	124	106	131
SANTA ROSA	1,021	31	50	86	98	111	124	87	86	93	113	71	71
SARASOTA	2,761	140	172	257	280	288	255	213	171	185	287	239	274
SEMINOLE	2,585	149	209	280	221	200	214	217	185	182	211	245	272
SUMTER	324	13	23	36	35	20	34	30	27	20	29	26	31
SUWANNEE	209	12	18	22	23	25	18	7	20	8	20	14	22
TAYLOR	104	5	8	11	11	13	11	3	10	8	10	7	7
UNION	115	3	10	8	13	16	8	10	2	17	4	14	10
VOLUSIA	3,194	145	238	326	296	280	308	274	231	233	309	273	281
WAKULLA	210	11	16	30	19	21	12	12	12	18	23	14	22
WALTON	1,713	34	43	107	149	241	279	157	147	211	196	89	60
WASHINGTON	156	6	14	13	20	12	18	12	8	12	20	15	6

TABLE M-2: MARRIAGES BY RACE OF GROOM AND BRIDE, FLORIDA, 2012

RACE OF GROOM	RACE OF BRIDE										
	TOTAL	WHITE	BLACK	AMERICAN INDIAN	CHINESE	JAPANESE	HAWAIIAN	FILIPINO	OTHER ASIAN/PAC ISL	OTHER ENTRIES	UNK
TOTAL	140,467	110,171	18,372	315	43	8	7	147	3,212	7,953	239
WHITE	109,572	103,664	1,487	232	27	6	5	111	1,654	2,310	76
BLACK	20,611	3,254	16,476	30	0	0	1	13	163	661	13
AMERICAN INDIAN	301	243	12	32	0	0	0	1	4	9	0
CHINESE	28	9	0	0	14	1	0	0	3	1	0
JAPANESE	6	5	0	0	0	1	0	0	0	0	0
HAWAIIAN	12	10	1	0	0	0	1	0	0	0	0
FILIPINO	47	24	0	0	0	0	0	18	4	1	0
OTH ASIAN/PAC ISL	2,146	743	38	6	2	0	0	1	1,308	45	3
OTHER ENTRIES	7,536	2,164	352	15	0	0	0	3	74	4,924	4
UNK	208	55	6	0	0	0	0	0	2	2	143

TABLE M-3: DISSOLUTIONS* OF MARRIAGE BY DURATION OF MARRIAGE IN YEARS AND NUMBER OF MINOR CHILDREN AFFECTED, FLORIDA, 2012

DURATION IN YEARS	NUMBER OF MINOR CHILDREN AFFECTED								
	TOTAL	NONE	ONE	TWO	THREE	FOUR	FIVE	SIX+	UNK
TOTAL	81,490	45,510	15,649	11,231	3,079	589	110	44	5,278
<1	2,107	1,779	106	50	6	0	0	0	166
1	4,216	3,345	407	81	22	3	1	0	357
2	4,983	3,670	706	174	22	10	1	0	400
3	5,674	3,856	1,078	310	47	13	1	1	368
4	6,202	4,091	1,152	415	70	9	0	1	464
5-9	22,323	12,135	4,853	3,149	699	120	16	7	1,344
10-14	12,911	5,056	2,965	3,147	961	186	34	16	546
15-19	8,509	2,850	1,861	2,395	830	182	39	12	340
20-24	5,647	2,647	1,434	960	281	41	8	6	270
25-29	3,239	2,178	566	217	51	10	3	0	214
30-34	1,616	1,295	126	37	9	1	0	0	148
35-39	794	686	21	11	6	0	0	0	70
40+	766	677	13	9	2	0	0	0	65
UNK	2,503	1,245	361	276	73	14	7	1	526

*Includes divorces and annulments.

TABLE M-4: DISSOLUTIONS* OF MARRIAGE BY MONTH, BY COUNTY, FLORIDA, 2012

	TOTAL	JAN	FEB	MAR	APR	MAY	JUN	JUL	AUG	SEP	OCT	NOV	DEC
FLORIDA	81,490	6,350	6,530	7,290	6,944	7,916	6,816	6,670	6,908	6,240	7,511	6,218	6,097
ALACHUA	896	98	90	77	65	66	83	61	79	73	91	63	50
BAKER	104	9	7	13	4	10	9	6	13	5	7	3	18
BAY	800	64	83	2	84	89	2	90	76	75	97	74	64
BRADFORD	126	4	10	12	11	17	14	13	5	8	15	6	11
BREVARD	2,245	139	234	178	214	208	180	171	200	178	198	165	180
BROWARD	8,612	573	398	1,070	566	701	869	818	697	493	877	781	769
CALHOUN	70	6	7	3	3	3	12	10	4	9	2	7	4
CHARLOTTE	531	47	47	44	43	54	44	30	48	35	45	50	44
CITRUS	638	51	52	46	47	63	41	86	39	57	75	46	35
CLAY	989	83	65	85	67	77	96	72	103	65	107	95	74
COLLIER	1,107	83	90	91	101	93	121	70	93	70	75	84	136
COLUMBIA	317	20	40	25	15	54	29	24	20	13	27	32	18
MIAMI-DADE	13,324	1,038	1,067	1,049	1,243	1,265	1,060	1,031	944	961	1,417	1,144	1,105
DESOTO	111	8	9	12	12	13	7	10	15	3	8	5	9
DIXIE	109	7	7	12	8	7	8	8	11	7	10	14	10
DUVAL	3,759	396	256	300	304	296	116	163	500	408	493	282	245
ESCAMBIA	1,384	97	109	153	115	126	134	108	85	121	139	118	79
FLAGLER	309	29	31	21	26	29	29	46	35	19	18	11	15
FRANKLIN	49	8	3	8	4	10	1	4	2	3	2	3	1
GADSDEN	153	6	7	18	4	22	25	9	12	9	16	15	10
GILCHRIST	87	5	7	2	1	6	22	6	12	5	5	8	8
GLADES	36	2	3	3	4	6	1	3	5	1	1	2	5
GULF	35	5	2	1	7	1	2	3	2	0	3	2	7
HAMILTON	47	6	4	5	0	5	4	2	6	2	3	4	6
HARDEE	92	9	6	8	5	14	10	5	6	2	15	4	8
HENDRY	120	9	9	9	9	14	8	9	12	13	17	0	11
HERNANDO	591	37	36	58	46	58	56	70	59	33	35	60	43
HIGHLANDS	295	23	31	20	35	38	14	21	16	23	28	14	32
HILLSBOROUGH	5,825	484	421	516	468	648	480	529	445	432	483	442	477
HOLMES	104	6	13	15	9	11	9	6	6	9	9	5	6
INDIAN RIVER	527	35	47	38	44	59	46	48	38	44	50	40	38
JACKSON	143	11	13	9	0	18	15	1	18	7	20	13	18
JEFFERSON	39	3	4	6	4	3	4	4	2	3	5	0	1
LAFAYETTE	30	3	1	1	2	4	4	6	2	2	2	1	2
LAKE	1,064	74	88	95	96	108	120	93	76	90	85	74	65
LEE	2,686	219	246	261	254	252	277	207	4	188	281	216	281
LEON	934	83	71	62	94	93	80	80	68	67	90	55	91
LEVY	174	8	8	17	18	11	20	21	12	20	16	4	19
LIBERTY	40	0	4	2	5	3	5	2	3	6	3	0	7
MADISON	61	5	7	7	5	3	4	5	10	4	7	3	1
MANATEE	1,080	82	80	80	128	91	99	65	85	93	117	82	78
MARION	1,257	89	119	125	109	120	89	85	108	130	122	59	102
MARTIN	485	26	44	58	36	53	10	37	38	55	49	22	57
MONROE	1,053	70	69	101	129	78	81	65	119	86	75	117	63
NASSAU	341	24	18	30	28	21	28	39	34	20	31	42	26
OKALOOSA	1,173	87	82	121	87	98	114	89	126	86	101	82	100
OKECHOBEE	149	5	21	10	12	17	16	6	18	4	9	10	21
ORANGE	4,051	402	475	382	479	497	453	418	514	354	76	0	1
OSCEOLA	1,521	90	120	129	154	154	88	145	144	107	158	119	113
PALM BEACH	5,219	384	479	436	472	584	439	372	412	369	476	439	357
PASCO	1,828	132	184	178	127	171	152	164	109	186	164	130	131
PINELLAS	3,303	271	246	292	243	327	265	275	347	269	232	252	284
POLK	2,486	193	197	236	173	260	206	203	233	208	214	207	156
PUTNAM	297	16	31	23	30	19	18	31	24	10	51	14	30
SAINT JOHNS	875	89	77	62	56	89	72	66	79	83	66	78	58
SAINT LUCIE	967	52	77	68	82	109	78	96	85	90	62	68	100
SANTA ROSA	665	46	80	55	45	63	77	48	38	68	87	58	0
SARASOTA	1,391	94	123	120	113	165	82	99	128	109	131	136	91
SEMINOLE	1,706	128	128	136	132	170	136	150	183	137	140	136	130
SUMTER	195	18	15	24	19	24	11	19	16	14	12	14	9
SUWANNEE	132	7	11	13	17	13	8	14	16	8	11	8	6
TAYLOR	92	5	7	10	8	5	15	7	12	5	6	5	7
UNION	63	6	5	2	4	9	1	3	10	5	6	3	9
VOLUSIA	2,194	202	171	204	182	185	184	198	210	163	208	149	138
WAKULLA	116	12	5	15	12	8	13	7	6	3	6	17	12
WALTON	274	21	29	22	25	28	20	18	31	15	24	26	15
WASHINGTON	14	6	4	4	0	0	0	0	0	0	0	0	0

*Includes divorces and annulments.

TABLE M-5: DISSOLUTIONS* OF MARRIAGE BY NUMBER OF MINOR CHILDREN AFFECTED, BY COUNTY, FLORIDA, 2012

	TOTAL	NONE	ONE	TWO	THREE	FOUR	FIVE	SIX	SEVEN	EIGHT+	UNK
FLORIDA	81,490	45,510	15,649	11,231	3,079	589	110	27	11	6	5,278
ALACHUA	896	520	188	139	40	7	0	1	0	0	1
BAKER	104	59	18	20	5	2	0	0	0	0	0
BAY	800	498	170	90	39	0	3	0	0	0	0
BRADFORD	126	73	25	19	7	2	0	0	0	0	0
BREVARD	2,245	1,317	478	330	95	23	2	0	0	0	0
BROWARD	8,612	4,827	1,492	1,041	264	41	6	3	0	0	938
CALHOUN	70	37	12	14	5	2	0	0	0	0	0
CHARLOTTE	531	345	80	78	24	2	1	0	1	0	0
CITRUS	638	366	112	108	30	6	1	1	0	0	14
CLAY	989	474	222	194	58	13	2	0	0	0	26
COLLIER	1,107	681	208	156	48	13	0	0	0	0	1
COLUMBIA	317	172	78	43	16	6	1	0	0	0	1
MIAMI-DADE	13,324	9,190	2,343	1,413	311	52	9	4	0	2	0
DESOTO	111	53	29	21	6	2	0	0	0	0	0
DIXIE	109	64	18	19	8	0	0	0	0	0	0
DUVAL	3,759	2,040	835	573	168	33	8	1	0	0	101
ESCAMBIA	1,384	779	286	194	63	13	3	0	1	0	45
FLAGLER	309	92	57	44	19	3	0	1	0	0	93
FRANKLIN	49	1	8	7	1	2	0	0	0	0	30
GADSDEN	153	102	22	15	10	3	0	1	0	0	0
GILCHRIST	87	35	27	13	4	0	0	0	0	0	8
GLADES	36	25	5	4	1	1	0	0	0	0	0
GULF	35	18	8	9	0	0	0	0	0	0	0
HAMILTON	47	25	16	5	0	1	0	0	0	0	0
HARDEE	92	24	20	13	6	2	0	0	1	0	26
HENDRY	120	59	29	21	8	2	0	0	0	0	1
HERNANDO	591	338	102	83	30	9	1	0	0	0	28
HIGHLANDS	295	168	54	43	26	2	1	1	0	0	0
HILLSBOROUGH	5,825	3,363	1,109	914	272	42	5	2	1	0	117
HOLMES	104	58	19	18	7	2	0	0	0	0	0
INDIAN RIVER	527	308	100	87	24	2	1	2	1	0	2
JACKSON	143	81	30	24	6	2	0	0	0	0	0
JEFFERSON	39	18	7	7	0	1	1	0	0	0	5
LAFAYETTE	30	16	3	7	3	0	0	0	0	0	1
LAKE	1,064	469	200	142	56	10	3	0	2	2	180
LEE	2,686	1,734	466	356	99	21	2	1	0	0	7
LEON	934	490	189	155	33	14	2	0	0	0	51
LEVY	174	111	31	23	4	2	0	0	0	0	3
LIBERTY	40	23	9	7	0	1	0	0	0	0	0
MADISON	61	9	12	11	5	0	0	0	0	0	24
MANATEE	1,080	635	218	156	50	12	1	2	0	0	6
MARION	1,257	673	296	196	61	5	4	0	0	1	21
MARTIN	485	277	107	77	18	2	1	0	0	0	3
MONROE	1,053	790	131	93	14	6	1	0	0	0	18
NASSAU	341	174	67	57	17	1	0	0	0	0	25
OKALOOSA	1,173	695	262	168	32	11	4	1	0	0	0
OKEECHOBEE	149	80	35	22	7	5	0	0	0	0	0
ORANGE	4,051	2,517	800	532	148	40	10	0	0	0	4
OSCEOLA	1,521	974	285	200	46	7	1	0	0	0	8
PALM BEACH	5,219	452	953	727	171	30	8	2	1	0	2,875
PASCO	1,828	971	415	320	94	14	4	1	0	0	9
PINELLAS	3,303	2,177	576	445	89	13	2	1	0	0	0
POLK	2,486	1,371	561	391	125	24	7	1	2	0	4
PUTNAM	297	167	65	52	12	1	0	0	0	0	0
SAINT JOHNS	875	479	167	156	65	7	1	0	0	0	0
SAINT LUCIE	967	538	200	172	42	9	1	0	0	0	5
SANTA ROSA	665	340	161	124	33	6	1	0	0	0	0
SARASOTA	1,391	882	255	187	47	15	2	0	0	0	3
SEMINOLE	1,706	681	359	275	81	10	5	1	0	1	293
SUMTER	195	122	46	20	6	1	0	0	0	0	0
SUWANNEE	132	75	33	15	7	2	0	0	0	0	0
TAYLOR	92	51	16	14	1	0	0	0	0	0	10
UNION	63	42	9	9	3	0	0	0	0	0	0
VOLUSIA	2,194	1,041	426	315	98	24	4	0	1	0	285
WAKULLA	116	75	22	12	1	0	0	0	0	0	6
WALTON	274	160	63	36	10	4	1	0	0	0	0
WASHINGTON	14	9	4	0	0	1	0	0	0	0	0

*Includes divorces and annulments.

