

Population

POPULATION

- In 2012, Florida's population reached 19,042,458 residents, a 0.6 percent increase from the 2011 population of 18,934,175.
- Since 1970, Florida's population has more than doubled (178 percent). The population has risen by 46.2 percent since 1990 and 18.5 percent since 2000.
- In 2012, whites accounted for 78.4 percent of the population, and blacks accounted for 16.5 percent of the population. Additionally, Hispanics accounted for 23.2 percent of the population.
- A Florida Resident born in 2012 can expected to live 79.3 years. Since 1970, life expectancy at birth has increased by 8.2 years from 71.1 years.
- Compared to 2011, life expectancy increased for black males and black females. White male's life expectancy remained constant at 76.9 years. Life expectancy for white females, Hispanic males, and Hispanic females decreased in 2012. The largest decrease was among Hispanic females whose life expectancy decreased by 0.9 years.
- Women of all races and ethnicities are expected to live longer than men.
- The age distribution of Florida's population in 2012 is older than in 1970.
 - Persons under 15 accounted for 17.4 percent of Florida's population in 2012 and 25.6 percent of Florida's population in 1970
 - Persons 65 and older accounted for 18.0 percent of Florida's population in 2012 and 14.7 percent of Florida's population in 1970
 - Persons 75 and older accounted for 8.3 percent of Florida's population in 2012 and 5.1 percent of Florida's population in 1970
 - Persons 85 and older accounted for 2.5 percent of Florida's population in 2012 and 0.8 percent of Florida's population in 1970

CHART P-1: YEARS OF LIFE EXPECTANCY AT BIRTH, BY RACE, ETHNICITY, AND GENDER, FOR FLORIDA RESIDENTS AND UNITED STATES TOTAL, CENSUS YEARS 1970-2000 AND 2002-2012

YEAR	FLORIDA							UNITED STATES			
	TOTAL	WHITE ¹		BLACK ¹		HISPANIC ²		TOTAL	WHITE ¹	BLACK ¹	HISPANIC ²
		MALE	FEMALE	MALE	FEMALE	MALE	FEMALE				
1970	71.1	68.5	77.0	59.1	68.7	NA	NA	70.9	71.1	NA	NA
1980	74.3	71.2	79.4	63.2	72.8	NA	NA	73.7	74.4	68.0	NA
1990	76.3	73.5	81.1	64.4	73.8	NA	NA	75.4	76.1	69.1	NA
2000	77.8	75.5	81.5	69.6	75.7	NA	NA	76.8	77.3	71.8	NA
2002	78.1	75.7	81.5	70.0	75.9	NA	NA	76.9	77.4	72.1	NA
2003	78.2	75.6	81.6	70.3	76.1	NA	NA	77.1	77.6	72.3	NA
2004	78.7	76.4	81.9	71.1	76.9	79.4	84.8	77.5	77.9	72.8	NA
2005	78.0	75.5	81.5	70.7	76.8	77.5	84.2	77.6	78.0	73.0	NA
2006	78.5	75.9	82.0	71.4	77.3	78.4	84.7	77.8	78.3	73.4	80.3
2007	78.9	76.4	82.4	71.7	78.2	78.6	85.4	78.1	78.5	73.8	80.7
2008	79.1	76.5	82.5	72.5	78.9	79.3	85.3	78.2	78.5	74.3	80.8
2009	79.5	76.9	82.8	73.1	79.1	79.7	86.0	78.6	78.8	74.7	81.1
2010	79.1	76.6	82.2	73.6	79.1	80.5	86.0	78.7	79.0	75.1	81.2
2011	79.3	76.9	82.4	74.1	79.7	80.7	86.1	78.7 ³	79.0 ³	75.3 ³	81.4 ³
2012	79.3	76.9	82.2	74.3	80.2	80.1	85.2	NA	NA	NA	NA

- 1. Regardless of ethnicity.
- 2. Regardless of race
- 3. Preliminary data.

GRAPH P-1: YEARS OF LIFE EXPECTANCY AT BIRTH, FLORIDA AND UNITED STATES, CENSUS YEARS 1970-2000 AND 2002-2012

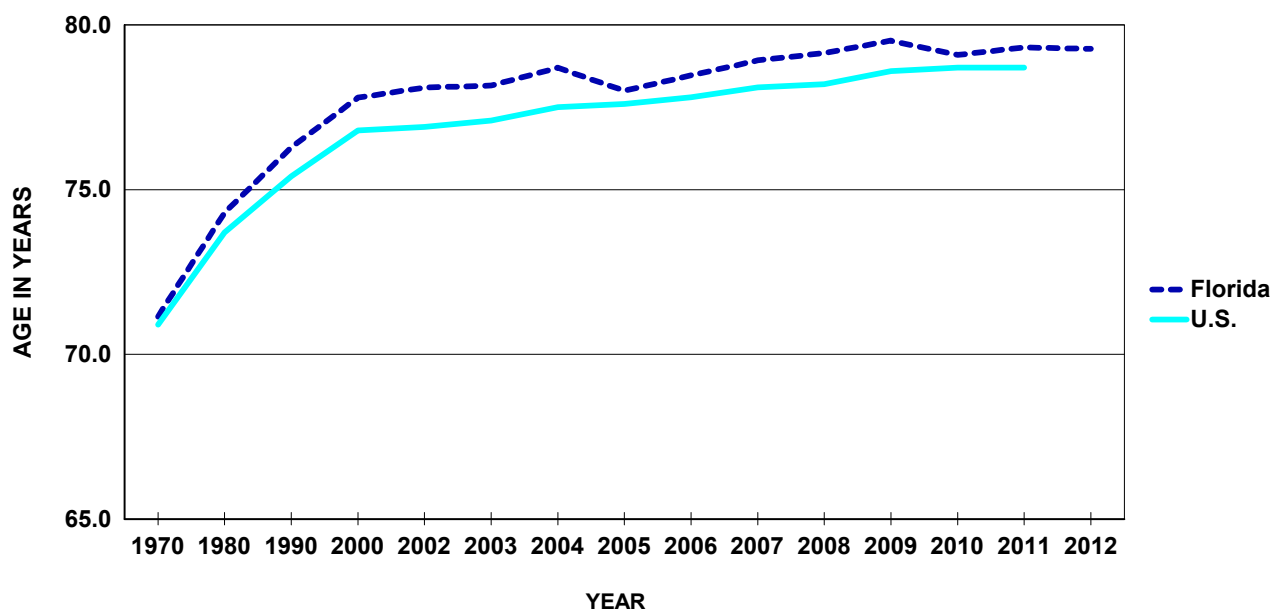


CHART P-2: NATURAL INCREASE* IN POPULATION, BY RACE, FLORIDA 2002-2012				
YEAR	TOTAL	WHITE	BLACK	OTHER
2002	37,878	3,182	28,290	6,087
2003	43,784	7,879	29,197	6,477
2004	49,681	10,917	28,939	9,452
2005	55,919	16,079	29,953	9,552
2006	67,801	25,153	32,494	9,858
2007	71,412	27,292	33,308	10,396
2008	60,944	17,521	33,076	9,870
2009	51,537	9,996	32,220	8,714
2010	42,010	1,891	30,938	8,243
2011	40,381	171	30,470	9,210
2012	37,105	-3,177	30,121	9,578

*Resident Live Births minus Resident Deaths.

GRAPH P-2: PERCENT DISTRIBUTION OF RACE-SPECIFIC POPULATION
BY AGE GROUPS, FLORIDA, 2012

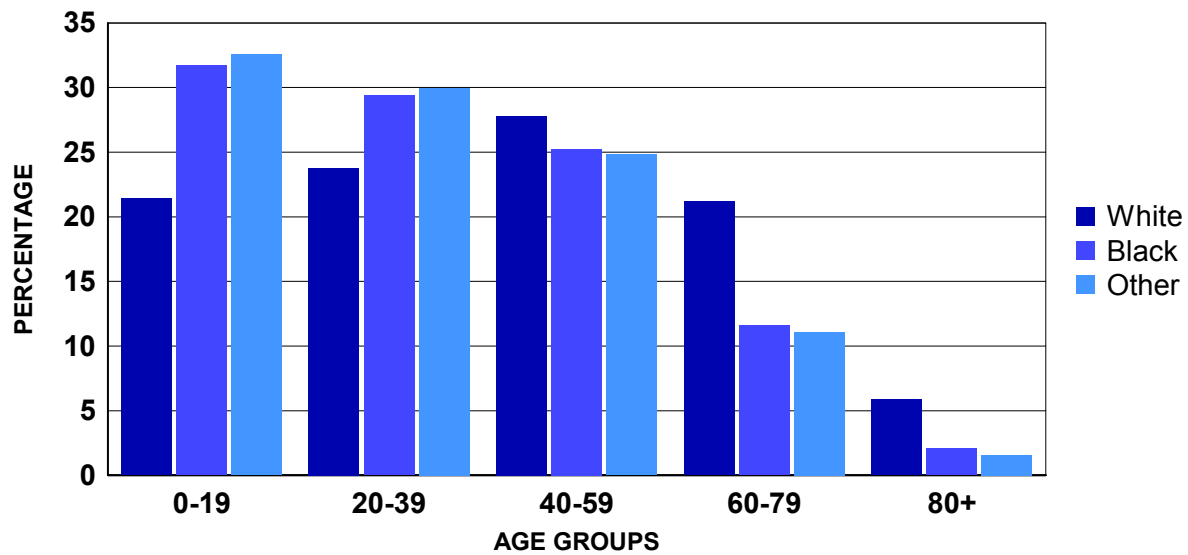


CHART P-3: RESIDENT MIDYEAR POPULATION ESTIMATES, BY AGE, RACE AND GENDER, FLORIDA, 2012

AGE GROUP	TOTAL	WHITE			BLACK			OTHER		
		TOTAL	MALE	FEMALE	TOTAL	MALE	FEMALE	TOTAL	MALE	FEMALE
TOTAL	19,042,458	14,930,936	7,331,419	7,599,517	3,150,349	1,517,653	1,632,696	961,173	460,322	500,851
<1 ¹	209,035	148,500	76,093	72,407	48,334	24,629	23,705	12,201	6,159	6,042
1-4 ²	868,895	603,731	308,221	295,510	194,093	98,988	95,105	71,071	36,237	34,834
5-9	1,095,035	771,585	394,557	377,028	242,966	123,131	119,835	80,484	40,293	40,191
10-14	1,130,994	806,002	413,109	392,893	248,230	125,694	122,536	76,762	38,384	38,378
15-19	1,201,681	863,987	443,644	420,343	265,307	134,558	130,749	72,387	36,702	35,685
20-24	1,257,586	918,427	473,237	445,190	264,711	132,818	131,893	74,448	37,629	36,819
25-29	1,205,487	896,135	459,751	436,384	237,306	116,139	121,167	72,046	35,273	36,773
30-34	1,147,236	859,360	436,053	423,307	216,832	103,892	112,940	71,044	33,703	37,341
35-39	1,150,875	873,866	440,798	433,068	206,665	97,538	109,127	70,344	33,144	37,200
40-44	1,216,231	944,219	474,368	469,851	205,333	97,427	107,906	66,679	30,983	35,696
45-49	1,327,834	1,055,563	527,174	528,389	209,958	99,823	110,135	62,313	28,946	33,367
50-54	1,365,360	1,101,862	542,037	559,825	205,062	96,611	108,451	58,436	26,609	31,827
55-59	1,272,719	1,046,447	502,766	543,681	175,175	81,304	93,871	51,097	22,970	28,127
60-64	1,174,797	996,453	470,870	525,583	136,846	62,613	74,233	41,498	18,428	23,070
65-69	1,022,869	891,924	418,867	473,057	100,827	45,250	55,577	30,118	13,520	16,598
70-74	815,081	719,377	336,399	382,978	74,505	32,284	42,221	21,199	9,560	11,639
75-79	621,686	555,146	254,936	300,210	52,726	22,052	30,674	13,814	5,937	7,877
80-84	496,808	452,346	198,066	254,280	35,612	13,486	22,126	8,850	3,565	5,285
85+	462,249	426,006	160,473	265,533	29,861	9,416	20,445	6,382	2,280	4,102

Source: The Florida Legislature, Office of Economic and Demographic Research, July 1 estimates or births and infant deaths from the Bureau of Vital Statistics.

1. The <1 age group is number of births minus infant deaths obtained when in-state births and infant deaths were finalized plus the number of out-of-state births minus infant deaths from the previous calendar year. When the estimate of individuals <1 in a county exceeds the 0-4 population estimate from the Office of Economic and Demographic Research for the county, then the county's total 0-4 population estimate is reallocated based on the proportion of individuals <1 in each race, ethnic, gender group in relation to the total number who are <1 in the county. A final adjustment may have been made to the <1 estimate to ensure that the sum of the <1, 1, 2, 3, and 4 age groups total to the county's 0-4 population estimate.

2. The 1-4 age group for each county is the Office of Economic and Demographic Research 0-4 age group estimate minus the <1 age group estimate described in the previous footnote. A final adjustment may have been made to the 1-4 estimate to ensure that the sum of the <1, 1, 2, 3, and 4 age groups total to the county's 0-4 population estimate.

**CHART P-4: RESIDENT MIDYEAR POPULATION ESTIMATES, BY RACE AND GENDER, FLORIDA,
CENSUS YEARS 1970-1990 AND 1993 - 2012**

YEAR	TOTAL	WHITE			BLACK			OTHER		
		TOTAL	MALE	FEMALE	TOTAL	MALE	FEMALE	TOTAL	MALE	FEMALE
1970	6,851,176	5,775,400	2,791,845	2,983,555	1,047,244	501,598	545,646	28,532	13,990	14,542
1980	9,840,317	8,389,968	4,031,868	4,358,100	1,366,808	649,110	717,698	83,541	39,070	44,471
1990	13,029,114	11,040,436	5,358,366	5,682,070	1,790,653	854,838	935,815	198,025	94,610	103,415
1993	13,803,101	11,566,432	5,628,837	5,937,595	1,988,175	953,489	1,034,686	248,494	118,137	130,357
1994	14,120,555	11,791,929	5,741,676	6,050,253	2,062,457	990,398	1,072,059	266,169	126,402	139,767
1995	14,405,514	11,995,367	5,846,164	6,149,203	2,124,830	1,020,988	1,103,842	285,317	135,304	150,013
1996	14,701,293	12,205,330	5,957,258	6,248,072	2,191,834	1,053,895	1,137,939	304,129	144,321	159,808
1997	15,011,697	12,422,254	6,070,358	6,351,896	2,265,376	1,089,602	1,175,774	324,067	153,464	170,603
1998	15,309,968	12,633,341	6,177,496	6,455,845	2,334,494	1,122,859	1,211,635	342,133	162,015	180,118
1999	15,679,606	12,903,840	6,313,637	6,590,203	2,412,203	1,160,236	1,251,967	363,563	173,549	190,014
2000	16,074,896	13,200,518	6,461,066	6,739,452	2,487,562	1,196,463	1,291,099	386,816	186,108	200,708
2001	16,384,860	13,308,708	6,517,402	6,791,306	2,506,652	1,203,991	1,302,661	569,500	274,650	294,850
2002	16,718,033	13,530,669	6,628,652	6,902,017	2,577,689	1,238,065	1,339,624	609,675	294,751	314,924
2003	17,074,368	13,771,781	6,751,592	7,020,189	2,650,445	1,273,337	1,377,108	652,142	313,870	338,272
2004	17,476,489	14,047,501	6,893,166	7,154,335	2,732,636	1,312,932	1,419,704	696,352	334,256	362,096
2005	17,876,663	14,314,124	7,027,973	7,286,151	2,818,056	1,353,355	1,464,701	744,483	357,294	387,189
2006	18,237,596	14,539,520	7,142,191	7,397,329	2,904,545	1,395,616	1,508,929	793,531	381,434	412,097
2007	18,500,958	14,695,237	7,223,143	7,472,094	2,970,749	1,428,525	1,542,224	834,972	400,760	434,212
2008	18,636,837	14,747,636	7,244,354	7,503,282	3,019,761	1,452,221	1,567,540	869,440	416,260	453,180
2009	18,711,844	14,762,048	7,248,318	7,513,730	3,049,814	1,466,943	1,582,871	899,982	431,386	468,596
2010	18,820,278	14,815,082	7,276,743	7,538,339	3,083,154	1,483,295	1,599,859	922,042	442,190	479,852
2011	18,934,175	14,866,474	7,305,024	7,561,450	3,117,755	1,501,281	1,616,474	949,946	454,730	495,216
2012	19,042,458	14,930,936	7,331,419	7,599,517	3,150,349	1,517,653	1,632,696	961,173	460,322	500,851

Source: The Florida Legislature, Office of Economic and Demographic Research

**CHART P-5: RESIDENT MIDYEAR POPULATION ESTIMATES, BY AGE GROUPS, FLORIDA,
CENSUS YEARS 1970-1990 AND 1993 - 2012**

YEAR	AGE GROUP											
	TOTAL	<1 ¹	1-4 ²	5-14	15-24	25-34	35-44	45-54	55-64	65-74	75-84	85+
1970	6,851,176	112,644	391,737	1,251,059	1,093,338	768,900	748,346	767,772	713,958	656,231	289,759	57,432
1980	9,840,317	129,893	448,565	1,310,351	1,630,632	1,438,555	1,051,361	994,915	1,131,187	1,067,585	517,689	119,584
1990	13,029,114	197,234	687,549	1,577,347	1,679,321	2,125,870	1,830,009	1,291,371	1,266,366	1,372,242	792,709	209,096
1993	13,803,101	190,799	755,015	1,763,752	1,664,800	2,129,966	2,021,357	1,490,623	1,247,843	1,433,272	856,301	249,373
1994	14,120,555	189,006	758,595	1,823,222	1,688,009	2,129,987	2,098,672	1,570,953	1,266,249	1,451,927	881,634	262,301
1995	14,405,514	187,132	748,894	1,876,511	1,709,090	2,125,881	2,176,563	1,650,994	1,286,878	1,463,428	906,789	273,354
1996	14,701,293	187,933	738,827	1,925,408	1,736,529	2,118,987	2,251,266	1,733,377	1,314,581	1,470,070	939,150	285,165
1997	15,011,697	190,946	733,187	1,968,856	1,782,923	2,103,482	2,321,998	1,817,926	1,365,920	1,465,328	964,172	296,959
1998	15,309,968	194,149	729,556	2,009,851	1,833,426	2,078,343	2,382,246	1,893,110	1,438,765	1,456,934	984,061	309,527
1999	15,679,606	195,521	737,786	2,057,884	1,893,078	2,071,054	2,445,284	1,995,809	1,508,272	1,445,428	1,006,711	322,779
2000	16,074,896	202,607	752,066	2,094,766	1,961,818	2,086,402	2,488,959	2,090,243	1,579,582	1,455,587	1,029,871	332,995
2001	16,384,860	204,733	787,332	2,110,339	2,040,630	2,083,035	2,478,306	2,163,930	1,665,444	1,463,755	1,048,642	338,714
2002	16,718,033	204,486	781,008	2,120,022	2,086,329	2,071,620	2,490,536	2,267,322	1,758,361	1,489,751	1,085,544	363,054
2003	17,074,368	211,257	808,356	2,171,906	2,140,399	2,120,794	2,541,604	2,304,679	1,790,311	1,517,846	1,103,047	364,169
2004	17,476,489	220,922	840,464	2,223,491	2,291,411	2,114,627	2,515,128	2,419,314	1,925,093	1,433,804	1,071,348	420,887
2005	17,876,663	226,176	848,666	2,271,019	2,323,896	2,169,191	2,559,269	2,488,666	1,976,581	1,460,734	1,142,811	409,654
2006	18,237,596	236,579	857,820	2,296,310	2,366,202	2,221,896	2,544,341	2,551,058	2,067,667	1,513,436	1,149,747	432,540
2007	18,500,958	237,193	871,978	2,313,360	2,401,336	2,259,101	2,525,432	2,601,729	2,142,955	1,546,842	1,150,763	450,269
2008	18,636,837	230,660	905,284	2,306,432	2,410,214	2,272,113	2,481,650	2,627,769	2,198,837	1,565,961	1,148,391	489,526
2009	18,711,844	220,233	923,983	2,294,240	2,415,671	2,281,287	2,433,459	2,652,212	2,253,825	1,584,274	1,141,403	511,257
2010	18,820,278	224,098	834,824	2,202,794	2,437,270	2,272,695	2,421,253	2,744,741	2,368,230	1,760,445	1,114,335	439,593
2011	18,934,175	223,227	837,104	2,213,728	2,442,802	2,306,898	2,395,451	2,726,097	2,413,585	1,803,948	1,119,075	452,260
2012	19,042,458	209,035	868,895	2,226,029	2,459,267	2,352,723	2,367,106	2,693,194	2,447,516	1,837,950	1,118,494	462,249

Source: The Florida Legislature, Office of Economic and Demographic Research, July 1 estimates or births and infant deaths from the Bureau of Vital Statistics.

1. The <1 age group is number of births minus infant deaths obtained when in-state births and infant deaths were finalized plus the number of out-of-state births minus infant deaths from the previous calendar year. When the estimate of individuals <1 in a county exceeds the 0-4 population estimate from the Office of Economic and Demographic Research for the county, then the county's total 0-4 population estimate is reallocated based on the proportion of individuals <1 in each race, ethnic, gender group in relation to the total number who are <1 in the county. A final adjustment may have been made to the <1 estimate to ensure that the sum of the <1, 1, 2, 3, and 4 age groups total to the county's 0-4 population estimate.

2. The 1-4 age group for each county is the Office of Economic and Demographic Research 0-4 age group estimate minus the <1 age group estimate described in the previous footnote. A final adjustment may have been made to the 1-4 estimate to ensure that the sum of the <1, 1, 2, 3, and 4 age groups total to the county's

TABLE P-1: RESIDENT MIDYEAR POPULATION ESTIMATES, BY RACE, ETHNICITY, AND COUNTY, FLORIDA, 2012

	TOTAL	RACE			ETHNICITY	
		WHITE	BLACK	OTHER	NON-HISPANIC	HISPANIC
FLORIDA	19,042,458	14,930,936	3,150,349	961,173	14,629,656	4,412,802
ALACHUA	248,070	176,334	50,476	21,260	225,900	22,170
BAKER	27,055	22,529	3,883	643	26,470	585
BAY	170,018	141,029	19,180	9,809	161,509	8,509
BRADFORD	28,641	22,045	5,880	716	27,550	1,091
BREVARD	547,669	461,296	58,112	28,261	500,912	46,757
BROWARD	1,754,756	1,160,570	488,581	105,605	1,293,087	461,669
CALHOUN	14,777	12,030	2,122	625	13,959	818
CHARLOTTE	161,110	146,224	9,877	5,009	151,221	9,889
CITRUS	141,454	132,377	4,376	4,701	134,797	6,657
CLAY	192,832	160,346	20,228	12,258	177,237	15,595
COLLIER	327,058	294,965	22,534	9,559	239,458	87,600
COLUMBIA	67,850	53,416	12,168	2,266	64,452	3,398
MIAMI-DADE	2,534,877	1,965,545	489,307	80,025	876,162	1,658,715
DESOTO	34,641	29,175	4,460	1,006	23,884	10,757
DIXIE	16,498	14,756	1,365	377	15,906	592
DUVAL	865,865	543,447	258,455	63,963	796,378	69,487
ESCAMBIA	300,265	209,002	70,361	20,902	284,505	15,760
FLAGLER	98,252	81,817	11,852	4,583	89,138	9,114
FRANKLIN	11,595	9,674	1,614	307	11,011	584
GADSDEN	49,434	21,101	27,151	1,182	44,371	5,063
GILCHRIST	17,066	15,741	945	380	16,144	922
GLADES	12,800	10,399	1,517	884	9,893	2,907
GULF	15,748	12,420	2,912	416	15,025	723
HAMILTON	14,762	9,423	4,921	418	13,352	1,410
HARDEE	27,576	24,484	2,075	1,017	15,479	12,097
HENDRY	38,537	31,492	5,360	1,685	19,078	19,459
HERNANDO	174,578	158,832	9,879	5,867	155,422	19,156
HIGHLANDS	98,967	85,295	9,978	3,694	81,067	17,900
HILLSBOROUGH	1,251,038	949,590	219,014	82,434	932,642	318,396
HOLMES	19,929	17,935	1,277	717	19,408	521
INDIAN RIVER	139,882	122,096	13,400	4,386	123,308	16,574
JACKSON	50,150	35,105	13,520	1,525	47,721	2,429
JEFFERSON	14,625	9,074	5,241	310	14,055	570
LAFAYETTE	8,619	7,167	1,291	161	7,551	1,068
LAKE	301,834	256,112	31,885	13,837	262,429	39,405
LEE	635,496	555,841	56,664	22,991	513,563	121,933
LEON	277,157	176,551	85,529	15,077	260,382	16,775
LEVY	40,917	35,695	4,041	1,181	37,674	3,243
LIBERTY	8,530	6,768	1,506	256	8,010	520
MADISON	19,374	11,448	7,530	396	18,396	978
MANATEE	329,566	285,966	30,767	12,833	278,255	51,311
MARION	334,523	279,070	43,287	12,166	296,829	37,694
MARTIN	147,335	133,475	8,462	5,398	128,448	18,887
MONROE	72,267	65,198	4,608	2,461	56,554	15,713
NASSAU	74,479	67,188	5,134	2,157	71,713	2,766
OKALOOSA	182,462	150,539	17,999	13,924	169,333	13,129
OKEECHOBEE	39,865	35,142	3,341	1,382	29,922	9,943
ORANGE	1,171,890	819,703	254,704	97,483	847,673	324,217
OSCEOLA	281,162	227,058	35,998	18,106	148,915	132,247
PALM BEACH	1,333,088	1,029,743	238,817	64,528	1,066,757	266,331
PASCO	471,490	425,090	24,326	22,074	413,682	57,808
PINELLAS	918,061	768,783	98,795	50,483	838,318	79,743
POLK	610,615	489,906	94,439	26,270	497,489	113,126
PUTNAM	73,829	59,361	12,321	2,147	66,932	6,897
SAINT JOHNS	197,363	177,240	11,747	8,376	186,065	11,298
SAINT LUCIE	283,954	216,167	55,482	12,305	235,707	48,247
SANTA ROSA	158,235	138,664	10,011	9,560	150,358	7,877
SARASOTA	383,620	352,705	19,087	11,828	351,269	32,351
SEMINOLE	426,881	347,165	50,989	28,727	349,781	77,100
SUMTER	100,402	88,661	9,659	2,082	94,113	6,289
SUWANNEE	44,475	37,673	5,480	1,322	40,263	4,212
TAYLOR	22,506	17,056	4,716	734	21,672	834
UNION	15,445	11,641	3,485	319	14,610	835
VOLUSIA	496,832	422,971	54,455	19,406	439,772	57,060
WAKULLA	31,094	25,512	4,621	961	29,968	1,126
WALTON	56,213	50,182	3,549	2,482	53,010	3,203
WASHINGTON	24,504	19,931	3,603	970	23,742	762