

# Live Births

## LIVE BIRTHS

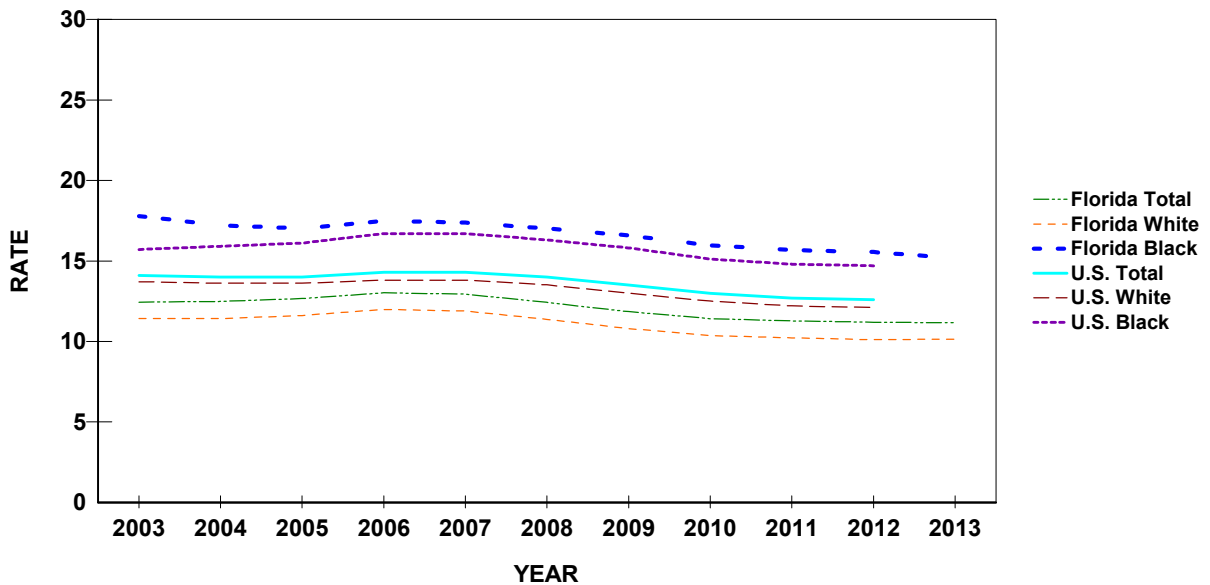
- Since 1970, Florida's resident live births have increased. The largest increase was between 1980 and 1990, when births increased from 131,811 to 199,146. Between 2000 and 2010, births increased from 204,030 to 214,519. Further analysis of this decade shows gains in the number of births until 2007, when the highest number (239,120) was reached. In 2013, the number of resident live births increased to 215,194, after decreasing for five consecutive years.
- In 2013, Florida experienced a birth rate of 11.1 births per 1,000 population. This is a decrease of 0.9 percent from the 2012 rate of 11.2.
- In 2013, the resident birth rate for whites was 10.1 births per 1,000 population and 15.2 births per 1,000 population for blacks.
- Both the number and percentage of resident births to mothers aged 18 and under decreased between 2012 and 2013. The number decreased from 8,885 to 7,660 and the percent from 4.2 to 3.6.
- Comparing the percentage of resident births to mothers of 18 years or younger by race, the percent for black mothers (5.4 percent) is 1.7 times higher than the percent for white mothers (3.1 percent).
- Between 2012 and 2013, the percent of resident live births with birthweights less than 2,500 grams (5 lbs. 8.2 oz.) decreased from 8.6 to 8.5. The percent of resident live births with birthweights less than 1,500 grams (3 lbs. 4.9 oz.) was also decreased from 2012 to 2013 at 1.5. The percent of resident live births with birthweights of 4,000 grams (8 lbs. 13.1 oz.) and heavier was 6.9 in 2013, the same as in 2012.
- About 12 out of every 25 resident live births (48.0 percent) were to unwed mothers. For blacks, about twelve out of every seventeen births (70.7 percent) were to unwed mothers. Among whites, about eight out of every nineteen births (42.5 percent) were to unwed mothers. Among other races, approximately five out of every seventeen live births (29.5 percent) were to unwed mothers.
- Of the live births to unwed mothers, 7.0 percent were to women 18 years old and younger.
- Mothers of Hispanic origin accounted for 27.5 percent of the resident live births.
- The majority of infants born during 2013 had a white mother (71.2 percent of Florida's total resident live births). About twenty-three percent had a black mother and the mother of 5.7 percent were of other race.
- Of the resident live births, 97.9 percent occurred in hospitals. Physicians attended 89.2 percent of the hospital births.

**CHART B-1: RESIDENT LIVE BIRTHS AND RATES PER 1,000 POPULATION,  
BY RACE\*, FLORIDA AND UNITED STATES TOTAL,  
CENSUS YEARS 1970-2000 AND 2003-2013**

YEAR	NUMBER OF BIRTHS -FL				RATES - FL			RATES-U.S.		
	TOTAL	WHITE	BLACK	OTHER	TOTAL	WHITE	BLACK	TOTAL	WHITE	BLACK
1970	115,113	86,941	27,567	586	16.8	15.1	26.3	18.4	17.4	25.1
1980	131,810	97,401	33,127	1,259	13.4	11.6	24.2	15.9	15.1	21.3
1990	199,146	149,743	46,353	2,912	15.3	13.6	25.9	16.7	15.8	22.4
2000	204,030	150,115	47,271	6,351	12.7	11.4	19.0	14.4	13.9	17.0
2003	212,243	157,402	47,117	7,449	12.4	11.4	17.8	14.1	13.7	15.7
2004	218,045	160,132	46,998	10,479	12.5	11.4	17.2	14.0	13.6	15.9
2005	226,219	166,181	47,957	11,651	12.7	11.6	17.0	14.0	13.6	16.1
2006	237,166	174,147	50,808	11,889	13.0	12.0	17.5	14.3	13.8	16.7
2007	239,120	174,597	51,587	12,503	12.9	11.9	17.4	14.3	13.8	16.7
2008	231,417	167,487	51,362	12,049	12.4	11.4	17.0	14.0	13.5	16.3
2009	221,391	159,186	50,559	11,006	11.8	10.8	16.6	13.5	13.0	15.8
2010	214,519	153,480	49,189	10,716	11.4	10.4	16.0	13.0	12.5	15.1
2011	213,237	152,007	48,838	11,623	11.3	10.2	15.7	12.7	12.2	14.8
2012	212,954	150,866	48,992	12,335	11.2	10.1	15.6	12.6	12.1	14.7
2013	215,194	153,278	48,737	12,213	11.1	10.1	15.2	NA	NA	NA

\*Data are based on the race of the mother.

**GRAPH B-1: RESIDENT LIVE BIRTH RATES PER 1,000 POPULATION, BY RACE OF MOTHER, FLORIDA AND UNITED STATES TOTAL, 2003-2013**



**CHART B-2: RESIDENT LIVE BIRTHS TO MOTHERS 18 YEARS AND UNDER,  
BY SINGLE YEARS OF AGE, AND PERCENT OF TOTAL BIRTHS,  
BY RACE OF MOTHER, FLORIDA, 1970, 1975, 1980, 1985, 1990, 1995, 2000, 2005, AND 2009-2013**

YEAR	AGE OF MOTHER							18 YEARS & UNDER	
	< 13	13	14	15	16	17	18	NUMBER	PERCENT
<b>TOTAL</b>									
1970	26	107	503	1,463	3,107	4,887	6,808	16,901	14.7
1975	20	145	647	1,798	3,369	4,936	6,482	17,397	16.5
1980	21	98	509	1,537	2,913	4,429	6,299	15,806	12.0
1985	16	105	549	1,407	2,709	4,348	6,139	15,273	9.3
1990	31	138	591	1,661	3,148	5,193	7,544	18,306	9.2
1995	20	128	588	1,583	3,236	5,166	6,971	17,692	9.4
2000	24	95	412	1,213	2,702	4,730	7,094	16,270	8.0
2005	15	59	341	1,036	2,428	4,126	6,797	14,802	6.5
2009	6	42	214	803	1,895	3,610	6,355	12,925	5.8
2010	6	54	190	660	1,567	3,171	5,466	11,114	5.2
2011	2	34	158	552	1,422	2,749	4,840	9,757	4.6
2012	6	32	154	497	1,274	2,448	4,474	8,885	4.2
2013	5	27	132	448	1,074	2,176	3,798	7,660	3.6
<b>WHITE</b>									
1970	3	19	155	524	1,553	3,004	4,463	9,721	11.2
1975	5	34	207	693	1,651	2,868	4,078	9,536	12.2
1980	5	24	128	581	1,370	2,434	3,887	8,429	8.7
1985	4	26	168	600	1,439	2,537	3,744	8,518	6.9
1990	8	37	201	693	1,571	2,976	4,636	10,122	6.8
1995	9	32	230	801	1,801	3,124	4,451	10,448	7.4
2000	6	43	167	625	1,512	2,863	4,463	9,679	6.4
2005	7	26	161	567	1,468	2,643	4,452	9,324	5.6
2009	1	14	100	425	1,081	2,204	3,966	7,791	4.9
2010	4	24	103	346	915	1,930	3,363	6,685	4.4
2011	2	15	84	295	835	1,597	2,970	5,798	3.8
2012	3	14	78	261	763	1,516	2,815	5,450	3.6
2013	2	9	64	247	641	1,379	2,372	4,714	3.1
<b>BLACK</b>									
1970	22	88	348	939	1,552	1,873	2,331	7,153	25.9
1975	15	111	439	1,101	1,711	2,057	2,387	7,821	29.4
1980	16	74	379	954	1,533	1,986	2,389	7,331	22.1
1985	12	78	379	799	1,259	1,796	2,368	6,691	17.3
1990	22	101	387	953	1,552	2,166	2,847	8,028	17.3
1995	10	96	353	761	1,399	1,973	2,446	7,038	16.7
2000	18	50	238	576	1,148	1,798	2,525	6,353	13.4
2005	8	33	169	426	884	1,354	2,121	4,995	10.4
2009	5	24	104	352	757	1,296	2,196	4,734	9.4
2010	2	27	81	282	597	1,144	1,910	4,043	8.2
2011	0	17	65	233	530	1,046	1,703	3,594	7.4
2012	3	17	73	218	452	835	1,485	3,083	6.3
2013	2	15	67	181	397	685	1,267	2,614	5.4
<b>OTHER</b>									
1970	1	0	0	0	2	9	14	26	4.4
1975	0	0	0	3	6	11	16	36	3.9
1980	0	0	1	2	10	8	23	44	3.5
1985	0	1	2	8	10	15	26	62	3.5
1990	1	0	3	14	22	46	58	144	4.9
1995	1	0	5	21	32	65	73	197	4.4
2000	0	2	6	12	37	64	103	224	3.5
2005	0	0	11	40	74	125	211	461	4.0
2009	0	4	9	24	50	102	180	369	3.4
2010	0	3	4	26	48	76	169	326	3.0
2011	0	2	7	21	52	99	151	332	2.9
2012	0	1	3	15	54	91	155	319	2.6
2013	1	3	1	19	32	101	138	295	2.4

**CHART B-3: PERCENT OF RESIDENT LIVE BIRTHS FOR SELECTED BIRTHWEIGHT GROUPS,  
BY RACE OF MOTHER AND GENDER OF CHILD, FLORIDA, 1970, 1980, 1990, 2000, AND 2003-2013**

**VERY LOW BIRTHWEIGHT:  
LESS THAN 1,500 GRAMS**

**LOW BIRTHWEIGHT:  
LESS THAN 2,500 GRAMS**

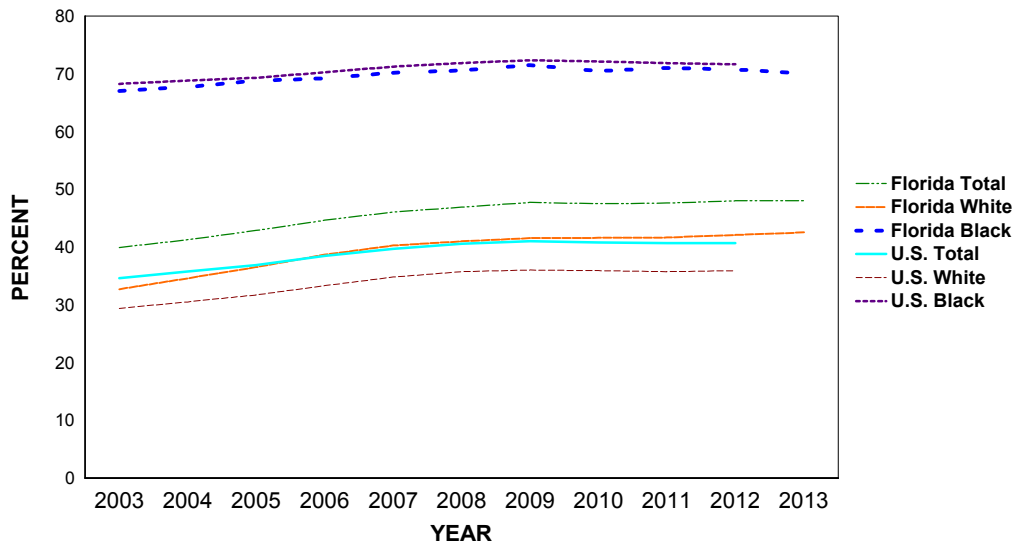
YEAR	WHITE			BLACK		OTHER		TOTAL	WHITE			BLACK		OTHER	
	TOTAL	MALE	FEMALE	MALE	FEMALE	MALE	FEMALE		MALE	FEMALE	MALE	FEMALE	MALE	FEMALE	
1970	1.3	0.9	0.9	2.4	2.4	8.5	10.4	8.5	6.4	7.5	12.0	14.6	1.6	1.8	
1980	1.4	1.0	0.9	2.6	2.6	3.8	5.9	7.6	5.6	6.5	11.6	13.1	0.6	0.7	
1990	1.5	1.0	1.0	2.8	2.9	7.3	7.2	7.4	5.5	6.3	11.5	13.4	0.9	1.1	
2000	1.5	1.2	1.1	2.8	2.9	7.4	8.8	8.0	6.2	7.0	11.4	13.3	1.2	1.1	
2003	1.6	1.2	1.1	2.9	2.9	7.2	9.6	8.5	6.5	7.7	11.8	14.6	1.0	1.8	
2004	1.6	1.1	1.2	3.0	3.2	8.0	9.7	8.6	6.6	7.9	11.9	14.3	1.3	1.4	
2005	1.6	1.2	1.2	3.0	3.2	7.9	9.7	8.8	6.7	8.0	12.2	15.0	1.3	1.5	
2006	1.6	1.2	1.2	3.0	3.2	7.7	9.6	8.7	6.8	8.0	11.9	15.0	1.2	1.3	
2007	1.6	1.2	1.2	3.0	3.3	7.2	9.2	8.7	6.7	7.8	12.4	15.0	1.3	1.5	
2008	1.7	1.2	1.3	2.9	3.1	8.0	9.0	8.8	6.8	8.0	12.3	14.8	1.3	1.6	
2009	1.6	1.1	1.2	2.9	3.3	8.1	9.8	8.7	6.6	7.8	12.0	14.9	1.2	1.3	
2010	1.6	1.3	1.2	2.8	3.2	8.2	9.6	8.7	6.6	7.7	12.5	14.9	1.4	1.2	
2011	1.6	1.1	1.2	2.9	3.1	8.6	8.3	8.7	6.6	8.1	12.2	14.1	1.5	1.1	
2012	1.6	1.2	1.2	2.8	2.9	7.7	9.0	8.6	6.8	7.7	11.7	14.0	1.2	1.3	
2013	1.5	1.1	1.1	2.7	3.0	8.1	8.9	8.5	6.6	7.8	11.7	14.1	1.4	1.3	

**CHART B-4: RESIDENT LIVE BIRTHS TO UNWED MOTHERS  
AND PERCENT OF TOTAL LIVE BIRTHS, BY RACE\*,  
FLORIDA AND UNITED STATES TOTAL, CENSUS YEARS 1920-2000 AND 2003-2013**

YEAR	NUMBER OF BIRTHS <sup>1</sup>				PERCENT - FL				PERCENT-U.S.		
	TOTAL	WHITE	BLACK	OTHER	TOTAL	WHITE	BLACK	OTHER	TOTAL	WHITE	BLACK
1970	17,264	5,679	11,554	27	15.0	6.5	41.9	4.6	10.7	5.7	37.6
1980	30,156	10,295	19,778	82	22.9	10.6	59.7	6.5	18.4	11.0	55.2
1990	63,126	31,276	31,360	442	31.7	20.9	67.7	15.2	28.0	20.4	66.5
2000	78,026	44,616	31,934	1,400	38.2	29.7	67.6	22.0	33.2	27.1	68.5
2003	84,733	51,482	31,584	1,594	39.9	32.7	67.0	21.4	34.6	29.4	68.2
2004	89,976	55,381	31,799	2,670	41.3	34.6	67.7	25.5	35.8	30.5	68.8
2005	96,895	60,665	32,972	3,129	42.8	36.5	68.8	26.9	36.9	31.7	69.3
2006	105,770	67,305	35,133	3,208	44.6	38.6	69.1	27.0	38.5	33.3	70.2
2007	110,160	70,251	36,197	3,501	46.1	40.2	70.2	28.0	39.7	34.8	71.2
2008	108,484	68,583	36,227	3,412	46.9	40.9	70.5	28.3	40.6	35.7	71.8
2009	105,654	66,080	36,133	3,133	47.7	41.5	71.5	28.5	41.0	36.0	72.3
2010	101,810	63,796	34,658	2,867	47.5	41.6	70.5	26.8	40.8	35.9	72.1
2011	101,466	63,266	34,657	3,230	47.6	41.6	71.0	27.8	40.7	35.7	71.8
2012	102,135	63,507	34,654	3,665	48.0	42.1	70.7	29.7	40.7	35.9	71.6
2013	103,303	65,151	34,150	3,599	48.0	42.5	70.1	29.5	NA	NA	NA

\*Data are based on the race of the mother.

**GRAPH B-2: PERCENT OF RESIDENT LIVE BIRTHS TO UNWED MOTHERS,  
BY RACE OF MOTHER, FLORIDA AND UNITED STATES TOTAL, 2003-2013**



**CHART B-5: RESIDENT LIVE BIRTHS TO UNWED MOTHERS AND PERCENT  
BY AGE AND RACE OF MOTHER, FLORIDA, 2003 AND 2013**

AGE OF MOTHER	WHITE				BLACK				OTHER			
	2003		2013		2003		2013		2003		2013	
	NUMBER	%	NUMBER	%	NUMBER	%	NUMBER	%	NUMBER	%	NUMBER	%
TOTAL	51,482	32.7	65,151	42.5	31,584	67.0	34,150	70.1	1,594	21.4	3,599	29.5
10-14	137	93.2	74	98.7	202	99.0	84	100.0	11	100.0	5	100.0
15	460	91.8	242	98.0	428	99.3	181	100.0	12	80.0	19	100.0
16	1,235	88.3	610	95.2	841	98.7	397	100.0	36	94.7	32	100.0
17	2,125	84.3	1,284	93.1	1,394	99.1	676	98.7	54	93.1	93	92.1
18	3,380	79.9	2,118	89.3	2,091	96.5	1,251	98.7	85	76.6	127	92.0
19	4,275	70.7	3,429	83.4	2,639	93.4	1,989	96.5	97	64.2	220	84.6
20-24	19,317	51.4	22,535	67.2	12,643	81.3	13,030	88.8	549	43.0	1,143	58.0
25-29	10,645	25.7	17,656	39.4	6,355	57.7	9,037	67.4	396	17.7	950	28.0
30-34	6,076	15.5	10,882	26.4	3,213	42.0	4,967	50.5	230	10.1	595	15.9
35-44	3,799	15.7	6,252	25.5	1,754	35.5	2,504	41.3	123	9.8	409	16.1
45+	32	15.4	69	22.6	22	37.9	34	41.5	1	5.9	6	26.1
UNK	1	20.0	0	0.0	2	100.0	0	0.0	0	0.0	0	0.0

% = Percent

TABLE B-1: RESIDENT AND RECORDED LIVE BIRTHS AND BIRTH RATES PER 1,000 POPULATION, BY RACE OF MOTHER, BY COUNTY, FLORIDA, 2013

RESIDENT LIVE BIRTHS

	NUMBERS					RATES		
	TOTAL	WHITE	BLACK	OTHER	UNK	TOTAL	WHITE	BLACK
FLORIDA	215,194	153,278	48,737	12,213	966	11.1	10.1	15.2
ALACHUA	2,823	1,715	853	254	1	11.4	9.7	16.8
BAKER	349	300	42	6	1	12.8	13.2	10.6
BAY	2,239	1,703	327	157	52	13.1	12.0	16.9
BRADFORD	312	244	60	8	0	11.7	11.9	10.8
BREVARD	5,076	4,003	718	350	5	9.2	8.7	12.2
BROWARD	21,541	11,773	8,337	1,369	62	12.1	10.0	16.7
CALHOUN	137	116	17	4	0	9.3	9.7	8.1
CHARLOTTE	1,021	902	63	54	2	6.2	6.0	6.1
CITRUS	1,021	937	34	48	2	7.2	7.1	7.7
CLAY	2,088	1,693	255	134	6	10.7	10.4	12.3
COLLIER	3,154	2,621	384	148	1	9.4	8.6	16.4
COLUMBIA	824	644	163	16	1	12.1	12.0	13.3
MIAMI-DADE	31,147	23,128	7,131	727	161	12.1	11.5	14.3
DESOTO	363	319	36	8	0	10.6	11.0	8.2
DIXIE	156	139	16	1	0	9.4	9.4	11.4
DUVAL	12,555	7,042	4,412	1,076	25	14.3	12.8	16.7
ESCAMBIA	3,804	2,418	1,162	216	8	12.7	11.6	16.5
FLAGLER	783	629	110	44	0	7.8	7.5	9.0
FRANKLIN	112	94	16	1	1	9.6	9.7	9.6
GADSDEN	561	207	343	8	3	12.0	10.3	13.3
GILCHRIST	196	188	6	2	0	11.5	11.9	6.4
GLADES	65	52	9	4	0	5.1	5.0	6.0
GULF	134	119	12	2	1	8.4	9.4	4.1
HAMILTON	160	104	54	2	0	10.7	10.9	10.9
HARDEE	387	364	16	7	0	13.9	14.7	7.7
HENDRY	569	481	68	18	2	15.0	15.6	13.0
HERNANDO	1,484	1,309	120	48	7	8.5	8.2	11.9
HIGHLANDS	855	692	130	30	3	8.6	8.1	12.9
HILLSBOROUGH	16,614	12,081	3,556	958	19	13.0	12.5	15.8
HOLMES	174	164	2	7	1	8.7	9.1	1.6
INDIAN RIVER	1,217	740	224	39	214	8.6	6.0	16.5
JACKSON	495	345	139	11	0	10.0	9.9	10.4
JEFFERSON	135	72	62	1	0	9.3	8.0	12.0
LAFAYETTE	81	74	5	2	0	9.3	10.2	3.9
LAKE	3,077	2,473	421	169	14	10.1	9.6	13.0
LEE	6,399	5,246	827	306	20	9.8	9.2	14.0
LEON	3,011	1,554	1,238	218	1	10.8	8.7	14.3
LEVY	390	331	51	8	0	9.6	9.4	12.8
LIBERTY	88	87	1	0	0	10.0	12.5	0.6
MADISON	221	113	103	5	0	11.5	10.0	13.8
MANATEE	3,375	2,587	452	327	9	10.1	8.9	14.3
MARION	3,338	2,540	669	127	2	9.9	9.0	15.2
MARTIN	1,169	1,020	91	54	4	7.9	7.6	10.6
MONROE	741	604	110	24	3	10.2	9.2	23.6
NASSAU	741	680	40	21	0	9.9	10.1	7.8
OKALOOSA	2,768	2,228	309	222	9	14.5	14.2	16.3
OKEECHOBEE	522	454	29	30	9	13.1	12.9	8.7
ORANGE	15,829	10,017	4,310	1,491	11	13.2	12.0	16.4
OSCEOLA	3,909	3,183	458	265	3	13.4	13.6	12.2
PALM BEACH	14,198	9,229	4,149	794	26	10.5	8.9	17.0
PASCO	4,789	4,257	284	234	14	10.1	9.9	11.3
PINELLAS	8,576	6,174	1,556	652	194	9.3	8.0	15.6
POLK	7,253	5,481	1,438	323	11	11.8	11.1	15.0
PUTNAM	845	623	184	35	3	11.6	10.6	15.2
SAINT JOHNS	1,988	1,703	169	115	1	9.8	9.4	14.0
SAINT LUCIE	2,990	2,002	843	125	20	10.5	9.2	15.0
SANTA ROSA	1,797	1,614	76	104	3	11.4	11.7	7.6
SARASOTA	2,803	2,407	259	137	0	7.2	6.8	13.3
SEMINOLE	4,416	3,317	715	376	8	10.2	9.4	13.7
SUMTER	461	373	69	19	0	4.4	4.0	7.1
SUWANNEE	486	414	62	9	1	11.0	11.1	11.5
TAYLOR	247	184	60	3	0	10.7	10.5	12.4
UNION	183	162	18	3	0	11.7	13.7	5.1
VOLUSIA	4,632	3,645	751	219	17	9.3	8.6	13.6
WAKULLA	305	263	35	7	0	9.8	10.3	7.6
WALTON	758	697	36	24	1	12.9	13.3	9.8
WASHINGTON	246	196	42	6	2	9.7	9.5	11.3



TABLE B-1 (Cont.): RESIDENT AND RECORDED LIVE BIRTHS AND BIRTH RATES PER 1,000 POPULATION, BY RACE OF MOTHER, BY COUNTY, FLORIDA, 2013

	RECORDED LIVE BIRTHS					RATES		
	NUMBERS					TOTAL	WHITE	BLACK
	TOTAL	WHITE	BLACK	OTHER	UNK			
FLORIDA	215,655	153,629	48,810	12,245	971	11.2	10.2	15.2
ALACHUA	5,650	4,076	1,260	312	2	22.8	23.2	24.8
BAKER	3	2	1	0	0	0.1	0.1	0.3
BAY	2,717	2,101	390	169	57	15.9	14.9	20.2
BRADFORD	1	1	0	0	0	0.0	0.0	0.0
BREVARD	4,979	3,935	694	344	6	9.1	8.5	11.8
BROWARD	23,383	12,670	9,275	1,374	64	13.1	10.8	18.5
CALHOUN	1	0	0	1	0	0.1	0.0	0.0
CHARLOTTE	1,244	1,108	87	48	1	7.5	7.4	8.5
CITRUS	833	765	29	38	1	5.9	5.8	6.5
CLAY	2,163	1,605	410	140	8	11.1	9.9	19.7
COLLIER	3,404	2,852	393	159	0	10.1	9.4	16.8
COLUMBIA	934	701	220	12	1	13.7	13.0	17.9
MIAMI-DADE	28,168	21,555	5,839	610	164	10.9	10.8	11.7
DESOTO	392	346	34	12	0	11.4	12.0	7.7
DIXIE	0	0	0	0	0	0.0	0.0	0.0
DUVAL	14,215	8,679	4,361	1,149	26	16.2	15.8	16.5
ESCAMBIA	5,393	3,857	1,240	287	9	18.0	18.5	17.6
FLAGLER	9	9	0	0	0	0.1	0.1	0.0
FRANKLIN	3	2	1	0	0	0.3	0.2	0.6
GADSDEN	6	6	0	0	0	0.1	0.3	0.0
GILCHRIST	1	1	0	0	0	0.1	0.1	0.0
GLADES	0	0	0	0	0	0.0	0.0	0.0
GULF	0	0	0	0	0	0.0	0.0	0.0
HAMILTON	0	0	0	0	0	0.0	0.0	0.0
HARDEE	3	2	0	0	1	0.1	0.1	0.0
HENDRY	3	2	1	0	0	0.1	0.1	0.2
HERNANDO	1,614	1,443	116	49	6	9.2	9.0	11.5
HIGHLANDS	1,102	910	147	43	2	11.1	10.6	14.6
HILLSBOROUGH	18,833	13,967	3,822	1,031	13	14.7	14.4	16.9
HOLMES	2	2	0	0	0	0.1	0.1	0.0
INDIAN RIVER	1,107	648	205	35	219	7.8	5.3	15.1
JACKSON	470	329	125	16	0	9.4	9.5	9.3
JEFFERSON	0	0	0	0	0	0.0	0.0	0.0
LAFAYETTE	0	0	0	0	0	0.0	0.0	0.0
LAKE	2,571	2,011	391	152	17	8.4	7.8	12.0
LEE	6,565	5,407	824	314	20	10.0	9.4	14.0
LEON	4,680	2,557	1,871	247	5	16.7	14.4	21.6
LEVY	6	6	0	0	0	0.1	0.2	0.0
LIBERTY	1	1	0	0	0	0.1	0.1	0.0
MADISON	4	2	2	0	0	0.2	0.2	0.3
MANATEE	2,722	2,050	364	306	2	8.1	7.0	11.5
MARION	2,603	1,974	520	107	2	7.7	7.0	11.9
MARTIN	1,635	1,401	149	84	1	11.0	10.4	17.4
MONROE	526	411	95	20	0	7.2	6.3	20.4
NASSAU	545	480	45	18	2	7.3	7.1	8.8
OKALOOSA	2,444	1,924	286	226	8	12.8	12.2	15.1
OKEECHOBEE	10	8	1	1	0	0.3	0.2	0.3
ORANGE	20,376	13,764	4,804	1,798	10	17.0	16.5	18.3
OSCEOLA	3,866	3,117	441	306	2	13.3	13.3	11.7
PALM BEACH	16,721	10,975	4,764	957	25	12.4	10.6	19.5
PASCO	2,044	1,764	153	116	11	4.3	4.1	6.1
PINELLAS	9,920	7,356	1,606	738	220	10.8	9.6	16.1
POLK	5,917	4,488	1,155	269	5	9.6	9.1	12.1
PUTNAM	417	296	106	14	1	5.7	5.1	8.7
SAINT JOHNS	1,363	1,086	194	78	5	6.7	6.0	16.1
SAINT LUCIE	2,271	1,468	695	80	28	8.0	6.8	12.4
SANTA ROSA	414	369	23	20	2	2.6	2.7	2.3
SARASOTA	3,158	2,704	316	138	0	8.1	7.6	16.2
SEMINOLE	3,129	2,296	608	214	11	7.2	6.5	11.7
SUMTER	1	1	0	0	0	0.0	0.0	0.0
SUWANNEE	2	2	0	0	0	0.0	0.1	0.0
TAYLOR	0	0	0	0	0	0.0	0.0	0.0
UNION	1	1	0	0	0	0.1	0.1	0.0
VOLUSIA	4,029	3,127	705	185	12	8.1	7.3	12.8
WAKULLA	2	2	0	0	0	0.1	0.1	0.0
WALTON	1,076	1,005	42	28	1	18.4	19.2	11.4
WASHINGTON	2	2	0	0	0	0.1	0.1	0.0

TABLE B-2: RESIDENT LIVE BIRTHS BY HISPANIC OR HAITIAN ORIGIN OF MOTHER,  
BY COUNTY, FLORIDA, 2013

	NUMBERS									RATE
	HISPANIC ORIGIN									
	TOTAL	TOTAL HISPANIC	MEXICAN	PUERTO RICAN	CUBAN	OTHER/ UNK HISPANIC	HAITIAN	NON-HISPANIC/ HAITIAN	UNK	
FLORIDA	215,194	59,083	12,062	11,982	12,447	22,592	8,256	146,437	1,418	13.0
ALACHUA	2,823	214	42	69	33	70	6	2,592	11	9.6
BAKER	349	4	0	1	2	1	0	345	0	7.0
BAY	2,239	152	59	49	4	40	0	2,085	2	17.4
BRADFORD	312	9	7	1	1	0	0	303	0	9.4
BREVARD	5,076	569	97	240	51	181	27	4,476	4	11.9
BROWARD	21,541	6,339	502	975	1,024	3,838	2,344	12,743	115	13.3
CALHOUN	137	2	2	0	0	0	0	135	0	2.5
CHARLOTTE	1,021	82	23	17	12	30	9	928	2	7.9
CITRUS	1,021	69	14	28	11	16	0	949	3	10.1
CLAY	2,088	181	54	65	13	49	24	1,879	4	11.2
COLLIER	3,154	1,403	735	68	222	378	281	1,470	0	15.4
COLUMBIA	824	26	15	3	2	6	0	795	3	7.4
MIAMI-DADE	31,147	19,019	876	1,073	8,144	8,926	1,809	9,470	849	11.2
DESOTO	363	160	151	1	1	7	1	200	2	14.9
DIXIE	156	3	3	0	0	0	0	153	0	5.2
DUVAL	12,555	1,137	277	335	114	411	111	11,287	20	15.8
ESCAMBIA	3,804	206	99	43	13	51	4	3,586	8	12.9
FLAGLER	783	91	12	40	10	29	4	688	0	9.7
FRANKLIN	112	3	1	0	0	2	0	108	1	5.2
GADSDEN	561	105	69	2	0	34	0	455	1	21.3
GILCHRIST	196	30	14	2	1	13	0	166	0	32.0
GLADES	65	27	18	4	1	4	0	38	0	9.2
GULF	134	5	2	3	0	0	1	127	1	7.1
HAMILTON	160	28	24	1	2	1	0	131	1	19.6
HARDEE	387	226	216	3	0	7	4	155	2	18.4
HENDRY	569	329	229	38	21	41	1	238	1	17.1
HERNANDO	1,484	186	24	102	28	32	2	1,287	9	9.4
HIGHLANDS	855	240	138	67	18	17	10	602	3	13.1
HILLSBOROUGH	16,614	4,869	1,523	1,424	839	1,083	164	11,557	24	14.7
HOLMES	174	3	1	0	0	2	0	171	0	5.8
INDIAN RIVER	1,217	251	158	27	18	48	27	939	0	14.7
JACKSON	495	17	8	3	1	5	1	476	1	7.0
JEFFERSON	135	9	7	0	1	1	0	126	0	16.0
LAFAYETTE	81	14	13	0	1	0	0	67	0	13.2
LAKE	3,077	568	223	183	27	135	26	2,477	6	13.9
LEE	6,399	1,942	657	412	294	579	227	4,209	21	15.1
LEON	3,011	141	51	25	18	47	21	2,845	4	8.2
LEVY	390	42	20	9	1	12	0	348	0	12.8
LIBERTY	88	8	6	0	0	2	0	80	0	14.9
MADISON	221	5	4	1	0	0	0	216	0	5.1
MANATEE	3,375	985	654	98	21	212	49	2,331	10	18.5
MARION	3,338	479	138	204	31	106	11	2,839	9	12.3
MARTIN	1,169	350	105	44	12	189	8	811	0	18.0
MONROE	741	199	31	8	93	67	52	486	4	12.4
NASSAU	741	34	13	7	3	11	0	707	0	12.0
OKALOOSA	2,768	263	132	37	13	81	4	2,495	6	18.8
OKEECHOBEE	522	183	149	8	7	19	0	338	1	18.2
ORANGE	15,829	4,741	725	2,190	286	1,540	825	10,247	16	14.0
OSCEOLA	3,909	2,042	127	1,294	77	544	63	1,793	11	14.7
PALM BEACH	14,198	4,276	921	587	507	2,261	1,739	8,149	34	15.6
PASCO	4,789	792	215	318	79	180	16	3,969	12	13.2
PINELLAS	8,576	1,038	434	309	77	218	19	7,353	166	12.8
POLK	7,253	1,785	970	508	85	222	134	5,324	10	15.3
PUTNAM	845	141	95	36	3	7	0	702	2	20.5
SAINT JOHNS	1,988	95	19	24	9	43	1	1,890	2	8.1
SAINT LUCIE	2,990	655	251	146	56	202	176	2,158	1	13.2
SANTA ROSA	1,797	86	39	22	4	21	1	1,705	5	10.8
SARASOTA	2,803	409	172	51	34	152	16	2,377	1	12.2
SEMINOLE	4,416	857	105	422	67	263	28	3,521	10	10.8
SUMTER	461	63	48	6	2	7	0	397	1	9.6
SUWANNEE	486	65	46	2	7	10	0	420	1	15.2
TAYLOR	247	7	2	1	2	2	0	239	1	8.4
UNION	183	11	4	4	0	3	0	172	0	13.2
VOLUSIA	4,632	728	239	334	43	112	10	3,881	13	12.4
WAKULLA	305	5	3	2	0	0	0	299	1	4.4
WALTON	758	71	47	3	1	20	0	686	1	20.8
WASHINGTON	246	8	3	3	0	2	0	238	0	10.3

**TABLE B-3: RESIDENT LIVE BIRTHS FOR INCORPORATED CITIES OF 2,400 OR MORE POPULATION,  
BY RACE OF MOTHER, BY COUNTY, FLORIDA, 2013**

	TOTAL	WHITE	BLACK	AMER INDIAN	CHINESE	JAPANESE	HAWAIIAN	FILIPINO	OTHER ASIAN/ PAC ISL	MULTI - RACE & OTHER	UNK
<b>FLORIDA</b>	<b>215,194</b>	<b>153,278</b>	<b>48,737</b>	<b>282</b>	<b>823</b>	<b>154</b>	<b>36</b>	<b>1,127</b>	<b>4,274</b>	<b>5,517</b>	<b>966</b>
<b>ALACHUA</b>	<b>2,823</b>	<b>1,715</b>	<b>853</b>	<b>2</b>	<b>54</b>	<b>2</b>	<b>0</b>	<b>19</b>	<b>108</b>	<b>69</b>	<b>1</b>
ALACHUA	104	78	23	0	0	0	0	0	2	1	0
GAINESVILLE	1,928	1,003	708	2	51	1	0	12	96	54	1
HIGH SPRINGS	74	64	10	0	0	0	0	0	0	0	0
NEWBERRY	99	80	15	0	0	0	0	1	2	1	0
BALANCE OF COUNTY	618	490	97	0	3	1	0	6	8	13	0
<b>BAKER</b>	<b>349</b>	<b>300</b>	<b>42</b>	<b>1</b>	<b>0</b>	<b>0</b>	<b>0</b>	<b>0</b>	<b>3</b>	<b>2</b>	<b>1</b>
MACCLENNEY	76	59	16	0	0	0	0	0	1	0	0
BALANCE OF COUNTY	273	241	26	1	0	0	0	0	2	2	1
<b>BAY</b>	<b>2,239</b>	<b>1,703</b>	<b>327</b>	<b>12</b>	<b>2</b>	<b>3</b>	<b>1</b>	<b>19</b>	<b>31</b>	<b>89</b>	<b>52</b>
CALLAWAY	25	21	4	0	0	0	0	0	0	0	0
LYNN HAVEN	210	180	18	0	0	0	0	3	4	3	2
PANAMA CITY	1,200	806	276	5	0	2	0	7	11	57	36
PANAMA CITY BEACH	382	326	8	3	2	1	1	5	10	18	8
PARKER	8	7	1	0	0	0	0	0	0	0	0
SPRINGFIELD	9	5	3	0	0	0	0	0	0	1	0
BALANCE OF COUNTY	405	358	17	4	0	0	0	4	6	10	6
<b>BRADFORD</b>	<b>312</b>	<b>244</b>	<b>60</b>	<b>0</b>	<b>0</b>	<b>0</b>	<b>0</b>	<b>1</b>	<b>2</b>	<b>5</b>	<b>0</b>
STARKE	108	60	44	0	0	0	0	0	2	2	0
BALANCE OF COUNTY	204	184	16	0	0	0	0	1	0	3	0
<b>BREVARD</b>	<b>5,076</b>	<b>4,003</b>	<b>718</b>	<b>11</b>	<b>26</b>	<b>3</b>	<b>0</b>	<b>31</b>	<b>84</b>	<b>195</b>	<b>5</b>
CAPE CANAVERAL	61	53	3	0	0	0	0	0	2	3	0
COCOA	529	384	110	1	1	0	0	1	6	24	2
COCOA BEACH	57	52	1	0	0	1	0	0	1	2	0
INDIALANTIC	71	65	0	0	0	0	0	3	1	2	0
INDIAN HARBOUR BEACH	41	37	0	0	0	0	0	0	0	4	0
MALABAR	13	9	1	1	0	0	0	0	1	1	0
MELBOURNE	1,100	865	136	1	8	0	0	8	28	54	0
MELBOURNE BEACH	33	33	0	0	0	0	0	0	0	0	0
PALM BAY	1,160	846	247	0	4	0	0	8	7	48	0
ROCKLEDGE	327	246	53	3	4	0	0	4	5	11	1
SATELLITE BEACH	120	111	1	1	0	0	0	1	4	1	1
TITUSVILLE	514	395	91	1	2	0	0	3	6	16	0
WEST MELBOURNE	183	153	7	0	5	0	0	1	9	8	0
BALANCE OF COUNTY	867	754	68	3	2	2	0	2	14	21	1
<b>BROWARD</b>	<b>21,541</b>	<b>11,773</b>	<b>8,337</b>	<b>34</b>	<b>139</b>	<b>15</b>	<b>2</b>	<b>101</b>	<b>616</b>	<b>462</b>	<b>62</b>
COCONUT CREEK	531	347	142	1	6	2	0	5	17	11	0
COOPER CITY	310	238	29	2	6	0	0	1	21	11	2
CORAL SPRINGS	1,437	902	401	1	19	0	0	13	64	32	5
DANIA BEACH	220	116	91	0	1	0	0	1	8	3	0
DAVIE	854	663	99	2	12	3	0	7	38	28	2
DEERFIELD BEACH	628	385	214	0	4	0	0	2	9	13	1
FORT LAUDERDALE	2,863	1,348	1,425	0	2	1	0	5	48	30	4
HALLANDALE	354	255	84	0	0	1	0	2	3	7	2
HOLLYWOOD	1,937	1,323	484	12	11	3	1	9	39	43	12
LAUDERDALE BY THE SEA	13	12	1	0	0	0	0	0	0	0	0
LAUDERDALE LAKES	516	26	484	0	0	0	0	0	2	4	0
LAUDERHILL	978	121	826	1	1	0	0	0	14	14	1
LIGHTHOUSE POINT	80	64	7	0	2	0	0	0	5	2	0
MARGATE	554	300	212	0	3	0	0	3	14	21	1
MIRAMAR	1,596	696	748	2	13	0	0	9	70	51	7
NORTH LAUDERDALE	659	191	439	0	0	0	0	1	16	12	0
OAKLAND PARK	390	226	147	0	0	1	0	1	9	6	0
PARKLAND	192	158	12	0	4	0	0	1	12	5	0
PEMBROKE PARK	38	2	35	0	0	0	0	0	0	1	0
PEMBROKE PINES	1,636	1,040	429	7	17	1	0	11	60	61	10
PLANTATION	982	620	269	0	15	1	0	5	39	31	2
POMPANO BEACH	1,664	825	791	0	3	1	0	3	24	17	0
SOUTHWEST RANCHES	49	43	3	0	1	0	0	0	1	1	0
SUNRISE	1,017	507	422	1	9	0	0	10	33	31	4
TAMARAC	655	370	240	0	4	0	0	5	28	8	0
WEST PARK	151	41	106	0	0	0	0	1	1	0	2

**TABLE B-3 (Cont.): RESIDENT LIVE BIRTHS FOR INCORPORATED CITIES OF 2,400 OR MORE  
POPULATION, BY RACE OF MOTHER, BY COUNTY, FLORIDA, 2013**

	TOTAL	WHITE	BLACK	AMER INDIAN	CHINESE	JAPANESE	HAWAIIAN	FILIPINO	OTHER ASIAN/ PAC ISL	MULTI - RACE & OTHER	UNK
<b>BROWARD (Cont.)</b>											
WESTON	461	389	23	3	4	0	0	4	30	8	0
WILTON MANORS	52	31	19	0	0	0	0	1	1	0	0
BALANCE OF COUNTY	724	534	155	2	2	1	1	1	10	11	7
<b>CALHOUN</b>											
BLOUNTSTOWN	32	19	11	0	1	0	0	0	0	1	0
BALANCE OF COUNTY	105	97	6	0	0	0	0	0	0	2	0
<b>CHARLOTTE</b>											
PUNTA GORDA	70	60	3	0	0	0	0	0	4	3	0
BALANCE OF COUNTY	951	842	60	0	0	0	0	4	13	30	2
<b>CITRUS</b>											
CRYSTAL RIVER	49	43	1	0	0	0	0	1	0	3	1
INVERNESS	138	126	9	0	0	0	0	1	0	2	0
BALANCE OF COUNTY	834	768	24	3	2	0	0	5	5	26	1
<b>CLAY</b>											
GREEN COVE SPRINGS	43	36	6	0	0	0	0	0	0	0	1
ORANGE PARK	268	191	55	0	1	1	0	8	2	10	0
BALANCE OF COUNTY	1,777	1,466	194	2	7	0	2	22	19	60	5
<b>COLLIER</b>											
MARCO ISLAND	7	7	0	0	0	0	0	0	0	0	0
NAPLES	422	349	47	1	0	0	0	3	6	16	0
BALANCE OF COUNTY	2,725	2,265	337	10	4	3	0	7	16	82	1
<b>COLUMBIA</b>											
LAKE CITY	478	335	135	0	0	0	0	0	4	4	0
BALANCE OF COUNTY	346	309	28	0	0	0	0	1	2	5	1
<b>MIAMI-DADE</b>											
AVENTURA	437	400	23	0	1	1	0	1	8	2	1
BAL HARBOUR	28	27	1	0	0	0	0	0	0	0	0
BAY HARBOR ISLANDS	48	44	1	0	0	1	0	0	1	1	0
BISCAYNE PARK	23	20	3	0	0	0	0	0	0	0	0
CORAL GABLES	156	146	1	0	2	1	0	1	1	3	1
CUTLER BAY	62	49	11	0	1	0	0	0	0	0	1
DORAL	322	299	3	0	4	0	0	0	11	5	0
EL PORTAL	11	6	4	0	0	0	0	0	0	1	0
FLORIDA CITY	92	67	23	0	0	0	0	0	2	0	0
HIALEAH	2,613	2,486	82	0	7	0	0	3	11	21	3
HIALEAH GARDENS	87	85	2	0	0	0	0	0	0	0	0
HOMESTEAD	1,020	777	219	0	0	2	0	2	6	13	1
KEY BISCAYNE	52	51	0	0	0	0	0	0	0	1	0
MIAMI	11,211	7,008	3,965	3	33	5	0	16	92	76	13
MIAMI BEACH	989	932	28	0	2	2	1	0	11	11	2
MIAMI GARDENS	973	287	663	0	0	0	0	3	5	15	0
MIAMI LAKES	230	205	18	0	0	0	0	1	1	5	0
MIAMI SHORES	98	73	21	0	0	0	0	1	2	1	0
MIAMI SPRINGS	86	80	2	0	1	0	0	1	1	1	0
NORTH BAY VILLAGE	72	64	4	0	0	1	0	1	1	1	0
NORTH MIAMI	613	217	377	0	1	0	0	5	6	6	1
NORTH MIAMI BEACH	628	326	286	0	4	0	0	1	4	5	2
OPA-LOCKA	335	153	176	0	0	0	0	1	1	4	0
PINECREST	5	5	0	0	0	0	0	0	0	0	0
PALMETTO BAY	16	12	2	0	1	0	0	0	1	0	0
SOUTH MIAMI	13	8	1	0	0	0	0	0	0	1	3
SUNNY ISLES BEACH	359	342	8	0	1	0	0	1	4	3	0
SURFSIDE	65	64	0	0	0	0	0	0	1	0	0
SWEETWATER	2	2	0	0	0	0	0	0	0	0	0
VIRGINIA GARDENS	11	11	0	0	0	0	0	0	0	0	0
WEST MIAMI	2	1	0	0	0	0	0	0	0	1	0
BALANCE OF COUNTY	10,488	8,881	1,207	12	35	6	0	26	75	113	133
<b>DESOTO</b>											
ARCADIA	178	146	27	0	0	0	0	0	2	3	0
BALANCE OF COUNTY	185	173	9	1	0	0	0	0	1	1	0

**TABLE B-3 (Cont.): RESIDENT LIVE BIRTHS FOR INCORPORATED CITIES OF 2,400 OR MORE  
POPULATION, BY RACE OF MOTHER, BY COUNTY, FLORIDA, 2013**

	TOTAL	WHITE	BLACK	AMER INDIAN	CHINESE	JAPANESE	HAWAIIAN	FILIPINO	OTHER ASIAN/ PAC ISL	MULTI - RACE & OTHER	UNK
<b>DIXIE</b>	156	139	16	1	0	0	0	0	0	0	0
<b>DUVAL</b>	12,555	7,042	4,412	13	42	16	2	157	412	434	25
ATLANTIC BEACH	272	211	42	0	1	0	0	6	3	9	0
BALDWIN	19	14	5	0	0	0	0	0	0	0	0
JACKSONVILLE	11,949	6,522	4,356	11	41	16	2	146	407	423	25
JACKSONVILLE BEACH	251	235	9	1	0	0	0	3	1	2	0
NEPTUNE BEACH	64	60	0	1	0	0	0	2	1	0	0
<b>ESCAMBIA</b>	3,804	2,418	1,162	3	2	6	1	35	62	107	8
CENTURY	7	3	3	1	0	0	0	0	0	0	0
PENSACOLA	1,342	722	542	2	0	3	1	11	25	36	0
BALANCE OF COUNTY	2,455	1,693	617	0	2	3	0	24	37	71	8
<b>FLAGLER</b>	783	629	110	1	0	0	0	9	15	19	0
BUNNELL	59	45	13	0	0	0	0	1	0	0	0
FLAGLER BEACH	31	29	1	0	0	0	0	0	1	0	0
PALM COAST	559	445	78	1	0	0	0	7	13	15	0
BALANCE OF COUNTY	134	110	18	0	0	0	0	1	1	4	0
<b>FRANKLIN</b>	112	94	16	0	0	0	0	0	0	1	1
APALACHICOLA	25	15	9	0	0	0	0	0	0	0	1
BALANCE OF COUNTY	87	79	7	0	0	0	0	0	0	1	0
<b>GADSDEN</b>	561	207	343	0	0	0	0	1	1	6	3
CHATTAHOOCHEE	34	9	25	0	0	0	0	0	0	0	0
GRETNA	16	4	12	0	0	0	0	0	0	0	0
HAVANA	49	20	28	0	0	0	0	0	0	1	0
QUINCY	185	53	127	0	0	0	0	0	1	2	2
BALANCE OF COUNTY	277	121	151	0	0	0	0	1	0	3	1
<b>GILCHRIST</b>	196	188	6	0	0	0	0	0	0	2	0
<b>GLADES</b>	65	52	9	0	0	0	0	1	0	3	0
<b>GULF</b>	134	119	12	0	0	0	0	0	0	2	1
PORT ST JOE	42	34	8	0	0	0	0	0	0	0	0
BALANCE OF COUNTY	92	85	4	0	0	0	0	0	0	2	1
<b>HAMILTON</b>	160	104	54	0	0	0	0	0	2	0	0
<b>HARDEE</b>	387	364	16	0	0	0	0	0	0	7	0
BOWLING GREEN	58	57	1	0	0	0	0	0	0	0	0
WAUCHULA	144	134	9	0	0	0	0	0	0	1	0
BALANCE OF COUNTY	185	173	6	0	0	0	0	0	0	6	0
<b>HENDRY</b>	569	481	68	12	0	0	0	0	2	4	2
CLEWISTON	56	45	5	4	0	0	0	0	0	1	1
LABELLE	153	142	8	3	0	0	0	0	0	0	0
BALANCE OF COUNTY	360	294	55	5	0	0	0	0	2	3	1
<b>HERNANDO</b>	1,484	1,309	120	1	5	0	1	3	17	21	7
BROOKSVILLE	206	161	39	0	0	0	0	0	2	1	3
BALANCE OF COUNTY	1,278	1,148	81	1	5	0	1	3	15	20	4
<b>HIGHLANDS</b>	855	692	130	3	1	1	0	4	7	14	3
AVON PARK	164	119	44	0	0	0	0	1	0	0	0
SEBRING	342	268	55	0	1	0	0	2	6	8	2
BALANCE OF COUNTY	349	305	31	3	0	1	0	1	1	6	1
<b>HILLSBOROUGH</b>	16,614	12,081	3,556	12	52	11	6	68	533	276	19
PLANT CITY	530	453	62	0	0	0	0	3	1	11	0
TAMPA	9,317	6,137	2,634	6	34	6	4	29	326	130	11
TEMPLE TERRACE	80	51	18	0	0	0	0	0	6	5	0
BALANCE OF COUNTY	6,687	5,440	842	6	18	5	2	36	200	130	8
<b>HOLMES</b>	174	164	2	1	0	0	0	1	1	4	1
BONIFAY	38	36	1	1	0	0	0	0	0	0	0
BALANCE OF COUNTY	136	128	1	0	0	0	0	1	1	4	1

TABLE B-3 (Cont.): RESIDENT LIVE BIRTHS FOR INCORPORATED CITIES OF 2,400 OR MORE  
POPULATION, BY RACE OF MOTHER, BY COUNTY, FLORIDA, 2013

	TOTAL	WHITE	BLACK	AMER INDIAN	CHINESE	JAPANESE	HAWAIIAN	FILIPINO	OTHER ASIAN/ PAC ISL	MULTI - RACE & OTHER	UNK
<b>INDIAN RIVER</b>	1,217	740	224	1	1	1	0	5	16	15	214
FELLSMERE	81	11	7	0	0	0	0	0	0	0	63
SEBASTIAN	144	121	8	0	0	0	0	1	1	0	13
VERO BEACH	244	160	42	0	0	1	0	2	6	2	31
BALANCE OF COUNTY	748	448	167	1	1	0	0	2	9	13	107
<b>JACKSON</b>	495	345	139	1	1	0	0	0	0	9	0
GRACEVILLE	18	15	3	0	0	0	0	0	0	0	0
MARIANNA	125	62	60	0	1	0	0	0	0	2	0
BALANCE OF COUNTY	352	268	76	1	0	0	0	0	0	7	0
<b>JEFFERSON</b>	135	72	62	0	0	0	0	0	0	1	0
MONTICELLO	64	26	37	0	0	0	0	0	0	1	0
BALANCE OF COUNTY	71	46	25	0	0	0	0	0	0	0	0
<b>LAFAYETTE</b>	81	74	5	0	0	0	0	0	1	1	0
<b>LAKE</b>	3,077	2,473	421	6	6	0	1	9	44	103	14
CLERMONT	647	504	81	0	2	0	0	3	14	38	5
EUSTIS	272	204	52	1	1	0	0	1	1	11	1
FRUITLAND PARK	84	73	9	0	0	0	0	0	2	0	0
GROVELAND	176	141	19	0	0	0	0	1	2	9	4
LADY LAKE	114	99	10	0	1	0	0	1	2	1	0
LEESBURG	458	299	129	0	1	0	1	1	6	20	1
MASCOTTE	94	75	11	1	0	0	0	0	1	4	2
MINNEOLA	92	76	12	0	0	0	0	0	2	1	1
MOUNT DORA	194	147	44	0	0	0	0	1	2	0	0
TAVARES	134	110	16	1	0	0	0	0	3	4	0
UMATILLA	65	63	1	1	0	0	0	0	0	0	0
BALANCE OF COUNTY	747	682	37	2	1	0	0	1	9	15	0
<b>LEE</b>	6,399	5,246	827	11	11	2	1	19	61	201	20
BONITA SPRINGS	130	126	2	0	0	0	0	0	0	2	0
CAPE CORAL	1,472	1,334	69	1	2	1	0	5	10	39	11
FORT MYERS	1,235	786	354	4	3	0	0	4	18	62	4
FORT MYERS BEACH	17	16	0	0	0	0	0	1	0	0	0
SANIBEL	9	7	1	0	0	0	0	0	1	0	0
BALANCE OF COUNTY	3,536	2,977	401	6	6	1	1	9	32	98	5
<b>LEON</b>	3,011	1,554	1,238	0	35	0	0	10	102	71	1
TALLAHASSEE	2,514	1,211	1,105	0	33	0	0	10	95	59	1
BALANCE OF COUNTY	497	343	133	0	2	0	0	0	7	12	0
<b>LEVY</b>	390	331	51	0	0	0	0	1	1	6	0
WILLISTON	52	34	14	0	0	0	0	1	0	3	0
BALANCE OF COUNTY	338	297	37	0	0	0	0	0	1	3	0
<b>LIBERTY</b>	88	87	1	0	0	0	0	0	0	0	0
<b>MADISON</b>	221	113	103	0	0	0	0	1	1	3	0
MADISON	73	17	55	0	0	0	0	1	0	0	0
BALANCE OF COUNTY	148	96	48	0	0	0	0	0	1	3	0
<b>MANATEE</b>	3,375	2,587	452	4	11	2	0	23	49	238	9
BRADENTON	1,479	1,081	238	2	4	1	0	9	15	125	4
BRADENTON BEACH	2	1	1	0	0	0	0	0	0	0	0
HOLMES BEACH	4	4	0	0	0	0	0	0	0	0	0
LONGBOAT KEY	1	1	0	0	0	0	0	0	0	0	0
PALMETTO	226	161	47	0	1	0	0	1	1	14	1
BALANCE OF COUNTY	1,663	1,339	166	2	6	1	0	13	33	99	4
<b>MARION</b>	3,338	2,540	669	2	7	0	1	17	37	63	2
BELLEVIEW	49	43	5	0	0	0	0	0	0	1	0
OCALA	1,127	733	339	1	2	0	0	8	19	25	0
BALANCE OF COUNTY	2,162	1,764	325	1	5	0	1	9	18	37	2
<b>MARTIN</b>	1,169	1,020	91	0	1	0	0	7	14	32	4
PORT SAINT LUCIE	1	1	0	0	0	0	0	0	0	0	0
STUART	298	243	40	0	0	0	0	3	1	7	4

**TABLE B-3 (Cont.): RESIDENT LIVE BIRTHS FOR INCORPORATED CITIES OF 2,400 OR MORE  
POPULATION, BY RACE OF MOTHER, BY COUNTY, FLORIDA, 2013**

	TOTAL	WHITE	BLACK	AMER INDIAN	CHINESE	JAPANESE	HAWAIIAN	FILIPINO	OTHER ASIAN/ PAC ISL	MULTI - RACE & OTHER	UNK
<b>MARTIN (Cont.)</b>											
BALANCE OF COUNTY	870	776	51	0	1	0	0	4	13	25	0
<b>MONROE</b>											
ISLAMORADA	3	3	0	0	0	0	0	0	0	0	0
KEY WEST	375	280	83	0	0	0	0	0	5	6	1
MARATHON	21	18	2	0	0	0	0	0	0	1	0
BALANCE OF COUNTY	342	303	25	0	0	0	0	1	4	7	2
<b>NASSAU</b>											
FERNANDINA BEACH	138	114	19	0	0	1	0	0	0	4	0
HILLIARD	60	57	3	0	0	0	0	0	0	0	0
BALANCE OF COUNTY	543	509	18	1	1	0	0	4	4	6	0
<b>OKALOOSA</b>											
CRESTVIEW	586	462	75	1	0	1	2	5	6	33	1
DESTIN	178	157	5	0	1	0	0	5	2	8	0
FORT WALTON BEACH	663	471	132	2	3	2	0	7	11	31	4
MARY ESTHER	143	111	18	1	0	0	0	4	1	7	1
NICEVILLE	354	321	12	1	0	0	0	4	6	10	0
VALPARAISO	40	35	1	1	1	0	0	0	0	1	1
BALANCE OF COUNTY	804	671	66	2	2	0	0	11	13	37	2
<b>OKEECHOBEE</b>											
OKEECHOBEE	425	368	26	14	0	0	0	0	2	7	8
BALANCE OF COUNTY	97	86	3	5	0	0	0	0	0	2	1
<b>ORANGE</b>											
APOPKA	954	698	189	1	1	1	0	5	24	33	2
BELLE ISLE	27	23	1	1	1	0	0	0	1	0	0
EATONVILLE	6	0	6	0	0	0	0	0	0	0	0
MAITLAND	134	100	21	1	1	0	0	0	7	4	0
OCOEE	483	355	88	0	3	0	0	1	16	20	0
ORLANDO	10,794	6,395	3,351	14	76	16	2	90	350	493	7
WINDERMERE	255	201	11	0	4	0	0	3	26	10	0
WINTER GARDEN	541	413	68	0	8	1	0	6	17	27	1
WINTER PARK	478	380	63	1	2	1	0	4	11	16	0
BALANCE OF COUNTY	2,157	1,452	512	3	13	5	0	12	59	100	1
<b>OSCEOLA</b>											
KISSIMMEE	2,157	1,730	271	0	5	1	1	12	41	94	2
ST CLOUD	470	417	30	0	2	1	0	1	5	14	0
BALANCE OF COUNTY	1,282	1,036	157	2	8	0	0	8	18	52	1
<b>PALM BEACH</b>											
BELLE GLADE	283	114	162	0	0	0	0	0	4	3	0
BOCA RATON	1,276	1,053	130	1	6	3	0	5	33	40	5
BOYNTON BEACH	1,406	733	586	1	5	0	0	7	37	35	2
DELRAY BEACH	731	402	287	0	2	2	0	1	18	19	0
GREENACRES	381	265	93	0	1	0	0	2	8	11	1
HIGHLAND BEACH	6	5	0	0	1	0	0	0	0	0	0
HYPOLUXO	17	14	2	0	0	0	0	0	0	1	0
JUNO BEACH	15	13	0	0	0	0	0	0	1	1	0
JUPITER	688	616	23	1	5	1	0	3	16	20	3
LAKE CLARKE SHORES	4	4	0	0	0	0	0	0	0	0	0
LAKE PARK	174	56	109	0	0	0	0	0	4	3	2
LAKE WORTH	1,654	1,149	424	1	6	1	0	9	25	36	3
LANTANA	248	155	85	0	1	0	0	0	2	5	0
NORTH PALM BEACH	103	88	5	1	0	0	0	1	4	4	0
PAHOKEE	84	31	53	0	0	0	0	0	0	0	0
PALM BEACH	28	25	2	0	0	0	0	0	0	1	0
PALM BEACH GARDENS	594	492	47	0	12	1	0	3	14	24	1
PALM SPRINGS	183	126	46	0	0	0	0	0	4	7	0
RIVIERA BEACH	418	67	341	0	0	0	0	1	3	6	0
ROYAL PALM BEACH	398	294	71	1	5	0	0	3	13	10	1
SOUTH BAY	35	10	24	0	0	0	0	0	0	1	0
TEQUESTA	48	46	1	0	0	0	0	0	0	1	0
WELLINGTON	484	373	73	0	1	0	0	5	20	12	0
WEST PALM BEACH	3,469	2,009	1,267	0	9	2	1	19	57	101	4

**TABLE B-3 (Cont.): RESIDENT LIVE BIRTHS FOR INCORPORATED CITIES OF 2,400 OR MORE  
POPULATION, BY RACE OF MOTHER, BY COUNTY, FLORIDA, 2013**

	TOTAL	WHITE	BLACK	AMER INDIAN	CHINESE	JAPANESE	HAWAIIAN	FILIPINO	OTHER ASIAN/ PAC ISL	MULTI - RACE & OTHER	UNK
<b>PALM BEACH (Cont.)</b>											
BALANCE OF COUNTY	1,471	1,089	318	1	8	1	0	3	21	26	4
<b>PASCO</b>											
DADE CITY	123	102	19	0	0	0	0	0	0	2	0
NEW PORT RICHEY	631	574	27	1	3	1	1	0	7	16	1
PORT RICHEY	338	305	14	0	1	0	0	1	0	13	4
ZEPHYRHILLS	151	134	12	1	0	0	0	0	2	1	1
BALANCE OF COUNTY	3,546	3,142	212	4	7	3	1	24	73	72	8
<b>PINELLAS</b>											
BELLEAIR	15	15	0	0	0	0	0	0	0	0	0
BELLEAIR BLUFFS	7	6	0	0	0	0	0	0	0	1	0
CLEARWATER	1,720	1,308	268	2	5	0	1	18	55	43	20
DUNEDIN	269	233	14	1	3	0	0	3	5	7	3
GULFPORT	60	45	7	0	1	0	0	0	1	4	2
INDIAN ROCKS BEACH	27	25	0	0	0	0	0	0	0	1	1
KENNETH CITY	41	33	6	0	0	0	0	0	2	0	0
LARGO	907	732	92	1	2	0	0	8	29	25	18
MADEIRA BEACH	16	13	1	0	0	0	0	0	1	1	0
OLDSMAR	183	144	11	0	2	1	0	3	18	3	1
PINELLAS PARK	476	359	40	1	2	1	0	6	35	21	11
REDINGTON SHORES	10	10	0	0	0	0	0	0	0	0	0
SAFETY HARBOR	117	99	10	0	1	0	0	0	4	3	0
SEMINOLE	327	287	14	0	0	0	0	0	5	8	13
SOUTH PASADENA	12	8	2	0	0	0	0	0	0	0	2
ST PETERSBURG	3,097	1,731	1,004	7	12	3	0	14	109	107	110
ST PETERSBURG BEACH	32	28	0	0	0	0	0	0	2	0	2
TARPON SPRINGS	248	197	38	0	1	0	0	0	4	5	3
TREASURE ISLAND	25	25	0	0	0	0	0	0	0	0	0
BALANCE OF COUNTY	987	876	49	3	1	1	2	8	19	20	8
<b>POLK</b>											
AUBURNDALE	223	175	38	1	0	0	0	0	3	6	0
BARTOW	275	194	73	1	0	0	0	1	2	4	0
DUNDEE	51	34	14	0	0	0	0	0	0	3	0
EAGLE LAKE	40	36	3	0	0	0	0	0	1	0	0
FORT MEADE	77	60	17	0	0	0	0	0	0	0	0
FROSTPROOF	47	41	6	0	0	0	0	0	0	0	0
HAINES CITY	393	293	84	1	0	0	0	0	1	14	0
LAKE ALFRED	70	50	16	1	0	0	0	1	1	1	0
LAKE WALES	285	198	76	1	1	0	0	0	1	6	2
LAKELAND	1,488	1,009	393	2	1	0	0	5	37	40	1
MULBERRY	85	73	10	0	0	0	0	0	0	2	0
WINTER HAVEN	842	554	248	1	5	0	0	5	14	14	1
BALANCE OF COUNTY	3,377	2,764	460	6	4	1	1	12	41	81	7
<b>PUTNAM</b>											
PALATKA	214	104	102	0	1	0	0	1	1	5	0
BALANCE OF COUNTY	631	519	82	0	1	0	0	2	4	20	3
<b>SAINT JOHNS</b>											
ST AUGUSTINE	787	651	94	3	6	0	0	3	10	19	1
ST AUGUSTINE BEACH	2	1	1	0	0	0	0	0	0	0	0
BALANCE OF COUNTY	1,199	1,051	74	0	6	2	1	8	26	31	0
<b>SAINT LUCIE</b>											
FORT PIERCE	1,069	544	494	0	1	0	0	2	12	8	8
PORT ST LUCIE	1,747	1,320	323	2	6	0	0	10	29	47	10
BALANCE OF COUNTY	174	138	26	2	1	1	0	0	1	3	2
<b>SANTA ROSA</b>											
GULF BREEZE	62	52	4	0	0	1	0	0	2	3	0
MILTON	159	133	14	2	0	0	0	2	3	4	1
BALANCE OF COUNTY	1,576	1,429	58	3	1	1	0	10	21	51	2
<b>SARASOTA</b>											
LONGBOAT KEY	2	2	0	0	0	0	0	0	0	0	0
NORTH PORT	210	182	18	0	0	0	0	1	3	6	0
SARASOTA	1,004	773	178	1	2	0	0	1	17	32	0



**TABLE B-3 (Cont.): RESIDENT LIVE BIRTHS FOR INCORPORATED CITIES OF 2,400 OR MORE  
POPULATION, BY RACE OF MOTHER, BY COUNTY, FLORIDA, 2013**

	TOTAL	WHITE	BLACK	AMER INDIAN	CHINESE	JAPANESE	HAWAIIAN	FILIPINO	OTHER ASIAN/ PAC ISL	MULTI- RACE & OTHER	UNK
<b>SARASOTA (Cont.)</b>											
VENICE	105	102	1	0	0	0	0	1	1	0	0
BALANCE OF COUNTY	1,482	1,348	62	0	3	0	0	6	14	49	0
<b>SEMINOLE</b>											
ALTAMONTE SPRINGS	614	413	136	1	5	0	1	10	14	34	0
CASSELBERRY	371	310	35	0	0	1	0	3	12	10	0
LAKE MARY	319	250	38	0	3	0	0	4	16	8	0
LONGWOOD	366	321	19	0	4	1	0	3	7	10	1
MAITLAND	46	37	5	0	0	0	0	0	1	3	0
OVIEDO	539	446	39	0	8	2	0	4	24	16	0
SANFORD	1,019	595	337	3	3	1	1	4	32	40	3
WINTER SPRINGS	350	297	25	1	1	0	0	4	8	13	1
BALANCE OF COUNTY	792	648	81	0	5	4	1	8	17	25	3
<b>SUMTER</b>											
BUSHNELL	59	51	6	0	0	0	0	0	0	2	0
WILDWOOD	120	74	41	0	0	0	0	0	1	4	0
BALANCE OF COUNTY	282	248	22	0	0	0	0	1	3	8	0
<b>SUWANNEE</b>											
LIVE OAK	123	91	29	0	0	0	0	0	1	2	0
BALANCE OF COUNTY	363	323	33	2	0	0	0	0	3	1	1
<b>TAYLOR</b>											
PERRY	122	66	54	0	0	0	0	0	1	1	0
BALANCE OF COUNTY	125	118	6	0	0	0	0	0	0	1	0
<b>UNION</b>											
	183	162	18	1	0	0	0	0	0	2	0
<b>VOLUSIA</b>											
DAYTONA BEACH	845	431	366	0	4	0	0	6	5	32	1
DAYTONA BEACH SHORES	8	5	0	0	0	0	0	0	2	1	0
DEBARY	124	116	4	0	1	0	0	0	1	2	0
DELAND	555	439	88	0	2	1	0	2	5	15	3
DELTONA	831	702	85	2	2	1	1	4	8	24	2
EDGEWATER	177	164	8	0	0	0	0	2	1	1	1
HOLLY HILL	129	80	42	0	0	0	0	1	1	5	0
LAKE HELEN	31	24	5	0	0	0	0	0	0	2	0
NEW SMYRNA BEACH	242	216	20	0	0	0	0	0	0	5	1
ORANGE CITY	184	160	15	0	0	0	0	1	3	3	2
ORMOND BEACH	409	357	26	0	2	1	0	5	8	8	2
PIERSON	36	35	0	0	0	0	0	0	0	0	1
PONCE INLET	9	9	0	0	0	0	0	0	0	0	0
PORT ORANGE	470	417	26	0	2	0	0	2	15	7	1
SOUTH DAYTONA	109	80	24	0	0	0	0	1	1	3	0
BALANCE OF COUNTY	473	410	42	0	2	0	0	1	5	10	3
<b>WAKULLA</b>											
	305	263	35	0	0	0	0	0	2	5	0
<b>WALTON</b>											
DEFUNIAK SPRINGS	132	105	19	0	0	0	0	0	2	5	1
BALANCE OF COUNTY	626	592	17	2	1	0	0	2	5	7	0
<b>WASHINGTON</b>											
CHIPLEY	91	63	22	0	0	0	0	0	0	4	2
BALANCE OF COUNTY	155	133	20	0	0	0	0	0	0	2	0

TABLE B-4: RESIDENT LIVE BIRTHS BY TYPE OF PLACE OF DELIVERY AND ATTENDANT, BY COUNTY, FLORIDA, 2013

	TOTAL	HOSPITAL			BIRTHING CENTER			OTHER NAMED PLACE	UNK
		PHYSICIAN	MIDWIFE	OTHER/ UNKNOWN	PHYSICIAN	MIDWIFE	OTHER/ UNKNOWN		
FLORIDA	215,194	187,952	22,059	922	9	1,735	4	2,232	281
ALACHUA	2,823	2,359	386	8	0	14	0	53	3
BAKER	349	299	46	1	0	1	0	2	0
BAY	2,239	2,039	180	1	0	4	0	10	5
BRADFORD	312	266	41	1	0	2	0	2	0
BREVARD	5,076	4,723	236	19	0	17	0	75	6
BROWARD	21,541	18,565	2,560	73	2	150	4	171	16
CALHOUN	137	125	7	0	0	1	0	3	1
CHARLOTTE	1,021	942	42	14	0	5	0	18	0
CITRUS	1,021	962	40	2	0	8	0	9	0
CLAY	2,088	1,713	334	5	0	13	0	19	4
COLLIER	3,154	3,002	33	42	5	43	0	23	6
COLUMBIA	824	681	113	9	0	5	0	15	1
MIAMI-DADE	31,147	30,001	702	19	1	203	0	200	21
DESOTO	363	350	6	0	0	6	0	1	0
DIXIE	156	129	21	5	0	0	0	1	0
DUVAL	12,555	11,403	845	46	0	115	0	131	15
ESCAMBIA	3,804	3,509	241	3	0	3	0	37	11
FLAGLER	783	680	84	1	0	8	0	9	1
FRANKLIN	112	101	9	0	0	0	0	2	0
GADSDEN	561	453	97	2	0	0	0	7	2
GILCHRIST	196	165	28	1	0	1	0	1	0
GLADES	65	58	6	1	0	0	0	0	0
GULF	134	124	10	0	0	0	0	0	0
HAMILTON	160	127	27	0	0	0	0	0	6
HARDEE	387	376	3	1	0	3	0	3	1
HENDRY	569	429	134	2	0	0	0	4	0
HERNANDO	1,484	1,139	306	11	0	12	0	12	4
HIGHLANDS	855	839	4	2	0	4	0	5	1
HILLSBOROUGH	16,614	14,633	1,575	86	0	144	0	156	20
HOLMES	174	131	3	0	0	0	0	32	8
INDIAN RIVER	1,217	1,172	18	0	0	1	0	26	0
JACKSON	495	385	17	1	0	0	0	70	22
JEFFERSON	135	108	22	3	0	1	0	1	0
LAFAYETTE	81	71	7	1	0	0	0	1	1
LAKE	3,077	2,903	80	22	0	30	0	40	2
LEE	6,399	4,616	1,640	14	1	94	0	29	5
LEON	3,011	2,457	436	24	0	44	0	46	4
LEVY	390	331	40	3	0	6	0	10	0
LIBERTY	88	72	9	4	0	1	0	2	0
MADISON	221	149	48	5	0	1	0	3	15
MANATEE	3,375	3,107	190	1	0	33	0	41	3
MARION	3,338	2,747	507	9	0	28	0	43	4
MARTIN	1,169	591	539	5	0	4	0	30	0
MONROE	741	651	72	6	0	3	0	7	2
NASSAU	741	639	86	2	0	3	0	5	6
OKALOOSA	2,768	2,603	93	6	0	25	0	31	10
OKEECHOBEE	522	336	177	4	0	0	0	4	1
ORANGE	15,829	13,918	1,336	226	0	154	0	185	10
OSCEOLA	3,909	3,530	294	36	0	19	0	26	4
PALM BEACH	14,198	11,426	2,586	23	0	41	0	109	13
PASCO	4,789	4,271	404	19	0	55	0	34	6
PINELLAS	8,576	6,623	1,688	42	0	144	0	72	7
POLK	7,253	6,319	797	23	0	47	0	64	3
PUTNAM	845	740	93	1	0	6	0	5	0
SAINT JOHNS	1,988	1,650	270	9	0	22	0	32	5
SAINT LUCIE	2,990	2,104	818	11	0	2	0	54	1
SANTA ROSA	1,797	1,663	106	0	0	7	0	19	2
SARASOTA	2,803	2,653	43	7	0	54	0	43	3
SEMINOLE	4,416	3,419	812	30	0	78	0	73	4
SUMTER	461	446	11	1	0	2	0	1	0
SUWANNEE	486	421	53	5	0	1	0	6	0
TAYLOR	247	216	25	1	0	3	0	1	1
UNION	183	151	27	2	0	1	0	1	1
VOLUSIA	4,632	3,960	513	11	0	57	0	83	8
WAKULLA	305	234	63	4	0	3	0	1	0
WALTON	758	732	3	5	0	3	0	12	3
WASHINGTON	246	211	14	0	0	0	0	19	2

TABLE B-5: RESIDENT LIVE BIRTHS BY BIRTHWEIGHT, BY COUNTY, FLORIDA, 2013

	TOTAL	BIRTHWEIGHT IN GRAMS										LESS THAN 1500 GRAMS		LESS THAN 2500 GRAMS	
		<500	500- 999	1000- 1499	1500- 1999	2000- 2499	2500- 2999	3000- 3499	3500- 3999	4000+	UNK	NUMBER	%	NUMBER	%
FLORIDA	215,194	380	1,291	1,640	3,534	11,526	41,198	85,482	55,220	14,903	20	3,311	1.5	18,371	8.5
ALACHUA	2,823	18	21	29	41	130	515	1,061	791	217	0	68	2.4	239	8.5
BAKER	349	0	6	5	8	24	80	128	81	17	0	11	3.2	43	12.3
BAY	2,239	1	14	10	49	114	419	872	580	180	0	25	1.1	188	8.4
BRADFORD	312	4	4	3	8	21	61	112	79	20	0	11	3.5	40	12.8
BREVARD	5,076	15	21	38	59	241	866	2,006	1,410	419	1	74	1.5	374	7.4
BROWARD	21,541	47	150	175	421	1,233	4,431	8,713	5,115	1,254	2	372	1.7	2,026	9.4
CALHOUN	137	0	0	2	4	7	25	60	34	5	0	2	1.5	13	9.5
CHARLOTTE	1,021	0	6	7	14	57	179	430	266	62	0	13	1.3	84	8.2
CITRUS	1,021	2	2	10	21	45	176	395	284	86	0	14	1.4	80	7.8
CLAY	2,088	1	7	14	32	98	416	836	544	140	0	22	1.1	152	7.3
COLLIER	3,154	7	19	19	46	142	536	1,210	915	260	0	45	1.4	233	7.4
COLUMBIA	824	1	8	4	23	44	154	306	221	63	0	13	1.6	80	9.7
MIAMI-DADE	31,147	36	209	205	516	1,670	6,181	12,761	7,780	1,786	3	450	1.4	2,636	8.5
DESOTO	363	0	1	0	7	14	60	143	96	42	0	1	0.3	22	6.1
DIXIE	156	0	1	1	1	7	26	64	45	11	0	2	1.3	10	6.4
DUVAL	12,555	21	83	109	211	729	2,517	4,865	3,165	852	3	213	1.7	1,153	9.2
ESCAMBIA	3,804	8	17	36	60	243	810	1,477	919	234	0	61	1.6	364	9.6
FLAGLER	783	0	4	5	9	37	132	311	229	56	0	9	1.1	55	7.0
FRANKLIN	112	0	0	0	3	2	34	42	25	5	1	0	0.0	5	4.5
GADSDEN	561	3	3	7	13	40	134	217	115	29	0	13	2.3	66	11.8
GILCHRIST	196	0	0	0	4	6	30	63	71	22	0	0	0.0	10	5.1
GLADES	65	0	0	0	2	2	14	21	15	11	0	0	0.0	4	6.2
GULF	134	1	2	1	1	2	32	51	30	14	0	4	3.0	7	5.2
HAMILTON	160	0	0	1	1	12	39	54	39	14	0	1	0.6	14	8.8
HARDEE	387	0	2	1	4	18	67	156	109	30	0	3	0.8	25	6.5
HENDRY	569	0	2	7	11	25	115	209	150	50	0	9	1.6	45	7.9
HERNANDO	1,484	1	15	7	32	93	265	581	396	93	1	23	1.5	148	10.0
HIGHLANDS	855	1	2	2	7	45	172	361	221	44	0	5	0.6	57	6.7
HILLSBOROUGH	16,614	51	87	146	280	929	3,146	6,588	4,206	1,181	0	284	1.7	1,493	9.0
HOLMES	174	0	1	0	1	6	38	71	45	12	0	1	0.6	8	4.6
INDIAN RIVER	1,217	4	3	8	18	52	233	482	341	76	0	15	1.2	85	7.0
JACKSON	495	0	4	5	8	27	98	228	104	21	0	9	1.8	44	8.9
JEFFERSON	135	1	2	2	2	12	27	54	26	9	0	5	3.7	19	14.1
LAFAYETTE	81	0	0	0	2	1	23	23	26	6	0	0	0.0	3	3.7
LAKE	3,077	4	19	15	40	171	575	1,186	826	241	0	38	1.2	249	8.1
LEE	6,399	10	44	55	114	355	1,165	2,503	1,691	462	0	109	1.7	578	9.0
LEON	3,011	7	27	29	47	191	626	1,134	730	220	0	63	2.1	301	10.0
LEVY	390	0	3	1	10	18	69	124	118	47	0	4	1.0	32	8.2
LIBERTY	88	0	0	0	1	5	18	29	26	9	0	0	0.0	6	6.8
MADISON	221	0	5	3	5	20	59	65	48	16	0	8	3.6	33	14.9
MANATEE	3,375	4	16	27	58	139	569	1,323	944	295	0	47	1.4	244	7.2
MARION	3,338	4	19	20	40	178	718	1,306	823	230	0	43	1.3	261	7.8
MARTIN	1,169	0	13	11	14	55	221	464	308	83	0	24	2.1	93	8.0
MONROE	741	0	9	11	10	37	109	290	209	65	1	20	2.7	67	9.0
NASSAU	741	0	2	5	18	27	120	309	206	53	1	7	0.9	52	7.0
OKALOOSA	2,768	3	10	18	51	136	544	1,039	763	204	0	31	1.1	218	7.9
OKEECHOBEE	522	1	2	4	10	27	96	210	128	44	0	7	1.3	44	8.4
ORANGE	15,829	46	93	125	270	896	2,964	6,264	4,070	1,100	1	264	1.7	1,430	9.0
OSCEOLA	3,909	6	17	26	61	185	741	1,638	976	259	0	49	1.3	295	7.5
PALM BEACH	14,198	10	91	101	203	757	2,803	5,941	3,455	835	2	202	1.4	1,162	8.2
PASCO	4,789	11	20	25	60	267	842	1,901	1,277	386	0	56	1.2	383	8.0
PINELLAS	8,576	11	53	72	154	430	1,568	3,245	2,344	699	0	136	1.6	720	8.4
POLK	7,253	12	42	62	114	404	1,302	2,827	1,955	534	1	116	1.6	634	8.7
PUTNAM	845	1	10	13	11	50	195	337	174	54	0	24	2.8	85	10.1
SAINT JOHNS	1,988	1	9	16	33	94	328	753	562	192	0	26	1.3	153	7.7
SAINT LUCIE	2,990	5	15	23	52	153	560	1,204	754	224	0	43	1.4	248	8.3
SANTA ROSA	1,797	1	6	21	24	79	350	688	485	143	0	28	1.6	131	7.3
SARASOTA	2,803	6	14	14	32	107	474	1,084	836	236	0	34	1.2	173	6.2
SEMINOLE	4,416	6	25	31	62	225	790	1,738	1,154	385	0	62	1.4	349	7.9
SUMTER	461	0	1	3	6	25	114	159	118	35	0	4	0.9	35	7.6
SUWANNEE	486	1	2	6	12	30	78	201	118	38	0	9	1.9	51	10.5
TAYLOR	247	0	0	3	5	15	47	112	47	18	0	3	1.2	23	9.3
UNION	183	0	2	1	4	12	35	67	46	16	0	3	1.6	19	10.4
VOLUSIA	4,632	5	25	32	74	242	824	1,840	1,229	359	2	62	1.3	378	8.2
WAKULLA	305	1	1	3	3	13	59	119	78	28	0	5	1.6	21	6.9
WALTON	758	1	0	5	14	41	138	313	190	56	0	6	0.8	61	8.0
WASHINGTON	246	0	0	0	3	13	43	114	57	16	0	0	0.0	16	6.5



TABLE B-5 (Cont.): RESIDENT LIVE BIRTHS TO BLACK MOTHERS BY BIRTHWEIGHT, BY COUNTY, FLORIDA, 2013

	BIRTHWEIGHT IN GRAMS											LESS THAN 1500 GRAMS		LESS THAN 2500 GRAMS	
	TOTAL	<500	500- 999	1000- 1499	1500- 1999	2000- 2499	2500- 2999	3000- 3499	3500- 3999	4000+	UNK	NUMBER	%	NUMBER	%
FLORIDA	48,737	190	590	625	1,174	3,693	12,245	19,233	9,029	1,952	6	1,405	2.9	6,272	12.9
ALACHUA	853	10	8	17	25	52	225	333	156	27	0	35	4.1	112	13.1
BAKER	42	0	1	1	2	3	13	15	6	1	0	2	4.8	7	16.7
BAY	327	0	2	2	8	25	88	141	48	13	0	4	1.2	37	11.3
BRADFORD	60	2	1	2	2	5	14	20	13	1	0	5	8.3	12	20.0
BREVARD	718	4	5	11	7	60	177	312	117	25	0	20	2.8	87	12.1
BROWARD	8,337	36	109	95	218	589	1,964	3,317	1,619	389	1	240	2.9	1,047	12.6
CALHOUN	17	0	0	1	0	0	3	10	3	0	0	1	5.9	1	5.9
CHARLOTTE	63	0	1	1	1	3	15	28	12	2	0	2	3.2	6	9.5
CITRUS	34	1	0	1	2	2	8	11	7	2	0	2	5.9	6	17.6
CLAY	255	0	2	1	4	19	81	98	44	6	0	3	1.2	26	10.2
COLLIER	384	2	4	2	6	28	81	161	81	19	0	8	2.1	42	10.9
COLUMBIA	163	1	3	2	10	9	40	68	27	3	0	6	3.7	25	15.3
MIAMI-DADE	7,131	14	91	76	157	576	1,819	2,797	1,332	269	0	181	2.5	914	12.8
DESOTO	36	0	0	0	0	1	8	22	5	0	0	0	0.0	1	2.8
DIXIE	16	0	0	0	0	0	4	3	9	0	0	0	0.0	0	0.0
DUVAL	4,412	11	52	58	107	327	1,121	1,726	845	163	2	121	2.7	555	12.6
ESCAMBIA	1,162	6	9	12	27	119	340	425	198	26	0	27	2.3	173	14.9
FLAGLER	110	0	1	1	2	6	24	49	21	6	0	2	1.8	10	9.1
FRANKLIN	16	0	0	0	1	0	5	6	2	1	1	0	0.0	1	6.3
GADSDEN	343	3	3	4	12	31	104	121	51	14	0	10	2.9	53	15.5
GILCHRIST	6	0	0	0	0	0	0	3	0	3	0	0	0.0	0	0.0
GLADES	9	0	0	0	1	1	3	3	1	0	0	0	0.0	2	22.2
GULF	12	0	0	0	0	0	4	6	2	0	0	0	0.0	0	0.0
HAMILTON	54	0	0	1	0	7	15	20	8	3	0	1	1.9	8	14.8
HARDEE	16	0	0	0	0	1	4	7	4	0	0	0	0.0	1	6.3
HENDRY	68	0	0	2	3	3	21	23	15	1	0	2	2.9	8	11.8
HERNANDO	120	1	4	1	3	12	30	44	23	2	0	6	5.0	21	17.5
HIGHLANDS	130	0	0	1	0	8	42	55	19	5	0	1	0.8	9	6.9
HILLSBOROUGH	3,556	20	35	58	92	310	868	1,390	631	152	0	113	3.2	515	14.5
HOLMES	2	0	0	0	0	0	0	1	1	0	0	0	0.0	0	0.0
INDIAN RIVER	224	3	1	3	5	21	63	78	48	2	0	7	3.1	33	14.7
JACKSON	139	0	2	3	2	15	43	53	19	2	0	5	3.6	22	15.8
JEFFERSON	62	1	2	1	2	9	14	22	9	2	0	4	6.5	15	24.2
LAFAYETTE	5	0	0	0	0	0	2	1	2	0	0	0	0.0	0	0.0
LAKE	421	1	7	5	3	29	122	169	71	14	0	13	3.1	45	10.7
LEE	827	4	13	20	21	67	203	303	158	38	0	37	4.5	125	15.1
LEON	1,238	4	24	20	26	109	345	452	209	49	0	48	3.9	183	14.8
LEVY	51	0	0	0	5	1	15	17	9	4	0	0	0.0	6	11.8
LIBERTY	1	0	0	0	0	0	1	0	0	0	0	0	0.0	0	0.0
MADISON	103	0	4	3	4	10	34	29	15	4	0	7	6.8	21	20.4
MANATEE	452	3	8	8	16	22	120	179	82	14	0	19	4.2	57	12.6
MARION	669	3	10	5	18	51	175	289	107	11	0	18	2.7	87	13.0
MARTIN	91	0	3	2	4	7	20	39	15	1	0	5	5.5	16	17.6
MONROE	110	0	2	5	0	7	24	41	20	10	1	7	6.4	14	12.7
NASSAU	40	0	1	2	4	3	9	17	4	0	0	3	7.5	10	25.0
OKALOOSA	309	2	6	3	9	31	94	101	54	9	0	11	3.6	51	16.5
ORKEECHOBEE	29	1	0	0	0	1	8	11	6	2	0	1	3.4	2	6.9
ORANGE	4,310	22	50	51	112	334	1,007	1,684	864	185	1	123	2.9	569	13.2
OSCEOLA	458	3	3	8	7	29	114	196	80	18	0	14	3.1	50	10.9
PALM BEACH	4,149	6	51	46	86	272	1,038	1,708	767	175	0	103	2.5	461	11.1
PASCO	284	1	2	1	7	24	72	120	46	11	0	4	1.4	35	12.3
PINELLAS	1,556	5	15	23	39	111	414	597	282	70	0	43	2.8	193	12.4
POLK	1,438	7	12	15	34	98	357	575	274	66	0	34	2.4	166	11.5
PUTNAM	184	1	7	4	3	18	56	65	24	6	0	12	6.5	33	17.9
SAINT JOHNS	169	0	4	4	6	13	46	68	22	6	0	8	4.7	27	16.0
SAINT LUCIE	843	3	9	5	21	66	191	350	159	39	0	17	2.0	104	12.3
SANTA ROSA	76	0	0	2	2	6	18	33	11	4	0	2	2.6	10	13.2
SARASOTA	259	2	3	2	4	18	64	107	49	10	0	7	2.7	29	11.2
SEMINOLE	715	3	12	11	18	51	172	281	137	30	0	26	3.6	95	13.3
SUMTER	69	0	0	1	3	5	28	25	5	2	0	1	1.4	9	13.0
SUWANNEE	62	0	1	2	0	5	15	26	12	1	0	3	4.8	8	12.9
TAYLOR	60	0	0	1	1	7	17	24	9	1	0	1	1.7	9	15.0
UNION	18	0	0	0	1	1	4	7	5	0	0	0	0.0	2	11.1
VOLUSIA	751	3	7	15	18	49	191	307	130	31	0	25	3.3	92	12.3
WAKULLA	35	0	0	3	1	2	6	12	10	1	0	3	8.6	6	17.1
WALTON	36	1	0	1	1	2	10	15	6	0	0	2	5.6	5	13.9
WASHINGTON	42	0	0	0	1	2	12	17	9	1	0	0	0.0	3	7.1





TABLE B-6 (Cont.): RESIDENT LIVE BIRTHS TO WHITE MOTHERS, BY AGE OF MOTHER, BY COUNTY, FLORIDA, 2013

	TOTAL	<13	13	14	15	16	17	18	19	20-24	25-29	30-34	35-44	45+	UNK
FLORIDA	153,278	2	9	64	247	641	1,379	2,372	4,111	33,536	44,847	41,226	24,538	305	1
ALACHUA	1,715	0	0	0	3	2	10	11	35	298	537	534	282	3	0
BAKER	300	0	0	0	0	3	2	9	11	106	96	41	31	1	0
BAY	1,703	0	0	0	5	6	19	30	66	492	532	374	177	1	1
BRADFORD	244	0	1	1	0	0	3	5	12	78	68	58	18	0	0
BREVARD	4,003	0	0	2	7	15	35	72	109	923	1,242	1,056	539	3	0
BROWARD	11,773	0	0	2	11	31	59	96	151	1,720	3,156	3,845	2,670	32	0
CALHOUN	116	0	0	0	1	3	3	1	11	39	35	15	7	1	0
CHARLOTTE	902	0	0	0	0	2	7	19	33	279	248	216	96	2	0
CITRUS	937	0	0	0	2	3	15	27	44	329	278	170	69	0	0
CLAY	1,693	0	0	3	6	3	9	33	56	447	535	393	205	3	0
COLLIER	2,621	0	0	0	7	14	16	35	83	612	749	674	426	5	0
COLUMBIA	644	0	0	1	0	4	9	19	29	201	188	132	61	0	0
MIAMI-DADE	23,128	0	0	6	24	69	151	223	396	4,011	6,600	6,622	4,959	67	0
DESOTO	319	0	0	1	2	5	7	9	9	92	105	58	30	1	0
DIXIE	139	0	0	0	0	0	3	5	5	49	41	26	10	0	0
DUVAL	7,042	0	0	2	14	27	58	86	190	1,472	2,198	1,981	999	15	0
ESCAMBIA	2,418	0	1	1	6	20	24	51	80	651	786	555	241	2	0
FLAGLER	629	0	1	0	0	4	4	10	28	134	184	168	96	0	0
FRANKLIN	94	0	0	0	0	2	1	2	2	34	33	15	5	0	0
GADSDEN	207	0	0	0	1	1	3	7	5	49	66	51	24	0	0
GILCHRIST	188	0	0	0	0	2	4	7	12	63	43	38	19	0	0
GLADES	52	0	0	0	1	1	1	2	1	16	14	13	3	0	0
GULF	119	0	0	0	0	0	0	3	6	34	38	28	9	1	0
HAMILTON	104	0	0	0	0	1	0	4	6	29	45	9	10	0	0
HARDEE	364	0	0	0	2	6	9	15	14	128	102	52	36	0	0
HENDRY	481	0	0	1	1	5	11	16	33	159	121	89	45	0	0
HERNANDO	1,309	0	0	0	0	5	17	36	49	370	412	280	140	0	0
HIGHLANDS	692	0	1	1	2	6	8	21	21	209	193	159	70	1	0
HILLSBOROUGH	12,081	0	0	5	22	52	112	174	333	2,719	3,490	3,316	1,831	27	0
HOLMES	164	0	0	0	1	2	2	7	10	58	45	24	15	0	0
INDIAN RIVER	740	0	0	1	1	4	8	15	21	164	233	177	114	2	0
JACKSON	345	0	0	2	1	3	1	8	20	131	84	72	23	0	0
JEFFERSON	72	0	0	0	0	1	0	2	2	14	27	17	9	0	0
LAFAYETTE	74	0	0	0	0	2	0	3	7	24	17	15	6	0	0
LAKE	2,473	0	0	3	4	11	26	65	81	666	706	585	325	1	0
LEE	5,246	1	2	1	8	18	58	89	142	1,229	1,631	1,275	782	10	0
LEON	1,554	0	0	1	0	4	9	18	33	247	471	518	250	3	0
LEVY	331	0	1	0	0	2	3	8	8	110	108	60	31	0	0
LIBERTY	87	0	0	1	0	0	0	2	9	24	31	12	8	0	0
MADISON	113	0	0	0	0	0	1	2	7	31	39	25	7	1	0
MANATEE	2,587	0	0	3	8	28	40	59	83	589	750	671	352	4	0
MARION	2,540	0	0	1	9	14	40	54	100	768	778	540	231	5	0
MARTIN	1,020	0	0	0	2	7	10	10	29	209	296	290	162	5	0
MONROE	604	0	0	0	0	1	2	6	20	125	174	163	113	0	0
NASSAU	680	0	0	0	2	4	6	10	26	184	222	141	84	1	0
OKALOOSA	2,228	0	0	0	6	7	22	36	69	592	761	508	225	2	0
OKEECHOBEE	454	0	0	0	1	5	7	12	24	167	129	64	45	0	0
ORANGE	10,017	0	0	6	16	41	87	137	269	1,998	2,753	2,899	1,797	14	0
OSCEOLA	3,183	0	0	2	10	23	44	76	107	865	905	737	410	4	0
PALM BEACH	9,229	1	1	1	15	30	67	123	159	1,579	2,513	2,803	1,905	32	0
PASCO	4,257	0	0	4	7	12	42	69	143	1,064	1,246	1,104	561	5	0
PINELLAS	6,174	0	0	1	7	15	41	72	134	1,253	1,802	1,884	947	18	0
POLK	5,481	0	1	2	12	50	87	154	218	1,650	1,596	1,134	571	6	0
PUTNAM	623	0	0	1	1	7	13	13	31	238	183	85	51	0	0
SAINT JOHNS	1,703	0	0	0	1	3	9	9	36	248	477	607	306	7	0
SAINT LUCIE	2,002	0	0	3	2	6	19	33	56	459	627	532	260	5	0
SANTA ROSA	1,614	0	0	0	1	5	22	24	74	404	518	398	168	0	0
SARASOTA	2,407	0	0	1	4	9	25	47	54	511	731	632	389	4	0
SEMINOLE	3,317	0	0	0	3	3	13	35	83	529	1,012	1,046	589	4	0
SUMTER	373	0	0	0	1	3	4	15	19	129	102	68	32	0	0
SUWANNEE	414	0	0	3	1	3	9	9	19	129	132	74	35	0	0
TAYLOR	184	0	0	0	0	3	9	5	7	70	51	26	13	0	0
UNION	162	0	0	0	0	2	0	3	14	56	49	29	9	0	0
VOLUSIA	3,645	0	0	1	4	14	42	83	118	970	1,141	800	466	6	0
WAKULLA	263	0	0	0	1	0	2	9	10	67	93	49	32	0	0
WALTON	697	0	0	0	1	5	1	19	29	179	208	165	89	1	0
WASHINGTON	196	0	0	0	0	1	8	3	10	62	68	27	17	0	0





TABLE B-6 (Cont.): RESIDENT LIVE BIRTHS TO OTHER MOTHERS, BY AGE OF MOTHER,  
BY COUNTY, FLORIDA, 2013

	TOTAL	<13	13	14	15	16	17	18	19	20-24	25-29	30-34	35-44	45+	UNK
FLORIDA	12,213	1	3	1	19	32	101	138	260	1,972	3,388	3,733	2,542	23	0
ALACHUA	254	0	0	0	0	0	2	1	3	22	67	103	56	0	0
BAKER	6	0	0	0	0	0	0	0	0	0	3	2	1	0	0
BAY	157	0	0	0	1	2	1	1	5	43	58	34	12	0	0
BRADFORD	8	0	0	0	0	0	0	1	0	3	1	3	0	0	0
BREVARD	350	0	0	0	0	2	8	4	9	81	89	101	56	0	0
BROWARD	1,369	0	0	0	0	0	7	9	16	160	362	476	336	3	0
CALHOUN	4	0	0	0	0	0	1	0	0	1	1	0	1	0	0
CHARLOTTE	54	0	0	0	0	0	0	2	5	8	17	12	10	0	0
CITRUS	48	0	0	0	0	0	1	4	2	12	13	9	7	0	0
CLAY	134	0	0	0	1	1	2	3	4	31	33	34	25	0	0
COLLIER	148	0	0	0	0	0	0	2	3	14	35	46	48	0	0
COLUMBIA	16	0	0	0	0	0	1	0	0	4	8	2	1	0	0
MIAMI-DADE	727	0	0	0	0	0	3	4	10	66	187	253	202	2	0
DESOTO	8	0	0	0	0	0	0	0	0	5	1	2	0	0	0
DIXIE	1	0	0	0	0	0	0	0	0	0	1	0	0	0	0
DUVAL	1,076	0	0	0	0	1	16	12	16	201	319	326	180	5	0
ESCAMBIA	216	0	0	0	3	2	0	4	9	55	49	50	44	0	0
FLAGLER	44	0	0	0	1	0	0	0	1	10	14	13	5	0	0
FRANKLIN	1	0	0	0	0	0	0	0	0	1	0	0	0	0	0
GADSDEN	8	0	0	0	0	1	0	0	0	2	1	2	2	0	0
GILCHRIST	2	0	0	0	0	0	0	0	0	0	1	0	1	0	0
GLADES	4	0	0	0	0	0	0	0	0	3	0	1	0	0	0
GULF	2	0	0	0	0	0	1	0	0	0	1	0	0	0	0
HAMILTON	2	0	0	0	0	0	0	0	0	0	0	2	0	0	0
HARDEE	7	0	0	0	0	0	0	0	0	4	1	0	1	1	0
HENDRY	18	0	0	0	0	1	0	0	0	6	6	1	4	0	0
HERNANDO	48	0	0	0	0	0	0	0	2	9	9	19	9	0	0
HIGHLANDS	30	0	0	0	0	0	0	0	1	10	6	7	6	0	0
HILLSBOROUGH	958	1	0	1	2	3	4	8	14	132	269	342	178	4	0
HOLMES	7	0	0	0	0	0	0	0	0	4	0	0	3	0	0
INDIAN RIVER	39	0	0	0	0	1	0	2	1	9	9	7	10	0	0
JACKSON	11	0	0	0	0	0	0	0	0	3	3	4	1	0	0
JEFFERSON	1	0	0	0	0	0	0	0	1	0	0	0	0	0	0
LAFAYETTE	2	0	0	0	0	0	0	0	0	0	0	2	0	0	0
LAKE	169	0	0	0	0	0	2	4	5	34	38	44	41	1	0
LEE	306	0	0	0	1	1	3	4	5	48	80	88	75	1	0
LEON	218	0	0	0	0	0	0	4	3	30	71	69	41	0	0
LEVY	8	0	0	0	0	0	0	1	1	2	1	2	1	0	0
LIBERTY	0	0	0	0	0	0	0	0	0	0	0	0	0	0	0
MADISON	5	0	0	0	0	0	0	1	0	1	0	2	1	0	0
MANATEE	327	0	1	0	3	1	4	5	8	58	89	88	69	1	0
MARION	127	0	0	0	0	0	3	4	3	34	31	29	23	0	0
MARTIN	54	0	0	0	0	2	1	2	4	11	7	14	13	0	0
MONROE	24	0	0	0	0	1	0	2	2	5	3	4	7	0	0
NASSAU	21	0	0	0	0	1	0	0	0	0	12	3	5	0	0
OKALOOSA	222	0	0	0	0	1	4	0	8	57	73	52	27	0	0
OKEECHOBEE	30	0	0	0	0	0	4	2	1	8	6	6	3	0	0
ORANGE	1,491	0	0	0	1	4	4	14	20	195	425	474	350	4	0
OSCEOLA	265	0	0	0	0	1	3	1	10	44	87	71	48	0	0
PALM BEACH	794	0	0	0	2	0	0	3	9	95	242	241	202	0	0
PASCO	234	0	0	0	0	1	4	2	8	40	52	73	54	0	0
PINELLAS	652	0	0	0	3	2	6	7	20	117	200	192	105	0	0
POLK	323	0	0	0	0	1	5	7	17	66	82	86	59	0	0
PUTNAM	35	0	0	0	0	0	1	1	1	13	9	8	2	0	0
SAINT JOHN'S	115	0	0	0	0	0	0	3	2	13	25	41	31	0	0
SAINT LUCIE	125	0	0	0	0	0	1	1	5	27	36	36	19	0	0
SANTA ROSA	104	0	1	0	0	0	3	2	3	16	36	30	13	0	0
SARASOTA	137	0	1	0	0	0	1	1	6	21	37	40	29	1	0
SEMINOLE	376	0	0	0	0	1	2	6	7	61	105	117	77	0	0
SUMTER	19	0	0	0	0	0	1	0	0	7	8	2	1	0	0
SUWANNEE	9	0	0	0	0	0	0	0	0	1	3	3	2	0	0
TAYLOR	3	0	0	0	0	0	0	0	0	1	1	1	0	0	0
UNION	3	0	0	0	0	0	0	0	0	2	1	0	0	0	0
VOLUSIA	219	0	0	0	1	1	2	2	7	56	53	56	41	0	0
WAKULLA	7	0	0	0	0	0	0	1	0	4	2	0	0	0	0
WALTON	24	0	0	0	0	0	0	1	2	3	7	8	3	0	0
WASHINGTON	6	0	0	0	0	0	0	0	0	3	2	0	1	0	0

TABLE B-7: RESIDENT LIVE BIRTHS BY TRIMESTER PRENATAL CARE BEGAN, BY COUNTY, FLORIDA, 2013

	TRIMESTER PRENATAL CARE BEGAN <sup>1</sup>						% CARE BEGAN BY TRIMESTER <sup>2</sup>			
	TOTAL	1ST	2ND	3RD	NONE	UNK	1ST	2ND	3RD	NONE
FLORIDA	215,194	159,880	30,399	6,884	2,833	15,198	79.9	15.2	3.4	1.4
ALACHUA	2,823	2,116	421	93	28	165	79.6	15.8	3.5	1.1
BAKER	349	241	64	11	13	20	73.3	19.5	3.3	4.0
BAY	2,239	1,404	334	94	12	395	76.1	18.1	5.1	0.7
BRADFORD	312	221	46	17	4	24	76.7	16.0	5.9	1.4
BREVARD	5,076	3,928	693	127	52	276	81.8	14.4	2.6	1.1
BROWARD	21,541	15,428	2,999	737	428	1,949	78.7	15.3	3.8	2.2
CALHOUN	137	77	23	6	2	29	71.3	21.3	5.6	1.9
CHARLOTTE	1,021	698	168	45	17	93	75.2	18.1	4.8	1.8
CITRUS	1,021	711	206	53	17	34	72.0	20.9	5.4	1.7
CLAY	2,088	1,583	323	73	25	84	79.0	16.1	3.6	1.2
COLLIER	3,154	2,083	746	211	20	94	68.1	24.4	6.9	0.7
COLUMBIA	824	541	177	52	13	41	69.1	22.6	6.6	1.7
MIAMI-DADE	31,147	25,567	3,003	625	280	1,672	86.7	10.2	2.1	0.9
DESOTO	363	234	80	25	5	19	68.0	23.3	7.3	1.5
DIXIE	156	107	28	10	3	8	72.3	18.9	6.8	2.0
DUVAL	12,555	8,423	2,502	534	273	823	71.8	21.3	4.6	2.3
ESCAMBIA	3,804	2,631	519	138	55	461	78.7	15.5	4.1	1.6
FLAGLER	783	584	74	21	7	97	85.1	10.8	3.1	1.0
FRANKLIN	112	59	17	2	0	34	75.6	21.8	2.6	0.0
GADSDEN	561	284	60	21	8	188	76.1	16.1	5.6	2.1
GILCHRIST	196	128	42	10	0	16	71.1	23.3	5.6	0.0
GLADES	65	41	17	2	5	0	63.1	26.2	3.1	7.7
GULF	134	79	21	3	0	31	76.7	20.4	2.9	0.0
HAMILTON	160	91	37	16	5	11	61.1	24.8	10.7	3.4
HARDEE	387	238	115	20	6	8	62.8	30.3	5.3	1.6
HENDRY	569	370	137	35	14	13	66.5	24.6	6.3	2.5
HERNANDO	1,484	1,128	157	26	11	162	85.3	11.9	2.0	0.8
HIGHLANDS	855	543	244	38	9	21	65.1	29.3	4.6	1.1
HILLSBOROUGH	16,614	14,180	1,716	208	153	357	87.2	10.6	1.3	0.9
HOLMES	174	96	19	8	3	48	76.2	15.1	6.3	2.4
INDIAN RIVER	1,217	854	226	82	10	45	72.9	19.3	7.0	0.9
JACKSON	495	293	49	14	3	136	81.6	13.6	3.9	0.8
JEFFERSON	135	75	14	2	1	43	81.5	15.2	2.2	1.1
LAFAYETTE	81	65	5	2	1	8	89.0	6.8	2.7	1.4
LAKE	3,077	2,435	359	59	44	180	84.1	12.4	2.0	1.5
LEE	6,399	4,573	1,288	292	43	203	73.8	20.8	4.7	0.7
LEON	3,011	1,647	231	73	21	1,039	83.5	11.7	3.7	1.1
LEVY	390	272	72	18	4	24	74.3	19.7	4.9	1.1
LIBERTY	88	60	5	4	0	19	87.0	7.2	5.8	0.0
MADISON	221	111	25	7	2	76	76.6	17.2	4.8	1.4
MANATEE	3,375	2,394	664	186	31	100	73.1	20.3	5.7	0.9
MARION	3,338	1,989	901	176	56	216	63.7	28.9	5.6	1.8
MARTIN	1,169	774	274	67	18	36	68.3	24.2	5.9	1.6
MONROE	741	587	98	15	11	30	82.6	13.8	2.1	1.5
NASSAU	741	573	89	10	7	62	84.4	13.1	1.5	1.0
OKALOOSA	2,768	2,000	415	160	23	170	77.0	16.0	6.2	0.9
OKEECHOBEE	522	354	126	16	10	16	70.0	24.9	3.2	2.0
ORANGE	15,829	12,643	1,530	248	288	1,120	86.0	10.4	1.7	2.0
OSCEOLA	3,909	2,960	471	117	62	299	82.0	13.0	3.2	1.7
PALM BEACH	14,198	9,935	2,164	796	155	1,148	76.1	16.6	6.1	1.2
PASCO	4,789	3,678	699	120	61	231	80.7	15.3	2.6	1.3
PINELLAS	8,576	6,285	1,196	249	120	726	80.1	15.2	3.2	1.5
POLK	7,253	4,989	1,455	281	108	420	73.0	21.3	4.1	1.6
PUTNAM	845	577	160	23	15	70	74.5	20.6	3.0	1.9
SAINT JOHNS	1,988	1,606	179	54	4	145	87.1	9.7	2.9	0.2
SAINT LUCIE	2,990	2,167	544	107	76	96	74.9	18.8	3.7	2.6
SANTA ROSA	1,797	1,376	212	55	6	148	83.4	12.9	3.3	0.4
SARASOTA	2,803	2,090	478	98	19	118	77.8	17.8	3.6	0.7
SEMINOLE	4,416	3,565	445	89	55	262	85.8	10.7	2.1	1.3
SUMTER	461	370	62	4	3	22	84.3	14.1	0.9	0.7
SUWANNEE	486	311	115	27	6	27	67.8	25.1	5.9	1.3
TAYLOR	247	124	34	12	2	75	72.1	19.8	7.0	1.2
UNION	183	134	33	7	4	5	75.3	18.5	3.9	2.2
VOLUSIA	4,632	3,346	635	106	84	461	80.2	15.2	2.5	2.0
WAKULLA	305	146	25	7	2	125	81.1	13.9	3.9	1.1
WALTON	758	553	100	31	4	70	80.4	14.5	4.5	0.6
WASHINGTON	246	151	31	9	3	52	77.8	16.0	4.6	1.5

1. Starting in 2004, "trimester prenatal care began" is calculated as the time elapsed from the date of the last menstrual period to the date of the first prenatal care visit. Prior to 2004, these data were obtained by direct question that noted the trimester the mother began prenatal care. Consequently, these data are not comparable to data from prior years.

2. Births with unknown information as to when prenatal care began are excluded from the denominator.

TABLE B-7 (Cont.): RESIDENT LIVE BIRTHS TO WHITE MOTHERS BY TRIMESTER  
 PRENATAL CARE BEGAN, BY COUNTY, FLORIDA, 2013

	TRIMESTER PRENATAL CARE BEGAN <sup>1</sup>						% CARE BEGAN BY TRIMESTER <sup>2</sup>			
	TOTAL	1ST	2ND	3RD	NONE	UNK	1ST	2ND	3RD	NONE
FLORIDA	153,278	117,506	19,713	4,499	1,576	9,984	82.0	13.8	3.1	1.1
ALACHUA	1,715	1,355	212	48	13	87	83.2	13.0	2.9	0.8
BAKER	300	216	51	9	9	15	75.8	17.9	3.2	3.2
BAY	1,703	1,093	237	64	6	303	78.1	16.9	4.6	0.4
BRADFORD	244	177	32	13	3	19	78.7	14.2	5.8	1.3
BREVARD	4,003	3,178	480	90	38	217	83.9	12.7	2.4	1.0
BROWARD	11,773	8,998	1,272	359	165	979	83.4	11.8	3.3	1.5
CALHOUN	116	68	18	6	1	23	73.1	19.4	6.5	1.1
CHARLOTTE	902	617	148	41	13	83	75.3	18.1	5.0	1.6
CITRUS	937	653	187	49	14	34	72.3	20.7	5.4	1.6
CLAY	1,693	1,297	254	49	22	71	80.0	15.7	3.0	1.4
COLLIER	2,621	1,784	590	158	15	74	70.0	23.2	6.2	0.6
COLUMBIA	644	434	136	32	11	31	70.8	22.2	5.2	1.8
MIAMI-DADE	23,128	19,339	1,953	452	153	1,231	88.3	8.9	2.1	0.7
DESOTO	319	205	70	24	4	16	67.7	23.1	7.9	1.3
DIXIE	139	96	25	8	3	7	72.7	18.9	6.1	2.3
DUVAL	7,042	5,235	1,084	220	100	403	78.9	16.3	3.3	1.5
ESCAMBIA	2,418	1,768	279	85	26	260	81.9	12.9	3.9	1.2
FLAGLER	629	473	61	18	5	72	84.9	11.0	3.2	0.9
FRANKLIN	94	49	13	1	0	31	77.8	20.6	1.6	0.0
GADSDEN	207	105	23	10	0	69	76.1	16.7	7.2	0.0
GILCHRIST	188	123	39	10	0	16	71.5	22.7	5.8	0.0
GLADES	52	33	14	2	3	0	63.5	26.9	3.8	5.8
GULF	119	69	19	3	0	28	75.8	20.9	3.3	0.0
HAMILTON	104	56	25	12	3	8	58.3	26.0	12.5	3.1
HARDEE	364	223	111	17	6	7	62.5	31.1	4.8	1.7
HENDRY	481	310	118	30	11	12	66.1	25.2	6.4	2.3
HERNANDO	1,309	1,006	134	23	10	136	85.8	11.4	2.0	0.9
HIGHLANDS	692	451	187	25	8	21	67.2	27.9	3.7	1.2
HILLSBOROUGH	12,081	10,303	1,269	160	100	249	87.1	10.7	1.4	0.8
HOLMES	164	89	18	8	3	46	75.4	15.3	6.8	2.5
INDIAN RIVER	740	548	117	41	5	29	77.1	16.5	5.8	0.7
JACKSON	345	187	34	11	2	111	79.9	14.5	4.7	0.9
JEFFERSON	72	41	4	1	1	25	87.2	8.5	2.1	2.1
LAFAYETTE	74	60	5	2	0	7	89.6	7.5	3.0	0.0
LAKE	2,473	1,993	263	51	31	135	85.2	11.2	2.2	1.3
LEE	5,246	3,796	1,021	235	29	165	74.7	20.1	4.6	0.6
LEON	1,554	895	88	28	9	534	87.7	8.6	2.7	0.9
LEVY	331	229	63	16	3	20	73.6	20.3	5.1	1.0
LIBERTY	87	60	5	4	0	18	87.0	7.2	5.8	0.0
MADISON	113	60	15	3	2	33	75.0	18.8	3.8	2.5
MANATEE	2,587	1,871	488	135	27	66	74.2	19.4	5.4	1.1
MARION	2,540	1,553	648	136	44	159	65.2	27.2	5.7	1.8
MARTIN	1,020	682	231	62	13	32	69.0	23.4	6.3	1.3
MONROE	604	493	71	12	3	25	85.1	12.3	2.1	0.5
NASSAU	680	533	80	7	4	56	85.4	12.8	1.1	0.6
OKALOOSA	2,228	1,625	327	133	17	126	77.3	15.6	6.3	0.8
OKEECHOBEE	454	319	105	12	5	13	72.3	23.8	2.7	1.1
ORANGE	10,017	8,254	825	124	125	689	88.5	8.8	1.3	1.3
OSCEOLA	3,183	2,454	366	85	39	239	83.4	12.4	2.9	1.3
PALM BEACH	9,229	6,716	1,280	441	85	707	78.8	15.0	5.2	1.0
PASCO	4,257	3,287	615	97	51	207	81.2	15.2	2.4	1.3
PINELLAS	6,174	4,757	729	156	77	455	83.2	12.7	2.7	1.3
POLK	5,481	3,866	1,042	195	76	302	74.6	20.1	3.8	1.5
PUTNAM	623	427	116	17	12	51	74.7	20.3	3.0	2.1
SAINT JOHNS	1,703	1,397	136	49	3	118	88.1	8.6	3.1	0.2
SAINT LUCIE	2,002	1,500	330	76	32	64	77.4	17.0	3.9	1.7
SANTA ROSA	1,614	1,248	183	45	6	132	84.2	12.3	3.0	0.4
SARASOTA	2,407	1,820	396	76	15	100	78.9	17.2	3.3	0.7
SEMINOLE	3,317	2,768	278	59	35	177	88.2	8.9	1.9	1.1
SUMTER	373	303	48	3	2	17	85.1	13.5	0.8	0.6
SUWANNEE	414	265	98	21	5	25	68.1	25.2	5.4	1.3
TAYLOR	184	97	24	10	2	51	72.9	18.0	7.5	1.5
UNION	162	121	27	6	4	4	76.6	17.1	3.8	2.5
VOLUSIA	3,645	2,710	464	81	57	333	81.8	14.0	2.4	1.7
WAKULLA	263	131	22	7	1	102	81.4	13.7	4.3	0.6
WALTON	697	519	85	29	3	61	81.6	13.4	4.6	0.5
WASHINGTON	196	115	24	7	3	47	77.2	16.1	4.7	2.0

1. Starting in 2004, "trimester prenatal care began" is calculated as the time elapsed from the date of the last menstrual period to the date of the first prenatal care visit. Prior to 2004, these data were obtained by direct question that noted the trimester the mother began prenatal care. Consequently, these data are not comparable to data from prior years.

2. Births with unknown information as to when prenatal care began are excluded from the denominator.

TABLE B-7 (Cont.): RESIDENT LIVE BIRTHS TO BLACK MOTHERS BY TRIMESTER  
 PRENATAL CARE BEGAN, BY COUNTY, FLORIDA, 2013

	TRIMESTER PRENATAL CARE BEGAN <sup>1</sup>						% CARE BEGAN BY TRIMESTER <sup>2</sup>			
	TOTAL	1ST	2ND	3RD	NONE	UNK	1ST	2ND	3RD	NONE
FLORIDA	48,737	32,760	8,822	1,887	1,094	4,174	73.5	19.8	4.2	2.5
ALACHUA	853	562	178	32	15	66	71.4	22.6	4.1	1.9
BAKER	42	21	12	2	4	3	53.8	30.8	5.1	10.3
BAY	327	195	61	11	4	56	72.0	22.5	4.1	1.5
BRADFORD	60	38	13	3	1	5	69.1	23.6	5.5	1.8
BREVARD	718	488	159	23	10	38	71.8	23.4	3.4	1.5
BROWARD	8,337	5,392	1,539	336	231	839	71.9	20.5	4.5	3.1
CALHOUN	17	7	4	0	1	5	58.3	33.3	0.0	8.3
CHARLOTTE	63	40	10	1	3	9	74.1	18.5	1.9	5.6
CITRUS	34	22	10	1	1	0	64.7	29.4	2.9	2.9
CLAY	255	189	42	17	2	5	75.6	16.8	6.8	0.8
COLLIER	384	204	122	38	3	17	55.6	33.2	10.4	0.8
COLUMBIA	163	95	38	20	1	9	61.7	24.7	13.0	0.6
MIAMI-DADE	7,131	5,494	983	158	123	373	81.3	14.5	2.3	1.8
DESOTO	36	24	8	1	1	2	70.6	23.5	2.9	2.9
DIXIE	16	10	3	2	0	1	66.7	20.0	13.3	0.0
DUVAL	4,412	2,458	1,224	268	151	311	59.9	29.8	6.5	3.7
ESCAMBIA	1,162	702	206	48	26	180	71.5	21.0	4.9	2.6
FLAGLER	110	76	9	3	2	20	84.4	10.0	3.3	2.2
FRANKLIN	16	10	3	1	0	2	71.4	21.4	7.1	0.0
GADSDEN	343	173	36	10	8	116	76.2	15.9	4.4	3.5
GILCHRIST	6	4	2	0	0	0	66.7	33.3	0.0	0.0
GLADES	9	5	2	0	2	0	55.6	22.2	0.0	22.2
GULF	12	8	2	0	0	2	80.0	20.0	0.0	0.0
HAMILTON	54	34	11	4	2	3	66.7	21.6	7.8	3.9
HARDEE	16	11	2	2	0	1	73.3	13.3	13.3	0.0
HENDRY	68	47	15	3	3	0	69.1	22.1	4.4	4.4
HERNANDO	120	81	18	2	1	18	79.4	17.6	2.0	1.0
HIGHLANDS	130	68	50	11	1	0	52.3	38.5	8.5	0.8
HILLSBOROUGH	3,556	3,037	367	36	43	73	87.2	10.5	1.0	1.2
HOLMES	2	0	0	0	0	2	0.0	0.0	0.0	0.0
INDIAN RIVER	224	143	50	17	3	11	67.1	23.5	8.0	1.4
JACKSON	139	99	13	3	1	23	85.3	11.2	2.6	0.9
JEFFERSON	62	33	10	1	0	18	75.0	22.7	2.3	0.0
LAFAYETTE	5	3	0	0	1	1	75.0	0.0	0.0	25.0
LAKE	421	311	64	4	10	32	79.9	16.5	1.0	2.6
LEE	827	566	188	42	9	22	70.3	23.4	5.2	1.1
LEON	1,238	632	122	34	12	438	79.0	15.3	4.3	1.5
LEVY	51	36	9	1	1	4	76.6	19.1	2.1	2.1
LIBERTY	1	0	0	0	0	1	0.0	0.0	0.0	0.0
MADISON	103	49	8	4	0	42	80.3	13.1	6.6	0.0
MANATEE	452	313	90	28	3	18	72.1	20.7	6.5	0.7
MARION	669	365	212	34	11	47	58.7	34.1	5.5	1.8
MARTIN	91	52	29	4	4	2	58.4	32.6	4.5	4.5
MONROE	110	71	25	3	7	4	67.0	23.6	2.8	6.6
NASSAU	40	23	8	3	2	4	63.9	22.2	8.3	5.6
OKALOOSA	309	201	53	21	4	30	72.0	19.0	7.5	1.4
OKEECHOBEE	29	17	7	2	2	1	60.7	25.0	7.1	7.1
ORANGE	4,310	3,157	574	101	146	332	79.4	14.4	2.5	3.7
OSCEOLA	458	319	69	19	17	34	75.2	16.3	4.5	4.0
PALM BEACH	4,149	2,624	782	301	65	377	69.6	20.7	8.0	1.7
PASCO	284	209	45	12	7	11	76.6	16.5	4.4	2.6
PINELLAS	1,556	969	328	60	33	166	69.7	23.6	4.3	2.4
POLK	1,438	903	338	66	30	101	67.5	25.3	4.9	2.2
PUTNAM	184	124	36	5	3	16	73.8	21.4	3.0	1.8
SAINT JOHNS	169	118	27	4	1	19	78.7	18.0	2.7	0.7
SAINT LUCIE	843	557	193	23	40	30	68.5	23.7	2.8	4.9
SANTA ROSA	76	54	15	4	0	3	74.0	20.5	5.5	0.0
SARASOTA	259	177	57	11	4	10	71.1	22.9	4.4	1.6
SEMINOLE	715	490	134	17	15	59	74.7	20.4	2.6	2.3
SUMTER	69	52	11	1	1	4	80.0	16.9	1.5	1.5
SUWANNEE	62	39	15	5	1	2	65.0	25.0	8.3	1.7
TAYLOR	60	24	10	2	0	24	66.7	27.8	5.6	0.0
UNION	18	10	6	1	0	1	58.8	35.3	5.9	0.0
VOLUSIA	751	463	147	18	21	102	71.3	22.7	2.8	3.2
WAKULLA	35	12	2	0	0	21	85.7	14.3	0.0	0.0
WALTON	36	21	9	1	1	4	65.6	28.1	3.1	3.1
WASHINGTON	42	29	7	2	0	4	76.3	18.4	5.3	0.0

1. Starting in 2004, "trimester prenatal care began" is calculated as the time elapsed from the date of the last menstrual period to the date of the first prenatal care visit. Prior to 2004, these data were obtained by direct question that noted the trimester the mother began prenatal care. Consequently, these data are not comparable to data from prior years.

2. Births with unknown information as to when prenatal care began are excluded from the denominator.

TABLE B-7 (Cont.): RESIDENT LIVE BIRTHS TO OTHER MOTHERS BY TRIMESTER  
 PRENATAL CARE BEGAN, BY COUNTY, FLORIDA, 2013

	TRIMESTER PRENATAL CARE BEGAN <sup>1</sup>						% CARE BEGAN BY TRIMESTER <sup>2</sup>			
	TOTAL	1ST	2ND	3RD	NONE	UNK	1ST	2ND	3RD	NONE
FLORIDA	12,213	9,017	1,718	457	141	880	79.6	15.2	4.0	1.2
ALACHUA	254	198	31	13	0	12	81.8	12.8	5.4	0.0
BAKER	6	3	1	0	0	2	75.0	25.0	0.0	0.0
BAY	157	88	32	14	1	22	65.2	23.7	10.4	0.7
BRADFORD	8	6	1	1	0	0	75.0	12.5	12.5	0.0
BREVARD	350	261	52	14	4	19	78.9	15.7	4.2	1.2
BROWARD	1,369	1,002	181	41	27	118	80.1	14.5	3.3	2.2
CALHOUN	4	2	1	0	0	1	66.7	33.3	0.0	0.0
CHARLOTTE	54	40	9	3	1	1	75.5	17.0	5.7	1.9
CITRUS	48	35	8	3	2	0	72.9	16.7	6.3	4.2
CLAY	134	94	27	7	0	6	73.4	21.1	5.5	0.0
COLLIER	148	95	33	15	2	3	65.5	22.8	10.3	1.4
COLUMBIA	16	11	3	0	1	1	73.3	20.0	0.0	6.7
MIAMI-DADE	727	597	57	15	3	55	88.8	8.5	2.2	0.4
DESOTO	8	5	2	0	0	1	71.4	28.6	0.0	0.0
DIXIE	1	1	0	0	0	0	100.0	0.0	0.0	0.0
DUVAL	1,076	715	191	45	20	105	73.6	19.7	4.6	2.1
ESCAMBIA	216	156	33	4	3	20	79.6	16.8	2.0	1.5
FLAGLER	44	35	4	0	0	5	89.7	10.3	0.0	0.0
FRANKLIN	1	0	0	0	0	1	0.0	0.0	0.0	0.0
GADSDEN	8	4	1	1	0	2	66.7	16.7	16.7	0.0
GILCHRIST	2	1	1	0	0	0	50.0	50.0	0.0	0.0
GLADES	4	3	1	0	0	0	75.0	25.0	0.0	0.0
GULF	2	2	0	0	0	0	100.0	0.0	0.0	0.0
HAMILTON	2	1	1	0	0	0	50.0	50.0	0.0	0.0
HARDEE	7	4	2	1	0	0	57.1	28.6	14.3	0.0
HENDRY	18	13	3	1	0	1	76.5	17.6	5.9	0.0
HERNANDO	48	35	5	1	0	7	85.4	12.2	2.4	0.0
HIGHLANDS	30	24	5	1	0	0	80.0	16.7	3.3	0.0
HILLSBOROUGH	958	832	77	11	9	29	89.6	8.3	1.2	1.0
HOLMES	7	6	1	0	0	0	85.7	14.3	0.0	0.0
INDIAN RIVER	39	24	12	2	1	0	61.5	30.8	5.1	2.6
JACKSON	11	7	2	0	0	2	77.8	22.2	0.0	0.0
JEFFERSON	1	1	0	0	0	0	100.0	0.0	0.0	0.0
LAFAYETTE	2	2	0	0	0	0	100.0	0.0	0.0	0.0
LAKE	169	120	30	4	2	13	76.9	19.2	2.6	1.3
LEE	306	202	71	15	5	13	68.9	24.2	5.1	1.7
LEON	218	120	20	11	0	67	79.5	13.2	7.3	0.0
LEVY	8	7	0	1	0	0	87.5	0.0	12.5	0.0
LIBERTY	0	0	0	0	0	0	0.0	0.0	0.0	0.0
MADISON	5	2	2	0	0	1	50.0	50.0	0.0	0.0
MANATEE	327	205	86	23	1	12	65.1	27.3	7.3	0.3
MARION	127	70	40	6	1	10	59.8	34.2	5.1	0.9
MARTIN	54	36	14	1	1	2	69.2	26.9	1.9	1.9
MONROE	24	20	2	0	1	1	87.0	8.7	0.0	4.3
NASSAU	21	17	1	0	1	2	89.5	5.3	0.0	5.3
OKALOOSA	222	166	35	5	2	14	79.8	16.8	2.4	1.0
OKEECHOBEE	30	13	11	2	2	2	46.4	39.3	7.1	7.1
ORANGE	1,491	1,228	130	23	17	93	87.8	9.3	1.6	1.2
OSCEOLA	265	187	35	13	5	25	77.9	14.6	5.4	2.1
PALM BEACH	794	580	101	54	4	55	78.5	13.7	7.3	0.5
PASCO	234	176	36	11	3	8	77.9	15.9	4.9	1.3
PINELLAS	652	462	109	26	7	48	76.5	18.0	4.3	1.2
POLK	323	215	73	20	1	14	69.6	23.6	6.5	0.3
PUTNAM	35	23	8	1	0	3	71.9	25.0	3.1	0.0
SAINT JOHNS	115	90	16	1	0	8	84.1	15.0	0.9	0.0
SAINT LUCIE	125	96	16	8	3	2	78.0	13.0	6.5	2.4
SANTA ROSA	104	72	13	6	0	13	79.1	14.3	6.6	0.0
SARASOTA	137	93	25	11	0	8	72.1	19.4	8.5	0.0
SEMINOLE	376	302	32	13	5	24	85.8	9.1	3.7	1.4
SUMTER	19	15	3	0	0	1	83.3	16.7	0.0	0.0
SUWANNEE	9	6	2	1	0	0	66.7	22.2	11.1	0.0
TAYLOR	3	3	0	0	0	0	100.0	0.0	0.0	0.0
UNION	3	3	0	0	0	0	100.0	0.0	0.0	0.0
VOLUSIA	219	162	23	7	5	22	82.2	11.7	3.6	2.5
WAKULLA	7	3	1	0	1	2	60.0	20.0	0.0	20.0
WALTON	24	13	6	1	0	4	65.0	30.0	5.0	0.0
WASHINGTON	6	6	0	0	0	0	100.0	0.0	0.0	0.0

1. Starting in 2004, "trimester prenatal care began" is calculated as the time elapsed from the date of the last menstrual period to the date of the first prenatal care visit. Prior to 2004, these data were obtained by direct question that noted the trimester the mother began prenatal care. Consequently, these data are not comparable to data from prior years.

2. Births with unknown information as to when prenatal care began are excluded from the denominator.









TABLE B-8 (Cont.): RESIDENT LIVE BIRTHS TO UNWED OTHER MOTHERS, BY AGE OF MOTHER, BY COUNTY, FLORIDA, 2013

	TOTAL	<13	13	14	15	16	17	18	19	20-24	25-29	30-34	35-44	45+	UNK
FLORIDA	3,599	1	3	1	19	32	93	127	220	1,143	950	595	409	6	0
ALACHUA	35	0	0	0	0	0	2	0	1	8	11	6	7	0	0
BAKER	2	0	0	0	0	0	0	0	0	0	2	0	0	0	0
BAY	64	0	0	0	1	2	1	1	4	28	20	5	2	0	0
BRADFORD	3	0	0	0	0	0	0	1	0	1	1	0	0	0	0
BREVARD	111	0	0	0	0	2	6	4	5	41	27	18	8	0	0
BROWARD	342	0	0	0	0	0	6	9	12	82	96	85	52	0	0
CALHOUN	2	0	0	0	0	0	1	0	0	0	1	0	0	0	0
CHARLOTTE	24	0	0	0	0	0	0	2	4	8	9	0	1	0	0
CITRUS	30	0	0	0	0	0	1	4	2	10	10	1	2	0	0
CLAY	51	0	0	0	1	1	2	3	1	22	10	5	6	0	0
COLLIER	43	0	0	0	0	0	0	2	3	9	13	7	9	0	0
COLUMBIA	7	0	0	0	0	0	1	0	0	3	2	0	1	0	0
MIAMI-DADE	173	0	0	0	0	0	3	4	6	33	43	48	35	1	0
DESOTO	3	0	0	0	0	0	0	0	0	1	1	1	0	0	0
DIXIE	1	0	0	0	0	0	0	0	0	0	1	0	0	0	0
DUVAL	283	0	0	0	0	1	16	10	12	103	70	42	26	3	0
ESCAMBIA	76	0	0	0	3	2	0	4	7	34	12	9	5	0	0
FLAGLER	21	0	0	0	1	0	0	0	1	6	7	5	1	0	0
FRANKLIN	1	0	0	0	0	0	0	0	0	1	0	0	0	0	0
GADSDEN	4	0	0	0	0	1	0	0	0	2	0	1	0	0	0
GILCHRIST	2	0	0	0	0	0	0	0	0	0	1	0	1	0	0
GLADES	3	0	0	0	0	0	0	0	0	2	0	1	0	0	0
GULF	1	0	0	0	0	0	1	0	0	0	0	0	0	0	0
HAMILTON	1	0	0	0	0	0	0	0	0	0	0	1	0	0	0
HARDEE	3	0	0	0	0	0	0	0	0	2	1	0	0	0	0
HENDRY	11	0	0	0	0	1	0	0	0	4	3	1	2	0	0
HERNANDO	15	0	0	0	0	0	0	0	1	8	3	3	0	0	0
HIGHLANDS	10	0	0	0	0	0	0	0	1	5	1	3	0	0	0
HILLSBOROUGH	210	1	0	1	2	3	4	8	13	70	55	30	22	1	0
HOLMES	2	0	0	0	0	0	0	0	0	1	0	0	1	0	0
INDIAN RIVER	10	0	0	0	0	1	0	2	1	3	2	1	0	0	0
JACKSON	3	0	0	0	0	0	0	0	0	0	3	0	0	0	0
JEFFERSON	1	0	0	0	0	0	0	0	1	0	0	0	0	0	0
LAFAYETTE	0	0	0	0	0	0	0	0	0	0	0	0	0	0	0
LAKE	71	0	0	0	0	0	1	3	5	27	17	12	6	0	0
LEE	114	0	0	0	1	1	3	3	4	31	36	19	16	0	0
LEON	43	0	0	0	0	0	0	3	3	15	15	6	1	0	0
LEVY	5	0	0	0	0	0	0	1	1	1	0	2	0	0	0
LIBERTY	0	0	0	0	0	0	0	0	0	0	0	0	0	0	0
MADISON	1	0	0	0	0	0	0	1	0	0	0	0	0	0	0
MANATEE	156	0	1	0	3	1	3	4	7	38	39	35	25	0	0
MARION	48	0	0	0	0	0	3	3	2	21	14	4	1	0	0
MARTIN	23	0	0	0	0	2	1	2	4	8	2	2	2	0	0
MONROE	11	0	0	0	0	1	0	1	2	1	1	1	4	0	0
NASSAU	7	0	0	0	0	1	0	0	0	0	5	1	0	0	0
OKALOOSA	55	0	0	0	0	1	4	0	6	24	11	7	2	0	0
OKEECHOBEE	20	0	0	0	0	0	4	2	1	6	3	1	3	0	0
ORANGE	386	0	0	0	1	4	4	14	20	124	108	57	53	1	0
OSCEOLA	75	0	0	0	0	1	3	1	8	27	22	10	3	0	0
PALM BEACH	200	0	0	0	2	0	0	3	8	46	68	38	35	0	0
PASCO	73	0	0	0	0	1	4	2	8	22	11	14	11	0	0
PINELLAS	255	0	0	0	3	2	4	7	19	78	76	46	20	0	0
POLK	128	0	0	0	0	1	5	6	17	43	25	16	15	0	0
PUTNAM	18	0	0	0	0	0	1	1	1	8	3	3	1	0	0
SAINT JOHNS	23	0	0	0	0	0	0	3	2	6	3	4	5	0	0
SAINT LUCIE	52	0	0	0	0	0	1	1	5	21	13	9	2	0	0
SANTA ROSA	33	0	1	0	0	0	3	2	2	12	6	5	2	0	0
SARASOTA	49	0	1	0	0	0	1	0	6	16	13	7	5	0	0
SEMINOLE	88	0	0	0	0	1	1	6	6	30	28	9	7	0	0
SUMTER	5	0	0	0	0	0	1	0	0	4	0	0	0	0	0
SUWANNEE	4	0	0	0	0	0	0	0	0	1	2	0	1	0	0
TAYLOR	2	0	0	0	0	0	0	0	0	1	1	0	0	0	0
UNION	2	0	0	0	0	0	0	0	0	2	0	0	0	0	0
VOLUSIA	92	0	0	0	1	1	2	2	6	38	21	13	8	0	0
WAKULLA	4	0	0	0	0	0	0	1	0	3	0	0	0	0	0
WALTON	3	0	0	0	0	0	0	1	1	0	0	1	0	0	0
WASHINGTON	4	0	0	0	0	0	0	0	0	2	2	0	0	0	0



TABLE B-10: RESIDENT LIVE BIRTHS BY MOTHER'S EDUCATION\*, BY COUNTY, FLORIDA, 2013

	HIGHEST LEVEL/DEGREE OF EDUCATION COMPLETED									
	TOTAL	< 9TH GRADE	9TH-12TH NO DIPLOMA	HIGH SCHOOL DIPLOMA	SOME COLLEGE	ASSOCIATE DEGREE	BACHELOR DEGREE	MASTER DEGREE	DOCTORATE	UNK
FLORIDA	215,194	7,114	23,652	65,601	41,780	21,319	35,902	13,779	3,695	2,352
ALACHUA	2,823	28	254	574	595	308	527	331	197	9
BAKER	349	6	56	131	78	37	28	8	2	3
BAY	2,239	45	288	610	577	196	302	87	25	109
BRADFORD	312	7	42	115	82	34	24	5	0	3
BREVARD	5,076	91	461	1,285	1,288	640	857	315	88	51
BROWARD	21,541	413	1,996	5,791	4,031	2,297	4,357	1,903	497	256
CALHOUN	137	5	22	53	30	10	12	3	1	1
CHARLOTTE	1,021	11	112	396	263	88	93	32	8	18
CITRUS	1,021	15	137	411	256	79	89	21	5	8
CLAY	2,088	27	173	618	570	220	334	90	22	34
COLLIER	3,154	273	276	1,149	597	192	444	192	21	10
COLUMBIA	824	19	127	323	187	68	70	20	4	6
MIAMI-DADE	31,147	1,083	2,609	10,455	4,446	3,476	5,491	2,612	637	338
DESOTO	363	60	85	138	47	14	13	4	0	2
DIXIE	156	5	31	63	40	13	2	1	0	1
DUVAL	12,555	374	1,360	3,486	3,215	1,066	2,032	673	221	128
ESCAMBIA	3,804	71	523	1,651	390	405	504	185	43	32
FLAGLER	783	10	55	208	230	104	134	28	5	9
FRANKLIN	112	4	20	37	33	3	5	2	2	6
GADSDEN	561	50	114	165	124	33	42	16	1	16
GILCHRIST	196	14	33	69	33	28	14	3	1	1
GLADES	65	6	13	26	10	4	5	1	0	0
GULF	134	2	15	45	28	12	21	1	1	9
HAMILTON	160	18	27	65	28	16	5	1	0	0
HARDEE	387	53	98	129	59	22	19	6	1	0
HENDRY	569	65	121	261	67	26	19	5	0	5
HERNANDO	1,484	16	164	534	339	163	158	48	7	55
HIGHLANDS	855	60	160	272	181	66	79	27	7	3
HILLSBOROUGH	16,614	514	2,266	5,320	2,893	1,179	2,948	1,070	317	107
HOLMES	174	4	31	68	27	17	10	8	1	8
INDIAN RIVER	1,217	32	161	422	275	110	141	50	19	7
JACKSON	495	12	75	169	132	40	51	14	0	2
JEFFERSON	135	7	18	42	35	8	15	6	0	4
LAFAYETTE	81	4	13	30	12	13	6	3	0	0
LAKE	3,077	73	397	1,048	589	343	425	149	23	30
LEE	6,399	315	875	2,561	898	722	717	171	48	92
LEON	3,011	46	241	468	678	256	790	359	106	67
LEVY	390	17	64	145	88	34	34	3	2	3
LIBERTY	88	5	8	34	18	6	12	3	1	1
MADISON	221	8	34	80	53	22	20	1	0	3
MANATEE	3,375	286	560	1,029	585	257	444	139	53	22
MARION	3,338	73	524	1,092	921	286	287	96	35	24
MARTIN	1,169	126	131	257	218	108	200	84	32	13
MONROE	741	25	72	226	169	77	124	33	5	10
NASSAU	741	17	77	218	166	97	109	37	15	5
OKALOOSA	2,768	23	237	770	737	297	506	149	35	14
OKEECHOBEE	522	45	105	169	118	34	38	9	1	3
ORANGE	15,829	374	1,535	4,650	2,906	1,530	3,119	1,297	260	158
OSCEOLA	3,909	58	385	1,464	786	476	540	148	24	28
PALM BEACH	14,198	1,097	1,466	3,581	2,569	1,460	2,604	972	309	140
PASCO	4,789	75	565	1,312	1,049	479	884	294	67	64
PINELLAS	8,576	147	905	2,355	1,859	826	1,593	539	175	177
POLK	7,253	425	1,224	2,430	1,428	574	858	234	42	38
PUTNAM	845	48	172	346	166	56	40	13	3	1
SAINT JOHNS	1,988	11	65	403	503	162	550	199	69	26
SAINT LUCIE	2,990	117	398	973	698	355	307	104	24	14
SANTA ROSA	1,797	16	136	589	270	268	363	112	32	11
SARASOTA	2,803	36	233	1,080	473	345	431	141	40	24
SEMINOLE	4,416	58	263	952	904	509	1,121	468	89	52
SUMTER	461	20	88	191	95	26	25	9	3	4
SUWANNEE	486	35	85	186	99	44	27	5	3	2
TAYLOR	247	5	33	103	59	25	15	2	0	5
UNION	183	5	39	63	46	19	8	1	1	1
VOLUSIA	4,632	92	619	1,290	1,148	525	672	175	53	58
WAKULLA	305	4	36	90	80	34	41	14	2	4
WALTON	758	23	92	236	153	61	136	43	9	5
WASHINGTON	246	4	49	98	52	19	11	5	1	7

\* Starting in 2004, "mother's education" is measured according to the highest level/degree completed, instead of highest grade completed.

TABLE B-10 (Cont.): WHITE RESIDENT LIVE BIRTHS BY MOTHER'S EDUCATION\*, BY COUNTY, FLORIDA, 2013

	HIGHEST LEVEL/DEGREE OF EDUCATION COMPLETED										
	TOTAL	9TH-12TH		HIGH SCHOOL		SOME COLLEGE	ASSOCIATE DEGREE	BACHELOR DEGREE	MASTER DEGREE	DOCTORATE	UNK
		GRADE	DIPLOMA	DIPLOMA	DIPLOMA						
FLORIDA	153,278	5,939	14,893	43,503	28,999	15,911	28,786	10,740	2,887	1,620	
ALACHUA	1,715	15	94	250	342	226	403	241	137	7	
BAKER	300	6	43	106	72	35	28	6	2	2	
BAY	1,703	29	192	453	442	157	251	78	21	80	
BRADFORD	244	6	26	96	61	31	21	2	0	1	
BREVARD	4,003	70	335	943	1,012	523	746	257	72	45	
BROWARD	11,773	299	793	2,628	2,064	1,237	3,002	1,249	355	146	
CALHOUN	116	5	21	41	25	10	10	3	1	0	
CHARLOTTE	902	8	99	358	230	73	86	28	5	15	
CITRUS	937	14	131	372	235	76	79	19	5	6	
CLAY	1,693	26	141	496	457	185	268	77	14	29	
COLLIER	2,621	266	229	911	477	150	391	174	14	9	
COLUMBIA	644	16	102	236	140	62	63	17	3	5	
MIAMI-DADE	23,128	940	1,595	6,891	3,178	2,749	4,716	2,271	553	235	
DESOTO	319	60	80	112	37	13	12	3	0	2	
DIXIE	139	5	27	54	36	13	2	1	0	1	
DUVAL	7,042	239	554	1,671	1,748	649	1,471	458	173	79	
ESCAMBIA	2,418	52	241	932	248	291	431	165	36	22	
FLAGLER	629	8	40	155	180	93	121	21	3	8	
FRANKLIN	94	3	18	28	29	3	5	2	2	4	
GADSDEN	207	42	39	55	28	17	14	7	1	4	
GILCHRIST	188	13	31	66	31	28	14	3	1	1	
GLADES	52	6	10	20	6	4	5	1	0	0	
GULF	119	1	12	38	26	12	20	1	1	8	
HAMILTON	104	15	18	35	17	14	4	1	0	0	
HARDEE	364	50	92	122	54	21	18	6	1	0	
HENDRY	481	62	106	217	49	23	16	5	0	3	
HERNANDO	1,309	14	148	478	291	144	139	41	7	47	
HIGHLANDS	692	56	120	212	142	60	71	25	4	2	
HILLSBOROUGH	12,081	459	1,550	3,664	2,065	904	2,332	779	253	75	
HOLMES	164	4	31	62	27	15	10	8	0	7	
INDIAN RIVER	740	5	57	231	188	86	117	41	12	3	
JACKSON	345	10	49	109	97	23	42	13	0	2	
JEFFERSON	72	6	8	17	15	7	13	6	0	0	
LAFAYETTE	74	4	11	25	12	13	6	3	0	0	
LAKE	2,473	64	295	833	468	286	365	120	18	24	
LEE	5,246	289	636	1,984	770	645	647	159	40	76	
LEON	1,554	33	78	201	282	125	522	226	64	23	
LEVY	331	16	55	110	80	31	32	3	2	2	
LIBERTY	87	5	8	34	17	6	12	3	1	1	
MADISON	113	6	13	33	27	15	15	1	0	3	
MANATEE	2,587	213	417	740	442	217	378	121	42	17	
MARION	2,540	62	380	804	695	227	242	79	28	23	
MARTIN	1,020	121	105	212	189	92	182	77	32	10	
MONROE	604	16	49	176	142	69	109	33	4	6	
NASSAU	680	17	75	195	148	93	102	34	12	4	
OKALOOSA	2,228	20	186	584	587	244	426	135	33	13	
OKEECHOBEE	454	41	88	146	105	29	33	8	1	3	
ORANGE	10,017	283	789	2,665	1,771	984	2,313	939	179	94	
OSCEOLA	3,183	53	315	1,215	627	397	426	112	16	22	
PALM BEACH	9,229	920	742	1,943	1,583	940	2,031	740	254	76	
PASCO	4,257	68	499	1,198	924	441	772	250	49	56	
PINELLAS	6,174	116	527	1,533	1,317	650	1,333	439	142	117	
POLK	5,481	377	895	1,769	1,038	459	709	176	31	27	
PUTNAM	623	44	130	233	128	39	33	12	3	1	
SAINT JOHNS	1,703	8	45	302	430	148	506	186	54	24	
SAINT LUCIE	2,002	91	253	601	473	254	232	70	18	10	
SANTA ROSA	1,614	14	128	533	228	237	333	100	30	11	
SARASOTA	2,407	31	183	897	407	309	397	130	33	20	
SEMINOLE	3,317	45	167	660	661	389	929	360	64	42	
SUMTER	373	20	66	145	79	25	23	9	3	3	
SUWANNEE	414	33	70	157	79	40	26	5	3	1	
TAYLOR	184	4	27	74	41	20	14	2	0	2	
UNION	162	5	32	56	39	19	8	1	1	1	
VOLUSIA	3,645	80	449	1,022	904	431	534	141	42	42	
WAKULLA	263	4	25	76	75	31	35	12	2	3	
WALTON	697	22	82	216	136	57	130	40	9	5	
WASHINGTON	196	3	38	72	45	15	10	5	1	7	

\* Starting in 2004, "mother's education" is measured according to the highest level/degree completed, instead of highest grade completed.

TABLE B-10 (Cont.): BLACK RESIDENT LIVE BIRTHS BY MOTHER'S EDUCATION\*, BY COUNTY, FLORIDA, 2013

	TOTAL	HIGHEST LEVEL/DEGREE OF EDUCATION COMPLETED									
		< 9TH GRADE	9TH-12TH NO DIPLOMA	HIGH SCHOOL DIPLOMA	SOME COLLEGE	ASSOCIATE DEGREE	BACHELOR DEGREE	MASTER DEGREE	DOCTORATE	UNK	
FLORIDA	48,737	762	7,786	19,125	10,505	4,159	4,001	1,650	300	449	
ALACHUA	853	10	152	307	222	64	54	34	8	2	
BAKER	42	0	13	22	5	1	0	0	0	1	
BAY	327	8	64	116	80	25	16	5	1	12	
BRADFORD	60	1	15	18	18	2	1	3	0	2	
BREVARD	718	9	96	267	207	71	38	22	4	4	
BROWARD	8,337	98	1,131	2,860	1,765	927	941	458	76	81	
CALHOUN	17	0	1	10	3	0	2	0	0	1	
CHARLOTTE	63	0	5	21	21	10	3	1	1	1	
CITRUS	34	0	4	15	10	0	4	0	0	1	
CLAY	255	0	21	81	77	25	34	9	6	2	
COLLIER	384	5	40	194	99	29	13	3	1	0	
COLUMBIA	163	2	24	81	41	5	6	3	1	0	
MIAMI-DADE	7,131	130	987	3,382	1,159	635	537	217	38	46	
DESOTO	36	0	3	21	9	1	1	1	0	0	
DIXIE	16	0	4	8	4	0	0	0	0	0	
DUVAL	4,412	68	739	1,575	1,223	328	320	107	19	33	
ESCAMBIA	1,162	16	260	646	103	80	39	12	0	6	
FLAGLER	110	0	14	39	37	6	10	3	0	1	
FRANKLIN	16	0	1	9	4	0	0	0	0	2	
GADSDEN	343	6	73	107	96	16	26	9	0	10	
GILCHRIST	6	0	2	3	1	0	0	0	0	0	
GLADES	9	0	1	4	4	0	0	0	0	0	
GULF	12	0	2	6	2	0	1	0	0	1	
HAMILTON	54	2	9	30	10	2	1	0	0	0	
HARDEE	16	2	3	6	3	1	1	0	0	0	
HENDRY	68	2	9	33	17	3	3	0	0	1	
HERNANDO	120	1	14	42	34	14	6	5	0	4	
HIGHLANDS	130	1	35	54	30	4	4	1	0	1	
HILLSBOROUGH	3,556	37	669	1,497	703	196	305	117	14	18	
HOLMES	2	0	0	2	0	0	0	0	0	0	
INDIAN RIVER	224	1	38	102	53	14	9	2	3	2	
JACKSON	139	1	25	55	32	16	9	1	0	0	
JEFFERSON	62	1	9	25	20	1	2	0	0	4	
LAFAYETTE	5	0	2	3	0	0	0	0	0	0	
LAKE	421	3	80	160	89	33	33	17	2	4	
LEE	827	12	202	446	82	48	29	2	3	3	
LEON	1,238	11	155	243	375	112	196	81	23	42	
LEVY	51	0	9	34	5	2	0	0	0	1	
LIBERTY	1	0	0	0	1	0	0	0	0	0	
MADISON	103	2	20	45	25	7	4	0	0	0	
MANATEE	452	5	96	207	97	21	20	3	3	0	
MARION	669	9	129	248	194	56	25	6	2	0	
MARTIN	91	0	18	36	20	8	4	3	0	2	
MONROE	110	6	21	43	21	6	10	0	0	3	
NASSAU	40	0	1	19	11	4	1	1	2	1	
OKALOOSA	309	3	36	110	83	31	38	6	2	0	
OKEECHOBEE	29	0	8	8	8	3	1	1	0	0	
ORANGE	4,310	57	673	1,675	897	375	372	187	28	46	
OSCEOLA	458	1	48	169	114	43	53	22	4	4	
PALM BEACH	4,149	158	688	1,484	840	442	346	126	17	48	
PASCO	284	3	44	72	72	21	46	19	7	0	
PINELLAS	1,556	15	294	629	377	104	84	19	5	29	
POLK	1,438	35	283	575	324	87	89	35	4	6	
PUTNAM	184	2	37	98	32	12	3	0	0	0	
SAINT JOHNS	169	0	15	86	37	6	12	5	6	2	
SAINT LUCIE	843	18	134	336	190	82	55	22	3	3	
SANTA ROSA	76	0	3	26	22	11	9	5	0	0	
SARASOTA	259	5	37	136	48	18	9	3	1	2	
SEMINOLE	715	4	73	233	181	72	88	48	10	6	
SUMTER	69	0	19	39	10	1	0	0	0	0	
SUWANNEE	62	1	14	26	17	2	1	0	0	1	
TAYLOR	60	1	6	26	18	5	1	0	0	3	
UNION	18	0	7	5	6	0	0	0	0	0	
VOLUSIA	751	9	145	225	195	63	79	23	6	6	
WAKULLA	35	0	10	9	5	3	5	2	0	1	
WALTON	36	0	8	13	11	1	2	1	0	0	
WASHINGTON	42	1	8	23	6	4	0	0	0	0	

\* Starting in 2004, "mother's education" is measured according to the highest level/degree completed, instead of highest grade completed.

TABLE B-10 (Cont.): OTHER RESIDENT LIVE BIRTHS BY MOTHER'S EDUCATION\*, BY COUNTY, FLORIDA, 2013

	HIGHEST LEVEL/DEGREE OF EDUCATION COMPLETED										
	TOTAL	< 9TH GRADE	9TH-12TH NO DIPLOMA	HIGH SCHOOL DIPLOMA	SOME COLLEGE	ASSOCIATE DEGREE	BACHELOR DEGREE	MASTER DEGREE	DOCTORATE	UNK	
FLORIDA	12,213	354	842	2,768	2,132	1,188	2,988	1,338	494	109	
ALACHUA	254	3	8	17	31	18	69	56	52	0	
BAKER	6	0	0	2	1	1	0	2	0	0	
BAY	157	3	25	30	45	11	27	4	2	10	
BRADFORD	8	0	1	1	3	1	2	0	0	0	
BREVARD	350	12	30	72	68	45	73	36	12	2	
BROWARD	1,369	16	67	288	195	127	406	192	65	13	
CALHOUN	4	0	0	2	2	0	0	0	0	0	
CHARLOTTE	54	3	8	17	11	5	3	3	2	2	
CITRUS	48	1	2	23	11	3	6	2	0	0	
CLAY	134	1	11	40	36	10	30	4	2	0	
COLLIER	148	2	7	44	21	13	40	15	6	0	
COLUMBIA	16	1	1	6	6	1	1	0	0	0	
MIAMI-DADE	727	11	21	157	90	79	210	107	43	9	
DESOTO	8	0	2	5	1	0	0	0	0	0	
DIXIE	1	0	0	1	0	0	0	0	0	0	
DUVAL	1,076	67	65	235	237	89	238	107	29	9	
ESCAMBIA	216	3	21	72	35	33	33	8	7	4	
FLAGLER	44	2	1	14	13	5	3	4	2	0	
FRANKLIN	1	1	0	0	0	0	0	0	0	0	
GADSDEN	8	0	2	2	0	0	2	0	0	2	
GILCHRIST	2	1	0	0	1	0	0	0	0	0	
GLADES	4	0	2	2	0	0	0	0	0	0	
GULF	2	0	1	1	0	0	0	0	0	0	
HAMILTON	2	1	0	0	1	0	0	0	0	0	
HARDEE	7	1	3	1	2	0	0	0	0	0	
HENDRY	18	1	5	11	1	0	0	0	0	0	
HERNANDO	48	1	1	13	13	5	13	2	0	0	
HIGHLANDS	30	1	4	6	9	2	4	1	3	0	
HILLSBOROUGH	958	18	47	158	124	76	306	173	50	6	
HOLMES	7	0	0	4	0	2	0	0	1	0	
INDIAN RIVER	39	0	6	14	8	2	4	2	3	0	
JACKSON	11	1	1	5	3	1	0	0	0	0	
JEFFERSON	1	0	1	0	0	0	0	0	0	0	
LAFAYETTE	2	0	0	2	0	0	0	0	0	0	
LAKE	169	5	20	52	30	20	25	12	3	2	
LEE	306	14	36	126	45	29	39	10	5	2	
LEON	218	2	7	24	21	19	72	52	19	2	
LEVY	8	1	0	1	3	1	2	0	0	0	
LIBERTY	0	0	0	0	0	0	0	0	0	0	
MADISON	5	0	1	2	1	0	1	0	0	0	
MANATEE	327	68	47	81	45	18	44	14	8	2	
MARION	127	2	15	40	31	3	20	11	5	0	
MARTIN	54	3	8	9	9	7	14	4	0	0	
MONROE	24	3	2	7	5	2	4	0	1	0	
NASSAU	21	0	1	4	7	0	6	2	1	0	
OKALOOSA	222	0	15	72	65	20	42	8	0	0	
OKEECHOBEE	30	1	6	12	5	2	4	0	0	0	
ORANGE	1,491	32	73	310	237	171	432	171	53	12	
OSCEOLA	265	4	22	79	45	36	61	14	4	0	
PALM BEACH	794	19	36	151	143	75	224	104	38	4	
PASCO	234	4	20	42	52	16	65	21	11	3	
PINELLAS	652	11	63	158	121	63	136	66	20	14	
POLK	323	12	44	84	65	28	59	23	7	1	
PUTNAM	35	1	4	15	5	5	4	1	0	0	
SAINT JOHNS	115	3	5	15	35	8	32	8	9	0	
SAINT LUCIE	125	6	4	32	33	18	18	11	3	0	
SANTA ROSA	104	2	5	29	20	19	20	7	2	0	
SARASOTA	137	0	13	47	18	18	25	8	6	2	
SEMINOLE	376	6	22	59	62	47	103	60	15	2	
SUMTER	19	0	3	7	6	0	2	0	0	1	
SUWANNEE	9	1	1	2	3	2	0	0	0	0	
TAYLOR	3	0	0	3	0	0	0	0	0	0	
UNION	3	0	0	2	1	0	0	0	0	0	
VOLUSIA	219	2	22	43	44	29	58	11	5	5	
WAKULLA	7	0	1	5	0	0	1	0	0	0	
WALTON	24	1	2	6	6	3	4	2	0	0	
WASHINGTON	6	0	1	3	1	0	1	0	0	0	

\* Starting in 2004, "mother's education" is measured according to the highest level/degree completed, instead of highest grade completed.

TABLE B-11: RESIDENT LIVE BIRTHS TO MOTHERS UNDER 15 YEARS OF AGE FOR SELECTED INDICATORS,  
BY COUNTY, FLORIDA, 2013

	TOTAL	UNWED	BIRTHWEIGHT		THIRD TRIMESTER OR NO PRENATAL CARE*	ONE OR MORE PREVIOUS LIVE BIRTHS
			UNDER 1,500 GRAMS	UNDER 2,500 GRAMS		
FLORIDA	164	163	7	27	27	2
ALACHUA	5	5	1	2	2	0
BAKER	0	0	0	0	0	0
BAY	2	2	0	0	0	0
BRADFORD	2	2	0	2	0	0
BREVARD	4	4	0	1	0	0
BROWARD	4	4	0	2	1	0
CALHOUN	0	0	0	0	0	0
CHARLOTTE	0	0	0	0	0	0
CITRUS	0	0	0	0	0	0
CLAY	4	4	0	0	0	0
COLLIER	0	0	0	0	0	0
COLUMBIA	1	1	1	1	0	0
MIAMI-DADE	17	16	1	4	2	1
DESOTO	1	1	0	0	0	0
DIXIE	0	0	0	0	0	0
DUVAL	15	15	0	0	5	0
ESCAMBIA	5	5	0	0	0	0
FLAGLER	1	1	0	0	0	0
FRANKLIN	0	0	0	0	0	0
GADSDEN	0	0	0	0	0	0
GILCHRIST	0	0	0	0	0	0
GLADES	0	0	0	0	0	0
GULF	0	0	0	0	0	0
HAMILTON	0	0	0	0	0	0
HARDEE	0	0	0	0	0	0
HENDRY	2	2	0	0	0	0
HERNANDO	0	0	0	0	0	0
HIGHLANDS	2	2	0	0	0	0
HILLSBOROUGH	17	17	0	2	0	0
HOLMES	0	0	0	0	0	0
INDIAN RIVER	1	1	0	0	0	0
JACKSON	2	2	0	0	0	0
JEFFERSON	0	0	0	0	0	0
LAFAYETTE	0	0	0	0	0	0
LAKE	3	3	0	0	0	0
LEE	6	6	1	1	1	0
LEON	1	1	0	0	0	0
LEVY	1	1	0	0	1	0
LIBERTY	1	1	0	0	0	0
MADISON	2	2	0	0	0	0
MANATEE	5	5	0	1	0	0
MARION	5	5	1	1	1	0
MARTIN	0	0	0	0	0	0
MONROE	0	0	0	0	0	0
NASSAU	0	0	0	0	0	0
OKALOOSA	2	2	0	0	1	0
OKEECHOBEE	0	0	0	0	0	0
ORANGE	15	15	0	0	6	0
OSCEOLA	2	2	0	0	0	0
PALM BEACH	5	5	0	0	1	0
PASCO	5	5	2	4	3	1
PINELLAS	5	5	0	2	2	0
POLK	4	4	0	1	0	0
PUTNAM	1	1	0	0	1	0
SAINT JOHNS	1	1	0	0	0	0
SAINT LUCIE	4	4	0	0	0	0
SANTA ROSA	1	1	0	1	0	0
SARASOTA	4	4	0	0	0	0
SEMINOLE	1	1	0	0	0	0
SUMTER	0	0	0	0	0	0
SUWANNEE	3	3	0	2	0	0
TAYLOR	0	0	0	0	0	0
UNION	0	0	0	0	0	0
VOLUSIA	1	1	0	0	0	0
WAKULLA	1	1	0	0	0	0
WALTON	0	0	0	0	0	0
WASHINGTON	0	0	0	0	0	0

\* Starting in 2004, "trimester prenatal care began" is calculated as the time elapsed from the date of the last menstrual period to the date of the first prenatal care visit. Prior to 2004, these data were obtained by direct question that noted the trimester the mother began prenatal care. Consequently, these data are not comparable to data from prior years.



TABLE B-12: RESIDENT LIVE BIRTHS TO MOTHERS 15 THROUGH 19 YEARS OF AGE FOR SELECTED INDICATORS, AND AGE-SPECIFIC BIRTH RATES PER 1,000 FEMALES, BY COUNTY, FLORIDA, 2013

	TOTAL	UNWED		BIRTHWEIGHT						THIRD TRIMESTER OR NO PRENATAL CARE		ONE OR MORE PREVIOUS LIVE BIRTHS		AGE-SPECIFIC BIRTH RATE	POPULATION 15-19 FEMALES
				UNDER 1,500 GRAMS		UNDER 2,500 GRAMS		NUMBER <sup>1</sup>	% <sup>2</sup>	NUMBER	%	NUMBER	%		
				NUMBER	%	NUMBER	%								
FLORIDA	13,956	12,722	91.2	211	1.5	1,347	9.7	1,028	8.0	2,283	16.4	23.8	587,339		
ALACHUA	148	135	91.2	7	4.7	15	10.1	8	6.0	24	16.2	11.8	12,578		
BAKER	29	24	82.8	0	0.0	1	3.4	2	7.4	5	17.2	34.3	846		
BAY	178	154	86.5	4	2.2	18	10.1	8	5.3	34	19.1	35.0	5,090		
BRADFORD	28	26	92.9	0	0.0	1	3.6	0	0.0	8	28.6	43.5	643		
BREVARD	324	294	90.7	3	0.9	25	7.7	17	5.5	47	14.5	21.3	15,197		
BROWARD	995	941	94.6	14	1.4	105	10.6	104	11.6	160	16.1	18.2	54,653		
CALHOUN	23	18	78.3	1	4.3	1	4.3	1	5.6	4	17.4	56.5	407		
CHARLOTTE	70	60	85.7	1	1.4	7	10.0	6	9.4	12	17.1	21.1	3,321		
CITRUS	100	91	91.0	0	0.0	4	4.0	9	9.0	14	14.0	32.0	3,122		
CLAY	136	111	81.6	1	0.7	8	5.9	11	8.7	19	14.0	19.5	6,967		
COLLIER	186	167	89.8	1	0.5	15	8.1	19	10.4	29	15.6	21.6	8,602		
COLUMBIA	79	69	87.3	0	0.0	5	6.3	9	12.2	8	10.1	41.2	1,919		
MIAMI-DADE	1,513	1,400	92.5	16	1.1	148	9.8	63	4.4	238	15.7	18.8	80,555		
DESOTO	35	29	82.9	0	0.0	1	2.9	3	8.8	6	17.1	36.8	952		
DIXIE	16	13	81.3	0	0.0	2	12.5	2	15.4	3	18.8	41.0	390		
DUVAL	864	795	92.0	16	1.9	93	10.8	90	11.3	134	15.5	30.3	28,519		
ESCAMBIA	361	329	91.1	5	1.4	45	12.5	26	8.6	61	16.9	36.3	9,953		
FLAGLER	56	52	92.9	0	0.0	1	1.8	4	7.8	8	14.3	21.0	2,673		
FRANKLIN	8	7	87.5	0	0.0	0	0.0	1	20.0	2	25.0	33.8	237		
GADSDEN	57	53	93.0	1	1.8	9	15.8	4	10.0	6	10.5	41.6	1,370		
GILCHRIST	27	24	88.9	0	0.0	5	18.5	2	8.7	3	11.1	55.0	491		
GLADES	7	7	100.0	0	0.0	1	14.3	2	28.6	2	28.6	23.6	296		
GULF	13	12	92.3	1	7.7	1	7.7	0	0.0	0	0.0	37.0	351		
HAMILTON	15	12	80.0	0	0.0	2	13.3	3	20.0	4	26.7	39.4	381		
HARDEE	47	40	85.1	0	0.0	3	6.4	2	4.3	7	14.9	51.0	922		
HENDRY	72	62	86.1	1	1.4	6	8.3	9	13.2	17	23.6	52.9	1,362		
HERNANDO	120	103	85.8	0	0.0	16	13.3	4	3.6	16	13.3	25.4	4,719		
HIGHLANDS	78	74	94.9	0	0.0	4	5.1	6	8.1	11	14.1	33.7	2,312		
HILLSBOROUGH	1,121	1,043	93.0	30	2.7	118	10.5	36	3.3	214	19.1	25.7	43,655		
HOLMES	22	16	72.7	0	0.0	1	4.5	3	16.7	5	22.7	40.7	541		
INDIAN RIVER	101	93	92.1	2	2.0	14	13.9	14	14.6	10	9.9	28.2	3,586		
JACKSON	47	43	91.5	1	2.1	4	8.5	3	7.9	5	10.6	36.4	1,292		
JEFFERSON	12	10	83.3	1	8.3	1	8.3	0	0.0	3	25.0	36.1	332		
LAFAYETTE	12	8	66.7	0	0.0	0	0.0	0	0.0	2	16.7	53.8	223		
LAKE	256	229	89.5	5	2.0	30	11.7	15	6.2	50	19.5	31.3	8,170		
LEE	433	399	92.1	4	0.9	43	9.9	40	9.6	72	16.6	24.6	17,569		
LEON	189	177	93.7	3	1.6	17	9.0	13	10.9	25	13.2	12.5	15,146		
LEVY	27	22	81.5	0	0.0	1	3.7	3	11.1	3	11.1	24.3	1,111		
LIBERTY	11	9	81.8	0	0.0	1	9.1	1	14.3	1	9.1	52.4	210		
MADISON	17	13	76.5	0	0.0	0	0.0	0	0.0	1	5.9	32.6	522		
MANATEE	296	276	93.2	7	2.4	23	7.8	29	10.1	51	17.2	32.6	9,083		
MARION	307	281	91.5	6	2.0	30	9.8	29	10.1	45	14.7	35.5	8,644		
MARTIN	77	65	84.4	1	1.3	7	9.1	12	15.8	13	16.9	20.9	3,687		
MONROE	41	34	82.9	2	4.9	7	17.1	4	10.0	7	17.1	28.0	1,464		
NASSAU	52	45	86.5	1	1.9	1	1.9	4	8.7	9	17.3	23.6	2,208		
OKALOOSA	183	153	83.6	1	0.5	16	8.7	12	6.9	18	9.8	32.2	5,690		
OKEECHOBEE	64	60	93.8	1	1.6	3	4.7	4	6.3	10	15.6	52.6	1,217		
ORANGE	985	913	92.7	14	1.4	106	10.8	76	8.3	182	18.5	22.4	43,920		
OSCEOLA	316	279	88.3	3	0.9	40	12.7	16	5.5	39	12.3	30.0	10,519		
PALM BEACH	686	631	92.0	20	2.9	73	10.6	77	12.4	114	16.6	18.0	38,169		
PASCO	313	275	87.9	4	1.3	27	8.6	22	7.4	46	14.7	23.3	13,410		
PINELLAS	518	491	94.8	6	1.2	40	7.7	30	6.6	82	15.8	22.3	23,211		
POLK	717	650	90.7	8	1.1	60	8.4	58	8.8	135	18.8	37.6	19,052		
PUTNAM	97	83	85.6	3	3.1	10	10.3	7	7.8	14	14.4	46.6	2,083		
SAINT JOHNS	87	83	95.4	3	3.4	6	6.9	3	3.9	13	14.9	13.4	6,491		
SAINT LUCIE	220	203	92.3	2	0.9	24	10.9	20	9.3	34	15.5	26.4	8,332		
SANTA ROSA	138	113	81.9	2	1.4	9	6.5	5	4.0	20	14.5	27.8	4,961		
SARASOTA	177	161	91.0	2	1.1	14	7.9	13	7.5	31	17.5	20.4	8,657		
SEMINOLE	209	190	90.9	1	0.5	19	9.1	18	9.1	38	18.2	14.1	14,819		
SUMTER	55	46	83.6	1	1.8	5	9.1	0	0.0	7	12.7	46.1	1,192		
SUWANNEE	51	45	88.2	0	0.0	3	5.9	8	15.7	9	17.6	41.2	1,238		
TAYLOR	30	25	83.3	1	3.3	4	13.3	4	18.2	8	26.7	52.0	577		
UNION	21	18	85.7	1	4.8	2	9.5	1	4.8	4	19.0	54.4	386		
VOLUSIA	360	332	92.2	3	0.8	34	9.4	30	9.4	61	16.9	25.4	14,148		
WAKULLA	27	23	85.2	0	0.0	2	7.4	0	0.0	2	7.4	31.0	872		
WALTON	64	56	87.5	0	0.0	7	10.9	1	1.9	15	23.4	44.5	1,437		
WASHINGTON	29	24	82.8	0	0.0	3	10.3	2	7.4	3	10.3	42.2	687		

1. Starting in 2004, "trimester prenatal care began" is calculated as the time elapsed from the date of the last menstrual period to the date of the first prenatal care visit. Prior to 2004, these data were obtained by direct question that noted the trimester the mother began prenatal care. Consequently, these data are not comparable to data from prior years.

2. Births with unknown information as to when prenatal care began are excluded from the denominator.

