

Fetal and Infant Deaths

FETAL DEATHS AND INFANT DEATHS

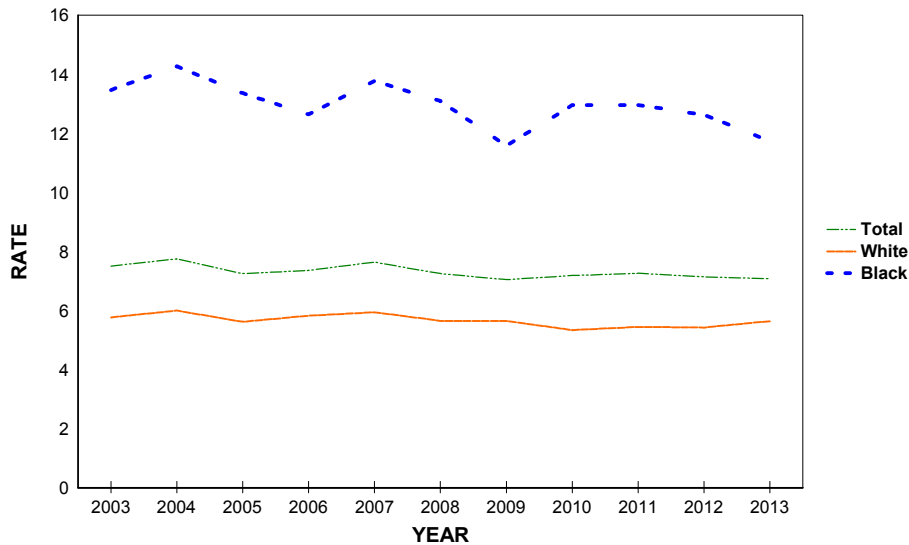
- The number of resident fetal deaths (stillbirths occurring at 20 or more weeks of gestation) increased by 3 from 1,530 in 2012 to 1,533 in 2013. The rate was unchanged at 7.1 per 1,000 live births from 2012 to 2013.
- Between 2012 and 2013, resident fetal deaths increased among whites from 822 to 869, decreased among blacks from 626 to 579, and increased by 4 for other races from 77 to 81.
- Of all resident fetal deaths in 2013, 68.5 percent were to mothers of non-Hispanic and non-Haitian origin, 21.4 percent were to mothers of Hispanic origin, 6.5 percent were to mothers of Haitian origin and 3.6 percent were to mothers whose ethnicity was unknown.
- Between 2012 and 2013, the neonatal death rate increased slightly from 3.9 per 1,000 live births to 4.0 per 1,000 live births. The 2013 rate represents less than half the rate of 1980 (9.7 per 1,000 live births) and one quarter of the rate from 1970 (16.0 per 1,000 live births).
- Between 2012 and 2013, the black neonatal death rate increased from 6.6 per 1,000 live births to 7.0 per 1,000 live births. The black neonatal death rate (7.0 per 1,000 live births) is more than twice the white rate (3.0 per 1,000 live births).
- Florida's 2013 infant mortality rate is 6.1 per 1,000 live births. This is an increase after setting a record low in 2012. From 2000 to 2008, the resident infant mortality rate fluctuated between a low of 7.0 per 1,000 live births to a high of 7.5 per 1,000 live births. Between 2009 and 2013 the rate shows a downward trend. The 2013 resident infant mortality rate has dropped 36.5 percent since 1990 and is currently less than half the rate of 1980.
- The resident infant mortality rate increased slightly from 6.0 per 1,000 live births in 2012 to 6.1 per 1,000 live births in 2013. The white infant mortality rate remained unchanged with 4.6 per 1,000 live births in 2012 and 4.6 per 1,000 live births in 2013. The black infant mortality rate slightly decreased from 10.7 per 1,000 live births in 2012 to 10.6 per 1,000 live births in 2013.
- In 2013, resident infant deaths among non-Hispanic and non-Haitian origin accounted for 74.6 percent of all resident infant deaths. Among other ethnic groups, infants of Hispanic origin represented 19.8 percent, infants of Haitian origin represented 3.9 percent and 1.7 percent occurred to infants whose ethnicity was unknown.
- Among all resident infant deaths during 2013, 65.2 percent were neonatal deaths (occurring before infants were 28 days old). Furthermore, 38.0 percent of infant deaths occurred to infants who were less than one day old.
- The most frequent causes of resident infant deaths in 2013 were: 1) Perinatal Period Conditions (674 deaths), 2) Congenital Malformations (236 deaths), 3) Unintentional Injuries (Accidents) (119 deaths), and 4) Sudden Infant Death Syndrome (SIDS) (53 deaths). These causes accounted for 78.3 percent of all resident infant deaths.

CHART F-1: RESIDENT FETAL DEATHS AND RATES PER 1,000 LIVE BIRTHS AND FETAL DEATHS, BY RACE*, FLORIDA AND UNITED STATES, CENSUS YEARS 1970-2000 AND 2003-2013

YEAR	NUMBER OF FETAL DEATHS - FL				RATES PER 1,000 - FL			RATES - U.S.		
	TOTAL	WHITE	BLACK	OTHER	TOTAL	WHITE	BLACK	TOTAL	WHITE	BLACK
1970	1,708	1,034	608	7	14.6	11.8	21.6	14.0	12.3	23.2
1980	1,356	848	476	15	10.2	8.6	14.2	9.1	8.1	14.7
1990	1,811	1,071	695	25	9.0	7.1	14.8	7.5	6.4	13.3
2000	1,675	954	667	37	8.1	6.3	13.9	6.6	5.6	12.4
2003	1,604	912	643	35	7.5	5.8	13.5	6.3	5.3	12.1
2004	1,701	966	680	43	7.7	6.0	14.3	6.3	5.4	11.6
2005	1,650	938	649	39	7.2	5.6	13.4	6.2	5.3	11.4
2006	1,756	1,020	650	83	7.3	5.8	12.6	NA	NA	NA
2007	1,840	1,042	720	72	7.6	5.9	13.8	NA	NA	NA
2008	1,688	951	681	44	7.2	5.6	13.1	NA	NA	NA
2009	1,569	904	592	63	7.0	5.6	11.6	NA	NA	NA
2010	1,551	822	645	79	7.2	5.3	12.9	NA	NA	NA
2011	1,558	832	641	76	7.3	5.4	13.0	NA	NA	NA
2012	1,530	822	626	77	7.1	5.4	12.6	NA	NA	NA
2013	1,533	869	579	81	7.1	5.6	11.7	NA	NA	NA

*Fetal deaths and live births based on the race of the mother.

GRAPH F-1: RESIDENT FETAL DEATH RATES PER 1,000 LIVE BIRTHS AND FETAL DEATHS, BY RACE OF MOTHER, FLORIDA, 2003-2013



**CHART F-2: RESIDENT NEONATAL DEATHS AND RATES PER 1,000 LIVE BIRTHS,
BY RACE, FLORIDA AND UNITED STATES TOTAL,
CENSUS YEARS 1970-2000 AND 2003-2013**

YEAR	NUMBER OF NEONATAL DEATHS - FL ¹				RATES - FL ¹			RATES - U.S.		
	TOTAL	WHITE	BLACK	OTHER	TOTAL	WHITE	BLACK	TOTAL	WHITE	BLACK
1970	1,847	1,198	636	11	16.0	13.8	23.1	15.1	13.8	22.8
1980	1,282	791	487	3	9.7	8.1	14.7	8.5	7.4	14.6
1990	1,227	742	476	8	6.2	5.0	10.3	5.9	4.8	11.6
2000	925	526	384	13	4.5	3.5	8.1	4.6	3.8	9.4
2003	1,025	584	420	18	4.8	3.7	8.9	4.6	3.9	9.4
2004	989	563	401	24	4.5	3.5	8.5	4.5	3.8	9.1
2005	1,024	544	422	57	4.5	3.3	8.8	4.5	3.8	9.1
2006	1,122	630	436	54	4.7	3.6	8.6	4.5	3.7	8.8
2007	1,062	573	422	65	4.4	3.3	8.2	4.4	3.7	8.7
2008	1,061	592	402	65	4.6	3.5	7.8	4.3	3.6	8.2
2009	996	513	438	42	4.5	3.2	8.7	4.2	3.5	8.2
2010	929	497	385	46	4.3	3.2	7.8	4.1	3.5	7.5
2011	915	465	401	46	4.3	3.1	8.2	4.0 ²	3.5 ²	7.5 ²
2012	826	457	321	47	3.9	3.0	6.6	NA	NA	NA
2013	859	458	341	57	4.0	3.0	7.0	NA	NA	NA

1. Neonatal deaths based on race of decedent, live births based on race of mother.

2. Preliminary data.

**GRAPH F-2: RESIDENT NEONATAL DEATH RATES PER 1,000 LIVE BIRTHS, BY RACE,
FLORIDA AND UNITED STATES TOTAL, 2003-2013**

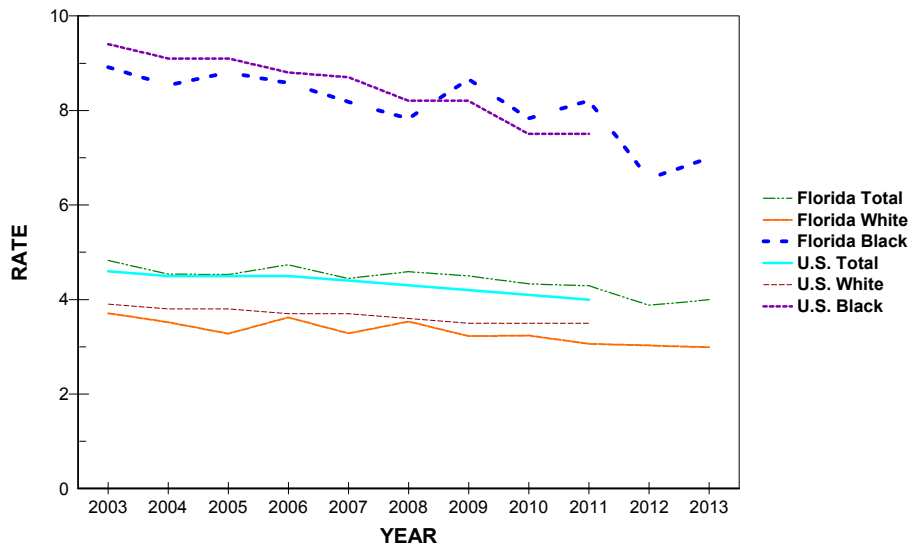


CHART F-3: RESIDENT INFANT DEATHS AND RATES PER 1,000 LIVE BIRTHS, BY RACE, FLORIDA AND UNITED STATES, CENSUS YEARS 1970-2000 AND 2003-2013

YEAR	NUMBER OF INFANT DEATHS - FL ¹				RATES - FL ¹			RATE - U.S.		
	TOTAL	WHITE	BLACK	OTHER	TOTAL	WHITE	BLACK	TOTAL	WHITE	BLACK
1970	2,469	1,538	918	11	21.4	17.7	33.3	20.0	17.8	32.7
1980	1,918	1,137	774	6	14.6	11.7	23.4	12.6	10.9	22.1
1990	1,912	1,123	775	12	9.6	7.5	16.7	9.2	7.6	18.0
2000	1,423	810	594	17	7.0	5.4	12.6	6.9	5.7	14.1
2003	1,584	907	647	27	7.5	5.8	13.7	6.9	5.7	14.0
2004	1,536	876	621	38	7.0	5.5	13.2	6.8	5.7	13.8
2005	1,626	882	652	91	7.2	5.3	13.6	6.9	5.7	13.7
2006	1,713	974	653	84	7.2	5.6	12.9	6.7	5.6	13.3
2007	1,689	906	689	92	7.1	5.2	13.4	6.8	5.6	13.2
2008	1,667	914	661	90	7.2	5.5	12.9	6.6	5.5	12.7
2009	1,525	780	667	75	6.9	4.9	13.2	6.4	5.3	12.6
2010	1,400	750	580	69	6.5	4.9	11.8	6.2	5.2	11.6
2011	1,372	698	584	86	6.4	4.6	12.0	6.1 ²	5.1 ²	11.4 ²
2012	1,285	687	523	73	6.0	4.6	10.7	NA	NA	NA
2013	1,318	707	517	90	6.1	4.6	10.6	NA	NA	NA

1. Infant deaths based on race of decedent, live births based on race of mother.
 2. Preliminary data.

GRAPH F-3: RESIDENT INFANT DEATH RATES PER 1,000 LIVE BIRTHS, BY RACE, FLORIDA AND UNITED STATES TOTAL, 2003-2013

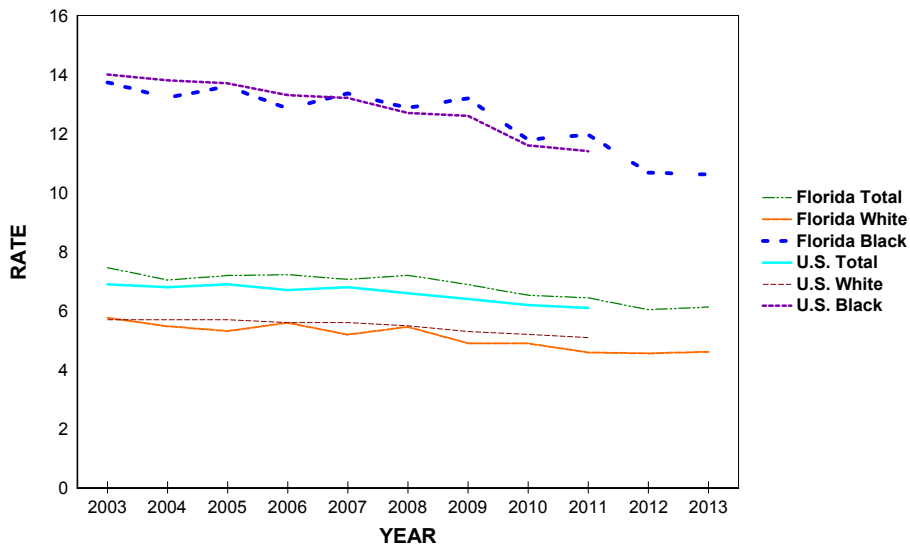


TABLE F-1: RESIDENT AND RECORDED FETAL DEATHS (OF 20 OR MORE WEEKS GESTATION) AND RATES PER 1,000 LIVE BIRTHS AND FETAL DEATHS, BY RACE OF MOTHER, BY COUNTY, FLORIDA, 2013

RESIDENT FETAL DEATHS

	NUMBERS					RATES		
	TOTAL	WHITE	BLACK	OTHER	UNK	TOTAL	WHITE	BLACK
FLORIDA	1533	869	579	81	4	7.1	5.6	11.7
ALACHUA	17	7	9	1	0	6.0	4.1	10.4
BAKER	2	2	0	0	0	5.7	6.6	0.0
BAY	14	9	5	0	0	6.2	5.3	15.1
BRADFORD	4	4	0	0	0	12.7	16.1	0.0
BREVARD	36	28	7	1	0	7.0	6.9	9.7
BROWARD	180	51	113	15	1	8.3	4.3	13.4
CALHOUN	2	1	0	1	0	14.4	8.5	0.0
CHARLOTTE	5	5	0	0	0	4.9	5.5	0.0
CITRUS	4	4	0	0	0	3.9	4.3	0.0
CLAY	16	15	1	0	0	7.6	8.8	3.9
COLLIER	15	9	6	0	0	4.7	3.4	15.4
COLUMBIA	7	3	3	1	0	8.4	4.6	18.1
MIAMI-DADE	229	107	108	12	2	7.3	4.6	14.9
DESOTO	5	5	0	0	0	13.6	15.4	0.0
DIXIE	1	1	0	0	0	6.4	7.1	0.0
DUVAL	79	29	46	4	0	6.3	4.1	10.3
ESCAMBIA	25	9	15	1	0	6.5	3.7	12.7
FLAGLER	9	9	0	0	0	11.4	14.1	0.0
FRANKLIN	0	0	0	0	0	0.0	0.0	0.0
GADSDEN	8	1	7	0	0	14.1	4.8	20.0
GILCHRIST	2	2	0	0	0	10.1	10.5	0.0
GLADES	0	0	0	0	0	0.0	0.0	0.0
GULF	1	1	0	0	0	7.4	8.3	0.0
HAMILTON	1	0	1	0	0	6.2	0.0	18.2
HARDEE	3	3	0	0	0	7.7	8.2	0.0
HENDRY	6	3	3	0	0	10.4	6.2	42.3
HERNANDO	7	7	0	0	0	4.7	5.3	0.0
HIGHLANDS	6	2	4	0	0	7.0	2.9	29.9
HILLSBOROUGH	120	76	39	5	0	7.2	6.3	10.8
HOLMES	4	4	0	0	0	22.5	23.8	0.0
INDIAN RIVER	10	9	1	0	0	8.1	12.0	4.4
JACKSON	3	3	0	0	0	6.0	8.6	0.0
JEFFERSON	2	2	0	0	0	14.6	27.0	0.0
LAFAYETTE	0	0	0	0	0	0.0	0.0	0.0
LAKE	19	13	4	2	0	6.1	5.2	9.4
LEE	40	30	10	0	0	6.2	5.7	11.9
LEON	19	5	14	0	0	6.3	3.2	11.2
LEVY	2	2	0	0	0	5.1	6.0	0.0
LIBERTY	0	0	0	0	0	0.0	0.0	0.0
MADISON	2	0	1	1	0	9.0	0.0	9.6
MANATEE	20	14	4	2	0	5.9	5.4	8.8
MARION	33	22	10	1	0	9.8	8.6	14.7
MARTIN	7	3	3	1	0	6.0	2.9	31.9
MONROE	2	2	0	0	0	2.7	3.3	0.0
NASSAU	8	7	1	0	0	10.7	10.2	24.4
OKALOOSA	17	11	3	3	0	6.1	4.9	9.6
OKEECHOBEE	2	2	0	0	0	3.8	4.4	0.0
ORANGE	102	58	39	5	0	6.4	5.8	9.0
OSCEOLA	31	22	7	2	0	7.9	6.9	15.1
PALM BEACH	97	40	50	6	1	6.8	4.3	11.9
PASCO	35	30	4	1	0	7.3	7.0	13.9
PINELLAS	60	36	14	10	0	6.9	5.8	8.9
POLK	59	43	16	0	0	8.1	7.8	11.0
PUTNAM	8	6	2	0	0	9.4	9.5	10.8
SAINT JOHNS	10	8	2	0	0	5.0	4.7	11.7
SAINT LUCIE	18	11	5	2	0	6.0	5.5	5.9
SANTA ROSA	7	4	2	1	0	3.9	2.5	25.6
SARASOTA	18	16	2	0	0	6.4	6.6	7.7
SEMINOLE	28	19	7	2	0	6.3	5.7	9.7
SUMTER	2	2	0	0	0	4.3	5.3	0.0
SUWANNEE	5	4	1	0	0	10.2	9.6	15.9
TAYLOR	2	2	0	0	0	8.0	10.8	0.0
UNION	1	0	1	0	0	5.4	0.0	52.6
VOLUSIA	40	34	6	0	0	8.6	9.2	7.9
WAKULLA	3	3	0	0	0	9.7	11.3	0.0
WALTON	8	8	0	0	0	10.4	11.3	0.0
WASHINGTON	2	1	1	0	0	8.1	5.1	23.3

TABLE F-1 (Cont.): RESIDENT AND RECORDED FETAL DEATHS (OF 20 OR MORE WEEKS GESTATION) AND RATES PER 1,000 LIVE BIRTHS AND FETAL DEATHS, BY RACE OF MOTHER, BY COUNTY, FLORIDA, 2013

RECORDED FETAL DEATHS

	NUMBERS					RATES		
	TOTAL	WHITE	BLACK	OTHER	UNK	TOTAL	WHITE	BLACK
FLORIDA	1572	887	594	86	5	7.2	5.7	12.0
ALACHUA	45	29	15	1	0	7.9	7.1	11.8
BAKER	0	0	0	0	0	0.0	0.0	0.0
BAY	15	10	5	0	0	5.5	4.7	12.7
BRADFORD	0	0	0	0	0	0.0	0.0	----
BREVARD	32	25	6	1	0	6.4	6.3	8.6
BROWARD	224	72	134	16	2	9.5	5.7	14.2
CALHOUN	0	0	0	0	0	0.0	----	----
CHARLOTTE	6	6	0	0	0	4.8	5.4	0.0
CITRUS	2	2	0	0	0	2.4	2.6	0.0
CLAY	14	11	2	1	0	6.4	6.8	4.9
COLLIER	15	8	7	0	0	4.4	2.8	17.5
COLUMBIA	11	7	3	1	0	11.6	9.9	13.5
MIAMI-DADE	206	102	90	13	1	7.3	4.7	15.2
DESOTO	4	4	0	0	0	10.1	11.4	0.0
DIXIE	1	1	0	0	0	1,000.0	1,000.0	----
DUVAL	95	47	46	2	0	6.6	5.4	10.4
ESCAMBIA	41	17	21	3	0	7.5	4.4	16.7
FLAGLER	1	1	0	0	0	100.0	100.0	----
FRANKLIN	0	0	0	0	0	0.0	0.0	0.0
GADSDEN	0	0	0	0	0	0.0	0.0	----
GILCHRIST	0	0	0	0	0	0.0	0.0	----
GLADES	0	0	0	0	0	----	----	----
GULF	0	0	0	0	0	----	----	----
HAMILTON	0	0	0	0	0	----	----	----
HARDEE	0	0	0	0	0	0.0	0.0	----
HENDRY	0	0	0	0	0	0.0	0.0	0.0
HERNANDO	7	7	0	0	0	4.3	4.8	0.0
HIGHLANDS	7	3	4	0	0	6.3	3.3	26.5
HILLSBOROUGH	139	89	46	4	0	7.3	6.3	11.9
HOLMES	1	1	0	0	0	333.3	333.3	----
INDIAN RIVER	8	8	0	0	0	7.2	12.2	0.0
JACKSON	3	3	0	0	0	6.3	9.0	0.0
JEFFERSON	0	0	0	0	0	----	----	----
LAFAYETTE	0	0	0	0	0	----	----	----
LAKE	15	9	4	2	0	5.8	4.5	10.1
LEE	44	33	10	1	0	6.7	6.1	12.0
LEON	38	14	22	2	0	8.1	5.4	11.6
LEVY	0	0	0	0	0	0.0	0.0	----
LIBERTY	0	0	0	0	0	0.0	0.0	----
MADISON	0	0	0	0	0	0.0	0.0	0.0
MANATEE	15	9	3	3	0	5.5	4.4	8.2
MARION	21	14	6	1	0	8.0	7.0	11.4
MARTIN	7	4	2	1	0	4.3	2.8	13.2
MONROE	3	3	0	0	0	5.7	7.2	0.0
NASSAU	3	3	0	0	0	5.5	6.2	0.0
OKALOOSA	9	8	0	1	0	3.7	4.1	0.0
OKEECHOBEE	0	0	0	0	0	0.0	0.0	0.0
ORANGE	149	87	57	5	0	7.3	6.3	11.7
OSCEOLA	23	20	1	2	0	5.9	6.4	2.3
PALM BEACH	120	43	66	9	2	7.1	3.9	13.7
PASCO	22	19	3	0	0	10.6	10.7	19.2
PINELLAS	68	43	14	11	0	6.8	5.8	8.6
POLK	41	33	7	1	0	6.9	7.3	6.0
PUTNAM	3	1	2	0	0	7.1	3.4	18.5
SAINT JOHNS	10	7	2	1	0	7.3	6.4	10.2
SAINT LUCIE	10	6	3	1	0	4.4	4.1	4.3
SANTA ROSA	4	3	1	0	0	9.6	8.1	41.7
SARASOTA	23	21	2	0	0	7.2	7.7	6.3
SEMINOLE	26	19	5	2	0	8.2	8.2	8.2
SUMTER	0	0	0	0	0	0.0	0.0	----
SUWANNEE	0	0	0	0	0	0.0	0.0	----
TAYLOR	0	0	0	0	0	----	----	----
UNION	0	0	0	0	0	0.0	0.0	----
VOLUSIA	31	26	5	0	0	7.6	8.2	7.0
WAKULLA	0	0	0	0	0	0.0	0.0	----
WALTON	10	9	0	1	0	9.2	8.9	0.0
WASHINGTON	0	0	0	0	0	0.0	0.0	----

TABLE F-2: RESIDENT FETAL DEATHS BY HISPANIC OR HAITIAN ORIGIN OF MOTHER, BY COUNTY, FLORIDA, 2013

	NUMBERS									RATE
	HISPANIC ORIGIN									
	TOTAL	TOTAL HISPANIC	MEXICAN	PUERTO RICAN	CUBAN	OTHER/ UNK HISPANIC	HAITIAN	NON- HISPANIC/ HAITIAN	UNK	
FLORIDA	1,533	328	74	70	59	125	100	1,050	55	5.5
ALACHUA	17	1	0	0	0	1	0	16	0	4.7
BAKER	2	0	0	0	0	0	0	2	0	----
BAY	14	0	0	0	0	0	0	13	1	----
BRADFORD	4	0	0	0	0	0	0	4	0	----
BREVARD	36	1	0	1	0	0	1	33	1	1.8
BROWARD	180	36	4	6	4	22	28	111	5	5.6
CALHOUN	2	0	0	0	0	0	0	2	0	----
CHARLOTTE	5	0	0	0	0	0	0	5	0	----
CITRUS	4	0	0	0	0	0	0	4	0	----
CLAY	16	1	0	1	0	0	0	15	0	5.5
COLLIER	15	4	1	0	1	2	5	6	0	2.8
COLUMBIA	7	0	0	0	0	0	0	6	1	----
MIAMI-DADE	229	101	5	9	35	52	23	80	25	5.3
DESOTO	5	2	2	0	0	0	0	3	0	12.3
DIXIE	1	0	0	0	0	0	0	1	0	----
DUVAL	79	2	0	1	1	0	1	75	1	1.8
ESCAMBIA	25	2	0	0	1	1	0	23	0	9.6
FLAGLER	9	0	0	0	0	0	0	9	0	----
FRANKLIN	0	0	0	0	0	0	0	0	0	----
GADSDEN	8	1	1	0	0	0	0	4	3	9.4
GILCHRIST	2	0	0	0	0	0	0	2	0	----
GLADES	0	0	0	0	0	0	0	0	0	----
GULF	1	0	0	0	0	0	0	1	0	----
HAMILTON	1	0	0	0	0	0	0	1	0	----
HARDEE	3	0	0	0	0	0	0	3	0	----
HENDRY	6	2	2	0	0	0	0	4	0	6.0
HERNANDO	7	0	0	0	0	0	0	7	0	----
HIGHLANDS	6	1	0	0	0	1	0	5	0	4.1
HILLSBOROUGH	120	33	13	11	2	7	3	84	0	6.7
HOLMES	4	0	0	0	0	0	0	4	0	----
INDIAN RIVER	10	2	2	0	0	0	0	8	0	7.9
JACKSON	3	0	0	0	0	0	0	3	0	----
JEFFERSON	2	0	0	0	0	0	0	2	0	----
LAFAYETTE	0	0	0	0	0	0	0	0	0	----
LAKE	19	3	2	0	0	1	0	16	0	5.3
LEE	40	10	6	0	2	2	2	27	1	5.1
LEON	19	0	0	0	0	0	0	19	0	----
LEVY	2	0	0	0	0	0	0	2	0	----
LIBERTY	0	0	0	0	0	0	0	0	0	----
MADISON	2	0	0	0	0	0	0	1	1	----
MANATEE	20	4	3	0	0	1	3	13	0	4.0
MARION	33	6	2	2	1	1	0	26	1	12.4
MARTIN	7	2	2	0	0	0	1	4	0	5.7
MONROE	2	1	0	0	0	1	0	1	0	5.0
NASSAU	8	2	2	0	0	0	0	6	0	55.6
OKALOOSA	17	4	3	0	0	1	0	12	1	15.0
OKEECHOBEE	2	2	2	0	0	0	0	0	0	10.8
ORANGE	102	24	3	14	2	5	6	67	5	5.0
OSCEOLA	31	13	0	10	0	3	1	16	1	6.3
PALM BEACH	97	12	2	0	4	6	22	62	1	2.8
PASCO	35	8	2	1	3	2	0	27	0	10.0
PINELLAS	60	12	4	1	2	5	0	48	0	11.4
POLK	59	8	5	2	0	1	1	49	1	4.5
PUTNAM	8	0	0	0	0	0	0	7	1	----
SAINT JOHNS	10	0	0	0	0	0	0	10	0	----
SAINT LUCIE	18	5	1	1	0	3	3	10	0	7.6
SANTA ROSA	7	0	0	0	0	0	0	7	0	----
SARASOTA	18	7	1	3	1	2	0	11	0	16.8
SEMINOLE	28	7	1	4	0	2	0	21	0	8.1
SUMTER	2	0	0	0	0	0	0	2	0	----
SUWANNEE	5	1	1	0	0	0	0	4	0	15.2
TAYLOR	2	0	0	0	0	0	0	2	0	----
UNION	1	0	0	0	0	0	0	1	0	----
VOLUSIA	40	8	2	3	0	3	0	30	2	10.9
WAKULLA	3	0	0	0	0	0	0	3	0	----
WALTON	8	0	0	0	0	0	0	8	0	----
WASHINGTON	2	0	0	0	0	0	0	2	0	----

TABLE F-3: RESIDENT FETAL DEATHS BY AGE OF MOTHER, BY COUNTY, FLORIDA, 2013

	AGE OF MOTHER														
	TOTAL	<13	13	14	15	16	17	18	19	20-24	25-29	30-34	35-44	45+	UNK
FLORIDA	1,533	0	1	0	4	8	15	38	43	368	399	335	295	3	24
ALACHUA	17	0	0	0	0	0	0	0	0	3	6	1	7	0	0
BAKER	2	0	0	0	0	0	0	0	0	2	0	0	0	0	0
BAY	14	0	0	0	0	1	0	0	0	7	4	1	1	0	0
BRADFORD	4	0	0	0	0	0	0	0	0	1	1	1	1	0	0
BREVARD	36	0	0	0	0	0	0	1	1	7	9	12	6	0	0
BROWARD	180	0	0	0	1	0	0	3	3	33	40	50	37	0	13
CALHOUN	2	0	0	0	0	0	0	0	0	1	0	1	0	0	0
CHARLOTTE	5	0	0	0	0	0	1	0	0	0	1	1	2	0	0
CITRUS	4	0	0	0	0	0	0	0	0	1	2	1	0	0	0
CLAY	16	0	0	0	0	0	0	1	0	6	5	3	1	0	0
COLLIER	15	0	0	0	0	0	0	0	0	3	5	2	5	0	0
COLUMBIA	7	0	0	0	0	0	0	1	0	2	3	1	0	0	0
MIAMI-DADE	229	0	0	0	0	2	2	6	9	41	65	42	58	2	2
DESOTO	5	0	0	0	0	0	0	0	0	2	2	1	0	0	0
DIXIE	1	0	0	0	0	0	0	0	0	0	1	0	0	0	0
DUVAL	79	0	0	0	0	0	2	1	1	26	22	18	8	0	1
ESCAMBIA	25	0	0	0	0	0	0	2	1	11	5	4	2	0	0
FLAGLER	9	0	0	0	0	0	0	0	0	2	2	4	1	0	0
FRANKLIN	0	0	0	0	0	0	0	0	0	0	0	0	0	0	0
GADSDEN	8	0	0	0	0	0	1	1	0	1	2	3	0	0	0
GILCHRIST	2	0	0	0	0	0	0	0	0	1	0	0	1	0	0
GLADES	0	0	0	0	0	0	0	0	0	0	0	0	0	0	0
GULF	1	0	0	0	0	0	0	0	0	0	0	0	1	0	0
HAMILTON	1	0	0	0	0	0	0	0	0	1	0	0	0	0	0
HARDEE	3	0	0	0	0	0	0	0	0	1	1	0	1	0	0
HENDRY	6	0	0	0	0	0	0	0	0	1	2	2	1	0	0
HERNANDO	7	0	0	0	0	0	0	1	0	4	1	1	0	0	0
HIGHLANDS	6	0	0	0	0	0	0	0	1	1	1	1	1	0	1
HILLSBOROUGH	120	0	0	0	1	0	1	2	7	31	34	20	24	0	0
HOLMES	4	0	0	0	0	1	0	0	0	1	1	1	0	0	0
INDIAN RIVER	10	0	0	0	0	0	0	0	1	3	4	1	1	0	0
JACKSON	3	0	0	0	0	0	0	0	0	1	1	1	0	0	0
JEFFERSON	2	0	0	0	0	0	0	0	1	0	1	0	0	0	0
LAFAYETTE	0	0	0	0	0	0	0	0	0	0	0	0	0	0	0
LAKE	19	0	0	0	0	0	0	1	1	7	1	6	3	0	0
LEE	40	0	0	0	0	0	0	2	2	10	5	13	8	0	0
LEON	19	0	0	0	0	0	0	0	0	6	6	7	0	0	0
LEVY	2	0	0	0	0	0	0	0	0	0	0	2	0	0	0
LIBERTY	0	0	0	0	0	0	0	0	0	0	0	0	0	0	0
MADISON	2	0	0	0	0	0	0	0	0	1	0	1	0	0	0
MANATEE	20	0	1	0	0	0	1	2	0	2	5	5	4	0	0
MARION	33	0	0	0	0	1	1	2	0	11	10	5	3	0	0
MARTIN	7	0	0	0	0	0	0	0	1	1	2	3	0	0	0
MONROE	2	0	0	0	0	0	0	0	0	0	1	0	1	0	0
NASSAU	8	0	0	0	0	0	0	0	0	1	1	4	2	0	0
OKALOOSA	17	0	0	0	0	0	0	0	0	8	5	4	0	0	0
OKEECHOBEE	2	0	0	0	0	0	0	0	0	1	1	0	0	0	0
ORANGE	102	0	0	0	2	0	1	1	3	21	20	26	27	0	1
OSCEOLA	31	0	0	0	0	0	0	0	0	14	7	7	3	0	0
PALM BEACH	97	0	0	0	0	0	0	2	1	20	26	26	20	0	2
PASCO	35	0	0	0	0	1	1	1	0	9	10	7	6	0	0
PINELLAS	60	0	0	0	0	2	0	1	2	11	19	13	12	0	0
POLK	59	0	0	0	0	0	0	2	2	16	17	8	13	0	1
PUTNAM	8	0	0	0	0	0	1	0	1	0	5	1	0	0	0
SAINT JOHNS	10	0	0	0	0	0	1	0	0	0	3	1	5	0	0
SAINT LUCIE	18	0	0	0	0	0	0	0	2	2	7	1	6	0	0
SANTA ROSA	7	0	0	0	0	0	0	0	1	2	2	2	0	0	0
SARASOTA	18	0	0	0	0	0	1	0	0	6	4	4	3	0	0
SEMINOLE	28	0	0	0	0	0	0	0	1	5	5	5	12	0	0
SUMTER	2	0	0	0	0	0	0	0	0	1	0	0	1	0	0
SUWANNEE	5	0	0	0	0	0	1	0	0	3	0	0	1	0	0
TAYLOR	2	0	0	0	0	0	0	1	0	0	0	1	0	0	0
UNION	1	0	0	0	0	0	0	0	0	0	1	0	0	0	0
VOLUSIA	40	0	0	0	0	0	0	3	1	12	9	8	6	1	0
WAKULLA	3	0	0	0	0	0	0	1	0	1	0	1	0	0	0
WALTON	8	0	0	0	0	0	0	0	0	2	5	1	0	0	0
WASHINGTON	2	0	0	0	0	0	0	0	0	1	1	0	0	0	0

TABLE F-4: RESIDENT AND RECORDED NEONATAL DEATHS (UNDER 28 DAYS) AND RATES PER 1,000 LIVE BIRTHS, BY RACE, BY COUNTY, FLORIDA, 2013

RESIDENT NEONATAL DEATHS

	NUMBERS					RATES*		
	TOTAL	WHITE	BLACK	OTHER	UNK	TOTAL	WHITE	BLACK
FLORIDA	859	458	341	57	3	4.0	3.0	7.0
ALACHUA	21	11	8	2	0	7.4	6.4	9.4
BAKER	1	1	0	0	0	2.9	3.3	0.0
BAY	12	8	2	2	0	5.4	4.7	6.1
BRADFORD	5	3	2	0	0	16.0	12.3	33.3
BREVARD	24	17	5	2	0	4.7	4.2	7.0
BROWARD	77	21	48	6	2	3.6	1.8	5.8
CALHOUN	0	0	0	0	0	0.0	0.0	0.0
CHARLOTTE	0	0	0	0	0	0.0	0.0	0.0
CITRUS	6	6	0	0	0	5.9	6.4	0.0
CLAY	6	4	1	1	0	2.9	2.4	3.9
COLLIER	12	9	2	1	0	3.8	3.4	5.2
COLUMBIA	4	3	1	0	0	4.9	4.7	6.1
MIAMI-DADE	81	43	34	3	1	2.6	1.9	4.8
DESOTO	0	0	0	0	0	0.0	0.0	0.0
DIXIE	0	0	0	0	0	0.0	0.0	0.0
DUVAL	66	26	36	4	0	5.3	3.7	8.2
ESCAMBIA	18	6	10	2	0	4.7	2.5	8.6
FLAGLER	0	0	0	0	0	0.0	0.0	0.0
FRANKLIN	1	0	1	0	0	8.9	0.0	62.5
GADSDEN	6	1	5	0	0	10.7	4.8	14.6
GILCHRIST	0	0	0	0	0	0.0	0.0	0.0
GLADES	0	0	0	0	0	0.0	0.0	0.0
GULF	1	1	0	0	0	7.5	8.4	0.0
HAMILTON	0	0	0	0	0	0.0	0.0	0.0
HARDEE	1	1	0	0	0	2.6	2.7	0.0
HENDRY	2	0	1	1	0	3.5	0.0	14.7
HERNANDO	5	3	2	0	0	3.4	2.3	16.7
HIGHLANDS	3	1	1	1	0	3.5	1.4	7.7
HILLSBOROUGH	93	53	33	7	0	5.6	4.4	9.3
HOLMES	1	1	0	0	0	5.7	6.1	0.0
INDIAN RIVER	6	2	3	1	0	4.9	2.7	13.4
JACKSON	3	1	1	1	0	6.1	2.9	7.2
JEFFERSON	2	0	2	0	0	14.8	0.0	32.3
LAFAYETTE	0	0	0	0	0	0.0	0.0	0.0
LAKE	11	8	2	1	0	3.6	3.2	4.8
LEE	21	11	9	1	0	3.3	2.1	10.9
LEON	12	6	4	2	0	4.0	3.9	3.2
LEVY	2	2	0	0	0	5.1	6.0	0.0
LIBERTY	1	1	0	0	0	11.4	11.5	0.0
MADISON	0	0	0	0	0	0.0	0.0	0.0
MANATEE	9	5	3	1	0	2.7	1.9	6.6
MARION	11	6	5	0	0	3.3	2.4	7.5
MARTIN	6	5	1	0	0	5.1	4.9	11.0
MONROE	3	2	0	1	0	4.0	3.3	0.0
NASSAU	1	0	1	0	0	1.3	0.0	25.0
OKALOOSA	14	10	4	0	0	5.1	4.5	12.9
OKEECHOBEE	2	2	0	0	0	3.8	4.4	0.0
ORANGE	92	43	44	5	0	5.8	4.3	10.2
OSCEOLA	15	8	6	1	0	3.8	2.5	13.1
PALM BEACH	39	20	15	4	0	2.7	2.2	3.6
PASCO	20	18	1	1	0	4.2	4.2	3.5
PINELLAS	34	20	13	1	0	4.0	3.2	8.4
POLK	29	19	10	0	0	4.0	3.5	7.0
PUTNAM	5	2	2	1	0	5.9	3.2	10.9
SAINT JOHNS	8	6	1	1	0	4.0	3.5	5.9
SAINT LUCIE	9	4	5	0	0	3.0	2.0	5.9
SANTA ROSA	8	7	1	0	0	4.5	4.3	13.2
SARASOTA	9	7	2	0	0	3.2	2.9	7.7
SEMINOLE	17	7	9	1	0	3.8	2.1	12.6
SUMTER	2	2	0	0	0	4.3	5.4	0.0
SUWANNEE	2	1	1	0	0	4.1	2.4	16.1
TAYLOR	0	0	0	0	0	0.0	0.0	0.0
UNION	1	1	0	0	0	5.5	6.2	0.0
VOLUSIA	13	10	2	1	0	2.8	2.7	2.7
WAKULLA	3	2	1	0	0	9.8	7.6	28.6
WALTON	3	1	1	1	0	4.0	1.4	27.8
WASHINGTON	0	0	0	0	0	0.0	0.0	0.0

*Rates based on neonatal deaths by race of decedent, live births by race of mother.

TABLE F-4 (Cont.): RESIDENT AND RECORDED NEONATAL DEATHS (UNDER 28 DAYS) AND RATES PER 1,000 LIVE BIRTHS, BY RACE, BY COUNTY, FLORIDA, 2013

RECORDED NEONATAL DEATHS

	NUMBERS					RATES*		
	TOTAL	WHITE	BLACK	OTHER	UNK	TOTAL	WHITE	BLACK
FLORIDA	879	465	352	60	2	4.1	3.0	7.2
ALACHUA	53	29	22	2	0	9.4	7.1	17.5
BAKER	0	0	0	0	0	0.0	0.0	0.0
BAY	8	6	1	1	0	2.9	2.9	2.6
BRADFORD	1	1	0	0	0	1,000.0	1,000.0	----
BREVARD	16	10	4	2	0	3.2	2.5	5.8
BROWARD	87	20	61	5	1	3.7	1.6	6.6
CALHOUN	0	0	0	0	0	0.0	----	----
CHARLOTTE	0	0	0	0	0	0.0	0.0	0.0
CITRUS	2	2	0	0	0	2.4	2.6	0.0
CLAY	4	4	0	0	0	1.8	2.5	0.0
COLLIER	7	6	0	1	0	2.1	2.1	0.0
COLUMBIA	1	0	1	0	0	1.1	0.0	4.5
MIAMI-DADE	78	44	29	5	0	2.8	2.0	5.0
DESOTO	0	0	0	0	0	0.0	0.0	0.0
DIXIE	0	0	0	0	0	----	----	----
DUVAL	83	37	38	8	0	5.8	4.3	8.7
ESCAMBIA	39	20	15	4	0	7.2	5.2	12.1
FLAGLER	0	0	0	0	0	0.0	0.0	----
FRANKLIN	0	0	0	0	0	0.0	0.0	0.0
GADSDEN	0	0	0	0	0	0.0	0.0	----
GILCHRIST	0	0	0	0	0	0.0	0.0	----
GLADES	0	0	0	0	0	----	----	----
GULF	0	0	0	0	0	----	----	----
HAMILTON	0	0	0	0	0	----	----	----
HARDEE	0	0	0	0	0	0.0	0.0	----
HENDRY	0	0	0	0	0	0.0	0.0	0.0
HERNANDO	2	1	1	0	0	1.2	0.7	8.6
HIGHLANDS	1	0	1	0	0	0.9	0.0	6.8
HILLSBOROUGH	127	79	38	10	0	6.7	5.7	9.9
HOLMES	0	0	0	0	0	0.0	0.0	----
INDIAN RIVER	4	1	3	0	0	3.6	1.5	14.6
JACKSON	2	1	1	0	0	4.3	3.0	8.0
JEFFERSON	0	0	0	0	0	----	----	----
LAFAYETTE	0	0	0	0	0	----	----	----
LAKE	6	4	2	0	0	2.3	2.0	5.1
LEE	27	14	11	2	0	4.1	2.6	13.3
LEON	23	9	11	3	0	4.9	3.5	5.9
LEVY	0	0	0	0	0	0.0	0.0	----
LIBERTY	0	0	0	0	0	0.0	0.0	----
MADISON	0	0	0	0	0	0.0	0.0	0.0
MANATEE	4	1	3	0	0	1.5	0.5	8.2
MARION	3	3	0	0	0	1.2	1.5	0.0
MARTIN	2	1	1	0	0	1.2	0.7	6.7
MONROE	0	0	0	0	0	0.0	0.0	0.0
NASSAU	0	0	0	0	0	0.0	0.0	0.0
OKALOOSA	5	3	2	0	0	2.0	1.6	7.0
OKEECHOBEE	0	0	0	0	0	0.0	0.0	0.0
ORANGE	140	70	61	9	0	6.9	5.1	12.7
OSCEOLA	4	2	2	0	0	1.0	0.6	4.5
PALM BEACH	51	32	14	5	0	3.1	2.9	2.9
PASCO	1	1	0	0	0	0.5	0.6	0.0
PINELLAS	54	33	18	2	1	5.4	4.5	11.2
POLK	8	5	3	0	0	1.4	1.1	2.6
PUTNAM	2	1	0	1	0	4.8	3.4	0.0
SAINT JOHNS	1	1	0	0	0	0.7	0.9	0.0
SAINT LUCIE	2	0	2	0	0	0.9	0.0	2.9
SANTA ROSA	4	4	0	0	0	9.7	10.8	0.0
SARASOTA	10	8	2	0	0	3.2	3.0	6.3
SEMINOLE	10	6	4	0	0	3.2	2.6	6.6
SUMTER	0	0	0	0	0	0.0	0.0	----
SUWANNEE	0	0	0	0	0	0.0	0.0	----
TAYLOR	0	0	0	0	0	----	----	----
UNION	0	0	0	0	0	0.0	0.0	----
VOLUSIA	4	4	0	0	0	1.0	1.3	0.0
WAKULLA	0	0	0	0	0	0.0	0.0	----
WALTON	3	2	1	0	0	2.8	2.0	23.8
WASHINGTON	0	0	0	0	0	0.0	0.0	----

*Rates based on neonatal deaths by race of decedent, live births by race of mother.

TABLE F-5: RESIDENT AND RECORDED INFANT DEATHS (UNDER 1 YEAR) AND RATES PER 1,000 LIVE BIRTHS, BY RACE, BY COUNTY, FLORIDA, 2013

	RESIDENT INFANT DEATHS					RATES*		
	NUMBERS							
	TOTAL	WHITE	BLACK	OTHER	UNK	TOTAL	WHITE	BLACK
FLORIDA	1318	707	517	90	4	6.1	4.6	10.6
ALACHUA	28	14	11	3	0	9.9	8.2	12.9
BAKER	5	5	0	0	0	14.3	16.7	0.0
BAY	18	11	4	3	0	8.0	6.5	12.2
BRADFORD	6	4	2	0	0	19.2	16.4	33.3
BREVARD	35	24	7	4	0	6.9	6.0	9.7
BROWARD	114	31	69	11	3	5.3	2.6	8.3
CALHOUN	0	0	0	0	0	0.0	0.0	0.0
CHARLOTTE	1	1	0	0	0	1.0	1.1	0.0
CITRUS	8	7	0	1	0	7.8	7.5	0.0
CLAY	10	8	1	1	0	4.8	4.7	3.9
COLLIER	19	13	4	2	0	6.0	5.0	10.4
COLUMBIA	6	5	1	0	0	7.3	7.8	6.1
MIAMI-DADE	138	69	63	5	1	4.4	3.0	8.8
DESOTO	1	1	0	0	0	2.8	3.1	0.0
DIXIE	0	0	0	0	0	0.0	0.0	0.0
DUVAL	111	43	62	6	0	8.8	6.1	14.1
ESCAMBIA	28	11	13	4	0	7.4	4.5	11.2
FLAGLER	2	1	1	0	0	2.6	1.6	9.1
FRANKLIN	2	1	1	0	0	17.9	10.6	62.5
GADSDEN	9	1	8	0	0	16.0	4.8	23.3
GILCHRIST	0	0	0	0	0	0.0	0.0	0.0
GLADES	1	1	0	0	0	15.4	19.2	0.0
GULF	1	1	0	0	0	7.5	8.4	0.0
HAMILTON	1	1	0	0	0	6.3	9.6	0.0
HARDEE	1	1	0	0	0	2.6	2.7	0.0
HENDRY	4	2	1	1	0	7.0	4.2	14.7
HERNANDO	8	6	2	0	0	5.4	4.6	16.7
HIGHLANDS	3	1	1	1	0	3.5	1.4	7.7
HILLSBOROUGH	122	70	43	9	0	7.3	5.8	12.1
HOLMES	2	2	0	0	0	11.5	12.2	0.0
INDIAN RIVER	8	2	4	2	0	6.6	2.7	17.9
JACKSON	4	1	2	1	0	8.1	2.9	14.4
JEFFERSON	4	0	4	0	0	29.6	0.0	64.5
LAFAYETTE	0	0	0	0	0	0.0	0.0	0.0
LAKE	23	18	4	1	0	7.5	7.3	9.5
LEE	38	26	11	1	0	5.9	5.0	13.3
LEON	16	8	6	2	0	5.3	5.1	4.8
LEVY	2	2	0	0	0	5.1	6.0	0.0
LIBERTY	1	1	0	0	0	11.4	11.5	0.0
MADISON	0	0	0	0	0	0.0	0.0	0.0
MANATEE	15	8	6	1	0	4.4	3.1	13.3
MARION	26	17	9	0	0	7.8	6.7	13.5
MARTIN	8	6	1	1	0	6.8	5.9	11.0
MONROE	4	2	1	1	0	5.4	3.3	9.1
NASSAU	1	0	1	0	0	1.3	0.0	25.0
OKALOOSA	21	14	5	2	0	7.6	6.3	16.2
OKEECHOBEE	4	4	0	0	0	7.7	8.8	0.0
ORANGE	119	56	58	5	0	7.5	5.6	13.5
OSCEOLA	20	10	9	1	0	5.1	3.1	19.7
PALM BEACH	65	29	29	7	0	4.6	3.1	7.0
PASCO	37	31	3	3	0	7.7	7.3	10.6
PINELLAS	48	26	20	2	0	5.6	4.2	12.9
POLK	49	32	16	1	0	6.8	5.8	11.1
PUTNAM	6	2	3	1	0	7.1	3.2	16.3
SAINT JOHNS	14	12	1	1	0	7.0	7.0	5.9
SAINT LUCIE	13	4	8	1	0	4.3	2.0	9.5
SANTA ROSA	11	10	1	0	0	6.1	6.2	13.2
SARASOTA	15	12	3	0	0	5.4	5.0	11.6
SEMINOLE	24	13	10	1	0	5.4	3.9	14.0
SUMTER	2	2	0	0	0	4.3	5.4	0.0
SUWANNEE	5	3	1	1	0	10.3	7.2	16.1
TAYLOR	0	0	0	0	0	0.0	0.0	0.0
UNION	1	1	0	0	0	5.5	6.2	0.0
VOLUSIA	21	15	5	1	0	4.5	4.1	6.7
WAKULLA	3	2	1	0	0	9.8	7.6	28.6
WALTON	6	3	1	2	0	7.9	4.3	27.8
WASHINGTON	0	0	0	0	0	0.0	0.0	0.0

*Rates based on infant deaths by race of decedent, live births by race of mother.

TABLE F-5 (Cont.): RESIDENT AND RECORDED INFANT DEATHS (UNDER 1 YEAR) AND RATES PER 1,000 LIVE BIRTHS, BY RACE, BY COUNTY, FLORIDA, 2013

	RECORDED INFANT DEATHS					RATES*		
	NUMBERS					RATES*		
	TOTAL	WHITE	BLACK	OTHER	UNK	TOTAL	WHITE	BLACK
FLORIDA	1337	713	529	93	2	6.2	4.6	10.8
ALACHUA	73	43	27	3	0	12.9	10.5	21.4
BAKER	1	1	0	0	0	333.3	500.0	0.0
BAY	14	9	3	2	0	5.2	4.3	7.7
BRADFORD	2	2	0	0	0	2,000.0	2,000.0	----
BREVARD	20	12	5	3	0	4.0	3.0	7.2
BROWARD	123	29	84	9	1	5.3	2.3	9.1
CALHOUN	0	0	0	0	0	0.0	----	----
CHARLOTTE	0	0	0	0	0	0.0	0.0	0.0
CITRUS	4	3	0	1	0	4.8	3.9	0.0
CLAY	6	6	0	0	0	2.8	3.7	0.0
COLLIER	13	10	2	1	0	3.8	3.5	5.1
COLUMBIA	4	3	1	0	0	4.3	4.3	4.5
MIAMI-DADE	140	72	60	8	0	5.0	3.3	10.3
DESOTO	1	1	0	0	0	2.6	2.9	0.0
DIXIE	0	0	0	0	0	----	----	----
DUVAL	131	58	63	10	0	9.2	6.7	14.4
ESCAMBIA	53	27	19	7	0	9.8	7.0	15.3
FLAGLER	1	1	0	0	0	111.1	111.1	----
FRANKLIN	1	1	0	0	0	333.3	500.0	0.0
GADSDEN	3	1	2	0	0	500.0	166.7	----
GILCHRIST	0	0	0	0	0	0.0	0.0	----
GLADES	0	0	0	0	0	----	----	----
GULF	0	0	0	0	0	----	----	----
HAMILTON	0	0	0	0	0	----	----	----
HARDEE	0	0	0	0	0	0.0	0.0	----
HENDRY	1	1	0	0	0	333.3	500.0	0.0
HERNANDO	6	5	1	0	0	3.7	3.5	8.6
HIGHLANDS	1	0	1	0	0	0.9	0.0	6.8
HILLSBOROUGH	157	97	47	13	0	8.3	6.9	12.3
HOLMES	1	1	0	0	0	500.0	500.0	----
INDIAN RIVER	6	1	4	1	0	5.4	1.5	19.5
JACKSON	3	1	2	0	0	6.4	3.0	16.0
JEFFERSON	1	0	1	0	0	----	----	----
LAFAYETTE	0	0	0	0	0	----	----	----
LAKE	11	8	3	0	0	4.3	4.0	7.7
LEE	42	27	13	2	0	6.4	5.0	15.8
LEON	28	10	15	3	0	6.0	3.9	8.0
LEVY	0	0	0	0	0	0.0	0.0	----
LIBERTY	0	0	0	0	0	0.0	0.0	----
MADISON	0	0	0	0	0	0.0	0.0	0.0
MANATEE	8	3	5	0	0	2.9	1.5	13.7
MARION	12	9	3	0	0	4.6	4.6	5.8
MARTIN	2	1	1	0	0	1.2	0.7	6.7
MONROE	1	0	1	0	0	1.9	0.0	10.5
NASSAU	0	0	0	0	0	0.0	0.0	0.0
OKALOOSA	11	7	2	2	0	4.5	3.6	7.0
OKEECHOBEE	2	2	0	0	0	200.0	250.0	0.0
ORANGE	196	104	81	11	0	9.6	7.6	16.9
OSCEOLA	8	3	5	0	0	2.1	1.0	11.3
PALM BEACH	76	41	25	10	0	4.5	3.7	5.2
PASCO	10	9	1	0	0	4.9	5.1	6.5
PINELLAS	85	52	28	4	1	8.6	7.1	17.4
POLK	19	11	8	0	0	3.2	2.5	6.9
PUTNAM	3	1	1	1	0	7.2	3.4	9.4
SAINT JOHNS	4	4	0	0	0	2.9	3.7	0.0
SAINT LUCIE	5	0	4	1	0	2.2	0.0	5.8
SANTA ROSA	4	4	0	0	0	9.7	10.8	0.0
SARASOTA	15	13	2	0	0	4.7	4.8	6.3
SEMINOLE	12	7	5	0	0	3.8	3.0	8.2
SUMTER	1	1	0	0	0	1,000.0	1,000.0	----
SUWANNEE	2	1	0	1	0	1,000.0	500.0	----
TAYLOR	0	0	0	0	0	----	----	----
UNION	0	0	0	0	0	0.0	0.0	----
VOLUSIA	10	7	3	0	0	2.5	2.2	4.3
WAKULLA	0	0	0	0	0	0.0	0.0	----
WALTON	4	3	1	0	0	3.7	3.0	23.8
WASHINGTON	0	0	0	0	0	0.0	0.0	----

*Rates based on infant deaths by race of decedent, live births by race of mother.

TABLE F-6: RESIDENT INFANT DEATHS AND RATE BY HISPANIC OR HAITIAN ORIGIN, BY COUNTY, FLORIDA, 2013

	NUMBERS											RATE
	HISPANIC ORIGIN											
	TOTAL	TOTAL HISPANIC	MEXICAN	PUERTO RICAN	CUBAN	CENTRAL/SOUTH AMERICAN	OTHER/UNK HISPANIC	HAITIAN	NON-HISPANIC/HAITIAN	UNK	TOTAL HISPANIC	
FLORIDA	1,318	261	65	85	33	36	42	51	983	23	4.4	
ALACHUA	28	0	0	0	0	0	0	0	28	0	----	
BAKER	5	0	0	0	0	0	0	0	5	0	----	
BAY	18	0	0	0	0	0	0	0	18	0	----	
BRADFORD	6	0	0	0	0	0	0	0	6	0	----	
BREVARD	35	4	0	3	0	1	0	1	30	0	7.0	
BROWARD	114	17	1	6	3	6	1	11	78	8	2.7	
CALHOUN	0	0	0	0	0	0	0	0	0	0	----	
CHARLOTTE	1	0	0	0	0	0	0	0	1	0	----	
CITRUS	8	2	0	1	0	0	1	0	6	0	29.0	
CLAY	10	1	0	1	0	0	0	0	9	0	5.5	
COLLIER	19	6	5	0	0	1	0	3	10	0	4.3	
COLUMBIA	6	0	0	0	0	0	0	0	6	0	----	
MIAMI-DADE	138	54	6	5	17	17	9	14	65	5	2.8	
DESOTO	1	1	1	0	0	0	0	0	0	0	6.3	
DIXIE	0	0	0	0	0	0	0	0	0	0	----	
DUVAL	111	8	1	3	1	0	3	0	100	3	7.0	
ESCAMBIA	28	4	3	1	0	0	0	0	23	1	19.4	
FLAGLER	2	1	0	1	0	0	0	0	1	0	11.0	
FRANKLIN	2	0	0	0	0	0	0	0	2	0	----	
GADSDEN	9	0	0	0	0	0	0	0	9	0	----	
GILCHRIST	0	0	0	0	0	0	0	0	0	0	----	
GLADES	1	1	1	0	0	0	0	0	0	0	37.0	
GULF	1	0	0	0	0	0	0	0	1	0	----	
HAMILTON	1	0	0	0	0	0	0	0	1	0	----	
HARDEE	1	1	1	0	0	0	0	0	0	0	4.4	
HENDRY	4	4	3	1	0	0	0	0	0	0	12.2	
HERNANDO	8	3	0	3	0	0	0	0	5	0	16.1	
HIGHLANDS	3	0	0	0	0	0	0	0	3	0	----	
HILLSBOROUGH	122	36	7	13	6	2	8	1	85	0	7.4	
HOLMES	2	0	0	0	0	0	0	0	2	0	----	
INDIAN RIVER	8	0	0	0	0	0	0	0	8	0	----	
JACKSON	4	0	0	0	0	0	0	0	4	0	----	
JEFFERSON	4	0	0	0	0	0	0	0	4	0	----	
LAFAYETTE	0	0	0	0	0	0	0	0	0	0	----	
LAKE	23	2	1	0	0	0	1	0	21	0	3.5	
LEE	38	14	4	7	1	0	2	1	23	0	7.2	
LEON	16	0	0	0	0	0	0	0	16	0	----	
LEVY	2	0	0	0	0	0	0	0	2	0	----	
LIBERTY	1	0	0	0	0	0	0	0	1	0	----	
MADISON	0	0	0	0	0	0	0	0	0	0	----	
MANATEE	15	3	2	1	0	0	0	0	12	0	3.0	
MARION	26	4	0	4	0	0	0	0	22	0	8.4	
MARTIN	8	3	2	1	0	0	0	0	5	0	8.6	
MONROE	4	1	0	0	1	0	0	0	3	0	5.0	
NASSAU	1	0	0	0	0	0	0	0	1	0	----	
OKALOOSA	21	2	2	0	0	0	0	0	19	0	7.6	
OKEECHOBEE	4	0	0	0	0	0	0	0	4	0	----	
ORANGE	119	31	6	10	2	5	8	9	75	4	6.5	
OSCEOLA	20	4	0	2	1	1	0	0	15	1	2.0	
PALM BEACH	65	11	0	4	0	1	6	9	44	1	2.6	
PASCO	37	6	2	3	0	0	1	0	31	0	7.6	
PINELLAS	48	5	3	2	0	0	0	0	43	0	4.8	
POLK	49	14	9	3	0	1	1	0	35	0	7.8	
PUTNAM	6	2	1	1	0	0	0	0	4	0	14.2	
SAINT JOHNS	14	0	0	0	0	0	0	0	14	0	----	
SAINT LUCIE	13	3	1	1	0	0	1	2	8	0	4.6	
SANTA ROSA	11	0	0	0	0	0	0	0	11	0	----	
SARASOTA	15	2	1	1	0	0	0	0	13	0	4.9	
SEMINOLE	24	4	1	3	0	0	0	0	20	0	4.7	
SUMTER	2	0	0	0	0	0	0	0	2	0	----	
SUWANNEE	5	1	0	1	0	0	0	0	4	0	15.4	
TAYLOR	0	0	0	0	0	0	0	0	0	0	----	
UNION	1	0	0	0	0	0	0	0	1	0	----	
VOLUSIA	21	6	1	3	1	1	0	0	15	0	8.2	
WAKULLA	3	0	0	0	0	0	0	0	3	0	----	
WALTON	6	0	0	0	0	0	0	0	6	0	----	
WASHINGTON	0	0	0	0	0	0	0	0	0	0	----	

TABLE F-7: RESIDENT INFANT, NEONATAL AND POST-NEONATAL DEATHS FROM SELECTED CAUSES*
BY RACE, FLORIDA, 2013

	TOTAL			POST NEO- NATAL	WHITE			POST NEO- NATAL
	NEONATAL		INFANT		NEONATAL		INFANT	
	<1 DAY	1-27 DAYS			<1 DAY	1-27 DAYS		
TOTAL	1,318	501	358	459	707	239	219	249
Intestinal Infectious Disease	1	0	0	1	0	0	0	0
Diarrhea & Gastroenteritis--Infectious Origin	18	0	0	18	12	0	0	12
Tuberculosis	0	0	0	0	0	0	0	0
Tetanus	0	0	0	0	0	0	0	0
Diphtheria	0	0	0	0	0	0	0	0
Whooping Cough	1	0	0	1	1	0	0	1
Meningococcal Infection	1	0	0	1	0	0	0	0
Septicemia	9	0	0	9	2	0	0	2
Congenital Syphilis	0	0	0	0	0	0	0	0
Gonococcal Infection	0	0	0	0	0	0	0	0
Acute Poliomyelitis	0	0	0	0	0	0	0	0
Varicella (Chicken Pox)	0	0	0	0	0	0	0	0
Measles	0	0	0	0	0	0	0	0
HIV Disease	0	0	0	0	0	0	0	0
Mumps	0	0	0	0	0	0	0	0
Other & Unspec Viral Diseases	4	0	1	3	2	0	0	2
Candidiasis	0	0	0	0	0	0	0	0
Malaria	0	0	0	0	0	0	0	0
Pneumocystosis	0	0	0	0	0	0	0	0
Other & Unspecified Infectious & Parasitic Diseases	1	0	0	1	1	0	0	1
Hodgkins Disease & Non-Hodgkins Lymphomas	0	0	0	0	0	0	0	0
Leukemia	3	0	1	2	1	0	0	1
Other & Unspecified Malignant Neoplasm	2	0	0	2	2	0	0	2
In Situ/Benign/Malignant Neoplasms Uncert/Unk Behavior	5	0	0	5	2	0	0	2
Anemias	0	0	0	0	0	0	0	0
Blood, Blood-Forming, Hemorrhagic Diseases	4	0	2	2	3	0	2	1
Disorders Involving Immune Mechanism	0	0	0	0	0	0	0	0
Short Stature	0	0	0	0	0	0	0	0
Nutritional Deficiencies	0	0	0	0	0	0	0	0
Cystic Fibrosis	1	0	0	1	1	0	0	1
Fluid/Electrolyte/Acid-Base/Volume Depletion Disorders	2	0	1	1	1	0	1	0
Other Endocrine, Nutritional, Metabolic Diseases	5	0	2	3	5	0	2	3
Meningitis	0	0	0	0	0	0	0	0
Infantile Spinal Muscular Atrophy, Type 1 (Werdnig-Hoffman)	0	0	0	0	0	0	0	0
Infantile Cerebral Palsy	0	0	0	0	0	0	0	0
Anoxic Brain Damage	4	0	0	4	2	0	0	2
Other Nervous System Diseases	10	0	1	9	9	0	1	8
Ear & Mastoid Process Diseases	0	0	0	0	0	0	0	0
Pulmonary Heart/Circulation Diseases	5	0	0	5	4	0	0	4
Pericarditis, Endocarditis, Myocarditis	0	0	0	0	0	0	0	0
Cardiomyopathy	9	1	1	7	6	1	0	5
Cardiac Arrest	0	0	0	0	0	0	0	0
Cerebrovascular Diseases	11	0	0	11	5	0	0	5
Other Circulatory System Diseases	9	0	1	8	7	0	1	6
Acute Upper Respiratory Infections	2	0	0	2	1	0	0	1
Influenza	0	0	0	0	0	0	0	0
Pneumonia	11	0	0	11	1	0	0	1

TABLE F-7 (Cont.): RESIDENT INFANT, NEONATAL AND POST-NEONATAL DEATHS FROM SELECTED CAUSES*, BY RACE, FLORIDA, 2013

	TOTAL			POST NEO- NATAL	WHITE			POST NEO- NATAL
	NEONATAL		INFANT		NEONATAL		INFANT	
	<1 DAY	1-27 DAYS			<1 DAY	1-27 DAYS		
Acute Bronchitis & Acute Bronchiolitis	0	0	0	0	0	0	0	0
Bronchitis, Chronic & Unspecified	1	0	0	1	0	0	0	0
Asthma	0	0	0	0	0	0	0	0
Pneumonitis Due to Solids & Liquids	1	0	0	1	1	0	0	1
Other & Unspecified Respiratory System Diseases	20	0	0	20	10	0	0	10
Gastritis, Duodenitis, Noninfective Enteritis/Colitis	5	1	1	3	1	0	0	1
Hernia Abdom Cavity & Intestinal Obstruct W/O Hernia	2	0	1	1	1	0	1	0
Other & Unspec Digestive System Disease	6	0	0	6	3	0	0	3
Renal Failure & Other Kidney Disorders	5	0	3	2	3	0	2	1
Other & Unspec Genitourinary System Dis	0	0	0	0	0	0	0	0
PERINATAL PERIOD CONDITIONS	674	418	234	22	330	183	134	13
Maternal Hypertensive Disorders	2	2	0	0	0	0	0	0
Maternal Conditions Unrelated Present Pregnancy	4	2	2	0	3	1	2	0
Incompetent Cervix	41	39	2	0	13	12	1	0
Premature Rupture of Membranes	47	46	1	0	24	23	1	0
Multiple Pregnancy	8	8	0	0	7	7	0	0
Maternal Complications of Pregnancy	11	8	3	0	7	5	2	0
Placenta Complications	19	15	3	1	10	7	2	1
Cord Complications	1	1	0	0	1	1	0	0
Chorioamnionitis	37	36	1	0	16	16	0	0
Other & Unspecified Membrane Abnormalities	0	0	0	0	0	0	0	0
Other Complications of Labor & Delivery	4	4	0	0	1	1	0	0
Noxious Influences Via Placenta or Breast Milk	6	4	2	0	3	3	0	0
Slow Fetal Growth & Fetal Malnutrition	2	1	1	0	0	0	0	0
Extreme Low Birth Weight or Extreme Immaturity	135	113	21	1	58	40	17	1
Other Low Birth Weight or Preterm	76	68	5	3	28	26	2	0
Long Gestation & High Birth Weight	0	0	0	0	0	0	0	0
Birth Trauma	2	0	2	0	2	0	2	0
Intrauterine Hypoxia	15	7	8	0	7	4	3	0
Birth Asphyxia	12	5	7	0	8	4	4	0
Respiratory Distress	36	9	27	0	23	7	16	0
Congenital Pneumonia	2	0	1	1	1	0	1	0
Neonatal Aspiration Syndromes	4	2	2	0	4	2	2	0
Interstitial Emphysema & Related Conditions	6	1	4	1	5	0	4	1
Pulmonary Hemorrhage	11	1	10	0	6	1	5	0
Chronic Respiratory Disease	7	0	1	6	4	0	0	4
Atelectasis	10	4	5	1	5	2	2	1
Other Respiratory Conditions	2	2	0	0	2	2	0	0
Bacterial Sepsis	41	2	38	1	22	2	19	1
Omphalitis With or Without Hemorrhage	0	0	0	0	0	0	0	0
All Other Infections	9	4	5	0	6	3	3	0
Neonatal Hemorrhage	28	1	25	2	16	1	14	1
Hemorrhagic Disease of Newborn	0	0	0	0	0	0	0	0
Hemolytic Dis Due to Isoimmunization/Perinat Jaundice	0	0	0	0	0	0	0	0
Hematological Disorders	5	1	4	0	3	0	3	0
Diabetes Mellitus, Maternal or Neonatal	0	0	0	0	0	0	0	0
Necrotizing Enterocolitis	17	0	17	0	12	0	12	0
Hydrops Fetalis Not Due To Hemolytic Dis	4	3	1	0	3	2	1	0

TABLE F-7 (Cont.): RESIDENT INFANT, NEONATAL AND POST-NEONATAL DEATHS FROM SELECTED CAUSES*, BY RACE, FLORIDA, 2013

	TOTAL			POST NEO- NATAL	WHITE			POST NEO- NATAL
	NEONATAL		INFANT		NEONATAL		INFANT	
	<1 DAY	1-27 DAYS			<1 DAY	1-27 DAYS		
Other Perinatal Conditions	70	29	36	5	30	11	16	3
CONGENITAL / CHROMOSOMAL ANOMALIES	236	78	84	74	151	53	57	41
Anencephaly & Similar Anomalies	13	10	3	0	9	7	2	0
Congenital Hydrocephalus	2	1	0	1	1	1	0	0
Spina Bifida	2	0	1	1	1	0	0	1
Other Cong Malf Nervous System	17	4	4	9	11	4	2	5
Congenital Malf of Heart	49	5	21	23	30	2	15	13
Other Congenital Malf of Circulatory Sys	6	0	4	2	3	0	1	2
Congenital Malf of Respiratory Sys	19	10	7	2	12	6	6	0
Congenital Anomalies of Digestive Sys	5	0	2	3	1	0	0	1
Congenital Malf of Genitourinary Sys	28	15	8	5	20	11	6	3
Congenital Malf of Musculoskeletal Sys	34	11	14	9	23	8	9	6
Downs Syndrome	2	1	1	0	0	0	0	0
Edwards Syndrome	26	7	9	10	18	5	7	6
Pataus Syndrome	12	5	3	4	8	4	3	1
Other Congenital Malf	17	7	6	4	12	4	5	3
Other Chromosomal Abnorm	4	2	1	1	2	1	1	0
Sudden Infant Death Syndrome	53	0	3	50	28	0	3	25
Symptoms, Signs, Abn Clinical/Lab Findings	61	3	7	51	34	2	4	28
All Other Diseases	1	0	0	1	0	0	0	0
Unint Inj: Motor Vehicle	5	0	2	3	4	0	2	2
Unint Inj: Other & Unspecified Transport	0	0	0	0	0	0	0	0
Unint Inj: Falls	1	0	0	1	1	0	0	1
Unint Inj: Firearms Discharge	0	0	0	0	0	0	0	0
Unint Inj: Drowning & Submersion	4	0	0	4	2	0	0	2
Unint Inj: Suffocation & Strangulation in Bed	64	0	6	58	36	0	4	32
Unint Inj: Other Suffocation & Strangulation	38	0	7	31	23	0	5	18
Unint Inj: Inhale/Ingest--Respiratory Tract Obstruction	1	0	0	1	0	0	0	0
Unint Inj: Smoke, Fire, Flames Exposure	0	0	0	0	0	0	0	0
Unint Inj: Poisoning & Noxious Substance Exposure	2	0	0	2	1	0	0	1
Unint Inj: Other & Unspecified	4	0	0	4	2	0	0	2
Homicide: Hanging, Strangulation, Suffocation	0	0	0	0	0	0	0	0
Homicide: Firearms Discharge	1	0	0	1	1	0	0	1
Homicide: Neglect, Abandonment, Maltreatment	5	0	0	5	3	0	0	3
Homicide: Other & Unspecified Means	6	0	0	6	3	0	0	3
Medical & Surgical Care Complications	1	0	0	1	0	0	0	0
Other External Causes	3	0	0	3	1	0	0	1

* ICD-10 codes associated with each cause of death group are presented on pages (xiv-xvi).

TABLE F-7 (Cont.): RESIDENT INFANT, NEONATAL AND POST-NEONATAL DEATHS FROM SELECTED CAUSES*,
BY RACE, FLORIDA, 2013

	BLACK			POST NEO- NATAL	OTHER			POST NEO- NATAL
	NEONATAL		INFANT		NEONATAL		INFANT	
	<1 DAY	1-27 DAYS			<1 DAY	1-27 DAYS		
TOTAL	517	222	119	176	90	38	19	33
Intestinal Infectious Disease	1	0	0	1	0	0	0	0
Diarrhea & Gastroenteritis--Infectious Origin	5	0	0	5	1	0	0	1
Tuberculosis	0	0	0	0	0	0	0	0
Tetanus	0	0	0	0	0	0	0	0
Diphtheria	0	0	0	0	0	0	0	0
Whooping Cough	0	0	0	0	0	0	0	0
Meningococcal Infection	0	0	0	0	1	0	0	1
Septicemia	7	0	0	7	0	0	0	0
Congenital Syphilis	0	0	0	0	0	0	0	0
Gonococcal Infection	0	0	0	0	0	0	0	0
Acute Poliomyelitis	0	0	0	0	0	0	0	0
Varicella (Chicken Pox)	0	0	0	0	0	0	0	0
Measles	0	0	0	0	0	0	0	0
HIV Disease	0	0	0	0	0	0	0	0
Mumps	0	0	0	0	0	0	0	0
Other & Unspec Viral Diseases	2	0	1	1	0	0	0	0
Candidiasis	0	0	0	0	0	0	0	0
Malaria	0	0	0	0	0	0	0	0
Pneumocystosis	0	0	0	0	0	0	0	0
Other & Unspecified Infectious & Parasitic Diseases	0	0	0	0	0	0	0	0
Hodgkins Disease & Non-Hodgkins Lymphomas	0	0	0	0	0	0	0	0
Leukemia	2	0	1	1	0	0	0	0
Other & Unspecified Malignant Neoplasm	0	0	0	0	0	0	0	0
In Situ/Benign/Malignant Neoplasms Uncert/Unk Behavior	2	0	0	2	1	0	0	1
Anemias	0	0	0	0	0	0	0	0
Blood, Blood-Forming, Hemorrhagic Diseases	1	0	0	1	0	0	0	0
Disorders Involving Immune Mechanism	0	0	0	0	0	0	0	0
Short Stature	0	0	0	0	0	0	0	0
Nutritional Deficiencies	0	0	0	0	0	0	0	0
Cystic Fibrosis	0	0	0	0	0	0	0	0
Fluid/Electrolyte/Acid-Base/Volume Depletion Disorders	0	0	0	0	1	0	0	1
Other Endocrine, Nutritional, Metabolic Diseases	0	0	0	0	0	0	0	0
Meningitis	0	0	0	0	0	0	0	0
Infantile Spinal Muscular Atrophy, Type 1 (Werdnig-Hoffman)	0	0	0	0	0	0	0	0
Infantile Cerebral Palsy	0	0	0	0	0	0	0	0
Anoxic Brain Damage	2	0	0	2	0	0	0	0
Other Nervous System Diseases	0	0	0	0	1	0	0	1
Ear & Mastoid Process Diseases	0	0	0	0	0	0	0	0
Pulmonary Heart/Circulation Diseases	1	0	0	1	0	0	0	0
Pericarditis, Endocarditis, Myocarditis	0	0	0	0	0	0	0	0
Cardiomyopathy	2	0	1	1	1	0	0	1
Cardiac Arrest	0	0	0	0	0	0	0	0
Cerebrovascular Diseases	5	0	0	5	1	0	0	1
Other Circulatory System Diseases	1	0	0	1	1	0	0	1
Acute Upper Respiratory Infections	1	0	0	1	0	0	0	0
Influenza	0	0	0	0	0	0	0	0
Pneumonia	9	0	0	9	1	0	0	1

TABLE F-7 (Cont.): RESIDENT INFANT, NEONATAL AND POST-NEONATAL DEATHS FROM SELECTED CAUSES*,
BY RACE, FLORIDA, 2013

	BLACK			POST NEO- NATAL	OTHER			POST NEO- NATAL
	NEONATAL		INFANT		NEONATAL		INFANT	
	<1 DAY	1-27 DAYS			<1 DAY	1-27 DAYS		
Acute Bronchitis & Acute Bronchiolitis	0	0	0	0	0	0	0	0
Bronchitis, Chronic & Unspecified	1	0	0	1	0	0	0	0
Asthma	0	0	0	0	0	0	0	0
Pneumonitis Due to Solids & Liquids	0	0	0	0	0	0	0	0
Other & Unspecified Respiratory System Diseases	9	0	0	9	1	0	0	1
Gastritis, Duodenitis, Noninfective Enteritis/Colitis	3	1	0	2	1	0	1	0
Hernia Abdom Cavity & Intestinal Obstruct W/O Hernia	1	0	0	1	0	0	0	0
Other & Unspec Digestive System Disease	3	0	0	3	0	0	0	0
Renal Failure & Other Kidney Disorders	2	0	1	1	0	0	0	0
Other & Unspec Genitourinary System Dis	0	0	0	0	0	0	0	0
PERINATAL PERIOD CONDITIONS	295	200	87	8	47	34	12	1
Maternal Hypertensive Disorders	2	2	0	0	0	0	0	0
Maternal Conditions Unrelated Present Pregnancy	1	1	0	0	0	0	0	0
Incompetent Cervix	22	21	1	0	6	6	0	0
Premature Rupture of Membranes	22	22	0	0	1	1	0	0
Multiple Pregnancy	1	1	0	0	0	0	0	0
Maternal Complications of Pregnancy	4	3	1	0	0	0	0	0
Placenta Complications	6	5	1	0	3	3	0	0
Cord Complications	0	0	0	0	0	0	0	0
Chorioamnionitis	20	19	1	0	1	1	0	0
Other & Unspecified Membrane Abnormalities	0	0	0	0	0	0	0	0
Other Complications of Labor & Delivery	2	2	0	0	1	1	0	0
Noxious Influences Via Placenta or Breast Milk	2	1	1	0	1	0	1	0
Slow Fetal Growth & Fetal Malnutrition	2	1	1	0	0	0	0	0
Extreme Low Birth Weight or Extreme Immaturity	67	64	3	0	9	8	1	0
Other Low Birth Weight or Preterm	36	30	3	3	12	12	0	0
Long Gestation & High Birth Weight	0	0	0	0	0	0	0	0
Birth Trauma	0	0	0	0	0	0	0	0
Intrauterine Hypoxia	6	2	4	0	2	1	1	0
Birth Asphyxia	4	1	3	0	0	0	0	0
Respiratory Distress	11	2	9	0	2	0	2	0
Congenital Pneumonia	1	0	0	1	0	0	0	0
Neonatal Aspiration Syndromes	0	0	0	0	0	0	0	0
Interstitial Emphysema & Related Conditions	1	1	0	0	0	0	0	0
Pulmonary Hemorrhage	4	0	4	0	1	0	1	0
Chronic Respiratory Disease	2	0	1	1	1	0	0	1
Atelectasis	4	2	2	0	1	0	1	0
Other Respiratory Conditions	0	0	0	0	0	0	0	0
Bacterial Sepsis	18	0	18	0	1	0	1	0
Omphalitis With or Without Hemorrhage	0	0	0	0	0	0	0	0
All Other Infections	3	1	2	0	0	0	0	0
Neonatal Hemorrhage	12	0	11	1	0	0	0	0
Hemorrhagic Disease of Newborn	0	0	0	0	0	0	0	0
Hemolytic Dis Due to Isoimmunization/Perinat Jaundice	0	0	0	0	0	0	0	0
Hematological Disorders	1	0	1	0	1	1	0	0
Diabetes Mellitus, Maternal or Neonatal	0	0	0	0	0	0	0	0
Necrotizing Enterocolitis	5	0	5	0	0	0	0	0
Hydrops Fetalis Not Due To Hemolytic Dis	1	1	0	0	0	0	0	0

TABLE F-7 (Cont.): RESIDENT INFANT, NEONATAL AND POST-NEONATAL DEATHS FROM SELECTED CAUSES*, BY RACE, FLORIDA, 2013

	BLACK			POST NEO-	OTHER			POST NEO-
	NEONATAL		INFANT		NEONATAL		INFANT	
	<1 DAY	1-27 DAYS			<1 DAY	1-27 DAYS		
Other Perinatal Conditions	35	18	15	2	4	0	4	0
CONGENITAL / CHROMOSOMAL ANOMALIES	75	21	22	32	10	4	5	1
Anencephaly & Similar Anomalies	4	3	1	0	0	0	0	0
Congenital Hydrocephalus	1	0	0	1	0	0	0	0
Spina Bifida	1	0	1	0	0	0	0	0
Other Cong Malf Nervous System	5	0	1	4	1	0	1	0
Congenital Malf of Heart	18	3	5	10	1	0	1	0
Other Congenital Malf of Circulatory Sys	3	0	3	0	0	0	0	0
Congenital Malf of Respiratory Sys	6	3	1	2	1	1	0	0
Congenital Anomalies of Digestive Sys	4	0	2	2	0	0	0	0
Congenital Malf of Genitourinary Sys	7	3	2	2	1	1	0	0
Congenital Malf of Musculoskeletal Sys	7	2	3	2	4	1	2	1
Downs Syndrome	2	1	1	0	0	0	0	0
Edwards Syndrome	7	2	1	4	1	0	1	0
Patau Syndrome	3	0	0	3	1	1	0	0
Other Congenital Malf	5	3	1	1	0	0	0	0
Other Chromosomal Abnorm	2	1	0	1	0	0	0	0
Sudden Infant Death Syndrome	23	0	0	23	2	0	0	2
Symptoms, Signs, Abn Clinical/Lab Findings	19	0	2	17	7	0	1	6
All Other Diseases	1	0	0	1	0	0	0	0
Unint Inj: Motor Vehicle	0	0	0	0	1	0	0	1
Unint Inj: Other & Unspecified Transport	0	0	0	0	0	0	0	0
Unint Inj: Falls	0	0	0	0	0	0	0	0
Unint Inj: Firearms Discharge	0	0	0	0	0	0	0	0
Unint Inj: Drowning & Submersion	2	0	0	2	0	0	0	0
Unint Inj: Suffocation & Strangulation in Bed	24	0	2	22	4	0	0	4
Unint Inj: Other Suffocation & Strangulation	11	0	2	9	4	0	0	4
Unint Inj: Inhale/Ingest--Respiratory Tract Obstruction	1	0	0	1	0	0	0	0
Unint Inj: Smoke, Fire, Flames Exposure	0	0	0	0	0	0	0	0
Unint Inj: Poisoning & Noxious Substance Exposure	1	0	0	1	0	0	0	0
Unint Inj: Other & Unspecified	0	0	0	0	2	0	0	2
Homicide: Hanging, Strangulation, Suffocation	0	0	0	0	0	0	0	0
Homicide: Firearms Discharge	0	0	0	0	0	0	0	0
Homicide: Neglect, Abandonment, Maltreatment	1	0	0	1	1	0	0	1
Homicide: Other & Unspecified Means	2	0	0	2	1	0	0	1
Medical & Surgical Care Complications	1	0	0	1	0	0	0	0
Other External Causes	1	0	0	1	0	0	0	0

* ICD-10 codes associated with each cause of death group are presented on pages (xiv-xvi).