

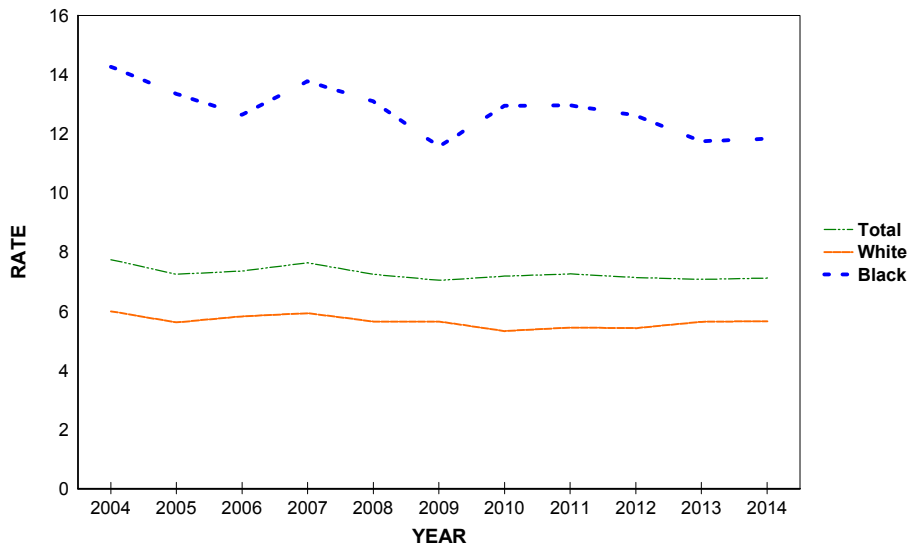
Fetal and Infant Deaths

CHART F-1: RESIDENT FETAL DEATHS AND RATES PER 1,000 LIVE BIRTHS AND FETAL DEATHS, BY RACE*, FLORIDA AND UNITED STATES, CENSUS YEARS 1970-2000 AND 2004-2014

YEAR	NUMBER OF FETAL DEATHS - FL				RATES PER 1,000 - FL			RATES - U.S.		
	TOTAL	WHITE	BLACK	OTHER	TOTAL	WHITE	BLACK	TOTAL	WHITE	BLACK
1970	1,708	1,034	608	7	14.6	11.8	21.6	14.0	12.3	23.2
1980	1,356	848	476	15	10.2	8.6	14.2	9.1	8.1	14.7
1990	1,811	1,071	695	25	9.0	7.1	14.8	7.5	6.4	13.3
2000	1,675	954	667	37	8.1	6.3	13.9	6.6	5.6	12.4
2004	1,701	966	680	43	7.7	6.0	14.3	6.3	5.4	11.6
2005	1,650	938	649	39	7.2	5.6	13.4	6.2	5.3	11.4
2006	1,756	1,020	650	83	7.3	5.8	12.6	6.1	NA	NA
2007	1,840	1,042	720	72	7.6	5.9	13.8	NA	NA	NA
2008	1,688	951	681	44	7.2	5.6	13.1	NA	NA	NA
2009	1,569	904	592	63	7.0	5.6	11.6	NA	NA	NA
2010	1,551	822	645	79	7.2	5.3	12.9	NA	NA	NA
2011	1,558	832	641	76	7.3	5.4	13.0	NA	NA	NA
2012	1,530	822	626	77	7.1	5.4	12.6	NA	NA	NA
2013	1,533	869	579	81	7.1	5.6	11.7	NA	NA	NA
2014	1,576	893	587	90	7.1	5.7	11.8	NA	NA	NA

*Fetal deaths and live births based on the race of the mother.

GRAPH F-1: RESIDENT FETAL DEATH RATES PER 1,000 LIVE BIRTHS AND FETAL DEATHS, BY RACE OF MOTHER, FLORIDA, 2004-2014



**CHART F-2: RESIDENT NEONATAL DEATHS AND RATES PER 1,000 LIVE BIRTHS,
BY RACE, FLORIDA AND UNITED STATES,
CENSUS YEARS 1970-2000 AND 2004-2014**

YEAR	NUMBER OF NEONATAL DEATHS - FL ¹				RATES - FL ¹			RATES - U.S.		
	TOTAL	WHITE	BLACK	OTHER	TOTAL	WHITE	BLACK	TOTAL	WHITE	BLACK
1970	1,847	1,198	636	11	16.0	13.8	23.1	15.1	13.8	22.8
1980	1,282	791	487	3	9.7	8.1	14.7	8.5	7.4	14.6
1990	1,227	742	476	8	6.2	5.0	10.3	5.9	4.8	11.6
2000	925	526	384	13	4.5	3.5	8.1	4.6	3.8	9.4
2004	989	563	401	24	4.5	3.5	8.5	4.5	3.8	9.1
2005	1,024	544	422	57	4.5	3.3	8.8	4.5	3.8	9.1
2006	1,122	630	436	54	4.7	3.6	8.6	4.5	3.7	8.8
2007	1,062	573	422	65	4.4	3.3	8.2	4.4	3.7	8.7
2008	1,061	592	402	65	4.6	3.5	7.8	4.3	3.6	8.2
2009	996	513	438	42	4.5	3.2	8.7	4.2	3.5	8.2
2010	929	497	385	46	4.3	3.2	7.8	4.1	3.5	7.5
2011	915	465	401	46	4.3	3.1	8.2	4.1	3.5	7.5
2012	826	457	321	47	3.9	3.0	6.6	4.0	3.5	7.3
2013	859	458	341	57	4.0	3.0	7.0	4.0	3.5	7.4
2014	893	463	363	62	4.1	2.9	7.4	NA	NA	NA

1. Neonatal deaths based on race of decedent, live births based on race of mother.

**GRAPH F-2: RESIDENT NEONATAL DEATH RATES PER 1,000 LIVE BIRTHS, BY RACE,
FLORIDA AND UNITED STATES, 2004-2014**

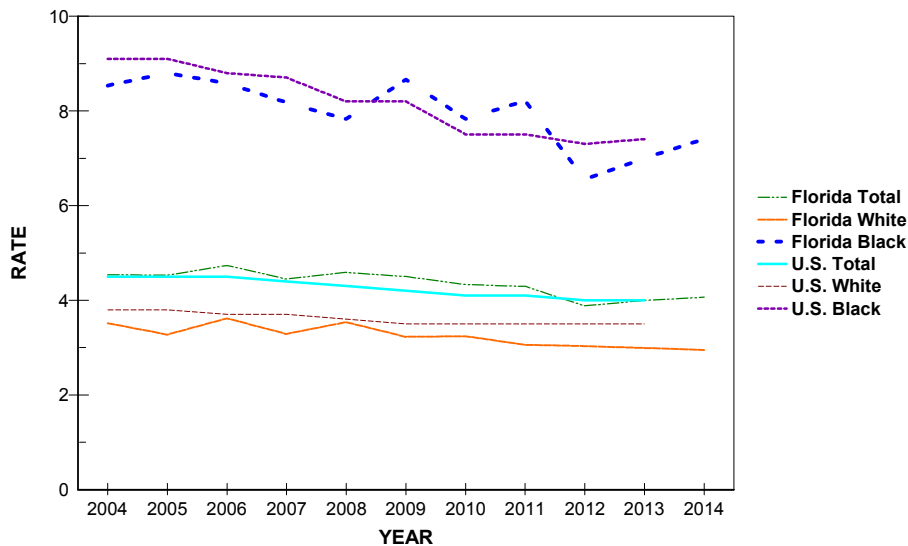


CHART F-3: RESIDENT INFANT DEATHS AND RATES PER 1,000 LIVE BIRTHS, BY RACE, FLORIDA AND UNITED STATES, CENSUS YEARS 1970-2000 AND 2004-2014

YEAR	NUMBER OF INFANT DEATHS - FL ¹				RATES - FL ¹			RATE - U.S.		
	TOTAL	WHITE	BLACK	OTHER	TOTAL	WHITE	BLACK	TOTAL	WHITE	BLACK
1970	2,469	1,538	918	11	21.4	17.7	33.3	20.0	17.8	32.7
1980	1,918	1,137	774	6	14.6	11.7	23.4	12.6	10.9	22.1
1990	1,912	1,123	775	12	9.6	7.5	16.7	9.2	7.6	18.0
2000	1,423	810	594	17	7.0	5.4	12.6	6.9	5.7	14.1
2004	1,536	876	621	38	7.0	5.5	13.2	6.8	5.7	13.8
2005	1,626	882	652	91	7.2	5.3	13.6	6.9	5.7	13.7
2006	1,713	974	653	84	7.2	5.6	12.9	6.7	5.6	13.3
2007	1,689	906	689	92	7.1	5.2	13.4	6.8	5.6	13.2
2008	1,667	914	661	90	7.2	5.5	12.9	6.6	5.5	12.7
2009	1,525	780	667	75	6.9	4.9	13.2	6.4	5.3	12.6
2010	1,400	750	580	69	6.5	4.9	11.8	6.2	5.2	11.6
2011	1,372	698	584	86	6.4	4.6	12.0	6.1	5.1	11.5
2012	1,285	687	523	73	6.0	4.6	10.7	6.0	5.1	11.2
2013	1,318	707	517	90	6.1	4.6	10.6	6.0	5.1	11.2
2014	1,327	688	538	95	6.0	4.4	11.0	NA	NA	NA

1. Infant deaths based on race of decedent, live births based on race of mother.

GRAPH F-3: RESIDENT INFANT DEATH RATES PER 1,000 LIVE BIRTHS, BY RACE, FLORIDA AND UNITED STATES, 2004-2014

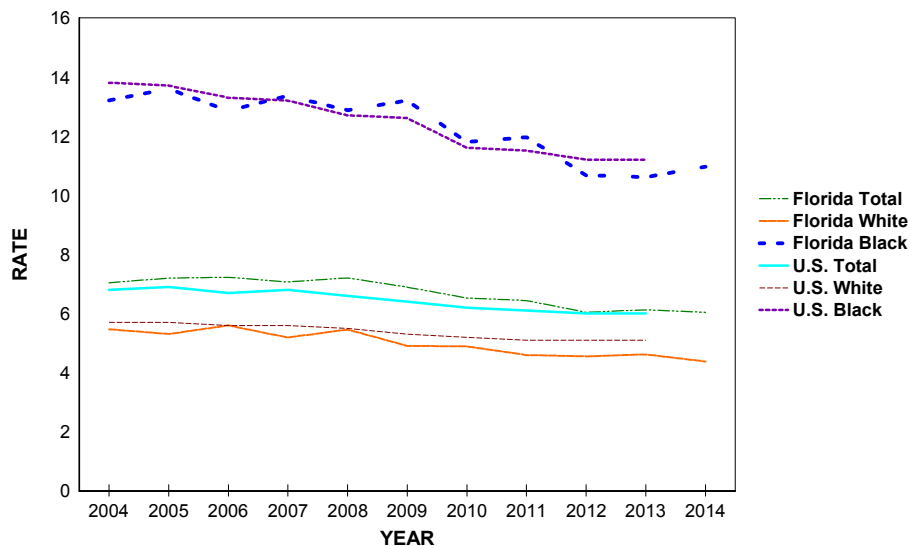


TABLE F-1: RESIDENT AND RECORDED FETAL DEATHS (OF 20 OR MORE WEEKS GESTATION) AND RATES PER 1,000 LIVE BIRTHS AND FETAL DEATHS, BY RACE OF MOTHER, BY COUNTY, FLORIDA, 2014

RESIDENT FETAL DEATHS

	NUMBERS					RATES		
	TOTAL	WHITE	BLACK	OTHER	UNK	TOTAL	WHITE	BLACK
FLORIDA	1576	893	587	90	6	7.1	5.7	11.8
ALACHUA	14	7	5	2	0	4.8	4.0	5.6
BAKER	2	1	1	0	0	5.4	3.1	27.8
BAY	17	10	6	1	0	7.2	5.6	17.9
BRADFORD	0	0	0	0	0	0.0	0.0	0.0
BREVARD	26	17	8	1	0	4.9	4.1	10.0
BROWARD	148	44	85	18	1	6.6	3.7	9.9
CALHOUN	1	1	0	0	0	7.6	8.5	0.0
CHARLOTTE	8	6	1	1	0	7.9	6.7	12.2
CITRUS	8	8	0	0	0	7.8	8.4	0.0
CLAY	9	6	2	1	0	4.3	3.4	9.5
COLLIER	27	22	5	0	0	8.1	7.9	12.9
COLUMBIA	9	7	2	0	0	10.7	10.6	12.7
MIAMI-DADE	240	111	110	18	1	7.4	4.6	15.3
DESOTO	3	3	0	0	0	7.8	8.9	0.0
DIXIE	1	1	0	0	0	5.9	6.3	0.0
DUVAL	121	53	63	4	1	9.6	7.5	14.2
ESCAMBIA	28	11	17	0	0	7.2	4.4	14.2
FLAGLER	3	3	0	0	0	3.6	4.5	0.0
FRANKLIN	1	1	0	0	0	9.9	11.0	0.0
GADSDEN	6	1	5	0	0	11.1	5.1	14.9
GILCHRIST	2	2	0	0	0	11.8	12.8	0.0
GLADES	0	0	0	0	0	0.0	0.0	0.0
GULF	1	1	0	0	0	8.5	10.2	0.0
HAMILTON	0	0	0	0	0	0.0	0.0	0.0
HARDEE	3	3	0	0	0	7.2	7.7	0.0
HENDRY	1	1	0	0	0	1.8	2.0	0.0
HERNANDO	15	14	1	0	0	10.0	10.7	8.5
HIGHLANDS	11	7	4	0	0	11.6	9.3	25.6
HILLSBOROUGH	121	70	40	10	1	7.1	5.7	11.3
HOLMES	0	0	0	0	0	0.0	0.0	0.0
INDIAN RIVER	10	7	3	0	0	7.7	8.8	12.9
JACKSON	1	0	1	0	0	1.9	0.0	6.6
JEFFERSON	1	0	1	0	0	7.8	0.0	15.6
LAFAYETTE	0	0	0	0	0	0.0	0.0	0.0
LAKE	29	23	6	0	0	9.1	8.9	14.0
LEE	47	31	15	1	0	7.3	5.9	15.5
LEON	24	10	14	0	0	7.7	6.2	10.8
LEVY	4	1	2	1	0	9.7	2.8	44.4
LIBERTY	0	0	0	0	0	0.0	0.0	0.0
MADISON	1	0	1	0	0	5.2	0.0	11.5
MANATEE	19	15	2	2	0	5.3	5.4	4.4
MARION	29	19	9	1	0	8.4	7.1	14.0
MARTIN	6	5	1	0	0	4.7	4.5	9.2
MONROE	4	3	0	1	0	5.3	4.8	0.0
NASSAU	6	5	1	0	0	8.0	7.3	23.3
OKALOOSA	16	13	2	0	1	5.6	5.6	6.1
OKEECHOBEE	4	3	1	0	0	7.2	6.2	32.3
ORANGE	110	59	41	9	1	6.7	5.6	9.2
OSCEOLA	28	18	7	3	0	6.6	5.2	14.8
PALM BEACH	108	56	47	5	0	7.4	5.9	11.1
PASCO	34	27	5	2	0	7.0	6.3	15.7
PINELLAS	62	44	14	4	0	7.2	7.0	9.4
POLK	50	33	17	0	0	6.5	5.7	11.2
PUTNAM	10	7	3	0	0	11.9	11.1	16.6
SAINT JOHNS	11	7	4	0	0	5.1	3.8	24.2
SAINT LUCIE	20	8	11	1	0	6.7	4.0	13.4
SANTA ROSA	10	9	0	1	0	5.5	5.5	0.0
SARASOTA	20	14	5	1	0	6.7	5.4	20.5
SEMINOLE	29	25	3	1	0	6.4	7.2	4.3
SUMTER	5	4	1	0	0	10.0	10.0	12.0
SUWANNEE	7	4	3	0	0	15.7	10.9	45.5
TAYLOR	2	1	0	1	0	9.1	5.9	0.0
UNION	0	0	0	0	0	0.0	0.0	0.0
VOLUSIA	39	28	11	0	0	8.1	7.4	13.9
WAKULLA	0	0	0	0	0	0.0	0.0	0.0
WALTON	3	3	0	0	0	4.1	4.4	0.0
WASHINGTON	1	0	1	0	0	4.1	0.0	32.3

TABLE F-1 (Cont.): RESIDENT AND RECORDED FETAL DEATHS (OF 20 OR MORE WEEKS GESTATION) AND RATES PER 1,000 LIVE BIRTHS AND FETAL DEATHS, BY RACE OF MOTHER, BY COUNTY, FLORIDA, 2014

	RECORDED FETAL DEATHS					RATES		
	NUMBERS					RATES		
	TOTAL	WHITE	BLACK	OTHER	UNK	TOTAL	WHITE	BLACK
FLORIDA	1606	910	596	94	6	7.2	5.8	12.0
ALACHUA	46	29	14	3	0	8.1	7.2	10.9
BAKER	0	0	0	0	0	0.0	0.0	0.0
BAY	21	12	8	1	0	7.5	5.5	21.3
BRADFORD	0	0	0	0	0	0.0	0.0	----
BREVARD	23	13	9	1	0	4.5	3.2	12.0
BROWARD	179	59	99	20	1	7.5	4.6	10.5
CALHOUN	0	0	0	0	0	0.0	0.0	----
CHARLOTTE	10	8	1	1	0	7.5	6.8	10.1
CITRUS	8	8	0	0	0	9.3	10.0	0.0
CLAY	14	11	3	0	0	6.3	6.5	8.0
COLLIER	27	21	6	0	0	7.6	7.0	15.5
COLUMBIA	9	5	4	0	0	9.0	6.6	18.1
MIAMI-DADE	229	112	97	19	1	7.8	5.0	16.2
DESOTO	1	1	0	0	0	3.4	3.8	0.0
DIXIE	0	0	0	0	0	0.0	0.0	----
DUVAL	131	60	64	6	1	9.2	6.9	14.7
ESCAMBIA	34	15	18	1	0	6.1	3.8	13.8
FLAGLER	0	0	0	0	0	0.0	0.0	0.0
FRANKLIN	0	0	0	0	0	0.0	0.0	0.0
GADSDEN	0	0	0	0	0	0.0	0.0	0.0
GILCHRIST	0	0	0	0	0	0.0	0.0	----
GLADES	0	0	0	0	0	----	----	----
GULF	0	0	0	0	0	----	----	----
HAMILTON	0	0	0	0	0	----	----	----
HARDEE	0	0	0	0	0	0.0	0.0	----
HENDRY	0	0	0	0	0	0.0	0.0	0.0
HERNANDO	18	17	1	0	0	10.6	11.3	9.1
HIGHLANDS	10	8	2	0	0	7.6	7.3	11.8
HILLSBOROUGH	147	88	49	9	1	7.5	6.1	12.6
HOLMES	0	0	0	0	0	0.0	0.0	----
INDIAN RIVER	6	4	2	0	0	5.4	6.2	9.8
JACKSON	3	1	2	0	0	6.6	3.2	15.3
JEFFERSON	0	0	0	0	0	0.0	0.0	----
LAFAYETTE	0	0	0	0	0	----	----	----
LAKE	21	16	4	1	0	7.9	7.6	10.0
LEE	52	36	15	1	0	8.0	6.7	15.6
LEON	34	14	19	1	0	7.2	5.3	10.0
LEVY	0	0	0	0	0	0.0	0.0	----
LIBERTY	0	0	0	0	0	----	----	----
MADISON	0	0	0	0	0	0.0	----	0.0
MANATEE	15	12	1	2	0	5.5	5.7	2.9
MARION	14	10	3	1	0	5.4	5.0	6.1
MARTIN	5	5	0	0	0	5.0	5.8	0.0
MONROE	2	2	0	0	0	3.7	4.7	0.0
NASSAU	1	0	1	0	0	1.7	0.0	16.9
OKALOOSA	14	11	1	1	1	5.8	5.8	3.6
OKEECHOBEE	0	0	0	0	0	0.0	0.0	0.0
ORANGE	163	99	55	8	1	7.7	6.9	11.1
OSCEOLA	28	19	6	3	0	6.5	5.4	12.7
PALM BEACH	117	57	54	6	0	6.9	5.1	11.3
PASCO	9	7	0	2	0	4.5	4.0	0.0
PINELLAS	75	56	14	5	0	7.6	7.5	8.9
POLK	26	16	10	0	0	4.4	3.6	8.5
PUTNAM	6	3	3	0	0	15.0	11.1	27.0
SAINT JOHNS	9	5	4	0	0	6.1	4.1	20.4
SAINT LUCIE	19	9	10	0	0	6.0	4.1	12.6
SANTA ROSA	7	7	0	0	0	18.7	21.5	0.0
SARASOTA	21	14	6	1	0	6.1	4.8	17.3
SEMINOLE	13	10	2	1	0	4.0	4.2	3.3
SUMTER	0	0	0	0	0	0.0	0.0	----
SUWANNEE	2	2	0	0	0	250.0	285.7	0.0
TAYLOR	0	0	0	0	0	0.0	0.0	0.0
UNION	0	0	0	0	0	----	----	----
VOLUSIA	31	23	8	0	0	7.4	7.1	10.9
WAKULLA	0	0	0	0	0	0.0	0.0	----
WALTON	6	5	1	0	0	5.1	4.6	19.6
WASHINGTON	0	0	0	0	0	----	----	----

---- Indicates that no fetal deaths nor live births occurred for the race group in the county, therefore a rate could not be calculated.

TABLE F-2: RESIDENT FETAL DEATHS AND DEATH RATES PER 1,000 LIVE BIRTHS BY HISPANIC OR HAITIAN ORIGIN OF MOTHER, BY COUNTY, FLORIDA, 2014

	RATE									
	HISPANIC ORIGIN					NUMBERS				
	TOTAL	TOTAL HISPANIC	MEXICAN	PUERTO RICAN	CUBAN	OTHER/ UNK HISPANIC	HAITIAN	NON-HISPANIC/ HAITIAN	UNK	TOTAL HISPANIC
FLORIDA	1,576	347	66	85	74	122	97	1,085	47	5.6
ALACHUA	14	1	0	0	0	1	0	13	0	4.4
BAKER	2	0	0	0	0	0	0	2	0	0.0
BAY	17	0	0	0	0	0	0	16	1	0.0
BRADFORD	0	0	0	0	0	0	0	0	0	0.0
BREVARD	26	1	0	1	0	0	1	23	1	1.8
BROWARD	148	29	0	6	6	17	22	82	15	4.4
CALHOUN	1	0	0	0	0	0	0	1	0	0.0
CHARLOTTE	8	2	1	1	0	0	0	6	0	21.3
CITRUS	8	0	0	0	0	0	0	8	0	0.0
CLAY	9	0	0	0	0	0	0	9	0	0.0
COLLIER	27	10	6	3	1	0	4	13	0	6.6
COLUMBIA	9	0	0	0	0	0	1	8	0	0.0
MIAMI-DADE	240	105	2	9	49	45	25	100	10	5.2
DESOTO	3	3	3	0	0	0	0	0	0	20.5
DIXIE	1	0	0	0	0	0	0	1	0	0.0
DUVAL	121	13	3	1	1	8	1	106	1	10.0
ESCAMBIA	28	0	0	0	0	0	0	28	0	0.0
FLAGLER	3	0	0	0	0	0	0	3	0	0.0
FRANKLIN	1	0	0	0	0	0	0	1	0	0.0
GADSDEN	6	0	0	0	0	0	0	6	0	0.0
GILCHRIST	2	0	0	0	0	0	0	2	0	0.0
GLADES	0	0	0	0	0	0	0	0	0	0.0
GULF	1	0	0	0	0	0	0	1	0	0.0
HAMILTON	0	0	0	0	0	0	0	0	0	0.0
HARDEE	3	3	3	0	0	0	0	0	0	12.6
HENDRY	1	0	0	0	0	0	0	1	0	0.0
HERNANDO	15	0	0	0	0	0	0	15	0	0.0
HIGHLANDS	11	3	3	0	0	0	0	8	0	11.3
HILLSBOROUGH	121	34	10	13	5	6	5	79	3	6.8
HOLMES	0	0	0	0	0	0	0	0	0	0.0
INDIAN RIVER	10	0	0	0	0	0	0	10	0	0.0
JACKSON	1	0	0	0	0	0	0	1	0	0.0
JEFFERSON	1	0	0	0	0	0	0	1	0	0.0
LAFAYETTE	0	0	0	0	0	0	0	0	0	0.0
LAKE	29	4	1	2	0	1	0	25	0	6.5
LEE	47	13	4	3	2	4	7	26	1	6.6
LEON	24	1	1	0	0	0	0	22	1	6.4
LEVY	4	1	0	0	0	1	0	3	0	22.7
LIBERTY	0	0	0	0	0	0	0	0	0	0.0
MADISON	1	0	0	0	0	0	0	1	0	0.0
MANATEE	19	7	5	0	0	2	0	12	0	6.8
MARION	29	5	0	1	0	4	0	24	0	9.1
MARTIN	6	1	0	0	0	1	0	5	0	2.5
MONROE	4	1	0	0	1	0	0	2	1	4.2
NASSAU	6	0	0	0	0	0	0	6	0	0.0
OKALOOSA	16	3	1	2	0	0	0	11	2	10.0
OKEECHOBEE	4	1	1	0	0	0	0	3	0	5.4
ORANGE	110	26	1	19	0	6	14	67	3	5.2
OSCEOLA	28	10	0	7	0	3	2	16	0	4.4
PALM BEACH	108	30	7	7	5	11	12	63	3	7.1
PASCO	34	2	0	0	0	2	0	31	1	2.7
PINELLAS	62	10	1	5	1	3	0	52	0	9.2
POLK	50	10	6	2	1	1	2	37	1	5.2
PUTNAM	10	2	2	0	0	0	0	8	0	18.2
SAINT JOHNS	11	0	0	0	0	0	0	11	0	0.0
SAINT LUCIE	20	5	1	0	0	4	0	15	0	7.3
SANTA ROSA	10	1	0	0	0	1	0	9	0	9.9
SARASOTA	20	3	2	1	0	0	1	16	0	7.9
SEMINOLE	29	4	0	1	2	1	0	25	0	4.1
SUMTER	5	1	1	0	0	0	0	4	0	14.5
SUWANNEE	7	0	0	0	0	0	0	7	0	0.0
TAYLOR	2	0	0	0	0	0	0	2	0	0.0
UNION	0	0	0	0	0	0	0	0	0	0.0
VOLUSIA	39	2	1	1	0	0	0	34	3	2.8
WAKULLA	0	0	0	0	0	0	0	0	0	0.0
WALTON	3	0	0	0	0	0	0	3	0	0.0
WASHINGTON	1	0	0	0	0	0	0	1	0	0.0

TABLE F-3: RESIDENT FETAL DEATHS BY AGE OF MOTHER, BY COUNTY, FLORIDA, 2014

	TOTAL	AGE OF MOTHER													
		<13	13	14	15	16	17	18	19	20-24	25-29	30-34	35-44	45+	UNK
FLORIDA	1,576	0	0	0	12	4	16	23	58	362	374	379	314	3	31
ALACHUA	14	0	0	0	0	0	0	0	0	2	5	4	3	0	0
BAKER	2	0	0	0	0	0	0	0	0	2	0	0	0	0	0
BAY	17	0	0	0	0	0	0	0	0	5	7	2	3	0	0
BRADFORD	0	0	0	0	0	0	0	0	0	0	0	0	0	0	0
BREVARD	26	0	0	0	0	0	0	0	1	9	8	4	3	0	1
BROWARD	148	0	0	0	1	0	3	0	1	26	33	36	27	1	20
CALHOUN	1	0	0	0	0	0	0	0	0	0	1	0	0	0	0
CHARLOTTE	8	0	0	0	0	0	0	0	0	1	3	1	3	0	0
CITRUS	8	0	0	0	0	0	0	0	0	2	2	2	2	0	0
CLAY	9	0	0	0	0	0	0	0	0	5	0	3	1	0	0
COLLIER	27	0	0	0	0	0	0	1	0	5	6	8	7	0	0
COLUMBIA	9	0	0	0	0	0	0	0	0	2	1	3	3	0	0
MIAMI-DADE	240	0	0	0	1	0	5	3	10	46	44	61	67	1	2
DESOTO	3	0	0	0	0	0	0	0	0	1	1	1	0	0	0
DIXIE	1	0	0	0	0	0	0	0	0	0	0	1	0	0	0
DUVAL	121	0	0	0	1	1	0	4	4	41	30	27	13	0	0
ESCAMBIA	28	0	0	0	0	0	1	2	2	8	7	5	3	0	0
FLAGLER	3	0	0	0	0	0	0	0	0	0	1	0	2	0	0
FRANKLIN	1	0	0	0	0	0	0	0	0	0	0	0	1	0	0
GADSDEN	6	0	0	0	0	0	0	0	0	1	3	0	2	0	0
GILCHRIST	2	0	0	0	0	0	0	0	0	0	1	1	0	0	0
GLADES	0	0	0	0	0	0	0	0	0	0	0	0	0	0	0
GULF	1	0	0	0	0	0	0	0	0	0	0	1	0	0	0
HAMILTON	0	0	0	0	0	0	0	0	0	0	0	0	0	0	0
HARDEE	3	0	0	0	0	0	0	0	0	1	2	0	0	0	0
HENDRY	1	0	0	0	0	0	0	0	0	0	0	0	1	0	0
HERNANDO	15	0	0	0	1	0	0	0	0	7	4	3	0	0	0
HIGHLANDS	11	0	0	0	0	0	0	0	1	2	2	5	1	0	0
HILLSBOROUGH	121	0	0	0	1	0	1	2	6	29	30	33	19	0	0
HOLMES	0	0	0	0	0	0	0	0	0	0	0	0	0	0	0
INDIAN RIVER	10	0	0	0	0	0	0	0	0	2	5	1	2	0	0
JACKSON	1	0	0	0	0	0	0	0	0	1	0	0	0	0	0
JEFFERSON	1	0	0	0	0	0	0	0	0	0	0	1	0	0	0
LAFAYETTE	0	0	0	0	0	0	0	0	0	0	0	0	0	0	0
LAKE	29	0	0	0	0	0	0	0	2	6	8	6	7	0	0
LEE	47	0	0	0	0	0	0	0	6	11	12	9	9	0	0
LEON	24	0	0	0	2	0	0	0	2	7	4	7	1	0	1
LEVY	4	0	0	0	0	0	0	0	0	0	0	2	2	0	0
LIBERTY	0	0	0	0	0	0	0	0	0	0	0	0	0	0	0
MADISON	1	0	0	0	0	0	0	0	0	0	1	0	0	0	0
MANATEE	19	0	0	0	1	0	1	0	0	6	7	3	1	0	0
MARION	29	0	0	0	0	0	0	1	1	9	4	9	5	0	0
MARTIN	6	0	0	0	0	0	0	0	0	2	1	1	2	0	0
MONROE	4	0	0	0	0	0	0	0	0	0	0	0	4	0	0
NASSAU	6	0	0	0	0	0	0	0	1	1	2	1	1	0	0
OKALOOSA	16	0	0	0	0	0	0	0	1	1	6	3	4	0	1
OKEECHOBEE	4	0	0	0	0	0	0	1	0	2	1	0	0	0	0
ORANGE	110	0	0	0	2	0	1	1	4	24	29	26	21	0	2
OSCEOLA	28	0	0	0	0	0	0	2	1	4	7	7	7	0	0
PALM BEACH	108	0	0	0	1	0	0	1	5	22	20	29	29	0	1
PASCO	34	0	0	0	0	0	0	0	0	6	16	6	6	0	0
PINELLAS	62	0	0	0	0	0	0	1	1	20	15	11	12	0	2
POLK	50	0	0	0	1	0	0	2	2	7	14	9	14	0	1
PUTNAM	10	0	0	0	0	0	0	1	0	2	2	2	3	0	0
SAINT JOHNS	11	0	0	0	0	0	0	0	0	3	1	7	0	0	0
SAINT LUCIE	20	0	0	0	0	0	1	1	1	5	2	7	3	0	0
SANTA ROSA	10	0	0	0	0	0	0	0	1	4	1	1	3	0	0
SARASOTA	20	0	0	0	0	0	0	0	1	3	6	6	3	1	0
SEMINOLE	29	0	0	0	0	0	0	0	2	7	8	8	4	0	0
SUMTER	5	0	0	0	0	1	0	0	0	1	1	0	2	0	0
SUWANNEE	7	0	0	0	0	0	0	0	0	2	2	2	1	0	0
TAYLOR	2	0	0	0	0	0	0	0	0	0	0	1	1	0	0
UNION	0	0	0	0	0	0	0	0	0	0	0	0	0	0	0
VOLUSIA	39	0	0	0	0	2	2	0	1	9	7	12	6	0	0
WAKULLA	0	0	0	0	0	0	0	0	0	0	0	0	0	0	0
WALTON	3	0	0	0	0	0	0	0	1	0	1	1	0	0	0
WASHINGTON	1	0	0	0	0	0	1	0	0	0	0	0	0	0	0

TABLE F-4: RESIDENT AND RECORDED NEONATAL DEATHS (UNDER 28 DAYS) AND RATES PER 1,000 LIVE BIRTHS, BY RACE, BY COUNTY, FLORIDA, 2014

	RESIDENT NEONATAL DEATHS					RATES*		
	NUMBERS					TOTAL	WHITE	BLACK
	TOTAL	WHITE	BLACK	OTHER	UNK			
FLORIDA	893	463	363	62	5	4.1	2.9	7.4
ALACHUA	24	6	17	1	0	8.2	3.5	19.1
BAKER	2	2	0	0	0	5.5	6.3	0.0
BAY	15	7	5	2	1	6.4	3.9	15.2
BRADFORD	2	1	1	0	0	7.1	4.4	19.2
BREVARD	21	12	8	1	0	4.0	2.9	10.1
BROWARD	73	20	46	7	0	3.3	1.7	5.4
CALHOUN	0	0	0	0	0	0.0	0.0	0.0
CHARLOTTE	1	1	0	0	0	1.0	1.1	0.0
CITRUS	2	2	0	0	0	2.0	2.1	0.0
CLAY	6	4	1	1	0	2.9	2.3	4.8
COLLIER	11	7	3	1	0	3.3	2.5	7.9
COLUMBIA	5	5	0	0	0	6.0	7.7	0.0
MIAMI-DADE	101	58	38	5	0	3.2	2.4	5.4
DESOTO	3	3	0	0	0	7.8	9.0	0.0
DIXIE	0	0	0	0	0	0.0	0.0	0.0
DUVAL	76	23	45	7	1	6.1	3.3	10.3
ESCAMBIA	23	7	13	2	1	5.9	2.8	11.0
FLAGLER	3	3	0	0	0	3.6	4.5	0.0
FRANKLIN	0	0	0	0	0	0.0	0.0	0.0
GADSDEN	4	1	3	0	0	7.5	5.1	9.1
GILCHRIST	1	1	0	0	0	6.0	6.5	0.0
GLADES	0	0	0	0	0	0.0	0.0	0.0
GULF	2	1	1	0	0	17.1	10.3	76.9
HAMILTON	2	2	0	0	0	13.8	20.6	0.0
HARDEE	3	3	0	0	0	7.2	7.8	0.0
HENDRY	0	0	0	0	0	0.0	0.0	0.0
HERNANDO	7	6	0	1	0	4.7	4.7	0.0
HIGHLANDS	7	5	2	0	0	7.5	6.7	13.2
HILLSBOROUGH	85	50	30	5	0	5.0	4.1	8.6
HOLMES	1	1	0	0	0	4.8	5.1	0.0
INDIAN RIVER	4	1	2	1	0	3.1	1.3	8.7
JACKSON	1	0	1	0	0	1.9	0.0	6.7
JEFFERSON	1	0	1	0	0	7.9	0.0	15.9
LAFAYETTE	0	0	0	0	0	0.0	0.0	0.0
LAKE	19	12	5	2	0	6.0	4.7	11.8
LEE	25	17	6	2	0	3.9	3.3	6.3
LEON	14	3	10	1	0	4.5	1.9	7.8
LEVY	0	0	0	0	0	0.0	0.0	0.0
LIBERTY	0	0	0	0	0	0.0	0.0	0.0
MADISON	1	0	1	0	0	5.2	0.0	11.6
MANATEE	12	8	3	1	0	3.4	2.9	6.6
MARION	25	10	11	2	2	7.3	3.8	17.4
MARTIN	6	5	1	0	0	4.8	4.6	9.3
MONROE	1	1	0	0	0	1.3	1.6	0.0
NASSAU	2	2	0	0	0	2.7	2.9	0.0
OKALOOSA	8	2	4	2	0	2.8	0.9	12.3
OKEECHOBEE	4	3	0	1	0	7.2	6.3	0.0
ORANGE	66	32	30	4	0	4.1	3.1	6.8
OSCEOLA	13	10	2	1	0	3.1	2.9	4.3
PALM BEACH	48	19	26	3	0	3.3	2.0	6.2
PASCO	21	18	1	2	0	4.4	4.2	3.2
PINELLAS	35	20	12	3	0	4.1	3.2	8.1
POLK	32	21	8	3	0	4.2	3.6	5.4
PUTNAM	5	3	2	0	0	6.0	4.8	11.2
SAINT JOHN'S	9	7	1	1	0	4.2	3.8	6.2
SAINT LUCIE	11	3	8	0	0	3.7	1.5	9.9
SANTA ROSA	5	5	0	0	0	2.7	3.1	0.0
SARASOTA	8	7	1	0	0	2.7	2.7	4.2
SEMINOLE	11	7	4	0	0	2.4	2.0	5.8
SUMTER	5	3	2	0	0	10.1	7.6	24.4
SUWANNEE	2	2	0	0	0	4.5	5.5	0.0
TAYLOR	0	0	0	0	0	0.0	0.0	0.0
UNION	0	0	0	0	0	0.0	0.0	0.0
VOLUSIA	15	8	7	0	0	3.1	2.1	9.0
WAKULLA	1	1	0	0	0	3.0	3.3	0.0
WALTON	1	1	0	0	0	1.4	1.5	0.0
WASHINGTON	2	1	1	0	0	8.2	4.9	33.3

*Rates based on neonatal deaths by race of decedent, live births by race of mother.

---- Indicates that no neonatal deaths nor live births occurred for the race group in the county, therefore a rate could not be calculated.

TABLE F-4 (Cont.): RESIDENT AND RECORDED NEONATAL DEATHS (UNDER 28 DAYS) AND RATES PER 1,000 LIVE BIRTHS, BY RACE, BY COUNTY, FLORIDA, 2014

	RECORDED NEONATAL DEATHS					RATES*		
	NUMBERS					TOTAL	WHITE	BLACK
	TOTAL	WHITE	BLACK	OTHER	UNK			
FLORIDA	925	484	369	66	6	4.2	3.1	7.5
ALACHUA	57	24	27	4	2	10.1	6.0	21.2
BAKER	0	0	0	0	0	0.0	0.0	0.0
BAY	15	8	5	1	1	5.4	3.7	13.6
BRADFORD	0	0	0	0	0	0.0	0.0	----
BREVARD	12	7	5	0	0	2.3	1.7	6.7
BROWARD	86	29	49	8	0	3.6	2.3	5.3
CALHOUN	0	0	0	0	0	0.0	0.0	----
CHARLOTTE	1	1	0	0	0	0.8	0.9	0.0
CITRUS	1	1	0	0	0	1.2	1.3	0.0
CLAY	3	2	1	0	0	1.4	1.2	2.7
COLLIER	9	5	3	1	0	2.6	1.7	7.9
COLUMBIA	3	3	0	0	0	3.0	4.0	0.0
MIAMI-DADE	104	62	37	5	0	3.6	2.8	6.3
DESOTO	1	1	0	0	0	3.4	3.8	0.0
DIXIE	0	0	0	0	0	0.0	0.0	----
DUVAL	93	41	43	8	1	6.6	4.8	10.0
ESCAMBIA	38	15	17	5	1	6.8	3.8	13.2
FLAGLER	0	0	0	0	0	0.0	0.0	0.0
FRANKLIN	0	0	0	0	0	0.0	0.0	0.0
GADSDEN	0	0	0	0	0	0.0	0.0	0.0
GILCHRIST	0	0	0	0	0	0.0	0.0	----
GLADES	0	0	0	0	0	----	----	----
GULF	0	0	0	0	0	----	----	----
HAMILTON	0	0	0	0	0	----	----	----
HARDEE	0	0	0	0	0	0.0	0.0	----
HENDRY	0	0	0	0	0	0.0	0.0	0.0
HERNANDO	5	4	0	1	0	3.0	2.7	0.0
HIGHLANDS	7	6	1	0	0	5.4	5.5	6.0
HILLSBOROUGH	131	85	39	7	0	6.8	5.9	10.2
HOLMES	0	0	0	0	0	0.0	0.0	----
INDIAN RIVER	1	0	1	0	0	0.9	0.0	5.0
JACKSON	1	0	1	0	0	2.2	0.0	7.8
JEFFERSON	0	0	0	0	0	0.0	0.0	----
LAFAYETTE	0	0	0	0	0	----	----	----
LAKE	10	7	2	1	0	3.8	3.3	5.1
LEE	24	16	6	2	0	3.7	3.0	6.3
LEON	23	5	17	1	0	4.9	1.9	9.1
LEVY	0	0	0	0	0	0.0	0.0	----
LIBERTY	0	0	0	0	0	----	----	----
MADISON	0	0	0	0	0	0.0	----	0.0
MANATEE	5	4	0	1	0	1.8	1.9	0.0
MARION	10	2	7	1	0	3.9	1.0	14.4
MARTIN	0	0	0	0	0	0.0	0.0	0.0
MONROE	0	0	0	0	0	0.0	0.0	0.0
NASSAU	1	1	0	0	0	1.8	2.0	0.0
OKALOOSA	3	1	2	0	0	1.3	0.5	7.1
OKEECHOBEE	0	0	0	0	0	0.0	0.0	0.0
ORANGE	125	70	47	8	0	6.0	4.9	9.6
OSCEOLA	5	4	1	0	0	1.2	1.2	2.2
PALM BEACH	62	26	32	4	0	3.7	2.3	6.8
PASCO	6	5	1	0	0	3.0	2.9	7.0
PINELLAS	41	24	12	5	0	4.2	3.3	7.7
POLK	7	2	2	2	1	1.2	0.5	1.7
PUTNAM	0	0	0	0	0	0.0	0.0	0.0
SAINT JOHNS	0	0	0	0	0	0.0	0.0	0.0
SAINT LUCIE	7	2	4	1	0	2.2	0.9	5.1
SANTA ROSA	1	1	0	0	0	2.7	3.1	0.0
SARASOTA	11	10	1	0	0	3.2	3.4	2.9
SEMINOLE	5	4	1	0	0	1.5	1.7	1.7
SUMTER	0	0	0	0	0	0.0	0.0	----
SUWANNEE	0	0	0	0	0	0.0	0.0	0.0
TAYLOR	0	0	0	0	0	0.0	0.0	0.0
UNION	0	0	0	0	0	----	----	----
VOLUSIA	10	5	5	0	0	2.4	1.5	6.9
WAKULLA	0	0	0	0	0	0.0	0.0	----
WALTON	1	1	0	0	0	0.9	0.9	0.0
WASHINGTON	0	0	0	0	0	----	----	----

*Rates based on neonatal deaths by race of decedent, live births by race of mother.

---- Indicates that no neonatal deaths nor live births occurred for the race group in the county, therefore a rate could not be calculated.

TABLE F-5: RESIDENT AND RECORDED INFANT DEATHS (UNDER 1 YEAR) AND RATES PER 1,000 LIVE BIRTHS, BY RACE, BY COUNTY, FLORIDA, 2014

	RESIDENT INFANT DEATHS					RATES*		
	NUMBERS					RATES*		
	TOTAL	WHITE	BLACK	OTHER	UNK	TOTAL	WHITE	BLACK
FLORIDA	1327	688	538	95	6	6.0	4.4	11.0
ALACHUA	28	8	19	1	0	9.6	4.6	21.4
BAKER	2	2	0	0	0	5.5	6.3	0.0
BAY	25	11	7	6	1	10.7	6.2	21.3
BRADFORD	2	1	1	0	0	7.1	4.4	19.2
BREVARD	29	16	11	2	0	5.5	3.9	13.9
BROWARD	111	26	76	9	0	5.0	2.2	8.9
CALHOUN	1	1	0	0	0	7.6	8.5	0.0
CHARLOTTE	4	4	0	0	0	4.0	4.5	0.0
CITRUS	7	6	1	0	0	6.9	6.3	27.0
CLAY	13	9	1	3	0	6.2	5.2	4.8
COLLIER	15	11	3	1	0	4.6	4.0	7.9
COLUMBIA	7	5	1	1	0	8.4	7.7	6.4
MIAMI-DADE	145	78	61	5	1	4.5	3.3	8.6
DESOTO	3	3	0	0	0	7.8	9.0	0.0
DIXIE	0	0	0	0	0	0.0	0.0	0.0
DUVAL	110	33	66	10	1	8.8	4.7	15.0
ESCAMBIA	30	9	18	2	1	7.7	3.7	15.2
FLAGLER	7	6	1	0	0	8.4	9.1	8.9
FRANKLIN	1	1	0	0	0	10.0	11.1	0.0
GADSDEN	5	2	3	0	0	9.3	10.2	9.1
GILCHRIST	2	2	0	0	0	12.0	13.0	0.0
GLADES	1	0	0	1	0	16.7	0.0	0.0
GULF	2	1	1	0	0	17.1	10.3	76.9
HAMILTON	2	2	0	0	0	13.8	20.6	0.0
HARDEE	3	3	0	0	0	7.2	7.8	0.0
HENDRY	1	1	0	0	0	1.8	2.0	0.0
HERNANDO	13	10	0	3	0	8.7	7.8	0.0
HIGHLANDS	8	5	3	0	0	8.5	6.7	19.7
HILLSBOROUGH	119	69	42	8	0	7.1	5.6	12.0
HOLMES	3	3	0	0	0	14.5	15.4	0.0
INDIAN RIVER	6	1	3	2	0	4.7	1.3	13.0
JACKSON	3	2	1	0	0	5.8	5.7	6.7
JEFFERSON	1	0	1	0	0	7.9	0.0	15.9
LAFAYETTE	0	0	0	0	0	0.0	0.0	0.0
LAKE	28	20	5	3	0	8.8	7.8	11.8
LEE	33	23	7	3	0	5.2	4.4	7.4
LEON	22	5	15	2	0	7.1	3.1	11.7
LEVY	1	0	1	0	0	2.4	0.0	23.3
LIBERTY	0	0	0	0	0	0.0	0.0	0.0
MADISON	4	2	2	0	0	20.9	19.2	23.3
MANATEE	20	14	4	2	0	5.6	5.0	8.8
MARION	34	15	15	2	2	10.0	5.7	23.7
MARTIN	9	7	2	0	0	7.1	6.4	18.5
MONROE	3	2	1	0	0	4.0	3.2	11.4
NASSAU	4	3	0	1	0	5.4	4.4	0.0
OKALOOSA	13	6	4	3	0	4.6	2.6	12.3
OKEECHOBEE	5	4	0	1	0	9.0	8.4	0.0
ORANGE	84	43	37	4	0	5.2	4.1	8.4
OSCEOLA	20	14	5	1	0	4.8	4.1	10.7
PALM BEACH	69	28	36	5	0	4.8	3.0	8.6
PASCO	31	27	1	3	0	6.4	6.3	3.2
PINELLAS	60	34	23	3	0	7.0	5.5	15.5
POLK	52	34	15	3	0	6.8	5.9	10.0
PUTNAM	10	6	3	1	0	12.0	9.6	16.9
SAINT JOHNS	14	10	1	3	0	6.5	5.4	6.2
SAINT LUCIE	18	3	15	0	0	6.1	1.5	18.5
SANTA ROSA	8	8	0	0	0	4.4	4.9	0.0
SARASOTA	15	12	3	0	0	5.1	4.7	12.6
SEMINOLE	22	14	8	0	0	4.9	4.1	11.5
SUMTER	7	4	3	0	0	14.2	10.1	36.6
SUWANNEE	5	4	1	0	0	11.4	11.0	15.9
TAYLOR	0	0	0	0	0	0.0	0.0	0.0
UNION	0	0	0	0	0	0.0	0.0	0.0
VOLUSIA	21	11	10	0	0	4.4	2.9	12.8
WAKULLA	1	1	0	0	0	3.0	3.3	0.0
WALTON	2	2	0	0	0	2.8	3.0	0.0
WASHINGTON	3	1	1	1	0	12.3	4.9	33.3

*Rates based on infant deaths by race of decedent, live births by race of mother.

--- Indicates that no neonatal deaths nor live births occurred for the race group in the county, therefore a rate could not be calculated.

TABLE F-5 (Cont.): RESIDENT AND RECORDED INFANT DEATHS (UNDER 1 YEAR) AND RATES PER 1,000 LIVE BIRTHS, BY RACE, BY COUNTY, FLORIDA, 2014

	RECORDED INFANT DEATHS					RATES*		
	NUMBERS					RATES*		
	TOTAL	WHITE	BLACK	OTHER	UNK	TOTAL	WHITE	BLACK
FLORIDA	1366	714	546	100	6	6.2	4.5	11.1
ALACHUA	76	30	40	4	2	13.5	7.5	31.4
BAKER	0	0	0	0	0	0.0	0.0	0.0
BAY	22	10	6	5	1	7.9	4.6	16.3
BRADFORD	0	0	0	0	0	0.0	0.0	----
BREVARD	18	10	8	0	0	3.5	2.5	10.8
BROWARD	129	36	81	12	0	5.4	2.8	8.7
CALHOUN	1	1	0	0	0	1,000.0	1,000.0	----
CHARLOTTE	2	2	0	0	0	1.5	1.7	0.0
CITRUS	4	3	1	0	0	4.7	3.8	30.3
CLAY	9	4	3	2	0	4.1	2.4	8.1
COLLIER	9	5	3	1	0	2.6	1.7	7.9
COLUMBIA	4	3	0	1	0	4.1	4.0	0.0
MIAMI-DADE	162	93	64	5	0	5.5	4.2	10.9
DESOTO	1	1	0	0	0	3.4	3.8	0.0
DIXIE	0	0	0	0	0	0.0	0.0	----
DUVAL	135	60	60	14	1	9.5	7.0	13.9
ESCAMBIA	49	21	21	6	1	8.8	5.3	16.4
FLAGLER	1	0	1	0	0	90.9	0.0	500.0
FRANKLIN	0	0	0	0	0	0.0	0.0	0.0
GADSDEN	0	0	0	0	0	0.0	0.0	0.0
GILCHRIST	1	1	0	0	0	333.3	333.3	----
GLADES	0	0	0	0	0	----	----	----
GULF	0	0	0	0	0	----	----	----
HAMILTON	0	0	0	0	0	----	----	----
HARDEE	0	0	0	0	0	0.0	0.0	----
HENDRY	1	0	0	1	0	250.0	0.0	0.0
HERNANDO	8	6	0	2	0	4.8	4.0	0.0
HIGHLANDS	8	6	2	0	0	6.1	5.5	12.0
HILLSBOROUGH	175	111	54	10	0	9.0	7.7	14.1
HOLMES	0	0	0	0	0	0.0	0.0	----
INDIAN RIVER	3	0	2	1	0	2.7	0.0	9.9
JACKSON	3	2	1	0	0	6.6	6.5	7.8
JEFFERSON	0	0	0	0	0	0.0	0.0	----
LAFAYETTE	0	0	0	0	0	----	----	----
LAKE	15	11	3	1	0	5.7	5.3	7.6
LEE	30	21	7	2	0	4.6	3.9	7.4
LEON	30	8	20	2	0	6.4	3.1	10.7
LEVY	0	0	0	0	0	0.0	0.0	----
LIBERTY	0	0	0	0	0	----	----	----
MADISON	3	2	1	0	0	1,500.0	----	500.0
MANATEE	12	9	1	2	0	4.4	4.3	2.9
MARION	15	6	8	1	0	5.8	3.0	16.5
MARTIN	0	0	0	0	0	0.0	0.0	0.0
MONROE	2	1	1	0	0	3.8	2.4	13.3
NASSAU	2	2	0	0	0	3.5	4.1	0.0
OKALOOSA	6	4	2	0	0	2.5	2.1	7.1
OKEECHOBEE	0	0	0	0	0	0.0	0.0	0.0
ORANGE	164	95	59	10	0	7.8	6.6	12.0
OSCEOLA	8	5	3	0	0	1.9	1.4	6.5
PALM BEACH	85	36	43	6	0	5.0	3.3	9.1
PASCO	10	8	2	0	0	5.0	4.6	14.0
PINELLAS	84	54	23	7	0	8.5	7.3	14.8
POLK	17	8	6	2	1	2.9	1.8	5.2
PUTNAM	3	2	0	1	0	7.6	7.5	0.0
SAINT JOHNS	2	2	0	0	0	1.4	1.7	0.0
SAINT LUCIE	10	2	7	1	0	3.2	0.9	8.9
SANTA ROSA	3	3	0	0	0	8.2	9.4	0.0
SARASOTA	14	12	2	0	0	4.1	4.1	5.9
SEMINOLE	9	7	2	0	0	2.8	2.9	3.3
SUMTER	0	0	0	0	0	0.0	0.0	----
SUWANNEE	1	1	0	0	0	166.7	200.0	0.0
TAYLOR	0	0	0	0	0	0.0	0.0	0.0
UNION	0	0	0	0	0	----	----	----
VOLUSIA	17	8	9	0	0	4.1	2.5	12.4
WAKULLA	0	0	0	0	0	0.0	0.0	----
WALTON	2	2	0	0	0	1.7	1.8	0.0
WASHINGTON	1	0	0	1	0	----	----	----

*Rates based on infant deaths by race of decedent, live births by race of mother.

---- Indicates that no neonatal deaths nor live births occurred for the race group in the county, therefore a rate could not be calculated.

TABLE F-6: RESIDENT INFANT DEATHS AND RATE BY HISPANIC OR HAITIAN ORIGIN, BY COUNTY, FLORIDA, 2014

	NUMBERS									RATE
	HISPANIC ORIGIN									
	TOTAL	TOTAL HISPANIC	MEXICAN	PUERTO RICAN	CUBAN	OTHER/ UNK HISPANIC	HAITIAN	NON-HISPANIC/ HAITIAN	UNK	
FLORIDA	1,327	304	81	80	41	102	62	933	28	4.9
ALACHUA	28	0	0	0	0	0	0	27	1	----
BAKER	2	0	0	0	0	0	0	2	0	----
BAY	25	2	0	1	0	1	0	22	1	11.8
BRADFORD	2	0	0	0	0	0	0	2	0	----
BREVARD	29	4	0	3	0	1	1	23	1	7.0
BROWARD	111	21	3	4	1	13	12	71	7	3.2
CALHOUN	1	0	0	0	0	0	0	1	0	----
CHARLOTTE	4	2	2	0	0	0	0	2	0	21.7
CITRUS	7	0	0	0	0	0	0	7	0	----
CLAY	13	2	1	0	1	0	0	11	0	10.2
COLLIER	15	6	3	0	1	2	3	6	0	4.0
COLUMBIA	7	0	0	0	0	0	0	7	0	----
MIAMI-DADE	145	74	3	5	26	40	10	59	2	3.7
DESOTO	3	0	0	0	0	0	0	3	0	----
DIXIE	0	0	0	0	0	0	0	0	0	----
DUVAL	110	6	3	2	0	1	2	99	3	4.7
ESCAMBIA	30	2	1	1	0	0	0	27	1	10.1
FLAGLER	7	1	0	0	0	1	0	6	0	11.8
FRANKLIN	1	0	0	0	0	0	0	1	0	----
GADSDEN	5	1	1	0	0	0	0	4	0	11.2
GILCHRIST	2	1	1	0	0	0	0	1	0	76.9
GLADES	1	0	0	0	0	0	0	1	0	----
GULF	2	0	0	0	0	0	0	2	0	----
HAMILTON	2	1	1	0	0	0	0	1	0	37.0
HARDEE	3	2	2	0	0	0	0	1	0	8.5
HENDRY	1	1	1	0	0	0	0	0	0	3.0
HERNANDO	13	2	1	0	1	0	1	10	0	11.0
HIGHLANDS	8	2	1	1	0	0	0	6	0	7.6
HILLSBOROUGH	119	40	11	16	2	11	3	74	2	8.1
HOLMES	3	0	0	0	0	0	0	3	0	----
INDIAN RIVER	6	1	1	0	0	0	0	4	1	3.7
JACKSON	3	0	0	0	0	0	0	3	0	----
JEFFERSON	1	0	0	0	0	0	0	1	0	----
LAFAYETTE	0	0	0	0	0	0	0	0	0	----
LAKE	28	4	1	2	0	1	0	23	1	6.5
LEE	33	14	9	2	0	3	3	16	0	7.2
LEON	22	0	0	0	0	0	0	21	1	----
LEVY	1	0	0	0	0	0	0	1	0	----
LIBERTY	0	0	0	0	0	0	0	0	0	----
MADISON	4	0	0	0	0	0	0	4	0	----
MANATEE	20	8	4	0	1	3	0	12	0	7.8
MARION	34	3	1	1	0	1	2	27	2	5.5
MARTIN	9	3	2	0	0	1	0	6	0	7.6
MONROE	3	0	0	0	0	0	0	3	0	----
NASSAU	4	0	0	0	0	0	0	4	0	----
OKALOOSA	13	2	2	0	0	0	0	11	0	6.8
OKEECHOBEE	5	3	3	0	0	0	0	2	0	16.3
ORANGE	84	28	6	16	0	6	7	48	1	5.6
OSCEOLA	20	12	1	7	1	3	3	5	0	5.3
PALM BEACH	69	18	2	7	1	8	14	37	0	4.3
PASCO	31	6	1	1	1	3	0	25	0	8.0
PINELLAS	60	7	3	2	1	1	0	51	2	6.5
POLK	52	9	4	4	1	0	0	42	1	4.7
PUTNAM	10	1	0	1	0	0	0	9	0	9.3
SAINT JOHNS	14	1	1	0	0	0	0	13	0	9.2
SAINT LUCIE	18	0	0	0	0	0	1	17	0	----
SANTA ROSA	8	1	0	1	0	0	0	7	0	10.0
SARASOTA	15	5	3	0	1	1	0	10	0	13.3
SEMINOLE	22	3	0	1	2	0	0	18	1	3.1
SUMTER	7	0	0	0	0	0	0	7	0	----
SUWANNEE	5	0	0	0	0	0	0	5	0	----
TAYLOR	0	0	0	0	0	0	0	0	0	----
UNION	0	0	0	0	0	0	0	0	0	----
VOLUSIA	21	5	2	2	0	1	0	16	0	6.9
WAKULLA	1	0	0	0	0	0	0	1	0	----
WALTON	2	0	0	0	0	0	0	2	0	----
WASHINGTON	3	0	0	0	0	0	0	3	0	----

TABLE F-7: RESIDENT INFANT, NEONATAL AND POST-NEONATAL DEATHS FROM SELECTED CAUSES*
BY RACE, FLORIDA, 2014

	TOTAL			POST NEO- NATAL	WHITE			POST NEO- NATAL
	NEONATAL		INFANT		NEONATAL		INFANT	
	<1 DAY	1-27 DAYS			<1 DAY	1-27 DAYS		
TOTAL	1,327	495	398	434	688	254	209	225
Intestinal Infectious Disease	2	0	0	2	2	0	0	2
Diarrhea & Gastroenteritis--Infectious Origin	16	0	0	16	10	0	0	10
Tuberculosis	0	0	0	0	0	0	0	0
Tetanus	0	0	0	0	0	0	0	0
Diphtheria	0	0	0	0	0	0	0	0
Whooping Cough	0	0	0	0	0	0	0	0
Meningococcal Infection	0	0	0	0	0	0	0	0
Septicemia	11	0	0	11	5	0	0	5
Congenital Syphilis	0	0	0	0	0	0	0	0
Gonococcal Infection	0	0	0	0	0	0	0	0
Acute Poliomyelitis	0	0	0	0	0	0	0	0
Varicella (Chicken Pox)	0	0	0	0	0	0	0	0
Measles	0	0	0	0	0	0	0	0
HIV Disease	0	0	0	0	0	0	0	0
Mumps	0	0	0	0	0	0	0	0
Other & Unspec Viral Diseases	6	0	1	5	0	0	0	0
Candidiasis	0	0	0	0	0	0	0	0
Malaria	0	0	0	0	0	0	0	0
Pneumocystosis	0	0	0	0	0	0	0	0
Other & Unspecified Infectious & Parasitic Diseases	1	0	0	1	0	0	0	0
Hodgkins Disease & Non-Hodgkins Lymphomas	0	0	0	0	0	0	0	0
Leukemia	0	0	0	0	0	0	0	0
Other & Unspecified Malignant Neoplasm	1	0	0	1	1	0	0	1
In Situ/Benign/Malignant Neoplasms Uncert/Unk Behavior	5	0	3	2	3	0	1	2
Anemias	0	0	0	0	0	0	0	0
Blood, Blood-Forming, Hemorrhagic Diseases	4	0	2	2	2	0	0	2
Disorders Involving Immune Mechanism	0	0	0	0	0	0	0	0
Short Stature	0	0	0	0	0	0	0	0
Nutritional Deficiencies	0	0	0	0	0	0	0	0
Cystic Fibrosis	0	0	0	0	0	0	0	0
Fluid/Electrolyte/Acid-Base/Volume Depletion Disorders	2	0	1	1	1	0	1	0
Other Endocrine, Nutritional, Metabolic Diseases	3	0	2	1	3	0	2	1
Meningitis	3	0	1	2	3	0	1	2
Infantile Spinal Muscular Atrophy, Type 1 (Werdnig-Hoffman)	0	0	0	0	0	0	0	0
Infantile Cerebral Palsy	0	0	0	0	0	0	0	0
Anoxic Brain Damage	0	0	0	0	0	0	0	0
Other Nervous System Diseases	10	0	1	9	9	0	1	8
Ear & Mastoid Process Diseases	0	0	0	0	0	0	0	0
Pulmonary Heart/Circulation Diseases	10	0	0	10	6	0	0	6
Pericarditis, Endocarditis, Myocarditis	1	0	0	1	0	0	0	0
Cardiomyopathy	7	0	1	6	5	0	1	4
Cardiac Arrest	1	0	0	1	0	0	0	0
Cerebrovascular Diseases	7	0	0	7	4	0	0	4
Other Circulatory System Diseases	7	0	2	5	4	0	2	2
Acute Upper Respiratory Infections	0	0	0	0	0	0	0	0
Influenza	0	0	0	0	0	0	0	0

TABLE F-7 (Cont.): RESIDENT INFANT, NEONATAL AND POST-NEONATAL DEATHS FROM SELECTED CAUSES*, BY RACE, FLORIDA, 2014

	TOTAL			POST NEO- NATAL	WHITE			POST NEO- NATAL
	NEONATAL		INFANT		NEONATAL		INFANT	
	<1 DAY	1-27 DAYS			<1 DAY	1-27 DAYS		
Pneumonia	12	0	0	12	5	0	0	5
Acute Bronchitis & Acute Bronchiolitis	1	0	0	1	1	0	0	1
Bronchitis, Chronic & Unspecified	2	0	0	2	1	0	0	1
Asthma	0	0	0	0	0	0	0	0
Pneumonitis Due to Solids & Liquids	0	0	0	0	0	0	0	0
Other & Unspecified Respiratory System Diseases	18	0	0	18	5	0	0	5
Gastritis, Duodenitis, Noninfective Enteritis/Colitis	1	0	0	1	0	0	0	0
Hernia Abdom Cavity & Intestinal Obstruct W/O Hernia	1	0	1	0	0	0	0	0
Other & Unspec Digestive System Disease	5	0	0	5	1	0	0	1
Renal Failure & Other Kidney Disorders	12	1	7	4	6	0	4	2
Other & Unspec Genitourinary System Dis	3	0	2	1	2	0	1	1
PERINATAL PERIOD CONDITIONS	677	413	252	12	327	201	119	7
Maternal Hypertensive Disorders	6	5	0	1	4	3	0	1
Maternal Conditions Unrelated Present Pregnancy	7	5	2	0	2	2	0	0
Incompetent Cervix	36	33	3	0	15	14	1	0
Premature Rupture of Membranes	42	38	4	0	18	16	2	0
Multiple Pregnancy	6	6	0	0	0	0	0	0
Maternal Complications of Pregnancy	11	7	4	0	7	4	3	0
Placenta Complications	29	23	6	0	24	19	5	0
Cord Complications	2	2	0	0	2	2	0	0
Chorioamnionitis	37	29	8	0	17	13	4	0
Other & Unspecified Membrane Abnormalities	0	0	0	0	0	0	0	0
Other Complications of Labor & Delivery	11	9	2	0	5	4	1	0
Noxious Influences Via Placenta or Breast Milk	3	2	1	0	2	1	1	0
Slow Fetal Growth & Fetal Malnutrition	5	3	2	0	1	1	0	0
Extreme Low Birth Weight or Extreme Immaturity	145	129	14	2	70	63	6	1
Other Low Birth Weight or Preterm	54	47	6	1	22	19	2	1
Long Gestation & High Birth Weight	0	0	0	0	0	0	0	0
Birth Trauma	0	0	0	0	0	0	0	0
Intrauterine Hypoxia	17	3	14	0	10	2	8	0
Birth Asphyxia	8	5	3	0	6	3	3	0
Respiratory Distress	33	11	21	1	17	5	11	1
Congenital Pneumonia	3	0	3	0	1	0	1	0
Neonatal Aspiration Syndromes	3	0	3	0	3	0	3	0
Interstitial Emphysema & Related Conditions	6	2	4	0	2	0	2	0
Pulmonary Hemorrhage	10	1	9	0	2	0	2	0
Chronic Respiratory Disease	1	0	0	1	0	0	0	0
Atelectasis	21	16	5	0	9	7	2	0
Other Respiratory Conditions	2	1	1	0	2	1	1	0
Bacterial Sepsis	50	11	37	2	21	7	12	2
Omphalitis With or Without Hemorrhage	0	0	0	0	0	0	0	0
All Other Infections	5	0	5	0	2	0	2	0
Neonatal Hemorrhage	27	1	25	1	16	0	16	0
Hemorrhagic Disease of Newborn	0	0	0	0	0	0	0	0
Hemolytic Dis Due to Isoimmunization/Perinat Jaundice	1	1	0	0	1	1	0	0
Hematological Disorders	5	1	4	0	2	0	2	0
Diabetes Mellitus, Maternal or Neonatal	0	0	0	0	0	0	0	0
Necrotizing Enterocolitis	27	0	26	1	9	0	9	0

TABLE F-7 (Cont.): RESIDENT INFANT, NEONATAL AND POST-NEONATAL DEATHS FROM SELECTED CAUSES*, BY RACE, FLORIDA, 2014

	TOTAL			POST NEO- NATAL	WHITE			POST NEO- NATAL
	NEONATAL		INFANT		NEONATAL		INFANT	
	<1 DAY	1-27 DAYS			<1 DAY	1-27 DAYS		
Hydrops Fetalis Not Due To Hemolytic Dis	9	5	4	0	6	2	4	0
Other Perinatal Conditions	55	17	36	2	29	12	16	1
CONGENITAL / CHROMOSOMAL ANOMALIES	252	73	98	81	155	48	59	48
Anencephaly & Similar Anomalies	22	15	7	0	9	6	3	0
Congenital Hydrocephalus	4	0	3	1	4	0	3	1
Spina Bifida	1	1	0	0	1	1	0	0
Other Cong Malf Nervous System	9	4	3	2	7	4	2	1
Congenital Malf of Heart	56	6	23	27	31	5	11	15
Other Congenital Malf of Circulatory Sys	8	0	5	3	5	0	3	2
Congenital Malf of Respiratory Sys	18	9	9	0	12	5	7	0
Congenital Anomalies of Digestive Sys	1	1	0	0	1	1	0	0
Congenital Malf of Genitourinary Sys	32	13	13	6	23	11	9	3
Congenital Malf of Musculoskeletal Sys	23	6	12	5	13	6	4	3
Downs Syndrome	5	2	0	3	2	0	0	2
Edwards Syndrome	34	6	11	17	20	2	7	11
Patau Syndrome	13	2	7	4	10	2	6	2
Other Congenital Malf	21	8	4	9	15	5	3	7
Other Chromosomal Abnorm	5	0	1	4	2	0	1	1
Sudden Infant Death Syndrome	56	0	3	53	27	0	2	25
Symptoms, Signs, Abn Clinical/Lab Findings	57	6	11	40	25	3	6	16
All Other Diseases	0	0	0	0	0	0	0	0
Unint Inj: Motor Vehicle	9	0	1	8	6	0	1	5
Unint Inj: Other & Unspecified Transport	0	0	0	0	0	0	0	0
Unint Inj: Falls	1	0	0	1	0	0	0	0
Unint Inj: Firearms Discharge	1	1	0	0	1	1	0	0
Unint Inj: Drowning & Submersion	2	0	0	2	2	0	0	2
Unint Inj: Suffocation & Strangulation in Bed	89	0	8	81	49	0	7	42
Unint Inj: Other Suffocation & Strangulation	9	0	0	9	4	0	0	4
Unint Inj: Inhale/Ingest--Respiratory Tract Obstruction	1	0	1	0	1	0	1	0
Unint Inj: Smoke, Fire, Flames Exposure	1	0	0	1	1	0	0	1
Unint Inj: Poisoning & Noxious Substance Exposure	0	0	0	0	0	0	0	0
Unint Inj: Other & Unspecified	6	0	0	6	3	0	0	3
Homicide: Hanging, Strangulation, Suffocation	2	0	0	2	2	0	0	2
Homicide: Firearms Discharge	1	0	0	1	1	0	0	1
Homicide: Neglect, Abandonment, Maltreatment	4	1	0	3	2	1	0	1
Homicide: Other & Unspecified Means	5	0	0	5	2	0	0	2
Medical & Surgical Care Complications	2	0	0	2	1	0	0	1
Other External Causes	0	0	0	0	0	0	0	0

* ICD-10 codes associated with each cause of death group are presented on pages (xiv-xvi).

TABLE F-7 (Cont.): RESIDENT INFANT, NEONATAL AND POST-NEONATAL DEATHS FROM SELECTED CAUSES*,
BY RACE, FLORIDA, 2014

	BLACK			POST NEO- NATAL	OTHER			POST NEO- NATAL
	NEONATAL		INFANT		NEONATAL		INFANT	
	<1 DAY	1-27 DAYS			<1 DAY	1-27 DAYS		
TOTAL	538	200	163	175	95	37	25	33
Intestinal Infectious Disease	0	0	0	0	0	0	0	0
Diarrhea & Gastroenteritis--Infectious Origin	6	0	0	6	0	0	0	0
Tuberculosis	0	0	0	0	0	0	0	0
Tetanus	0	0	0	0	0	0	0	0
Diphtheria	0	0	0	0	0	0	0	0
Whooping Cough	0	0	0	0	0	0	0	0
Meningococcal Infection	0	0	0	0	0	0	0	0
Septicemia	6	0	0	6	0	0	0	0
Congenital Syphilis	0	0	0	0	0	0	0	0
Gonococcal Infection	0	0	0	0	0	0	0	0
Acute Poliomyelitis	0	0	0	0	0	0	0	0
Varicella (Chicken Pox)	0	0	0	0	0	0	0	0
Measles	0	0	0	0	0	0	0	0
HIV Disease	0	0	0	0	0	0	0	0
Mumps	0	0	0	0	0	0	0	0
Other & Unspec Viral Diseases	5	0	1	4	1	0	0	1
Candidiasis	0	0	0	0	0	0	0	0
Malaria	0	0	0	0	0	0	0	0
Pneumocystosis	0	0	0	0	0	0	0	0
Other & Unspecified Infectious & Parasitic Diseases	1	0	0	1	0	0	0	0
Hodgkins Disease & Non-Hodgkins Lymphomas	0	0	0	0	0	0	0	0
Leukemia	0	0	0	0	0	0	0	0
Other & Unspecified Malignant Neoplasm	0	0	0	0	0	0	0	0
In Situ/Benign/Malignant Neoplasms Uncert/Unk Behavior	2	0	2	0	0	0	0	0
Anemias	0	0	0	0	0	0	0	0
Blood, Blood-Forming, Hemorrhagic Diseases	2	0	2	0	0	0	0	0
Disorders Involving Immune Mechanism	0	0	0	0	0	0	0	0
Short Stature	0	0	0	0	0	0	0	0
Nutritional Deficiencies	0	0	0	0	0	0	0	0
Cystic Fibrosis	0	0	0	0	0	0	0	0
Fluid/Electrolyte/Acid-Base/Volume Depletion Disorders	1	0	0	1	0	0	0	0
Other Endocrine, Nutritional, Metabolic Diseases	0	0	0	0	0	0	0	0
Meningitis	0	0	0	0	0	0	0	0
Infantile Spinal Muscular Atrophy, Type 1 (Werdnig-Hoffman)	0	0	0	0	0	0	0	0
Infantile Cerebral Palsy	0	0	0	0	0	0	0	0
Anoxic Brain Damage	0	0	0	0	0	0	0	0
Other Nervous System Diseases	0	0	0	0	1	0	0	1
Ear & Mastoid Process Diseases	0	0	0	0	0	0	0	0
Pulmonary Heart/Circulation Diseases	4	0	0	4	0	0	0	0
Pericarditis, Endocarditis, Myocarditis	1	0	0	1	0	0	0	0
Cardiomyopathy	2	0	0	2	0	0	0	0
Cardiac Arrest	1	0	0	1	0	0	0	0
Cerebrovascular Diseases	2	0	0	2	1	0	0	1
Other Circulatory System Diseases	3	0	0	3	0	0	0	0
Acute Upper Respiratory Infections	0	0	0	0	0	0	0	0
Influenza	0	0	0	0	0	0	0	0

TABLE F-7 (Cont.): RESIDENT INFANT, NEONATAL AND POST-NEONATAL DEATHS FROM SELECTED CAUSES*,
BY RACE, FLORIDA, 2014

	BLACK			POST NEO- NATAL	OTHER			POST NEO- NATAL
	NEONATAL		INFANT		NEONATAL		INFANT	
	<1 DAY	1-27 DAYS			<1 DAY	1-27 DAYS		
Pneumonia	6	0	0	6	1	0	0	1
Acute Bronchitis & Acute Bronchiolitis	0	0	0	0	0	0	0	0
Bronchitis, Chronic & Unspecified	0	0	0	0	1	0	0	1
Asthma	0	0	0	0	0	0	0	0
Pneumonitis Due to Solids & Liquids	0	0	0	0	0	0	0	0
Other & Unspecified Respiratory System Diseases	12	0	0	12	0	0	0	0
Gastritis, Duodenitis, Noninfective Enteritis/Colitis	1	0	0	1	0	0	0	0
Hernia Abdom Cavity & Intestinal Obstruct W/O Hernia	1	0	1	0	0	0	0	0
Other & Unspec Digestive System Disease	3	0	0	3	1	0	0	1
Renal Failure & Other Kidney Disorders	6	1	3	2	0	0	0	0
Other & Unspec Genitourinary System Dis	1	0	1	0	0	0	0	0
PERINATAL PERIOD CONDITIONS	300	179	117	4	46	30	15	1
Maternal Hypertensive Disorders	2	2	0	0	0	0	0	0
Maternal Conditions Unrelated Present Pregnancy	4	2	2	0	1	1	0	0
Incompetent Cervix	18	16	2	0	3	3	0	0
Premature Rupture of Membranes	21	19	2	0	2	2	0	0
Multiple Pregnancy	4	4	0	0	2	2	0	0
Maternal Complications of Pregnancy	3	2	1	0	1	1	0	0
Placenta Complications	5	4	1	0	0	0	0	0
Cord Complications	0	0	0	0	0	0	0	0
Chorioamnionitis	18	14	4	0	2	2	0	0
Other & Unspecified Membrane Abnormalities	0	0	0	0	0	0	0	0
Other Complications of Labor & Delivery	5	4	1	0	1	1	0	0
Noxious Influences Via Placenta or Breast Milk	1	1	0	0	0	0	0	0
Slow Fetal Growth & Fetal Malnutrition	2	0	2	0	2	2	0	0
Extreme Low Birth Weight or Extreme Immaturity	67	58	8	1	7	7	0	0
Other Low Birth Weight or Preterm	29	25	4	0	2	2	0	0
Long Gestation & High Birth Weight	0	0	0	0	0	0	0	0
Birth Trauma	0	0	0	0	0	0	0	0
Intrauterine Hypoxia	6	0	6	0	1	1	0	0
Birth Asphyxia	1	1	0	0	1	1	0	0
Respiratory Distress	13	6	7	0	3	0	3	0
Congenital Pneumonia	2	0	2	0	0	0	0	0
Neonatal Aspiration Syndromes	0	0	0	0	0	0	0	0
Interstitial Emphysema & Related Conditions	3	2	1	0	1	0	1	0
Pulmonary Hemorrhage	6	1	5	0	2	0	2	0
Chronic Respiratory Disease	1	0	0	1	0	0	0	0
Atelectasis	11	8	3	0	1	1	0	0
Other Respiratory Conditions	0	0	0	0	0	0	0	0
Bacterial Sepsis	24	2	22	0	5	2	3	0
Omphalitis With or Without Hemorrhage	0	0	0	0	0	0	0	0
All Other Infections	3	0	3	0	0	0	0	0
Neonatal Hemorrhage	8	1	6	1	3	0	3	0
Hemorrhagic Disease of Newborn	0	0	0	0	0	0	0	0
Hemolytic Dis Due to Isoimmunization/Perinat Jaundice	0	0	0	0	0	0	0	0
Hematological Disorders	2	1	1	0	0	0	0	0
Diabetes Mellitus, Maternal or Neonatal	0	0	0	0	0	0	0	0
Necrotizing Enterocolitis	16	0	15	1	2	0	2	0

TABLE F-7 (Cont.): RESIDENT INFANT, NEONATAL AND POST-NEONATAL DEATHS FROM SELECTED CAUSES*, BY RACE, FLORIDA, 2014

	BLACK			POST NEO- NATAL	OTHER			POST NEO- NATAL
	NEONATAL		INFANT		NEONATAL		INFANT	
	<1 DAY	1-27 DAYS			<1 DAY	1-27 DAYS		
Hydrops Fetalis Not Due To Hemolytic Dis	1	1	0	0	2	2	0	0
Other Perinatal Conditions	24	5	19	0	2	0	1	1
CONGENITAL / CHROMOSOMAL ANOMALIES	75	18	30	27	21	6	9	6
Anencephaly & Similar Anomalies	8	6	2	0	4	2	2	0
Congenital Hydrocephalus	0	0	0	0	0	0	0	0
Spina Bifida	0	0	0	0	0	0	0	0
Other Cong Malf Nervous System	2	0	1	1	0	0	0	0
Congenital Malf of Heart	22	0	11	11	3	1	1	1
Other Congenital Malf of Circulatory Sys	1	0	1	0	2	0	1	1
Congenital Malf of Respiratory Sys	4	3	1	0	2	1	1	0
Congenital Anomalies of Digestive Sys	0	0	0	0	0	0	0	0
Congenital Malf of Genitourinary Sys	7	2	3	2	2	0	1	1
Congenital Malf of Musculoskeletal Sys	7	0	5	2	3	0	3	0
Downs Syndrome	3	2	0	1	0	0	0	0
Edwards Syndrome	10	2	4	4	4	2	0	2
Patau Syndrome	2	0	1	1	1	0	0	1
Other Congenital Malf	6	3	1	2	0	0	0	0
Other Chromosomal Abnorm	3	0	0	3	0	0	0	0
Sudden Infant Death Syndrome	22	0	1	21	7	0	0	7
Symptoms, Signs, Abn Clinical/Lab Findings	28	2	4	22	4	1	1	2
All Other Diseases	0	0	0	0	0	0	0	0
Unint Inj: Motor Vehicle	2	0	0	2	1	0	0	1
Unint Inj: Other & Unspecified Transport	0	0	0	0	0	0	0	0
Unint Inj: Falls	1	0	0	1	0	0	0	0
Unint Inj: Firearms Discharge	0	0	0	0	0	0	0	0
Unint Inj: Drowning & Submersion	0	0	0	0	0	0	0	0
Unint Inj: Suffocation & Strangulation in Bed	33	0	1	32	7	0	0	7
Unint Inj: Other Suffocation & Strangulation	4	0	0	4	1	0	0	1
Unint Inj: Inhale/Ingest--Respiratory Tract Obstruction	0	0	0	0	0	0	0	0
Unint Inj: Smoke, Fire, Flames Exposure	0	0	0	0	0	0	0	0
Unint Inj: Poisoning & Noxious Substance Exposure	0	0	0	0	0	0	0	0
Unint Inj: Other & Unspecified	2	0	0	2	1	0	0	1
Homicide: Hanging, Strangulation, Suffocation	0	0	0	0	0	0	0	0
Homicide: Firearms Discharge	0	0	0	0	0	0	0	0
Homicide: Neglect, Abandonment, Maltreatment	1	0	0	1	1	0	0	1
Homicide: Other & Unspecified Means	3	0	0	3	0	0	0	0
Medical & Surgical Care Complications	1	0	0	1	0	0	0	0
Other External Causes	0	0	0	0	0	0	0	0

* ICD-10 codes associated with each cause of death group are presented on pages (xiv-xvi).