

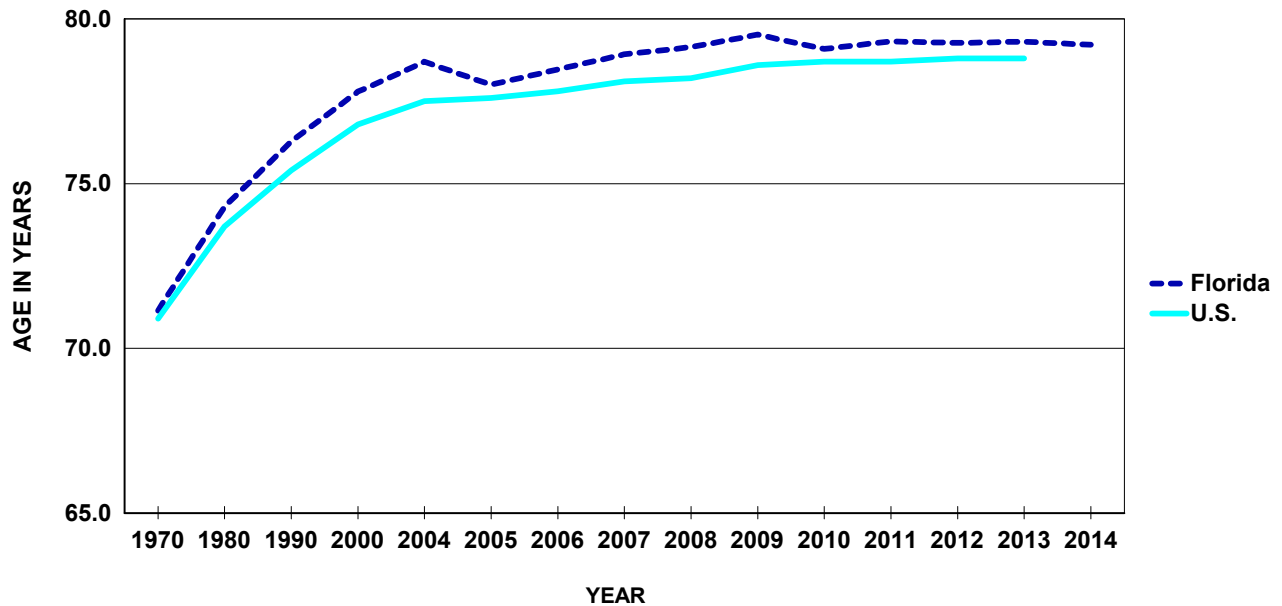
Population

CHART P-1: YEARS OF LIFE EXPECTANCY AT BIRTH, BY RACE, ETHNICITY, AND GENDER, FOR FLORIDA RESIDENTS AND UNITED STATES, CENSUS YEARS 1970-2000 AND 2004-2014

YEAR	FLORIDA								UNITED STATES			
	TOTAL	WHITE ¹		BLACK ¹		HISPANIC ²		TOTAL	WHITE ¹	BLACK ¹	HISPANIC ²	
		MALE	FEMALE	MALE	FEMALE	MALE	FEMALE					
1970	71.1	68.5	77.0	59.1	68.7	NA	NA	70.9	71.1	NA	NA	
1980	74.3	71.2	79.4	63.2	72.8	NA	NA	73.7	74.4	68.0	NA	
1990	76.3	73.5	81.1	64.4	73.8	NA	NA	75.4	76.1	69.1	NA	
2000	77.8	75.5	81.5	69.6	75.7	NA	NA	76.8	77.3	71.8	NA	
2004	78.7	76.4	81.9	71.1	76.9	79.4	84.8	77.5	77.9	72.8	NA	
2005	78.0	75.5	81.5	70.7	76.8	77.5	84.2	77.6	78.0	73.0	NA	
2006	78.5	75.9	82.0	71.4	77.3	78.4	84.7	77.8	78.3	73.4	80.3	
2007	78.9	76.4	82.4	71.7	78.2	78.6	85.4	78.1	78.5	73.8	80.7	
2008	79.1	76.5	82.5	72.5	78.9	79.3	85.3	78.2	78.5	74.3	80.8	
2009	79.5	76.9	82.8	73.1	79.1	79.7	86.0	78.6	78.8	74.7	81.1	
2010	79.1	76.6	82.2	73.6	79.1	80.5	86.0	78.7	78.9	75.1	81.2	
2011	79.3	76.9	82.4	74.1	79.7	80.7	86.1	78.7	79.0	75.3	81.4	
2012	79.3	76.9	82.2	74.3	80.2	80.1	85.2	78.8	79.1	75.5	81.6	
2013	79.3	77.0	82.2	74.5	80.2	80.5	85.3	78.8	79.1	75.5	81.8	
2014	79.2	76.8	82.2	74.8	80.3	80.0	85.4	NA	NA	NA	NA	

1. Regardless of ethnicity.
2. Regardless of race

GRAPH P-1: YEARS OF LIFE EXPECTANCY AT BIRTH, FLORIDA AND UNITED STATES, CENSUS YEARS 1970-2000 AND 2004-2014



**CHART P-2: NATURAL INCREASE* IN POPULATION,
BY RACE, FLORIDA 2004-2014**

YEAR	TOTAL	WHITE	BLACK	OTHER
2004	49,681	10,917	28,939	9,452
2005	55,919	16,079	29,953	9,552
2006	67,801	25,153	32,494	9,858
2007	71,412	27,292	33,308	10,396
2008	60,944	17,521	33,076	9,870
2009	51,537	9,996	32,220	8,714
2010	42,010	1,891	30,938	8,243
2011	40,381	171	30,470	9,210
2012	37,105	-3,177	30,121	9,578
2013	35,179	-3,948	29,305	9,029
2014	34,867	-4,483	29,163	9,256

*Resident Live Births minus Resident Deaths.

**GRAPH P-2: PERCENT DISTRIBUTION OF RACE-SPECIFIC POPULATION
BY AGE GROUPS, FLORIDA, 2014**

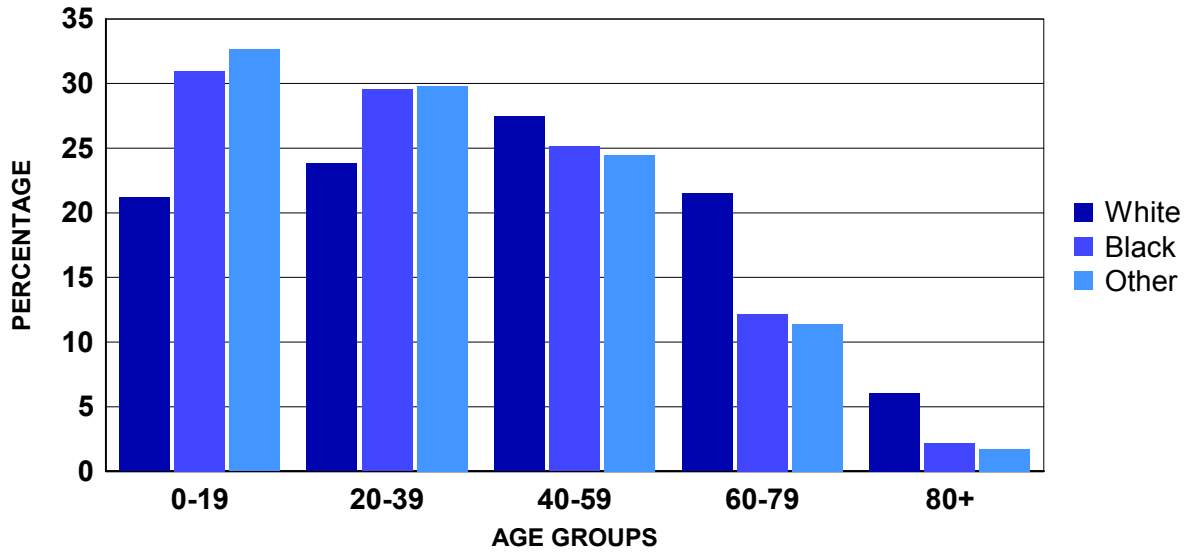


CHART P-3: RESIDENT MIDYEAR POPULATION ESTIMATES, BY AGE, RACE AND GENDER, FLORIDA, 2014

AGE GROUP	WHITE			BLACK			OTHER			
	TOTAL	TOTAL	MALE	FEMALE	TOTAL	MALE	FEMALE	TOTAL	MALE	FEMALE
TOTAL	19,548,031	15,286,521	7,504,627	7,781,894	3,263,817	1,572,592	1,691,225	997,693	478,350	519,343
<1 ¹	217,026	155,989	80,236	75,753	48,454	24,521	23,933	12,583	6,414	6,169
1-4 ²	886,618	610,178	310,818	299,360	201,103	102,910	98,193	75,337	38,332	37,005
5-9	1,132,972	796,345	406,842	389,503	251,670	127,884	123,786	84,957	42,809	42,148
10-14	1,146,040	813,969	416,722	397,247	251,979	127,278	124,701	80,092	39,929	40,163
15-19	1,192,611	862,862	441,791	421,071	257,126	129,351	127,775	72,623	36,420	36,203
20-24	1,312,024	953,542	490,656	462,886	278,889	140,865	138,024	79,593	40,243	39,350
25-29	1,247,007	925,447	475,243	450,204	246,948	122,140	124,808	74,612	36,866	37,746
30-34	1,201,455	899,598	456,310	443,288	228,489	109,744	118,745	73,368	35,014	38,354
35-39	1,140,351	860,748	434,585	426,163	209,702	99,226	110,476	69,901	33,044	36,857
40-44	1,205,376	928,185	464,520	463,665	210,001	99,041	110,960	67,190	31,056	36,134
45-49	1,281,100	1,011,358	505,772	505,586	208,222	99,189	109,033	61,520	28,717	32,803
50-54	1,418,759	1,146,363	565,974	580,389	211,938	100,143	111,795	60,458	27,743	32,715
55-59	1,354,519	1,109,356	536,504	572,852	190,322	88,207	102,115	54,841	24,765	30,076
60-64	1,220,417	1,025,216	483,852	541,364	150,608	68,787	81,821	44,593	19,847	24,746
65-69	1,092,477	948,531	445,498	503,033	111,478	49,718	61,760	32,468	14,422	18,046
70-74	859,148	758,170	352,544	405,626	78,907	34,168	44,739	22,071	9,864	12,207
75-79	624,276	553,732	253,553	300,179	56,026	23,604	32,422	14,518	6,272	8,246
80-84	518,427	469,679	208,184	261,495	38,993	15,118	23,875	9,755	3,990	5,765
85+	497,428	457,253	175,023	282,230	32,962	10,698	22,264	7,213	2,603	4,610

Source: The Florida Legislature, Office of Economic and Demographic Research, July 1 estimates or births and infant deaths from the Bureau of Vital Statistics.

1. The <1 age group is number of births minus infant deaths obtained when in-state births and infant deaths were finalized plus the number of out-of-state births minus infant deaths from the previous calendar year. When the estimate of individuals <1 in a county exceeds the 0-4 population estimate from the Office of Economic and Demographic Research for the county, then the county's total 0-4 population estimate is reallocated based on the proportion of individuals <1 in each race, ethnic, gender group in relation to the total number who are <1 in the county. A final adjustment may have been made to the <1 estimate to ensure that the sum of the <1, 1, 2, 3, and 4 age groups total to the county's 0-4 population estimate.

2. The 1-4 age group for each county is the Office of Economic and Demographic Research 0-4 age group estimate minus the <1 age group estimate described in the previous footnote. A final adjustment may have been made to the 1-4 estimate to ensure that the sum of the <1, 1, 2, 3, and 4 age groups total to the county's 0-4 population estimate.

**CHART P-4: RESIDENT MIDYEAR POPULATION ESTIMATES, BY RACE AND GENDER, FLORIDA,
CENSUS YEARS 1970-1990 AND 1995-2014**

YEAR	TOTAL	WHITE			BLACK			OTHER		
		TOTAL	MALE	FEMALE	TOTAL	MALE	FEMALE	TOTAL	MALE	FEMALE
1970	6,851,176	5,775,400	2,791,845	2,983,555	1,047,244	501,598	545,646	28,532	13,990	14,542
1980	9,840,317	8,389,968	4,031,868	4,358,100	1,366,808	649,110	717,698	83,541	39,070	44,471
1990	13,029,114	11,040,436	5,358,366	5,682,070	1,790,653	854,838	935,815	198,025	94,610	103,415
1995	14,405,514	11,995,367	5,846,164	6,149,203	2,124,830	1,020,988	1,103,842	285,317	135,304	150,013
1996	14,701,293	12,205,330	5,957,258	6,248,072	2,191,834	1,053,895	1,137,939	304,129	144,321	159,808
1997	15,011,697	12,422,254	6,070,358	6,351,896	2,265,376	1,089,602	1,175,774	324,067	153,464	170,603
1998	15,309,968	12,633,341	6,177,496	6,455,845	2,334,494	1,122,859	1,211,635	342,133	162,015	180,118
1999	15,679,606	12,903,840	6,313,637	6,590,203	2,412,203	1,160,236	1,251,967	363,563	173,549	190,014
2000	16,074,896	13,200,518	6,461,066	6,739,452	2,487,562	1,196,463	1,291,099	386,816	186,108	200,708
2001	16,384,860	13,308,708	6,517,402	6,791,306	2,506,652	1,203,991	1,302,661	569,500	274,650	294,850
2002	16,718,033	13,530,669	6,628,652	6,902,017	2,577,689	1,238,065	1,339,624	609,675	294,751	314,924
2003	17,074,368	13,771,781	6,751,592	7,020,189	2,650,445	1,273,337	1,377,108	652,142	313,870	338,272
2004	17,476,489	14,047,501	6,893,166	7,154,335	2,732,636	1,312,932	1,419,704	696,352	334,256	362,096
2005	17,876,663	14,314,124	7,027,973	7,286,151	2,818,056	1,353,355	1,464,701	744,483	357,294	387,189
2006	18,237,596	14,539,520	7,142,191	7,397,329	2,904,545	1,395,616	1,508,929	793,531	381,434	412,097
2007	18,500,958	14,695,237	7,223,143	7,472,094	2,970,749	1,428,525	1,542,224	834,972	400,760	434,212
2008	18,636,837	14,747,636	7,244,354	7,503,282	3,019,761	1,452,221	1,567,540	869,440	416,260	453,180
2009	18,711,844	14,762,048	7,248,318	7,513,730	3,049,814	1,466,943	1,582,871	899,982	431,386	468,596
2010	18,820,278	14,815,082	7,276,743	7,538,339	3,083,154	1,483,295	1,599,859	922,042	442,190	479,852
2011	18,934,175	14,866,474	7,305,024	7,561,450	3,117,755	1,501,281	1,616,474	949,946	454,730	495,216
2012	19,042,458	14,930,936	7,331,419	7,599,517	3,150,349	1,517,653	1,632,696	961,173	460,322	500,851
2013	19,318,859	15,122,965	7,425,559	7,697,406	3,212,321	1,547,688	1,664,633	983,573	471,324	512,249
2014	19,548,031	15,286,521	7,504,627	7,781,894	3,263,817	1,572,592	1,691,225	997,693	478,350	519,343

Source: The Florida Legislature, Office of Economic and Demographic Research

**CHART P-5: RESIDENT MIDYEAR POPULATION ESTIMATES, BY AGE GROUPS, FLORIDA,
CENSUS YEARS 1970-1990 AND 1995-2014**

YEAR	AGE GROUP											
	TOTAL	<1 ¹	1-4 ²	5-14	15-24	25-34	35-44	45-54	55-64	65-74	75-84	85+
1970	6,851,176	112,644	391,737	1,251,059	1,093,338	768,900	748,346	767,772	713,958	656,231	289,759	57,432
1980	9,840,317	129,893	448,565	1,310,351	1,630,632	1,438,555	1,051,361	994,915	1,131,187	1,067,585	517,689	119,584
1990	13,029,114	197,234	687,549	1,577,347	1,679,321	2,125,870	1,830,009	1,291,371	1,266,366	1,372,242	792,709	209,096
1995	14,405,514	187,132	748,894	1,876,511	1,709,090	2,125,881	2,176,563	1,650,994	1,286,878	1,463,428	906,789	273,354
1996	14,701,293	187,933	738,827	1,925,408	1,736,529	2,118,987	2,251,266	1,733,377	1,314,581	1,470,070	939,150	285,165
1997	15,011,697	190,946	733,187	1,968,856	1,782,923	2,103,482	2,321,998	1,817,926	1,365,920	1,465,328	964,172	296,959
1998	15,309,968	194,149	729,556	2,009,851	1,833,426	2,078,343	2,382,246	1,893,110	1,438,765	1,456,934	984,061	309,527
1999	15,679,606	195,521	737,786	2,057,884	1,893,078	2,071,054	2,445,284	1,995,809	1,508,272	1,445,428	1,006,711	322,779
2000	16,074,896	202,607	752,066	2,094,766	1,961,818	2,086,402	2,488,959	2,090,243	1,579,582	1,455,587	1,029,871	332,995
2001	16,384,860	204,733	787,332	2,110,339	2,040,630	2,083,035	2,478,306	2,163,930	1,665,444	1,463,755	1,048,642	338,714
2002	16,718,033	204,486	781,008	2,120,022	2,086,329	2,071,620	2,490,536	2,267,322	1,758,361	1,489,751	1,085,544	363,054
2003	17,074,368	211,257	808,356	2,171,906	2,140,399	2,120,794	2,541,604	2,304,679	1,790,311	1,517,846	1,103,047	364,169
2004	17,476,489	220,922	840,464	2,223,491	2,291,411	2,114,627	2,515,128	2,419,314	1,925,093	1,433,804	1,071,348	420,887
2005	17,876,663	226,176	848,666	2,271,019	2,323,896	2,169,191	2,559,269	2,488,666	1,976,581	1,460,734	1,142,811	409,654
2006	18,237,596	236,579	857,820	2,296,310	2,366,202	2,221,896	2,544,341	2,551,058	2,067,667	1,513,436	1,149,747	432,540
2007	18,500,958	237,193	871,978	2,313,360	2,401,336	2,259,101	2,525,432	2,601,729	2,142,955	1,546,842	1,150,763	450,269
2008	18,636,837	230,660	905,284	2,306,432	2,410,214	2,272,113	2,481,650	2,627,769	2,198,837	1,565,961	1,148,391	489,526
2009	18,711,844	220,233	923,983	2,294,240	2,415,671	2,281,287	2,433,459	2,652,212	2,253,825	1,584,274	1,141,403	511,257
2010	18,820,278	224,098	834,824	2,202,794	2,437,270	2,272,695	2,421,253	2,744,741	2,368,230	1,760,445	1,114,335	439,593
2011	18,934,175	223,227	837,104	2,213,728	2,442,802	2,306,898	2,395,451	2,726,097	2,413,585	1,803,948	1,119,075	452,260
2012	19,042,458	209,035	868,895	2,226,029	2,459,267	2,352,723	2,367,106	2,693,194	2,447,516	1,837,950	1,118,494	462,249
2013	19,318,859	211,231	880,025	2,253,445	2,482,735	2,403,341	2,362,567	2,697,200	2,515,421	1,900,490	1,133,668	478,736
2014	19,548,031	217,026	886,618	2,279,012	2,504,635	2,448,462	2,345,727	2,699,859	2,574,936	1,951,625	1,142,703	497,428

Source: The Florida Legislature, Office of Economic and Demographic Research, July 1 estimates or births and infant deaths from the Bureau of Vital Statistics.

1. The <1 age group is number of births minus infant deaths obtained when in-state births and infant deaths were finalized plus the number of out-of-state births minus infant deaths from the previous calendar year. When the estimate of individuals <1 in a county exceeds the 0-4 population estimate from the Office of Economic and Demographic Research for the county, then the county's total 0-4 population estimate is reallocated based on the proportion of individuals <1 in each race, ethnic, gender group in relation to the total number who are <1 in the county. A final adjustment may have been made to the <1 estimate to ensure that the sum of the <1, 1, 2, 3, and 4 age groups total to the county's 0-4 population estimate.

2. The 1-4 age group for each county is the Office of Economic and Demographic Research 0-4 age group estimate minus the <1 age group estimate described in the previous footnote. A final adjustment may have been made to the 1-4 estimate to ensure that the sum of the <1, 1, 2, 3, and 4 age groups total to the county's

TABLE P-1: RESIDENT MIDYEAR POPULATION ESTIMATES, BY RACE, ETHNICITY, AND COUNTY, FLORIDA, 2014

	TOTAL	RACE			ETHNICITY	
		WHITE	BLACK	OTHER	NON-HISPANIC	HISPANIC
FLORIDA	19,548,031	15,286,521	3,263,817	997,693	14,861,999	4,686,032
ALACHUA	250,697	178,081	51,202	21,414	227,334	23,363
BAKER	27,250	22,722	3,883	645	26,622	628
BAY	171,761	142,121	19,586	10,054	162,161	9,600
BRADFORD	27,460	21,325	5,524	611	26,478	982
BREVARD	554,279	464,795	60,238	29,246	503,347	50,932
BROWARD	1,796,314	1,181,902	506,009	108,403	1,326,068	470,246
CALHOUN	14,728	12,030	2,092	606	13,877	851
CHARLOTTE	164,927	149,253	10,405	5,269	154,259	10,668
CITRUS	142,172	132,566	4,643	4,963	135,016	7,156
CLAY	197,041	162,544	21,496	13,001	180,005	17,036
COLLIER	340,146	305,925	24,033	10,188	245,613	94,533
COLUMBIA	68,146	53,470	12,346	2,330	64,483	3,663
MIAMI-DADE	2,615,410	2,035,173	498,675	81,562	877,748	1,737,662
DESOTO	34,440	28,948	4,452	1,040	23,472	10,968
DIXIE	16,443	14,725	1,349	369	15,812	631
DUVAL	884,814	551,177	267,713	65,924	809,977	74,837
ESCAMBIA	302,421	209,812	71,411	21,198	285,911	16,510
FLAGLER	101,680	84,169	12,652	4,859	91,403	10,277
FRANKLIN	11,623	9,730	1,615	278	11,063	560
GADSDEN	48,080	20,746	26,166	1,168	42,942	5,138
GILCHRIST	17,024	15,726	915	383	16,000	1,024
GLADES	12,786	10,379	1,524	883	9,714	3,072
GULF	16,203	12,909	2,936	358	15,434	769
HAMILTON	14,535	9,398	4,718	419	13,080	1,455
HARDEE	27,683	24,627	2,049	1,007	15,350	12,333
HENDRY	37,935	31,237	5,052	1,646	17,998	19,937
HERNANDO	177,315	160,030	10,886	6,399	156,921	20,394
HIGHLANDS	100,034	86,111	10,177	3,746	80,969	19,065
HILLSBOROUGH	1,302,861	985,859	230,601	86,401	960,315	342,546
HOLMES	20,083	18,082	1,289	712	19,541	542
INDIAN RIVER	141,746	123,341	13,853	4,552	124,105	17,641
JACKSON	50,337	35,260	13,544	1,533	47,855	2,482
JEFFERSON	14,654	9,168	5,207	279	13,977	677
LAFAYETTE	8,687	7,295	1,270	122	7,579	1,108
LAKE	311,196	262,926	33,691	14,579	268,019	43,177
LEE	659,800	575,302	60,073	24,425	525,629	134,171
LEON	280,981	177,031	88,450	15,500	263,525	17,456
LEVY	40,822	35,684	3,937	1,201	37,253	3,569
LIBERTY	8,634	6,834	1,543	257	8,096	538
MADISON	19,514	11,555	7,543	416	18,478	1,036
MANATEE	340,055	294,347	32,221	13,487	283,397	56,658
MARION	341,652	284,180	44,834	12,638	300,345	41,307
MARTIN	150,005	135,529	8,775	5,701	129,086	20,919
MONROE	73,584	66,312	4,739	2,533	57,372	16,212
NASSAU	76,324	68,973	5,174	2,177	73,167	3,157
OKALOOSA	189,540	156,176	18,802	14,562	175,377	14,163
OKEECHOBEE	39,998	35,255	3,358	1,385	29,642	10,356
ORANGE	1,233,793	856,230	273,513	104,050	878,656	355,137
OSCEOLA	299,457	240,494	39,280	19,683	154,215	145,242
PALM BEACH	1,362,383	1,050,206	245,760	66,417	1,079,059	283,324
PASCO	484,641	434,513	26,364	23,764	421,025	63,616
PINELLAS	928,733	774,068	102,598	52,067	844,795	83,938
POLK	626,232	500,822	97,958	27,452	499,348	126,884
PUTNAM	72,611	58,450	12,033	2,128	65,323	7,288
SAINT JOHNS	209,352	187,859	12,599	8,894	196,361	12,991
SAINT LUCIE	287,888	218,125	57,109	12,654	237,057	50,831
SANTA ROSA	160,506	140,818	10,050	9,638	151,542	8,964
SARASOTA	389,911	359,037	19,061	11,813	354,637	35,274
SEMINOLE	436,021	353,428	52,972	29,621	354,852	81,169
SUMTER	110,677	98,384	10,051	2,242	103,845	6,832
SUWANNEE	44,373	37,596	5,430	1,347	39,649	4,724
TAYLOR	23,137	17,593	4,812	732	22,262	875
UNION	15,793	11,869	3,618	306	14,938	855
VOLUSIA	503,179	427,703	55,643	19,833	442,646	60,533
WAKULLA	31,353	25,520	4,859	974	30,084	1,269
WALTON	59,246	52,701	3,850	2,695	55,700	3,546
WASHINGTON	24,925	20,365	3,606	954	24,190	735