

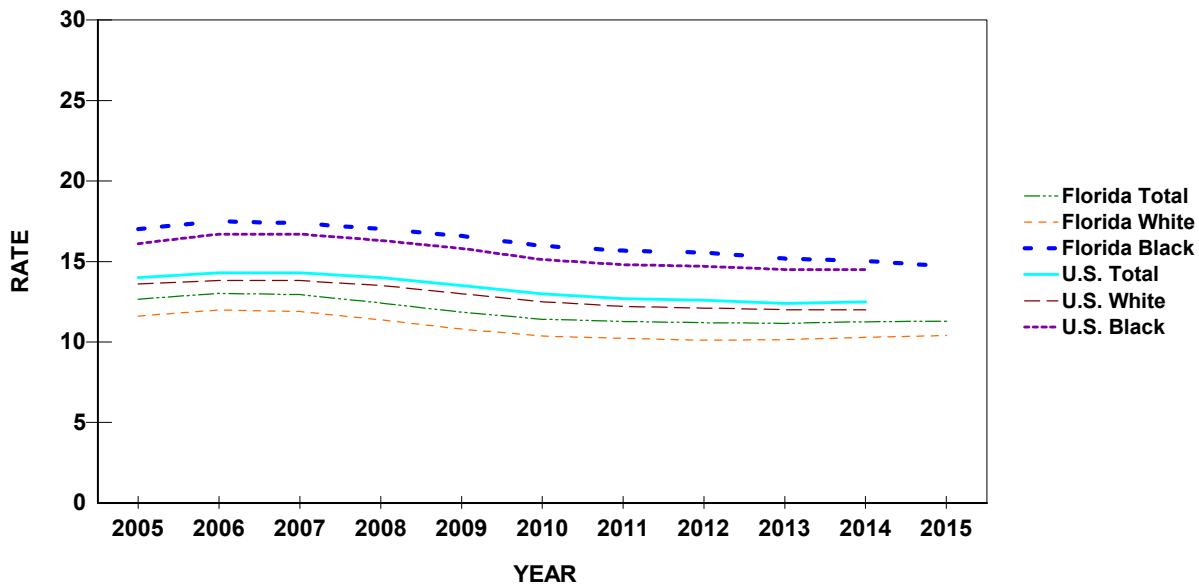
Live Births

**CHART B-1: RESIDENT LIVE BIRTHS AND RATES PER 1,000 POPULATION,
BY RACE*, FLORIDA AND UNITED STATES,
CENSUS YEARS 1970-2000 AND 2005-2015**

YEAR	NUMBER OF BIRTHS -FL				RATES - FL			RATES-U.S.		
	TOTAL	WHITE	BLACK	OTHER	TOTAL	WHITE	BLACK	TOTAL	WHITE	BLACK
1970	115,113	86,941	27,567	586	16.8	15.1	26.3	18.4	17.4	25.1
1980	131,810	97,401	33,127	1,259	13.4	11.6	24.2	15.9	15.1	21.3
1990	199,146	149,743	46,353	2,912	15.3	13.6	25.9	16.7	15.8	22.4
2000	204,030	150,115	47,271	6,351	12.7	11.4	19.0	14.4	13.9	17.0
2005	226,219	166,181	47,957	11,651	12.7	11.6	17.0	14.0	13.6	16.1
2006	237,166	174,147	50,808	11,889	13.0	12.0	17.5	14.3	13.8	16.7
2007	239,120	174,597	51,587	12,503	12.9	11.9	17.4	14.3	13.8	16.7
2008	231,417	167,487	51,362	12,049	12.4	11.4	17.0	14.0	13.5	16.3
2009	221,391	159,186	50,559	11,006	11.8	10.8	16.6	13.5	13.0	15.8
2010	214,519	153,480	49,189	10,716	11.4	10.4	16.0	13.0	12.5	15.1
2011	213,237	152,007	48,838	11,623	11.3	10.2	15.7	12.7	12.2	14.8
2012	212,954	150,866	48,992	12,335	11.2	10.1	15.6	12.6	12.1	14.7
2013	215,194	153,278	48,737	12,213	11.1	10.1	15.2	12.4	12.0	14.5
2014	219,905	156,999	49,059	12,712	11.2	10.3	15.0	12.5	12.0	14.5
2015	224,273	160,830	49,109	13,127	11.3	10.4	14.7	NA	NA	NA

*Data are based on the race of the mother.

GRAPH B-1: RESIDENT LIVE BIRTH RATES PER 1,000 POPULATION, BY RACE OF MOTHER, FLORIDA AND UNITED STATES, 2005-2015



**CHART B-2: RESIDENT LIVE BIRTHS TO MOTHERS 18 YEARS AND UNDER,
BY SINGLE YEARS OF AGE, AND PERCENT OF TOTAL BIRTHS,
BY RACE OF MOTHER, FLORIDA, 1975, 1980, 1985, 1990, 1995, 2000, 2005, 2010 AND 2011-2015**

YEAR	AGE OF MOTHER							18 YEARS & UNDER	
	< 13	13	14	15	16	17	18	NUMBER	PERCENT
TOTAL									
1975	20	145	647	1,798	3,369	4,936	6,482	17,397	16.5
1980	21	98	509	1,537	2,913	4,429	6,299	15,806	12.0
1985	16	105	549	1,407	2,709	4,348	6,139	15,273	9.3
1990	31	138	591	1,661	3,148	5,193	7,544	18,306	9.2
1995	20	128	588	1,583	3,236	5,166	6,971	17,692	9.4
2000	24	95	412	1,213	2,702	4,730	7,094	16,270	8.0
2005	15	59	341	1,036	2,428	4,126	6,797	14,802	6.5
2010	6	54	190	660	1,567	3,171	5,466	11,114	5.2
2011	2	34	158	552	1,422	2,749	4,840	9,757	4.6
2012	6	32	154	497	1,274	2,448	4,474	8,885	4.2
2013	5	27	132	448	1,074	2,176	3,798	7,660	3.6
2014	5	15	122	386	958	1,862	3,590	6,938	3.2
2015	5	17	108	340	906	1,857	3,283	6,516	2.9
WHITE									
1975	5	34	207	693	1,651	2,868	4,078	9,536	12.2
1980	5	24	128	581	1,370	2,434	3,887	8,429	8.7
1985	4	26	168	600	1,439	2,537	3,744	8,518	6.9
1990	8	37	201	693	1,571	2,976	4,636	10,122	6.8
1995	9	32	230	801	1,801	3,124	4,451	10,448	7.4
2000	6	43	167	625	1,512	2,863	4,463	9,679	6.4
2005	7	26	161	567	1,468	2,643	4,452	9,324	5.6
2010	4	24	103	346	915	1,930	3,363	6,685	4.4
2011	2	15	84	295	835	1,597	2,970	5,798	3.8
2012	3	14	78	261	763	1,516	2,815	5,450	3.6
2013	2	9	64	247	641	1,379	2,372	4,714	3.1
2014	3	7	67	210	593	1,192	2,304	4,376	2.8
2015	2	7	55	196	548	1,200	2,174	4,182	2.6
BLACK									
1975	15	111	439	1,101	1,711	2,057	2,387	7,821	29.4
1980	16	74	379	954	1,533	1,986	2,389	7,331	22.1
1985	12	78	379	799	1,259	1,796	2,368	6,691	17.3
1990	22	101	387	953	1,552	2,166	2,847	8,028	17.3
1995	10	96	353	761	1,399	1,973	2,446	7,038	16.7
2000	18	50	238	576	1,148	1,798	2,525	6,353	13.4
2005	8	33	169	426	884	1,354	2,121	4,995	10.4
2010	2	27	81	282	597	1,144	1,910	4,043	8.2
2011	0	17	65	233	530	1,046	1,703	3,594	7.4
2012	3	17	73	218	452	835	1,485	3,083	6.3
2013	2	15	67	181	397	685	1,267	2,614	5.4
2014	2	7	51	153	318	582	1,133	2,246	4.6
2015	3	8	46	128	317	563	967	2,032	4.1
OTHER									
1975	0	0	0	3	6	11	16	36	3.9
1980	0	0	1	2	10	8	23	44	3.5
1985	0	1	2	8	10	15	26	62	3.5
1990	1	0	3	14	22	46	58	144	4.9
1995	1	0	5	21	32	65	73	197	4.4
2000	0	2	6	12	37	64	103	224	3.5
2005	0	0	11	40	74	125	211	461	4.0
2010	0	3	4	26	48	76	169	326	3.0
2011	0	2	7	21	52	99	151	332	2.9
2012	0	1	3	15	54	91	155	319	2.6
2013	1	3	1	19	32	101	138	295	2.4
2014	0	1	4	18	44	71	132	270	2.1
2015	0	2	6	14	34	90	125	271	2.1

**CHART B-3: PERCENT OF RESIDENT LIVE BIRTHS FOR SELECTED BIRTHWEIGHT GROUPS,
BY RACE OF MOTHER AND GENDER OF CHILD, FLORIDA, 1970-2000 AND 2005-2015**

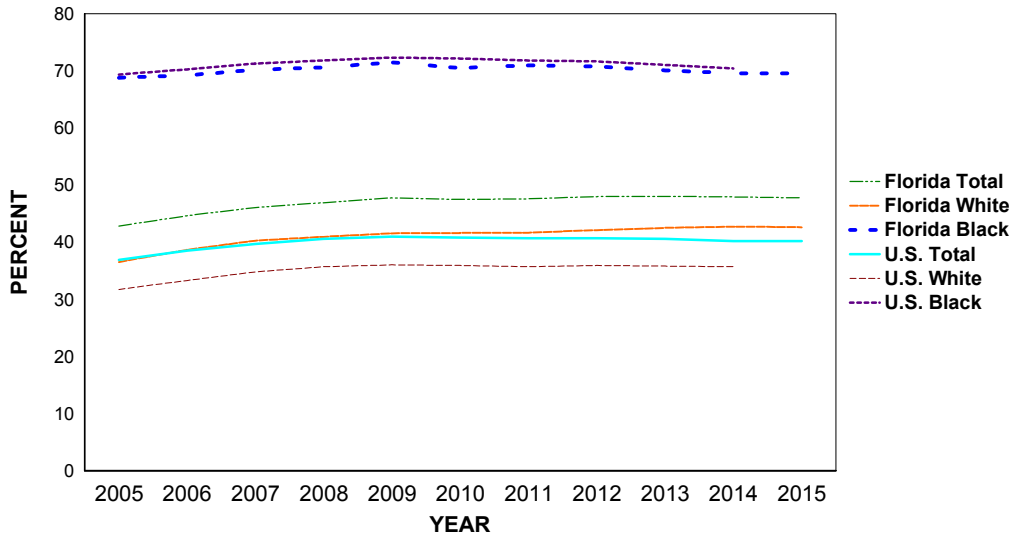
YEAR	VERY LOW BIRTHWEIGHT: LESS THAN 1,500 GRAMS								LOW BIRTHWEIGHT: LESS THAN 2,500 GRAMS							
	TOTAL	WHITE		BLACK		OTHER		TOTAL	WHITE		BLACK		OTHER			
		MALE	FEMALE	MALE	FEMALE	MALE	FEMALE		MALE	FEMALE	MALE	FEMALE	MALE	FEMALE		
1970	1.3	0.9	0.9	2.4	2.4	1.6	1.8	8.5	6.4	7.5	12.0	14.6	8.5	10.4		
1980	1.4	1.0	0.9	2.6	2.6	0.6	0.7	7.6	5.6	6.5	11.6	13.1	3.8	5.9		
1990	1.5	1.0	1.0	2.8	2.9	0.9	1.1	7.4	5.5	6.3	11.5	13.4	7.3	7.2		
2000	1.5	1.2	1.1	2.8	2.9	1.2	1.1	8.0	6.2	7.0	11.4	13.3	7.4	8.8		
2005	1.6	1.2	1.2	3.0	3.2	1.3	1.5	8.8	6.7	8.0	12.2	15.0	7.9	9.7		
2006	1.6	1.2	1.2	3.0	3.2	1.2	1.3	8.7	6.8	8.0	11.9	15.0	7.7	9.6		
2007	1.6	1.2	1.2	3.0	3.3	1.3	1.5	8.7	6.7	7.8	12.4	15.0	7.2	9.2		
2008	1.7	1.2	1.3	2.9	3.1	1.3	1.6	8.8	6.8	8.0	12.3	14.8	8.0	9.0		
2009	1.6	1.1	1.2	2.9	3.3	1.2	1.3	8.7	6.6	7.8	12.0	14.9	8.1	9.8		
2010	1.6	1.3	1.2	2.8	3.2	1.4	1.2	8.7	6.6	7.7	12.5	14.9	8.2	9.6		
2011	1.6	1.1	1.2	2.9	3.1	1.5	1.1	8.7	6.6	8.1	12.2	14.1	8.6	8.3		
2012	1.6	1.2	1.2	2.8	2.9	1.2	1.3	8.6	6.8	7.7	11.7	14.0	7.7	9.0		
2013	1.5	1.1	1.1	2.7	3.0	1.4	1.3	8.5	6.6	7.8	11.7	14.1	8.1	8.9		
2014	1.6	1.2	1.2	3.0	2.9	1.5	1.3	8.7	6.6	7.9	12.3	14.5	7.6	9.1		
2015	1.6	1.2	1.1	2.8	3.1	1.2	1.5	8.6	6.7	7.7	12.1	14.5	8.1	9.8		

**CHART B-4: RESIDENT LIVE BIRTHS TO UNWED MOTHERS
AND PERCENT OF TOTAL LIVE BIRTHS, BY RACE*,
FLORIDA AND UNITED STATES, CENSUS YEARS 1970-2000 AND 2005-2015**

YEAR	NUMBER OF BIRTHS ¹				PERCENT - FL				PERCENT-U.S.		
	TOTAL	WHITE	BLACK	OTHER	TOTAL	WHITE	BLACK	OTHER	TOTAL	WHITE	BLACK
1970	17,264	5,679	11,554	27	15.0	6.5	41.9	4.6	10.7	5.7	37.6
1980	30,156	10,295	19,778	82	22.9	10.6	59.7	6.5	18.4	11.0	55.2
1990	63,126	31,276	31,360	442	31.7	20.9	67.7	15.2	28.0	20.4	66.5
2000	78,026	44,616	31,934	1,400	38.2	29.7	67.6	22.0	33.2	27.1	68.5
2005	96,895	60,665	32,972	3,129	42.8	36.5	68.8	26.9	36.9	31.7	69.3
2006	105,770	67,305	35,133	3,208	44.6	38.6	69.1	27.0	38.5	33.3	70.2
2007	110,160	70,251	36,197	3,501	46.1	40.2	70.2	28.0	39.7	34.8	71.2
2008	108,484	68,583	36,227	3,412	46.9	40.9	70.5	28.3	40.6	35.7	71.8
2009	105,654	66,080	36,133	3,133	47.7	41.5	71.5	28.5	41.0	36.0	72.3
2010	101,810	63,796	34,658	2,867	47.5	41.6	70.5	26.8	40.8	35.9	72.1
2011	101,466	63,266	34,657	3,230	47.6	41.6	71.0	27.8	40.7	35.7	71.8
2012	102,135	63,507	34,654	3,665	48.0	42.1	70.7	29.7	40.7	35.9	71.6
2013	103,303	65,151	34,150	3,599	48.0	42.5	70.1	29.5	40.6	35.8	71.0
2014	105,278	67,010	34,128	3,677	47.9	42.7	69.6	28.9	40.2	35.7	70.4
2015	106,998	68,504	34,157	3,795	47.7	42.6	69.6	28.9	40.2	NA	NA

*Data are based on the race of the mother.

**GRAPH B-2: PERCENT OF RESIDENT LIVE BIRTHS TO UNWED MOTHERS,
BY RACE OF MOTHER, FLORIDA AND UNITED STATES, 2005-2015**



**CHART B-5: RESIDENT LIVE BIRTHS TO UNWED MOTHERS AND PERCENT
BY AGE AND RACE OF MOTHER, FLORIDA, 2005 AND 2015**

	WHITE				BLACK				OTHER			
	2005		2015		2005		2015		2005		2015	
	NUMBER	%	NUMBER	%	NUMBER	%	NUMBER	%	NUMBER	%	NUMBER	%
TOTAL	60,665	36.5	68,504	42.6	32,972	68.8	34,157	69.6	3,129	26.9	3,795	28.9
10-14	187	96.4	64	100.0	210	100.0	57	100.0	11	100.0	8	100.0
15	529	93.3	193	98.5	426	100.0	128	100.0	39	97.5	14	100.0
16	1,326	90.3	526	96.0	881	99.7	315	99.4	69	93.2	34	100.0
17	2,231	84.4	1,116	93.0	1,331	98.3	557	98.9	115	92.0	83	92.2
18	3,640	81.8	1,953	89.8	2,051	96.7	945	97.7	172	81.5	113	90.4
19	4,884	75.2	3,063	84.6	2,809	94.5	1,646	96.8	219	72.5	184	83.6
20-24	22,919	55.9	21,795	68.0	12,983	83.0	12,173	88.3	1,093	49.4	1,180	60.3
25-29	13,378	30.0	20,046	41.6	7,126	60.9	9,926	69.7	721	21.5	1,022	27.8
30-34	7,094	18.1	12,457	27.4	3,280	43.1	5,493	52.9	421	12.6	733	17.5
35-44	4,417	17.5	7,196	26.7	1,857	37.5	2,894	42.1	265	13.5	414	15.1
45+	56	21.2	93	23.8	17	26.2	23	28.4	2	9.1	10	17.2
UNK	4	30.8	2	50.0	1	50.0	0	0.0	2	66.7	0	0.0

% = Percent

TABLE B-1: RESIDENT AND RECORDED LIVE BIRTHS AND BIRTH RATES PER 1,000 POPULATION, BY RACE OF MOTHER, BY COUNTY, FLORIDA, 2015

RESIDENT LIVE BIRTHS

	NUMBERS					RATES		
	TOTAL	WHITE	BLACK	OTHER	UNK	TOTAL	WHITE	BLACK
FLORIDA	224,273	160,830	49,109	13,127	1,207	11.3	10.4	14.7
ALACHUA	2,885	1,783	834	263	5	11.4	10.0	15.9
BAKER	336	287	43	5	1	12.2	12.5	10.9
BAY	2,396	1,843	309	179	65	13.9	12.9	15.6
BRADFORD	294	229	54	10	1	10.6	10.7	9.6
BREVARD	5,246	4,133	752	354	7	9.4	8.8	12.2
BROWARD	22,307	12,387	8,203	1,488	229	12.2	10.4	15.8
CALHOUN	150	121	24	5	0	10.3	10.1	11.7
CHARLOTTE	1,030	891	87	49	3	6.2	5.9	8.1
CITRUS	1,017	946	29	41	1	7.1	7.1	6.2
CLAY	2,225	1,786	289	139	11	11.0	10.8	12.6
COLLIER	3,256	2,714	396	145	1	9.4	8.8	16.0
COLUMBIA	827	621	176	29	1	12.1	11.6	14.1
MIAMI-DADE	32,432	24,622	6,827	730	253	12.2	11.9	13.5
DESOTO	376	332	39	4	1	10.9	11.6	8.4
DIXIE	142	124	13	5	0	8.5	8.3	9.1
DUVAL	13,041	7,239	4,609	1,166	27	14.5	13.0	16.6
ESCAMBIA	3,902	2,430	1,198	270	4	12.7	11.5	16.5
FLAGLER	797	653	90	52	2	7.8	7.7	7.0
FRANKLIN	106	96	8	2	0	9.0	9.7	5.0
GADSDEN	557	221	331	5	0	11.5	10.6	12.5
GILCHRIST	194	180	8	5	1	11.5	11.5	9.5
GLADES	79	72	5	2	0	6.1	6.8	3.3
GULF	119	96	14	7	2	7.2	7.2	4.9
HAMILTON	167	117	42	8	0	11.4	12.2	8.9
HARDEE	390	363	20	7	0	14.1	14.8	9.7
HENDRY	631	543	68	20	0	16.6	17.3	13.7
HERNANDO	1,600	1,408	109	77	6	9.0	8.8	9.8
HIGHLANDS	917	715	151	50	1	9.1	8.2	14.7
HILLSBOROUGH	17,570	12,711	3,738	1,083	38	13.2	12.6	15.7
HOLMES	219	206	4	8	1	10.9	11.4	3.2
INDIAN RIVER	1,246	756	232	49	209	8.7	6.0	16.5
JACKSON	496	355	122	18	1	9.9	10.1	9.0
JEFFERSON	124	72	51	1	0	8.4	7.9	9.7
LAFAYETTE	59	58	1	0	0	6.8	7.9	0.8
LAKE	3,184	2,518	463	197	6	10.0	9.4	13.3
LEE	6,776	5,545	1,022	205	4	10.0	9.4	16.5
LEON	3,047	1,570	1,290	182	5	10.7	8.8	14.3
LEVY	391	323	52	15	1	9.6	9.1	13.1
LIBERTY	75	64	10	1	0	8.6	9.2	6.6
MADISON	210	107	100	3	0	10.9	9.3	13.4
MANATEE	3,469	2,654	475	334	6	10.0	8.8	14.4
MARION	3,584	2,760	665	159	0	10.5	9.7	14.7
MARTIN	1,262	1,057	101	62	42	8.4	7.8	11.5
MONROE	752	627	86	37	2	10.1	9.4	17.9
NASSAU	803	723	54	23	3	10.4	10.4	10.3
OKALOOSA	2,829	2,272	282	267	8	14.7	14.4	14.6
OKEECHOBEE	523	463	34	21	5	13.0	13.1	10.0
ORANGE	16,718	10,655	4,440	1,604	19	13.2	12.2	15.6
OSCEOLA	4,183	3,502	438	239	4	13.5	14.2	10.7
PALM BEACH	14,873	9,922	4,048	884	19	10.8	9.3	16.2
PASCO	5,105	4,526	325	236	18	10.4	10.3	11.8
PINELLAS	8,744	6,482	1,498	648	116	9.3	8.3	13.9
POLK	7,483	5,632	1,487	356	8	11.7	11.1	14.9
PUTNAM	815	595	191	28	1	11.2	10.2	15.9
SAINT JOHNS	2,158	1,835	162	152	9	10.0	9.4	12.4
SAINT LUCIE	3,099	2,008	892	174	25	10.8	9.2	15.7
SANTA ROSA	1,943	1,751	87	105	0	11.8	12.2	8.3
SARASOTA	2,907	2,499	248	150	10	7.4	6.9	12.8
SEMINOLE	4,554	3,428	683	437	6	10.3	9.6	12.4
SUMTER	500	399	90	11	0	4.2	3.8	8.8
SUWANNEE	434	353	63	18	0	9.7	9.3	11.5
TAYLOR	249	195	49	5	0	10.8	11.1	10.4
UNION	147	128	15	4	0	9.2	10.7	4.2
VOLUSIA	4,939	3,874	794	255	16	9.7	9.0	13.9
WAKULLA	338	304	30	4	0	10.7	11.8	6.2
WALTON	806	752	28	25	1	13.1	13.7	7.0
WASHINGTON	228	189	29	10	0	9.0	9.2	7.9

TABLE B-1 (Cont.): RESIDENT AND RECORDED LIVE BIRTHS AND BIRTH RATES PER 1,000 POPULATION, BY RACE OF MOTHER, BY COUNTY, FLORIDA, 2015

	RECORDED LIVE BIRTHS					RATES		
	NUMBERS					TOTAL	WHITE	BLACK
	TOTAL	WHITE	BLACK	OTHER	UNK			
FLORIDA	224,531	160,986	49,203	13,166	1,176	11.3	10.4	14.7
ALACHUA	6,003	4,316	1,300	378	9	23.7	24.1	24.8
BAKER	3	1	2	0	0	0.1	0.0	0.5
BAY	2,861	2,232	356	202	71	16.5	15.6	18.0
BRADFORD	2	2	0	0	0	0.1	0.1	0.0
BREVARD	5,157	4,085	721	346	5	9.2	8.7	11.7
BROWARD	23,902	13,208	9,024	1,404	266	13.1	11.1	17.4
CALHOUN	1	0	1	0	0	0.1	0.0	0.5
CHARLOTTE	1,147	996	98	48	5	6.9	6.6	9.2
CITRUS	851	784	28	39	0	6.0	5.9	5.9
CLAY	2,291	1,677	470	128	16	11.3	10.1	20.6
COLLIER	3,495	2,935	399	159	2	10.1	9.5	16.2
COLUMBIA	763	552	190	21	0	11.1	10.3	15.3
MIAMI-DADE	29,625	23,081	5,688	654	202	11.2	11.2	11.3
DESOTO	332	296	28	7	1	9.6	10.3	6.0
DIXIE	0	0	0	0	0	0.0	0.0	0.0
DUVAL	14,726	8,920	4,501	1,275	30	16.3	16.1	16.2
ESCAMBIA	5,637	3,983	1,285	367	2	18.4	18.8	17.7
FLAGLER	15	12	1	2	0	0.1	0.1	0.1
FRANKLIN	1	1	0	0	0	0.1	0.1	0.0
GADSDEN	4	3	1	0	0	0.1	0.1	0.0
GILCHRIST	2	2	0	0	0	0.1	0.1	0.0
GLADES	0	0	0	0	0	0.0	0.0	0.0
GULF	0	0	0	0	0	0.0	0.0	0.0
HAMILTON	0	0	0	0	0	0.0	0.0	0.0
HARDEE	2	2	0	0	0	0.1	0.1	0.0
HENDRY	4	2	2	0	0	0.1	0.1	0.4
HERNANDO	1,758	1,558	106	84	10	9.9	9.7	9.5
HIGHLANDS	1,179	953	168	58	0	11.7	11.0	16.3
HILLSBOROUGH	20,294	15,012	4,128	1,122	32	15.2	14.9	17.3
HOLMES	1	0	0	1	0	0.0	0.0	0.0
INDIAN RIVER	1,047	587	197	44	219	7.3	4.7	14.0
JACKSON	450	322	103	25	0	8.9	9.2	7.6
JEFFERSON	2	2	0	0	0	0.1	0.2	0.0
LAFAYETTE	0	0	0	0	0	0.0	0.0	0.0
LAKE	2,665	2,047	455	159	4	8.3	7.6	13.1
LEE	7,004	5,758	1,038	202	6	10.4	9.8	16.8
LEON	4,732	2,643	1,884	200	5	16.6	14.8	20.9
LEVY	9	8	1	0	0	0.2	0.2	0.3
LIBERTY	0	0	0	0	0	0.0	0.0	0.0
MADISON	2	2	0	0	0	0.1	0.2	0.0
MANATEE	2,617	1,964	334	316	3	7.5	6.5	10.1
MARION	2,579	1,971	486	122	0	7.5	6.9	10.8
MARTIN	985	812	77	52	44	6.6	6.0	8.7
MONROE	525	420	77	28	0	7.1	6.3	16.0
NASSAU	636	543	69	24	0	8.2	7.8	13.2
OKALOOSA	2,468	1,953	257	250	8	12.8	12.3	13.3
OKEECHOBEE	10	9	1	0	0	0.2	0.3	0.3
ORANGE	21,742	14,774	4,942	2,001	25	17.2	16.9	17.4
OSCEOLA	4,287	3,528	450	304	5	13.9	14.3	11.0
PALM BEACH	17,390	11,695	4,582	1,100	13	12.6	11.0	18.3
PASCO	2,166	1,892	150	115	9	4.4	4.3	5.4
PINELLAS	10,146	7,719	1,556	742	129	10.8	9.9	14.4
POLK	5,550	4,169	1,107	270	4	8.7	8.2	11.1
PUTNAM	263	176	79	8	0	3.6	3.0	6.6
SAINT JOHNS	1,536	1,217	208	101	10	7.1	6.3	15.9
SAINT LUCIE	3,229	2,162	882	168	17	11.2	9.9	15.5
SANTA ROSA	378	340	25	13	0	2.3	2.4	2.4
SARASOTA	3,570	3,032	368	163	7	9.1	8.4	18.9
SEMINOLE	3,039	2,210	621	200	8	6.8	6.2	11.3
SUMTER	2	1	0	1	0	0.0	0.0	0.0
SUWANNEE	7	6	1	0	0	0.2	0.2	0.2
TAYLOR	2	2	0	0	0	0.1	0.1	0.0
UNION	0	0	0	0	0	0.0	0.0	0.0
VOLUSIA	4,241	3,307	707	218	9	8.3	7.7	12.4
WAKULLA	2	2	0	0	0	0.1	0.1	0.0
WALTON	1,193	1,099	49	45	0	19.3	20.1	12.2
WASHINGTON	0	0	0	0	0	0.0	0.0	0.0

TABLE B-2: RESIDENT LIVE BIRTHS AND BIRTH RATES PER 1,000 POPULATION BY HISPANIC OR HAITIAN ORIGIN OF MOTHER, BY COUNTY, FLORIDA, 2015

	NUMBERS									RATE
	HISPANIC ORIGIN									
	TOTAL	TOTAL HISPANIC	MEXICAN	PUERTO RICAN	CUBAN	OTHER/ UNK HISPANIC	HAITIAN	NON-HISPANIC/ HAITIAN	UNK	
FLORIDA	224,273	63,978	12,039	12,976	13,563	25,400	8,406	151,193	696	13.2
ALACHUA	2,885	252	53	79	34	86	5	2,620	8	10.5
BAKER	336	8	0	3	4	1	0	327	1	12.7
BAY	2,396	198	72	59	9	58	1	2,191	6	19.5
BRADFORD	294	8	4	1	1	2	0	285	1	7.9
BREVARD	5,246	647	129	243	51	224	35	4,556	8	12.2
BROWARD	22,307	6,850	505	969	981	4,395	2,318	13,071	68	13.9
CALHOUN	150	8	7	0	0	1	0	142	0	9.4
CHARLOTTE	1,030	110	33	35	20	22	15	902	3	9.9
CITRUS	1,017	62	13	30	3	16	1	953	1	8.5
CLAY	2,225	219	46	81	19	73	33	1,958	15	11.8
COLLIER	3,256	1,543	712	89	265	477	274	1,438	1	15.9
COLUMBIA	827	38	13	6	4	15	0	788	1	10.0
MIAMI-DADE	32,432	20,023	803	927	8,869	9,424	1,804	10,429	176	11.3
DESOTO	376	135	122	4	2	7	0	238	3	11.7
DIXIE	142	3	1	1	0	1	0	139	0	4.7
DUVAL	13,041	1,386	314	427	128	517	76	11,547	32	17.1
ESCAMBIA	3,902	228	106	48	12	62	7	3,664	3	13.1
FLAGLER	797	89	14	37	9	29	6	690	12	8.4
FRANKLIN	106	6	3	0	1	2	0	100	0	10.0
GADSDEN	557	101	63	2	0	36	0	456	0	19.4
GILCHRIST	194	22	8	1	1	12	0	172	0	20.5
GLADES	79	26	18	1	0	7	0	53	0	8.2
GULF	119	5	3	1	0	1	0	114	0	6.5
HAMILTON	167	38	30	1	2	5	0	129	0	25.7
HARDEE	390	235	223	4	0	8	2	153	0	18.9
HENDRY	631	398	280	33	38	47	0	233	0	19.7
HERNANDO	1,600	224	25	128	25	46	1	1,364	11	10.8
HIGHLANDS	917	269	142	87	21	19	12	636	0	13.6
HILLSBOROUGH	17,570	5,336	1,581	1,542	935	1,278	184	12,014	36	14.8
HOLMES	219	5	3	1	0	1	0	214	0	9.1
INDIAN RIVER	1,246	258	165	27	17	49	18	969	1	13.9
JACKSON	496	18	9	1	3	5	0	478	0	7.0
JEFFERSON	124	6	2	0	0	4	0	118	0	8.7
LAFAYETTE	59	7	7	0	0	0	0	52	0	6.1
LAKE	3,184	612	245	222	26	119	26	2,541	5	13.3
LEE	6,776	2,123	647	459	311	706	272	4,372	9	14.9
LEON	3,047	165	64	32	19	50	26	2,848	8	9.2
LEVY	391	41	20	12	3	6	0	346	4	11.3
LIBERTY	75	9	8	0	0	1	0	66	0	16.2
MADISON	210	12	6	0	2	4	0	198	0	11.4
MANATEE	3,469	944	586	83	39	236	51	2,465	9	16.1
MARION	3,584	542	156	235	39	112	5	3,034	3	12.8
MARTIN	1,262	387	111	41	10	225	14	859	2	18.2
MONROE	752	239	30	9	122	78	52	460	1	14.4
NASSAU	803	39	20	10	0	9	0	762	2	11.3
OKALOOSA	2,829	377	152	61	5	159	0	2,448	4	25.2
OKEECHOBEE	523	166	134	8	9	15	0	357	0	15.8
ORANGE	16,718	5,344	647	2,526	298	1,873	1,016	10,329	29	14.3
OSCEOLA	4,183	2,310	133	1,413	93	671	60	1,809	4	15.2
PALM BEACH	14,873	4,572	885	604	589	2,494	1,617	8,650	34	15.4
PASCO	5,105	843	207	324	109	203	10	4,239	13	12.8
PINELLAS	8,744	1,159	441	336	95	287	16	7,484	85	12.6
POLK	7,483	1,959	982	606	105	266	151	5,361	12	14.6
PUTNAM	815	121	85	27	3	6	1	691	2	16.1
SAINT JOHNS	2,158	144	29	42	18	55	4	1,997	13	10.4
SAINT LUCIE	3,099	690	255	142	53	240	235	2,173	1	13.5
SANTA ROSA	1,943	105	43	26	6	30	1	1,837	0	11.1
SARASOTA	2,907	322	145	51	44	82	12	2,567	6	8.9
SEMINOLE	4,554	999	112	465	65	357	31	3,516	8	11.7
SUMTER	500	56	43	7	2	4	1	443	0	7.9
SUWANNEE	434	51	33	3	4	11	0	380	3	10.4
TAYLOR	249	9	5	1	1	2	0	240	0	10.6
UNION	147	6	4	2	0	0	0	141	0	6.9
VOLUSIA	4,939	744	220	348	37	139	13	4,132	50	11.8
WAKULLA	338	6	2	3	0	1	0	332	0	4.6
WALTON	806	104	72	4	2	26	0	702	0	27.1
WASHINGTON	228	11	7	2	0	2	0	217	0	13.8

**TABLE B-3: RESIDENT LIVE BIRTHS FOR INCORPORATED CITIES OF 2,400 OR MORE POPULATION,
BY RACE OF MOTHER, BY COUNTY, FLORIDA, 2015**

	TOTAL	WHITE	BLACK	AMER INDIAN	CHINESE	JAPANESE	HAWAIIAN	FILIPINO	OTHER ASIAN/ PAC ISL	MULTI - RACE & OTHER	UNK
FLORIDA	224,273	160,830	49,109	289	878	149	38	1,101	4,477	6,195	1,207
ALACHUA	2,885	1,783	834	1	45	1	0	14	85	117	5
ALACHUA	129	83	39	0	1	1	0	0	2	3	0
GAINESVILLE	1,930	1,036	678	1	37	0	0	14	68	92	4
HIGH SPRINGS	70	63	5	0	0	0	0	0	0	2	0
NEWBERRY	121	103	10	0	1	0	0	0	3	4	0
BALANCE OF COUNTY	635	498	102	0	6	0	0	0	12	16	1
BAKER	336	287	43	1	0	1	0	0	0	3	1
MACCLENNY	82	61	19	0	0	1	0	0	0	1	0
BALANCE OF COUNTY	254	226	24	1	0	0	0	0	0	2	1
BAY	2,396	1,843	309	7	7	4	1	17	33	110	65
CALLAWAY	25	21	1	0	0	0	0	0	0	2	1
LYNN HAVEN	202	164	22	1	2	0	0	0	2	8	3
PANAMA CITY	1,276	900	239	2	3	1	0	10	21	64	36
PANAMA CITY BEACH	361	289	24	3	1	1	0	2	7	19	15
PARKER	7	5	1	0	0	0	0	0	1	0	0
SPRINGFIELD	3	3	0	0	0	0	0	0	0	0	0
BALANCE OF COUNTY	522	461	22	1	1	2	1	5	2	17	10
BRADFORD	294	229	54	1	0	0	0	1	0	8	1
STARKE	113	74	35	0	0	0	0	0	0	4	0
BALANCE OF COUNTY	181	155	19	1	0	0	0	1	0	4	1
BREVARD	5,246	4,133	752	3	22	7	1	32	75	214	7
CAPE CANAVERAL	78	69	3	0	1	1	0	0	0	4	0
COCOA	522	374	123	0	0	0	0	2	5	18	0
COCOA BEACH	56	51	2	0	0	1	0	1	1	0	0
GRANT-VALKARIA	2	2	0	0	0	0	0	0	0	0	0
INDIALANTIC	79	74	1	0	0	0	0	0	4	0	0
INDIAN HARBOUR BEACH	51	48	0	0	0	0	0	0	1	2	0
MALABAR	16	15	1	0	0	0	0	0	0	0	0
MELBOURNE	1,133	906	133	0	7	0	0	10	22	55	0
MELBOURNE BEACH	38	36	0	0	0	0	0	1	1	0	0
PALM BAY	1,174	862	240	0	3	1	0	5	12	48	3
ROCKLEDGE	344	274	50	1	4	0	0	4	6	5	0
SATELLITE BEACH	141	131	1	0	2	1	1	0	1	4	0
TITUSVILLE	540	388	117	1	1	0	0	2	5	25	1
WEST MELBOURNE	162	132	5	0	2	0	0	3	5	15	0
BALANCE OF COUNTY	910	771	76	1	2	3	0	4	12	38	3
BROWARD	22,307	12,387	8,203	37	131	11	3	86	678	542	229
COCONUT CREEK	578	409	116	0	5	1	0	4	15	27	1
COOPER CITY	271	223	17	1	4	0	0	0	19	5	2
CORAL SPRINGS	1,468	932	405	1	17	1	0	7	63	37	5
DANIA BEACH	219	113	91	0	1	0	0	0	5	1	8
DAVIE	912	721	82	6	13	0	0	7	39	30	14
DEERFIELD BEACH	607	364	189	1	4	1	0	4	11	32	1
FORT LAUDERDALE	3,152	1,490	1,518	0	8	2	1	11	55	46	21
HALLANDALE	695	518	143	0	1	1	0	1	7	6	18
HOLLYWOOD	2,011	1,322	494	15	9	0	0	5	54	41	71
LAUDERDALE BY THE SEA	8	7	0	0	1	0	0	0	0	0	0
LAUDERDALE LAKES	500	33	451	0	1	0	0	0	10	5	0
LAUDERHILL	923	118	768	0	2	0	0	0	20	14	1
LIGHTHOUSE POINT	63	56	2	0	0	0	0	0	3	2	0
MARGATE	599	331	221	0	2	1	0	0	26	17	1
MIRAMAR	1,634	720	747	4	22	1	0	12	63	48	17
NORTH LAUDERDALE	633	188	413	0	0	0	0	1	21	10	0
OAKLAND PARK	365	216	131	0	0	0	0	1	7	9	1
PARKLAND	194	152	14	0	1	0	0	5	13	9	0
PEMBROKE PARK	38	8	27	0	0	0	0	1	0	1	1
PEMBROKE PINES	1,614	1,069	397	5	12	0	1	7	55	44	24
PLANTATION	945	610	237	2	4	0	0	2	46	41	3
POMPANO BEACH	1,674	835	767	0	4	2	0	5	30	30	1
SOUTHWEST RANCHES	55	51	2	0	0	0	0	0	0	1	1
SUNRISE	1,068	557	420	1	4	1	0	7	46	28	4

**TABLE B-3 (Cont.): RESIDENT LIVE BIRTHS FOR INCORPORATED CITIES OF 2,400 OR MORE
POPULATION, BY RACE OF MOTHER, BY COUNTY, FLORIDA, 2015**

	TOTAL	WHITE	BLACK	AMER INDIAN	CHINESE	JAPANESE	HAWAIIAN	FILIPINO	OTHER ASIAN/ PAC ISL	MULTI- RACE & OTHER	UNK
BROWARD (Cont.)											
TAMARAC	667	346	262	1	3	0	1	1	28	22	3
WEST PARK	166	59	98	0	0	0	0	0	3	0	6
WESTON	491	424	22	0	9	0	0	2	24	10	0
WILTON MANORS	64	41	20	0	0	0	0	0	0	3	0
BALANCE OF COUNTY	693	474	149	0	4	0	0	3	15	23	25
CALHOUN											
BLOUNTSTOWN	49	30	17	0	0	0	0	1	0	1	0
BALANCE OF COUNTY	101	91	7	0	0	0	0	1	0	2	0
CHARLOTTE											
PUNTA GORDA	99	83	10	2	1	0	0	0	2	1	0
BALANCE OF COUNTY	931	808	77	1	2	0	0	8	13	19	3
CITRUS											
CRYSTAL RIVER	86	79	5	0	0	0	0	0	0	2	0
INVERNESS	127	115	7	0	0	0	0	1	0	4	0
BALANCE OF COUNTY	804	752	17	1	0	0	0	11	9	13	1
CLAY											
GREEN COVE SPRINGS	38	31	7	0	0	0	0	0	0	0	0
ORANGE PARK	290	179	74	1	0	1	0	14	2	18	1
BALANCE OF COUNTY	1,897	1,576	208	3	4	2	0	22	19	53	10
COLLIER											
MARCO ISLAND	3	3	0	0	0	0	0	0	0	0	0
NAPLES	372	302	58	0	0	1	0	1	3	7	0
BALANCE OF COUNTY	2,881	2,409	338	11	5	0	0	9	26	82	1
COLUMBIA											
LAKE CITY	433	270	143	0	1	0	0	1	5	12	1
BALANCE OF COUNTY	394	351	33	2	0	1	0	1	3	3	0
MIAMI-DADE											
AVENTURA	431	400	11	0	2	0	0	2	5	5	6
BAL HARBOUR	40	36	3	0	0	0	0	0	0	0	1
BAY HARBOR ISLANDS	51	49	0	0	0	0	0	1	0	1	0
BISCAYNE PARK	28	21	7	0	0	0	0	0	0	0	0
CORAL GABLES	154	150	2	0	1	0	0	0	0	1	0
CUTLER BAY	88	70	16	0	0	0	0	0	0	2	0
DORAL	375	353	6	1	1	0	0	0	7	7	0
EL PORTAL	17	10	7	0	0	0	0	0	0	0	0
FLORIDA CITY	82	48	33	0	0	0	0	1	0	0	0
HIALEAH	2,796	2,650	95	1	7	0	0	4	15	17	7
HIALEAH GARDENS	143	136	4	0	1	0	0	0	0	2	0
HOMESTEAD	1,020	792	205	0	2	1	0	3	4	13	0
KEY BISCAYNE	34	33	0	0	0	0	0	0	0	1	0
MIAMI	11,199	7,253	3,690	2	24	1	0	11	68	107	43
MIAMI BEACH	900	851	23	0	3	1	0	2	8	11	1
MIAMI GARDENS	1,148	402	728	0	0	0	0	0	3	7	8
MIAMI LAKES	240	222	9	0	0	1	0	2	1	4	1
MIAMI SHORES	77	59	16	0	1	0	0	0	1	0	0
MIAMI SPRINGS	77	73	2	0	2	0	0	0	0	0	0
NORTH BAY VILLAGE	62	55	4	1	0	0	0	0	1	1	0
NORTH MIAMI	641	213	404	2	4	0	0	3	3	8	4
NORTH MIAMI BEACH	665	383	254	0	7	0	0	3	8	4	6
OPA-LOCKA	329	150	176	0	0	0	0	0	1	2	0
PINECREST	10	9	0	0	1	0	0	0	0	0	0
PALMETTO BAY	27	23	0	0	1	0	0	0	2	1	0
SOUTH MIAMI	20	15	3	0	0	1	0	0	0	1	0
SUNNY ISLES BEACH	370	359	0	0	0	0	0	0	6	1	4
SURFSIDE	60	56	2	0	1	0	0	0	1	0	0
SWEETWATER	1	1	0	0	0	0	0	0	0	0	0
VIRGINIA GARDENS	12	11	1	0	0	0	0	0	0	0	0
WEST MIAMI	4	4	0	0	0	0	0	0	0	0	0
BALANCE OF COUNTY	11,331	9,735	1,126	5	64	6	0	26	85	112	172
DESOTO											
ARCADIA	202	170	28	0	1	0	0	0	1	1	1

**TABLE B-3 (Cont.): RESIDENT LIVE BIRTHS FOR INCORPORATED CITIES OF 2,400 OR MORE
POPULATION, BY RACE OF MOTHER, BY COUNTY, FLORIDA, 2015**

	TOTAL	WHITE	BLACK	AMER INDIAN	CHINESE	JAPANESE	HAWAIIAN	FILIPINO	OTHER ASIAN/ PAC ISL	MULTI- RACE & OTHER	UNK
DESOTO (Cont.)											
BALANCE OF COUNTY	174	162	11	0	0	0	0	0	0	1	0
DIXIE	142	124	13	1	0	0	0	1	1	2	0
DUVAL											
ATLANTIC BEACH	278	215	39	2	2	2	0	7	0	10	1
BALDWIN	11	8	3	0	0	0	0	0	0	0	0
JACKSONVILLE	12,396	6,693	4,551	9	46	15	3	144	415	494	26
JACKSONVILLE BEACH	290	259	15	0	0	0	0	6	1	9	0
NEPTUNE BEACH	66	64	1	0	0	0	0	0	0	1	0
ESCAMBIA	3,902	2,430	1,198	11	13	6	0	44	73	123	4
CENTURY	13	5	8	0	0	0	0	0	0	0	0
PENSACOLA	1,190	733	354	1	4	5	0	16	27	49	1
BALANCE OF COUNTY	2,699	1,692	836	10	9	1	0	28	46	74	3
FLAGLER	797	653	90	3	6	2	0	5	11	25	2
BUNNELL	53	47	6	0	0	0	0	0	0	0	0
FLAGLER BEACH	29	29	0	0	0	0	0	0	0	0	0
PALM COAST	593	484	63	3	5	2	0	5	11	19	1
BALANCE OF COUNTY	122	93	21	0	1	0	0	0	0	6	1
FRANKLIN	106	96	8	1	0	0	0	0	0	1	0
APALACHICOLA	31	24	6	0	0	0	0	0	0	1	0
CARRABELLE	26	24	2	0	0	0	0	0	0	0	0
BALANCE OF COUNTY	49	48	0	1	0	0	0	0	0	0	0
GADSDEN	557	221	331	0	0	0	1	0	2	2	0
CHATTAHOOCHEE	28	10	17	0	0	0	0	0	0	1	0
GRETNA	25	3	22	0	0	0	0	0	0	0	0
HAVANA	52	27	24	0	0	0	0	0	1	0	0
MIDWAY	44	7	37	0	0	0	0	0	0	0	0
QUINCY	242	78	161	0	0	0	1	0	1	1	0
BALANCE OF COUNTY	166	96	70	0	0	0	0	0	0	0	0
GILCHRIST	194	180	8	0	0	0	0	0	1	4	1
GLADES	79	72	5	0	0	0	0	0	0	2	0
GULF	119	96	14	1	0	0	0	0	1	5	2
PORT ST JOE	37	27	6	0	0	0	0	0	0	2	2
BALANCE OF COUNTY	82	69	8	1	0	0	0	0	1	3	0
HAMILTON	167	117	42	1	0	0	0	0	2	5	0
JASPER	35	16	18	0	0	0	0	0	0	1	0
BALANCE OF COUNTY	132	101	24	1	0	0	0	0	2	4	0
HARDEE	390	363	20	1	0	1	0	0	3	2	0
BOWLING GREEN	35	33	1	1	0	0	0	0	0	0	0
WAUCHULA	134	124	9	0	0	0	0	0	0	1	0
BALANCE OF COUNTY	221	206	10	0	0	1	0	0	3	1	0
HENDRY	631	543	68	9	1	0	0	3	0	7	0
CLEWISTON	116	91	21	2	0	0	0	1	0	1	0
LABELLE	7	6	0	0	0	0	0	0	0	1	0
BALANCE OF COUNTY	508	446	47	7	1	0	0	2	0	5	0
HERNANDO	1,600	1,408	109	4	5	0	0	3	10	55	6
BROOKSVILLE	299	260	33	1	0	0	0	0	0	5	0
BALANCE OF COUNTY	1,301	1,148	76	3	5	0	0	3	10	50	6
HIGHLANDS	917	715	151	2	1	1	0	6	11	29	1
AVON PARK	150	105	38	1	0	0	0	0	1	5	0
SEBRING	300	222	54	0	1	0	0	3	6	14	0
BALANCE OF COUNTY	467	388	59	1	0	1	0	3	4	10	1
HILLSBOROUGH	17,570	12,711	3,738	17	57	12	3	77	619	298	38
PLANT CITY	685	593	72	0	0	0	0	1	6	13	0

**TABLE B-3 (Cont.): RESIDENT LIVE BIRTHS FOR INCORPORATED CITIES OF 2,400 OR MORE
POPULATION, BY RACE OF MOTHER, BY COUNTY, FLORIDA, 2015**

	TOTAL	WHITE	BLACK	AMER INDIAN	CHINESE	JAPANESE	HAWAIIAN	FILIPINO	OTHER ASIAN/ PAC ISL	MULTI - RACE & OTHER	UNK
HILLSBOROUGH (Cont.)											
TAMPA	9,885	6,521	2,704	8	42	7	3	39	394	150	17
TEMPLE TERRACE	81	61	14	0	0	0	0	0	3	3	0
BALANCE OF COUNTY	6,919	5,536	948	9	15	5	0	37	216	132	21
HOLMES	219	206	4	0	0	0	0	2	0	6	1
BONIFAY	82	73	4	0	0	0	0	0	0	5	0
BALANCE OF COUNTY	137	133	0	0	0	0	0	2	0	1	1
INDIAN RIVER	1,246	756	232	1	4	2	0	6	20	16	209
FELLSMERE	86	18	4	0	0	0	0	0	0	0	64
SEBASTIAN	140	121	5	1	0	0	0	1	0	2	10
VERO BEACH	248	177	32	0	1	0	0	1	5	5	27
BALANCE OF COUNTY	772	440	191	0	3	2	0	4	15	9	108
JACKSON	496	355	122	1	0	0	0	0	3	14	1
GRACEVILLE	37	27	6	0	0	0	0	0	1	3	0
MARIANNA	137	79	52	0	0	0	0	0	2	4	0
BALANCE OF COUNTY	322	249	64	1	0	0	0	0	0	7	1
JEFFERSON	124	72	51	0	0	0	1	0	0	0	0
MONTICELLO	60	27	33	0	0	0	0	0	0	0	0
BALANCE OF COUNTY	64	45	18	0	0	0	1	0	0	0	0
LAFAYETTE	59	58	1	0	0	0	0	0	0	0	0
LAKE	3,184	2,518	463	4	10	1	1	17	39	125	6
CLERMONT	511	381	61	0	5	0	0	6	11	45	2
EUSTIS	284	210	60	1	1	0	0	0	3	8	1
FRUITLAND PARK	58	51	4	0	0	0	0	1	1	1	0
GROVELAND	145	118	20	1	0	0	0	0	1	5	0
LADY LAKE	101	82	12	1	0	0	0	1	1	4	0
LEESBURG	423	272	125	0	0	0	1	4	8	13	0
MASCOTTE	68	58	4	0	0	0	0	0	0	6	0
MINNEOLA	103	91	6	0	0	0	0	0	1	5	0
MOUNT DORA	209	150	51	0	0	0	0	1	4	3	0
TAVARES	134	108	18	0	1	0	0	0	2	5	0
UMATILLA	57	52	4	0	0	0	0	1	0	0	0
BALANCE OF COUNTY	1,091	945	98	1	3	1	0	3	7	30	3
LEE	6,776	5,545	1,022	9	16	0	0	27	69	84	4
BONITA SPRINGS	35	34	0	0	0	0	0	0	1	0	0
CAPE CORAL	1,473	1,359	76	1	2	0	0	8	11	16	0
FORT MYERS	1,348	887	418	3	4	0	0	3	12	21	0
FORT MYERS BEACH	11	11	0	0	0	0	0	0	0	0	0
SANIBEL	11	9	1	0	0	0	0	1	0	0	0
BALANCE OF COUNTY	3,898	3,245	527	5	10	0	0	15	45	47	4
LEON	3,047	1,570	1,290	4	26	1	0	3	91	57	5
TALLAHASSEE	2,539	1,196	1,180	3	23	1	0	2	77	52	5
BALANCE OF COUNTY	508	374	110	1	3	0	0	1	14	5	0
LEVY	391	323	52	2	1	0	0	1	1	10	1
WILLISTON	58	33	20	0	0	0	0	0	1	4	0
BALANCE OF COUNTY	333	290	32	2	1	0	0	1	0	6	1
LIBERTY	75	64	10	0	0	0	0	0	1	0	0
MADISON	210	107	100	0	0	0	0	0	0	3	0
MADISON	84	15	68	0	0	0	0	0	0	1	0
BALANCE OF COUNTY	126	92	32	0	0	0	0	0	0	2	0
MANATEE	3,469	2,654	475	2	5	0	2	11	38	276	6
BRADENTON	1,572	1,119	249	1	3	0	2	1	20	175	2
BRADENTON BEACH	2	2	0	0	0	0	0	0	0	0	0
HOLMES BEACH	2	2	0	0	0	0	0	0	0	0	0
PALMETTO	334	252	59	0	0	0	0	1	0	22	0
BALANCE OF COUNTY	1,559	1,279	167	1	2	0	0	9	18	79	4
MARION	3,584	2,760	665	2	4	0	1	12	40	100	0

**TABLE B-3 (Cont.): RESIDENT LIVE BIRTHS FOR INCORPORATED CITIES OF 2,400 OR MORE
POPULATION, BY RACE OF MOTHER, BY COUNTY, FLORIDA, 2015**

	TOTAL	WHITE	BLACK	AMER INDIAN	CHINESE	JAPANESE	HAWAIIAN	FILIPINO	OTHER ASIAN/ PAC ISL	MULTI - RACE & OTHER	UNK
MARION (Cont.)											
BELLEVIEW	52	46	6	0	0	0	0	0	0	0	0
OCALA	1,240	824	347	0	2	0	1	6	22	38	0
BALANCE OF COUNTY	2,292	1,890	312	2	2	0	0	6	18	62	0
MARTIN											
PORT SAINT LUCIE	5	3	2	0	0	0	0	0	0	0	0
STUART	299	239	38	0	0	0	0	0	6	7	9
BALANCE OF COUNTY	958	815	61	0	1	0	0	4	15	29	33
MONROE											
ISLAMORADA	6	6	0	0	0	0	0	0	0	0	0
KEY WEST	315	234	63	0	0	1	0	1	6	10	0
MARATHON	52	46	3	0	0	0	0	1	0	2	0
BALANCE OF COUNTY	379	341	20	0	4	0	0	0	6	6	2
NASSAU											
FERNANDINA BEACH	136	113	17	0	0	0	0	1	0	5	0
HILLIARD	54	48	6	0	0	0	0	0	0	0	0
BALANCE OF COUNTY	613	562	31	1	2	0	0	3	4	7	3
OKALOOSA											
CRESTVIEW	641	494	84	1	0	2	1	11	6	42	0
DESTIN	183	160	3	0	2	0	0	2	8	8	0
FORT WALTON BEACH	778	577	112	0	2	2	0	10	20	49	6
MARY ESTHER	156	132	10	0	0	0	0	6	2	6	0
NICEVILLE	313	272	17	0	0	0	0	2	5	16	1
VALPARAISO	35	32	2	0	0	0	0	0	0	1	0
BALANCE OF COUNTY	723	605	54	5	4	3	2	6	6	37	1
OKEECHOBEE											
OKEECHOBEE	523	463	34	13	0	0	0	2	0	6	5
BALANCE OF COUNTY	389	342	30	8	0	0	0	2	0	3	4
BALANCE OF COUNTY	134	121	4	5	0	0	0	0	0	3	1
ORANGE											
APOPKA	16,718	10,655	4,440	18	79	18	6	129	492	862	19
BELLE ISLE	868	633	180	2	0	0	0	6	13	34	0
EATONVILLE	13	11	0	0	0	0	0	0	0	2	0
EDGEWOOD	5	0	5	0	0	0	0	0	0	0	0
OCOEE	2	1	1	0	0	0	0	0	0	0	0
ORLANDO	379	256	76	0	1	0	0	4	15	27	0
ORLANDO	8,730	5,172	2,705	10	37	9	6	63	259	462	7
MAITLAND	106	78	13	0	1	1	0	1	5	7	0
WINDERMERE	234	178	12	1	1	1	0	3	20	18	0
WINTER GARDEN	454	333	74	0	3	1	0	2	15	25	1
WINTER PARK	451	335	68	2	3	2	0	11	12	16	2
BALANCE OF COUNTY	5,476	3,658	1,306	3	33	4	0	39	153	271	9
OSCEOLA											
KISSIMMEE	4,183	3,502	438	2	18	2	0	19	50	148	4
ST CLOUD	1,816	1,486	210	0	8	1	0	11	25	73	2
BALANCE OF COUNTY	450	419	16	1	1	0	0	2	1	10	0
BALANCE OF COUNTY	1,917	1,597	212	1	9	1	0	6	24	65	2
PALM BEACH											
BELLE GLADE	14,873	9,922	4,048	14	82	14	2	47	339	386	19
BOCA RATON	299	130	166	0	0	0	0	0	1	0	2
BOYNTON BEACH	1,488	1,200	112	0	20	4	1	7	49	94	1
DELRAY BEACH	1,421	797	544	3	5	2	0	7	35	28	0
GREENACRES	735	420	271	0	1	0	0	5	20	18	0
HIGHLAND BEACH	433	307	103	0	1	0	0	3	9	10	0
HYPOLUXO	9	8	0	0	0	0	0	0	1	0	0
JUNO BEACH	21	18	3	0	0	0	0	0	0	0	0
JUPITER	10	9	0	0	1	0	0	0	0	0	0
LAKE CLARKE SHORES	719	654	20	3	8	2	0	1	16	15	0
LAKE PARK	8	7	0	0	0	1	0	0	0	0	0
LAKE WORTH	163	60	99	0	0	0	0	0	1	3	0
LANTANA	1,855	1,359	414	0	8	1	0	2	32	39	0
LOXAHATCHEE GROVES	277	166	102	0	0	0	0	1	2	5	1
NORTH PALM BEACH	1	1	0	0	0	0	0	0	0	0	0
PAHOKEE	104	92	3	1	1	0	0	0	5	2	0
PALM BEACH	101	28	73	0	0	0	0	0	0	0	0
PALM BEACH	21	20	1	0	0	0	0	0	0	0	0

**TABLE B-3 (Cont.): RESIDENT LIVE BIRTHS FOR INCORPORATED CITIES OF 2,400 OR MORE
POPULATION, BY RACE OF MOTHER, BY COUNTY, FLORIDA, 2015**

	TOTAL	WHITE	BLACK	AMER INDIAN	CHINESE	JAPANESE	HAWAIIAN	FILIPINO	OTHER ASIAN/ PAC ISL	MULTI - RACE & OTHER	UNK
PALM BEACH (Cont.)											
PALM BEACH GARDENS	607	504	45	0	6	1	0	2	33	15	1
PALM SPRINGS	200	133	56	0	0	0	0	3	4	4	0
RIVIERA BEACH	456	89	355	0	1	0	0	0	5	5	1
ROYAL PALM BEACH	426	325	75	1	2	0	0	3	7	13	0
SOUTH BAY	46	18	28	0	0	0	0	0	0	0	0
TEQUESTA	73	67	1	0	1	0	0	1	0	3	0
WELLINGTON	479	368	61	1	7	1	0	1	25	13	2
WEST PALM BEACH	3,562	2,134	1,245	3	15	1	1	6	66	87	4
BALANCE OF COUNTY	1,359	1,008	271	2	5	1	0	5	28	32	7
PASCO											
DADE CITY	129	110	16	0	0	0	0	0	2	1	0
NEW PORT RICHEY	619	573	21	1	3	0	1	3	6	8	3
PORT RICHEY	333	300	18	0	1	0	0	0	2	10	2
ZEPHYRHILLS	176	160	12	0	0	0	0	0	1	2	1
BALANCE OF COUNTY	3,848	3,383	258	6	11	3	1	25	68	81	12
PINELLAS											
BELLEAIR	13	12	1	0	0	0	0	0	0	0	0
BELLEAIR BLUFFS	11	9	0	0	1	0	0	0	1	0	0
CLEARWATER	1,663	1,325	228	2	5	2	0	8	40	36	17
DUNEDIN	242	213	11	0	1	0	0	2	6	8	1
GULFPORT	68	54	10	0	0	0	0	1	0	1	2
INDIAN ROCKS BEACH	21	21	0	0	0	0	0	0	0	0	0
KENNETH CITY	44	29	7	0	0	1	0	0	4	3	0
LARGO	872	707	87	3	5	1	0	10	24	27	8
MADEIRA BEACH	16	15	0	0	0	0	0	0	1	0	0
OLDSMAR	176	153	8	0	1	0	0	3	10	1	0
PINELLAS PARK	461	353	33	1	3	1	0	2	39	23	6
REDINGTON SHORES	7	5	0	0	0	0	0	0	1	1	0
SAFETY HARBOR	115	98	6	1	1	0	0	1	2	5	1
SEMINOLE	353	326	5	2	1	0	0	2	9	3	5
SOUTH PASADENA	17	16	1	0	0	0	0	0	0	0	0
ST PETERSBURG	3,311	1,949	1,012	6	10	0	2	14	127	120	71
ST PETERSBURG BEACH	26	23	1	0	0	0	0	0	0	1	1
TARPON SPRINGS	259	222	34	0	1	0	0	0	0	2	0
TREASURE ISLAND	26	23	0	0	0	0	0	0	0	3	0
BALANCE OF COUNTY	1,043	929	54	0	11	1	1	7	19	17	4
POLK											
AUBURNDALE	265	210	52	0	0	0	0	0	1	2	0
BARTOW	261	188	67	0	0	0	0	0	0	6	0
DAVENPORT	324	260	31	0	1	1	0	4	5	20	2
DUNDEE	39	26	10	0	0	0	0	1	0	2	0
EAGLE LAKE	33	30	3	0	0	0	0	0	0	0	0
FORT MEADE	67	60	7	0	0	0	0	0	0	0	0
FROSTPROOF	53	46	7	0	0	0	0	0	0	0	0
HAINES CITY	357	246	85	2	0	0	0	4	3	16	1
LAKE ALFRED	71	53	16	0	0	0	0	1	0	1	0
LAKE WALES	264	177	80	0	1	0	0	0	1	5	0
LAKELAND	1,310	896	327	2	1	2	0	7	22	53	0
MULBERRY	49	43	3	0	0	0	0	0	2	1	0
WINTER HAVEN	882	557	275	1	4	0	0	5	18	20	2
BALANCE OF COUNTY	3,508	2,840	524	5	6	0	0	10	42	78	3
PUTNAM											
PALATKA	815	595	191	1	1	0	0	1	6	19	1
BALANCE OF COUNTY	248	123	119	0	0	0	0	1	0	5	0
BALANCE OF COUNTY	567	472	72	1	1	0	0	0	6	14	1
SAINT JOHNS											
ST AUGUSTINE	2,158	1,835	162	2	12	1	1	13	49	74	9
ST AUGUSTINE BEACH	608	480	85	1	3	0	0	3	6	29	1
BALANCE OF COUNTY	7	7	0	0	0	0	0	0	0	0	0
BALANCE OF COUNTY	1,543	1,348	77	1	9	1	1	10	43	45	8
SAINT LUCIE											
FORT PIERCE	3,099	2,008	892	2	10	0	1	4	36	121	25
PORT ST LUCIE	1,034	523	478	1	2	0	0	0	4	22	4
BALANCE OF COUNTY	1,776	1,271	357	0	6	0	1	4	30	93	14
BALANCE OF COUNTY	289	214	57	1	2	0	0	0	2	6	7

TABLE B-3 (Cont.): RESIDENT LIVE BIRTHS FOR INCORPORATED CITIES OF 2,400 OR MORE
POPULATION, BY RACE OF MOTHER, BY COUNTY, FLORIDA, 2015

	TOTAL	WHITE	BLACK	AMER INDIAN	CHINESE	JAPANESE	HAWAIIAN	FILIPINO	OTHER ASIAN/ PAC ISL	MULTI - RACE & OTHER	UNK
SANTA ROSA	1,943	1,751	87	6	6	3	0	12	19	59	0
GULF BREEZE	61	52	0	0	4	1	0	2	1	1	0
MILTON	191	166	18	0	1	1	0	0	1	4	0
BALANCE OF COUNTY	1,691	1,533	69	6	1	1	0	10	17	54	0
SARASOTA	2,907	2,499	248	1	4	1	0	5	41	98	10
NORTH PORT	169	153	7	0	0	0	0	0	1	6	2
SARASOTA	701	544	103	0	2	1	0	0	12	37	2
VENICE	69	66	1	0	0	0	0	0	0	2	0
BALANCE OF COUNTY	1,968	1,736	137	1	2	0	0	5	28	53	6
SEMINOLE	4,554	3,428	683	4	34	7	0	28	183	181	6
ALTAMONTE SPRINGS	575	419	109	1	0	0	0	6	17	23	0
CASSELBERRY	342	280	33	0	2	0	0	1	11	15	0
LAKE MARY	281	210	28	1	3	3	0	2	28	6	0
LONGWOOD	331	278	19	0	2	1	0	1	11	19	0
MAITLAND	48	45	3	0	0	0	0	0	0	0	0
OVIEDO	430	340	34	0	6	0	0	5	24	20	1
SANFORD	902	529	287	1	4	0	0	5	44	30	2
WINTER SPRINGS	318	268	31	0	0	0	0	1	7	11	0
BALANCE OF COUNTY	1,327	1,059	139	1	17	3	0	7	41	57	3
SUMTER	500	399	90	1	1	0	0	1	5	3	0
BUSHNELL	52	42	9	0	1	0	0	0	0	0	0
WILDWOOD	109	61	47	0	0	0	0	0	1	0	0
BALANCE OF COUNTY	339	296	34	1	0	0	0	1	4	3	0
SUWANNEE	434	353	63	1	0	0	0	0	6	11	0
LIVE OAK	132	83	42	0	0	0	0	0	3	4	0
BALANCE OF COUNTY	302	270	21	1	0	0	0	0	3	7	0
TAYLOR	249	195	49	0	0	0	0	2	2	1	0
PERRY	158	109	44	0	0	0	0	2	2	1	0
BALANCE OF COUNTY	91	86	5	0	0	0	0	0	0	0	0
UNION	147	128	15	1	0	0	0	0	0	3	0
VOLUSIA	4,939	3,874	794	10	10	0	3	23	77	132	16
DAYTONA BEACH	990	533	386	2	2	0	0	4	16	44	3
DAYTONA BEACH SHORES	11	8	0	0	0	0	0	0	3	0	0
DEBARY	123	108	5	0	1	0	0	1	3	4	1
DELAND	558	432	102	0	2	0	1	0	10	10	1
DELTONA	764	635	82	2	0	0	0	5	11	28	1
EDGEWATER	214	204	7	0	0	0	0	0	1	2	0
HOLLY HILL	115	78	33	0	0	0	0	1	1	2	0
LAKE HELEN	35	33	2	0	0	0	0	0	0	0	0
NEW SMYRNA BEACH	243	213	21	1	0	0	0	3	3	1	1
ORANGE CITY	214	193	15	0	0	0	0	1	1	4	0
ORMOND BEACH	414	365	22	1	1	0	1	2	12	10	0
PIERSON	35	33	1	0	0	0	0	0	0	1	0
PONCE INLET	9	9	0	0	0	0	0	0	0	0	0
PORT ORANGE	468	417	20	1	4	0	0	1	9	10	6
SOUTH DAYTONA	110	76	28	1	0	0	0	1	0	4	0
BALANCE OF COUNTY	636	537	70	2	0	0	1	4	7	12	3
WAKULLA	338	304	30	1	0	0	0	1	0	2	0
WALTON	806	752	28	2	0	0	0	2	7	14	1
DEFUNIAK SPRINGS	169	150	15	0	0	0	0	0	0	4	0
BALANCE OF COUNTY	637	602	13	2	0	0	0	2	7	10	1
WASHINGTON	228	189	29	1	0	0	0	2	0	7	0
CHIPLEY	84	64	15	0	0	0	0	2	0	3	0
BALANCE OF COUNTY	144	125	14	1	0	0	0	0	0	4	0

TABLE B-4: RESIDENT LIVE BIRTHS BY TYPE OF PLACE OF DELIVERY AND ATTENDANT, BY COUNTY, FLORIDA, 2015

	TOTAL	HOSPITAL			BIRTHING CENTER			OTHER NAMED PLACE 2,218	UNK 4
		PHYSICIAN	MIDWIFE	OTHER/ UNKNOWN	PHYSICIAN	MIDWIFE	OTHER/ UNKNOWN		
FLORIDA	224,273	195,241	23,920	1,082	3	1,801	4		
ALACHUA	2,885	2,445	356	7	0	16	0	61	
BAKER	336	300	33	1	0	1	0	1	
BAY	2,396	1,916	464	0	0	7	0	9	
BRADFORD	294	253	39	1	0	0	0	1	
BREVARD	5,246	4,837	306	21	0	11	0	70	
BROWARD	22,307	19,672	2,218	83	0	133	0	201	
CALHOUN	150	136	14	0	0	0	0	0	
CHARLOTTE	1,030	966	29	10	0	8	0	17	
CITRUS	1,017	972	25	0	0	4	0	16	
CLAY	2,225	1,862	328	6	0	10	2	17	
COLLIER	3,256	3,085	43	48	0	57	0	23	
COLUMBIA	827	679	116	13	0	6	0	13	
MIAMI-DADE	32,432	31,559	460	36	0	179	0	198	
DESOTO	376	362	6	1	0	3	0	4	
DIXIE	142	118	22	1	0	0	0	1	
DUVAL	13,041	11,834	771	163	0	126	0	147	
ESCAMBIA	3,902	3,630	244	6	0	1	0	21	
FLAGLER	797	695	75	1	0	11	0	15	
FRANKLIN	106	83	23	0	0	0	0	0	
GADSDEN	557	449	96	4	0	4	0	4	
GILCHRIST	194	157	32	0	0	2	0	3	
GLADES	79	65	13	1	0	0	0	0	
GULF	119	103	15	0	0	0	0	1	
HAMILTON	167	145	13	7	0	1	0	1	
HARDEE	390	380	4	1	0	2	0	3	
HENDRY	631	493	130	3	0	2	0	3	
HERNANDO	1,600	1,337	233	1	0	11	0	18	
HIGHLANDS	917	902	4	3	0	5	0	3	
HILLSBOROUGH	17,570	14,985	2,277	22	3	154	0	129	
HOLMES	219	196	18	1	0	1	0	3	
INDIAN RIVER	1,246	1,183	39	2	0	0	0	22	
JACKSON	496	474	14	1	0	3	0	4	
JEFFERSON	124	98	23	1	0	0	0	2	
LAFAYETTE	59	51	6	2	0	0	0	0	
LAKE	3,184	2,903	154	41	0	41	0	45	
LEE	6,776	4,815	1,813	27	0	80	0	41	
LEON	3,047	2,444	508	10	0	39	0	46	
LEVY	391	319	55	2	0	4	0	11	
LIBERTY	75	62	12	1	0	0	0	0	
MADISON	210	154	42	10	0	2	0	2	
MANATEE	3,469	3,098	288	1	0	33	0	49	
MARION	3,584	2,952	526	16	0	48	0	42	
MARTIN	1,262	741	485	4	0	2	0	30	
MONROE	752	683	48	12	0	4	0	5	
NASSAU	803	699	72	13	0	12	0	7	
OKALOOSA	2,829	2,662	101	7	0	30	0	29	
OKEECHOBEE	523	326	190	2	0	0	0	5	
ORANGE	16,718	14,500	1,616	267	0	147	0	188	
OSCEOLA	4,183	3,862	235	26	0	26	0	34	
PALM BEACH	14,873	12,279	2,408	31	0	24	0	130	
PASCO	5,105	4,442	557	7	0	61	0	38	
PINELLAS	8,744	6,404	2,063	36	0	166	0	75	
POLK	7,483	6,454	896	15	0	47	0	71	
PUTNAM	815	709	90	2	0	4	0	10	
SAINT JOHNS	2,158	1,748	332	14	0	24	1	39	
SAINT LUCIE	3,099	2,067	981	2	0	1	0	48	
SANTA ROSA	1,943	1,786	125	5	0	12	1	13	
SARASOTA	2,907	2,623	162	2	0	44	0	76	
SEMINOLE	4,554	3,455	906	51	0	67	0	75	
SUMTER	500	478	13	4	0	3	0	2	
SUWANNEE	434	365	56	4	0	2	0	7	
TAYLOR	249	216	30	1	0	0	0	2	
UNION	147	117	27	1	0	1	0	1	
VOLUSIA	4,939	4,203	541	13	0	105	0	77	
WAKULLA	338	260	68	1	0	7	0	2	
WALTON	806	781	3	7	0	7	0	7	
WASHINGTON	228	201	27	0	0	0	0	0	

TABLE B-5: RESIDENT LIVE BIRTHS BY BIRTHWEIGHT, BY COUNTY, FLORIDA, 2015

	BIRTHWEIGHT IN GRAMS											LESS THAN 1500 GRAMS		LESS THAN 2500 GRAMS	
	TOTAL	<500	500- 999	1000- 1499	1500- 1999	2000- 2499	2500- 2999	3000- 3499	3500- 3999	4000+	UNK	NUMBER	%	NUMBER	%
FLORIDA	224,273	474	1,306	1,717	3,849	12,021	42,995	88,498	57,414	15,950	49	3,497	1.6	19,367	8.6
ALACHUA	2,885	12	15	29	57	172	532	1,067	774	227	0	56	1.9	285	9.9
BAKER	336	0	1	4	6	21	77	145	65	17	0	5	1.5	32	9.5
BAY	2,396	3	8	22	43	137	429	886	662	205	1	33	1.4	213	8.9
BRADFORD	294	0	2	3	5	29	52	111	72	19	1	5	1.7	39	13.3
BREVARD	5,246	10	26	23	85	285	905	1,970	1,465	476	1	59	1.1	429	8.2
BROWARD	22,307	45	183	166	401	1,279	4,663	8,943	5,330	1,290	7	394	1.8	2,074	9.3
CALHOUN	150	1	0	3	1	10	25	62	37	11	0	4	2.7	15	10.0
CHARLOTTE	1,030	1	4	8	19	61	204	428	235	70	0	13	1.3	93	9.0
CITRUS	1,017	5	6	9	21	71	160	387	284	73	1	20	2.0	112	11.0
CLAY	2,225	3	16	16	36	124	410	883	571	166	0	35	1.6	195	8.8
COLLIER	3,256	11	13	25	45	111	557	1,360	882	251	1	49	1.5	205	6.3
COLUMBIA	827	3	7	9	18	48	154	309	215	64	0	19	2.3	85	10.3
MIAMI-DADE	32,432	45	225	242	561	1,660	6,617	13,241	7,945	1,884	12	512	1.6	2,733	8.4
DESOTO	376	1	3	4	3	21	76	137	101	30	0	8	2.1	32	8.5
DIXIE	142	1	0	2	4	11	27	54	31	12	0	3	2.1	18	12.7
DUVAL	13,041	40	98	123	252	793	2,597	4,958	3,224	956	0	261	2.0	1,306	10.0
ESCAMBIA	3,902	13	26	30	81	276	789	1,503	948	235	1	69	1.8	426	10.9
FLAGLER	797	2	3	1	11	41	134	322	216	67	0	6	0.8	58	7.3
FRANKLIN	106	0	0	0	1	7	14	47	27	10	0	0	0.0	8	7.5
GADSDEN	557	1	6	10	15	43	117	222	112	31	0	17	3.1	75	13.5
GILCHRIST	194	1	0	1	8	15	28	74	47	20	0	2	1.0	25	12.9
GLADES	79	0	1	1	0	4	19	28	23	3	0	2	2.5	6	7.6
GULF	119	0	0	0	2	4	24	45	38	6	0	0	0.0	6	5.0
HAMILTON	167	2	2	0	0	16	33	60	40	14	0	4	2.4	20	12.0
HARDEE	390	0	2	1	4	18	74	158	102	31	0	3	0.8	25	6.4
HENDRY	631	2	4	7	11	22	133	257	164	31	0	13	2.1	46	7.3
HERNANDO	1,600	3	4	11	27	84	292	594	458	127	0	18	1.1	129	8.1
HIGHLANDS	917	1	1	12	12	43	206	372	201	69	0	14	1.5	69	7.5
HILLSBOROUGH	17,570	60	89	150	292	995	3,396	6,833	4,487	1,264	4	299	1.7	1,586	9.0
HOLMES	219	0	2	3	4	12	45	73	61	19	0	5	2.3	21	9.6
INDIAN RIVER	1,246	3	2	16	19	58	219	492	355	82	0	21	1.7	98	7.9
JACKSON	496	1	2	2	11	27	108	202	114	29	0	5	1.0	43	8.7
JEFFERSON	124	0	2	0	0	3	26	53	30	10	0	2	1.6	5	4.0
LAFAYETTE	59	0	0	3	0	3	10	26	16	1	0	3	5.1	6	10.2
LAKE	3,184	10	21	21	59	185	538	1,293	838	219	0	52	1.6	296	9.3
LEE	6,776	18	20	40	107	325	1,224	2,656	1,850	536	0	78	1.2	510	7.5
LEON	3,047	6	14	22	59	164	632	1,168	745	237	0	42	1.4	265	8.7
LEVY	391	2	3	3	13	22	82	140	90	36	0	8	2.0	43	11.0
LIBERTY	75	0	0	0	3	4	16	37	14	1	0	0	0.0	7	9.3
MADISON	210	0	0	5	2	22	35	83	53	10	0	5	2.4	29	13.8
MANATEE	3,469	5	18	23	45	146	631	1,398	898	305	0	46	1.3	237	6.8
MARION	3,584	9	19	32	61	210	711	1,363	920	259	0	60	1.7	331	9.2
MARTIN	1,262	1	6	4	16	40	203	509	378	104	1	11	0.9	67	5.3
MONROE	752	1	3	4	13	24	104	299	214	89	1	8	1.1	45	6.0
NASSAU	803	0	7	5	16	48	138	302	219	67	1	12	1.5	76	9.5
OKALOOSA	2,829	3	8	19	35	142	488	1,125	778	231	0	30	1.1	207	7.3
OKEECHOBEE	523	3	0	3	6	26	93	205	143	44	0	6	1.1	38	7.3
ORANGE	16,718	47	108	159	299	895	3,293	6,581	4,197	1,135	4	314	1.9	1,508	9.0
OSCEOLA	4,183	7	19	29	71	224	811	1,677	1,094	251	0	55	1.3	350	8.4
PALM BEACH	14,873	17	95	102	275	770	2,930	6,133	3,653	891	7	214	1.4	1,259	8.5
PASCO	5,105	3	30	28	82	277	863	2,058	1,390	374	0	61	1.2	420	8.2
PINELLAS	8,744	19	37	57	146	404	1,559	3,308	2,442	770	2	113	1.3	663	7.6
POLK	7,483	20	42	48	113	369	1,352	2,933	1,968	637	1	110	1.5	592	7.9
PUTNAM	815	4	11	2	15	51	182	339	169	42	0	17	2.1	83	10.2
SAINT JOHNS	2,158	1	10	15	28	91	339	874	603	197	0	26	1.2	145	6.7
SAINT LUCIE	3,099	6	11	24	57	145	594	1,199	786	276	1	41	1.3	243	7.8
SANTA ROSA	1,943	1	7	14	28	102	353	706	549	183	0	22	1.1	152	7.8
SARASOTA	2,907	3	16	27	41	133	461	1,118	833	275	0	46	1.6	220	7.6
SEMINOLE	4,554	6	18	37	61	242	800	1,795	1,222	372	1	61	1.3	364	8.0
SUMTER	500	0	3	1	14	32	116	183	113	38	0	4	0.8	50	10.0
SUWANNEE	434	1	3	5	6	19	94	168	110	28	0	9	2.1	34	7.8
TAYLOR	249	0	1	2	8	17	57	92	54	18	0	3	1.2	28	11.2
UNION	147	0	0	1	2	13	21	56	43	11	0	1	0.7	16	10.9
VOLUSIA	4,939	10	19	36	93	298	875	1,884	1,327	396	1	65	1.3	456	9.2
WAKULLA	338	1	0	5	8	23	62	114	93	32	0	6	1.8	37	10.9
WALTON	806	0	2	7	10	43	136	320	228	60	0	9	1.1	62	7.7
WASHINGTON	228	0	1	1	2	9	45	77	67	26	0	2	0.9	13	5.7

TABLE B-5 (Cont.): RESIDENT LIVE BIRTHS TO WHITE MOTHERS BY BIRTHWEIGHT, BY COUNTY, FLORIDA, 2015

	TOTAL	BIRTHWEIGHT IN GRAMS										LESS THAN 1500 GRAMS		LESS THAN 2500 GRAMS	
		<500	500- 999	1000- 1499	1500- 1999	2000- 2499	2500- 2999	3000- 3499	3500- 3999	4000+	UNK	NUMBER	%	NUMBER	%
FLORIDA	160,830	192	690	961	2,309	7,401	27,423	63,446	45,275	13,125	8	1,843	1.1	11,553	7.2
ALACHUA	1,783	5	3	13	25	89	261	639	566	182	0	21	1.2	135	7.6
BAKER	287	0	0	3	6	19	60	123	60	16	0	3	1.0	28	9.8
BAY	1,843	3	5	15	24	93	301	677	551	174	0	23	1.2	140	7.6
BRADFORD	229	0	1	1	3	23	37	85	61	18	0	2	0.9	28	12.2
BREVARD	4,133	5	16	11	62	201	652	1,538	1,221	426	1	32	0.8	295	7.1
BROWARD	12,387	13	66	57	178	587	2,257	4,991	3,388	850	0	136	1.1	901	7.3
CALHOUN	121	1	0	2	0	8	21	44	35	10	0	3	2.5	11	9.1
CHARLOTTE	891	0	2	5	14	53	175	366	211	65	0	7	0.8	74	8.3
CITRUS	946	4	6	9	21	60	146	367	264	69	0	19	2.0	100	10.6
CLAY	1,786	1	11	12	29	92	304	706	488	143	0	24	1.3	145	8.1
COLLIER	2,714	8	9	19	36	89	433	1,143	759	218	0	36	1.3	161	5.9
COLUMBIA	621	0	5	6	14	26	93	242	180	55	0	11	1.8	51	8.2
MIAMI-DADE	24,622	21	129	154	344	1,092	4,610	10,179	6,521	1,568	4	304	1.2	1,740	7.1
DESOTO	332	0	2	4	3	20	63	118	95	27	0	6	1.8	29	8.7
DIXIE	124	1	0	1	4	9	25	44	29	11	0	2	1.6	15	12.1
DUVAL	7,239	7	37	49	112	339	1,172	2,713	2,121	689	0	93	1.3	544	7.5
ESCAMBIA	2,430	3	17	11	35	128	406	919	712	199	0	31	1.3	194	8.0
FLAGLER	653	2	0	1	4	32	93	276	188	57	0	3	0.5	39	6.0
FRANKLIN	96	0	0	0	1	5	12	42	26	10	0	0	0.0	6	6.3
GADSDEN	221	0	0	4	5	11	33	90	58	20	0	4	1.8	20	9.0
GILCHRIST	180	1	0	0	7	13	27	68	45	19	0	1	0.6	21	11.7
GLADES	72	0	1	1	0	3	17	26	22	2	0	2	2.8	5	6.9
GULF	96	0	0	0	2	3	16	38	31	6	0	0	0.0	5	5.2
HAMILTON	117	1	1	0	0	10	21	43	28	13	0	2	1.7	12	10.3
HARDEE	363	0	2	1	3	16	67	147	96	31	0	3	0.8	22	6.1
HENDRY	543	2	3	3	9	12	112	222	152	28	0	8	1.5	29	5.3
HERNANDO	1,408	2	3	7	22	69	254	522	412	117	0	12	0.9	103	7.3
HIGHLANDS	715	0	0	7	10	33	148	287	171	59	0	7	1.0	50	7.0
HILLSBOROUGH	12,711	23	57	86	156	617	2,213	4,934	3,593	1,032	0	166	1.3	939	7.4
HOLMES	206	0	2	2	4	10	44	70	55	19	0	4	1.9	18	8.7
INDIAN RIVER	756	1	1	7	12	36	119	293	232	55	0	9	1.2	57	7.5
JACKSON	355	0	1	1	4	14	69	151	91	24	0	2	0.6	20	5.6
JEFFERSON	72	0	0	0	0	0	13	32	18	9	0	0	0.0	0	0.0
LAFAYETTE	58	0	0	3	0	3	10	25	16	1	0	3	5.2	6	10.3
LAKE	2,518	4	14	12	38	133	389	1,033	701	194	0	30	1.2	201	8.0
LEE	5,545	5	16	29	77	237	916	2,177	1,596	492	0	50	0.9	364	6.6
LEON	1,570	4	4	8	24	57	240	574	480	179	0	16	1.0	97	6.2
LEVY	323	2	1	1	10	18	65	118	77	31	0	4	1.2	32	9.9
LIBERTY	64	0	0	0	1	3	12	34	13	1	0	0	0.0	4	6.3
MADISON	107	0	0	1	0	9	11	40	37	9	0	1	0.9	10	9.3
MANATEE	2,654	1	12	18	28	105	425	1,052	745	268	0	31	1.2	164	6.2
MARION	2,760	5	11	20	41	140	485	1,075	756	227	0	36	1.3	217	7.9
MARTIN	1,057	0	3	2	13	26	156	420	339	98	0	5	0.5	44	4.2
MONROE	627	0	1	4	11	17	78	250	188	78	0	5	0.8	33	5.3
NASSAU	723	0	4	4	12	39	120	273	205	66	0	8	1.1	59	8.2
OKALOOSA	2,272	2	5	12	26	113	370	869	675	200	0	19	0.8	158	7.0
ORKEECHOBEE	463	1	0	3	5	23	79	179	132	41	0	4	0.9	32	6.9
ORANGE	10,655	18	43	71	161	491	1,811	4,229	2,986	844	1	132	1.2	784	7.4
OSCEOLA	3,502	4	16	25	60	181	653	1,402	943	218	0	45	1.3	286	8.2
PALM BEACH	9,922	9	38	47	155	428	1,717	4,076	2,751	700	1	94	0.9	677	6.8
PASCO	4,526	2	26	24	72	227	722	1,840	1,262	351	0	52	1.1	351	7.8
PINELLAS	6,482	12	21	33	93	273	996	2,425	1,981	648	0	66	1.0	432	6.7
POLK	5,632	4	23	33	79	224	913	2,199	1,621	536	0	60	1.1	363	6.4
PUTNAM	595	2	9	0	10	35	128	241	134	36	0	11	1.8	56	9.4
SAINT JOHNS	1,835	0	8	11	17	73	265	736	540	185	0	19	1.0	109	5.9
SAINT LUCIE	2,008	2	7	11	33	64	337	768	571	214	1	20	1.0	117	5.8
SANTA ROSA	1,751	1	4	12	26	86	300	641	509	172	0	17	1.0	129	7.4
SARASOTA	2,499	1	13	21	33	107	371	966	741	246	0	35	1.4	175	7.0
SEMINOLE	3,428	2	10	26	43	143	535	1,327	1,015	327	0	38	1.1	224	6.5
SUMTER	399	0	1	0	10	18	82	152	101	35	0	1	0.3	29	7.3
SUWANNEE	353	1	2	2	4	17	76	137	90	24	0	5	1.4	26	7.4
TAYLOR	195	0	0	2	7	11	38	76	47	14	0	2	1.0	20	10.3
UNION	128	0	0	1	1	13	15	47	40	11	0	1	0.8	15	11.7
VOLUSIA	3,874	5	14	21	57	210	620	1,464	1,136	347	0	40	1.0	307	7.9
WAKULLA	304	1	0	4	6	21	53	104	86	29	0	5	1.6	32	10.5
WALTON	752	0	2	7	6	38	125	296	219	59	0	9	1.2	53	7.0
WASHINGTON	189	0	1	1	1	5	32	65	61	23	0	2	1.1	8	4.2

TABLE B-5 (Cont.): RESIDENT LIVE BIRTHS TO BLACK MOTHERS BY BIRTHWEIGHT, BY COUNTY, FLORIDA, 2015

	BIRTHWEIGHT IN GRAMS											LESS THAN 1500 GRAMS		LESS THAN 2500 GRAMS	
	TOTAL	<500	500- 999	1000- 1499	1500- 1999	2000- 2499	2500- 2999	3000- 3499	3500- 3999	4000+	UNK	NUMBER	%	NUMBER	%
FLORIDA	49,109	236	554	658	1,280	3,796	12,429	19,230	8,908	2,013	5	1,448	2.9	6,524	13.3
ALACHUA	834	6	12	15	26	71	202	328	146	28	0	33	4.0	130	15.6
BAKER	43	0	1	1	0	2	15	19	4	1	0	2	4.7	4	9.3
BAY	309	0	3	5	11	30	90	110	50	9	1	8	2.6	49	15.9
BRADFORD	54	0	1	1	2	5	12	23	10	0	0	2	3.7	9	16.7
BREVARD	752	4	9	9	15	64	172	291	153	35	0	22	2.9	101	13.4
BROWARD	8,203	30	100	99	191	583	2,000	3,258	1,584	358	0	229	2.8	1,003	12.2
CALHOUN	24	0	0	1	1	2	3	14	2	1	0	1	4.2	4	16.7
CHARLOTTE	87	1	1	2	4	6	21	38	11	3	0	4	4.6	14	16.1
CITRUS	29	1	0	0	0	4	4	9	10	1	0	1	3.4	5	17.2
CLAY	289	2	4	3	3	24	82	113	47	11	0	9	3.1	36	12.5
COLLIER	396	2	4	6	9	17	97	155	86	20	0	12	3.0	38	9.6
COLUMBIA	176	3	2	3	4	21	54	56	25	8	0	8	4.5	33	18.8
MIAMI-DADE	6,827	17	89	83	194	509	1,772	2,675	1,213	275	0	189	2.8	892	13.1
DESOTO	39	1	1	0	0	1	11	18	5	2	0	2	5.1	3	7.7
DIXIE	13	0	0	1	0	1	2	7	1	1	0	1	7.7	2	15.4
DUVAL	4,609	27	55	63	120	381	1,171	1,750	843	199	0	145	3.1	646	14.0
ESCAMBIA	1,198	10	8	19	39	125	328	482	164	22	1	37	3.1	201	16.8
FLAGLER	90	0	1	0	4	5	29	27	16	8	0	1	1.1	10	11.1
FRANKLIN	8	0	0	0	0	2	1	4	1	0	0	0	0.0	2	25.0
GADSDEN	331	1	6	6	10	31	84	130	52	11	0	13	3.9	54	16.3
GILCHRIST	8	0	0	1	1	2	0	2	1	1	0	1	12.5	4	50.0
GLADES	5	0	0	0	0	0	2	2	0	1	0	0	0.0	0	0.0
GULF	14	0	0	0	0	1	7	6	0	0	0	0	0.0	1	7.1
HAMILTON	42	0	1	0	0	6	12	14	8	1	0	1	2.4	7	16.7
HARDEE	20	0	0	0	1	2	6	8	3	0	0	0	0.0	3	15.0
HENDRY	68	0	0	4	2	9	17	30	6	0	0	4	5.9	15	22.1
HERNANDO	109	0	1	4	4	12	21	40	21	6	0	5	4.6	21	19.3
HIGHLANDS	151	1	1	4	2	8	45	63	21	6	0	6	4.0	16	10.6
HILLSBOROUGH	3,738	29	30	51	115	303	962	1,435	647	166	0	110	2.9	528	14.1
HOLMES	4	0	0	1	0	0	0	1	2	0	0	1	25.0	1	25.0
INDIAN RIVER	232	1	1	7	6	14	56	84	52	11	0	9	3.9	29	12.5
JACKSON	122	1	1	1	7	13	32	43	20	4	0	3	2.5	23	18.9
JEFFERSON	51	0	2	0	0	3	13	20	12	1	0	2	3.9	5	9.8
LAFAYETTE	1	0	0	0	0	0	0	1	0	0	0	0	0.0	0	0.0
LAKE	463	5	6	8	17	42	115	173	85	12	0	19	4.1	78	16.8
LEE	1,022	12	4	9	27	78	260	398	199	35	0	25	2.4	130	12.7
LEON	1,290	2	9	12	35	99	343	524	218	48	0	23	1.8	157	12.2
LEVY	52	0	2	2	3	4	14	17	8	2	0	4	7.7	11	21.2
LIBERTY	10	0	0	0	2	1	4	3	0	0	0	0	0.0	3	30.0
MADISON	100	0	0	4	2	13	24	40	16	1	0	4	4.0	19	19.0
MANATEE	475	4	5	3	13	26	128	204	78	14	0	12	2.5	51	10.7
MARION	665	3	7	10	17	61	188	236	124	19	0	20	3.0	98	14.7
MARTIN	101	1	3	2	1	6	33	39	13	3	0	6	5.9	13	12.9
MONROE	86	1	2	0	0	3	24	31	15	10	0	3	3.5	6	7.0
NASSAU	54	0	3	1	2	6	15	18	8	1	0	4	7.4	12	22.2
OKALOOSA	282	1	2	4	6	20	74	129	38	8	0	7	2.5	33	11.7
ORKEECHOBEE	34	2	0	0	1	1	8	15	4	3	0	2	5.9	4	11.8
ORANGE	4,440	24	61	77	106	313	1,088	1,707	864	199	1	162	3.6	581	13.1
OSCEOLA	438	2	2	2	8	32	99	172	97	24	0	6	1.4	46	10.5
PALM BEACH	4,048	6	54	53	101	288	1,005	1,678	712	150	1	113	2.8	502	12.4
PASCO	325	1	3	3	8	34	86	116	67	7	0	7	2.2	49	15.1
PINELLAS	1,498	6	14	18	40	89	387	584	286	73	1	38	2.5	167	11.1
POLK	1,487	16	16	14	25	122	368	579	275	72	0	46	3.1	193	13.0
PUTNAM	191	2	2	1	5	16	48	84	29	4	0	5	2.6	26	13.6
SAINT JOHNS	162	1	2	3	7	13	42	60	28	6	0	6	3.7	26	16.0
SAINT LUCIE	892	3	4	11	21	71	207	362	169	44	0	18	2.0	110	12.3
SANTA ROSA	87	0	1	2	1	10	30	26	14	3	0	3	3.4	14	16.1
SARASOTA	248	1	2	5	6	20	58	83	54	19	0	8	3.2	34	13.7
SEMINOLE	683	2	7	8	11	69	175	270	116	25	0	17	2.5	97	14.2
SUMTER	90	0	2	1	4	13	31	27	10	2	0	3	3.3	20	22.2
SUWANNEE	63	0	1	2	1	2	16	23	15	3	0	3	4.8	6	9.5
TAYLOR	49	0	1	0	1	6	17	15	6	3	0	1	2.0	8	16.3
UNION	15	0	0	0	1	0	5	7	2	0	0	0	0.0	1	6.7
VOLUSIA	794	4	5	12	31	73	186	322	130	31	0	21	2.6	125	15.7
WAKULLA	30	0	0	1	2	2	8	10	5	2	0	1	3.3	5	16.7
WALTON	28	0	0	0	3	4	8	11	2	0	0	0	0.0	7	25.0
WASHINGTON	29	0	0	0	1	2	11	10	5	0	0	0	0.0	3	10.3

TABLE B-5 (Cont.): RESIDENT LIVE BIRTHS TO OTHER MOTHERS BY BIRTHWEIGHT, BY COUNTY, FLORIDA, 2015

	BIRTHWEIGHT IN GRAMS											LESS THAN 1500 GRAMS		LESS THAN 2500 GRAMS	
	TOTAL	<500	500- 999	1000- 1499	1500- 1999	2000- 2499	2500- 2999	3000- 3499	3500- 3999	4000+	UNK	NUMBER	%	NUMBER	%
FLORIDA	13,127	32	55	87	236	765	2,920	5,355	2,927	749	1	174	1.3	1,175	9.0
ALACHUA	263	1	0	1	6	12	67	98	61	17	0	2	0.8	20	7.6
BAKER	5	0	0	0	0	0	2	2	1	0	0	0	0.0	0	0.0
BAY	179	0	0	1	6	11	27	72	44	18	0	1	0.6	18	10.1
BRADFORD	10	0	0	1	0	1	3	3	1	1	0	1	10.0	2	20.0
BREVARD	354	0	1	2	8	20	79	139	90	15	0	3	0.8	31	8.8
BROWARD	1,488	2	14	9	30	97	370	598	293	75	0	25	1.7	152	10.2
CALHOUN	5	0	0	0	0	0	1	4	0	0	0	0	0.0	0	0.0
CHARLOTTE	49	0	1	1	0	2	8	23	12	2	0	2	4.1	4	8.2
CITRUS	41	0	0	0	0	7	10	11	10	3	0	0	0.0	7	17.1
CLAY	139	0	1	1	3	7	23	58	34	12	0	2	1.4	12	8.6
COLLIER	145	1	0	0	0	5	27	62	37	13	0	1	0.7	6	4.1
COLUMBIA	29	0	0	0	0	1	7	11	9	1	0	0	0.0	1	3.4
MIAMI-DADE	730	5	4	3	15	46	178	301	143	34	1	12	1.6	73	10.0
DESOTO	4	0	0	0	0	0	2	1	0	1	0	0	0.0	0	0.0
DIXIE	5	0	0	0	0	1	0	3	1	0	0	0	0.0	1	20.0
DUVAL	1,166	6	6	10	20	71	249	482	258	64	0	22	1.9	113	9.7
ESCAMBIA	270	0	1	0	7	23	54	102	71	12	0	1	0.4	31	11.5
FLAGLER	52	0	2	0	3	3	12	18	12	2	0	2	3.8	8	15.4
FRANKLIN	2	0	0	0	0	0	1	1	0	0	0	0	0.0	0	0.0
GADSDEN	5	0	0	0	0	1	0	2	2	0	0	0	0.0	1	20.0
GILCHRIST	5	0	0	0	0	0	1	3	1	0	0	0	0.0	0	0.0
GLADES	2	0	0	0	0	1	0	0	1	0	0	0	0.0	1	50.0
GULF	7	0	0	0	0	0	1	1	5	0	0	0	0.0	0	0.0
HAMILTON	8	1	0	0	0	0	0	3	4	0	0	1	12.5	1	12.5
HARDEE	7	0	0	0	0	0	1	3	3	0	0	0	0.0	0	0.0
HENDRY	20	0	1	0	0	1	4	5	6	3	0	1	5.0	2	10.0
HERNANDO	77	1	0	0	1	3	14	30	24	4	0	1	1.3	5	6.5
HIGHLANDS	50	0	0	1	0	2	13	21	9	4	0	1	2.0	3	6.0
HILLSBOROUGH	1,083	4	2	12	21	71	213	454	241	65	0	18	1.7	110	10.2
HOLMES	8	0	0	0	0	2	1	2	3	0	0	0	0.0	2	25.0
INDIAN RIVER	49	0	0	1	1	5	7	23	9	3	0	1	2.0	7	14.3
JACKSON	18	0	0	0	0	0	7	7	3	1	0	0	0.0	0	0.0
JEFFERSON	1	0	0	0	0	0	0	1	0	0	0	0	0.0	0	0.0
LAFAYETTE	0	0	0	0	0	0	0	0	0	0	0	0	0.0	0	0.0
LAKE	197	1	1	1	4	10	32	84	52	12	0	3	1.5	17	8.6
LEE	205	1	0	2	3	10	46	80	54	9	0	3	1.5	16	7.8
LEON	182	0	1	2	0	8	49	67	45	10	0	3	1.6	11	6.0
LEVY	15	0	0	0	0	0	3	4	5	3	0	0	0.0	0	0.0
LIBERTY	1	0	0	0	0	0	0	0	1	0	0	0	0.0	0	0.0
MADISON	3	0	0	0	0	0	0	3	0	0	0	0	0.0	0	0.0
MANATEE	334	0	1	2	3	14	78	139	74	23	0	3	0.9	20	6.0
MARION	159	1	1	2	3	9	38	52	40	13	0	4	2.5	16	10.1
MARTIN	62	0	0	0	0	7	7	30	15	3	0	0	0.0	7	11.3
MONROE	37	0	0	0	2	4	2	18	10	1	0	0	0.0	6	16.2
NASSAU	23	0	0	0	2	2	3	10	6	0	0	0	0.0	4	17.4
OKALOOSA	267	0	1	3	3	9	43	122	64	22	0	4	1.5	16	6.0
ORKEECHOBEE	21	0	0	0	0	2	4	10	5	0	0	0	0.0	2	9.5
ORANGE	1,604	2	4	11	32	89	391	639	345	91	0	17	1.1	138	8.6
OSCEOLA	239	1	1	2	3	11	58	102	52	9	0	4	1.7	18	7.5
PALM BEACH	884	2	3	2	18	54	207	369	188	41	0	7	0.8	79	8.9
PASCO	236	0	1	0	2	13	53	96	57	14	0	1	0.4	16	6.8
PINELLAS	648	1	1	4	10	32	149	262	153	36	0	6	0.9	48	7.4
POLK	356	0	3	1	8	23	70	152	70	29	0	4	1.1	35	9.8
PUTNAM	28	0	0	1	0	0	6	13	6	2	0	1	3.6	1	3.6
SAINT JOHNS	152	0	0	1	2	5	31	73	35	5	0	1	0.7	8	5.3
SAINT LUCIE	174	1	0	2	3	9	44	63	37	15	0	3	1.7	15	8.6
SANTA ROSA	105	0	2	0	1	6	23	39	26	8	0	2	1.9	9	8.6
SARASOTA	150	0	1	1	2	6	32	65	34	9	0	2	1.3	10	6.7
SEMINOLE	437	0	1	3	7	30	89	198	89	20	0	4	0.9	41	9.4
SUMTER	11	0	0	0	0	1	3	4	2	1	0	0	0.0	1	9.1
SUWANNEE	18	0	0	1	1	0	2	8	5	1	0	1	5.6	2	11.1
TAYLOR	5	0	0	0	0	0	2	1	1	1	0	0	0.0	0	0.0
UNION	4	0	0	0	0	0	1	2	1	0	0	0	0.0	0	0.0
VOLUSIA	255	1	0	3	5	15	66	92	57	16	0	4	1.6	24	9.4
WAKULLA	4	0	0	0	0	0	1	0	2	1	0	0	0.0	0	0.0
WALTON	25	0	0	0	1	1	3	12	7	1	0	0	0.0	2	8.0
WASHINGTON	10	0	0	0	0	2	2	2	1	3	0	0	0.0	2	20.0

TABLE B-6: RESIDENT LIVE BIRTHS BY AGE OF MOTHER, BY RACE OF MOTHER,
BY COUNTY, FLORIDA, 2015

	TOTAL	<13	13	14	15	16	17	18	19	20-24	25-29	30-34	35-44	45+	UNK
FLORIDA	224,273	5	17	108	340	906	1,857	3,283	5,570	48,043	66,418	60,374	36,804	539	9
ALACHUA	2,885	0	0	0	4	9	23	29	71	617	822	837	466	7	0
BAKER	336	0	0	0	0	1	4	8	13	105	116	70	19	0	0
BAY	2,396	0	0	1	10	20	31	53	64	640	762	545	265	5	0
BRADFORD	294	0	0	0	1	3	5	9	18	98	92	45	23	0	0
BREVARD	5,246	0	1	1	9	17	42	80	135	1,194	1,685	1,344	732	6	0
BROWARD	22,307	2	2	7	19	74	100	192	387	3,542	6,318	6,727	4,870	66	1
CALHOUN	150	0	0	0	1	0	0	5	2	60	45	25	12	0	0
CHARLOTTE	1,030	0	0	0	2	6	9	21	33	290	312	236	120	1	0
CITRUS	1,017	0	0	1	4	5	10	23	43	339	282	206	103	1	0
CLAY	2,225	0	0	0	4	11	24	29	76	553	703	556	260	9	0
COLLIER	3,256	0	0	2	2	10	28	41	104	637	932	853	642	5	0
COLUMBIA	827	0	0	0	1	9	16	21	31	254	269	150	74	2	0
MIAMI-DADE	32,432	1	1	11	34	84	179	353	564	5,557	9,205	9,629	6,703	110	1
DESOTO	376	0	0	0	1	2	6	12	15	123	108	74	34	1	0
DIXIE	142	0	0	0	1	2	2	2	6	44	51	25	9	0	0
DUVAL	13,041	1	3	5	20	58	122	193	342	3,145	3,996	3,364	1,772	20	0
ESCAMBIA	3,902	0	0	4	14	19	43	70	128	1,084	1,275	865	394	6	0
FLAGLER	797	0	0	1	0	5	3	9	19	189	238	216	115	2	0
FRANKLIN	106	0	0	0	0	1	2	5	7	34	31	21	5	0	0
GADSDEN	557	0	0	0	2	2	5	12	24	182	158	108	64	0	0
GILCHRIST	194	0	0	0	0	3	3	5	2	55	62	39	25	0	0
GLADES	79	0	0	0	0	0	1	0	2	20	31	18	7	0	0
GULF	119	0	0	0	0	0	4	3	4	45	37	12	14	0	0
HAMILTON	167	0	0	0	0	1	1	4	4	41	71	33	12	0	0
HARDEE	390	0	0	2	1	2	5	15	20	137	100	65	43	0	0
HENDRY	631	0	0	2	2	1	16	13	24	185	182	145	61	0	0
HERNANDO	1,600	0	0	2	1	6	11	33	40	442	513	353	197	2	0
HIGHLANDS	917	0	0	1	1	0	19	25	34	262	280	183	111	1	0
HILLSBOROUGH	17,570	0	4	10	28	87	160	269	443	3,863	5,162	4,797	2,708	36	3
HOLMES	219	0	0	0	1	3	6	9	15	70	66	34	15	0	0
INDIAN RIVER	1,246	0	0	2	1	5	6	21	39	290	373	322	184	3	0
JACKSON	496	0	0	1	2	1	5	19	18	180	141	97	32	0	0
JEFFERSON	124	0	0	0	1	0	1	1	3	31	45	29	12	1	0
LAFAYETTE	59	0	0	1	0	1	3	0	1	21	17	11	4	0	0
LAKE	3,184	0	0	2	5	19	23	70	109	813	952	776	412	3	0
LEE	6,776	0	0	7	9	30	72	126	195	1,511	2,028	1,781	995	21	1
LEON	3,047	0	0	2	7	18	16	33	55	710	893	833	475	5	0
LEVY	391	0	0	0	1	0	2	9	22	137	109	83	27	1	0
LIBERTY	75	0	0	0	0	1	1	4	5	21	30	12	1	0	0
MADISON	210	0	0	1	0	0	5	6	4	64	70	39	21	0	0
MANATEE	3,469	0	1	3	9	30	41	56	120	830	1,003	856	515	5	0
MARION	3,584	0	0	4	11	27	31	77	117	1,072	1,117	736	390	2	0
MARTIN	1,262	0	0	1	2	8	5	11	29	236	378	367	219	6	0
MONROE	752	0	0	1	0	2	6	2	13	125	247	236	116	4	0
NASSAU	803	0	0	1	1	3	13	12	20	197	270	188	98	0	0
OKALOOSA	2,829	0	1	0	3	11	26	31	60	704	969	685	331	7	1
OKEECHOBEE	523	0	0	0	2	6	12	13	15	173	153	99	49	1	0
ORANGE	16,718	0	0	8	23	47	122	239	392	3,336	4,726	4,749	3,042	34	0
OSCEOLA	4,183	0	0	1	3	18	49	94	148	1,019	1,225	1,030	586	10	0
PALM BEACH	14,873	0	1	3	23	58	95	174	273	2,592	4,208	4,402	2,989	55	0
PASCO	5,105	0	1	4	8	21	58	95	155	1,122	1,549	1,335	737	19	1
PINELLAS	8,744	0	1	4	17	33	75	120	191	1,827	2,563	2,480	1,416	17	0
POLK	7,483	1	0	4	12	34	93	163	275	2,085	2,344	1,658	802	12	0
PUTNAM	815	0	1	1	5	6	8	30	47	266	229	145	76	1	0
SAINT JOHNS	2,158	0	0	0	4	7	12	19	39	289	599	752	426	11	0
SAINT LUCIE	3,099	0	0	1	1	13	28	46	88	750	971	712	484	5	0
SANTA ROSA	1,943	0	0	0	3	5	19	38	73	429	674	487	213	2	0
SARASOTA	2,907	0	0	1	4	4	21	40	60	615	889	797	471	5	0
SEMINOLE	4,554	0	0	1	4	8	20	42	85	749	1,390	1,362	878	15	0
SUMTER	500	0	0	0	0	5	7	10	19	189	138	88	44	0	0
SUWANNEE	434	0	0	2	1	4	7	12	18	128	131	88	43	0	0
TAYLOR	249	0	0	0	1	0	4	8	11	86	69	48	21	1	0
UNION	147	0	0	0	1	0	3	7	10	32	53	27	14	0	0
VOLUSIA	4,939	0	0	1	11	32	60	82	148	1,233	1,548	1,164	650	10	0
WAKULLA	338	0	0	0	0	2	7	8	10	83	104	90	31	3	0
WALTON	806	0	0	1	2	4	19	15	24	191	249	194	107	0	0
WASHINGTON	228	0	0	0	0	2	2	6	9	100	55	37	17	0	0

TABLE B-6 (Cont.): RESIDENT LIVE BIRTHS TO WHITE MOTHERS, BY AGE OF MOTHER, BY COUNTY, FLORIDA, 2015

	TOTAL	<13	13	14	15	16	17	18	19	20-24	25-29	30-34	35-44	45+	UNK
FLORIDA	160,830	2	7	55	196	548	1,200	2,174	3,619	32,053	48,150	45,467	26,964	391	4
ALACHUA	1,783	0	0	0	1	3	11	13	29	287	512	585	337	5	0
BAKER	287	0	0	0	0	1	4	8	10	86	101	62	15	0	0
BAY	1,843	0	0	0	6	15	20	43	49	469	615	423	199	4	0
BRADFORD	229	0	0	0	1	3	3	8	13	75	71	38	17	0	0
BREVARD	4,133	0	1	1	6	13	33	62	95	891	1,344	1,076	607	4	0
BROWARD	12,387	1	0	1	7	24	37	81	138	1,571	3,524	4,059	2,908	35	1
CALHOUN	121	0	0	0	1	0	0	3	2	51	37	21	6	0	0
CHARLOTTE	891	0	0	0	1	5	8	18	32	249	278	215	84	1	0
CITRUS	946	0	0	1	4	4	10	22	42	317	267	189	89	1	0
CLAY	1,786	0	0	0	4	10	16	24	60	441	577	445	202	7	0
COLLIER	2,714	0	0	2	1	9	26	36	88	548	788	709	505	2	0
COLUMBIA	621	0	0	0	0	7	10	14	19	199	202	115	55	0	0
MIAMI-DADE	24,622	0	1	8	12	47	109	223	332	3,747	6,983	7,696	5,374	89	1
DESOTO	332	0	0	0	1	2	5	11	14	111	90	66	31	1	0
DIXIE	124	0	0	0	1	2	1	2	5	40	43	24	6	0	0
DUVAL	7,239	0	0	1	7	20	49	76	146	1,468	2,268	2,111	1,079	14	0
ESCAMBIA	2,430	0	0	2	6	7	15	35	65	596	823	605	273	3	0
FLAGLER	653	0	0	1	0	5	2	7	16	157	198	171	94	2	0
FRANKLIN	96	0	0	0	0	1	2	5	7	30	26	20	5	0	0
GADSDEN	221	0	0	0	0	1	1	5	10	59	61	49	35	0	0
GILCHRIST	180	0	0	0	0	3	3	5	2	48	59	35	25	0	0
GLADES	72	0	0	0	0	0	0	0	0	20	29	16	7	0	0
GULF	96	0	0	0	0	0	4	3	4	36	30	9	10	0	0
HAMILTON	117	0	0	0	0	1	1	2	2	26	50	24	11	0	0
HARDEE	363	0	0	2	1	2	5	15	18	123	93	61	43	0	0
HENDRY	543	0	0	2	2	1	15	12	20	154	155	131	51	0	0
HERNANDO	1,408	0	0	1	0	4	9	28	35	398	454	306	171	2	0
HIGHLANDS	715	0	0	1	1	0	15	17	25	203	227	143	82	1	0
HILLSBOROUGH	12,711	0	3	1	21	50	106	185	308	2,587	3,705	3,664	2,049	32	0
HOLMES	206	0	0	0	1	3	6	8	14	64	64	33	13	0	0
INDIAN RIVER	756	0	0	0	1	2	2	14	27	152	224	215	117	2	0
JACKSON	355	0	0	1	2	1	4	15	11	137	95	64	25	0	0
JEFFERSON	72	0	0	0	1	0	0	0	1	17	24	18	10	1	0
LAFAYETTE	58	0	0	1	0	1	3	0	1	20	17	11	4	0	0
LAKE	2,518	0	0	0	4	15	19	51	80	630	773	624	319	3	0
LEE	5,545	0	0	4	4	26	52	97	153	1,195	1,680	1,505	811	17	1
LEON	1,570	0	0	1	2	3	3	15	17	230	472	525	299	3	0
LEVY	323	0	0	0	1	0	2	7	15	115	93	66	23	1	0
LIBERTY	64	0	0	0	0	1	1	3	4	18	26	10	1	0	0
MADISON	107	0	0	0	0	0	3	3	2	32	36	20	11	0	0
MANATEE	2,654	0	1	2	8	16	32	36	85	585	779	690	417	3	0
MARION	2,760	0	0	2	8	22	22	61	82	817	878	576	291	1	0
MARTIN	1,057	0	0	1	2	7	3	9	21	182	324	320	184	4	0
MONROE	627	0	0	1	0	2	6	2	13	102	207	198	93	3	0
NASSAU	723	0	0	1	1	2	10	10	17	177	251	169	85	0	0
OKALOOSA	2,272	0	0	0	2	7	20	20	47	544	796	572	260	3	1
OKEECHOBEE	463	0	0	0	2	6	9	9	12	151	140	90	43	1	0
ORANGE	10,655	0	0	6	10	23	58	134	222	1,952	3,030	3,252	1,942	26	0
OSCEOLA	3,502	0	0	1	3	14	40	76	124	873	1,035	859	470	7	0
PALM BEACH	9,922	0	0	1	16	33	60	99	160	1,544	2,766	3,146	2,057	40	0
PASCO	4,526	0	1	4	8	17	53	86	133	1,014	1,408	1,169	620	13	0
PINELLAS	6,482	0	0	0	4	14	48	65	113	1,134	1,931	1,998	1,161	14	0
POLK	5,632	1	0	3	9	29	64	114	200	1,537	1,799	1,292	574	10	0
PUTNAM	595	0	0	1	3	4	6	20	35	191	166	115	54	0	0
SAINT JOHNS	1,835	0	0	0	2	5	9	16	33	223	509	659	371	8	0
SAINT LUCIE	2,008	0	0	0	1	6	15	29	48	475	646	486	299	3	0
SANTA ROSA	1,751	0	0	0	3	4	17	34	67	383	611	444	187	1	0
SARASOTA	2,499	0	0	0	2	3	15	35	45	481	786	713	416	3	0
SEMINOLE	3,428	0	0	0	3	7	11	27	53	517	1,036	1,088	674	12	0
SUMTER	399	0	0	0	0	4	6	9	18	146	113	67	36	0	0
SUWANNEE	353	0	0	0	1	2	6	12	13	100	108	73	38	0	0
TAYLOR	195	0	0	0	0	0	2	6	10	68	57	38	13	1	0
UNION	128	0	0	0	1	0	3	4	8	28	48	24	12	0	0
VOLUSIA	3,874	0	0	0	5	21	44	57	109	897	1,237	972	526	6	0
WAKULLA	304	0	0	0	0	2	5	8	8	76	93	81	29	2	0
WALTON	752	0	0	1	2	4	19	13	24	178	231	183	97	0	0
WASHINGTON	189	0	0	0	0	2	2	6	8	81	48	30	12	0	0

TABLE B-6 (Cont.): RESIDENT LIVE BIRTHS TO BLACK MOTHERS, BY AGE OF MOTHER, BY COUNTY, FLORIDA, 2015

	TOTAL	<13	13	14	15	16	17	18	19	20-24	25-29	30-34	35-44	45+	UNK
FLORIDA	49,109	3	8	46	128	317	563	967	1,701	13,784	14,246	10,387	6,876	81	2
ALACHUA	834	0	0	0	3	6	12	15	38	305	233	156	66	0	0
BAKER	43	0	0	0	0	0	0	0	2	17	14	7	3	0	0
BAY	309	0	0	1	2	4	6	8	9	107	77	57	37	1	0
BRADFORD	54	0	0	0	0	0	2	1	5	19	19	5	3	0	0
BREVARD	752	0	0	0	1	3	8	13	31	223	222	174	76	1	0
BROWARD	8,203	1	2	6	12	47	59	101	228	1,764	2,327	2,079	1,558	19	0
CALHOUN	24	0	0	0	0	0	0	1	0	8	7	3	5	0	0
CHARLOTTE	87	0	0	0	0	1	1	2	0	29	21	10	23	0	0
CITRUS	29	0	0	0	0	1	0	1	0	10	8	6	3	0	0
CLAY	289	0	0	0	0	1	5	4	10	83	85	68	32	1	0
COLLIER	396	0	0	0	1	1	0	4	15	74	101	102	95	3	0
COLUMBIA	176	0	0	0	1	2	6	6	12	47	57	28	15	2	0
MIAMI-DADE	6,827	1	0	3	22	35	68	126	221	1,716	1,955	1,591	1,074	15	0
DESOTO	39	0	0	0	0	0	1	1	1	11	15	7	3	0	0
DIXIE	13	0	0	0	0	0	0	0	1	4	7	0	1	0	0
DUVAL	4,609	1	3	4	13	33	65	109	179	1,464	1,386	874	475	3	0
ESCAMBIA	1,198	0	0	2	7	11	21	32	54	437	366	186	81	1	0
FLAGLER	90	0	0	0	0	0	0	2	2	20	28	26	12	0	0
FRANKLIN	8	0	0	0	0	0	0	0	0	3	4	1	0	0	0
GADSDEN	331	0	0	0	2	1	4	7	14	122	94	59	28	0	0
GILCHRIST	8	0	0	0	0	0	0	0	0	4	2	2	0	0	0
GLADES	5	0	0	0	0	0	0	0	1	0	2	2	0	0	0
GULF	14	0	0	0	0	0	0	0	0	5	5	1	3	0	0
HAMILTON	42	0	0	0	0	0	0	2	2	13	18	6	1	0	0
HARDEE	20	0	0	0	0	0	0	0	1	10	5	4	0	0	0
HENDRY	68	0	0	0	0	0	1	1	2	26	22	9	7	0	0
HERNANDO	109	0	0	0	0	1	1	4	3	31	34	24	11	0	0
HIGHLANDS	151	0	0	0	0	0	1	7	7	48	38	28	22	0	0
HILLSBOROUGH	3,738	0	0	8	6	35	50	77	126	1,141	1,127	730	435	1	2
HOLMES	4	0	0	0	0	0	0	0	1	2	1	0	0	0	0
INDIAN RIVER	232	0	0	1	0	0	3	2	7	82	68	42	27	0	0
JACKSON	122	0	0	0	0	0	1	4	7	36	39	29	6	0	0
JEFFERSON	51	0	0	0	0	0	1	1	2	14	20	11	2	0	0
LAFAYETTE	1	0	0	0	0	0	0	0	0	1	0	0	0	0	0
LAKE	463	0	0	2	1	3	3	19	21	152	123	83	56	0	0
LEE	1,022	0	0	3	5	4	19	27	38	286	289	204	146	1	0
LEON	1,290	0	0	1	4	15	13	18	37	452	369	251	129	1	0
LEVY	52	0	0	0	0	0	0	2	4	20	13	11	2	0	0
LIBERTY	10	0	0	0	0	0	0	1	1	3	3	2	0	0	0
MADISON	100	0	0	1	0	0	2	3	1	32	33	19	9	0	0
MANATEE	475	0	0	1	1	13	7	13	28	167	127	67	51	0	0
MARION	665	0	0	2	3	3	8	15	27	223	195	119	70	0	0
MARTIN	101	0	0	0	0	1	2	0	3	36	26	21	12	0	0
MONROE	86	0	0	0	0	0	0	0	0	19	25	24	17	1	0
NASSAU	54	0	0	0	0	1	3	2	2	14	11	12	9	0	0
OKALOOSA	282	0	1	0	0	3	0	8	10	100	85	44	30	1	0
OKEECHOBEE	34	0	0	0	0	0	0	1	1	12	11	7	2	0	0
ORANGE	4,440	0	0	2	10	23	60	95	151	1,178	1,262	945	709	5	0
OSCEOLA	438	0	0	0	0	2	6	13	20	107	128	95	65	2	0
PALM BEACH	4,048	0	1	2	7	23	34	66	103	958	1,204	938	702	10	0
PASCO	325	0	0	0	0	3	3	5	17	69	77	93	55	3	0
PINELLAS	1,498	0	0	3	12	15	23	35	63	565	423	242	116	1	0
POLK	1,487	0	0	1	3	4	23	44	65	483	430	268	165	1	0
PUTNAM	191	0	1	0	2	2	2	9	11	69	54	22	18	1	0
SAINT JOHNS	162	0	0	0	1	1	1	3	3	49	47	35	21	1	0
SAINT LUCIE	892	0	0	1	0	7	8	15	30	237	264	179	149	2	0
SANTA ROSA	87	0	0	0	0	1	2	2	2	21	29	19	11	0	0
SARASOTA	248	0	0	0	1	1	4	4	11	101	63	43	19	1	0
SEMINOLE	683	0	0	1	1	1	7	10	27	184	215	136	100	1	0
SUMTER	90	0	0	0	0	1	1	1	1	40	22	17	7	0	0
SUWANNEE	63	0	0	0	0	2	1	0	4	23	21	10	2	0	0
TAYLOR	49	0	0	0	1	0	2	2	1	18	12	8	5	0	0
UNION	15	0	0	0	0	0	0	3	2	2	4	2	2	0	0
VOLUSIA	794	0	0	1	6	6	11	19	33	261	246	126	83	2	0
WAKULLA	30	0	0	0	0	0	2	0	2	6	11	8	1	0	0
WALTON	28	0	0	0	0	0	0	1	0	9	9	4	5	0	0
WASHINGTON	29	0	0	0	0	0	0	0	1	12	7	6	3	0	0

TABLE B-6 (Cont.): RESIDENT LIVE BIRTHS TO OTHER MOTHERS, BY AGE OF MOTHER, BY COUNTY, FLORIDA, 2015

	TOTAL	<13	13	14	15	16	17	18	19	20-24	25-29	30-34	35-44	45+	UNK
FLORIDA	13,127	0	2	6	14	34	90	125	220	1,957	3,675	4,196	2,750	58	0
ALACHUA	263	0	0	0	0	0	0	1	4	25	75	95	61	2	0
BAKER	5	0	0	0	0	0	0	0	1	1	1	1	1	0	0
BAY	179	0	0	0	1	1	4	2	3	43	59	44	22	0	0
BRADFORD	10	0	0	0	0	0	0	0	0	4	1	2	3	0	0
BREVARD	354	0	0	0	2	1	1	5	9	78	115	94	48	1	0
BROWARD	1,488	0	0	0	0	3	4	7	17	159	399	529	361	9	0
CALHOUN	5	0	0	0	0	0	0	1	0	1	1	1	1	0	0
CHARLOTTE	49	0	0	0	1	0	0	1	1	11	13	10	12	0	0
CITRUS	41	0	0	0	0	0	0	0	1	12	7	10	11	0	0
CLAY	139	0	0	0	0	0	3	1	5	27	37	40	25	1	0
COLLIER	145	0	0	0	0	0	2	1	1	14	43	42	42	0	0
COLUMBIA	29	0	0	0	0	0	0	1	0	8	9	7	4	0	0
MIAMI-DADE	730	0	0	0	0	2	1	3	7	65	195	256	197	4	0
DESOTO	4	0	0	0	0	0	0	0	0	0	3	1	0	0	0
DIXIE	5	0	0	0	0	0	1	0	0	0	1	1	2	0	0
DUVAL	1,166	0	0	0	0	4	8	7	16	207	334	373	214	3	0
ESCAMBIA	270	0	0	0	1	1	7	3	9	50	85	73	39	2	0
FLAGLER	52	0	0	0	0	0	1	0	1	11	11	19	9	0	0
FRANKLIN	2	0	0	0	0	0	0	0	0	1	1	0	0	0	0
GADSDEN	5	0	0	0	0	0	0	0	0	1	3	0	1	0	0
GILCHRIST	5	0	0	0	0	0	0	0	0	2	1	2	0	0	0
GLADES	2	0	0	0	0	0	1	0	1	0	0	0	0	0	0
GULF	7	0	0	0	0	0	0	0	0	3	2	1	1	0	0
HAMILTON	8	0	0	0	0	0	0	0	0	2	3	3	0	0	0
HARDEE	7	0	0	0	0	0	0	0	1	4	2	0	0	0	0
HENDRY	20	0	0	0	0	0	0	0	2	5	5	5	3	0	0
HERNANDO	77	0	0	1	1	1	1	1	2	13	22	21	14	0	0
HIGHLANDS	50	0	0	0	0	0	3	1	2	10	15	12	7	0	0
HILLSBOROUGH	1,083	0	1	1	1	1	4	7	9	123	324	391	218	3	0
HOLMES	8	0	0	0	0	0	0	1	0	3	1	1	2	0	0
INDIAN RIVER	49	0	0	0	0	0	0	1	0	8	19	13	7	1	0
JACKSON	18	0	0	0	0	0	0	0	0	6	7	4	1	0	0
JEFFERSON	1	0	0	0	0	0	0	0	0	0	1	0	0	0	0
LAFAYETTE	0	0	0	0	0	0	0	0	0	0	0	0	0	0	0
LAKE	197	0	0	0	0	1	1	0	8	30	54	66	37	0	0
LEE	205	0	0	0	0	0	1	2	4	29	59	71	36	3	0
LEON	182	0	0	0	1	0	0	0	1	28	51	54	46	1	0
LEVY	15	0	0	0	0	0	0	0	3	2	3	5	2	0	0
LIBERTY	1	0	0	0	0	0	0	0	0	0	1	0	0	0	0
MADISON	3	0	0	0	0	0	0	0	1	0	1	0	1	0	0
MANATEE	334	0	0	0	0	1	2	7	7	77	95	97	46	2	0
MARION	159	0	0	0	0	2	1	1	8	32	44	41	29	1	0
MARTIN	62	0	0	0	0	0	0	1	1	5	17	19	19	0	0
MONROE	37	0	0	0	0	0	0	0	0	4	13	14	6	0	0
NASSAU	23	0	0	0	0	0	0	0	1	6	6	6	4	0	0
OKALOOSA	267	0	0	0	1	1	6	3	2	58	84	68	41	3	0
OKEECHOBEE	21	0	0	0	0	0	3	2	2	8	1	1	4	0	0
ORANGE	1,604	0	0	0	2	1	4	10	18	204	426	548	388	3	0
OSCEOLA	239	0	0	0	0	1	3	5	3	37	62	76	51	1	0
PALM BEACH	884	0	0	0	0	1	1	8	10	86	233	313	227	5	0
PASCO	236	0	0	0	0	1	2	3	5	36	57	70	59	3	0
PINELLAS	648	0	1	1	1	4	4	18	10	111	174	209	113	2	0
POLK	356	0	0	0	0	1	6	5	10	61	113	97	62	1	0
PUTNAM	28	0	0	0	0	0	0	1	1	5	9	8	4	0	0
SAINT JOHNS	152	0	0	0	1	1	2	0	3	17	39	57	31	1	0
SAINT LUCIE	174	0	0	0	0	0	5	1	10	31	53	42	32	0	0
SANTA ROSA	105	0	0	0	0	0	0	2	4	25	34	24	15	1	0
SARASOTA	150	0	0	1	1	0	2	0	4	32	37	37	35	1	0
SEMINOLE	437	0	0	0	0	0	2	5	5	47	137	138	101	2	0
SUMTER	11	0	0	0	0	0	0	0	0	3	3	4	1	0	0
SUWANNEE	18	0	0	2	0	0	0	0	1	5	2	5	3	0	0
TAYLOR	5	0	0	0	0	0	0	0	0	0	0	2	3	0	0
UNION	4	0	0	0	0	0	0	0	0	2	1	1	0	0	0
VOLUSIA	255	0	0	0	0	5	4	6	6	68	62	63	40	1	0
WAKULLA	4	0	0	0	0	0	0	0	0	1	0	1	1	1	0
WALTON	25	0	0	0	0	0	0	1	0	3	9	7	5	0	0
WASHINGTON	10	0	0	0	0	0	0	0	0	7	0	1	2	0	0

TABLE B-7: RESIDENT LIVE BIRTHS BY TRIMESTER PRENATAL CARE BEGAN, BY RACE OF MOTHER, BY COUNTY, FLORIDA, 2015

	TRIMESTER PRENATAL CARE BEGAN ¹						% CARE BEGAN BY TRIMESTER ²			
	TOTAL	1ST	2ND	3RD	NONE	UNK	1ST	2ND	3RD	NONE
FLORIDA	224,273	161,643	31,092	8,011	3,116	20,411	79.3	15.3	3.9	1.5
ALACHUA	2,885	2,079	370	120	20	296	80.3	14.3	4.6	0.8
BAKER	336	217	77	10	7	25	69.8	24.8	3.2	2.3
BAY	2,396	1,430	390	129	34	413	72.1	19.7	6.5	1.7
BRADFORD	294	193	43	14	4	40	76.0	16.9	5.5	1.6
BREVARD	5,246	4,192	601	96	55	302	84.8	12.2	1.9	1.1
BROWARD	22,307	15,301	3,298	958	532	2,218	76.2	16.4	4.8	2.6
CALHOUN	150	98	20	4	1	27	79.7	16.3	3.3	0.8
CHARLOTTE	1,030	674	204	60	10	82	71.1	21.5	6.3	1.1
CITRUS	1,017	713	202	46	15	41	73.1	20.7	4.7	1.5
CLAY	2,225	1,633	338	73	30	151	78.7	16.3	3.5	1.4
COLLIER	3,256	2,015	683	186	26	346	69.2	23.5	6.4	0.9
COLUMBIA	827	473	132	52	11	159	70.8	19.8	7.8	1.6
MIAMI-DADE	32,432	25,493	2,977	916	268	2,778	86.0	10.0	3.1	0.9
DESOTO	376	231	80	22	10	33	67.3	23.3	6.4	2.9
DIXIE	142	76	26	5	2	33	69.7	23.9	4.6	1.8
DUVAL	13,041	8,391	2,881	674	331	764	68.3	23.5	5.5	2.7
ESCAMBIA	3,902	2,636	686	207	45	328	73.8	19.2	5.8	1.3
FLAGLER	797	614	76	22	7	78	85.4	10.6	3.1	1.0
FRANKLIN	106	70	18	3	0	15	76.9	19.8	3.3	0.0
GADSDEN	557	312	86	15	3	141	75.0	20.7	3.6	0.7
GILCHRIST	194	137	30	6	1	20	78.7	17.2	3.4	0.6
GLADES	79	42	17	4	4	12	62.7	25.4	6.0	6.0
GULF	119	67	23	4	2	23	69.8	24.0	4.2	2.1
HAMILTON	167	79	38	11	2	37	60.8	29.2	8.5	1.5
HARDEE	390	217	118	26	9	20	58.6	31.9	7.0	2.4
HENDRY	631	406	118	22	10	75	73.0	21.2	4.0	1.8
HERNANDO	1,600	1,318	184	44	11	43	84.6	11.8	2.8	0.7
HIGHLANDS	917	528	303	61	11	14	58.5	33.6	6.8	1.2
HILLSBOROUGH	17,570	15,655	1,226	172	114	403	91.2	7.1	1.0	0.7
HOLMES	219	158	24	13	1	23	80.6	12.2	6.6	0.5
INDIAN RIVER	1,246	851	265	69	17	44	70.8	22.0	5.7	1.4
JACKSON	496	378	63	16	4	35	82.0	13.7	3.5	0.9
JEFFERSON	124	76	21	0	0	27	78.4	21.6	0.0	0.0
LAFAYETTE	59	34	14	2	1	8	66.7	27.5	3.9	2.0
LAKE	3,184	2,385	362	102	57	278	82.1	12.5	3.5	2.0
LEE	6,776	4,408	1,374	344	80	570	71.0	22.1	5.5	1.3
LEON	3,047	1,944	324	110	23	646	81.0	13.5	4.6	1.0
LEVY	391	239	66	22	4	60	72.2	19.9	6.6	1.2
LIBERTY	75	48	6	3	0	18	84.2	10.5	5.3	0.0
MADISON	210	120	29	14	4	43	71.9	17.4	8.4	2.4
MANATEE	3,469	2,443	647	187	56	136	73.3	19.4	5.6	1.7
MARION	3,584	2,116	861	221	63	323	64.9	26.4	6.8	1.9
MARTIN	1,262	910	244	50	11	47	74.9	20.1	4.1	0.9
MONROE	752	584	111	12	4	41	82.1	15.6	1.7	0.6
NASSAU	803	645	83	17	7	51	85.8	11.0	2.3	0.9
OKALOOSA	2,829	1,671	404	126	29	599	74.9	18.1	5.7	1.3
OKEECHOBEE	523	315	148	21	19	20	62.6	29.4	4.2	3.8
ORANGE	16,718	11,433	1,664	336	326	2,959	83.1	12.1	2.4	2.4
OSCEOLA	4,183	3,029	481	99	63	511	82.5	13.1	2.7	1.7
PALM BEACH	14,873	10,336	2,239	815	148	1,335	76.3	16.5	6.0	1.1
PASCO	5,105	4,200	544	97	46	218	85.9	11.1	2.0	0.9
PINELLAS	8,744	6,461	1,183	273	107	720	80.5	14.7	3.4	1.3
POLK	7,483	5,129	1,420	291	156	487	73.3	20.3	4.2	2.2
PUTNAM	815	516	159	39	16	85	70.7	21.8	5.3	2.2
SAINT JOHNS	2,158	1,693	242	80	15	128	83.4	11.9	3.9	0.7
SAINT LUCIE	3,099	2,147	619	152	68	113	71.9	20.7	5.1	2.3
SANTA ROSA	1,943	1,471	239	68	9	156	82.3	13.4	3.8	0.5
SARASOTA	2,907	2,054	463	112	32	246	77.2	17.4	4.2	1.2
SEMINOLE	4,554	3,279	461	92	56	666	84.3	11.9	2.4	1.4
SUMTER	500	375	61	16	7	41	81.7	13.3	3.5	1.5
SUWANNEE	434	242	77	34	3	78	68.0	21.6	9.6	0.8
TAYLOR	249	146	41	6	5	51	73.7	20.7	3.0	2.5
UNION	147	104	22	6	1	14	78.2	16.5	4.5	0.8
VOLUSIA	4,939	3,483	717	150	93	496	78.4	16.1	3.4	2.1
WAKULLA	338	217	32	10	1	78	83.5	12.3	3.8	0.4
WALTON	806	568	100	32	5	101	80.6	14.2	4.5	0.7
WASHINGTON	228	142	36	11	0	39	75.1	19.0	5.8	0.0

1. Starting in 2004, "trimester prenatal care began" is calculated as the time elapsed from the date of the last menstrual period to the date of the first prenatal care visit. Prior to 2004, these data were obtained by direct question that noted the trimester the mother began prenatal care. Consequently, these data are not comparable to data from prior years.

2. Births with unknown information as to when prenatal care began are excluded from the denominator.

TABLE B-7 (Cont.): RESIDENT LIVE BIRTHS TO WHITE MOTHERS BY TRIMESTER
 PRENATAL CARE BEGAN, BY COUNTY, FLORIDA, 2015

	TRIMESTER PRENATAL CARE BEGAN ¹						% CARE BEGAN BY TRIMESTER ²			
	TOTAL	1ST	2ND	3RD	NONE	UNK	1ST	2ND	3RD	NONE
FLORIDA	160,830	119,588	20,324	5,314	1,815	13,789	81.3	13.8	3.6	1.2
ALACHUA	1,783	1,352	191	77	8	155	83.0	11.7	4.7	0.5
BAKER	287	196	61	9	4	17	72.6	22.6	3.3	1.5
BAY	1,843	1,121	290	93	20	319	73.6	19.0	6.1	1.3
BRADFORD	229	157	31	9	4	28	78.1	15.4	4.5	2.0
BREVARD	4,133	3,346	444	62	38	243	86.0	11.4	1.6	1.0
BROWARD	12,387	9,060	1,554	511	191	1,071	80.1	13.7	4.5	1.7
CALHOUN	121	81	14	3	1	22	81.8	14.1	3.0	1.0
CHARLOTTE	891	592	175	45	9	70	72.1	21.3	5.5	1.1
CITRUS	946	666	189	38	15	38	73.3	20.8	4.2	1.7
CLAY	1,786	1,361	252	47	21	105	81.0	15.0	2.8	1.2
COLLIER	2,714	1,717	553	150	17	277	70.5	22.7	6.2	0.7
COLUMBIA	621	365	96	42	10	108	71.2	18.7	8.2	1.9
MIAMI-DADE	24,622	19,503	2,034	732	160	2,193	87.0	9.1	3.3	0.7
DESOTO	332	208	67	20	7	30	68.9	22.2	6.6	2.3
DIXIE	124	68	22	3	2	29	71.6	23.2	3.2	2.1
DUVAL	7,239	5,045	1,289	361	165	379	73.5	18.8	5.3	2.4
ESCAMBIA	2,430	1,747	359	121	16	187	77.9	16.0	5.4	0.7
FLAGLER	653	514	56	17	5	61	86.8	9.5	2.9	0.8
FRANKLIN	96	66	15	3	0	12	78.6	17.9	3.6	0.0
GADSDEN	221	136	25	2	0	58	83.4	15.3	1.2	0.0
GILCHRIST	180	126	30	6	1	17	77.3	18.4	3.7	0.6
GLADES	72	39	16	3	3	11	63.9	26.2	4.9	4.9
GULF	96	54	19	1	2	20	71.1	25.0	1.3	2.6
HAMILTON	117	58	29	5	0	25	63.0	31.5	5.4	0.0
HARDEE	363	203	108	26	9	17	58.7	31.2	7.5	2.6
HENDRY	543	356	103	16	8	60	73.7	21.3	3.3	1.7
HERNANDO	1,408	1,168	159	31	10	40	85.4	11.6	2.3	0.7
HIGHLANDS	715	417	232	50	7	9	59.1	32.9	7.1	1.0
HILLSBOROUGH	12,711	11,374	878	118	71	270	91.4	7.1	0.9	0.6
HOLMES	206	150	23	11	1	21	81.1	12.4	5.9	0.5
INDIAN RIVER	756	555	124	40	9	28	76.2	17.0	5.5	1.2
JACKSON	355	273	46	10	3	23	82.2	13.9	3.0	0.9
JEFFERSON	72	47	9	0	0	16	83.9	16.1	0.0	0.0
LAFAYETTE	58	33	14	2	1	8	66.0	28.0	4.0	2.0
LAKE	2,518	1,916	282	69	45	206	82.9	12.2	3.0	1.9
LEE	5,545	3,685	1,070	259	63	468	72.6	21.1	5.1	1.2
LEON	1,570	1,080	128	48	8	306	85.4	10.1	3.8	0.6
LEVY	323	203	49	20	3	48	73.8	17.8	7.3	1.1
LIBERTY	64	42	4	2	0	16	87.5	8.3	4.2	0.0
MADISON	107	65	9	9	4	20	74.7	10.3	10.3	4.6
MANATEE	2,654	1,908	468	124	43	111	75.0	18.4	4.9	1.7
MARION	2,760	1,672	634	170	50	234	66.2	25.1	6.7	2.0
MARTIN	1,057	776	198	36	9	38	76.2	19.4	3.5	0.9
MONROE	627	500	78	11	4	34	84.3	13.2	1.9	0.7
NASSAU	723	588	74	14	7	40	86.1	10.8	2.0	1.0
OKALOOSA	2,272	1,361	321	102	21	467	75.4	17.8	5.7	1.2
OKEECHOBEE	463	287	128	19	16	13	63.8	28.4	4.2	3.6
ORANGE	10,655	7,641	939	182	160	1,733	85.6	10.5	2.0	1.8
OSCEOLA	3,502	2,551	393	73	49	436	83.2	12.8	2.4	1.6
PALM BEACH	9,922	7,163	1,359	486	80	834	78.8	15.0	5.3	0.9
PASCO	4,526	3,735	481	77	42	191	86.2	11.1	1.8	1.0
PINELLAS	6,482	4,953	783	178	78	490	82.7	13.1	3.0	1.3
POLK	5,632	3,977	1,006	203	95	351	75.3	19.0	3.8	1.8
PUTNAM	595	374	117	27	13	64	70.4	22.0	5.1	2.4
SAINT JOHNS	1,835	1,469	197	60	10	99	84.6	11.3	3.5	0.6
SAINT LUCIE	2,008	1,464	350	80	38	76	75.8	18.1	4.1	2.0
SANTA ROSA	1,751	1,340	209	56	9	137	83.0	12.9	3.5	0.6
SARASOTA	2,499	1,784	385	87	25	218	78.2	16.9	3.8	1.1
SEMINOLE	3,428	2,537	308	59	30	494	86.5	10.5	2.0	1.0
SUMTER	399	297	50	12	7	33	81.1	13.7	3.3	1.9
SUWANNEE	353	198	60	26	1	68	69.5	21.1	9.1	0.4
TAYLOR	195	118	34	5	5	33	72.8	21.0	3.1	3.1
UNION	128	93	18	4	1	12	80.2	15.5	3.4	0.9
VOLUSIA	3,874	2,793	539	106	76	360	79.5	15.3	3.0	2.2
WAKULLA	304	204	24	9	1	66	85.7	10.1	3.8	0.4
WALTON	752	538	92	29	2	91	81.4	13.9	4.4	0.3
WASHINGTON	189	120	29	7	0	33	76.9	18.6	4.5	0.0

1. Starting in 2004, "trimester prenatal care began" is calculated as the time elapsed from the date of the last menstrual period to the date of the first prenatal care visit. Prior to 2004, these data were obtained by direct question that noted the trimester the mother began prenatal care. Consequently, these data are not comparable to data from prior years.

2. Births with unknown information as to when prenatal care began are excluded from the denominator.

TABLE B-7 (Cont.): RESIDENT LIVE BIRTHS TO BLACK MOTHERS BY TRIMESTER
 PRENATAL CARE BEGAN, BY COUNTY, FLORIDA, 2015

	TRIMESTER PRENATAL CARE BEGAN ¹						% CARE BEGAN BY TRIMESTER ²			
	TOTAL	1ST	2ND	3RD	NONE	UNK	1ST	2ND	3RD	NONE
FLORIDA	49,109	31,994	8,749	2,077	1,101	5,188	72.8	19.9	4.7	2.5
ALACHUA	834	531	143	30	12	118	74.2	20.0	4.2	1.7
BAKER	43	16	16	1	3	7	44.4	44.4	2.8	8.3
BAY	309	184	53	18	7	47	70.2	20.2	6.9	2.7
BRADFORD	54	31	10	2	0	11	72.1	23.3	4.7	0.0
BREVARD	752	556	118	25	15	38	77.9	16.5	3.5	2.1
BROWARD	8,203	5,060	1,504	374	298	967	69.9	20.8	5.2	4.1
CALHOUN	24	13	5	1	0	5	68.4	26.3	5.3	0.0
CHARLOTTE	87	54	19	8	1	5	65.9	23.2	9.8	1.2
CITRUS	29	20	5	3	0	1	71.4	17.9	10.7	0.0
CLAY	289	177	58	18	5	31	68.6	22.5	7.0	1.9
COLLIER	396	204	108	31	7	46	58.3	30.9	8.9	2.0
COLUMBIA	176	91	32	7	1	45	69.5	24.4	5.3	0.8
MIAMI-DADE	6,827	5,242	862	153	97	473	82.5	13.6	2.4	1.5
DESOTO	39	21	11	1	3	3	58.3	30.6	2.8	8.3
DIXIE	13	5	3	2	0	3	50.0	30.0	20.0	0.0
DUVAL	4,609	2,564	1,335	250	144	316	59.7	31.1	5.8	3.4
ESCAMBIA	1,198	694	285	75	27	117	64.2	26.4	6.9	2.5
FLAGLER	90	60	15	3	2	10	75.0	18.8	3.8	2.5
FRANKLIN	8	4	1	0	0	3	80.0	20.0	0.0	0.0
GADSDEN	331	171	61	13	3	83	69.0	24.6	5.2	1.2
GILCHRIST	8	7	0	0	0	1	100.0	0.0	0.0	0.0
GLADES	5	2	1	1	1	0	40.0	20.0	20.0	20.0
GULF	14	7	2	2	0	3	63.6	18.2	18.2	0.0
HAMILTON	42	20	8	4	1	9	60.6	24.2	12.1	3.0
HARDEE	20	11	6	0	0	3	64.7	35.3	0.0	0.0
HENDRY	68	42	10	3	2	11	73.7	17.5	5.3	3.5
HERNANDO	109	83	18	7	0	1	76.9	16.7	6.5	0.0
HIGHLANDS	151	79	55	8	4	5	54.1	37.7	5.5	2.7
HILLSBOROUGH	3,738	3,304	280	36	30	88	90.5	7.7	1.0	0.8
HOLMES	4	3	1	0	0	0	75.0	25.0	0.0	0.0
INDIAN RIVER	232	137	67	14	7	7	60.9	29.8	6.2	3.1
JACKSON	122	91	15	5	1	10	81.3	13.4	4.5	0.9
JEFFERSON	51	28	12	0	0	11	70.0	30.0	0.0	0.0
LAFAYETTE	1	1	0	0	0	0	100.0	0.0	0.0	0.0
LAKE	463	328	58	22	9	46	78.7	13.9	5.3	2.2
LEE	1,022	580	271	73	14	84	61.8	28.9	7.8	1.5
LEON	1,290	740	180	52	14	304	75.1	18.3	5.3	1.4
LEVY	52	26	13	2	1	10	61.9	31.0	4.8	2.4
LIBERTY	10	5	2	1	0	2	62.5	25.0	12.5	0.0
MADISON	100	52	20	5	0	23	67.5	26.0	6.5	0.0
MANATEE	475	314	101	32	11	17	68.6	22.1	7.0	2.4
MARION	665	353	188	40	11	73	59.6	31.8	6.8	1.9
MARTIN	101	61	23	10	2	5	63.5	24.0	10.4	2.1
MONROE	86	53	28	1	0	4	64.6	34.1	1.2	0.0
NASSAU	54	42	4	3	0	5	85.7	8.2	6.1	0.0
OKALOOSA	282	143	42	12	6	79	70.4	20.7	5.9	3.0
OKEECHOBEE	34	17	11	2	1	3	54.8	35.5	6.5	3.2
ORANGE	4,440	2,664	580	119	143	934	76.0	16.5	3.4	4.1
OSCEOLA	438	300	61	16	10	51	77.5	15.8	4.1	2.6
PALM BEACH	4,048	2,564	736	273	59	416	70.6	20.3	7.5	1.6
PASCO	325	265	32	12	2	14	85.2	10.3	3.9	0.6
PINELLAS	1,498	953	291	67	21	166	71.5	21.8	5.0	1.6
POLK	1,487	906	345	70	52	114	66.0	25.1	5.1	3.8
PUTNAM	191	121	36	12	3	19	70.3	20.9	7.0	1.7
SAINT JOHNS	162	104	26	8	2	22	74.3	18.6	5.7	1.4
SAINT LUCIE	892	551	229	58	26	28	63.8	26.5	6.7	3.0
SANTA ROSA	87	65	12	5	0	5	79.3	14.6	6.1	0.0
SARASOTA	248	164	49	13	4	18	71.3	21.3	5.7	1.7
SEMINOLE	683	421	103	23	23	113	73.9	18.1	4.0	4.0
SUMTER	90	71	9	2	0	8	86.6	11.0	2.4	0.0
SUWANNEE	63	35	11	8	0	9	64.8	20.4	14.8	0.0
TAYLOR	49	23	7	1	0	18	74.2	22.6	3.2	0.0
UNION	15	9	2	2	0	2	69.2	15.4	15.4	0.0
VOLUSIA	794	505	144	35	13	97	72.5	20.7	5.0	1.9
WAKULLA	30	11	6	1	0	12	61.1	33.3	5.6	0.0
WALTON	28	18	3	0	2	5	78.3	13.0	0.0	8.7
WASHINGTON	29	16	7	2	0	4	64.0	28.0	8.0	0.0

1. Starting in 2004, "trimester prenatal care began" is calculated as the time elapsed from the date of the last menstrual period to the date of the first prenatal care visit. Prior to 2004, these data were obtained by direct question that noted the trimester the mother began prenatal care. Consequently, these data are not comparable to data from prior years.

2. Births with unknown information as to when prenatal care began are excluded from the denominator.

TABLE B-7 (Cont.): RESIDENT LIVE BIRTHS TO OTHER MOTHERS BY TRIMESTER
 PRENATAL CARE BEGAN, BY COUNTY, FLORIDA, 2015

	TRIMESTER PRENATAL CARE BEGAN ¹						% CARE BEGAN BY TRIMESTER ²			
	TOTAL	1ST	2ND	3RD	NONE	UNK	1ST	2ND	3RD	NONE
FLORIDA	13,127	9,315	1,821	566	168	1,257	78.5	15.3	4.8	1.4
ALACHUA	263	193	34	13	0	23	80.4	14.2	5.4	0.0
BAKER	5	5	0	0	0	0	100.0	0.0	0.0	0.0
BAY	179	97	33	15	3	31	65.5	22.3	10.1	2.0
BRADFORD	10	5	2	3	0	0	50.0	20.0	30.0	0.0
BREVARD	354	287	39	8	2	18	85.4	11.6	2.4	0.6
BROWARD	1,488	1,033	201	58	34	162	77.9	15.2	4.4	2.6
CALHOUN	5	4	1	0	0	0	80.0	20.0	0.0	0.0
CHARLOTTE	49	27	9	7	0	6	62.8	20.9	16.3	0.0
CITRUS	41	27	8	5	0	1	67.5	20.0	12.5	0.0
CLAY	139	93	27	7	3	9	71.5	20.8	5.4	2.3
COLLIER	145	94	22	5	2	22	76.4	17.9	4.1	1.6
COLUMBIA	29	16	4	3	0	6	69.6	17.4	13.0	0.0
MIAMI-DADE	730	561	63	26	8	72	85.3	9.6	4.0	1.2
DESOTO	4	2	1	1	0	0	50.0	25.0	25.0	0.0
DIXIE	5	3	1	0	0	1	75.0	25.0	0.0	0.0
DUVAL	1,166	770	253	62	20	61	69.7	22.9	5.6	1.8
ESCAMBIA	270	193	41	11	2	23	78.1	16.6	4.5	0.8
FLAGLER	52	39	5	2	0	6	84.8	10.9	4.3	0.0
FRANKLIN	2	0	2	0	0	0	0.0	100.0	0.0	0.0
GADSDEN	5	5	0	0	0	0	100.0	0.0	0.0	0.0
GILCHRIST	5	3	0	0	0	2	100.0	0.0	0.0	0.0
GLADES	2	1	0	0	0	1	100.0	0.0	0.0	0.0
GULF	7	5	1	1	0	0	71.4	14.3	14.3	0.0
HAMILTON	8	1	1	2	1	3	20.0	20.0	40.0	20.0
HARDEE	7	3	4	0	0	0	42.9	57.1	0.0	0.0
HENDRY	20	8	5	3	0	4	50.0	31.3	18.8	0.0
HERNANDO	77	64	5	6	0	2	85.3	6.7	8.0	0.0
HIGHLANDS	50	32	15	3	0	0	64.0	30.0	6.0	0.0
HILLSBOROUGH	1,083	950	66	16	12	39	91.0	6.3	1.5	1.1
HOLMES	8	5	0	1	0	2	83.3	0.0	16.7	0.0
INDIAN RIVER	49	25	14	5	0	5	56.8	31.8	11.4	0.0
JACKSON	18	13	2	1	0	2	81.3	12.5	6.3	0.0
JEFFERSON	1	1	0	0	0	0	100.0	0.0	0.0	0.0
LAFAYETTE	0	0	0	0	0	0	0.0	0.0	0.0	0.0
LAKE	197	138	22	11	1	25	80.2	12.8	6.4	0.6
LEE	205	142	31	12	3	17	75.5	16.5	6.4	1.6
LEON	182	120	15	10	1	36	82.2	10.3	6.8	0.7
LEVY	15	9	4	0	0	2	69.2	30.8	0.0	0.0
LIBERTY	1	1	0	0	0	0	100.0	0.0	0.0	0.0
MADISON	3	3	0	0	0	0	100.0	0.0	0.0	0.0
MANATEE	334	216	77	31	2	8	66.3	23.6	9.5	0.6
MARION	159	91	39	11	2	16	63.6	27.3	7.7	1.4
MARTIN	62	45	16	0	0	1	73.8	26.2	0.0	0.0
MONROE	37	30	5	0	0	2	85.7	14.3	0.0	0.0
NASSAU	23	14	5	0	0	4	73.7	26.3	0.0	0.0
OKALOOSA	267	165	40	12	2	48	75.3	18.3	5.5	0.9
OKEECHOBEE	21	9	6	0	2	4	52.9	35.3	0.0	11.8
ORANGE	1,604	1,124	145	35	20	280	84.9	11.0	2.6	1.5
OSCEOLA	239	176	25	10	4	24	81.9	11.6	4.7	1.9
PALM BEACH	884	599	143	54	9	79	74.4	17.8	6.7	1.1
PASCO	236	188	27	8	2	11	83.6	12.0	3.6	0.9
PINELLAS	648	482	93	23	5	45	79.9	15.4	3.8	0.8
POLK	356	242	68	16	9	21	72.2	20.3	4.8	2.7
PUTNAM	28	20	6	0	0	2	76.9	23.1	0.0	0.0
SAINT JOHNS	152	114	18	12	2	6	78.1	12.3	8.2	1.4
SAINT LUCIE	174	117	32	13	4	8	70.5	19.3	7.8	2.4
SANTA ROSA	105	66	18	7	0	14	72.5	19.8	7.7	0.0
SARASOTA	150	100	27	11	3	9	70.9	19.1	7.8	2.1
SEMINOLE	437	320	50	10	3	54	83.6	13.1	2.6	0.8
SUMTER	11	7	2	2	0	0	63.6	18.2	18.2	0.0
SUWANNEE	18	9	6	0	2	1	52.9	35.3	0.0	11.8
TAYLOR	5	5	0	0	0	0	100.0	0.0	0.0	0.0
UNION	4	2	2	0	0	0	50.0	50.0	0.0	0.0
VOLUSIA	255	176	33	9	4	33	79.3	14.9	4.1	1.8
WAKULLA	4	2	2	0	0	0	50.0	50.0	0.0	0.0
WALTON	25	12	5	3	1	4	57.1	23.8	14.3	4.8
WASHINGTON	10	6	0	2	0	2	75.0	0.0	25.0	0.0

1. Starting in 2004, "trimester prenatal care began" is calculated as the time elapsed from the date of the last menstrual period to the date of the first prenatal care visit. Prior to 2004, these data were obtained by direct question that noted the trimester the mother began prenatal care. Consequently, these data are not comparable to data from prior years.

2. Births with unknown information as to when prenatal care began are excluded from the denominator.

TABLE B-8: RESIDENT LIVE BIRTHS TO UNWED MOTHERS, BY AGE OF MOTHER, BY RACE OF MOTHER, BY COUNTY, FLORIDA, 2015

	TOTAL	<13	13	14	15	16	17	18	19	20-24	25-29	30-34	35-44	45+	UNK
FLORIDA	106,998	5	17	108	336	880	1,760	3,028	4,918	35,312	31,150	18,785	10,566	131	2
ALACHUA	1,263	0	0	0	4	9	19	28	67	475	337	212	111	1	0
BAKER	180	0	0	0	0	1	3	7	9	74	54	27	5	0	0
BAY	1,120	0	0	1	10	20	31	48	59	411	297	157	85	1	0
BRADFORD	161	0	0	0	1	2	5	7	14	68	42	16	6	0	0
BREVARD	2,463	0	1	1	9	17	40	77	127	836	747	407	200	1	0
BROWARD	9,785	2	2	7	19	73	92	177	349	2,685	3,005	2,021	1,339	13	1
CALHOUN	84	0	0	0	1	0	0	5	2	39	22	10	5	0	0
CHARLOTTE	522	0	0	0	2	6	9	20	25	205	150	73	32	0	0
CITRUS	589	0	0	1	4	5	9	22	38	242	139	86	42	1	0
CLAY	913	0	0	0	4	11	24	26	60	365	225	138	58	2	0
COLLIER	1,496	0	0	2	2	10	27	37	87	450	410	261	209	1	0
COLUMBIA	481	0	0	0	1	9	15	18	26	172	138	69	31	2	0
MIAMI-DADE	16,029	1	1	11	34	81	173	326	510	4,242	4,863	3,544	2,208	34	1
DESOTO	208	0	0	0	1	2	6	9	13	80	58	26	13	0	0
DIXIE	83	0	0	0	1	2	1	1	5	32	28	9	4	0	0
DUVAL	6,390	1	3	5	20	57	120	184	303	2,289	1,885	1,037	484	2	0
ESCAMBIA	2,026	0	0	4	14	19	42	63	108	755	602	300	117	2	0
FLAGLER	363	0	0	1	0	5	3	7	15	130	103	72	27	0	0
FRANKLIN	57	0	0	0	0	1	2	4	4	20	13	11	2	0	0
GADSDEN	365	0	0	0	2	2	5	12	21	147	103	50	23	0	0
GILCHRIST	103	0	0	0	0	2	3	4	2	41	29	18	4	0	0
GLADES	43	0	0	0	0	0	1	0	2	17	15	6	2	0	0
GULF	60	0	0	0	0	0	3	2	4	30	13	3	5	0	0
HAMILTON	100	0	0	0	0	1	1	4	4	26	43	16	5	0	0
HARDEE	226	0	0	2	1	2	3	14	15	83	54	35	17	0	0
HENDRY	394	0	0	2	2	1	15	11	22	136	116	66	23	0	0
HERNANDO	824	0	0	2	1	6	9	30	29	319	241	121	65	1	0
HIGHLANDS	515	0	0	1	1	0	17	23	34	178	138	78	45	0	0
HILLSBOROUGH	8,493	0	4	10	27	83	145	253	407	2,917	2,472	1,407	761	7	0
HOLMES	101	0	0	0	1	3	5	7	12	41	23	7	2	0	0
INDIAN RIVER	651	0	0	2	1	5	6	21	38	229	184	110	53	2	0
JACKSON	273	0	0	1	2	1	5	17	16	113	68	42	8	0	0
JEFFERSON	65	0	0	0	1	0	1	1	2	24	21	12	3	0	0
LAFAYETTE	29	0	0	1	0	1	2	0	0	8	11	4	2	0	0
LAKE	1,562	0	0	2	5	19	23	67	95	579	432	225	115	0	0
LEE	3,424	0	0	7	9	28	68	118	174	1,146	951	605	312	6	0
LEON	1,387	0	0	2	7	17	15	30	51	569	382	211	103	0	0
LEVY	231	0	0	0	1	0	1	9	19	92	60	40	9	0	0
LIBERTY	41	0	0	0	0	1	1	2	2	14	12	8	1	0	0
MADISON	124	0	0	1	0	0	4	4	3	46	41	19	6	0	0
MANATEE	1,785	0	1	3	8	30	40	56	109	629	495	265	149	0	0
MARION	1,982	0	0	4	11	25	29	67	103	780	564	254	145	0	0
MARTIN	545	0	0	1	2	8	5	7	24	175	166	96	58	3	0
MONROE	320	0	0	1	0	2	6	1	10	80	114	67	37	2	0
NASSAU	292	0	0	1	1	3	12	10	18	112	73	42	20	0	0
OKALOOSA	1,003	0	1	0	3	11	24	29	44	386	277	150	76	2	0
OKEECHOBEE	320	0	0	0	2	6	12	11	14	135	79	36	25	0	0
ORANGE	7,699	0	0	8	22	46	120	222	353	2,589	2,200	1,334	796	9	0
OSCEOLA	2,040	0	0	1	3	18	47	87	126	706	577	313	161	1	0
PALM BEACH	6,688	0	1	3	23	54	91	156	241	1,962	2,034	1,316	793	14	0
PASCO	2,358	0	1	4	8	21	55	91	138	840	640	364	192	4	0
PINELLAS	4,321	0	1	4	17	32	72	112	174	1,447	1,293	757	408	4	0
POLK	3,999	1	0	4	11	33	86	153	233	1,525	1,107	586	258	2	0
PUTNAM	521	0	1	1	5	6	8	26	41	195	137	69	31	1	0
SAINT JOHNS	591	0	0	0	4	7	11	17	38	202	163	93	55	1	0
SAINT LUCIE	1,602	0	0	1	1	13	28	43	77	561	452	271	154	1	0
SANTA ROSA	603	0	0	0	3	5	18	31	61	226	165	66	28	0	0
SARASOTA	1,347	0	0	1	4	4	20	36	54	452	406	235	133	2	0
SEMINOLE	1,704	0	0	1	4	7	18	40	74	559	533	281	183	4	0
SUMTER	294	0	0	0	0	5	5	9	16	137	68	36	18	0	0
SUWANNEE	222	0	0	2	1	4	7	10	12	72	67	30	17	0	0
TAYLOR	143	0	0	0	1	0	4	7	10	59	32	18	12	0	0
UNION	71	0	0	0	1	0	2	7	10	20	18	7	6	0	0
VOLUSIA	2,739	0	0	1	11	30	59	78	131	925	800	466	233	5	0
WAKULLA	150	0	0	0	0	2	6	7	9	55	40	22	9	0	0
WALTON	322	0	0	1	2	4	19	13	17	108	99	37	22	0	0
WASHINGTON	104	0	0	0	0	2	2	6	8	50	19	12	5	0	0

TABLE B-8 (Cont.): RESIDENT LIVE BIRTHS TO UNWED WHITE MOTHERS, BY AGE OF MOTHER, BY COUNTY, FLORIDA, 2015

	TOTAL	<13	13	14	15	16	17	18	19	20-24	25-29	30-34	35-44	45+	UNK
FLORIDA	68,504	2	7	55	193	526	1,116	1,953	3,063	21,795	20,046	12,457	7,196	93	2
ALACHUA	555	0	0	0	1	3	8	12	26	195	140	107	62	1	0
BAKER	135	0	0	0	0	1	3	7	6	55	40	19	4	0	0
BAY	778	0	0	0	6	15	20	39	44	276	215	107	55	1	0
BRADFORD	115	0	0	0	1	2	3	6	10	48	28	11	6	0	0
BREVARD	1,785	0	1	1	6	13	31	59	88	591	541	289	165	0	0
BROWARD	4,323	1	0	1	7	24	32	71	112	1,075	1,371	952	670	6	1
CALHOUN	64	0	0	0	1	0	0	3	2	33	14	8	3	0	0
CHARLOTTE	445	0	0	0	1	5	8	17	24	173	132	64	21	0	0
CITRUS	554	0	0	1	4	4	9	21	37	228	131	82	36	1	0
CLAY	715	0	0	0	4	10	16	21	49	278	176	114	46	1	0
COLLIER	1,247	0	0	2	1	9	25	32	71	381	345	213	167	1	0
COLUMBIA	315	0	0	0	0	7	9	12	14	124	84	45	20	0	0
MIAMI-DADE	10,967	0	1	8	12	45	104	202	288	2,673	3,373	2,547	1,685	28	1
DESOTO	174	0	0	0	1	2	5	8	12	70	43	21	12	0	0
DIXIE	68	0	0	0	1	2	1	1	4	28	22	8	1	0	0
DUVAL	2,659	0	0	1	7	19	48	72	116	893	805	461	236	1	0
ESCAMBIA	938	0	0	2	6	7	14	29	49	337	285	147	60	2	0
FLAGLER	286	0	0	1	0	5	2	5	12	100	83	55	23	0	0
FRANKLIN	50	0	0	0	0	1	2	4	4	17	9	11	2	0	0
GADSDEN	100	0	0	0	0	1	1	5	7	37	24	16	9	0	0
GILCHRIST	91	0	0	0	0	2	3	4	2	35	26	15	4	0	0
GLADES	36	0	0	0	0	0	0	0	0	17	13	4	2	0	0
GULF	43	0	0	0	0	0	3	2	4	22	9	1	2	0	0
HAMILTON	59	0	0	0	0	1	1	2	2	13	26	9	5	0	0
HARDEE	208	0	0	2	1	2	3	14	14	74	49	32	17	0	0
HENDRY	325	0	0	2	2	1	14	10	18	108	94	59	17	0	0
HERNANDO	710	0	0	1	0	4	7	25	25	281	205	106	55	1	0
HIGHLANDS	379	0	0	1	1	0	13	15	25	134	105	57	28	0	0
HILLSBOROUGH	5,530	0	3	1	20	47	94	169	275	1,812	1,602	968	532	7	0
HOLMES	95	0	0	0	1	3	5	7	11	38	22	6	2	0	0
INDIAN RIVER	355	0	0	0	1	2	2	14	27	116	99	65	28	1	0
JACKSON	163	0	0	1	2	1	4	13	9	76	30	21	6	0	0
JEFFERSON	20	0	0	0	1	0	0	0	0	11	4	3	1	0	0
LAFAYETTE	29	0	0	1	0	1	2	0	0	8	11	4	2	0	0
LAKE	1,149	0	0	0	4	15	19	48	69	415	317	170	92	0	0
LEE	2,659	0	0	4	4	24	48	90	133	867	739	494	250	6	0
LEON	402	0	0	1	2	2	2	12	14	138	113	79	39	0	0
LEVY	173	0	0	0	1	0	1	7	12	71	47	27	7	0	0
LIBERTY	32	0	0	0	0	1	1	1	1	11	10	6	1	0	0
MADISON	48	0	0	0	0	0	2	1	1	20	15	7	2	0	0
MANATEE	1,224	0	1	2	7	16	31	36	77	425	329	191	109	0	0
MARION	1,414	0	0	2	8	20	20	53	69	557	404	182	99	0	0
MARTIN	423	0	0	1	2	7	3	5	16	128	137	78	44	2	0
MONROE	276	0	0	1	0	2	6	1	10	67	101	58	29	1	0
NASSAU	247	0	0	1	1	2	9	8	15	98	64	34	15	0	0
OKALOOSA	756	0	0	0	2	7	18	19	34	280	218	119	58	1	0
OKEECHOBEE	272	0	0	0	2	6	9	7	11	117	69	29	22	0	0
ORANGE	4,364	0	0	6	10	22	56	118	187	1,451	1,249	788	472	5	0
OSCEOLA	1,712	0	0	1	3	14	38	69	104	594	495	270	123	1	0
PALM BEACH	4,004	0	0	1	16	30	57	86	136	1,099	1,202	836	530	11	0
PASCO	2,076	0	1	4	8	17	50	82	118	746	576	306	165	3	0
PINELLAS	2,750	0	0	0	4	13	45	59	99	809	872	538	307	4	0
POLK	2,726	1	0	3	8	28	58	105	161	1,032	758	400	171	1	0
PUTNAM	350	0	0	1	3	4	6	17	30	126	93	49	21	0	0
SAINT JOHNS	443	0	0	0	2	5	8	14	33	146	118	69	48	0	0
SAINT LUCIE	915	0	0	0	1	6	15	26	39	326	253	164	85	0	0
SANTA ROSA	527	0	0	0	3	4	16	27	56	194	143	61	23	0	0
SARASOTA	1,074	0	0	0	2	3	14	31	39	334	341	195	114	1	0
SEMINOLE	1,143	0	0	0	3	6	9	25	46	358	360	200	133	3	0
SUMTER	215	0	0	0	0	4	4	8	15	99	51	22	12	0	0
SUWANNEE	162	0	0	0	1	2	6	10	8	47	51	22	15	0	0
TAYLOR	101	0	0	0	0	0	2	5	9	41	21	15	8	0	0
UNION	60	0	0	0	1	0	2	4	8	17	16	6	6	0	0
VOLUSIA	1,986	0	0	0	5	19	44	53	95	640	591	355	181	3	0
WAKULLA	129	0	0	0	0	2	4	7	7	50	31	19	9	0	0
WALTON	291	0	0	1	2	4	19	11	17	98	89	32	18	0	0
WASHINGTON	78	0	0	0	0	2	2	6	7	37	14	6	4	0	0

TABLE B-8 (Cont.): RESIDENT LIVE BIRTHS TO UNWED BLACK MOTHERS, BY AGE OF MOTHER, BY COUNTY, FLORIDA, 2015

	TOTAL	<13	13	14	15	16	17	18	19	20-24	25-29	30-34	35-44	45+	UNK
FLORIDA	34,157	3	8	46	128	315	557	945	1,646	12,173	9,926	5,493	2,894	23	0
ALACHUA	664	0	0	0	3	6	11	15	38	269	181	98	43	0	0
BAKER	41	0	0	0	0	0	0	0	2	17	14	7	1	0	0
BAY	229	0	0	1	2	4	6	8	9	94	53	30	22	0	0
BRADFORD	40	0	0	0	0	0	2	1	4	17	13	3	0	0	0
BREVARD	535	0	0	0	1	3	8	13	30	195	159	97	29	0	0
BROWARD	5,023	1	2	6	12	46	57	97	219	1,501	1,500	979	600	3	0
CALHOUN	17	0	0	0	0	0	0	1	0	5	7	2	2	0	0
CHARLOTTE	58	0	0	0	0	1	1	2	0	24	14	7	9	0	0
CITRUS	22	0	0	0	0	1	0	1	0	7	7	4	2	0	0
CLAY	145	0	0	0	0	1	5	4	7	66	35	17	10	0	0
COLLIER	204	0	0	0	1	1	0	4	15	60	49	40	34	0	0
COLUMBIA	152	0	0	0	1	2	6	6	12	42	48	22	11	2	0
MIAMI-DADE	4,825	1	0	3	22	34	67	120	215	1,525	1,423	937	473	5	0
DESOTO	33	0	0	0	0	0	1	1	1	10	14	5	1	0	0
DIXIE	12	0	0	0	0	0	0	0	1	4	6	0	1	0	0
DUVAL	3,406	1	3	4	13	33	64	107	173	1,280	992	515	220	1	0
ESCAMBIA	979	0	0	2	7	11	21	31	51	389	286	127	54	0	0
FLAGLER	56	0	0	0	0	0	0	2	2	20	14	14	4	0	0
FRANKLIN	5	0	0	0	0	0	0	0	0	2	3	0	0	0	0
GADSDEN	263	0	0	0	2	1	4	7	14	109	78	34	14	0	0
GILCHRIST	7	0	0	0	0	0	0	0	0	3	2	2	0	0	0
GLADES	5	0	0	0	0	0	0	0	1	0	2	2	0	0	0
GULF	11	0	0	0	0	0	0	0	0	4	3	1	3	0	0
HAMILTON	36	0	0	0	0	0	0	2	2	11	16	5	0	0	0
HARDEE	16	0	0	0	0	0	0	0	1	8	4	3	0	0	0
HENDRY	59	0	0	0	0	0	1	1	2	25	20	5	5	0	0
HERNANDO	77	0	0	0	0	1	1	4	3	27	25	10	6	0	0
HIGHLANDS	118	0	0	0	0	0	1	7	7	40	29	20	14	0	0
HILLSBOROUGH	2,743	0	0	8	6	35	49	77	125	1,036	814	387	206	0	0
HOLMES	4	0	0	0	0	0	0	0	1	2	1	0	0	0	0
INDIAN RIVER	177	0	0	1	0	0	3	2	7	74	53	21	16	0	0
JACKSON	99	0	0	0	0	0	1	4	7	31	33	21	2	0	0
JEFFERSON	45	0	0	0	0	0	1	1	2	13	17	9	2	0	0
LAFAYETTE	0	0	0	0	0	0	0	0	0	0	0	0	0	0	0
LAKE	332	0	0	2	1	3	3	19	21	141	89	38	15	0	0
LEE	682	0	0	3	5	4	19	26	38	255	190	92	50	0	0
LEON	945	0	0	1	4	15	13	18	36	411	261	125	61	0	0
LEVY	47	0	0	0	0	0	0	2	4	20	11	8	2	0	0
LIBERTY	9	0	0	0	0	0	0	1	1	3	2	2	0	0	0
MADISON	75	0	0	1	0	0	2	3	1	26	26	12	4	0	0
MANATEE	384	0	0	1	1	13	7	13	26	147	108	43	25	0	0
MARION	502	0	0	2	3	3	8	13	26	198	141	65	43	0	0
MARTIN	71	0	0	0	0	1	2	0	3	32	17	9	7	0	0
MONROE	34	0	0	0	0	0	0	0	0	11	8	8	6	1	0
NASSAU	34	0	0	0	0	1	3	2	2	11	7	5	3	0	0
OKALOOSA	177	0	1	0	0	3	0	8	8	79	42	24	12	0	0
OKEECHOBEE	29	0	0	0	0	0	0	1	1	11	8	6	2	0	0
ORANGE	2,916	0	0	2	10	23	60	95	150	1,018	836	455	263	4	0
OSCEOLA	259	0	0	0	0	2	6	13	19	89	70	33	27	0	0
PALM BEACH	2,489	0	1	2	7	23	34	62	97	822	782	423	234	2	0
PASCO	206	0	0	0	0	3	3	5	16	66	44	46	22	1	0
PINELLAS	1,264	0	0	3	12	15	23	34	63	538	342	165	69	0	0
POLK	1,142	0	0	1	3	4	23	44	63	448	314	165	77	0	0
PUTNAM	155	0	1	0	2	2	2	8	10	64	38	17	10	1	0
SAINT JOHNS	114	0	0	0	1	1	1	3	2	46	35	17	7	1	0
SAINT LUCIE	593	0	0	1	0	7	8	15	29	209	174	89	60	1	0
SANTA ROSA	46	0	0	0	0	1	2	2	2	17	15	3	4	0	0
SARASOTA	204	0	0	0	1	1	4	4	11	94	50	29	9	1	0
SEMINOLE	472	0	0	1	1	1	7	10	24	168	148	69	43	0	0
SUMTER	76	0	0	0	0	1	1	1	1	36	16	14	6	0	0
SUWANNEE	51	0	0	0	0	2	1	0	3	22	15	7	1	0	0
TAYLOR	41	0	0	0	1	0	2	2	1	18	11	3	3	0	0
UNION	8	0	0	0	0	0	0	3	2	1	2	0	0	0	0
VOLUSIA	630	0	0	1	6	6	11	19	32	238	187	86	44	0	0
WAKULLA	21	0	0	0	0	0	2	0	2	5	9	3	0	0	0
WALTON	20	0	0	0	0	0	0	1	0	8	7	3	1	0	0
WASHINGTON	22	0	0	0	0	0	0	0	1	11	5	5	0	0	0

TABLE B-8 (Cont.): RESIDENT LIVE BIRTHS TO UNWED OTHER MOTHERS, BY AGE OF MOTHER, BY COUNTY, FLORIDA, 2015

	TOTAL	<13	13	14	15	16	17	18	19	20-24	25-29	30-34	35-44	45+	UNK
FLORIDA	3,795	0	2	6	14	34	83	113	184	1,180	1,022	733	414	10	0
ALACHUA	43	0	0	0	0	0	0	1	3	11	15	7	6	0	0
BAKER	3	0	0	0	0	0	0	0	1	1	0	1	0	0	0
BAY	78	0	0	0	1	1	4	1	3	28	24	11	5	0	0
BRADFORD	6	0	0	0	0	0	0	0	0	3	1	2	0	0	0
BREVARD	140	0	0	0	2	1	1	5	9	50	44	21	6	1	0
BROWARD	340	0	0	0	0	3	3	6	15	80	99	73	59	2	0
CALHOUN	3	0	0	0	0	0	0	1	0	1	1	0	0	0	0
CHARLOTTE	17	0	0	0	1	0	0	1	1	7	4	2	1	0	0
CITRUS	13	0	0	0	0	0	0	0	1	7	1	0	4	0	0
CLAY	48	0	0	0	0	0	3	1	4	19	11	7	2	1	0
COLLIER	45	0	0	0	0	0	2	1	1	9	16	8	8	0	0
COLUMBIA	13	0	0	0	0	0	0	0	0	6	5	2	0	0	0
MIAMI-DADE	150	0	0	0	0	2	1	3	4	22	45	44	29	0	0
DESOTO	1	0	0	0	0	0	0	0	0	0	1	0	0	0	0
DIXIE	3	0	0	0	0	0	0	0	0	0	0	1	2	0	0
DUVAL	310	0	0	0	0	4	8	4	13	112	83	60	26	0	0
ESCAMBIA	107	0	0	0	1	1	7	3	8	29	30	25	3	0	0
FLAGLER	20	0	0	0	0	0	1	0	1	10	5	3	0	0	0
FRANKLIN	2	0	0	0	0	0	0	0	0	1	1	0	0	0	0
GADSDEN	2	0	0	0	0	0	0	0	0	1	1	0	0	0	0
GILCHRIST	4	0	0	0	0	0	0	0	0	2	1	1	0	0	0
GLADES	2	0	0	0	0	0	1	0	1	0	0	0	0	0	0
GULF	5	0	0	0	0	0	0	0	0	3	1	1	0	0	0
HAMILTON	5	0	0	0	0	0	0	0	0	2	1	2	0	0	0
HARDEE	2	0	0	0	0	0	0	0	0	1	1	0	0	0	0
HENDRY	10	0	0	0	0	0	0	0	2	3	2	2	1	0	0
HERNANDO	34	0	0	1	1	1	1	1	1	11	8	5	4	0	0
HIGHLANDS	18	0	0	0	0	0	3	1	2	4	4	1	3	0	0
HILLSBOROUGH	210	0	1	1	1	1	2	7	7	64	52	51	23	0	0
HOLMES	1	0	0	0	0	0	0	0	0	0	0	1	0	0	0
INDIAN RIVER	16	0	0	0	0	0	0	1	0	5	7	2	0	1	0
JACKSON	10	0	0	0	0	0	0	0	0	5	5	0	0	0	0
JEFFERSON	0	0	0	0	0	0	0	0	0	0	0	0	0	0	0
LAFAYETTE	0	0	0	0	0	0	0	0	0	0	0	0	0	0	0
LAKE	78	0	0	0	0	1	1	0	5	22	25	16	8	0	0
LEE	82	0	0	0	0	0	1	2	3	23	22	19	12	0	0
LEON	39	0	0	0	1	0	0	0	1	20	8	6	3	0	0
LEVY	10	0	0	0	0	0	0	0	3	1	2	4	0	0	0
LIBERTY	0	0	0	0	0	0	0	0	0	0	0	0	0	0	0
MADISON	1	0	0	0	0	0	0	0	1	0	0	0	0	0	0
MANATEE	177	0	0	0	0	1	2	7	6	57	58	31	15	0	0
MARION	66	0	0	0	0	2	1	1	8	25	19	7	3	0	0
MARTIN	17	0	0	0	0	0	0	1	1	4	3	4	4	0	0
MONROE	10	0	0	0	0	0	0	0	0	2	5	1	2	0	0
NASSAU	10	0	0	0	0	0	0	0	1	3	2	2	2	0	0
OKALOOSA	67	0	0	0	1	1	6	2	1	26	17	6	6	1	0
OKEECHOBEE	15	0	0	0	0	0	3	2	2	6	1	0	1	0	0
ORANGE	411	0	0	0	2	1	4	9	15	120	111	90	59	0	0
OSCEOLA	66	0	0	0	0	1	3	5	2	22	12	10	11	0	0
PALM BEACH	187	0	0	0	0	1	0	7	8	38	48	55	29	1	0
PASCO	65	0	0	0	0	1	2	3	4	25	16	11	3	0	0
PINELLAS	255	0	1	1	1	4	4	17	8	86	66	41	26	0	0
POLK	127	0	0	0	0	1	5	4	9	42	34	21	10	1	0
PUTNAM	15	0	0	0	0	0	0	1	1	4	6	3	0	0	0
SAINT JOHNS	31	0	0	0	1	1	2	0	3	10	7	7	0	0	0
SAINT LUCIE	81	0	0	0	0	0	5	1	9	23	19	16	8	0	0
SANTA ROSA	30	0	0	0	0	0	0	2	3	15	7	2	1	0	0
SARASOTA	62	0	0	1	1	0	2	0	4	23	14	8	9	0	0
SEMINOLE	88	0	0	0	0	0	2	5	4	32	25	12	7	1	0
SUMTER	3	0	0	0	0	0	0	0	0	2	1	0	0	0	0
SUWANNEE	9	0	0	2	0	0	0	0	1	3	1	1	1	0	0
TAYLOR	1	0	0	0	0	0	0	0	0	0	0	0	1	0	0
UNION	3	0	0	0	0	0	0	0	0	2	0	1	0	0	0
VOLUSIA	114	0	0	0	0	5	3	6	4	44	21	23	7	1	0
WAKULLA	0	0	0	0	0	0	0	0	0	0	0	0	0	0	0
WALTON	10	0	0	0	0	0	0	1	0	1	3	2	3	0	0
WASHINGTON	4	0	0	0	0	0	0	0	0	2	0	1	1	0	0

TABLE B-9: RESIDENT LIVE BIRTHS BY MONTH, BY RACE OF MOTHER, BY COUNTY, FLORIDA, 2015

	TOTAL	JAN	FEB	MAR	APR	MAY	JUN	JUL	AUG	SEP	OCT	NOV	DEC
FLORIDA	224,273	18,705	16,787	18,268	17,659	17,785	17,505	19,442	20,069	19,855	19,458	19,048	19,692
ALACHUA	2,885	249	209	248	234	239	235	223	263	240	243	257	245
BAKER	336	20	28	27	23	21	18	24	38	36	40	28	33
BAY	2,396	225	157	188	210	189	180	221	197	219	188	191	231
BRADFORD	294	25	11	19	23	28	30	37	32	27	23	28	11
BREVARD	5,246	404	375	448	454	388	418	486	452	500	457	424	440
BROWARD	22,307	1,846	1,697	1,798	1,710	1,797	1,770	1,938	2,006	1,951	1,890	1,883	2,021
CALHOUN	150	11	13	10	17	10	7	15	11	14	13	12	17
CHARLOTTE	1,030	75	85	88	75	68	84	94	87	87	93	92	102
CITRUS	1,017	82	73	82	71	98	77	104	94	83	78	90	85
CLAY	2,225	189	163	183	186	205	151	185	209	186	217	174	177
COLLIER	3,256	287	237	257	247	246	271	263	287	298	294	282	287
COLUMBIA	827	80	81	59	58	61	71	81	65	73	70	68	60
MIAMI-DADE	32,432	2,670	2,372	2,649	2,552	2,602	2,456	2,779	2,866	2,954	2,792	2,813	2,927
DESOTO	376	40	26	24	25	38	26	27	35	32	34	32	37
DIXIE	142	11	12	10	11	8	11	11	11	12	15	18	12
DUVAL	13,041	1,115	1,025	1,010	1,045	1,051	960	1,100	1,185	1,130	1,140	1,107	1,173
ESCAMBIA	3,902	309	307	311	306	303	291	332	379	322	359	330	353
FLAGLER	797	60	60	71	52	67	70	62	69	76	73	57	80
FRANKLIN	106	5	13	8	9	7	12	10	10	3	5	13	11
GADSDEN	557	37	47	40	51	50	47	51	44	43	40	55	52
GILCHRIST	194	11	19	19	23	15	15	19	14	18	11	15	15
GLADES	79	5	7	8	6	9	5	6	2	11	7	7	6
GULF	119	13	5	8	7	7	12	9	14	10	15	10	9
HAMILTON	167	19	12	14	11	12	10	5	12	20	16	19	17
HARDEE	390	29	35	29	31	30	21	44	40	29	35	32	35
HENDRY	631	50	40	56	40	57	48	43	57	51	65	63	61
HERNANDO	1,600	125	108	131	127	111	135	144	164	129	167	128	131
HIGHLANDS	917	92	65	69	66	67	75	85	67	82	80	86	83
HILLSBOROUGH	17,570	1,462	1,327	1,423	1,390	1,438	1,400	1,520	1,559	1,518	1,483	1,488	1,562
HOLMES	219	23	10	18	23	16	9	18	14	22	23	15	28
INDIAN RIVER	1,246	114	87	104	86	80	105	100	112	122	119	121	96
JACKSON	496	38	42	40	45	38	39	46	44	46	42	38	38
JEFFERSON	124	9	10	6	20	8	10	12	11	13	9	7	9
LAFAYETTE	59	8	6	4	4	3	1	5	4	10	3	4	7
LAKE	3,184	262	230	279	248	268	243	254	285	261	309	270	275
LEE	6,776	549	505	576	539	576	537	581	591	589	573	597	563
LEON	3,047	269	242	222	220	247	246	255	270	298	277	240	261
LEVY	391	35	35	25	28	41	26	35	30	38	38	28	32
LIBERTY	75	7	1	3	5	7	9	5	7	5	6	13	7
MADISON	210	16	15	17	26	10	14	19	22	21	15	15	20
MANATEE	3,469	307	247	292	257	278	279	291	335	285	315	286	297
MARION	3,584	314	271	277	278	264	276	320	319	315	324	340	286
MARTIN	1,262	112	97	95	120	62	113	121	123	101	104	112	102
MONROE	752	70	62	66	48	53	63	47	79	69	64	59	72
NASSAU	803	61	68	66	53	58	70	77	72	72	67	63	76
OKALOOSA	2,829	218	211	249	236	220	228	249	253	263	241	229	232
OKEECHOBEE	523	31	33	62	44	35	36	55	52	42	43	40	50
ORANGE	16,718	1,387	1,235	1,350	1,300	1,304	1,333	1,429	1,491	1,494	1,466	1,455	1,474
OSCEOLA	4,183	341	325	336	338	322	317	378	363	386	390	337	350
PALM BEACH	14,873	1,236	1,074	1,257	1,199	1,144	1,133	1,311	1,318	1,353	1,259	1,244	1,345
PASCO	5,105	454	391	392	415	412	387	432	446	485	422	439	430
PINELLAS	8,744	743	655	746	678	715	708	786	756	737	754	742	724
POLK	7,483	632	578	621	550	580	578	653	708	635	652	637	659
PUTNAM	815	63	64	68	52	55	66	65	85	67	78	79	73
SAINT JOHNS	2,158	178	146	188	170	157	182	198	172	211	170	194	192
SAINT LUCIE	3,099	271	233	246	240	209	232	313	289	283	257	253	273
SANTA ROSA	1,943	168	149	149	160	131	147	176	149	196	192	159	167
SARASOTA	2,907	232	203	237	237	259	224	248	292	251	253	225	246
SEMINOLE	4,554	386	375	357	354	387	372	365	397	411	385	381	384
SUMTER	500	43	43	34	35	42	35	49	40	45	46	47	41
SUWANNEE	434	39	27	37	40	41	36	36	25	38	40	35	40
TAYLOR	249	18	17	22	14	22	21	20	29	22	22	28	14
UNION	147	9	9	18	21	11	7	7	17	16	10	14	8
VOLUSIA	4,939	415	361	415	402	397	399	446	480	388	426	401	409
WAKULLA	338	37	30	22	35	27	22	32	29	26	37	12	29
WALTON	806	48	67	66	62	66	79	66	77	67	56	68	84
WASHINGTON	228	14	23	19	16	18	16	21	13	17	27	19	25

TABLE B-10: RESIDENT LIVE BIRTHS BY MOTHER'S EDUCATION*, BY RACE OF MOTHER, BY COUNTY, FLORIDA,
2015
HIGHEST LEVEL/DEGREE OF EDUCATION COMPLETED

	TOTAL	HIGHEST LEVEL/DEGREE OF EDUCATION COMPLETED								
		< 9TH GRADE	9TH-12TH NO DIPLOMA	HIGH SCHOOL DIPLOMA	SOME COLLEGE	ASSOCIATE DEGREE	BACHELOR DEGREE	MASTER DEGREE	DOCTORATE	UNK
FLORIDA	224,273	7,275	21,541	69,420	43,454	21,746	38,911	15,196	4,396	2,334
ALACHUA	2,885	29	253	600	586	278	556	348	215	20
BAKER	336	7	45	132	75	36	29	7	2	3
BAY	2,396	43	327	632	570	247	330	114	19	114
BRADFORD	294	9	56	108	65	30	20	4	1	1
BREVARD	5,246	86	446	1,296	1,325	735	895	345	75	43
BROWARD	22,307	506	1,952	6,025	4,162	2,275	4,568	2,052	537	230
CALHOUN	150	7	23	50	40	11	10	4	0	5
CHARLOTTE	1,030	12	85	386	256	116	127	26	12	10
CITRUS	1,017	17	144	403	251	90	69	26	6	11
CLAY	2,225	26	170	622	607	269	361	99	23	48
COLLIER	3,256	278	243	1,214	529	246	456	230	47	13
COLUMBIA	827	17	143	326	182	69	62	17	6	5
MIAMI-DADE	32,432	1,030	1,873	11,815	4,645	3,252	5,988	2,753	776	300
DESOTO	376	46	81	145	62	20	12	5	2	3
DIXIE	142	2	28	63	36	6	6	0	0	1
DUVAL	13,041	403	1,303	3,561	3,321	1,107	2,202	746	264	134
ESCAMBIA	3,902	57	490	1,678	404	425	590	183	58	17
FLAGLER	797	8	38	228	224	110	126	43	12	8
FRANKLIN	106	5	16	38	23	11	8	0	0	5
GADSDEN	557	36	79	173	117	57	51	21	3	20
GILCHRIST	194	12	32	60	56	14	12	6	0	2
GLADES	79	7	12	44	8	3	4	0	0	1
GULF	119	3	17	49	26	9	7	4	0	4
HAMILTON	167	26	29	65	29	7	7	3	0	1
HARDEE	390	69	92	110	59	26	28	3	2	1
HENDRY	631	46	157	292	58	28	38	1	3	8
HERNANDO	1,600	14	153	608	440	162	166	36	8	13
HIGHLANDS	917	56	160	313	191	76	88	26	5	2
HILLSBOROUGH	17,570	593	1,735	5,732	3,097	1,294	3,248	1,320	396	155
HOLMES	219	13	46	87	41	10	13	7	1	1
INDIAN RIVER	1,246	39	141	460	247	114	166	58	17	4
JACKSON	496	13	58	194	128	40	44	13	1	5
JEFFERSON	124	6	13	33	34	12	15	7	1	3
LAFAYETTE	59	1	12	22	16	2	6	0	0	0
LAKE	3,184	71	394	1,050	652	295	511	155	31	25
LEE	6,776	353	811	3,053	911	547	814	214	49	24
LEON	3,047	36	232	514	667	298	730	363	123	84
LEVY	391	16	70	155	87	34	20	5	1	3
LIBERTY	75	2	10	26	15	9	8	2	0	3
MADISON	210	3	30	83	46	19	20	4	0	5
MANATEE	3,469	207	528	1,058	631	285	493	165	61	41
MARION	3,584	96	505	1,209	933	329	331	109	43	29
MARTIN	1,262	135	145	249	233	135	242	85	33	5
MONROE	752	25	75	234	141	76	140	44	13	4
NASSAU	803	8	66	214	202	98	141	45	16	13
OKALOOSA	2,829	48	249	794	686	323	511	166	39	13
OKEECHOBEE	523	35	120	173	95	52	36	9	3	0
ORANGE	16,718	462	1,482	4,771	3,160	1,569	3,478	1,318	347	131
OSCEOLA	4,183	66	324	1,653	805	505	625	167	19	19
PALM BEACH	14,873	1,118	1,271	3,841	2,762	1,374	2,880	1,112	387	128
PASCO	5,105	60	571	1,400	1,169	513	947	300	80	65
PINELLAS	8,744	131	827	2,262	1,903	822	1,716	682	219	182
POLK	7,483	410	1,131	2,563	1,496	692	851	248	52	40
PUTNAM	815	50	145	341	148	54	46	18	3	10
SAINT JOHNS	2,158	11	110	364	495	153	639	250	101	35
SAINT LUCIE	3,099	97	396	885	823	374	371	110	30	13
SANTA ROSA	1,943	21	171	601	292	270	407	144	26	11
SARASOTA	2,907	34	208	1,032	511	378	438	156	50	100
SEMINOLE	4,554	54	261	976	907	524	1,165	526	95	46
SUMTER	500	17	92	202	104	35	34	11	2	3
SUWANNEE	434	31	90	138	85	42	39	5	1	3
TAYLOR	249	6	38	92	56	24	22	3	1	7
UNION	147	2	13	55	40	16	14	5	0	2
VOLUSIA	4,939	111	546	1,444	1,218	566	707	215	63	69
WAKULLA	338	4	29	99	69	52	58	15	2	10
WALTON	806	23	112	243	145	84	147	35	12	5
WASHINGTON	228	8	37	80	57	11	22	3	0	10

* Starting in 2004, "mother's education" is measured according to the highest level/degree completed, instead of highest grade completed.

TABLE B-10 (Cont.): WHITE RESIDENT LIVE BIRTHS BY MOTHER'S EDUCATION*, BY COUNTY, FLORIDA, 2015

	HIGHEST LEVEL/DEGREE OF EDUCATION COMPLETED									
	TOTAL	< 9TH GRADE	9TH-12TH NO DIPLOMA	HIGH SCHOOL DIPLOMA	SOME COLLEGE	ASSOCIATE DEGREE	BACHELOR DEGREE	MASTER DEGREE	DOCTORATE	UNK
FLORIDA	160,830	6,150	13,953	46,309	30,293	16,251	31,086	11,954	3,377	1,457
ALACHUA	1,783	21	103	269	330	205	428	267	148	12
BAKER	287	7	37	100	72	36	25	7	2	1
BAY	1,843	30	246	459	454	199	266	92	14	83
BRADFORD	229	7	43	83	48	25	18	4	1	0
BREVARD	4,133	73	341	947	1,038	600	746	291	63	34
BROWARD	12,387	361	784	2,798	2,164	1,246	3,112	1,427	378	117
CALHOUN	121	7	17	44	34	5	9	4	0	1
CHARLOTTE	891	8	72	338	216	108	116	19	10	4
CITRUS	946	17	141	376	235	83	57	22	5	10
CLAY	1,786	24	140	507	481	220	286	78	20	30
COLLIER	2,714	274	203	980	425	187	395	201	40	9
COLUMBIA	621	11	105	230	144	59	53	12	3	4
MIAMI-DADE	24,622	934	1,236	8,044	3,342	2,615	5,196	2,412	683	160
DESOTO	332	46	77	118	54	18	11	4	2	2
DIXIE	124	2	24	53	33	6	5	0	0	1
DUVAL	7,239	277	576	1,625	1,765	631	1,587	508	189	81
ESCAMBIA	2,430	44	234	901	269	301	472	150	49	10
FLAGLER	653	6	27	184	181	91	109	39	10	6
FRANKLIN	96	5	15	33	22	10	8	0	0	3
GADSDEN	221	30	27	66	30	25	26	10	1	6
GILCHRIST	180	12	27	55	53	14	11	6	0	2
GLADES	72	7	12	39	7	3	3	0	0	1
GULF	96	3	16	37	20	8	6	2	0	4
HAMILTON	117	22	16	37	25	7	7	2	0	1
HARDEE	363	68	90	98	50	24	27	3	2	1
HENDRY	543	46	145	246	42	23	31	1	3	6
HERNANDO	1,408	10	138	538	386	143	143	32	8	10
HIGHLANDS	715	53	119	229	154	63	72	20	3	2
HILLSBOROUGH	12,711	548	1,216	3,936	2,179	981	2,507	961	296	87
HOLMES	206	13	44	80	39	10	11	7	1	1
INDIAN RIVER	756	12	51	243	163	86	139	49	12	1
JACKSON	355	11	34	132	94	32	37	9	1	5
JEFFERSON	72	5	4	17	14	8	13	7	1	3
LAFAYETTE	58	1	12	22	16	2	5	0	0	0
LAKE	2,518	62	306	812	525	230	430	116	17	20
LEE	5,545	331	629	2,373	753	473	736	194	40	16
LEON	1,570	22	66	201	272	161	495	237	79	37
LEVY	323	15	59	125	68	30	20	3	1	2
LIBERTY	64	2	9	20	12	8	8	2	0	3
MADISON	107	2	14	37	22	12	15	3	0	2
MANATEE	2,654	135	376	750	488	238	437	147	54	29
MARION	2,760	83	375	898	709	280	272	94	28	21
MARTIN	1,057	116	112	193	192	118	220	77	25	4
MONROE	627	18	49	191	124	69	127	38	10	1
NASSAU	723	8	55	191	183	90	131	39	15	11
OKALOOSA	2,272	40	200	608	538	271	431	138	35	11
OKEECHOBEE	463	34	108	151	81	48	30	8	3	0
ORANGE	10,655	373	732	2,813	1,938	1,004	2,526	962	233	74
OSCEOLA	3,502	62	274	1,398	669	419	519	134	14	13
PALM BEACH	9,922	952	717	2,139	1,724	895	2,291	835	301	68
PASCO	4,526	57	517	1,246	1,048	455	828	262	58	55
PINELLAS	6,482	98	525	1,457	1,358	670	1,496	581	178	119
POLK	5,632	349	827	1,846	1,129	553	678	188	36	26
PUTNAM	595	43	108	233	102	46	39	14	2	8
SAINT JOHNS	1,835	9	80	275	430	138	576	223	83	21
SAINT LUCIE	2,008	79	229	506	545	262	276	80	21	10
SANTA ROSA	1,751	21	150	545	261	232	372	137	23	10
SARASOTA	2,499	31	161	865	436	342	396	146	42	80
SEMINOLE	3,428	38	156	707	694	413	918	400	70	32
SUMTER	399	13	72	156	84	33	26	11	1	3
SUWANNEE	353	24	73	107	71	35	35	5	1	2
TAYLOR	195	5	26	78	42	22	16	3	0	3
UNION	128	2	12	43	37	13	14	5	0	2
VOLUSIA	3,874	99	398	1,101	937	480	581	176	48	54
WAKULLA	304	2	28	87	62	47	54	14	1	9
WALTON	752	21	108	229	130	80	136	33	12	3
WASHINGTON	189	7	30	62	50	9	20	3	0	8

* Starting in 2004, "mother's education" is measured according to the highest level/degree completed, instead of highest grade completed.

TABLE B-10 (Cont.): BLACK RESIDENT LIVE BIRTHS BY MOTHER'S EDUCATION*, BY COUNTY, FLORIDA, 2015

	HIGHEST LEVEL/DEGREE OF EDUCATION COMPLETED									
	TOTAL	< 9TH GRADE	9TH-12TH NO DIPLOMA	HIGH SCHOOL DIPLOMA	SOME COLLEGE	ASSOCIATE DEGREE	BACHELOR DEGREE	MASTER DEGREE	DOCTORATE	UNK
FLORIDA	49,109	696	6,618	19,980	10,816	4,243	4,270	1,656	383	447
ALACHUA	834	5	139	308	227	55	56	31	10	3
BAKER	43	0	7	30	3	0	2	0	0	1
BAY	309	4	54	111	67	21	25	9	2	16
BRADFORD	54	1	11	21	17	3	1	0	0	0
BREVARD	752	4	83	275	205	97	61	19	5	3
BROWARD	8,203	97	1,063	2,862	1,777	886	961	414	85	58
CALHOUN	24	0	6	4	4	6	0	0	0	4
CHARLOTTE	87	1	4	35	33	5	3	3	0	3
CITRUS	29	0	1	15	7	5	1	0	0	0
CLAY	289	0	23	82	88	28	44	15	0	9
COLLIER	396	1	32	207	85	38	24	5	2	2
COLUMBIA	176	4	36	84	31	8	6	3	3	1
MIAMI-DADE	6,827	88	594	3,592	1,182	552	532	208	41	38
DESOTO	39	0	4	23	8	2	0	1	0	1
DIXIE	13	0	3	7	2	0	1	0	0	0
DUVAL	4,609	68	643	1,681	1,305	375	351	119	34	33
ESCAMBIA	1,198	10	235	686	98	92	50	21	3	3
FLAGLER	90	0	9	30	33	10	5	2	1	0
FRANKLIN	8	0	0	4	1	1	0	0	0	2
GADSDEN	331	6	52	106	86	32	22	11	2	14
GILCHRIST	8	0	3	3	2	0	0	0	0	0
GLADES	5	0	0	3	1	0	1	0	0	0
GULF	14	0	0	8	4	1	0	1	0	0
HAMILTON	42	1	12	25	4	0	0	0	0	0
HARDEE	20	0	0	10	7	2	1	0	0	0
HENDRY	68	0	8	38	15	3	2	0	0	2
HERNANDO	109	1	10	44	33	12	8	0	0	1
HIGHLANDS	151	3	31	67	31	11	4	3	1	0
HILLSBOROUGH	3,738	33	479	1,629	788	242	369	137	35	26
HOLMES	4	0	2	2	0	0	0	0	0	0
INDIAN RIVER	232	2	31	125	52	10	7	1	3	1
JACKSON	122	0	21	57	29	7	4	4	0	0
JEFFERSON	51	1	9	16	19	4	2	0	0	0
LAFAYETTE	1	0	0	0	0	0	1	0	0	0
LAKE	463	3	71	184	88	43	45	21	6	2
LEE	1,022	15	167	592	131	58	41	11	3	4
LEON	1,290	11	163	288	373	130	177	84	21	43
LEVY	52	0	10	25	15	2	0	0	0	0
LIBERTY	10	0	1	6	2	1	0	0	0	0
MADISON	100	1	16	45	23	6	5	1	0	3
MANATEE	475	2	94	208	97	33	21	9	2	9
MARION	665	9	110	271	180	40	35	7	6	7
MARTIN	101	1	20	34	26	9	7	3	1	0
MONROE	86	5	25	31	14	3	6	1	1	0
NASSAU	54	0	8	17	13	6	6	4	0	0
OKALOOSA	282	4	30	113	74	23	28	9	1	0
OKEECHOBEE	34	0	6	12	9	3	4	0	0	0
ORANGE	4,440	65	685	1,657	958	403	446	157	36	33
OSCEOLA	438	2	34	185	95	56	47	16	1	2
PALM BEACH	4,048	144	519	1,529	894	410	352	130	33	37
PASCO	325	0	34	101	74	33	53	19	8	3
PINELLAS	1,498	15	246	611	406	77	72	31	10	30
POLK	1,487	42	263	632	296	106	94	40	4	10
PUTNAM	191	6	34	96	43	6	4	2	0	0
SAINT JOHNS	162	2	20	64	35	6	17	9	5	4
SAINT LUCIE	892	15	144	331	225	89	61	21	3	3
SANTA ROSA	87	0	11	27	11	17	15	5	1	0
SARASOTA	248	1	36	115	49	19	10	3	2	13
SEMINOLE	683	7	90	211	159	74	89	44	3	6
SUMTER	90	4	20	43	18	2	3	0	0	0
SUWANNEE	63	2	14	28	11	6	2	0	0	0
TAYLOR	49	1	12	13	13	1	4	0	1	4
UNION	15	0	0	10	2	3	0	0	0	0
VOLUSIA	794	6	124	274	218	63	75	20	6	8
WAKULLA	30	2	1	11	7	3	3	1	1	1
WALTON	28	0	2	9	9	3	3	1	0	1
WASHINGTON	29	1	3	17	4	1	1	0	0	2

* Starting in 2004, "mother's education" is measured according to the highest level/degree completed, instead of highest grade completed.

TABLE B-10 (Cont.): OTHER RESIDENT LIVE BIRTHS BY MOTHER'S EDUCATION*, BY COUNTY, FLORIDA, 2015

	HIGHEST LEVEL/DEGREE OF EDUCATION COMPLETED									
	TOTAL	< 9TH GRADE	9TH-12TH NO DIPLOMA	HIGH SCHOOL DIPLOMA	SOME COLLEGE	ASSOCIATE DEGREE	BACHELOR DEGREE	MASTER DEGREE	DOCTORATE	UNK
FLORIDA	13,127	359	847	2,863	2,158	1,174	3,419	1,528	627	152
ALACHUA	263	3	10	22	29	18	71	49	57	4
BAKER	5	0	1	2	0	0	2	0	0	0
BAY	179	2	17	44	41	21	33	11	3	7
BRADFORD	10	1	2	4	0	2	1	0	0	0
BREVARD	354	9	22	74	80	38	87	35	7	2
BROWARD	1,488	32	85	308	183	133	460	198	70	19
CALHOUN	5	0	0	2	2	0	1	0	0	0
CHARLOTTE	49	2	8	13	7	3	8	3	2	3
CITRUS	41	0	2	12	9	2	11	4	1	0
CLAY	139	2	7	32	38	21	30	6	3	0
COLLIER	145	3	8	27	19	21	37	24	5	1
COLUMBIA	29	2	1	12	7	2	3	2	0	0
MIAMI-DADE	730	6	32	148	85	60	221	110	50	18
DESOTO	4	0	0	3	0	0	1	0	0	0
DIXIE	5	0	1	3	1	0	0	0	0	0
DUVAL	1,166	58	82	250	246	100	262	117	41	10
ESCAMBIA	270	3	21	90	37	32	67	12	6	2
FLAGLER	52	2	2	14	9	9	12	2	1	1
FRANKLIN	2	0	1	1	0	0	0	0	0	0
GADSDEN	5	0	0	1	1	0	3	0	0	0
GILCHRIST	5	0	1	2	1	0	1	0	0	0
GLADES	2	0	0	2	0	0	0	0	0	0
GULF	7	0	0	3	2	0	1	1	0	0
HAMILTON	8	3	1	3	0	0	0	1	0	0
HARDEE	7	1	2	2	2	0	0	0	0	0
HENDRY	20	0	4	8	1	2	5	0	0	0
HERNANDO	77	3	5	26	17	7	14	4	0	1
HIGHLANDS	50	0	10	17	5	2	12	3	1	0
HILLSBOROUGH	1,083	12	40	163	129	69	369	220	65	16
HOLMES	8	0	0	5	1	0	2	0	0	0
INDIAN RIVER	49	0	6	17	6	7	6	5	2	0
JACKSON	18	2	3	4	5	1	3	0	0	0
JEFFERSON	1	0	0	0	1	0	0	0	0	0
LAFAYETTE	0	0	0	0	0	0	0	0	0	0
LAKE	197	6	17	54	38	20	36	17	8	1
LEE	205	7	15	88	27	16	36	9	6	1
LEON	182	3	3	25	22	7	58	40	23	1
LEVY	15	1	1	5	4	2	0	2	0	0
LIBERTY	1	0	0	0	1	0	0	0	0	0
MADISON	3	0	0	1	1	1	0	0	0	0
MANATEE	334	70	58	100	44	14	31	9	5	3
MARION	159	4	20	40	44	9	24	8	9	1
MARTIN	62	5	5	8	12	6	14	5	7	0
MONROE	37	2	1	12	3	4	7	5	2	1
NASSAU	23	0	3	5	6	2	4	2	1	0
OKALOOSA	267	4	18	72	68	29	52	19	3	2
OKEECHOBEE	21	0	6	7	4	1	2	1	0	0
ORANGE	1,604	24	64	300	264	162	506	199	78	7
OSCEOLA	239	2	16	68	41	30	59	17	4	2
PALM BEACH	884	21	35	173	142	68	235	146	52	12
PASCO	236	3	19	47	42	24	66	18	14	3
PINELLAS	648	15	50	167	108	62	135	65	29	17
POLK	356	19	39	85	70	31	78	20	12	2
PUTNAM	28	1	3	12	3	2	3	2	1	1
SAINT JOHNS	152	0	10	25	30	9	45	18	13	2
SAINT LUCIE	174	3	20	40	44	23	29	9	6	0
SANTA ROSA	105	0	10	29	20	21	20	2	2	1
SARASOTA	150	1	11	48	25	15	32	7	6	5
SEMINOLE	437	9	15	58	53	37	157	82	22	4
SUMTER	11	0	0	3	2	0	5	0	1	0
SUWANNEE	18	5	3	3	3	1	2	0	0	1
TAYLOR	5	0	0	1	1	1	2	0	0	0
UNION	4	0	1	2	1	0	0	0	0	0
VOLUSIA	255	6	24	64	62	23	48	18	9	1
WAKULLA	4	0	0	1	0	2	1	0	0	0
WALTON	25	2	2	5	6	1	8	1	0	0
WASHINGTON	10	0	4	1	3	1	1	0	0	0

* Starting in 2004, "mother's education" is measured according to the highest level/degree completed, instead of highest grade completed.

TABLE B-11: RESIDENT LIVE BIRTHS TO MOTHERS UNDER 15 YEARS OF AGE FOR SELECTED INDICATORS,
BY COUNTY, FLORIDA, 2015

	TOTAL	UNWED	BIRTHWEIGHT		THIRD TRIMESTER OR NO PRENATAL CARE*	ONE OR MORE PREVIOUS LIVE BIRTHS
			UNDER 1,500 GRAMS	UNDER 2,500 GRAMS		
FLORIDA	130	130	8	24	20	1
ALACHUA	0	0	0	0	0	0
BAKER	0	0	0	0	0	0
BAY	1	1	0	0	0	0
BRADFORD	0	0	0	0	0	0
BREVARD	2	2	1	1	0	0
BROWARD	11	11	2	4	5	0
CALHOUN	0	0	0	0	0	0
CHARLOTTE	0	0	0	0	0	0
CITRUS	1	1	1	1	1	0
CLAY	0	0	0	0	0	0
COLLIER	2	2	0	0	0	0
COLUMBIA	0	0	0	0	0	0
MIAMI-DADE	13	13	0	3	2	1
DESOTO	0	0	0	0	0	0
DIXIE	0	0	0	0	0	0
DUVAL	9	9	0	1	1	0
ESCAMBIA	4	4	0	0	0	0
FLAGLER	1	1	0	0	0	0
FRANKLIN	0	0	0	0	0	0
GADSDEN	0	0	0	0	0	0
GILCHRIST	0	0	0	0	0	0
GLADES	0	0	0	0	0	0
GULF	0	0	0	0	0	0
HAMILTON	0	0	0	0	0	0
HARDEE	2	2	0	0	1	0
HENDRY	2	2	0	0	0	0
HERNANDO	2	2	0	0	1	0
HIGHLANDS	1	1	0	0	0	0
HILLSBOROUGH	14	14	0	3	2	0
HOLMES	0	0	0	0	0	0
INDIAN RIVER	2	2	0	0	2	0
JACKSON	1	1	0	0	0	0
JEFFERSON	0	0	0	0	0	0
LAFAYETTE	1	1	0	0	0	0
LAKE	2	2	0	1	0	0
LEE	7	7	1	1	1	0
LEON	2	2	0	0	0	0
LEVY	0	0	0	0	0	0
LIBERTY	0	0	0	0	0	0
MADISON	1	1	0	1	0	0
MANATEE	4	4	1	1	0	0
MARION	4	4	0	0	1	0
MARTIN	1	1	0	0	0	0
MONROE	1	1	0	0	0	0
NASSAU	1	1	0	0	0	0
OKALOOSA	1	1	0	1	0	0
OKEECHOBEE	0	0	0	0	0	0
ORANGE	8	8	0	2	1	0
OSCEOLA	1	1	0	0	0	0
PALM BEACH	4	4	0	0	0	0
PASCO	5	5	1	1	0	0
PINELLAS	5	5	0	0	1	0
POLK	5	5	0	0	0	0
PUTNAM	2	2	0	0	0	0
SAINT JOHNS	0	0	0	0	0	0
SAINT LUCIE	1	1	0	1	0	0
SANTA ROSA	0	0	0	0	0	0
SARASOTA	1	1	0	0	1	0
SEMINOLE	1	1	0	0	0	0
SUMTER	0	0	0	0	0	0
SUWANNEE	2	2	1	2	0	0
TAYLOR	0	0	0	0	0	0
UNION	0	0	0	0	0	0
VOLUSIA	1	1	0	0	0	0
WAKULLA	0	0	0	0	0	0
WALTON	1	1	0	0	0	0
WASHINGTON	0	0	0	0	0	0

* Starting in 2004, "trimester prenatal care began" is calculated as the time elapsed from the date of the last menstrual period to the date of the first prenatal care visit. Prior to 2004, these data were obtained by direct question that noted the trimester the mother began prenatal care. Consequently, these data are not comparable to data from prior years.

TABLE B-12: RESIDENT LIVE BIRTHS TO MOTHERS 15 THROUGH 19 YEARS OF AGE FOR SELECTED INDICATORS, AND AGE-SPECIFIC BIRTH RATES PER 1,000 FEMALES, BY COUNTY, FLORIDA, 2015

	TOTAL	UNWED		BIRTHWEIGHT						THIRD TRIMESTER OR NO PRENATAL CARE		ONE OR MORE PREVIOUS LIVE BIRTHS		AGE-SPECIFIC BIRTH RATE	POPULATION 15-19 FEMALES
				UNDER 1,500 GRAMS		UNDER 2,500 GRAMS		NUMBER ¹	% ²	NUMBER	%	NUMBER	%		
				NUMBER	%	NUMBER	%								
FLORIDA	11,956	10,922	91.4	210	1.8	1,186	9.9	910	8.5	1,889	15.8	20.3	587,840		
ALACHUA	136	127	93.4	1	0.7	11	8.1	13	10.5	16	11.8	10.7	12,711		
BAKER	26	20	76.9	0	0.0	2	7.7	1	4.0	4	15.4	31.0	839		
BAY	178	168	94.4	5	2.8	24	13.5	17	10.9	22	12.4	35.6	5,000		
BRADFORD	36	29	80.6	0	0.0	6	16.7	2	6.7	5	13.9	55.1	653		
BREVARD	283	270	95.4	5	1.8	24	8.5	15	5.7	33	11.7	19.2	14,761		
BROWARD	772	710	92.0	17	2.2	83	10.8	94	13.8	145	18.8	14.1	54,576		
CALHOUN	8	8	100.0	0	0.0	0	0.0	0	0.0	2	25.0	20.3	395		
CHARLOTTE	71	62	87.3	0	0.0	4	5.6	8	11.9	11	15.5	22.7	3,132		
CITRUS	85	78	91.8	3	3.5	9	10.6	7	8.5	9	10.6	28.8	2,949		
CLAY	144	125	86.8	3	2.1	11	7.6	9	6.8	19	13.2	20.6	6,997		
COLLIER	185	163	88.1	2	1.1	14	7.6	15	9.1	33	17.8	21.2	8,709		
COLUMBIA	78	69	88.5	0	0.0	8	10.3	10	16.7	16	20.5	42.5	1,836		
MIAMI-DADE	1,214	1,124	92.6	23	1.9	125	10.3	61	5.5	177	14.6	15.3	79,542		
DESOTO	36	31	86.1	0	0.0	1	2.8	1	3.1	7	19.4	39.8	905		
DIXIE	13	10	76.9	0	0.0	0	0.0	0	0.0	3	23.1	34.6	376		
DUVAL	735	684	93.1	24	3.3	102	13.9	83	12.4	116	15.8	25.5	28,791		
ESCAMBIA	274	246	89.8	4	1.5	34	12.4	24	9.8	50	18.2	28.5	9,626		
FLAGLER	36	30	83.3	0	0.0	4	11.1	2	6.3	3	8.3	13.5	2,675		
FRANKLIN	15	11	73.3	0	0.0	1	6.7	0	0.0	1	6.7	63.6	236		
GADSDEN	45	42	93.3	1	2.2	8	17.8	2	6.3	7	15.6	34.5	1,306		
GILCHRIST	13	11	84.6	0	0.0	3	23.1	1	7.7	1	7.7	27.4	475		
GLADES	3	3	100.0	0	0.0	1	33.3	0	0.0	1	33.3	10.0	301		
GULF	11	9	81.8	0	0.0	1	9.1	2	22.2	1	9.1	30.5	361		
HAMILTON	10	10	100.0	0	0.0	0	0.0	1	11.1	2	20.0	27.5	364		
HARDEE	43	35	81.4	0	0.0	4	9.3	9	21.4	9	20.9	47.0	914		
HENDRY	56	51	91.1	1	1.8	3	5.4	4	8.5	11	19.6	43.1	1,298		
HERNANDO	91	75	82.4	0	0.0	9	9.9	6	6.8	15	16.5	19.5	4,662		
HIGHLANDS	79	75	94.9	0	0.0	4	5.1	10	13.0	11	13.9	35.0	2,255		
HILLSBOROUGH	987	915	92.7	22	2.2	120	12.2	22	2.3	176	17.8	22.1	44,617		
HOLMES	34	28	82.4	2	5.9	6	17.6	2	7.1	6	17.6	66.4	512		
INDIAN RIVER	72	71	98.6	0	0.0	3	4.2	6	8.5	12	16.7	20.3	3,551		
JACKSON	45	41	91.1	0	0.0	6	13.3	4	9.5	12	26.7	37.1	1,214		
JEFFERSON	6	5	83.3	0	0.0	0	0.0	0	0.0	0	0.0	18.8	319		
LAFAYETTE	5	3	60.0	0	0.0	0	0.0	0	0.0	0	0.0	22.3	224		
LAKE	226	209	92.5	2	0.9	20	8.8	20	9.5	31	13.7	27.3	8,287		
LEE	432	397	91.9	3	0.7	30	6.9	45	11.1	68	15.7	24.4	17,681		
LEON	129	120	93.0	3	2.3	17	13.2	4	4.2	13	10.1	8.6	15,061		
LEVY	34	30	88.2	2	5.9	5	14.7	2	6.9	7	20.6	32.2	1,055		
LIBERTY	11	6	54.5	0	0.0	2	18.2	1	11.1	3	27.3	52.4	210		
MADISON	15	11	73.3	0	0.0	1	6.7	2	15.4	0	0.0	30.9	485		
MANATEE	256	243	94.9	2	0.8	20	7.8	24	9.8	55	21.5	27.7	9,232		
MARION	263	235	89.4	6	2.3	18	6.8	26	10.7	42	16.0	31.6	8,316		
MARTIN	55	46	83.6	2	3.6	4	7.3	6	11.5	10	18.2	15.0	3,666		
MONROE	23	19	82.6	0	0.0	3	13.0	1	4.8	3	13.0	15.9	1,449		
NASSAU	49	44	89.8	1	2.0	5	10.2	2	4.5	7	14.3	22.1	2,215		
OKALOOSA	131	111	84.7	4	3.1	14	10.7	9	10.0	22	16.8	23.2	5,648		
OKEECHOBEE	48	45	93.8	0	0.0	6	12.5	5	11.4	12	25.0	41.1	1,167		
ORANGE	823	763	92.7	15	1.8	87	10.6	74	11.3	144	17.5	18.2	45,105		
OSCEOLA	312	281	90.1	6	1.9	40	12.8	12	4.3	44	14.1	28.7	10,856		
PALM BEACH	623	565	90.7	11	1.8	64	10.3	63	11.5	102	16.4	16.4	38,099		
PASCO	337	313	92.9	4	1.2	28	8.3	14	4.4	51	15.1	24.7	13,669		
PINELLAS	436	407	93.3	8	1.8	31	7.1	25	6.4	51	11.7	19.0	22,922		
POLK	577	516	89.4	12	2.1	47	8.1	41	7.8	86	14.9	30.0	19,228		
PUTNAM	96	86	89.6	3	3.1	7	7.3	8	9.1	20	20.8	48.4	1,985		
SAINT JOHNS	81	77	95.1	0	0.0	4	4.9	6	8.0	10	12.3	11.8	6,888		
SAINT LUCIE	176	162	92.0	3	1.7	13	7.4	12	7.1	28	15.9	21.6	8,144		
SANTA ROSA	138	118	85.5	3	2.2	19	13.8	6	4.7	12	8.7	27.5	5,027		
SARASOTA	129	118	91.5	1	0.8	10	7.8	10	8.5	23	17.8	15.2	8,476		
SEMINOLE	159	143	89.9	2	1.3	17	10.7	20	15.3	18	11.3	10.8	14,770		
SUMTER	41	35	85.4	1	2.4	3	7.3	3	8.1	9	22.0	33.0	1,244		
SUWANNEE	42	34	81.0	0	0.0	1	2.4	3	9.7	10	23.8	34.0	1,235		
TAYLOR	24	22	91.7	0	0.0	3	12.5	1	4.8	6	25.0	44.1	544		
UNION	21	20	95.2	0	0.0	0	0.0	2	10.0	5	23.8	54.0	389		
VOLUSIA	333	309	92.8	3	0.9	31	9.3	25	8.5	44	13.2	22.6	14,742		
WAKULLA	27	24	88.9	0	0.0	2	7.4	2	10.0	1	3.7	32.1	840		
WALTON	64	55	85.9	0	0.0	3	4.7	3	5.6	9	14.1	43.3	1,478		
WASHINGTON	19	18	94.7	0	0.0	0	0.0	1	5.6	6	31.6	29.5	645		

1. Starting in 2004, "trimester prenatal care began" is the time elapsed from the date of the last menstrual period to the date of the first prenatal care visit. Prior to 2004, these data were obtained by direct question that noted the trimester the mother began prenatal care. Consequently, these data are not comparable to data from prior years.

2. Births with unknown information as to when prenatal care began are excluded from the denominator.