

Marriages and Dissolutions of Marriage

**CHART M-1: MARRIAGES AND DISSOLUTIONS OF MARRIAGE,
AND RATES PER 1,000 POPULATION, FLORIDA AND UNITED
STATES, CENSUS YEARS 1920-2000 AND 2005-2015**

YEAR	MARRIAGES			DISSOLUTIONS ¹		
	FLORIDA		U.S.	FLORIDA		U.S.
	NUMBER	RATE	RATE	NUMBER	RATE	RATE
1920	NA	NA	12.0	NA	NA	1.6
1930	17,147	11.7	9.2	3,262	2.5	1.6
1940	32,709	17.1	12.1	11,061	5.8	2.0
1950	27,588	9.8	11.1	17,845	6.3	2.6
1960	39,315	7.9	8.5	19,326	3.9	2.2
1970	70,244	10.3	10.6	37,556	5.5	3.5
1980	108,344	11.0	10.6	71,590	7.3	5.2
1990	141,816	10.9	9.8	81,122	6.2	4.7
2000	145,300	9.0	8.2 ²	81,493	5.1	4.0 ²
2005	158,192	8.8	7.6 ²	81,287	4.5	3.6 ²
2006	158,167	8.7	7.5 ²	85,955	4.7	3.7 ²
2007	155,998	8.4	7.3 ²	84,386	4.6	3.6 ²
2008	147,888	7.9	7.1 ²	79,868	4.3	3.5 ²
2009	139,127	7.4	6.8 ²	78,752	4.2	3.5 ²
2010	137,250	7.3	NA	83,342	4.4	NA
2011	140,900	7.4	NA	84,785	4.5	NA
2012	140,467	7.4	NA	81,490	4.3	NA
2013	137,127	7.1	NA	80,619	4.2	NA
2014	145,250	7.4	NA	79,432	4.1	NA
2015	166,921	8.4	NA	80,204	4.0	NA

¹ Includes divorces and annulments.
² Provisional data.

**GRAPH M-1: MARRIAGES AND DISSOLUTIONS OF MARRIAGE RATES PER 1,000 POPULATION,
FLORIDA AND UNITED STATES, 2005-2015**

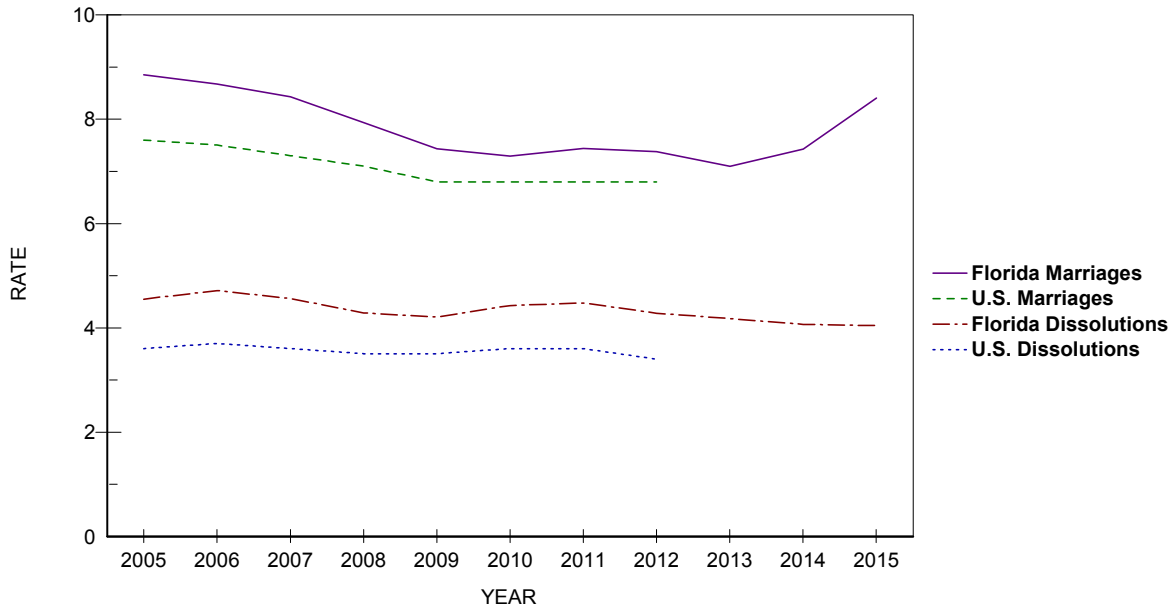


TABLE M-1: MARRIAGES PERFORMED BY MONTH, BY COUNTY OF ISSUANCE, FLORIDA, 2015

	TOTAL	JAN	FEB	MAR	APR	MAY	JUN	JUL	AUG	SEP	OCT	NOV	DEC
FLORIDA	166,921	12,083	13,278	15,371	14,638	16,430	13,860	12,977	11,907	12,126	16,431	13,945	13,875
ALACHUA	1,895	131	160	176	184	223	163	136	133	121	190	146	132
BAKER	230	10	12	26	26	26	11	13	21	21	31	21	12
BAY	2,691	127	166	157	221	309	315	299	230	263	304	157	143
BRADFORD	234	12	23	19	18	24	15	21	16	25	17	24	20
BREVARD	4,911	352	367	470	451	549	415	368	325	321	494	383	416
BROWARD	15,804	1,315	1,369	1,553	1,284	1,413	1,227	1,206	1,191	1,042	1,342	1,410	1,452
CALHOUN	89	7	5	12	5	4	10	9	4	10	7	9	7
CHARLOTTE	1,128	92	100	106	84	116	86	85	73	64	109	95	118
CITRUS	801	51	68	83	77	73	64	64	51	56	75	65	74
CLAY	1,425	87	78	139	124	150	102	103	103	101	168	140	130
COLLIER	3,005	226	271	261	254	296	251	203	187	191	303	276	286
COLUMBIA	533	30	49	68	58	33	44	55	27	45	51	47	26
MIAMI-DADE	23,841	1,850	2,030	2,109	2,057	2,022	1,911	1,790	1,875	1,805	2,021	2,128	2,243
DESOTO	178	11	18	28	24	13	11	10	15	4	18	12	14
DIXIE	98	12	8	9	8	10	11	7	6	6	10	4	7
DUVAL	6,726	435	509	669	601	677	560	528	510	537	665	530	505
ESCAMBIA	4,446	313	340	409	393	539	413	364	318	365	449	271	272
FLAGLER	709	44	54	65	67	62	77	51	55	48	68	56	62
FRANKLIN	164	6	7	9	12	24	22	15	13	24	15	7	10
GADSDEN	199	6	17	26	17	21	17	18	19	16	16	16	10
GILCHRIST	264	9	22	23	18	30	34	24	16	21	27	19	21
GLADES	47	3	4	5	3	7	3	2	2	4	4	6	4
GULF	239	4	7	15	22	31	25	34	21	21	31	15	13
HAMILTON	112	8	7	5	18	11	11	13	7	9	13	7	3
HARDEE	153	10	11	13	14	12	16	12	9	11	16	15	14
HENDRY	230	23	20	22	22	20	18	14	21	19	15	13	23
HERNANDO	1,095	92	97	123	99	108	68	76	79	71	114	88	80
HIGHLANDS	544	52	33	46	53	57	43	34	39	38	59	44	46
HILLSBOROUGH	10,583	891	895	1,048	917	940	810	768	764	706	1,078	925	841
HOLMES	164	8	10	18	14	18	14	12	14	9	21	11	15
INDIAN RIVER	942	81	79	97	82	119	76	59	75	48	94	65	67
JACKSON	326	14	22	26	27	40	31	22	28	33	39	21	23
JEFFERSON	83	4	6	9	13	13	9	4	5	11	9	0	0
LAFAYETTE	52	1	7	4	6	3	5	3	6	4	3	8	2
LAKE	3,548	185	238	295	319	367	290	321	231	297	431	306	268
LEE	5,295	394	439	508	476	525	450	374	324	336	507	490	472
LEON	2,099	177	176	200	203	222	186	159	145	131	188	143	169
LEVY	207	13	16	27	22	20	15	8	17	14	19	18	18
LIBERTY	59	2	3	5	8	3	4	7	4	6	8	5	4
MADISON	143	11	16	15	12	18	11	7	9	5	16	17	6
MANATEE	2,324	146	216	235	207	214	194	175	151	166	242	185	193
MARION	2,152	141	193	203	190	180	170	178	140	168	217	207	165
MARTIN	1,007	66	78	93	103	116	69	73	77	56	96	84	96
MONROE	3,054	200	234	270	296	325	303	239	168	220	275	262	262
NASSAU	909	45	59	65	84	114	90	80	64	78	105	62	63
OKALOOSA	3,152	118	132	232	245	392	376	341	286	324	370	174	162
OKEECHOBEE	249	19	24	23	30	30	17	18	11	16	18	25	18
ORANGE	11,711	917	865	1,084	983	1,151	894	901	877	850	1,201	988	1,000
OSCEOLA	4,028	285	290	339	342	369	329	324	314	324	388	343	381
PALM BEACH	9,577	793	792	881	844	948	752	694	644	652	860	828	889
PASCO	2,642	161	225	247	237	287	199	187	154	186	261	242	256
PINELLAS	8,427	605	725	758	761	870	719	658	553	558	930	698	592
POLK	3,997	292	373	417	374	365	308	297	250	295	384	323	319
PUTNAM	453	24	44	40	44	56	29	39	30	29	39	35	44
SAINT JOHNS	2,041	143	135	186	182	214	168	148	139	140	250	167	169
SAINT LUCIE	1,722	150	137	166	152	150	131	122	125	112	154	163	160
SANTA ROSA	1,098	60	63	80	99	104	127	114	83	116	110	66	76
SARASOTA	3,169	240	269	281	284	332	272	245	166	183	345	292	260
SEMINOLE	2,937	206	212	301	258	298	209	211	195	224	314	256	253
SUMTER	429	23	33	48	37	43	32	42	29	28	42	39	33
SUWANNEE	267	17	18	24	21	28	21	21	19	24	29	22	23
TAYLOR	129	11	13	8	21	7	9	17	7	6	9	7	14
UNION	162	10	18	11	7	14	11	18	18	13	17	11	14
VOLUSIA	3,813	252	293	350	332	373	319	331	269	275	393	313	313
WAKULLA	201	14	15	21	19	25	17	9	12	11	17	24	17
WALTON	1,794	38	46	91	160	256	228	181	125	196	302	106	65
WASHINGTON	185	8	17	19	13	21	23	16	13	17	18	10	10

TABLE M-2: MARRIAGES BY RACE OF SPOUSES, FLORIDA, 2015

RACE OF SPOUSE	RACE OF SPOUSE										
	TOTAL	WHITE	BLACK	AMERICAN INDIAN	CHINESE	JAPANESE	HAWAIIAN	FILIPINO	OTHER ASIAN/PAC ISL	OTHER ENTRIES	UNK
TOTAL	166,921	130,444	21,758	380	49	18	26	144	3,863	9,721	518
WHITE	129,699	122,351	2,090	273	28	13	18	108	2,002	2,666	150
BLACK	24,164	4,087	19,072	31	2	3	2	8	155	773	31
AMERICAN INDIAN	415	313	25	50	0	1	0	2	11	13	0
CHINESE	22	2	1	0	16	0	0	1	1	1	0
JAPANESE	7	6	0	0	0	0	0	0	0	1	0
HAWAIIAN	34	24	1	0	0	0	5	0	2	1	1
FILIPINO	63	42	3	0	1	0	0	13	2	2	0
OTH ASIAN/PAC ISL	2,528	819	47	10	2	1	1	1	1,594	51	2
OTHER ENTRIES	9,471	2,648	492	15	0	0	0	10	90	6,211	5
UNK	518	152	27	1	0	0	0	1	6	2	329

TABLE M-3: DISSOLUTIONS* OF MARRIAGE BY DURATION OF MARRIAGE IN YEARS AND NUMBER OF MINOR CHILDREN AFFECTED, FLORIDA, 2015

DURATION IN YEARS	NUMBER OF MINOR CHILDREN AFFECTED								
	TOTAL	NONE	ONE	TWO	THREE	FOUR	FIVE	SIX+	UNK
TOTAL	80,204	48,543	14,549	10,309	2,672	545	92	314	3,180
<1	2,258	1,967	104	46	11	3	2	13	112
1	4,045	3,392	338	79	27	4	0	28	177
2	4,642	3,564	678	173	24	4	1	12	186
3	5,437	3,987	821	260	60	12	3	18	276
4	5,588	3,952	934	417	51	8	2	14	210
5-9	20,963	11,805	4,555	2,997	627	104	17	53	805
10-14	13,202	6,004	2,776	2,872	870	177	25	48	430
15-19	8,564	3,328	1,923	2,199	663	149	31	44	227
20-24	5,897	3,103	1,387	870	228	56	6	19	228
25-29	3,616	2,593	571	192	45	9	2	13	191
30-34	1,987	1,693	114	32	10	1	1	9	127
35-39	966	870	22	6	6	1	0	1	60
40+	894	794	13	11	2	4	0	7	63
UNK	2,145	1,491	313	155	48	13	2	35	88

*Includes divorces and annulments.

TABLE M-4: DISSOLUTIONS* OF MARRIAGE BY MONTH, BY COUNTY, FLORIDA, 2015

	TOTAL	JAN	FEB	MAR	APR	MAY	JUN	JUL	AUG	SEP	OCT	NOV	DEC
FLORIDA	80,204	6,137	6,250	6,622	7,210	7,078	6,981	7,101	6,565	6,738	6,741	6,191	6,590
ALACHUA	779	40	66	78	71	82	49	53	83	32	106	47	72
BAKER	148	8	8	15	20	12	10	16	1	14	5	26	13
BAY	872	42	64	84	93	54	85	63	72	73	89	66	87
BRADFORD	112	10	13	10	12	8	15	11	5	6	11	5	6
BREVARD	2,148	189	174	205	184	175	191	176	162	185	200	149	158
BROWARD	8,216	627	641	651	820	812	743	644	655	614	505	697	807
CALHOUN	75	7	10	4	2	13	4	12	5	7	2	1	8
CHARLOTTE	541	37	41	48	59	47	44	52	41	45	42	49	36
CITRUS	425	31	27	27	34	47	33	33	57	35	41	27	33
CLAY	874	44	71	64	85	82	80	76	88	62	79	72	71
COLLIER	1,275	85	74	100	115	197	118	117	99	104	83	105	78
COLUMBIA	293	23	10	18	28	20	28	39	17	27	29	17	37
MIAMI-DADE	13,402	1,023	915	1,158	1,192	1,046	1,279	1,285	1,238	1,198	1,051	1,078	939
DESOTO	124	12	10	12	12	8	9	8	13	14	11	5	10
DIXIE	61	1	4	1	9	7	6	6	7	7	1	7	5
DUVAL	3,708	338	317	419	440	458	225	199	293	265	287	261	206
ESCAMBIA	1,106	68	69	96	92	126	94	107	80	106	84	72	112
FLAGLER	301	20	28	22	26	30	20	23	13	33	36	28	22
FRANKLIN	51	4	4	4	4	6	10	3	4	4	1	1	6
GADSDEN	184	4	32	15	7	16	7	41	11	12	11	16	12
GILCHRIST	89	1	6	11	8	7	10	11	0	5	13	14	3
GLADES	25	2	0	5	0	0	4	2	3	1	3	3	2
GULF	51	5	5	6	6	0	8	4	1	1	10	1	4
HAMILTON	52	3	4	7	4	4	7	3	1	0	9	4	6
HARDEE	111	3	4	6	5	7	5	7	0	24	12	24	14
HENDRY	135	8	12	11	7	8	5	17	7	11	21	8	20
HERNANDO	553	52	66	63	35	46	44	38	35	42	43	53	36
HIGHLANDS	303	17	27	43	22	20	23	29	24	33	22	25	18
HILLSBOROUGH	5,350	404	457	363	412	520	424	435	420	498	504	438	475
HOLMES	86	5	8	4	6	4	8	15	11	6	5	5	9
INDIAN RIVER	519	46	41	55	50	42	40	47	50	37	48	26	37
JACKSON	145	0	0	11	22	19	14	21	21	10	9	5	13
JEFFERSON	32	4	2	4	2	1	2	1	4	6	4	1	1
LAFAYETTE	35	1	1	7	5	3	4	2	2	4	1	3	2
LAKE	1,011	90	71	107	75	99	97	92	76	98	77	56	73
LEE	3,380	175	255	343	270	291	295	314	282	234	311	302	308
LEON	912	75	63	83	90	80	83	83	72	90	67	48	78
LEVY	158	11	22	14	16	14	6	16	9	7	24	7	12
LIBERTY	45	4	1	5	3	0	7	6	4	3	7	3	2
MADISON	49	0	7	8	2	1	6	7	2	3	6	3	4
MANATEE	1,020	86	86	59	89	96	90	83	94	69	87	89	92
MARION	1,300	63	58	71	108	93	78	240	172	167	47	42	161
MARTIN	555	24	55	32	48	46	53	63	42	61	47	36	48
MONROE	731	37	42	57	61	90	53	84	58	61	74	54	60
NASSAU	308	22	19	36	24	24	28	25	24	37	23	19	27
OKALOOSA	1,092	81	86	81	88	112	95	96	99	89	121	60	84
OKECHOBEE	160	19	19	8	19	13	16	10	11	12	19	8	6
ORANGE	4,577	354	358	337	387	412	434	481	274	420	431	303	386
OSCEOLA	1,396	80	91	71	153	92	122	109	102	105	143	173	155
PALM BEACH	5,355	379	446	347	470	493	459	508	420	496	412	474	451
PASCO	1,431	136	142	132	140	120	121	12	140	126	134	113	115
PINELLAS	3,551	537	317	282	264	235	309	300	254	237	301	252	263
POLK	2,361	171	189	214	214	172	213	233	181	196	229	137	212
PUTNAM	305	32	17	22	64	7	21	28	34	17	26	18	19
SAINT JOHNS	774	55	55	59	80	60	83	63	59	58	76	52	74
SAINT LUCIE	971	91	82	74	82	73	65	85	92	64	101	74	88
SANTA ROSA	672	60	54	64	49	71	57	53	55	51	48	47	63
SARASOTA	1,296	98	119	99	111	105	113	90	107	107	125	96	126
SEMINOLE	1,567	109	118	152	147	96	140	141	108	171	136	135	114
SUMTER	214	18	11	19	18	25	15	22	27	16	17	13	13
SUWANNEE	160	8	18	12	14	11	9	20	17	9	14	15	13
TAYLOR	74	5	6	6	9	8	10	5	8	4	6	3	4
UNION	40	6	4	2	9	3	5	3	2	2	1	2	1
VOLUSIA	2,123	107	197	156	178	179	216	186	196	170	207	174	157
WAKULLA	89	9	7	14	9	5	1	7	6	6	9	9	7
WALTON	252	20	19	24	24	16	17	26	15	28	30	22	11
WASHINGTON	94	11	5	5	6	9	16	14	0	3	7	13	5

*Includes divorces and annulments.

TABLE M-5: DISSOLUTIONS* OF MARRIAGE BY NUMBER OF MINOR CHILDREN AFFECTED, BY COUNTY, FLORIDA, 2015

	TOTAL	NONE	ONE	TWO	THREE	FOUR	FIVE	SIX	SEVEN	EIGHT+	UNK
FLORIDA	80,204	48,543	14,549	10,309	2,672	545	92	34	9	16	3,435
ALACHUA	779	464	160	115	31	8	0	0	0	0	1
BAKER	148	90	13	11	3	0	0	0	0	0	31
BAY	872	531	174	126	34	7	0	0	0	0	0
BRADFORD	112	51	31	20	8	1	0	0	0	0	1
BREVARD	2,148	1,269	455	319	83	17	0	0	0	0	5
BROWARD	8,216	5,927	1,237	830	184	28	9	1	0	0	0
CALHOUN	75	34	16	14	1	0	0	0	0	1	9
CHARLOTTE	541	525	8	5	3	0	0	0	0	0	0
CITRUS	425	262	65	73	22	2	0	1	0	0	0
CLAY	874	355	202	167	44	8	3	0	0	0	95
COLLIER	1,275	809	219	175	47	17	2	2	0	0	4
COLUMBIA	293	124	62	50	17	6	0	0	0	0	34
MIAMI-DADE	13,402	9,556	2,274	1,275	248	41	6	1	1	0	0
DESOTO	124	59	36	22	5	1	1	0	0	0	0
DIXIE	61	40	7	10	3	0	0	1	0	0	0
DUVAL	3,708	2,169	787	557	148	30	10	3	0	0	4
ESCAMBIA	1,106	709	187	166	35	8	0	1	0	0	0
FLAGLER	301	135	48	41	14	3	1	0	0	0	59
FRANKLIN	51	25	12	2	0	0	0	0	0	0	12
GADSDEN	184	119	33	21	8	1	0	0	1	0	1
GILCHRIST	89	41	18	17	9	3	1	0	0	0	0
GLADES	25	16	4	5	0	0	0	0	0	0	0
GULF	51	26	11	10	2	1	0	0	0	1	0
HAMILTON	52	29	14	4	2	1	0	0	0	0	2
HARDEE	111	61	12	17	10	4	0	0	0	2	5
HENDRY	135	73	29	20	9	3	0	1	0	0	0
HERNANDO	553	328	108	76	28	12	1	0	0	0	0
HIGHLANDS	303	185	63	39	9	5	0	0	0	0	2
HILLSBOROUGH	5,350	3,343	1,024	745	189	40	7	0	1	1	0
HOLMES	86	43	21	16	4	1	0	1	0	0	0
INDIAN RIVER	519	302	105	92	19	1	0	0	0	0	0
JACKSON	145	87	32	18	5	0	0	0	0	0	3
JEFFERSON	32	17	10	4	1	0	0	0	0	0	0
LAFAYETTE	35	22	5	7	1	0	0	0	0	0	0
LAKE	1,011	388	136	125	37	11	3	1	2	1	307
LEE	3,380	2,235	601	390	118	30	5	0	1	0	0
LEON	912	529	190	145	33	10	1	1	0	0	3
LEVY	158	89	33	25	10	1	0	0	0	0	0
LIBERTY	45	29	10	4	1	1	0	0	0	0	0
MADISON	49	18	16	9	2	3	0	0	0	1	0
MANATEE	1,020	634	194	128	54	7	2	0	1	0	0
MARION	1,300	687	254	166	57	11	7	1	0	2	115
MARTIN	555	343	100	85	14	3	0	1	0	2	7
MONROE	731	535	86	55	17	2	0	0	0	0	36
NASSAU	308	180	63	51	10	2	0	0	0	0	2
OKALOOSA	1,092	631	218	196	39	8	0	0	0	0	0
OKEECHOBEE	160	94	32	22	7	1	2	0	0	0	2
ORANGE	4,577	2,967	814	591	165	30	5	1	1	3	0
OSCEOLA	1,396	790	304	228	57	14	2	1	0	0	0
PALM BEACH	5,355	1,480	1,024	720	187	32	3	2	1	0	1,906
PASCO	1,431	876	255	223	64	12	1	0	0	0	0
PINELLAS	3,551	2,342	628	467	87	17	1	4	0	0	5
POLK	2,361	1,331	504	364	107	31	6	3	0	0	15
PUTNAM	305	179	63	41	17	2	0	1	0	0	2
SAINT JOHNS	774	414	162	150	37	10	0	0	0	0	1
SAINT LUCIE	971	602	161	146	45	11	4	2	0	0	0
SANTA ROSA	672	334	146	119	36	6	1	1	0	0	29
SARASOTA	1,296	909	184	143	50	8	1	1	0	0	0
SEMINOLE	1,567	779	322	264	84	13	1	0	0	0	104
SUMTER	214	147	33	13	10	3	0	0	0	1	7
SUWANNEE	160	93	27	25	13	1	0	1	0	0	0
TAYLOR	74	37	16	11	5	0	0	0	0	0	5
UNION	40	22	10	8	0	0	0	0	0	0	0
VOLUSIA	2,123	731	413	279	71	8	5	1	0	0	615
WAKULLA	89	59	16	11	2	0	0	0	0	0	1
WALTON	252	167	40	30	8	6	0	0	0	0	1
WASHINGTON	94	66	12	6	2	2	1	0	0	1	4

*Includes divorces and annulments.