

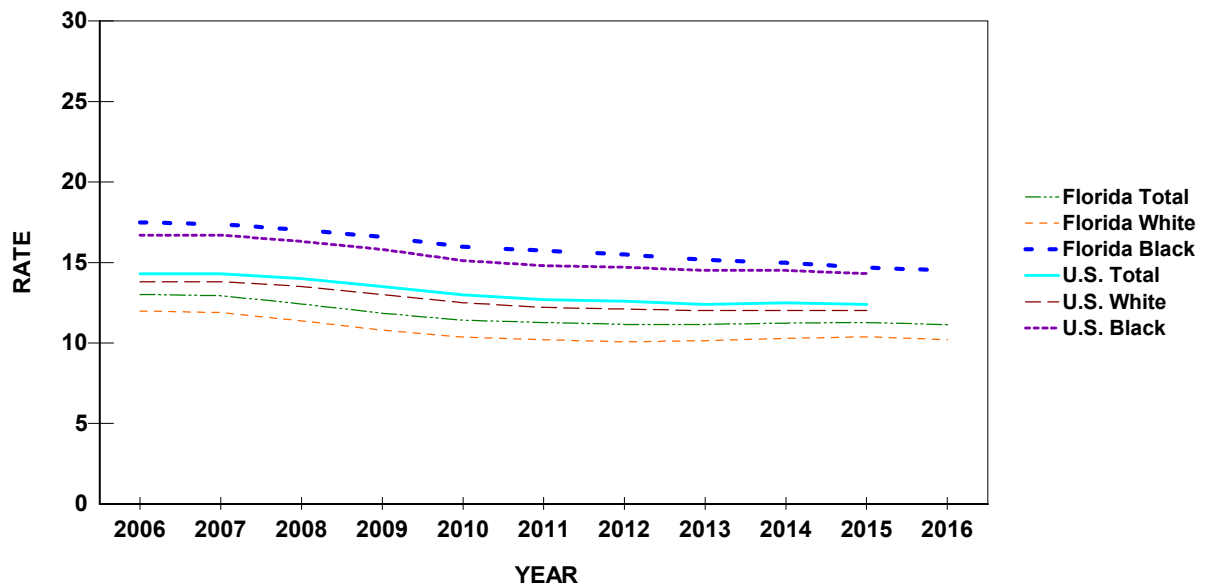
# Live Births

**CHART B-1: RESIDENT LIVE BIRTHS AND RATES PER 1,000 POPULATION,  
BY RACE\*, FLORIDA AND UNITED STATES,  
CENSUS YEARS 1970-2000 AND 2006-2016**

YEAR	NUMBER OF BIRTHS - FL				RATES - FL			RATES-U.S.		
	TOTAL	WHITE	BLACK	OTHER	TOTAL	WHITE	BLACK	TOTAL	WHITE	BLACK
1970	115,113	86,941	27,567	586	16.8	15.1	26.3	18.4	17.4	25.1
1980	131,810	97,401	33,127	1,259	13.4	11.6	24.2	15.9	15.1	21.3
1990	199,146	149,743	46,353	2,912	15.3	13.6	25.9	16.7	15.8	22.4
2000	204,030	150,115	47,271	6,351	12.7	11.4	19.0	14.4	13.9	17.0
2006	237,166	174,147	50,808	11,889	13.0	12.0	17.5	14.3	13.8	16.7
2007	239,120	174,597	51,587	12,503	12.9	11.9	17.4	14.3	13.8	16.7
2008	231,417	167,487	51,362	12,049	12.4	11.4	17.0	14.0	13.5	16.3
2009	221,391	159,186	50,559	11,006	11.8	10.8	16.6	13.5	13.0	15.8
2010	214,519	153,480	49,189	10,716	11.4	10.4	16.0	13.0	12.5	15.1
2011	213,237	152,007	48,838	11,623	11.3	10.2	15.7	12.7	12.2	14.8
2012	212,954	150,866	48,992	12,335	11.1	10.1	15.5	12.6	12.1	14.7
2013	215,194	153,278	48,737	12,213	11.1	10.1	15.1	12.4	12.0	14.5
2014	219,905	156,999	49,059	12,712	11.2	10.3	15.0	12.5	12.0	14.5
2015	224,273	160,830	49,109	13,127	11.3	10.4	14.7	12.4	12.0	14.3
2016	225,018	160,365	49,405	13,833	11.1	10.2	14.5	NA	NA	NA

\*Data are based on the race of the mother.

**GRAPH B-1: RESIDENT LIVE BIRTH RATES PER 1,000 POPULATION, BY RACE OF  
MOTHER, FLORIDA AND UNITED STATES, 2006-2016**



**CHART B-2: RESIDENT LIVE BIRTHS TO MOTHERS 18 YEARS AND UNDER,  
BY SINGLE YEARS OF AGE, AND PERCENT OF TOTAL BIRTHS,  
BY RACE OF MOTHER, FLORIDA, 1975, 1980, 1985, 1990, 1995, 2000, 2005, 2010 AND 2012-2016**

YEAR	AGE OF MOTHER							18 YEARS & UNDER	
	< 13	13	14	15	16	17	18	NUMBER	PERCENT
<b>TOTAL</b>									
1975	20	145	647	1,798	3,369	4,936	6,482	17,397	16.5
1980	21	98	509	1,537	2,913	4,429	6,299	15,806	12.0
1985	16	105	549	1,407	2,709	4,348	6,139	15,273	9.3
1990	31	138	591	1,661	3,148	5,193	7,544	18,306	9.2
1995	20	128	588	1,583	3,236	5,166	6,971	17,692	9.4
2000	24	95	412	1,213	2,702	4,730	7,094	16,270	8.0
2005	15	59	341	1,036	2,428	4,126	6,797	14,802	6.5
2010	6	54	190	660	1,567	3,171	5,466	11,114	5.2
2012	6	32	154	497	1,274	2,448	4,474	8,885	4.2
2013	5	27	132	448	1,074	2,176	3,798	7,660	3.6
2014	5	15	122	386	958	1,862	3,590	6,938	3.2
2015	5	17	108	340	906	1,857	3,283	6,516	2.9
2016	5	17	94	333	837	1,689	3,106	6,081	2.7
<b>WHITE</b>									
1975	5	34	207	693	1,651	2,868	4,078	9,536	12.2
1980	5	24	128	581	1,370	2,434	3,887	8,429	8.7
1985	4	26	168	600	1,439	2,537	3,744	8,518	6.9
1990	8	37	201	693	1,571	2,976	4,636	10,122	6.8
1995	9	32	230	801	1,801	3,124	4,451	10,448	7.4
2000	6	43	167	625	1,512	2,863	4,463	9,679	6.4
2005	7	26	161	567	1,468	2,643	4,452	9,324	5.6
2010	4	24	103	346	915	1,930	3,363	6,685	4.4
2012	3	14	78	261	763	1,516	2,815	5,450	3.6
2013	2	9	64	247	641	1,379	2,372	4,714	3.1
2014	3	7	67	210	593	1,192	2,304	4,376	2.8
2015	2	7	55	196	548	1,200	2,174	4,182	2.6
2016	4	11	49	184	518	1,089	2,011	3,866	2.4
<b>BLACK</b>									
1975	15	111	439	1,101	1,711	2,057	2,387	7,821	29.4
1980	16	74	379	954	1,533	1,986	2,389	7,331	22.1
1985	12	78	379	799	1,259	1,796	2,368	6,691	17.3
1990	22	101	387	953	1,552	2,166	2,847	8,028	17.3
1995	10	96	353	761	1,399	1,973	2,446	7,038	16.7
2000	18	50	238	576	1,148	1,798	2,525	6,353	13.4
2005	8	33	169	426	884	1,354	2,121	4,995	10.4
2010	2	27	81	282	597	1,144	1,910	4,043	8.2
2012	3	17	73	218	452	835	1,485	3,083	6.3
2013	2	15	67	181	397	685	1,267	2,614	5.4
2014	2	7	51	153	318	582	1,133	2,246	4.6
2015	3	8	46	128	317	563	967	2,032	4.1
2016	1	4	41	128	272	522	952	1,920	3.9
<b>OTHER</b>									
1975	0	0	0	3	6	11	16	36	3.9
1980	0	0	1	2	10	8	23	44	3.5
1985	0	1	2	8	10	15	26	62	3.5
1990	1	0	3	14	22	46	58	144	4.9
1995	1	0	5	21	32	65	73	197	4.4
2000	0	2	6	12	37	64	103	224	3.5
2005	0	0	11	40	74	125	211	461	4.0
2010	0	3	4	26	48	76	169	326	3.0
2012	0	1	3	15	54	91	155	319	2.6
2013	1	3	1	19	32	101	138	295	2.4
2014	0	1	4	18	44	71	132	270	2.1
2015	0	2	6	14	34	90	125	271	2.1
2016	0	2	3	17	36	63	126	247	1.8

**CHART B-3: PERCENT OF RESIDENT LIVE BIRTHS FOR SELECTED BIRTHWEIGHT GROUPS,  
BY RACE OF MOTHER AND GENDER OF CHILD, FLORIDA, 1970-2000 AND 2006-2016**

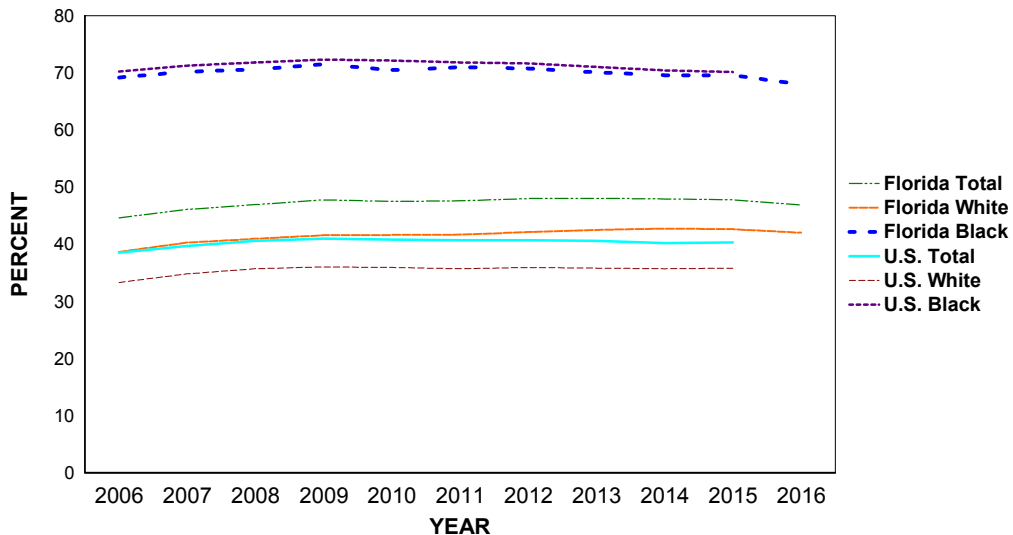
YEAR	VERY LOW BIRTHWEIGHT: LESS THAN 1,500 GRAMS								LOW BIRTHWEIGHT: LESS THAN 2,500 GRAMS							
	TOTAL	WHITE		BLACK		OTHER		TOTAL	WHITE		BLACK		OTHER			
		MALE	FEMALE	MALE	FEMALE	MALE	FEMALE		MALE	FEMALE	MALE	FEMALE	MALE	FEMALE		
1970	1.3	0.9	0.9	2.4	2.4	1.6	1.8	8.5	6.4	7.5	12.0	14.6	8.5	10.4		
1980	1.4	1.0	0.9	2.6	2.6	0.6	0.7	7.6	5.6	6.5	11.6	13.1	3.8	5.9		
1990	1.5	1.0	1.0	2.8	2.9	0.9	1.1	7.4	5.5	6.3	11.5	13.4	7.3	7.2		
2000	1.5	1.2	1.1	2.8	2.9	1.2	1.1	8.0	6.2	7.0	11.4	13.3	7.4	8.8		
2006	1.6	1.2	1.2	3.0	3.2	1.2	1.3	8.7	6.8	8.0	11.9	15.0	7.7	9.6		
2007	1.6	1.2	1.2	3.0	3.3	1.3	1.5	8.7	6.7	7.8	12.4	15.0	7.2	9.2		
2008	1.7	1.2	1.3	2.9	3.1	1.3	1.6	8.8	6.8	8.0	12.3	14.8	8.0	9.0		
2009	1.6	1.1	1.2	2.9	3.3	1.2	1.3	8.7	6.6	7.8	12.0	14.9	8.1	9.8		
2010	1.6	1.3	1.2	2.8	3.2	1.4	1.2	8.7	6.6	7.7	12.5	14.9	8.2	9.6		
2011	1.6	1.1	1.2	2.9	3.1	1.5	1.1	8.7	6.6	8.1	12.2	14.1	8.6	8.3		
2012	1.6	1.2	1.2	2.8	2.9	1.2	1.3	8.6	6.8	7.7	11.7	14.0	7.7	9.0		
2013	1.5	1.1	1.1	2.7	3.0	1.4	1.3	8.5	6.6	7.8	11.7	14.1	8.1	8.9		
2014	1.6	1.2	1.2	3.0	2.9	1.5	1.3	8.7	6.6	7.9	12.3	14.5	7.6	9.1		
2015	1.6	1.2	1.1	2.8	3.1	1.2	1.5	8.6	6.7	7.7	12.1	14.5	8.1	9.8		
2016	1.5	1.1	1.1	2.8	3.2	1.1	1.1	8.7	6.5	7.9	12.5	15.2	7.4	9.7		

**CHART B-4: RESIDENT LIVE BIRTHS TO UNWED MOTHERS  
AND PERCENT OF TOTAL LIVE BIRTHS, BY RACE\*,  
FLORIDA AND UNITED STATES, CENSUS YEARS 1970-2000 AND 2006-2016**

YEAR	NUMBER OF BIRTHS				PERCENT - FL				PERCENT-U.S.		
	TOTAL	WHITE	BLACK	OTHER	TOTAL	WHITE	BLACK	OTHER	TOTAL	WHITE	BLACK
1970	17,264	5,679	11,554	27	15.0	6.5	41.9	4.6	10.7	5.7	37.6
1980	30,156	10,295	19,778	82	22.9	10.6	59.7	6.5	18.4	11.0	55.2
1990	63,126	31,276	31,360	442	31.7	20.9	67.7	15.2	28.0	20.4	66.5
2000	78,026	44,616	31,934	1,400	38.2	29.7	67.6	22.0	33.2	27.1	68.5
2006	105,770	67,305	35,133	3,208	44.6	38.6	69.1	27.0	38.5	33.3	70.2
2007	110,160	70,251	36,197	3,501	46.1	40.2	70.2	28.0	39.7	34.8	71.2
2008	108,484	68,583	36,227	3,412	46.9	40.9	70.5	28.3	40.6	35.7	71.8
2009	105,654	66,080	36,133	3,133	47.7	41.5	71.5	28.5	41.0	36.0	72.3
2010	101,810	63,796	34,658	2,867	47.5	41.6	70.5	26.8	40.8	35.9	72.1
2011	101,466	63,266	34,657	3,230	47.6	41.6	71.0	27.8	40.7	35.7	71.8
2012	102,135	63,507	34,654	3,665	48.0	42.1	70.7	29.7	40.7	35.9	71.6
2013	103,303	65,151	34,150	3,599	48.0	42.5	70.1	29.5	40.6	35.8	71.0
2014	105,278	67,010	34,128	3,677	47.9	42.7	69.6	28.9	40.2	35.7	70.4
2015	106,998	68,504	34,157	3,795	47.7	42.6	69.6	28.9	40.3	35.8	70.1
2016	105,424	67,348	33,561	3,884	46.9	42.0	67.9	28.1	NA	NA	NA

\*Data are based on the race of the mother.

**GRAPH B-2: PERCENT OF RESIDENT LIVE BIRTHS TO UNWED MOTHERS,  
BY RACE OF MOTHER, FLORIDA AND UNITED STATES, 2006-2016**



**CHART B-5: RESIDENT LIVE BIRTHS TO UNWED MOTHERS AND PERCENT  
BY AGE AND RACE OF MOTHER, FLORIDA, 2006 AND 2016**

	WHITE				BLACK				OTHER			
	2006		2016		2006		2016		2006		2016	
	NUMBER	%	NUMBER	%	NUMBER	%	NUMBER	%	NUMBER	%	NUMBER	%
<b>TOTAL</b>	<b>67,305</b>	<b>38.6</b>	<b>67,348</b>	<b>42.0</b>	<b>35,133</b>	<b>69.1</b>	<b>33,561</b>	<b>67.9</b>	<b>3,208</b>	<b>27.0</b>	<b>3,884</b>	<b>28.1</b>
10-14	164	94.3	64	100.0	169	100.0	46	100.0	8	100.0	5	100.0
15	557	95.4	182	98.9	427	99.8	128	100.0	23	92.0	17	100.0
16	1,355	90.3	498	96.1	904	99.6	271	99.6	69	95.8	35	97.2
17	2,549	87.4	1,025	94.1	1,527	99.2	520	99.6	135	88.8	60	95.2
18	3,927	82.1	1,802	89.6	2,233	98.0	936	98.3	169	84.9	119	94.4
19	5,243	76.5	2,929	84.7	2,789	95.2	1,454	96.7	217	70.5	195	87.8
20-24	25,219	57.6	20,800	68.2	13,633	83.5	11,557	88.2	1,086	49.3	1,186	59.4
25-29	15,268	32.2	19,727	41.5	7,810	61.1	10,045	69.1	799	23.3	1,017	26.4
30-34	7,851	19.9	12,695	27.2	3,679	45.5	5,466	50.2	422	12.7	739	16.6
35-44	5,110	19.4	7,521	26.9	1,941	36.6	3,091	42.2	276	12.8	508	16.7
45+	59	24.5	105	27.7	21	31.8	47	41.2	2	12.5	3	8.6
UNK	3	21.4	0	0.0	0	0.0	0	0.0	2	66.7	0	0.0

% = Percent

TABLE B-1: RESIDENT AND RECORDED LIVE BIRTHS AND BIRTH RATES PER 1,000 POPULATION, BY RACE OF MOTHER, BY COUNTY, FLORIDA, 2016

RESIDENT LIVE BIRTHS

	NUMBERS					RATES		
	TOTAL	WHITE	BLACK	OTHER	UNK	TOTAL	WHITE	BLACK
FLORIDA	225,018	160,365	49,405	13,833	1,415	11.1	10.2	14.5
ALACHUA	2,862	1,711	867	284	0	11.1	9.4	16.3
BAKER	343	306	36	1	0	12.7	13.5	10.0
BAY	2,341	1,707	363	197	74	13.3	11.7	18.3
BRADFORD	301	245	48	8	0	10.9	11.4	9.1
BREVARD	5,273	4,119	765	379	10	9.2	8.6	12.6
BROWARD	22,563	12,465	8,319	1,565	214	12.1	10.4	15.2
CALHOUN	142	129	9	4	0	9.7	10.7	4.6
CHARLOTTE	1,037	893	88	49	7	6.1	5.8	8.4
CITRUS	1,064	973	41	49	1	7.4	7.3	9.5
CLAY	2,207	1,720	302	170	15	10.7	10.1	13.4
COLLIER	3,323	2,751	420	152	0	9.4	8.7	16.4
COLUMBIA	806	600	177	29	0	11.7	11.2	14.1
MIAMI-DADE	32,679	25,102	6,608	800	169	12.0	11.8	13.0
DESOTO	368	309	50	6	3	10.5	10.5	11.0
DIXIE	163	143	17	3	0	9.7	9.6	10.8
DUVAL	13,293	7,320	4,681	1,244	48	14.3	12.8	16.7
ESCAMBIA	3,967	2,497	1,200	268	2	12.8	11.6	16.8
FLAGLER	798	627	110	55	6	7.7	7.2	9.5
FRANKLIN	88	81	4	2	1	7.4	8.2	2.4
GADSDEN	568	213	339	13	3	11.7	10.6	12.4
GILCHRIST	200	189	8	3	0	11.9	12.2	9.3
GLADES	66	53	8	4	1	5.0	5.1	4.4
GULF	121	94	17	5	5	7.2	7.2	5.5
HAMILTON	157	100	52	5	0	10.7	11.0	10.4
HARDEE	386	360	16	10	0	14.0	14.7	7.6
HENDRY	570	488	66	13	3	14.8	15.4	13.2
HERNANDO	1,586	1,370	129	83	4	8.8	8.4	12.8
HIGHLANDS	938	712	181	43	2	9.2	8.2	17.1
HILLSBOROUGH	17,327	12,460	3,683	1,136	48	12.7	12.2	15.4
HOLMES	186	176	5	5	0	9.3	9.8	3.9
INDIAN RIVER	1,245	769	202	44	230	8.5	6.0	14.7
JACKSON	529	367	143	17	2	10.5	10.5	10.6
JEFFERSON	121	70	50	1	0	8.3	7.8	9.7
LAFAYETTE	68	61	6	1	0	7.9	8.6	4.6
LAKE	3,268	2,567	465	231	5	10.0	9.3	13.4
LEE	6,751	5,558	1,010	182	1	9.9	9.3	16.4
LEON	2,989	1,516	1,288	172	13	10.4	8.4	14.1
LEVY	396	319	72	5	0	9.8	9.0	19.3
LIBERTY	77	70	4	2	1	8.8	10.3	2.4
MADISON	197	112	84	1	0	10.2	9.9	11.2
MANATEE	3,445	2,627	457	352	9	9.6	8.5	13.8
MARION	3,472	2,697	629	143	3	10.0	9.4	13.7
MARTIN	1,273	942	96	66	169	8.4	6.9	11.3
MONROE	733	586	102	44	1	9.6	8.6	19.6
NASSAU	817	744	49	20	4	10.5	10.5	10.2
OKALOOSA	2,784	2,258	295	222	9	14.4	14.3	15.2
OKEECHOBEE	485	435	29	19	2	11.8	12.1	8.2
ORANGE	16,649	10,507	4,377	1,746	19	12.9	11.9	15.0
OSCEOLA	4,329	3,577	419	325	8	13.3	13.7	9.5
PALM BEACH	14,963	9,673	4,197	1,001	92	10.7	9.2	15.7
PASCO	5,108	4,473	350	279	6	10.3	10.1	12.4
PINELLAS	8,479	6,221	1,509	629	120	8.9	7.8	14.5
POLK	7,805	5,916	1,537	346	6	12.0	11.4	15.0
PUTNAM	852	616	201	30	5	11.7	10.5	16.8
SAINT JOHNS	2,120	1,816	170	126	8	9.5	9.1	14.0
SAINT LUCIE	2,998	1,975	815	170	38	10.2	9.0	13.6
SANTA ROSA	1,906	1,712	92	99	3	11.3	11.7	8.5
SARASOTA	2,927	2,470	267	182	8	7.3	6.7	13.7
SEMINOLE	4,753	3,514	766	463	10	10.5	9.7	13.9
SUMTER	460	365	73	22	0	3.9	3.4	7.8
SUWANNEE	489	406	72	10	1	11.0	10.9	12.1
TAYLOR	248	193	52	3	0	11.1	11.3	11.3
UNION	152	123	24	4	1	9.6	10.4	6.6
VOLUSIA	5,033	3,972	790	253	18	9.7	9.1	13.6
WAKULLA	353	314	35	4	0	11.1	12.0	7.7
WALTON	758	695	34	27	2	11.9	12.2	9.9
WASHINGTON	246	206	33	6	1	9.9	10.3	8.7

TABLE B-1 (Cont.): RESIDENT AND RECORDED LIVE BIRTHS AND BIRTH RATES PER 1,000 POPULATION, BY RACE OF MOTHER, BY COUNTY, FLORIDA, 2016

	RECORDED LIVE BIRTHS					RATES		
	NUMBERS					TOTAL	WHITE	BLACK
	TOTAL	WHITE	BLACK	OTHER	UNK			
FLORIDA	225,261	160,491	49,470	13,873	1,427	11.1	10.2	14.5
ALACHUA	6,193	4,400	1,415	376	2	24.1	24.3	26.6
BAKER	4	4	0	0	0	0.1	0.2	0.0
BAY	2,812	2,111	408	208	85	15.9	14.5	20.5
BRADFORD	2	2	0	0	0	0.1	0.1	0.0
BREVARD	5,101	4,015	705	370	11	8.9	8.4	11.6
BROWARD	24,025	13,359	8,974	1,442	250	12.9	11.2	16.4
CALHOUN	3	2	1	0	0	0.2	0.2	0.5
CHARLOTTE	992	840	98	46	8	5.8	5.4	9.4
CITRUS	839	764	31	43	1	5.8	5.7	7.2
CLAY	2,526	1,784	591	134	17	12.2	10.5	26.2
COLLIER	3,634	3,039	432	162	1	10.3	9.6	16.9
COLUMBIA	619	443	161	15	0	9.0	8.2	12.8
MIAMI-DADE	29,824	23,372	5,626	686	140	11.0	11.0	11.1
DESOTO	306	270	29	7	0	8.7	9.2	6.4
DIXIE	0	0	0	0	0	0.0	0.0	0.0
DUVAL	14,756	8,871	4,482	1,355	48	15.9	15.5	16.0
ESCAMBIA	5,707	4,064	1,292	347	4	18.4	18.8	18.1
FLAGLER	9	5	3	1	0	0.1	0.1	0.3
FRANKLIN	0	0	0	0	0	0.0	0.0	0.0
GADSDEN	4	3	1	0	0	0.1	0.1	0.0
GILCHRIST	0	0	0	0	0	0.0	0.0	0.0
GLADES	0	0	0	0	0	0.0	0.0	0.0
GULF	0	0	0	0	0	0.0	0.0	0.0
HAMILTON	1	0	1	0	0	0.1	0.0	0.2
HARDEE	2	2	0	0	0	0.1	0.1	0.0
HENDRY	1	1	0	0	0	0.0	0.0	0.0
HERNANDO	1,694	1,460	131	97	6	9.4	8.9	13.0
HIGHLANDS	1,239	994	190	53	2	12.2	11.4	17.9
HILLSBOROUGH	20,472	15,034	4,161	1,234	43	15.1	14.7	17.4
HOLMES	3	3	0	0	0	0.1	0.2	0.0
INDIAN RIVER	1,023	578	172	39	234	7.0	4.5	12.5
JACKSON	423	283	120	18	2	8.4	8.1	8.9
JEFFERSON	2	2	0	0	0	0.1	0.2	0.0
LAFAYETTE	0	0	0	0	0	0.0	0.0	0.0
LAKE	2,661	2,065	416	178	2	8.2	7.5	12.0
LEE	6,896	5,692	1,022	177	5	10.1	9.6	16.5
LEON	4,692	2,596	1,881	199	16	16.3	14.4	20.7
LEVY	2	0	2	0	0	0.0	0.0	0.5
LIBERTY	0	0	0	0	0	0.0	0.0	0.0
MADISON	2	2	0	0	0	0.1	0.2	0.0
MANATEE	2,534	1,868	344	318	4	7.0	6.0	10.4
MARION	2,435	1,871	451	112	1	7.0	6.5	9.8
MARTIN	953	615	93	61	184	6.3	4.5	11.0
MONROE	510	385	84	41	0	6.7	5.6	16.1
NASSAU	634	549	55	28	2	8.1	7.7	11.5
OKALOOSA	2,327	1,844	269	202	12	12.0	11.7	13.9
OKEECHOBEE	6	6	0	0	0	0.1	0.2	0.0
ORANGE	22,247	14,959	5,070	2,187	31	17.3	17.0	17.4
OSCEOLA	4,495	3,710	428	357	0	13.8	14.2	9.7
PALM BEACH	17,528	11,422	4,725	1,285	96	12.6	10.8	17.6
PASCO	2,344	2,037	160	145	2	4.7	4.6	5.7
PINELLAS	9,650	7,257	1,561	692	140	10.1	9.1	15.0
POLK	5,534	4,195	1,069	267	3	8.5	8.1	10.4
PUTNAM	296	193	92	11	0	4.1	3.3	7.7
SAINT JOHNS	1,617	1,281	230	94	12	7.3	6.4	19.0
SAINT LUCIE	3,177	2,226	775	154	22	10.8	10.1	12.9
SANTA ROSA	368	326	26	16	0	2.2	2.2	2.4
SARASOTA	3,735	3,152	357	219	7	9.3	8.6	18.3
SEMINOLE	2,985	2,166	568	242	9	6.6	6.0	10.3
SUMTER	5	4	0	1	0	0.0	0.0	0.0
SUWANNEE	6	6	0	0	0	0.1	0.2	0.0
TAYLOR	3	2	1	0	0	0.1	0.1	0.2
UNION	2	2	0	0	0	0.1	0.2	0.0
VOLUSIA	4,189	3,242	719	204	24	8.1	7.4	12.4
WAKULLA	3	3	0	0	0	0.1	0.1	0.0
WALTON	1,207	1,109	48	50	0	19.0	19.4	14.0
WASHINGTON	1	1	0	0	0	0.0	0.0	0.0



TABLE B-2: RESIDENT LIVE BIRTHS AND BIRTH RATES PER 1,000 POPULATION BY HISPANIC OR HAITIAN ORIGIN OF MOTHER, BY COUNTY, FLORIDA, 2016

	NUMBERS									RATE
	HISPANIC ORIGIN									
	TOTAL	TOTAL HISPANIC	MEXICAN	PUERTO RICAN	CUBAN	OTHER/ UNK HISPANIC	HAITIAN	NON-HISPANIC/ HAITIAN	UNK	
FLORIDA	225,018	65,371	11,674	13,100	14,332	26,265	8,867	149,092	1,688	13.2
ALACHUA	2,862	209	38	65	25	81	4	2,648	1	8.9
BAKER	343	5	1	0	1	3	0	332	6	7.8
BAY	2,341	221	86	58	12	65	1	2,112	7	20.8
BRADFORD	301	9	4	4	0	1	1	291	0	8.6
BREVARD	5,273	674	116	269	65	224	58	4,534	7	12.4
BROWARD	22,563	7,117	496	998	1,061	4,562	2,476	12,870	100	13.6
CALHOUN	142	4	2	2	0	0	0	138	0	4.9
CHARLOTTE	1,037	92	22	26	15	29	23	916	6	8.0
CITRUS	1,064	68	20	28	5	15	0	988	8	9.1
CLAY	2,207	213	52	72	15	74	19	1,959	16	11.1
COLLIER	3,323	1,570	737	84	287	462	307	1,444	2	16.6
COLUMBIA	806	45	12	10	9	14	0	760	1	11.4
MIAMI-DADE	32,679	20,159	785	932	9,173	9,269	1,813	9,715	992	11.1
DESOTO	368	141	132	3	3	3	1	224	2	12.9
DIXIE	163	6	4	0	0	2	0	157	0	9.3
DUVAL	13,293	1,537	347	423	160	607	104	11,549	103	18.6
ESCAMBIA	3,967	225	94	40	17	74	2	3,737	3	13.2
FLAGLER	798	87	15	30	7	35	2	702	7	8.4
FRANKLIN	88	8	1	1	0	6	0	79	1	12.9
GADSDEN	568	98	63	1	3	31	2	455	13	20.3
GILCHRIST	200	19	8	1	1	9	0	181	0	20.8
GLADES	66	17	10	3	3	1	0	49	0	6.1
GULF	121	6	2	1	1	2	0	115	0	7.1
HAMILTON	157	33	28	1	2	2	0	124	0	24.7
HARDEE	386	231	220	3	2	6	1	154	0	19.4
HENDRY	570	342	236	37	24	45	1	225	2	17.2
HERNANDO	1,586	190	19	111	28	32	0	1,390	6	8.9
HIGHLANDS	938	263	134	77	25	27	12	663	0	13.9
HILLSBOROUGH	17,327	5,307	1,474	1,497	1,049	1,287	202	11,770	48	14.4
HOLMES	186	5	2	1	1	1	0	181	0	9.5
INDIAN RIVER	1,245	287	162	33	23	69	19	937	2	16.4
JACKSON	529	26	11	8	0	7	0	503	0	11.2
JEFFERSON	121	3	1	0	1	1	0	117	1	5.2
LAFAYETTE	68	11	7	0	2	2	0	57	0	10.6
LAKE	3,268	662	238	247	33	144	28	2,571	7	14.3
LEE	6,751	2,224	711	441	377	695	270	4,252	5	16.3
LEON	2,989	147	51	16	17	63	24	2,779	39	8.4
LEVY	396	35	16	6	1	12	0	360	1	10.4
LIBERTY	77	7	4	3	0	0	0	70	0	11.7
MADISON	197	9	2	2	2	3	1	187	0	9.4
MANATEE	3,445	958	553	100	38	267	57	2,420	10	16.8
MARION	3,472	502	126	234	27	115	7	2,959	4	11.9
MARTIN	1,273	401	102	32	13	254	19	851	2	20.5
MONROE	733	234	38	12	98	86	62	434	3	13.5
NASSAU	817	52	18	16	4	14	0	762	3	17.2
OKALOOSA	2,784	299	124	64	7	104	1	2,475	9	18.2
OKEECHOBEE	485	150	115	6	7	22	0	335	0	14.5
ORANGE	16,649	5,643	651	2,455	343	2,194	1,093	9,890	23	14.7
OSCEOLA	4,329	2,413	130	1,446	101	736	77	1,831	8	14.4
PALM BEACH	14,963	4,724	860	604	627	2,633	1,717	8,466	56	16.1
PASCO	5,108	910	231	357	119	203	10	4,179	9	13.2
PINELLAS	8,479	1,088	404	327	108	249	19	7,285	87	12.6
POLK	7,805	2,130	974	720	103	333	177	5,482	16	16.1
PUTNAM	852	141	92	25	6	18	0	708	3	20.1
SAINT JOHNS	2,120	129	18	38	18	55	2	1,981	8	9.2
SAINT LUCIE	2,998	692	236	154	62	240	179	2,121	6	13.1
SANTA ROSA	1,906	96	46	23	11	16	2	1,806	2	10.9
SARASOTA	2,927	313	116	19	46	132	10	2,598	6	9.0
SEMINOLE	4,753	1,117	119	505	88	405	47	3,580	9	12.5
SUMTER	460	51	40	6	0	5	2	407	0	7.7
SUWANNEE	489	57	33	3	8	13	0	431	1	14.7
TAYLOR	248	3	3	0	0	0	0	244	1	3.3
UNION	152	11	5	4	0	2	0	141	0	12.5
VOLUSIA	5,033	833	217	403	46	167	15	4,157	28	12.7
WAKULLA	353	3	1	1	0	1	0	349	1	2.6
WALTON	758	93	55	6	1	31	0	663	2	24.8
WASHINGTON	246	11	4	2	1	4	0	235	0	12.5

**TABLE B-3: RESIDENT LIVE BIRTHS FOR INCORPORATED CITIES OF 2,400 OR MORE POPULATION,  
BY RACE OF MOTHER, BY COUNTY, FLORIDA, 2016**

	TOTAL	WHITE	BLACK	AMER INDIAN	CHINESE	JAPANESE	HAWAIIAN	FILIPINO	OTHER ASIAN/ PAC ISL	MULTI - RACE & OTHER	UNK
<b>FLORIDA</b>	<b>225,018</b>	<b>160,365</b>	<b>49,405</b>	<b>244</b>	<b>1,078</b>	<b>162</b>	<b>29</b>	<b>1,178</b>	<b>4,630</b>	<b>6,512</b>	<b>1,415</b>
<b>ALACHUA</b>	<b>2,862</b>	<b>1,711</b>	<b>867</b>	<b>1</b>	<b>68</b>	<b>0</b>	<b>0</b>	<b>15</b>	<b>75</b>	<b>125</b>	<b>0</b>
ALACHUA	120	87	25	0	0	0	0	0	4	4	0
GAINESVILLE	1,987	1,019	726	0	62	0	0	13	62	105	0
HIGH SPRINGS	82	72	7	0	0	0	0	1	0	2	0
NEWBERRY	104	80	17	0	1	0	0	0	2	4	0
BALANCE OF COUNTY	569	453	92	1	5	0	0	1	7	10	0
<b>BAKER</b>	<b>343</b>	<b>306</b>	<b>36</b>	<b>0</b>	<b>0</b>	<b>0</b>	<b>0</b>	<b>0</b>	<b>0</b>	<b>1</b>	<b>0</b>
MACCLENNY	61	53	8	0	0	0	0	0	0	0	0
BALANCE OF COUNTY	282	253	28	0	0	0	0	0	0	1	0
<b>BAY</b>	<b>2,341</b>	<b>1,707</b>	<b>363</b>	<b>6</b>	<b>6</b>	<b>4</b>	<b>1</b>	<b>19</b>	<b>26</b>	<b>135</b>	<b>74</b>
CALLAWAY	30	25	1	1	0	0	0	0	0	2	1
LYNN HAVEN	214	174	21	0	0	1	0	1	3	10	4
PANAMA CITY	1,253	826	276	2	3	2	1	12	8	79	44
PANAMA CITY BEACH	342	268	24	3	1	0	0	4	6	21	15
PARKER	3	3	0	0	0	0	0	0	0	0	0
SPRINGFIELD	9	8	1	0	0	0	0	0	0	0	0
BALANCE OF COUNTY	490	403	40	0	2	1	0	2	9	23	10
<b>BRADFORD</b>	<b>301</b>	<b>245</b>	<b>48</b>	<b>0</b>	<b>0</b>	<b>0</b>	<b>0</b>	<b>2</b>	<b>0</b>	<b>6</b>	<b>0</b>
STARKE	83	60	21	0	0	0	0	0	0	2	0
BALANCE OF COUNTY	218	185	27	0	0	0	0	2	0	4	0
<b>BREVARD</b>	<b>5,273</b>	<b>4,119</b>	<b>765</b>	<b>7</b>	<b>34</b>	<b>7</b>	<b>0</b>	<b>36</b>	<b>72</b>	<b>223</b>	<b>10</b>
CAPE CANAVERAL	51	45	6	0	0	0	0	0	0	0	0
COCOA	458	291	137	0	0	0	0	4	2	20	4
COCOA BEACH	42	41	0	0	0	0	0	0	0	0	1
GRANT-VALKARIA	1	1	0	0	0	0	0	0	0	0	0
INDIALANTIC	99	92	0	0	2	1	0	0	2	2	0
INDIAN HARBOUR BEACH	56	49	2	0	0	0	0	1	0	4	0
MALABAR	22	19	3	0	0	0	0	0	0	0	0
MELBOURNE	1,175	919	131	1	19	1	0	15	31	58	0
MELBOURNE BEACH	30	28	0	0	0	0	0	0	1	1	0
PALM BAY	1,208	865	241	2	4	1	0	5	10	80	0
ROCKLEDGE	347	265	60	1	1	1	0	1	5	13	0
SATELLITE BEACH	148	140	1	0	0	0	0	2	0	5	0
TITUSVILLE	532	410	94	2	1	0	0	2	5	18	0
WEST MELBOURNE	182	157	7	0	3	1	0	0	7	7	0
BALANCE OF COUNTY	922	797	83	1	4	2	0	6	9	15	5
<b>BROWARD</b>	<b>22,563</b>	<b>12,465</b>	<b>8,319</b>	<b>32</b>	<b>161</b>	<b>22</b>	<b>1</b>	<b>86</b>	<b>695</b>	<b>568</b>	<b>214</b>
COCONUT CREEK	554	377	113	0	4	0	0	2	34	22	2
COOPER CITY	272	226	18	1	6	1	0	2	11	6	1
CORAL SPRINGS	1,426	852	418	5	20	2	0	11	67	46	5
DANIA BEACH	231	116	106	0	0	0	0	0	0	3	6
DAVIE	981	770	99	2	12	0	0	8	43	32	15
DEERFIELD BEACH	575	334	211	0	4	1	0	2	7	16	0
FORT LAUDERDALE	3,123	1,518	1,470	3	5	2	0	7	55	51	12
HALLANDALE	675	512	126	1	1	0	0	1	11	9	14
HOLLYWOOD	2,098	1,392	506	12	7	3	0	5	53	41	79
LAUDERDALE BY THE SEA	18	15	2	0	0	0	0	0	1	0	0
LAUDERDALE LAKES	464	21	433	0	1	0	0	0	4	5	0
LAUDERHILL	1,011	127	839	0	2	0	0	1	22	17	3
LIGHTHOUSE POINT	74	67	1	0	0	0	0	0	4	2	0
MARGATE	650	343	246	0	7	0	0	0	24	24	6
MIRAMAR	1,549	658	733	2	20	2	0	12	53	52	17
NORTH LAUDERDALE	614	185	399	0	0	0	0	0	14	13	3
OAKLAND PARK	383	218	152	0	0	1	0	0	5	6	1
PARKLAND	253	190	15	0	12	0	0	2	20	12	2
PEMBROKE PARK	29	7	20	0	0	0	0	0	0	0	2
PEMBROKE PINES	1,683	1,098	403	2	24	3	1	13	66	55	18
PLANTATION	1,052	695	241	1	3	3	0	3	67	36	3
POMPANO BEACH	1,754	864	817	1	5	0	0	2	33	28	4
SOUTHWEST RANCHES	53	47	4	0	0	0	0	0	2	0	0
SUNRISE	1,031	555	392	1	5	1	0	9	31	34	3

**TABLE B-3 (Cont.): RESIDENT LIVE BIRTHS FOR INCORPORATED CITIES OF 2,400 OR MORE  
POPULATION, BY RACE OF MOTHER, BY COUNTY, FLORIDA, 2016**

	TOTAL	WHITE	BLACK	AMER INDIAN	CHINESE	JAPANESE	HAWAIIAN	FILIPINO	OTHER ASIAN/ PAC ISL	MULTI - RACE & OTHER	UNK
<b>BROWARD (Cont.)</b>											
TAMARAC	689	355	268	0	4	1	0	2	36	20	3
WEST PARK	161	51	99	0	0	1	0	0	0	2	8
WESTON	436	361	27	0	16	1	0	3	18	9	1
WILTON MANORS	39	28	10	0	0	0	0	0	1	0	0
BALANCE OF COUNTY	685	483	151	1	3	0	0	1	13	27	6
<b>CALHOUN</b>											
BLOUNTSTOWN	45	35	9	0	0	0	0	0	1	0	0
BALANCE OF COUNTY	97	94	0	0	0	0	0	1	0	2	0
<b>CHARLOTTE</b>											
PUNTA GORDA	154	131	14	2	1	0	0	0	3	3	0
BALANCE OF COUNTY	883	762	74	1	1	0	0	5	9	24	7
<b>CITRUS</b>											
CRYSTAL RIVER	81	68	7	0	0	0	0	0	0	6	0
INVERNESS	149	133	5	0	1	0	0	4	3	3	0
BALANCE OF COUNTY	834	772	29	1	0	0	0	6	6	19	1
<b>CLAY</b>											
GREEN COVE SPRINGS	56	43	8	0	0	1	0	1	0	2	1
ORANGE PARK	287	175	70	1	1	1	0	8	7	17	7
BALANCE OF COUNTY	1,864	1,502	224	2	7	3	1	21	22	75	7
<b>COLLIER</b>											
NAPLES	273	221	37	0	0	1	0	0	5	9	0
BALANCE OF COUNTY	3,050	2,530	383	14	9	2	0	10	30	72	0
<b>COLUMBIA</b>											
LAKE CITY	378	242	119	0	2	0	0	0	3	12	0
BALANCE OF COUNTY	428	358	58	1	0	0	0	2	1	8	0
<b>MIAMI-DADE</b>											
AVENTURA	412	371	18	0	6	1	0	2	5	4	5
BAL HARBOUR	20	20	0	0	0	0	0	0	0	0	0
BAY HARBOR ISLANDS	38	33	2	0	1	1	0	0	0	1	0
BISCAYNE PARK	23	18	4	0	0	0	0	0	1	0	0
CORAL GABLES	166	154	3	0	2	1	0	0	1	4	1
CUTLER BAY	120	96	18	0	0	0	0	0	1	5	0
DORAL	423	396	6	0	6	0	0	0	10	3	2
EL PORTAL	19	14	4	0	0	0	0	0	0	0	1
FLORIDA CITY	99	58	39	0	0	0	0	0	1	1	0
HIALEAH	2,769	2,613	110	0	9	1	0	3	8	20	5
HIALEAH GARDENS	110	108	1	0	0	0	0	0	0	1	0
HOMESTEAD	780	606	154	0	0	0	0	2	9	8	1
KEY BISCAYNE	19	18	0	0	0	0	0	0	0	1	0
MIAMI	11,097	7,184	3,642	2	36	3	1	10	81	98	40
MIAMI BEACH	876	806	31	0	2	0	0	5	9	22	1
MIAMI GARDENS	1,085	419	642	0	2	1	0	2	4	13	2
MIAMI LAKES	230	215	9	0	3	0	0	1	0	2	0
MIAMI SHORES	92	75	10	0	0	1	0	0	4	1	1
MIAMI SPRINGS	75	75	0	0	0	0	0	0	0	0	0
NORTH BAY VILLAGE	57	54	0	0	0	0	0	0	1	2	0
NORTH MIAMI	584	219	348	0	1	0	0	2	6	4	4
NORTH MIAMI BEACH	641	377	229	1	9	1	0	2	10	6	6
OPA-LOCKA	314	138	175	0	0	0	0	0	0	1	0
PINECREST	8	7	0	0	0	0	0	0	1	0	0
PALMETTO BAY	26	19	6	0	1	0	0	0	0	0	0
SOUTH MIAMI	16	12	2	0	0	0	0	0	0	1	1
SUNNY ISLES BEACH	488	476	1	0	2	0	0	0	5	1	3
SURFSIDE	46	44	1	0	0	0	0	0	1	0	0
SWEETWATER	2	2	0	0	0	0	0	0	0	0	0
VIRGINIA GARDENS	11	11	0	0	0	0	0	0	0	0	0
WEST MIAMI	1	1	0	0	0	0	0	0	0	0	0
BALANCE OF COUNTY	12,032	10,463	1,153	5	54	7	0	23	75	156	96
<b>DESOTO</b>											
ARCADIA	256	214	35	0	0	0	0	1	1	2	3
BALANCE OF COUNTY	112	95	15	0	0	0	0	0	1	1	0

**TABLE B-3 (Cont.): RESIDENT LIVE BIRTHS FOR INCORPORATED CITIES OF 2,400 OR MORE  
POPULATION, BY RACE OF MOTHER, BY COUNTY, FLORIDA, 2016**

	TOTAL	WHITE	BLACK	AMER INDIAN	CHINESE	JAPANESE	HAWAIIAN	FILIPINO	OTHER ASIAN/ PAC ISL	MULTI - RACE & OTHER	UNK
<b>DIXIE</b>	<b>163</b>	<b>143</b>	<b>17</b>	<b>0</b>	<b>0</b>	<b>0</b>	<b>0</b>	<b>0</b>	<b>0</b>	<b>3</b>	<b>0</b>
<b>DUVAL</b>	<b>13,293</b>	<b>7,320</b>	<b>4,681</b>	<b>11</b>	<b>32</b>	<b>16</b>	<b>3</b>	<b>179</b>	<b>440</b>	<b>563</b>	<b>48</b>
ATLANTIC BEACH	215	168	28	0	1	2	0	3	1	10	2
BALDWIN	21	16	5	0	0	0	0	0	0	0	0
JACKSONVILLE	12,732	6,836	4,637	11	30	14	3	171	438	546	46
JACKSONVILLE BEACH	262	240	11	0	0	0	0	4	1	6	0
NEPTUNE BEACH	63	60	0	0	1	0	0	1	0	1	0
<b>ESCAMBIA</b>	<b>3,967</b>	<b>2,497</b>	<b>1,200</b>	<b>11</b>	<b>9</b>	<b>4</b>	<b>1</b>	<b>49</b>	<b>50</b>	<b>144</b>	<b>2</b>
CENTURY	15	11	4	0	0	0	0	0	0	0	0
PENSACOLA	1,513	879	502	5	5	3	0	22	29	67	1
BALANCE OF COUNTY	2,439	1,607	694	6	4	1	1	27	21	77	1
<b>FLAGLER</b>	<b>798</b>	<b>627</b>	<b>110</b>	<b>3</b>	<b>0</b>	<b>0</b>	<b>0</b>	<b>8</b>	<b>14</b>	<b>30</b>	<b>6</b>
BUNNELL	71	51	17	0	0	0	0	0	1	1	1
FLAGLER BEACH	26	26	0	0	0	0	0	0	0	0	0
PALM COAST	534	418	72	3	0	0	0	8	9	22	2
BALANCE OF COUNTY	167	132	21	0	0	0	0	0	4	7	3
<b>FRANKLIN</b>	<b>88</b>	<b>81</b>	<b>4</b>	<b>0</b>	<b>0</b>	<b>0</b>	<b>0</b>	<b>0</b>	<b>0</b>	<b>2</b>	<b>1</b>
APALACHICOLA	17	12	4	0	0	0	0	0	0	1	0
CARRABELLE	28	26	0	0	0	0	0	0	0	1	1
BALANCE OF COUNTY	43	43	0	0	0	0	0	0	0	0	0
<b>GADSDEN</b>	<b>568</b>	<b>213</b>	<b>339</b>	<b>1</b>	<b>0</b>	<b>0</b>	<b>0</b>	<b>0</b>	<b>5</b>	<b>7</b>	<b>3</b>
CHATTAHOOCHEE	43	12	31	0	0	0	0	0	0	0	0
GRETNA	19	4	15	0	0	0	0	0	0	0	0
HAVANA	74	40	33	1	0	0	0	0	0	0	0
MIDWAY	49	8	41	0	0	0	0	0	0	0	0
QUINCY	307	117	180	0	0	0	0	0	4	3	3
BALANCE OF COUNTY	76	32	39	0	0	0	0	0	1	4	0
<b>GILCHRIST</b>	<b>200</b>	<b>189</b>	<b>8</b>	<b>0</b>	<b>0</b>	<b>0</b>	<b>0</b>	<b>0</b>	<b>0</b>	<b>3</b>	<b>0</b>
<b>GLADES</b>	<b>66</b>	<b>53</b>	<b>8</b>	<b>1</b>	<b>0</b>	<b>0</b>	<b>0</b>	<b>1</b>	<b>0</b>	<b>2</b>	<b>1</b>
<b>GULF</b>	<b>121</b>	<b>94</b>	<b>17</b>	<b>1</b>	<b>1</b>	<b>0</b>	<b>0</b>	<b>1</b>	<b>0</b>	<b>2</b>	<b>5</b>
PORT ST JOE	38	26	10	0	1	0	0	1	0	0	0
BALANCE OF COUNTY	83	68	7	1	0	0	0	0	0	2	5
<b>HAMILTON</b>	<b>157</b>	<b>100</b>	<b>52</b>	<b>0</b>	<b>0</b>	<b>0</b>	<b>0</b>	<b>0</b>	<b>0</b>	<b>5</b>	<b>0</b>
JASPER	38	13	23	0	0	0	0	0	0	2	0
BALANCE OF COUNTY	119	87	29	0	0	0	0	0	0	3	0
<b>HARDEE</b>	<b>386</b>	<b>360</b>	<b>16</b>	<b>0</b>	<b>0</b>	<b>0</b>	<b>0</b>	<b>0</b>	<b>5</b>	<b>5</b>	<b>0</b>
BOWLING GREEN	38	36	0	0	0	0	0	0	2	0	0
WAUCHULA	110	98	9	0	0	0	0	0	1	2	0
BALANCE OF COUNTY	238	226	7	0	0	0	0	0	2	3	0
<b>HENDRY</b>	<b>570</b>	<b>488</b>	<b>66</b>	<b>4</b>	<b>1</b>	<b>0</b>	<b>0</b>	<b>0</b>	<b>4</b>	<b>4</b>	<b>3</b>
CLEWISTON	91	72	15	0	0	0	0	0	1	1	2
LABELLE	6	6	0	0	0	0	0	0	0	0	0
BALANCE OF COUNTY	473	410	51	4	1	0	0	0	3	3	1
<b>HERNANDO</b>	<b>1,586</b>	<b>1,370</b>	<b>129</b>	<b>3</b>	<b>4</b>	<b>2</b>	<b>0</b>	<b>7</b>	<b>6</b>	<b>61</b>	<b>4</b>
BROOKSVILLE	310	261	42	1	0	1	0	2	1	2	0
BALANCE OF COUNTY	1,276	1,109	87	2	4	1	0	5	5	59	4
<b>HIGHLANDS</b>	<b>938</b>	<b>712</b>	<b>181</b>	<b>4</b>	<b>1</b>	<b>1</b>	<b>0</b>	<b>5</b>	<b>5</b>	<b>27</b>	<b>2</b>
AVON PARK	167	112	49	0	0	0	0	1	0	5	0
LAKE PLACID	38	30	8	0	0	0	0	0	0	0	0
SEBRING	285	219	50	0	0	0	0	3	2	11	0
BALANCE OF COUNTY	448	351	74	4	1	1	0	1	3	11	2
<b>HILLSBOROUGH</b>	<b>17,327</b>	<b>12,460</b>	<b>3,683</b>	<b>13</b>	<b>91</b>	<b>13</b>	<b>4</b>	<b>89</b>	<b>619</b>	<b>307</b>	<b>48</b>
PLANT CITY	628	561	56	0	0	0	0	0	1	9	1
TAMPA	9,419	6,282	2,487	1	46	6	3	43	377	150	24

**TABLE B-3 (Cont.): RESIDENT LIVE BIRTHS FOR INCORPORATED CITIES OF 2,400 OR MORE  
POPULATION, BY RACE OF MOTHER, BY COUNTY, FLORIDA, 2016**

	TOTAL	WHITE	BLACK	AMER INDIAN	CHINESE	JAPANESE	HAWAIIAN	FILIPINO	OTHER ASIAN/ PAC ISL	MULTI - RACE & OTHER	UNK
<b>HILLSBOROUGH (Cont.)</b>											
TEMPLE TERRACE	87	61	20	0	1	0	0	0	2	3	0
BALANCE OF COUNTY	7,193	5,556	1,120	12	44	7	1	46	239	145	23
<b>HOLMES</b>											
BONIFAY	84	76	4	0	0	0	0	0	0	4	0
BALANCE OF COUNTY	102	100	1	0	0	0	0	0	0	1	0
<b>INDIAN RIVER</b>											
FELLSMERE	89	21	3	0	0	0	0	0	0	1	64
SEBASTIAN	151	126	12	0	0	0	0	1	0	1	11
VERO BEACH	229	175	29	0	2	0	0	0	2	4	17
BALANCE OF COUNTY	776	447	158	0	3	1	0	4	17	8	138
<b>JACKSON</b>											
GRACEVILLE	51	39	12	0	0	0	0	0	0	0	0
MARIANNA	142	72	64	0	0	0	0	0	1	4	1
BALANCE OF COUNTY	336	256	67	1	1	0	0	0	0	10	1
<b>JEFFERSON</b>											
MONTICELLO	96	53	42	0	0	0	0	1	0	0	0
BALANCE OF COUNTY	25	17	8	0	0	0	0	0	0	0	0
<b>LAFAYETTE</b>											
	68	61	6	0	0	0	0	0	1	0	0
<b>LAKE</b>											
CLERMONT	581	430	67	1	2	0	0	5	15	59	2
EUSTIS	269	204	57	0	1	0	0	0	2	5	0
FRUITLAND PARK	96	90	3	1	0	0	0	2	0	0	0
GROVELAND	178	138	18	0	1	0	0	0	9	11	1
LADY LAKE	104	85	11	1	0	0	0	0	3	3	1
LEESBURG	442	281	144	1	0	0	1	2	4	9	0
MASCOTTE	96	85	7	0	0	0	0	0	1	3	0
MINNEOLA	105	87	3	0	0	0	0	0	1	14	0
MOUNT DORA	209	160	37	0	2	1	0	1	1	6	1
TAVARES	148	110	34	0	1	0	0	0	1	2	0
UMATILLA	59	58	0	0	0	0	0	0	0	1	0
BALANCE OF COUNTY	981	839	84	0	2	0	0	8	9	39	0
<b>LEE</b>											
BONITA SPRINGS	59	59	0	0	0	0	0	0	0	0	0
CAPE CORAL	1,476	1,348	84	3	7	0	0	2	17	15	0
ESTERO	1	1	0	0	0	0	0	0	0	0	0
FORT MYERS	1,354	923	398	0	2	0	0	4	11	16	0
FORT MYERS BEACH	12	12	0	0	0	0	0	0	0	0	0
SANIBEL	5	5	0	0	0	0	0	0	0	0	0
BALANCE OF COUNTY	3,844	3,210	528	4	6	0	0	14	42	39	1
<b>LEON</b>											
TALLAHASSEE	2,790	1,397	1,219	2	23	0	0	8	85	43	13
BALANCE OF COUNTY	199	119	69	1	1	0	0	0	6	3	0
<b>LEVY</b>											
WILLISTON	91	51	40	0	0	0	0	0	0	0	0
BALANCE OF COUNTY	305	268	32	0	0	0	0	1	2	2	0
<b>LIBERTY</b>											
	77	70	4	0	0	0	0	0	0	2	1
<b>MADISON</b>											
MADISON	106	41	65	0	0	0	0	0	0	0	0
BALANCE OF COUNTY	91	71	19	1	0	0	0	0	0	0	0
<b>MANATEE</b>											
BRADENTON	1,271	899	215	1	3	0	0	3	13	132	5
BRADENTON BEACH	5	3	2	0	0	0	0	0	0	0	0
HOLMES BEACH	5	3	0	0	0	0	0	0	1	1	0
PALMETTO	267	197	39	0	0	0	0	2	4	23	2
BALANCE OF COUNTY	1,897	1,525	201	2	4	1	0	6	29	127	2
<b>MARION</b>											
	3,472	2,697	629	4	13	0	1	11	29	85	3

**TABLE B-3 (Cont.): RESIDENT LIVE BIRTHS FOR INCORPORATED CITIES OF 2,400 OR MORE  
POPULATION, BY RACE OF MOTHER, BY COUNTY, FLORIDA, 2016**

	TOTAL	WHITE	BLACK	AMER INDIAN	CHINESE	JAPANESE	HAWAIIAN	FILIPINO	OTHER ASIAN/ PAC ISL	MULTI - RACE & OTHER	UNK
<b>MARION (Cont.)</b>											
BELLEVIEW	71	65	4	1	0	0	0	0	0	1	0
OCALA	1,227	848	320	2	4	0	0	3	13	36	1
BALANCE OF COUNTY	2,174	1,784	305	1	9	0	1	8	16	48	2
<b>MARTIN</b>											
	1,273	942	96	2	2	1	0	7	10	44	169
STUART	349	259	49	1	1	0	0	4	2	10	23
BALANCE OF COUNTY	924	683	47	1	1	1	0	3	8	34	146
<b>MONROE</b>											
	733	586	102	0	0	1	0	9	11	23	1
ISLAMORADA	5	5	0	0	0	0	0	0	0	0	0
KEY WEST	350	248	68	0	0	0	0	7	7	20	0
MARATHON	51	42	5	0	0	0	0	1	2	1	0
BALANCE OF COUNTY	327	291	29	0	0	1	0	1	2	2	1
<b>NASSAU</b>											
	817	744	49	1	3	0	1	4	4	7	4
FERNANDINA BEACH	150	131	12	0	1	0	0	1	1	3	1
HILLIARD	57	48	8	0	0	0	0	0	0	0	1
BALANCE OF COUNTY	610	565	29	1	2	0	1	3	3	4	2
<b>OKALOOSA</b>											
	2,784	2,258	295	3	5	6	1	31	42	134	9
CRESTVIEW	620	498	86	0	0	0	0	7	8	21	0
DESTIN	206	187	6	0	1	0	0	1	3	8	0
FORT WALTON BEACH	732	543	122	0	0	1	0	10	12	38	6
MARY ESTHER	153	123	13	0	0	0	0	5	3	9	0
NICEVILLE	291	259	6	1	1	0	0	2	2	19	1
VALPARAISO	46	37	6	0	0	0	0	0	2	1	0
BALANCE OF COUNTY	736	611	56	2	3	5	1	6	12	38	2
<b>OKEECHOBEE</b>											
	485	435	29	12	1	0	0	0	1	5	2
OKEECHOBEE	352	317	24	5	1	0	0	0	1	4	0
BALANCE OF COUNTY	133	118	5	7	0	0	0	0	0	1	2
<b>ORANGE</b>											
	16,649	10,507	4,377	9	131	22	3	142	600	839	19
APOPKA	952	672	216	0	2	0	0	10	17	32	3
BELLE ISLE	40	39	1	0	0	0	0	0	0	0	0
EATONVILLE	3	0	3	0	0	0	0	0	0	0	0
EDGEWOOD	5	3	2	0	0	0	0	0	0	0	0
OAKLAND	11	6	3	0	0	0	0	0	2	0	0
OCOEE	445	300	97	1	2	0	0	5	28	12	0
ORLANDO	9,307	5,486	2,830	6	73	13	1	79	360	446	13
MAITLAND	150	114	25	0	0	0	1	1	7	2	0
WINDERMERE	260	198	13	0	5	1	0	1	29	13	0
WINTER GARDEN	526	398	75	0	10	1	0	6	14	22	0
WINTER PARK	455	362	57	0	4	0	0	5	16	11	0
BALANCE OF COUNTY	4,495	2,929	1,055	2	35	7	1	35	127	301	3
<b>OSCEOLA</b>											
	4,329	3,577	419	3	26	0	1	30	83	182	8
KISSIMMEE	1,891	1,547	191	0	14	0	0	10	46	81	2
ST CLOUD	515	462	19	3	0	0	1	8	8	13	1
BALANCE OF COUNTY	1,923	1,568	209	0	12	0	0	12	29	88	5
<b>PALM BEACH</b>											
	14,963	9,673	4,197	9	100	13	2	49	375	453	92
BELLE GLADE	299	129	166	0	0	0	0	0	2	1	1
BOCA RATON	1,480	1,159	131	1	14	3	0	4	57	110	1
BOYNTON BEACH	1,521	773	645	1	8	3	0	6	48	30	7
DELRAY BEACH	712	411	257	0	6	0	0	4	23	10	1
GREENACRES	467	322	105	1	3	0	0	1	16	12	7
HIGHLAND BEACH	5	2	0	0	1	0	0	0	2	0	0
HYPOLUXO	19	13	6	0	0	0	0	0	0	0	0
JUNO BEACH	14	14	0	0	0	0	0	0	0	0	0
JUPITER	651	591	20	1	7	1	0	0	13	16	2
LAKE CLARKE SHORES	3	3	0	0	0	0	0	0	0	0	0
LAKE PARK	142	46	88	0	1	0	1	0	2	4	0
LAKE WORTH	1,798	1,277	416	2	9	0	0	7	31	36	20
LANTANA	229	134	79	0	1	1	0	0	3	8	3
NORTH PALM BEACH	90	81	1	0	1	0	0	0	4	3	0
PAHOKEE	106	32	73	0	0	0	0	0	0	1	0
PALM BEACH	28	27	1	0	0	0	0	0	0	0	0
PALM BEACH GARDENS	605	486	50	0	10	1	0	3	26	28	1

**TABLE B-3 (Cont.): RESIDENT LIVE BIRTHS FOR INCORPORATED CITIES OF 2,400 OR MORE  
POPULATION, BY RACE OF MOTHER, BY COUNTY, FLORIDA, 2016**

	TOTAL	WHITE	BLACK	AMER INDIAN	CHINESE	JAPANESE	HAWAIIAN	FILIPINO	OTHER ASIAN/ PAC ISL	MULTI - RACE & OTHER	UNK
<b>PALM BEACH (Cont.)</b>											
PALM SPRINGS	202	153	34	0	0	0	0	0	7	8	0
RIVIERA BEACH	468	73	371	0	3	0	0	1	10	10	0
ROYAL PALM BEACH	384	267	89	0	1	1	0	2	11	8	5
SOUTH BAY	51	10	41	0	0	0	0	0	0	0	0
TEQUESTA	61	57	3	0	0	0	0	0	1	0	0
WELLINGTON	482	374	67	0	7	1	0	3	16	10	4
WEST PALM BEACH	3,487	2,040	1,214	3	14	1	0	8	67	105	35
BALANCE OF COUNTY	1,659	1,199	340	0	14	1	1	10	36	53	5
<b>PASCO</b>											
DADE CITY	141	119	20	0	0	0	0	0	0	2	0
NEW PORT RICHEY	630	570	32	1	2	0	0	1	8	15	1
PORT RICHEY	368	335	13	2	1	0	0	2	3	12	0
ZEPHYRHILLS	153	137	9	0	1	0	0	0	1	5	0
BALANCE OF COUNTY	3,816	3,312	276	2	17	2	1	17	82	102	5
<b>PINELLAS</b>											
BELLEAIR	23	22	0	0	0	0	0	0	1	0	0
BELLEAIR BLUFFS	14	13	1	0	0	0	0	0	0	0	0
CLEARWATER	1,642	1,261	243	3	8	0	0	18	34	54	21
DUNEDIN	231	209	7	0	2	0	0	4	4	4	1
GULFPORT	59	43	9	0	0	0	0	0	0	3	4
INDIAN ROCKS BEACH	13	13	0	0	0	0	0	0	0	0	0
KENNETH CITY	39	26	5	0	0	0	0	0	4	3	1
LARGO	857	699	91	4	3	0	0	4	19	21	16
MADEIRA BEACH	14	13	0	0	1	0	0	0	0	0	0
OLDSMAR	166	131	11	1	2	0	0	3	16	2	0
PINELLAS PARK	481	347	55	2	3	0	0	3	38	23	10
REDINGTON SHORES	6	6	0	0	0	0	0	0	0	0	0
SAFETY HARBOR	118	110	6	0	1	0	0	0	1	0	0
SEMINOLE	342	301	12	0	3	1	0	1	8	8	8
SOUTH PASADENA	9	7	1	0	0	0	0	0	0	1	0
ST PETERSBURG	3,127	1,855	966	3	9	1	0	8	113	116	56
ST PETERSBURG BEACH	26	23	0	0	0	0	0	1	0	2	0
TARPON SPRINGS	212	162	36	1	2	0	0	3	3	4	1
TREASURE ISLAND	17	17	0	0	0	0	0	0	0	0	0
BALANCE OF COUNTY	1,083	963	66	1	6	2	1	10	17	15	2
<b>POLK</b>											
AUBURNDALE	278	228	34	1	0	0	0	2	6	7	0
BARTOW	260	178	77	0	1	0	0	0	3	1	0
DAVENPORT	370	308	33	0	2	0	0	3	3	21	0
DUNDEE	46	34	12	0	0	0	0	0	0	0	0
EAGLE LAKE	40	35	5	0	0	0	0	0	0	0	0
FORT MEADE	70	59	11	0	0	0	0	0	0	0	0
FROSTPROOF	45	42	3	0	0	0	0	0	0	0	0
HAINES CITY	369	267	83	0	0	0	0	2	1	14	2
LAKE ALFRED	61	39	20	0	1	0	0	0	0	1	0
LAKE WALES	273	188	78	0	0	0	0	0	0	7	0
LAKELAND	1,428	1,020	318	2	3	0	1	9	27	48	0
MULBERRY	86	68	12	0	0	0	0	0	2	4	0
WINTER HAVEN	930	609	274	0	5	0	0	3	15	24	0
BALANCE OF COUNTY	3,549	2,841	577	4	6	1	0	11	27	78	4
<b>PUTNAM</b>											
PALATKA	209	98	102	0	2	0	0	0	0	7	0
BALANCE OF COUNTY	643	518	99	1	0	0	0	0	3	17	5
<b>SAINT JOHNS</b>											
ST AUGUSTINE	497	409	66	0	0	0	0	0	4	16	2
ST AUGUSTINE BEACH	1	1	0	0	0	0	0	0	0	0	0
BALANCE OF COUNTY	1,622	1,406	104	0	9	1	0	17	38	41	6
<b>SAINT LUCIE</b>											
FORT PIERCE	959	508	417	0	2	0	0	3	8	17	4
PORT ST LUCIE	1,806	1,306	340	2	9	0	0	11	31	76	31
BALANCE OF COUNTY	233	161	58	0	0	0	0	0	4	7	3

**TABLE B-3 (Cont.): RESIDENT LIVE BIRTHS FOR INCORPORATED CITIES OF 2,400 OR MORE  
POPULATION, BY RACE OF MOTHER, BY COUNTY, FLORIDA, 2016**

	TOTAL	WHITE	BLACK	AMER INDIAN	CHINESE	JAPANESE	HAWAIIAN	FILIPINO	OTHER ASIAN/ PAC ISL	MULTI - RACE & OTHER	UNK
<b>SANTA ROSA</b>	1,906	1,712	92	6	3	3	1	21	13	52	3
GULF BREEZE	76	68	3	0	1	0	0	0	1	3	0
MILTON	213	187	15	1	0	0	0	2	3	4	1
BALANCE OF COUNTY	1,617	1,457	74	5	2	3	1	19	9	45	2
<b>SARASOTA</b>	2,927	2,470	267	3	5	0	0	2	37	135	8
NORTH PORT	221	192	18	1	0	0	0	0	3	7	0
SARASOTA	860	703	96	1	1	0	0	2	14	41	2
VENICE	52	50	0	0	0	0	0	0	0	2	0
BALANCE OF COUNTY	1,794	1,525	153	1	4	0	0	0	20	85	6
<b>SEMINOLE</b>	4,753	3,514	766	4	43	6	1	30	199	180	10
ALTAMONTE SPRINGS	645	452	131	0	4	1	0	6	14	35	2
CASSELBERRY	339	287	32	0	4	0	0	2	5	9	0
LAKE MARY	322	235	32	0	2	0	0	0	40	11	2
LONGWOOD	359	309	21	1	1	0	0	1	19	6	1
MAITLAND	56	51	2	0	0	0	0	2	1	0	0
OVIEDO	427	324	43	0	11	0	1	6	24	17	1
SANFORD	994	581	326	1	4	0	0	1	39	40	2
WINTER SPRINGS	367	303	29	1	3	2	0	3	13	13	0
BALANCE OF COUNTY	1,244	972	150	1	14	3	0	9	44	49	2
<b>SUMTER</b>	460	365	73	2	2	1	0	2	5	10	0
BUSHNELL	46	37	7	0	1	1	0	0	0	0	0
WILDWOOD	110	63	42	1	1	0	0	0	0	3	0
BALANCE OF COUNTY	304	265	24	1	0	0	0	2	5	7	0
<b>SUWANNEE</b>	489	406	72	1	0	0	1	0	3	5	1
LIVE OAK	151	102	43	0	0	0	1	0	2	3	0
BALANCE OF COUNTY	338	304	29	1	0	0	0	0	1	2	1
<b>TAYLOR</b>	248	193	52	0	0	0	0	1	1	1	0
PERRY	186	135	49	0	0	0	0	1	1	0	0
BALANCE OF COUNTY	62	58	3	0	0	0	0	0	0	1	0
<b>UNION</b>	152	123	24	3	0	0	0	0	0	1	1
<b>VOLUSIA</b>	5,033	3,972	790	3	16	3	0	23	69	139	18
DAYTONA BEACH	965	494	414	0	3	1	0	3	14	27	9
DAYTONA BEACH SHORES	6	4	0	0	0	0	0	0	1	1	0
DEBARY	155	140	5	0	1	0	0	0	4	5	0
DELAND	628	510	89	2	0	0	0	4	10	10	3
DELTONA	903	757	95	1	4	1	0	1	5	39	0
EDGEWATER	197	187	4	0	0	1	0	1	1	2	1
HOLLY HILL	129	93	31	0	0	0	0	1	1	2	1
LAKE HELEN	27	24	2	0	0	0	0	0	0	1	0
NEW SMYRNA BEACH	216	199	11	0	0	0	0	0	2	4	0
ORANGE CITY	195	162	25	0	0	0	0	2	2	4	0
ORMOND BEACH	433	383	26	0	1	0	0	2	9	11	1
PIERSON	35	33	0	0	0	0	0	0	0	2	0
PONCE INLET	5	4	0	0	0	0	0	0	1	0	0
PORT ORANGE	489	428	30	0	5	0	0	4	14	7	1
SOUTH DAYTONA	113	86	18	0	0	0	0	1	1	6	1
BALANCE OF COUNTY	537	468	40	0	2	0	0	4	4	18	1
<b>WAKULLA</b>	353	314	35	0	1	0	0	1	0	2	0
<b>WALTON</b>	758	695	34	1	1	1	1	6	5	12	2
DEFUNIAK SPRINGS	141	116	18	0	0	0	0	0	1	5	1
FREEPORT	35	35	0	0	0	0	0	0	0	0	0
BALANCE OF COUNTY	582	544	16	1	1	1	1	6	4	7	1
<b>WASHINGTON</b>	246	206	33	1	0	0	0	1	1	3	1
CHIPLEY	95	70	21	1	0	0	0	1	1	1	0
BALANCE OF COUNTY	151	136	12	0	0	0	0	0	0	2	1



TABLE B-4: RESIDENT LIVE BIRTHS BY TYPE OF PLACE OF DELIVERY AND ATTENDANT, BY COUNTY, FLORIDA, 2016

	TOTAL	HOSPITAL			BIRTHING CENTER			OTHER NAMED PLACE 2,252	UNK 4
		PHYSICIAN 197,067	MIDWIFE 22,986	OTHER/ UNKNOWN 985	PHYSICIAN 2	MIDWIFE 1,718	OTHER/ UNKNOWN 4		
FLORIDA	225,018	197,067	22,986	985	2	1,718	4	2,252	4
ALACHUA	2,862	2,426	380	1	0	15	0	40	0
BAKER	343	312	26	0	0	3	0	2	0
BAY	2,341	1,867	457	2	0	3	0	12	0
BRADFORD	301	252	41	2	0	4	0	2	0
BREVARD	5,273	4,913	259	12	0	17	0	72	0
BROWARD	22,563	19,998	2,120	64	0	111	0	269	1
CALHOUN	142	121	18	1	0	0	0	2	0
CHARLOTTE	1,037	997	21	1	0	5	0	13	0
CITRUS	1,064	996	46	0	0	12	0	10	0
CLAY	2,207	1,910	243	6	0	20	0	28	0
COLLIER	3,323	3,188	34	40	0	31	1	28	1
COLUMBIA	806	680	106	10	0	1	0	9	0
MIAMI-DADE	32,679	31,955	264	59	1	179	0	221	0
DESOTO	368	356	3	0	0	5	0	4	0
DIXIE	163	134	26	1	0	0	0	2	0
DUVAL	13,293	12,182	695	137	0	137	0	142	0
ESCAMBIA	3,967	3,634	302	4	0	5	0	22	0
FLAGLER	798	698	81	3	0	7	0	9	0
FRANKLIN	88	71	16	0	0	0	0	1	0
GADSDEN	568	443	117	1	0	2	0	5	0
GILCHRIST	200	165	33	2	0	0	0	0	0
GLADES	66	56	9	0	0	1	0	0	0
GULF	121	95	25	0	0	0	0	1	0
HAMILTON	157	136	16	4	0	0	0	1	0
HARDEE	386	372	11	1	0	0	0	2	0
HENDRY	570	451	115	1	0	1	0	2	0
HERNANDO	1,586	1,303	251	1	0	14	0	17	0
HIGHLANDS	938	915	8	6	0	4	0	5	0
HILLSBOROUGH	17,327	14,821	2,189	24	0	162	0	131	0
HOLMES	186	167	17	0	0	0	0	2	0
INDIAN RIVER	1,245	1,179	30	1	0	0	0	35	0
JACKSON	529	498	23	1	0	5	0	2	0
JEFFERSON	121	96	18	2	0	3	0	2	0
LAFAYETTE	68	54	12	2	0	0	0	0	0
LAKE	3,268	2,929	201	63	0	40	0	35	0
LEE	6,751	4,999	1,624	30	0	40	0	58	0
LEON	2,989	2,381	523	15	0	35	0	35	0
LEVY	396	334	55	2	0	3	0	2	0
LIBERTY	77	64	12	0	0	0	0	1	0
MADISON	197	148	39	5	0	1	0	4	0
MANATEE	3,445	3,146	237	0	0	28	0	34	0
MARION	3,472	2,855	487	12	0	59	0	59	0
MARTIN	1,273	676	540	6	0	18	0	33	0
MONROE	733	661	45	14	0	4	0	9	0
NASSAU	817	729	50	7	0	21	0	10	0
OKALOOSA	2,784	2,611	116	11	0	23	0	23	0
OKEECHOBEE	485	340	140	1	0	0	0	4	0
ORANGE	16,649	14,317	1,795	241	1	149	1	145	0
OSCEOLA	4,329	3,979	272	20	0	25	0	33	0
PALM BEACH	14,963	12,287	2,493	11	0	41	1	130	0
PASCO	5,108	4,613	384	8	0	54	0	49	0
PINELLAS	8,479	6,351	1,911	12	0	126	0	79	0
POLK	7,805	6,838	833	17	0	48	0	69	0
PUTNAM	852	719	117	4	0	6	1	5	0
SAINT JOHNS	2,120	1,681	354	18	0	22	0	45	0
SAINT LUCIE	2,998	2,041	898	6	0	8	0	45	0
SANTA ROSA	1,906	1,752	127	3	0	6	0	17	1
SARASOTA	2,927	2,794	33	3	0	40	0	57	0
SEMINOLE	4,753	3,620	952	46	0	72	0	62	1
SUMTER	460	422	22	8	0	2	0	6	0
SUWANNEE	489	403	70	6	0	5	0	5	0
TAYLOR	248	205	37	2	0	2	0	2	0
UNION	152	116	33	1	0	0	0	2	0
VOLUSIA	5,033	4,367	474	16	0	91	0	85	0
WAKULLA	353	288	59	2	0	0	0	4	0
WALTON	758	733	7	6	0	2	0	10	0
WASHINGTON	246	211	34	0	0	0	0	1	0

TABLE B-5: RESIDENT LIVE BIRTHS BY BIRTHWEIGHT, BY COUNTY, FLORIDA, 2016

	TOTAL	BIRTHWEIGHT IN GRAMS										LESS THAN 1500 GRAMS		LESS THAN 2500 GRAMS	
		<500	500- 999	1000- 1499	1500- 1999	2000- 2499	2500- 2999	3000- 3499	3500- 3999	4000+	UNK	NUMBER	%	NUMBER	%
FLORIDA	225,018	449	1,320	1,709	3,835	12,348	43,507	88,787	57,284	15,764	15	3,478	1.5	19,661	8.7
ALACHUA	2,862	9	21	21	54	185	578	1,069	719	206	0	51	1.8	290	10.1
BAKER	343	0	2	1	9	22	58	139	85	27	0	3	0.9	34	9.9
BAY	2,341	4	22	15	31	136	417	919	606	191	0	41	1.8	208	8.9
BRADFORD	301	0	0	0	9	20	58	123	79	12	0	0	0.0	29	9.6
BREVARD	5,273	10	28	37	84	253	943	1,999	1,454	464	1	75	1.4	412	7.8
BROWARD	22,563	35	171	187	441	1,360	4,655	9,122	5,310	1,282	0	393	1.7	2,194	9.7
CALHOUN	142	0	0	2	3	4	32	41	44	16	0	2	1.4	9	6.3
CHARLOTTE	1,037	3	6	10	13	63	216	428	241	57	0	19	1.8	95	9.2
CITRUS	1,064	2	2	7	10	58	206	384	293	102	0	11	1.0	79	7.4
CLAY	2,207	3	8	14	37	110	430	880	556	169	0	25	1.1	172	7.8
COLLIER	3,323	7	12	13	52	140	545	1,348	950	256	0	32	1.0	224	6.7
COLUMBIA	806	1	3	11	25	61	152	321	182	50	0	15	1.9	101	12.5
MIAMI-DADE	32,679	57	185	255	570	1,742	6,620	13,576	7,857	1,811	6	497	1.5	2,809	8.6
DESOTO	368	0	3	3	6	29	67	130	96	34	0	6	1.6	41	11.1
DIXIE	163	0	1	2	7	12	29	64	38	10	0	3	1.8	22	13.5
DUVAL	13,293	41	100	118	272	799	2,733	5,042	3,271	914	3	259	1.9	1,330	10.0
ESCAMBIA	3,967	8	27	23	89	259	814	1,500	972	275	0	58	1.5	406	10.2
FLAGLER	798	0	1	6	18	46	152	292	217	66	0	7	0.9	71	8.9
FRANKLIN	88	0	1	0	1	8	16	29	25	8	0	1	1.1	10	11.4
GADSDEN	568	1	7	5	8	44	137	220	125	21	0	13	2.3	65	11.4
GILCHRIST	200	0	0	0	6	10	25	68	60	31	0	0	0.0	16	8.0
GLADES	66	0	0	3	1	4	4	32	14	8	0	3	4.5	8	12.1
GULF	121	0	0	1	0	7	21	48	30	14	0	1	0.8	8	6.6
HAMILTON	157	0	2	0	6	9	34	64	29	13	0	2	1.3	17	10.8
HARDEE	386	1	1	1	9	15	77	150	103	29	0	3	0.8	27	7.0
HENDRY	570	0	5	4	10	33	92	260	127	39	0	9	1.6	52	9.1
HERNANDO	1,586	1	6	9	31	109	309	578	427	116	0	16	1.0	156	9.8
HIGHLANDS	938	3	5	6	10	52	218	387	189	68	0	14	1.5	76	8.1
HILLSBOROUGH	17,327	51	110	138	286	956	3,307	6,789	4,461	1,227	2	299	1.7	1,541	8.9
HOLMES	186	1	0	1	4	8	30	59	71	12	0	2	1.1	14	7.5
INDIAN RIVER	1,245	3	9	11	30	56	246	461	336	93	0	23	1.8	109	8.8
JACKSON	529	0	0	3	8	32	102	229	123	32	0	3	0.6	43	8.1
JEFFERSON	121	0	1	0	2	9	29	46	24	10	0	1	0.8	12	9.9
LAFAYETTE	68	0	0	2	3	3	12	24	22	2	0	2	2.9	8	11.8
LAKE	3,268	3	17	27	54	190	575	1,248	887	267	0	47	1.4	291	8.9
LEE	6,751	21	30	36	111	383	1,263	2,646	1,762	499	0	87	1.3	581	8.6
LEON	2,989	6	14	26	54	178	566	1,114	796	235	0	46	1.5	278	9.3
LEVY	396	2	6	1	11	18	78	141	110	29	0	9	2.3	38	9.6
LIBERTY	77	0	0	0	1	2	14	26	22	12	0	0	0.0	3	3.9
MADISON	197	3	2	2	0	11	39	71	56	13	0	7	3.6	18	9.1
MANATEE	3,445	7	20	22	54	159	614	1,347	937	285	0	49	1.4	262	7.6
MARION	3,472	11	22	23	69	202	700	1,352	862	231	0	56	1.6	327	9.4
MARTIN	1,273	1	7	8	14	66	216	532	337	92	0	16	1.3	96	7.5
MONROE	733	0	5	5	11	27	130	271	224	60	0	10	1.4	48	6.5
NASSAU	817	0	6	6	16	37	136	311	234	71	0	12	1.5	65	8.0
OKALOOSA	2,784	3	8	16	51	137	499	1,074	779	217	0	27	1.0	215	7.7
OKEECHOBEE	485	0	2	6	10	17	94	175	131	50	0	8	1.6	35	7.2
ORANGE	16,649	57	95	121	264	928	3,293	6,574	4,238	1,077	2	273	1.6	1,465	8.8
OSCEOLA	4,329	7	23	31	70	212	892	1,698	1,115	281	0	61	1.4	343	7.9
PALM BEACH	14,963	16	73	110	237	800	2,969	6,095	3,722	940	1	199	1.3	1,236	8.3
PASCO	5,108	8	26	31	83	263	922	2,039	1,313	423	0	65	1.3	411	8.0
PINELLAS	8,479	20	50	69	141	439	1,537	3,267	2,236	720	0	139	1.6	719	8.5
POLK	7,805	16	54	68	117	385	1,422	3,047	2,081	615	0	138	1.8	640	8.2
PUTNAM	852	1	6	8	7	69	216	335	167	43	0	15	1.8	91	10.7
SAINT JOHNS	2,120	4	8	24	30	85	301	806	653	209	0	36	1.7	151	7.1
SAINT LUCIE	2,998	5	24	27	48	158	598	1,126	774	238	0	56	1.9	262	8.7
SANTA ROSA	1,906	1	11	14	23	101	298	737	536	185	0	26	1.4	150	7.9
SARASOTA	2,927	4	14	24	37	144	461	1,125	857	261	0	42	1.4	223	7.6
SEMINOLE	4,753	6	20	37	68	247	839	1,823	1,312	401	0	63	1.3	378	8.0
SUMTER	460	0	4	3	3	24	98	178	111	39	0	7	1.5	34	7.4
SUWANNEE	489	0	4	7	6	34	97	181	124	36	0	11	2.2	51	10.4
TAYLOR	248	0	3	2	6	12	56	92	54	23	0	5	2.0	23	9.3
UNION	152	0	0	0	1	9	31	61	37	13	0	0	0.0	10	6.6
VOLUSIA	5,033	6	25	38	70	297	947	1,909	1,293	448	0	69	1.4	436	8.7
WAKULLA	353	0	1	2	6	8	53	143	111	29	0	3	0.8	17	4.8
WALTON	758	0	1	3	13	35	138	319	204	45	0	4	0.5	52	6.9
WASHINGTON	246	0	0	3	4	16	48	100	64	11	0	3	1.2	23	9.3

TABLE B-5 (Cont.): RESIDENT LIVE BIRTHS TO WHITE MOTHERS BY BIRTHWEIGHT, BY COUNTY, FLORIDA, 2016

	BIRTHWEIGHT IN GRAMS											LESS THAN 1500 GRAMS		LESS THAN 2500 GRAMS	
	TOTAL	<500	500- 999	1000- 1499	1500- 1999	2000- 2499	2500- 2999	3000- 3499	3500- 3999	4000+	UNK	NUMBER	%	NUMBER	%
FLORIDA	160,365	192	636	978	2,221	7,465	27,631	63,411	44,843	12,980	8	1,806	1.1	11,492	7.2
ALACHUA	1,711	2	9	6	20	83	259	647	519	166	0	17	1.0	120	7.0
BAKER	306	0	1	0	7	20	45	125	81	27	0	1	0.3	28	9.2
BAY	1,707	0	11	12	20	93	267	669	476	159	0	23	1.3	136	8.0
BRADFORD	245	0	0	0	4	14	43	101	71	12	0	0	0.0	18	7.3
BREVARD	4,119	4	18	23	54	169	668	1,561	1,214	407	1	45	1.1	268	6.5
BROWARD	12,465	6	47	76	178	582	2,239	5,116	3,345	876	0	129	1.0	889	7.1
CALHOUN	129	0	0	1	2	4	28	37	41	16	0	1	0.8	7	5.4
CHARLOTTE	893	3	4	7	11	55	180	360	218	55	0	14	1.6	80	9.0
CITRUS	973	1	1	7	10	55	179	351	273	96	0	9	0.9	74	7.6
CLAY	1,720	2	6	8	27	80	311	683	460	143	0	16	0.9	123	7.2
COLLIER	2,751	7	6	9	41	104	428	1,104	821	231	0	22	0.8	167	6.1
COLUMBIA	600	0	1	7	13	39	105	228	160	47	0	8	1.3	60	10.0
MIAMI-DADE	25,102	17	101	161	371	1,144	4,703	10,602	6,498	1,502	3	279	1.1	1,794	7.1
DESOTO	309	0	2	1	4	23	52	110	87	30	0	3	1.0	30	9.7
DIXIE	143	0	1	2	6	12	24	54	34	10	0	3	2.1	21	14.7
DUVAL	7,320	9	32	46	101	330	1,235	2,709	2,204	653	1	87	1.2	518	7.1
ESCAMBIA	2,497	2	9	12	40	119	419	927	740	229	0	23	0.9	182	7.3
FLAGLER	627	0	1	3	14	31	119	226	182	51	0	4	0.6	49	7.8
FRANKLIN	81	0	1	0	0	6	16	27	24	7	0	1	1.2	7	8.6
GADSDEN	213	0	1	0	1	6	38	81	69	17	0	1	0.5	8	3.8
GILCHRIST	189	0	0	0	6	7	22	64	59	31	0	0	0.0	13	6.9
GLADES	53	0	0	3	1	3	3	23	12	8	0	3	5.7	7	13.2
GULF	94	0	0	0	0	4	13	38	27	12	0	0	0.0	4	4.3
HAMILTON	100	0	1	0	4	3	15	46	22	9	0	1	1.0	8	8.0
HARDEE	360	1	0	1	8	15	69	140	98	28	0	2	0.6	25	6.9
HENDRY	488	0	3	4	9	25	75	225	111	36	0	7	1.4	41	8.4
HERNANDO	1,370	1	6	7	22	95	249	506	376	108	0	14	1.0	131	9.6
HIGHLANDS	712	2	4	3	8	34	158	291	153	59	0	9	1.3	51	7.2
HILLSBOROUGH	12,460	25	51	81	161	569	2,137	4,874	3,526	1,035	1	157	1.3	887	7.1
HOLMES	176	1	0	1	4	7	29	56	66	12	0	2	1.1	13	7.4
INDIAN RIVER	769	1	5	5	17	37	126	287	216	75	0	11	1.4	65	8.5
JACKSON	367	0	0	0	4	24	54	157	99	29	0	0	0.0	28	7.6
JEFFERSON	70	0	1	0	2	6	15	23	14	9	0	1	1.4	9	12.9
LAFAYETTE	61	0	0	2	3	2	7	24	21	2	0	2	3.3	7	11.5
LAKE	2,567	2	8	16	30	138	416	967	753	237	0	26	1.0	194	7.6
LEE	5,558	14	19	27	78	295	974	2,178	1,528	445	0	60	1.1	433	7.8
LEON	1,516	0	4	7	17	58	186	548	523	173	0	11	0.7	86	5.7
LEVY	319	2	4	1	7	14	52	112	100	27	0	7	2.2	28	8.8
LIBERTY	70	0	0	0	1	2	12	22	21	12	0	0	0.0	3	4.3
MADISON	112	0	0	1	0	6	15	39	40	11	0	1	0.9	7	6.3
MANATEE	2,627	6	14	12	39	102	409	1,034	769	242	0	32	1.2	173	6.6
MARION	2,697	3	17	17	49	141	499	1,042	721	208	0	37	1.4	227	8.4
MARTIN	942	0	4	7	12	45	139	389	271	75	0	11	1.2	68	7.2
MONROE	586	0	2	4	8	21	97	203	197	54	0	6	1.0	35	6.0
NASSAU	744	0	5	5	12	28	118	287	221	68	0	10	1.3	50	6.7
OKALOOSA	2,258	2	7	11	41	98	372	862	676	189	0	20	0.9	159	7.0
ORKEECHOBEE	435	0	1	6	7	16	81	164	117	43	0	7	1.6	30	6.9
ORANGE	10,507	19	41	57	134	503	1,833	4,144	2,980	795	1	117	1.1	754	7.2
OSCEOLA	3,577	7	19	23	56	154	703	1,415	957	243	0	49	1.4	259	7.2
PALM BEACH	9,673	7	24	55	104	426	1,694	4,014	2,648	700	1	86	0.9	616	6.4
PASCO	4,473	6	18	26	72	224	779	1,765	1,183	400	0	50	1.1	346	7.7
PINELLAS	6,221	11	29	44	80	259	986	2,435	1,782	595	0	84	1.4	423	6.8
POLK	5,916	9	26	41	78	254	948	2,322	1,720	518	0	76	1.3	408	6.9
PUTNAM	616	1	5	5	5	43	136	247	136	38	0	11	1.8	59	9.6
SAINT JOHNS	1,816	4	5	16	24	61	240	681	593	192	0	25	1.4	110	6.1
SAINT LUCIE	1,975	2	8	12	23	87	355	739	560	189	0	22	1.1	132	6.7
SANTA ROSA	1,712	1	7	12	20	89	256	657	498	172	0	20	1.2	129	7.5
SARASOTA	2,470	4	6	21	27	117	360	944	755	236	0	31	1.3	175	7.1
SEMINOLE	3,514	5	13	25	45	168	556	1,294	1,057	351	0	43	1.2	256	7.3
SUMTER	365	0	4	3	2	14	68	148	93	33	0	7	1.9	23	6.3
SUWANNEE	406	0	4	5	4	19	78	157	106	33	0	9	2.2	32	7.9
TAYLOR	193	0	0	2	5	10	37	76	44	19	0	2	1.0	17	8.8
UNION	123	0	0	0	1	7	25	47	30	13	0	0	0.0	8	6.5
VOLUSIA	3,972	3	18	22	48	211	679	1,501	1,091	399	0	43	1.1	302	7.6
WAKULLA	314	0	0	1	3	7	43	128	103	29	0	1	0.3	11	3.5
WALTON	695	0	1	3	13	34	118	290	191	45	0	4	0.6	51	7.3
WASHINGTON	206	0	0	3	3	14	35	86	57	8	0	3	1.5	20	9.7

TABLE B-5 (Cont.): RESIDENT LIVE BIRTHS TO BLACK MOTHERS BY BIRTHWEIGHT, BY COUNTY, FLORIDA, 2016

	BIRTHWEIGHT IN GRAMS											LESS THAN 1500 GRAMS		LESS THAN 2500 GRAMS	
	TOTAL	<500	500- 999	1000- 1499	1500- 1999	2000- 2499	2500- 2999	3000- 3499	3500- 3999	4000+	UNK	NUMBER	%	NUMBER	%
FLORIDA	49,405	209	620	642	1,381	3,982	12,569	19,134	8,886	1,977	5	1,471	3.0	6,834	13.8
ALACHUA	867	6	12	13	31	86	252	306	133	28	0	31	3.6	148	17.1
BAKER	36	0	1	1	2	2	12	14	4	0	0	2	5.6	6	16.7
BAY	363	4	10	3	9	32	102	133	58	12	0	17	4.7	58	16.0
BRADFORD	48	0	0	0	5	5	12	20	6	0	0	0	0.0	10	20.8
BREVARD	765	6	9	12	26	60	198	277	147	30	0	27	3.5	113	14.8
BROWARD	8,319	28	117	98	232	651	2,035	3,242	1,582	334	0	243	2.9	1,126	13.5
CALHOUN	9	0	0	1	0	0	3	3	2	0	0	1	11.1	1	11.1
CHARLOTTE	88	0	1	3	2	4	24	41	11	2	0	4	4.5	10	11.4
CITRUS	41	0	1	0	0	0	15	12	10	3	0	1	2.4	1	2.4
CLAY	302	1	2	5	7	22	74	119	55	17	0	8	2.6	37	12.3
COLLIER	420	0	4	4	9	28	95	178	88	14	0	8	1.9	45	10.7
COLUMBIA	177	1	2	4	12	20	42	77	17	2	0	7	4.0	39	22.0
MIAMI-DADE	6,608	27	81	90	184	530	1,700	2,580	1,142	271	3	198	3.0	912	13.8
DESOTO	50	0	1	2	1	3	13	19	7	4	0	3	6.0	7	14.0
DIXIE	17	0	0	0	1	0	5	8	3	0	0	0	0.0	1	5.9
DUVAL	4,681	25	58	65	148	387	1,231	1,788	800	179	0	148	3.2	683	14.6
ESCAMBIA	1,200	6	16	7	43	127	325	459	183	34	0	29	2.4	199	16.6
FLAGLER	110	0	0	3	2	11	20	46	21	7	0	3	2.7	16	14.5
FRANKLIN	4	0	0	0	1	1	0	1	0	1	0	0	0.0	2	50.0
GADSDEN	339	1	5	4	6	36	97	134	54	2	0	10	2.9	52	15.3
GILCHRIST	8	0	0	0	0	3	2	2	1	0	0	0	0.0	3	37.5
GLADES	8	0	0	0	0	1	1	4	2	0	0	0	0.0	1	12.5
GULF	17	0	0	1	0	3	5	7	1	0	0	1	5.9	4	23.5
HAMILTON	52	0	1	0	2	6	17	17	6	3	0	1	1.9	9	17.3
HARDEE	16	0	1	0	1	0	6	6	2	0	0	1	6.3	2	12.5
HENDRY	66	0	2	0	1	8	13	30	10	2	0	2	3.0	11	16.7
HERNANDO	129	0	0	2	9	11	35	35	32	5	0	2	1.6	22	17.1
HIGHLANDS	181	1	1	3	2	17	52	74	24	7	0	5	2.8	24	13.3
HILLSBOROUGH	3,683	22	52	51	100	314	901	1,449	649	144	1	125	3.4	539	14.6
HOLMES	5	0	0	0	0	1	1	2	1	0	0	0	0.0	1	20.0
INDIAN RIVER	202	2	4	5	8	12	51	76	40	4	0	11	5.4	31	15.3
JACKSON	143	0	0	3	4	7	41	62	23	3	0	3	2.1	14	9.8
JEFFERSON	50	0	0	0	0	3	14	23	9	1	0	0	0.0	3	6.0
LAFAYETTE	6	0	0	0	0	1	4	0	1	0	0	0	0.0	1	16.7
LAKE	465	1	8	11	18	38	110	194	67	18	0	20	4.3	76	16.3
LEE	1,010	7	10	7	33	83	242	407	179	42	0	24	2.4	140	13.9
LEON	1,288	6	10	19	36	112	350	493	210	52	0	35	2.7	183	14.2
LEVY	72	0	2	0	4	4	24	27	9	2	0	2	2.8	10	13.9
LIBERTY	4	0	0	0	0	0	2	2	0	0	0	0	0.0	0	0.0
MADISON	84	3	2	1	0	5	24	32	15	2	0	6	7.1	11	13.1
MANATEE	457	1	5	9	13	41	111	176	86	15	0	15	3.3	69	15.1
MARION	629	6	5	5	20	56	174	243	103	17	0	16	2.5	92	14.6
MARTIN	96	0	2	1	2	13	24	29	21	4	0	3	3.1	18	18.8
MONROE	102	0	3	1	3	6	23	46	18	2	0	4	3.9	13	12.7
NASSAU	49	0	1	1	4	7	12	15	8	1	0	2	4.1	13	26.5
OKALOOSA	295	0	1	2	4	27	79	120	46	16	0	3	1.0	34	11.5
ORKEECHOBEE	29	0	1	0	1	0	10	5	9	3	0	1	3.4	2	6.9
ORANGE	4,377	27	47	57	108	313	1,082	1,701	842	199	1	131	3.0	552	12.6
OSCEOLA	419	0	2	6	8	28	111	155	89	20	0	8	1.9	44	10.5
PALM BEACH	4,197	9	42	47	114	310	1,055	1,628	812	180	0	98	2.3	522	12.4
PASCO	350	1	6	4	6	25	84	144	65	15	0	11	3.1	42	12.0
PINELLAS	1,509	6	19	16	47	134	377	565	283	62	0	41	2.7	222	14.7
POLK	1,537	6	27	22	33	114	404	579	275	77	0	55	3.6	202	13.1
PUTNAM	201	0	1	3	2	21	70	77	24	3	0	4	2.0	27	13.4
SAINT JOHNS	170	0	3	6	4	17	41	69	22	8	0	9	5.3	30	17.6
SAINT LUCIE	815	2	14	15	20	58	194	305	171	36	0	31	3.8	109	13.4
SANTA ROSA	92	0	3	0	1	9	26	37	12	4	0	3	3.3	13	14.1
SARASOTA	267	0	8	1	8	18	66	101	55	10	0	9	3.4	35	13.1
SEMINOLE	766	1	7	10	19	52	165	334	147	31	0	18	2.3	89	11.6
SUMTER	73	0	0	0	1	8	25	24	11	4	0	0	0.0	9	12.3
SUWANNEE	72	0	0	2	2	15	17	21	12	3	0	2	2.8	19	26.4
TAYLOR	52	0	3	0	1	2	19	15	9	3	0	3	5.8	6	11.5
UNION	24	0	0	0	0	1	6	11	6	0	0	0	0.0	1	4.2
VOLUSIA	790	3	6	15	17	72	210	295	136	36	0	24	3.0	113	14.3
WAKULLA	35	0	1	1	3	1	10	13	6	0	0	2	5.7	6	17.1
WALTON	34	0	0	0	0	0	12	14	8	0	0	0	0.0	0	0.0
WASHINGTON	33	0	0	0	1	0	12	13	4	3	0	0	0.0	1	3.0

TABLE B-5 (Cont.): RESIDENT LIVE BIRTHS TO OTHER MOTHERS BY BIRTHWEIGHT, BY COUNTY, FLORIDA, 2016

	BIRTHWEIGHT IN GRAMS											LESS THAN 1500 GRAMS		LESS THAN 2500 GRAMS	
	TOTAL	<500	500- 999	1000- 1499	1500- 1999	2000- 2499	2500- 2999	3000- 3499	3500- 3999	4000+	UNK	NUMBER	%	NUMBER	%
FLORIDA	13,833	20	58	77	203	820	3,008	5,714	3,209	724	0	155	1.1	1,178	8.5
ALACHUA	284	1	0	2	3	16	67	116	67	12	0	3	1.1	22	7.7
BAKER	1	0	0	0	0	0	1	0	0	0	0	0	0.0	0	0.0
BAY	197	0	1	0	2	7	38	82	53	14	0	1	0.5	10	5.1
BRADFORD	8	0	0	0	0	1	3	2	2	0	0	0	0.0	1	12.5
BREVARD	379	0	0	2	4	23	75	157	92	26	0	2	0.5	29	7.7
BROWARD	1,565	0	6	9	25	110	339	674	339	63	0	15	1.0	150	9.6
CALHOUN	4	0	0	0	1	0	1	1	1	0	0	0	0.0	1	25.0
CHARLOTTE	49	0	0	0	0	3	12	25	9	0	0	0	0.0	3	6.1
CITRUS	49	1	0	0	0	3	12	21	10	2	0	1	2.0	4	8.2
CLAY	170	0	0	1	3	8	44	68	38	8	0	1	0.6	12	7.1
COLLIER	152	0	2	0	2	8	22	66	41	11	0	2	1.3	12	7.9
COLUMBIA	29	0	0	0	0	2	5	16	5	1	0	0	0.0	2	6.9
MIAMI-DADE	800	1	3	4	11	60	179	324	187	31	0	8	1.0	79	9.9
DESOTO	6	0	0	0	1	2	2	0	1	0	0	0	0.0	3	50.0
DIXIE	3	0	0	0	0	0	0	2	1	0	0	0	0.0	0	0.0
DUVAL	1,244	5	10	7	21	76	258	531	258	78	0	22	1.8	119	9.6
ESCAMBIA	268	0	2	4	6	12	70	113	49	12	0	6	2.2	24	9.0
FLAGLER	55	0	0	0	2	3	13	17	13	7	0	0	0.0	5	9.1
FRANKLIN	2	0	0	0	0	1	0	1	0	0	0	0	0.0	1	50.0
GADSDEN	13	0	1	1	0	2	1	5	1	2	0	2	15.4	4	30.8
GILCHRIST	3	0	0	0	0	0	1	2	0	0	0	0	0.0	0	0.0
GLADES	4	0	0	0	0	0	0	4	0	0	0	0	0.0	0	0.0
GULF	5	0	0	0	0	0	2	2	1	0	0	0	0.0	0	0.0
HAMILTON	5	0	0	0	0	0	2	1	1	1	0	0	0.0	0	0.0
HARDEE	10	0	0	0	0	0	2	4	3	1	0	0	0.0	0	0.0
HENDRY	13	0	0	0	0	0	3	5	4	1	0	0	0.0	0	0.0
HERNANDO	83	0	0	0	0	3	24	36	18	2	0	0	0.0	3	3.6
HIGHLANDS	43	0	0	0	0	1	8	21	11	2	0	0	0.0	1	2.3
HILLSBOROUGH	1,136	2	6	4	23	69	259	454	275	44	0	12	1.1	104	9.2
HOLMES	5	0	0	0	0	0	0	1	4	0	0	0	0.0	0	0.0
INDIAN RIVER	44	0	0	0	1	0	11	17	12	3	0	0	0.0	1	2.3
JACKSON	17	0	0	0	0	1	7	8	1	0	0	0	0.0	1	5.9
JEFFERSON	1	0	0	0	0	0	0	0	1	0	0	0	0.0	0	0.0
LAFAYETTE	1	0	0	0	0	0	1	0	0	0	0	0	0.0	0	0.0
LAKE	231	0	1	0	6	13	47	87	65	12	0	1	0.4	20	8.7
LEE	182	0	1	2	0	5	46	61	55	12	0	3	1.6	8	4.4
LEON	172	0	0	0	0	8	27	68	60	9	0	0	0.0	8	4.7
LEVY	5	0	0	0	0	0	2	2	1	0	0	0	0.0	0	0.0
LIBERTY	2	0	0	0	0	0	0	1	1	0	0	0	0.0	0	0.0
MADISON	1	0	0	0	0	0	0	0	1	0	0	0	0.0	0	0.0
MANATEE	352	0	1	1	2	16	90	135	80	27	0	2	0.6	20	5.7
MARION	143	0	0	1	0	5	27	67	37	6	0	1	0.7	6	4.2
MARTIN	66	0	0	0	0	3	16	35	7	5	0	0	0.0	3	4.5
MONROE	44	0	0	0	0	0	10	22	8	4	0	0	0.0	0	0.0
NASSAU	20	0	0	0	0	2	5	8	3	2	0	0	0.0	2	10.0
OKALOOSA	222	1	0	3	6	10	45	90	55	12	0	4	1.8	20	9.0
ORKEECHOBEE	19	0	0	0	1	1	3	6	4	4	0	0	0.0	2	10.5
ORANGE	1,746	6	7	6	22	111	377	725	410	82	0	19	1.1	152	8.7
OSCEOLA	325	0	1	2	5	27	76	127	69	18	0	3	0.9	35	10.8
PALM BEACH	1,001	0	7	7	17	61	198	422	234	55	0	14	1.4	92	9.2
PASCO	279	0	2	1	5	13	58	129	65	6	0	3	1.1	21	7.5
PINELLAS	629	2	2	6	9	40	151	230	136	53	0	10	1.6	59	9.4
POLK	346	0	1	5	6	17	68	146	83	20	0	6	1.7	29	8.4
PUTNAM	30	0	0	0	0	5	10	9	6	0	0	0	0.0	5	16.7
SAINT JOHNS	126	0	0	2	2	5	20	53	35	9	0	2	1.6	9	7.1
SAINT LUCIE	170	1	2	0	4	13	37	70	34	9	0	3	1.8	20	11.8
SANTA ROSA	99	0	1	2	2	3	16	41	26	8	0	3	3.0	8	8.1
SARASOTA	182	0	0	2	2	7	35	75	46	15	0	2	1.1	11	6.0
SEMINOLE	463	0	0	2	4	26	116	191	105	19	0	2	0.4	32	6.9
SUMTER	22	0	0	0	0	2	5	6	7	2	0	0	0.0	2	9.1
SUWANNEE	10	0	0	0	0	0	2	3	5	0	0	0	0.0	0	0.0
TAYLOR	3	0	0	0	0	0	0	1	1	1	0	0	0.0	0	0.0
UNION	4	0	0	0	0	0	0	3	1	0	0	0	0.0	0	0.0
VOLUSIA	253	0	1	1	5	13	52	107	61	13	0	2	0.8	20	7.9
WAKULLA	4	0	0	0	0	0	0	2	2	0	0	0	0.0	0	0.0
WALTON	27	0	0	0	0	1	7	15	4	0	0	0	0.0	1	3.7
WASHINGTON	6	0	0	0	0	2	0	1	3	0	0	0	0.0	2	33.3

TABLE B-6: RESIDENT LIVE BIRTHS BY AGE OF MOTHER, BY RACE OF MOTHER,  
BY COUNTY, FLORIDA, 2016

	TOTAL	<13	13	14	15	16	17	18	19	20-24	25-29	30-34	35-44	45+	UNK
FLORIDA	225,018	5	17	94	333	837	1,689	3,106	5,221	45,878	66,328	62,410	38,563	532	5
ALACHUA	2,862	1	0	1	1	8	13	38	64	530	857	863	476	10	0
BAKER	343	0	0	1	2	1	7	11	14	104	116	58	29	0	0
BAY	2,341	0	0	3	3	13	15	48	87	629	724	549	269	1	0
BRADFORD	301	0	0	0	1	1	4	6	15	92	93	59	30	0	0
BREVARD	5,273	0	0	1	9	15	39	54	131	1,109	1,630	1,500	774	11	0
BROWARD	22,563	0	1	4	20	54	106	207	335	3,487	6,195	6,987	5,071	95	1
CALHOUN	142	0	0	2	1	0	3	6	12	39	40	25	14	0	0
CHARLOTTE	1,037	0	0	0	1	3	10	20	36	281	293	266	127	0	0
CITRUS	1,064	0	0	0	5	1	13	20	38	331	349	185	119	3	0
CLAY	2,207	0	0	0	3	9	24	34	57	514	713	564	285	4	0
COLLIER	3,323	0	0	3	1	16	26	51	59	604	998	929	629	7	0
COLUMBIA	806	0	0	0	0	4	4	24	32	254	230	175	82	1	0
MIAMI-DADE	32,679	0	1	13	35	79	166	315	565	5,258	9,216	9,978	6,938	113	2
DESOTO	368	0	0	0	0	4	4	7	20	99	119	70	45	0	0
DIXIE	163	0	0	0	0	1	2	4	9	45	52	33	17	0	0
DUVAL	13,293	0	0	5	20	50	130	206	332	3,038	4,151	3,527	1,803	31	0
ESCAMBIA	3,967	0	1	3	8	20	35	61	143	1,060	1,268	913	453	2	0
FLAGLER	798	0	0	1	0	3	6	14	18	171	246	209	129	1	0
FRANKLIN	88	0	0	0	0	1	0	5	4	30	29	16	3	0	0
GADSDEN	568	0	0	0	6	10	7	8	18	173	149	129	68	0	0
GILCHRIST	200	0	0	0	0	2	3	6	11	50	63	41	24	0	0
GLADES	66	0	0	0	0	1	1	3	0	24	17	12	7	1	0
GULF	121	0	0	0	1	2	2	4	3	35	38	21	15	0	0
HAMILTON	157	0	0	0	0	1	1	6	7	46	45	36	15	0	0
HARDEE	386	0	0	1	2	3	5	12	20	112	128	64	39	0	0
HENDRY	570	0	0	1	3	5	10	22	14	149	167	119	79	1	0
HERNANDO	1,586	0	0	0	2	4	20	27	54	400	557	359	163	0	0
HIGHLANDS	938	0	0	0	1	5	8	31	43	262	286	206	94	2	0
HILLSBOROUGH	17,327	0	1	7	26	73	128	200	409	3,622	5,094	4,908	2,823	36	0
HOLMES	186	0	0	0	0	3	3	2	11	57	66	28	16	0	0
INDIAN RIVER	1,245	0	0	0	2	8	15	23	40	276	368	321	190	2	0
JACKSON	529	0	0	1	1	2	8	15	20	183	162	98	39	0	0
JEFFERSON	121	0	0	0	1	1	0	4	2	34	38	27	13	1	0
LAFAYETTE	68	0	0	1	1	0	0	1	3	15	22	15	9	1	0
LAKE	3,268	0	0	0	4	17	31	58	95	810	990	797	462	4	0
LEE	6,751	0	1	4	13	30	68	104	189	1,509	2,003	1,770	1,046	14	0
LEON	2,989	0	1	3	4	9	19	37	56	650	905	851	449	5	0
LEVY	396	0	0	1	0	1	4	10	11	141	107	78	42	1	0
LIBERTY	77	0	0	0	0	0	1	1	3	23	23	21	5	0	0
MADISON	197	0	0	0	0	0	2	5	10	65	61	40	14	0	0
MANATEE	3,445	0	1	3	12	27	30	54	110	759	1,010	909	520	10	0
MARION	3,472	0	0	5	11	24	41	69	128	971	1,120	740	357	6	0
MARTIN	1,273	0	0	0	5	7	13	22	20	218	361	375	248	4	0
MONROE	733	0	0	0	0	1	3	2	9	122	240	199	154	3	0
NASSAU	817	0	0	0	1	6	10	17	28	195	251	199	106	4	0
OKALOOSA	2,784	0	0	2	5	9	15	35	79	675	962	671	328	3	0
OKEECHOBEE	485	0	0	0	3	3	8	12	31	147	142	95	44	0	0
ORANGE	16,649	0	1	6	19	50	131	207	339	3,171	4,793	4,772	3,131	29	0
OSCEOLA	4,329	0	0	0	2	9	42	70	104	1,006	1,258	1,102	730	6	0
PALM BEACH	14,963	1	4	4	22	59	109	175	256	2,464	4,149	4,506	3,161	53	0
PASCO	5,108	1	0	1	6	20	29	85	148	1,085	1,511	1,430	785	7	0
PINELLAS	8,479	0	1	4	15	35	73	119	170	1,698	2,397	2,443	1,508	16	0
POLK	7,805	0	3	6	15	40	69	175	261	2,089	2,459	1,759	922	7	0
PUTNAM	852	0	0	0	4	5	14	26	46	283	240	156	78	0	0
SAINT JOHNS	2,120	0	0	1	2	8	14	14	20	271	560	767	456	7	0
SAINT LUCIE	2,998	1	0	2	0	6	23	36	74	662	965	762	461	6	0
SANTA ROSA	1,906	0	0	1	2	8	16	30	31	426	619	494	278	1	0
SARASOTA	2,927	0	0	1	6	10	19	51	79	577	882	808	486	8	0
SEMINOLE	4,753	0	1	0	3	14	16	52	82	776	1,321	1,534	947	7	0
SUMTER	460	0	0	0	4	2	5	10	17	162	132	83	45	0	0
SUWANNEE	489	0	0	0	2	6	8	12	23	155	138	97	48	0	0
TAYLOR	248	0	0	0	0	1	2	7	11	81	88	41	17	0	0
UNION	152	0	0	0	0	2	3	5	8	51	46	28	9	0	0
VOLUSIA	5,033	1	0	1	11	22	39	86	127	1,197	1,643	1,221	679	6	0
WAKULLA	353	0	0	1	2	1	1	6	4	90	117	91	40	0	0
WALTON	758	0	0	0	2	1	8	11	12	156	246	216	104	2	0
WASHINGTON	246	0	0	0	2	1	5	8	14	78	66	59	13	0	0

TABLE B-6 (Cont.): RESIDENT LIVE BIRTHS TO WHITE MOTHERS, BY AGE OF MOTHER, BY COUNTY, FLORIDA, 2016

	TOTAL	<13	13	14	15	16	17	18	19	20-24	25-29	30-34	35-44	45+	UNK
FLORIDA	160,365	4	11	49	184	518	1,089	2,011	3,459	30,496	47,528	46,705	27,929	379	3
ALACHUA	1,711	0	0	0	0	1	3	13	29	254	488	598	318	7	0
BAKER	306	0	0	1	2	0	5	11	14	89	108	51	25	0	0
BAY	1,707	0	0	2	2	10	10	27	72	432	538	418	195	1	0
BRADFORD	245	0	0	0	0	1	3	6	11	77	75	48	24	0	0
BREVARD	4,119	0	0	0	4	12	28	34	92	836	1,275	1,207	623	8	0
BROWARD	12,465	0	0	3	6	19	49	77	154	1,524	3,427	4,169	2,972	64	1
CALHOUN	129	0	0	2	1	0	3	5	12	35	37	25	9	0	0
CHARLOTTE	893	0	0	0	1	3	9	19	31	245	256	226	103	0	0
CITRUS	973	0	0	0	5	0	12	18	33	304	325	171	102	3	0
CLAY	1,720	0	0	0	3	3	16	25	47	407	568	448	201	2	0
COLLIER	2,751	0	0	3	0	13	23	46	53	512	835	769	493	4	0
COLUMBIA	600	0	0	0	0	3	2	15	22	188	166	136	67	1	0
MIAMI-DADE	25,102	0	1	9	20	49	96	209	393	3,612	6,990	8,027	5,610	84	2
DESOTO	309	0	0	0	0	4	4	6	18	77	97	60	43	0	0
DIXIE	143	0	0	0	0	0	2	4	7	40	45	28	17	0	0
DUVAL	7,320	0	0	2	7	18	52	89	138	1,409	2,338	2,211	1,038	18	0
ESCAMBIA	2,497	0	0	1	4	10	15	27	66	578	825	651	318	2	0
FLAGLER	627	0	0	0	0	1	4	6	10	140	189	174	102	1	0
FRANKLIN	81	0	0	0	0	1	0	5	4	27	27	14	3	0	0
GADSDEN	213	0	0	0	0	4	3	1	7	60	47	60	31	0	0
GILCHRIST	189	0	0	0	0	2	3	5	10	47	58	40	24	0	0
GLADES	53	0	0	0	0	0	1	2	0	20	15	10	5	0	0
GULF	94	0	0	0	0	2	1	2	2	26	29	17	15	0	0
HAMILTON	100	0	0	0	0	1	0	5	4	27	23	26	14	0	0
HARDEE	360	0	0	1	2	3	5	11	19	105	116	61	37	0	0
HENDRY	488	0	0	0	1	5	7	17	10	122	148	106	71	1	0
HERNANDO	1,370	0	0	0	2	4	17	21	51	342	489	312	132	0	0
HIGHLANDS	712	0	0	0	1	4	6	23	32	191	226	157	71	1	0
HILLSBOROUGH	12,460	0	1	1	17	47	91	133	269	2,396	3,640	3,724	2,111	30	0
HOLMES	176	0	0	0	0	3	3	2	10	55	62	28	13	0	0
INDIAN RIVER	769	0	0	0	0	3	4	13	17	143	240	227	120	2	0
JACKSON	367	0	0	0	1	1	7	12	15	130	105	69	27	0	0
JEFFERSON	70	0	0	0	0	0	0	2	0	16	21	20	10	1	0
LAFAYETTE	61	0	0	1	1	0	0	1	3	15	17	15	7	1	0
LAKE	2,567	0	0	0	2	12	25	47	71	613	797	638	359	3	0
LEE	5,558	0	1	2	7	23	55	78	150	1,198	1,679	1,511	842	12	0
LEON	1,516	0	0	1	0	2	3	10	20	222	456	540	259	3	0
LEVY	319	0	0	1	0	1	4	8	7	113	86	64	34	1	0
LIBERTY	70	0	0	0	0	0	1	1	2	22	20	20	4	0	0
MADISON	112	0	0	0	0	0	2	1	2	36	38	24	9	0	0
MANATEE	2,627	0	0	2	7	22	19	35	72	555	756	743	406	10	0
MARION	2,697	0	0	2	7	18	29	54	98	741	865	597	281	5	0
MARTIN	942	0	0	0	4	2	7	15	10	152	272	285	191	4	0
MONROE	586	0	0	0	0	1	3	2	6	99	180	169	123	3	0
NASSAU	744	0	0	0	1	5	10	16	25	169	232	185	97	4	0
OKALOOSA	2,258	0	0	1	3	8	12	29	60	516	800	572	256	1	0
OKEECHOBEE	435	0	0	0	3	2	8	10	27	128	129	89	39	0	0
ORANGE	10,507	0	0	3	7	28	86	128	183	1,846	3,039	3,165	2,010	12	0
OSCEOLA	3,577	0	0	0	2	6	37	61	89	857	1,044	914	561	6	0
PALM BEACH	9,673	1	4	2	12	33	64	105	158	1,399	2,675	3,138	2,051	31	0
PASCO	4,473	1	0	0	5	17	26	77	136	955	1,344	1,242	664	6	0
PINELLAS	6,221	0	1	0	5	19	38	60	105	1,075	1,753	1,936	1,215	14	0
POLK	5,916	0	2	4	10	29	47	127	183	1,577	1,894	1,356	682	5	0
PUTNAM	616	0	0	0	3	4	10	18	31	200	174	119	57	0	0
SAINT JOHNS	1,816	0	0	1	2	7	13	8	13	211	486	671	397	7	0
SAINT LUCIE	1,975	1	0	1	0	1	16	14	49	418	654	534	284	3	0
SANTA ROSA	1,712	0	0	0	2	8	16	29	29	385	562	443	237	1	0
SARASOTA	2,470	0	0	1	3	7	11	38	64	461	753	705	420	7	0
SEMINOLE	3,514	0	1	0	2	10	10	42	54	536	962	1,175	718	4	0
SUMTER	365	0	0	0	3	2	4	7	14	129	102	71	33	0	0
SUWANNEE	406	0	0	0	2	6	6	10	19	125	113	86	39	0	0
TAYLOR	193	0	0	0	0	1	2	7	10	68	58	32	15	0	0
UNION	123	0	0	0	0	2	3	5	6	39	39	23	6	0	0
VOLUSIA	3,972	1	0	1	7	13	26	57	88	882	1,325	1,021	547	4	0
WAKULLA	314	0	0	1	2	1	1	6	3	80	105	80	35	0	0
WALTON	695	0	0	0	1	0	7	9	10	142	231	200	93	2	0
WASHINGTON	206	0	0	0	2	1	4	5	10	65	58	49	12	0	0

TABLE B-6 (Cont.): RESIDENT LIVE BIRTHS TO BLACK MOTHERS, BY AGE OF MOTHER, BY COUNTY, FLORIDA, 2016

	TOTAL	<13	13	14	15	16	17	18	19	20-24	25-29	30-34	35-44	45+	UNK
FLORIDA	49,405	1	4	41	128	272	522	952	1,504	13,106	14,539	10,894	7,328	114	0
ALACHUA	867	1	0	1	1	7	10	23	34	258	283	163	85	1	0
BAKER	36	0	0	0	0	1	2	0	0	15	8	6	4	0	0
BAY	363	0	0	1	1	1	1	11	11	130	112	64	31	0	0
BRADFORD	48	0	0	0	1	0	1	0	4	11	16	11	4	0	0
BREVARD	765	0	0	0	5	2	10	14	29	201	237	180	84	3	0
BROWARD	8,319	0	1	1	13	34	55	122	161	1,748	2,282	2,197	1,679	26	0
CALHOUN	9	0	0	0	0	0	0	1	0	2	2	0	4	0	0
CHARLOTTE	88	0	0	0	0	0	0	0	5	26	24	23	10	0	0
CITRUS	41	0	0	0	0	0	0	2	2	14	12	7	4	0	0
CLAY	302	0	0	0	0	4	5	6	6	81	94	57	48	1	0
COLLIER	420	0	0	0	0	3	3	5	4	73	123	105	102	2	0
COLUMBIA	177	0	0	0	0	1	2	9	10	55	57	31	12	0	0
MIAMI-DADE	6,608	0	0	4	15	30	67	105	166	1,542	1,951	1,621	1,084	23	0
DESOTO	50	0	0	0	0	0	0	1	2	21	19	7	0	0	0
DIXIE	17	0	0	0	0	0	0	0	2	4	6	5	0	0	0
DUVAL	4,681	0	0	3	11	29	70	101	167	1,401	1,458	917	512	12	0
ESCAMBIA	1,200	0	0	2	4	9	13	26	71	408	364	201	102	0	0
FLAGLER	110	0	0	1	0	2	1	5	5	25	32	20	19	0	0
FRANKLIN	4	0	0	0	0	0	0	0	0	1	1	2	0	0	0
GADSDEN	339	0	0	0	6	6	4	7	10	112	96	67	31	0	0
GILCHRIST	8	0	0	0	0	0	0	1	1	2	3	1	0	0	0
GLADES	8	0	0	0	0	0	0	0	0	4	0	1	2	1	0
GULF	17	0	0	0	1	0	1	2	1	5	5	2	0	0	0
HAMILTON	52	0	0	0	0	0	1	1	2	16	21	10	1	0	0
HARDEE	16	0	0	0	0	0	0	0	0	3	8	3	2	0	0
HENDRY	66	0	0	0	1	0	2	5	4	21	16	11	6	0	0
HERNANDO	129	0	0	0	0	0	3	5	1	33	40	29	18	0	0
HIGHLANDS	181	0	0	0	0	1	2	7	9	60	48	35	18	1	0
HILLSBOROUGH	3,683	0	0	6	9	25	34	63	127	1,113	1,124	747	431	4	0
HOLMES	5	0	0	0	0	0	0	0	1	0	2	0	2	0	0
INDIAN RIVER	202	0	0	0	1	2	5	5	11	69	52	37	20	0	0
JACKSON	143	0	0	1	0	1	0	1	3	48	53	25	11	0	0
JEFFERSON	50	0	0	0	1	1	0	2	2	18	16	7	3	0	0
LAFAYETTE	6	0	0	0	0	0	0	0	0	0	4	0	2	0	0
LAKE	465	0	0	0	2	4	4	9	16	161	128	88	52	1	0
LEE	1,010	0	0	2	6	7	13	25	35	282	275	200	164	1	0
LEON	1,288	0	0	2	4	6	15	26	34	406	402	254	137	2	0
LEVY	72	0	0	0	0	0	0	2	4	26	19	14	7	0	0
LIBERTY	4	0	0	0	0	0	0	0	0	0	2	1	1	0	0
MADISON	84	0	0	0	0	0	0	3	8	29	23	16	5	0	0
MANATEE	457	0	1	0	2	3	9	13	24	136	149	78	42	0	0
MARION	629	0	0	3	4	6	10	11	26	199	203	111	55	1	0
MARTIN	96	0	0	0	0	0	1	2	3	23	25	25	17	0	0
MONROE	102	0	0	0	0	0	0	0	3	15	40	22	22	0	0
NASSAU	49	0	0	0	0	1	0	1	2	21	13	7	4	0	0
OKALOOSA	295	0	0	1	0	1	2	2	15	114	89	43	27	1	0
OKEECHOBEE	29	0	0	0	0	0	0	1	3	14	6	2	3	0	0
ORANGE	4,377	0	1	3	12	20	39	72	134	1,108	1,274	977	728	9	0
OSCEOLA	419	0	0	0	0	3	5	6	11	92	118	101	83	0	0
PALM BEACH	4,197	0	0	2	8	25	43	66	92	932	1,188	1,008	815	18	0
PASCO	350	0	0	1	1	0	2	3	8	89	87	93	66	0	0
PINELLAS	1,509	0	0	4	8	11	28	54	54	499	444	265	142	0	0
POLK	1,537	0	1	2	3	7	21	47	61	445	460	309	180	1	0
PUTNAM	201	0	0	0	1	1	4	7	11	75	51	35	16	0	0
SAINT JOHNS	170	0	0	0	0	1	0	4	5	44	47	42	27	0	0
SAINT LUCIE	815	0	0	1	0	5	7	18	23	208	241	177	132	3	0
SANTA ROSA	92	0	0	0	0	0	0	0	1	25	32	21	13	0	0
SARASOTA	267	0	0	0	2	2	6	9	12	93	75	40	28	0	0
SEMINOLE	766	0	0	0	1	3	6	8	21	192	228	187	119	1	0
SUMTER	73	0	0	0	0	0	1	3	3	26	26	9	5	0	0
SUWANNEE	72	0	0	0	0	0	2	2	4	29	20	9	6	0	0
TAYLOR	52	0	0	0	0	0	0	0	1	13	28	8	2	0	0
UNION	24	0	0	0	0	0	0	0	2	11	5	5	1	0	0
VOLUSIA	790	0	0	0	4	7	10	25	31	250	241	134	86	2	0
WAKULLA	35	0	0	0	0	0	0	0	1	8	12	9	5	0	0
WALTON	34	0	0	0	0	0	1	0	2	9	11	5	6	0	0
WASHINGTON	33	0	0	0	0	0	1	3	3	11	7	7	1	0	0



TABLE B-6 (Cont.): RESIDENT LIVE BIRTHS TO OTHER MOTHERS, BY AGE OF MOTHER, BY COUNTY, FLORIDA, 2016

	TOTAL	<13	13	14	15	16	17	18	19	20-24	25-29	30-34	35-44	45+	UNK
FLORIDA	13,833	0	2	3	17	36	63	126	222	1,998	3,851	4,445	3,035	35	0
ALACHUA	284	0	0	0	0	0	0	2	1	18	86	102	73	2	0
BAKER	1	0	0	0	0	0	0	0	0	0	0	1	0	0	0
BAY	197	0	0	0	0	2	3	9	3	45	51	52	32	0	0
BRADFORD	8	0	0	0	0	0	0	0	0	4	2	0	2	0	0
BREVARD	379	0	0	1	0	1	1	6	9	70	116	108	67	0	0
BROWARD	1,565	0	0	0	1	0	2	8	15	184	429	552	369	5	0
CALHOUN	4	0	0	0	0	0	0	0	0	2	1	0	1	0	0
CHARLOTTE	49	0	0	0	0	0	1	1	0	6	11	16	14	0	0
CITRUS	49	0	0	0	0	1	1	0	3	13	12	6	13	0	0
CLAY	170	0	0	0	0	2	3	2	4	25	46	53	34	1	0
COLLIER	152	0	0	0	1	0	0	0	2	19	40	55	34	1	0
COLUMBIA	29	0	0	0	0	0	0	0	0	11	7	8	3	0	0
MIAMI-DADE	800	0	0	0	0	0	1	0	4	88	221	281	202	3	0
DESOTO	6	0	0	0	0	0	0	0	0	1	1	2	2	0	0
DIXIE	3	0	0	0	0	1	0	0	0	1	1	0	0	0	0
DUVAL	1,244	0	0	0	2	3	8	15	26	218	340	387	244	1	0
ESCAMBIA	268	0	1	0	0	1	7	8	6	72	79	61	33	0	0
FLAGLER	55	0	0	0	0	0	1	3	3	6	20	14	8	0	0
FRANKLIN	2	0	0	0	0	0	0	0	0	1	1	0	0	0	0
GADSDEN	13	0	0	0	0	0	0	0	1	1	5	2	4	0	0
GILCHRIST	3	0	0	0	0	0	0	0	0	1	2	0	0	0	0
GLADES	4	0	0	0	0	1	0	0	0	0	2	1	0	0	0
GULF	5	0	0	0	0	0	0	0	0	1	4	0	0	0	0
HAMILTON	5	0	0	0	0	0	0	0	1	3	1	0	0	0	0
HARDEE	10	0	0	0	0	0	0	1	1	4	4	0	0	0	0
HENDRY	13	0	0	0	1	0	1	0	0	4	3	2	2	0	0
HERNANDO	83	0	0	0	0	0	0	1	2	23	27	18	12	0	0
HIGHLANDS	43	0	0	0	0	0	0	1	2	10	11	14	5	0	0
HILLSBOROUGH	1,136	0	0	0	0	0	3	3	11	107	317	420	273	2	0
HOLMES	5	0	0	0	0	0	0	0	0	2	2	0	1	0	0
INDIAN RIVER	44	0	0	0	0	0	1	1	1	6	13	16	6	0	0
JACKSON	17	0	0	0	0	0	1	2	2	5	3	3	1	0	0
JEFFERSON	1	0	0	0	0	0	0	0	0	0	1	0	0	0	0
LAFAYETTE	1	0	0	0	0	0	0	0	0	0	1	0	0	0	0
LAKE	231	0	0	0	0	1	2	2	7	34	64	70	51	0	0
LEE	182	0	0	0	0	0	0	1	4	29	48	59	40	1	0
LEON	172	0	1	0	0	1	1	1	2	21	45	50	50	0	0
LEVY	5	0	0	0	0	0	0	0	0	2	2	0	1	0	0
LIBERTY	2	0	0	0	0	0	0	0	1	1	0	0	0	0	0
MADISON	1	0	0	0	0	0	0	1	0	0	0	0	0	0	0
MANATEE	352	0	0	1	3	2	2	6	14	67	102	86	69	0	0
MARION	143	0	0	0	0	0	2	4	4	29	51	32	21	0	0
MARTIN	66	0	0	0	0	1	0	1	0	8	14	28	14	0	0
MONROE	44	0	0	0	0	0	0	0	0	8	20	7	9	0	0
NASSAU	20	0	0	0	0	0	0	0	1	4	5	6	4	0	0
OKALOOSA	222	0	0	0	2	0	1	4	3	43	70	55	43	1	0
OKEECHOBEE	19	0	0	0	0	1	0	1	1	5	7	4	0	0	0
ORANGE	1,746	0	0	0	0	2	6	7	22	213	477	623	388	8	0
OSCEOLA	325	0	0	0	0	0	0	3	4	56	94	84	84	0	0
PALM BEACH	1,001	0	0	0	1	1	2	2	5	112	253	341	281	3	0
PASCO	279	0	0	0	0	3	1	5	4	38	78	94	55	1	0
PINELLAS	629	0	0	0	1	4	6	4	9	103	169	210	121	2	0
POLK	346	0	0	0	2	4	1	1	17	65	103	93	59	1	0
PUTNAM	30	0	0	0	0	0	0	1	4	7	13	2	3	0	0
SAINT JOHNS	126	0	0	0	0	0	1	2	2	14	24	52	31	0	0
SAINT LUCIE	170	0	0	0	0	0	0	4	1	28	58	38	41	0	0
SANTA ROSA	99	0	0	1	0	0	0	1	1	16	25	28	27	0	0
SARASOTA	182	0	0	0	1	1	2	4	3	22	51	60	37	1	0
SEMINOLE	463	0	0	0	0	1	0	2	7	47	128	168	108	2	0
SUMTER	22	0	0	0	1	0	0	0	0	7	4	3	7	0	0
SUWANNEE	10	0	0	0	0	0	0	0	0	1	5	1	3	0	0
TAYLOR	3	0	0	0	0	0	0	0	0	0	2	1	0	0	0
UNION	4	0	0	0	0	0	0	0	0	1	1	0	2	0	0
VOLUSIA	253	0	0	0	0	1	2	4	8	57	73	63	45	0	0
WAKULLA	4	0	0	0	0	0	0	0	0	2	0	2	0	0	0
WALTON	27	0	0	0	1	1	0	2	0	5	4	9	5	0	0
WASHINGTON	6	0	0	0	0	0	0	0	1	2	1	2	0	0	0

TABLE B-7: RESIDENT LIVE BIRTHS BY TRIMESTER PRENATAL CARE BEGAN, BY RACE OF MOTHER, BY COUNTY, FLORIDA, 2016

	TRIMESTER PRENATAL CARE BEGAN <sup>1</sup>						% CARE BEGAN BY TRIMESTER <sup>2</sup>			
	TOTAL	1ST	2ND	3RD	NONE	UNK	1ST	2ND	3RD	NONE
FLORIDA	225,018	157,084	31,086	8,152	3,974	24,722	78.4	15.5	4.1	2.0
ALACHUA	2,862	2,069	330	102	13	348	82.3	13.1	4.1	0.5
BAKER	343	218	80	12	10	23	68.1	25.0	3.8	3.1
BAY	2,341	1,379	321	117	28	496	74.7	17.4	6.3	1.5
BRADFORD	301	194	46	14	2	45	75.8	18.0	5.5	0.8
BREVARD	5,273	4,313	567	91	58	244	85.8	11.3	1.8	1.2
BROWARD	22,563	15,079	3,630	1,139	539	2,176	74.0	17.8	5.6	2.6
CALHOUN	142	89	23	1	2	27	77.4	20.0	0.9	1.7
CHARLOTTE	1,037	693	182	38	17	107	74.5	19.6	4.1	1.8
CITRUS	1,064	633	268	53	15	95	65.3	27.7	5.5	1.5
CLAY	2,207	1,469	416	111	34	177	72.4	20.5	5.5	1.7
COLLIER	3,323	2,064	668	159	32	400	70.6	22.9	5.4	1.1
COLUMBIA	806	501	134	39	4	128	73.9	19.8	5.8	0.6
MIAMI-DADE	32,679	25,412	3,075	909	250	3,033	85.7	10.4	3.1	0.8
DESOTO	368	244	77	11	5	31	72.4	22.8	3.3	1.5
DIXIE	163	82	31	5	3	42	67.8	25.6	4.1	2.5
DUVAL	13,293	7,927	2,855	772	430	1,309	66.1	23.8	6.4	3.6
ESCAMBIA	3,967	2,719	576	158	69	445	77.2	16.4	4.5	2.0
FLAGLER	798	540	91	28	11	128	80.6	13.6	4.2	1.6
FRANKLIN	88	45	14	3	8	18	64.3	20.0	4.3	11.4
GADSDEN	568	214	56	9	61	228	62.9	16.5	2.6	17.9
GILCHRIST	200	139	32	9	0	20	77.2	17.8	5.0	0.0
GLADES	66	48	6	0	0	12	88.9	11.1	0.0	0.0
GULF	121	71	20	4	1	25	74.0	20.8	4.2	1.0
HAMILTON	157	76	28	6	7	40	65.0	23.9	5.1	6.0
HARDEE	386	214	125	24	3	20	58.5	34.2	6.6	0.8
HENDRY	570	340	108	16	7	99	72.2	22.9	3.4	1.5
HERNANDO	1,586	1,170	185	46	16	169	82.6	13.1	3.2	1.1
HIGHLANDS	938	517	272	90	15	44	57.8	30.4	10.1	1.7
HILLSBOROUGH	17,327	14,584	1,608	238	261	636	87.4	9.6	1.4	1.6
HOLMES	186	134	21	7	3	21	81.2	12.7	4.2	1.8
INDIAN RIVER	1,245	907	227	47	11	53	76.1	19.0	3.9	0.9
JACKSON	529	409	61	12	8	39	83.5	12.4	2.4	1.6
JEFFERSON	121	58	8	1	6	48	79.5	11.0	1.4	8.2
LAFAYETTE	68	36	7	5	2	18	72.0	14.0	10.0	4.0
LAKE	3,268	2,406	408	129	48	277	80.4	13.6	4.3	1.6
LEE	6,751	4,400	1,289	292	54	716	72.9	21.4	4.8	0.9
LEON	2,989	1,385	302	74	275	953	68.0	14.8	3.6	13.5
LEVY	396	228	65	23	6	74	70.8	20.2	7.1	1.9
LIBERTY	77	41	7	1	5	23	75.9	13.0	1.9	9.3
MADISON	197	98	16	6	24	53	68.1	11.1	4.2	16.7
MANATEE	3,445	2,435	610	194	39	167	74.3	18.6	5.9	1.2
MARION	3,472	1,973	795	239	65	400	64.2	25.9	7.8	2.1
MARTIN	1,273	908	232	55	15	63	75.0	19.2	4.5	1.2
MONROE	733	570	105	15	6	37	81.9	15.1	2.2	0.9
NASSAU	817	622	85	18	12	80	84.4	11.5	2.4	1.6
OKALOOSA	2,784	1,568	298	122	30	766	77.7	14.8	6.0	1.5
OKEECHOBEE	485	319	114	20	27	5	66.5	23.8	4.2	5.6
ORANGE	16,649	10,750	1,637	367	410	3,485	81.7	12.4	2.8	3.1
OSCEOLA	4,329	3,080	414	104	99	632	83.3	11.2	2.8	2.7
PALM BEACH	14,963	10,088	2,235	815	166	1,659	75.8	16.8	6.1	1.2
PASCO	5,108	4,052	607	104	52	293	84.2	12.6	2.2	1.1
PINELLAS	8,479	6,195	1,123	247	101	813	80.8	14.6	3.2	1.3
POLK	7,805	5,367	1,458	306	179	495	73.4	19.9	4.2	2.4
PUTNAM	852	558	162	30	18	84	72.7	21.1	3.9	2.3
SAINT JOHNS	2,120	1,685	220	64	18	133	84.8	11.1	3.2	0.9
SAINT LUCIE	2,998	2,081	535	141	77	164	73.4	18.9	5.0	2.7
SANTA ROSA	1,906	1,367	223	72	18	226	81.4	13.3	4.3	1.1
SARASOTA	2,927	1,981	481	113	42	310	75.7	18.4	4.3	1.6
SEMINOLE	4,753	3,277	528	76	71	801	82.9	13.4	1.9	1.8
SUMTER	460	338	64	13	10	35	79.5	15.1	3.1	2.4
SUWANNEE	489	294	78	18	4	95	74.6	19.8	4.6	1.0
TAYLOR	248	120	19	3	17	89	75.5	11.9	1.9	10.7
UNION	152	108	16	9	0	19	81.2	12.0	6.8	0.0
VOLUSIA	5,033	3,297	690	152	116	778	77.5	16.2	3.6	2.7
WAKULLA	353	169	25	15	27	117	71.6	10.6	6.4	11.4
WALTON	758	559	67	30	6	96	84.4	10.1	4.5	0.9
WASHINGTON	246	172	29	8	2	35	81.5	13.7	3.8	0.9

1. Starting in 2004, "trimester prenatal care began" is calculated as the time elapsed from the date of the last menstrual period to the date of the first prenatal care visit. Prior to 2004, these data were obtained by direct question that noted the trimester the mother began prenatal care. Consequently, these data are not comparable to data from prior years.

2. Births with unknown information as to when prenatal care began are excluded from the denominator.

TABLE B-7 (Cont.): RESIDENT LIVE BIRTHS TO WHITE MOTHERS BY TRIMESTER  
 PRENATAL CARE BEGAN, BY COUNTY, FLORIDA, 2016

	TRIMESTER PRENATAL CARE BEGAN <sup>1</sup>						% CARE BEGAN BY TRIMESTER <sup>2</sup>			
	TOTAL	1ST	2ND	3RD	NONE	UNK	1ST	2ND	3RD	NONE
FLORIDA	160,365	115,893	20,066	5,332	2,345	16,729	80.7	14.0	3.7	1.6
ALACHUA	1,711	1,305	167	58	7	174	84.9	10.9	3.8	0.5
BAKER	306	199	68	10	9	20	69.6	23.8	3.5	3.1
BAY	1,707	1,057	213	79	14	344	77.5	15.6	5.8	1.0
BRADFORD	245	157	38	13	0	37	75.5	18.3	6.3	0.0
BREVARD	4,119	3,429	411	67	37	175	86.9	10.4	1.7	0.9
BROWARD	12,465	8,901	1,672	593	200	1,099	78.3	14.7	5.2	1.8
CALHOUN	129	85	18	1	1	24	81.0	17.1	1.0	1.0
CHARLOTTE	893	597	158	33	14	91	74.4	19.7	4.1	1.7
CITRUS	973	583	237	48	15	90	66.0	26.8	5.4	1.7
CLAY	1,720	1,191	293	75	24	137	75.2	18.5	4.7	1.5
COLLIER	2,751	1,739	530	118	29	335	72.0	21.9	4.9	1.2
COLUMBIA	600	389	97	26	1	87	75.8	18.9	5.1	0.2
MIAMI-DADE	25,102	19,534	2,167	736	161	2,504	86.4	9.6	3.3	0.7
DESOTO	309	202	68	9	4	26	71.4	24.0	3.2	1.4
DIXIE	143	70	28	4	3	38	66.7	26.7	3.8	2.9
DUVAL	7,320	4,815	1,269	392	232	612	71.8	18.9	5.8	3.5
ESCAMBIA	2,497	1,842	311	87	24	233	81.4	13.7	3.8	1.1
FLAGLER	627	425	70	26	8	98	80.3	13.2	4.9	1.5
FRANKLIN	81	40	14	3	8	16	61.5	21.5	4.6	12.3
GADSDEN	213	74	22	1	27	89	59.7	17.7	0.8	21.8
GILCHRIST	189	131	30	8	0	20	77.5	17.8	4.7	0.0
GLADES	53	40	5	0	0	8	88.9	11.1	0.0	0.0
GULF	94	55	15	3	1	20	74.3	20.3	4.1	1.4
HAMILTON	100	41	18	5	6	30	58.6	25.7	7.1	8.6
HARDEE	360	203	115	22	2	18	59.4	33.6	6.4	0.6
HENDRY	488	302	92	15	5	74	72.9	22.2	3.6	1.2
HERNANDO	1,370	1,017	152	36	16	149	83.3	12.4	2.9	1.3
HIGHLANDS	712	398	207	64	10	33	58.6	30.5	9.4	1.5
HILLSBOROUGH	12,460	10,550	1,107	160	183	460	87.9	9.2	1.3	1.5
HOLMES	176	127	20	6	3	20	81.4	12.8	3.8	1.9
INDIAN RIVER	769	590	107	28	7	37	80.6	14.6	3.8	1.0
JACKSON	367	281	40	8	6	32	83.9	11.9	2.4	1.8
JEFFERSON	70	38	4	1	5	22	79.2	8.3	2.1	10.4
LAFAYETTE	61	30	7	4	2	18	69.8	16.3	9.3	4.7
LAKE	2,567	1,933	293	95	38	208	81.9	12.4	4.0	1.6
LEE	5,558	3,663	1,041	218	44	592	73.8	21.0	4.4	0.9
LEON	1,516	767	115	30	136	468	73.2	11.0	2.9	13.0
LEVY	319	193	48	19	4	55	73.1	18.2	7.2	1.5
LIBERTY	70	38	7	0	5	20	76.0	14.0	0.0	10.0
MADISON	112	68	10	2	8	24	77.3	11.4	2.3	9.1
MANATEE	2,627	1,916	423	130	27	131	76.8	16.9	5.2	1.1
MARION	2,697	1,562	596	181	55	303	65.2	24.9	7.6	2.3
MARTIN	942	704	149	37	9	43	78.3	16.6	4.1	1.0
MONROE	586	470	71	9	5	31	84.7	12.8	1.6	0.9
NASSAU	744	571	73	18	9	73	85.1	10.9	2.7	1.3
OKALOOSA	2,258	1,298	243	97	23	597	78.1	14.6	5.8	1.4
OKEECHOBEE	435	288	99	18	25	5	67.0	23.0	4.2	5.8
ORANGE	10,507	7,193	913	183	168	2,050	85.1	10.8	2.2	2.0
OSCEOLA	3,577	2,578	324	73	77	525	84.5	10.6	2.4	2.5
PALM BEACH	9,673	6,763	1,331	479	90	1,010	78.1	15.4	5.5	1.0
PASCO	4,473	3,567	516	89	48	253	84.5	12.2	2.1	1.1
PINELLAS	6,221	4,722	732	142	67	558	83.4	12.9	2.5	1.2
POLK	5,916	4,197	1,026	209	121	363	75.6	18.5	3.8	2.2
PUTNAM	616	398	123	18	17	60	71.6	22.1	3.2	3.1
SAINT JOHNS	1,816	1,483	170	47	13	103	86.6	9.9	2.7	0.8
SAINT LUCIE	1,975	1,415	330	89	41	100	75.5	17.6	4.7	2.2
SANTA ROSA	1,712	1,240	195	66	17	194	81.7	12.8	4.3	1.1
SARASOTA	2,470	1,715	389	86	32	248	77.2	17.5	3.9	1.4
SEMINOLE	3,514	2,511	333	53	51	566	85.2	11.3	1.8	1.7
SUMTER	365	270	47	12	7	29	80.4	14.0	3.6	2.1
SUWANNEE	406	255	63	16	3	69	75.7	18.7	4.7	0.9
TAYLOR	193	94	16	3	15	65	73.4	12.5	2.3	11.7
UNION	123	88	13	8	0	14	80.7	11.9	7.3	0.0
VOLUSIA	3,972	2,679	502	117	92	582	79.0	14.8	3.5	2.7
WAKULLA	314	153	22	13	26	100	71.5	10.3	6.1	12.1
WALTON	695	513	61	28	4	89	84.7	10.1	4.6	0.7
WASHINGTON	206	147	21	7	2	29	83.1	11.9	4.0	1.1

1. Starting in 2004, "trimester prenatal care began" is calculated as the time elapsed from the date of the last menstrual period to the date of the first prenatal care visit. Prior to 2004, these data were obtained by direct question that noted the trimester the mother began prenatal care. Consequently, these data are not comparable to data from prior years.

2. Births with unknown information as to when prenatal care began are excluded from the denominator.

TABLE B-7 (Cont.): RESIDENT LIVE BIRTHS TO BLACK MOTHERS BY TRIMESTER  
 PRENATAL CARE BEGAN, BY COUNTY, FLORIDA, 2016

	TRIMESTER PRENATAL CARE BEGAN <sup>1</sup>						% CARE BEGAN BY TRIMESTER <sup>2</sup>			
	TOTAL	1ST	2ND	3RD	NONE	UNK	1ST	2ND	3RD	NONE
FLORIDA	49,405	30,804	8,791	2,144	1,375	6,291	71.4	20.4	5.0	3.2
ALACHUA	867	554	136	27	6	144	76.6	18.8	3.7	0.8
BAKER	36	18	12	2	1	3	54.5	36.4	6.1	3.0
BAY	363	192	61	22	8	80	67.8	21.6	7.8	2.8
BRADFORD	48	32	8	1	1	6	76.2	19.0	2.4	2.4
BREVARD	765	560	118	16	18	53	78.7	16.6	2.2	2.5
BROWARD	8,319	4,987	1,660	458	291	923	67.4	22.4	6.2	3.9
CALHOUN	9	3	3	0	1	2	42.9	42.9	0.0	14.3
CHARLOTTE	88	60	14	3	2	9	75.9	17.7	3.8	2.5
CITRUS	41	20	14	3	0	4	54.1	37.8	8.1	0.0
CLAY	302	163	86	24	2	27	59.3	31.3	8.7	0.7
COLLIER	420	227	108	33	2	50	61.4	29.2	8.9	0.5
COLUMBIA	177	92	33	9	3	40	67.2	24.1	6.6	2.2
MIAMI-DADE	6,608	5,131	823	140	78	436	83.1	13.3	2.3	1.3
DESOTO	50	34	8	2	1	5	75.6	17.8	4.4	2.2
DIXIE	17	11	2	1	0	3	78.6	14.3	7.1	0.0
DUVAL	4,681	2,358	1,304	316	162	541	57.0	31.5	7.6	3.9
ESCAMBIA	1,200	709	223	55	40	173	69.0	21.7	5.4	3.9
FLAGLER	110	76	15	2	3	14	79.2	15.6	2.1	3.1
FRANKLIN	4	3	0	0	0	1	100.0	0.0	0.0	0.0
GADSDEN	339	134	32	7	33	133	65.0	15.5	3.4	16.0
GILCHRIST	8	5	2	1	0	0	62.5	25.0	12.5	0.0
GLADES	8	4	0	0	0	4	100.0	0.0	0.0	0.0
GULF	17	9	5	0	0	3	64.3	35.7	0.0	0.0
HAMILTON	52	33	10	1	0	8	75.0	22.7	2.3	0.0
HARDEE	16	8	4	2	1	1	53.3	26.7	13.3	6.7
HENDRY	66	30	15	0	2	19	63.8	31.9	0.0	4.3
HERNANDO	129	91	23	6	0	9	75.8	19.2	5.0	0.0
HIGHLANDS	181	95	53	22	4	7	54.6	30.5	12.6	2.3
HILLSBOROUGH	3,683	3,010	413	51	65	144	85.1	11.7	1.4	1.8
HOLMES	5	3	1	0	0	1	75.0	25.0	0.0	0.0
INDIAN RIVER	202	127	53	7	4	11	66.5	27.7	3.7	2.1
JACKSON	143	114	19	3	1	6	83.2	13.9	2.2	0.7
JEFFERSON	50	20	4	0	1	25	80.0	16.0	0.0	4.0
LAFAYETTE	6	5	0	1	0	0	83.3	0.0	16.7	0.0
LAKE	465	317	74	19	8	47	75.8	17.7	4.5	1.9
LEE	1,010	613	216	62	8	111	68.2	24.0	6.9	0.9
LEON	1,288	531	166	39	126	426	61.6	19.3	4.5	14.6
LEVY	72	32	16	4	2	18	59.3	29.6	7.4	3.7
LIBERTY	4	1	0	1	0	2	50.0	0.0	50.0	0.0
MADISON	84	30	6	4	16	28	53.6	10.7	7.1	28.6
MANATEE	457	295	99	27	11	25	68.3	22.9	6.3	2.5
MARION	629	330	161	43	10	85	60.7	29.6	7.9	1.8
MARTIN	96	59	22	5	1	9	67.8	25.3	5.7	1.1
MONROE	102	67	24	5	1	5	69.1	24.7	5.2	1.0
NASSAU	49	34	9	0	2	4	75.6	20.0	0.0	4.4
OKALOOSA	295	135	32	11	3	114	74.6	17.7	6.1	1.7
OKEECHOBEE	29	19	8	1	1	0	65.5	27.6	3.4	3.4
ORANGE	4,377	2,398	554	126	210	1,089	72.9	16.8	3.8	6.4
OSCEOLA	419	274	51	14	18	62	76.8	14.3	3.9	5.0
PALM BEACH	4,197	2,546	757	279	64	551	69.8	20.8	7.7	1.8
PASCO	350	268	46	8	2	26	82.7	14.2	2.5	0.6
PINELLAS	1,509	952	277	72	23	185	71.9	20.9	5.4	1.7
POLK	1,537	942	363	76	51	105	65.8	25.3	5.3	3.6
PUTNAM	201	139	37	7	1	17	75.5	20.1	3.8	0.5
SAINT JOHNS	170	106	31	13	3	17	69.3	20.3	8.5	2.0
SAINT LUCIE	815	514	178	45	31	47	66.9	23.2	5.9	4.0
SANTA ROSA	92	55	18	4	1	14	70.5	23.1	5.1	1.3
SARASOTA	267	148	58	16	8	37	64.3	25.2	7.0	3.5
SEMINOLE	766	442	137	15	16	156	72.5	22.5	2.5	2.6
SUMTER	73	55	10	0	3	5	80.9	14.7	0.0	4.4
SUWANNEE	72	32	12	2	1	25	68.1	25.5	4.3	2.1
TAYLOR	52	24	3	0	2	23	82.8	10.3	0.0	6.9
UNION	24	16	3	0	0	5	84.2	15.8	0.0	0.0
VOLUSIA	790	451	148	29	18	144	69.8	22.9	4.5	2.8
WAKULLA	35	16	2	1	1	15	80.0	10.0	5.0	5.0
WALTON	34	24	4	0	2	4	80.0	13.3	0.0	6.7
WASHINGTON	33	20	7	1	0	5	71.4	25.0	3.6	0.0

1. Starting in 2004, "trimester prenatal care began" is calculated as the time elapsed from the date of the last menstrual period to the date of the first prenatal care visit. Prior to 2004, these data were obtained by direct question that noted the trimester the mother began prenatal care. Consequently, these data are not comparable to data from prior years.

2. Births with unknown information as to when prenatal care began are excluded from the denominator.

TABLE B-7 (Cont.): RESIDENT LIVE BIRTHS TO OTHER MOTHERS BY TRIMESTER  
 PRENATAL CARE BEGAN, BY COUNTY, FLORIDA, 2016

	TRIMESTER PRENATAL CARE BEGAN <sup>1</sup>						% CARE BEGAN BY TRIMESTER <sup>2</sup>			
	TOTAL	1ST	2ND	3RD	NONE	UNK	1ST	2ND	3RD	NONE
FLORIDA	13,833	9,532	1,957	611	223	1,510	77.4	15.9	5.0	1.8
ALACHUA	284	210	27	17	0	30	82.7	10.6	6.7	0.0
BAKER	1	1	0	0	0	0	100.0	0.0	0.0	0.0
BAY	197	97	38	14	4	44	63.4	24.8	9.2	2.6
BRADFORD	8	5	0	0	1	2	83.3	0.0	0.0	16.7
BREVARD	379	316	37	8	3	15	86.8	10.2	2.2	0.8
BROWARD	1,565	1,056	249	75	40	145	74.4	17.5	5.3	2.8
CALHOUN	4	1	2	0	0	1	33.3	66.7	0.0	0.0
CHARLOTTE	49	31	9	2	1	6	72.1	20.9	4.7	2.3
CITRUS	49	30	16	2	0	1	62.5	33.3	4.2	0.0
CLAY	170	107	35	10	7	11	67.3	22.0	6.3	4.4
COLLIER	152	98	30	8	1	15	71.5	21.9	5.8	0.7
COLUMBIA	29	20	4	4	0	1	71.4	14.3	14.3	0.0
MIAMI-DADE	800	638	68	26	8	60	86.2	9.2	3.5	1.1
DESOTO	6	5	1	0	0	0	83.3	16.7	0.0	0.0
DIXIE	3	1	1	0	0	1	50.0	50.0	0.0	0.0
DUVAL	1,244	726	276	63	35	144	66.0	25.1	5.7	3.2
ESCAMBIA	268	167	41	16	5	39	72.9	17.9	7.0	2.2
FLAGLER	55	36	5	0	0	14	87.8	12.2	0.0	0.0
FRANKLIN	2	1	0	0	0	1	100.0	0.0	0.0	0.0
GADSDEN	13	6	2	1	1	3	60.0	20.0	10.0	10.0
GILCHRIST	3	3	0	0	0	0	100.0	0.0	0.0	0.0
GLADES	4	3	1	0	0	0	75.0	25.0	0.0	0.0
GULF	5	4	0	0	0	1	100.0	0.0	0.0	0.0
HAMILTON	5	2	0	0	1	2	66.7	0.0	0.0	33.3
HARDEE	10	3	6	0	0	1	33.3	66.7	0.0	0.0
HENDRY	13	7	1	1	0	4	77.8	11.1	11.1	0.0
HERNANDO	83	59	10	4	0	10	80.8	13.7	5.5	0.0
HIGHLANDS	43	24	11	4	1	3	60.0	27.5	10.0	2.5
HILLSBOROUGH	1,136	994	82	26	11	23	89.3	7.4	2.3	1.0
HOLMES	5	4	0	1	0	0	80.0	0.0	20.0	0.0
INDIAN RIVER	44	34	5	2	0	3	82.9	12.2	4.9	0.0
JACKSON	17	13	2	1	1	0	76.5	11.8	5.9	5.9
JEFFERSON	1	0	0	0	0	1	0.0	0.0	0.0	0.0
LAFAYETTE	1	1	0	0	0	0	100.0	0.0	0.0	0.0
LAKE	231	155	39	15	2	20	73.5	18.5	7.1	0.9
LEE	182	123	32	12	2	13	72.8	18.9	7.1	1.2
LEON	172	81	21	5	11	54	68.6	17.8	4.2	9.3
LEVY	5	3	1	0	0	1	75.0	25.0	0.0	0.0
LIBERTY	2	1	0	0	0	1	100.0	0.0	0.0	0.0
MADISON	1	0	0	0	0	1	0.0	0.0	0.0	0.0
MANATEE	352	218	87	37	1	9	63.6	25.4	10.8	0.3
MARION	143	81	38	15	0	9	60.4	28.4	11.2	0.0
MARTIN	66	45	12	3	2	4	72.6	19.4	4.8	3.2
MONROE	44	33	10	1	0	0	75.0	22.7	2.3	0.0
NASSAU	20	14	2	0	1	3	82.4	11.8	0.0	5.9
OKALOOSA	222	131	23	14	4	50	76.2	13.4	8.1	2.3
OKEECHOBEE	19	10	7	1	1	0	52.6	36.8	5.3	5.3
ORANGE	1,746	1,150	166	58	32	340	81.8	11.8	4.1	2.3
OSCEOLA	325	226	39	14	4	42	79.9	13.8	4.9	1.4
PALM BEACH	1,001	722	129	53	9	88	79.1	14.1	5.8	1.0
PASCO	279	213	44	7	2	13	80.1	16.5	2.6	0.8
PINELLAS	629	455	88	25	8	53	79.0	15.3	4.3	1.4
POLK	346	225	67	21	7	26	70.3	20.9	6.6	2.2
PUTNAM	30	19	1	5	0	5	76.0	4.0	20.0	0.0
SAINT JOHNS	126	91	16	4	2	13	80.5	14.2	3.5	1.8
SAINT LUCIE	170	124	24	6	4	12	78.5	15.2	3.8	2.5
SANTA ROSA	99	70	10	2	0	17	85.4	12.2	2.4	0.0
SARASOTA	182	114	32	10	2	24	72.2	20.3	6.3	1.3
SEMINOLE	463	318	57	7	3	78	82.6	14.8	1.8	0.8
SUMTER	22	13	7	1	0	1	61.9	33.3	4.8	0.0
SUWANNEE	10	6	3	0	0	1	66.7	33.3	0.0	0.0
TAYLOR	3	2	0	0	0	1	100.0	0.0	0.0	0.0
UNION	4	3	0	1	0	0	75.0	0.0	25.0	0.0
VOLUSIA	253	157	39	6	6	45	75.5	18.8	2.9	2.9
WAKULLA	4	0	1	1	0	2	0.0	50.0	50.0	0.0
WALTON	27	21	2	2	0	2	84.0	8.0	8.0	0.0
WASHINGTON	6	4	1	0	0	1	80.0	20.0	0.0	0.0

1. Starting in 2004, "trimester prenatal care began" is calculated as the time elapsed from the date of the last menstrual period to the date of the first prenatal care visit. Prior to 2004, these data were obtained by direct question that noted the trimester the mother began prenatal care. Consequently, these data are not comparable to data from prior years.

2. Births with unknown information as to when prenatal care began are excluded from the denominator.

TABLE B-8: RESIDENT LIVE BIRTHS TO UNWED MOTHERS, BY AGE OF MOTHER, BY RACE OF MOTHER, BY COUNTY, FLORIDA, 2016

	TOTAL	<13	13	14	15	16	17	18	19	20-24	25-29	30-34	35-44	45+	UNK
FLORIDA	105,424	5	17	94	331	814	1,620	2,871	4,607	33,727	30,965	19,019	11,197	156	1
ALACHUA	1,216	1	0	1	1	8	13	38	59	407	385	189	110	4	0
BAKER	168	0	0	1	2	1	5	9	13	68	43	20	6	0	0
BAY	1,082	0	0	3	3	12	12	44	72	404	298	162	72	0	0
BRADFORD	151	0	0	0	1	1	4	5	10	59	42	20	9	0	0
BREVARD	2,387	0	0	1	9	15	37	50	119	795	721	428	210	2	0
BROWARD	9,752	0	1	4	20	53	102	193	301	2,679	2,881	2,034	1,464	20	0
CALHOUN	70	0	0	2	1	0	3	6	8	25	16	3	6	0	0
CHARLOTTE	583	0	0	0	1	3	7	20	33	210	156	106	47	0	0
CITRUS	600	0	0	0	5	1	13	19	33	239	178	68	44	0	0
CLAY	852	0	0	0	3	9	24	31	50	321	237	115	61	1	0
COLLIER	1,435	0	0	3	1	15	26	44	50	408	435	267	183	3	0
COLUMBIA	464	0	0	0	0	4	4	23	25	182	123	76	27	0	0
MIAMI-DADE	15,759	0	1	13	34	76	157	290	501	4,093	4,772	3,499	2,283	40	0
DESOTO	234	0	0	0	0	4	4	6	15	72	78	38	17	0	0
DIXIE	96	0	0	0	0	1	2	4	7	31	30	16	5	0	0
DUVAL	6,404	0	0	5	20	48	127	192	301	2,192	1,949	1,041	520	9	0
ESCAMBIA	1,987	0	1	3	8	20	35	61	124	738	570	291	136	0	0
FLAGLER	387	0	0	1	0	3	5	14	17	114	113	76	43	1	0
FRANKLIN	57	0	0	0	0	1	0	5	4	22	17	6	2	0	0
GADSDEN	396	0	0	0	6	10	7	8	17	147	108	61	32	0	0
GILCHRIST	93	0	0	0	0	2	3	6	7	27	21	16	11	0	0
GLADES	40	0	0	0	0	1	1	3	0	17	10	4	4	0	0
GULF	54	0	0	0	1	2	2	4	2	17	18	5	3	0	0
HAMILTON	103	0	0	0	0	1	1	6	6	35	30	17	7	0	0
HARDEE	223	0	0	1	2	2	5	9	13	75	71	26	19	0	0
HENDRY	363	0	0	1	3	5	10	22	13	118	98	53	39	1	0
HERNANDO	847	0	0	0	2	4	20	23	47	287	271	135	58	0	0
HIGHLANDS	547	0	0	0	1	5	8	26	38	193	159	79	37	1	0
HILLSBOROUGH	8,110	0	1	7	26	71	122	184	364	2,764	2,377	1,442	745	7	0
HOLMES	86	0	0	0	0	3	3	2	9	32	22	9	6	0	0
INDIAN RIVER	605	0	0	0	2	7	15	21	34	199	166	108	52	1	0
JACKSON	285	0	0	1	1	2	8	13	17	119	78	32	14	0	0
JEFFERSON	72	0	0	0	1	1	0	4	2	27	22	11	4	0	0
LAFAYETTE	27	0	0	1	1	0	0	1	2	12	6	2	2	0	0
LAKE	1,514	0	0	0	4	17	28	52	82	594	415	201	120	1	0
LEE	3,402	0	1	4	13	30	64	98	168	1,106	943	629	342	4	0
LEON	1,394	0	1	3	4	9	19	35	52	530	430	200	111	0	0
LEVY	243	0	0	1	0	1	3	9	10	103	60	32	23	1	0
LIBERTY	34	0	0	0	0	0	1	0	3	13	9	7	1	0	0
MADISON	115	0	0	0	0	0	2	4	10	41	34	18	6	0	0
MANATEE	1,704	0	1	3	12	27	30	49	97	560	462	292	169	2	0
MARION	1,920	0	0	5	11	22	37	66	118	689	574	273	123	2	0
MARTIN	559	0	0	0	5	6	13	20	17	154	162	105	75	2	0
MONROE	293	0	0	0	0	1	3	2	5	75	97	51	58	1	0
NASSAU	315	0	0	0	1	6	10	15	22	109	83	44	25	0	0
OKALOOSA	981	0	0	2	5	9	12	32	61	365	277	148	68	2	0
OKEECHOBEE	304	0	0	0	3	3	8	9	27	115	75	44	20	0	0
ORANGE	7,482	0	1	6	19	49	128	196	307	2,416	2,219	1,294	835	12	0
OSCEOLA	2,090	0	0	0	2	9	40	59	91	739	586	343	218	3	0
PALM BEACH	6,628	1	4	4	22	57	105	164	226	1,898	1,931	1,352	847	17	0
PASCO	2,317	1	0	1	6	19	28	79	131	803	651	398	198	2	0
PINELLAS	4,097	0	1	4	15	35	71	117	153	1,295	1,230	752	421	3	0
POLK	4,139	0	3	6	14	39	66	158	232	1,498	1,189	635	296	3	0
PUTNAM	536	0	0	0	4	5	14	22	40	212	134	70	35	0	0
SAINT JOHNS	558	0	0	1	2	8	14	14	18	185	154	100	61	1	0
SAINT LUCIE	1,544	1	0	2	0	6	21	34	68	502	492	265	151	2	0
SANTA ROSA	621	0	0	1	2	8	16	22	23	221	171	104	53	0	0
SARASOTA	1,283	0	0	1	6	10	18	47	67	420	372	201	138	3	0
SEMINOLE	1,801	0	1	0	3	13	14	46	77	574	531	346	195	1	0
SUMTER	253	0	0	0	4	2	5	10	14	97	67	41	13	0	0
SUWANNEE	255	0	0	0	2	6	8	10	18	103	63	31	14	0	0
TAYLOR	149	0	0	0	0	1	2	7	9	53	49	19	9	0	0
UNION	85	0	0	0	0	2	3	4	7	33	21	12	3	0	0
VOLUSIA	2,703	1	0	1	11	20	38	81	113	895	829	460	251	3	0
WAKULLA	143	0	0	1	2	1	1	6	4	56	40	20	12	0	0
WALTON	289	0	0	0	2	1	8	10	11	93	89	54	20	1	0
WASHINGTON	127	0	0	0	2	1	5	8	13	50	23	20	5	0	0

TABLE B-8 (Cont.): RESIDENT LIVE BIRTHS TO UNWED WHITE MOTHERS, BY AGE OF MOTHER, BY COUNTY, FLORIDA, 2016

	TOTAL	<13	13	14	15	16	17	18	19	20-24	25-29	30-34	35-44	45+	UNK
FLORIDA	67,348	4	11	49	182	498	1,025	1,802	2,929	20,800	19,727	12,695	7,521	105	0
ALACHUA	512	0	0	0	0	1	3	13	24	170	149	91	57	4	0
BAKER	137	0	0	1	2	0	3	9	13	53	37	14	5	0	0
BAY	704	0	0	2	2	9	9	24	57	253	188	116	44	0	0
BRADFORD	108	0	0	0	0	1	3	5	6	47	27	12	7	0	0
BREVARD	1,709	0	0	0	4	12	26	31	82	572	505	321	154	2	0
BROWARD	4,316	0	0	3	6	18	45	69	129	1,054	1,334	939	707	12	0
CALHOUN	60	0	0	2	1	0	3	5	8	22	13	3	3	0	0
CHARLOTTE	505	0	0	0	1	3	6	19	28	183	130	95	40	0	0
CITRUS	551	0	0	0	5	0	12	17	28	218	164	65	42	0	0
CLAY	621	0	0	0	3	3	16	22	41	232	179	82	42	1	0
COLLIER	1,192	0	0	3	0	12	23	40	44	342	359	223	144	2	0
COLUMBIA	309	0	0	0	0	3	2	14	15	126	74	57	18	0	0
MIAMI-DADE	11,000	0	1	9	19	46	88	186	333	2,644	3,319	2,574	1,754	27	0
DESOTO	186	0	0	0	0	4	4	5	13	52	61	30	17	0	0
DIXIE	78	0	0	0	0	0	2	4	5	27	24	11	5	0	0
DUVAL	2,649	0	0	2	7	16	49	77	117	843	821	470	243	4	0
ESCAMBIA	929	0	0	1	4	10	15	27	52	323	271	151	75	0	0
FLAGLER	285	0	0	0	0	1	3	6	9	86	85	60	34	1	0
FRANKLIN	53	0	0	0	0	1	0	5	4	20	16	5	2	0	0
GADSDEN	102	0	0	0	0	4	3	1	6	39	21	18	10	0	0
GILCHRIST	84	0	0	0	0	2	3	5	6	24	18	15	11	0	0
GLADES	30	0	0	0	0	0	1	2	0	13	9	3	2	0	0
GULF	35	0	0	0	0	2	1	2	1	10	13	3	3	0	0
HAMILTON	60	0	0	0	0	1	0	5	4	18	14	11	7	0	0
HARDEE	203	0	0	1	2	2	5	8	12	70	63	23	17	0	0
HENDRY	295	0	0	0	1	5	7	17	9	94	84	42	35	1	0
HERNANDO	719	0	0	0	2	4	17	17	45	239	231	115	49	0	0
HIGHLANDS	391	0	0	0	1	4	6	18	28	132	117	57	28	0	0
HILLSBOROUGH	5,302	0	1	1	17	45	85	119	231	1,703	1,525	1,018	551	6	0
HOLMES	79	0	0	0	0	3	3	2	8	31	20	9	3	0	0
INDIAN RIVER	332	0	0	0	0	3	4	13	16	95	93	72	35	1	0
JACKSON	164	0	0	0	1	1	7	10	13	69	35	18	10	0	0
JEFFERSON	27	0	0	0	0	0	0	2	0	11	6	6	2	0	0
LAFAYETTE	24	0	0	1	1	0	0	1	2	12	3	2	2	0	0
LAKE	1,114	0	0	0	2	12	22	42	58	430	307	148	93	0	0
LEE	2,667	0	1	2	7	23	51	72	129	846	749	525	259	3	0
LEON	403	0	0	1	0	2	3	9	17	140	123	64	44	0	0
LEVY	182	0	0	1	0	1	3	7	6	78	44	24	17	1	0
LIBERTY	29	0	0	0	0	0	1	0	2	13	6	6	1	0	0
MADISON	47	0	0	0	0	0	2	1	2	19	12	8	3	0	0
MANATEE	1,183	0	0	2	7	22	19	30	60	393	312	212	124	2	0
MARION	1,367	0	0	2	7	16	25	52	88	493	398	193	92	1	0
MARTIN	382	0	0	0	4	2	7	13	8	112	114	66	54	2	0
MONROE	243	0	0	0	0	1	3	2	4	61	77	46	48	1	0
NASSAU	276	0	0	0	1	5	10	14	19	90	75	39	23	0	0
OKALOOSA	743	0	0	1	3	8	9	26	44	262	211	126	52	1	0
OKEECHOBEE	266	0	0	0	3	2	8	7	23	99	66	41	17	0	0
ORANGE	4,214	0	0	3	7	27	83	118	158	1,325	1,263	752	472	6	0
OSCEOLA	1,765	0	0	0	2	6	35	50	77	634	491	288	179	3	0
PALM BEACH	3,857	1	4	2	12	32	62	96	137	1,021	1,154	822	507	7	0
PASCO	2,002	1	0	0	5	16	25	71	120	691	559	342	170	2	0
PINELLAS	2,551	0	1	0	5	19	36	58	92	743	785	515	294	3	0
POLK	2,856	0	2	4	9	28	44	110	155	1,049	805	444	203	3	0
PUTNAM	355	0	0	0	3	4	10	15	27	140	84	49	23	0	0
SAINT JOHNS	421	0	0	1	2	7	13	8	12	135	116	79	47	1	0
SAINT LUCIE	914	1	0	1	0	1	14	12	44	297	298	160	84	2	0
SANTA ROSA	558	0	0	0	2	8	16	21	21	198	150	94	48	0	0
SARASOTA	1,005	0	0	1	3	7	10	34	52	315	297	171	112	3	0
SEMINOLE	1,209	0	1	0	2	9	8	37	51	377	346	231	146	1	0
SUMTER	185	0	0	0	3	2	4	7	11	70	44	34	10	0	0
SUWANNEE	193	0	0	0	2	6	6	8	14	78	46	23	10	0	0
TAYLOR	105	0	0	0	0	1	2	7	8	42	24	14	7	0	0
UNION	63	0	0	0	0	2	3	4	5	22	16	9	2	0	0
VOLUSIA	1,972	1	0	1	7	11	25	52	74	633	621	358	188	1	0
WAKULLA	117	0	0	1	2	1	1	6	3	46	30	16	11	0	0
WALTON	253	0	0	0	1	0	7	8	9	82	80	49	16	1	0
WASHINGTON	93	0	0	0	2	1	4	5	10	38	15	13	5	0	0

TABLE B-8 (Cont.): RESIDENT LIVE BIRTHS TO UNWED BLACK MOTHERS, BY AGE OF MOTHER, BY COUNTY, FLORIDA, 2016

	TOTAL	<13	13	14	15	16	17	18	19	20-24	25-29	30-34	35-44	45+	UNK
FLORIDA	33,561	1	4	41	128	271	520	936	1,454	11,557	10,045	5,466	3,091	47	0
ALACHUA	667	1	0	1	1	7	10	23	34	226	225	92	47	0	0
BAKER	30	0	0	0	0	1	2	0	0	15	6	5	1	0	0
BAY	269	0	0	1	1	1	1	11	11	114	77	33	19	0	0
BRADFORD	40	0	0	0	1	0	1	0	4	10	14	8	2	0	0
BREVARD	540	0	0	0	5	2	10	13	27	178	172	90	43	0	0
BROWARD	4,958	0	1	1	13	34	55	117	155	1,517	1,414	976	668	7	0
CALHOUN	8	0	0	0	0	0	0	1	0	2	2	0	3	0	0
CHARLOTTE	58	0	0	0	0	0	0	0	5	22	20	7	4	0	0
CITRUS	29	0	0	0	0	0	0	2	2	12	10	3	0	0	0
CLAY	174	0	0	0	0	4	5	6	6	73	44	21	15	0	0
COLLIER	201	0	0	0	0	3	3	4	4	58	63	35	31	0	0
COLUMBIA	139	0	0	0	0	1	2	9	10	47	46	15	9	0	0
MIAMI-DADE	4,525	0	0	4	15	30	66	103	162	1,402	1,388	867	475	13	0
DESOTO	44	0	0	0	0	0	0	1	2	19	16	6	0	0	0
DIXIE	15	0	0	0	0	0	0	0	2	3	5	5	0	0	0
DUVAL	3,397	0	0	3	11	29	70	101	162	1,217	1,052	504	243	5	0
ESCAMBIA	943	0	0	2	4	9	13	26	67	363	277	126	56	0	0
FLAGLER	78	0	0	1	0	2	1	5	5	23	21	12	8	0	0
FRANKLIN	3	0	0	0	0	0	0	0	0	1	1	1	0	0	0
GADSDEN	284	0	0	0	6	6	4	7	10	107	82	42	20	0	0
GILCHRIST	8	0	0	0	0	0	0	1	1	2	3	1	0	0	0
GLADES	7	0	0	0	0	0	0	0	0	4	0	1	2	0	0
GULF	13	0	0	0	1	0	1	2	1	4	3	1	0	0	0
HAMILTON	41	0	0	0	0	0	1	1	1	16	16	6	0	0	0
HARDEE	15	0	0	0	0	0	0	0	0	3	7	3	2	0	0
HENDRY	60	0	0	0	1	0	2	5	4	20	14	10	4	0	0
HERNANDO	92	0	0	0	0	0	3	5	1	30	31	15	7	0	0
HIGHLANDS	139	0	0	0	0	1	2	7	9	54	36	22	7	1	0
HILLSBOROUGH	2,609	0	0	6	9	25	34	61	124	1,008	796	378	167	1	0
HOLMES	5	0	0	0	0	0	0	0	1	0	2	0	2	0	0
INDIAN RIVER	157	0	0	0	1	2	5	5	10	61	47	21	5	0	0
JACKSON	110	0	0	1	0	1	0	1	3	47	41	13	3	0	0
JEFFERSON	45	0	0	0	1	1	0	2	2	16	16	5	2	0	0
LAFAYETTE	3	0	0	0	0	0	0	0	0	0	3	0	0	0	0
LAKE	328	0	0	0	2	4	4	9	16	142	87	43	20	1	0
LEE	675	0	0	2	6	7	13	25	35	242	184	86	74	1	0
LEON	954	0	0	2	4	6	15	25	34	377	298	131	62	0	0
LEVY	59	0	0	0	0	0	0	2	4	24	15	8	6	0	0
LIBERTY	3	0	0	0	0	0	0	0	0	0	2	1	0	0	0
MADISON	68	0	0	0	0	0	0	3	8	22	22	10	3	0	0
MANATEE	360	0	1	0	2	3	9	13	24	123	110	52	23	0	0
MARION	489	0	0	3	4	6	10	11	26	176	153	71	28	1	0
MARTIN	70	0	0	0	0	0	1	2	3	19	20	19	6	0	0
MONROE	37	0	0	0	0	0	0	0	1	12	13	5	6	0	0
NASSAU	28	0	0	0	0	1	0	1	2	14	6	3	1	0	0
OKALOOSA	175	0	0	1	0	1	2	2	13	82	46	17	10	1	0
OKEECHOBEE	25	0	0	0	0	0	0	1	3	14	4	2	1	0	0
ORANGE	2,826	0	1	3	12	20	39	71	128	952	839	452	304	5	0
OSCEOLA	234	0	0	0	0	3	5	6	11	73	73	41	22	0	0
PALM BEACH	2,498	0	0	2	8	24	42	65	84	804	710	458	292	9	0
PASCO	210	0	0	1	1	0	2	3	8	78	62	37	18	0	0
PINELLAS	1,244	0	0	4	8	11	28	54	52	457	366	178	86	0	0
POLK	1,147	0	1	2	3	7	21	47	61	401	347	170	87	0	0
PUTNAM	162	0	0	0	1	1	4	6	11	67	42	20	10	0	0
SAINT JOHNS	106	0	0	0	0	1	0	4	4	39	33	14	11	0	0
SAINT LUCIE	546	0	0	1	0	5	7	18	22	179	166	94	54	0	0
SANTA ROSA	41	0	0	0	0	0	0	0	1	16	16	6	2	0	0
SARASOTA	211	0	0	0	2	2	6	9	12	88	58	17	17	0	0
SEMINOLE	496	0	0	0	1	3	6	7	20	167	158	94	40	0	0
SUMTER	58	0	0	0	0	0	1	3	3	23	19	6	3	0	0
SUWANNEE	56	0	0	0	0	0	2	2	4	25	15	6	2	0	0
TAYLOR	44	0	0	0	0	0	0	0	1	11	25	5	2	0	0
UNION	19	0	0	0	0	0	0	0	2	10	4	3	0	0	0
VOLUSIA	608	0	0	0	4	7	10	25	31	220	176	80	53	2	0
WAKULLA	24	0	0	0	0	0	0	0	1	8	10	4	1	0	0
WALTON	23	0	0	0	0	0	1	0	2	7	8	3	2	0	0
WASHINGTON	29	0	0	0	0	0	1	3	2	10	7	6	0	0	0



TABLE B-8 (Cont.): RESIDENT LIVE BIRTHS TO UNWED OTHER MOTHERS, BY AGE OF MOTHER, BY COUNTY, FLORIDA, 2016

	TOTAL	<13	13	14	15	16	17	18	19	20-24	25-29	30-34	35-44	45+	UNK
FLORIDA	3,884	0	2	3	17	35	60	119	195	1,186	1,017	739	508	3	0
ALACHUA	37	0	0	0	0	0	0	2	1	11	11	6	6	0	0
BAKER	1	0	0	0	0	0	0	0	0	0	0	1	0	0	0
BAY	78	0	0	0	0	2	1	8	3	24	22	12	6	0	0
BRADFORD	3	0	0	0	0	0	0	0	0	2	1	0	0	0	0
BREVARD	132	0	0	1	0	1	1	6	9	44	42	15	13	0	0
BROWARD	373	0	0	0	1	0	2	7	13	88	101	89	71	1	0
CALHOUN	2	0	0	0	0	0	0	0	0	1	1	0	0	0	0
CHARLOTTE	18	0	0	0	0	0	1	1	0	3	6	4	3	0	0
CITRUS	20	0	0	0	0	1	1	0	3	9	4	0	2	0	0
CLAY	51	0	0	0	0	2	3	2	3	16	11	10	4	0	0
COLLIER	42	0	0	0	1	0	0	0	2	8	13	9	8	1	0
COLUMBIA	16	0	0	0	0	0	0	0	0	9	3	4	0	0	0
MIAMI-DADE	177	0	0	0	0	0	1	0	4	37	45	44	46	0	0
DESOTO	3	0	0	0	0	0	0	0	0	1	1	1	0	0	0
DIXIE	3	0	0	0	0	1	0	0	0	1	1	0	0	0	0
DUVAL	336	0	0	0	2	3	8	13	21	126	70	62	31	0	0
ESCAMBIA	113	0	1	0	0	1	7	8	5	50	22	14	5	0	0
FLAGLER	21	0	0	0	0	0	1	3	3	5	4	4	1	0	0
FRANKLIN	1	0	0	0	0	0	0	0	0	1	0	0	0	0	0
GADSDEN	9	0	0	0	0	0	0	0	1	1	4	1	2	0	0
GILCHRIST	1	0	0	0	0	0	0	0	0	1	0	0	0	0	0
GLADES	2	0	0	0	0	1	0	0	0	0	1	0	0	0	0
GULF	2	0	0	0	0	0	0	0	0	0	2	0	0	0	0
HAMILTON	2	0	0	0	0	0	0	0	1	1	0	0	0	0	0
HARDEE	5	0	0	0	0	0	0	1	1	2	1	0	0	0	0
HENDRY	6	0	0	0	1	0	1	0	0	3	0	1	0	0	0
HERNANDO	32	0	0	0	0	0	0	1	1	16	8	5	1	0	0
HIGHLANDS	15	0	0	0	0	0	0	1	1	6	5	0	2	0	0
HILLSBOROUGH	184	0	0	0	0	0	3	3	7	50	53	44	24	0	0
HOLMES	2	0	0	0	0	0	0	0	0	1	0	0	1	0	0
INDIAN RIVER	15	0	0	0	0	0	1	1	1	4	4	2	2	0	0
JACKSON	11	0	0	0	0	0	1	2	1	3	2	1	1	0	0
JEFFERSON	0	0	0	0	0	0	0	0	0	0	0	0	0	0	0
LAFAYETTE	0	0	0	0	0	0	0	0	0	0	0	0	0	0	0
LAKE	68	0	0	0	0	1	2	1	7	20	21	9	7	0	0
LEE	60	0	0	0	0	0	0	1	4	18	10	18	9	0	0
LEON	36	0	1	0	0	1	1	1	1	13	8	5	5	0	0
LEVY	2	0	0	0	0	0	0	0	0	1	1	0	0	0	0
LIBERTY	1	0	0	0	0	0	0	0	1	0	0	0	0	0	0
MADISON	0	0	0	0	0	0	0	0	0	0	0	0	0	0	0
MANATEE	158	0	0	1	3	2	2	6	13	43	40	26	22	0	0
MARION	64	0	0	0	0	0	2	3	4	20	23	9	3	0	0
MARTIN	22	0	0	0	0	0	0	1	0	4	6	9	2	0	0
MONROE	13	0	0	0	0	0	0	0	0	2	7	0	4	0	0
NASSAU	10	0	0	0	0	0	0	0	1	4	2	2	1	0	0
OKALOOSA	60	0	0	0	2	0	1	4	3	21	19	5	5	0	0
OKEECHOBEE	11	0	0	0	0	1	0	1	1	2	5	1	0	0	0
ORANGE	436	0	0	0	0	2	6	7	21	135	116	90	58	1	0
OSCEOLA	89	0	0	0	0	0	0	3	3	31	22	13	17	0	0
PALM BEACH	232	0	0	0	1	1	1	2	4	56	55	65	47	0	0
PASCO	102	0	0	0	0	3	1	5	3	32	29	19	10	0	0
PINELLAS	236	0	0	0	1	4	6	4	8	77	64	43	29	0	0
POLK	133	0	0	0	2	4	1	1	16	47	35	21	6	0	0
PUTNAM	16	0	0	0	0	0	0	1	2	4	7	1	1	0	0
SAINT JOHNS	26	0	0	0	0	0	1	2	2	10	2	6	3	0	0
SAINT LUCIE	72	0	0	0	0	0	0	4	1	21	24	9	13	0	0
SANTA ROSA	20	0	0	1	0	0	0	1	1	7	5	2	3	0	0
SARASOTA	64	0	0	0	1	1	2	4	3	16	16	12	9	0	0
SEMINOLE	92	0	0	0	0	1	0	2	6	29	25	20	9	0	0
SUMTER	10	0	0	0	1	0	0	0	0	4	4	1	0	0	0
SUWANNEE	5	0	0	0	0	0	0	0	0	0	2	1	2	0	0
TAYLOR	0	0	0	0	0	0	0	0	0	0	0	0	0	0	0
UNION	3	0	0	0	0	0	0	0	0	1	1	0	1	0	0
VOLUSIA	111	0	0	0	0	1	2	4	8	36	28	22	10	0	0
WAKULLA	2	0	0	0	0	0	0	0	0	2	0	0	0	0	0
WALTON	12	0	0	0	1	1	0	2	0	4	1	1	2	0	0
WASHINGTON	4	0	0	0	0	0	0	0	1	2	1	0	0	0	0

TABLE B-9: RESIDENT LIVE BIRTHS BY MONTH, BY COUNTY, FLORIDA, 2016

	TOTAL	JAN	FEB	MAR	APR	MAY	JUN	JUL	AUG	SEP	OCT	NOV	DEC
FLORIDA	225,018	18,313	17,817	18,547	17,506	17,936	18,349	19,044	20,116	19,654	19,244	19,206	19,286
ALACHUA	2,862	212	208	249	226	220	217	276	232	247	256	276	243
BAKER	343	26	24	19	31	25	33	34	32	24	27	41	27
BAY	2,341	193	164	193	167	171	192	206	233	208	192	217	205
BRADFORD	301	10	36	32	28	24	12	30	19	21	30	24	35
BREVARD	5,273	446	401	476	375	432	442	425	456	460	425	440	495
BROWARD	22,563	1,754	1,751	1,847	1,792	1,829	1,908	1,944	1,961	2,023	1,879	1,926	1,949
CALHOUN	142	9	10	9	8	14	9	10	15	20	10	16	12
CHARLOTTE	1,037	81	71	90	80	87	79	89	98	88	106	88	80
CITRUS	1,064	100	85	92	85	92	70	81	78	88	118	101	74
CLAY	2,207	176	171	177	188	159	192	212	175	193	190	179	195
COLLIER	3,323	265	264	247	278	282	277	294	304	297	280	270	265
COLUMBIA	806	77	54	73	58	57	57	75	80	67	65	73	70
MIAMI-DADE	32,679	2,684	2,626	2,781	2,447	2,623	2,649	2,695	2,872	2,831	2,780	2,855	2,836
DESOTO	368	35	30	22	36	32	31	32	40	27	36	21	26
DIXIE	163	12	11	16	13	9	7	16	20	14	9	20	16
DUVAL	13,293	1,043	1,039	1,099	1,062	1,117	1,072	1,125	1,208	1,132	1,127	1,136	1,133
ESCAMBIA	3,967	330	314	309	311	299	319	326	362	328	352	361	356
FLAGLER	798	53	68	66	63	59	72	68	87	61	69	67	65
FRANKLIN	88	9	8	8	13	8	8	3	5	7	3	9	7
GADSDEN	568	55	50	46	35	41	42	46	58	52	47	42	54
GILCHRIST	200	16	15	15	13	15	9	21	22	19	16	19	20
GLADES	66	6	5	5	10	5	3	5	4	4	3	9	7
GULF	121	8	11	8	10	10	14	12	14	7	11	2	14
HAMILTON	157	9	9	15	11	7	11	19	14	18	14	12	18
HARDEE	386	31	28	29	27	41	23	31	33	41	21	36	45
HENDRY	570	43	52	38	50	40	58	51	47	46	54	45	46
HERNANDO	1,586	157	130	110	120	120	121	158	129	145	138	119	139
HIGHLANDS	938	89	82	67	66	67	69	100	80	80	76	80	82
HILLSBOROUGH	17,327	1,403	1,412	1,414	1,294	1,391	1,426	1,436	1,601	1,518	1,442	1,510	1,480
HOLMES	186	25	14	12	16	7	15	13	20	14	21	16	13
INDIAN RIVER	1,245	104	95	114	96	108	100	94	119	110	85	107	113
JACKSON	529	54	38	46	30	51	55	28	55	42	50	44	36
JEFFERSON	121	9	12	10	9	8	9	7	10	10	11	14	12
LAFAYETTE	68	4	7	7	9	7	2	3	7	6	4	5	7
LAKE	3,268	246	250	261	272	257	252	275	308	271	300	260	316
LEE	6,751	544	538	521	506	545	527	555	660	611	574	585	585
LEON	2,989	251	246	223	231	247	241	242	274	272	241	249	272
LEVY	396	37	29	25	32	39	32	38	24	32	36	33	39
LIBERTY	77	6	8	10	4	1	9	5	8	6	6	7	7
MADISON	197	22	13	18	16	17	13	12	16	20	17	19	14
MANATEE	3,445	291	254	291	274	293	267	289	288	283	273	339	303
MARION	3,472	283	285	295	284	247	298	281	315	297	315	306	266
MARTIN	1,273	114	90	101	102	119	99	95	119	97	109	107	121
MONROE	733	57	56	60	59	60	74	66	57	61	66	54	63
NASSAU	817	67	63	61	65	76	82	75	75	64	59	69	61
OKALOOSA	2,784	248	212	229	191	205	241	238	266	214	264	241	235
OKEECHOBEE	485	41	38	33	39	43	45	43	47	43	45	30	38
ORANGE	16,649	1,306	1,292	1,324	1,295	1,314	1,396	1,416	1,515	1,487	1,500	1,437	1,367
OSCEOLA	4,329	364	343	360	346	312	337	386	439	361	360	336	385
PALM BEACH	14,963	1,200	1,214	1,239	1,176	1,197	1,176	1,287	1,300	1,318	1,310	1,278	1,268
PASCO	5,108	407	400	444	413	401	426	459	418	466	421	440	413
PINELLAS	8,479	728	668	678	678	683	692	712	736	755	713	723	713
POLK	7,805	638	631	646	628	583	630	633	747	677	681	649	662
PUTNAM	852	74	61	71	63	65	61	58	72	78	82	94	73
SAINT JOHNS	2,120	179	164	185	209	158	163	194	153	173	182	187	173
SAINT LUCIE	2,998	245	239	264	207	240	239	241	272	267	268	245	271
SANTA ROSA	1,906	152	131	168	153	145	167	185	172	194	159	143	137
SARASOTA	2,927	241	242	252	222	225	269	237	253	249	274	241	222
SEMINOLE	4,753	407	418	401	368	386	392	395	418	396	378	370	424
SUMTER	460	32	41	38	40	36	31	42	37	36	49	27	51
SUWANNEE	489	35	47	47	45	49	43	47	48	28	34	31	35
TAYLOR	248	18	22	22	21	10	16	22	35	13	23	18	28
UNION	152	13	10	24	14	12	14	10	10	13	13	9	10
VOLUSIA	5,033	430	416	394	396	422	385	443	428	489	413	383	434
WAKULLA	353	32	29	34	30	20	38	17	27	42	28	26	30
WALTON	758	58	49	65	52	54	67	60	67	70	83	71	62
WASHINGTON	246	18	21	21	16	16	22	21	21	22	21	16	31

TABLE B-10: RESIDENT LIVE BIRTHS BY MOTHER'S EDUCATION\*, BY RACE OF MOTHER, BY COUNTY, FLORIDA,  
2016  
HIGHEST LEVEL/DEGREE OF EDUCATION COMPLETED

	TOTAL	< 9TH GRADE	9TH-12TH NO DIPLOMA	HIGH SCHOOL DIPLOMA	SOME COLLEGE	ASSOCIATE DEGREE	BACHELOR DEGREE	MASTER DEGREE	DOCTORATE	UNK
FLORIDA	225,018	6,695	20,861	69,125	42,356	22,529	39,880	15,870	4,532	3,170
ALACHUA	2,862	40	246	571	575	273	531	388	212	26
BAKER	343	11	44	129	72	39	34	9	0	5
BAY	2,341	57	283	664	533	242	304	117	27	114
BRADFORD	301	7	36	116	76	30	24	9	3	0
BREVARD	5,273	56	392	1,263	1,317	734	963	408	77	63
BROWARD	22,563	463	1,873	6,009	3,991	2,333	4,795	2,120	587	392
CALHOUN	142	3	24	56	26	19	9	2	1	2
CHARLOTTE	1,037	14	107	397	250	108	103	25	11	22
CITRUS	1,064	23	154	394	271	88	88	27	9	10
CLAY	2,207	19	159	601	629	255	377	104	29	34
COLLIER	3,323	288	301	1,124	531	270	540	201	54	14
COLUMBIA	806	23	107	329	188	68	60	21	4	6
MIAMI-DADE	32,679	984	1,921	11,140	4,870	3,408	5,983	2,945	851	577
DESOTO	368	38	83	154	48	21	21	1	0	2
DIXIE	163	5	28	77	32	14	4	2	0	1
DUVAL	13,293	405	1,294	3,650	3,214	1,131	2,355	804	275	165
ESCAMBIA	3,967	60	476	1,761	374	431	580	204	60	21
FLAGLER	798	9	58	221	204	104	128	42	8	24
FRANKLIN	88	5	12	34	16	6	9	0	0	6
GADSDEN	568	41	85	214	105	37	36	18	3	29
GILCHRIST	200	20	24	61	50	20	19	2	2	2
GLADES	66	2	10	30	8	6	6	2	0	2
GULF	121	3	20	26	37	8	17	4	0	6
HAMILTON	157	21	33	60	22	8	8	1	2	2
HARDEE	386	57	76	137	64	31	16	5	0	0
HENDRY	570	47	99	297	58	26	29	5	1	8
HERNANDO	1,586	20	175	559	427	162	165	39	9	30
HIGHLANDS	938	49	155	353	186	83	78	26	4	4
HILLSBOROUGH	17,327	410	1,575	5,691	3,096	1,366	3,375	1,320	371	123
HOLMES	186	4	36	63	38	15	18	1	1	10
INDIAN RIVER	1,245	32	138	440	257	123	184	45	21	5
JACKSON	529	13	66	195	126	62	42	15	5	5
JEFFERSON	121	1	18	40	17	19	16	5	0	5
LAFAYETTE	68	5	7	33	7	5	5	4	0	2
LAKE	3,268	60	353	1,128	664	307	535	169	29	23
LEE	6,751	323	702	3,160	968	486	842	191	42	37
LEON	2,989	30	173	655	535	284	733	350	100	129
LEVY	396	16	73	148	96	33	20	5	0	5
LIBERTY	77	1	10	26	9	12	14	1	0	4
MADISON	197	1	23	75	46	27	17	1	1	6
MANATEE	3,445	203	491	1,016	614	353	482	164	67	55
MARION	3,472	95	516	1,133	892	342	334	97	37	26
MARTIN	1,273	147	144	257	216	151	223	96	37	2
MONROE	733	23	59	207	135	87	156	50	12	4
NASSAU	817	23	75	234	207	97	117	38	21	5
OKALOOSA	2,784	27	196	790	613	316	532	191	43	76
OKEECHOBEE	485	38	104	150	113	42	26	11	1	0
ORANGE	16,649	385	1,586	4,537	3,044	1,640	3,477	1,484	337	159
OSCEOLA	4,329	60	334	1,609	803	528	725	204	29	37
PALM BEACH	14,963	1,157	1,422	3,753	2,405	1,478	2,997	1,186	402	163
PASCO	5,108	60	535	1,445	1,136	556	921	347	67	41
PINELLAS	8,479	98	787	2,233	1,870	786	1,677	590	231	207
POLK	7,805	338	1,049	2,821	1,512	784	927	273	56	45
PUTNAM	852	34	153	370	160	55	48	20	0	12
SAINT JOHNS	2,120	14	108	361	447	189	617	263	91	30
SAINT LUCIE	2,998	80	326	956	716	373	387	117	22	21
SANTA ROSA	1,906	14	132	665	240	280	401	118	30	26
SARASOTA	2,927	26	213	956	528	471	412	142	35	144
SEMINOLE	4,753	45	280	1,035	930	543	1,228	513	126	53
SUMTER	460	22	73	213	70	26	35	15	3	3
SUWANNEE	489	29	88	189	108	36	25	6	6	2
TAYLOR	248	7	39	116	36	19	17	2	1	11
UNION	152	4	24	65	36	15	6	0	1	1
VOLUSIA	5,033	78	530	1,499	1,247	547	755	232	60	85
WAKULLA	353	6	29	101	67	45	68	18	3	16
WALTON	758	13	77	240	119	68	169	48	13	11
WASHINGTON	246	3	40	92	56	8	32	6	2	7

\* Starting in 2004, "mother's education" is measured according to the highest level/degree completed, instead of highest grade completed.

TABLE B-10 (Cont.): WHITE RESIDENT LIVE BIRTHS BY MOTHER'S EDUCATION\*, BY COUNTY, FLORIDA, 2016

	HIGHEST LEVEL/DEGREE OF EDUCATION COMPLETED									
	TOTAL	< 9TH GRADE	9TH-12TH NO DIPLOMA	HIGH SCHOOL DIPLOMA	SOME COLLEGE	ASSOCIATE DEGREE	BACHELOR DEGREE	MASTER DEGREE	DOCTORATE	UNK
FLORIDA	160,365	5,549	13,498	45,806	29,354	16,631	31,579	12,339	3,505	2,104
ALACHUA	1,711	25	85	259	306	203	400	270	142	21
BAKER	306	11	40	108	64	37	32	9	0	5
BAY	1,707	43	186	448	397	197	246	96	22	72
BRADFORD	245	6	28	94	61	28	20	5	3	0
BREVARD	4,119	41	282	933	1,006	595	799	344	63	56
BROWARD	12,465	346	779	2,707	2,050	1,241	3,259	1,469	410	204
CALHOUN	129	2	22	51	22	18	9	2	1	2
CHARLOTTE	893	13	92	342	216	90	90	20	11	19
CITRUS	973	20	143	365	243	83	74	27	8	10
CLAY	1,720	14	117	480	489	204	292	82	17	25
COLLIER	2,751	266	257	905	418	208	457	177	51	12
COLUMBIA	600	20	76	240	132	57	47	20	2	6
MIAMI-DADE	25,102	910	1,331	7,635	3,567	2,735	5,183	2,614	745	382
DESOTO	309	35	74	123	40	18	16	1	0	2
DIXIE	143	5	24	65	29	14	3	2	0	1
DUVAL	7,320	259	555	1,691	1,682	633	1,678	542	190	90
ESCAMBIA	2,497	45	220	984	239	297	472	170	53	17
FLAGLER	627	6	43	161	165	85	105	34	8	20
FRANKLIN	81	4	12	32	14	6	9	0	0	4
GADSDEN	213	36	28	63	34	17	11	6	2	16
GILCHRIST	189	20	19	55	50	20	19	2	2	2
GLADES	53	2	8	27	5	4	4	1	0	2
GULF	94	2	16	16	29	7	15	4	0	5
HAMILTON	100	17	25	30	12	5	6	1	2	2
HARDEE	360	54	72	124	62	28	15	5	0	0
HENDRY	488	46	86	254	51	20	22	2	1	6
HERNANDO	1,370	20	155	474	367	144	145	34	7	24
HIGHLANDS	712	46	117	241	149	65	64	24	3	3
HILLSBOROUGH	12,460	366	1,127	3,858	2,217	1,051	2,579	910	283	69
HOLMES	176	4	34	59	36	14	17	1	1	10
INDIAN RIVER	769	4	55	224	175	93	159	41	14	4
JACKSON	367	9	47	128	83	43	36	13	4	4
JEFFERSON	70	1	8	16	10	15	12	5	0	3
LAFAYETTE	61	5	5	29	6	5	5	4	0	2
LAKE	2,567	50	289	856	508	253	436	140	18	17
LEE	5,558	301	546	2,495	829	412	745	161	37	32
LEON	1,516	19	56	246	192	145	514	208	65	71
LEVY	319	15	54	118	75	29	18	5	0	5
LIBERTY	70	1	9	23	8	10	14	1	0	4
MADISON	112	1	9	35	30	17	14	1	1	4
MANATEE	2,627	127	360	722	453	310	418	140	55	42
MARION	2,697	83	391	840	699	274	281	80	27	22
MARTIN	942	61	80	172	177	123	204	90	33	2
MONROE	586	17	41	154	107	73	135	44	12	3
NASSAU	744	23	67	208	183	95	110	36	19	3
OKALOOSA	2,258	23	155	606	499	266	450	160	36	63
OKEECHOBEE	435	35	92	131	104	37	25	10	1	0
ORANGE	10,507	292	790	2,685	1,818	1,048	2,491	1,063	223	97
OSCEOLA	3,577	47	287	1,360	650	440	579	159	25	30
PALM BEACH	9,673	1,001	759	2,007	1,412	906	2,287	890	321	90
PASCO	4,473	54	486	1,267	997	495	802	286	51	35
PINELLAS	6,221	78	497	1,436	1,351	624	1,421	496	194	124
POLK	5,916	290	806	2,046	1,116	614	760	208	41	35
PUTNAM	616	30	118	255	112	42	41	13	0	5
SAINT JOHNS	1,816	12	86	270	384	168	570	232	75	19
SAINT LUCIE	1,975	68	213	574	472	254	280	83	16	15
SANTA ROSA	1,712	13	124	601	212	247	362	102	27	24
SARASOTA	2,470	25	160	777	444	413	377	132	31	111
SEMINOLE	3,514	35	178	739	681	407	976	383	78	37
SUMTER	365	15	60	166	54	20	30	15	2	3
SUWANNEE	406	27	71	148	92	32	23	6	5	2
TAYLOR	193	7	32	86	27	17	14	2	1	7
UNION	123	3	17	51	30	14	6	0	1	1
VOLUSIA	3,972	72	370	1,133	997	453	642	188	49	68
WAKULLA	314	6	20	91	58	40	63	17	3	16
WALTON	695	12	69	217	110	66	156	46	11	8
WASHINGTON	206	3	37	69	45	7	32	5	2	6

\* Starting in 2004, "mother's education" is measured according to the highest level/degree completed, instead of highest grade completed.

TABLE B-10 (Cont.): BLACK RESIDENT LIVE BIRTHS BY MOTHER'S EDUCATION\*, BY COUNTY, FLORIDA, 2016

	TOTAL	HIGHEST LEVEL/DEGREE OF EDUCATION COMPLETED								
		< 9TH GRADE	9TH-12TH NO DIPLOMA	HIGH SCHOOL DIPLOMA	SOME COLLEGE	ASSOCIATE DEGREE	BACHELOR DEGREE	MASTER DEGREE	DOCTORATE	UNK
FLORIDA	49,405	658	6,419	19,994	10,524	4,557	4,512	1,748	389	604
ALACHUA	867	11	150	291	240	58	66	35	12	4
BAKER	36	0	3	21	8	2	2	0	0	0
BAY	363	1	65	137	80	18	26	9	2	25
BRADFORD	48	1	7	19	13	2	3	3	0	0
BREVARD	765	7	83	255	222	96	72	20	6	4
BROWARD	8,319	86	989	2,961	1,672	928	1,066	394	98	125
CALHOUN	9	1	1	3	3	1	0	0	0	0
CHARLOTTE	88	0	8	38	18	12	6	3	0	3
CITRUS	41	2	4	16	14	4	1	0	0	0
CLAY	302	1	28	83	100	32	35	14	6	3
COLLIER	420	19	37	181	85	50	40	5	1	2
COLUMBIA	177	3	29	81	46	9	7	0	2	0
MIAMI-DADE	6,608	66	563	3,323	1,196	608	537	201	44	70
DESOTO	50	1	8	28	7	3	3	0	0	0
DIXIE	17	0	3	10	3	0	1	0	0	0
DUVAL	4,681	65	673	1,699	1,291	399	351	133	29	41
ESCAMBIA	1,200	12	234	669	97	102	58	20	4	4
FLAGLER	110	2	11	45	25	14	7	6	0	0
FRANKLIN	4	0	0	1	2	0	0	0	0	1
GADSDEN	339	2	56	148	71	17	23	11	1	10
GILCHRIST	8	0	5	3	0	0	0	0	0	0
GLADES	8	0	0	2	2	2	1	1	0	0
GULF	17	1	3	6	7	0	0	0	0	0
HAMILTON	52	2	7	29	10	2	2	0	0	0
HARDEE	16	0	3	10	1	1	1	0	0	0
HENDRY	66	0	9	39	6	6	4	2	0	0
HERNANDO	129	0	15	59	31	7	10	4	0	3
HIGHLANDS	181	3	33	92	29	13	9	1	0	1
HILLSBOROUGH	3,683	34	413	1,654	744	230	381	174	26	27
HOLMES	5	0	1	3	1	0	0	0	0	0
INDIAN RIVER	202	0	30	105	44	14	6	1	2	0
JACKSON	143	2	16	63	39	14	6	2	0	1
JEFFERSON	50	0	10	23	7	4	4	0	0	2
LAFAYETTE	6	0	2	3	1	0	0	0	0	0
LAKE	465	7	53	197	108	38	42	13	3	4
LEE	1,010	19	148	604	110	60	55	9	2	3
LEON	1,288	6	112	384	325	133	179	80	24	45
LEVY	72	0	19	29	19	4	1	0	0	0
LIBERTY	4	0	0	2	1	1	0	0	0	0
MADISON	84	0	14	39	16	10	3	0	0	2
MANATEE	457	4	77	201	107	23	23	10	2	10
MARION	629	7	114	250	152	56	37	10	3	0
MARTIN	96	0	17	43	21	11	2	1	1	0
MONROE	102	6	18	42	19	10	5	2	0	0
NASSAU	49	0	7	20	14	1	3	1	1	2
OKALOOSA	295	1	24	124	72	24	27	11	3	9
OKEECHOBEE	29	0	8	12	3	5	0	1	0	0
ORANGE	4,377	78	723	1,526	950	402	426	189	43	40
OSCEOLA	419	5	32	166	92	48	54	18	1	3
PALM BEACH	4,197	136	609	1,508	811	481	415	154	30	53
PASCO	350	2	35	110	87	31	47	33	4	1
PINELLAS	1,509	7	233	613	402	98	80	20	9	47
POLK	1,537	35	209	673	328	139	101	42	6	4
PUTNAM	201	2	31	100	42	10	7	4	0	5
SAINT JOHNS	170	1	16	77	36	12	15	7	3	3
SAINT LUCIE	815	7	102	328	195	94	64	19	1	5
SANTA ROSA	92	0	4	39	17	14	12	6	0	0
SARASOTA	267	0	39	119	52	31	7	3	0	16
SEMINOLE	766	3	89	230	174	93	106	50	13	8
SUMTER	73	3	12	41	11	4	2	0	0	0
SUWANNEE	72	0	16	38	13	4	0	0	1	0
TAYLOR	52	0	7	29	8	2	2	0	0	4
UNION	24	0	6	12	5	1	0	0	0	0
VOLUSIA	790	6	129	294	194	65	62	24	5	11
WAKULLA	35	0	8	9	9	4	4	1	0	0
WALTON	34	1	5	16	6	0	3	0	1	2
WASHINGTON	33	0	3	19	10	0	0	0	0	1

\* Starting in 2004, "mother's education" is measured according to the highest level/degree completed, instead of highest grade completed.

TABLE B-10 (Cont.): OTHER RESIDENT LIVE BIRTHS BY MOTHER'S EDUCATION\*, BY COUNTY, FLORIDA, 2016

	HIGHEST LEVEL/DEGREE OF EDUCATION COMPLETED									
	TOTAL	< 9TH GRADE	9TH-12TH NO DIPLOMA	HIGH SCHOOL DIPLOMA	SOME COLLEGE	ASSOCIATE DEGREE	BACHELOR DEGREE	MASTER DEGREE	DOCTORATE	UNK
FLORIDA	13,833	344	770	2,985	2,302	1,242	3,662	1,735	613	180
ALACHUA	284	4	11	21	29	12	65	83	58	1
BAKER	1	0	1	0	0	0	0	0	0	0
BAY	197	8	19	56	41	26	24	10	3	10
BRADFORD	8	0	1	3	2	0	1	1	0	0
BREVARD	379	7	24	74	88	41	91	44	8	2
BROWARD	1,565	19	83	300	233	144	441	245	75	25
CALHOUN	4	0	1	2	1	0	0	0	0	0
CHARLOTTE	49	1	5	15	14	5	7	2	0	0
CITRUS	49	1	7	12	14	1	13	0	1	0
CLAY	170	2	13	35	36	18	47	8	6	5
COLLIER	152	3	7	38	28	12	43	19	2	0
COLUMBIA	29	0	2	8	10	2	6	1	0	0
MIAMI-DADE	800	6	24	163	101	58	250	125	60	13
DESOTO	6	2	1	0	1	0	2	0	0	0
DIXIE	3	0	1	2	0	0	0	0	0	0
DUVAL	1,244	81	64	250	233	98	323	127	53	15
ESCAMBIA	268	3	22	106	38	32	50	14	3	0
FLAGLER	55	1	4	14	13	4	15	2	0	2
FRANKLIN	2	1	0	1	0	0	0	0	0	0
GADSDEN	13	2	1	3	0	2	2	1	0	2
GILCHRIST	3	0	0	3	0	0	0	0	0	0
GLADES	4	0	1	1	1	0	1	0	0	0
GULF	5	0	1	2	0	1	1	0	0	0
HAMILTON	5	2	1	1	0	1	0	0	0	0
HARDEE	10	3	1	3	1	2	0	0	0	0
HENDRY	13	1	3	4	1	0	3	1	0	0
HERNANDO	83	0	5	26	29	9	9	1	2	2
HIGHLANDS	43	0	5	19	8	5	4	1	1	0
HILLSBOROUGH	1,136	8	33	174	128	81	411	232	59	10
HOLMES	5	0	1	1	1	1	1	0	0	0
INDIAN RIVER	44	1	3	20	6	2	9	2	1	0
JACKSON	17	2	3	3	3	5	0	0	1	0
JEFFERSON	1	0	0	1	0	0	0	0	0	0
LAFAYETTE	1	0	0	1	0	0	0	0	0	0
LAKE	231	3	11	71	48	16	56	16	8	2
LEE	182	3	8	61	29	13	42	21	3	2
LEON	172	4	5	24	17	6	38	59	11	8
LEVY	5	1	0	1	2	0	1	0	0	0
LIBERTY	2	0	1	1	0	0	0	0	0	0
MADISON	1	0	0	1	0	0	0	0	0	0
MANATEE	352	72	54	91	52	18	41	14	10	0
MARION	143	5	11	43	41	12	16	7	7	1
MARTIN	66	8	7	9	12	10	15	2	3	0
MONROE	44	0	0	11	9	4	16	4	0	0
NASSAU	20	0	0	6	8	1	4	1	0	0
OKALOOSA	222	3	16	54	42	26	54	20	4	3
OKEECHOBEE	19	2	4	6	6	0	1	0	0	0
ORANGE	1,746	15	73	325	272	187	557	231	71	15
OSCEOLA	325	8	15	83	61	37	88	27	3	3
PALM BEACH	1,001	14	38	211	168	86	285	141	46	12
PASCO	279	4	13	66	52	30	72	28	12	2
PINELLAS	629	10	47	148	101	53	160	66	25	19
POLK	346	12	34	101	66	31	66	23	9	4
PUTNAM	30	2	4	14	6	2	0	2	0	0
SAINT JOHNS	126	1	6	14	27	9	31	24	13	1
SAINT LUCIE	170	4	9	46	38	19	38	11	5	0
SANTA ROSA	99	1	4	24	11	19	26	10	3	1
SARASOTA	182	1	14	59	31	27	25	6	4	15
SEMINOLE	463	7	13	64	74	41	145	80	35	4
SUMTER	22	4	1	6	5	2	3	0	1	0
SUWANNEE	10	1	1	3	3	0	2	0	0	0
TAYLOR	3	0	0	1	1	0	1	0	0	0
UNION	4	1	1	2	0	0	0	0	0	0
VOLUSIA	253	0	28	67	55	27	50	20	6	0
WAKULLA	4	0	1	1	0	1	1	0	0	0
WALTON	27	0	3	6	3	2	9	2	1	1
WASHINGTON	6	0	0	3	1	1	0	1	0	0

\* Starting in 2004, "mother's education" is measured according to the highest level/degree completed, instead of highest grade completed.

TABLE B-11: RESIDENT LIVE BIRTHS TO MOTHERS UNDER 15 YEARS OF AGE FOR SELECTED INDICATORS,  
BY COUNTY, FLORIDA, 2016

	TOTAL	UNWED	BIRTHWEIGHT		THIRD TRIMESTER OR NO PRENATAL CARE*	ONE OR MORE PREVIOUS LIVE BIRTHS
			UNDER 1,500 GRAMS	UNDER 2,500 GRAMS		
FLORIDA	116	116	3	13	25	2
ALACHUA	2	2	0	2	0	0
BAKER	1	1	0	0	0	0
BAY	3	3	0	0	0	0
BRADFORD	0	0	0	0	0	0
BREVARD	1	1	0	0	0	0
BROWARD	5	5	0	0	1	0
CALHOUN	2	2	0	0	0	0
CHARLOTTE	0	0	0	0	0	0
CITRUS	0	0	0	0	0	0
CLAY	0	0	0	0	0	0
COLLIER	3	3	1	1	0	0
COLUMBIA	0	0	0	0	0	0
MIAMI-DADE	14	14	0	0	4	0
DESOTO	0	0	0	0	0	0
DIXIE	0	0	0	0	0	0
DUVAL	5	5	0	0	2	0
ESCAMBIA	4	4	0	2	0	0
FLAGLER	1	1	0	0	0	0
FRANKLIN	0	0	0	0	0	0
GADSDEN	0	0	0	0	0	0
GILCHRIST	0	0	0	0	0	0
GLADES	0	0	0	0	0	0
GULF	0	0	0	0	0	0
HAMILTON	0	0	0	0	0	0
HARDEE	1	1	0	1	0	0
HENDRY	1	1	0	0	0	0
HERNANDO	0	0	0	0	0	0
HIGHLANDS	0	0	0	0	0	0
HILLSBOROUGH	8	8	0	1	1	1
HOLMES	0	0	0	0	0	0
INDIAN RIVER	0	0	0	0	0	0
JACKSON	1	1	0	0	0	0
JEFFERSON	0	0	0	0	0	0
LAFAYETTE	1	1	0	0	1	0
LAKE	0	0	0	0	0	0
LEE	5	5	1	2	0	0
LEON	4	4	0	0	2	0
LEVY	1	1	0	0	1	0
LIBERTY	0	0	0	0	0	0
MADISON	0	0	0	0	0	0
MANATEE	4	4	0	0	0	0
MARION	5	5	0	0	1	0
MARTIN	0	0	0	0	0	0
MONROE	0	0	0	0	0	0
NASSAU	0	0	0	0	0	0
OKALOOSA	2	2	0	0	0	0
OKEECHOBEE	0	0	0	0	0	0
ORANGE	7	7	0	1	3	0
OSCEOLA	0	0	0	0	0	0
PALM BEACH	9	9	0	0	5	1
PASCO	2	2	0	0	1	0
PINELLAS	5	5	0	0	0	0
POLK	9	9	0	0	0	0
PUTNAM	0	0	0	0	0	0
SAINT JOHNS	1	1	0	0	0	0
SAINT LUCIE	3	3	1	2	1	0
SANTA ROSA	1	1	0	0	0	0
SARASOTA	1	1	0	0	1	0
SEMINOLE	1	1	0	0	0	0
SUMTER	0	0	0	0	0	0
SUWANNEE	0	0	0	0	0	0
TAYLOR	0	0	0	0	0	0
UNION	0	0	0	0	0	0
VOLUSIA	2	2	0	1	1	0
WAKULLA	1	1	0	0	0	0
WALTON	0	0	0	0	0	0
WASHINGTON	0	0	0	0	0	0

\* Starting in 2004, "trimester prenatal care began" is calculated as the time elapsed from the date of the last menstrual period to the date of the first prenatal care visit. Prior to 2004, these data were obtained by direct question that noted the trimester the mother began prenatal care. Consequently, these data are not comparable to data from prior years.

TABLE B-12: RESIDENT LIVE BIRTHS TO MOTHERS 15 THROUGH 19 YEARS OF AGE FOR SELECTED INDICATORS, AND AGE-SPECIFIC BIRTH RATES PER 1,000 FEMALES, BY COUNTY, FLORIDA, 2016

	TOTAL	UNWED		BIRTHWEIGHT				THIRD TRIMESTER OR NO PRENATAL CARE		ONE OR MORE PREVIOUS LIVE BIRTHS		AGE-SPECIFIC BIRTH RATE	POPULATION 15-19 FEMALES
				UNDER 1,500 GRAMS		UNDER 2,500 GRAMS		NUMBER <sup>1</sup>	% <sup>2</sup>	NUMBER	%		
				NUMBER	%	NUMBER	%						
FLORIDA	11,186	10,243	91.6	213	1.9	1,264	11.3	940	9.7	1,784	15.9	19.5	574,259
ALACHUA	124	119	96.0	4	3.2	22	17.7	8	8.0	26	21.0	11.4	10,897
BAKER	35	30	85.7	0	0.0	1	2.9	3	9.7	6	17.1	41.7	839
BAY	166	143	86.1	2	1.2	12	7.2	19	13.9	26	15.7	36.7	4,521
BRADFORD	27	21	77.8	0	0.0	6	22.2	1	5.3	7	25.9	39.6	681
BREVARD	248	230	92.7	4	1.6	21	8.5	9	3.9	32	12.9	16.7	14,815
BROWARD	722	669	92.7	10	1.4	96	13.3	113	17.4	124	17.2	13.4	54,059
CALHOUN	22	18	81.8	1	4.5	2	9.1	1	6.7	7	31.8	55.1	399
CHARLOTTE	70	64	91.4	3	4.3	6	8.6	8	13.8	12	17.1	22.2	3,149
CITRUS	77	71	92.2	1	1.3	6	7.8	6	8.6	9	11.7	25.7	2,996
CLAY	127	117	92.1	0	0.0	5	3.9	8	7.0	13	10.2	17.7	7,167
COLLIER	153	136	88.9	2	1.3	17	11.1	19	14.0	20	13.1	18.6	8,216
COLUMBIA	64	56	87.5	2	3.1	11	17.2	7	12.5	10	15.6	34.9	1,832
MIAMI-DADE	1,160	1,058	91.2	22	1.9	136	11.7	59	5.7	166	14.3	15.1	76,752
DESOTO	35	29	82.9	0	0.0	1	2.9	1	3.2	8	22.9	40.8	858
DIXIE	16	14	87.5	2	12.5	3	18.8	1	12.5	0	0.0	40.9	391
DUVAL	738	688	93.2	13	1.8	99	13.4	97	15.3	121	16.4	27.3	26,995
ESCAMBIA	267	248	92.9	10	3.7	41	15.4	22	10.3	61	22.8	27.1	9,836
FLAGLER	41	39	95.1	2	4.9	10	24.4	1	3.0	8	19.5	16.1	2,544
FRANKLIN	10	10	100.0	0	0.0	4	40.0	3	37.5	2	20.0	46.7	214
GADSDEN	49	48	98.0	2	4.1	6	12.2	10	35.7	7	14.3	35.0	1,401
GILCHRIST	22	18	81.8	0	0.0	1	4.5	2	11.1	1	4.5	46.6	472
GLADES	5	5	100.0	0	0.0	0	0.0	0	0.0	0	0.0	17.6	284
GULF	12	11	91.7	0	0.0	1	8.3	0	0.0	1	8.3	31.6	380
HAMILTON	15	14	93.3	0	0.0	1	6.7	1	7.1	3	20.0	41.3	363
HARDEE	42	31	73.8	0	0.0	4	9.5	2	4.9	9	21.4	45.5	924
HENDRY	54	53	98.1	3	5.6	14	25.9	4	9.5	10	18.5	42.5	1,270
HERNANDO	107	96	89.7	2	1.9	19	17.8	5	5.3	14	13.1	22.5	4,766
HIGHLANDS	88	78	88.6	1	1.1	9	10.2	13	15.3	12	13.6	37.9	2,320
HILLSBOROUGH	836	767	91.7	13	1.6	102	12.2	38	4.7	131	15.7	19.4	43,119
HOLMES	19	17	89.5	0	0.0	4	21.1	0	0.0	5	26.3	37.5	507
INDIAN RIVER	88	79	89.8	3	3.4	12	13.6	3	3.5	12	13.6	25.8	3,408
JACKSON	46	41	89.1	0	0.0	3	6.5	1	2.3	9	19.6	35.5	1,295
JEFFERSON	8	8	100.0	0	0.0	1	12.5	0	0.0	1	12.5	24.5	326
LAFAYETTE	5	4	80.0	0	0.0	2	40.0	0	0.0	2	40.0	21.9	228
LAKE	205	183	89.3	4	2.0	26	12.7	17	9.0	32	15.6	24.2	8,467
LEE	404	373	92.3	6	1.5	46	11.4	32	8.7	63	15.6	23.1	17,489
LEON	125	119	95.2	0	0.0	14	11.2	15	18.1	21	16.8	9.2	13,659
LEVY	26	23	88.5	2	7.7	5	19.2	1	5.6	3	11.5	25.8	1,006
LIBERTY	5	4	80.0	0	0.0	2	40.0	0	0.0	2	40.0	24.0	208
MADISON	17	16	94.1	3	17.6	3	17.6	3	27.3	1	5.9	35.9	473
MANATEE	233	215	92.3	2	0.9	14	6.0	22	10.0	61	26.2	25.7	9,079
MARION	273	254	93.0	4	1.5	31	11.4	27	11.7	45	16.5	32.3	8,440
MARTIN	67	61	91.0	1	1.5	7	10.4	7	11.5	7	10.4	18.2	3,680
MONROE	15	11	73.3	0	0.0	1	6.7	0	0.0	2	13.3	10.6	1,411
NASSAU	62	54	87.1	0	0.0	7	11.3	3	5.7	10	16.1	28.1	2,207
OKALOOSA	143	119	83.2	1	0.7	20	14.0	7	8.0	25	17.5	29.2	4,890
OKEECHOBEE	57	50	87.7	0	0.0	4	7.0	8	14.0	15	26.3	52.1	1,094
ORANGE	746	699	93.7	15	2.0	78	10.5	75	13.5	127	17.0	17.2	43,265
OSCEOLA	227	201	88.5	6	2.6	23	10.1	17	8.9	24	10.6	20.1	11,271
PALM BEACH	621	574	92.4	14	2.3	61	9.8	57	10.8	100	16.1	16.2	38,374
PASCO	288	263	91.3	4	1.4	31	10.8	16	6.0	52	18.1	20.8	13,868
PINELLAS	412	391	94.9	8	1.9	41	10.0	21	5.9	50	12.1	18.4	22,355
POLK	560	509	90.9	16	2.9	52	9.3	54	10.5	100	17.9	27.8	20,113
PUTNAM	95	85	89.5	2	2.1	10	10.5	8	9.3	18	18.9	47.6	1,996
SAINT JOHNS	58	56	96.6	3	5.2	7	12.1	5	9.3	5	8.6	8.4	6,901
SAINT LUCIE	139	129	92.8	4	2.9	12	8.6	12	9.1	15	10.8	16.8	8,273
SANTA ROSA	87	71	81.6	2	2.3	10	11.5	7	9.2	15	17.2	17.5	4,962
SARASOTA	165	148	89.7	3	1.8	19	11.5	13	9.4	25	15.2	19.1	8,646
SEMINOLE	167	153	91.6	3	1.8	20	12.0	7	5.4	13	7.8	12.2	13,736
SUMTER	38	35	92.1	1	2.6	3	7.9	2	5.9	5	13.2	35.8	1,060
SUWANNEE	51	44	86.3	2	3.9	6	11.8	2	5.3	11	21.6	42.9	1,188
TAYLOR	21	19	90.5	0	0.0	2	9.5	0	0.0	3	14.3	42.7	492
UNION	18	16	88.9	0	0.0	1	5.6	0	0.0	5	27.8	45.1	399
VOLUSIA	285	263	92.3	4	1.4	27	9.5	32	13.6	43	15.1	20.2	14,138
WAKULLA	14	14	100.0	0	0.0	1	7.1	1	12.5	2	14.3	16.9	827
WALTON	34	32	94.1	1	2.9	2	5.9	3	10.0	6	17.6	23.9	1,423
WASHINGTON	30	29	96.7	0	0.0	0	0.0	1	4.3	3	10.0	46.5	645

1. Starting in 2004, "trimester prenatal care began" is the time elapsed from the date of the last menstrual period to the date of the first prenatal care visit. Prior to 2004, these data were obtained by direct question that noted the trimester the mother began prenatal care. Consequently, these data are not comparable to data from prior years.

2. Births with unknown information as to when prenatal care began are excluded from the denominator.