

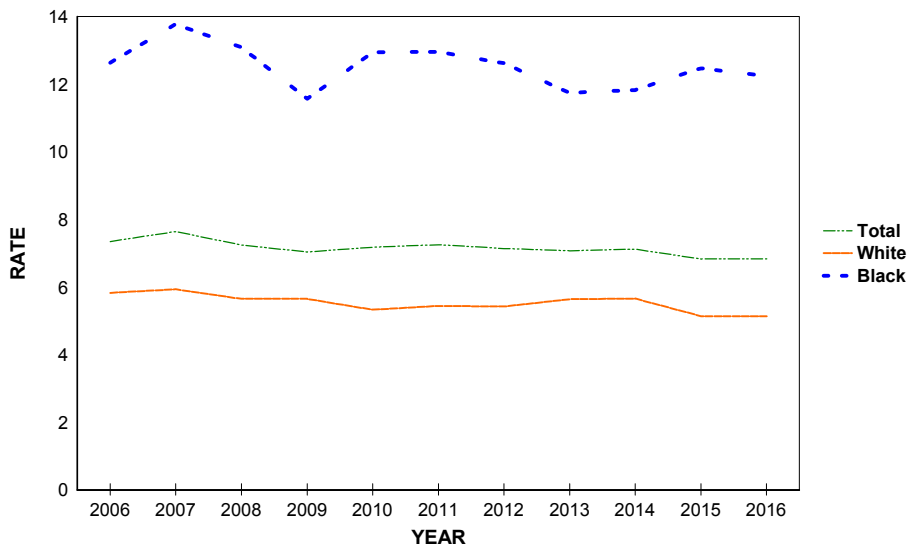
# **Fetal and Infant Deaths**

**CHART F-1: RESIDENT FETAL DEATHS AND RATES PER 1,000 LIVE BIRTHS AND FETAL DEATHS, BY RACE\*, FLORIDA AND UNITED STATES, CENSUS YEARS 1970-2000 AND 2006-2016**

YEAR	NUMBER OF FETAL DEATHS - FL				RATES PER 1,000 - FL			RATES - U.S.		
	TOTAL	WHITE	BLACK	OTHER	TOTAL	WHITE	BLACK	TOTAL	WHITE	BLACK
1970	1,708	1,034	608	7	14.6	11.8	21.6	14.0	12.3	23.2
1980	1,356	848	476	15	10.2	8.6	14.2	9.1	8.1	14.7
1990	1,811	1,071	695	25	9.0	7.1	14.8	7.5	6.4	13.3
2000	1,675	954	667	37	8.1	6.3	13.9	6.6	5.6	12.4
2006	1,756	1,020	650	83	7.3	5.8	12.6	6.1	NA	NA
2007	1,840	1,042	720	72	7.6	5.9	13.8	6.1	NA	NA
2008	1,688	951	681	44	7.2	5.6	13.1	6.2	NA	NA
2009	1,569	904	592	63	7.0	5.6	11.6	6.0	NA	NA
2010	1,551	822	645	79	7.2	5.3	12.9	6.0	NA	NA
2011	1,558	832	641	76	7.3	5.4	13.0	6.1	NA	NA
2012	1,530	822	626	77	7.1	5.4	12.6	6.1	NA	NA
2013	1,533	869	579	81	7.1	5.6	11.7	6.0	NA	NA
2014	1,576	893	587	90	7.1	5.7	11.8	NA	NA	NA
2015	1,541	831	620	83	6.8	5.1	12.5	NA	NA	NA
2016	1,548	828	612	94	6.8	5.1	12.2	NA	NA	NA

\*Fetal deaths and live births based on the race of the mother.

**GRAPH F-1: RESIDENT FETAL DEATH RATES PER 1,000 LIVE BIRTHS AND FETAL DEATHS, BY RACE OF MOTHER, FLORIDA, 2006-2016**

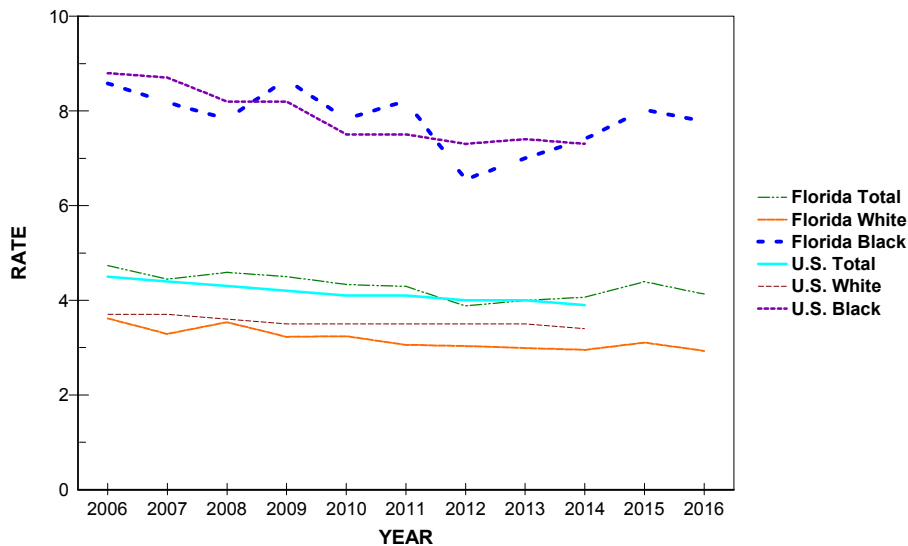


**CHART F-2: RESIDENT NEONATAL DEATHS AND RATES PER 1,000 LIVE BIRTHS,  
BY RACE, FLORIDA AND UNITED STATES,  
CENSUS YEARS 1970-2000 AND 2006-2016**

YEAR	NUMBER OF NEONATAL DEATHS - FL <sup>1</sup>				RATES - FL <sup>1</sup>			RATES - U.S.		
	TOTAL	WHITE	BLACK	OTHER	TOTAL	WHITE	BLACK	TOTAL	WHITE	BLACK
1970	1,847	1,198	636	11	16.0	13.8	23.1	15.1	13.8	22.8
1980	1,282	791	487	3	9.7	8.1	14.7	8.5	7.4	14.6
1990	1,227	742	476	8	6.2	5.0	10.3	5.9	4.8	11.6
2000	925	526	384	13	4.5	3.5	8.1	4.6	3.8	9.4
2006	1,122	630	436	54	4.7	3.6	8.6	4.5	3.7	8.8
2007	1,062	573	422	65	4.4	3.3	8.2	4.4	3.7	8.7
2008	1,061	592	402	65	4.6	3.5	7.8	4.3	3.6	8.2
2009	996	513	438	42	4.5	3.2	8.7	4.2	3.5	8.2
2010	929	497	385	46	4.3	3.2	7.8	4.1	3.5	7.5
2011	915	465	401	46	4.3	3.1	8.2	4.1	3.5	7.5
2012	826	457	321	47	3.9	3.0	6.6	4.0	3.5	7.3
2013	859	458	341	57	4.0	3.0	7.0	4.0	3.5	7.4
2014	893	463	363	62	4.1	2.9	7.4	3.9	3.4	7.3
2015	984	499	394	84	4.4	3.1	8.0	NA	NA	NA
2016	929	469	384	69	4.1	2.9	7.8	NA	NA	NA

1. Neonatal deaths based on race of decedent, live births based on race of mother.

**GRAPH F-2: RESIDENT NEONATAL DEATH RATES PER 1,000 LIVE BIRTHS, BY RACE,  
FLORIDA AND UNITED STATES, 2006-2016**



**CHART F-3: RESIDENT INFANT DEATHS AND RATES PER 1,000 LIVE BIRTHS, BY RACE, FLORIDA AND UNITED STATES, CENSUS YEARS 1970-2000 AND 2006-2016**

YEAR	NUMBER OF INFANT DEATHS - FL <sup>1</sup>				RATES - FL <sup>1</sup>			RATE - U.S.		
	TOTAL	WHITE	BLACK	OTHER	TOTAL	WHITE	BLACK	TOTAL	WHITE	BLACK
1970	2,469	1,538	918	11	21.4	17.7	33.3	20.0	17.8	32.7
1980	1,918	1,137	774	6	14.6	11.7	23.4	12.6	10.9	22.1
1990	1,912	1,123	775	12	9.6	7.5	16.7	9.2	7.6	18.0
2000	1,423	810	594	17	7.0	5.4	12.6	6.9	5.7	14.1
2006	1,713	974	653	84	7.2	5.6	12.9	6.7	5.6	13.3
2007	1,689	906	689	92	7.1	5.2	13.4	6.8	5.6	13.2
2008	1,667	914	661	90	7.2	5.5	12.9	6.6	5.5	12.7
2009	1,525	780	667	75	6.9	4.9	13.2	6.4	5.3	12.6
2010	1,400	750	580	69	6.5	4.9	11.8	6.2	5.2	11.6
2011	1,372	698	584	86	6.4	4.6	12.0	6.1	5.1	11.5
2012	1,285	687	523	73	6.0	4.6	10.7	6.0	5.1	11.2
2013	1,318	707	517	90	6.1	4.6	10.6	6.0	5.1	11.2
2014	1,327	688	538	95	6.0	4.4	11.0	5.8	4.9	11.0
2015	1,400	711	558	124	6.2	4.4	11.4	NA	NA	NA
2016	1,380	694	575	102	6.1	4.3	11.6	NA	NA	NA

1. Infant deaths based on race of decedent, live births based on race of mother.

**GRAPH F-3: RESIDENT INFANT DEATH RATES PER 1,000 LIVE BIRTHS, BY RACE, FLORIDA AND UNITED STATES, 2006-2016**

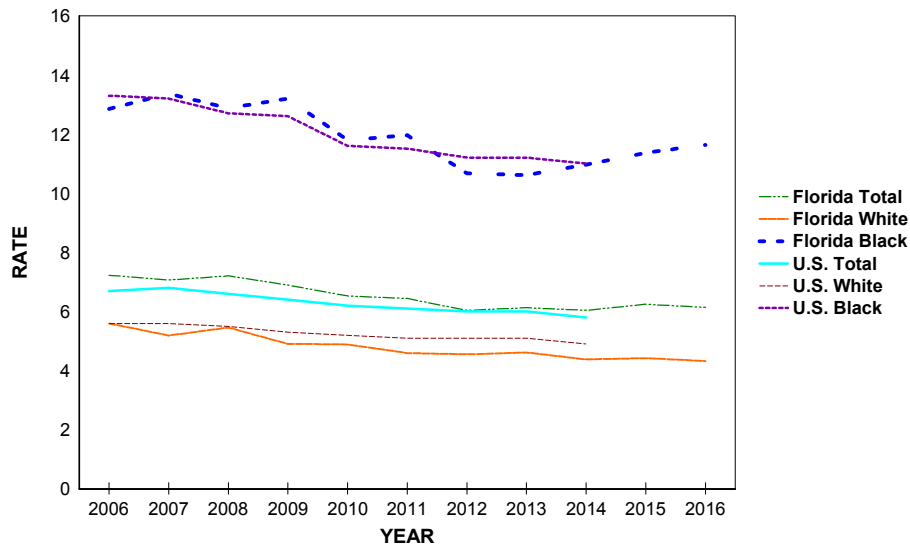


TABLE F-1: RESIDENT AND RECORDED FETAL DEATHS (OF 20 OR MORE WEEKS GESTATION) AND RATES PER 1,000 LIVE BIRTHS AND FETAL DEATHS, BY RACE OF MOTHER, BY COUNTY, FLORIDA, 2016

	RESIDENT FETAL DEATHS					RATES		
	NUMBERS					RATES		
	TOTAL	WHITE	BLACK	OTHER	UNK	TOTAL	WHITE	BLACK
FLORIDA	1548	828	612	94	14	6.8	5.1	12.2
ALACHUA	20	7	12	1	0	6.9	4.1	13.7
BAKER	2	2	0	0	0	5.8	6.5	0.0
BAY	12	7	4	1	0	5.1	4.1	10.9
BRADFORD	5	4	1	0	0	16.3	16.1	20.4
BREVARD	25	18	7	0	0	4.7	4.4	9.1
BROWARD	175	53	113	9	0	7.7	4.2	13.4
CALHOUN	1	1	0	0	0	7.0	7.7	0.0
CHARLOTTE	6	4	1	1	0	5.8	4.5	11.2
CITRUS	4	3	1	0	0	3.7	3.1	23.8
CLAY	11	6	4	1	0	5.0	3.5	13.1
COLLIER	20	14	2	4	0	6.0	5.1	4.7
COLUMBIA	7	4	3	0	0	8.6	6.6	16.7
MIAMI-DADE	206	102	91	8	5	6.3	4.0	13.6
DESOTO	2	2	0	0	0	5.4	6.4	0.0
DIXIE	1	0	0	1	0	6.1	0.0	0.0
DUVAL	121	51	62	6	2	9.0	6.9	13.1
ESCAMBIA	27	14	12	1	0	6.8	5.6	9.9
FLAGLER	8	5	2	0	1	9.9	7.9	17.9
FRANKLIN	2	1	1	0	0	22.2	12.2	200.0
GADSDEN	6	1	5	0	0	10.5	4.7	14.5
GILCHRIST	2	1	1	0	0	9.9	5.3	111.1
GLADES	0	0	0	0	0	0.0	0.0	0.0
GULF	1	1	0	0	0	8.2	10.5	0.0
HAMILTON	1	1	0	0	0	6.3	9.9	0.0
HARDEE	1	1	0	0	0	2.6	2.8	0.0
HENDRY	4	3	1	0	0	7.0	6.1	14.9
HERNANDO	8	8	0	0	0	5.0	5.8	0.0
HIGHLANDS	9	6	2	1	0	9.5	8.4	10.9
HILLSBOROUGH	140	80	47	13	0	8.0	6.4	12.6
HOLMES	1	1	0	0	0	5.3	5.6	0.0
INDIAN RIVER	11	8	2	1	0	8.8	10.3	9.8
JACKSON	5	4	1	0	0	9.4	10.8	6.9
JEFFERSON	1	0	1	0	0	8.2	0.0	19.6
LAFAYETTE	0	0	0	0	0	0.0	0.0	0.0
LAKE	23	13	10	0	0	7.0	5.0	21.1
LEE	34	22	10	2	0	5.0	3.9	9.8
LEON	21	7	13	1	0	7.0	4.6	10.0
LEVY	3	2	1	0	0	7.5	6.2	13.7
LIBERTY	0	0	0	0	0	0.0	0.0	0.0
MADISON	1	0	1	0	0	5.1	0.0	11.8
MANATEE	18	11	7	0	0	5.2	4.2	15.1
MARION	28	16	12	0	0	8.0	5.9	18.7
MARTIN	8	7	1	0	0	6.2	7.4	10.3
MONROE	7	3	3	1	0	9.5	5.1	28.6
NASSAU	6	4	2	0	0	7.3	5.3	39.2
OKALOOSA	19	10	5	3	1	6.8	4.4	16.7
OKEECHOBEE	1	1	0	0	0	2.1	2.3	0.0
ORANGE	98	37	48	10	3	5.9	3.5	10.8
OSCEOLA	31	22	6	2	1	7.1	6.1	14.1
PALM BEACH	110	56	44	10	0	7.3	5.8	10.4
PASCO	33	30	2	1	0	6.4	6.7	5.7
PINELLAS	48	31	16	0	1	5.6	5.0	10.5
POLK	49	32	17	0	0	6.2	5.4	10.9
PUTNAM	7	6	1	0	0	8.1	9.6	5.0
SAINT JOHNS	12	9	2	1	0	5.6	4.9	11.6
SAINT LUCIE	28	15	9	4	0	9.3	7.5	10.9
SANTA ROSA	8	7	1	0	0	4.2	4.1	10.8
SARASOTA	19	13	2	4	0	6.4	5.2	7.4
SEMINOLE	35	23	10	2	0	7.3	6.5	12.9
SUMTER	2	2	0	0	0	4.3	5.4	0.0
SUWANNEE	2	0	2	0	0	4.1	0.0	27.0
TAYLOR	2	2	0	0	0	8.0	10.3	0.0
UNION	2	1	1	0	0	13.0	8.1	40.0
VOLUSIA	43	29	9	5	0	8.5	7.2	11.3
WAKULLA	1	1	0	0	0	2.8	3.2	0.0
WALTON	3	3	0	0	0	3.9	4.3	0.0
WASHINGTON	1	0	1	0	0	4.0	0.0	29.4

TABLE F-1 (Cont.): RESIDENT AND RECORDED FETAL DEATHS (OF 20 OR MORE WEEKS GESTATION) AND RATES PER 1,000 LIVE BIRTHS AND FETAL DEATHS, BY RACE OF MOTHER, BY COUNTY, FLORIDA, 2016

	RECORDED FETAL DEATHS					RATES		
	NUMBERS							
	TOTAL	WHITE	BLACK	OTHER	UNK	TOTAL	WHITE	BLACK
FLORIDA	1577	841	621	98	17	7.0	5.2	12.4
ALACHUA	52	27	23	2	0	8.3	6.1	16.0
BAKER	0	0	0	0	0	0.0	0.0	----
BAY	20	12	7	1	0	7.1	5.7	16.9
BRADFORD	0	0	0	0	0	0.0	0.0	----
BREVARD	23	15	7	0	1	4.5	3.7	9.8
BROWARD	180	53	117	9	1	7.4	4.0	12.9
CALHOUN	0	0	0	0	0	0.0	0.0	0.0
CHARLOTTE	4	3	0	1	0	4.0	3.6	0.0
CITRUS	5	4	1	0	0	5.9	5.2	31.3
CLAY	11	7	2	2	0	4.3	3.9	3.4
COLLIER	20	13	3	4	0	5.5	4.3	6.9
COLUMBIA	4	1	3	0	0	6.4	2.3	18.3
MIAMI-DADE	207	103	91	8	5	6.9	4.4	15.9
DESOTO	1	1	0	0	0	3.3	3.7	0.0
DIXIE	0	0	0	0	0	----	----	----
DUVAL	133	61	63	6	3	8.9	6.8	13.9
ESCAMBIA	36	21	14	1	0	6.3	5.1	10.7
FLAGLER	0	0	0	0	0	0.0	0.0	0.0
FRANKLIN	0	0	0	0	0	----	----	----
GADSDEN	0	0	0	0	0	0.0	0.0	0.0
GILCHRIST	0	0	0	0	0	----	----	----
GLADES	0	0	0	0	0	----	----	----
GULF	0	0	0	0	0	----	----	----
HAMILTON	0	0	0	0	0	0.0	----	0.0
HARDEE	0	0	0	0	0	0.0	0.0	----
HENDRY	0	0	0	0	0	0.0	0.0	----
HERNANDO	12	12	0	0	0	7.0	8.2	0.0
HIGHLANDS	10	8	2	0	0	8.0	8.0	10.4
HILLSBOROUGH	161	98	50	13	0	7.8	6.5	11.9
HOLMES	0	0	0	0	0	0.0	0.0	----
INDIAN RIVER	10	6	3	1	0	9.7	10.3	17.1
JACKSON	2	2	0	0	0	4.7	7.0	0.0
JEFFERSON	0	0	0	0	0	0.0	0.0	----
LAFAYETTE	0	0	0	0	0	----	----	----
LAKE	19	10	9	0	0	7.1	4.8	21.2
LEE	36	23	10	3	0	5.2	4.0	9.7
LEON	31	12	18	1	0	6.6	4.6	9.5
LEVY	0	0	0	0	0	0.0	----	0.0
LIBERTY	0	0	0	0	0	----	----	----
MADISON	0	0	0	0	0	0.0	0.0	----
MANATEE	13	7	5	1	0	5.1	3.7	14.3
MARION	19	10	9	0	0	7.7	5.3	19.6
MARTIN	3	3	0	0	0	3.1	4.9	0.0
MONROE	3	1	1	1	0	5.8	2.6	11.8
NASSAU	6	5	1	0	0	9.4	9.0	17.9
OKALOOSA	16	8	4	3	1	6.8	4.3	14.7
OKEECHOBEE	0	0	0	0	0	0.0	0.0	----
ORANGE	148	69	62	15	2	6.6	4.6	12.1
OSCEOLA	35	23	7	3	2	7.7	6.2	16.1
PALM BEACH	132	70	50	12	0	7.5	6.1	10.5
PASCO	18	14	3	1	0	7.6	6.8	18.4
PINELLAS	54	37	16	0	1	5.6	5.1	10.1
POLK	32	19	13	0	0	5.7	4.5	12.0
PUTNAM	4	3	1	0	0	13.3	15.3	10.8
SAINT JOHNS	12	8	2	1	1	7.4	6.2	8.6
SAINT LUCIE	26	16	6	4	0	8.1	7.1	7.7
SANTA ROSA	3	3	0	0	0	8.1	9.1	0.0
SARASOTA	21	15	3	3	0	5.6	4.7	8.3
SEMINOLE	17	11	6	0	0	5.7	5.1	10.5
SUMTER	0	0	0	0	0	0.0	0.0	----
SUWANNEE	0	0	0	0	0	0.0	0.0	----
TAYLOR	0	0	0	0	0	0.0	0.0	0.0
UNION	0	0	0	0	0	0.0	0.0	----
VOLUSIA	34	23	9	2	0	8.1	7.0	12.4
WAKULLA	0	0	0	0	0	0.0	0.0	----
WALTON	3	3	0	0	0	2.5	2.7	0.0
WASHINGTON	0	0	0	0	0	0.0	0.0	----

---- Indicates that no fetal deaths nor live births occurred for the race group in the county, therefore a rate could not be calculated.

TABLE F-2: RESIDENT FETAL DEATHS AND RATE PER 1,000 LIVE BIRTHS AND FETAL DEATHS BY HISPANIC OR HAITIAN ORIGIN OF MOTHER, BY COUNTY, FLORIDA, 2016

	NUMBERS									RATE
	HISPANIC ORIGIN									TOTAL HISPANIC
	TOTAL	TOTAL HISPANIC	MEXICAN	PUERTO RICAN	CUBAN	OTHER/UNK HISPANIC	HAITIAN	NON-HISPANIC/HAITIAN	UNK	
FLORIDA	1,548	357	66	78	73	140	121	1,008	62	5.4
ALACHUA	20	1	0	1	0	0	0	19	0	4.8
BAKER	2	0	0	0	0	0	0	2	0	0.0
BAY	12	2	1	0	0	1	0	10	0	9.0
BRADFORD	5	0	0	0	0	0	0	5	0	0.0
BREVARD	25	2	1	1	0	0	0	22	1	3.0
BROWARD	175	34	3	1	7	23	28	97	16	4.8
CALHOUN	1	0	0	0	0	0	0	1	0	0.0
CHARLOTTE	6	1	0	0	0	1	0	5	0	10.8
CITRUS	4	1	0	0	1	0	0	3	0	14.5
CLAY	11	0	0	0	0	0	0	11	0	0.0
COLLIER	20	11	4	1	4	2	3	6	0	7.0
COLUMBIA	7	0	0	0	0	0	0	7	0	0.0
MIAMI-DADE	206	100	2	8	41	49	35	57	14	4.9
DESOTO	2	1	1	0	0	0	0	1	0	7.0
DIXIE	1	0	0	0	0	0	0	1	0	0.0
DUVAL	121	10	4	4	0	2	2	103	6	6.5
ESCAMBIA	27	1	0	0	0	1	1	24	1	4.4
FLAGLER	8	1	0	0	1	0	0	6	1	11.4
FRANKLIN	2	0	0	0	0	0	0	2	0	0.0
GADSDEN	6	1	0	0	0	1	0	5	0	10.1
GILCHRIST	2	0	0	0	0	0	0	2	0	0.0
GLADES	0	0	0	0	0	0	0	0	0	0.0
GULF	1	0	0	0	0	0	0	1	0	0.0
HAMILTON	1	0	0	0	0	0	0	1	0	0.0
HARDEE	1	0	0	0	0	0	0	1	0	0.0
HENDRY	4	2	1	0	1	0	0	2	0	5.8
HERNANDO	8	1	0	1	0	0	0	7	0	5.2
HIGHLANDS	9	4	3	0	1	0	0	5	0	15.0
HILLSBOROUGH	140	28	9	3	5	11	3	106	3	5.2
HOLMES	1	0	0	0	0	0	0	1	0	0.0
INDIAN RIVER	11	2	0	1	0	1	0	9	0	6.9
JACKSON	5	1	1	0	0	0	0	4	0	37.0
JEFFERSON	1	0	0	0	0	0	0	1	0	0.0
LAFAYETTE	0	0	0	0	0	0	0	0	0	0.0
LAKE	23	2	1	0	0	1	1	20	0	3.0
LEE	34	9	1	2	4	2	6	19	0	4.0
LEON	21	1	1	0	0	0	0	20	0	6.8
LEVY	3	0	0	0	0	0	0	3	0	0.0
LIBERTY	0	0	0	0	0	0	0	0	0	0.0
MADISON	1	0	0	0	0	0	0	1	0	0.0
MANATEE	18	5	4	1	0	0	0	13	0	5.2
MARION	28	3	0	1	0	2	0	25	0	5.9
MARTIN	8	0	0	0	0	0	0	8	0	0.0
MONROE	7	1	0	0	0	1	1	5	0	4.3
NASSAU	6	1	0	1	0	0	0	5	0	18.9
OKALOOSA	19	1	1	0	0	0	0	17	1	3.3
OKEECHOBEE	1	0	0	0	0	0	0	1	0	0.0
ORANGE	98	28	3	12	1	12	19	43	8	4.9
OSCEOLA	31	13	0	13	0	0	4	14	0	5.4
PALM BEACH	110	32	6	5	5	16	14	60	4	6.7
PASCO	33	4	2	0	0	2	0	27	2	4.4
PINELLAS	48	8	4	1	1	2	0	38	2	7.3
POLK	49	11	5	6	0	0	2	36	0	5.1
PUTNAM	7	1	0	0	1	0	0	6	0	7.0
SAINT JOHNS	12	1	1	0	0	0	0	11	0	7.7
SAINT LUCIE	28	9	5	2	0	2	1	18	0	12.8
SANTA ROSA	8	1	0	1	0	0	0	7	0	10.3
SARASOTA	19	4	0	2	0	2	1	13	1	12.6
SEMINOLE	35	7	1	2	0	4	0	27	1	6.2
SUMTER	2	0	0	0	0	0	0	2	0	0.0
SUWANNEE	2	0	0	0	0	0	0	2	0	0.0
TAYLOR	2	0	0	0	0	0	0	2	0	0.0
UNION	2	0	0	0	0	0	0	2	0	0.0
VOLUSIA	43	11	1	8	0	2	0	31	1	13.0
WAKULLA	1	0	0	0	0	0	0	1	0	0.0
WALTON	3	0	0	0	0	0	0	3	0	0.0
WASHINGTON	1	0	0	0	0	0	0	1	0	0.0

TABLE F-3: RESIDENT FETAL DEATHS BY AGE OF MOTHER, BY COUNTY, FLORIDA, 2016

	TOTAL	AGE OF MOTHER													
		<13	13	14	15	16	17	18	19	20-24	25-29	30-34	35-44	45+	UNK
FLORIDA	1,548	0	0	0	5	6	15	31	46	291	411	371	327	8	37
ALACHUA	20	0	0	0	0	0	0	2	0	5	1	6	6	0	0
BAKER	2	0	0	0	0	1	0	0	0	1	0	0	0	0	0
BAY	12	0	0	0	0	0	0	0	0	4	3	1	4	0	0
BRADFORD	5	0	0	0	0	0	0	0	0	1	3	0	1	0	0
BREVARD	25	0	0	0	0	0	0	2	0	3	6	7	7	0	0
BROWARD	175	0	0	0	1	1	0	1	4	16	35	47	48	1	21
CALHOUN	1	0	0	0	0	0	0	0	0	0	1	0	0	0	0
CHARLOTTE	6	0	0	0	0	0	0	0	0	2	2	0	2	0	0
CITRUS	4	0	0	0	0	0	0	0	1	3	0	0	0	0	0
CLAY	11	0	0	0	0	0	0	0	1	1	4	4	1	0	0
COLLIER	20	0	0	0	0	0	0	1	1	4	6	4	3	0	1
COLUMBIA	7	0	0	0	0	0	0	0	0	2	3	2	0	0	0
MIAMI-DADE	206	0	0	0	1	1	3	5	5	36	40	61	47	1	6
DESOTO	2	0	0	0	0	0	0	0	0	0	2	0	0	0	0
DIXIE	1	0	0	0	0	0	0	0	0	0	0	1	0	0	0
DUVAL	121	0	0	0	1	0	3	2	2	23	49	27	12	0	2
ESCAMBIA	27	0	0	0	0	0	0	1	3	10	5	3	5	0	0
FLAGLER	8	0	0	0	0	0	0	0	0	2	1	2	3	0	0
FRANKLIN	2	0	0	0	0	0	0	0	0	2	0	0	0	0	0
GADSDEN	6	0	0	0	0	0	0	0	0	2	1	3	0	0	0
GILCHRIST	2	0	0	0	0	0	0	0	0	0	1	1	0	0	0
GLADES	0	0	0	0	0	0	0	0	0	0	0	0	0	0	0
GULF	1	0	0	0	0	0	0	0	0	0	1	0	0	0	0
HAMILTON	1	0	0	0	0	0	0	0	0	0	0	1	0	0	0
HARDEE	1	0	0	0	0	0	0	0	0	0	0	1	0	0	0
HENDRY	4	0	0	0	0	0	0	0	0	0	2	1	1	0	0
HERNANDO	8	0	0	0	0	0	0	0	0	0	3	3	2	0	0
HIGHLANDS	9	0	0	0	0	0	0	0	0	0	2	3	4	0	0
HILLSBOROUGH	140	0	0	0	0	0	1	2	9	33	34	30	28	3	0
HOLMES	1	0	0	0	0	0	0	0	0	1	0	0	0	0	0
INDIAN RIVER	11	0	0	0	0	0	0	1	1	5	1	1	2	0	0
JACKSON	5	0	0	0	0	1	0	0	0	0	2	1	1	0	0
JEFFERSON	1	0	0	0	0	0	0	0	0	1	0	0	0	0	0
LAFAYETTE	0	0	0	0	0	0	0	0	0	0	0	0	0	0	0
LAKE	23	0	0	0	0	0	0	0	1	5	10	4	3	0	0
LEE	34	0	0	0	0	0	1	0	2	6	7	9	9	0	0
LEON	21	0	0	0	1	0	0	0	0	5	7	2	6	0	0
LEVY	3	0	0	0	0	0	0	0	0	2	0	0	1	0	0
LIBERTY	0	0	0	0	0	0	0	0	0	0	0	0	0	0	0
MADISON	1	0	0	0	0	0	0	0	0	0	0	1	0	0	0
MANATEE	18	0	0	0	0	0	1	0	0	1	7	5	4	0	0
MARION	28	0	0	0	0	1	1	0	0	9	4	6	7	0	0
MARTIN	8	0	0	0	0	0	0	0	0	1	1	3	3	0	0
MONROE	7	0	0	0	0	0	0	0	0	1	2	3	1	0	0
NASSAU	6	0	0	0	0	0	0	0	0	2	2	1	1	0	0
OKALOOSA	19	0	0	0	0	0	0	1	1	2	9	3	3	0	0
OKEECHOBEE	1	0	0	0	0	0	0	0	0	1	0	0	0	0	0
ORANGE	98	0	0	0	0	1	1	1	4	16	22	25	23	0	5
OSCEOLA	31	0	0	0	0	0	0	1	1	4	5	14	6	0	0
PALM BEACH	110	0	0	0	0	0	0	1	1	16	38	23	30	1	0
PASCO	33	0	0	0	1	0	0	0	1	7	12	7	5	0	0
PINELLAS	48	0	0	0	0	0	1	1	3	7	15	10	9	1	1
POLK	49	0	0	0	0	0	2	2	1	10	17	10	7	0	0
PUTNAM	7	0	0	0	0	0	0	0	1	1	3	1	1	0	0
SAINT JOHNS	12	0	0	0	0	0	0	0	0	2	4	3	3	0	0
SAINT LUCIE	28	0	0	0	0	0	0	2	0	10	7	4	5	0	0
SANTA ROSA	8	0	0	0	0	0	0	0	0	2	3	1	2	0	0
SARASOTA	19	0	0	0	0	0	1	2	0	3	3	9	0	1	0
SEMINOLE	35	0	0	0	0	0	0	1	1	4	9	6	13	0	1
SUMTER	2	0	0	0	0	0	0	0	0	1	1	0	0	0	0
SUWANNEE	2	0	0	0	0	0	0	0	0	1	0	1	0	0	0
TAYLOR	2	0	0	0	0	0	0	0	0	1	1	0	0	0	0
UNION	2	0	0	0	0	0	0	0	1	1	0	0	0	0	0
VOLUSIA	43	0	0	0	0	0	0	1	1	11	14	9	7	0	0
WAKULLA	1	0	0	0	0	0	0	1	0	0	0	0	0	0	0
WALTON	3	0	0	0	0	0	0	0	0	2	0	0	1	0	0
WASHINGTON	1	0	0	0	0	0	0	0	0	0	0	1	0	0	0



TABLE F-4: RESIDENT AND RECORDED NEONATAL DEATHS (UNDER 28 DAYS) AND RATES PER 1,000 LIVE BIRTHS, BY RACE, BY COUNTY, FLORIDA, 2016

	RESIDENT NEONATAL DEATHS					RATES*		
	NUMBERS					TOTAL	WHITE	BLACK
	TOTAL	WHITE	BLACK	OTHER	UNK			
FLORIDA	929	469	384	69	7	4.1	2.9	7.8
ALACHUA	18	3	12	1	2	6.3	1.8	13.8
BAKER	1	0	0	1	0	2.9	0.0	0.0
BAY	10	4	6	0	0	4.3	2.3	16.5
BRADFORD	1	0	1	0	0	3.3	0.0	20.8
BREVARD	17	11	5	1	0	3.2	2.7	6.5
BROWARD	78	31	44	3	0	3.5	2.5	5.3
CALHOUN	0	0	0	0	0	0.0	0.0	0.0
CHARLOTTE	6	6	0	0	0	5.8	6.7	0.0
CITRUS	6	4	0	2	0	5.6	4.1	0.0
CLAY	6	4	2	0	0	2.7	2.3	6.6
COLLIER	14	11	3	0	0	4.2	4.0	7.1
COLUMBIA	3	1	1	1	0	3.7	1.7	5.6
MIAMI-DADE	115	52	58	5	0	3.5	2.1	8.8
DESOTO	1	0	1	0	0	2.7	0.0	20.0
DIXIE	1	1	0	0	0	6.1	7.0	0.0
DUVAL	67	24	36	7	0	5.0	3.3	7.7
ESCAMBIA	22	10	9	3	0	5.5	4.0	7.5
FLAGLER	1	1	0	0	0	1.3	1.6	0.0
FRANKLIN	0	0	0	0	0	0.0	0.0	0.0
GADSDEN	3	1	2	0	0	5.3	4.7	5.9
GILCHRIST	2	2	0	0	0	10.0	10.6	0.0
GLADES	1	1	0	0	0	15.2	18.9	0.0
GULF	1	0	0	1	0	8.3	0.0	0.0
HAMILTON	2	1	0	1	0	12.7	10.0	0.0
HARDEE	0	0	0	0	0	0.0	0.0	0.0
HENDRY	1	0	1	0	0	1.8	0.0	15.2
HERNANDO	3	2	1	0	0	1.9	1.5	7.8
HIGHLANDS	3	3	0	0	0	3.2	4.2	0.0
HILLSBOROUGH	91	39	48	4	0	5.3	3.1	13.0
HOLMES	1	1	0	0	0	5.4	5.7	0.0
INDIAN RIVER	7	3	4	0	0	5.6	3.9	19.8
JACKSON	0	0	0	0	0	0.0	0.0	0.0
JEFFERSON	0	0	0	0	0	0.0	0.0	0.0
LAFAYETTE	2	2	0	0	0	29.4	32.8	0.0
LAKE	7	5	2	0	0	2.1	1.9	4.3
LEE	30	19	6	5	0	4.4	3.4	5.9
LEON	10	2	8	0	0	3.3	1.3	6.2
LEVY	3	2	0	1	0	7.6	6.3	0.0
LIBERTY	0	0	0	0	0	0.0	0.0	0.0
MADISON	3	0	1	2	0	15.2	0.0	11.9
MANATEE	19	14	4	0	1	5.5	5.3	8.8
MARION	28	18	8	2	0	8.1	6.7	12.7
MARTIN	8	6	1	1	0	6.3	6.4	10.4
MONROE	4	3	1	0	0	5.5	5.1	9.8
NASSAU	2	2	0	0	0	2.4	2.7	0.0
OKALOOSA	11	8	1	2	0	4.0	3.5	3.4
OKEECHOBEE	0	0	0	0	0	0.0	0.0	0.0
ORANGE	91	40	43	6	2	5.5	3.8	9.8
OSCEOLA	21	15	3	2	1	4.9	4.2	7.2
PALM BEACH	41	16	21	4	0	2.7	1.7	5.0
PASCO	22	20	1	1	0	4.3	4.5	2.9
PINELLAS	43	24	14	5	0	5.1	3.9	9.3
POLK	34	14	18	2	0	4.4	2.4	11.7
PUTNAM	5	3	0	2	0	5.9	4.9	0.0
SAINT JOHNS	6	4	2	0	0	2.8	2.2	11.8
SAINT LUCIE	13	7	5	1	0	4.3	3.5	6.1
SANTA ROSA	5	2	3	0	0	2.6	1.2	32.6
SARASOTA	8	5	2	0	1	2.7	2.0	7.5
SEMINOLE	9	7	1	1	0	1.9	2.0	1.3
SUMTER	1	1	0	0	0	2.2	2.7	0.0
SUWANNEE	0	0	0	0	0	0.0	0.0	0.0
TAYLOR	0	0	0	0	0	0.0	0.0	0.0
UNION	0	0	0	0	0	0.0	0.0	0.0
VOLUSIA	19	12	5	2	0	3.8	3.0	6.3
WAKULLA	0	0	0	0	0	0.0	0.0	0.0
WALTON	0	0	0	0	0	0.0	0.0	0.0
WASHINGTON	2	2	0	0	0	8.1	9.7	0.0

\*Rates based on neonatal deaths by race of decedent, live births by race of mother.

---- Indicates that no neonatal deaths nor live births occurred for the race group in the county, therefore a rate could not be calculated.

TABLE F-4 (Cont.): RESIDENT AND RECORDED NEONATAL DEATHS (UNDER 28 DAYS) AND RATES PER 1,000 LIVE BIRTHS, BY RACE, BY COUNTY, FLORIDA, 2016

	RECORDED NEONATAL DEATHS					RATES*		
	NUMBERS					TOTAL	WHITE	BLACK
	TOTAL	WHITE	BLACK	OTHER	UNK			
FLORIDA	945	482	386	69	8	4.2	3.0	7.8
ALACHUA	62	26	24	10	2	10.0	5.9	17.0
BAKER	0	0	0	0	0	0.0	0.0	----
BAY	14	7	6	1	0	5.0	3.3	14.7
BRADFORD	0	0	0	0	0	0.0	0.0	----
BREVARD	8	5	3	0	0	1.6	1.2	4.3
BROWARD	88	29	56	3	0	3.7	2.2	6.2
CALHOUN	0	0	0	0	0	0.0	0.0	0.0
CHARLOTTE	1	1	0	0	0	1.0	1.2	0.0
CITRUS	3	2	0	1	0	3.6	2.6	0.0
CLAY	6	5	1	0	0	2.4	2.8	1.7
COLLIER	11	9	1	1	0	3.0	3.0	2.3
COLUMBIA	2	1	0	1	0	3.2	2.3	0.0
MIAMI-DADE	116	63	48	5	0	3.9	2.7	8.5
DESOTO	0	0	0	0	0	0.0	0.0	0.0
DIXIE	0	0	0	0	0	----	----	----
DUVAL	77	31	39	7	0	5.2	3.5	8.7
ESCAMBIA	36	20	14	2	0	6.3	4.9	10.8
FLAGLER	0	0	0	0	0	0.0	0.0	0.0
FRANKLIN	0	0	0	0	0	----	----	----
GADSDEN	0	0	0	0	0	0.0	0.0	0.0
GILCHRIST	1	1	0	0	0	----	----	----
GLADES	0	0	0	0	0	----	----	----
GULF	0	0	0	0	0	----	----	----
HAMILTON	0	0	0	0	0	0.0	----	0.0
HARDEE	0	0	0	0	0	0.0	0.0	----
HENDRY	0	0	0	0	0	0.0	0.0	----
HERNANDO	0	0	0	0	0	0.0	0.0	0.0
HIGHLANDS	1	1	0	0	0	0.8	1.0	0.0
HILLSBOROUGH	133	71	60	2	0	6.5	4.7	14.4
HOLMES	0	0	0	0	0	0.0	0.0	----
INDIAN RIVER	4	2	2	0	0	3.9	3.5	11.6
JACKSON	0	0	0	0	0	0.0	0.0	0.0
JEFFERSON	0	0	0	0	0	0.0	0.0	----
LAFAYETTE	0	0	0	0	0	----	----	----
LAKE	3	2	1	0	0	1.1	1.0	2.4
LEE	29	17	7	5	0	4.2	3.0	6.8
LEON	14	1	10	2	1	3.0	0.4	5.3
LEVY	0	0	0	0	0	0.0	----	0.0
LIBERTY	0	0	0	0	0	----	----	----
MADISON	0	0	0	0	0	0.0	0.0	----
MANATEE	10	6	3	0	1	3.9	3.2	8.7
MARION	5	4	1	0	0	2.1	2.1	2.2
MARTIN	3	2	1	0	0	3.1	3.3	10.8
MONROE	2	1	1	0	0	3.9	2.6	11.9
NASSAU	1	1	0	0	0	1.6	1.8	0.0
OKALOOSA	3	2	0	1	0	1.3	1.1	0.0
OKEECHOBEE	0	0	0	0	0	0.0	0.0	----
ORANGE	153	84	54	12	3	6.9	5.6	10.7
OSCEOLA	4	4	0	0	0	0.9	1.1	0.0
PALM BEACH	50	19	25	6	0	2.9	1.7	5.3
PASCO	6	4	1	1	0	2.6	2.0	6.3
PINELLAS	59	36	17	6	0	6.1	5.0	10.9
POLK	10	4	4	2	0	1.8	1.0	3.7
PUTNAM	1	0	1	0	0	3.4	0.0	10.9
SAINT JOHNS	2	2	0	0	0	1.2	1.6	0.0
SAINT LUCIE	8	4	4	0	0	2.5	1.8	5.2
SANTA ROSA	0	0	0	0	0	0.0	0.0	0.0
SARASOTA	12	9	2	0	1	3.2	2.9	5.6
SEMINOLE	2	2	0	0	0	0.7	0.9	0.0
SUMTER	0	0	0	0	0	0.0	0.0	----
SUWANNEE	0	0	0	0	0	0.0	0.0	----
TAYLOR	0	0	0	0	0	0.0	0.0	0.0
UNION	0	0	0	0	0	0.0	0.0	----
VOLUSIA	4	3	0	1	0	1.0	0.9	0.0
WAKULLA	0	0	0	0	0	0.0	0.0	----
WALTON	1	1	0	0	0	0.8	0.9	0.0
WASHINGTON	0	0	0	0	0	0.0	0.0	----

\*Rates based on neonatal deaths by race of decedent, live births by race of mother.

---- Indicates that no neonatal deaths nor live births occurred for the race group in the county, therefore a rate could not be calculated.

TABLE F-5: RESIDENT AND RECORDED INFANT DEATHS (UNDER 1 YEAR) AND RATES PER 1,000 LIVE BIRTHS, BY RACE, BY COUNTY, FLORIDA, 2016

	RESIDENT INFANT DEATHS					RATES*		
	NUMBERS					RATES*		
	TOTAL	WHITE	BLACK	OTHER	UNK	TOTAL	WHITE	BLACK
FLORIDA	1380	694	575	102	9	6.1	4.3	11.6
ALACHUA	24	6	14	2	2	8.4	3.5	16.1
BAKER	1	0	0	1	0	2.9	0.0	0.0
BAY	15	8	6	1	0	6.4	4.7	16.5
BRADFORD	2	1	1	0	0	6.6	4.1	20.8
BREVARD	29	19	8	1	1	5.5	4.6	10.5
BROWARD	117	40	67	9	1	5.2	3.2	8.1
CALHOUN	1	1	0	0	0	7.0	7.8	0.0
CHARLOTTE	8	7	1	0	0	7.7	7.8	11.4
CITRUS	9	7	0	2	0	8.5	7.2	0.0
CLAY	12	7	4	1	0	5.4	4.1	13.2
COLLIER	16	12	4	0	0	4.8	4.4	9.5
COLUMBIA	8	5	2	1	0	9.9	8.3	11.3
MIAMI-DADE	170	78	86	6	0	5.2	3.1	13.0
DESOTO	1	0	1	0	0	2.7	0.0	20.0
DIXIE	1	1	0	0	0	6.1	7.0	0.0
DUVAL	111	39	62	10	0	8.4	5.3	13.2
ESCAMBIA	33	15	15	3	0	8.3	6.0	12.5
FLAGLER	2	1	0	1	0	2.5	1.6	0.0
FRANKLIN	1	1	0	0	0	11.4	12.3	0.0
GADSDEN	7	2	5	0	0	12.3	9.4	14.7
GILCHRIST	2	2	0	0	0	10.0	10.6	0.0
GLADES	2	1	0	1	0	30.3	18.9	0.0
GULF	2	1	0	1	0	16.5	10.6	0.0
HAMILTON	2	1	0	1	0	12.7	10.0	0.0
HARDEE	0	0	0	0	0	0.0	0.0	0.0
HENDRY	2	0	2	0	0	3.5	0.0	30.3
HERNANDO	6	5	1	0	0	3.8	3.6	7.8
HIGHLANDS	3	3	0	0	0	3.2	4.2	0.0
HILLSBOROUGH	129	59	64	6	0	7.4	4.7	17.4
HOLMES	1	1	0	0	0	5.4	5.7	0.0
INDIAN RIVER	10	5	5	0	0	8.0	6.5	24.8
JACKSON	2	2	0	0	0	3.8	5.4	0.0
JEFFERSON	0	0	0	0	0	0.0	0.0	0.0
LAFAYETTE	2	2	0	0	0	29.4	32.8	0.0
LAKE	16	11	4	1	0	4.9	4.3	8.6
LEE	43	28	8	7	0	6.4	5.0	7.9
LEON	16	2	12	2	0	5.4	1.3	9.3
LEVY	5	3	1	1	0	12.6	9.4	13.9
LIBERTY	0	0	0	0	0	0.0	0.0	0.0
MADISON	3	0	1	2	0	15.2	0.0	11.9
MANATEE	24	16	6	1	1	7.0	6.1	13.1
MARION	38	23	13	2	0	10.9	8.5	20.7
MARTIN	9	6	2	1	0	7.1	6.4	20.8
MONROE	5	4	1	0	0	6.8	6.8	9.8
NASSAU	4	3	1	0	0	4.9	4.0	20.4
OKALOOSA	14	9	3	2	0	5.0	4.0	10.2
OKEECHOBEE	3	2	1	0	0	6.2	4.6	34.5
ORANGE	118	52	54	10	2	7.1	4.9	12.3
OSCEOLA	26	19	4	2	1	6.0	5.3	9.5
PALM BEACH	64	29	30	5	0	4.3	3.0	7.1
PASCO	31	28	1	2	0	6.1	6.3	2.9
PINELLAS	58	32	20	6	0	6.8	5.1	13.3
POLK	55	22	30	3	0	7.0	3.7	19.5
PUTNAM	5	3	0	2	0	5.9	4.9	0.0
SAINT JOHNS	11	9	2	0	0	5.2	5.0	11.8
SAINT LUCIE	16	7	8	1	0	5.3	3.5	9.8
SANTA ROSA	11	6	5	0	0	5.8	3.5	54.3
SARASOTA	12	7	3	1	1	4.1	2.8	11.2
SEMINOLE	19	12	5	2	0	4.0	3.4	6.5
SUMTER	3	3	0	0	0	6.5	8.2	0.0
SUWANNEE	2	1	1	0	0	4.1	2.5	13.9
TAYLOR	0	0	0	0	0	0.0	0.0	0.0
UNION	0	0	0	0	0	0.0	0.0	0.0
VOLUSIA	33	21	10	2	0	6.6	5.3	12.7
WAKULLA	0	0	0	0	0	0.0	0.0	0.0
WALTON	2	2	0	0	0	2.6	2.9	0.0
WASHINGTON	3	2	1	0	0	12.2	9.7	30.3

\*Rates based on infant deaths by race of decedent, live births by race of mother.

--- Indicates that no neonatal deaths nor live births occurred for the race group in the county, therefore a rate could not be calculated.

TABLE F-5 (Cont.): RESIDENT AND RECORDED INFANT DEATHS (UNDER 1 YEAR) AND RATES PER 1,000 LIVE BIRTHS, BY RACE, BY COUNTY, FLORIDA, 2016

	RECORDED INFANT DEATHS					RATES*		
	NUMBERS					RATES*		
	TOTAL	WHITE	BLACK	OTHER	UNK	TOTAL	WHITE	BLACK
FLORIDA	1415	718	586	101	10	6.3	4.5	11.8
ALACHUA	81	34	34	11	2	13.1	7.7	24.0
BAKER	0	0	0	0	0	0.0	0.0	----
BAY	21	13	6	2	0	7.5	6.2	14.7
BRADFORD	1	0	0	1	0	500.0	0.0	----
BREVARD	14	9	4	0	1	2.7	2.2	5.7
BROWARD	137	44	85	7	1	5.7	3.3	9.5
CALHOUN	1	1	0	0	0	333.3	500.0	0.0
CHARLOTTE	2	1	1	0	0	2.0	1.2	10.2
CITRUS	6	4	1	1	0	7.2	5.2	32.3
CLAY	12	9	3	0	0	4.8	5.0	5.1
COLLIER	15	12	2	1	0	4.1	3.9	4.6
COLUMBIA	5	4	0	1	0	8.1	9.0	0.0
MIAMI-DADE	181	94	78	9	0	6.1	4.0	13.9
DESOTO	0	0	0	0	0	0.0	0.0	0.0
DIXIE	0	0	0	0	0	----	----	----
DUVAL	129	52	67	10	0	8.7	5.9	14.9
ESCAMBIA	52	30	20	2	0	9.1	7.4	15.5
FLAGLER	1	0	0	1	0	111.1	0.0	0.0
FRANKLIN	1	1	0	0	0	----	----	----
GADSDEN	3	0	3	0	0	750.0	0.0	3,000.0
GILCHRIST	1	1	0	0	0	----	----	----
GLADES	0	0	0	0	0	----	----	----
GULF	0	0	0	0	0	----	----	----
HAMILTON	0	0	0	0	0	0.0	----	0.0
HARDEE	0	0	0	0	0	0.0	0.0	----
HENDRY	1	0	1	0	0	1,000.0	0.0	----
HERNANDO	3	3	0	0	0	1.8	2.1	0.0
HIGHLANDS	1	1	0	0	0	0.8	1.0	0.0
HILLSBOROUGH	171	89	77	5	0	8.4	5.9	18.5
HOLMES	0	0	0	0	0	0.0	0.0	----
INDIAN RIVER	6	3	3	0	0	5.9	5.2	17.4
JACKSON	2	2	0	0	0	4.7	7.1	0.0
JEFFERSON	0	0	0	0	0	0.0	0.0	----
LAFAYETTE	0	0	0	0	0	----	----	----
LAKE	8	6	2	0	0	3.0	2.9	4.8
LEE	38	22	9	7	0	5.5	3.9	8.8
LEON	24	4	15	4	1	5.1	1.5	8.0
LEVY	0	0	0	0	0	0.0	----	0.0
LIBERTY	0	0	0	0	0	----	----	----
MADISON	0	0	0	0	0	0.0	0.0	----
MANATEE	14	8	5	0	1	5.5	4.3	14.5
MARION	9	7	2	0	0	3.7	3.7	4.4
MARTIN	3	2	1	0	0	3.1	3.3	10.8
MONROE	2	1	1	0	0	3.9	2.6	11.9
NASSAU	1	1	0	0	0	1.6	1.8	0.0
OKALOOSA	6	3	2	1	0	2.6	1.6	7.4
OKEECHOBEE	2	2	0	0	0	333.3	333.3	----
ORANGE	201	105	75	18	3	9.0	7.0	14.8
OSCEOLA	11	9	2	0	0	2.4	2.4	4.7
PALM BEACH	67	28	33	6	0	3.8	2.5	7.0
PASCO	10	8	1	1	0	4.3	3.9	6.3
PINELLAS	89	55	26	8	0	9.2	7.6	16.7
POLK	24	11	10	3	0	4.3	2.6	9.4
PUTNAM	1	0	1	0	0	3.4	0.0	10.9
SAINT JOHNS	3	3	0	0	0	1.9	2.3	0.0
SAINT LUCIE	11	4	6	1	0	3.5	1.8	7.7
SANTA ROSA	1	0	1	0	0	2.7	0.0	38.5
SARASOTA	14	11	2	0	1	3.7	3.5	5.6
SEMINOLE	10	7	3	0	0	3.4	3.2	5.3
SUMTER	3	2	1	0	0	600.0	500.0	----
SUWANNEE	0	0	0	0	0	0.0	0.0	----
TAYLOR	0	0	0	0	0	0.0	0.0	0.0
UNION	0	0	0	0	0	0.0	0.0	----
VOLUSIA	13	10	2	1	0	3.1	3.1	2.8
WAKULLA	0	0	0	0	0	0.0	0.0	----
WALTON	2	2	0	0	0	1.7	1.8	0.0
WASHINGTON	1	0	1	0	0	1,000.0	0.0	----

\*Rates based on infant deaths by race of decedent, live births by race of mother.

---- Indicates that no neonatal deaths nor live births occurred for the race group in the county, therefore a rate could not be calculated.

TABLE F-6: RESIDENT INFANT DEATHS AND RATE PER 1,000 LIVE BIRTHS BY HISPANIC OR HAITIAN ORIGIN, BY COUNTY, FLORIDA, 2016

	NUMBERS										RATE
	HISPANIC ORIGIN										
	TOTAL	TOTAL			OTHER/UNK			NON-HISPANIC/		TOTAL	
	HISPANIC	MEXICAN	PUERTO RICAN	CUBAN	HISPANIC	HAITIAN	HAITIAN	UNK	HISPANIC		
FLORIDA	1,380	355	59	95	50	151	73	919	33	5.4	
ALACHUA	24	0	0	0	0	0	0	21	3	0.0	
BAKER	1	0	0	0	0	0	0	0	1	0.0	
BAY	15	0	0	0	0	0	0	15	0	0.0	
BRADFORD	2	0	0	0	0	0	0	2	0	0.0	
BREVARD	29	3	0	3	0	0	1	24	1	4.5	
BROWARD	117	34	2	7	6	19	15	63	5	4.8	
CALHOUN	1	0	0	0	0	0	0	1	0	0.0	
CHARLOTTE	8	2	0	0	0	2	0	6	0	21.7	
CITRUS	9	1	0	0	1	0	0	8	0	14.7	
CLAY	12	3	2	0	0	1	0	9	0	14.1	
COLLIER	16	11	6	1	0	4	1	4	0	7.0	
COLUMBIA	8	1	1	0	0	0	0	7	0	22.2	
MIAMI-DADE	170	72	4	4	26	38	19	75	4	3.6	
DESOTO	1	0	0	0	0	0	0	1	0	0.0	
DIXIE	1	0	0	0	0	0	0	1	0	0.0	
DUVAL	111	13	0	3	0	10	1	93	4	8.5	
ESCAMBIA	33	0	0	0	0	0	0	33	0	0.0	
FLAGLER	2	1	0	1	0	0	0	1	0	11.5	
FRANKLIN	1	0	0	0	0	0	0	1	0	0.0	
GADSDEN	7	1	0	0	0	1	0	6	0	10.2	
GILCHRIST	2	0	0	0	0	0	0	2	0	0.0	
GLADES	2	0	0	0	0	0	0	1	1	0.0	
GULF	2	0	0	0	0	0	0	2	0	0.0	
HAMILTON	2	1	0	0	0	1	0	1	0	30.3	
HARDEE	0	0	0	0	0	0	0	0	0	0.0	
HENDRY	2	0	0	0	0	0	0	2	0	0.0	
HERNANDO	6	0	0	0	0	0	0	6	0	0.0	
HIGHLANDS	3	0	0	0	0	0	0	3	0	0.0	
HILLSBOROUGH	129	40	9	14	6	11	7	81	1	7.5	
HOLMES	1	0	0	0	0	0	0	1	0	0.0	
INDIAN RIVER	10	0	0	0	0	0	0	10	0	0.0	
JACKSON	2	1	0	1	0	0	0	1	0	38.5	
JEFFERSON	0	0	0	0	0	0	0	0	0	0.0	
LAFAYETTE	2	0	0	0	0	0	0	2	0	0.0	
LAKE	16	4	1	2	0	1	0	12	0	6.0	
LEE	43	21	7	3	2	9	1	21	0	9.4	
LEON	16	2	0	0	0	2	0	13	1	13.6	
LEVY	5	0	0	0	0	0	0	5	0	0.0	
LIBERTY	0	0	0	0	0	0	0	0	0	0.0	
MADISON	3	0	0	0	0	0	0	3	0	0.0	
MANATEE	24	11	6	0	0	5	0	12	1	11.5	
MARION	38	4	2	1	0	1	0	30	4	8.0	
MARTIN	9	4	2	0	0	2	0	5	0	10.0	
MONROE	5	3	0	2	1	0	0	2	0	12.8	
NASSAU	4	0	0	0	0	0	0	4	0	0.0	
OKALOOSA	14	2	1	0	0	1	0	12	0	6.7	
ORKEECHOBEE	3	0	0	0	0	0	0	3	0	0.0	
ORANGE	118	39	4	23	2	10	15	59	5	6.9	
OSCEOLA	26	15	0	6	1	8	1	10	0	6.2	
PALM BEACH	64	22	4	7	2	9	8	33	1	4.7	
PASCO	31	8	1	2	1	4	0	23	0	8.8	
PINELLAS	58	10	1	4	2	3	1	46	1	9.2	
POLK	55	7	2	3	0	2	3	45	0	3.3	
PUTNAM	5	1	1	0	0	0	0	4	0	7.1	
SAINT JOHNS	11	2	0	0	0	2	0	9	0	15.5	
SAINT LUCIE	16	2	0	2	0	0	0	14	0	2.9	
SANTA ROSA	11	0	0	0	0	0	0	11	0	0.0	
SARASOTA	12	4	0	1	0	3	0	8	0	12.8	
SEMINOLE	19	3	0	2	0	1	0	16	0	2.7	
SUMTER	3	0	0	0	0	0	0	3	0	0.0	
SUWANNEE	2	1	1	0	0	0	0	1	0	17.5	
TAYLOR	0	0	0	0	0	0	0	0	0	0.0	
UNION	0	0	0	0	0	0	0	0	0	0.0	
VOLUSIA	33	6	2	3	0	1	0	27	0	7.2	
WAKULLA	0	0	0	0	0	0	0	0	0	0.0	
WALTON	2	0	0	0	0	0	0	2	0	0.0	
WASHINGTON	3	0	0	0	0	0	0	3	0	0.0	

**TABLE F-7: RESIDENT INFANT, NEONATAL AND POST-NEONATAL DEATHS FROM SELECTED CAUSES  
BY RACE, FLORIDA, 2016**

	TOTAL			POST NEO- NATAL	WHITE			POST NEO- NATAL
	NEONATAL		1-27 DAYS		NEONATAL		1-27 DAYS	
	<1 DAY	<1 DAY			<1 DAY	<1 DAY		
INFANT	DAY	DAYS	NATAL	INFANT	DAY	DAYS	NATAL	
<b>TOTAL</b>	<b>1,380</b>	<b>529</b>	<b>400</b>	<b>451</b>	<b>694</b>	<b>250</b>	<b>219</b>	<b>225</b>
Intestinal Infectious Disease	0	0	0	0	0	0	0	0
Diarrhea & Gastroenteritis--Infectious Origin	12	0	2	10	5	0	2	3
Tuberculosis	0	0	0	0	0	0	0	0
Tetanus	0	0	0	0	0	0	0	0
Diphtheria	0	0	0	0	0	0	0	0
Whooping Cough	0	0	0	0	0	0	0	0
Meningococcal Infection	0	0	0	0	0	0	0	0
Septicemia	23	0	0	23	8	0	0	8
Congenital Syphilis	0	0	0	0	0	0	0	0
Gonococcal Infection	0	0	0	0	0	0	0	0
Acute Poliomyelitis	0	0	0	0	0	0	0	0
Varicella (Chicken Pox)	0	0	0	0	0	0	0	0
Measles	0	0	0	0	0	0	0	0
HIV Disease	0	0	0	0	0	0	0	0
Mumps	0	0	0	0	0	0	0	0
Other & Unspec Viral Diseases	7	0	0	7	2	0	0	2
Candidiasis	0	0	0	0	0	0	0	0
Malaria	0	0	0	0	0	0	0	0
Pneumocystosis	0	0	0	0	0	0	0	0
Other & Unspecified Infectious & Parasitic Diseases	2	0	1	1	1	0	0	1
Hodgkins Disease & Non-Hodgkins Lymphomas	0	0	0	0	0	0	0	0
Leukemia	1	0	0	1	1	0	0	1
Other & Unspecified Malignant Neoplasm	1	0	0	1	1	0	0	1
In Situ/Benign/Malignant Neoplasms Uncert/Unk Behavior	2	1	0	1	1	0	0	1
Anemias	0	0	0	0	0	0	0	0
Blood, Blood-Forming, Hemorrhagic Diseases	7	1	2	4	5	1	2	2
Disorders Involving Immune Mechanism	0	0	0	0	0	0	0	0
Short Stature	0	0	0	0	0	0	0	0
Nutritional Deficiencies	0	0	0	0	0	0	0	0
Cystic Fibrosis	0	0	0	0	0	0	0	0
Fluid/Electrolyte/Acid-Base/Volume Depletion Disorders	7	0	3	4	6	0	3	3
Other Endocrine, Nutritional, Metabolic Diseases	8	1	3	4	4	0	2	2
Meningitis	5	0	2	3	2	0	2	0
Infantile Spinal Muscular Atrophy, Type 1 (Werdnig-Hoffman)	0	0	0	0	0	0	0	0
Infantile Cerebral Palsy	0	0	0	0	0	0	0	0
Anoxic Brain Damage	1	0	0	1	0	0	0	0
Other Nervous System Diseases	9	0	1	8	6	0	1	5
Ear & Mastoid Process Diseases	1	0	0	1	0	0	0	0
Pulmonary Heart/Circulation Diseases	3	0	0	3	2	0	0	2
Pericarditis, Endocarditis, Myocarditis	2	0	1	1	1	0	1	0
Cardiomyopathy	4	1	0	3	2	0	0	2
Cardiac Arrest	1	0	0	1	1	0	0	1
Cerebrovascular Diseases	4	0	0	4	1	0	0	1
Other Circulatory System Diseases	7	1	2	4	3	1	1	1
Acute Upper Respiratory Infections	0	0	0	0	0	0	0	0
Influenza	0	0	0	0	0	0	0	0
Pneumonia	15	0	0	15	11	0	0	11

TABLE F-7 (Cont.): RESIDENT INFANT, NEONATAL AND POST-NEONATAL DEATHS FROM SELECTED CAUSES, BY RACE, FLORIDA, 2016

	TOTAL			POST NEO- NATAL	WHITE			POST NEO- NATAL
	NEONATAL		INFANT		NEONATAL		INFANT	
	<1 DAY	1-27 DAYS			<1 DAY	1-27 DAYS		
Acute Bronchitis & Acute Bronchiolitis	4	0	0	4	2	0	0	2
Bronchitis, Chronic & Unspecified	1	0	0	1	1	0	0	1
Asthma	0	0	0	0	0	0	0	0
Pneumonitis Due to Solids & Liquids	1	0	0	1	0	0	0	0
Other & Unspecified Respiratory System Diseases	11	0	0	11	5	0	0	5
Gastritis, Duodenitis, Noninfective Enteritis/Colitis	2	0	1	1	0	0	0	0
Hernia Abdom Cavity & Intestinal Obstruct W/O Hernia	3	2	0	1	1	0	0	1
Other & Unspec Digestive System Disease	8	0	1	7	5	0	0	5
Renal Failure & Other Kidney Disorders	5	0	3	2	2	0	2	0
Other & Unspec Genitourinary System Dis	0	0	0	0	0	0	0	0
<b>PERINATAL PERIOD CONDITIONS</b>	<b>719</b>	<b>429</b>	<b>273</b>	<b>17</b>	<b>334</b>	<b>189</b>	<b>136</b>	<b>9</b>
Maternal Hypertensive Disorders	6	4	2	0	3	2	1	0
Maternal Conditions Unrelated Present Pregnancy	4	1	3	0	3	0	3	0
Incompetent Cervix	40	39	1	0	19	19	0	0
Premature Rupture of Membranes	47	45	2	0	24	24	0	0
Multiple Pregnancy	10	9	0	1	4	3	0	1
Maternal Complications of Pregnancy	16	12	4	0	6	3	3	0
Placenta Complications	21	19	1	1	11	9	1	1
Cord Complications	2	0	1	1	2	0	1	1
Chorioamnionitis	30	30	0	0	9	9	0	0
Other & Unspecified Membrane Abnormalities	0	0	0	0	0	0	0	0
Other Complications of Labor & Delivery	5	5	0	0	4	4	0	0
Noxious Influences Via Placenta or Breast Milk	5	3	2	0	3	2	1	0
Slow Fetal Growth & Fetal Malnutrition	12	4	8	0	3	0	3	0
Extreme Low Birth Weight or Extreme Immaturity	154	130	23	1	61	53	7	1
Other Low Birth Weight or Preterm	55	52	3	0	25	23	2	0
Long Gestation & High Birth Weight	0	0	0	0	0	0	0	0
Birth Trauma	1	0	0	1	0	0	0	0
Intrauterine Hypoxia	11	1	10	0	7	1	6	0
Birth Asphyxia	7	1	4	2	5	1	2	2
Respiratory Distress	27	9	17	1	16	6	10	0
Congenital Pneumonia	0	0	0	0	0	0	0	0
Neonatal Aspiration Syndromes	2	0	2	0	0	0	0	0
Interstitial Emphysema & Related Conditions	8	3	5	0	2	2	0	0
Pulmonary Hemorrhage	11	1	10	0	6	1	5	0
Chronic Respiratory Disease	4	0	0	4	1	0	0	1
Atelectasis	23	15	8	0	11	6	5	0
Other Respiratory Conditions	6	1	5	0	1	1	0	0
Bacterial Sepsis	42	6	36	0	18	3	15	0
Omphalitis With or Without Hemorrhage	0	0	0	0	0	0	0	0
All Other Infections	6	1	5	0	4	0	4	0
Neonatal Hemorrhage	32	4	28	0	18	0	18	0
Hemorrhagic Disease of Newborn	1	0	1	0	1	0	1	0
Hemolytic Dis Due to Isoimmunization/Perinat Jaundice	3	0	1	2	1	0	0	1
Hematological Disorders	6	2	4	0	5	1	4	0
Diabetes Mellitus, Maternal or Neonatal	0	0	0	0	0	0	0	0
Necrotizing Enterocolitis	19	0	18	1	6	0	6	0
Hydrops Fetalis Not Due To Hemolytic Dis	9	4	5	0	7	3	4	0

TABLE F-7 (Cont.): RESIDENT INFANT, NEONATAL AND POST-NEONATAL DEATHS FROM SELECTED CAUSES, BY RACE, FLORIDA, 2016

	TOTAL			POST NEO- NATAL	WHITE			POST NEO- NATAL
	NEONATAL		INFANT		NEONATAL		INFANT	
	<1 DAY	1-27 DAYS			<1 DAY	1-27 DAYS		
Other Perinatal Conditions	94	28	64	2	48	13	34	1
<b>CONGENITAL / CHROMOSOMAL ANOMALIES</b>	<b>262</b>	<b>90</b>	<b>90</b>	<b>82</b>	<b>160</b>	<b>58</b>	<b>56</b>	<b>46</b>
Anencephaly & Similar Anomalies	16	11	5	0	12	8	4	0
Congenital Hydrocephalus	3	0	1	2	3	0	1	2
Spina Bifida	2	2	0	0	1	1	0	0
Other Cong Malf Nervous System	14	5	4	5	9	4	2	3
Congenital Malf of Heart	71	11	23	37	48	9	16	23
Other Congenital Malf of Circulatory Sys	9	0	5	4	6	0	4	2
Congenital Malf of Respiratory Sys	21	11	6	4	10	5	2	3
Congenital Anomalies of Digestive Sys	4	0	0	4	3	0	0	3
Congenital Malf of Genitourinary Sys	29	18	10	1	16	10	6	0
Congenital Malf of Musculoskeletal Sys	24	5	14	5	16	3	9	4
Downs Syndrome	4	1	1	2	2	0	1	1
Edwards Syndrome	25	4	12	9	13	4	6	3
Pataus Syndrome	11	6	2	3	3	2	0	1
Other Congenital Malf	26	16	6	4	18	12	5	1
Other Chromosomal Abnorm	3	0	1	2	0	0	0	0
Sudden Infant Death Syndrome	65	0	4	61	29	0	2	27
Symptoms, Signs, Abn Clinical/Lab Findings	45	1	4	40	23	0	4	19
All Other Diseases	1	0	0	1	1	0	0	1
Unint Inj: Motor Vehicle	6	1	1	4	5	1	0	4
Unint Inj: Other & Unspecified Transport	0	0	0	0	0	0	0	0
Unint Inj: Falls	0	0	0	0	0	0	0	0
Unint Inj: Firearms Discharge	0	0	0	0	0	0	0	0
Unint Inj: Drowning & Submersion	4	0	0	4	2	0	0	2
Unint Inj: Suffocation & Strangulation in Bed	87	0	4	83	43	0	4	39
Unint Inj: Other Suffocation & Strangulation	6	0	0	6	5	0	0	5
Unint Inj: Inhale/Ingest--Respiratory Tract Obstruction	2	0	1	1	0	0	0	0
Unint Inj: Smoke, Fire, Flames Exposure	1	0	0	1	0	0	0	0
Unint Inj: Poisoning & Noxious Substance Exposure	0	0	0	0	0	0	0	0
Unint Inj: Other & Unspecified	2	1	0	1	1	0	0	1
Homicide: Hanging, Strangulation, Suffocation	1	0	0	1	0	0	0	0
Homicide: Firearms Discharge	1	0	0	1	0	0	0	0
Homicide: Neglect, Abandonment, Maltreatment	2	0	0	2	1	0	0	1
Homicide: Other & Unspecified Means	12	0	1	11	7	0	1	6
Medical & Surgical Care Complications	2	0	0	2	1	0	0	1
Other External Causes	5	0	0	5	3	0	0	3

ICD-10 codes associated with each cause of death group are presented in Appendix 2.



TABLE F-7 (Cont.): RESIDENT INFANT, NEONATAL AND POST-NEONATAL DEATHS FROM SELECTED CAUSES, BY RACE, FLORIDA, 2016

	BLACK			POST NEO- NATAL	OTHER			POST NEO- NATAL
	NEONATAL		INFANT		NEONATAL		INFANT	
	<1 DAY	1-27 DAYS			<1 DAY	1-27 DAYS		
TOTAL	575	229	155	191	102	44	25	33
Intestinal Infectious Disease	0	0	0	0	0	0	0	0
Diarrhea & Gastroenteritis--Infectious Origin	7	0	0	7	0	0	0	0
Tuberculosis	0	0	0	0	0	0	0	0
Tetanus	0	0	0	0	0	0	0	0
Diphtheria	0	0	0	0	0	0	0	0
Whooping Cough	0	0	0	0	0	0	0	0
Meningococcal Infection	0	0	0	0	0	0	0	0
Septicemia	11	0	0	11	4	0	0	4
Congenital Syphilis	0	0	0	0	0	0	0	0
Gonococcal Infection	0	0	0	0	0	0	0	0
Acute Poliomyelitis	0	0	0	0	0	0	0	0
Varicella (Chicken Pox)	0	0	0	0	0	0	0	0
Measles	0	0	0	0	0	0	0	0
HIV Disease	0	0	0	0	0	0	0	0
Mumps	0	0	0	0	0	0	0	0
Other & Unspec Viral Diseases	5	0	0	5	0	0	0	0
Candidiasis	0	0	0	0	0	0	0	0
Malaria	0	0	0	0	0	0	0	0
Pneumocystosis	0	0	0	0	0	0	0	0
Other & Unspecified Infectious & Parasitic Diseases	1	0	1	0	0	0	0	0
Hodgkins Disease & Non-Hodgkins Lymphomas	0	0	0	0	0	0	0	0
Leukemia	0	0	0	0	0	0	0	0
Other & Unspecified Malignant Neoplasm	0	0	0	0	0	0	0	0
In Situ/Benign/Malignant Neoplasms Uncert/Unk Behavior	1	1	0	0	0	0	0	0
Anemias	0	0	0	0	0	0	0	0
Blood, Blood-Forming, Hemorrhagic Diseases	1	0	0	1	1	0	0	1
Disorders Involving Immune Mechanism	0	0	0	0	0	0	0	0
Short Stature	0	0	0	0	0	0	0	0
Nutritional Deficiencies	0	0	0	0	0	0	0	0
Cystic Fibrosis	0	0	0	0	0	0	0	0
Fluid/Electrolyte/Acid-Base/Volume Depletion Disorders	1	0	0	1	0	0	0	0
Other Endocrine, Nutritional, Metabolic Diseases	4	1	1	2	0	0	0	0
Meningitis	2	0	0	2	1	0	0	1
Infantile Spinal Muscular Atrophy, Type 1 (Werdnig-Hoffman)	0	0	0	0	0	0	0	0
Infantile Cerebral Palsy	0	0	0	0	0	0	0	0
Anoxic Brain Damage	1	0	0	1	0	0	0	0
Other Nervous System Diseases	3	0	0	3	0	0	0	0
Ear & Mastoid Process Diseases	1	0	0	1	0	0	0	0
Pulmonary Heart/Circulation Diseases	1	0	0	1	0	0	0	0
Pericarditis, Endocarditis, Myocarditis	0	0	0	0	1	0	0	1
Cardiomyopathy	1	0	0	1	1	1	0	0
Cardiac Arrest	0	0	0	0	0	0	0	0
Cerebrovascular Diseases	3	0	0	3	0	0	0	0
Other Circulatory System Diseases	4	0	1	3	0	0	0	0
Acute Upper Respiratory Infections	0	0	0	0	0	0	0	0
Influenza	0	0	0	0	0	0	0	0

TABLE F-7 (Cont.): RESIDENT INFANT, NEONATAL AND POST-NEONATAL DEATHS FROM SELECTED CAUSES, BY RACE, FLORIDA, 2016

	BLACK			POST NEO- NATAL	OTHER			POST NEO- NATAL
	NEONATAL		INFANT		NEONATAL		INFANT	
	<1 DAY	1-27 DAYS			<1 DAY	1-27 DAYS		
Pneumonia	4	0	0	4	0	0	0	0
Acute Bronchitis & Acute Bronchiolitis	2	0	0	2	0	0	0	0
Bronchitis, Chronic & Unspecified	0	0	0	0	0	0	0	0
Asthma	0	0	0	0	0	0	0	0
Pneumonitis Due to Solids & Liquids	1	0	0	1	0	0	0	0
Other & Unspecified Respiratory System Diseases	4	0	0	4	2	0	0	2
Gastritis, Duodenitis, Noninfective Enteritis/Colitis	2	0	1	1	0	0	0	0
Hernia Abdom Cavity & Intestinal Obstruct W/O Hernia	2	2	0	0	0	0	0	0
Other & Unspec Digestive System Disease	2	0	0	2	1	0	1	0
Renal Failure & Other Kidney Disorders	2	0	0	2	1	0	1	0
Other & Unspec Genitourinary System Dis	0	0	0	0	0	0	0	0
<b>PERINATAL PERIOD CONDITIONS</b>	<b>324</b>	<b>201</b>	<b>117</b>	<b>6</b>	<b>54</b>	<b>33</b>	<b>19</b>	<b>2</b>
Maternal Hypertensive Disorders	3	2	1	0	0	0	0	0
Maternal Conditions Unrelated Present Pregnancy	1	1	0	0	0	0	0	0
Incompetent Cervix	18	17	1	0	2	2	0	0
Premature Rupture of Membranes	20	18	2	0	3	3	0	0
Multiple Pregnancy	6	6	0	0	0	0	0	0
Maternal Complications of Pregnancy	8	8	0	0	1	0	1	0
Placenta Complications	7	7	0	0	3	3	0	0
Cord Complications	0	0	0	0	0	0	0	0
Chorioamnionitis	17	17	0	0	4	4	0	0
Other & Unspecified Membrane Abnormalities	0	0	0	0	0	0	0	0
Other Complications of Labor & Delivery	1	1	0	0	0	0	0	0
Noxious Influences Via Placenta or Breast Milk	2	1	1	0	0	0	0	0
Slow Fetal Growth & Fetal Malnutrition	8	4	4	0	1	0	1	0
Extreme Low Birth Weight or Extreme Immaturity	79	65	14	0	12	11	1	0
Other Low Birth Weight or Preterm	21	20	1	0	6	6	0	0
Long Gestation & High Birth Weight	0	0	0	0	0	0	0	0
Birth Trauma	1	0	0	1	0	0	0	0
Intrauterine Hypoxia	2	0	2	0	2	0	2	0
Birth Asphyxia	2	0	2	0	0	0	0	0
Respiratory Distress	11	3	7	1	0	0	0	0
Congenital Pneumonia	0	0	0	0	0	0	0	0
Neonatal Aspiration Syndromes	2	0	2	0	0	0	0	0
Interstitial Emphysema & Related Conditions	6	1	5	0	0	0	0	0
Pulmonary Hemorrhage	4	0	4	0	1	0	1	0
Chronic Respiratory Disease	2	0	0	2	1	0	0	1
Atelectasis	12	9	3	0	0	0	0	0
Other Respiratory Conditions	5	0	5	0	0	0	0	0
Bacterial Sepsis	20	2	18	0	4	1	3	0
Omphalitis With or Without Hemorrhage	0	0	0	0	0	0	0	0
All Other Infections	1	1	0	0	1	0	1	0
Neonatal Hemorrhage	9	3	6	0	5	1	4	0
Hemorrhagic Disease of Newborn	0	0	0	0	0	0	0	0
Hemolytic Dis Due to Isoimmunization/Perinat Jaundice	1	0	1	0	1	0	0	1
Hematological Disorders	1	1	0	0	0	0	0	0
Diabetes Mellitus, Maternal or Neonatal	0	0	0	0	0	0	0	0
Necrotizing Enterocolitis	11	0	10	1	2	0	2	0

TABLE F-7 (Cont.): RESIDENT INFANT, NEONATAL AND POST-NEONATAL DEATHS FROM SELECTED CAUSES, BY RACE, FLORIDA, 2016

	BLACK			POST NEO- NATAL	OTHER			POST NEO- NATAL
	NEONATAL		INFANT		NEONATAL		INFANT	
	<1 DAY	1-27 DAYS			<1 DAY	1-27 DAYS		
Hydrops Fetalis Not Due To Hemolytic Dis	2	1	1	0	0	0	0	0
Other Perinatal Conditions	41	13	27	1	5	2	3	0
<b>CONGENITAL / CHROMOSOMAL ANOMALIES</b>	<b>82</b>	<b>22</b>	<b>30</b>	<b>30</b>	<b>20</b>	<b>10</b>	<b>4</b>	<b>6</b>
Anencephaly & Similar Anomalies	3	2	1	0	1	1	0	0
Congenital Hydrocephalus	0	0	0	0	0	0	0	0
Spina Bifida	1	1	0	0	0	0	0	0
Other Cong Malf Nervous System	4	0	2	2	1	1	0	0
Congenital Malf of Heart	16	0	6	10	7	2	1	4
Other Congenital Malf of Circulatory Sys	3	0	1	2	0	0	0	0
Congenital Malf of Respiratory Sys	8	4	4	0	3	2	0	1
Congenital Anomalies of Digestive Sys	0	0	0	0	1	0	0	1
Congenital Malf of Genitourinary Sys	11	7	3	1	2	1	1	0
Congenital Malf of Musculoskeletal Sys	8	2	5	1	0	0	0	0
Downs Syndrome	1	0	0	1	1	1	0	0
Edwards Syndrome	11	0	5	6	1	0	1	0
Pataus Syndrome	7	3	2	2	1	1	0	0
Other Congenital Malf	7	3	1	3	1	1	0	0
Other Chromosomal Abnorm	2	0	0	2	1	0	1	0
Sudden Infant Death Syndrome	27	0	2	25	8	0	0	8
Symptoms, Signs, Abn Clinical/Lab Findings	21	1	0	20	1	0	0	1
All Other Diseases	0	0	0	0	0	0	0	0
Unint Inj: Motor Vehicle	1	0	1	0	0	0	0	0
Unint Inj: Other & Unspecified Transport	0	0	0	0	0	0	0	0
Unint Inj: Falls	0	0	0	0	0	0	0	0
Unint Inj: Firearms Discharge	0	0	0	0	0	0	0	0
Unint Inj: Drowning & Submersion	1	0	0	1	1	0	0	1
Unint Inj: Suffocation & Strangulation in Bed	40	0	0	40	4	0	0	4
Unint Inj: Other Suffocation & Strangulation	1	0	0	1	0	0	0	0
Unint Inj: Inhale/Ingest--Respiratory Tract Obstruction	1	0	1	0	1	0	0	1
Unint Inj: Smoke, Fire, Flames Exposure	1	0	0	1	0	0	0	0
Unint Inj: Poisoning & Noxious Substance Exposure	0	0	0	0	0	0	0	0
Unint Inj: Other & Unspecified	1	1	0	0	0	0	0	0
Homicide: Hanging, Strangulation, Suffocation	1	0	0	1	0	0	0	0
Homicide: Firearms Discharge	1	0	0	1	0	0	0	0
Homicide: Neglect, Abandonment, Maltreatment	1	0	0	1	0	0	0	0
Homicide: Other & Unspecified Means	4	0	0	4	0	0	0	0
Medical & Surgical Care Complications	1	0	0	1	0	0	0	0
Other External Causes	1	0	0	1	1	0	0	1

ICD-10 codes associated with each cause of death group are presented in Appendix 2.

