

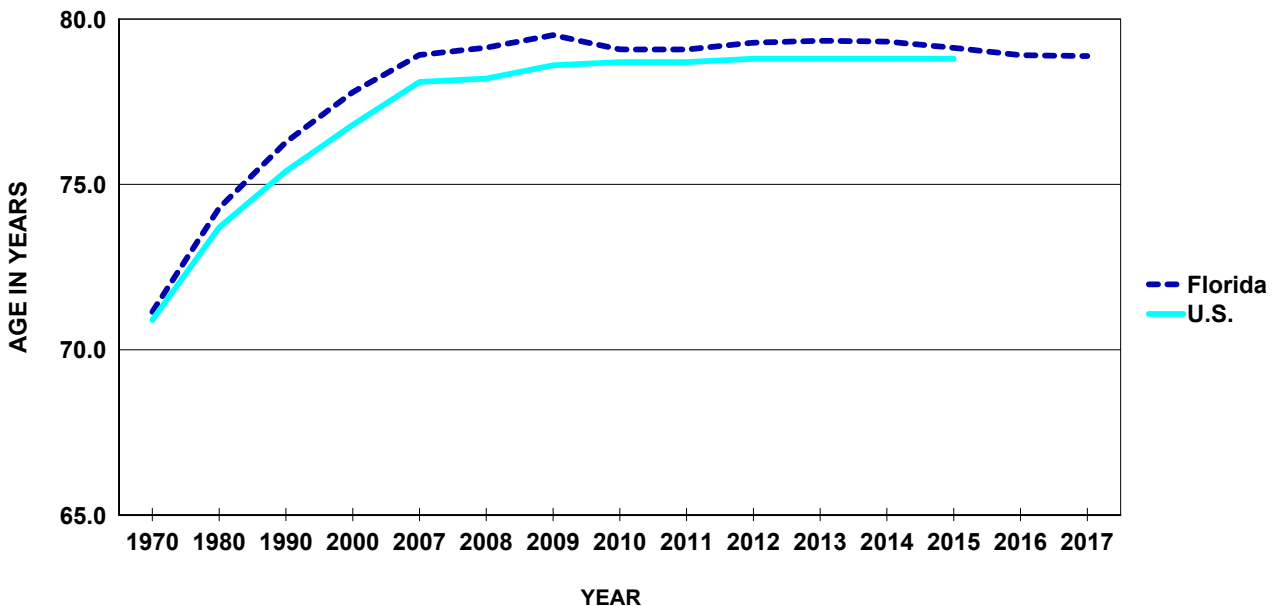
Population

CHART P-1: YEARS OF LIFE EXPECTANCY AT BIRTH, BY RACE, ETHNICITY AND GENDER, FOR FLORIDA RESIDENTS AND UNITED STATES TOTAL, CENSUS YEARS 1970-2000 AND 2007-2017

YEAR	FLORIDA							UNITED STATES			
	TOTAL	WHITE ¹		BLACK ¹		HISPANIC ²		TOTAL	WHITE ¹	BLACK ¹	HISPANIC ²
		MALE	FEMALE	MALE	FEMALE	MALE	FEMALE				
1970	71.1	68.5	77.0	59.1	68.7	NA	NA	70.9	71.1	NA	NA
1980	74.3	71.2	79.4	63.2	72.8	NA	NA	73.7	74.4	68.0	NA
1990	76.3	73.5	81.1	64.4	73.8	NA	NA	75.4	76.1	69.1	NA
2000	77.8	75.5	81.5	69.6	75.7	NA	NA	76.8	77.3	71.8	NA
2007	78.9	76.4	82.4	71.7	78.2	78.6	85.4	78.1	78.5	73.8	80.7
2008	79.1	76.5	82.5	72.5	78.9	79.3	85.3	78.2	78.5	74.3	80.8
2009	79.5	76.9	82.8	73.1	79.1	79.7	86.0	78.6	78.8	74.7	81.1
2010	79.1	76.6	82.2	73.6	79.1	80.5	86.0	78.7	78.9	75.1	81.2
2011	79.1	76.6	82.3	73.4	79.2	79.6	85.3	78.7	79.0	75.3	81.4
2012	79.3	76.9	82.3	73.7	79.9	79.8	85.0	78.8	79.1	75.5	81.6
2013	79.3	77.1	82.4	73.9	80.0	80.2	85.2	78.8	79.1	75.5	81.6
2014	79.3	76.9	82.4	74.3	80.1	79.9	85.6	78.8	79.0	75.6	81.8
2015	79.1	76.6	82.4	73.8	80.2	79.7	85.6	78.8	NA	NA	NA
2016	78.9	76.3	82.1	73.9	79.8	79.5	85.5	NA	NA	NA	NA
2017	78.9	76.3	82.0	73.8	80.2	NA	NA	NA	NA	NA	NA

1. Regardless of ethnicity.
2. Regardless of race

GRAPH P-1: YEARS OF LIFE EXPECTANCY AT BIRTH, FLORIDA AND UNITED STATES, CENSUS YEARS 1970-2000 AND 2007-2017



**CHART P-2: NATURAL INCREASE* IN POPULATION,
BY RACE, FLORIDA 2007-2017**

YEAR	TOTAL	WHITE	BLACK	OTHER
2007	71,412	27,292	33,308	10,396
2008	60,944	17,521	33,076	9,870
2009	51,537	9,996	32,220	8,714
2010	42,010	1,891	30,938	8,243
2011	40,381	171	30,470	9,210
2012	37,105	-3,177	30,121	9,578
2013	35,180	-3,947	29,305	9,029
2014	34,867	-4,483	29,163	9,256
2015	32,785	-5,563	28,145	9,242
2016	27,782	-10,602	27,312	9,783
2017	20,226	-17,934	26,987	10,185

*Resident Live Births minus Resident Deaths.

**GRAPH P-2: PERCENT DISTRIBUTION OF RACE-SPECIFIC POPULATION
BY AGE GROUPS, FLORIDA, 2017**

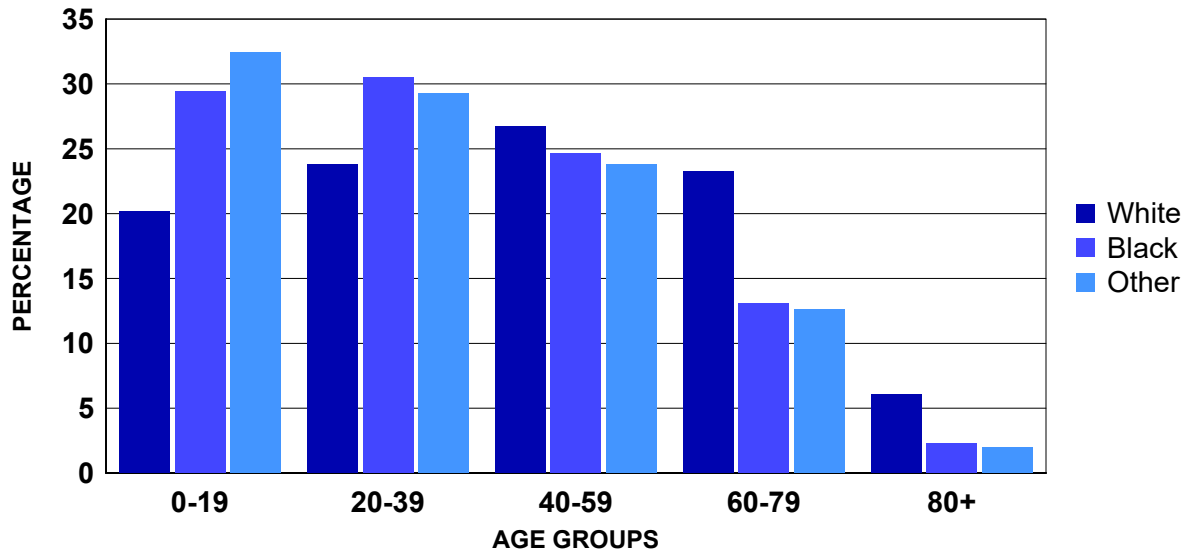


CHART P-3: RESIDENT MIDYEAR POPULATION ESTIMATES, BY AGE, RACE AND GENDER, FLORIDA, 2017

AGE GROUP	TOTAL	WHITE			BLACK			OTHER		
		TOTAL	MALE	FEMALE	TOTAL	MALE	FEMALE	TOTAL	MALE	FEMALE
TOTAL	20,555,728	15,944,707	7,826,179	8,118,528	3,470,100	1,670,734	1,799,366	1,140,921	546,006	594,915
<1 ¹	219,916	156,422	79,907	76,515	49,134	24,953	24,181	14,360	7,389	6,971
1-4 ²	904,104	616,632	315,961	300,671	203,000	103,101	99,899	84,472	42,919	41,553
5-9	1,140,565	784,651	401,487	383,164	258,660	131,118	127,542	97,254	49,450	47,804
10-14	1,151,511	810,282	415,302	394,980	251,444	127,220	124,224	89,785	45,152	44,633
15-19	1,186,803	843,158	433,733	409,425	259,924	132,104	127,820	83,721	42,287	41,434
20-24	1,271,555	901,974	464,296	437,678	284,100	143,919	140,181	85,481	42,994	42,487
25-29	1,387,899	1,009,910	517,810	492,100	290,460	144,222	146,238	87,529	43,454	44,075
30-34	1,291,730	957,319	488,535	468,784	251,704	121,846	129,858	82,707	39,360	43,347
35-39	1,234,391	922,968	465,703	457,265	233,592	111,143	122,449	77,831	36,320	41,511
40-44	1,225,687	933,019	468,489	464,530	216,717	101,876	114,841	75,951	35,206	40,745
45-49	1,323,581	1,038,134	518,579	519,555	214,132	101,409	112,723	71,315	33,047	38,268
50-54	1,426,204	1,141,715	562,942	578,773	218,611	102,994	115,617	65,878	30,057	35,821
55-59	1,416,889	1,152,145	556,277	595,868	206,163	95,969	110,194	58,581	26,074	32,507
60-64	1,301,038	1,081,026	506,939	574,087	168,756	76,367	92,389	51,256	22,385	28,871
65-69	1,267,153	1,091,679	511,225	580,454	132,297	59,011	73,286	43,177	18,693	24,484
70-74	999,467	880,528	411,437	469,091	89,325	39,040	50,285	29,614	13,287	16,327
75-79	738,324	655,878	302,090	353,788	62,890	26,346	36,544	19,556	8,877	10,679
80-84	516,233	463,678	207,989	255,689	40,732	15,848	24,884	11,823	5,130	6,693
85+	552,678	503,589	197,478	306,111	38,459	12,248	26,211	10,630	3,925	6,705

Source: The Florida Legislature, Office of Economic and Demographic Research, July 1 estimates or births and infant deaths from the Bureau of Vital Statistics.
 1. The <1 age group is number of births minus infant deaths obtained when in-state births and infant deaths were finalized plus the number of out-of-state births minus infant deaths from the previous calendar year. When the estimate of individuals <1 in a county exceeds the 0-4 population estimate from the Office of Economic and Demographic Research for the county, then the county's total 0-4 population estimate is reallocated based on the proportion of individuals <1 in each race, ethnic, gender group in relation to the total number who are <1 in the county. A final adjustment may have been made to the <1 estimate to ensure that the sum of the <1, 1, 2, 3, and 4 age groups total to the county's 0-4 population estimate.

2. The 1-4 age group for each county is the Office of Economic and Demographic Research 0-4 age group estimate minus the <1 age group estimate described in the previous footnote. A final adjustment may have been made to the 1-4 estimate to ensure that the sum of the <1, 1, 2, 3, and 4 age groups total to the county's 0-4 population estimate.

**CHART P-4: RESIDENT MIDYEAR POPULATION ESTIMATES, BY RACE AND GENDER, FLORIDA,
CENSUS YEARS 1970-1990 AND 1998-2017**

YEAR	TOTAL	WHITE			BLACK			OTHER		
		TOTAL	MALE	FEMALE	TOTAL	MALE	FEMALE	TOTAL	MALE	FEMALE
1970	6,851,176	5,775,400	2,791,845	2,983,555	1,047,244	501,598	545,646	28,532	13,990	14,542
1980	9,840,317	8,389,968	4,031,868	4,358,100	1,366,808	649,110	717,698	83,541	39,070	44,471
1990	13,029,114	11,040,436	5,358,366	5,682,070	1,790,653	854,838	935,815	198,025	94,610	103,415
1998	15,309,968	12,633,341	6,177,496	6,455,845	2,334,494	1,122,859	1,211,635	342,133	162,015	180,118
1999	15,679,606	12,903,840	6,313,637	6,590,203	2,412,203	1,160,236	1,251,967	363,563	173,549	190,014
2000	16,074,896	13,200,518	6,461,066	6,739,452	2,487,562	1,196,463	1,291,099	386,816	186,108	200,708
2001	16,384,860	13,308,708	6,517,402	6,791,306	2,506,652	1,203,991	1,302,661	569,500	274,650	294,850
2002	16,718,033	13,530,669	6,628,652	6,902,017	2,577,689	1,238,065	1,339,624	609,675	294,751	314,924
2003	17,074,368	13,771,781	6,751,592	7,020,189	2,650,445	1,273,337	1,377,108	652,142	313,870	338,272
2004	17,476,489	14,047,501	6,893,166	7,154,335	2,732,636	1,312,932	1,419,704	696,352	334,256	362,096
2005	17,876,663	14,314,124	7,027,973	7,286,151	2,818,056	1,353,355	1,464,701	744,483	357,294	387,189
2006	18,237,596	14,539,520	7,142,191	7,397,329	2,904,545	1,395,616	1,508,929	793,531	381,434	412,097
2007	18,500,958	14,695,237	7,223,143	7,472,094	2,970,749	1,428,525	1,542,224	834,972	400,760	434,212
2008	18,636,837	14,747,636	7,244,354	7,503,282	3,019,761	1,452,221	1,567,540	869,440	416,260	453,180
2009	18,711,844	14,762,048	7,248,318	7,513,730	3,049,814	1,466,943	1,582,871	899,982	431,386	468,596
2010	18,820,278	14,815,082	7,276,743	7,538,339	3,083,154	1,483,295	1,599,859	922,042	442,190	479,852
2011	18,941,742	14,910,321	7,321,404	7,588,917	3,106,365	1,494,849	1,611,516	925,056	442,904	482,152
2012	19,118,938	14,997,292	7,364,269	7,633,023	3,165,062	1,524,688	1,640,374	956,584	457,994	498,590
2013	19,314,396	15,106,653	7,418,152	7,688,501	3,219,386	1,549,521	1,669,865	988,357	473,154	515,203
2014	19,579,871	15,278,924	7,504,007	7,774,917	3,278,527	1,578,356	1,700,171	1,022,420	489,472	532,948
2015	19,897,762	15,492,935	7,608,260	7,884,675	3,344,939	1,610,114	1,734,825	1,059,888	507,150	552,738
2016	20,231,092	15,722,428	7,719,778	8,002,650	3,408,734	1,641,187	1,767,547	1,099,930	526,199	573,731
2017	20,555,728	15,944,707	7,826,179	8,118,528	3,470,100	1,670,734	1,799,366	1,140,921	546,006	594,915

Source: The Florida Legislature, Office of Economic and Demographic Research

**CHART P-5: RESIDENT MIDYEAR POPULATION ESTIMATES, BY AGE GROUPS, FLORIDA,
CENSUS YEARS 1970-1990 AND 1998-2017**

YEAR	AGE GROUP											
	TOTAL	<1 ¹	1-4 ²	5-14	15-24	25-34	35-44	45-54	55-64	65-74	75-84	85+
1970	6,851,176	112,644	391,737	1,251,059	1,093,338	768,900	748,346	767,772	713,958	656,231	289,759	57,432
1980	9,840,317	129,893	448,565	1,310,351	1,630,632	1,438,555	1,051,361	994,915	1,131,187	1,067,585	517,689	119,584
1990	13,029,114	197,234	687,549	1,577,347	1,679,321	2,125,870	1,830,009	1,291,371	1,266,366	1,372,242	792,709	209,096
1998	15,309,968	194,149	729,556	2,009,851	1,833,426	2,078,343	2,382,246	1,893,110	1,438,765	1,456,934	984,061	309,527
1999	15,679,606	195,521	737,786	2,057,884	1,893,078	2,071,054	2,445,284	1,995,809	1,508,272	1,445,428	1,006,711	322,779
2000	16,074,896	202,607	752,066	2,094,766	1,961,818	2,086,402	2,488,959	2,090,243	1,579,582	1,455,587	1,029,871	332,995
2001	16,384,860	204,733	787,332	2,110,339	2,040,630	2,083,035	2,478,306	2,163,930	1,665,444	1,463,755	1,048,642	338,714
2002	16,718,033	204,486	781,008	2,120,022	2,086,329	2,071,620	2,490,536	2,267,322	1,758,361	1,489,751	1,085,544	363,054
2003	17,074,368	211,257	808,356	2,171,906	2,140,399	2,120,794	2,541,604	2,304,679	1,790,311	1,517,846	1,103,047	364,169
2004	17,476,489	220,922	840,464	2,223,491	2,291,411	2,114,627	2,515,128	2,419,314	1,925,093	1,433,804	1,071,348	420,887
2005	17,876,663	226,176	848,666	2,271,019	2,323,896	2,169,191	2,559,269	2,488,666	1,976,581	1,460,734	1,142,811	409,654
2006	18,237,596	236,579	857,820	2,296,310	2,366,202	2,221,896	2,544,341	2,551,058	2,067,667	1,513,436	1,149,747	432,540
2007	18,500,958	237,193	871,978	2,313,360	2,401,336	2,259,101	2,525,432	2,601,729	2,142,955	1,546,842	1,150,763	450,269
2008	18,636,837	230,660	905,284	2,306,432	2,410,214	2,272,113	2,481,650	2,627,769	2,198,837	1,565,961	1,148,391	489,526
2009	18,711,844	220,233	923,983	2,294,240	2,415,671	2,281,287	2,433,459	2,652,212	2,253,825	1,584,274	1,141,403	511,257
2010	18,820,278	224,098	834,824	2,202,794	2,437,270	2,272,695	2,421,253	2,744,741	2,368,230	1,760,445	1,114,335	439,593
2011	18,941,742	210,081	866,725	2,221,303	2,473,323	2,312,891	2,437,668	2,758,848	2,364,888	1,748,471	1,106,676	440,868
2012	19,118,938	209,568	864,252	2,220,419	2,483,701	2,358,439	2,412,827	2,761,736	2,440,747	1,781,802	1,118,070	467,377
2013	19,314,396	211,853	861,000	2,230,250	2,483,104	2,405,697	2,403,414	2,745,448	2,460,721	1,892,949	1,133,537	486,423
2014	19,579,871	217,037	856,486	2,247,663	2,490,275	2,462,027	2,410,595	2,737,635	2,508,083	1,987,603	1,156,350	506,117
2015	19,897,762	221,333	868,873	2,260,954	2,487,272	2,532,191	2,424,296	2,736,706	2,572,268	2,082,092	1,187,221	524,556
2016	20,231,092	220,904	889,872	2,272,126	2,474,982	2,608,186	2,443,227	2,742,649	2,645,654	2,175,153	1,218,261	540,078
2017	20,555,728	219,916	904,104	2,292,076	2,458,358	2,679,629	2,460,078	2,749,785	2,717,927	2,266,620	1,254,557	552,678

Source: The Florida Legislature, Office of Economic and Demographic Research, July 1 estimates or births and infant deaths from the Bureau of Vital Statistics.

1. The <1 age group is number of births minus infant deaths obtained when in-state births and infant deaths were finalized plus the number of out-of-state births minus infant deaths from the previous calendar year. When the estimate of individuals <1 in a county exceeds the 0-4 population estimate from the Office of Economic and Demographic Research for the county, then the county's total 0-4 population estimate is reallocated based on the proportion of individuals <1 in each race, ethnic, gender group in relation to the total number who are <1 in the county. A final adjustment may have been made to the <1 estimate to ensure that the sum of the <1, 1, 2, 3, and 4 age groups total to the county's 0-4 population estimate.

2. The 1-4 age group for each county is the Office of Economic and Demographic Research 0-4 age group estimate minus the <1 age group estimate described in the previous footnote. A final adjustment may have been made to the 1-4 estimate to ensure that the sum of the <1, 1, 2, 3, and 4 age groups total to the county's 0-4 population estimate.

TABLE P-1: RESIDENT MIDYEAR POPULATION ESTIMATES, BY RACE, ETHNICITY AND COUNTY, FLORIDA, 2017

	TOTAL	RACE			ETHNICITY	
		WHITE	BLACK	OTHER	NON-HISPANIC	HISPANIC
FLORIDA	20,555,728	15,944,707	3,470,100	1,140,921	15,419,874	5,135,854
ALACHUA	259,349	182,116	53,367	23,866	234,969	24,380
BAKER	27,066	22,527	3,770	769	26,388	678
BAY	178,953	147,136	20,237	11,580	167,655	11,298
BRADFORD	27,808	21,593	5,364	851	26,716	1,092
BREVARD	576,970	482,710	61,502	32,758	520,080	56,890
BROWARD	1,884,545	1,203,417	558,865	122,263	1,343,427	541,118
CALHOUN	14,658	12,088	1,902	668	13,819	839
CHARLOTTE	173,954	157,422	10,504	6,028	161,959	11,995
CITRUS	144,922	135,228	4,426	5,268	137,072	7,850
CLAY	210,767	172,610	23,734	14,423	190,481	20,286
COLLIER	358,506	320,744	26,284	11,478	261,757	96,749
COLUMBIA	69,250	54,086	12,631	2,533	65,109	4,141
MIAMI-DADE	2,754,749	2,156,123	510,640	87,986	891,044	1,863,705
DESOTO	35,454	29,648	4,583	1,223	24,429	11,025
DIXIE	17,040	14,943	1,673	424	16,331	709
DUVAL	942,841	578,623	285,719	78,499	855,900	86,941
ESCAMBIA	312,811	216,966	71,885	23,960	295,160	17,651
FLAGLER	106,076	89,150	11,651	5,275	95,166	10,910
FRANKLIN	12,006	9,962	1,658	386	11,372	634
GADSDEN	48,690	20,241	27,277	1,172	43,758	4,932
GILCHRIST	16,977	15,680	808	489	16,024	953
GLADES	13,263	10,368	1,899	996	10,421	2,842
GULF	16,957	13,371	3,096	490	16,170	787
HAMILTON	14,749	9,215	4,986	548	13,407	1,342
HARDEE	27,675	24,480	2,104	1,091	15,673	12,002
HENDRY	38,675	31,937	4,912	1,826	18,547	20,128
HERNANDO	183,065	165,516	10,452	7,097	160,411	22,654
HIGHLANDS	102,590	87,729	10,766	4,095	83,002	19,588
HILLSBOROUGH	1,388,111	1,038,994	245,660	103,457	1,004,834	383,277
HOLMES	20,132	18,023	1,324	785	19,581	551
INDIAN RIVER	149,930	130,522	14,014	5,394	131,886	18,044
JACKSON	50,303	35,117	13,424	1,762	47,903	2,400
JEFFERSON	14,530	9,105	5,053	372	13,934	596
LAFAYETTE	8,651	7,123	1,293	235	7,575	1,076
LAKE	333,598	280,697	36,091	16,810	284,393	49,205
LEE	700,837	609,707	63,314	27,816	557,404	143,433
LEON	291,879	181,505	92,251	18,123	273,677	18,202
LEVY	40,832	35,704	3,825	1,303	37,465	3,367
LIBERTY	8,839	6,860	1,705	274	8,246	593
MADISON	19,295	11,361	7,449	485	18,359	936
MANATEE	367,130	316,531	33,848	16,751	307,972	59,158
MARION	352,067	290,390	46,873	14,804	307,981	44,086
MARTIN	152,333	137,878	8,560	5,895	132,224	20,109
MONROE	77,300	69,159	5,279	2,862	59,477	17,823
NASSAU	79,592	72,289	4,846	2,457	76,244	3,348
OKALOOSA	194,811	158,910	19,729	16,172	177,880	16,931
OKEECHOBEE	41,469	36,154	3,662	1,653	30,875	10,594
ORANGE	1,317,704	900,274	298,513	118,917	915,345	402,359
OSCEOLA	339,470	270,725	46,337	22,408	161,899	177,571
PALM BEACH	1,411,054	1,063,837	273,091	74,126	1,108,132	302,922
PASCO	507,081	450,773	29,885	26,423	434,523	72,558
PINELLAS	961,253	797,411	105,088	58,754	871,804	89,449
POLK	663,999	527,195	104,842	31,962	523,800	140,199
PUTNAM	73,068	58,770	11,972	2,326	65,935	7,133
SAINT JOHNS	229,272	204,736	12,611	11,925	214,195	15,077
SAINT LUCIE	299,962	224,553	61,162	14,247	244,959	55,003
SANTA ROSA	171,851	149,914	11,185	10,752	162,557	9,294
SARASOTA	407,501	373,606	19,477	14,418	371,404	36,097
SEMINOLE	457,028	365,371	56,847	34,810	364,006	93,022
SUMTER	123,928	111,657	9,380	2,891	117,089	6,839
SUWANNEE	44,522	37,305	5,919	1,298	40,488	4,034
TAYLOR	22,220	16,987	4,420	813	21,286	934
UNION	15,896	11,792	3,660	444	14,987	909
VOLUSIA	525,121	442,685	58,848	23,588	456,624	68,497
WAKULLA	32,134	26,493	4,544	1,097	30,926	1,208
WALTON	65,724	58,914	3,630	3,180	61,706	4,018
WASHINGTON	24,935	20,051	3,794	1,090	24,052	883