

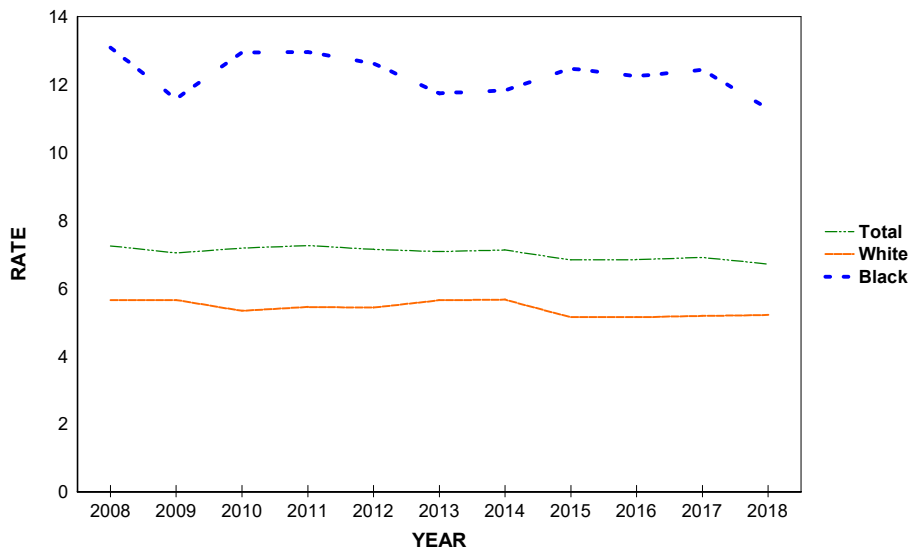
# **Fetal and Infant Deaths**

**CHART F-1: RESIDENT FETAL DEATHS AND RATES PER 1,000 LIVE BIRTHS AND FETAL DEATHS, BY RACE\*, FLORIDA AND UNITED STATES, CENSUS YEARS 1970-2000 AND 2008-2018**

YEAR	NUMBER OF FETAL DEATHS - FL				RATES PER 1,000 - FL			RATES - U.S.		
	TOTAL	WHITE	BLACK	OTHER	TOTAL	WHITE	BLACK	TOTAL	WHITE	BLACK
1970	1,708	1,034	608	7	14.6	11.8	21.6	14.0	12.3	23.2
1980	1,356	848	476	15	10.2	8.6	14.2	9.1	8.1	14.7
1990	1,811	1,071	695	25	9.0	7.1	14.8	7.5	6.4	13.3
2000	1,675	954	667	37	8.1	6.3	13.9	6.6	5.6	12.4
2008	1,688	951	681	44	7.2	5.6	13.1	6.2	NA	NA
2009	1,569	904	592	63	7.0	5.6	11.6	6.0	NA	NA
2010	1,551	822	645	79	7.2	5.3	12.9	6.0	NA	NA
2011	1,558	832	641	76	7.3	5.4	13.0	6.1	NA	NA
2012	1,530	822	626	77	7.1	5.4	12.6	6.1	NA	NA
2013	1,533	869	579	81	7.1	5.6	11.7	6.0	NA	NA
2014	1,576	893	587	90	7.1	5.7	11.8	NA	NA	NA
2015	1,541	831	620	83	6.8	5.1	12.5	NA	NA	NA
2016	1,548	828	612	94	6.8	5.1	12.2	NA	NA	NA
2017	1,553	823	627	83	6.9	5.2	12.4	NA	NA	NA
2018	1,495	826	554	83	6.7	5.2	11.3	NA	NA	NA

\*Fetal deaths and live births based on the race of the mother.

**GRAPH F-1: RESIDENT FETAL DEATH RATES PER 1,000 LIVE BIRTHS AND FETAL DEATHS, BY RACE OF MOTHER, FLORIDA, 2008-2018**

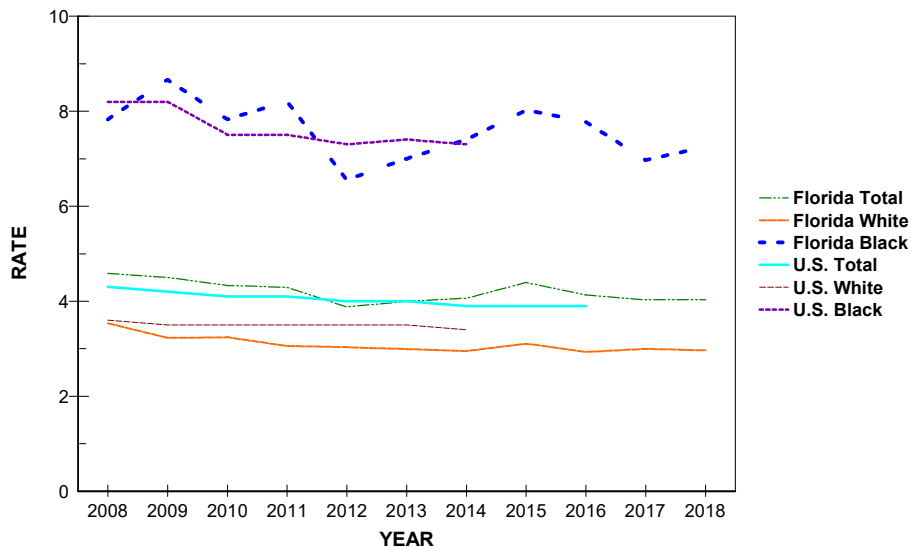


**CHART F-2: RESIDENT NEONATAL DEATHS AND RATES PER 1,000 LIVE BIRTHS, BY RACE, FLORIDA AND UNITED STATES, CENSUS YEARS 1970-2000 AND 2008-2018**

YEAR	NUMBER OF NEONATAL DEATHS - FL <sup>1</sup>				RATES - FL <sup>1</sup>			RATES - U.S.		
	TOTAL	WHITE	BLACK	OTHER	TOTAL	WHITE	BLACK	TOTAL	WHITE	BLACK
1970	1,847	1,198	636	11	16.0	13.8	23.1	15.1	13.8	22.8
1980	1,282	791	487	3	9.7	8.1	14.7	8.5	7.4	14.6
1990	1,227	742	476	8	6.2	5.0	10.3	5.9	4.8	11.6
2000	925	526	384	13	4.5	3.5	8.1	4.6	3.8	9.4
2008	1,061	592	402	65	4.6	3.5	7.8	4.3	3.6	8.2
2009	996	513	438	42	4.5	3.2	8.7	4.2	3.5	8.2
2010	929	497	385	46	4.3	3.2	7.8	4.1	3.5	7.5
2011	915	465	401	46	4.3	3.1	8.2	4.1	3.5	7.5
2012	826	457	321	47	3.9	3.0	6.6	4.0	3.5	7.3
2013	859	458	341	57	4.0	3.0	7.0	4.0	3.5	7.4
2014	893	463	363	62	4.1	2.9	7.4	3.9	3.4	7.3
2015	984	499	394	84	4.4	3.1	8.0	3.9	NA	NA
2016	929	469	384	69	4.1	2.9	7.8	3.9	NA	NA
2017	900	473	347	74	4.0	3.0	7.0	NA	NA	NA
2018	892	467	352	67	4.0	3.0	7.2	NA	NA	NA

1. Neonatal deaths based on race of decedent, live births based on race of mother.

**GRAPH F-2: RESIDENT NEONATAL DEATH RATES PER 1,000 LIVE BIRTHS, BY RACE, FLORIDA AND UNITED STATES, 2008-2018**



**CHART F-3: RESIDENT INFANT DEATHS AND RATES PER 1,000 LIVE BIRTHS, BY RACE, FLORIDA AND UNITED STATES, CENSUS YEARS 1970-2000 AND 2008-2018**

YEAR	NUMBER OF INFANT DEATHS - FL <sup>1</sup>				RATES - FL <sup>1</sup>			RATE - U.S.		
	TOTAL	WHITE	BLACK	OTHER	TOTAL	WHITE	BLACK	TOTAL	WHITE	BLACK
1970	2,469	1,538	918	11	21.4	17.7	33.3	20.0	17.8	32.7
1980	1,918	1,137	774	6	14.6	11.7	23.4	12.6	10.9	22.1
1990	1,912	1,123	775	12	9.6	7.5	16.7	9.2	7.6	18.0
2000	1,423	810	594	17	7.0	5.4	12.6	6.9	5.7	14.1
2008	1,667	914	661	90	7.2	5.5	12.9	6.6	5.5	12.7
2009	1,525	780	667	75	6.9	4.9	13.2	6.4	5.3	12.6
2010	1,400	750	580	69	6.5	4.9	11.8	6.2	5.2	11.6
2011	1,372	698	584	86	6.4	4.6	12.0	6.1	5.1	11.5
2012	1,285	687	523	73	6.0	4.6	10.7	6.0	5.1	11.2
2013	1,318	707	517	90	6.1	4.6	10.6	6.0	5.1	11.2
2014	1,327	688	538	95	6.0	4.4	11.0	5.8	4.9	11.0
2015	1,400	711	558	124	6.2	4.4	11.4	5.9	NA	NA
2016	1,380	694	575	102	6.1	4.3	11.6	5.9	NA	NA
2017	1,355	696	536	115	6.1	4.4	10.8	NA	NA	NA
2018	1,334	677	547	103	6.0	4.3	11.3	NA	NA	NA

1. Infant deaths based on race of decedent, live births based on race of mother.

**GRAPH F-3: RESIDENT INFANT DEATH RATES PER 1,000 LIVE BIRTHS, BY RACE, FLORIDA AND UNITED STATES, 2008-2018**

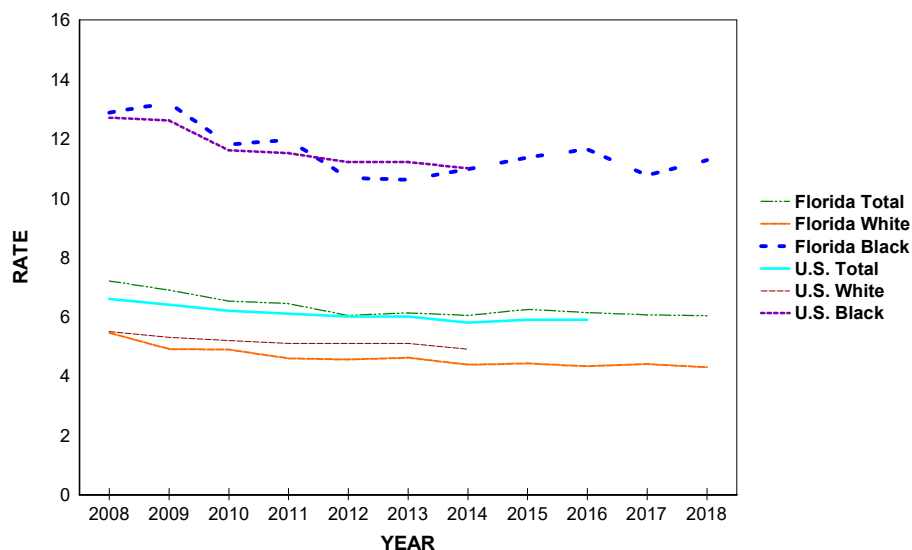


TABLE F-1: RESIDENT AND RECORDED FETAL DEATHS (OF 20 OR MORE WEEKS GESTATION) AND RATES PER 1,000 LIVE BIRTHS AND FETAL DEATHS, BY RACE OF MOTHER, BY COUNTY, FLORIDA, 2018

	RESIDENT FETAL DEATHS					RATES		
	NUMBERS					TOTAL	WHITE	BLACK
	TOTAL	WHITE	BLACK	OTHER	UNK			
FLORIDA	1495	826	554	83	32	6.7	5.2	11.3
ALACHUA	14	5	9	0	0	5.1	3.1	10.6
BAKER	0	0	0	0	0	0.0	0.0	0.0
BAY	15	9	4	2	0	6.8	5.5	12.3
BRADFORD	1	1	0	0	0	3.4	4.6	0.0
BREVARD	36	27	8	1	0	6.7	6.5	9.7
BROWARD	183	63	87	16	17	8.3	5.2	10.5
CALHOUN	1	1	0	0	0	7.1	8.4	0.0
CHARLOTTE	5	3	1	1	0	4.8	3.3	14.9
CITRUS	13	10	0	3	0	12.5	10.7	0.0
CLAY	15	11	2	1	1	6.8	6.4	5.8
COLLIER	15	9	6	0	0	4.7	3.5	13.4
COLUMBIA	4	1	3	0	0	4.9	1.6	16.9
MIAMI-DADE	212	119	83	5	5	6.8	4.9	14.0
DESOTO	3	3	0	0	0	7.5	8.6	0.0
DIXIE	0	0	0	0	0	0.0	0.0	0.0
DUVAL	104	40	54	7	3	8.0	5.6	11.6
ESCAMBIA	25	12	10	3	0	6.7	5.1	9.0
FLAGLER	6	5	0	1	0	7.4	7.7	0.0
FRANKLIN	1	1	0	0	0	12.2	13.3	0.0
GADSDEN	3	1	2	0	0	6.0	5.6	6.4
GILCHRIST	1	1	0	0	0	5.6	6.2	0.0
GLADES	2	2	0	0	0	29.9	34.5	0.0
GULF	2	1	1	0	0	18.2	11.0	66.7
HAMILTON	0	0	0	0	0	0.0	0.0	0.0
HARDEE	2	2	0	0	0	5.9	6.5	0.0
HENDRY	1	0	1	0	0	1.7	0.0	14.1
HERNANDO	11	10	1	0	0	6.8	7.2	7.4
HIGHLANDS	10	6	2	2	0	11.9	9.4	13.0
HILLSBOROUGH	143	82	55	5	1	8.3	6.8	14.7
HOLMES	1	1	0	0	0	5.6	5.8	0.0
INDIAN RIVER	5	5	0	0	0	3.8	5.1	0.0
JACKSON	5	5	0	0	0	9.8	14.4	0.0
JEFFERSON	1	0	1	0	0	8.9	0.0	19.6
LAFAYETTE	0	0	0	0	0	0.0	0.0	0.0
LAKE	13	8	5	0	0	3.8	3.1	9.5
LEE	49	30	18	0	1	7.2	5.3	18.2
LEON	26	11	12	3	0	8.8	7.2	9.6
LEVY	3	1	2	0	0	7.0	2.8	35.7
LIBERTY	1	1	0	0	0	16.7	18.2	0.0
MADISON	1	0	1	0	0	5.4	0.0	12.7
MANATEE	27	17	8	2	0	7.8	6.4	17.5
MARION	21	13	7	1	0	6.0	4.9	10.2
MARTIN	7	6	1	0	0	5.6	5.9	10.1
MONROE	2	2	0	0	0	2.8	3.5	0.0
NASSAU	7	4	2	0	1	8.2	5.3	37.0
OKALOOSA	12	9	2	1	0	4.4	4.2	6.4
OKEECHOBEE	4	2	2	0	0	7.1	4.0	60.6
ORANGE	103	51	43	8	1	6.1	4.7	9.8
OSCEOLA	36	24	9	2	1	8.1	6.7	18.0
PALM BEACH	67	24	37	5	1	4.4	2.4	8.5
PASCO	37	32	4	1	0	7.2	7.4	9.0
PINELLAS	52	31	20	1	0	6.4	5.3	13.8
POLK	59	43	13	3	0	7.5	7.4	7.9
PUTNAM	9	6	3	0	0	10.8	9.5	17.3
SAINT JOHNS	8	5	2	1	0	3.6	2.6	13.7
SAINT LUCIE	26	12	12	2	0	8.3	5.8	13.0
SANTA ROSA	6	5	1	0	0	3.1	2.9	10.6
SARASOTA	13	9	4	0	0	4.5	3.6	18.4
SEMINOLE	22	14	4	4	0	4.7	4.1	5.3
SUMTER	4	3	1	0	0	8.3	7.7	13.5
SUWANNEE	5	4	1	0	0	10.4	10.0	14.7
TAYLOR	1	0	1	0	0	4.1	0.0	19.6
UNION	0	0	0	0	0	0.0	0.0	0.0
VOLUSIA	29	18	9	2	0	5.9	4.7	11.3
WAKULLA	1	1	0	0	0	2.9	3.4	0.0
WALTON	2	2	0	0	0	2.6	2.8	0.0
WASHINGTON	2	2	0	0	0	7.9	9.2	0.0

TABLE F-1 (Cont.): RESIDENT AND RECORDED FETAL DEATHS (OF 20 OR MORE WEEKS GESTATION) AND RATES PER 1,000 LIVE BIRTHS AND FETAL DEATHS, BY RACE OF MOTHER, BY COUNTY, FLORIDA, 2018

	RECORDED FETAL DEATHS					RATES		
	NUMBERS					TOTAL	WHITE	BLACK
	TOTAL	WHITE	BLACK	OTHER	UNK			
FLORIDA	1531	845	564	87	35	6.9	5.3	11.5
ALACHUA	40	21	19	0	0	6.6	4.9	13.6
BAKER	0	0	0	0	0	0.0	0.0	----
BAY	19	13	4	2	0	7.7	6.9	11.4
BRADFORD	0	0	0	0	0	0.0	0.0	----
BREVARD	35	25	9	1	0	6.8	6.2	11.9
BROWARD	193	67	94	15	17	8.0	5.0	10.1
CALHOUN	0	0	0	0	0	----	----	----
CHARLOTTE	7	5	1	1	0	6.7	5.6	11.5
CITRUS	10	8	0	2	0	13.4	12.0	0.0
CLAY	14	7	1	4	2	5.6	3.9	1.7
COLLIER	16	9	6	1	0	4.5	3.1	13.2
COLUMBIA	4	1	3	0	0	6.0	2.2	16.6
MIAMI-DADE	206	115	81	5	5	7.3	5.1	17.2
DESOTO	0	0	0	0	0	0.0	0.0	0.0
DIXIE	0	0	0	0	0	0.0	0.0	----
DUVAL	114	51	53	7	3	7.7	5.7	11.7
ESCAMBIA	31	18	10	3	0	5.5	4.5	8.2
FLAGLER	1	1	0	0	0	125.0	333.3	0.0
FRANKLIN	0	0	0	0	0	----	----	----
GADSDEN	1	0	1	0	0	200.0	0.0	250.0
GILCHRIST	0	0	0	0	0	0.0	0.0	----
GLADES	0	0	0	0	0	----	----	----
GULF	0	0	0	0	0	0.0	0.0	----
HAMILTON	0	0	0	0	0	0.0	----	0.0
HARDEE	0	0	0	0	0	----	----	----
HENDRY	0	0	0	0	0	0.0	0.0	0.0
HERNANDO	10	9	1	0	0	5.6	5.9	7.4
HIGHLANDS	12	8	2	2	0	10.5	8.6	12.3
HILLSBOROUGH	173	107	60	6	0	8.6	7.5	14.2
HOLMES	0	0	0	0	0	0.0	0.0	----
INDIAN RIVER	6	6	0	0	0	5.5	7.5	0.0
JACKSON	4	4	0	0	0	10.8	15.9	0.0
JEFFERSON	0	0	0	0	0	0.0	0.0	----
LAFAYETTE	0	0	0	0	0	----	----	----
LAKE	11	7	4	0	0	4.3	3.7	8.6
LEE	54	34	19	0	1	7.8	6.0	19.1
LEON	36	18	15	3	0	8.0	7.2	8.4
LEVY	0	0	0	0	0	0.0	0.0	----
LIBERTY	0	0	0	0	0	0.0	0.0	----
MADISON	0	0	0	0	0	0.0	0.0	0.0
MANATEE	18	11	5	2	0	7.0	5.7	16.2
MARION	10	7	2	1	0	4.0	3.8	4.0
MARTIN	5	3	2	0	0	5.8	4.6	24.7
MONROE	2	2	0	0	0	3.9	5.1	0.0
NASSAU	3	1	2	0	0	6.1	2.4	39.2
OKALOOSA	14	11	3	0	0	6.6	6.9	11.5
OKEECHOBEE	0	0	0	0	0	0.0	0.0	----
ORANGE	151	79	58	13	1	6.7	5.1	11.3
OSCEOLA	36	25	9	1	1	7.7	6.8	16.4
PALM BEACH	75	29	38	6	2	4.3	2.5	7.9
PASCO	19	16	1	2	0	7.7	7.6	5.2
PINELLAS	60	35	22	1	2	6.4	5.1	14.5
POLK	37	29	6	2	0	6.4	6.8	5.1
PUTNAM	5	3	2	0	0	21.9	19.0	31.3
SAINT JOHNS	8	4	4	0	0	4.9	3.0	19.4
SAINT LUCIE	24	12	10	2	0	7.4	5.4	11.6
SANTA ROSA	2	2	0	0	0	5.0	5.8	0.0
SARASOTA	21	13	7	0	1	5.4	3.9	19.5
SEMINOLE	15	10	3	2	0	4.4	4.1	4.9
SUMTER	0	0	0	0	0	0.0	0.0	----
SUWANNEE	1	1	0	0	0	66.7	71.4	----
TAYLOR	1	1	0	0	0	333.3	333.3	----
UNION	0	0	0	0	0	0.0	0.0	----
VOLUSIA	24	15	7	2	0	6.1	4.9	10.3
WAKULLA	0	0	0	0	0	----	----	----
WALTON	3	2	0	1	0	2.2	1.6	0.0
WASHINGTON	0	0	0	0	0	----	----	----

---- Indicates that no fetal deaths nor live births occurred for the race group in the county, therefore a rate could not be calculated.

TABLE F-2: RESIDENT FETAL DEATHS AND RATE PER 1,000 LIVE BIRTHS AND FETAL DEATHS BY HISPANIC OR HAITIAN ORIGIN OF MOTHER, BY COUNTY, FLORIDA, 2018

	NUMBERS								RATE		
	HISPANIC ORIGIN								NON-HISPANIC/ NON-HAITIAN	UNK	TOTAL HISPANIC
	TOTAL	TOTAL HISPANIC	MEXICAN	PUERTO RICAN	CUBAN	OTHER/UNK HISPANIC	HAITIAN				
FLORIDA	1,495	375	62	88	67	158	102	952	66	5.6	
ALACHUA	14	0	0	0	0	0	0	14	0	0.0	
BAKER	0	0	0	0	0	0	0	0	0	0.0	
BAY	15	1	0	0	0	1	0	13	1	5.4	
BRADFORD	1	0	0	0	0	0	0	1	0	0.0	
BREVARD	36	5	0	3	0	2	1	30	0	6.7	
BROWARD	183	41	2	9	7	23	29	92	21	5.8	
CALHOUN	1	0	0	0	0	0	0	1	0	0.0	
CHARLOTTE	5	1	0	0	0	1	0	4	0	7.8	
CITRUS	13	1	0	1	0	0	0	12	0	13.9	
CLAY	15	1	0	0	0	1	0	13	1	5.1	
COLLIER	15	6	2	0	2	2	5	4	0	3.9	
COLUMBIA	4	0	0	0	0	0	0	4	0	0.0	
MIAMI-DADE	212	110	4	11	43	52	23	61	18	5.8	
DESOTO	3	2	2	0	0	0	0	1	0	13.1	
DIXIE	0	0	0	0	0	0	0	0	0	0.0	
DUVAL	104	11	4	1	1	5	3	85	5	6.7	
ESCAMBIA	25	3	0	1	0	2	0	21	1	12.0	
FLAGLER	6	0	0	0	0	0	0	5	1	0.0	
FRANKLIN	1	0	0	0	0	0	0	1	0	0.0	
GADSDEN	3	0	0	0	0	0	0	3	0	0.0	
GILCHRIST	1	1	0	0	0	1	0	0	0	47.6	
GLADES	2	1	1	0	0	0	0	1	0	43.5	
GULF	2	1	1	0	0	0	0	1	0	333.3	
HAMILTON	0	0	0	0	0	0	0	0	0	0.0	
HARDEE	2	2	2	0	0	0	0	0	0	10.9	
HENDRY	1	0	0	0	0	0	0	1	0	0.0	
HERNANDO	11	1	0	1	0	0	0	10	0	3.9	
HIGHLANDS	10	3	1	1	0	1	0	7	0	11.7	
HILLSBOROUGH	143	50	13	15	2	20	5	87	1	9.0	
HOLMES	1	0	0	0	0	0	0	1	0	0.0	
INDIAN RIVER	5	3	3	0	0	0	0	2	0	11.7	
JACKSON	5	0	0	0	0	0	0	5	0	0.0	
JEFFERSON	1	0	0	0	0	0	0	1	0	0.0	
LAFAYETTE	0	0	0	0	0	0	0	0	0	0.0	
LAKE	13	2	1	1	0	0	0	10	1	2.8	
LEE	49	8	3	0	2	3	4	36	1	3.3	
LEON	26	1	0	0	0	1	0	25	0	5.6	
LEVY	3	0	0	0	0	0	0	3	0	0.0	
LIBERTY	1	0	0	0	0	0	0	1	0	0.0	
MADISON	1	0	0	0	0	0	0	1	0	0.0	
MANATEE	27	7	3	2	0	2	1	19	0	7.1	
MARION	21	2	0	0	0	2	0	18	1	3.7	
MARTIN	7	2	0	0	1	1	0	5	0	5.1	
MONROE	2	1	0	0	0	1	0	1	0	4.2	
NASSAU	7	1	0	0	0	1	0	5	1	20.0	
OKALOOSA	12	2	1	0	0	1	0	10	0	5.3	
OKEECHOBEE	4	1	0	1	0	0	0	3	0	5.3	
ORANGE	103	29	2	12	0	15	7	63	4	4.7	
OSCEOLA	36	16	1	8	3	4	4	15	1	6.0	
PALM BEACH	67	11	4	2	0	5	16	37	3	2.3	
PASCO	37	7	2	2	2	1	0	30	0	7.2	
PINELLAS	52	9	2	4	0	3	0	41	2	7.5	
POLK	59	17	4	9	1	3	0	41	1	7.2	
PUTNAM	9	1	0	0	0	1	0	8	0	7.5	
SAINT JOHNS	8	0	0	0	0	0	0	8	0	0.0	
SAINT LUCIE	26	5	3	0	1	1	4	16	1	6.4	
SANTA ROSA	6	0	0	0	0	0	0	6	0	0.0	
SARASOTA	13	1	0	0	1	0	0	12	0	2.6	
SEMINOLE	22	5	0	2	1	2	0	17	0	4.3	
SUMTER	4	1	1	0	0	0	0	3	0	14.9	
SUWANNEE	5	0	0	0	0	0	0	5	0	0.0	
TAYLOR	1	0	0	0	0	0	0	1	0	0.0	
UNION	0	0	0	0	0	0	0	0	0	0.0	
VOLUSIA	29	2	0	2	0	0	0	26	1	2.2	
WAKULLA	1	0	0	0	0	0	0	1	0	0.0	
WALTON	2	0	0	0	0	0	0	2	0	0.0	
WASHINGTON	2	0	0	0	0	0	0	2	0	0.0	

TABLE F-3: RESIDENT FETAL DEATHS BY AGE OF MOTHER, BY COUNTY, FLORIDA, 2018

	TOTAL	AGE OF MOTHER													
		<13	13	14	15	16	17	18	19	20-24	25-29	30-34	35-44	45+	UNK
FLORIDA	1,495	0	0	1	2	4	11	18	37	291	383	387	322	5	34
ALACHUA	14	0	0	0	0	0	1	0	0	2	6	2	3	0	0
BAKER	0	0	0	0	0	0	0	0	0	0	0	0	0	0	0
BAY	15	0	0	0	0	0	0	0	1	2	6	0	4	0	2
BRADFORD	1	0	0	0	0	0	0	0	0	0	1	0	0	0	0
BREVARD	36	0	0	0	1	1	0	0	4	12	12	5	0	1	
BROWARD	182	0	0	0	0	1	5	6	23	39	46	48	1	13	
CALHOUN	1	0	0	0	0	0	0	0	0	0	1	0	0	0	
CHARLOTTE	5	0	0	0	0	1	0	0	1	0	2	1	0	0	
CITRUS	13	0	0	0	0	0	0	0	2	4	4	2	1	0	
CLAY	15	0	0	0	0	0	0	1	2	7	2	3	0	0	
COLLIER	15	0	0	0	0	0	0	0	1	6	5	3	0	0	
COLUMBIA	4	0	0	0	0	0	0	0	1	3	0	0	0	0	
MIAMI-DADE	212	0	0	0	0	1	1	2	31	50	59	62	0	6	
DESOTO	3	0	0	0	0	0	0	1	1	1	0	0	0	0	
DIXIE	0	0	0	0	0	0	0	0	0	0	0	0	0	0	
DUVAL	104	0	0	1	0	1	1	1	25	32	25	15	0	3	
ESCAMBIA	25	0	0	0	1	0	1	1	6	6	7	2	0	0	
FLAGLER	6	0	0	0	0	0	0	1	2	1	1	1	0	0	
FRANKLIN	1	0	0	0	0	0	1	0	0	0	0	0	0	0	
GADSDEN	3	0	0	0	0	0	0	0	0	0	1	2	0	0	
GILCHRIST	1	0	0	0	0	0	0	0	1	0	0	0	0	0	
GLADES	2	0	0	0	0	0	0	0	1	0	1	0	0	0	
GULF	2	0	0	0	1	0	0	0	1	0	0	0	0	0	
HAMILTON	0	0	0	0	0	0	0	0	0	0	0	0	0	0	
HARDEE	2	0	0	0	0	0	0	1	0	1	0	0	0	0	
HENDRY	1	0	0	0	0	0	0	0	0	0	0	1	0	0	
HERNANDO	11	0	0	0	0	0	0	0	0	5	4	2	0	0	
HIGHLANDS	10	0	0	0	0	0	0	0	2	2	1	5	0	0	
HILLSBOROUGH	143	0	0	0	0	1	2	5	37	36	33	29	0	0	
HOLMES	1	0	0	0	0	0	0	0	0	1	0	0	0	0	
INDIAN RIVER	5	0	0	0	0	0	0	1	1	1	1	1	0	0	
JACKSON	5	0	0	0	0	0	0	1	2	1	1	0	0	0	
JEFFERSON	1	0	0	0	0	0	0	0	0	0	0	1	0	0	
LAFAYETTE	0	0	0	0	0	0	0	0	0	0	0	0	0	0	
LAKE	13	0	0	0	0	0	0	1	6	2	1	3	0	0	
LEE	49	0	0	0	0	1	1	0	14	15	11	7	0	0	
LEON	26	0	0	0	0	0	0	0	4	10	8	4	0	0	
LEVY	3	0	0	0	0	0	0	1	0	1	0	1	0	0	
LIBERTY	1	0	0	0	0	0	0	0	1	0	0	0	0	0	
MADISON	1	0	0	0	0	0	0	0	1	0	0	0	0	0	
MANATEE	27	0	0	0	0	0	0	1	10	5	5	5	0	1	
MARION	21	0	0	0	0	0	0	2	7	7	4	0	1	0	
MARTIN	7	0	0	0	0	0	1	0	1	1	3	0	0	1	
MONROE	2	0	0	0	0	0	0	0	0	2	0	0	0	0	
NASSAU	7	0	0	0	0	0	0	0	3	2	2	0	0	0	
OKALOOSA	12	0	0	0	0	0	0	0	1	3	4	4	0	0	
OKEECHOBEE	4	0	0	0	0	0	0	0	2	0	2	0	0	0	
ORANGE	103	0	0	0	1	1	0	1	3	16	20	34	26	1	
OSCEOLA	36	0	0	0	0	0	0	1	7	5	14	9	0	0	
PALM BEACH	68	0	0	0	0	1	0	1	11	18	20	15	0	2	
PASCO	37	0	0	0	0	0	1	0	7	5	14	10	0	0	
PINELLAS	52	0	0	0	1	0	0	1	12	10	16	10	0	2	
POLK	59	0	0	0	0	1	2	1	14	17	13	8	2	1	
PUTNAM	9	0	0	0	0	0	0	0	4	2	2	1	0	0	
SAINT JOHNS	8	0	0	0	0	0	0	1	0	1	1	5	0	0	
SAINT LUCIE	26	0	0	0	0	0	0	0	3	11	7	5	0	0	
SANTA ROSA	6	0	0	0	0	0	0	0	2	1	1	2	0	0	
SARASOTA	13	0	0	0	0	0	1	1	4	4	1	2	0	0	
SEMINOLE	22	0	0	0	0	0	0	0	4	10	3	5	0	0	
SUMTER	4	0	0	0	0	0	0	0	2	0	2	0	0	0	
SUWANNEE	5	0	0	0	0	0	0	1	1	0	2	1	0	0	
TAYLOR	1	0	0	0	0	0	0	0	1	0	0	0	0	0	
UNION	0	0	0	0	0	0	0	0	0	0	0	0	0	0	
VOLUSIA	29	0	0	0	0	0	0	0	4	8	9	7	0	1	
WAKULLA	1	0	0	0	0	0	0	0	0	1	0	0	0	0	
WALTON	2	0	0	0	0	0	0	0	1	1	0	0	0	0	
WASHINGTON	2	0	0	0	0	0	0	0	0	0	0	2	0	0	



TABLE F-4: RESIDENT AND RECORDED NEONATAL DEATHS (UNDER 28 DAYS) AND RATES PER 1,000 LIVE BIRTHS, BY RACE, BY COUNTY, FLORIDA, 2018

	RESIDENT NEONATAL DEATHS					RATES*		
	NUMBERS					TOTAL	WHITE	BLACK
	TOTAL	WHITE	BLACK	OTHER	UNK			
FLORIDA	892	467	352	67	6	4.0	3.0	7.2
ALACHUA	26	8	16	2	0	9.5	5.0	19.0
BAKER	2	2	0	0	0	5.9	6.9	0.0
BAY	16	10	5	1	0	7.3	6.1	15.5
BRADFORD	1	1	0	0	0	3.4	4.6	0.0
BREVARD	28	18	7	3	0	5.3	4.4	8.6
BROWARD	64	21	40	3	0	2.9	1.7	4.9
CALHOUN	1	1	0	0	0	7.1	8.5	0.0
CHARLOTTE	6	5	0	1	0	5.8	5.5	0.0
CITRUS	7	6	1	0	0	6.8	6.5	27.8
CLAY	6	4	1	1	0	2.7	2.4	2.9
COLLIER	11	7	3	1	0	3.4	2.7	6.8
COLUMBIA	7	5	2	0	0	8.6	8.1	11.5
MIAMI-DADE	100	54	41	4	1	3.2	2.2	7.0
DESOTO	0	0	0	0	0	0.0	0.0	0.0
DIXIE	2	1	1	0	0	13.4	7.4	90.9
DUVAL	80	21	52	7	0	6.2	3.0	11.3
ESCAMBIA	17	6	7	4	0	4.6	2.5	6.4
FLAGLER	4	3	1	0	0	4.9	4.7	9.6
FRANKLIN	0	0	0	0	0	0.0	0.0	0.0
GADSDEN	4	2	2	0	0	8.1	11.3	6.5
GILCHRIST	2	2	0	0	0	11.2	12.4	0.0
GLADES	0	0	0	0	0	0.0	0.0	0.0
GULF	2	1	1	0	0	18.5	11.1	71.4
HAMILTON	1	0	1	0	0	5.9	0.0	17.5
HARDEE	0	0	0	0	0	0.0	0.0	0.0
HENDRY	2	0	2	0	0	3.4	0.0	28.6
HERNANDO	7	5	1	1	0	4.3	3.6	7.5
HIGHLANDS	6	5	1	0	0	7.2	7.9	6.6
HILLSBOROUGH	76	43	24	9	0	4.4	3.6	6.5
HOLMES	0	0	0	0	0	0.0	0.0	0.0
INDIAN RIVER	0	0	0	0	0	0.0	0.0	0.0
JACKSON	4	2	2	0	0	8.0	5.8	14.8
JEFFERSON	0	0	0	0	0	0.0	0.0	0.0
LAFAYETTE	0	0	0	0	0	0.0	0.0	0.0
LAKE	8	5	2	1	0	2.4	1.9	3.8
LEE	27	19	6	2	0	4.0	3.4	6.2
LEON	17	4	10	3	0	5.8	2.7	8.1
LEVY	1	1	0	0	0	2.4	2.8	0.0
LIBERTY	0	0	0	0	0	0.0	0.0	0.0
MADISON	2	1	1	0	0	10.9	9.8	12.8
MANATEE	9	6	3	0	0	2.6	2.3	6.7
MARION	25	17	6	2	0	7.2	6.5	8.8
MARTIN	4	4	0	0	0	3.2	4.0	0.0
MONROE	1	1	0	0	0	1.4	1.7	0.0
NASSAU	3	3	0	0	0	3.5	4.0	0.0
OKALOOSA	14	8	4	1	1	5.2	3.8	12.9
OKEECHOBEE	1	1	0	0	0	1.8	2.0	0.0
ORANGE	71	30	35	5	1	4.2	2.8	8.0
OSCEOLA	16	14	2	0	0	3.6	3.9	4.1
PALM BEACH	50	20	26	3	1	3.3	2.0	6.1
PASCO	17	12	4	1	0	3.3	2.8	9.1
PINELLAS	26	18	5	3	0	3.2	3.1	3.5
POLK	39	23	13	2	1	5.0	4.0	8.0
PUTNAM	4	2	1	1	0	4.9	3.2	5.9
SAINT JOHN'S	5	2	2	1	0	2.2	1.0	13.9
SAINT LUCIE	7	4	3	0	0	2.2	1.9	3.3
SANTA ROSA	9	7	0	1	1	4.6	4.1	0.0
SARASOTA	5	1	3	1	0	1.7	0.4	14.1
SEMINOLE	13	5	7	1	0	2.8	1.5	9.3
SUMTER	1	0	1	0	0	2.1	0.0	13.7
SUWANNEE	4	3	1	0	0	8.4	7.5	14.9
TAYLOR	2	1	0	1	0	8.3	5.4	0.0
UNION	1	1	0	0	0	5.8	6.8	0.0
VOLUSIA	23	17	5	1	0	4.7	4.5	6.4
WAKULLA	3	2	1	0	0	8.9	6.9	27.0
WALTON	2	2	0	0	0	2.6	2.8	0.0
WASHINGTON	0	0	0	0	0	0.0	0.0	0.0

\*Rates based on neonatal deaths by race of decedent, live births by race of mother.

---- Indicates that no neonatal deaths nor live births occurred for the race group in the county, therefore a rate could not be calculated.

TABLE F-4 (Cont.): RESIDENT AND RECORDED NEONATAL DEATHS (UNDER 28 DAYS) AND RATES PER 1,000 LIVE BIRTHS, BY RACE, BY COUNTY, FLORIDA, 2018

	RECORDED NEONATAL DEATHS					RATES*		
	NUMBERS					TOTAL	WHITE	BLACK
	TOTAL	WHITE	BLACK	OTHER	UNK			
FLORIDA	922	484	360	71	7	4.2	3.1	7.4
ALACHUA	84	45	34	5	0	13.9	10.5	24.7
BAKER	0	0	0	0	0	0.0	0.0	----
BAY	19	13	5	1	0	7.8	7.0	14.4
BRADFORD	0	0	0	0	0	0.0	0.0	----
BREVARD	12	10	1	1	0	2.4	2.5	1.3
BROWARD	80	27	47	5	1	3.3	2.0	5.1
CALHOUN	0	0	0	0	0	----	----	----
CHARLOTTE	3	3	0	0	0	2.9	3.4	0.0
CITRUS	4	3	1	0	0	5.4	4.6	37.0
CLAY	8	2	5	1	0	3.2	1.1	8.6
COLLIER	6	4	2	0	0	1.7	1.4	4.5
COLUMBIA	5	4	1	0	0	7.6	8.6	5.6
MIAMI-DADE	104	63	36	5	0	3.7	2.8	7.8
DESOTO	0	0	0	0	0	0.0	0.0	0.0
DIXIE	0	0	0	0	0	0.0	0.0	----
DUVAL	88	29	50	8	1	6.0	3.3	11.1
ESCAMBIA	36	17	12	6	1	6.5	4.3	10.0
FLAGLER	0	0	0	0	0	0.0	0.0	0.0
FRANKLIN	0	0	0	0	0	----	----	----
GADSDEN	0	0	0	0	0	0.0	0.0	0.0
GILCHRIST	0	0	0	0	0	0.0	0.0	----
GLADES	0	0	0	0	0	----	----	----
GULF	0	0	0	0	0	0.0	0.0	----
HAMILTON	0	0	0	0	0	0.0	----	0.0
HARDEE	0	0	0	0	0	----	----	----
HENDRY	0	0	0	0	0	0.0	0.0	0.0
HERNANDO	1	1	0	0	0	0.6	0.7	0.0
HIGHLANDS	2	0	2	0	0	1.8	0.0	12.5
HILLSBOROUGH	115	70	33	11	1	5.8	4.9	7.9
HOLMES	0	0	0	0	0	0.0	0.0	----
INDIAN RIVER	0	0	0	0	0	0.0	0.0	0.0
JACKSON	0	0	0	0	0	0.0	0.0	0.0
JEFFERSON	0	0	0	0	0	0.0	0.0	----
LAFAYETTE	0	0	0	0	0	----	----	----
LAKE	2	2	0	0	0	0.8	1.0	0.0
LEE	27	16	8	3	0	3.9	2.8	8.2
LEON	25	9	11	5	0	5.6	3.6	6.2
LEVY	0	0	0	0	0	0.0	0.0	----
LIBERTY	0	0	0	0	0	0.0	0.0	----
MADISON	0	0	0	0	0	0.0	0.0	0.0
MANATEE	3	2	1	0	0	1.2	1.0	3.3
MARION	3	3	0	0	0	1.2	1.6	0.0
MARTIN	1	0	1	0	0	1.2	0.0	12.7
MONROE	0	0	0	0	0	0.0	0.0	0.0
NASSAU	1	1	0	0	0	2.0	2.4	0.0
OKALOOSA	2	0	1	0	1	0.9	0.0	3.9
OKEECHOBEE	0	0	0	0	0	0.0	0.0	----
ORANGE	154	83	58	12	1	6.9	5.4	11.5
OSCEOLA	12	8	4	0	0	2.6	2.2	7.4
PALM BEACH	49	21	24	3	1	2.8	1.8	5.0
PASCO	5	3	2	0	0	2.0	1.4	10.5
PINELLAS	32	20	8	4	0	3.5	2.9	5.3
POLK	11	8	3	0	0	1.9	1.9	2.6
PUTNAM	0	0	0	0	0	0.0	0.0	0.0
SAINT JOHNS	1	0	1	0	0	0.6	0.0	5.0
SAINT LUCIE	8	5	3	0	0	2.5	2.2	3.5
SANTA ROSA	2	2	0	0	0	5.0	5.8	0.0
SARASOTA	7	3	3	1	0	1.8	0.9	8.5
SEMINOLE	1	0	1	0	0	0.3	0.0	1.6
SUMTER	0	0	0	0	0	0.0	0.0	----
SUWANNEE	0	0	0	0	0	0.0	0.0	----
TAYLOR	0	0	0	0	0	0.0	0.0	----
UNION	0	0	0	0	0	0.0	0.0	----
VOLUSIA	6	4	2	0	0	1.5	1.3	3.0
WAKULLA	0	0	0	0	0	----	----	----
WALTON	3	3	0	0	0	2.2	2.4	0.0
WASHINGTON	0	0	0	0	0	----	----	----

\*Rates based on neonatal deaths by race of decedent, live births by race of mother.

---- Indicates that no neonatal deaths nor live births occurred for the race group in the county, therefore a rate could not be calculated.

TABLE F-5: RESIDENT AND RECORDED INFANT DEATHS (UNDER 1 YEAR) AND RATES PER 1,000 LIVE BIRTHS, BY RACE, BY COUNTY, FLORIDA, 2018

	RESIDENT INFANT DEATHS					RATES*		
	NUMBERS							
	TOTAL	WHITE	BLACK	OTHER	UNK	TOTAL	WHITE	BLACK
FLORIDA	1334	677	547	103	7	6.0	4.3	11.3
ALACHUA	30	9	17	4	0	11.0	5.6	20.2
BAKER	4	3	0	1	0	11.8	10.4	0.0
BAY	25	14	10	1	0	11.4	8.6	31.1
BRADFORD	1	1	0	0	0	3.4	4.6	0.0
BREVARD	34	22	8	4	0	6.4	5.3	9.8
BROWARD	103	27	66	9	1	4.7	2.2	8.1
CALHOUN	1	1	0	0	0	7.1	8.5	0.0
CHARLOTTE	7	6	0	1	0	6.7	6.7	0.0
CITRUS	11	10	1	0	0	10.7	10.8	27.8
CLAY	10	7	1	2	0	4.6	4.1	2.9
COLLIER	15	9	5	1	0	4.7	3.5	11.3
COLUMBIA	9	7	2	0	0	11.0	11.4	11.5
MIAMI-DADE	144	76	63	4	1	4.6	3.1	10.8
DESOTO	1	1	0	0	0	2.5	2.9	0.0
DIXIE	2	1	1	0	0	13.4	7.4	90.9
DUVAL	123	35	77	11	0	9.5	4.9	16.7
ESCAMBIA	30	9	16	5	0	8.0	3.8	14.6
FLAGLER	6	4	1	1	0	7.4	6.2	9.6
FRANKLIN	1	1	0	0	0	12.3	13.5	0.0
GADSDEN	7	3	4	0	0	14.1	16.9	12.9
GILCHRIST	2	2	0	0	0	11.2	12.4	0.0
GLADES	1	0	1	0	0	15.4	0.0	142.9
GULF	3	2	1	0	0	27.8	22.2	71.4
HAMILTON	1	0	1	0	0	5.9	0.0	17.5
HARDEE	0	0	0	0	0	0.0	0.0	0.0
HENDRY	2	0	2	0	0	3.4	0.0	28.6
HERNANDO	9	7	1	1	0	5.6	5.1	7.5
HIGHLANDS	10	7	3	0	0	12.0	11.1	19.7
HILLSBOROUGH	107	58	39	10	0	6.2	4.8	10.6
HOLMES	0	0	0	0	0	0.0	0.0	0.0
INDIAN RIVER	2	1	1	0	0	1.5	1.0	4.4
JACKSON	6	3	2	1	0	11.9	8.8	14.8
JEFFERSON	1	0	1	0	0	9.0	0.0	20.0
LAFAYETTE	0	0	0	0	0	0.0	0.0	0.0
LAKE	15	10	4	1	0	4.5	3.8	7.7
LEE	40	26	10	4	0	5.9	4.6	10.3
LEON	25	9	13	3	0	8.6	6.0	10.5
LEVY	1	1	0	0	0	2.4	2.8	0.0
LIBERTY	0	0	0	0	0	0.0	0.0	0.0
MADISON	2	1	1	0	0	10.9	9.8	12.8
MANATEE	12	7	5	0	0	3.5	2.6	11.2
MARION	33	23	7	3	0	9.5	8.8	10.3
MARTIN	5	5	0	0	0	4.0	5.0	0.0
MONROE	3	1	2	0	0	4.2	1.7	20.8
NASSAU	3	3	0	0	0	3.5	4.0	0.0
OKALOOSA	21	14	4	2	1	7.7	6.6	12.9
OKEECHOBEE	3	2	1	0	0	5.4	4.0	32.3
ORANGE	104	43	52	8	1	6.1	3.9	11.9
OSCEOLA	25	22	3	0	0	5.6	6.2	6.1
PALM BEACH	73	29	38	5	1	4.8	2.9	8.8
PASCO	22	15	6	1	0	4.3	3.5	13.6
PINELLAS	44	21	16	7	0	5.4	3.6	11.2
POLK	64	40	20	3	1	8.2	6.9	12.3
PUTNAM	6	3	2	1	0	7.3	4.8	11.8
SAINT JOHNS	7	3	3	1	0	3.1	1.6	20.8
SAINT LUCIE	12	7	5	0	0	3.8	3.4	5.5
SANTA ROSA	17	13	1	2	1	8.7	7.5	10.8
SARASOTA	11	6	4	1	0	3.8	2.4	18.8
SEMINOLE	21	7	12	2	0	4.5	2.1	16.0
SUMTER	3	1	2	0	0	6.3	2.6	27.4
SUWANNEE	6	3	3	0	0	12.6	7.5	44.8
TAYLOR	2	1	0	1	0	8.3	5.4	0.0
UNION	2	2	0	0	0	11.6	13.7	0.0
VOLUSIA	36	27	7	2	0	7.4	7.1	8.9
WAKULLA	5	3	2	0	0	14.8	10.4	54.1
WALTON	3	3	0	0	0	3.8	4.2	0.0
WASHINGTON	0	0	0	0	0	0.0	0.0	0.0

\*Rates based on infant deaths by race of decedent, live births by race of mother.

---- Indicates that no neonatal deaths nor live births occurred for the race group in the county, therefore a rate could not be calculated.

TABLE F-5 (Cont.): RESIDENT AND RECORDED INFANT DEATHS (UNDER 1 YEAR) AND RATES PER 1,000 LIVE BIRTHS, BY RACE, BY COUNTY, FLORIDA, 2018

	RECORDED INFANT DEATHS					RATES*		
	NUMBERS							
	TOTAL	WHITE	BLACK	OTHER	UNK	TOTAL	WHITE	BLACK
FLORIDA	1369	693	560	108	8	6.2	4.4	11.5
ALACHUA	101	57	37	7	0	16.7	13.3	26.9
BAKER	2	1	0	1	0	285.7	142.9	----
BAY	27	16	10	1	0	11.0	8.6	28.8
BRADFORD	1	1	0	0	0	333.3	333.3	----
BREVARD	17	13	2	2	0	3.3	3.3	2.7
BROWARD	122	35	77	8	2	5.1	2.6	8.4
CALHOUN	0	0	0	0	0	----	----	----
CHARLOTTE	3	3	0	0	0	2.9	3.4	0.0
CITRUS	5	4	1	0	0	6.8	6.1	37.0
CLAY	16	5	8	3	0	6.4	2.8	13.8
COLLIER	9	6	3	0	0	2.5	2.1	6.7
COLUMBIA	6	5	1	0	0	9.1	10.8	5.6
MIAMI-DADE	156	90	58	8	0	5.6	4.0	12.5
DESOTO	0	0	0	0	0	0.0	0.0	0.0
DIXIE	0	0	0	0	0	0.0	0.0	----
DUVAL	131	44	75	11	1	8.9	5.0	16.7
ESCAMBIA	53	23	20	9	1	9.5	5.8	16.6
FLAGLER	2	0	1	1	0	285.7	0.0	333.3
FRANKLIN	2	2	0	0	0	----	----	----
GADSDEN	2	0	2	0	0	500.0	0.0	666.7
GILCHRIST	0	0	0	0	0	0.0	0.0	----
GLADES	1	0	1	0	0	----	----	----
GULF	0	0	0	0	0	0.0	0.0	----
HAMILTON	0	0	0	0	0	0.0	----	0.0
HARDEE	0	0	0	0	0	----	----	----
HENDRY	0	0	0	0	0	0.0	0.0	0.0
HERNANDO	3	3	0	0	0	1.7	2.0	0.0
HIGHLANDS	3	0	3	0	0	2.7	0.0	18.8
HILLSBOROUGH	152	89	50	12	1	7.6	6.3	12.0
HOLMES	0	0	0	0	0	0.0	0.0	----
INDIAN RIVER	1	0	1	0	0	0.9	0.0	4.9
JACKSON	0	0	0	0	0	0.0	0.0	0.0
JEFFERSON	1	0	1	0	0	333.3	0.0	----
LAFAYETTE	0	0	0	0	0	----	----	----
LAKE	5	4	1	0	0	2.0	2.1	2.2
LEE	38	21	12	5	0	5.5	3.7	12.3
LEON	33	13	15	5	0	7.4	5.2	8.4
LEVY	0	0	0	0	0	0.0	0.0	----
LIBERTY	0	0	0	0	0	0.0	0.0	----
MADISON	0	0	0	0	0	0.0	0.0	0.0
MANATEE	5	2	3	0	0	2.0	1.0	9.9
MARION	8	6	1	1	0	3.2	3.3	2.0
MARTIN	1	0	1	0	0	1.2	0.0	12.7
MONROE	1	0	1	0	0	1.9	0.0	12.3
NASSAU	1	1	0	0	0	2.0	2.4	0.0
OKALOOSA	9	7	1	0	1	4.2	4.4	3.9
OKEECHOBEE	1	1	0	0	0	90.9	111.1	----
ORANGE	221	119	84	17	1	9.9	7.7	16.6
OSCEOLA	16	11	5	0	0	3.4	3.0	9.3
PALM BEACH	70	29	34	6	1	4.0	2.5	7.1
PASCO	9	5	3	1	0	3.7	2.4	15.7
PINELLAS	59	31	21	7	0	6.4	4.5	14.0
POLK	22	15	7	0	0	3.8	3.5	6.0
PUTNAM	1	0	1	0	0	4.5	0.0	16.1
SAINT JOHNS	1	0	1	0	0	0.6	0.0	5.0
SAINT LUCIE	11	6	5	0	0	3.4	2.7	5.8
SANTA ROSA	5	4	1	0	0	12.5	11.6	35.7
SARASOTA	14	9	4	1	0	3.6	2.7	11.4
SEMINOLE	6	2	3	1	0	1.8	0.8	4.9
SUMTER	0	0	0	0	0	0.0	0.0	----
SUWANNEE	2	1	1	0	0	142.9	76.9	----
TAYLOR	0	0	0	0	0	0.0	0.0	----
UNION	0	0	0	0	0	0.0	0.0	----
VOLUSIA	11	6	4	1	0	2.8	2.0	5.9
WAKULLA	0	0	0	0	0	----	----	----
WALTON	3	3	0	0	0	2.2	2.4	0.0
WASHINGTON	0	0	0	0	0	----	----	----

\*Rates based on infant deaths by race of decedent, live births by race of mother.

---- Indicates that no neonatal deaths nor live births occurred for the race group in the county, therefore a rate could not be calculated.

TABLE F-6: RESIDENT INFANT DEATHS AND RATE PER 1,000 LIVE BIRTHS BY HISPANIC OR HAITIAN ORIGIN, BY COUNTY, FLORIDA, 2018

	NUMBERS									RATE
	HISPANIC ORIGIN									
	TOTAL	PUERTO RICAN			OTHER/UNK		NON-HISPANIC/ NON-HAITIAN		TOTAL	
	HISPANIC	MEXICAN	RICAN	CUBAN	HISPANIC	HAITIAN		UNK	HISPANIC	
FLORIDA	1,334	347	72	84	59	132	61	899	27	5.2
ALACHUA	30	1	0	0	0	1	0	29	0	4.0
BAKER	4	0	0	0	0	0	0	4	0	0.0
BAY	25	2	0	1	0	1	0	23	0	10.8
BRADFORD	1	0	0	0	0	0	0	1	0	0.0
BREVARD	34	4	2	0	1	1	0	30	0	5.4
BROWARD	103	25	0	3	5	17	17	57	4	3.5
CALHOUN	1	0	0	0	0	0	0	1	0	0.0
CHARLOTTE	7	0	0	0	0	0	0	7	0	0.0
CITRUS	11	2	0	1	0	1	0	9	0	28.2
CLAY	10	4	1	2	0	1	0	6	0	20.4
COLLIER	15	6	4	0	0	2	5	4	0	3.9
COLUMBIA	9	1	1	0	0	0	0	8	0	20.8
MIAMI-DADE	144	72	2	5	35	30	11	59	2	3.9
DESOTO	1	0	0	0	0	0	0	1	0	0.0
DIXIE	2	1	1	0	0	0	0	1	0	166.7
DUVAL	123	15	6	5	1	3	1	102	5	9.2
ESCAMBIA	30	3	1	1	0	1	0	27	0	12.1
FLAGLER	6	1	0	1	0	0	0	5	0	10.0
FRANKLIN	1	0	0	0	0	0	0	1	0	0.0
GADSDEN	7	2	0	0	0	2	0	5	0	22.5
GILCHRIST	2	1	0	0	0	1	0	1	0	50.0
GLADES	1	0	0	0	0	0	0	1	0	0.0
GULF	3	0	0	0	0	0	0	3	0	0.0
HAMILTON	1	0	0	0	0	0	0	1	0	0.0
HARDEE	0	0	0	0	0	0	0	0	0	0.0
HENDRY	2	0	0	0	0	0	0	2	0	0.0
HERNANDO	9	4	1	1	0	2	0	5	0	15.7
HIGHLANDS	10	4	3	1	0	0	0	6	0	15.8
HILLSBOROUGH	107	43	10	16	10	7	2	62	0	7.8
HOLMES	0	0	0	0	0	0	0	0	0	0.0
INDIAN RIVER	2	0	0	0	0	0	0	2	0	0.0
JACKSON	6	0	0	0	0	0	0	6	0	0.0
JEFFERSON	1	0	0	0	0	0	0	1	0	0.0
LAFAYETTE	0	0	0	0	0	0	0	0	0	0.0
LAKE	15	1	0	0	0	1	0	14	0	1.4
LEE	40	12	3	0	1	8	3	25	0	5.0
LEON	25	3	1	1	0	1	0	22	0	17.0
LEVY	1	0	0	0	0	0	0	1	0	0.0
LIBERTY	0	0	0	0	0	0	0	0	0	0.0
MADISON	2	0	0	0	0	0	0	2	0	0.0
MANATEE	12	4	3	0	0	1	0	8	0	4.1
MARION	33	9	2	6	0	1	0	23	1	16.7
MARTIN	5	4	0	0	0	4	0	1	0	10.2
MONROE	3	1	0	0	1	0	2	0	0	4.2
NASSAU	3	0	0	0	0	0	0	3	0	0.0
OKALOOSA	21	1	0	1	0	0	0	19	1	2.7
OKEECHOBEE	3	0	0	0	0	0	0	3	0	0.0
ORANGE	104	28	4	9	1	14	8	64	4	4.6
OSCEOLA	25	19	0	11	0	8	1	5	0	7.1
PALM BEACH	73	25	6	3	2	14	10	36	2	5.2
PASCO	22	1	0	1	0	0	0	21	0	1.0
PINELLAS	44	7	4	2	0	1	0	37	0	5.9
POLK	64	23	9	10	1	3	1	38	2	9.8
PUTNAM	6	1	1	0	0	0	0	5	0	7.5
SAINT JOHNS	7	2	0	1	0	1	0	5	0	11.8
SAINT LUCIE	12	0	0	0	0	0	0	12	0	0.0
SANTA ROSA	17	2	1	0	0	1	0	14	1	16.7
SARASOTA	11	5	4	0	0	1	0	6	0	13.1
SEMINOLE	21	1	0	0	0	1	0	20	0	0.9
SUMTER	3	0	0	0	0	0	0	3	0	0.0
SUWANNEE	6	1	1	0	0	0	0	5	0	16.4
TAYLOR	2	0	0	0	0	0	0	2	0	0.0
UNION	2	0	0	0	0	0	0	2	0	0.0
VOLUSIA	36	6	1	2	1	2	0	25	5	6.7
WAKULLA	5	0	0	0	0	0	0	5	0	0.0
WALTON	3	0	0	0	0	0	0	3	0	0.0
WASHINGTON	0	0	0	0	0	0	0	0	0	0.0

**TABLE F-7: RESIDENT INFANT, NEONATAL AND POST-NEONATAL DEATHS FROM SELECTED CAUSES  
BY RACE, FLORIDA, 2018**

	TOTAL			POST NEO- NATAL	WHITE			POST NEO- NATAL
	NEONATAL		INFANT		NEONATAL		INFANT	
	<1 DAY	1-27 DAYS			<1 DAY	1-27 DAYS		
<b>TOTAL</b>	<b>1,334</b>	<b>458</b>	<b>434</b>	<b>442</b>	<b>677</b>	<b>239</b>	<b>228</b>	<b>210</b>
Intestinal Infectious Disease	2	0	0	2	1	0	0	1
Diarrhea & Gastroenteritis--Infectious Origin	8	0	0	8	4	0	0	4
Tuberculosis	0	0	0	0	0	0	0	0
Tetanus	0	0	0	0	0	0	0	0
Diphtheria	0	0	0	0	0	0	0	0
Whooping Cough	0	0	0	0	0	0	0	0
Meningococcal Infection	0	0	0	0	0	0	0	0
Septicemia	8	0	0	8	1	0	0	1
Congenital Syphilis	0	0	0	0	0	0	0	0
Gonococcal Infection	0	0	0	0	0	0	0	0
Acute Poliomyelitis	0	0	0	0	0	0	0	0
Varicella (Chicken Pox)	0	0	0	0	0	0	0	0
Measles	0	0	0	0	0	0	0	0
HIV Disease	0	0	0	0	0	0	0	0
Mumps	0	0	0	0	0	0	0	0
Other & Unspec Viral Diseases	11	0	0	11	7	0	0	7
Candidiasis	1	0	0	1	0	0	0	0
Malaria	0	0	0	0	0	0	0	0
Pneumocystosis	0	0	0	0	0	0	0	0
Other & Unspecified Infectious & Parasitic Diseases	0	0	0	0	0	0	0	0
Hodgkins Disease & Non-Hodgkins Lymphomas	0	0	0	0	0	0	0	0
Leukemia	1	0	1	0	1	0	1	0
Other & Unspecified Malignant Neoplasm	3	0	1	2	2	0	0	2
In Situ/Benign/Malignant Neoplasms Uncert/Unk Behavior	4	1	1	2	2	1	0	1
Anemias	0	0	0	0	0	0	0	0
Blood, Blood-Forming, Hemorrhagic Diseases	6	0	3	3	3	0	1	2
Disorders Involving Immune Mechanism	1	0	0	1	0	0	0	0
Short Stature	0	0	0	0	0	0	0	0
Nutritional Deficiencies	0	0	0	0	0	0	0	0
Cystic Fibrosis	0	0	0	0	0	0	0	0
Fluid/Electrolyte/Acid-Base/Volume Depletion Disorders	2	0	0	2	2	0	0	2
Other Endocrine, Nutritional, Metabolic Diseases	5	0	2	3	5	0	2	3
Meningitis	5	0	2	3	3	0	2	1
Infantile Spinal Muscular Atrophy, Type 1 (Werdnig-Hoffman)	0	0	0	0	0	0	0	0
Infantile Cerebral Palsy	0	0	0	0	0	0	0	0
Anoxic Brain Damage	0	0	0	0	0	0	0	0
Other Nervous System Diseases	5	0	2	3	3	0	1	2
Ear & Mastoid Process Diseases	0	0	0	0	0	0	0	0
Pulmonary Heart/Circulation Diseases	8	0	1	7	4	0	1	3
Pericarditis, Endocarditis, Myocarditis	2	0	0	2	1	0	0	1
Cardiomyopathy	5	0	1	4	3	0	1	2
Cardiac Arrest	1	1	0	0	1	1	0	0
Cerebrovascular Diseases	15	0	3	12	11	0	3	8
Other Circulatory System Diseases	10	0	1	9	4	0	0	4
Acute Upper Respiratory Infections	2	0	0	2	1	0	0	1
Influenza	2	0	0	2	2	0	0	2
Pneumonia	9	0	0	9	3	0	0	3

TABLE F-7 (Cont.): RESIDENT INFANT, NEONATAL AND POST-NEONATAL DEATHS FROM SELECTED CAUSES, BY RACE, FLORIDA, 2018

	TOTAL			POST NEO- NATAL	WHITE			POST NEO- NATAL
	NEONATAL		INFANT		NEONATAL		INFANT	
	<1 DAY	1-27 DAYS			<1 DAY	1-27 DAYS		
Acute Bronchitis & Acute Bronchiolitis	1	0	0	1	0	0	0	0
Bronchitis, Chronic & Unspecified	0	0	0	0	0	0	0	0
Asthma	0	0	0	0	0	0	0	0
Pneumonitis Due to Solids & Liquids	0	0	0	0	0	0	0	0
Other & Unspecified Respiratory System Diseases	7	0	1	6	4	0	1	3
Gastritis, Duodenitis, Noninfective Enteritis/Colitis	1	0	0	1	1	0	0	1
Hernia Abdom Cavity & Intestinal Obstruct W/O Hernia	4	0	1	3	2	0	1	1
Other & Unspec Digestive System Disease	9	0	2	7	3	0	1	2
Renal Failure & Other Kidney Disorders	6	0	2	4	3	0	0	3
Other & Unspec Genitourinary System Dis	1	0	0	1	0	0	0	0
<b>PERINATAL PERIOD CONDITIONS</b>	<b>693</b>	<b>373</b>	<b>292</b>	<b>28</b>	<b>342</b>	<b>181</b>	<b>147</b>	<b>14</b>
Maternal Hypertensive Disorders	6	6	0	0	1	1	0	0
Maternal Conditions Unrelated Present Pregnancy	3	1	1	1	2	1	0	1
Incompetent Cervix	38	35	3	0	24	22	2	0
Premature Rupture of Membranes	39	35	4	0	14	12	2	0
Multiple Pregnancy	4	4	0	0	3	3	0	0
Maternal Complications of Pregnancy	16	14	2	0	7	7	0	0
Placenta Complications	40	29	11	0	23	15	8	0
Cord Complications	2	2	0	0	2	2	0	0
Chorioamnionitis	25	23	2	0	12	10	2	0
Other & Unspecified Membrane Abnormalities	0	0	0	0	0	0	0	0
Other Complications of Labor & Delivery	3	1	2	0	2	0	2	0
Noxious Influences Via Placenta or Breast Milk	4	3	1	0	3	3	0	0
Slow Fetal Growth & Fetal Malnutrition	11	5	6	0	5	1	4	0
Extreme Low Birth Weight or Extreme Immaturity	152	115	34	3	64	50	14	0
Other Low Birth Weight or Preterm	42	35	5	2	19	16	3	0
Long Gestation & High Birth Weight	0	0	0	0	0	0	0	0
Birth Trauma	0	0	0	0	0	0	0	0
Intrauterine Hypoxia	12	6	6	0	5	3	2	0
Birth Asphyxia	7	2	5	0	2	1	1	0
Respiratory Distress	24	4	19	1	11	3	8	0
Congenital Pneumonia	2	0	2	0	2	0	2	0
Neonatal Aspiration Syndromes	6	2	4	0	3	2	1	0
Interstitial Emphysema & Related Conditions	4	1	3	0	2	1	1	0
Pulmonary Hemorrhage	12	1	11	0	8	1	7	0
Chronic Respiratory Disease	8	0	0	8	5	0	0	5
Atelectasis	20	9	10	1	16	7	8	1
Other Respiratory Conditions	0	0	0	0	0	0	0	0
Bacterial Sepsis	55	7	46	2	26	2	23	1
Omphalitis With or Without Hemorrhage	0	0	0	0	0	0	0	0
All Other Infections	8	2	6	0	3	0	3	0
Neonatal Hemorrhage	28	0	28	0	15	0	15	0
Hemorrhagic Disease of Newborn	0	0	0	0	0	0	0	0
Hemolytic Dis Due to Isoimmunization/Perinat Jaundice	0	0	0	0	0	0	0	0
Hematological Disorders	5	1	4	0	2	1	1	0
Diabetes Mellitus, Maternal or Neonatal	0	0	0	0	0	0	0	0
Necrotizing Enterocolitis	16	0	14	2	7	0	6	1
Hydrops Fetalis Not Due To Hemolytic Dis	11	2	6	3	6	2	3	1

TABLE F-7 (Cont.): RESIDENT INFANT, NEONATAL AND POST-NEONATAL DEATHS FROM SELECTED CAUSES, BY RACE, FLORIDA, 2018

	TOTAL				WHITE			
	NEONATAL		POST NEO-	NATAL	NEONATAL		POST NEO-	NATAL
	<1 INFANT	1-27 DAY			<1 INFANT	1-27 DAY		
Other Perinatal Conditions	90	28	57	5	48	15	29	4
<b>CONGENITAL / CHROMOSOMAL ANOMALIES</b>	<b>246</b>	<b>78</b>	<b>95</b>	<b>73</b>	<b>140</b>	<b>52</b>	<b>54</b>	<b>34</b>
Anencephaly & Similar Anomalies	9	4	5	0	8	3	5	0
Congenital Hydrocephalus	4	2	1	1	2	2	0	0
Spina Bifida	0	0	0	0	0	0	0	0
Other Cong Malf Nervous System	12	3	3	6	6	2	1	3
Congenital Malf of Heart	54	7	19	28	35	6	11	18
Other Congenital Malf of Circulatory Sys	8	0	4	4	6	0	4	2
Congenital Malf of Respiratory Sys	18	6	8	4	10	4	4	2
Congenital Anomalies of Digestive Sys	2	0	0	2	2	0	0	2
Congenital Malf of Genitourinary Sys	34	19	13	2	21	13	7	1
Congenital Malf of Musculoskeletal Sys	29	8	15	6	16	4	9	3
Downs Syndrome	5	1	1	3	2	1	1	0
Edwards Syndrome	29	8	11	10	13	3	7	3
Pataus Syndrome	14	4	8	2	5	3	2	0
Other Congenital Malf	25	16	5	4	13	11	2	0
Other Chromosomal Abnorm	3	0	2	1	1	0	1	0
Sudden Infant Death Syndrome	69	0	8	61	32	0	4	28
Symptoms, Signs, Abn Clinical/Lab Findings	54	2	5	47	20	1	1	18
All Other Diseases	0	0	0	0	0	0	0	0
Unint Inj: Motor Vehicle	6	1	0	5	3	1	0	2
Unint Inj: Other & Unspecified Transport	0	0	0	0	0	0	0	0
Unint Inj: Falls	1	0	0	1	1	0	0	1
Unint Inj: Firearms Discharge	0	0	0	0	0	0	0	0
Unint Inj: Drowning & Submersion	10	0	0	10	6	0	0	6
Unint Inj: Suffocation & Strangulation in Bed	72	0	6	66	35	0	4	31
Unint Inj: Other Suffocation & Strangulation	12	0	0	12	5	0	0	5
Unint Inj: Inhale/Ingest--Respiratory Tract Obstruction	1	0	0	1	0	0	0	0
Unint Inj: Smoke, Fire, Flames Exposure	1	0	0	1	1	0	0	1
Unint Inj: Poisoning & Noxious Substance Exposure	1	0	0	1	1	0	0	1
Unint Inj: Other & Unspecified	6	0	3	3	4	0	2	2
Homicide: Hanging, Strangulation, Suffocation	1	1	0	0	1	1	0	0
Homicide: Firearms Discharge	0	0	0	0	0	0	0	0
Homicide: Neglect, Abandonment, Maltreatment	4	0	0	4	2	0	0	2
Homicide: Other & Unspecified Means	5	1	0	4	4	1	0	3
Medical & Surgical Care Complications	2	0	1	1	1	0	1	0
Other External Causes	5	0	0	5	2	0	0	2

ICD-10 codes associated with each cause of death group are presented in Appendix 2.



TABLE F-7 (Cont.): RESIDENT INFANT, NEONATAL AND POST-NEONATAL DEATHS FROM SELECTED CAUSES, BY RACE, FLORIDA, 2018

	BLACK			POST NEO- NATAL	OTHER			POST NEO- NATAL
	NEONATAL		INFANT		NEONATAL		INFANT	
	<1 DAY	1-27 DAYS			<1 DAY	1-27 DAYS		
TOTAL	547	182	170	195	103	33	34	36
Intestinal Infectious Disease	1	0	0	1	0	0	0	0
Diarrhea & Gastroenteritis--Infectious Origin	4	0	0	4	0	0	0	0
Tuberculosis	0	0	0	0	0	0	0	0
Tetanus	0	0	0	0	0	0	0	0
Diphtheria	0	0	0	0	0	0	0	0
Whooping Cough	0	0	0	0	0	0	0	0
Meningococcal Infection	0	0	0	0	0	0	0	0
Septicemia	5	0	0	5	2	0	0	2
Congenital Syphilis	0	0	0	0	0	0	0	0
Gonococcal Infection	0	0	0	0	0	0	0	0
Acute Poliomyelitis	0	0	0	0	0	0	0	0
Varicella (Chicken Pox)	0	0	0	0	0	0	0	0
Measles	0	0	0	0	0	0	0	0
HIV Disease	0	0	0	0	0	0	0	0
Mumps	0	0	0	0	0	0	0	0
Other & Unspec Viral Diseases	4	0	0	4	0	0	0	0
Candidiasis	1	0	0	1	0	0	0	0
Malaria	0	0	0	0	0	0	0	0
Pneumocystosis	0	0	0	0	0	0	0	0
Other & Unspecified Infectious & Parasitic Diseases	0	0	0	0	0	0	0	0
Hodgkins Disease & Non-Hodgkins Lymphomas	0	0	0	0	0	0	0	0
Leukemia	0	0	0	0	0	0	0	0
Other & Unspecified Malignant Neoplasm	1	0	1	0	0	0	0	0
In Situ/Benign/Malignant Neoplasms Uncert/Unk Behavior	2	0	1	1	0	0	0	0
Anemias	0	0	0	0	0	0	0	0
Blood, Blood-Forming, Hemorrhagic Diseases	3	0	2	1	0	0	0	0
Disorders Involving Immune Mechanism	1	0	0	1	0	0	0	0
Short Stature	0	0	0	0	0	0	0	0
Nutritional Deficiencies	0	0	0	0	0	0	0	0
Cystic Fibrosis	0	0	0	0	0	0	0	0
Fluid/Electrolyte/Acid-Base/Volume Depletion Disorders	0	0	0	0	0	0	0	0
Other Endocrine, Nutritional, Metabolic Diseases	0	0	0	0	0	0	0	0
Meningitis	1	0	0	1	1	0	0	1
Infantile Spinal Muscular Atrophy, Type 1 (Werdnig-Hoffman)	0	0	0	0	0	0	0	0
Infantile Cerebral Palsy	0	0	0	0	0	0	0	0
Anoxic Brain Damage	0	0	0	0	0	0	0	0
Other Nervous System Diseases	1	0	1	0	1	0	0	1
Ear & Mastoid Process Diseases	0	0	0	0	0	0	0	0
Pulmonary Heart/Circulation Diseases	2	0	0	2	2	0	0	2
Pericarditis, Endocarditis, Myocarditis	1	0	0	1	0	0	0	0
Cardiomyopathy	2	0	0	2	0	0	0	0
Cardiac Arrest	0	0	0	0	0	0	0	0
Cerebrovascular Diseases	4	0	0	4	0	0	0	0
Other Circulatory System Diseases	6	0	1	5	0	0	0	0
Acute Upper Respiratory Infections	1	0	0	1	0	0	0	0
Influenza	0	0	0	0	0	0	0	0

TABLE F-7 (Cont.): RESIDENT INFANT, NEONATAL AND POST-NEONATAL DEATHS FROM SELECTED CAUSES, BY RACE, FLORIDA, 2018

	BLACK			POST NEO- NATAL	OTHER			POST NEO- NATAL
	NEONATAL		INFANT		NEONATAL		INFANT	
	<1 DAY	1-27 DAYS			<1 DAY	1-27 DAYS		
Pneumonia	5	0	0	5	1	0	0	1
Acute Bronchitis & Acute Bronciolitis	1	0	0	1	0	0	0	0
Bronchitis, Chronic & Unspecified	0	0	0	0	0	0	0	0
Asthma	0	0	0	0	0	0	0	0
Pneumonitis Due to Solids & Liquids	0	0	0	0	0	0	0	0
Other & Unspecified Respiratory System Diseases	3	0	0	3	0	0	0	0
Gastritis, Duodenitis, Noninfective Enteritis/Colitis	0	0	0	0	0	0	0	0
Hernia Abdom Cavity & Intestinal Obstruct W/O Hernia	2	0	0	2	0	0	0	0
Other & Unspec Digestive System Disease	6	0	1	5	0	0	0	0
Renal Failure & Other Kidney Disorders	3	0	2	1	0	0	0	0
Other & Unspec Genitourinary System Dis	1	0	0	1	0	0	0	0
<b>PERINATAL PERIOD CONDITIONS</b>	<b>291</b>	<b>158</b>	<b>120</b>	<b>13</b>	<b>54</b>	<b>30</b>	<b>23</b>	<b>1</b>
Maternal Hypertensive Disorders	5	5	0	0	0	0	0	0
Maternal Conditions Unrelated Present Pregnancy	1	0	1	0	0	0	0	0
Incompetent Cervix	10	10	0	0	4	3	1	0
Premature Rupture of Membranes	19	17	2	0	6	6	0	0
Multiple Pregnancy	1	1	0	0	0	0	0	0
Maternal Complications of Pregnancy	6	4	2	0	3	3	0	0
Placenta Complications	16	13	3	0	1	1	0	0
Cord Complications	0	0	0	0	0	0	0	0
Chorioamnionitis	10	10	0	0	3	3	0	0
Other & Unspecified Membrane Abnormalities	0	0	0	0	0	0	0	0
Other Complications of Labor & Delivery	1	1	0	0	0	0	0	0
Noxious Influences Via Placenta or Breast Milk	1	0	1	0	0	0	0	0
Slow Fetal Growth & Fetal Malnutrition	6	4	2	0	0	0	0	0
Extreme Low Birth Weight or Extreme Immaturity	76	56	17	3	10	7	3	0
Other Low Birth Weight or Preterm	18	14	2	2	4	4	0	0
Long Gestation & High Birth Weight	0	0	0	0	0	0	0	0
Birth Trauma	0	0	0	0	0	0	0	0
Intrauterine Hypoxia	6	2	4	0	0	0	0	0
Birth Asphyxia	4	1	3	0	1	0	1	0
Respiratory Distress	13	1	11	1	0	0	0	0
Congenital Pneumonia	0	0	0	0	0	0	0	0
Neonatal Aspiration Syndromes	2	0	2	0	0	0	0	0
Interstitial Emphysema & Related Conditions	2	0	2	0	0	0	0	0
Pulmonary Hemorrhage	3	0	3	0	1	0	1	0
Chronic Respiratory Disease	3	0	0	3	0	0	0	0
Atelectasis	3	2	1	0	1	0	1	0
Other Respiratory Conditions	0	0	0	0	0	0	0	0
Bacterial Sepsis	23	5	17	1	6	0	6	0
Omphalitis With or Without Hemorrhage	0	0	0	0	0	0	0	0
All Other Infections	5	2	3	0	0	0	0	0
Neonatal Hemorrhage	11	0	11	0	2	0	2	0
Hemorrhagic Disease of Newborn	0	0	0	0	0	0	0	0
Hemolytic Dis Due to Isoimmunization/Perinat Jaundice	0	0	0	0	0	0	0	0
Hematological Disorders	2	0	2	0	1	0	1	0
Diabetes Mellitus, Maternal or Neonatal	0	0	0	0	0	0	0	0
Necrotizing Enterocolitis	6	0	5	1	3	0	3	0

TABLE F-7 (Cont.): RESIDENT INFANT, NEONATAL AND POST-NEONATAL DEATHS FROM SELECTED CAUSES, BY RACE, FLORIDA, 2018

	BLACK			POST NEO- NATAL	OTHER			POST NEO- NATAL
	NEONATAL		INFANT		NEONATAL		INFANT	
	<1 DAY	1-27 DAYS			<1 DAY	1-27 DAYS		
Hydrops Fetalis Not Due To Hemolytic Dis	3	0	1	2	2	0	2	0
Other Perinatal Conditions	35	10	25	0	6	3	2	1
<b>CONGENITAL / CHROMOSOMAL ANOMALIES</b>	<b>86</b>	<b>23</b>	<b>31</b>	<b>32</b>	<b>20</b>	<b>3</b>	<b>10</b>	<b>7</b>
Anencephaly & Similar Anomalies	1	1	0	0	0	0	0	0
Congenital Hydrocephalus	0	0	0	0	2	0	1	1
Spina Bifida	0	0	0	0	0	0	0	0
Other Cong Malf Nervous System	4	0	2	2	2	1	0	1
Congenital Malf of Heart	14	1	4	9	5	0	4	1
Other Congenital Malf of Circulatory Sys	2	0	0	2	0	0	0	0
Congenital Malf of Respiratory Sys	6	1	3	2	2	1	1	0
Congenital Anomalies of Digestive Sys	0	0	0	0	0	0	0	0
Congenital Malf of Genitourinary Sys	13	6	6	1	0	0	0	0
Congenital Malf of Musculoskeletal Sys	12	4	5	3	1	0	1	0
Downs Syndrome	3	0	0	3	0	0	0	0
Edwards Syndrome	14	5	3	6	2	0	1	1
Patau Syndrome	8	1	5	2	1	0	1	0
Other Congenital Malf	8	4	2	2	4	1	1	2
Other Chromosomal Abnorm	1	0	1	0	1	0	0	1
Sudden Infant Death Syndrome	30	0	4	26	6	0	0	6
Symptoms, Signs, Abn Clinical/Lab Findings	30	1	4	25	4	0	0	4
All Other Diseases	0	0	0	0	0	0	0	0
Unint Inj: Motor Vehicle	3	0	0	3	0	0	0	0
Unint Inj: Other & Unspecified Transport	0	0	0	0	0	0	0	0
Unint Inj: Falls	0	0	0	0	0	0	0	0
Unint Inj: Firearms Discharge	0	0	0	0	0	0	0	0
Unint Inj: Drowning & Submersion	2	0	0	2	2	0	0	2
Unint Inj: Suffocation & Strangulation in Bed	30	0	2	28	7	0	0	7
Unint Inj: Other Suffocation & Strangulation	7	0	0	7	0	0	0	0
Unint Inj: Inhale/Ingest--Respiratory Tract Obstruction	1	0	0	1	0	0	0	0
Unint Inj: Smoke, Fire, Flames Exposure	0	0	0	0	0	0	0	0
Unint Inj: Poisoning & Noxious Substance Exposure	0	0	0	0	0	0	0	0
Unint Inj: Other & Unspecified	0	0	0	0	2	0	1	1
Homicide: Hanging, Strangulation, Suffocation	0	0	0	0	0	0	0	0
Homicide: Firearms Discharge	0	0	0	0	0	0	0	0
Homicide: Neglect, Abandonment, Maltreatment	2	0	0	2	0	0	0	0
Homicide: Other & Unspecified Means	0	0	0	0	1	0	0	1
Medical & Surgical Care Complications	1	0	0	1	0	0	0	0
Other External Causes	3	0	0	3	0	0	0	0

ICD-10 codes associated with each cause of death group are presented in Appendix 2.

