

Fetal and Infant Deaths

FETAL AND INFANT DEATHS

- Both the number and ratio of resident fetal deaths (20 or more weeks gestation) have decreased from last year.
- Resident fetal deaths among whites increased by only 0.2 percent from 1997 to 1998, but decreased 1.0 percent among nonwhites.
- Of the fetal deaths, 18.4 percent occurred to mothers residing in Miami-Dade County.
- More than one of every five resident fetal deaths occurred to a mother of Hispanic or Haitian origin.
- About one of every ten fetal deaths occurred to a mother who was aged 18 years or under.
- In 1998 both the number and rate of resident neonatal deaths (under 28 days) increased. The number increased 1.0 percent for whites, but decreased 0.2 percent for nonwhites.
- The neonatal death rate increased to 4.8 per 1,000 live births in 1998. This represents less than half the rate of 1980 (9.7).
- The nonwhite neonatal death rate (7.5) is almost twice the white rate (3.8).
- There was an overall increase in infant deaths (under one year). The resident infant mortality rate increased slightly from a record low of 7.1 deaths per 1,000 live births in 1997 to a rate of 7.2 in 1998 — which is slightly above the U.S. provisional rate (7.0).
- The resident infant mortality rate has dropped 25.0 percent since 1990 and is less than half the rate of 1980.
- The resident infant mortality rate for nonwhites (11.4) is nearly double the rate for whites (5.8).
- Resident infants of Hispanic or Haitian origin accounted for 16.3 percent of all infant deaths.
- Of the total resident deaths occurring within the first year of life, 65.9 percent were less than 28 days old. Furthermore, 37.8 percent were less than one day old.
- The leading causes of resident infant deaths in 1998 were Perinatal Conditions, Congenital Anomalies, and Sudden Infant Death Syndrome. These causes accounted for 75.4 percent of all resident infant deaths.

**CHART F-1: RESIDENT FETAL DEATHS AND RATIOS PER 1,000 LIVE BIRTHS,
BY RACE OF MOTHER, FLORIDA AND UNITED STATES TOTAL,
CENSUS YEARS 1920-1980 AND 1988-1998**

YEAR	NUMBER OF FETAL DEATHS - FL			RATIOS - FL			RATIO - U.S.
	TOTAL	WHITE	NON-WHITE	TOTAL	WHITE	NON-WHITE	TOTAL
1920 ¹	1,287	595	692	65.9	43.9	115.4	NA
1930 ¹	1,754	746	1,008	65.0	40.1	120.1	NA
1940	1,415	683	732	42.0	28.7	74.0	NA
1950	1,443	757	868	22.4	16.6	36.7	18.8
1960	1,846	1,043	803	16.0	12.4	25.7	15.8
1970	1,701	1,064	637	14.8	12.2	22.6	14.0
1980	1,355	847	491	10.3	8.7	14.3	9.1
1988	1,738	1,033	688	9.4	7.5	15.0	7.5
1989	1,802	1,084	689	9.3	7.5	14.4	7.5
1990	1,811	1,071	720	9.1	7.2	14.6	7.5
1991	1,692	978	703	8.7	6.8	14.4	7.3
1992	1,498	920	570	7.8	6.4	11.8	7.4
1993	1,447	858	580	7.5	6.0	12.0	NA
1994	1,519	909	599	8.0	6.4	12.7	NA
1995	1,531	937	581	8.1	6.6	12.5	NA
1996	1,478	885	577	7.8	6.2	12.3	NA
1997	1,523	910	600	7.9	6.3	12.4	NA
1998	1,520	912	594	7.8	6.3	12.0	NA

¹ Only recorded data are available.

GRAPH F-1: RESIDENT FETAL DEATH RATIOS, BY RACE OF MOTHER, FLORIDA AND UNITED STATES TOTAL, 1988-1998

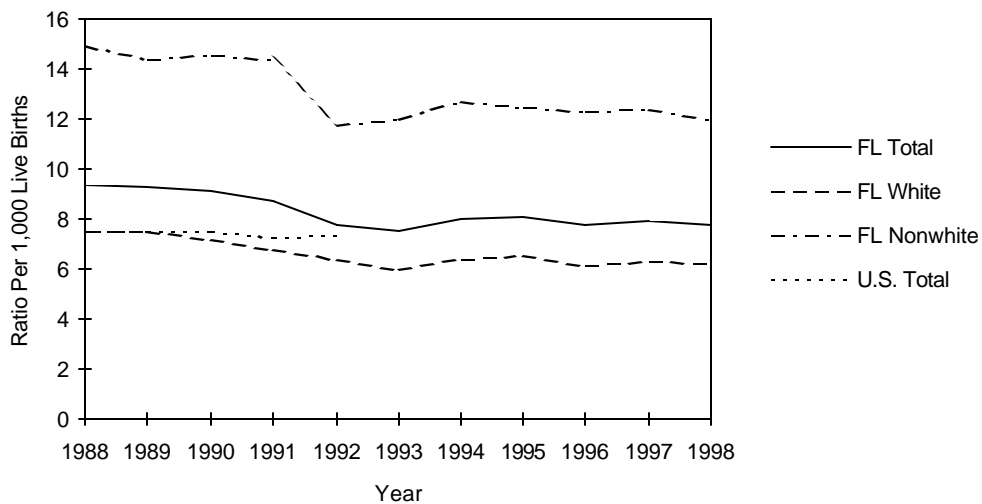


CHART F-2: RESIDENT NEONATAL DEATHS AND RATES PER 1,000 LIVE BIRTHS, BY RACE, FLORIDA AND UNITED STATES TOTAL, CENSUS YEARS 1920-1980 AND 1988-1998							
YEAR	NUMBER OF NEONATAL DEATHS - FL			RATES ¹ - FL			RATE - U.S.
	TOTAL	WHITE	NON-WHITE	TOTAL	WHITE	NON-WHITE	TOTAL
1920	NA	NA	NA	NA	NA	NA	NA
1930	NA	NA	NA	NA	NA	NA	NA
1940	1,142	662	480	33.9	27.8	48.5	28.8
1950	1,551	975	576	24.1	21.3	30.8	20.5
1960	2,404	1,531	873	20.8	18.1	28.0	18.7
1970	1,848	1,198	648	16.1	13.8	23.0	15.1
1980	1,282	791	490	9.7	8.1	14.2	8.5
1988	1,270	776	494	6.9	5.6	10.8	6.3
1989	1,251	736	514	6.5	5.1	10.8	6.2
1990	1,227	742	484	6.2	5.0	9.8	5.8
1991	1,122	635	485	5.8	4.4	10.0	5.5
1992	1,120	666	452	5.8	4.7	9.4	5.4
1993	1,071	609	460	5.6	4.2	9.6	5.3
1994	1,027	624	402	5.4	4.4	8.5	5.1
1995	874	523	351	4.6	3.7	7.5	4.9
1996	895	517	377	4.7	3.6	8.0	4.8
1997	889	518	370	4.6	3.6	7.6	4.7 ²
1998	933	559	371	4.8	3.8	7.5	NA

¹ Rates based on neonatal deaths by race of decedent, live births by race of mother.

² Preliminary data.

GRAPH F-2: RESIDENT NEONATAL DEATH RATES¹, BY RACE, FLORIDA AND UNITED STATES TOTAL, 1988-1998

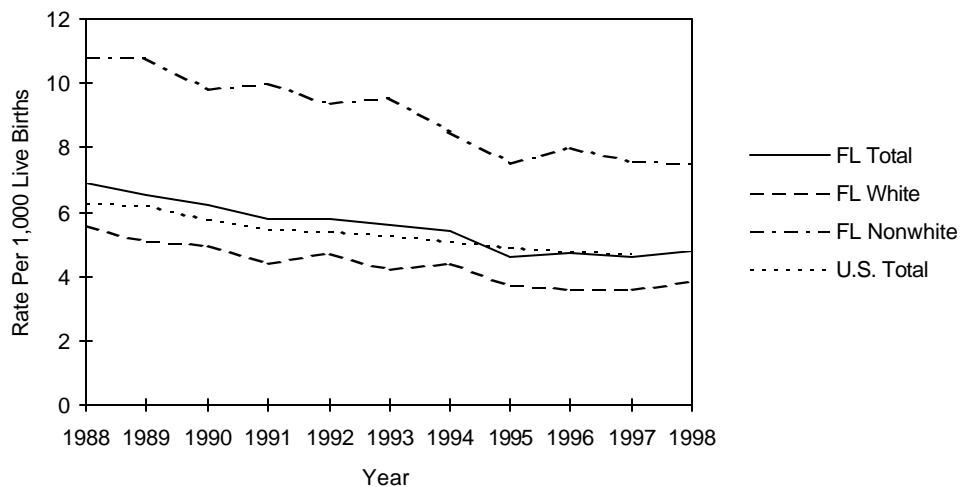


CHART F-3: RESIDENT INFANT DEATHS AND RATES PER 1,000 LIVE BIRTHS, BY RACE, FLORIDA AND UNITED STATES TOTAL, CENSUS YEARS 1920-1980 AND 1988-1998							
YEAR	NUMBER OF INFANT DEATHS - FL			RATES ² - FL			RATE - U.S.
	TOTAL	WHITE	NON-WHITE	TOTAL	WHITE	NON-WHITE	TOTAL
1920 ¹	1,835	1,031	804	93.9	76.1	134.0	NA
1930 ¹	1,729	928	801	64.1	49.9	95.4	NA
1940	1,812	1,052	760	53.8	44.2	76.8	47.0
1950	2,078	1,225	853	32.3	26.8	45.7	29.2
1960	3,431	1,992	1,439	29.7	23.6	46.1	26.0
1970	2,466	1,537	927	21.4	17.7	32.9	20.0
1980	1,915	1,135	779	14.5	11.7	22.7	12.6
1988	1,949	1,167	782	10.6	8.5	17.0	10.0
1989	1,899	1,141	756	9.8	7.9	15.8	9.8
1990	1,909	1,121	786	9.6	7.5	16.0	9.2
1991	1,726	966	758	8.9	6.7	15.6	8.9
1992	1,685	987	695	8.8	6.9	14.4	8.5
1993	1,654	951	699	8.6	6.6	14.5	8.4
1994	1,540	927	611	8.1	6.5	12.9	8.0
1995	1,402	840	562	7.4	5.9	12.1	7.6
1996	1,405	821	583	7.4	5.8	12.4	7.3
1997	1,358	805	552	7.1	5.6	11.4	7.1 ³
1998	1,415	850	562	7.2	5.8	11.4	7.0 ⁴

¹ Only recorded data are available.

² Rates based on infant deaths by race of decedent, live births by race of mother.

³ Preliminary data.

⁴ Provisional data for January through November 1998.

GRAPH F-3: RESIDENT INFANT DEATH RATES², BY RACE, FLORIDA AND UNITED STATES TOTAL, 1988-1998

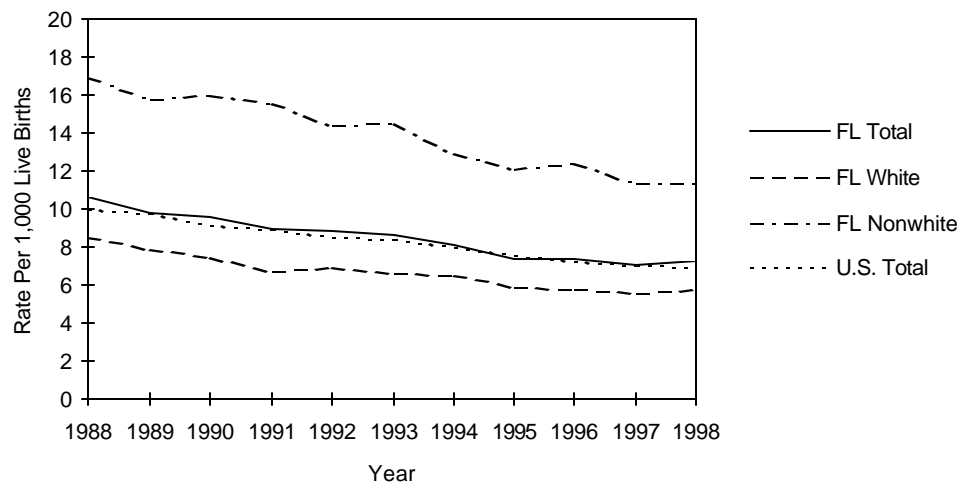


TABLE F-1: RESIDENT AND RECORDED FETAL DEATHS (OF 20 OR MORE WEEKS GESTATION) AND RATIOS PER 1,000 LIVE BIRTHS, BY RACE OF MOTHER, BY COUNTY, FLORIDA, 1998

	RESIDENT FETAL DEATHS							RECORDED FETAL DEATHS						
	NUMBER				RATIOS			NUMBER				RATIOS		
	TOTAL	WHITE	NON-WHITE	UNK	TOTAL	WHITE	NON-WHITE	TOTAL	WHITE	NON-WHITE	UNK	TOTAL	WHITE	NON-WHITE
FLORIDA	1,520	912	594	14	7.8	6.3	12.0	1,545	934	598	13	7.9	6.4	12.1
ALACHUA	21	11	10	0	8.7	7.0	11.8	46	30	16	0	8.6	7.5	12.1
BAKER	1	1	0	0	3.1	3.5	0.0	0	0	0	0	0.0	0.0	0.0
BAY	15	10	5	0	7.4	6.1	13.6	22	15	7	0	9.0	7.4	16.5
BRADFORD	1	1	0	0	3.2	4.0	0.0	0	0	0	0	0.0	0.0	0.0
BREVARD	34	25	9	0	7.1	6.1	12.5	26	20	6	0	5.6	5.1	8.7
BROWARD	171	84	85	2	8.3	6.3	11.6	158	77	79	2	8.1	6.4	10.7
CALHOUN	3	3	0	0	18.8	22.7	0.0	0	0	0	0	—	—	—
CHARLOTTE	7	6	1	0	6.7	6.3	12.7	5	4	1	0	4.7	4.0	11.9
CITRUS	1	1	0	0	1.2	1.3	0.0	1	1	0	0	1.4	1.4	0.0
CLAY	6	6	0	0	3.3	3.8	0.0	6	4	2	0	3.7	3.0	7.9
COLLIER	22	17	5	0	8.1	7.3	13.5	14	9	5	0	5.7	4.2	15.2
COLUMBIA	3	3	0	0	3.9	5.0	0.0	1	1	0	0	1.8	2.6	0.0
MIAMI-DADE	280	145	129	6	8.9	6.7	13.1	289	150	133	6	9.0	6.7	13.7
DESOTO	3	2	1	0	7.3	5.9	14.1	4	3	1	0	6.1	5.2	14.5
DIXIE	1	1	0	0	6.5	7.3	0.0	0	0	0	0	0.0	0.0	—
DUVAL	95	41	54	0	7.8	5.4	12.0	105	50	55	0	7.6	5.5	12.0
ESCAMBIA	40	21	19	0	10.2	8.1	14.3	53	33	20	0	9.8	8.4	13.6
FLAGLER	6	4	2	0	16.6	13.0	37.0	1	0	1	0	1000.0	—	1000.0
FRANKLIN	0	0	0	0	0.0	0.0	0.0	0	0	0	0	—	—	—
GADSDEN	8	1	5	2	11.5	4.4	10.7	0	0	0	0	0.0	0.0	0.0
GILCHRIST	0	0	0	0	0.0	0.0	0.0	0	0	0	0	0.0	0.0	—
GLADES	0	0	0	0	0.0	0.0	0.0	0	0	0	0	0.0	0.0	0.0
GULF	1	1	0	0	7.0	8.5	0.0	0	0	0	0	—	—	—
HAMILTON	2	1	1	0	12.0	10.4	14.1	1	0	1	0	166.7	0.0	333.3
HARDEE	3	2	1	0	6.7	4.6	83.3	0	0	0	0	0.0	0.0	0.0
HENDRY	4	2	2	0	6.0	3.8	14.6	1	0	1	0	1000.0	—	1000.0
HERNANDO	9	7	2	0	8.3	7.0	24.1	8	6	2	0	7.0	5.6	24.7
HIGHLANDS	8	4	4	0	9.5	6.0	23.0	6	4	2	0	7.1	6.1	10.2
HILLSBOROUGH	100	63	33	4	7.0	5.7	10.0	120	84	33	3	7.7	6.9	9.6
HOLMES	1	1	0	0	5.3	5.6	0.0	0	0	0	0	0.0	0.0	—
INDIAN RIVER	2	2	0	0	1.8	2.2	0.0	1	1	0	0	0.9	1.1	0.0
JACKSON	1	1	0	0	1.9	2.7	0.0	1	1	0	0	1.6	2.3	0.0
JEFFERSON	1	0	1	0	7.5	0.0	14.5	0	0	0	0	0.0	0.0	—
LAFAYETTE	2	1	1	0	26.7	15.4	100.0	0	0	0	0	—	—	—
LAKE	12	5	7	0	5.4	2.7	20.0	10	4	6	0	5.6	2.8	16.9
LEE	36	31	5	0	7.8	8.0	7.1	47	42	5	0	8.8	9.2	6.3
LEON	25	8	17	0	8.2	4.4	13.9	41	15	24	2	8.5	5.3	11.8
LEVY	4	4	0	0	9.9	12.0	0.0	0	0	0	0	0.0	0.0	—
LIBERTY	1	1	0	0	11.4	13.5	0.0	0	0	0	0	—	—	—
MADISON	4	1	3	0	18.6	9.2	28.3	1	0	1	0	—	—	—
MANATEE	28	23	5	0	9.8	9.6	10.7	15	10	5	0	6.3	5.1	12.3
MARION	21	14	7	0	7.7	6.3	13.5	17	10	7	0	7.2	5.2	16.4
MARTIN	6	3	3	0	5.4	3.3	14.9	6	3	3	0	4.3	2.5	14.9
MONROE	4	2	2	0	5.7	3.2	29.4	2	1	1	0	4.2	2.4	17.2
NASSAU	4	2	2	0	5.4	3.0	29.9	1	0	1	0	2.9	0.0	23.8
OKALOOSA	12	10	2	0	5.2	5.2	4.9	12	10	2	0	4.8	4.8	5.0
OKEECHOBEE	2	2	0	0	4.2	4.7	0.0	1	1	0	0	125.0	333.3	0.0
ORANGE	113	64	49	0	8.8	6.9	13.3	157	97	60	0	10.0	8.2	15.5
OSCEOLA	22	18	4	0	9.8	9.1	14.4	17	14	3	0	7.1	6.9	8.6
PALM BEACH	87	51	36	0	6.7	5.5	9.5	99	56	43	0	6.8	5.3	10.6
PASCO	20	20	0	0	5.9	6.2	0.0	6	6	0	0	4.2	4.5	0.0
PINELLAS	74	52	22	0	7.8	6.9	11.8	88	65	23	0	8.3	7.5	12.2
POLK	45	32	13	0	6.9	6.2	9.6	37	24	13	0	6.3	5.2	10.7
PUTNAM	5	3	2	0	5.6	4.6	8.2	2	1	1	0	4.0	3.1	5.9
ST JOHNS	12	9	3	0	10.1	8.6	20.8	11	8	3	0	14.7	12.8	24.8
ST LUCIE	16	8	8	0	7.1	5.1	11.9	15	7	8	0	7.0	4.7	12.0
SANTA ROSA	13	11	2	0	8.5	7.8	16.3	2	2	0	0	4.9	5.4	0.0
SARASOTA	25	16	9	0	9.6	6.9	31.3	41	31	10	0	13.5	11.5	27.9
SEMINOLE	23	16	7	0	5.4	4.5	10.4	18	13	5	0	5.2	4.6	8.0
SUMTER	1	0	1	0	2.4	0.0	13.3	0	0	0	0	0.0	0.0	—
SUWANNEE	5	4	1	0	11.0	10.4	14.3	0	0	0	0	0.0	0.0	0.0
TAYLOR	1	0	1	0	4.1	0.0	15.2	0	0	0	0	0.0	0.0	0.0
UNION	1	0	1	0	6.4	0.0	43.5	0	0	0	0	—	—	—
VOLUSIA	38	28	10	0	8.6	7.6	13.8	30	21	9	0	7.8	6.6	13.0
WAKULLA	2	2	0	0	7.8	9.2	0.0	0	0	0	0	—	—	—
WALTON	2	2	0	0	4.8	5.4	0.0	0	0	0	0	0.0	0.0	0.0
WASHINGTON	4	2	2	0	17.7	11.2	43.5	0	0	0	0	0.0	0.0	—

TABLE F-2: RESIDENT FETAL DEATHS BY HISPANIC OR HAITIAN ORIGIN OF MOTHER, BY COUNTY, FLORIDA, 1998

	HISPANIC OR HAITIAN ORIGIN								NON-HISPANIC/HAITIAN	UNK
	TOTAL	TOTAL HISPANIC/HAITIAN	MEXICAN	PUERTO RICAN	CUBAN	CENTRAL/SOUTH AMERICAN	OTHER/UNK HISPANIC	HAITIAN		
FLORIDA	1,520	308	41	54	53	84	22	54	1,126	86
ALACHUA	21	4	0	3	0	1	0	0	17	0
BAKER	1	0	0	0	0	0	0	0	1	0
BAY	15	0	0	0	0	0	0	0	15	0
BRADFORD	1	0	0	0	0	0	0	0	1	0
BREVARD	34	2	0	1	0	0	1	0	32	0
BROWARD	171	47	0	7	5	12	7	16	114	10
CALHOUN	3	1	1	0	0	0	0	0	2	0
CHARLOTTE	7	0	0	0	0	0	0	0	7	0
CITRUS	1	0	0	0	0	0	0	0	1	0
CLAY	6	0	0	0	0	0	0	0	6	0
COLLIER	22	12	7	0	0	2	0	3	10	0
COLUMBIA	3	0	0	0	0	0	0	0	3	0
MIAMI-DADE	280	121	4	7	38	51	2	19	92	67
DESOTO	3	0	0	0	0	0	0	0	3	0
DIXIE	1	0	0	0	0	0	0	0	1	0
DUVAL	95	2	0	1	0	1	0	0	93	0
ESCAMBIA	40	2	2	0	0	0	0	0	38	0
FLAGLER	6	0	0	0	0	0	0	0	6	0
FRANKLIN	0	0	0	0	0	0	0	0	0	0
GADSDEN	8	1	1	0	0	0	0	0	5	2
GILCHRIST	0	0	0	0	0	0	0	0	0	0
GLADES	0	0	0	0	0	0	0	0	0	0
GULF	1	0	0	0	0	0	0	0	1	0
HAMILTON	2	0	0	0	0	0	0	0	2	0
HARDEE	3	1	1	0	0	0	0	0	2	0
HENDRY	4	0	0	0	0	0	0	0	4	0
HERNANDO	9	1	0	1	0	0	0	0	8	0
HIGHLANDS	8	0	0	0	0	0	0	0	8	0
HILLSBOROUGH	100	22	3	7	4	0	8	0	75	3
HOLMES	1	0	0	0	0	0	0	0	1	0
INDIAN RIVER	2	0	0	0	0	0	0	0	2	0
JACKSON	1	0	0	0	0	0	0	0	1	0
JEFFERSON	1	0	0	0	0	0	0	0	1	0
LAFAYETTE	2	0	0	0	0	0	0	0	2	0
LAKE	12	1	0	1	0	0	0	0	11	0
LEE	36	7	3	0	0	2	0	2	29	0
LEON	25	0	0	0	0	0	0	0	25	0
LEVY	4	1	0	0	0	1	0	0	3	0
LIBERTY	1	0	0	0	0	0	0	0	1	0
MADISON	4	0	0	0	0	0	0	0	4	0
MANATEE	28	7	3	2	0	0	0	2	21	0
MARION	21	0	0	0	0	0	0	0	21	0
MARTIN	6	1	0	0	0	0	0	1	5	0
MONROE	4	0	0	0	0	0	0	0	3	1
NASSAU	4	0	0	0	0	0	0	0	4	0
OKALOOSA	12	0	0	0	0	0	0	0	12	0
OKEECHOBEE	2	0	0	0	0	0	0	0	2	0
ORANGE	113	28	5	13	2	4	0	4	85	0
OSCEOLA	22	5	0	3	0	2	0	0	16	1
PALM BEACH	87	22	3	3	3	7	1	5	64	1
PASCO	20	1	1	0	0	0	0	0	19	0
PINELLAS	74	4	0	3	0	0	1	0	70	0
POLK	45	5	4	0	0	1	0	0	39	1
PUTNAM	5	0	0	0	0	0	0	0	5	0
ST JOHNS	12	0	0	0	0	0	0	0	12	0
ST LUCIE	16	4	1	0	0	0	1	2	12	0
SANTA ROSA	13	0	0	0	0	0	0	0	13	0
SARASOTA	25	1	0	0	0	0	1	0	24	0
SEMINOLE	23	0	0	0	0	0	0	0	23	0
SUMTER	1	0	0	0	0	0	0	0	1	0
SUWANNEE	5	0	0	0	0	0	0	0	5	0
TAYLOR	1	0	0	0	0	0	0	0	1	0
UNION	1	0	0	0	0	0	0	0	1	0
VOLUSIA	38	5	2	2	1	0	0	0	33	0
WAKULLA	2	0	0	0	0	0	0	0	2	0
WALTON	2	0	0	0	0	0	0	0	2	0
WASHINGTON	4	0	0	0	0	0	0	0	4	0

TABLE F-3: RESIDENT FETAL DEATHS BY AGE OF MOTHER, BY COUNTY, FLORIDA, 1998

	AGE OF MOTHER														
	TOTAL	<13	13	14	15	16	17	18	19	20-24	25-29	30-34	35-44	45+	UNK
FLORIDA	1,520	0	2	4	14	25	44	55	69	325	363	304	271	8	36
ALACHUA	21	0	0	0	0	0	1	0	2	7	4	4	2	1	0
BAKER	1	0	0	0	0	0	0	0	0	1	0	0	0	0	0
BAY	15	0	0	0	0	0	1	1	1	2	3	6	1	0	0
BRADFORD	1	0	0	0	0	0	0	0	0	1	0	0	0	0	0
BREVARD	34	0	0	0	0	0	2	0	2	7	14	4	5	0	0
BROWARD	171	0	0	0	1	3	2	1	8	34	43	34	32	2	11
CALHOUN	3	0	0	0	0	0	0	0	0	3	0	0	0	0	0
CHARLOTTE	7	0	0	0	0	0	0	0	0	2	0	1	4	0	0
CITRUS	1	0	0	0	0	0	0	0	0	1	0	0	0	0	0
CLAY	6	0	0	0	0	0	0	0	0	2	1	1	2	0	0
COLLIER	22	0	0	0	0	0	0	0	1	6	2	7	6	0	0
COLUMBIA	3	0	0	0	0	0	0	0	0	2	0	0	1	0	0
MIAMI-DADE	280	0	0	1	2	5	9	7	9	45	65	63	60	1	13
DESOTO	3	0	0	0	0	0	0	0	0	2	0	0	1	0	0
DIXIE	1	0	0	0	0	0	0	1	0	0	0	0	0	0	0
DUVAL	95	0	1	0	0	3	1	6	3	22	25	14	15	0	5
ESCAMBIA	40	0	0	1	0	0	0	3	2	9	15	9	1	0	0
FLAGLER	6	0	0	0	0	0	0	1	1	0	2	0	2	0	0
FRANKLIN	0	0	0	0	0	0	0	0	0	0	0	0	0	0	0
GADSDEN	8	0	0	0	0	1	0	1	0	2	1	1	2	0	0
GILCHRIST	0	0	0	0	0	0	0	0	0	0	0	0	0	0	0
GLADES	0	0	0	0	0	0	0	0	0	0	0	0	0	0	0
GULF	1	0	0	0	0	0	0	0	0	0	0	0	1	0	0
HAMILTON	2	0	0	0	1	0	0	0	0	0	1	0	0	0	0
HARDEE	3	0	0	0	0	0	0	0	1	0	0	1	1	0	0
HENDRY	4	0	0	0	0	0	0	0	1	2	1	0	0	0	0
HERNANDO	9	0	0	0	0	0	0	1	0	3	1	1	3	0	0
HIGHLANDS	8	0	0	0	0	0	1	1	0	3	1	1	0	0	1
HILLSBOROUGH	100	0	0	0	4	1	4	4	5	20	26	18	15	0	3
HOLMES	1	0	0	0	0	0	0	0	0	0	0	1	0	0	0
INDIAN RIVER	2	0	0	0	0	0	0	0	0	1	0	0	1	0	0
JACKSON	1	0	0	0	0	0	0	0	1	0	0	0	0	0	0
JEFFERSON	1	0	0	0	0	0	0	0	0	0	1	0	0	0	0
LAFAYETTE	2	0	0	0	0	0	0	1	0	0	0	1	0	0	0
LAKE	12	0	0	0	1	0	1	2	0	4	4	0	0	0	0
LEE	36	0	0	0	0	1	1	2	1	9	10	4	7	1	0
LEON	25	0	0	0	0	0	1	2	1	3	10	6	2	0	0
LEVY	4	0	0	0	0	0	0	0	0	2	1	0	1	0	0
LIBERTY	1	0	0	0	0	0	0	0	0	1	0	0	0	0	0
MADISON	4	0	0	0	0	0	0	0	1	1	0	1	1	0	0
MANATEE	28	0	0	1	1	0	1	0	4	3	5	11	2	0	0
MARION	21	0	0	0	0	0	1	0	0	2	6	5	7	0	0
MARTIN	6	0	0	0	0	1	0	0	0	1	2	1	1	0	0
MONROE	4	0	0	0	0	0	0	1	1	1	0	0	1	0	0
NASSAU	4	0	0	0	0	0	0	1	0	2	0	0	1	0	0
OKALOOSA	12	0	0	0	0	1	0	0	0	2	6	1	2	0	0
OKEECHOBEE	2	0	0	0	0	0	0	0	0	0	0	1	1	0	0
ORANGE	113	0	0	0	1	1	4	3	6	20	26	30	22	0	0
OSCEOLA	22	0	0	0	0	1	0	1	1	3	8	3	5	0	0
PALM BEACH	87	0	1	0	1	1	1	3	5	15	21	16	22	1	0
PASCO	20	0	0	0	0	1	1	1	0	4	6	3	3	1	0
PINELLAS	74	0	0	0	0	0	3	1	5	23	13	13	15	0	1
POLK	45	0	0	1	0	2	1	4	0	20	9	5	2	0	1
PUTNAM	5	0	0	0	0	0	0	0	0	1	3	0	1	0	0
ST JOHNS	12	0	0	0	0	0	3	0	0	0	2	4	3	0	0
ST LUCIE	16	0	0	0	0	0	1	2	0	2	2	5	3	0	1
SANTA ROSA	13	0	0	0	1	0	0	0	0	5	3	2	2	0	0
SARASOTA	25	0	0	0	1	0	0	1	4	3	2	6	8	0	0
SEMINOLE	23	0	0	0	0	0	2	3	0	6	8	3	1	0	0
SUMTER	1	0	0	0	0	0	0	0	0	1	0	0	0	0	0
SUWANNEE	5	0	0	0	0	0	0	0	1	2	1	0	1	0	0
TAYLOR	1	0	0	0	0	0	0	0	0	1	0	0	0	0	0
UNION	1	0	0	0	0	0	0	0	0	1	0	0	0	0	0
VOLUSIA	38	0	0	0	0	2	1	0	2	9	9	12	2	1	0
WAKULLA	2	0	0	0	0	0	0	0	0	0	0	2	0	0	0
WALTON	2	0	0	0	0	0	0	0	0	1	0	1	0	0	0
WASHINGTON	4	0	0	0	0	1	1	0	0	0	0	2	0	0	0

TABLE F-4: RESIDENT AND RECORDED NEONATAL DEATHS (UNDER 28 DAYS) AND RATES PER 1,000 LIVE BIRTHS, BY RACE, BY COUNTY, FLORIDA, 1998

	RESIDENT NEONATAL DEATHS							RECORDED NEONATAL DEATHS						
	NUMBER				RATES*			NUMBER				RATES*		
	TOTAL	WHITE	NON-WHITE	UNK	TOTAL	WHITE	NON-WHITE	TOTAL	WHITE	NON-WHITE	UNK	TOTAL	WHITE	NON-WHITE
FLORIDA	933	559	371	3	4.8	3.8	7.5	954	574	377	3	4.9	3.9	7.6
ALACHUA	24	12	12	0	9.9	7.6	14.2	75	48	27	0	14.1	12.0	20.4
BAKER	1	0	1	0	3.1	0.0	25.6	0	0	0	0	0.0	0.0	0.0
BAY	11	8	3	0	5.5	4.9	8.2	8	6	2	0	3.3	3.0	4.7
BRADFORD	4	1	3	0	13.0	4.0	53.6	0	0	0	0	0.0	0.0	0.0
BREVARD	10	4	6	0	2.1	1.0	8.3	2	2	0	0	0.4	0.5	0.0
BROWARD	90	49	41	0	4.4	3.7	5.6	99	51	48	0	5.1	4.2	6.5
CALHOUN	1	1	0	0	6.3	7.6	0.0	0	0	0	0	---	---	---
CHARLOTTE	4	4	0	0	3.8	4.2	0.0	1	1	0	0	0.9	1.0	0.0
CITRUS	3	3	0	0	3.7	4.0	0.0	3	3	0	0	4.1	4.3	0.0
CLAY	16	14	2	0	8.9	8.9	8.8	5	3	2	0	3.1	2.2	7.9
COLLIER	9	9	0	0	3.3	3.8	0.0	5	5	0	0	2.0	2.3	0.0
COLUMBIA	8	3	5	0	10.5	5.0	30.5	3	2	1	0	5.4	5.3	5.7
MIAMI-DADE	115	59	55	1	3.6	2.7	5.6	118	64	53	1	3.7	2.9	5.5
DESOTO	2	1	1	0	4.9	2.9	14.1	0	0	0	0	0.0	0.0	0.0
DIXIE	1	1	0	0	6.5	7.3	0.0	0	0	0	0	0.0	0.0	---
DUVAL	82	37	44	1	6.8	4.9	9.8	110	62	47	1	8.0	6.8	10.2
ESCAMBIA	24	10	14	0	6.1	3.9	10.5	48	32	16	0	8.9	8.2	10.9
FLAGLER	3	2	1	0	8.3	6.5	18.5	0	0	0	0	0.0	---	0.0
FRANKLIN	4	4	0	0	31.0	37.4	0.0	0	0	0	0	---	---	---
GADSDEN	8	1	7	0	11.5	4.4	15.0	2	1	1	0	133.3	142.9	125.0
GILCHRIST	1	0	1	0	5.9	0.0	166.7	0	0	0	0	0.0	0.0	---
GLADES	1	0	1	0	11.1	0.0	34.5	0	0	0	0	0.0	0.0	0.0
GULF	0	0	0	0	0.0	0.0	0.0	0	0	0	0	---	---	---
HAMILTON	0	0	0	0	0.0	0.0	0.0	0	0	0	0	0.0	0.0	0.0
HARDEE	3	3	0	0	6.7	6.9	0.0	0	0	0	0	0.0	0.0	0.0
HENDRY	2	1	1	0	3.0	1.9	7.3	0	0	0	0	0.0	---	0.0
HERNANDO	5	4	1	0	4.6	4.0	12.0	0	0	0	0	0.0	0.0	0.0
HIGHLANDS	3	3	0	0	3.6	4.5	0.0	0	0	0	0	0.0	0.0	0.0
HILLSBOROUGH	78	48	29	1	5.5	4.4	8.8	104	74	29	1	6.6	6.1	8.4
HOLMES	1	1	0	0	5.3	5.6	0.0	0	0	0	0	0.0	0.0	---
INDIAN RIVER	4	2	2	0	3.7	2.2	10.3	2	1	1	0	1.9	1.1	5.1
JACKSON	3	2	1	0	5.7	5.4	6.6	1	0	1	0	1.6	0.0	5.6
JEFFERSON	2	0	2	0	15.0	0.0	29.0	0	0	0	0	0.0	0.0	---
LAFAYETTE	0	0	0	0	0.0	0.0	0.0	0	0	0	0	---	---	---
LAKE	9	6	3	0	4.1	3.2	8.6	0	0	0	0	0.0	0.0	0.0
LEE	21	16	5	0	4.6	4.1	7.1	24	18	6	0	4.5	3.9	7.5
LEON	28	12	16	0	9.2	6.6	13.1	44	17	27	0	9.1	6.0	13.2
LEVY	4	3	1	0	9.9	9.0	13.9	1	1	0	0	250.0	250.0	---
LIBERTY	0	0	0	0	0.0	0.0	0.0	0	0	0	0	---	---	---
MADISON	2	1	1	0	9.3	9.2	9.4	0	0	0	0	---	---	---
MANATEE	11	10	1	0	3.8	4.2	2.1	3	3	0	0	1.3	1.5	0.0
MARION	12	9	3	0	4.4	4.1	5.8	2	2	0	0	0.9	1.0	0.0
MARTIN	5	3	2	0	4.5	3.3	9.9	1	0	1	0	0.7	0.0	5.0
MONROE	1	1	0	0	1.4	1.6	0.0	1	1	0	0	2.1	2.4	0.0
NASSAU	2	2	0	0	2.7	3.0	0.0	0	0	0	0	0.0	0.0	0.0
OKALOOSA	17	15	2	0	7.3	7.8	4.9	5	4	1	0	2.0	1.9	2.5
OKEECHOBEE	1	1	0	0	2.1	2.3	0.0	0	0	0	0	0.0	0.0	0.0
ORANGE	53	34	19	0	4.1	3.7	5.2	101	65	36	0	6.4	5.5	9.3
OSCEOLA	5	3	2	0	2.2	1.5	7.2	0	0	0	0	0.0	0.0	0.0
PALM BEACH	46	16	30	0	3.5	1.7	7.9	59	23	36	0	4.1	2.2	8.9
PASCO	15	15	0	0	4.4	4.6	0.0	0	0	0	0	0.0	0.0	0.0
PINELLAS	53	31	22	0	5.6	4.1	11.8	76	49	27	0	7.2	5.6	14.4
POLK	31	23	8	0	4.8	4.5	5.9	16	10	6	0	2.7	2.2	4.9
PUTNAM	3	3	0	0	3.4	4.6	0.0	1	1	0	0	2.0	3.1	0.0
SAINT JOHNS	6	6	0	0	5.1	5.8	0.0	0	0	0	0	0.0	0.0	0.0
SAINT LUCIE	15	5	10	0	6.7	3.2	14.8	4	2	2	0	1.9	1.3	3.0
SANTA ROSA	8	8	0	0	5.2	5.7	0.0	2	2	0	0	4.9	5.4	0.0
SARASOTA	14	10	4	0	5.4	4.3	13.9	17	13	4	0	5.6	4.8	11.2
SEMINOLE	17	14	3	0	4.0	3.9	4.4	6	5	1	0	1.7	1.8	1.6
SUMTER	1	1	0	0	2.4	2.9	0.0	0	0	0	0	0.0	0.0	---
SUWANNEE	6	5	1	0	13.2	13.0	14.3	0	0	0	0	0.0	0.0	0.0
TAYLOR	1	1	0	0	4.1	5.7	0.0	0	0	0	0	0.0	0.0	0.0
UNION	0	0	0	0	0.0	0.0	0.0	0	0	0	0	---	---	---
VOLUSIA	19	15	4	0	4.3	4.0	5.5	5	3	2	0	1.3	0.9	2.9
WAKULLA	1	0	1	0	3.9	0.0	25.6	0	0	0	0	---	---	---
WALTON	3	3	0	0	7.2	8.1	0.0	0	0	0	0	0.0	0.0	0.0
WASHINGTON	0	0	0	0	0.0	0.0	0.0	0	0	0	0	0.0	0.0	---

*Rates based on neonatal deaths by race of decedent, live births by race of mother.

TABLE F-5: RESIDENT AND RECORDED INFANT DEATHS (UNDER 1 YEAR) AND RATES PER 1,000 LIVE BIRTHS, BY RACE, BY COUNTY, FLORIDA, 1998

	RESIDENT INFANT DEATHS							RECORDED INFANT DEATHS						
	NUMBER				RATES*			NUMBER				RATES*		
	TOTAL	WHITE	NON-WHITE	UNK	TOTAL	WHITE	NON-WHITE	TOTAL	WHITE	NON-WHITE	UNK	TOTAL	WHITE	NON-WHITE
FLORIDA	1,415	850	562	3	7.2	5.8	11.4	1,447	871	573	3	7.4	6.0	11.6
ALACHUA	33	18	15	0	13.6	11.4	17.7	105	67	38	0	19.7	16.8	28.7
BAKER	2	1	1	0	6.2	3.5	25.6	0	0	0	0	0.0	0.0	0.0
BAY	14	11	3	0	6.9	6.7	8.2	10	8	2	0	4.1	4.0	4.7
BRADFORD	4	1	3	0	13.0	4.0	53.6	0	0	0	0	0.0	0.0	0.0
BREVARD	19	12	7	0	3.9	2.9	9.7	5	5	0	0	1.1	1.3	0.0
BROWARD	139	64	75	0	6.7	4.8	10.2	143	65	78	0	7.3	5.4	10.5
CALHOUN	1	1	0	0	6.3	7.6	0.0	0	0	0	0	---	---	---
CHARLOTTE	6	6	0	0	5.8	6.3	0.0	2	2	0	0	1.9	2.0	0.0
CITRUS	4	4	0	0	5.0	5.3	0.0	5	5	0	0	6.8	7.2	0.0
CLAY	19	14	5	0	10.6	8.9	22.0	7	4	3	0	4.4	3.0	11.8
COLLIER	18	17	1	0	6.6	7.3	2.7	11	10	1	0	4.5	4.7	3.0
COLUMBIA	12	6	6	0	15.7	10.0	36.6	5	3	2	0	9.0	7.9	11.4
MIAMI-DADE	181	98	82	1	5.7	4.5	8.3	198	111	86	1	6.2	5.0	8.9
DESOTO	5	4	1	0	12.2	11.8	14.1	1	1	0	0	1.5	1.7	0.0
DIXIE	2	2	0	0	13.0	14.6	0.0	1	1	0	0	250.0	250.0	---
DUVAL	119	52	66	1	9.8	6.8	14.7	150	76	73	1	10.9	8.3	15.9
ESCAMBIA	34	15	19	0	8.7	5.8	14.3	63	41	22	0	11.7	10.5	14.9
FLAGLER	3	2	1	0	8.3	6.5	18.5	0	0	0	0	0.0	---	0.0
FRANKLIN	5	5	0	0	38.8	46.7	0.0	1	1	0	0	---	---	---
GADSDEN	12	1	11	0	17.3	4.4	23.6	3	1	2	0	200.0	142.9	250.0
GILCHRIST	1	0	1	0	5.9	0.0	166.7	0	0	0	0	0.0	0.0	---
GLADES	1	0	1	0	11.1	0.0	34.5	0	0	0	0	0.0	0.0	0.0
GULF	0	0	0	0	0.0	0.0	0.0	0	0	0	0	---	---	---
HAMILTON	2	1	1	0	12.0	10.4	14.1	0	0	0	0	0.0	0.0	0.0
HARDEE	3	3	0	0	6.7	6.9	0.0	0	0	0	0	0.0	0.0	0.0
HENDRY	2	1	1	0	3.0	1.9	7.3	0	0	0	0	0.0	---	0.0
HERNANDO	7	5	2	0	6.4	5.0	24.1	2	1	1	0	1.7	0.9	12.3
HIGHLANDS	3	3	0	0	3.6	4.5	0.0	0	0	0	0	0.0	0.0	0.0
HILLSBOROUGH	111	72	38	1	7.8	6.5	11.5	145	102	42	1	9.3	8.4	12.2
HOLMES	2	2	0	0	10.6	11.2	0.0	2	2	0	0	2000.0	2000.0	---
INDIAN RIVER	4	2	2	0	3.7	2.2	10.3	2	1	1	0	1.9	1.1	5.1
JACKSON	6	4	2	0	11.5	10.7	13.2	2	1	1	0	3.3	2.3	5.6
JEFFERSON	2	0	2	0	15.0	0.0	29.0	0	0	0	0	0.0	0.0	---
LAFAYETTE	1	1	0	0	13.3	15.4	0.0	1	1	0	0	---	---	---
LAKE	15	9	6	0	6.8	4.8	17.1	2	0	2	0	1.1	0.0	5.6
LEE	35	27	8	0	7.6	7.0	11.3	35	26	9	0	6.5	5.7	11.3
LEON	34	14	20	0	11.2	7.7	16.4	57	21	36	0	11.8	7.5	17.7
LEVY	4	3	1	0	9.9	9.0	13.9	1	1	0	0	250.0	250.0	---
LIBERTY	1	1	0	0	11.4	13.5	0.0	0	0	0	0	---	---	---
MADISON	3	1	2	0	14.0	9.2	18.9	2	1	1	0	---	---	---
MANATEE	20	18	2	0	7.0	7.5	4.3	8	8	0	0	3.4	4.1	0.0
MARION	22	16	6	0	8.0	7.2	11.6	7	6	1	0	3.0	3.1	2.3
MARTIN	10	6	4	0	9.0	6.6	19.8	4	2	2	0	2.9	1.7	10.0
MONROE	1	1	0	0	1.4	1.6	0.0	1	1	0	0	2.1	2.4	0.0
NASSAU	4	3	1	0	5.4	4.4	14.9	1	0	1	0	2.9	0.0	23.8
OKALOOSA	25	22	3	0	10.7	11.5	7.4	10	9	1	0	4.0	4.3	2.5
OKEECHOBEE	2	2	0	0	4.2	4.7	0.0	0	0	0	0	0.0	0.0	0.0
ORANGE	87	46	41	0	6.7	5.0	11.2	155	92	63	0	9.9	7.8	16.3
OSCEOLA	12	10	2	0	5.3	5.1	7.2	5	5	0	0	2.1	2.5	0.0
PALM BEACH	76	36	40	0	5.8	3.9	10.6	91	45	46	0	6.3	4.3	11.3
PASCO	26	25	1	0	7.6	7.7	6.3	4	4	0	0	2.8	3.0	0.0
PINELLAS	75	45	30	0	7.9	5.9	16.0	114	79	35	0	10.8	9.1	18.6
POLK	49	38	11	0	7.5	7.4	8.1	28	20	8	0	4.8	4.3	6.6
PUTNAM	4	3	1	0	4.5	4.6	4.1	1	1	0	0	2.0	3.1	0.0
SAINT JOHNS	8	7	1	0	6.7	6.7	6.9	1	1	0	0	1.3	1.6	0.0
SAINT LUCIE	20	8	12	0	8.9	5.1	17.8	5	3	2	0	2.3	2.0	3.0
SANTA ROSA	11	11	0	0	7.2	7.8	0.0	4	4	0	0	9.8	10.8	0.0
SARASOTA	17	13	4	0	6.5	5.6	13.9	21	16	5	0	6.9	6.0	14.0
SEMINOLE	24	17	7	0	5.7	4.8	10.4	11	7	4	0	3.2	2.5	6.4
SUMTER	1	1	0	0	2.4	2.9	0.0	0	0	0	0	0.0	0.0	---
SUWANNEE	8	7	1	0	17.5	18.1	14.3	1	1	0	0	200.0	250.0	0.0
TAYLOR	1	1	0	0	4.1	5.7	0.0	0	0	0	0	0.0	0.0	0.0
UNION	1	1	0	0	6.4	7.5	0.0	1	1	0	0	---	---	---
VOLUSIA	35	25	10	0	7.9	6.7	13.8	13	8	5	0	3.4	2.5	7.2
WAKULLA	3	1	2	0	11.7	4.6	51.3	0	0	0	0	---	---	---
WALTON	3	3	0	0	7.2	8.1	0.0	0	0	0	0	0.0	0.0	0.0
WASHINGTON	1	1	0	0	4.4	5.6	0.0	0	0	0	0	0.0	0.0	---

*Rates based on infant deaths by race of decedent, live births by race of mother.

TABLE F-6: RESIDENT INFANT DEATHS BY HISPANIC OR HAITIAN ORIGIN, BY COUNTY, FLORIDA, 1998

	HISPANIC OR HAITIAN ORIGIN									
	TOTAL	TOTAL HISPANIC/ HAITIAN	MEXICAN	PUERTO RICAN	CUBAN	CENTRAL/ SOUTH AMERICAN	OTHER/ UNK HISPANIC	HAITIAN	NON- HISPANIC/ HAITIAN	UNK
FLORIDA	1,415	231	44	41	41	46	20	39	1,149	35
ALACHUA	33	1	0	0	0	0	1	0	32	0
BAKER	2	0	0	0	0	0	0	0	2	0
BAY	14	0	0	0	0	0	0	0	14	0
BRADFORD	4	0	0	0	0	0	0	0	4	0
BREVARD	19	0	0	0	0	0	0	0	19	0
BROWARD	139	35	2	7	2	9	0	15	102	2
CALHOUN	1	0	0	0	0	0	0	0	1	0
CHARLOTTE	6	0	0	0	0	0	0	0	6	0
CITRUS	4	0	0	0	0	0	0	0	4	0
CLAY	19	0	0	0	0	0	0	0	19	0
COLLIER	18	10	7	0	0	1	1	1	8	0
COLUMBIA	12	0	0	0	0	0	0	0	12	0
MIAMI-DADE	181	80	3	6	27	30	1	13	76	25
DESOTO	5	2	2	0	0	0	0	0	3	0
DIXIE	2	0	0	0	0	0	0	0	2	0
DUVAL	119	3	1	0	0	0	2	0	115	1
ESCAMBIA	34	0	0	0	0	0	0	0	34	0
FLAGLER	3	0	0	0	0	0	0	0	3	0
FRANKLIN	5	0	0	0	0	0	0	0	5	0
GADSDEN	12	0	0	0	0	0	0	0	12	0
GILCHRIST	1	0	0	0	0	0	0	0	1	0
GLADES	1	0	0	0	0	0	0	0	1	0
GULF	0	0	0	0	0	0	0	0	0	0
HAMILTON	2	0	0	0	0	0	0	0	2	0
HARDEE	3	1	1	0	0	0	0	0	2	0
HENDRY	2	0	0	0	0	0	0	0	2	0
HERNANDO	7	0	0	0	0	0	0	0	7	0
HIGHLANDS	3	0	0	0	0	0	0	0	3	0
HILLSBOROUGH	111	29	8	8	6	2	5	0	80	2
HOLMES	2	0	0	0	0	0	0	0	2	0
INDIAN RIVER	4	0	0	0	0	0	0	0	4	0
JACKSON	6	0	0	0	0	0	0	0	6	0
JEFFERSON	2	0	0	0	0	0	0	0	2	0
LAFAYETTE	1	0	0	0	0	0	0	0	1	0
LAKE	15	1	0	0	0	0	0	1	14	0
LEE	35	3	1	1	0	0	1	0	32	0
LEON	34	0	0	0	0	0	0	0	34	0
LEVY	4	0	0	0	0	0	0	0	4	0
LIBERTY	1	0	0	0	0	0	0	0	1	0
MADISON	3	0	0	0	0	0	0	0	3	0
MANATEE	20	5	4	0	0	0	1	0	15	0
MARION	22	1	1	0	0	0	0	0	21	0
MARTIN	10	2	1	0	0	0	1	0	8	0
MONROE	1	0	0	0	0	0	0	0	1	0
NASSAU	4	0	0	0	0	0	0	0	4	0
OKALOOSA	25	3	1	1	0	1	0	0	22	0
OKEECHOBEE	2	0	0	0	0	0	0	0	2	0
ORANGE	87	14	2	8	2	1	1	0	73	0
OSCEOLA	12	2	0	1	1	0	0	0	10	0
PALM BEACH	76	15	2	2	1	1	3	6	58	3
PASCO	26	5	4	1	0	0	0	0	21	0
PINELLAS	75	4	0	2	0	0	2	0	70	1
POLK	49	5	2	1	1	0	1	0	43	1
PUTNAM	4	0	0	0	0	0	0	0	4	0
SAINT JOHNS	8	0	0	0	0	0	0	0	8	0
SAINT LUCIE	20	3	1	0	0	0	0	2	17	0
SANTA ROSA	11	0	0	0	0	0	0	0	11	0
SARASOTA	17	1	0	0	0	1	0	0	16	0
SEMINOLE	24	1	0	1	0	0	0	0	23	0
SUMTER	1	1	1	0	0	0	0	0	0	0
SUWANNEE	8	1	0	0	1	0	0	0	7	0
TAYLOR	1	0	0	0	0	0	0	0	1	0
UNION	1	0	0	0	0	0	0	0	1	0
VOLUSIA	35	3	0	2	0	0	0	1	32	0
WAKULLA	3	0	0	0	0	0	0	0	3	0
WALTON	3	0	0	0	0	0	0	0	3	0
WASHINGTON	1	0	0	0	0	0	0	0	1	0

TABLE F-7: RESIDENT INFANT, NEONATAL AND POST-NEONATAL DEATHS FROM SELECTED CAUSES, BY RACE, FLORIDA, 1998

	TOTAL				WHITE				NONWHITE			
	NEONATAL		POST		NEONATAL		POST		NEONATAL		POST	
	INFANT	NEONATAL <1 DAY	1-27 DAYS	NEO-NATAL	INFANT	NEONATAL <1 DAY	1-27 DAYS	NEO-NATAL	INFANT	NEONATAL <1 DAY	1-27 DAYS	NEO-NATAL
TOTAL (ICD 9 GROUPING)	1,415	535	398	482	850	310	249	291	562	222	149	191
INTESTINAL INFECTIOUS DISEASES (001-009)	13	0	0	13	6	0	0	6	7	0	0	7
MENINGOCOCCAL INFECTION (036)	1	0	0	1	1	0	0	1	0	0	0	0
SEPTICEMIA (038)	17	0	0	17	9	0	0	9	8	0	0	8
HUMAN IMMUNODEFICIENCY VIRUS (H.I.V.) (042-044)	3	0	0	3	0	0	0	0	3	0	0	3
SYPHILIS: CONGENITAL (090)	0	0	0	0	0	0	0	0	0	0	0	0
OTHER INFECTIOUS & PARASITIC DISEASES (BAL: 010-139)	25	0	9	16	16	0	8	8	9	0	1	8
MALIGNANT NEOPLASM (CANCER) (140-208)	2	0	1	1	1	0	0	1	1	0	1	0
NEOPLASM NOT SPECIFIED MALIGNANT (210-239)	2	1	0	1	2	1	0	1	0	0	1	0
ENDOCRINE DISORDERS (240-259)	2	1	0	1	2	1	0	1	0	0	0	0
NUTRITIONAL DEFICIENCIES (260-269)	0	0	0	0	0	0	0	0	0	0	0	0
CYSTIC FIBROSIS (277.0)	1	0	1	0	1	0	1	0	0	0	0	0
OTHER METABOLIC & IMMUNE DISORDERS (BAL: 270-279)	7	1	2	4	4	1	1	2	3	0	1	2
DISEASES OF BLOOD & BLOODFORMING ORGAN (280-289)	2	0	1	1	2	0	1	1	0	0	0	0
MENINGITIS (320-322)	6	0	0	6	3	0	0	3	3	0	0	3
OTHER DISEASE NERVOUS SYSTEM & SENSE ORGANS (323-389)	14	0	3	11	12	0	3	9	2	0	0	2
HEART DISEASE (390-398, 402, 404-429)	37	6	11	20	21	4	6	11	16	2	5	9
CEREBROVASCULAR DISEASE (430-438)	12	0	6	6	7	0	4	3	5	0	2	3
OTHER CIRCULATORY DISEASES (401, 403, 440-459)	4	0	3	1	1	0	1	0	3	0	2	1
ACUTE UPPER RESPIRATORY DISEASES (460-465)	0	0	0	0	0	0	0	0	0	0	0	0
ACUTE BRONCHITIS & BRONCHIOLITIS (466)	1	0	0	1	1	0	0	1	0	0	0	0
PNEUMONIA (480-486)	24	1	2	21	12	1	2	9	12	0	0	12
INFLUENZA (487)	0	0	0	0	0	0	0	0	0	0	0	0
BRONCHITIS, UNSPECIFIED & CHRONIC (490-491)	2	0	0	2	1	0	0	1	1	0	0	1
ALL OTHER RESPIRATORY DISEASES (470-478, 492-519)	20	0	2	18	10	0	2	8	10	0	0	10
GASTRITIS & DUODENITIS (535)	0	0	0	0	0	0	0	0	0	0	0	0
HERNIA & INTESTINAL OBSTRUCTION (550-553, 560)	2	0	0	2	1	0	0	1	1	0	0	1
NONINFECTIVE ENTERITIS & COLITIS (555-558)	5	0	3	2	2	0	2	0	3	0	1	2
ALL OTHER DIGESTIVE DISEASES (BAL: 520-579)	10	0	0	10	7	0	0	7	3	0	0	3
DISEASES OF GENITOURINARY SYSTEM (580-629)	11	0	10	1	5	0	5	0	6	0	5	1
DISEASES OF SKIN & SUBCUTANEOUS TISSUE (680-709)	0	0	0	0	0	0	0	0	0	0	0	0
DISEASES OF MUSCULOSKELETAL SYSTEM-CONNECTIVE TISSUE (710-739)	2	1	0	1	2	1	0	1	0	0	0	0
CONGENITAL ANOMALIES (740-759)	264	103	86	75	191	73	61	57	73	30	25	18
ANENCEPHALUS AND SIMILAR ANOMALIES (740)	11	9	2	0	8	6	2	0	3	3	0	0
SPINA BIFIDA (741)	0	0	0	0	0	0	0	0	0	0	0	0
CONGENITAL HYDROCEPHALUS (742.3)	1	0	0	1	1	0	0	1	0	0	0	0
OTHER CONGENITAL ANOMALIES NERVOUS SYSTEM, EYE (BAL: 742,743)	12	2	5	5	9	1	4	4	3	1	1	1
CONGENITAL ANOMALIES OF HEART (745-746)	66	7	26	33	49	5	20	24	17	2	6	9
OTHER CONGENITAL ANOMALIES OF CIRCULATORY SYSTEM (747)	8	3	4	1	3	1	2	0	5	2	2	1
CONGENITAL ANOMALIES OF RESPIRATORY SYSTEM (748)	44	30	12	2	25	18	7	0	19	12	5	2
CONGENITAL ANOMALIES OF DIGESTIVE SYSTEM (749-751)	6	1	1	4	4	1	0	3	2	0	1	1
CONGENITAL ANOMALIES, GENITOURINARY (752-753)	16	13	2	1	13	9	6	3	4	2	2	0
CONGENITAL ANOMALIES, MUSCULOSKELETAL (754-756)	22	11	8	3	18	9	6	3	4	2	2	0
DOWN'S SYNDROME (758.0)	4	1	0	3	3	0	0	3	1	1	0	0
OTHER CHROMOSOMAL ANOMALIES (BAL: 758)	46	9	20	17	34	6	14	14	12	3	6	3
OTHER & UNSPECIFIED CONGENITAL ANOMALIES (744,757,759)	28	17	6	5	24	13	6	5	4	4	0	0

TABLE F-7 (Cont.): RESIDENT INFANT, NEONATAL AND POST-NEONATAL DEATHS FROM SELECTED CAUSES, BY RACE, FLORIDA, 1998

	TOTAL				WHITE				NONWHITE			
	NEONATAL		POST		NEONATAL		POST		NEONATAL		POST	
	INFANT	NEONATAL	NEONATAL	POST	INFANT	NEONATAL	NEONATAL	POST	INFANT	NEONATAL	NEONATAL	POST
	<1	1-27	1-27	NEO-	<1	1-27	1-27	NEO-	<1	1-27	1-27	NEO-
	DAY	DAYS	DAYS	NATAL	DAY	DAYS	DAYS	NATAL	DAY	DAYS	DAYS	NATAL
PERINATAL CONDITIONS (760-779)	685	415	230	40	378	225	134	19	304	187	96	21
MATERNAL CONDITIONS UNRELATED TO PREGNANCY (760)	14	10	4	0	9	5	4	0	5	5	0	0
MATERNAL COMPLICATIONS OF PREGNANCY (761)	100	92	8	0	58	54	4	0	42	38	4	0
COMPLICATIONS PLACENTA, CORD & MEMBRANES (762)	44	39	3	2	29	25	2	2	15	14	1	0
OTHER COMPLICATIONS OF LABOR & DELIVERY (763)	3	2	0	1	0	0	0	0	3	2	0	1
LOW FETAL GROWTH & FETAL MALNUTRITION (764)	1	1	0	0	0	0	0	0	1	1	0	0
SHORT GESTATION & UNSPECIFIED LOW BIRTHWEIGHT (765)	174	154	14	6	87	77	7	3	86	76	7	3
LONG GESTATION & HIGH BIRTHWEIGHT (766)	0	0	0	0	0	0	0	0	0	0	0	0
BIRTH TRAUMA (767)	5	0	4	1	4	0	3	1	1	0	1	0
INTRAUTERINE HYPOXIA AND BIRTH ASPHYXIA (768)	24	6	18	0	14	4	10	0	10	2	8	0
RESPIRATORY DISTRESS SYNDROME (769)	61	22	35	4	38	15	21	2	23	7	14	2
OTHER RESPIRATORY CONDITIONS OF NEWBORN (770)	87	28	36	23	44	14	21	9	43	14	15	14
INFECTIONS SPECIFIC TO PERINATAL PERIOD (771)	47	9	38	0	35	4	31	0	12	5	7	0
NEONATAL HEMORRHAGE (772)	18	3	13	2	8	1	5	2	10	2	8	0
HEMOLYTIC DISEASE DUE TO ISOIMMUNIZATION (773)	0	0	0	0	0	0	0	0	0	0	0	0
OTHER PERINATAL JAUNDICE (774)	0	0	0	0	0	0	0	0	0	0	0	0
DIABETES, MATERNAL OR NEONATAL (775.0-775.1)	0	0	0	0	0	0	0	0	0	0	0	0
HEMORRHAGIC DISEASE OF NEWBORN (776.0)	1	0	1	0	0	0	0	0	1	0	1	0
ALL OTHER PERINATAL CONDITIONS (BAL:775-779)	106	49	56	1	52	26	26	0	52	21	30	1
SUDDEN INFANT DEATH SYNDROME (798.0)	118	0	11	107	72	0	7	65	46	0	4	42
SYMPTOMS, SIGNS, OTHER ILL-DEFINED CONDITIONS (BAL: 780-799)	51	5	11	35	32	3	8	21	19	2	3	14
ALL OTHER NATURAL CAUSES (BAL: 001-799)	0	0	0	0	0	0	0	0	0	0	0	0
UNINTENTIONAL INJURY: MOTOR VEHICLE (E810-E825)	8	0	0	8	6	0	0	6	2	0	0	2
UNINTENTIONAL INJURY: DROWNING (E910)	8	0	0	8	6	0	0	6	2	0	0	2
UNINTENTIONAL INJURY: SUFFOCATION INHALE/INGEST (E911-E912)	3	0	0	3	3	0	0	3	0	0	0	0
UNINTENTIONAL INJURY: SUFFOCATION MECHANICAL (E913)	27	0	1	26	21	0	1	20	6	0	0	6
UNINTENTIONAL INJURY: OTHER (BAL: E800-E949)	11	0	3	8	4	0	1	3	7	0	2	5
HOMICIDE: BATTERING & OTHER MALTREATMENT (E967)	1	0	0	1	1	0	0	1	0	0	0	0
HOMICIDE: OTHER (E960-E966, E968-E978)	8	1	0	7	4	1	0	3	4	0	0	4
ALL OTHER EXTERNAL CAUSES (BAL: E800-E999)	7	1	1	5	5	0	1	4	2	1	0	1

