

Marriages and Dissolutions of Marriage

MARRIAGES AND DISSOLUTIONS OF MARRIAGE

- The number of marriages decreased 17,439 in 1998 from a record high 158,783 in 1997 – an 11% decrease.
- Because of the decline in the number of marriages, the marriage rate per 1,000 population decreased from 10.7 for 1997 to 9.4 in 1998. The U.S. provisional rate for 1998 was 8.5.
- Florida's marriage rate was 10.6 percent higher than the U.S. provisional rate for 1998.
- May was the most popular month for marriages with 13,819 marriages performed.
- After decreasing for four consecutive years, then increasing last year, the number of dissolutions of marriage, again decreased in 1998.
- Since 1980, the dissolution rate has declined 27.4 percent despite an overall increase in the number of dissolutions.
- The dissolution of marriage rate had declined steadily since 1980, reaching a rate of 5.4 per 1,000 population in 1996. In 1997 the rate increased to 5.6 per 1,000 population, but again declined in 1998 to 5.3 per 1,000 population.
- Florida's dissolution of marriage rate was 51.4 percent higher than the U.S. provisional rate for 1998.
- The marriage rate in Florida is nearly double the dissolution rate.

CHART M-1: MARRIAGES AND DISSOLUTIONS OF MARRIAGE, AND RATES PER 1,000 POPULATION, FLORIDA AND UNITED STATES, CENSUS YEARS 1920-1980 AND 1988-1998						
YEAR	MARRIAGES			DISSOLUTIONS ¹		
	FLORIDA		U.S.	FLORIDA		U.S.
	NUMBER	RATE	RATE	NUMBER	RATE	RATE
1920 ²	NA	NA	12.0	NA	NA	1.6
1930 ²	17,147	11.7	9.2	3,262	2.5	1.6
1940	32,709	17.1	12.1	11,061	5.8	2.0
1950	27,588	9.8	11.1	17,845	6.3	2.6
1960	39,315	7.9	8.5	19,326	3.9	2.2
1970	69,249	10.1	10.6	37,506	5.4	3.5
1980	108,344	11.0	10.6	71,578	7.3	5.2
1988	138,072	11.0	9.8	78,708	6.3	4.8
1989	137,892	10.7	9.7	79,810	6.2	4.7
1990	141,816	10.7	9.8	81,119	6.1	4.7
1991	136,994	10.3	9.4	82,929	6.3	4.7
1992	139,191	10.3	9.3	84,011	6.2	4.8
1993	141,892	10.3	9.0 ³	82,956	6.0	4.6 ³
1994	142,895	10.2	9.1 ³	81,628	5.9	4.6 ³
1995	145,090	10.2	9.1 ³	78,416	5.5	4.5 ³
1996	150,599	10.4	8.8 ³	77,750	5.4	4.3 ³
1997	158,783	10.7	8.9 ³	82,161	5.6	4.3 ³
1998	141,344	9.4	8.5 ³	80,466	5.3	3.5 ³

¹ Includes divorces and annulments.

² Provisional data.

³ Provisional data for January through November 1998.

GRAPH M-1: MARRIAGE AND DISSOLUTION OF MARRIAGE RATES,
FLORIDA AND UNITED STATES, 1988-1998

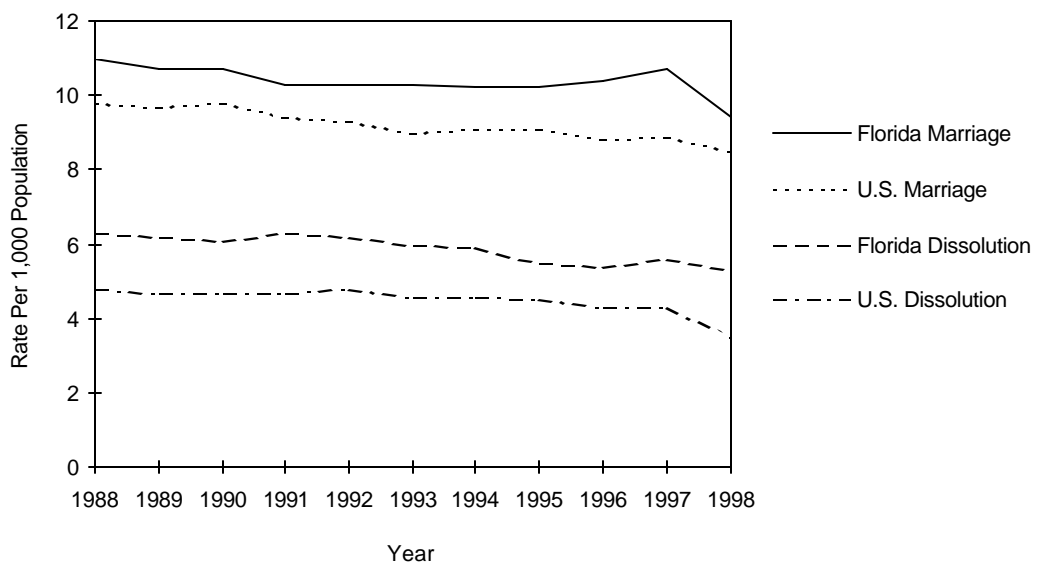


TABLE M-1: MARRIAGES PERFORMED BY MONTH, BY COUNTY OF ISSUANCE, FLORIDA, 1998

	TOTAL	JAN	FEB	MAR	APR	MAY	JUN	JUL	AUG	SEP	OCT	NOV	DEC
FLORIDA	141,344	9,494	12,115	11,633	11,895	13,819	12,742	11,595	11,383	10,252	12,543	11,449	12,424
ALACHUA	1,866	114	124	143	139	190	189	151	171	104	166	201	174
BAKER	309	10	32	26	30	33	22	33	30	25	23	25	20
BAY	2,069	99	171	160	180	208	242	195	180	169	162	138	165
BRADFORD	299	20	18	29	18	23	29	34	37	24	26	14	27
BREVARD	3,728	217	324	306	309	393	335	318	310	267	337	301	311
BROWARD	11,625	871	964	988	993	1,034	993	955	928	805	1,000	1,037	1,057
CALHOUN	149	6	10	15	20	20	11	15	6	10	6	13	17
CHARLOTTE	973	54	104	74	88	127	72	89	77	54	73	75	86
CITRUS	814	41	78	64	77	81	73	67	52	61	77	60	83
CLAY	1,455	81	127	114	126	150	123	136	123	127	134	102	112
COLLIER	2,050	134	191	177	181	186	191	161	158	137	185	159	190
COLUMBIA	712	39	61	55	72	81	64	59	60	55	47	58	61
MIAMI-DADE	21,351	1,805	1,817	1,745	1,654	1,849	1,835	1,673	1,756	1,416	1,827	1,836	2,138
DESOTO	250	22	15	23	24	22	21	19	24	13	19	20	28
DIXIE	155	9	9	8	15	17	16	13	12	10	18	11	17
DUVAL	7,314	436	625	629	631	770	740	611	634	552	596	464	626
ESCAMBIA	3,310	209	261	273	277	370	345	297	286	223	287	212	270
FLAGLER	286	16	33	19	17	34	36	24	19	16	29	15	28
FRANKLIN	140	8	16	8	14	9	19	16	9	13	11	6	11
GADSDEN	338	16	31	27	30	25	31	26	37	27	33	24	31
GILCHRIST	175	14	14	15	9	16	19	19	10	10	11	20	18
GLADES	50	6	7	5	3	6	4	4	1	1	4	5	4
GULF	149	10	14	13	11	5	19	27	11	11	9	8	11
HAMILTON	164	8	19	7	10	21	16	17	11	14	17	17	7
HARDEE	179	13	17	13	15	12	14	20	16	16	17	11	15
HENDRY	359	30	34	43	24	30	39	24	23	23	26	25	38
HERNANDO	914	120	81	73	87	73	69	71	69	65	73	58	75
HIGHLANDS	597	40	68	57	44	50	52	36	48	48	42	48	64
HILLSBOROUGH	9,051	594	804	788	727	871	809	787	715	622	800	786	748
HOLMES	211	16	22	21	10	20	22	24	17	11	12	20	16
INDIAN RIVER	883	49	71	89	77	80	74	69	72	62	82	76	82
JACKSON	477	30	41	39	40	52	35	37	46	40	40	31	46
JEFFERSON	234	10	22	13	26	26	22	18	15	17	19	23	23
LAFAYETTE	82	4	4	3	8	11	9	4	8	8	8	9	6
LAKE	1,688	94	186	181	141	166	146	134	137	125	143	103	132
LEE	3,447	235	290	282	313	338	309	297	249	223	309	329	273
LEON	2,192	128	164	176	180	258	214	173	220	168	184	144	183
LEVY	255	13	21	23	20	30	28	19	15	28	25	16	17
LIBERTY	72	5	4	4	8	8	6	7	6	8	7	4	5
MADISON	187	13	18	14	13	21	22	18	14	16	15	11	12
MANATEE	1,716	36	148	127	148	168	160	152	141	138	185	158	155
MARION	2,109	117	203	176	201	200	181	189	172	149	171	178	172
MARTIN	935	79	90	55	83	81	100	73	65	61	83	65	100
MONROE	2,349	177	220	176	209	261	207	184	182	156	204	182	191
NASSAU	774	61	62	56	75	94	56	37	74	63	71	55	70
OKALOOSA	2,067	104	132	143	185	193	235	181	207	204	168	155	160
ORKEECHOBEE	354	28	25	26	24	34	41	28	22	28	24	26	48
ORANGE	9,195	587	746	815	767	910	790	742	706	754	850	758	770
OSCEOLA	3,866	245	257	265	279	375	368	293	293	445	434	307	305
PALM BEACH	8,088	585	696	615	713	798	692	675	603	540	749	670	752
PASCO	2,299	136	211	187	213	216	202	202	181	143	207	194	207
PINELLAS	7,925	425	676	670	700	854	706	642	641	573	774	645	619
POLK	4,047	268	393	361	302	358	387	342	345	288	331	311	361
PUTNAM	620	27	73	52	46	68	67	50	45	51	44	45	52
ST JOHNS	1,280	110	96	95	119	125	119	105	93	89	130	84	115
ST LUCIE	1,289	71	151	93	113	139	127	109	90	37	128	110	121
SANTA ROSA	826	52	56	68	76	80	80	73	70	62	68	65	76
SARASOTA	2,766	235	233	225	251	282	219	185	194	173	293	231	245
SEMINOLE	3,006	178	265	255	262	328	241	206	221	239	291	273	247
SUMTER	270	19	32	22	28	24	24	18	23	21	23	18	18
SUWANNEE	326	19	28	22	24	37	30	40	24	22	24	25	31
TAYLOR	199	12	28	16	22	26	14	16	17	16	7	11	14
UNION	83	5	11	8	8	5	11	3	5	8	4	5	10
VOLUSIA	3,552	228	305	297	326	359	304	282	291	280	294	298	288
WAKULLA	230	15	20	13	19	18	16	21	23	25	18	18	24
WALTON	443	29	29	29	33	52	35	31	34	48	55	38	30
WASHINGTON	171	7	17	24	8	18	15	19	9	15	14	9	16

TABLE M-2: MARRIAGES BY RACE OF GROOM AND BRIDE, FLORIDA, 1998

RACE OF GROOM	RACE OF BRIDE										
	TOTAL	WHITE	BLACK	AMERICAN INDIAN	CHINESE	JAPANESE	HAWAIIAN	FILIPINO	OTHER ASIAN/ PAC ISL	OTHER ENTRIES	UNK
TOTAL	141,344	114,689	18,705	230	223	133	36	578	1,190	5,495	65
WHITE	114,315	110,952	1,046	171	100	88	29	379	586	948	16
BLACK	19,995	2,182	17,435	18	3	10	5	34	55	250	3
AMERICAN INDIAN	244	199	5	37	0	0	0	0	1	2	0
CHINESE	155	43	2	0	99	0	0	1	9	1	0
JAPANESE	44	14	0	0	1	27	0	1	1	0	0
HAWAIIAN	21	16	0	0	0	0	2	1	2	0	0
FILIPINO	253	99	3	0	2	1	0	136	12	0	0
OTH ASIAN/PAC ISL	967	367	26	4	16	7	0	22	520	5	0
OTHER ENTRIES	5,293	809	186	0	2	0	0	4	3	4,289	0
UNK	57	8	2	0	0	0	0	0	1	0	46

TABLE M-3: DISSOLUTIONS* OF MARRIAGE BY DURATION OF MARRIAGE IN YEARS AND NUMBER OF MINOR CHILDREN AFFECTED, FLORIDA, 1998

DURATION IN YEARS	NUMBER OF MINOR CHILDREN AFFECTED								
	TOTAL	NONE	ONE	TWO	THREE	FOUR	FIVE	SIX+	UNK
TOTAL	80,466	40,881	17,128	12,371	3,372	620	122	61	5,911
<1	3,817	3,087	218	96	25	3	1	3	384
1	6,612	4,946	747	186	30	2	0	0	701
2	6,513	4,393	1,221	213	35	4	0	5	642
3	6,587	4,063	1,516	389	52	9	3	6	549
4	6,003	3,365	1,498	544	73	11	2	1	509
5-9	21,157	9,195	5,689	3,909	807	113	17	11	1,416
10-14	12,310	3,983	2,758	3,521	1,137	199	46	13	653
15-19	7,164	1,921	1,508	2,306	876	206	31	14	302
20-24	4,127	1,678	1,143	804	222	49	15	2	214
25-29	2,458	1,588	482	170	43	7	3	2	163
30-34	1,135	934	70	29	8	3	0	0	91
35-39	597	522	11	10	2	1	0	2	49
40+	637	552	9	8	5	1	0	0	62
UNK	1,349	654	258	186	57	12	4	2	176

* Includes divorces and annulments.

TABLE M-4: DISSOLUTIONS* OF MARRIAGE BY MONTH, BY COUNTY, FLORIDA, 1998

	TOTAL	JAN	FEB	MAR	APR	MAY	JUN	JUL	AUG	SEP	OCT	NOV	DEC
FLORIDA	80,466	5,967	6,174	7,023	6,799	6,606	7,098	7,491	6,422	6,517	7,242	6,161	6,965
ALACHUA	1,005	74	73	78	96	89	112	81	87	79	90	51	95
BAKER	151	13	3	15	21	11	15	12	12	15	14	9	11
BAY	1,069	75	79	86	107	108	100	92	75	74	99	86	88
BRADFORD	170	21	11	21	13	10	14	20	10	13	16	9	12
BREVARD	2,364	126	203	239	197	210	147	209	213	175	215	230	200
BROWARD	7,882	637	629	668	681	672	693	704	543	649	754	554	698
CALHOUN	58	4	7	11	3	1	4	10	4	4	2	4	4
CHARLOTTE	471	37	35	35	34	49	53	36	31	36	49	33	43
CITRUS	571	44	42	35	40	37	21	53	49	51	68	58	73
CLAY	860	56	55	93	88	68	85	85	67	87	48	56	72
COLLIER	1,009	76	78	111	84	64	109	73	79	82	85	87	81
COLUMBIA	411	34	21	34	33	42	16	63	45	30	19	53	21
MIAMI-DADE	11,852	861	933	1,063	1,069	904	1,036	1,214	989	820	1,148	870	945
DESOTO	140	13	7	10	19	10	16	4	16	7	12	9	17
DIXIE	75	6	4	9	11	7	2	6	6	8	3	5	8
DUVAL	4,796	329	327	382	391	386	404	467	412	418	475	392	413
ESCAMBIA	1,540	117	101	126	154	151	97	184	107	125	153	94	131
FLAGLER	239	10	22	26	12	21	22	13	20	22	27	15	29
FRANKLIN	58	8	4	3	5	7	2	5	6	9	2	4	3
GADSDEN	160	4	0	10	27	13	13	14	10	12	22	16	19
GILCHRIST	101	7	8	10	12	11	11	3	10	1	2	15	11
GLADES	29	2	1	2	1	3	2	0	3	8	1	2	4
GULF	74	4	10	6	7	9	6	5	3	9	6	5	4
HAMILTON	53	3	4	4	7	2	4	5	4	4	6	4	5
HARDEE	125	10	3	11	14	5	11	18	2	24	9	7	11
HENDRY	182	8	23	14	14	18	16	14	11	16	18	17	13
HERNANDO	467	26	30	50	52	38	40	44	43	23	52	34	35
HIGHLANDS	328	26	29	35	19	37	33	25	22	27	21	31	23
HILLSBOROUGH	5,059	401	425	437	266	417	548	487	370	473	399	401	435
HOLMES	134	12	10	12	6	9	12	10	16	8	8	15	16
INDIAN RIVER	556	54	47	47	58	55	42	38	41	34	49	44	47
JACKSON	247	18	24	19	28	18	14	23	35	14	20	24	10
JEFFERSON	210	18	15	15	21	20	13	17	21	10	18	14	28
LAFAYETTE	53	4	4	5	5	6	5	1	3	6	4	7	3
LAKE	1,039	68	85	100	82	92	86	89	93	91	85	77	91
LEE	2,116	111	193	166	195	159	208	177	171	107	209	145	275
LEON	1,100	100	76	102	99	82	103	70	107	77	90	85	109
LEVY	191	21	13	16	15	16	14	22	7	13	22	17	15
LIBERTY	44	3	4	3	6	5	1	6	6	2	2	3	3
MADISON	87	5	10	2	8	6	8	2	8	6	12	12	8
MANATEE	1,002	50	75	115	80	102	68	108	93	72	95	71	73
MARION	1,547	156	59	231	115	83	130	112	87	174	154	106	140
MARTIN	529	46	32	45	59	35	51	53	31	38	40	28	71
MONROE	302	23	31	37	33	26	27	27	19	17	14	29	19
NASSAU	327	23	29	25	27	28	46	23	30	39	17	16	24
OKALOOSA	1,378	100	99	116	113	125	120	138	91	99	135	110	132
OKECHOBEE	210	3	15	24	17	18	16	29	20	20	21	13	14
ORANGE	4,553	364	313	400	380	412	409	453	369	399	374	371	309
OSCEOLA	1,041	73	52	93	71	62	83	112	94	105	105	97	94
PALM BEACH	4,797	376	392	422	409	426	431	435	370	355	408	364	409
PASCO	1,441	109	105	104	106	117	112	150	138	120	136	114	130
PINELLAS	4,506	344	389	323	414	377	398	404	353	356	429	309	410
POLK	2,678	199	240	203	237	172	257	182	286	228	261	208	205
PUTNAM	334	20	21	38	36	9	49	30	22	35	28	27	19
ST JOHN'S	533	35	47	42	39	48	51	64	18	40	59	29	61
ST LUCIE	936	72	72	65	76	95	126	72	52	85	56	77	88
SANTA ROSA	568	34	42	48	44	56	44	37	48	60	40	66	49
SARASOTA	1,799	138	105	146	132	130	128	216	122	192	158	134	198
SEMINOLE	1,675	136	135	155	150	138	156	138	131	143	91	172	130
SUMTER	196	13	14	19	23	8	13	18	16	11	25	15	21
SUWANNEE	227	12	19	15	25	18	17	25	23	15	23	19	16
TAYLOR	104	8	11	0	16	5	4	7	17	10	8	8	10
UNION	68	4	6	8	2	13	4	10	5	10	0	2	4
VOLUSIA	2,247	155	187	199	163	194	184	221	190	188	205	159	202
WAKULLA	105	11	9	9	9	6	16	6	7	7	11	7	7
WALTON	180	10	16	15	15	23	15	12	17	18	8	14	17
WASHINGTON	107	7	11	15	8	12	5	8	16	12	7	2	4

* Includes divorces and annulments.