

# Fetal and Infant Deaths

## FETAL AND INFANT DEATHS

- Both the number and ratio of resident fetal deaths (20 or more weeks gestation) have increased from last year.
- Resident fetal deaths among both whites and nonwhites increased by 4.2 percent from 1998 to 1999.
- Of the fetal deaths, 16.8 percent occurred to mothers residing in Miami-Dade County.
- More than one of every five resident fetal deaths occurred to a mother of Hispanic or Haitian origin.
- About one of every ten fetal deaths occurred to a mother who was aged 18 years or under.
- In 1999 both the overall number and rate of resident neonatal deaths (under 28 days) increased. The number remained constant for whites, but increased for nonwhites.
- The neonatal death rate increased to 4.9 per 1,000 live births in 1999. This represents half the rate of 1980 (9.7).
- The nonwhite neonatal death rate (7.9) is more than twice the white rate (3.8).
- There was an overall increase in infant deaths (under one year). The resident infant mortality rate increased slightly from a record low of 7.2 deaths per 1,000 live births in 1998 to a rate of 7.3 in 1999 — which is slightly above the U.S. provisional rate (7.0).
- The resident infant mortality rate has dropped 24.0 percent since 1990 and is half the rate of 1980.
- The resident infant mortality rate for nonwhites (12.4) is more than double the infant mortality rate for whites (5.6).
- Resident infants of Hispanic or Haitian origin accounted for 17.6 percent of all infant deaths.
- Of the total resident deaths occurring within the first year of life, 66.7 percent were less than 28 days old. Furthermore, 38.3 percent were less than one day old.
- The leading causes of resident infant deaths in 1999 were Perinatal Conditions, Congenital Anomalies, and Sudden Infant Death Syndrome. These causes accounted for 78.9 percent of all resident infant deaths.

CHART F-1: RESIDENT FETAL DEATHS AND RATIOS PER 1,000 LIVE BIRTHS, BY RACE OF MOTHER, FLORIDA AND UNITED STATES TOTAL, CENSUS YEARS 1920-1980 AND 1989-1999							
YEAR	NUMBER OF FETAL DEATHS - FL			RATIOS - FL			RATIO - U.S.
	TOTAL	WHITE	NON- WHITE	TOTAL	WHITE	NON- WHITE	TOTAL
1920 <sup>1</sup>	1,287	595	692	65.9	43.9	115.4	NA
1930 <sup>1</sup>	1,754	746	1,008	65.0	40.1	120.1	NA
1940	1,415	683	732	42.0	28.7	74.0	NA
1950	1,443	757	868	22.4	16.6	36.7	18.8
1960	1,846	1,043	803	16.0	12.4	25.7	15.8
1970	1,701	1,064	637	14.8	12.2	22.6	14.0
1980	1,355	847	491	10.3	8.7	14.3	9.1
1989	1,802	1,084	689	9.3	7.5	14.4	7.5
1990	1,811	1,071	720	9.1	7.2	14.6	7.5
1991	1,692	978	703	8.7	6.8	14.4	7.3
1992	1,498	920	570	7.8	6.4	11.8	7.4
1993	1,447	858	580	7.5	6.0	12.0	7.1
1994	1,519	909	599	8.0	6.4	12.7	7.0
1995	1,531	937	581	8.1	6.6	12.5	7.0
1996	1,478	885	577	7.8	6.2	12.3	6.9
1997	1,523	910	600	7.9	6.3	12.4	6.8
1998	1,520	912	594	7.8	6.3	12.0	NA
1999	1,579	953	619	8.0	6.5	12.3	NA

<sup>1</sup> Only recorded data are available.

GRAPH F-1: RESIDENT FETAL DEATH RATIOS, BY RACE OF MOTHER, FLORIDA AND UNITED STATES TOTAL, 1989-1999

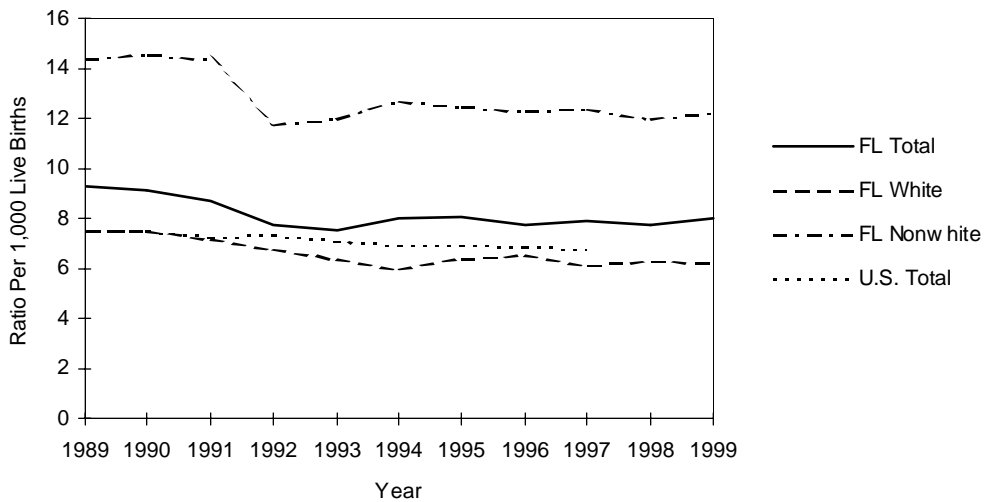


CHART F-2: RESIDENT NEONATAL DEATHS AND RATES PER 1,000 LIVE BIRTHS, BY RACE, FLORIDA AND UNITED STATES TOTAL, CENSUS YEARS 1920-1980 AND 1989-1999							
YEAR	NUMBER OF NEONATAL DEATHS - FL			RATES <sup>1</sup> - FL			RATE - U.S.
	TOTAL	WHITE	NON-WHITE	TOTAL	WHITE	NON-WHITE	TOTAL
1920	NA	NA	NA	NA	NA	NA	NA
1930	NA	NA	NA	NA	NA	NA	NA
1940	1,142	662	480	33.9	27.8	48.5	28.8
1950	1,551	975	576	24.1	21.3	30.8	20.5
1960	2,404	1,531	873	20.8	18.1	28.0	18.7
1970	1,848	1,198	648	16.1	13.8	23.0	15.1
1980	1,282	791	490	9.7	8.1	14.2	8.5
1989	1,251	736	514	6.5	5.1	10.8	6.2
1990	1,227	742	484	6.2	5.0	9.8	5.8
1991	1,122	635	485	5.8	4.4	10.0	5.5
1992	1,120	666	452	5.8	4.7	9.4	5.4
1993	1,071	609	460	5.6	4.2	9.6	5.3
1994	1,027	624	402	5.4	4.4	8.5	5.1
1995	874	523	351	4.6	3.7	7.5	4.9
1996	895	517	377	4.7	3.6	8.0	4.8
1997	889	518	370	4.6	3.6	7.6	4.8
1998	933	559	371	4.8	3.8	7.5	4.8 <sup>2</sup>
1999	962	559	401	4.9	3.8	7.9	NA

<sup>1</sup>Rates based on neonatal deaths by race of decedent, live births by race of mother.

<sup>2</sup>Preliminary data.

GRAPH F-2: RESIDENT NEONATAL DEATH RATES<sup>1</sup>, BY RACE, FLORIDA AND UNITED STATES TOTAL, 1989-1999

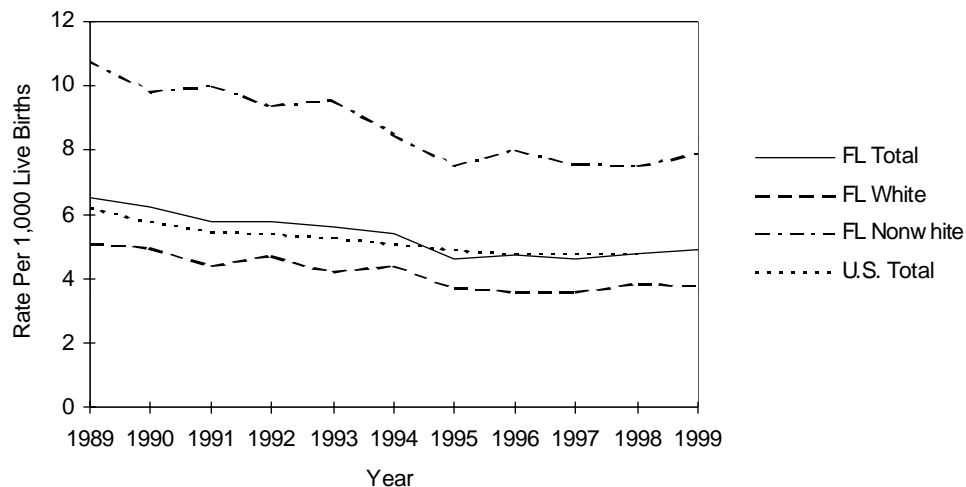


CHART F-3: RESIDENT INFANT DEATHS AND RATES PER 1,000 LIVE BIRTHS, BY RACE, FLORIDA AND UNITED STATES TOTAL, CENSUS YEARS 1920-1980 AND 1989-1999							
YEAR	NUMBER OF INFANT DEATHS - FL			RATES <sup>2</sup> - FL			RATE - U.S.
	TOTAL	WHITE	NON-WHITE	TOTAL	WHITE	NON-WHITE	TOTAL
1920 <sup>1</sup>	1,835	1,031	804	93.9	76.1	134.0	NA
1930 <sup>1</sup>	1,729	928	801	64.1	49.9	95.4	NA
1940	1,812	1,052	760	53.8	44.2	76.8	47.0
1950	2,078	1,225	853	32.3	26.8	45.7	29.2
1960	3,431	1,992	1,439	29.7	23.6	46.1	26.0
1970	2,466	1,537	927	21.4	17.7	32.9	20.0
1980	1,915	1,135	779	14.5	11.7	22.7	12.6
1989	1,899	1,141	756	9.8	7.9	15.8	9.8
1990	1,909	1,121	786	9.6	7.5	16.0	9.2
1991	1,726	966	758	8.9	6.7	15.6	8.9
1992	1,685	987	695	8.8	6.9	14.4	8.5
1993	1,654	951	699	8.6	6.6	14.5	8.4
1994	1,540	927	611	8.1	6.5	12.9	8.0
1995	1,402	840	562	7.4	5.9	12.1	7.6
1996	1,405	821	583	7.4	5.8	12.4	7.3
1997	1,358	805	552	7.1	5.6	11.4	7.2
1998	1,415	850	562	7.2	5.8	11.4	7.2 <sup>3</sup>
1999	1,442	815	625	7.3	5.6	12.4	7.0 <sup>4</sup>

<sup>1</sup> Only recorded data are available.

<sup>2</sup> Rates based on infant deaths by race of decedent, live births by race of mother.

<sup>3</sup> Preliminary data.

<sup>4</sup> Provisional data for January through August 1999.

GRAPH F-3: RESIDENT INFANT DEATH RATES<sup>2</sup>, BY RACE, FLORIDA AND UNITED STATES TOTAL, 1989-1999

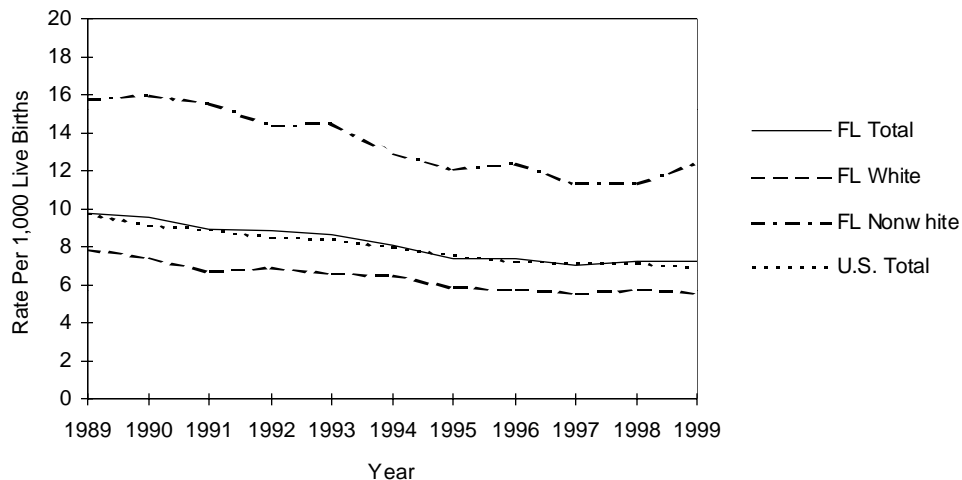


TABLE F-1: RESIDENT AND RECORDED FETAL DEATHS (OF 20 OR MORE WEEKS GESTATION) AND RATIOS PER 1,000 LIVE BIRTHS, BY RACE OF MOTHER, BY COUNTY, FLORIDA, 1999

	RESIDENT FETAL DEATHS					RATIOS			
	NUMBER					RATIOS			
	TOTAL	WHITE	BLACK	OTHER	UNK	TOTAL	WHITE	BLACK	OTHER
FLORIDA	1,579	953	594	25	7	8.0	6.5	13.2	4.6
ALACHUA	25	10	15	0	0	10.5	6.4	20.3	0.0
BAKER	1	1	0	0	0	2.6	3.0	0.0	0.0
BAY	14	11	3	0	0	7.1	7.0	9.5	0.0
BRADFORD	2	1	1	0	0	5.9	3.5	18.9	0.0
BREVARD	38	33	5	0	0	8.0	8.4	7.6	0.0
BROWARD	182	95	82	4	1	8.7	7.1	11.8	6.2
CALHOUN	1	1	0	0	0	7.8	9.3	0.0	0.0
CHARLOTTE	5	4	0	1	0	5.2	4.6	0.0	90.9
CITRUS	6	5	1	0	0	7.2	6.5	20.4	0.0
CLAY	14	12	2	0	0	8.0	7.7	14.2	0.0
COLLIER	14	8	6	0	0	4.9	3.2	20.5	0.0
COLUMBIA	7	4	3	0	0	9.3	6.7	19.6	0.0
MIAMI-DADE	265	119	143	2	1	8.4	5.5	15.5	3.5
DESOTO	2	0	1	0	1	4.8	0.0	17.5	0.0
DIXIE	0	0	0	0	0	0.0	0.0	0.0	---
DUVAL	97	45	49	3	0	8.0	6.1	11.7	5.8
ESCAMBIA	39	21	18	0	0	9.8	7.9	15.2	0.0
FLAGLER	6	4	2	0	0	17.6	14.0	38.5	0.0
FRANKLIN	0	0	0	0	0	0.0	0.0	0.0	0.0
GADSDEN	2	0	2	0	0	2.8	0.0	4.8	0.0
GILCHRIST	2	2	0	0	0	12.7	13.2	0.0	---
GLADES	1	1	0	0	0	13.3	17.9	0.0	0.0
GULF	0	0	0	0	0	0.0	0.0	0.0	0.0
HAMILTON	3	0	3	0	0	18.5	0.0	50.8	---
HARDEE	8	5	3	0	0	18.0	12.0	111.1	0.0
HENDRY	6	3	3	0	0	9.8	6.0	28.8	0.0
HERNANDO	4	2	2	0	0	3.8	2.1	27.4	0.0
HIGHLANDS	12	5	6	0	1	14.3	7.6	37.3	0.0
HILLSBOROUGH	111	73	34	4	0	7.7	6.6	11.6	9.2
HOLMES	1	1	0	0	0	5.0	5.2	0.0	0.0
INDIAN RIVER	9	8	1	0	0	8.8	9.4	6.7	0.0
JACKSON	7	5	2	0	0	12.1	12.6	12.0	0.0
JEFFERSON	5	1	4	0	0	29.2	9.9	58.0	0.0
LAFAYETTE	0	0	0	0	0	0.0	0.0	0.0	---
LAKE	14	12	2	0	0	6.3	6.4	5.9	0.0
LEE	31	23	8	0	0	6.5	5.7	11.8	0.0
LEON	14	5	9	0	0	4.8	2.9	7.9	0.0
LEVY	2	1	1	0	0	5.3	3.3	14.9	0.0
LIBERTY	2	2	0	0	0	24.4	27.8	0.0	0.0
MADISON	2	1	1	0	0	10.0	10.9	9.3	0.0
MANATEE	25	18	7	0	0	8.2	7.1	17.2	0.0
MARION	16	11	5	0	0	5.8	5.0	9.3	0.0
MARTIN	3	2	1	0	0	2.5	2.0	8.3	0.0
MONROE	6	6	0	0	0	7.5	8.7	0.0	0.0
NASSAU	3	2	1	0	0	3.9	2.9	13.7	0.0
OKALOOSA	10	10	0	0	0	4.4	5.3	0.0	0.0
OKEECHOBEE	1	0	1	0	0	2.1	0.0	31.3	0.0
ORANGE	122	75	42	5	0	9.3	8.1	12.6	9.4
OSCEOLA	24	22	2	0	0	10.2	10.6	9.4	0.0
PALM BEACH	101	60	41	0	0	7.7	6.5	12.3	0.0
PASCO	19	16	2	0	1	5.4	4.9	15.7	0.0
PINELLAS	70	50	17	2	1	7.6	6.7	11.5	5.6
POLK	66	43	23	0	0	10.0	8.3	17.5	0.0
PUTNAM	11	7	4	0	0	11.5	9.8	17.0	0.0
ST JOHNS	8	5	3	0	0	6.6	4.6	26.5	0.0
ST LUCIE	19	8	11	0	0	8.8	5.3	18.0	0.0
SANTA ROSA	11	11	0	0	0	7.1	7.7	0.0	0.0
SARASOTA	20	14	5	1	0	7.6	5.9	21.9	20.8
SEMINOLE	48	36	9	2	1	10.8	9.8	14.4	12.2
SUMTER	4	2	2	0	0	9.5	5.9	25.3	0.0
SUWANNEE	2	2	0	0	0	4.2	5.0	0.0	0.0
TAYLOR	2	1	1	0	0	8.3	5.2	21.7	0.0
UNION	0	0	0	0	0	0.0	0.0	0.0	---
VOLUSIA	26	22	3	1	0	5.8	5.9	4.5	13.0
WAKULLA	1	1	0	0	0	3.7	4.3	0.0	0.0
WALTON	2	2	0	0	0	4.5	5.1	0.0	0.0
WASHINGTON	5	3	2	0	0	21.3	16.3	44.4	0.0

TABLE F-1 (Cont.): RESIDENT AND RECORDED FETAL DEATHS (OF 20 OR MORE WEEKS GESTATION) AND RATIOS PER 1,000 LIVE BIRTHS, BY RACE OF MOTHER, BY COUNTY, FLORIDA, 1999

	RECORDED FETAL DEATHS								
	NUMBER					RATIOS			
	TOTAL	WHITE	BLACK	OTHER	UNK	TOTAL	WHITE	BLACK	OTHER
FLORIDA	1,614	979	601	26	8	8.2	6.7	13.3	4.8
ALACHUA	42	20	22	0	0	8.0	5.1	17.9	0.0
BAKER	0	0	0	0	0	0.0	0.0	0.0	---
BAY	18	15	3	0	0	7.5	7.8	8.1	0.0
BRADFORD	0	0	0	0	0	0.0	0.0	0.0	---
BREVARD	30	26	4	0	0	6.6	6.9	6.5	0.0
BROWARD	184	93	86	4	1	9.2	7.5	12.2	6.5
CALHOUN	0	0	0	0	0	---	---	---	---
CHARLOTTE	2	1	0	1	0	2.1	1.2	0.0	90.9
CITRUS	5	4	1	0	0	6.5	5.6	22.2	0.0
CLAY	6	5	1	0	0	3.9	3.9	5.0	0.0
COLLIER	10	4	6	0	0	4.0	1.8	24.5	0.0
COLUMBIA	9	5	4	0	0	14.8	11.2	25.0	0.0
MIAMI-DADE	274	129	142	2	1	8.6	5.8	15.7	3.4
DESOTO	2	1	1	0	0	3.0	1.7	13.9	0.0
DIXIE	0	0	0	0	0	0.0	0.0	---	---
DUVAL	118	61	54	3	0	8.5	6.7	12.7	5.5
ESCAMBIA	57	36	21	0	0	10.6	9.2	16.7	0.0
FLAGLER	0	0	0	0	0	0.0	0.0	---	---
FRANKLIN	0	0	0	0	0	0.0	0.0	0.0	---
GADSDEN	0	0	0	0	0	0.0	0.0	0.0	---
GILCHRIST	0	0	0	0	0	---	---	---	---
GLADES	0	0	0	0	0	---	---	---	---
GULF	0	0	0	0	0	---	---	---	---
HAMILTON	0	0	0	0	0	0.0	0.0	0.0	---
HARDEE	0	0	0	0	0	0.0	0.0	---	---
HENDRY	0	0	0	0	0	0.0	0.0	0.0	---
HERNANDO	2	0	2	0	0	1.7	0.0	29.9	0.0
HIGHLANDS	11	3	7	0	1	12.7	4.4	43.5	0.0
HILLSBOROUGH	127	90	34	3	0	8.0	7.3	11.1	6.6
HOLMES	0	0	0	0	0	0.0	0.0	0.0	---
INDIAN RIVER	6	5	1	0	0	6.0	5.9	6.9	0.0
JACKSON	5	2	3	0	0	8.0	4.6	16.9	0.0
JEFFERSON	0	0	0	0	0	0.0	0.0	---	---
LAFAYETTE	0	0	0	0	0	---	---	---	---
LAKE	12	10	2	0	0	6.7	7.1	5.8	0.0
LEE	38	30	8	0	0	6.7	6.2	10.6	0.0
LEON	27	11	16	0	0	5.6	3.9	8.5	0.0
LEVY	0	0	0	0	0	0.0	0.0	---	---
LIBERTY	0	0	0	0	0	---	---	---	---
MADISON	0	0	0	0	0	0.0	---	0.0	---
MANATEE	18	11	7	0	0	7.5	5.6	21.1	0.0
MARION	9	6	3	0	0	3.9	3.2	7.4	0.0
MARTIN	3	2	1	0	0	2.1	1.6	9.1	0.0
MONROE	3	3	0	0	0	5.3	6.5	0.0	0.0
NASSAU	1	1	0	0	0	2.5	3.0	0.0	0.0
OKALOOSA	11	10	1	0	0	4.4	4.8	3.4	0.0
OKEECHOBEE	0	0	0	0	0	0.0	0.0	0.0	---
ORANGE	190	130	52	7	1	11.9	11.0	14.5	12.3
OSCEOLA	13	10	2	1	0	5.2	4.6	8.8	8.7
PALM BEACH	112	66	45	0	1	7.7	6.3	12.6	0.0
PASCO	9	6	2	0	1	6.4	4.7	23.0	0.0
PINELLAS	97	75	18	3	1	9.4	8.8	12.1	8.0
POLK	57	37	20	0	0	9.7	8.1	17.2	0.0
PUTNAM	6	3	3	0	0	12.4	9.7	17.3	0.0
ST JOHNS	3	3	0	0	0	3.7	4.3	0.0	0.0
ST LUCIE	20	9	11	0	0	9.9	6.5	18.1	0.0
SANTA ROSA	1	1	0	0	0	2.1	2.3	0.0	0.0
SARASOTA	29	19	8	1	1	9.1	6.7	25.4	18.9
SEMINOLE	20	14	5	1	0	5.5	4.7	8.9	9.0
SUMTER	0	0	0	0	0	0.0	0.0	---	---
SUWANNEE	1	1	0	0	0	142.9	200.0	0.0	---
TAYLOR	1	0	1	0	0	500.0	0.0	1000.0	---
UNION	0	0	0	0	0	0.0	---	0.0	---
VOLUSIA	25	21	4	0	0	6.4	6.6	6.0	0.0
WAKULLA	0	0	0	0	0	0.0	0.0	---	---
WALTON	0	0	0	0	0	0.0	0.0	0.0	---
WASHINGTON	0	0	0	0	0	---	---	---	---

TABLE F-2: RESIDENT FETAL DEATHS BY HISPANIC OR HAITIAN ORIGIN OF MOTHER, BY COUNTY, FLORIDA, 1999

	HISPANIC ORIGIN									
	TOTAL	TOTAL HISPANIC	MEXICAN	PUERTO RICAN	CUBAN	CENTRAL/ SOUTH AMERICAN	OTHER/ UNK HISPANIC	HAITIAN	NON- HISPANIC/ HAITIAN	UNK
FLORIDA	1,579	275	49	65	67	70	24	69	1,164	71
ALACHUA	25	2	0	1	0	1	0	0	23	0
BAKER	1	0	0	0	0	0	0	0	1	0
BAY	14	0	0	0	0	0	0	0	14	0
BRADFORD	2	0	0	0	0	0	0	0	2	0
BREVARD	38	4	0	2	0	0	2	2	32	0
BROWARD	182	42	3	11	5	15	8	18	118	4
CALHOUN	1	0	0	0	0	0	0	0	1	0
CHARLOTTE	5	0	0	0	0	0	0	0	5	0
CITRUS	6	0	0	0	0	0	0	0	6	0
CLAY	14	0	0	0	0	0	0	0	14	0
COLLIER	14	4	2	0	0	2	0	2	8	0
COLUMBIA	7	1	1	0	0	0	0	0	6	0
MIAMI-DADE	265	95	1	10	47	35	2	29	88	53
DESOTO	2	0	0	0	0	0	0	0	1	1
DIXIE	0	0	0	0	0	0	0	0	0	0
DUVAL	97	2	0	0	0	0	2	0	95	0
ESCAMBIA	39	1	0	1	0	0	0	0	38	0
FLAGLER	6	0	0	0	0	0	0	0	6	0
FRANKLIN	0	0	0	0	0	0	0	0	0	0
GADSDEN	2	0	0	0	0	0	0	0	2	0
GILCHRIST	2	0	0	0	0	0	0	0	2	0
GLADES	1	0	0	0	0	0	0	0	1	0
GULF	0	0	0	0	0	0	0	0	0	0
HAMILTON	3	0	0	0	0	0	0	0	3	0
HARDEE	8	2	1	0	0	0	1	0	6	0
HENDRY	6	2	2	0	0	0	0	0	4	0
HERNANDO	4	0	0	0	0	0	0	0	4	0
HIGHLANDS	12	1	1	0	0	0	0	0	10	1
HILLSBOROUGH	111	20	7	5	3	2	3	0	87	4
HOLMES	1	0	0	0	0	0	0	0	1	0
INDIAN RIVER	9	2	2	0	0	0	0	0	7	0
JACKSON	7	0	0	0	0	0	0	0	7	0
JEFFERSON	5	0	0	0	0	0	0	0	5	0
LAFAYETTE	0	0	0	0	0	0	0	0	0	0
LAKE	14	1	1	0	0	0	0	0	13	0
LEE	31	4	2	1	0	1	0	0	26	1
LEON	14	0	0	0	0	0	0	0	14	0
LEVY	2	0	0	0	0	0	0	0	2	0
LIBERTY	2	0	0	0	0	0	0	0	2	0
MADISON	2	0	0	0	0	0	0	0	2	0
MANATEE	25	7	7	0	0	0	0	0	18	0
MARION	16	0	0	0	0	0	0	0	15	1
MARTIN	3	1	0	0	0	1	0	0	2	0
MONROE	6	4	0	1	3	0	0	0	1	1
NASSAU	3	0	0	0	0	0	0	0	3	0
OKALOOSA	10	2	1	0	0	0	1	0	8	0
OKEECHOBEE	1	0	0	0	0	0	0	0	1	0
ORANGE	122	24	5	12	2	5	0	8	89	1
OSCEOLA	24	12	0	4	2	4	2	0	12	0
PALM BEACH	101	13	5	3	2	2	1	9	79	0
PASCO	19	1	1	0	0	0	0	0	16	2
PINELLAS	70	9	3	3	0	2	1	0	60	1
POLK	66	3	2	0	1	0	0	1	62	0
PUTNAM	11	1	0	1	0	0	0	0	10	0
ST JOHNS	8	0	0	0	0	0	0	0	8	0
ST LUCIE	19	1	0	0	1	0	0	0	18	0
SANTA ROSA	11	0	0	0	0	0	0	0	11	0
SARASOTA	20	0	0	0	0	0	0	0	20	0
SEMINOLE	48	8	0	6	1	0	1	0	39	1
SUMTER	4	1	1	0	0	0	0	0	3	0
SUWANNEE	2	0	0	0	0	0	0	0	2	0
TAYLOR	2	0	0	0	0	0	0	0	2	0
UNION	0	0	0	0	0	0	0	0	0	0
VOLUSIA	26	5	1	4	0	0	0	0	21	0
WAKULLA	1	0	0	0	0	0	0	0	1	0
WALTON	2	0	0	0	0	0	0	0	2	0
WASHINGTON	5	0	0	0	0	0	0	0	5	0



TABLE F-3: RESIDENT FETAL DEATHS BY AGE OF MOTHER, BY COUNTY, FLORIDA, 1999

	TOTAL	AGE OF MOTHER													UNK
		<13	13	14	15	16	17	18	19	20-24	25-29	30-34	35-44	45+	
FLORIDA	1,579	0	2	4	17	31	40	59	71	351	353	329	272	5	45
ALACHUA	25	0	0	0	0	0	2	1	0	7	5	6	4	0	0
BAKER	1	0	0	0	0	0	0	1	0	0	0	0	0	0	0
BAY	14	0	0	0	0	0	0	0	0	5	4	2	3	0	0
BRADFORD	2	0	0	0	0	0	0	0	0	1	0	1	0	0	0
BREVARD	38	0	0	0	0	0	1	2	4	12	5	9	5	0	0
BROWARD	182	0	0	0	1	1	0	4	9	23	37	41	52	1	13
CALHOUN	1	0	0	0	0	0	0	0	0	0	1	0	0	0	0
CHARLOTTE	5	0	0	0	0	0	0	1	0	0	4	0	0	0	0
CITRUS	6	0	0	0	0	1	0	0	0	1	3	1	0	0	0
CLAY	14	0	0	0	0	0	0	1	1	4	3	3	2	0	0
COLLIER	14	0	0	0	0	0	1	1	0	5	3	4	0	0	0
COLUMBIA	7	0	0	0	1	0	0	0	2	1	1	1	1	0	0
MIAMI-DADE	265	0	0	1	1	4	9	5	11	49	52	54	62	2	15
DESOTO	2	0	0	0	0	0	0	0	0	0	0	2	0	0	0
DIXIE	0	0	0	0	0	0	0	0	0	0	0	0	0	0	0
DUVAL	97	0	0	1	1	3	2	6	7	24	24	16	12	0	1
ESCAMBIA	39	0	0	0	0	3	0	4	1	12	5	5	9	0	0
FLAGLER	6	0	0	0	0	0	0	0	0	2	1	2	1	0	0
FRANKLIN	0	0	0	0	0	0	0	0	0	0	0	0	0	0	0
GADSDEN	2	0	0	0	1	0	0	0	0	0	0	1	0	0	0
GILCHRIST	2	0	0	0	0	0	0	1	0	1	0	0	0	0	0
GLADES	1	0	0	0	0	0	0	0	0	0	0	1	0	0	0
GULF	0	0	0	0	0	0	0	0	0	0	0	0	0	0	0
HAMILTON	3	0	0	0	0	0	1	0	0	0	1	1	0	0	0
HARDEE	8	0	0	0	0	0	0	1	0	2	4	1	0	0	0
HENDRY	6	0	0	0	0	0	0	1	2	2	1	0	0	0	0
HERNANDO	4	0	0	0	0	2	0	0	0	1	0	1	0	0	0
HIGHLANDS	12	0	0	0	0	1	1	1	2	1	2	2	1	0	1
HILLSBOROUGH	111	0	0	0	3	3	4	8	4	23	27	22	15	0	2
HOLMES	1	0	0	0	0	0	0	0	0	0	1	0	0	0	0
INDIAN RIVER	9	0	0	0	0	0	0	0	0	5	2	1	1	0	0
JACKSON	7	0	0	0	0	0	0	1	0	4	0	2	0	0	0
JEFFERSON	5	0	0	0	0	0	0	0	0	2	3	0	0	0	0
LAFAYETTE	0	0	0	0	0	0	0	0	0	0	0	0	0	0	0
LAKE	14	0	0	0	1	0	0	0	1	4	6	1	1	0	0
LEE	31	0	0	0	0	0	0	2	1	10	6	6	5	0	1
LEON	14	0	1	0	0	0	0	0	0	5	3	3	2	0	0
LEVY	2	0	0	0	0	0	1	0	0	0	0	1	0	0	0
LIBERTY	2	0	0	0	0	0	0	1	0	0	1	0	0	0	0
MADISON	2	0	0	0	0	0	0	0	0	0	2	0	0	0	0
MANATEE	25	0	0	1	0	0	1	0	2	6	6	5	4	0	0
MARION	16	0	0	0	0	1	2	2	0	4	3	1	3	0	0
MARTIN	3	0	0	0	0	0	1	0	0	0	1	1	0	0	0
MONROE	6	0	0	0	0	0	0	0	0	1	0	3	2	0	0
NASSAU	3	0	0	0	0	0	0	0	0	0	1	1	1	0	0
OKALOOSA	10	0	0	0	0	0	0	1	0	3	2	2	2	0	0
OKEECHOBEE	1	0	0	0	0	0	0	0	0	0	0	1	0	0	0
ORANGE	122	0	0	1	2	2	5	4	2	27	31	32	13	1	2
OSCEOLA	24	0	0	0	0	1	0	0	1	6	5	8	1	0	2
PALM BEACH	101	0	0	0	3	4	2	2	5	21	20	21	18	0	5
PASCO	19	0	0	0	1	0	0	0	1	8	1	4	4	0	0
PINELLAS	70	0	0	0	1	0	0	2	6	11	21	16	10	0	3
POLK	66	0	0	0	1	2	2	2	4	20	15	8	12	0	0
PUTNAM	11	0	0	0	0	1	1	0	0	1	2	5	1	0	0
ST JOHNS	8	0	0	0	0	0	0	0	2	2	1	1	2	0	0
ST LUCIE	19	0	0	0	0	1	2	0	0	5	4	4	3	0	0
SANTA ROSA	11	0	0	0	0	0	0	0	0	5	3	1	2	0	0
SARASOTA	20	0	0	0	0	0	0	0	1	3	7	4	5	0	0
SEMINOLE	48	0	0	0	0	1	2	3	2	9	11	9	10	1	0
SUMTER	4	0	0	0	0	0	0	0	0	1	3	0	0	0	0
SUWANNEE	2	0	0	0	0	0	0	0	0	1	1	0	0	0	0
TAYLOR	2	0	0	0	0	0	0	0	0	2	0	0	0	0	0
UNION	0	0	0	0	0	0	0	0	0	0	0	0	0	0	0
VOLUSIA	26	0	1	0	0	0	0	1	0	7	5	9	3	0	0
WAKULLA	1	0	0	0	0	0	0	0	0	1	0	0	0	0	0
WALTON	2	0	0	0	0	0	0	0	0	1	0	1	0	0	0
WASHINGTON	5	0	0	0	0	0	0	0	0	0	3	2	0	0	0

TABLE F-4: RESIDENT AND RECORDED NEONATAL DEATHS (UNDER 28 DAYS) AND RATES PER 1,000 LIVE BIRTHS, BY RACE, BY COUNTY, FLORIDA, 1999

	RESIDENT NEONATAL DEATHS									
	NUMBER					RATES*				
	TOTAL	WHITE	BLACK	OTHER	UNK	TOTAL	WHITE	BLACK	OTHER	
FLORIDA	962	559	390	11	2	4.9	3.8	8.7	2.0	
ALACHUA	15	5	10	0	0	6.3	3.2	13.6	0.0	
BAKER	1	1	0	0	0	2.6	3.0	0.0	0.0	
BAY	19	11	7	1	0	9.7	7.0	22.2	15.9	
BRADFORD	0	0	0	0	0	0.0	0.0	0.0	0.0	
BREVARD	14	10	4	0	0	3.0	2.5	6.1	0.0	
BROWARD	103	44	59	0	0	4.9	3.3	8.5	0.0	
CALHOUN	1	1	0	0	0	7.8	9.3	0.0	0.0	
CHARLOTTE	0	0	0	0	0	0.0	0.0	0.0	0.0	
CITRUS	4	4	0	0	0	4.8	5.2	0.0	0.0	
CLAY	7	6	1	0	0	4.0	3.9	7.1	0.0	
COLLIER	12	9	3	0	0	4.2	3.6	10.2	0.0	
COLUMBIA	6	2	4	0	0	7.9	3.4	26.1	0.0	
MIAMI-DADE	106	63	40	3	0	3.4	2.9	4.3	5.2	
DESOTO	3	2	1	0	0	7.1	5.5	17.5	0.0	
DIXIE	0	0	0	0	0	0.0	0.0	0.0	---	
DUVAL	86	38	48	0	0	7.1	5.1	11.5	0.0	
ESCAMBIA	25	13	12	0	0	6.3	4.9	10.1	0.0	
FLAGLER	2	1	0	1	0	5.9	3.5	0.0	500.0	
FRANKLIN	1	0	1	0	0	8.5	0.0	66.7	0.0	
GADSDEN	12	2	9	1	0	16.8	6.9	21.4	200.0	
GILCHRIST	3	2	1	0	0	19.1	13.2	200.0	---	
GLADES	0	0	0	0	0	0.0	0.0	0.0	0.0	
GULF	3	2	1	0	0	21.9	19.2	33.3	0.0	
HAMILTON	0	0	0	0	0	0.0	0.0	0.0	---	
HARDEE	0	0	0	0	0	0.0	0.0	0.0	0.0	
HENDRY	2	2	0	0	0	3.3	4.0	0.0	0.0	
HERNANDO	7	7	0	0	0	6.6	7.2	0.0	0.0	
HIGHLANDS	7	5	2	0	0	8.4	7.6	12.4	0.0	
HILLSBOROUGH	76	44	29	2	1	5.3	4.0	9.9	4.6	
HOLMES	0	0	0	0	0	0.0	0.0	0.0	0.0	
INDIAN RIVER	5	4	1	0	0	4.9	4.7	6.7	0.0	
JACKSON	0	0	0	0	0	0.0	0.0	0.0	0.0	
JEFFERSON	1	1	0	0	0	5.8	9.9	0.0	0.0	
LAFAYETTE	0	0	0	0	0	0.0	0.0	0.0	---	
LAKE	10	5	5	0	0	4.5	2.7	14.8	0.0	
LEE	21	15	6	0	0	4.4	3.7	8.9	0.0	
LEON	34	23	11	0	0	11.6	13.5	9.7	0.0	
LEVY	2	2	0	0	0	5.3	6.6	0.0	0.0	
LIBERTY	0	0	0	0	0	0.0	0.0	0.0	0.0	
MADISON	1	0	1	0	0	5.0	0.0	9.3	0.0	
MANATEE	13	10	3	0	0	4.3	3.9	7.4	0.0	
MARION	20	14	5	0	1	7.2	6.4	9.3	0.0	
MARTIN	7	6	1	0	0	5.8	6.1	8.3	0.0	
MONROE	1	0	1	0	0	1.2	0.0	11.1	0.0	
NASSAU	1	0	1	0	0	1.3	0.0	13.7	0.0	
OKALOOSA	10	6	4	0	0	4.4	3.2	13.7	0.0	
OKEECHOBEE	0	0	0	0	0	0.0	0.0	0.0	0.0	
ORANGE	76	38	35	3	0	5.8	4.1	10.5	5.6	
OSCEOLA	6	4	2	0	0	2.5	1.9	9.4	0.0	
PALM BEACH	58	35	23	0	0	4.4	3.8	6.9	0.0	
PASCO	8	8	0	0	0	2.3	2.4	0.0	0.0	
PINELLAS	56	38	18	0	0	6.0	5.1	12.2	0.0	
POLK	40	21	19	0	0	6.1	4.1	14.4	0.0	
PUTNAM	5	2	3	0	0	5.2	2.8	12.8	0.0	
SAINT JOHNS	3	2	1	0	0	2.5	1.9	8.8	0.0	
SAINT LUCIE	8	3	5	0	0	3.7	2.0	8.2	0.0	
SANTA ROSA	8	7	1	0	0	5.2	4.9	14.3	0.0	
SARASOTA	8	7	1	0	0	3.0	3.0	4.4	0.0	
SEMINOLE	16	12	4	0	0	3.6	3.3	6.4	0.0	
SUMTER	2	1	1	0	0	4.7	3.0	12.7	0.0	
SUWANNEE	4	4	0	0	0	8.5	9.9	0.0	0.0	
TAYLOR	4	4	0	0	0	16.6	20.7	0.0	0.0	
UNION	1	1	0	0	0	6.4	7.8	0.0	---	
VOLUSIA	12	8	4	0	0	2.7	2.2	6.0	0.0	
WAKULLA	2	1	1	0	0	7.4	4.3	24.4	0.0	
WALTON	3	3	0	0	0	6.7	7.6	0.0	0.0	
WASHINGTON	1	0	1	0	0	4.3	0.0	22.2	0.0	

\*Rates based on neonatal deaths by race of decedent, live births by race of mother.

TABLE F-4 (Cont.): RESIDENT AND RECORDED NEONATAL DEATHS (UNDER 28 DAYS) AND RATES PER 1,000 LIVE BIRTHS, BY RACE, BY COUNTY, FLORIDA, 1999

	RECORDED NEONATAL DEATHS									
	NUMBER					RATES*				
	TOTAL	WHITE	BLACK	OTHER	UNK	TOTAL	WHITE	BLACK	OTHER	
FLORIDA	988	575	400	11	2	5.0	3.9	8.9	2.0	
ALACHUA	75	45	29	0	1	14.3	11.5	23.6	0.0	
BAKER	0	0	0	0	0	0.0	0.0	0.0	---	
BAY	17	8	8	1	0	7.1	4.1	21.7	14.1	
BRADFORD	0	0	0	0	0	0.0	0.0	0.0	---	
BREVARD	4	3	1	0	0	0.9	0.8	1.6	0.0	
BROWARD	89	37	52	0	0	4.5	3.0	7.4	0.0	
CALHOUN	0	0	0	0	0	---	---	---	---	
CHARLOTTE	2	2	0	0	0	2.1	2.3	0.0	0.0	
CITRUS	4	4	0	0	0	5.2	5.6	0.0	0.0	
CLAY	0	0	0	0	0	0.0	0.0	0.0	0.0	
COLLIER	1	1	0	0	0	0.4	0.5	0.0	0.0	
COLUMBIA	2	0	2	0	0	3.3	0.0	12.5	0.0	
MIAMI-DADE	122	73	46	3	0	3.8	3.3	5.1	5.1	
DESOTO	2	2	0	0	0	3.0	3.3	0.0	0.0	
DIXIE	0	0	0	0	0	0.0	0.0	---	---	
DUVAL	99	49	50	0	0	7.2	5.4	11.8	0.0	
ESCAMBIA	46	28	18	0	0	8.6	7.1	14.3	0.0	
FLAGLER	0	0	0	0	0	0.0	0.0	---	---	
FRANKLIN	1	0	1	0	0	200.0	0.0	333.3	---	
GADSDEN	0	0	0	0	0	0.0	0.0	0.0	---	
GILCHRIST	0	0	0	0	0	---	---	---	---	
GLADES	0	0	0	0	0	---	---	---	---	
GULF	0	0	0	0	0	---	---	---	---	
HAMILTON	0	0	0	0	0	0.0	0.0	0.0	---	
HARDEE	0	0	0	0	0	0.0	0.0	---	---	
HENDRY	0	0	0	0	0	0.0	0.0	0.0	---	
HERNANDO	1	1	0	0	0	0.8	0.9	0.0	0.0	
HIGHLANDS	3	2	1	0	0	3.5	3.0	6.2	0.0	
HILLSBOROUGH	98	64	31	2	1	6.1	5.2	10.1	4.4	
HOLMES	0	0	0	0	0	0.0	0.0	0.0	---	
INDIAN RIVER	3	3	0	0	0	3.0	3.6	0.0	0.0	
JACKSON	0	0	0	0	0	0.0	0.0	0.0	0.0	
JEFFERSON	0	0	0	0	0	0.0	0.0	---	---	
LA FAYETTE	0	0	0	0	0	---	---	---	---	
LAKE	2	0	2	0	0	1.1	0.0	5.8	0.0	
LEE	24	17	7	0	0	4.2	3.5	9.3	0.0	
LEON	50	25	24	1	0	10.4	8.9	12.8	9.9	
LEVY	0	0	0	0	0	0.0	0.0	---	---	
LIBERTY	0	0	0	0	0	---	---	---	---	
MADISON	0	0	0	0	0	0.0	---	0.0	---	
MANATEE	4	3	1	0	0	1.7	1.5	3.0	0.0	
MARION	1	1	0	0	0	0.4	0.5	0.0	0.0	
MARTIN	3	3	0	0	0	2.1	2.4	0.0	0.0	
MONROE	0	0	0	0	0	0.0	0.0	0.0	0.0	
NASSAU	0	0	0	0	0	0.0	0.0	0.0	0.0	
OKALOOSA	4	2	2	0	0	1.6	1.0	6.7	0.0	
OKEECHOBEE	0	0	0	0	0	0.0	0.0	0.0	---	
ORANGE	118	67	47	4	0	7.4	5.7	13.1	7.0	
OSCEOLA	1	0	1	0	0	0.4	0.0	4.4	0.0	
PALM BEACH	75	45	30	0	0	5.1	4.3	8.4	0.0	
PASCO	1	1	0	0	0	0.7	0.8	0.0	0.0	
PINELLAS	74	54	20	0	0	7.1	6.4	13.5	0.0	
POLK	27	12	15	0	0	4.6	2.6	12.9	0.0	
PUTNAM	0	0	0	0	0	0.0	0.0	0.0	0.0	
SAINT JOHNS	2	1	1	0	0	2.4	1.4	9.1	0.0	
SAINT LUCIE	3	0	3	0	0	1.5	0.0	4.9	0.0	
SANTA ROSA	2	2	0	0	0	4.1	4.5	0.0	0.0	
SARASOTA	16	12	4	0	0	5.0	4.2	12.7	0.0	
SEMINOLE	8	6	2	0	0	2.2	2.0	3.6	0.0	
SUMTER	0	0	0	0	0	0.0	0.0	---	---	
SUWANNEE	0	0	0	0	0	0.0	0.0	0.0	---	
TAYLOR	0	0	0	0	0	0.0	0.0	0.0	---	
UNION	0	0	0	0	0	0.0	---	0.0	---	
VOLUSIA	4	2	2	0	0	1.0	0.6	3.0	0.0	
WAKULLA	0	0	0	0	0	0.0	0.0	---	---	
WALTON	0	0	0	0	0	0.0	0.0	0.0	---	
WASHINGTON	0	0	0	0	0	---	---	---	---	

\*Rates based on neonatal deaths by race of decedent, live births by race of mother.

TABLE F-5: RESIDENT AND RECORDED INFANT DEATHS (UNDER 1 YEAR) AND RATES PER 1,000 LIVE BIRTHS, BY RACE, BY COUNTY, FLORIDA, 1999

	RESIDENT INFANT DEATHS					RESIDENT INFANT DEATHS			
	NUMBER					RATES*			
	TOTAL	WHITE	BLACK	OTHER	UNK	TOTAL	WHITE	BLACK	OTHER
FLORIDA	1,442	815	605	20	2	7.3	5.6	13.4	3.7
ALACHUA	20	9	11	0	0	8.4	5.8	14.9	0.0
BAKER	2	2	0	0	0	5.1	6.0	0.0	0.0
BAY	24	13	10	1	0	12.3	8.3	31.7	15.9
BRADFORD	2	0	2	0	0	5.9	0.0	37.7	0.0
BREVARD	23	14	8	1	0	4.9	3.6	12.2	6.6
BROWARD	147	64	83	0	0	7.0	4.8	12.0	0.0
CALHOUN	1	1	0	0	0	7.8	9.3	0.0	0.0
CHARLOTTE	0	0	0	0	0	0.0	0.0	0.0	0.0
CITRUS	8	8	0	0	0	9.7	10.4	0.0	0.0
CLAY	10	9	1	0	0	5.7	5.8	7.1	0.0
COLLIER	16	11	5	0	0	5.6	4.4	17.1	0.0
COLUMBIA	10	4	6	0	0	13.2	6.7	39.2	0.0
MIAMI-DADE	164	84	77	3	0	5.2	3.9	8.3	5.2
DESOTO	5	4	1	0	0	11.9	11.0	17.5	0.0
DIXIE	0	0	0	0	0	0.0	0.0	0.0	---
DUVAL	124	52	71	1	0	10.2	7.0	17.0	1.9
ESCAMBIA	36	16	20	0	0	9.1	6.0	16.9	0.0
FLAGLER	3	2	0	1	0	8.8	7.0	0.0	500.0
FRANKLIN	2	1	1	0	0	17.1	10.0	66.7	0.0
GADSDEN	16	3	12	1	0	22.4	10.4	28.6	200.0
GILCHRIST	3	2	1	0	0	19.1	13.2	200.0	---
GLADES	0	0	0	0	0	0.0	0.0	0.0	0.0
GULF	3	2	1	0	0	21.9	19.2	33.3	0.0
HAMILTON	1	0	1	0	0	6.2	0.0	16.9	---
HARDEE	4	4	0	0	0	9.0	9.6	0.0	0.0
HENDRY	2	2	0	0	0	3.3	4.0	0.0	0.0
HERNANDO	10	10	0	0	0	9.4	10.3	0.0	0.0
HIGHLANDS	9	7	2	0	0	10.7	10.6	12.4	0.0
HILLSBOROUGH	123	72	48	2	1	8.5	6.5	16.4	4.6
HOLMES	1	1	0	0	0	5.0	5.2	0.0	0.0
INDIAN RIVER	10	7	3	0	0	9.8	8.3	20.0	0.0
JACKSON	0	0	0	0	0	0.0	0.0	0.0	0.0
JEFFERSON	1	1	0	0	0	5.8	9.9	0.0	0.0
LAFAYETTE	1	1	0	0	0	14.1	15.6	0.0	---
LAKE	14	7	7	0	0	6.3	3.8	20.7	0.0
LEE	37	25	12	0	0	7.8	6.2	17.8	0.0
LEON	41	24	17	0	0	14.0	14.1	14.9	0.0
LEVY	3	3	0	0	0	8.0	9.9	0.0	0.0
LIBERTY	0	0	0	0	0	0.0	0.0	0.0	0.0
MADISON	1	0	1	0	0	5.0	0.0	9.3	0.0
MANATEE	24	17	7	0	0	7.9	6.7	17.2	0.0
MARION	26	19	6	0	1	9.4	8.7	11.2	0.0
MARTIN	11	9	2	0	0	9.2	9.2	16.7	0.0
MONROE	2	1	1	0	0	2.5	1.5	11.1	0.0
NASSAU	5	3	2	0	0	6.6	4.4	27.4	0.0
OKALOOSA	13	7	6	0	0	5.7	3.7	20.5	0.0
OKEECHOBEE	2	2	0	0	0	4.1	4.5	0.0	0.0
ORANGE	118	56	56	6	0	9.0	6.0	16.8	11.3
OSCEOLA	10	5	4	1	0	4.2	2.4	18.8	15.9
PALM BEACH	81	49	32	0	0	6.2	5.3	9.6	0.0
PASCO	15	14	0	1	0	4.3	4.2	0.0	13.2
PINELLAS	83	54	28	1	0	9.0	7.3	18.9	2.8
POLK	62	34	28	0	0	9.4	6.6	21.3	0.0
PUTNAM	6	3	3	0	0	6.3	4.2	12.8	0.0
SAINT JOHNS	6	4	2	0	0	5.0	3.7	17.7	0.0
SAINT LUCIE	10	5	5	0	0	4.6	3.3	8.2	0.0
SANTA ROSA	9	8	1	0	0	5.8	5.6	14.3	0.0
SARASOTA	11	10	1	0	0	4.2	4.2	4.4	0.0
SEMINOLE	23	16	7	0	0	5.2	4.4	11.2	0.0
SUMTER	6	5	1	0	0	14.2	14.8	12.7	0.0
SUWANNEE	6	5	1	0	0	12.7	12.4	14.9	0.0
TAYLOR	4	4	0	0	0	16.6	20.7	0.0	0.0
UNION	1	1	0	0	0	6.4	7.8	0.0	---
VOLUSIA	23	13	9	1	0	5.2	3.5	13.5	13.0
WAKULLA	4	3	1	0	0	14.7	13.0	24.4	0.0
WALTON	3	3	0	0	0	6.7	7.6	0.0	0.0
WASHINGTON	1	0	1	0	0	4.3	0.0	22.2	0.0

\*Rates based on infant deaths by race of decedent, live births by race of mother.

TABLE F-5 (Cont.) : RESIDENT AND RECORDED INFANT DEATHS (UNDER 1 YEAR) AND RATES PER 1,000 LIVE BIRTHS, BY RACE, BY COUNTY, FLORIDA, 1999

	RECORDED INFANT DEATHS								
	NUMBER					RATES*			
	TOTAL	WHITE	BLACK	OTHER	UNK	TOTAL	WHITE	BLACK	OTHER
FLORIDA	1,470	833	614	21	2	7.5	5.7	13.6	3.9
ALACHUA	101	61	38	1	1	19.2	15.5	30.9	9.3
BAKER	1	1	0	0	0	200.0	500.0	0.0	---
BAY	21	10	10	1	0	8.8	5.2	27.1	14.1
BRADFORD	1	1	0	0	0	500.0	1,000.0	0.0	---
BREVARD	8	5	3	0	0	1.8	1.3	4.9	0.0
BROWARD	128	53	75	0	0	6.4	4.3	10.6	0.0
CALHOUN	0	0	0	0	0	---	---	---	---
CHARLOTTE	3	3	0	0	0	3.1	3.5	0.0	0.0
CITRUS	7	7	0	0	0	9.0	9.8	0.0	0.0
CLAY	1	1	0	0	0	0.7	0.8	0.0	0.0
COLLIER	2	1	1	0	0	0.8	0.5	4.1	0.0
COLUMBIA	4	1	3	0	0	6.6	2.2	18.8	0.0
MIAMI-DADE	190	101	86	3	0	6.0	4.6	9.5	5.1
DESOTO	4	4	0	0	0	6.0	6.7	0.0	0.0
DIXIE	0	0	0	0	0	0.0	0.0	---	---
DUVAL	143	65	77	1	0	10.3	7.2	18.2	1.8
ESCAMBIA	58	31	27	0	0	10.8	7.9	21.4	0.0
FLAGLER	0	0	0	0	0	0.0	0.0	---	---
FRANKLIN	2	1	1	0	0	400.0	500.0	333.3	---
GADSDEN	0	0	0	0	0	0.0	0.0	0.0	---
GILCHRIST	0	0	0	0	0	---	---	---	---
GLADES	0	0	0	0	0	---	---	---	---
GULF	0	0	0	0	0	---	---	---	---
HAMILTON	0	0	0	0	0	0.0	0.0	0.0	---
HARDEE	2	2	0	0	0	2,000.0	2,000.0	---	---
HENDRY	0	0	0	0	0	0.0	0.0	0.0	---
HERNANDO	3	3	0	0	0	2.5	2.7	0.0	0.0
HIGHLANDS	5	4	1	0	0	5.8	5.9	6.2	0.0
HILLSBOROUGH	157	101	51	4	1	9.8	8.1	16.6	8.8
HOLMES	1	1	0	0	0	200.0	333.3	0.0	---
INDIAN RIVER	5	4	1	0	0	5.0	4.7	6.9	0.0
JACKSON	0	0	0	0	0	0.0	0.0	0.0	0.0
JEFFERSON	0	0	0	0	0	0.0	0.0	---	---
LAFAYETTE	1	1	0	0	0	---	---	---	---
LAKE	5	2	3	0	0	2.8	1.4	8.7	0.0
LEE	39	26	13	0	0	6.9	5.4	17.2	0.0
LEON	63	29	33	1	0	13.1	10.3	17.5	9.9
LEVY	0	0	0	0	0	0.0	0.0	---	---
LIBERTY	0	0	0	0	0	---	---	---	---
MADISON	0	0	0	0	0	0.0	---	0.0	---
MANATEE	11	7	4	0	0	4.6	3.5	12.1	0.0
MARION	5	5	0	0	0	2.2	2.7	0.0	0.0
MARTIN	5	5	0	0	0	3.4	4.0	0.0	0.0
MONROE	2	2	0	0	0	3.6	4.3	0.0	0.0
NASSAU	0	0	0	0	0	0.0	0.0	0.0	0.0
OKALOOSA	6	3	3	0	0	2.4	1.4	10.1	0.0
OKEECHOBEE	2	2	0	0	0	400.0	1,000.0	0.0	---
ORANGE	169	89	74	6	0	10.6	7.5	20.6	10.5
OSCEOLA	5	1	3	1	0	2.0	0.5	13.2	8.7
PALM BEACH	95	57	38	0	0	6.5	5.4	10.6	0.0
PASCO	6	6	0	0	0	4.3	4.7	0.0	0.0
PINELLAS	111	79	30	2	0	10.7	9.3	20.2	5.3
POLK	43	21	22	0	0	7.3	4.6	18.9	0.0
PUTNAM	0	0	0	0	0	0.0	0.0	0.0	0.0
SAINT JOHNS	3	2	1	0	0	3.7	2.9	9.1	0.0
SAINT LUCIE	5	2	3	0	0	2.5	1.4	4.9	0.0
SANTA ROSA	3	3	0	0	0	6.2	6.8	0.0	0.0
SARASOTA	18	14	4	0	0	5.6	4.9	12.7	0.0
SEMINOLE	12	8	4	0	0	3.3	2.7	7.1	0.0
SUMTER	2	2	0	0	0	500.0	500.0	---	---
SUWANNEE	0	0	0	0	0	0.0	0.0	0.0	---
TAYLOR	0	0	0	0	0	0.0	0.0	0.0	---
UNION	0	0	0	0	0	0.0	0.0	0.0	---
VOLUSIA	12	6	5	1	0	3.1	1.9	7.6	15.6
WAKULLA	0	0	0	0	0	0.0	0.0	---	---
WALTON	0	0	0	0	0	0.0	0.0	0.0	---
WASHINGTON	0	0	0	0	0	---	---	---	---

\*Rates based on infant deaths by race of decedent, live births by race of mother.

TABLE F-6: RESIDENT INFANT DEATHS BY HISPANIC OR HAITIAN ORIGIN, BY COUNTY, FLORIDA, 1999

	TOTAL	HISPANIC ORIGIN							HAITIAN	NON-HISPANIC/HAITIAN	UNK
		TOTAL HISPANIC	MEXICAN	PUERTO RICAN	CUBAN	CENTRAL/SOUTH AMERICAN	OTHER/UNK HISPANIC				
FLORIDA	1,442	206	56	51	39	41	19	48	1,157	31	
ALACHUA	20	0	0	0	0	0	0	0	20	0	
BAKER	2	0	0	0	0	0	0	0	2	0	
BAY	24	0	0	0	0	0	0	0	24	0	
BRADFORD	2	0	0	0	0	0	0	0	2	0	
BREVARD	23	2	0	0	2	0	0	0	20	1	
BROWARD	147	18	0	7	2	6	3	15	114	0	
CALHOUN	1	0	0	0	0	0	0	0	1	0	
CHARLOTTE	0	0	0	0	0	0	0	0	0	0	
CITRUS	8	0	0	0	0	0	0	0	8	0	
CLAY	10	0	0	0	0	0	0	0	10	0	
COLLIER	16	9	5	1	0	3	0	4	3	0	
COLUMBIA	10	1	0	0	0	0	1	0	9	0	
MIAMI-DADE	164	58	1	6	30	18	3	8	72	26	
DESOTO	5	2	2	0	0	0	0	0	3	0	
DIXIE	0	0	0	0	0	0	0	0	0	0	
DUVAL	124	1	0	0	0	0	1	0	123	0	
ESCAMBIA	36	3	2	1	0	0	0	0	33	0	
FLAGLER	3	0	0	0	0	0	0	0	3	0	
FRANKLIN	2	0	0	0	0	0	0	0	2	0	
GADSDEN	16	3	1	0	0	1	1	0	13	0	
GILCHRIST	3	0	0	0	0	0	0	0	3	0	
GLADES	0	0	0	0	0	0	0	0	0	0	
GULF	3	0	0	0	0	0	0	0	3	0	
HAMILTON	1	0	0	0	0	0	0	0	1	0	
HARDEE	4	3	3	0	0	0	0	0	1	0	
HENDRY	2	1	1	0	0	0	0	0	1	0	
HERNANDO	10	0	0	0	0	0	0	0	10	0	
HIGHLANDS	9	2	1	1	0	0	0	0	7	0	
HILLSBOROUGH	123	19	9	5	1	2	2	0	101	3	
HOLMES	1	0	0	0	0	0	0	0	1	0	
INDIAN RIVER	10	3	2	0	0	1	0	0	7	0	
JACKSON	0	0	0	0	0	0	0	0	0	0	
JEFFERSON	1	0	0	0	0	0	0	0	1	0	
LAFAYETTE	1	0	0	0	0	0	0	0	1	0	
LAKE	14	2	2	0	0	0	0	0	12	0	
LEE	37	3	1	1	0	1	0	0	34	0	
LEON	41	2	1	0	0	1	0	0	39	0	
LEVY	3	0	0	0	0	0	0	0	3	0	
LIBERTY	0	0	0	0	0	0	0	0	0	0	
MADISON	1	0	0	0	0	0	0	0	1	0	
MANATEE	24	9	7	1	0	0	1	2	13	0	
MARION	26	4	2	1	0	1	0	0	22	0	
MARTIN	11	6	1	3	0	1	1	1	4	0	
MONROE	2	0	0	0	0	0	0	0	2	0	
NASSAU	5	0	0	0	0	0	0	0	5	0	
OKALOOSA	13	0	0	0	0	0	0	0	13	0	
OKEECHOBEE	2	1	1	0	0	0	0	0	1	0	
ORANGE	118	19	5	11	0	2	1	5	93	1	
OSCEOLA	10	3	0	2	1	0	0	1	6	0	
PALM BEACH	81	14	4	5	3	1	1	7	60	0	
PASCO	15	0	0	0	0	0	0	0	15	0	
PINELLAS	83	5	1	2	0	1	1	0	78	0	
POLK	62	6	3	1	0	1	1	4	52	0	
PUTNAM	6	0	0	0	0	0	0	0	6	0	
SAINT JOHNS	6	0	0	0	0	0	0	0	6	0	
SAINT LUCIE	10	0	0	0	0	0	0	1	9	0	
SANTA ROSA	9	0	0	0	0	0	0	0	9	0	
SARASOTA	11	2	1	1	0	0	0	0	9	0	
SEMINOLE	23	3	0	1	0	1	1	0	20	0	
SUMTER	6	0	0	0	0	0	0	0	6	0	
SUWANNEE	6	1	0	0	0	0	1	0	5	0	
TAYLOR	4	0	0	0	0	0	0	0	4	0	
UNION	1	0	0	0	0	0	0	0	1	0	
VOLUSIA	23	1	0	1	0	0	0	0	22	0	
WAKULLA	4	0	0	0	0	0	0	0	4	0	
WALTON	3	0	0	0	0	0	0	0	3	0	
WASHINGTON	1	0	0	0	0	0	0	0	1	0	

TABLE F-7: RESIDENT INFANT, NEONATAL AND POST-NEONATAL DEATHS FROM SELECTED CAUSES, BY RACE, FLORIDA, 1999

	TOTAL				WHITE			
	INFANT	NEONATAL <1 DAY	1-27 DAYS	POST NEO- NATAL	INFANT	NEONATAL <1 DAY	1-27 DAYS	POST NEO- NATAL
TOTAL (ICD - 10 GROUPING)	1,442	553	409	480	815	299	260	256
INTESTINAL INFECTIOUS DISEASES (A00-A08)	2	0	0	2	1	0	0	1
DIARRHEA & GASTROENTERITIS--INFECTIOUS ORIGIN (A09)	0	0	0	0	0	0	0	0
TUBERCULOSIS (A16-A19)	0	0	0	0	0	0	0	0
TETANUS (A33-A35)	0	0	0	0	0	0	0	0
DIPHTHERIA (A36)	0	0	0	0	0	0	0	0
WHOOPING COUGH (A37)	0	0	0	0	0	0	0	0
MENINGOCOCCAL INFECTION (A39)	4	0	1	3	4	0	1	3
SEPTICEMIA (A40-A41)	24	0	1	23	9	0	0	9
CONGENITAL SYPHILIS (A50)	0	0	0	0	0	0	0	0
GONOCOCCAL INFECTION (A54)	0	0	0	0	0	0	0	0
ACUTE POLIOMYELITIS (A80)	0	0	0	0	0	0	0	0
VARICELLA (CHICKEN POX) (B01)	0	0	0	0	0	0	0	0
MEASLES (B05)	0	0	0	0	0	0	0	0
HIV DISEASE (B20-B24)	4	0	0	4	1	0	0	1
MUMPS (B26)	0	0	0	0	0	0	0	0
OTHER & UNSPEC VIRAL DIS (A81-B00, B02-B04, B06-B19, B25, B27-B34)	3	0	1	2	1	0	0	1
CANDIDIASIS (B37)	2	0	0	2	0	0	0	0
MALARIA (B50-B54)	0	0	0	0	0	0	0	0
PNEUMOCYSTOSIS (B59)	0	0	0	0	0	0	0	0
OTHER & UNSPECIFIED INFECTIOUS & PARASITIC DISEASES & SEQUELAE *1	0	0	0	0	0	0	0	0
HODGKIN'S DISEASE & NON-HODGKIN'S LYMPHOMAS (C81-C85)	0	0	0	0	0	0	0	0
LEUKEMIA (C91-C95)	2	0	0	2	2	0	0	2
OTHER & UNSPECIFIED MALIGNANT NEOPLASM (C00-C80, C88, C90, C96-C97)	0	0	0	0	0	0	0	0
IN SITU/BENIGN/MALIGNANT NEOPLASMS UNCERT/UNK BEHAVIOR (D00-D48)	2	2	0	0	0	0	0	0
ANEMIAS (D50-D64)	0	0	0	0	0	0	0	0
BLOOD, BLOOD-FORMING, HEMORRHAGIC DISEASES (D65-D76)	3	0	0	3	0	0	0	0
DISORDERS INVOLVING IMMUNE MECHANISM (D80-D89)	1	0	0	1	1	0	0	1
SHORT STATURE (E34.4)	4	3	0	1	3	2	0	1
NUTRITIONAL DEFICIENCIES (E40-E64)	0	0	0	0	0	0	0	0
CYSTIC FIBROSIS (E84)	0	0	0	0	0	0	0	0
FLUID/ELECTROLYTE/ACID-BASE/VOLUME DEPLETION DISORDERS (E86-E87)	4	0	0	4	3	0	0	3
OTHER ENDOCRINE, NUTRITIONAL, METABOLIC DISEASES *2	1	0	0	1	0	0	0	0
MENINGITIS (G00, G03)	5	0	0	5	3	0	0	3
INFANTILE SPINAL MUSCULAR ATROPHY, TYPE 1 (WERDNIG-HOFFMAN) (G12.0)	1	0	0	1	0	0	0	0
INFANTILE CEREBRAL PALSY (G80)	1	0	1	0	0	0	0	0
ANOXIC BRAIN DAMAGE (G93.1)	3	0	0	3	1	0	0	1
OTHER NERVOUS SYSTEM DISEASES *3	8	0	2	6	4	0	1	3
EAR & MASTOID PROCESS DISEASES (H60-H93)	1	0	0	1	1	0	0	1
PULMONARY HEART/CIRCULATION DISEASES (I26-I28)	11	1	7	3	7	0	5	2
PERICARDITIS, ENDOCARDITIS, MYOCARDITIS (I30, I33, I40)	0	0	0	0	0	0	0	0
CARDIOMYOPATHY (I42)	8	1	2	5	6	1	2	3
CARDIAC ARREST (I46)	2	0	0	2	1	0	0	1
CEREBROVASCULAR DISEASES (I60-I69)	6	0	0	6	3	0	0	3
OTHER CIRCULAT SYS DIS (I00-I25, I31, I34-I38, I44-I45, I47-I51, I70-I99)	6	0	1	5	5	0	1	4
ACUTE UPPER RESPIRATORY INFECTIONS (J00-J06)	0	0	0	0	0	0	0	0
INFLUENZA (J10-J11)	1	0	0	1	0	0	0	0
PNEUMONIA (J12-J18)	20	0	3	17	9	0	1	8

TABLE F-7 (Cont.): RESIDENT INFANT, NEONATAL AND POST-NEONATAL DEATHS FROM SELECTED CAUSES, BY RACE, FLORIDA, 1999

	TOTAL				WHITE			
	INFANT	NEONATAL <1 DAY	1-27 DAYS	POST NEO- NATAL	INFANT	NEONATAL <1 DAY	1-27 DAYS	POST NEO- NATAL
ACUTE BRONCHITIS & ACUTE BRONCIOLITIS (J20-J21)	2	0	0	2	1	0	0	1
BRONCHITIS, CHRONIC & UNSPECIFIED (J40-J42)	0	0	0	0	0	0	0	0
ASTHMA (J45-J46)	1	0	0	1	0	0	0	0
PNEUMONITIS DUE TO SOLIDS & LIQUIDS (J69)	0	0	0	0	0	0	0	0
OTHER & UNSPEC RESPIR SYS DIS (J22,J30-J39,J43-J44,J47-J68,J70-J98)	12	0	0	12	4	0	0	4
GASTRITIS, DUODENITIS, NONINFECTIVE ENTERITIS/COLITIS (K29, K50-K55)	9	0	0	9	5	0	0	5
HERNIA ABDOM CAVITY & INTESTINAL OBSTRUCT W/O HERNIA (K40-K46, K56)	1	0	0	1	0	0	0	0
OTHER & UNSPEC DIGESTIVE SYSTEM DISEASE (K00-K28, K30-K38, K57-K92)	11	0	1	10	6	0	0	6
RENAL FAILURE & OTHER KIDNEY DISORDERS (N17-N19, N25, N27)	5	0	1	4	2	0	0	2
OTHER & UNSPEC GENITOURINARY SYS DIS (N00-N15, N20-N23, N26,N28-N98)	6	5	0	1	2	1	0	1
PERINATAL PERIOD CONDITIONS (P00-P96)	744	424	286	34	400	210	176	14
MATERNAL HYPERTENSIVE DISORDERS (P00.0)	3	3	0	0	2	2	0	0
MATERNAL CONDITIONS UNRELATED PRESENT PREGNANCY (P00.1-P00.9)	11	6	4	1	8	5	3	0
INCOMPETENT CERVIX (P01.0)	13	13	0	0	4	4	0	0
PREMATURE RUPTURE OF MEMBRANES (P01.1)	49	47	2	0	26	25	1	0
MULTIPLE PREGNANCY (P01.5)	37	30	7	0	15	10	5	0
MATERNAL COMPLICATIONS OF PREGNANCY (P01.2-P01.4, P01.6-P01.9)	10	10	0	0	3	3	0	0
PLACENTA COMPLICATIONS (P02.0-P02.3)	26	21	3	2	17	15	2	0
CORD COMPLICATIONS (P02.4-P02.6)	3	3	0	0	0	0	0	0
CHORIOAMNIONITIS (P02.7)	21	21	0	0	11	11	0	0
OTHER & UNSPECIFIED MEMBRANE ABNORMALITIES (P02.8-P02.9)	0	0	0	0	0	0	0	0
OTHER COMPLICATIONS OF LABOR & DELIVERY (P03)	9	5	4	0	5	2	3	0
NOXIOUS INFLUENCES VIA PLACENTA OR BREAST MILK (P04)	0	0	0	0	0	0	0	0
SLOW FETAL GROWTH & FETAL MALNUTRITION (P05)	2	0	2	0	1	0	1	0
EXTREME LOW BIRTH WEIGHT OR EXTREME IMMATURITY (P07.0, P07.2)	162	134	26	2	81	65	15	1
OTHER LOW BIRTH WEIGHT OR PRETERM (P07.1, P07.3)	63	54	3	6	33	28	2	3
LONG GESTATION & HIGH BIRTH WEIGHT (P08)	0	0	0	0	0	0	0	0
BIRTH TRAUMA (P10-P15)	0	0	0	0	0	0	0	0
INTRAUTERINE HYPOXIA (P20)	2	1	1	0	0	0	0	0
BIRTH ASPHYXIA (P21)	24	4	19	1	20	4	15	1
RESPIRATORY DISTRESS (P22)	31	8	19	4	14	3	9	2
CONGENITAL PNEUMONIA (P23)	4	1	3	0	2	0	2	0
NEONATAL ASPIRATION SYNDROMES (P24)	0	0	0	0	0	0	0	0
INTERSTITIAL EMPHYSEMA & RELATED CONDITIONS (P25)	6	1	5	0	3	1	2	0
PULMONARY HEMORRHAGE (P26)	15	1	14	0	11	1	10	0
CHRONIC RESPIRATORY DISEASE (P27)	16	0	1	15	7	0	1	6
ATELECTASIS (P28.0-P28.1)	12	7	5	0	7	4	3	0
OTHER RESPIRATORY CONDITIONS (P28.2-P28.9)	14	4	10	0	7	2	5	0
BACTERIAL SEPSIS (P36)	69	11	57	1	39	9	29	1
OMPHALITIS W/ OR W/O HEMORRHAGE (P38)	0	0	0	0	0	0	0	0
ALL OTHER INFECTIONS (P35, P37, P39)	6	1	5	0	2	0	2	0
NEONATAL HEMORRHAGE (P50-P52, P54)	33	4	29	0	26	2	24	0
HEMORRHAGIC DISEASE OF NEWBORN (P53)	0	0	0	0	0	0	0	0
HEMOLYTIC DIS DUE TO ISOIMMUNIZATION/PERINAT JAUNDICE (P55-P59)	0	0	0	0	0	0	0	0
HEMATOLOGICAL DISORDERS (P60-P61)	4	1	3	0	3	1	2	0
DIABETES MELLITUS, MATERNAL OR NEONATAL (P70.0-P70.2)	0	0	0	0	0	0	0	0
NECROTIZING ENTEROCOLITIS (P77)	11	0	11	0	5	0	5	0
HYDROPS FETALIS NOT DUE TO HEMOLYTIC DIS (P83.2)	8	3	5	0	5	2	3	0
OTHER PERINATAL CONDITIONS *4	80	30	48	2	43	11	32	0



TABLE F-7 (Cont.): RESIDENT INFANT, NEONATAL AND POST-NEONATAL DEATHS FROM SELECTED CAUSES, BY RACE, FLORIDA, 1999

	TOTAL				WHITE			
	INFANT	NEONATAL		POST NEO- NATAL	INFANT	NEONATAL		POST NEO- NATAL
		<1 DAY	1-27 DAYS			<1 DAY	1-27 DAYS	
CONGENITAL / CHROMOSOMAL ANOMALIES (Q00-Q99)	283	109	83	91	186	80	59	47
ANENCEPHALY & SIMILAR ANOMALIES (Q00)	13	12	1	0	10	9	1	0
CONGENITAL HYDROCEPHALUS (Q03)	6	1	2	3	3	1	0	2
SPINA BIFIDA (Q05)	1	0	1	0	1	0	1	0
OTHER CONGENITAL ANOMALIES CENT NERV SYS (Q01-Q02,Q04,Q06-Q07)	18	2	7	9	10	1	5	4
CONGENITAL ANOMALIES OF HEART (Q20-Q24)	67	4	25	38	43	4	20	19
OTHER CONGENITAL ANOMALIES OF CIRCULATORY SYS (Q25-Q28)	11	0	6	5	8	0	5	3
CONGENITAL ANOMALIES OF RESPIRATORY SYS (Q30-Q34)	64	45	18	1	43	30	13	0
CONGENITAL ANOMALIES OF DIGESTIVE SYS (Q35-Q45)	3	0	0	3	1	0	0	1
CONGENITAL ANOMALIES OF GENITOURINARY SYS (Q50-Q64)	16	11	3	2	13	9	2	2
CONGENITAL ANOMALIES OF MUSCULOSKELETAL SYS (Q65-Q85)	15	5	4	6	8	3	2	3
DOWN'S SYNDROME (Q90)	6	2	0	4	5	2	0	3
EDWARD'S SYNDROME (Q91.0-Q91.3)	12	2	5	5	8	2	3	3
PATAU'S SYNDROME (Q91.4-Q91.7)	15	4	6	5	7	3	3	1
OTHER CONGENITAL ANOMALIES (Q10-Q18, Q86-Q89)	30	21	2	7	21	16	1	4
OTHER CHROMOSOMAL ANOMALIES (Q92-Q99)	6	0	3	3	5	0	3	2
SUDDEN INFANT DEATH SYNDROME (R95)	111	0	7	104	67	0	6	61
SYMPTOMS, SIGNS, ABN CLINICAL/LAB FINDINGS (R00-R53,R55-R94,R96-R99)	55	7	10	38	33	5	7	21
ALL OTHER DISEASES (F01-F99, H00-H57, L00-M99)	0	0	0	0	0	0	0	0
UNINT INJ: MOTOR VEHICLE *5	5	0	0	5	4	0	0	4
UNINT INJ: OTHER & UNSPEC TRANSPORT & SEQUELAE *6	2	0	0	2	1	0	0	1
UNINT INJ: FALLS (W00-W19)	0	0	0	0	0	0	0	0
UNINT INJ: FIREARMS DISCHARGE (W32-W34)	0	0	0	0	0	0	0	0
UNINT INJ: DROWNING & SUBMERSION (W65-W74)	6	0	0	6	2	0	0	2
UNINT INJ: SUFFOCATION & STRANGULATION IN BED (W75)	20	0	1	19	13	0	0	13
UNINT INJ: OTHER SUFFOCATION & STRANGULATION (W76-W77, W81-W84)	11	0	1	10	6	0	1	5
UNINT INJ: INHALE/INGEST--RESPIRATORY TRACT OBSTRUCTION (W78-W80)	2	0	0	2	1	0	0	1
UNINT INJ: SMOKE, FIRE, FLAMES EXPOSURE (X00-X09)	1	0	0	1	0	0	0	0
UNINT INJ: POISONING & NOXIOUS SUBSTANCE EXPOSURE (X40-X49)	2	0	0	2	1	0	0	1
UNINT INJ: OTHER & UNSPECIFIED & SEQUELAE *7	2	0	0	2	1	0	0	1
HOMICIDE: HANGING, STRANGULATION, SUFFOCATION (X91)	1	0	0	1	1	0	0	1
HOMICIDE: FIREARMS DISCHARGE (X93-X95)	2	0	0	2	2	0	0	2
HOMICIDE: NEGLECT, ABANDONMENT, MALTREATMENT (Y06-Y07)	7	0	0	7	5	0	0	5
HOMICIDE: OTHER & UNSPECIFIED MEANS & SEQUELAE *8	9	1	0	8	5	0	0	5
MEDICAL & SURGICAL CARE COMPLICATIONS (Y40-Y84, Y88)	0	0	0	0	0	0	0	0
OTHER EXTERNAL CAUSES & SEQUELAE (X60-X84,Y10-Y36,Y87.0,Y87.2,Y89)	3	0	0	3	2	0	0	2
*1 (A20-A32, A38, A42-A49, A51-A53, A55-A79, B35-B36, B38-B49, B55-B58, B60-B99)								
*2 (E00-E32, E34.0-E34.2, E34.4-E34.9, E65-E83, E85, E88)								
*3 (G04,G06-G11,G12.1-G12.9,G20-G72,G81-G92,G93.0,G93.2-G93.9,G95-G98)								
*4 (P29,P70.3-P70.9,P71-P76,P78-P81,P83.0-P83.1,P83.3-P83.9,P90-P96)								
*5 (V02-V04, V09.0, V09.2, V12-V14, V19.0-V19.2, V19.4-V19.6, V20-V79, V80.3-V80.5, V81.0-V81.1, V82.0-V82.1, V83-V86, V87.0-V87.8, V88.0-V88.8, V89.0, V89.2)								
*6 (V01, V05-V06, V09.1, V09.3-V09.9, V10-V11, V15-V18, V19.3, V19.8-V19.9, V80.0-V80.2, V80.6-V80.9, V81.2-V81.9, V82.2-V82.9, V87.9, V88.9, V89.1, V89.3, V89.9, V90-V99, Y85)								
*7 (W20-W31, W35-W64, W85-W99, X10-X39, X50-X59, Y86)								
*8 (X85-X90, X92, X96-X99, Y00-Y05, Y08-Y09, Y87.1)								

TABLE F-7 (Cont.): RESIDENT INFANT, NEONATAL AND POST-NEONATAL DEATHS FROM SELECTED CAUSES, BY RACE, FLORIDA, 1999

	BLACK				OTHER			
	INFANT	NEONATAL <1 DAY	1-27 DAYS	POST NEO- NATAL	INFANT	NEONATAL <1 DAY	1-27 DAYS	POST NEO- NATAL
TOTAL (ICD - 10 GROUPING)	605	250	140	215	20	4	7	9
INTESTINAL INFECTIOUS DISEASES (A00-A08)	1	0	0	1	0	0	0	0
DIARRHEA & GASTROENTERITIS--INFECTIOUS ORIGIN (A09)	0	0	0	0	0	0	0	0
TUBERCULOSIS (A16-A19)	0	0	0	0	0	0	0	0
TETANUS (A33-A35)	0	0	0	0	0	0	0	0
DIPHTHERIA (A36)	0	0	0	0	0	0	0	0
WHOOPING COUGH (A37)	0	0	0	0	0	0	0	0
MENINGOCOCCAL INFECTION (A39)	0	0	0	0	0	0	0	0
SEPTICEMIA (A40-A41)	15	0	1	14	0	0	0	0
CONGENITAL SYPHILIS (A50)	0	0	0	0	0	0	0	0
GONOCOCCAL INFECTION (A54)	0	0	0	0	0	0	0	0
ACUTE POLIOMYELITIS (A80)	0	0	0	0	0	0	0	0
VARICELLA (CHICKEN POX) (B01)	0	0	0	0	0	0	0	0
MEASLES (B05)	0	0	0	0	0	0	0	0
HIV DISEASE (B20-B24)	3	0	0	3	0	0	0	0
MUMPS (B26)	0	0	0	0	0	0	0	0
OTHER & UNSPEC VIRAL DIS (A81-B00, B02-B04, B06-B19, B25, B27-B34)	2	0	1	1	0	0	0	0
CANDIDIASIS (B37)	2	0	0	2	0	0	0	0
MALARIA (B50-B54)	0	0	0	0	0	0	0	0
PNEUMOCYSTOSIS (B59)	0	0	0	0	0	0	0	0
OTHER & UNSPECIFIED INFECTIOUS & PARASITIC DISEASES & SEQUELAE *1	0	0	0	0	0	0	0	0
HODGKIN'S DISEASE & NON-HODGKIN'S LYMPHOMAS (C81-C85)	0	0	0	0	0	0	0	0
LEUKEMIA (C91-C95)	0	0	0	0	0	0	0	0
OTHER & UNSPECIFIED MALIGNANT NEOPLASM (C00-C80, C88, C90, C96-C97)	0	0	0	0	0	0	0	0
IN SITU/BENIGN/MALIGNANT NEOPLASMS UNCERT/UNK BEHAVIOR (D00-D48)	2	2	0	0	0	0	0	0
ANEMIAS (D50-D64)	0	0	0	0	0	0	0	0
BLOOD, BLOOD-FORMING, HEMORRHAGIC DISEASES (D65-D76)	2	0	0	2	1	0	0	1
DISORDERS INVOLVING IMMUNE MECHANISM (D80-D89)	0	0	0	0	0	0	0	0
SHORT STATURE (E34.4)	1	1	0	0	0	0	0	0
NUTRITIONAL DEFICIENCIES (E40-E64)	0	0	0	0	0	0	0	0
CYSTIC FIBROSIS (E84)	0	0	0	0	0	0	0	0
FLUID/ELECTROLYTE/ACID-BASE/VOLUME DEPLETION DISORDERS (E86-E87)	1	0	0	1	0	0	0	0
OTHER ENDOCRINE, NUTRITIONAL, METABOLIC DISEASES *2	1	0	0	1	0	0	0	0
MENINGITIS (G00, G03)	2	0	0	2	0	0	0	0
INFANTILE SPINAL MUSCULAR ATROPHY, TYPE 1 (WERDNIG-HOFFMAN) (G12.0)	0	0	0	0	1	0	0	1
INFANTILE CEREBRAL PALSY (G80)	1	0	1	0	0	0	0	0
ANOXIC BRAIN DAMAGE (G93.1)	2	0	0	2	0	0	0	0
OTHER NERVOUS SYSTEM DISEASES *3	4	0	1	3	0	0	0	0
EAR & MASTOID PROCESS DISEASES (H60-H93)	0	0	0	0	0	0	0	0
PULMONARY HEART/CIRCULATION DISEASES (I26-I28)	4	1	2	1	0	0	0	0
PERICARDITIS, ENDOCARDITIS, MYOCARDITIS (I30, I33, I40)	0	0	0	0	0	0	0	0
CARDIOMYOPATHY (I42)	2	0	0	2	0	0	0	0
CARDIAC ARREST (I46)	0	0	0	0	1	0	0	1
CEREBROVASCULAR DISEASES (I60-I69)	3	0	0	3	0	0	0	0
OTHER CIRCULAT SYS DIS (I00-I25, I31, I34-I38, I44-I45, I47-I51, I70-I99)	1	0	0	1	0	0	0	0
ACUTE UPPER RESPIRATORY INFECTIONS (J00-J06)	0	0	0	0	0	0	0	0
INFLUENZA (J10-J11)	1	0	0	1	0	0	0	0
PNEUMONIA (J12-J18)	10	0	2	8	1	0	0	1

TABLE F-7 (Cont.): RESIDENT INFANT, NEONATAL AND POST-NEONATAL DEATHS FROM SELECTED CAUSES, BY RACE, FLORIDA, 1999

	BLACK				OTHER			
	INFANT	NEONATAL		POST NEO- NATAL	INFANT	NEONATAL		POST NEO- NATAL
		<1 DAY	1-27 DAYS			<1 DAY	1-27 DAYS	
ACUTE BRONCHITIS & ACUTE BRONCIOLITIS (J20-J21)	1	0	0	1	0	0	0	0
BRONCHITIS, CHRONIC & UNSPECIFIED (J40-J42)	0	0	0	0	0	0	0	0
ASTHMA (J45-J46)	1	0	0	1	0	0	0	0
PNEUMONITIS DUE TO SOLIDS & LIQUIDS (J69)	0	0	0	0	0	0	0	0
OTHER & UNSPEC RESPIR SYS DIS (J22,J30-J39,J43-J44,J47-J68,J70-J98)	8	0	0	8	0	0	0	0
GASTRITIS, DUODENITIS, NONINFECTIVE ENTERITIS/COLITIS (K29, K50-K55)	4	0	0	4	0	0	0	0
HERNIA ABDOM CAVITY & INTESTINAL OBSTRUCT W/O HERNIA (K40-K46, K56)	1	0	0	1	0	0	0	0
OTHER & UNSPEC DIGESTIVE SYSTEM DISEASE (K00-K28, K30-K38, K57-K92)	5	0	1	4	0	0	0	0
RENAL FAILURE & OTHER KIDNEY DISORDERS (N17-N19, N25, N27)	3	0	1	2	0	0	0	0
OTHER & UNSPEC GENITOURINARY SYS DIS (N00-N15, N20-N23, N26,N28-N98)	4	4	0	0	0	0	0	0
PERINATAL PERIOD CONDITIONS (P00-P96)	334	210	104	20	8	4	4	0
MATERNAL HYPERTENSIVE DISORDERS (P00.0)	1	1	0	0	0	0	0	0
MATERNAL CONDITIONS UNRELATED PRESENT PREGNANCY (P00.1-P00.9)	3	1	1	1	0	0	0	0
INCOMPETENT CERVIX (P01.0)	6	6	0	0	3	3	0	0
PREMATURE RUPTURE OF MEMBRANES (P01.1)	23	22	1	0	0	0	0	0
MULTIPLE PREGNANCY (P01.5)	22	20	2	0	0	0	0	0
MATERNAL COMPLICATIONS OF PREGNANCY (P01.2-P01.4, P01.6-P01.9)	7	7	0	0	0	0	0	0
PLACENTA COMPLICATIONS (P02.0-P02.3)	9	6	1	2	0	0	0	0
CORD COMPLICATIONS (P02.4-P02.6)	3	3	0	0	0	0	0	0
CHORIOAMNIONITIS (P02.7)	10	10	0	0	0	0	0	0
OTHER & UNSPECIFIED MEMBRANE ABNORMALITIES (P02.8-P02.9)	0	0	0	0	0	0	0	0
OTHER COMPLICATIONS OF LABOR & DELIVERY (P03)	4	3	1	0	0	0	0	0
NOXIOUS INFLUENCES VIA PLACENTA OR BREAST MILK (P04)	0	0	0	0	0	0	0	0
SLOW FETAL GROWTH & FETAL MALNUTRITION (P05)	1	0	1	0	0	0	0	0
EXTREME LOW BIRTH WEIGHT OR EXTREME IMMATUREITY (P07.0, P07.2)	79	69	9	1	1	0	1	0
OTHER LOW BIRTH WEIGHT OR PRETERM (P07.1, P07.3)	29	25	1	3	1	1	0	0
LONG GESTATION & HIGH BIRTH WEIGHT (P08)	0	0	0	0	0	0	0	0
BIRTH TRAUMA (P10-P15)	0	0	0	0	0	0	0	0
INTRAUTERINE HYPOXIA (P20)	2	1	1	0	0	0	0	0
BIRTH ASPHYXIA (P21)	3	0	3	0	1	0	1	0
RESPIRATORY DISTRESS (P22)	17	5	10	2	0	0	0	0
CONGENITAL PNEUMONIA (P23)	2	1	1	0	0	0	0	0
NEONATAL ASPIRATION SYNDROMES (P24)	0	0	0	0	0	0	0	0
INTERSTITIAL EMPHYSEMA & RELATED CONDITIONS (P25)	3	0	3	0	0	0	0	0
PULMONARY HEMORRHAGE (P26)	3	0	3	0	1	0	1	0
CHRONIC RESPIRATORY DISEASE (P27)	9	0	0	9	0	0	0	0
ATELECTASIS (P28.0-P28.1)	5	3	2	0	0	0	0	0
OTHER RESPIRATORY CONDITIONS (P28.2-P28.9)	7	2	5	0	0	0	0	0
BACTERIAL SEPSIS (P36)	29	2	27	0	0	0	0	0
OMPHALITIS W/ OR W/O HEMORRHAGE (P38)	0	0	0	0	0	0	0	0
ALL OTHER INFECTIONS (P35, P37, P39)	3	1	2	0	1	0	1	0
NEONATAL HEMORRHAGE (P50-P52, P54)	7	2	5	0	0	0	0	0
HEMORRHAGIC DISEASE OF NEWBORN (P53)	0	0	0	0	0	0	0	0
HEMOLYTIC DIS DUE TO ISOIMMUNIZATION/PERINAT JAUNDICE (P55-P59)	0	0	0	0	0	0	0	0
HEMATOLOGICAL DISORDERS (P60-P61)	1	0	1	0	0	0	0	0
DIABETES MELLITUS, MATERNAL OR NEONATAL (P70.0-P70.2)	0	0	0	0	0	0	0	0
NECROTIZING ENTEROCOLITIS (P77)	6	0	6	0	0	0	0	0
HYDROPS FETALIS NOT DUE TO HEMOLYTIC DIS (P83.2)	3	1	2	0	0	0	0	0
OTHER PERINATAL CONDITIONS *4	37	19	16	2	0	0	0	0

TABLE F-7 (Cont.): RESIDENT INFANT, NEONATAL AND POST-NEONATAL DEATHS FROM SELECTED CAUSES, BY RACE, FLORIDA, 1999

	BLACK				OTHER			
	INFANT	NEONATAL		POST	INFANT	NEONATAL		POST
		<1 DAY	1-27 DAYS	NEO- NATAL		<1 DAY	1-27 DAYS	NEO- NATAL
CONGENITAL / CHROMOSOMAL ANOMALIES (Q00-Q99)	91	29	22	40	6	0	2	4
ANENCEPHALY & SIMILAR ANOMALIES (Q00)	3	3	0	0	0	0	0	0
CONGENITAL HYDROCEPHALUS (Q03)	3	0	2	1	0	0	0	0
SPINA BIFIDA (Q05)	0	0	0	0	0	0	0	0
OTHER CONGENITAL ANOMALIES CENT NERV SYS (Q01-Q02,Q04,Q06-Q07)	7	1	2	4	1	0	0	1
CONGENITAL ANOMALIES OF HEART (Q20-Q24)	22	0	5	17	2	0	0	2
OTHER CONGENITAL ANOMALIES OF CIRCULATORY SYS (Q25-Q28)	2	0	1	1	1	0	0	1
CONGENITAL ANOMALIES OF RESPIRATORY SYS (Q30-Q34)	21	15	5	1	0	0	0	0
CONGENITAL ANOMALIES OF DIGESTIVE SYS (Q35-Q45)	2	0	0	2	0	0	0	0
CONGENITAL ANOMALIES OF GENITOURINARY SYS (Q50-Q64)	2	2	0	0	1	0	1	0
CONGENITAL ANOMALIES OF MUSCULOSKELETAL SYS (Q65-Q85)	7	2	2	3	0	0	0	0
DOWN'S SYNDROME (Q90)	1	0	0	1	0	0	0	0
EDWARD'S SYNDROME (Q91.0-Q91.3)	4	0	2	2	0	0	0	0
PATAU'S SYNDROME (Q91.4-Q91.7)	8	1	3	4	0	0	0	0
OTHER CONGENITAL ANOMALIES (Q10-Q18, Q86-Q89)	8	5	0	3	1	0	1	0
OTHER CHROMOSOMAL ANOMALIES (Q92-Q99)	1	0	0	1	0	0	0	0
SUDDEN INFANT DEATH SYNDROME (R95)	42	0	0	42	2	0	1	1
SYMPTOMS, SIGNS, ABN CLINICAL/LAB FINDINGS (R00-R53,R55-R94,R96-R99)	22	2	3	17	0	0	0	0
ALL OTHER DISEASES (F01-F99, H00-H57, L00-M99)	0	0	0	0	0	0	0	0
UNINT INJ: MOTOR VEHICLE *5	1	0	0	1	0	0	0	0
UNINT INJ: OTHER & UNSPEC TRANSPORT & SEQUELAE *6	1	0	0	1	0	0	0	0
UNINT INJ: FALLS (W00-W19)	0	0	0	0	0	0	0	0
UNINT INJ: FIREARMS DISCHARGE (W32-W34)	0	0	0	0	0	0	0	0
UNINT INJ: DROWNING & SUBMERSION (W65-W74)	4	0	0	4	0	0	0	0
UNINT INJ: SUFFOCATION & STRANGULATION IN BED (W75)	7	0	1	6	0	0	0	0
UNINT INJ: OTHER SUFFOCATION & STRANGULATION (W76-W77, W81-W84)	5	0	0	5	0	0	0	0
UNINT INJ: INHALE/INGEST--RESPIRATORY TRACT OBSTRUCTION (W78-W80)	1	0	0	1	0	0	0	0
UNINT INJ: SMOKE, FIRE, FLAMES EXPOSURE (X00-X09)	1	0	0	1	0	0	0	0
UNINT INJ: POISONING & NOXIOUS SUBSTANCE EXPOSURE (X40-X49)	1	0	0	1	0	0	0	0
UNINT INJ: OTHER & UNSPECIFIED & SEQUELAE *7	1	0	0	1	0	0	0	0
HOMICIDE: HANGING, STRANGULATION, SUFFOCATION (X91)	0	0	0	0	0	0	0	0
HOMICIDE: FIREARMS DISCHARGE (X93-X95)	0	0	0	0	0	0	0	0
HOMICIDE: NEGLECT, ABANDONMENT, MALTREATMENT (Y06-Y07)	2	0	0	2	0	0	0	0
HOMICIDE: OTHER & UNSPECIFIED MEANS & SEQUELAE *8	4	1	0	3	0	0	0	0
MEDICAL & SURGICAL CARE COMPLICATIONS (Y40-Y84, Y88)	0	0	0	0	0	0	0	0
OTHER EXTERNAL CAUSES & SEQUELAE (X60-X84,Y10-Y36,Y87.0,Y87.2,Y89)	1	0	0	1	0	0	0	0
*1 (A20-A32, A38, A42-A49, A51-A53, A55-A79, B35-B36, B38-B49, B55-B58, B60-B99)								
*2 (E00-E32, E34.0-E34.2, E34.4-E34.9, E65-E83, E85, E88)								
*3 (G04,G06-G11,G12.1-G12.9,G20-G72,G81-G92,G93.0,G93.2-G93.9,G95-G98)								
*4 (P29,P70.3-P70.9,P71-P76,P78-P81,P83.0-P83.1,P83.3-P83.9,P90-P96)								
*5 (V02-V04, V09.0, V09.2, V12-V14, V19.0-V19.2, V19.4-V19.6, V20-V79, V80.3-V80.5, V81.0-V81.1, V82.0-V82.1, V83-V86, V87.0-V87.8, V88.0-V88.8, V89.0, V89.2)								
*6 (V01, V05-V06, V09.1, V09.3-V09.9, V10-V11, V15-V18, V19.3, V19.8-V19.9, V80.0-V80.2, V80.6-V80.9, V81.2-V81.9, V82.2-V82.9, V87.9, V88.9, V89.1, V89.3, V89.9, V90-V99, Y85)								
*7 (W20-W31, W35-W64, W85-W99, X10-X39, X50-X59, Y86)								
*8 (X85-X90, X92, X96-X99, Y00-Y05, Y08-Y09, Y87.1)								