

Marriages and Dissolutions of Marriage

MARRIAGES AND DISSOLUTIONS OF MARRIAGE

- From a record high 158,783 in 1997, the number of marriages decreased 17,439 in 1998 (11% decrease) and again decreased 4,941 in 1999.
- Because of the decline in the number of marriages, the marriage rate per 1,000 population decreased from 10.7 for 1997 to 9.4 in 1998 to 8.9 in 1999.
- May was the most popular month for marriages with 13,599 marriages performed.
- After decreasing for four consecutive years, then increasing and decreasing the next two years, respectively, the number of dissolutions of marriage increased in 1999.
- Since 1980, the dissolution rate has declined 27.4 percent despite an overall increase in the number of dissolutions.
- The dissolution of marriage rate had declined steadily since 1980, reaching a rate of 5.4 per 1,000 population in 1996. In 1997 the rate increased to 5.6 per 1,000 population, but again declined in 1998 to 5.3 per 1,000 population. The rate remained constant at 5.3 per 1,000 population in 1999.
- Of the 136,403 marriage ceremonies conducted in 1999, the reported race of the bride and of the groom was the same in 124,277 (91.1%) of the marriages. This is a decrease of 0.3% from 1998.
- Of the 80,983 dissolutions of marriage in 1999, over half (52.2%) affected no minor children.
- Over 4 of every 10 dissolutions of marriage occurred to couples married between 5 and 14 years.
- The marriage rate in Florida is over 1 ½ times the dissolution rate.

CHART M-1: MARRIAGES AND DISSOLUTIONS OF MARRIAGE, AND RATES PER 1,000 POPULATION, FLORIDA AND UNITED STATES, CENSUS YEARS 1920-1980 AND 1989-1999						
YEAR	MARRIAGES			DISSOLUTIONS ¹		
	FLORIDA		U.S.	FLORIDA		U.S.
	NUMBER	RATE	RATE	NUMBER	RATE	RATE
1920 ¹	NA	NA	12.0	NA	NA	1.6
1930 ¹	17,147	11.7	9.2	3,262	2.5	1.6
1940	32,709	17.1	12.1	11,061	5.8	2.0
1950	27,588	9.8	11.1	17,845	6.3	2.6
1960	39,315	7.9	8.5	19,326	3.9	2.2
1970	69,249	10.1	10.6	37,506	5.4	3.5
1980	108,344	11.0	10.6	71,578	7.3	5.2
1989	137,892	10.7	9.7	79,810	6.2	4.7
1990	141,816	10.7	9.8	81,119	6.1	4.7
1991	136,994	10.3	9.4	82,929	6.3	4.7
1992	139,191	10.3	9.3	84,011	6.2	4.8
1993	141,892	10.3	9.0 ²	82,956	6.0	4.6 ²
1994	142,895	10.2	9.1 ²	81,628	5.9	4.6 ²
1995	145,090	10.2	9.1 ²	78,416	5.5	4.5 ²
1996	150,599	10.4	8.8 ²	77,750	5.4	4.3 ²
1997	158,783	10.7	8.9 ²	82,161	5.6	4.3 ²
1998	141,344	9.4	8.5 ²	80,466	5.3	4.3 ²
1999	136,403	8.9	8.4 ³	80,983	5.3	NA

¹ Includes divorces and annulments.

² Provisional data.

³ Provisional data for January through August 1999.

GRAPH M-1: MARRIAGE AND DISSOLUTION OF MARRIAGE RATES,
FLORIDA AND UNITED STATES, 1989-1999

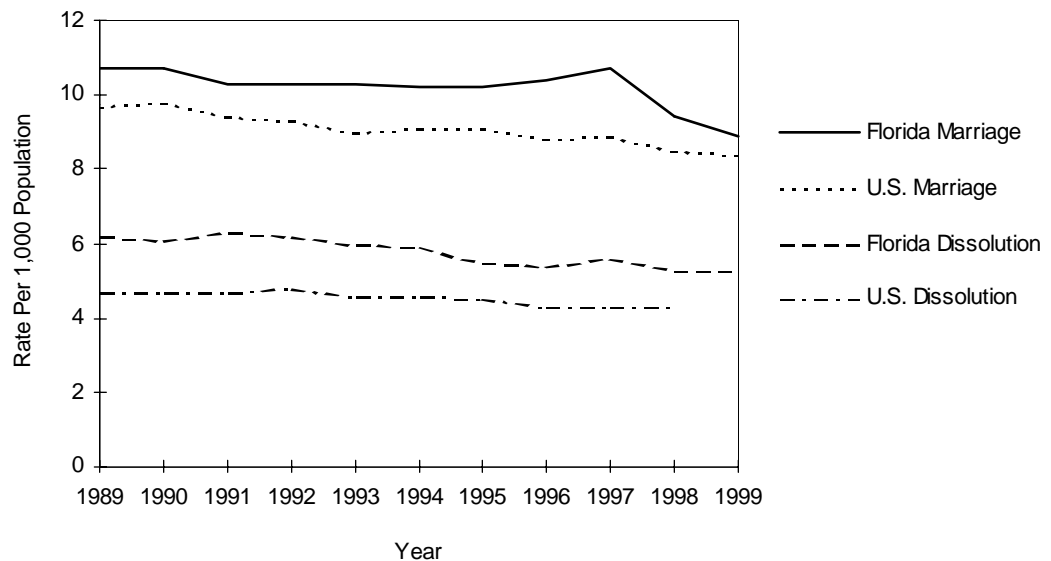


TABLE M-1: MARRIAGES PERFORMED BY MONTH, BY COUNTY OF ISSUANCE, FLORIDA, 1999

	TOTAL	JAN	FEB	MAR	APR	MAY	JUN	JUL	AUG	SEP	OCT	NOV	DEC
FLORIDA	136,403	7,517	10,215	11,339	11,940	13,599	12,588	12,295	10,468	10,718	12,493	11,586	11,645
ALACHUA	1,708	98	106	127	128	212	169	165	163	116	154	124	146
BAKER	261	11	20	16	24	26	25	20	15	22	34	20	28
BAY	2,013	83	119	128	174	193	237	217	169	177	195	153	168
BRADFORD	252	8	23	23	19	19	26	26	23	18	25	17	25
BREVARD	3,792	223	281	329	329	396	361	335	260	286	365	331	296
BROWARD	10,803	589	839	919	867	948	902	919	926	811	1,072	1,009	1,002
CALHOUN	108	4	9	9	5	13	12	11	4	10	14	6	11
CHARLOTTE	964	45	81	84	89	105	81	86	60	69	90	75	99
CITRUS	815	31	60	67	72	72	84	75	72	67	64	65	86
CLAY	1,277	72	89	109	114	131	121	122	112	111	115	95	86
COLLIER	2,182	147	155	161	190	250	217	182	135	161	185	195	204
COLUMBIA	585	31	38	40	57	75	53	61	42	48	44	41	55
MIAMI-DADE	21,409	1,208	1,687	1,718	1,840	1,913	1,887	1,888	1,859	1,590	1,841	1,825	2,153
DESOTO	252	15	24	23	24	18	22	29	12	28	14	18	25
DIXIE	136	8	11	18	17	12	19	8	6	7	14	10	6
DUVAL	6,266	342	419	545	579	708	623	540	516	538	565	442	449
ESCAMBIA	3,019	165	227	226	260	308	306	273	254	263	278	216	243
FLAGLER	317	13	21	18	30	33	25	33	28	25	36	29	26
FRANKLIN	144	1	9	10	14	20	18	14	7	13	15	10	13
GADSDEN	317	17	31	20	24	24	35	34	26	27	23	21	35
GILCHRIST	135	6	11	11	14	15	11	12	10	12	10	11	12
GLADES	32	3	4	2	5	2	4	1	1	3	2	1	4
GULF	132	8	7	10	14	11	10	15	9	16	13	9	10
HAMILTON	142	6	10	10	16	13	12	13	13	8	13	13	15
HARDEE	157	3	10	21	7	12	12	15	15	6	7	16	33
HENDRY	307	23	28	25	24	27	29	35	15	21	18	30	32
HERNANDO	804	34	61	63	70	79	65	93	53	73	81	64	68
HIGHLANDS	559	28	55	54	46	62	45	58	34	29	44	50	54
HILLSBOROUGH	8,758	480	678	765	823	879	800	815	644	654	805	754	661
HOLMES	189	7	6	19	17	17	22	17	12	19	17	19	17
INDIAN RIVER	863	60	69	53	87	101	78	82	56	52	80	73	72
JACKSON	354	5	27	32	40	39	32	31	25	31	32	25	35
JEFFERSON	180	8	14	13	15	12	23	26	8	19	14	15	13
LAFAYETTE	63	5	3	7	2	8	8	6	5	8	4	5	2
LAKE	1,512	105	139	123	145	124	127	137	100	108	115	160	129
LEE	3,559	217	250	277	336	365	330	303	226	269	340	315	331
LEON	2,012	101	132	173	189	233	192	167	183	162	163	139	178
LEVY	222	13	16	24	21	20	21	19	9	18	21	17	23
LIBERTY	49	2	3	3	4	4	3	7	4	4	5	4	6
MADISON	144	9	2	17	13	8	15	17	7	9	17	13	17
MANATEE	1,797	90	155	147	182	166	161	154	129	130	172	144	167
MARION	1,961	111	164	175	172	173	184	185	142	152	159	176	168
MARTIN	865	41	61	95	64	111	75	94	55	64	78	63	64
MONROE	2,531	120	203	211	239	287	253	194	195	192	198	236	203
NASSAU	609	48	45	49	44	67	64	68	48	31	53	50	42
OKALOOSA	2,034	91	127	133	147	206	218	243	169	211	192	139	158
OKEECHOBEE	257	12	19	23	28	18	9	24	17	25	25	26	31
ORANGE	9,497	501	683	800	763	934	892	820	701	835	907	917	744
OSCEOLA	3,547	188	231	246	312	357	346	274	223	392	384	323	271
PALM BEACH	8,359	467	631	731	711	902	797	743	635	577	730	744	691
PASCO	2,262	119	181	184	206	225	198	207	157	165	233	193	194
PINELLAS	7,441	393	545	668	696	781	675	644	534	608	729	615	553
POLK	3,858	221	319	356	307	373	376	364	289	277	307	318	351
PUTNAM	523	28	42	46	53	39	41	52	48	36	41	49	48
ST JOHNS	1,164	55	91	108	90	128	102	89	87	94	143	85	92
ST LUCIE	1,239	83	112	98	113	136	106	114	88	90	106	89	104
SANTA ROSA	824	52	66	66	75	83	75	90	60	68	72	59	58
SARASOTA	2,750	180	184	228	274	261	239	263	179	207	270	248	217
SEMINOLE	3,052	199	246	270	241	316	261	269	224	252	283	275	216
SUMTER	278	12	20	28	26	38	30	17	23	19	23	21	21
SUWANNEE	290	22	25	26	34	26	28	27	20	21	17	26	18
TAYLOR	144	8	8	15	13	11	15	8	12	11	15	15	13
UNION	108	10	9	9	8	12	8	12	4	10	10	7	9
VOLUSIA	3,386	194	239	277	308	356	297	341	249	249	325	268	283
WAKULLA	198	6	14	25	25	24	11	23	11	16	19	16	8
WALTON	450	22	18	19	49	49	45	47	33	57	41	39	31
WASHINGTON	186	10	3	14	16	13	20	22	18	21	17	10	22

TABLE M-2: MARRIAGES BY RACE OF GROOM AND BRIDE, FLORIDA, 1999

RACE OF GROOM	RACE OF BRIDE										
	TOTAL	WHITE	BLACK	AMERICAN INDIAN	CHINESE	JAPANESE	HAWAIIAN	FILIPINO	OTHER ASIAN/ PAC ISL	OTHER ENTRIES	UNK
TOTAL	136,403	109,723	18,623	271	207	108	16	489	1,417	5,459	90
WHITE	109,442	105,977	994	187	106	75	13	331	665	1,050	44
BLACK	19,854	2,059	17,401	32	3	9	0	24	63	261	2
AMERICAN INDIAN	273	206	12	45	1	0	0	3	3	3	0
CHINESE	112	20	1	0	80	1	0	3	7	0	0
JAPANESE	34	12	0	0	1	18	0	1	2	0	0
HAWAIIAN	16	11	0	0	0	0	2	2	1	0	0
FILIPINO	214	83	8	0	2	0	1	102	16	2	0
OTH ASIAN/PAC ISL	1,182	451	33	5	11	5	0	17	652	8	0
OTHER ENTRIES	5,205	877	173	2	3	0	0	6	8	4,135	1
UNK	71	27	1	0	0	0	0	0	0	0	43

TABLE M-3: DISSOLUTIONS* OF MARRIAGE BY DURATION OF MARRIAGE IN YEARS AND NUMBER OF MINOR CHILDREN AFFECTED, FLORIDA, 1999

DURATION IN YEARS	NUMBER OF MINOR CHILDREN AFFECTED								
	TOTAL	NONE	ONE	TWO	THREE	FOUR	FIVE	SIX+	UNK
TOTAL	80,983	42,248	17,522	12,294	3,256	627	122	54	4,860
<1	2,019	1,644	117	48	12	2	0	1	195
1	5,653	4,363	632	141	17	7	0	2	491
2	7,089	4,995	1,233	218	37	12	1	2	591
3	6,629	4,305	1,492	332	54	11	2	0	433
4	6,177	3,642	1,479	504	68	12	1	1	470
5-9	21,523	9,769	5,867	3,836	714	126	20	8	1,183
10-14	12,256	4,051	2,858	3,495	1,090	179	44	16	523
15-19	7,510	2,085	1,649	2,359	877	205	39	17	279
20-24	4,327	1,838	1,179	871	239	42	7	3	148
25-29	2,583	1,714	499	186	49	7	1	1	126
30-34	1,247	1,012	102	41	9	4	1	2	76
35-39	636	555	21	12	5	1	2	0	40
40+	596	523	17	10	6	0	0	0	40
UNK	2,738	1,752	377	241	79	19	4	1	265

* Includes divorces and annulments.

TABLE M-4: DISSOLUTIONS* OF MARRIAGE BY MONTH, BY COUNTY, FLORIDA, 1999

	TOTAL	JAN	FEB	MAR	APR	MAY	JUN	JUL	AUG	SEP	OCT	NOV	DEC
FLORIDA	80,983	5,828	6,321	7,130	7,024	6,514	7,127	6,736	7,287	6,497	6,740	6,129	7,648
ALACHUA	926	64	68	77	59	85	79	67	112	74	78	72	91
BAKER	118	11	10	15	22	12	9	7	7	7	4	4	10
BAY	1,058	72	84	95	103	92	76	98	79	94	97	89	79
BRADFORD	155	11	11	12	8	7	12	10	16	17	20	14	17
BREVARD	2,577	161	183	212	235	204	227	214	398	165	191	195	192
BROWARD	8,280	579	585	605	512	888	617	758	869	734	742	401	990
CALHOUN	76	4	13	9	5	3	5	5	5	4	8	5	10
CHARLOTTE	479	34	36	38	48	37	53	34	37	35	50	37	40
CITRUS	643	53	50	49	70	42	54	46	74	42	44	51	68
CLAY	751	48	76	79	68	54	52	90	64	45	59	64	52
COLLIER	1,089	90	96	98	85	88	89	100	81	87	100	77	98
COLUMBIA	467	27	46	41	54	24	50	42	21	50	39	11	62
MIAMI-DADE	12,108	937	939	1,142	1,059	868	1,096	996	1,014	969	959	1,041	1,088
DESOTO	154	4	13	13	16	13	26	7	9	6	5	23	19
DIXIE	71	3	7	5	9	7	6	10	7	2	6	4	5
DUVAL	4,521	335	337	389	433	388	418	388	394	378	369	311	381
ESCAMBIA	1,659	122	139	148	193	111	89	113	156	210	141	131	106
FLAGLER	247	17	16	36	25	19	24	21	20	16	11	18	24
FRANKLIN	64	4	1	4	7	7	2	6	3	7	6	6	11
GADSDEN	212	20	26	9	17	23	14	24	19	18	6	17	19
GILCHRIST	90	4	8	3	10	12	5	8	7	8	7	9	9
GLADES	35	1	1	4	2	3	1	8	6	3	1	1	4
GULF	75	4	6	9	5	10	3	4	9	8	3	9	5
HAMILTON	67	6	6	8	3	6	9	6	6	4	5	3	5
HARDEE	87	5	2	6	7	5	11	5	8	12	9	8	9
HENDRY	130	17	7	5	6	9	15	19	9	5	13	8	17
HERNANDO	494	41	40	44	43	32	50	46	42	40	41	35	40
HIGHLANDS	368	32	32	22	44	30	21	40	31	35	33	18	30
HILLSBOROUGH	5,212	389	326	480	502	318	464	507	431	420	431	359	585
HOLMES	125	10	16	12	11	12	10	5	6	12	10	14	7
INDIAN RIVER	546	45	27	52	49	48	53	47	39	40	44	45	57
JACKSON	282	22	14	20	25	18	42	23	32	24	19	13	30
JEFFERSON	185	17	20	22	9	19	9	15	18	15	16	8	17
LAFAYETTE	42	4	5	1	5	6	3	3	0	7	1	2	5
LAKE	1,022	84	95	84	67	82	101	81	90	90	70	80	98
LEE	2,127	133	158	201	180	158	241	141	165	169	204	191	186
LEON	921	84	65	58	97	73	101	81	73	85	64	59	81
LEVY	150	16	9	11	14	13	12	14	10	10	11	16	14
LIBERTY	41	1	5	3	4	0	8	8	2	2	2	5	1
MADISON	80	5	6	8	9	12	10	5	1	11	4	2	7
MANATEE	929	65	67	78	75	68	69	76	89	81	84	67	110
MARION	1,445	82	105	172	51	169	149	62	157	49	169	104	176
MARTIN	533	43	35	37	45	56	55	45	31	43	47	39	57
MONROE	465	20	44	45	58	38	47	39	31	27	39	37	40
NASSAU	305	15	31	29	30	31	23	24	18	34	36	16	18
OKALOOSA	1,305	93	96	113	119	105	125	105	101	100	129	92	127
OKEECHOBEE	160	14	20	11	13	8	11	13	9	8	13	17	23
ORANGE	4,774	371	423	397	418	385	419	346	459	345	363	432	416
OSCEOLA	953	47	80	115	46	82	110	94	84	76	86	77	56
PALM BEACH	5,102	408	384	429	437	424	478	431	432	452	418	391	417
PASCO	1,366	80	135	102	147	107	78	98	107	94	145	117	156
PINELLAS	4,231	299	368	383	369	298	373	327	375	343	380	306	409
POLK	2,776	190	262	269	265	219	225	225	259	218	234	183	227
PUTNAM	372	20	24	27	23	18	46	37	48	29	36	28	36
ST JOHNS	536	27	48	51	49	33	65	32	41	45	43	75	27
ST LUCIE	887	67	54	73	47	74	96	56	87	50	112	65	106
SANTA ROSA	552	43	49	57	45	47	66	28	45	43	25	46	58
SARASOTA	1,580	114	116	150	157	107	128	138	147	105	80	167	171
SEMINOLE	1,683	101	132	154	164	123	130	165	128	137	135	156	158
SUMTER	212	10	14	16	29	16	6	18	32	12	20	26	13
SUWANNEE	170	18	5	20	33	11	15	15	9	14	7	8	15
TAYLOR	129	6	14	7	15	13	15	8	6	7	14	11	13
UNION	62	2	10	1	6	3	7	5	10	2	3	11	2
VOLUSIA	2,272	158	185	212	220	203	186	217	165	177	178	165	206
WAKULLA	121	3	10	15	10	6	10	6	12	16	9	7	17
WALTON	204	11	15	27	23	23	13	17	23	11	8	17	16
WASHINGTON	125	5	11	11	10	9	15	7	12	19	4	13	9

* Includes divorces and annulments.