

Live Births

LIVE BIRTHS

- In 1995, Florida's resident live births dropped to 188,535, the lowest number for the previous ten years. The number of resident live births increased slightly in 1996 and then climbed again in 1997, 1998, and 1999. The number rose to a record 204,030 in 2000.
- The resident birth rate dropped from 13.0 births per 1,000 population in 1998 to 12.8 births per 1,000 population in 1999, but increased again to 13.0 in 2000. Until this year the rate had steadily decreased since 1989 when it was 15.2 births per 1,000 population.
- In 2000, the resident birth rate for whites was 11.4 births per 1,000 population, 21.6 births per 1,000 population for blacks, and 21.7 births per 1,000 population for other races.
- From 1999 to 2000, the percentage of resident births to both white mothers and nonwhite mothers aged 18 years and under decreased. However, the percentage of resident births for nonwhite mothers (12.3) was almost twice the percentage for white mothers (6.4).
- Of the live births to unwed mothers, 18.1 percent were to women 18 years and younger.
- Of the resident live births in 2000, 8.0 percent had a birthweight of less than 2,500 grams (5 lbs. 8.2 oz.) and 1.5 percent had a birthweight of less than 1,500 grams (3 lbs. 4.9 oz.). Both of these percentages represent a decrease from 1999 -- 8.2 percent and 1.6 percent, respectively.
- Birthweights of 4,000 grams (8 lbs. 13.1 oz.) and over accounted for 8.7 percent of the total resident live births.
- One out of every three resident live births (38.2%) was to an unwed mother. For blacks, two out of every three births (67.6%) were to unwed mothers; among white mothers, one out of every four births (29.7%) was to an unwed mother; and among mothers of other races, only one out of every five live births (22.0%) was to an unwed mother.
- Mothers of Hispanic origin accounted for 22.5 percent of the resident live births.
- Almost ninety percent (88.2%) of the resident live births to nonwhite mothers were to black mothers. Black mothers accounted for 23.2 percent of the total resident live births.
- Of the resident live births, 99.1 percent occurred in hospitals. Physicians were attendants in 88.9 percent of those hospital births.
- In 2000, 82.9 percent of all mothers received prenatal care in the first trimester.
- Of black mothers, 72.5 percent had 12 or more years of education, compared to 80.8 percent of white mothers and 82.6 percent of mothers of other races.
- Of the mothers aged 15-19 years, 21.0 percent had one or more previous live births.
- Resident live births to mothers aged 18 years and under accounted for 8.0 percent of the total, while mothers aged 35 years and over comprised 13.9 percent of the total.

CHART B-1: RESIDENT LIVE BIRTHS AND RATES PER 1,000 POPULATION,
 BY RACE OF MOTHER, FLORIDA AND UNITED STATES TOTAL,
 CENSUS YEARS 1920-1980 AND 1990-2000

YEAR	NUMBER OF BIRTHS - FL			RATES - FL			RATE - U.S.
	TOTAL	WHITE	NON-WHITE	TOTAL	WHITE	NON-WHITE	TOTAL
1920 ¹	19,540	13,541	5,999	19.7	20.6	17.9	27.7
1930 ¹	26,991	18,596	8,395	18.3	17.9	19.3	21.3
1940	33,696	23,805	9,891	17.6	17.0	19.1	19.4
1950	64,370	45,699	18,671	22.8	20.7	30.5	24.1
1960	115,610	84,402	31,208	23.1	20.6	34.9	23.7
1970	115,113	86,945	28,166	16.7	15.0	26.1	18.4
1980	131,811	97,402	34,386	13.4	11.6	23.9	15.9
1990	199,146	149,743	49,265	15.1	13.4	24.3	16.7
1991	193,717	144,862	48,734	14.6	12.9	23.9	16.3
1992	191,530	143,136	48,297	14.2	12.6	23.2	15.9
1993	192,453	144,189	48,146	14.1	12.5	22.6	15.5
1994	190,546	143,147	47,278	13.7	12.2	21.6	15.2
1995	188,535	141,848	46,555	13.3	12.0	19.8	14.8
1996	189,338	142,391	46,848	13.1	11.8	19.5	14.7
1997	192,304	143,767	48,397	13.0	11.5	20.7	14.5
1998	195,564	145,868	49,502	13.0	11.5	20.9	14.6
1999	196,963	146,329	50,473	12.8	11.3	20.8	14.5
2000	204,030	150,115	53,622	13.0	11.4	21.6	14.8 ²

¹ Only recorded data are available.

² Preliminary data.

GRAPH B-1: RESIDENT LIVE BIRTH RATES PER 1,000 POPULATION,
 BY RACE OF MOTHER, FLORIDA AND UNITED STATES TOTAL, 1990-2000

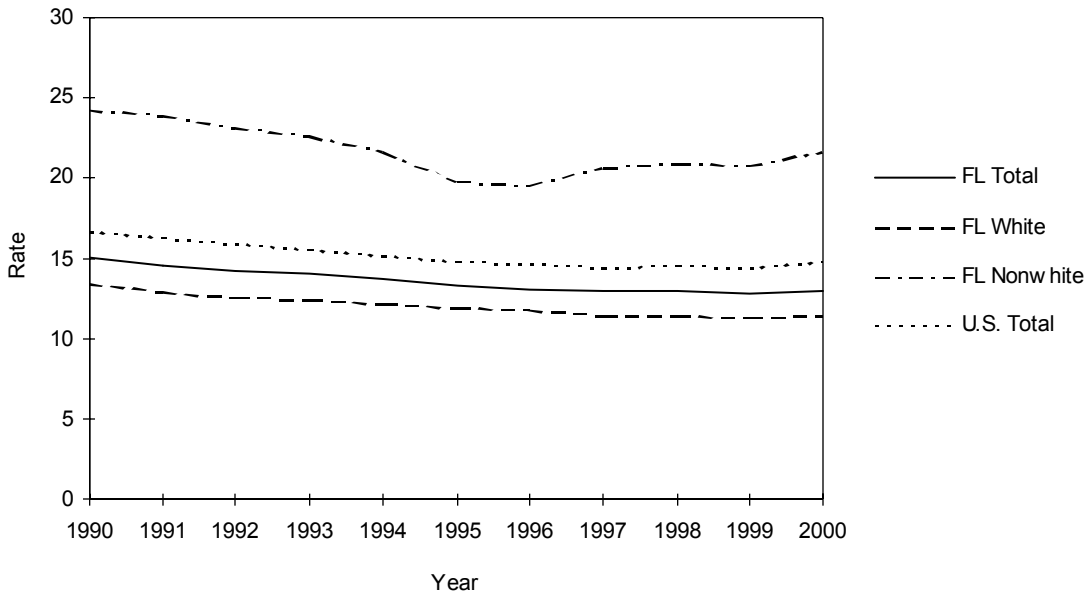


CHART B-2: RESIDENT LIVE BIRTHS TO MOTHERS 18 YEARS AND UNDER,
 BY SINGLE YEARS OF AGE, AND PERCENT OF TOTAL BIRTHS,
 BY RACE OF MOTHER, FLORIDA, 1970, 1975, 1980, 1985, 1990 AND 1996-2000

YEAR	AGE OF MOTHER							18 YEARS & UNDER	
	<13	13	14	15	16	17	18	NUMBER	PERCENT
TOTAL									
1970	26	107	503	1,463	3,107	4,887	6,808	16,901	14.7
1975	19	145	647	1,799	3,370	4,936	6,482	17,398	16.5
1980	21	98	509	1,537	2,913	4,429	6,299	15,806	12.0
1985	16	105	549	1,407	2,709	4,348	6,139	15,273	9.3
1990	31	138	591	1,661	3,148	5,193	7,544	18,306	9.2
1996	25	110	507	1,542	3,172	4,791	6,694	16,841	8.5
1997	20	102	480	1,428	3,013	5,005	6,891	16,939	8.8
1998	17	130	457	1,352	2,987	4,934	7,072	16,949	8.7
1999	18	100	426	1,322	2,739	4,703	6,933	16,241	8.2
2000	24	95	412	1,213	2,702	4,730	7,094	16,270	8.0
WHITE									
1970	3	19	155	524	1,553	3,004	4,463	9,721	11.2
1975	4	34	207	693	1,651	2,868	4,078	9,535	12.2
1980	5	24	128	581	1,370	2,434	3,887	8,429	8.7
1985	4	26	168	600	1,439	2,537	3,744	8,518	6.9
1990	8	37	201	693	1,571	2,976	4,636	10,122	6.8
1996	5	34	212	728	1,779	2,914	4,244	9,916	7.0
1997	4	41	201	689	1,704	3,037	4,323	9,999	7.0
1998	2	49	195	710	1,694	3,002	4,536	10,188	7.0
1999	7	41	199	681	1,574	2,937	4,445	9,884	6.8
2000	6	43	167	625	1,512	2,863	4,463	9,679	6.4
NONWHITE									
1970	23	88	348	939	1,554	1,883	2,345	7,180	25.5
1975	15	111	440	1,105	1,718	2,068	2,403	7,860	28.5
1980	16	74	380	956	1,543	1,994	2,412	7,375	21.4
1985	12	79	381	807	1,269	1,811	2,394	6,753	16.7
1990	23	101	390	967	1,574	2,212	2,905	8,172	16.6
1996	20	76	295	814	1,391	1,876	2,446	6,918	14.8
1997	16	61	279	737	1,308	1,967	2,563	6,931	14.3
1998	14	81	262	642	1,291	1,928	2,534	6,752	13.6
1999	11	59	227	641	1,162	1,764	2,486	6,350	12.6
2000	18	52	244	588	1,185	1,862	2,628	6,577	12.3

CHART B-3: PERCENT OF RESIDENT LIVE BIRTHS FOR SELECTED BIRTHWEIGHT GROUPS,
BY RACE OF MOTHER AND GENDER OF CHILD, FLORIDA, 1970, 1980 AND 1990-2000

YEAR	VERY LOW BIRTHWEIGHT: LESS THAN 1,500 GRAMS					LOW BIRTHWEIGHT: LESS THAN 2,500 GRAMS				
	TOTAL	WHITE		NONWHITE		TOTAL	WHITE		NONWHITE	
		MALE	FEMALE	MALE	FEMALE		MALE	FEMALE	MALE	FEMALE
1970	1.3	0.9	0.9	2.4	2.4	8.5	6.4	7.5	11.9	14.5
1980	1.3	1.0	0.9	2.4	2.4	7.5	5.6	6.4	11.2	12.8
1990	1.5	1.0	1.0	2.7	2.8	7.4	5.5	6.3	11.2	13.1
1991	1.4	1.1	1.0	2.6	2.6	7.4	5.4	6.4	10.9	13.2
1992	1.5	1.1	1.1	2.6	2.7	7.4	5.6	6.4	10.6	12.8
1993	1.4	1.0	1.1	2.6	2.5	7.5	5.7	6.6	10.7	12.7
1994	1.5	1.1	1.1	2.7	2.7	7.8	5.9	6.8	11.2	13.0
1995	1.5	1.1	1.0	2.7	2.7	7.7	5.9	6.9	10.3	13.0
1996	1.5	1.1	1.1	2.6	2.6	7.9	6.0	7.1	10.7	12.9
1997	1.5	1.2	1.2	2.6	2.6	8.0	6.2	7.3	10.7	13.0
1998	1.6	1.3	1.2	2.6	2.8	8.1	6.3	7.4	10.4	13.2
1999	1.6	1.2	1.3	2.7	2.9	8.2	6.4	7.5	10.7	13.1
2000	1.5	1.2	1.1	2.6	2.7	8.0	6.2	7.0	10.9	12.8

CHART B-4: RESIDENT LIVE BIRTHS TO UNWED MOTHERS AND PERCENT OF TOTAL LIVE BIRTHS, BY RACE OF MOTHER, FLORIDA AND UNITED STATES TOTAL, CENSUS YEARS 1920-1980 AND 1990-2000							
YEAR	NUMBER OF BIRTHS - FL			PERCENT - FL			PERCENT - U.S.
	TOTAL	WHITE	NON-WHITE	TOTAL	WHITE	NON-WHITE	TOTAL
1920 ¹	754	125	629	3.9	0.9	10.5	NA
1930 ¹	1,467	277	1,190	5.4	1.5	14.2	NA
1940	2,075	358	1,717	6.2	1.5	17.4	3.8
1950	5,134	805	4,329	8.0	1.8	23.2	4.0
1960	11,042	2,321	8,721	9.6	2.8	27.9	5.3
1970	17,264	5,676	11,588	15.0	6.5	41.1	10.7
1980	30,156	10,295	19,860	22.9	10.6	57.8	20.3
1990	63,126	31,276	31,802	31.7	20.9	64.6	28.0
1991	64,233	32,315	31,890	33.2	22.3	65.4	29.5
1992	65,415	33,880	31,509	34.2	23.7	65.2	30.1
1993	67,365	35,909	31,421	35.0	24.9	65.3	31.0
1994	68,084	37,395	30,641	35.7	26.1	64.8	32.6
1995	67,422	37,625	29,742	35.7	26.5	63.9	32.2
1996	68,082	38,567	29,546	36.0	27.0	63.1	32.4
1997	69,226	38,956	30,227	36.0	27.1	62.5	32.4
1998	71,602	40,701	30,842	36.6	27.9	62.3	32.8
1999	73,785	42,398	31,335	37.5	29.0	62.1	33.0
2000	78,026	44,616	33,334	38.2	29.7	62.2	33.1 ²

¹ Only recorded data are available.

² Preliminary data.

GRAPH B-2: PERCENT OF RESIDENT LIVE BIRTHS TO UNWED MOTHERS,
BY RACE OF MOTHER, FLORIDA AND UNITED STATES TOTAL, 1990-2000

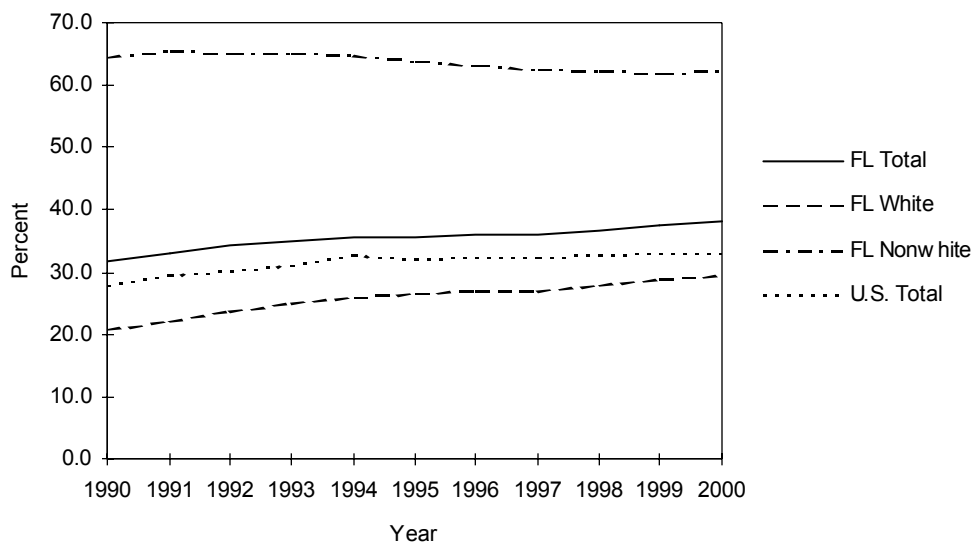


CHART B-5: RESIDENT LIVE BIRTHS TO UNWED MOTHERS AND PERCENT, BY AGE AND RACE OF MOTHER, FLORIDA, 1990 AND 2000				
NUMBER OF LIVE BIRTHS TO UNWED MOTHERS				
AGE OF MOTHER	WHITE		NONWHITE	
	1990	2000	1990	2000
TOTAL	31,276	44,616	31,802	33,334
10-14	219	206	511	314
15	550	577	952	580
16	1,121	1,294	1,538	1,169
17	1,830	2,309	2,139	1,809
18	2,465	3,350	2,715	2,515
19	2,916	4,017	2,913	3,063
20-24	10,454	15,882	10,470	12,549
25-29	6,596	8,659	5,866	6,415
30-34	3,509	4,985	3,284	2,993
35-44	1,589	3,305	1,384	1,905
45+	3	24	15	15
UNK	24	8	15	7
PERCENT OF TOTAL BIRTHS WHICH WERE TO UNWED MOTHERS				
AGE OF MOTHER	WHITE		NONWHITE	
	1990	2000	1990	2000
TOTAL	20.9	29.7	64.6	62.2
10-14	89.0	95.4	99.4	100.0
15	79.4	92.3	98.4	98.6
16	71.4	85.6	97.7	98.6
17	61.5	80.6	96.7	97.2
18	53.2	75.1	93.5	95.7
19	46.0	66.4	88.0	91.1
20-24	27.3	45.4	70.5	76.7
25-29	13.6	21.4	49.8	50.1
30-34	10.6	13.8	42.6	34.2
35-44	12.0	14.7	47.9	33.4
45+	7.9	15.5	2.8	33.3

TABLE B-1: RESIDENT AND RECORDED LIVE BIRTHS AND BIRTH RATES PER 1,000 POPULATION, BY RACE OF MOTHER, BY COUNTY, FLORIDA, 2000

	RESIDENT LIVE BIRTHS									
	NUMBER					RATES				
	TOTAL	WHITE	BLACK	OTHER	UNK	TOTAL	WHITE	BLACK	OTHER	
FLORIDA	204,030	150,115	47,271	6,351	293	13.0	11.4	21.6	21.7	
ALACHUA	2,600	1,687	795	118	0	11.8	9.8	19.1	16.6	
BAKER	356	307	44	5	0	15.7	15.7	15.1	34.0	
BAY	2,010	1,660	280	69	1	13.1	12.5	17.5	16.3	
BRADFORD	320	255	59	6	0	12.4	12.4	11.7	23.9	
BREVARD	5,014	4,146	704	156	8	10.3	9.4	18.8	17.1	
BROWARD	22,089	13,719	7,644	715	11	14.6	11.4	27.0	20.0	
CALHOUN	157	126	28	3	0	10.9	10.6	12.2	13.5	
CHARLOTTE	1,033	956	54	23	0	7.3	7.1	9.0	15.8	
CITRUS	871	823	27	20	1	7.4	7.2	10.3	22.6	
CLAY	1,830	1,608	156	66	0	12.8	12.2	19.9	19.2	
COLLIER	3,064	2,651	349	63	1	13.5	12.3	36.2	37.4	
COLUMBIA	764	601	145	18	0	13.0	12.8	13.0	23.0	
MIAMI-DADE	32,300	21,988	9,417	762	133	15.0	13.6	19.1	16.1	
DESOTO	424	359	61	4	0	14.5	15.0	12.3	13.0	
DIXIE	159	139	19	1	0	11.4	11.0	15.6	12.2	
DUVAL	12,169	7,429	4,223	511	6	15.7	13.2	22.4	23.1	
ESCAMBIA	3,845	2,481	1,182	181	1	12.4	10.5	18.6	16.3	
FLAGLER	414	360	47	6	1	8.6	8.2	12.8	9.8	
FRANKLIN	106	94	12	0	0	9.6	9.6	9.9	0.0	
GADSDEN	706	270	435	1	0	13.4	12.5	14.2	1.8	
GILCHRIST	181	176	2	3	0	13.0	13.8	1.7	33.0	
GLADES	88	66	9	13	0	8.6	8.2	6.1	17.4	
GULF	127	108	16	3	0	8.5	9.2	5.2	15.8	
HAMILTON	168	110	57	1	0	11.0	12.1	9.5	6.9	
HARDEE	450	418	31	1	0	19.8	20.4	15.3	3.8	
HENDRY	643	529	96	18	0	20.4	20.3	20.7	22.5	
HERNANDO	1,175	1,066	87	22	0	8.9	8.4	19.2	24.4	
HIGHLANDS	841	666	159	16	0	10.1	8.8	22.7	19.6	
HILLSBOROUGH	14,662	11,146	2,982	494	40	14.9	13.4	22.6	24.8	
HOLMES	213	200	8	5	0	11.1	11.4	6.1	14.2	
INDIAN RIVER	1,127	940	164	23	0	10.0	9.0	22.1	30.1	
JACKSON	583	415	162	6	0	11.6	11.6	11.6	10.1	
JEFFERSON	136	74	61	1	0	9.3	8.6	10.3	8.1	
LAFAYETTE	91	79	12	0	0	12.4	12.7	11.1	0.0	
LAKE	2,362	1,970	352	39	1	11.3	10.2	22.1	26.7	
LEE	5,196	4,403	736	53	4	12.1	11.1	27.4	13.7	
LEON	2,989	1,753	1,134	95	7	12.2	9.8	19.0	17.5	
LEVY	431	356	67	8	0	12.5	11.7	18.9	21.2	
LIBERTY	78	70	8	0	0	9.2	10.0	5.6	0.0	
MADISON	219	101	116	2	0	10.9	8.4	14.6	12.5	
MANATEE	3,235	2,660	467	107	1	12.5	11.2	24.5	42.6	
MARION	2,902	2,266	581	54	1	11.3	10.1	19.8	20.4	
MARTIN	1,238	977	128	130	3	9.9	8.4	18.4	114.1	
MONROE	795	690	67	26	12	9.0	8.3	15.0	25.2	
NASSAU	743	689	48	6	0	12.6	12.9	10.0	15.0	
OKALOOSA	2,359	1,898	342	119	0	12.8	11.9	19.2	17.5	
OKEECHOBEE	527	483	37	7	0	14.4	14.6	12.5	12.3	
ORANGE	14,070	9,693	3,743	626	8	16.2	13.7	27.0	24.7	
OSCEOLA	2,615	2,261	253	100	1	16.0	15.0	27.4	28.6	
PALM BEACH	13,321	9,228	3,488	577	28	12.5	10.0	26.6	37.5	
PASCO	3,759	3,537	141	78	3	11.3	10.9	21.0	25.2	
PINELLAS	9,596	7,512	1,650	425	9	10.6	9.2	22.4	28.1	
POLK	6,874	5,440	1,328	104	2	14.2	13.0	21.9	18.7	
PUTNAM	897	659	232	3	3	12.2	10.9	18.2	4.0	
ST JOHN'S	1,325	1,162	141	22	0	11.2	10.6	18.7	24.1	
ST LUCIE	2,248	1,574	619	54	1	11.7	9.7	21.7	23.9	
SANTA ROSA	1,501	1,387	70	44	0	13.0	12.9	13.2	16.2	
SARASOTA	2,719	2,364	290	64	1	8.3	7.6	21.8	25.9	
SEMINOLE	4,583	3,774	642	164	3	12.6	11.6	21.6	20.6	
SUMTER	477	363	106	7	1	9.2	8.6	11.3	14.8	
SUWANNEE	465	383	81	1	0	13.1	12.4	18.5	4.0	
TAYLOR	249	189	56	4	0	12.0	11.7	13.4	12.7	
UNION	133	109	24	0	0	9.2	10.0	7.3	0.0	
VOLUSIA	4,459	3,697	681	80	1	10.2	9.4	18.7	15.5	
WAKULLA	287	248	36	3	0	13.3	13.4	13.2	12.2	
WALTON	442	391	40	11	0	10.6	10.3	14.8	12.4	
WASHINGTON	220	176	40	4	0	9.9	9.8	10.8	6.2	

TABLE B-1 (Cont.): RESIDENT AND RECORDED LIVE BIRTHS AND BIRTH RATES PER 1,000 POPULATION, BY RACE OF MOTHER, BY COUNTY, FLORIDA, 2000

	RECORDED LIVE BIRTHS									
	NUMBER					RATES				
	TOTAL	WHITE	BLACK	OTHER	UNK	TOTAL	WHITE	BLACK	OTHER	
FLORIDA	204,316	150,313	47,371	6,362	270	13.0	11.4	21.6	21.7	
ALACHUA	5,593	4,122	1,314	155	2	25.3	24.0	31.5	21.8	
BAKER	6	5	1	0	0	0.3	0.3	0.3	0.0	
BAY	2,443	2,049	315	78	1	16.0	15.4	19.7	18.4	
BRADFORD	1	1	0	0	0	0.0	0.0	0.0	0.0	
BREVARD	4,868	4,036	672	152	8	10.0	9.2	17.9	16.7	
BROWARD	21,258	12,726	7,843	683	6	14.0	10.6	27.7	19.1	
CALHOUN	2	0	1	1	0	0.1	0.0	0.4	4.5	
CHARLOTTE	1,029	956	52	21	0	7.3	7.1	8.6	14.4	
CITRUS	805	766	23	15	1	6.8	6.7	8.8	17.0	
CLAY	1,618	1,353	202	63	0	11.3	10.3	25.7	18.3	
COLLIER	2,603	2,271	284	48	0	11.5	10.5	29.4	28.5	
COLUMBIA	525	378	139	8	0	8.9	8.1	12.5	10.2	
MIAMI-DADE	32,427	22,333	9,185	773	136	15.0	13.8	18.6	16.3	
DESOTO	692	613	74	5	0	23.7	25.6	14.9	16.2	
DIXIE	3	1	2	0	0	0.2	0.1	1.6	0.0	
DUVAL	13,895	9,047	4,306	536	6	17.9	16.0	22.8	24.3	
ESCAMBIA	5,147	3,646	1,275	226	0	16.6	15.5	20.1	20.4	
FLAGLER	5	4	1	0	0	0.1	0.1	0.3	0.0	
FRANKLIN	3	2	1	0	0	0.3	0.2	0.8	0.0	
GADSDEN	10	6	4	0	0	0.2	0.3	0.1	0.0	
GILCHRIST	0	0	0	0	0	0.0	0.0	0.0	0.0	
GLADES	1	0	0	1	0	0.1	0.0	0.0	1.3	
GULF	0	0	0	0	0	0.0	0.0	0.0	0.0	
HAMILTON	1	1	0	0	0	0.1	0.1	0.0	0.0	
HARDEE	2	2	0	0	0	0.1	0.1	0.0	0.0	
HENDRY	6	5	1	0	0	0.2	0.2	0.2	0.0	
HERNANDO	1,327	1,217	84	26	0	10.1	9.6	18.5	28.9	
HIGHLANDS	1,017	797	188	32	0	12.2	10.5	26.8	39.3	
HILLSBOROUGH	16,188	12,494	3,133	523	38	16.4	15.0	23.7	26.3	
HOLMES	2	2	0	0	0	0.1	0.1	0.0	0.0	
INDIAN RIVER	1,105	928	156	21	0	9.8	8.9	21.0	27.5	
JACKSON	578	406	163	9	0	11.5	11.3	11.6	15.1	
JEFFERSON	0	0	0	0	0	0.0	0.0	0.0	0.0	
LAFAYETTE	0	0	0	0	0	0.0	0.0	0.0	0.0	
LAKE	1,876	1,446	398	32	0	8.9	7.5	25.0	21.9	
LEE	6,216	5,311	829	74	2	14.5	13.4	30.9	19.1	
LEON	4,889	2,887	1,887	109	6	20.0	16.1	31.6	20.0	
LEVY	1	1	0	0	0	0.0	0.0	0.0	0.0	
LIBERTY	1	1	0	0	0	0.1	0.1	0.0	0.0	
MADISON	2	0	2	0	0	0.1	0.0	0.3	0.0	
MANATEE	2,650	2,155	398	97	0	10.2	9.1	20.9	38.6	
MARION	2,433	1,933	448	51	1	9.5	8.6	15.3	19.3	
MARTIN	1,605	1,330	136	139	0	12.9	11.4	19.5	122.0	
MONROE	585	491	62	23	9	6.6	5.9	13.8	22.3	
NASSAU	414	372	38	4	0	7.0	6.9	7.9	10.0	
OKALOOSA	2,529	2,069	336	124	0	13.7	13.0	18.8	18.3	
OKEECHOBEE	6	6	0	0	0	0.2	0.2	0.0	0.0	
ORANGE	16,912	12,342	3,892	669	9	19.4	17.5	28.0	26.4	
OSCEOLA	2,852	2,394	296	161	1	17.4	15.9	32.1	46.1	
PALM BEACH	14,964	10,589	3,716	632	27	14.0	11.5	28.4	41.0	
PASCO	1,648	1,488	110	49	1	4.9	4.6	16.4	15.8	
PINELLAS	10,676	8,583	1,651	431	11	11.8	10.5	22.4	28.5	
POLK	6,002	4,757	1,152	92	1	12.4	11.4	19.0	16.5	
PUTNAM	531	344	186	1	0	7.2	5.7	14.6	1.3	
ST JOHN'S	873	726	135	11	1	7.4	6.6	17.9	12.1	
ST LUCIE	1,913	1,290	582	40	1	9.9	8.0	20.4	17.7	
SANTA ROSA	554	514	31	9	0	4.8	4.8	5.8	3.3	
SARASOTA	3,266	2,832	361	73	0	10.0	9.1	27.1	29.5	
SEMINOLE	3,788	3,049	644	94	1	10.4	9.3	21.7	11.8	
SUMTER	5	4	1	0	0	0.1	0.1	0.1	0.0	
SUWANNEE	5	4	1	0	0	0.1	0.1	0.2	0.0	
TAYLOR	3	2	1	0	0	0.1	0.1	0.2	0.0	
UNION	0	0	0	0	0	0.0	0.0	0.0	0.0	
VOLUSIA	3,941	3,214	655	71	1	9.0	8.2	18.0	13.8	
WAKULLA	4	3	1	0	0	0.2	0.2	0.4	0.0	
WALTON	11	9	2	0	0	0.3	0.2	0.7	0.0	
WASHINGTON	1	0	1	0	0	0.0	0.0	0.3	0.0	

TABLE B-2: RESIDENT LIVE BIRTHS BY HISPANIC OR HAITIAN ORIGIN OF MOTHER, BY COUNTY, FLORIDA, 2000

	HISPANIC ORIGIN									
	TOTAL	TOTAL HISPANIC	MEXICAN	PUERTO RICAN	CUBAN	CENTRAL/SOUTH AMERICAN	OTHER/UNK HISPANIC	HAITIAN	NON-HISPANIC/HAITIAN	UNK
FLORIDA	204,030	45,839	10,845	8,457	9,318	15,956	1,263	6,164	151,811	216
ALACHUA	2,600	110	16	35	10	45	4	1	2,489	0
BAKER	356	4	1	1	0	1	1	0	352	0
BAY	2,010	65	24	23	6	8	4	0	1,941	4
BRADFORD	320	5	5	0	0	0	0	0	315	0
BREVARD	5,014	321	77	114	24	84	22	7	4,681	5
BROWARD	22,089	4,955	497	854	792	2,541	271	1,648	15,474	12
CALHOUN	157	9	9	0	0	0	0	0	148	0
CHARLOTTE	1,033	62	24	16	5	14	3	13	958	0
CITRUS	871	19	7	4	1	3	4	2	848	2
CLAY	1,830	101	26	35	1	26	13	6	1,723	0
COLLIER	3,064	1,271	854	61	103	234	19	235	1,557	1
COLUMBIA	764	22	10	5	3	4	0	0	742	0
MIAMI-DADE	32,300	18,078	1,042	1,274	6,854	8,653	255	1,932	12,226	64
DESOTO	424	146	129	7	0	3	7	0	278	0
DIXIE	159	5	2	0	0	2	1	0	154	0
DUVAL	12,169	557	116	197	48	129	67	28	11,577	7
ESCAMBIA	3,845	126	52	18	3	22	31	0	3,719	0
FLAGLER	414	24	2	13	1	4	4	0	390	0
FRANKLIN	106	0	0	0	0	0	0	0	106	0
GADSDEN	706	100	75	2	1	15	7	0	605	1
GILCHRIST	181	6	4	0	0	1	1	0	175	0
GLADES	88	16	13	1	1	1	0	0	72	0
GULF	127	2	0	2	0	0	0	0	125	0
HAMILTON	168	14	9	0	1	4	0	0	154	0
HARDEE	450	264	250	3	0	2	9	1	184	1
HENDRY	643	317	256	24	16	17	4	1	323	2
HERNANDO	1,175	67	12	39	5	7	4	0	1,108	0
HIGHLANDS	841	187	137	36	6	7	1	5	649	0
HILLSBOROUGH	14,662	3,540	1,242	1,030	496	643	129	109	10,971	42
HOLMES	213	4	1	1	0	0	2	0	209	0
INDIAN RIVER	1,127	182	147	9	1	20	5	8	937	0
JACKSON	583	9	6	1	1	1	0	0	574	0
JEFFERSON	136	2	2	0	0	0	0	0	134	0
LAFAYETTE	91	10	10	0	0	0	0	0	81	0
LAKE	2,362	297	201	53	13	28	2	10	2,054	1
LEE	5,196	1,048	524	259	37	200	28	142	4,002	4
LEON	2,989	96	22	30	13	22	9	2	2,887	4
LEVY	431	19	10	2	4	2	1	0	412	0
LIBERTY	78	4	4	0	0	0	0	0	74	0
MADISON	219	9	7	0	1	1	0	0	210	0
MANATEE	3,235	739	565	62	7	99	6	34	2,461	1
MARION	2,902	254	91	107	10	38	8	0	2,648	0
MARTIN	1,238	182	121	25	5	30	1	14	1,041	1
MONROE	795	213	33	16	107	49	8	12	564	6
NASSAU	743	12	2	2	0	5	3	0	731	0
OKALOOSA	2,359	141	51	43	3	25	19	1	2,217	0
OKEECHOBEE	527	179	167	3	1	7	1	0	347	1
ORANGE	14,070	3,456	649	1,759	166	807	75	644	9,963	7
OSCEOLA	2,615	1,004	94	604	30	265	11	23	1,587	1
PALM BEACH	13,321	3,049	932	500	349	1,212	56	1,061	9,185	26
PASCO	3,759	395	185	114	30	43	23	1	3,359	4
PINELLAS	9,596	873	389	232	43	154	55	13	8,705	5
POLK	6,874	1,180	842	208	26	87	17	73	5,617	4
PUTNAM	897	107	72	28	2	2	3	0	789	1
ST JOHNS	1,325	51	9	21	3	10	8	0	1,274	0
ST LUCIE	2,248	329	217	45	11	50	6	112	1,806	1
SANTA ROSA	1,501	30	10	6	1	6	7	1	1,470	0
SARASOTA	2,719	326	179	45	22	71	9	6	2,385	2
SEMINOLE	4,583	623	102	275	38	186	22	17	3,941	2
SUMTER	477	41	33	4	0	3	1	0	435	1
SUWANNEE	465	47	36	0	4	6	1	0	418	0
TAYLOR	249	2	2	0	0	0	0	0	247	0
UNION	133	2	0	1	1	0	0	0	131	0
VOLUSIA	4,459	509	228	201	12	54	14	2	3,945	3
WAKULLA	287	4	2	0	0	1	1	0	283	0
WALTON	442	13	8	4	0	1	0	0	429	0
WASHINGTON	220	5	1	3	0	1	0	0	215	0

TABLE B-3: RESIDENT LIVE BIRTHS FOR INCORPORATED CITIES OF 2,400 OR MORE POPULATION,
BY RACE OF MOTHER, BY COUNTY, FLORIDA, 2000

	TOTAL	WHITE	BLACK	AMERICAN				HAWAIIAN	FILIPINO	OTHER	OTHER	UNK
				INDIAN	CHINESE	JAPANESE	PAC ISL			ENTRIES		
FLORIDA	204,030	150,115	47,271	1,126	482	158	35	974	3,360	216	293	
ALACHUA	2,600	1,687	795	3	34	2	0	10	67	2	0	
ALACHUA	94	63	30	0	0	0	0	0	1	0	0	
GAINESVILLE	1,549	857	598	2	29	1	0	8	53	1	0	
HIGH SPRINGS	60	47	13	0	0	0	0	0	0	0	0	
NEWBERRY	62	54	8	0	0	0	0	0	0	0	0	
BALANCE OF COUNTY	835	666	146	1	5	1	0	2	13	1	0	
BAKER	356	307	44	3	1	0	0	0	0	1	0	
MACCLENNY	75	60	14	0	1	0	0	0	0	0	0	
BALANCE OF COUNTY	281	247	30	3	0	0	0	0	0	1	0	
BAY	2,010	1,660	280	20	0	1	3	15	26	4	1	
CALLAWAY	36	29	4	1	0	0	0	2	0	0	0	
LYNN HAVEN	178	159	16	1	0	0	0	1	1	0	0	
PANAMA CITY	1,043	774	228	10	0	1	2	6	20	2	0	
PANAMA CITY BEACH	228	216	6	3	0	0	0	1	1	1	0	
PARKER	17	13	2	1	0	0	0	0	1	0	0	
SPRINGFIELD	14	13	0	1	0	0	0	0	0	0	0	
BALANCE OF COUNTY	494	456	24	3	0	0	1	5	3	1	1	
BRADFORD	320	255	59	0	0	0	0	1	5	0	0	
STARKE	103	65	36	0	0	0	0	0	2	0	0	
BALANCE OF COUNTY	217	190	23	0	0	0	0	1	3	0	0	
BREVARD	5,014	4,146	704	20	13	3	0	25	94	1	8	
CAPE CANAVERAL	46	43	1	0	0	0	0	0	1	0	1	
COCOA	400	255	142	2	0	0	0	1	0	0	0	
COCOA BEACH	79	73	2	1	0	0	0	1	2	0	0	
INDIALANTIC	84	78	0	0	1	0	0	0	5	0	0	
INDIAN HARBOUR BEACH	56	55	0	0	0	0	0	0	1	0	0	
MALABAR	28	27	1	0	0	0	0	0	0	0	0	
MELBOURNE	929	758	125	3	5	1	0	8	28	0	1	
MELBOURNE BEACH	42	37	0	0	0	0	0	1	4	0	0	
PALM BAY	983	822	131	3	1	0	0	2	21	1	2	
ROCKLEDGE	266	212	46	0	0	0	0	0	7	0	1	
SATELLITE BEACH	144	139	1	0	1	0	0	0	3	0	0	
TITUSVILLE	527	386	129	4	0	2	0	1	5	0	0	
WEST MELBOURNE	101	91	0	0	2	0	0	4	4	0	0	
BALANCE OF COUNTY	1,329	1,170	126	7	3	0	0	7	13	0	3	
BROWARD	22,089	13,719	7,644	66	68	11	1	77	482	10	11	
COCONUT CREEK	590	506	46	0	6	0	0	1	31	0	0	
COOPER CITY	261	238	11	2	0	0	0	2	7	1	0	
CORAL SPRINGS	1,548	1,248	239	2	10	0	0	7	39	2	1	
DANIA	208	105	101	0	0	0	0	0	1	0	1	
DAVIE	869	774	67	4	2	1	0	3	17	0	1	
DEERFIELD BEACH	579	406	159	0	3	1	0	0	9	1	0	
FORT LAUDERDALE	3,379	1,523	1,799	2	3	2	0	6	42	1	1	
HALLANDALE	333	195	130	1	0	0	0	0	6	0	1	
HOLLYWOOD	2,081	1,402	596	35	6	1	0	2	38	0	1	
LAUDERDALE LAKES	493	31	455	0	0	1	0	0	5	0	1	
LAUDERDALE-BY-THE-SEA	15	15	0	0	0	0	0	0	0	0	0	
LAUDERHILL	937	146	771	0	3	0	0	1	15	1	0	
LIGHTHOUSE POINT	129	120	7	0	0	0	0	1	0	1	0	
MARGATE	668	508	140	0	0	0	0	1	19	0	0	
MIRAMAR	1,144	502	596	4	3	0	0	11	28	0	0	
NORTH LAUDERDALE	515	264	232	2	0	0	0	0	16	1	0	
OAKLAND PARK	299	167	123	2	1	0	0	1	5	0	0	
PARKLAND	183	175	3	0	1	0	0	1	3	0	0	
PEMBROKE PARK	15	4	11	0	0	0	0	0	0	0	0	
PEMBROKE PINES	1,866	1,404	356	1	10	2	0	20	69	2	2	
PLANTATION	1,047	765	233	3	7	0	1	4	33	0	1	
POMPANO BEACH	1,757	952	781	3	2	0	0	3	16	0	0	

TABLE B-3 (Cont.): RESIDENT LIVE BIRTHS FOR INCORPORATED CITIES OF 2,400 OR MORE POPULATION,
BY RACE OF MOTHER, BY COUNTY, FLORIDA, 2000

	TOTAL	WHITE	BLACK	AMERICAN INDIAN	CHINESE	JAPANESE	HAWAIIAN	FILIPINO	OTHER ASIAN/ PAC ISL	OTHER ENTRIES	UNK
BROWARD (Cont.)											
SUNRISE	1,074	661	371	2	5	0	0	5	30	0	0
TAMARAC	570	393	150	0	2	1	0	1	23	0	0
WESTON	774	704	43	1	2	1	0	4	19	0	0
WILTON MANOR	81	39	39	1	0	0	0	0	2	0	0
BALANCE OF COUNTY	674	472	185	1	2	1	0	3	9	0	1
CALHOUN											
BLOUNTSTOWN	45	25	19	0	0	0	0	1	0	0	0
BALANCE OF COUNTY	112	101	9	2	0	0	0	0	0	0	0
CHARLOTTE											
PUNTA GORDA	90	78	8	0	0	0	0	0	4	0	0
BALANCE OF COUNTY	943	878	46	0	1	0	0	4	14	0	0
CITRUS											
CRYSTAL RIVER	76	66	6	0	0	0	0	1	3	0	0
INVERNESS	96	85	6	3	0	0	0	0	2	0	0
BALANCE OF COUNTY	699	672	15	2	0	1	0	1	6	1	1
CLAY											
GREEN COVE SPRINGS	42	33	8	0	0	0	0	1	0	0	0
ORANGE PARK	347	272	51	2	1	4	0	4	13	0	0
BALANCE OF COUNTY	1,441	1,303	97	8	1	2	2	14	14	0	0
COLLIER											
MARCO ISLAND	58	57	0	0	0	0	0	1	0	0	0
NAPLES	210	161	42	0	0	0	1	0	5	0	1
BALANCE OF COUNTY	2,796	2,433	307	15	0	1	0	7	33	0	0
COLUMBIA											
LAKE CITY	306	202	97	2	2	0	0	2	1	0	0
BALANCE OF COUNTY	458	399	48	7	1	0	0	0	3	0	0
MIAMI-DADE											
AVENTURA	241	231	7	0	0	0	0	1	1	0	1
BAL HARBOUR	24	24	0	0	0	0	0	0	0	0	0
BAY HARBOR ISLANDS	36	34	2	0	0	0	0	0	0	0	0
BISCAYNE PARK	17	13	3	0	0	0	0	0	1	0	0
CORAL GABLES	332	321	2	0	1	0	0	0	3	1	4
EL PORTAL	2	2	0	0	0	0	0	0	0	0	0
FLORIDA CITY	34	16	12	5	0	0	0	0	1	0	0
HIALEAH	2,720	2,537	137	17	2	0	0	3	18	3	3
HIALEAH GARDENS	169	164	2	1	1	0	0	0	0	0	1
HOMESTEAD	725	519	187	16	0	0	0	0	3	0	0
KEY BISCAYNE	79	77	0	0	0	0	0	0	0	1	1
MIAMI	13,665	6,962	6,294	188	27	3	1	24	135	4	27
MIAMI BEACH	838	764	52	4	0	0	0	4	12	0	2
MIAMI SHORES	80	61	16	1	1	0	0	1	0	0	0
MIAMI SPRINGS	82	75	3	0	0	0	0	2	2	0	0
NORTH BAY VILLAGE	58	50	3	1	1	0	0	1	2	0	0
NORH MIAMI	544	209	315	2	4	1	0	4	5	0	4
NORTH MIAMI BEACH	678	373	287	3	2	0	0	2	9	0	2
OPA-LOCKA	498	178	316	1	0	0	0	0	3	0	0
PINECREST	7	7	0	0	0	0	0	0	0	0	0
SOUTH MIAMI	45	32	12	0	0	0	0	0	0	0	1
SUNNY ISLES BEACH	30	25	2	0	0	1	0	0	2	0	0
SURFSIDE	44	41	1	0	0	0	0	0	2	0	0
SWEETWATER	0	0	0	0	0	0	0	0	0	0	0
VIRGINIA GARDENS	9	9	0	0	0	0	0	0	0	0	0
WEST MIAMI	5	5	0	0	0	0	0	0	0	0	0
BALANCE OF COUNTY	11,338	9,259	1,764	15	31	8	0	22	134	18	87
DESOTO											
ARCADIA	187	134	52	1	0	0	0	0	0	0	0
BALANCE OF COUNTY	237	225	9	1	0	0	0	1	1	0	0

TABLE B-3 (Cont.): RESIDENT LIVE BIRTHS FOR INCORPORATED CITIES OF 2,400 OR MORE POPULATION,
BY RACE OF MOTHER, BY COUNTY, FLORIDA, 2000

	TOTAL	WHITE	BLACK	AMERICAN				OTHER		OTHER ENTRIES	UNK
				INDIAN	CHINESE	JAPANESE	HAWAIIAN	FILIPINO	PAC ISL		
DIXIE	159	139	19	0	0	1	0	0	0	0	0
DUVAL	12,169	7,429	4,223	34	18	11	3	165	265	15	6
ATLANTIC BEACH	404	307	75	3	1	0	0	11	7	0	0
BALDWIN	40	30	10	0	0	0	0	0	0	0	0
JACKSONVILLE	11,424	6,821	4,119	30	17	10	3	152	252	15	5
JACKSONVILLE BEACH	242	215	18	1	0	1	0	1	5	0	1
NEPTUNE BEACH	59	56	1	0	0	0	0	1	1	0	0
ESCAMBIA	3,845	2,481	1,182	42	9	8	0	36	84	2	1
CENTURY	14	5	8	1	0	0	0	0	0	0	0
PENSACOLA	878	461	377	8	2	1	0	11	17	0	1
BALANCE OF COUNTY	2,953	2,015	797	33	7	7	0	25	67	2	0
FLAGLER	414	360	47	0	0	0	0	5	1	0	1
FLAGLER BEACH	29	29	0	0	0	0	0	0	0	0	0
BALANCE OF COUNTY	385	331	47	0	0	0	0	5	1	0	1
FRANKLIN	106	94	12	0	0	0	0	0	0	0	0
APALACHICOLA	29	21	8	0	0	0	0	0	0	0	0
BALANCE OF COUNTY	77	73	4	0	0	0	0	0	0	0	0
GADSDEN	706	270	435	0	0	0	0	0	1	0	0
CHATTAHOOCHEE	40	13	27	0	0	0	0	0	0	0	0
GRETNA	26	7	19	0	0	0	0	0	0	0	0
HAVANA	57	23	34	0	0	0	0	0	0	0	0
QUINCY	205	58	147	0	0	0	0	0	0	0	0
BALANCE OF COUNTY	378	169	208	0	0	0	0	0	1	0	0
GILCHRIST	181	176	2	1	0	1	0	0	1	0	0
GLADES	88	66	9	13	0	0	0	0	0	0	0
GULF	127	108	16	2	1	0	0	0	0	0	0
PORT SAINT JOE	44	33	10	0	1	0	0	0	0	0	0
BALANCE OF COUNTY	83	75	6	2	0	0	0	0	0	0	0
HAMILTON	168	110	57	0	0	0	0	0	0	1	0
HARDEE	450	418	31	1	0	0	0	0	0	0	0
BOWLING GREEN	63	56	7	0	0	0	0	0	0	0	0
WAUCHULA	130	115	15	0	0	0	0	0	0	0	0
BALANCE OF COUNTY	257	247	9	1	0	0	0	0	0	0	0
HENDRY	643	529	96	16	0	0	0	2	0	0	0
CLEWISTON	186	114	66	4	0	0	0	2	0	0	0
LA BELLE	154	150	4	0	0	0	0	0	0	0	0
BALANCE OF COUNTY	303	265	26	12	0	0	0	0	0	0	0
HERNANDO	1,175	1,066	87	5	0	1	0	8	8	0	0
BROOKSVILLE	92	73	17	0	0	1	0	1	0	0	0
BALANCE OF COUNTY	1,083	993	70	5	0	0	0	7	8	0	0
HIGHLANDS	841	666	159	5	1	0	0	4	6	0	0
AVON PARK	152	92	58	0	1	0	0	1	0	0	0
SEBRING	217	165	49	1	0	0	0	0	2	0	0
BALANCE OF COUNTY	472	409	52	4	0	0	0	3	4	0	0
HILLSBOROUGH	14,662	11,146	2,982	45	38	10	2	74	314	11	40
PLANT CITY	604	502	94	1	0	1	0	2	3	1	0
TAMPA	8,462	5,636	2,458	27	26	7	2	42	233	8	23
TEMPLE TERRACE	149	100	41	0	0	0	0	1	5	0	2
BALANCE OF COUNTY	5,447	4,908	389	17	12	2	0	29	73	2	15
HOLMES	213	200	8	1	0	0	0	1	3	0	0
BONIFAY	67	57	6	1	0	0	0	1	2	0	0
BALANCE OF COUNTY	146	143	2	0	0	0	0	0	1	0	0

TABLE B-3 (Cont.): RESIDENT LIVE BIRTHS FOR INCORPORATED CITIES OF 2,400 OR MORE POPULATION,
BY RACE OF MOTHER, BY COUNTY, FLORIDA, 2000

	TOTAL	WHITE	BLACK	AMERICAN INDIAN	CHINESE	JAPANESE	HAWAIIAN	FILIPINO	OTHER ASIAN/ PAC ISL	OTHER ENTRIES	UNK
INDIAN RIVER	1,127	940	164	4	0	2	0	0	10	7	0
FELLSMERE	95	92	3	0	0	0	0	0	0	0	0
INDIAN RIVER SHORES	0	0	0	0	0	0	0	0	0	0	0
SEBASTIAN	140	129	8	0	0	0	0	0	3	0	0
VERO BEACH	264	230	26	1	0	0	0	0	2	5	0
BALANCE OF COUNTY	628	489	127	3	0	2	0	0	5	2	0
JACKSON	583	415	162	2	0	0	0	2	2	0	0
GRACEVILLE	41	29	11	1	0	0	0	0	0	0	0
MARIANNA	127	62	64	0	0	0	0	1	0	0	0
BALANCE OF COUNTY	415	324	87	1	0	0	0	1	2	0	0
JEFFERSON	136	74	61	0	0	0	0	0	1	0	0
MONTICELLO	50	13	36	0	0	0	0	0	1	0	0
BALANCE OF COUNTY	86	61	25	0	0	0	0	0	0	0	0
LAFAYETTE	91	79	12	0	0	0	0	0	0	0	0
LAKE	2,362	1,970	352	8	4	2	2	8	15	0	1
CLERMONT	276	250	21	0	1	0	1	2	1	0	0
EUSTIS	196	139	55	1	0	0	0	0	1	0	0
FRUITLAND PARK	43	36	4	0	0	0	0	0	3	0	0
GROVELAND	76	68	7	0	0	1	0	0	0	0	0
LADY LAKE	62	53	9	0	0	0	0	0	0	0	0
LEESBURG	298	151	141	2	2	0	0	1	1	0	0
MASCOTTE	59	57	2	0	0	0	0	0	0	0	0
MINNEOLA	11	9	1	1	0	0	0	0	0	0	0
MOUNT DORA	130	87	43	0	0	0	0	0	0	0	0
TAVARES	87	75	9	1	0	0	0	0	2	0	0
UMATILLA	42	40	2	0	0	0	0	0	0	0	0
BALANCE OF COUNTY	1,082	1,005	58	3	1	1	1	5	7	0	1
LEE	5,196	4,403	736	4	7	3	1	10	24	4	4
CAPE CORAL	1,099	1,041	40	1	0	1	1	5	8	1	1
FORT MYERS	1,012	517	485	1	2	0	0	1	3	0	3
FORT MYERS BEACH	24	23	0	0	0	0	0	0	1	0	0
SANIBEL	4	4	0	0	0	0	0	0	0	0	0
BALANCE OF COUNTY	3,057	2,818	211	2	5	2	0	4	12	3	0
LEON	2,989	1,753	1,134	5	23	3	0	9	54	1	7
TALLAHASSEE	2,170	1,111	964	4	22	2	0	9	50	1	7
BALANCE OF COUNTY	819	642	170	1	1	1	0	0	4	0	0
LEVY	431	356	67	4	0	0	0	1	2	1	0
WILLISTON	51	32	18	1	0	0	0	0	0	0	0
BALANCE OF COUNTY	380	324	49	3	0	0	0	1	2	1	0
LIBERTY	78	70	8	0	0	0	0	0	0	0	0
MADISON	219	101	116	1	0	0	0	0	1	0	0
MADISON	83	28	55	0	0	0	0	0	0	0	0
BALANCE OF COUNTY	136	73	61	1	0	0	0	0	1	0	0
MANATEE	3,235	2,660	467	6	6	2	2	16	23	52	1
BRADENTON	747	546	167	5	2	0	0	2	5	20	0
BRADENTON BEACH	6	6	0	0	0	0	0	0	0	0	0
HOLMES BEACH	20	20	0	0	0	0	0	0	0	0	0
LONGBOAT KEY	3	3	0	0	0	0	0	0	0	0	0
PAMETTO	222	175	41	0	0	1	0	0	0	5	0
BALANCE OF COUNTY	2,237	1,910	259	1	4	1	2	14	18	27	1
MARION	2,902	2,266	581	9	2	2	0	8	26	7	1
BELLEVIEW	0	0	0	0	0	0	0	0	0	0	0
OCALA	973	628	323	3	1	0	0	4	13	1	0
BALANCE OF COUNTY	1,929	1,638	258	6	1	2	0	4	13	6	1

TABLE B-3 (Cont.): RESIDENT LIVE BIRTHS FOR INCORPORATED CITIES OF 2,400 OR MORE POPULATION,
BY RACE OF MOTHER, BY COUNTY, FLORIDA, 2000

	TOTAL	AMERICAN					OTHER		PAC ISL	OTHER ENTRIES	UNK
		WHITE	BLACK	INDIAN	CHINESE	JAPANESE	HAWAIIAN	FILIPINO			
MARTIN	1,238	977	128	111	1	0	1	5	11	1	3
PORT SAINT LUCIE	3	1	1	0	0	0	0	0	1	0	0
STUART	261	210	40	8	1	0	0	0	1	0	1
BALANCE OF COUNTY	974	766	87	103	0	0	1	5	9	1	2
MONROE	795	690	67	6	3	1	1	7	6	2	12
ISLAMORADA	11	8	0	0	0	0	0	0	0	0	3
KEY WEST	300	234	42	3	2	1	1	5	3	2	7
MARATHON	74	68	4	1	0	0	0	1	0	0	0
BALANCE OF COUNTY	410	380	21	2	1	0	0	1	3	0	2
NASSAU	743	689	48	2	0	0	0	1	3	0	0
FERNANDINA BEACH	140	122	18	0	0	0	0	0	0	0	0
HILLIARD	41	38	3	0	0	0	0	0	0	0	0
BALANCE OF COUNTY	562	529	27	2	0	0	0	1	3	0	0
OKALOOSA	2,359	1,898	342	12	2	8	2	43	45	7	0
CRESTVIEW	257	196	55	1	0	0	0	4	1	0	0
DESTIN	98	93	0	0	0	0	0	1	4	0	0
FORT WALTON BEACH	416	281	109	2	0	1	0	9	13	1	0
MARY ESTHER	102	72	21	1	0	1	1	4	0	2	0
NICEVILLE	207	178	12	2	0	1	0	5	9	0	0
VALPARAISO	37	33	3	0	0	0	0	1	0	0	0
BALANCE OF COUNTY	1,242	1,045	142	6	2	5	1	19	18	4	0
OKEECHOBEE	527	483	37	5	0	0	0	0	2	0	0
OKEECHOBEE	318	288	27	1	0	0	0	0	2	0	0
BALANCE OF COUNTY	209	195	10	4	0	0	0	0	0	0	0
ORANGE	14,070	9,693	3,743	34	50	24	5	91	410	12	8
APOPKA	769	590	169	1	0	0	0	3	6	0	0
BELLE ISLE	4	3	0	0	0	1	0	0	0	0	0
EATONVILLE	9	0	9	0	0	0	0	0	0	0	0
MAITLAND	120	89	28	0	0	1	0	0	2	0	0
OCOEE	479	432	33	1	0	0	0	6	6	1	0
ORLANDO	8,004	5,137	2,437	23	28	18	5	58	287	8	3
WINTER GARDEN	304	225	74	0	0	0	0	0	2	3	0
WINTER PARK	498	395	87	0	2	0	0	2	10	0	2
BALANCE OF COUNTY	3,883	2,822	906	9	20	4	0	22	97	0	3
OSCEOLA	2,615	2,261	253	8	8	2	1	15	66	0	1
KISSIMMEE	1,238	1,020	161	6	3	2	1	10	35	0	0
SAINT CLOUD	242	224	10	1	1	0	0	1	5	0	0
BALANCE OF COUNTY	1,135	1,017	82	1	4	0	0	4	26	0	1
PALM BEACH	13,321	9,228	3,488	210	41	10	1	52	251	12	28
BELLE GLADE	419	184	231	1	0	0	0	0	0	0	3
BOCA RATON	1,236	1,098	81	1	11	0	0	6	36	2	1
BOYNTON BEACH	1,028	611	381	4	5	1	0	5	20	0	1
DELRAY BEACH	809	387	386	2	3	3	1	4	23	0	0
GREENACRES CITY	157	135	18	0	0	0	0	2	1	1	0
HIGHLAND BEACH	18	17	0	0	0	0	0	0	1	0	0
JUNO BEACH	16	16	0	0	0	0	0	0	0	0	0
JUPITER	500	456	20	11	0	0	0	3	8	1	1
LAKE CLARK SHORES	8	8	0	0	0	0	0	0	0	0	0
LAKE PARK	170	69	95	1	0	0	0	1	2	0	2
LAKE WORTH	1,616	1,213	325	45	2	1	0	6	22	1	1
LANTANA	276	200	70	2	0	0	0	0	4	0	0
NORTH PALM BEACH	81	72	3	0	0	0	0	0	6	0	0
PAHOKEE	150	40	109	0	0	0	0	1	0	0	0
PALM BEACH	35	35	0	0	0	0	0	0	0	0	0
PALM BEACH GARDENS	445	394	29	0	3	1	0	3	12	1	2
PALM SPRINGS	118	98	19	0	0	0	0	1	0	0	0
RIVIERA BEACH	474	29	438	5	0	0	0	0	2	0	0

TABLE B-3 (Cont.): RESIDENT LIVE BIRTHS FOR INCORPORATED CITIES OF 2,400 OR MORE POPULATION,
BY RACE OF MOTHER, BY COUNTY, FLORIDA, 2000

	TOTAL	AMERICAN						OTHER		OTHER ENTRIES	UNK
		WHITE	BLACK	INDIAN	CHINESE	JAPANESE	HAWAIIAN	FILIPINO	PAC ISL		
PALM BEACH (Cont.)											
ROYAL PALM BEACH	258	205	42	0	1	0	0	4	6	0	0
SOUTH BAY	48	13	35	0	0	0	0	0	0	0	0
TEQUESTA	65	62	0	0	0	0	0	0	2	0	1
WELLINGTON	397	361	23	0	0	0	0	2	10	0	1
WEST PALM BEACH	2,851	1,655	988	133	4	1	0	6	54	2	8
BALANCE OF COUNTY	2,146	1,870	195	5	12	3	0	8	42	4	7
PASCO											
DADE CITY	186	133	52	1	0	0	0	0	0	0	0
NEW PORT RICHEY	603	570	12	2	1	2	0	4	11	1	0
PORT RICHEY	272	258	6	0	1	0	1	0	4	2	0
ZEPHYRHILLS	135	119	15	1	0	0	0	0	0	0	0
BALANCE OF COUNTY	2,563	2,457	56	9	2	1	0	11	23	1	3
PINELLAS											
BELLEAIR	29	29	0	0	0	0	0	0	0	0	0
BELLEAIR BLUFFS	9	8	0	0	0	0	0	0	1	0	0
CLEARWATER	1,783	1,444	270	5	7	2	2	15	31	4	3
DUNEDIN	252	230	11	2	2	0	0	3	3	1	0
GULFPORT	86	65	20	0	0	0	0	0	1	0	0
INDIAN ROCKS BEACH	26	26	0	0	0	0	0	0	0	0	0
KENNETH CITY	29	24	4	0	0	0	0	0	1	0	0
LARGO	960	823	87	3	1	1	1	11	28	5	0
MADEIRA BEACH	26	25	1	0	0	0	0	0	0	0	0
OLDSMAR	171	156	8	1	1	0	0	0	2	2	1
PINELLAS PARK	521	472	14	4	1	0	0	4	25	1	0
REDINGTON SHORES	1	1	0	0	0	0	0	0	0	0	0
SAFETY HARBOR	0	0	0	0	0	0	0	0	0	0	0
SAINT PETERSBURG	3,453	2,130	1,138	15	4	3	0	22	135	2	4
SAINT PETERSBURG BEACH	45	45	0	0	0	0	0	0	0	0	0
SEMINOLE	290	281	2	1	0	1	0	1	4	0	0
SOUTH PASADENA	19	19	0	0	0	0	0	0	0	0	0
TARPON SPRINGS	285	231	41	1	1	1	0	5	5	0	0
TREASURE ISLAND	31	30	0	0	0	0	0	0	1	0	0
BALANCE OF COUNTY	1,580	1,473	54	4	5	2	0	8	30	3	1
POLK											
AUBURNDALE	241	192	46	1	0	0	0	0	2	0	0
BARTOW	220	158	61	0	0	0	1	0	0	0	0
DUNDEE	35	26	9	0	0	0	0	0	0	0	0
FORT MEADE	94	68	26	0	0	0	0	0	0	0	0
FROSTPROOF	67	61	6	0	0	0	0	0	0	0	0
HAINES CITY	278	197	78	0	0	0	0	1	2	0	0
LAKE ALFRED	74	54	19	0	1	0	0	0	0	0	0
LAKE WALES	213	128	81	0	0	0	0	2	2	0	0
LAKELAND	1,374	992	352	2	2	0	0	3	21	2	0
MULBERRY	53	42	9	1	0	0	0	0	1	0	0
WINTER HAVEN	590	368	204	2	1	0	0	7	8	0	0
BALANCE OF COUNTY	3,635	3,154	437	7	2	2	0	9	22	0	2
PUTNAM											
PALATKA	234	93	140	0	0	0	0	0	0	0	1
BALANCE OF COUNTY	663	566	92	1	0	0	0	0	2	0	2
ST JOHNS											
SAINT AUGUSTINE	311	245	62	0	0	0	0	2	1	1	0
SAINT AUGUSTINE BEACH	4	4	0	0	0	0	0	0	0	0	0
BALANCE OF COUNTY	1,010	913	79	3	1	1	0	5	8	0	0
ST LUCIE											
FORT PIERCE	928	460	447	3	0	0	0	6	11	1	0
PORT SAINT LUCIE	983	854	100	4	4	0	0	8	12	1	0
BALANCE OF COUNTY	337	260	72	2	0	0	0	1	1	0	1

TABLE B-3 (Cont.): RESIDENT LIVE BIRTHS FOR INCORPORATED CITIES OF 2,400 OR MORE POPULATION,
BY RACE OF MOTHER, BY COUNTY, FLORIDA, 2000

	TOTAL	AMERICAN						OTHER		OTHER ENTRIES	UNK
		WHITE	BLACK	INDIAN	CHINESE	JAPANESE	HAWAIIAN	FILIPINO	PAC ISL		
SANTA ROSA	1,501	1,387	70	12	2	3	0	12	14	1	0
GULF BREEZE	56	56	0	0	0	0	0	0	0	0	0
MILTON	256	223	24	1	0	1	0	3	4	0	0
BALANCE OF COUNTY	1,189	1,108	46	11	2	2	0	9	10	1	0
SARASOTA	2,719	2,364	290	7	13	2	0	9	33	0	1
LONGBOAT KEY	1	1	0	0	0	0	0	0	0	0	0
NORTH PORT	283	264	17	0	1	0	0	0	1	0	0
SARASOTA	667	458	193	2	1	1	0	1	10	0	1
VENICE	53	51	2	0	0	0	0	0	0	0	0
BALANCE OF COUNTY	1,715	1,590	78	5	11	1	0	8	22	0	0
SEMINOLE	4,583	3,774	642	11	16	2	1	16	114	4	3
ALTAMONTE SPRINGS	649	519	101	1	0	0	0	5	22	1	0
CASSELBERRY	314	283	21	0	2	0	0	1	6	1	0
LAKE MARY	320	268	22	0	2	1	0	1	25	0	1
LONGWOOD	364	334	14	1	3	0	0	1	11	0	0
MAITLAND	16	15	1	0	0	0	0	0	0	0	0
OVIEDO	490	426	45	3	3	0	0	1	11	0	1
SANFORD	825	491	322	2	0	0	0	0	8	2	0
WINTER SPRINGS	358	326	23	0	3	1	0	1	4	0	0
BALANCE OF COUNTY	1,247	1,112	93	4	3	0	1	6	27	0	1
SUMTER	477	363	106	2	0	0	0	1	3	1	1
BUSHNELL	31	25	5	0	0	0	0	0	1	0	0
WILDWOOD	69	30	39	0	0	0	0	0	0	0	0
BALANCE OF COUNTY	377	308	62	2	0	0	0	1	2	1	1
SUWANNEE	465	383	81	0	0	1	0	0	0	0	0
LIVE OAK	147	92	55	0	0	0	0	0	0	0	0
BALANCE OF COUNTY	318	291	26	0	0	1	0	0	0	0	0
TAYLOR	249	189	56	2	0	0	0	0	2	0	0
PERRY	116	65	49	0	0	0	0	0	2	0	0
BALANCE OF COUNTY	133	124	7	2	0	0	0	0	0	0	0
UNION	133	109	24	0	0	0	0	0	0	0	0
VOLUSIA	4,459	3,697	681	7	8	4	0	12	48	1	1
DAYTONA BEACH	814	432	360	2	2	0	0	3	15	0	0
DAYTONA BEACH SHORES	8	8	0	0	0	0	0	0	0	0	0
DE BARY	113	107	1	0	0	0	0	1	4	0	0
DELAND	441	327	105	0	2	0	0	0	6	1	0
DELTONA	810	740	59	1	1	0	0	2	7	0	0
EDGEWATER	185	181	2	0	0	1	0	0	1	0	0
HOLLY HILL	171	131	40	0	0	0	0	0	0	0	0
LAKE HELEN	31	25	6	0	0	0	0	0	0	0	0
NEW SMYRNA BEACH	190	166	21	0	0	0	0	2	1	0	0
ORANGE CITY	135	130	4	0	0	0	0	0	1	0	0
ORMOND BEACH	391	362	17	2	1	1	0	3	5	0	0
PONCE INLET	7	7	0	0	0	0	0	0	0	0	0
PORT ORANGE	425	413	8	1	0	1	0	0	2	0	0
SOUTH DAYTONA	155	127	24	0	1	1	0	0	2	0	0
BALANCE OF COUNTY	583	541	34	1	1	0	0	1	4	0	1
WAKULLA	287	248	36	0	0	0	0	1	2	0	0
WALTON	442	391	40	4	0	1	0	3	3	0	0
DEFUNIAK SPRINGS	82	58	24	0	0	0	0	0	0	0	0
BALANCE OF COUNTY	360	333	16	4	0	1	0	3	3	0	0
WASHINGTON	220	176	40	1	0	0	0	0	2	1	0
CHIPLEY	75	54	19	0	0	0	0	0	2	0	0
BALANCE OF COUNTY	145	122	21	1	0	0	0	0	0	1	0

TABLE B-4: RESIDENT LIVE BIRTHS BY TYPE OF PLACE OF DELIVERY AND ATTENDANT, BY COUNTY, FLORIDA, 2000

	TOTAL	HOSPITAL			BIRTHING CENTER			OTHER NAMED PLACE	UNK
		PHYSICIAN	MIDWIFE	OTHER	PHYSICIAN	MIDWIFE	OTHER		
FLORIDA	204,030	179,764	21,757	638	37	709	60	1060	5
ALACHUA	2,600	2,419	96	12	0	51	0	22	0
BAKER	356	287	66	0	0	0	0	3	0
BAY	2,010	1,727	277	1	0	1	0	4	0
BRADFORD	320	312	6	2	0	0	0	0	0
BREVARD	5,014	4,429	529	17	0	3	0	35	1
BROWARD	22,089	18,400	3,474	75	2	35	2	101	0
CALHOUN	157	119	36	0	0	1	0	1	0
CHARLOTTE	1,033	902	99	18	0	7	2	5	0
CITRUS	871	844	8	2	0	3	0	14	0
CLAY	1,830	1,631	177	11	0	2	0	9	0
COLLIER	3,064	2,957	49	13	0	7	22	16	0
COLUMBIA	764	640	95	5	0	2	0	22	0
MIAMI-DADE	32,300	31,341	741	66	1	63	3	85	0
DESOTO	424	408	11	1	0	1	1	2	0
DIXIE	159	151	3	1	0	1	0	3	0
DUVAL	12,169	11,262	825	30	0	0	0	52	0
ESCAMBIA	3,845	3,541	246	39	0	0	0	19	0
FLAGLER	414	386	20	2	0	0	0	6	0
FRANKLIN	106	69	36	0	0	0	0	1	0
GADSDEN	706	345	353	0	0	1	0	7	0
GILCHRIST	181	174	4	0	1	1	0	1	0
GLADES	88	72	15	0	0	0	0	1	0
GULF	127	117	10	0	0	0	0	0	0
HAMILTON	168	146	22	0	0	0	0	0	0
HARDEE	450	412	34	2	1	0	0	1	0
HENDRY	643	451	181	3	0	0	0	8	0
HERNANDO	1,175	848	316	6	0	2	0	3	0
HIGHLANDS	841	811	7	8	0	6	0	9	0
HILLSBOROUGH	14,662	13,267	1,243	73	2	11	1	65	0
HOLMES	213	192	20	0	0	0	0	1	0
INDIAN RIVER	1,127	843	270	3	1	2	0	8	0
JACKSON	583	469	114	0	0	0	0	0	0
JEFFERSON	136	74	61	0	0	1	0	0	0
LAFAYETTE	91	83	6	1	0	0	0	1	0
LAKE	2,362	2,054	282	3	0	9	0	14	0
LEE	5,196	3,542	1,568	27	0	1	21	37	0
LEON	2,989	1,696	1,238	5	0	8	0	42	0
LEVY	431	407	21	0	0	2	0	1	0
LIBERTY	78	50	27	0	0	0	0	1	0
MADISON	219	114	101	1	0	0	0	3	0
MANATEE	3,235	3,115	70	10	2	22	0	16	0
MARION	2,902	2,183	690	0	0	6	0	23	0
MARTIN	1,238	797	383	0	1	42	0	15	0
MONROE	795	656	84	2	12	39	0	2	0
NASSAU	743	698	38	2	0	1	0	4	0
OKALOOSA	2,359	2,086	249	12	0	2	0	10	0
OKEECHOBEE	527	472	30	5	1	19	0	0	0
ORANGE	14,070	13,459	389	43	2	98	1	77	1
OSCEOLA	2,615	2,462	114	17	0	10	0	12	0
PALM BEACH	13,321	11,209	1,989	34	0	8	0	80	1
PASCO	3,759	2,973	747	10	1	7	3	18	0
PINELLAS	9,596	7,970	1,525	12	2	45	2	40	0
POLK	6,874	6,068	732	16	1	26	1	29	1
PUTNAM	897	851	24	5	0	5	0	12	0
ST JOHNS	1,325	1,155	161	1	0	0	0	7	1
ST LUCIE	2,248	1,942	218	4	5	70	0	9	0
SANTA ROSA	1,501	1,414	77	6	0	0	0	4	0
SARASOTA	2,719	2,336	318	4	2	43	0	16	0
SEMINOLE	4,583	3,911	599	12	0	29	1	31	0
SUMTER	477	459	12	0	0	1	0	5	0
SUWANNEE	465	397	59	6	0	1	0	2	0
TAYLOR	249	161	86	0	0	0	0	2	0
UNION	133	130	2	0	0	1	0	0	0
VOLUSIA	4,459	4,091	313	9	0	9	0	37	0
WAKULLA	287	163	120	0	0	0	0	4	0
WALTON	442	429	7	1	0	4	0	1	0
WASHINGTON	220	185	34	0	0	0	0	1	0

TABLE B-5: RESIDENT LIVE BIRTHS BY BIRTHWEIGHT, BY COUNTY, FLORIDA, 2000

	TOTAL	BIRTHWEIGHT IN GRAMS										LESS THAN 1,500 GRAMS		LESS THAN 2,500 GRAMS	
		<500	500- 999	1,000- 1,499	1,500- 1,999	2,000- 2,499	2,500- 2,999	3,000- 3,499	3,500- 3,999	4,000+	UNK	NUMBER	% NUMBER	%	
FLORIDA	204,030	314	1,272	1,533	3,130	10,035	35,718	77,684	56,488	17,803	53	3,119	1.5	16,284	8.0
ALACHUA	2,600	8	28	16	31	128	433	967	763	226	0	52	2.0	211	8.1
BAKER	356	0	0	4	5	15	72	106	118	36	0	4	1.1	24	6.7
BAY	2,010	0	17	11	25	85	382	789	541	160	0	28	1.4	138	6.9
BRADFORD	320	0	2	1	5	15	55	119	96	27	0	3	0.9	23	7.2
BREVARD	5,014	7	25	23	74	242	820	1,910	1,441	472	0	55	1.1	371	7.4
BROWARD	22,089	41	165	177	312	1,117	3,955	8,772	5,842	1,706	2	383	1.7	1,812	8.2
CALHOUN	157	0	1	2	3	11	29	58	43	10	0	3	1.9	17	10.8
CHARLOTTE	1,033	0	5	1	12	42	166	403	305	99	0	6	0.6	60	5.8
CITRUS	871	0	6	7	8	45	133	276	279	116	1	13	1.5	66	7.6
CLAY	1,830	1	10	12	27	68	287	641	587	197	0	23	1.3	118	6.4
COLLIER	3,064	2	14	28	26	123	490	1,194	899	287	1	44	1.4	193	6.3
COLUMBIA	764	2	3	10	14	43	132	294	199	67	0	15	2.0	72	9.4
MIAMI-DADE	32,300	41	200	266	493	1,563	5,654	12,626	8,802	2,645	10	507	1.6	2,563	7.9
DESOTO	424	1	3	1	4	20	96	165	103	31	0	5	1.2	29	6.8
DIXIE	159	2	0	0	1	6	28	56	53	13	0	2	1.3	9	5.7
DUVAL	12,169	20	100	128	220	675	2,141	4,517	3,239	1,128	1	248	2.0	1,143	9.4
ESCAMBIA	3,845	9	18	33	59	204	735	1,494	988	304	1	60	1.6	323	8.4
FLAGLER	414	2	1	1	3	16	51	169	128	43	0	4	1.0	23	5.6
FRANKLIN	106	0	0	1	0	4	22	34	35	10	0	1	0.9	5	4.7
GADSDEN	706	4	3	9	13	52	188	255	151	29	2	16	2.3	81	11.5
GILCHRIST	181	0	2	1	7	10	30	57	53	21	0	3	1.7	20	11.0
GLADES	88	0	0	1	2	1	12	39	26	7	0	1	1.1	4	4.5
GULF	127	0	0	0	3	4	23	54	32	11	0	0	0.0	7	5.5
HAMILTON	168	0	3	2	0	13	40	52	40	17	1	5	3.0	18	10.7
HARDEE	450	0	3	4	7	18	93	149	137	39	0	7	1.6	32	7.1
HENDRY	643	0	3	4	10	37	128	239	175	47	0	7	1.1	54	8.4
HERNANDO	1,175	0	7	8	13	47	210	422	352	116	0	15	1.3	75	6.4
HIGHLANDS	841	4	10	5	16	39	146	292	241	88	0	19	2.3	74	8.8
HILLSBOROUGH	14,662	28	75	106	248	734	2,570	5,509	4,096	1,294	2	209	1.4	1,191	8.1
HOLMES	213	0	0	6	3	14	32	91	50	17	0	6	2.8	23	10.8
INDIAN RIVER	1,127	4	9	4	17	46	207	432	310	98	0	17	1.5	80	7.1
JACKSON	583	0	3	4	17	33	117	219	148	41	1	7	1.2	57	9.8
JEFFERSON	136	0	0	1	2	6	35	51	34	7	0	1	0.7	9	6.6
LAFAYETTE	91	0	0	0	4	8	10	30	23	16	0	0	0.0	12	13.2
LAKE	2,362	1	19	16	31	130	400	892	648	224	1	36	1.5	197	8.3
LEE	5,196	9	27	32	93	229	840	2,021	1,486	455	4	68	1.3	390	7.5
LEON	2,989	6	28	28	54	150	581	1,175	761	206	0	62	2.1	266	8.9
LEVY	431	3	2	2	9	25	75	160	118	37	0	7	1.6	41	9.5
LIBERTY	78	0	1	0	0	1	21	30	20	5	0	1	1.3	2	2.6
MADISON	219	1	4	0	5	14	54	69	56	16	0	5	2.3	24	11.0
MANATEE	3,235	4	17	19	55	145	546	1,211	927	311	0	40	1.2	240	7.4
MARION	2,902	4	15	19	48	135	490	1,044	851	295	1	38	1.3	221	7.6
MARTIN	1,238	2	7	4	19	46	169	466	387	137	1	13	1.1	78	6.3
MONROE	795	2	4	4	7	24	128	313	225	85	3	10	1.3	41	5.2
NASSAU	743	1	5	4	11	31	145	283	182	81	0	10	1.3	52	7.0
OKALOOSA	2,359	3	12	17	30	103	351	847	719	274	3	32	1.4	165	7.0
OKEECHOBEE	527	1	4	2	10	18	90	206	153	43	0	7	1.3	35	6.6
ORANGE	14,070	25	103	116	250	800	2,649	5,394	3,702	1,025	6	244	1.7	1,294	9.2
OSCEOLA	2,615	0	5	20	40	122	490	1,069	691	177	1	25	1.0	187	7.2
PALM BEACH	13,321	19	75	102	178	652	2,391	5,211	3,601	1,088	4	196	1.5	1,026	7.7
PASCO	3,759	7	26	18	51	184	617	1,363	1,090	403	0	51	1.4	286	7.6
PINELLAS	9,596	17	54	67	147	466	1,562	3,531	2,746	1,006	0	138	1.4	751	7.8
POLK	6,874	8	36	47	94	307	1,160	2,551	2,005	666	0	91	1.3	492	7.2
PUTNAM	897	2	5	5	21	55	155	340	229	83	2	12	1.3	88	9.8
ST JOHNS	1,325	2	6	8	22	51	210	474	425	127	0	16	1.2	89	6.7
ST LUCIE	2,248	2	11	13	38	108	393	831	648	203	1	26	1.2	172	7.7
SANTA ROSA	1,501	0	6	8	24	74	263	520	444	161	1	14	0.9	112	7.5
SARASOTA	2,719	3	19	20	42	140	438	954	793	309	1	42	1.5	224	8.2
SEMINOLE	4,583	5	22	35	82	198	763	1,724	1,373	381	0	62	1.4	342	7.5
SUMTER	477	1	3	2	7	30	93	189	117	35	0	6	1.3	43	9.0
SUWANNEE	465	8	2	3	10	16	90	167	126	43	0	13	2.8	39	8.4
TAYLOR	249	0	0	3	1	14	62	101	49	19	0	3	1.2	18	7.2
UNION	133	0	2	0	2	6	26	49	40	8	0	2	1.5	10	7.5
VOLUSIA	4,459	2	31	37	51	226	757	1,673	1,289	391	2	70	1.6	347	7.8
WAKULLA	287	0	0	1	5	22	56	95	91	17	0	1	0.3	28	9.8
WALTON	442	0	1	2	7	20	85	157	120	50	0	3	0.7	30	6.8
WASHINGTON	220	0	4	2	2	9	46	93	47	17	0	6	2.7	17	7.7

TABLE B-5 (Cont.): RESIDENT LIVE BIRTHS TO WHITE MOTHERS BY BIRTHWEIGHT, BY COUNTY, FLORIDA, 2000

	TOTAL	BIRTHWEIGHT IN GRAMS										LESS THAN 1,500 GRAMS		LESS THAN 2,500 GRAMS	
		<500	500- 999	1,000- 1,499	1,500- 1,999	2,000- 2,499	2,500- 2,999	3,000- 3,499	3,500- 3,999	4,000+	UNK	NUMBER	%	NUMBER	%
FLORIDA	150,115	144	665	886	1,919	6,283	23,373	56,540	45,326	14,959	20	1,695	1.1	9,897	6.6
ALACHUA	1,687	5	12	7	15	54	227	629	550	188	0	24	1.4	93	5.5
BAKER	307	0	0	0	4	11	57	95	105	35	0	0	0.0	15	4.9
BAY	1,660	0	9	7	21	57	300	646	473	147	0	16	1.0	94	5.7
BRADFORD	255	0	1	1	5	13	41	93	77	24	0	2	0.8	20	7.8
BREVARD	4,146	2	17	16	60	184	609	1,558	1,264	436	0	35	0.8	279	6.7
BROWARD	13,719	13	63	90	159	588	2,177	5,377	4,016	1,236	0	166	1.2	913	6.7
CALHOUN	126	0	0	1	3	9	21	42	41	9	0	1	0.8	13	10.3
CHARLOTTE	956	0	4	1	10	38	154	373	283	93	0	5	0.5	53	5.5
CITRUS	823	0	4	6	7	43	121	264	264	113	1	10	1.2	60	7.3
CLAY	1,608	0	9	12	24	62	239	560	520	182	0	21	1.3	107	6.7
COLLIER	2,651	2	10	22	22	103	417	1,028	789	258	0	34	1.3	159	6.0
COLUMBIA	601	0	2	7	7	31	87	239	169	59	0	9	1.5	47	7.8
MIAMI-DADE	21,988	19	101	133	262	892	3,391	8,633	6,595	1,958	4	253	1.2	1,407	6.4
DESOTO	359	0	3	0	2	17	77	139	94	27	0	3	0.8	22	6.1
DIXIE	139	1	0	0	0	5	23	48	51	11	0	1	0.7	6	4.3
DUVAL	7,429	3	36	53	93	322	1,070	2,634	2,337	881	0	92	1.2	507	6.8
ESCAMBIA	2,481	3	7	16	25	100	412	941	724	253	0	26	1.0	151	6.1
FLAGLER	360	1	0	1	2	10	44	149	115	38	0	2	0.6	14	3.9
FRANKLIN	94	0	0	1	0	3	19	29	32	10	0	1	1.1	4	4.3
GADSDEN	270	0	1	2	2	13	53	101	78	20	0	3	1.1	18	6.7
GILCHRIST	176	0	2	1	7	10	30	54	52	20	0	3	1.7	20	11.4
GLADES	66	0	0	1	0	0	9	31	18	7	0	1	1.5	1	1.5
GULF	108	0	0	0	3	3	17	49	29	7	0	0	0.0	6	5.6
HAMILTON	110	0	2	1	0	5	22	29	35	15	1	3	2.7	8	7.3
HARDEE	418	0	3	4	6	18	85	139	124	39	0	7	1.7	31	7.4
HENDRY	529	0	1	3	7	28	93	203	153	41	0	4	0.8	39	7.4
HERNANDO	1,066	0	5	8	11	40	182	379	333	108	0	13	1.2	64	6.0
HIGHLANDS	666	1	7	3	9	29	113	208	219	77	0	11	1.7	49	7.4
HILLSBOROUGH	11,146	14	39	70	165	485	1,727	4,154	3,359	1,132	1	123	1.1	773	6.9
HOLMES	200	0	0	6	3	13	30	83	48	17	0	6	3.0	22	11.0
INDIAN RIVER	940	1	5	2	10	35	164	357	276	90	0	8	0.9	53	5.6
JACKSON	415	0	0	3	6	22	70	167	112	34	1	3	0.7	31	7.5
JEFFERSON	74	0	0	1	1	3	12	28	24	5	0	1	1.4	5	6.8
LAFAYETTE	79	0	0	0	2	6	9	25	22	15	0	0	0.0	8	10.1
LAKE	1,970	1	15	11	24	100	307	720	579	213	0	27	1.4	151	7.7
LEE	4,403	7	17	24	65	174	691	1,680	1,318	425	2	48	1.1	287	6.5
LEON	1,753	1	6	11	29	62	273	674	529	168	0	18	1.0	109	6.2
LEVY	356	3	1	2	8	20	54	130	102	36	0	6	1.7	34	9.6
LIBERTY	70	0	0	0	0	0	18	28	19	5	0	0	0.0	0	0.0
MADISON	101	1	0	0	3	7	10	31	39	10	0	1	1.0	11	10.9
MANATEE	2,660	3	12	13	47	101	417	988	804	275	0	28	1.1	176	6.6
MARION	2,266	3	6	13	38	92	343	792	714	264	1	22	1.0	152	6.7
MARTIN	977	0	4	2	15	38	117	357	321	123	0	6	0.6	59	6.0
MONROE	690	1	3	3	5	19	106	268	206	79	0	7	1.0	31	4.5
NASSAU	689	1	5	4	9	28	126	266	172	78	0	10	1.5	47	6.8
OKALOOSA	1,898	3	10	15	18	65	257	679	610	239	2	28	1.5	111	5.8
OKEECHOBEE	483	1	4	2	8	15	80	190	140	43	0	7	1.4	30	6.2
ORANGE	9,693	12	54	57	125	441	1,611	3,680	2,880	830	3	123	1.3	689	7.1
OSCEOLA	2,261	0	5	19	34	94	399	927	618	165	0	24	1.1	152	6.7
PALM BEACH	9,228	9	28	53	102	393	1,435	3,598	2,731	879	0	90	1.0	585	6.3
PASCO	3,537	6	24	14	48	163	564	1,283	1,042	393	0	44	1.2	255	7.2
PINELLAS	7,512	10	28	42	88	311	1,067	2,730	2,340	896	0	80	1.1	479	6.4
POLK	5,440	3	23	35	70	225	801	2,006	1,690	587	0	61	1.1	356	6.5
PUTNAM	659	1	3	4	16	31	95	257	186	66	0	8	1.2	55	8.3
ST JOHNS	1,162	2	4	4	16	41	177	405	393	120	0	10	0.9	67	5.8
ST LUCIE	1,574	0	7	9	23	56	232	563	517	166	1	16	1.0	95	6.0
SANTA ROSA	1,387	0	6	6	22	68	240	475	417	152	1	12	0.9	102	7.4
SARASOTA	2,364	1	14	15	29	100	366	824	723	291	1	30	1.3	159	6.7
SEMINOLE	3,774	2	14	21	59	135	553	1,437	1,202	351	0	37	1.0	231	6.1
SUMTER	363	1	1	2	3	23	59	148	93	33	0	4	1.1	30	8.3
SUWANNEE	383	7	1	1	6	11	73	137	109	38	0	9	2.3	26	6.8
TAYLOR	189	0	0	2	1	6	43	76	43	18	0	2	1.1	9	4.8
UNION	109	0	2	0	2	4	18	42	34	7	0	2	1.8	8	7.3
VOLUSIA	3,697	0	21	19	42	166	581	1,376	1,141	350	1	40	1.1	248	6.7
WAKULLA	248	0	0	1	3	18	47	84	79	16	0	1	0.4	22	8.9
WALTON	391	0	1	2	7	16	72	135	112	46	0	3	0.8	26	6.6
WASHINGTON	176	0	3	1	1	8	39	70	42	12	0	4	2.3	13	7.4

TABLE B-5 (Cont.): RESIDENT LIVE BIRTHS TO BLACK MOTHERS BY BIRTHWEIGHT, BY COUNTY, FLORIDA, 2000

	TOTAL	BIRTHWEIGHT IN GRAMS										LESS THAN 1,500 GRAMS		LESS THAN 2,500 GRAMS	
		<500	500- 999	1,000- 1,499	1,500- 1,999	2,000- 2,499	2,500- 2,999	3,000- 3,499	3,500- 3,999	4,000+	UNK	NUMBER	%	NUMBER	%
FLORIDA	47,271	156	575	607	1,113	3,389	10,946	18,434	9,587	2,455	9	1,338	2.8	5,840	12.4
ALACHUA	795	3	15	9	14	72	190	290	169	33	0	27	3.4	113	14.2
BAKER	44	0	0	4	1	4	13	10	12	0	0	4	9.1	9	20.5
BAY	280	0	8	4	4	26	66	114	50	8	0	12	4.3	42	15.0
BRADFORD	59	0	1	0	0	2	14	24	15	3	0	1	1.7	3	5.1
BREVARD	704	5	8	5	12	51	178	299	126	20	0	18	2.6	81	11.5
BROWARD	7,644	28	100	80	143	483	1,629	3,066	1,682	433	0	208	2.7	834	10.9
CALHOUN	28	0	1	1	0	2	7	14	2	1	0	2	7.1	4	14.3
CHARLOTTE	54	0	1	0	1	2	8	19	18	5	0	1	1.9	4	7.4
CITRUS	27	0	2	1	1	2	4	7	8	2	0	3	11.1	6	22.2
CLAY	156	1	1	0	3	4	35	55	49	8	0	2	1.3	9	5.8
COLLIER	349	0	4	5	3	19	64	142	89	23	0	9	2.6	31	8.9
COLUMBIA	145	2	1	3	7	10	41	50	23	8	0	6	4.1	23	15.9
MIAMI-DADE	9,417	18	92	131	217	623	2,091	3,631	1,995	618	1	241	2.6	1,081	11.5
DESOTO	61	1	0	1	2	3	19	24	8	3	0	2	3.3	7	11.5
DIXIE	19	1	0	0	1	1	5	8	2	1	0	1	5.3	3	15.8
DUVAL	4,223	16	60	70	118	325	968	1,667	781	217	1	146	3.5	589	13.9
ESCAMBIA	1,182	6	10	16	32	93	274	476	231	43	1	32	2.7	157	13.3
FLAGLER	47	1	1	0	1	6	6	16	11	5	0	2	4.3	9	19.1
FRANKLIN	12	0	0	0	0	1	3	5	3	0	0	0	0.0	1	8.3
GADSDEN	435	4	2	7	11	39	135	153	73	9	2	13	3.0	63	14.5
GILCHRIST	2	0	0	0	0	0	0	1	1	0	0	0	0.0	0	0.0
GLADES	9	0	0	0	2	0	2	3	2	0	0	0	0.0	2	22.2
GULF	16	0	0	0	0	1	5	4	3	3	0	0	0.0	1	6.3
HAMILTON	57	0	1	1	0	8	17	23	5	2	0	2	3.5	10	17.5
HARDEE	31	0	0	0	1	0	8	9	13	0	0	0	0.0	1	3.2
HENDRY	96	0	2	1	3	9	29	34	15	3	0	3	3.1	15	15.6
HERNANDO	87	0	2	0	1	6	20	36	15	7	0	2	2.3	9	10.3
HIGHLANDS	159	3	3	2	7	10	31	75	17	11	0	8	5.0	25	15.7
HILLSBOROUGH	2,982	12	35	34	75	222	730	1,143	601	130	0	81	2.7	378	12.7
HOLMES	8	0	0	0	0	1	2	5	0	0	0	0	0.0	1	12.5
INDIAN RIVER	164	3	4	2	6	10	39	64	29	7	0	9	5.5	25	15.2
JACKSON	162	0	3	1	11	10	45	52	33	7	0	4	2.5	25	15.4
JEFFERSON	61	0	0	0	1	3	22	23	10	2	0	0	0.0	4	6.6
LAFAYETTE	12	0	0	0	2	2	1	5	1	1	0	0	0.0	4	33.3
LAKE	352	0	4	5	7	25	85	155	60	11	0	9	2.6	41	11.6
LEE	736	1	9	8	28	51	140	318	152	29	0	18	2.4	97	13.2
LEON	1,134	5	20	17	24	84	281	457	209	37	0	42	3.7	150	13.2
LEVY	67	0	1	0	1	5	19	27	14	0	0	1	1.5	7	10.4
LIBERTY	8	0	1	0	0	1	3	2	1	0	0	1	12.5	2	25.0
MADISON	116	0	4	0	2	7	44	36	17	6	0	4	3.4	13	11.2
MANATEE	467	1	5	6	8	36	111	186	87	27	0	12	2.6	56	12.0
MARION	581	1	6	5	9	43	136	236	121	24	0	12	2.1	64	11.0
MARTIN	128	2	2	1	3	5	24	55	28	8	0	5	3.9	13	10.2
MONROE	67	1	1	1	2	4	15	29	9	5	0	3	4.5	9	13.4
NASSAU	48	0	0	0	2	2	17	16	9	2	0	0	0.0	4	8.3
OKALOOSA	342	0	2	1	12	30	69	129	73	25	1	3	0.9	45	13.2
OKEECHOBEE	37	0	0	0	2	3	8	15	9	0	0	0	0.0	5	13.5
ORANGE	3,743	12	46	50	110	313	895	1,454	697	165	1	108	2.9	531	14.2
OSCEOLA	253	0	0	1	6	21	70	99	48	8	0	1	0.4	28	11.1
PALM BEACH	3,488	10	45	46	67	230	815	1,349	743	183	0	101	2.9	398	11.4
PASCO	141	1	1	3	2	14	34	47	32	7	0	5	3.5	21	14.9
PINELLAS	1,650	5	25	25	50	129	410	602	312	92	0	55	3.3	234	14.2
POLK	1,328	5	13	12	21	75	334	509	286	73	0	30	2.3	126	9.5
PUTNAM	232	1	2	1	5	23	59	82	41	17	1	4	1.7	32	13.8
ST JOHNS	141	0	2	3	6	9	31	58	28	4	0	5	3.5	20	14.2
ST LUCIE	619	2	4	4	15	48	148	245	120	33	0	10	1.6	73	11.8
SANTA ROSA	70	0	0	1	2	5	12	26	18	6	0	1	1.4	8	11.4
SARASOTA	290	1	5	4	10	37	64	108	52	9	0	10	3.4	57	19.7
SEMINOLE	642	2	7	13	20	51	168	229	131	21	0	22	3.4	93	14.5
SUMTER	106	0	2	0	4	7	33	38	20	2	0	2	1.9	13	12.3
SUWANNEE	81	1	1	2	4	5	17	30	17	4	0	4	4.9	13	16.0
TAYLOR	56	0	0	1	0	8	18	25	3	1	0	1	1.8	9	16.1
UNION	24	0	0	0	0	2	8	7	6	1	0	0	0.0	2	8.3
VOLUSIA	681	1	9	18	8	59	151	271	129	34	1	28	4.1	95	14.0
WAKULLA	36	0	0	0	2	4	9	9	11	1	0	0	0.0	6	16.7
WALTON	40	0	0	0	0	2	11	18	7	2	0	0	0.0	2	5.0
WASHINGTON	40	0	1	1	1	1	6	20	5	5	0	2	5.0	4	10.0

TABLE B-5 (Cont.): RESIDENT LIVE BIRTHS TO OTHER MOTHERS BY BIRTHWEIGHT, BY COUNTY, FLORIDA, 2000

	TOTAL	BIRTHWEIGHT IN GRAMS										LESS THAN 1,500 GRAMS		LESS THAN 2,500 GRAMS	
		<500	500- 999	1,000- 1,499	1,500- 1,999	2,000- 2,499	2,500- 2,999	3,000- 3,499	3,500- 3,999	4,000+	UNK	NUMBER	%	NUMBER	%
FLORIDA	6,351	7	27	38	95	348	1,351	2,612	1,509	364	0	72	1.1	515	8.1
ALACHUA	118	0	1	0	2	2	16	48	44	5	0	1	0.8	5	4.2
BAKER	5	0	0	0	0	0	2	1	1	1	0	0	0.0	0	0.0
BAY	69	0	0	0	0	2	16	29	17	5	0	0	0.0	2	2.9
BRADFORD	6	0	0	0	0	0	0	2	4	0	0	0	0.0	0	0.0
BREVARD	156	0	0	2	2	7	31	49	49	16	0	2	1.3	11	7.1
BROWARD	715	0	2	7	9	46	147	325	143	36	0	9	1.3	64	9.0
CALHOUN	3	0	0	0	0	0	1	2	0	0	0	0	0.0	0	0.0
CHARLOTTE	23	0	0	0	1	2	4	11	4	1	0	0	0.0	3	13.0
CITRUS	20	0	0	0	0	0	7	5	7	1	0	0	0.0	0	0.0
CLAY	66	0	0	0	0	2	13	26	18	7	0	0	0.0	2	3.0
COLLIER	63	0	0	1	1	1	9	24	21	6	0	1	1.6	3	4.8
COLUMBIA	18	0	0	0	0	2	4	5	7	0	0	0	0.0	2	11.1
MIAMI-DADE	762	0	4	2	13	37	149	315	183	59	0	6	0.8	56	7.3
DESOTO	4	0	0	0	0	0	0	2	1	1	0	0	0.0	0	0.0
DIXIE	1	0	0	0	0	0	0	0	0	1	0	0	0.0	0	0.0
DUVAL	511	1	3	5	9	28	101	216	119	29	0	9	1.8	46	9.0
ESCAMBIA	181	0	1	1	2	11	49	77	32	8	0	2	1.1	15	8.3
FLAGLER	6	0	0	0	0	0	1	4	1	0	0	0	0.0	0	0.0
FRANKLIN	0	0	0	0	0	0	0	0	0	0	0	0	--	0	--
GADSDEN	1	0	0	0	0	0	0	1	0	0	0	0	0.0	0	0.0
GILCHRIST	3	0	0	0	0	0	0	2	0	1	0	0	0.0	0	0.0
GLADES	13	0	0	0	0	1	1	5	6	0	0	0	0.0	1	7.7
GULF	3	0	0	0	0	0	1	1	0	1	0	0	0.0	0	0.0
HAMILTON	1	0	0	0	0	0	1	0	0	0	0	0	0.0	0	0.0
HARDEE	1	0	0	0	0	0	0	1	0	0	0	0	0.0	0	0.0
HENDRY	18	0	0	0	0	0	6	2	7	3	0	0	0.0	0	0.0
HERNANDO	22	0	0	0	1	1	8	7	4	1	0	0	0.0	2	9.1
HIGHLANDS	16	0	0	0	0	0	2	9	5	0	0	0	0.0	0	0.0
HILLSBOROUGH	494	1	1	2	8	26	106	197	128	25	0	4	0.8	38	7.7
HOLMES	5	0	0	0	0	0	0	3	2	0	0	0	0.0	0	0.0
INDIAN RIVER	23	0	0	0	1	1	4	11	5	1	0	0	0.0	2	8.7
JACKSON	6	0	0	0	0	1	2	0	3	0	0	0	0.0	1	16.7
JEFFERSON	1	0	0	0	0	0	1	0	0	0	0	0	0.0	0	0.0
LAFALETTE	0	0	0	0	0	0	0	0	0	0	0	0	--	0	--
LAKE	39	0	0	0	0	5	8	17	9	0	0	0	0.0	5	12.8
LEE	53	0	1	0	0	4	8	23	16	1	0	1	1.9	5	9.4
LEON	95	0	2	0	1	4	26	40	21	1	0	2	2.1	7	7.4
LEVY	8	0	0	0	0	0	2	3	2	1	0	0	0.0	0	0.0
LIBERTY	0	0	0	0	0	0	0	0	0	0	0	0	--	0	--
MADISON	2	0	0	0	0	0	0	2	0	0	0	0	0.0	0	0.0
MANATEE	107	0	0	0	0	8	18	37	36	8	0	0	0.0	8	7.5
MARION	54	0	3	1	1	0	11	16	15	7	0	4	7.4	5	9.3
MARTIN	130	0	0	1	1	3	28	54	37	6	0	1	0.8	5	3.8
MONROE	26	0	0	0	0	1	6	10	8	1	0	0	0.0	1	3.8
NASSAU	6	0	0	0	0	1	2	1	1	1	0	0	0.0	1	16.7
OKALOOSA	119	0	0	1	0	8	25	39	36	10	0	1	0.8	9	7.6
OKEECHOBEE	7	0	0	0	0	0	2	1	4	0	0	0	0.0	0	0.0
ORANGE	626	1	3	7	15	46	142	260	124	28	0	11	1.8	72	11.5
OSCEOLA	100	0	0	0	0	7	21	43	25	4	0	0	0.0	7	7.0
PALM BEACH	577	0	2	3	9	29	137	254	119	24	0	5	0.9	43	7.5
PASCO	78	0	1	1	1	7	19	33	14	2	0	2	2.6	10	12.8
PINELLAS	425	2	1	0	8	25	84	194	93	18	0	3	0.7	36	8.5
POLK	104	0	0	0	3	6	25	36	28	6	0	0	0.0	9	8.7
PUTNAM	3	0	0	0	0	0	0	1	2	0	0	0	0.0	0	0.0
ST JOHNS	22	0	0	1	0	1	2	11	4	3	0	1	4.5	2	9.1
ST LUCIE	54	0	0	0	0	4	12	23	11	4	0	0	0.0	4	7.4
SANTA ROSA	44	0	0	1	0	1	11	19	9	3	0	1	2.3	2	4.5
SARASOTA	64	1	0	1	3	3	8	21	18	9	0	2	3.1	8	12.5
SEMINOLE	164	0	1	1	3	12	42	57	39	9	0	2	1.2	17	10.4
SUMTER	7	0	0	0	0	0	1	2	4	0	0	0	0.0	0	0.0
SUWANNEE	1	0	0	0	0	0	0	0	0	1	0	0	0.0	0	0.0
TAYLOR	4	0	0	0	0	0	1	0	3	0	0	0	0.0	0	0.0
UNION	0	0	0	0	0	0	0	0	0	0	0	0	--	0	--
VOLUSIA	80	1	1	0	1	1	25	26	18	7	0	2	2.5	4	5.0
WAKULLA	3	0	0	0	0	0	0	2	1	0	0	0	0.0	0	0.0
WALTON	11	0	0	0	0	2	2	4	1	2	0	0	0.0	2	18.2
WASHINGTON	4	0	0	0	0	0	1	3	0	0	0	0	0.0	0	0.0

TABLE B-6: RESIDENT LIVE BIRTHS BY AGE OF MOTHER, BY COUNTY, FLORIDA, 2000

	TOTAL	AGE OF MOTHER													
		<13	13	14	15	16	17	18	19	20-24	25-29	30-34	35-44	45+	UNK
FLORIDA	204,030	24	95	412	1,213	2,702	4,730	7,094	9,414	51,408	53,421	45,019	28,247	200	51
ALACHUA	2,600	0	2	7	18	32	56	96	123	667	706	552	339	2	0
BAKER	356	0	0	1	2	5	14	31	26	122	99	29	26	1	0
BAY	2,010	0	1	6	13	32	46	79	118	614	521	339	239	2	0
BRADFORD	320	0	0	1	1	7	10	19	25	111	87	37	22	0	0
BREVARD	5,014	1	1	11	23	43	98	171	231	1,272	1,242	1,095	821	4	1
BROWARD	22,089	0	8	42	93	206	350	500	724	4,343	5,745	5,944	4,096	36	2
CALHOUN	157	0	0	0	1	3	7	8	9	61	34	23	11	0	0
CHARLOTTE	1,033	0	0	0	3	9	23	40	62	251	288	218	139	0	0
CITRUS	871	0	0	1	10	9	23	32	56	263	226	166	82	1	2
CLAY	1,830	0	1	1	12	20	37	62	75	452	580	388	198	1	3
COLLIER	3,064	0	2	5	23	42	56	116	133	808	794	661	420	4	0
COLUMBIA	764	0	0	2	7	15	18	48	55	270	173	115	59	1	1
MIAMI-DADE	32,300	5	10	68	183	429	718	990	1,188	7,105	8,708	7,759	5,097	34	6
DESOTO	424	0	0	2	1	17	15	27	25	151	112	44	29	1	0
DIXIE	159	0	0	2	0	2	10	10	14	61	33	21	6	0	0
DUVAL	12,169	3	7	24	77	176	316	466	615	3,361	3,381	2,409	1,321	8	5
ESCAMBIA	3,845	0	1	8	27	68	113	187	218	1,178	1,001	694	349	1	0
FLAGLER	414	0	0	0	3	6	3	9	14	105	115	91	66	1	1
FRANKLIN	106	0	1	1	1	2	0	5	12	36	25	15	8	0	0
GADSDEN	706	0	0	3	9	23	37	40	54	254	154	88	42	1	1
GILCHRIST	181	0	0	0	1	1	6	8	13	63	46	32	11	0	0
GLADES	88	0	0	1	0	2	3	5	2	33	23	15	4	0	0
GULF	127	0	0	0	2	1	4	4	7	34	41	19	15	0	0
HAMILTON	168	0	0	0	0	5	7	9	12	64	42	22	7	0	0
HARDEE	450	0	0	3	3	14	25	26	40	163	120	40	16	0	0
HENDRY	643	0	1	1	10	23	18	35	39	218	151	98	49	0	0
HERNANDO	1,175	0	0	0	5	13	23	48	57	352	324	211	142	0	0
HIGHLANDS	841	1	3	3	6	12	40	46	67	259	194	146	64	0	0
HILLSBOROUGH	14,662	2	8	33	97	226	378	547	692	3,811	3,757	3,251	1,844	11	5
HOLMES	213	0	0	0	1	1	5	10	19	78	54	29	14	1	1
INDIAN RIVER	1,127	0	0	5	8	17	26	45	47	320	279	233	147	0	0
JACKSON	583	0	0	1	4	8	23	19	37	202	176	79	33	1	0
JEFFERSON	136	0	0	0	1	4	2	2	9	48	39	22	9	0	0
LAFAYETTE	91	0	0	0	0	1	4	5	4	38	25	6	8	0	0
LAKE	2,362	1	0	6	11	35	60	102	142	661	611	470	257	6	0
LEE	5,196	1	2	10	32	81	120	195	271	1,399	1,372	1,043	662	7	1
LEON	2,989	2	1	3	11	40	51	77	139	825	807	675	356	2	0
LEVY	431	0	1	1	3	7	22	23	23	133	110	66	42	0	0
LIBERTY	78	0	0	0	0	3	3	2	8	28	19	9	6	0	0
MADISON	219	0	0	2	5	7	6	12	15	74	66	21	11	0	0
MANATEE	3,235	1	3	7	39	55	82	130	173	914	799	653	376	3	0
MARION	2,902	0	2	3	17	36	81	152	209	876	713	506	306	1	0
MARTIN	1,238	0	1	3	6	16	26	47	72	282	278	293	211	2	1
MONROE	795	0	1	0	1	13	16	21	34	172	206	208	122	1	0
NASSAU	743	0	0	3	1	9	24	18	38	253	193	139	65	0	0
OKALOOSA	2,359	0	0	0	12	25	61	98	131	734	609	457	232	0	0
OKEECHOBEE	527	0	0	0	8	12	29	42	54	163	126	55	37	1	0
ORANGE	14,070	3	8	27	86	175	330	456	650	3,589	3,707	3,141	1,877	13	8
OSCEOLA	2,615	0	2	2	15	30	65	86	118	752	705	527	311	1	1
PALM BEACH	13,321	2	10	28	81	153	221	363	496	2,738	3,395	3,389	2,426	17	2
PASCO	3,759	0	1	11	16	51	83	155	161	999	1,004	782	493	3	0
PINELLAS	9,596	0	3	19	61	111	207	302	432	2,279	2,518	2,200	1,456	6	2
POLK	6,874	1	3	22	51	132	239	367	452	2,170	1,750	1,100	581	4	2
PUTNAM	897	0	2	3	9	14	42	53	72	293	233	110	65	1	0
ST JOHN'S	1,325	0	0	4	6	13	27	32	57	270	326	332	255	2	1
ST LUCIE	2,248	0	1	4	22	31	65	106	121	644	567	439	245	2	1
SANTA ROSA	1,501	0	0	0	4	16	30	55	77	389	400	335	195	0	0
SARASOTA	2,719	0	2	6	15	29	48	89	123	620	666	658	459	3	1
SEMINOLE	4,583	0	1	2	21	34	85	115	141	913	1,224	1,296	746	4	1
SUMTER	477	0	0	1	5	6	19	29	40	161	122	59	34	1	0
SUWANNEE	465	0	0	0	2	11	30	15	31	168	120	51	35	1	1
TAYLOR	249	0	0	1	4	4	13	11	21	95	61	27	12	0	0
UNION	133	0	0	0	1	3	6	8	7	46	35	19	8	0	0
VOLUSIA	4,459	1	4	12	17	57	95	129	225	1,309	1,142	913	547	7	1
WAKULLA	287	0	0	0	1	6	8	16	16	86	73	53	28	0	0
WALTON	442	0	0	0	3	10	16	28	28	132	117	66	42	0	0
WASHINGTON	220	0	1	0	2	3	6	15	15	73	52	36	16	1	0

TABLE B-6 (Cont.): RESIDENT LIVE BIRTHS TO WHITE MOTHERS, BY AGE OF MOTHER, BY COUNTY, FLORIDA, 2000

	TOTAL	AGE OF MOTHER													
		<13	13	14	15	16	17	18	19	20-24	25-29	30-34	35-44	45+	UNK
FLORIDA	150,115	6	43	167	625	1,512	2,863	4,463	6,047	35,006	40,538	36,188	22,473	155	29
ALACHUA	1,687	0	0	2	6	8	27	40	58	352	523	413	256	2	0
BAKER	307	0	0	1	2	4	10	28	22	110	81	25	23	1	0
BAY	1,660	0	1	4	11	24	39	58	94	475	437	308	208	1	0
BRADFORD	255	0	0	1	0	7	8	17	19	86	69	30	18	0	0
BREVARD	4,146	0	1	3	15	20	73	127	180	1,005	1,014	969	735	4	0
BROWARD	13,719	0	3	10	31	66	119	221	296	2,150	3,681	4,221	2,894	27	0
CALHOUN	126	0	0	0	0	2	6	4	8	48	30	19	9	0	0
CHARLOTTE	956	0	0	0	2	8	21	37	55	233	271	198	131	0	0
CITRUS	823	0	0	1	9	8	22	32	54	247	212	153	82	1	2
CLAY	1,608	0	1	0	9	16	33	54	60	400	516	336	179	1	3
COLLIER	2,651	0	1	4	18	35	48	99	112	703	685	578	364	4	0
COLUMBIA	601	0	0	2	6	8	16	34	37	217	142	90	47	1	1
MIAMI-DADE	21,988	1	4	28	88	216	367	522	621	4,286	6,192	5,926	3,713	21	3
DESOTO	359	0	0	2	1	12	14	23	20	124	98	41	23	1	0
DIXIE	139	0	0	2	0	2	8	8	13	54	29	18	5	0	0
DUVAL	7,429	0	2	5	21	64	125	227	289	1,840	2,183	1,698	962	8	5
ESCAMBIA	2,481	0	0	2	9	34	48	90	107	709	694	521	266	1	0
FLAGLER	360	0	0	0	3	4	2	8	12	85	104	81	60	1	0
FRANKLIN	94	0	1	1	1	2	0	4	11	31	22	13	8	0	0
GADSDEN	270	0	0	1	2	4	9	12	10	83	81	40	27	1	0
GILCHRIST	176	0	0	0	1	0	6	7	12	61	46	32	11	0	0
GLADES	66	0	0	0	0	1	3	3	2	24	18	11	4	0	0
GULF	108	0	0	0	2	1	2	3	6	30	36	16	12	0	0
HAMILTON	110	0	0	0	0	4	4	7	7	41	30	14	3	0	0
HARDEE	418	0	0	3	2	12	23	26	37	151	111	37	16	0	0
HENDRY	529	0	1	1	9	21	14	26	31	170	128	89	39	0	0
HERNANDO	1,066	0	0	0	4	12	19	42	51	311	298	196	133	0	0
HIGHLANDS	666	1	1	3	6	10	26	35	54	196	166	116	52	0	0
HILLSBOROUGH	11,146	0	6	16	47	141	240	354	457	2,669	2,951	2,718	1,536	8	3
HOLMES	200	0	0	0	1	1	5	8	18	72	51	29	13	1	1
INDIAN RIVER	940	0	0	2	4	9	16	37	37	254	239	208	134	0	0
JACKSON	415	0	0	0	3	7	15	10	21	139	125	65	29	1	0
JEFFERSON	74	0	0	0	1	2	2	0	6	22	17	7	7	0	0
LAFAYETTE	79	0	0	0	0	0	3	4	4	30	25	6	7	0	0
LAKE	1,970	1	0	3	8	22	47	76	110	522	530	415	231	5	0
LEE	4,403	0	0	6	19	53	90	152	214	1,130	1,214	941	578	6	0
LEON	1,753	0	0	0	2	9	19	33	65	352	520	485	266	2	0
LEVY	356	0	1	1	1	6	13	13	21	113	97	55	35	0	0
LIBERTY	70	0	0	0	0	3	3	2	8	25	15	9	5	0	0
MADISON	101	0	0	0	0	2	2	3	7	34	37	8	8	0	0
MANATEE	2,660	0	3	3	27	34	62	81	139	721	657	592	338	3	0
MARION	2,266	0	0	1	8	25	60	107	143	670	580	416	255	1	0
MARTIN	977	0	1	1	4	10	14	35	44	196	227	253	190	2	0
MONROE	690	0	1	0	1	12	15	14	25	144	183	188	106	1	0
NASSAU	689	0	0	2	1	9	21	16	35	235	178	130	62	0	0
OKALOOSA	1,898	0	0	0	9	19	47	79	89	560	509	396	190	0	0
OKEECHOBEE	483	0	0	0	7	12	28	37	52	144	116	52	34	1	0
ORANGE	9,693	1	3	6	36	84	197	273	389	2,311	2,598	2,386	1,398	7	4
OSCEOLA	2,261	0	0	1	12	26	55	70	99	647	620	459	272	0	0
PALM BEACH	9,228	1	5	10	23	70	119	180	287	1,552	2,406	2,658	1,904	12	1
PASCO	3,537	0	1	10	15	47	75	138	147	933	958	743	468	2	0
PINELLAS	7,512	0	1	4	33	50	122	192	279	1,620	2,008	1,924	1,272	6	1
POLK	5,440	0	0	9	32	91	162	261	335	1,680	1,441	950	475	3	1
PUTNAM	659	0	1	2	6	6	26	30	50	216	177	89	55	1	0
ST JOHN'S	1,162	0	0	1	4	10	20	24	46	210	296	313	235	2	1
ST LUCIE	1,574	0	0	2	12	16	36	57	72	438	413	337	190	1	0
SANTA ROSA	1,387	0	0	0	3	16	26	50	75	351	370	316	180	0	0
SARASOTA	2,364	0	1	3	9	21	30	66	97	499	595	619	420	3	1
SEMINOLE	3,774	0	0	1	10	23	52	76	106	676	1,035	1,128	662	4	1
SUMTER	363	0	0	1	4	4	15	21	31	114	95	48	30	0	0
SUWANNEE	383	0	0	0	2	6	24	10	23	136	105	43	33	0	1
TAYLOR	189	0	0	0	3	2	9	8	15	74	47	24	7	0	0
UNION	109	0	0	0	1	0	6	8	7	32	31	16	8	0	0
VOLUSIA	3,697	1	2	6	14	44	71	97	168	1,015	961	828	483	7	0
WAKULLA	248	0	0	0	1	6	7	13	15	74	62	43	27	0	0
WALTON	391	0	0	0	3	7	12	25	22	115	107	64	36	0	0
WASHINGTON	176	0	1	0	1	2	5	9	11	59	45	28	14	1	0

TABLE B-6 (Cont.): RESIDENT LIVE BIRTHS TO BLACK MOTHERS, BY AGE OF MOTHER, BY COUNTY, FLORIDA, 2000

	TOTAL	AGE OF MOTHER													
		<13	13	14	15	16	17	18	19	20-24	25-29	30-34	35-44	45+	UNK
FLORIDA	47,271	18	50	238	576	1,148	1,798	2,525	3,195	15,215	10,833	6,943	4,682	42	8
ALACHUA	795	0	2	5	12	24	28	55	64	309	148	87	61	0	0
BAKER	44	0	0	0	0	1	3	3	3	12	15	4	3	0	0
BAY	280	0	0	2	2	8	4	17	22	118	71	15	21	0	0
BRADFORD	59	0	0	0	1	0	2	2	6	22	16	6	4	0	0
BREVARD	704	1	0	7	8	21	24	41	48	243	186	71	54	0	0
BROWARD	7,644	0	5	32	62	139	225	270	411	2,114	1,836	1,477	1,062	9	2
CALHOUN	28	0	0	0	1	1	1	4	1	11	4	3	2	0	0
CHARLOTTE	54	0	0	0	1	1	2	3	7	14	12	9	5	0	0
CITRUS	27	0	0	0	1	1	1	0	2	12	6	4	0	0	0
CLAY	156	0	0	0	3	4	4	6	13	43	41	28	14	0	0
COLLIER	349	0	1	1	3	6	8	17	20	91	88	68	46	0	0
COLUMBIA	145	0	0	0	1	7	2	14	15	51	29	17	9	0	0
MIAMI-DADE	9,417	4	6	38	93	206	338	459	552	2,674	2,261	1,567	1,204	13	2
DESOTO	61	0	0	0	0	4	1	4	5	26	13	2	6	0	0
DIXIE	19	0	0	0	0	0	2	2	1	7	3	3	1	0	0
DUVAL	4,223	3	5	19	56	106	186	231	312	1,420	1,029	573	283	0	0
ESCAMBIA	1,182	0	1	6	18	30	63	89	109	429	238	136	63	0	0
FLAGLER	47	0	0	0	0	2	1	1	2	19	11	8	2	0	1
FRANKLIN	12	0	0	0	0	0	0	1	1	5	3	2	0	0	0
GADSDEN	435	0	0	2	7	19	28	28	44	171	72	48	15	0	1
GILCHRIST	2	0	0	0	0	1	0	0	1	0	0	0	0	0	0
GLADES	9	0	0	1	0	1	0	0	0	2	3	2	0	0	0
GULF	16	0	0	0	0	0	2	1	1	3	4	2	3	0	0
HAMILTON	57	0	0	0	0	1	3	2	5	23	12	8	3	0	0
HARDEE	31	0	0	0	1	2	1	0	3	12	9	3	0	0	0
HENDRY	96	0	0	0	1	2	3	9	8	41	19	8	5	0	0
HERNANDO	87	0	0	0	1	1	3	5	6	37	21	8	5	0	0
HIGHLANDS	159	0	2	0	0	2	14	11	13	61	25	23	8	0	0
HILLSBOROUGH	2,982	2	1	17	50	84	131	191	224	1,047	631	375	227	2	0
HOLMES	8	0	0	0	0	0	0	1	1	5	1	0	0	0	0
INDIAN RIVER	164	0	0	3	4	6	10	7	10	63	33	20	8	0	0
JACKSON	162	0	0	1	1	1	8	9	16	62	50	10	4	0	0
JEFFERSON	61	0	0	0	0	2	0	2	3	26	21	5	2	0	0
LAFAYETTE	12	0	0	0	0	1	1	1	0	8	0	0	1	0	0
LAKE	352	0	0	3	3	13	12	26	31	133	67	45	18	1	0
LEE	736	1	2	4	13	28	30	42	53	254	141	87	80	1	0
LEON	1,134	2	1	3	9	31	32	44	72	457	255	153	75	0	0
LEVY	67	0	0	0	1	1	8	10	2	20	11	8	6	0	0
LIBERTY	8	0	0	0	0	0	0	0	0	3	4	0	1	0	0
MADISON	116	0	0	2	5	5	4	9	8	39	29	12	3	0	0
MANATEE	467	1	0	4	12	17	18	47	28	165	105	41	29	0	0
MARION	581	0	2	2	9	11	21	44	63	194	115	78	42	0	0
MARTIN	128	0	0	2	1	4	5	5	15	46	21	18	11	0	0
MONROE	67	0	0	0	0	1	1	5	7	19	12	13	9	0	0
NASSAU	48	0	0	1	0	0	3	2	3	17	14	6	2	0	0
OKALOOSA	342	0	0	0	3	6	12	16	31	144	72	36	22	0	0
OKEECHOBEE	37	0	0	0	1	0	1	4	0	19	7	2	3	0	0
ORANGE	3,743	2	4	19	50	91	131	180	249	1,180	911	555	365	5	1
OSCEOLA	253	0	2	1	3	4	9	16	18	80	57	42	20	1	0
PALM BEACH	3,488	1	5	18	57	78	98	170	195	1,050	793	584	434	5	0
PASCO	141	0	0	1	1	4	7	15	14	48	24	14	12	1	0
PINELLAS	1,650	0	2	14	25	56	81	99	137	580	368	171	116	0	1
POLK	1,328	1	3	13	18	41	76	104	114	475	267	121	94	1	0
PUTNAM	232	0	1	1	3	8	16	23	22	76	53	19	10	0	0
ST JOHNS	141	0	0	3	2	3	7	7	11	56	28	13	11	0	0
ST LUCIE	619	0	1	2	10	14	29	48	48	198	134	89	45	1	0
SANTA ROSA	70	0	0	0	0	0	4	3	1	23	17	11	11	0	0
SARASOTA	290	0	1	3	6	8	18	23	25	109	54	22	21	0	0
SEMINOLE	642	0	1	1	11	11	32	38	35	215	135	110	53	0	0
SUMTER	106	0	0	0	1	2	4	8	8	46	25	7	4	1	0
SUWANNEE	81	0	0	0	0	5	6	5	8	32	15	7	2	1	0
TAYLOR	56	0	0	1	1	2	4	3	6	19	12	3	5	0	0
UNION	24	0	0	0	0	3	0	0	0	14	4	3	0	0	0
VOLUSIA	681	0	2	6	3	13	24	32	54	283	149	65	50	0	0
WAKULLA	36	0	0	0	0	0	1	3	1	12	10	8	1	0	0
WALTON	40	0	0	0	0	3	4	3	4	15	6	1	4	0	0
WASHINGTON	40	0	0	0	1	1	1	5	3	13	7	7	2	0	0

TABLE B-6 (Cont.): RESIDENT LIVE BIRTHS TO OTHER MOTHERS, BY AGE OF MOTHER, BY COUNTY, FLORIDA, 2000

	TOTAL	AGE OF MOTHER													
		<13	13	14	15	16	17	18	19	20-24	25-29	30-34	35-44	45+	UNK
FLORIDA	6,351	0	2	6	12	37	64	103	166	1,138	1,968	1,820	1,030	3	2
ALACHUA	118	0	0	0	0	0	1	1	1	6	35	52	22	0	0
BAKER	5	0	0	0	0	0	1	0	1	0	3	0	0	0	0
BAY	69	0	0	0	0	0	3	4	2	21	13	15	10	1	0
BRADFORD	6	0	0	0	0	0	0	0	0	3	2	1	0	0	0
BREVARD	156	0	0	1	0	2	1	3	3	23	42	53	28	0	0
BROWARD	715	0	0	0	0	0	6	9	17	79	227	244	133	0	0
CALHOUN	3	0	0	0	0	0	0	0	0	2	0	1	0	0	0
CHARLOTTE	23	0	0	0	0	0	0	0	0	4	5	11	3	0	0
CITRUS	20	0	0	0	0	0	0	0	0	4	8	8	0	0	0
CLAY	66	0	0	1	0	0	0	2	2	9	23	24	5	0	0
COLLIER	63	0	0	0	2	1	0	0	1	14	21	15	9	0	0
COLUMBIA	18	0	0	0	0	0	0	0	3	2	2	8	3	0	0
MIAMI-DADE	762	0	0	1	2	5	9	9	12	119	208	235	162	0	0
DESOTO	4	0	0	0	0	1	0	0	0	1	1	1	0	0	0
DIXIE	1	0	0	0	0	0	0	0	0	0	1	0	0	0	0
DUVAL	511	0	0	0	0	5	5	8	14	99	168	137	75	0	0
ESCAMBIA	181	0	0	0	0	4	2	8	2	40	68	37	20	0	0
FLAGLER	6	0	0	0	0	0	0	0	0	0	0	2	4	0	0
FRANKLIN	0	0	0	0	0	0	0	0	0	0	0	0	0	0	0
GADSDEN	1	0	0	0	0	0	0	0	0	0	1	0	0	0	0
GILCHRIST	3	0	0	0	0	0	0	1	0	2	0	0	0	0	0
GLADES	13	0	0	0	0	0	0	2	0	7	2	2	0	0	0
GULF	3	0	0	0	0	0	0	0	0	1	1	1	0	0	0
HAMILTON	1	0	0	0	0	0	0	0	0	0	0	0	1	0	0
HARDEE	1	0	0	0	0	0	1	0	0	0	0	0	0	0	0
HENDRY	18	0	0	0	0	0	1	0	0	7	4	1	5	0	0
HERNANDO	22	0	0	0	0	0	1	1	0	4	5	7	4	0	0
HIGHLANDS	16	0	0	0	0	0	0	0	0	2	3	7	4	0	0
HILLSBOROUGH	494	0	1	0	0	1	6	2	11	88	162	150	72	1	0
HOLMES	5	0	0	0	0	0	0	1	0	1	2	0	1	0	0
INDIAN RIVER	23	0	0	0	0	2	0	1	0	3	7	5	5	0	0
JACKSON	6	0	0	0	0	0	0	0	0	1	1	4	0	0	0
JEFFERSON	1	0	0	0	0	0	0	0	0	0	1	0	0	0	0
LAFAYETTE	0	0	0	0	0	0	0	0	0	0	0	0	0	0	0
LAKE	39	0	0	0	0	0	1	0	1	6	14	9	8	0	0
LEE	53	0	0	0	0	0	0	1	4	15	16	13	4	0	0
LEON	95	0	0	0	0	0	0	0	1	13	32	35	14	0	0
LEVY	8	0	0	0	1	0	1	0	0	0	2	3	1	0	0
LIBERTY	0	0	0	0	0	0	0	0	0	0	0	0	0	0	0
MADISON	2	0	0	0	0	0	0	0	0	1	0	1	0	0	0
MANATEE	107	0	0	0	0	4	2	2	6	28	36	20	9	0	0
MARION	54	0	0	0	0	0	0	1	3	12	18	12	8	0	0
MARTIN	130	0	0	0	1	2	7	7	13	39	30	20	10	0	1
MONROE	26	0	0	0	0	0	0	1	1	6	8	6	4	0	0
NASSAU	6	0	0	0	0	0	0	0	0	1	1	3	1	0	0
OKALOOSA	119	0	0	0	0	0	2	3	11	30	28	25	20	0	0
OKEECHOBEE	7	0	0	0	0	0	0	1	2	0	3	1	0	0	0
ORANGE	626	0	1	2	0	0	2	3	11	98	197	200	110	1	1
OSCEOLA	100	0	0	0	0	0	1	0	1	25	28	26	19	0	0
PALM BEACH	577	0	0	0	1	4	4	11	14	132	188	139	84	0	0
PASCO	78	0	0	0	0	0	1	2	0	17	22	25	11	0	0
PINELLAS	425	0	0	1	3	5	4	11	16	79	140	102	64	0	0
POLK	104	0	0	0	1	0	1	2	3	15	42	29	11	0	0
PUTNAM	3	0	0	0	0	0	0	0	0	1	1	1	0	0	0
ST JOHN	22	0	0	0	0	0	0	1	0	4	2	6	9	0	0
ST LUCIE	54	0	0	0	0	1	0	1	1	8	20	13	10	0	0
SANTA ROSA	44	0	0	0	1	0	0	2	1	15	13	8	4	0	0
SARASOTA	64	0	0	0	0	0	0	0	1	12	17	17	17	0	0
SEMINOLE	164	0	0	0	0	0	1	1	0	22	53	57	30	0	0
SUMTER	7	0	0	0	0	0	0	0	1	1	2	3	0	0	0
SUWANNEE	1	0	0	0	0	0	0	0	0	0	0	1	0	0	0
TAYLOR	4	0	0	0	0	0	0	0	0	2	2	0	0	0	0
UNION	0	0	0	0	0	0	0	0	0	0	0	0	0	0	0
VOLUSIA	80	0	0	0	0	0	0	0	3	11	32	20	14	0	0
WAKULLA	3	0	0	0	0	0	0	0	0	0	1	2	0	0	0
WALTON	11	0	0	0	0	0	0	0	2	2	4	1	2	0	0
WASHINGTON	4	0	0	0	0	0	0	1	1	1	0	1	0	0	0

TABLE B-7: RESIDENT LIVE BIRTHS BY TRIMESTER PRENATAL CARE BEGAN, BY COUNTY, FLORIDA, 2000

	TRIMESTER PRENATAL CARE BEGAN						% CARE BEGAN BY TRIMESTER			
	TOTAL	1ST	2ND	3RD	NONE	UNK	1ST	2ND	3RD	NONE
FLORIDA	204,030	169,059	25,877	5,010	2,079	2,005	82.9	12.7	2.5	1.0
ALACHUA	2,600	2,185	335	43	29	8	84.0	12.9	1.7	1.1
BAKER	356	292	43	4	3	14	82.0	12.1	1.1	0.8
BAY	2,010	1,651	232	43	12	72	82.1	11.5	2.1	0.6
BRADFORD	320	258	47	11	1	3	80.6	14.7	3.4	0.3
BREVARD	5,014	4,306	561	79	51	17	85.9	11.2	1.6	1.0
BROWARD	22,089	18,311	2,590	691	272	225	82.9	11.7	3.1	1.2
CALHOUN	157	140	12	2	1	2	89.2	7.6	1.3	0.6
CHARLOTTE	1,033	753	206	61	3	10	72.9	19.9	5.9	0.3
CITRUS	871	749	109	7	3	3	86.0	12.5	0.8	0.3
CLAY	1,830	1,573	199	31	8	19	86.0	10.9	1.7	0.4
COLLIER	3,064	2,330	594	115	21	4	76.0	19.4	3.8	0.7
COLUMBIA	764	588	123	20	31	2	77.0	16.1	2.6	4.1
MIAMI-DADE	32,300	27,838	3,693	470	202	97	86.2	11.4	1.5	0.6
DESOTO	424	275	111	29	9	0	64.9	26.2	6.8	2.1
DIXIE	159	120	34	1	4	0	75.5	21.4	0.6	2.5
DUVAL	12,169	9,915	1,369	238	161	486	81.5	11.2	2.0	1.3
ESCAMBIA	3,845	3,155	473	81	22	114	82.1	12.3	2.1	0.6
FLAGLER	414	362	36	4	5	7	87.4	8.7	1.0	1.2
FRANKLIN	106	93	8	1	1	3	87.7	7.5	0.9	0.9
GADSDEN	706	586	90	10	6	14	83.0	12.7	1.4	0.8
GILCHRIST	181	145	29	3	3	1	80.1	16.0	1.7	1.7
GLADES	88	67	19	2	0	0	76.1	21.6	2.3	0.0
GULF	127	106	14	5	1	1	83.5	11.0	3.9	0.8
HAMILTON	168	138	22	6	1	1	82.1	13.1	3.6	0.6
HARDEE	450	291	123	33	1	2	64.7	27.3	7.3	0.2
HENDRY	643	469	123	33	5	13	72.9	19.1	5.1	0.8
HERNANDO	1,175	1,062	95	12	6	0	90.4	8.1	1.0	0.5
HIGHLANDS	841	677	132	22	10	0	80.5	15.7	2.6	1.2
HILLSBOROUGH	14,662	12,483	1,668	249	101	161	85.1	11.4	1.7	0.7
HOLMES	213	182	22	3	1	5	85.4	10.3	1.4	0.5
INDIAN RIVER	1,127	831	174	48	13	61	73.7	15.4	4.3	1.2
JACKSON	583	522	44	9	1	7	89.5	7.5	1.5	0.2
JEFFERSON	136	116	18	2	0	0	85.3	13.2	1.5	0.0
LAFAYETTE	91	75	12	4	0	0	82.4	13.2	4.4	0.0
LAKE	2,362	1,920	330	79	20	13	81.3	14.0	3.3	0.8
LEE	5,196	4,211	776	152	41	16	81.0	14.9	2.9	0.8
LEON	2,989	2,676	244	38	18	13	89.5	8.2	1.3	0.6
LEVY	431	352	69	6	2	2	81.7	16.0	1.4	0.5
LIBERTY	78	70	6	1	0	1	89.7	7.7	1.3	0.0
MADISON	219	179	28	8	2	2	81.7	12.8	3.7	0.9
MANATEE	3,235	2,555	503	142	32	3	79.0	15.5	4.4	1.0
MARION	2,902	2,156	587	117	33	9	74.3	20.2	4.0	1.1
MARTIN	1,238	914	231	69	18	6	73.8	18.7	5.6	1.5
MONROE	795	657	108	11	10	9	82.6	13.6	1.4	1.3
NASSAU	743	662	53	6	9	13	89.1	7.1	0.8	1.2
OKALOOSA	2,359	1,917	344	49	10	39	81.3	14.6	2.1	0.4
KEECHOBEE	527	380	106	20	15	6	72.1	20.1	3.8	2.8
ORANGE	14,070	11,736	1,654	260	251	169	83.4	11.8	1.8	1.8
OSCEOLA	2,615	2,224	300	48	31	12	85.0	11.5	1.8	1.2
PALM BEACH	13,321	10,114	2,107	753	214	133	75.9	15.8	5.7	1.6
PASCO	3,759	3,331	338	47	19	24	88.6	9.0	1.3	0.5
PINELLAS	9,596	8,168	1,118	194	79	37	85.1	11.7	2.0	0.8
POLK	6,874	5,100	1,376	271	104	23	74.2	20.0	3.9	1.5
PUTNAM	897	671	173	42	5	6	74.8	19.3	4.7	0.6
ST JOHNS	1,325	1,146	135	24	9	11	86.5	10.2	1.8	0.7
ST LUCIE	2,248	1,709	415	75	40	9	76.0	18.5	3.3	1.8
SANTA ROSA	1,501	1,345	123	14	3	16	89.6	8.2	0.9	0.2
SARASOTA	2,719	2,374	264	54	21	6	87.3	9.7	2.0	0.8
SEMINOLE	4,583	4,066	407	47	37	26	88.7	8.9	1.0	0.8
SUMTER	477	401	57	11	5	3	84.1	11.9	2.3	1.0
SUWANNEE	465	368	73	18	4	2	79.1	15.7	3.9	0.9
TAYLOR	249	221	23	4	1	0	88.8	9.2	1.6	0.4
UNION	133	116	11	3	1	2	87.2	8.3	2.3	0.8
VOLUSIA	4,459	3,857	456	65	51	30	86.5	10.2	1.5	1.1
WAKULLA	287	259	25	1	0	2	90.2	8.7	0.3	0.0
WALTON	442	371	53	8	4	6	83.9	12.0	1.8	0.9
WASHINGTON	220	189	24	1	2	4	85.9	10.9	0.5	0.9

TABLE B-7 (Cont.): RESIDENT LIVE BIRTHS TO WHITE MOTHERS BY TRIMESTER PRENATAL CARE BEGAN, BY COUNTY, FLORIDA, 2000

	TRIMESTER PRENATAL CARE BEGAN						% CARE BEGAN BY TRIMESTER			
	TOTAL	1ST	2ND	3RD	NONE	UNK	1ST	2ND	3RD	NONE
FLORIDA	150,115	129,438	15,588	2,918	1,137	1,034	86.2	10.4	1.9	0.8
ALACHUA	1,687	1,516	146	11	8	6	89.9	8.7	0.7	0.5
BAKER	307	263	29	2	1	12	85.7	9.4	0.7	0.3
BAY	1,660	1,378	180	33	8	61	83.0	10.8	2.0	0.5
BRADFORD	255	212	32	8	0	3	83.1	12.5	3.1	0.0
BREVARD	4,146	3,648	404	53	28	13	88.0	9.7	1.3	0.7
BROWARD	13,719	12,166	1,082	276	111	84	88.7	7.9	2.0	0.8
CALHOUN	126	115	7	1	1	2	91.3	5.6	0.8	0.8
CHARLOTTE	956	700	191	54	3	8	73.2	20.0	5.6	0.3
CITRUS	823	712	100	6	3	2	86.5	12.2	0.7	0.4
CLAY	1,608	1,398	166	25	5	14	86.9	10.3	1.6	0.3
COLLIER	2,651	2,059	477	96	17	2	77.7	18.0	3.6	0.6
COLUMBIA	601	478	80	17	24	2	79.5	13.3	2.8	4.0
MIAMI-DADE	21,988	19,739	1,897	213	104	35	89.8	8.6	1.0	0.5
DESOTO	359	231	95	24	9	0	64.3	26.5	6.7	2.5
DIXIE	139	106	30	1	2	0	76.3	21.6	0.7	1.4
DUVAL	7,429	6,557	549	94	54	175	88.3	7.4	1.3	0.7
ESCAMBIA	2,481	2,182	224	31	6	38	87.9	9.0	1.2	0.2
FLAGLER	360	321	30	3	3	3	89.2	8.3	0.8	0.8
FRANKLIN	94	82	7	1	1	3	87.2	7.4	1.1	1.1
GADSDEN	270	240	21	5	0	4	88.9	7.8	1.9	0.0
GILCHRIST	176	142	28	2	3	1	80.7	15.9	1.1	1.7
GLADES	66	53	12	1	0	0	80.3	18.2	1.5	0.0
GULF	108	94	9	3	1	1	87.0	8.3	2.8	0.9
HAMILTON	110	89	16	5	0	0	80.9	14.5	4.5	0.0
HARDEE	418	269	113	33	1	2	64.4	27.0	7.9	0.2
HENDRY	529	392	102	27	2	6	74.1	19.3	5.1	0.4
HERNANDO	1,066	974	79	11	2	0	91.4	7.4	1.0	0.2
HIGHLANDS	666	541	98	17	10	0	81.2	14.7	2.6	1.5
HILLSBOROUGH	11,146	9,744	1,083	170	67	82	87.4	9.7	1.5	0.6
HOLMES	200	173	20	2	0	5	86.5	10.0	1.0	0.0
INDIAN RIVER	940	719	121	37	8	55	76.5	12.9	3.9	0.9
JACKSON	415	379	28	5	1	2	91.3	6.7	1.2	0.2
JEFFERSON	74	67	6	1	0	0	90.5	8.1	1.4	0.0
LAFAYETTE	79	65	10	4	0	0	82.3	12.7	5.1	0.0
LAKE	1,970	1,638	252	56	14	10	83.1	12.8	2.8	0.7
LEE	4,403	3,663	589	109	29	13	83.2	13.4	2.5	0.7
LEON	1,753	1,642	89	11	3	8	93.7	5.1	0.6	0.2
LEVY	356	296	53	4	1	2	83.1	14.9	1.1	0.3
LIBERTY	70	65	4	1	0	0	92.9	5.7	1.4	0.0
MADISON	101	92	5	2	1	1	91.1	5.0	2.0	1.0
MANATEE	2,660	2,154	384	92	28	2	81.0	14.4	3.5	1.1
MARION	2,266	1,761	396	87	17	5	77.7	17.5	3.8	0.8
MARTIN	977	789	142	34	9	3	80.8	14.5	3.5	0.9
MONROE	690	586	85	9	7	3	84.9	12.3	1.3	1.0
NASSAU	689	617	45	6	8	13	89.6	6.5	0.9	1.2
OKALOOSA	1,898	1,582	246	35	7	28	83.4	13.0	1.8	0.4
KEECHOBEE	483	350	96	17	14	6	72.5	19.9	3.5	2.9
ORANGE	9,693	8,413	914	150	130	86	86.8	9.4	1.5	1.3
OSCEOLA	2,261	1,948	238	41	25	9	86.2	10.5	1.8	1.1
PALM BEACH	9,228	7,599	1,064	390	112	63	82.3	11.5	4.2	1.2
PASCO	3,537	3,157	302	40	15	23	89.3	8.5	1.1	0.4
PINELLAS	7,512	6,563	732	132	55	30	87.4	9.7	1.8	0.7
POLK	5,440	4,195	973	186	70	16	77.1	17.9	3.4	1.3
PUTNAM	659	515	107	28	4	5	78.1	16.2	4.2	0.6
ST JOHNS	1,162	1,039	98	15	4	6	89.4	8.4	1.3	0.3
ST LUCIE	1,574	1,289	220	39	20	6	81.9	14.0	2.5	1.3
SANTA ROSA	1,387	1,249	109	11	3	15	90.1	7.9	0.8	0.2
SARASOTA	2,364	2,093	208	42	16	5	88.5	8.8	1.8	0.7
SEMINOLE	3,774	3,470	244	25	18	17	91.9	6.5	0.7	0.5
SUMTER	363	307	41	9	5	1	84.6	11.3	2.5	1.4
SUWANNEE	383	310	56	14	2	1	80.9	14.6	3.7	0.5
TAYLOR	189	175	11	3	0	0	92.6	5.8	1.6	0.0
UNION	109	98	8	0	1	2	89.9	7.3	0.0	0.9
VOLUSIA	3,697	3,267	326	50	32	22	88.4	8.8	1.4	0.9
WAKULLA	248	226	19	1	0	2	91.1	7.7	0.4	0.0
WALTON	391	332	44	6	3	6	84.9	11.3	1.5	0.8
WASHINGTON	176	154	16	1	1	4	87.5	9.1	0.6	0.6

TABLE B-7 (Cont.): RESIDENT LIVE BIRTHS TO BLACK MOTHERS BY TRIMESTER PRENATAL CARE BEGAN, BY COUNTY, FLORIDA, 2000

	TRIMESTER PRENATAL CARE BEGAN						% CARE BEGAN BY TRIMESTER			
	TOTAL	1ST	2ND	3RD	NONE	UNK	1ST	2ND	3RD	NONE
FLORIDA	47,271	34,218	9,530	1,844	878	801	72.4	20.2	3.9	1.9
ALACHUA	795	562	180	31	20	2	70.7	22.6	3.9	2.5
BAKER	44	27	13	1	2	1	61.4	29.5	2.3	4.5
BAY	280	213	45	9	4	9	76.1	16.1	3.2	1.4
BRADFORD	59	42	13	3	1	0	71.2	22.0	5.1	1.7
BREVARD	704	507	151	23	21	2	72.0	21.4	3.3	3.0
BROWARD	7,644	5,519	1,443	396	157	129	72.2	18.9	5.2	2.1
CALHOUN	28	22	5	1	0	0	78.6	17.9	3.6	0.0
CHARLOTTE	54	33	15	5	0	1	61.1	27.8	9.3	0.0
CITRUS	27	20	7	0	0	0	74.1	25.9	0.0	0.0
CLAY	156	120	27	3	3	3	76.9	17.3	1.9	1.9
COLLIER	349	217	110	17	4	1	62.2	31.5	4.9	1.1
COLUMBIA	145	99	39	3	4	0	68.3	26.9	2.1	2.8
MIAMI-DADE	9,417	7,342	1,707	238	90	40	78.0	18.1	2.5	1.0
DESOTO	61	42	16	3	0	0	68.9	26.2	4.9	0.0
DIXIE	19	13	4	0	2	0	68.4	21.1	0.0	10.5
DUVAL	4,223	2,927	768	138	103	287	69.3	18.2	3.3	2.4
ESCAMBIA	1,182	828	224	45	16	69	70.1	19.0	3.8	1.4
FLAGLER	47	36	4	1	2	4	76.6	8.5	2.1	4.3
FRANKLIN	12	11	1	0	0	0	91.7	8.3	0.0	0.0
GADSDEN	435	345	69	5	6	10	79.3	15.9	1.1	1.4
GILCHRIST	2	1	1	0	0	0	50.0	50.0	0.0	0.0
GLADES	9	5	4	0	0	0	55.6	44.4	0.0	0.0
GULF	16	10	4	2	0	0	62.5	25.0	12.5	0.0
HAMILTON	57	49	5	1	1	1	86.0	8.8	1.8	1.8
HARDEE	31	21	10	0	0	0	67.7	32.3	0.0	0.0
HENDRY	96	64	18	4	3	7	66.7	18.8	4.2	3.1
HERNANDO	87	69	14	0	4	0	79.3	16.1	0.0	4.6
HIGHLANDS	159	122	32	5	0	0	76.7	20.1	3.1	0.0
HILLSBOROUGH	2,982	2,290	542	70	32	48	76.8	18.2	2.3	1.1
HOLMES	8	5	2	0	1	0	62.5	25.0	0.0	12.5
INDIAN RIVER	164	95	48	11	5	5	57.9	29.3	6.7	3.0
JACKSON	162	137	16	4	0	5	84.6	9.9	2.5	0.0
JEFFERSON	61	49	11	1	0	0	80.3	18.0	1.6	0.0
LAFAYETTE	12	10	2	0	0	0	83.3	16.7	0.0	0.0
LAKE	352	249	73	22	6	2	70.7	20.7	6.3	1.7
LEE	736	505	177	41	12	1	68.6	24.0	5.6	1.6
LEON	1,134	934	153	27	15	5	82.4	13.5	2.4	1.3
LEVY	67	49	15	2	1	0	73.1	22.4	3.0	1.5
LIBERTY	8	5	2	0	0	1	62.5	25.0	0.0	0.0
MADISON	116	85	23	6	1	1	73.3	19.8	5.2	0.9
MANATEE	467	325	100	38	3	1	69.6	21.4	8.1	0.6
MARION	581	358	176	28	15	4	61.6	30.3	4.8	2.6
MARTIN	128	78	42	5	2	1	60.9	32.8	3.9	1.6
MONROE	67	43	18	2	3	1	64.2	26.9	3.0	4.5
NASSAU	48	40	7	0	1	0	83.3	14.6	0.0	2.1
OKALOOSA	342	250	72	11	2	7	73.1	21.1	3.2	0.6
OKEECHOBEE	37	24	9	3	1	0	64.9	24.3	8.1	2.7
ORANGE	3,743	2,763	696	99	113	72	73.8	18.6	2.6	3.0
OSCEOLA	253	192	52	4	5	0	75.9	20.6	1.6	2.0
PALM BEACH	3,488	2,140	933	280	87	48	61.4	26.7	8.0	2.5
PASCO	141	109	24	6	2	0	77.3	17.0	4.3	1.4
PINELLAS	1,650	1,239	327	57	23	4	75.1	19.8	3.5	1.4
POLK	1,328	824	386	81	33	4	62.0	29.1	6.1	2.5
PUTNAM	232	153	64	13	1	1	65.9	27.6	5.6	0.4
ST JOHNS	141	89	35	8	5	4	63.1	24.8	5.7	3.5
ST LUCIE	619	375	189	33	20	2	60.6	30.5	5.3	3.2
SANTA ROSA	70	56	11	2	0	1	80.0	15.7	2.9	0.0
SARASOTA	290	224	51	9	5	1	77.2	17.6	3.1	1.7
SEMINOLE	642	445	151	20	19	7	69.3	23.5	3.1	3.0
SUMTER	106	87	16	2	0	1	82.1	15.1	1.9	0.0
SUWANNEE	81	57	17	4	2	1	70.4	21.0	4.9	2.5
TAYLOR	56	43	11	1	1	0	76.8	19.6	1.8	1.8
UNION	24	18	3	3	0	0	75.0	12.5	12.5	0.0
VOLUSIA	681	518	124	15	17	7	76.1	18.2	2.2	2.5
WAKULLA	36	30	6	0	0	0	83.3	16.7	0.0	0.0
WALTON	40	28	9	2	1	0	70.0	22.5	5.0	2.5
WASHINGTON	40	31	8	0	1	0	77.5	20.0	0.0	2.5

TABLE B-7 (Cont.): RESIDENT LIVE BIRTHS TO OTHER MOTHERS BY TRIMESTER PRENATAL CARE BEGAN, BY COUNTY, FLORIDA, 2000

	TRIMESTER PRENATAL CARE BEGAN						% CARE BEGAN BY TRIMESTER			
	TOTAL	1ST	2ND	3RD	NONE	UNK	1ST	2ND	3RD	NONE
FLORIDA	6,351	5,239	743	236	56	77	82.5	11.7	3.7	0.9
ALACHUA	118	107	9	1	1	0	90.7	7.6	0.8	0.8
BAKER	5	2	1	1	0	1	40.0	20.0	20.0	0.0
BAY	69	59	7	1	0	2	85.5	10.1	1.4	0.0
BRADFORD	6	4	2	0	0	0	66.7	33.3	0.0	0.0
BREVARD	156	145	6	3	2	0	92.9	3.8	1.9	1.3
BROWARD	715	623	63	17	3	9	87.1	8.8	2.4	0.4
CALHOUN	3	3	0	0	0	0	100.0	0.0	0.0	0.0
CHARLOTTE	23	20	0	2	0	1	87.0	0.0	8.7	0.0
CITRUS	20	17	2	1	0	0	85.0	10.0	5.0	0.0
CLAY	66	55	6	3	0	2	83.3	9.1	4.5	0.0
COLLIER	63	54	7	2	0	0	85.7	11.1	3.2	0.0
COLUMBIA	18	11	4	0	3	0	61.1	22.2	0.0	16.7
MIAMI-DADE	762	660	81	14	5	2	86.6	10.6	1.8	0.7
DESOTO	4	2	0	2	0	0	50.0	0.0	50.0	0.0
DIXIE	1	1	0	0	0	0	100.0	0.0	0.0	0.0
DUVAL	511	428	52	6	3	22	83.8	10.2	1.2	0.6
ESCAMBIA	181	144	25	5	0	7	79.6	13.8	2.8	0.0
FLAGLER	6	4	2	0	0	0	66.7	33.3	0.0	0.0
FRANKLIN	0	0	0	0	0	0	---	---	---	---
GADSDEN	1	1	0	0	0	0	100.0	0.0	0.0	0.0
GILCHRIST	3	2	0	1	0	0	66.7	0.0	33.3	0.0
GLADES	13	9	3	1	0	0	69.2	23.1	7.7	0.0
GULF	3	2	1	0	0	0	66.7	33.3	0.0	0.0
HAMILTON	1	0	1	0	0	0	0.0	100.0	0.0	0.0
HARDEE	1	1	0	0	0	0	100.0	0.0	0.0	0.0
HENDRY	18	13	3	2	0	0	72.2	16.7	11.1	0.0
HERNANDO	22	19	2	1	0	0	86.4	9.1	4.5	0.0
HIGHLANDS	16	14	2	0	0	0	87.5	12.5	0.0	0.0
HILLSBOROUGH	494	435	42	8	1	8	88.1	8.5	1.6	0.2
HOLMES	5	4	0	1	0	0	80.0	0.0	20.0	0.0
INDIAN RIVER	23	17	5	0	0	1	73.9	21.7	0.0	0.0
JACKSON	6	6	0	0	0	0	100.0	0.0	0.0	0.0
JEFFERSON	1	0	1	0	0	0	0.0	100.0	0.0	0.0
LAFAYETTE	0	0	0	0	0	0	---	---	---	---
LAKE	39	33	5	1	0	0	84.6	12.8	2.6	0.0
LEE	53	41	10	2	0	0	77.4	18.9	3.8	0.0
LEON	95	94	1	0	0	0	98.9	1.1	0.0	0.0
LEVY	8	7	1	0	0	0	87.5	12.5	0.0	0.0
LIBERTY	0	0	0	0	0	0	---	---	---	---
MADISON	2	2	0	0	0	0	100.0	0.0	0.0	0.0
MANATEE	107	75	19	12	1	0	70.1	17.8	11.2	0.9
MARION	54	37	15	2	0	0	68.5	27.8	3.7	0.0
MARTIN	130	47	47	30	6	0	36.2	36.2	23.1	4.6
MONROE	26	23	2	0	0	1	88.5	7.7	0.0	0.0
NASSAU	6	5	1	0	0	0	83.3	16.7	0.0	0.0
OKALOOSA	119	85	26	3	1	4	71.4	21.8	2.5	0.8
OKEECHOBEE	7	6	1	0	0	0	85.7	14.3	0.0	0.0
ORANGE	626	558	44	11	8	5	89.1	7.0	1.8	1.3
OSCEOLA	100	84	10	3	1	2	84.0	10.0	3.0	1.0
PALM BEACH	577	366	109	80	15	7	63.4	18.9	13.9	2.6
PASCO	78	63	12	1	2	0	80.8	15.4	1.3	2.6
PINELLAS	425	359	59	5	1	1	84.5	13.9	1.2	0.2
POLK	104	81	17	4	1	1	77.9	16.3	3.8	1.0
PUTNAM	3	1	2	0	0	0	33.3	66.7	0.0	0.0
ST JOHNS	22	18	2	1	0	1	81.8	9.1	4.5	0.0
ST LUCIE	54	45	6	3	0	0	83.3	11.1	5.6	0.0
SANTA ROSA	44	40	3	1	0	0	90.9	6.8	2.3	0.0
SARASOTA	64	56	5	3	0	0	87.5	7.8	4.7	0.0
SEMINOLE	164	150	12	2	0	0	91.5	7.3	1.2	0.0
SUMTER	7	7	0	0	0	0	100.0	0.0	0.0	0.0
SUWANNEE	1	1	0	0	0	0	100.0	0.0	0.0	0.0
TAYLOR	4	3	1	0	0	0	75.0	25.0	0.0	0.0
UNION	0	0	0	0	0	0	---	---	---	---
VOLUSIA	80	72	6	0	2	0	90.0	7.5	0.0	2.5
WAKULLA	3	3	0	0	0	0	100.0	0.0	0.0	0.0
WALTON	11	11	0	0	0	0	100.0	0.0	0.0	0.0
WASHINGTON	4	4	0	0	0	0	100.0	0.0	0.0	0.0

TABLE B-8: RESIDENT LIVE BIRTHS TO UNWED MOTHERS, BY AGE OF MOTHER, BY COUNTY, FLORIDA, 2000

	AGE OF MOTHER														
	TOTAL	<13	13	14	15	16	17	18	19	20-24	25-29	30-34	35-44	45+	UNK
FLORIDA	78,026	24	94	403	1,157	2,468	4,122	5,866	7,084	28,455	15,093	7,988	5,217	39	16
ALACHUA	987	0	2	7	17	31	49	83	93	412	170	74	49	0	0
BAKER	134	0	0	1	2	5	12	19	12	46	30	3	4	0	0
BAY	697	0	1	6	11	29	29	61	82	268	125	54	30	1	0
BRADFORD	142	0	0	1	1	6	8	17	17	60	19	6	7	0	0
BREVARD	1,746	1	1	11	22	40	83	148	173	684	331	152	98	2	0
BROWARD	7,595	0	8	42	92	196	325	436	597	2,581	1,566	991	753	7	1
CALHOUN	59	0	0	0	1	3	6	5	4	30	5	4	1	0	0
CHARLOTTE	329	0	0	0	3	9	20	34	38	122	60	29	14	0	0
CITRUS	307	0	0	1	10	9	14	25	37	105	60	28	17	0	1
CLAY	485	0	1	1	12	18	34	42	44	169	97	44	21	0	2
COLLIER	1,137	0	2	5	20	35	44	85	100	427	241	99	77	2	0
COLUMBIA	339	0	0	2	3	13	12	40	43	125	57	30	13	1	0
MIAMI-DADE	13,742	5	10	65	173	394	630	844	935	4,285	3,056	1,922	1,409	8	6
DESOTO	204	0	0	2	1	15	13	20	20	74	41	10	8	0	0
DIXIE	72	0	0	2	0	2	8	8	6	29	10	7	0	0	0
DUVAL	4,720	3	7	24	75	171	286	380	475	1,792	889	397	221	0	0
ESCAMBIA	1,615	0	1	8	25	68	101	156	171	616	275	129	65	0	0
FLAGLER	122	0	0	0	3	5	3	8	12	54	21	8	7	0	1
FRANKLIN	49	0	1	0	1	1	0	3	10	20	10	2	1	0	0
GADSDEN	424	0	0	3	6	21	33	33	43	187	60	27	10	0	1
GILCHRIST	61	0	0	0	1	1	5	2	7	26	12	5	2	0	0
GLADES	34	0	0	1	0	1	3	4	1	13	8	3	0	0	0
GULF	34	0	0	0	2	1	3	2	4	13	6	0	3	0	0
HAMILTON	71	0	0	0	0	4	6	6	8	29	12	4	2	0	0
HARDEE	215	0	0	3	3	13	17	19	21	80	47	7	5	0	0
HENDRY	312	0	1	1	9	18	15	30	25	122	48	33	10	0	0
HERNANDO	412	0	0	0	4	9	19	40	39	168	68	44	21	0	0
HIGHLANDS	361	1	3	3	5	9	28	32	45	133	55	34	13	0	0
HILLSBOROUGH	5,672	2	8	33	94	206	339	470	529	2,177	1,013	518	282	0	1
HOLMES	65	0	0	0	0	1	2	7	9	24	15	4	3	0	0
INDIAN RIVER	414	0	0	5	8	14	22	34	37	156	69	43	26	0	0
JACKSON	229	0	0	1	4	4	18	13	28	100	40	17	4	0	0
JEFFERSON	62	0	0	0	1	3	1	1	6	30	16	3	1	0	0
LAFAYETTE	27	0	0	0	0	1	4	4	3	11	3	0	1	0	0
LAKE	864	1	0	6	11	29	52	80	103	334	142	69	37	0	0
LEE	2,116	1	2	10	32	76	102	157	200	804	394	207	130	1	0
LEON	1,122	2	1	3	11	37	46	65	112	519	206	76	44	0	0
LEVY	168	0	1	1	3	6	20	19	13	59	20	18	8	0	0
LIBERTY	26	0	0	0	0	3	2	0	3	9	7	1	1	0	0
MADISON	109	0	0	2	5	6	5	12	13	41	19	4	2	0	0
MANATEE	1,374	1	3	7	39	51	73	105	139	511	263	104	77	1	0
MARION	1,258	0	2	3	17	34	70	129	155	460	211	107	70	0	0
MARTIN	458	0	1	3	6	13	21	36	57	163	75	47	34	1	1
MONROE	265	0	1	0	1	13	12	14	23	77	46	45	32	1	0
NASSAU	208	0	0	3	1	6	18	12	23	95	27	15	8	0	0
OKALOOSA	695	0	0	0	10	23	52	70	79	270	104	50	37	0	0
OKEECHOBEE	240	0	0	0	6	10	24	31	32	80	38	8	10	1	0
ORANGE	5,525	3	8	27	85	162	302	388	515	2,086	1,092	551	302	4	0
OSCEOLA	901	0	2	2	15	29	55	64	79	336	186	82	51	0	0
PALM BEACH	4,781	2	10	28	79	140	193	321	391	1,654	1,011	576	373	3	0
PASCO	1,260	0	1	10	16	45	66	121	113	469	229	108	81	1	0
PINELLAS	3,737	0	3	19	58	105	194	267	345	1,422	733	364	226	0	1
POLK	3,082	1	3	21	49	112	207	306	328	1,176	525	223	131	0	0
PUTNAM	440	0	2	2	8	12	33	43	45	169	80	32	14	0	0
ST JOHN'S	370	0	0	4	6	10	27	25	37	132	64	41	24	0	0
ST LUCIE	968	0	1	4	21	27	59	90	89	368	179	84	45	1	0
SANTA ROSA	371	0	0	0	4	15	25	37	42	152	53	21	22	0	0
SARASOTA	900	0	2	6	15	29	42	73	95	342	165	85	46	0	0
SEMINOLE	1,257	0	1	2	19	31	76	97	107	480	234	127	83	0	0
SUMTER	200	0	0	1	4	4	14	22	22	78	36	12	6	1	0
SUWANNEE	173	0	0	0	1	8	25	11	18	65	34	4	6	0	1
TAYLOR	111	0	0	1	2	3	9	9	14	40	22	7	4	0	0
UNION	48	0	0	0	1	3	5	6	6	19	4	3	1	0	0
VOLUSIA	1,801	1	3	10	17	53	81	101	181	756	317	161	117	3	0
WAKULLA	87	0	0	0	1	4	6	14	10	33	8	7	4	0	0
WALTON	155	0	0	0	3	10	10	19	13	59	22	9	10	0	0
WASHINGTON	82	0	1	0	2	3	4	11	8	29	12	9	3	0	0

TABLE B-8 (Cont.): RESIDENT LIVE BIRTHS TO UNWED WHITE MOTHERS, BY AGE OF MOTHER, BY COUNTY, FLORIDA, 2000

	TOTAL	AGE OF MOTHER													
		<13	13	14	15	16	17	18	19	20-24	25-29	30-34	35-44	45+	UNK
FLORIDA	44,616	6	42	158	577	1,294	2,309	3,350	4,017	15,882	8,659	4,985	3,305	24	8
ALACHUA	379	0	0	2	5	8	20	31	32	149	80	31	21	0	0
BAKER	96	0	0	1	2	4	9	16	9	35	16	2	2	0	0
BAY	477	0	1	4	9	21	23	42	61	170	81	42	22	1	0
BRADFORD	101	0	0	1	0	6	6	15	12	40	11	5	5	0	0
BREVARD	1,217	0	1	3	14	18	58	107	126	481	216	118	73	2	0
BROWARD	3,030	0	3	10	30	56	102	175	215	974	646	445	371	3	0
CALHOUN	39	0	0	0	0	2	6	1	4	19	3	4	0	0	0
CHARLOTTE	298	0	0	0	2	8	18	31	33	112	55	25	14	0	0
CITRUS	284	0	0	1	9	8	13	25	35	95	53	27	17	0	1
CLAY	396	0	1	0	9	14	30	35	32	139	78	37	19	0	2
COLLIER	941	0	1	4	16	28	36	71	83	361	198	80	61	2	0
COLUMBIA	224	0	0	2	2	6	10	26	27	83	39	18	10	1	0
MIAMI-DADE	7,055	1	4	25	80	182	286	393	421	2,029	1,649	1,149	830	3	3
DESOTO	160	0	0	2	1	11	12	16	16	53	35	8	6	0	0
DIXIE	56	0	0	2	0	2	6	6	5	22	8	5	0	0	0
DUVAL	1,821	0	2	5	19	59	98	153	179	691	335	169	111	0	0
ESCAMBIA	674	0	0	2	7	34	37	63	67	264	115	58	27	0	0
FLAGLER	94	0	0	0	3	3	2	7	10	38	18	7	6	0	0
FRANKLIN	39	0	1	0	1	1	0	2	9	15	7	2	1	0	0
GADSDEN	84	0	0	1	0	2	5	7	5	41	17	3	3	0	0
GILCHRIST	57	0	0	0	1	0	5	1	6	25	12	5	2	0	0
GLADES	19	0	0	0	0	0	3	2	1	7	4	2	0	0	0
GULF	25	0	0	0	2	1	1	1	3	10	5	0	2	0	0
HAMILTON	32	0	0	0	0	3	4	4	3	12	4	1	1	0	0
HARDEE	195	0	0	3	2	11	16	19	19	72	41	7	5	0	0
HENDRY	219	0	1	1	8	16	11	21	17	82	29	25	8	0	0
HERNANDO	349	0	0	0	3	9	16	36	33	137	58	38	19	0	0
HIGHLANDS	235	1	1	3	5	7	14	22	32	81	37	23	9	0	0
HILLSBOROUGH	3,452	0	6	16	45	122	205	282	310	1,284	633	341	207	0	1
HOLMES	56	0	0	0	0	1	2	5	8	19	14	4	3	0	0
INDIAN RIVER	285	0	0	2	4	6	12	26	27	105	51	30	22	0	0
JACKSON	114	0	0	0	3	3	10	5	12	54	14	11	2	0	0
JEFFERSON	19	0	0	0	1	1	1	0	3	8	3	1	1	0	0
LAFAYETTE	21	0	0	0	0	0	3	3	3	8	3	0	1	0	0
LAKE	597	1	0	3	8	17	40	54	72	217	105	50	30	0	0
LEE	1,555	0	0	6	19	48	72	117	146	584	307	165	90	1	0
LEON	324	0	0	0	2	7	14	24	44	136	55	22	20	0	0
LEVY	113	0	1	1	1	5	11	9	11	42	15	12	5	0	0
LIBERTY	21	0	0	0	0	3	2	0	3	7	4	1	1	0	0
MADISON	26	0	0	0	0	1	1	3	5	11	4	1	0	0	0
MANATEE	971	0	3	3	27	30	55	56	107	360	181	87	61	1	0
MARION	826	0	0	1	8	23	49	87	95	305	131	76	51	0	0
MARTIN	297	0	1	1	4	8	11	27	32	102	51	34	25	1	0
MONROE	210	0	1	0	1	12	11	9	14	57	39	37	28	1	0
NASSAU	175	0	0	2	1	6	15	10	20	80	20	13	8	0	0
OKALOOSA	473	0	0	0	7	17	38	53	47	181	68	36	26	0	0
OSCEOLA	210	0	0	0	5	10	23	26	30	66	34	6	9	1	0
ORANGE	2,974	1	3	6	35	74	172	211	277	1,123	587	317	167	1	0
OSCEOLA	734	0	0	1	12	25	46	48	62	276	148	68	48	0	0
PALM BEACH	2,366	1	5	10	22	61	96	144	204	767	505	335	215	1	0
PASCO	1,146	0	1	9	15	41	59	105	101	423	211	106	74	1	0
PINELLAS	2,347	0	1	4	32	44	111	160	200	875	472	274	174	0	0
POLK	2,030	0	0	8	30	71	133	201	218	770	336	169	94	0	0
PUTNAM	252	0	1	1	5	4	18	20	25	107	40	21	10	0	0
ST JOHNS	258	0	0	1	4	7	20	17	28	82	43	36	20	0	0
ST LUCIE	519	0	0	2	11	12	31	41	42	204	96	49	30	1	0
SANTA ROSA	326	0	0	0	3	15	21	32	41	132	45	20	17	0	0
SARASOTA	656	0	1	3	9	21	25	52	69	240	124	73	39	0	0
SEMINOLE	819	0	0	1	8	20	44	60	76	302	149	94	65	0	0
SUMTER	118	0	0	1	3	2	10	14	15	40	20	8	5	0	0
SUWANNEE	121	0	0	0	1	3	19	6	13	45	26	1	6	0	1
TAYLOR	60	0	0	0	1	1	5	6	8	22	12	4	1	0	0
UNION	31	0	0	0	1	0	5	6	6	8	3	1	1	0	0
VOLUSIA	1,276	1	1	4	14	40	58	70	125	513	231	127	89	3	0
WAKULLA	68	0	0	0	1	4	5	11	9	23	4	7	4	0	0
WALTON	123	0	0	0	3	7	6	16	9	48	17	8	9	0	0
WASHINGTON	51	0	1	0	1	2	3	6	5	19	8	4	2	0	0

TABLE B-8 (Cont.): RESIDENT LIVE BIRTHS TO UNWED BLACK MOTHERS, BY AGE OF MOTHER, BY COUNTY, FLORIDA, 2000

	TOTAL	AGE OF MOTHER													
		<13	13	14	15	16	17	18	19	20-24	25-29	30-34	35-44	45+	UNK
FLORIDA	31,934	18	50	238	569	1,135	1,761	2,434	2,946	12,105	6,058	2,816	1,783	15	6
ALACHUA	601	0	2	5	12	23	28	51	60	262	90	40	28	0	0
BAKER	38	0	0	0	0	1	3	3	3	11	14	1	2	0	0
BAY	203	0	0	2	2	8	4	17	19	91	42	11	7	0	0
BRADFORD	41	0	0	0	1	0	2	2	5	20	8	1	2	0	0
BREVARD	496	1	0	7	8	21	24	38	44	194	108	31	20	0	0
BROWARD	4,457	0	5	32	62	139	217	254	373	1,584	893	527	366	4	1
CALHOUN	19	0	0	0	1	1	0	4	0	10	2	0	1	0	0
CHARLOTTE	30	0	0	0	1	1	2	3	5	9	5	4	0	0	0
CITRUS	20	0	0	0	1	1	1	0	2	10	5	0	0	0	0
CLAY	71	0	0	0	3	4	4	6	10	27	13	3	1	0	0
COLLIER	178	0	1	1	2	6	8	14	17	59	39	16	15	0	0
COLUMBIA	110	0	0	0	1	7	2	14	13	41	18	11	3	0	0
MIAMI-DADE	6,424	4	6	38	91	205	333	443	505	2,177	1,345	724	546	5	2
DESOTO	44	0	0	0	0	4	1	4	4	21	6	2	2	0	0
DIXIE	16	0	0	0	0	0	2	2	1	7	2	2	0	0	0
DUVAL	2,795	3	5	19	56	106	184	222	286	1,064	527	221	102	0	0
ESCAMBIA	897	0	1	6	18	30	63	88	103	339	147	67	35	0	0
FLAGLER	27	0	0	0	0	2	1	1	2	15	3	1	1	0	1
FRANKLIN	10	0	0	0	0	0	0	1	1	5	3	0	0	0	0
GADSDEN	340	0	0	2	6	19	28	26	38	146	43	24	7	0	1
GILCHRIST	2	0	0	0	0	1	0	0	1	0	0	0	0	0	0
GLADES	7	0	0	1	0	1	0	0	0	2	3	0	0	0	0
GULF	9	0	0	0	0	0	2	1	1	3	1	0	1	0	0
HAMILTON	39	0	0	0	0	1	2	2	5	17	8	3	1	0	0
HARDEE	19	0	0	0	1	2	0	0	2	8	6	0	0	0	0
HENDRY	85	0	0	0	1	2	3	9	8	36	17	7	2	0	0
HERNANDO	61	0	0	0	1	0	3	4	6	30	10	5	2	0	0
HIGHLANDS	124	0	2	0	0	2	14	10	13	52	18	11	2	0	0
HILLSBOROUGH	2,130	2	1	17	49	83	129	186	211	858	360	164	70	0	0
HOLMES	8	0	0	0	0	0	0	1	1	5	1	0	0	0	0
INDIAN RIVER	121	0	0	3	4	6	10	7	10	50	15	12	4	0	0
JACKSON	113	0	0	1	1	1	8	8	16	45	25	6	2	0	0
JEFFERSON	43	0	0	0	0	2	0	1	3	22	13	2	0	0	0
LAFAYETTE	6	0	0	0	0	1	1	1	0	3	0	0	0	0	0
LAKE	262	0	0	3	3	12	12	26	31	117	33	19	6	0	0
LEE	546	1	2	4	13	28	30	40	51	214	85	38	40	0	0
LEON	785	2	1	3	9	30	32	41	67	378	147	51	24	0	0
LEVY	53	0	0	0	1	1	8	10	2	17	5	6	3	0	0
LIBERTY	5	0	0	0	0	0	0	0	0	2	3	0	0	0	0
MADISON	83	0	0	2	5	5	4	9	8	30	15	3	2	0	0
MANATEE	357	1	0	4	12	17	17	47	28	137	66	15	13	0	0
MARION	420	0	2	2	9	11	21	41	59	151	76	31	17	0	0
MARTIN	87	0	0	2	1	4	5	5	14	34	10	8	4	0	0
MONROE	44	0	0	0	0	1	1	4	7	14	7	6	4	0	0
NASSAU	33	0	0	1	0	0	3	2	3	15	7	2	0	0	0
OKALOOSA	184	0	0	0	3	6	12	14	23	79	30	11	6	0	0
OSCEOLA	27	0	0	0	1	0	1	4	0	14	4	2	1	0	0
ORANGE	2,449	2	4	19	50	88	128	175	232	933	475	216	124	3	0
OSCEOLA	158	0	2	1	3	4	8	16	16	58	33	14	3	0	0
PALM BEACH	2,232	1	5	18	56	74	96	166	177	825	446	220	146	2	0
PASCO	95	0	0	1	1	4	6	14	12	39	12	1	5	0	0
PINELLAS	1,291	0	2	14	24	56	80	98	132	514	243	81	46	0	1
POLK	1,026	1	3	13	18	41	73	103	107	399	180	52	36	0	0
PUTNAM	184	0	1	1	3	8	15	23	20	61	37	11	4	0	0
ST JOHNS	108	0	0	3	2	3	7	7	9	48	21	5	3	0	0
ST LUCIE	438	0	1	2	10	14	28	48	46	161	81	32	15	0	0
SANTA ROSA	35	0	0	0	0	0	4	3	1	14	7	1	5	0	0
SARASOTA	234	0	1	3	6	8	17	21	25	97	38	11	7	0	0
SEMINOLE	422	0	1	1	11	11	31	36	31	175	77	33	15	0	0
SUMTER	82	0	0	0	1	2	4	8	7	38	16	4	1	1	0
SUWANNEE	52	0	0	0	0	5	6	5	5	20	8	3	0	0	0
TAYLOR	51	0	0	1	1	2	4	3	6	18	10	3	3	0	0
UNION	17	0	0	0	0	3	0	0	0	11	1	2	0	0	0
VOLUSIA	514	0	2	6	3	13	23	31	53	240	83	34	26	0	0
WAKULLA	19	0	0	0	0	0	1	3	1	10	4	0	0	0	0
WALTON	27	0	0	0	0	3	4	3	2	10	4	0	1	0	0
WASHINGTON	30	0	0	0	1	1	1	5	3	9	4	5	1	0	0

TABLE B-8 (Cont.): RESIDENT LIVE BIRTHS TO UNWED OTHER MOTHERS, BY AGE OF MOTHER, BY COUNTY, FLORIDA, 2000

	TOTAL	AGE OF MOTHER													
		<13	13	14	15	16	17	18	19	20-24	25-29	30-34	35-44	45+	UNK
FLORIDA	1,400	0	2	6	11	34	48	81	117	444	357	177	122	0	1
ALACHUA	7	0	0	0	0	0	1	1	1	1	0	3	0	0	0
BAKER	0	0	0	0	0	0	0	0	0	0	0	0	0	0	0
BAY	17	0	0	0	0	0	2	2	2	7	2	1	1	0	0
BRADFORD	0	0	0	0	0	0	0	0	0	0	0	0	0	0	0
BREVARD	32	0	0	1	0	1	1	3	3	9	7	3	4	0	0
BROWARD	105	0	0	0	0	0	6	7	9	23	27	19	14	0	0
CALHOUN	1	0	0	0	0	0	0	0	0	1	0	0	0	0	0
CHARLOTTE	1	0	0	0	0	0	0	0	0	1	0	0	0	0	0
CITRUS	3	0	0	0	0	0	0	0	0	0	2	1	0	0	0
CLAY	18	0	0	1	0	0	0	1	2	3	6	4	1	0	0
COLLIER	18	0	0	0	2	1	0	0	0	7	4	3	1	0	0
COLUMBIA	5	0	0	0	0	0	0	0	3	1	0	1	0	0	0
MIAMI-DADE	223	0	0	1	2	5	8	8	7	67	50	45	30	0	0
DESOTO	0	0	0	0	0	0	0	0	0	0	0	0	0	0	0
DIXIE	0	0	0	0	0	0	0	0	0	0	0	0	0	0	0
DUVAL	103	0	0	0	0	5	4	5	10	37	27	7	8	0	0
ESCAMBIA	44	0	0	0	0	4	1	5	1	13	13	4	3	0	0
FLAGLER	0	0	0	0	0	0	0	0	0	0	0	0	0	0	0
FRANKLIN	0	0	0	0	0	0	0	0	0	0	0	0	0	0	0
GADSDEN	0	0	0	0	0	0	0	0	0	0	0	0	0	0	0
GILCHRIST	2	0	0	0	0	0	0	1	0	1	0	0	0	0	0
GLADES	8	0	0	0	0	0	0	2	0	4	1	1	0	0	0
GULF	0	0	0	0	0	0	0	0	0	0	0	0	0	0	0
HAMILTON	0	0	0	0	0	0	0	0	0	0	0	0	0	0	0
HARDEE	1	0	0	0	0	0	1	0	0	0	0	0	0	0	0
HENDRY	8	0	0	0	0	0	1	0	0	4	2	1	0	0	0
HERNANDO	2	0	0	0	0	0	0	0	0	1	0	1	0	0	0
HIGHLANDS	2	0	0	0	0	0	0	0	0	0	0	0	2	0	0
HILLSBOROUGH	81	0	1	0	0	1	4	2	8	31	18	11	5	0	0
HOLMES	1	0	0	0	0	0	0	1	0	0	0	0	0	0	0
INDIAN RIVER	8	0	0	0	0	2	0	1	0	1	3	1	0	0	0
JACKSON	2	0	0	0	0	0	0	0	0	1	1	0	0	0	0
JEFFERSON	0	0	0	0	0	0	0	0	0	0	0	0	0	0	0
LAFAYETTE	0	0	0	0	0	0	0	0	0	0	0	0	0	0	0
LAKE	5	0	0	0	0	0	0	0	0	0	4	0	1	0	0
LEE	14	0	0	0	0	0	0	0	3	6	2	3	0	0	0
LEON	9	0	0	0	0	0	0	0	0	3	4	2	0	0	0
LEVY	2	0	0	0	1	0	1	0	0	0	0	0	0	0	0
LIBERTY	0	0	0	0	0	0	0	0	0	0	0	0	0	0	0
MADISON	0	0	0	0	0	0	0	0	0	0	0	0	0	0	0
MANATEE	46	0	0	0	0	4	1	2	4	14	16	2	3	0	0
MARION	12	0	0	0	0	0	0	1	1	4	4	0	2	0	0
MARTIN	73	0	0	0	1	1	5	4	11	26	14	5	5	0	1
MONROE	6	0	0	0	0	0	0	1	1	3	0	1	0	0	0
NASSAU	0	0	0	0	0	0	0	0	0	0	0	0	0	0	0
OKALOOSA	38	0	0	0	0	0	2	3	9	10	6	3	5	0	0
OSCEOLA	3	0	0	0	0	0	0	1	2	0	0	0	0	0	0
ORANGE	102	0	1	2	0	0	2	2	6	30	30	18	11	0	0
OSCEOLA	9	0	0	0	0	0	1	0	1	2	5	0	0	0	0
PALM BEACH	177	0	0	0	1	4	1	10	10	61	58	20	12	0	0
PASCO	19	0	0	0	0	0	1	2	0	7	6	1	2	0	0
PINELLAS	98	0	0	1	2	5	3	9	13	33	17	9	6	0	0
POLK	26	0	0	0	1	0	1	2	3	7	9	2	1	0	0
PUTNAM	2	0	0	0	0	0	0	0	0	1	1	0	0	0	0
ST JOHN'S	4	0	0	0	0	0	0	1	0	2	0	0	1	0	0
ST LUCIE	11	0	0	0	0	1	0	1	1	3	2	3	0	0	0
SANTA ROSA	10	0	0	0	1	0	0	2	0	6	1	0	0	0	0
SARASOTA	10	0	0	0	0	0	0	0	1	5	3	1	0	0	0
SEMINOLE	15	0	0	0	0	0	1	1	0	3	8	0	2	0	0
SUMTER	0	0	0	0	0	0	0	0	0	0	0	0	0	0	0
SUWANNEE	0	0	0	0	0	0	0	0	0	0	0	0	0	0	0
TAYLOR	0	0	0	0	0	0	0	0	0	0	0	0	0	0	0
UNION	0	0	0	0	0	0	0	0	0	0	0	0	0	0	0
VOLUSIA	11	0	0	0	0	0	0	0	3	3	3	0	2	0	0
WAKULLA	0	0	0	0	0	0	0	0	0	0	0	0	0	0	0
WALTON	5	0	0	0	0	0	0	0	2	1	1	1	0	0	0
WASHINGTON	1	0	0	0	0	0	0	0	0	1	0	0	0	0	0

TABLE B-9: RESIDENT LIVE BIRTHS BY MONTH, BY COUNTY, FLORIDA, 2000

	TOTAL	JAN	FEB	MAR	APR	MAY	JUN	JUL	AUG	SEP	OCT	NOV	DEC
FLORIDA	204,030	16,901	16,045	16,742	15,577	16,574	16,354	16,623	18,167	17,941	17,844	17,473	17,789
ALACHUA	2,600	233	210	210	202	199	224	216	225	224	219	219	219
BAKER	356	37	31	29	20	29	23	22	35	27	37	33	33
BAY	2,010	166	164	172	144	145	173	168	192	160	156	183	187
BRADFORD	320	23	20	26	28	25	28	23	33	37	22	25	30
BREVARD	5,014	426	390	473	383	406	387	426	451	400	426	402	444
BROWARD	22,089	1,749	1,726	1,810	1,664	1,745	1,812	1,819	1,986	1,911	2,010	1,935	1,922
CALHOUN	157	14	12	19	13	15	11	9	13	17	11	11	12
CHARLOTTE	1,033	92	78	87	71	83	81	87	107	85	98	74	90
CITRUS	871	63	68	76	72	76	73	75	68	78	76	61	85
CLAY	1,830	147	161	138	168	154	146	152	163	155	156	141	149
COLLIER	3,064	241	202	261	237	256	230	255	283	269	261	258	311
COLUMBIA	764	62	64	69	56	57	66	57	68	67	83	64	51
MIAMI-DADE	32,300	2,679	2,440	2,694	2,411	2,697	2,571	2,642	2,929	2,939	2,765	2,805	2,728
DESOTO	424	39	34	27	33	33	34	22	42	35	36	39	50
DIXIE	159	18	10	11	15	9	18	9	13	14	19	11	12
DUVAL	12,169	1,069	982	1,011	935	978	964	990	1,057	1,018	1,027	1,020	1,118
ESCAMBIA	3,845	321	298	345	284	316	312	305	347	353	341	303	320
FLAGLER	414	23	31	43	30	37	36	34	33	36	28	43	40
FRANKLIN	106	13	7	10	8	7	6	8	19	5	7	9	7
GADSDEN	706	57	62	46	52	58	61	62	67	65	68	50	58
GILCHRIST	181	13	23	13	14	17	13	9	21	15	16	11	16
GLADES	88	9	5	7	5	10	8	7	3	5	9	7	13
GULF	127	14	10	8	9	10	11	13	7	12	15	8	10
HAMILTON	168	12	17	16	12	13	8	16	12	18	19	15	10
HARDEE	450	42	37	35	51	31	20	36	37	44	33	44	40
HENDRY	643	54	38	58	50	53	56	42	53	60	67	65	47
HERNANDO	1,175	92	98	85	91	100	86	102	109	103	101	99	109
HIGHLANDS	841	80	75	64	62	60	80	61	58	84	70	68	79
HILLSBOROUGH	14,662	1,215	1,192	1,179	1,088	1,222	1,134	1,224	1,352	1,254	1,263	1,260	1,279
HOLMES	213	15	25	16	13	8	22	15	16	24	22	17	20
INDIAN RIVER	1,127	104	79	97	85	96	78	91	93	99	111	98	96
JACKSON	583	50	43	44	47	44	48	45	59	48	52	51	52
JEFFERSON	136	9	14	8	12	10	11	16	8	12	12	8	16
LAFAYETTE	91	3	5	3	3	10	6	6	8	12	10	11	14
LAKE	2,362	204	161	191	165	191	188	199	214	207	220	196	226
LEE	5,196	432	426	403	412	424	389	378	504	446	457	483	442
LEON	2,989	254	239	257	218	208	277	256	240	222	273	255	290
LEVY	431	35	25	39	35	34	31	46	37	35	48	37	29
LIBERTY	78	6	5	6	7	7	2	10	9	6	4	5	11
MADISON	219	23	19	22	12	14	20	13	17	25	21	20	13
MANATEE	3,235	258	250	265	307	278	257	255	295	277	278	262	253
MARION	2,902	263	219	228	224	246	220	234	255	260	255	232	266
MARTIN	1,238	87	97	111	90	112	99	96	111	103	112	112	108
MONROE	795	56	80	53	71	68	68	78	61	61	70	63	66
NASSAU	743	54	60	66	55	54	69	73	68	57	71	66	50
OKALOOSA	2,359	181	208	164	206	211	184	174	221	194	233	185	198
OKEECHOBEE	527	39	28	51	41	37	36	41	41	46	46	62	59
ORANGE	14,070	1,104	1,127	1,173	1,075	1,158	1,115	1,169	1,185	1,241	1,278	1,232	1,213
OSCEOLA	2,615	222	201	199	185	193	198	219	217	266	225	220	270
PALM BEACH	13,321	1,122	996	1,073	1,012	1,105	1,089	1,060	1,156	1,238	1,160	1,132	1,178
PASCO	3,759	290	291	305	327	289	300	309	338	343	323	304	340
PINELLAS	9,596	817	780	773	736	775	794	763	824	834	855	805	840
POLK	6,874	582	582	563	519	524	571	554	613	598	595	599	574
PUTNAM	897	85	67	65	70	76	76	72	78	74	78	87	69
ST JOHNS	1,325	97	92	127	96	107	133	86	107	117	119	137	107
ST LUCIE	2,248	217	168	173	159	201	202	152	188	202	192	200	194
SANTA ROSA	1,501	124	128	151	112	115	116	135	114	136	113	128	129
SARASOTA	2,719	231	246	213	216	210	212	217	247	233	221	237	236
SEMINOLE	4,583	383	362	351	365	410	349	401	406	410	406	370	370
SUMTER	477	47	37	38	32	36	36	46	42	44	30	49	40
SUWANNEE	465	39	30	33	37	28	41	41	52	39	43	38	44
TAYLOR	249	26	16	20	11	14	25	30	16	26	23	19	23
UNION	133	13	15	9	9	14	4	11	13	9	11	12	13
VOLUSIA	4,459	348	370	353	337	350	347	361	444	424	356	381	388
WAKULLA	287	18	21	24	21	26	29	19	23	24	23	32	27
WALTON	442	40	33	34	26	31	28	37	42	42	45	40	44
WASHINGTON	220	20	15	19	21	19	12	24	22	17	14	25	12

TABLE B-10: RESIDENT LIVE BIRTHS BY EDUCATION OF MOTHER, BY COUNTY, FLORIDA, 2000

	TOTAL	YEARS OF EDUCATION COMPLETED									UNK
		0	1-7	8	9	10	11	12	13-15	16+	
FLORIDA	204,030	444	6,025	3,325	8,033	10,388	13,951	69,608	47,100	44,247	909
ALACHUA	2,600	0	7	22	67	111	176	635	775	807	0
BAKER	356	1	5	12	27	29	23	153	79	24	3
BAY	2,010	0	11	33	78	122	146	703	566	326	25
BRADFORD	320	0	4	10	25	25	23	134	68	31	0
BREVARD	5,014	1	33	81	166	229	340	1,535	1,445	1,166	18
BROWARD	22,089	26	335	222	484	786	1,170	7,112	5,498	6,340	116
CALHOUN	157	1	4	4	5	16	18	59	31	18	1
CHARLOTTE	1,033	0	8	8	26	60	92	426	270	141	2
CITRUS	871	0	2	14	37	50	70	359	217	120	2
CLAY	1,830	0	19	31	71	69	102	650	533	351	4
COLLIER	3,064	41	383	85	234	189	187	923	537	480	5
COLUMBIA	764	1	13	20	49	62	76	307	170	66	0
MIAMI-DADE	32,300	53	1,128	416	1,272	1,222	1,893	12,307	6,579	7,358	72
DESOTO	424	3	57	13	44	49	38	157	50	13	0
DIXIE	159	1	4	7	13	20	10	72	29	3	0
DUVAL	12,169	4	145	205	384	645	818	4,285	3,029	2,490	164
ESCAMBIA	3,845	1	15	34	109	225	367	1,338	1,068	666	22
FLAGLER	414	0	1	2	9	19	18	155	128	77	5
FRANKLIN	106	0	2	3	7	8	9	40	25	11	1
GADSDEN	706	2	49	12	35	47	95	283	119	56	8
GILCHRIST	181	0	3	4	7	16	18	73	47	13	0
GLADES	88	0	5	3	6	10	4	43	13	4	0
GULF	127	0	0	4	4	8	9	57	33	12	0
HAMILTON	168	2	3	10	11	15	24	73	19	11	0
HARDEE	450	8	85	25	46	52	31	133	54	14	2
HENDRY	643	4	119	22	71	51	55	214	68	32	7
HERNANDO	1,175	0	6	15	52	61	103	512	290	136	0
HIGHLANDS	841	2	71	27	67	60	101	276	158	79	0
HILLSBOROUGH	14,662	31	563	347	728	837	1,022	4,480	3,233	3,351	70
HOLMES	213	0	3	5	9	19	16	90	46	22	3
INDIAN RIVER	1,127	0	69	21	69	76	83	370	230	209	0
JACKSON	583	0	4	11	26	34	38	235	151	82	2
JEFFERSON	136	0	2	2	3	6	17	68	28	8	2
LAFAJETTE	91	0	4	2	4	6	7	36	17	15	0
LAKE	2,362	0	75	48	124	145	194	897	494	384	1
LEE	5,196	27	259	104	210	310	400	2,082	1,029	761	14
LEON	2,989	1	18	28	60	112	179	710	804	1,064	13
LEVY	431	0	6	10	25	37	39	180	94	40	0
LIBERTY	78	0	4	4	5	9	2	34	11	8	1
MADISON	219	1	1	9	13	16	20	91	48	18	2
MANATEE	3,235	14	221	112	185	244	279	983	702	494	1
MARION	2,902	1	54	44	129	222	250	1,174	701	327	0
MARTIN	1,238	38	128	18	45	61	69	325	274	277	3
MONROE	795	1	14	9	23	34	41	282	214	167	10
NASSAU	743	0	3	16	27	46	46	307	182	112	4
OKALOOSA	2,359	0	12	23	58	91	143	878	716	434	4
OSCEOLA	527	4	54	18	52	40	61	177	85	33	3
ORANGE	14,070	18	308	173	470	743	1,044	4,604	3,101	3,575	34
OSCEOLA	2,615	1	28	34	107	130	191	1,008	647	468	1
PALM BEACH	13,321	98	632	221	533	635	793	3,885	2,779	3,549	196
PASCO	3,759	3	71	54	154	231	304	1,334	981	616	11
PINELLAS	9,596	7	136	152	369	521	661	3,129	2,399	2,212	10
POLK	6,874	32	416	197	476	540	669	2,389	1,324	820	11
PUTNAM	897	1	37	30	69	82	104	382	126	61	5
ST JOHNS	1,325	0	3	13	37	58	68	399	283	459	5
ST LUCIE	2,248	10	128	59	102	155	193	830	514	255	2
SANTA ROSA	1,501	0	5	12	39	60	101	453	424	404	3
SARASOTA	2,719	0	47	43	74	125	191	940	669	628	2
SEMINOLE	4,583	3	42	29	95	155	200	1,296	1,209	1,543	11
SUMTER	477	0	16	23	36	32	49	204	89	27	1
SUWANNEE	465	1	23	15	34	41	46	167	102	36	0
TAYLOR	249	0	1	7	10	18	22	129	44	18	0
UNION	133	0	0	5	10	8	8	56	35	11	0
VOLUSIA	4,459	1	107	66	169	188	309	1,623	1,171	801	24
WAKULLA	287	0	1	4	17	13	20	103	86	41	2
WALTON	442	0	10	9	27	36	38	159	105	57	1
WASHINGTON	220	0	3	4	4	16	18	105	55	15	0

TABLE B-10 (Cont.): RESIDENT LIVE BIRTHS TO WHITE MOTHERS, BY EDUCATION OF MOTHER, BY COUNTY, FLORIDA, 2000

	YEARS OF EDUCATION COMPLETED										
	TOTAL	0	1-7	8	9	10	11	12	13-15	16+	UNK
FLORIDA	150,115	293	4,894	2,481	6,009	6,776	7,943	47,828	35,920	37,550	421
ALACHUA	1,687	0	5	13	37	46	64	347	520	655	0
BAKER	307	1	5	12	26	26	17	125	72	22	1
BAY	1,660	0	10	30	70	103	99	568	465	295	20
BRADFORD	255	0	4	8	21	22	14	105	53	28	0
BREVARD	4,146	0	29	61	131	159	232	1,236	1,237	1,047	14
BROWARD	13,719	12	205	110	231	361	421	3,883	3,512	4,954	30
CALHOUN	126	1	4	3	4	12	16	45	24	16	1
CHARLOTTE	956	0	7	8	24	57	83	403	249	123	2
CITRUS	823	0	2	13	36	48	70	343	200	110	1
CLAY	1,608	0	17	29	64	61	85	569	465	314	4
COLLIER	2,651	37	353	70	208	153	137	758	478	454	3
COLUMBIA	601	1	13	18	39	47	50	242	134	57	0
MIAMI-DADE	21,988	33	829	281	906	700	907	7,370	4,728	6,206	28
DESOTO	359	3	55	13	39	42	29	121	47	10	0
DIXIE	139	1	4	7	12	17	8	61	26	3	0
DUVAL	7,429	2	93	128	223	318	351	2,398	1,913	1,949	54
ESCAMBIA	2,481	0	10	22	63	130	162	794	729	561	10
FLAGLER	360	0	1	2	9	15	16	133	112	69	3
FRANKLIN	94	0	2	3	7	8	8	35	19	11	1
GADSDEN	270	2	45	9	15	13	19	81	47	36	3
GILCHRIST	176	0	3	3	7	16	16	71	47	13	0
GLADES	66	0	4	3	3	8	1	34	9	4	0
GULF	108	0	0	3	3	6	8	47	30	11	0
HAMILTON	110	2	3	9	9	9	12	44	13	9	0
HARDEE	418	8	84	25	45	47	27	119	47	14	2
HENDRY	529	4	118	20	60	40	35	167	54	28	3
HERNANDO	1,066	0	6	13	48	55	87	467	267	123	0
HIGHLANDS	666	2	68	19	53	46	68	208	130	72	0
HILLSBOROUGH	11,146	29	526	281	580	529	624	3,192	2,487	2,871	27
HOLMES	200	0	3	5	9	16	15	86	43	20	3
INDIAN RIVER	940	0	68	15	58	54	56	294	196	199	0
JACKSON	415	0	4	9	19	23	22	158	106	72	2
JEFFERSON	74	0	2	2	3	4	6	28	20	7	2
LAFAYETTE	79	0	4	2	4	5	5	29	15	15	0
LAKE	1,970	0	70	42	105	123	129	715	434	352	0
LEE	4,403	22	234	86	188	225	280	1,700	939	722	7
LEON	1,753	1	12	15	30	37	59	367	451	772	9
LEVY	356	0	6	7	22	29	26	146	83	37	0
LIBERTY	70	0	4	4	5	9	2	30	8	8	0
MADISON	101	1	0	3	6	7	5	39	25	14	1
MANATEE	2,660	9	190	98	152	172	184	794	607	454	0
MARION	2,266	1	51	37	107	171	159	901	566	273	0
MARTIN	977	4	62	16	42	46	47	258	237	264	1
MONROE	690	1	8	9	21	28	30	237	192	161	3
NASSAU	689	0	3	15	26	42	38	284	172	105	4
OKALOOSA	1,898	0	10	17	49	78	92	683	581	384	4
OKEECHOBEE	483	4	54	17	49	36	55	160	75	30	3
ORANGE	9,693	12	238	110	311	473	540	2,838	2,221	2,930	20
OSCEOLA	2,261	1	25	28	94	114	154	884	548	413	0
PALM BEACH	9,228	47	389	134	335	339	376	2,358	2,081	3,071	98
PASCO	3,537	3	67	51	150	215	283	1,241	941	577	9
PINELLAS	7,512	7	120	112	261	295	387	2,377	1,988	1,961	4
POLK	5,440	31	378	167	402	414	442	1,814	1,070	713	9
PUTNAM	659	1	36	27	56	56	61	270	94	57	1
ST JOHN'S	1,162	0	3	11	31	51	47	317	267	432	3
ST LUCIE	1,574	7	112	43	66	87	90	558	404	206	1
SANTA ROSA	1,387	0	5	11	37	59	93	406	390	383	3
SARASOTA	2,364	0	42	34	66	99	124	806	600	592	1
SEMINOLE	3,774	1	37	20	66	102	120	1,010	1,039	1,373	6
SUMTER	363	0	13	22	30	21	30	151	71	25	0
SUWANNEE	383	1	23	15	28	35	30	126	89	36	0
TAYLOR	189	0	1	5	9	13	10	99	34	18	0
UNION	109	0	0	3	7	8	7	44	29	11	0
VOLUSIA	3,697	1	102	61	149	141	213	1,338	980	695	17
WAKULLA	248	0	1	4	15	10	17	94	68	37	2
WALTON	391	0	10	7	24	31	33	138	94	53	1
WASHINGTON	176	0	2	1	4	14	10	84	48	13	0

TABLE B-10 (Cont.): RESIDENT LIVE BIRTHS TO BLACK MOTHERS, BY EDUCATION OF MOTHER, BY COUNTY, FLORIDA, 2000

	YEARS OF EDUCATION COMPLETED										
	TOTAL	0	1-7	8	9	10	11	12	13-15	16+	UNK
FLORIDA	47,271	60	755	768	1,864	3,425	5,790	20,120	9,757	4,396	336
ALACHUA	795	0	2	9	30	64	111	277	233	69	0
BAKER	44	0	0	0	0	2	6	26	6	2	2
BAY	280	0	0	2	7	14	39	113	82	20	3
BRADFORD	59	0	0	2	4	3	9	26	13	2	0
BREVARD	704	0	3	18	29	64	104	265	165	56	0
BROWARD	7,644	14	125	108	246	411	736	3,037	1,824	1,064	79
CALHOUN	28	0	0	1	1	4	2	13	6	1	0
CHARLOTTE	54	0	0	0	2	3	8	18	17	6	0
CITRUS	27	0	0	1	1	2	0	13	6	4	0
CLAY	156	0	2	2	5	5	14	67	40	21	0
COLLIER	349	4	27	12	25	34	48	146	43	9	1
COLUMBIA	145	0	0	2	9	14	23	62	30	5	0
MIAMI-DADE	9,417	15	229	117	325	495	957	4,695	1,708	864	12
DESOTO	61	0	0	0	5	7	9	34	3	3	0
DIXIE	19	0	0	0	1	3	2	11	2	0	0
DUVAL	4,223	1	42	73	148	309	450	1,754	970	376	100
ESCAMBIA	1,182	0	3	10	40	90	199	494	276	61	9
FLAGLER	47	0	0	0	0	4	2	20	14	5	2
FRANKLIN	12	0	0	0	0	0	1	5	6	0	0
GADSDEN	435	0	3	3	20	34	76	202	72	20	5
GILCHRIST	2	0	0	1	0	0	0	1	0	0	0
GLADES	9	0	1	0	0	1	0	4	3	0	0
GULF	16	0	0	0	1	2	1	9	2	1	0
HAMILTON	57	0	0	1	2	6	12	29	6	1	0
HARDEE	31	0	1	0	1	5	3	14	7	0	0
HENDRY	96	0	0	2	7	11	18	41	11	2	4
HERNANDO	87	0	0	2	2	5	16	38	18	6	0
HIGHLANDS	159	0	3	6	11	14	33	65	26	1	0
HILLSBOROUGH	2,982	0	26	60	139	289	377	1,158	636	286	11
HOLMES	8	0	0	0	0	2	1	4	1	0	0
INDIAN RIVER	164	0	0	5	9	22	24	69	29	6	0
JACKSON	162	0	0	2	7	11	16	77	42	7	0
JEFFERSON	61	0	0	0	0	2	11	39	8	1	0
LAFAYETTE	12	0	0	0	0	1	2	7	2	0	0
LAKE	352	0	4	6	19	22	64	169	48	20	0
LEE	736	3	25	17	22	83	117	363	78	25	3
LEON	1,134	0	5	13	29	74	117	329	340	224	3
LEVY	67	0	0	2	2	8	13	31	10	1	0
LIBERTY	8	0	0	0	0	0	0	4	3	0	1
MADISON	116	0	1	6	7	9	15	51	23	3	1
MANATEE	467	1	7	11	24	66	90	172	76	20	0
MARION	581	0	2	7	20	46	90	261	121	34	0
MARTIN	128	0	4	1	1	10	20	60	27	5	0
MONROE	67	0	3	0	1	6	11	26	17	2	1
NASSAU	48	0	0	1	1	4	8	20	10	4	0
OKALOOSA	342	0	0	5	6	9	42	150	102	28	0
KEECHOBEE	37	0	0	1	2	3	5	17	7	2	0
ORANGE	3,743	5	55	59	150	255	488	1,577	744	404	6
OSCEOLA	253	0	2	6	13	14	34	94	72	18	0
PALM BEACH	3,488	13	112	84	189	290	409	1,432	601	278	80
PASCO	141	0	0	1	3	12	19	65	26	15	0
PINELLAS	1,650	0	6	31	95	209	254	630	312	112	1
POLK	1,328	1	36	30	72	123	223	549	228	66	0
PUTNAM	232	0	1	3	13	26	43	108	31	4	3
ST JOHNS	141	0	0	2	6	7	20	77	14	13	2
ST LUCIE	619	2	15	14	36	65	102	259	100	26	0
SANTA ROSA	70	0	0	0	0	1	6	27	23	13	0
SARASOTA	290	0	2	9	8	25	61	118	53	14	0
SEMINOLE	642	1	3	9	28	48	74	257	133	86	3
SUMTER	106	0	1	0	6	10	19	50	18	2	0
SUWANNEE	81	0	0	0	6	6	16	41	12	0	0
TAYLOR	56	0	0	1	1	5	12	28	9	0	0
UNION	24	0	0	2	3	0	1	12	6	0	0
VOLUSIA	681	0	3	5	19	46	93	264	174	73	4
WAKULLA	36	0	0	0	2	3	3	9	17	2	0
WALTON	40	0	0	0	3	5	5	17	8	2	0
WASHINGTON	40	0	1	3	0	2	6	20	7	1	0

TABLE B-10 (Cont.): RESIDENT LIVE BIRTHS TO OTHER MOTHERS, BY EDUCATION OF MOTHER, BY COUNTY, FLORIDA, 2000

	YEARS OF EDUCATION COMPLETED										
	TOTAL	0	1-7	8	9	10	11	12	13-15	16+	UNK
FLORIDA	6,351	89	372	75	156	181	214	1,617	1,386	2,241	20
ALACHUA	118	0	0	0	0	1	1	11	22	83	0
BAKER	5	0	0	0	1	1	0	2	1	0	0
BAY	69	0	1	1	1	5	8	22	19	10	2
BRADFORD	6	0	0	0	0	0	0	3	2	1	0
BREVARD	156	1	1	2	6	6	4	32	43	61	0
BROWARD	715	0	5	4	7	14	13	190	162	319	1
CALHOUN	3	0	0	0	0	0	0	1	1	1	0
CHARLOTTE	23	0	1	0	0	0	1	5	4	12	0
CITRUS	20	0	0	0	0	0	0	3	11	6	0
CLAY	66	0	0	0	2	3	3	14	28	16	0
COLLIER	63	0	3	3	1	2	2	19	16	17	0
COLUMBIA	18	0	0	0	1	1	3	3	6	4	0
MIAMI-DADE	762	5	68	17	38	24	25	217	115	252	1
DESOTO	4	0	2	0	0	0	0	2	0	0	0
DIXIE	1	0	0	0	0	0	0	0	1	0	0
DUVAL	511	1	10	4	13	18	17	133	145	164	6
ESCAMBIA	181	1	2	2	6	5	6	50	63	43	3
FLAGLER	6	0	0	0	0	0	0	1	2	3	0
FRANKLIN	0	0	0	0	0	0	0	0	0	0	0
GADSDEN	1	0	1	0	0	0	0	0	0	0	0
GILCHRIST	3	0	0	0	0	0	2	1	0	0	0
GLADES	13	0	0	0	3	1	3	5	1	0	0
GULF	3	0	0	1	0	0	0	1	1	0	0
HAMILTON	1	0	0	0	0	0	0	0	0	1	0
HARDEE	1	0	0	0	0	0	1	0	0	0	0
HENDRY	18	0	1	0	4	0	2	6	3	2	0
HERNANDO	22	0	0	0	2	1	0	7	5	7	0
HIGHLANDS	16	0	0	2	3	0	0	3	2	6	0
HILLSBOROUGH	494	2	11	6	9	16	21	127	110	191	1
HOLMES	5	0	0	0	0	1	0	0	2	2	0
INDIAN RIVER	23	0	1	1	2	0	3	7	5	4	0
JACKSON	6	0	0	0	0	0	0	0	3	3	0
JEFFERSON	1	0	0	0	0	0	0	1	0	0	0
LAFAYETTE	0	0	0	0	0	0	0	0	0	0	0
LAKE	39	0	1	0	0	0	1	13	12	12	0
LEE	53	2	0	1	0	2	3	19	11	14	1
LEON	95	0	1	0	1	1	3	13	12	64	0
LEVY	8	0	0	1	1	0	0	3	1	2	0
LIBERTY	0	0	0	0	0	0	0	0	0	0	0
MADISON	2	0	0	0	0	0	0	1	0	1	0
MANATEE	107	4	24	3	9	6	5	17	19	20	0
MARION	54	0	1	0	2	5	1	12	13	20	0
MARTIN	130	33	62	1	2	5	2	7	10	8	0
MONROE	26	0	1	0	0	0	0	16	4	4	1
NASSAU	6	0	0	0	0	0	0	3	0	3	0
OKALOOSA	119	0	2	1	3	4	9	45	33	22	0
OKEECHOBEE	7	0	0	0	1	1	1	0	3	1	0
ORANGE	626	1	15	4	9	15	16	188	136	240	2
OSCEOLA	100	0	1	0	0	2	3	30	27	37	0
PALM BEACH	577	38	131	3	9	6	8	93	95	194	0
PASCO	78	0	4	2	1	4	2	28	13	24	0
PINELLAS	425	0	10	9	13	17	20	121	98	137	0
POLK	104	0	2	0	2	3	4	26	26	41	0
PUTNAM	3	0	0	0	0	0	0	2	1	0	0
ST JOHN'S	22	0	0	0	0	0	1	5	2	14	0
ST LUCIE	54	1	1	2	0	3	1	13	10	23	0
SANTA ROSA	44	0	0	1	2	0	2	20	11	8	0
SARASOTA	64	0	3	0	0	1	6	16	16	22	0
SEMINOLE	164	0	2	0	1	5	6	29	37	84	0
SUMTER	7	0	2	1	0	1	0	3	0	0	0
SUWANNEE	1	0	0	0	0	0	0	0	1	0	0
TAYLOR	4	0	0	1	0	0	0	2	1	0	0
UNION	0	0	0	0	0	0	0	0	0	0	0
VOLUSIA	80	0	2	0	1	1	3	21	17	33	2
WAKULLA	3	0	0	0	0	0	0	0	1	2	0
WALTON	11	0	0	2	0	0	0	4	3	2	0
WASHINGTON	4	0	0	0	0	0	2	1	0	1	0

TABLE B-11: RESIDENT LIVE BIRTHS TO MOTHERS UNDER 15 YEARS OF AGE FOR SELECTED INDICATORS, BY COUNTY, FLORIDA, 2000

	TOTAL	UNWED	BIRTHWEIGHT		THIRD TRIMESTER OR NO PRENATAL CARE	ONE OR MORE PREVIOUS LIVE BIRTHS
			UNDER 1,500 GRAMS	UNDER 2,500 GRAMS		
FLORIDA	531	521	18	86	74	11
ALACHUA	9	9	1	1	3	0
BAKER	1	1	0	0	0	0
BAY	7	7	0	1	2	0
BRADFORD	1	1	0	0	0	0
BREVARD	13	13	0	6	1	0
BROWARD	50	50	1	4	8	1
CALHOUN	0	0	0	0	0	0
CHARLOTTE	0	0	0	0	0	0
CITRUS	1	1	0	0	0	0
CLAY	2	2	0	0	1	0
COLLIER	7	7	0	0	0	0
COLUMBIA	2	2	0	0	0	0
MIAMI-DADE	83	80	1	9	7	2
DESOTO	2	2	0	0	0	0
DIXIE	2	2	0	0	1	0
DUVAL	34	34	2	8	4	0
ESCAMBIA	9	9	0	3	0	0
FLAGLER	0	0	0	0	0	0
FRANKLIN	2	1	0	0	0	0
GADSDEN	3	3	0	1	0	0
GILCHRIST	0	0	0	0	0	0
GLADES	1	1	0	0	0	0
GULF	0	0	0	0	0	0
HAMILTON	0	0	0	0	0	0
HARDEE	3	3	1	3	0	0
HENDRY	2	2	0	1	0	0
HERNANDO	0	0	0	0	0	0
HIGHLANDS	7	7	0	1	1	0
HILLSBOROUGH	43	43	2	6	4	0
HOLMES	0	0	0	0	0	0
INDIAN RIVER	5	5	0	1	1	0
JACKSON	1	1	0	0	0	0
JEFFERSON	0	0	0	0	0	0
LAFAYETTE	0	0	0	0	0	0
LAKE	7	7	0	2	0	0
LEE	13	13	0	3	3	0
LEON	6	6	0	1	2	0
LEVY	2	2	0	0	0	0
LIBERTY	0	0	0	0	0	0
MADISON	2	2	0	0	1	0
MANATEE	11	11	0	2	0	1
MARION	5	5	0	0	0	0
MARTIN	4	4	0	0	1	0
MONROE	1	1	0	0	0	0
NASSAU	3	3	0	0	0	0
OKALOOSA	0	0	0	0	0	0
OKEECHOBEE	0	0	0	0	0	0
ORANGE	38	38	3	8	7	2
OSCEOLA	4	4	0	1	1	0
PALM BEACH	40	40	2	3	11	3
PASCO	12	11	0	3	2	0
PINELLAS	22	22	3	6	3	1
POLK	26	25	1	4	6	1
PUTNAM	5	4	0	1	0	0
SAINT JOHNS	4	4	0	1	1	0
SAINT LUCIE	5	5	0	1	1	0
SANTA ROSA	0	0	0	0	0	0
SARASOTA	8	8	1	2	0	0
SEMINOLE	3	3	0	0	0	0
SUMTER	1	1	0	0	0	0
SUWANNEE	0	0	0	0	0	0
TAYLOR	1	1	0	0	0	0
UNION	0	0	0	0	0	0
VOLUSIA	17	14	0	3	2	0
WAKULLA	0	0	0	0	0	0
WALTON	0	0	0	0	0	0
WASHINGTON	1	1	0	0	0	0

TABLE B-12: RESIDENT LIVE BIRTHS TO MOTHERS 15 THROUGH 19 YEARS OF AGE FOR SELECTED INDICATORS, AND AGE-SPECIFIC BIRTH RATES PER 1,000 FEMALES, BY COUNTY, FLORIDA, 2000

	BIRTHWEIGHT												POPULATION 15-19 FEMALES
	UNWED		UNDER 1,500 GRAMS		UNDER 2,500 GRAMS		THIRD TRIMESTER OR NO PRENATAL CARE		ONE OR MORE PREVIOUS LIVE BIRTHS		AGE- SPECIFIC BIRTH RATE		
	TOTAL	NUMBER	%	NUMBER	%	NUMBER	%	NUMBER	%	NUMBER		%	
FLORIDA	25,153	20,697	82.3	491	2.0	2,505	10.0	1,595	6.3	5,275	21.0	53.8	467,834
ALACHUA	325	273	84.0	9	2.8	33	10.2	18	5.5	68	20.9	29.4	11,047
BAKER	78	50	64.1	0	0.0	4	5.1	2	2.6	18	23.1	87.7	889
BAY	288	212	73.6	6	2.1	18	6.3	13	4.5	62	21.5	57.2	5,036
BRADFORD	62	49	79.0	2	3.2	9	14.5	5	8.1	12	19.4	82.1	755
BREVARD	566	466	82.3	8	1.4	37	6.5	21	3.7	103	18.2	38.3	14,791
BROWARD	1,873	1,646	87.9	39	2.1	197	10.5	180	9.6	396	21.1	46.9	39,961
CALHOUN	28	19	67.9	0	0.0	4	14.3	1	3.6	5	17.9	59.4	471
CHARLOTTE	137	104	75.9	0	0.0	6	4.4	15	10.9	27	19.7	41.8	3,274
CITRUS	130	95	73.1	4	3.1	19	14.6	2	1.5	23	17.7	49.0	2,651
CLAY	206	150	72.8	4	1.9	19	9.2	11	5.3	31	15.0	36.8	5,592
COLLIER	370	284	76.8	11	3.0	33	8.9	28	7.6	76	20.5	67.1	5,511
COLUMBIA	143	111	77.6	1	0.7	14	9.8	11	7.7	28	19.6	63.3	2,259
MIAMI-DADE	3,508	2,976	84.8	66	1.9	366	10.4	166	4.7	697	19.9	49.6	70,685
DESOTO	85	69	81.2	0	0.0	10	11.8	6	7.1	23	27.1	106.5	798
DIXIE	36	24	66.7	0	0.0	2	5.6	0	0.0	6	16.7	82.2	438
DUVAL	1,650	1,387	84.1	51	3.1	198	12.0	89	5.4	363	22.0	65.3	25,265
ESCAMBIA	613	521	85.0	10	1.6	71	11.6	30	4.9	142	23.2	54.7	11,210
FLAGLER	35	31	88.6	0	0.0	2	5.7	3	8.6	4	11.4	30.1	1,161
FRANKLIN	20	15	75.0	0	0.0	0	0.0	1	5.0	3	15.0	67.8	295
GADSDEN	163	136	83.4	4	2.5	19	11.7	3	1.8	34	20.9	86.0	1,895
GILCHRIST	29	16	55.2	1	3.4	5	17.2	0	0.0	5	17.2	64.7	448
GLADES	12	9	75.0	0	0.0	0	0.0	2	16.7	2	16.7	40.1	299
GULF	18	12	66.7	0	0.0	1	5.6	5	27.8	2	11.1	40.9	440
HAMILTON	33	24	72.7	2	6.1	3	9.1	1	3.0	8	24.2	65.2	506
HARDEE	108	73	67.6	1	0.9	11	10.2	7	6.5	24	22.2	144.2	749
HENDRY	125	97	77.6	4	3.2	8	6.4	10	8.0	33	26.4	109.5	1,142
HERNANDO	146	111	76.0	1	0.7	5	3.4	7	4.8	28	19.2	43.2	3,381
HIGHLANDS	171	119	69.6	3	1.8	16	9.4	13	7.6	37	21.6	91.2	1,876
HILLSBOROUGH	1,940	1,638	84.4	36	1.9	197	10.2	81	4.2	449	23.1	62.7	30,961
HOLMES	36	19	52.8	1	2.8	4	11.1	1	2.8	4	11.1	61.9	582
INDIAN RIVER	143	115	80.4	4	2.8	11	7.7	7	4.9	32	22.4	51.0	2,804
JACKSON	91	67	73.6	2	2.2	12	13.2	4	4.4	21	23.1	56.8	1,601
JEFFERSON	18	12	66.7	1	5.6	3	16.7	0	0.0	5	27.8	35.9	501
LAFAYETTE	14	12	85.7	0	0.0	2	14.3	1	7.1	2	14.3	65.7	213
LAKE	350	275	78.6	8	2.3	40	11.4	31	8.9	84	24.0	71.6	4,885
LEE	699	567	81.1	6	0.9	63	9.0	41	5.9	138	19.7	65.8	10,624
LEON	318	271	85.2	8	2.5	40	12.6	13	4.1	61	19.2	23.2	13,679
LEVY	78	61	78.2	1	1.3	7	9.0	3	3.8	16	20.5	74.9	1,041
LIBERTY	16	8	50.0	0	0.0	0	0.0	0	0.0	5	31.3	63.7	251
MADISON	45	41	91.1	2	4.4	7	15.6	4	8.9	7	15.6	66.6	676
MANATEE	479	407	85.0	5	1.0	39	8.1	32	6.7	112	23.4	76.5	6,263
MARION	495	405	81.8	5	1.0	43	8.7	37	7.5	105	21.2	68.8	7,200
MARTIN	167	133	79.6	2	1.2	16	9.6	22	13.2	43	25.7	57.7	2,895
MONROE	85	63	74.1	3	3.5	7	8.2	3	3.5	11	12.9	42.7	1,992
NASSAU	90	60	66.7	1	1.1	3	3.3	2	2.2	13	14.4	44.9	2,005
OKALOOSA	327	234	71.6	3	0.9	22	6.7	19	5.8	63	19.3	53.5	6,117
OKEECHOBEE	145	103	71.0	2	1.4	8	5.5	12	8.3	32	22.1	121.8	1,190
ORANGE	1,697	1,452	85.6	36	2.1	215	12.7	122	7.2	354	20.9	56.8	29,860
OSCEOLA	314	242	77.1	3	1.0	21	6.7	17	5.4	55	17.5	59.9	5,239
PALM BEACH	1,314	1,124	85.5	30	2.3	133	10.1	190	14.5	279	21.2	48.9	26,891
PASCO	466	361	77.5	4	0.9	46	9.9	13	2.8	81	17.4	59.6	7,821
PINELLAS	1,113	969	87.1	26	2.3	115	10.3	74	6.6	262	23.5	49.6	22,454
POLK	1,241	1,002	80.7	14	1.1	92	7.4	92	7.4	294	23.7	84.3	14,724
PUTNAM	190	141	74.2	3	1.6	19	10.0	13	6.8	44	23.2	78.8	2,412
SAINT JOHNS	135	105	77.8	2	1.5	7	5.2	5	3.7	25	18.5	38.2	3,535
SAINT LUCIE	345	286	82.9	4	1.2	39	11.3	23	6.7	79	22.9	62.8	5,492
SANTA ROSA	182	123	67.6	4	2.2	22	12.1	4	2.2	36	19.8	48.2	3,777
SARASOTA	304	254	83.6	13	4.3	35	11.5	23	7.6	62	20.4	45.4	6,695
SEMINOLE	396	330	83.3	10	2.5	37	9.3	21	5.3	75	18.9	33.2	11,937
SUMTER	99	66	66.7	1	1.0	11	11.1	1	1.0	17	17.2	71.7	1,380
SUWANNEE	89	63	70.8	7	7.9	10	11.2	4	4.5	22	24.7	71.1	1,252
TAYLOR	53	37	69.8	1	1.9	6	11.3	1	1.9	6	11.3	81.8	648
UNION	25	21	84.0	1	4.0	2	8.0	1	4.0	7	28.0	73.7	339
VOLUSIA	523	433	82.8	14	2.7	49	9.4	21	4.0	84	16.1	42.3	12,362
WAKULLA	47	35	74.5	0	0.0	4	8.5	0	0.0	10	21.3	62.7	750
WALTON	85	55	64.7	0	0.0	5	5.9	5	5.9	15	17.6	69.4	1,225
WASHINGTON	41	28	68.3	1	2.4	3	7.3	2	4.9	5	12.2	55.7	736

