

Fetal and Infant Deaths

FETAL AND INFANT DEATHS

- Both the number and ratio of resident fetal deaths (20 or more weeks gestation) have increased from last year.
- Resident fetal deaths among both whites and nonwhites increased by 6.1 percent from 1999 to 2000.
- Of the fetal deaths, 18.2 percent occurred to mothers residing in Miami-Dade County.
- Nearly one of every five resident fetal deaths occurred to a mother of Hispanic origin.
- About one of every ten fetal deaths occurred to a mother who was aged 18 years or under.
- In 2000 both the overall number and rate of resident neonatal deaths (under 28 days) decreased. The number dropped slightly both for whites and for nonwhites.
- The neonatal death rate decreased to 4.5 per 1,000 live births in 2000. This represents less than half the rate of 1980 (9.7).
- The nonwhite neonatal death rate (7.4) is more than twice the white rate (3.5).
- There was an overall decrease in infant deaths (under one year). The resident infant mortality rate decreased from 7.3 in 1999 to 7.0 in 2000.
- The resident infant mortality rate has dropped 27.1 percent since 1990 and is about half the rate of 1980.
- The resident infant mortality rate for nonwhites (11.4) is more than double the infant mortality rate for whites (5.4).
- Resident infants of Hispanic origin accounted for 15.6 percent of all infant deaths.
- Of the total resident deaths occurring within the first year of life, 65.0 percent were less than 28 days old. Furthermore, 36.9 percent were less than one day old.
- The leading causes of resident infant deaths in 2000 were Perinatal Conditions, Congenital Anomalies, and Sudden Infant Death Syndrome. These causes accounted for 76.2 percent of all resident infant deaths.

CHART F-1: RESIDENT FETAL DEATHS AND RATIOS PER 1,000 LIVE BIRTHS, BY RACE OF MOTHER, FLORIDA AND UNITED STATES TOTAL, CENSUS YEARS 1920-1980 AND 1990-2000							
YEAR	NUMBER OF FETAL DEATHS - FL			RATIOS - FL			RATIO - U.S.
	TOTAL	WHITE	NON- WHITE	TOTAL	WHITE	NON- WHITE	TOTAL
1920 ¹	1,287	595	692	65.9	43.9	115.4	NA
1930 ¹	1,754	746	1,008	65.0	40.1	120.1	NA
1940	1,415	683	732	42.0	28.7	74.0	NA
1950	1,443	757	868	22.4	16.6	36.7	18.8
1960	1,846	1,043	803	16.0	12.4	25.7	15.8
1970	1,701	1,064	637	14.8	12.2	22.6	14.0
1980	1,355	847	491	10.3	8.7	14.3	9.1
1990	1,811	1,071	720	9.1	7.2	14.6	7.5
1991	1,692	978	703	8.7	6.8	14.4	7.3
1992	1,498	920	570	7.8	6.4	11.8	7.4
1993	1,447	858	580	7.5	6.0	12.0	7.1
1994	1,519	909	599	8.0	6.4	12.7	7.0
1995	1,531	937	581	8.1	6.6	12.5	7.0
1996	1,478	885	577	7.8	6.2	12.3	6.9
1997	1,523	910	600	7.9	6.3	12.4	6.8
1998	1,520	912	594	7.8	6.3	12.0	6.7
1999	1,579	953	619	8.0	6.5	12.3	NA
2000	1,675	954	704	8.2	6.4	13.1	NA

¹ Only recorded data are available.

GRAPH F-1: RESIDENT FETAL DEATH RATIOS PER 1,000 LIVE BIRTHS, BY RACE OF MOTHER, FLORIDA AND UNITED STATES TOTAL, 1990-2000

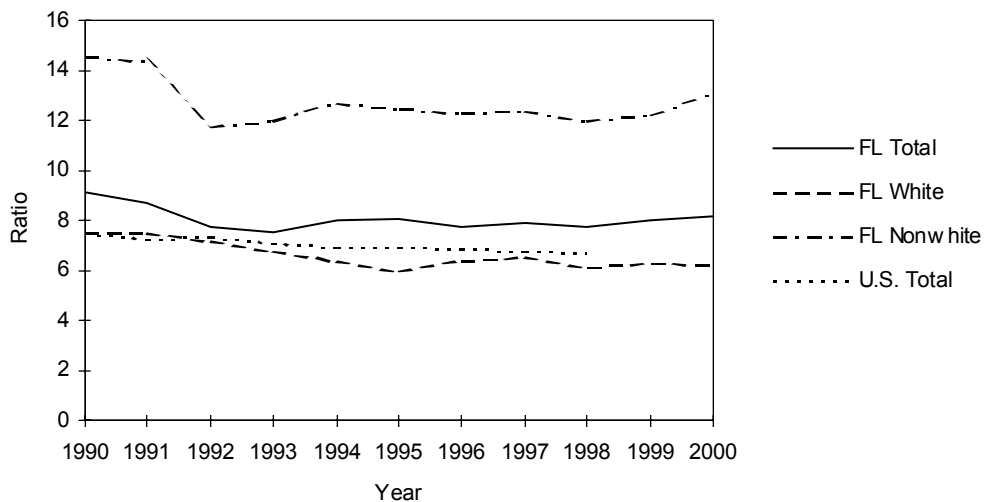


CHART F-2: RESIDENT NEONATAL DEATHS AND RATES PER 1,000 LIVE BIRTHS, BY RACE, FLORIDA AND UNITED STATES TOTAL, CENSUS YEARS 1920-1980 AND 1990-2000							
YEAR	NUMBER OF NEONATAL DEATHS - FL			RATES ¹ - FL			RATE - U.S.
	TOTAL	WHITE	NON-WHITE	TOTAL	WHITE	NON-WHITE	TOTAL
1920	NA	NA	NA	NA	NA	NA	NA
1930	NA	NA	NA	NA	NA	NA	NA
1940	1,142	662	480	33.9	27.8	48.5	28.8
1950	1,551	975	576	24.1	21.3	30.8	20.5
1960	2,404	1,531	873	20.8	18.1	28.0	18.7
1970	1,848	1,198	648	16.1	13.8	23.0	15.1
1980	1,282	791	490	9.7	8.1	14.2	8.5
1990	1,227	742	484	6.2	5.0	9.8	5.8
1991	1,122	635	485	5.8	4.4	10.0	5.5
1992	1,120	666	452	5.8	4.7	9.4	5.4
1993	1,071	609	460	5.6	4.2	9.6	5.3
1994	1,027	624	402	5.4	4.4	8.5	5.1
1995	874	523	351	4.6	3.7	7.5	4.9
1996	895	517	377	4.7	3.6	8.0	4.8
1997	889	518	370	4.6	3.6	7.6	4.8
1998	933	559	371	4.8	3.8	7.5	4.8
1999	962	559	401	4.9	3.8	7.9	NA
2000	925	526	397	4.5	3.5	7.4	NA

¹Rates based on neonatal deaths by race of decedent, live births by race of mother.

GRAPH F-2: RESIDENT NEONATAL DEATH RATES¹ PER 1,000 LIVE BIRTHS, BY RACE, FLORIDA AND UNITED STATES TOTAL, 1990-2000

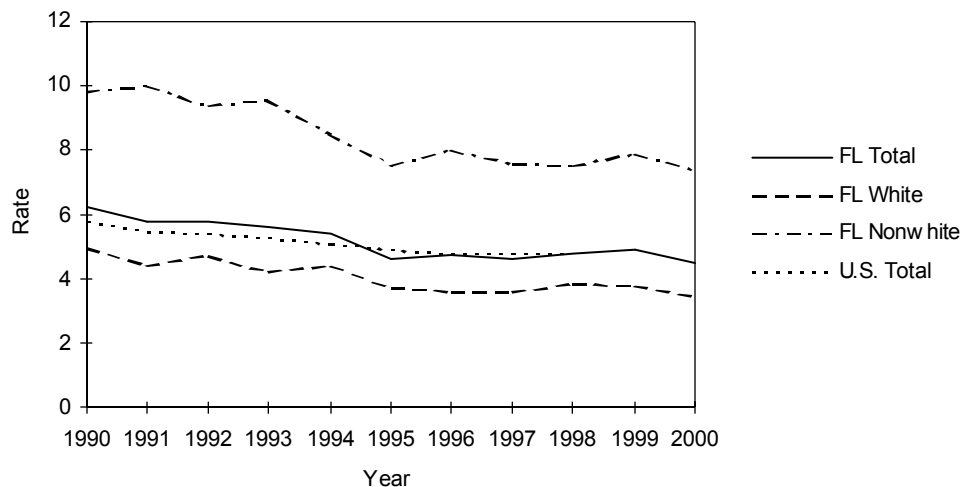


CHART F-3: RESIDENT INFANT DEATHS AND RATES PER 1,000 LIVE BIRTHS, BY RACE, FLORIDA AND UNITED STATES TOTAL, CENSUS YEARS 1920-1980 AND 1990-2000							
YEAR	NUMBER OF INFANT DEATHS - FL			RATES ² - FL			RATE - U.S.
	TOTAL	WHITE	NON-WHITE	TOTAL	WHITE	NON-WHITE	TOTAL
1920 ¹	1,835	1,031	804	93.9	76.1	134.0	NA
1930 ¹	1,729	928	801	64.1	49.9	95.4	NA
1940	1,812	1,052	760	53.8	44.2	76.8	47.0
1950	2,078	1,225	853	32.3	26.8	45.7	29.2
1960	3,431	1,992	1,439	29.7	23.6	46.1	26.0
1970	2,466	1,537	927	21.4	17.7	32.9	20.0
1980	1,915	1,135	779	14.5	11.7	22.7	12.6
1990	1,909	1,121	786	9.6	7.5	16.0	9.2
1991	1,726	966	758	8.9	6.7	15.6	8.9
1992	1,685	987	695	8.8	6.9	14.4	8.5
1993	1,654	951	699	8.6	6.6	14.5	8.4
1994	1,540	927	611	8.1	6.5	12.9	8.0
1995	1,402	840	562	7.4	5.9	12.1	7.6
1996	1,405	821	583	7.4	5.8	12.4	7.3
1997	1,358	805	552	7.1	5.6	11.4	7.2
1998	1,415	850	562	7.2	5.8	11.4	7.2
1999	1,442	815	625	7.3	5.6	12.4	7.1 ³
2000	1,423	810	611	7.0	5.4	11.4	NA

¹ Only recorded data are available.

² Rates based on infant deaths by race of decedent, live births by race of mother.

³ Preliminary data.

GRAPH F-3: RESIDENT INFANT DEATH RATES² PER 1,000 LIVE BIRTHS, BY RACE, FLORIDA AND UNITED STATES TOTAL, 1990-2000

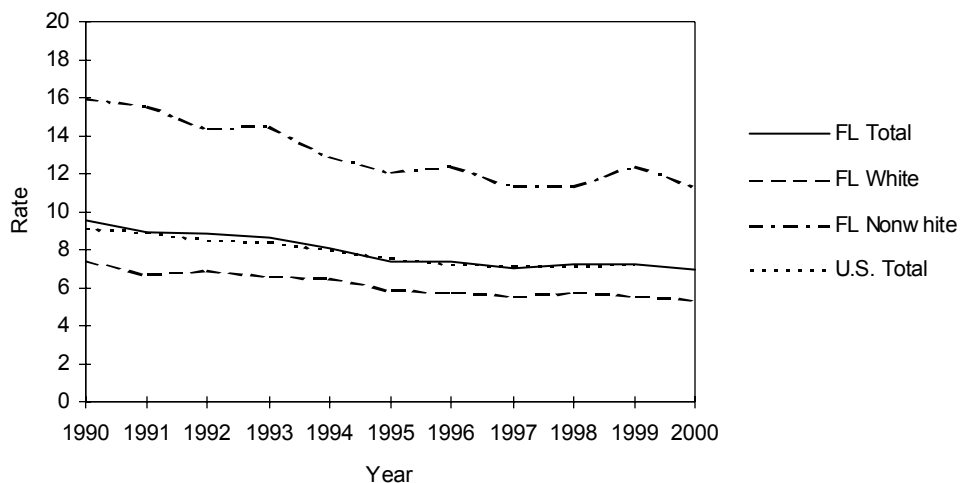


TABLE F-1: RESIDENT AND RECORDED FETAL DEATHS (OF 20 OR MORE WEEKS GESTATION) AND RATIOS PER 1,000 LIVE BIRTHS, BY RACE OF MOTHER, BY COUNTY, FLORIDA, 2000

	RESIDENT FETAL DEATHS									
	NUMBER					RATIOS				
	TOTAL	WHITE	BLACK	OTHER	UNK	TOTAL	WHITE	BLACK	OTHER	
FLORIDA	1,675	954	667	37	17	8.2	6.4	14.1	5.8	
ALACHUA	16	9	7	0	0	6.2	5.3	8.8	0.0	
BAKER	3	2	1	0	0	8.4	6.5	22.7	0.0	
BAY	11	7	4	0	0	5.5	4.2	14.3	0.0	
BRADFORD	2	1	1	0	0	6.3	3.9	16.9	0.0	
BREVARD	36	24	10	1	1	7.2	5.8	14.2	6.4	
BROWARD	201	78	114	6	3	9.1	5.7	14.9	8.4	
CALHOUN	1	1	0	0	0	6.4	7.9	0.0	0.0	
CHARLOTTE	8	6	2	0	0	7.7	6.3	37.0	0.0	
CITRUS	6	3	3	0	0	6.9	3.6	111.1	0.0	
CLAY	9	6	3	0	0	4.9	3.7	19.2	0.0	
COLLIER	28	24	4	0	0	9.1	9.1	11.5	0.0	
COLUMBIA	5	4	1	0	0	6.5	6.7	6.9	0.0	
MIAMI-DADE	305	146	150	3	6	9.4	6.6	15.9	3.9	
DESOTO	5	3	2	0	0	11.8	8.4	32.8	0.0	
DIXIE	4	3	1	0	0	25.2	21.6	52.6	0.0	
DUVAL	80	33	46	0	1	6.6	4.4	10.9	0.0	
ESCAMBIA	39	16	19	4	0	10.1	6.4	16.1	22.1	
FLAGLER	4	3	1	0	0	9.7	8.3	21.3	0.0	
FRANKLIN	0	0	0	0	0	0.0	0.0	0.0	---	
GADSDEN	6	0	4	1	1	8.5	0.0	9.2	1000.0	
GILCHRIST	2	1	1	0	0	11.0	5.7	500.0	0.0	
GLADES	0	0	0	0	0	0.0	0.0	0.0	0.0	
GULF	1	0	1	0	0	7.9	0.0	62.5	0.0	
HAMILTON	0	0	0	0	0	0.0	0.0	0.0	0.0	
HARDEE	2	1	1	0	0	4.4	2.4	32.3	0.0	
HENDRY	4	4	0	0	0	6.2	7.6	0.0	0.0	
HERNANDO	7	5	2	0	0	6.0	4.7	23.0	0.0	
HIGHLANDS	7	4	2	1	0	8.3	6.0	12.6	62.5	
HILLSBOROUGH	115	78	35	1	1	7.8	7.0	11.7	2.0	
HOLMES	1	1	0	0	0	4.7	5.0	0.0	0.0	
INDIAN RIVER	12	8	4	0	0	10.6	8.5	24.4	0.0	
JACKSON	5	2	3	0	0	8.6	4.8	18.5	0.0	
JEFFERSON	1	0	1	0	0	7.4	0.0	16.4	0.0	
LAFAYETTE	2	1	1	0	0	22.0	12.7	83.3	---	
LAKE	25	20	4	1	0	10.6	10.2	11.4	25.6	
LEE	45	32	13	0	0	8.7	7.3	17.7	0.0	
LEON	23	6	16	1	0	7.7	3.4	14.1	10.5	
LEVY	5	4	1	0	0	11.6	11.2	14.9	0.0	
LIBERTY	1	1	0	0	0	12.8	14.3	0.0	---	
MADISON	5	1	4	0	0	22.8	9.9	34.5	0.0	
MANATEE	32	26	6	0	0	9.9	9.8	12.8	0.0	
MARION	27	19	8	0	0	9.3	8.4	13.8	0.0	
MARTIN	11	8	3	0	0	8.9	8.2	23.4	0.0	
MONROE	7	6	0	1	0	8.8	8.7	0.0	38.5	
NASSAU	11	10	1	0	0	14.8	14.5	20.8	0.0	
OKALOOSA	16	11	5	0	0	6.8	5.8	14.6	0.0	
OSCEOLA	3	2	1	0	0	5.7	4.1	27.0	0.0	
ORANGE	124	70	46	6	2	8.8	7.2	12.3	9.6	
OSCEOLA	22	17	2	3	0	8.4	7.5	7.9	30.0	
PALM BEACH	99	48	48	1	2	7.4	5.2	13.8	1.7	
PASCO	21	19	1	1	0	5.6	5.4	7.1	12.8	
PINELLAS	73	46	24	3	0	7.6	6.1	14.5	7.1	
POLK	62	40	21	1	0	9.0	7.4	15.8	9.6	
PUTNAM	4	3	1	0	0	4.5	4.6	4.3	0.0	
ST JOHNS	11	8	3	0	0	8.3	6.9	21.3	0.0	
ST LUCIE	11	5	6	0	0	4.9	3.2	9.7	0.0	
SANTA ROSA	9	8	1	0	0	6.0	5.8	14.3	0.0	
SARASOTA	21	17	4	0	0	7.7	7.2	13.8	0.0	
SEMINOLE	28	17	9	2	0	6.1	4.5	14.0	12.2	
SUMTER	2	1	1	0	0	4.2	2.8	9.4	0.0	
SUWANNEE	6	3	3	0	0	12.9	7.8	37.0	0.0	
TAYLOR	3	1	2	0	0	12.0	5.3	35.7	0.0	
UNION	0	0	0	0	0	0.0	0.0	0.0	---	
VOLUSIA	36	27	9	0	0	8.1	7.3	13.2	0.0	
WAKULLA	2	2	0	0	0	7.0	8.1	0.0	0.0	
WALTON	1	1	0	0	0	2.3	2.6	0.0	0.0	
WASHINGTON	1	1	0	0	0	4.5	5.7	0.0	0.0	

TABLE F-1 (Cont.): RESIDENT AND RECORDED FETAL DEATHS (OF 20 OR MORE WEEKS GESTATION) AND RATIOS PER 1,000 LIVE BIRTHS, BY RACE OF MOTHER, BY COUNTY, FLORIDA, 2000

	RECORDED FETAL DEATHS								
	NUMBER					RATIOS			
	TOTAL	WHITE	BLACK	OTHER	UNK	TOTAL	WHITE	BLACK	OTHER
FLORIDA	1,708	977	676	37	18	8.4	6.5	14.3	5.8
ALACHUA	52	34	18	0	0	9.3	8.2	13.7	0.0
BAKER	0	0	0	0	0	0.0	0.0	0.0	---
BAY	15	10	5	0	0	6.1	4.9	15.9	0.0
BRADFORD	1	0	1	0	0	1000.0	0.0	---	---
BREVARD	28	16	10	1	1	5.8	4.0	14.9	6.6
BROWARD	213	86	117	6	4	10.0	6.8	14.9	8.8
CALHOUN	0	0	0	0	0	0.0	---	0.0	0.0
CHARLOTTE	8	6	2	0	0	7.8	6.3	38.5	0.0
CITRUS	4	3	1	0	0	5.0	3.9	43.5	0.0
CLAY	8	4	4	0	0	4.9	3.0	19.8	0.0
COLLIER	26	22	4	0	0	10.0	9.7	14.1	0.0
COLUMBIA	2	1	1	0	0	3.8	2.6	7.2	0.0
MIAMI-DADE	303	146	147	4	6	9.3	6.5	16.0	5.2
DESOTO	3	3	0	0	0	4.3	4.9	0.0	0.0
DIXIE	0	0	0	0	0	0.0	0.0	0.0	---
DUVAL	98	48	48	1	1	7.1	5.3	11.1	1.9
ESCAMBIA	50	25	21	4	0	9.7	6.9	16.5	17.7
FLAGLER	1	0	1	0	0	200.0	0.0	1000.0	---
FRANKLIN	0	0	0	0	0	0.0	0.0	0.0	---
GADSDEN	1	0	0	1	0	100.0	0.0	0.0	---
GILCHRIST	0	0	0	0	0	---	---	---	---
GLADES	0	0	0	0	0	0.0	---	---	0.0
GULF	0	0	0	0	0	---	---	---	---
HAMILTON	0	0	0	0	0	0.0	0.0	---	---
HARDEE	0	0	0	0	0	0.0	0.0	---	---
HENDRY	0	0	0	0	0	0.0	0.0	0.0	---
HERNANDO	6	4	2	0	0	4.5	3.3	23.8	0.0
HIGHLANDS	7	4	2	1	0	6.9	5.0	10.6	31.3
HILLSBOROUGH	126	87	37	1	1	7.8	7.0	11.8	1.9
HOLMES	0	0	0	0	0	0.0	0.0	---	---
INDIAN RIVER	11	7	4	0	0	10.0	7.5	25.6	0.0
JACKSON	3	2	1	0	0	5.2	4.9	6.1	0.0
JEFFERSON	0	0	0	0	0	---	---	---	---
LAFAYETTE	0	0	0	0	0	---	---	---	---
LAKE	20	15	4	1	0	10.7	10.4	10.1	31.3
LEE	52	39	13	0	0	8.4	7.3	15.7	0.0
LEON	42	11	29	1	1	8.6	3.8	15.4	9.2
LEVY	1	0	1	0	0	1000.0	0.0	---	---
LIBERTY	0	0	0	0	0	0.0	0.0	---	---
MADISON	0	0	0	0	0	0.0	---	0.0	---
MANATEE	18	13	5	0	0	6.8	6.0	12.6	0.0
MARION	15	11	4	0	0	6.2	5.7	8.9	0.0
MARTIN	10	8	2	0	0	6.2	6.0	14.7	0.0
MONROE	5	5	0	0	0	8.5	10.2	0.0	0.0
NASSAU	1	1	0	0	0	2.4	2.7	0.0	0.0
OKALOOSA	16	12	4	0	0	6.3	5.8	11.9	0.0
KEECHOBEE	0	0	0	0	0	0.0	0.0	---	---
ORANGE	167	103	57	5	2	9.9	8.3	14.6	7.5
OSCEOLA	21	18	0	3	0	7.4	7.5	0.0	18.6
PALM BEACH	106	51	52	1	2	7.1	4.8	14.0	1.6
PASCO	16	13	2	1	0	9.7	8.7	18.2	20.4
PINELLAS	82	55	24	3	0	7.7	6.4	14.5	7.0
POLK	57	35	21	1	0	9.5	7.4	18.2	10.9
PUTNAM	4	3	1	0	0	7.5	8.7	5.4	0.0
ST JOHNS	11	8	3	0	0	12.6	11.0	22.2	0.0
ST LUCIE	10	5	5	0	0	5.2	3.9	8.6	0.0
SANTA ROSA	2	1	1	0	0	3.6	1.9	32.3	0.0
SARASOTA	37	30	7	0	0	11.3	10.6	19.4	0.0
SEMINOLE	21	15	4	2	0	5.5	4.9	6.2	21.3
SUMTER	1	0	1	0	0	200.0	0.0	1000.0	---
SUWANNEE	0	0	0	0	0	0.0	0.0	0.0	---
TAYLOR	1	0	1	0	0	333.3	0.0	1000.0	---
UNION	0	0	0	0	0	---	---	---	---
VOLUSIA	26	17	9	0	0	6.6	5.3	13.7	0.0
WAKULLA	0	0	0	0	0	0.0	0.0	0.0	---
WALTON	0	0	0	0	0	0.0	0.0	0.0	---
WASHINGTON	0	0	0	0	0	0.0	---	0.0	---

TABLE F-2: RESIDENT FETAL DEATHS BY HISPANIC OR HAITIAN ORIGIN OF MOTHER, BY COUNTY, FLORIDA, 2000

	HISPANIC ORIGIN								NON-HISPANIC/HAITIAN	UNK
	TOTAL	TOTAL HISPANIC	MEXICAN	PUERTO RICAN	CUBAN	CENTRAL/SOUTH AMERICAN	OTHER/UNK HISPANIC	HAITIAN		
FLORIDA	1,675	304	70	59	69	82	24	84	1,203	84
ALACHUA	16	1	0	0	0	1	0	0	15	0
BAKER	3	0	0	0	0	0	0	0	3	0
BAY	11	0	0	0	0	0	0	0	11	0
BRADFORD	2	0	0	0	0	0	0	0	2	0
BREVARD	36	1	0	0	0	0	1	0	34	1
BROWARD	201	34	3	7	4	17	3	33	128	6
CALHOUN	1	0	0	0	0	0	0	0	1	0
CHARLOTTE	8	2	0	2	0	0	0	0	6	0
CITRUS	6	0	0	0	0	0	0	0	6	0
CLAY	9	1	1	0	0	0	0	0	8	0
COLLIER	28	12	8	0	1	3	0	3	13	0
COLUMBIA	5	0	0	0	0	0	0	0	5	0
MIAMI-DADE	305	109	3	5	53	43	5	27	113	56
DESOTO	5	3	2	0	0	0	1	0	2	0
DIXIE	4	0	0	0	0	0	0	0	4	0
DUVAL	80	4	0	3	0	0	1	0	73	3
ESCAMBIA	39	0	0	0	0	0	0	0	39	0
FLAGLER	4	0	0	0	0	0	0	0	4	0
FRANKLIN	0	0	0	0	0	0	0	0	0	0
GADSDEN	6	0	0	0	0	0	0	0	5	1
GILCHRIST	2	0	0	0	0	0	0	0	2	0
GLADES	0	0	0	0	0	0	0	0	0	0
GULF	1	0	0	0	0	0	0	0	1	0
HAMILTON	0	0	0	0	0	0	0	0	0	0
HARDEE	2	0	0	0	0	0	0	0	2	0
HENDRY	4	3	3	0	0	0	0	0	1	0
HERNANDO	7	0	0	0	0	0	0	0	7	0
HIGHLANDS	7	1	0	1	0	0	0	0	6	0
HILLSBOROUGH	115	24	11	8	1	0	4	0	82	9
HOLMES	1	0	0	0	0	0	0	0	1	0
INDIAN RIVER	12	3	3	0	0	0	0	0	9	0
JACKSON	5	0	0	0	0	0	0	0	5	0
JEFFERSON	1	0	0	0	0	0	0	0	1	0
LAFAYETTE	2	1	1	0	0	0	0	0	1	0
LAKE	25	1	0	0	1	0	0	0	24	0
LEE	45	8	4	2	0	2	0	0	37	0
LEON	23	0	0	0	0	0	0	0	23	0
LEVY	5	0	0	0	0	0	0	0	5	0
LIBERTY	1	0	0	0	0	0	0	0	1	0
MADISON	5	0	0	0	0	0	0	0	5	0
MANATEE	32	8	4	0	1	1	2	0	23	1
MARION	27	3	2	1	0	0	0	0	24	0
MARTIN	11	0	0	0	0	0	0	0	11	0
MONROE	7	2	1	0	0	1	0	0	5	0
NASSAU	11	0	0	0	0	0	0	0	11	0
OKALOOSA	16	2	1	0	0	1	0	0	14	0
OKEECHOBEE	3	0	0	0	0	0	0	0	3	0
ORANGE	124	27	3	13	4	4	3	2	91	4
OSCEOLA	22	6	1	3	0	2	0	0	16	0
PALM BEACH	99	21	7	6	1	4	3	15	61	2
PASCO	21	2	1	0	0	0	1	0	19	0
PINELLAS	73	4	3	1	0	0	0	0	69	0
POLK	62	9	7	2	0	0	0	2	51	0
PUTNAM	4	0	0	0	0	0	0	0	4	0
ST JOHNS	11	0	0	0	0	0	0	0	10	1
ST LUCIE	11	1	0	0	0	1	0	2	8	0
SANTA ROSA	9	0	0	0	0	0	0	0	9	0
SARASOTA	21	0	0	0	0	0	0	0	21	0
SEMINOLE	28	4	0	0	3	1	0	0	24	0
SUMTER	2	0	0	0	0	0	0	0	2	0
SUWANNEE	6	0	0	0	0	0	0	0	6	0
TAYLOR	3	0	0	0	0	0	0	0	3	0
UNION	0	0	0	0	0	0	0	0	0	0
VOLUSIA	36	7	1	5	0	1	0	0	29	0
WAKULLA	2	0	0	0	0	0	0	0	2	0
WALTON	1	0	0	0	0	0	0	0	1	0
WASHINGTON	1	0	0	0	0	0	0	0	1	0

TABLE F-3: RESIDENT FETAL DEATHS BY AGE OF MOTHER, BY COUNTY, FLORIDA, 2000

	AGE OF MOTHER														
	TOTAL	<13	13	14	15	16	17	18	19	20-24	25-29	30-34	35-44	45+	UNK
FLORIDA	1,675	0	1	5	15	21	49	67	86	359	356	334	284	5	93
ALACHUA	16	0	0	0	0	0	2	0	0	3	3	5	3	0	0
BAKER	3	0	0	0	0	0	0	0	1	1	1	0	0	0	0
BAY	11	0	0	0	0	0	1	1	3	2	0	4	0	0	0
BRADFORD	2	0	0	0	0	0	0	0	0	1	0	1	0	0	0
BREVARD	36	0	0	0	1	1	0	1	2	5	7	6	11	0	2
BROWARD	201	0	0	1	2	1	5	7	10	40	49	42	35	1	8
CALHOUN	1	0	0	0	0	0	0	0	0	0	1	0	0	0	0
CHARLOTTE	8	0	0	0	0	0	0	0	1	3	1	2	1	0	0
CITRUS	6	0	0	0	0	0	0	0	2	2	1	1	0	0	0
CLAY	9	0	0	0	0	0	0	0	0	3	4	1	1	0	0
COLLIER	28	0	0	0	0	1	1	0	2	5	4	8	7	0	0
COLUMBIA	5	0	0	0	0	0	1	0	1	0	2	1	0	0	0
MIAMI-DADE	305	0	1	0	0	3	3	8	7	43	73	58	47	1	61
DESOTO	5	0	0	0	0	0	0	0	0	3	0	1	1	0	0
DIXIE	4	0	0	0	0	0	0	0	0	2	1	1	0	0	0
DUVAL	80	0	0	0	2	1	4	4	6	18	18	11	15	0	1
ESCAMBIA	39	0	0	0	1	1	0	3	7	11	7	3	5	1	0
FLAGLER	4	0	0	0	0	0	1	0	1	1	0	1	0	0	0
FRANKLIN	0	0	0	0	0	0	0	0	0	0	0	0	0	0	0
GADSDEN	6	0	0	0	0	0	0	0	1	1	1	1	2	0	0
GILCHRIST	2	0	0	0	0	0	0	1	0	1	0	0	0	0	0
GLADES	0	0	0	0	0	0	0	0	0	0	0	0	0	0	0
GULF	1	0	0	0	0	0	0	0	0	0	0	0	1	0	0
HAMILTON	0	0	0	0	0	0	0	0	0	0	0	0	0	0	0
HARDEE	2	0	0	0	0	0	0	0	0	2	0	0	0	0	0
HENDRY	4	0	0	0	0	0	0	1	0	2	1	0	0	0	0
HERNANDO	7	0	0	0	0	0	0	0	0	3	3	0	1	0	0
HIGHLANDS	7	0	0	0	0	0	0	1	1	2	2	0	1	0	0
HILLSBOROUGH	115	0	0	1	4	1	9	5	6	20	25	22	19	0	3
HOLMES	1	0	0	0	0	0	0	0	0	1	0	0	0	0	0
INDIAN RIVER	12	0	0	0	0	0	1	1	2	4	2	1	1	0	0
JACKSON	5	0	0	0	0	0	0	0	0	2	1	2	0	0	0
JEFFERSON	1	0	0	0	0	0	0	0	0	0	0	0	1	0	0
LAFAYETTE	2	0	0	0	0	0	0	0	0	1	0	0	1	0	0
LAKE	25	0	0	0	0	0	0	0	1	7	5	6	6	0	0
LEE	45	0	0	0	0	1	2	3	2	9	7	5	15	0	1
LEON	23	0	0	0	0	0	0	3	0	6	3	6	5	0	0
LEVY	5	0	0	0	0	0	1	0	2	0	0	2	0	0	0
LIBERTY	1	0	0	0	0	0	0	0	1	0	0	0	0	0	0
MADISON	5	0	0	0	0	0	0	0	0	2	2	0	1	0	0
MANATEE	32	0	0	1	0	0	1	3	4	6	7	5	4	1	0
MARION	27	0	0	1	0	0	2	3	1	8	4	7	1	0	0
MARTIN	11	0	0	0	0	0	1	0	1	2	2	4	1	0	0
MONROE	7	0	0	0	0	0	0	0	0	0	2	4	0	0	1
NASSAU	11	0	0	0	0	0	0	0	0	2	7	2	0	0	0
OKALOOSA	16	0	0	0	1	0	0	0	0	5	1	4	5	0	0
OKEECHOBEE	3	0	0	0	0	0	0	2	0	1	0	0	0	0	0
ORANGE	124	0	0	0	0	2	3	4	5	29	27	25	22	0	7
OSCEOLA	22	0	0	0	0	1	0	1	1	8	2	6	3	0	0
PALM BEACH	99	0	0	0	0	4	1	3	1	20	31	18	17	0	4
PASCO	21	0	0	0	1	0	1	3	2	9	1	3	1	0	0
PINELLAS	73	0	0	1	1	2	2	3	6	14	13	15	14	0	2
POLK	62	0	0	0	0	2	4	3	2	21	9	11	9	1	0
PUTNAM	4	0	0	0	0	0	0	1	0	2	1	0	0	0	0
ST JOHNS	11	0	0	0	1	0	2	0	0	1	1	3	3	0	0
ST LUCIE	11	0	0	0	0	0	0	0	0	2	1	3	4	0	1
SANTA ROSA	9	0	0	0	0	0	0	0	1	1	3	4	0	0	0
SARASOTA	21	0	0	0	0	0	0	1	0	4	2	8	6	0	0
SEMINOLE	28	0	0	0	0	0	0	0	1	2	9	10	4	0	2
SUMTER	2	0	0	0	0	0	0	0	0	1	1	0	0	0	0
SUWANNEE	6	0	0	0	0	0	0	0	1	3	1	0	1	0	0
TAYLOR	3	0	0	0	0	0	0	0	0	1	1	1	0	0	0
UNION	0	0	0	0	0	0	0	0	0	0	0	0	0	0	0
VOLUSIA	36	0	0	0	1	0	1	1	1	9	5	9	9	0	0
WAKULLA	2	0	0	0	0	0	0	0	0	1	0	1	0	0	0
WALTON	1	0	0	0	0	0	0	0	0	1	0	0	0	0	0
WASHINGTON	1	0	0	0	0	0	0	0	0	0	1	0	0	0	0

TABLE F-4: RESIDENT AND RECORDED NEONATAL DEATHS (UNDER 28 DAYS) AND RATES PER 1,000 LIVE BIRTHS, BY RACE, BY COUNTY, FLORIDA, 2000

	RESIDENT NEONATAL DEATHS									
	NUMBER					RATES*				
	TOTAL	WHITE	BLACK	OTHER	UNK	TOTAL	WHITE	BLACK	OTHER	
FLORIDA	925	526	384	13	2	4.5	3.5	8.1	2.0	
ALACHUA	18	9	8	1	0	6.9	5.3	10.1	8.5	
BAKER	0	0	0	0	0	0.0	0.0	0.0	0.0	
BAY	7	4	3	0	0	3.5	2.4	10.7	0.0	
BRADFORD	2	1	1	0	0	6.3	3.9	16.9	0.0	
BREVARD	14	9	5	0	0	2.8	2.2	7.1	0.0	
BROWARD	91	42	48	1	0	4.1	3.1	6.3	1.4	
CALHOUN	0	0	0	0	0	0.0	0.0	0.0	0.0	
CHARLOTTE	3	2	1	0	0	2.9	2.1	18.5	0.0	
CITRUS	2	2	0	0	0	2.3	2.4	0.0	0.0	
CLAY	8	5	2	1	0	4.4	3.1	12.8	15.2	
COLLIER	12	11	1	0	0	3.9	4.1	2.9	0.0	
COLUMBIA	4	2	2	0	0	5.2	3.3	13.8	0.0	
MIAMI-DADE	125	70	53	1	1	3.9	3.2	5.6	1.3	
DESOTO	1	0	1	0	0	2.4	0.0	16.4	0.0	
DIXIE	3	2	1	0	0	18.9	14.4	52.6	0.0	
DUVAL	65	22	42	1	0	5.3	3.0	9.9	2.0	
ESCAMBIA	26	11	15	0	0	6.8	4.4	12.7	0.0	
FLAGLER	0	0	0	0	0	0.0	0.0	0.0	0.0	
FRANKLIN	1	1	0	0	0	9.4	10.6	0.0	---	
GADSDEN	8	2	6	0	0	11.3	7.4	13.8	0.0	
GILCHRIST	3	3	0	0	0	16.6	17.0	0.0	0.0	
GLADES	0	0	0	0	0	0.0	0.0	0.0	0.0	
GULF	2	1	0	1	0	15.7	9.3	0.0	333.3	
HAMILTON	0	0	0	0	0	0.0	0.0	0.0	0.0	
HARDEE	1	1	0	0	0	2.2	2.4	0.0	0.0	
HENDRY	1	1	0	0	0	1.6	1.9	0.0	0.0	
HERNANDO	3	3	0	0	0	2.6	2.8	0.0	0.0	
HIGHLANDS	7	3	4	0	0	8.3	4.5	25.2	0.0	
HILLSBOROUGH	73	40	31	2	0	5.0	3.6	10.4	4.0	
HOLMES	0	0	0	0	0	0.0	0.0	0.0	0.0	
INDIAN RIVER	9	6	3	0	0	8.0	6.4	18.3	0.0	
JACKSON	1	0	1	0	0	1.7	0.0	6.2	0.0	
JEFFERSON	0	0	0	0	0	0.0	0.0	0.0	0.0	
LAFAYETTE	0	0	0	0	0	0.0	0.0	0.0	---	
LAKE	4	4	0	0	0	1.7	2.0	0.0	0.0	
LEE	22	16	6	0	0	4.2	3.6	8.2	0.0	
LEON	20	5	15	0	0	6.7	2.9	13.2	0.0	
LEVY	3	3	0	0	0	7.0	8.4	0.0	0.0	
LIBERTY	1	1	0	0	0	12.8	14.3	0.0	---	
MADISON	2	1	1	0	0	9.1	9.9	8.6	0.0	
MANATEE	12	8	4	0	0	3.7	3.0	8.6	0.0	
MARION	14	10	4	0	0	4.8	4.4	6.9	0.0	
MARTIN	6	4	2	0	0	4.8	4.1	15.6	0.0	
MONROE	4	3	1	0	0	5.0	4.3	14.9	0.0	
NASSAU	4	4	0	0	0	5.4	5.8	0.0	0.0	
OKALOOSA	8	7	1	0	0	3.4	3.7	2.9	0.0	
OKEECHOBEE	5	5	0	0	0	9.5	10.4	0.0	0.0	
ORANGE	69	36	32	0	1	4.9	3.7	8.5	0.0	
OSCEOLA	6	5	1	0	0	2.3	2.2	4.0	0.0	
PALM BEACH	65	26	38	1	0	4.9	2.8	10.9	1.7	
PASCO	16	16	0	0	0	4.3	4.5	0.0	0.0	
PINELLAS	49	30	17	2	0	5.1	4.0	10.3	4.7	
POLK	31	20	11	0	0	4.5	3.7	8.3	0.0	
PUTNAM	6	4	2	0	0	6.7	6.1	8.6	0.0	
SAINT JOHN'S	6	6	0	0	0	4.5	5.2	0.0	0.0	
SAINT LUCIE	12	5	7	0	0	5.3	3.2	11.3	0.0	
SANTA ROSA	4	3	0	1	0	2.7	2.2	0.0	22.7	
SARASOTA	19	13	5	1	0	7.0	5.5	17.2	15.6	
SEMINOLE	13	10	3	0	0	2.8	2.6	4.7	0.0	
SUMTER	2	2	0	0	0	4.2	5.5	0.0	0.0	
SUWANNEE	9	8	1	0	0	19.4	20.9	12.3	0.0	
TAYLOR	0	0	0	0	0	0.0	0.0	0.0	0.0	
UNION	1	1	0	0	0	7.5	9.2	0.0	---	
VOLUSIA	20	16	4	0	0	4.5	4.3	5.9	0.0	
WAKULLA	0	0	0	0	0	0.0	0.0	0.0	0.0	
WALTON	0	0	0	0	0	0.0	0.0	0.0	0.0	
WASHINGTON	2	1	1	0	0	9.1	5.7	25.0	0.0	

*Rates based on neonatal deaths by race of decedent, live births by race of mother.

TABLE F-4 (Cont.): RESIDENT AND RECORDED NEONATAL DEATHS (UNDER 28 DAYS) AND RATES PER 1,000 LIVE BIRTHS, BY RACE, BY COUNTY, FLORIDA, 2000

	RECORDED NEONATAL DEATHS					RATES*			
	NUMBER					RATES*			
	TOTAL	WHITE	BLACK	OTHER	UNK	TOTAL	WHITE	BLACK	OTHER
FLORIDA	952	544	392	14	2	4.7	3.6	8.3	2.2
ALACHUA	68	46	21	1	0	12.2	11.2	16.0	6.5
BAKER	0	0	0	0	0	0.0	0.0	0.0	---
BAY	8	4	4	0	0	3.3	2.0	12.7	0.0
BRADFORD	0	0	0	0	0	0.0	0.0	---	---
BREVARD	6	4	2	0	0	1.2	1.0	3.0	0.0
BROWARD	98	47	50	1	0	4.6	3.7	6.4	1.5
CALHOUN	0	0	0	0	0	0.0	---	0.0	0.0
CHARLOTTE	0	0	0	0	0	0.0	0.0	0.0	0.0
CITRUS	0	0	0	0	0	0.0	0.0	0.0	0.0
CLAY	3	1	1	1	0	1.9	0.7	5.0	15.9
COLLIER	4	3	1	0	0	1.5	1.3	3.5	0.0
COLUMBIA	2	2	0	0	0	3.8	5.3	0.0	0.0
MIAMI-DADE	139	78	59	1	1	4.3	3.5	6.4	1.3
DESOTO	0	0	0	0	0	0.0	0.0	0.0	0.0
DIXIE	1	1	0	0	0	333.3	1000.0	0.0	---
DUVAL	85	40	44	1	0	6.1	4.4	10.2	1.9
ESCAMBIA	33	16	16	1	0	6.4	4.4	12.5	4.4
FLAGLER	0	0	0	0	0	0.0	0.0	0.0	---
FRANKLIN	0	0	0	0	0	0.0	0.0	0.0	---
GADSDEN	1	0	1	0	0	100.0	0.0	250.0	---
GILCHRIST	0	0	0	0	0	---	---	---	---
GLADES	0	0	0	0	0	0.0	---	---	0.0
GULF	1	0	0	1	0	---	---	---	---
HAMILTON	1	1	0	0	0	1000.0	1000.0	---	---
HARDEE	0	0	0	0	0	0.0	0.0	---	---
HENDRY	0	0	0	0	0	0.0	0.0	0.0	---
HERNANDO	0	0	0	0	0	0.0	0.0	0.0	0.0
HIGHLANDS	2	1	1	0	0	2.0	1.3	5.3	0.0
HILLSBOROUGH	99	61	36	2	0	6.1	4.9	11.5	3.8
HOLMES	0	0	0	0	0	0.0	0.0	---	---
INDIAN RIVER	7	2	5	0	0	6.3	2.2	32.1	0.0
JACKSON	0	0	0	0	0	0.0	0.0	0.0	0.0
JEFFERSON	0	0	0	0	0	---	---	---	---
LAFAYETTE	0	0	0	0	0	---	---	---	---
LAKE	1	1	0	0	0	0.5	0.7	0.0	0.0
LEE	23	16	7	0	0	3.7	3.0	8.4	0.0
LEON	28	7	21	0	0	5.7	2.4	11.1	0.0
LEVY	0	0	0	0	0	0.0	0.0	---	---
LIBERTY	0	0	0	0	0	0.0	0.0	---	---
MADISON	1	0	1	0	0	500.0	---	500.0	---
MANATEE	1	1	0	0	0	0.4	0.5	0.0	0.0
MARION	2	0	2	0	0	0.8	0.0	4.5	0.0
MARTIN	3	1	2	0	0	1.9	0.8	14.7	0.0
MONROE	2	1	1	0	0	3.4	2.0	16.1	0.0
NASSAU	3	3	0	0	0	7.2	8.1	0.0	0.0
OKALOOSA	1	1	0	0	0	0.4	0.5	0.0	0.0
OKEECHOBEE	2	2	0	0	0	333.3	333.3	---	---
ORANGE	132	86	44	1	1	7.8	7.0	11.3	1.5
OSCEOLA	2	2	0	0	0	0.7	0.8	0.0	0.0
PALM BEACH	67	30	36	1	0	4.5	2.8	9.7	1.6
PASCO	2	2	0	0	0	1.2	1.3	0.0	0.0
PINELLAS	81	58	21	2	0	7.6	6.8	12.7	4.6
POLK	10	4	6	0	0	1.7	0.8	5.2	0.0
PUTNAM	1	1	0	0	0	1.9	2.9	0.0	0.0
SAINT JOHN'S	0	0	0	0	0	0.0	0.0	0.0	0.0
SAINT LUCIE	5	1	4	0	0	2.6	0.8	6.9	0.0
SANTA ROSA	1	1	0	0	0	1.8	1.9	0.0	0.0
SARASOTA	18	11	6	1	0	5.5	3.9	16.6	13.7
SEMINOLE	0	0	0	0	0	0.0	0.0	0.0	0.0
SUMTER	3	3	0	0	0	600.0	750.0	0.0	---
SUWANNEE	1	1	0	0	0	200.0	250.0	0.0	---
TAYLOR	0	0	0	0	0	0.0	0.0	0.0	---
UNION	0	0	0	0	0	---	---	---	---
VOLUSIA	4	4	0	0	0	1.0	1.2	0.0	0.0
WAKULLA	0	0	0	0	0	0.0	0.0	0.0	---
WALTON	0	0	0	0	0	0.0	0.0	0.0	---
WASHINGTON	0	0	0	0	0	0.0	---	0.0	---

*Rates based on neonatal deaths by race of decedent, live births by race of mother.

TABLE F-5: RESIDENT AND RECORDED INFANT DEATHS (UNDER 1 YEAR) AND RATES PER 1,000 LIVE BIRTHS, BY RACE, BY COUNTY, FLORIDA, 2000

	RESIDENT INFANT DEATHS									
	NUMBER					RATES*				
	TOTAL	WHITE	BLACK	OTHER	UNK	TOTAL	WHITE	BLACK	OTHER	
FLORIDA	1,423	810	594	17	2	7.0	5.4	12.6	2.7	
ALACHUA	28	15	12	1	0	10.8	8.9	15.1	8.5	
BAKER	1	1	0	0	0	2.8	3.3	0.0	0.0	
BAY	10	5	5	0	0	5.0	3.0	17.9	0.0	
BRADFORD	4	3	1	0	0	12.5	11.8	16.9	0.0	
BREVARD	26	14	11	1	0	5.2	3.4	15.6	6.4	
BROWARD	129	56	71	2	0	5.8	4.1	9.3	2.8	
CALHOUN	0	0	0	0	0	0.0	0.0	0.0	0.0	
CHARLOTTE	8	6	2	0	0	7.7	6.3	37.0	0.0	
CITRUS	7	6	1	0	0	8.0	7.3	37.0	0.0	
CLAY	14	10	3	1	0	7.7	6.2	19.2	15.2	
COLLIER	17	14	3	0	0	5.5	5.3	8.6	0.0	
COLUMBIA	7	4	3	0	0	9.2	6.7	20.7	0.0	
MIAMI-DADE	186	97	87	1	1	5.8	4.4	9.2	1.3	
DESOTO	3	1	2	0	0	7.1	2.8	32.8	0.0	
DIXIE	3	2	1	0	0	18.9	14.4	52.6	0.0	
DUVAL	118	46	71	1	0	9.7	6.2	16.8	2.0	
ESCAMBIA	47	21	26	0	0	12.2	8.5	22.0	0.0	
FLAGLER	2	2	0	0	0	4.8	5.6	0.0	0.0	
FRANKLIN	1	1	0	0	0	9.4	10.6	0.0	--	
GADSDEN	12	3	9	0	0	17.0	11.1	20.7	0.0	
GILCHRIST	3	3	0	0	0	16.6	17.0	0.0	0.0	
GLADES	1	1	0	0	0	11.4	15.2	0.0	0.0	
GULF	3	2	0	1	0	23.6	18.5	0.0	333.3	
HAMILTON	0	0	0	0	0	0.0	0.0	0.0	0.0	
HARDEE	1	1	0	0	0	2.2	2.4	0.0	0.0	
HENDRY	2	2	0	0	0	3.1	3.8	0.0	0.0	
HERNANDO	6	5	1	0	0	5.1	4.7	11.5	0.0	
HIGHLANDS	10	4	6	0	0	11.9	6.0	37.7	0.0	
HILLSBOROUGH	116	62	51	3	0	7.9	5.6	17.1	6.1	
HOLMES	2	2	0	0	0	9.4	10.0	0.0	0.0	
INDIAN RIVER	10	6	4	0	0	8.9	6.4	24.4	0.0	
JACKSON	3	1	2	0	0	5.1	2.4	12.3	0.0	
JEFFERSON	0	0	0	0	0	0.0	0.0	0.0	0.0	
LAFAYETTE	0	0	0	0	0	0.0	0.0	0.0	--	
LAKE	7	7	0	0	0	3.0	3.6	0.0	0.0	
LEE	35	24	11	0	0	6.7	5.5	14.9	0.0	
LEON	29	8	21	0	0	9.7	4.6	18.5	0.0	
LEVY	4	4	0	0	0	9.3	11.2	0.0	0.0	
LIBERTY	1	1	0	0	0	12.8	14.3	0.0	--	
MADISON	3	2	1	0	0	13.7	19.8	8.6	0.0	
MANATEE	24	17	7	0	0	7.4	6.4	15.0	0.0	
MARION	19	13	6	0	0	6.5	5.7	10.3	0.0	
MARTIN	10	7	3	0	0	8.1	7.2	23.4	0.0	
MONROE	7	6	1	0	0	8.8	8.7	14.9	0.0	
NASSAU	7	7	0	0	0	9.4	10.2	0.0	0.0	
OKALOOSA	15	10	5	0	0	6.4	5.3	14.6	0.0	
OKEECHOBEE	8	7	1	0	0	15.2	14.5	27.0	0.0	
ORANGE	93	50	41	1	1	6.6	5.2	11.0	1.6	
OSCEOLA	9	8	1	0	0	3.4	3.5	4.0	0.0	
PALM BEACH	95	43	51	1	0	7.1	4.7	14.6	1.7	
PASCO	25	24	1	0	0	6.7	6.8	7.1	0.0	
PINELLAS	61	38	21	2	0	6.4	5.1	12.7	4.7	
POLK	48	35	13	0	0	7.0	6.4	9.8	0.0	
PUTNAM	11	8	3	0	0	12.3	12.1	12.9	0.0	
SAINT JOHNS	7	7	0	0	0	5.3	6.0	0.0	0.0	
SAINT LUCIE	16	7	9	0	0	7.1	4.4	14.5	0.0	
SANTA ROSA	7	6	0	1	0	4.7	4.3	0.0	22.7	
SARASOTA	22	15	6	1	0	8.1	6.3	20.7	15.6	
SEMINOLE	22	15	7	0	0	4.8	4.0	10.9	0.0	
SUMTER	3	2	1	0	0	6.3	5.5	9.4	0.0	
SUWANNEE	10	8	2	0	0	21.5	20.9	24.7	0.0	
TAYLOR	0	0	0	0	0	0.0	0.0	0.0	0.0	
UNION	1	1	0	0	0	7.5	9.2	0.0	--	
VOLUSIA	39	31	8	0	0	8.7	8.4	11.7	0.0	
WAKULLA	1	1	0	0	0	3.5	4.0	0.0	0.0	
WALTON	0	0	0	0	0	0.0	0.0	0.0	0.0	
WASHINGTON	4	2	2	0	0	18.2	11.4	50.0	0.0	

*Rates based on infant deaths by race of decedent, live births by race of mother.

TABLE F-5 (Cont.) : RESIDENT AND RECORDED INFANT DEATHS (UNDER 1 YEAR) AND RATES PER 1,000 LIVE BIRTHS, BY RACE, BY COUNTY, FLORIDA, 2000

	RECORDED INFANT DEATHS								
	NUMBER					RATES*			
	TOTAL	WHITE	BLACK	OTHER	UNK	TOTAL	WHITE	BLACK	OTHER
FLORIDA	1,452	827	605	18	2	7.1	5.5	12.8	2.8
ALACHUA	96	63	32	1	0	17.2	15.3	24.4	6.5
BAKER	0	0	0	0	0	0.0	0.0	0.0	--
BAY	9	5	4	0	0	3.7	2.4	12.7	0.0
BRADFORD	1	1	0	0	0	1,000.0	1,000.0	--	--
BREVARD	14	8	6	0	0	2.9	2.0	8.9	0.0
BROWARD	131	59	70	2	0	6.2	4.6	8.9	2.9
CALHOUN	0	0	0	0	0	0.0	--	0.0	0.0
CHARLOTTE	2	2	0	0	0	1.9	2.1	0.0	0.0
CITRUS	2	2	0	0	0	2.5	2.6	0.0	0.0
CLAY	8	5	2	1	0	4.9	3.7	9.9	15.9
COLLIER	7	4	3	0	0	2.7	1.8	10.6	0.0
COLUMBIA	5	4	1	0	0	9.5	10.6	7.2	0.0
MIAMI-DADE	213	111	100	1	1	6.6	5.0	10.9	1.3
DESOTO	1	0	1	0	0	1.4	0.0	13.5	0.0
DIXIE	1	1	0	0	0	333.3	1,000.0	0.0	--
DUVAL	142	70	71	1	0	10.2	7.7	16.5	1.9
ESCAMBIA	56	26	29	1	0	10.9	7.1	22.7	4.4
FLAGLER	1	1	0	0	0	200.0	250.0	0.0	--
FRANKLIN	0	0	0	0	0	0.0	0.0	0.0	--
GADSDEN	3	0	3	0	0	300.0	0.0	750.0	--
GILCHRIST	0	0	0	0	0	--	--	--	--
GLADES	1	1	0	0	0	1,000.0	--	--	0.0
GULF	1	0	0	1	0	--	--	--	--
HAMILTON	1	1	0	0	0	1,000.0	1,000.0	--	--
HARDEE	0	0	0	0	0	0.0	0.0	--	--
HENDRY	0	0	0	0	0	0.0	0.0	0.0	--
HERNANDO	3	2	1	0	0	2.3	1.6	11.9	0.0
HIGHLANDS	4	2	2	0	0	3.9	2.5	10.6	0.0
HILLSBOROUGH	152	86	62	4	0	9.4	6.9	19.8	7.6
HOLMES	1	1	0	0	0	500.0	500.0	--	--
INDIAN RIVER	8	2	6	0	0	7.2	2.2	38.5	0.0
JACKSON	1	1	0	0	0	1.7	2.5	0.0	0.0
JEFFERSON	0	0	0	0	0	--	--	--	--
LAFAYETTE	0	0	0	0	0	--	--	--	--
LAKE	4	4	0	0	0	2.1	2.8	0.0	0.0
LEE	38	27	11	0	0	6.1	5.1	13.3	0.0
LEON	40	11	29	0	0	8.2	3.8	15.4	0.0
LEVY	1	1	0	0	0	1,000.0	1,000.0	--	--
LIBERTY	0	0	0	0	0	0.0	0.0	--	--
MADISON	1	0	1	0	0	500.0	--	500.0	--
MANATEE	10	8	2	0	0	3.8	3.7	5.0	0.0
MARION	5	2	3	0	0	2.1	1.0	6.7	0.0
MARTIN	6	3	3	0	0	3.7	2.3	22.1	0.0
MONROE	3	2	1	0	0	5.1	4.1	16.1	0.0
NASSAU	3	3	0	0	0	7.2	8.1	0.0	0.0
OKALOOSA	3	2	1	0	0	1.2	1.0	3.0	0.0
OKEECHOBEE	3	3	0	0	0	500.0	500.0	--	--
ORANGE	172	107	62	2	1	10.2	8.7	15.9	3.0
OSCEOLA	3	3	0	0	0	1.1	1.3	0.0	0.0
PALM BEACH	97	49	47	1	0	6.5	4.6	12.6	1.6
PASCO	6	6	0	0	0	3.6	4.0	0.0	0.0
PINELLAS	108	79	27	2	0	10.1	9.2	16.4	4.6
POLK	22	16	6	0	0	3.7	3.4	5.2	0.0
PUTNAM	5	4	1	0	0	9.4	11.6	5.4	0.0
SAINT JOHNS	1	1	0	0	0	1.1	1.4	0.0	0.0
SAINT LUCIE	6	2	4	0	0	3.1	1.6	6.9	0.0
SANTA ROSA	4	4	0	0	0	7.2	7.8	0.0	0.0
SARASOTA	20	12	7	1	0	6.1	4.2	19.4	13.7
SEMINOLE	6	4	2	0	0	1.6	1.3	3.1	0.0
SUMTER	0	0	0	0	0	0.0	0.0	0.0	--
SUWANNEE	1	1	0	0	0	200.0	250.0	0.0	--
TAYLOR	1	1	0	0	0	333.3	500.0	0.0	--
UNION	0	0	0	0	0	--	--	--	--
VOLUSIA	18	14	4	0	0	4.6	4.4	6.1	0.0
WAKULLA	0	0	0	0	0	0.0	0.0	0.0	--
WALTON	0	0	0	0	0	0.0	0.0	0.0	--
WASHINGTON	1	0	1	0	0	1,000.0	--	1,000.0	--

*Rates based on infant deaths by race of decedent, live births by race of mother.

TABLE F-6: RESIDENT INFANT DEATHS BY HISPANIC OR HAITIAN ORIGIN, BY COUNTY, FLORIDA, 2000

	TOTAL	HISPANIC ORIGIN						HAITIAN	NON-HISPANIC/HAITIAN	UNK
		TOTAL HISPANIC	MEXICAN	PUERTO RICAN	CUBAN	CENTRAL/SOUTH AMERICAN	OTHER/UNK HISPANIC			
FLORIDA	1,423	222	69	60	43	39	11	55	1,112	34
ALACHUA	28	0	0	0	0	0	0	0	28	0
BAKER	1	0	0	0	0	0	0	0	1	0
BAY	10	0	0	0	0	0	0	0	10	0
BRADFORD	4	0	0	0	0	0	0	0	4	0
BREVARD	26	2	0	1	0	0	1	0	24	0
BROWARD	129	24	4	2	5	12	1	17	88	0
CALHOUN	0	0	0	0	0	0	0	0	0	0
CHARLOTTE	8	0	0	0	0	0	0	0	8	0
CITRUS	7	1	0	1	0	0	0	0	6	0
CLAY	14	1	0	1	0	0	0	0	13	0
COLLIER	17	7	3	0	1	3	0	2	8	0
COLUMBIA	7	0	0	0	0	0	0	0	7	0
MIAMI-DADE	186	48	4	6	26	12	0	10	101	27
DESOTO	3	0	0	0	0	0	0	0	3	0
DIXIE	3	0	0	0	0	0	0	0	3	0
DUVAL	118	3	0	2	0	0	1	0	115	0
ESCAMBIA	47	2	0	1	0	0	1	0	45	0
FLAGLER	2	0	0	0	0	0	0	0	2	0
FRANKLIN	1	0	0	0	0	0	0	0	1	0
GADSDEN	12	3	3	0	0	0	0	0	9	0
GILCHRIST	3	0	0	0	0	0	0	0	3	0
GLADES	1	0	0	0	0	0	0	0	1	0
GULF	3	1	1	0	0	0	0	0	2	0
HAMILTON	0	0	0	0	0	0	0	0	0	0
HARDEE	1	0	0	0	0	0	0	0	1	0
HENDRY	2	2	2	0	0	0	0	0	0	0
HERNANDO	6	0	0	0	0	0	0	0	6	0
HIGHLANDS	10	2	1	1	0	0	0	0	8	0
HILLSBOROUGH	116	24	11	8	3	0	2	1	86	5
HOLMES	2	0	0	0	0	0	0	0	2	0
INDIAN RIVER	10	1	1	0	0	0	0	2	7	0
JACKSON	3	0	0	0	0	0	0	0	3	0
JEFFERSON	0	0	0	0	0	0	0	0	0	0
LAFAYETTE	0	0	0	0	0	0	0	0	0	0
LAKE	7	3	2	0	1	0	0	0	4	0
LEE	35	5	3	1	0	1	0	3	27	0
LEON	29	1	0	0	0	1	0	0	28	0
LEVY	4	0	0	0	0	0	0	0	4	0
LIBERTY	1	0	0	0	0	0	0	0	1	0
MADISON	3	0	0	0	0	0	0	0	3	0
MANATEE	24	7	4	1	0	1	1	0	17	0
MARION	19	1	1	0	0	0	0	0	18	0
MARTIN	10	2	1	0	0	1	0	0	8	0
MONROE	7	1	0	0	1	0	0	0	6	0
NASSAU	7	0	0	0	0	0	0	0	7	0
OKALOOSA	15	2	2	0	0	0	0	0	13	0
OKEECHOBEE	8	2	2	0	0	0	0	0	6	0
ORANGE	93	24	3	14	4	3	0	5	64	0
OSCEOLA	9	4	0	3	0	1	0	0	5	0
PALM BEACH	95	17	7	4	1	3	2	11	66	1
PASCO	25	4	2	2	0	0	0	0	21	0
PINELLAS	61	4	2	2	0	0	0	0	57	0
POLK	48	7	4	2	0	0	1	2	38	1
PUTNAM	11	1	0	0	0	0	1	0	10	0
SAINT JOHNS	7	0	0	0	0	0	0	0	7	0
SAINT LUCIE	16	3	2	1	0	0	0	2	11	0
SANTA ROSA	7	0	0	0	0	0	0	0	7	0
SARASOTA	22	1	0	1	0	0	0	0	21	0
SEMINOLE	22	3	0	1	1	1	0	0	19	0
SUMTER	3	0	0	0	0	0	0	0	3	0
SUWANNEE	10	3	3	0	0	0	0	0	7	0
TAYLOR	0	0	0	0	0	0	0	0	0	0
UNION	1	0	0	0	0	0	0	0	1	0
VOLUSIA	39	6	1	5	0	0	0	0	33	0
WAKULLA	1	0	0	0	0	0	0	0	1	0
WALTON	0	0	0	0	0	0	0	0	0	0
WASHINGTON	4	0	0	0	0	0	0	0	4	0

TABLE F-7: RESIDENT INFANT, NEONATAL AND POST-NEONATAL DEATHS FROM SELECTED CAUSES, BY RACE, FLORIDA, 2000

	TOTAL				WHITE				
	NEONATAL <1 DAY		POST-NEONATAL		NEONATAL <1 DAY		POST-NEONATAL		
	INFANT	1,423	525	400	498	810	283	243	284
TOTAL (ICD - 10 GROUPING)									
INTESTINAL INFECTIOUS DISEASES (A00-A08)		3	0	0	3	2	0	0	2
DIARRHEA & GASTROENTERITIS--INFECTIOUS ORIGIN (A09)		0	0	0	0	0	0	0	0
TUBERCULOSIS (A16-A19)		0	0	0	0	0	0	0	0
TETANUS (A33-A35)		0	0	0	0	0	0	0	0
DIPHTHERIA (A36)		0	0	0	0	0	0	0	0
WHOOPING COUGH (A37)		0	0	0	0	0	0	0	0
MENINGOCOCCAL INFECTION (A39)		2	0	0	2	2	0	0	2
SEPTICEMIA (A40-A41)		18	0	0	18	13	0	0	13
CONGENITAL SYPHILIS (A50)		0	0	0	0	0	0	0	0
GONOCOCCAL INFECTION (A54)		0	0	0	0	0	0	0	0
ACUTE POLIOMYELITIS (A80)		0	0	0	0	0	0	0	0
VARICELLA (CHICKEN POX) (B01)		0	0	0	0	0	0	0	0
MEASLES (B05)		0	0	0	0	0	0	0	0
HIV DISEASE (B20-B24)		1	0	0	1	0	0	0	0
MUMPS (B26)		0	0	0	0	0	0	0	0
OTHER & UNSPEC VIRAL DIS (A81-B00, B02-B04, B06-B19, B25, B27-B34)		4	0	1	3	3	0	1	2
CANDIDIASIS (B37)		2	0	0	2	1	0	0	1
MALARIA (B50-B54)		0	0	0	0	0	0	0	0
PNEUMOCYSTOSIS (B59)		0	0	0	0	0	0	0	0
OTHER & UNSPECIFIED INFECTIOUS & PARASITIC DISEASES & SEQUELAE *1		3	0	0	3	2	0	0	2
HODGKIN'S DISEASE & NON-HODGKIN'S LYMPHOMAS (C81-C85)		0	0	0	0	0	0	0	0
LEUKEMIA (C91-C95)		1	0	0	1	1	0	0	1
OTHER & UNSPECIFIED MALIGNANT NEOPLASM (C00-C80, C88, C90, C96-C97)		1	0	0	1	0	0	0	0
IN SITU/BENIGN/MALIGNANT NEOPLASMS UNCERT/UNK BEHAVIOR (D00-D48)		2	0	2	0	2	0	2	0
ANEMIAS (D50-D64)		1	0	0	1	0	0	0	0
BLOOD, BLOOD-FORMING, HEMORRHAGIC DISEASES (D65-D76)		2	0	0	2	2	0	0	2
DISORDERS INVOLVING IMMUNE MECHANISM (D80-D89)		2	0	1	1	1	0	1	0
SHORT STATURE (E34.4)		2	2	0	0	2	2	0	0
NUTRITIONAL DEFICIENCIES (E40-E64)		1	0	0	1	1	0	0	1
CYSTIC FIBROSIS (E84)		0	0	0	0	0	0	0	0
FLUID/ELECTROLYTE/ACID-BASE/VOLUME DEPLETION DISORDERS (E86-E87)		2	0	1	1	2	0	1	1
OTHER ENDOCRINE, NUTRITIONAL, METABOLIC DISEASES *2		8	0	2	6	5	0	1	4
MENINGITIS (G00, G03)		3	0	0	3	2	0	0	2
INFANTILE SPINAL MUSCULAR ATROPHY, TYPE 1 (WERDNIG-HOFFMAN) (G12.0)		5	0	0	5	4	0	0	4
INFANTILE CEREBRAL PALSY (G80)		1	0	0	1	1	0	0	1
ANOXIC BRAIN DAMAGE (G93.1)		4	0	0	4	4	0	0	4
OTHER NERVOUS SYSTEM DISEASES *3		6	0	2	4	5	0	2	3
EAR & MASTOID PROCESS DISEASES (H60-H93)		1	0	0	1	0	0	0	0
PULMONARY HEART/CIRCULATION DISEASES (I26-I28)		9	2	4	3	5	1	4	0
PERICARDITIS, ENDOCARDITIS, MYOCARDITIS (I30, I33, I40)		0	0	0	0	0	0	0	0
CARDIOMYOPATHY (I42)		4	0	2	2	3	0	1	2
CARDIAC ARREST (I46)		2	0	0	2	1	0	0	1
CEREBROVASCULAR DISEASES (I60-I69)		8	0	1	7	4	0	1	3
OTHER CIRCULAT SYS DIS (I00-I25, I31, I34-I38, I44-I45, I47-I51, I70-I99)		7	0	1	6	6	0	0	6
ACUTE UPPER RESPIRATORY INFECTIONS (J00-J06)		1	0	0	1	0	0	0	0
INFLUENZA (J10-J11)		0	0	0	0	0	0	0	0
PNEUMONIA (J12-J18)		19	0	2	17	12	0	1	11

TABLE F-7 (Cont.): RESIDENT INFANT, NEONATAL AND POST-NEONATAL DEATHS FROM SELECTED CAUSES, BY RACE, FLORIDA, 2000

	TOTAL				WHITE			
	INFANT	NEONATAL <1 DAY	1-27 DAYS	POST NEO- NATAL	INFANT	NEONATAL <1 DAY	1-27 DAYS	POST NEO- NATAL
ACUTE BRONCHITIS & ACUTE BRONCIOLITIS (J20-J21)	3	0	0	3	2	0	0	2
BRONCHITIS, CHRONIC & UNSPECIFIED (J40-J42)	1	0	0	1	0	0	0	0
ASTHMA (J45-J46)	2	0	0	2	1	0	0	1
PNEUMONITIS DUE TO SOLIDS & LIQUIDS (J69)	0	0	0	0	0	0	0	0
OTHER & UNSPEC RESPIR SYS DIS (J22,J30-J39,J43-J44,J47-J68,J70-J98)	12	0	0	12	3	0	0	3
GASTRITIS, DUODENITIS, NONINFECTIVE ENTERITIS/COLITIS (K29, K50-K55)	16	0	0	16	6	0	0	6
HERNIA ABDOM CAVITY & INTESTINAL OBSTRUCT W/O HERNIA (K40-K46, K56)	1	1	0	0	1	1	0	0
OTHER & UNSPEC DIGESTIVE SYSTEM DISEASE (K00-K28, K30-K38, K57-K92)	13	2	1	10	6	0	1	5
RENAL FAILURE & OTHER KIDNEY DISORDERS (N17-N19, N25, N27)	13	0	7	6	4	0	1	3
OTHER & UNSPEC GENITOURINARY SYS DIS (N00-N15, N20-N23, N26,N28-N98)	0	0	0	0	0	0	0	0
PERINATAL PERIOD CONDITIONS (P00-P96)	711	420	240	51	378	213	144	21
MATERNAL HYPERTENSIVE DISORDERS (P00.0)	2	2	0	0	2	2	0	0
MATERNAL CONDITIONS UNRELATED PRESENT PREGNANCY (P00.1-P00.9)	3	1	1	1	2	1	1	0
INCOMPETENT CERVIX (P01.0)	19	17	2	0	6	4	2	0
PREMATURE RUPTURE OF MEMBRANES (P01.1)	24	23	1	0	11	10	1	0
MULTIPLE PREGNANCY (P01.5)	19	18	1	0	9	8	1	0
MATERNAL COMPLICATIONS OF PREGNANCY (P01.2-P01.4, P01.6-P01.9)	5	5	0	0	4	4	0	0
PLACENTA COMPLICATIONS (P02.0-P02.3)	19	12	7	0	14	9	5	0
CORD COMPLICATIONS (P02.4-P02.6)	2	1	1	0	2	1	1	0
CHORIOAMNIONITIS (P02.7)	29	27	1	1	8	8	0	0
OTHER & UNSPECIFIED MEMBRANE ABNORMALITIES (P02.8-P02.9)	0	0	0	0	0	0	0	0
OTHER COMPLICATIONS OF LABOR & DELIVERY (P03)	8	7	1	0	5	4	1	0
NOXIOUS INFLUENCES VIA PLACENTA OR BREAST MILK (P04)	1	0	1	0	0	0	0	0
SLOW FETAL GROWTH & FETAL MALNUTRITION (P05)	2	2	0	0	1	1	0	0
EXTREME LOW BIRTH WEIGHT OR EXTREME IMMATUREITY (P07.0, P07.2)	163	131	24	8	82	65	12	5
OTHER LOW BIRTH WEIGHT OR PRETERM (P07.1, P07.3)	82	78	2	2	44	43	1	0
LONG GESTATION & HIGH BIRTH WEIGHT (P08)	0	0	0	0	0	0	0	0
BIRTH TRAUMA (P10-P15)	2	0	1	1	1	0	1	0
INTRAUTERINE HYPOXIA (P20)	6	1	4	1	5	1	3	1
BIRTH ASPHYXIA (P21)	36	11	23	2	25	6	18	1
RESPIRATORY DISTRESS (P22)	38	12	23	3	13	5	7	1
CONGENITAL PNEUMONIA (P23)	2	0	1	1	1	0	0	1
NEONATAL ASPIRATION SYNDROMES (P24)	1	0	1	0	0	0	0	0
INTERSTITIAL EMPHYSEMA & RELATED CONDITIONS (P25)	11	4	7	0	10	3	7	0
PULMONARY HEMORRHAGE (P26)	11	1	9	1	6	0	5	1
CHRONIC RESPIRATORY DISEASE (P27)	20	0	3	17	6	0	3	3
ATELECTASIS (P28.0-P28.1)	26	17	9	0	16	10	6	0
OTHER RESPIRATORY CONDITIONS (P28.2-P28.9)	2	1	1	0	1	1	0	0
BACTERIAL SEPSIS (P36)	47	9	34	4	22	5	15	2
OMPHALITIS W/ OR W/O HEMORRHAGE (P38)	0	0	0	0	0	0	0	0
ALL OTHER INFECTIONS (P35, P37, P39)	9	2	5	2	6	1	3	2
NEONATAL HEMORRHAGE (P50-P52, P54)	25	0	24	1	12	0	11	1
HEMORRHAGIC DISEASE OF NEW BORN (P53)	0	0	0	0	0	0	0	0
HEMOLYTIC DIS DUE TO ISOIMMUNIZATION/PERINAT JAUNDICE (P55-P59)	0	0	0	0	0	0	0	0
HEMATOLOGICAL DISORDERS (P60-P61)	4	0	4	0	3	0	3	0
DIABETES MELLITUS, MATERNAL OR NEONATAL (P70.0-P70.2)	0	0	0	0	0	0	0	0
NECROTIZING ENTEROCOLITIS (P77)	11	0	8	3	9	0	7	2
HYDROPS FETALIS NOT DUE TO HEMOLYTIC DIS (P83.2)	8	5	3	0	8	5	3	0
OTHER PERINATAL CONDITIONS *4	74	33	38	3	44	16	27	1

TABLE F-7 (Cont.): RESIDENT INFANT, NEONATAL AND POST-NEONATAL DEATHS FROM SELECTED CAUSES, BY RACE, FLORIDA, 2000

	TOTAL				WHITE			
	INFANT	NEONATAL <1 DAY	1-27 DAYS	POST NEO- NATAL	INFANT	NEONATAL <1 DAY	1-27 DAYS	POST NEO- NATAL
CONGENITAL / CHROMOSOMAL ANOMALIES (Q00-Q99)	272	86	112	74	170	60	69	41
ANENCEPHALY & SIMILAR ANOMALIES (Q00)	19	14	5	0	11	7	4	0
CONGENITAL HYDROCEPHALUS (Q03)	6	4	1	1	5	4	1	0
SPINA BIFIDA (Q05)	3	3	0	0	2	2	0	0
OTHER CONGENITAL ANOMALIES CENT NERV SYS (Q01-Q02,Q04,Q06-Q07)	10	0	3	7	6	0	1	5
CONGENITAL ANOMALIES OF HEART (Q20-Q24)	83	3	44	36	51	3	28	20
OTHER CONGENITAL ANOMALIES OF CIRCULATORY SYS (Q25-Q28)	14	1	8	5	9	1	6	2
CONGENITAL ANOMALIES OF RESPIRATORY SYS (Q30-Q34)	24	15	7	2	15	10	4	1
CONGENITAL ANOMALIES OF DIGESTIVE SYS (Q35-Q45)	5	0	0	5	2	0	0	2
CONGENITAL ANOMALIES OF GENITOURINARY SYS (Q50-Q64)	18	10	4	4	12	7	3	2
CONGENITAL ANOMALIES OF MUSCULOSKELETAL SYS (Q65-Q85)	16	5	8	3	11	4	4	3
DOWN'S SYNDROME (Q90)	2	2	0	0	0	0	0	0
EDWARD'S SYNDROME (Q91.0-Q91.3)	24	5	14	5	13	3	6	4
PATAU'S SYNDROME (Q91.4-Q91.7)	12	1	11	0	8	1	7	0
OTHER CONGENITAL ANOMALIES (Q10-Q18, Q86-Q89)	30	18	7	5	20	14	5	1
OTHER CHROMOSOMAL ANOMALIES (Q92-Q99)	6	5	0	1	5	4	0	1
SUDDEN INFANT DEATH SYNDROME (R95)	101	0	3	98	74	0	3	71
SYMPTOMS, SIGNS, ABN CLINICAL/LAB FINDINGS (R00-R53,R55-R94,R96-R99)	78	11	10	57	35	5	5	25
ALL OTHER DISEASES (F01-F99, H00-H57, L00-M99)	0	0	0	0	0	0	0	0
UNINT INJ: MOTOR VEHICLE *5	6	0	1	5	4	0	0	4
UNINT INJ: OTHER & UNSPEC TRANSPORT & SEQUELAE *6	0	0	0	0	0	0	0	0
UNINT INJ: FALLS (W00-W19)	0	0	0	0	0	0	0	0
UNINT INJ: FIREARMS DISCHARGE (W32-W34)	0	0	0	0	0	0	0	0
UNINT INJ: DROWNING & SUBMERSION (W65-W74)	9	0	0	9	6	0	0	6
UNINT INJ: SUFFOCATION & STRANGULATION IN BED (W75)	22	1	1	20	15	1	0	14
UNINT INJ: OTHER SUFFOCATION & STRANGULATION (W76-W77, W81-W84)	10	0	2	8	4	0	1	3
UNINT INJ: INHALE/INGEST--RESPIRATORY TRACT OBSTRUCTION (W78-W80)	2	0	1	1	2	0	1	1
UNINT INJ: SMOKE, FIRE, FLAMES EXPOSURE (X00-X09)	2	0	0	2	2	0	0	2
UNINT INJ: POISONING & NOXIOUS SUBSTANCE EXPOSURE (X40-X49)	1	0	1	0	1	0	1	0
UNINT INJ: OTHER & UNSPECIFIED & SEQUELAE *7	2	0	2	0	2	0	2	0
HOMICIDE: HANGING, STRANGULATION, SUFFOCATION (X91)	1	0	0	1	0	0	0	0
HOMICIDE: FIREARMS DISCHARGE (X93-X95)	1	0	0	1	0	0	0	0
HOMICIDE: NEGLECT, ABANDONMENT, MALTREATMENT (Y06-Y07)	6	0	0	6	4	0	0	4
HOMICIDE: OTHER & UNSPECIFIED MEANS & SEQUELAE *8	11	0	0	11	4	0	0	4
MEDICAL & SURGICAL CARE COMPLICATIONS (Y40-Y84, Y88)	0	0	0	0	0	0	0	0
OTHER EXTERNAL CAUSES & SEQUELAE (X60-X84,Y10-Y36,Y87.0,Y87.2,Y89)	2	0	0	2	0	0	0	0

*1 (A20-A32, A38, A42-A49, A51-A53, A55-A79, B35-B36, B38-B49, B55-B58, B60-B99)

*2 (E00-E32, E34.0-E34.2, E34.4-E34.9, E65-E83, E85, E88)

*3 (G04,G06-G11,G12.1-G12.9,G20-G72,G81-G92,G93.0,G93.2-G93.9,G95-G98)

*4 (P29,P70.3-P70.9,P71-P76,P78-P81,P83.0-P83.1,P83.3-P83.9,P90-P96)

*5 (V02-V04, V09.0, V09.2, V12-V14, V19.0-V19.2, V19.4-V19.6, V20-V79, V80.3-V80.5, V81.0-V81.1, V82.0-V82.1, V83-V86, V87.0-V87.8, V88.0-V88.8, V89.0, V89.2)

*6 (V01, V05-V06, V09.1, V09.3-V09.9, V10-V11, V15-V18, V19.3, V19.8-V19.9, V80.0-V80.2, V80.6-V80.9, V81.2-V81.9, V82.2-V82.9, V87.9, V88.9, V89.1, V89.3, V89.9, V90-V99, Y85)

*7 (W20-W31, W35-W64, W85-W99, X10-X39, X50-X59, Y86)

*8 (X85-X90, X92, X96-X99, Y00-Y05, Y08-Y09, Y87.1)

TABLE F-7 (Cont.): RESIDENT INFANT, NEONATAL AND POST-NEONATAL DEATHS FROM SELECTED CAUSES, BY RACE, FLORIDA, 2000

	BLACK				OTHER			
	INFANT	NEONATAL <1 DAY	1-27 DAYS	POST NEO- NATAL	INFANT	NEONATAL <1 DAY	1-27 DAYS	POST NEO- NATAL
TOTAL (ICD - 10 GROUPING)	594	233	151	210	17	8	5	4
INTESTINAL INFECTIOUS DISEASES (A00-A08)	1	0	0	1	0	0	0	0
DIARRHEA & GASTROENTERITIS--INFECTIOUS ORIGIN (A09)	0	0	0	0	0	0	0	0
TUBERCULOSIS (A16-A19)	0	0	0	0	0	0	0	0
TETANUS (A33-A35)	0	0	0	0	0	0	0	0
DIPHTHERIA (A36)	0	0	0	0	0	0	0	0
WHOOPING COUGH (A37)	0	0	0	0	0	0	0	0
MENINGOCOCCAL INFECTION (A39)	0	0	0	0	0	0	0	0
SEPTICEMIA (A40-A41)	5	0	0	5	0	0	0	0
CONGENITAL SYPHILIS (A50)	0	0	0	0	0	0	0	0
GONOCOCCAL INFECTION (A54)	0	0	0	0	0	0	0	0
ACUTE POLIOMYELITIS (A80)	0	0	0	0	0	0	0	0
VARICELLA (CHICKEN POX) (B01)	0	0	0	0	0	0	0	0
MEASLES (B05)	0	0	0	0	0	0	0	0
HIV DISEASE (B20-B24)	1	0	0	1	0	0	0	0
MUMPS (B26)	0	0	0	0	0	0	0	0
OTHER & UNSPEC VIRAL DIS (A81-B00, B02-B04, B06-B19, B25, B27-B34)	1	0	0	1	0	0	0	0
CANDIDIASIS (B37)	1	0	0	1	0	0	0	0
MALARIA (B50-B54)	0	0	0	0	0	0	0	0
PNEUMOCYSTOSIS (B59)	0	0	0	0	0	0	0	0
OTHER & UNSPECIFIED INFECTIOUS & PARASITIC DISEASES & SEQUELAE *1	1	0	0	1	0	0	0	0
HODGKIN'S DISEASE & NON-HODGKIN'S LYMPHOMAS (C81-C85)	0	0	0	0	0	0	0	0
LEUKEMIA (C91-C95)	0	0	0	0	0	0	0	0
OTHER & UNSPECIFIED MALIGNANT NEOPLASM (C00-C80, C88, C90, C96-C97)	1	0	0	1	0	0	0	0
IN SITU/BENIGN/MALIGNANT NEOPLASMS UNCERT/UNK BEHAVIOR (D00-D48)	0	0	0	0	0	0	0	0
ANEMIAS (D50-D64)	1	0	0	1	0	0	0	0
BLOOD, BLOOD-FORMING, HEMORRHAGIC DISEASES (D65-D76)	0	0	0	0	0	0	0	0
DISORDERS INVOLVING IMMUNE MECHANISM (D80-D89)	1	0	0	1	0	0	0	0
SHORT STATURE (E34.4)	0	0	0	0	0	0	0	0
NUTRITIONAL DEFICIENCIES (E40-E64)	0	0	0	0	0	0	0	0
CYSTIC FIBROSIS (E84)	0	0	0	0	0	0	0	0
FLUID/ELECTROLYTE/ACID-BASE/VOLUME DEPLETION DISORDERS (E86-E87)	0	0	0	0	0	0	0	0
OTHER ENDOCRINE, NUTRITIONAL, METABOLIC DISEASES *2	3	0	1	2	0	0	0	0
MENINGITIS (G00, G03)	1	0	0	1	0	0	0	0
INFANTILE SPINAL MUSCULAR ATROPHY, TYPE 1 (WERDNIG-HOFFMAN) (G12.0)	1	0	0	1	0	0	0	0
INFANTILE CEREBRAL PALSY (G80)	0	0	0	0	0	0	0	0
ANOXIC BRAIN DAMAGE (G93.1)	0	0	0	0	0	0	0	0
OTHER NERVOUS SYSTEM DISEASES *3	0	0	0	0	1	0	0	1
EAR & MASTOID PROCESS DISEASES (H60-H93)	1	0	0	1	0	0	0	0
PULMONARY HEART/CIRCULATION DISEASES (I26-I28)	4	1	0	3	0	0	0	0
PERICARDITIS, ENDOCARDITIS, MYOCARDITIS (I30, I33, I40)	0	0	0	0	0	0	0	0
CARDIOMYOPATHY (I42)	0	0	0	0	0	0	0	0
CARDIAC ARREST (I46)	1	0	0	1	0	0	0	0
CEREBROVASCULAR DISEASES (I60-I69)	4	0	0	4	0	0	0	0
OTHER CIRCULAT SYS DIS (I00-I25, I31, I34-I38, I44-I45, I47-I51, I70-I99)	1	0	1	0	0	0	0	0
ACUTE UPPER RESPIRATORY INFECTIONS (J00-J06)	1	0	0	1	0	0	0	0
INFLUENZA (J10-J11)	0	0	0	0	0	0	0	0
PNEUMONIA (J12-J18)	7	0	1	6	0	0	0	0

TABLE F-7 (Cont.): RESIDENT INFANT, NEONATAL AND POST-NEONATAL DEATHS FROM SELECTED CAUSES, BY RACE, FLORIDA, 2000

	BLACK				OTHER			
	INFANT	NEONATAL <1 DAY	1-27 DAYS	POST NEO- NATAL	INFANT	NEONATAL <1 DAY	1-27 DAYS	POST NEO- NATAL
ACUTE BRONCHITIS & ACUTE BRONCIOLITIS (J20-J21)	1	0	0	1	0	0	0	0
BRONCHITIS, CHRONIC & UNSPECIFIED (J40-J42)	1	0	0	1	0	0	0	0
ASTHMA (J45-J46)	1	0	0	1	0	0	0	0
PNEUMONITIS DUE TO SOLIDS & LIQUIDS (J69)	0	0	0	0	0	0	0	0
OTHER & UNSPEC RESPIR SYS DIS (J22,J30-J39,J43-J44,J47-J68,J70-J98)	9	0	0	9	0	0	0	0
GASTRITIS, DUODENITIS, NONINFECTIVE ENTERITIS/CO LITIS (K29, K50-K55)	10	0	0	10	0	0	0	0
HERNIA ABDOM CAVITY & INTESTINAL OBSTRUCT W/O HERNIA (K40-K46, K56)	0	0	0	0	0	0	0	0
OTHER & UNSPEC DIGESTIVE SYSTEM DISEASE (K00-K28, K30-K38, K57-K92)	7	2	0	5	0	0	0	0
RENAL FAILURE & OTHER KIDNEY DISORDERS (N17-N19, N25, N27)	9	0	6	3	0	0	0	0
OTHER & UNSPEC GENITOURINARY SYS DIS (N00-N15, N20-N23, N26,N28-N98)	0	0	0	0	0	0	0	0
PERINATAL PERIOD CONDITIONS (P00-P96)	325	202	93	30	8	5	3	0
MATERNAL HYPERTENSIVE DISORDERS (P00.0)	0	0	0	0	0	0	0	0
MATERNAL CONDITIONS UNRELATED PRESENT PREGNANCY (P00.1-P00.9)	1	0	0	1	0	0	0	0
INCOMPETENT CERVIX (P01.0)	13	13	0	0	0	0	0	0
PREMATURE RUPTURE OF MEMBRANES (P01.1)	11	11	0	0	2	2	0	0
MULTIPLE PREGNANCY (P01.5)	10	10	0	0	0	0	0	0
MATERNAL COMPLICATIONS OF PREGNANCY (P01.2-P01.4, P01.6-P01.9)	1	1	0	0	0	0	0	0
PLACENTA COMPLICATIONS (P02.0-P02.3)	5	3	2	0	0	0	0	0
CORD COMPLICATIONS (P02.4-P02.6)	0	0	0	0	0	0	0	0
CHORIOAMNIONITIS (P02.7)	21	19	1	1	0	0	0	0
OTHER & UNSPECIFIED MEMBRANE ABNORMALITIES (P02.8-P02.9)	0	0	0	0	0	0	0	0
OTHER COMPLICATIONS OF LABOR & DELIVERY (P03)	3	3	0	0	0	0	0	0
NOXIOUS INFLUENCES VIA PLACENTA OR BREAST MILK (P04)	1	0	1	0	0	0	0	0
SLOW FETAL GROWTH & FETAL MALNUTRITION (P05)	1	1	0	0	0	0	0	0
EXTREME LOW BIRTH WEIGHT OR EXTREME IMMATURITY (P07.0, P07.2)	78	64	11	3	3	2	1	0
OTHER LOW BIRTH WEIGHT OR PRETERM (P07.1, P07.3)	37	34	1	2	1	1	0	0
LONG GESTATION & HIGH BIRTH WEIGHT (P08)	0	0	0	0	0	0	0	0
BIRTH TRAUMA (P10-P15)	1	0	0	1	0	0	0	0
INTRAUTERINE HYPOXIA (P20)	1	0	1	0	0	0	0	0
BIRTH ASPHYXIA (P21)	11	5	5	1	0	0	0	0
RESPIRATORY DISTRESS (P22)	25	7	16	2	0	0	0	0
CONGENITAL PNEUMONIA (P23)	1	0	1	0	0	0	0	0
NEONATAL ASPIRATION SYNDROMES (P24)	1	0	1	0	0	0	0	0
INTERSTITIAL EMPHYSEMA & RELATED CONDITIONS (P25)	1	1	0	0	0	0	0	0
PULMONARY HEMORRHAGE (P26)	5	1	4	0	0	0	0	0
CHRONIC RESPIRATORY DISEASE (P27)	14	0	0	14	0	0	0	0
ATELECTASIS (P28.0-P28.1)	10	7	3	0	0	0	0	0
OTHER RESPIRATORY CONDITIONS (P28.2-P28.9)	1	0	1	0	0	0	0	0
BACTERIAL SEPSIS (P36)	24	4	18	2	1	0	1	0
OMPHALITIS W/ OR W/O HEMORRHAGE (P38)	0	0	0	0	0	0	0	0
ALL OTHER INFECTIONS (P35, P37, P39)	3	1	2	0	0	0	0	0
NEONATAL HEMORRHAGE (P50-P52, P54)	12	0	12	0	1	0	1	0
HEMORRHAGIC DISEASE OF NEWBORN (P53)	0	0	0	0	0	0	0	0
HEMOLYTIC DIS DUE TO ISOIMMUNIZATION/PERINAT JAUNDICE (P55-P59)	0	0	0	0	0	0	0	0
HEMATOLOGICAL DISORDERS (P60-P61)	1	0	1	0	0	0	0	0
DIABETES MELLITUS, MATERNAL OR NEONATAL (P70.0-P70.2)	0	0	0	0	0	0	0	0
NECROTIZING ENTEROCOLITIS (P77)	2	0	1	1	0	0	0	0
HYDROPS FETALIS NOT DUE TO HEMOLYTIC DIS (P83.2)	0	0	0	0	0	0	0	0
OTHER PERINATAL CONDITIONS *4	30	17	11	2	0	0	0	0

TABLE F-7 (Cont.): RESIDENT INFANT, NEONATAL AND POST-NEONATAL DEATHS FROM SELECTED CAUSES, BY RACE, FLORIDA, 2000

	BLACK				OTHER			
	INFANT	NEONATAL		POST NEO- NATAL	INFANT	NEONATAL		POST NEO- NATAL
		<1 DAY	1-27 DAYS			<1 DAY	1-27 DAYS	
CONGENITAL / CHROMOSOMAL ANOMALIES (Q00-Q99)	96	23	41	32	6	3	2	1
ANENCEPHALY & SIMILAR ANOMALIES (Q00)	6	5	1	0	2	2	0	0
CONGENITAL HYDROCEPHALUS (Q03)	1	0	0	1	0	0	0	0
SPINA BIFIDA (Q05)	1	1	0	0	0	0	0	0
OTHER CONGENITAL ANOMALIES CENT NERV SYS (Q01-Q02,Q04,Q06-Q07)	4	0	2	2	0	0	0	0
CONGENITAL ANOMALIES OF HEART (Q20-Q24)	30	0	15	15	2	0	1	1
OTHER CONGENITAL ANOMALIES OF CIRCULATORY SYS (Q25-Q28)	5	0	2	3	0	0	0	0
CONGENITAL ANOMALIES OF RESPIRATORY SYS (Q30-Q34)	9	5	3	1	0	0	0	0
CONGENITAL ANOMALIES OF DIGESTIVE SYS (Q35-Q45)	3	0	0	3	0	0	0	0
CONGENITAL ANOMALIES OF GENITOURINARY SYS (Q50-Q64)	6	3	1	2	0	0	0	0
CONGENITAL ANOMALIES OF MUSCULOSKELETAL SYS (Q65-Q85)	5	1	4	0	0	0	0	0
DOWN'S SYNDROME (Q90)	2	2	0	0	0	0	0	0
EDWARD'S SYNDROME (Q91.0-Q91.3)	11	2	8	1	0	0	0	0
PATAU'S SYNDROME (Q91.4-Q91.7)	3	0	3	0	1	0	1	0
OTHER CONGENITAL ANOMALIES (Q10-Q18, Q86-Q89)	10	4	2	4	0	0	0	0
OTHER CHROMOSOMAL ANOMALIES (Q92-Q99)	0	0	0	0	1	1	0	0
SUDDEN INFANT DEATH SYNDROME (R95)	27	0	0	27	0	0	0	0
SYMPTOMS, SIGNS, ABN CLINICAL/LAB FINDINGS (R00-R53,R55-R94,R96-R99)	41	5	5	31	1	0	0	1
ALL OTHER DISEASES (F01-F99, H00-H57, L00-M99)	0	0	0	0	0	0	0	0
UNINT INJ: MOTOR VEHICLE *5	2	0	1	1	0	0	0	0
UNINT INJ: OTHER & UNSPEC TRANSPORT & SEQUELAE *6	0	0	0	0	0	0	0	0
UNINT INJ: FALLS (W00-W19)	0	0	0	0	0	0	0	0
UNINT INJ: FIREARMS DISCHARGE (W32-W34)	0	0	0	0	0	0	0	0
UNINT INJ: DROWNING & SUBMERSION (W65-W74)	3	0	0	3	0	0	0	0
UNINT INJ: SUFFOCATION & STRANGULATION IN BED (W75)	7	0	1	6	0	0	0	0
UNINT INJ: OTHER SUFFOCATION & STRANGULATION (W76-W77, W81-W84)	6	0	1	5	0	0	0	0
UNINT INJ: INHALE/INGEST--RESPIRATORY TRACT OBSTRUCTION (W78-W80)	0	0	0	0	0	0	0	0
UNINT INJ: SMOKE, FIRE, FLAMES EXPOSURE (X00-X09)	0	0	0	0	0	0	0	0
UNINT INJ: POISONING & NOXIOUS SUBSTANCE EXPOSURE (X40-X49)	0	0	0	0	0	0	0	0
UNINT INJ: OTHER & UNSPECIFIED & SEQUELAE *7	0	0	0	0	0	0	0	0
HOMICIDE: HANGING, STRANGULATION, SUFFOCATION (X91)	1	0	0	1	0	0	0	0
HOMICIDE: FIREARMS DISCHARGE (X93-X95)	1	0	0	1	0	0	0	0
HOMICIDE: NEGLECT, ABANDONMENT, MALTREATMENT (Y06-Y07)	2	0	0	2	0	0	0	0
HOMICIDE: OTHER & UNSPECIFIED MEANS & SEQUELAE *8	6	0	0	6	1	0	0	1
MEDICAL & SURGICAL CARE COMPLICATIONS (Y40-Y84, Y88)	0	0	0	0	0	0	0	0
OTHER EXTERNAL CAUSES & SEQUELAE (X60-X84,Y10-Y36,Y87.0,Y87.2,Y89)	2	0	0	2	0	0	0	0
*1 (A20-A32, A38, A42-A49, A51-A53, A55-A79, B35-B36, B38-B49, B55-B58, B60-B99)								
*2 (E00-E32, E34.0-E34.2, E34.4-E34.9, E65-E83, E85, E88)								
*3 (G04,G06-G11,G12.1-G12.9,G20-G72,G81-G92,G93.0,G93.2-G93.9,G95-G98)								
*4 (P29,P70.3-P70.9,P71-P76,P78-P81,P83.0-P83.1,P83.3-P83.9,P90-P96)								
*5 (V02-V04, V09.0, V09.2, V12-V14, V19.0-V19.2, V19.4-V19.6, V20-V79, V80.3-V80.5, V81.0-V81.1, V82.0-V82.1, V83-V86, V87.0-V87.8, V88.0-V88.8, V89.0, V89.2)								
*6 (V01, V05-V06, V09.1, V09.3-V09.9, V10-V11, V15-V18, V19.3, V19.8-V19.9, V80.0-V80.2, V80.6-V80.9, V81.2-V81.9, V82.2-V82.9, V87.9, V88.9, V89.1, V89.3, V89.9, V90-V99, Y85)								
*7 (W20-W31, W35-W64, W85-W99, X10-X39, X50-X59, Y86)								
*8 (X85-X90, X92, X96-X99, Y00-Y05, Y08-Y09, Y87.1)								