

Marriages and Dissolutions of Marriage

MARRIAGES AND DISSOLUTIONS OF MARRIAGE

- From a record high 158,783 in 1997, the number of marriages decreased 17,439 in 1998, decreased 4,941 in 1999, but increased 8,897 in 2000 to a total of 145,300.
- The marriage rate per 1,000 population decreased from 10.7 in 1997, to 9.4 in 1998, to 8.9 in 1999, but rose to 9.3 in 2000.
- May was the most popular month for marriages with 13,465 marriages performed.
- After decreasing for four consecutive years, then increasing and decreasing the next two years, respectively, the number of dissolutions of marriage increased both in 1999 and in 2000.
- Since 1980, the dissolution rate has declined 27.4 percent despite an overall increase in the number of dissolutions.
- The dissolution of marriage rate had declined steadily since 1980, reaching a rate of 5.4 per 1,000 population in 1996. In 1997 the rate increased to 5.6 per 1,000 population, but then declined in 1998 to 5.3, remained constant at 5.3 in 1999, and then declined to 5.2 in 2000.
- Of the 145,300 marriage ceremonies conducted in 2000, the reported race of the bride and of the groom was the same in 130,786 (90.0%) of the marriages. This is a decrease of 1.1% from 1999.
- Of the 81,493 dissolutions of marriage in 2000, over half (54.3%) affected no minor children.
- Over 4 of every 10 dissolutions of marriage occurred to couples married between 5 and 14 years.
- The marriage rate in Florida is over 1 ½ times the dissolution rate.

CHART M-1: MARRIAGES AND DISSOLUTIONS OF MARRIAGE, AND RATES PER 1,000 POPULATION, FLORIDA AND UNITED STATES, CENSUS YEARS 1920-1980 AND 1990-2000						
YEAR	MARRIAGES			DISSOLUTIONS ¹		
	FLORIDA		U.S.	FLORIDA		U.S.
	NUMBER	RATE	RATE	NUMBER	RATE	RATE
1920 ¹	NA	NA	12.0	NA	NA	1.6
1930 ¹	17,147	11.7	9.2	3,262	2.5	1.6
1940	32,709	17.1	12.1	11,061	5.8	2.0
1950	27,588	9.8	11.1	17,845	6.3	2.6
1960	39,315	7.9	8.5	19,326	3.9	2.2
1970	69,249	10.1	10.6	37,506	5.4	3.5
1980	108,344	11.0	10.6	71,578	7.3	5.2
1990	141,816	10.7	9.8	81,119	6.1	4.7
1991	136,994	10.3	9.4	82,929	6.3	4.7
1992	139,191	10.3	9.3 ²	84,011	6.2	4.8 ²
1993	141,892	10.3	9.0 ²	82,956	6.0	4.6 ²
1994	142,895	10.2	9.1 ²	81,628	5.9	4.6 ²
1995	145,090	10.2	9.1 ²	78,416	5.5	4.5 ²
1996	150,599	10.4	8.8 ²	77,750	5.4	4.3 ²
1997	158,783	10.7	8.9 ²	82,161	5.6	4.3 ²
1998	141,344	9.4	8.5 ²	80,466	5.3	4.3 ²
1999	136,403	8.9	8.4 ²	80,983	5.3	NA
2000	145,300	9.3	NA	81,439	5.2	NA

¹ Includes divorces and annulments.

² Provisional data.

GRAPH M-1: MARRIAGE AND DISSOLUTION OF MARRIAGE RATES PER 1,000 POPULATION,
FLORIDA AND UNITED STATES, 1990-2000

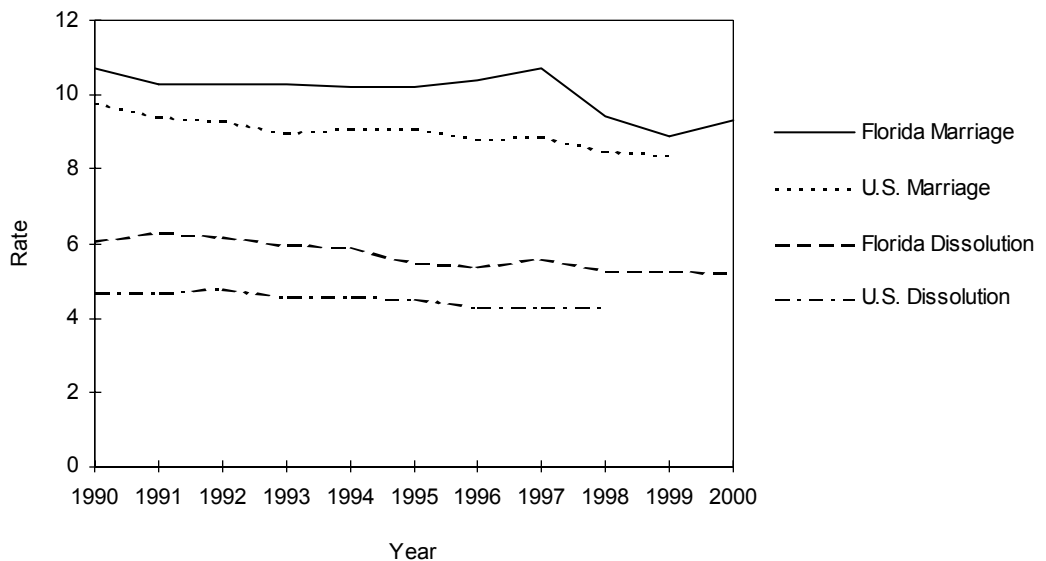


TABLE M-1: MARRIAGES PERFORMED BY MONTH, BY COUNTY OF ISSUANCE, FLORIDA, 2000

	TOTAL	JAN	FEB	MAR	APR	MAY	JUN	JUL	AUG	SEP	OCT	NOV	DEC
FLORIDA	145,300	9,658	12,247	12,875	12,986	13,465	13,097	12,875	10,465	11,988	11,810	11,796	12,038
ALACHUA	1,696	106	136	148	151	168	166	173	154	124	112	118	140
BAKER	270	19	22	19	33	23	24	34	15	27	15	13	26
BAY	2,187	119	169	163	182	205	226	248	195	198	185	140	157
BRADFORD	255	20	19	19	27	26	24	25	23	16	17	26	13
BREVARD	3,942	264	336	352	349	391	380	364	280	331	266	291	338
BROWARD	12,138	862	1,054	1,082	1,039	1,077	1,072	1,085	875	960	933	1,067	1,032
CALHOUN	130	9	18	12	8	10	8	9	11	16	12	6	11
CHARLOTTE	1,068	83	80	105	88	108	90	104	70	80	78	82	100
CITRUS	890	69	75	83	108	78	74	64	49	73	71	60	86
CLAY	1,368	84	115	115	126	136	120	115	121	100	115	112	109
COLLIER	2,402	192	167	199	223	270	211	183	132	189	199	194	243
COLUMBIA	653	58	55	73	60	49	56	65	49	44	42	49	53
MIAMI-DADE	23,041	1,664	2,046	2,093	1,885	1,859	1,942	1,942	1,803	1,814	1,744	1,956	2,293
DESOTO	226	13	26	27	19	20	27	18	14	15	12	21	14
DIXIE	109	2	15	14	15	13	5	11	6	6	7	3	12
DUVAL	6,546	365	552	556	646	583	611	615	488	595	559	461	515
ESCAMBIA	3,085	166	244	275	290	308	298	289	248	263	258	231	215
FLAGLER	335	16	24	24	34	35	34	36	25	23	31	32	21
FRANKLIN	151	11	9	8	13	20	15	17	15	16	9	6	12
GADSDEN	314	20	36	37	25	25	24	30	25	28	17	29	18
GILCHRIST	181	11	22	11	16	25	20	16	13	17	12	7	11
GLADES	54	6	2	2	4	5	2	3	7	3	10	6	4
GULF	114	10	5	10	3	7	11	12	14	11	9	9	13
HAMILTON	121	8	9	9	14	9	9	10	11	11	6	8	17
HARDEE	197	10	20	20	24	14	14	26	10	20	11	9	19
HENDRY	354	33	38	36	29	32	35	29	22	23	23	19	35
HERNANDO	828	61	67	73	91	82	72	76	47	63	62	67	67
HIGHLANDS	602	41	61	49	52	54	54	47	44	44	52	46	58
HILLSBOROUGH	9,224	584	787	796	801	868	785	819	662	787	772	805	758
HOLMES	196	10	17	10	17	17	24	18	11	22	16	18	16
INDIAN RIVER	885	59	71	79	85	89	75	77	56	58	66	72	98
JACKSON	373	26	31	26	22	26	47	37	26	40	18	36	38
JEFFERSON	191	10	19	22	17	14	16	14	13	17	19	7	23
LAFAYETTE	75	5	2	7	5	8	11	6	3	12	4	5	7
LAKE	1,586	116	140	125	136	138	118	146	102	153	138	122	152
LEE	3,714	276	323	341	357	324	328	342	220	289	315	299	300
LEON	2,062	122	136	189	176	230	194	183	178	188	159	148	159
LEVY	284	16	24	18	31	20	28	40	20	23	19	21	24
LIBERTY	58	3	3	4	6	6	3	8	2	5	3	8	7
MADISON	178	13	12	15	13	19	13	18	16	8	18	12	21
MANATEE	1,884	126	151	170	201	144	176	183	113	160	153	158	149
MARION	2,102	143	167	217	193	200	202	212	105	169	163	158	173
MARTIN	978	76	99	73	87	83	90	76	61	70	81	90	92
MONROE	2,630	190	256	193	252	308	253	197	179	174	200	230	198
NASSAU	706	42	53	70	72	68	77	71	47	62	34	51	59
OKALOOSA	2,133	102	134	175	204	242	197	223	194	197	190	135	140
OKEECHOBEE	316	18	30	26	28	30	36	33	26	26	21	22	20
ORANGE	10,018	604	790	901	880	949	895	852	723	891	867	874	792
OSCEOLA	3,909	231	286	318	315	381	350	296	291	403	394	349	295
PALM BEACH	8,786	629	772	814	777	807	778	778	620	693	723	716	679
PASCO	2,373	161	228	206	223	240	225	199	146	197	170	184	194
PINELLAS	7,842	512	643	713	739	764	720	672	521	632	700	649	577
POLK	4,020	276	369	380	351	361	388	339	301	324	328	296	307
PUTNAM	623	41	69	53	60	59	57	56	45	53	50	35	45
ST JOHNS	1,344	82	100	109	138	149	133	129	98	105	110	111	80
ST LUCIE	1,315	85	118	113	122	114	111	130	100	115	103	104	100
SANTA ROSA	791	43	66	59	67	92	89	69	53	63	69	58	63
SARASOTA	2,734	181	226	247	277	276	237	227	183	184	251	244	201
SEMINOLE	3,240	187	258	307	290	297	291	274	219	279	308	298	232
SUMTER	279	27	31	32	24	18	23	25	21	19	18	20	21
SUWANNEE	304	26	21	29	33	26	32	23	15	28	24	27	20
TAYLOR	185	16	16	10	17	19	17	18	10	17	14	13	18
UNION	118	9	13	10	7	15	13	12	7	9	8	9	6
VOLUSIA	3,687	258	302	328	311	327	347	345	253	320	340	275	281
WAKULLA	203	9	19	22	30	30	28	11	6	18	10	10	10
WALTON	504	15	19	37	53	59	45	53	35	53	58	41	36
WASHINGTON	193	7	24	17	15	16	21	18	18	15	9	18	15

TABLE M-2: MARRIAGES BY RACE OF GROOM AND BRIDE, FLORIDA, 2000

RACE OF GROOM	RACE OF BRIDE										
	TOTAL	WHITE	BLACK	AMERICAN INDIAN	CHINESE	JAPANESE	HAWAIIAN	FILIPINO	OTHER ASIAN/ PAC ISL	OTHER ENTRIES	UNK
TOTAL	145,300	116,611	19,629	261	281	137	30	572	1,471	6,208	100
WHITE	116,340	112,428	1,117	200	129	92	22	383	712	1,202	55
BLACK	20,985	2,250	18,258	15	6	10	4	46	72	320	4
AMERICAN INDIAN	280	227	10	37	0	1	0	0	1	4	0
CHINESE	177	29	2	0	126	1	0	2	16	1	0
JAPANESE	47	16	1	0	0	26	0	1	3	0	0
HAWAIIAN	18	9	0	0	0	1	1	3	4	0	0
FILIPINO	215	87	5	1	1	0	2	107	12	0	0
OTH ASIAN/PAC ISL	1,207	467	40	4	17	3	0	26	640	9	1
OTHER ENTRIES	5,960	1,069	194	4	2	3	1	4	11	4,672	0
UNK	71	29	2	0	0	0	0	0	0	0	40

TABLE M-3: DISSOLUTIONS* OF MARRIAGE BY DURATION OF MARRIAGE IN YEARS AND NUMBER OF MINOR CHILDREN AFFECTED, FLORIDA, 2000

DURATION IN YEARS	NUMBER OF MINOR CHILDREN AFFECTED								
	TOTAL	NONE	ONE	TWO	THREE	FOUR	FIVE	SIX+	UNK
TOTAL	81,493	44,286	17,252	12,287	3,347	606	121	59	3,535
<1	995	848	45	22	2	0	0	0	78
1	4,015	3,350	306	79	16	4	0	0	260
2	5,793	4,310	885	193	33	5	0	0	367
3	7,048	5,000	1,292	301	51	9	0	1	394
4	6,512	4,173	1,438	478	71	9	5	0	338
5-9	22,276	11,246	5,732	3,551	674	94	24	12	943
10-14	12,882	4,676	2,965	3,480	1,068	203	33	13	444
15-19	7,815	2,340	1,677	2,405	924	190	38	16	225
20-24	4,740	1,989	1,300	952	274	47	8	8	162
25-29	2,647	1,780	535	182	48	7	5	1	89
30-34	1,362	1,142	107	35	10	4	0	1	63
35-39	676	598	32	5	5	2	0	0	34
40+	637	573	11	5	5	2	1	0	40
UNK	4,095	2,261	927	599	166	30	7	7	98

* Includes divorces and annulments.

TABLE M-4: DISSOLUTIONS* OF MARRIAGE BY MONTH, BY COUNTY, FLORIDA, 2000

	TOTAL	JAN	FEB	MAR	APR	MAY	JUN	JUL	AUG	SEP	OCT	NOV	DEC
FLORIDA	81,493	5,594	6,507	7,531	6,497	7,219	7,345	6,728	7,279	6,548	6,852	6,753	6,640
ALACHUA	911	57	67	91	75	71	96	82	67	95	88	63	59
BAKER	125	7	8	11	17	13	12	15	9	7	7	10	9
BAY	1,036	96	87	97	74	89	84	105	77	75	83	92	77
BRADFORD	183	5	13	28	14	16	14	22	10	16	15	19	11
BREVARD	2,447	137	227	226	204	223	203	202	229	212	162	223	199
BROWARD	7,832	563	721	636	641	554	830	776	692	523	714	668	514
CALHOUN	79	5	6	11	9	4	5	6	6	10	2	9	6
CHARLOTTE	454	61	27	32	29	45	43	33	39	35	37	34	39
CITRUS	640	42	59	61	39	59	55	54	63	66	59	41	42
CLAY	837	82	69	63	56	61	67	64	62	83	68	75	87
COLLIER	1,155	78	71	117	109	100	103	96	99	105	112	86	79
COLUMBIA	397	22	60	56	38	22	22	23	45	21	13	33	42
MIAMI-DADE	11,891	825	864	1,195	902	1,023	1,052	972	992	952	1,023	1,032	1,059
DESOTO	155	12	15	10	10	11	12	13	6	17	18	20	11
DIXIE	70	3	7	6	4	8	6	5	9	6	7	3	6
DUVAL	4,825	269	286	441	325	615	426	404	479	393	400	436	351
ESCAMBIA	1,669	138	131	164	142	143	112	135	159	133	122	139	151
FLAGLER	257	13	20	29	18	26	38	14	21	16	19	26	17
FRANKLIN	58	7	9	8	3	2	3	4	6	3	4	3	6
GADSDEN	222	22	13	11	25	22	20	34	16	20	11	7	21
GILCHRIST	92	6	13	9	10	8	4	11	6	4	7	6	8
GLADES	23	3	1	0	2	1	3	1	1	2	1	6	2
GULF	72	5	3	4	12	7	4	3	10	3	10	10	1
HAMILTON	73	4	3	9	9	12	4	6	3	9	9	1	4
HARDEE	97	6	10	9	10	5	12	6	9	7	9	8	6
HENDRY	189	4	18	23	24	17	13	18	17	18	13	11	13
HERNANDO	465	21	43	40	58	41	41	44	41	30	33	40	33
HIGHLANDS	374	19	25	38	29	36	35	44	51	34	17	24	22
HILLSBOROUGH	5,281	307	439	390	419	451	528	376	517	526	430	411	487
HOLMES	110	7	10	14	3	8	9	11	12	10	5	16	5
INDIAN RIVER	573	34	39	55	56	37	56	56	58	38	50	58	36
JACKSON	248	21	10	23	18	29	17	30	25	15	20	18	22
JEFFERSON	216	14	21	25	22	16	12	16	27	16	13	23	11
LAFAYETTE	54	2	7	5	2	7	4	11	3	3	2	5	3
LAKE	1,057	77	84	113	76	109	75	84	97	56	103	107	76
LEE	2,019	138	186	192	128	207	140	190	127	192	186	179	154
LEON	1,008	70	71	95	99	81	98	67	111	71	80	70	95
LEVY	218	9	17	21	15	16	17	23	18	19	24	14	25
LIBERTY	25	3	4	3	1	0	3	1	1	2	4	0	3
MADISON	80	7	6	3	7	3	5	8	11	5	15	4	6
MANATEE	1,045	60	76	112	102	65	111	90	98	75	83	95	78
MARION	1,505	90	167	102	184	116	122	120	158	106	122	96	122
MARTIN	517	26	44	37	46	50	71	47	45	24	45	50	32
MONROE	469	25	35	53	34	38	45	46	30	45	42	42	34
NASSAU	292	21	18	31	23	17	36	24	29	22	18	18	35
OKALOOSA	1,273	111	91	112	91	121	164	87	73	112	104	117	90
OKEECHOBEE	168	18	12	14	21	12	14	21	16	12	6	3	19
ORANGE	4,819	375	318	437	402	425	456	343	413	405	395	410	440
OSCEOLA	1,001	73	76	100	70	100	123	75	85	89	98	81	31
PALM BEACH	5,297	407	393	515	396	460	412	456	534	461	416	368	479
PASCO	1,431	94	124	106	133	128	137	118	107	93	146	133	112
PINELLAS	4,314	292	410	434	328	373	367	329	374	345	320	376	366
POLK	2,669	169	218	255	237	246	217	207	277	219	218	192	214
PUTNAM	348	19	23	41	27	23	27	34	27	23	42	39	23
ST JOHNS	574	34	48	61	41	53	18	56	54	41	75	52	41
ST LUCIE	839	47	86	55	49	98	106	41	88	86	42	55	86
SANTA ROSA	591	50	44	52	52	49	40	37	59	47	54	50	57
SARASOTA	1,532	108	97	159	94	140	135	134	123	101	168	104	169
SEMINOLE	1,841	137	151	193	157	192	149	138	151	145	131	157	140
SUMTER	245	4	32	16	20	20	22	21	18	18	31	25	18
SUWANNEE	175	4	19	14	15	22	20	7	14	18	16	12	14
TAYLOR	118	11	10	5	8	9	11	11	9	13	7	14	10
UNION	62	7	2	6	8	6	1	1	11	6	0	4	10
VOLUSIA	2,413	189	201	216	198	217	223	198	209	161	229	186	186
WAKULLA	96	4	12	6	1	12	10	3	21	9	6	9	3
WALTON	210	10	23	20	13	16	17	12	20	13	20	24	22
WASHINGTON	132	8	7	15	13	13	8	7	5	11	23	11	11

* Includes divorces and annulments.