

Fetal and Infant Deaths

FETAL AND INFANT DEATHS

- Both the number of resident fetal deaths (20 or more weeks gestation) and the ratio of resident fetal deaths to resident live births have decreased from last year.
- Resident fetal deaths among both whites and nonwhites decreased by 0.4 percent from 2000 to 2001.
- Of the 1,668 fetal deaths, 16.8 percent occurred to mothers residing in Miami-Dade County.
- Nearly one of every five resident fetal deaths occurred to a mother of Hispanic origin.
- About one of every ten fetal deaths occurred to a mother who was aged 18 years or under.
- In 2001 both the overall number and rate of resident neonatal deaths (under 28 days) increased. The number increased slightly both for whites and for nonwhites.
- The neonatal death rate increased from 4.5 per 1,000 live births in 2000 to 4.8 in 2001. This represents less than half the rate of 1980 (9.7).
- The nonwhite neonatal death rate (8.2) is more than twice the white rate (3.6).
- There was an overall increase in infant deaths (under one year). The resident infant mortality rate increased slightly from 7.2 deaths per 1,000 live births in 1998 to a rate of 7.3 in 1999, decreased to 7.0 in 2000, but increased back to 7.3 in 2001.
- The resident infant mortality rate has dropped 24.0 percent since 1990 and is about half the rate of 1980.
- The resident infant mortality rate for nonwhites (12.2) is more than double the infant mortality rate for whites (5.5).
- Resident infants of Hispanic origin accounted for 14.6 percent of all infant deaths.
- Of the total resident deaths occurring within the first year of life, 65.6 percent were less than 28 days old. Furthermore, 38.7 percent were less than one day old.
- The leading causes of resident infant deaths in 2001 were Perinatal Conditions, Congenital Anomalies, and Sudden Infant Death Syndrome. These causes accounted for 77.2 percent of all resident infant deaths.

CHART F-1: RESIDENT FETAL DEATHS AND RATIOS PER 1,000 LIVE BIRTHS, BY RACE OF MOTHER, FLORIDA AND UNITED STATES TOTAL, CENSUS YEARS 1920-1990 AND 1991-2001							
YEAR	NUMBER OF FETAL DEATHS - FL			RATIOS - FL			RATIO - U.S.
	TOTAL	WHITE	NON- WHITE	TOTAL	WHITE	NON- WHITE	TOTAL
1920 ¹	1,287	595	692	65.9	43.9	115.4	NA
1930 ¹	1,754	746	1,008	65.0	40.1	120.1	NA
1940	1,415	683	732	42.0	28.7	74.0	NA
1950	1,443	757	686	22.4	16.6	36.7	18.8
1960	1,846	1,043	803	16.0	12.4	25.7	15.8
1970	1,701	1,064	637	14.8	12.2	22.6	14.0
1980	1,355	847	491	10.3	8.7	14.3	9.1
1990	1,811	1,071	720	9.1	7.2	14.6	7.5
1991	1,692	978	703	8.7	6.8	14.4	7.3
1992	1,498	920	570	7.8	6.4	11.8	7.4
1993	1,447	858	580	7.5	6.0	12.0	7.1
1994	1,519	909	599	8.0	6.4	12.7	7.0
1995	1,531	937	581	8.1	6.6	12.5	7.0
1996	1,478	885	577	7.8	6.2	12.3	6.9
1997	1,523	910	600	7.9	6.3	12.4	6.8
1998	1,520	912	594	7.8	6.3	12.0	6.7
1999	1,579	953	619	8.0	6.5	12.3	NA
2000	1,675	954	704	8.2	6.4	13.1	NA
2001	1,668	972	678	8.1	6.4	12.6	NA

¹ Only recorded data are available.

GRAPH F-1: RESIDENT FETAL DEATH RATIOS PER 1,000 LIVE BIRTHS, BY RACE OF MOTHER, FLORIDA AND UNITED STATES TOTAL, 1991-2001

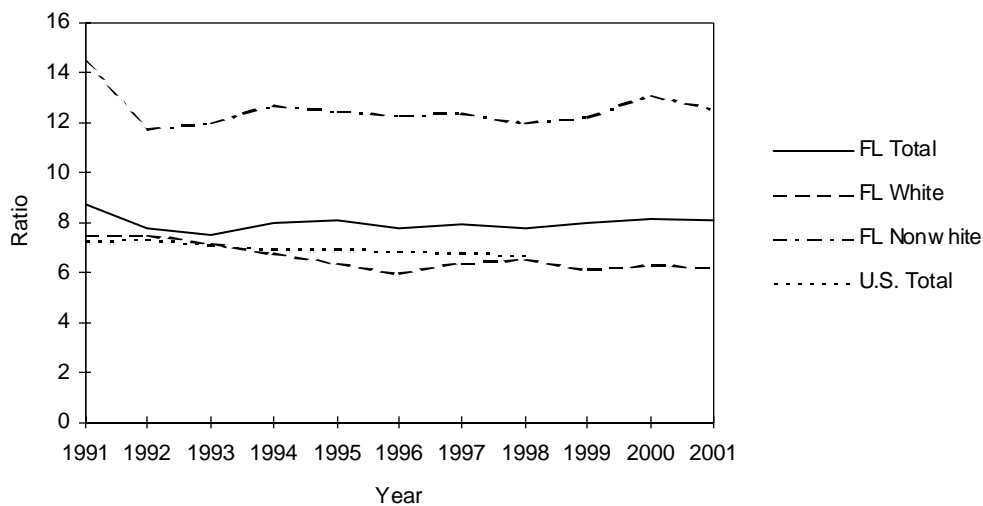


CHART F-2: RESIDENT NEONATAL DEATHS AND RATES PER 1,000 LIVE BIRTHS, BY RACE, FLORIDA AND UNITED STATES TOTAL, CENSUS YEARS 1920-1990 AND 1991-2001

YEAR	NUMBER OF NEONATAL DEATHS - FL			RATES ¹ - FL			RATE - U.S.
	TOTAL	WHITE	NON-WHITE	TOTAL	WHITE	NON-WHITE	TOTAL
1920	NA	NA	NA	NA	NA	NA	NA
1930	NA	NA	NA	NA	NA	NA	NA
1940	1,142	662	480	33.9	27.8	48.5	28.8
1950	1,551	975	576	24.1	21.3	30.8	20.5
1960	2,404	1,531	873	20.8	18.1	28.0	18.7
1970	1,848	1,198	648	16.1	13.8	23.0	15.1
1980	1,282	791	490	9.7	8.1	14.2	8.5
1990	1,227	742	484	6.2	5.0	9.8	5.8
1991	1,122	635	485	5.8	4.4	10.0	5.5
1992	1,120	666	452	5.8	4.7	9.4	5.4
1993	1,071	609	460	5.6	4.2	9.6	5.3
1994	1,027	624	402	5.4	4.4	8.5	5.1
1995	874	523	351	4.6	3.7	7.5	4.9
1996	895	517	377	4.7	3.6	8.0	4.8
1997	889	518	370	4.6	3.6	7.6	4.8
1998	933	559	371	4.8	3.8	7.5	4.8
1999	962	559	401	4.9	3.8	7.9	4.7
2000	925	526	397	4.5	3.5	7.4	4.6 ²
2001	980	539	440	4.8	3.6	8.2	NA

¹Rates based on neonatal deaths by race of decedent, live births by race of mother.

²Preliminary data.

GRAPH F-2: RESIDENT NEONATAL DEATH RATES¹ PER 1,000 LIVE BIRTHS, BY RACE, FLORIDA AND UNITED STATES TOTAL, 1991-2001

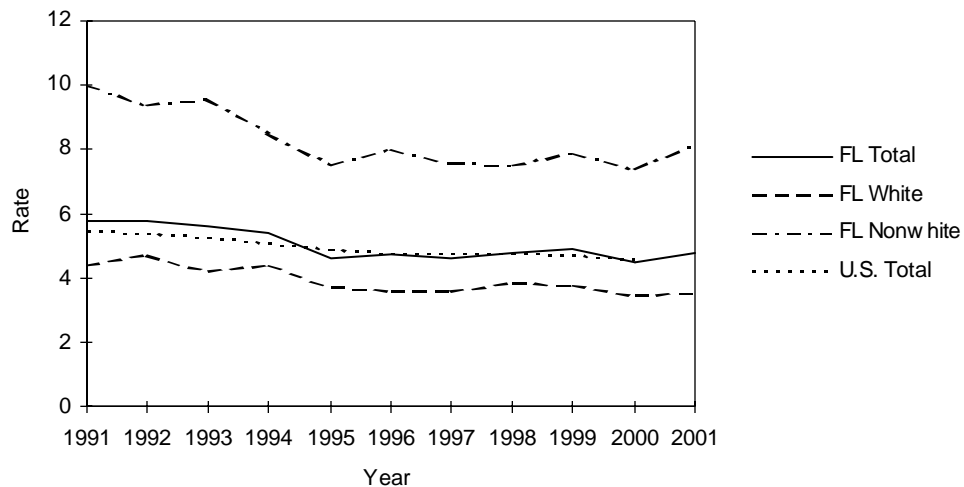


CHART F-3: RESIDENT INFANT DEATHS AND RATES PER 1,000 LIVE BIRTHS, BY RACE, FLORIDA AND UNITED STATES TOTAL, CENSUS YEARS 1920-1990 AND 1991-2001							
YEAR	NUMBER OF INFANT DEATHS - FL			RATES ² - FL			RATE - U.S.
	TOTAL	WHITE	NON-WHITE	TOTAL	WHITE	NON-WHITE	TOTAL
1920 ¹	1,835	1,031	804	93.9	76.1	134.0	NA
1930 ¹	1,729	928	801	64.1	49.9	95.4	NA
1940	1,812	1,052	760	53.8	44.2	76.8	47.0
1950	2,078	1,225	853	32.3	26.8	45.7	29.2
1960	3,431	1,992	1,439	29.7	23.6	46.1	26.0
1970	2,466	1,537	927	21.4	17.7	32.9	20.0
1980	1,915	1,135	779	14.5	11.7	22.7	12.6
1990	1,909	1,121	786	9.6	7.5	16.0	9.2
1991	1,726	966	758	8.9	6.7	15.6	8.9
1992	1,685	987	695	8.8	6.9	14.4	8.5
1993	1,654	951	699	8.6	6.6	14.5	8.4
1994	1,540	927	611	8.1	6.5	12.9	8.0
1995	1,402	840	562	7.4	5.9	12.1	7.6
1996	1,405	821	583	7.4	5.8	12.4	7.3
1997	1,358	805	552	7.1	5.6	11.4	7.2
1998	1,415	850	562	7.2	5.8	11.4	7.2
1999	1,442	815	625	7.3	5.6	12.4	7.1
2000	1,423	810	611	7.0	5.4	11.4	6.9 ³
2001	1,495	839	655	7.3	5.5	12.2	NA

¹ Only recorded data are available.

² Rates based on infant deaths by race of decedent, live births by race of mother.

³ Preliminary data.

GRAPH F-3: RESIDENT INFANT DEATH RATES² PER 1,000 LIVE BIRTHS, BY RACE, FLORIDA AND UNITED STATES TOTAL, 1991-2001

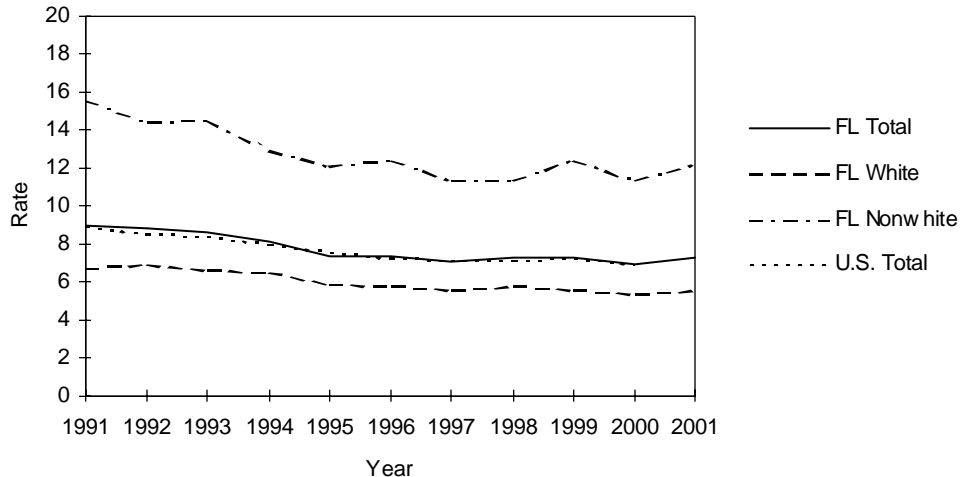


TABLE F-1: RESIDENT AND RECORDED FETAL DEATHS (OF 20 OR MORE WEEKS GESTATION) AND RATIOS PER 1,000 LIVE BIRTHS, BY RACE OF MOTHER, BY COUNTY, FLORIDA, 2001

	RESIDENT FETAL DEATHS						RATIOS		
	NUMBER		NONWHITE				TOTAL	WHITE	NONWHITE
	TOTAL	WHITE	TOTAL	BLACK	OTHER	UNK			
FLORIDA	1,668	972	678	658	20	18	8.1	6.4	12.6
ALACHUA	16	8	8	8	0	0	6.5	5.1	9.1
BAKER	1	1	0	0	0	0	2.9	3.5	0.0
BAY	14	11	3	3	0	0	7.3	7.2	8.5
BRADFORD	0	0	0	0	0	0	0.0	0.0	0.0
BREVARD	37	27	10	9	1	0	7.7	6.9	11.8
BROWARD	190	78	111	107	4	1	8.5	5.7	12.9
CALHOUN	1	1	0	0	0	0	7.0	8.3	0.0
CHARLOTTE	8	8	0	0	0	0	7.7	8.5	0.0
CITRUS	5	4	1	1	0	0	5.9	5.1	16.4
CLAY	13	11	2	2	0	0	6.6	6.4	8.3
COLLIER	26	19	7	7	0	0	7.5	6.3	15.3
COLUMBIA	4	3	1	1	0	0	5.2	5.1	5.7
MIAMI-DADE	281	146	128	126	2	7	8.7	6.5	13.0
DESOTO	3	3	0	0	0	0	6.7	7.9	0.0
DIXIE	3	2	1	1	0	0	17.4	12.7	66.7
DUVAL	101	38	61	59	2	2	8.3	5.2	12.5
ESCAMBIA	43	16	27	27	0	0	11.0	6.4	18.9
FLAGLER	9	6	3	3	0	0	21.5	17.3	41.7
FRANKLIN	0	0	0	0	0	0	0.0	0.0	0.0
GADSDEN	8	0	7	7	0	1	11.4	0.0	16.0
GILCHRIST	2	2	0	0	0	0	11.6	12.2	0.0
GLADES	0	0	0	0	0	0	0.0	0.0	0.0
GULF	1	1	0	0	0	0	9.0	10.9	0.0
HAMILTON	2	0	2	2	0	0	12.3	0.0	32.3
HARDEE	6	5	1	0	1	0	12.7	11.2	35.7
HENDRY	6	4	1	1	0	1	8.9	7.1	9.1
HERNANDO	15	13	2	2	0	0	12.1	11.4	19.4
HIGHLANDS	7	6	1	1	0	0	7.9	8.3	6.1
HILLSBOROUGH	101	67	33	33	0	1	6.8	5.9	9.5
HOLMES	0	0	0	0	0	0	0.0	0.0	0.0
INDIAN RIVER	5	5	0	0	0	0	4.4	5.4	0.0
JACKSON	0	0	0	0	0	0	0.0	0.0	0.0
JEFFERSON	2	1	1	1	0	0	13.0	14.9	11.5
LAFAYETTE	2	2	0	0	0	0	21.1	22.7	0.0
LAKE	24	16	8	8	0	0	9.7	7.7	19.9
LEE	40	28	10	9	1	2	7.5	6.2	11.7
LEON	33	7	26	26	0	0	11.2	4.1	21.1
LEVY	4	2	2	2	0	0	10.5	6.4	29.4
LIBERTY	1	1	0	0	0	0	11.9	14.1	0.0
MADISON	2	0	2	2	0	0	8.4	0.0	17.1
MANATEE	27	22	5	5	0	0	8.5	8.3	9.3
MARION	27	19	8	6	2	0	9.1	8.2	12.6
MARTIN	7	4	3	2	1	0	5.7	4.1	12.6
MONROE	4	3	1	1	0	0	5.6	4.9	10.8
NASSAU	8	7	1	1	0	0	11.2	10.7	16.4
OKALOOSA	13	10	3	3	0	0	5.4	5.2	6.6
OKEECHOBEE	5	4	1	1	0	0	9.1	8.0	19.6
ORANGE	129	76	53	52	1	0	9.1	7.7	12.1
OSCEOLA	14	12	2	2	0	0	5.2	5.1	6.0
PALM BEACH	119	62	54	51	3	3	8.7	6.5	12.7
PASCO	22	22	0	0	0	0	5.7	6.1	0.0
PINELLAS	64	46	18	17	1	0	6.8	6.2	9.2
POLK	61	42	19	19	0	0	8.9	7.7	13.1
PUTNAM	10	6	4	4	0	0	11.0	9.0	16.3
ST JOHNS	5	3	2	2	0	0	3.9	2.7	11.8
ST LUCIE	17	8	9	9	0	0	7.6	5.0	14.3
SANTA ROSA	7	6	1	1	0	0	4.6	4.2	9.0
SARASOTA	19	17	2	2	0	0	6.8	6.9	5.9
SEMINOLE	33	23	10	9	1	0	7.3	6.2	12.5
SUMTER	7	4	3	3	0	0	16.3	11.7	34.9
SUWANNEE	2	2	0	0	0	0	4.4	5.3	0.0
TAYLOR	1	0	1	1	0	0	3.9	0.0	17.2
UNION	4	3	1	1	0	0	26.0	21.7	62.5
VOLUSIA	42	26	16	16	0	0	9.0	6.7	20.8
WAKULLA	1	1	0	0	0	0	3.4	3.9	0.0
WALTON	3	1	2	2	0	0	6.5	2.4	43.5
WASHINGTON	1	1	0	0	0	0	4.6	5.8	0.0

TABLE F-1 (Cont.): RESIDENT AND RECORDED FETAL DEATHS (OF 20 OR MORE WEEKS GESTATION) AND RATIOS PER 1,000 LIVE BIRTHS, BY RACE OF MOTHER, BY COUNTY, FLORIDA, 2001

	RECORDED FETAL DEATHS						RATIOS		
	TOTAL	WHITE	NONWHITE			UNK	TOTAL	WHITE	NONWHITE
			TOTAL	BLACK	OTHER				
FLORIDA	1,697	991	688	667	21	18	8.2	6.5	12.7
ALACHUA	55	39	16	16	0	0	10.2	9.7	11.4
BAKER	0	0	0	0	0	0	0.0	0.0	0.0
BAY	17	13	4	4	0	0	7.3	6.8	9.7
BRADFORD	0	0	0	0	0	0	---	---	---
BREVARD	25	19	6	5	1	0	5.4	5.0	7.3
BROWARD	198	77	120	116	4	1	9.2	6.0	13.6
CALHOUN	0	0	0	0	0	0	0.0	0.0	---
CHARLOTTE	8	8	0	0	0	0	7.3	8.1	0.0
CITRUS	2	1	1	1	0	0	2.6	1.4	17.2
CLAY	8	6	2	2	0	0	4.6	4.3	6.3
COLLIER	26	19	7	7	0	0	7.8	6.5	16.9
COLUMBIA	2	1	1	1	0	0	3.6	2.5	6.0
MIAMI-DADE	279	148	124	122	2	7	8.6	6.5	13.0
DESOTO	6	6	0	0	0	0	8.5	9.5	0.0
DIXIE	0	0	0	0	0	0	---	---	---
DUVAL	123	55	66	64	2	2	8.9	6.2	13.4
ESCAMBIA	54	24	30	30	0	0	10.2	6.4	19.3
FLAGLER	1	0	1	1	0	0	100.0	0.0	250.0
FRANKLIN	0	0	0	0	0	0	---	---	---
GADSDEN	0	0	0	0	0	0	0.0	0.0	0.0
GILCHRIST	0	0	0	0	0	0	---	---	---
GLADES	0	0	0	0	0	0	0.0	0.0	0.0
GULF	0	0	0	0	0	0	---	---	---
HAMILTON	0	0	0	0	0	0	---	0.0	---
HARDEE	0	0	0	0	0	0	---	---	---
HENDRY	1	0	1	1	0	0	250.0	0.0	---
HERNANDO	10	10	0	0	0	0	7.3	7.9	0.0
HIGHLANDS	10	9	1	1	0	0	7.6	8.1	4.7
HILLSBOROUGH	126	87	38	37	1	1	---	6.9	10.3
HOLMES	0	0	0	0	0	0	0.0	0.0	---
INDIAN RIVER	4	4	0	0	0	0	3.6	4.4	0.0
JACKSON	1	1	0	0	0	0	1.8	2.7	0.0
JEFFERSON	0	0	0	0	0	0	0.0	0.0	---
LAFAYETTE	0	0	0	0	0	0	---	---	---
LAKE	21	10	11	11	0	0	11.0	6.7	27.0
LEE	43	30	10	9	1	3	7.0	5.8	10.6
LEON	47	10	36	36	0	1	9.9	3.6	17.9
LEVY	0	0	0	0	0	0	0.0	0.0	---
LIBERTY	0	0	0	0	0	0	0.0	0.0	---
MADISON	0	0	0	0	0	0	0.0	0.0	0.0
MANATEE	23	17	6	6	0	0	8.9	8.0	13.2
MARION	17	11	6	4	2	0	6.9	5.6	11.8
MARTIN	6	4	2	1	1	0	3.6	2.8	7.6
MONROE	3	3	0	0	0	0	5.8	7.1	0.0
NASSAU	1	1	0	0	0	0	2.8	3.1	0.0
OKALOOSA	9	8	1	1	0	0	3.6	3.9	2.3
OKEECHOBEE	1	1	0	0	0	0	83.3	100.0	0.0
ORANGE	167	103	64	63	1	0	9.8	8.3	13.8
OSCEOLA	17	16	1	1	0	0	5.6	6.1	2.4
PALM BEACH	128	67	58	55	3	3	8.4	6.2	12.8
PASCO	12	12	0	0	0	0	6.9	7.6	0.0
PINELLAS	72	54	18	17	1	0	6.8	6.3	9.0
POLK	50	34	16	16	0	0	8.5	7.4	12.8
PUTNAM	5	1	4	4	0	0	8.7	2.6	21.2
ST JOHNS	3	2	1	1	0	0	3.7	3.0	6.8
ST LUCIE	19	9	10	10	0	0	11.9	8.6	18.1
SANTA ROSA	4	3	1	1	0	0	7.1	5.9	20.0
SARASOTA	25	23	2	1	1	0	7.5	7.9	4.8
SEMINOLE	26	21	5	4	1	0	6.8	6.8	6.9
SUMTER	0	0	0	0	0	0	0.0	0.0	---
SUWANNEE	0	0	0	0	0	0	0.0	0.0	0.0
TAYLOR	0	0	0	0	0	0	0.0	0.0	0.0
UNION	0	0	0	0	0	0	---	---	---
VOLUSIA	42	24	18	18	0	0	10.3	7.2	24.3
WAKULLA	0	0	0	0	0	0	0.0	0.0	0.0
WALTON	0	0	0	0	0	0	0.0	0.0	0.0
WASHINGTON	0	0	0	0	0	0	0.0	0.0	---

TABLE F-2: RESIDENT FETAL DEATHS BY HISPANIC OR HAITIAN ORIGIN OF MOTHER, BY COUNTY, FLORIDA, 2001

	HISPANIC ORIGIN									
	TOTAL	TOTAL HISPANIC	MEXICAN	PUERTO RICAN	CUBAN	CENTRAL/ SOUTH AMERICAN	OTHER/ UNK HISPANIC	HAITIAN	NON-HISPANIC/ HAITIAN	UNK
FLORIDA	1,668	290	74	65	51	82	18	85	1,208	85
ALACHUA	16	0	0	0	0	0	0	0	16	0
BAKER	1	0	0	0	0	0	0	0	1	0
BAY	14	0	0	0	0	0	0	0	14	0
BRADFORD	0	0	0	0	0	0	0	0	0	0
BREVARD	37	2	0	2	0	0	0	0	35	0
BROWARD	190	27	1	6	3	12	5	20	140	3
CALHOUN	1	0	0	0	0	0	0	0	1	0
CHARLOTTE	8	1	0	1	0	0	0	0	7	0
CITRUS	5	0	0	0	0	0	0	0	5	0
CLAY	13	0	0	0	0	0	0	0	13	0
COLLIER	26	9	4	2	0	2	1	6	11	0
COLUMBIA	4	0	0	0	0	0	0	0	4	0
MIAMI-DADE	281	106	6	13	41	44	2	22	97	56
DESOTO	3	0	0	0	0	0	0	0	3	0
DIXIE	3	0	0	0	0	0	0	0	3	0
DUVAL	101	3	1	1	0	0	1	2	94	2
ESCAMBIA	43	1	1	0	0	0	0	0	42	0
FLAGLER	9	2	0	1	0	1	0	0	7	0
FRANKLIN	0	0	0	0	0	0	0	0	0	0
GADSDEN	8	0	0	0	0	0	0	0	7	1
GILCHRIST	2	0	0	0	0	0	0	0	2	0
GLADES	0	0	0	0	0	0	0	0	0	0
GULF	1	0	0	0	0	0	0	0	1	0
HAMILTON	2	0	0	0	0	0	0	0	2	0
HARDEE	6	2	2	0	0	0	0	0	4	0
HENDRY	6	2	1	0	0	0	1	0	3	1
HERNANDO	15	0	0	0	0	0	0	0	15	0
HIGHLANDS	7	1	0	1	0	0	0	0	5	1
HILLSBOROUGH	101	19	6	4	1	7	1	1	75	6
HOLMES	0	0	0	0	0	0	0	0	0	0
INDIAN RIVER	5	1	1	0	0	0	0	0	4	0
JACKSON	0	0	0	0	0	0	0	0	0	0
JEFFERSON	2	1	1	0	0	0	0	0	1	0
LAFAYETTE	2	1	1	0	0	0	0	0	1	0
LAKE	24	1	1	0	0	0	0	0	23	0
LEE	40	10	7	2	0	0	1	0	25	5
LEON	33	0	0	0	0	0	0	1	32	0
LEVY	4	0	0	0	0	0	0	0	4	0
LIBERTY	1	0	0	0	0	0	0	0	1	0
MADISON	2	0	0	0	0	0	0	0	2	0
MANATEE	27	6	3	1	0	1	1	3	18	0
MARION	27	2	1	0	0	1	0	1	24	0
MARTIN	7	2	2	0	0	0	0	1	4	0
MONROE	4	1	0	0	1	0	0	0	3	0
NASSAU	8	0	0	0	0	0	0	0	8	0
OKALOOSA	13	2	2	0	0	0	0	0	11	0
OKEECHOBEE	5	1	1	0	0	0	0	0	4	0
ORANGE	129	32	7	20	0	4	1	8	88	1
OSCEOLA	14	8	1	5	0	2	0	0	6	0
PALM BEACH	119	17	6	1	4	5	1	15	82	5
PASCO	22	1	0	0	0	1	0	0	21	0
PINELLAS	64	6	2	2	1	0	1	0	56	2
POLK	61	8	6	2	0	0	0	3	49	1
PUTNAM	10	0	0	0	0	0	0	0	10	0
ST JOHNS	5	0	0	0	0	0	0	0	5	0
ST LUCIE	17	4	3	1	0	0	0	2	11	0
SANTA ROSA	7	0	0	0	0	0	0	0	7	0
SARASOTA	19	4	4	0	0	0	0	0	15	0
SEMINOLE	33	2	1	0	0	1	0	0	31	0
SUMTER	7	1	1	0	0	0	0	0	6	0
SUWANNEE	2	1	1	0	0	0	0	0	1	0
TAYLOR	1	0	0	0	0	0	0	0	1	0
UNION	4	0	0	0	0	0	0	0	4	0
VOLUSIA	42	3	0	0	0	1	2	0	39	0
WAKULLA	1	0	0	0	0	0	0	0	0	1
WALTON	3	0	0	0	0	0	0	0	3	0
WASHINGTON	1	0	0	0	0	0	0	0	1	0

TABLE F-3: RESIDENT FETAL DEATHS BY AGE OF MOTHER, BY COUNTY, FLORIDA, 2001

	TOTAL	AGE OF MOTHER													
		<13	13	14	15	16	17	18	19	20-24	25-29	30-34	35-44	45+	UNK
FLORIDA	1,668	0	1	3	7	30	41	63	84	401	348	293	299	3	95
ALACHUA	16	0	0	0	0	0	0	0	1	6	3	3	3	0	0
BAKER	1	0	0	0	0	0	0	1	0	0	0	0	0	0	0
BAY	14	0	0	0	0	0	0	2	0	7	2	1	2	0	0
BRADFORD	0	0	0	0	0	0	0	0	0	0	0	0	0	0	0
BREVARD	37	0	0	0	1	1	1	1	3	8	4	5	12	1	0
BROWARD	190	0	0	0	0	5	4	9	8	36	38	42	38	0	10
CALHOUN	1	0	0	0	0	0	0	0	0	0	0	0	1	0	0
CHARLOTTE	8	0	0	0	0	0	0	0	0	3	2	3	0	0	0
CITRUS	5	0	0	0	0	0	0	0	0	1	1	1	2	0	0
CLAY	13	0	0	0	0	0	1	1	1	4	2	2	2	0	0
COLLIER	26	0	0	0	0	0	1	1	0	6	7	4	7	0	0
COLUMBIA	4	0	0	0	0	0	0	0	0	2	2	0	0	0	0
MIAMI-DADE	281	0	0	0	0	2	5	9	9	42	47	54	54	0	59
DESOTO	3	0	0	0	0	0	0	0	1	0	1	1	0	0	0
DIXIE	3	0	0	0	0	0	0	2	0	0	1	0	0	0	0
DUVAL	101	0	0	0	0	3	2	4	11	23	29	10	12	0	7
ESCAMBIA	43	0	0	1	0	2	2	4	1	10	11	10	2	0	0
FLAGLER	9	0	0	0	0	0	0	0	1	4	1	2	1	0	0
FRANKLIN	0	0	0	0	0	0	0	0	0	0	0	0	0	0	0
GADSDEN	8	0	0	0	1	1	0	0	0	3	2	0	0	0	1
GILCHRIST	2	0	0	0	0	0	0	0	0	0	2	0	0	0	0
GLADES	0	0	0	0	0	0	0	0	0	0	0	0	0	0	0
GULF	1	0	0	0	0	0	0	0	0	0	1	0	0	0	0
HAMILTON	2	0	0	0	0	0	0	0	0	2	0	0	0	0	0
HARDEE	6	0	0	0	0	0	0	0	1	1	3	0	1	0	0
HENDRY	6	0	0	0	0	0	0	0	1	3	1	0	1	0	0
HERNANDO	15	0	0	0	1	0	0	0	0	10	1	0	2	1	0
HIGHLANDS	7	0	0	0	0	1	1	0	1	3	0	0	1	0	0
HILLSBOROUGH	101	0	1	1	2	4	3	2	2	31	21	18	16	0	0
HOLMES	0	0	0	0	0	0	0	0	0	0	0	0	0	0	0
INDIAN RIVER	5	0	0	0	0	0	0	0	0	1	0	2	2	0	0
JACKSON	0	0	0	0	0	0	0	0	0	0	0	0	0	0	0
JEFFERSON	2	0	0	0	0	0	0	0	0	2	0	0	0	0	0
LAFAYETTE	2	0	0	0	0	0	0	0	0	1	1	0	0	0	0
LAKE	24	0	0	0	0	0	1	0	2	9	3	5	4	0	0
LEE	40	0	0	0	0	1	0	0	1	9	12	8	7	0	2
LEON	33	0	0	0	0	0	2	1	2	7	9	2	9	0	1
LEVY	4	0	0	0	0	0	0	1	0	1	1	0	1	0	0
LIBERTY	1	0	0	0	0	0	0	0	0	1	0	0	0	0	0
MADISON	2	0	0	0	0	0	0	0	0	1	0	0	1	0	0
MANATEE	27	0	0	0	0	1	2	1	2	4	6	3	8	0	0
MARION	27	0	0	0	0	0	1	2	0	11	6	4	3	0	0
MARTIN	7	0	0	0	1	0	0	1	0	1	1	2	0	0	1
MONROE	4	0	0	0	0	0	0	0	1	0	1	2	0	0	0
NASSAU	8	0	0	0	0	0	0	1	1	2	1	2	1	0	0
OKALOOSA	13	0	0	0	0	0	1	0	1	3	1	2	5	0	0
OKEECHOBEE	5	0	0	0	0	0	0	1	0	3	0	1	0	0	0
ORANGE	129	0	0	1	1	1	3	4	9	34	29	24	21	0	2
OSCEOLA	14	0	0	0	0	0	1	2	0	1	1	4	4	0	1
PALM BEACH	119	0	0	0	0	3	4	2	7	29	24	21	24	1	4
PASCO	22	0	0	0	0	0	1	0	1	7	4	3	6	0	0
PINELLAS	64	0	0	0	0	0	0	2	2	17	12	17	13	0	1
POLK	61	0	0	0	0	1	1	2	5	16	18	9	9	0	0
PUTNAM	10	0	0	0	0	0	0	3	2	3	1	0	1	0	0
ST JOHN'S	5	0	0	0	0	0	0	0	0	1	2	0	1	0	1
ST LUCIE	17	0	0	0	0	0	1	2	1	2	2	4	3	0	2
SANTA ROSA	7	0	0	0	0	0	0	0	0	3	4	0	0	0	0
SARASOTA	19	0	0	0	0	1	0	0	1	4	3	5	5	0	0
SEMINOLE	33	0	0	0	0	2	0	1	1	13	4	5	6	0	1
SUMTER	7	0	0	0	0	1	0	0	1	1	3	1	0	0	0
SUWANNEE	2	0	0	0	0	0	0	0	0	0	1	0	0	0	1
TAYLOR	1	0	0	0	0	0	0	0	0	0	1	0	0	0	0
UNION	4	0	0	0	0	0	0	0	0	0	2	0	2	0	0
VOLUSIA	42	0	0	0	0	0	3	1	3	8	12	10	5	0	0
WAKULLA	1	0	0	0	0	0	0	0	0	0	0	0	0	0	1
WALTON	3	0	0	0	0	0	0	0	0	1	1	0	1	0	0
WASHINGTON	1	0	0	0	0	0	0	0	0	0	0	1	0	0	0

TABLE F-4: RESIDENT AND RECORDED NEONATAL DEATHS (UNDER 28 DAYS) AND RATES PER 1,000 LIVE BIRTHS, BY RACE, BY COUNTY, FLORIDA, 2001

	RESIDENT NEONATAL DEATHS						RATES*		
	TOTAL	WHITE	NUMBER				TOTAL	WHITE	NONWHITE
			TOTAL	BLACK	OTHER	UNK			
			NONWHITE						
FLORIDA	980	539	440	426	14	1	4.8	3.6	8.2
ALACHUA	16	6	10	9	1	0	6.5	3.8	11.4
BAKER	0	0	0	0	0	0	0.0	0.0	0.0
BAY	12	7	5	5	0	0	6.3	4.6	14.1
BRADFORD	3	2	1	1	0	0	10.3	8.5	17.9
BREVARD	20	18	2	2	0	0	4.2	4.6	2.4
BROWARD	96	37	59	58	1	0	4.3	2.7	6.9
CALHOUN	2	2	0	0	0	0	14.0	16.5	0.0
CHARLOTTE	5	5	0	0	0	0	4.8	5.3	0.0
CITRUS	5	5	0	0	0	0	5.9	6.3	0.0
CLAY	10	9	1	1	0	0	5.1	5.3	4.1
COLLIER	16	13	3	3	0	0	4.6	4.3	6.5
COLUMBIA	3	1	2	2	0	0	3.9	1.7	11.4
MIAMI-DADE	118	54	64	63	1	0	3.6	2.4	6.5
DESOTO	4	2	2	2	0	0	8.9	5.2	29.9
DIXIE	1	0	1	1	0	0	5.8	0.0	66.7
DUVAL	90	37	53	50	3	0	7.4	5.1	10.9
ESCAMBIA	32	11	21	19	2	0	8.2	4.4	14.7
FLAGLER	2	1	1	1	0	0	4.8	2.9	13.9
FRANKLIN	0	0	0	0	0	0	0.0	0.0	0.0
GADSDEN	6	2	4	4	0	0	8.5	7.5	9.1
GILCHRIST	0	0	0	0	0	0	0.0	0.0	0.0
GLADES	0	0	0	0	0	0	0.0	0.0	0.0
GULF	1	1	0	0	0	0	9.0	10.9	0.0
HAMILTON	2	1	1	1	0	0	12.3	9.9	16.1
HARDEE	2	2	0	0	0	0	4.2	4.5	0.0
HENDRY	6	5	1	1	0	0	8.9	8.9	9.1
HERNANDO	6	4	2	2	0	0	4.8	3.5	19.4
HIGHLANDS	9	6	3	3	0	0	10.1	8.3	18.3
HILLSBOROUGH	80	47	33	31	2	0	5.4	4.2	9.5
HOLMES	3	1	2	2	0	0	13.4	4.6	250.0
INDIAN RIVER	4	3	1	1	0	0	3.6	3.3	4.9
JACKSON	2	1	1	1	0	0	3.9	2.9	5.8
JEFFERSON	1	0	1	1	0	0	6.5	0.0	11.5
LAFAYETTE	0	0	0	0	0	0	0.0	0.0	0.0
LAKE	8	5	3	3	0	0	3.2	2.4	7.5
LEE	20	12	8	8	0	0	3.7	2.7	9.3
LEON	21	6	15	14	1	0	7.1	3.5	12.2
LEVY	1	0	1	1	0	0	2.6	0.0	14.7
LIBERTY	0	0	0	0	0	0	0.0	0.0	0.0
MADISON	1	0	1	1	0	0	4.2	0.0	8.5
MANATEE	21	10	11	11	0	0	6.6	3.8	20.4
MARION	16	11	5	5	0	0	5.4	4.7	7.9
MARTIN	7	1	6	6	0	0	5.7	1.0	25.2
MONROE	2	2	0	0	0	0	2.8	3.3	0.0
NASSAU	2	2	0	0	0	0	2.8	3.1	0.0
OKALOOSA	12	7	5	4	1	0	5.0	3.6	11.1
OKEECHOBEE	1	1	0	0	0	0	1.8	2.0	0.0
ORANGE	64	31	32	31	1	1	4.5	3.2	7.3
OSCEOLA	10	7	3	3	0	0	3.7	3.0	9.0
PALM BEACH	57	32	25	25	0	0	4.1	3.4	5.9
PASCO	16	16	0	0	0	0	4.1	4.4	0.0
PINELLAS	61	39	22	21	1	0	6.5	5.2	11.3
POLK	34	20	14	14	0	0	4.9	3.7	9.7
PUTNAM	8	6	2	2	0	0	8.8	9.0	8.1
SAINT JOHNS	4	3	1	1	0	0	3.2	2.7	5.9
SAINT LUCIE	6	5	1	1	0	0	2.7	3.1	1.6
SANTA ROSA	4	4	0	0	0	0	2.6	2.8	0.0
SARASOTA	4	4	0	0	0	0	1.4	1.6	0.0
SEMINOLE	18	15	3	3	0	0	4.0	4.1	3.7
SUMTER	1	1	0	0	0	0	2.3	2.9	0.0
SUWANNEE	2	1	1	1	0	0	4.4	2.7	11.9
TAYLOR	1	1	0	0	0	0	3.9	5.1	0.0
UNION	0	0	0	0	0	0	0.0	0.0	0.0
VOLUSIA	19	12	7	7	0	0	4.1	3.1	9.1
WAKULLA	0	0	0	0	0	0	0.0	0.0	0.0
WALTON	0	0	0	0	0	0	0.0	0.0	0.0
WASHINGTON	2	2	0	0	0	0	9.1	11.6	0.0

*Rates based on neonatal deaths by race of decedent, live births by race of mother.

TABLE F-4 (Cont.): RESIDENT AND RECORDED NEONATAL DEATHS (UNDER 28 DAYS) AND RATES PER 1,000 LIVE BIRTHS, BY RACE, BY COUNTY, FLORIDA, 2001

	RECORDED NEONATAL DEATHS						RATES*		
	TOTAL	WHITE	NUMBER				TOTAL	WHITE	NONWHITE
			TOTAL	BLACK	OTHER	UNK			
			NONWHITE						
FLORIDA	1003	551	451	437	14	1	4.9	3.6	8.4
ALACHUA	61	36	25	24	1	0	11.3	9.0	17.8
BAKER	0	0	0	0	0	0	0.0	0.0	0.0
BAY	12	8	4	4	0	0	5.1	4.2	9.7
BRADFORD	0	0	0	0	0	0	---	---	---
BREVARD	12	11	1	1	0	0	2.6	2.9	1.2
BROWARD	91	33	58	57	1	0	4.2	2.6	6.6
CALHOUN	1	1	0	0	0	0	500.0	500.0	---
CHARLOTTE	1	0	1	1	0	0	0.9	0.0	9.5
CITRUS	2	2	0	0	0	0	2.6	2.8	0.0
CLAY	4	3	1	1	0	0	2.3	2.1	3.2
COLLIER	9	7	2	2	0	0	2.7	2.4	4.8
COLUMBIA	1	0	1	1	0	0	1.8	0.0	6.0
MIAMI-DADE	136	67	69	68	1	0	4.2	2.9	7.2
DESOTO	2	1	1	1	0	0	2.8	1.6	12.8
DIXIE	0	0	0	0	0	0	---	---	---
DUVAL	111	52	59	56	3	0	8.0	5.8	12.0
ESCAMBIA	40	18	22	20	2	0	7.6	4.8	14.2
FLAGLER	1	0	1	1	0	0	100.0	0.0	250.0
FRANKLIN	0	0	0	0	0	0	---	---	---
GADSDEN	0	0	0	0	0	0	0.0	0.0	0.0
GILCHRIST	0	0	0	0	0	0	---	---	---
GLADES	0	0	0	0	0	0	0.0	0.0	0.0
GULF	0	0	0	0	0	0	---	---	---
HAMILTON	1	1	0	0	0	0	1000.0	1000.0	---
HARDEE	0	0	0	0	0	0	---	---	---
HENDRY	1	0	1	1	0	0	250.0	0.0	---
HERNANDO	1	1	0	0	0	0	0.7	0.8	0.0
HIGHLANDS	6	4	2	2	0	0	4.5	3.6	9.3
HILLSBOROUGH	101	64	37	35	2	0	6.1	5.0	10.1
HOLMES	1	0	1	1	0	0	500.0	0.0	---
INDIAN RIVER	4	3	1	1	0	0	3.6	3.3	4.8
JACKSON	0	0	0	0	0	0	0.0	0.0	0.0
JEFFERSON	0	0	0	0	0	0	0.0	0.0	---
LAFAYETTE	0	0	0	0	0	0	---	---	---
LAKE	0	0	0	0	0	0	0.0	0.0	0.0
LEE	25	17	8	8	0	0	4.1	3.3	8.5
LEON	32	10	22	21	1	0	6.7	3.6	11.0
LEVY	0	0	0	0	0	0	0.0	0.0	---
LIBERTY	0	0	0	0	0	0	0.0	0.0	---
MADISON	0	0	0	0	0	0	0.0	0.0	0.0
MANATEE	10	1	9	9	0	0	3.9	0.5	19.8
MARION	3	2	1	1	0	0	1.2	1.0	2.0
MARTIN	4	0	4	4	0	0	2.4	0.0	15.2
MONROE	1	0	1	1	0	0	1.9	0.0	12.0
NASSAU	0	0	0	0	0	0	0.0	0.0	0.0
OKALOOSA	5	1	4	3	1	0	2.0	0.5	9.2
OKEECHOBEE	0	0	0	0	0	0	0.0	0.0	0.0
ORANGE	115	70	44	43	1	1	6.8	5.7	9.5
OSCEOLA	3	2	1	1	0	0	1.0	0.8	2.4
PALM BEACH	60	34	26	26	0	0	3.9	3.2	5.7
PASCO	5	5	0	0	0	0	2.9	3.2	0.0
PINELLAS	80	56	24	23	1	0	7.6	6.6	12.0
POLK	20	11	9	9	0	0	3.4	2.4	7.2
PUTNAM	3	2	1	1	0	0	5.2	5.2	5.3
SAINT JOHNS	1	0	1	1	0	0	1.2	0.0	6.8
SAINT LUCIE	3	2	1	1	0	0	1.9	1.9	1.8
SANTA ROSA	2	2	0	0	0	0	3.6	3.9	0.0
SARASOTA	18	16	2	2	0	0	5.4	5.5	4.8
SEMINOLE	6	4	2	2	0	0	1.6	1.3	2.7
SUMTER	0	0	0	0	0	0	0.0	0.0	---
SUWANNEE	0	0	0	0	0	0	0.0	0.0	0.0
TAYLOR	0	0	0	0	0	0	0.0	0.0	0.0
UNION	0	0	0	0	0	0	---	---	---
VOLUSIA	8	4	4	4	0	0	2.0	1.2	5.4
WAKULLA	0	0	0	0	0	0	0.0	0.0	0.0
WALTON	0	0	0	0	0	0	0.0	0.0	0.0
WASHINGTON	0	0	0	0	0	0	0.0	0.0	---

*Rates based on neonatal deaths by race of decedent, live births by race of mother.

TABLE F-5: RESIDENT AND RECORDED INFANT DEATHS (UNDER 1 YEAR) AND RATES PER 1,000 LIVE BIRTHS, BY RACE, BY COUNTY, FLORIDA, 2001

	RESIDENT INFANT DEATHS						RATES*		
	TOTAL	WHITE	NUMBER				TOTAL	WHITE	NONWHITE
			TOTAL	BLACK	OTHER	UNK			
			NONWHITE						
FLORIDA	1,495	839	655	635	20	1	7.3	5.5	12.2
ALACHUA	20	8	12	11	1	0	8.1	5.1	13.6
BAKER	2	1	1	1	0	0	5.9	3.5	19.6
BAY	16	10	6	6	0	0	8.4	6.5	16.9
BRADFORD	3	2	1	1	0	0	10.3	8.5	17.9
BREVARD	24	20	4	4	0	0	5.0	5.1	4.7
BROWARD	147	59	88	86	2	0	6.6	4.3	10.3
CALHOUN	3	3	0	0	0	0	21.0	24.8	0.0
CHARLOTTE	8	8	0	0	0	0	7.7	8.5	0.0
CITRUS	6	6	0	0	0	0	7.0	7.6	0.0
CLAY	14	13	1	1	0	0	7.2	7.6	4.1
COLLIER	20	16	4	4	0	0	5.7	5.3	8.7
COLUMBIA	6	3	3	3	0	0	7.9	5.1	17.0
MIAMI-DADE	189	90	99	97	2	0	5.8	4.0	10.1
DESOTO	4	2	2	2	0	0	8.9	5.2	29.9
DIXIE	1	0	1	1	0	0	5.8	0.0	66.7
DUVAL	136	57	79	75	4	0	11.2	7.8	16.2
ESCAMBIA	58	23	35	33	2	0	14.8	9.3	24.5
FLAGLER	3	2	1	1	0	0	7.2	5.8	13.9
FRANKLIN	0	0	0	0	0	0	0.0	0.0	0.0
GADSDEN	9	3	6	6	0	0	12.8	11.3	13.7
GILCHRIST	0	0	0	0	0	0	0.0	0.0	0.0
GLADES	0	0	0	0	0	0	0.0	0.0	0.0
GULF	2	2	0	0	0	0	18.0	21.7	0.0
HAMILTON	3	1	2	2	0	0	18.4	9.9	32.3
HARDEE	3	2	1	1	0	0	6.3	4.5	35.7
HENDRY	7	5	2	2	0	0	10.4	8.9	18.2
HERNANDO	6	4	2	2	0	0	4.8	3.5	19.4
HIGHLANDS	11	8	3	3	0	0	12.4	11.0	18.3
HILLSBOROUGH	125	71	54	52	2	0	8.4	6.3	15.6
HOLMES	4	2	2	2	0	0	17.9	9.3	250.0
INDIAN RIVER	4	3	1	1	0	0	3.6	3.3	4.9
JACKSON	4	2	2	2	0	0	7.7	5.8	11.7
JEFFERSON	2	0	2	2	0	0	13.0	0.0	23.0
LAFAYETTE	0	0	0	0	0	0	0.0	0.0	0.0
LAKE	19	14	5	5	0	0	7.6	6.7	12.4
LEE	29	19	10	10	0	0	5.4	4.2	11.7
LEON	29	10	19	18	1	0	9.9	5.9	15.4
LEVY	2	1	1	1	0	0	5.2	3.2	14.7
LIBERTY	0	0	0	0	0	0	0.0	0.0	0.0
MADISON	2	0	2	2	0	0	8.4	0.0	17.1
MANATEE	29	18	11	11	0	0	9.1	6.8	20.4
MARION	22	13	9	9	0	0	7.5	5.6	14.2
MARTIN	12	5	7	7	0	0	9.8	5.1	29.4
MONROE	3	3	0	0	0	0	4.2	4.9	0.0
NASSAU	4	4	0	0	0	0	5.6	6.1	0.0
OKALOOSA	22	16	6	5	1	0	9.2	8.3	13.3
OKEECHOBEE	2	2	0	0	0	0	3.6	4.0	0.0
ORANGE	105	52	52	51	1	1	7.4	5.3	11.8
OSCEOLA	15	11	4	4	0	0	5.5	4.6	11.9
PALM BEACH	89	49	40	40	0	0	6.5	5.2	9.4
PASCO	24	24	0	0	0	0	6.2	6.7	0.0
PINELLAS	81	54	27	26	1	0	8.6	7.2	13.8
POLK	50	32	18	17	1	0	7.3	5.9	12.4
PUTNAM	10	8	2	2	0	0	11.0	12.0	8.1
SAINT JOHNS	10	5	5	4	1	0	7.9	4.6	29.4
SAINT LUCIE	9	7	2	2	0	0	4.0	4.4	3.2
SANTA ROSA	7	6	1	1	0	0	4.6	4.2	9.0
SARASOTA	10	9	1	1	0	0	3.6	3.7	3.0
SEMINOLE	26	20	6	6	0	0	5.8	5.4	7.5
SUMTER	2	2	0	0	0	0	4.7	5.8	0.0
SUWANNEE	3	2	1	1	0	0	6.6	5.3	11.9
TAYLOR	3	1	2	1	1	0	11.7	5.1	34.5
UNION	1	1	0	0	0	0	6.5	7.2	0.0
VOLUSIA	29	19	10	10	0	0	6.2	4.9	13.0
WAKULLA	2	2	0	0	0	0	6.8	7.8	0.0
WALTON	1	1	0	0	0	0	2.2	2.4	0.0
WASHINGTON	3	3	0	0	0	0	13.7	17.3	0.0

*Rates based on infant deaths by race of decedent, live births by race of mother.

TABLE F-5 (Cont.) : RESIDENT AND RECORDED INFANT DEATHS (UNDER 1 YEAR) AND RATES PER 1,000 LIVE BIRTHS, BY RACE, BY COUNTY, FLORIDA, 2001

	RECORDED INFANT DEATHS						RATES*		
	TOTAL	WHITE	NONWHITE				TOTAL	WHITE	NONWHITE
			TOTAL	BLACK	OTHER	UNK			
FLORIDA	1,539	867	671	650	21	1	7.5	5.7	12.4
ALACHUA	78	45	33	32	1	0	14.4	11.2	23.5
BAKER	1	0	1	1	0	0	333.3	0.0	500.0
BAY	15	10	5	5	0	0	6.4	5.2	12.2
BRADFORD	0	0	0	0	0	0	---	---	---
BREVARD	14	13	1	1	0	0	3.0	3.4	1.2
BROWARD	137	53	84	82	2	0	6.3	4.1	9.5
CALHOUN	1	1	0	0	0	0	500.0	500.0	---
CHARLOTTE	2	1	1	1	0	0	1.8	1.0	9.5
CITRUS	4	4	0	0	0	0	5.1	5.5	0.0
CLAY	7	6	1	1	0	0	4.1	4.3	3.2
COLLIER	11	8	3	3	0	0	3.3	2.8	7.3
COLUMBIA	2	1	1	1	0	0	3.6	2.5	6.0
MIAMI-DADE	227	114	113	111	2	0	7.0	5.0	11.8
DESOTO	2	1	1	1	0	0	2.8	1.6	12.8
DIXIE	0	0	0	0	0	0	---	---	---
DUVAL	170	82	88	83	5	0	12.3	9.2	17.8
ESCAMBIA	70	34	36	34	2	0	13.2	9.1	23.2
FLAGLER	1	0	1	1	0	0	100.0	0.0	250.0
FRANKLIN	0	0	0	0	0	0	---	---	---
GADSDEN	1	0	1	1	0	0	333.3	0.0	500.0
GILCHRIST	0	0	0	0	0	0	---	---	---
GLADES	0	0	0	0	0	0	0.0	0.0	0.0
GULF	1	1	0	0	0	0	---	---	---
HAMILTON	2	1	1	1	0	0	2,000.0	1,000.0	---
HARDEE	1	0	1	1	0	0	---	---	---
HENDRY	2	0	2	2	0	0	500.0	0.0	---
HERNANDO	1	1	0	0	0	0	0.7	0.8	0.0
HIGHLANDS	7	5	2	2	0	0	5.3	4.5	9.3
HILLSBOROUGH	153	96	57	55	2	0	9.3	7.6	15.5
HOLMES	1	0	1	1	0	0	500.0	0.0	---
INDIAN RIVER	4	3	1	1	0	0	3.6	3.3	4.8
JACKSON	1	1	0	0	0	0	1.8	2.7	0.0
JEFFERSON	0	0	0	0	0	0	0.0	0.0	---
LAFAYETTE	0	0	0	0	0	0	---	---	---
LAKE	6	4	2	2	0	0	3.1	2.7	4.9
LEE	34	24	10	10	0	0	5.6	4.6	10.6
LEON	39	13	26	25	1	0	8.2	4.7	12.9
LEVY	0	0	0	0	0	0	0.0	0.0	---
LIBERTY	0	0	0	0	0	0	0.0	0.0	---
MADISON	2	0	2	2	0	0	500.0	0.0	666.7
MANATEE	14	5	9	9	0	0	5.4	2.3	19.8
MARION	4	3	1	1	0	0	1.6	1.5	2.0
MARTIN	8	3	5	5	0	0	4.7	2.1	18.9
MONROE	2	1	1	1	0	0	3.9	2.4	12.0
NASSAU	0	0	0	0	0	0	0.0	0.0	0.0
OKALOOSA	10	6	4	3	1	0	4.0	2.9	9.2
OKEECHOBEE	2	2	0	0	0	0	166.7	200.0	0.0
ORANGE	176	107	68	67	1	1	10.3	8.7	14.7
OSCEOLA	8	5	3	2	1	0	2.6	1.9	7.1
PALM BEACH	92	55	37	37	0	0	6.0	5.1	8.2
PASCO	11	11	0	0	0	0	6.4	7.0	0.0
PINELLAS	108	77	31	30	1	0	10.3	9.0	15.6
POLK	29	17	12	11	1	0	4.9	3.7	9.6
PUTNAM	5	4	1	1	0	0	8.7	10.4	5.3
SAINT JOHNS	6	2	4	3	1	0	7.4	3.0	27.4
SAINT LUCIE	6	3	3	3	0	0	3.7	2.9	5.4
SANTA ROSA	4	4	0	0	0	0	7.1	7.8	0.0
SARASOTA	24	21	3	3	0	0	7.2	7.2	7.1
SEMINOLE	14	9	5	5	0	0	3.7	2.9	6.9
SUMTER	0	0	0	0	0	0	0.0	0.0	---
SUWANNEE	0	0	0	0	0	0	0.0	0.0	0.0
TAYLOR	2	0	2	2	0	0	333.3	0.0	500.0
UNION	1	1	0	0	0	0	---	---	---
VOLUSIA	15	8	7	7	0	0	3.7	2.4	9.4
WAKULLA	1	1	0	0	0	0	500.0	1,000.0	0.0
WALTON	0	0	0	0	0	0	0.0	0.0	0.0
WASHINGTON	0	0	0	0	0	0	0.0	0.0	---

*Rates based on infant deaths by race of decedent, live births by race of mother.

TABLE F-6: RESIDENT INFANT DEATHS BY HISPANIC OR HAITIAN ORIGIN, BY COUNTY, FLORIDA, 2001

	TOTAL	HISPANIC ORIGIN							NON-HISPANIC/HAITIAN	UNK
		TOTAL HISPANIC	MEXICAN	PUERTO RICAN	CUBAN	CENTRAL/SOUTH AMERICAN	OTHER/UNK HISPANIC	HAITIAN		
FLORIDA	1,495	219	60	65	26	47	21	35	1,202	39
ALACHUA	20	0	0	0	0	0	0	0	20	0
BAKER	2	0	0	0	0	0	0	0	2	0
BAY	16	1	0	1	0	0	0	0	15	0
BRADFORD	3	0	0	0	0	0	0	0	3	0
BREVARD	24	8	0	4	0	1	3	0	16	0
BROWARD	147	16	2	5	0	7	2	7	122	2
CALHOUN	3	0	0	0	0	0	0	0	3	0
CHARLOTTE	8	0	0	0	0	0	0	0	8	0
CITRUS	6	0	0	0	0	0	0	0	6	0
CLAY	14	2	1	0	0	1	0	0	12	0
COLLIER	20	5	3	0	0	2	0	2	13	0
COLUMBIA	6	0	0	0	0	0	0	0	6	0
MIAMI-DADE	189	52	5	3	23	20	1	2	111	24
DESOTO	4	2	1	0	0	0	1	0	2	0
DIXIE	1	0	0	0	0	0	0	0	1	0
DUVAL	136	7	1	3	0	1	2	1	128	0
ESCAMBIA	58	2	1	0	0	0	1	0	56	0
FLAGLER	3	0	0	0	0	0	0	0	3	0
FRANKLIN	0	0	0	0	0	0	0	0	0	0
GADSDEN	9	1	1	0	0	0	0	0	8	0
GILCHRIST	0	0	0	0	0	0	0	0	0	0
GLADES	0	0	0	0	0	0	0	0	0	0
GULF	2	0	0	0	0	0	0	0	2	0
HAMILTON	3	0	0	0	0	0	0	0	3	0
HARDEE	3	1	1	0	0	0	0	0	1	1
HENDRY	7	5	3	1	0	1	0	0	2	0
HERNANDO	6	0	0	0	0	0	0	0	6	0
HIGHLANDS	11	1	1	0	0	0	0	0	10	0
HILLSBOROUGH	125	22	8	9	1	1	3	3	97	3
HOLMES	4	0	0	0	0	0	0	0	4	0
INDIAN RIVER	4	0	0	0	0	0	0	0	4	0
JACKSON	4	0	0	0	0	0	0	0	4	0
JEFFERSON	2	0	0	0	0	0	0	0	2	0
LAFAYETTE	0	0	0	0	0	0	0	0	0	0
LAKE	19	4	2	0	0	0	2	0	15	0
LEE	29	5	3	2	0	0	0	0	24	0
LEON	29	1	1	0	0	0	0	0	28	0
LEVY	2	0	0	0	0	0	0	0	2	0
LIBERTY	0	0	0	0	0	0	0	0	0	0
MADISON	2	0	0	0	0	0	0	0	2	0
MANATEE	29	6	5	0	0	0	1	0	23	0
MARION	22	0	0	0	0	0	0	0	22	0
MARTIN	12	3	1	1	0	1	0	0	9	0
MONROE	3	0	0	0	0	0	0	0	3	0
NASSAU	4	0	0	0	0	0	0	0	4	0
OKALOOSA	22	0	0	0	0	0	0	0	22	0
OKEECHOBEE	2	0	0	0	0	0	0	0	2	0
ORANGE	105	20	0	17	1	2	0	8	75	2
OSCEOLA	15	8	1	6	0	1	0	0	7	0
PALM BEACH	89	14	3	5	0	4	2	12	59	4
PASCO	24	2	1	1	0	0	0	0	22	0
PINELLAS	81	5	2	1	0	2	0	0	75	1
POLK	50	11	6	2	1	2	0	0	38	1
PUTNAM	10	0	0	0	0	0	0	0	10	0
SAINT JOHNS	10	0	0	0	0	0	0	0	10	0
SAINT LUCIE	9	3	3	0	0	0	0	0	6	0
SANTA ROSA	7	0	0	0	0	0	0	0	7	0
SARASOTA	10	5	1	1	0	1	2	0	5	0
SEMINOLE	26	4	2	2	0	0	0	0	21	1
SUMTER	2	0	0	0	0	0	0	0	2	0
SUWANNEE	3	0	0	0	0	0	0	0	3	0
TAYLOR	3	0	0	0	0	0	0	0	3	0
UNION	1	0	0	0	0	0	0	0	1	0
VOLUSIA	29	3	1	1	0	0	1	0	26	0
WAKULLA	2	0	0	0	0	0	0	0	2	0
WALTON	1	0	0	0	0	0	0	0	1	0
WASHINGTON	3	0	0	0	0	0	0	0	3	0

TABLE F-7: RESIDENT INFANT, NEONATAL AND POST-NEONATAL DEATHS FROM SELECTED CAUSES, BY RACE, FLORIDA, 2001

	TOTAL				WHITE			
	INFANT	NEONATAL <1 DAY	1-27 DAYS	POST NEO- NATAL	INFANT	NEONATAL <1 DAY	1-27 DAYS	POST NEO- NATAL
TOTAL (ICD - 10 GROUPING)	1,495	578	402	515	839	304	235	300
INTESTINAL INFECTIOUS DISEASES (A00-A08)	1	0	0	1	1	0	0	1
DIARRHEA & GASTROENTERITIS--INFECTIOUS ORIGIN (A09)	0	0	0	0	0	0	0	0
TUBERCULOSIS (A16-A19)	0	0	0	0	0	0	0	0
TETANUS (A33-A35)	0	0	0	0	0	0	0	0
DIPHTHERIA (A36)	0	0	0	0	0	0	0	0
WHOOPING COUGH (A37)	0	0	0	0	0	0	0	0
MENINGOCOCCAL INFECTION (A39)	0	0	0	0	0	0	0	0
SEPTICEMIA (A40-A41)	18	1	0	17	10	1	0	9
CONGENITAL SYPHILIS (A50)	0	0	0	0	0	0	0	0
GONOCOCCAL INFECTION (A54)	0	0	0	0	0	0	0	0
ACUTE POLIOMYELITIS (A80)	0	0	0	0	0	0	0	0
VARICELLA (CHICKEN POX) (B01)	0	0	0	0	0	0	0	0
MEASLES (B05)	0	0	0	0	0	0	0	0
HIV DISEASE (B20-B24)	1	0	0	1	1	0	0	1
MUMPS (B26)	0	0	0	0	0	0	0	0
OTHER & UNSPEC VIRAL DIS (A81-B00, B02-B04, B06-B19, B25, B27-B34)	7	0	0	7	4	0	0	4
CANDIDIASIS (B37)	2	0	0	2	1	0	0	1
MALARIA (B50-B54)	0	0	0	0	0	0	0	0
PNEUMOCYSTOSIS (B59)	0	0	0	0	0	0	0	0
OTHER & UNSPECIFIED INFECTIOUS & PARASITIC DISEASES & SEQUELAE *1	3	0	0	3	1	0	0	1
HODGKIN'S DISEASE & NON-HODGKIN'S LYMPHOMAS (C81-C85)	0	0	0	0	0	0	0	0
LEUKEMIA (C91-C95)	0	0	0	0	0	0	0	0
OTHER & UNSPECIFIED MALIGNANT NEOPLASM (C00-C80, C88, C90, C96-C97)	3	0	1	2	3	0	1	2
IN SITU/BENIGN/MALIGNANT NEOPLASMS UNCERT/UNK BEHAVIOR (D00-D48)	1	0	1	0	1	0	1	0
ANEMIAS (D50-D64)	2	0	0	2	1	0	0	1
BLOOD, BLOOD-FORMING, HEMORRHAGIC DISEASES (D65-D76)	2	0	0	2	2	0	0	2
DISORDERS INVOLVING IMMUNE MECHANISM (D80-D89)	3	0	0	3	1	0	0	1
SHORT STATURE (E34.4)	0	0	0	0	0	0	0	0
NUTRITIONAL DEFICIENCIES (E40-E64)	0	0	0	0	0	0	0	0
CYSTIC FIBROSIS (E84)	1	0	0	1	1	0	0	1
FLUID/ELECTROLYTE/ACID-BASE/VOLUME DEPLETION DISORDERS (E86-E87)	6	0	2	4	1	0	1	0
OTHER ENDOCRINE, NUTRITIONAL, METABOLIC DISEASES *2	10	0	5	5	7	0	5	2
MENINGITIS (G00, G03)	5	0	1	4	3	0	0	3
INFANTILE SPINAL MUSCULAR ATROPHY, TYPE 1 (WERDNIG-HOFFMAN) (G12.0)	1	0	0	1	1	0	0	1
INFANTILE CEREBRAL PALSY (G80)	1	0	0	1	0	0	0	0
ANOXIC BRAIN DAMAGE (G93.1)	2	0	0	2	1	0	0	1
OTHER NERVOUS SYSTEM DISEASES *3	16	0	2	14	13	0	2	11
EAR & MASTOID PROCESS DISEASES (H60-H93)	0	0	0	0	0	0	0	0
PULMONARY HEART/CIRCULATION DISEASES (I26-I28)	6	0	5	1	3	0	2	1
PERICARDITIS, ENDOCARDITIS, MYOCARDITIS (I30, I33, I40)	2	0	0	2	0	0	0	0
CARDIOMYOPATHY (I42)	12	0	2	10	5	0	1	4
CARDIAC ARREST (I46)	2	0	0	2	1	0	0	1
CEREBROVASCULAR DISEASES (I60-I69)	8	0	1	7	5	0	1	4
OTHER CIRCULAT SYS DIS (I00-I25, I31, I34-I38, I44-I45, I47-I51, I70-I99)	4	0	1	3	3	0	1	2
ACUTE UPPER RESPIRATORY INFECTIONS (J00-J06)	1	0	0	1	1	0	0	1
INFLUENZA (J10-J11)	0	0	0	0	0	0	0	0
PNEUMONIA (J12-J18)	21	0	0	21	7	0	0	7

TABLE F-7 (Cont.): RESIDENT INFANT, NEONATAL AND POST-NEONATAL DEATHS FROM SELECTED CAUSES, BY RACE, FLORIDA, 2001

	TOTAL				WHITE			
	INFANT	NEONATAL <1 DAY	1-27 DAYS	POST NEO- NATAL	INFANT	NEONATAL <1 DAY	1-27 DAYS	POST NEO- NATAL
ACUTE BRONCHITIS & ACUTE BRONCIOLITIS (J20-J21)	5	0	0	5	4	0	0	4
BRONCHITIS, CHRONIC & UNSPECIFIED (J40-J42)	1	0	0	1	0	0	0	0
ASTHMA (J45-J46)	0	0	0	0	0	0	0	0
PNEUMONITIS DUE TO SOLIDS & LIQUIDS (J69)	0	0	0	0	0	0	0	0
OTHER & UNSPEC RESPIR SYS DIS (J22,J30-J39,J43-J44,J47-J68,J70-J98)	18	0	2	16	11	0	1	10
GASTRITIS, DUODENITIS, NONINFECTIVE ENTERITIS/COLITIS (K29, K50-K55)	19	0	3	16	10	0	2	8
HERNIA ABDOM CAVITY & INTESTINAL OBSTRUCT W/O HERNIA (K40-K46, K56)	3	1	0	2	1	0	0	1
OTHER & UNSPEC DIGESTIVE SYSTEM DISEASE (K00-K28, K30-K38, K57-K92)	9	0	1	8	6	0	1	5
RENAL FAILURE & OTHER KIDNEY DISORDERS (N17-N19, N25, N27)	7	0	1	6	4	0	1	3
OTHER & UNSPEC GENITOURINARY SYS DIS (N00-N15, N20-N23, N26,N28-N98)	2	1	0	1	0	0	0	0
PERINATAL PERIOD CONDITIONS (P00-P96)	783	471	263	49	403	234	142	27
MATERNAL HYPERTENSIVE DISORDERS (P00.0)	4	3	1	0	2	1	1	0
MATERNAL CONDITIONS UNRELATED PRESENT PREGNANCY (P00.1-P00.9)	6	3	2	1	4	2	2	0
INCOMPETENT CERVIX (P01.0)	24	23	1	0	13	13	0	0
PREMATURE RUPTURE OF MEMBRANES (P01.1)	34	32	1	1	17	17	0	0
MULTIPLE PREGNANCY (P01.5)	42	39	3	0	22	20	2	0
MATERNAL COMPLICATIONS OF PREGNANCY (P01.2-P01.4, P01.6-P01.9)	9	8	1	0	6	5	1	0
PLACENTA COMPLICATIONS (P02.0-P02.3)	20	16	3	1	14	11	2	1
CORD COMPLICATIONS (P02.4-P02.6)	4	3	1	0	3	2	1	0
CHORIOAMNIONITIS (P02.7)	19	19	0	0	9	9	0	0
OTHER & UNSPECIFIED MEMBRANE ABNORMALITIES (P02.8-P02.9)	0	0	0	0	0	0	0	0
OTHER COMPLICATIONS OF LABOR & DELIVERY (P03)	10	10	0	0	8	8	0	0
NOXIOUS INFLUENCES VIA PLACENTA OR BREAST MILK (P04)	7	5	2	0	2	1	1	0
SLOW FETAL GROWTH & FETAL MALNUTRITION (P05)	2	0	1	1	2	0	1	1
EXTREME LOW BIRTH WEIGHT OR EXTREME IMMATUREITY (P07.0, P07.2)	156	127	24	5	74	59	10	5
OTHER LOW BIRTH WEIGHT OR PRETERM (P07.1, P07.3)	82	75	3	4	34	32	1	1
LONG GESTATION & HIGH BIRTH WEIGHT (P08)	0	0	0	0	0	0	0	0
BIRTH TRAUMA (P10-P15)	7	0	7	0	4	0	4	0
INTRAUTERINE HYPOXIA (P20)	6	0	6	0	4	0	4	0
BIRTH ASPHYXIA (P21)	18	1	14	3	13	0	10	3
RESPIRATORY DISTRESS (P22)	60	21	36	3	18	4	12	2
CONGENITAL PNEUMONIA (P23)	9	2	6	1	6	1	4	1
NEONATAL ASPIRATION SYNDROMES (P24)	0	0	0	0	0	0	0	0
INTERSTITIAL EMPHYSEMA & RELATED CONDITIONS (P25)	11	5	6	0	8	2	6	0
PULMONARY HEMORRHAGE (P26)	16	0	15	1	9	0	9	0
CHRONIC RESPIRATORY DISEASE (P27)	22	0	2	20	8	0	0	8
ATELECTASIS (P28.0-P28.1)	20	13	6	1	16	11	4	1
OTHER RESPIRATORY CONDITIONS (P28.2-P28.9)	3	1	2	0	1	0	1	0
BACTERIAL SEPSIS (P36)	50	12	38	0	33	9	24	0
OMPHALITIS W/ OR W/O HEMORRHAGE (P38)	1	0	1	0	1	0	1	0
ALL OTHER INFECTIONS (P35, P37, P39)	15	6	9	0	6	2	4	0
NEONATAL HEMORRHAGE (P50-P52, P54)	22	3	19	0	11	2	9	0
HEMORRHAGIC DISEASE OF NEWBORN (P53)	0	0	0	0	0	0	0	0
HEMOLYTIC DIS DUE TO ISOIMMUNIZATION/PERINAT JAUNDICE (P55-P59)	3	1	1	1	2	1	0	1
HEMATOLOGICAL DISORDERS (P60-P61)	6	1	5	0	4	1	3	0
DIABETES MELLITUS, MATERNAL OR NEONATAL (P70.0-P70.2)	0	0	0	0	0	0	0	0
NECROTIZING ENTEROCOLITIS (P77)	16	0	13	3	6	0	4	2
HYDROPS FETALIS NOT DUE TO HEMOLYTIC DIS (P83.2)	11	5	6	0	9	4	5	0
OTHER PERINATAL CONDITIONS *4	68	37	28	3	34	17	16	1

TABLE F-7 (Cont.): RESIDENT INFANT, NEONATAL AND POST-NEONATAL DEATHS FROM SELECTED CAUSES, BY RACE, FLORIDA, 2001

	TOTAL				WHITE			
	INFANT	NEONATAL <1 DAY	1-27 DAYS	POST NEO- NATAL	INFANT	NEONATAL <1 DAY	1-27 DAYS	POST NEO- NATAL
CONGENITAL / CHROMOSOMAL ANOMALIES (Q00-Q99)	275	98	85	92	186	66	59	61
ANENCEPHALY & SIMILAR ANOMALIES (Q00)	14	14	0	0	10	10	0	0
CONGENITAL HYDROCEPHALUS (Q03)	3	2	0	1	2	1	0	1
SPINA BIFIDA (Q05)	1	1	0	0	1	1	0	0
OTHER CONGENITAL ANOMALIES CENT NERV SYS (Q01-Q02,Q04,Q06-Q07)	15	2	4	9	11	2	3	6
CONGENITAL ANOMALIES OF HEART (Q20-Q24)	65	4	25	36	42	2	17	23
OTHER CONGENITAL ANOMALIES OF CIRCULATORY SYS (Q25-Q28)	15	1	9	5	13	1	9	3
CONGENITAL ANOMALIES OF RESPIRATORY SYS (Q30-Q34)	33	17	13	3	19	9	8	2
CONGENITAL ANOMALIES OF DIGESTIVE SYS (Q35-Q45)	8	0	0	8	7	0	0	7
CONGENITAL ANOMALIES OF GENITOURINARY SYS (Q50-Q64)	19	13	5	1	12	9	2	1
CONGENITAL ANOMALIES OF MUSCULOSKELETAL SYS (Q65-Q85)	21	6	6	9	14	3	4	7
DOWN'S SYNDROME (Q90)	6	3	1	2	5	3	1	1
EDWARD'S SYNDROME (Q91.0-Q91.3)	26	7	9	10	17	6	6	5
PATAU'S SYNDROME (Q91.4-Q91.7)	16	5	8	3	11	3	6	2
OTHER CONGENITAL ANOMALIES (Q10-Q18, Q86-Q89)	28	23	2	3	21	16	2	3
OTHER CHROMOSOMAL ANOMALIES (Q92-Q99)	5	0	3	2	1	0	1	0
SUDDEN INFANT DEATH SYNDROME (R95)	96	0	5	91	56	0	2	54
SYMPTOMS, SIGNS, ABN CLINICAL/LAB FINDINGS (R00-R53,R55-R94,R96-R99)	52	6	7	39	28	3	5	20
ALL OTHER DISEASES (F01-F99, H00-H57, L00-M99)	2	0	0	2	2	0	0	2
UNINT INJ: MOTOR VEHICLE *5	4	0	1	3	4	0	1	3
UNINT INJ: OTHER & UNSPEC TRANSPORT & SEQUELAE *6	0	0	0	0	0	0	0	0
UNINT INJ: FALLS (W00-W19)	0	0	0	0	0	0	0	0
UNINT INJ: FIREARMS DISCHARGE (W32-W34)	0	0	0	0	0	0	0	0
UNINT INJ: DROWNING & SUBMERSION (W65-W74)	5	0	0	5	4	0	0	4
UNINT INJ: SUFFOCATION & STRANGULATION IN BED (W75)	43	0	6	37	26	0	3	23
UNINT INJ: OTHER SUFFOCATION & STRANGULATION (W76-W77, W81-W84)	7	0	2	5	4	0	1	3
UNINT INJ: INHALE/INGEST--RESPIRATORY TRACT OBSTRUCTION (W78-W80)	0	0	0	0	0	0	0	0
UNINT INJ: SMOKE, FIRE, FLAMES EXPOSURE (X00-X09)	1	0	0	1	0	0	0	0
UNINT INJ: POISONING & NOXIOUS SUBSTANCE EXPOSURE (X40-X49)	0	0	0	0	0	0	0	0
UNINT INJ: OTHER & UNSPECIFIED & SEQUELAE *7	2	0	1	1	1	0	0	1
HOMICIDE: HANGING, STRANGULATION, SUFFOCATION (X91)	0	0	0	0	0	0	0	0
HOMICIDE: FIREARMS DISCHARGE (X93-X95)	0	0	0	0	0	0	0	0
HOMICIDE: NEGLECT, ABANDONMENT, MALTREATMENT (Y06-Y07)	4	0	0	4	1	0	0	1
HOMICIDE: OTHER & UNSPECIFIED MEANS & SEQUELAE *8	12	0	3	9	8	0	2	6
MEDICAL & SURGICAL CARE COMPLICATIONS (Y40-Y84, Y88)	2	0	1	1	0	0	0	0
OTHER EXTERNAL CAUSES & SEQUELAE (X60-X84,Y10-Y36,Y87.0,Y87.2,Y89)	2	0	0	2	2	0	0	2
*1 (A20-A32, A38, A42-A49, A51-A53, A55-A79, B35-B36, B38-B49, B55-B58, B60-B99)								
*2 (E00-E32, E34.0-E34.2, E34.4-E34.9, E65-E83, E85, E88)								
*3 (G04,G06-G11,G12.1-G12.9,G20-G72,G81-G92,G93.0,G93.2-G93.9,G95-G98)								
*4 (P29,P70.3-P70.9,P71-P76,P78-P81,P83.0-P83.1,P83.3-P83.9,P90-P96)								
*5 (V02-V04, V09.0, V09.2, V12-V14, V19.0-V19.2, V19.4-V19.6, V20-V79, V80.3-V80.5, V81.0-V81.1, V82.0-V82.1, V83-V86, V87.0-V87.8, V88.0-V88.8, V89.0, V89.2)								
*6 (V01, V05-V06, V09.1, V09.3-V09.9, V10-V11, V15-V18, V19.3, V19.8-V19.9, V80.0-V80.2, V80.6-V80.9, V81.2-V81.9, V82.2-V82.9, V87.9, V88.9, V89.1, V89.3, V89.9, V90-V99, Y85)								
*7 (W20-W31, W35-W64, W85-W99, X10-X39, X50-X59, Y86)								
*8 (X85-X90, X92, X96-X99, Y00-Y05, Y08-Y09, Y87.1)								

TABLE F-7 (Cont.): RESIDENT INFANT, NEONATAL AND POST-NEONATAL DEATHS FROM SELECTED CAUSES, BY RACE, FLORIDA, 2001

	BLACK				OTHER			
	INFANT	NEONATAL	POST	NEO- NATAL	INFANT	NEONATAL	POST	NEO- NATAL
		<1 DAY	1-27 DAYS			NEO- NATAL	<1 DAY	
TOTAL (ICD - 10 GROUPING)	635	265	161	209	20	8	6	6
INTESTINAL INFECTIOUS DISEASES (A00-A08)	0	0	0	0	0	0	0	0
DIARRHEA & GASTROENTERITIS--INFECTIOUS ORIGIN (A09)	0	0	0	0	0	0	0	0
TUBERCULOSIS (A16-A19)	0	0	0	0	0	0	0	0
TETANUS (A33-A35)	0	0	0	0	0	0	0	0
DIPHTHERIA (A36)	0	0	0	0	0	0	0	0
WHOOPING COUGH (A37)	0	0	0	0	0	0	0	0
MENINGOCOCCAL INFECTION (A39)	0	0	0	0	0	0	0	0
SEPTICEMIA (A40-A41)	8	0	0	8	0	0	0	0
CONGENITAL SYPHILIS (A50)	0	0	0	0	0	0	0	0
GONOCOCCAL INFECTION (A54)	0	0	0	0	0	0	0	0
ACUTE POLIOMYELITIS (A80)	0	0	0	0	0	0	0	0
VARICELLA (CHICKEN POX) (B01)	0	0	0	0	0	0	0	0
MEASLES (B05)	0	0	0	0	0	0	0	0
HIV DISEASE (B20-B24)	0	0	0	0	0	0	0	0
MUMPS (B26)	0	0	0	0	0	0	0	0
OTHER & UNSPEC VIRAL DIS (A81-B00, B02-B04, B06-B19, B25, B27-B34)	3	0	0	3	0	0	0	0
CANDIDIASIS (B37)	1	0	0	1	0	0	0	0
MALARIA (B50-B54)	0	0	0	0	0	0	0	0
PNEUMOCYSTOSIS (B59)	0	0	0	0	0	0	0	0
OTHER & UNSPECIFIED INFECTIOUS & PARASITIC DISEASES & SEQUELAE *1	2	0	0	2	0	0	0	0
HODGKIN'S DISEASE & NON-HODGKIN'S LYMPHOMAS (C81-C85)	0	0	0	0	0	0	0	0
LEUKEMIA (C91-C95)	0	0	0	0	0	0	0	0
OTHER & UNSPECIFIED MALIGNANT NEOPLASM (C00-C80, C88, C90, C96-C97)	0	0	0	0	0	0	0	0
IN SITU/BENIGN/MALIGNANT NEOPLASMS UNCERT/UNK BEHAVIOR (D00-D48)	0	0	0	0	0	0	0	0
ANEMIAS (D50-D64)	1	0	0	1	0	0	0	0
BLOOD, BLOOD-FORMING, HEMORRHAGIC DISEASES (D65-D76)	0	0	0	0	0	0	0	0
DISORDERS INVOLVING IMMUNE MECHANISM (D80-D89)	2	0	0	2	0	0	0	0
SHORT STATURE (E34.4)	0	0	0	0	0	0	0	0
NUTRITIONAL DEFICIENCIES (E40-E64)	0	0	0	0	0	0	0	0
CYSTIC FIBROSIS (E84)	0	0	0	0	0	0	0	0
FLUID/ELECTROLYTE/ACID-BASE/VOLUME DEPLETION DISORDERS (E86-E87)	5	0	1	4	0	0	0	0
OTHER ENDOCRINE, NUTRITIONAL, METABOLIC DISEASES *2	3	0	0	3	0	0	0	0
MENINGITIS (G00, G03)	2	0	1	1	0	0	0	0
INFANTILE SPINAL MUSCULAR ATROPHY, TYPE 1 (WERDNIG-HOFFMAN) (G12.0)	0	0	0	0	0	0	0	0
INFANTILE CEREBRAL PALSY (G80)	1	0	0	1	0	0	0	0
ANOXIC BRAIN DAMAGE (G93.1)	1	0	0	1	0	0	0	0
OTHER NERVOUS SYSTEM DISEASES *3	3	0	0	3	0	0	0	0
EAR & MASTOID PROCESS DISEASES (H60-H93)	0	0	0	0	0	0	0	0
PULMONARY HEART/CIRCULATION DISEASES (I26-I28)	3	0	3	0	0	0	0	0
PERICARDITIS, ENDOCARDITIS, MYOCARDITIS (I30, I33, I40)	2	0	0	2	0	0	0	0
CARDIOMYOPATHY (I42)	7	0	1	6	0	0	0	0
CARDIAC ARREST (I46)	1	0	0	1	0	0	0	0
CEREBROVASCULAR DISEASES (I60-I69)	3	0	0	3	0	0	0	0
OTHER CIRCULAT SYS DIS (I00-I25, I31, I34-I38, I44-I45, I47-I51, I70-I99)	0	0	0	0	1	0	0	1
ACUTE UPPER RESPIRATORY INFECTIONS (J00-J06)	0	0	0	0	0	0	0	0
INFLUENZA (J10-J11)	0	0	0	0	0	0	0	0
PNEUMONIA (J12-J18)	14	0	0	14	0	0	0	0

TABLE F-7 (Cont.): RESIDENT INFANT, NEONATAL AND POST-NEONATAL DEATHS FROM SELECTED CAUSES, BY RACE, FLORIDA, 2001

	BLACK				OTHER			
	INFANT	NEONATAL		POST	INFANT	NEONATAL		POST
		<1 DAY	1-27 DAYS	NEO- NATAL		<1 DAY	1-27 DAYS	NEO- NATAL
ACUTE BRONCHITIS & ACUTE BRONCIOLITIS (J20-J21)	1	0	0	1	0	0	0	0
BRONCHITIS, CHRONIC & UNSPECIFIED (J40-J42)	1	0	0	1	0	0	0	0
ASTHMA (J45-J46)	0	0	0	0	0	0	0	0
PNEUMONITIS DUE TO SOLIDS & LIQUIDS (J69)	0	0	0	0	0	0	0	0
OTHER & UNSPEC RESPIR SYS DIS (J22,J30-J39,J43-J44,J47-J68,J70-J98)	7	0	1	6	0	0	0	0
GASTRITIS, DUODENITIS, NONINFECTIVE ENTERITIS/COLITIS (K29, K50-K55)	9	0	1	8	0	0	0	0
HERNIA ABDOM CAVITY & INTESTINAL OBSTRUCT W/O HERNIA (K40-K46, K56)	2	1	0	1	0	0	0	0
OTHER & UNSPEC DIGESTIVE SYSTEM DISEASE (K00-K28, K30-K38, K57-K92)	3	0	0	3	0	0	0	0
RENAL FAILURE & OTHER KIDNEY DISORDERS (N17-N19, N25, N27)	3	0	0	3	0	0	0	0
OTHER & UNSPEC GENITOURINARY SYS DIS (N00-N15, N20-N23, N26,N28-N98)	2	1	0	1	0	0	0	0
PERINATAL PERIOD CONDITIONS (P00-P96)	370	232	116	22	9	4	5	0
MATERNAL HYPERTENSIVE DISORDERS (P00.0)	2	2	0	0	0	0	0	0
MATERNAL CONDITIONS UNRELATED PRESENT PREGNANCY (P00.1-P00.9)	2	1	0	1	0	0	0	0
INCOMPETENT CERVIX (P01.0)	11	10	1	0	0	0	0	0
PREMATURE RUPTURE OF MEMBRANES (P01.1)	17	15	1	1	0	0	0	0
MULTIPLE PREGNANCY (P01.5)	20	19	1	0	0	0	0	0
MATERNAL COMPLICATIONS OF PREGNANCY (P01.2-P01.4, P01.6-P01.9)	3	3	0	0	0	0	0	0
PLACENTA COMPLICATIONS (P02.0-P02.3)	6	5	1	0	0	0	0	0
CORD COMPLICATIONS (P02.4-P02.6)	1	1	0	0	0	0	0	0
CHORIOAMNIONITIS (P02.7)	9	9	0	0	1	1	0	0
OTHER & UNSPECIFIED MEMBRANE ABNORMALITIES (P02.8-P02.9)	0	0	0	0	0	0	0	0
OTHER COMPLICATIONS OF LABOR & DELIVERY (P03)	2	2	0	0	0	0	0	0
NOXIOUS INFLUENCES VIA PLACENTA OR BREAST MILK (P04)	5	4	1	0	0	0	0	0
SLOW FETAL GROWTH & FETAL MALNUTRITION (P05)	0	0	0	0	0	0	0	0
EXTREME LOW BIRTH WEIGHT OR EXTREME IMMATUREITY (P07.0, P07.2)	81	67	14	0	0	0	0	0
OTHER LOW BIRTH WEIGHT OR PRETERM (P07.1, P07.3)	48	43	2	3	0	0	0	0
LONG GESTATION & HIGH BIRTH WEIGHT (P08)	0	0	0	0	0	0	0	0
BIRTH TRAUMA (P10-P15)	2	0	2	0	1	0	1	0
INTRAUTERINE HYPOXIA (P20)	2	0	2	0	0	0	0	0
BIRTH ASPHYXIA (P21)	5	1	4	0	0	0	0	0
RESPIRATORY DISTRESS (P22)	41	17	23	1	1	0	1	0
CONGENITAL PNEUMONIA (P23)	3	1	2	0	0	0	0	0
NEONATAL ASPIRATION SYNDROMES (P24)	0	0	0	0	0	0	0	0
INTERSTITIAL EMPHYSEMA & RELATED CONDITIONS (P25)	3	3	0	0	0	0	0	0
PULMONARY HEMORRHAGE (P26)	7	0	6	1	0	0	0	0
CHRONIC RESPIRATORY DISEASE (P27)	14	0	2	12	0	0	0	0
ATELECTASIS (P28.0-P28.1)	4	2	2	0	0	0	0	0
OTHER RESPIRATORY CONDITIONS (P28.2-P28.9)	1	0	1	0	1	1	0	0
BACTERIAL SEPSIS (P36)	16	3	13	0	1	0	1	0
OMPHALITIS W/ OR W/O HEMORRHAGE (P38)	0	0	0	0	0	0	0	0
ALL OTHER INFECTIONS (P35, P37, P39)	8	3	5	0	1	1	0	0
NEONATAL HEMORRHAGE (P50-P52, P54)	10	0	10	0	1	1	0	0
HEMORRHAGIC DISEASE OF NEWBORN (P53)	0	0	0	0	0	0	0	0
HEMOLYTIC DIS DUE TO ISOIMMUNIZATION/PERINAT JAUNDICE (P55-P59)	1	0	1	0	0	0	0	0
HEMATOLOGICAL DISORDERS (P60-P61)	2	0	2	0	0	0	0	0
DIABETES MELLITUS, MATERNAL OR NEONATAL (P70.0-P70.2)	0	0	0	0	0	0	0	0
NECROTIZING ENTEROCOLITIS (P77)	10	0	9	1	0	0	0	0
HYDROPS FETALIS NOT DUE TO HEMOLYTIC DIS (P83.2)	2	1	1	0	0	0	0	0
OTHER PERINATAL CONDITIONS *4	32	20	10	2	2	0	2	0

TABLE F-7 (Cont.): RESIDENT INFANT, NEONATAL AND POST-NEONATAL DEATHS FROM SELECTED CAUSES, BY RACE, FLORIDA, 2001

	BLACK				OTHER			
	INFANT	NEONATAL <1 DAY	1-27 DAYS	POST NEO- NATAL	INFANT	NEONATAL <1 DAY	1-27 DAYS	POST NEO- NATAL
CONGENITAL / CHROMOSOMAL ANOMALIES (Q00-Q99)	84	29	25	30	5	3	1	1
ANENCEPHALY & SIMILAR ANOMALIES (Q00)	2	2	0	0	2	2	0	0
CONGENITAL HYDROCEPHALUS (Q03)	1	1	0	0	0	0	0	0
SPINA BIFIDA (Q05)	0	0	0	0	0	0	0	0
OTHER CONGENITAL ANOMALIES CENT NERV SYS (Q01-Q02,Q04,Q06-Q07)	4	0	1	3	0	0	0	0
CONGENITAL ANOMALIES OF HEART (Q20-Q24)	22	2	7	13	1	0	1	0
OTHER CONGENITAL ANOMALIES OF CIRCULATORY SYS (Q25-Q28)	2	0	0	2	0	0	0	0
CONGENITAL ANOMALIES OF RESPIRATORY SYS (Q30-Q34)	14	8	5	1	0	0	0	0
CONGENITAL ANOMALIES OF DIGESTIVE SYS (Q35-Q45)	1	0	0	1	0	0	0	0
CONGENITAL ANOMALIES OF GENITOURINARY SYS (Q50-Q64)	7	4	3	0	0	0	0	0
CONGENITAL ANOMALIES OF MUSCULOSKELETAL SYS (Q65-Q85)	6	2	2	2	1	1	0	0
DOWN'S SYNDROME (Q90)	0	0	0	0	1	0	0	1
EDWARD'S SYNDROME (Q91.0-Q91.3)	9	1	3	5	0	0	0	0
PATAU'S SYNDROME (Q91.4-Q91.7)	5	2	2	1	0	0	0	0
OTHER CONGENITAL ANOMALIES (Q10-Q18, Q86-Q89)	7	7	0	0	0	0	0	0
OTHER CHROMOSOMAL ANOMALIES (Q92-Q99)	4	0	2	2	0	0	0	0
SUDDEN INFANT DEATH SYNDROME (R95)	39	0	3	36	1	0	0	1
SYMPTOMS, SIGNS, ABN CLINICAL/LAB FINDINGS (R00-R53,R55-R94,R96-R99)	22	2	2	18	2	1	0	1
ALL OTHER DISEASES (F01-F99, H00-H57, L00-M99)	0	0	0	0	0	0	0	0
UNINT INJ: MOTOR VEHICLE *5	0	0	0	0	0	0	0	0
UNINT INJ: OTHER & UNSPEC TRANSPORT & SEQUELAE *6	0	0	0	0	0	0	0	0
UNINT INJ: FALLS (W00-W19)	0	0	0	0	0	0	0	0
UNINT INJ: FIREARMS DISCHARGE (W32-W34)	0	0	0	0	0	0	0	0
UNINT INJ: DROWNING & SUBMERSION (W65-W74)	1	0	0	1	0	0	0	0
UNINT INJ: SUFFOCATION & STRANGULATION IN BED (W75)	17	0	3	14	0	0	0	0
UNINT INJ: OTHER SUFFOCATION & STRANGULATION (W76-W77, W81-W84)	3	0	1	2	0	0	0	0
UNINT INJ: INHALE/INGEST--RESPIRATORY TRACT OBSTRUCTION (W78-W80)	0	0	0	0	0	0	0	0
UNINT INJ: SMOKE, FIRE, FLAMES EXPOSURE (X00-X09)	1	0	0	1	0	0	0	0
UNINT INJ: POISONING & NOXIOUS SUBSTANCE EXPOSURE (X40-X49)	0	0	0	0	0	0	0	0
UNINT INJ: OTHER & UNSPECIFIED & SEQUELAE *7	1	0	1	0	0	0	0	0
HOMICIDE: HANGING, STRANGULATION, SUFFOCATION (X91)	0	0	0	0	0	0	0	0
HOMICIDE: FIREARMS DISCHARGE (X93-X95)	0	0	0	0	0	0	0	0
HOMICIDE: NEGLECT, ABANDONMENT, MALTREATMENT (Y06-Y07)	1	0	0	1	2	0	0	2
HOMICIDE: OTHER & UNSPECIFIED MEANS & SEQUELAE *8	4	0	1	3	0	0	0	0
MEDICAL & SURGICAL CARE COMPLICATIONS (Y40-Y84, Y88)	2	0	1	1	0	0	0	0
OTHER EXTERNAL CAUSES & SEQUELAE (X60-X84, Y10-Y36, Y87.0, Y87.2, Y89)	0	0	0	0	0	0	0	0
*1 (A20-A32, A38, A42-A49, A51-A53, A55-A79, B35-B36, B38-B49, B55-B58, B60-B99)								
*2 (E00-E32, E34.0-E34.2, E34.4-E34.9, E65-E83, E85, E88)								
*3 (G04, G06-G11, G12.1-G12.9, G20-G72, G81-G92, G93.0, G93.2-G93.9, G95-G98)								
*4 (P29, P70.3-P70.9, P71-P76, P78-P81, P83.0-P83.1, P83.3-P83.9, P90-P96)								
*5 (V02-V04, V09.0, V09.2, V12-V14, V19.0-V19.2, V19.4-V19.6, V20-V79, V80.3-V80.5, V81.0-V81.1, V82.0-V82.1, V83-V86, V87.0-V87.8, V88.0-V88.8, V89.0, V89.2)								
*6 (V01, V05-V06, V09.1, V09.3-V09.9, V10-V11, V15-V18, V19.3, V19.8-V19.9, V80.0-V80.2, V80.6-V80.9, V81.2-V81.9, V82.2-V82.9, V87.9, V88.9, V89.1, V89.3, V89.9, V90-V99, Y85)								
*7 (W20-W31, W35-W64, W85-W99, X10-X39, X50-X59, Y86)								
*8 (X85-X90, X92, X96-X99, Y00-Y05, Y08-Y09, Y87.1)								