

Marriages and Dissolutions of Marriage

MARRIAGES AND DISSOLUTIONS OF MARRIAGE

- From a record high 158,783 in 1997, the number of marriages decreased in 1998 and 1999, then increased in 2000, and then increased again in 2001 to a total of 153,298.
- The marriage rate per 1,000 population decreased from 10.6 in 1997, to 9.2 in 1998, to 8.7 in 1999, rose to 9.0 in 2000, and then increased again to 9.3 in 2001.
- April was the most popular month for marriages with 18,098 marriages performed.
- After decreasing for four consecutive years, then increasing and decreasing the next two years, respectively, the number of dissolutions of marriage increased in 1999, 2000, and again in 2001.
- Since 1980, the dissolution rate has declined 28.8 percent despite an overall increase in the number of dissolutions.
- The dissolution of marriage rate had declined steadily since 1980, reaching a rate of 5.3 per 1,000 population in 1996. In 1997 the rate increased to 5.5 per 1,000 population, but then declined to 5.3 in 1998, declined again to 5.2 in 1999, declined to 5.1 in 2000, and then increased slightly to 5.2 in 2001.
- Of the 153,298 marriage ceremonies conducted in 2001, the reported race of the bride and of the groom was the same in 134,998 (88.1%) of the marriages. This is a decrease of 2.1% from 2000.
- Of the 85,259 dissolutions of marriage in 2001, over half (54.7%) affected no minor children.
- Over 4 of every 10 dissolutions of marriage occurred to couples married between 5 and 14 years.
- The marriage rate in Florida is over 1 $\frac{3}{4}$ times the dissolution rate.

CHART M-1: MARRIAGES AND DISSOLUTIONS OF MARRIAGE, AND RATES PER 1,000 POPULATION, FLORIDA AND UNITED STATES, CENSUS YEARS 1920-1990 AND 1991-2001						
YEAR	MARRIAGES			DISSOLUTIONS ¹		
	FLORIDA		U.S.	FLORIDA		U.S.
	NUMBER	RATE	RATE	NUMBER	RATE	RATE
1920 ¹	NA	NA	12.0	NA	NA	1.6
1930 ¹	17,147	11.7	9.2	3,262	2.5	1.6
1940	32,709	17.1	12.1	11,061	5.8	2.0
1950	27,588	9.8	11.1	17,845	6.3	2.6
1960	39,315	7.9	8.5	19,326	3.9	2.2
1970	69,249	10.1	10.6	37,506	5.4	3.5
1980	108,344	11.0	10.6	71,578	7.3	5.2
1990	141,816	10.9	9.8	81,119	6.2	4.7
1991	136,994	10.3	9.4	82,929	6.2	4.7
1992	139,191	10.3	9.3 ²	84,011	6.2	4.8 ²
1993	141,892	10.3	9.0 ²	82,956	6.0	4.6 ²
1994	142,895	10.1	9.1 ²	81,628	5.8	4.6 ²
1995	145,090	10.1	9.1 ²	78,416	5.4	4.5 ²
1996	150,599	10.2	8.8 ²	77,750	5.3	4.3 ²
1997	158,783	10.6	8.9 ²	82,161	5.5	4.3 ²
1998	141,344	9.2	8.5 ²	80,466	5.3	4.3 ²
1999	136,403	8.7	8.5 ²	80,983	5.2	4.1 ²
2000	145,300	9.0	8.7 ²	81,439	5.1	4.2 ²
2001	153,298	9.3	8.5 ²	85,259	5.2	4.0 ²

¹ Includes divorces and annulments.

² Provisional data.

GRAPH M-1: MARRIAGE AND DISSOLUTION OF MARRIAGE RATES PER 1,000 POPULATION, FLORIDA AND UNITED STATES, 1991-2001

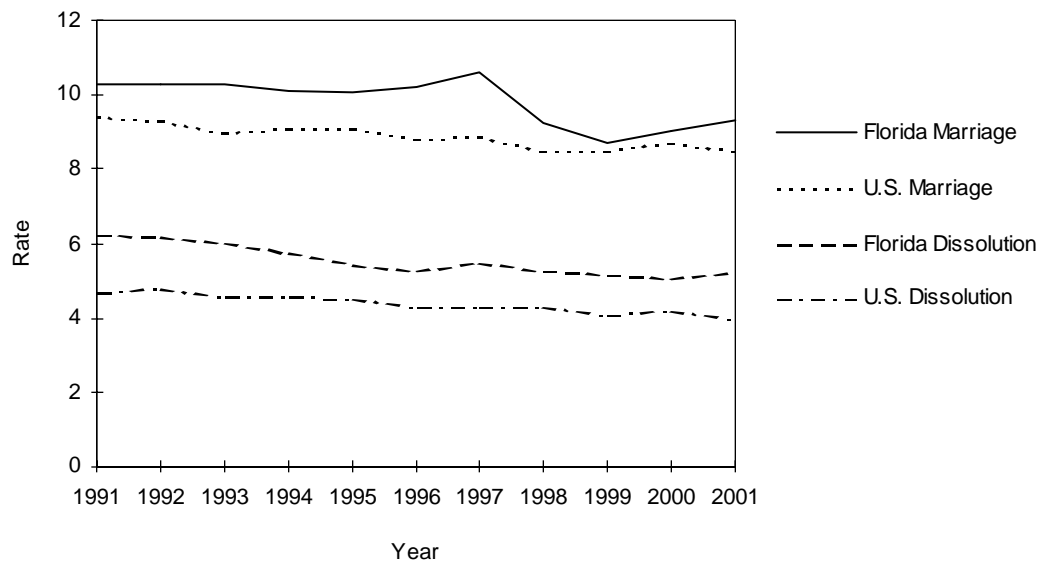


TABLE M-1: MARRIAGES PERFORMED BY MONTH, BY COUNTY OF ISSUANCE, FLORIDA, 2001

	TOTAL	JAN	FEB	MAR	APR	MAY	JUN	JUL	AUG	SEP	OCT	NOV	DEC
FLORIDA	153,298	9,008	12,708	15,626	18,098	13,138	13,826	11,443	10,812	11,163	12,463	12,141	12,872
ALACHUA	1,783	89	111	172	152	191	186	167	150	124	146	115	180
BAKER	255	8	19	36	29	24	27	23	17	21	19	15	17
BAY	2,006	38	163	174	174	196	230	224	158	207	170	122	150
BRADFORD	257	14	18	25	23	28	23	16	18	27	19	24	22
BREVARD	3,922	236	323	349	373	358	374	327	250	334	336	319	343
BROWARD	13,618	882	1,136	1,420	1,844	1,022	1,112	953	1,010	848	1,084	1,087	1,220
CALHOUN	102	8	11	11	10	9	9	9	5	9	7	8	6
CHARLOTTE	952	61	97	101	102	79	66	59	65	78	81	92	71
CITRUS	804	50	56	83	65	70	76	55	57	62	75	89	66
CLAY	1,360	73	95	134	132	119	135	111	105	113	105	117	121
COLLIER	2,575	174	239	269	361	206	207	175	168	165	194	212	205
COLUMBIA	607	36	44	59	50	57	58	45	50	52	40	51	65
MIAMI-DADE	27,788	1,712	2,468	3,050	4,317	1,914	2,126	1,855	1,890	1,760	1,967	2,050	2,679
DESOTO	271	16	30	37	32	20	22	14	21	20	17	20	22
DIXIE	123	9	6	8	18	11	16	9	8	10	12	8	8
DUVAL	6,513	346	479	660	621	604	637	543	528	537	562	518	478
ESCAMBIA	3,107	149	225	297	296	297	339	258	292	265	255	207	227
FLAGLER	363	11	26	31	47	32	49	22	25	28	43	36	13
FRANKLIN	169	7	10	13	16	15	15	16	20	24	17	12	4
GADSDEN	312	18	31	38	34	27	16	33	28	24	20	18	25
GILCHRIST	144	11	10	13	18	7	13	11	14	14	10	11	12
GLADES	61	5	7	7	6	7	9	3	5	3	1	2	6
GULF	130	6	7	11	12	10	17	15	14	8	9	8	13
HAMILTON	169	6	19	20	14	12	12	17	13	12	15	16	13
HARDEE	195	11	20	28	23	16	11	14	14	15	13	14	16
HENDRY	340	16	33	48	40	32	23	24	20	23	24	26	31
HERNANDO	810	43	61	66	82	75	71	62	57	78	76	84	55
HIGHLANDS	611	46	54	72	60	43	55	48	39	47	42	43	62
HILLSBOROUGH	9,581	533	830	1,031	1,120	797	834	716	656	741	779	778	766
HOLMES	157	13	13	13	10	13	19	12	13	14	7	15	15
INDIAN RIVER	938	73	83	95	87	82	100	61	59	73	82	74	69
JACKSON	359	22	17	33	26	33	41	30	33	38	34	27	25
JEFFERSON	182	16	22	11	16	14	17	13	6	18	13	20	16
LAFAYETTE	77	5	9	10	8	7	6	4	6	6	2	9	5
LAKE	1,576	104	147	160	137	124	154	141	120	116	110	140	123
LEE	3,801	250	300	353	426	329	388	258	253	250	323	337	334
LEON	2,086	104	136	190	181	210	197	154	171	167	242	145	189
LEVY	238	12	8	21	20	26	26	18	22	18	27	14	26
LIBERTY	49	1	5	5	5	3	4	5	1	5	3	5	7
MADISON	156	8	15	15	10	20	16	17	10	11	15	9	10
MANATEE	1,947	122	159	215	211	171	196	140	132	139	163	142	157
MARION	1,999	131	176	192	199	180	184	176	149	157	156	139	160
MARTIN	921	67	75	75	90	93	84	79	56	49	81	90	82
MONROE	2,647	170	221	210	266	327	264	194	175	157	226	215	222
NASSAU	677	24	32	56	57	84	77	63	61	58	49	46	70
OKALOOSA	2,315	100	124	196	173	264	239	198	205	268	223	172	153
OKEECHOBEE	330	23	28	30	40	26	39	37	19	17	19	25	27
ORANGE	10,527	591	867	1,098	1,178	949	956	792	735	778	906	881	796
OSCEOLA	3,801	217	303	329	378	350	368	268	282	366	270	333	337
PALM BEACH	10,144	643	892	1,131	1,395	822	880	714	602	670	734	765	896
PASCO	2,355	138	218	232	251	228	222	172	146	180	188	192	188
PINELLAS	7,996	457	655	773	845	762	761	604	529	592	746	705	567
POLK	3,925	253	377	413	426	314	368	268	269	291	314	321	311
PUTNAM	568	27	68	52	59	38	67	34	50	48	45	40	40
ST JOHNS	1,233	65	77	107	124	118	133	109	90	107	118	95	90
ST LUCIE	1,373	72	112	145	169	101	126	109	95	105	110	117	112
SANTA ROSA	802	35	58	63	73	79	97	62	62	78	75	67	53
SARASOTA	2,753	185	212	296	329	278	228	193	153	164	260	242	213
SEMINOLE	3,065	185	258	320	319	263	264	225	209	221	285	271	245
SUMTER	227	16	20	25	25	13	29	23	18	2	23	15	18
SUWANNEE	290	20	28	34	28	24	29	23	17	22	22	13	30
TAYLOR	148	9	20	16	12	11	13	18	2	10	10	11	16
UNION	110	4	9	10	12	10	12	8	12	8	12	2	11
VOLUSIA	3,664	191	278	371	352	385	350	321	267	231	329	287	302
WAKULLA	192	9	11	18	15	20	24	14	31	14	13	10	13
WALTON	571	19	26	37	57	78	65	51	43	55	68	36	36
WASHINGTON	171	13	21	13	18	11	15	11	12	11	22	12	12

TABLE M-2: MARRIAGES BY RACE OF GROOM AND BRIDE, FLORIDA, 2001

RACE OF GROOM	RACE OF BRIDE										
	TOTAL	WHITE	BLACK	AMERICAN INDIAN	CHINESE	JAPANESE	HAWAIIAN	FILIPINO	OTHER ASIAN PAC ISL	OTHER ENTRIES	UNK
TOTAL	153,298	119,591	21,683	279	324	126	30	643	1,746	8,739	137
WHITE	119,198	114,673	1,288	204	142	90	25	401	759	1,554	62
BLACK	23,110	2,588	19,970	23	2	11	2	49	70	388	7
AMERICAN INDIAN	298	242	7	36	0	2	0	2	5	4	0
CHINESE	228	32	4	0	159	1	0	2	28	1	1
JAPANESE	41	18	1	0	0	16	0	2	4	0	0
HAWAIIAN	19	15	2	0	0	0	0	2	0	0	0
FILIPINO	279	113	3	1	1	1	0	144	14	2	0
OTH ASIAN/PAC ISL	1,534	541	69	6	15	3	2	33	850	12	3
OTHER ENTRIES	8,461	1,306	336	9	5	2	1	7	15	6,778	2
UNK	130	63	3	0	0	0	0	1	1	0	62

TABLE M-3: DISSOLUTIONS* OF MARRIAGE BY DURATION OF MARRIAGE IN YEARS AND NUMBER OF MINOR CHILDREN AFFECTED, FLORIDA, 2001

DURATION IN YEARS	NUMBER OF MINOR CHILDREN AFFECTED								
	TOTAL	NONE	ONE	TWO	THREE	FOUR	FIVE	SIX+	UNK
TOTAL	85,259	46,599	17,782	12,587	3,313	627	112	62	4,177
<1	2,971	2,551	130	53	18	2	1	0	216
1	5,165	4,110	571	104	18	2	4	0	356
2	5,812	4,139	1,062	215	40	5	0	0	351
3	6,665	4,453	1,363	432	48	11	0	0	358
4	7,150	4,599	1,506	555	74	11	3	3	399
5-9	22,260	11,067	5,642	3,611	741	117	21	9	1,052
10-14	12,459	4,346	2,850	3,445	1,051	214	27	15	511
15-19	7,599	2,253	1,651	2,327	848	177	43	23	277
20-24	4,673	2,076	1,245	862	236	46	7	4	197
25-29	2,614	1,801	465	167	40	4	2	4	131
30-34	1,425	1,162	112	44	13	2	0	0	92
35-39	644	575	20	12	2	0	0	1	34
40+	619	558	6	3	1	1	0	0	50
UNK	5,203	2,909	1,159	757	183	35	4	3	153

* Includes divorces and annulments.

TABLE M-4: DISSOLUTIONS* OF MARRIAGE BY MONTH, BY COUNTY, FLORIDA, 2001

	TOTAL	JAN	FEB	MAR	APR	MAY	JUN	JUL	AUG	SEP	OCT	NOV	DEC
FLORIDA	85,259	6,102	6,996	7,635	7,385	8,131	7,105	6,949	7,622	6,468	7,922	6,501	6,443
ALACHUA	975	77	95	71	81	89	108	76	93	62	80	61	82
BAKER	138	9	11	20	12	16	8	12	12	10	7	15	6
BAY	1,034	92	63	95	72	113	112	95	86	78	80	90	58
BRADFORD	143	16	8	20	10	15	16	10	14	7	9	11	7
BREVARD	2,251	185	193	198	249	232	226	160	223	107	187	156	135
BROWARD	9,003	605	947	759	761	798	833	597	661	655	885	676	826
CALHOUN	56	4	0	13	8	6	1	3	4	6	8	2	1
CHARLOTTE	483	22	23	55	17	34	94	60	33	28	58	42	17
CITRUS	562	38	39	42	52	70	49	44	69	35	50	37	37
CLAY	774	58	73	60	73	58	68	65	47	49	79	92	52
COLLIER	1,254	101	87	105	110	121	104	103	88	127	88	112	108
COLUMBIA	455	36	14	53	34	20	35	33	36	69	42	22	61
MIAMI-DADE	13,708	833	1,029	1,320	1,250	1,420	1,077	1,063	1,326	1,076	1,282	1,051	981
DESOTO	175	12	9	9	9	21	21	13	11	13	17	19	21
DIXIE	74	5	1	7	8	6	7	9	6	8	6	5	6
DUVAL	4,534	347	356	345	406	419	379	388	411	380	448	331	324
ESCAMBIA	1,738	97	174	138	181	158	75	171	166	134	181	148	115
FLAGLER	234	21	18	17	14	16	20	17	25	16	21	29	20
FRANKLIN	49	6	3	7	3	6	5	4	10	5	0	0	0
GADSDEN	197	18	16	14	11	21	11	22	26	16	22	14	6
GILCHRIST	92	17	6	7	10	2	8	3	11	7	6	6	9
GLADES	32	1	2	3	5	2	2	0	9	2	4	0	2
GULF	75	5	7	6	9	7	3	3	3	8	9	6	9
HAMILTON	63	2	4	5	9	6	6	7	2	7	9	5	1
HARDEE	81	5	8	9	5	8	3	6	8	4	5	10	10
HENDRY	150	13	17	13	13	11	7	19	21	11	9	9	7
HERNANDO	506	36	51	39	46	41	37	42	42	52	30	60	30
HIGHLANDS	412	48	32	17	48	29	37	43	28	22	36	46	26
HILLSBOROUGH	5,472	422	407	545	502	464	488	437	560	420	551	382	294
HOLMES	86	5	9	10	1	2	7	11	6	7	13	9	6
INDIAN RIVER	611	57	46	45	40	56	67	58	48	41	55	45	53
JACKSON	246	17	25	21	20	28	22	21	20	17	15	24	16
JEFFERSON	159	12	10	21	15	18	8	13	14	8	17	21	2
LAFAYETTE	41	4	1	8	5	0	6	3	1	2	7	3	1
LAKE	1,064	88	72	108	106	96	67	84	106	94	102	60	81
LEE	2,087	115	200	193	199	186	173	165	188	140	214	144	170
LEON	1,060	46	94	108	94	117	77	97	87	89	87	72	92
LEVY	186	16	12	12	16	15	20	17	9	12	30	11	16
LIBERTY	48	3	2	6	2	3	3	3	11	6	5	1	3
MADISON	87	7	8	13	6	11	10	5	7	7	2	8	3
MANATEE	1,044	71	96	101	90	99	64	93	97	61	106	76	90
MARION	1,581	139	93	134	140	150	86	198	155	102	143	109	132
MARTIN	501	26	57	47	30	45	58	57	46	17	33	32	53
MONROE	599	48	49	51	43	59	57	54	65	32	51	50	40
NASSAU	312	25	15	34	17	11	29	26	35	30	45	18	27
OKALOOSA	1,275	86	105	122	101	118	113	104	117	68	115	112	114
OKEECHOBEE	174	12	3	11	15	19	19	23	19	16	16	6	15
ORANGE	5,295	350	452	453	452	570	347	502	438	393	473	392	473
OSCEOLA	1,439	133	126	105	81	151	154	142	103	104	114	128	98
PALM BEACH	5,474	423	449	484	442	513	477	444	486	454	469	439	394
PASCO	1,444	152	114	137	92	151	111	111	129	132	128	85	102
PINELLAS	4,404	351	359	428	373	432	392	359	360	298	375	344	333
POLK	2,534	150	201	225	145	259	202	173	277	182	264	242	214
PUTNAM	267	14	27	16	42	36	12	12	22	18	33	24	11
ST JOHNS	536	25	25	60	40	41	43	52	54	60	49	36	51
ST LUCIE	935	65	51	86	114	86	52	62	94	77	85	89	74
SANTA ROSA	572	43	45	43	60	63	38	39	55	32	50	64	40
SARASOTA	1,358	101	124	128	121	117	130	104	160	115	134	0	124
SEMINOLE	1,790	127	150	157	184	172	145	137	71	187	193	117	150
SUMTER	203	20	11	18	17	10	15	22	18	5	27	23	17
SUWANNEE	180	18	14	10	19	20	19	19	22	13	11	7	8
TAYLOR	117	15	12	10	10	8	14	8	5	10	11	8	6
UNION	55	5	0	4	4	8	5	4	5	2	8	4	6
VOLUSIA	2,329	179	212	185	195	216	186	201	218	180	206	208	143
WAKULLA	123	7	3	14	14	7	16	5	11	10	12	15	9
WALTON	216	4	28	25	26	19	14	10	19	21	9	25	16
WASHINGTON	107	12	3	10	6	10	7	6	13	12	6	13	9

* Includes divorces and annulments.