

Population

POPULATION

- Historically, midyear population projections have been used as the basis for various rate calculations. Based on the 2000 Census, population estimates for 1991 through 2000 were determined to be aberrant and have been adjusted accordingly in this Annual Report. Further, race questions on the 2000 Census permitted multiple responses rather than just a single response as in past decennial Census. As a result, shifts occurred from the traditional white-only and black-only categories to a multiple-race category. What is unknown is the degree of shifting from the traditional single-race categories to the multiple-race category. Midyear estimates for 2001 were obtained from the Florida Consensus Estimating Winter Conference prepared November, 2001 and were used for rate calculations in this Annual Report.
- In 2001, Florida's population rose to a record high of 16,410,669. This represents a 2.1 percent increase from the 2000 population of 16,075,747.
- The population has risen 26.0 percent since 1990 and 66.8 percent since 1980. It has more than doubled since 1970 and more than tripled since 1960.
- In 2001, whites accounted for 77.8 percent of the population, and nonwhites accounted for 22.2 percent of the population.
- Increases in the population occurred for all race/gender groups. Both white males and white females increased by 2.0 percent. Nonwhite males increased by 2.4 percent and nonwhite females increased by 2.5 percent.
- Floridians aged 65 years and older made up 17.5 percent of the population. Those aged 14 years and younger comprised 18.9 percent.
- The number of persons 75 years and older was 1,402,443 or 8.5 percent of the population.
- A person born in Florida in 2001 can expect to live 77.8 years. This value increased slightly from 77.7 in 2000.
- Although the life expectancy remained constant for white males and white females, it increased for nonwhite males. Life expectancy decreased for nonwhite females. However, white females still have the highest life expectancy of the four groups and nonwhite males have the lowest life expectancy.

CHART P-1: YEARS OF LIFE EXPECTANCY AT BIRTH, BY RACE AND GENDER, FOR FLORIDA RESIDENTS AND UNITED STATES TOTAL, SELECTED YEARS, 1919-1991 AND 1996-2001						
YEAR	FLORIDA					U.S.
	TOTAL	WHITE		NONWHITE		TOTAL
		MALE	FEMALE	MALE	FEMALE	
1919-1921	55.3	57.3	60.6	NA	NA	56.4
1929-1931	56.6	59.3	64.2	45.4	48.9	59.2
1939-1941	61.2	62.4	68.8	49.4	54.4	63.6
1949-1951	67.7	66.7	74.0	56.5	62.2	68.1
1959-1961	69.8	68.4	76.2	60.4	65.9	69.9
1969-1971	71.0	68.4	76.8	59.3	67.9	70.8
1979-1981	74.0	71.1	78.9	63.8	72.4	73.9
1989-1991	76.2	73.5	80.9	66.2	75.3	75.3
1996	76.8	74.1	80.8	70.5	77.4	76.1
1997	77.2	74.7	80.9	71.8	78.3	76.5
1998	77.4	74.8	80.8	72.6	78.7	76.7
1999	77.4	75.0	80.7	72.9	78.9	76.7
2000	77.7	75.0	81.1	73.9	79.6	76.9 ¹
2001	77.8	75.0	81.1	74.2	79.2	NA

¹ Preliminary Data.

GRAPH P-1: YEARS OF LIFE EXPECTANCY AT BIRTH, FLORIDA AND UNITED STATES, 1919-1991

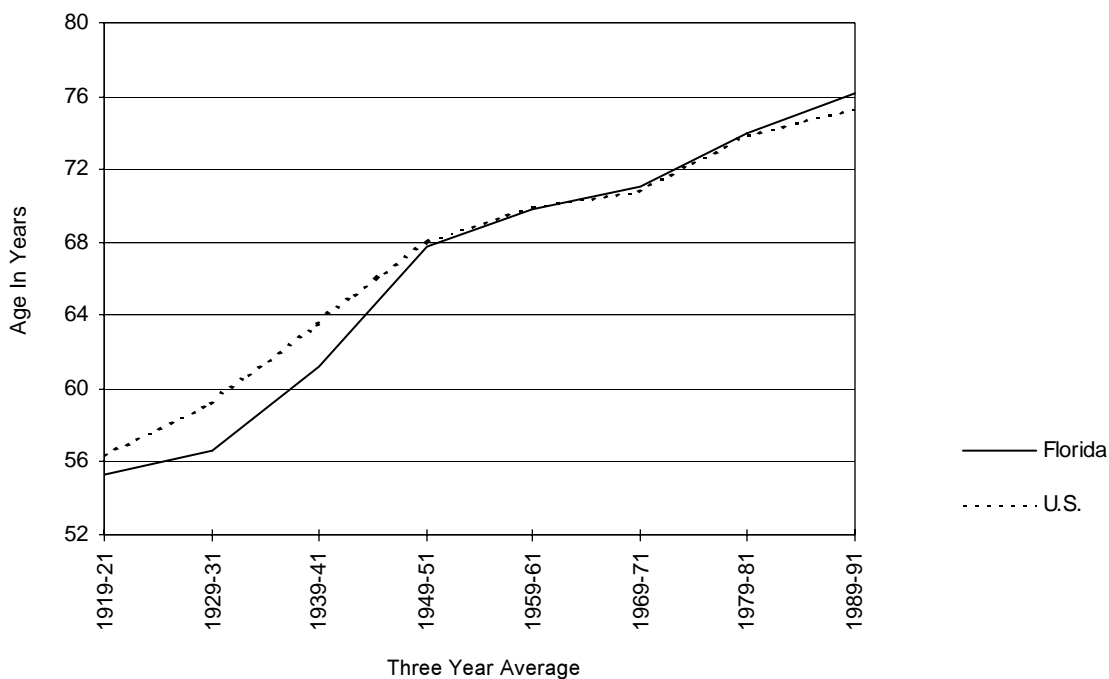


CHART P-2: NATURAL INCREASE* IN POPULATION, BY RACE, FLORIDA, 1991-2001			
YEAR	TOTAL	WHITE	NONWHITE
1991	58,729	22,760	36,079
1992	52,916	17,359	35,635
1993	47,388	12,622	34,843
1994	43,677	12,945	30,858
1995	36,916	7,616	29,199
1996	36,640	6,617	29,990
1997	38,474	6,867	31,701
1998	38,404	5,928	32,493
1999	34,841	2,026	32,824
2000	41,191	5,341	35,882
2001	38,619	2,909	35,402

* Resident Live Births minus Resident Deaths

GRAPH P-2: PERCENT DISTRIBUTION OF RACE-SPECIFIC POPULATION, BY AGE GROUPS, FLORIDA, 2001

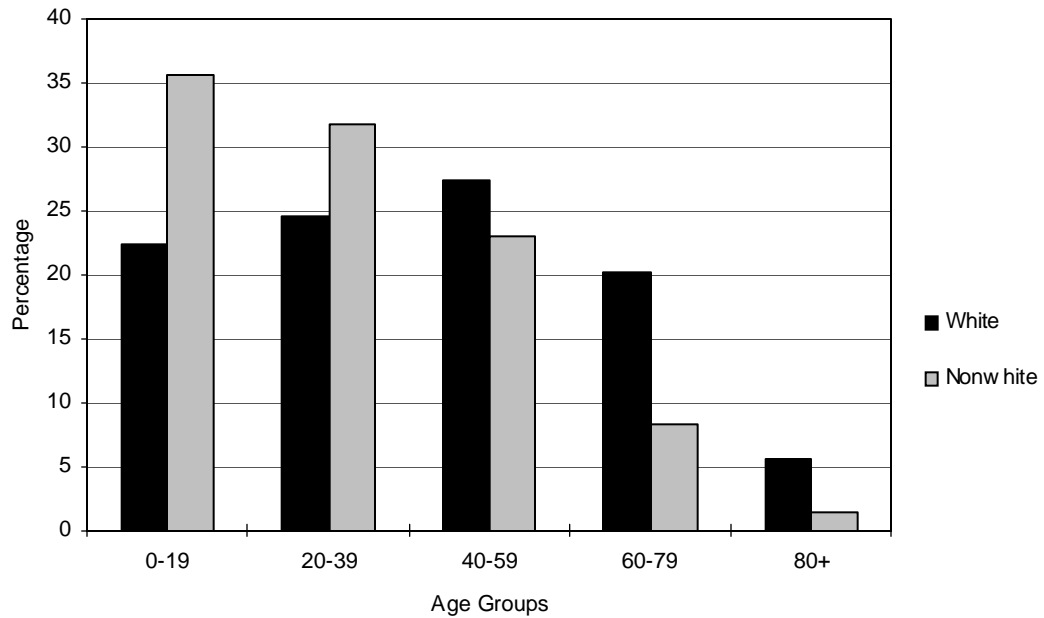


CHART P-3: RESIDENT MIDYEAR POPULATION ESTIMATES, BY AGE, RACE AND GENDER, FLORIDA, 2001

AGE GROUP	TOTAL	WHITE			NONWHITE		
		TOTAL	MALE	FEMALE	TOTAL	MALE	FEMALE
TOTAL	16,410,669	12,775,556	6,236,628	6,538,928	3,635,113	1,771,172	1,863,941
<1*	203,952	150,784	77,306	73,478	53,168	26,974	26,194
1-4**	790,052	536,268	275,438	260,830	253,784	129,099	124,685
5-9	1,024,163	697,332	358,692	338,640	326,831	166,328	160,503
10-14	1,082,814	747,142	384,799	362,343	335,672	170,454	165,218
15-19	1,051,356	724,529	373,293	351,236	326,827	166,344	160,483
20-24	969,027	670,033	344,372	325,661	298,994	151,934	147,060
25-29	986,417	703,552	358,811	344,741	282,865	140,929	141,936
30-34	1,078,879	799,622	406,078	393,544	279,257	137,415	141,842
35-39	1,243,770	951,769	480,483	471,286	292,001	141,291	150,710
40-44	1,269,816	988,220	495,031	493,189	281,596	134,305	147,291
45-49	1,143,044	906,097	447,114	458,983	236,947	111,771	125,176
50-54	1,033,605	850,120	412,953	437,167	183,485	85,398	98,087
55-59	887,187	754,308	358,241	396,067	132,879	60,967	71,912
60-64	776,892	672,574	314,837	357,737	104,318	47,834	56,484
65-69	739,935	655,864	309,225	346,639	84,071	37,619	46,452
70-74	727,317	662,366	304,911	357,455	64,951	27,262	37,689
75-79	631,923	586,657	258,333	328,324	45,266	17,886	27,380
80-84	429,830	402,022	167,401	234,621	27,808	9,953	17,855
85+	340,690	316,297	109,310	206,987	24,393	7,409	16,984

Source: Florida Consensus Estimating Conference, July 1 estimate prepared November 2001.

*Age group <1 estimated by Office of Vital Statistics using Resident Live Births minus Resident Infant Deaths.

**Age group 1-4 estimated by Office of Vital Statistics using the age group 0-4 population minus the age group <1 estimate.

CHART P-4: RESIDENT MIDYEAR POPULATION ESTIMATES, BY RACE AND GENDER,
FLORIDA, 1950, 1960, 1970, 1980 AND 1982-2001

YEAR	TOTAL	WHITE			NONWHITE		
		TOTAL	MALE	FEMALE	TOTAL	MALE	FEMALE
1950	2,821,000	2,208,200	1,093,400	1,114,800	612,800	298,100	314,700
1960	5,003,200	4,109,000	2,021,861	2,087,139	894,200	439,117	455,083
1970	6,888,178	5,806,952	2,804,954	3,001,998	1,081,226	517,784	563,442
1980	9,836,232	8,258,349	3,966,610	4,291,739	1,577,883	751,479	826,404
1982	10,442,676	8,760,311	4,202,945	4,557,366	1,682,365	800,356	882,009
1983	10,645,793	8,927,055	4,276,119	4,650,936	1,718,738	821,606	897,132
1984	11,015,061	9,232,929	4,419,755	4,813,174	1,782,132	851,799	930,333
1985	11,377,318	9,532,665	4,565,109	4,967,556	1,844,653	879,813	964,840
1986	11,744,900	10,021,877	4,833,244	5,188,633	1,723,023	820,748	902,275
1987	12,136,000	10,327,223	4,980,711	5,346,512	1,808,777	863,084	945,693
1988	12,503,800	10,614,705	5,122,774	5,491,931	1,889,095	903,966	985,129
1989	12,838,700	10,875,303	5,260,341	5,614,962	1,963,397	943,752	1,019,645
1990	13,028,835	11,041,272	5,358,161	5,683,111	1,987,563	948,980	1,038,583
1991	13,323,601	11,233,165	5,455,850	5,777,315	2,090,436	1,000,021	1,090,415
1992	13,551,275	11,338,253	5,511,339	5,826,914	2,213,022	1,061,434	1,151,588
1993	13,803,114	11,440,951	5,565,659	5,875,292	2,362,163	1,136,596	1,225,567
1994	14,120,674	11,578,884	5,636,813	5,942,071	2,541,790	1,227,045	1,314,745
1995	14,405,661	11,683,244	5,691,468	5,991,776	2,722,417	1,318,248	1,404,169
1996	14,701,520	11,791,792	5,747,949	6,043,843	2,909,728	1,412,564	1,497,164
1997	15,011,969	11,920,625	5,813,884	6,106,741	3,091,344	1,503,734	1,587,610
1998	15,310,309	12,054,854	5,881,790	6,173,064	3,255,455	1,585,809	1,669,646
1999	15,679,636	12,266,224	5,986,798	6,279,426	3,413,412	1,663,996	1,749,416
2000	16,075,747	12,527,079	6,115,174	6,411,905	3,548,668	1,730,059	1,818,609
2001*	16,410,669	12,775,556	6,236,628	6,538,928	3,635,113	1,771,172	1,863,941

*Source: Florida Consensus Estimating Conference, July 1 estimate prepared November 2001.

CHART P-5: RESIDENT MIDYEAR POPULATION ESTIMATES, BY AGE GROUPS, FLORIDA, 1950, 1960, 1970, 1980 AND 1982-2001												
YEAR	AGE GROUP											
	TOTAL	<1**	1-4***	5-14	15-24	25-34	35-44	45-54	55-64	65-74	75-84	85+
1950	2,821,000	57,300	238,500	442,700	402,100	448,500	419,600	330,100	240,400	170,200	63,137	8,463
1960	5,003,200	110,882	431,405	935,118	644,065	630,714	656,774	562,536	468,696	395,413	142,581	25,016
1970	6,888,178	107,767	398,368	1,259,283	1,091,069	778,948	757,652	771,769	718,929	658,887	290,401	55,105
1980	9,836,232	130,414	441,294	1,306,304	1,639,780	1,432,434	1,047,500	995,623	1,132,847	1,072,207	518,739	119,090
1982	10,442,676	123,519	451,362	1,282,392	1,758,238	1,588,716	1,104,774	1,034,405	1,225,249	1,166,196	572,063	135,761
1983	10,645,793	125,505	444,213	1,254,091	1,801,284	1,654,264	1,122,539	1,043,004	1,260,575	1,203,093	594,277	142,948
1984	11,015,061	126,765	445,800	1,242,502	1,872,919	1,747,493	1,157,622	1,067,260	1,316,196	1,259,531	626,362	152,611
1985	11,377,318	127,700	446,224	1,226,464	1,943,970	1,841,988	1,191,712	1,090,047	1,371,768	1,316,143	658,812	162,490
1986	11,744,900	163,542	609,745	1,401,745	1,672,982	1,783,791	1,476,819	1,125,387	1,296,307	1,311,901	727,426	175,254
1987	12,136,000	168,667	651,665	1,464,236	1,687,164	1,857,724	1,578,774	1,190,106	1,328,075	1,311,607	722,012	175,970
1988	12,503,800	177,691	679,235	1,519,503	1,692,733	1,933,717	1,673,519	1,245,086	1,353,724	1,294,476	745,018	189,099
1989	12,838,700	185,045	698,397	1,570,372	1,695,777	2,002,372	1,761,740	1,295,467	1,370,268	1,338,929	731,277	189,056
1990	13,028,835	197,109	684,333	1,569,198	1,686,731	2,126,572	1,826,084	1,295,736	1,270,382	1,372,432	792,492	207,766
1991	13,323,601	197,613	707,121	1,620,217	1,697,664	2,147,353	1,907,965	1,347,846	1,276,049	1,390,555	814,565	216,653
1992	13,551,275	189,751	725,499	1,668,671	1,703,579	2,149,338	1,979,576	1,401,722	1,277,986	1,397,624	831,864	225,665
1993	13,803,114	190,802	730,290	1,723,407	1,715,962	2,148,508	2,052,870	1,465,276	1,285,818	1,403,702	850,443	236,036
1994	14,120,674	188,881	738,297	1,788,317	1,740,340	2,151,886	2,133,156	1,542,533	1,304,299	1,412,283	872,394	248,288
1995	14,405,661	187,133	741,078	1,848,159	1,763,627	2,144,345	2,204,473	1,621,488	1,325,433	1,416,139	893,149	260,637
1996	14,701,520	187,933	741,204	1,906,866	1,792,473	2,134,072	2,272,380	1,706,066	1,354,042	1,418,476	914,575	273,433
1997	15,011,969	190,946	740,783	1,962,205	1,826,090	2,121,383	2,335,606	1,795,169	1,392,121	1,422,460	938,453	286,753
1998	15,310,309	194,149	741,855	2,008,338	1,861,926	2,103,103	2,388,407	1,884,630	1,438,543	1,426,152	963,345	299,861
1999	15,679,636	195,364	753,784	2,054,209	1,911,069	2,092,283	2,442,450	1,983,298	1,501,892	1,437,224	994,088	313,975
2000	16,075,747	202,609	767,566	2,091,131	1,967,849	2,083,122	2,489,105	2,084,698	1,579,797	1,452,901	1,028,779	328,190
2001*	16,410,669	203,952	790,052	2,106,977	2,020,383	2,065,296	2,513,586	2,176,649	1,664,079	1,467,252	1,061,753	340,690

*Source: Florida Consensus Estimating Conference, July 1 estimate prepared November 2001.

**Age group <1 estimated by Office of Vital Statistics using Resident Live Births minus Resident Infant Deaths.

***Age group 1-4 estimated by Office of Vital Statistics using the age group 0-4 population minus the age group <1 estimate.

TABLE P-1: RESIDENT MIDYEAR POPULATION ESTIMATES, BY RACE, BY COUNTY, FLORIDA, 2001

	TOTAL	WHITE	NONWHITE
FLORIDA	16,410,669	12,775,556	3,635,113
ALACHUA	223,910	164,216	59,694
BAKER	22,602	18,991	3,611
BAY	150,832	126,737	24,095
BRADFORD	26,084	19,878	6,206
BREVARD	487,261	422,346	64,915
BROWARD	1,656,387	1,161,374	495,013
CALHOUN	13,087	10,430	2,657
CHARLOTTE	145,306	134,246	11,060
CITRUS	121,073	115,039	6,034
CLAY	143,318	125,154	18,164
COLLIER	267,473	230,550	36,923
COLUMBIA	57,232	45,619	11,613
MIAMI-DADE	2,293,222	1,593,320	699,902
DESOTO	32,876	24,013	8,863
DIXIE	14,118	12,521	1,597
DUVAL	797,143	521,946	275,197
ESCAMBIA	297,358	215,091	82,267
FLAGLER	53,772	46,828	6,944
FRANKLIN	11,225	9,085	2,140
GADSDEN	45,373	17,660	27,713
GILCHRIST	14,762	13,336	1,426
GLADES	10,632	8,132	2,500
GULF	15,249	12,035	3,214
HAMILTON	13,783	8,130	5,653
HARDEE	26,934	19,010	7,924
HENDRY	36,371	24,035	12,336
HERNANDO	133,300	123,667	9,633
HIGHLANDS	88,455	73,767	14,688
HILLSBOROUGH	1,032,784	775,554	257,230
HOLMES	18,748	16,791	1,957
INDIAN RIVER	116,309	101,650	14,659
JACKSON	47,634	33,477	14,157
JEFFERSON	13,138	7,876	5,262
LAFAYETTE	7,045	5,537	1,508
LAKE	222,453	194,520	27,933
LEE	458,098	401,352	56,746
LEON	245,334	162,826	82,508
LEVY	35,284	30,326	4,958
LIBERTY	7,160	5,423	1,737
MADISON	18,898	10,851	8,047
MANATEE	272,319	234,823	37,496
MARION	265,587	223,410	42,177
MARTIN	129,444	116,133	13,311
MONROE	80,844	73,217	7,627
NASSAU	59,789	53,882	5,907
OKALOOSA	174,125	144,967	29,158
OKEECHOBEE	36,207	28,656	7,551
ORANGE	936,781	639,144	297,637
OSCEOLA	181,144	139,845	41,299
PALM BEACH	1,159,986	915,475	244,511
PASCO	354,041	331,299	22,742
PINELLAS	931,220	798,552	132,668
POLK	498,772	396,806	101,966
PUTNAM	70,934	55,394	15,540
ST JOHNS	129,760	118,046	11,714
ST LUCIE	199,570	158,291	41,279
SANTA ROSA	122,266	110,774	11,492
SARASOTA	335,741	310,701	25,040
SEMINOLE	380,812	313,210	67,602
SUMTER	57,648	47,412	10,236
SUWANNEE	35,899	30,440	5,459
TAYLOR	19,610	15,126	4,484
UNION	13,560	9,915	3,645
VOLUSIA	454,037	390,429	63,608
WAKULLA	24,018	20,626	3,392
WALTON	42,974	38,075	4,899
WASHINGTON	21,558	17,569	3,989