

Fetal and Infant Deaths

FETAL AND INFANT DEATHS

- Both the number of resident fetal deaths (20 or more weeks gestation) and the ratio of resident fetal deaths to resident live births have decreased from last year.
- Resident fetal deaths among both whites and nonwhites decreased by 5.0 percent from 2001 to 2002.
- Of the 1,591 fetal deaths, 17.6 percent occurred to mothers residing in Miami-Dade County.
- Nearly one of every five resident fetal deaths occurred to a mother of Hispanic origin.
- About one of every fifteen fetal deaths occurred to a mother who was 18 years or under.
- In 2002 both the overall number and rate of resident neonatal deaths (under 28 days) increased. The number increased for whites but decreased slightly for nonwhites.
- The neonatal death rate increased from 4.5 per 1,000 live births in 2000 to 4.8 in 2001, then increased to 5.0 in 2002. This represents less than half the rate of 1980 (9.7).
- The nonwhite neonatal death rate (8.2) is more than twice the white rate (3.9).
- There was an overall increase in infant deaths (under one year). The resident infant mortality rate increased slightly from 7.2 deaths per 1,000 live births in 1998 to a rate of 7.3 in 1999, decreased to 7.0 in 2000, increased back to 7.3 in 2001, and then increased again to 7.5 in 2002 .
- The resident infant mortality rate has dropped 21.9 percent since 1990 and is about half the rate of 1980.
- The resident infant mortality rate for nonwhites (12.4) is more than double the infant mortality rate for whites (5.9).
- Resident infants of Hispanic origin accounted for 15.1 percent of all infant deaths.
- Of the total resident deaths occurring within the first year of life, 66.7 percent were less than 28 days old. Furthermore, 39.6 percent were less than one day old.
- The leading causes of resident infant deaths in 2002 were Perinatal Conditions, Congenital Anomalies, and Sudden Infant Death Syndrome. These causes accounted for 75.2 percent of all resident infant deaths.

CHART F-1: RESIDENT FETAL DEATHS AND RATIOS PER 1,000 LIVE BIRTHS, BY RACE OF MOTHER, FLORIDA AND UNITED STATES TOTAL, CENSUS YEARS 1920-1990 AND 1992-2002							
YEAR	NUMBER OF FETAL DEATHS - FL			RATIOS - FL			RATIO - U.S.
	TOTAL	WHITE	NON- WHITE	TOTAL	WHITE	NON- WHITE	TOTAL
1920 ¹	1,287	595	692	65.9	43.9	115.4	NA
1930 ¹	1,754	746	1,008	65.0	40.1	120.1	NA
1940	1,415	683	732	42.0	28.7	74.0	NA
1950	1,443	757	686	22.4	16.6	36.7	18.8
1960	1,846	1,043	803	16.0	12.4	25.7	15.8
1970	1,701	1,064	637	14.8	12.2	22.6	14.0
1980	1,355	847	491	10.3	8.7	14.3	9.1
1990	1,811	1,071	720	9.1	7.2	14.6	7.5
1992	1,498	920	570	7.8	6.4	11.8	7.4
1993	1,447	858	580	7.5	6.0	12.0	7.1
1994	1,519	909	599	8.0	6.4	12.7	7.0
1995	1,531	937	581	8.1	6.6	12.5	7.0
1996	1,478	885	577	7.8	6.2	12.3	6.9
1997	1,523	910	600	7.9	6.3	12.4	6.8
1998	1,520	912	594	7.8	6.3	12.0	6.7
1999	1,579	953	619	8.0	6.5	12.3	NA
2000	1,675	954	704	8.2	6.4	13.1	NA
2001	1,668	972	678	8.1	6.4	12.6	NA
2002	1,591	920	657	7.7	6.0	12.4	NA

¹ Only recorded data are available.

GRAPH F-1: RESIDENT FETAL DEATH RATIOS PER 1,000 LIVE BIRTHS, BY RACE OF MOTHER, FLORIDA AND UNITED STATES TOTAL, 1992-2002

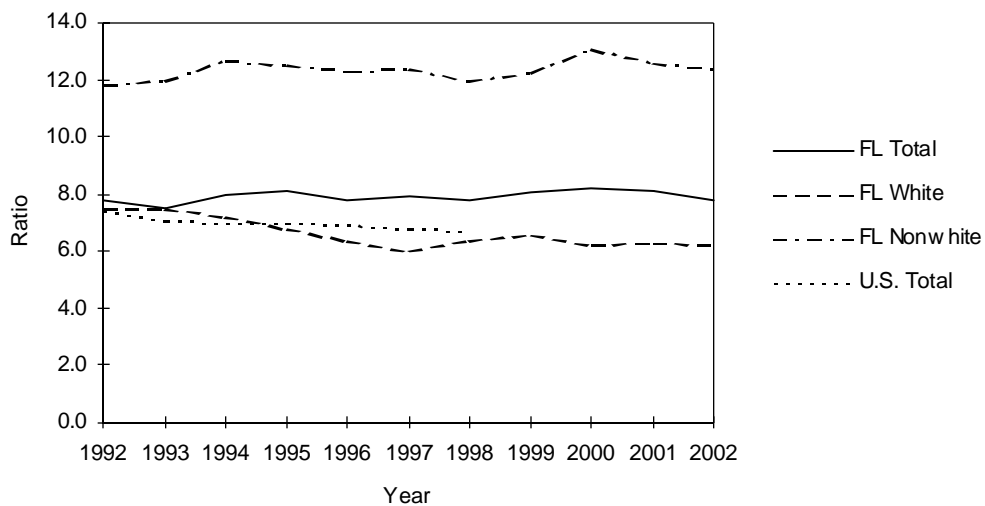


CHART F-2: RESIDENT NEONATAL DEATHS AND RATES PER 1,000 LIVE BIRTHS, BY RACE, FLORIDA AND UNITED STATES TOTAL, CENSUS YEARS 1920-1990 AND 1992-2002

YEAR	NUMBER OF NEONATAL DEATHS - FL			RATES ¹ - FL			RATE - U.S.
	TOTAL	WHITE	NON-WHITE	TOTAL	WHITE	NON-WHITE	TOTAL
1920	NA	NA	NA	NA	NA	NA	NA
1930	NA	NA	NA	NA	NA	NA	NA
1940	1,142	662	480	33.9	27.8	48.5	28.8
1950	1,551	975	576	24.1	21.3	30.8	20.5
1960	2,404	1,531	873	20.8	18.1	28.0	18.7
1970	1,848	1,198	648	16.1	13.8	23.0	15.1
1980	1,282	791	490	9.7	8.1	14.2	8.5
1990	1,227	742	484	6.2	5.0	9.8	5.8
1992	1,120	666	452	5.8	4.7	9.4	5.4
1993	1,071	609	460	5.6	4.2	9.6	5.3
1994	1,027	624	402	5.4	4.4	8.5	5.1
1995	874	523	351	4.6	3.7	7.5	4.9
1996	895	517	377	4.7	3.6	8.0	4.8
1997	889	518	370	4.6	3.6	7.6	4.8
1998	933	559	371	4.8	3.8	7.5	4.8
1999	962	559	401	4.9	3.8	7.9	4.7
2000	925	526	397	4.5	3.5	7.4	4.6 ²
2001	980	539	440	4.8	3.6	8.2	NA
2002	1,032	596	436	5.0	3.9	8.2	NA

¹Rates based on neonatal deaths by race of decedent, live births by race of mother.

²Preliminary data.

GRAPH F-2: RESIDENT NEONATAL DEATH RATES¹ PER 1,000 LIVE BIRTHS, BY RACE, FLORIDA AND UNITED STATES TOTAL, 1992-2002

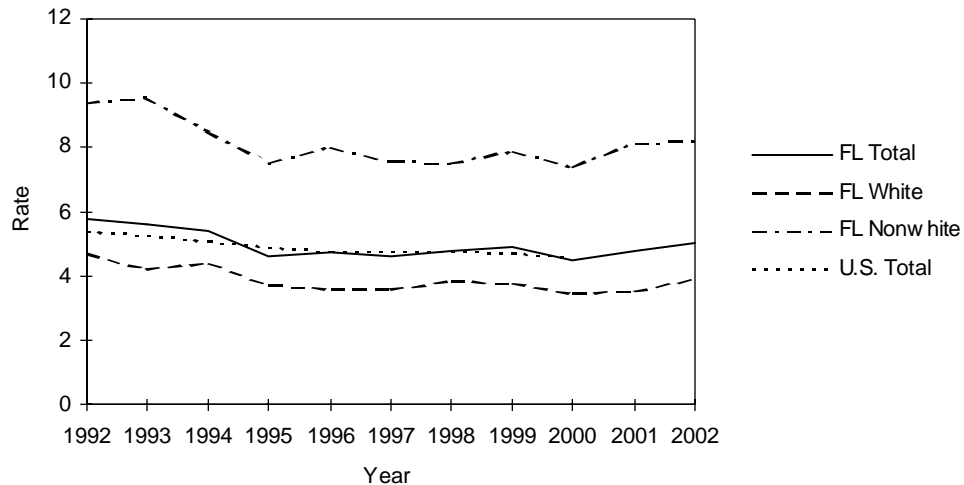


CHART F-3: RESIDENT INFANT DEATHS AND RATES PER 1,000 LIVE BIRTHS, BY RACE, FLORIDA AND UNITED STATES TOTAL, CENSUS YEARS 1920-1990 AND 1992-2002							
YEAR	NUMBER OF INFANT DEATHS - FL			RATES ² - FL			RATE - U.S.
	TOTAL	WHITE	NON-WHITE	TOTAL	WHITE	NON-WHITE	TOTAL
1920 ¹	1,835	1,031	804	93.9	76.1	134.0	NA
1930 ¹	1,729	928	801	64.1	49.9	95.4	NA
1940	1,812	1,052	760	53.8	44.2	76.8	47.0
1950	2,078	1,225	853	32.3	26.8	45.7	29.2
1960	3,431	1,992	1,439	29.7	23.6	46.1	26.0
1970	2,466	1,537	927	21.4	17.7	32.9	20.0
1980	1,915	1,135	779	14.5	11.7	22.7	12.6
1990	1,909	1,121	786	9.6	7.5	16.0	9.2
1992	1,685	987	695	8.8	6.9	14.4	8.5
1993	1,654	951	699	8.6	6.6	14.5	8.4
1994	1,540	927	611	8.1	6.5	12.9	8.0
1995	1,402	840	562	7.4	5.9	12.1	7.6
1996	1,405	821	583	7.4	5.8	12.4	7.3
1997	1,358	805	552	7.1	5.6	11.4	7.2
1998	1,415	850	562	7.2	5.8	11.4	7.2
1999	1,442	815	625	7.3	5.6	12.4	7.1
2000	1,423	810	611	7.0	5.4	11.4	6.7 ³
2001	1,495	839	655	7.3	5.5	12.3	6.9 ³
2002	1,548	892	656	7.5	5.9	12.4	6.9 ³

¹ Only recorded data are available.

² Rates based on infant deaths by race of decedent, live births by race of mother.

³ Provisional data.

GRAPH F-3: RESIDENT INFANT DEATH RATES² PER 1,000 LIVE BIRTHS, BY RACE, FLORIDA AND UNITED STATES TOTAL, 1992-2002

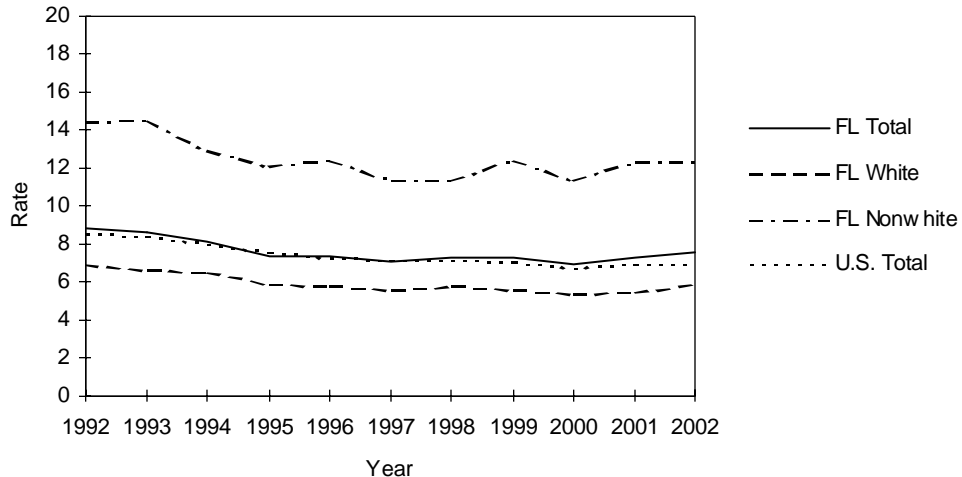


TABLE F-1: RESIDENT AND RECORDED FETAL DEATHS (OF 20 OR MORE WEEKS GESTATION) AND RATIOS PER 1,000 LIVE BIRTHS, BY RACE OF MOTHER, BY COUNTY, FLORIDA, 2002

	RESIDENT FETAL DEATHS						RATIOS		
	NUMBER						TOTAL	WHITE	NONWHITE
	TOTAL	WHITE	NONWHITE			UNK			
		TOTAL	BLACK	OTHER	UNK				
FLORIDA	1,591	920	657	616	41	14	7.7	6.0	12.4
ALACHUA	15	10	5	3	2	0	6.2	6.6	5.6
BAKER	3	2	1	1	0	0	8.5	6.4	22.7
BAY	14	8	6	4	2	0	7.0	5.0	16.4
BRADFORD	3	1	2	2	0	0	10.0	4.3	31.3
BREVARD	24	20	4	3	1	0	5.0	5.1	4.7
BROWARD	217	88	127	123	4	2	9.8	6.4	15.0
CALHOUN	1	1	0	0	0	0	6.2	7.5	0.0
CHARLOTTE	3	3	0	0	0	0	3.0	3.3	0.0
CITRUS	3	3	0	0	0	0	3.6	3.8	0.0
CLAY	10	7	3	2	1	0	5.4	4.3	12.4
COLLIER	19	12	7	7	0	0	5.3	3.8	15.1
COLUMBIA	7	6	1	1	0	0	8.6	9.2	6.1
MIAMI-DADE	280	145	133	131	2	2	8.7	6.4	14.1
DESOTO	4	4	0	0	0	0	8.9	10.1	0.0
DIXIE	1	1	0	0	0	0	6.3	6.8	0.0
DUVAL	96	46	50	48	2	0	8.0	6.3	10.7
ESCAMBIA	22	10	12	11	1	0	5.7	4.0	8.8
FLAGLER	3	1	2	2	0	0	5.9	2.3	24.7
FRANKLIN	1	1	0	0	0	0	10.0	11.6	0.0
GADSDEN	11	2	9	8	1	0	15.8	8.7	19.4
GILCHRIST	3	3	0	0	0	0	15.8	16.5	0.0
GLADES	0	0	0	0	0	0	0.0	0.0	0.0
GULF	0	0	0	0	0	0	0.0	0.0	0.0
HAMILTON	2	1	1	1	0	0	11.0	8.1	17.2
HARDEE	4	4	0	0	0	0	9.1	9.8	0.0
HENDRY	3	2	1	1	0	0	4.6	3.6	9.1
HERNANDO	5	5	0	0	0	0	4.1	4.5	0.0
HIGHLANDS	4	4	0	0	0	0	4.4	5.4	0.0
HILLSBOROUGH	113	69	42	36	6	2	7.5	6.0	12.1
HOLMES	1	1	0	0	0	0	4.6	4.9	0.0
INDIAN RIVER	3	0	3	3	0	0	2.8	0.0	15.5
JACKSON	4	3	1	1	0	0	7.8	7.8	7.6
JEFFERSON	1	1	0	0	0	0	6.1	11.5	0.0
LAFAYETTE	0	0	0	0	0	0	0.0	0.0	0.0
LAKE	18	14	4	3	1	0	6.9	6.4	9.9
LEE	30	21	8	7	1	1	5.6	4.6	9.9
LEON	20	9	11	11	0	0	6.8	5.4	8.8
LEVY	1	0	1	1	0	0	2.4	0.0	16.4
LIBERTY	1	0	1	1	0	0	12.3	0.0	200.0
MADISON	3	0	3	3	0	0	13.5	0.0	25.2
MANATEE	19	14	5	4	1	0	5.6	5.0	8.7
MARION	15	11	4	4	0	0	5.2	4.8	6.4
MARTIN	1	1	0	0	0	0	0.8	1.1	0.0
MONROE	5	4	1	1	0	0	6.8	6.1	12.7
NASSAU	7	5	2	2	0	0	10.2	8.1	29.9
OKALOOSA	15	9	6	4	2	0	6.1	4.5	13.5
OKEECHOBEE	5	5	0	0	0	0	9.2	10.3	0.0
ORANGE	108	61	47	44	3	0	7.6	6.3	10.6
OSCEOLA	19	17	2	1	1	0	6.6	6.6	6.1
PALM BEACH	120	60	58	54	4	2	8.6	6.2	13.9
PASCO	34	30	4	3	1	0	8.8	8.5	14.5
PINELLAS	80	50	26	23	3	4	8.9	7.1	14.0
POLK	48	29	19	19	0	0	7.0	5.4	12.9
PUTNAM	11	10	1	1	0	0	12.3	15.2	4.3
ST JOHNS	7	6	1	1	0	0	5.0	4.9	5.8
ST LUCIE	19	6	13	13	0	0	8.3	3.7	19.6
SANTA ROSA	12	11	1	0	1	0	7.7	7.7	7.8
SARASOTA	17	15	2	2	0	0	6.0	6.0	5.8
SEMINOLE	42	31	11	11	0	0	9.3	8.4	13.1
SUMTER	3	2	1	1	0	0	6.1	5.2	9.3
SUWANNEE	3	0	2	2	0	1	6.6	0.0	26.3
TAYLOR	1	1	0	0	0	0	4.4	5.6	0.0
UNION	3	2	1	1	0	0	23.3	18.3	50.0
VOLUSIA	38	27	11	10	1	0	8.4	7.2	14.3
WAKULLA	1	0	1	1	0	0	3.7	0.0	34.5
WALTON	3	3	0	0	0	0	5.9	6.7	0.0
WASHINGTON	2	2	0	0	0	0	10.4	13.5	0.0

TABLE F-1 (Cont.): RESIDENT AND RECORDED FETAL DEATHS (OF 20 OR MORE WEEKS GESTATION) AND RATIOS PER 1,000 LIVE BIRTHS, BY RACE OF MOTHER, BY COUNTY, FLORIDA, 2002

	RECORDED FETAL DEATHS						RATIOS		
	TOTAL	WHITE	NONWHITE			UNK	TOTAL	WHITE	NONWHITE
			TOTAL	BLACK	OTHER				
FLORIDA	1,619	943	662	621	41	14	7.9	6.2	12.5
ALACHUA	42	29	13	11	2	0	8.1	7.5	9.6
BAKER	0	0	0	0	0	0	0.0	0.0	---
BAY	17	10	7	5	2	0	6.9	5.0	16.0
BRADFORD	0	0	0	0	0	0	0.0	0.0	0.0
BREVARD	23	19	4	3	1	0	4.9	4.9	4.9
BROWARD	202	75	126	119	7	1	9.5	5.9	14.6
CALHOUN	1	0	1	1	0	0	1000.0	---	1000.0
CHARLOTTE	6	6	0	0	0	0	5.4	5.9	0.0
CITRUS	2	2	0	0	0	0	2.6	2.8	0.0
CLAY	15	12	3	2	1	0	8.6	8.3	10.3
COLLIER	18	13	5	5	0	0	5.1	4.2	11.5
COLUMBIA	3	1	2	2	0	0	4.2	1.9	9.8
MIAMI-DADE	299	160	136	134	2	3	9.3	7.0	14.9
DESOTO	6	6	0	0	0	0	9.7	10.7	0.0
DIXIE	0	0	0	0	0	0	0.0	0.0	---
DUVAL	103	50	53	51	2	0	7.5	5.6	11.1
ESCAMBIA	30	18	12	11	1	0	5.8	4.9	8.0
FLAGLER	0	0	0	0	0	0	0.0	0.0	---
FRANKLIN	0	0	0	0	0	0	---	---	---
GADSDEN	0	0	0	0	0	0	0.0	0.0	0.0
GILCHRIST	0	0	0	0	0	0	---	---	---
GLADES	0	0	0	0	0	0	0.0	0.0	---
GULF	0	0	0	0	0	0	---	---	---
HAMILTON	0	0	0	0	0	0	0.0	0.0	---
HARDEE	1	1	0	0	0	0	1000.0	1000.0	---
HENDRY	1	0	1	1	0	0	1000.0	---	---
HERNANDO	7	7	0	0	0	0	5.4	5.9	0.0
HIGHLANDS	5	4	1	1	0	0	3.8	3.7	4.4
HILLSBOROUGH	129	82	45	38	7	2	7.6	6.3	12.1
HOLMES	0	0	0	0	0	0	0.0	---	0.0
INDIAN RIVER	4	1	3	3	0	0	3.9	1.2	16.9
JACKSON	4	3	1	1	0	0	8.5	8.6	8.2
JEFFERSON	0	0	0	0	0	0	---	---	---
LAFAYETTE	1	0	0	0	0	1	---	---	---
LAKE	15	11	4	4	0	0	7.7	7.1	10.0
LEE	34	23	10	9	1	1	5.6	4.4	11.5
LEON	40	15	25	24	1	0	8.4	5.5	12.2
LEVY	0	0	0	0	0	0	---	---	---
LIBERTY	0	0	0	0	0	0	0.0	0.0	---
MADISON	0	0	0	0	0	0	0.0	---	0.0
MANATEE	12	8	4	3	1	0	4.5	3.6	9.0
MARION	11	9	2	2	0	0	4.5	4.6	3.9
MARTIN	4	4	0	0	0	0	2.4	2.9	0.0
MONROE	2	2	0	0	0	0	3.9	4.5	0.0
NASSAU	6	5	1	1	0	0	15.8	15.5	17.9
OKALOOSA	15	9	6	4	2	0	5.6	4.0	13.3
OKEECHOBEE	0	0	0	0	0	0	0.0	0.0	0.0
ORANGE	154	103	51	47	4	0	9.0	8.3	10.8
OSCEOLA	18	15	3	2	1	0	5.6	5.3	7.4
PALM BEACH	131	67	62	61	1	2	8.4	6.0	13.8
PASCO	9	8	1	1	0	0	5.5	5.5	6.5
PINELLAS	99	67	28	25	3	4	9.8	8.2	14.6
POLK	39	25	14	14	0	0	6.7	5.5	11.2
PUTNAM	4	3	1	1	0	0	7.6	8.7	5.6
ST JOHNS	6	5	1	1	0	0	6.3	6.2	6.8
ST LUCIE	16	4	12	12	0	0	9.3	3.5	20.2
SANTA ROSA	7	6	1	0	1	0	12.6	12.0	18.5
SARASOTA	23	19	4	4	0	0	6.7	6.4	8.5
SEMINOLE	25	17	8	7	1	0	6.8	5.8	10.8
SUMTER	0	0	0	0	0	0	0.0	0.0	---
SUWANNEE	0	0	0	0	0	0	0.0	0.0	0.0
TAYLOR	0	0	0	0	0	0	0.0	0.0	0.0
UNION	0	0	0	0	0	0	---	---	---
VOLUSIA	30	19	11	11	0	0	7.6	6.0	15.0
WAKULLA	0	0	0	0	0	0	0.0	0.0	---
WALTON	0	0	0	0	0	0	0.0	0.0	---
WASHINGTON	0	0	0	0	0	0	---	---	---

TABLE F-2: RESIDENT FETAL DEATHS BY HISPANIC OR HAITIAN ORIGIN OF MOTHER, BY COUNTY, FLORIDA, 2002

	HISPANIC ORIGIN									
	TOTAL	TOTAL HISPANIC	MEXICAN	PUERTO RICAN	CUBAN	CENTRAL/SOUTH AMERICAN	OTHER/UNK HISPANIC	HAITIAN	NON-HISPANIC/HAITIAN	UNK
FLORIDA	1,591	299	72	70	52	84	21	98	1,067	127
ALACHUA	15	0	0	0	0	0	0	0	15	0
BAKER	3	0	0	0	0	0	0	0	3	0
BAY	14	1	0	0	0	0	1	0	13	0
BRADFORD	3	0	0	0	0	0	0	0	3	0
BREVARD	24	0	0	0	0	0	0	0	24	0
BROWARD	217	51	5	11	9	19	7	31	127	8
CALHOUN	1	1	1	0	0	0	0	0	0	0
CHARLOTTE	3	1	0	0	0	1	0	0	2	0
CITRUS	3	0	0	0	0	0	0	0	3	0
CLAY	10	0	0	0	0	0	0	0	10	0
COLLIER	19	8	5	0	1	2	0	7	4	0
COLUMBIA	7	0	0	0	0	0	0	0	7	0
MIAMI-DADE	280	83	4	13	34	31	1	27	73	97
DESOTO	4	2	2	0	0	0	0	0	2	0
DIXIE	1	0	0	0	0	0	0	0	1	0
DUVAL	96	6	1	3	1	0	1	0	90	0
ESCAMBIA	22	0	0	0	0	0	0	0	22	0
FLAGLER	3	0	0	0	0	0	0	0	3	0
FRANKLIN	1	0	0	0	0	0	0	0	1	0
GADSDEN	11	1	1	0	0	0	0	0	10	0
GILCHRIST	3	0	0	0	0	0	0	0	3	0
GLADES	0	0	0	0	0	0	0	0	0	0
GULF	0	0	0	0	0	0	0	0	0	0
HAMILTON	2	0	0	0	0	0	0	0	2	0
HARDEE	4	3	3	0	0	0	0	0	1	0
HENDRY	3	1	1	0	0	0	0	0	2	0
HERNANDO	5	0	0	0	0	0	0	0	5	0
HIGHLANDS	4	1	0	1	0	0	0	0	3	0
HILLSBOROUGH	113	25	7	5	3	5	5	2	81	5
HOLMES	1	0	0	0	0	0	0	0	1	0
INDIAN RIVER	3	0	0	0	0	0	0	0	3	0
JACKSON	4	0	0	0	0	0	0	0	4	0
JEFFERSON	1	0	0	0	0	0	0	0	1	0
LAFAYETTE	0	0	0	0	0	0	0	0	0	0
LAKE	18	3	1	0	0	2	0	0	15	0
LEE	30	7	3	3	0	1	0	2	19	2
LEON	20	1	0	1	0	0	0	0	19	0
LEVY	1	0	0	0	0	0	0	0	1	0
LIBERTY	1	0	0	0	0	0	0	0	1	0
MADISON	3	0	0	0	0	0	0	0	3	0
MANATEE	19	1	1	0	0	0	0	1	16	1
MARION	15	1	0	0	0	1	0	0	14	0
MARTIN	1	1	0	0	0	1	0	0	0	0
MONROE	5	2	1	0	0	1	0	0	2	1
NASSAU	7	1	0	1	0	0	0	0	6	0
OKALOOSA	15	0	0	0	0	0	0	0	14	1
OKEECHOBEE	5	1	1	0	0	0	0	0	4	0
ORANGE	108	27	4	14	0	9	0	5	75	1
OSCEOLA	19	8	2	3	1	2	0	0	11	0
PALM BEACH	120	26	10	5	2	8	1	18	70	6
PASCO	34	3	2	1	0	0	0	0	31	0
PINELLAS	80	9	2	3	0	0	4	1	66	4
POLK	48	11	9	2	0	0	0	2	35	0
PUTNAM	11	0	0	0	0	0	0	0	11	0
ST JOHNS	7	0	0	0	0	0	0	0	7	0
ST LUCIE	19	2	1	0	0	0	1	2	15	0
SANTA ROSA	12	0	0	0	0	0	0	0	12	0
SARASOTA	17	1	0	0	0	1	0	0	16	0
SEMINOLE	42	5	2	2	1	0	0	0	37	0
SUMTER	3	1	1	0	0	0	0	0	2	0
SUWANNEE	3	0	0	0	0	0	0	0	2	1
TAYLOR	1	0	0	0	0	0	0	0	1	0
UNION	3	0	0	0	0	0	0	0	3	0
VOLUSIA	38	2	0	2	0	0	0	0	36	0
WAKULLA	1	0	0	0	0	0	0	0	1	0
WALTON	3	2	2	0	0	0	0	0	1	0
WASHINGTON	2	0	0	0	0	0	0	0	2	0

TABLE F-3: RESIDENT FETAL DEATHS BY AGE OF MOTHER, BY COUNTY, FLORIDA, 2002

	TOTAL	AGE OF MOTHER													
		<13	13	14	15	16	17	18	19	20-24	25-29	30-34	35-44	45+	UNK
FLORIDA	1,591	1	2	6	6	18	37	40	64	360	369	294	285	4	105
ALACHUA	15	0	0	0	0	0	0	0	0	3	5	4	3	0	0
BAKER	3	0	0	0	0	0	0	0	0	3	0	0	0	0	0
BAY	14	0	0	0	0	0	0	0	3	3	3	3	2	0	0
BRADFORD	3	0	0	0	0	0	0	1	0	1	1	0	0	0	0
BREVARD	24	0	0	0	0	0	0	1	2	7	5	5	4	0	0
BROWARD	217	0	0	1	1	2	1	3	7	39	61	47	47	0	8
CALHOUN	1	0	0	0	0	0	0	0	0	0	1	0	0	0	0
CHARLOTTE	3	0	0	0	0	0	0	0	0	0	1	1	1	0	0
CITRUS	3	0	0	0	0	0	0	0	0	0	1	1	1	0	0
CLAY	10	0	0	0	0	0	0	0	3	1	4	1	1	0	0
COLLIER	19	0	0	0	0	1	3	1	0	3	5	2	4	0	0
COLUMBIA	7	0	0	0	0	1	0	0	0	4	1	1	0	0	0
MIAMI-DADE	280	0	0	1	1	0	2	2	7	45	55	40	49	1	77
DESOTO	4	0	0	1	0	0	1	0	0	1	1	0	0	0	0
DIXIE	1	0	0	0	0	0	0	0	0	0	1	0	0	0	0
DUVAL	96	1	0	0	0	1	2	5	4	29	18	20	13	1	2
ESCAMBIA	22	0	0	0	0	1	0	2	0	8	4	4	3	0	0
FLAGLER	3	0	0	0	0	0	0	1	0	1	1	0	0	0	0
FRANKLIN	1	0	0	0	0	0	0	0	0	0	0	1	0	0	0
GADSDEN	11	0	0	0	0	0	1	0	1	4	5	0	0	0	0
GILCHRIST	3	0	0	0	0	0	0	0	0	1	1	0	1	0	0
GLADES	0	0	0	0	0	0	0	0	0	0	0	0	0	0	0
GULF	0	0	0	0	0	0	0	0	0	0	0	0	0	0	0
HAMILTON	2	0	0	0	0	0	0	0	0	2	0	0	0	0	0
HARDEE	4	0	0	0	0	0	0	0	1	0	1	1	0	0	1
HENDRY	3	0	0	0	0	0	0	0	0	1	0	1	1	0	0
HERNANDO	5	0	0	0	0	0	0	0	0	2	0	2	1	0	0
HIGHLANDS	4	0	0	0	0	0	0	0	0	1	0	2	1	0	0
HILLSBOROUGH	113	0	0	0	0	2	4	1	6	30	23	23	22	1	1
HOLMES	1	0	0	0	0	0	0	0	0	1	0	0	0	0	0
INDIAN RIVER	3	0	0	0	0	0	0	0	1	0	1	1	0	0	0
JACKSON	4	0	0	0	0	0	0	0	1	1	1	0	1	0	0
JEFFERSON	1	0	0	0	0	0	0	0	0	0	1	0	0	0	0
LAFAYETTE	0	0	0	0	0	0	0	0	0	0	0	0	0	0	0
LAKE	18	0	0	0	0	1	0	1	2	3	6	1	3	0	1
LEE	30	0	0	0	0	1	2	1	1	5	9	7	3	0	1
LEON	20	0	0	0	0	0	2	0	0	2	8	6	2	0	0
LEVY	1	0	0	0	0	0	0	0	0	1	0	0	0	0	0
LIBERTY	1	0	0	0	0	0	0	0	0	0	1	0	0	0	0
MADISON	3	0	0	0	0	0	0	0	0	0	3	0	0	0	0
MANATEE	19	0	0	0	0	0	0	1	1	5	2	3	7	0	0
MARION	15	0	0	0	0	0	1	2	1	3	4	3	0	0	1
MARTIN	1	0	0	0	0	0	0	0	0	0	0	0	1	0	0
MONROE	5	0	0	0	0	0	0	0	1	2	1	0	0	0	1
NASSAU	7	0	0	0	0	0	0	0	0	5	2	0	0	0	0
OKALOOSA	15	0	0	0	0	1	0	0	1	6	2	2	2	0	1
OKEECHOBEE	5	0	0	0	0	0	0	0	0	2	0	3	0	0	0
ORANGE	108	0	0	0	1	2	2	3	3	20	31	24	20	0	2
OSCEOLA	19	0	0	0	0	0	0	1	0	11	1	2	2	0	2
PALM BEACH	120	0	0	0	2	3	5	4	5	25	24	22	28	0	2
PASCO	34	0	1	0	0	0	3	1	2	8	10	6	3	0	0
PINELLAS	80	0	0	0	0	0	3	1	4	13	22	16	16	0	5
POLK	48	0	0	0	1	1	4	6	2	16	6	6	6	0	0
PUTNAM	11	0	0	0	0	0	0	0	0	3	2	2	4	0	0
ST JOHN'S	7	0	0	0	0	0	0	0	0	2	2	3	0	0	0
ST LUCIE	19	0	1	1	0	0	0	0	0	5	4	3	5	0	0
SANTA ROSA	12	0	0	0	0	0	0	1	0	6	0	2	3	0	0
SARASOTA	17	0	0	0	0	0	0	0	1	3	5	5	3	0	0
SEMINOLE	42	0	0	1	0	1	1	0	1	9	12	8	8	1	0
SUMTER	3	0	0	0	0	0	0	0	1	1	0	0	1	0	0
SUWANNEE	3	0	0	1	0	0	0	0	0	1	0	0	1	0	0
TAYLOR	1	0	0	0	0	0	0	0	0	0	0	1	0	0	0
UNION	3	0	0	0	0	0	0	1	0	0	1	1	0	0	0
VOLUSIA	38	0	0	0	0	0	0	0	2	12	6	8	10	0	0
WAKULLA	1	0	0	0	0	0	0	0	0	0	0	0	1	0	0
WALTON	3	0	0	0	0	0	0	0	0	0	2	0	1	0	0
WASHINGTON	2	0	0	0	0	0	0	0	0	0	2	0	0	0	0

TABLE F-4: RESIDENT AND RECORDED NEONATAL DEATHS (UNDER 28 DAYS) AND RATES PER 1,000 LIVE BIRTHS, BY RACE, BY COUNTY, FLORIDA, 2002

	RESIDENT NEONATAL DEATHS						RATES*		
			NUMBER						
	TOTAL	WHITE	TOTAL	BLACK	OTHER	UNK	TOTAL	WHITE	NONWHITE
			<u>NONWHITE</u>						
FLORIDA	1,032	596	436	419	17	0	5.0	3.9	8.2
ALACHUA	23	12	11	11	0	0	9.5	7.9	12.2
BAKER	0	0	0	0	0	0	0.0	0.0	0.0
BAY	11	4	7	6	1	0	5.5	2.5	19.2
BRADFORD	2	2	0	0	0	0	6.7	8.5	0.0
BREVARD	31	22	9	8	1	0	6.4	5.6	10.6
BROWARD	94	38	56	54	2	0	4.2	2.8	6.6
CALHOUN	0	0	0	0	0	0	0.0	0.0	0.0
CHARLOTTE	6	5	1	1	0	0	6.0	5.5	12.5
CITRUS	4	3	1	1	0	0	4.8	3.8	17.2
CLAY	9	6	3	3	0	0	4.8	3.7	12.4
COLLIER	9	8	1	1	0	0	2.5	2.6	2.2
COLUMBIA	8	6	2	2	0	0	9.8	9.2	12.3
MIAMI-DADE	130	76	54	54	0	0	4.0	3.4	5.7
DESOTO	2	1	1	1	0	0	4.4	2.5	18.2
DIXIE	0	0	0	0	0	0	0.0	0.0	0.0
DUVAL	82	39	43	41	2	0	6.8	5.3	9.2
ESCAMBIA	23	8	15	15	0	0	5.9	3.2	11.0
FLAGLER	2	2	0	0	0	0	3.9	4.7	0.0
FRANKLIN	0	0	0	0	0	0	0.0	0.0	0.0
GADSDEN	6	1	5	5	0	0	8.6	4.3	10.8
GILCHRIST	1	1	0	0	0	0	5.3	5.5	0.0
GLADES	0	0	0	0	0	0	0.0	0.0	0.0
GULF	1	1	0	0	0	0	8.3	10.1	0.0
HAMILTON	3	2	1	1	0	0	16.6	16.3	17.2
HARDEE	2	1	1	1	0	0	4.6	2.4	34.5
HENDRY	2	2	0	0	0	0	3.0	3.6	0.0
HERNANDO	5	5	0	0	0	0	4.1	4.5	0.0
HIGHLANDS	1	1	0	0	0	0	1.1	1.4	0.0
HILLSBOROUGH	83	53	30	26	4	0	5.5	4.6	8.6
HOLMES	1	1	0	0	0	0	4.6	4.9	0.0
INDIAN RIVER	4	2	2	2	0	0	3.8	2.3	10.4
JACKSON	1	0	1	1	0	0	1.9	0.0	7.6
JEFFERSON	4	0	4	4	0	0	24.4	0.0	51.9
LAFAYETTE	0	0	0	0	0	0	0.0	0.0	0.0
LAKE	8	7	1	1	0	0	3.1	3.2	2.5
LEE	28	15	13	11	2	0	5.2	3.3	16.0
LEON	27	9	18	16	2	0	9.2	5.4	14.4
LEVY	1	0	1	1	0	0	2.4	0.0	16.4
LIBERTY	1	1	0	0	0	0	12.3	13.2	0.0
MADISON	3	2	1	1	0	0	13.5	19.4	8.4
MANATEE	11	9	2	2	0	0	3.2	3.2	3.5
MARION	20	15	5	5	0	0	6.9	6.6	8.0
MARTIN	6	6	0	0	0	0	5.0	6.4	0.0
MONROE	1	1	0	0	0	0	1.4	1.5	0.0
NASSAU	3	3	0	0	0	0	4.4	4.9	0.0
OKALOOSA	17	11	6	6	0	0	6.9	5.5	13.5
OKEECHOBEE	1	1	0	0	0	0	1.8	2.1	0.0
ORANGE	64	29	35	34	1	0	4.5	3.0	7.9
OSCEOLA	14	12	2	2	0	0	4.8	4.7	6.1
PALM BEACH	82	46	36	36	0	0	5.9	4.7	8.6
PASCO	21	21	0	0	0	0	5.4	5.9	0.0
PINELLAS	39	19	20	18	2	0	4.4	2.7	10.8
POLK	44	25	19	19	0	0	6.5	4.7	12.9
PUTNAM	5	2	3	3	0	0	5.6	3.0	12.9
SAINT JOHNS	7	5	2	2	0	0	5.0	4.1	11.6
SAINT LUCIE	15	7	8	8	0	0	6.6	4.3	12.1
SANTA ROSA	4	2	2	2	0	0	2.6	1.4	15.6
SARASOTA	10	8	2	2	0	0	3.5	3.2	5.8
SEMINOLE	16	12	4	4	0	0	3.5	3.3	4.8
SUMTER	7	6	1	1	0	0	14.2	15.5	9.3
SUWANNEE	4	4	0	0	0	0	8.8	10.6	0.0
TAYLOR	1	1	0	0	0	0	4.4	5.6	0.0
UNION	0	0	0	0	0	0	0.0	0.0	0.0
VOLUSIA	18	12	6	6	0	0	4.0	3.2	7.8
WAKULLA	3	3	0	0	0	0	11.1	12.4	0.0
WALTON	0	0	0	0	0	0	0.0	0.0	0.0
WASHINGTON	1	0	1	1	0	0	5.2	0.0	22.2

*Rates based on neonatal deaths by race of decedent, live births by race of mother.

TABLE F-4 (Cont.): RESIDENT AND RECORDED NEONATAL DEATHS (UNDER 28 DAYS) AND RATES PER 1,000 LIVE BIRTHS, BY RACE, BY COUNTY, FLORIDA, 2002

	RECORDED NEONATAL DEATHS						RATES*		
	TOTAL	WHITE	NUMBER				TOTAL	WHITE	NONWHITE
			TOTAL	BLACK	OTHER	UNK			
			NONWHITE						
FLORIDA	1,050	607	443	424	19	0	5.1	4.0	8.3
ALACHUA	72	49	23	22	1	0	13.8	12.7	17.0
BAKER	0	0	0	0	0	0	0.0	0.0	----
BAY	6	0	6	5	1	0	2.4	0.0	13.7
BRADFORD	0	0	0	0	0	0	0.0	0.0	0.0
BREVARD	13	10	3	3	0	0	2.8	2.6	3.7
BROWARD	92	35	57	56	1	0	4.3	2.8	6.6
CALHOUN	0	0	0	0	0	0	0.0	----	0.0
CHARLOTTE	3	2	1	1	0	0	2.7	2.0	10.6
CITRUS	2	1	1	1	0	0	2.6	1.4	18.9
CLAY	4	2	2	2	0	0	2.3	1.4	6.8
COLLIER	6	6	0	0	0	0	1.7	2.0	0.0
COLUMBIA	3	2	1	1	0	0	4.2	3.9	4.9
MIAMI-DADE	145	87	58	57	1	0	4.5	3.8	6.3
DESOTO	0	0	0	0	0	0	0.0	0.0	0.0
DIXIE	0	0	0	0	0	0	0.0	0.0	----
DUVAL	92	46	46	45	1	0	6.7	5.2	9.6
ESCAMBIA	45	23	22	22	0	0	8.7	6.2	14.7
FLAGLER	1	1	0	0	0	0	333.3	333.3	----
FRANKLIN	0	0	0	0	0	0	----	----	----
GADSDEN	0	0	0	0	0	0	0.0	0.0	0.0
GILCHRIST	0	0	0	0	0	0	----	----	----
GLADES	0	0	0	0	0	0	0.0	0.0	----
GULF	0	0	0	0	0	0	----	----	----
HAMILTON	0	0	0	0	0	0	0.0	0.0	----
HARDEE	0	0	0	0	0	0	0.0	0.0	----
HENDRY	0	0	0	0	0	0	0.0	----	----
HERNANDO	0	0	0	0	0	0	0.0	0.0	0.0
HIGHLANDS	2	2	0	0	0	0	1.5	1.9	0.0
HILLSBOROUGH	125	89	36	31	5	0	7.4	6.9	9.7
HOLMES	0	0	0	0	0	0	0.0	----	0.0
INDIAN RIVER	2	1	1	1	0	0	1.9	1.2	5.6
JACKSON	0	0	0	0	0	0	0.0	0.0	0.0
JEFFERSON	0	0	0	0	0	0	----	----	----
LAFAYETTE	0	0	0	0	0	0	----	----	----
LAKE	2	2	0	0	0	0	1.0	1.3	0.0
LEE	26	16	10	8	2	0	4.3	3.1	11.5
LEON	48	17	31	29	2	0	10.0	6.2	15.2
LEVY	0	0	0	0	0	0	----	----	----
LIBERTY	0	0	0	0	0	0	0.0	0.0	----
MADISON	0	0	0	0	0	0	0.0	----	0.0
MANATEE	5	3	2	2	0	0	1.9	1.3	4.5
MARION	3	2	1	1	0	0	1.2	1.0	1.9
MARTIN	1	1	0	0	0	0	0.6	0.7	0.0
MONROE	0	0	0	0	0	0	0.0	0.0	0.0
NASSAU	0	0	0	0	0	0	0.0	0.0	0.0
OKALOOSA	5	2	3	3	0	0	1.9	0.9	6.6
OKEECHOBEE	0	0	0	0	0	0	0.0	0.0	0.0
ORANGE	136	82	54	52	2	0	7.9	6.6	11.4
OSCEOLA	3	3	0	0	0	0	0.9	1.1	0.0
PALM BEACH	91	52	39	39	0	0	5.8	4.7	8.7
PASCO	3	3	0	0	0	0	1.8	2.0	0.0
PINELLAS	58	34	24	21	3	0	5.7	4.1	12.5
POLK	18	10	8	8	0	0	3.1	2.2	6.4
PUTNAM	1	0	1	1	0	0	1.9	0.0	5.6
SAINT JOHNS	4	3	1	1	0	0	4.2	3.7	6.8
SAINT LUCIE	8	3	5	5	0	0	4.6	2.7	8.4
SANTA ROSA	1	1	0	0	0	0	1.8	2.0	0.0
SARASOTA	13	9	4	4	0	0	3.8	3.1	8.5
SEMINOLE	4	3	1	1	0	0	1.1	1.0	1.3
SUMTER	0	0	0	0	0	0	0.0	0.0	----
SUWANNEE	0	0	0	0	0	0	0.0	0.0	0.0
TAYLOR	0	0	0	0	0	0	0.0	0.0	0.0
UNION	0	0	0	0	0	0	----	----	----
VOLUSIA	7	5	2	2	0	0	1.8	1.6	2.7
WAKULLA	0	0	0	0	0	0	0.0	0.0	----
WALTON	0	0	0	0	0	0	0.0	0.0	----
WASHINGTON	0	0	0	0	0	0	----	----	----

*Rates based on neonatal deaths by race of decedent, live births by race of mother.

TABLE F-5: RESIDENT AND RECORDED INFANT DEATHS (UNDER 1 YEAR) AND RATES PER 1,000 LIVE BIRTHS, BY RACE, BY COUNTY, FLORIDA, 2002

	RESIDENT INFANT DEATHS						RATES*		
	TOTAL	WHITE	NUMBER				TOTAL	WHITE	NONWHITE
			TOTAL	BLACK	OTHER	UNK			
			NONWHITE						
FLORIDA	1,548	892	656	629	27	0	7.5	5.9	12.4
ALACHUA	33	15	18	17	1	0	13.7	9.9	20.0
BAKER	3	3	0	0	0	0	8.5	9.6	0.0
BAY	23	13	10	9	1	0	11.5	8.1	27.4
BRADFORD	3	3	0	0	0	0	10.0	12.8	0.0
BREVARD	43	32	11	10	1	0	8.9	8.1	12.9
BROWARD	133	58	75	73	2	0	6.0	4.2	8.9
CALHOUN	0	0	0	0	0	0	0.0	0.0	0.0
CHARLOTTE	8	7	1	1	0	0	8.0	7.7	12.5
CITRUS	5	4	1	1	0	0	5.9	5.1	17.2
CLAY	11	8	3	3	0	0	5.9	5.0	12.4
COLLIER	13	12	1	1	0	0	3.6	3.8	2.2
COLUMBIA	9	7	2	2	0	0	11.0	10.8	12.3
MIAMI-DADE	192	99	93	92	1	0	6.0	4.4	9.9
DESOTO	2	1	1	1	0	0	4.4	2.5	18.2
DIXIE	2	1	1	1	0	0	12.5	6.8	71.4
DUVAL	116	55	61	59	2	0	9.6	7.5	13.0
ESCAMBIA	37	17	20	20	0	0	9.6	6.8	14.6
FLAGLER	3	2	1	0	1	0	5.9	4.7	12.3
FRANKLIN	0	0	0	0	0	0	0.0	0.0	0.0
GADSDEN	10	2	8	8	0	0	14.3	8.7	17.2
GILCHRIST	1	1	0	0	0	0	5.3	5.5	0.0
GLADES	1	0	1	0	1	0	13.0	0.0	45.5
GULF	2	2	0	0	0	0	16.5	20.2	0.0
HAMILTON	3	2	1	1	0	0	16.6	16.3	17.2
HARDEE	3	2	1	1	0	0	6.8	4.9	34.5
HENDRY	5	3	2	2	0	0	7.6	5.5	18.2
HERNANDO	11	9	2	1	1	0	9.0	8.2	17.7
HIGHLANDS	5	5	0	0	0	0	5.6	6.8	0.0
HILLSBOROUGH	133	84	49	43	6	0	8.8	7.3	14.1
HOLMES	1	1	0	0	0	0	4.6	4.9	0.0
INDIAN RIVER	6	3	3	3	0	0	5.7	3.5	15.5
JACKSON	1	0	1	1	0	0	1.9	0.0	7.6
JEFFERSON	5	0	5	5	0	0	30.5	0.0	64.9
LAFAYETTE	0	0	0	0	0	0	0.0	0.0	0.0
LAKE	17	12	5	5	0	0	6.5	5.4	12.3
LEE	40	23	17	15	2	0	7.4	5.0	21.0
LEON	35	12	23	21	2	0	11.9	7.1	18.4
LEVY	2	1	1	1	0	0	4.7	2.8	16.4
LIBERTY	1	1	0	0	0	0	12.3	13.2	0.0
MADISON	5	2	3	3	0	0	22.5	19.4	25.2
MANATEE	20	15	5	5	0	0	5.9	5.3	8.7
MARION	28	18	10	10	0	0	9.6	7.9	16.0
MARTIN	12	12	0	0	0	0	10.0	12.8	0.0
MONROE	3	3	0	0	0	0	4.1	4.6	0.0
NASSAU	7	7	0	0	0	0	10.2	11.3	0.0
OKALOOSA	24	17	7	7	0	0	9.8	8.5	15.8
OKEECHOBEE	3	2	1	1	0	0	5.5	4.1	16.9
ORANGE	104	48	56	53	3	0	7.4	4.9	12.7
OSCEOLA	23	20	3	3	0	0	7.9	7.8	9.2
PALM BEACH	119	62	57	57	0	0	8.6	6.4	13.6
PASCO	25	24	1	1	0	0	6.5	6.8	3.6
PINELLAS	56	29	27	25	2	0	6.3	4.1	14.6
POLK	66	41	25	24	1	0	9.7	7.7	16.9
PUTNAM	6	3	3	3	0	0	6.7	4.6	12.9
SAINT JOHNS	7	5	2	2	0	0	5.0	4.1	11.6
SAINT LUCIE	18	10	8	8	0	0	7.9	6.1	12.1
SANTA ROSA	9	5	4	4	0	0	5.8	3.5	31.3
SARASOTA	16	13	3	3	0	0	5.6	5.2	8.7
SEMINOLE	27	16	11	11	0	0	6.0	4.3	13.1
SUMTER	10	9	1	1	0	0	20.2	23.3	9.3
SUWANNEE	5	5	0	0	0	0	11.1	13.3	0.0
TAYLOR	2	2	0	0	0	0	8.8	11.3	0.0
UNION	0	0	0	0	0	0	0.0	0.0	0.0
VOLUSIA	28	18	10	10	0	0	6.2	4.8	13.0
WAKULLA	3	3	0	0	0	0	11.1	12.4	0.0
WALTON	2	2	0	0	0	0	3.9	4.5	0.0
WASHINGTON	2	1	1	1	0	0	10.4	6.8	22.2

*Rates based on infant deaths by race of decedent, live births by race of mother.

TABLE F-5 (Cont.) : RESIDENT AND RECORDED INFANT DEATHS (UNDER 1 YEAR) AND RATES PER 1,000 LIVE BIRTHS, BY RACE, BY COUNTY, FLORIDA, 2002

	RECORDED INFANT DEATHS						RATES*		
	TOTAL	WHITE	NUMBER				TOTAL	WHITE	NONWHITE
			TOTAL	BLACK	OTHER	UNK			
			NONWHITE						
FLORIDA	1,577	910	667	638	29	0	7.7	6.0	12.5
ALACHUA	101	65	36	34	2	0	19.4	16.9	26.6
BAKER	1	1	0	0	0	0	500.0	500.0	----
BAY	13	7	6	5	1	0	5.3	3.5	13.7
BRADFORD	0	0	0	0	0	0	0.0	0.0	0.0
BREVARD	20	15	5	5	0	0	4.3	3.9	6.1
BROWARD	138	57	81	79	2	0	6.5	4.5	9.4
CALHOUN	0	0	0	0	0	0	0.0	----	0.0
CHARLOTTE	4	3	1	1	0	0	3.6	2.9	10.6
CITRUS	2	1	1	1	0	0	2.6	1.4	18.9
CLAY	7	4	3	3	0	0	4.0	2.8	10.3
COLLIER	6	6	0	0	0	0	1.7	2.0	0.0
COLUMBIA	4	3	1	1	0	0	5.5	5.8	4.9
MIAMI-DADE	217	118	99	98	1	0	6.7	5.1	10.8
DESOTO	0	0	0	0	0	0	0.0	0.0	0.0
DIXIE	0	0	0	0	0	0	0.0	0.0	----
DUVAL	130	65	65	64	1	0	9.5	7.3	13.6
ESCAMBIA	66	38	28	28	0	0	12.7	10.3	18.8
FLAGLER	1	1	0	0	0	0	333.3	333.3	----
FRANKLIN	0	0	0	0	0	0	----	----	----
GADSDEN	3	1	2	2	0	0	1,000.0	1,000.0	1,000.0
GILCHRIST	0	0	0	0	0	0	----	----	----
GLADES	0	0	0	0	0	0	0.0	0.0	----
GULF	0	0	0	0	0	0	----	----	----
HAMILTON	0	0	0	0	0	0	0.0	0.0	----
HARDEE	0	0	0	0	0	0	0.0	0.0	----
HENDRY	1	0	1	1	0	0	1,000.0	----	----
HERNANDO	1	1	0	0	0	0	0.8	0.8	0.0
HIGHLANDS	5	5	0	0	0	0	3.8	4.6	0.0
HILLSBOROUGH	184	125	59	52	7	0	10.9	9.7	15.9
HOLMES	0	0	0	0	0	0	0.0	----	0.0
INDIAN RIVER	2	1	1	1	0	0	1.9	1.2	5.6
JACKSON	0	0	0	0	0	0	0.0	0.0	0.0
JEFFERSON	0	0	0	0	0	0	----	----	----
LAFAYETTE	0	0	0	0	0	0	----	----	----
LAKE	7	6	1	1	0	0	3.6	3.9	2.5
LEE	41	27	14	12	2	0	6.8	5.2	16.1
LEON	59	19	40	38	2	0	12.3	6.9	19.6
LEVY	1	1	0	0	0	0	----	----	----
LIBERTY	0	0	0	0	0	0	0.0	0.0	----
MADISON	1	0	1	1	0	0	333.3	----	333.3
MANATEE	11	8	3	3	0	0	4.1	3.6	6.7
MARION	6	3	3	3	0	0	2.4	1.5	5.8
MARTIN	5	5	0	0	0	0	3.0	3.6	0.0
MONROE	2	2	0	0	0	0	3.9	4.5	0.0
NASSAU	1	1	0	0	0	0	2.6	3.1	0.0
OKALOOSA	9	6	3	3	0	0	3.4	2.7	6.6
OKEECHOBEE	3	1	2	1	1	0	750.0	500.0	1,000.0
ORANGE	199	114	85	80	5	0	11.6	9.2	18.0
OSCEOLA	8	8	0	0	0	0	2.5	2.8	0.0
PALM BEACH	124	67	57	57	0	0	8.0	6.0	12.7
PASCO	6	6	0	0	0	0	3.7	4.1	0.0
PINELLAS	90	55	35	31	4	0	8.9	6.7	18.2
POLK	30	18	12	11	1	0	5.2	4.0	9.6
PUTNAM	1	0	1	1	0	0	1.9	0.0	5.6
SAINT JOHNS	5	4	1	1	0	0	5.2	5.0	6.8
SAINT LUCIE	11	5	6	6	0	0	6.4	4.4	10.1
SANTA ROSA	4	3	1	1	0	0	7.2	6.0	18.5
SARASOTA	17	12	5	5	0	0	5.0	4.1	10.7
SEMINOLE	10	8	2	2	0	0	2.7	2.7	2.7
SUMTER	0	0	0	0	0	0	0.0	0.0	----
SUWANNEE	0	0	0	0	0	0	0.0	0.0	0.0
TAYLOR	1	1	0	0	0	0	250.0	500.0	0.0
UNION	0	0	0	0	0	0	----	----	----
VOLUSIA	18	12	6	6	0	0	4.6	3.8	8.2
WAKULLA	0	0	0	0	0	0	0.0	0.0	----
WALTON	0	0	0	0	0	0	0.0	0.0	----
WASHINGTON	1	1	0	0	0	0	----	----	----

*Rates based on infant deaths by race of decedent, live births by race of mother.

TABLE F-6: RESIDENT INFANT DEATHS BY HISPANIC OR HAITIAN ORIGIN, BY COUNTY, FLORIDA, 2002

	TOTAL	HISPANIC ORIGIN							NON-HISPANIC/HAITIAN	UNK
		TOTAL HISPANIC	MEXICAN	PUERTO RICAN	CUBAN	CENTRAL/SOUTH AMERICAN	OTHER/UNK HISPANIC	HAITIAN		
FLORIDA	1,548	234	65	66	36	58	9	42	1,223	49
ALACHUA	33	3	0	2	0	1	0	0	29	1
BAKER	3	0	0	0	0	0	0	0	3	0
BAY	23	0	0	0	0	0	0	0	23	0
BRADFORD	3	0	0	0	0	0	0	0	3	0
BREVARD	43	1	0	0	1	0	0	0	42	0
BROWARD	133	16	1	3	4	7	1	10	103	4
CALHOUN	0	0	0	0	0	0	0	0	0	0
CHARLOTTE	8	0	0	0	0	0	0	1	7	0
CITRUS	5	0	0	0	0	0	0	0	5	0
CLAY	11	2	0	1	0	1	0	0	9	0
COLLIER	13	5	3	0	1	1	0	1	7	0
COLUMBIA	9	0	0	0	0	0	0	0	9	0
MIAMI-DADE	192	56	8	3	23	22	0	8	90	38
DESOTO	2	0	0	0	0	0	0	0	2	0
DIXIE	2	0	0	0	0	0	0	0	2	0
DUVAL	116	7	1	3	0	1	2	0	108	1
ESCAMBIA	37	0	0	0	0	0	0	0	37	0
FLAGLER	3	0	0	0	0	0	0	0	3	0
FRANKLIN	0	0	0	0	0	0	0	0	0	0
GADSDEN	10	1	1	0	0	0	0	0	9	0
GILCHRIST	1	0	0	0	0	0	0	0	1	0
GLADES	1	0	0	0	0	0	0	0	1	0
GULF	2	0	0	0	0	0	0	0	2	0
HAMILTON	3	2	2	0	0	0	0	0	1	0
HARDEE	3	3	3	0	0	0	0	0	0	0
HENDRY	5	3	1	1	0	1	0	0	2	0
HERNANDO	11	2	0	2	0	0	0	0	9	0
HIGHLANDS	5	2	2	0	0	0	0	0	3	0
HILLSBOROUGH	133	26	9	9	3	2	3	1	104	2
HOLMES	1	0	0	0	0	0	0	0	1	0
INDIAN RIVER	6	1	1	0	0	0	0	0	5	0
JACKSON	1	0	0	0	0	0	0	0	1	0
JEFFERSON	5	0	0	0	0	0	0	0	5	0
LAFAYETTE	0	0	0	0	0	0	0	0	0	0
LAKE	17	3	3	0	0	0	0	0	14	0
LEE	40	11	5	4	0	2	0	1	28	0
LEON	35	0	0	0	0	0	0	0	35	0
LEVY	2	0	0	0	0	0	0	0	2	0
LIBERTY	1	0	0	0	0	0	0	0	1	0
MADISON	5	0	0	0	0	0	0	0	5	0
MANATEE	20	5	4	1	0	0	0	1	14	0
MARION	28	2	1	1	0	0	0	0	26	0
MARTIN	12	2	0	0	0	2	0	0	10	0
MONROE	3	2	1	0	1	0	0	0	1	0
NASSAU	7	0	0	0	0	0	0	0	7	0
OKALOOSA	24	1	1	0	0	0	0	0	23	0
OKEECHOBEE	3	2	2	0	0	0	0	0	1	0
ORANGE	104	23	2	17	1	3	0	4	77	0
OSCEOLA	23	10	0	9	0	1	0	0	13	0
PALM BEACH	119	21	5	2	2	11	1	12	83	3
PASCO	25	2	0	2	0	0	0	0	23	0
PINELLAS	56	3	1	2	0	0	0	0	53	0
POLK	66	6	3	2	0	0	1	0	60	0
PUTNAM	6	0	0	0	0	0	0	0	6	0
SAINT JOHNS	7	0	0	0	0	0	0	0	7	0
SAINT LUCIE	18	2	2	0	0	0	0	2	14	0
SANTA ROSA	9	1	1	0	0	0	0	0	8	0
SARASOTA	16	3	0	1	0	1	1	0	13	0
SEMINOLE	27	2	0	0	0	2	0	1	24	0
SUMTER	10	1	1	0	0	0	0	0	9	0
SUWANNEE	5	0	0	0	0	0	0	0	5	0
TAYLOR	2	0	0	0	0	0	0	0	2	0
UNION	0	0	0	0	0	0	0	0	0	0
VOLUSIA	28	2	1	1	0	0	0	0	26	0
WAKULLA	3	0	0	0	0	0	0	0	3	0
WALTON	2	0	0	0	0	0	0	0	2	0
WASHINGTON	2	0	0	0	0	0	0	0	2	0

TABLE F-7: RESIDENT INFANT, NEONATAL AND POST-NEONATAL DEATHS FROM SELECTED CAUSES, BY RACE, FLORIDA, 2002

	TOTAL				WHITE			
	INFANT	NEONATAL <1 DAY	1-27 DAYS	POST NEO- NATAL	INFANT	NEONATAL <1 DAY	1-27 DAYS	POST NEO- NATAL
TOTAL (ICD - 10 GROUPING)	1,548	613	419	516	892	331	265	296
INTESTINAL INFECTIOUS DISEASES (A00-A08)	1	0	0	1	0	0	0	0
DIARRHEA & GASTROENTERITIS--INFECTIOUS ORIGIN (A09)	0	0	0	0	0	0	0	0
TUBERCULOSIS (A16-A19)	0	0	0	0	0	0	0	0
TETANUS (A33-A35)	0	0	0	0	0	0	0	0
DIPHTHERIA (A36)	0	0	0	0	0	0	0	0
WHOOPING COUGH (A37)	0	0	0	0	0	0	0	0
MENINGOCOCCAL INFECTION (A39)	1	0	0	1	0	0	0	0
SEPTICEMIA (A40-A41)	26	0	1	25	14	0	0	14
CONGENITAL SYPHILIS (A50)	0	0	0	0	0	0	0	0
GONOCOCCAL INFECTION (A54)	0	0	0	0	0	0	0	0
ACUTE POLIOMYELITIS (A80)	0	0	0	0	0	0	0	0
VARICELLA (CHICKEN POX) (B01)	0	0	0	0	0	0	0	0
MEASLES (B05)	0	0	0	0	0	0	0	0
HIV DISEASE (B20-B24)	1	0	0	1	0	0	0	0
MUMPS (B26)	0	0	0	0	0	0	0	0
OTHER & UNSPEC VIRAL DIS (A81-B00, B02-B04, B06-B19, B25, B27-B34)	10	0	2	8	4	0	2	2
CANDIDIASIS (B37)	3	0	1	2	2	0	1	1
MALARIA (B50-B54)	0	0	0	0	0	0	0	0
PNEUMOCYSTOSIS (B59)	0	0	0	0	0	0	0	0
OTHER & UNSPECIFIED INFECTIOUS & PARASITIC DISEASES & SEQUELAE *1	4	0	2	2	3	0	2	1
HODGKIN'S DISEASE & NON-HODGKIN'S LYMPHOMAS (C81-C85)	0	0	0	0	0	0	0	0
LEUKEMIA (C91-C95)	2	0	0	2	2	0	0	2
OTHER & UNSPECIFIED MALIGNANT NEOPLASM (C00-C80, C88, C90, C96-C97)	1	0	0	1	1	0	0	1
IN SITU/BENIGN/MALIGNANT NEOPLASMS UNCERT/UNK BEHAVIOR (D00-D48)	0	0	0	0	0	0	0	0
ANEMIAS (D50-D64)	2	0	0	2	0	0	0	0
BLOOD, BLOOD-FORMING, HEMORRHAGIC DISEASES (D65-D76)	2	0	1	1	0	0	0	0
DISORDERS INVOLVING IMMUNE MECHANISM (D80-D89)	3	0	1	2	3	0	1	2
SHORT STATURE (E34.4)	1	1	0	0	1	1	0	0
NUTRITIONAL DEFICIENCIES (E40-E64)	0	0	0	0	0	0	0	0
CYSTIC FIBROSIS (E84)	1	0	0	1	1	0	0	1
FLUID/ELECTROLYTE/ACID-BASE/VOLUME DEPLETION DISORDERS (E86-E87)	2	0	2	0	1	0	1	0
OTHER ENDOCRINE, NUTRITIONAL, METABOLIC DISEASES *2	5	0	2	3	4	0	2	2
MENINGITIS (G00, G03)	7	0	0	7	3	0	0	3
INFANTILE SPINAL MUSCULAR ATROPHY, TYPE 1 (WERDNIG-HOFFMAN) (G12.0)	1	0	0	1	0	0	0	0
INFANTILE CEREBRAL PALSY (G80)	1	0	0	1	1	0	0	1
ANOXIC BRAIN DAMAGE (G93.1)	4	0	1	3	1	0	1	0
OTHER NERVOUS SYSTEM DISEASES *3	11	1	0	10	9	1	0	8
EAR & MASTOID PROCESS DISEASES (H60-H93)	1	0	0	1	1	0	0	1
PULMONARY HEART/CIRCULATION DISEASES (I26-I28)	6	1	3	2	1	0	1	0
PERICARDITIS, ENDOCARDITIS, MYOCARDITIS (I30, I33, I40)	2	0	0	2	1	0	0	1
CARDIOMYOPATHY (I42)	13	1	4	8	10	1	3	6
CARDIAC ARREST (I46)	1	0	1	0	1	0	1	0
CEREBROVASCULAR DISEASES (I60-I69)	6	0	2	4	4	0	2	2
OTHER CIRCULAT SYS DIS (I00-I25, I31, I34-I38, I44-I45, I47-I51, I70-I99)	10	0	5	5	7	0	3	4
ACUTE UPPER RESPIRATORY INFECTIONS (J00-J06)	0	0	0	0	0	0	0	0
INFLUENZA (J10-J11)	0	0	0	0	0	0	0	0
PNEUMONIA (J12-J18)	17	0	2	15	10	0	0	10

TABLE F-7 (Cont.): RESIDENT INFANT, NEONATAL AND POST-NEONATAL DEATHS FROM SELECTED CAUSES, BY RACE, FLORIDA, 2002

	TOTAL				WHITE			
	INFANT	NEONATAL <1 DAY	1-27 DAYS	POST NEO- NATAL	INFANT	NEONATAL <1 DAY	1-27 DAYS	POST NEO- NATAL
ACUTE BRONCHITIS & ACUTE BRONCIOLITIS (J20-J21)	1	0	0	1	1	0	0	1
BRONCHITIS, CHRONIC & UNSPECIFIED (J40-J42)	0	0	0	0	0	0	0	0
ASTHMA (J45-J46)	0	0	0	0	0	0	0	0
PNEUMONITIS DUE TO SOLIDS & LIQUIDS (J69)	0	0	0	0	0	0	0	0
OTHER & UNSPEC RESPIR SYS DIS (J22,J30-J39,J43-J44,J47-J68,J70-J98)	18	1	2	15	5	1	0	4
GASTRITIS, DUODENITIS, NONINFECTIVE ENTERITIS/COLITIS (K29, K50-K55)	18	0	3	15	7	0	2	5
HERNIA ABDOM CAVITY & INTESTINAL OBSTRUCT W/O HERNIA (K40-K46, K56)	1	0	1	0	0	0	0	0
OTHER & UNSPEC DIGESTIVE SYSTEM DISEASE (K00-K28, K30-K38, K57-K92)	10	0	1	9	5	0	0	5
RENAL FAILURE & OTHER KIDNEY DISORDERS (N17-N19, N25, N27)	17	0	10	7	9	0	5	4
OTHER & UNSPEC GENITOURINARY SYS DIS (N00-N15, N20-N23, N26,N 28-N98)	0	0	0	0	0	0	0	0
PERINATAL PERIOD CONDITIONS (P00-P96)	788	495	258	35	421	247	155	19
MATERNAL HYPERTENSIVE DISORDERS (P00.0)	4	2	2	0	2	1	1	0
MATERNAL CONDITIONS UNRELATED PRESENT PREGNANCY (P00.1-P00.9)	6	5	1	0	3	2	1	0
INCOMPETENT CERVIX (P01.0)	32	31	1	0	15	14	1	0
PREMATURE RUPTURE OF MEMBRANES (P01.1)	41	38	3	0	20	18	2	0
MULTIPLE PREGNANCY (P01.5)	20	20	0	0	1	1	0	0
MATERNAL COMPLICATIONS OF PREGNANCY (P01.2-P01.4, P01.6-P01.9)	16	12	4	0	9	7	2	0
PLACENTA COMPLICATIONS (P02.0-P02.3)	22	18	4	0	14	11	3	0
CORD COMPLICATIONS (P02.4-P02.6)	1	1	0	0	1	1	0	0
CHORIOAMNIONITIS (P02.7)	32	32	0	0	13	13	0	0
OTHER & UNSPECIFIED MEMBRANE ABNORMALITIES (P02.8-P02.9)	0	0	0	0	0	0	0	0
OTHER COMPLICATIONS OF LABOR & DELIVERY (P03)	12	12	0	0	9	9	0	0
NOXIOUS INFLUENCES VIA PLACENTA OR BREAST MILK (P04)	3	3	0	0	2	2	0	0
SLOW FETAL GROWTH & FETAL MALNUTRITION (P05)	2	1	1	0	2	1	1	0
EXTREME LOW BIRTH WEIGHT OR EXTREME IMMATURITY (P07.0, P07.2)	194	159	33	2	92	73	18	1
OTHER LOW BIRTH WEIGHT OR PRETERM (P07.1, P07.3)	71	67	4	0	38	35	3	0
LONG GESTATION & HIGH BIRTH WEIGHT (P08)	0	0	0	0	0	0	0	0
BIRTH TRAUMA (P10-P15)	14	2	12	0	7	2	5	0
INTRAUTERINE HYPOXIA (P20)	6	1	4	1	5	1	3	1
BIRTH ASPHYXIA (P21)	31	5	25	1	21	4	16	1
RESPIRATORY DISTRESS (P22)	34	11	21	2	19	9	10	0
CONGENITAL PNEUMONIA (P23)	3	1	2	0	3	1	2	0
NEONATAL ASPIRATION SYNDROMES (P24)	1	0	1	0	1	0	1	0
INTERSTITIAL EMPHYSEMA & RELATED CONDITIONS (P25)	8	0	8	0	5	0	5	0
PULMONARY HEMORRHAGE (P26)	4	0	4	0	1	0	1	0
CHRONIC RESPIRATORY DISEASE (P27)	19	0	2	17	10	0	2	8
ATELECTASIS (P28.0-P28.1)	24	16	8	0	11	6	5	0
OTHER RESPIRATORY CONDITIONS (P28.2-P28.9)	2	1	1	0	2	1	1	0
BACTERIAL SEPSIS (P36)	46	8	36	2	31	7	24	0
OMPHALITIS W/ OR W/O HEMORRHAGE (P38)	0	0	0	0	0	0	0	0
ALL OTHER INFECTIONS (P35, P37, P39)	12	3	8	1	8	2	5	1
NEONATAL HEMORRHAGE (P50-P52, P54)	29	7	21	1	21	6	14	1
HEMORRHAGIC DISEASE OF NEWBORN (P53)	0	0	0	0	0	0	0	0
HEMOLYTIC DIS DUE TO ISOIMMUNIZATION/PERINAT JAUNDICE (P55-P59)	1	0	0	1	0	0	0	0
HEMATOLOGICAL DISORDERS (P60-P61)	4	2	2	0	3	2	1	0
DIABETES MELLITUS, MATERNAL OR NEONATAL (P70.0-P70.2)	0	0	0	0	0	0	0	0
NECROTIZING ENTEROCOLITIS (P77)	21	0	19	2	9	0	8	1
HYDROPS FETALIS NOT DUE TO HEMOLYTIC DIS (P83.2)	15	8	4	3	12	6	3	3
OTHER PERINATAL CONDITIONS *4	58	29	27	2	31	12	17	2

TABLE F-7 (Cont.): RESIDENT INFANT, NEONATAL AND POST-NEONATAL DEATHS FROM SELECTED CAUSES, BY RACE, FLORIDA, 2002

	TOTAL				WHITE			
	INFANT	NEONATAL <1 DAY	1-27 DAYS	POST NEO- NATAL	INFANT	NEONATAL <1 DAY	1-27 DAYS	POST NEO- NATAL
CONGENITAL / CHROMOSOMAL ANOMALIES (Q00-Q99)	282	101	94	87	202	74	71	57
ANENCEPHALY & SIMILAR ANOMALIES (Q00)	8	8	0	0	6	6	0	0
CONGENITAL HYDROCEPHALUS (Q03)	7	2	3	2	5	1	2	2
SPINA BIFIDA (Q05)	2	1	0	1	2	1	0	1
OTHER CONGENITAL ANOMALIES CENT NERV SYS (Q01-Q02,Q04,Q06-Q07)	19	5	6	8	14	5	4	5
CONGENITAL ANOMALIES OF HEART (Q20-Q24)	73	8	28	37	46	7	19	20
OTHER CONGENITAL ANOMALIES OF CIRCULATORY SYS (Q25-Q28)	9	0	6	3	9	0	6	3
CONGENITAL ANOMALIES OF RESPIRATORY SYS (Q30-Q34)	29	17	11	1	17	9	8	0
CONGENITAL ANOMALIES OF DIGESTIVE SYS (Q35-Q45)	3	0	1	2	1	0	1	0
CONGENITAL ANOMALIES OF GENITOURINARY SYS (Q50-Q64)	21	14	6	1	18	12	5	1
CONGENITAL ANOMALIES OF MUSCULOSKELETAL SYS (Q65-Q85)	31	13	8	10	23	10	6	7
DOWN'S SYNDROME (Q90)	5	2	1	2	4	2	1	1
EDWARD'S SYNDROME (Q91.0-Q91.3)	25	6	14	5	18	5	10	3
PATAU'S SYNDROME (Q91.4-Q91.7)	12	7	2	3	11	6	2	3
OTHER CONGENITAL ANOMALIES (Q10-Q18, Q86-Q89)	30	17	5	8	21	9	4	8
OTHER CHROMOSOMAL ANOMALIES (Q92-Q99)	8	1	3	4	7	1	3	3
SUDDEN INFANT DEATH SYNDROME (R95)	95	0	5	90	55	0	3	52
SYMPTOMS, SIGNS, ABN CLINICAL/LAB FINDINGS (R00-R53,R55-R94,R96-R99)	75	11	7	57	43	5	5	33
ALL OTHER DISEASES (F01-F99, H00-H57, L00-M99)	0	0	0	0	0	0	0	0
UNINT INJ: MOTOR VEHICLE *5	8	0	0	8	2	0	0	2
UNINT INJ: OTHER & UNSPEC TRANSPORT & SEQUELAE *6	0	0	0	0	0	0	0	0
UNINT INJ: FALLS (W00-W19)	2	0	0	2	2	0	0	2
UNINT INJ: FIREARMS DISCHARGE (W32-W34)	0	0	0	0	0	0	0	0
UNINT INJ: DROWNING & SUBMERSION (W65-W74)	8	0	0	8	8	0	0	8
UNINT INJ: SUFFOCATION & STRANGULATION IN BED (W75)	40	0	6	34	21	0	3	18
UNINT INJ: OTHER SUFFOCATION & STRANGULATION (W76-W77, W81-W84)	6	0	0	6	5	0	0	5
UNINT INJ: INHALE/INGEST--RESPIRATORY TRACT OBSTRUCTION (W78-W80)	4	0	0	4	3	0	0	3
UNINT INJ: SMOKE, FIRE, FLAMES EXPOSURE (X00-X09)	2	0	0	2	1	0	0	1
UNINT INJ: POISONING & NOXIOUS SUBSTANCE EXPOSURE (X40-X49)	1	0	0	1	0	0	0	0
UNINT INJ: OTHER & UNSPECIFIED & SEQUELAE *7	2	0	0	2	1	0	0	1
HOMICIDE: HANGING, STRANGULATION, SUFFOCATION (X91)	3	1	0	2	3	1	0	2
HOMICIDE: FIREARMS DISCHARGE (X93-X95)	2	0	0	2	1	0	0	1
HOMICIDE: NEGLECT, ABANDONMENT, MALTREATMENT (Y06-Y07)	2	0	1	1	2	0	1	1
HOMICIDE: OTHER & UNSPECIFIED MEANS & SEQUELAE *8	14	0	1	13	9	0	0	9
MEDICAL & SURGICAL CARE COMPLICATIONS (Y40-Y84, Y88)	2	0	0	2	1	0	0	1
OTHER EXTERNAL CAUSES & SEQUELAE (X60-X84,Y10-Y36,Y87.0,Y87.2,Y89)	2	0	0	2	0	0	0	0
*1 (A20-A32, A38, A42-A49, A51-A53, A55-A79, B35-B36, B38-B49, B55-B58, B60-B99)								
*2 (E00-E32, E34.0-E34.2, E34.4-E34.9, E65-E83, E85, E88)								
*3 (G04,G06-G11,G12.1-G12.9,G20-G72,G81-G92,G93.0,G93.2-G93.9,G95-G98)								
*4 (P29,P70.3-P70.9,P71-P76,P78-P81,P83.0-P83.1,P83.3-P83.9,P90-P96)								
*5 (V02-V04, V09.0, V09.2, V12-V14, V19.0-V19.2, V19.4-V19.6, V20-V79, V80.3-V80.5, V81.0-V81.1, V82.0-V82.1, V83-V86, V87.0-V87.8, V88.0-V88.8, V89.0, V89.2)								
*6 (V01, V05-V06, V09.1, V09.3-V09.9, V10-V11, V15-V18, V19.3, V19.8-V19.9, V80.0-V80.2, V80.6-V80.9, V81.2-V81.9, V82.2-V82.9, V87.9, V88.9, V89.1, V89.3, V89.9, V90-V99, Y85)								
*7 (W20-W31, W35-W64, W85-W99, X10-X39, X50-X59, Y86)								
*8 (X85-X90, X92, X96-X99, Y00-Y05, Y08-Y09, Y87.1)								

TABLE F-7 (Cont.): RESIDENT INFANT, NEONATAL AND POST-NEONATAL DEATHS FROM SELECTED CAUSES, BY RACE, FLORIDA, 2002

	BLACK				OTHER			
	INFANT	NEONATAL <1 DAY	1-27 DAYS	POST NEO- NATAL	INFANT	NEONATAL <1 DAY	1-27 DAYS	POST NEO- NATAL
TOTAL (ICD - 10 GROUPING)	629	270	149	210	27	12	5	10
INTESTINAL INFECTIOUS DISEASES (A00-A08)	1	0	0	1	0	0	0	0
DIARRHEA & GASTROENTERITIS--INFECTIOUS ORIGIN (A09)	0	0	0	0	0	0	0	0
TUBERCULOSIS (A16-A19)	0	0	0	0	0	0	0	0
TETANUS (A33-A35)	0	0	0	0	0	0	0	0
DIPHTHERIA (A36)	0	0	0	0	0	0	0	0
WHOOPING COUGH (A37)	0	0	0	0	0	0	0	0
MENINGOCOCCAL INFECTION (A39)	1	0	0	1	0	0	0	0
SEPTICEMIA (A40-A41)	11	0	1	10	1	0	0	1
CONGENITAL SYPHILIS (A50)	0	0	0	0	0	0	0	0
GONOCOCCAL INFECTION (A54)	0	0	0	0	0	0	0	0
ACUTE POLIOMYELITIS (A80)	0	0	0	0	0	0	0	0
VARICELLA (CHICKEN POX) (B01)	0	0	0	0	0	0	0	0
MEASLES (B05)	0	0	0	0	0	0	0	0
HIV DISEASE (B20-B24)	1	0	0	1	0	0	0	0
MUMPS (B26)	0	0	0	0	0	0	0	0
OTHER & UNSPEC VIRAL DIS (A81-B00, B02-B04, B06-B19, B25, B27-B34)	5	0	0	5	1	0	0	1
CANDIDIASIS (B37)	1	0	0	1	0	0	0	0
MALARIA (B50-B54)	0	0	0	0	0	0	0	0
PNEUMOCYSTOSIS (B59)	0	0	0	0	0	0	0	0
OTHER & UNSPECIFIED INFECTIOUS & PARASITIC DISEASES & SEQUELAE *1	1	0	0	1	0	0	0	0
HODGKIN'S DISEASE & NON-HODGKIN'S LYMPHOMAS (C81-C85)	0	0	0	0	0	0	0	0
LEUKEMIA (C91-C95)	0	0	0	0	0	0	0	0
OTHER & UNSPECIFIED MALIGNANT NEOPLASM (C00-C80, C88, C90, C96-C97)	0	0	0	0	0	0	0	0
IN SITU/BENIGN/MALIGNANT NEOPLASMS UNCERT/UNK BEHAVIOR (D00-D48)	0	0	0	0	0	0	0	0
ANEMIAS (D50-D64)	2	0	0	2	0	0	0	0
BLOOD, BLOOD-FORMING, HEMORRHAGIC DISEASES (D65-D76)	2	0	1	1	0	0	0	0
DISORDERS INVOLVING IMMUNE MECHANISM (D80-D89)	0	0	0	0	0	0	0	0
SHORT STATURE (E34.4)	0	0	0	0	0	0	0	0
NUTRITIONAL DEFICIENCIES (E40-E64)	0	0	0	0	0	0	0	0
CYSTIC FIBROSIS (E84)	0	0	0	0	0	0	0	0
FLUID/ELECTROLYTE/ACID-BASE/VOLUME DEPLETION DISORDERS (E86-E87)	1	0	1	0	0	0	0	0
OTHER ENDOCRINE, NUTRITIONAL, METABOLIC DISEASES *2	1	0	0	1	0	0	0	0
MENINGITIS (G00, G03)	4	0	0	4	0	0	0	0
INFANTILE SPINAL MUSCULAR ATROPHY, TYPE 1 (WERDNIG-HOFFMAN) (G12.0)	1	0	0	1	0	0	0	0
INFANTILE CEREBRAL PALSY (G80)	0	0	0	0	0	0	0	0
ANOXIC BRAIN DAMAGE (G93.1)	3	0	0	3	0	0	0	0
OTHER NERVOUS SYSTEM DISEASES *3	2	0	0	2	0	0	0	0
EAR & MASTOID PROCESS DISEASES (H60-H93)	0	0	0	0	0	0	0	0
PULMONARY HEART/CIRCULATION DISEASES (I26-I28)	5	1	2	2	0	0	0	0
PERICARDITIS, ENDOCARDITIS, MYOCARDITIS (I30, I33, I40)	1	0	0	1	0	0	0	0
CARDIOMYOPATHY (I42)	3	0	1	2	0	0	0	0
CARDIAC ARREST (I46)	0	0	0	0	0	0	0	0
CEREBROVASCULAR DISEASES (I60-I69)	1	0	0	1	1	0	0	1
OTHER CIRCULAT SYS DIS (I00-I25, I31, I34-I38, I44-I45, I47-151, I70-I99)	3	0	2	1	0	0	0	0
ACUTE UPPER RESPIRATORY INFECTIONS (J00-J06)	0	0	0	0	0	0	0	0
INFLUENZA (J10-J11)	0	0	0	0	0	0	0	0
PNEUMONIA (J12-J18)	7	0	2	5	0	0	0	0

TABLE F-7 (Cont.): RESIDENT INFANT, NEONATAL AND POST-NEONATAL DEATHS FROM SELECTED CAUSES, BY RACE, FLORIDA, 2002

	BLACK				OTHER			
	INFANT	NEONATAL <1 DAY	1-27 DAYS	POST NEO- NATAL	INFANT	NEONATAL <1 DAY	1-27 DAYS	POST NEO- NATAL
ACUTE BRONCHITIS & ACUTE BRONCIOLITIS (J20-J21)	0	0	0	0	0	0	0	0
BRONCHITIS, CHRONIC & UNSPECIFIED (J40-J42)	0	0	0	0	0	0	0	0
ASTHMA (J45-J46)	0	0	0	0	0	0	0	0
PNEUMONITIS DUE TO SOLIDS & LIQUIDS (J69)	0	0	0	0	0	0	0	0
OTHER & UNSPEC RESPIR SYS DIS (J22,J30-J39,J43-J44,J47-J68,J70-J98)	13	0	2	11	0	0	0	0
GASTRITIS, DUODENITIS, NONINFECTIVE ENTERITIS/COLITIS (K29, K50-K55)	10	0	1	9	1	0	0	1
HERNIA ABDOM CAVITY & INTESTINAL OBSTRUCT W/O HERNIA (K40-K46, K56)	0	0	0	0	1	0	1	0
OTHER & UNSPEC DIGESTIVE SYSTEM DISEASE (K00-K28, K30-K38, K57-K92)	5	0	1	4	0	0	0	0
RENAL FAILURE & OTHER KIDNEY DISORDERS (N17-N19, N25, N27)	7	0	4	3	1	0	1	0
OTHER & UNSPEC GENITOURINARY SYS DIS (N00-N15, N20-N23, N26,N28-N98)	0	0	0	0	0	0	0	0
PERINATAL PERIOD CONDITIONS (P00-P96)	356	238	102	16	11	10	1	0
MATERNAL HYPERTENSIVE DISORDERS (P00.0)	2	1	1	0	0	0	0	0
MATERNAL CONDITIONS UNRELATED PRESENT PREGNANCY (P00.1-P00.9)	2	2	0	0	1	1	0	0
INCOMPETENT CERVIX (P01.0)	17	17	0	0	0	0	0	0
PREMATURE RUPTURE OF MEMBRANES (P01.1)	17	16	1	0	4	4	0	0
MULTIPLE PREGNANCY (P01.5)	17	17	0	0	2	2	0	0
MATERNAL COMPLICATIONS OF PREGNANCY (P01.2-P01.4, P01.6-P01.9)	7	5	2	0	0	0	0	0
PLACENTA COMPLICATIONS (P02.0-P02.3)	8	7	1	0	0	0	0	0
CORD COMPLICATIONS (P02.4-P02.6)	0	0	0	0	0	0	0	0
CHORIOAMNIONITIS (P02.7)	17	17	0	0	2	2	0	0
OTHER & UNSPECIFIED MEMBRANE ABNORMALITIES (P02.8-P02.9)	0	0	0	0	0	0	0	0
OTHER COMPLICATIONS OF LABOR & DELIVERY (P03)	3	3	0	0	0	0	0	0
NOXIOUS INFLUENCES VIA PLACENTA OR BREAST MILK (P04)	1	1	0	0	0	0	0	0
SLOW FETAL GROWTH & FETAL MALNUTRITION (P05)	0	0	0	0	0	0	0	0
EXTREME LOW BIRTH WEIGHT OR EXTREME IMMATUREITY (P07.0, P07.2)	102	86	15	1	0	0	0	0
OTHER LOW BIRTH WEIGHT OR PRETERM (P07.1, P07.3)	33	32	1	0	0	0	0	0
LONG GESTATION & HIGH BIRTH WEIGHT (P08)	0	0	0	0	0	0	0	0
BIRTH TRAUMA (P10-P15)	7	0	7	0	0	0	0	0
INTRAUTERINE HYPOXIA (P20)	1	0	1	0	0	0	0	0
BIRTH ASPHYXIA (P21)	10	1	9	0	0	0	0	0
RESPIRATORY DISTRESS (P22)	15	2	11	2	0	0	0	0
CONGENITAL PNEUMONIA (P23)	0	0	0	0	0	0	0	0
NEONATAL ASPIRATION SYNDROMES (P24)	0	0	0	0	0	0	0	0
INTERSTITIAL EMPHYSEMA & RELATED CONDITIONS (P25)	3	0	3	0	0	0	0	0
PULMONARY HEMORRHAGE (P26)	3	0	3	0	0	0	0	0
CHRONIC RESPIRATORY DISEASE (P27)	9	0	0	9	0	0	0	0
ATELECTASIS (P28.0-P28.1)	13	10	3	0	0	0	0	0
OTHER RESPIRATORY CONDITIONS (P28.2-P28.9)	0	0	0	0	0	0	0	0
BACTERIAL SEPSIS (P36)	15	1	12	2	0	0	0	0
OMPHALITIS W/ OR W/O HEMORRHAGE (P38)	0	0	0	0	0	0	0	0
ALL OTHER INFECTIONS (P35, P37, P39)	4	1	3	0	0	0	0	0
NEONATAL HEMORRHAGE (P50-P52, P54)	8	1	7	0	0	0	0	0
HEMORRHAGIC DISEASE OF NEW BORN (P53)	0	0	0	0	0	0	0	0
HEMOLYTIC DIS DUE TO ISOIMMUNIZATION/PERINAT JAUNDICE (P55-P59)	1	0	0	1	0	0	0	0
HEMATOLOGICAL DISORDERS (P60-P61)	1	0	1	0	0	0	0	0
DIABETES MELLITUS, MATERNAL OR NEONATAL (P70.0-P70.2)	0	0	0	0	0	0	0	0
NECROTIZING ENTEROCOLITIS (P77)	11	0	10	1	1	0	1	0
HYDROPS FETALIS NOT DUE TO HEMOLYTIC DIS (P83.2)	2	1	1	0	1	1	0	0
OTHER PERINATAL CONDITIONS *4	27	17	10	0	0	0	0	0

TABLE F-7 (Cont.): RESIDENT INFANT, NEONATAL AND POST-NEONATAL DEATHS FROM SELECTED CAUSES, BY RACE, FLORIDA, 2002

	BLACK				OTHER			
	INFANT	NEONATAL <1 DAY	1-27 DAYS	POST NEO- NATAL	INFANT	NEONATAL <1 DAY	1-27 DAYS	POST NEO- NATAL
CONGENITAL / CHROMOSOMAL ANOMALIES (Q00-Q99)	74	25	21	28	6	2	2	2
ANENCEPHALY & SIMILAR ANOMALIES (Q00)	2	2	0	0	0	0	0	0
CONGENITAL HYDROCEPHALUS (Q03)	2	1	1	0	0	0	0	0
SPINA BIFIDA (Q05)	0	0	0	0	0	0	0	0
OTHER CONGENITAL ANOMALIES CENT NERV SYS (Q01-Q02,Q04,Q06-Q07)	4	0	2	2	1	0	0	1
CONGENITAL ANOMALIES OF HEART (Q20-Q24)	26	1	9	16	1	0	0	1
OTHER CONGENITAL ANOMALIES OF CIRCULATORY SYS (Q25-Q28)	0	0	0	0	0	0	0	0
CONGENITAL ANOMALIES OF RESPIRATORY SYS (Q30-Q34)	11	7	3	1	1	1	0	0
CONGENITAL ANOMALIES OF DIGESTIVE SYS (Q35-Q45)	2	0	0	2	0	0	0	0
CONGENITAL ANOMALIES OF GENITOURINARY SYS (Q50-Q64)	3	2	1	0	0	0	0	0
CONGENITAL ANOMALIES OF MUSCULOSKELETAL SYS (Q65-Q85)	7	3	1	3	1	0	1	0
DOWN'S SYNDROME (Q90)	1	0	0	1	0	0	0	0
EDWARD'S SYNDROME (Q91.0-Q91.3)	6	1	3	2	1	0	1	0
PATAU'S SYNDROME (Q91.4-Q91.7)	1	1	0	0	0	0	0	0
OTHER CONGENITAL ANOMALIES (Q10-Q18, Q86-Q89)	8	7	1	0	1	1	0	0
OTHER CHROMOSOMAL ANOMALIES (Q92-Q99)	1	0	0	1	0	0	0	0
SUDDEN INFANT DEATH SYNDROME (R95)	36	0	2	34	4	0	0	4
SYMPTOMS, SIGNS, ABN CLINICAL/LAB FINDINGS (R00-R53,R55-R94,R96-R99)	32	6	2	24	0	0	0	0
ALL OTHER DISEASES (F01-F99, H00-H57, L00-M99)	0	0	0	0	0	0	0	0
UNINT INJ: MOTOR VEHICLE *5	6	0	0	6	0	0	0	0
UNINT INJ: OTHER & UNSPEC TRANSPORT & SEQUELAE *6	0	0	0	0	0	0	0	0
UNINT INJ: FALLS (W00-W19)	0	0	0	0	0	0	0	0
UNINT INJ: FIREARMS DISCHARGE (W32-W34)	0	0	0	0	0	0	0	0
UNINT INJ: DROWNING & SUBMERSION (W65-W74)	0	0	0	0	0	0	0	0
UNINT INJ: SUFFOCATION & STRANGULATION IN BED (W75)	19	0	3	16	0	0	0	0
UNINT INJ: OTHER SUFFOCATION & STRANGULATION (W76-W77, W81-W84)	1	0	0	1	0	0	0	0
UNINT INJ: INHALE/INGEST--RESPIRATORY TRACT OBSTRUCTION (W78-W80)	1	0	0	1	0	0	0	0
UNINT INJ: SMOKE, FIRE, FLAMES EXPOSURE (X00-X09)	1	0	0	1	0	0	0	0
UNINT INJ: POISONING & NOXIOUS SUBSTANCE EXPOSURE (X40-X49)	1	0	0	1	0	0	0	0
UNINT INJ: OTHER & UNSPECIFIED & SEQUELAE *7	1	0	0	1	0	0	0	0
HOMICIDE: HANGING, STRANGULATION, SUFFOCATION (X91)	0	0	0	0	0	0	0	0
HOMICIDE: FIREARMS DISCHARGE (X93-X95)	1	0	0	1	0	0	0	0
HOMICIDE: NEGLECT, ABANDONMENT, MALTREATMENT (Y06-Y07)	0	0	0	0	0	0	0	0
HOMICIDE: OTHER & UNSPECIFIED MEANS & SEQUELAE *8	5	0	1	4	0	0	0	0
MEDICAL & SURGICAL CARE COMPLICATIONS (Y40-Y84, Y88)	1	0	0	1	0	0	0	0
OTHER EXTERNAL CAUSES & SEQUELAE (X60-X84,Y10-Y36,Y87.0,Y87.2,Y89)	2	0	0	2	0	0	0	0
*1 (A20-A32, A38, A42-A49, A51-A53, A55-A79, B35-B36, B38-B49, B55-B58, B60-B99)								
*2 (E00-E32, E34.0-E34.2, E34.4-E34.9, E65-E83, E85, E88)								
*3 (G04,G06-G11,G12.1-G12.9,G20-G72,G81-G92,G93.0,G93.2-G93.9,G95-G98)								
*4 (P29,P70.3-P70.9,P71-P76,P78-P81,P83.0-P83.1,P83.3-P83.9,P90-P96)								
*5 (V02-V04, V09.0, V09.2, V12-V14, V19.0-V19.2, V19.4-V19.6, V20-V79, V80.3-V80.5, V81.0-V81.1, V82.0-V82.1, V83-V86, V87.0-V87.8, V88.0-V88.8, V89.0, V89.2)								
*6 (V01, V05-V06, V09.1, V09.3-V09.9, V10-V11, V15-V18, V19.3, V19.8-V19.9, V80.0-V80.2, V80.6-V80.9, V81.2-V81.9, V82.2-V82.9, V87.9, V88.9, V89.1, V89.3, V89.9, V90-V99, Y85)								
*7 (W20-W31, W35-W64, W85-W99, X10-X39, X50-X59, Y86)								
*8 (X85-X90, X92, X96-X99, Y00-Y05, Y08-Y09, Y87.1)								