

Marriages and Dissolutions of Marriage

MARRIAGES AND DISSOLUTIONS OF MARRIAGE

- The number of marriages has increased the last three years to a total of 157,554 in 2002.
- The marriage rate per 1,000 population decreased from 10.7 in 1997, to 9.4 in 1998, to 8.9 in 1999, rose to 9.3 in 2000, remained constant in 2001, and then rose to 9.4 in 2002.
- May was the most popular month for marriages with 14,877 marriages performed.
- After increasing for three consecutive years, the number of dissolutions of marriage decreased slightly in 2002.
- Since 1980, the dissolution rate has declined 30.1 percent despite an overall increase in the number of dissolutions.
- The dissolution of marriage rate had declined steadily since 1980, reaching a rate of 5.4 per 1,000 population in 1996. In 1997 the rate increased to 5.6 per 1,000 population, but then declined in 1998 to 5.3, remained constant in 1999, declined to 5.2 in 2000, remained constant in 2001, and then declined to 5.1 in 2002.
- Of the 157,554 marriage ceremonies conducted in 2002, the reported race of the bride and of the groom was the same in 138,981 (88.2%) of the marriages. This is a slight increase of 0.1% from 2001.
- Of the 85,181 dissolutions of marriage in 2002, over half (53.8%) affected no minor children.
- Over 4 of every 10 dissolutions of marriage occurred to couples married between 5 and 14 years.
- The marriage rate in Florida is nearly twice the dissolution rate.

CHART M-1: MARRIAGES AND DISSOLUTIONS OF MARRIAGE, AND RATES PER 1,000 POPULATION, FLORIDA AND UNITED STATES, CENSUS YEARS 1920-1990 AND 1992-2002						
YEAR	MARRIAGES			DISSOLUTIONS ¹		
	FLORIDA		U.S.	FLORIDA		U.S.
	NUMBER	RATE	RATE	NUMBER	RATE	RATE
1920 ¹	NA	NA	12.0	NA	NA	1.6
1930 ¹	17,147	11.7	9.2	3,262	2.5	1.6
1940	32,709	17.1	12.1	11,061	5.8	2.0
1950	27,588	9.8	11.1	17,845	6.3	2.6
1960	39,315	7.9	8.5	19,326	3.9	2.2
1970	69,249	10.1	10.6	37,506	5.4	3.5
1980	108,344	11.0	10.6	71,578	7.3	5.2
1990	141,816	10.9	9.8	81,119	6.2	4.7
1992	139,191	10.3	9.3 ²	84,011	6.2	4.8 ²
1993	141,892	10.3	9.0 ²	82,956	6.0	4.6 ²
1994	142,895	10.1	9.1 ²	81,628	5.8	4.6 ²
1995	145,090	10.1	9.1 ²	78,416	5.4	4.5 ²
1996	150,599	10.2	8.8 ²	77,750	5.3	4.3 ²
1997	158,783	10.6	8.9 ²	82,161	5.5	4.3 ²
1998	141,344	9.2	8.5 ²	80,466	5.3	4.3 ²
1999	136,403	8.7	8.5 ²	80,983	5.2	4.1 ²
2000	145,300	9.0	8.7 ²	81,439	5.1	4.2 ²
2001	153,298	9.3	8.4 ²	85,259	5.2	4.0 ²
2002	157,554	9.4	7.9 ²	85,181	5.1	NA

¹ Includes divorces and annulments.

² Provisional data.

GRAPH M-1: MARRIAGE AND DISSOLUTION OF MARRIAGE RATES PER 1,000 POPULATION, FLORIDA AND UNITED STATES, 1992-2002

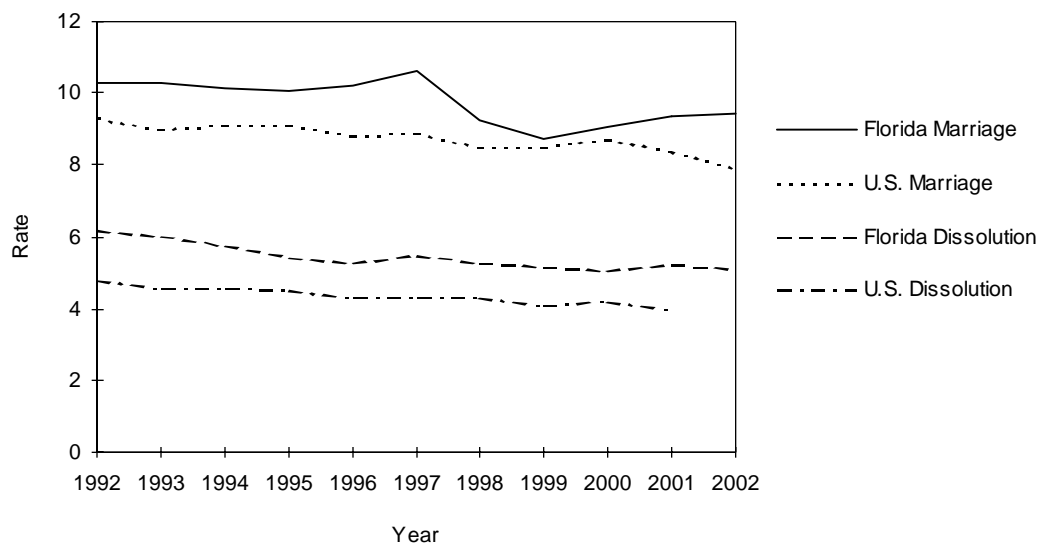


TABLE M-1: MARRIAGES PERFORMED BY MONTH, BY COUNTY OF ISSUANCE, FLORIDA, 2002

	TOTAL	JAN	FEB	MAR	APR	MAY	JUN	JUL	AUG	SEP	OCT	NOV	DEC
FLORIDA	157,554	9,394	13,682	14,523	14,641	14,877	14,828	12,868	12,888	11,436	12,783	13,283	12,351
ALACHUA	1,812	85	131	175	169	195	178	151	157	129	140	138	164
BAKER	244	15	30	22	19	22	23	26	18	16	20	18	15
BAY	2,127	87	152	159	189	222	235	234	199	186	171	159	134
BRADFORD	258	12	16	32	17	22	27	19	22	30	21	20	20
BREVARD	3,787	194	342	371	363	354	347	316	277	261	311	319	332
BROWARD	14,974	948	1,382	1,302	1,344	1,320	1,361	1,160	1,334	1,043	1,193	1,312	1,275
CALHOUN	142	7	11	10	7	20	18	16	12	12	11	9	9
CHARLOTTE	1,066	62	89	104	107	99	103	89	80	78	80	94	81
CITRUS	809	38	93	80	78	73	91	55	56	58	61	59	67
CLAY	1,374	69	101	130	116	154	125	118	110	111	132	116	92
COLLIER	2,731	171	244	240	282	277	260	202	188	188	209	254	216
COLUMBIA	607	32	55	65	53	50	60	47	54	44	53	50	44
MIAMI-DADE	28,894	2,083	2,657	2,660	2,681	2,569	2,451	2,299	2,427	2,094	2,090	2,473	2,410
DESOTO	211	3	35	21	12	24	20	20	21	13	8	19	15
DIXIE	125	5	14	17	13	12	16	8	9	6	11	4	10
DUVAL	6,658	381	506	627	570	635	668	550	616	525	538	545	497
ESCAMBIA	3,275	167	237	295	280	345	337	340	309	250	285	234	196
FLAGLER	335	16	20	14	32	29	47	30	33	28	34	29	23
FRANKLIN	164	10	16	9	14	15	18	16	16	16	12	12	10
GADSDEN	314	14	38	35	28	29	36	21	27	14	25	19	28
GILCHRIST	151	8	9	11	13	21	17	16	18	10	10	9	9
GLADES	42	2	6	3	6	2	5	5	3	2	1	2	5
GULF	145	12	8	11	10	11	14	20	16	13	11	10	9
HAMILTON	194	10	8	24	18	18	26	14	10	14	10	20	22
HARDEE	159	6	18	17	9	20	18	14	7	12	11	12	15
HENDRY	277	13	27	19	24	19	21	18	28	24	34	25	25
HERNANDO	816	53	66	82	83	92	71	65	51	62	63	61	67
HIGHLANDS	689	43	62	62	62	52	55	61	66	46	55	55	70
HILLSBOROUGH	9,642	540	852	941	926	915	897	736	764	697	833	826	715
HOLMES	173	8	11	21	10	16	15	19	16	13	15	13	16
INDIAN RIVER	872	47	90	85	90	88	77	64	82	54	55	65	75
JACKSON	388	12	33	37	36	40	36	38	23	33	34	35	31
JEFFERSON	185	9	25	18	22	16	16	17	11	17	12	10	12
LAFAYETTE	65	5	5	5	1	4	4	4	11	11	4	4	7
LAKE	1,663	105	136	170	141	155	152	142	135	123	144	119	141
LEE	3,935	236	353	362	404	377	378	282	307	226	321	356	333
LEON	1,928	102	147	200	172	217	197	161	156	138	137	140	161
LEVY	264	9	28	34	20	24	22	23	24	15	25	26	14
LIBERTY	44	3	4	3	6	6	3	5	1	2	1	4	6
MADISON	191	11	11	20	13	19	22	14	15	11	17	13	25
MANATEE	1,890	116	180	180	163	194	183	143	144	117	154	185	131
MARION	2,068	111	186	185	191	213	223	169	155	157	149	163	166
MARTIN	888	36	62	86	87	87	84	79	74	56	76	74	87
MONROE	2,931	175	269	203	279	308	300	267	210	184	230	284	222
NASSAU	695	32	58	60	59	80	74	64	64	48	54	59	43
OKALOOSA	2,702	122	166	214	242	283	299	279	240	271	251	177	158
OKEECHOBEE	335	19	33	42	42	26	29	27	27	12	18	24	36
ORANGE	10,078	593	866	911	941	933	957	821	787	781	873	843	772
OSCEOLA	4,400	258	358	393	431	395	376	335	335	395	396	368	360
PALM BEACH	10,162	653	958	984	957	905	879	768	818	665	891	919	765
PASCO	2,301	140	200	220	233	218	262	175	171	162	169	172	179
PINELLAS	7,907	431	646	758	785	802	754	640	644	515	689	715	528
POLK	3,969	234	368	388	380	327	379	332	309	286	336	306	324
PUTNAM	614	43	52	67	50	59	55	49	53	62	51	41	32
ST JOHNS	1,312	60	91	112	132	129	145	92	106	113	108	117	107
ST LUCIE	1,344	75	129	134	113	123	137	109	111	97	100	118	98
SANTA ROSA	817	34	68	68	73	98	81	82	70	70	63	56	54
SARASOTA	2,858	159	245	243	287	324	277	215	174	191	249	269	225
SEMINOLE	3,171	181	266	304	277	297	301	286	245	224	263	276	251
SUMTER	284	14	31	28	30	20	25	25	18	17	15	27	34
SUWANNEE	282	17	19	41	26	4	39	27	23	14	26	29	17
TAYLOR	168	8	19	22	12	14	17	17	16	12	13	11	7
UNION	91	3	8	11	10	8	6	12	8	7	10	6	2
VOLUSIA	3,514	209	277	295	316	351	355	318	282	245	291	289	286
WAKULLA	212	11	13	23	12	23	28	18	14	17	17	14	22
WALTON	682	15	37	43	62	76	75	66	70	79	76	42	41
WASHINGTON	149	12	9	15	11	2	21	18	11	14	17	11	8

TABLE M-2: MARRIAGES BY RACE OF GROOM AND BRIDE, FLORIDA, 2002

RACE OF GROOM	RACE OF BRIDE										
	TOTAL	WHITE	BLACK	AMERICAN INDIAN	CHINESE	JAPANESE	HAWAIIAN	FILIPINO	OTHER ASIAN PAC ISL	OTHER ENTRIES	UNK
TOTAL	157,554	123,037	21,829	294	344	130	26	769	1,687	9,333	105
WHITE	122,727	117,801	1,374	213	153	97	21	520	756	1,741	51
BLACK	23,383	2,731	20,016	29	6	13	4	45	76	458	5
AMERICAN INDIAN	300	238	14	34	0	1	0	3	5	5	0
CHINESE	232	41	1	1	163	3	0	3	20	0	0
JAPANESE	40	23	0	0	1	13	0	0	3	0	0
HAWAIIAN	16	11	0	0	0	0	1	1	3	0	0
FILIPINO	270	91	6	0	1	0	0	156	14	2	0
OTH ASIAN/PAC ISL	1,509	580	54	4	19	1	0	33	797	16	5
OTHER ENTRIES	8,990	1,479	362	13	1	2	0	8	13	7,111	1
UNK	87	42	2	0	0	0	0	0	0	0	43

TABLE M-3: DISSOLUTIONS* OF MARRIAGE BY DURATION OF MARRIAGE IN YEARS AND NUMBER OF MINOR CHILDREN AFFECTED, FLORIDA, 2002

DURATION IN YEARS	NUMBER OF MINOR CHILDREN AFFECTED								
	TOTAL	NONE	ONE	TWO	THREE	FOUR	FIVE	SIX+	UNK
TOTAL	85,181	45,868	17,300	12,355	3,297	612	108	69	5,572
<1	3,246	2,755	144	64	12	3	0	0	268
1	5,421	4,272	571	109	19	4	0	1	445
2	5,761	4,004	1,048	213	47	5	1	3	440
3	5,753	3,642	1,237	371	49	9	1	1	443
4	6,209	3,781	1,409	488	86	12	3	0	430
5-9	22,913	11,489	5,507	3,534	705	115	23	14	1,526
10-14	12,426	4,369	2,761	3,266	1,047	189	33	18	743
15-19	7,793	2,224	1,642	2,429	807	180	35	15	461
20-24	4,806	2,109	1,236	860	262	51	3	6	279
25-29	2,571	1,731	469	156	40	9	3	2	161
30-34	1,507	1,232	122	38	11	2	0	1	101
35-39	659	573	12	13	6	1	0	0	54
40+	615	548	7	4	3	1	1	0	51
UNK	5,501	3,139	1,135	810	203	31	5	8	170

* Includes divorces and annulments.

TABLE M-4: DISSOLUTIONS* OF MARRIAGE BY MONTH, BY COUNTY, FLORIDA, 2002

	TOTAL	JAN	FEB	MAR	APR	MAY	JUN	JUL	AUG	SEP	OCT	NOV	DEC
FLORIDA	85,181	6,346	6,734	6,724	7,353	7,936	7,189	7,449	7,715	6,900	7,795	6,462	6,578
ALACHUA	984	70	72	102	80	113	70	105	64	74	93	52	89
BAKER	145	7	12	17	10	23	12	10	14	10	12	10	8
BAY	1,013	110	69	74	107	104	71	87	100	78	116	46	51
BRADFORD	179	15	15	18	14	14	18	11	13	14	13	19	15
BREVARD	1,526	130	130	135	141	157	117	126	150	98	136	99	107
BROWARD	9,365	505	823	661	760	904	917	787	1,131	795	923	601	558
CALHOUN	64	9	4	8	8	10	5	5	4	0	1	6	4
CHARLOTTE	564	67	34	51	49	53	23	75	26	40	54	46	46
CITRUS	453	32	27	33	46	44	34	45	36	33	38	54	31
CLAY	838	62	79	38	98	74	46	95	78	65	74	75	54
COLLIER	1,159	82	93	103	109	108	91	93	118	97	104	82	79
COLUMBIA	397	7	35	37	35	40	55	8	41	33	58	16	32
MIAMI-DADE	13,844	883	970	1,091	1,197	1,179	1,363	1,321	1,177	1,152	1,264	1,140	1,107
DESOTO	177	6	13	8	16	23	19	9	26	4	23	15	15
DIXIE	62	6	6	4	7	10	3	7	5	7	3	3	1
DUVAL	4,548	376	343	354	362	355	354	439	402	376	410	448	329
ESCAMBIA	1,626	174	130	163	147	156	109	114	134	117	157	125	100
FLAGLER	236	17	22	17	27	20	22	15	22	13	22	16	23
FRANKLIN	65	0	4	12	5	5	8	4	8	6	5	4	4
GADSDEN	211	10	17	21	9	27	22	8	31	18	13	13	22
GILCHRIST	89	5	4	6	2	18	6	8	9	10	7	9	5
GLADES	26	2	2	5	1	1	5	0	0	1	2	3	4
GULF	60	5	2	5	1	12	5	8	3	6	2	5	6
HAMILTON	69	13	6	6	4	5	2	6	3	11	2	4	7
HARDEE	97	8	7	10	6	2	11	7	17	17	1	6	5
HENDRY	193	14	13	21	24	9	24	10	12	24	15	13	14
HERNANDO	472	32	30	45	28	32	32	49	31	44	48	43	58
HIGHLANDS	408	30	36	33	31	39	30	52	34	42	35	24	22
HILLSBOROUGH	5,724	526	621	419	385	559	491	369	563	444	487	351	509
HOLMES	138	12	16	8	13	11	9	10	12	13	8	17	9
INDIAN RIVER	561	49	47	47	39	40	51	49	49	36	60	45	49
JACKSON	283	18	15	23	29	34	26	41	24	21	20	15	17
JEFFERSON	144	17	9	22	9	16	8	9	14	11	12	6	11
LAFAYETTE	34	1	2	3	3	4	2	5	1	8	2	2	1
LAKE	1,045	92	78	86	105	111	71	75	109	84	85	71	78
LEE	2,273	169	169	168	157	246	183	186	194	194	230	170	207
LEON	997	80	94	57	112	82	106	90	95	40	107	62	72
LEVY	172	14	11	12	18	5	20	24	18	11	17	15	7
LIBERTY	45	2	1	5	8	2	1	7	2	6	4	1	6
MADISON	67	3	5	5	5	13	6	2	5	7	6	5	5
MANATEE	1,161	72	99	82	81	120	67	119	115	102	124	103	77
MARION	1,355	109	116	101	143	140	89	123	121	91	106	114	102
MARTIN	589	29	45	43	69	48	50	41	58	49	54	45	58
MONROE	540	26	46	43	43	57	45	44	50	52	41	38	55
NASSAU	303	13	29	24	26	36	14	28	22	22	25	31	33
OKALOOSA	949	81	80	79	97	82	103	102	65	59	69	64	68
OKEECHOBEE	203	20	19	16	12	22	25	24	10	6	19	8	22
ORANGE	5,327	405	400	435	502	550	425	500	452	431	408	371	448
OSCEOLA	1,464	132	88	126	116	129	108	140	121	159	157	82	106
PALM BEACH	5,389	384	401	426	487	507	426	470	459	412	479	459	479
PASCO	1,518	114	118	100	178	127	137	91	150	140	106	123	134
PINELLAS	4,266	359	317	328	414	397	374	360	364	310	404	301	338
POLK	2,783	217	263	212	237	255	193	242	213	253	277	218	203
PUTNAM	251	16	11	18	14	28	11	28	6	31	28	33	27
ST JOHNS	546	29	33	48	48	57	35	53	48	55	48	50	42
ST LUCIE	712	68	45	78	31	93	60	68	36	78	50	51	54
SANTA ROSA	551	31	47	50	35	60	34	56	56	46	51	58	27
SARASOTA	1,667	124	121	150	153	109	132	156	123	155	161	135	148
SEMINOLE	1,886	176	113	145	198	169	147	139	166	138	173	175	147
SUMTER	251	29	15	16	23	17	30	23	26	16	32	10	14
SUWANNEE	174	12	23	12	19	18	13	13	8	17	12	7	20
TAYLOR	105	7	7	8	8	10	11	7	16	2	10	10	9
UNION	63	4	7	8	3	3	5	9	0	5	7	5	7
VOLUSIA	2,337	205	183	203	174	200	171	207	213	184	239	201	157
WAKULLA	112	4	8	14	9	7	10	3	14	11	12	8	12
WALTON	195	12	16	17	15	19	18	20	21	10	18	17	12
WASHINGTON	131	8	18	9	11	16	8	12	7	6	16	8	12

* Includes divorces and annulments.