

Live Births

LIVE BIRTHS

- In 1995 Florida's resident live births dropped to 188,535, the lowest number for the past ten years. The number increased yearly to a record 205,800 in 2001. In 2002 the number dropped slightly to 205,580. In 2003 the number increased to a new record of 212,243.
- The resident birth rate dropped from 12.8 births per 1,000 population in 1998 to 12.6 births in 1999, increased again to 12.7 in 2000, decreased to 12.5 in 2001, and then decreased to 12.3 in 2002. It increased slightly in 2003 to 12.4 live births per 1,000 population.
- In 2003 the resident birth rate for whites was 11.2 births per 1,000 population, and 17.5 births per 1,000 population for nonwhites.
- From 2002 to 2003, total resident births to mothers aged 18 and under decreased from 7.0 percent to 6.6 percent of the total resident live births.
- From 2002 to 2003, the percentage of resident births to both white mothers and nonwhite mothers aged 18 years or younger decreased. However, the percentage of resident births for nonwhite mothers (9.8) was almost twice the percentage for white mothers (5.6).
- Of the resident live births in 2003, 8.5 percent had a birthweight of less than 2,500 grams (5 lbs. 8.2 oz.) and 1.6 percent had a birthweight of less than 1,500 grams (3 lbs. 4.9 oz.).
- Birthweights of 4,000 grams (8 lbs. 13.1 oz.) and heavier accounted for 7.5 percent of the total resident live births.
- Two out of every five resident live births (39.9%) was to an unwed mother. For blacks, two out of every three births (67.0%) were to unwed mothers; among white mothers, one out of every three births (32.7%) was to an unwed mother; and among mothers of other races, only one out of every five live births (21.3%) was to an unwed mother.
- Of the live births to unwed mothers, 14.8 percent were to women 18 years old and younger.
- Mothers of Hispanic origin accounted for 25.8 percent of the resident live births.
- Almost ninety percent (86.3%) of the resident live births to nonwhite mothers were to black mothers. Black mothers accounted for 22.2 percent of the total resident live births.
- Of the resident live births, 98.7 percent occurred in hospitals. Physicians were attendants in 88.0 percent of those hospital births.
- In 2003 84.9 percent of all mothers received prenatal care in the first trimester.
- Of black mothers, 74.1 percent had 12 or more years of education, compared to 80.6 percent of white mothers and 85.3 percent of mothers of other races.
- Of the mothers aged 15-19 years, 19.9 percent had one or more previous live births.
- Resident live births to mothers aged 18 years or younger accounted for 6.6 percent of the total number of live births, while mothers aged 35 years or older comprised 14.5 percent of the total.

CHART B-1: RESIDENT LIVE BIRTHS AND RATES PER 1,000 POPULATION,
 BY RACE OF MOTHER, FLORIDA AND UNITED STATES TOTAL,
 CENSUS YEARS 1920-1990 AND 1993-2003

YEAR	NUMBER OF BIRTHS - FL			RATES - FL			RATE - U.S.
	TOTAL	WHITE	NON-WHITE	TOTAL	WHITE	NON-WHITE	TOTAL
1920 ¹	19,540	13,541	5,999	19.7	20.6	17.9	27.7
1930 ¹	26,991	18,596	8,395	18.3	17.9	19.3	21.3
1940	33,696	23,805	9,891	17.6	17.0	19.1	19.4
1950	64,370	45,699	18,671	22.8	20.7	30.5	24.1
1960	115,610	84,402	31,208	23.1	20.6	34.9	23.7
1970	115,113	86,945	28,166	16.8	15.1	26.2	18.4
1980	131,811	97,402	34,386	13.4	11.6	23.7	15.9
1990	199,146	149,743	49,265	15.3	13.6	24.8	16.7
1993	192,453	144,189	48,146	13.9	12.5	21.5	15.4
1994	190,546	143,147	47,278	13.5	12.1	20.3	15.0
1995	188,535	141,848	46,555	13.1	11.8	19.3	14.6
1996	189,338	142,391	46,848	12.9	11.7	18.8	14.4
1997	192,304	143,767	48,397	12.8	11.6	18.7	14.2
1998	195,564	145,868	49,502	12.8	11.5	18.5	14.3
1999	196,963	146,329	50,473	12.6	11.3	18.2	14.2
2000	204,030	150,115	53,622	12.7	11.4	18.7	14.4
2001	205,800	151,623	53,827	12.5	11.3	18.2	14.1
2002	205,580	152,127	53,071	12.3	11.1	17.4	13.9
2003	212,243	157,402	54,566	12.4	11.2	17.5	14.0 ²

¹ Only recorded data are available.

² Provisional data.

GRAPH B-1: RESIDENT LIVE BIRTH RATES PER 1,000 POPULATION,
 BY RACE OF MOTHER, FLORIDA AND UNITED STATES TOTAL, 1993-2003

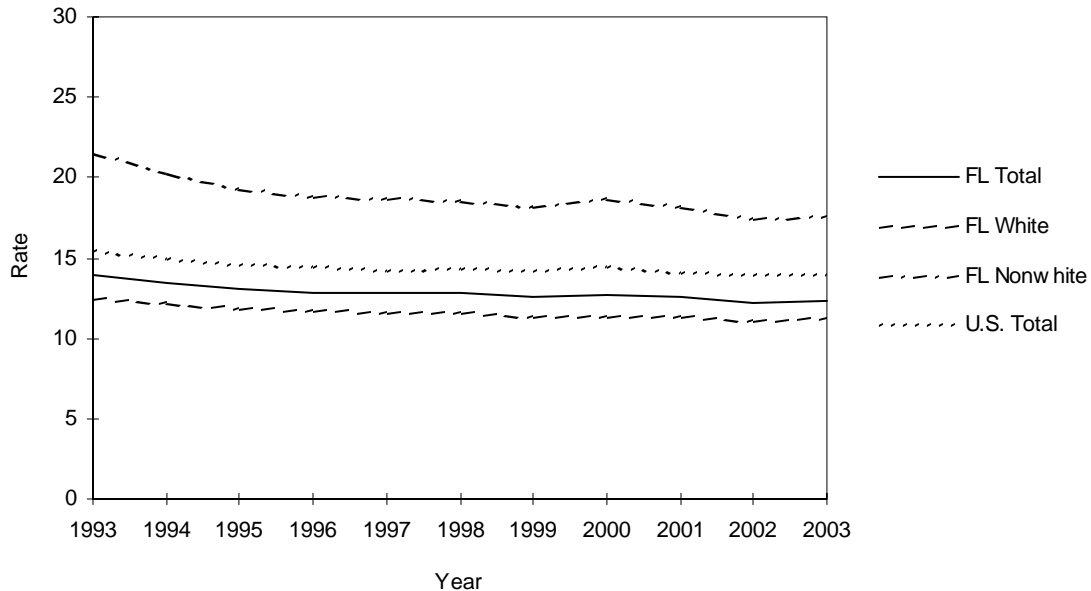


CHART B-2: RESIDENT LIVE BIRTHS TO MOTHERS 18 YEARS AND UNDER,
 BY SINGLE YEARS OF AGE, AND PERCENT OF TOTAL BIRTHS,
 BY RACE OF MOTHER, FLORIDA, 1970, 1975, 1980, 1985, 1990, 1995 AND 1999-2003

YEAR	AGE OF MOTHER							18 YEARS & UNDER	
	<13	13	14	15	16	17	18	NUMBER	PERCENT
TOTAL									
1970	26	107	503	1,463	3,107	4,887	6,808	16,901	14.7
1975	19	145	647	1,799	3,370	4,936	6,482	17,398	16.5
1980	21	98	509	1,537	2,913	4,429	6,299	15,806	12.0
1985	16	105	549	1,407	2,709	4,348	6,139	15,273	9.3
1990	31	138	591	1,661	3,148	5,193	7,544	18,306	9.2
1995	20	128	588	1,583	3,236	5,166	6,971	17,692	9.4
1999	18	100	426	1,322	2,739	4,703	6,933	16,241	8.2
2000	24	95	412	1,213	2,702	4,730	7,094	16,270	8.0
2001	17	96	394	1,111	2,514	4,388	6,891	15,411	7.5
2002	10	87	323	1,034	2,316	4,078	6,582	14,430	7.0
2003	10	65	287	947	2,290	3,990	6,514	14,103	6.9
WHITE									
1970	3	19	155	524	1,553	3,004	4,463	9,721	11.2
1975	4	34	207	693	1,651	2,868	4,078	9,535	12.2
1980	5	24	128	581	1,370	2,434	3,887	8,429	8.7
1985	4	26	168	600	1,439	2,537	3,744	8,518	6.9
1990	8	37	201	693	1,571	2,976	4,636	10,122	6.8
1995	9	32	230	801	1,801	3,124	4,451	10,448	7.4
1999	7	41	199	681	1,574	2,937	4,445	9,884	7.0
2000	6	43	167	625	1,512	2,863	4,463	9,679	6.8
2001	7	30	167	550	1,426	2,670	4,366	9,216	6.4
2002	5	32	141	563	1,353	2,578	4,216	8,888	6.1
2003	1	17	129	501	1,399	2,521	4,231	8,799	5.8
NONWHITE									
1970	23	88	348	939	1,554	1,883	2,345	7,180	25.5
1975	15	111	440	1,105	1,718	2,068	2,403	7,860	28.5
1980	16	74	380	956	1,543	1,994	2,412	7,375	21.4
1985	12	79	381	807	1,269	1,811	2,394	6,753	16.7
1990	23	101	390	967	1,574	2,212	2,905	8,172	16.6
1995	11	96	358	782	1,431	2,038	2,519	7,235	15.5
1999	11	59	227	641	1,162	1,764	2,486	6,350	13.6
2000	18	52	244	588	1,185	1,862	2,628	6,577	12.6
2001	9	66	226	557	1,084	1,713	2,517	6,172	12.3
2002	5	55	182	470	963	1,497	2,357	5,529	11.5
2003	9	48	158	446	890	1,465	2,278	5,294	9.8

CHART B-3: PERCENT OF RESIDENT LIVE BIRTHS FOR SELECTED BIRTHWEIGHT GROUPS,
BY RACE OF MOTHER AND GENDER OF CHILD, FLORIDA, 1970, 1980, 1990 AND 1993-2003

YEAR	VERY LOW BIRTHWEIGHT: LESS THAN 1,500 GRAMS					LOW BIRTHWEIGHT: LESS THAN 2,500 GRAMS				
	TOTAL	WHITE		NONWHITE		TOTAL	WHITE		NONWHITE	
		MALE	FEMALE	MALE	FEMALE		MALE	FEMALE	MALE	FEMALE
1970	1.3	0.9	0.9	2.4	2.4	8.5	6.4	7.5	11.9	14.5
1980	1.3	1.0	0.9	2.4	2.4	7.5	5.6	6.4	11.2	12.8
1990	1.5	1.0	1.0	2.7	2.8	7.4	5.5	6.3	11.2	13.1
1993	1.4	1.0	1.1	2.6	2.5	7.5	5.7	6.6	10.7	12.7
1994	1.5	1.1	1.1	2.7	2.7	7.8	5.9	6.8	11.2	13.0
1995	1.5	1.1	1.0	2.7	2.7	7.7	5.9	6.9	10.3	13.0
1996	1.5	1.1	1.1	2.6	2.6	7.9	6.0	7.1	10.7	12.9
1997	1.5	1.2	1.2	2.6	2.6	8.0	6.2	7.3	10.7	13.0
1998	1.6	1.3	1.2	2.6	2.8	8.1	6.3	7.4	10.4	13.2
1999	1.6	1.2	1.3	2.7	2.9	8.2	6.4	7.5	10.7	13.1
2000	1.5	1.2	1.1	2.6	2.7	8.0	6.2	7.0	10.9	12.8
2001	1.6	1.2	1.2	2.6	2.9	8.2	6.3	7.3	10.8	13.1
2002	1.6	1.2	1.2	2.9	2.8	8.4	6.6	7.7	11.0	13.4
2003	1.6	1.2	1.1	2.6	2.8	8.5	6.5	7.7	11.1	14.0

CHART B-4: RESIDENT LIVE BIRTHS TO UNWED MOTHERS AND PERCENT OF TOTAL LIVE BIRTHS, BY RACE OF MOTHER, FLORIDA AND UNITED STATES TOTAL, CENSUS YEARS 1920-1990 AND 1993-2003							
YEAR	NUMBER OF BIRTHS - FL			PERCENT - FL			PERCENT - U.S.
	TOTAL	WHITE	NON-WHITE	TOTAL	WHITE	NON-WHITE	TOTAL
1920 ¹	754	125	629	3.9	0.9	10.5	NA
1930 ¹	1,467	277	1,190	5.4	1.5	14.2	NA
1940	2,075	358	1,717	6.2	1.5	17.4	3.8
1950	5,134	805	4,329	8.0	1.8	23.2	4.0
1960	11,042	2,321	8,721	9.6	2.8	27.9	5.3
1970	17,264	5,676	11,588	15.0	6.5	41.1	10.7
1980	30,156	10,295	19,860	22.9	10.6	57.8	20.3
1990	63,126	31,276	31,802	31.7	20.9	64.6	28.0
1993	67,365	35,909	31,421	35.0	24.9	65.3	31.0
1994	68,084	37,395	30,641	35.7	26.1	64.8	32.6
1995	67,422	37,625	29,742	35.7	26.5	63.9	32.2
1996	68,082	38,567	29,546	36.0	27.0	63.1	32.4
1997	69,226	38,956	30,227	36.0	27.1	62.5	32.4
1998	71,602	40,701	30,842	36.6	27.9	62.3	32.8
1999	73,785	42,398	31,335	37.5	29.0	62.1	33.0
2000	78,026	44,616	33,334	38.2	29.7	62.2	33.2
2001	80,209	46,846	33,266	39.0	30.9	61.8	33.5
2002	80,833	48,400	32,326	39.3	31.8	60.9	33.8 ²
2003	84,733	51,482	33,178	39.9	32.7	60.8	NA

¹ Only recorded data are available.

² Preliminary data.

GRAPH B-2: PERCENT OF RESIDENT LIVE BIRTHS TO UNWED MOTHERS,
BY RACE OF MOTHER, FLORIDA AND UNITED STATES TOTAL, 1993-2003

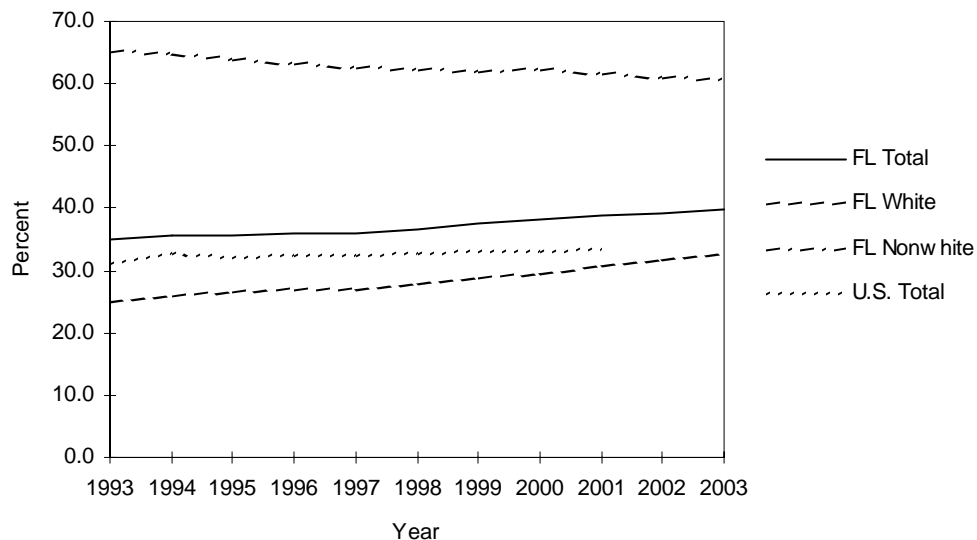


CHART B-5: RESIDENT LIVE BIRTHS TO UNWED MOTHERS
AND PERCENT, BY AGE AND RACE OF MOTHER,
FLORIDA, 1993 AND 2003

NUMBER OF LIVE BIRTHS TO UNWED MOTHERS				
AGE OF MOTHER	WHITE		NONWHITE	
	1993	2003	1993	2003
TOTAL	35,909	51,482	31,421	33,178
10-14	235	137	507	213
15	595	460	929	440
16	1,313	1,235	1,489	877
17	1,929	2,125	2,042	1,448
18	2,773	3,380	2,372	2,176
19	2,945	4,275	2,802	2,736
20-24	12,536	19,317	11,098	13,192
25-29	7,107	10,645	5,422	6,751
30-34	4,256	6,076	3,133	3,443
35-44	2,200	3,799	1,618	1,877
45+	11	32	6	23
UNK	9	1	3	2
PERCENT OF TOTAL BIRTHS WHICH WERE TO UNWED MOTHERS				
AGE OF MOTHER	WHITE		NONWHITE	
	1993	2003	1993	2003
TOTAL	24.9	32.7	65.3	60.8
10-14	89.4	93.2	99.6	99.1
15	85.5	91.8	98.9	98.7
16	76.5	88.3	98.7	98.5
17	70.4	84.3	96.6	98.8
18	64.4	79.9	93.9	95.5
19	55.3	70.7	89.7	91.9
20-24	35.1	51.4	75.5	78.4
25-29	16.6	25.7	49.8	50.9
30-34	12.2	15.5	40.4	34.7
35-44	13.9	15.7	40.0	30.3
45+	14.7	15.4	21.4	30.7

TABLE B-1: RESIDENT AND RECORDED LIVE BIRTHS AND BIRTH RATES PER 1,000 POPULATION, BY RACE OF MOTHER, BY COUNTY, FLORIDA, 2003

	RESIDENT LIVE BIRTHS						RATES		
	NUMBER		NONWHITE				TOTAL	WHITE	NONWHITE
	TOTAL	WHITE	TOTAL	BLACK	OTHER	UNK			
FLORIDA	212,243	157,402	54,566	47,117	7,449	275	12.4	11.2	17.5
ALACHUA	2,480	1,543	932	774	158	5	10.7	8.8	16.4
BAKER	353	308	45	43	2	0	15.0	15.5	12.5
BAY	2,058	1,667	375	309	66	16	13.2	12.5	17.0
BRADFORD	300	231	69	64	5	0	11.1	11.0	11.4
BREVARD	5,017	4,107	906	741	165	4	9.8	9.1	15.7
BROWARD	22,489	13,727	8,737	7,756	981	25	13.2	10.9	19.6
CALHOUN	138	114	24	22	2	0	10.2	10.3	9.9
CHARLOTTE	1,047	950	97	67	30	0	6.8	6.6	9.8
CITRUS	894	838	55	36	19	1	7.1	6.9	11.2
CLAY	2,091	1,818	272	193	79	1	13.3	12.9	16.5
COLLIER	3,730	3,239	490	421	69	1	12.6	11.8	24.1
COLUMBIA	771	608	163	155	8	0	13.0	12.7	14.4
MIAMI-DADE	32,551	23,350	9,146	8,497	649	55	13.8	13.0	16.2
DESOTO	459	389	70	69	1	0	13.5	13.5	13.6
DIXIE	157	143	14	12	2	0	10.6	10.8	9.3
DUVAL	12,421	7,421	4,994	4,371	623	6	15.0	13.3	18.3
ESCAMBIA	3,981	2,639	1,342	1,185	157	0	13.1	11.7	17.0
FLAGLER	557	483	74	54	20	0	8.9	8.7	10.8
FRANKLIN	123	115	8	7	1	0	11.7	12.4	6.2
GADSDEN	710	263	447	442	5	0	15.2	13.5	16.5
GILCHRIST	176	163	13	12	1	0	11.3	11.3	11.2
GLADES	58	41	17	11	6	0	5.4	4.6	9.7
GULF	108	93	15	14	1	0	6.9	7.6	4.4
HAMILTON	172	97	75	73	2	0	12.3	11.3	13.7
HARDEE	506	471	35	32	3	0	18.4	19.2	11.9
HENDRY	694	579	112	84	28	3	18.9	18.9	18.5
HERNANDO	1,248	1,128	120	90	30	0	8.8	8.4	15.3
HIGHLANDS	898	741	157	140	17	0	9.9	9.2	15.0
HILLSBOROUGH	15,294	11,611	3,603	2,999	604	80	14.1	13.3	17.0
HOLMES	229	217	11	5	6	1	12.1	12.4	7.1
INDIAN RIVER	1,213	988	225	201	24	0	10.0	9.0	19.0
JACKSON	535	372	162	159	3	1	10.9	10.6	11.5
JEFFERSON	145	79	66	64	2	0	10.6	9.4	12.6
LAFAYETTE	90	86	4	4	0	0	12.2	13.8	3.4
LAKE	2,838	2,414	423	354	69	1	11.7	11.0	17.6
LEE	5,653	4,806	844	752	92	3	11.3	10.5	19.8
LEON	3,132	1,742	1,387	1,243	144	3	12.2	10.1	16.6
LEVY	388	338	50	49	1	0	10.5	10.4	11.2
LIBERTY	96	81	15	14	1	0	13.2	14.2	9.7
MADISON	234	115	119	117	2	0	12.2	10.2	15.0
MANATEE	3,338	2,712	625	493	132	1	11.6	10.4	21.3
MARION	2,979	2,350	628	551	77	1	10.5	9.5	16.7
MARTIN	1,175	942	233	100	133	0	8.7	7.5	24.6
MONROE	711	616	94	72	22	1	8.8	8.2	17.8
NASSAU	704	641	63	55	8	0	11.1	11.0	11.6
OKALOOSA	2,541	2,134	406	302	104	1	14.0	13.6	16.1
OKEECHOBEE	537	470	67	44	23	0	14.4	13.9	18.3
ORANGE	14,917	10,409	4,496	3,745	751	12	15.1	14.0	18.2
OSCEOLA	3,148	2,740	405	286	119	3	14.7	14.7	15.0
PALM BEACH	14,659	10,197	4,450	3,812	638	12	12.0	10.1	21.0
PASCO	4,042	3,731	294	151	143	17	10.7	10.3	19.6
PINELLAS	9,225	7,152	2,065	1,564	501	8	9.8	8.7	17.6
POLK	7,053	5,622	1,430	1,307	123	1	13.7	13.0	17.5
PUTNAM	923	682	240	235	5	1	12.8	11.6	18.2
ST JOHN'S	1,484	1,289	195	159	36	0	10.5	9.9	18.2
ST LUCIE	2,448	1,746	702	648	54	0	11.5	9.9	18.6
SANTA ROSA	1,580	1,464	116	73	43	0	12.2	12.2	12.2
SARASOTA	2,987	2,631	355	268	87	1	8.5	8.0	18.0
SEMINOLE	4,599	3,808	787	580	207	4	11.6	11.1	14.4
SUMTER	449	359	89	81	8	1	7.1	6.6	9.8
SUWANNEE	486	403	83	76	7	0	13.0	12.4	16.8
TAYLOR	210	161	49	47	2	0	10.1	9.8	11.0
UNION	155	139	16	15	1	0	11.2	13.4	4.7
VOLUSIA	4,809	3,984	822	697	125	3	10.2	9.5	15.3
WAKULLA	290	259	31	29	2	0	11.5	11.8	9.7
WALTON	509	445	63	50	13	1	10.7	10.3	14.9
WASHINGTON	251	201	49	42	7	1	11.4	10.9	13.7

TABLE B-1 (Cont.): RESIDENT AND RECORDED LIVE BIRTHS AND BIRTH RATES PER 1,000 POPULATION, BY RACE OF MOTHER, BY COUNTY, FLORIDA, 2003

	RECORDED LIVE BIRTHS						RATES		
	TOTAL	WHITE	NUMBER				TOTAL	WHITE	NONWHITE
			TOTAL	BLACK	OTHER	UNK			
FLORIDA	212,322	157,428	54,624	47,164	7,460	270	12.4	11.2	17.6
ALACHUA	5,272	3,896	1,371	1,189	182	5	22.7	22.2	24.2
BAKER	2	2	0	0	0	0	0.1	0.1	0.0
BAY	2,565	2,109	437	358	79	19	16.5	15.8	19.8
BRADFORD	2	2	0	0	0	0	0.1	0.1	0.0
BREVARD	4,940	4,050	887	721	166	3	9.7	8.9	15.4
BROWARD	22,178	13,078	9,080	8,105	975	20	13.0	10.4	20.4
CALHOUN	2	1	1	0	1	0	0.1	0.1	0.4
CHARLOTTE	1,139	1,028	111	76	35	0	7.5	7.2	11.3
CITRUS	802	759	42	32	10	1	6.3	6.2	8.6
CLAY	1,828	1,543	284	218	66	1	11.6	11.0	17.2
COLLIER	3,705	3,247	458	406	52	0	12.5	11.8	22.5
COLUMBIA	702	494	208	198	10	0	11.9	10.3	18.3
MIAMI-DADE	31,926	23,256	8,612	7,979	633	58	13.6	13.0	15.3
DESOTO	689	606	83	82	1	0	20.3	21.1	16.1
DIXIE	1	1	0	0	0	0	0.1	0.1	0.0
DUVAL	14,234	9,121	5,107	4,451	656	6	17.2	16.4	18.7
ESCAMBIA	5,453	3,978	1,475	1,281	194	0	17.9	17.7	18.7
FLAGLER	9	6	3	2	1	0	0.1	0.1	0.4
FRANKLIN	1	1	0	0	0	0	0.1	0.1	0.0
GADSDEN	3	2	1	1	0	0	0.1	0.1	0.0
GILCHRIST	0	0	0	0	0	0	0.0	0.0	0.0
GLADES	0	0	0	0	0	0	0.0	0.0	0.0
GULF	1	1	0	0	0	0	0.1	0.1	0.0
HAMILTON	2	1	1	1	0	0	0.1	0.1	0.2
HARDEE	3	2	1	1	0	0	0.1	0.1	0.3
HENDRY	6	5	0	0	0	1	0.2	0.2	0.0
HERNANDO	1,312	1,209	103	77	26	0	9.3	9.0	13.1
HIGHLANDS	1,270	1,066	204	167	37	0	14.0	13.3	19.5
HILLSBOROUGH	17,079	13,131	3,852	3,187	665	96	15.7	15.0	18.2
HOLMES	0	0	0	0	0	0	0.0	0.0	0.0
INDIAN RIVER	1,166	953	213	192	21	0	9.6	8.7	18.0
JACKSON	494	342	151	143	8	1	10.0	9.7	10.8
JEFFERSON	1	1	0	0	0	0	0.1	0.1	0.0
LAFAYETTE	0	0	0	0	0	0	0.0	0.0	0.0
LAKE	2,065	1,675	389	353	36	1	8.5	7.7	16.2
LEE	6,277	5,365	908	794	114	4	12.6	11.7	21.3
LEON	4,948	2,809	2,136	1,979	157	3	19.3	16.2	25.6
LEVY	1	1	0	0	0	0	0.0	0.0	0.0
LIBERTY	0	0	0	0	0	0	0.0	0.0	0.0
MADISON	4	2	2	2	0	0	0.2	0.2	0.3
MANATEE	2,678	2,182	495	384	111	1	9.3	8.4	16.9
MARION	2,546	2,005	540	467	73	1	9.0	8.1	14.3
MARTIN	1,629	1,354	275	136	139	0	12.0	10.8	29.0
MONROE	519	435	83	64	19	1	6.4	5.8	15.7
NASSAU	411	355	56	47	9	0	6.5	6.1	10.3
OKALOOSA	2,775	2,351	424	311	113	0	15.2	15.0	16.8
OKEECHOBEE	5	3	2	2	0	0	0.1	0.1	0.5
ORANGE	18,044	13,142	4,887	4,024	863	15	18.2	17.7	19.8
OSCEOLA	3,645	3,175	468	291	177	2	17.1	17.0	17.3
PALM BEACH	16,578	11,732	4,831	4,122	709	15	13.6	11.7	22.8
PASCO	1,610	1,454	156	88	68	0	4.3	4.0	10.4
PINELLAS	10,543	8,411	2,122	1,591	531	10	11.2	10.2	18.1
POLK	6,081	4,850	1,231	1,126	105	0	11.8	11.2	15.1
PUTNAM	527	342	184	178	6	1	7.3	5.8	13.9
ST JOHN'S	1,009	835	174	155	19	0	7.1	6.4	16.2
ST LUCIE	1,797	1,175	622	578	44	0	8.4	6.7	16.5
SANTA ROSA	444	406	38	30	8	0	3.4	3.4	4.0
SARASOTA	3,474	2,990	484	377	107	0	9.9	9.0	24.5
SEMINOLE	3,756	3,095	659	551	108	2	9.5	9.0	12.0
SUMTER	2	2	0	0	0	0	0.0	0.0	0.0
SUWANNEE	9	5	4	4	0	0	0.2	0.2	0.8
TAYLOR	2	1	1	1	0	0	0.1	0.1	0.2
UNION	0	0	0	0	0	0	0.0	0.0	0.0
VOLUSIA	4,143	3,374	766	640	126	3	8.8	8.0	14.3
WAKULLA	0	0	0	0	0	0	0.0	0.0	0.0
WALTON	13	11	2	2	0	0	0.3	0.3	0.5
WASHINGTON	0	0	0	0	0	0	0.0	0.0	0.0

TABLE B-2: RESIDENT LIVE BIRTHS BY HISPANIC OR HAITIAN ORIGIN OF MOTHER, BY COUNTY, FLORIDA, 2003

	TOTAL	HISPANIC ORIGIN							NON-HISPANIC/HAITIAN	UNK
		TOTAL HISPANIC	MEXICAN	PUERTO RICAN	CUBAN	CENTRAL/SOUTH AMERICAN	OTHER/UNK HISPANIC	HAITIAN		
FLORIDA	212,243	54,849	13,355	9,508	10,557	20,187	1,242	6,873	150,199	322
ALACHUA	2,480	145	25	37	27	46	10	6	2,324	5
BAKER	353	6	2	2	1	0	1	0	347	0
BAY	2,058	73	35	26	1	9	2	1	1,976	8
BRADFORD	300	3	2	0	0	1	0	0	297	0
BREVARD	5,017	436	94	170	34	120	18	16	4,561	4
BROWARD	22,489	5,933	616	912	859	3,420	126	1,833	14,671	52
CALHOUN	138	7	6	0	0	0	1	0	131	0
CHARLOTTE	1,047	96	28	28	7	29	4	11	940	0
CITRUS	894	43	8	26	2	7	0	3	846	2
CLAY	2,091	123	37	40	5	32	9	10	1,957	1
COLLIER	3,730	1,801	1,128	95	159	403	16	320	1,607	2
COLUMBIA	771	24	14	4	1	3	2	0	747	0
MIAMI-DADE	32,551	20,022	1,059	1,309	7,632	9,799	223	1,896	10,575	58
DESOTO	459	184	144	3	0	6	31	0	274	1
DIXIE	157	5	3	0	0	1	1	0	152	0
DUVAL	12,421	824	220	278	54	176	96	47	11,545	5
ESCAMBIA	3,981	119	58	18	5	22	16	1	3,860	1
FLAGLER	557	38	3	12	4	10	9	1	518	0
FRANKLIN	123	3	0	2	0	1	0	0	120	0
GADSDEN	710	108	72	1	1	27	7	0	600	2
GILCHRIST	176	13	6	1	1	5	0	0	163	0
GLADES	58	16	14	1	0	1	0	0	42	0
GULF	108	0	0	0	0	0	0	0	107	1
HAMILTON	172	27	19	0	2	6	0	2	143	0
HARDEE	506	315	265	2	0	3	45	4	186	1
HENDRY	694	371	273	35	21	39	3	0	322	1
HERNANDO	1,248	101	19	52	9	18	3	0	1,147	0
HIGHLANDS	898	281	175	69	12	21	4	9	608	0
HILLSBOROUGH	15,294	4,207	1,551	1,120	573	855	108	130	10,873	84
HOLMES	229	6	4	0	1	0	1	0	223	0
INDIAN RIVER	1,213	239	191	11	5	27	5	11	963	0
JACKSON	535	18	13	0	2	2	1	0	516	1
JEFFERSON	145	9	5	1	1	1	1	0	136	0
LAFAYETTE	90	18	17	0	0	0	1	0	72	0
LAKE	2,838	503	270	103	14	71	45	7	2,328	0
LEE	5,653	1,439	732	241	69	369	28	173	4,032	9
LEON	3,132	119	41	26	14	31	7	8	3,001	4
LEVY	388	31	14	7	2	7	1	0	357	0
LIBERTY	96	5	5	0	0	0	0	0	91	0
MADISON	234	15	14	0	0	0	1	0	218	1
MANATEE	3,338	932	700	63	16	144	9	52	2,353	1
MARION	2,979	337	126	125	12	64	10	6	2,634	2
MARTIN	1,175	197	124	28	4	39	2	10	967	1
MONROE	711	199	26	9	111	50	3	15	496	1
NASSAU	704	17	5	2	0	5	5	0	687	0
OKALOOSA	2,541	181	90	35	2	43	11	1	2,358	1
OKEECHOBEE	537	177	164	3	3	6	1	0	360	0
ORANGE	14,917	4,049	799	1,846	188	1,155	61	731	10,121	16
OSCEOLA	3,148	1,356	146	792	45	360	13	33	1,756	3
PALM BEACH	14,659	3,831	1,101	518	406	1,732	74	1,262	9,553	13
PASCO	4,042	535	231	145	37	80	42	3	3,490	14
PINELLAS	9,225	1,013	469	237	45	183	79	23	8,183	6
POLK	7,053	1,501	1,056	253	34	140	18	94	5,453	5
PUTNAM	923	131	92	26	0	11	2	0	791	1
ST JOHNS	1,484	78	14	24	8	22	10	1	1,405	0
ST LUCIE	2,448	504	283	80	22	108	11	125	1,819	0
SANTA ROSA	1,580	62	35	7	4	10	6	0	1,518	0
SARASOTA	2,987	416	210	43	23	132	8	8	2,563	0
SEMINOLE	4,599	806	138	359	55	243	11	12	3,777	4
SUMTER	449	55	26	8	1	2	18	1	392	1
SUWANNEE	486	54	35	5	3	9	2	0	432	0
TAYLOR	210	3	1	0	0	1	1	0	207	0
UNION	155	3	3	0	0	0	0	0	151	1
VOLUSIA	4,809	653	277	263	19	76	18	7	4,143	6
WAKULLA	290	1	0	1	0	0	0	0	288	1
WALTON	509	28	19	3	1	4	1	0	480	1
WASHINGTON	251	4	3	1	0	0	0	0	246	1

TABLE B-3: RESIDENT LIVE BIRTHS FOR INCORPORATED CITIES OF 2,400 OR MORE POPULATION,
BY RACE OF MOTHER, BY COUNTY, FLORIDA, 2003

	TOTAL	WHITE	BLACK	AMERICAN INDIAN	CHINESE	JAPANESE	HAWAIIAN	FILIPINO	OTHER ASIAN/ PAC ISL	OTHER ENTRIES	UNK
FLORIDA	212,243	157,402	47,117	1,085	578	132	30	993	4,041	590	275
ALACHUA	2,480	1,543	774	6	30	5	0	12	102	3	5
ALACHUA	95	68	18	1	0	0	0	0	8	0	0
GAINESVILLE	1,534	794	605	4	29	5	0	10	83	2	2
HIGH SPRINGS	66	52	14	0	0	0	0	0	0	0	0
NEWBERRY	68	58	9	0	0	0	0	0	0	1	0
BALANCE OF COUNTY	717	571	128	1	1	0	0	2	11	0	3
BAKER	353	308	43	0	0	0	0	0	2	0	0
MACCLENNY	68	52	15	0	0	0	0	0	1	0	0
BALANCE OF COUNTY	285	256	28	0	0	0	0	0	1	0	0
BAY	2,058	1,667	309	19	0	2	2	12	28	3	16
CALLAWAY	41	33	5	0	0	0	0	0	2	0	1
CEDAR GROVE	7	4	2	0	0	0	0	0	1	0	0
LYNN HAVEN	169	154	12	1	0	0	0	1	0	0	1
PANAMA CITY	1,056	755	255	11	0	1	1	7	16	3	7
PANAMA CITY BEACH	229	214	4	2	0	0	0	1	5	0	3
PARKER	11	11	0	0	0	0	0	0	0	0	0
SPRINGFIELD	9	8	1	0	0	0	0	0	0	0	0
BALANCE OF COUNTY	536	488	30	5	0	1	1	3	4	0	4
BRADFORD	300	231	64	1	0	0	0	1	2	1	0
STARKE	111	61	47	1	0	0	0	0	2	0	0
BALANCE OF COUNTY	189	170	17	0	0	0	0	1	0	1	0
BREVARD	5,017	4,107	741	20	8	2	2	23	105	5	4
CAPE CANAVERAL	56	50	4	0	0	0	0	0	2	0	0
COCOA	355	208	143	0	0	1	0	0	3	0	0
COCOA BEACH	82	78	1	3	0	0	0	0	0	0	0
INDIALANTIC	69	65	2	0	0	0	0	0	2	0	0
INDIAN HARBOUR BEACH	27	27	0	0	0	0	0	0	0	0	0
MALABAR	26	25	1	0	0	0	0	0	0	0	0
MELBOURNE	1,003	821	127	3	5	1	1	4	37	2	2
MELBOURNE BEACH	29	27	0	0	0	0	1	0	1	0	0
PALM BAY	1,023	827	169	3	0	0	0	4	17	2	1
ROCKLEDGE	285	227	47	0	0	0	0	2	9	0	0
SATELLITE BEACH	118	113	3	0	0	0	0	0	2	0	0
TITUSVILLE	490	362	107	6	0	0	0	5	9	1	0
WEST MELBOURNE	120	106	4	1	2	0	0	1	6	0	0
BALANCE OF COUNTY	1,334	1,171	133	4	1	0	0	7	17	0	1
BROWARD	22,489	13,727	7,756	88	84	9	2	77	625	96	25
COCONUT CREEK	622	514	68	2	1	1	0	3	29	3	1
COOPER CITY	236	220	10	1	0	0	0	0	5	0	0
CORAL SPRINGS	1,513	1,138	295	4	12	0	0	4	54	2	4
DANIA	176	84	90	0	1	0	0	0	1	0	0
DAVIE	893	780	69	2	6	0	0	3	29	3	1
DEERFIELD BEACH	601	408	179	1	0	0	0	1	9	2	1
FORT LAUDERDALE	3,115	1,414	1,630	3	3	1	0	4	41	17	2
HALLANDALE	259	168	87	0	0	0	0	0	3	1	0
HOLLYWOOD	2,151	1,488	573	29	4	0	2	5	49	1	0
LAUDERDALE LAKES	409	32	372	1	0	0	0	0	3	1	0
LAUDERDALE-BY-THE-SEA	23	20	0	0	0	0	0	3	0	0	0
LAUDERHILL	988	144	816	2	4	0	0	1	21	0	0
LIGHHOUSE POINT	104	98	2	0	0	0	0	0	1	3	0
MARGATE	663	436	176	4	0	0	0	4	31	8	4
MIRAMAR	1,483	719	661	6	10	0	0	16	68	1	2
NORTH LAUDERDALE	597	263	305	2	2	0	0	3	15	7	0
OAKLAND PARK	280	149	115	1	1	0	0	0	5	9	0
PARKLAND	206	180	14	1	1	0	0	0	10	0	0
PEMBROKE PARK	21	5	14	0	0	0	0	1	1	0	0
PEMBROKE PINES	1,920	1,394	404	6	15	1	0	16	81	3	0
PLANTATION	1,064	743	260	7	4	4	0	2	41	1	2
POMPANO BEACH	1,718	948	715	4	6	0	0	3	27	13	2

TABLE B-3 (Cont.): RESIDENT LIVE BIRTHS FOR INCORPORATED CITIES OF 2,400 OR MORE POPULATION,
BY RACE OF MOTHER, BY COUNTY, FLORIDA, 2003

	TOTAL	WHITE	BLACK	AMERICAN INDIAN	CHINESE	JAPANESE	HAWAIIAN	OTHER ASIAN/ FILIPINO	PACISL	OTHER ENTRIES	UNK
BROWARD (Cont.)											
SUNRISE	1,102	644	399	3	3	2	0	3	42	6	0
TAMARAC	622	416	177	4	1	0	0	1	12	8	3
WESTON	800	718	35	3	7	0	0	1	35	1	0
WILTON MANOR	53	30	20	0	0	0	0	0	2	1	0
BALANCE OF COUNTY	870	574	270	2	3	0	0	3	10	5	3
CALHOUN											
BLOUNTSTOWN	48	31	16	1	0	0	0	0	0	0	0
BALANCE OF COUNTY	90	83	6	1	0	0	0	0	0	0	0
CHARLOTTE											
PUNTA GORDA	113	92	15	2	1	0	0	0	1	2	0
BALANCE OF COUNTY	934	858	52	1	4	0	0	5	12	2	0
CITRUS											
CRYSTAL RIVER	72	59	12	0	0	0	0	0	1	0	0
INVERNESS	90	83	3	0	1	0	0	0	2	0	1
BALANCE OF COUNTY	732	696	21	4	1	0	0	6	4	0	0
CLAY											
GREEN COVE SPRINGS	50	45	5	0	0	0	0	0	0	0	0
ORANGE PARK	362	271	66	5	1	0	0	11	7	1	0
BALANCE OF COUNTY	1,679	1,502	122	7	1	2	1	19	19	5	1
COLLIER											
MARCO ISLAND	31	30	0	0	0	0	0	0	1	0	0
NAPLES	170	132	36	0	0	0	0	0	2	0	0
BALANCE OF COUNTY	3,529	3,077	385	24	3	3	1	4	28	3	1
COLUMBIA											
LAKE CITY	303	197	104	1	0	0	0	0	1	0	0
BALANCE OF COUNTY	468	411	51	3	0	0	0	0	3	0	0
MIAMI-DADE											
AVENTURA	270	260	7	0	0	0	0	0	2	1	0
BAL HARBOUR	46	43	2	0	0	0	0	0	1	0	0
BAY HARBOR ISLANDS	62	61	1	0	0	0	0	0	0	0	0
BISCAYNE PARK	23	19	2	0	0	0	0	0	2	0	0
CORAL GABLES	337	324	9	0	0	1	0	0	2	1	0
EL PORTAL	1	1	0	0	0	0	0	0	0	0	0
FLORIDA CITY	48	25	19	4	0	0	0	0	0	0	0
HIALEAH	2,766	2,627	113	8	1	0	0	3	13	0	1
HIALEAH GARDENS	120	115	4	1	0	0	0	0	0	0	0
HOMESTEAD	619	440	167	6	0	0	0	0	5	1	0
KEY BISCAYNE	103	102	0	0	0	0	0	0	0	0	1
MIAMI	13,469	7,692	5,516	77	24	4	0	15	99	38	4
MIAMI BEACH	930	862	34	4	2	2	0	6	8	10	2
MIAMI SHORES	64	53	8	0	0	0	0	2	0	1	0
MIAMI SPRINGS	105	100	3	0	0	0	0	1	0	1	0
NORTH BAY VILLAGE	61	56	1	0	0	0	0	0	2	2	0
NORH MIAMI	677	258	403	1	2	0	0	2	10	1	0
NORTH MIAMI BEACH	661	395	241	2	4	0	0	4	12	2	1
OPA-LOCKA	460	206	250	3	0	0	0	0	1	0	0
PINECREST	9	9	0	0	0	0	0	0	0	0	0
SOUTH MIAMI	26	22	3	0	1	0	0	0	0	0	0
SUNNY ISLES BEACH	82	73	4	0	1	0	0	0	2	2	0
SURFSIDE	59	58	1	0	0	0	0	0	0	0	0
SWEETWATER	1	1	0	0	0	0	0	0	0	0	0
VIRGINIA GARDENS	5	4	1	0	0	0	0	0	0	0	0
WEST MIAMI	4	4	0	0	0	0	0	0	0	0	0
BALANCE OF COUNTY	11,543	9,540	1,708	19	34	4	0	27	127	38	46
DESOTO											
ARCADIA	261	206	55	0	0	0	0	0	0	0	0
BALANCE OF COUNTY	198	183	14	1	0	0	0	0	0	0	0

TABLE B-3 (Cont.): RESIDENT LIVE BIRTHS FOR INCORPORATED CITIES OF 2,400 OR MORE POPULATION,
BY RACE OF MOTHER, BY COUNTY, FLORIDA, 2003

	TOTAL	WHITE	BLACK	AMERICAN INDIAN	CHINESE	JAPANESE	HAWAIIAN	FILIPINO	OTHER ASIAN/ PAC ISL	OTHER ENTRIES	UNK
DIXIE	157	143	12	2	0	0	0	0	0	0	0
DUVAL	12,421	7,421	4,371	35	23	15	2	197	318	33	6
ATLANTIC BEACH	366	281	69	4	1	1	0	7	3	0	0
BALDWIN	40	36	4	0	0	0	0	0	0	0	0
JACKSONVILLE	11,737	6,846	4,282	31	21	14	2	188	314	33	6
JACKSONVILLE BEACH	223	203	16	0	1	0	0	2	1	0	0
NEPTUNE BEACH	55	55	0	0	0	0	0	0	0	0	0
ESCAMBIA	3,981	2,639	1,185	22	11	4	0	41	78	1	0
CENTURY	18	11	7	0	0	0	0	0	0	0	0
PENSACOLA	1,126	595	484	4	4	1	0	8	30	0	0
BALANCE OF COUNTY	2,837	2,033	694	18	7	3	0	33	48	1	0
FLAGLER	557	483	54	3	1	0	0	5	7	4	0
FLAGLER BEACH	27	26	0	0	0	0	0	0	0	1	0
PALM COAST	360	321	23	3	1	0	0	5	5	2	0
BALANCE OF COUNTY	170	136	31	0	0	0	0	0	2	1	0
FRANKLIN	123	115	7	0	0	0	0	0	1	0	0
APALACHICOLA	35	30	5	0	0	0	0	0	0	0	0
BALANCE OF COUNTY	88	85	2	0	0	0	0	0	1	0	0
GADSDEN	710	263	442	1	0	0	0	0	1	3	0
CHATTAHOOCHEE	55	15	40	0	0	0	0	0	0	0	0
GRETNA	37	5	32	0	0	0	0	0	0	0	0
HAVANA	73	21	51	0	0	0	0	0	1	0	0
QUINCY	233	75	156	1	0	0	0	0	0	1	0
BALANCE OF COUNTY	312	147	163	0	0	0	0	0	0	2	0
GILCHRIST	176	163	12	0	0	0	0	0	1	0	0
GLADES	58	41	11	6	0	0	0	0	0	0	0
GULF	108	93	14	0	0	0	0	0	0	1	0
PORT SAINT JOE	44	32	11	0	0	0	0	0	0	1	0
BALANCE OF COUNTY	64	61	3	0	0	0	0	0	0	0	0
HAMILTON	172	97	73	2	0	0	0	0	0	0	0
HARDEE	506	471	32	0	0	0	0	0	3	0	0
BOWLING GREEN	76	69	7	0	0	0	0	0	0	0	0
WAUCHULA	181	164	16	0	0	0	0	0	1	0	0
BALANCE OF COUNTY	249	238	9	0	0	0	0	0	2	0	0
HENDRY	694	579	84	23	0	0	0	3	2	0	3
CLEWISTON	160	96	50	10	0	0	0	1	2	0	1
LA BELLE	184	172	12	0	0	0	0	0	0	0	0
BALANCE OF COUNTY	350	311	22	13	0	0	0	2	0	0	2
HERNANDO	1,248	1,128	90	2	3	1	0	3	15	6	0
BROOKSVILLE	144	115	27	0	1	0	0	1	0	0	0
BALANCE OF COUNTY	1,104	1,013	63	2	2	1	0	2	15	6	0
HIGHLANDS	898	741	140	8	1	0	0	2	6	0	0
AVON PARK	165	122	42	0	0	0	0	0	1	0	0
SEBRING	264	211	44	3	0	0	0	1	5	0	0
BALANCE OF COUNTY	469	408	54	5	1	0	0	1	0	0	0
HILLSBOROUGH	15,294	11,611	2,999	44	37	14	5	62	414	28	80
PLANT CITY	695	585	100	2	0	0	0	0	8	0	0
TAMPA	8,125	5,408	2,310	23	21	4	2	35	254	20	48
TEMPLE TERRACE	214	117	81	0	1	2	0	3	10	0	0
BALANCE OF COUNTY	6,260	5,501	508	19	15	8	3	24	142	8	32
HOLMES	229	217	5	3	0	0	0	1	2	0	1
BONIFAY	51	46	3	1	0	0	0	1	0	0	0
BALANCE OF COUNTY	178	171	2	2	0	0	0	0	2	0	1

TABLE B-3 (Cont.): RESIDENT LIVE BIRTHS FOR INCORPORATED CITIES OF 2,400 OR MORE POPULATION,
BY RACE OF MOTHER, BY COUNTY, FLORIDA, 2003

	TOTAL	WHITE	BLACK	AMERICAN				OTHER		OTHER ENTRIES	UNK
				INDIAN	CHINESE	JAPANESE	HAWAIIAN	FILIPINO	ASIAN/PACISL		
INDIAN RIVER	1,213	988	201	1	1	0	0	5	7	10	0
FELLSMERE	106	104	1	0	0	0	0	0	0	1	0
INDIAN RIVER SHORES	0	0	0	0	0	0	0	0	0	0	0
SEBASTIAN	142	129	10	1	0	0	0	1	1	0	0
VERO BEACH	253	219	25	0	0	0	0	3	2	4	0
BALANCE OF COUNTY	712	536	165	0	1	0	0	1	4	5	0
JACKSON	535	372	159	2	0	0	0	1	0	0	1
GRACEVILLE	33	28	5	0	0	0	0	0	0	0	0
MARIANNA	102	52	50	0	0	0	0	0	0	0	0
BALANCE OF COUNTY	400	292	104	2	0	0	0	1	0	0	1
JEFFERSON	145	79	64	1	0	0	0	1	0	0	0
MONTICELLO	63	21	41	1	0	0	0	0	0	0	0
BALANCE OF COUNTY	82	58	23	0	0	0	0	1	0	0	0
LAFAYETTE	90	86	4	0	0	0	0	0	0	0	0
LAKE	2,838	2,414	354	8	4	3	1	10	33	10	1
CLERMONT	476	390	54	1	2	2	0	6	16	5	0
EUSTIS	227	174	50	2	0	0	0	0	0	0	1
FRUITLAND PARK	66	56	8	0	0	0	0	0	2	0	0
GROVELAND	94	82	9	0	0	0	0	0	2	1	0
LADY LAKE	71	53	16	0	1	0	0	0	1	0	0
LEESBURG	325	205	114	1	0	0	0	1	3	1	0
MASCOTTE	81	75	5	1	0	0	0	0	0	0	0
MINNEOLA	13	13	0	0	0	0	0	0	0	0	0
MOUNT DORA	157	117	38	0	0	0	0	1	1	0	0
TAVARES	110	96	14	0	0	0	0	0	0	0	0
UMATILLA	50	46	4	0	0	0	0	0	0	0	0
BALANCE OF COUNTY	1,168	1,107	42	3	1	1	1	2	8	3	0
LEE	5,653	4,806	752	12	13	4	0	12	50	1	3
BONITA SPRINGS	356	351	1	1	0	0	0	0	3	0	0
CAPE CORAL	1,238	1,159	51	1	4	1	0	6	15	0	1
FORT MYERS	1,168	655	499	4	1	0	0	0	8	0	1
FORT MYERS BEACH	31	30	0	0	1	0	0	0	0	0	0
SANIBEL	4	3	1	0	0	0	0	0	0	0	0
BALANCE OF COUNTY	2,856	2,608	200	6	7	3	0	6	24	1	1
LEON	3,132	1,742	1,243	7	27	1	0	11	95	3	3
TALLAHASSEE	2,341	1,156	1,054	6	25	0	0	10	85	2	3
BALANCE OF COUNTY	791	586	189	1	2	1	0	1	10	1	0
LEVY	388	338	49	0	0	0	0	0	1	0	0
WILLISTON	55	44	11	0	0	0	0	0	0	0	0
BALANCE OF COUNTY	333	294	38	0	0	0	0	0	1	0	0
LIBERTY	96	81	14	0	0	0	0	0	1	0	0
MADISON	234	115	117	0	0	0	0	0	2	0	0
MADISON	81	15	65	0	0	0	0	0	1	0	0
BALANCE OF COUNTY	153	100	52	0	0	0	0	0	1	0	0
MANATEE	3,338	2,712	493	7	10	3	1	15	46	50	1
BRADENTON	714	523	175	2	2	0	0	1	5	6	0
BRADENTON BEACH	6	6	0	0	0	0	0	0	0	0	0
HOLMES BEACH	6	6	0	0	0	0	0	0	0	0	0
LONGBOAT KEY	2	2	0	0	0	0	0	0	0	0	0
PAIETTO	185	149	34	0	1	0	0	0	0	1	0
BALANCE OF COUNTY	2,425	2,026	284	5	7	3	1	14	41	43	1
MARION	2,979	2,350	551	14	5	3	0	12	30	13	1
BELLEVIEW	72	69	1	0	0	0	0	0	1	1	0
OCALA	980	665	297	2	1	1	0	4	9	1	0
BALANCE OF COUNTY	1,927	1,616	253	12	4	2	0	8	20	11	1

TABLE B-3 (Cont.): RESIDENT LIVE BIRTHS FOR INCORPORATED CITIES OF 2,400 OR MORE POPULATION,
BY RACE OF MOTHER, BY COUNTY, FLORIDA, 2003

	TOTAL	WHITE	BLACK	AMERICAN				OTHER		OTHER ENTRIES	UNK
				INDIAN	CHINESE	JAPANESE	HAWAIIAN	FILIPINO	ASIAN/PACISL		
MARTIN	1,175	942	100	122	0	0	0	2	9	0	0
PORT SAINT LUCIE	0	0	0	0	0	0	0	0	0	0	0
STUART	280	225	39	14	0	0	0	0	2	0	0
BALANCE OF COUNTY	895	717	61	108	0	0	0	2	7	0	0
MONROE	711	616	72	1	3	3	0	7	6	2	1
ISLAMORADA	6	6	0	0	0	0	0	0	0	0	0
KEY WEST	297	237	44	1	1	2	0	5	5	2	0
MARATHON	31	27	4	0	0	0	0	0	0	0	0
BALANCE OF COUNTY	377	346	24	0	2	1	0	2	1	0	1
NASSAU	704	641	55	3	0	0	0	1	3	1	0
FERNANDINA BEACH	115	89	22	0	0	0	0	1	2	1	0
HILLIARD	51	49	2	0	0	0	0	0	0	0	0
BALANCE OF COUNTY	538	503	31	3	0	0	0	0	1	0	0
OKALOOSA	2,541	2,134	302	10	1	5	0	39	48	1	1
CRESTVIEW	281	224	51	1	0	0	0	2	3	0	0
DESTIN	113	110	2	0	0	0	0	1	0	0	0
FORT WALTON BEACH	277	205	64	2	0	1	0	2	2	0	1
MARY ESTHER	51	38	9	0	0	0	0	2	2	0	0
NICEVILLE	180	168	4	1	0	0	0	0	7	0	0
VALPARAISO	27	26	1	0	0	0	0	0	0	0	0
BALANCE OF COUNTY	1,612	1,363	171	6	1	4	0	32	34	1	0
OKEECHOBEE	537	470	44	19	1	0	0	3	0	0	0
OKEECHOBEE	308	270	28	8	1	0	0	1	0	0	0
BALANCE OF COUNTY	229	200	16	11	0	0	0	2	0	0	0
ORANGE	14,917	10,409	3,745	41	66	16	4	69	477	78	12
APOPKA	909	729	161	1	0	0	0	3	13	2	0
BELLE ISLE	9	9	0	0	0	0	0	0	0	0	0
EATONVILLE	10	1	9	0	0	0	0	0	0	0	0
MAITLAND	145	111	25	0	1	0	0	0	5	3	0
OCOEFE	452	391	39	0	2	0	0	1	19	0	0
ORLANDO	8,148	5,073	2,677	26	34	4	1	35	253	39	6
WINTER GARDEN	427	348	67	1	1	0	0	1	6	3	0
WINTER PARK	490	393	71	4	3	2	0	2	9	4	2
BALANCE OF COUNTY	4,327	3,354	696	9	25	10	3	27	172	27	4
OSCEOLA	3,148	2,740	286	8	9	0	0	26	68	8	3
KISSIMMEE	1,435	1,210	168	3	7	0	0	12	30	5	0
SAINT CLOUD	320	297	11	0	0	0	0	1	10	0	1
BALANCE OF COUNTY	1,393	1,233	107	5	2	0	0	13	28	3	2
PALM BEACH	14,659	10,197	3,812	229	54	4	2	47	276	26	12
BELLE GLADE	400	177	220	0	0	0	0	0	1	1	1
BOCA RATON	1,178	1,039	81	3	14	1	0	3	33	3	1
BOYNTON BEACH	1,275	769	467	3	4	1	0	6	23	0	2
DELRAY BEACH	841	458	350	1	6	1	0	4	21	0	0
GREENACRES CITY	255	202	42	3	0	0	0	1	6	1	0
HIGHLAND BEACH	10	9	1	0	0	0	0	0	0	0	0
JUNO BEACH	18	18	0	0	0	0	0	0	0	0	0
JUPITER	552	487	25	27	0	0	0	1	12	0	0
LAKE CLARK SHORES	7	7	0	0	0	0	0	0	0	0	0
LAKE PARK	151	51	91	5	0	0	0	0	3	1	0
LAKE WORTH	1,948	1,496	371	31	2	0	1	9	35	1	2
LANTANA	326	213	94	3	0	0	0	5	11	0	0
NORTH PALM BEACH	82	74	6	0	0	0	0	0	2	0	0
PAHOKEE	164	53	110	1	0	0	0	0	0	0	0
PALM BEACH	27	25	1	0	0	0	0	0	0	1	0
PALM BEACH GARDENS	478	408	39	1	6	0	0	0	23	1	0
PALM SPRINGS	119	100	18	0	0	0	0	0	1	0	0
RIVIERA BEACH	452	44	391	11	0	0	0	2	3	1	0

TABLE B-3 (Cont.): RESIDENT LIVE BIRTHS FOR INCORPORATED CITIES OF 2,400 OR MORE POPULATION,
BY RACE OF MOTHER, BY COUNTY, FLORIDA, 2003

	TOTAL	WHITE	BLACK	AMERICAN INDIAN	CHINESE	JAPANESE	HAWAIIAN	FILIPINO	OTHER ASIAN/ PACISL	OTHER ENTRIES	UNK
PALM BEACH (Cont.)											
ROYAL PALM BEACH	401	311	75	1	2	0	0	4	7	0	1
SOUTH BAY	67	14	53	0	0	0	0	0	0	0	0
TEQUESTA	52	49	1	0	1	0	0	0	1	0	0
WELLINGTON	457	400	45	1	2	0	0	1	6	1	1
WEST PALM BEACH	3,304	1,996	1,106	133	5	0	1	8	44	9	2
BALANCE OF COUNTY	2,095	1,797	225	5	12	1	0	3	44	6	2
PASCO											
DADE CITY	197	166	28	0	0	0	0	0	2	1	0
NEW PORT RICHEY	574	542	11	2	0	1	0	4	11	3	0
PORT RICHEY	258	231	11	2	5	0	0	2	3	4	0
ZEPHYRHILLS	165	155	7	0	1	0	0	0	2	0	0
BALANCE OF COUNTY	2,848	2,637	94	11	8	1	0	17	57	6	17
PINELLAS											
BELLEAIR	21	21	0	0	0	0	0	0	0	0	0
BELLEAIR BLUFFS	5	5	0	0	0	0	0	0	0	0	0
CLEARWATER	1,688	1,361	240	5	6	0	0	10	54	12	0
DUNEDIN	284	263	8	3	0	0	0	4	6	0	0
GULFPORT	70	58	9	0	0	0	0	0	3	0	0
INDIAN ROCKS BEACH	26	25	1	0	0	0	0	0	0	0	0
KENNETH CITY	43	22	4	0	0	0	0	2	14	1	0
LARGO	898	748	89	4	3	0	1	5	39	8	1
MADEIRA BEACH	19	19	0	0	0	0	0	0	0	0	0
OLDSMAR	183	161	7	1	1	0	0	1	12	0	0
PINELLAS PARK	496	436	21	2	0	0	0	4	33	0	0
REDINGTON SHORES	15	15	0	0	0	0	0	0	0	0	0
SAFETY HARBOR	136	119	8	0	0	0	0	2	5	2	0
SAINT PETERSBURG	3,397	2,108	1,095	5	10	2	0	19	146	6	6
SAINT PETERSBURG BEACH	48	48	0	0	0	0	0	0	0	0	0
SEMINOLE	274	257	6	1	1	0	0	3	5	1	0
SOUTH PASADENA	3	3	0	0	0	0	0	0	0	0	0
TARPON SPRINGS	253	207	39	0	0	0	0	0	5	2	0
TREASURE ISLAND	37	37	0	0	0	0	0	0	0	0	0
BALANCE OF COUNTY	1,329	1,239	37	1	3	1	0	6	38	3	1
POLK											
AUBURNDALE	225	194	28	0	1	0	0	0	1	1	0
BARTOW	298	205	85	1	3	0	1	0	3	0	0
DUNDEE	55	42	13	0	0	0	0	0	0	0	0
EAGLE LAKE	23	20	3	0	0	0	0	0	0	0	0
FORT MEADE	99	83	15	0	1	0	0	0	0	0	0
FROSTPROOF	72	66	5	1	0	0	0	0	0	0	0
HAINES CITY	364	289	72	0	0	0	0	0	2	1	0
LAKE ALFRED	60	43	16	0	0	0	0	0	1	0	0
LAKE WALES	285	199	83	0	0	0	0	0	2	0	1
LAKELAND	1,317	945	328	3	6	3	0	7	22	3	0
MULBERRY	64	56	6	0	0	0	0	1	0	1	0
WINTER HAVEN	796	545	243	1	0	0	0	4	3	0	0
BALANCE OF COUNTY	3,395	2,935	410	8	3	1	1	10	24	3	0
PUTNAM											
PALATKA	219	87	130	0	0	0	0	0	1	0	1
BALANCE OF COUNTY	704	595	105	1	1	0	0	0	2	0	0
ST JOHNS											
SAINT AUGUSTINE	399	306	83	1	0	0	0	2	6	1	0
SAINT AUGUSTINE BEACH	8	8	0	0	0	0	0	0	0	0	0
BALANCE OF COUNTY	1,077	975	76	5	2	0	0	9	10	0	0
ST LUCIE											
FORT PIERCE	1,027	550	458	3	1	0	0	3	12	0	0
PORT SAINT LUCIE	1,130	976	123	4	6	1	0	10	10	0	0
BALANCE OF COUNTY	291	220	67	2	0	0	0	0	2	0	0

TABLE B-3 (Cont.): RESIDENT LIVE BIRTHS FOR INCORPORATED CITIES OF 2,400 OR MORE POPULATION,
BY RACE OF MOTHER, BY COUNTY, FLORIDA, 2003

	TOTAL	WHITE	BLACK	AMERICAN INDIAN	CHINESE	JAPANESE	HAWAIIAN	FILIPINO	OTHER ASIAN/ PACISL	OTHER ENTRIES	UNK
SANTA ROSA	1,580	1,464	73	9	1	2	0	10	20	1	0
GULF BREEZE	32	31	0	0	0	0	0	0	1	0	0
MILTON	202	176	21	1	0	1	0	2	1	0	0
BALANCE OF COUNTY	1,346	1,257	52	8	1	1	0	8	18	1	0
SARASOTA	2,987	2,631	268	9	11	0	2	22	37	6	1
LONGBOAT KEY	2	2	0	0	0	0	0	0	0	0	0
NORTH PORT	395	363	18	0	1	0	1	8	4	0	0
SARASOTA	664	509	139	2	3	0	0	2	7	2	0
VENICE	77	76	1	0	0	0	0	0	0	0	0
BALANCE OF COUNTY	1,849	1,681	110	7	7	0	1	12	26	4	1
SEMINOLE	4,599	3,808	580	25	19	3	2	13	133	12	4
ALTAMONTE SPRINGS	689	553	105	6	1	0	0	4	18	2	0
CASSELBERRY	331	283	33	2	2	0	0	0	9	2	0
LAKE MARY	322	276	13	3	4	0	0	1	24	1	0
LONGWOOD	295	261	17	1	3	0	0	1	12	0	0
MAITLAND	12	11	1	0	0	0	0	0	0	0	0
OVIEDO	417	374	32	1	0	1	0	1	7	0	1
SANFORD	856	560	268	5	1	0	0	1	18	2	1
WINTER SPRINGS	319	291	15	0	0	1	2	1	8	1	0
BALANCE OF COUNTY	1,358	1,199	96	7	8	1	0	4	37	4	2
SUMTER	449	359	81	2	0	0	0	0	5	1	1
BUSHNELL	38	34	4	0	0	0	0	0	0	0	0
WILDWOOD	59	27	32	0	0	0	0	0	0	0	0
BALANCE OF COUNTY	352	298	45	2	0	0	0	0	5	1	1
SUWANNEE	486	403	76	4	0	0	0	0	2	1	0
LIVE OAK	160	108	49	2	0	0	0	0	1	0	0
BALANCE OF COUNTY	326	295	27	2	0	0	0	0	1	1	0
TAYLOR	210	161	47	0	0	0	0	1	1	0	0
PERRY	106	63	41	0	0	0	0	1	1	0	0
BALANCE OF COUNTY	104	98	6	0	0	0	0	0	0	0	0
UNION	155	139	15	0	0	0	0	1	0	0	0
VOLUSIA	4,809	3,984	697	13	12	6	0	13	70	11	3
DAYTONA BEACH	806	424	342	4	5	2	0	1	22	6	0
DAYTONA BEACH SHORES	4	4	0	0	0	0	0	0	0	0	0
DE BARY	126	119	5	0	0	0	0	1	1	0	0
DELAND	493	398	87	1	1	1	0	4	1	0	0
DELTONA	827	729	83	1	1	0	0	2	9	2	0
EDGEWATER	206	199	2	0	0	2	0	0	2	1	0
HOLLY HILL	205	164	39	1	0	0	0	0	1	0	0
LAKE HELEN	22	16	6	0	0	0	0	0	0	0	0
NEW SMYRNA BEACH	209	182	24	1	1	0	0	0	1	0	0
ORANGE CITY	127	123	2	0	0	1	0	0	1	0	0
ORMOND BEACH	399	363	18	1	2	0	0	1	13	1	0
PIERSON	56	52	3	1	0	0	0	0	0	0	0
PONCE INLET	7	7	0	0	0	0	0	0	0	0	0
PORT ORANGE	506	472	17	0	1	0	0	4	11	1	0
SOUTH DAYTONA	153	125	26	1	0	0	0	0	1	0	0
BALANCE OF COUNTY	663	607	43	2	1	0	0	0	7	0	3
WAKULLA	290	259	29	0	0	0	0	1	1	0	0
WALTON	509	445	50	6	0	1	0	1	4	1	1
DEFUNIAK SPRINGS	103	72	27	2	0	0	0	0	1	1	0
BALANCE OF COUNTY	406	373	23	4	0	1	0	1	3	0	1
WASHINGTON	251	201	42	5	0	0	0	1	1	0	1
CHIPLEY	71	50	20	1	0	0	0	0	0	0	0
BALANCE OF COUNTY	180	151	22	4	0	0	0	1	1	0	1

TABLE B-4: RESIDENT LIVE BIRTHS BY TYPE OF PLACE OF DELIVERY AND ATTENDANT, BY COUNTY, FLORIDA, 2003

	TOTAL	HOSPITAL			BIRTHING CENTER			OTHER NAMED PLACE	UNK
		PHYSICIAN	MIDWIFE	OTHER	PHYSICIAN	MIDWIFE	OTHER		
FLORIDA	212,243	184,352	24,104	939	4	795	15	1230	804
ALACHUA	2,480	2,282	101	16	0	63	0	16	2
BAKER	353	308	45	0	0	0	0	0	0
BAY	2,058	1,628	411	0	0	1	0	2	16
BRADFORD	300	284	8	1	0	3	0	3	1
BREVARD	5,017	4,674	274	19	0	2	0	37	11
BROWARD	22,489	18,532	3,588	137	2	74	0	113	43
CALHOUN	138	110	23	0	0	0	0	2	3
CHARLOTTE	1,047	797	212	24	0	2	0	8	4
CITRUS	894	855	22	0	0	11	0	4	2
CLAY	2,091	1,844	223	3	0	5	0	10	6
COLLIER	3,730	3,588	62	13	0	27	0	26	14
COLUMBIA	771	624	105	2	0	1	0	35	4
MIAMI-DADE	32,551	31,669	496	57	1	181	10	98	39
DESOTO	459	444	10	1	0	2	0	2	0
DIXIE	157	147	5	0	0	1	0	4	0
DUVAL	12,421	11,502	765	22	0	1	0	87	44
ESCAMBIA	3,981	3,747	170	1	0	0	1	24	38
FLAGLER	557	475	70	2	0	0	0	9	1
FRANKLIN	123	94	27	0	0	1	0	0	1
GADSDEN	710	340	352	3	0	5	0	2	8
GILCHRIST	176	166	5	2	0	0	0	1	2
GLADES	58	40	17	0	0	0	0	1	0
GULF	108	83	24	0	0	0	0	0	1
HAMILTON	172	120	34	1	0	0	0	1	16
HARDEE	506	494	8	0	0	1	0	2	1
HENDRY	694	445	239	1	0	0	0	7	2
HERNANDO	1,248	726	476	33	0	7	0	5	1
HIGHLANDS	898	864	3	21	0	4	0	4	2
HILLSBOROUGH	15,294	13,403	1,654	98	0	31	0	83	25
HOLMES	229	151	12	0	0	0	0	0	66
INDIAN RIVER	1,213	820	383	0	0	0	0	8	2
JACKSON	535	386	36	3	0	0	0	2	108
JEFFERSON	145	95	45	0	0	1	0	2	2
LAFAYETTE	90	79	8	0	0	0	0	1	2
LAKE	2,838	2,575	222	1	0	18	0	19	3
LEE	5,653	3,764	1,804	15	1	18	0	43	8
LEON	3,132	1,893	1,161	12	0	32	0	24	10
LEVY	388	363	16	0	0	5	0	2	2
LIBERTY	96	50	43	1	0	1	0	1	0
MADISON	234	138	76	1	0	1	0	4	14
MANATEE	3,338	3,230	76	4	0	0	0	19	9
MARION	2,979	2,283	660	7	0	4	0	17	8
MARTIN	1,175	632	502	4	0	0	0	33	4
MONROE	711	598	90	2	0	5	0	8	8
NASSAU	704	658	23	0	0	0	0	6	17
OKALOOSA	2,541	2,393	93	8	0	4	0	9	34
OKEECHOBEE	537	433	96	5	0	0	0	1	2
ORANGE	14,917	13,915	656	126	0	118	0	72	30
OSCEOLA	3,148	2,813	301	7	0	7	1	12	7
PALM BEACH	14,659	12,934	1,583	27	0	7	0	83	25
PASCO	4,042	3,188	662	142	0	16	0	24	10
PINELLAS	9,225	7,185	1,937	8	0	36	0	42	17
POLK	7,053	5,228	1,734	26	0	40	0	13	12
PUTNAM	923	806	82	15	0	11	0	9	0
ST JOHNS	1,484	1,336	129	1	0	0	0	17	1
ST LUCIE	2,448	1,813	583	18	0	0	0	29	5
SANTA ROSA	1,580	1,493	51	0	0	0	0	16	20
SARASOTA	2,987	2,629	303	4	0	2	0	42	7
SEMINOLE	4,599	3,909	594	20	0	36	1	32	7
SUMTER	449	423	19	2	0	0	0	3	2
SUWANNEE	486	394	82	2	0	2	0	3	3
TAYLOR	210	144	64	2	0	0	0	0	0
UNION	155	150	5	0	0	0	0	0	0
VOLUSIA	4,809	4,319	420	12	0	3	0	42	13
WAKULLA	290	189	96	1	0	1	2	1	0
WALTON	509	479	4	6	0	4	0	5	11
WASHINGTON	251	179	24	0	0	0	0	0	48

TABLE B-5: RESIDENT LIVE BIRTHS BY BIRTHWEIGHT, BY COUNTY, FLORIDA, 2003

	TOTAL	BIRTHWEIGHT IN GRAMS										LESS THAN 1,500 GRAMS		LESS THAN 2,500 GRAMS	
		<500	500- 999	1,000- 1,499	1,500- 1,999	2,000- 2,499	2,500- 2,999	3,000- 3,499	3,500- 3,999	4,000+	UNK	NUMBER	%	NUMBER	%
FLORIDA	212,243	369	1,342	1,608	3,433	11,295	39,011	83,213	56,023	15,913	36	3,319	1.6	18,047	8.5
ALACHUA	2,480	15	16	19	44	136	409	979	656	206	0	50	2.0	230	9.3
BAKER	353	2	1	3	7	17	51	145	104	23	0	6	1.7	30	8.5
BAY	2,058	7	15	25	32	118	398	821	502	137	3	47	2.3	197	9.6
BRADFORD	300	0	2	1	4	21	53	117	74	28	0	3	1.0	28	9.3
BREVARD	5,017	4	26	45	80	241	827	1,976	1,420	398	0	75	1.5	396	7.9
BROWARD	22,489	28	171	183	356	1,217	4,446	9,055	5,617	1,412	4	382	1.7	1,955	8.7
CALHOUN	138	0	0	2	2	9	36	48	33	8	0	2	1.4	13	9.4
CHARLOTTE	1,047	3	3	8	8	61	166	407	301	90	0	14	1.3	83	7.9
CITRUS	894	2	6	7	17	36	149	327	257	92	1	15	1.7	68	7.6
CLAY	2,091	2	7	11	31	86	331	841	584	197	1	20	1.0	137	6.6
COLLIER	3,730	3	11	21	43	129	629	1,485	1,081	328	0	35	0.9	207	5.5
COLUMBIA	771	4	8	11	17	38	124	308	194	67	0	23	3.0	78	10.1
MIAMI-DADE	32,551	44	249	256	542	1,706	6,082	12,949	8,478	2,242	3	549	1.7	2,797	8.6
DESOTO	459	0	1	1	7	28	91	184	120	27	0	2	0.4	37	8.1
DIXIE	157	0	0	1	5	9	29	55	47	11	0	1	0.6	15	9.6
DUVAL	12,421	30	88	114	236	739	2,420	4,642	3,195	954	3	232	1.9	1,207	9.7
ESCAMBIA	3,981	10	24	32	87	263	737	1,493	1,019	315	1	66	1.7	416	10.4
FLAGLER	557	1	2	4	4	27	97	224	148	50	0	7	1.3	38	6.8
FRANKLIN	123	0	1	0	2	9	25	40	35	11	0	1	0.8	12	9.8
GADSDEN	710	3	6	6	17	43	159	285	153	38	0	15	2.1	75	10.6
GILCHRIST	176	1	2	0	2	10	33	64	46	18	0	3	1.7	15	8.5
GLADES	58	0	0	0	0	5	6	24	19	4	0	0	0.0	5	8.6
GULF	108	0	1	1	0	5	23	49	26	3	0	2	1.9	7	6.5
HAMILTON	172	1	1	1	3	6	40	71	42	6	1	3	1.7	12	7.0
HARDEE	506	0	1	2	11	24	103	211	113	41	0	3	0.6	38	7.5
HENDRY	694	2	2	5	12	30	142	254	192	54	1	9	1.3	51	7.3
HERNANDO	1,248	0	8	9	8	44	206	476	392	105	0	17	1.4	69	5.5
HIGHLANDS	898	2	1	6	11	42	187	367	228	54	0	9	1.0	62	6.9
HILLSBOROUGH	15,294	45	117	133	234	814	2,797	5,975	3,961	1,217	1	295	1.9	1,343	8.8
HOLMES	229	1	1	0	5	13	45	95	52	17	0	2	0.9	20	8.7
INDIAN RIVER	1,213	3	3	14	27	62	197	451	349	107	0	20	1.6	109	9.0
JACKSON	535	3	5	5	8	35	108	227	106	38	0	13	2.4	56	10.5
JEFFERSON	145	0	2	2	1	3	44	52	29	12	0	4	2.8	8	5.5
LAFAYETTE	90	0	3	1	2	9	10	32	24	9	0	4	4.4	15	16.7
LAKE	2,838	1	13	15	42	177	501	1,087	763	239	0	29	1.0	248	8.7
LEE	5,653	15	19	45	70	300	1,012	2,259	1,551	381	1	79	1.4	449	7.9
LEON	3,132	13	17	25	43	181	591	1,233	805	223	1	55	1.8	279	8.9
LEVY	388	1	1	3	3	16	72	144	112	36	0	5	1.3	24	6.2
LIBERTY	96	0	0	1	0	10	22	39	19	5	0	1	1.0	11	11.5
MADISON	234	1	0	0	2	20	39	108	54	10	0	1	0.4	23	9.8
MANATEE	3,338	1	20	26	40	187	602	1,289	905	268	0	47	1.4	274	8.2
MARION	2,979	6	13	19	49	147	528	1,128	823	264	2	38	1.3	234	7.9
MARTIN	1,175	0	2	7	18	56	197	457	338	100	0	9	0.8	83	7.1
MONROE	711	0	1	3	9	32	125	250	217	74	0	4	0.6	45	6.3
NASSAU	704	3	2	5	15	32	144	267	185	50	1	10	1.4	57	8.1
OKALOOSA	2,541	2	12	15	36	128	379	978	743	248	0	29	1.1	193	7.6
OKEECHOBEE	537	0	4	0	9	24	100	222	148	30	0	4	0.7	37	6.9
ORANGE	14,917	26	107	131	304	869	2,928	5,831	3,738	979	4	264	1.8	1,437	9.6
OSCEOLA	3,148	7	21	24	46	155	590	1,284	825	196	0	52	1.7	253	8.0
PALM BEACH	14,659	15	94	99	253	784	2,751	5,846	3,861	955	1	208	1.4	1,245	8.5
PASCO	4,042	3	22	23	50	210	697	1,577	1,095	365	0	48	1.2	308	7.6
PINELLAS	9,225	21	46	58	143	473	1,677	3,545	2,480	780	2	125	1.4	741	8.0
POLK	7,053	15	36	59	101	340	1,245	2,698	1,879	680	0	110	1.6	551	7.8
PUTNAM	923	6	8	4	13	42	168	371	232	77	2	18	2.0	73	7.9
ST JOHNS	1,484	1	5	8	26	88	221	570	420	145	0	14	0.9	128	8.6
ST LUCIE	2,448	4	16	17	38	126	453	964	644	186	0	37	1.5	201	8.2
SANTA ROSA	1,580	1	7	14	19	70	285	578	472	134	0	22	1.4	111	7.0
SARASOTA	2,987	2	16	19	47	161	446	1,151	893	252	0	37	1.2	245	8.2
SEMINOLE	4,599	4	30	22	75	244	789	1,822	1,269	343	1	56	1.2	375	8.2
SUMTER	449	1	2	6	12	37	91	176	93	31	0	9	2.0	58	12.9
SUWANNEE	486	1	3	6	6	26	79	182	143	40	0	10	2.1	42	8.6
TAYLOR	210	1	4	1	1	8	34	92	59	10	0	6	2.9	15	7.1
UNION	155	0	0	0	2	6	25	56	54	12	0	0	0.0	8	5.2
VOLUSIA	4,809	1	34	20	81	239	828	1,871	1,343	391	1	55	1.1	375	7.8
WAKULLA	290	1	1	0	1	24	55	105	74	29	0	2	0.7	27	9.3
WALTON	509	0	2	3	9	32	86	198	131	48	0	5	1.0	46	9.0
WASHINGTON	251	0	0	1	5	16	51	106	58	13	1	1	0.4	22	8.8

TABLE B-5 (Cont.): RESIDENT LIVE BIRTHS TO WHITE MOTHERS BY BIRTHWEIGHT, BY COUNTY, FLORIDA, 2003

	BIRTHWEIGHT IN GRAMS										LESS THAN 1,500 GRAMS		LESS THAN 2,500 GRAMS		
	TOTAL	<500	500- 999	1,000- 1,499	1,500- 1,999	2,000- 2,499	2,500- 2,999	3,000- 3,499	3,500- 3,999	4,000+	UNK	NUMBER	%	NUMBER	%
FLORIDA	157,402	162	727	952	2,089	7,260	25,775	61,659	45,318	13,444	16	1,841	1.2	11,190	7.1
ALACHUA	1,543	6	5	6	18	62	192	595	487	172	0	17	1.1	97	6.3
BAKER	308	2	1	3	4	14	41	124	98	21	0	6	1.9	24	7.8
BAY	1,667	2	11	13	23	95	294	669	431	126	3	26	1.6	144	8.6
BRADFORD	231	0	1	1	3	17	39	93	54	23	0	2	0.9	22	9.5
BREVARD	4,107	3	15	35	50	177	609	1,625	1,231	362	0	53	1.3	280	6.8
BROWARD	13,727	3	63	86	174	635	2,384	5,564	3,805	1,012	1	152	1.1	961	7.0
CALHOUN	114	0	0	1	1	6	29	39	31	7	0	1	0.9	8	7.0
CHARLOTTE	950	2	1	7	8	59	139	371	279	84	0	10	1.1	77	8.1
CITRUS	838	2	6	6	12	34	132	308	247	90	1	14	1.7	60	7.2
CLAY	1,818	0	5	9	22	75	283	716	522	186	0	14	0.8	111	6.1
COLLIER	3,239	0	11	16	35	106	523	1,308	949	291	0	27	0.8	168	5.2
COLUMBIA	608	2	5	8	14	27	90	232	172	58	0	15	2.5	56	9.2
MIAMI-DADE	23,350	19	129	137	304	1,036	3,885	9,402	6,659	1,778	1	285	1.2	1,625	7.0
DESOTO	389	0	0	1	6	21	71	155	110	25	0	1	0.3	28	7.2
DIXIE	143	0	0	1	5	7	25	50	45	10	0	1	0.7	13	9.1
DUVAL	7,421	8	34	49	108	353	1,187	2,784	2,177	720	1	91	1.2	552	7.4
ESCAMBIA	2,639	5	15	13	40	147	405	972	776	266	0	33	1.3	220	8.3
FLAGLER	483	1	2	3	3	23	78	194	133	46	0	6	1.2	32	6.6
FRANKLIN	115	0	1	0	2	7	25	37	32	11	0	1	0.9	10	8.7
GADSDEN	263	2	0	1	2	10	43	104	80	21	0	3	1.1	15	5.7
GILCHRIST	163	1	2	0	2	8	29	59	44	18	0	3	1.8	13	8.0
GLADES	41	0	0	0	0	2	6	16	15	2	0	0	0.0	2	4.9
GULF	93	0	1	1	0	4	18	40	26	3	0	2	2.2	6	6.5
HAMILTON	97	0	0	1	1	3	21	35	29	6	1	1	1.0	5	5.2
HARDEE	471	0	1	2	7	19	98	196	107	41	0	3	0.6	29	6.2
HENDRY	579	1	1	3	9	25	107	210	174	49	0	5	0.9	39	6.7
HERNANDO	1,128	0	6	6	8	36	184	422	367	99	0	12	1.1	56	5.0
HIGHLANDS	741	2	0	6	9	35	141	306	197	45	0	8	1.1	52	7.0
HILLSBOROUGH	11,611	22	63	82	139	532	1,930	4,503	3,301	1,038	1	167	1.4	838	7.2
HOLMES	217	1	1	0	5	10	43	92	48	17	0	2	0.9	17	7.8
INDIAN RIVER	988	2	2	7	21	50	145	368	298	95	0	11	1.1	82	8.3
JACKSON	372	2	2	1	6	23	67	157	83	31	0	5	1.3	34	9.1
JEFFERSON	79	0	1	0	0	1	23	29	19	6	0	1	1.3	2	2.5
LAFAYETTE	86	0	3	1	1	8	10	31	23	9	0	4	4.7	13	15.1
LAKE	2,414	1	8	10	35	136	387	921	701	215	0	19	0.8	190	7.9
LEE	4,806	8	13	34	55	244	791	1,929	1,380	352	0	55	1.1	354	7.4
LEON	1,742	2	8	3	25	64	267	662	535	175	1	13	0.7	102	5.9
LEVY	338	1	0	3	2	11	56	126	104	35	0	4	1.2	17	5.0
LIBERTY	81	0	0	1	0	8	17	35	16	4	0	1	1.2	9	11.1
MADISON	115	0	0	0	0	9	12	54	31	9	0	0	0.0	9	7.8
MANATEE	2,712	1	16	15	26	123	460	1,051	773	247	0	32	1.2	181	6.7
MARION	2,350	5	10	9	32	101	378	865	704	245	1	24	1.0	157	6.7
MARTIN	942	0	2	4	10	38	150	366	284	88	0	6	0.6	54	5.7
MONROE	616	0	1	3	7	25	105	216	192	67	0	4	0.6	36	5.8
NASSAU	641	0	1	5	13	27	128	246	172	48	1	6	0.9	46	7.2
OKALOOSA	2,134	1	9	12	21	95	294	816	659	227	0	22	1.0	138	6.5
OKEECHOBEE	470	0	3	0	6	20	82	194	135	30	0	3	0.6	29	6.2
ORANGE	10,409	13	61	69	182	518	1,803	4,069	2,895	796	3	143	1.4	843	8.1
OSCEOLA	2,740	4	16	17	38	133	494	1,102	756	180	0	37	1.4	208	7.6
PALM BEACH	10,197	6	39	63	136	451	1,680	4,087	2,971	764	0	108	1.1	695	6.8
PASCO	3,731	3	20	22	46	178	628	1,448	1,042	344	0	45	1.2	269	7.2
PINELLAS	7,152	8	29	38	94	333	1,131	2,709	2,112	698	0	75	1.0	502	7.0
POLK	5,622	7	20	46	68	237	893	2,129	1,620	602	0	73	1.3	378	6.7
PUTNAM	682	2	5	4	10	25	111	268	192	64	1	11	1.6	46	6.7
ST JOHNS	1,289	1	2	8	23	66	176	485	389	139	0	11	0.9	100	7.8
ST LUCIE	1,746	2	6	9	18	81	279	690	502	159	0	17	1.0	116	6.6
SANTA ROSA	1,464	1	7	13	17	64	255	532	446	129	0	21	1.4	102	7.0
SARASOTA	2,631	1	13	15	40	130	375	1,008	820	229	0	29	1.1	199	7.6
SEMINOLE	3,808	3	18	18	58	194	589	1,514	1,106	308	0	39	1.0	291	7.6
SUMTER	359	1	1	3	9	23	66	142	87	27	0	5	1.4	37	10.3
SUWANNEE	403	1	2	5	5	18	56	157	123	36	0	8	2.0	31	7.7
TAYLOR	161	0	1	0	0	6	19	76	49	10	0	1	0.6	7	4.3
UNION	139	0	0	0	2	5	21	50	50	11	0	0	0.0	7	5.0
VOLUSIA	3,984	1	25	13	56	176	623	1,550	1,186	354	0	39	1.0	271	6.8
WAKULLA	259	1	1	0	1	20	46	92	69	29	0	2	0.8	23	8.9
WALTON	445	0	2	3	8	23	71	176	118	44	0	5	1.1	36	8.1
WASHINGTON	201	0	0	1	4	11	36	88	50	11	0	1	0.5	16	8.0

TABLE B-5 (Cont.): RESIDENT LIVE BIRTHS TO BLACK MOTHERS BY BIRTHWEIGHT, BY COUNTY, FLORIDA, 2003

	TOTAL	BIRTHWEIGHT IN GRAMS										LESS THAN 1,500 GRAMS		LESS THAN 2,500 GRAMS	
		<500	500- 999	1,000- 1,499	1,500- 1,999	2,000- 2,499	2,500- 2,999	3,000- 3,499	3,500- 3,999	4,000+	UNK	NUMBER	%	NUMBER	%
FLORIDA	47,117	195	567	603	1,216	3,622	11,511	18,340	8,989	2,067	7	1,365	2.9	6,203	13.2
ALACHUA	774	9	11	13	23	63	188	312	126	29	0	33	4.3	119	15.4
BAKER	43	0	0	0	3	3	9	20	6	2	0	0	0.0	6	14.0
BAY	309	5	4	9	8	21	88	120	47	7	0	18	5.8	47	15.2
BRADFORD	64	0	1	0	1	4	13	22	18	5	0	1	1.6	6	9.4
BREVARD	741	1	6	10	22	53	181	294	149	25	0	17	2.3	92	12.4
BROWARD	7,756	22	99	94	166	522	1,834	3,050	1,603	364	2	215	2.8	903	11.6
CALHOUN	22	0	0	1	1	3	7	8	2	0	0	1	4.5	5	22.7
CHARLOTTE	67	1	2	0	0	0	18	26	18	2	0	3	4.5	3	4.5
CITRUS	36	0	0	1	3	2	9	12	7	2	0	1	2.8	6	16.7
CLAY	193	2	2	2	8	9	33	89	41	7	0	6	3.1	23	11.9
COLLIER	421	3	0	5	7	22	96	151	106	31	0	8	1.9	37	8.8
COLUMBIA	155	2	3	3	3	11	33	72	21	7	0	8	5.2	22	14.2
MIAMI-DADE	8,497	24	114	115	224	640	2,035	3,263	1,651	431	0	253	3.0	1,117	13.1
DESOTO	69	0	1	0	1	7	20	28	10	2	0	1	1.4	9	13.0
DIXIE	12	0	0	0	0	2	4	4	1	1	0	0	0.0	2	16.7
DUVAL	4,371	21	51	59	119	345	1,088	1,613	883	190	2	131	3.0	595	13.6
ESCAMBIA	1,185	5	9	19	44	103	303	456	206	39	1	33	2.8	180	15.2
FLAGLER	54	0	0	1	0	4	15	21	9	4	0	1	1.9	5	9.3
FRANKLIN	7	0	0	0	0	2	0	3	2	0	0	0	0.0	2	28.6
GADSDEN	442	1	6	5	15	33	116	178	71	17	0	12	2.7	60	13.6
GILCHRIST	12	0	0	0	0	2	4	5	1	0	0	0	0.0	2	16.7
GLADES	11	0	0	0	0	3	0	6	1	1	0	0	0.0	3	27.3
GULF	14	0	0	0	0	1	5	8	0	0	0	0	0.0	1	7.1
HAMILTON	73	1	1	0	2	3	19	35	12	0	0	2	2.7	7	9.6
HARDEE	32	0	0	0	3	5	5	14	5	0	0	0	0.0	8	25.0
HENDRY	84	0	1	2	3	4	29	32	12	1	0	3	3.6	10	11.9
HERNANDO	90	0	2	0	0	7	18	41	20	2	0	2	2.2	9	10.0
HIGHLANDS	140	0	1	0	2	7	42	54	27	7	0	1	0.7	10	7.1
HILLSBOROUGH	2,999	21	47	47	88	253	712	1,190	507	134	0	115	3.8	456	15.2
HOLMES	5	0	0	0	0	1	1	2	1	0	0	0	0.0	1	20.0
INDIAN RIVER	201	1	0	6	6	11	47	71	47	12	0	7	3.5	24	11.9
JACKSON	159	1	3	4	2	12	41	69	21	6	0	8	5.0	22	13.8
JEFFERSON	64	0	1	2	1	2	21	23	8	6	0	3	4.7	6	9.4
LAFAYETTE	4	0	0	0	1	1	0	1	1	0	0	0	0.0	2	50.0
LAKE	354	0	5	5	6	37	95	134	54	18	0	10	2.8	53	15.0
LEE	752	6	6	9	14	52	205	285	150	25	0	21	2.8	87	11.6
LEON	1,243	11	9	17	18	113	303	501	231	40	0	37	3.0	168	13.5
LEVY	49	0	1	0	1	4	16	18	8	1	0	1	2.0	6	12.2
LIBERTY	14	0	0	0	0	2	5	3	3	1	0	0	0.0	2	14.3
MADISON	117	1	0	0	2	11	27	53	22	1	0	1	0.9	14	12.0
MANATEE	493	0	4	8	13	53	125	184	91	15	0	12	2.4	78	15.8
MARION	551	1	3	10	16	45	127	226	107	16	0	14	2.5	75	13.6
MARTIN	100	0	0	2	7	12	18	38	20	3	0	2	2.0	21	21.0
MONROE	72	0	0	0	1	5	15	28	16	7	0	0	0.0	6	8.3
NASSAU	55	3	1	0	2	5	15	17	10	2	0	4	7.3	11	20.0
OKALOOSA	302	1	3	3	14	29	64	116	56	16	0	7	2.3	50	16.6
OKEECHOBEE	44	0	1	0	3	3	13	17	7	0	0	1	2.3	7	15.9
ORANGE	3,745	11	40	57	93	306	931	1,470	688	148	1	108	2.9	507	13.5
OSCEOLA	286	2	5	6	6	16	70	124	48	9	0	13	4.5	35	12.2
PALM BEACH	3,812	9	52	34	109	302	914	1,488	744	160	0	95	2.5	506	13.3
PASCO	151	0	2	0	4	16	42	55	23	9	0	2	1.3	22	14.6
PINELLAS	1,564	13	14	17	44	116	415	622	261	61	1	44	2.8	204	13.0
POLK	1,307	8	15	13	31	96	321	520	231	72	0	36	2.8	163	12.5
PUTNAM	235	4	3	0	3	17	55	103	39	11	0	7	3.0	27	11.5
ST JOHNS	159	0	3	0	3	20	39	65	24	5	0	3	1.9	26	16.4
ST LUCIE	648	2	10	7	20	41	165	247	132	24	0	19	2.9	80	12.3
SANTA ROSA	73	0	0	1	1	5	22	30	11	3	0	1	1.4	7	9.6
SARASOTA	268	1	3	4	6	25	53	106	54	16	0	8	3.0	39	14.6
SEMINOLE	580	1	10	2	12	39	152	212	124	28	0	13	2.2	64	11.0
SUMTER	81	0	1	3	3	12	23	31	5	3	0	4	4.9	19	23.5
SUWANNEE	76	0	1	1	1	8	20	22	19	4	0	2	2.6	11	14.5
TAYLOR	47	1	3	1	1	2	15	14	10	0	0	5	10.6	8	17.0
UNION	15	0	0	0	0	1	3	6	4	1	0	0	0.0	1	6.7
VOLUSIA	697	0	7	5	24	52	177	268	135	29	0	12	1.7	88	12.6
WAKULLA	29	0	0	0	0	4	8	12	5	0	0	0	0.0	4	13.8
WALTON	50	0	0	0	1	7	11	17	11	3	0	0	0.0	8	16.0
WASHINGTON	42	0	0	0	1	5	13	15	6	2	0	0	0.0	6	14.3

TABLE B-5 (Cont.): RESIDENT LIVE BIRTHS TO OTHER MOTHERS BY BIRTHWEIGHT, BY COUNTY, FLORIDA, 2003

	TOTAL	BIRTHWEIGHT IN GRAMS										LESS THAN 1,500 GRAMS		LESS THAN 2,500 GRAMS	
		<500	500- 999	1,000- 1,499	1,500- 1,999	2,000- 2,499	2,500- 2,999	3,000- 3,499	3,500- 3,999	4,000+	UNK	NUMBER	%	NUMBER	%
FLORIDA	7,449	10	44	49	123	398	1,685	3,101	1,654	385	0	103	1.4	624	8.4
ALACHUA	158	0	0	0	3	11	27	72	40	5	0	0	0.0	14	8.9
BAKER	2	0	0	0	0	0	1	1	0	0	0	0	0.0	0	0.0
BAY	66	0	0	3	0	1	14	24	20	4	0	3	4.5	4	6.1
BRADFORD	5	0	0	0	0	0	1	2	2	0	0	0	0.0	0	0.0
BREVARD	165	0	4	0	8	10	37	56	39	11	0	4	2.4	22	13.3
BROWARD	981	3	9	3	16	58	226	429	203	34	0	15	1.5	89	9.1
CALHOUN	2	0	0	0	0	0	0	1	0	1	0	0	0.0	0	0.0
CHARLOTTE	30	0	0	1	0	2	9	10	4	4	0	1	3.3	3	10.0
CITRUS	19	0	0	0	2	0	8	7	2	0	0	0	0.0	2	10.5
CLAY	79	0	0	0	1	2	15	36	21	4	0	0	0.0	3	3.8
COLLIER	69	0	0	0	1	1	10	25	26	6	0	0	0.0	2	2.9
COLUMBIA	8	0	0	0	0	0	1	4	1	2	0	0	0.0	0	0.0
MIAMI-DADE	649	1	5	2	14	30	153	258	157	29	0	8	1.2	52	8.0
DESOTO	1	0	0	0	0	0	0	1	0	0	0	0	0.0	0	0.0
DIXIE	2	0	0	0	0	0	0	1	1	0	0	0	0.0	0	0.0
DUVAL	623	1	3	6	9	41	142	243	135	43	0	10	1.6	60	9.6
ESCAMBIA	157	0	0	0	3	13	29	65	37	10	0	0	0.0	16	10.2
FLAGLER	20	0	0	0	1	0	4	9	6	0	0	0	0.0	1	5.0
FRANKLIN	1	0	0	0	0	0	0	0	1	0	0	0	0.0	0	0.0
GADSDEN	5	0	0	0	0	0	0	3	2	0	0	0	0.0	0	0.0
GILCHRIST	1	0	0	0	0	0	0	0	1	0	0	0	0.0	0	0.0
GLADES	6	0	0	0	0	0	0	2	3	1	0	0	0.0	0	0.0
GULF	1	0	0	0	0	0	0	1	0	0	0	0	0.0	0	0.0
HAMILTON	2	0	0	0	0	0	0	1	1	0	0	0	0.0	0	0.0
HARDEE	3	0	0	0	1	0	0	1	1	0	0	0	0.0	1	33.3
HENDRY	28	0	0	0	0	1	6	11	6	4	0	0	0.0	1	3.6
HERNANDO	30	0	0	3	0	1	4	13	5	4	0	3	10.0	4	13.3
HIGHLANDS	17	0	0	0	0	0	4	7	4	2	0	0	0.0	0	0.0
HILLSBOROUGH	604	1	6	4	5	26	140	246	136	40	0	11	1.8	42	7.0
HOLMES	6	0	0	0	0	2	1	1	2	0	0	0	0.0	2	33.3
INDIAN RIVER	24	0	1	1	0	1	5	12	4	0	0	2	8.3	3	12.5
JACKSON	3	0	0	0	0	0	0	1	1	1	0	0	0.0	0	0.0
JEFFERSON	2	0	0	0	0	0	0	0	2	0	0	0	0.0	0	0.0
LAFAYETTE	0	0	0	0	0	0	0	0	0	0	0	0	—	0	—
LAKE	69	0	0	0	1	4	19	31	8	6	0	0	0.0	5	7.2
LEE	92	1	0	2	1	4	16	44	21	3	0	3	3.3	8	8.7
LEON	144	0	0	5	0	4	21	70	36	8	0	5	3.5	9	6.3
LEVY	1	0	0	0	0	1	0	0	0	0	0	0	0.0	1	100.0
LIBERTY	1	0	0	0	0	0	0	1	0	0	0	0	0.0	0	0.0
MADISON	2	0	0	0	0	0	0	1	1	0	0	0	0.0	0	0.0
MANATEE	132	0	0	3	0	11	17	54	41	6	0	3	2.3	14	10.6
MARION	77	0	0	0	1	1	23	37	12	3	0	0	0.0	2	2.6
MARTIN	133	0	0	1	1	6	29	53	34	9	0	1	0.8	8	6.0
MONROE	22	0	0	0	1	2	4	6	9	0	0	0	0.0	3	13.6
NASSAU	8	0	0	0	0	0	1	4	3	0	0	0	0.0	0	0.0
OKALOOSA	104	0	0	0	1	4	21	46	27	5	0	0	0.0	5	4.8
OKEECHOBEE	23	0	0	0	0	1	5	11	6	0	0	0	0.0	1	4.3
ORANGE	751	2	6	4	29	45	192	287	152	34	0	12	1.6	86	11.5
OSCEOLA	119	1	0	1	1	6	26	57	21	6	0	2	1.7	9	7.6
PALM BEACH	638	0	3	2	8	31	156	266	142	30	0	5	0.8	44	6.9
PASCO	143	0	0	0	0	10	25	70	26	12	0	0	0.0	10	7.0
PINELLAS	501	0	3	3	5	24	131	209	105	21	0	6	1.2	35	7.0
POLK	123	0	1	0	2	7	31	48	28	6	0	1	0.8	10	8.1
PUTNAM	5	0	0	0	0	0	2	0	1	2	0	0	0.0	0	0.0
ST JOHNS	36	0	0	0	0	2	6	20	7	1	0	0	0.0	2	5.6
ST LUCIE	54	0	0	1	0	4	9	27	10	3	0	1	1.9	5	9.3
SANTA ROSA	43	0	0	0	1	1	8	16	15	2	0	0	0.0	2	4.7
SARASOTA	87	0	0	0	1	6	18	36	19	7	0	0	0.0	7	8.0
SEMINOLE	207	0	1	2	5	11	47	95	39	7	0	3	1.4	19	9.2
SUMTER	8	0	0	0	0	2	2	2	1	1	0	0	0.0	2	25.0
SUWANNEE	7	0	0	0	0	0	3	3	1	0	0	0	0.0	0	0.0
TAYLOR	2	0	0	0	0	0	0	2	0	0	0	0	0.0	0	0.0
UNION	1	0	0	0	0	0	1	0	0	0	0	0	0.0	0	0.0
VOLUSIA	125	0	2	2	1	9	28	53	22	8	0	4	3.2	14	11.2
WAKULLA	2	0	0	0	0	0	1	1	0	0	0	0	0.0	0	0.0
WALTON	13	0	0	0	0	2	4	5	2	0	0	0	0.0	2	15.4
WASHINGTON	7	0	0	0	0	0	2	3	2	0	0	0	0.0	0	0.0

TABLE B-6: RESIDENT LIVE BIRTHS BY AGE OF MOTHER, BY COUNTY, FLORIDA, 2003

	TOTAL	AGE OF MOTHER													
		<13	13	14	15	16	17	18	19	20-24	25-29	30-34	35-44	45+	UNK
FLORIDA	212,243	10	65	287	947	2,290	3,990	6,514	9,027	54,469	54,804	49,109	30,423	283	25
ALACHUA	2,480	0	1	4	14	29	28	72	113	669	672	565	312	0	1
BAKER	353	0	0	0	0	9	15	20	21	143	83	50	12	0	0
BAY	2,058	0	0	1	11	14	40	98	105	680	553	366	190	0	0
BRADFORD	300	0	0	0	2	6	9	9	19	111	85	42	17	0	0
BREVARD	5,017	0	2	6	14	46	85	165	203	1,350	1,310	1,097	729	10	0
BROWARD	22,489	1	2	23	63	168	248	497	665	4,351	5,776	6,327	4,328	38	2
CALHOUN	138	1	0	0	1	2	4	3	14	49	42	16	6	0	0
CHARLOTTE	1,047	0	0	1	3	20	27	35	52	293	257	214	145	0	0
CITRUS	894	0	0	1	4	8	19	35	62	312	196	178	78	1	0
CLAY	2,091	0	0	3	7	16	24	68	113	572	583	476	228	0	1
COLLIER	3,730	0	1	5	17	45	88	104	145	970	953	875	521	6	0
COLUMBIA	771	0	1	0	0	9	26	42	57	278	186	124	48	0	0
MIAMI-DADE	32,551	0	12	47	138	329	558	827	1,097	6,919	8,638	8,387	5,538	59	2
DESOTO	459	0	1	1	6	6	14	16	25	173	106	74	36	1	0
DIXIE	157	0	0	0	0	3	1	5	15	71	38	16	8	0	0
DUVAL	12,421	1	7	22	62	129	277	414	640	3,715	3,240	2,530	1,365	19	0
ESCAMBIA	3,981	0	2	9	15	39	93	143	221	1,276	1,032	729	418	4	0
FLAGLER	557	0	0	1	0	2	9	9	26	126	167	136	81	0	0
FRANKLIN	123	0	0	0	1	0	3	12	14	44	27	10	12	0	0
GADSDEN	710	0	0	3	11	16	20	40	46	260	177	103	34	0	0
GILCHRIST	176	0	0	1	0	8	8	10	7	52	43	34	13	0	0
GLADES	58	0	0	0	1	1	1	4	4	20	14	7	6	0	0
GULF	108	0	0	0	2	0	5	9	4	28	32	22	6	0	0
HAMILTON	172	0	0	1	0	4	5	5	13	63	47	20	13	0	1
HARDEE	506	0	0	1	7	15	15	26	29	181	106	88	37	1	0
HENDRY	694	0	1	1	10	21	17	33	45	223	184	99	59	0	1
HERNANDO	1,248	1	0	2	6	16	33	50	57	387	341	209	146	0	0
HIGHLANDS	898	0	2	2	5	12	21	46	68	296	242	133	71	0	0
HILLSBOROUGH	15,294	0	1	24	98	165	299	521	636	4,050	3,863	3,512	2,099	25	1
HOLMES	229	0	0	0	0	3	5	4	14	86	64	34	19	0	0
INDIAN RIVER	1,213	0	1	1	9	15	20	33	53	358	294	268	158	3	0
JACKSON	535	0	0	0	3	7	13	26	37	201	122	78	48	0	0
JEFFERSON	145	0	0	0	2	0	3	7	8	44	40	31	10	0	0
LAFAYETTE	90	0	0	0	1	1	2	4	6	29	25	15	7	0	0
LAKE	2,838	1	0	6	11	23	58	105	151	783	774	619	306	1	0
LEE	5,653	0	3	9	39	77	144	199	218	1,563	1,482	1,205	708	4	2
LEON	3,132	0	3	3	8	34	39	79	111	869	859	728	395	4	0
LEVY	388	0	1	1	6	4	14	14	33	123	103	62	27	0	0
LIBERTY	96	0	0	0	0	3	5	3	8	20	36	16	5	0	0
MADISON	234	0	0	2	1	3	12	14	9	77	63	34	19	0	0
MANATEE	3,338	1	1	5	29	55	85	135	183	952	783	683	421	4	1
MARION	2,979	0	2	3	16	40	76	122	193	1,015	734	484	293	0	1
MARTIN	1,175	1	0	4	5	13	25	37	51	282	262	275	218	2	0
MONROE	711	0	0	0	1	6	5	11	16	163	179	192	136	1	1
NASSAU	704	0	0	1	0	11	15	22	39	196	180	156	84	0	0
OKALOOSA	2,541	0	0	4	5	18	47	62	121	866	707	460	250	1	0
OKEECHOBEE	537	0	1	4	3	7	14	30	47	198	135	69	29	0	0
ORANGE	14,917	0	4	12	57	158	263	420	614	3,651	3,991	3,579	2,150	15	3
OSCEOLA	3,148	1	0	1	11	49	59	92	130	926	872	620	385	2	0
PALM BEACH	14,659	1	2	18	59	147	218	369	499	3,161	3,449	3,950	2,750	33	3
PASCO	4,042	0	1	1	15	37	81	123	180	1,032	1,095	949	524	4	0
PINELLAS	9,225	0	6	12	41	102	169	275	387	2,279	2,335	2,146	1,455	18	0
POLK	7,053	0	4	9	51	104	188	324	418	2,346	1,758	1,244	603	4	0
PUTNAM	923	0	0	3	4	16	30	43	54	331	223	149	69	0	1
ST JOHNS	1,484	0	0	2	8	16	24	47	59	302	349	401	270	6	0
ST LUCIE	2,448	0	2	13	10	40	57	73	126	718	643	464	300	2	0
SANTA ROSA	1,580	0	0	1	1	15	43	47	74	406	438	367	187	1	0
SARASOTA	2,987	0	0	2	14	22	52	69	127	650	777	748	523	3	0
SEMINOLE	4,599	0	0	3	6	29	70	102	144	971	1,207	1,304	758	4	1
SUMTER	449	0	0	1	2	12	7	28	36	165	104	48	45	1	0
SUWANNEE	486	0	0	1	5	6	19	20	32	187	121	63	32	0	0
TAYLOR	210	0	0	1	2	8	4	8	11	84	59	21	12	0	0
UNION	155	0	0	0	0	1	1	7	19	44	50	28	5	0	0
VOLUSIA	4,809	1	1	5	22	58	97	182	243	1,407	1,239	985	560	6	3
WAKULLA	290	0	0	0	0	5	11	12	17	96	74	50	25	0	0
WALTON	509	0	0	0	1	5	16	30	31	150	111	106	59	0	0
WASHINGTON	251	0	0	0	1	2	7	18	12	76	74	39	22	0	0

TABLE B-6 (Cont.): RESIDENT LIVE BIRTHS TO WHITE MOTHERS, BY AGE OF MOTHER, BY COUNTY, FLORIDA, 2003

	TOTAL	AGE OF MOTHER														UNK
		<13	13	14	15	16	17	18	19	20-24	25-29	30-34	35-44	45+		
FLORIDA	157,402	1	17	129	501	1,399	2,521	4,231	6,046	37,588	41,457	39,119	24,180	208	5	
ALACHUA	1,543	0	0	1	2	13	12	21	50	349	449	416	230	0	0	
BAKER	308	0	0	0	0	9	12	19	20	121	70	47	10	0	0	
BAY	1,667	0	0	0	5	10	31	72	82	549	442	317	159	0	0	
BRADFORD	231	0	0	0	1	2	8	5	14	88	67	35	11	0	0	
BREVARD	4,107	0	0	2	8	26	60	123	155	1,058	1,086	937	645	7	0	
BROWARD	13,727	0	1	7	13	51	91	194	282	2,194	3,564	4,336	2,971	23	0	
CALHOUN	114	1	0	0	1	2	4	2	14	37	36	12	5	0	0	
CHARLOTTE	950	0	0	1	2	19	23	28	47	268	235	196	131	0	0	
CITRUS	838	0	0	1	4	8	18	28	58	301	185	162	72	1	0	
CLAY	1,818	0	0	3	5	15	22	59	95	484	524	418	193	0	0	
COLLIER	3,239	0	1	4	14	40	74	92	135	847	822	766	438	6	0	
COLUMBIA	608	0	1	0	0	7	22	31	42	219	149	101	36	0	0	
MIAMI-DADE	23,350	0	4	19	66	165	284	493	654	4,265	6,409	6,631	4,318	42	0	
DESOTO	389	0	1	0	5	3	12	14	19	145	96	61	32	1	0	
DIXIE	143	0	0	0	0	3	1	4	13	64	37	14	7	0	0	
DUVAL	7,421	0	0	6	20	47	133	181	317	1,956	2,025	1,753	969	14	0	
ESCAMBIA	2,639	0	1	0	8	20	44	76	120	763	737	550	317	3	0	
FLAGLER	483	0	0	1	0	2	6	6	18	109	147	126	68	0	0	
FRANKLIN	115	0	0	0	0	0	2	11	13	40	27	10	12	0	0	
GADSDEN	263	0	0	0	2	2	4	11	13	84	81	45	21	0	0	
GILCHRIST	163	0	0	1	0	8	7	9	6	47	39	33	13	0	0	
GLADES	41	0	0	0	1	1	1	3	4	13	9	4	5	0	0	
GULF	93	0	0	0	0	0	3	8	4	21	30	21	6	0	0	
HAMILTON	97	0	0	0	0	1	2	1	7	31	33	12	9	0	1	
HARDEE	471	0	0	1	6	15	15	25	28	165	99	82	35	0	0	
HENDRY	579	0	1	1	7	21	15	27	35	185	150	84	53	0	0	
HERNANDO	1,128	0	0	1	5	13	27	41	53	348	309	197	134	0	0	
HIGHLANDS	741	0	1	2	5	7	17	38	53	247	199	117	55	0	0	
HILLSBOROUGH	11,611	0	1	12	57	107	213	366	447	2,862	2,950	2,871	1,708	17	0	
HOLMES	217	0	0	0	0	3	4	3	12	83	62	34	16	0	0	
INDIAN RIVER	988	0	0	0	4	11	13	22	43	271	245	235	141	3	0	
JACKSON	372	0	0	0	2	3	8	16	24	140	89	56	34	0	0	
JEFFERSON	79	0	0	0	0	0	2	1	3	21	22	23	7	0	0	
LAFAYETTE	86	0	0	0	1	1	2	4	6	26	24	15	7	0	0	
LAKE	2,414	0	0	4	7	15	37	83	117	649	686	544	271	1	0	
LEE	4,806	0	1	6	29	66	119	155	171	1,278	1,306	1,063	609	3	0	
LEON	1,742	0	1	1	0	12	12	32	44	359	485	513	280	3	0	
LEVY	338	0	0	0	4	3	10	13	29	107	93	56	23	0	0	
LIBERTY	81	0	0	0	0	3	5	3	7	16	30	14	3	0	0	
MADISON	115	0	0	0	0	1	7	3	4	39	31	18	12	0	0	
MANATEE	2,712	0	0	3	24	48	62	104	136	744	648	577	363	3	0	
MARION	2,350	0	1	3	10	28	53	84	138	798	584	415	236	0	0	
MARTIN	942	0	0	1	0	8	17	20	38	202	218	238	198	2	0	
MONROE	616	0	0	0	0	6	3	9	14	136	148	175	124	1	0	
NASSAU	641	0	0	1	0	11	11	17	33	180	168	140	80	0	0	
OKALOOSA	2,134	0	0	3	4	15	39	51	104	693	600	407	217	1	0	
OKEECHOBEE	470	0	1	2	3	6	12	27	39	174	120	63	23	0	0	
ORANGE	10,409	0	0	5	23	92	154	257	393	2,409	2,794	2,660	1,613	7	2	
OSCEOLA	2,740	0	0	1	10	41	48	80	115	811	765	538	329	2	0	
PALM BEACH	10,197	0	0	6	26	70	114	201	272	1,893	2,433	3,044	2,109	27	2	
PASCO	3,731	0	1	1	13	34	79	116	174	956	1,001	874	478	4	0	
PINELLAS	7,152	0	0	7	23	55	90	173	267	1,583	1,846	1,809	1,287	12	0	
POLK	5,622	0	0	6	29	78	134	241	327	1,808	1,441	1,055	499	4	0	
PUTNAM	682	0	0	1	1	14	21	26	37	229	176	121	56	0	0	
ST JOHNS	1,289	0	0	2	5	11	17	36	42	237	312	364	257	6	0	
ST LUCIE	1,746	0	0	3	5	26	36	47	78	475	479	367	228	2	0	
SANTA ROSA	1,464	0	0	1	1	14	40	45	65	374	400	345	178	1	0	
SARASOTA	2,631	0	0	1	8	16	32	50	105	548	685	685	498	3	0	
SEMINOLE	3,808	0	0	2	6	19	50	74	93	725	1,025	1,141	670	3	0	
SUMTER	359	0	0	0	0	9	4	21	31	127	85	42	39	1	0	
SUWANNEE	403	0	0	1	4	5	15	16	24	152	103	53	30	0	0	
TAYLOR	161	0	0	0	2	3	4	7	7	68	43	18	9	0	0	
UNION	139	0	0	0	0	1	0	7	16	40	44	26	5	0	0	
VOLUSIA	3,984	0	0	5	18	43	74	151	186	1,112	1,040	859	491	5	0	
WAKULLA	259	0	0	0	0	5	10	11	16	84	63	46	24	0	0	
WALTON	445	0	0	0	1	5	14	25	28	125	98	95	54	0	0	
WASHINGTON	201	0	0	0	1	1	6	12	10	56	59	37	19	0	0	

TABLE B-6 (Cont.): RESIDENT LIVE BIRTHS TO BLACK MOTHERS, BY AGE OF MOTHER, BY COUNTY, FLORIDA, 2003

	TOTAL	AGE OF MOTHER													
		<13	13	14	15	16	17	18	19	20-24	25-29	30-34	35-44	45+	UNK
FLORIDA	47,117	8	47	149	431	852	1,407	2,167	2,826	15,555	11,023	7,650	4,942	58	2
ALACHUA	774	0	1	3	11	15	15	50	63	307	167	88	54	0	0
BAKER	43	0	0	0	0	0	3	1	0	21	13	3	2	0	0
BAY	309	0	0	1	5	3	7	24	21	115	84	33	16	0	0
BRADFORD	64	0	0	0	1	3	1	4	5	23	15	6	6	0	0
BREVARD	741	0	2	4	6	20	25	40	43	264	173	99	62	3	0
BROWARD	7,756	1	1	16	50	115	154	297	369	2,001	1,909	1,677	1,152	14	0
CALHOUN	22	0	0	0	0	0	0	1	0	11	5	4	1	0	0
CHARLOTTE	67	0	0	0	1	0	3	4	4	20	17	12	6	0	0
CITRUS	36	0	0	0	0	0	1	3	4	9	6	8	5	0	0
CLAY	193	0	0	0	1	1	2	9	13	74	38	36	19	0	0
COLLIER	421	0	0	1	3	3	12	10	8	108	110	92	74	0	0
COLUMBIA	155	0	0	0	0	2	4	11	14	58	35	20	11	0	0
MIAMI-DADE	8,497	0	7	26	71	159	269	325	434	2,569	2,010	1,531	1,080	15	1
DESOTO	69	0	0	1	1	3	2	2	6	27	10	13	4	0	0
DIXIE	12	0	0	0	0	0	0	1	2	5	1	2	1	0	0
DUVAL	4,371	1	7	16	41	79	141	227	313	1,630	1,012	594	307	3	0
ESCAMBIA	1,185	0	1	9	7	18	46	64	97	483	242	141	76	1	0
FLAGLER	54	0	0	0	0	0	2	2	7	15	12	8	8	0	0
FRANKLIN	7	0	0	0	1	0	1	1	1	3	0	0	0	0	0
GADSDEN	442	0	0	3	9	14	16	28	33	174	96	57	12	0	0
GILCHRIST	12	0	0	0	0	0	1	1	1	5	4	0	0	0	0
GLADES	11	0	0	0	0	0	0	0	0	5	3	2	1	0	0
GULF	14	0	0	0	2	0	2	1	0	6	2	1	0	0	0
HAMILTON	73	0	0	1	0	3	3	4	6	31	14	7	4	0	0
HARDEE	32	0	0	0	1	0	0	1	1	16	6	5	1	1	0
HENDRY	84	0	0	0	1	0	2	6	7	33	24	6	5	0	0
HERNANDO	90	1	0	1	1	3	5	8	3	33	22	7	6	0	0
HIGHLANDS	140	0	1	0	0	5	3	7	13	47	39	12	13	0	0
HILLSBOROUGH	2,999	0	0	11	40	55	83	148	178	1,093	714	405	268	3	1
HOLMES	5	0	0	0	0	0	0	1	1	2	0	0	1	0	0
INDIAN RIVER	201	0	1	1	5	4	6	11	10	82	40	26	15	0	0
JACKSON	159	0	0	0	1	4	5	10	13	60	31	22	13	0	0
JEFFERSON	64	0	0	0	2	0	1	6	5	22	18	7	3	0	0
LAFAYETTE	4	0	0	0	0	0	0	0	0	3	1	0	0	0	0
LAKE	354	1	0	2	4	7	21	22	32	121	67	51	26	0	0
LEE	752	0	2	3	10	11	25	43	45	263	148	116	85	1	0
LEON	1,243	0	2	2	8	20	26	46	66	496	315	169	92	1	0
LEVY	49	0	1	1	2	1	4	1	4	16	10	6	3	0	0
LIBERTY	14	0	0	0	0	0	0	0	1	4	6	2	1	0	0
MADISON	117	0	0	2	1	2	5	11	5	38	30	16	7	0	0
MANATEE	493	1	1	2	5	7	22	26	42	179	96	71	40	1	0
MARION	551	0	1	0	6	12	21	35	51	204	124	53	44	0	0
MARTIN	100	0	0	0	1	2	5	7	6	42	14	10	13	0	0
MONROE	72	0	0	0	1	0	2	1	2	22	22	11	11	0	0
NASSAU	55	0	0	0	0	0	4	5	5	15	11	14	1	0	0
OKALOOSA	302	0	0	1	1	2	7	6	13	143	72	33	24	0	0
OKEECHOBEE	44	0	0	1	0	1	1	1	3	19	10	3	5	0	0
ORANGE	3,745	0	4	7	34	66	103	152	216	1,142	974	645	398	4	0
OSCEOLA	286	1	0	0	1	7	9	11	14	93	69	50	31	0	0
PALM BEACH	3,812	1	2	11	31	72	99	160	215	1,124	837	723	531	6	0
PASCO	151	0	0	0	2	2	2	3	4	51	54	25	8	0	0
PINELLAS	1,564	0	6	5	18	44	74	95	108	592	328	187	103	4	0
POLK	1,307	0	4	3	22	25	52	83	88	509	283	152	86	0	0
PUTNAM	235	0	0	2	3	2	9	17	17	99	46	27	13	0	0
ST JOHNS	159	0	0	0	3	5	6	11	16	60	27	23	8	0	0
ST LUCIE	648	0	2	9	5	14	21	25	48	232	149	81	62	0	0
SANTA ROSA	73	0	0	0	0	1	2	1	6	26	22	11	4	0	0
SARASOTA	268	0	0	1	6	6	19	16	20	88	61	34	17	0	0
SEMINOLE	580	0	0	1	0	9	19	28	46	216	128	93	40	0	0
SUMTER	81	0	0	1	1	3	3	7	5	35	15	5	6	0	0
SUWANNEE	76	0	0	0	1	1	4	4	8	33	14	10	1	0	0
TAYLOR	47	0	0	1	0	5	0	1	4	16	15	2	3	0	0
UNION	15	0	0	0	0	0	1	0	3	4	6	1	0	0	0
VOLUSIA	697	1	1	0	4	15	22	29	53	272	163	90	46	1	0
WAKULLA	29	0	0	0	0	0	1	1	1	10	11	4	1	0	0
WALTON	50	0	0	0	0	0	2	5	2	19	12	6	4	0	0
WASHINGTON	42	0	0	0	0	1	1	6	2	17	11	2	2	0	0

TABLE B-6 (Cont.): RESIDENT LIVE BIRTHS TO OTHER MOTHERS, BY AGE OF MOTHER, BY COUNTY, FLORIDA, 2003

	TOTAL	AGE OF MOTHER													UNK
		<13	13	14	15	16	17	18	19	20-24	25-29	30-34	35-44	45+	
FLORIDA	7,449	1	1	9	15	38	58	111	151	1,278	2,240	2,280	1,250	17	0
ALACHUA	158	0	0	0	1	1	1	1	0	13	55	59	27	0	0
BAKER	2	0	0	0	0	0	0	0	1	1	0	0	0	0	0
BAY	66	0	0	0	1	1	2	1	2	13	20	14	12	0	0
BRADFORD	5	0	0	0	0	1	0	0	0	0	3	1	0	0	0
BREVARD	165	0	0	0	0	0	0	2	5	28	49	61	20	0	0
BROWARD	981	0	0	0	0	2	3	5	14	152	294	307	203	1	0
CALHOUN	2	0	0	0	0	0	0	0	0	1	1	0	0	0	0
CHARLOTTE	30	0	0	0	0	1	1	3	1	5	5	6	8	0	0
CITRUS	19	0	0	0	0	0	0	4	0	2	5	7	1	0	0
CLAY	79	0	0	0	1	0	0	0	5	14	21	22	16	0	0
COLLIER	69	0	0	0	0	2	2	2	2	14	21	17	9	0	0
COLUMBIA	8	0	0	0	0	0	0	0	1	1	2	3	1	0	0
MIAMI-DADE	649	0	1	2	1	4	5	9	6	78	200	210	131	2	0
DESOTO	1	0	0	0	0	0	0	0	0	1	0	0	0	0	0
DIXIE	2	0	0	0	0	0	0	0	0	2	0	0	0	0	0
DUVAL	623	0	0	0	1	3	3	6	10	126	202	181	89	2	0
ESCAMBIA	157	0	0	0	0	1	3	3	4	30	53	38	25	0	0
FLAGLER	20	0	0	0	0	0	1	1	1	2	8	2	5	0	0
FRANKLIN	1	0	0	0	0	0	0	0	0	1	0	0	0	0	0
GADSDEN	5	0	0	0	0	0	0	1	0	2	0	1	1	0	0
GILCHRIST	1	0	0	0	0	0	0	0	0	0	0	1	0	0	0
GLADES	6	0	0	0	0	0	0	1	0	2	2	1	0	0	0
GULF	1	0	0	0	0	0	0	0	0	1	0	0	0	0	0
HAMILTON	2	0	0	0	0	0	0	0	0	1	0	1	0	0	0
HARDEE	3	0	0	0	0	0	0	0	0	0	1	1	1	0	0
HENDRY	28	0	0	0	2	0	0	0	3	5	9	8	1	0	0
HERNANDO	30	0	0	0	0	0	1	1	1	6	10	5	6	0	0
HIGHLANDS	17	0	0	0	0	0	1	1	2	2	4	4	3	0	0
HILLSBOROUGH	604	0	0	1	1	3	0	4	11	78	174	221	106	5	0
HOLMES	6	0	0	0	0	0	1	0	1	0	2	0	2	0	0
INDIAN RIVER	24	0	0	0	0	0	1	0	0	5	9	7	2	0	0
JACKSON	3	0	0	0	0	0	0	0	0	1	1	0	1	0	0
JEFFERSON	2	0	0	0	0	0	0	0	0	1	0	1	0	0	0
LAFAYETTE	0	0	0	0	0	0	0	0	0	0	0	0	0	0	0
LAKE	69	0	0	0	0	1	0	0	2	13	20	24	9	0	0
LEE	92	0	0	0	0	0	0	1	2	22	28	26	13	0	0
LEON	144	0	0	0	0	2	1	1	1	13	57	46	23	0	0
LEVY	1	0	0	0	0	0	0	0	0	0	0	0	1	0	0
LIBERTY	1	0	0	0	0	0	0	0	0	0	0	0	1	0	0
MADISON	2	0	0	0	0	0	0	0	0	0	2	0	0	0	0
MANATEE	132	0	0	0	0	0	1	5	5	29	39	35	18	0	0
MARION	77	0	0	0	0	0	2	3	4	13	26	16	13	0	0
MARTIN	133	1	0	3	4	3	3	10	7	38	30	27	7	0	0
MONROE	22	0	0	0	0	0	0	1	0	5	9	6	1	0	0
NASSAU	8	0	0	0	0	0	0	0	1	1	1	2	3	0	0
OKALOOSA	104	0	0	0	0	1	1	5	4	30	34	20	9	0	0
OKEECHOBEE	23	0	0	1	0	0	1	2	5	5	5	3	1	0	0
ORANGE	751	0	0	0	0	0	6	11	5	96	222	270	137	4	0
OSCEOLA	119	0	0	0	0	1	2	1	1	21	36	32	25	0	0
PALM BEACH	638	0	0	1	2	5	5	8	11	143	177	180	106	0	0
PASCO	143	0	0	0	0	1	0	4	2	23	35	45	33	0	0
PINELLAS	501	0	0	0	0	3	5	7	12	104	158	147	63	2	0
POLK	123	0	0	0	0	1	1	0	3	29	34	37	18	0	0
PUTNAM	5	0	0	0	0	0	0	0	0	3	1	1	0	0	0
ST JOHNS	36	0	0	0	0	0	1	0	1	5	10	14	5	0	0
ST LUCIE	54	0	0	1	0	0	0	1	0	11	15	16	10	0	0
SANTA ROSA	43	0	0	0	0	0	1	1	3	6	16	11	5	0	0
SARASOTA	87	0	0	0	0	0	1	3	2	13	31	29	8	0	0
SEMINOLE	207	0	0	0	0	1	1	0	5	29	54	70	46	1	0
SUMTER	8	0	0	0	1	0	0	0	0	3	3	1	0	0	0
SUWANNEE	7	0	0	0	0	0	0	0	0	2	4	0	1	0	0
TAYLOR	2	0	0	0	0	0	0	0	0	0	1	1	0	0	0
UNION	1	0	0	0	0	0	0	0	0	0	0	1	0	0	0
VOLUSIA	125	0	0	0	0	0	1	2	4	23	36	36	23	0	0
WAKULLA	2	0	0	0	0	0	0	0	0	2	0	0	0	0	0
WALTON	13	0	0	0	0	0	0	0	1	5	1	5	1	0	0
WASHINGTON	7	0	0	0	0	0	0	0	0	3	4	0	0	0	0

TABLE B-7: RESIDENT LIVE BIRTHS BY TRIMESTER PRENATAL CARE BEGAN, BY COUNTY, FLORIDA, 2003

	TRIMESTER PRENATAL CARE BEGAN						% CARE BEGAN BY TRIMESTER			
	TOTAL	1ST	2ND	3RD	NONE	UNK	1ST	2ND	3RD	NONE
FLORIDA	212,243	180,107	23,827	3,940	1,927	2,442	84.9	11.2	1.9	0.9
ALACHUA	2,480	2,110	293	49	17	11	85.1	11.8	2.0	0.7
BAKER	353	296	42	1	2	12	83.9	11.9	0.3	0.6
BAY	2,058	1,546	159	28	19	306	75.1	7.7	1.4	0.9
BRADFORD	300	250	39	8	1	2	83.3	13.0	2.7	0.3
BREVARD	5,017	4,386	501	66	51	13	87.4	10.0	1.3	1.0
BROWARD	22,489	19,599	2,033	418	226	213	87.1	9.0	1.9	1.0
CALHOUN	138	120	11	0	2	5	87.0	8.0	0.0	1.4
CHARLOTTE	1,047	797	189	44	14	3	76.1	18.1	4.2	1.3
CITRUS	894	768	112	8	5	1	85.9	12.5	0.9	0.6
CLAY	2,091	1,850	175	23	10	33	88.5	8.4	1.1	0.5
COLLIER	3,730	2,784	778	126	30	12	74.6	20.9	3.4	0.8
COLUMBIA	771	614	93	19	43	2	79.6	12.1	2.5	5.6
MIAMI-DADE	32,551	28,961	2,951	318	199	122	89.0	9.1	1.0	0.6
DESOTO	459	315	123	17	4	0	68.6	26.8	3.7	0.9
DIXIE	157	131	20	4	0	2	83.4	12.7	2.5	0.0
DUVAL	12,421	10,315	1,247	199	118	542	83.0	10.0	1.6	1.0
ESCAMBIA	3,981	3,298	464	91	32	96	82.8	11.7	2.3	0.8
FLAGLER	557	507	41	4	2	3	91.0	7.4	0.7	0.4
FRANKLIN	123	100	10	2	0	11	81.3	8.1	1.6	0.0
GADSDEN	710	586	90	9	4	21	82.5	12.7	1.3	0.6
GILCHRIST	176	141	28	4	0	3	80.1	15.9	2.3	0.0
GLADES	58	45	11	1	0	1	77.6	19.0	1.7	0.0
GULF	108	78	10	0	1	19	72.2	9.3	0.0	0.9
HAMILTON	172	131	31	3	2	5	76.2	18.0	1.7	1.2
HARDEE	506	338	142	14	10	2	66.8	28.1	2.8	2.0
HENDRY	694	536	120	22	10	6	77.2	17.3	3.2	1.4
HERNANDO	1,248	1,186	40	13	8	1	95.0	3.2	1.0	0.6
HIGHLANDS	898	692	170	27	8	1	77.1	18.9	3.0	0.9
HILLSBOROUGH	15,294	13,325	1,448	199	108	214	87.1	9.5	1.3	0.7
HOLMES	229	203	11	5	0	10	88.6	4.8	2.2	0.0
INDIAN RIVER	1,213	965	208	32	5	3	79.6	17.1	2.6	0.4
JACKSON	535	473	36	6	6	14	88.4	6.7	1.1	1.1
JEFFERSON	145	114	20	4	1	6	78.6	13.8	2.8	0.7
LAFAYETTE	90	70	16	2	0	2	77.8	17.8	2.2	0.0
LAKE	2,838	2,425	307	58	27	21	85.4	10.8	2.0	1.0
LEE	5,653	4,626	843	133	39	12	81.8	14.9	2.4	0.7
LEON	3,132	2,775	265	30	15	47	88.6	8.5	1.0	0.5
LEVY	388	315	54	13	4	2	81.2	13.9	3.4	1.0
LIBERTY	96	87	7	1	0	1	90.6	7.3	1.0	0.0
MADISON	234	200	28	2	2	2	85.5	12.0	0.9	0.9
MANATEE	3,338	2,527	610	160	35	6	75.7	18.3	4.8	1.0
MARION	2,979	2,290	563	82	35	9	76.9	18.9	2.8	1.2
MARTIN	1,175	836	231	65	32	11	71.1	19.7	5.5	2.7
MONROE	711	595	69	4	5	38	83.7	9.7	0.6	0.7
NASSAU	704	619	69	6	1	9	87.9	9.8	0.9	0.1
OKALOOSA	2,541	2,204	256	39	15	27	86.7	10.1	1.5	0.6
OKEECHOBEE	537	435	79	11	7	5	81.0	14.7	2.0	1.3
ORANGE	14,917	13,132	1,337	154	169	125	88.0	9.0	1.0	1.1
OSCEOLA	3,148	2,787	303	28	27	3	88.5	9.6	0.9	0.9
PALM BEACH	14,659	11,721	2,019	560	182	177	80.0	13.8	3.8	1.2
PASCO	4,042	3,710	242	35	22	33	91.8	6.0	0.9	0.5
PINELLAS	9,225	7,850	1,077	202	78	18	85.1	11.7	2.2	0.8
POLK	7,053	5,036	1,587	283	129	18	71.4	22.5	4.0	1.8
PUTNAM	923	709	164	33	5	12	76.8	17.8	3.6	0.5
ST JOHNS	1,484	1,298	137	20	8	21	87.5	9.2	1.3	0.5
ST LUCIE	2,448	1,946	400	47	47	8	79.5	16.3	1.9	1.9
SANTA ROSA	1,580	1,409	132	13	8	18	89.2	8.4	0.8	0.5
SARASOTA	2,987	2,666	273	29	17	2	89.3	9.1	1.0	0.6
SEMINOLE	4,599	4,165	329	47	25	33	90.6	7.2	1.0	0.5
SUMTER	449	388	48	7	5	1	86.4	10.7	1.6	1.1
SUWANNEE	486	371	94	15	6	0	76.3	19.3	3.1	1.2
TAYLOR	210	194	14	2	0	0	92.4	6.7	1.0	0.0
UNION	155	133	20	1	0	1	85.8	12.9	0.6	0.0
VOLUSIA	4,809	4,120	524	84	38	43	85.7	10.9	1.7	0.8
WAKULLA	290	264	21	3	1	1	91.0	7.2	1.0	0.3
WALTON	509	439	50	3	5	12	86.2	9.8	0.6	1.0
WASHINGTON	251	205	13	4	0	29	81.7	5.2	1.6	0.0

TABLE B-7 (Cont.): RESIDENT LIVE BIRTHS TO WHITE MOTHERS BY TRIMESTER PRENATAL CARE BEGAN, BY COUNTY, FLORIDA, 2003

	TRIMESTER PRENATAL CARE BEGAN						% CARE BEGAN BY TRIMESTER			
	TOTAL	1ST	2ND	3RD	NONE	UNK	1ST	2ND	3RD	NONE
FLORIDA	157,402	137,560	14,992	2,388	1,108	1,354	87.4	9.5	1.5	0.7
ALACHUA	1,543	1,384	132	15	7	5	89.7	8.6	1.0	0.5
BAKER	308	261	38	0	2	7	84.7	12.3	0.0	0.6
BAY	1,667	1,273	126	22	13	233	76.4	7.6	1.3	0.8
BRADFORD	231	202	21	8	0	0	87.4	9.1	3.5	0.0
BREVARD	4,107	3,642	385	36	36	8	88.7	9.4	0.9	0.9
BROWARD	13,727	12,529	851	168	93	86	91.3	6.2	1.2	0.7
CALHOUN	114	99	9	0	2	4	86.8	7.9	0.0	1.8
CHARLOTTE	950	738	161	36	12	3	77.7	16.9	3.8	1.3
CITRUS	838	724	103	6	5	0	86.4	12.3	0.7	0.6
CLAY	1,818	1,629	142	18	5	24	89.6	7.8	1.0	0.3
COLLIER	3,239	2,462	642	101	27	7	76.0	19.8	3.1	0.8
COLUMBIA	608	481	70	14	41	2	79.1	11.5	2.3	6.7
MIAMI-DADE	23,350	21,472	1,584	134	102	58	92.0	6.8	0.6	0.4
DESOTO	389	270	100	16	3	0	69.4	25.7	4.1	0.8
DIXIE	143	121	18	2	0	2	84.6	12.6	1.4	0.0
DUVAL	7,421	6,577	536	86	31	191	88.6	7.2	1.2	0.4
ESCAMBIA	2,639	2,312	229	45	7	46	87.6	8.7	1.7	0.3
FLAGLER	483	445	30	3	2	3	92.1	6.2	0.6	0.4
FRANKLIN	115	95	9	1	0	10	82.6	7.8	0.9	0.0
GADSDEN	263	230	16	5	3	9	87.5	6.1	1.9	1.1
GILCHRIST	163	131	26	4	0	2	80.4	16.0	2.5	0.0
GLADES	41	32	7	1	0	1	78.0	17.1	2.4	0.0
GULF	93	67	8	0	1	17	72.0	8.6	0.0	1.1
HAMILTON	97	68	19	3	2	5	70.1	19.6	3.1	2.1
HARDEE	471	319	129	14	8	1	67.7	27.4	3.0	1.7
HENDRY	579	449	100	16	10	4	77.5	17.3	2.8	1.7
HERNANDO	1,128	1,077	33	10	7	1	95.5	2.9	0.9	0.6
HIGHLANDS	741	579	131	22	8	1	78.1	17.7	3.0	1.1
HILLSBOROUGH	11,611	10,333	984	128	68	98	89.0	8.5	1.1	0.6
HOLMES	217	192	11	5	0	9	88.5	5.1	2.3	0.0
INDIAN RIVER	988	798	155	27	5	3	80.8	15.7	2.7	0.5
JACKSON	372	331	21	6	5	9	89.0	5.6	1.6	1.3
JEFFERSON	79	67	9	1	0	2	84.8	11.4	1.3	0.0
LAFAYETTE	86	66	16	2	0	2	76.7	18.6	2.3	0.0
LAKE	2,414	2,095	236	45	19	19	86.8	9.8	1.9	0.8
LEE	4,806	4,025	636	110	27	8	83.7	13.2	2.3	0.6
LEON	1,742	1,636	77	7	7	15	93.9	4.4	0.4	0.4
LEVY	338	278	45	9	4	2	82.2	13.3	2.7	1.2
LIBERTY	81	74	5	1	0	1	91.4	6.2	1.2	0.0
MADISON	115	104	10	0	0	1	90.4	8.7	0.0	0.0
MANATEE	2,712	2,094	469	120	24	5	77.2	17.3	4.4	0.9
MARION	2,350	1,847	420	55	23	5	78.6	17.9	2.3	1.0
MARTIN	942	740	133	40	22	7	78.6	14.1	4.2	2.3
MONROE	616	521	60	4	4	27	84.6	9.7	0.6	0.6
NASSAU	641	568	60	4	1	8	88.6	9.4	0.6	0.2
OKALOOSA	2,134	1,877	192	29	13	23	88.0	9.0	1.4	0.6
OKEECHOBEE	470	388	64	9	6	3	82.6	13.6	1.9	1.3
ORANGE	10,409	9,404	753	86	88	78	90.3	7.2	0.8	0.8
OSCEOLA	2,740	2,450	252	20	17	1	89.4	9.2	0.7	0.6
PALM BEACH	10,197	8,566	1,081	331	97	122	84.0	10.6	3.2	1.0
PASCO	3,731	3,436	224	31	22	18	92.1	6.0	0.8	0.6
PINELLAS	7,152	6,292	684	127	39	10	88.0	9.6	1.8	0.5
POLK	5,622	4,159	1,170	200	79	14	74.0	20.8	3.6	1.4
PUTNAM	682	546	105	20	4	7	80.1	15.4	2.9	0.6
ST JOHNS	1,289	1,161	100	9	5	14	90.1	7.8	0.7	0.4
ST LUCIE	1,746	1,443	240	29	28	6	82.6	13.7	1.7	1.6
SANTA ROSA	1,464	1,309	122	9	8	16	89.4	8.3	0.6	0.5
SARASOTA	2,631	2,381	216	19	13	2	90.5	8.2	0.7	0.5
SEMINOLE	3,808	3,527	218	27	14	22	92.6	5.7	0.7	0.4
SUMTER	359	316	33	6	4	0	88.0	9.2	1.7	1.1
SUWANNEE	403	316	72	11	4	0	78.4	17.9	2.7	1.0
TAYLOR	161	151	8	2	0	0	93.8	5.0	1.2	0.0
UNION	139	121	16	1	0	1	87.1	11.5	0.7	0.0
VOLUSIA	3,984	3,484	375	66	26	33	87.4	9.4	1.7	0.7
WAKULLA	259	240	16	2	1	0	92.7	6.2	0.8	0.4
WALTON	445	391	40	2	4	8	87.9	9.0	0.4	0.9
WASHINGTON	201	165	9	2	0	25	82.1	4.5	1.0	0.0

TABLE B-7 (Cont.): RESIDENT LIVE BIRTHS TO BLACK MOTHERS BY TRIMESTER PRENATAL CARE BEGAN, BY COUNTY, FLORIDA, 2003

	TRIMESTER PRENATAL CARE BEGAN						% CARE BEGAN BY TRIMESTER			
	TOTAL	1ST	2ND	3RD	NONE	UNK	1ST	2ND	3RD	NONE
FLORIDA	47,117	36,091	8,021	1,398	759	848	76.6	17.0	3.0	1.6
ALACHUA	774	585	143	30	10	6	75.6	18.5	3.9	1.3
BAKER	43	33	4	1	0	5	76.7	9.3	2.3	0.0
BAY	309	214	29	5	5	56	69.3	9.4	1.6	1.6
BRADFORD	64	44	17	0	1	2	68.8	26.6	0.0	1.6
BREVARD	741	594	105	27	12	3	80.2	14.2	3.6	1.6
BROWARD	7,756	6,169	1,107	234	126	120	79.5	14.3	3.0	1.6
CALHOUN	22	19	2	0	0	1	86.4	9.1	0.0	0.0
CHARLOTTE	67	39	20	6	2	0	58.2	29.9	9.0	3.0
CITRUS	36	28	7	1	0	0	77.8	19.4	2.8	0.0
CLAY	193	154	24	3	5	7	79.8	12.4	1.6	2.6
COLLIER	421	263	130	22	2	4	62.5	30.9	5.2	0.5
COLUMBIA	155	127	21	5	2	0	81.9	13.5	3.2	1.3
MIAMI-DADE	8,497	6,890	1,300	176	97	34	81.1	15.3	2.1	1.1
DESOTO	69	44	23	1	1	0	63.8	33.3	1.4	1.4
DIXIE	12	8	2	2	0	0	66.7	16.7	16.7	0.0
DUVAL	4,371	3,197	660	106	85	323	73.1	15.1	2.4	1.9
ESCAMBIA	1,185	855	214	46	24	46	72.2	18.1	3.9	2.0
FLAGLER	54	44	9	1	0	0	81.5	16.7	1.9	0.0
FRANKLIN	7	4	1	1	0	1	57.1	14.3	14.3	0.0
GADSDEN	442	351	74	4	1	12	79.4	16.7	0.9	0.2
GILCHRIST	12	9	2	0	0	1	75.0	16.7	0.0	0.0
GLADES	11	9	2	0	0	0	81.8	18.2	0.0	0.0
GULF	14	10	2	0	0	2	71.4	14.3	0.0	0.0
HAMILTON	73	62	11	0	0	0	84.9	15.1	0.0	0.0
HARDEE	32	18	12	0	1	1	56.3	37.5	0.0	3.1
HENDRY	84	66	13	5	0	0	78.6	15.5	6.0	0.0
HERNANDO	90	81	5	3	1	0	90.0	5.6	3.3	1.1
HIGHLANDS	140	99	37	4	0	0	70.7	26.4	2.9	0.0
HILLSBOROUGH	2,999	2,418	435	68	37	41	80.6	14.5	2.3	1.2
HOLMES	5	4	0	0	0	1	80.0	0.0	0.0	0.0
INDIAN RIVER	201	146	50	5	0	0	72.6	24.9	2.5	0.0
JACKSON	159	139	15	0	1	4	87.4	9.4	0.0	0.6
JEFFERSON	64	45	11	3	1	4	70.3	17.2	4.7	1.6
LAFAYETTE	4	4	0	0	0	0	100.0	0.0	0.0	0.0
LAKE	354	274	60	13	5	2	77.4	16.9	3.7	1.4
LEE	752	520	198	20	12	2	69.1	26.3	2.7	1.6
LEON	1,243	1,002	184	22	8	27	80.6	14.8	1.8	0.6
LEVY	49	36	9	4	0	0	73.5	18.4	8.2	0.0
LIBERTY	14	12	2	0	0	0	85.7	14.3	0.0	0.0
MADISON	117	95	17	2	2	1	81.2	14.5	1.7	1.7
MANATEE	493	331	116	36	10	0	67.1	23.5	7.3	2.0
MARION	551	386	126	25	11	3	70.1	22.9	4.5	2.0
MARTIN	100	48	37	9	4	2	48.0	37.0	9.0	4.0
MONROE	72	54	7	0	1	10	75.0	9.7	0.0	1.4
NASSAU	55	46	6	2	0	1	83.6	10.9	3.6	0.0
OKALOOSA	302	243	47	7	2	3	80.5	15.6	2.3	0.7
OKEECHOBEE	44	32	9	0	1	2	72.7	20.5	0.0	2.3
ORANGE	3,745	3,043	531	65	76	30	81.3	14.2	1.7	2.0
OSCEOLA	286	229	41	6	9	1	80.1	14.3	2.1	3.1
PALM BEACH	3,812	2,669	828	195	74	46	70.0	21.7	5.1	1.9
PASCO	151	137	9	3	0	2	90.7	6.0	2.0	0.0
PINELLAS	1,564	1,154	316	60	29	5	73.8	20.2	3.8	1.9
POLK	1,307	778	398	78	50	3	59.5	30.5	6.0	3.8
PUTNAM	235	159	58	13	1	4	67.7	24.7	5.5	0.4
ST JOHNS	159	105	33	11	3	7	66.0	20.8	6.9	1.9
ST LUCIE	648	463	149	15	19	2	71.5	23.0	2.3	2.9
SANTA ROSA	73	60	9	2	0	2	82.2	12.3	2.7	0.0
SARASOTA	268	209	46	9	4	0	78.0	17.2	3.4	1.5
SEMINOLE	580	448	97	19	9	7	77.2	16.7	3.3	1.6
SUMTER	81	66	14	1	0	0	81.5	17.3	1.2	0.0
SUWANNEE	76	51	19	4	2	0	67.1	25.0	5.3	2.6
TAYLOR	47	41	6	0	0	0	87.2	12.8	0.0	0.0
UNION	15	11	4	0	0	0	73.3	26.7	0.0	0.0
VOLUSIA	697	523	141	14	12	7	75.0	20.2	2.0	1.7
WAKULLA	29	23	4	1	0	1	79.3	13.8	3.4	0.0
WALTON	50	37	10	1	1	1	74.0	20.0	2.0	2.0
WASHINGTON	42	34	3	2	0	3	81.0	7.1	4.8	0.0

TABLE B-7 (Cont.): RESIDENT LIVE BIRTHS TO OTHER MOTHERS BY TRIMESTER PRENATAL CARE BEGAN, BY COUNTY, FLORIDA, 2003

	TRIMESTER PRENATAL CARE BEGAN						% CARE BEGAN BY TRIMESTER			
	TOTAL	1ST	2ND	3RD	NONE	UNK	1ST	2ND	3RD	NONE
FLORIDA	7,449	6,344	802	151	56	96	85.2	10.8	2.0	0.8
ALACHUA	158	137	18	3	0	0	86.7	11.4	1.9	0.0
BAKER	2	2	0	0	0	0	100.0	0.0	0.0	0.0
BAY	66	44	4	1	0	17	66.7	6.1	1.5	0.0
BRADFORD	5	4	1	0	0	0	80.0	20.0	0.0	0.0
BREVARD	165	148	11	3	3	0	89.7	6.7	1.8	1.8
BROWARD	981	882	73	16	6	4	89.9	7.4	1.6	0.6
CALHOUN	2	2	0	0	0	0	100.0	0.0	0.0	0.0
CHARLOTTE	30	20	8	2	0	0	66.7	26.7	6.7	0.0
CITRUS	19	16	2	1	0	0	84.2	10.5	5.3	0.0
CLAY	79	67	9	2	0	1	84.8	11.4	2.5	0.0
COLLIER	69	59	6	3	1	0	85.5	8.7	4.3	1.4
COLUMBIA	8	6	2	0	0	0	75.0	25.0	0.0	0.0
MIAMI-DADE	649	577	63	7	0	2	88.9	9.7	1.1	0.0
DESOTO	1	1	0	0	0	0	100.0	0.0	0.0	0.0
DIXIE	2	2	0	0	0	0	100.0	0.0	0.0	0.0
DUVAL	623	540	50	6	2	25	86.7	8.0	1.0	0.3
ESCAMBIA	157	131	21	0	1	4	83.4	13.4	0.0	0.6
FLAGLER	20	18	2	0	0	0	90.0	10.0	0.0	0.0
FRANKLIN	1	1	0	0	0	0	100.0	0.0	0.0	0.0
GADSDEN	5	5	0	0	0	0	100.0	0.0	0.0	0.0
GILCHRIST	1	1	0	0	0	0	100.0	0.0	0.0	0.0
GLADES	6	4	2	0	0	0	66.7	33.3	0.0	0.0
GULF	1	1	0	0	0	0	100.0	0.0	0.0	0.0
HAMILTON	2	1	1	0	0	0	50.0	50.0	0.0	0.0
HARDEE	3	1	1	0	1	0	33.3	33.3	0.0	33.3
HENDRY	28	20	7	1	0	0	71.4	25.0	3.6	0.0
HERNANDO	30	28	2	0	0	0	93.3	6.7	0.0	0.0
HIGHLANDS	17	14	2	1	0	0	82.4	11.8	5.9	0.0
HILLSBOROUGH	604	558	28	3	3	12	92.4	4.6	0.5	0.5
HOLMES	6	6	0	0	0	0	100.0	0.0	0.0	0.0
INDIAN RIVER	24	21	3	0	0	0	87.5	12.5	0.0	0.0
JACKSON	3	2	0	0	0	1	66.7	0.0	0.0	0.0
JEFFERSON	2	2	0	0	0	0	100.0	0.0	0.0	0.0
LAFAYETTE	0	0	0	0	0	0	---	---	---	---
LAKE	69	55	11	0	3	0	79.7	15.9	0.0	4.3
LEE	92	80	9	3	0	0	87.0	9.8	3.3	0.0
LEON	144	135	4	1	0	4	93.8	2.8	0.7	0.0
LEVY	1	1	0	0	0	0	100.0	0.0	0.0	0.0
LIBERTY	1	1	0	0	0	0	100.0	0.0	0.0	0.0
MADISON	2	1	1	0	0	0	50.0	50.0	0.0	0.0
MANATEE	132	102	25	4	1	0	77.3	18.9	3.0	0.8
MARION	77	57	17	2	1	0	74.0	22.1	2.6	1.3
MARTIN	133	48	61	16	6	2	36.1	45.9	12.0	4.5
MONROE	22	20	2	0	0	0	90.9	9.1	0.0	0.0
NASSAU	8	5	3	0	0	0	62.5	37.5	0.0	0.0
OKALOOSA	104	83	17	3	0	1	79.8	16.3	2.9	0.0
OKEECHOBEE	23	15	6	2	0	0	65.2	26.1	8.7	0.0
ORANGE	751	680	53	3	4	11	90.5	7.1	0.4	0.5
OSCEOLA	119	105	10	2	1	1	88.2	8.4	1.7	0.8
PALM BEACH	638	481	109	34	11	3	75.4	17.1	5.3	1.7
PASCO	143	130	9	1	0	3	90.9	6.3	0.7	0.0
PINELLAS	501	400	75	15	10	1	79.8	15.0	3.0	2.0
POLK	123	99	19	5	0	0	80.5	15.4	4.1	0.0
PUTNAM	5	4	1	0	0	0	80.0	20.0	0.0	0.0
ST JOHNS	36	32	4	0	0	0	88.9	11.1	0.0	0.0
ST LUCIE	54	40	11	3	0	0	74.1	20.4	5.6	0.0
SANTA ROSA	43	40	1	2	0	0	93.0	2.3	4.7	0.0
SARASOTA	87	76	10	1	0	0	87.4	11.5	1.1	0.0
SEMINOLE	207	189	14	1	1	2	91.3	6.8	0.5	0.5
SUMTER	8	6	1	0	1	0	75.0	12.5	0.0	12.5
SUWANNEE	7	4	3	0	0	0	57.1	42.9	0.0	0.0
TAYLOR	2	2	0	0	0	0	100.0	0.0	0.0	0.0
UNION	1	1	0	0	0	0	100.0	0.0	0.0	0.0
VOLUSIA	125	113	8	4	0	0	90.4	6.4	3.2	0.0
WAKULLA	2	1	1	0	0	0	50.0	50.0	0.0	0.0
WALTON	13	11	0	0	0	2	84.6	0.0	0.0	0.0
WASHINGTON	7	6	1	0	0	0	85.7	14.3	0.0	0.0

TABLE B-8: RESIDENT LIVE BIRTHS TO UNWED MOTHERS, BY AGE OF MOTHER, BY COUNTY, FLORIDA, 2003

	TOTAL	AGE OF MOTHER													UNK
		<13	13	14	15	16	17	18	19	20-24	25-29	30-34	35-44	45+	
FLORIDA	84,733	10	65	275	900	2,113	3,577	5,560	7,013	32,536	17,418	9,530	5,678	55	3
ALACHUA	944	0	1	4	13	26	25	69	93	425	180	72	36	0	0
BAKER	153	0	0	0	0	5	13	18	12	71	24	6	4	0	0
BAY	774	0	0	1	10	13	30	74	83	327	135	66	35	0	0
BRADFORD	138	0	0	0	2	5	8	6	14	54	33	10	6	0	0
BREVARD	1,865	0	2	6	14	45	79	145	161	749	374	180	108	2	0
BROWARD	8,001	1	2	23	62	163	235	451	556	2,743	1,874	1,123	761	7	0
CALHOUN	61	1	0	0	1	2	2	3	11	27	13	1	0	0	0
CHARLOTTE	450	0	0	1	3	18	25	33	43	170	87	39	31	0	0
CITRUS	393	0	0	1	3	6	17	32	47	172	67	34	14	0	0
CLAY	612	0	0	2	6	15	18	59	91	245	95	59	22	0	0
COLLIER	1,503	0	1	4	16	39	79	78	101	531	316	217	120	1	0
COLUMBIA	342	0	1	0	0	8	24	34	35	132	60	41	7	0	0
MIAMI-DADE	13,741	0	12	44	132	305	513	696	856	4,511	3,145	2,125	1,383	18	1
DESOTO	241	0	1	1	5	5	14	12	19	104	37	32	10	1	0
DIXIE	71	0	0	0	0	1	1	4	9	34	13	5	4	0	0
DUVAL	5,241	1	7	22	62	125	256	365	503	2,215	987	458	238	2	0
ESCAMBIA	1,680	0	2	8	14	35	91	121	166	721	294	151	77	0	0
FLAGLER	175	0	0	1	0	2	8	7	22	68	39	17	11	0	0
FRANKLIN	56	0	0	0	1	0	2	10	9	25	7	0	2	0	0
GADSDEN	472	0	0	3	11	16	19	39	37	216	83	38	10	0	0
GILCHRIST	83	0	0	1	0	7	6	7	6	30	14	10	2	0	0
GLADES	39	0	0	0	1	0	0	3	2	17	8	3	5	0	0
GULF	42	0	0	0	2	0	3	8	3	15	8	3	0	0	0
HAMILTON	97	0	0	1	0	4	4	4	10	35	21	13	5	0	0
HARDEE	247	0	0	1	6	12	10	22	17	113	36	24	6	0	0
HENDRY	375	0	1	1	10	20	15	29	34	139	81	24	21	0	0
HERNANDO	527	1	0	2	6	15	29	41	41	216	102	47	27	0	0
HIGHLANDS	412	0	2	2	3	10	18	32	48	162	84	29	22	0	0
HILLSBOROUGH	6,207	0	1	24	97	148	264	461	515	2,470	1,288	590	341	7	1
HOLMES	71	0	0	0	0	1	5	2	5	36	12	6	4	0	0
INDIAN RIVER	475	0	1	1	9	12	16	26	43	209	88	43	27	0	0
JACKSON	237	0	0	0	3	7	12	23	23	101	41	19	8	0	0
JEFFERSON	72	0	0	0	2	0	3	7	8	28	17	4	3	0	0
LAFAYETTE	28	0	0	0	1	1	2	2	2	12	4	1	3	0	0
LAKE	1,073	1	0	6	11	22	52	84	118	431	186	106	56	0	0
LEE	2,441	0	3	8	36	75	130	173	173	959	486	257	140	1	0
LEON	1,246	0	3	3	8	31	36	66	96	583	264	107	48	1	0
LEVY	170	0	1	1	6	4	13	11	19	70	29	11	5	0	0
LIBERTY	42	0	0	0	0	2	2	3	4	13	11	5	2	0	0
MADISON	130	0	0	2	1	2	10	14	8	48	24	13	8	0	0
MANATEE	1,537	1	1	5	28	54	75	115	139	642	278	129	69	1	0
MARION	1,419	0	2	2	15	37	65	103	159	604	265	100	67	0	0
MARTIN	411	1	0	4	5	11	22	31	37	164	78	40	18	0	0
MONROE	227	0	0	0	1	4	4	8	12	85	48	35	30	0	0
NASSAU	235	0	0	0	0	9	15	16	29	83	43	31	9	0	0
OKALOOSA	741	0	0	4	4	16	40	45	69	319	132	72	40	0	0
OKEECHOBEE	273	0	1	4	3	7	12	21	29	108	59	19	10	0	0
ORANGE	5,947	0	4	12	56	151	243	361	498	2,242	1,314	680	383	2	1
OSCEOLA	1,260	1	0	1	9	43	50	80	89	503	264	128	92	0	0
PALM BEACH	5,428	1	2	18	54	140	195	317	414	2,043	1,097	714	428	5	0
PASCO	1,418	0	1	0	15	33	65	97	136	566	281	143	80	1	0
PINELLAS	3,794	0	6	12	38	98	158	249	311	1,499	786	395	238	4	0
POLK	3,278	0	4	8	45	92	166	263	305	1,357	610	302	126	0	0
PUTNAM	478	0	0	3	3	12	26	36	42	206	85	44	21	0	0
ST JOHNS	428	0	0	2	8	14	21	39	47	178	61	37	20	1	0
ST LUCIE	1,078	0	2	13	10	35	48	60	95	424	212	114	65	0	0
SANTA ROSA	442	0	0	1	0	15	39	35	57	159	82	32	22	0	0
SARASOTA	1,020	0	0	2	14	20	50	61	93	359	222	117	82	0	0
SEMINOLE	1,362	0	0	3	6	27	56	95	114	531	306	132	92	0	0
SUMTER	212	0	0	1	2	11	5	23	23	82	37	15	13	0	0
SUWANNEE	208	0	0	1	5	5	16	12	20	90	38	12	9	0	0
TAYLOR	101	0	0	1	1	8	3	6	9	45	21	4	3	0	0
UNION	56	0	0	0	0	1	1	5	14	20	7	6	2	0	0
VOLUSIA	2,055	1	1	4	20	53	86	161	192	846	364	204	122	1	0
WAKULLA	121	0	0	0	0	3	10	10	10	57	16	12	3	0	0
WALTON	181	0	0	0	1	5	13	22	18	67	26	16	13	0	0
WASHINGTON	96	0	0	0	0	2	4	15	9	30	19	8	9	0	0

TABLE B-8 (Cont.): RESIDENT LIVE BIRTHS TO UNWED WHITE MOTHERS, BY AGE OF MOTHER, BY COUNTY, FLORIDA, 2003

	TOTAL	AGE OF MOTHER													
		<13	13	14	15	16	17	18	19	20-24	25-29	30-34	35-44	45+	UNK
FLORIDA	51,482	1	17	119	460	1,235	2,125	3,380	4,275	19,317	10,645	6,076	3,799	32	1
ALACHUA	362	0	0	1	2	10	9	18	33	161	71	37	20	0	0
BAKER	115	0	0	0	0	5	10	17	11	50	14	5	3	0	0
BAY	540	0	0	0	5	9	23	50	60	238	80	47	28	0	0
BRADFORD	90	0	0	0	1	1	7	3	10	43	17	5	3	0	0
BREVARD	1,308	0	0	2	8	25	54	103	115	521	260	131	88	1	0
BROWARD	3,367	0	1	7	12	47	80	160	212	1,137	822	526	361	2	0
CALHOUN	47	1	0	0	1	2	2	2	11	17	10	1	0	0	0
CHARLOTTE	396	0	0	1	2	17	21	26	39	151	77	33	29	0	0
CITRUS	364	0	0	1	3	6	17	27	44	163	62	28	13	0	0
CLAY	491	0	0	2	4	14	16	50	76	191	73	47	18	0	0
COLLIER	1,279	0	1	3	13	35	65	70	93	454	262	186	96	1	0
COLUMBIA	232	0	1	0	0	6	20	23	22	86	40	30	4	0	0
MIAMI-DADE	7,856	0	4	17	62	145	242	376	452	2,341	1,893	1,382	932	10	0
DESOTO	184	0	1	0	4	2	12	10	14	79	32	22	7	1	0
DIXIE	58	0	0	0	0	1	1	3	7	27	12	3	4	0	0
DUVAL	2,141	0	0	6	20	43	112	141	209	884	402	192	130	2	0
ESCAMBIA	765	0	1	0	7	16	42	57	72	312	131	83	44	0	0
FLAGLER	135	0	0	1	0	2	5	4	15	55	29	14	10	0	0
FRANKLIN	48	0	0	0	0	0	1	9	8	21	7	0	2	0	0
GADSDEN	121	0	0	0	2	2	4	11	6	56	24	11	5	0	0
GILCHRIST	73	0	0	1	0	7	5	6	5	25	12	10	2	0	0
GLADES	25	0	0	0	1	0	0	2	2	10	5	1	4	0	0
GULF	30	0	0	0	0	0	1	7	3	11	6	2	0	0	0
HAMILTON	41	0	0	0	0	1	1	1	5	10	14	7	2	0	0
HARDEE	226	0	0	1	5	12	10	21	16	100	33	22	6	0	0
HENDRY	287	0	1	1	7	20	13	23	24	104	58	18	18	0	0
HERNANDO	448	0	0	1	5	12	23	32	38	184	87	44	22	0	0
HIGHLANDS	311	0	1	2	3	6	15	25	35	123	60	25	16	0	0
HILLSBOROUGH	3,992	0	1	12	56	91	178	310	337	1,529	845	398	231	4	0
HOLMES	62	0	0	0	0	1	4	1	3	34	11	6	2	0	0
INDIAN RIVER	319	0	0	0	4	8	9	15	33	135	65	29	21	0	0
JACKSON	114	0	0	0	2	3	7	13	10	53	18	5	3	0	0
JEFFERSON	26	0	0	0	0	0	2	1	3	12	5	0	3	0	0
LAFAYETTE	25	0	0	0	1	1	2	2	2	10	3	1	3	0	0
LAKE	802	0	0	4	7	14	32	63	87	326	141	81	47	0	0
LEE	1,890	0	1	5	26	64	105	132	130	734	384	210	98	1	0
LEON	339	0	1	1	0	9	9	20	29	163	56	36	14	1	0
LEVY	129	0	0	0	4	3	9	10	15	54	22	9	3	0	0
LIBERTY	30	0	0	0	0	2	2	3	3	9	6	4	1	0	0
MADISON	37	0	0	0	0	0	5	3	3	13	8	1	4	0	0
MANATEE	1,120	0	0	3	23	47	52	86	96	469	206	88	49	1	0
MARION	990	0	1	2	9	26	44	67	105	439	171	74	52	0	0
MARTIN	273	0	0	1	0	7	14	16	28	106	61	27	13	0	0
MONROE	181	0	0	0	0	4	2	6	10	68	36	29	26	0	0
NASSAU	199	0	0	0	0	9	11	11	24	70	41	26	7	0	0
OKALOOSA	553	0	0	3	3	13	32	36	58	226	97	55	30	0	0
OKEECHOBEE	221	0	1	2	3	6	10	18	23	87	48	17	6	0	0
ORANGE	3,438	0	0	5	23	85	136	208	291	1,280	760	401	246	2	1
OSCEOLA	1,045	0	0	1	8	35	39	68	75	427	214	105	73	0	0
PALM BEACH	2,867	0	0	6	22	65	92	160	205	1,048	617	382	267	3	0
PASCO	1,302	0	1	0	13	30	63	90	132	515	249	134	74	1	0
PINELLAS	2,420	0	0	7	20	52	79	151	198	911	534	275	192	1	0
POLK	2,239	0	0	5	23	66	112	185	222	912	421	209	84	0	0
PUTNAM	288	0	0	1	0	10	17	19	26	122	51	31	11	0	0
ST JOHNS	301	0	0	2	5	9	14	28	31	124	42	28	17	1	0
ST LUCIE	612	0	0	3	5	21	27	36	50	233	127	66	44	0	0
SANTA ROSA	390	0	0	1	0	14	36	33	49	141	68	30	18	0	0
SARASOTA	779	0	0	1	8	14	30	42	74	272	173	94	71	0	0
SEMINOLE	937	0	0	2	6	17	37	68	68	357	216	95	71	0	0
SUMTER	141	0	0	0	0	8	2	16	19	49	25	11	11	0	0
SUWANNEE	155	0	0	1	4	4	12	8	12	63	33	10	8	0	0
TAYLOR	58	0	0	0	1	3	3	5	5	31	6	2	2	0	0
UNION	46	0	0	0	0	1	0	5	12	16	4	6	2	0	0
VOLUSIA	1,518	0	0	4	16	38	63	132	139	611	250	159	106	0	0
WAKULLA	100	0	0	0	0	3	9	9	9	47	10	10	3	0	0
WALTON	142	0	0	0	1	5	11	17	15	50	18	13	12	0	0
WASHINGTON	62	0	0	0	0	1	3	10	7	17	10	7	7	0	0

TABLE B-8 (Cont.): RESIDENT LIVE BIRTHS TO UNWED BLACK MOTHERS, BY AGE OF MOTHER, BY COUNTY, FLORIDA, 2003

	TOTAL	AGE OF MOTHER													UNK
		<13	13	14	15	16	17	18	19	20-24	25-29	30-34	35-44	45+	
FLORIDA	31,584	8	47	147	428	841	1,394	2,091	2,639	12,643	6,355	3,213	1,754	22	2
ALACHUA	574	0	1	3	11	15	15	50	60	263	107	34	15	0	0
BAKER	37	0	0	0	0	0	3	1	0	21	10	1	1	0	0
BAY	216	0	0	1	5	3	6	24	21	83	50	18	5	0	0
BRADFORD	45	0	0	0	1	3	1	3	4	11	14	5	3	0	0
BREVARD	524	0	2	4	6	20	25	40	41	213	110	42	20	1	0
BROWARD	4,488	1	1	16	50	114	153	286	334	1,557	1,012	579	380	5	0
CALHOUN	14	0	0	0	0	0	0	1	0	10	3	0	0	0	0
CHARLOTTE	45	0	0	0	1	0	3	4	3	16	10	6	2	0	0
CITRUS	25	0	0	0	0	0	0	3	3	8	5	5	1	0	0
CLAY	103	0	0	0	1	1	2	9	12	50	16	10	2	0	0
COLLIER	200	0	0	1	3	2	12	8	6	69	48	29	22	0	0
COLUMBIA	108	0	0	0	0	2	4	11	12	46	19	11	3	0	0
MIAMI-DADE	5,731	0	7	25	69	156	266	313	402	2,131	1,212	709	433	7	1
DESOTO	57	0	0	1	1	3	2	2	5	25	5	10	3	0	0
DIXIE	11	0	0	0	0	0	0	1	2	5	1	2	0	0	0
DUVAL	2,967	1	7	16	41	79	141	221	287	1,269	552	250	103	0	0
ESCAMBIA	888	0	1	8	7	18	46	61	93	398	157	66	33	0	0
FLAGLER	35	0	0	0	0	0	2	2	6	12	9	3	1	0	0
FRANKLIN	7	0	0	0	1	0	1	1	1	3	0	0	0	0	0
GADSDEN	347	0	0	3	9	14	15	27	31	159	59	26	4	0	0
GILCHRIST	10	0	0	0	0	0	1	1	1	5	2	0	0	0	0
GLADES	10	0	0	0	0	0	0	0	0	5	3	1	1	0	0
GULF	12	0	0	0	2	0	2	1	0	4	2	1	0	0	0
HAMILTON	54	0	0	1	0	3	3	3	5	24	7	5	3	0	0
HARDEE	21	0	0	0	1	0	0	1	1	13	3	2	0	0	0
HENDRY	70	0	0	0	1	0	2	6	7	30	18	3	3	0	0
HERNANDO	71	1	0	1	1	3	5	8	3	28	14	3	4	0	0
HIGHLANDS	96	0	1	0	0	4	3	6	12	37	23	4	6	0	0
HILLSBOROUGH	2,095	0	0	11	40	54	83	144	170	904	414	167	104	3	1
HOLMES	4	0	0	0	0	0	0	1	1	1	0	0	1	0	0
INDIAN RIVER	147	0	1	1	5	4	6	11	10	69	22	12	6	0	0
JACKSON	123	0	0	0	1	4	5	10	13	48	23	14	5	0	0
JEFFERSON	45	0	0	0	2	0	1	6	5	15	12	4	0	0	0
LAFAYETTE	3	0	0	0	0	0	0	0	0	2	1	0	0	0	0
LAKE	256	1	0	2	4	7	20	21	30	98	40	25	8	0	0
LEE	535	0	2	3	10	11	25	40	42	219	97	45	41	0	0
LEON	895	0	2	2	8	20	26	46	66	419	202	70	34	0	0
LEVY	41	0	1	1	2	1	4	1	4	16	7	2	2	0	0
LIBERTY	12	0	0	0	0	0	0	0	1	4	5	1	1	0	0
MADISON	93	0	0	2	1	2	5	11	5	35	16	12	4	0	0
MANATEE	365	1	1	2	5	7	22	25	39	150	61	36	16	0	0
MARION	411	0	1	0	6	11	20	34	51	163	86	24	15	0	0
MARTIN	71	0	0	0	1	1	5	6	5	38	8	4	3	0	0
MONROE	41	0	0	0	1	0	2	1	2	16	10	5	4	0	0
NASSAU	35	0	0	0	0	0	4	5	5	13	2	5	1	0	0
OKALOOSA	159	0	0	1	1	2	7	5	9	84	29	14	7	0	0
OKEECHOBEE	39	0	0	1	0	1	1	1	3	19	9	1	3	0	0
ORANGE	2,371	0	4	7	33	66	101	144	204	919	516	252	125	0	0
OSCEOLA	183	1	0	0	1	7	9	11	14	65	43	19	13	0	0
PALM BEACH	2,373	1	2	11	31	71	98	154	201	915	432	304	151	2	0
PASCO	84	0	0	0	2	2	2	3	4	39	25	5	2	0	0
PINELLAS	1,233	0	6	5	18	43	74	93	105	532	212	103	39	3	0
POLK	1,016	0	4	3	22	25	52	78	83	434	186	90	39	0	0
PUTNAM	187	0	0	2	3	2	9	17	16	82	33	13	10	0	0
ST JOHNS	120	0	0	0	3	5	6	11	15	53	17	7	3	0	0
ST LUCIE	452	0	2	9	5	14	21	23	45	188	82	43	20	0	0
SANTA ROSA	40	0	0	0	0	1	2	1	5	17	10	2	2	0	0
SARASOTA	216	0	0	1	6	6	19	16	19	80	40	19	10	0	0
SEMINOLE	396	0	0	1	0	9	18	27	43	167	80	34	17	0	0
SUMTER	68	0	0	1	1	3	3	7	4	32	11	4	2	0	0
SUWANNEE	53	0	0	0	1	1	4	4	8	27	5	2	1	0	0
TAYLOR	43	0	0	1	0	5	0	1	4	14	15	2	1	0	0
UNION	10	0	0	0	0	0	1	0	2	4	3	0	0	0	0
VOLUSIA	513	1	1	0	4	15	22	28	49	230	107	42	13	1	0
WAKULLA	20	0	0	0	0	0	1	1	1	9	6	2	0	0	0
WALTON	36	0	0	0	0	0	2	5	2	15	8	3	1	0	0
WASHINGTON	34	0	0	0	0	1	1	5	2	13	9	1	2	0	0

TABLE B-8 (Cont.): RESIDENT LIVE BIRTHS TO UNWED OTHER MOTHERS, BY AGE OF MOTHER, BY COUNTY, FLORIDA, 2003

	TOTAL	AGE OF MOTHER													UNK
		<13	13	14	15	16	17	18	19	20-24	25-29	30-34	35-44	45+	
FLORIDA	1,594	1	1	9	12	36	54	85	97	549	396	230	123	1	0
ALACHUA	8	0	0	0	0	1	1	1	0	1	2	1	1	0	0
BAKER	1	0	0	0	0	0	0	0	1	0	0	0	0	0	0
BAY	16	0	0	0	0	1	1	0	2	5	4	1	2	0	0
BRADFORD	3	0	0	0	0	1	0	0	0	0	2	0	0	0	0
BREVARD	32	0	0	0	0	0	0	2	5	15	3	7	0	0	0
BROWARD	140	0	0	0	0	2	2	4	10	46	38	18	20	0	0
CALHOUN	0	0	0	0	0	0	0	0	0	0	0	0	0	0	0
CHARLOTTE	9	0	0	0	0	1	1	3	1	3	0	0	0	0	0
CITRUS	4	0	0	0	0	0	0	2	0	1	0	1	0	0	0
CLAY	18	0	0	0	1	0	0	0	3	4	6	2	2	0	0
COLLIER	23	0	0	0	0	2	2	0	2	7	6	2	2	0	0
COLUMBIA	2	0	0	0	0	0	0	0	1	0	1	0	0	0	0
MIAMI-DADE	141	0	1	2	1	3	5	7	1	35	34	34	17	1	0
DESOTO	0	0	0	0	0	0	0	0	0	0	0	0	0	0	0
DIXIE	2	0	0	0	0	0	0	0	0	2	0	0	0	0	0
DUVAL	129	0	0	0	1	3	3	3	7	59	33	15	5	0	0
ESCAMBIA	27	0	0	0	0	1	3	3	1	11	6	2	0	0	0
FLAGLER	5	0	0	0	0	0	1	1	1	1	1	0	0	0	0
FRANKLIN	1	0	0	0	0	0	0	0	0	1	0	0	0	0	0
GADSDEN	4	0	0	0	0	0	0	1	0	1	0	1	1	0	0
GILCHRIST	0	0	0	0	0	0	0	0	0	0	0	0	0	0	0
GLADES	4	0	0	0	0	0	0	1	0	2	0	1	0	0	0
GULF	0	0	0	0	0	0	0	0	0	0	0	0	0	0	0
HAMILTON	2	0	0	0	0	0	0	0	0	1	0	1	0	0	0
HARDEE	0	0	0	0	0	0	0	0	0	0	0	0	0	0	0
HENDRY	17	0	0	0	2	0	0	0	3	5	4	3	0	0	0
HERNANDO	8	0	0	0	0	0	1	1	0	4	1	0	1	0	0
HIGHLANDS	5	0	0	0	0	0	0	1	1	2	1	0	0	0	0
HILLSBOROUGH	94	0	0	1	1	3	0	4	8	28	22	21	6	0	0
HOLMES	4	0	0	0	0	0	1	0	1	0	1	0	1	0	0
INDIAN RIVER	9	0	0	0	0	0	1	0	0	5	1	2	0	0	0
JACKSON	0	0	0	0	0	0	0	0	0	0	0	0	0	0	0
JEFFERSON	1	0	0	0	0	0	0	0	0	1	0	0	0	0	0
LAFAYETTE	0	0	0	0	0	0	0	0	0	0	0	0	0	0	0
LAKE	14	0	0	0	0	1	0	0	1	7	4	0	1	0	0
LEE	16	0	0	0	0	0	0	1	1	6	5	2	1	0	0
LEON	12	0	0	0	0	2	1	0	1	1	6	1	0	0	0
LEVY	0	0	0	0	0	0	0	0	0	0	0	0	0	0	0
LIBERTY	0	0	0	0	0	0	0	0	0	0	0	0	0	0	0
MADISON	0	0	0	0	0	0	0	0	0	0	0	0	0	0	0
MANATEE	52	0	0	0	0	0	1	4	4	23	11	5	4	0	0
MARION	18	0	0	0	0	0	1	2	3	2	8	2	0	0	0
MARTIN	67	1	0	3	4	3	3	9	4	20	9	9	2	0	0
MONROE	5	0	0	0	0	0	0	1	0	1	2	1	0	0	0
NASSAU	1	0	0	0	0	0	0	0	0	0	0	0	1	0	0
OKALOOSA	29	0	0	0	0	1	1	4	2	9	6	3	3	0	0
OKEECHOBEE	13	0	0	1	0	0	1	2	3	2	2	1	1	0	0
ORANGE	132	0	0	0	0	0	6	9	3	40	38	24	12	0	0
OSCEOLA	31	0	0	0	0	1	2	1	0	11	6	4	6	0	0
PALM BEACH	183	0	0	1	1	4	5	3	7	80	47	26	9	0	0
PASCO	31	0	0	0	0	1	0	4	0	12	6	4	4	0	0
PINELLAS	140	0	0	0	0	3	5	5	8	56	40	16	7	0	0
POLK	22	0	0	0	0	1	1	0	0	11	3	3	3	0	0
PUTNAM	3	0	0	0	0	0	0	0	0	2	1	0	0	0	0
ST JOHNS	7	0	0	0	0	0	1	0	1	1	2	2	0	0	0
ST LUCIE	14	0	0	1	0	0	0	1	0	3	3	5	1	0	0
SANTA ROSA	12	0	0	0	0	0	1	1	3	1	4	0	2	0	0
SARASOTA	25	0	0	0	0	0	1	3	0	7	9	4	1	0	0
SEMINOLE	28	0	0	0	0	1	1	0	3	6	10	3	4	0	0
SUMTER	3	0	0	0	1	0	0	0	0	1	1	0	0	0	0
SUWANNEE	0	0	0	0	0	0	0	0	0	0	0	0	0	0	0
TAYLOR	0	0	0	0	0	0	0	0	0	0	0	0	0	0	0
UNION	0	0	0	0	0	0	0	0	0	0	0	0	0	0	0
VOLUSIA	24	0	0	0	0	0	1	1	4	5	7	3	3	0	0
WAKULLA	1	0	0	0	0	0	0	0	0	1	0	0	0	0	0
WALTON	2	0	0	0	0	0	0	0	1	1	0	0	0	0	0
WASHINGTON	0	0	0	0	0	0	0	0	0	0	0	0	0	0	0

TABLE B-9: RESIDENT LIVE BIRTHS BY MONTH, BY COUNTY, FLORIDA, 2003

	TOTAL	JAN	FEB	MAR	APR	MAY	JUN	JUL	AUG	SEP	OCT	NOV	DEC
FLORIDA	212,243	17,515	16,129	17,052	16,721	17,345	16,655	17,901	18,675	19,240	19,183	17,199	18,628
ALACHUA	2,480	209	191	166	208	226	190	204	212	220	238	180	236
BAKER	353	37	25	25	21	30	21	27	34	26	34	34	39
BAY	2,058	198	151	168	145	168	171	166	183	180	181	151	196
BRADFORD	300	22	24	18	29	29	23	23	25	30	20	21	36
BREVARD	5,017	444	359	425	376	425	381	404	452	446	442	422	441
BROWARD	22,489	1,794	1,739	1,809	1,732	1,939	1,766	1,875	1,976	2,022	1,966	1,837	2,034
CALHOUN	138	12	7	12	11	9	9	17	16	7	14	7	17
CHARLOTTE	1,047	98	78	72	81	93	104	103	82	92	83	60	101
CITRUS	894	63	77	72	73	77	72	76	65	95	77	73	74
CLAY	2,091	176	151	165	157	169	174	170	190	201	187	183	168
COLLIER	3,730	315	278	283	320	308	261	322	342	329	340	319	313
COLUMBIA	771	70	53	55	50	75	64	62	70	71	65	54	82
MIAMI-DADE	32,551	2,685	2,496	2,662	2,565	2,647	2,593	2,729	2,778	3,002	2,997	2,667	2,730
DESOTO	459	26	27	36	43	43	29	36	48	37	37	45	52
DIXIE	157	10	9	13	14	8	9	12	15	12	16	17	22
DUVAL	12,421	985	924	965	975	1,025	992	1,119	1,114	1,145	1,092	1,013	1,072
ESCAMBIA	3,981	353	311	333	299	363	292	305	350	356	345	336	338
FLAGLER	557	50	47	47	35	45	45	44	46	45	48	47	58
FRANKLIN	123	12	6	8	6	8	12	8	12	10	23	12	6
GADSDEN	710	70	60	55	49	62	54	58	70	60	71	48	53
GILCHRIST	176	12	15	21	14	15	13	18	15	9	18	8	18
GLADES	58	3	3	4	7	5	5	4	1	5	6	4	11
GULF	108	9	8	9	10	9	6	10	9	11	10	9	8
HAMILTON	172	18	10	15	7	6	9	13	16	31	15	19	13
HARDEE	506	50	43	52	36	44	42	38	46	40	36	36	43
HENDRY	694	68	56	58	56	56	47	52	47	56	63	73	62
HERNANDO	1,248	91	98	91	94	115	109	99	126	114	102	104	105
HIGHLANDS	898	65	71	66	75	75	70	89	66	75	82	79	85
HILLSBOROUGH	15,294	1,281	1,147	1,276	1,253	1,230	1,124	1,272	1,328	1,396	1,432	1,190	1,365
HOLMES	229	23	23	24	14	11	14	21	18	17	18	20	26
INDIAN RIVER	1,213	112	92	91	92	105	97	101	109	105	109	93	107
JACKSON	535	50	37	40	35	50	50	58	38	41	49	44	43
JEFFERSON	145	10	8	17	14	9	8	8	14	16	8	15	18
LAFAYETTE	90	8	3	6	3	6	9	10	8	7	9	9	12
LAKE	2,838	243	194	218	252	235	212	244	235	256	282	224	243
LEE	5,653	490	409	441	461	453	432	498	524	483	528	451	483
LEON	3,132	240	250	290	233	263	222	288	264	288	252	263	279
LEVY	388	27	30	29	30	33	30	37	34	37	36	26	39
LIBERTY	96	10	6	6	7	6	13	5	7	8	15	6	7
MADISON	234	17	22	17	13	24	20	13	20	19	29	12	28
MANATEE	3,338	269	235	261	262	256	240	286	310	326	287	277	329
MARION	2,979	240	233	244	231	230	219	241	262	268	259	241	311
MARTIN	1,175	98	108	81	93	87	112	94	92	107	111	88	104
MONROE	711	57	63	55	53	50	57	57	65	70	70	59	55
NASSAU	704	58	47	49	76	50	60	52	62	67	59	60	64
OKALOOSA	2,541	191	194	204	221	187	214	208	238	256	224	170	234
OKEECHOBEE	537	44	44	38	42	47	31	49	44	47	49	52	50
ORANGE	14,917	1,231	1,094	1,151	1,213	1,169	1,226	1,313	1,332	1,352	1,382	1,166	1,288
OSCEOLA	3,148	266	217	259	252	229	242	262	285	298	276	283	279
PALM BEACH	14,659	1,214	1,132	1,131	1,157	1,186	1,191	1,212	1,327	1,300	1,304	1,209	1,296
PASCO	4,042	332	302	329	311	311	326	342	318	391	406	333	341
PINELLAS	9,225	741	725	764	765	760	727	754	775	838	855	740	781
POLK	7,053	613	531	598	561	526	529	606	636	618	636	604	595
PUTNAM	923	77	60	86	68	82	73	70	85	79	96	78	69
ST JOHNS	1,484	116	112	109	115	131	138	132	119	129	125	119	139
ST LUCIE	2,448	197	182	226	165	197	181	199	202	226	225	208	240
SANTA ROSA	1,580	129	138	121	119	133	121	140	148	137	135	123	136
SARASOTA	2,987	250	221	216	229	244	261	252	269	272	278	240	255
SEMINOLE	4,599	398	340	398	356	392	379	389	398	416	400	363	370
SUMTER	449	28	38	31	46	32	38	35	39	37	49	38	38
SUWANNEE	486	40	42	51	34	30	32	52	50	38	39	42	36
TAYLOR	210	15	18	13	14	21	15	19	26	15	23	21	10
UNION	155	15	13	18	4	12	11	18	15	15	13	8	13
VOLUSIA	4,809	371	409	372	358	386	355	402	475	435	406	399	441
WAKULLA	290	21	26	30	24	19	16	25	33	31	29	12	24
WALTON	509	33	48	37	31	57	39	33	47	49	50	38	47
WASHINGTON	251	15	19	20	26	22	28	21	18	23	22	17	20

TABLE B-10: RESIDENT LIVE BIRTHS BY EDUCATION OF MOTHER, BY COUNTY, FLORIDA, 2003

	TOTAL	YEARS OF EDUCATION COMPLETED									UNK
		0	1-7	8	9	10	11	12	13-15	16+	
FLORIDA	212,243	465	7,126	3,158	8,061	9,808	13,420	71,063	46,801	50,461	1880
ALACHUA	2,480	0	15	24	52	117	171	558	625	910	8
BAKER	353	0	8	5	22	33	27	176	59	22	1
BAY	2,058	0	17	34	89	87	141	745	484	325	136
BRADFORD	300	0	1	4	16	32	24	126	76	21	0
BREVARD	5,017	2	48	56	134	247	334	1,476	1,547	1,160	13
BROWARD	22,489	21	404	169	484	718	1,130	6,754	5,035	6,942	832
CALHOUN	138	0	4	5	13	9	6	63	23	14	1
CHARLOTTE	1,047	0	15	14	18	54	89	429	250	177	1
CITRUS	894	0	1	16	39	63	76	361	224	113	1
CLAY	2,091	1	17	26	48	103	113	765	547	463	8
COLLIER	3,730	59	503	95	229	202	215	1,190	578	653	6
COLUMBIA	771	2	8	15	56	49	57	303	183	96	2
MIAMI-DADE	32,551	29	1,143	402	1,116	1,094	1,558	12,649	6,310	8,180	70
DESOTO	459	3	57	22	48	46	39	164	58	22	0
DIXIE	157	1	2	5	16	13	18	67	24	11	0
DUVAL	12,421	2	135	227	403	557	863	4,515	2,907	2,598	214
ESCAMBIA	3,981	2	19	43	106	209	335	1,334	1,103	816	14
FLAGLER	557	1	3	5	10	19	26	201	170	120	2
FRANKLIN	123	0	2	2	4	8	5	62	15	15	10
GADSDEN	710	1	48	21	49	54	81	298	109	49	0
GILCHRIST	176	1	8	6	10	14	14	66	36	21	0
GLADES	58	0	10	1	4	2	4	23	9	5	0
GULF	108	0	0	0	3	5	11	46	21	14	8
HAMILTON	172	5	13	3	12	14	15	68	29	12	1
HARDEE	506	15	103	23	57	37	38	161	47	23	2
HENDRY	694	6	130	28	63	55	63	242	76	26	5
HERNANDO	1,248	0	7	14	44	71	95	518	373	126	0
HIGHLANDS	898	7	102	25	55	53	76	351	132	96	1
HILLSBOROUGH	15,294	43	672	313	764	779	984	4,420	3,229	3,959	131
HOLMES	229	0	1	5	11	9	13	103	54	31	2
INDIAN RIVER	1,213	5	85	17	78	69	97	400	240	221	1
JACKSON	535	2	10	7	14	35	51	199	141	73	3
JEFFERSON	145	0	3	2	6	7	11	62	35	19	0
LAFAYETTE	90	0	9	6	5	6	3	36	13	11	1
LAKE	2,838	1	95	48	134	160	198	997	644	546	15
LEE	5,653	40	382	98	278	311	405	2,113	1,085	930	11
LEON	3,132	0	21	28	68	109	153	718	755	1,272	8
LEVY	388	0	14	8	24	31	37	136	102	36	0
LIBERTY	96	1	1	2	6	9	6	36	22	12	1
MADISON	234	0	5	1	13	15	22	107	40	29	2
MANATEE	3,338	8	279	95	236	244	277	1,006	626	566	1
MARION	2,979	5	61	46	140	195	303	1,170	707	350	2
MARTIN	1,175	30	139	18	57	61	68	267	244	291	0
MONROE	711	1	19	6	13	18	39	281	171	157	6
NASSAU	704	0	3	16	29	33	49	320	142	110	2
OKALOOSA	2,541	0	23	24	47	102	149	888	788	516	4
OKEECHOBEE	537	2	64	14	58	51	39	206	68	33	2
ORANGE	14,917	16	343	157	461	621	949	4,794	3,193	4,334	49
OSCEOLA	3,148	3	54	32	100	144	219	1,242	767	582	5
PALM BEACH	14,659	94	858	233	505	600	786	4,152	2,973	4,276	182
PASCO	4,042	3	77	54	141	213	344	1,310	1,051	831	18
PINELLAS	9,225	3	154	121	422	485	612	2,860	2,265	2,288	15
POLK	7,053	30	436	216	513	493	636	2,401	1,409	915	4
PUTNAM	923	2	59	24	57	85	86	385	152	67	6
ST JOHNS	1,484	0	2	15	42	50	78	419	333	539	6
ST LUCIE	2,448	7	171	71	140	169	213	870	525	281	1
SANTA ROSA	1,580	0	5	9	32	52	94	506	447	432	3
SARASOTA	2,987	0	59	31	98	136	192	965	742	764	0
SEMINOLE	4,599	4	54	29	73	137	202	1,232	1,190	1,671	7
SUMTER	449	1	15	19	22	45	40	202	75	29	1
SUWANNEE	486	3	28	11	36	37	48	181	89	52	1
TAYLOR	210	0	0	4	15	10	14	114	35	18	0
UNION	155	1	1	2	8	10	13	54	51	15	0
VOLUSIA	4,809	1	92	69	163	241	288	1,775	1,121	1,020	39
WAKULLA	290	0	0	1	14	19	23	127	60	46	0
WALTON	509	1	6	13	28	41	39	188	103	85	5
WASHINGTON	251	0	3	3	10	11	16	110	64	24	10

TABLE B-10 (Cont.): RESIDENT LIVE BIRTHS TO WHITE MOTHERS, BY EDUCATION OF MOTHER, BY COUNTY, FLORIDA, 2003

	YEARS OF EDUCATION COMPLETED										
	TOTAL	0	1-7	8	9	10	11	12	13-15	16+	UNK
FLORIDA	157,402	367	6,046	2,429	6,256	6,535	7,918	48,991	35,618	42,331	911
ALACHUA	1,543	0	13	11	28	39	59	281	404	706	2
BAKER	308	0	8	5	20	32	20	147	55	21	0
BAY	1,667	0	10	28	76	67	107	599	382	291	107
BRADFORD	231	0	1	4	14	22	12	95	63	20	0
BREVARD	4,107	1	43	45	101	187	217	1,174	1,293	1,038	8
BROWARD	13,727	17	267	82	277	307	441	3,599	3,113	5,262	362
CALHOUN	114	0	4	5	11	8	5	51	17	12	1
CHARLOTTE	950	0	13	14	17	46	81	382	236	160	1
CITRUS	838	0	1	16	36	61	74	338	207	105	0
CLAY	1,818	1	15	24	47	90	96	656	479	405	5
COLLIER	3,239	46	469	80	209	172	156	971	518	615	3
COLUMBIA	608	2	7	14	45	39	46	220	150	84	1
MIAMI-DADE	23,350	24	902	291	795	668	793	8,195	4,627	7,030	25
DESOTO	389	3	57	21	40	40	31	129	48	20	0
DIXIE	143	1	2	4	14	13	14	60	24	11	0
DUVAL	7,421	0	84	137	251	303	361	2,461	1,806	1,947	71
ESCAMBIA	2,639	1	14	28	71	139	147	756	777	698	8
FLAGLER	483	1	2	1	9	13	18	178	153	106	2
FRANKLIN	115	0	2	2	4	7	5	56	14	15	10
GADSDEN	263	1	41	10	28	12	10	90	40	31	0
GILCHRIST	163	1	8	6	10	12	11	61	33	21	0
GLADES	41	0	10	1	3	2	2	13	6	4	0
GULF	93	0	0	0	2	4	9	38	21	12	7
HAMILTON	97	5	12	2	6	8	3	35	14	11	1
HARDEE	471	14	103	23	55	37	36	141	38	22	2
HENDRY	579	6	128	25	58	42	52	179	62	24	3
HERNANDO	1,128	0	6	13	41	63	80	461	350	114	0
HIGHLANDS	741	7	97	22	47	44	63	266	109	85	1
HILLSBOROUGH	11,611	42	641	262	612	512	600	3,131	2,483	3,289	39
HOLMES	217	0	1	5	9	9	12	98	52	30	1
INDIAN RIVER	988	4	80	15	63	47	61	315	195	207	1
JACKSON	372	2	10	6	9	24	31	128	92	67	3
JEFFERSON	79	0	3	2	2	2	5	27	23	15	0
LAFALETTE	86	0	9	6	4	6	3	33	13	11	1
LAKE	2,414	1	93	45	119	132	142	824	555	491	12
LEE	4,806	38	368	83	243	247	294	1,690	969	866	8
LEON	1,742	0	15	13	36	41	37	349	380	869	2
LEVY	338	0	13	6	19	27	31	115	92	35	0
LIBERTY	81	1	1	2	6	8	5	29	18	10	1
MADISON	115	0	5	1	7	8	3	41	25	23	2
MANATEE	2,712	8	254	83	209	187	194	754	510	513	0
MARION	2,350	5	55	41	125	148	215	899	561	300	1
MARTIN	942	4	62	13	50	45	40	222	224	282	0
MONROE	616	1	16	6	11	14	30	237	152	145	4
NASSAU	641	0	3	14	29	30	39	289	129	106	2
OKALOOSA	2,134	0	21	24	40	87	106	712	670	471	3
KEECHOBEE	470	2	63	14	51	38	35	176	61	29	1
ORANGE	10,409	11	282	114	330	380	529	2,945	2,296	3,492	30
OSCEOLA	2,740	3	53	29	93	121	191	1,085	659	504	2
PALM BEACH	10,197	66	603	164	354	299	331	2,458	2,178	3,635	109
PASCO	3,731	3	75	52	136	204	321	1,209	985	738	8
PINELLAS	7,152	0	129	92	324	290	338	2,093	1,860	2,019	7
POLK	5,622	28	418	191	448	364	423	1,818	1,129	801	2
PUTNAM	682	2	57	17	47	54	52	270	120	59	4
ST JOHNS	1,289	0	2	13	35	39	58	327	303	508	4
ST LUCIE	1,746	6	145	45	99	99	132	575	411	234	0
SANTA ROSA	1,464	0	5	9	31	52	88	456	414	406	3
SARASOTA	2,631	0	54	22	82	104	141	839	670	719	0
SEMINOLE	3,808	3	49	23	60	99	131	961	998	1,481	3
SUMTER	359	1	14	17	18	33	29	156	66	25	0
SUWANNEE	403	3	28	7	30	33	37	137	78	49	1
TAYLOR	161	0	0	4	10	6	10	91	27	13	0
UNION	139	1	1	1	8	10	9	47	47	15	0
VOLUSIA	3,984	1	90	59	145	196	202	1,469	934	860	28
WAKULLA	259	0	0	1	12	18	21	111	53	43	0
WALTON	445	0	6	11	27	36	33	155	94	80	3
WASHINGTON	201	0	3	3	8	9	10	88	53	21	6

TABLE B-10 (Cont.): RESIDENT LIVE BIRTHS TO BLACK MOTHERS, BY EDUCATION OF MOTHER, BY COUNTY, FLORIDA, 2003

	TOTAL	YEARS OF EDUCATION COMPLETED									UNK
		0	1-7	8	9	10	11	12	13-15	16+	
FLORIDA	47,117	40	701	645	1,633	3,105	5,313	20,185	9,639	5,110	746
ALACHUA	774	0	2	12	22	76	110	271	199	81	1
BAKER	43	0	0	0	2	1	7	28	3	1	1
BAY	309	0	3	4	10	18	28	121	86	16	23
BRADFORD	64	0	0	0	2	9	12	29	12	0	0
BREVARD	741	0	4	11	33	55	113	261	193	68	3
BROWARD	7,756	3	119	82	183	394	676	2,902	1,730	1,229	438
CALHOUN	22	0	0	0	2	1	1	12	4	2	0
CHARLOTTE	67	0	2	0	0	5	6	34	11	9	0
CITRUS	36	0	0	0	0	2	2	19	12	1	0
CLAY	193	0	1	1	1	12	17	84	48	27	2
COLLIER	421	13	33	12	16	29	54	198	48	16	2
COLUMBIA	155	0	1	1	11	10	11	79	29	12	1
MIAMI-DADE	8,497	3	202	104	304	411	756	4,291	1,566	850	10
DESOTO	69	0	0	1	8	6	8	34	10	2	0
DIXIE	12	0	0	0	2	0	3	7	0	0	0
DUVAL	4,371	0	44	85	137	235	487	1,903	921	424	135
ESCAMBIA	1,185	0	0	13	30	67	181	525	293	73	3
FLAGLER	54	0	1	2	1	6	7	15	13	9	0
FRANKLIN	7	0	0	0	0	1	0	5	1	0	0
GADSDEN	442	0	6	10	21	40	71	207	69	18	0
GILCHRIST	12	0	0	0	0	2	3	5	2	0	0
GLADES	11	0	0	0	0	0	0	7	3	1	0
GULF	14	0	0	0	1	1	2	7	0	2	1
HAMILTON	73	0	0	1	6	6	12	33	14	1	0
HARDEE	32	1	0	0	2	0	2	17	9	1	0
HENDRY	84	0	0	1	2	11	10	49	11	0	0
HERNANDO	90	0	1	1	3	6	14	46	13	6	0
HIGHLANDS	140	0	4	2	6	9	13	79	21	6	0
HILLSBOROUGH	2,999	1	25	46	142	258	372	1,160	610	360	25
HOLMES	5	0	0	0	0	0	1	2	1	0	1
INDIAN RIVER	201	0	1	1	15	21	35	80	41	7	0
JACKSON	159	0	0	1	5	11	20	70	47	5	0
JEFFERSON	64	0	0	0	4	5	6	33	12	4	0
LAFAYETTE	4	0	0	0	1	0	0	3	0	0	0
LAKE	354	0	2	2	12	26	54	158	68	30	2
LEE	752	2	14	14	32	61	110	388	99	32	0
LEON	1,243	0	5	15	31	67	113	347	357	302	6
LEVY	49	0	1	2	5	4	6	20	10	1	0
LIBERTY	14	0	0	0	0	1	1	7	4	1	0
MADISON	117	0	0	0	6	7	19	64	15	6	0
MANATEE	493	0	9	10	15	52	73	222	96	16	0
MARION	551	0	3	4	12	44	86	243	127	32	0
MARTIN	100	0	2	2	4	10	27	40	13	2	0
MONROE	72	0	3	0	2	3	9	36	13	6	0
NASSAU	55	0	0	2	0	2	10	27	12	2	0
OKALOOSA	302	0	1	0	5	13	36	129	87	30	1
OKEECHOBEE	44	0	0	0	4	8	1	21	7	2	1
ORANGE	3,745	4	50	40	122	232	397	1,636	756	498	10
OSCEOLA	286	0	1	2	6	18	26	122	78	33	0
PALM BEACH	3,812	10	106	59	141	293	450	1,582	702	407	62
PASCO	151	0	0	1	3	7	18	54	37	31	0
PINELLAS	1,564	0	9	21	84	181	251	615	295	104	4
POLK	1,307	2	13	24	61	127	210	552	249	68	1
PUTNAM	235	0	2	6	10	30	34	114	30	8	1
ST JOHNS	159	0	0	1	4	10	20	87	22	14	1
ST LUCIE	648	1	23	25	40	69	81	280	101	27	1
SANTA ROSA	73	0	0	0	1	0	4	33	22	13	0
SARASOTA	268	0	2	5	16	30	47	100	56	12	0
SEMINOLE	580	0	3	5	11	36	64	236	149	75	1
SUMTER	81	0	1	2	2	10	11	44	8	3	0
SUWANNEE	76	0	0	4	5	4	11	42	8	2	0
TAYLOR	47	0	0	0	5	4	4	23	8	3	0
UNION	15	0	0	1	0	0	4	7	3	0	0
VOLUSIA	697	0	2	7	17	41	82	273	159	110	6
WAKULLA	29	0	0	0	2	1	2	15	6	3	0
WALTON	50	0	0	0	1	4	6	31	4	3	1
WASHINGTON	42	0	0	0	2	2	6	21	6	3	2

TABLE B-10 (Cont.): RESIDENT LIVE BIRTHS TO OTHER MOTHERS, BY EDUCATION OF MOTHER, BY COUNTY, FLORIDA, 2003

	YEARS OF EDUCATION COMPLETED										
	TOTAL	0	1-7	8	9	10	11	12	13-15	16+	UNK
FLORIDA	7,449	58	377	83	171	167	184	1,849	1,521	2,984	55
ALACHUA	158	0	0	1	2	2	2	6	22	123	0
BAKER	2	0	0	0	0	0	0	1	1	0	0
BAY	66	0	3	2	3	2	5	17	16	14	4
BRADFORD	5	0	0	0	0	1	0	2	1	1	0
BREVARD	165	1	1	0	0	5	4	41	59	54	0
BROWARD	981	1	17	5	24	17	12	249	191	445	20
CALHOUN	2	0	0	0	0	0	0	0	2	0	0
CHARLOTTE	30	0	0	0	1	3	2	13	3	8	0
CITRUS	19	0	0	0	3	0	0	4	5	7	0
CLAY	79	0	1	1	0	1	0	25	20	31	0
COLLIER	69	0	1	3	4	1	5	21	12	22	0
COLUMBIA	8	0	0	0	0	0	0	4	4	0	0
MIAMI-DADE	649	2	39	6	17	15	9	153	112	293	3
DESOTO	1	0	0	0	0	0	0	1	0	0	0
DIXIE	2	0	0	1	0	0	1	0	0	0	0
DUVAL	623	2	7	5	15	19	14	150	179	226	6
ESCAMBIA	157	1	5	2	5	3	7	53	33	45	3
FLAGLER	20	0	0	2	0	0	1	8	4	5	0
FRANKLIN	1	0	0	0	0	0	0	1	0	0	0
GADSDEN	5	0	1	1	0	2	0	1	0	0	0
GILCHRIST	1	0	0	0	0	0	0	0	1	0	0
GLADES	6	0	0	0	1	0	2	3	0	0	0
GULF	1	0	0	0	0	0	0	1	0	0	0
HAMILTON	2	0	1	0	0	0	0	0	1	0	0
HARDEE	3	0	0	0	0	0	0	3	0	0	0
HENDRY	28	0	2	2	2	2	1	14	3	2	0
HERNANDO	30	0	0	0	0	2	1	11	10	6	0
HIGHLANDS	17	0	1	1	2	0	0	6	2	5	0
HILLSBOROUGH	604	0	6	5	10	9	10	127	132	301	4
HOLMES	6	0	0	0	2	0	0	2	1	1	0
INDIAN RIVER	24	1	4	1	0	1	1	5	4	7	0
JACKSON	3	0	0	0	0	0	0	1	1	1	0
JEFFERSON	2	0	0	0	0	0	0	2	0	0	0
LAFAYETTE	0	0	0	0	0	0	0	0	0	0	0
LAKE	69	0	0	1	3	2	2	14	21	25	1
LEE	92	0	0	1	3	3	1	35	17	32	0
LEON	144	0	1	0	1	0	3	21	17	101	0
LEVY	1	0	0	0	0	0	0	1	0	0	0
LIBERTY	1	0	0	0	0	0	0	0	0	1	0
MADISON	2	0	0	0	0	0	0	2	0	0	0
MANATEE	132	0	16	2	12	5	10	30	20	37	0
MARION	77	0	3	1	3	3	2	28	19	18	0
MARTIN	133	26	75	3	3	6	1	5	7	7	0
MONROE	22	0	0	0	0	1	0	8	6	6	1
NASSAU	8	0	0	0	0	1	0	4	1	2	0
OKALOOSA	104	0	1	0	2	2	7	46	31	15	0
OKEECHOBEE	23	0	1	0	3	5	3	9	0	2	0
ORANGE	751	1	11	3	9	9	23	209	141	342	3
OSCEOLA	119	0	0	1	1	5	2	35	29	45	1
PALM BEACH	638	18	149	10	10	8	5	110	92	233	3
PASCO	143	0	2	1	2	2	5	45	26	60	0
PINELLAS	501	3	16	8	14	14	23	152	108	162	1
POLK	123	0	5	1	4	2	3	31	31	46	0
PUTNAM	5	0	0	1	0	1	0	1	2	0	0
ST JOHNS	36	0	0	1	3	1	0	5	8	17	1
ST LUCIE	54	0	3	1	1	1	0	15	13	20	0
SANTA ROSA	43	0	0	0	0	0	2	17	11	13	0
SARASOTA	87	0	3	4	0	2	4	25	16	33	0
SEMINOLE	207	1	2	1	2	2	7	35	43	114	0
SUMTER	8	0	0	0	2	2	0	2	1	1	0
SUWANNEE	7	0	0	0	1	0	0	2	3	1	0
TAYLOR	2	0	0	0	0	0	0	0	0	2	0
UNION	1	0	0	0	0	0	0	0	1	0	0
VOLUSIA	125	0	0	3	1	4	4	33	28	50	2
WAKULLA	2	0	0	0	0	0	0	1	1	0	0
WALTON	13	1	0	2	0	1	0	2	4	2	1
WASHINGTON	7	0	0	0	0	0	0	1	5	0	1

TABLE B-11: RESIDENT LIVE BIRTHS TO MOTHERS UNDER 15 YEARS OF AGE FOR SELECTED INDICATORS, BY COUNTY, FLORIDA, 2003

	TOTAL	UNWED	BIRTHWEIGHT		THIRD TRIMESTER OR NO PRENATAL CARE	ONE OR MORE PREVIOUS LIVE BIRTHS
			UNDER 1,500 GRAMS	UNDER 2,500 GRAMS		
FLORIDA	362	350	8	37	52	10
ALACHUA	5	5	0	1	1	0
BAKER	0	0	0	0	0	0
BAY	1	1	0	0	0	0
BRADFORD	0	0	0	0	0	0
BREVARD	8	8	0	0	1	2
BROWARD	26	26	1	3	5	2
CALHOUN	1	1	0	0	0	0
CHARLOTTE	1	1	0	0	0	0
CITRUS	1	1	0	0	0	0
CLAY	3	2	0	0	0	0
COLLIER	6	5	0	1	2	0
COLUMBIA	1	1	0	0	1	0
MIAMI-DADE	59	56	0	3	9	2
DESOTO	2	2	0	0	0	0
DIXIE	0	0	0	0	0	0
DUVAL	30	30	2	5	2	0
ESCAMBIA	11	10	0	0	0	2
FLAGLER	1	1	0	0	0	0
FRANKLIN	0	0	0	0	0	0
GADSDEN	3	3	1	1	0	0
GILCHRIST	1	1	0	0	0	0
GLADES	0	0	0	0	0	0
GULF	0	0	0	0	0	0
HAMILTON	1	1	0	0	0	0
HARDEE	1	1	0	0	0	0
HENDRY	2	2	0	0	0	0
HERNANDO	3	3	0	1	1	0
HIGHLANDS	4	4	0	0	1	0
HILLSBOROUGH	25	25	1	4	4	0
HOLMES	0	0	0	0	0	0
INDIAN RIVER	2	2	0	0	0	0
JACKSON	0	0	0	0	0	0
JEFFERSON	0	0	0	0	0	0
LAFAYETTE	0	0	0	0	0	0
LAKE	7	7	0	2	2	0
LEE	12	11	1	3	2	1
LEON	6	6	0	0	0	0
LEVY	2	2	0	0	1	0
LIBERTY	0	0	0	0	0	0
MADISON	2	2	0	0	1	0
MANATEE	7	7	0	0	4	0
MARION	5	4	0	1	0	0
MARTIN	5	5	0	0	1	0
MONROE	0	0	0	0	0	0
NASSAU	1	0	0	0	0	0
OKALOOSA	4	4	0	1	0	0
OKEECHOBEE	5	5	0	0	0	0
ORANGE	16	16	1	3	2	0
OSCEOLA	2	2	1	1	1	0
PALM BEACH	21	21	0	2	4	0
PASCO	2	1	0	0	0	0
PINELLAS	18	18	0	1	2	0
POLK	13	12	0	2	1	1
PUTNAM	3	3	0	0	1	0
SAINT JOHNS	2	2	0	0	0	0
SAINT LUCIE	15	15	0	1	2	0
SANTA ROSA	1	1	0	0	1	0
SARASOTA	2	2	0	0	0	0
SEMINOLE	3	3	0	0	0	0
SUMTER	1	1	0	0	0	0
SUWANNEE	1	1	0	1	0	0
TAYLOR	1	1	0	0	0	0
UNION	0	0	0	0	0	0
VOLUSIA	7	6	0	0	0	0
WAKULLA	0	0	0	0	0	0
WALTON	0	0	0	0	0	0
WASHINGTON	0	0	0	0	0	0

TABLE B-12: RESIDENT LIVE BIRTHS TO MOTHERS 15 THROUGH 19 YEARS OF AGE FOR SELECTED INDICATORS, AND AGE-SPECIFIC BIRTH RATES PER 1,000 FEMALES, BY COUNTY, FLORIDA, 2003

	BIRTHWEIGHT												POPULATION 15-19 FEMALES
	UNWED		UNDER 1,500 GRAMS		UNDER 2,500 GRAMS		THIRD TRIMESTER OR NO PRENATAL CARE		ONE OR MORE PREVIOUS LIVE BIRTHS		AGE- SPECIFIC BIRTH RATE		
	TOTAL	NUMBER	%	NUMBER	%	NUMBER	%	NUMBER	%	NUMBER		%	
FLORIDA	22,768	19,163	84.2	468	2.1	2,431	10.7	1,202	5.3	4,530	19.9	42.4	536,507
ALACHUA	256	226	88.3	5	2.0	28	10.9	13	5.1	56	21.9	20.2	12,644
BAKER	65	48	73.8	1	1.5	8	12.3	0	0.0	17	26.2	70.1	927
BAY	268	210	78.4	7	2.6	37	13.8	10	3.7	51	19.0	51.9	5,161
BRADFORD	45	35	77.8	1	2.2	4	8.9	1	2.2	9	20.0	53.1	847
BREVARD	513	444	86.5	12	2.3	42	8.2	28	5.5	80	15.6	33.2	15,447
BROWARD	1,641	1,467	89.4	36	2.2	185	11.3	98	6.0	309	18.8	32.9	49,931
CALHOUN	24	19	79.2	0	0.0	2	8.3	1	4.2	5	20.8	55.4	433
CHARLOTTE	137	122	89.1	5	3.6	19	13.9	13	9.5	16	11.7	39.9	3,432
CITRUS	128	105	82.0	3	2.3	11	8.6	4	3.1	16	12.5	43.1	2,971
CLAY	228	189	82.9	4	1.8	20	8.8	8	3.5	34	14.9	37.9	6,008
COLLIER	399	313	78.4	4	1.0	26	6.5	30	7.5	86	21.6	55.0	7,252
COLUMBIA	134	101	75.4	4	3.0	15	11.2	5	3.7	22	16.4	63.6	2,108
MIAMI-DADE	2,949	2,502	84.8	53	1.8	322	10.9	110	3.7	521	17.7	36.6	80,501
DESOTO	67	55	82.1	1	1.5	9	13.4	5	7.5	16	23.9	65.0	1,030
DIXIE	24	15	62.5	0	0.0	4	16.7	1	4.2	9	37.5	54.3	442
DUVAL	1,522	1,311	86.1	35	2.3	189	12.4	66	4.3	323	21.2	52.9	28,789
ESCAMBIA	511	427	83.6	15	2.9	76	14.9	33	6.5	110	21.5	45.6	11,204
FLAGLER	46	39	84.8	1	2.2	3	6.5	0	0.0	9	19.6	29.9	1,540
FRANKLIN	30	22	73.3	0	0.0	3	10.0	0	0.0	4	13.3	101.4	296
GADSDEN	133	122	91.7	1	0.8	17	12.8	0	0.0	25	18.8	78.4	1,696
GILCHRIST	33	26	78.8	0	0.0	3	9.1	0	0.0	3	9.1	63.6	519
GLADES	11	6	54.5	0	0.0	0	0.0	0	0.0	2	18.2	34.9	315
GULF	20	16	80.0	1	5.0	2	10.0	1	5.0	4	20.0	44.7	447
HAMILTON	27	22	81.5	1	3.7	1	3.7	1	3.7	1	3.7	61.2	441
HARDEE	92	67	72.8	0	0.0	3	3.3	5	5.4	21	22.8	95.9	959
HENDRY	126	108	85.7	3	2.4	11	8.7	6	4.8	23	18.3	94.2	1,337
HERNANDO	162	132	81.5	2	1.2	12	7.4	3	1.9	36	22.2	45.3	3,575
HIGHLANDS	152	111	73.0	2	1.3	15	9.9	8	5.3	31	20.4	66.6	2,281
HILLSBOROUGH	1,719	1,485	86.4	42	2.4	191	11.1	73	4.2	365	21.2	47.3	36,355
HOLMES	26	13	50.0	0	0.0	3	11.5	1	3.8	3	11.5	44.0	591
INDIAN RIVER	130	106	81.5	7	5.4	24	18.5	9	6.9	24	18.5	41.4	3,139
JACKSON	86	68	79.1	5	5.8	16	18.6	6	7.0	20	23.3	53.9	1,597
JEFFERSON	20	20	100.0	0	0.0	1	5.0	2	10.0	3	15.0	46.4	431
LAFAYETTE	14	8	57.1	1	7.1	2	14.3	0	0.0	3	21.4	68.3	205
LAKE	348	287	82.5	8	2.3	40	11.5	18	5.2	76	21.8	57.1	6,092
LEE	677	587	86.7	11	1.6	60	8.9	26	3.8	138	20.4	54.2	12,482
LEON	271	237	87.5	5	1.8	37	13.7	14	5.2	57	21.0	19.2	14,100
LEVY	71	53	74.6	0	0.0	6	8.5	6	8.5	19	26.8	59.2	1,199
LIBERTY	19	11	57.9	0	0.0	1	5.3	0	0.0	5	26.3	85.6	222
MADISON	39	35	89.7	0	0.0	3	7.7	1	2.6	5	12.8	57.4	680
MANATEE	487	411	84.4	10	2.1	49	10.1	48	9.9	128	26.3	65.7	7,418
MARION	447	379	84.8	10	2.2	40	8.9	33	7.4	93	20.8	53.6	8,346
MARTIN	131	106	80.9	1	0.8	13	9.9	29	22.1	31	23.7	40.1	3,270
MONROE	39	29	74.4	1	2.6	4	10.3	0	0.0	4	10.3	21.9	1,779
NASSAU	87	69	79.3	0	0.0	12	13.8	0	0.0	17	19.5	40.6	2,142
OKALOOSA	253	174	68.8	3	1.2	20	7.9	7	2.8	46	18.2	41.3	6,121
ORKEECHOBEE	101	72	71.3	0	0.0	11	10.9	5	5.0	28	27.7	85.7	1,178
ORANGE	1,512	1,309	86.6	44	2.9	194	12.8	75	5.0	333	22.0	42.9	35,272
OSCEOLA	341	271	79.5	5	1.5	28	8.2	6	1.8	60	17.6	45.4	7,505
PALM BEACH	1,292	1,120	86.7	25	1.9	162	12.5	129	10.0	282	21.8	38.9	33,247
PASCO	436	346	79.4	7	1.6	35	8.0	13	3.0	80	18.3	44.9	9,718
PINELLAS	974	854	87.7	22	2.3	105	10.8	55	5.6	196	20.1	40.1	24,315
POLK	1,085	871	80.3	22	2.0	99	9.1	88	8.1	243	22.4	65.4	16,597
PUTNAM	147	119	81.0	6	4.1	15	10.2	9	6.1	33	22.4	61.3	2,397
SAINT JOHNS	154	129	83.8	0	0.0	10	6.5	9	5.8	27	17.5	33.0	4,672
SAINT LUCIE	306	248	81.0	7	2.3	34	11.1	14	4.6	56	18.3	48.4	6,319
SANTA ROSA	180	146	81.1	5	2.8	17	9.4	8	4.4	32	17.8	39.8	4,526
SARASOTA	284	238	83.8	5	1.8	25	8.8	11	3.9	48	16.9	37.4	7,586
SEMINOLE	351	298	84.9	5	1.4	23	6.6	15	4.3	55	15.7	26.1	13,474
SUMTER	85	64	75.3	2	2.4	12	14.1	2	2.4	23	27.1	60.4	1,407
SUWANNEE	82	58	70.7	0	0.0	6	7.3	10	12.2	14	17.1	63.1	1,299
TAYLOR	33	27	81.8	2	6.1	3	9.1	1	3.0	6	18.2	47.3	698
UNION	28	21	75.0	0	0.0	4	14.3	0	0.0	9	32.1	71.8	390
VOLUSIA	602	512	85.0	8	1.3	43	7.1	25	4.2	92	15.3	42.5	14,176
WAKULLA	45	33	73.3	0	0.0	3	6.7	1	2.2	5	11.1	50.1	898
WALTON	83	59	71.1	2	2.4	7	8.4	2	2.4	21	25.3	57.9	1,434
WASHINGTON	40	30	75.0	0	0.0	6	15.0	1	2.5	11	27.5	57.4	697

