

Fetal and Infant Deaths

FETAL AND INFANT DEATHS

- Although the number of resident fetal deaths (20 or more weeks gestation) increased from last year, the ratio of resident fetal deaths to resident live births decreased from last year.
- Resident fetal deaths among whites decreased slightly, and among nonwhites, increased slightly from 2002 to 2003.
- Of the 1,604 fetal deaths, 17.8 percent occurred to mothers residing in Miami-Dade County.
- Nearly one of every six resident fetal deaths occurred to a mother of Hispanic origin.
- About one of every 15 fetal deaths occurred to a mother who was 18 years old or younger.
- In 2003 both the overall number and rate of resident neonatal deaths (under 28 days) decreased. The number decreased for whites, but increased slightly for nonwhites.
- The neonatal death rate increased from 4.5 per 1,000 live births in 2000 to 4.8 in 2001 and then to 5.0 in 2002. It decreased to 4.8 in 2003. This represents less than half the rate of 1980 (9.7).
- The nonwhite neonatal death rate (8.0) is more than twice the white rate (3.7).
- The resident infant mortality rate increased slightly from 7.2 deaths per 1,000 live births in 1998 to a rate of 7.3 in 1999, decreased to 7.0 in 2000, increased back to 7.3 in 2001, and then increased again to 7.5 in 2002. It remained at 7.5 in 2003.
- The resident infant mortality rate has dropped 21.9 percent since 1990 and is about half the rate of 1980.
- The resident infant mortality rate for nonwhites (12.4) is more than double the infant mortality rate for whites (5.8).
- Resident infants of Hispanic origin accounted for 17.2 percent of all infant deaths.
- Of the total resident deaths occurring within the first year of life, 64.7 percent were less than 28 days old. Furthermore, 36.8 percent were less than one day old.
- The leading causes of resident infant deaths in 2003 were Perinatal Conditions, Congenital Anomalies, and Sudden Infant Death Syndrome. These causes accounted for 73.5 percent of all resident infant deaths.

CHART F-1: RESIDENT FETAL DEATHS AND RATIOS PER 1,000 LIVE BIRTHS, BY RACE OF MOTHER, FLORIDA AND UNITED STATES TOTAL, CENSUS YEARS 1920-1990 AND 1993-2003							
YEAR	NUMBER OF FETAL DEATHS - FL			RATIOS - FL			RATIO - U.S.
	TOTAL	WHITE	NON- WHITE	TOTAL	WHITE	NON- WHITE	TOTAL
1920 ¹	1,287	595	692	65.9	43.9	115.4	NA
1930 ¹	1,754	746	1,008	65.0	40.1	120.1	NA
1940	1,415	683	732	42.0	28.7	74.0	NA
1950	1,443	757	868	22.4	16.6	36.7	18.8
1960	1,846	1,043	803	16.0	12.4	25.7	15.8
1970	1,701	1,064	637	14.8	12.2	22.6	14.0
1980	1,355	847	491	10.3	8.7	14.3	9.1
1990	1,811	1,071	720	9.1	7.2	14.6	7.5
1993	1,447	858	580	7.5	6.0	12.0	7.1
1994	1,519	909	599	8.0	6.4	12.7	7.0
1995	1,531	937	581	8.1	6.6	12.5	7.0
1996	1,478	885	577	7.8	6.2	12.3	6.9
1997	1,523	910	600	7.9	6.3	12.4	6.8
1998	1,520	912	594	7.8	6.3	12.0	6.7
1999	1,579	953	619	8.0	6.5	12.3	6.7
2000	1,675	954	704	8.2	6.4	13.1	6.6
2001	1,668	972	678	8.1	6.4	12.6	6.5
2002	1,591	920	657	7.7	6.0	12.4	NA
2003	1,604	912	678	7.6	5.8	12.4	NA

¹ Only recorded data are available.

GRAPH F-1: RESIDENT FETAL DEATH RATIOS PER 1,000 LIVE BIRTHS, BY RACE OF MOTHER, FLORIDA AND UNITED STATES TOTAL, 1993-2003

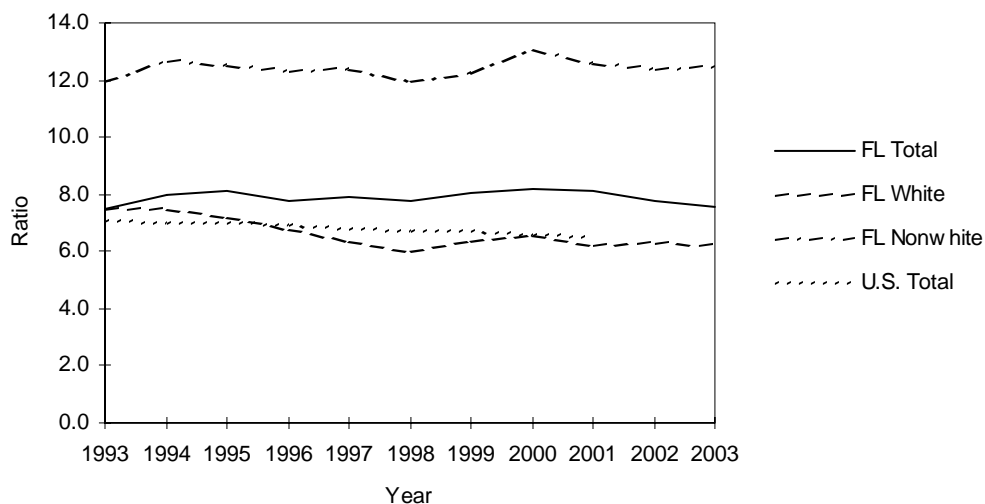


CHART F-2: RESIDENT NEONATAL DEATHS AND RATES PER 1,000 LIVE BIRTHS, BY RACE, FLORIDA AND UNITED STATES TOTAL, CENSUS YEARS 1920-1990 AND 1993-2003							
YEAR	NUMBER OF NEONATAL DEATHS - FL			RATES ¹ - FL			RATE - U.S.
	TOTAL	WHITE	NON-WHITE	TOTAL	WHITE	NON-WHITE	TOTAL
1920	NA	NA	NA	NA	NA	NA	NA
1930	NA	NA	NA	NA	NA	NA	NA
1940	1,142	662	480	33.9	27.8	48.5	28.8
1950	1,551	975	576	24.1	21.3	30.8	20.5
1960	2,404	1,531	873	20.8	18.1	28.0	18.7
1970	1,848	1,198	648	16.1	13.8	23.0	15.1
1980	1,282	791	490	9.7	8.1	14.2	8.5
1990	1,227	742	484	6.2	5.0	9.8	5.8
1993	1,071	609	460	5.6	4.2	9.6	5.3
1994	1,027	624	402	5.4	4.4	8.5	5.1
1995	874	523	351	4.6	3.7	7.5	4.9
1996	895	517	377	4.7	3.6	8.0	4.8
1997	889	518	370	4.6	3.6	7.6	4.8
1998	933	559	371	4.8	3.8	7.5	4.8
1999	962	559	401	4.9	3.8	7.9	4.7
2000	925	526	397	4.5	3.5	7.4	4.6
2001	980	539	440	4.8	3.6	8.2	4.5
2002	1,032	596	436	5.0	3.9	8.2	NA
2003	1,025	584	438	4.8	3.7	8.0	NA

¹ Rates based on neonatal deaths by race of decedent, live births by race of mother.

GRAPH F-2: RESIDENT NEONATAL DEATH RATES¹ PER 1,000 LIVE BIRTHS, BY RACE, FLORIDA AND UNITED STATES TOTAL, 1993-2003

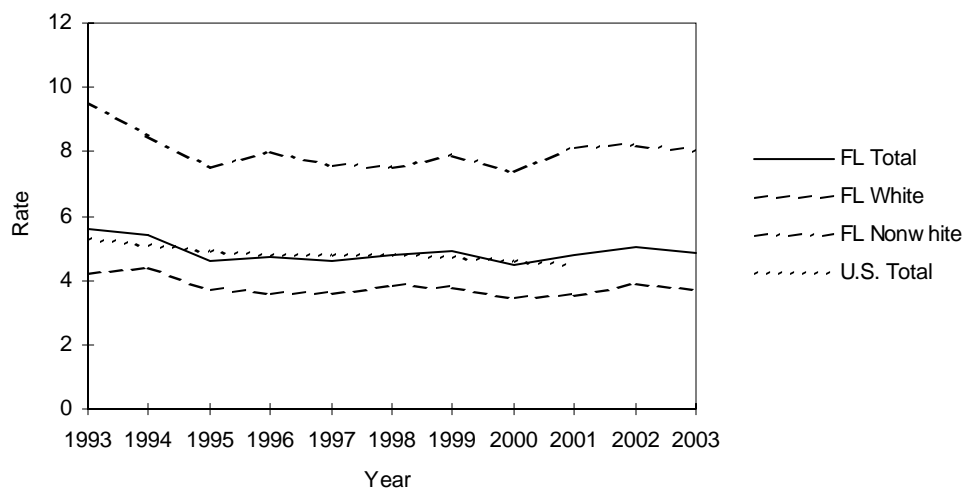


CHART F-3: RESIDENT INFANT DEATHS AND RATES PER 1,000 LIVE BIRTHS, BY RACE, FLORIDA AND UNITED STATES TOTAL, CENSUS YEARS 1920-1990 AND 1993-2003							
YEAR	NUMBER OF INFANT DEATHS - FL			RATES ² - FL			RATE - U.S.
	TOTAL	WHITE	NON-WHITE	TOTAL	WHITE	NON-WHITE	TOTAL
1920 ¹	1,835	1,031	804	93.9	76.1	134.0	NA
1930 ¹	1,729	928	801	64.1	49.9	95.4	NA
1940	1,812	1,052	760	53.8	44.2	76.8	47.0
1950	2,078	1,225	853	32.3	26.8	45.7	29.2
1960	3,431	1,992	1,439	29.7	23.6	46.1	26.0
1970	2,466	1,537	927	21.4	17.7	32.9	20.0
1980	1,915	1,135	779	14.5	11.7	22.7	12.6
1990	1,909	1,121	786	9.6	7.5	16.0	9.2
1993	1,654	951	699	8.6	6.6	14.5	8.4
1994	1,540	927	611	8.1	6.5	12.9	8.0
1995	1,402	840	562	7.4	5.9	12.1	7.6
1996	1,405	821	583	7.4	5.8	12.4	7.3
1997	1,358	805	552	7.1	5.6	11.4	7.2
1998	1,415	850	562	7.2	5.8	11.4	7.2
1999	1,442	815	625	7.3	5.6	12.4	7.1
2000	1,423	810	611	7.0	5.4	11.4	6.9
2001	1,495	839	655	7.3	5.5	12.3	6.9
2002	1,548	892	656	7.5	5.9	12.4	6.9
2003	1,584	907	674	7.5	5.8	12.4	6.7 ³

¹ Only recorded data are available.

² Rates based on infant deaths by race of decedent, live births by race of mother.

³ Provisional data.

GRAPH F-3: RESIDENT INFANT DEATH RATES² PER 1,000 LIVE BIRTHS, BY RACE, FLORIDA AND UNITED STATES TOTAL, 1993-2003

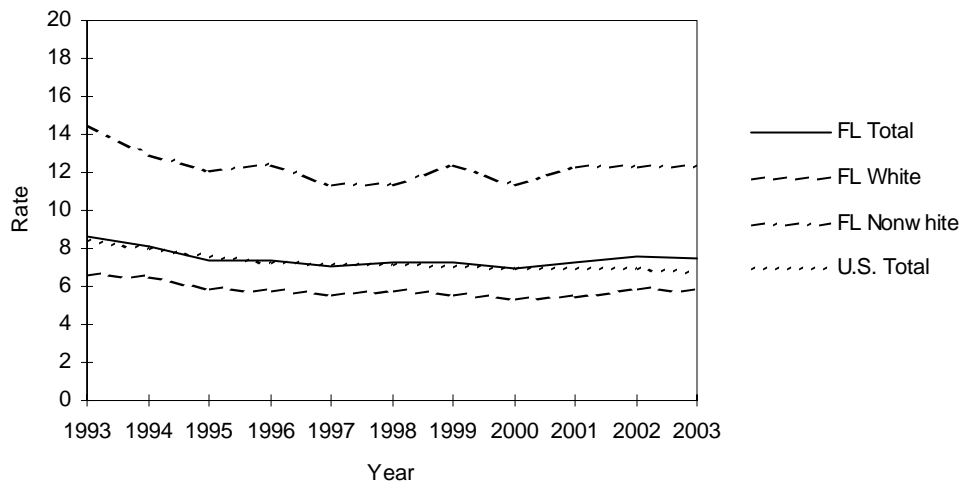


TABLE F-1: RESIDENT AND RECORDED FETAL DEATHS (OF 20 OR MORE WEEKS GESTATION) AND RATIOS PER 1,000 LIVE BIRTHS, BY RACE OF MOTHER, BY COUNTY, FLORIDA, 2003

	RESIDENT FETAL DEATHS						RATIOS		
	NUMBER						TOTAL	WHITE	NONWHITE
	TOTAL	WHITE	NONWHITE			UNK			
		TOTAL	BLACK	OTHER					
FLORIDA	1,604	912	678	643	35	14	7.6	5.8	12.4
ALACHUA	18	8	10	9	1	0	7.3	5.2	10.7
BAKER	5	4	1	1	0	0	14.2	13.0	22.2
BAY	14	8	6	6	0	0	6.8	4.8	16.0
BRADFORD	2	1	1	1	0	0	6.7	4.3	14.5
BREVARD	29	20	9	7	2	0	5.8	4.9	9.9
BROWARD	194	64	130	124	6	0	8.6	4.7	14.9
CALHOUN	3	2	1	1	0	0	21.7	17.5	41.7
CHARLOTTE	10	10	0	0	0	0	9.6	10.5	0.0
CITRUS	7	6	1	0	1	0	7.8	7.2	18.2
CLAY	6	5	1	1	0	0	2.9	2.8	3.7
COLLIER	16	11	5	5	0	0	4.3	3.4	10.2
COLUMBIA	7	7	0	0	0	0	9.1	11.5	0.0
MIAMI-DADE	285	147	133	131	2	5	8.8	6.3	14.5
DESOTO	3	3	0	0	0	0	6.5	7.7	0.0
DIXIE	2	2	0	0	0	0	12.7	14.0	0.0
DUVAL	109	58	50	48	2	1	8.8	7.8	10.0
ESCAMBIA	36	13	23	23	0	0	9.0	4.9	17.1
FLAGLER	4	3	1	1	0	0	7.2	6.2	13.5
FRANKLIN	0	0	0	0	0	0	0.0	0.0	0.0
GADSDEN	12	3	9	9	0	0	16.9	11.4	20.1
GILCHRIST	0	0	0	0	0	0	0.0	0.0	0.0
GLADES	1	0	1	0	1	0	17.2	0.0	58.8
GULF	1	1	0	0	0	0	9.3	10.8	0.0
HAMILTON	3	2	1	1	0	0	17.4	20.6	13.3
HARDEE	5	5	0	0	0	0	9.9	10.6	0.0
HENDRY	3	0	3	3	0	0	4.3	0.0	26.8
HERNANDO	4	3	1	1	0	0	3.2	2.7	8.3
HIGHLANDS	7	3	4	4	0	0	7.8	4.0	25.5
HILLSBOROUGH	103	70	32	28	4	1	6.7	6.0	8.9
HOLMES	1	1	0	0	0	0	4.4	4.6	0.0
INDIAN RIVER	9	8	1	1	0	0	7.4	8.1	4.4
JACKSON	5	3	2	2	0	0	9.3	8.1	12.3
JEFFERSON	0	0	0	0	0	0	0.0	0.0	0.0
LAFAYETTE	0	0	0	0	0	0	0.0	0.0	0.0
LAKE	19	17	2	2	0	0	6.7	7.0	4.7
LEE	37	21	16	15	1	0	6.5	4.4	19.0
LEON	20	7	13	12	1	0	6.4	4.0	9.4
LEVY	5	4	1	1	0	0	12.9	11.8	20.0
LIBERTY	0	0	0	0	0	0	0.0	0.0	0.0
MADISON	1	0	1	1	0	0	4.3	0.0	8.4
MANATEE	30	19	11	10	1	0	9.0	7.0	17.6
MARION	27	17	10	10	0	0	9.1	7.2	15.9
MARTIN	7	7	0	0	0	0	6.0	7.4	0.0
MONROE	4	3	1	0	1	0	5.6	4.9	10.6
NASSAU	1	1	0	0	0	0	1.4	1.6	0.0
OKALOOSA	17	11	6	6	0	0	6.7	5.2	14.8
OKEECHOBEE	3	3	0	0	0	0	5.6	6.4	0.0
ORANGE	120	60	60	56	4	0	8.0	5.8	13.3
OSCEOLA	24	21	3	3	0	0	7.6	7.7	7.4
PALM BEACH	100	48	49	47	2	3	6.8	4.7	11.0
PASCO	31	28	3	2	1	0	7.7	7.5	10.2
PINELLAS	56	38	15	13	2	3	6.1	5.3	7.3
POLK	40	28	12	12	0	0	5.7	5.0	8.4
PUTNAM	7	2	4	4	0	1	7.6	2.9	16.7
ST JOHNS	9	6	3	3	0	0	6.1	4.7	15.4
ST LUCIE	25	15	10	10	0	0	10.2	8.6	14.2
SANTA ROSA	11	11	0	0	0	0	7.0	7.5	0.0
SARASOTA	16	11	5	3	2	0	5.4	4.2	14.1
SEMINOLE	43	29	14	13	1	0	9.3	7.6	17.8
SUMTER	9	4	5	5	0	0	20.0	11.1	56.2
SUWANNEE	4	2	2	2	0	0	8.2	5.0	24.1
TAYLOR	1	1	0	0	0	0	4.8	6.2	0.0
UNION	1	1	0	0	0	0	6.5	7.2	0.0
VOLUSIA	29	23	6	6	0	0	6.0	5.8	7.3
WAKULLA	1	1	0	0	0	0	3.4	3.9	0.0
WALTON	1	1	0	0	0	0	2.0	2.2	0.0
WASHINGTON	1	1	0	0	0	0	4.0	5.0	0.0

TABLE F-1 (Cont.): RESIDENT AND RECORDED FETAL DEATHS (OF 20 OR MORE WEEKS GESTATION) AND RATIOS PER 1,000 LIVE BIRTHS, BY RACE OF MOTHER, BY COUNTY, FLORIDA, 2003

	RECORDED FETAL DEATHS						RATIOS		
	NUMBER		NONWHITE			UNK	TOTAL	WHITE	NONWHITE
	TOTAL	WHITE	TOTAL	BLACK	OTHER				
FLORIDA	1,631	933	684	648	36	14	7.7	5.9	12.5
ALACHUA	54	36	18	17	1	0	10.2	9.2	13.1
BAKER	1	1	0	0	0	0	500.0	500.0	----
BAY	16	11	5	5	0	0	6.2	5.2	11.4
BRADFORD	0	0	0	0	0	0	0.0	0.0	----
BREVARD	26	18	8	6	2	0	5.3	4.4	9.0
BROWARD	204	70	134	130	4	0	9.2	5.4	14.8
CALHOUN	0	0	0	0	0	0	0.0	0.0	0.0
CHARLOTTE	5	5	0	0	0	0	4.4	4.9	0.0
CITRUS	6	5	1	0	1	0	7.5	6.6	23.8
CLAY	5	3	2	2	0	0	2.7	1.9	7.0
COLLIER	15	10	5	5	0	0	4.0	3.1	10.9
COLUMBIA	8	5	3	3	0	0	11.4	10.1	14.4
MIAMI-DADE	294	155	134	130	4	5	9.2	6.7	15.6
DESOTO	8	8	0	0	0	0	11.6	13.2	0.0
DIXIE	0	0	0	0	0	0	0.0	0.0	----
DUVAL	120	69	51	49	2	0	8.4	7.6	10.0
ESCAMBIA	51	25	26	26	0	0	9.4	6.3	17.6
FLAGLER	0	0	0	0	0	0	0.0	0.0	0.0
FRANKLIN	1	1	0	0	0	0	1000.0	1000.0	----
GADSDEN	1	0	1	1	0	0	333.3	0.0	1000.0
GILCHRIST	0	0	0	0	0	0	----	----	----
GLADES	0	0	0	0	0	0	----	----	----
GULF	0	0	0	0	0	0	0.0	0.0	----
HAMILTON	0	0	0	0	0	0	0.0	0.0	0.0
HARDEE	0	0	0	0	0	0	0.0	0.0	0.0
HENDRY	1	0	1	1	0	0	166.7	0.0	----
HERNANDO	7	6	1	1	0	0	5.3	5.0	9.7
HIGHLANDS	12	7	5	4	1	0	9.4	6.6	24.5
HILLSBOROUGH	114	79	34	30	4	1	6.7	6.0	8.8
HOLMES	0	0	0	0	0	0	----	----	----
INDIAN RIVER	11	9	2	2	0	0	9.4	9.4	9.4
JACKSON	5	3	2	2	0	0	10.1	8.8	13.2
JEFFERSON	0	0	0	0	0	0	0.0	0.0	----
LAFAYETTE	0	0	0	0	0	0	----	----	----
LAKE	14	9	5	5	0	0	6.8	5.4	12.9
LEE	38	21	17	16	1	0	6.1	3.9	18.7
LEON	32	10	22	21	1	0	6.5	3.6	10.3
LEVY	0	0	0	0	0	0	0.0	0.0	----
LIBERTY	0	0	0	0	0	0	----	----	----
MADISON	0	0	0	0	0	0	0.0	0.0	0.0
MANATEE	18	12	6	5	1	0	6.7	5.5	12.1
MARION	14	9	5	5	0	0	5.5	4.5	9.3
MARTIN	10	10	0	0	0	0	6.1	7.4	0.0
MONROE	1	0	1	0	1	0	1.9	0.0	12.0
NASSAU	2	2	0	0	0	0	4.9	5.6	0.0
OKALOOSA	15	11	4	4	0	0	5.4	4.7	9.4
OKEECHOBEE	0	0	0	0	0	0	0.0	0.0	0.0
ORANGE	181	114	67	61	6	0	10.0	8.7	13.7
OSCEOLA	23	18	5	5	0	0	6.3	5.7	10.7
PALM BEACH	107	51	53	51	2	3	6.5	4.3	11.0
PASCO	13	12	1	0	1	0	8.1	8.3	6.4
PINELLAS	66	49	14	12	2	3	6.3	5.8	6.6
POLK	32	20	12	12	0	0	5.3	4.1	9.7
PUTNAM	5	1	3	3	0	1	9.5	2.9	16.3
ST JOHNS	5	2	3	3	0	0	5.0	2.4	17.2
ST LUCIE	12	7	5	5	0	0	6.7	6.0	8.0
SANTA ROSA	1	1	0	0	0	0	2.3	2.5	0.0
SARASOTA	31	21	10	8	2	0	8.9	7.0	20.7
SEMINOLE	19	9	10	10	0	0	5.1	2.9	15.2
SUMTER	0	0	0	0	0	0	0.0	0.0	----
SUWANNEE	0	0	0	0	0	0	0.0	0.0	0.0
TAYLOR	1	1	0	0	0	0	500.0	1000.0	0.0
UNION	0	0	0	0	0	0	----	----	----
VOLUSIA	25	16	8	8	0	1	6.0	4.7	10.4
WAKULLA	0	0	0	0	0	0	----	----	----
WALTON	0	0	0	0	0	0	0.0	0.0	0.0
WASHINGTON	1	1	0	0	0	0	----	----	----

TABLE F-2: RESIDENT FETAL DEATHS BY HISPANIC OR HAITIAN ORIGIN OF MOTHER, BY COUNTY, FLORIDA, 2003

	HISPANIC ORIGIN									
	TOTAL	TOTAL HISPANIC	MEXICAN	PUERTO RICAN	CUBAN	CENTRAL/SOUTH AMERICAN	OTHER/UNK HISPANIC	HAITIAN	NON-HISPANIC/HAITIAN	UNK
FLORIDA	1,604	264	49	45	63	89	18	89	1,131	120
ALACHUA	18	0	0	0	0	0	0	0	18	0
BAKER	5	0	0	0	0	0	0	0	5	0
BAY	14	0	0	0	0	0	0	0	14	0
BRADFORD	2	0	0	0	0	0	0	0	2	0
BREVARD	29	0	0	0	0	0	0	1	28	0
BROWARD	194	36	3	4	9	15	5	31	123	4
CALHOUN	3	0	0	0	0	0	0	0	3	0
CHARLOTTE	10	0	0	0	0	0	0	0	10	0
CITRUS	7	2	1	1	0	0	0	0	5	0
CLAY	6	0	0	0	0	0	0	0	6	0
COLLIER	16	5	2	0	2	1	0	5	6	0
COLUMBIA	7	0	0	0	0	0	0	0	7	0
MIAMI-DADE	285	91	4	8	37	41	1	20	75	99
DESOTO	3	1	1	0	0	0	0	0	2	0
DIXIE	2	0	0	0	0	0	0	0	2	0
DUVAL	109	2	0	0	0	1	1	3	103	1
ESCAMBIA	36	0	0	0	0	0	0	0	36	0
FLAGLER	4	1	0	0	1	0	0	0	3	0
FRANKLIN	0	0	0	0	0	0	0	0	0	0
GADSDEN	12	1	1	0	0	0	0	0	11	0
GILCHRIST	0	0	0	0	0	0	0	0	0	0
GLADES	1	0	0	0	0	0	0	0	1	0
GULF	1	0	0	0	0	0	0	0	1	0
HAMILTON	3	0	0	0	0	0	0	0	3	0
HARDEE	5	3	3	0	0	0	0	0	2	0
HENDRY	3	0	0	0	0	0	0	0	3	0
HERNANDO	4	0	0	0	0	0	0	0	4	0
HIGHLANDS	7	0	0	0	0	0	0	0	7	0
HILLSBOROUGH	103	25	7	7	4	4	3	2	72	4
HOLMES	1	0	0	0	0	0	0	0	1	0
INDIAN RIVER	9	0	0	0	0	0	0	0	9	0
JACKSON	5	0	0	0	0	0	0	0	5	0
JEFFERSON	0	0	0	0	0	0	0	0	0	0
LAFAYETTE	0	0	0	0	0	0	0	0	0	0
LAKE	19	1	0	0	1	0	0	0	18	0
LEE	37	5	1	0	2	2	0	3	29	0
LEON	20	1	1	0	0	0	0	0	18	1
LEVY	5	1	0	1	0	0	0	0	4	0
LIBERTY	0	0	0	0	0	0	0	0	0	0
MADISON	1	0	0	0	0	0	0	0	1	0
MANATEE	30	3	2	0	0	1	0	0	27	0
MARION	27	2	0	2	0	0	0	0	25	0
MARTIN	7	1	0	0	0	1	0	0	6	0
MONROE	4	1	0	0	0	1	0	0	3	0
NASSAU	1	0	0	0	0	0	0	0	1	0
OKALOOSA	17	0	0	0	0	0	0	0	17	0
OKEECHOBEE	3	1	1	0	0	0	0	0	2	0
ORANGE	120	20	3	7	2	8	0	5	94	1
OSCEOLA	24	10	0	8	0	1	1	0	14	0
PALM BEACH	100	13	4	1	0	7	1	12	71	4
PASCO	31	4	2	1	1	0	0	0	27	0
PINELLAS	56	4	2	1	1	0	0	0	47	5
POLK	40	7	5	0	1	0	1	2	31	0
PUTNAM	7	0	0	0	0	0	0	0	6	1
ST JOHNS	9	1	0	0	0	1	0	0	8	0
ST LUCIE	25	2	1	0	0	0	1	3	20	0
SANTA ROSA	11	1	1	0	0	0	0	0	10	0
SARASOTA	16	5	0	0	2	2	1	0	11	0
SEMINOLE	43	7	0	3	0	3	1	2	34	0
SUMTER	9	1	1	0	0	0	0	0	8	0
SUWANNEE	4	0	0	0	0	0	0	0	4	0
TAYLOR	1	1	1	0	0	0	0	0	0	0
UNION	1	0	0	0	0	0	0	0	1	0
VOLUSIA	29	5	2	1	0	0	2	0	24	0
WAKULLA	1	0	0	0	0	0	0	0	1	0
WALTON	1	0	0	0	0	0	0	0	1	0
WASHINGTON	1	0	0	0	0	0	0	0	1	0

TABLE F-3: RESIDENT FETAL DEATHS BY AGE OF MOTHER, BY COUNTY, FLORIDA, 2003

	TOTAL	AGE OF MOTHER													
		<13	13	14	15	16	17	18	19	20-24	25-29	30-34	35-44	45+	UNK
FLORIDA	1,604	0	0	2	11	24	26	47	68	385	337	327	305	7	65
ALACHUA	18	0	0	0	0	0	0	0	1	4	5	4	3	0	1
BAKER	5	0	0	0	0	0	0	1	1	1	0	1	1	0	0
BAY	14	0	0	0	0	1	0	2	0	5	3	1	2	0	0
BRADFORD	2	0	0	0	0	0	0	0	0	1	1	0	0	0	0
BREVARD	29	0	0	0	1	0	0	1	1	13	2	7	4	0	0
BROWARD	194	0	0	1	0	2	5	4	6	34	47	42	45	2	6
CALHOUN	3	0	0	0	0	0	0	0	0	0	2	1	0	0	0
CHARLOTTE	10	0	0	0	0	0	0	0	1	2	2	2	3	0	0
CITRUS	7	0	0	0	0	0	0	0	1	1	3	1	1	0	0
CLAY	6	0	0	0	0	0	0	0	0	1	0	2	3	0	0
COLLIER	16	0	0	0	0	1	0	1	0	3	4	4	2	1	0
COLUMBIA	7	0	0	0	0	0	0	1	1	2	0	2	1	0	0
MIAMI-DADE	285	0	0	0	1	2	3	5	14	46	62	51	63	1	37
DESOTO	3	0	0	0	0	1	0	1	0	1	0	0	0	0	0
DIXIE	2	0	0	0	0	0	0	0	1	0	1	0	0	0	0
DUVAL	109	0	0	0	1	1	1	4	6	31	24	20	18	1	2
ESCAMBIA	36	0	0	0	2	1	0	1	0	12	5	12	3	0	0
FLAGLER	4	0	0	0	0	0	0	0	0	2	1	1	0	0	0
FRANKLIN	0	0	0	0	0	0	0	0	0	0	0	0	0	0	0
GADSDEN	12	0	0	0	0	0	0	0	3	3	2	3	1	0	0
GILCHRIST	0	0	0	0	0	0	0	0	0	0	0	0	0	0	0
GLADES	1	0	0	0	0	0	0	0	0	0	1	0	0	0	0
GULF	1	0	0	0	0	0	0	0	0	0	1	0	0	0	0
HAMILTON	3	0	0	0	0	0	0	0	0	0	2	0	1	0	0
HARDEE	5	0	0	0	0	0	0	0	0	2	2	1	0	0	0
HENDRY	3	0	0	0	0	0	0	0	0	1	0	2	0	0	0
HERNANDO	4	0	0	0	0	0	0	0	1	0	2	0	1	0	0
HIGHLANDS	7	0	0	0	0	0	1	0	1	2	0	1	2	0	0
HILLSBOROUGH	103	0	0	0	1	2	2	1	5	25	21	26	20	0	0
HOLMES	1	0	0	0	0	0	0	0	0	0	0	1	0	0	0
INDIAN RIVER	9	0	0	0	0	0	0	1	0	2	1	3	2	0	0
JACKSON	5	0	0	0	0	0	0	0	0	2	0	0	3	0	0
JEFFERSON	0	0	0	0	0	0	0	0	0	0	0	0	0	0	0
LAFAYETTE	0	0	0	0	0	0	0	0	0	0	0	0	0	0	0
LAKE	19	0	0	0	0	1	0	3	2	3	4	5	1	0	0
LEE	37	0	0	1	1	0	1	1	0	7	8	6	12	0	0
LEON	20	0	0	0	0	0	0	1	0	6	4	5	3	0	1
LEVY	5	0	0	0	0	0	1	0	0	2	0	0	2	0	0
LIBERTY	0	0	0	0	0	0	0	0	0	0	0	0	0	0	0
MADISON	1	0	0	0	0	0	0	0	0	1	0	0	0	0	0
MANATEE	30	0	0	0	1	1	0	1	0	12	8	3	4	0	0
MARION	27	0	0	0	0	0	1	0	3	9	4	7	3	0	0
MARTIN	7	0	0	0	0	1	0	1	0	1	1	1	2	0	0
MONROE	4	0	0	0	0	0	0	0	0	0	2	1	1	0	0
NASSAU	1	0	0	0	0	0	0	0	0	0	0	1	0	0	0
OKALOOSA	17	0	0	0	0	0	0	0	1	3	1	5	7	0	0
OKEECHOBEE	3	0	0	0	0	0	0	0	0	1	1	0	1	0	0
ORANGE	120	0	0	0	1	2	1	3	5	40	24	17	20	0	7
OSCEOLA	24	0	0	0	0	0	1	0	0	6	7	5	5	0	0
PALM BEACH	100	0	0	0	0	2	3	1	3	24	19	24	20	1	3
PASCO	31	0	0	0	0	0	0	2	0	7	6	11	5	0	0
PINELLAS	56	0	0	0	1	2	2	3	1	10	10	11	9	0	7
POLK	40	0	0	0	0	1	2	1	3	17	7	5	4	0	0
PUTNAM	7	0	0	0	0	0	0	0	1	2	2	1	1	0	0
ST JOHN'S	9	0	0	0	0	0	0	1	0	2	1	3	2	0	0
ST LUCIE	25	0	0	0	0	2	0	0	1	5	6	3	7	1	0
SANTA ROSA	11	0	0	0	0	0	0	1	0	2	3	4	1	0	0
SARASOTA	16	0	0	0	0	0	1	1	0	2	5	3	4	0	0
SEMINOLE	43	0	0	0	0	0	1	2	1	8	10	13	8	0	0
SUMTER	9	0	0	0	0	0	0	1	1	2	1	2	1	0	1
SUWANNEE	4	0	0	0	1	0	0	0	0	2	0	1	0	0	0
TAYLOR	1	0	0	0	0	0	0	0	0	0	1	0	0	0	0
UNION	1	0	0	0	0	0	0	0	0	0	0	0	1	0	0
VOLUSIA	29	0	0	0	0	1	0	1	3	13	8	2	1	0	0
WAKULLA	1	0	0	0	0	0	0	0	0	1	0	0	0	0	0
WALTON	1	0	0	0	0	0	0	0	0	1	0	0	0	0	0
WASHINGTON	1	0	0	0	0	0	0	0	0	0	0	0	1	0	0

TABLE F-4: RESIDENT AND RECORDED NEONATAL DEATHS (UNDER 28 DAYS) AND RATES PER 1,000 LIVE BIRTHS, BY RACE, BY COUNTY, FLORIDA, 2003

	RESIDENT NEONATAL DEATHS						RATES*		
			NUMBER						
	TOTAL	WHITE	NONWHITE				TOTAL	WHITE	NONWHITE
		TOTAL	BLACK	OTHER	UNK				
FLORIDA	1,025	584	438	420	18	3	4.8	3.7	8.0
ALACHUA	25	10	15	15	0	0	10.1	6.5	16.1
BAKER	2	2	0	0	0	0	5.7	6.5	0.0
BAY	24	14	10	10	0	0	11.7	8.4	26.7
BRADFORD	2	1	1	1	0	0	6.7	4.3	14.5
BREVARD	16	10	6	6	0	0	3.2	2.4	6.6
BROWARD	91	38	52	48	4	1	4.0	2.8	6.0
CALHOUN	0	0	0	0	0	0	0.0	0.0	0.0
CHARLOTTE	6	4	2	2	0	0	5.7	4.2	20.6
CITRUS	3	3	0	0	0	0	3.4	3.6	0.0
CLAY	10	6	4	4	0	0	4.8	3.3	14.7
COLLIER	16	11	5	4	1	0	4.3	3.4	10.2
COLUMBIA	9	7	2	2	0	0	11.7	11.5	12.3
MIAMI-DADE	122	61	61	61	0	0	3.7	2.6	6.7
DESOTO	2	2	0	0	0	0	4.4	5.1	0.0
DIXIE	1	1	0	0	0	0	6.4	7.0	0.0
DUVAL	81	26	55	51	4	0	6.5	3.5	11.0
ESCAMBIA	20	14	6	6	0	0	5.0	5.3	4.5
FLAGLER	4	4	0	0	0	0	7.2	8.3	0.0
FRANKLIN	1	1	0	0	0	0	8.1	8.7	0.0
GADSDEN	4	3	1	1	0	0	5.6	11.4	2.2
GILCHRIST	2	2	0	0	0	0	11.4	12.3	0.0
GLADES	0	0	0	0	0	0	0.0	0.0	0.0
GULF	1	1	0	0	0	0	9.3	10.8	0.0
HAMILTON	1	0	1	1	0	0	5.8	0.0	13.3
HARDEE	0	0	0	0	0	0	0.0	0.0	0.0
HENDRY	2	1	1	1	0	0	2.9	1.7	8.9
HERNANDO	7	5	2	2	0	0	5.6	4.4	16.7
HIGHLANDS	3	3	0	0	0	0	3.3	4.0	0.0
HILLSBOROUGH	98	56	41	38	3	1	6.4	4.8	11.4
HOLMES	2	2	0	0	0	0	8.7	9.2	0.0
INDIAN RIVER	4	3	1	1	0	0	3.3	3.0	4.4
JACKSON	4	3	1	1	0	0	7.5	8.1	6.2
JEFFERSON	2	1	1	1	0	0	13.8	12.7	15.2
LAFAYETTE	0	0	0	0	0	0	0.0	0.0	0.0
LAKE	7	4	2	2	0	1	2.5	1.7	4.7
LEE	24	15	9	7	2	0	4.2	3.1	10.7
LEON	22	7	15	15	0	0	7.0	4.0	10.8
LEVY	3	3	0	0	0	0	7.7	8.9	0.0
LIBERTY	0	0	0	0	0	0	0.0	0.0	0.0
MADISON	1	0	1	1	0	0	4.3	0.0	8.4
MANATEE	12	9	3	3	0	0	3.6	3.3	4.8
MARION	19	14	5	5	0	0	6.4	6.0	8.0
MARTIN	6	5	1	1	0	0	5.1	5.3	4.3
MONROE	2	1	1	1	0	0	2.8	1.6	10.6
NASSAU	3	2	1	1	0	0	4.3	3.1	15.9
OKALOOSA	9	6	3	2	1	0	3.5	2.8	7.4
OKEECHOBEE	2	1	1	1	0	0	3.7	2.1	14.9
ORANGE	82	55	27	26	1	0	5.5	5.3	6.0
OSCEOLA	11	8	3	3	0	0	3.5	2.9	7.4
PALM BEACH	67	32	35	34	1	0	4.6	3.1	7.9
PASCO	16	16	0	0	0	0	4.0	4.3	0.0
PINELLAS	55	33	22	22	0	0	6.0	4.6	10.7
POLK	35	21	14	14	0	0	5.0	3.7	9.8
PUTNAM	10	6	4	4	0	0	10.8	8.8	16.7
SAINT JOHNS	7	5	2	2	0	0	4.7	3.9	10.3
SAINT LUCIE	8	5	3	3	0	0	3.3	2.9	4.3
SANTA ROSA	5	5	0	0	0	0	3.2	3.4	0.0
SARASOTA	16	11	5	5	0	0	5.4	4.2	14.1
SEMINOLE	13	9	4	3	1	0	2.8	2.4	5.1
SUMTER	4	3	1	1	0	0	8.9	8.4	11.2
SUWANNEE	2	1	1	1	0	0	4.1	2.5	12.0
TAYLOR	2	1	1	1	0	0	9.5	6.2	20.4
UNION	0	0	0	0	0	0	0.0	0.0	0.0
VOLUSIA	11	6	5	5	0	0	2.3	1.5	6.1
WAKULLA	4	3	1	1	0	0	13.8	11.6	32.3
WALTON	1	1	0	0	0	0	2.0	2.2	0.0
WASHINGTON	1	1	0	0	0	0	4.0	5.0	0.0

*Rates based on neonatal deaths by race of decedent, live births by race of mother.

TABLE F-4 (Cont.): RESIDENT AND RECORDED NEONATAL DEATHS (UNDER 28 DAYS) AND RATES PER 1,000 LIVE BIRTHS, BY RACE, BY COUNTY, FLORIDA, 2003

	RECORDED NEONATAL DEATHS						RATES*		
			NUMBER						
	TOTAL	WHITE	NONWHITE				TOTAL	WHITE	NONWHITE
		TOTAL	BLACK	OTHER	UNK				
FLORIDA	1,045	599	443	425	18	3	4.9	3.8	8.1
ALACHUA	69	44	25	25	0	0	13.1	11.3	18.2
BAKER	0	0	0	0	0	0	0.0	0.0	----
BAY	18	9	9	9	0	0	7.0	4.3	20.6
BRADFORD	1	1	0	0	0	0	500.0	500.0	----
BREVARD	10	8	2	2	0	0	2.0	2.0	2.3
BROWARD	91	39	51	48	3	1	4.1	3.0	5.6
CALHOUN	0	0	0	0	0	0	0.0	0.0	0.0
CHARLOTTE	3	2	1	1	0	0	2.6	1.9	9.0
CITRUS	2	2	0	0	0	0	2.5	2.6	0.0
CLAY	6	3	3	3	0	0	3.3	1.9	10.6
COLLIER	6	4	2	2	0	0	1.6	1.2	4.4
COLUMBIA	2	0	2	2	0	0	2.8	0.0	9.6
MIAMI-DADE	143	76	67	66	1	0	4.5	3.3	7.8
DESOTO	2	2	0	0	0	0	2.9	3.3	0.0
DIXIE	0	0	0	0	0	0	0.0	0.0	----
DUVAL	95	36	59	55	4	0	6.7	3.9	11.6
ESCAMBIA	30	21	9	8	1	0	5.5	5.3	6.1
FLAGLER	0	0	0	0	0	0	0.0	0.0	0.0
FRANKLIN	1	1	0	0	0	0	1000.0	1000.0	----
GADSDEN	0	0	0	0	0	0	0.0	0.0	0.0
GILCHRIST	0	0	0	0	0	0	----	----	----
GLADES	0	0	0	0	0	0	----	----	----
GULF	1	1	0	0	0	0	1000.0	1000.0	----
HAMILTON	0	0	0	0	0	0	0.0	0.0	0.0
HARDEE	0	0	0	0	0	0	0.0	0.0	0.0
HENDRY	0	0	0	0	0	0	0.0	0.0	----
HERNANDO	1	1	0	0	0	0	0.8	0.8	0.0
HIGHLANDS	4	3	1	1	0	0	3.1	2.8	4.9
HILLSBOROUGH	138	88	49	46	3	1	8.1	6.7	12.7
HOLMES	0	0	0	0	0	0	----	----	----
INDIAN RIVER	0	0	0	0	0	0	0.0	0.0	0.0
JACKSON	4	3	1	1	0	0	8.1	8.8	6.6
JEFFERSON	0	0	0	0	0	0	0.0	0.0	----
LAFAYETTE	0	0	0	0	0	0	----	----	----
LAKE	5	2	2	2	0	1	2.4	1.2	5.1
LEE	30	18	12	10	2	0	4.8	3.4	13.2
LEON	32	14	18	18	0	0	6.5	5.0	8.4
LEVY	0	0	0	0	0	0	0.0	0.0	----
LIBERTY	0	0	0	0	0	0	----	----	----
MADISON	0	0	0	0	0	0	0.0	0.0	0.0
MANATEE	6	6	0	0	0	0	2.2	2.7	0.0
MARION	6	3	3	3	0	0	2.4	1.5	5.6
MARTIN	0	0	0	0	0	0	0.0	0.0	0.0
MONROE	1	1	0	0	0	0	1.9	2.3	0.0
NASSAU	0	0	0	0	0	0	0.0	0.0	0.0
OKALOOSA	5	4	1	1	0	0	1.8	1.7	2.4
OKEECHOBEE	0	0	0	0	0	0	0.0	0.0	0.0
ORANGE	132	88	44	43	1	0	7.3	6.7	9.0
OSCEOLA	6	6	0	0	0	0	1.6	1.9	0.0
PALM BEACH	69	32	37	36	1	0	4.2	2.7	7.7
PASCO	0	0	0	0	0	0	0.0	0.0	0.0
PINELLAS	84	56	28	26	2	0	8.0	6.7	13.2
POLK	15	8	7	7	0	0	2.5	1.6	5.7
PUTNAM	5	1	4	4	0	0	9.5	2.9	21.7
SAINT JOHNS	4	3	1	1	0	0	4.0	3.6	5.7
SAINT LUCIE	4	2	2	2	0	0	2.2	1.7	3.2
SANTA ROSA	1	1	0	0	0	0	2.3	2.5	0.0
SARASOTA	9	6	3	3	0	0	2.6	2.0	6.2
SEMINOLE	1	1	0	0	0	0	0.3	0.3	0.0
SUMTER	0	0	0	0	0	0	0.0	0.0	----
SUWANNEE	0	0	0	0	0	0	0.0	0.0	0.0
TAYLOR	0	0	0	0	0	0	0.0	0.0	0.0
UNION	0	0	0	0	0	0	----	----	----
VOLUSIA	2	2	0	0	0	0	0.5	0.6	0.0
WAKULLA	1	1	0	0	0	0	----	----	----
WALTON	0	0	0	0	0	0	0.0	0.0	0.0
WASHINGTON	0	0	0	0	0	0	----	----	----

*Rates based on neonatal deaths by race of decedent, live births by race of mother.

TABLE F-5: RESIDENT AND RECORDED INFANT DEATHS (UNDER 1 YEAR) AND RATES PER 1,000 LIVE BIRTHS, BY RACE, BY COUNTY, FLORIDA, 2003

	RESIDENT INFANT DEATHS						RATES*		
	TOTAL	WHITE	NUMBER				TOTAL	WHITE	NONWHITE
			TOTAL	BLACK	OTHER	UNK			
			NONWHITE						
FLORIDA	1,584	907	674	647	27	3	7.5	5.8	12.4
ALACHUA	34	14	20	20	0	0	13.7	9.1	21.5
BAKER	3	3	0	0	0	0	8.5	9.7	0.0
BAY	30	19	11	11	0	0	14.6	11.4	29.3
BRADFORD	3	2	1	1	0	0	10.0	8.7	14.5
BREVARD	25	18	7	7	0	0	5.0	4.4	7.7
BROWARD	143	54	88	81	7	1	6.4	3.9	10.1
CALHOUN	1	1	0	0	0	0	7.2	8.8	0.0
CHARLOTTE	8	6	2	2	0	0	7.6	6.3	20.6
CITRUS	5	5	0	0	0	0	5.6	6.0	0.0
CLAY	19	13	6	6	0	0	9.1	7.2	22.1
COLLIER	29	21	8	7	1	0	7.8	6.5	16.3
COLUMBIA	11	9	2	2	0	0	14.3	14.8	12.3
MIAMI-DADE	194	87	107	107	0	0	6.0	3.7	11.7
DESOTO	2	2	0	0	0	0	4.4	5.1	0.0
DIXIE	2	2	0	0	0	0	12.7	14.0	0.0
DUVAL	130	51	79	74	5	0	10.5	6.9	15.8
ESCAMBIA	34	23	11	11	0	0	8.5	8.7	8.2
FLAGLER	4	4	0	0	0	0	7.2	8.3	0.0
FRANKLIN	2	2	0	0	0	0	16.3	17.4	0.0
GADSDEN	6	3	3	3	0	0	8.5	11.4	6.7
GILCHRIST	2	2	0	0	0	0	11.4	12.3	0.0
GLADES	1	1	0	0	0	0	17.2	24.4	0.0
GULF	1	1	0	0	0	0	9.3	10.8	0.0
HAMILTON	3	2	1	1	0	0	17.4	20.6	13.3
HARDEE	0	0	0	0	0	0	0.0	0.0	0.0
HENDRY	5	4	1	1	0	0	7.2	6.9	8.9
HERNANDO	11	9	2	2	0	0	8.8	8.0	16.7
HIGHLANDS	5	5	0	0	0	0	5.6	6.7	0.0
HILLSBOROUGH	137	81	55	51	4	1	9.0	7.0	15.3
HOLMES	2	2	0	0	0	0	8.7	9.2	0.0
INDIAN RIVER	7	6	1	1	0	0	5.8	6.1	4.4
JACKSON	5	3	2	2	0	0	9.3	8.1	12.3
JEFFERSON	2	1	1	1	0	0	13.8	12.7	15.2
LAFAYETTE	0	0	0	0	0	0	0.0	0.0	0.0
LAKE	16	10	5	4	1	1	5.6	4.1	11.8
LEE	29	19	10	8	2	0	5.1	4.0	11.8
LEON	33	17	16	16	0	0	10.5	9.8	11.5
LEVY	4	4	0	0	0	0	10.3	11.8	0.0
LIBERTY	0	0	0	0	0	0	0.0	0.0	0.0
MADISON	2	1	1	1	0	0	8.5	8.7	8.4
MANATEE	20	13	7	7	0	0	6.0	4.8	11.2
MARION	33	26	7	7	0	0	11.1	11.1	11.1
MARTIN	8	6	2	2	0	0	6.8	6.4	8.6
MONROE	5	4	1	1	0	0	7.0	6.5	10.6
NASSAU	4	2	2	2	0	0	5.7	3.1	31.7
OKALOOSA	21	17	4	3	1	0	8.3	8.0	9.9
OKEECHOBEE	3	2	1	1	0	0	5.6	4.3	14.9
ORANGE	123	67	56	54	2	0	8.2	6.4	12.5
OSCEOLA	15	12	3	3	0	0	4.8	4.4	7.4
PALM BEACH	112	56	56	55	1	0	7.6	5.5	12.6
PASCO	23	23	0	0	0	0	5.7	6.2	0.0
PINELLAS	72	41	31	31	0	0	7.8	5.7	15.0
POLK	57	37	20	20	0	0	8.1	6.6	14.0
PUTNAM	13	7	6	6	0	0	14.1	10.3	25.0
SAINT JOHNS	11	8	3	3	0	0	7.4	6.2	15.4
SAINT LUCIE	11	5	6	6	0	0	4.5	2.9	8.5
SANTA ROSA	13	13	0	0	0	0	8.2	8.9	0.0
SARASOTA	18	13	5	5	0	0	6.0	4.9	14.1
SEMINOLE	25	15	10	7	3	0	5.4	3.9	12.7
SUMTER	4	3	1	1	0	0	8.9	8.4	11.2
SUWANNEE	5	3	2	2	0	0	10.3	7.4	24.1
TAYLOR	3	2	1	1	0	0	14.3	12.4	20.4
UNION	0	0	0	0	0	0	0.0	0.0	0.0
VOLUSIA	24	15	9	9	0	0	5.0	3.8	10.9
WAKULLA	5	4	1	1	0	0	17.2	15.4	32.3
WALTON	4	4	0	0	0	0	7.9	9.0	0.0
WASHINGTON	2	2	0	0	0	0	8.0	10.0	0.0

*Rates based on infant deaths by race of decedent, live births by race of mother.

TABLE F-5 (Cont.) : RESIDENT AND RECORDED INFANT DEATHS (UNDER 1 YEAR) AND RATES PER 1,000 LIVE BIRTHS, BY RACE, BY COUNTY, FLORIDA, 2003

	RECORDED INFANT DEATHS						RATES*		
	TOTAL	WHITE	NUMBER				TOTAL	WHITE	NONWHITE
			TOTAL	BLACK	OTHER	UNK			
			NONWHITE						
FLORIDA	1,609	924	682	655	27	3	7.6	5.9	12.5
ALACHUA	104	65	39	37	2	0	19.7	16.7	28.4
BAKER	1	1	0	0	0	0	500.0	500.0	----
BAY	23	13	10	10	0	0	9.0	6.2	22.9
BRADFORD	2	2	0	0	0	0	1,000.0	1,000.0	----
BREVARD	15	13	2	2	0	0	3.0	3.2	2.3
BROWARD	142	57	84	78	6	1	6.4	4.4	9.3
CALHOUN	0	0	0	0	0	0	0.0	0.0	0.0
CHARLOTTE	5	4	1	1	0	0	4.4	3.9	9.0
CITRUS	3	3	0	0	0	0	3.7	4.0	0.0
CLAY	14	10	4	4	0	0	7.7	6.5	14.1
COLLIER	12	9	3	3	0	0	3.2	2.8	6.6
COLUMBIA	3	1	2	2	0	0	4.3	2.0	9.6
MIAMI-DADE	237	111	126	125	1	0	7.4	4.8	14.6
DESOTO	2	2	0	0	0	0	2.9	3.3	0.0
DIXIE	0	0	0	0	0	0	0.0	0.0	----
DUVAL	153	67	86	81	5	0	10.7	7.3	16.8
ESCAMBIA	49	35	14	13	1	0	9.0	8.8	9.5
FLAGLER	0	0	0	0	0	0	0.0	0.0	0.0
FRANKLIN	2	2	0	0	0	0	2,000.0	2,000.0	----
GADSDEN	1	0	1	1	0	0	333.3	0.0	1,000.0
GILCHRIST	0	0	0	0	0	0	----	----	----
GLADES	0	0	0	0	0	0	----	----	----
GULF	1	1	0	0	0	0	1,000.0	1,000.0	----
HAMILTON	0	0	0	0	0	0	0.0	0.0	0.0
HARDEE	0	0	0	0	0	0	0.0	0.0	0.0
HENDRY	0	0	0	0	0	0	0.0	0.0	----
HERNANDO	4	4	0	0	0	0	3.0	3.3	0.0
HIGHLANDS	5	4	1	1	0	0	3.9	3.8	4.9
HILLSBOROUGH	186	121	64	59	5	1	10.9	9.2	16.6
HOLMES	0	0	0	0	0	0	----	----	----
INDIAN RIVER	1	1	0	0	0	0	0.9	1.0	0.0
JACKSON	4	3	1	1	0	0	8.1	8.8	6.6
JEFFERSON	0	0	0	0	0	0	0.0	0.0	----
LAFAYETTE	0	0	0	0	0	0	----	----	----
LAKE	8	4	3	3	0	1	3.9	2.4	7.7
LEE	39	25	14	12	2	0	6.2	4.7	15.4
LEON	42	22	20	20	0	0	8.5	7.8	9.4
LEVY	1	1	0	0	0	0	1,000.0	1,000.0	----
LIBERTY	0	0	0	0	0	0	----	----	----
MADISON	1	1	0	0	0	0	250.0	500.0	0.0
MANATEE	12	10	2	2	0	0	4.5	4.6	4.0
MARION	14	10	4	4	0	0	5.5	5.0	7.4
MARTIN	0	0	0	0	0	0	0.0	0.0	0.0
MONROE	2	2	0	0	0	0	3.9	4.6	0.0
NASSAU	0	0	0	0	0	0	0.0	0.0	0.0
OKALOOSA	12	10	2	2	0	0	4.3	4.3	4.7
OKEECHOBEE	1	1	0	0	0	0	200.0	333.3	0.0
ORANGE	192	114	78	76	2	0	10.6	8.7	16.0
OSCEOLA	10	10	0	0	0	0	2.7	3.1	0.0
PALM BEACH	104	52	52	51	1	0	6.3	4.4	10.8
PASCO	2	2	0	0	0	0	1.2	1.4	0.0
PINELLAS	114	77	37	35	2	0	10.8	9.2	17.4
POLK	31	19	12	12	0	0	5.1	3.9	9.7
PUTNAM	9	3	6	6	0	0	17.1	8.8	32.6
SAINT JOHNS	5	4	1	1	0	0	5.0	4.8	5.7
SAINT LUCIE	6	2	4	4	0	0	3.3	1.7	6.4
SANTA ROSA	6	5	1	1	0	0	13.5	12.3	26.3
SARASOTA	11	8	3	3	0	0	3.2	2.7	6.2
SEMINOLE	4	2	2	2	0	0	1.1	0.6	3.0
SUMTER	0	0	0	0	0	0	0.0	0.0	----
SUWANNEE	2	2	0	0	0	0	222.2	400.0	0.0
TAYLOR	0	0	0	0	0	0	0.0	0.0	0.0
UNION	0	0	0	0	0	0	----	----	----
VOLUSIA	10	7	3	3	0	0	2.4	2.1	3.9
WAKULLA	1	1	0	0	0	0	----	----	----
WALTON	1	1	0	0	0	0	76.9	90.9	0.0
WASHINGTON	0	0	0	0	0	0	----	----	----

*Rates based on infant deaths by race of decedent, live births by race of mother.

TABLE F-6: RESIDENT INFANT DEATHS BY HISPANIC OR HAITIAN ORIGIN, BY COUNTY, FLORIDA, 2003

	TOTAL	HISPANIC ORIGIN							NON-HISPANIC/HAITIAN	UNK
		TOTAL HISPANIC	MEXICAN	PUERTO RICAN	CUBAN	CENTRAL/SOUTH AMERICAN	OTHER/UNK HISPANIC	HAITIAN		
FLORIDA	1,584	273	80	78	36	57	22	60	1,196	55
ALACHUA	34	1	0	1	0	0	0	0	33	0
BAKER	3	0	0	0	0	0	0	0	3	0
BAY	30	1	1	0	0	0	0	0	29	0
BRADFORD	3	0	0	0	0	0	0	0	3	0
BREVARD	25	2	0	1	0	0	1	0	23	0
BROWARD	143	23	0	7	3	12	1	19	99	2
CALHOUN	1	0	0	0	0	0	0	0	1	0
CHARLOTTE	8	0	0	0	0	0	0	1	7	0
CITRUS	5	0	0	0	0	0	0	0	5	0
CLAY	19	2	1	1	0	0	0	0	17	0
COLLIER	29	12	11	0	0	1	0	3	13	1
COLUMBIA	11	1	0	0	0	0	1	0	10	0
MIAMI-DADE	194	53	3	3	21	23	3	10	91	40
DESOTO	2	1	1	0	0	0	0	0	1	0
DIXIE	2	0	0	0	0	0	0	0	2	0
DUVAL	130	2	0	1	0	0	1	0	127	1
ESCAMBIA	34	1	1	0	0	0	0	0	33	0
FLAGLER	4	1	0	1	0	0	0	0	3	0
FRANKLIN	2	0	0	0	0	0	0	0	2	0
GADSDEN	6	2	1	0	0	0	1	0	4	0
GILCHRIST	2	0	0	0	0	0	0	0	2	0
GLADES	1	0	0	0	0	0	0	0	1	0
GULF	1	0	0	0	0	0	0	0	1	0
HAMILTON	3	0	0	0	0	0	0	0	3	0
HARDEE	0	0	0	0	0	0	0	0	0	0
HENDRY	5	2	2	0	0	0	0	0	3	0
HERNANDO	11	0	0	0	0	0	0	0	11	0
HIGHLANDS	5	2	1	1	0	0	0	0	3	0
HILLSBOROUGH	137	37	12	16	3	2	4	1	95	4
HOLMES	2	0	0	0	0	0	0	0	2	0
INDIAN RIVER	7	3	1	0	0	2	0	0	4	0
JACKSON	5	1	1	0	0	0	0	0	4	0
JEFFERSON	2	0	0	0	0	0	0	0	2	0
LAFAYETTE	0	0	0	0	0	0	0	0	0	0
LAKE	16	4	2	1	0	1	0	0	11	1
LEE	29	8	4	3	0	1	0	1	20	0
LEON	33	1	0	0	0	1	0	1	31	0
LEVY	4	0	0	0	0	0	0	0	4	0
LIBERTY	0	0	0	0	0	0	0	0	0	0
MADISON	2	1	1	0	0	0	0	0	1	0
MANATEE	20	8	7	0	0	0	1	0	12	0
MARION	33	3	1	2	0	0	0	0	29	1
MARTIN	8	2	2	0	0	0	0	0	5	1
MONROE	5	2	0	0	1	1	0	1	1	1
NASSAU	4	0	0	0	0	0	0	0	4	0
OKALOOSA	21	4	2	1	0	0	1	0	17	0
OKEECHOBEE	3	0	0	0	0	0	0	0	3	0
ORANGE	123	34	4	18	3	7	2	5	83	1
OSCEOLA	15	4	1	2	1	0	0	0	11	0
PALM BEACH	112	20	9	3	2	5	1	17	73	2
PASCO	23	5	0	4	0	0	1	0	18	0
PINELLAS	72	5	2	1	0	0	2	0	67	0
POLK	57	8	4	4	0	0	0	0	49	0
PUTNAM	13	3	1	2	0	0	0	0	10	0
SAINT JOHNS	11	0	0	0	0	0	0	0	11	0
SAINT LUCIE	11	1	0	0	0	0	1	1	9	0
SANTA ROSA	13	2	1	1	0	0	0	0	11	0
SARASOTA	18	2	1	1	0	0	0	0	16	0
SEMINOLE	25	5	1	1	2	1	0	0	20	0
SUMTER	4	0	0	0	0	0	0	0	4	0
SUWANNEE	5	1	1	0	0	0	0	0	4	0
TAYLOR	3	0	0	0	0	0	0	0	3	0
UNION	0	0	0	0	0	0	0	0	0	0
VOLUSIA	24	3	0	2	0	0	1	0	21	0
WAKULLA	5	0	0	0	0	0	0	0	5	0
WALTON	4	0	0	0	0	0	0	0	4	0
WASHINGTON	2	0	0	0	0	0	0	0	2	0

TABLE F-7: RESIDENT INFANT, NEONATAL AND POST-NEONATAL DEATHS FROM SELECTED CAUSES, BY RACE, FLORIDA, 2003

	TOTAL				WHITE			
	INFANT	NEONATAL <1 DAY	1-27 DAYS	POST NEO- NATAL	INFANT	NEONATAL <1 DAY	1-27 DAYS	POST NEO- NATAL
TOTAL (ICD - 10 GROUPING)	1,584	583	442	559	907	316	268	323
INTESTINAL INFECTIOUS DISEASES (A00-A08)	0	0	0	0	0	0	0	0
DIARRHEA & GASTROENTERITIS--INFECTIOUS ORIGIN (A09)	0	0	0	0	0	0	0	0
TUBERCULOSIS (A16-A19)	0	0	0	0	0	0	0	0
TETANUS (A33-A35)	0	0	0	0	0	0	0	0
DIPHTHERIA (A36)	0	0	0	0	0	0	0	0
WHOOPING COUGH (A37)	0	0	0	0	0	0	0	0
MENINGOCOCCAL INFECTION (A39)	1	0	0	1	1	0	0	1
SEPTICEMIA (A40-A41)	30	0	0	30	9	0	0	9
CONGENITAL SYPHILIS (A50)	0	0	0	0	0	0	0	0
GONOCOCCAL INFECTION (A54)	0	0	0	0	0	0	0	0
ACUTE POLIOMYELITIS (A80)	0	0	0	0	0	0	0	0
VARICELLA (CHICKEN POX) (B01)	0	0	0	0	0	0	0	0
MEASLES (B05)	0	0	0	0	0	0	0	0
HIV DISEASE (B20-B24)	1	0	0	1	1	0	0	1
MUMPS (B26)	0	0	0	0	0	0	0	0
OTHER & UNSPEC VIRAL DIS (A81-B00, B02-B04, B06-B19, B25, B27-B34)	8	0	1	7	3	0	0	3
CANDIDIASIS (B37)	1	0	0	1	0	0	0	0
MALARIA (B50-B54)	0	0	0	0	0	0	0	0
PNEUMOCYSTOSIS (B59)	0	0	0	0	0	0	0	0
OTHER & UNSPECIFIED INFECTIOUS & PARASITIC DISEASES & SEQUELAE *1	2	0	1	1	0	0	0	0
HODGKIN'S DISEASE & NON-HODGKIN'S LYMPHOMAS (C81-C85)	0	0	0	0	0	0	0	0
LEUKEMIA (C91-C95)	0	0	0	0	0	0	0	0
OTHER & UNSPECIFIED MALIGNANT NEOPLASM (C00-C80, C88, C90, C96-C97)	0	0	0	0	0	0	0	0
IN SITU/BENIGN/MALIGNANT NEOPLASMS UNCERT/UNK BEHAVIOR (D00-D48)	2	0	1	1	1	0	1	0
ANEMIAS (D50-D64)	3	0	2	1	2	0	2	0
BLOOD, BLOOD-FORMING, HEMORRHAGIC DISEASES (D65-D76)	6	2	2	2	4	0	2	2
DISORDERS INVOLVING IMMUNE MECHANISM (D80-D89)	0	0	0	0	0	0	0	0
SHORT STATURE (E34.4)	0	0	0	0	0	0	0	0
NUTRITIONAL DEFICIENCIES (E40-E64)	2	0	0	2	1	0	0	1
CYSTIC FIBROSIS (E84)	0	0	0	0	0	0	0	0
FLUID/ELECTROLYTE/ACID-BASE/VOLUME DEPLETION DISORDERS (E86-E87)	1	0	1	0	1	0	1	0
OTHER ENDOCRINE, NUTRITIONAL, METABOLIC DISEASES *2	6	0	1	5	2	0	0	2
MENINGITIS (G00, G03)	10	0	3	7	7	0	3	4
INFANTILE SPINAL MUSCULAR ATROPHY, TYPE 1 (WERDNIG-HOFFMAN) (G12.0)	2	0	0	2	2	0	0	2
INFANTILE CEREBRAL PALSY (G80)	0	0	0	0	0	0	0	0
ANOXIC BRAIN DAMAGE (G93.1)	2	0	0	2	1	0	0	1
OTHER NERVOUS SYSTEM DISEASES *3	16	1	2	13	12	1	2	9
EAR & MASTOID PROCESS DISEASES (H60-H93)	1	0	0	1	0	0	0	0
PULMONARY HEART/CIRCULATION DISEASES (I26-I28)	28	3	11	14	13	1	6	6
PERICARDITIS, ENDOCARDITIS, MYOCARDITIS (I30, I33, I40)	0	0	0	0	0	0	0	0
CARDIOMYOPATHY (I42)	8	1	4	3	5	1	2	2
CARDIAC ARREST (I46)	1	0	0	1	0	0	0	0
CEREBROVASCULAR DISEASES (I60-I69)	10	0	2	8	5	0	1	4
OTHER CIRCULAT SYS DIS (I00-I25, I31, I34-I38, I44-I45, I47-I51, I70-I99)	7	1	3	3	6	1	3	2
ACUTE UPPER RESPIRATORY INFECTIONS (J00-J06)	0	0	0	0	0	0	0	0
INFLUENZA (J10-J11)	1	0	0	1	0	0	0	0
PNEUMONIA (J12-J18)	21	0	3	18	12	0	1	11

TABLE F-7(Cont.): RESIDENT INFANT, NEONATAL AND POST-NEONATAL DEATHS FROM SELECTED CAUSES, BY RACE, FLORIDA, 2003

	TOTAL				WHITE			
	INFANT	NEONATAL <1 DAY	1-27 DAYS	POST NEO- NATAL	INFANT	NEONATAL <1 DAY	1-27 DAYS	POST NEO- NATAL
ACUTE BRONCHITIS & ACUTE BRONCIOLITIS (J20-J21)	3	0	0	3	3	0	0	3
BRONCHITIS, CHRONIC & UNSPECIFIED (J40-J42)	2	0	0	2	2	0	0	2
ASTHMA (J45-J46)	1	0	0	1	1	0	0	1
PNEUMONITIS DUE TO SOLIDS & LIQUIDS (J69)	1	0	0	1	1	0	0	1
OTHER & UNSPEC RESPIR SYS DIS (J22,J30-J39,J43-J44,J47-J68,J70-J98)	16	0	1	15	10	0	0	10
GASTRITIS, DUODENITIS, NONINFECTIVE ENTERITIS/COLITIS (K29, K50-K55)	23	0	1	22	16	0	1	15
HERNIA ABDOM CAVITY & INTESTINAL OBSTRUCT W/O HERNIA (K40-K46, K56)	7	4	0	3	6	4	0	2
OTHER & UNSPEC DIGESTIVE SYSTEM DISEASE (K00-K28, K30-K38, K57-K92)	15	0	0	15	7	0	0	7
RENAL FAILURE & OTHER KIDNEY DISORDERS (N17-N19, N25, N27)	6	0	3	3	3	0	2	1
OTHER & UNSPEC GENITOURINARY SYS DIS (N00-N15, N20-N23, N26,N28-N98)	4	0	1	3	2	0	1	1
PERINATAL PERIOD CONDITIONS (P00-P96)	783	476	267	40	419	242	158	19
MATERNAL HYPERTENSIVE DISORDERS (P00.0)	5	5	0	0	0	0	0	0
MATERNAL CONDITIONS UNRELATED PRESENT PREGNANCY (P00.1-P00.9)	8	4	3	1	3	2	1	0
INCOMPETENT CERVIX (P01.0)	28	28	0	0	11	11	0	0
PREMATURE RUPTURE OF MEMBRANES (P01.1)	54	51	3	0	29	26	3	0
MULTIPLE PREGNANCY (P01.5)	39	37	1	1	27	25	1	1
MATERNAL COMPLICATIONS OF PREGNANCY (P01.2-P01.4, P01.6-P01.9)	11	10	1	0	7	6	1	0
PLACENTA COMPLICATIONS (P02.0-P02.3)	26	25	1	0	10	10	0	0
CORD COMPLICATIONS (P02.4-P02.6)	2	2	0	0	2	2	0	0
CHORIOAMNIONITIS (P02.7)	25	24	1	0	13	12	1	0
OTHER & UNSPECIFIED MEMBRANE ABNORMALITIES (P02.8-P02.9)	0	0	0	0	0	0	0	0
OTHER COMPLICATIONS OF LABOR & DELIVERY (P03)	6	6	0	0	3	3	0	0
NOXIOUS INFLUENCES VIA PLACENTA OR BREAST MILK (P04)	3	2	1	0	2	1	1	0
SLOW FETAL GROWTH & FETAL MALNUTRITION (P05)	8	1	3	4	5	1	2	2
EXTREME LOW BIRTH WEIGHT OR EXTREME IMMATURITY (P07.0, P07.2)	156	128	25	3	72	56	15	1
OTHER LOW BIRTH WEIGHT OR PRETERM (P07.1, P07.3)	74	64	3	7	33	33	0	0
LONG GESTATION & HIGH BIRTH WEIGHT (P08)	0	0	0	0	0	0	0	0
BIRTH TRAUMA (P10-P15)	0	0	0	0	0	0	0	0
INTRAUTERINE HYPOXIA (P20)	6	4	2	0	4	3	1	0
BIRTH ASPHYXIA (P21)	25	5	19	1	16	3	12	1
RESPIRATORY DISTRESS (P22)	38	7	30	1	19	5	13	1
CONGENITAL PNEUMONIA (P23)	3	0	1	2	1	0	0	1
NEONATAL ASPIRATION SYNDROMES (P24)	2	1	1	0	1	0	1	0
INTERSTITIAL EMPHYSEMA & RELATED CONDITIONS (P25)	5	1	4	0	4	1	3	0
PULMONARY HEMORRHAGE (P26)	6	0	6	0	2	0	2	0
CHRONIC RESPIRATORY DISEASE (P27)	13	0	0	13	7	0	0	7
ATELECTASIS (P28.0-P28.1)	24	14	9	1	19	11	7	1
OTHER RESPIRATORY CONDITIONS (P28.2-P28.9)	2	0	1	1	1	0	1	0
BACTERIAL SEPSIS (P36)	74	14	60	0	35	7	28	0
OMPHALITIS W/ OR W/O HEMORRHAGE (P38)	0	0	0	0	0	0	0	0
ALL OTHER INFECTIONS (P35, P37, P39)	9	2	5	2	8	2	4	2
NEONATAL HEMORRHAGE (P50-P52, P54)	36	4	32	0	29	3	26	0
HEMORRHAGIC DISEASE OF NEWBORN (P53)	0	0	0	0	0	0	0	0
HEMOLYTIC DIS DUE TO ISOIMMUNIZATION/PERINAT JAUNDICE (P55-P59)	1	0	1	0	1	0	1	0
HEMATOLOGICAL DISORDERS (P60-P61)	1	1	0	0	1	1	0	0
DIABETES MELLITUS, MATERNAL OR NEONATAL (P70.0-P70.2)	0	0	0	0	0	0	0	0
NECROTIZING ENTEROCOLITIS (P77)	30	0	28	2	17	0	16	1
HYDROPS FETALIS NOT DUE TO HEMOLYTIC DIS (P83.2)	16	10	6	0	12	7	5	0
OTHER PERINATAL CONDITIONS *4	47	26	20	1	25	11	13	1

TABLE F-7 (Cont.): RESIDENT INFANT, NEONATAL AND POST-NEONATAL DEATHS FROM SELECTED CAUSES, BY RACE, FLORIDA, 2003

	TOTAL				WHITE			
	INFANT	NEONATAL <1 DAY	1-27 DAYS	POST NEO- NATAL	INFANT	NEONATAL <1 DAY	1-27 DAYS	POST NEO- NATAL
CONGENITAL / CHROMOSOMAL ANOMALIES (Q00-Q99)	290	86	104	100	199	63	66	70
ANENCEPHALY & SIMILAR ANOMALIES (Q00)	17	11	6	0	13	10	3	0
CONGENITAL HYDROCEPHALUS (Q03)	4	0	2	2	4	0	2	2
SPINA BIFIDA (Q05)	1	0	1	0	1	0	1	0
OTHER CONGENITAL ANOMALIES CENT NERV SYS (Q01-Q02,Q04,Q06-Q07)	9	5	1	3	7	4	1	2
CONGENITAL ANOMALIES OF HEART (Q20-Q24)	78	2	32	44	55	1	21	33
OTHER CONGENITAL ANOMALIES OF CIRCULATORY SYS (Q25-Q28)	10	0	5	5	5	0	3	2
CONGENITAL ANOMALIES OF RESPIRATORY SYS (Q30-Q34)	33	16	12	5	21	11	5	5
CONGENITAL ANOMALIES OF DIGESTIVE SYS (Q35-Q45)	4	2	0	2	2	1	0	1
CONGENITAL ANOMALIES OF GENITOURINARY SYS (Q50-Q64)	18	12	5	1	15	9	5	1
CONGENITAL ANOMALIES OF MUSCULOSKELETAL SYS (Q65-Q85)	22	10	5	7	17	6	5	6
DOWN'S SYNDROME (Q90)	4	0	2	2	4	0	2	2
EDWARD'S SYNDROME (Q91.0-Q91.3)	34	6	15	13	20	4	9	7
PATAU'S SYNDROME (Q91.4-Q91.7)	18	5	8	5	12	3	5	4
OTHER CONGENITAL ANOMALIES (Q10-Q18, Q86-Q89)	26	12	6	8	15	9	2	4
OTHER CHROMOSOMAL ANOMALIES (Q92-Q99)	12	5	4	3	8	5	2	1
SUDDEN INFANT DEATH SYNDROME (R95)	92	0	7	85	60	0	3	57
SYMPTOMS, SIGNS, ABN CLINICAL/LAB FINDINGS (R00-R53,R55-R94,R96-R99)	66	6	10	50	28	1	6	21
ALL OTHER DISEASES (F01-F99, H00-H57, L00-M99)	2	0	0	2	1	0	0	1
UNINT INJ: MOTOR VEHICLE *5	7	0	0	7	4	0	0	4
UNINT INJ: OTHER & UNSPEC TRANSPORT & SEQUELAE *6	0	0	0	0	0	0	0	0
UNINT INJ: FALLS (W00-W19)	0	0	0	0	0	0	0	0
UNINT INJ: FIREARMS DISCHARGE (W32-W34)	0	0	0	0	0	0	0	0
UNINT INJ: DROWNING & SUBMERSION (W65-W74)	9	0	0	9	8	0	0	8
UNINT INJ: SUFFOCATION & STRANGULATION IN BED (W75)	53	0	7	46	30	0	6	24
UNINT INJ: OTHER SUFFOCATION & STRANGULATION (W76-W77, W81-W84)	2	0	0	2	2	0	0	2
UNINT INJ: INHALE/INGEST--RESPIRATORY TRACT OBSTRUCTION (W78-W80)	3	0	1	2	1	0	0	1
UNINT INJ: SMOKE, FIRE, FLAMES EXPOSURE (X00-X09)	1	0	0	1	1	0	0	1
UNINT INJ: POISONING & NOXIOUS SUBSTANCE EXPOSURE (X40-X49)	2	0	0	2	0	0	0	0
UNINT INJ: OTHER & UNSPECIFIED & SEQUELAE *7	5	0	0	5	3	0	0	3
HOMICIDE: HANGING, STRANGULATION, SUFFOCATION (X91)	2	1	1	0	2	1	1	0
HOMICIDE: FIREARMS DISCHARGE (X93-X95)	0	0	0	0	0	0	0	0
HOMICIDE: NEGLECT, ABANDONMENT, MALTREATMENT (Y06-Y07)	3	0	0	3	2	0	0	2
HOMICIDE: OTHER & UNSPECIFIED MEANS & SEQUELAE *8	14	1	2	11	6	0	0	6
MEDICAL & SURGICAL CARE COMPLICATIONS (Y40-Y84, Y88)	1	0	0	1	1	0	0	1
OTHER EXTERNAL CAUSES & SEQUELAE (X60-X84,Y10-Y36,Y87.0,Y87.2,Y89)	1	1	0	0	1	1	0	0
*1 (A20-A32, A38, A42-A49, A51-A53, A55-A79, B35-B36, B38-B49, B55-B58, B60-B99)								
*2 (E00-E32, E34.0-E34.2, E34.4-E34.9, E65-E83, E85, E88)								
*3 (G04,G06-G11,G12.1-G12.9,G20-G72,G81-G92,G93.0,G93.2-G93.9,G95-G98)								
*4 (P29,P70.3-P70.9,P71-P76,P78-P81,P83.0-P83.1,P83.3-P83.9,P90-P96)								
*5 (V02-V04, V09.0, V09.2, V12-V14, V19.0-V19.2, V19.4-V19.6, V20-V79, V80.3-V80.5, V81.0-V81.1, V82.0-V82.1, V83-V86, V87.0-V87.8, V88.0-V88.8, V89.0, V89.2)								
*6 (V01, V05-V06, V09.1, V09.3-V09.9, V10-V11, V15-V18, V19.3, V19.8-V19.9, V80.0-V80.2, V80.6-V80.9, V81.2-V81.9, V82.2-V82.9, V87.9, V88.9, V89.1, V89.3, V89.9, V90-V99, Y85)								
*7 (W20-W31, W35-W64, W85-W99, X10-X39, X50-X59, Y86)								
*8 (X85-X90, X92, X96-X99, Y00-Y05, Y08-Y09, Y87.1)								

TABLE F-7(Cont.): RESIDENT INFANT, NEONATAL AND POST-NEONATAL DEATHS FROM SELECTED CAUSES, BY RACE, FLORIDA, 2003

	BLACK				OTHER			
	INFANT	NEONATAL <1 DAY	1-27 DAYS	POST NEO- NATAL	INFANT	NEONATAL <1 DAY	1-27 DAYS	POST NEO- NATAL
TOTAL (ICD - 10 GROUPING)	647	251	169	227	27	13	5	9
INTESTINAL INFECTIOUS DISEASES (A00-A08)	0	0	0	0	0	0	0	0
DIARRHEA & GASTROENTERITIS--INFECTIOUS ORIGIN (A09)	0	0	0	0	0	0	0	0
TUBERCULOSIS (A16-A19)	0	0	0	0	0	0	0	0
TETANUS (A33-A35)	0	0	0	0	0	0	0	0
DIPHTHERIA (A36)	0	0	0	0	0	0	0	0
WHOOPING COUGH (A37)	0	0	0	0	0	0	0	0
MENINGOCOCCAL INFECTION (A39)	0	0	0	0	0	0	0	0
SEPTICEMIA (A40-A41)	21	0	0	21	0	0	0	0
CONGENITAL SYPHILIS (A50)	0	0	0	0	0	0	0	0
GONOCOCCAL INFECTION (A54)	0	0	0	0	0	0	0	0
ACUTE POLIOMYELITIS (A80)	0	0	0	0	0	0	0	0
VARICELLA (CHICKEN POX) (B01)	0	0	0	0	0	0	0	0
MEASLES (B05)	0	0	0	0	0	0	0	0
HIV DISEASE (B20-B24)	0	0	0	0	0	0	0	0
MUMPS (B26)	0	0	0	0	0	0	0	0
OTHER & UNSPEC VIRAL DIS (A81-B00, B02-B04, B06-B19, B25, B27-B34)	4	0	1	3	1	0	0	1
CANDIDIASIS (B37)	1	0	0	1	0	0	0	0
MALARIA (B50-B54)	0	0	0	0	0	0	0	0
PNEUMOCYSTOSIS (B59)	0	0	0	0	0	0	0	0
OTHER & UNSPECIFIED INFECTIOUS & PARASITIC DISEASES & SEQUELAE *1	2	0	1	1	0	0	0	0
HODGKIN'S DISEASE & NON-HODGKIN'S LYMPHOMAS (C81-C85)	0	0	0	0	0	0	0	0
LEUKEMIA (C91-C95)	0	0	0	0	0	0	0	0
OTHER & UNSPECIFIED MALIGNANT NEOPLASM (C00-C80, C88, C90, C96-C97)	0	0	0	0	0	0	0	0
IN SITU/BENIGN/MALIGNANT NEOPLASMS UNCERT/UNK BEHAVIOR (D00-D48)	1	0	0	1	0	0	0	0
ANEMIAS (D50-D64)	0	0	0	0	1	0	0	1
BLOOD, BLOOD-FORMING, HEMORRHAGIC DISEASES (D65-D76)	2	2	0	0	0	0	0	0
DISORDERS INVOLVING IMMUNE MECHANISM (D80-D89)	0	0	0	0	0	0	0	0
SHORT STATURE (E34.4)	0	0	0	0	0	0	0	0
NUTRITIONAL DEFICIENCIES (E40-E64)	1	0	0	1	0	0	0	0
CYSTIC FIBROSIS (E84)	0	0	0	0	0	0	0	0
FLUID/ELECTROLYTE/ACID-BASE/VOLUME DEPLETION DISORDERS (E86-E87)	0	0	0	0	0	0	0	0
OTHER ENDOCRINE, NUTRITIONAL, METABOLIC DISEASES *2	2	0	0	2	2	0	1	1
MENINGITIS (G00, G03)	3	0	0	3	0	0	0	0
INFANTILE SPINAL MUSCULAR ATROPHY, TYPE 1 (WERDNIG-HOFFMAN) (G12.0)	0	0	0	0	0	0	0	0
INFANTILE CEREBRAL PALSY (G80)	0	0	0	0	0	0	0	0
ANOXIC BRAIN DAMAGE (G93.1)	1	0	0	1	0	0	0	0
OTHER NERVOUS SYSTEM DISEASES *3	4	0	0	4	0	0	0	0
EAR & MASTOID PROCESS DISEASES (H60-H93)	1	0	0	1	0	0	0	0
PULMONARY HEART/CIRCULATION DISEASES (I26-I28)	14	1	5	8	1	1	0	0
PERICARDITIS, ENDOCARDITIS, MYOCARDITIS (I30, I33, I40)	0	0	0	0	0	0	0	0
CARDIOMYOPATHY (I42)	3	0	2	1	0	0	0	0
CARDIAC ARREST (I46)	1	0	0	1	0	0	0	0
CEREBROVASCULAR DISEASES (I60-I69)	5	0	1	4	0	0	0	0
OTHER CIRCULAT SYS DIS (I00-I25, I31, I34-I38, I44-I45, I47-I51, I70-I99)	1	0	0	1	0	0	0	0
ACUTE UPPER RESPIRATORY INFECTIONS (J00-J06)	0	0	0	0	0	0	0	0
INFLUENZA (J10-J11)	1	0	0	1	0	0	0	0
PNEUMONIA (J12-J18)	9	0	2	7	0	0	0	0

TABLE F-7(Cont.): RESIDENT INFANT, NEONATAL AND POST-NEONATAL DEATHS FROM SELECTED CAUSES, BY RACE, FLORIDA, 2003

	BLACK				OTHER			
	INFANT	NEONATAL <1 DAY	1-27 DAYS	POST NEO- NATAL	INFANT	NEONATAL <1 DAY	1-27 DAYS	POST NEO- NATAL
ACUTE BRONCHITIS & ACUTE BRONCIOLITIS (J20-J21)	0	0	0	0	0	0	0	0
BRONCHITIS, CHRONIC & UNSPECIFIED (J40-J42)	0	0	0	0	0	0	0	0
ASTHMA (J45-J46)	0	0	0	0	0	0	0	0
PNEUMONITIS DUE TO SOLIDS & LIQUIDS (J69)	0	0	0	0	0	0	0	0
OTHER & UNSPEC RESPIR SYS DIS (J22,J30-J39,J43-J44,J47-J68,J70-J98)	6	0	1	5	0	0	0	0
GASTRITIS, DUODENITIS, NONINFECTIVE ENTERITIS/COLITIS (K29, K50-K55)	7	0	0	7	0	0	0	0
HERNIA ABDOM CAVITY & INTESTINAL OBSTRUCT W/O HERNIA (K40-K46, K56)	1	0	0	1	0	0	0	0
OTHER & UNSPEC DIGESTIVE SYSTEM DISEASE (K00-K28, K30-K38, K57-K92)	8	0	0	8	0	0	0	0
RENAL FAILURE & OTHER KIDNEY DISORDERS (N17-N19, N25, N27)	3	0	1	2	0	0	0	0
OTHER & UNSPEC GENITOURINARY SYS DIS (N00-N15, N20-N23, N26,N28-N98)	1	0	0	1	1	0	0	1
PERINATAL PERIOD CONDITIONS (P00-P96)	349	222	106	21	13	10	3	0
MATERNAL HYPERTENSIVE DISORDERS (P00.0)	5	5	0	0	0	0	0	0
MATERNAL CONDITIONS UNRELATED PRESENT PREGNANCY (P00.1-P00.9)	5	2	2	1	0	0	0	0
INCOMPETENT CERVIX (P01.0)	16	16	0	0	1	1	0	0
PREMATURE RUPTURE OF MEMBRANES (P01.1)	25	25	0	0	0	0	0	0
MULTIPLE PREGNANCY (P01.5)	12	12	0	0	0	0	0	0
MATERNAL COMPLICATIONS OF PREGNANCY (P01.2-P01.4, P01.6-P01.9)	4	4	0	0	0	0	0	0
PLACENTA COMPLICATIONS (P02.0-P02.3)	16	15	1	0	0	0	0	0
CORD COMPLICATIONS (P02.4-P02.6)	0	0	0	0	0	0	0	0
CHORIOAMNIONITIS (P02.7)	12	12	0	0	0	0	0	0
OTHER & UNSPECIFIED MEMBRANE ABNORMALITIES (P02.8-P02.9)	0	0	0	0	0	0	0	0
OTHER COMPLICATIONS OF LABOR & DELIVERY (P03)	3	3	0	0	0	0	0	0
NOXIOUS INFLUENCES VIA PLACENTA OR BREAST MILK (P04)	1	1	0	0	0	0	0	0
SLOW FETAL GROWTH & FETAL MALNUTRITION (P05)	3	0	1	2	0	0	0	0
EXTREME LOW BIRTH WEIGHT OR EXTREME IMMATUREITY (P07.0, P07.2)	78	66	10	2	5	5	0	0
OTHER LOW BIRTH WEIGHT OR PRETERM (P07.1, P07.3)	37	27	3	7	3	3	0	0
LONG GESTATION & HIGH BIRTH WEIGHT (P08)	0	0	0	0	0	0	0	0
BIRTH TRAUMA (P10-P15)	0	0	0	0	0	0	0	0
INTRAUTERINE HYPOXIA (P20)	2	1	1	0	0	0	0	0
BIRTH ASPHYXIA (P21)	8	2	6	0	1	0	1	0
RESPIRATORY DISTRESS (P22)	17	2	15	0	2	0	2	0
CONGENITAL PNEUMONIA (P23)	2	0	1	1	0	0	0	0
NEONATAL ASPIRATION SYNDROMES (P24)	1	1	0	0	0	0	0	0
INTERSTITIAL EMPHYSEMA & RELATED CONDITIONS (P25)	1	0	1	0	0	0	0	0
PULMONARY HEMORRHAGE (P26)	4	0	4	0	0	0	0	0
CHRONIC RESPIRATORY DISEASE (P27)	6	0	0	6	0	0	0	0
ATELECTASIS (P28.0-P28.1)	5	3	2	0	0	0	0	0
OTHER RESPIRATORY CONDITIONS (P28.2-P28.9)	1	0	0	1	0	0	0	0
BACTERIAL SEPSIS (P36)	38	6	32	0	1	1	0	0
OMPHALITIS W/ OR W/O HEMORRHAGE (P38)	0	0	0	0	0	0	0	0
ALL OTHER INFECTIONS (P35, P37, P39)	1	0	1	0	0	0	0	0
NEONATAL HEMORRHAGE (P50-P52, P54)	7	1	6	0	0	0	0	0
HEMORRHAGIC DISEASE OF NEWBORN (P53)	0	0	0	0	0	0	0	0
HEMOLYTIC DIS DUE TO ISOIMMUNIZATION/PERINAT JAUNDICE (P55-P59)	0	0	0	0	0	0	0	0
HEMATOLOGICAL DISORDERS (P60-P61)	0	0	0	0	0	0	0	0
DIABETES MELLITUS, MATERNAL OR NEONATAL (P70.0-P70.2)	0	0	0	0	0	0	0	0
NECROTIZING ENTEROCOLITIS (P77)	13	0	12	1	0	0	0	0
HYDROPS FETALIS NOT DUE TO HEMOLYTIC DIS (P83.2)	4	3	1	0	0	0	0	0
OTHER PERINATAL CONDITIONS *4	22	15	7	0	0	0	0	0

TABLE F-7(Cont.): RESIDENT INFANT, NEONATAL AND POST-NEONATAL DEATHS FROM SELECTED CAUSES, BY RACE, FLORIDA, 2003

	BLACK				OTHER			
	INFANT	NEONATAL <1 DAY	1-27 DAYS	POST NEO- NATAL	INFANT	NEONATAL <1 DAY	1-27 DAYS	POST NEO- NATAL
CONGENITAL / CHROMOSOMAL ANOMALIES (Q00-Q99)	85	21	37	27	5	1	1	3
ANENCEPHALY & SIMILAR ANOMALIES (Q00)	4	1	3	0	0	0	0	0
CONGENITAL HYDROCEPHALUS (Q03)	0	0	0	0	0	0	0	0
SPINA BIFIDA (Q05)	0	0	0	0	0	0	0	0
OTHER CONGENITAL ANOMALIES CENT NERV SYS (Q01-Q02,Q04,Q06-Q07)	1	0	0	1	0	0	0	0
CONGENITAL ANOMALIES OF HEART (Q20-Q24)	21	1	10	10	2	0	1	1
OTHER CONGENITAL ANOMALIES OF CIRCULATORY SYS (Q25-Q28)	5	0	2	3	0	0	0	0
CONGENITAL ANOMALIES OF RESPIRATORY SYS (Q30-Q34)	11	4	7	0	1	1	0	0
CONGENITAL ANOMALIES OF DIGESTIVE SYS (Q35-Q45)	2	1	0	1	0	0	0	0
CONGENITAL ANOMALIES OF GENITOURINARY SYS (Q50-Q64)	3	3	0	0	0	0	0	0
CONGENITAL ANOMALIES OF MUSCULOSKELETAL SYS (Q65-Q85)	5	4	0	1	0	0	0	0
DOWN'S SYNDROME (Q90)	0	0	0	0	0	0	0	0
EDWARD'S SYNDROME (Q91.0-Q91.3)	12	2	6	4	2	0	0	2
PATAU'S SYNDROME (Q91.4-Q91.7)	6	2	3	1	0	0	0	0
OTHER CONGENITAL ANOMALIES (Q10-Q18, Q86-Q89)	11	3	4	4	0	0	0	0
OTHER CHROMOSOMAL ANOMALIES (Q92-Q99)	4	0	2	2	0	0	0	0
SUDDEN INFANT DEATH SYNDROME (R95)	32	0	4	28	0	0	0	0
SYMPTOMS, SIGNS, ABN CLINICAL/LAB FINDINGS (R00-R53,R55-R94,R96-R99)	35	4	4	27	3	1	0	2
ALL OTHER DISEASES (F01-F99, H00-H57, L00-M99)	1	0	0	1	0	0	0	0
UNINT INJ: MOTOR VEHICLE *5	3	0	0	3	0	0	0	0
UNINT INJ: OTHER & UNSPEC TRANSPORT & SEQUELAE *6	0	0	0	0	0	0	0	0
UNINT INJ: FALLS (W00-W19)	0	0	0	0	0	0	0	0
UNINT INJ: FIREARMS DISCHARGE (W32-W34)	0	0	0	0	0	0	0	0
UNINT INJ: DROWNING & SUBMERSION (W65-W74)	1	0	0	1	0	0	0	0
UNINT INJ: SUFFOCATION & STRANGULATION IN BED (W75)	23	0	1	22	0	0	0	0
UNINT INJ: OTHER SUFFOCATION & STRANGULATION (W76-W77, W81-W84)	0	0	0	0	0	0	0	0
UNINT INJ: INHALE/INGEST--RESPIRATORY TRACT OBSTRUCTION (W78-W80)	2	0	1	1	0	0	0	0
UNINT INJ: SMOKE, FIRE, FLAMES EXPOSURE (X00-X09)	0	0	0	0	0	0	0	0
UNINT INJ: POISONING & NOXIOUS SUBSTANCE EXPOSURE (X40-X49)	2	0	0	2	0	0	0	0
UNINT INJ: OTHER & UNSPECIFIED & SEQUELAE *7	2	0	0	2	0	0	0	0
HOMICIDE: HANGING, STRANGULATION, SUFFOCATION (X91)	0	0	0	0	0	0	0	0
HOMICIDE: FIREARMS DISCHARGE (X93-X95)	0	0	0	0	0	0	0	0
HOMICIDE: NEGLECT, ABANDONMENT, MALTREATMENT (Y06-Y07)	1	0	0	1	0	0	0	0
HOMICIDE: OTHER & UNSPECIFIED MEANS & SEQUELAE *8	8	1	2	5	0	0	0	0
MEDICAL & SURGICAL CARE COMPLICATIONS (Y40-Y84, Y88)	0	0	0	0	0	0	0	0
OTHER EXTERNAL CAUSES & SEQUELAE (X60-X84,Y10-Y36,Y87.0,Y87.2,Y89)	0	0	0	0	0	0	0	0
*1 (A20-A32, A38, A42-A49, A51-A53, A55-A79, B35-B36, B38-B49, B55-B58, B60-B99)								
*2 (E00-E32, E34.0-E34.2, E34.4-E34.9, E65-E83, E85, E88)								
*3 (G04,G06-G11,G12.1-G12.9,G20-G72,G81-G92,G93.0,G93.2-G93.9,G95-G98)								
*4 (P29,P70.3-P70.9,P71-P76,P78-P81,P83.0-P83.1,P83.3-P83.9,P90-P96)								
*5 (V02-V04, V09.0, V09.2, V12-V14, V19.0-V19.2, V19.4-V19.6, V20-V79, V80.3-V80.5, V81.0-V81.1, V82.0-V82.1, V83-V86, V87.0-V87.8, V88.0-V88.8, V89.0, V89.2)								
*6 (V01, V05-V06, V09.1, V09.3-V09.9, V10-V11, V15-V18, V19.3, V19.8-V19.9, V80.0-V80.2, V80.6-V80.9, V81.2-V81.9, V82.2-V82.9, V87.9, V88.9, V89.1, V89.3, V89.9, V90-V99, Y85)								
*7 (W20-W31, W35-W64, W85-W99, X10-X39, X50-X59, Y86)								
*8 (X85-X90, X92, X96-X99, Y00-Y05, Y08-Y09, Y87.1)								