

Marriages and Dissolutions of Marriage

MARRIAGES AND DISSOLUTIONS OF MARRIAGE

- The number of marriage ceremonies decreased slightly from a total of 157,554 in 2002 to a total of 153,023 in 2003.
- The marriage rate per 1,000 population has increased slightly each year since 1999 to 9.4 in 2002. It dropped to 8.9 in 2003.
- May was the most popular month for marriages with 15,219 marriages performed.
- After increasing for three consecutive years, the number of dissolutions of marriage decreased slightly in 2002. The number increased slightly in 2003.
- Since 1980, the dissolution rate has declined 31.5 percent despite an overall increase in the number of dissolutions.
- The dissolution of marriage rate per 1,000 population declined from 5.2 in 2001 to 5.1 in 2002, and then to 5.0 in 2003.
- Of the 85,367 dissolutions of marriage in 2003, over half (55.0 percent) affected no minor children.
- More than four of every 10 dissolutions of marriage occurred to couples married between five and 14 years.
- The marriage rate in Florida is more than 1 $\frac{3}{4}$ times the dissolution rate.

CHART M-1: MARRIAGES AND DISSOLUTIONS OF MARRIAGE, AND RATES PER 1,000 POPULATION, FLORIDA AND UNITED STATES, CENSUS YEARS 1920-1990 AND 1993-2003						
YEAR	MARRIAGES			DISSOLUTIONS ¹		
	FLORIDA		U.S.	FLORIDA		U.S.
	NUMBER	RATE	RATE	NUMBER	RATE	RATE
1920 ¹	NA	NA	12.0	NA	NA	1.6
1930 ¹	17,147	11.7	9.2	3,262	2.5	1.6
1940	32,709	17.1	12.1	11,061	5.8	2.0
1950	27,588	9.8	11.1	17,845	6.3	2.6
1960	39,315	7.9	8.5	19,326	3.9	2.2
1970	69,249	10.1	10.6	37,506	5.5	3.5
1980	108,344	11.0	10.6	71,578	7.3	5.2
1990	141,816	10.9	9.8	81,119	6.2	4.7
1993	141,892	10.3	9.0 ²	82,956	6.0	4.6 ²
1994	142,895	10.1	9.1 ²	81,628	5.8	4.6 ²
1995	145,090	10.1	9.1 ²	78,416	5.4	4.5 ²
1996	150,599	10.2	8.8 ²	77,750	5.3	4.3 ²
1997	158,783	10.6	8.9 ²	82,161	5.5	4.3 ²
1998	141,344	9.2	8.5 ²	80,466	5.3	4.3 ²
1999	136,403	8.7	8.5 ²	80,983	5.2	4.1 ²
2000	145,300	9.0	8.7 ²	81,439	5.1	4.2 ²
2001	153,298	9.3	8.2 ²	85,259	5.2	4.0 ²
2002	157,554	9.4	7.8 ²	85,181	5.1	4.0 ²
2003	153,023	8.9	7.5 ²	85,367	5.0	3.8 ²

¹ Includes divorces and annulments.

² Provisional data.

GRAPH M-1: MARRIAGE AND DISSOLUTION OF MARRIAGE RATES PER 1,000 POPULATION, FLORIDA AND UNITED STATES, 1993-2003

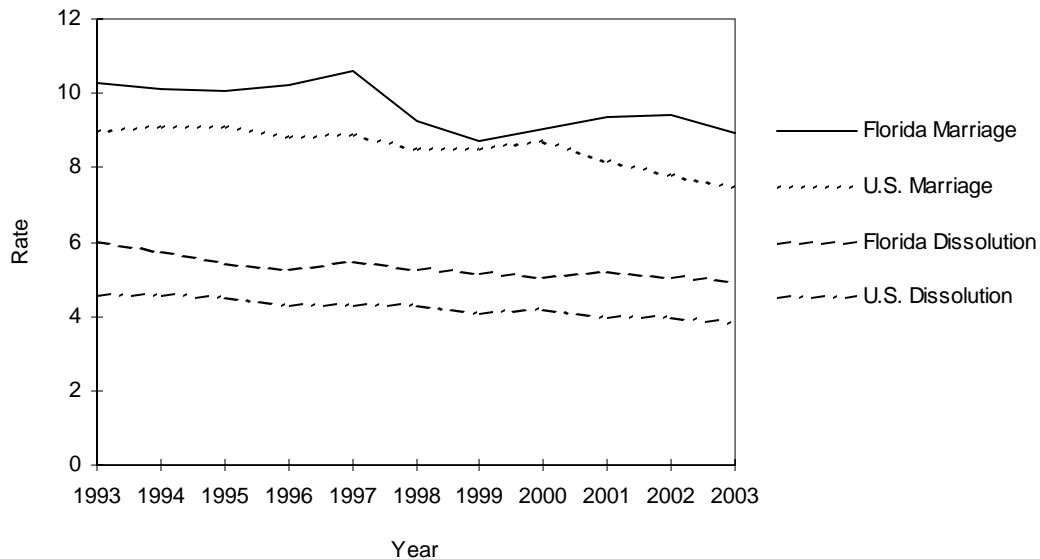


TABLE M-1: MARRIAGES PERFORMED BY MONTH, BY COUNTY OF ISSUANCE, FLORIDA, 2003

	TOTAL	JAN	FEB	MAR	APR	MAY	JUN	JUL	AUG	SEP	OCT	NOV	DEC
FLORIDA	153,023	9,597	13,231	14,604	13,022	15,219	14,039	12,448	12,629	10,481	12,905	12,959	11,889
ALACHUA	1,755	74	130	195	153	198	194	142	164	101	159	114	131
BAKER	274	20	21	27	27	35	34	17	23	17	12	24	17
BAY	2,154	124	170	158	155	229	216	216	197	177	222	164	126
BRADFORD	254	14	31	24	31	15	25	14	27	24	17	12	20
BREVARD	4,059	211	369	385	365	378	358	345	348	276	336	319	369
BROWARD	14,383	941	1,256	1,397	1,217	1,318	1,312	1,166	1,230	939	1,206	1,210	1,191
CALHOUN	109	4	13	5	9	17	4	13	6	8	11	9	10
CHARLOTTE	1,045	56	111	108	97	104	69	70	73	70	93	101	93
CITRUS	748	49	74	79	50	83	70	69	60	32	56	63	63
CLAY	1,542	83	135	146	127	165	154	131	133	114	144	117	93
COLLIER	2,804	186	227	260	257	279	234	207	217	173	234	271	259
COLUMBIA	580	37	51	68	46	69	61	43	53	31	47	33	41
MIAMI-DADE	26,335	1,931	2,403	2,398	2,214	2,403	2,281	2,156	2,238	1,796	2,019	2,162	2,334
DESOTO	222	16	20	20	11	21	24	17	25	17	15	15	21
DIXIE	137	9	14	8	14	13	17	9	13	8	12	9	11
DUVAL	6,502	379	518	641	589	696	629	542	584	440	554	513	417
ESCAMBIA	3,148	171	253	260	303	333	320	285	300	231	285	230	177
FLAGLER	374	26	26	32	37	36	41	30	19	26	28	35	38
FRANKLIN	157	6	8	13	21	20	14	19	10	13	17	9	7
GADSDEN	289	17	35	32	26	29	30	19	11	26	20	27	17
GILCHRIST	158	7	15	11	14	14	14	13	19	10	21	11	9
GLADES	36	2	7	5	1	6	2	1	1	0	4	5	2
GULF	161	5	12	13	9	16	19	26	13	11	14	10	13
HAMILTON	162	6	15	15	15	19	22	14	12	11	9	18	6
HARDEE	194	18	17	18	28	24	16	12	12	12	9	14	14
HENDRY	302	21	26	30	22	28	29	19	23	22	32	22	28
HERNANDO	806	56	78	84	64	75	82	55	57	53	65	72	65
HIGHLANDS	586	33	56	73	45	55	50	52	51	35	36	53	47
HILLSBOROUGH	9,300	635	794	947	790	882	829	722	738	651	803	848	661
HOLMES	166	13	10	19	8	29	17	13	8	10	17	12	10
INDIAN RIVER	900	55	82	84	77	75	72	62	86	68	67	81	91
JACKSON	337	15	27	34	24	33	35	41	21	28	26	30	23
JEFFERSON	173	10	17	26	14	17	24	6	14	7	10	16	12
LAFAYETTE	51	4	1	12	4	4	3	4	4	7	3	3	2
LAKE	1,737	102	145	174	136	171	156	144	132	120	140	176	141
LEE	3,929	226	357	405	356	421	355	317	254	211	345	359	323
LEON	1,907	99	134	183	159	239	192	163	186	122	155	153	122
LEVY	236	13	17	26	19	20	21	22	26	17	22	19	14
LIBERTY	41	7	4	4	4	2	8	1	3	2	2	2	2
MADISON	153	9	12	21	14	25	12	8	6	11	16	11	8
MANATEE	1,751	108	153	179	153	191	165	145	120	113	147	154	123
MARION	1,999	104	192	209	170	193	179	147	161	131	156	186	171
MARTIN	921	44	83	66	79	98	87	84	72	53	82	96	77
MONROE	3,064	213	280	249	252	371	304	221	217	196	233	288	240
NASSAU	691	32	46	70	60	80	84	61	45	59	55	56	43
OKALOOSA	2,707	142	156	187	233	314	306	271	298	244	257	165	134
OKEECHOBEE	284	15	23	34	29	15	27	28	24	21	26	23	19
ORANGE	9,892	583	798	988	773	959	855	781	835	714	909	897	800
OSCEOLA	4,825	289	372	404	391	474	462	378	373	432	483	394	373
PALM BEACH	9,342	658	880	938	790	858	762	706	748	626	759	849	768
PASCO	2,405	151	209	220	210	233	228	197	174	163	207	224	189
PINELLAS	7,436	430	614	754	681	824	652	595	601	467	645	682	491
POLK	3,850	265	391	384	344	393	345	305	297	268	269	293	296
PUTNAM	552	38	56	70	46	43	45	46	49	45	37	40	37
ST JOHNS	1,383	61	87	126	117	151	141	132	122	91	146	109	100
ST LUCIE	1,431	82	135	141	110	129	148	120	108	95	111	139	113
SANTA ROSA	852	50	63	71	55	86	95	78	86	65	82	68	53
SARASOTA	2,854	173	244	258	268	332	261	220	205	158	269	253	213
SEMINOLE	2,963	170	260	297	222	299	282	228	224	206	252	284	239
SUMTER	292	22	24	32	22	30	31	22	26	14	20	15	34
SUWANNEE	288	19	34	25	22	34	33	22	25	27	23	12	12
TAYLOR	177	12	28	13	17	14	20	9	13	12	15	13	11
UNION	118	6	9	15	16	11	7	12	6	8	7	11	10
VOLUSIA	3,496	195	337	349	310	293	333	330	276	236	295	288	254
WAKULLA	189	13	18	20	15	13	17	14	21	11	21	13	13
WALTON	877	28	32	49	66	161	104	82	86	86	102	50	31
WASHINGTON	178	4	16	16	19	24	21	9	20	13	14	5	17

TABLE M-2: MARRIAGES BY RACE OF GROOM AND BRIDE, FLORIDA, 2003

RACE OF GROOM	RACE OF BRIDE										
	TOTAL	WHITE	BLACK	AMERICAN INDIAN	CHINESE	JAPANESE	HAWAIIAN	FILIPINO	OTHER ASIAN/ PAC ISL	OTHER ENTRIES	UNK
TOTAL	153,023	119,379	20,920	316	166	66	14	344	2,493	9,174	151
WHITE	118,894	113,939	1,385	241	83	56	10	219	1,214	1,684	63
BLACK	22,569	2,824	19,116	21	2	5	2	20	129	438	12
AMERICAN INDIAN	352	276	16	42	0	0	1	1	9	7	0
CHINESE	88	17	2	0	58	0	0	0	9	2	0
JAPANESE	15	12	0	0	1	2	0	0	0	0	0
HAWAIIAN	13	10	1	0	0	0	0	0	2	0	0
FILIPINO	165	55	2	0	2	1	0	92	8	4	1
OTH ASIAN/PAC ISL	1,867	661	60	7	18	2	1	9	1,089	19	1
OTHER ENTRIES	8,911	1,519	331	4	2	0	0	3	31	7,019	2
UNK	149	66	7	1	0	0	0	0	2	1	72

TABLE M-3: DISSOLUTIONS* OF MARRIAGE BY DURATION OF MARRIAGE IN YEARS AND NUMBER OF MINOR CHILDREN AFFECTED, FLORIDA, 2003

DURATION IN YEARS	NUMBER OF MINOR CHILDREN AFFECTED								
	TOTAL	NONE	ONE	TWO	THREE	FOUR	FIVE	SIX+	UNK
TOTAL	85,367	46,986	17,396	12,350	3,275	642	126	54	4,538
<1	3,471	3,013	148	52	16	1	0	0	241
1	5,666	4,629	525	118	29	2	0	1	362
2	5,987	4,328	1,014	207	32	10	3	1	392
3	5,988	3,870	1,269	380	56	7	5	0	401
4	5,625	3,419	1,305	456	78	15	2	2	348
5-9	22,532	11,433	5,488	3,559	743	114	20	10	1,165
10-14	12,227	4,335	2,866	3,253	959	186	33	17	578
15-19	8,027	2,466	1,675	2,397	846	216	43	17	367
20-24	5,091	2,259	1,386	908	249	45	10	5	229
25-29	2,670	1,826	497	174	32	5	0	0	136
30-34	1,488	1,223	127	35	14	1	0	0	88
35-39	760	678	16	9	5	0	0	1	51
40+	672	608	6	9	5	3	1	0	40
UNK	5,163	2,899	1,074	793	211	37	9	0	140

* Includes divorces and annulments.

TABLE M-4: DISSOLUTIONS* OF MARRIAGE BY MONTH, BY COUNTY, FLORIDA, 2003

	TOTAL	JAN	FEB	MAR	APR	MAY	JUN	JUL	AUG	SEP	OCT	NOV	DEC
FLORIDA	85,367	6,835	6,594	6,920	7,741	7,838	6,829	7,367	7,364	6,994	7,697	5,848	7,340
ALACHUA	830	75	72	68	75	57	69	56	68	77	64	77	72
BAKER	135	8	12	11	21	14	9	11	8	6	22	3	10
BAY	1,015	75	92	90	118	96	77	86	72	82	82	66	79
BRADFORD	140	14	8	12	16	12	12	13	7	17	14	6	9
BREVARD	1,470	119	130	102	151	121	122	116	122	116	145	129	97
BROWARD	9,858	994	618	781	987	938	766	875	840	806	742	644	867
CALHOUN	49	4	6	5	2	5	7	4	5	2	4	5	0
CHARLOTTE	565	51	44	48	40	37	42	46	59	36	51	53	58
CITRUS	532	27	27	37	56	47	36	64	43	54	58	36	47
CLAY	796	44	62	63	75	57	77	68	74	55	73	81	67
COLLIER	1,286	127	91	117	100	127	97	117	72	125	122	87	104
COLUMBIA	377	14	53	41	17	21	25	28	22	42	44	31	39
MIAMI-DADE	13,985	879	1,115	1,024	1,321	1,414	979	1,111	1,583	1,075	1,357	778	1,349
DESOTO	164	17	5	14	18	25	9	17	8	17	10	7	17
DIXIE	38	8	8	6	4	7	5	0	0	0	0	0	0
DUVAL	4,654	419	327	410	334	462	368	413	299	456	413	375	378
ESCAMBIA	1,590	136	127	123	131	161	111	160	145	130	141	104	121
FLAGLER	262	14	18	18	26	30	25	19	27	22	25	20	18
FRANKLIN	63	3	3	5	8	2	4	4	9	9	5	8	3
GADSDEN	188	18	19	9	30	23	8	21	11	6	20	9	14
GILCHRIST	97	6	5	5	3	5	9	13	6	10	13	11	11
GLADES	16	2	3	1	2	1	4	1	2	0	0	0	0
GULF	81	11	10	9	4	4	6	5	9	12	5	0	6
HAMILTON	72	5	11	7	11	6	5	5	3	2	8	3	6
HARDEE	89	4	7	6	5	6	15	9	10	3	11	9	4
HENDRY	185	13	17	14	13	15	9	18	20	19	14	18	15
HERNANDO	414	34	24	37	34	27	27	44	33	44	47	25	38
HIGHLANDS	339	28	32	27	30	21	38	42	19	25	19	41	17
HILLSBOROUGH	5,534	464	410	410	472	424	614	462	487	395	607	319	470
HOLMES	101	3	5	14	12	6	3	12	11	5	13	12	5
INDIAN RIVER	597	35	50	74	67	43	43	44	37	61	54	43	46
JACKSON	262	18	21	24	31	28	21	17	29	24	14	11	24
JEFFERSON	143	6	12	10	15	12	19	10	13	8	16	11	11
LAFAYETTE	46	5	2	3	3	1	7	1	4	7	7	3	3
LAKE	1,021	52	75	101	92	84	80	106	42	106	101	69	113
LEE	2,114	174	160	157	236	184	136	174	168	178	202	160	185
LEON	965	77	90	94	95	77	65	88	88	68	83	55	85
LEVY	180	15	25	17	10	11	26	12	10	20	18	8	8
LIBERTY	34	1	5	5	4	4	3	1	2	4	0	1	4
MADISON	71	5	7	5	5	12	5	7	5	4	4	6	6
MANATEE	1,174	118	95	93	89	111	66	101	105	90	107	89	110
MARION	1,417	108	114	111	99	151	104	121	102	118	177	103	109
MARTIN	455	29	36	43	33	35	44	29	30	53	48	34	41
MONROE	525	56	47	49	41	62	46	50	31	30	33	38	42
NASSAU	340	11	22	36	29	34	20	26	33	34	35	26	34
OKALOOSA	1,422	113	111	116	139	113	112	117	119	140	129	103	110
OKEECHOBEE	192	14	17	15	9	21	29	15	8	20	14	12	18
ORANGE	5,252	383	426	455	483	476	413	465	404	453	453	378	463
OSCEOLA	1,648	157	119	160	125	152	97	185	166	129	120	104	134
PALM BEACH	5,399	475	373	424	510	524	400	479	475	462	429	384	464
PASCO	1,544	138	111	125	116	150	116	144	136	139	149	116	104
PINELLAS	4,086	348	338	357	364	363	370	328	359	339	374	253	293
POLK	2,425	200	242	177	212	254	234	168	218	155	168	171	226
PUTNAM	331	23	34	34	36	23	35	35	23	14	25	32	17
ST JOHNS	612	21	49	65	62	48	57	43	45	48	63	56	55
ST LUCIE	941	72	98	61	77	86	82	82	69	81	76	75	82
SANTA ROSA	612	61	40	47	53	59	46	51	56	46	54	45	54
SARASOTA	1,528	131	107	124	126	127	151	135	89	142	141	111	144
SEMINOLE	1,884	129	119	159	180	155	146	205	176	127	170	163	155
SUMTER	205	10	18	26	23	16	24	13	17	11	14	9	24
SUWANNEE	204	16	24	9	12	12	16	31	18	17	16	18	15
TAYLOR	96	6	8	9	8	9	5	10	13	10	12	6	0
UNION	65	4	5	0	1	12	8	3	2	7	13	5	5
VOLUSIA	2,230	174	192	178	208	186	194	192	158	167	216	165	200
WAKULLA	128	12	9	10	7	14	15	16	6	8	11	4	16
WALTON	196	16	21	21	18	11	11	16	17	14	16	19	16
WASHINGTON	98	6	11	12	7	7	5	7	17	12	6	5	3

* Includes divorces and annulments.