

Fetal and Infant Deaths

FETAL AND INFANT DEATHS

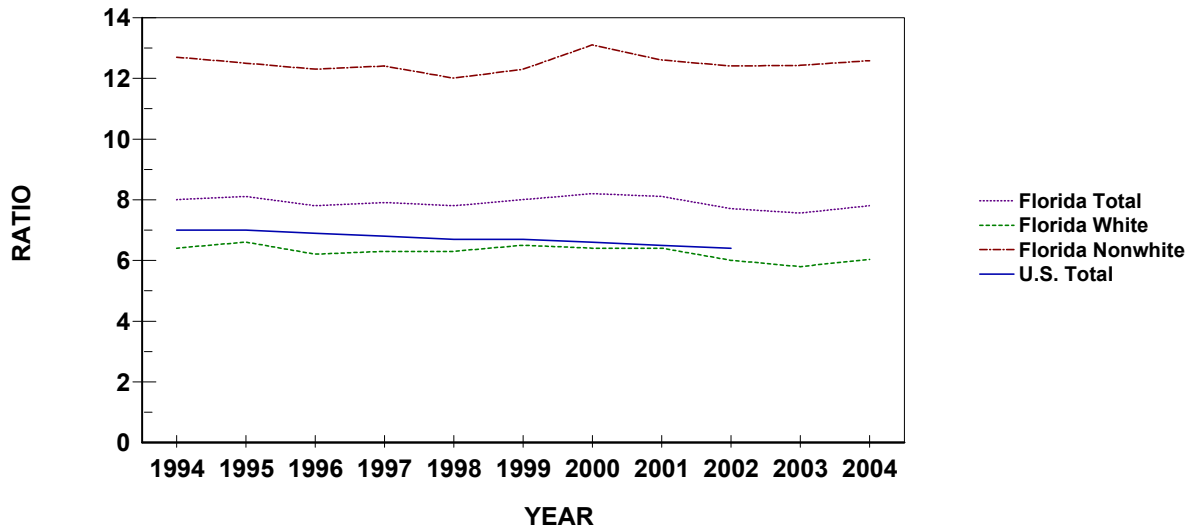
- The number of resident fetal deaths (stillbirths occurring at 20 or more weeks of gestation) increased from 2003, and the ratio of resident fetal deaths to resident live births also increased from 2003.
- Resident fetal deaths increased among whites and nonwhites from 2003 to 2004.
- Of the 1,701 fetal deaths, 16.0 percent occurred to mothers residing in Miami-Dade County.
- Of all resident fetal deaths; 68.4 percent were to mothers of Non-Hispanic or Haitian origin, 19.3 percent were to mothers of Hispanic origin, and 4.7 percent were to mothers of Haitian origin and 7.6 percent were to mothers whose ethnicity was unknown.
- About one of every 12 fetal deaths occurred to a mother who was 18 years old or younger.
- In 2004, both the overall number and rate of resident neonatal deaths (under 28 days) decreased. The number also decreased for whites and for nonwhites.
- The neonatal death rate increased from 4.5 per 1,000 live births in 2000 to 4.8 in 2001, and then increased to 5.0 in 2002. It decreased to 4.8 in 2003 and then decreased to 4.5 in 2004. This represents less than half the rate of 1980 (9.7).
- The nonwhite neonatal death rate (7.4 per 1,000 live births) is more than twice the white rate (3.5 per 1,000 live births).
- The resident infant mortality rate increased slightly from 7.2 deaths per 1,000 live births in 1998 to a rate of 7.3 in 1999, decreased to 7.0 in 2000, and increased back to 7.3 in 2001. It increased to 7.5 in 2002 and remained at 7.5 in 2003. In 2004 the rate dropped to 7.0.
- The resident infant mortality rate has dropped 27.1 percent since 1990 and is about half the rate of 1980.
- The resident infant mortality rate for nonwhites (11.5 per 1,000 live births) is more than double the infant mortality rate for whites (5.5 per 1,000 live births).
- Of all resident infant deaths; 77.7 percent were to infants of Non-Hispanic or Haitian origin, 15.9 percent were to infants of Hispanic origin, 3.2 percent were to infants of Haitian origin and 3.2 percent were to infants whose ethnicity was unknown.
- Of the total resident deaths occurring within the first year of life, 64.4 percent were less than 28 days old. Furthermore, 37.2 percent were less than one day old.
- The leading causes of resident infant deaths in 2004 were Perinatal Period Conditions, Congenital Anomalies, Unintentional Injuries (Accidents), and Sudden Infant Death Syndrome. These causes accounted for 78.7 percent of all resident infant deaths.

**CHART F-1: RESIDENT FETAL DEATHS AND RATIOS PER 1,000 LIVE BIRTHS,
BY RACE OF MOTHER, FLORIDA AND UNITED STATES TOTAL,
CENSUS YEARS 1920-1990 AND 1994-2004**

YEAR	NUMBER OF FETAL DEATHS - FL			RATIOS - FL			RATIO - U.S.
	TOTAL	WHITE	NONWHITE	TOTAL	WHITE	NONWHITE	TOTAL
1920 ¹	1,287	595	692	65.9	43.9	115.4	NA
1930 ¹	1,754	746	1,008	65.0	40.1	120.1	NA
1940	1,415	683	732	42.0	28.7	74.0	NA
1950	1,443	757	868	22.4	16.6	36.7	18.8
1960	1,846	1,043	803	16.0	12.4	25.7	15.8
1970	1,701	1,064	637	14.8	12.2	22.6	14.0
1980	1,355	847	491	10.3	8.7	14.3	9.1
1990	1,811	1,071	720	9.1	7.2	14.6	7.5
1994	1,519	909	599	8.0	6.4	12.7	7.0
1995	1,531	937	581	8.1	6.6	12.5	7.0
1996	1,478	885	577	7.8	6.2	12.3	6.9
1997	1,523	910	600	7.9	6.3	12.4	6.8
1998	1,520	912	594	7.8	6.3	12.0	6.7
1999	1,579	953	619	8.0	6.5	12.3	6.7
2000	1,675	954	704	8.2	6.4	13.1	6.6
2001	1,668	972	678	8.1	6.4	12.6	6.5
2002	1,591	920	657	7.7	6.0	12.4	6.4
2003	1,604	912	678	7.6	5.8	12.4	NA
2004	1,701	966	723	7.8	6.0	12.6	NA

1. Only recorded data are available.

**GRAPH F-1: RESIDENT FETAL DEATH RATIOS PER 1,000 LIVE BIRTHS, BY RACE OF MOTHER,
FLORIDA, AND UNITED STATES TOTAL, 1994-2004**



**CHART F-2: RESIDENT NEONATAL DEATHS AND RATES PER 1,000 LIVE BIRTHS,
BY RACE, FLORIDA AND UNITED STATES TOTAL,
CENSUS YEARS 1920-1990 AND 1994-2004**

YEAR	NUMBER OF NEONATAL DEATHS - FL			RATES - FL ¹			RATE - U.S.
	TOTAL	WHITE	NONWHITE	TOTAL	WHITE	NONWHITE	TOTAL
1920	NA	NA	NA	NA	NA	NA	NA
1930	NA	NA	NA	NA	NA	NA	NA
1940	1,142	662	480	33.9	27.8	48.5	28.8
1950	1,551	975	576	24.1	21.3	30.8	20.5
1960	2,404	1,531	873	20.8	18.1	28.0	18.7
1970	1,848	1,198	648	16.1	13.8	23.0	15.1
1980	1,282	791	490	9.7	8.1	14.2	8.5
1990	1,227	742	484	6.2	5.0	9.8	5.8
1994	1,027	624	402	5.4	4.4	8.5	5.1
1995	874	523	351	4.6	3.7	7.5	4.9
1996	895	517	377	4.7	3.6	8.0	4.8
1997	889	518	370	4.6	3.6	7.6	4.8
1998	933	559	371	4.8	3.8	7.5	4.8
1999	962	559	401	4.9	3.8	7.9	4.7
2000	925	526	397	4.5	3.5	7.4	4.6
2001	980	539	440	4.8	3.6	8.2	4.5
2002	1,032	596	436	5.0	3.9	8.2	4.7
2003	1,025	584	438	4.8	3.7	8.0	NA
2004	989	563	425	4.5	3.5	7.4	NA

1. Rates based on neonatal deaths by race of decedent, live births by race of mother.

**GRAPH F-2: RESIDENT NEONATAL DEATH RATES PER 1,000 LIVE BIRTHS, BY RACE,
FLORIDA AND UNITED STATES TOTAL, 1994-2004**

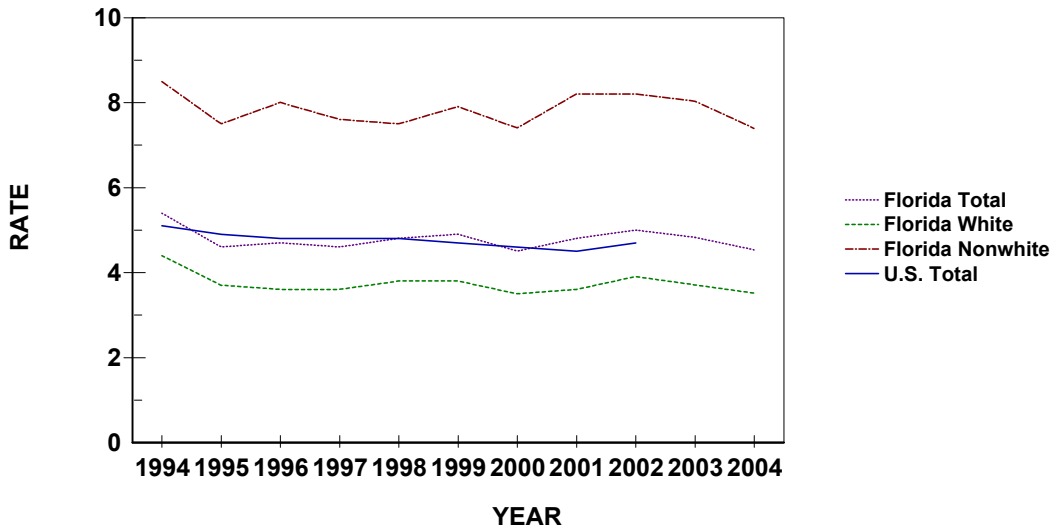


CHART F-3: RESIDENT INFANT DEATHS AND RATES PER 1,000 LIVE BIRTHS, BY RACE, FLORIDA AND UNITED STATES TOTAL, CENSUS YEARS 1920-1990 AND 1994-2004

YEAR	NUMBER OF INFANT DEATHS - FL			RATES - FL ²			RATE - U.S.
	TOTAL	WHITE	NONWHITE	TOTAL	WHITE	NONWHITE	TOTAL
1920 ¹	1,835	1,031	804	93.9	76.1	134.0	NA
1930 ¹	1,729	928	801	64.1	49.9	95.4	NA
1940	1,812	1,052	760	53.8	44.2	76.8	47.0
1950	2,078	1,225	853	32.3	26.8	45.7	29.2
1960	3,431	1,992	1,439	29.7	23.6	46.1	26.0
1970	2,466	1,537	927	21.4	17.7	32.9	20.0
1980	1,915	1,135	779	14.5	11.7	22.7	12.6
1990	1,909	1,121	786	9.6	7.5	16.0	9.2
1994	1,540	927	611	8.1	6.5	12.9	8.0
1995	1,402	840	562	7.4	5.9	12.1	7.6
1996	1,405	821	583	7.4	5.8	12.4	7.3
1997	1,358	805	552	7.1	5.6	11.4	7.2
1998	1,415	850	562	7.2	5.8	11.4	7.2
1999	1,442	815	625	7.3	5.6	12.4	7.1
2000	1,423	810	611	7.0	5.4	11.4	6.9
2001	1,495	839	655	7.3	5.5	12.3	6.8
2002	1,548	892	656	7.5	5.9	12.4	6.9
2003	1,584	907	674	7.5	5.8	12.4	6.7
2004	1,536	876	659	7.0	5.5	11.5	NA

1. Only recorded data are available

2. Rates based on neonatal deaths by race of decedent, live births by race of mother

GRAPH F-3: RESIDENT INFANT DEATH RATES PER 1,000 LIVE BIRTHS, BY RACE, FLORIDA AND UNITED STATES TOTAL, 1994-2004

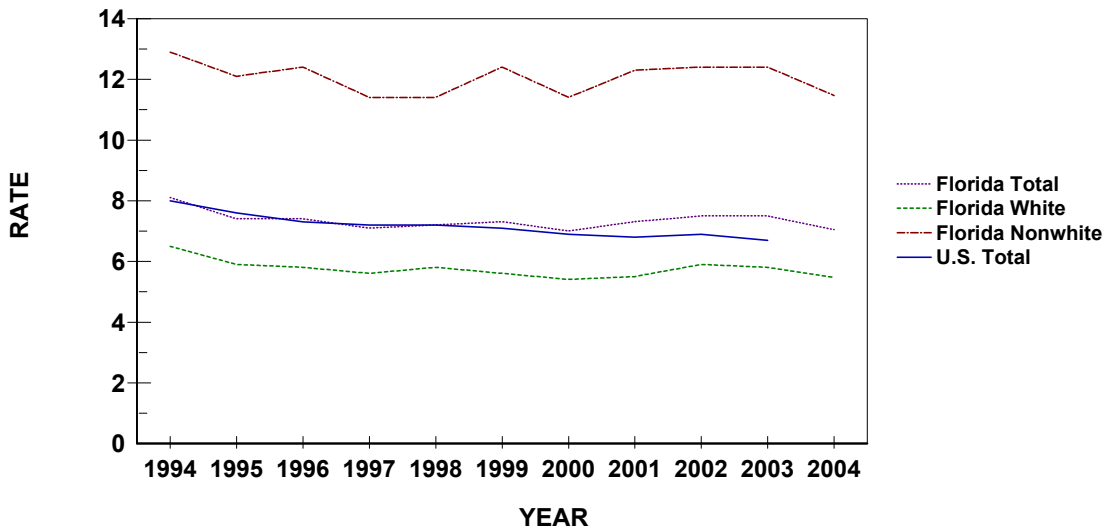


TABLE F-1: RESIDENT AND RECORDED FETAL DEATHS (OF 20 OR MORE WEEKS GESTATION) AND RATIOS PER 1,000 LIVE BIRTHS, BY RACE OF MOTHER, BY COUNTY, FLORIDA, 2004

RESIDENT FETAL DEATHS									
	NUMBERS						RATIOS		
	TOTAL	WHITE	NONWHITE			UNK	TOTAL	WHITE	NONWHITE
			TOTAL	BLACK	OTHER				
FLORIDA	1,701	966	723	680	43	12	7.8	6.0	12.6
ALACHUA	15	6	9	9	0	0	5.8	3.9	8.4
BAKER	2	2	0	0	0	0	5.4	6.0	0.0
BAY	19	11	8	7	1	0	8.5	6.2	18.0
BRADFORD	5	4	1	1	0	0	15.3	15.2	15.6
BREVARD	39	32	7	7	0	0	7.5	7.6	7.0
BROWARD	212	88	123	117	6	1	9.3	6.5	13.3
CALHOUN	0	0	0	0	0	0	0.0	0.0	0.0
CHARLOTTE	9	7	2	2	0	0	8.4	7.2	19.0
CITRUS	5	3	2	2	0	0	5.4	3.5	27.4
CLAY	12	9	3	3	0	0	5.7	5.0	10.0
COLLIER	31	22	9	8	1	0	8.0	6.5	17.6
COLUMBIA	7	5	2	2	0	0	8.6	7.8	12.0
MIAMI-DADE	272	141	128	122	6	3	8.5	6.1	14.3
DESOTO	5	5	0	0	0	0	11.8	13.2	0.0
DIXIE	2	2	0	0	0	0	12.9	14.6	0.0
DUVAL	92	41	51	48	3	0	7.2	5.5	9.7
ESCAMBIA	34	17	17	17	0	0	8.4	6.4	12.1
FLAGLER	0	0	0	0	0	0	0.0	0.0	0.0
FRANKLIN	0	0	0	0	0	0	0.0	0.0	0.0
GADSDEN	7	2	4	4	0	1	10.5	7.9	9.7
GILCHRIST	1	1	0	0	0	0	5.1	5.3	0.0
GLADES	1	1	0	0	0	0	11.2	13.9	0.0
GULF	1	0	1	1	0	0	7.8	0.0	50.0
HAMILTON	1	0	1	1	0	0	5.6	0.0	21.3
HARDEE	4	4	0	0	0	0	8.1	8.8	0.0
HENDRY	3	2	1	1	0	0	4.5	3.6	10.1
HERNANDO	6	6	0	0	0	0	4.2	4.7	0.0
HIGHLANDS	4	3	1	1	0	0	4.1	3.8	5.9
HILLSBOROUGH	141	82	56	51	5	3	8.8	6.9	13.7
HOLMES	4	4	0	0	0	0	18.6	19.8	0.0
INDIAN RIVER	9	6	3	3	0	0	7.3	6.0	13.2
JACKSON	4	3	1	1	0	0	7.2	7.3	6.9
JEFFERSON	1	0	1	1	0	0	6.2	0.0	14.7
LAFAYETTE	1	1	0	0	0	0	10.6	11.8	0.0
LAKE	20	10	10	10	0	0	6.6	3.9	21.1
LEE	56	32	24	24	0	0	9.5	6.4	26.3
LEON	23	7	15	15	0	1	7.4	4.1	10.5
LEVY	4	3	1	1	0	0	9.1	7.8	18.2
LIBERTY	2	2	0	0	0	0	22.2	25.6	0.0
MADISON	4	0	4	4	0	0	18.0	0.0	36.0
MANATEE	22	14	8	8	0	0	6.3	4.9	12.2
MARION	23	16	7	5	2	0	7.2	6.3	10.3
MARTIN	7	6	1	1	0	0	5.4	6.2	3.1
MONROE	4	3	1	1	0	0	5.4	4.7	10.8
NASSAU	0	0	0	0	0	0	0.0	0.0	0.0
OKALOOSA	9	7	2	1	1	0	3.3	3.2	4.0
OKEECHOBEE	1	1	0	0	0	0	1.7	1.9	0.0
ORANGE	131	70	61	56	5	0	8.5	6.7	12.6
OSCEOLA	20	18	2	2	0	0	6.0	6.3	4.5
PALM BEACH	117	59	55	53	2	3	7.8	5.7	12.0
PASCO	21	19	2	2	0	0	4.6	4.5	5.6
PINELLAS	70	46	24	22	2	0	7.7	6.6	11.9
POLK	59	37	22	21	1	0	8.1	6.6	13.7
PUTNAM	9	6	3	3	0	0	9.3	8.3	12.6
SAINT JOHNS	6	5	1	1	0	0	3.8	3.8	4.2
SAINT LUCIE	25	19	6	3	3	0	8.7	9.3	7.3
SANTA ROSA	9	9	0	0	0	0	5.3	5.8	0.0
SARASOTA	17	9	8	6	2	0	5.8	3.4	25.8
SEMINOLE	43	22	21	19	2	0	9.1	5.8	22.7
SUMTER	6	4	2	2	0	0	11.7	10.7	14.6
SUWANNEE	3	2	1	1	0	0	5.8	4.5	13.9
TAYLOR	1	1	0	0	0	0	4.3	5.7	0.0
UNION	0	0	0	0	0	0	0.0	0.0	0.0
VOLUSIA	29	19	10	9	1	0	6.1	4.9	11.8
WAKULLA	3	3	0	0	0	0	9.7	10.7	0.0
WALTON	6	5	1	1	0	0	10.7	10.0	16.7
WASHINGTON	2	2	0	0	0	0	7.8	9.4	0.0

TABLE F-1 (Cont.): RESIDENT AND RECORDED FETAL DEATHS (OF 20 OR MORE WEEKS GESTATION) AND RATIOS PER 1,000 LIVE BIRTHS, BY RACE OF MOTHER, BY COUNTY, FLORIDA, 2004

	RECORDED FETAL DEATHS							RATIOS		
	NUMBERS									
	TOTAL	WHITE	NONWHITE			UNK	TOTAL	WHITE	NONWHITE	
		TOTAL	BLACK	OTHER						
FLORIDA	1,736	990	734	691	43	12	8.0	6.2	12.7	
ALACHUA	53	31	22	21	1	0	9.4	7.5	14.2	
BAKER	0	0	0	0	0	0	0.0	0.0	0.0	
BAY	23	15	8	7	1	0	8.1	6.5	15.2	
BRADFORD	0	0	0	0	0	0	0.0	----	0.0	
BREVARD	26	20	6	6	0	0	5.1	4.8	6.1	
BROWARD	218	82	135	130	5	1	9.7	6.4	14.2	
CALHOUN	0	0	0	0	0	0	0.0	0.0	----	
CHARLOTTE	5	3	2	2	0	0	4.7	3.2	18.9	
CITRUS	5	3	2	2	0	0	6.2	4.0	31.7	
CLAY	13	10	3	3	0	0	6.9	6.4	9.1	
COLLIER	28	20	8	7	1	0	7.2	5.9	16.0	
COLUMBIA	2	0	2	2	0	0	2.9	0.0	10.9	
MIAMI-DADE	267	146	118	111	7	3	8.5	6.4	14.0	
DESOTO	6	6	0	0	0	0	9.7	10.6	0.0	
DIXIE	0	0	0	0	0	0	0.0	0.0	----	
DUVAL	100	48	52	49	3	0	6.9	5.2	9.7	
ESCAMBIA	48	26	22	22	0	0	8.3	6.2	14.2	
FLAGLER	0	0	0	0	0	0	0.0	0.0	----	
FRANKLIN	0	0	0	0	0	0	----	----	----	
GADSDEN	1	0	0	0	0	1	166.7	0.0	0.0	
GILCHRIST	0	0	0	0	0	0	0.0	0.0	0.0	
GLADES	0	0	0	0	0	0	0.0	0.0	----	
GULF	0	0	0	0	0	0	0.0	0.0	----	
HAMILTON	0	0	0	0	0	0	0.0	0.0	----	
HARDEE	0	0	0	0	0	0	0.0	0.0	0.0	
HENDRY	0	0	0	0	0	0	0.0	0.0	0.0	
HERNANDO	7	7	0	0	0	0	4.6	5.0	0.0	
HIGHLANDS	6	4	2	2	0	0	4.5	3.6	9.2	
HILLSBOROUGH	157	97	57	52	5	3	8.6	7.1	13.0	
HOLMES	0	0	0	0	0	0	----	----	----	
INDIAN RIVER	10	7	3	3	0	0	8.4	7.2	13.5	
JACKSON	4	4	0	0	0	0	8.8	12.3	0.0	
JEFFERSON	1	0	1	1	0	0	1,000.0	0.0	----	
LAFAYETTE	0	0	0	0	0	0	----	----	----	
LAKE	13	8	5	5	0	0	5.2	4.0	9.9	
LEE	60	37	23	23	0	0	9.1	6.6	23.8	
LEON	40	16	23	23	0	1	8.2	5.8	10.9	
LEVY	0	0	0	0	0	0	0.0	0.0	----	
LIBERTY	0	0	0	0	0	0	----	----	----	
MADISON	0	0	0	0	0	0	0.0	0.0	0.0	
MANATEE	14	9	5	5	0	0	5.0	4.0	9.7	
MARION	11	8	3	2	1	0	4.0	3.7	5.2	
MARTIN	10	9	1	1	0	0	5.3	6.0	2.6	
MONROE	4	3	1	1	0	0	7.8	6.9	13.3	
NASSAU	0	0	0	0	0	0	0.0	0.0	0.0	
OKALOOSA	16	13	3	2	1	0	5.3	5.2	5.8	
OKEECHOBEE	0	0	0	0	0	0	0.0	0.0	0.0	
ORANGE	187	113	74	69	5	0	10.1	8.5	14.2	
OSCEOLA	20	16	4	4	0	0	5.3	5.0	7.4	
PALM BEACH	129	64	62	59	3	3	7.5	5.3	12.2	
PASCO	8	6	2	2	0	0	4.6	3.8	12.7	
PINELLAS	76	53	23	21	2	0	7.2	6.3	10.8	
POLK	44	26	18	17	1	0	7.2	5.5	12.9	
PUTNAM	7	3	4	4	0	0	13.2	8.2	24.5	
SAINT JOHNS	2	1	1	1	0	0	1.9	1.1	5.5	
SAINT LUCIE	17	14	3	1	2	0	8.5	10.6	4.5	
SANTA ROSA	2	2	0	0	0	0	7.5	8.3	0.0	
SARASOTA	43	30	13	11	2	0	12.1	9.6	29.6	
SEMINOLE	32	15	17	15	2	0	8.0	4.7	20.7	
SUMTER	0	0	0	0	0	0	0.0	0.0	0.0	
SUWANNEE	1	1	0	0	0	0	125.0	333.3	0.0	
TAYLOR	0	0	0	0	0	0	0.0	0.0	0.0	
UNION	0	0	0	0	0	0	----	----	----	
VOLUSIA	19	13	6	5	1	0	4.9	4.1	7.8	
WAKULLA	0	0	0	0	0	0	0.0	0.0	----	
WALTON	1	1	0	0	0	0	100.0	142.9	0.0	
WASHINGTON	0	0	0	0	0	0	----	----	----	

TABLE F-2: RESIDENT FETAL DEATHS BY HISPANIC OR HAITIAN ORIGIN OF MOTHER, BY COUNTY, FLORIDA, 2004

	TOTAL	HISPANIC ORIGIN								NON-HISPANIC/HAITIAN	UNK
		TOTAL HISPANIC	MEXICAN	PUERTO RICAN	CUBAN	CENTRAL/SOUTH AMERICAN	OTHER/UNK HISPANIC	HAITIAN			
FLORIDA	1,701	328	89	71	55	90	23	80	1,163	130	
ALACHUA	15	1	0	0	0	0	1	0	14	0	
BAKER	2	0	0	0	0	0	0	0	2	0	
BAY	19	1	0	1	0	0	0	0	17	1	
BRADFORD	5	0	0	0	0	0	0	0	5	0	
BREVARD	39	3	0	3	0	0	0	0	36	0	
BROWARD	212	44	13	7	7	16	1	25	131	12	
CALHOUN	0	0	0	0	0	0	0	0	0	0	
CHARLOTTE	9	0	0	0	0	0	0	0	9	0	
CITRUS	5	0	0	0	0	0	0	0	5	0	
CLAY	12	0	0	0	0	0	0	0	12	0	
COLLIER	31	14	10	1	1	2	0	6	11	0	
COLUMBIA	7	0	0	0	0	0	0	0	7	0	
MIAMI-DADE	272	88	4	10	40	32	2	19	76	89	
DESOTO	5	3	3	0	0	0	0	0	2	0	
DIXIE	2	0	0	0	0	0	0	0	2	0	
DUVAL	92	7	1	2	0	3	1	1	84	0	
ESCAMBIA	34	0	0	0	0	0	0	0	34	0	
FLAGLER	0	0	0	0	0	0	0	0	0	0	
FRANKLIN	0	0	0	0	0	0	0	0	0	0	
GADSDEN	7	1	0	0	0	0	1	0	5	1	
GILCHRIST	1	0	0	0	0	0	0	0	1	0	
GLADES	1	0	0	0	0	0	0	0	1	0	
GULF	1	0	0	0	0	0	0	0	1	0	
HAMILTON	1	0	0	0	0	0	0	0	1	0	
HARDEE	4	2	2	0	0	0	0	0	2	0	
HENDRY	3	0	0	0	0	0	0	0	2	1	
HERNANDO	6	1	1	0	0	0	0	0	5	0	
HIGHLANDS	4	1	1	0	0	0	0	0	3	0	
HILLSBOROUGH	141	32	11	5	2	4	10	0	102	7	
HOLMES	4	0	0	0	0	0	0	0	4	0	
INDIAN RIVER	9	2	1	0	0	1	0	1	6	0	
JACKSON	4	0	0	0	0	0	0	0	4	0	
JEFFERSON	1	0	0	0	0	0	0	0	1	0	
LAFAYETTE	1	0	0	0	0	0	0	0	1	0	
LAKE	20	0	0	0	0	0	0	0	20	0	
LEE	56	12	6	2	1	3	0	6	33	5	
LEON	23	1	1	0	0	0	0	0	22	0	
LEVY	4	0	0	0	0	0	0	0	4	0	
LIBERTY	2	0	0	0	0	0	0	0	2	0	
MADISON	4	0	0	0	0	0	0	0	4	0	
MANATEE	22	4	3	1	0	0	0	0	18	0	
MARION	23	2	0	1	0	1	0	0	21	0	
MARTIN	7	1	1	0	0	0	0	0	6	0	
MONROE	4	2	0	0	2	0	0	0	1	1	
NASSAU	0	0	0	0	0	0	0	0	0	0	
OKALOOSA	9	3	0	3	0	0	0	0	6	0	
OKEECHOBEE	1	0	0	0	0	0	0	0	1	0	
ORANGE	131	32	4	14	2	9	3	8	90	1	
OSCEOLA	20	10	1	6	0	2	1	0	9	1	
PALM BEACH	117	19	5	1	0	12	1	11	79	8	
PASCO	21	3	1	1	0	1	0	0	18	0	
PINELLAS	70	5	3	0	0	1	1	0	63	2	
POLK	59	12	9	3	0	0	0	3	43	1	
PUTNAM	9	2	0	2	0	0	0	0	7	0	
SAINT JOHNS	6	0	0	0	0	0	0	0	6	0	
SAINT LUCIE	25	7	5	1	0	1	0	0	18	0	
SANTA ROSA	9	0	0	0	0	0	0	0	9	0	
SARASOTA	17	0	0	0	0	0	0	0	17	0	
SEMINOLE	43	5	0	3	0	2	0	0	38	0	
SUMTER	6	1	1	0	0	0	0	0	5	0	
SUWANNEE	3	0	0	0	0	0	0	0	3	0	
TAYLOR	1	0	0	0	0	0	0	0	1	0	
UNION	0	0	0	0	0	0	0	0	0	0	
VOLUSIA	29	5	0	4	0	0	1	0	24	0	
WAKULLA	3	0	0	0	0	0	0	0	3	0	
WALTON	6	2	2	0	0	0	0	0	4	0	
WASHINGTON	2	0	0	0	0	0	0	0	2	0	

TABLE F-3: RESIDENT FETAL DEATHS BY AGE OF MOTHER, BY COUNTY, FLORIDA, 2004

	AGE OF MOTHER														
	TOTAL	<13	13	14	15	16	17	18	19	20-24	25-29	30-34	35-44	45+	UNK
FLORIDA	1,701	0	1	2	11	24	39	63	76	397	397	336	305	8	42
ALACHUA	15	0	0	0	0	0	0	0	0	4	5	2	4	0	0
BAKER	2	0	0	0	0	0	0	0	0	0	1	1	0	0	0
BAY	19	0	0	0	0	0	0	0	0	6	9	1	3	0	0
BRADFORD	5	0	0	0	1	0	0	1	0	2	0	0	1	0	0
BREVARD	39	0	0	0	1	0	2	0	3	5	8	14	6	0	0
BROWARD	212	0	0	0	0	2	0	5	4	39	61	47	44	0	10
CALHOUN	0	0	0	0	0	0	0	0	0	0	0	0	0	0	0
CHARLOTTE	9	0	0	0	0	0	0	0	0	5	2	2	0	0	0
CITRUS	5	0	0	0	0	0	0	0	0	2	2	1	0	0	0
CLAY	12	0	0	0	0	0	0	0	1	6	0	1	4	0	0
COLLIER	31	0	0	0	0	0	1	3	3	6	5	10	3	0	0
COLUMBIA	7	0	0	0	0	0	0	0	1	0	4	2	0	0	0
MIAMI-DADE	272	0	0	0	2	5	6	11	5	44	51	71	58	1	18
DESOTO	5	0	0	0	0	0	0	0	2	0	3	0	0	0	0
DIXIE	2	0	0	0	0	0	0	0	0	1	1	0	0	0	0
DUVAL	92	0	0	0	1	2	2	6	3	24	26	16	11	0	1
ESCAMBIA	34	0	0	0	0	1	1	4	2	8	7	4	7	0	0
FLAGLER	0	0	0	0	0	0	0	0	0	0	0	0	0	0	0
FRANKLIN	0	0	0	0	0	0	0	0	0	0	0	0	0	0	0
GADSDEN	7	0	0	0	1	0	0	0	1	0	1	3	0	0	1
GILCHRIST	1	0	0	0	0	0	0	0	0	1	0	0	0	0	0
GLADES	1	0	0	0	0	0	0	0	0	0	0	0	1	0	0
GULF	1	0	0	0	0	0	0	0	0	0	1	0	0	0	0
HAMILTON	1	0	0	0	0	0	0	0	0	1	0	0	0	0	0
HARDEE	4	0	0	0	0	0	0	0	0	2	1	1	0	0	0
HENDRY	3	0	0	0	0	0	0	0	0	1	0	1	1	0	0
HERNANDO	6	0	0	0	0	0	0	0	0	1	3	1	1	0	0
HIGHLANDS	4	0	0	0	0	0	0	0	1	2	0	0	1	0	0
HILLSBOROUGH	141	0	0	1	2	4	5	8	11	29	30	26	25	0	0
HOLMES	4	0	0	0	0	0	0	0	0	2	0	2	0	0	0
INDIAN RIVER	9	0	0	0	0	0	0	0	0	1	2	1	5	0	0
JACKSON	4	0	0	0	0	0	0	0	0	3	0	0	1	0	0
JEFFERSON	1	0	0	0	0	0	0	0	0	0	0	0	1	0	0
LAFAYETTE	1	0	0	0	0	0	1	0	0	0	0	0	0	0	0
LAKE	20	0	0	0	0	0	0	1	0	6	5	4	4	0	0
LEE	56	0	0	1	2	0	2	2	2	15	16	9	7	0	0
LEON	23	0	0	0	0	0	1	0	0	5	5	3	7	0	2
LEVY	4	0	0	0	0	0	0	0	1	1	0	1	1	0	0
LIBERTY	2	0	0	0	0	0	0	0	0	1	1	0	0	0	0
MADISON	4	0	0	0	0	0	0	0	3	1	0	0	0	0	0
MANATEE	22	0	0	0	0	1	1	2	2	9	1	2	4	0	0
MARION	23	0	0	0	0	0	1	0	1	5	6	7	3	0	0
MARTIN	7	0	0	0	0	0	0	0	0	0	3	3	1	0	0
MONROE	4	0	0	0	0	1	0	0	1	0	2	0	0	0	0
NASSAU	0	0	0	0	0	0	0	0	0	0	0	0	0	0	0
OKALOOSA	9	0	0	0	0	0	0	0	0	6	0	2	1	0	0
OKEECHOBEE	1	0	0	0	0	0	0	0	0	1	0	0	0	0	0
ORANGE	131	0	0	0	0	1	3	5	9	40	24	23	23	0	3
OSCEOLA	20	0	0	0	0	0	1	0	1	4	6	5	2	1	0
PALM BEACH	117	0	0	0	0	2	2	6	5	23	34	21	17	2	5
PASCO	21	0	0	0	0	0	0	0	1	5	6	5	4	0	0
PINELLAS	70	0	0	0	0	2	4	2	3	23	10	8	16	0	2
POLK	59	0	0	0	0	0	4	1	1	18	18	9	8	0	0
PUTNAM	9	0	0	0	0	0	0	1	0	3	2	1	2	0	0
SAINT JOHNS	6	0	0	0	0	0	0	0	0	2	1	2	0	1	0
SAINT LUCIE	25	0	0	0	0	0	0	0	1	8	6	5	5	0	0
SANTA ROSA	9	0	0	0	0	1	0	0	1	1	2	2	0	2	0
SARASOTA	17	0	0	0	0	0	1	2	1	5	4	1	3	0	0
SEMINOLE	43	0	1	0	1	0	0	1	2	6	10	7	15	0	0
SUMTER	6	0	0	0	0	0	0	0	1	2	2	0	0	1	0
SUWANNEE	3	0	0	0	0	0	0	0	0	2	0	0	1	0	0
TAYLOR	1	0	0	0	0	0	0	0	0	0	1	0	0	0	0
UNION	0	0	0	0	0	0	0	0	0	0	0	0	0	0	0
VOLUSIA	29	0	0	0	0	0	1	2	3	6	8	5	4	0	0
WAKULLA	3	0	0	0	0	0	0	0	0	1	0	2	0	0	0
WALTON	6	0	0	0	0	1	0	0	0	2	1	2	0	0	0
WASHINGTON	2	0	0	0	0	1	0	0	0	1	0	0	0	0	0

TABLE F-4: RESIDENT AND RECORDED NEONATAL DEATHS (UNDER 28 DAYS) AND RATES PER 1,000 LIVE BIRTHS, BY RACE, BY COUNTY, FLORIDA, 2004

	RESIDENT NEONATAL DEATHS						RATES*		
	NUMBERS						TOTAL	WHITE	NONWHITE
	TOTAL	WHITE	NONWHITE			UNK			
		TOTAL	BLACK	OTHER					
FLORIDA	989	563	425	401	24	1	4.5	3.5	7.4
ALACHUA	21	9	12	12	0	0	8.1	5.8	11.2
BAKER	1	1	0	0	0	0	2.7	3.0	0.0
BAY	7	3	4	4	0	0	3.1	1.7	9.0
BRADFORD	1	1	0	0	0	0	3.1	3.8	0.0
BREVARD	16	9	7	6	1	0	3.1	2.1	7.0
BROWARD	88	33	55	52	3	0	3.8	2.4	5.9
CALHOUN	1	1	0	0	0	0	6.9	8.0	0.0
CHARLOTTE	3	3	0	0	0	0	2.8	3.1	0.0
CITRUS	5	5	0	0	0	0	5.4	5.9	0.0
CLAY	9	7	2	2	0	0	4.3	3.9	6.6
COLLIER	20	17	3	3	0	0	5.1	5.0	5.9
COLUMBIA	7	6	1	1	0	0	8.6	9.3	6.0
MIAMI-DADE	98	63	35	34	1	0	3.1	2.7	3.9
DESOTO	2	1	1	1	0	0	4.7	2.6	21.3
DIXIE	1	1	0	0	0	0	6.5	7.3	0.0
DUVAL	89	36	53	49	4	0	7.0	4.8	10.1
ESCAMBIA	30	14	16	14	2	0	7.4	5.3	11.4
FLAGLER	1	1	0	0	0	0	1.7	2.0	0.0
FRANKLIN	0	0	0	0	0	0	0.0	0.0	0.0
GADSDEN	7	1	6	6	0	0	10.5	3.9	14.5
GILCHRIST	2	0	2	2	0	0	10.1	0.0	181.8
GLADES	0	0	0	0	0	0	0.0	0.0	0.0
GULF	0	0	0	0	0	0	0.0	0.0	0.0
HAMILTON	0	0	0	0	0	0	0.0	0.0	0.0
HARDEE	1	1	0	0	0	0	2.0	2.2	0.0
HENDRY	3	2	1	1	0	0	4.5	3.6	10.1
HERNANDO	8	5	3	3	0	0	5.7	3.9	21.6
HIGHLANDS	4	3	1	1	0	0	4.1	3.8	5.9
HILLSBOROUGH	100	56	43	40	3	1	6.2	4.7	10.5
HOLMES	2	2	0	0	0	0	9.3	9.9	0.0
INDIAN RIVER	5	3	2	2	0	0	4.1	3.0	8.8
JACKSON	2	2	0	0	0	0	3.6	4.9	0.0
JEFFERSON	1	0	1	1	0	0	6.2	0.0	14.7
LAFAYETTE	1	0	1	1	0	0	10.6	0.0	111.1
LAKE	8	8	0	0	0	0	2.6	3.1	0.0
LEE	24	19	5	5	0	0	4.1	3.8	5.5
LEON	20	4	16	16	0	0	6.4	2.4	11.2
LEVY	7	5	2	1	1	0	16.0	13.1	36.4
LIBERTY	0	0	0	0	0	0	0.0	0.0	0.0
MADISON	2	0	2	2	0	0	9.0	0.0	18.0
MANATEE	8	7	1	1	0	0	2.3	2.5	1.5
MARION	18	11	7	7	0	0	5.6	4.4	10.3
MARTIN	2	1	1	1	0	0	1.6	1.0	3.1
MONROE	5	4	1	1	0	0	6.8	6.2	10.8
NASSAU	0	0	0	0	0	0	0.0	0.0	0.0
OKALOOSA	5	4	1	0	1	0	1.9	1.8	2.0
OKEECHOBEE	2	2	0	0	0	0	3.4	3.8	0.0
ORANGE	80	37	43	39	4	0	5.2	3.5	8.9
OSCEOLA	12	11	1	1	0	0	3.6	3.8	2.2
PALM BEACH	66	33	33	33	0	0	4.4	3.2	7.2
PASCO	25	20	5	3	2	0	5.4	4.7	14.0
PINELLAS	39	27	12	10	2	0	4.3	3.8	5.9
POLK	39	23	16	16	0	0	5.4	4.1	10.0
PUTNAM	9	3	6	6	0	0	9.3	4.1	25.2
SAINT JOHNS	7	3	4	4	0	0	4.5	2.3	16.9
SAINT LUCIE	8	5	3	3	0	0	2.8	2.5	3.6
SANTA ROSA	7	7	0	0	0	0	4.2	4.5	0.0
SARASOTA	5	4	1	1	0	0	1.7	1.5	3.2
SEMINOLE	22	16	6	6	0	0	4.6	4.2	6.5
SUMTER	3	3	0	0	0	0	5.9	8.0	0.0
SUWANNEE	2	2	0	0	0	0	3.9	4.5	0.0
TAYLOR	2	2	0	0	0	0	8.5	11.4	0.0
UNION	0	0	0	0	0	0	0.0	0.0	0.0
VOLUSIA	17	10	7	7	0	0	3.6	2.6	8.3
WAKULLA	4	3	1	1	0	0	12.9	10.7	35.7
WALTON	3	2	1	1	0	0	5.4	4.0	16.7
WASHINGTON	2	1	1	1	0	0	7.8	4.7	22.7

*Rates based on neonatal deaths by race of decedent, live births by race of mother.

TABLE F-4 (Cont.): RESIDENT AND RECORDED NEONATAL DEATHS (UNDER 28 DAYS) AND RATES PER 1,000 LIVE BIRTHS, BY RACE, BY COUNTY, FLORIDA, 2004

	RECORDED NEONATAL DEATHS						RATES*		
	NUMBERS								
	TOTAL	WHITE	NONWHITE			UNK	TOTAL	WHITE	NONWHITE
		TOTAL	BLACK	OTHER					
FLORIDA	1,011	579	431	406	25	1	4.6	3.6	7.5
ALACHUA	73	43	30	29	1	0	12.9	10.5	19.3
BAKER	1	1	0	0	0	0	111.1	125.0	0.0
BAY	8	4	4	4	0	0	2.8	1.7	7.6
BRADFORD	0	0	0	0	0	0	0.0	----	0.0
BREVARD	8	7	1	1	0	0	1.6	1.7	1.0
BROWARD	91	31	60	57	3	0	4.0	2.4	6.3
CALHOUN	0	0	0	0	0	0	0.0	0.0	----
CHARLOTTE	1	1	0	0	0	0	0.9	1.1	0.0
CITRUS	0	0	0	0	0	0	0.0	0.0	0.0
CLAY	1	1	0	0	0	0	0.5	0.6	0.0
COLLIER	6	5	1	1	0	0	1.5	1.5	2.0
COLUMBIA	2	2	0	0	0	0	2.9	3.9	0.0
MIAMI-DADE	115	76	39	37	2	0	3.6	3.3	4.6
DESOTO	2	2	0	0	0	0	3.2	3.5	0.0
DIXIE	0	0	0	0	0	0	0.0	0.0	----
DUVAL	106	48	58	54	4	0	7.3	5.2	10.8
ESCAMBIA	43	27	16	14	2	0	7.5	6.4	10.3
FLAGLER	0	0	0	0	0	0	0.0	0.0	----
FRANKLIN	0	0	0	0	0	0	----	----	----
GADSDEN	0	0	0	0	0	0	0.0	0.0	0.0
GILCHRIST	0	0	0	0	0	0	0.0	0.0	0.0
GLADES	0	0	0	0	0	0	0.0	0.0	----
GULF	0	0	0	0	0	0	0.0	0.0	----
HAMILTON	0	0	0	0	0	0	0.0	0.0	----
HARDEE	0	0	0	0	0	0	0.0	0.0	0.0
HENDRY	0	0	0	0	0	0	0.0	0.0	0.0
HERNANDO	3	2	1	1	0	0	2.0	1.4	7.5
HIGHLANDS	2	1	1	1	0	0	1.5	0.9	4.6
HILLSBOROUGH	134	80	53	49	4	1	7.4	5.8	12.1
HOLMES	0	0	0	0	0	0	----	----	----
INDIAN RIVER	2	1	1	1	0	0	1.7	1.0	4.5
JACKSON	1	1	0	0	0	0	2.2	3.1	0.0
JEFFERSON	0	0	0	0	0	0	0.0	0.0	----
LAFAYETTE	0	0	0	0	0	0	----	----	----
LAKE	3	3	0	0	0	0	1.2	1.5	0.0
LEE	28	22	6	6	0	0	4.3	3.9	6.2
LEON	39	11	28	28	0	0	8.0	4.0	13.2
LEVY	1	1	0	0	0	0	333.3	333.3	----
LIBERTY	0	0	0	0	0	0	----	----	----
MADISON	0	0	0	0	0	0	0.0	0.0	0.0
MANATEE	1	1	0	0	0	0	0.4	0.4	0.0
MARION	4	2	2	2	0	0	1.5	0.9	3.5
MARTIN	2	2	0	0	0	0	1.1	1.3	0.0
MONROE	1	1	0	0	0	0	2.0	2.3	0.0
NASSAU	0	0	0	0	0	0	0.0	0.0	0.0
OKALOOSA	2	1	1	0	1	0	0.7	0.4	1.9
OKEECHOBEE	2	2	0	0	0	0	200.0	222.2	0.0
ORANGE	137	82	55	50	5	0	7.4	6.2	10.6
OSCEOLA	5	5	0	0	0	0	1.3	1.6	0.0
PALM BEACH	65	34	31	31	0	0	3.8	2.8	6.1
PASCO	2	2	0	0	0	0	1.1	1.3	0.0
PINELLAS	73	52	21	18	3	0	6.9	6.2	9.9
POLK	20	10	10	10	0	0	3.2	2.1	7.2
PUTNAM	3	0	3	3	0	0	5.6	0.0	18.4
SAINT JOHNS	1	1	0	0	0	0	0.9	1.1	0.0
SAINT LUCIE	3	1	2	2	0	0	1.5	0.8	3.0
SANTA ROSA	0	0	0	0	0	0	0.0	0.0	0.0
SARASOTA	5	3	2	2	0	0	1.4	1.0	4.6
SEMINOLE	2	1	1	1	0	0	0.5	0.3	1.2
SUMTER	0	0	0	0	0	0	0.0	0.0	0.0
SUWANNEE	0	0	0	0	0	0	0.0	0.0	0.0
TAYLOR	0	0	0	0	0	0	0.0	0.0	0.0
UNION	0	0	0	0	0	0	----	----	----
VOLUSIA	12	8	4	4	0	0	3.1	2.5	5.2
WAKULLA	0	0	0	0	0	0	0.0	0.0	----
WALTON	1	1	0	0	0	0	100.0	142.9	0.0
WASHINGTON	0	0	0	0	0	0	----	----	----

*Rates based on neonatal deaths by race of decedent, live births by race of mother.

TABLE F-5: RESIDENT AND RECORDED INFANT DEATHS (UNDER 1 YEAR) AND RATES PER 1,000 LIVE BIRTHS, BY RACE, BY COUNTY, FLORIDA, 2004

	RESIDENT INFANT DEATHS						RATES*		
	NUMBERS						TOTAL	WHITE	NONWHITE
	TOTAL	WHITE	NONWHITE			UNK			
		TOTAL	BLACK	OTHER					
FLORIDA	1,536	876	659	621	38	1	7.0	5.5	11.5
ALACHUA	32	12	20	20	0	0	12.3	7.8	18.7
BAKER	2	2	0	0	0	0	5.4	6.0	0.0
BAY	11	5	6	6	0	0	4.9	2.8	13.5
BRADFORD	2	2	0	0	0	0	6.1	7.6	0.0
BREVARD	32	21	11	10	1	0	6.1	5.0	11.0
BROWARD	135	55	80	75	5	0	5.9	4.1	8.7
CALHOUN	1	1	0	0	0	0	6.9	8.0	0.0
CHARLOTTE	6	5	1	1	0	0	5.6	5.2	9.5
CITRUS	7	7	0	0	0	0	7.6	8.2	0.0
CLAY	12	10	2	2	0	0	5.7	5.5	6.6
COLLIER	25	22	3	3	0	0	6.4	6.5	5.9
COLUMBIA	9	7	2	2	0	0	11.1	10.9	12.0
MIAMI-DADE	167	94	73	68	5	0	5.2	4.1	8.1
DESOTO	3	2	1	1	0	0	7.1	5.3	21.3
DIXIE	1	1	0	0	0	0	6.5	7.3	0.0
DUVAL	138	56	82	77	5	0	10.9	7.5	15.7
ESCAMBIA	43	21	22	20	2	0	10.6	7.9	15.6
FLAGLER	1	1	0	0	0	0	1.7	2.0	0.0
FRANKLIN	1	1	0	0	0	0	8.2	9.7	0.0
GADSDEN	9	1	8	8	0	0	13.5	3.9	19.4
GILCHRIST	2	0	2	2	0	0	10.1	0.0	181.8
GLADES	2	2	0	0	0	0	22.5	27.8	0.0
GULF	0	0	0	0	0	0	0.0	0.0	0.0
HAMILTON	1	1	0	0	0	0	5.6	7.6	0.0
HARDEE	2	2	0	0	0	0	4.0	4.4	0.0
HENDRY	6	3	3	3	0	0	9.1	5.3	30.3
HERNANDO	14	10	4	4	0	0	9.9	7.9	28.8
HIGHLANDS	6	4	2	2	0	0	6.2	5.0	11.8
HILLSBOROUGH	142	78	63	59	4	1	8.9	6.5	15.4
HOLMES	3	3	0	0	0	0	14.0	14.9	0.0
INDIAN RIVER	8	6	2	2	0	0	6.5	6.0	8.8
JACKSON	3	3	0	0	0	0	5.4	7.3	0.0
JEFFERSON	2	0	2	2	0	0	12.4	0.0	29.4
LAFAYETTE	1	0	1	1	0	0	10.6	0.0	111.1
LAKE	17	15	2	2	0	0	5.6	5.9	4.2
LEE	38	29	9	9	0	0	6.4	5.8	9.8
LEON	32	10	22	22	0	0	10.2	5.9	15.5
LEVY	9	7	2	1	1	0	20.5	18.3	36.4
LIBERTY	0	0	0	0	0	0	0.0	0.0	0.0
MADISON	4	0	4	4	0	0	18.0	0.0	36.0
MANATEE	20	15	5	5	0	0	5.7	5.3	7.6
MARION	27	15	12	12	0	0	8.4	6.0	17.6
MARTIN	7	5	2	2	0	0	5.4	5.1	6.3
MONROE	5	4	1	1	0	0	6.8	6.2	10.8
NASSAU	1	1	0	0	0	0	1.4	1.6	0.0
OKALOOSA	9	6	3	2	1	0	3.3	2.7	6.0
OKEECHOBEE	2	2	0	0	0	0	3.4	3.8	0.0
ORANGE	117	55	62	57	5	0	7.6	5.2	12.8
OSCEOLA	19	17	2	2	0	0	5.7	5.9	4.5
PALM BEACH	97	46	51	49	2	0	6.5	4.4	11.1
PASCO	35	29	6	4	2	0	7.6	6.9	16.8
PINELLAS	54	39	15	12	3	0	6.0	5.6	7.4
POLK	63	37	26	26	0	0	8.7	6.6	16.2
PUTNAM	13	6	7	7	0	0	13.5	8.3	29.4
SAINT JOHNS	13	7	6	6	0	0	8.3	5.3	25.4
SAINT LUCIE	17	12	5	5	0	0	5.9	5.9	6.1
SANTA ROSA	10	10	0	0	0	0	5.9	6.4	0.0
SARASOTA	8	6	2	1	1	0	2.7	2.3	6.5
SEMINOLE	29	20	9	9	0	0	6.1	5.2	9.7
SUMTER	5	4	1	1	0	0	9.8	10.7	7.3
SUWANNEE	4	4	0	0	0	0	7.8	9.0	0.0
TAYLOR	4	3	1	0	1	0	17.0	17.1	16.7
UNION	1	1	0	0	0	0	6.7	7.7	0.0
VOLUSIA	35	24	11	11	0	0	7.4	6.2	13.0
WAKULLA	4	3	1	1	0	0	12.9	10.7	35.7
WALTON	5	4	1	1	0	0	8.9	8.0	16.7
WASHINGTON	3	2	1	1	0	0	11.7	9.4	22.7

*Rates based on infant deaths by race of decedent, live births by race of mother.

TABLE F-5 (Cont.): RESIDENT AND RECORDED INFANT DEATHS (UNDER 1 YEAR) AND RATES PER 1,000 LIVE BIRTHS, BY RACE, BY COUNTY, FLORIDA, 2004

	RECORDED INFANT DEATHS						RATES*		
	NUMBERS								
	TOTAL	WHITE	NONWHITE			UNK	TOTAL	WHITE	NONWHITE
			TOTAL	BLACK	OTHER				
FLORIDA	1,568	899	668	630	38	1	7.2	5.6	11.6
ALACHUA	101	54	47	46	1	0	17.8	13.1	30.3
BAKER	1	1	0	0	0	0	111.1	125.0	0.0
BAY	10	6	4	4	0	0	3.5	2.6	7.6
BRADFORD	2	2	0	0	0	0	1,000.0	----	0.0
BREVARD	18	13	5	5	0	0	3.5	3.1	5.1
BROWARD	138	55	83	78	5	0	6.1	4.3	8.7
CALHOUN	0	0	0	0	0	0	0.0	0.0	----
CHARLOTTE	2	1	1	1	0	0	1.9	1.1	9.4
CITRUS	2	2	0	0	0	0	2.5	2.7	0.0
CLAY	3	3	0	0	0	0	1.6	1.9	0.0
COLLIER	11	10	1	1	0	0	2.8	2.9	2.0
COLUMBIA	3	3	0	0	0	0	4.3	5.8	0.0
MIAMI-DADE	194	112	82	76	6	0	6.2	4.9	9.7
DESOTO	3	3	0	0	0	0	4.9	5.3	0.0
DIXIE	0	0	0	0	0	0	0.0	0.0	----
DUVAL	165	76	89	84	5	0	11.3	8.3	16.6
ESCAMBIA	63	39	24	22	2	0	10.9	9.3	15.5
FLAGLER	0	0	0	0	0	0	0.0	0.0	----
FRANKLIN	1	1	0	0	0	0	----	----	----
GADSDEN	2	0	2	2	0	0	333.3	0.0	2,000.0
GILCHRIST	0	0	0	0	0	0	0.0	0.0	0.0
GLADES	0	0	0	0	0	0	0.0	0.0	----
GULF	0	0	0	0	0	0	0.0	0.0	----
HAMILTON	0	0	0	0	0	0	0.0	0.0	----
HARDEE	1	1	0	0	0	0	200.0	250.0	0.0
HENDRY	2	0	2	2	0	0	285.7	0.0	666.7
HERNANDO	5	4	1	1	0	0	3.3	2.9	7.5
HIGHLANDS	4	2	2	2	0	0	3.0	1.8	9.2
HILLSBOROUGH	175	104	70	65	5	1	9.6	7.6	16.0
HOLMES	1	1	0	0	0	0	----	----	----
INDIAN RIVER	5	4	1	1	0	0	4.2	4.1	4.5
JACKSON	1	1	0	0	0	0	2.2	3.1	0.0
JEFFERSON	1	0	1	1	0	0	1,000.0	0.0	----
LAFAYETTE	0	0	0	0	0	0	----	----	----
LAKE	8	7	1	1	0	0	3.2	3.5	2.0
LEE	40	32	8	8	0	0	6.1	5.7	8.3
LEON	52	19	33	33	0	0	10.7	6.9	15.6
LEVY	3	3	0	0	0	0	1,000.0	1,000.0	----
LIBERTY	0	0	0	0	0	0	----	----	----
MADISON	1	0	1	1	0	0	333.3	0.0	1,000.0
MANATEE	11	7	4	4	0	0	3.9	3.1	7.7
MARION	9	5	4	4	0	0	3.3	2.3	7.0
MARTIN	7	7	0	0	0	0	3.7	4.7	0.0
MONROE	1	1	0	0	0	0	2.0	2.3	0.0
NASSAU	1	1	0	0	0	0	2.3	2.7	0.0
OKALOOSA	4	1	3	2	1	0	1.3	0.4	5.8
OKEECHOBEE	2	2	0	0	0	0	200.0	222.2	0.0
ORANGE	197	115	82	76	6	0	10.6	8.6	15.8
OSCEOLA	10	8	2	2	0	0	2.7	2.5	3.7
PALM BEACH	95	49	46	45	1	0	5.6	4.1	9.1
PASCO	10	9	1	1	0	0	5.7	5.6	6.3
PINELLAS	110	75	35	30	5	0	10.4	8.9	16.5
POLK	35	22	13	13	0	0	5.7	4.6	9.3
PUTNAM	5	1	4	4	0	0	9.4	2.7	24.5
SAINT JOHNS	3	3	0	0	0	0	2.8	3.4	0.0
SAINT LUCIE	9	5	4	4	0	0	4.5	3.8	6.0
SANTA ROSA	0	0	0	0	0	0	0.0	0.0	0.0
SARASOTA	6	4	2	2	0	0	1.7	1.3	4.6
SEMINOLE	4	3	1	1	0	0	1.0	0.9	1.2
SUMTER	0	0	0	0	0	0	0.0	0.0	0.0
SUWANNEE	1	1	0	0	0	0	125.0	333.3	0.0
TAYLOR	2	0	2	1	1	0	25.0	0.0	83.3
UNION	0	0	0	0	0	0	----	----	----
VOLUSIA	24	17	7	7	0	0	6.1	5.4	9.1
WAKULLA	0	0	0	0	0	0	0.0	0.0	----
WALTON	3	3	0	0	0	0	300.0	428.6	0.0
WASHINGTON	1	1	0	0	0	0	----	----	----

*Rates based on infant deaths by race of decedent, live births by race of mother.

TABLE F-6: RESIDENT INFANT DEATHS BY HISPANIC OR HAITIAN ORIGIN, BY COUNTY, FLORIDA, 2004

	TOTAL	HISPANIC ORIGIN							HAITIAN	NON-HISPANIC/HAITIAN	UNK
		TOTAL HISPANIC	MEXICAN	PUERTO RICAN	CUBAN	CENTRAL/SOUTH AMERICAN	OTHER/UNK HISPANIC				
FLORIDA	1,536	242	70	53	35	62	22	50	1,194	50	
ALACHUA	32	1	0	0	0	1	0	0	31	0	
BAKER	2	0	0	0	0	0	0	0	2	0	
BAY	11	0	0	0	0	0	0	0	11	0	
BRADFORD	2	0	0	0	0	0	0	0	2	0	
BREVARD	32	3	2	1	0	0	0	0	29	0	
BROWARD	135	19	4	5	1	9	0	9	103	4	
CALHOUN	1	0	0	0	0	0	0	0	1	0	
CHARLOTTE	6	0	0	0	0	0	0	0	6	0	
CITRUS	7	0	0	0	0	0	0	0	7	0	
CLAY	12	0	0	0	0	0	0	0	12	0	
COLLIER	25	6	5	0	0	0	1	3	16	0	
COLUMBIA	9	0	0	0	0	0	0	0	9	0	
MIAMI-DADE	167	58	4	3	25	23	3	8	65	36	
DESOTO	3	1	1	0	0	0	0	0	2	0	
DIXIE	1	0	0	0	0	0	0	0	1	0	
DUVAL	138	6	2	1	1	2	0	0	132	0	
ESCAMBIA	43	0	0	0	0	0	0	0	43	0	
FLAGLER	1	0	0	0	0	0	0	0	1	0	
FRANKLIN	1	0	0	0	0	0	0	0	1	0	
GADSDEN	9	1	0	0	0	0	1	0	8	0	
GILCHRIST	2	0	0	0	0	0	0	0	2	0	
GLADES	2	0	0	0	0	0	0	0	2	0	
GULF	0	0	0	0	0	0	0	0	0	0	
HAMILTON	1	0	0	0	0	0	0	0	1	0	
HARDEE	2	2	2	0	0	0	0	0	0	0	
HENDRY	6	3	3	0	0	0	0	0	3	0	
HERNANDO	14	1	0	1	0	0	0	0	13	0	
HIGHLANDS	6	2	2	0	0	0	0	0	4	0	
HILLSBOROUGH	142	28	9	7	3	1	8	5	104	5	
HOLMES	3	0	0	0	0	0	0	0	3	0	
INDIAN RIVER	8	2	0	0	0	0	2	0	6	0	
JACKSON	3	0	0	0	0	0	0	0	3	0	
JEFFERSON	2	0	0	0	0	0	0	0	2	0	
LAFAYETTE	1	0	0	0	0	0	0	0	1	0	
LAKE	17	1	1	0	0	0	0	0	16	0	
LEE	38	10	5	2	0	3	0	2	26	0	
LEON	32	2	2	0	0	0	0	0	30	0	
LEVY	9	1	0	0	0	1	0	0	8	0	
LIBERTY	0	0	0	0	0	0	0	0	0	0	
MADISON	4	0	0	0	0	0	0	0	4	0	
MANATEE	20	6	3	2	0	0	1	0	14	0	
MARION	27	1	1	0	0	0	0	0	26	0	
MARTIN	7	1	0	0	0	1	0	0	6	0	
MONROE	5	2	0	0	0	2	0	0	2	1	
NASSAU	1	0	0	0	0	0	0	0	1	0	
OKALOOSA	9	0	0	0	0	0	0	0	9	0	
OKEECHOBEE	2	1	1	0	0	0	0	0	1	0	
ORANGE	117	25	5	12	0	7	1	11	81	0	
OSCEOLA	19	9	1	8	0	0	0	0	9	1	
PALM BEACH	97	18	2	3	2	9	2	10	67	2	
PASCO	35	1	0	1	0	0	0	0	34	0	
PINELLAS	54	6	5	1	0	0	0	0	48	0	
POLK	63	8	5	3	0	0	0	1	54	0	
PUTNAM	13	2	2	0	0	0	0	0	11	0	
SAINT JOHNS	13	1	0	0	1	0	0	0	12	0	
SAINT LUCIE	17	4	2	2	0	0	0	1	11	1	
SANTA ROSA	10	0	0	0	0	0	0	0	10	0	
SARASOTA	8	1	1	0	0	0	0	0	7	0	
SEMINOLE	29	3	0	1	1	1	0	0	26	0	
SUMTER	5	0	0	0	0	0	0	0	5	0	
SUWANNEE	4	2	0	0	1	0	1	0	2	0	
TAYLOR	4	1	0	0	0	1	0	0	3	0	
UNION	1	0	0	0	0	0	0	0	1	0	
VOLUSIA	35	3	0	0	0	1	2	0	32	0	
WAKULLA	4	0	0	0	0	0	0	0	4	0	
WALTON	5	0	0	0	0	0	0	0	5	0	
WASHINGTON	3	0	0	0	0	0	0	0	3	0	

TABLE F-7: RESIDENT INFANT, NEONATAL AND POST-NEONATAL DEATHS FROM SELECTED CAUSES* BY RACE, FLORIDA, 2004

	TOTAL			POST NEO- NATAL	WHITE			POST NEO- NATAL
	NEONATAL		INFANT		NEONATAL		INFANT	
	<1 DAY	1-27 DAYS			<1 DAY	1-27 DAYS		
TOTAL	1,536	572	417	547	876	317	246	313
Intestinal Infectious Disease	1	0	0	1	1	0	0	1
Diarrhea & Gastroenteritis--Infectious Origin	0	0	0	0	0	0	0	0
Tuberculosis	0	0	0	0	0	0	0	0
Tetanus	0	0	0	0	0	0	0	0
Diphtheria	0	0	0	0	0	0	0	0
Whooping Cough	0	0	0	0	0	0	0	0
Meningococcal Infection	1	0	0	1	1	0	0	1
Septicemia	22	0	0	22	13	0	0	13
Congenital Syphilis	0	0	0	0	0	0	0	0
Gonococcal Infection	0	0	0	0	0	0	0	0
Acute Poliomyelitis	0	0	0	0	0	0	0	0
Varicella (Chicken Pox)	0	0	0	0	0	0	0	0
Measles	0	0	0	0	0	0	0	0
HIV Disease	1	0	0	1	1	0	0	1
Mumps	0	0	0	0	0	0	0	0
Other & Unspec Viral Diseases	3	0	2	1	3	0	2	1
Candidiasis	2	0	0	2	1	0	0	1
Malaria	0	0	0	0	0	0	0	0
Pneumocystosis	0	0	0	0	0	0	0	0
Other & Unspecified Infectious & Parasitic Diseases	2	0	1	1	1	0	0	1
Hodgkins Disease & Non-Hodgkins Lymphomas	0	0	0	0	0	0	0	0
Leukemia	0	0	0	0	0	0	0	0
Other & Unspecified Malignant Neoplasm	1	1	0	0	1	1	0	0
In Situ/Benign/Malignant Neoplasms Uncert/Unk Behavior	6	2	1	3	6	2	1	3
Anemias	1	0	0	1	1	0	0	1
Blood, Blood-Forming, Hemorrhagic Diseases	5	0	3	2	4	0	2	2
Disorders Involving Immune Mechanism	0	0	0	0	0	0	0	0
Short Stature	0	0	0	0	0	0	0	0
Nutritional Deficiencies	2	0	0	2	1	0	0	1
Cystic Fibrosis	0	0	0	0	0	0	0	0
Fluid/Electrolyte/Acid-Base/Volume Depletion Disorders	3	0	2	1	0	0	0	0
Other Endocrine, Nutritional, Metabolic Diseases	6	0	3	3	5	0	3	2
Meningitis	8	0	2	6	6	0	2	4
Infantile Spinal Muscular Atrophy, Type 1 (Werdnig-Hoffman)	1	0	0	1	1	0	0	1
Infantile Cerebral Palsy	0	0	0	0	0	0	0	0
Anoxic Brain Damage	1	0	0	1	0	0	0	0
Other Nervous System Diseases	13	2	1	10	13	2	1	10
Ear & Mastoid Process Diseases	0	0	0	0	0	0	0	0
Pulmonary Heart/Circulation Diseases	8	0	7	1	4	0	3	1
Pericarditis, Endocarditis, Myocarditis	0	0	0	0	0	0	0	0
Cardiomyopathy	7	0	1	6	5	0	0	5
Cardiac Arrest	3	0	0	3	1	0	0	1
Cerebrovascular Diseases	5	0	1	4	1	0	0	1
Other Circulatory System Diseases	9	0	0	9	5	0	0	5
Acute Upper Respiratory Infections	1	0	0	1	1	0	0	1
Influenza	0	0	0	0	0	0	0	0
Pneumonia	11	0	0	11	7	0	0	7

TABLE F-7 (Cont.): RESIDENT INFANT, NEONATAL AND POST-NEONATAL DEATHS FROM SELECTED CAUSES*, BY RACE, FLORIDA, 2004

	TOTAL			POST NEO- NATAL	WHITE			POST NEO- NATAL
	NEONATAL		INFANT		NEONATAL		INFANT	
	<1 DAY	1-27 DAYS			<1 DAY	1-27 DAYS		
Acute Bronchitis & Acute Bronchiolitis	3	0	0	3	1	0	0	1
Bronchitis, Chronic & Unspecified	4	0	0	4	3	0	0	3
Asthma	1	0	0	1	1	0	0	1
Pneumonitis Due to Solids & Liquids	0	0	0	0	0	0	0	0
Other & Unspecified Respiratory System Diseases	24	1	1	22	11	1	0	10
Gastritis, Duodenitis, Noninfective Enteritis/Colitis	22	0	0	22	10	0	0	10
Hernia Abdom Cavity & Intestinal Obstruct W/O Hernia	7	0	2	5	5	0	2	3
Other & Unspec Digestive System Disease	15	0	2	13	5	0	0	5
Renal Failure & Other Kidney Disorders	15	0	4	11	9	0	1	8
Other & Unspec Genitourinary System Dis	1	0	0	1	0	0	0	0
PERINATAL PERIOD CONDITIONS	771	464	258	49	416	239	145	32
Maternal Hypertensive Disorders	0	0	0	0	0	0	0	0
Maternal Conditions Unrelated Present Pregnancy	7	4	3	0	5	3	2	0
Incompetent Cervix	27	25	2	0	10	9	1	0
Premature Rupture of Membranes	40	39	1	0	19	18	1	0
Multiple Pregnancy	42	35	6	1	26	23	2	1
Maternal Complications of Pregnancy	12	11	1	0	6	5	1	0
Placenta Complications	15	11	4	0	9	5	4	0
Cord Complications	2	0	2	0	2	0	2	0
Chorioamnionitis	24	20	4	0	11	11	0	0
Other & Unspecified Membrane Abnormalities	0	0	0	0	0	0	0	0
Other Complications of Labor & Delivery	9	9	0	0	4	4	0	0
Noxious Influences Via Placenta or Breast Milk	3	0	3	0	3	0	3	0
Slow Fetal Growth & Fetal Malnutrition	4	2	1	1	2	1	0	1
Extreme Low Birth Weight or Extreme Immaturity	188	162	22	4	90	76	11	3
Other Low Birth Weight or Preterm	66	61	2	3	39	35	1	3
Long Gestation & High Birth Weight	0	0	0	0	0	0	0	0
Birth Trauma	1	0	0	1	1	0	0	1
Intrauterine Hypoxia	8	5	3	0	4	3	1	0
Birth Asphyxia	19	6	11	2	10	4	5	1
Respiratory Distress	44	12	26	6	27	7	18	2
Congenital Pneumonia	3	0	3	0	3	0	3	0
Neonatal Aspiration Syndromes	1	0	0	1	0	0	0	0
Interstitial Emphysema & Related Conditions	9	4	4	1	6	3	2	1
Pulmonary Hemorrhage	8	0	8	0	6	0	6	0
Chronic Respiratory Disease	19	0	3	16	10	0	1	9
Atelectasis	22	13	9	0	11	5	6	0
Other Respiratory Conditions	2	0	2	0	1	0	1	0
Bacterial Sepsis	67	13	51	3	36	7	27	2
Omphalitis With or Without Hemorrhage	0	0	0	0	0	0	0	0
All Other Infections	8	2	4	2	4	0	3	1
Neonatal Hemorrhage	28	4	21	3	16	4	9	3
Hemorrhagic Disease of Newborn	0	0	0	0	0	0	0	0
Hemolytic Dis Due to Isoimmunization/Perinat Jaundice	1	0	1	0	1	0	1	0
Hematological Disorders	7	4	3	0	3	2	1	0
Diabetes Mellitus, Maternal or Neonatal	0	0	0	0	0	0	0	0
Necrotizing Enterocolitis	32	0	30	2	17	0	16	1
Hydrops Fetalis Not Due To Hemolytic Dis	14	6	6	2	10	4	4	2

TABLE F-7 (Cont.): RESIDENT INFANT, NEONATAL AND POST-NEONATAL DEATHS FROM SELECTED CAUSES*,
BY RACE, FLORIDA, 2004

	TOTAL			POST NEO- NATAL	WHITE			POST NEO- NATAL
	NEONATAL		INFANT		NEONATAL		INFANT	
	<1 DAY	1-27 DAYS			<1 DAY	1-27 DAYS		
Other Perinatal Conditions	39	16	22	1	24	10	13	1
CONGENITAL / CHROMOSOMAL ANOMALIES	268	95	95	78	177	70	65	42
Anencephaly & Similar Anomalies	19	16	3	0	15	13	2	0
Congenital Hydrocephalus	6	1	4	1	5	1	3	1
Spina Bifida	0	0	0	0	0	0	0	0
Other Cong Malf Nervous System	20	6	5	9	12	4	3	5
Congenital Malf of Heart	63	6	23	34	40	5	18	17
Other Congenital Malf of Circulatory Sys	17	2	11	4	8	1	6	1
Congenital Malf of Respiratory Sys	29	16	10	3	20	12	7	1
Congenital Anomalies of Digestive Sys	3	0	1	2	2	0	1	1
Congenital Malf of Genitourinary Sys	12	9	3	0	7	5	2	0
Congenital Malf of Musculoskeletal Sys	28	8	12	8	23	7	11	5
Downs Syndrome	6	2	0	4	4	2	0	2
Edwards Syndrome	24	10	9	5	15	7	6	2
Pataus Syndrome	8	4	2	2	4	3	0	1
Other Congenital Malf	18	8	5	5	12	5	2	5
Other Chromosomal Abnorm	15	7	7	1	10	5	4	1
Sudden Infant Death Syndrome	79	0	7	72	47	0	3	44
Symptoms, Signs, Abn Clinical/Lab Findings	85	5	13	67	40	1	7	32
All Other Diseases	0	0	0	0	0	0	0	0
Unint Inj: Motor Vehicle	12	0	1	11	6	0	1	5
Unint Inj: Other & Unspecified Transport	0	0	0	0	0	0	0	0
Unint Inj: Falls	0	0	0	0	0	0	0	0
Unint Inj: Firearms Discharge	0	0	0	0	0	0	0	0
Unint Inj: Drowning & Submersion	7	0	0	7	6	0	0	6
Unint Inj: Suffocation & Strangulation in Bed	64	0	8	56	39	0	7	32
Unint Inj: Other Suffocation & Strangulation	4	0	0	4	1	0	0	1
Unint Inj: Inhale/Ingest--Respiratory Tract Obstruction	1	0	0	1	1	0	0	1
Unint Inj: Smoke, Fire, Flames Exposure	0	0	0	0	0	0	0	0
Unint Inj: Poisoning & Noxious Substance Exposure	1	0	0	1	0	0	0	0
Unint Inj: Other & Unspecified	2	0	0	2	2	0	0	2
Homicide: Hanging, Strangulation, Suffocation	2	1	0	1	2	1	0	1
Homicide: Firearms Discharge	0	0	0	0	0	0	0	0
Homicide: Neglect, Abandonment, Maltreatment	8	0	0	8	2	0	0	2
Homicide: Other & Unspecified Means	13	1	1	11	6	0	1	5
Medical & Surgical Care Complications	1	0	0	1	1	0	0	1
Other External Causes	3	0	1	2	2	0	0	2

* ICD-10 codes associated with each cause of death group are presented on pages (xiv-xvi).

TABLE F-7 (Cont.): RESIDENT INFANT, NEONATAL AND POST-NEONATAL DEATHS FROM SELECTED CAUSES*, BY RACE, FLORIDA, 2004

	BLACK			POST NEO- NATAL	OTHER			POST NEO- NATAL
	NEONATAL		INFANT		NEONATAL		INFANT	
	<1 DAY	1-27 DAYS			<1 DAY	1-27 DAYS		
TOTAL	621	242	159	220	38	13	11	14
Intestinal Infectious Disease	0	0	0	0	0	0	0	0
Diarrhea & Gastroenteritis--Infectious Origin	0	0	0	0	0	0	0	0
Tuberculosis	0	0	0	0	0	0	0	0
Tetanus	0	0	0	0	0	0	0	0
Diphtheria	0	0	0	0	0	0	0	0
Whooping Cough	0	0	0	0	0	0	0	0
Meningococcal Infection	0	0	0	0	0	0	0	0
Septicemia	8	0	0	8	1	0	0	1
Congenital Syphilis	0	0	0	0	0	0	0	0
Gonococcal Infection	0	0	0	0	0	0	0	0
Acute Poliomyelitis	0	0	0	0	0	0	0	0
Varicella (Chicken Pox)	0	0	0	0	0	0	0	0
Measles	0	0	0	0	0	0	0	0
HIV Disease	0	0	0	0	0	0	0	0
Mumps	0	0	0	0	0	0	0	0
Other & Unspec Viral Diseases	0	0	0	0	0	0	0	0
Candidiasis	1	0	0	1	0	0	0	0
Malaria	0	0	0	0	0	0	0	0
Pneumocystosis	0	0	0	0	0	0	0	0
Other & Unspecified Infectious & Parasitic Diseases	1	0	1	0	0	0	0	0
Hodgkins Disease & Non-Hodgkins Lymphomas	0	0	0	0	0	0	0	0
Leukemia	0	0	0	0	0	0	0	0
Other & Unspecified Malignant Neoplasm	0	0	0	0	0	0	0	0
In Situ/Benign/Malignant Neoplasms Uncert/Unk Behavior	0	0	0	0	0	0	0	0
Anemias	0	0	0	0	0	0	0	0
Blood, Blood-Forming, Hemorrhagic Diseases	1	0	1	0	0	0	0	0
Disorders Involving Immune Mechanism	0	0	0	0	0	0	0	0
Short Stature	0	0	0	0	0	0	0	0
Nutritional Deficiencies	1	0	0	1	0	0	0	0
Cystic Fibrosis	0	0	0	0	0	0	0	0
Fluid/Electrolyte/Acid-Base/Volume Depletion Disorders	2	0	2	0	1	0	0	1
Other Endocrine, Nutritional, Metabolic Diseases	0	0	0	0	1	0	0	1
Meningitis	2	0	0	2	0	0	0	0
Infantile Spinal Muscular Atrophy, Type 1 (Werdnig-Hoffman)	0	0	0	0	0	0	0	0
Infantile Cerebral Palsy	0	0	0	0	0	0	0	0
Anoxic Brain Damage	1	0	0	1	0	0	0	0
Other Nervous System Diseases	0	0	0	0	0	0	0	0
Ear & Mastoid Process Diseases	0	0	0	0	0	0	0	0
Pulmonary Heart/Circulation Diseases	4	0	4	0	0	0	0	0
Pericarditis, Endocarditis, Myocarditis	0	0	0	0	0	0	0	0
Cardiomyopathy	2	0	1	1	0	0	0	0
Cardiac Arrest	2	0	0	2	0	0	0	0
Cerebrovascular Diseases	4	0	1	3	0	0	0	0
Other Circulatory System Diseases	4	0	0	4	0	0	0	0
Acute Upper Respiratory Infections	0	0	0	0	0	0	0	0
Influenza	0	0	0	0	0	0	0	0
Pneumonia	4	0	0	4	0	0	0	0

TABLE F-7 (Cont.): RESIDENT INFANT, NEONATAL AND POST-NEONATAL DEATHS FROM SELECTED CAUSES*,
BY RACE, FLORIDA, 2004

	BLACK			POST NEO-	OTHER			POST NEO-
	NEONATAL		INFANT		NEONATAL		INFANT	
	<1 DAY	1-27 DAYS			<1 DAY	1-27 DAYS		
Acute Bronchitis & Acute Bronchiolitis	2	0	0	2	0	0	0	0
Bronchitis, Chronic & Unspecified	1	0	0	1	0	0	0	0
Asthma	0	0	0	0	0	0	0	0
Pneumonitis Due to Solids & Liquids	0	0	0	0	0	0	0	0
Other & Unspecified Respiratory System Diseases	12	0	1	11	1	0	0	1
Gastritis, Duodenitis, Noninfective Enteritis/Colitis	10	0	0	10	2	0	0	2
Hernia Abdom Cavity & Intestinal Obstruct W/O Hernia	2	0	0	2	0	0	0	0
Other & Unspec Digestive System Disease	10	0	2	8	0	0	0	0
Renal Failure & Other Kidney Disorders	5	0	3	2	1	0	0	1
Other & Unspec Genitourinary System Dis	1	0	0	1	0	0	0	0
PERINATAL PERIOD CONDITIONS	334	212	105	17	20	13	7	0
Maternal Hypertensive Disorders	0	0	0	0	0	0	0	0
Maternal Conditions Unrelated Present Pregnancy	2	1	1	0	0	0	0	0
Incompetent Cervix	17	16	1	0	0	0	0	0
Premature Rupture of Membranes	20	20	0	0	1	1	0	0
Multiple Pregnancy	14	10	4	0	2	2	0	0
Maternal Complications of Pregnancy	6	6	0	0	0	0	0	0
Placenta Complications	5	5	0	0	1	1	0	0
Cord Complications	0	0	0	0	0	0	0	0
Chorioamnionitis	12	8	4	0	1	1	0	0
Other & Unspecified Membrane Abnormalities	0	0	0	0	0	0	0	0
Other Complications of Labor & Delivery	5	5	0	0	0	0	0	0
Noxious Influences Via Placenta or Breast Milk	0	0	0	0	0	0	0	0
Slow Fetal Growth & Fetal Malnutrition	2	1	1	0	0	0	0	0
Extreme Low Birth Weight or Extreme Immaturity	93	81	11	1	5	5	0	0
Other Low Birth Weight or Preterm	24	23	1	0	3	3	0	0
Long Gestation & High Birth Weight	0	0	0	0	0	0	0	0
Birth Trauma	0	0	0	0	0	0	0	0
Intrauterine Hypoxia	4	2	2	0	0	0	0	0
Birth Asphyxia	9	2	6	1	0	0	0	0
Respiratory Distress	17	5	8	4	0	0	0	0
Congenital Pneumonia	0	0	0	0	0	0	0	0
Neonatal Aspiration Syndromes	1	0	0	1	0	0	0	0
Interstitial Emphysema & Related Conditions	3	1	2	0	0	0	0	0
Pulmonary Hemorrhage	1	0	1	0	1	0	1	0
Chronic Respiratory Disease	9	0	2	7	0	0	0	0
Atelectasis	11	8	3	0	0	0	0	0
Other Respiratory Conditions	1	0	1	0	0	0	0	0
Bacterial Sepsis	30	6	23	1	1	0	1	0
Omphalitis With or Without Hemorrhage	0	0	0	0	0	0	0	0
All Other Infections	4	2	1	1	0	0	0	0
Neonatal Hemorrhage	12	0	12	0	0	0	0	0
Hemorrhagic Disease of Newborn	0	0	0	0	0	0	0	0
Hemolytic Dis Due to Isoimmunization/Perinat Jaundice	0	0	0	0	0	0	0	0
Hematological Disorders	4	2	2	0	0	0	0	0
Diabetes Mellitus, Maternal or Neonatal	0	0	0	0	0	0	0	0
Necrotizing Enterocolitis	11	0	10	1	3	0	3	0
Hydrops Fetalis Not Due To Hemolytic Dis	2	2	0	0	2	0	2	0

TABLE F-7 (Cont.): RESIDENT INFANT, NEONATAL AND POST-NEONATAL DEATHS FROM SELECTED CAUSES*,
BY RACE, FLORIDA, 2004

	BLACK			POST NEO- NATAL	OTHER			POST NEO- NATAL
	NEONATAL		INFANT		NEONATAL		INFANT	
	<1 DAY	1-27 DAYS			<1 DAY	1-27 DAYS		
Other Perinatal Conditions	15	6	9	0	0	0	0	0
CONGENITAL / CHROMOSOMAL ANOMALIES	87	25	27	35	4	0	3	1
Anencephaly & Similar Anomalies	3	3	0	0	1	0	1	0
Congenital Hydrocephalus	1	0	1	0	0	0	0	0
Spina Bifida	0	0	0	0	0	0	0	0
Other Cong Malf Nervous System	8	2	2	4	0	0	0	0
Congenital Malf of Heart	22	1	5	16	1	0	0	1
Other Congenital Malf of Circulatory Sys	9	1	5	3	0	0	0	0
Congenital Malf of Respiratory Sys	8	4	2	2	1	0	1	0
Congenital Anomalies of Digestive Sys	1	0	0	1	0	0	0	0
Congenital Malf of Genitourinary Sys	5	4	1	0	0	0	0	0
Congenital Malf of Musculoskeletal Sys	5	1	1	3	0	0	0	0
Downs Syndrome	2	0	0	2	0	0	0	0
Edwards Syndrome	8	3	2	3	1	0	1	0
Patau Syndrome	4	1	2	1	0	0	0	0
Other Congenital Malf	6	3	3	0	0	0	0	0
Other Chromosomal Abnorm	5	2	3	0	0	0	0	0
Sudden Infant Death Syndrome	30	0	3	27	2	0	1	1
Symptoms, Signs, Abn Clinical/Lab Findings	42	4	6	32	3	0	0	3
All Other Diseases	0	0	0	0	0	0	0	0
Unint Inj: Motor Vehicle	5	0	0	5	1	0	0	1
Unint Inj: Other & Unspecified Transport	0	0	0	0	0	0	0	0
Unint Inj: Falls	0	0	0	0	0	0	0	0
Unint Inj: Firearms Discharge	0	0	0	0	0	0	0	0
Unint Inj: Drowning & Submersion	1	0	0	1	0	0	0	0
Unint Inj: Suffocation & Strangulation in Bed	24	0	1	23	1	0	0	1
Unint Inj: Other Suffocation & Strangulation	3	0	0	3	0	0	0	0
Unint Inj: Inhale/Ingest--Respiratory Tract Obstruction	0	0	0	0	0	0	0	0
Unint Inj: Smoke, Fire, Flames Exposure	0	0	0	0	0	0	0	0
Unint Inj: Poisoning & Noxious Substance Exposure	1	0	0	1	0	0	0	0
Unint Inj: Other & Unspecified	0	0	0	0	0	0	0	0
Homicide: Hanging, Strangulation, Suffocation	0	0	0	0	0	0	0	0
Homicide: Firearms Discharge	0	0	0	0	0	0	0	0
Homicide: Neglect, Abandonment, Maltreatment	6	0	0	6	0	0	0	0
Homicide: Other & Unspecified Means	7	1	0	6	0	0	0	0
Medical & Surgical Care Complications	0	0	0	0	0	0	0	0
Other External Causes	1	0	1	0	0	0	0	0

* ICD-10 codes associated with each cause of death group are presented on pages (xiv-xvi).