

Marriages and Dissolutions of Marriage

MARRIAGES AND DISSOLUTIONS OF MARRIAGE

- The number of marriage ceremonies increased slightly from a total of 153,023 in 2003 to a total of 154,453 in 2004.
- The marriage rate per 1,000 population has increased slightly each year since 1999 to 9.4 in 2002. It dropped to 8.9 in 2003 and then dropped to 8.8 in 2004.
- May was the most popular month for marriages with 15,479 marriages performed.
- After increasing for three consecutive years, the number of dissolutions of marriage decreased slightly in 2002, increased slightly in 2003, and then decreased in 2004.
- Since 1980, the dissolution rate has declined 35.6 percent. There had been an overall increase in the number of dissolutions from 1998 through 2003. In 2004 the number of dissolutions declined.
- The dissolution of marriage rate per 1,000 population declined from 5.2 in 2001 to 5.1 in 2002, and then to 5.0 in 2003. The dissolution rate dropped to 4.7 in 2004.
- Of the 83,306 dissolutions of marriage in 2004, over half (56.6 percent) did not affect any minor children.
- More than four of every 10 dissolutions of marriage occurred to couples married between 5 and 14 years.
- The marriage rate in Florida is more than 1 ³/₄ times the dissolution rate.

**CHART M-1: MARRIAGES AND DISSOLUTIONS OF MARRIAGE,
AND RATES PER 1,000 POPULATION, FLORIDA AND UNITED
STATES, CENSUS YEARS 1920-1990 AND 1994-2004**

YEAR	MARRIAGES			DISSOLUTIONS ¹		
	FLORIDA		U.S. RATE	FLORIDA		U.S. RATE
	NUMBER	RATE		NUMBER	RATE	
1920	NA	NA	12.0	NA	NA	1.6
1930	17,147	11.7	9.2	3,262	2.5	1.6
1940	32,709	17.1	12.1	11,061	5.8	2.0
1950	27,588	9.8	11.1	17,845	6.3	2.6
1960	39,315	7.9	8.5	19,326	3.9	2.2
1970	69,249	10.1	10.6	37,506	5.5	3.5
1980	108,344	11.0	10.6	71,578	7.3	5.2
1990	141,816	10.9	9.8	81,119	6.2	4.7
1994	142,895	10.1	9.1 ²	81,628	5.8	4.6 ²
1995	145,090	10.1	9.1 ²	78,416	5.4	4.5 ²
1996	150,599	10.2	8.8 ²	77,750	5.3	4.3 ²
1997	158,783	10.6	8.9 ²	82,161	5.5	4.3 ²
1998	141,344	9.2	8.5 ²	80,466	5.3	4.3 ²
1999	136,403	8.7	8.5 ²	80,983	5.2	4.1 ²
2000	145,300	9.0	8.7 ²	81,439	5.1	4.2 ²
2001	153,298	9.3	8.2 ²	85,259	5.2	4.0 ²
2002	157,554	9.4	7.8 ²	85,181	5.1	4.0 ²
2003	153,023	8.9	7.7 ²	85,367	5.0	3.8 ²
2004	154,453	8.8	7.8 ²	83,306	4.7	3.7 ²

¹ Includes divorces and annulments.
² Provisional data.

**GRAPH M-1: MARRIAGES AND DISSOLUTIONS OF MARRIAGE RATES PER 1,000 POPULATION,
FLORIDA AND UNITED STATES, 1994-2004**

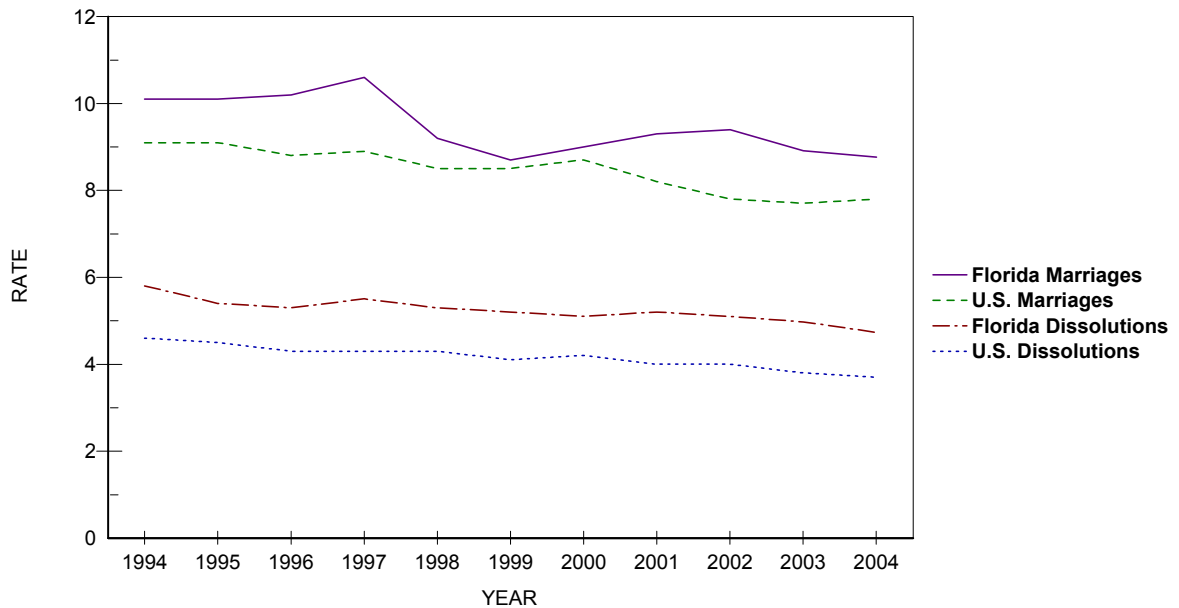


TABLE M-1: MARRIAGES PERFORMED BY MONTH, BY COUNTY OF ISSUANCE, FLORIDA, 2004

	TOTAL	JAN	FEB	MAR	APR	MAY	JUN	JUL	AUG	SEP	OCT	NOV	DEC
FLORIDA	154,453	9,689	13,321	13,725	14,599	15,479	14,026	13,832	11,102	9,471	13,909	12,724	12,576
ALACHUA	1,920	126	163	171	168	232	183	185	143	97	173	135	144
BAKER	241	13	24	29	27	17	25	14	18	20	24	15	15
BAY	2,311	109	153	184	200	267	261	246	190	157	249	149	146
BRADFORD	254	15	25	21	25	25	23	21	13	20	26	17	23
BREVARD	4,068	261	362	366	417	382	361	402	274	225	379	327	312
BROWARD	14,411	1,024	1,288	1,279	1,277	1,300	1,230	1,258	1,100	827	1,250	1,276	1,302
CALHOUN	137	10	17	14	14	15	14	7	10	7	11	13	5
CHARLOTTE	1,100	60	118	131	98	96	116	99	58	50	84	78	112
CITRUS	825	54	77	67	66	79	79	77	54	63	79	56	74
CLAY	1,436	99	112	118	154	163	134	110	101	104	124	102	115
COLLIER	2,975	174	253	250	312	316	258	248	173	175	270	281	265
COLUMBIA	592	47	58	66	71	53	51	53	32	32	45	35	49
MIAMI-DADE	26,050	1,915	2,354	2,346	2,403	2,375	2,165	2,212	2,060	1,589	2,013	2,241	2,377
DESOTO	244	23	26	26	15	17	27	17	11	17	27	14	24
DIXIE	133	10	5	12	10	17	11	17	10	8	9	8	16
DUVAL	6,429	365	450	549	640	713	584	597	504	458	702	434	433
ESCAMBIA	2,950	177	244	282	273	336	315	296	234	143	223	228	199
FLAGLER	454	21	34	40	42	48	43	49	32	28	30	31	56
FRANKLIN	191	7	13	17	28	22	23	16	11	13	19	17	5
GADSDEN	307	18	43	25	21	20	26	33	26	21	23	32	19
GILCHRIST	138	12	10	9	11	9	17	12	12	9	9	17	11
GLADES	51	5	0	2	3	8	5	1	5	6	3	7	6
GULF	162	7	7	11	14	19	21	16	13	21	11	12	10
HAMILTON	116	10	9	11	11	13	7	10	5	10	15	8	7
HARDEE	191	6	17	17	20	26	21	22	11	14	6	13	18
HENDRY	280	27	39	31	34	19	19	22	19	8	24	20	18
HERNANDO	915	58	81	80	93	84	77	77	57	74	68	94	72
HIGHLANDS	604	36	71	63	50	64	57	55	36	29	40	57	46
HILLSBOROUGH	9,344	581	782	896	840	939	842	772	628	600	876	824	764
HOLMES	189	10	16	14	22	23	10	17	15	16	10	22	14
INDIAN RIVER	942	57	92	90	87	93	94	105	60	44	75	79	66
JACKSON	367	17	41	33	31	37	33	34	27	27	41	20	26
JEFFERSON	128	8	12	14	9	20	13	12	7	11	11	6	5
LAFAYETTE	62	3	3	5	10	4	7	3	8	3	3	6	7
LAKE	1,951	111	189	168	179	173	165	156	176	124	198	153	159
LEE	4,012	256	363	341	394	470	376	340	212	235	367	354	304
LEON	1,933	119	137	171	181	211	180	178	142	116	192	155	151
LEVY	222	8	18	21	24	24	22	20	13	6	25	22	19
LIBERTY	64	2	8	5	3	12	5	5	6	6	6	4	2
MADISON	157	11	18	12	12	24	15	12	7	13	11	11	11
MANATEE	1,986	121	165	178	204	227	200	166	129	100	192	168	136
MARION	2,096	110	182	185	202	218	202	206	131	109	188	167	196
MARTIN	947	54	74	80	88	93	90	108	75	40	84	78	83
MONROE	3,126	177	269	248	365	321	335	262	204	156	261	275	253
NASSAU	672	35	46	51	58	78	72	56	38	51	80	55	52
OKALOOSA	2,743	123	193	221	258	317	294	346	281	171	235	145	159
OKEECHOBEE	271	26	32	23	23	16	30	17	26	11	18	19	30
ORANGE	9,945	603	862	913	939	989	866	896	600	648	987	823	819
OSCEOLA	4,767	355	363	374	430	475	451	380	299	421	443	387	389
PALM BEACH	9,182	572	824	861	879	869	808	802	750	431	823	784	779
PASCO	2,540	149	227	225	253	249	216	222	159	158	250	217	215
PINELLAS	7,427	395	631	659	760	803	645	614	488	529	744	623	536
POLK	3,772	216	368	347	348	361	348	341	246	256	315	334	292
PUTNAM	542	27	61	45	48	54	44	54	49	36	42	37	45
SAINT JOHNS	1,502	70	91	124	151	180	169	137	99	93	162	132	94
SAINT LUCIE	1,400	112	135	113	109	128	131	142	97	49	120	137	127
SANTA ROSA	871	44	63	62	83	108	105	87	77	40	86	59	57
SARASOTA	2,982	160	257	262	279	302	258	308	196	185	291	243	241
SEMINOLE	3,023	179	262	263	281	304	290	278	208	191	285	228	254
SUMTER	301	20	35	23	30	23	24	29	18	19	25	30	25
SUWANNEE	260	13	22	27	27	29	27	28	20	20	14	18	15
TAYLOR	142	5	19	5	15	12	12	16	14	15	12	5	12
UNION	110	10	15	11	8	8	12	8	11	2	9	6	10
VOLUSIA	3,607	191	326	339	331	372	332	355	251	209	339	295	267
WAKULLA	220	4	21	29	25	29	16	22	10	21	16	7	20
WALTON	998	37	37	50	103	135	120	112	102	69	128	61	44
WASHINGTON	165	9	9	20	13	14	14	14	11	15	9	18	19

TABLE M-2: MARRIAGES BY RACE OF GROOM AND BRIDE, FLORIDA, 2004

RACE OF GROOM	RACE OF BRIDE										
	TOTAL	WHITE	BLACK	AMERICAN INDIAN	CHINESE	JAPANESE	HAWAIIAN	FILIPINO	OTHER ASIAN/PAC ISL	OTHER ENTRIES	UNK
TOTAL	154,453	120,806	20,277	301	50	25	10	161	3,112	9,532	179
WHITE	120,692	115,378	1,439	220	28	17	9	116	1,576	1,837	72
BLACK	21,982	2,846	18,488	31	0	1	0	8	157	436	15
AMERICAN INDIAN	287	224	8	34	0	0	0	0	12	9	0
CHINESE	34	10	1	0	18	0	0	2	3	0	0
JAPANESE	9	4	0	0	0	5	0	0	0	0	0
HAWAIIAN	8	7	1	0	0	0	0	0	0	0	0
FILIPINO	54	20	0	0	0	0	0	29	3	2	0
OTH ASIAN/PAC ISL	2,115	709	39	5	4	1	0	5	1,328	22	2
OTHER ENTRIES	9,117	1,555	298	9	0	1	1	1	28	7,224	0
UNK	155	53	3	2	0	0	0	0	5	2	90

TABLE M-3: DISSOLUTIONS* OF MARRIAGE BY DURATION OF MARRIAGE IN YEARS AND NUMBER OF MINOR CHILDREN AFFECTED, FLORIDA, 2004

DURATION IN YEARS	NUMBER OF MINOR CHILDREN AFFECTED								
	TOTAL	NONE	ONE	TWO	THREE	FOUR	FIVE	SIX+	UNK
TOTAL	83,306	47,173	16,699	11,639	3,093	606	106	56	3,934
<1	3,161	2,713	153	42	16	0	0	0	237
1	5,724	4,725	511	99	25	4	0	1	359
2	6,252	4,743	919	199	42	5	2	1	341
3	5,922	4,069	1,166	314	51	9	1	2	310
4	5,513	3,397	1,283	432	79	16	1	0	305
5-9	21,304	10,914	5,173	3,384	693	127	20	13	980
10-14	12,123	4,537	2,775	3,162	918	183	33	12	503
15-19	7,494	2,345	1,650	2,207	803	176	37	16	260
20-24	4,917	2,238	1,339	838	226	43	8	7	218
25-29	2,534	1,760	459	142	27	9	1	0	136
30-34	1,487	1,250	111	37	8	2	0	0	79
35-39	713	646	18	8	2	0	0	0	39
40+	613	564	8	4	2	1	0	0	34
UNK	5,549	3,272	1,134	771	201	31	3	4	133

*Includes divorces and annulments.

TABLE M-4: DISSOLUTIONS* OF MARRIAGE BY MONTH, BY COUNTY, FLORIDA, 2004

	TOTAL	JAN	FEB	MAR	APR	MAY	JUN	JUL	AUG	SEP	OCT	NOV	DEC
FLORIDA	83,306	6,207	6,899	7,687	7,281	7,097	7,314	7,786	7,363	5,683	6,868	6,493	6,628
ALACHUA	763	74	55	67	59	81	49	86	93	50	42	49	58
BAKER	141	12	14	9	21	11	5	17	8	11	6	19	8
BAY	961	78	67	79	86	78	84	96	111	64	67	106	45
BRADFORD	106	16	12	10	11	13	2	14	6	10	0	1	11
BREVARD	1,356	78	110	150	119	131	117	118	137	80	98	117	101
BROWARD	9,491	649	835	968	797	881	809	828	782	678	805	682	777
CALHOUN	54	4	3	5	2	5	6	4	3	4	11	4	3
CHARLOTTE	522	34	30	46	56	60	57	62	27	29	32	51	38
CITRUS	506	38	43	70	46	36	53	58	31	31	42	29	29
CLAY	826	59	53	78	53	93	79	72	91	63	72	59	54
COLLIER	1,241	111	99	147	113	103	105	69	109	75	112	105	93
COLUMBIA	366	24	38	23	40	33	41	45	35	20	29	23	15
MIAMI-DADE	14,278	1,105	1,275	1,242	1,036	1,034	1,207	1,458	1,352	1,026	1,214	1,187	1,142
DESOTO	136	20	11	9	17	14	10	12	7	8	11	11	6
DIXIE	85	3	10	6	6	6	7	15	4	10	9	2	7
DUVAL	4,475	285	430	363	305	412	397	445	386	369	438	344	301
ESCAMBIA	1,438	118	122	154	125	114	149	135	161	91	85	98	86
FLAGLER	264	26	18	29	20	26	24	14	25	31	21	17	13
FRANKLIN	49	4	1	5	3	5	9	9	6	2	1	2	2
GADSDEN	160	4	11	19	19	22	6	18	27	4	14	9	7
GILCHRIST	86	3	8	8	7	6	12	8	10	4	6	6	8
GLADES	20	2	1	3	2	0	2	2	2	2	1	0	3
GULF	65	3	5	3	8	5	7	6	5	10	4	3	6
HAMILTON	56	5	2	6	6	5	3	5	9	4	3	2	6
HARDEE	130	10	8	20	6	9	14	15	5	9	9	10	15
HENDRY	128	8	19	7	14	4	18	7	16	4	7	17	7
HERNANDO	427	51	26	45	40	35	30	29	43	21	49	30	28
HIGHLANDS	331	45	28	29	14	39	15	39	26	29	32	19	16
HILLSBOROUGH	5,539	401	438	427	495	628	427	514	453	380	425	497	454
HOLMES	105	12	17	8	9	4	6	14	9	9	7	4	6
INDIAN RIVER	506	38	34	42	61	42	55	40	59	13	36	41	45
JACKSON	140	15	15	0	17	22	0	13	0	14	10	15	19
JEFFERSON	75	3	4	12	13	10	10	8	5	2	2	2	4
LAFAYETTE	32	6	1	1	7	0	6	1	7	1	0	1	1
LAKE	994	68	89	88	87	78	127	64	78	55	90	97	73
LEE	2,062	168	162	207	190	176	255	158	165	100	144	129	208
LEON	954	72	79	71	81	65	84	103	93	92	77	63	74
LEVY	191	15	15	18	23	18	17	19	13	2	26	14	11
LIBERTY	32	1	3	5	4	2	2	3	0	0	5	3	4
MADISON	102	5	4	11	10	11	12	8	5	10	10	7	9
MANATEE	1,164	78	106	93	92	80	106	119	146	93	99	59	93
MARION	1,281	101	106	118	124	123	98	152	119	64	89	85	102
MARTIN	511	41	24	51	32	54	38	55	49	19	34	47	67
MONROE	482	44	50	40	28	35	41	61	38	39	34	36	36
NASSAU	266	18	18	28	11	13	28	29	24	19	33	15	30
OKALOOSA	1,301	121	82	122	126	110	134	111	118	81	86	97	113
OKEECHOBEE	166	5	26	13	22	18	14	10	14	4	13	12	15
ORANGE	4,895	347	351	505	503	353	410	497	359	388	383	426	373
OSCEOLA	1,602	139	149	193	157	122	152	134	112	95	123	87	139
PALM BEACH	5,428	435	522	511	527	444	424	504	508	252	473	387	441
PASCO	1,583	125	119	148	108	124	161	109	148	95	189	105	152
PINELLAS	4,132	280	289	377	440	293	340	358	362	330	363	325	375
POLK	2,416	179	236	195	246	243	215	140	166	217	204	176	199
PUTNAM	459	38	24	52	26	38	53	47	44	33	26	45	33
SAINT JOHNS	633	35	42	79	69	52	48	76	48	52	40	52	40
SAINT LUCIE	908	49	46	86	79	106	67	120	88	22	47	117	81
SANTA ROSA	576	35	35	49	81	53	30	60	54	26	52	60	41
SARASOTA	1,567	126	112	130	181	98	147	145	151	131	126	133	87
SEMINOLE	1,391	105	114	129	111	112	166	120	126	82	116	77	133
SUMTER	197	8	15	25	25	12	13	24	25	8	22	10	10
SUWANNEE	152	17	12	13	12	15	15	13	16	11	4	16	8
TAYLOR	128	6	10	13	12	19	11	6	6	20	11	9	5
UNION	67	2	7	7	2	4	6	9	7	3	11	3	6
VOLUSIA	2,313	160	181	165	190	200	238	205	204	148	205	197	220
WAKULLA	165	11	11	16	16	27	17	10	13	11	13	13	7
WALTON	219	23	11	24	19	21	17	26	0	18	18	20	22
WASHINGTON	111	6	6	15	14	11	7	15	14	5	2	9	7

*Includes divorces and annulments.