

# Live Births

## LIVE BIRTHS

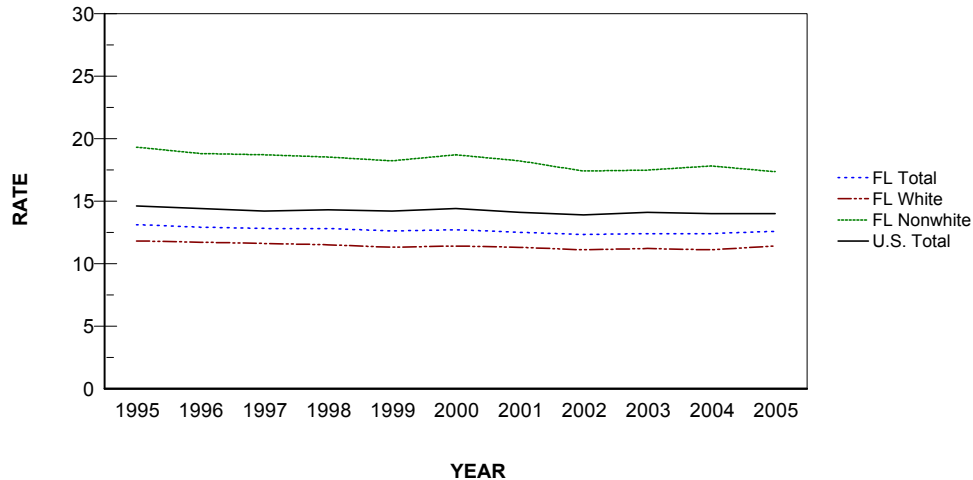
- From 1995 through 2001 Florida's resident live births increased yearly. In 2002, the number dropped slightly, but the number increased in 2003 and again in 2004. In 2005, the number of resident live births number increased to a new record of 226,219.
- The resident birth rate per 1,000 persons dropped each year from 2000 through 2002. It increased slightly to 12.4 in 2003 and remained constant in 2004. In 2005, the rate increased to 12.6 resident live births per 1,000 persons.
- In 2005, the resident birth rate for whites was 11.4 births per 1,000 persons, and 17.3 births per 1,000 persons for nonwhites.
- Although the total resident births to mothers 18 years or younger increased slightly in 2005, the percentage of births to mothers in this age group slightly decreased from 6.7 percent to 6.5 percent.
- The percentage of resident nonwhite births among mothers 18 years or younger (9.2 percent) was 64.3 percent greater than the percentage for white mothers (5.6 percent).
- Low birthweight infants (less than 2,500 grams or 5 lbs. 8.2 oz.) accounted for 8.8 percent of the resident live births in 2005 and very low birthweight infants (less than 1,500 grams or 3 lbs. 4.9 oz.) accounted for 1.6 percent of the resident live births in 2005.
- Infants weighing 4,000 grams (8 lbs. 13.1 oz.) or more at birth accounted for 7.0 percent of the total resident live births.
- Two out of every five resident live births (42.8%) were to an unwed mother. For blacks, two out of every three births (68.8%) were to unwed mothers; among white mothers, one out of every three births (36.5%) as to an unwed mother; and among mothers of other races, only one out of every four live births (26.9%) as to an unwed mother.
- Of the live births to unwed mothers, 13.7 percent were to women 18 years or younger.
- Mothers of Hispanic origin accounted for 28.2 percent of the resident live births.
- Over eighty percent (80.5%) of the resident live births to nonwhite mothers were to black mothers. Black mothers accounted for 21.2 percent of the total resident live births.
- Of the resident live births, 98.9 percent occurred in hospitals. Physicians were attendants in 88.6 percent of those hospital births.
- In 2005, 78.5 percent of all mothers received prenatal care in the first trimester.
- Of black mothers, 73.6 percent had a high school diploma or greater level of education, compared to 78.9 percent of white mothers and 84.3 percent of mothers of other races.
- Of the mothers aged 15-19 years, 18.6 percent had one or more previous live births.
- Resident live births to mothers aged 18 years or younger accounted for 6.5 percent of the total number of live births, while mothers aged 35 years or older comprised 14.4 percent of the total.

**CHART B-1: RESIDENT LIVE BIRTHS AND RATES PER 1,000 POPULATION,  
BY RACE OF MOTHER, FLORIDA AND UNITED STATES TOTAL,  
CENSUS YEARS 1920-1990 AND 1995-2005**

YEAR	NUMBER OF BIRTHS -FL			RATES - FL			RATE-U.S.
	TOTAL	WHITE	NONWHITE	TOTAL	WHITE	NONWHITE	TOTAL
1920 <sup>1</sup>	19,540	13,541	5,999	19.7	20.6	17.9	27.7
1930 <sup>1</sup>	26,991	18,596	8,395	18.3	17.9	19.3	21.3
1940	33,696	23,805	9,891	17.6	17.0	19.1	19.4
1950	64,370	45,699	18,671	22.8	20.7	30.5	24.1
1960	115,610	84,402	31,208	23.1	20.6	34.9	23.7
1970	115,113	86,945	28,166	16.8	15.1	26.2	18.4
1980	131,811	97,402	34,386	13.4	11.6	23.7	15.9
1990	199,146	149,743	49,265	15.3	13.6	24.8	16.7
1995	188,535	141,848	46,555	13.1	11.8	19.3	14.6
1996	189,338	142,391	46,848	12.9	11.7	18.8	14.4
1997	192,304	143,767	48,397	12.8	11.6	18.7	14.2
1998	195,564	145,868	49,502	12.8	11.5	18.5	14.3
1999	196,963	146,329	50,473	12.6	11.3	18.2	14.2
2000	204,030	150,115	53,622	12.7	11.4	18.7	14.4
2001	205,800	151,623	53,827	12.5	11.3	18.2	14.1
2002	205,580	152,127	53,071	12.3	11.1	17.4	13.9
2003	212,243	157,402	54,566	12.4	11.2	17.5	14.1
2004	218,045	160,132	57,477	12.4	11.1	17.8	14.0
2005	226,219	166,181	59,608	12.6	11.4	17.3	14.0 <sup>2</sup>

1. Only recorded data are available.
2. Preliminary data.
3. Provisional data.

**GRAPH B-1: RESIDENT LIVE BIRTH RATES PER 1,000 POPULATION, BY RACE OF  
MOTHER, FLORIDA AND UNITED STATES TOTAL, 1995-2005**



**CHART B-2: RESIDENT LIVE BIRTHS TO MOTHERS 18 YEARS AND UNDER,  
BY SINGLE YEARS OF AGE, AND PERCENT OF TOTAL BIRTHS,  
BY RACE OF MOTHER, FLORIDA, 1970, 1975, 1980, 1985, 1990, 1995 AND 2001-2005**

YEAR	AGE OF MOTHER							18 YEARS & UNDER	
	<13	13	14	15	16	17	18	NUMBER	PERCENT
<b>TOTAL</b>									
1970	26	107	503	1,463	3,107	4,887	6,808	16,901	14.7
1975	20	145	647	1,798	3,369	4,936	6,482	17,397	16.5
1980	21	98	509	1,537	2,913	4,429	6,299	15,806	12.0
1985	16	105	549	1,407	2,709	4,348	6,139	15,273	9.3
1990	31	138	591	1,661	3,148	5,193	7,544	18,306	9.2
1995	20	128	588	1,583	3,236	5,166	6,971	17,692	9.4
2001	17	96	394	1,111	2,514	4,388	6,891	15,411	7.5
2002	10	87	323	1,034	2,316	4,078	6,582	14,430	7.0
2003	10	65	287	947	2,290	3,990	6,514	14,103	6.6
2004	10	65	329	1,014	2,314	4,108	6,661	14,501	6.7
2005	15	59	341	1,036	2,428	4,126	6,797	14,802	6.5
<b>WHITE</b>									
1970	3	19	155	524	1,553	3,004	4,463	9,721	11.2
1975	5	34	207	693	1,651	2,868	4,078	9,536	12.2
1980	5	24	128	581	1,370	2,434	3,887	8,429	8.7
1985	4	26	168	600	1,439	2,537	3,744	8,518	6.9
1990	8	37	201	693	1,571	2,976	4,636	10,122	6.8
1995	9	32	230	801	1,801	3,124	4,451	10,448	7.4
2001	7	30	167	550	1,426	2,670	4,366	9,216	6.1
2002	5	32	141	563	1,353	2,578	4,216	8,888	5.8
2003	1	17	129	501	1,399	2,521	4,231	8,799	5.6
2004	2	33	132	564	1,362	2,611	4,304	9,008	5.6
2005	7	26	161	567	1,468	2,643	4,452	9,324	5.6
<b>NONWHITE</b>									
1970	23	88	348	939	1,554	1,882	2,345	7,179	25.5
1975	15	111	439	1,104	1,717	2,068	2,403	7,857	28.5
1980	16	74	380	956	1,543	1,994	2,412	7,375	21.4
1985	12	79	381	807	1,269	1,811	2,394	6,753	16.7
1990	23	101	390	967	1,574	2,212	2,905	8,172	16.6
1995	11	96	358	782	1,431	2,038	2,519	7,235	15.5
2001	10	66	226	557	1,084	1,713	2,517	6,173	11.5
2002	5	55	182	470	963	1,497	2,357	5,529	10.4
2003	9	48	158	446	890	1,465	2,278	5,294	9.7
2004	8	32	197	448	950	1,491	2,345	5,471	9.5
2005	8	33	180	466	958	1,479	2,332	5,456	9.2

**CHART B-3: PERCENT OF RESIDENT LIVE BIRTHS FOR SELECTED BIRTHWEIGHT GROUPS,  
BY RACE OF MOTHER AND GENDER OF CHILD, FLORIDA, 1970, 1980, 1990 AND 1995-2005**

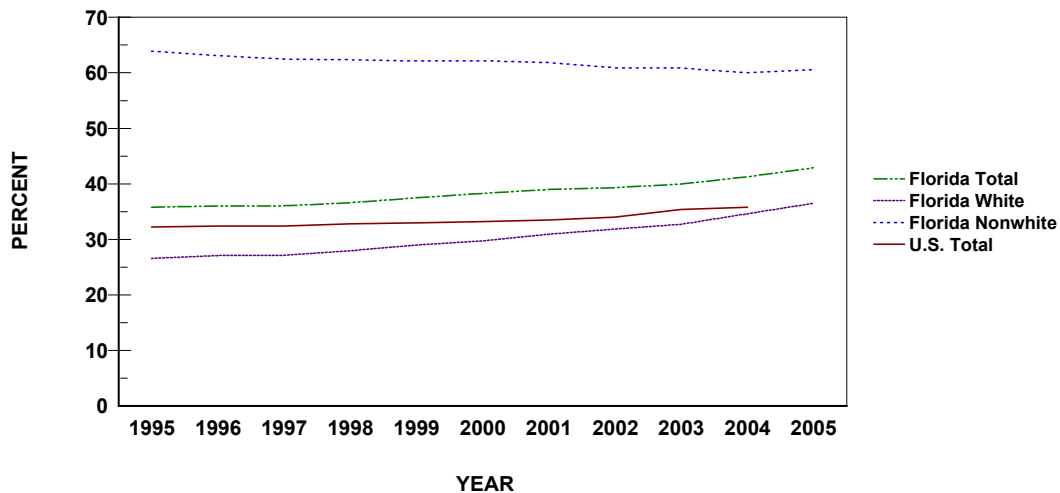
YEAR	VERY LOW BIRTHWEIGHT: LESS THAN 1,500 GRAMS					LOW BIRTHWEIGHT: LESS THAN 2,500 GRAMS				
	TOTAL	WHITE		NONWHITE		TOTAL	WHITE		NONWHITE	
		MALE	FEMALE	MALE	FEMALE		MALE	FEMALE	MALE	FEMALE
1970	1.3	0.9	0.9	2.4	2.4	8.5	6.4	7.5	11.9	14.5
1980	1.4	1.0	0.9	2.5	2.5	7.6	5.6	6.5	11.3	12.9
1990	1.5	1.0	1.0	2.7	2.8	7.4	5.5	6.3	11.2	13.1
1995	1.5	1.1	1.0	2.7	2.7	7.7	5.9	6.9	10.3	13.0
1996	1.5	1.1	1.1	2.6	2.6	7.9	6.0	7.1	10.7	12.9
1997	1.5	1.2	1.2	2.6	2.6	8.0	6.2	7.3	10.7	13.0
1998	1.6	1.3	1.2	2.6	2.8	8.1	6.3	7.4	10.4	13.2
1999	1.6	1.2	1.3	2.7	2.9	8.2	6.4	7.5	10.7	13.1
2000	1.5	1.2	1.1	2.6	2.7	8.0	6.2	7.0	10.9	12.8
2001	1.6	1.2	1.2	2.6	2.9	8.2	6.3	7.3	10.8	13.1
2002	1.6	1.2	1.2	2.9	2.8	8.4	6.6	7.7	11.0	13.4
2003	1.6	1.2	1.1	2.6	2.8	8.5	6.5	7.7	11.1	14.0
2004	1.6	1.1	1.2	2.7	2.9	8.6	6.6	7.9	11.2	13.4
2005	1.6	1.2	1.2	2.7	2.9	8.8	6.7	8.0	11.4	14.0

**CHART B-4: RESIDENT LIVE BIRTHS TO UNWED MOTHERS  
AND PERCENT OF TOTAL LIVE BIRTHS, BY RACE OF MOTHER,  
FLORIDA AND UNITED STATES TOTAL, CENSUS YEARS 1920-1990 AND 1995-2005**

YEAR	NUMBER OF BIRTHS			PERCENT - FL			PERCENT-U.S.
	TOTAL	WHITE	NONWHITE	TOTAL	WHITE	NONWHITE	TOTAL
1920 <sup>1</sup>	754	125	629	3.9	0.9	10.5	NA
1930 <sup>1</sup>	1,467	277	1,190	5.4	1.5	14.2	NA
1940	2,075	358	1,717	6.2	1.5	17.4	3.8
1950	5,134	805	4,329	8.0	1.8	23.2	4.0
1960	11,042	2,321	8,721	9.6	2.8	27.9	5.3
1970	17,264	5,679	11,581	15.0	6.5	41.1	10.7
1980	30,156	10,295	19,860	22.9	10.6	57.8	20.3
1990	63,126	31,276	31,802	31.7	20.9	64.6	28.0
1995	67,422	37,625	29,742	35.8	26.5	63.9	32.2
1996	68,082	38,509	29,546	36.0	27.0	63.1	32.4
1997	69,226	38,956	30,227	36.0	27.1	62.5	32.4
1998	71,602	40,701	30,842	36.6	27.9	62.3	32.8
1999	73,785	42,398	31,335	37.5	29.0	62.1	33.0
2000	78,026	44,616	33,334	38.2	29.7	62.2	33.2
2001	80,209	46,846	33,266	39.0	30.9	61.8	33.5
2002	80,833	48,400	32,326	39.3	31.8	60.9	34.0
2003	84,733	51,482	33,178	39.9	32.7	60.8	34.6
2004	89,976	55,381	34,469	41.3	34.6	60.0	35.8
2005	96,895	60,665	36,101	42.8	36.5	60.6	NA

1. Only recorded data are available.

**GRAPH B-2: PERCENT OF RESIDENT LIVE BIRTHS TO UNWED MOTHERS,  
BY RACE OF MOTHER, FLORIDA AND UNITED STATES TOTAL, 1995-2005**



**CHART B-5: RESIDENT LIVE BIRTHS TO UNWED MOTHERS AND PERCENT  
BY AGE AND RACE OF MOTHER, FLORIDA, 1995 AND 2005**

AGE OF MOTHER	WHITE				NONWHITE			
	1995		2005		1995		2005	
	NUMBER	PERCENT	NUMBER	PERCENT	NUMBER	PERCENT	NUMBER	PERCENT
TOTAL	37,625	26.5	60,665	36.5	29,742	63.9	36,101	60.6
10-14	252	93.0	187	96.4	464	99.8	221	100.0
15	682	85.1	529	93.3	773	98.8	465	99.8
16	1,482	82.3	1,326	90.3	1,402	98.0	950	99.2
17	2,335	74.7	2,231	84.4	1,972	96.8	1,446	97.8
18	3,062	68.8	3,640	81.8	2,372	94.2	2,223	95.3
19	3,149	59.2	4,884	75.2	2,482	89.1	3,028	92.5
20-24	12,590	38.3	22,919	55.9	10,524	75.6	14,076	78.8
25-29	7,069	18.0	13,378	30.0	5,023	48.7	7,847	52.1
30-34	4,423	12.3	7,094	18.1	3,065	39.3	3,701	33.8
35-44	2,569	14.4	4,417	17.5	1,649	36.9	2,122	30.7
45+	8	10.1	56	21.2	10	37.0	19	21.8
UNK	4	20.0	4	30.8	6	66.7	3	60.0

TABLE B-1: RESIDENT AND RECORDED LIVE BIRTHS AND BIRTH RATES PER 1,000 POPULATION, BY RACE OF MOTHER, BY COUNTY, FLORIDA, 2005

	RESIDENT LIVE BIRTHS							RATES		
			NUMBERS							
	TOTAL	WHITE	TOTAL	BLACK	OTHER	UNK	TOTAL	WHITE	NONWHITE	
FLORIDA	226,219	166,181	59,608	47,957	11,651	430	12.6	11.4	17.3	
ALACHUA	2,690	1,646	1,044	814	230	0	11.1	9.2	16.8	
BAKER	369	315	54	48	6	0	15.4	15.4	15.1	
BAY	2,391	1,829	523	334	189	39	14.7	13.2	21.9	
BRADFORD	332	277	55	50	5	0	11.8	12.8	8.3	
BREVARD	5,387	4,348	1,018	727	291	21	10.1	9.3	15.7	
BROWARD	23,127	13,576	9,467	7,868	1,599	84	13.2	10.8	19.2	
CALHOUN	158	140	18	16	2	0	11.3	12.4	6.6	
CHARLOTTE	1,084	973	110	66	44	1	7.0	6.8	9.9	
CITRUS	1,021	945	76	32	44	0	7.6	7.4	13.0	
CLAY	2,238	1,897	339	213	126	2	13.1	12.6	16.6	
COLLIER	4,069	3,514	553	458	95	2	12.7	11.9	22.4	
COLUMBIA	851	672	178	158	20	1	13.8	13.4	15.5	
MIAMI-DADE	32,365	23,334	8,865	8,107	758	166	13.3	12.7	15.1	
DESOTO	505	450	54	50	4	1	15.6	16.4	11.1	
DIXIE	170	164	6	5	1	0	11.0	11.8	3.9	
DUVAL	12,974	7,597	5,368	4,449	919	9	15.0	13.5	17.8	
ESCAMBIA	4,237	2,745	1,490	1,241	249	2	14.0	12.3	18.6	
FLAGLER	689	587	102	79	23	0	8.6	8.4	9.9	
FRANKLIN	119	108	10	5	5	1	10.9	11.2	7.7	
GADSDEN	741	278	462	450	12	1	15.5	13.9	16.5	
GILCHRIST	194	178	16	13	3	0	11.9	11.8	13.1	
GLADES	77	58	19	12	7	0	7.2	6.4	11.1	
GULF	130	110	20	20	0	0	7.9	8.5	5.5	
HAMILTON	191	123	68	64	4	0	13.3	14.0	12.3	
HARDEE	456	425	31	25	6	0	16.7	17.4	10.8	
HENDRY	757	643	114	95	19	0	19.6	19.8	18.5	
HERNANDO	1,496	1,313	181	116	65	2	9.8	9.2	18.7	
HIGHLANDS	939	754	184	145	39	1	10.0	9.1	16.9	
HILLSBOROUGH	16,753	12,602	4,134	3,132	1,002	17	14.7	14.0	17.4	
HOLMES	247	233	14	9	5	0	12.9	13.4	7.6	
INDIAN RIVER	1,360	1,138	222	191	31	0	10.4	9.7	16.7	
JACKSON	567	389	176	161	15	2	11.4	10.9	12.3	
JEFFERSON	167	96	71	70	1	0	11.7	10.7	13.5	
LAFAYETTE	114	100	14	14	0	0	14.1	14.7	11.0	
LAKE	3,223	2,679	541	396	145	3	12.1	11.2	20.4	
LEE	6,704	5,685	1,017	844	173	2	12.1	11.3	19.9	
LEON	3,105	1,676	1,426	1,222	204	3	11.4	9.5	14.7	
LEVY	462	403	59	50	9	0	12.1	12.0	13.0	
LIBERTY	108	95	13	11	2	0	14.2	16.3	7.3	
MADISON	253	130	123	123	0	0	12.8	11.1	15.2	
MANATEE	3,809	3,098	710	470	240	1	12.4	11.3	21.5	
MARION	3,449	2,651	798	616	182	0	11.2	9.9	19.8	
MARTIN	1,340	1,010	329	111	218	1	9.4	7.7	32.9	
MONROE	768	663	103	70	33	2	9.3	8.6	17.8	
NASSAU	812	751	60	47	13	1	12.3	12.4	11.0	
OKALOOSA	2,738	2,182	553	300	253	3	14.4	13.5	19.7	
OKEECHOBEE	587	535	52	36	16	0	15.5	15.8	13.1	
ORANGE	16,556	11,175	5,371	4,162	1,209	10	15.8	14.6	18.9	
OSCEOLA	3,593	3,068	522	353	169	3	15.1	15.0	15.5	
PALM BEACH	15,160	10,562	4,583	3,788	795	15	11.9	10.2	19.2	
PASCO	4,753	4,341	409	189	220	3	11.6	11.1	20.6	
PINELLAS	9,065	6,999	2,060	1,402	658	6	9.6	8.6	15.8	
POLK	7,786	6,088	1,693	1,406	287	5	14.3	13.4	18.7	
PUTNAM	1,034	766	268	252	16	0	14.0	12.7	20.0	
SAINT JOHNS	1,761	1,547	214	130	84	0	11.1	10.5	17.6	
SAINT LUCIE	3,003	2,132	869	741	128	2	12.4	10.7	19.6	
SANTA ROSA	1,746	1,594	151	64	87	1	12.7	12.6	13.9	
SARASOTA	2,997	2,632	365	236	129	0	8.1	7.5	17.2	
SEMINOLE	4,786	3,787	995	659	336	4	11.6	10.8	16.0	
SUMTER	501	398	103	89	14	0	6.6	6.1	9.7	
SUWANNEE	470	387	82	73	9	1	12.3	11.5	17.1	
TAYLOR	244	183	60	56	4	1	11.4	11.0	12.5	
UNION	166	141	25	24	1	0	11.0	12.4	6.7	
VOLUSIA	5,093	4,228	861	699	162	4	10.2	9.7	14.4	
WAKULLA	288	256	32	27	5	0	10.6	10.8	9.1	
WALTON	604	545	59	36	23	0	11.1	11.1	11.3	
WASHINGTON	249	208	41	35	6	0	10.7	10.7	10.8	



TABLE B-1 (Cont.): RESIDENT AND RECORDED LIVE BIRTHS AND BIRTH RATES PER 1,000 POPULATION, BY RACE OF MOTHER, BY COUNTY, FLORIDA, 2005

	RECORDED LIVE BIRTHS						RATES		
			NUMBERS						
	TOTAL	WHITE	TOTAL	BLACK	OTHER	UNK	TOTAL	WHITE	NONWHITE
FLORIDA	226,763	166,510	59,862	48,145	11,717	391	12.6	11.4	17.4
ALACHUA	5,876	4,343	1,532	1,230	302	1	24.3	24.2	24.7
BAKER	3	1	2	1	1	0	0.1	0.0	0.6
BAY	2,973	2,329	602	395	207	42	18.3	16.8	25.2
BRADFORD	3	2	1	1	0	0	0.1	0.1	0.2
BREVARD	5,293	4,270	1,003	703	300	20	9.9	9.1	15.5
BROWARD	23,678	13,566	10,034	8,450	1,584	78	13.6	10.8	20.3
CALHOUN	1	1	0	0	0	0	0.1	0.1	0.0
CHARLOTTE	1,058	932	125	75	50	1	6.9	6.5	11.2
CITRUS	939	873	66	30	36	0	7.0	6.8	11.3
CLAY	1,936	1,602	333	227	106	1	11.3	10.6	16.3
COLLIER	4,091	3,561	529	448	81	1	12.8	12.0	21.4
COLUMBIA	767	547	218	203	15	2	12.4	10.9	19.0
MIAMI-DADE	30,959	22,652	8,131	7,390	741	176	12.7	12.3	13.8
DESOTO	649	594	55	48	7	0	20.0	21.6	11.3
DIXIE	1	1	0	0	0	0	0.1	0.1	0.0
DUVAL	15,161	9,577	5,575	4,569	1,006	9	17.5	17.0	18.5
ESCAMBIA	6,049	4,369	1,680	1,348	332	0	19.9	19.6	20.9
FLAGLER	2	1	1	1	0	0	0.0	0.0	0.1
FRANKLIN	0	0	0	0	0	0	0.0	0.0	0.0
GADSDEN	6	4	2	2	0	0	0.1	0.2	0.1
GILCHRIST	0	0	0	0	0	0	0.0	0.0	0.0
GLADES	0	0	0	0	0	0	0.0	0.0	0.0
GULF	1	0	0	0	0	1	0.1	0.0	0.0
HAMILTON	6	3	3	3	0	0	0.4	0.3	0.5
HARDEE	2	2	0	0	0	0	0.1	0.1	0.0
HENDRY	4	2	2	2	0	0	0.1	0.1	0.3
HERNANDO	1,635	1,456	177	109	68	2	10.8	10.2	18.3
HIGHLANDS	1,337	1,107	229	179	50	1	14.3	13.3	21.0
HILLSBOROUGH	19,003	14,512	4,477	3,370	1,107	14	16.7	16.1	18.9
HOLMES	2	2	0	0	0	0	0.1	0.1	0.0
INDIAN RIVER	1,277	1,074	202	177	25	1	9.8	9.1	15.2
JACKSON	544	378	166	151	15	0	10.9	10.6	11.6
JEFFERSON	0	0	0	0	0	0	0.0	0.0	0.0
LAFAYETTE	0	0	0	0	0	0	0.0	0.0	0.0
LAKE	2,883	2,325	557	425	132	1	10.8	9.7	21.0
LEE	7,400	6,324	1,075	885	190	1	13.3	12.5	21.1
LEON	5,001	2,804	2,193	1,963	230	4	18.3	15.9	22.6
LEVY	4	3	1	1	0	0	0.1	0.1	0.2
LIBERTY	0	0	0	0	0	0	0.0	0.0	0.0
MADISON	1	1	0	0	0	0	0.1	0.1	0.0
MANATEE	2,939	2,409	530	327	203	0	9.6	8.8	16.0
MARION	2,808	2,127	681	515	166	0	9.1	8.0	16.9
MARTIN	2,045	1,629	414	167	247	2	14.4	12.4	41.4
MONROE	545	455	90	64	26	0	6.6	5.9	15.6
NASSAU	472	409	63	51	12	0	7.1	6.8	11.6
OKALOOSA	3,080	2,531	549	286	263	0	16.2	15.7	19.5
OKEECHOBEE	6	4	2	2	0	0	0.2	0.1	0.5
ORANGE	19,996	14,093	5,892	4,512	1,380	11	19.0	18.4	20.7
OSCEOLA	3,873	3,270	603	362	241	0	16.3	16.0	17.9
PALM BEACH	17,359	12,283	5,061	4,155	906	15	13.6	11.9	21.2
PASCO	1,768	1,610	157	79	78	1	4.3	4.1	7.9
PINELLAS	10,671	8,492	2,175	1,445	730	4	11.2	10.4	16.7
POLK	6,572	5,118	1,453	1,219	234	1	12.1	11.3	16.1
PUTNAM	582	392	190	181	9	0	7.9	6.5	14.1
SAINT JOHNS	1,111	943	168	133	35	0	7.0	6.4	13.8
SAINT LUCIE	2,071	1,370	701	608	93	0	8.5	6.9	15.8
SANTA ROSA	343	306	37	15	22	0	2.5	2.4	3.4
SARASOTA	3,738	3,205	533	389	144	0	10.1	9.2	25.1
SEMINOLE	3,912	3,092	819	596	223	1	9.5	8.8	13.2
SUMTER	2	2	0	0	0	0	0.0	0.0	0.0
SUWANNEE	2	2	0	0	0	0	0.1	0.1	0.0
TAYLOR	49	34	15	15	0	0	2.3	2.0	3.1
UNION	1	1	0	0	0	0	0.1	0.1	0.0
VOLUSIA	4,257	3,501	756	637	119	0	8.6	8.0	12.6
WAKULLA	1	0	1	0	1	0	0.0	0.0	0.3
WALTON	15	14	1	1	0	0	0.3	0.3	0.2
WASHINGTON	0	0	0	0	0	0	0.0	0.0	0.0

TABLE B-2: RESIDENT LIVE BIRTHS BY HISPANIC OR HAITIAN ORIGIN OF MOTHER, BY COUNTY, FLORIDA, 2005

	TOTAL	HISPANIC ORIGIN							NON-HISPANIC/ HAITIAN	UNK
		TOTAL HISPANIC	MEXICAN	PUERTO RICAN	CUBAN	CENTRAL/ SOUTH AMERICAN	OTHER/ UNK HISPANIC	HAITIAN		
FLORIDA	226,219	63,757	16,859	10,979	11,396	20,506	4,017	7,229	154,411	822
ALACHUA	2,690	192	43	39	24	67	19	7	2,489	2
BAKER	369	5	4	0	1	0	0	0	362	2
BAY	2,391	157	81	31	9	23	13	3	2,218	13
BRADFORD	332	11	7	1	2	1	0	0	321	0
BREVARD	5,387	509	133	163	42	138	33	32	4,827	19
BROWARD	23,127	6,847	712	1,069	898	3,622	546	1,939	14,270	71
CALHOUN	158	7	5	1	0	0	1	0	150	1
CHARLOTTE	1,084	107	33	28	10	20	16	16	960	1
CITRUS	1,021	52	15	17	6	8	6	1	968	0
CLAY	2,238	167	54	52	7	31	23	7	2,060	4
COLLIER	4,069	2,139	1,308	76	220	449	86	331	1,592	7
COLUMBIA	851	38	16	10	4	7	1	0	813	0
MIAMI-DADE	32,365	20,433	1,237	1,266	7,938	8,602	1,390	1,740	10,081	111
DESOTO	505	229	211	3	1	11	3	0	276	0
DIXIE	170	4	2	1	0	1	0	0	166	0
DUVAL	12,974	1,146	322	329	98	321	76	68	11,720	40
ESCAMBIA	4,237	202	103	39	6	42	12	1	4,033	1
FLAGLER	689	73	10	27	4	23	9	5	609	2
FRANKLIN	119	9	5	1	0	2	1	0	109	1
GADSDEN	741	119	90	0	0	23	6	0	621	1
GILCHRIST	194	18	5	3	1	6	3	0	176	0
GLADES	77	21	16	1	0	1	3	1	54	1
GULF	130	0	0	0	0	0	0	0	129	1
HAMILTON	191	35	31	1	1	2	0	1	154	1
HARDEE	456	280	270	3	1	1	5	1	175	0
HENDRY	757	448	337	27	24	20	40	0	304	5
HERNANDO	1,496	146	21	79	15	20	11	2	1,340	8
HIGHLANDS	939	264	186	49	7	9	13	3	670	2
HILLSBOROUGH	16,753	5,141	1,950	1,326	638	906	321	132	11,197	283
HOLMES	247	6	3	0	1	0	2	0	241	0
INDIAN RIVER	1,360	320	253	14	13	38	2	22	1,018	0
JACKSON	567	21	13	4	2	1	1	0	545	1
JEFFERSON	167	8	6	0	2	0	0	0	159	0
LAFAYETTE	114	13	13	0	0	0	0	0	101	0
LAKE	3,223	684	377	139	31	96	41	13	2,524	2
LEE	6,704	2,157	973	282	178	499	225	218	4,323	6
LEON	3,105	134	44	28	13	30	19	17	2,954	0
LEVY	462	39	21	5	5	6	2	1	422	0
LIBERTY	108	5	4	1	0	0	0	0	103	0
MADISON	253	19	8	0	3	6	2	2	232	0
MANATEE	3,809	1,276	942	95	30	200	9	53	2,479	1
MARION	3,449	503	201	159	18	39	86	7	2,936	3
MARTIN	1,340	282	174	33	5	62	8	13	1,045	0
MONROE	768	227	41	17	91	71	7	26	509	6
NASSAU	812	26	14	3	1	3	5	0	783	3
OKALOOSA	2,738	335	180	52	11	63	29	0	2,399	4
OKEECHOBEE	587	200	178	10	2	8	2	1	386	0
ORANGE	16,556	5,086	1,012	2,248	215	1,357	254	763	10,673	34
OSCEOLA	3,593	1,750	207	959	58	401	125	41	1,801	1
PALM BEACH	15,160	4,552	1,259	529	436	2,201	127	1,406	9,170	32
PASCO	4,753	701	291	197	54	108	51	6	3,954	92
PINELLAS	9,065	1,182	618	248	61	114	141	10	7,855	18
POLK	7,786	1,947	1,322	369	45	130	81	119	5,712	8
PUTNAM	1,034	169	118	38	3	6	4	1	864	0
SAINT JOHNS	1,761	100	26	29	10	22	13	3	1,655	3
SAINT LUCIE	3,003	704	383	95	31	180	15	165	2,133	1
SANTA ROSA	1,746	93	53	14	4	16	6	0	1,653	0
SARASOTA	2,997	497	282	49	34	110	22	17	2,481	2
SEMINOLE	4,786	894	155	394	41	246	58	19	3,867	6
SUMTER	501	72	65	4	1	0	2	1	428	0
SUWANNEE	470	64	45	2	3	14	0	0	406	0
TAYLOR	244	4	0	1	1	2	0	0	239	1
UNION	166	5	4	1	0	0	0	0	161	0
VOLUSIA	5,093	820	327	309	34	115	35	15	4,245	13
WAKULLA	288	3	0	3	0	0	0	0	285	0
WALTON	604	46	35	1	2	4	4	0	556	2
WASHINGTON	249	4	1	1	0	0	2	0	245	0

TABLE B-3: RESIDENT LIVE BIRTHS FOR INCORPORATED CITIES OF 2,400 OR MORE POPULATION,  
BY RACE OF MOTHER, BY COUNTY, FLORIDA, 2005

	TOTAL	WHITE	BLACK	AMER INDIAN	CHINESE	JAPANESE	HAWAIIAN	FILIPINO	OTHER ASIAN/ PAC ISL	MULTI - RACE & OTHER	UNK
<b>FLORIDA</b>	<b>226,219</b>	<b>166,181</b>	<b>47,957</b>	<b>536</b>	<b>695</b>	<b>211</b>	<b>31</b>	<b>1,194</b>	<b>3,896</b>	<b>5,088</b>	<b>430</b>
<b>ALACHUA</b>	<b>2,690</b>	<b>1,646</b>	<b>814</b>	<b>1</b>	<b>44</b>	<b>7</b>	<b>1</b>	<b>16</b>	<b>92</b>	<b>69</b>	<b>0</b>
ALACHUA	111	69	35	0	0	0	0	0	3	4	0
GAINESVILLE	1,633	845	608	1	39	5	0	13	79	43	0
HIGH SPRINGS	72	64	8	0	0	0	0	0	0	0	0
NEWBERRY	85	70	14	0	1	0	0	0	0	0	0
BALANCE OF COUNTY	789	598	149	0	4	2	1	3	10	22	0
<b>BAKER</b>	<b>369</b>	<b>315</b>	<b>48</b>	<b>0</b>	<b>1</b>	<b>0</b>	<b>0</b>	<b>0</b>	<b>1</b>	<b>4</b>	<b>0</b>
MACCLENNY	103	83	15	0	1	0	0	0	1	3	0
BALANCE OF COUNTY	266	232	33	0	0	0	0	0	0	1	0
<b>BAY</b>	<b>2,391</b>	<b>1,829</b>	<b>334</b>	<b>11</b>	<b>2</b>	<b>1</b>	<b>0</b>	<b>28</b>	<b>30</b>	<b>117</b>	<b>39</b>
CALLAWAY	40	27	8	0	0	0	0	2	0	3	0
CEDAR GROVE	7	5	0	0	0	0	0	0	0	2	0
LYNN HAVEN	204	169	17	1	2	0	0	3	3	6	3
PANAMA CITY	1,265	873	269	7	0	0	0	16	17	59	24
PANAMA CITY BEACH	301	263	5	1	0	0	0	3	5	17	7
PARKER	19	12	1	0	0	0	0	1	1	4	0
SPRINGFIELD	7	6	1	0	0	0	0	0	0	0	0
BALANCE OF COUNTY	548	474	33	2	0	1	0	3	4	26	5
<b>BRADFORD</b>	<b>332</b>	<b>277</b>	<b>50</b>	<b>1</b>	<b>1</b>	<b>0</b>	<b>1</b>	<b>0</b>	<b>0</b>	<b>2</b>	<b>0</b>
STARKE	95	62	31	0	1	0	1	0	0	0	0
BALANCE OF COUNTY	237	215	19	1	0	0	0	0	0	2	0
<b>BREVARD</b>	<b>5,387</b>	<b>4,348</b>	<b>727</b>	<b>14</b>	<b>22</b>	<b>5</b>	<b>0</b>	<b>40</b>	<b>77</b>	<b>133</b>	<b>21</b>
CAPE CANAVERAL	77	69	4	0	0	1	0	0	0	2	1
COCOA	456	301	135	2	0	0	0	3	2	13	0
COCOA BEACH	75	71	1	0	2	0	0	1	0	0	0
INDIALANTIC	77	72	1	0	0	0	0	2	1	0	1
INDIAN HARBOUR BEACH	47	44	0	0	0	0	0	0	0	1	2
MALABAR	18	17	0	0	0	0	0	0	0	1	0
MELBOURNE	1,130	921	143	2	4	1	0	10	21	23	5
MELBOURNE BEACH	34	33	1	0	0	0	0	0	0	0	0
PALM BAY	1,110	861	186	2	4	0	0	8	16	31	2
ROCKLEDGE	310	257	39	1	2	0	0	1	3	6	1
SATELLITE BEACH	105	90	4	1	0	0	0	1	3	6	0
TITUSVILLE	506	368	102	1	2	0	0	6	5	21	1
WEST MELBOURNE	164	138	5	1	3	0	0	1	10	5	1
BALANCE OF COUNTY	1,278	1,106	106	4	5	3	0	7	16	24	7
<b>BROWARD</b>	<b>23,127</b>	<b>13,576</b>	<b>7,868</b>	<b>41</b>	<b>109</b>	<b>25</b>	<b>1</b>	<b>90</b>	<b>571</b>	<b>762</b>	<b>84</b>
COCONUT CREEK	613	487	77	1	3	2	0	2	19	21	1
COOPER CITY	226	201	7	0	3	0	0	2	3	10	0
CORAL SPRINGS	1,543	1,047	335	2	10	1	0	6	56	61	25
DANIA BEACH	271	157	104	0	1	1	0	0	1	7	0
DAVIE	987	821	94	2	7	1	0	3	29	29	1
DEERFIELD BEACH	634	384	187	0	4	1	1	2	7	44	4
FORT LAUDERDALE	3,163	1,397	1,606	3	11	4	0	13	29	97	3
HALLANDALE	359	242	109	0	0	1	0	0	2	5	0
HOLLYWOOD	2,279	1,571	581	17	5	4	0	5	31	64	1
LAUDERDALE BY THE SEA	18	15	1	0	0	1	0	0	0	1	0
LAUDERDALE LAKES	478	34	429	0	0	0	0	0	2	13	0
LAUDERHILL	950	142	747	0	1	0	0	2	13	40	5
LIGHTHOUSE POINT	76	72	2	0	0	0	0	0	2	0	0
MARGATE	724	463	185	1	6	0	0	3	32	32	2
MIRAMAR	1,741	846	739	2	15	1	0	20	75	41	2
NORTH LAUDERDALE	686	248	380	0	0	0	0	2	20	32	4
OAKLAND PARK	304	166	119	0	1	1	0	0	7	9	1
PARKLAND	206	176	11	0	6	0	0	1	8	4	0
PEMBROKE PARK	61	16	45	0	0	0	0	0	0	0	0
PEMBROKE PINES	1,824	1,286	398	7	9	1	0	11	62	49	1
PLANTATION	1,088	728	251	1	7	0	0	6	56	37	2
POMPANO BEACH	1,709	914	682	1	5	2	0	0	22	69	14
SOUTHWEST RANCHES	57	54	2	0	1	0	0	0	0	0	0
SUNRISE	1,129	608	416	1	9	1	0	5	40	47	2
TAMARAC	665	424	195	2	2	1	0	2	12	18	9

TABLE B-3 (Cont.): RESIDENT LIVE BIRTHS FOR INCORPORATED CITIES OF 2,400 OR MORE POPULATION, BY RACE OF MOTHER, BY COUNTY, FLORIDA, 2005

	TOTAL	WHITE	BLACK	AMER INDIAN	CHINESE	JAPANESE	HAWAIIAN	FILIPINO	OTHER ASIAN/ PAC ISL	MULTI - RACE & OTHER	UNK
<b>BROWARD (Cont.)</b>											
WESTON	780	697	31	1	3	2	0	3	31	12	0
WILTON MANORS	59	39	17	0	0	0	0	0	1	1	1
BALANCE OF COUNTY	497	341	118	0	0	0	0	2	11	19	6
<b>CALHOUN</b>											
BLOUNTSTOWN	46	32	13	0	0	0	0	0	1	0	0
BALANCE OF COUNTY	112	108	3	1	0	0	0	0	0	0	0
<b>CHARLOTTE</b>											
PUNTA GORDA	111	96	9	0	2	0	0	2	2	0	0
BALANCE OF COUNTY	973	877	57	1	0	0	0	6	4	27	1
<b>CITRUS</b>											
CRYSTAL RIVER	48	43	4	0	0	0	0	0	1	0	0
INVERNESS	137	120	6	0	0	0	1	4	4	2	0
BALANCE OF COUNTY	836	782	22	2	0	3	1	9	7	10	0
<b>CLAY</b>											
GREEN COVE SPRINGS	84	66	16	1	0	0	0	0	0	1	0
ORANGE PARK	451	345	83	0	1	1	0	4	5	12	0
BALANCE OF COUNTY	1,703	1,486	114	3	6	1	0	17	21	53	2
<b>COLLIER</b>											
MARCO ISLAND	47	44	0	0	0	0	1	0	1	1	0
NAPLES	409	325	65	1	0	1	0	3	8	4	2
BALANCE OF COUNTY	3,613	3,145	393	16	5	3	0	8	25	18	0
<b>COLUMBIA</b>											
LAKE CITY	412	280	118	3	0	0	0	2	4	4	1
BALANCE OF COUNTY	439	392	40	1	0	0	0	1	1	4	0
<b>MIAMI-DADE</b>											
AVENTURA	351	319	11	0	2	1	0	4	6	7	1
BAL HARBOUR	20	19	0	0	0	0	0	0	1	0	0
BAY HARBOR ISLANDS	66	63	1	0	0	0	0	1	1	0	0
BISCAYNE PARK	20	18	2	0	0	0	0	0	0	0	0
CORAL GABLES	435	405	8	0	3	0	0	0	2	10	7
DORAL	223	208	4	0	0	0	0	1	6	3	1
EL PORTAL	5	5	0	0	0	0	0	0	0	0	0
FLORIDA CITY	103	64	37	0	0	0	0	0	2	0	0
HIALEAH	2,790	2,652	98	0	6	0	0	3	6	17	8
HIALEAH GARDENS	130	126	3	0	1	0	0	0	0	0	0
HOMESTEAD	1,316	1,052	244	0	0	1	0	3	2	12	2
KEY BISCAYNE	123	122	0	0	0	0	0	0	0	1	0
MIAMI	15,339	9,735	5,296	3	29	8	0	22	89	112	45
MIAMI BEACH	861	791	21	0	5	4	0	4	15	11	10
MIAMI GARDENS	180	56	120	0	0	0	0	0	0	3	1
MIAMI LAKES	358	313	38	0	2	0	0	2	1	1	1
MIAMI SHORES	80	68	10	0	1	0	0	0	0	1	0
MIAMI SPRINGS	107	102	3	0	0	0	0	1	0	1	0
NORTH BAY VILLAGE	42	33	0	0	2	2	0	1	2	1	1
NORTH MIAMI	691	295	377	0	1	1	0	3	4	9	1
NORTH MIAMI BEACH	616	372	219	0	2	0	0	2	10	11	0
OPA-LOCKA	839	253	574	0	1	0	0	2	3	4	2
PALMETTO BAY	21	20	0	0	0	0	0	0	1	0	0
PINECREST	45	45	0	0	0	0	0	0	0	0	0
SOUTH MIAMI	29	25	2	0	1	0	0	0	0	0	1
SUNNY ISLES BEACH	39	36	1	0	0	0	0	1	1	0	0
SURFSIDE	68	63	1	0	1	2	0	0	0	0	1
SWEETWATER	4	4	0	0	0	0	0	0	0	0	0
VIRGINIA GARDENS	12	10	1	0	0	0	0	0	0	1	0
WEST MIAMI	8	8	0	0	0	0	0	0	0	0	0
BALANCE OF COUNTY	7,444	6,052	1,036	11	23	11	0	10	78	139	84
<b>DESOTO</b>											
ARCADIA	276	238	34	0	1	0	0	0	1	2	0
BALANCE OF COUNTY	229	212	16	0	0	0	0	0	0	0	1
<b>DIXIE</b>											
	170	164	5	0	0	0	0	0	0	1	0

**TABLE B-3 (Cont.): RESIDENT LIVE BIRTHS FOR INCORPORATED CITIES OF 2,400 OR MORE  
POPULATION, BY RACE OF MOTHER, BY COUNTY, FLORIDA, 2005**

	TOTAL	WHITE	BLACK	AMER INDIAN	CHINESE	JAPANESE	HAWAIIAN	FILIPINO	OTHER ASIAN/ PAC ISL	MULTI - RACE & OTHER	UNK	
<b>DIXIE (Cont.)</b>												
<b>DUVAL</b>	12,974	7,597	4,449	22	37	14	1	212	276	357	9	
ATLANTIC BEACH	368	276	76	1	1	1	0	2	2	9	0	
BALDWIN	43	38	5	0	0	0	0	0	0	0	0	
JACKSONVILLE	12,300	7,045	4,352	21	35	13	1	208	273	343	9	
JACKSONVILLE BEACH	203	183	12	0	1	0	0	2	1	4	0	
NEPTUNE BEACH	60	55	4	0	0	0	0	0	0	1	0	
<b>ESCAMBIA</b>	4,237	2,745	1,241	23	7	7	2	47	57	106	2	
CENTURY	26	10	15	1	0	0	0	0	0	0	0	
PENSACOLA	1,566	823	652	6	1	3	1	16	30	34	0	
BALANCE OF COUNTY	2,645	1,912	574	16	6	4	1	31	27	72	2	
<b>FLAGLER</b>	689	587	79	0	4	0	0	2	2	15	0	
FLAGLER BEACH	29	28	0	0	0	0	0	0	0	1	0	
PALM COAST	511	446	47	0	3	0	0	2	2	11	0	
BALANCE OF COUNTY	149	113	32	0	1	0	0	0	0	3	0	
<b>FRANKLIN</b>	119	108	5	0	0	0	0	2	0	3	1	
APALACHICOLA	35	28	4	0	0	0	0	0	0	2	1	
BALANCE OF COUNTY	84	80	1	0	0	0	0	2	0	1	0	
<b>GADSDEN</b>	741	278	450	0	0	0	0	1	3	8	1	
CHATTAHOOCHEE	49	6	42	0	0	0	0	0	0	0	1	
GRETNA	35	8	27	0	0	0	0	0	0	0	0	
HAVANA	60	25	34	0	0	0	0	0	0	1	0	
QUINCY	245	84	157	0	0	0	0	0	2	2	0	
BALANCE OF COUNTY	352	155	190	0	0	0	0	1	1	5	0	
<b>GILCHRIST</b>	194	178	13	1	0	0	0	0	0	2	0	
<b>GLADES</b>	77	58	12	5	0	0	1	0	0	1	0	
<b>GULF</b>	130	110	20	0	0	0	0	0	0	0	0	
PORT ST JOE	47	31	16	0	0	0	0	0	0	0	0	
BALANCE OF COUNTY	83	79	4	0	0	0	0	0	0	0	0	
<b>HAMILTON</b>	191	123	64	0	0	0	0	0	2	2	0	
<b>HARDEE</b>	456	425	25	1	0	0	0	0	3	2	0	
BOWLING GREEN	67	63	4	0	0	0	0	0	0	0	0	
WAUCHULA	168	150	14	1	0	0	0	0	2	1	0	
BALANCE OF COUNTY	221	212	7	0	0	0	0	0	1	1	0	
<b>HENDRY</b>	757	643	95	15	0	0	0	1	1	2	0	
CLEWISTON	194	118	68	7	0	0	0	0	0	1	0	
LABELLE	195	179	13	1	0	0	0	0	1	1	0	
BALANCE OF COUNTY	368	346	14	7	0	0	0	1	0	0	0	
<b>HERNANDO</b>	1,496	1,313	116	3	2	0	0	5	9	46	2	
BROOKSVILLE	206	146	53	1	0	0	0	0	0	5	1	
BALANCE OF COUNTY	1,290	1,167	63	2	2	0	0	5	9	41	1	
<b>HIGHLANDS</b>	939	754	145	6	1	0	0	4	7	21	1	
AVON PARK	164	113	46	1	0	0	0	0	0	3	1	
SEBRING	304	235	46	4	0	0	0	4	4	11	0	
BALANCE OF COUNTY	471	406	53	1	1	0	0	0	3	7	0	
<b>HILLSBOROUGH</b>	16,753	12,602	3,132	23	42	17	3	96	437	384	17	
PLANT CITY	602	508	77	1	0	0	0	1	5	10	0	
TAMPA	9,185	6,115	2,445	12	25	11	1	52	292	221	11	
TEMPLE TERRACE	96	70	15	0	0	0	0	2	6	3	0	
BALANCE OF COUNTY	6,870	5,909	595	10	17	6	2	41	134	150	6	
<b>HOLMES</b>	247	233	9	1	0	0	0	0	0	4	0	
BONIFAY	61	54	5	0	0	0	0	0	0	2	0	
BALANCE OF COUNTY	186	179	4	1	0	0	0	0	0	2	0	

TABLE B-3 (Cont.): RESIDENT LIVE BIRTHS FOR INCORPORATED CITIES OF 2,400 OR MORE  
POPULATION, BY RACE OF MOTHER, BY COUNTY, FLORIDA, 2005

	TOTAL	WHITE	BLACK	AMER INDIAN	CHINESE	JAPANESE	HAWAIIAN	FILIPINO	OTHER ASIAN/ PAC ISL	MULTI - RACE & OTHER	UNK
<b>INDIAN RIVER</b>	1,360	1,138	191	2	2	0	0	1	6	20	0
FELLSMERE	157	151	3	0	0	0	0	0	0	3	0
INDIAN RIVER SHORES	1	1	0	0	0	0	0	0	0	0	0
SEBASTIAN	155	136	12	0	0	0	0	1	3	3	0
VERO BEACH	288	247	35	0	1	0	0	0	1	4	0
BALANCE OF COUNTY	759	603	141	2	1	0	0	0	2	10	0
<b>JACKSON</b>	567	389	161	3	0	0	1	2	2	7	2
GRACEVILLE	21	13	6	1	0	0	0	0	0	1	0
MARIANNA	116	64	48	1	0	0	0	0	1	1	1
BALANCE OF COUNTY	430	312	107	1	0	0	1	2	1	5	1
<b>JEFFERSON</b>	167	96	70	0	0	0	0	0	1	0	0
MONTICELLO	71	29	41	0	0	0	0	0	1	0	0
BALANCE OF COUNTY	96	67	29	0	0	0	0	0	0	0	0
<b>LAFAYETTE</b>	114	100	14	0	0	0	0	0	0	0	0
<b>LAKE</b>	3,223	2,679	396	7	4	3	2	6	34	89	3
CLERMONT	563	440	73	1	0	2	2	3	12	29	1
EUSTIS	280	219	55	0	1	0	0	0	1	4	0
FRUITLAND PARK	84	78	5	0	0	0	0	0	0	1	0
GROVELAND	115	95	11	0	0	0	0	0	1	8	0
LADY LAKE	96	78	11	2	0	0	0	0	2	3	0
LEESBURG	425	267	136	0	1	0	0	1	7	12	1
MASCOTTE	101	93	3	0	0	0	0	0	2	3	0
MINNEOLA	111	98	6	1	0	0	0	0	0	6	0
MOUNT DORA	205	155	44	0	0	0	0	0	2	3	1
TAVARES	121	104	13	0	1	0	0	0	0	3	0
UMATILLA	59	54	4	0	0	0	0	0	0	1	0
BALANCE OF COUNTY	1,063	998	35	3	1	1	0	2	7	16	0
<b>LEE</b>	6,704	5,685	844	8	16	6	1	22	64	56	2
BONITA SPRINGS	448	438	3	1	0	1	0	0	4	1	0
CAPE CORAL	1,625	1,516	64	0	4	4	1	9	13	14	0
FORT MYERS	1,458	910	525	1	3	0	0	2	4	12	1
FORT MYERS BEACH	26	25	0	0	0	0	0	0	0	1	0
SANIBEL	11	10	1	0	0	0	0	0	0	0	0
BALANCE OF COUNTY	3,136	2,786	251	6	9	1	0	11	43	28	1
<b>LEON</b>	3,105	1,676	1,222	2	24	2	1	10	102	63	3
TALLAHASSEE	2,363	1,132	1,043	1	23	2	0	9	94	56	3
BALANCE OF COUNTY	742	544	179	1	1	0	1	1	8	7	0
<b>LEVY</b>	462	403	50	3	0	0	0	0	2	4	0
WILLISTON	49	33	13	2	0	0	0	0	0	1	0
BALANCE OF COUNTY	413	370	37	1	0	0	0	0	2	3	0
<b>LIBERTY</b>	108	95	11	1	0	0	0	0	0	1	0
<b>MADISON</b>	253	130	123	0	0	0	0	0	0	0	0
MADISON	95	24	71	0	0	0	0	0	0	0	0
BALANCE OF COUNTY	158	106	52	0	0	0	0	0	0	0	0
<b>MANATEE</b>	3,809	3,098	470	3	10	2	1	10	50	164	1
BRADENTON	1,168	927	178	0	3	0	1	0	13	45	1
BRADENTON BEACH	2	2	0	0	0	0	0	0	0	0	0
HOLMES BEACH	8	8	0	0	0	0	0	0	0	0	0
LONGBOAT KEY	2	1	0	0	0	0	0	1	0	0	0
PALMETTO	249	207	33	0	0	0	0	0	1	8	0
BALANCE OF COUNTY	2,380	1,953	259	3	7	2	0	9	36	111	0
<b>MARION</b>	3,449	2,651	616	10	4	0	1	15	30	122	0
BELLEVUE	63	56	5	0	0	0	0	0	0	2	0
OCALA	1,352	897	372	3	1	0	1	9	18	51	0
BALANCE OF COUNTY	2,034	1,698	239	7	3	0	0	6	12	69	0
<b>MARTIN</b>	1,340	1,010	111	173	2	1	0	9	14	19	1
PORT SAINT LUCIE	1	1	0	0	0	0	0	0	0	0	0
STUART	281	231	26	14	0	0	0	1	4	5	0

TABLE B-3 (Cont.): RESIDENT LIVE BIRTHS FOR INCORPORATED CITIES OF 2,400 OR MORE POPULATION, BY RACE OF MOTHER, BY COUNTY, FLORIDA, 2005

	TOTAL	WHITE	BLACK	AMER INDIAN	CHINESE	JAPANESE	HAWAIIAN	FILIPINO	OTHER ASIAN/ PAC ISL	MULTI - RACE & OTHER	UNK	
<b>MARTIN (Cont.)</b>												
BALANCE OF COUNTY	1,058	778	85	159	2	1	0	8	10	14	1	
<b>MONROE</b>												
ISLAMORADA	9	8	0	0	0	0	0	0	1	0	0	
KEY WEST	311	253	43	1	0	0	0	2	2	10	0	
MARATHON	76	64	9	0	1	0	0	1	1	0	0	
BALANCE OF COUNTY	372	338	18	0	0	0	0	1	4	9	2	
<b>NASSAU</b>												
FERNANDINA BEACH	142	111	30	0	0	0	0	0	0	1	0	
HILLIARD	56	55	1	0	0	0	0	0	0	0	0	
BALANCE OF COUNTY	614	585	16	2	1	0	0	2	3	4	1	
<b>OKALOOSA</b>												
CRESTVIEW	356	272	53	0	0	0	0	7	2	21	1	
DESTIN	155	149	0	0	0	0	0	0	0	6	0	
FORT WALTON BEACH	311	224	57	0	1	0	0	5	5	19	0	
MARY ESTHER	178	144	17	1	0	0	0	4	2	10	0	
NICEVILLE	240	208	8	0	1	0	1	2	4	16	0	
VALPARAISO	27	24	0	0	0	0	0	2	0	1	0	
BALANCE OF COUNTY	1,471	1,161	165	2	3	9	0	20	23	86	2	
<b>OKEECHOBEE</b>												
OKEECHOBEE	336	294	33	2	0	0	0	2	2	3	0	
BALANCE OF COUNTY	251	241	3	6	0	0	0	1	0	0	0	
<b>ORANGE</b>												
APOPKA	1,087	845	183	0	3	0	0	9	14	33	0	
BELLE ISLE	4	4	0	0	0	0	0	0	0	0	0	
EATONVILLE	16	3	13	0	0	0	0	0	0	0	0	
MAITLAND	113	83	21	0	0	0	0	0	3	6	0	
OCOEE	493	396	52	0	1	0	0	1	19	24	0	
ORLANDO	11,044	6,887	3,312	12	49	17	6	87	349	319	6	
WINTER GARDEN	497	378	75	0	2	0	0	2	16	24	0	
WINTER PARK	506	420	63	1	5	4	0	0	4	9	0	
BALANCE OF COUNTY	2,796	2,159	443	2	15	7	0	18	88	60	4	
<b>OSCEOLA</b>												
KISSIMMEE	1,752	1,435	206	1	7	3	0	12	48	39	1	
ST CLOUD	400	374	15	0	0	0	0	1	7	2	1	
BALANCE OF COUNTY	1,441	1,259	132	1	2	2	0	8	25	11	1	
<b>PALM BEACH</b>												
BELLE GLADE	378	170	206	0	0	0	0	0	1	1	0	
BOCA RATON	1,187	1,008	91	0	17	0	0	5	33	31	2	
BOYNTON BEACH	1,242	713	474	0	4	1	0	5	19	25	1	
DELRAY BEACH	839	443	356	0	4	0	0	4	20	11	1	
GREENACRES	358	270	68	0	0	0	0	2	9	9	0	
HIGHLAND BEACH	8	7	0	0	0	0	0	0	0	1	0	
HYPOLUXO	11	10	1	0	0	0	0	0	0	0	0	
JUNO BEACH	16	13	1	0	0	0	0	0	0	2	0	
JUPITER	612	567	18	0	1	0	0	1	12	13	0	
LAKE CLARKE SHORES	9	9	0	0	0	0	0	0	0	0	0	
LAKE PARK	164	69	90	0	0	0	0	0	2	3	0	
LAKE WORTH	1,893	1,458	330	2	6	2	0	14	35	44	2	
LANTANA	341	229	99	0	0	1	0	3	1	8	0	
NORTH PALM BEACH	95	91	2	0	0	0	0	0	2	0	0	
PAHOKEE	157	51	105	0	0	0	0	0	0	1	0	
PALM BEACH	21	18	2	0	0	0	0	0	1	0	0	
PALM BEACH GARDENS	466	410	28	1	3	1	0	2	12	8	1	
PALM SPRINGS	141	113	21	0	1	1	0	1	1	3	0	
RIVIERA BEACH	449	48	388	0	2	0	0	1	2	7	1	
ROYAL PALM BEACH	484	366	70	0	2	0	0	7	20	17	2	
SOUTH BAY	58	14	43	0	0	0	0	0	0	1	0	
TEQUESTA	53	49	0	0	1	0	0	1	0	2	0	
WELLINGTON	520	434	49	1	3	0	0	1	16	16	0	
WEST PALM BEACH	3,622	2,332	1,109	0	6	2	0	22	55	93	3	
BALANCE OF COUNTY	2,036	1,670	237	1	16	1	0	7	43	59	2	

TABLE B-3 (Cont.): RESIDENT LIVE BIRTHS FOR INCORPORATED CITIES OF 2,400 OR MORE  
POPULATION, BY RACE OF MOTHER, BY COUNTY, FLORIDA, 2005

	TOTAL	WHITE	BLACK	AMER INDIAN	CHINESE	JAPANESE	HAWAIIAN	FILIPINO	OTHER ASIAN/ PAC ISL	MULTI - RACE & OTHER	UNK
<b>PASCO</b>	4,753	4,341	189	16	8	2	0	24	74	96	3
DADE CITY	232	192	37	0	0	0	0	0	1	2	0
NEW PORT RICHEY	645	590	14	4	2	1	0	4	10	20	0
PORT RICHEY	303	289	5	1	2	0	0	2	0	4	0
ZEPHYRHILLS	199	186	7	0	0	0	0	0	2	4	0
BALANCE OF COUNTY	3,374	3,084	126	11	4	1	0	18	61	66	3
<b>PINELLAS</b>	9,065	6,999	1,402	18	25	4	0	53	296	262	6
BELLEAIR	15	13	0	0	0	0	0	0	0	2	0
BELLEAIR BLUFFS	9	7	1	0	1	0	0	0	0	0	0
CLEARWATER	1,741	1,428	211	1	3	0	0	7	43	47	1
DUNEDIN	267	232	17	1	1	0	0	2	6	7	1
GULFPORT	71	59	8	0	0	0	0	0	1	3	0
INDIAN ROCKS BEACH	18	17	0	0	0	0	0	1	0	0	0
KENNETH CITY	41	25	5	0	0	0	0	0	8	3	0
LARGO	934	776	84	3	2	0	0	10	39	20	0
MADEIRA BEACH	18	18	0	0	0	0	0	0	0	0	0
OLDSMAR	193	173	9	0	0	2	0	0	5	3	1
PINELLAS PARK	493	402	19	0	1	0	0	3	46	22	0
REDINGTON SHORES	2	2	0	0	0	0	0	0	0	0	0
SAFETY HARBOR	132	119	7	0	1	0	0	1	2	2	0
SEMINOLE	260	243	6	1	2	0	0	0	2	6	0
SOUTH PASADENA	7	5	2	0	0	0	0	0	0	0	0
ST PETERSBURG	3,212	2,001	953	9	8	2	0	16	109	112	2
ST PETERSBURG BEACH	33	32	0	0	0	0	0	0	0	1	0
TARPON SPRINGS	236	196	29	1	1	0	0	2	5	2	0
TREASURE ISLAND	24	20	0	0	0	0	0	2	0	2	0
BALANCE OF COUNTY	1,359	1,231	51	2	5	0	0	9	30	30	1
<b>POLK</b>	7,786	6,088	1,406	11	14	1	0	22	78	161	5
AUBURNDALE	251	198	41	1	2	0	0	0	2	7	0
BARTOW	301	200	92	0	1	0	0	0	2	6	0
DUNDEE	49	41	8	0	0	0	0	0	0	0	0
EAGLE LAKE	22	21	1	0	0	0	0	0	0	0	0
FORT MEADE	88	71	14	1	0	0	0	1	0	1	0
FROSTPROOF	77	66	11	0	0	0	0	0	0	0	0
HAINES CITY	389	312	60	2	0	0	0	3	1	9	2
LAKE ALFRED	57	34	21	0	0	0	0	0	0	2	0
LAKE WALES	274	195	76	0	0	0	0	0	1	2	0
LAKELAND	1,555	1,084	399	1	5	0	0	3	28	32	3
MULBERRY	85	73	11	0	0	0	0	0	0	1	0
WINTER HAVEN	849	575	238	2	2	0	0	4	10	18	0
BALANCE OF COUNTY	3,789	3,218	434	4	4	1	0	11	34	83	0
<b>PUTNAM</b>	1,034	766	252	0	1	0	0	1	4	10	0
PALATKA	294	127	163	0	1	0	0	0	0	3	0
BALANCE OF COUNTY	740	639	89	0	0	0	0	1	4	7	0
<b>SAINT JOHNS</b>	1,761	1,547	130	0	6	3	0	10	32	33	0
ST AUGUSTINE	529	440	65	0	1	1	0	2	9	11	0
ST AUGUSTINE BEACH	1	1	0	0	0	0	0	0	0	0	0
BALANCE OF COUNTY	1,231	1,106	65	0	5	2	0	8	23	22	0
<b>SAINT LUCIE</b>	3,003	2,132	741	5	6	3	0	14	42	58	2
FORT PIERCE	1,139	614	486	1	1	1	0	5	9	21	1
PORT ST LUCIE	1,579	1,275	219	4	4	2	0	9	32	34	0
BALANCE OF COUNTY	285	243	36	0	1	0	0	0	1	3	1
<b>SANTA ROSA</b>	1,746	1,594	64	7	3	4	2	13	17	41	1
GULF BREEZE	32	31	0	0	0	0	0	0	1	0	0
MILTON	254	222	18	2	1	2	0	1	1	7	0
BALANCE OF COUNTY	1,460	1,341	46	5	2	2	2	12	15	34	1
<b>SARASOTA</b>	2,997	2,632	236	3	12	5	1	11	41	56	0
LONGBOAT KEY	2	2	0	0	0	0	0	0	0	0	0
NORTH PORT	338	315	15	0	2	0	0	1	4	1	0
SARASOTA	518	405	90	1	0	0	0	2	5	15	0
VENICE	61	59	1	0	0	0	0	0	1	0	0
BALANCE OF COUNTY	2,078	1,851	130	2	10	5	1	8	31	40	0



TABLE B-3 (Cont.): RESIDENT LIVE BIRTHS FOR INCORPORATED CITIES OF 2,400 OR MORE  
POPULATION, BY RACE OF MOTHER, BY COUNTY, FLORIDA, 2005

	TOTAL	WHITE	BLACK	AMER INDIAN	CHINESE	JAPANESE	HAWAIIAN	FILIPINO	OTHER ASIAN/ PAC ISL	MULTI - RACE & OTHER	UNK
<b>SEMINOLE</b>	4,786	3,787	659	4	25	4	1	35	147	120	4
ALTAMONTE SPRINGS	722	557	114	2	4	1	0	10	15	19	0
CASSELBERRY	373	310	35	0	3	0	0	4	11	9	1
LAKE MARY	393	316	26	0	4	1	0	4	29	12	1
LONGWOOD	348	315	21	0	0	0	0	1	5	6	0
MAITLAND	17	14	0	0	0	0	0	0	0	3	0
OVIEDO	470	378	45	1	6	0	1	3	21	14	1
SANFORD	1,084	682	333	1	3	1	0	7	31	25	1
WINTER SPRINGS	348	303	18	0	1	0	0	3	14	9	0
BALANCE OF COUNTY	1,031	912	67	0	4	1	0	3	21	23	0
<b>SUMTER</b>	501	398	89	0	0	0	0	1	3	10	0
BUSHNELL	46	41	4	0	0	0	0	0	0	1	0
WILDWOOD	80	41	37	0	0	0	0	0	0	2	0
BALANCE OF COUNTY	375	316	48	0	0	0	0	1	3	7	0
<b>SUWANNEE</b>	470	387	73	3	1	0	0	0	1	4	1
LIVE OAK	165	109	50	2	0	0	0	0	1	2	1
BALANCE OF COUNTY	305	278	23	1	1	0	0	0	0	2	0
<b>TAYLOR</b>	244	183	56	0	1	0	0	0	2	1	1
PERRY	122	70	50	0	0	0	0	0	1	1	0
BALANCE OF COUNTY	122	113	6	0	1	0	0	0	1	0	1
<b>UNION</b>	166	141	24	0	0	0	0	0	0	1	0
<b>VOLUSIA</b>	5,093	4,228	699	6	6	4	0	11	58	77	4
DAYTONA BEACH	799	447	325	2	1	0	0	1	11	12	0
DAYTONA BEACH SHORES	6	6	0	0	0	0	0	0	0	0	0
DEBARY	166	152	3	0	1	0	0	1	5	3	1
DELAND	644	521	106	1	0	1	0	0	5	9	1
DELTONA	1,042	899	105	0	0	0	0	3	10	25	0
EDGEWATER	226	216	3	1	0	0	0	1	1	4	0
HOLLY HILL	187	141	41	1	0	0	0	0	1	3	0
LAKE HELEN	35	30	5	0	0	0	0	0	0	0	0
NEW SMYRNA BEACH	196	172	18	0	0	0	0	0	2	4	0
ORANGE CITY	188	173	5	0	0	0	0	0	5	5	0
ORMOND BEACH	393	364	17	0	0	2	0	1	5	4	0
PIERSON	62	59	3	0	0	0	0	0	0	0	0
PONCE INLET	9	9	0	0	0	0	0	0	0	0	0
PORT ORANGE	479	442	22	1	2	1	0	1	4	4	2
SOUTH DAYTONA	141	119	17	0	0	0	0	1	3	1	0
BALANCE OF COUNTY	520	478	29	0	2	0	0	2	6	3	0
<b>WAKULLA</b>	288	256	27	1	1	0	0	0	1	2	0
<b>WALTON</b>	604	545	36	1	0	1	0	1	6	14	0
DEFUNIAK SPRINGS	108	84	20	0	0	0	0	0	1	3	0
BALANCE OF COUNTY	496	461	16	1	0	1	0	1	5	11	0
<b>WASHINGTON</b>	249	208	35	2	0	0	0	0	0	4	0
CHIPLEY	71	48	22	0	0	0	0	0	0	1	0
BALANCE OF COUNTY	178	160	13	2	0	0	0	0	0	3	0

TABLE B-4: RESIDENT LIVE BIRTHS BY TYPE OF PLACE OF DELIVERY AND ATTENDANT, BY COUNTY, FLORIDA, 2005

	TOTAL	HOSPITAL			BIRTHING CENTER			OTHER NAMED PLACE	UNK
		PHYSICIAN	MIDWIFE	OTHER/ UNKNOWN	PHYSICIAN	MIDWIFE	OTHER/ UNKNOWN		
FLORIDA	226,219	198,362	24,798	647	50	1,015	19	1,323	5
ALACHUA	2,690	2,405	195	18	0	42	0	30	0
BAKER	369	324	42	0	0	2	0	1	0
BAY	2,391	2,201	178	1	0	0	0	11	0
BRADFORD	332	308	18	3	0	0	0	3	0
BREVARD	5,387	5,080	229	26	0	4	0	48	0
BROWARD	23,127	20,156	2,656	61	32	88	11	123	0
CALHOUN	158	132	25	0	0	0	0	1	0
CHARLOTTE	1,084	872	168	35	0	2	0	7	0
CITRUS	1,021	991	18	1	0	0	0	11	0
CLAY	2,238	2,007	215	4	0	2	0	10	0
COLLIER	4,069	3,935	85	3	0	18	1	27	0
COLUMBIA	851	753	60	5	0	1	0	32	0
MIAMI-DADE	32,365	31,461	444	20	15	270	3	151	1
DESOTO	505	482	16	3	0	2	0	2	0
DIXIE	170	164	2	0	0	2	0	2	0
DUVAL	12,974	12,213	655	15	0	8	2	81	0
ESCAMBIA	4,237	3,950	237	2	0	19	0	29	0
FLAGLER	689	581	102	3	0	0	0	3	0
FRANKLIN	119	104	14	0	0	1	0	0	0
GADSDEN	741	534	194	3	0	3	0	7	0
GILCHRIST	194	180	12	1	0	1	0	0	0
GLADES	77	49	25	2	0	1	0	0	0
GULF	130	118	12	0	0	0	0	0	0
HAMILTON	191	173	16	1	0	0	0	1	0
HARDEE	456	445	7	4	0	0	0	0	0
HENDRY	757	468	281	2	0	0	0	6	0
HERNANDO	1,496	1,147	342	0	0	3	0	4	0
HIGHLANDS	939	908	10	16	0	2	0	3	0
HILLSBOROUGH	16,753	14,963	1,565	68	0	72	0	85	0
HOLMES	247	243	3	0	0	1	0	0	0
INDIAN RIVER	1,360	964	386	2	0	0	0	8	0
JACKSON	567	546	19	0	0	0	0	2	0
JEFFERSON	167	119	45	2	0	1	0	0	0
LAFAYETTE	114	111	3	0	0	0	0	0	0
LAKE	3,223	2,784	403	7	0	16	0	13	0
LEE	6,704	4,255	2,363	18	0	26	0	42	0
LEON	3,105	2,381	660	9	0	26	0	29	0
LEVY	462	424	20	4	0	9	0	5	0
LIBERTY	108	80	28	0	0	0	0	0	0
MADISON	253	173	78	2	0	0	0	0	0
MANATEE	3,809	3,601	179	0	0	4	0	25	0
MARION	3,449	2,811	600	20	0	5	0	13	0
MARTIN	1,340	717	586	6	0	0	0	31	0
MONROE	768	695	62	0	0	4	0	7	0
NASSAU	812	784	23	0	0	0	0	5	0
OKALOOSA	2,738	2,586	117	10	0	7	0	18	0
OKEECHOBEE	587	450	130	3	0	0	0	4	0
ORANGE	16,556	15,440	822	81	0	158	0	55	0
OSCEOLA	3,593	3,167	374	24	0	15	0	13	0
PALM BEACH	15,160	12,835	2,175	58	1	10	1	80	0
PASCO	4,753	3,842	850	13	0	19	1	28	0
PINELLAS	9,065	6,988	1,990	3	0	48	0	36	0
POLK	7,786	5,545	2,147	13	0	44	0	37	0
PUTNAM	1,034	919	100	4	1	6	0	4	0
SAINT JOHNS	1,761	1,547	187	1	0	2	0	24	0
SAINT LUCIE	3,003	2,232	718	13	1	1	0	38	0
SANTA ROSA	1,746	1,676	62	3	0	3	0	2	0
SARASOTA	2,997	2,504	434	15	0	11	0	33	0
SEMINOLE	4,786	4,003	703	12	0	40	0	28	0
SUMTER	501	483	13	2	0	2	0	1	0
SUWANNEE	470	430	35	1	0	1	0	3	0
TAYLOR	244	201	42	1	0	0	0	0	0
UNION	166	160	5	0	0	0	0	1	0
VOLUSIA	5,093	4,486	532	16	0	6	0	53	0
WAKULLA	288	221	63	2	0	1	0	1	0
WALTON	604	582	5	5	0	6	0	6	0
WASHINGTON	249	241	8	0	0	0	0	0	0

TABLE B-5: RESIDENT LIVE BIRTHS BY BIRTHWEIGHT, BY COUNTY, FLORIDA, 2005

	TOTAL	BIRTHWEIGHT IN GRAMS										LESS THAN 1500 GRAMS		LESS THAN 2500 GRAMS	
		<500	500- 999	1000- 1499	1500- 1999	2000- 2499	2500- 2999	3000- 3499	3500- 3999	4000+	UNK	NUMBER	%	NUMBER	%
FLORIDA	226,219	370	1,485	1,782	3,859	12,306	43,375	89,548	57,722	15,736	36	3,637	1.6	19,802	8.8
ALACHUA	2,690	9	14	19	53	147	500	1,039	695	214	0	42	1.6	242	9.0
BAKER	369	3	3	2	6	21	59	155	92	28	0	8	2.2	35	9.5
BAY	2,391	1	19	18	47	133	483	943	597	146	4	38	1.6	218	9.1
BRADFORD	332	0	0	2	11	19	71	128	70	31	0	2	0.6	32	9.6
BREVARD	5,387	7	26	36	94	321	967	2,111	1,462	363	0	69	1.3	484	9.0
BROWARD	23,127	32	206	179	431	1,294	4,702	9,363	5,545	1,374	1	417	1.8	2,142	9.3
CALHOUN	158	1	3	0	4	14	34	60	34	8	0	4	2.5	22	13.9
CHARLOTTE	1,084	1	2	9	11	47	201	434	284	95	0	12	1.1	70	6.5
CITRUS	1,021	2	4	5	13	54	204	393	263	82	1	11	1.1	78	7.6
CLAY	2,238	5	13	9	25	116	356	853	672	189	0	27	1.2	168	7.5
COLLIER	4,069	2	13	21	68	172	727	1,695	1,064	307	0	36	0.9	276	6.8
COLUMBIA	851	4	6	10	14	41	157	327	224	68	0	20	2.4	75	8.8
MIAMI-DADE	32,365	50	232	284	550	1,802	6,344	13,069	7,954	2,079	1	566	1.7	2,918	9.0
DESOTO	505	0	3	2	10	21	104	216	119	30	0	5	1.0	36	7.1
DIXIE	170	0	2	0	4	7	33	62	46	16	0	2	1.2	13	7.6
DUVAL	12,974	38	100	112	263	738	2,588	4,919	3,240	974	2	250	1.9	1,251	9.6
ESCAMBIA	4,237	6	24	44	98	259	827	1,597	1,084	298	0	74	1.7	431	10.2
FLAGLER	689	0	4	4	13	29	102	273	207	57	0	8	1.2	50	7.3
FRANKLIN	119	0	2	1	1	6	24	43	32	10	0	3	2.5	10	8.4
GADSDEN	741	4	7	13	18	53	174	298	145	28	1	24	3.2	95	12.8
GILCHRIST	194	0	2	0	2	6	29	73	55	27	0	2	1.0	10	5.2
GLADES	77	0	0	0	2	3	10	39	17	6	0	0	0.0	5	6.5
GULF	130	1	0	3	2	4	25	60	26	9	0	4	3.1	10	7.7
HAMILTON	191	0	2	1	2	16	43	76	42	9	0	3	1.6	21	11.0
HARDEE	456	0	1	3	6	22	100	180	116	28	0	4	0.9	32	7.0
HENDRY	757	0	7	6	9	33	142	347	165	48	0	13	1.7	55	7.3
HERNANDO	1,496	3	6	9	30	62	234	575	424	153	0	18	1.2	110	7.4
HIGHLANDS	939	0	5	4	14	51	206	393	206	60	0	9	1.0	74	7.9
HILLSBOROUGH	16,753	56	102	120	278	948	3,275	6,560	4,274	1,135	5	278	1.7	1,504	9.0
HOLMES	247	0	0	1	2	13	56	106	57	12	0	1	0.4	16	6.5
INDIAN RIVER	1,360	0	11	5	26	65	220	517	388	128	0	16	1.2	107	7.9
JACKSON	567	2	4	2	11	41	118	225	133	31	0	8	1.4	60	10.6
JEFFERSON	167	0	1	1	3	15	38	66	34	9	0	2	1.2	20	12.0
LAFAYETTE	114	0	1	0	3	6	26	32	37	9	0	1	0.9	10	8.8
LAKE	3,223	4	16	23	51	160	636	1,238	843	252	0	43	1.3	254	7.9
LEE	6,704	7	33	58	98	359	1,279	2,633	1,785	448	4	98	1.5	555	8.3
LEON	3,105	11	19	27	50	195	612	1,212	766	213	0	57	1.8	302	9.7
LEVY	462	1	2	4	8	32	92	187	99	37	0	7	1.5	47	10.2
LIBERTY	108	0	0	0	1	11	23	38	25	10	0	0	0.0	12	11.1
MADISON	253	1	0	3	3	9	65	98	54	20	0	4	1.6	16	6.3
MANATEE	3,809	10	17	26	58	180	647	1,573	998	300	0	53	1.4	291	7.6
MARION	3,449	12	17	29	53	197	639	1,358	913	231	0	58	1.7	308	8.9
MARTIN	1,340	0	7	5	24	81	223	555	338	106	1	12	0.9	117	8.7
MONROE	768	1	7	6	11	36	133	292	226	56	0	14	1.8	61	7.9
NASSAU	812	0	6	2	15	38	160	347	183	61	0	8	1.0	61	7.5
OKALOOSA	2,738	1	9	17	50	131	494	1,062	737	234	3	27	1.0	208	7.6
OKEECHOBEE	587	0	3	5	10	35	126	231	144	33	0	8	1.4	53	9.0
ORANGE	16,556	22	107	131	304	912	3,324	6,716	4,072	964	4	260	1.6	1,476	8.9
OSCEOLA	3,593	8	24	24	52	195	692	1,499	903	196	0	56	1.6	303	8.4
PALM BEACH	15,160	11	105	128	288	863	2,999	6,031	3,763	970	2	244	1.6	1,395	9.2
PASCO	4,753	9	31	49	60	240	879	1,817	1,284	384	0	89	1.9	389	8.2
PINELLAS	9,065	12	66	71	145	469	1,647	3,505	2,466	682	2	149	1.6	763	8.4
POLK	7,786	14	60	77	117	400	1,387	3,054	2,067	607	3	151	1.9	668	8.6
PUTNAM	1,034	2	9	8	24	59	202	400	256	73	1	19	1.8	102	9.9
SAINT JOHNS	1,761	2	7	7	19	87	278	662	525	173	1	16	0.9	122	6.9
SAINT LUCIE	3,003	3	16	28	49	144	548	1,197	773	245	0	47	1.6	240	8.0
SANTA ROSA	1,746	0	7	11	29	82	318	673	485	141	0	18	1.0	129	7.4
SARASOTA	2,997	1	16	24	34	150	494	1,147	868	263	0	41	1.4	225	7.5
SEMINOLE	4,786	7	29	31	65	233	853	1,866	1,314	388	0	67	1.4	365	7.6
SUMTER	501	0	1	3	7	33	107	191	134	25	0	4	0.8	44	8.8
SUWANNEE	470	0	6	3	5	28	86	178	132	32	0	9	1.9	42	8.9
TAYLOR	244	0	2	1	5	19	53	103	51	10	0	3	1.2	27	11.1
UNION	166	0	0	1	6	10	32	72	36	9	0	1	0.6	17	10.2
VOLUSIA	5,093	3	24	45	73	269	932	1,976	1,361	410	0	72	1.4	414	8.1
WAKULLA	288	0	6	2	3	13	60	100	74	30	0	8	2.8	24	8.3
WALTON	604	1	6	7	12	36	114	223	155	50	0	14	2.3	62	10.3
WASHINGTON	249	0	2	1	5	19	53	71	81	17	0	3	1.2	27	10.8

TABLE B-5 (Cont.): RESIDENT LIVE BIRTHS TO WHITE MOTHERS BY BIRTHWEIGHT, BY COUNTY, FLORIDA, 2005

	TOTAL	BIRTHWEIGHT IN GRAMS										LESS THAN 1500 GRAMS		LESS THAN 2500 GRAMS	
		<500	500- 999	1000- 1499	1500- 1999	2000- 2499	2500- 2999	3000- 3499	3500- 3999	4000+	UNK	NUMBER	%	NUMBER	%
FLORIDA	166,181	169	759	1,032	2,435	7,826	28,587	66,130	46,169	13,054	20	1,960	1.2	12,221	7.4
ALACHUA	1,646	1	5	4	23	67	242	627	499	178	0	10	0.6	100	6.1
BAKER	315	2	2	2	4	17	45	131	84	28	0	6	1.9	27	8.6
BAY	1,829	0	11	15	33	89	326	734	500	118	3	26	1.4	148	8.1
BRADFORD	277	0	0	1	10	11	59	106	62	28	0	1	0.4	22	7.9
BREVARD	4,348	6	15	25	64	246	711	1,685	1,260	336	0	46	1.1	356	8.2
BROWARD	13,576	10	75	77	206	609	2,409	5,616	3,666	908	0	162	1.2	977	7.2
CALHOUN	140	1	3	0	2	13	27	54	32	8	0	4	2.9	19	13.6
CHARLOTTE	973	1	1	6	7	46	181	395	252	84	0	8	0.8	61	6.3
CITRUS	945	1	4	5	12	46	185	364	246	81	1	10	1.1	68	7.2
CLAY	1,897	3	9	7	18	89	285	725	590	171	0	19	1.0	126	6.6
COLLIER	3,514	1	9	17	51	135	599	1,479	953	270	0	27	0.8	213	6.1
COLUMBIA	672	2	4	9	10	27	119	254	187	60	0	15	2.2	52	7.7
MIAMI-DADE	23,334	24	114	166	333	1,092	4,140	9,578	6,224	1,662	1	304	1.3	1,729	7.4
DESOTO	450	0	1	1	8	18	91	193	109	29	0	2	0.4	28	6.2
DIXIE	164	0	1	0	4	7	32	61	44	15	0	1	0.6	12	7.3
DUVAL	7,597	5	37	43	124	335	1,224	2,904	2,214	710	1	85	1.1	544	7.2
ESCAMBIA	2,745	1	11	19	59	130	446	1,040	802	237	0	31	1.1	220	8.0
FLAGLER	587	0	4	3	9	23	83	230	187	48	0	7	1.2	39	6.6
FRANKLIN	108	0	2	1	1	5	21	41	29	8	0	3	2.8	9	8.3
GADSDEN	278	2	1	8	2	13	54	111	67	19	1	11	4.0	26	9.4
GILCHRIST	178	0	2	0	2	5	25	66	51	27	0	2	1.1	9	5.1
GLADES	58	0	0	0	1	1	6	31	14	5	0	0	0.0	2	3.4
GULF	110	0	0	2	2	2	22	52	22	8	0	2	1.8	6	5.5
HAMILTON	123	0	0	1	2	10	20	49	33	8	0	1	0.8	13	10.6
HARDEE	425	0	1	3	6	21	89	168	111	26	0	4	0.9	31	7.3
HENDRY	643	0	5	3	8	28	104	306	146	43	0	8	1.2	44	6.8
HERNANDO	1,313	3	5	8	24	48	192	500	388	145	0	16	1.2	88	6.7
HIGHLANDS	754	0	1	2	8	35	164	314	176	54	0	3	0.4	46	6.1
HILLSBOROUGH	12,602	27	56	73	194	636	2,208	4,950	3,483	973	2	156	1.2	986	7.8
HOLMES	233	0	0	1	2	11	51	102	54	12	0	1	0.4	14	6.0
INDIAN RIVER	1,138	0	9	3	13	44	164	433	352	120	0	12	1.1	69	6.1
JACKSON	389	0	1	1	6	26	76	155	101	23	0	2	0.5	34	8.7
JEFFERSON	96	0	0	1	2	7	15	40	24	7	0	1	1.0	10	10.4
LAFAYETTE	100	0	0	0	1	6	23	26	36	8	0	0	0.0	7	7.0
LAKE	2,679	2	9	13	37	114	484	1,046	738	236	0	24	0.9	175	6.5
LEE	5,685	5	21	37	77	290	1,041	2,227	1,592	393	2	63	1.1	430	7.6
LEON	1,676	1	9	7	19	88	251	636	502	163	0	17	1.0	124	7.4
LEVY	403	1	1	2	7	27	73	166	91	35	0	4	1.0	38	9.4
LIBERTY	95	0	0	0	1	9	21	35	20	9	0	0	0.0	10	10.5
MADISON	130	0	0	1	2	4	25	49	35	14	0	1	0.8	7	5.4
MANATEE	3,098	6	10	17	42	139	498	1,252	872	262	0	33	1.1	214	6.9
MARION	2,651	11	8	18	35	131	439	1,053	749	207	0	37	1.4	203	7.7
MARTIN	1,010	0	3	5	19	55	151	410	277	90	0	8	0.8	82	8.1
MONROE	663	1	5	5	9	28	110	249	203	53	0	11	1.7	48	7.2
NASSAU	751	0	6	2	14	33	144	320	174	58	0	8	1.1	55	7.3
OKALOOSA	2,182	1	3	14	34	88	385	835	616	204	2	18	0.8	140	6.4
ORKEECHOBEE	535	0	2	5	10	29	111	218	128	32	0	7	1.3	46	8.6
ORANGE	11,175	13	48	73	168	511	2,030	4,580	3,016	733	3	134	1.2	813	7.3
OSCEOLA	3,068	6	18	18	39	158	552	1,293	810	174	0	42	1.4	239	7.8
PALM BEACH	10,562	2	48	66	194	501	1,851	4,230	2,903	767	0	116	1.1	811	7.7
PASCO	4,341	6	26	41	58	218	784	1,656	1,192	360	0	73	1.7	349	8.0
PINELLAS	6,999	5	36	41	102	324	1,110	2,721	2,057	602	1	82	1.2	508	7.3
POLK	6,088	9	35	43	80	279	977	2,414	1,715	535	1	87	1.4	446	7.3
PUTNAM	766	1	7	4	13	36	124	303	218	59	1	12	1.6	61	8.0
SAINT JOHNS	1,547	2	3	5	16	66	229	580	484	161	1	10	0.6	92	5.9
SAINT LUCIE	2,132	0	10	15	35	90	342	832	606	202	0	25	1.2	150	7.0
SANTA ROSA	1,594	0	7	10	26	73	281	613	454	130	0	17	1.1	116	7.3
SARASOTA	2,632	0	14	18	23	124	405	1,004	801	243	0	32	1.2	179	6.8
SEMINOLE	3,787	4	14	21	42	172	599	1,464	1,132	339	0	39	1.0	253	6.7
SUMTER	398	0	1	2	6	25	80	150	112	22	0	3	0.8	34	8.5
SUWANNEE	387	0	4	2	4	22	71	138	118	28	0	6	1.6	32	8.3
TAYLOR	183	0	0	0	3	12	39	80	40	9	0	0	0.0	15	8.2
UNION	141	0	0	0	6	8	23	63	33	8	0	0	0.0	14	9.9
VOLUSIA	4,228	2	11	31	49	213	727	1,628	1,192	375	0	44	1.0	306	7.2
WAKULLA	256	0	5	2	3	13	52	85	66	30	0	7	2.7	23	9.0
WALTON	545	1	5	6	8	30	97	206	145	47	0	12	2.2	50	9.2
WASHINGTON	208	0	1	1	2	16	38	61	75	14	0	2	1.0	20	9.6

TABLE B-5 (Cont.): RESIDENT LIVE BIRTHS TO BLACK MOTHERS BY BIRTHWEIGHT, BY COUNTY, FLORIDA, 2005

	BIRTHWEIGHT IN GRAMS											LESS THAN 1500 GRAMS		LESS THAN 2500 GRAMS	
	TOTAL	<500	500- 999	1000- 1499	1500- 1999	2000- 2499	2500- 2999	3000- 3499	3500- 3999	4000+	UNK	NUMBER	%	NUMBER	%
FLORIDA	47,957	190	651	666	1,237	3,777	12,141	18,376	8,874	2,031	14	1,507	3.1	6,521	13.6
ALACHUA	814	8	8	13	26	67	209	321	138	24	0	29	3.6	122	15.0
BAKER	48	1	0	0	2	4	12	22	7	0	0	1	2.1	7	14.6
BAY	334	0	6	2	10	34	95	124	48	14	1	8	2.4	52	15.6
BRADFORD	50	0	0	1	1	8	11	19	7	3	0	1	2.0	10	20.0
BREVARD	727	1	9	9	24	61	205	279	125	14	0	19	2.6	104	14.3
BROWARD	7,868	22	118	91	200	581	1,906	3,039	1,526	384	1	231	2.9	1,012	12.9
CALHOUN	16	0	0	0	2	1	5	6	2	0	0	0	0.0	3	18.8
CHARLOTTE	66	0	0	3	4	1	14	22	16	6	0	3	4.5	8	12.1
CITRUS	32	0	0	0	0	4	8	12	7	1	0	0	0.0	4	12.5
CLAY	213	2	4	1	2	21	49	75	49	10	0	7	3.3	30	14.1
COLLIER	458	1	4	4	14	33	110	175	87	30	0	9	2.0	56	12.2
COLUMBIA	158	2	2	1	3	14	34	63	32	7	0	5	3.2	22	13.9
MIAMI-DADE	8,107	25	115	115	199	658	2,010	3,079	1,533	373	0	255	3.1	1,112	13.7
DESOTO	50	0	2	1	2	3	13	19	9	1	0	3	6.0	8	16.0
DIXIE	5	0	1	0	0	0	1	1	1	1	0	1	20.0	1	20.0
DUVAL	4,449	33	57	63	126	352	1,144	1,660	815	198	1	153	3.4	631	14.2
ESCAMBIA	1,241	5	11	23	35	118	337	452	214	46	0	39	3.1	192	15.5
FLAGLER	79	0	0	1	2	4	17	36	14	5	0	1	1.3	7	8.9
FRANKLIN	5	0	0	0	0	0	2	1	2	0	0	0	0.0	0	0.0
GADSDEN	450	2	6	5	15	37	119	182	75	9	0	13	2.9	65	14.4
GILCHRIST	13	0	0	0	0	1	3	6	3	0	0	0	0.0	1	7.7
GLADES	12	0	0	0	1	0	4	6	1	0	0	0	0.0	1	8.3
GULF	20	1	0	1	0	2	3	8	4	1	0	2	10.0	4	20.0
HAMILTON	64	0	2	0	0	5	21	26	9	1	0	2	3.1	7	10.9
HARDEE	25	0	0	0	0	1	9	9	5	1	0	0	0.0	1	4.0
HENDRY	95	0	2	3	1	5	35	34	11	4	0	5	5.3	11	11.6
HERNANDO	116	0	1	1	5	13	30	46	18	2	0	2	1.7	20	17.2
HIGHLANDS	145	0	4	2	5	12	36	57	24	5	0	6	4.1	23	15.9
HILLSBOROUGH	3,132	27	39	43	68	246	836	1,191	568	111	3	109	3.5	423	13.5
HOLMES	9	0	0	0	0	2	3	2	2	0	0	0	0.0	2	22.2
INDIAN RIVER	191	0	2	2	12	19	46	74	30	6	0	4	2.1	35	18.3
JACKSON	161	2	3	1	4	14	39	63	28	7	0	6	3.7	24	14.9
JEFFERSON	70	0	1	0	1	8	23	26	9	2	0	1	1.4	10	14.3
LAFAYETTE	14	0	1	0	2	0	3	6	1	1	0	1	7.1	3	21.4
LAKE	396	1	5	6	11	37	112	137	74	13	0	12	3.0	60	15.2
LEE	844	2	11	21	19	59	204	338	149	39	2	34	4.0	112	13.3
LEON	1,222	10	9	20	29	96	314	470	229	45	0	39	3.2	164	13.4
LEVY	50	0	1	2	1	4	17	18	5	2	0	3	6.0	8	16.0
LIBERTY	11	0	0	0	0	1	2	2	5	1	0	0	0.0	1	9.1
MADISON	123	1	0	2	1	5	40	49	19	6	0	3	2.4	9	7.3
MANATEE	470	4	7	6	14	28	101	218	76	16	0	17	3.6	59	12.6
MARION	616	1	9	8	13	59	159	237	114	16	0	18	2.9	90	14.6
MARTIN	111	0	4	0	2	10	17	53	19	6	0	4	3.6	16	14.4
MONROE	70	0	1	1	2	5	16	28	14	3	0	2	2.9	9	12.9
NASSAU	47	0	0	0	1	4	13	19	8	2	0	0	0.0	5	10.6
OKALOOSA	300	0	6	1	13	26	71	116	52	14	1	7	2.3	46	15.3
OKEECHOBEE	36	0	1	0	0	5	12	7	10	1	0	1	2.8	6	16.7
ORANGE	4,162	9	51	51	118	322	1,022	1,623	790	175	1	111	2.7	551	13.2
OSCEOLA	353	1	5	4	13	23	103	133	58	13	0	10	2.8	46	13.0
PALM BEACH	3,788	9	54	48	81	307	958	1,460	706	164	1	111	2.9	499	13.2
PASCO	189	3	3	8	1	12	45	64	42	11	0	14	7.4	27	14.3
PINELLAS	1,402	4	23	24	34	104	388	529	244	51	1	51	3.6	189	13.5
POLK	1,406	5	22	31	35	103	354	522	282	50	2	58	4.1	196	13.9
PUTNAM	252	1	2	4	10	23	73	91	35	13	0	7	2.8	40	15.9
SAINT JOHNS	130	0	4	2	2	11	35	49	22	5	0	6	4.6	19	14.6
SAINT LUCIE	741	3	5	13	14	51	179	300	138	38	0	21	2.8	86	11.6
SANTA ROSA	64	0	0	1	2	4	21	20	13	3	0	1	1.6	7	10.9
SARASOTA	236	1	0	3	10	21	55	93	42	11	0	4	1.7	35	14.8
SEMINOLE	659	2	12	9	17	47	170	251	117	34	0	23	3.5	87	13.2
SUMTER	89	0	0	1	1	8	23	37	18	1	0	1	1.1	10	11.2
SUWANNEE	73	0	2	1	1	5	13	36	12	3	0	3	4.1	9	12.3
TAYLOR	56	0	2	1	2	7	13	20	11	0	0	3	5.4	12	21.4
UNION	24	0	0	1	0	2	9	8	3	1	0	1	4.2	3	12.5
VOLUSIA	699	1	12	11	18	51	176	279	129	22	0	24	3.4	93	13.3
WAKULLA	27	0	1	0	0	0	8	12	6	0	0	1	3.7	1	3.7
WALTON	36	0	1	0	3	5	10	11	5	1	0	1	2.8	9	25.0
WASHINGTON	35	0	0	0	3	3	15	5	6	3	0	0	0.0	6	17.1

TABLE B-5 (Cont.): RESIDENT LIVE BIRTHS TO OTHER MOTHERS BY BIRTHWEIGHT, BY COUNTY, FLORIDA, 2005

	BIRTHWEIGHT IN GRAMS											LESS THAN 1500 GRAMS		LESS THAN 2500 GRAMS	
	TOTAL	<500	500- 999	1000- 1499	1500- 1999	2000- 2499	2500- 2999	3000- 3499	3500- 3999	4000+	UNK	NUMBER	%	NUMBER	%
	FLORIDA	11,651	10	70	82	182	681	2,555	4,867	2,582	621	1	162	1.4	1,025
ALACHUA	230	0	1	2	4	13	49	91	58	12	0	3	1.3	20	8.7
BAKER	6	0	1	0	0	0	2	2	1	0	0	1	16.7	1	16.7
BAY	189	1	2	1	3	7	53	75	35	12	0	4	2.1	14	7.4
BRADFORD	5	0	0	0	0	0	1	3	1	0	0	0	0.0	0	0.0
BREVARD	291	0	2	2	6	14	45	141	69	12	0	4	1.4	24	8.2
BROWARD	1,599	0	12	9	23	102	364	674	335	80	0	21	1.3	146	9.1
CALHOUN	2	0	0	0	0	0	2	0	0	0	0	0	0.0	0	0.0
CHARLOTTE	44	0	1	0	0	0	6	16	16	5	0	1	2.3	1	2.3
CITRUS	44	1	0	0	1	4	11	17	10	0	0	1	2.3	6	13.6
CLAY	126	0	0	1	5	6	22	53	33	6	0	1	0.8	12	9.5
COLLIER	95	0	0	0	3	3	17	41	24	7	0	0	0.0	6	6.3
COLUMBIA	20	0	0	0	1	0	4	10	5	0	0	0	0.0	1	5.0
MIAMI-DADE	758	1	1	3	17	45	163	339	162	27	0	5	0.7	67	8.8
DESOTO	4	0	0	0	0	0	0	3	1	0	0	0	0.0	0	0.0
DIXIE	1	0	0	0	0	0	0	0	1	0	0	0	0.0	0	0.0
DUVAL	919	0	6	6	13	50	218	351	209	66	0	12	1.3	75	8.2
ESCAMBIA	249	0	2	2	4	10	43	105	68	15	0	4	1.6	18	7.2
FLAGLER	23	0	0	0	2	2	2	7	6	4	0	0	0.0	4	17.4
FRANKLIN	5	0	0	0	0	0	1	1	1	2	0	0	0.0	0	0.0
GADSDEN	12	0	0	0	1	3	1	5	2	0	0	0	0.0	4	33.3
GILCHRIST	3	0	0	0	0	0	1	1	1	0	0	0	0.0	0	0.0
GLADES	7	0	0	0	0	2	0	2	2	1	0	0	0.0	2	28.6
GULF	0	0	0	0	0	0	0	0	0	0	0	0	0.0	0	0.0
HAMILTON	4	0	0	0	0	1	2	1	0	0	0	0	0.0	1	25.0
HARDEE	6	0	0	0	0	0	2	3	0	1	0	0	0.0	0	0.0
HENDRY	19	0	0	0	0	0	3	7	8	1	0	0	0.0	0	0.0
HERNANDO	65	0	0	0	1	1	12	28	17	6	0	0	0.0	2	3.1
HIGHLANDS	39	0	0	0	1	4	6	21	6	1	0	0	0.0	5	12.8
HILLSBOROUGH	1,002	1	7	4	16	63	226	415	220	50	0	12	1.2	91	9.1
HOLMES	5	0	0	0	0	0	2	2	1	0	0	0	0.0	0	0.0
INDIAN RIVER	31	0	0	0	1	2	10	10	6	2	0	0	0.0	3	9.7
JACKSON	15	0	0	0	1	1	3	6	3	1	0	0	0.0	2	13.3
JEFFERSON	1	0	0	0	0	0	0	0	1	0	0	0	0.0	0	0.0
LAFAYETTE	0	0	0	0	0	0	0	0	0	0	0	0	0.0	0	0.0
LAKE	145	1	2	4	3	8	40	53	31	3	0	7	4.8	18	12.4
LEE	173	0	1	0	2	10	34	66	44	16	0	1	0.6	13	7.5
LEON	204	0	1	0	2	10	46	105	35	5	0	1	0.5	13	6.4
LEVY	9	0	0	0	0	1	2	3	3	0	0	0	0.0	1	11.1
LIBERTY	2	0	0	0	0	1	0	1	0	0	0	0	0.0	1	50.0
MADISON	0	0	0	0	0	0	0	0	0	0	0	0	0.0	0	0.0
MANATEE	240	0	0	3	2	13	48	103	50	21	0	3	1.3	18	7.5
MARION	182	0	0	3	5	7	41	68	50	8	0	3	1.6	15	8.2
MARTIN	218	0	0	0	3	16	55	91	42	10	1	0	0.0	19	8.7
MONROE	33	0	0	0	0	3	7	15	8	0	0	0	0.0	3	9.1
NASSAU	13	0	0	0	0	1	2	8	1	1	0	0	0.0	1	7.7
OKALOOSA	253	0	0	2	3	17	37	110	68	16	0	2	0.8	22	8.7
OKEECHOBEE	16	0	0	0	0	1	3	6	6	0	0	0	0.0	1	6.3
ORANGE	1,209	0	8	7	17	79	269	508	265	56	0	15	1.2	111	9.2
OSCEOLA	169	1	1	2	0	13	37	71	35	9	0	4	2.4	17	10.1
PALM BEACH	795	0	2	14	13	55	186	334	153	38	0	16	2.0	84	10.6
PASCO	220	0	2	0	1	10	50	95	49	13	0	2	0.9	13	5.9
PINELLAS	658	3	7	6	9	41	149	250	164	29	0	16	2.4	66	10.0
POLK	287	0	3	3	2	18	56	116	67	22	0	6	2.1	26	9.1
PUTNAM	16	0	0	0	1	0	5	6	3	1	0	0	0.0	1	6.3
SAINT JOHNS	84	0	0	0	1	10	14	33	19	7	0	0	0.0	11	13.1
SAINT LUCIE	128	0	1	0	0	3	27	63	29	5	0	1	0.8	4	3.1
SANTA ROSA	87	0	0	0	1	5	16	39	18	8	0	0	0.0	6	6.9
SARASOTA	129	0	2	3	1	5	34	50	25	9	0	5	3.9	11	8.5
SEMINOLE	336	1	3	1	6	14	82	151	64	14	0	5	1.5	25	7.4
SUMTER	14	0	0	0	0	0	4	4	4	2	0	0	0.0	0	0.0
SUWANNEE	9	0	0	0	0	1	2	4	1	1	0	0	0.0	1	11.1
TAYLOR	4	0	0	0	0	0	1	2	0	1	0	0	0.0	0	0.0
UNION	1	0	0	0	0	0	0	1	0	0	0	0	0.0	0	0.0
VOLUSIA	162	0	1	3	6	5	29	66	39	13	0	4	2.5	15	9.3
WAKULLA	5	0	0	0	0	0	0	3	2	0	0	0	0.0	0	0.0
WALTON	23	0	0	1	1	1	7	6	5	2	0	1	4.3	3	13.0
WASHINGTON	6	0	1	0	0	0	0	5	0	0	0	1	16.7	1	16.7

TABLE B-6: RESIDENT LIVE BIRTHS BY AGE OF MOTHER, BY COUNTY, FLORIDA, 2005

	TOTAL	<13	13	14	15	16	17	18	19	20-24	25-29	30-34	35-44	45+	UNK
FLORIDA	226,219	15	59	341	1,036	2,428	4,126	6,797	9,780	58,968	59,838	50,177	32,282	354	18
ALACHUA	2,690	0	0	3	10	24	43	64	95	698	759	638	353	3	0
BAKER	369	0	0	0	2	6	9	23	22	150	87	48	22	0	0
BAY	2,391	0	0	7	16	25	52	82	135	775	607	426	262	4	0
BRADFORD	332	0	0	0	0	7	11	17	25	121	82	43	26	0	0
BREVARD	5,387	0	2	6	22	52	92	164	230	1,445	1,499	1,127	740	8	0
BROWARD	23,127	3	6	17	77	163	317	476	708	4,716	6,023	6,101	4,471	45	4
CALHOUN	158	0	0	0	0	4	8	11	12	58	40	18	7	0	0
CHARLOTTE	1,084	0	0	1	6	8	20	33	55	350	280	206	125	0	0
CITRUS	1,021	0	0	0	1	10	18	48	75	323	250	175	120	1	0
CLAY	2,238	0	0	1	12	14	39	71	115	628	606	466	286	0	0
COLLIER	4,069	0	3	6	11	52	90	136	156	1,033	1,059	902	609	12	0
COLUMBIA	851	0	0	2	5	11	16	37	53	327	212	120	67	1	0
MIAMI-DADE	32,365	2	11	44	147	330	488	826	1,154	7,215	8,409	8,210	5,457	69	3
DESOTO	505	0	0	3	7	10	12	23	43	183	114	71	39	0	0
DIXIE	170	0	0	1	1	1	5	8	13	67	45	19	10	0	0
DUVAL	12,974	1	3	19	66	134	250	365	664	3,951	3,454	2,548	1,499	19	1
ESCAMBIA	4,237	0	4	7	32	68	87	163	236	1,386	1,150	715	386	3	0
FLAGLER	689	0	0	2	2	7	8	20	18	197	190	150	93	2	0
FRANKLIN	119	0	0	0	0	4	2	9	10	51	23	15	5	0	0
GADSDEN	741	0	1	5	9	13	16	35	44	283	185	110	39	1	0
GILCHRIST	194	0	0	1	1	4	3	10	20	71	39	24	21	0	0
GLADES	77	0	0	0	0	4	3	3	5	35	10	8	9	0	0
GULF	130	0	0	0	0	2	5	1	5	50	40	21	6	0	0
HAMILTON	191	0	1	0	1	9	6	13	12	68	48	23	10	0	0
HARDEE	456	0	1	0	2	10	21	18	34	149	127	62	31	1	0
HENDRY	757	0	0	3	6	22	26	27	44	270	190	109	58	2	0
HERNANDO	1,496	0	0	2	3	13	28	39	92	437	419	267	194	2	0
HIGHLANDS	939	0	0	4	8	8	20	47	56	310	257	138	90	1	0
HILLSBOROUGH	16,753	2	5	26	70	185	334	537	730	4,364	4,451	3,704	2,325	18	2
HOLMES	247	0	0	0	1	3	10	11	24	80	66	37	15	0	0
INDIAN RIVER	1,360	0	0	8	5	16	26	44	62	382	340	279	195	3	0
JACKSON	567	0	0	0	3	5	13	29	25	219	165	78	30	0	0
JEFFERSON	167	0	1	0	0	3	3	8	9	50	44	31	18	0	0
LAFAYETTE	114	0	0	0	1	0	5	3	7	45	27	16	10	0	0
LAKE	3,223	0	0	2	23	37	64	110	174	860	889	663	399	2	0
LEE	6,704	1	1	12	44	88	138	231	318	1,854	1,822	1,357	833	4	1
LEON	3,105	0	0	3	14	31	42	77	126	805	926	679	399	3	0
LEVY	462	0	0	1	1	6	14	18	34	147	126	76	39	0	0
LIBERTY	108	0	0	0	0	1	7	7	5	43	24	11	10	0	0
MADISON	253	1	0	3	2	6	10	15	12	88	63	38	15	0	0
MANATEE	3,809	1	0	7	25	54	98	148	164	1,108	981	777	436	9	1
MARION	3,449	0	1	9	23	55	93	164	210	1,148	869	544	327	5	1
MARTIN	1,340	0	0	1	10	10	35	40	58	332	332	305	215	2	0
MONROE	768	0	0	1	1	5	11	16	19	178	218	184	134	1	0
NASSAU	812	0	0	0	8	8	23	35	48	252	207	130	100	1	0
OKALOOSA	2,738	0	1	3	10	22	46	74	121	878	793	489	298	3	0
ORKEECHOBEE	587	0	2	4	4	8	20	38	30	204	146	91	40	0	0
ORANGE	16,556	0	6	31	93	166	285	448	680	4,050	4,543	3,929	2,307	15	3
OSCEOLA	3,593	0	0	3	14	41	68	135	161	1,011	988	720	446	6	0
PALM BEACH	15,160	0	2	26	61	160	227	383	520	3,224	3,763	3,851	2,904	37	2
PASCO	4,753	0	0	5	16	49	83	135	190	1,167	1,353	1,121	630	4	0
PINELLAS	9,065	0	4	10	39	107	155	265	393	2,322	2,319	2,018	1,412	21	0
POLK	7,786	2	2	19	41	127	186	329	457	2,584	2,093	1,287	653	6	0
PUTNAM	1,034	0	1	6	10	19	28	52	79	374	246	149	69	1	0
SAINT JOHNS	1,761	0	0	2	8	13	29	35	56	310	454	503	348	3	0
SAINT LUCIE	3,003	0	1	9	8	47	52	119	161	840	822	607	334	3	0
SANTA ROSA	1,746	0	0	1	6	13	29	57	75	480	496	385	201	3	0
SARASOTA	2,997	1	0	4	8	26	45	81	122	717	736	737	512	8	0
SEMINOLE	4,786	1	0	1	9	25	70	110	162	1,063	1,320	1,247	763	15	0
SUMTER	501	0	0	1	2	7	15	23	23	204	120	55	51	0	0
SUWANNEE	470	0	0	1	2	9	19	20	36	182	116	52	33	0	0
TAYLOR	244	0	0	1	3	5	8	13	20	90	59	30	14	1	0
UNION	166	0	0	0	0	2	4	3	9	61	54	26	7	0	0
VOLUSIA	5,093	0	0	5	21	42	104	177	258	1,539	1,335	1,016	591	5	0
WAKULLA	288	0	0	1	0	1	7	12	22	85	71	53	35	1	0
WALTON	604	0	0	0	1	8	17	19	31	187	174	99	68	0	0
WASHINGTON	249	0	0	1	2	1	7	6	18	85	74	33	22	0	0

TABLE B-6 (Cont.): RESIDENT LIVE BIRTHS TO WHITE MOTHERS, BY AGE OF MOTHER,  
BY COUNTY, FLORIDA, 2005

	TOTAL	<13	13	14	15	16	17	18	19	20-24	25-29	30-34	35-44	45+	UNK
FLORIDA	166,181	7	26	161	567	1,468	2,643	4,452	6,492	41,016	44,665	39,121	25,286	264	13
ALACHUA	1,646	0	0	0	3	1	19	25	43	353	481	464	255	2	0
BAKER	315	0	0	0	2	5	8	18	15	130	76	40	21	0	0
BAY	1,829	0	0	3	13	16	42	56	90	592	452	341	220	4	0
BRADFORD	277	0	0	0	0	5	8	14	21	103	70	33	23	0	0
BREVARD	4,348	0	1	1	15	34	70	119	174	1,126	1,228	933	639	8	0
BROWARD	13,576	1	3	3	16	56	110	189	289	2,266	3,547	4,079	2,983	31	3
CALHOUN	140	0	0	0	0	3	7	9	11	51	37	15	7	0	0
CHARLOTTE	973	0	0	1	4	8	18	30	53	321	242	182	114	0	0
CITRUS	945	0	0	0	1	9	15	45	71	309	229	154	111	1	0
CLAY	1,897	0	0	1	9	14	29	56	105	525	524	406	228	0	0
COLLIER	3,514	0	3	4	9	49	78	117	134	922	926	775	488	9	0
COLUMBIA	672	0	0	2	4	7	14	21	37	264	167	104	52	0	0
MIAMI-DADE	23,334	1	3	23	76	174	276	470	681	4,555	6,155	6,549	4,320	48	3
DESOTO	450	0	0	2	5	10	10	21	37	168	97	68	32	0	0
DIXIE	164	0	0	1	1	1	5	8	11	67	44	17	9	0	0
DUVAL	7,597	1	0	5	22	44	92	156	320	2,141	2,079	1,697	1,029	11	0
ESCAMBIA	2,745	0	2	2	15	32	47	81	116	829	792	541	286	2	0
FLAGLER	587	0	0	1	0	3	5	15	14	161	170	136	80	2	0
FRANKLIN	108	0	0	0	0	4	2	8	10	45	21	13	5	0	0
GADSDEN	278	0	0	3	2	5	7	6	9	79	83	60	23	1	0
GILCHRIST	178	0	0	1	1	4	3	10	17	64	39	21	18	0	0
GLADES	58	0	0	0	0	3	2	3	5	23	9	5	8	0	0
GULF	110	0	0	0	0	1	5	0	3	42	34	20	5	0	0
HAMILTON	123	0	0	0	1	5	4	6	7	41	35	18	6	0	0
HARDEE	425	0	1	0	2	9	20	17	30	139	120	58	29	0	0
HENDRY	643	0	0	3	6	21	22	23	36	222	163	94	51	2	0
HERNANDO	1,313	0	0	2	3	13	24	37	81	370	368	235	178	2	0
HIGHLANDS	754	0	0	4	6	6	13	33	42	248	210	117	75	0	0
HILLSBOROUGH	12,602	0	1	9	43	121	236	393	509	3,149	3,365	2,905	1,857	13	1
HOLMES	233	0	0	0	1	3	9	9	21	76	63	36	15	0	0
INDIAN RIVER	1,138	0	0	3	3	12	18	31	51	309	291	245	173	2	0
JACKSON	389	0	0	0	2	0	9	21	16	156	113	55	17	0	0
JEFFERSON	96	0	0	0	0	0	2	6	4	23	30	18	13	0	0
LAFAYETTE	100	0	0	0	0	0	5	3	6	37	25	14	10	0	0
LAKE	2,679	0	0	2	11	30	51	84	140	717	729	571	342	2	0
LEE	5,685	1	1	11	33	62	105	183	264	1,559	1,566	1,182	714	3	1
LEON	1,676	0	0	0	2	9	16	20	57	326	510	452	283	1	0
LEVY	403	0	0	1	1	5	9	17	30	126	114	65	35	0	0
LIBERTY	95	0	0	0	0	1	6	6	4	37	20	11	10	0	0
MADISON	130	0	0	1	0	3	2	10	4	41	35	27	7	0	0
MANATEE	3,098	1	0	4	19	42	79	115	120	865	834	657	355	7	0
MARION	2,651	0	1	7	15	39	60	115	152	845	703	438	271	5	0
MARTIN	1,010	0	0	0	4	7	21	18	39	222	253	260	184	2	0
MONROE	663	0	0	1	1	5	10	14	16	153	186	159	117	1	0
NASSAU	751	0	0	0	8	8	19	30	42	229	196	124	94	1	0
OKALOOSA	2,182	0	1	2	8	16	32	52	90	692	626	413	247	3	0
OKEECHOBEE	535	0	2	4	4	6	18	34	28	181	136	82	40	0	0
ORANGE	11,175	0	2	6	41	86	177	269	416	2,607	3,089	2,802	1,667	10	3
OSCEOLA	3,068	0	0	2	11	37	60	114	139	880	862	606	353	4	0
PALM BEACH	10,562	0	0	9	32	82	131	224	299	1,984	2,636	2,892	2,243	28	2
PASCO	4,341	0	0	5	15	45	76	124	173	1,092	1,231	1,007	570	3	0
PINELLAS	6,999	0	2	4	14	60	86	174	253	1,658	1,867	1,644	1,217	20	0
POLK	6,088	1	1	11	29	91	144	247	335	1,982	1,686	1,032	524	5	0
PUTNAM	766	0	1	4	8	14	18	39	55	271	181	119	55	1	0
SAINT JOHNS	1,547	0	0	1	5	11	21	28	47	258	404	446	323	3	0
SAINT LUCIE	2,132	0	1	6	4	27	28	74	102	577	640	439	232	2	0
SANTA ROSA	1,594	0	0	1	6	12	26	52	69	443	452	346	184	3	0
SARASOTA	2,632	1	0	1	6	15	30	68	92	613	657	675	467	7	0
SEMINOLE	3,787	0	0	1	3	20	46	69	117	795	1,065	1,027	633	11	0
SUMTER	398	0	0	0	1	6	11	19	18	154	96	47	46	0	0
SUWANNEE	387	0	0	0	2	4	16	16	33	146	99	44	27	0	0
TAYLOR	183	0	0	0	1	3	5	11	13	72	39	26	13	0	0
UNION	141	0	0	0	0	1	0	2	6	55	48	24	5	0	0
VOLUSIA	4,228	0	0	2	15	35	79	135	212	1,214	1,131	877	525	3	0
WAKULLA	256	0	0	1	0	1	5	10	16	77	65	47	33	1	0
WALTON	545	0	0	0	1	7	17	18	28	160	154	94	66	0	0
WASHINGTON	208	0	0	0	2	0	4	4	14	74	62	30	18	0	0



TABLE B-6 (Cont.): RESIDENT LIVE BIRTHS TO BLACK MOTHERS, BY AGE OF MOTHER,  
BY COUNTY, FLORIDA, 2005

	TOTAL	<13	13	14	15	16	17	18	19	20-24	25-29	30-34	35-44	45+	UNK
FLORIDA	47,957	8	33	169	426	884	1,354	2,121	2,971	15,642	11,710	7,616	4,956	65	2
ALACHUA	814	0	0	3	6	21	24	37	51	314	208	90	59	1	0
BAKER	48	0	0	0	0	1	0	5	6	18	9	8	1	0	0
BAY	334	0	0	3	3	8	6	19	27	112	92	47	17	0	0
BRADFORD	50	0	0	0	0	2	3	3	4	16	10	9	3	0	0
BREVARD	727	0	1	5	6	15	17	37	42	255	185	112	52	0	0
BROWARD	7,868	2	3	14	59	104	191	269	390	2,155	1,963	1,532	1,172	13	1
CALHOUN	16	0	0	0	0	1	1	2	1	7	1	3	0	0	0
CHARLOTTE	66	0	0	0	1	0	2	2	1	19	27	7	7	0	0
CITRUS	32	0	0	0	0	1	2	1	3	7	9	6	3	0	0
CLAY	213	0	0	0	2	0	8	11	5	77	46	35	29	0	0
COLLIER	458	0	0	1	2	2	12	17	18	100	111	92	100	3	0
COLUMBIA	158	0	0	0	1	2	2	14	15	61	39	12	12	0	0
MIAMI-DADE	8,107	1	8	21	67	155	209	343	463	2,547	1,993	1,350	933	17	0
DESOTO	50	0	0	0	2	0	2	2	6	14	16	3	5	0	0
DIXIE	5	0	0	0	0	0	0	0	2	0	0	2	1	0	0
DUVAL	4,449	0	3	14	40	83	143	194	320	1,628	1,094	598	328	4	0
ESCAMBIA	1,241	0	2	5	16	31	39	74	111	485	282	122	73	1	0
FLAGLER	79	0	0	1	2	3	2	5	3	31	15	8	9	0	0
FRANKLIN	5	0	0	0	0	0	0	0	0	2	2	1	0	0	0
GADSDEN	450	0	1	2	7	7	9	28	35	200	101	46	14	0	0
GILCHRIST	13	0	0	0	0	0	0	0	1	7	0	2	3	0	0
GLADES	12	0	0	0	0	1	1	0	0	6	0	3	1	0	0
GULF	20	0	0	0	0	1	0	1	2	8	6	1	1	0	0
HAMILTON	64	0	1	0	0	4	2	7	5	26	11	5	3	0	0
HARDEE	25	0	0	0	0	0	1	1	3	8	6	4	2	0	0
HENDRY	95	0	0	0	0	0	3	4	8	42	21	11	6	0	0
HERNANDO	116	0	0	0	0	0	4	2	8	48	34	15	5	0	0
HIGHLANDS	145	0	0	0	2	2	6	8	9	52	39	15	11	1	0
HILLSBOROUGH	3,132	2	4	16	24	58	90	134	209	1,033	790	489	279	3	1
HOLMES	9	0	0	0	0	0	0	2	2	3	2	0	0	0	0
INDIAN RIVER	191	0	0	5	1	4	7	10	8	67	44	24	20	1	0
JACKSON	161	0	0	0	1	5	4	8	8	59	45	18	13	0	0
JEFFERSON	70	0	1	0	0	3	1	2	5	27	14	12	5	0	0
LAFAYETTE	14	0	0	0	1	0	0	0	1	8	2	2	0	0	0
LAKE	396	0	0	0	9	6	11	23	29	120	110	55	33	0	0
LEE	844	0	0	1	10	21	33	43	52	270	211	121	82	0	0
LEON	1,222	0	0	3	12	22	25	54	63	450	354	156	81	2	0
LEVY	50	0	0	0	0	1	4	1	4	19	12	6	3	0	0
LIBERTY	11	0	0	0	0	0	1	1	1	4	4	0	0	0	0
MADISON	123	1	0	2	2	3	8	5	8	47	28	11	8	0	0
MANATEE	470	0	0	2	6	11	14	25	35	183	92	58	42	2	0
MARION	616	0	0	2	5	11	30	41	51	254	130	58	34	0	0
MARTIN	111	0	0	1	2	2	5	6	8	42	22	13	10	0	0
MONROE	70	0	0	0	0	0	1	1	2	18	21	15	12	0	0
NASSAU	47	0	0	0	0	0	4	5	4	19	8	2	5	0	0
OKALOOSA	300	0	0	1	1	4	7	15	20	108	93	27	24	0	0
OKEECHOBEE	36	0	0	0	0	2	2	4	1	16	6	5	0	0	0
ORANGE	4,162	0	4	23	47	73	96	169	240	1,245	1,084	745	433	3	0
OSCEOLA	353	0	0	1	2	4	6	19	18	93	78	67	63	2	0
PALM BEACH	3,788	0	2	15	28	74	90	142	200	1,123	882	717	509	6	0
PASCO	189	0	0	0	1	3	7	5	11	44	55	43	20	0	0
PINELLAS	1,402	0	2	5	25	42	61	86	124	499	284	195	79	0	0
POLK	1,406	1	1	8	12	32	40	74	112	525	326	187	87	1	0
PUTNAM	252	0	0	2	2	5	10	12	23	96	64	26	12	0	0
SAINT JOHNS	130	0	0	1	1	2	7	7	8	46	30	16	12	0	0
SAINT LUCIE	741	0	0	3	4	18	21	38	56	237	155	124	84	1	0
SANTA ROSA	64	0	0	0	0	1	2	4	1	18	10	17	11	0	0
SARASOTA	236	0	0	2	1	11	13	8	24	81	41	37	18	0	0
SEMINOLE	659	1	0	0	5	5	23	39	39	226	142	109	69	1	0
SUMTER	89	0	0	1	0	1	4	4	5	42	20	7	5	0	0
SUWANNEE	73	0	0	1	0	4	3	4	3	34	15	6	3	0	0
TAYLOR	56	0	0	1	2	2	3	2	6	15	19	4	1	1	0
UNION	24	0	0	0	0	1	4	1	3	5	6	2	2	0	0
VOLUSIA	699	0	0	3	6	7	23	36	37	287	164	92	42	2	0
WAKULLA	27	0	0	0	0	0	2	2	5	6	4	6	2	0	0
WALTON	36	0	0	0	0	0	0	1	2	18	11	4	0	0	0
WASHINGTON	35	0	0	1	0	1	3	2	4	9	11	1	3	0	0

TABLE B-6 (Cont.): RESIDENT LIVE BIRTHS TO OTHER MOTHERS, BY AGE OF MOTHER,  
BY COUNTY, FLORIDA, 2005

	TOTAL	<13	13	14	15	16	17	18	19	20-24	25-29	30-34	35-44	45+	UNK
FLORIDA	11,651	0	0	11	40	74	125	211	302	2,211	3,349	3,340	1,963	22	3
ALACHUA	230	0	0	0	1	2	0	2	1	31	70	84	39	0	0
BAKER	6	0	0	0	0	0	1	0	1	2	2	0	0	0	0
BAY	189	0	0	1	0	0	4	5	16	55	52	33	23	0	0
BRADFORD	5	0	0	0	0	0	0	0	0	2	2	1	0	0	0
BREVARD	291	0	0	0	1	3	5	8	12	59	84	74	45	0	0
BROWARD	1,599	0	0	0	2	3	14	17	25	278	489	466	305	0	0
CALHOUN	2	0	0	0	0	0	0	0	0	0	2	0	0	0	0
CHARLOTTE	44	0	0	0	1	0	0	1	1	10	11	16	4	0	0
CITRUS	44	0	0	0	0	0	1	2	1	7	12	15	6	0	0
CLAY	126	0	0	0	1	0	2	4	5	26	35	24	29	0	0
COLLIER	95	0	0	1	0	1	0	2	4	11	22	34	20	0	0
COLUMBIA	20	0	0	0	0	2	0	2	1	2	6	4	2	1	0
MIAMI-DADE	758	0	0	0	2	0	1	8	7	86	213	268	171	2	0
DESOTO	4	0	0	1	0	0	0	0	0	1	1	0	1	0	0
DIXIE	1	0	0	0	0	0	0	0	0	0	1	0	0	0	0
DUVAL	919	0	0	0	4	7	15	15	24	178	278	251	142	4	1
ESCAMBIA	249	0	0	0	1	5	1	8	9	70	76	52	27	0	0
FLAGLER	23	0	0	0	0	1	1	0	1	5	5	6	4	0	0
FRANKLIN	5	0	0	0	0	0	0	1	0	3	0	1	0	0	0
GADSDEN	12	0	0	0	0	1	0	1	0	4	1	4	1	0	0
GILCHRIST	3	0	0	0	0	0	0	0	2	0	0	1	0	0	0
GLADES	7	0	0	0	0	0	0	0	0	6	1	0	0	0	0
GULF	0	0	0	0	0	0	0	0	0	0	0	0	0	0	0
HAMILTON	4	0	0	0	0	0	0	0	0	1	2	0	1	0	0
HARDEE	6	0	0	0	0	1	0	0	1	2	1	0	0	1	0
HENDRY	19	0	0	0	0	1	1	0	0	6	6	4	1	0	0
HERNANDO	65	0	0	0	0	0	0	0	2	19	17	17	10	0	0
HIGHLANDS	39	0	0	0	0	0	1	6	5	10	8	6	3	0	0
HILLSBOROUGH	1,002	0	0	1	3	6	8	9	12	178	293	307	183	2	0
HOLMES	5	0	0	0	0	0	1	0	1	1	1	1	0	0	0
INDIAN RIVER	31	0	0	0	1	0	1	3	3	6	5	10	2	0	0
JACKSON	15	0	0	0	0	0	0	0	0	4	6	5	0	0	0
JEFFERSON	1	0	0	0	0	0	0	0	0	0	0	1	0	0	0
LAFAYETTE	0	0	0	0	0	0	0	0	0	0	0	0	0	0	0
LAKE	145	0	0	0	3	1	2	2	5	22	49	37	24	0	0
LEE	173	0	0	0	1	5	0	5	2	24	45	53	37	1	0
LEON	204	0	0	0	0	0	1	3	6	28	60	71	35	0	0
LEVY	9	0	0	0	0	0	1	0	0	2	0	5	1	0	0
LIBERTY	2	0	0	0	0	0	0	0	0	2	0	0	0	0	0
MADISON	0	0	0	0	0	0	0	0	0	0	0	0	0	0	0
MANATEE	240	0	0	1	0	1	5	8	9	59	55	62	39	0	1
MARION	182	0	0	0	3	5	3	8	7	49	36	48	22	0	1
MARTIN	218	0	0	0	4	1	9	16	11	68	57	32	20	0	0
MONROE	33	0	0	0	0	0	0	1	1	7	10	9	5	0	0
NASSAU	13	0	0	0	0	0	0	0	2	4	3	4	0	0	0
OKALOOSA	253	0	0	0	0	2	7	7	11	78	74	48	26	0	0
OKEECHOBEE	16	0	0	0	0	0	0	0	1	7	4	4	0	0	0
ORANGE	1,209	0	0	2	5	7	12	10	24	195	365	382	205	2	0
OSCEOLA	169	0	0	0	1	0	2	2	4	37	47	46	30	0	0
PALM BEACH	795	0	0	2	1	4	6	17	19	115	239	239	150	3	0
PASCO	220	0	0	0	0	1	0	5	6	30	66	71	40	1	0
PINELLAS	658	0	0	1	0	5	8	5	16	162	167	178	115	1	0
POLK	287	0	0	0	0	4	2	7	10	74	81	67	42	0	0
PUTNAM	16	0	0	0	0	0	0	1	1	7	1	4	2	0	0
SAINT JOHNS	84	0	0	0	2	0	1	0	1	6	20	41	13	0	0
SAINT LUCIE	128	0	0	0	0	2	3	7	3	25	27	43	18	0	0
SANTA ROSA	87	0	0	0	0	0	1	1	5	19	33	22	6	0	0
SARASOTA	129	0	0	1	1	0	2	5	6	23	38	25	27	1	0
SEMINOLE	336	0	0	0	1	0	1	2	6	41	112	111	59	3	0
SUMTER	14	0	0	0	1	0	0	0	0	8	4	1	0	0	0
SUWANNEE	9	0	0	0	0	1	0	0	0	2	2	2	2	0	0
TAYLOR	4	0	0	0	0	0	0	0	1	2	1	0	0	0	0
UNION	1	0	0	0	0	0	0	0	0	1	0	0	0	0	0
VOLUSIA	162	0	0	0	0	0	2	5	9	37	39	47	23	0	0
WAKULLA	5	0	0	0	0	0	0	0	1	2	2	0	0	0	0
WALTON	23	0	0	0	0	1	0	0	1	9	9	1	2	0	0
WASHINGTON	6	0	0	0	0	0	0	0	0	2	1	2	1	0	0

TABLE B-7: RESIDENT LIVE BIRTHS BY TRIMESTER PRENATAL CARE BEGAN, BY COUNTY, FLORIDA, 2005

	TRIMESTER PRENATAL CARE BEGAN <sup>1</sup>						% CARE BEGAN BY TRIMESTER <sup>2</sup>			
	TOTAL	1ST	2ND	3RD	NONE	UNK	1ST	2ND	3RD	NONE
FLORIDA	226,219	158,516	32,675	7,069	3,557	24,402	78.5	16.2	3.5	1.8
ALACHUA	2,690	2,073	372	75	18	152	81.7	14.7	3.0	0.7
BAKER	369	267	59	8	4	31	79.0	17.5	2.4	1.2
BAY	2,391	1,454	423	149	32	333	70.7	20.6	7.2	1.6
BRADFORD	332	232	72	7	4	17	73.7	22.9	2.2	1.3
BREVARD	5,387	4,019	732	156	66	414	80.8	14.7	3.1	1.3
BROWARD	23,127	16,163	2,994	818	471	2,681	79.1	14.6	4.0	2.3
CALHOUN	158	105	23	1	3	26	79.5	17.4	0.8	2.3
CHARLOTTE	1,084	729	221	45	40	49	70.4	21.4	4.3	3.9
CITRUS	1,021	752	160	20	10	79	79.8	17.0	2.1	1.1
CLAY	2,238	1,686	318	50	20	164	81.3	15.3	2.4	1.0
COLLIER	4,069	2,595	945	242	27	260	68.1	24.8	6.4	0.7
COLUMBIA	851	609	137	30	37	38	74.9	16.9	3.7	4.6
MIAMI-DADE	32,365	24,310	3,245	516	538	3,756	85.0	11.3	1.8	1.9
DESOTO	505	296	145	38	9	17	60.7	29.7	7.8	1.8
DIXIE	170	120	34	4	2	10	75.0	21.3	2.5	1.3
DUVAL	12,974	8,758	1,969	354	214	1,679	77.5	17.4	3.1	1.9
ESCAMBIA	4,237	3,026	711	166	183	151	74.1	17.4	4.1	4.5
FLAGLER	689	444	93	12	6	134	80.0	16.8	2.2	1.1
FRANKLIN	119	73	17	6	1	22	75.3	17.5	6.2	1.0
GADSDEN	741	509	75	17	7	133	83.7	12.3	2.8	1.2
GILCHRIST	194	156	27	5	0	6	83.0	14.4	2.7	0.0
GLADES	77	48	16	4	0	9	70.6	23.5	5.9	0.0
GULF	130	85	14	8	0	23	79.4	13.1	7.5	0.0
HAMILTON	191	116	42	4	4	25	69.9	25.3	2.4	2.4
HARDEE	456	277	123	31	9	16	63.0	28.0	7.0	2.0
HENDRY	757	423	192	59	17	66	61.2	27.8	8.5	2.5
HERNANDO	1,496	1,191	208	51	8	38	81.7	14.3	3.5	0.5
HIGHLANDS	939	608	208	36	8	79	70.7	24.2	4.2	0.9
HILLSBOROUGH	16,753	12,666	1,587	274	237	1,989	85.8	10.7	1.9	1.6
HOLMES	247	131	28	18	1	69	73.6	15.7	10.1	0.6
INDIAN RIVER	1,360	1,008	258	50	13	31	75.8	19.4	3.8	1.0
JACKSON	567	324	65	15	2	161	79.8	16.0	3.7	0.5
JEFFERSON	167	120	13	2	2	30	87.6	9.5	1.5	1.5
LAFAYETTE	114	89	17	3	0	5	81.7	15.6	2.8	0.0
LAKE	3,223	2,360	492	94	26	251	79.4	16.6	3.2	0.9
LEE	6,704	4,757	1,247	293	68	339	74.7	19.6	4.6	1.1
LEON	3,105	2,394	234	46	21	410	88.8	8.7	1.7	0.8
LEVY	462	347	73	11	3	28	80.0	16.8	2.5	0.7
LIBERTY	108	79	7	0	2	20	89.8	8.0	0.0	2.3
MADISON	253	175	24	1	2	51	86.6	11.9	0.5	1.0
MANATEE	3,809	2,475	935	245	54	100	66.7	25.2	6.6	1.5
MARION	3,449	2,219	865	167	50	148	67.2	26.2	5.1	1.5
MARTIN	1,340	705	374	123	52	86	56.2	29.8	9.8	4.1
MONROE	768	503	87	16	21	141	80.2	13.9	2.6	3.3
NASSAU	812	607	79	12	3	111	86.6	11.3	1.7	0.4
OKALOOSA	2,738	1,931	469	149	33	156	74.8	18.2	5.8	1.3
OKEECHOBEE	587	387	142	18	7	33	69.9	25.6	3.2	1.3
ORANGE	16,556	12,810	1,720	288	237	1,501	85.1	11.4	1.9	1.6
OSCEOLA	3,593	1,901	305	49	59	1,279	82.2	13.2	2.1	2.5
PALM BEACH	15,160	7,973	2,703	873	236	3,375	67.7	22.9	7.4	2.0
PASCO	4,753	3,523	678	91	57	404	81.0	15.6	2.1	1.3
PINELLAS	9,065	6,526	1,202	229	118	990	80.8	14.9	2.8	1.5
POLK	7,786	4,585	2,157	463	186	395	62.0	29.2	6.3	2.5
PUTNAM	1,034	645	187	30	16	156	73.5	21.3	3.4	1.8
SAINT JOHNS	1,761	1,290	168	17	12	274	86.8	11.3	1.1	0.8
SAINT LUCIE	3,003	2,065	629	95	80	134	72.0	21.9	3.3	2.8
SANTA ROSA	1,746	1,357	237	44	39	69	80.9	14.1	2.6	2.3
SARASOTA	2,997	2,411	398	77	28	83	82.7	13.7	2.6	1.0
SEMINOLE	4,786	3,619	541	115	55	456	83.6	12.5	2.7	1.3
SUMTER	501	372	43	11	1	74	87.1	10.1	2.6	0.2
SUWANNEE	470	312	103	22	8	25	70.1	23.1	4.9	1.8
TAYLOR	244	171	21	2	3	47	86.8	10.7	1.0	1.5
UNION	166	125	27	6	2	6	78.1	16.9	3.8	1.3
VOLUSIA	5,093	3,659	822	158	62	392	77.8	17.5	3.4	1.3
WAKULLA	288	223	23	2	0	40	89.9	9.3	0.8	0.0
WALTON	604	409	106	32	18	39	72.4	18.8	5.7	3.2
WASHINGTON	249	128	31	15	1	74	73.1	17.7	8.6	0.6

1. Starting in 2004, "trimester prenatal care began" is calculated as the time elapsed from the date of the last menstrual period to the date of the first prenatal care visit. Prior to 2004, these data were obtained by direct question that noted the trimester the mother began prenatal care. Consequently, these data are not comparable to data from prior years.

2. Births with unknown information as to when prenatal care began are excluded from the denominator.

TABLE B-7 (Cont.): RESIDENT LIVE BIRTHS TO WHITE MOTHERS BY TRIMESTER  
 PRENATAL CARE BEGAN, BY COUNTY, FLORIDA, 2005

	TRIMESTER PRENATAL CARE BEGAN <sup>1</sup>						% CARE BEGAN BY TRIMESTER <sup>2</sup>			
	TOTAL	1ST	2ND	3RD	NONE	UNK	1ST	2ND	3RD	NONE
FLORIDA	166,181	120,787	22,031	4,671	2,089	16,603	80.8	14.7	3.1	1.4
ALACHUA	1,646	1,351	192	30	7	66	85.5	12.2	1.9	0.4
BAKER	315	229	49	6	3	28	79.8	17.1	2.1	1.0
BAY	1,829	1,149	308	100	23	249	72.7	19.5	6.3	1.5
BRADFORD	277	195	59	7	2	14	74.1	22.4	2.7	0.8
BREVARD	4,348	3,362	523	104	48	311	83.3	13.0	2.6	1.2
BROWARD	13,576	10,198	1,434	377	204	1,363	83.5	11.7	3.1	1.7
CALHOUN	140	94	21	1	3	21	79.0	17.6	0.8	2.5
CHARLOTTE	973	656	195	43	35	44	70.6	21.0	4.6	3.8
CITRUS	945	700	149	15	10	71	80.1	17.0	1.7	1.1
CLAY	1,897	1,458	255	41	14	129	82.5	14.4	2.3	0.8
COLLIER	3,514	2,300	776	203	24	211	69.6	23.5	6.1	0.7
COLUMBIA	672	486	103	20	32	31	75.8	16.1	3.1	5.0
MIAMI-DADE	23,334	18,412	1,948	284	251	2,439	88.1	9.3	1.4	1.2
DESOTO	450	266	131	34	6	13	60.9	30.0	7.8	1.4
DIXIE	164	116	33	4	1	10	75.3	21.4	2.6	0.6
DUVAL	7,597	5,507	989	172	90	839	81.5	14.6	2.5	1.3
ESCAMBIA	2,745	2,096	387	92	80	90	78.9	14.6	3.5	3.0
FLAGLER	587	384	74	9	6	114	81.2	15.6	1.9	1.3
FRANKLIN	108	66	14	6	1	21	75.9	16.1	6.9	1.1
GADSDEN	278	192	20	3	3	60	88.1	9.2	1.4	1.4
GILCHRIST	178	146	22	5	0	5	84.4	12.7	2.9	0.0
GLADES	58	36	13	3	0	6	69.2	25.0	5.8	0.0
GULF	110	75	11	7	0	17	80.6	11.8	7.5	0.0
HAMILTON	123	71	25	3	4	20	68.9	24.3	2.9	3.9
HARDEE	425	260	113	29	8	15	63.4	27.6	7.1	2.0
HENDRY	643	364	172	50	9	48	61.2	28.9	8.4	1.5
HERNANDO	1,313	1,058	175	42	6	32	82.6	13.7	3.3	0.5
HIGHLANDS	754	502	162	28	7	55	71.8	23.2	4.0	1.0
HILLSBOROUGH	12,602	9,714	1,123	217	151	1,397	86.7	10.0	1.9	1.3
HOLMES	233	123	24	17	1	68	74.5	14.5	10.3	0.6
INDIAN RIVER	1,138	876	193	36	8	25	78.7	17.3	3.2	0.7
JACKSON	389	210	34	10	1	134	82.4	13.3	3.9	0.4
JEFFERSON	96	75	2	0	2	17	94.9	2.5	0.0	2.5
LAFAYETTE	100	79	14	3	0	4	82.3	14.6	3.1	0.0
LAKE	2,679	2,001	393	70	17	198	80.7	15.8	2.8	0.7
LEE	5,685	4,145	988	234	53	265	76.5	18.2	4.3	1.0
LEON	1,676	1,384	74	13	7	198	93.6	5.0	0.9	0.5
LEVY	403	301	63	9	3	27	80.1	16.8	2.4	0.8
LIBERTY	95	69	6	0	1	19	90.8	7.9	0.0	1.3
MADISON	130	85	8	0	2	35	89.5	8.4	0.0	2.1
MANATEE	3,098	2,060	732	184	45	77	68.2	24.2	6.1	1.5
MARION	2,651	1,743	639	114	33	122	68.9	25.3	4.5	1.3
MARTIN	1,010	617	236	67	29	61	65.0	24.9	7.1	3.1
MONROE	663	460	67	11	14	111	83.3	12.1	2.0	2.5
NASSAU	751	571	69	9	2	100	87.7	10.6	1.4	0.3
OKALOOSA	2,182	1,549	376	116	26	115	74.9	18.2	5.6	1.3
OKEECHOBEE	535	355	126	18	7	29	70.2	24.9	3.6	1.4
ORANGE	11,175	8,835	961	167	124	1,088	87.6	9.5	1.7	1.2
OSCEOLA	3,068	1,640	268	36	44	1,080	82.5	13.5	1.8	2.2
PALM BEACH	10,562	5,921	1,641	550	146	2,304	71.7	19.9	6.7	1.8
PASCO	4,341	3,232	619	83	49	358	81.1	15.5	2.1	1.2
PINELLAS	6,999	5,278	851	161	72	637	83.0	13.4	2.5	1.1
POLK	6,088	3,721	1,598	341	133	295	64.2	27.6	5.9	2.3
PUTNAM	766	496	136	22	7	105	75.0	20.6	3.3	1.1
SAINT JOHNS	1,547	1,153	141	12	10	231	87.6	10.7	0.9	0.8
SAINT LUCIE	2,132	1,499	420	63	52	98	73.7	20.6	3.1	2.6
SANTA ROSA	1,594	1,242	213	39	37	63	81.1	13.9	2.5	2.4
SARASOTA	2,632	2,145	334	62	25	66	83.6	13.0	2.4	1.0
SEMINOLE	3,787	2,950	375	84	34	344	85.7	10.9	2.4	1.0
SUMTER	398	290	34	8	0	66	87.3	10.2	2.4	0.0
SUWANNEE	387	264	80	18	7	18	71.5	21.7	4.9	1.9
TAYLOR	183	128	16	1	3	35	86.5	10.8	0.7	2.0
UNION	141	110	21	3	1	6	81.5	15.6	2.2	0.7
VOLUSIA	4,228	3,055	660	130	49	334	78.5	16.9	3.3	1.3
WAKULLA	256	195	22	2	0	37	89.0	10.0	0.9	0.0
WALTON	545	373	93	29	13	37	73.4	18.3	5.7	2.6
WASHINGTON	208	104	25	13	0	66	73.2	17.6	9.2	0.0

1. Starting in 2004, "trimester prenatal care began" is calculated as the time elapsed from the date of the last menstrual period to the date of the first prenatal care visit. Prior to 2004, these data were obtained by direct question that noted the trimester the mother began prenatal care. Consequently, these data are not comparable to data from prior years.

2. Births with unknown information as to when prenatal care began are excluded from the denominator.

TABLE B-7 (Cont.): RESIDENT LIVE BIRTHS TO BLACK MOTHERS BY TRIMESTER  
 PRENATAL CARE BEGAN, BY COUNTY, FLORIDA, 2005

	TRIMESTER PRENATAL CARE BEGAN <sup>1</sup>						% CARE BEGAN BY TRIMESTER <sup>2</sup>			
	TOTAL	1ST	2ND	3RD	NONE	UNK	1ST	2ND	3RD	NONE
FLORIDA	47,957	29,507	8,935	1,985	1,276	6,254	70.8	21.4	4.8	3.1
ALACHUA	814	535	155	35	10	79	72.8	21.1	4.8	1.4
BAKER	48	35	8	2	1	2	76.1	17.4	4.3	2.2
BAY	334	183	70	26	8	47	63.8	24.4	9.1	2.8
BRADFORD	50	34	11	0	2	3	72.3	23.4	0.0	4.3
BREVARD	727	442	155	41	18	71	67.4	23.6	6.3	2.7
BROWARD	7,868	4,844	1,321	387	228	1,088	71.4	19.5	5.7	3.4
CALHOUN	16	10	2	0	0	4	83.3	16.7	0.0	0.0
CHARLOTTE	66	39	19	1	4	3	61.9	30.2	1.6	6.3
CITRUS	32	21	5	2	0	4	75.0	17.9	7.1	0.0
CLAY	213	135	38	6	6	28	73.0	20.5	3.2	3.2
COLLIER	458	233	153	32	1	39	55.6	36.5	7.6	0.2
COLUMBIA	158	110	31	9	4	4	71.4	20.1	5.8	2.6
MIAMI-DADE	8,107	5,189	1,230	218	282	1,188	75.0	17.8	3.2	4.1
DESOTO	50	30	10	4	3	3	63.8	21.3	8.5	6.4
DIXIE	5	3	1	0	1	0	60.0	20.0	0.0	20.0
DUVAL	4,449	2,592	843	163	112	739	69.9	22.7	4.4	3.0
ESCAMBIA	1,241	756	282	66	88	49	63.4	23.7	5.5	7.4
FLAGLER	79	45	15	3	0	16	71.4	23.8	4.8	0.0
FRANKLIN	5	3	1	0	0	1	75.0	25.0	0.0	0.0
GADSDEN	450	309	55	13	4	69	81.1	14.4	3.4	1.0
GILCHRIST	13	9	3	0	0	1	75.0	25.0	0.0	0.0
GLADES	12	7	3	0	0	2	70.0	30.0	0.0	0.0
GULF	20	10	3	1	0	6	71.4	21.4	7.1	0.0
HAMILTON	64	43	15	1	0	5	72.9	25.4	1.7	0.0
HARDEE	25	13	9	1	1	1	54.2	37.5	4.2	4.2
HENDRY	95	48	17	9	4	17	61.5	21.8	11.5	5.1
HERNANDO	116	82	20	8	2	4	73.2	17.9	7.1	1.8
HIGHLANDS	145	83	38	6	0	18	65.4	29.9	4.7	0.0
HILLSBOROUGH	3,132	2,203	393	49	71	416	81.1	14.5	1.8	2.6
HOLMES	9	4	3	1	0	1	50.0	37.5	12.5	0.0
INDIAN RIVER	191	111	56	13	5	6	60.0	30.3	7.0	2.7
JACKSON	161	100	28	5	1	27	74.6	20.9	3.7	0.7
JEFFERSON	70	44	11	2	0	13	77.2	19.3	3.5	0.0
LAFAYETTE	14	10	3	0	0	1	76.9	23.1	0.0	0.0
LAKE	396	252	77	16	9	42	71.2	21.8	4.5	2.5
LEE	844	500	215	49	14	66	64.3	27.6	6.3	1.8
LEON	1,222	847	144	32	14	185	81.7	13.9	3.1	1.4
LEVY	50	39	8	2	0	1	79.6	16.3	4.1	0.0
LIBERTY	11	10	1	0	0	0	90.9	9.1	0.0	0.0
MADISON	123	90	16	1	0	16	84.1	15.0	0.9	0.0
MANATEE	470	259	144	41	8	18	57.3	31.9	9.1	1.8
MARION	616	359	180	47	15	15	59.7	30.0	7.8	2.5
MARTIN	111	46	34	10	7	14	47.4	35.1	10.3	7.2
MONROE	70	28	14	2	7	19	54.9	27.5	3.9	13.7
NASSAU	47	29	8	0	1	9	76.3	21.1	0.0	2.6
OKALOOSA	300	197	61	20	3	19	70.1	21.7	7.1	1.1
OKEECHOBEE	36	22	11	0	0	3	66.7	33.3	0.0	0.0
ORANGE	4,162	3,049	652	102	96	263	78.2	16.7	2.6	2.5
OSCEOLA	353	171	26	9	11	136	78.8	12.0	4.1	5.1
PALM BEACH	3,788	1,592	973	292	77	854	54.3	33.2	10.0	2.6
PASCO	189	137	24	5	3	20	81.1	14.2	3.0	1.8
PINELLAS	1,402	812	250	43	35	262	71.2	21.9	3.8	3.1
POLK	1,406	689	480	105	47	85	52.2	36.3	7.9	3.6
PUTNAM	252	136	50	7	8	51	67.7	24.9	3.5	4.0
SAINT JOHNS	130	79	18	4	1	28	77.5	17.6	3.9	1.0
SAINT LUCIE	741	481	178	27	23	32	67.8	25.1	3.8	3.2
SANTA ROSA	64	47	13	1	2	1	74.6	20.6	1.6	3.2
SARASOTA	236	169	43	9	3	12	75.4	19.2	4.0	1.3
SEMINOLE	659	433	124	21	16	65	72.9	20.9	3.5	2.7
SUMTER	89	72	7	3	1	6	86.7	8.4	3.6	1.2
SUWANNEE	73	44	19	4	1	5	64.7	27.9	5.9	1.5
TAYLOR	56	39	5	1	0	11	86.7	11.1	2.2	0.0
UNION	24	15	6	2	1	0	62.5	25.0	8.3	4.2
VOLUSIA	699	486	130	24	13	46	74.4	19.9	3.7	2.0
WAKULLA	27	23	1	0	0	3	95.8	4.2	0.0	0.0
WALTON	36	19	11	0	4	2	55.9	32.4	0.0	11.8
WASHINGTON	35	21	5	2	0	7	75.0	17.9	7.1	0.0

1. Starting in 2004, "trimester prenatal care began" is calculated as the time elapsed from the date of the last menstrual period to the date of the first prenatal care visit. Prior to 2004, these data were obtained by direct question that noted the trimester the mother began prenatal care. Consequently, these data are not comparable to data from prior years.

2. Births with unknown information as to when prenatal care began are excluded from the denominator.

TABLE B-7 (Cont.): RESIDENT LIVE BIRTHS TO OTHER MOTHERS BY TRIMESTER  
 PRENATAL CARE BEGAN, BY COUNTY, FLORIDA, 2005

	TRIMESTER PRENATAL CARE BEGAN <sup>1</sup>						% CARE BEGAN BY TRIMESTER <sup>2</sup>			
	TOTAL	1ST	2ND	3RD	NONE	UNK	1ST	2ND	3RD	NONE
FLORIDA	11,651	8,020	1,683	401	174	1,373	78.0	16.4	3.9	1.7
ALACHUA	230	187	25	10	1	7	83.9	11.2	4.5	0.4
BAKER	6	3	2	0	0	1	60.0	40.0	0.0	0.0
BAY	189	104	35	15	0	35	67.5	22.7	9.7	0.0
BRADFORD	5	3	2	0	0	0	60.0	40.0	0.0	0.0
BREVARD	291	204	49	11	0	27	77.3	18.6	4.2	0.0
BROWARD	1,599	1,096	237	53	28	185	77.5	16.8	3.7	2.0
CALHOUN	2	1	0	0	0	1	100.0	0.0	0.0	0.0
CHARLOTTE	44	33	7	1	1	2	78.6	16.7	2.4	2.4
CITRUS	44	31	6	3	0	4	77.5	15.0	7.5	0.0
CLAY	126	93	25	3	0	5	76.9	20.7	2.5	0.0
COLLIER	95	62	16	7	2	8	71.3	18.4	8.0	2.3
COLUMBIA	20	13	3	1	1	2	72.2	16.7	5.6	5.6
MIAMI-DADE	758	596	61	14	5	82	88.2	9.0	2.1	0.7
DESOTO	4	0	4	0	0	0	0.0	100.0	0.0	0.0
DIXIE	1	1	0	0	0	0	100.0	0.0	0.0	0.0
DUVAL	919	654	137	19	12	97	79.6	16.7	2.3	1.5
ESCAMBIA	249	174	42	8	15	10	72.8	17.6	3.3	6.3
FLAGLER	23	15	4	0	0	4	78.9	21.1	0.0	0.0
FRANKLIN	5	4	1	0	0	0	80.0	20.0	0.0	0.0
GADSDEN	12	7	0	1	0	4	87.5	0.0	12.5	0.0
GILCHRIST	3	1	2	0	0	0	33.3	66.7	0.0	0.0
GLADES	7	5	0	1	0	1	83.3	0.0	16.7	0.0
GULF	0	0	0	0	0	0	0.0	0.0	0.0	0.0
HAMILTON	4	2	2	0	0	0	50.0	50.0	0.0	0.0
HARDEE	6	4	1	1	0	0	66.7	16.7	16.7	0.0
HENDRY	19	11	3	0	4	1	61.1	16.7	0.0	22.2
HERNANDO	65	49	13	1	0	2	77.8	20.6	1.6	0.0
HIGHLANDS	39	23	8	2	1	5	67.6	23.5	5.9	2.9
HILLSBOROUGH	1,002	744	71	8	11	168	89.2	8.5	1.0	1.3
HOLMES	5	4	1	0	0	0	80.0	20.0	0.0	0.0
INDIAN RIVER	31	21	9	1	0	0	67.7	29.0	3.2	0.0
JACKSON	15	12	3	0	0	0	80.0	20.0	0.0	0.0
JEFFERSON	1	1	0	0	0	0	100.0	0.0	0.0	0.0
LAFAYETTE	0	0	0	0	0	0	0.0	0.0	0.0	0.0
LAKE	145	107	21	8	0	9	78.7	15.4	5.9	0.0
LEE	173	111	44	10	1	7	66.9	26.5	6.0	0.6
LEON	204	163	16	1	0	24	90.6	8.9	0.6	0.0
LEVY	9	7	2	0	0	0	77.8	22.2	0.0	0.0
LIBERTY	2	0	0	0	1	1	0.0	0.0	0.0	100.0
MADISON	0	0	0	0	0	0	0.0	0.0	0.0	0.0
MANATEE	240	156	59	20	1	4	66.1	25.0	8.5	0.4
MARION	182	117	46	6	2	11	68.4	26.9	3.5	1.2
MARTIN	218	42	104	46	16	10	20.2	50.0	22.1	7.7
MONROE	33	14	6	3	0	10	60.9	26.1	13.0	0.0
NASSAU	13	6	2	3	0	2	54.5	18.2	27.3	0.0
OKALOOSA	253	185	32	13	4	19	79.1	13.7	5.6	1.7
OKEECHOBEE	16	10	5	0	0	1	66.7	33.3	0.0	0.0
ORANGE	1,209	920	107	18	17	147	86.6	10.1	1.7	1.6
OSCEOLA	169	89	11	4	4	61	82.4	10.2	3.7	3.7
PALM BEACH	795	458	89	30	12	206	77.8	15.1	5.1	2.0
PASCO	220	153	35	3	5	24	78.1	17.9	1.5	2.6
PINELLAS	658	436	100	25	11	86	76.2	17.5	4.4	1.9
POLK	287	174	79	17	6	11	63.0	28.6	6.2	2.2
PUTNAM	16	13	1	1	1	0	81.3	6.3	6.3	6.3
SAINT JOHNS	84	58	9	1	1	15	84.1	13.0	1.4	1.4
SAINT LUCIE	128	84	31	5	5	3	67.2	24.8	4.0	4.0
SANTA ROSA	87	68	11	4	0	4	81.9	13.3	4.8	0.0
SARASOTA	129	97	21	6	0	5	78.2	16.9	4.8	0.0
SEMINOLE	336	235	42	9	4	46	81.0	14.5	3.1	1.4
SUMTER	14	10	2	0	0	2	83.3	16.7	0.0	0.0
SUWANNEE	9	3	4	0	0	2	42.9	57.1	0.0	0.0
TAYLOR	4	3	0	0	0	1	100.0	0.0	0.0	0.0
UNION	1	0	0	1	0	0	0.0	0.0	100.0	0.0
VOLUSIA	162	117	32	4	0	9	76.5	20.9	2.6	0.0
WAKULLA	5	5	0	0	0	0	100.0	0.0	0.0	0.0
WALTON	23	17	2	3	1	0	73.9	8.7	13.0	4.3
WASHINGTON	6	3	1	0	1	1	60.0	20.0	0.0	20.0

1. Starting in 2004, "trimester prenatal care began" is calculated as the time elapsed from the date of the last menstrual period to the date of the first prenatal care visit. Prior to 2004, these data were obtained by direct question that noted the trimester the mother began prenatal care. Consequently, these data are not comparable to data from prior years.

2. Births with unknown information as to when prenatal care began are excluded from the denominator.

TABLE B-8: RESIDENT LIVE BIRTHS TO UNWED MOTHERS, BY AGE OF MOTHER, BY COUNTY, FLORIDA, 2005

	TOTAL	<13	13	14	15	16	17	18	19	20-24	25-29	30-34	35-44	45+	UNK
FLORIDA	96,895	15	58	335	995	2,278	3,680	5,874	7,924	37,042	21,255	10,808	6,549	75	7
ALACHUA	1,085	0	0	3	8	23	42	61	77	482	240	100	48	1	0
BAKER	151	0	0	0	1	4	7	18	13	70	24	11	3	0	0
BAY	1,004	0	0	7	14	22	46	63	103	411	194	92	49	3	0
BRADFORD	154	0	0	0	0	5	9	13	18	68	23	12	6	0	0
BREVARD	2,195	0	2	6	22	46	81	150	191	904	468	212	111	2	0
BROWARD	8,986	3	6	17	77	155	297	436	607	3,136	2,158	1,208	877	7	2
CALHOUN	70	0	0	0	0	4	7	9	7	27	13	3	0	0	0
CHARLOTTE	458	0	0	1	6	7	19	29	45	199	99	28	25	0	0
CITRUS	481	0	0	0	1	7	17	42	57	207	79	40	31	0	0
CLAY	689	0	0	1	12	14	36	50	78	287	114	60	37	0	0
COLLIER	1,776	0	3	6	11	49	72	106	122	624	429	226	127	1	0
COLUMBIA	380	0	0	1	4	10	11	32	41	162	75	28	16	0	0
MIAMI-DADE	14,691	2	10	43	142	317	441	737	965	4,957	3,413	2,198	1,448	17	1
DESOTO	269	0	0	3	7	8	11	17	26	108	44	31	14	0	0
DIXIE	74	0	0	1	1	1	3	7	7	37	8	6	3	0	0
DUVAL	5,746	1	3	19	65	129	229	315	532	2,430	1,190	512	316	4	1
ESCAMBIA	1,979	0	4	6	29	67	78	145	198	810	403	154	85	0	0
FLAGLER	245	0	0	2	2	6	8	14	12	115	44	25	16	1	0
FRANKLIN	58	0	0	0	0	2	1	6	8	22	12	5	2	0	0
GADSDEN	480	0	1	5	9	13	15	30	39	228	101	28	11	0	0
GILCHRIST	85	0	0	1	1	3	3	8	17	32	13	5	2	0	0
GLADES	41	0	0	0	0	4	3	3	3	20	3	3	2	0	0
GULF	52	0	0	0	0	2	2	1	5	24	15	2	1	0	0
HAMILTON	96	0	1	0	1	9	4	10	9	37	15	6	4	0	0
HARDEE	230	0	1	0	2	7	18	9	25	84	56	22	6	0	0
HENDRY	440	0	0	3	4	17	18	22	35	181	98	44	16	2	0
HERNANDO	626	0	0	2	3	13	25	35	73	257	127	51	39	1	0
HIGHLANDS	480	0	0	4	8	8	19	38	52	182	100	33	35	1	0
HILLSBOROUGH	7,276	2	5	26	70	176	303	471	613	2,790	1,607	788	420	5	0
HOLMES	98	0	0	0	0	2	8	9	18	34	13	11	3	0	0
INDIAN RIVER	561	0	0	8	5	14	20	38	44	241	114	40	36	1	0
JACKSON	276	0	0	0	3	5	11	24	23	124	57	22	7	0	0
JEFFERSON	80	0	1	0	0	3	3	6	7	31	16	9	4	0	0
LAFAYETTE	49	0	0	0	1	0	4	3	5	23	6	5	2	0	0
LAKE	1,314	0	0	2	23	36	55	95	136	488	296	115	67	1	0
LEE	3,067	1	1	12	43	82	116	200	253	1,150	709	321	178	1	0
LEON	1,301	0	0	3	14	30	37	69	107	552	334	102	53	0	0
LEVY	205	0	0	1	1	4	13	16	23	80	36	22	9	0	0
LIBERTY	54	0	0	0	0	0	6	5	5	23	9	3	3	0	0
MADISON	149	1	0	3	2	6	10	11	10	64	31	7	4	0	0
MANATEE	1,856	1	0	7	24	51	88	127	132	749	386	197	91	3	0
MARION	1,762	0	1	9	22	53	80	142	169	716	340	160	69	0	1
MARTIN	554	0	0	1	10	6	33	33	47	216	110	55	43	0	0
MONROE	279	0	0	1	1	5	8	15	17	96	65	40	30	1	0
NASSAU	292	0	0	0	6	8	18	26	39	129	40	13	13	0	0
OKALOOSA	925	0	1	3	7	20	36	62	75	370	194	95	62	0	0
OKEECHOBEE	301	0	2	3	4	8	19	35	24	118	56	25	7	0	0
ORANGE	7,113	0	6	31	93	158	254	390	560	2,665	1,691	848	409	7	1
OSCEOLA	1,587	0	0	3	14	37	60	117	129	609	341	165	111	1	0
PALM BEACH	6,154	0	2	26	60	152	212	332	444	2,229	1,393	790	511	2	1
PASCO	1,737	0	0	4	15	44	74	120	160	670	356	181	112	1	0
PINELLAS	4,005	0	4	10	38	104	146	237	340	1,580	847	429	267	3	0
POLK	3,792	2	2	18	39	117	158	273	356	1,525	815	323	164	0	0
PUTNAM	596	0	1	6	8	18	26	41	62	246	109	49	29	1	0
SAINT JOHNS	459	0	0	2	8	13	24	28	40	167	101	43	31	2	0
SAINT LUCIE	1,341	0	1	9	7	46	47	100	136	498	288	126	82	1	0
SANTA ROSA	496	0	0	1	4	12	27	42	44	207	87	43	28	1	0
SARASOTA	1,153	1	0	4	8	22	42	71	102	429	225	166	81	2	0
SEMINOLE	1,630	1	0	1	9	24	68	99	130	662	354	176	105	1	0
SUMTER	244	0	0	1	1	6	12	19	18	121	37	16	13	0	0
SUWANNEE	229	0	0	1	1	8	13	15	23	104	43	10	11	0	0
TAYLOR	136	0	0	1	3	5	5	9	15	54	31	10	3	0	0
UNION	69	0	0	0	0	2	4	3	5	32	13	8	2	0	0
VOLUSIA	2,268	0	0	5	18	37	96	158	198	945	459	216	135	1	0
WAKULLA	121	0	0	1	0	1	4	10	18	53	21	8	5	0	0
WALTON	228	0	0	0	1	8	13	12	19	98	46	19	12	0	0
WASHINGTON	102	0	0	1	2	1	4	5	13	49	16	5	6	0	0

TABLE B-8 (Cont.): RESIDENT LIVE BIRTHS TO UNWED WHITE MOTHERS, BY AGE OF MOTHER, BY COUNTY, FLORIDA, 2005

	TOTAL	<13	13	14	15	16	17	18	19	20-24	25-29	30-34	35-44	45+	UNK
FLORIDA	60,665	7	25	155	529	1,326	2,231	3,640	4,884	22,919	13,378	7,094	4,417	56	4
ALACHUA	408	0	0	0	1	1	18	22	27	197	79	41	22	0	0
BAKER	107	0	0	0	1	3	6	14	6	51	17	7	2	0	0
BAY	687	0	0	3	11	13	36	38	67	298	119	65	34	3	0
BRADFORD	114	0	0	0	0	3	6	10	14	52	17	8	4	0	0
BREVARD	1,558	0	1	1	15	29	59	107	137	648	324	148	87	2	0
BROWARD	3,766	1	3	3	16	48	96	160	215	1,277	956	560	425	5	1
CALHOUN	58	0	0	0	0	3	6	7	6	21	12	3	0	0	0
CHARLOTTE	399	0	0	1	4	7	17	27	43	174	80	24	22	0	0
CITRUS	440	0	0	0	1	6	14	39	53	195	69	36	27	0	0
CLAY	553	0	0	1	9	14	27	35	70	221	92	56	28	0	0
COLLIER	1,507	0	3	4	9	46	61	90	103	544	374	181	92	0	0
COLUMBIA	250	0	0	1	3	6	9	16	26	109	46	23	11	0	0
MIAMI-DADE	8,781	1	2	22	73	161	235	392	520	2,770	2,085	1,489	1,019	11	1
DESOTO	227	0	0	2	5	8	9	16	20	97	32	28	10	0	0
DIXIE	70	0	0	1	1	1	3	7	5	37	8	5	2	0	0
DUVAL	2,375	1	0	5	21	40	74	116	218	1,016	500	228	152	4	0
ESCAMBIA	938	0	2	1	12	31	39	68	88	356	200	86	55	0	0
FLAGLER	184	0	0	1	0	2	5	9	9	88	33	22	14	1	0
FRANKLIN	48	0	0	0	0	2	1	5	8	16	10	4	2	0	0
GADSDEN	104	0	0	3	2	5	6	4	4	47	22	8	3	0	0
GILCHRIST	77	0	0	1	1	3	3	8	14	28	13	4	2	0	0
GLADES	26	0	0	0	0	3	2	3	3	10	2	1	2	0	0
GULF	36	0	0	0	0	1	2	0	3	18	10	2	0	0	0
HAMILTON	41	0	0	0	1	5	2	3	4	14	7	3	2	0	0
HARDEE	208	0	1	0	2	6	17	8	21	78	51	19	5	0	0
HENDRY	353	0	0	3	4	16	15	18	27	136	82	38	12	2	0
HERNANDO	529	0	0	2	3	13	21	33	64	214	103	40	35	1	0
HIGHLANDS	347	0	0	4	6	6	12	25	38	131	67	29	29	0	0
HILLSBOROUGH	4,806	0	1	9	43	113	205	332	401	1,807	1,062	536	294	3	0
HOLMES	90	0	0	0	0	2	8	7	16	32	12	10	3	0	0
INDIAN RIVER	406	0	0	3	3	10	12	28	35	177	85	25	28	0	0
JACKSON	145	0	0	0	2	0	7	16	14	71	24	10	1	0	0
JEFFERSON	21	0	0	0	0	0	2	4	2	6	5	1	1	0	0
LAFAYETTE	40	0	0	0	0	0	4	3	4	18	4	5	2	0	0
LAKE	987	0	0	2	11	29	43	72	106	380	201	88	54	1	0
LEE	2,419	1	1	11	32	56	84	154	204	911	577	257	130	1	0
LEON	370	0	0	0	2	8	11	14	43	149	92	31	20	0	0
LEVY	161	0	0	1	1	3	8	15	19	62	28	18	6	0	0
LIBERTY	42	0	0	0	0	0	5	4	4	18	5	3	3	0	0
MADISON	48	0	0	1	0	3	2	6	3	20	9	3	1	0	0
MANATEE	1,385	1	0	4	18	40	69	96	90	553	293	152	66	3	0
MARION	1,215	0	1	7	15	38	48	95	112	488	246	122	43	0	0
MARTIN	355	0	0	0	4	3	19	16	31	137	66	44	35	0	0
MONROE	225	0	0	1	1	5	7	13	14	78	53	30	22	1	0
NASSAU	252	0	0	0	6	8	14	21	33	111	35	13	11	0	0
OKALOOSA	670	0	1	2	5	14	23	42	51	269	136	79	48	0	0
OKEECHOBEE	267	0	2	3	4	6	17	31	22	101	51	23	7	0	0
ORANGE	4,124	0	2	6	41	79	149	222	323	1,547	978	510	260	6	1
OSCEOLA	1,338	0	0	2	11	33	53	97	109	522	295	133	82	1	0
PALM BEACH	3,608	0	0	9	31	74	117	185	241	1,270	861	479	339	1	1
PASCO	1,584	0	0	4	14	41	67	110	144	616	318	164	106	0	0
PINELLAS	2,658	0	2	4	13	57	78	146	208	1,051	598	292	206	3	0
POLK	2,640	1	1	10	27	81	117	191	244	1,041	576	228	123	0	0
PUTNAM	383	0	1	4	6	13	16	28	38	159	63	34	20	1	0
SAINT JOHNS	349	0	0	1	5	11	16	21	31	123	79	32	28	2	0
SAINT LUCIE	838	0	1	6	3	26	25	60	81	304	195	87	50	0	0
SANTA ROSA	445	0	0	1	4	11	24	37	41	188	75	36	27	1	0
SARASOTA	928	1	0	1	6	11	27	58	74	347	185	146	70	2	0
SEMINOLE	1,130	0	0	1	3	19	44	61	89	454	266	119	73	1	0
SUMTER	167	0	0	0	0	5	8	15	13	78	25	12	11	0	0
SUWANNEE	169	0	0	0	1	3	10	11	20	77	30	8	9	0	0
TAYLOR	82	0	0	0	1	3	2	7	9	38	14	6	2	0	0
UNION	51	0	0	0	0	1	0	2	2	30	9	6	1	0	0
VOLUSIA	1,705	0	0	2	12	30	72	118	161	679	346	167	118	0	0
WAKULLA	97	0	0	1	0	1	2	8	13	46	18	4	4	0	0
WALTON	190	0	0	0	1	7	13	11	17	77	37	16	11	0	0
WASHINGTON	73	0	0	0	2	0	1	3	9	39	11	5	3	0	0



TABLE B-8 (Cont.): RESIDENT LIVE BIRTHS TO UNWED BLACK MOTHERS, BY AGE OF MOTHER, BY COUNTY, FLORIDA, 2005

	TOTAL	<13	13	14	15	16	17	18	19	20-24	25-29	30-34	35-44	45+	UNK
FLORIDA	32,972	8	33	169	426	881	1,331	2,051	2,809	12,983	7,126	3,280	1,857	17	1
ALACHUA	640	0	0	3	6	21	24	37	50	270	152	52	24	1	0
BAKER	40	0	0	0	0	1	0	4	6	17	7	4	1	0	0
BAY	234	0	0	3	3	8	6	19	25	83	57	21	9	0	0
BRADFORD	39	0	0	0	0	2	3	3	4	15	6	4	2	0	0
BREVARD	540	0	1	5	6	15	17	36	41	222	125	53	19	0	0
BROWARD	4,790	2	3	14	59	104	186	262	371	1,721	1,079	584	402	2	1
CALHOUN	12	0	0	0	0	1	1	2	1	6	1	0	0	0	0
CHARLOTTE	42	0	0	0	1	0	2	2	1	17	15	1	3	0	0
CITRUS	25	0	0	0	0	1	2	1	3	7	7	2	2	0	0
CLAY	107	0	0	0	2	0	8	11	4	57	16	3	6	0	0
COLLIER	237	0	0	1	2	2	11	14	15	74	47	38	32	1	0
COLUMBIA	121	0	0	0	1	2	2	14	14	51	27	5	5	0	0
MIAMI-DADE	5,706	1	8	21	67	155	205	334	439	2,133	1,273	668	396	6	0
DESOTO	41	0	0	0	2	0	2	1	6	11	12	3	4	0	0
DIXIE	4	0	0	0	0	0	0	0	2	0	0	1	1	0	0
DUVAL	3,145	0	3	14	40	83	140	185	296	1,332	644	255	153	0	0
ESCAMBIA	961	0	2	5	16	31	38	71	102	419	190	58	29	0	0
FLAGLER	53	0	0	1	2	3	2	5	2	25	8	3	2	0	0
FRANKLIN	5	0	0	0	0	0	0	0	0	2	2	1	0	0	0
GADSDEN	371	0	1	2	7	7	9	25	35	180	78	19	8	0	0
GILCHRIST	5	0	0	0	0	0	0	0	1	4	0	0	0	0	0
GLADES	10	0	0	0	0	1	1	0	0	6	0	2	0	0	0
GULF	16	0	0	0	0	1	0	1	2	6	5	0	1	0	0
HAMILTON	54	0	1	0	0	4	2	7	5	23	7	3	2	0	0
HARDEE	20	0	0	0	0	0	1	1	3	6	5	3	1	0	0
HENDRY	76	0	0	0	0	0	3	4	8	41	13	3	4	0	0
HERNANDO	82	0	0	0	0	0	4	2	7	33	23	9	4	0	0
HIGHLANDS	115	0	0	0	2	2	6	8	9	47	32	3	5	1	0
HILLSBOROUGH	2,259	2	4	16	24	57	90	131	204	887	510	223	110	1	0
HOLMES	7	0	0	0	0	0	0	2	2	2	1	0	0	0	0
INDIAN RIVER	146	0	0	5	1	4	7	8	8	62	28	14	8	1	0
JACKSON	128	0	0	0	1	5	4	8	8	52	33	11	6	0	0
JEFFERSON	59	0	1	0	0	3	1	2	5	25	11	8	3	0	0
LAFAYETTE	9	0	0	0	1	0	0	0	1	5	2	0	0	0	0
LAKE	286	0	0	0	9	6	10	22	28	101	79	21	10	0	0
LEE	592	0	0	1	10	21	32	42	47	227	123	54	35	0	0
LEON	898	0	0	3	12	22	25	53	60	387	236	69	31	0	0
LEVY	41	0	0	0	0	1	4	1	4	17	8	3	3	0	0
LIBERTY	10	0	0	0	0	0	1	1	1	3	4	0	0	0	0
MADISON	101	1	0	2	2	3	8	5	7	44	22	4	3	0	0
MANATEE	362	0	0	2	6	10	14	25	35	156	66	30	18	0	0
MARION	474	0	0	2	5	11	29	40	51	206	82	31	17	0	0
MARTIN	82	0	0	1	2	2	5	6	8	36	11	7	4	0	0
MONROE	42	0	0	0	0	0	1	1	2	14	11	7	6	0	0
NASSAU	34	0	0	0	0	0	4	5	4	15	4	0	2	0	0
OKALOOSA	177	0	0	1	1	4	7	15	19	68	48	7	7	0	0
OKEECHOBEE	28	0	0	0	0	2	2	4	1	14	4	1	0	0	0
ORANGE	2,683	0	4	23	47	72	94	160	220	1,018	622	294	128	1	0
OSCEOLA	209	0	0	1	2	4	5	19	16	74	38	24	26	0	0
PALM BEACH	2,361	0	2	15	28	74	89	134	187	904	484	282	161	1	0
PASCO	96	0	0	0	1	3	7	4	11	36	25	8	1	0	0
PINELLAS	1,127	0	2	5	25	42	60	86	118	444	201	105	39	0	0
POLK	1,056	1	1	8	12	32	39	74	106	444	220	86	33	0	0
PUTNAM	205	0	0	2	2	5	10	12	23	83	45	15	8	0	0
SAINT JOHNS	97	0	0	1	1	2	7	7	8	40	22	7	2	0	0
SAINT LUCIE	469	0	0	3	4	18	21	36	53	181	88	38	26	1	0
SANTA ROSA	31	0	0	0	0	1	2	4	1	12	6	5	0	0	0
SARASOTA	188	0	0	2	1	11	13	8	23	74	29	19	8	0	0
SEMINOLE	437	1	0	0	5	5	23	37	36	185	71	47	27	0	0
SUMTER	71	0	0	1	0	1	4	4	5	39	12	3	2	0	0
SUWANNEE	56	0	0	1	0	4	3	4	3	26	12	2	1	0	0
TAYLOR	53	0	0	1	2	2	3	2	6	15	17	4	1	0	0
UNION	17	0	0	0	0	1	4	1	3	1	4	2	1	0	0
VOLUSIA	512	0	0	3	6	7	23	34	32	249	101	44	12	1	0
WAKULLA	21	0	0	0	0	0	2	2	5	5	2	4	1	0	0
WALTON	28	0	0	0	0	0	0	1	2	14	8	3	0	0	0
WASHINGTON	27	0	0	1	0	1	3	2	4	9	5	0	2	0	0

TABLE B-8 (Cont.): RESIDENT LIVE BIRTHS TO UNWED OTHER MOTHERS, BY AGE OF MOTHER, BY COUNTY, FLORIDA, 2005

	TOTAL	<13	13	14	15	16	17	18	19	20-24	25-29	30-34	35-44	45+	UNK
FLORIDA	3,129	0	0	11	39	69	115	172	219	1,093	721	421	265	2	2
ALACHUA	37	0	0	0	1	1	0	2	0	15	9	7	2	0	0
BAKER	4	0	0	0	0	0	1	0	1	2	0	0	0	0	0
BAY	67	0	0	1	0	0	4	5	9	22	15	5	6	0	0
BRADFORD	1	0	0	0	0	0	0	0	0	1	0	0	0	0	0
BREVARD	91	0	0	0	1	2	5	7	11	32	19	9	5	0	0
BROWARD	409	0	0	0	2	3	13	13	18	133	116	62	49	0	0
CALHOUN	0	0	0	0	0	0	0	0	0	0	0	0	0	0	0
CHARLOTTE	17	0	0	0	1	0	0	0	1	8	4	3	0	0	0
CITRUS	16	0	0	0	0	0	1	2	1	5	3	2	2	0	0
CLAY	29	0	0	0	1	0	1	4	4	9	6	1	3	0	0
COLLIER	32	0	0	1	0	1	0	2	4	6	8	7	3	0	0
COLUMBIA	9	0	0	0	0	2	0	2	1	2	2	0	0	0	0
MIAMI-DADE	160	0	0	0	2	0	0	7	4	40	43	34	30	0	0
DESOTO	1	0	0	1	0	0	0	0	0	0	0	0	0	0	0
DIXIE	0	0	0	0	0	0	0	0	0	0	0	0	0	0	0
DUVAL	223	0	0	0	4	6	15	14	18	79	46	29	11	0	1
ESCAMBIA	80	0	0	0	1	5	1	6	8	35	13	10	1	0	0
FLAGLER	8	0	0	0	0	1	1	0	1	2	3	0	0	0	0
FRANKLIN	4	0	0	0	0	0	0	1	0	3	0	0	0	0	0
GADSDEN	5	0	0	0	0	1	0	1	0	1	1	1	0	0	0
GILCHRIST	3	0	0	0	0	0	0	0	2	0	0	1	0	0	0
GLADES	5	0	0	0	0	0	0	0	0	4	1	0	0	0	0
GULF	0	0	0	0	0	0	0	0	0	0	0	0	0	0	0
HAMILTON	1	0	0	0	0	0	0	0	0	0	1	0	0	0	0
HARDEE	2	0	0	0	0	1	0	0	1	0	0	0	0	0	0
HENDRY	11	0	0	0	0	1	0	0	0	4	3	3	0	0	0
HERNANDO	15	0	0	0	0	0	0	0	2	10	1	2	0	0	0
HIGHLANDS	17	0	0	0	0	0	1	5	5	4	1	1	0	0	0
HILLSBOROUGH	204	0	0	1	3	6	8	7	8	94	34	29	13	1	0
HOLMES	1	0	0	0	0	0	0	0	0	0	0	1	0	0	0
INDIAN RIVER	9	0	0	0	1	0	1	2	1	2	1	1	0	0	0
JACKSON	2	0	0	0	0	0	0	0	0	1	0	1	0	0	0
JEFFERSON	0	0	0	0	0	0	0	0	0	0	0	0	0	0	0
LAFAYETTE	0	0	0	0	0	0	0	0	0	0	0	0	0	0	0
LAKE	40	0	0	0	3	1	2	0	2	7	16	6	3	0	0
LEE	55	0	0	0	1	5	0	4	2	11	9	10	13	0	0
LEON	30	0	0	0	0	0	1	2	4	15	4	2	2	0	0
LEVY	3	0	0	0	0	0	1	0	0	1	0	1	0	0	0
LIBERTY	2	0	0	0	0	0	0	0	0	2	0	0	0	0	0
MADISON	0	0	0	0	0	0	0	0	0	0	0	0	0	0	0
MANATEE	108	0	0	1	0	1	5	6	7	39	27	15	7	0	0
MARION	73	0	0	0	2	4	3	7	6	22	12	7	9	0	1
MARTIN	117	0	0	0	4	1	9	11	8	43	33	4	4	0	0
MONROE	10	0	0	0	0	0	0	1	1	4	0	2	2	0	0
NASSAU	6	0	0	0	0	0	0	0	2	3	1	0	0	0	0
OKALOOSA	76	0	0	0	0	2	6	5	5	33	10	9	6	0	0
OKEECHOBEE	6	0	0	0	0	0	0	0	1	3	1	1	0	0	0
ORANGE	303	0	0	2	5	7	11	8	17	100	89	44	20	0	0
OSCEOLA	40	0	0	0	1	0	2	1	4	13	8	8	3	0	0
PALM BEACH	179	0	0	2	1	4	6	13	14	53	46	29	11	0	0
PASCO	55	0	0	0	0	0	0	5	5	17	13	9	5	1	0
PINELLAS	218	0	0	1	0	5	8	5	14	83	48	32	22	0	0
POLK	94	0	0	0	0	4	2	7	6	39	19	9	8	0	0
PUTNAM	8	0	0	0	0	0	0	1	1	4	1	0	1	0	0
SAINT JOHNS	13	0	0	0	2	0	1	0	1	4	0	4	1	0	0
SAINT LUCIE	33	0	0	0	0	2	1	4	2	12	5	1	6	0	0
SANTA ROSA	20	0	0	0	0	0	1	1	2	7	6	2	1	0	0
SARASOTA	37	0	0	1	1	0	2	5	5	8	11	1	3	0	0
SEMINOLE	62	0	0	0	1	0	1	1	5	22	17	10	5	0	0
SUMTER	6	0	0	0	1	0	0	0	0	4	0	1	0	0	0
SUWANNEE	4	0	0	0	0	1	0	0	0	1	1	0	1	0	0
TAYLOR	1	0	0	0	0	0	0	0	0	1	0	0	0	0	0
UNION	1	0	0	0	0	0	0	0	0	1	0	0	0	0	0
VOLUSIA	50	0	0	0	0	0	1	5	5	17	12	5	5	0	0
WAKULLA	3	0	0	0	0	0	0	0	0	2	1	0	0	0	0
WALTON	10	0	0	0	0	1	0	0	0	7	1	0	1	0	0
WASHINGTON	2	0	0	0	0	0	0	0	0	1	0	0	1	0	0

TABLE B-9: RESIDENT LIVE BIRTHS BY MONTH, BY COUNTY, FLORIDA, 2005

	TOTAL	JAN	FEB	MAR	APR	MAY	JUN	JUL	AUG	SEP	OCT	NOV	DEC
FLORIDA	226,219	18,466	16,982	18,515	17,267	17,930	18,414	18,962	20,378	20,647	19,352	19,594	19,712
ALACHUA	2,690	221	229	211	210	226	228	219	241	222	216	244	223
BAKER	369	39	28	33	22	35	27	32	26	32	28	31	36
BAY	2,391	227	173	190	189	212	212	188	205	211	173	197	214
BRADFORD	332	28	26	36	18	21	31	32	26	35	34	24	21
BREVARD	5,387	443	379	465	389	459	452	439	463	490	489	461	458
BROWARD	23,127	1,873	1,715	1,988	1,812	1,834	1,910	1,955	2,073	2,077	1,906	1,999	1,985
CALHOUN	158	12	13	12	11	9	12	18	13	23	7	12	16
CHARLOTTE	1,084	93	85	103	76	95	78	82	113	91	73	101	94
CITRUS	1,021	92	69	91	74	72	65	71	93	115	94	81	104
CLAY	2,238	190	157	187	162	169	178	187	191	224	211	200	182
COLLIER	4,069	319	296	349	305	353	314	334	384	381	334	365	335
COLUMBIA	851	64	56	72	78	74	64	62	84	74	77	67	79
MIAMI-DADE	32,365	2,601	2,481	2,634	2,444	2,512	2,542	2,726	2,965	2,975	2,777	2,867	2,841
DESOTO	505	41	38	52	37	37	51	32	42	35	45	41	54
DIXIE	170	14	20	14	8	11	17	16	12	16	8	8	26
DUVAL	12,974	1,064	1,007	1,094	961	975	1,053	1,028	1,157	1,202	1,158	1,139	1,136
ESCAMBIA	4,237	340	312	328	314	334	355	359	380	414	381	330	390
FLAGLER	689	59	47	55	52	55	59	65	69	59	48	61	60
FRANKLIN	119	9	11	10	8	4	5	16	12	13	10	12	9
GADSDEN	741	68	45	68	42	61	42	68	73	71	62	63	78
GILCHRIST	194	13	13	12	19	16	19	19	16	12	22	16	17
GLADES	77	5	4	6	5	10	6	3	8	12	4	7	7
GULF	130	11	14	14	11	13	5	5	13	18	6	11	9
HAMILTON	191	23	10	12	18	14	17	16	19	15	21	15	11
HARDEE	456	47	33	39	37	23	48	42	39	39	43	26	40
HENDRY	757	56	58	66	62	66	69	65	62	63	61	67	62
HERNANDO	1,496	124	116	123	105	105	147	111	150	116	136	125	138
HIGHLANDS	939	84	68	66	76	75	78	78	72	86	80	84	92
HILLSBOROUGH	16,753	1,393	1,251	1,326	1,308	1,368	1,416	1,347	1,476	1,528	1,381	1,464	1,495
HOLMES	247	21	15	24	20	12	22	22	23	21	24	22	21
INDIAN RIVER	1,360	119	90	100	89	109	123	126	121	109	116	132	126
JACKSON	567	67	58	44	50	54	45	48	41	40	36	44	40
JEFFERSON	167	12	15	9	19	13	17	9	13	21	13	15	11
LAFAYETTE	114	11	5	14	11	7	9	13	7	14	2	10	11
LAKE	3,223	253	239	232	218	265	259	295	284	304	275	297	302
LEE	6,704	556	476	511	485	538	565	579	573	643	591	575	612
LEON	3,105	259	220	232	236	268	247	252	308	291	272	273	247
LEVY	462	36	41	33	29	34	39	40	47	36	41	42	44
LIBERTY	108	6	6	9	5	9	10	4	9	12	7	16	15
MADISON	253	13	16	25	24	29	15	21	23	19	22	24	22
MANATEE	3,809	269	289	322	290	301	285	359	365	331	314	329	355
MARION	3,449	285	261	266	282	253	259	306	308	313	305	290	321
MARTIN	1,340	115	93	110	102	103	99	114	134	130	116	112	112
MONROE	768	61	67	60	57	70	60	62	84	63	68	53	63
NASSAU	812	73	63	69	63	68	66	60	72	79	70	78	51
OKALOOSA	2,738	227	195	230	195	228	252	219	259	240	250	223	220
OKEECHOBEE	587	50	47	64	44	56	41	43	50	62	37	45	48
ORANGE	16,556	1,362	1,264	1,367	1,283	1,292	1,309	1,388	1,488	1,513	1,433	1,413	1,444
OSCEOLA	3,593	284	273	286	284	266	304	298	312	340	296	325	325
PALM BEACH	15,160	1,259	1,123	1,208	1,181	1,205	1,220	1,278	1,406	1,372	1,274	1,363	1,271
PASCO	4,753	386	340	399	396	379	373	428	413	433	416	384	406
PINELLAS	9,065	773	683	771	704	723	744	785	818	781	814	732	737
POLK	7,786	632	560	589	578	605	659	650	695	690	722	692	714
PUTNAM	1,034	83	84	100	73	82	72	89	91	102	82	79	97
SAINT JOHN'S	1,761	143	137	151	125	146	140	156	165	169	141	135	153
SAINT LUCIE	3,003	213	238	246	226	207	263	255	269	291	245	291	259
SANTA ROSA	1,746	110	144	151	129	133	157	150	154	164	125	180	149
SARASOTA	2,997	218	242	265	237	244	249	230	272	257	252	291	240
SEMINOLE	4,786	364	347	376	393	382	374	432	464	416	415	392	431
SUMTER	501	33	45	47	33	45	42	40	31	53	45	37	50
SUWANNEE	470	44	36	38	35	28	46	37	38	46	58	35	29
TAYLOR	244	23	16	18	19	14	20	19	28	24	19	18	26
UNION	166	12	8	15	11	14	19	16	21	12	9	13	16
VOLUSIA	5,093	449	413	399	384	407	408	430	409	515	440	410	429
WAKULLA	288	20	31	25	28	25	23	14	24	27	26	23	22
WALTON	604	42	30	34	53	49	59	54	52	40	73	58	60
WASHINGTON	249	25	14	18	17	27	17	20	25	23	22	22	19

TABLE B-10: RESIDENT LIVE BIRTHS BY MOTHER'S EDUCATION\*, BY COUNTY, FLORIDA, 2005

	HIGHEST LEVEL/DEGREE OF EDUCATION COMPLETED									
	TOTAL	< 9TH GRADE	9TH-12TH NO DIPLOMA	HIGH SCHOOL DIPLOMA	SOME COLLEGE	ASSOCIATE DEGREE	BACHELOR DEGREE	MASTER DEGREE	DOCTORATE	UNK
FLORIDA	226,219	13,567	33,772	71,219	37,826	19,065	34,805	10,917	2,717	2,331
ALACHUA	2,690	45	314	572	545	258	507	300	148	1
BAKER	369	17	60	161	79	35	15	1	0	1
BAY	2,391	77	402	762	563	168	292	85	19	23
BRADFORD	332	8	81	132	72	18	17	4	0	0
BREVARD	5,387	132	726	1,437	1,290	588	897	252	41	24
BROWARD	23,127	1,051	2,318	6,336	3,808	2,180	4,326	1,519	393	1,196
CALHOUN	158	10	38	55	29	11	11	4	0	0
CHARLOTTE	1,084	26	161	407	262	85	111	25	6	1
CITRUS	1,021	23	195	437	188	68	83	14	9	4
CLAY	2,238	45	313	726	482	191	340	107	23	11
COLLIER	4,069	728	782	1,295	376	294	420	141	27	6
COLUMBIA	851	29	173	309	174	68	68	23	6	1
MIAMI-DADE	32,365	2,244	3,662	11,673	4,043	2,701	5,560	1,820	498	164
DESOTO	505	116	146	172	33	10	20	6	1	1
DIXIE	170	7	47	63	32	16	3	1	0	1
DUVAL	12,974	431	1,884	4,342	2,632	961	1,839	554	176	155
ESCAMBIA	4,237	103	762	1,670	578	419	513	151	36	5
FLAGLER	689	17	79	211	183	72	88	33	6	0
FRANKLIN	119	7	30	55	13	4	7	0	2	1
GADSDEN	741	65	165	267	132	39	49	16	5	3
GILCHRIST	194	13	38	75	31	11	22	4	0	0
GLADES	77	7	23	29	8	9	1	0	0	0
GULF	130	2	24	43	32	11	13	4	0	1
HAMILTON	191	31	42	73	27	5	11	1	0	1
HARDEE	456	124	106	130	57	15	17	7	0	0
HENDRY	757	200	197	240	52	35	25	4	2	2
HERNANDO	1,496	18	225	623	223	162	110	31	9	95
HIGHLANDS	939	117	209	311	163	43	68	22	5	1
HILLSBOROUGH	16,753	1,209	2,716	4,497	2,856	1,290	2,864	932	246	143
HOLMES	247	9	52	99	54	8	18	6	0	1
INDIAN RIVER	1,360	120	266	430	220	89	169	51	15	0
JACKSON	567	17	99	216	137	26	57	14	0	1
JEFFERSON	167	9	30	58	37	12	15	3	1	2
LAFAYETTE	114	8	18	55	20	3	10	0	0	0
LAKE	3,223	181	596	1,039	570	284	431	105	9	8
LEE	6,704	667	1,181	2,365	915	563	780	192	30	11
LEON	3,105	41	319	649	714	264	715	286	105	12
LEVY	462	16	115	174	85	35	30	6	1	0
LIBERTY	108	5	19	37	25	7	11	4	0	0
MADISON	253	10	57	96	55	11	18	6	0	0
MANATEE	3,809	548	827	1,051	548	230	445	118	39	3
MARION	3,449	149	707	1,286	664	286	259	73	21	4
MARTIN	1,340	268	187	274	207	112	199	72	19	2
MONROE	768	31	101	229	166	57	146	28	4	6
NASSAU	812	28	122	305	141	69	106	28	10	3
OKALOOSA	2,738	56	343	970	651	213	387	94	19	5
OKEECHOBEE	587	92	160	187	66	39	33	7	1	2
ORANGE	16,556	693	2,541	5,132	2,710	1,509	2,904	846	160	61
OSCEOLA	3,593	101	604	1,374	590	366	455	89	10	4
PALM BEACH	15,160	1,401	2,240	3,887	2,445	1,250	2,669	898	239	131
PASCO	4,753	172	758	1,363	899	495	755	232	36	43
PINELLAS	9,065	226	1,222	3,004	1,495	855	1,568	477	104	114
POLK	7,786	798	1,830	2,559	1,219	432	777	142	19	10
PUTNAM	1,034	90	293	399	158	43	33	12	1	5
SAINT JOHNS	1,761	27	165	376	323	133	528	168	35	6
SAINT LUCIE	3,003	270	531	1,156	401	282	277	70	14	2
SANTA ROSA	1,746	30	206	557	293	213	338	86	23	0
SARASOTA	2,997	129	433	925	592	281	439	159	38	1
SEMINOLE	4,786	107	470	1,256	926	490	1,101	363	55	18
SUMTER	501	54	112	192	86	26	19	8	1	3
SUWANNEE	470	51	115	194	54	24	26	3	3	0
TAYLOR	244	1	59	111	40	12	15	3	2	1
UNION	166	6	30	65	38	14	7	5	0	1
VOLUSIA	5,093	213	851	1,591	1,093	501	625	167	36	16
WAKULLA	288	4	41	113	64	19	38	5	3	1
WALTON	604	30	92	233	102	34	86	17	6	4
WASHINGTON	249	4	54	99	58	9	14	9	0	2

\* Starting in 2004, "mother's education" is measured according to the highest level/degree completed, instead of highest grade completed.

TABLE B-10 (Cont.): WHITE RESIDENT LIVE BIRTHS BY MOTHER'S EDUCATION\*, BY COUNTY, FLORIDA, 2005

	HIGHEST LEVEL/DEGREE OF EDUCATION COMPLETED									
	TOTAL	< 9TH GRADE	9TH-12TH NO DIPLOMA	HIGH SCHOOL DIPLOMA	SOME COLLEGE	ASSOCIATE DEGREE	BACHELOR DEGREE	MASTER DEGREE	DOCTORATE	UNK
FLORIDA	166,181	11,449	22,462	48,853	27,539	14,950	28,678	8,915	2,204	1,131
ALACHUA	1,646	35	93	252	336	191	392	229	117	1
BAKER	315	16	49	131	68	35	15	1	0	0
BAY	1,829	57	299	567	419	142	243	71	17	14
BRADFORD	277	8	67	107	58	17	16	4	0	0
BREVARD	4,348	108	516	1,103	1,048	512	794	212	36	19
BROWARD	13,576	615	928	3,403	2,219	1,384	3,190	1,113	305	419
CALHOUN	140	9	30	51	25	11	10	4	0	0
CHARLOTTE	973	21	149	362	238	74	100	23	5	1
CITRUS	945	23	185	409	171	62	70	13	9	3
CLAY	1,897	39	273	609	421	163	281	87	16	8
COLLIER	3,514	680	657	1,052	318	265	386	126	25	5
COLUMBIA	672	26	142	224	139	61	52	22	5	1
MIAMI-DADE	23,334	1,859	2,155	7,597	2,752	2,112	4,759	1,575	439	86
DESOTO	450	113	131	149	24	9	16	6	1	1
DIXIE	164	7	45	59	32	16	3	1	0	1
DUVAL	7,597	302	883	2,312	1,546	641	1,326	393	134	60
ESCAMBIA	2,745	69	403	962	412	316	430	122	29	2
FLAGLER	587	13	61	175	154	68	81	30	5	0
FRANKLIN	108	5	29	50	11	4	6	0	2	1
GADSDEN	278	58	57	67	34	21	29	9	3	0
GILCHRIST	178	13	36	67	28	11	19	4	0	0
GLADES	58	7	18	19	8	5	1	0	0	0
GULF	110	2	21	35	25	10	12	4	0	1
HAMILTON	123	26	22	39	21	4	9	1	0	1
HARDEE	425	123	98	112	54	15	16	7	0	0
HENDRY	643	197	171	180	40	26	21	4	2	2
HERNANDO	1,313	16	196	535	201	145	102	26	7	85
HIGHLANDS	754	117	149	238	124	42	57	22	4	1
HILLSBOROUGH	12,602	1,112	1,911	3,196	2,058	1,019	2,286	723	198	99
HOLMES	233	9	47	95	51	8	16	6	0	1
INDIAN RIVER	1,138	113	210	331	189	76	158	46	15	0
JACKSON	389	13	64	146	98	13	42	12	0	1
JEFFERSON	96	6	14	28	18	10	15	3	1	1
LAFAYETTE	100	7	17	46	18	3	9	0	0	0
LAKE	2,679	169	471	825	472	248	391	91	6	6
LEE	5,685	624	941	1,885	806	500	710	186	26	7
LEON	1,676	24	114	288	317	156	501	198	73	5
LEVY	403	15	94	154	75	32	26	6	1	0
LIBERTY	95	5	14	33	21	7	11	4	0	0
MADISON	130	6	25	42	29	10	12	6	0	0
MANATEE	3,098	478	644	797	442	205	386	110	34	2
MARION	2,651	128	529	956	511	230	211	64	18	4
MARTIN	1,010	114	139	210	178	102	183	66	16	2
MONROE	663	29	81	191	136	51	141	28	3	3
NASSAU	751	26	105	277	132	67	105	27	9	3
OKALOOSA	2,182	50	260	750	505	175	337	84	17	4
OKEECHOBEE	535	92	142	166	60	36	30	7	1	1
ORANGE	11,175	549	1,528	3,139	1,786	1,103	2,269	653	113	35
OSCEOLA	3,068	99	516	1,190	503	294	380	75	7	4
PALM BEACH	10,562	1,191	1,195	2,284	1,723	923	2,227	742	196	81
PASCO	4,341	163	700	1,247	842	454	660	204	30	41
PINELLAS	6,999	196	858	2,131	1,191	711	1,344	414	90	64
POLK	6,088	739	1,373	1,882	941	355	668	112	12	6
PUTNAM	766	82	197	288	122	36	24	11	1	5
SAINT JOHNS	1,547	26	133	305	289	120	490	150	29	5
SAINT LUCIE	2,132	233	347	747	313	223	214	48	7	0
SANTA ROSA	1,594	30	188	500	265	195	314	81	21	0
SARASOTA	2,632	117	345	806	516	255	404	151	37	1
SEMINOLE	3,787	102	328	932	730	409	936	299	38	13
SUMTER	398	49	85	144	71	22	17	6	1	3
SUWANNEE	387	46	93	145	48	23	26	3	3	0
TAYLOR	183	0	35	84	33	10	15	3	2	1
UNION	141	6	20	56	33	14	7	5	0	0
VOLUSIA	4,228	200	672	1,296	893	435	539	150	31	12
WAKULLA	256	4	38	99	55	18	35	4	2	1
WALTON	545	28	83	201	92	32	85	16	5	3
WASHINGTON	208	4	38	87	49	6	14	9	0	1

\* Starting in 2004, "mother's education" is measured according to the highest level/degree completed, instead of highest grade completed.

TABLE B-10 (Cont.): BLACK RESIDENT LIVE BIRTHS BY MOTHER'S EDUCATION\*, BY COUNTY, FLORIDA, 2005

	HIGHEST LEVEL/DEGREE OF EDUCATION COMPLETED									
	TOTAL	< 9TH GRADE	9TH-12TH NO DIPLOMA	HIGH SCHOOL DIPLOMA	SOME COLLEGE	ASSOCIATE DEGREE	BACHELOR DEGREE	MASTER DEGREE	DOCTORATE	UNK
FLORIDA	47,957	1,591	10,129	19,360	8,408	3,056	3,307	953	214	939
ALACHUA	814	9	210	299	188	47	40	15	6	0
BAKER	48	1	9	28	10	0	0	0	0	0
BAY	334	7	73	116	91	13	21	7	0	6
BRADFORD	50	0	14	22	12	1	1	0	0	0
BREVARD	727	17	173	268	169	48	37	15	0	0
BROWARD	7,868	401	1,239	2,526	1,354	654	748	248	50	648
CALHOUN	16	1	7	4	4	0	0	0	0	0
CHARLOTTE	66	4	6	22	18	10	5	0	1	0
CITRUS	32	0	5	15	7	3	1	0	0	1
CLAY	213	0	34	81	34	16	34	9	3	2
COLLIER	458	42	113	217	50	20	15	1	0	0
COLUMBIA	158	3	26	79	32	6	12	0	0	0
MIAMI-DADE	8,107	367	1,458	3,873	1,178	511	518	135	33	34
DESOTO	50	1	14	23	9	1	2	0	0	0
DIXIE	5	0	2	3	0	0	0	0	0	0
DUVAL	4,449	103	924	1,807	920	241	278	72	17	87
ESCAMBIA	1,241	26	315	631	117	85	46	16	2	3
FLAGLER	79	3	15	31	20	4	4	1	1	0
FRANKLIN	5	0	1	4	0	0	0	0	0	0
GADSDEN	450	6	107	193	95	18	20	7	1	3
GILCHRIST	13	0	1	7	2	0	3	0	0	0
GLADES	12	0	3	6	0	3	0	0	0	0
GULF	20	0	3	8	7	1	1	0	0	0
HAMILTON	64	4	19	33	6	1	1	0	0	0
HARDEE	25	1	7	13	3	0	1	0	0	0
HENDRY	95	2	22	52	9	7	3	0	0	0
HERNANDO	116	0	20	64	13	8	5	1	0	5
HIGHLANDS	145	0	51	59	28	1	6	0	0	0
HILLSBOROUGH	3,132	81	721	1,117	640	194	250	78	20	31
HOLMES	9	0	4	3	1	0	1	0	0	0
INDIAN RIVER	191	5	51	86	26	13	8	2	0	0
JACKSON	161	4	33	65	32	10	15	2	0	0
JEFFERSON	70	3	16	29	19	2	0	0	0	1
LAFAYETTE	14	1	1	9	2	0	1	0	0	0
LAKE	396	5	103	170	74	15	19	8	1	1
LEE	844	35	216	413	94	50	29	3	0	4
LEON	1,222	17	197	327	377	93	151	39	15	6
LEVY	50	0	19	19	7	3	2	0	0	0
LIBERTY	11	0	3	4	4	0	0	0	0	0
MADISON	123	4	32	54	26	1	6	0	0	0
MANATEE	470	14	151	194	73	13	19	3	2	1
MARION	616	6	156	273	115	40	20	4	2	0
MARTIN	111	2	26	51	18	5	7	0	2	0
MONROE	70	2	16	26	21	3	1	0	0	1
NASSAU	47	1	13	23	6	2	0	1	1	0
OKALOOSA	300	2	53	127	75	17	24	1	0	1
OKEECHOBEE	36	0	15	15	3	1	1	0	0	1
ORANGE	4,162	105	893	1,696	736	270	319	102	22	19
OSCEOLA	353	2	73	127	64	45	33	8	1	0
PALM BEACH	3,788	185	967	1,440	596	248	232	69	15	36
PASCO	189	4	32	59	27	16	36	13	1	1
PINELLAS	1,402	14	299	642	219	88	85	20	0	35
POLK	1,406	36	413	592	236	49	60	16	2	2
PUTNAM	252	6	93	107	30	6	9	1	0	0
SAINT JOHNS	130	1	27	62	23	3	7	4	2	1
SAINT LUCIE	741	32	168	374	72	46	34	10	4	1
SANTA ROSA	64	0	13	26	9	9	5	2	0	0
SARASOTA	236	6	73	80	52	14	9	2	0	0
SEMINOLE	659	3	121	245	148	47	60	26	7	2
SUMTER	89	2	24	44	13	3	2	1	0	0
SUWANNEE	73	3	19	45	6	0	0	0	0	0
TAYLOR	56	1	22	24	7	2	0	0	0	0
UNION	24	0	10	8	5	0	0	0	0	1
VOLUSIA	699	11	161	250	158	47	58	9	2	3
WAKULLA	27	0	2	14	6	1	2	1	1	0
WALTON	36	0	6	25	5	0	0	0	0	0
WASHINGTON	35	0	15	11	7	1	0	0	0	1

\* Starting in 2004, "mother's education" is measured according to the highest level/degree completed, instead of highest grade completed.

TABLE B-10 (Cont.): OTHER RESIDENT LIVE BIRTHS BY MOTHER'S EDUCATION\*, BY COUNTY, FLORIDA, 2005

	HIGHEST LEVEL/DEGREE OF EDUCATION COMPLETED									
	TOTAL	< 9TH GRADE	9TH-12TH NO DIPLOMA	HIGH SCHOOL DIPLOMA	SOME COLLEGE	ASSOCIATE DEGREE	BACHELOR DEGREE	MASTER DEGREE	DOCTORATE	UNK
FLORIDA	11,651	509	1,145	2,911	1,801	1,037	2,755	1,026	295	172
ALACHUA	230	1	11	21	21	20	75	56	25	0
BAKER	6	0	2	2	1	0	0	0	0	1
BAY	189	7	23	66	47	11	26	5	2	2
BRADFORD	5	0	0	3	2	0	0	0	0	0
BREVARD	291	5	35	61	70	27	62	25	4	2
BROWARD	1,599	33	143	386	218	136	380	154	37	112
CALHOUN	2	0	1	0	0	0	1	0	0	0
CHARLOTTE	44	1	6	23	6	1	5	2	0	0
CITRUS	44	0	5	13	10	3	12	1	0	0
CLAY	126	6	6	36	26	12	25	11	4	0
COLLIER	95	6	12	25	7	9	19	14	2	1
COLUMBIA	20	0	5	5	3	1	4	1	1	0
MIAMI-DADE	758	15	41	171	87	68	242	100	26	8
DESOTO	4	2	1	0	0	0	1	0	0	0
DIXIE	1	0	0	1	0	0	0	0	0	0
DUVAL	919	26	77	223	161	78	235	87	25	7
ESCAMBIA	249	8	44	77	47	18	37	13	5	0
FLAGLER	23	1	3	5	9	0	3	2	0	0
FRANKLIN	5	2	0	0	2	0	1	0	0	0
GADSDEN	12	1	1	6	3	0	0	0	1	0
GILCHRIST	3	0	1	1	1	0	0	0	0	0
GLADES	7	0	2	4	0	1	0	0	0	0
GULF	0	0	0	0	0	0	0	0	0	0
HAMILTON	4	1	1	1	0	0	1	0	0	0
HARDEE	6	0	1	5	0	0	0	0	0	0
HENDRY	19	1	4	8	3	2	1	0	0	0
HERNANDO	65	2	9	23	8	9	3	4	2	5
HIGHLANDS	39	0	8	14	11	0	5	0	1	0
HILLSBOROUGH	1,002	14	81	183	156	77	327	129	27	8
HOLMES	5	0	1	1	2	0	1	0	0	0
INDIAN RIVER	31	2	5	13	5	0	3	3	0	0
JACKSON	15	0	1	4	7	3	0	0	0	0
JEFFERSON	1	0	0	1	0	0	0	0	0	0
LAFAYETTE	0	0	0	0	0	0	0	0	0	0
LAKE	145	7	21	43	24	21	21	6	2	0
LEE	173	8	24	67	14	13	41	3	3	0
LEON	204	0	8	31	20	15	63	49	17	1
LEVY	9	1	2	1	3	0	2	0	0	0
LIBERTY	2	0	2	0	0	0	0	0	0	0
MADISON	0	0	0	0	0	0	0	0	0	0
MANATEE	240	56	32	60	32	12	40	5	3	0
MARION	182	15	22	57	38	16	28	5	1	0
MARTIN	218	152	22	13	10	5	9	6	1	0
MONROE	33	0	4	12	9	3	4	0	1	0
NASSAU	13	1	4	5	3	0	0	0	0	0
OKALOOSA	253	3	30	93	70	21	26	8	2	0
OKEECHOBEE	16	0	3	6	3	2	2	0	0	0
ORANGE	1,209	39	120	296	186	135	314	90	25	4
OSCEOLA	169	0	14	57	21	27	42	6	2	0
PALM BEACH	795	24	78	161	124	78	209	86	28	7
PASCO	220	5	25	57	29	25	59	15	5	0
PINELLAS	658	16	65	229	83	56	139	43	14	13
POLK	287	23	44	83	42	28	48	14	5	0
PUTNAM	16	2	3	4	6	1	0	0	0	0
SAINT JOHNS	84	0	5	9	11	10	31	14	4	0
SAINT LUCIE	128	5	16	35	16	13	28	12	3	0
SANTA ROSA	87	0	5	30	19	9	19	3	2	0
SARASOTA	129	6	15	39	24	12	26	6	1	0
SEMINOLE	336	2	21	78	48	34	105	38	10	0
SUMTER	14	3	3	4	2	1	0	1	0	0
SUWANNEE	9	2	2	4	0	1	0	0	0	0
TAYLOR	4	0	2	2	0	0	0	0	0	0
UNION	1	0	0	1	0	0	0	0	0	0
VOLUSIA	162	2	18	43	41	19	28	8	3	0
WAKULLA	5	0	1	0	3	0	1	0	0	0
WALTON	23	2	3	7	5	2	1	1	1	1
WASHINGTON	6	0	1	1	2	2	0	0	0	0

\* Starting in 2004, "mother's education" is measured according to the highest level/degree completed, instead of highest grade completed.

TABLE B-11: RESIDENT LIVE BIRTHS TO MOTHERS UNDER 15 YEARS OF AGE FOR SELECTED INDICATORS, BY COUNTY, FLORIDA, 2005

	TOTAL	UNWED	BIRTHWEIGHT		THIRD TRIMESTER OR NO PRENATAL CARE*	ONE OR MORE PREVIOUS LIVE BIRTHS
			UNDER 1,500 GRAMS	UNDER 2,500 GRAMS		
FLORIDA	415	408	10	51	65	5
ALACHUA	3	3	0	0	0	0
BAKER	0	0	0	0	0	0
BAY	7	7	0	0	0	0
BRADFORD	0	0	0	0	0	0
BREVARD	8	8	0	1	1	0
BROWARD	26	26	1	1	7	1
CALHOUN	0	0	0	0	0	0
CHARLOTTE	1	1	0	0	1	0
CITRUS	0	0	0	0	0	0
CLAY	1	1	0	0	0	0
COLLIER	9	9	0	1	2	0
COLUMBIA	2	1	0	0	0	0
MIAMI-DADE	57	55	1	13	9	1
DESOTO	3	3	0	0	0	0
DIXIE	1	1	0	0	0	0
DUVAL	23	23	0	2	4	0
ESCAMBIA	11	10	0	1	3	2
FLAGLER	2	2	0	1	2	0
FRANKLIN	0	0	0	0	0	0
GADSDEN	6	6	0	0	0	0
GILCHRIST	1	1	0	0	0	0
GLADES	0	0	0	0	0	0
GULF	0	0	0	0	0	0
HAMILTON	1	1	0	0	0	0
HARDEE	1	1	0	1	0	0
HENDRY	3	3	1	1	1	0
HERNANDO	2	2	0	0	0	0
HIGHLANDS	4	4	0	1	1	0
HILLSBOROUGH	33	33	0	4	3	0
HOLMES	0	0	0	0	0	0
INDIAN RIVER	8	8	0	0	0	0
JACKSON	0	0	0	0	0	0
JEFFERSON	1	1	0	0	0	0
LAFAYETTE	0	0	0	0	0	0
LAKE	2	2	0	0	0	0
LEE	14	14	0	2	2	0
LEON	3	3	0	0	0	0
LEVY	1	1	0	0	0	0
LIBERTY	0	0	0	0	0	0
MADISON	4	4	0	0	2	0
MANATEE	8	8	0	1	4	0
MARION	10	10	0	1	0	0
MARTIN	1	1	0	0	0	0
MONROE	1	1	0	0	0	0
NASSAU	0	0	0	0	0	0
OKALOOSA	4	4	0	0	1	0
OKEECHOBEE	6	5	0	0	1	0
ORANGE	37	37	0	4	4	0
OSCEOLA	3	3	0	0	0	0
PALM BEACH	28	28	3	6	4	1
PASCO	5	4	0	1	1	0
PINELLAS	14	14	1	2	1	0
POLK	23	22	2	6	6	0
PUTNAM	7	7	1	1	0	0
SAINT JOHNS	2	2	0	0	0	0
SAINT LUCIE	10	10	0	0	1	0
SANTA ROSA	1	1	0	0	0	0
SARASOTA	5	5	0	0	2	0
SEMINOLE	2	2	0	0	1	0
SUMTER	1	1	0	0	0	0
SUWANNEE	1	1	0	0	0	0
TAYLOR	1	1	0	0	0	0
UNION	0	0	0	0	0	0
VOLUSIA	5	5	0	0	1	0
WAKULLA	1	1	0	0	0	0
WALTON	0	0	0	0	0	0
WASHINGTON	1	1	0	0	0	0

\* Starting in 2004, "trimester prenatal care began" is calculated as the time elapsed from the date of the last menstrual period to the date of the first prenatal care visit. Prior to 2004, these data were obtained by direct question that noted the trimester the mother began prenatal care. Consequently, these data are not comparable to data from prior years.



TABLE B-12: RESIDENT LIVE BIRTHS TO MOTHERS 15 THROUGH 19 YEARS OF AGE FOR SELECTED INDICATORS, AND AGE-SPECIFIC BIRTH RATES PER 1,000 FEMALES, BY COUNTY, FLORIDA, 2005

	TOTAL	UNWED		BIRTHWEIGHT				THIRD		ONE OR MORE		AGE-SPECIFIC BIRTH RATE	POPULATION 15-19 FEMALES
				UNDER 1,500 GRAMS		UNDER 2,500 GRAMS		TRIMESTER OR NO PRENATAL CARE		PREVIOUS LIVE BIRTHS			
				NUMBER	%	NUMBER	%	NUMBER <sup>1</sup>	% <sup>2</sup>	NUMBER	%		
FLORIDA	24,167	20,751	85.9	463	1.9	2,575	10.7	1,837	7.6	4,494	18.6	41.9	576,265
ALACHUA	236	211	89.4	7	3.0	33	14.0	7	3.0	45	19.1	19.4	12,151
BAKER	62	43	69.4	4	6.5	10	16.1	2	3.2	16	25.8	72.1	860
BAY	310	248	80.0	8	2.6	31	10.0	28	9.0	65	21.0	64.4	4,812
BRADFORD	60	45	75.0	0	0.0	11	18.3	1	1.7	16	26.7	73.1	821
BREVARD	560	490	87.5	6	1.1	76	13.6	30	5.4	91	16.3	32.8	17,070
BROWARD	1,741	1,572	90.3	36	2.1	214	12.3	179	10.3	273	15.7	32.5	53,603
CALHOUN	35	27	77.1	1	2.9	8	22.9	2	5.7	7	20.0	78.3	447
CHARLOTTE	122	106	86.9	2	1.6	8	6.6	16	13.1	19	15.6	33.9	3,599
CITRUS	152	124	81.6	1	0.7	14	9.2	7	4.6	24	15.8	45.6	3,332
CLAY	251	190	75.7	3	1.2	19	7.6	13	5.2	30	12.0	37.5	6,688
COLLIER	445	360	80.9	6	1.3	41	9.2	44	9.9	97	21.8	53.0	8,389
COLUMBIA	122	98	80.3	2	1.6	10	8.2	9	7.4	28	23.0	59.3	2,059
MIAMI-DADE	2,945	2,602	88.4	64	2.2	348	11.8	177	6.0	492	16.7	35.0	84,255
DESOTO	95	69	72.6	0	0.0	7	7.4	9	9.5	16	16.8	95.8	992
DIXIE	28	19	67.9	1	3.6	2	7.1	2	7.1	4	14.3	59.1	474
DUVAL	1,479	1,270	85.9	31	2.1	155	10.5	81	5.5	289	19.5	49.5	29,873
ESCAMBIA	586	517	88.2	16	2.7	75	12.8	63	10.8	125	21.3	48.4	12,116
FLAGLER	55	42	76.4	1	1.8	3	5.5	0	0.0	5	9.1	24.4	2,253
FRANKLIN	25	17	68.0	3	12.0	4	16.0	2	8.0	8	32.0	76.2	328
GADSDEN	117	106	90.6	3	2.6	16	13.7	3	2.6	23	19.7	69.5	1,683
GILCHRIST	38	32	84.2	0	0.0	1	2.6	2	5.3	12	31.6	70.4	540
GLADES	15	13	86.7	0	0.0	0	0.0	2	13.3	3	20.0	47.5	316
GULF	13	10	76.9	2	15.4	2	15.4	0	0.0	0	0.0	27.3	477
HAMILTON	41	33	80.5	0	0.0	6	14.6	2	4.9	4	9.8	96.7	424
HARDEE	85	61	71.8	0	0.0	7	8.2	14	16.5	22	25.9	91.6	928
HENDRY	125	96	76.8	1	0.8	6	4.8	19	15.2	25	20.0	81.4	1,536
HERNANDO	175	149	85.1	2	1.1	12	6.9	13	7.4	33	18.9	42.6	4,106
HIGHLANDS	139	125	89.9	4	2.9	14	10.1	8	5.8	27	19.4	58.1	2,391
HILLSBOROUGH	1,856	1,633	88.0	37	2.0	209	11.3	114	6.1	383	20.6	47.4	39,129
HOLMES	49	37	75.5	0	0.0	5	10.2	8	16.3	12	24.5	78.7	623
INDIAN RIVER	153	121	79.1	1	0.7	17	11.1	19	12.4	25	16.3	43.0	3,561
JACKSON	75	66	88.0	1	1.3	7	9.3	2	2.7	12	16.0	53.9	1,391
JEFFERSON	23	19	82.6	0	0.0	3	13.0	0	0.0	6	26.1	49.1	468
LAFAYETTE	16	13	81.3	0	0.0	1	6.3	1	6.3	3	18.8	78.4	204
LAKE	408	345	84.6	6	1.5	39	9.6	25	6.1	72	17.6	57.2	7,136
LEE	819	694	84.7	12	1.5	83	10.1	70	8.5	186	22.7	54.9	14,905
LEON	290	257	88.6	12	4.1	31	10.7	11	3.8	49	16.9	19.9	14,589
LEVY	73	57	78.1	1	1.4	5	6.8	4	5.5	14	19.2	56.1	1,302
LIBERTY	20	16	80.0	0	0.0	3	15.0	0	0.0	6	30.0	88.1	227
MADISON	45	39	86.7	3	6.7	5	11.1	1	2.2	7	15.6	61.3	734
MANATEE	489	422	86.3	12	2.5	51	10.4	53	10.8	119	24.3	58.0	8,428
MARION	545	466	85.5	11	2.0	60	11.0	38	7.0	88	16.1	58.3	9,350
MARTIN	153	129	84.3	1	0.7	13	8.5	33	21.6	26	17.0	42.8	3,578
MONROE	52	46	88.5	1	1.9	3	5.8	4	7.7	3	5.8	25.3	2,056
NASSAU	122	97	79.5	1	0.8	11	9.0	2	1.6	22	18.0	53.2	2,292
OKALOOSA	273	200	73.3	4	1.5	21	7.7	32	11.7	42	15.4	44.6	6,120
OKEECHOBEE	100	90	90.0	0	0.0	6	6.0	4	4.0	20	20.0	80.9	1,236
ORANGE	1,672	1,455	87.0	28	1.7	195	11.7	91	5.4	302	18.1	44.9	37,224
OSCEOLA	419	357	85.2	9	2.1	34	8.1	26	6.2	67	16.0	47.6	8,808
PALM BEACH	1,351	1,200	88.8	24	1.8	149	11.0	176	13.0	293	21.7	36.4	37,142
PASCO	473	413	87.3	14	3.0	49	10.4	32	6.8	79	16.7	41.7	11,339
PINELLAS	959	865	90.2	15	1.6	98	10.2	52	5.4	165	17.2	37.6	25,511
POLK	1,140	943	82.7	23	2.0	115	10.1	129	11.3	254	22.3	65.4	17,428
PUTNAM	188	155	82.4	5	2.7	22	11.7	6	3.2	41	21.8	75.9	2,476
SAINT JOHNS	141	113	80.1	0	0.0	2	1.4	10	7.1	26	18.4	27.5	5,124
SAINT LUCIE	387	336	86.8	5	1.3	34	8.8	31	8.0	83	21.4	50.1	7,717
SANTA ROSA	180	129	71.7	2	1.1	20	11.1	11	6.1	28	15.6	36.7	4,899
SARASOTA	282	245	86.9	3	1.1	17	6.0	19	6.7	42	14.9	34.2	8,256
SEMINOLE	376	330	87.8	11	2.9	35	9.3	29	7.7	57	15.2	27.4	13,726
SUMTER	70	56	80.0	0	0.0	7	10.0	2	2.9	19	27.1	43.8	1,599
SUWANNEE	86	60	69.8	0	0.0	6	7.0	8	9.3	20	23.3	73.3	1,174
TAYLOR	49	37	75.5	2	4.1	11	22.4	2	4.1	12	24.5	71.0	690
UNION	18	14	77.8	0	0.0	3	16.7	3	16.7	1	5.6	42.4	425
VOLUSIA	602	507	84.2	9	1.5	55	9.1	39	6.5	92	15.3	38.6	15,592
WAKULLA	42	33	78.6	2	4.8	3	7.1	1	2.4	6	14.3	45.0	933
WALTON	76	53	69.7	2	2.6	8	10.5	11	14.5	7	9.2	46.8	1,624
WASHINGTON	34	25	73.5	2	5.9	5	14.7	3	8.8	5	14.7	46.8	726

1. Starting in 2004, "trimester prenatal care began" is calculated as the time elapsed from the date of the last menstrual period to the date of the first prenatal care visit. Prior to 2004, these data were obtained by direct question that noted the trimester the mother began prenatal care. Consequently, these data are not comparable to data from prior years.

2. Births with unknown information as to when prenatal care began are excluded from the denominator.

