

# **Fetal and Infant Deaths**

## FETAL AND INFANT DEATHS

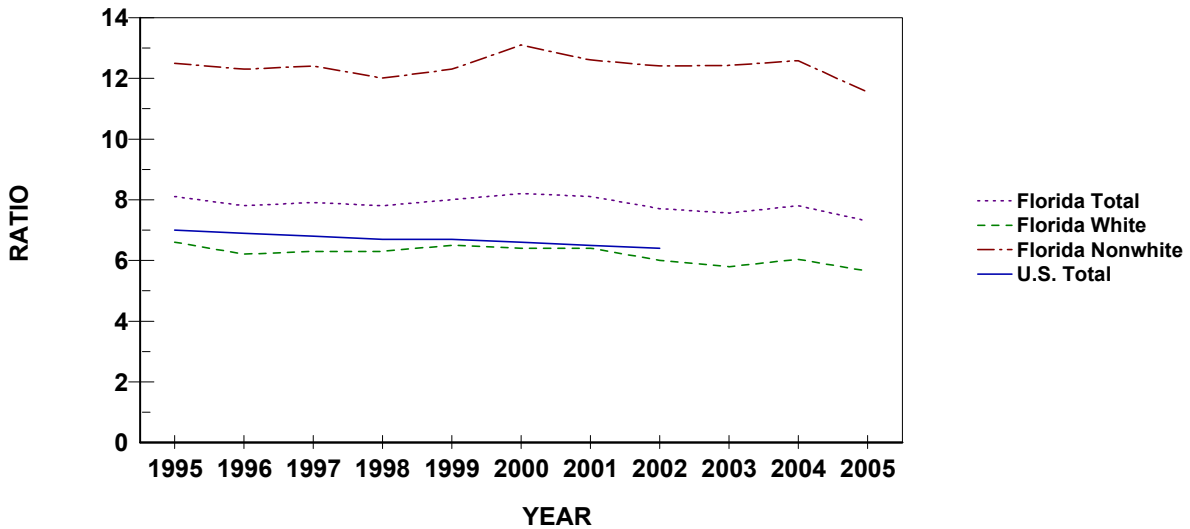
- The number of resident fetal deaths (stillbirths occurring at 20 or more weeks of gestation) increased in 2003 and 2004, but decreased in 2005. The ratio of resident fetal deaths to resident live births also decreased in 2005.
- Resident fetal deaths decreased among whites and nonwhites from 2004 to 2005.
- Of the 1,650 fetal deaths, 16.4 percent occurred to mothers residing in Miami-Dade County.
- Of all resident fetal deaths, 66.3 percent were to mothers of Non-Hispanic or Non-Haitian origin, 18.7 percent were to mothers of Hispanic origin, 4.7 percent were to mothers of Haitian origin and 10.2 percent were to mothers whose ethnicity was unknown.
- About one of every 12 fetal deaths occurred to a mother who was 18 years old or younger.
- In 2005, the overall number of resident neonatal deaths (under 28 days) increased, but the rate remained constant. The number decreased for whites but increased for nonwhites.
- The neonatal death rate increased from 2000 through 2002, and then decreased in 2003 and again in 2004. It remained constant in 2005. The 2005 rate of 4.5 per 1,000 live births represents less than half the rate of 1980 (9.7).
- The nonwhite neonatal death rate (8.0 per 1,000 live births) is more than twice the white rate (3.3 per 1,000 live births).
- The resident infant mortality rate increased slightly from 7.2 deaths per 1,000 live births in 1998 to a rate of 7.3 in 1999, decreased to 7.0 in 2000, and increased back to 7.3 in 2001. It increased to 7.5 in 2002 and remained at 7.5 in 2003. In 2004 the rate dropped to 7.0, but increased again to 7.2 in 2005.
- The resident infant mortality rate has dropped 25.0 percent since 1990 and is about half the rate of 1980.
- The resident infant mortality rate for nonwhites (12.5 per 1,000 live births) is more than double the infant mortality rate for whites (5.3 per 1,000 live births).
- Of all resident infant deaths, 73.3 percent were to infants of Non-Hispanic or Non-Haitian origin, 22.9 percent were to infants of Hispanic origin, and 3.3 percent were to infants of Haitian origin.
- Of the total resident deaths occurring within the first year of life, 63.0 percent were less than 28 days old. Furthermore, 36.7 percent were less than one day old.
- The leading causes of resident infant deaths in 2005 were Perinatal Period Conditions, Congenital Anomalies, Unintentional Injuries (Accidents), and Sudden Infant Death Syndrome. These causes accounted for 79.0 percent of all resident infant deaths.

**CHART F-1: RESIDENT FETAL DEATHS AND RATIOS PER 1,000 LIVE BIRTHS,  
BY RACE OF MOTHER, FLORIDA AND UNITED STATES TOTAL,  
CENSUS YEARS 1920-1990 AND 1995-2005**

YEAR	NUMBER OF FETAL DEATHS - FL			RATIOS - FL			RATIO - U.S.
	TOTAL	WHITE	NONWHITE	TOTAL	WHITE	NONWHITE	TOTAL
1920 <sup>1</sup>	1,287	595	692	65.9	43.9	115.4	NA
1930 <sup>1</sup>	1,754	746	1,008	65.0	40.1	120.1	NA
1940	1,415	683	732	42.0	28.7	74.0	NA
1950	1,443	757	868	22.4	16.6	36.7	18.8
1960	1,846	1,043	803	16.0	12.4	25.7	15.8
1970	1,701	1,064	637	14.8	12.2	22.6	14.0
1980	1,355	847	491	10.3	8.7	14.3	9.1
1990	1,811	1,071	720	9.1	7.2	14.6	7.5
1995	1,531	937	581	8.1	6.6	12.5	7.0
1996	1,478	885	577	7.8	6.2	12.3	6.9
1997	1,523	910	600	7.9	6.3	12.4	6.8
1998	1,520	912	594	7.8	6.3	12.0	6.7
1999	1,579	953	619	8.0	6.5	12.3	6.7
2000	1,675	954	704	8.2	6.4	13.1	6.6
2001	1,668	972	678	8.1	6.4	12.6	6.5
2002	1,591	920	657	7.7	6.0	12.4	6.4
2003	1,604	912	678	7.6	5.8	12.4	NA
2004	1,701	966	723	7.8	6.0	12.6	NA
2005	1,650	938	688	7.3	5.6	11.5	NA

1. Only recorded data are available.

**GRAPH F-1: RESIDENT FETAL DEATH RATIOS PER 1,000 LIVE BIRTHS, BY RACE OF MOTHER,  
FLORIDA, AND UNITED STATES TOTAL, 1995-2005**

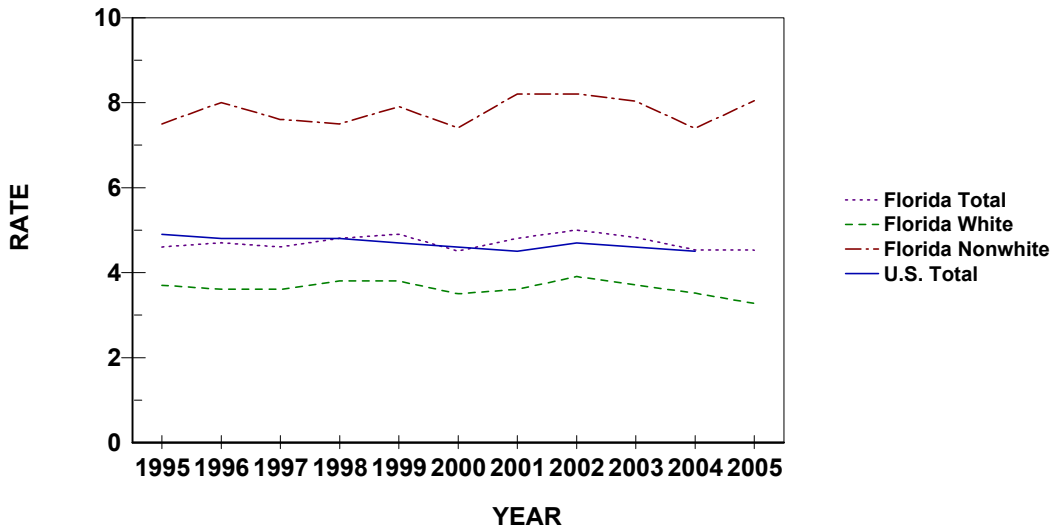


**CHART F-2: RESIDENT NEONATAL DEATHS AND RATES PER 1,000 LIVE BIRTHS,  
BY RACE, FLORIDA AND UNITED STATES TOTAL,  
CENSUS YEARS 1920-1990 AND 1995-2005**

YEAR	NUMBER OF NEONATAL DEATHS - FL			RATES - FL <sup>1</sup>			RATE - U.S.
	TOTAL	WHITE	NONWHITE	TOTAL	WHITE	NONWHITE	TOTAL
1920	NA	NA	NA	NA	NA	NA	NA
1930	NA	NA	NA	NA	NA	NA	NA
1940	1,142	662	480	33.9	27.8	48.5	28.8
1950	1,551	975	576	24.1	21.3	30.8	20.5
1960	2,404	1,531	873	20.8	18.1	28.0	18.7
1970	1,848	1,198	648	16.1	13.8	23.0	15.1
1980	1,282	791	490	9.7	8.1	14.2	8.5
1990	1,227	742	484	6.2	5.0	9.8	5.8
1995	874	523	351	4.6	3.7	7.5	4.9
1996	895	517	377	4.7	3.6	8.0	4.8
1997	889	518	370	4.6	3.6	7.6	4.8
1998	933	559	371	4.8	3.8	7.5	4.8
1999	962	559	401	4.9	3.8	7.9	4.7
2000	925	526	397	4.5	3.5	7.4	4.6
2001	980	539	440	4.8	3.6	8.2	4.5
2002	1,032	596	436	5.0	3.9	8.2	4.7
2003	1,025	584	438	4.8	3.7	8.0	4.6
2004	989	563	425	4.5	3.5	7.4	4.5 <sup>2</sup>
2005	1,024	544	479	4.5	3.3	8.0	NA

1. Rates based on neonatal deaths by race of decedent, live births by race of mother.  
2. Preliminary data.

**GRAPH F-2: RESIDENT NEONATAL DEATH RATES PER 1,000 LIVE BIRTHS, BY RACE,  
FLORIDA AND UNITED STATES TOTAL, 1995-2005**



**CHART F-3: RESIDENT INFANT DEATHS AND RATES PER 1,000 LIVE BIRTHS, BY RACE, FLORIDA AND UNITED STATES TOTAL, CENSUS YEARS 1920-1990 AND 1995-2005**

YEAR	NUMBER OF INFANT DEATHS - FL			RATES - FL <sup>2</sup>			RATE - U.S.
	TOTAL	WHITE	NONWHITE	TOTAL	WHITE	NONWHITE	TOTAL
1920 <sup>1</sup>	1,835	1,031	804	93.9	76.1	134.0	NA
1930 <sup>1</sup>	1,729	928	801	64.1	49.9	95.4	NA
1940	1,812	1,052	760	53.8	44.2	76.8	47.0
1950	2,078	1,225	853	32.3	26.8	45.7	29.2
1960	3,431	1,992	1,439	29.7	23.6	46.1	26.0
1970	2,466	1,537	927	21.4	17.7	32.9	20.0
1980	1,915	1,135	779	14.5	11.7	22.7	12.6
1990	1,909	1,121	786	9.6	7.5	16.0	9.2
1995	1,402	840	562	7.4	5.9	12.1	7.6
1996	1,405	821	583	7.4	5.8	12.4	7.3
1997	1,358	805	552	7.1	5.6	11.4	7.2
1998	1,415	850	562	7.2	5.8	11.4	7.2
1999	1,442	815	625	7.3	5.6	12.4	7.1
2000	1,423	810	611	7.0	5.4	11.4	6.9
2001	1,495	839	655	7.3	5.5	12.3	6.8
2002	1,548	892	656	7.5	5.9	12.4	7.0
2003	1,584	907	674	7.5	5.8	12.4	6.9
2004	1,536	876	659	7.0	5.5	11.5	6.8 <sup>3</sup>
2005	1,626	882	743	7.2	5.3	12.5	6.8 <sup>4</sup>

1. Only recorded data are available
2. Rates based on neonatal deaths by race of decedent, live births by race of mother
3. Preliminary data.
4. Provisional data.

**GRAPH F-3: RESIDENT INFANT DEATH RATES PER 1,000 LIVE BIRTHS, BY RACE, FLORIDA AND UNITED STATES TOTAL, 1995-2005**

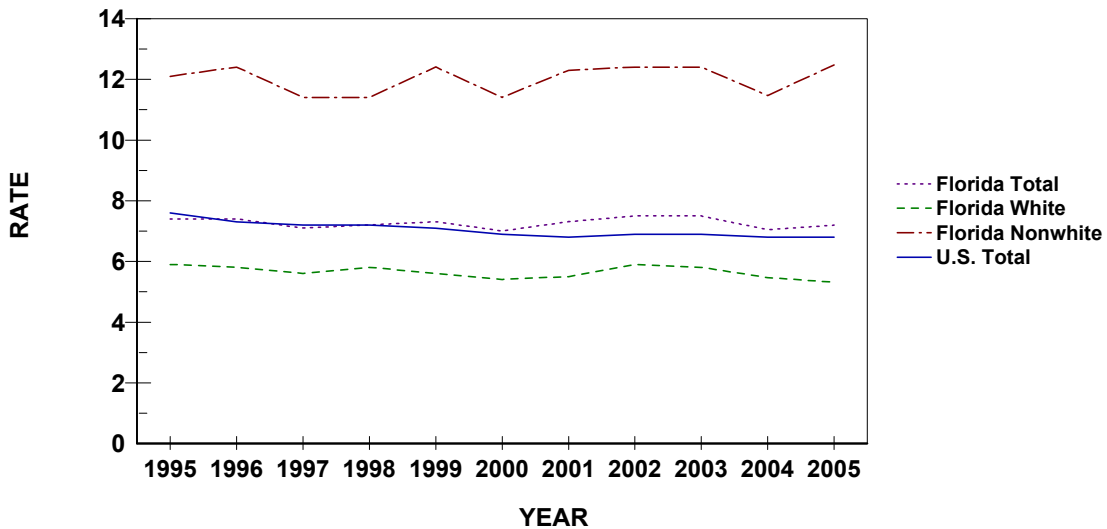


TABLE F-1: RESIDENT AND RECORDED FETAL DEATHS (OF 20 OR MORE WEEKS GESTATION) AND RATIOS PER 1,000 LIVE BIRTHS, BY RACE OF MOTHER, BY COUNTY, FLORIDA, 2005

RESIDENT FETAL DEATHS									
	NUMBERS						RATIOS		
	TOTAL	WHITE	NONWHITE			UNK	TOTAL	WHITE	NONWHITE
			TOTAL	BLACK	OTHER				
FLORIDA	1,650	938	688	649	39	24	7.3	5.6	11.5
ALACHUA	22	8	14	14	0	0	8.2	4.9	13.4
BAKER	2	2	0	0	0	0	5.4	6.3	0.0
BAY	12	10	1	1	0	1	5.0	5.5	1.9
BRADFORD	4	2	2	2	0	0	12.0	7.2	36.4
BREVARD	41	29	12	11	1	0	7.6	6.7	11.8
BROWARD	176	75	97	90	7	4	7.6	5.5	10.2
CALHOUN	2	2	0	0	0	0	12.7	14.3	0.0
CHARLOTTE	12	8	4	4	0	0	11.1	8.2	36.4
CITRUS	3	3	0	0	0	0	2.9	3.2	0.0
CLAY	15	11	4	3	1	0	6.7	5.8	11.8
COLLIER	26	22	4	4	0	0	6.4	6.3	7.2
COLUMBIA	3	3	0	0	0	0	3.5	4.5	0.0
MIAMI-DADE	270	143	124	123	1	3	8.3	6.1	14.0
DESOTO	2	2	0	0	0	0	4.0	4.4	0.0
DIXIE	2	2	0	0	0	0	11.8	12.2	0.0
DUVAL	103	46	57	56	1	0	7.9	6.1	10.6
ESCAMBIA	25	10	15	14	1	0	5.9	3.6	10.1
FLAGLER	6	5	1	1	0	0	8.7	8.5	9.8
FRANKLIN	0	0	0	0	0	0	0.0	0.0	0.0
GADSDEN	4	2	2	2	0	0	5.4	7.2	4.3
GILCHRIST	0	0	0	0	0	0	0.0	0.0	0.0
GLADES	2	1	1	0	1	0	26.0	17.2	52.6
GULF	1	1	0	0	0	0	7.7	9.1	0.0
HAMILTON	2	0	2	2	0	0	10.5	0.0	29.4
HARDEE	7	7	0	0	0	0	15.4	16.5	0.0
HENDRY	3	1	2	1	1	0	4.0	1.6	17.5
HERNANDO	8	7	1	1	0	0	5.3	5.3	5.5
HIGHLANDS	5	5	0	0	0	0	5.3	6.6	0.0
HILLSBOROUGH	104	70	32	29	3	2	6.2	5.6	7.7
HOLMES	1	1	0	0	0	0	4.0	4.3	0.0
INDIAN RIVER	10	7	3	3	0	0	7.4	6.2	13.5
JACKSON	2	1	1	1	0	0	3.5	2.6	5.7
JEFFERSON	1	0	1	1	0	0	6.0	0.0	14.1
LAFAYETTE	0	0	0	0	0	0	0.0	0.0	0.0
LAKE	21	12	9	9	0	0	6.5	4.5	16.6
LEE	56	36	20	18	2	0	8.4	6.3	19.7
LEON	20	7	12	11	1	1	6.4	4.2	8.4
LEVY	1	0	1	0	1	0	2.2	0.0	16.9
LIBERTY	0	0	0	0	0	0	0.0	0.0	0.0
MADISON	1	0	1	1	0	0	4.0	0.0	8.1
MANATEE	26	19	7	6	1	0	6.8	6.1	9.9
MARION	27	18	8	8	0	1	7.8	6.8	10.0
MARTIN	15	13	2	2	0	0	11.2	12.9	6.1
MONROE	2	2	0	0	0	0	2.6	3.0	0.0
NASSAU	3	3	0	0	0	0	3.7	4.0	0.0
OKALOOSA	11	8	3	2	1	0	4.0	3.7	5.4
OKEECHOBEE	10	8	2	2	0	0	17.0	15.0	38.5
ORANGE	141	66	70	65	5	5	8.5	5.9	13.0
OSCEOLA	22	18	4	4	0	0	6.1	5.9	7.7
PALM BEACH	116	49	62	58	4	5	7.7	4.6	13.5
PASCO	24	20	4	4	0	0	5.0	4.6	9.8
PINELLAS	61	35	25	24	1	1	6.7	5.0	12.1
POLK	58	36	22	21	1	0	7.4	5.9	13.0
PUTNAM	5	3	2	2	0	0	4.8	3.9	7.5
SAINT JOHNS	13	11	2	1	1	0	7.4	7.1	9.3
SAINT LUCIE	18	9	9	9	0	0	6.0	4.2	10.4
SANTA ROSA	8	8	0	0	0	0	4.6	5.0	0.0
SARASOTA	28	18	10	8	2	0	9.3	6.8	27.4
SEMINOLE	34	20	13	13	0	1	7.1	5.3	13.1
SUMTER	2	0	2	2	0	0	4.0	0.0	19.4
SUWANNEE	6	5	1	1	0	0	12.8	12.9	12.2
TAYLOR	0	0	0	0	0	0	0.0	0.0	0.0
UNION	3	2	1	1	0	0	18.1	14.2	40.0
VOLUSIA	31	17	14	12	2	0	6.1	4.0	16.3
WAKULLA	1	1	0	0	0	0	3.5	3.9	0.0
WALTON	9	7	2	2	0	0	14.9	12.8	33.9
WASHINGTON	1	1	0	0	0	0	4.0	4.8	0.0

TABLE F-1 (Cont.): RESIDENT AND RECORDED FETAL DEATHS (OF 20 OR MORE WEEKS GESTATION) AND RATIOS PER 1,000 LIVE BIRTHS, BY RACE OF MOTHER, BY COUNTY, FLORIDA, 2005

	RECORDED FETAL DEATHS						RATIOS		
	NUMBERS								
	TOTAL	WHITE	NONWHITE			UNK	TOTAL	WHITE	NONWHITE
TOTAL			BLACK	OTHER					
FLORIDA	1,673	958	691	652	39	24	7.4	5.8	11.5
ALACHUA	53	31	22	22	0	0	9.0	7.1	14.4
BAKER	0	0	0	0	0	0	0.0	0.0	0.0
BAY	13	11	1	1	0	1	4.4	4.7	1.7
BRADFORD	0	0	0	0	0	0	0.0	0.0	0.0
BREVARD	34	22	12	11	1	0	6.4	5.2	12.0
BROWARD	192	85	102	95	7	5	8.1	6.3	10.2
CALHOUN	0	0	0	0	0	0	0.0	0.0	----
CHARLOTTE	5	3	2	2	0	0	4.7	3.2	16.0
CITRUS	3	3	0	0	0	0	3.2	3.4	0.0
CLAY	16	7	9	8	1	0	8.3	4.4	27.0
COLLIER	27	23	4	4	0	0	6.6	6.5	7.6
COLUMBIA	6	4	2	2	0	0	7.8	7.3	9.2
MIAMI-DADE	255	136	117	116	1	2	8.2	6.0	14.4
DESOTO	5	5	0	0	0	0	7.7	8.4	0.0
DIXIE	0	0	0	0	0	0	0.0	0.0	----
DUVAL	119	63	56	54	2	0	7.8	6.6	10.0
ESCAMBIA	42	24	18	16	2	0	6.9	5.5	10.7
FLAGLER	0	0	0	0	0	0	0.0	0.0	0.0
FRANKLIN	0	0	0	0	0	0	----	----	----
GADSDEN	0	0	0	0	0	0	0.0	0.0	0.0
GILCHRIST	0	0	0	0	0	0	----	----	----
GLADES	0	0	0	0	0	0	----	----	----
GULF	0	0	0	0	0	0	0.0	----	----
HAMILTON	0	0	0	0	0	0	0.0	0.0	0.0
HARDEE	0	0	0	0	0	0	0.0	0.0	----
HENDRY	0	0	0	0	0	0	0.0	0.0	0.0
HERNANDO	7	7	0	0	0	0	4.3	4.8	0.0
HIGHLANDS	12	11	1	0	1	0	9.0	9.9	4.4
HILLSBOROUGH	116	75	39	35	4	2	6.1	5.2	8.7
HOLMES	0	0	0	0	0	0	0.0	0.0	----
INDIAN RIVER	7	4	3	3	0	0	5.5	3.7	14.9
JACKSON	4	3	1	1	0	0	7.4	7.9	6.0
JEFFERSON	0	0	0	0	0	0	----	----	----
LAFAYETTE	0	0	0	0	0	0	----	----	----
LAKE	11	4	7	7	0	0	3.8	1.7	12.6
LEE	50	29	21	19	2	0	6.8	4.6	19.5
LEON	27	10	16	15	1	1	5.4	3.6	7.3
LEVY	0	0	0	0	0	0	0.0	0.0	0.0
LIBERTY	0	0	0	0	0	0	----	----	----
MADISON	0	0	0	0	0	0	0.0	0.0	----
MANATEE	17	12	5	5	0	0	5.8	5.0	9.4
MARION	15	9	5	4	1	1	5.3	4.2	7.3
MARTIN	17	14	3	3	0	0	8.3	8.6	7.2
MONROE	2	2	0	0	0	0	3.7	4.4	0.0
NASSAU	2	2	0	0	0	0	4.2	4.9	0.0
OKALOOSA	11	9	2	2	0	0	3.6	3.6	3.6
OKEECHOBEE	0	0	0	0	0	0	0.0	0.0	0.0
ORANGE	196	108	82	79	3	6	9.8	7.7	13.9
OSCEOLA	24	20	4	3	1	0	6.2	6.1	6.6
PALM BEACH	132	60	67	62	5	5	7.6	4.9	13.2
PASCO	15	13	2	2	0	0	8.5	8.1	12.7
PINELLAS	64	40	23	22	1	1	6.0	4.7	10.6
POLK	46	28	18	17	1	0	7.0	5.5	12.4
PUTNAM	3	2	1	1	0	0	5.2	5.1	5.3
SAINT JOHNS	9	8	1	1	0	0	8.1	8.5	6.0
SAINT LUCIE	15	6	9	9	0	0	7.2	4.4	12.8
SANTA ROSA	3	3	0	0	0	0	8.7	9.8	0.0
SARASOTA	51	38	13	11	2	0	13.6	11.9	24.4
SEMINOLE	20	9	11	9	2	0	5.1	2.9	13.4
SUMTER	0	0	0	0	0	0	0.0	0.0	----
SUWANNEE	0	0	0	0	0	0	0.0	0.0	----
TAYLOR	0	0	0	0	0	0	0.0	0.0	0.0
UNION	0	0	0	0	0	0	0.0	0.0	----
VOLUSIA	26	15	11	10	1	0	6.1	4.3	14.6
WAKULLA	0	0	0	0	0	0	0.0	----	0.0
WALTON	1	0	1	1	0	0	66.7	0.0	1,000.0
WASHINGTON	0	0	0	0	0	0	----	----	----

TABLE F-2: RESIDENT FETAL DEATHS BY HISPANIC OR HAITIAN ORIGIN OF MOTHER, BY COUNTY, FLORIDA, 2005

	TOTAL	HISPANIC ORIGIN							HAITIAN	NON-HISPANIC/HAITIAN	UNK
		TOTAL HISPANIC	MEXICAN	PUERTO RICAN	CUBAN	CENTRAL/SOUTH AMERICAN	OTHER/UNK HISPANIC				
FLORIDA	1,650	309	95	59	50	88	17	78	1,094	169	
ALACHUA	22	1	0	1	0	0	0	0	21	0	
BAKER	2	0	0	0	0	0	0	0	2	0	
BAY	12	1	1	0	0	0	0	0	11	0	
BRADFORD	4	0	0	0	0	0	0	0	4	0	
BREVARD	41	4	0	1	0	3	0	1	36	0	
BROWARD	176	37	1	5	6	23	2	18	107	14	
CALHOUN	2	0	0	0	0	0	0	0	2	0	
CHARLOTTE	12	0	0	0	0	0	0	3	9	0	
CITRUS	3	0	0	0	0	0	0	0	3	0	
CLAY	15	0	0	0	0	0	0	0	15	0	
COLLIER	26	11	8	0	2	1	0	4	11	0	
COLUMBIA	3	0	0	0	0	0	0	0	3	0	
MIAMI-DADE	270	72	10	4	32	25	1	7	59	132	
DESOTO	2	2	2	0	0	0	0	0	0	0	
DIXIE	2	0	0	0	0	0	0	0	2	0	
DUVAL	103	8	2	2	1	1	2	0	95	0	
ESCAMBIA	25	0	0	0	0	0	0	0	25	0	
FLAGLER	6	0	0	0	0	0	0	0	6	0	
FRANKLIN	0	0	0	0	0	0	0	0	0	0	
GADSDEN	4	1	1	0	0	0	0	0	3	0	
GILCHRIST	0	0	0	0	0	0	0	0	0	0	
GLADES	2	0	0	0	0	0	0	0	2	0	
GULF	1	0	0	0	0	0	0	0	1	0	
HAMILTON	2	0	0	0	0	0	0	0	2	0	
HARDEE	7	2	2	0	0	0	0	0	5	0	
HENDRY	3	1	1	0	0	0	0	0	2	0	
HERNANDO	8	0	0	0	0	0	0	0	8	0	
HIGHLANDS	5	3	1	2	0	0	0	0	1	1	
HILLSBOROUGH	104	27	7	9	3	5	3	3	70	4	
HOLMES	1	0	0	0	0	0	0	0	1	0	
INDIAN RIVER	10	2	2	0	0	0	0	0	8	0	
JACKSON	2	0	0	0	0	0	0	0	2	0	
JEFFERSON	1	0	0	0	0	0	0	0	1	0	
LAFAYETTE	0	0	0	0	0	0	0	0	0	0	
LAKE	21	2	1	0	0	1	0	0	19	0	
LEE	56	16	11	2	2	1	0	5	35	0	
LEON	20	0	0	0	0	0	0	0	20	0	
LEVY	1	1	1	0	0	0	0	0	0	0	
LIBERTY	0	0	0	0	0	0	0	0	0	0	
MADISON	1	0	0	0	0	0	0	0	1	0	
MANATEE	26	3	3	0	0	0	0	0	23	0	
MARION	27	0	0	0	0	0	0	0	26	1	
MARTIN	15	8	3	1	0	4	0	0	7	0	
MONROE	2	0	0	0	0	0	0	0	2	0	
NASSAU	3	0	0	0	0	0	0	0	3	0	
OKALOOSA	11	0	0	0	0	0	0	0	11	0	
OKEECHOBEE	10	3	3	0	0	0	0	0	7	0	
ORANGE	141	29	6	11	2	7	3	10	95	7	
OSCEOLA	22	10	0	9	0	0	1	1	11	0	
PALM BEACH	116	23	8	4	0	10	1	20	66	7	
PASCO	24	5	2	2	0	1	0	0	19	0	
PINELLAS	61	9	4	2	1	2	0	1	50	1	
POLK	58	12	7	1	1	1	2	2	43	1	
PUTNAM	5	2	2	0	0	0	0	0	3	0	
SAINT JOHNS	13	1	0	0	0	1	0	0	12	0	
SAINT LUCIE	18	1	0	1	0	0	0	2	15	0	
SANTA ROSA	8	0	0	0	0	0	0	0	8	0	
SARASOTA	28	6	4	0	0	1	1	0	22	0	
SEMINOLE	34	3	0	2	0	1	0	1	29	1	
SUMTER	2	0	0	0	0	0	0	0	2	0	
SUWANNEE	6	0	0	0	0	0	0	0	6	0	
TAYLOR	0	0	0	0	0	0	0	0	0	0	
UNION	3	0	0	0	0	0	0	0	3	0	
VOLUSIA	31	3	2	0	0	0	1	0	28	0	
WAKULLA	1	0	0	0	0	0	0	0	1	0	
WALTON	9	0	0	0	0	0	0	0	9	0	
WASHINGTON	1	0	0	0	0	0	0	0	1	0	



TABLE F-3: RESIDENT FETAL DEATHS BY AGE OF MOTHER, BY COUNTY, FLORIDA, 2005

	TOTAL	AGE OF MOTHER													
		<13	13	14	15	16	17	18	19	20-24	25-29	30-34	35-44	45+	UNK
FLORIDA	1,650	0	1	7	13	28	35	50	90	402	387	301	284	6	46
ALACHUA	22	0	0	0	0	0	1	0	0	6	3	4	8	0	0
BAKER	2	0	0	0	0	0	0	0	0	1	1	0	0	0	0
BAY	12	0	0	0	0	0	0	0	0	5	5	1	1	0	0
BRADFORD	4	0	0	0	0	0	0	0	0	0	2	1	1	0	0
BREVARD	41	0	0	0	1	1	0	2	0	12	10	7	7	0	1
BROWARD	176	0	0	0	0	1	0	3	6	40	35	47	31	1	12
CALHOUN	2	0	0	0	0	0	0	0	0	2	0	0	0	0	0
CHARLOTTE	12	0	0	0	0	0	0	1	0	0	3	6	2	0	0
CITRUS	3	0	0	0	0	0	0	0	0	1	1	0	1	0	0
CLAY	15	0	0	0	0	0	0	0	1	5	3	3	3	0	0
COLLIER	26	0	0	0	0	0	0	2	3	5	5	5	6	0	0
COLUMBIA	3	0	0	0	1	0	0	1	0	0	0	1	0	0	0
MIAMI-DADE	270	0	0	0	3	3	4	9	12	54	64	54	54	3	10
DESOTO	2	0	0	0	0	0	0	1	0	0	0	0	1	0	0
DIXIE	2	0	0	0	0	0	0	0	1	0	0	1	0	0	0
DUVAL	103	0	0	0	0	3	2	1	5	29	30	12	19	1	1
ESCAMBIA	25	0	0	0	1	0	3	1	2	8	4	6	0	0	0
FLAGLER	6	0	0	0	0	0	0	0	0	2	2	0	2	0	0
FRANKLIN	0	0	0	0	0	0	0	0	0	0	0	0	0	0	0
GADSDEN	4	0	0	0	1	0	0	0	0	2	1	0	0	0	0
GILCHRIST	0	0	0	0	0	0	0	0	0	0	0	0	0	0	0
GLADES	2	0	0	0	0	0	0	0	0	0	1	0	1	0	0
GULF	1	0	0	0	0	0	0	0	0	1	0	0	0	0	0
HAMILTON	2	0	0	0	0	0	0	0	0	1	0	0	1	0	0
HARDEE	7	0	0	0	0	0	0	0	0	3	1	1	2	0	0
HENDRY	3	0	0	0	0	0	0	0	0	1	0	1	1	0	0
HERNANDO	8	0	0	0	0	0	0	0	0	1	1	1	3	0	2
HIGHLANDS	5	0	0	0	0	0	0	0	0	3	1	1	0	0	0
HILLSBOROUGH	104	0	0	1	1	2	1	3	9	32	33	8	13	0	1
HOLMES	1	0	0	0	0	0	0	0	0	0	1	0	0	0	0
INDIAN RIVER	10	0	0	1	0	0	0	0	3	1	2	1	2	0	0
JACKSON	2	0	0	0	1	0	0	0	1	0	0	0	0	0	0
JEFFERSON	1	0	0	0	0	0	0	0	0	1	0	0	0	0	0
LAFAYETTE	0	0	0	0	0	0	0	0	0	0	0	0	0	0	0
LAKE	21	0	0	0	0	1	2	1	3	7	3	1	2	0	1
LEE	56	0	0	0	0	2	3	2	3	17	12	7	10	0	0
LEON	20	0	0	0	0	2	2	0	2	3	6	4	1	0	0
LEVY	1	0	0	0	0	0	0	0	0	1	0	0	0	0	0
LIBERTY	0	0	0	0	0	0	0	0	0	0	0	0	0	0	0
MADISON	1	0	0	0	0	0	1	0	0	0	0	0	0	0	0
MANATEE	26	0	0	0	1	1	0	1	1	7	3	5	7	0	0
MARION	27	0	0	0	0	0	0	3	1	9	6	2	3	0	3
MARTIN	15	0	0	0	0	1	0	0	1	3	5	4	1	0	0
MONROE	2	0	0	0	0	0	0	0	0	0	1	0	1	0	0
NASSAU	3	0	0	0	0	0	0	0	0	1	1	1	0	0	0
OKALOOSA	11	0	0	0	0	0	0	0	0	3	2	4	2	0	0
OKEECHOBEE	10	0	0	0	0	1	0	0	1	3	4	1	0	0	0
ORANGE	141	0	0	1	1	3	6	2	4	30	35	24	29	0	6
OSCEOLA	22	0	0	0	0	1	1	1	2	8	1	7	1	0	0
PALM BEACH	116	0	0	1	1	2	2	4	3	23	27	26	22	1	4
PASCO	24	0	0	0	0	1	0	1	2	2	5	6	7	0	0
PINELLAS	61	0	0	0	0	1	0	2	4	15	16	12	10	0	1
POLK	58	0	0	0	1	0	4	3	5	12	16	8	8	0	1
PUTNAM	5	0	0	0	0	0	0	0	1	4	0	0	0	0	0
SAINT JOHNS	13	0	0	0	0	0	1	1	0	0	2	4	5	0	0
SAINT LUCIE	18	0	0	0	0	1	2	1	1	5	5	2	1	0	0
SANTA ROSA	8	0	0	0	0	0	0	0	0	4	4	0	0	0	0
SARASOTA	28	0	0	1	0	0	0	3	3	9	7	3	2	0	0
SEMINOLE	34	0	0	1	0	1	0	0	5	3	8	10	4	0	2
SUMTER	2	0	0	0	0	0	0	0	0	1	1	0	0	0	0
SUWANNEE	6	0	0	0	0	0	0	0	0	4	0	1	1	0	0
TAYLOR	0	0	0	0	0	0	0	0	0	0	0	0	0	0	0
UNION	3	0	0	0	0	0	0	0	1	1	0	0	1	0	0
VOLUSIA	31	0	1	1	0	0	0	1	2	10	4	7	4	0	1
WAKULLA	1	0	0	0	0	0	0	0	0	0	1	0	0	0	0
WALTON	9	0	0	0	0	0	0	0	2	1	2	1	3	0	0
WASHINGTON	1	0	0	0	0	0	0	0	0	0	1	0	0	0	0

TABLE F-4: RESIDENT AND RECORDED NEONATAL DEATHS (UNDER 28 DAYS) AND RATES PER 1,000 LIVE BIRTHS, BY RACE, BY COUNTY, FLORIDA, 2005

	RESIDENT NEONATAL DEATHS						RATES*		
			NUMBERS						
	TOTAL	WHITE	NONWHITE			TOTAL	WHITE	NONWHITE	
			TOTAL	BLACK	OTHER	UNK			
FLORIDA	1,024	544	479	422	57	1	4.5	3.3	8.0
ALACHUA	16	2	14	12	2	0	5.9	1.2	13.4
BAKER	4	1	3	2	1	0	10.8	3.2	55.6
BAY	9	6	3	1	2	0	3.8	3.3	5.7
BRADFORD	1	0	1	1	0	0	3.0	0.0	18.2
BREVARD	21	14	7	6	1	0	3.9	3.2	6.9
BROWARD	93	38	55	48	7	0	4.0	2.8	5.8
CALHOUN	1	1	0	0	0	0	6.3	7.1	0.0
CHARLOTTE	6	6	0	0	0	0	5.5	6.2	0.0
CITRUS	6	5	1	0	1	0	5.9	5.3	13.2
CLAY	6	4	2	2	0	0	2.7	2.1	5.9
COLLIER	11	9	2	2	0	0	2.7	2.6	3.6
COLUMBIA	9	6	3	3	0	0	10.6	8.9	16.9
MIAMI-DADE	121	61	60	56	4	0	3.7	2.6	6.8
DESOTO	1	1	0	0	0	0	2.0	2.2	0.0
DIXIE	0	0	0	0	0	0	0.0	0.0	0.0
DUVAL	97	34	63	55	8	0	7.5	4.5	11.7
ESCAMBIA	17	6	11	10	1	0	4.0	2.2	7.4
FLAGLER	4	4	0	0	0	0	5.8	6.8	0.0
FRANKLIN	0	0	0	0	0	0	0.0	0.0	0.0
GADSDEN	7	2	5	4	1	0	9.4	7.2	10.8
GILCHRIST	0	0	0	0	0	0	0.0	0.0	0.0
GLADES	0	0	0	0	0	0	0.0	0.0	0.0
GULF	1	0	1	1	0	0	7.7	0.0	50.0
HAMILTON	0	0	0	0	0	0	0.0	0.0	0.0
HARDEE	0	0	0	0	0	0	0.0	0.0	0.0
HENDRY	5	5	0	0	0	0	6.6	7.8	0.0
HERNANDO	5	4	1	1	0	0	3.3	3.0	5.5
HIGHLANDS	3	0	3	3	0	0	3.2	0.0	16.3
HILLSBOROUGH	104	46	57	49	8	1	6.2	3.7	13.8
HOLMES	1	1	0	0	0	0	4.0	4.3	0.0
INDIAN RIVER	6	6	0	0	0	0	4.4	5.3	0.0
JACKSON	5	2	3	3	0	0	8.8	5.1	17.0
JEFFERSON	3	2	1	1	0	0	18.0	20.8	14.1
LAFAYETTE	0	0	0	0	0	0	0.0	0.0	0.0
LAKE	11	8	3	2	1	0	3.4	3.0	5.5
LEE	22	15	7	6	1	0	3.3	2.6	6.9
LEON	21	4	17	15	2	0	6.8	2.4	11.9
LEVY	2	2	0	0	0	0	4.3	5.0	0.0
LIBERTY	0	0	0	0	0	0	0.0	0.0	0.0
MADISON	1	0	1	1	0	0	4.0	0.0	8.1
MANATEE	20	11	9	8	1	0	5.3	3.6	12.7
MARION	19	14	5	4	1	0	5.5	5.3	6.3
MARTIN	5	4	1	1	0	0	3.7	4.0	3.0
MONROE	1	1	0	0	0	0	1.3	1.5	0.0
NASSAU	6	5	1	1	0	0	7.4	6.7	16.7
OKALOOSA	9	6	3	3	0	0	3.3	2.7	5.4
OKEECHOBEE	0	0	0	0	0	0	0.0	0.0	0.0
ORANGE	81	44	37	34	3	0	4.9	3.9	6.9
OSCEOLA	18	13	5	4	1	0	5.0	4.2	9.6
PALM BEACH	48	28	20	17	3	0	3.2	2.7	4.4
PASCO	24	21	3	2	1	0	5.0	4.8	7.3
PINELLAS	51	24	27	23	4	0	5.6	3.4	13.1
POLK	36	21	15	15	0	0	4.6	3.4	8.9
PUTNAM	9	6	3	3	0	0	8.7	7.8	11.2
SAINT JOHNS	4	4	0	0	0	0	2.3	2.6	0.0
SAINT LUCIE	12	6	6	6	0	0	4.0	2.8	6.9
SANTA ROSA	3	2	1	0	1	0	1.7	1.3	6.6
SARASOTA	12	10	2	1	1	0	4.0	3.8	5.5
SEMINOLE	24	15	9	8	1	0	5.0	4.0	9.0
SUMTER	1	1	0	0	0	0	2.0	2.5	0.0
SUWANNEE	1	1	0	0	0	0	2.1	2.6	0.0
TAYLOR	1	0	1	1	0	0	4.1	0.0	16.7
UNION	0	0	0	0	0	0	0.0	0.0	0.0
VOLUSIA	11	7	4	4	0	0	2.2	1.7	4.6
WAKULLA	1	1	0	0	0	0	3.5	3.9	0.0
WALTON	4	4	0	0	0	0	6.6	7.3	0.0
WASHINGTON	3	0	3	3	0	0	12.0	0.0	73.2

\*Rates based on neonatal deaths by race of decedent, live births by race of mother.

TABLE F-4 (Cont.): RESIDENT AND RECORDED NEONATAL DEATHS (UNDER 28 DAYS) AND RATES PER 1,000 LIVE BIRTHS, BY RACE, BY COUNTY, FLORIDA, 2005

	RECORDED NEONATAL DEATHS						RATES*		
			NUMBERS						
	TOTAL	WHITE	NONWHITE			TOTAL	WHITE	NONWHITE	
			TOTAL	BLACK	OTHER	UNK			
FLORIDA	1,048	559	488	430	58	1	4.6	3.4	8.2
ALACHUA	66	35	31	26	5	0	11.2	8.1	20.2
BAKER	0	0	0	0	0	0	0.0	0.0	0.0
BAY	6	3	3	3	0	0	2.0	1.3	5.0
BRADFORD	0	0	0	0	0	0	0.0	0.0	0.0
BREVARD	7	5	2	2	0	0	1.3	1.2	2.0
BROWARD	89	29	60	52	8	0	3.8	2.1	6.0
CALHOUN	0	0	0	0	0	0	0.0	0.0	----
CHARLOTTE	3	3	0	0	0	0	2.8	3.2	0.0
CITRUS	0	0	0	0	0	0	0.0	0.0	0.0
CLAY	2	1	1	1	0	0	1.0	0.6	3.0
COLLIER	5	4	1	1	0	0	1.2	1.1	1.9
COLUMBIA	4	1	3	3	0	0	5.2	1.8	13.8
MIAMI-DADE	135	76	59	55	4	0	4.4	3.4	7.3
DESOTO	0	0	0	0	0	0	0.0	0.0	0.0
DIXIE	0	0	0	0	0	0	0.0	0.0	----
DUVAL	117	48	69	60	9	0	7.7	5.0	12.4
ESCAMBIA	28	15	13	9	4	0	4.6	3.4	7.7
FLAGLER	0	0	0	0	0	0	0.0	0.0	0.0
FRANKLIN	0	0	0	0	0	0	----	----	----
GADSDEN	0	0	0	0	0	0	0.0	0.0	0.0
GILCHRIST	0	0	0	0	0	0	----	----	----
GLADES	0	0	0	0	0	0	----	----	----
GULF	0	0	0	0	0	0	0.0	----	----
HAMILTON	0	0	0	0	0	0	0.0	0.0	0.0
HARDEE	0	0	0	0	0	0	0.0	0.0	----
HENDRY	0	0	0	0	0	0	0.0	0.0	0.0
HERNANDO	1	1	0	0	0	0	0.6	0.7	0.0
HIGHLANDS	1	0	1	1	0	0	0.7	0.0	4.4
HILLSBOROUGH	144	80	63	55	8	1	7.6	5.5	14.1
HOLMES	0	0	0	0	0	0	0.0	0.0	----
INDIAN RIVER	1	1	0	0	0	0	0.8	0.9	0.0
JACKSON	6	3	3	3	0	0	11.0	7.9	18.1
JEFFERSON	0	0	0	0	0	0	----	----	----
LAFAYETTE	0	0	0	0	0	0	----	----	----
LAKE	0	0	0	0	0	0	0.0	0.0	0.0
LEE	26	19	7	6	1	0	3.5	3.0	6.5
LEON	32	9	23	21	2	0	6.4	3.2	10.5
LEVY	0	0	0	0	0	0	0.0	0.0	0.0
LIBERTY	0	0	0	0	0	0	----	----	----
MADISON	0	0	0	0	0	0	0.0	0.0	----
MANATEE	9	7	2	1	1	0	3.1	2.9	3.8
MARION	3	2	1	1	0	0	1.1	0.9	1.5
MARTIN	2	1	1	1	0	0	1.0	0.6	2.4
MONROE	0	0	0	0	0	0	0.0	0.0	0.0
NASSAU	3	3	0	0	0	0	6.4	7.3	0.0
OKALOOSA	7	4	3	3	0	0	2.3	1.6	5.5
OKEECHOBEE	0	0	0	0	0	0	0.0	0.0	0.0
ORANGE	147	92	55	49	6	0	7.4	6.5	9.3
OSCEOLA	10	7	3	3	0	0	2.6	2.1	5.0
PALM BEACH	54	32	22	19	3	0	3.1	2.6	4.3
PASCO	8	7	1	1	0	0	4.5	4.3	6.4
PINELLAS	74	40	34	28	6	0	6.9	4.7	15.6
POLK	22	10	12	12	0	0	3.3	2.0	8.3
PUTNAM	4	4	0	0	0	0	6.9	10.2	0.0
SAINT JOHNS	1	1	0	0	0	0	0.9	1.1	0.0
SAINT LUCIE	4	3	1	1	0	0	1.9	2.2	1.4
SANTA ROSA	0	0	0	0	0	0	0.0	0.0	0.0
SARASOTA	14	8	6	6	0	0	3.7	2.5	11.3
SEMINOLE	5	2	3	2	1	0	1.3	0.6	3.7
SUMTER	0	0	0	0	0	0	0.0	0.0	----
SUWANNEE	0	0	0	0	0	0	0.0	0.0	----
TAYLOR	0	0	0	0	0	0	0.0	0.0	0.0
UNION	0	0	0	0	0	0	0.0	0.0	----
VOLUSIA	7	3	4	4	0	0	1.6	0.9	5.3
WAKULLA	0	0	0	0	0	0	0.0	----	0.0
WALTON	0	0	0	0	0	0	0.0	0.0	0.0
WASHINGTON	1	0	1	1	0	0	----	----	----

\*Rates based on neonatal deaths by race of decedent, live births by race of mother.

TABLE F-5: RESIDENT AND RECORDED INFANT DEATHS (UNDER 1 YEAR) AND RATES PER 1,000 LIVE BIRTHS, BY RACE, BY COUNTY, FLORIDA, 2005

	RESIDENT INFANT DEATHS						RATES*		
	NUMBERS								
	TOTAL	WHITE	NONWHITE			UNK	TOTAL	WHITE	NONWHITE
			TOTAL	BLACK	OTHER				
FLORIDA	1,626	882	743	652	91	1	7.2	5.3	12.5
ALACHUA	25	5	20	17	3	0	9.3	3.0	19.2
BAKER	7	4	3	2	1	0	19.0	12.7	55.6
BAY	14	10	4	2	2	0	5.9	5.5	7.6
BRADFORD	1	0	1	1	0	0	3.0	0.0	18.2
BREVARD	37	30	7	6	1	0	6.9	6.9	6.9
BROWARD	144	54	90	78	12	0	6.2	4.0	9.5
CALHOUN	2	2	0	0	0	0	12.7	14.3	0.0
CHARLOTTE	8	7	1	1	0	0	7.4	7.2	9.1
CITRUS	10	7	3	1	2	0	9.8	7.4	39.5
CLAY	15	12	3	3	0	0	6.7	6.3	8.8
COLLIER	18	16	2	2	0	0	4.4	4.6	3.6
COLUMBIA	11	8	3	3	0	0	12.9	11.9	16.9
MIAMI-DADE	176	92	84	78	6	0	5.4	3.9	9.5
DESOTO	2	2	0	0	0	0	4.0	4.4	0.0
DIXIE	0	0	0	0	0	0	0.0	0.0	0.0
DUVAL	150	60	90	78	12	0	11.6	7.9	16.8
ESCAMBIA	30	12	18	17	1	0	7.1	4.4	12.1
FLAGLER	4	4	0	0	0	0	5.8	6.8	0.0
FRANKLIN	1	1	0	0	0	0	8.4	9.3	0.0
GADSDEN	10	2	8	7	1	0	13.5	7.2	17.3
GILCHRIST	0	0	0	0	0	0	0.0	0.0	0.0
GLADES	0	0	0	0	0	0	0.0	0.0	0.0
GULF	1	0	1	1	0	0	7.7	0.0	50.0
HAMILTON	1	0	1	1	0	0	5.2	0.0	14.7
HARDEE	2	2	0	0	0	0	4.4	4.7	0.0
HENDRY	9	8	1	1	0	0	11.9	12.4	8.8
HERNANDO	12	10	2	2	0	0	8.0	7.6	11.0
HIGHLANDS	7	3	4	4	0	0	7.5	4.0	21.7
HILLSBOROUGH	149	65	83	71	12	1	8.9	5.2	20.1
HOLMES	1	1	0	0	0	0	4.0	4.3	0.0
INDIAN RIVER	7	6	1	1	0	0	5.1	5.3	4.5
JACKSON	9	3	6	5	1	0	15.9	7.7	34.1
JEFFERSON	3	2	1	1	0	0	18.0	20.8	14.1
LAFAYETTE	1	1	0	0	0	0	8.8	10.0	0.0
LAKE	26	18	8	7	1	0	8.1	6.7	14.8
LEE	34	24	10	7	3	0	5.1	4.2	9.8
LEON	26	6	20	18	2	0	8.4	3.6	14.0
LEVY	3	3	0	0	0	0	6.5	7.4	0.0
LIBERTY	0	0	0	0	0	0	0.0	0.0	0.0
MADISON	1	0	1	1	0	0	4.0	0.0	8.1
MANATEE	26	14	12	10	2	0	6.8	4.5	16.9
MARION	27	19	8	7	1	0	7.8	7.2	10.0
MARTIN	11	6	5	4	1	0	8.2	5.9	15.2
MONROE	1	1	0	0	0	0	1.3	1.5	0.0
NASSAU	8	7	1	1	0	0	9.9	9.3	16.7
OKALOOSA	16	11	5	3	2	0	5.8	5.0	9.0
OKEECHOBEE	1	1	0	0	0	0	1.7	1.9	0.0
ORANGE	128	67	61	56	5	0	7.7	6.0	11.4
OSCEOLA	29	22	7	5	2	0	8.1	7.2	13.4
PALM BEACH	96	48	48	41	7	0	6.3	4.5	10.5
PASCO	34	28	6	4	2	0	7.2	6.5	14.7
PINELLAS	77	39	38	34	4	0	8.5	5.6	18.4
POLK	64	35	29	27	2	0	8.2	5.7	17.1
PUTNAM	19	12	7	7	0	0	18.4	15.7	26.1
SAINT JOHNS	9	9	0	0	0	0	5.1	5.8	0.0
SAINT LUCIE	19	11	8	8	0	0	6.3	5.2	9.2
SANTA ROSA	9	8	1	0	1	0	5.2	5.0	6.6
SARASOTA	16	14	2	1	1	0	5.3	5.3	5.5
SEMINOLE	37	23	14	13	1	0	7.7	6.1	14.1
SUMTER	2	2	0	0	0	0	4.0	5.0	0.0
SUWANNEE	3	2	1	1	0	0	6.4	5.2	12.2
TAYLOR	2	0	2	2	0	0	8.2	0.0	33.3
UNION	0	0	0	0	0	0	0.0	0.0	0.0
VOLUSIA	24	16	8	8	0	0	4.7	3.8	9.3
WAKULLA	2	1	1	1	0	0	6.9	3.9	31.3
WALTON	4	4	0	0	0	0	6.6	7.3	0.0
WASHINGTON	4	1	3	3	0	0	16.1	4.8	73.2

\*Rates based on infant deaths by race of decedent, live births by race of mother.

TABLE F-5 (Cont.): RESIDENT AND RECORDED INFANT DEATHS (UNDER 1 YEAR) AND RATES PER 1,000 LIVE BIRTHS, BY RACE, BY COUNTY, FLORIDA, 2005

	RECORDED INFANT DEATHS						RATES*		
	NUMBERS								
	TOTAL	WHITE	NONWHITE			UNK	TOTAL	WHITE	NONWHITE
			TOTAL	BLACK	OTHER				
FLORIDA	1,664	906	757	665	92	1	7.3	5.4	12.6
ALACHUA	95	47	48	41	7	0	16.2	10.8	31.3
BAKER	2	2	0	0	0	0	666.7	2,000.0	0.0
BAY	9	5	4	4	0	0	3.0	2.1	6.6
BRADFORD	0	0	0	0	0	0	0.0	0.0	0.0
BREVARD	19	17	2	2	0	0	3.6	4.0	2.0
BROWARD	137	43	94	81	13	0	5.8	3.2	9.4
CALHOUN	1	1	0	0	0	0	1,000.0	1,000.0	----
CHARLOTTE	4	4	0	0	0	0	3.8	4.3	0.0
CITRUS	4	2	2	1	1	0	4.3	2.3	30.3
CLAY	8	7	1	1	0	0	4.1	4.4	3.0
COLLIER	10	8	2	2	0	0	2.4	2.2	3.8
COLUMBIA	6	3	3	3	0	0	7.8	5.5	13.8
MIAMI-DADE	219	123	96	88	8	0	7.1	5.4	11.8
DESOTO	1	1	0	0	0	0	1.5	1.7	0.0
DIXIE	0	0	0	0	0	0	0.0	0.0	----
DUVAL	173	78	95	82	13	0	11.4	8.1	17.0
ESCAMBIA	49	26	23	17	6	0	8.1	6.0	13.7
FLAGLER	0	0	0	0	0	0	0.0	0.0	0.0
FRANKLIN	1	1	0	0	0	0	----	----	----
GADSDEN	1	0	1	1	0	0	166.7	0.0	500.0
GILCHRIST	0	0	0	0	0	0	----	----	----
GLADES	0	0	0	0	0	0	----	----	----
GULF	0	0	0	0	0	0	0.0	----	----
HAMILTON	1	0	1	1	0	0	166.7	0.0	333.3
HARDEE	1	1	0	0	0	0	500.0	500.0	----
HENDRY	1	1	0	0	0	0	250.0	500.0	0.0
HERNANDO	5	5	0	0	0	0	3.1	3.4	0.0
HIGHLANDS	4	3	1	1	0	0	3.0	2.7	4.4
HILLSBOROUGH	197	105	91	80	11	1	10.4	7.2	20.3
HOLMES	0	0	0	0	0	0	0.0	0.0	----
INDIAN RIVER	2	1	1	1	0	0	1.6	0.9	5.0
JACKSON	8	4	4	4	0	0	14.7	10.6	24.1
JEFFERSON	0	0	0	0	0	0	----	----	----
LAFAYETTE	1	1	0	0	0	0	----	----	----
LAKE	6	4	2	2	0	0	2.1	1.7	3.6
LEE	38	28	10	7	3	0	5.1	4.4	9.3
LEON	41	11	30	27	3	0	8.2	3.9	13.7
LEVY	0	0	0	0	0	0	0.0	0.0	0.0
LIBERTY	0	0	0	0	0	0	----	----	----
MADISON	0	0	0	0	0	0	0.0	0.0	----
MANATEE	13	8	5	3	2	0	4.4	3.3	9.4
MARION	6	4	2	2	0	0	2.1	1.9	2.9
MARTIN	6	3	3	2	1	0	2.9	1.8	7.2
MONROE	0	0	0	0	0	0	0.0	0.0	0.0
NASSAU	5	5	0	0	0	0	10.6	12.2	0.0
OKALOOSA	10	7	3	3	0	0	3.2	2.8	5.5
OKEECHOBEE	0	0	0	0	0	0	0.0	0.0	0.0
ORANGE	221	134	87	80	7	0	11.1	9.5	14.8
OSCEOLA	15	10	5	4	1	0	3.9	3.1	8.3
PALM BEACH	96	52	44	39	5	0	5.5	4.2	8.7
PASCO	16	11	5	4	1	0	9.0	6.8	31.8
PINELLAS	119	68	51	43	8	0	11.2	8.0	23.4
POLK	40	22	18	17	1	0	6.1	4.3	12.4
PUTNAM	11	10	1	1	0	0	18.9	25.5	5.3
SAINT JOHNS	4	4	0	0	0	0	3.6	4.2	0.0
SAINT LUCIE	8	6	2	2	0	0	3.9	4.4	2.9
SANTA ROSA	3	3	0	0	0	0	8.7	9.8	0.0
SARASOTA	16	10	6	6	0	0	4.3	3.1	11.3
SEMINOLE	9	3	6	5	1	0	2.3	1.0	7.3
SUMTER	1	1	0	0	0	0	500.0	500.0	----
SUWANNEE	1	1	0	0	0	0	500.0	500.0	----
TAYLOR	0	0	0	0	0	0	0.0	0.0	0.0
UNION	0	0	0	0	0	0	0.0	0.0	----
VOLUSIA	18	11	7	7	0	0	4.2	3.1	9.3
WAKULLA	0	0	0	0	0	0	0.0	----	0.0
WALTON	0	0	0	0	0	0	0.0	0.0	0.0
WASHINGTON	2	1	1	1	0	0	----	----	----

\*Rates based on infant deaths by race of decedent, live births by race of mother.

TABLE F-6: RESIDENT INFANT DEATHS BY HISPANIC OR HAITIAN ORIGIN, BY COUNTY, FLORIDA, 2005

	TOTAL	HISPANIC ORIGIN							HAITIAN	NON-HISPANIC/HAITIAN	
		TOTAL HISPANIC	MEXICAN	PUERTO RICAN	CUBAN	CENTRAL/SOUTH AMERICAN	OTHER/UNK HISPANIC	HAITIAN		HAITIAN	UNK
FLORIDA	1,626	373	103	78	42	57	93	54	1,192	7	
ALACHUA	25	2	0	0	0	2	0	0	23	0	
BAKER	7	0	0	0	0	0	0	0	7	0	
BAY	14	0	0	0	0	0	0	0	14	0	
BRADFORD	1	0	0	0	0	0	0	0	1	0	
BREVARD	37	6	1	3	1	1	0	1	30	0	
BROWARD	144	34	5	7	3	5	14	20	90	0	
CALHOUN	2	0	0	0	0	0	0	0	2	0	
CHARLOTTE	8	2	2	0	0	0	0	0	6	0	
CITRUS	10	2	0	1	0	1	0	0	8	0	
CLAY	15	2	1	0	0	0	1	0	13	0	
COLLIER	18	9	8	0	0	0	1	0	9	0	
COLUMBIA	11	0	0	0	0	0	0	0	11	0	
MIAMI-DADE	176	91	7	3	18	19	44	7	74	4	
DESOTO	2	0	0	0	0	0	0	0	2	0	
DIXIE	0	0	0	0	0	0	0	0	0	0	
DUVAL	150	11	2	4	0	4	1	0	139	0	
ESCAMBIA	30	2	0	0	0	0	2	0	28	0	
FLAGLER	4	0	0	0	0	0	0	0	4	0	
FRANKLIN	1	0	0	0	0	0	0	0	1	0	
GADSDEN	10	2	1	0	0	1	0	0	8	0	
GILCHRIST	0	0	0	0	0	0	0	0	0	0	
GLADES	0	0	0	0	0	0	0	0	0	0	
GULF	1	0	0	0	0	0	0	0	1	0	
HAMILTON	1	0	0	0	0	0	0	0	1	0	
HARDEE	2	1	1	0	0	0	0	0	1	0	
HENDRY	9	6	6	0	0	0	0	0	3	0	
HERNANDO	12	2	0	1	1	0	0	0	10	0	
HIGHLANDS	7	2	1	0	1	0	0	0	5	0	
HILLSBOROUGH	149	43	9	14	10	4	6	2	104	0	
HOLMES	1	0	0	0	0	0	0	0	1	0	
INDIAN RIVER	7	2	2	0	0	0	0	0	5	0	
JACKSON	9	0	0	0	0	0	0	0	9	0	
JEFFERSON	3	0	0	0	0	0	0	0	3	0	
LAFAYETTE	1	0	0	0	0	0	0	0	1	0	
LAKE	26	2	2	0	0	0	0	0	24	0	
LEE	34	11	7	1	0	1	2	3	20	0	
LEON	26	2	0	0	1	1	0	0	24	0	
LEVY	3	1	1	0	0	0	0	0	2	0	
LIBERTY	0	0	0	0	0	0	0	0	0	0	
MADISON	1	0	0	0	0	0	0	0	1	0	
MANATEE	26	6	4	0	0	2	0	1	19	0	
MARION	27	2	1	0	0	1	0	0	25	0	
MARTIN	11	3	2	0	0	0	1	0	8	0	
MONROE	1	1	0	0	0	1	0	0	0	0	
NASSAU	8	1	1	0	0	0	0	0	7	0	
OKALOOSA	16	1	0	0	0	0	1	0	15	0	
OKEECHOBEE	1	1	0	1	0	0	0	0	0	0	
ORANGE	128	38	7	19	1	4	7	10	80	0	
OSCEOLA	29	8	0	4	0	2	2	0	21	0	
PALM BEACH	96	27	5	3	6	5	8	8	61	0	
PASCO	34	3	2	1	0	0	0	0	31	0	
PINELLAS	77	8	4	3	0	1	0	1	68	0	
POLK	64	17	9	6	0	1	1	1	46	0	
PUTNAM	19	4	2	2	0	0	0	0	15	0	
SAINT JOHNS	9	0	0	0	0	0	0	0	9	0	
SAINT LUCIE	19	7	4	1	0	1	1	0	11	1	
SANTA ROSA	9	1	1	0	0	0	0	0	8	0	
SARASOTA	16	1	1	0	0	0	0	0	15	0	
SEMINOLE	37	7	2	4	0	0	1	0	30	0	
SUMTER	2	1	1	0	0	0	0	0	1	0	
SUWANNEE	3	0	0	0	0	0	0	0	3	0	
TAYLOR	2	0	0	0	0	0	0	0	2	0	
UNION	0	0	0	0	0	0	0	0	0	0	
VOLUSIA	24	1	1	0	0	0	0	0	23	0	
WAKULLA	2	0	0	0	0	0	0	0	1	1	
WALTON	4	0	0	0	0	0	0	0	4	0	
WASHINGTON	4	0	0	0	0	0	0	0	4	0	

TABLE F-7: RESIDENT INFANT, NEONATAL AND POST-NEONATAL DEATHS FROM SELECTED CAUSES\* BY RACE, FLORIDA, 2005

	TOTAL			POST NEO- NATAL	WHITE			POST NEO- NATAL
	NEONATAL		INFANT		NEONATAL		INFANT	
	<1 DAY	1-27 DAYS			<1 DAY	1-27 DAYS		
TOTAL	1,626	596	428	602	882	282	262	338
Intestinal Infectious Disease	1	0	0	1	0	0	0	0
Diarrhea & Gastroenteritis--Infectious Origin	0	0	0	0	0	0	0	0
Tuberculosis	0	0	0	0	0	0	0	0
Tetanus	0	0	0	0	0	0	0	0
Diphtheria	0	0	0	0	0	0	0	0
Whooping Cough	1	0	0	1	0	0	0	0
Meningococcal Infection	1	0	0	1	1	0	0	1
Septicemia	26	0	3	23	11	0	1	10
Congenital Syphilis	0	0	0	0	0	0	0	0
Gonococcal Infection	0	0	0	0	0	0	0	0
Acute Poliomyelitis	0	0	0	0	0	0	0	0
Varicella (Chicken Pox)	0	0	0	0	0	0	0	0
Measles	0	0	0	0	0	0	0	0
HIV Disease	0	0	0	0	0	0	0	0
Mumps	0	0	0	0	0	0	0	0
Other & Unspec Viral Diseases	5	0	0	5	2	0	0	2
Candidiasis	3	0	1	2	0	0	0	0
Malaria	0	0	0	0	0	0	0	0
Pneumocystosis	0	0	0	0	0	0	0	0
Other & Unspecified Infectious & Parasitic Diseases	5	0	0	5	2	0	0	2
Hodgkins Disease & Non-Hodgkins Lymphomas	0	0	0	0	0	0	0	0
Leukemia	1	0	1	0	1	0	1	0
Other & Unspecified Malignant Neoplasm	5	0	0	5	3	0	0	3
In Situ/Benign/Malignant Neoplasms Uncert/Unk Behavior	4	0	1	3	4	0	1	3
Anemias	2	0	0	2	1	0	0	1
Blood, Blood-Forming, Hemorrhagic Diseases	6	1	1	4	5	1	1	3
Disorders Involving Immune Mechanism	1	0	0	1	1	0	0	1
Short Stature	0	0	0	0	0	0	0	0
Nutritional Deficiencies	0	0	0	0	0	0	0	0
Cystic Fibrosis	0	0	0	0	0	0	0	0
Fluid/Electrolyte/Acid-Base/Volume Depletion Disorders	7	1	1	5	4	1	0	3
Other Endocrine, Nutritional, Metabolic Diseases	8	0	1	7	4	0	1	3
Meningitis	1	0	0	1	1	0	0	1
Infantile Spinal Muscular Atrophy, Type 1 (Werdnig-Hoffman)	0	0	0	0	0	0	0	0
Infantile Cerebral Palsy	1	0	0	1	0	0	0	0
Anoxic Brain Damage	3	0	0	3	2	0	0	2
Other Nervous System Diseases	12	1	2	9	11	1	2	8
Ear & Mastoid Process Diseases	0	0	0	0	0	0	0	0
Pulmonary Heart/Circulation Diseases	6	0	1	5	3	0	0	3
Pericarditis, Endocarditis, Myocarditis	1	0	0	1	0	0	0	0
Cardiomyopathy	5	0	1	4	4	0	1	3
Cardiac Arrest	1	0	0	1	1	0	0	1
Cerebrovascular Diseases	10	0	1	9	7	0	1	6
Other Circulatory System Diseases	5	1	1	3	3	1	1	1
Acute Upper Respiratory Infections	0	0	0	0	0	0	0	0
Influenza	0	0	0	0	0	0	0	0
Pneumonia	11	0	0	11	6	0	0	6

TABLE F-7 (Cont.): RESIDENT INFANT, NEONATAL AND POST-NEONATAL DEATHS FROM SELECTED CAUSES\*, BY RACE, FLORIDA, 2005

	TOTAL				POST NEO- NATAL	WHITE			
	NEONATAL			INFANT		NEONATAL			POST NEO- NATAL
	<1 DAY	1-27 DAYS	INFANT			<1 DAY	1-27 DAYS	INFANT	
Acute Bronchitis & Acute Bronchiolitis	4	0	0	4	1	0	0	1	
Bronchitis, Chronic & Unspecified	1	0	0	1	0	0	0	0	
Asthma	0	0	0	0	0	0	0	0	
Pneumonitis Due to Solids & Liquids	0	0	0	0	0	0	0	0	
Other & Unspecified Respiratory System Diseases	21	0	1	20	13	0	1	12	
Gastritis, Duodenitis, Noninfective Enteritis/Colitis	26	0	0	26	9	0	0	9	
Hernia Abdom Cavity & Intestinal Obstruct W/O Hernia	4	0	0	4	3	0	0	3	
Other & Unspec Digestive System Disease	17	0	3	14	7	0	1	6	
Renal Failure & Other Kidney Disorders	13	1	3	9	9	1	3	5	
Other & Unspec Genitourinary System Dis	1	0	0	1	1	0	0	1	
<b>PERINATAL PERIOD CONDITIONS</b>	<b>799</b>	<b>484</b>	<b>270</b>	<b>45</b>	<b>379</b>	<b>214</b>	<b>146</b>	<b>19</b>	
Maternal Hypertensive Disorders	5	5	0	0	1	1	0	0	
Maternal Conditions Unrelated Present Pregnancy	7	5	2	0	3	1	2	0	
Incompetent Cervix	27	26	1	0	12	12	0	0	
Premature Rupture of Membranes	46	45	1	0	14	13	1	0	
Multiple Pregnancy	42	35	5	2	14	11	3	0	
Maternal Complications of Pregnancy	8	7	1	0	5	4	1	0	
Placenta Complications	20	15	5	0	13	10	3	0	
Cord Complications	1	1	0	0	0	0	0	0	
Chorioamnionitis	30	28	2	0	17	15	2	0	
Other & Unspecified Membrane Abnormalities	1	1	0	0	1	1	0	0	
Other Complications of Labor & Delivery	6	6	0	0	3	3	0	0	
Noxious Influences Via Placenta or Breast Milk	5	3	1	1	1	0	0	1	
Slow Fetal Growth & Fetal Malnutrition	5	2	3	0	1	0	1	0	
Extreme Low Birth Weight or Extreme Immaturity	166	142	20	4	69	58	8	3	
Other Low Birth Weight or Preterm	71	66	3	2	33	31	1	1	
Long Gestation & High Birth Weight	0	0	0	0	0	0	0	0	
Birth Trauma	0	0	0	0	0	0	0	0	
Intrauterine Hypoxia	7	1	6	0	1	1	0	0	
Birth Asphyxia	14	5	8	1	8	2	6	0	
Respiratory Distress	55	22	31	2	30	12	18	0	
Congenital Pneumonia	5	0	5	0	2	0	2	0	
Neonatal Aspiration Syndromes	2	0	2	0	1	0	1	0	
Interstitial Emphysema & Related Conditions	9	3	6	0	6	1	5	0	
Pulmonary Hemorrhage	3	0	3	0	3	0	3	0	
Chronic Respiratory Disease	22	0	3	19	5	0	0	5	
Atelectasis	30	17	13	0	16	10	6	0	
Other Respiratory Conditions	2	1	0	1	1	1	0	0	
Bacterial Sepsis	60	11	46	3	35	8	26	1	
Omphalitis With or Without Hemorrhage	0	0	0	0	0	0	0	0	
All Other Infections	11	2	5	4	7	2	2	3	
Neonatal Hemorrhage	35	4	31	0	16	2	14	0	
Hemorrhagic Disease of Newborn	0	0	0	0	0	0	0	0	
Hemolytic Dis Due to Isoimmunization/Perinat Jaundice	2	0	2	0	2	0	2	0	
Hematological Disorders	7	2	4	1	6	1	4	1	
Diabetes Mellitus, Maternal or Neonatal	0	0	0	0	0	0	0	0	
Necrotizing Enterocolitis	35	0	33	2	18	0	16	2	
Hydrops Fetalis Not Due To Hemolytic Dis	8	4	3	1	6	4	2	0	



TABLE F-7 (Cont.): RESIDENT INFANT, NEONATAL AND POST-NEONATAL DEATHS FROM SELECTED CAUSES\*, BY RACE, FLORIDA, 2005

	TOTAL			POST NEO- NATAL	WHITE			POST NEO- NATAL
	NEONATAL		INFANT		NEONATAL		INFANT	
	<1 DAY	1-27 DAYS			<1 DAY	1-27 DAYS		
Other Perinatal Conditions	52	25	25	2	29	10	17	2
<b>CONGENITAL / CHROMOSOMAL ANOMALIES</b>	<b>297</b>	<b>92</b>	<b>108</b>	<b>97</b>	<b>192</b>	<b>54</b>	<b>78</b>	<b>60</b>
Anencephaly & Similar Anomalies	14	10	4	0	10	7	3	0
Congenital Hydrocephalus	2	0	2	0	0	0	0	0
Spina Bifida	3	1	1	1	3	1	1	1
Other Cong Malf Nervous System	11	1	4	6	7	0	2	5
Congenital Malf of Heart	70	7	23	40	49	5	18	26
Other Congenital Malf of Circulatory Sys	22	1	13	8	13	1	6	6
Congenital Malf of Respiratory Sys	29	15	12	2	19	8	9	2
Congenital Anomalies of Digestive Sys	5	0	3	2	4	0	2	2
Congenital Malf of Genitourinary Sys	12	9	3	0	9	6	3	0
Congenital Malf of Musculoskeletal Sys	36	11	15	10	26	6	14	6
Downs Syndrome	4	1	0	3	2	1	0	1
Edwards Syndrome	20	4	9	7	12	2	6	4
Pataus Syndrome	14	6	6	2	10	4	5	1
Other Congenital Malf	37	19	9	9	18	9	7	2
Other Chromosomal Abnorm	18	7	4	7	10	4	2	4
Sudden Infant Death Syndrome	87	2	7	78	60	1	6	53
Symptoms, Signs, Abn Clinical/Lab Findings	101	10	12	79	62	6	11	45
All Other Diseases	2	1	0	1	1	1	0	0
Unint Inj: Motor Vehicle	8	0	1	7	7	0	0	7
Unint Inj: Other & Unspecified Transport	1	0	0	1	1	0	0	1
Unint Inj: Falls	5	0	0	5	2	0	0	2
Unint Inj: Firearms Discharge	0	0	0	0	0	0	0	0
Unint Inj: Drowning & Submersion	7	0	0	7	4	0	0	4
Unint Inj: Suffocation & Strangulation in Bed	52	1	8	43	30	1	6	23
Unint Inj: Other Suffocation & Strangulation	17	0	0	17	11	0	0	11
Unint Inj: Inhale/Ingest--Respiratory Tract Obstruction	4	0	0	4	2	0	0	2
Unint Inj: Smoke, Fire, Flames Exposure	1	0	0	1	0	0	0	0
Unint Inj: Poisoning & Noxious Substance Exposure	3	0	0	3	1	0	0	1
Unint Inj: Other & Unspecified	4	0	0	4	3	0	0	3
Homicide: Hanging, Strangulation, Suffocation	0	0	0	0	0	0	0	0
Homicide: Firearms Discharge	0	0	0	0	0	0	0	0
Homicide: Neglect, Abandonment, Maltreatment	4	1	0	3	2	0	0	2
Homicide: Other & Unspecified Means	12	0	0	12	2	0	0	2
Medical & Surgical Care Complications	0	0	0	0	0	0	0	0
Other External Causes	3	0	0	3	3	0	0	3

\* ICD-10 codes associated with each cause of death group are presented on pages (xiv-xvi).

TABLE F-7 (Cont.): RESIDENT INFANT, NEONATAL AND POST-NEONATAL DEATHS FROM SELECTED CAUSES\*, BY RACE, FLORIDA, 2005

	BLACK			POST NEO- NATAL	OTHER			POST NEO- NATAL
	NEONATAL		INFANT		NEONATAL		INFANT	
	<1 DAY	1-27 DAYS			<1 DAY	1-27 DAYS		
<b>TOTAL</b>	<b>652</b>	<b>279</b>	<b>143</b>	<b>230</b>	<b>91</b>	<b>34</b>	<b>23</b>	<b>34</b>
Intestinal Infectious Disease	1	0	0	1	0	0	0	0
Diarrhea & Gastroenteritis--Infectious Origin	0	0	0	0	0	0	0	0
Tuberculosis	0	0	0	0	0	0	0	0
Tetanus	0	0	0	0	0	0	0	0
Diphtheria	0	0	0	0	0	0	0	0
Whooping Cough	1	0	0	1	0	0	0	0
Meningococcal Infection	0	0	0	0	0	0	0	0
Septicemia	13	0	2	11	2	0	0	2
Congenital Syphilis	0	0	0	0	0	0	0	0
Gonococcal Infection	0	0	0	0	0	0	0	0
Acute Poliomyelitis	0	0	0	0	0	0	0	0
Varicella (Chicken Pox)	0	0	0	0	0	0	0	0
Measles	0	0	0	0	0	0	0	0
HIV Disease	0	0	0	0	0	0	0	0
Mumps	0	0	0	0	0	0	0	0
Other & Unspec Viral Diseases	3	0	0	3	0	0	0	0
Candidiasis	2	0	1	1	1	0	0	1
Malaria	0	0	0	0	0	0	0	0
Pneumocystosis	0	0	0	0	0	0	0	0
Other & Unspecified Infectious & Parasitic Diseases	3	0	0	3	0	0	0	0
Hodgkins Disease & Non-Hodgkins Lymphomas	0	0	0	0	0	0	0	0
Leukemia	0	0	0	0	0	0	0	0
Other & Unspecified Malignant Neoplasm	2	0	0	2	0	0	0	0
In Situ/Benign/Malignant Neoplasms Uncert/Unk Behavior	0	0	0	0	0	0	0	0
Anemias	1	0	0	1	0	0	0	0
Blood, Blood-Forming, Hemorrhagic Diseases	1	0	0	1	0	0	0	0
Disorders Involving Immune Mechanism	0	0	0	0	0	0	0	0
Short Stature	0	0	0	0	0	0	0	0
Nutritional Deficiencies	0	0	0	0	0	0	0	0
Cystic Fibrosis	0	0	0	0	0	0	0	0
Fluid/Electrolyte/Acid-Base/Volume Depletion Disorders	3	0	1	2	0	0	0	0
Other Endocrine, Nutritional, Metabolic Diseases	2	0	0	2	2	0	0	2
Meningitis	0	0	0	0	0	0	0	0
Infantile Spinal Muscular Atrophy, Type 1 (Werdnig-Hoffman)	0	0	0	0	0	0	0	0
Infantile Cerebral Palsy	1	0	0	1	0	0	0	0
Anoxic Brain Damage	0	0	0	0	1	0	0	1
Other Nervous System Diseases	1	0	0	1	0	0	0	0
Ear & Mastoid Process Diseases	0	0	0	0	0	0	0	0
Pulmonary Heart/Circulation Diseases	3	0	1	2	0	0	0	0
Pericarditis, Endocarditis, Myocarditis	1	0	0	1	0	0	0	0
Cardiomyopathy	1	0	0	1	0	0	0	0
Cardiac Arrest	0	0	0	0	0	0	0	0
Cerebrovascular Diseases	2	0	0	2	1	0	0	1
Other Circulatory System Diseases	2	0	0	2	0	0	0	0
Acute Upper Respiratory Infections	0	0	0	0	0	0	0	0
Influenza	0	0	0	0	0	0	0	0
Pneumonia	5	0	0	5	0	0	0	0

TABLE F-7 (Cont.): RESIDENT INFANT, NEONATAL AND POST-NEONATAL DEATHS FROM SELECTED CAUSES\*, BY RACE, FLORIDA, 2005

	BLACK			POST NEO-	OTHER			POST NEO-
	NEONATAL		INFANT		NEONATAL		INFANT	
	<1 DAY	1-27 DAYS			<1 DAY	1-27 DAYS		
Acute Bronchitis & Acute Bronchiolitis	2	0	0	2	1	0	0	1
Bronchitis, Chronic & Unspecified	1	0	0	1	0	0	0	0
Asthma	0	0	0	0	0	0	0	0
Pneumonitis Due to Solids & Liquids	0	0	0	0	0	0	0	0
Other & Unspecified Respiratory System Diseases	7	0	0	7	1	0	0	1
Gastritis, Duodenitis, Noninfective Enteritis/Colitis	16	0	0	16	1	0	0	1
Hernia Abdom Cavity & Intestinal Obstruct W/O Hernia	0	0	0	0	1	0	0	1
Other & Unspec Digestive System Disease	10	0	2	8	0	0	0	0
Renal Failure & Other Kidney Disorders	3	0	0	3	1	0	0	1
Other & Unspec Genitourinary System Dis	0	0	0	0	0	0	0	0
<b>PERINATAL PERIOD CONDITIONS</b>	<b>369</b>	<b>240</b>	<b>104</b>	<b>25</b>	<b>50</b>	<b>29</b>	<b>20</b>	<b>1</b>
Maternal Hypertensive Disorders	4	4	0	0	0	0	0	0
Maternal Conditions Unrelated Present Pregnancy	3	3	0	0	1	1	0	0
Incompetent Cervix	14	13	1	0	1	1	0	0
Premature Rupture of Membranes	29	29	0	0	3	3	0	0
Multiple Pregnancy	24	22	0	2	4	2	2	0
Maternal Complications of Pregnancy	2	2	0	0	1	1	0	0
Placenta Complications	6	5	1	0	1	0	1	0
Cord Complications	1	1	0	0	0	0	0	0
Chorioamnionitis	13	13	0	0	0	0	0	0
Other & Unspecified Membrane Abnormalities	0	0	0	0	0	0	0	0
Other Complications of Labor & Delivery	2	2	0	0	1	1	0	0
Noxious Influences Via Placenta or Breast Milk	4	3	1	0	0	0	0	0
Slow Fetal Growth & Fetal Malnutrition	4	2	2	0	0	0	0	0
Extreme Low Birth Weight or Extreme Immaturity	85	73	11	1	11	10	1	0
Other Low Birth Weight or Preterm	36	33	2	1	2	2	0	0
Long Gestation & High Birth Weight	0	0	0	0	0	0	0	0
Birth Trauma	0	0	0	0	0	0	0	0
Intrauterine Hypoxia	5	0	5	0	1	0	1	0
Birth Asphyxia	6	3	2	1	0	0	0	0
Respiratory Distress	21	10	9	2	4	0	4	0
Congenital Pneumonia	1	0	1	0	2	0	2	0
Neonatal Aspiration Syndromes	1	0	1	0	0	0	0	0
Interstitial Emphysema & Related Conditions	1	0	1	0	2	2	0	0
Pulmonary Hemorrhage	0	0	0	0	0	0	0	0
Chronic Respiratory Disease	15	0	2	13	2	0	1	1
Atelectasis	11	5	6	0	3	2	1	0
Other Respiratory Conditions	1	0	0	1	0	0	0	0
Bacterial Sepsis	22	2	18	2	3	1	2	0
Omphalitis With or Without Hemorrhage	0	0	0	0	0	0	0	0
All Other Infections	4	0	3	1	0	0	0	0
Neonatal Hemorrhage	16	1	15	0	3	1	2	0
Hemorrhagic Disease of Newborn	0	0	0	0	0	0	0	0
Hemolytic Dis Due to Isoimmunization/Perinat Jaundice	0	0	0	0	0	0	0	0
Hematological Disorders	0	0	0	0	1	1	0	0
Diabetes Mellitus, Maternal or Neonatal	0	0	0	0	0	0	0	0
Necrotizing Enterocolitis	16	0	16	0	1	0	1	0
Hydrops Fetalis Not Due To Hemolytic Dis	1	0	0	1	1	0	1	0

TABLE F-7 (Cont.): RESIDENT INFANT, NEONATAL AND POST-NEONATAL DEATHS FROM SELECTED CAUSES\*,  
BY RACE, FLORIDA, 2005

	BLACK			POST NEO- NATAL	OTHER			POST NEO- NATAL
	NEONATAL		INFANT		NEONATAL		INFANT	
	<1 DAY	1-27 DAYS			<1 DAY	1-27 DAYS		
Other Perinatal Conditions	21	14	7	0	2	1	1	0
<b>CONGENITAL / CHROMOSOMAL ANOMALIES</b>	<b>94</b>	<b>34</b>	<b>27</b>	<b>33</b>	<b>11</b>	<b>4</b>	<b>3</b>	<b>4</b>
Anencephaly & Similar Anomalies	3	2	1	0	1	1	0	0
Congenital Hydrocephalus	2	0	2	0	0	0	0	0
Spina Bifida	0	0	0	0	0	0	0	0
Other Cong Malf Nervous System	3	1	1	1	1	0	1	0
Congenital Malf of Heart	18	2	4	12	3	0	1	2
Other Congenital Malf of Circulatory Sys	8	0	7	1	1	0	0	1
Congenital Malf of Respiratory Sys	9	7	2	0	1	0	1	0
Congenital Anomalies of Digestive Sys	1	0	1	0	0	0	0	0
Congenital Malf of Genitourinary Sys	3	3	0	0	0	0	0	0
Congenital Malf of Musculoskeletal Sys	9	4	1	4	1	1	0	0
Downs Syndrome	2	0	0	2	0	0	0	0
Edwards Syndrome	7	2	3	2	1	0	0	1
Patau Syndrome	3	1	1	1	1	1	0	0
Other Congenital Malf	18	9	2	7	1	1	0	0
Other Chromosomal Abnorm	8	3	2	3	0	0	0	0
Sudden Infant Death Syndrome	23	1	1	21	4	0	0	4
Symptoms, Signs, Abn Clinical/Lab Findings	37	4	1	32	2	0	0	2
All Other Diseases	0	0	0	0	1	0	0	1
Unint Inj: Motor Vehicle	1	0	1	0	0	0	0	0
Unint Inj: Other & Unspecified Transport	0	0	0	0	0	0	0	0
Unint Inj: Falls	3	0	0	3	0	0	0	0
Unint Inj: Firearms Discharge	0	0	0	0	0	0	0	0
Unint Inj: Drowning & Submersion	2	0	0	2	1	0	0	1
Unint Inj: Suffocation & Strangulation in Bed	17	0	2	15	5	0	0	5
Unint Inj: Other Suffocation & Strangulation	6	0	0	6	0	0	0	0
Unint Inj: Inhale/Ingest--Respiratory Tract Obstruction	1	0	0	1	1	0	0	1
Unint Inj: Smoke, Fire, Flames Exposure	1	0	0	1	0	0	0	0
Unint Inj: Poisoning & Noxious Substance Exposure	1	0	0	1	1	0	0	1
Unint Inj: Other & Unspecified	0	0	0	0	1	0	0	1
Homicide: Hanging, Strangulation, Suffocation	0	0	0	0	0	0	0	0
Homicide: Firearms Discharge	0	0	0	0	0	0	0	0
Homicide: Neglect, Abandonment, Maltreatment	1	0	0	1	1	1	0	0
Homicide: Other & Unspecified Means	9	0	0	9	1	0	0	1
Medical & Surgical Care Complications	0	0	0	0	0	0	0	0
Other External Causes	0	0	0	0	0	0	0	0

\* ICD-10 codes associated with each cause of death group are presented on pages (xiv-xvi).