

Live Births

LIVE BIRTHS

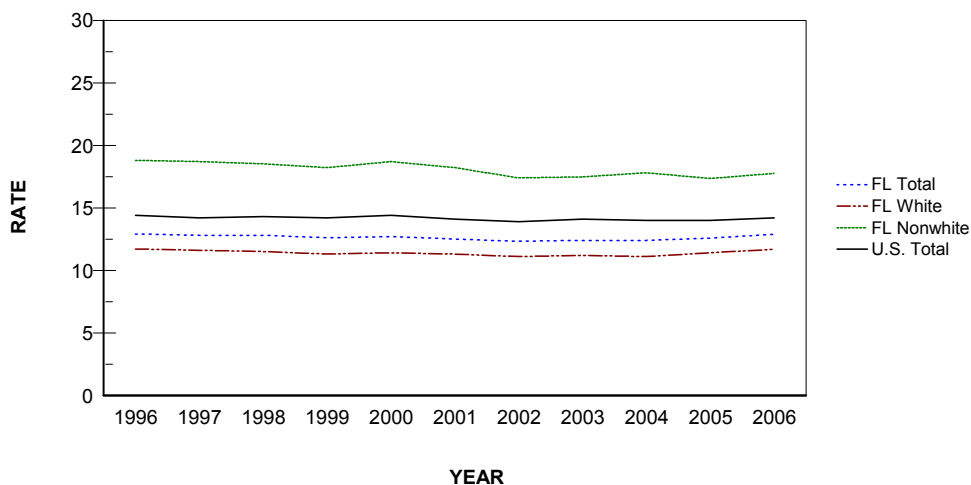
- From 1996 through 2001 Florida's resident live births increased each year to 205,800 in 2001. In 2002, the number dropped slightly, but increases resumed from 2003 through 2006. The number of resident births in 2006 set a new record at 237,166.
- In 1996, Florida experienced a birth rate of 12.9 births per 1,000 persons. From 1997 through 2005, the resident birth rate per 1,000 persons was consistently lower than the 1996 rate. In 2006, Florida birth rates increased and returned to the 1996 rate of 12.9 births per 1,000 persons.
- In 2006, the resident birth rate for Whites was 11.7 births per 1,000 persons and 17.8 births per 1,000 persons for Nonwhites.
- Total resident births to mothers aged 18 and under increased to 15,755 and the percent of births to mothers aged 18 and under increased slightly from 6.5 percent in 2005 to 6.6 percent in 2006.
- The percentage of resident Nonwhite births among mothers 18 years or younger (9.2 percent) was almost twice the percentage for White mothers (5.7 percent).
- Of the resident live births in 2006, 8.7 percent had a birthweight of less than 2,500 grams (5 lbs. 8.2 oz.) and a 1.6 percent had a birthweight of less than 1,500 grams (3 lbs. 4.9 oz.). Birthweights of 4,000 grams (8 lbs. 13.1 oz.) and heavier accounted for 6.7 percent of the total resident live births.
- About four out of every nine resident live births (44.6%) were to an unwed mother. For Blacks, about seven out of every ten births (69.1%) were to unwed mothers. Among White mothers, about five out of every thirteen births (38.6%) were to unwed mothers. Among mothers of Other Races, approximately three out of every eleven live births (27.0%) were to unwed mothers.
- Of the live births to unwed mothers, 13.5 percent were to women 18 years old and younger.
- Mothers of Hispanic origin accounted for 29.6 percent of the resident live births.
- Eighty-one percent of the resident live births to Nonwhite mothers were to Black mothers. Black mothers accounted for 21.4 percent of the total resident live births.
- Of the resident live births, 98.9 percent occurred in hospitals. Physicians were attendants in 88.6 percent of those hospital births.

**CHART B-1: RESIDENT LIVE BIRTHS AND RATES PER 1,000 POPULATION,
BY RACE, FLORIDA AND UNITED STATES TOTAL,
CENSUS YEARS 1920-1990 AND 1996-2006**

YEAR	NUMBER OF BIRTHS -FL ²			RATES - FL			RATE-U.S.
	TOTAL	WHITE	NONWHITE	TOTAL	WHITE	NONWHITE	TOTAL
1920 ¹	19,540	13,541	5,999	19.7	20.6	17.9	27.7
1930 ¹	26,991	18,596	8,395	18.3	17.9	19.3	21.3
1940	33,696	23,805	9,891	17.6	17.0	19.1	19.4
1950	64,370	45,699	18,671	22.8	20.7	30.5	24.1
1960	115,610	84,402	31,208	23.1	20.6	34.9	23.7
1970	115,113	86,941	28,153	16.8	15.1	26.2	18.4
1980	131,811	97,402	34,386	13.4	11.6	23.7	15.9
1990	199,146	149,743	49,265	15.3	13.6	24.8	16.7
1996	189,338	142,391	46,848	12.9	11.7	18.8	14.4
1997	192,304	143,767	48,397	12.8	11.6	18.7	14.2
1998	195,564	145,868	49,502	12.8	11.5	18.5	14.3
1999	196,963	146,329	50,473	12.6	11.3	18.2	14.2
2000	204,030	150,115	53,622	12.7	11.4	18.7	14.4
2001	205,800	151,623	53,827	12.5	11.3	18.2	14.1
2002	205,580	152,127	53,071	12.3	11.1	17.4	13.9
2003	212,243	157,402	54,566	12.4	11.2	17.5	14.1
2004	218,045	160,132	57,477	12.4	11.1	17.8	14.0
2005	226,219	166,181	59,608	12.6	11.4	17.3	14.0 ³
2006	237,166	174,147	62,697	12.9	11.7	17.8	14.2 ⁴

1. Only recorded data are available.
2. Data from 1920-1960 are based on the race of the child. Data from 1970 to present are based on the race of the mother.
3. Preliminary data.
4. Provisional data.

GRAPH B-1: RESIDENT LIVE BIRTH RATES PER 1,000 POPULATION, BY RACE OF MOTHER, FLORIDA AND UNITED STATES TOTAL, 1996-2006



**CHART B-2: RESIDENT LIVE BIRTHS TO MOTHERS 18 YEARS AND UNDER,
BY SINGLE YEARS OF AGE, AND PERCENT OF TOTAL BIRTHS,
BY RACE OF MOTHER, FLORIDA, 1970, 1975, 1980, 1985, 1990, 1995, 2000 AND 2002-2006**

YEAR	AGE OF MOTHER							18 YEARS & UNDER	
	<13	13	14	15	16	17	18	NUMBER	PERCENT
TOTAL									
1970	26	107	503	1,463	3,107	4,887	6,808	16,901	14.7
1975	20	145	647	1,798	3,369	4,936	6,482	17,397	16.5
1980	21	98	509	1,537	2,913	4,429	6,299	15,806	12.0
1985	16	105	549	1,407	2,709	4,348	6,139	15,273	9.3
1990	31	138	591	1,661	3,148	5,193	7,544	18,306	9.2
1995	20	128	588	1,583	3,236	5,166	6,971	17,692	9.4
2000	24	95	412	1,213	2,702	4,730	7,094	16,270	8.0
2002	10	87	323	1,034	2,316	4,078	6,582	14,430	7.0
2003	10	65	287	947	2,290	3,990	6,514	14,103	6.6
2004	10	65	329	1,014	2,314	4,108	6,661	14,501	6.7
2005	15	59	341	1,036	2,428	4,126	6,797	14,802	6.5
2006	12	55	286	1,038	2,485	4,612	7,267	15,755	6.6
WHITE									
1970	3	19	155	524	1,553	3,004	4,463	9,721	11.2
1975	5	34	207	693	1,651	2,868	4,078	9,536	12.2
1980	5	24	128	581	1,370	2,434	3,887	8,429	8.7
1985	4	26	168	600	1,439	2,537	3,744	8,518	6.9
1990	8	37	201	693	1,571	2,976	4,636	10,122	6.8
1995	9	32	230	801	1,801	3,124	4,451	10,448	7.4
2000	6	43	167	625	1,512	2,863	4,463	9,679	6.4
2002	5	32	141	563	1,353	2,578	4,216	8,888	5.8
2003	1	17	129	501	1,399	2,521	4,231	8,799	5.6
2004	2	33	132	564	1,362	2,611	4,304	9,008	5.6
2005	7	26	161	567	1,468	2,643	4,452	9,324	5.6
2006	7	24	143	584	1,501	2,918	4,781	9,958	5.7
NONWHITE									
1970	23	88	348	939	1,554	1,882	2,345	7,179	25.5
1975	15	111	439	1,104	1,717	2,068	2,403	7,857	28.5
1980	16	74	380	956	1,543	1,994	2,412	7,375	21.4
1985	12	79	381	807	1,269	1,811	2,394	6,753	16.7
1990	23	101	390	967	1,574	2,212	2,905	8,172	16.6
1995	11	96	358	782	1,431	2,038	2,519	7,235	15.5
2000	18	52	244	588	1,185	1,862	2,628	6,577	12.3
2002	5	55	182	470	963	1,497	2,357	5,529	10.4
2003	9	48	158	446	890	1,465	2,278	5,294	9.7
2004	8	32	197	448	950	1,491	2,345	5,471	9.5
2005	8	33	180	466	958	1,479	2,332	5,456	9.2
2006	5	31	141	453	980	1,691	2,478	5,779	9.2

**CHART B-3: PERCENT OF RESIDENT LIVE BIRTHS FOR SELECTED BIRTHWEIGHT GROUPS,
BY RACE OF MOTHER AND GENDER OF CHILD, FLORIDA, 1970, 1980, 1990, 2000 AND 1996-2006**

YEAR	VERY LOW BIRTHWEIGHT: LESS THAN 1,500 GRAMS					LOW BIRTHWEIGHT: LESS THAN 2,500 GRAMS				
	TOTAL	WHITE		NONWHITE		TOTAL	WHITE		NONWHITE	
		MALE	FEMALE	MALE	FEMALE		MALE	FEMALE	MALE	FEMALE
1970	1.3	0.9	0.9	2.4	2.4	8.5	6.4	7.5	11.9	14.5
1980	1.4	1.0	0.9	2.5	2.5	7.6	5.6	6.5	11.3	12.9
1990	1.5	1.0	1.0	2.7	2.8	7.4	5.5	6.3	11.2	13.1
1996	1.5	1.1	1.1	2.6	2.6	7.9	6.0	7.1	10.7	12.9
1997	1.5	1.2	1.2	2.6	2.6	8.0	6.2	7.3	10.7	13.0
1998	1.6	1.3	1.2	2.6	2.8	8.1	6.3	7.4	10.4	13.2
1999	1.6	1.2	1.3	2.7	2.9	8.2	6.4	7.5	10.7	13.1
2000	1.5	1.2	1.1	2.6	2.7	8.0	6.2	7.0	10.9	12.8
2001	1.6	1.2	1.2	2.6	2.9	8.2	6.3	7.3	10.8	13.1
2002	1.6	1.2	1.2	2.9	2.8	8.4	6.6	7.7	11.0	13.4
2003	1.6	1.2	1.1	2.6	2.8	8.5	6.5	7.7	11.1	14.0
2004	1.6	1.1	1.2	2.7	2.9	8.6	6.6	7.9	11.2	13.4
2005	1.6	1.2	1.2	2.7	2.9	8.8	6.7	8.0	11.4	14.0
2006	1.6	1.2	1.2	2.6	2.9	8.7	6.8	8.0	11.1	14.0

**CHART B-4: RESIDENT LIVE BIRTHS TO UNWED MOTHERS
AND PERCENT OF TOTAL LIVE BIRTHS, BY RACE,
FLORIDA AND UNITED STATES TOTAL, CENSUS YEARS 1920-1990 AND 1996-2006**

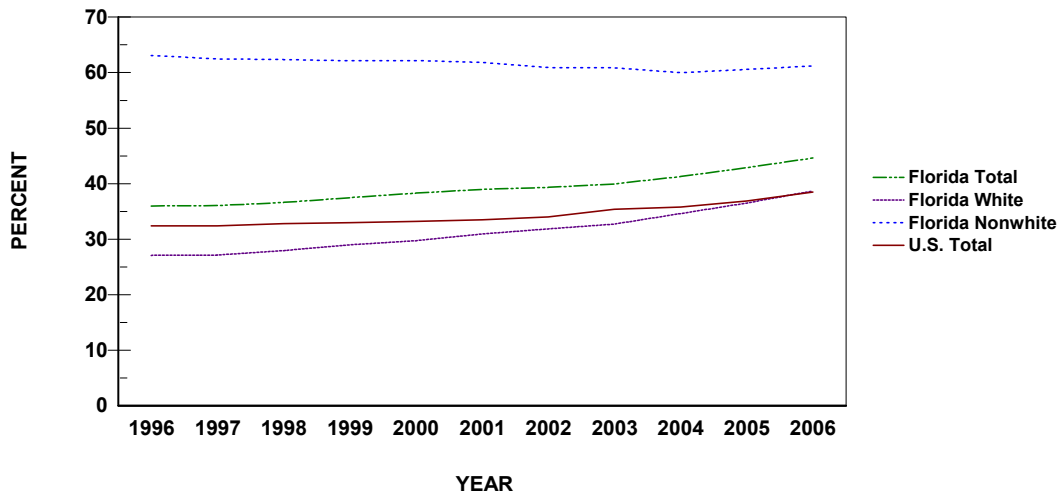
YEAR	NUMBER OF BIRTHS ²			PERCENT - FL			PERCENT-U.S.
	TOTAL	WHITE	NONWHITE	TOTAL	WHITE	NONWHITE	TOTAL
1920 ¹	754	125	629	3.9	0.9	10.5	NA
1930 ¹	1,467	277	1,190	5.4	1.5	14.2	NA
1940	2,075	358	1,717	6.2	1.5	17.4	3.8
1950	5,134	805	4,329	8.0	1.8	23.2	4.0
1960	11,042	2,321	8,721	9.6	2.8	27.9	5.3
1970	17,264	5,679	11,581	15.0	6.5	41.1	10.7
1980	30,156	10,295	19,860	22.9	10.6	57.8	20.3
1990	63,126	31,276	31,802	31.7	20.9	64.6	28.0
1996	68,082	38,509	29,546	36.0	27.0	63.1	32.4
1997	69,226	38,956	30,227	36.0	27.1	62.5	32.4
1998	71,602	40,701	30,842	36.6	27.9	62.3	32.8
1999	73,785	42,398	31,335	37.5	29.0	62.1	33.0
2000	78,026	44,616	33,334	38.2	29.7	62.2	33.2
2001	80,209	46,846	33,266	39.0	30.9	61.8	33.5
2002	80,833	48,400	32,326	39.3	31.8	60.9	34.0
2003	84,733	51,482	33,178	39.9	32.7	60.8	34.6
2004	89,976	55,381	34,469	41.3	34.6	60.0	35.8
2005	96,895	60,665	36,101	42.8	36.5	60.6	36.9 ³
2006	105,770	67,305	38,341	44.6	38.6	61.2	38.5 ⁴

1. Only recorded data are available.

2. Data from 1920-1960 are based on the race of the child. Data from 1970 to present are based on the race of the mother.

3. Preliminary data.

**GRAPH B-2: PERCENT OF RESIDENT LIVE BIRTHS TO UNWED MOTHERS,
BY RACE OF MOTHER, FLORIDA AND UNITED STATES TOTAL, 1996-2006**



**CHART B-5: RESIDENT LIVE BIRTHS TO UNWED MOTHERS AND PERCENT
BY AGE AND RACE OF MOTHER, FLORIDA, 1996 AND 2006**

AGE OF MOTHER	WHITE				NONWHITE			
	1996		2006		1996		2006	
	NUMBER	PERCENT	NUMBER	PERCENT	NUMBER	PERCENT	NUMBER	PERCENT
TOTAL	38,509	27.0	67,305	38.6	29,546	63.1	38,341	61.2
10-14	237	94.4	164	94.3	391	100.0	177	100.0
15	641	88.0	557	95.4	809	99.4	450	99.3
16	1,458	82.0	1,355	90.3	1,366	98.2	973	99.3
17	2,210	75.8	2,549	87.4	1,817	96.9	1,662	98.3
18	2,951	69.5	3,927	82.1	2,327	95.1	2,402	96.9
19	3,418	60.6	5,243	76.5	2,679	90.6	3,006	92.9
20-24	12,847	39.7	25,219	57.6	10,515	75.4	14,719	79.5
25-29	7,492	18.8	15,268	32.2	5,049	47.7	8,609	53.1
30-34	4,558	12.8	7,851	19.9	2,893	37.4	4,101	36.0
35-44	2,678	14.2	5,110	19.4	1,691	36.1	2,217	29.7
45+	11	12.1	59	24.5	7	29.2	23	28.0
UNK	8	36.4	3	21.4	2	40.0	2	66.7

TABLE B-1: RESIDENT AND RECORDED LIVE BIRTHS AND BIRTH RATES PER 1,000 POPULATION, BY RACE OF MOTHER, BY COUNTY, FLORIDA, 2006

	RESIDENT LIVE BIRTHS						RATES		
	TOTAL	WHITE	NUMBERS			UNK	TOTAL	WHITE	NONWHITE
			TOTAL	BLACK	OTHER				
FLORIDA	237,166	174,147	62,697	50,808	11,889	322	12.9	11.7	17.8
ALACHUA	2,837	1,736	1,101	863	238	0	11.6	9.6	17.5
BAKER	395	340	54	44	10	1	15.7	15.7	15.0
BAY	2,449	1,864	494	337	157	91	14.7	13.2	20.0
BRADFORD	359	290	69	60	9	0	12.5	13.2	10.4
BREVARD	5,610	4,514	1,093	763	330	3	10.3	9.4	16.4
BROWARD	23,434	13,504	9,835	8,183	1,652	95	13.3	10.8	19.5
CALHOUN	180	156	24	19	5	0	12.7	13.6	8.8
CHARLOTTE	1,202	1,080	122	78	44	0	7.4	7.2	10.2
CITRUS	1,136	1,049	86	46	40	1	8.3	8.0	14.0
CLAY	2,359	1,945	414	272	142	0	13.2	12.4	19.0
COLLIER	4,294	3,814	479	417	62	1	13.1	12.6	19.0
COLUMBIA	857	667	189	169	20	1	13.4	12.8	15.9
MIAMI-DADE	33,739	24,630	9,064	8,282	782	45	13.8	13.3	15.4
DESOTO	489	435	54	48	6	0	14.7	15.3	11.1
DIXIE	184	171	13	11	2	0	11.7	12.1	8.4
DUVAL	13,687	7,968	5,714	4,810	904	5	15.5	13.9	18.4
ESCAMBIA	4,478	2,860	1,616	1,389	227	2	14.4	12.5	19.6
FLAGLER	942	787	155	109	46	0	10.4	9.9	13.5
FRANKLIN	125	113	11	8	3	1	10.3	11.0	6.0
GADSDEN	761	294	467	460	7	0	15.7	14.4	16.7
GILCHRIST	180	170	10	7	3	0	10.7	10.9	8.0
GLADES	97	77	20	11	9	0	8.9	8.5	11.5
GULF	136	110	25	21	4	1	8.2	8.5	7.0
HAMILTON	188	128	60	56	4	0	12.9	14.2	10.8
HARDEE	530	506	24	17	7	0	19.5	20.8	8.4
HENDRY	726	616	110	92	18	0	18.7	18.8	18.1
HERNANDO	1,600	1,436	163	104	59	1	10.1	9.7	15.9
HIGHLANDS	1,106	888	218	175	43	0	11.4	10.3	19.1
HILLSBOROUGH	17,520	13,110	4,394	3,397	997	16	15.0	14.2	17.8
HOLMES	213	201	12	6	6	0	10.9	11.4	6.4
INDIAN RIVER	1,410	1,159	251	205	46	0	10.3	9.5	18.0
JACKSON	596	427	169	156	13	0	11.9	12.0	11.6
JEFFERSON	176	99	76	75	1	1	12.2	10.8	14.4
LAFAYETTE	87	76	11	8	3	0	10.8	11.2	8.5
LAKE	3,448	2,875	572	396	176	1	12.3	11.5	19.9
LEE	7,497	6,386	1,109	912	197	2	12.6	11.9	19.9
LEON	3,271	1,733	1,528	1,336	192	10	12.0	9.9	15.6
LEVY	488	432	56	47	9	0	12.4	12.5	12.1
LIBERTY	111	98	13	11	2	0	14.3	16.5	7.1
MADISON	254	144	110	109	1	0	12.8	12.2	13.6
MANATEE	4,139	3,398	739	521	218	2	13.4	12.3	21.9
MARION	3,611	2,753	858	683	175	0	11.4	10.0	20.5
MARTIN	1,399	1,029	369	124	245	1	9.8	7.8	36.3
MONROE	720	615	105	71	34	0	9.0	8.3	18.6
NASSAU	813	739	74	52	22	0	11.8	11.7	13.3
OKALOOSA	2,788	2,288	499	293	206	1	14.4	13.9	17.4
OKEECHOBEE	623	558	65	38	27	0	16.0	16.1	15.9
ORANGE	16,966	11,425	5,534	4,180	1,354	7	15.6	14.5	18.6
OSCEOLA	3,959	3,316	642	414	228	1	15.3	15.0	16.8
PALM BEACH	15,702	11,038	4,657	3,940	717	7	12.2	10.6	19.0
PASCO	5,237	4,710	525	251	274	2	12.2	11.6	24.3
PINELLAS	9,541	7,155	2,376	1,716	660	10	10.1	8.8	17.9
POLK	8,290	6,468	1,819	1,561	258	3	14.5	13.6	19.1
PUTNAM	1,072	796	275	261	14	1	14.4	13.1	20.1
SAINT JOHNS	1,770	1,537	233	150	83	0	10.6	9.9	18.7
SAINT LUCIE	3,534	2,525	1,007	851	156	2	13.4	11.8	20.8
SANTA ROSA	1,863	1,698	164	85	79	1	13.1	13.0	14.4
SARASOTA	3,163	2,766	397	282	115	0	8.3	7.7	17.9
SEMINOLE	4,821	3,800	1,020	702	318	1	11.4	10.6	15.8
SUMTER	523	426	97	85	12	0	6.2	5.7	9.9
SUWANNEE	500	417	83	70	13	0	12.8	12.2	17.2
TAYLOR	262	197	65	60	5	0	12.1	11.7	13.5
UNION	171	147	24	23	1	0	11.3	12.8	6.5
VOLUSIA	5,263	4,330	932	776	156	1	10.4	9.7	15.4
WAKULLA	307	271	36	31	5	0	10.7	10.8	9.9
WALTON	693	634	57	33	24	2	12.3	12.5	10.6
WASHINGTON	261	202	58	45	13	1	11.3	10.5	15.0

TABLE B-1 (Cont.): RESIDENT AND RECORDED LIVE BIRTHS AND BIRTH RATES PER 1,000 POPULATION, BY RACE OF MOTHER, BY COUNTY, FLORIDA, 2006

	RECORDED LIVE BIRTHS						RATES		
			NUMBERS						
	TOTAL	WHITE	TOTAL	NONWHITE	OTHER	UNK	TOTAL	WHITE	NONWHITE
FLORIDA	237,495	174,323	62,832	50,925	11,907	340	12.9	11.7	17.8
ALACHUA	6,085	4,469	1,616	1,303	313	0	24.9	24.6	25.7
BAKER	3	1	2	2	0	0	0.1	0.0	0.6
BAY	3,064	2,391	576	397	179	97	18.4	16.9	23.3
BRADFORD	2	2	0	0	0	0	0.1	0.1	0.0
BREVARD	5,530	4,462	1,066	736	330	2	10.1	9.3	15.9
BROWARD	24,840	13,781	10,968	9,260	1,708	91	14.2	11.0	21.7
CALHOUN	3	3	0	0	0	0	0.2	0.3	0.0
CHARLOTTE	1,237	1,093	143	94	49	1	7.6	7.3	11.9
CITRUS	1,042	967	74	43	31	1	7.6	7.4	12.1
CLAY	2,134	1,730	403	297	106	1	11.9	11.0	18.5
COLLIER	4,503	4,023	479	417	62	1	13.7	13.3	19.0
COLUMBIA	779	536	241	217	24	2	12.2	10.3	20.2
MIAMI-DADE	31,392	23,612	7,732	7,085	647	48	12.9	12.7	13.1
DESOTO	658	607	50	40	10	1	19.7	21.3	10.3
DIXIE	0	0	0	0	0	0	0.0	0.0	0.0
DUVAL	15,889	9,961	5,922	4,905	1,017	6	18.0	17.4	19.1
ESCAMBIA	6,202	4,449	1,746	1,453	293	7	20.0	19.5	21.2
FLAGLER	5	4	1	1	0	0	0.1	0.1	0.1
FRANKLIN	2	2	0	0	0	0	0.2	0.2	0.0
GADSDEN	5	3	2	1	1	0	0.1	0.1	0.1
GILCHRIST	0	0	0	0	0	0	0.0	0.0	0.0
GLADES	0	0	0	0	0	0	0.0	0.0	0.0
GULF	0	0	0	0	0	0	0.0	0.0	0.0
HAMILTON	3	3	0	0	0	0	0.2	0.3	0.0
HARDEE	3	2	1	1	0	0	0.1	0.1	0.3
HENDRY	4	3	1	1	0	0	0.1	0.1	0.2
HERNANDO	1,790	1,618	171	104	67	1	11.3	10.9	16.7
HIGHLANDS	1,566	1,293	272	208	64	1	16.1	15.0	23.9
HILLSBOROUGH	19,957	15,199	4,741	3,634	1,107	17	17.0	16.4	19.2
HOLMES	2	2	0	0	0	0	0.1	0.1	0.0
INDIAN RIVER	1,327	1,090	236	189	47	1	9.7	8.9	16.9
JACKSON	589	417	172	146	26	0	11.7	11.7	11.8
JEFFERSON	1	1	0	0	0	0	0.1	0.1	0.0
LAFAYETTE	0	0	0	0	0	0	0.0	0.0	0.0
LAKE	3,134	2,574	558	410	148	2	11.2	10.3	19.4
LEE	7,960	6,831	1,127	932	195	2	13.4	12.7	20.2
LEON	5,267	2,922	2,333	2,122	211	12	19.3	16.8	23.7
LEVY	3	3	0	0	0	0	0.1	0.1	0.0
LIBERTY	1	0	1	1	0	0	0.1	0.0	0.5
MADISON	1	0	1	1	0	0	0.1	0.0	0.1
MANATEE	3,398	2,813	585	396	189	0	11.0	10.2	17.3
MARION	2,960	2,247	713	553	160	0	9.3	8.1	17.1
MARTIN	2,216	1,753	462	202	260	1	15.5	13.2	45.5
MONROE	518	432	86	56	30	0	6.5	5.8	15.3
NASSAU	466	394	72	55	17	0	6.8	6.2	13.0
OKALOOSA	3,286	2,725	559	326	233	2	17.0	16.5	19.5
OKEECHOBEE	6	2	4	3	1	0	0.2	0.1	1.0
ORANGE	20,967	14,751	6,205	4,629	1,576	11	19.3	18.7	20.8
OSCEOLA	4,189	3,503	686	399	287	0	16.1	15.8	18.0
PALM BEACH	18,064	12,832	5,217	4,358	859	15	14.0	12.3	21.3
PASCO	1,794	1,611	182	98	84	1	4.2	4.0	8.4
PINELLAS	11,356	8,842	2,503	1,755	748	11	12.0	10.9	18.9
POLK	6,907	5,338	1,566	1,347	219	3	12.1	11.2	16.4
PUTNAM	579	396	182	180	2	1	7.8	6.5	13.3
SAINT JOHNS	1,167	978	189	157	32	0	7.0	6.3	15.2
SAINT LUCIE	2,344	1,564	780	665	115	0	8.9	7.3	16.1
SANTA ROSA	397	362	35	26	9	0	2.8	2.8	3.1
SARASOTA	3,712	3,176	536	401	135	0	9.7	8.8	24.1
SEMINOLE	3,582	2,828	753	595	158	1	8.5	7.9	11.7
SUMTER	0	0	0	0	0	0	0.0	0.0	0.0
SUWANNEE	5	3	2	1	1	0	0.1	0.1	0.4
TAYLOR	1	1	0	0	0	0	0.0	0.1	0.0
UNION	2	2	0	0	0	0	0.1	0.2	0.0
VOLUSIA	4,583	3,705	878	722	156	0	9.1	8.3	14.5
WAKULLA	1	1	0	0	0	0	0.0	0.0	0.0
WALTON	11	9	2	1	1	0	0.2	0.2	0.4
WASHINGTON	1	1	0	0	0	0	0.0	0.1	0.0

TABLE B-2: RESIDENT LIVE BIRTHS BY HISPANIC OR HAITIAN ORIGIN OF MOTHER, BY COUNTY, FLORIDA, 2006

	HISPANIC ORIGIN										
	TOTAL	PUERTO RICAN				CENTRAL/ SOUTH AMERICAN	OTHER/ UNK HISPANIC	HAITIAN	NON- HISPANIC/ HAITIAN		UNK
		HISPANIC	MEXICAN	RICAN	CUBAN				HAITIAN	UNK	
FLORIDA	237,166	70,094	18,619	12,056	12,088	23,329	4,002	7,585	158,487	1,000	
ALACHUA	2,837	233	60	58	22	76	17	6	2,597	1	
BAKER	395	6	3	0	0	2	1	0	388	1	
BAY	2,449	200	120	29	8	32	11	0	2,242	7	
BRADFORD	359	7	3	3	0	0	1	0	352	0	
BREVARD	5,610	601	140	197	48	160	56	60	4,942	7	
BROWARD	23,434	7,168	763	1,076	906	3,964	459	1,988	14,196	82	
CALHOUN	180	14	11	0	0	0	3	0	166	0	
CHARLOTTE	1,202	132	33	45	15	32	7	18	1,051	1	
CITRUS	1,136	54	10	22	5	9	8	2	1,078	2	
CLAY	2,359	195	64	64	16	29	22	23	2,141	0	
COLLIER	4,294	2,329	1,412	96	226	543	52	308	1,652	5	
COLUMBIA	857	53	19	12	4	12	6	0	804	0	
MIAMI-DADE	33,739	21,572	1,193	1,343	8,290	9,524	1,222	1,736	10,373	58	
DESOTO	489	223	206	5	3	8	1	1	265	0	
DIXIE	184	6	1	2	1	1	1	0	178	0	
DUVAL	13,687	1,320	401	354	85	402	78	82	12,277	8	
ESCAMBIA	4,478	228	132	34	8	45	9	4	4,242	4	
FLAGLER	942	99	22	24	12	25	16	18	824	1	
FRANKLIN	125	5	2	1	0	1	1	0	120	0	
GADSDEN	761	141	103	2	1	29	6	0	620	0	
GILCHRIST	180	19	9	2	3	4	1	0	160	1	
GLADES	97	24	17	1	0	2	4	0	73	0	
GULF	136	2	1	1	0	0	0	0	134	0	
HAMILTON	188	41	39	0	0	2	0	0	147	0	
HARDEE	530	337	322	2	4	6	3	3	190	0	
HENDRY	726	408	297	19	24	16	52	0	315	3	
HERNANDO	1,600	181	31	92	24	29	5	1	1,406	12	
HIGHLANDS	1,106	338	219	63	15	32	9	1	766	1	
HILLSBOROUGH	17,520	5,732	2,158	1,519	701	1,028	326	148	11,178	462	
HOLMES	213	5	4	1	0	0	0	0	207	1	
INDIAN RIVER	1,410	354	257	18	8	70	1	16	1,040	0	
JACKSON	596	25	13	7	1	2	2	0	569	2	
JEFFERSON	176	10	6	1	0	3	0	0	165	1	
LAFAYETTE	87	18	17	0	0	1	0	0	69	0	
LAKE	3,448	754	427	176	16	110	25	20	2,670	4	
LEE	7,497	2,731	1,176	302	268	689	296	262	4,494	10	
LEON	3,271	161	71	27	14	41	8	15	3,084	11	
LEVY	488	49	31	8	1	8	1	0	438	1	
LIBERTY	111	14	13	0	1	0	0	0	96	1	
MADISON	254	16	6	0	4	6	0	1	237	0	
MANATEE	4,139	1,411	997	101	19	278	16	58	2,669	1	
MARION	3,611	571	230	171	33	110	27	8	3,032	0	
MARTIN	1,399	322	164	43	12	71	32	13	1,063	1	
MONROE	720	232	43	14	88	79	8	18	470	0	
NASSAU	813	38	18	3	1	6	10	0	775	0	
OKALOOSA	2,788	343	159	40	8	102	34	2	2,438	5	
OKEECHOBEE	623	230	199	9	0	18	4	1	391	1	
ORANGE	16,966	5,451	1,121	2,336	259	1,355	380	837	10,657	21	
OSCEOLA	3,959	2,040	208	1,096	72	496	168	61	1,857	1	
PALM BEACH	15,702	5,125	1,403	593	459	2,508	162	1,428	9,128	21	
PASCO	5,237	823	328	237	60	149	49	13	4,198	203	
PINELLAS	9,541	1,332	709	295	60	166	102	16	8,171	22	
POLK	8,290	2,243	1,447	453	63	200	80	158	5,879	10	
PUTNAM	1,072	186	137	39	3	4	3	0	885	1	
SAINT JOHNS	1,770	106	26	24	15	28	13	2	1,657	5	
SAINT LUCIE	3,534	956	478	132	47	264	35	208	2,368	2	
SANTA ROSA	1,863	97	54	20	5	17	1	0	1,763	3	
SARASOTA	3,163	609	330	70	39	150	20	16	2,536	2	
SEMINOLE	4,821	971	166	432	58	226	89	20	3,826	4	
SUMTER	523	92	77	7	2	2	4	0	431	0	
SUWANNEE	500	79	55	2	7	12	3	0	421	0	
TAYLOR	262	7	2	2	0	2	1	0	255	0	
UNION	171	4	3	0	0	1	0	0	167	0	
VOLUSIA	5,263	915	377	321	40	132	45	13	4,328	7	
WAKULLA	307	12	8	2	1	0	1	0	295	0	
WALTON	693	78	63	1	3	9	2	0	613	2	
WASHINGTON	261	8	4	3	0	1	0	0	253	0	

**TABLE B-3: RESIDENT LIVE BIRTHS FOR INCORPORATED CITIES OF 2,400 OR MORE POPULATION,
BY RACE OF MOTHER, BY COUNTY, FLORIDA, 2006**

	TOTAL	WHITE	BLACK	AMER INDIAN	CHINESE	JAPANESE	HAWAIIAN	FILIPINO	OTHER ASIAN/ PAC ISL	MULTI - RACE & OTHER	UNK
FLORIDA	237,166	174,147	50,808	567	737	219	38	1,326	3,999	5,003	322
ALACHUA	2,837	1,736	863	1	48	4	0	16	102	67	0
ALACHUA	112	78	27	0	0	0	0	0	3	4	0
GAINESVILLE	1,810	951	671	0	42	3	0	14	84	45	0
HIGH SPRINGS	83	67	12	1	0	0	0	0	0	3	0
NEWBERRY	86	69	15	0	0	0	0	0	0	2	0
BALANCE OF COUNTY	746	571	138	0	6	1	0	2	15	13	0
BAKER	395	340	44	1	0	0	0	2	1	6	1
MACCLENNY	92	76	11	1	0	0	0	0	0	4	0
BALANCE OF COUNTY	303	264	33	0	0	0	0	2	1	2	1
BAY	2,449	1,864	337	12	6	3	2	17	34	83	91
CALLAWAY	34	26	4	0	0	0	0	0	0	1	3
CEDAR GROVE	3	3	0	0	0	0	0	0	0	0	0
LYNN HAVEN	203	163	17	0	1	0	0	3	5	9	5
PANAMA CITY	1,291	874	284	7	5	0	1	8	20	49	43
PANAMA CITY BEACH	289	242	6	3	0	0	1	0	6	12	19
PARKER	13	9	2	1	0	0	0	0	0	0	1
SPRINGFIELD	10	8	1	0	0	0	0	0	0	1	0
BALANCE OF COUNTY	606	539	23	1	0	3	0	6	3	11	20
BRADFORD	359	290	60	1	0	1	0	2	3	2	0
STARKE	112	76	33	0	0	0	0	1	1	1	0
BALANCE OF COUNTY	247	214	27	1	0	1	0	1	2	1	0
BREVARD	5,610	4,514	763	14	13	5	2	46	86	164	3
CAPE CANAVERAL	68	61	5	0	0	0	0	0	0	2	0
COCOA	544	375	152	0	0	1	0	3	1	12	0
COCOA BEACH	60	58	0	1	0	0	0	0	0	1	0
INDIALANTIC	76	66	1	0	1	1	0	0	3	4	0
INDIAN HARBOUR BEACH	44	42	0	0	0	0	0	0	0	2	0
MALABAR	20	20	0	0	0	0	0	0	0	0	0
MELBOURNE	1,190	950	145	5	5	1	2	11	34	37	0
MELBOURNE BEACH	34	32	0	0	0	0	0	1	0	1	0
PALM BAY	1,228	956	201	2	4	1	0	9	15	40	0
ROCKLEDGE	315	260	45	0	0	1	0	4	3	2	0
SATELLITE BEACH	124	106	4	1	0	0	0	2	2	8	1
TITUSVILLE	599	469	95	2	1	0	0	2	8	22	0
WEST MELBOURNE	153	140	6	0	0	0	0	0	2	5	0
BALANCE OF COUNTY	1,155	979	109	3	2	0	0	14	18	28	2
BROWARD	23,434	13,504	8,183	45	111	26	1	110	633	726	95
COCONUT CREEK	596	465	66	0	5	0	0	5	23	27	5
COOPER CITY	256	222	9	1	1	0	0	4	12	7	0
CORAL SPRINGS	1,520	1,036	333	2	9	3	0	8	68	34	27
DANIA BEACH	248	144	94	1	0	0	0	0	3	6	0
DAVIE	967	790	96	6	8	2	0	1	37	26	1
DEERFIELD BEACH	669	414	204	2	6	2	0	0	10	29	2
FORT LAUDERDALE	3,290	1,519	1,633	2	8	2	0	9	29	85	3
HALLANDALE	358	215	128	0	2	0	0	1	4	7	1
HOLLYWOOD	2,324	1,566	618	19	5	3	0	6	51	55	1
LAUDERDALE BY THE SEA	17	14	0	0	0	0	0	0	1	2	0
LAUDERDALE LAKES	509	35	465	0	0	0	0	0	3	5	1
LAUDERHILL	1,053	146	866	0	4	0	0	1	11	23	2
LIGHTHOUSE POINT	77	70	1	0	0	0	0	1	3	2	0
MARGATE	705	419	228	0	2	1	0	5	20	22	8
MIRAMAR	1,824	837	786	1	13	1	0	25	80	81	0
NORTH LAUDERDALE	630	242	333	1	3	0	0	3	13	26	9
OAKLAND PARK	317	185	118	0	1	0	0	3	0	10	0
PARKLAND	201	168	11	0	2	1	0	0	10	9	0
PEMBROKE PARK	61	12	48	0	0	0	0	0	0	1	0
PEMBROKE PINES	1,854	1,269	394	6	7	4	1	15	84	74	0
PLANTATION	1,073	752	226	1	7	0	0	7	45	33	2
POMPANO BEACH	1,779	969	702	1	6	1	0	5	20	64	11
SOUTHWEST RANCHES	48	46	1	0	0	0	0	0	0	1	0
SUNRISE	1,161	636	410	0	8	2	0	2	46	50	7
TAMARAC	672	393	219	1	5	0	0	0	20	22	12

**TABLE B-3 (Cont.): RESIDENT LIVE BIRTHS FOR INCORPORATED CITIES OF 2,400 OR MORE
POPULATION, BY RACE OF MOTHER, BY COUNTY, FLORIDA, 2006**

	TOTAL	WHITE	BLACK	AMER INDIAN	CHINESE	JAPANESE	HAWAIIAN	FILIPINO	OTHER ASIAN/ PAC ISL	MULTI - RACE & OTHER	UNK
BROWARD (Cont.)											
WESTON	698	592	38	0	6	4	0	6	33	17	2
WILTON MANORS	72	46	20	0	0	0	0	1	3	2	0
BALANCE OF COUNTY	455	302	136	1	3	0	0	2	4	6	1
CALHOUN											
BLOUNTSTOWN	48	31	15	0	0	0	0	0	0	2	0
BALANCE OF COUNTY	132	125	4	0	0	0	0	0	0	3	0
CHARLOTTE											
PUNTA GORDA	92	85	3	0	0	0	0	2	1	1	0
BALANCE OF COUNTY	1,110	995	75	4	2	0	0	7	13	14	0
CITRUS											
CRYSTAL RIVER	42	37	4	0	0	0	0	0	0	1	0
INVERNESS	123	106	9	0	0	0	0	5	1	2	0
BALANCE OF COUNTY	971	906	33	0	0	1	0	7	7	16	1
CLAY											
GREEN COVE SPRINGS	137	105	26	1	0	0	0	1	1	3	0
ORANGE PARK	519	362	105	0	2	0	0	12	11	27	0
BALANCE OF COUNTY	1,703	1,478	141	4	4	4	0	16	27	29	0
COLLIER											
MARCO ISLAND	23	23	0	0	0	0	0	0	0	0	0
NAPLES	308	255	45	0	1	0	1	0	1	5	0
BALANCE OF COUNTY	3,963	3,536	372	5	2	0	0	3	21	23	1
COLUMBIA											
LAKE CITY	389	247	130	1	1	0	0	0	3	6	1
BALANCE OF COUNTY	468	420	39	0	0	0	0	2	2	5	0
MIAMI-DADE											
AVENTURA	348	327	8	0	0	1	1	0	3	8	0
BAL HARBOUR	20	19	0	0	0	1	0	0	0	0	0
BAY HARBOR ISLANDS	58	56	1	0	0	0	0	1	0	0	0
BISCAYNE PARK	33	25	5	0	0	0	0	2	0	1	0
CORAL GABLES	385	368	7	0	0	1	1	1	5	0	2
DORAL	287	262	9	0	1	3	0	1	8	2	1
EL PORTAL	13	8	5	0	0	0	0	0	0	0	0
FLORIDA CITY	112	82	30	0	0	0	0	0	0	0	0
HIALEAH	2,873	2,701	118	3	0	1	0	3	16	31	0
HIALEAH GARDENS	133	124	4	0	0	0	0	0	1	4	0
HOMESTEAD	1,433	1,142	270	0	1	0	0	1	4	13	2
KEY BISCAYNE	109	107	0	0	0	0	0	1	1	0	0
MIAMI	15,119	9,545	5,262	5	39	9	0	34	96	114	15
MIAMI BEACH	926	866	34	1	2	4	0	3	8	6	2
MIAMI GARDENS	357	111	237	0	0	0	0	0	0	9	0
MIAMI LAKES	403	353	34	0	2	0	0	0	6	8	0
MIAMI SHORES	109	83	22	0	1	0	0	0	2	1	0
MIAMI SPRINGS	103	101	1	0	0	0	0	0	1	0	0
NORTH BAY VILLAGE	39	37	1	0	0	0	0	0	1	0	0
NORTH MIAMI	666	254	387	0	4	0	0	3	5	13	0
NORTH MIAMI BEACH	674	388	256	0	3	0	0	1	12	14	0
OPA-LOCKA	776	282	484	1	1	0	0	1	1	6	0
PALMETTO BAY	28	26	0	0	0	0	0	0	0	1	1
PINECREST	30	29	0	0	1	0	0	0	0	0	0
SOUTH MIAMI	26	20	4	0	0	0	0	1	1	0	0
SUNNY ISLES BEACH	49	47	1	0	0	0	0	0	1	0	0
SURFSIDE	65	65	0	0	0	0	0	0	0	0	0
SWEETWATER	3	2	0	0	0	0	0	0	0	1	0
VIRGINIA GARDENS	9	9	0	0	0	0	0	0	0	0	0
WEST MIAMI	5	4	1	0	0	0	0	0	0	0	0
BALANCE OF COUNTY	8,548	7,187	1,101	8	31	8	0	45	66	80	22
DESOTO											
ARCADIA	234	199	31	1	0	0	0	0	1	2	0
BALANCE OF COUNTY	255	236	17	1	0	0	0	0	1	0	0
DIXIE											
	184	171	11	0	0	0	0	0	0	2	0

**TABLE B-3 (Cont.): RESIDENT LIVE BIRTHS FOR INCORPORATED CITIES OF 2,400 OR MORE
POPULATION, BY RACE OF MOTHER, BY COUNTY, FLORIDA, 2006**

	TOTAL	WHITE	BLACK	AMER INDIAN	CHINESE	JAPANESE	HAWAIIAN	FILIPINO	OTHER ASIAN/ PAC ISL	MULTI - RACE & OTHER	UNK
DIXIE (Cont.)											
DUVAL	13,687	7,968	4,810	16	37	22	5	217	260	347	5
ATLANTIC BEACH	344	255	67	3	0	0	0	4	1	14	0
BALDWIN	28	22	6	0	0	0	0	0	0	0	0
JACKSONVILLE	13,060	7,463	4,724	13	35	22	5	208	256	329	5
JACKSONVILLE BEACH	197	173	13	0	2	0	0	3	2	4	0
NEPTUNE BEACH	58	55	0	0	0	0	0	2	1	0	0
ESCAMBIA	4,478	2,860	1,389	22	6	9	4	45	52	89	2
CENTURY	23	10	11	1	0	0	0	0	0	1	0
PENSACOLA	1,519	786	673	7	2	1	2	10	14	23	1
BALANCE OF COUNTY	2,936	2,064	705	14	4	8	2	35	38	65	1
FLAGLER	942	787	109	0	0	0	0	3	13	30	0
FLAGLER BEACH	21	20	1	0	0	0	0	0	0	0	0
PALM COAST	733	620	73	0	0	0	0	3	12	25	0
BALANCE OF COUNTY	188	147	35	0	0	0	0	0	1	5	0
FRANKLIN	125	113	8	1	0	0	0	0	1	1	1
APALACHICOLA	33	25	6	0	0	0	0	0	1	0	1
BALANCE OF COUNTY	92	88	2	1	0	0	0	0	0	1	0
GADSDEN	761	294	460	0	0	0	0	1	0	6	0
CHATTAHOOCHEE	53	19	34	0	0	0	0	0	0	0	0
GRETNA	36	9	27	0	0	0	0	0	0	0	0
HAVANA	78	32	46	0	0	0	0	0	0	0	0
QUINCY	248	82	162	0	0	0	0	1	0	3	0
BALANCE OF COUNTY	346	152	191	0	0	0	0	0	0	3	0
GILCHRIST	180	170	7	1	0	0	0	0	1	1	0
GLADES	97	77	11	9	0	0	0	0	0	0	0
GULF	136	110	21	0	0	0	0	0	0	4	1
PORT ST JOE	49	31	14	0	0	0	0	0	0	3	1
BALANCE OF COUNTY	87	79	7	0	0	0	0	0	0	1	0
HAMILTON	188	128	56	0	0	0	0	0	0	4	0
HARDEE	530	506	17	0	0	0	0	0	4	3	0
BOWLING GREEN	83	77	6	0	0	0	0	0	0	0	0
WAUCHULA	168	160	7	0	0	0	0	0	0	1	0
BALANCE OF COUNTY	279	269	4	0	0	0	0	0	4	2	0
HENDRY	726	616	92	8	0	0	0	3	0	7	0
CLEWISTON	196	116	66	5	0	0	0	3	0	6	0
LABELLE	197	185	11	1	0	0	0	0	0	0	0
BALANCE OF COUNTY	333	315	15	2	0	0	0	0	0	1	0
HERNANDO	1,600	1,436	104	4	2	0	1	8	10	34	1
BROOKSVILLE	223	168	47	2	1	0	0	1	1	3	0
BALANCE OF COUNTY	1,377	1,268	57	2	1	0	1	7	9	31	1
HIGHLANDS	1,106	888	175	3	2	0	0	9	9	20	0
AVON PARK	209	149	55	0	0	0	0	1	0	4	0
SEBRING	362	283	57	1	1	0	0	5	9	6	0
BALANCE OF COUNTY	535	456	63	2	1	0	0	3	0	10	0
HILLSBOROUGH	17,520	13,110	3,397	15	49	13	3	107	470	340	16
PLANT CITY	620	545	64	1	1	0	1	1	4	3	0
TAMPA	9,658	6,389	2,680	4	24	6	1	61	288	195	10
TEMPLE TERRACE	95	64	19	0	1	1	0	0	8	2	0
BALANCE OF COUNTY	7,147	6,112	634	10	23	6	1	45	170	140	6
HOLMES	213	201	6	0	0	0	0	0	2	4	0
BONIFAY	49	46	3	0	0	0	0	0	0	0	0
BALANCE OF COUNTY	164	155	3	0	0	0	0	0	2	4	0

TABLE B-3 (Cont.): RESIDENT LIVE BIRTHS FOR INCORPORATED CITIES OF 2,400 OR MORE
POPULATION, BY RACE OF MOTHER, BY COUNTY, FLORIDA, 2006

	TOTAL	WHITE	BLACK	AMER INDIAN	CHINESE	JAPANESE	HAWAIIAN	FILIPINO	OTHER ASIAN/ PAC ISL	MULTI - RACE & OTHER	UNK
INDIAN RIVER	1,410	1,159	205	0	3	0	0	4	7	32	0
FELLSMERE	147	137	8	0	0	0	0	0	0	2	0
SEBASTIAN	192	174	12	0	2	0	0	2	1	1	0
VERO BEACH	319	266	40	0	0	0	0	0	2	11	0
BALANCE OF COUNTY	752	582	145	0	1	0	0	2	4	18	0
JACKSON	596	427	156	1	0	0	0	0	2	10	0
GRACEVILLE	38	25	12	0	0	0	0	0	0	1	0
MARIANNA	116	58	54	0	0	0	0	0	1	3	0
BALANCE OF COUNTY	442	344	90	1	0	0	0	0	1	6	0
JEFFERSON	176	99	75	0	0	0	0	0	1	0	1
MONTICELLO	73	29	43	0	0	0	0	0	1	0	0
BALANCE OF COUNTY	103	70	32	0	0	0	0	0	0	0	1
LAFAYETTE	87	76	8	0	0	0	0	0	1	2	0
LAKE	3,448	2,875	396	2	8	5	1	11	34	115	1
CLERMONT	608	463	74	0	4	5	1	3	13	45	0
EUSTIS	327	262	49	0	1	0	0	2	4	9	0
FRUITLAND PARK	104	89	12	0	0	0	0	0	0	3	0
GROVELAND	144	108	23	0	0	0	0	1	1	11	0
LADY LAKE	95	82	8	0	1	0	0	0	2	2	0
LEESBURG	466	327	123	1	1	0	0	1	5	8	0
MASCOTTE	122	114	6	0	0	0	0	0	0	1	1
MINNEOLA	130	120	7	0	0	0	0	0	0	3	0
MOUNT DORA	185	138	42	0	0	0	0	0	1	4	0
TAVARES	123	104	15	0	0	0	0	0	2	2	0
UMATILLA	61	54	4	1	0	0	0	1	0	1	0
BALANCE OF COUNTY	1,083	1,014	33	0	1	0	0	3	6	26	0
LEE	7,497	6,386	912	7	8	3	0	28	74	77	2
BONITA SPRINGS	393	386	4	0	0	0	0	1	1	1	0
CAPE CORAL	1,750	1,606	73	3	3	0	0	11	22	31	1
FORT MYERS	1,743	1,190	528	1	1	1	0	4	8	10	0
FORT MYERS BEACH	34	34	0	0	0	0	0	0	0	0	0
SANIBEL	14	13	1	0	0	0	0	0	0	0	0
BALANCE OF COUNTY	3,563	3,157	306	3	4	2	0	12	43	35	1
LEON	3,271	1,733	1,336	3	18	2	0	8	76	85	10
TALLAHASSEE	2,527	1,207	1,137	3	17	2	0	8	75	71	7
BALANCE OF COUNTY	744	526	199	0	1	0	0	0	1	14	3
LEVY	488	432	47	1	0	0	0	0	1	7	0
WILLISTON	57	44	10	0	0	0	0	0	0	3	0
BALANCE OF COUNTY	431	388	37	1	0	0	0	0	1	4	0
LIBERTY	111	98	11	0	0	0	0	0	1	1	0
MADISON	254	144	109	0	0	0	0	0	0	1	0
MADISON	90	31	59	0	0	0	0	0	0	0	0
BALANCE OF COUNTY	164	113	50	0	0	0	0	0	0	1	0
MANATEE	4,139	3,398	521	4	10	1	3	15	50	135	2
BRADENTON	1,175	928	193	1	1	1	0	2	12	37	0
BRADENTON BEACH	8	8	0	0	0	0	0	0	0	0	0
HOLMES BEACH	5	4	0	0	0	0	0	1	0	0	0
LONGBOAT KEY	1	1	0	0	0	0	0	0	0	0	0
PALMETTO	267	213	38	0	0	0	0	1	2	13	0
BALANCE OF COUNTY	2,683	2,244	290	3	9	0	3	11	36	85	2
MARION	3,611	2,753	683	12	2	2	0	11	25	123	0
BELLEVIEW	87	80	7	0	0	0	0	0	0	0	0
OCALA	1,294	857	376	2	2	1	0	5	12	39	0
BALANCE OF COUNTY	2,230	1,816	300	10	0	1	0	6	13	84	0
MARTIN	1,399	1,029	124	203	3	3	0	4	7	25	1
PORT SAINT LUCIE	6	4	2	0	0	0	0	0	0	0	0
STUART	355	270	40	32	2	1	0	0	1	9	0

**TABLE B-3 (Cont.): RESIDENT LIVE BIRTHS FOR INCORPORATED CITIES OF 2,400 OR MORE
POPULATION, BY RACE OF MOTHER, BY COUNTY, FLORIDA, 2006**

	TOTAL	WHITE	BLACK	AMER INDIAN	CHINESE	JAPANESE	HAWAIIAN	FILIPINO	OTHER ASIAN/ PAC ISL	MULTI - RACE & OTHER	UNK
MARTIN (Cont.)											
BALANCE OF COUNTY	1,038	755	82	171	1	2	0	4	6	16	1
MONROE											
ISLAMORADA	3	3	0	0	0	0	0	0	0	0	0
KEY WEST	307	244	41	0	1	1	0	3	6	11	0
MARATHON	73	64	7	0	0	0	0	1	0	1	0
BALANCE OF COUNTY	337	304	23	1	0	0	0	3	3	3	0
NASSAU											
FERNANDINA BEACH	157	122	28	1	1	0	0	1	1	3	0
HILLIARD	56	50	5	0	0	0	0	0	0	1	0
BALANCE OF COUNTY	600	567	19	1	0	0	0	3	5	5	0
OKALOOSA											
CRESTVIEW	421	325	67	1	0	0	0	6	4	18	0
DESTIN	154	144	0	0	0	0	0	1	1	8	0
FORT WALTON BEACH	514	386	77	3	1	0	0	6	8	32	1
MARY ESTHER	176	143	21	0	0	0	0	5	4	3	0
NICEVILLE	219	197	10	0	0	1	0	3	2	6	0
VALPARAISO	30	29	1	0	0	0	0	0	0	0	0
BALANCE OF COUNTY	1,274	1,064	117	1	1	3	0	29	14	45	0
OKEECHOBEE											
OKEECHOBEE	390	346	34	5	0	0	0	0	0	5	0
BALANCE OF COUNTY	233	212	4	10	1	0	0	0	0	6	0
ORANGE											
APOPKA	1,169	919	207	0	1	0	0	5	20	17	0
BELLE ISLE	10	9	0	0	1	0	0	0	0	0	0
EATONVILLE	14	1	12	0	0	0	0	0	0	1	0
MAITLAND	117	83	25	0	0	0	0	0	5	4	0
OCOOE	557	440	66	0	4	0	0	3	16	28	0
ORLANDO	12,055	7,527	3,514	10	79	17	4	82	324	492	6
WINTER GARDEN	552	428	81	0	4	0	0	5	12	21	1
WINTER PARK	472	373	70	0	2	0	0	5	7	15	0
BALANCE OF COUNTY	2,020	1,645	205	2	15	5	0	15	73	60	0
OSCEOLA											
KISSIMMEE	1,770	1,461	204	4	1	0	0	9	45	45	1
ST CLOUD	406	372	18	0	1	0	0	5	5	5	0
BALANCE OF COUNTY	1,783	1,483	192	0	10	1	0	12	39	46	0
PALM BEACH											
BELLE GLADE	470	233	235	0	0	0	0	0	0	2	0
BOCA RATON	1,174	990	105	0	9	1	1	5	35	25	3
BOYNTON BEACH	1,201	699	438	0	4	0	0	13	29	18	0
DELRAY BEACH	797	463	303	0	2	0	0	3	16	9	1
GREENACRES	395	316	61	0	0	1	0	1	11	5	0
HIGHLAND BEACH	15	15	0	0	0	0	0	0	0	0	0
HYPOLUXO	9	7	2	0	0	0	0	0	0	0	0
JUNO BEACH	16	15	0	0	0	0	0	0	1	0	0
JUPITER	571	531	22	0	1	2	0	1	7	6	1
LAKE CLARKE SHORES	6	6	0	0	0	0	0	0	0	0	0
LAKE PARK	147	64	79	1	0	0	0	1	1	1	0
LAKE WORTH	2,033	1,618	345	0	7	0	0	9	21	32	1
LANTANA	342	240	87	0	0	1	0	1	6	7	0
MANGONIA PARK	1	0	1	0	0	0	0	0	0	0	0
NORTH PALM BEACH	102	89	5	0	0	0	0	0	5	3	0
PAHOKEE	161	48	112	0	0	0	0	0	0	1	0
PALM BEACH	32	28	3	0	0	0	0	0	0	1	0
PALM BEACH GARDENS	526	451	32	1	7	0	0	1	24	10	0
PALM SPRINGS	130	106	21	0	0	0	0	1	0	2	0
RIVIERA BEACH	504	73	418	0	0	0	0	1	7	5	0
ROYAL PALM BEACH	490	351	93	1	6	2	1	3	16	17	0
SOUTH BAY	57	18	39	0	0	0	0	0	0	0	0
TEQUESTA	36	32	1	0	0	0	0	0	2	1	0
WELLINGTON	591	463	92	1	5	0	0	6	19	5	0
WEST PALM BEACH	3,886	2,526	1,192	3	6	7	0	20	59	72	1

**TABLE B-3 (Cont.): RESIDENT LIVE BIRTHS FOR INCORPORATED CITIES OF 2,400 OR MORE
POPULATION, BY RACE OF MOTHER, BY COUNTY, FLORIDA, 2006**

	TOTAL	WHITE	BLACK	AMER INDIAN	CHINESE	JAPANESE	HAWAIIAN	FILIPINO	OTHER ASIAN/ PAC ISL	MULTI - RACE & OTHER	UNK
PALM BEACH (Cont.)											
BALANCE OF COUNTY	2,010	1,656	254	0	10	3	0	7	40	40	0
PASCO											
DADE CITY	273	223	44	0	0	0	0	0	1	5	0
NEW PORT RICHEY	685	636	13	2	3	0	0	5	10	16	0
PORT RICHEY	307	281	5	0	3	0	0	2	7	9	0
ZEPHYRHILLS	212	194	13	1	1	0	0	1	1	1	0
BALANCE OF COUNTY	3,760	3,376	176	8	13	3	0	36	79	67	2
PINELLAS											
BELLEAIR	17	17	0	0	0	0	0	0	0	0	0
BELLEAIR BLUFFS	8	8	0	0	0	0	0	0	0	0	0
CLEARWATER	1,894	1,495	295	3	9	1	0	14	40	36	1
DUNEDIN	276	245	15	1	1	0	0	6	2	6	0
GULFPORT	79	61	15	1	0	0	0	0	0	2	0
INDIAN ROCKS BEACH	20	20	0	0	0	0	0	0	0	0	0
KENNETH CITY	46	36	5	1	0	0	0	0	1	3	0
LARGO	952	799	101	4	0	0	0	3	26	19	0
MADEIRA BEACH	18	15	0	0	0	0	0	0	3	0	0
OLDSMAR	176	156	8	0	1	0	0	0	6	5	0
PINELLAS PARK	518	414	25	0	2	0	0	7	50	18	2
REDINGTON SHORES	4	4	0	0	0	0	0	0	0	0	0
SAFETY HARBOR	175	150	11	3	2	1	0	1	4	3	0
SEMINOLE	255	227	9	1	2	1	0	4	6	4	1
SOUTH PASADENA	5	4	0	0	0	0	0	0	0	1	0
ST PETERSBURG	3,562	2,142	1,142	14	9	5	0	14	118	113	5
ST PETERSBURG BEACH	34	32	1	0	0	0	0	0	1	0	0
TARPON SPRINGS	257	223	22	1	1	0	0	1	6	3	0
TREASURE ISLAND	24	24	0	0	0	0	0	0	0	0	0
BALANCE OF COUNTY	1,221	1,083	67	1	7	1	0	10	33	18	1
POLK											
AUBURNDALE	284	236	41	1	1	0	0	0	1	4	0
BARTOW	330	229	88	1	0	0	0	0	5	7	0
DUNDEE	51	42	9	0	0	0	0	0	0	0	0
EAGLE LAKE	31	28	3	0	0	0	0	0	0	0	0
FORT MEADE	102	82	20	0	0	0	0	0	0	0	0
FROSTPROOF	74	66	8	0	0	0	0	0	0	0	0
HAINES CITY	500	384	100	0	0	0	0	1	2	13	0
LAKE ALFRED	70	52	16	0	0	0	0	0	1	1	0
LAKE WALES	312	210	93	2	0	0	0	0	6	1	0
LAKELAND	1,600	1,108	430	2	2	1	0	7	26	22	2
MULBERRY	81	66	13	0	0	0	0	0	1	1	0
WINTER HAVEN	935	641	259	0	3	0	0	4	12	16	0
BALANCE OF COUNTY	3,920	3,324	481	6	2	4	3	10	36	53	1
PUTNAM											
PALATKA	297	127	167	0	0	0	0	0	2	1	0
BALANCE OF COUNTY	775	669	94	0	0	1	0	0	3	7	1
SAINT JOHNS											
ST AUGUSTINE	621	515	77	1	1	0	1	0	15	11	0
ST AUGUSTINE BEACH	2	2	0	0	0	0	0	0	0	0	0
BALANCE OF COUNTY	1,147	1,020	73	5	4	1	0	10	15	19	0
SAINT LUCIE											
FORT PIERCE	1,204	668	505	1	1	0	0	4	5	20	0
PORT ST LUCIE	2,057	1,633	307	7	4	1	0	6	36	61	2
BALANCE OF COUNTY	273	224	39	1	0	0	0	1	0	8	0
SANTA ROSA											
GULF BREEZE	45	42	2	0	0	0	0	1	0	0	0
MILTON	314	273	29	1	0	1	0	3	1	6	0
BALANCE OF COUNTY	1,504	1,383	54	9	1	1	1	8	20	26	1
SARASOTA											
LONGBOAT KEY	6	6	0	0	0	0	0	0	0	0	0
NORTH PORT	402	373	13	2	0	0	1	4	4	5	0
SARASOTA	606	457	137	1	0	0	1	0	4	6	0

**TABLE B-3 (Cont.): RESIDENT LIVE BIRTHS FOR INCORPORATED CITIES OF 2,400 OR MORE
POPULATION, BY RACE OF MOTHER, BY COUNTY, FLORIDA, 2006**

	TOTAL	WHITE	BLACK	AMER INDIAN	CHINESE	JAPANESE	HAWAIIAN	FILIPINO	OTHER ASIAN/ PAC ISL	MULTI- RACE & OTHER	UNK
SARASOTA (Cont.)											
VENICE	56	52	2	0	0	0	0	2	0	0	0
BALANCE OF COUNTY	2,093	1,878	130	3	12	2	0	4	29	35	0
SEMINOLE											
ALTAMONTE SPRINGS	677	510	112	2	3	1	0	8	15	25	1
CASSELBERRY	394	337	37	0	3	1	0	4	6	6	0
LAKE MARY	352	271	32	0	4	3	0	4	31	7	0
LONGWOOD	341	310	10	0	0	0	0	3	11	7	0
MAITLAND	10	10	0	0	0	0	0	0	0	0	0
OVIEDO	542	445	44	0	11	0	0	5	20	17	0
SANFORD	1,219	787	378	1	5	2	0	5	28	13	0
WINTER SPRINGS	352	319	23	0	2	1	0	0	4	3	0
BALANCE OF COUNTY	934	811	66	0	7	3	0	5	20	22	0
SUMTER											
BUSHNELL	61	55	4	0	0	0	0	0	0	2	0
WILDWOOD	89	48	39	0	0	0	0	0	0	2	0
BALANCE OF COUNTY	373	323	42	0	0	0	0	1	1	6	0
SUWANNEE											
LIVE OAK	173	117	47	0	2	0	0	0	1	6	0
BALANCE OF COUNTY	327	300	23	0	0	0	0	1	0	3	0
TAYLOR											
PERRY	127	70	54	0	0	0	0	0	1	2	0
BALANCE OF COUNTY	135	127	6	0	0	0	0	0	0	2	0
UNION											
	171	147	23	1	0	0	0	0	0	0	0
VOLUSIA											
DAYTONA BEACH	846	431	383	1	0	2	0	6	10	13	0
DAYTONA BEACH SHORES	3	3	0	0	0	0	0	0	0	0	0
DEBARY	170	154	5	1	1	0	0	0	6	3	0
DELAND	694	566	110	0	0	2	0	2	8	6	0
DELTONA	1,105	965	113	0	0	0	0	6	5	15	1
EDGEWATER	225	220	3	1	0	0	0	0	0	1	0
HOLLY HILL	173	136	31	0	0	0	0	1	3	2	0
LAKE HELEN	26	19	6	0	0	0	0	0	0	1	0
NEW SMYRNA BEACH	254	226	22	0	1	2	0	2	1	0	0
ORANGE CITY	206	185	14	1	0	0	0	0	3	3	0
ORMOND BEACH	411	375	19	0	0	0	0	3	11	3	0
PIERSON	57	56	1	0	0	0	0	0	0	0	0
PONCE INLET	10	8	1	0	1	0	0	0	0	0	0
PORT ORANGE	459	414	25	1	3	0	0	0	6	10	0
SOUTH DAYTONA	142	118	21	0	0	0	0	1	1	1	0
BALANCE OF COUNTY	482	454	22	0	1	0	0	0	3	2	0
WAKULLA											
	307	271	31	1	0	0	0	2	0	2	0
WALTON											
DEFUNIAK SPRINGS	146	115	22	0	1	0	0	1	2	5	0
BALANCE OF COUNTY	547	519	11	1	3	0	0	0	2	9	2
WASHINGTON											
CHIPLEY	77	47	24	3	0	0	0	0	1	1	1
BALANCE OF COUNTY	184	155	21	1	0	1	0	2	0	4	0

TABLE B-4: RESIDENT LIVE BIRTHS BY TYPE OF PLACE OF DELIVERY AND ATTENDANT, BY COUNTY, FLORIDA, 2006

	TOTAL	HOSPITAL			BIRTHING CENTER			OTHER NAMED PLACE 1,277	UNK 4
		PHYSICIAN 207,943	MIDWIFE 25,918	OTHER/ UNKNOWN 752	PHYSICIAN 59	MIDWIFE 1,173	OTHER/ UNKNOWN 40		
FLORIDA	237,166	207,943	25,918	752	59	1,173	40	1,277	4
ALACHUA	2,837	2,480	250	16	0	62	0	29	0
BAKER	395	349	42	1	0	2	0	1	0
BAY	2,449	2,192	248	0	0	0	1	8	0
BRADFORD	359	331	19	4	0	3	0	2	0
BREVARD	5,610	5,289	242	24	1	6	0	48	0
BROWARD	23,434	20,774	2,317	69	24	116	30	104	0
CALHOUN	180	161	14	1	0	1	0	3	0
CHARLOTTE	1,202	898	242	48	0	4	0	10	0
CITRUS	1,136	1,084	37	1	0	1	0	13	0
CLAY	2,359	2,066	263	7	0	13	0	10	0
COLLIER	4,294	4,166	67	1	0	29	0	31	0
COLUMBIA	857	733	89	0	0	3	0	32	0
MIAMI-DADE	33,739	32,784	513	18	24	272	6	122	0
DESOTO	489	459	19	7	0	2	0	2	0
DIXIE	184	172	8	1	0	1	0	2	0
DUVAL	13,687	12,801	759	13	0	49	0	65	0
ESCAMBIA	4,478	4,186	256	3	0	14	0	19	0
FLAGLER	942	837	97	3	0	0	0	5	0
FRANKLIN	125	100	21	1	0	1	0	2	0
GADSDEN	761	546	201	4	0	4	0	6	0
GILCHRIST	180	164	13	2	0	1	0	0	0
GLADES	97	70	26	0	0	0	0	1	0
GULF	136	120	15	0	0	0	0	1	0
HAMILTON	188	169	16	1	0	0	0	2	0
HARDEE	530	509	9	5	0	2	0	5	0
HENDRY	726	469	249	1	0	0	0	7	0
HERNANDO	1,600	1,189	402	2	0	2	0	5	0
HIGHLANDS	1,106	1,061	8	24	0	5	1	7	0
HILLSBOROUGH	17,520	15,739	1,559	78	0	61	0	83	0
HOLMES	213	205	7	1	0	0	0	0	0
INDIAN RIVER	1,410	1,022	378	2	0	1	0	7	0
JACKSON	596	577	17	0	0	1	0	1	0
JEFFERSON	176	132	39	0	2	0	0	2	1
LAFAYETTE	87	84	3	0	0	0	0	0	0
LAKE	3,448	2,963	450	2	0	15	0	18	0
LEE	7,497	4,857	2,521	26	2	49	0	42	0
LEON	3,271	2,466	719	18	3	37	0	28	0
LEVY	488	452	30	2	0	1	0	3	0
LIBERTY	111	92	17	1	0	0	0	1	0
MADISON	254	185	66	2	0	0	0	1	0
MANATEE	4,139	3,778	340	0	0	2	0	19	0
MARION	3,611	2,730	827	21	0	7	0	26	0
MARTIN	1,399	731	634	6	0	1	0	27	0
MONROE	720	668	48	0	0	0	0	4	0
NASSAU	813	780	24	0	0	3	0	6	0
OKALOOSA	2,788	2,668	86	14	0	10	0	10	0
OKEECHOBEE	623	520	97	3	0	0	0	3	0
ORANGE	16,966	15,864	758	118	1	150	1	74	0
OSCEOLA	3,959	3,460	439	35	0	7	0	18	0
PALM BEACH	15,702	13,345	2,273	12	0	12	0	60	0
PASCO	5,237	4,444	719	16	0	26	0	32	0
PINELLAS	9,541	7,413	2,016	2	1	65	0	43	1
POLK	8,290	6,059	2,132	19	1	45	0	34	0
PUTNAM	1,072	921	131	8	0	1	0	11	0
SAINT JOHNS	1,770	1,493	250	2	0	5	0	20	0
SAINT LUCIE	3,534	2,591	895	24	0	2	0	22	0
SANTA ROSA	1,863	1,759	86	3	0	9	0	6	0
SARASOTA	3,163	2,663	447	17	0	7	0	29	0
SEMINOLE	4,821	4,050	660	32	0	42	1	36	0
SUMTER	523	493	25	0	0	3	0	2	0
SUWANNEE	500	454	37	3	0	4	0	2	0
TAYLOR	262	202	57	2	0	0	0	1	0
UNION	171	154	10	3	0	2	0	2	0
VOLUSIA	5,263	4,599	580	17	0	10	0	57	0
WAKULLA	307	232	72	1	0	0	0	2	0
WALTON	693	675	9	5	0	2	0	2	0
WASHINGTON	261	243	17	0	0	0	0	1	0

TABLE B-5: RESIDENT LIVE BIRTHS BY BIRTHWEIGHT, BY COUNTY, FLORIDA, 2006

	TOTAL	BIRTHWEIGHT IN GRAMS										LESS THAN 1500 GRAMS		LESS THAN 2500 GRAMS	
		<500	500- 999	1000- 1499	1500- 1999	2000- 2499	2500- 2999	3000- 3499	3500- 3999	4000+	UNK	NUMBER	%	NUMBER	%
FLORIDA	237,166	420	1,471	1,916	3,941	12,966	46,197	94,471	59,939	15,817	28	3,807	1.6	20,714	8.7
ALACHUA	2,837	16	15	18	44	163	543	1,074	748	216	0	49	1.7	256	9.0
BAKER	395	1	2	5	10	23	78	138	106	32	0	8	2.0	41	10.4
BAY	2,449	8	10	21	24	144	475	992	620	153	2	39	1.6	207	8.5
BRADFORD	359	0	2	3	7	22	75	139	90	21	0	5	1.4	34	9.5
BREVARD	5,610	6	37	59	89	321	1,074	2,164	1,478	382	0	102	1.8	512	9.1
BROWARD	23,434	34	198	220	385	1,293	4,838	9,634	5,512	1,317	3	452	1.9	2,130	9.1
CALHOUN	180	0	1	4	2	9	41	71	45	7	0	5	2.8	16	8.9
CHARLOTTE	1,202	1	2	10	24	62	249	473	311	70	0	13	1.1	99	8.2
CITRUS	1,136	0	6	8	19	59	207	422	300	115	0	14	1.2	92	8.1
CLAY	2,359	3	11	21	35	122	418	955	609	185	0	35	1.5	192	8.1
COLLIER	4,294	5	26	24	49	185	765	1,800	1,146	294	0	55	1.3	289	6.7
COLUMBIA	857	3	6	5	12	42	169	324	232	64	0	14	1.6	68	7.9
MIAMI-DADE	33,739	58	248	251	560	1,784	6,743	13,675	8,348	2,068	4	557	1.7	2,901	8.6
DESOTO	489	1	1	3	9	27	97	193	128	30	0	5	1.0	41	8.4
DIXIE	184	0	4	0	4	10	32	63	58	13	0	4	2.2	18	9.8
DUVAL	13,687	23	88	139	243	810	2,746	5,291	3,423	923	1	250	1.8	1,303	9.5
ESCAMBIA	4,478	6	29	41	90	325	913	1,720	1,057	297	0	76	1.7	491	11.0
FLAGLER	942	0	15	7	19	52	152	356	267	74	0	22	2.3	93	9.9
FRANKLIN	125	0	0	1	1	7	31	55	27	3	0	1	0.8	9	7.2
GADSDEN	761	4	7	14	15	49	174	296	170	32	0	25	3.3	89	11.7
GILCHRIST	180	0	0	2	1	15	32	69	48	13	0	2	1.1	18	10.0
GLADES	97	0	0	0	1	5	18	43	28	2	0	0	0.0	6	6.2
GULF	136	0	1	2	3	10	23	60	26	10	1	3	2.2	16	11.8
HAMILTON	188	2	1	1	7	13	44	81	31	8	0	4	2.1	24	12.8
HARDEE	530	2	5	4	10	23	120	225	115	26	0	11	2.1	44	8.3
HENDRY	726	0	3	8	14	45	148	283	172	53	0	11	1.5	70	9.6
HERNANDO	1,600	4	6	12	19	80	284	638	454	103	0	22	1.4	121	7.6
HIGHLANDS	1,106	2	5	3	23	57	247	453	249	67	0	10	0.9	90	8.1
HILLSBOROUGH	17,520	50	90	139	326	990	3,389	7,019	4,347	1,168	2	279	1.6	1,595	9.1
HOLMES	213	0	1	3	4	8	40	94	53	10	0	4	1.9	16	7.5
INDIAN RIVER	1,410	2	5	11	13	69	246	554	400	110	0	18	1.3	100	7.1
JACKSON	596	5	2	7	7	43	146	219	134	33	0	14	2.3	64	10.7
JEFFERSON	176	1	0	0	4	14	31	67	47	12	0	1	0.6	19	10.8
LAFAYETTE	87	1	0	0	1	6	15	35	21	8	0	1	1.1	8	9.2
LAKE	3,448	8	14	26	44	189	666	1,394	879	227	1	48	1.4	281	8.1
LEE	7,497	10	40	45	129	400	1,425	2,998	1,923	523	4	95	1.3	624	8.3
LEON	3,271	10	31	29	80	176	647	1,275	814	208	1	70	2.1	326	10.0
LEVY	488	2	3	4	8	26	90	185	131	39	0	9	1.8	43	8.8
LIBERTY	111	0	0	1	1	9	21	46	23	10	0	1	0.9	11	9.9
MADISON	254	1	3	2	4	18	61	106	47	12	0	6	2.4	28	11.0
MANATEE	4,139	2	17	19	68	199	737	1,704	1,098	295	0	38	0.9	305	7.4
MARION	3,611	8	22	44	56	181	711	1,394	936	259	0	74	2.0	311	8.6
MARTIN	1,399	0	3	9	19	73	276	552	367	100	0	12	0.9	104	7.4
MONROE	720	2	6	9	15	31	121	276	196	64	0	17	2.4	63	8.8
NASSAU	813	0	3	14	12	48	164	310	213	49	0	17	2.1	77	9.5
OKALOOSA	2,788	0	7	14	34	154	543	1,086	730	218	2	21	0.8	209	7.5
OKEECHOBEE	623	0	4	2	8	49	104	250	166	40	0	6	1.0	63	10.1
ORANGE	16,966	34	115	159	297	997	3,478	6,772	4,106	1,007	1	308	1.8	1,602	9.4
OSCEOLA	3,959	11	21	35	79	225	762	1,614	972	240	0	67	1.7	371	9.4
PALM BEACH	15,702	9	92	111	260	940	3,132	6,424	3,797	936	1	212	1.4	1,412	9.0
PASCO	5,237	8	30	37	92	275	983	2,065	1,365	379	3	75	1.4	442	8.4
PINELLAS	9,541	25	59	78	163	486	1,757	3,648	2,594	731	0	162	1.7	811	8.5
POLK	8,290	15	44	69	117	419	1,482	3,214	2,256	673	1	128	1.5	664	8.0
PUTNAM	1,072	3	11	14	21	68	213	409	260	73	0	28	2.6	117	10.9
SAINT JOHNS	1,770	0	8	6	26	85	265	687	519	174	0	14	0.8	125	7.1
SAINT LUCIE	3,534	11	20	21	52	179	712	1,344	922	273	0	52	1.5	283	8.0
SANTA ROSA	1,863	1	11	9	18	110	322	727	509	156	0	21	1.1	149	8.0
SARASOTA	3,163	2	14	27	42	129	516	1,221	935	277	0	43	1.4	214	6.8
SEMINOLE	4,821	13	22	37	81	210	878	1,938	1,310	332	0	72	1.5	363	7.5
SUMTER	523	0	4	3	11	28	121	199	124	33	0	7	1.3	46	8.8
SUWANNEE	500	1	7	3	10	16	97	204	118	44	0	11	2.2	37	7.4
TAYLOR	262	0	1	2	7	11	60	102	56	23	0	3	1.1	21	8.0
UNION	171	0	0	0	5	10	38	64	47	7	0	0	0.0	15	8.8
VOLUSIA	5,263	2	29	32	74	259	982	2,101	1,412	372	0	63	1.2	396	7.5
WAKULLA	307	1	1	2	8	15	50	121	78	31	0	4	1.3	27	8.8
WALTON	693	1	2	5	14	46	129	252	180	63	1	8	1.2	68	9.8
WASHINGTON	261	0	0	1	12	15	49	105	52	27	0	1	0.4	28	10.7

TABLE B-5 (Cont.): RESIDENT LIVE BIRTHS TO WHITE MOTHERS BY BIRTHWEIGHT, BY COUNTY, FLORIDA, 2006

	BIRTHWEIGHT IN GRAMS											LESS THAN 1500 GRAMS		LESS THAN 2500 GRAMS	
	TOTAL	<500	500- 999	1000- 1499	1500- 1999	2000- 2499	2500- 2999	3000- 3499	3500- 3999	4000+	UNK	NUMBER	%	NUMBER	%
FLORIDA	174,147	195	773	1,107	2,474	8,299	30,326	69,570	48,186	13,200	17	2,075	1.2	12,848	7.4
ALACHUA	1,736	6	5	7	21	78	259	645	546	169	0	18	1.0	117	6.7
BAKER	340	1	1	4	9	19	60	114	102	30	0	6	1.8	34	10.0
BAY	1,864	4	6	16	17	117	320	761	497	125	1	26	1.4	160	8.6
BRADFORD	290	0	1	2	4	18	60	106	78	21	0	3	1.0	25	8.6
BREVARD	4,514	4	28	41	63	223	802	1,747	1,267	339	0	73	1.6	359	8.0
BROWARD	13,504	9	58	82	170	628	2,411	5,671	3,583	890	2	149	1.1	947	7.0
CALHOUN	156	0	1	4	1	7	34	63	40	6	0	5	3.2	13	8.3
CHARLOTTE	1,080	1	2	6	21	53	222	424	282	69	0	9	0.8	83	7.7
CITRUS	1,049	0	6	8	16	56	184	383	284	112	0	14	1.3	86	8.2
CLAY	1,945	1	8	17	29	90	311	788	532	169	0	26	1.3	145	7.5
COLLIER	3,814	4	20	17	44	156	663	1,611	1,028	271	0	41	1.1	241	6.3
COLUMBIA	667	2	4	4	7	32	117	242	202	57	0	10	1.5	49	7.3
MIAMI-DADE	24,630	27	124	149	369	1,154	4,462	10,180	6,514	1,648	3	300	1.2	1,823	7.4
DESOTO	435	1	1	2	8	22	87	167	117	30	0	4	0.9	34	7.8
DIXIE	171	0	4	0	4	8	29	59	54	13	0	4	2.3	16	9.4
DUVAL	7,968	7	28	55	120	365	1,305	3,033	2,378	676	1	90	1.1	575	7.2
ESCAMBIA	2,860	4	12	20	47	168	482	1,089	808	230	0	36	1.3	251	8.8
FLAGLER	787	0	10	6	12	40	121	298	231	69	0	16	2.0	68	8.6
FRANKLIN	113	0	0	1	1	7	27	48	26	3	0	1	0.9	9	8.0
GADSDEN	294	0	2	4	5	15	47	114	84	23	0	6	2.0	26	8.8
GILCHRIST	170	0	0	2	1	13	27	68	46	13	0	2	1.2	16	9.4
GLADES	77	0	0	0	1	5	14	34	22	1	0	0	0.0	6	7.8
GULF	110	0	1	2	2	8	17	50	22	7	1	3	2.7	13	11.8
HAMILTON	128	0	0	0	5	7	28	55	26	7	0	0	0.0	12	9.4
HARDEE	506	2	4	3	9	22	114	215	114	23	0	9	1.8	40	7.9
HENDRY	616	0	2	7	10	30	108	251	157	51	0	9	1.5	49	8.0
HERNANDO	1,436	2	6	10	17	66	250	570	418	97	0	18	1.3	101	7.0
HIGHLANDS	888	1	5	1	17	37	185	359	216	67	0	7	0.8	61	6.9
HILLSBOROUGH	13,110	24	50	89	205	657	2,291	5,242	3,557	994	1	163	1.2	1,025	7.8
HOLMES	201	0	1	3	3	7	37	90	50	10	0	4	2.0	14	7.0
INDIAN RIVER	1,159	2	2	9	13	49	187	442	354	101	0	13	1.1	75	6.5
JACKSON	427	2	2	3	3	21	100	154	115	27	0	7	1.6	31	7.3
JEFFERSON	99	0	0	0	1	7	10	40	32	9	0	0	0.0	8	8.1
LAFAYETTE	76	1	0	0	0	6	13	32	18	6	0	1	1.3	7	9.2
LAKE	2,875	3	11	20	28	138	522	1,163	784	206	0	34	1.2	200	7.0
LEE	6,386	6	28	30	108	318	1,145	2,540	1,729	480	2	64	1.0	490	7.7
LEON	1,733	1	7	13	32	61	265	667	531	156	0	21	1.2	114	6.6
LEVY	432	2	2	3	7	21	75	160	123	39	0	7	1.6	35	8.1
LIBERTY	98	0	0	1	1	7	16	42	22	9	0	1	1.0	9	9.2
MADISON	144	0	1	2	3	7	30	61	30	10	0	3	2.1	13	9.0
MANATEE	3,398	0	13	15	51	140	561	1,384	970	264	0	28	0.8	219	6.4
MARION	2,753	4	14	31	38	124	483	1,058	776	225	0	49	1.8	211	7.7
MARTIN	1,029	0	1	8	14	53	175	400	298	80	0	9	0.9	76	7.4
MONROE	615	2	5	7	12	27	90	235	178	59	0	14	2.3	53	8.6
NASSAU	739	0	2	12	10	41	139	287	201	47	0	14	1.9	65	8.8
OKALOOSA	2,288	0	3	11	26	112	422	877	641	195	1	14	0.6	152	6.6
OKEECHOBEE	558	0	3	2	7	42	93	221	152	38	0	5	0.9	54	9.7
ORANGE	11,425	23	55	75	145	571	2,027	4,626	3,119	784	0	153	1.3	869	7.6
OSCEOLA	3,316	8	16	28	59	175	618	1,345	861	206	0	52	1.6	286	8.6
PALM BEACH	11,038	2	51	53	149	549	1,958	4,550	2,951	775	0	106	1.0	804	7.3
PASCO	4,710	8	27	33	82	246	847	1,843	1,267	354	3	68	1.4	396	8.4
PINELLAS	7,155	8	30	49	112	310	1,150	2,724	2,147	625	0	87	1.2	509	7.1
POLK	6,468	6	28	39	77	296	1,044	2,497	1,907	573	1	73	1.1	446	6.9
PUTNAM	796	2	7	1	12	42	143	304	219	66	0	10	1.3	64	8.0
SAINT JOHNS	1,537	0	7	4	22	61	220	593	469	161	0	11	0.7	94	6.1
SAINT LUCIE	2,525	3	10	8	27	102	452	963	730	230	0	21	0.8	150	5.9
SANTA ROSA	1,698	1	10	8	16	101	283	658	473	148	0	19	1.1	136	8.0
SARASOTA	2,766	2	11	21	32	98	416	1,067	860	259	0	34	1.2	164	5.9
SEMINOLE	3,800	4	10	23	48	145	609	1,554	1,119	288	0	37	1.0	230	6.1
SUMTER	426	0	3	3	7	22	88	160	110	33	0	6	1.4	35	8.2
SUWANNEE	417	1	4	2	7	13	73	168	106	43	0	7	1.7	27	6.5
TAYLOR	197	0	1	2	7	5	33	82	44	23	0	3	1.5	15	7.6
UNION	147	0	0	0	4	7	32	52	45	7	0	0	0.0	11	7.5
VOLUSIA	4,330	2	16	21	48	207	742	1,721	1,238	335	0	39	0.9	294	6.8
WAKULLA	271	1	1	2	7	11	45	103	71	30	0	4	1.5	22	8.1
WALTON	634	0	2	5	12	41	113	230	168	62	1	7	1.1	60	9.5
WASHINGTON	202	0	0	0	9	12	31	83	43	24	0	0	0.0	21	10.4

TABLE B-5 (Cont.): RESIDENT LIVE BIRTHS TO BLACK MOTHERS BY BIRTHWEIGHT, BY COUNTY, FLORIDA, 2006

	BIRTHWEIGHT IN GRAMS											LESS THAN 1500 GRAMS		LESS THAN 2500 GRAMS	
	TOTAL	<500	500- 999	1000- 1499	1500- 1999	2000- 2499	2500- 2999	3000- 3499	3500- 3999	4000+	UNK	NUMBER	%	NUMBER	%
FLORIDA	50,808	213	637	728	1,259	3,985	13,030	19,907	9,070	1,970	9	1,578	3.1	6,822	13.4
ALACHUA	863	8	10	10	20	79	235	327	141	33	0	28	3.2	127	14.7
BAKER	44	0	1	1	1	4	13	20	3	1	0	2	4.5	7	15.9
BAY	337	4	4	4	6	19	94	140	57	8	1	12	3.6	37	11.0
BRADFORD	60	0	1	1	3	3	12	31	9	0	0	2	3.3	8	13.3
BREVARD	763	2	7	18	19	71	192	295	129	30	0	27	3.5	117	15.3
BROWARD	8,183	25	128	126	183	566	2,022	3,245	1,543	345	0	279	3.4	1,028	12.6
CALHOUN	19	0	0	0	0	2	4	7	5	1	0	0	0.0	2	10.5
CHARLOTTE	78	0	0	4	3	6	15	32	17	1	0	4	5.1	13	16.7
CITRUS	46	0	0	0	2	3	14	17	9	1	0	0	0.0	5	10.9
CLAY	272	2	3	4	4	23	78	98	48	12	0	9	3.3	36	13.2
COLLIER	417	1	6	6	5	28	89	160	104	18	0	13	3.1	46	11.0
COLUMBIA	169	1	2	1	5	10	48	70	29	3	0	4	2.4	19	11.2
MIAMI-DADE	8,282	31	116	97	175	584	2,088	3,177	1,634	379	1	244	2.9	1,003	12.1
DESOTO	48	0	0	1	1	5	9	24	8	0	0	1	2.1	7	14.6
DIXIE	11	0	0	0	0	2	3	4	2	0	0	0	0.0	2	18.2
DUVAL	4,810	15	56	79	105	392	1,244	1,885	845	189	0	150	3.1	647	13.5
ESCAMBIA	1,389	2	16	18	37	138	386	544	196	52	0	36	2.6	211	15.2
FLAGLER	109	0	5	1	4	10	19	41	26	3	0	6	5.5	20	18.3
FRANKLIN	8	0	0	0	0	0	4	4	0	0	0	0	0.0	0	0.0
GADSDEN	460	4	5	10	10	33	126	180	83	9	0	19	4.1	62	13.5
GILCHRIST	7	0	0	0	0	2	4	0	1	0	0	0	0.0	2	28.6
GLADES	11	0	0	0	0	0	3	4	3	1	0	0	0.0	0	0.0
GULF	21	0	0	0	1	2	4	9	2	3	0	0	0.0	3	14.3
HAMILTON	56	1	1	1	2	6	15	24	5	1	0	3	5.4	11	19.6
HARDEE	17	0	1	1	0	0	5	6	1	3	0	2	11.8	2	11.8
HENDRY	92	0	1	1	4	14	36	26	9	1	0	2	2.2	20	21.7
HERNANDO	104	2	0	2	0	10	21	47	17	5	0	4	3.8	14	13.5
HIGHLANDS	175	1	0	2	5	19	54	70	24	0	0	3	1.7	27	15.4
HILLSBOROUGH	3,397	24	35	36	96	278	864	1,364	590	109	1	95	2.8	469	13.8
HOLMES	6	0	0	0	1	0	3	1	1	0	0	0	0.0	1	16.7
INDIAN RIVER	205	0	3	2	0	18	51	86	37	8	0	5	2.4	23	11.2
JACKSON	156	2	0	4	4	18	45	60	18	5	0	6	3.8	28	17.9
JEFFERSON	75	1	0	0	3	7	21	26	15	2	0	1	1.3	11	14.7
LAFAYETTE	8	0	0	0	1	0	1	3	2	1	0	0	0.0	1	12.5
LAKE	396	5	3	6	15	35	106	158	56	12	0	14	3.5	64	16.2
LEE	912	4	12	14	20	74	236	367	151	32	2	30	3.3	124	13.6
LEON	1,336	9	20	15	43	108	339	523	238	40	1	44	3.3	195	14.6
LEVY	47	0	1	1	1	5	14	17	8	0	0	2	4.3	8	17.0
LIBERTY	11	0	0	0	0	2	3	4	1	1	0	0	0.0	2	18.2
MADISON	109	1	2	0	1	11	31	45	16	2	0	3	2.8	15	13.8
MANATEE	521	1	3	4	14	46	128	221	85	19	0	8	1.5	68	13.1
MARION	683	4	8	9	16	46	191	275	107	27	0	21	3.1	83	12.2
MARTIN	124	0	1	1	5	7	27	60	16	7	0	2	1.6	14	11.3
MONROE	71	0	1	2	2	2	18	34	9	3	0	3	4.2	7	9.9
NASSAU	52	0	1	2	2	7	12	17	10	1	0	3	5.8	12	23.1
OKALOOSA	293	0	4	3	6	30	75	117	45	12	1	7	2.4	43	14.7
ORKEECHOBEE	38	0	1	0	1	4	7	16	8	1	0	1	2.6	6	15.8
ORANGE	4,180	10	56	74	126	345	1,124	1,587	708	149	1	140	3.3	611	14.6
OSCEOLA	414	3	2	6	15	35	100	160	68	25	0	11	2.7	61	14.7
PALM BEACH	3,940	7	38	57	101	347	983	1,568	705	133	1	102	2.6	550	14.0
PASCO	251	0	2	3	8	16	56	113	44	9	0	5	2.0	29	11.6
PINELLAS	1,716	16	27	23	44	148	461	641	290	66	0	66	3.8	258	15.0
POLK	1,561	9	14	27	36	111	382	603	299	80	0	50	3.2	197	12.6
PUTNAM	261	1	4	10	9	26	68	99	38	6	0	15	5.7	50	19.2
SAINT JOHNS	150	0	1	1	1	15	29	66	30	7	0	2	1.3	18	12.0
SAINT LUCIE	851	7	10	10	23	66	223	329	149	34	0	27	3.2	116	13.6
SANTA ROSA	85	0	1	1	1	5	21	36	17	3	0	2	2.4	8	9.4
SARASOTA	282	0	2	6	9	26	74	109	45	11	0	8	2.8	43	15.2
SEMINOLE	702	9	9	10	25	46	190	262	119	32	0	28	4.0	99	14.1
SUMTER	85	0	1	0	4	5	30	34	11	0	0	1	1.2	10	11.8
SUWANNEE	70	0	2	1	3	3	20	32	9	0	0	3	4.3	9	12.9
TAYLOR	60	0	0	0	0	3	26	20	11	0	0	0	0.0	3	5.0
UNION	23	0	0	0	1	3	6	11	2	0	0	0	0.0	4	17.4
VOLUSIA	776	0	10	11	23	48	202	308	143	31	0	21	2.7	92	11.9
WAKULLA	31	0	0	0	1	4	2	17	6	1	0	0	0.0	5	16.1
WALTON	33	1	0	0	2	3	7	13	6	1	0	1	3.0	6	18.2
WASHINGTON	45	0	0	1	1	1	17	17	7	1	0	1	2.2	3	6.7

TABLE B-5 (Cont.): RESIDENT LIVE BIRTHS TO OTHER MOTHERS BY BIRTHWEIGHT, BY COUNTY, FLORIDA, 2006

	TOTAL	BIRTHWEIGHT IN GRAMS										LESS THAN 1500 GRAMS		LESS THAN 2500 GRAMS	
		<500	500- 999	1000- 1499	1500- 1999	2000- 2499	2500- 2999	3000- 3499	3500- 3999	4000+	UNK	NUMBER	%	NUMBER	%
FLORIDA	11,889	10	59	78	204	672	2,777	4,875	2,598	616	0	147	1.2	1,023	8.6
ALACHUA	238	2	0	1	3	6	49	102	61	14	0	3	1.3	12	5.0
BAKER	10	0	0	0	0	0	4	4	1	1	0	0	0.0	0	0.0
BAY	157	0	0	1	0	6	41	60	40	9	0	1	0.6	7	4.5
BRADFORD	9	0	0	0	0	1	3	2	3	0	0	0	0.0	1	11.1
BREVARD	330	0	2	0	7	26	80	122	80	13	0	2	0.6	35	10.6
BROWARD	1,652	0	12	11	32	98	388	678	359	74	0	23	1.4	153	9.3
CALHOUN	5	0	0	0	1	0	3	1	0	0	0	0	0.0	1	20.0
CHARLOTTE	44	0	0	0	0	3	12	17	12	0	0	0	0.0	3	6.8
CITRUS	40	0	0	0	1	0	9	22	6	2	0	0	0.0	1	2.5
CLAY	142	0	0	0	2	9	29	69	29	4	0	0	0.0	11	7.7
COLLIER	62	0	0	1	0	1	13	29	14	4	0	1	1.6	2	3.2
COLUMBIA	20	0	0	0	0	0	3	12	1	4	0	0	0.0	0	0.0
MIAMI-DADE	782	0	8	4	16	41	188	300	189	36	0	12	1.5	69	8.8
DESOTO	6	0	0	0	0	0	1	2	3	0	0	0	0.0	0	0.0
DIXIE	2	0	0	0	0	0	0	0	2	0	0	0	0.0	0	0.0
DUVAL	904	1	4	5	18	53	197	370	199	57	0	10	1.1	81	9.0
ESCAMBIA	227	0	1	2	6	19	45	87	52	15	0	3	1.3	28	12.3
FLAGLER	46	0	0	0	3	2	12	17	10	2	0	0	0.0	5	10.9
FRANKLIN	3	0	0	0	0	0	0	2	1	0	0	0	0.0	0	0.0
GADSDEN	7	0	0	0	0	1	1	2	3	0	0	0	0.0	1	14.3
GILCHRIST	3	0	0	0	0	0	1	1	1	0	0	0	0.0	0	0.0
GLADES	9	0	0	0	0	0	1	5	3	0	0	0	0.0	0	0.0
GULF	4	0	0	0	0	0	2	1	1	0	0	0	0.0	0	0.0
HAMILTON	4	1	0	0	0	0	1	2	0	0	0	1	25.0	1	25.0
HARDEE	7	0	0	0	1	1	1	4	0	0	0	0	0.0	2	28.6
HENDRY	18	0	0	0	0	1	4	6	6	1	0	0	0.0	1	5.6
HERNANDO	59	0	0	0	2	4	12	21	19	1	0	0	0.0	6	10.2
HIGHLANDS	43	0	0	0	1	1	8	24	9	0	0	0	0.0	2	4.7
HILLSBOROUGH	997	2	4	14	25	55	231	408	195	63	0	20	2.0	100	10.0
HOLMES	6	0	0	0	0	1	0	3	2	0	0	0	0.0	1	16.7
INDIAN RIVER	46	0	0	0	0	2	8	26	9	1	0	0	0.0	2	4.3
JACKSON	13	1	0	0	0	4	1	5	1	1	0	1	7.7	5	38.5
JEFFERSON	1	0	0	0	0	0	0	1	0	0	0	0	0.0	0	0.0
LAFAYETTE	3	0	0	0	0	0	1	0	1	1	0	0	0.0	0	0.0
LAKE	176	0	0	0	1	16	38	73	39	9	0	0	0.0	17	9.7
LEE	197	0	0	1	1	8	44	89	43	11	0	1	0.5	10	5.1
LEON	192	0	4	1	4	7	42	78	45	11	0	5	2.6	16	8.3
LEVY	9	0	0	0	0	0	1	8	0	0	0	0	0.0	0	0.0
LIBERTY	2	0	0	0	0	0	2	0	0	0	0	0	0.0	0	0.0
MADISON	1	0	0	0	0	0	0	0	1	0	0	0	0.0	0	0.0
MANATEE	218	1	1	0	3	13	48	97	43	12	0	2	0.9	18	8.3
MARION	175	0	0	4	2	11	37	61	53	7	0	4	2.3	17	9.7
MARTIN	245	0	1	0	0	13	74	92	52	13	0	1	0.4	14	5.7
MONROE	34	0	0	0	1	2	13	7	9	2	0	0	0.0	3	8.8
NASSAU	22	0	0	0	0	0	13	6	2	1	0	0	0.0	0	0.0
OKALOOSA	206	0	0	0	2	12	45	92	44	11	0	0	0.0	14	6.8
ORKEECHOBEE	27	0	0	0	0	3	4	13	6	1	0	0	0.0	3	11.1
ORANGE	1,354	1	4	10	26	81	325	556	277	74	0	15	1.1	122	9.0
OSCEOLA	228	0	3	1	5	15	44	108	43	9	0	4	1.8	24	10.5
PALM BEACH	717	0	3	1	9	44	190	303	139	28	0	4	0.6	57	7.9
PASCO	274	0	1	1	2	13	79	109	53	16	0	2	0.7	17	6.2
PINELLAS	660	0	1	6	6	28	141	283	156	39	0	7	1.1	41	6.2
POLK	258	0	2	3	4	12	54	113	50	20	0	5	1.9	21	8.1
PUTNAM	14	0	0	3	0	0	2	6	2	1	0	3	21.4	3	21.4
SAINT JOHNS	83	0	0	1	3	9	16	28	20	6	0	1	1.2	13	15.7
SAINT LUCIE	156	1	0	3	2	11	37	51	42	9	0	4	2.6	17	10.9
SANTA ROSA	79	0	0	0	1	4	17	33	19	5	0	0	0.0	5	6.3
SARASOTA	115	0	1	0	1	5	26	45	30	7	0	1	0.9	7	6.1
SEMINOLE	318	0	3	4	8	19	78	122	72	12	0	7	2.2	34	10.7
SUMTER	12	0	0	0	0	1	3	5	3	0	0	0	0.0	1	8.3
SUWANNEE	13	0	1	0	0	0	4	4	3	1	0	1	7.7	1	7.7
TAYLOR	5	0	0	0	0	3	1	0	1	0	0	0	0.0	3	60.0
UNION	1	0	0	0	0	0	0	1	0	0	0	0	0.0	0	0.0
VOLUSIA	156	0	3	0	3	4	38	72	30	6	0	3	1.9	10	6.4
WAKULLA	5	0	0	0	0	0	3	1	1	0	0	0	0.0	0	0.0
WALTON	24	0	0	0	0	2	8	8	6	0	0	0	0.0	2	8.3
WASHINGTON	13	0	0	0	2	1	1	5	2	2	0	0	0.0	3	23.1

TABLE B-6: RESIDENT LIVE BIRTHS BY AGE OF MOTHER, BY COUNTY, FLORIDA, 2006

	TOTAL	<13	13	14	15	16	17	18	19	20-24	25-29	30-34	35-44	45+	UNK
FLORIDA	237,166	12	55	286	1,038	2,485	4,612	7,267	10,105	62,396	63,770	50,917	33,880	323	20
ALACHUA	2,837	0	1	6	12	30	53	80	108	769	804	615	358	1	0
BAKER	395	0	0	0	3	6	15	20	32	142	107	51	19	0	0
BAY	2,449	0	0	4	11	30	51	95	133	841	706	365	211	2	0
BRADFORD	359	0	0	0	3	5	12	13	27	128	94	42	35	0	0
BREVARD	5,610	0	0	2	17	54	114	173	244	1,495	1,559	1,159	782	10	1
BROWARD	23,434	0	2	18	99	162	327	534	713	4,708	6,212	6,028	4,585	43	3
CALHOUN	180	0	0	0	0	0	7	4	9	63	52	36	9	0	0
CHARLOTTE	1,202	0	0	2	5	7	21	34	59	357	362	200	148	7	0
CITRUS	1,136	0	0	1	3	16	26	47	69	381	313	155	122	3	0
CLAY	2,359	0	0	0	5	19	38	68	118	647	633	526	301	4	0
COLLIER	4,294	1	0	7	22	47	92	143	178	1,172	1,096	910	622	4	0
COLUMBIA	857	0	0	1	5	7	30	48	58	314	213	119	62	0	0
MIAMI-DADE	33,739	0	5	37	154	339	537	785	1,202	7,668	8,745	8,517	5,682	65	3
DESOTO	489	0	0	0	3	11	20	24	41	171	122	60	37	0	0
DIXIE	184	0	0	0	2	3	7	5	11	85	37	18	16	0	0
DUVAL	13,687	0	6	19	43	139	268	456	641	4,161	3,838	2,589	1,516	11	0
ESCAMBIA	4,478	1	0	9	26	61	95	162	251	1,446	1,279	725	419	3	1
FLAGLER	942	0	0	1	1	5	19	25	28	260	280	191	129	3	0
FRANKLIN	125	0	0	0	0	3	2	7	8	53	32	11	9	0	0
GADSDEN	761	0	2	5	4	18	22	39	50	262	201	103	55	0	0
GILCHRIST	180	0	0	0	1	1	11	6	8	70	43	22	18	0	0
GLADES	97	0	0	0	0	3	6	8	5	29	31	7	8	0	0
GULF	136	0	0	0	0	1	0	5	9	40	44	24	13	0	0
HAMILTON	188	0	0	0	3	6	6	9	12	75	38	24	15	0	0
HARDEE	530	0	0	2	5	13	16	22	39	175	140	73	44	1	0
HENDRY	726	0	0	2	7	24	32	33	48	233	174	113	60	0	0
HERNANDO	1,600	0	0	3	4	10	39	56	58	477	435	296	221	1	0
HIGHLANDS	1,106	0	1	0	5	10	30	52	72	375	264	186	110	1	0
HILLSBOROUGH	17,520	1	3	26	73	207	382	570	816	4,616	4,709	3,727	2,372	18	0
HOLMES	213	0	0	1	1	3	6	12	17	82	54	26	11	0	0
INDIAN RIVER	1,410	0	0	2	8	16	28	46	65	416	380	275	173	1	0
JACKSON	596	0	0	1	5	5	9	28	36	211	171	80	50	0	0
JEFFERSON	176	0	0	0	2	2	5	8	15	48	51	25	20	0	0
LAFAYETTE	87	0	0	1	1	2	0	5	5	32	23	14	4	0	0
LAKE	3,448	0	0	6	19	45	79	123	160	959	955	693	407	2	0
LEE	7,497	0	6	15	42	111	150	250	376	2,122	2,010	1,498	904	13	0
LEON	3,271	0	0	4	18	20	44	88	117	898	926	728	427	1	0
LEVY	488	0	0	0	7	8	6	21	25	190	120	73	37	1	0
LIBERTY	111	0	0	1	1	1	1	6	9	42	25	18	7	0	0
MADISON	254	0	0	0	0	7	11	8	10	81	84	37	16	0	0
MANATEE	4,139	2	1	5	26	50	107	157	209	1,205	1,107	773	494	3	0
MARION	3,611	0	0	2	23	46	84	139	213	1,211	940	570	378	5	0
MARTIN	1,399	0	2	1	3	16	29	43	66	339	370	295	227	7	1
MONROE	720	0	0	1	0	4	10	16	20	165	205	170	129	0	0
NASSAU	813	0	0	0	1	11	23	25	34	238	229	163	89	0	0
OKALOOSA	2,788	0	0	5	6	12	44	80	136	935	880	438	252	0	0
OKEECHOBEE	623	0	0	1	3	11	23	22	49	228	147	86	53	0	0
ORANGE	16,966	2	6	14	62	149	324	520	694	4,158	4,690	3,825	2,507	14	1
OSCEOLA	3,959	0	2	2	17	40	78	121	206	1,088	1,145	776	480	4	0
PALM BEACH	15,702	1	7	18	68	151	285	415	499	3,432	3,935	3,926	2,923	39	3
PASCO	5,237	0	2	7	22	47	83	169	213	1,316	1,475	1,177	716	8	2
PINELLAS	9,541	0	2	12	45	115	189	295	397	2,458	2,439	2,015	1,558	15	1
POLK	8,290	2	4	11	53	114	246	365	430	2,731	2,240	1,313	775	6	0
PUTNAM	1,072	0	0	4	6	25	33	50	67	408	277	136	63	3	0
SAINT JOHNS	1,770	0	0	2	2	17	30	41	53	359	462	477	323	4	0
SAINT LUCIE	3,534	0	0	5	12	47	90	123	163	964	992	700	434	3	1
SANTA ROSA	1,863	0	0	1	5	13	32	52	74	518	559	382	224	3	0
SARASOTA	3,163	1	1	2	11	26	53	86	120	792	834	742	491	4	0
SEMINOLE	4,821	0	0	6	13	31	66	115	162	1,074	1,320	1,188	842	4	0
SUMTER	523	0	0	1	3	20	10	30	46	182	119	75	37	0	0
SUWANNEE	500	0	0	3	5	11	16	23	32	181	137	64	27	1	0
TAYLOR	262	0	0	1	4	5	11	14	9	108	61	32	17	0	0
UNION	171	0	0	0	1	2	5	9	13	71	50	14	6	0	0
VOLUSIA	5,263	1	2	6	20	58	100	191	247	1,533	1,445	1,003	653	3	1
WAKULLA	307	0	0	0	1	0	6	8	20	97	91	52	31	1	0
WALTON	693	0	0	0	3	5	13	27	32	212	187	128	85	1	0
WASHINGTON	261	0	0	0	2	2	4	12	17	96	69	34	25	0	0

TABLE B-6 (Cont.): RESIDENT LIVE BIRTHS TO WHITE MOTHERS, BY AGE OF MOTHER,
BY COUNTY, FLORIDA, 2006

	TOTAL	<13	13	14	15	16	17	18	19	20-24	25-29	30-34	35-44	45+	UNK
FLORIDA	174,147	7	24	143	584	1,501	2,918	4,781	6,855	43,791	47,472	39,443	26,373	241	14
ALACHUA	1,736	0	0	2	3	8	14	38	43	395	531	443	258	1	0
BAKER	340	0	0	0	1	6	13	17	25	122	95	43	18	0	0
BAY	1,864	0	0	2	4	22	34	71	104	634	533	289	169	2	0
BRADFORD	290	0	0	0	3	4	7	10	24	107	71	38	26	0	0
BREVARD	4,514	0	0	1	12	32	75	131	182	1,169	1,289	961	652	9	1
BROWARD	13,504	0	0	3	30	55	140	228	328	2,286	3,513	3,867	3,025	28	1
CALHOUN	156	0	0	0	0	0	5	3	9	54	44	32	9	0	0
CHARLOTTE	1,080	0	0	2	5	6	20	31	53	331	328	173	126	5	0
CITRUS	1,049	0	0	1	3	15	23	42	68	358	291	136	109	3	0
CLAY	1,945	0	0	0	3	16	30	59	95	544	524	420	250	4	0
COLLIER	3,814	1	0	6	19	42	82	132	161	1,060	971	792	545	3	0
COLUMBIA	667	0	0	1	3	5	17	35	42	250	167	94	53	0	0
MIAMI-DADE	24,630	0	2	18	88	188	310	455	692	4,995	6,458	6,824	4,557	41	2
DESOTO	435	0	0	0	1	11	18	21	32	153	115	53	31	0	0
DIXIE	171	0	0	0	2	3	7	5	11	74	36	18	15	0	0
DUVAL	7,968	0	1	5	11	42	116	191	314	2,252	2,355	1,695	982	4	0
ESCAMBIA	2,860	0	0	2	8	25	39	81	142	858	843	549	309	3	1
FLAGLER	787	0	0	0	1	4	12	21	22	215	250	159	100	3	0
FRANKLIN	113	0	0	0	0	1	2	6	8	48	30	9	9	0	0
GADSDEN	294	0	0	1	1	5	8	9	14	85	84	55	32	0	0
GILCHRIST	170	0	0	0	1	1	11	5	8	64	42	21	17	0	0
GLADES	77	0	0	0	0	2	4	7	4	25	24	6	5	0	0
GULF	110	0	0	0	0	1	0	5	7	36	32	20	9	0	0
HAMILTON	128	0	0	0	2	3	3	6	11	50	23	18	12	0	0
HARDEE	506	0	0	1	5	13	14	22	38	164	136	72	40	1	0
HENDRY	616	0	0	2	7	23	25	29	41	198	142	98	51	0	0
HERNANDO	1,436	0	0	1	4	9	35	42	54	428	398	270	194	1	0
HIGHLANDS	888	0	1	0	3	8	21	42	58	300	212	153	90	0	0
HILLSBOROUGH	13,110	1	3	18	51	137	260	401	571	3,314	3,529	2,923	1,886	16	0
HOLMES	201	0	0	1	1	3	6	11	16	74	54	24	11	0	0
INDIAN RIVER	1,159	0	0	0	6	13	23	35	45	330	319	236	151	1	0
JACKSON	427	0	0	0	2	2	3	20	20	148	126	67	39	0	0
JEFFERSON	99	0	0	0	1	1	3	2	9	22	29	15	17	0	0
LAFAYETTE	76	0	0	1	1	2	0	5	4	27	19	13	4	0	0
LAKE	2,875	0	0	5	15	31	60	101	130	784	816	595	336	2	0
LEE	6,386	0	4	11	30	89	127	212	304	1,827	1,705	1,295	771	11	0
LEON	1,733	0	0	1	4	4	13	34	34	351	521	468	303	0	0
LEVY	432	0	0	0	7	5	6	20	22	165	109	65	32	1	0
LIBERTY	98	0	0	1	1	1	1	6	9	36	23	15	5	0	0
MADISON	144	0	0	0	0	1	4	6	6	37	56	23	11	0	0
MANATEE	3,398	2	1	4	20	39	83	122	166	961	920	652	425	3	0
MARION	2,753	0	0	1	11	30	55	98	156	911	752	432	302	5	0
MARTIN	1,029	0	2	1	1	8	16	22	44	219	268	237	204	7	0
MONROE	615	0	0	1	0	4	10	11	16	140	171	147	115	0	0
NASSAU	739	0	0	0	1	11	21	23	31	209	208	152	83	0	0
OKALOOSA	2,288	0	0	1	4	11	33	59	111	761	731	365	212	0	0
OKEECHOBEE	558	0	0	1	2	9	21	19	41	207	132	77	49	0	0
ORANGE	11,425	0	1	4	29	82	184	303	435	2,648	3,237	2,734	1,759	9	0
OSCEOLA	3,316	0	1	2	17	30	59	107	180	930	964	636	387	3	0
PALM BEACH	11,038	0	1	10	34	81	173	235	308	2,208	2,782	2,944	2,232	27	3
PASCO	4,710	0	2	6	20	46	75	156	191	1,195	1,344	1,036	630	7	2
PINELLAS	7,155	0	1	2	19	56	94	169	250	1,730	1,887	1,617	1,316	13	1
POLK	6,468	2	2	9	31	86	173	273	339	2,083	1,800	1,057	609	4	0
PUTNAM	796	0	0	2	4	14	20	34	46	310	199	111	53	3	0
SAINT JOHNS	1,537	0	0	1	2	11	20	30	40	298	410	430	292	3	0
SAINT LUCIE	2,525	0	0	2	8	25	54	74	109	661	732	534	323	2	1
SANTA ROSA	1,698	0	0	0	3	12	29	48	65	471	509	359	199	3	0
SARASOTA	2,766	1	0	2	9	15	40	67	97	680	739	664	449	3	0
SEMINOLE	3,800	0	0	2	9	19	38	87	124	797	1,041	975	704	4	0
SUMTER	426	0	0	0	1	14	7	24	40	143	99	65	33	0	0
SUWANNEE	417	0	0	1	4	10	11	23	27	154	109	53	24	1	0
TAYLOR	197	0	0	1	0	3	9	9	6	82	46	24	17	0	0
UNION	147	0	0	0	1	2	5	6	10	60	47	12	4	0	0
VOLUSIA	4,330	0	2	4	9	37	75	142	206	1,209	1,198	883	561	3	1
WAKULLA	271	0	0	0	1	0	5	7	16	89	77	45	30	1	0
WALTON	634	0	0	0	2	5	13	26	26	186	171	124	80	1	0
WASHINGTON	202	0	0	0	2	2	4	9	13	76	53	28	15	0	0

TABLE B-6 (Cont.): RESIDENT LIVE BIRTHS TO BLACK MOTHERS, BY AGE OF MOTHER,
BY COUNTY, FLORIDA, 2006

	TOTAL	<13	13	14	15	16	17	18	19	20-24	25-29	30-34	35-44	45+	UNK
FLORIDA	50,808	5	29	135	428	908	1,539	2,279	2,929	16,321	12,787	8,080	5,302	66	0
ALACHUA	863	0	1	4	8	20	37	41	59	349	197	92	55	0	0
BAKER	44	0	0	0	2	0	1	2	7	17	8	6	1	0	0
BAY	337	0	0	0	6	5	12	17	15	132	97	39	14	0	0
BRADFORD	60	0	0	0	0	1	5	3	3	19	20	2	7	0	0
BREVARD	763	0	0	1	4	17	34	35	52	249	201	98	71	1	0
BROWARD	8,183	0	2	15	68	106	182	285	355	2,136	2,169	1,644	1,209	12	0
CALHOUN	19	0	0	0	0	0	1	0	0	7	8	3	0	0	0
CHARLOTTE	78	0	0	0	0	0	1	2	5	15	24	17	14	0	0
CITRUS	46	0	0	0	0	0	3	2	0	15	14	7	5	0	0
CLAY	272	0	0	0	1	3	6	7	18	75	69	60	33	0	0
COLLIER	417	0	0	1	3	5	10	10	15	104	102	99	68	0	0
COLUMBIA	169	0	0	0	2	2	13	13	13	56	40	21	9	0	0
MIAMI-DADE	8,282	0	2	19	65	146	220	322	491	2,552	2,066	1,419	956	24	0
DESOTO	48	0	0	0	2	0	2	3	9	15	7	6	4	0	0
DIXIE	11	0	0	0	0	0	0	0	0	9	1	0	1	0	0
DUVAL	4,810	0	5	12	30	92	136	249	306	1,713	1,208	686	368	5	0
ESCAMBIA	1,389	1	0	7	18	33	52	75	98	529	358	134	84	0	0
FLAGLER	109	0	0	1	0	1	4	4	6	32	18	20	23	0	0
FRANKLIN	8	0	0	0	0	2	0	1	0	3	0	2	0	0	0
GADSDEN	460	0	2	4	3	13	14	29	36	175	115	47	22	0	0
GILCHRIST	7	0	0	0	0	0	0	1	0	4	1	1	0	0	0
GLADES	11	0	0	0	0	0	0	0	0	4	6	0	1	0	0
GULF	21	0	0	0	0	0	0	0	1	3	11	3	3	0	0
HAMILTON	56	0	0	0	1	2	2	3	1	23	15	6	3	0	0
HARDEE	17	0	0	0	0	0	2	0	0	9	3	0	3	0	0
HENDRY	92	0	0	0	0	1	4	3	6	29	30	12	7	0	0
HERNANDO	104	0	0	2	0	1	3	13	3	35	24	13	10	0	0
HIGHLANDS	175	0	0	0	2	1	7	10	10	65	43	25	12	0	0
HILLSBOROUGH	3,397	0	0	7	21	65	112	156	224	1,137	897	480	297	1	0
HOLMES	6	0	0	0	0	0	0	1	0	4	0	1	0	0	0
INDIAN RIVER	205	0	0	2	2	2	4	10	19	74	44	30	18	0	0
JACKSON	156	0	0	1	1	3	6	7	14	57	44	13	10	0	0
JEFFERSON	75	0	0	0	1	1	2	6	6	25	22	9	3	0	0
LAFAYETTE	8	0	0	0	0	0	0	0	1	4	2	1	0	0	0
LAKE	396	0	0	1	2	13	16	20	23	139	93	48	41	0	0
LEE	912	0	2	4	12	20	22	35	68	253	242	152	100	2	0
LEON	1,336	0	0	3	14	15	29	53	78	512	343	191	97	1	0
LEVY	47	0	0	0	0	3	0	1	3	18	9	8	5	0	0
LIBERTY	11	0	0	0	0	0	0	0	0	5	1	3	2	0	0
MADISON	109	0	0	0	0	6	7	2	4	44	27	14	5	0	0
MANATEE	521	0	0	1	6	9	19	28	35	194	122	74	33	0	0
MARION	683	0	0	1	10	14	21	38	48	265	143	92	51	0	0
MARTIN	124	0	0	0	0	4	4	9	10	45	23	17	12	0	0
MONROE	71	0	0	0	0	0	0	5	3	15	27	14	7	0	0
NASSAU	52	0	0	0	0	0	1	1	2	23	17	6	2	0	0
OKALOOSA	293	0	0	3	0	0	10	13	19	111	83	36	18	0	0
OKEECHOBEE	38	0	0	0	1	0	0	3	6	9	12	5	2	0	0
ORANGE	4,180	2	4	10	32	61	129	193	238	1,305	1,046	693	463	4	0
OSCEOLA	414	0	1	0	0	7	16	9	20	115	103	82	61	0	0
PALM BEACH	3,940	1	6	8	32	67	108	169	186	1,134	960	738	521	10	0
PASCO	251	0	0	1	2	0	5	10	13	69	59	53	38	1	0
PINELLAS	1,716	0	1	9	25	53	78	113	124	610	362	220	119	2	0
POLK	1,561	0	2	2	22	27	68	88	81	587	371	189	122	2	0
PUTNAM	261	0	0	2	2	11	12	16	21	94	71	22	10	0	0
SAINT JOHNS	150	0	0	1	0	5	10	11	12	52	32	17	10	0	0
SAINT LUCIE	851	0	0	3	4	18	35	47	46	268	210	128	91	1	0
SANTA ROSA	85	0	0	1	1	1	1	3	5	28	26	12	7	0	0
SARASOTA	282	0	1	0	2	11	12	18	18	86	61	45	28	0	0
SEMINOLE	702	0	0	4	4	11	27	26	32	243	186	104	65	0	0
SUMTER	85	0	0	1	2	6	3	6	5	35	16	9	2	0	0
SUWANNEE	70	0	0	2	1	1	3	0	4	23	25	8	3	0	0
TAYLOR	60	0	0	0	4	2	2	3	3	25	14	7	0	0	0
UNION	23	0	0	0	0	0	0	3	3	11	3	1	2	0	0
VOLUSIA	776	1	0	2	9	21	25	43	36	288	201	85	65	0	0
WAKULLA	31	0	0	0	0	0	1	1	3	7	12	6	1	0	0
WALTON	33	0	0	0	1	0	0	0	4	17	9	1	1	0	0
WASHINGTON	45	0	0	0	0	0	0	2	3	16	14	3	7	0	0

TABLE B-6 (Cont.): RESIDENT LIVE BIRTHS TO OTHER MOTHERS, BY AGE OF MOTHER,
BY COUNTY, FLORIDA, 2006

	TOTAL	<13	13	14	15	16	17	18	19	20-24	25-29	30-34	35-44	45+	UNK
FLORIDA	11,889	0	2	6	25	72	152	199	308	2,201	3,422	3,324	2,159	16	3
ALACHUA	238	0	0	0	1	2	2	1	6	25	76	80	45	0	0
BAKER	10	0	0	0	0	0	1	1	0	3	4	1	0	0	0
BAY	157	0	0	1	1	1	5	4	8	41	48	26	22	0	0
BRADFORD	9	0	0	0	0	0	0	0	0	2	3	2	2	0	0
BREVARD	330	0	0	0	1	5	5	7	9	76	69	99	59	0	0
BROWARD	1,652	0	0	0	0	1	3	19	26	265	504	493	337	3	1
CALHOUN	5	0	0	0	0	0	1	1	0	2	0	1	0	0	0
CHARLOTTE	44	0	0	0	0	1	0	1	1	11	10	10	8	2	0
CITRUS	40	0	0	0	0	1	0	3	1	8	8	11	8	0	0
CLAY	142	0	0	0	1	0	2	2	5	28	40	46	18	0	0
COLLIER	62	0	0	0	0	0	0	1	2	7	23	19	9	1	0
COLUMBIA	20	0	0	0	0	0	0	0	3	7	6	4	0	0	0
MIAMI-DADE	782	0	1	0	1	5	7	7	19	113	213	257	159	0	0
DESOTO	6	0	0	0	0	0	0	0	0	3	0	1	2	0	0
DIXIE	2	0	0	0	0	0	0	0	0	2	0	0	0	0	0
DUVAL	904	0	0	2	2	5	16	16	21	194	274	207	165	2	0
ESCAMBIA	227	0	0	0	0	2	4	6	11	59	78	42	25	0	0
FLAGLER	46	0	0	0	0	0	3	0	0	13	12	12	6	0	0
FRANKLIN	3	0	0	0	0	0	0	0	0	2	1	0	0	0	0
GADSDEN	7	0	0	0	0	0	0	1	0	2	2	1	1	0	0
GILCHRIST	3	0	0	0	0	0	0	0	0	2	0	0	1	0	0
GLADES	9	0	0	0	0	1	2	1	1	0	1	1	2	0	0
GULF	4	0	0	0	0	0	0	0	1	1	0	1	1	0	0
HAMILTON	4	0	0	0	0	1	1	0	0	2	0	0	0	0	0
HARDEE	7	0	0	1	0	0	0	0	1	2	1	1	1	0	0
HENDRY	18	0	0	0	0	0	3	1	1	6	2	3	2	0	0
HERNANDO	59	0	0	0	0	0	1	1	1	14	13	12	17	0	0
HIGHLANDS	43	0	0	0	0	1	2	0	4	10	9	8	8	1	0
HILLSBOROUGH	997	0	0	1	1	5	10	13	21	161	278	321	185	1	0
HOLMES	6	0	0	0	0	0	0	0	1	4	0	1	0	0	0
INDIAN RIVER	46	0	0	0	0	1	1	1	1	12	17	9	4	0	0
JACKSON	13	0	0	0	2	0	0	1	2	6	1	0	1	0	0
JEFFERSON	1	0	0	0	0	0	0	0	0	0	0	1	0	0	0
LAFAYETTE	3	0	0	0	0	0	0	0	0	1	2	0	0	0	0
LAKE	176	0	0	0	2	1	3	2	7	36	45	50	30	0	0
LEE	197	0	0	0	0	2	1	2	4	41	63	51	33	0	0
LEON	192	0	0	0	0	0	2	1	4	33	59	67	26	0	0
LEVY	9	0	0	0	0	0	0	0	0	7	2	0	0	0	0
LIBERTY	2	0	0	0	0	0	0	0	0	1	1	0	0	0	0
MADISON	1	0	0	0	0	0	0	0	0	0	1	0	0	0	0
MANATEE	218	0	0	0	0	2	5	7	8	50	63	47	36	0	0
MARION	175	0	0	0	2	2	8	3	9	35	45	46	25	0	0
MARTIN	245	0	0	0	2	4	9	12	12	75	78	41	11	0	1
MONROE	34	0	0	0	0	0	0	0	1	10	7	9	7	0	0
NASSAU	22	0	0	0	0	0	1	1	1	6	4	5	4	0	0
OKALOOSA	206	0	0	0	2	1	1	8	6	63	66	37	22	0	0
OKEECHOBEE	27	0	0	0	0	2	2	0	2	12	3	4	2	0	0
ORANGE	1,354	0	1	0	1	6	10	24	21	205	404	396	284	1	1
OSCEOLA	228	0	0	0	0	3	3	5	6	43	78	57	32	1	0
PALM BEACH	717	0	0	0	2	3	4	11	5	90	191	242	167	2	0
PASCO	274	0	0	0	0	1	3	3	9	51	72	88	47	0	0
PINELLAS	660	0	0	1	1	6	17	13	23	116	186	175	122	0	0
POLK	258	0	0	0	0	1	5	4	9	61	67	67	44	0	0
PUTNAM	14	0	0	0	0	0	1	0	0	3	7	3	0	0	0
SAINT JOHNS	83	0	0	0	0	1	0	0	1	9	20	30	21	1	0
SAINT LUCIE	156	0	0	0	0	4	1	2	8	35	49	38	19	0	0
SANTA ROSA	79	0	0	0	1	0	2	1	4	19	24	11	17	0	0
SARASOTA	115	0	0	0	0	0	1	1	5	26	34	33	14	1	0
SEMINOLE	318	0	0	0	0	1	1	2	6	33	93	109	73	0	0
SUMTER	12	0	0	0	0	0	0	0	1	4	4	1	2	0	0
SUWANNEE	13	0	0	0	0	0	2	0	1	4	3	3	0	0	0
TAYLOR	5	0	0	0	0	0	0	2	0	1	1	1	0	0	0
UNION	1	0	0	0	0	0	0	0	0	0	0	1	0	0	0
VOLUSIA	156	0	0	0	2	0	0	6	5	35	46	35	27	0	0
WAKULLA	5	0	0	0	0	0	0	0	1	1	2	1	0	0	0
WALTON	24	0	0	0	0	0	0	1	2	8	7	3	3	0	0
WASHINGTON	13	0	0	0	0	0	0	0	1	4	2	3	3	0	0

TABLE B-7: RESIDENT LIVE BIRTHS BY TRIMESTER PRENATAL CARE BEGAN, BY COUNTY, FLORIDA, 2006

	TRIMESTER PRENATAL CARE BEGAN ¹						% CARE BEGAN BY TRIMESTER ²			
	TOTAL	1ST	2ND	3RD	NONE	UNK	1ST	2ND	3RD	NONE
FLORIDA	237,166	165,076	37,719	8,133	4,107	22,131	76.8	17.5	3.8	1.9
ALACHUA	2,837	2,125	460	74	29	149	79.1	17.1	2.8	1.1
BAKER	395	296	64	8	12	15	77.9	16.8	2.1	3.2
BAY	2,449	1,610	435	128	35	241	72.9	19.7	5.8	1.6
BRADFORD	359	252	77	7	1	22	74.8	22.8	2.1	0.3
BREVARD	5,610	4,213	804	146	73	374	80.5	15.4	2.8	1.4
BROWARD	23,434	16,158	3,257	821	528	2,670	77.8	15.7	4.0	2.5
CALHOUN	180	122	20	5	4	29	80.8	13.2	3.3	2.6
CHARLOTTE	1,202	821	257	72	23	29	70.0	21.9	6.1	2.0
CITRUS	1,136	804	241	37	11	43	73.6	22.0	3.4	1.0
CLAY	2,359	1,750	429	57	33	90	77.1	18.9	2.5	1.5
COLLIER	4,294	2,444	1,195	311	53	291	61.1	29.9	7.8	1.3
COLUMBIA	857	621	138	32	32	34	75.5	16.8	3.9	3.9
MIAMI-DADE	33,739	24,893	4,070	624	488	3,664	82.8	13.5	2.1	1.6
DESOTO	489	288	135	42	7	17	61.0	28.6	8.9	1.5
DIXIE	184	126	42	6	4	6	70.8	23.6	3.4	2.2
DUVAL	13,687	9,353	2,255	446	384	1,249	75.2	18.1	3.6	3.1
ESCAMBIA	4,478	3,165	795	195	110	213	74.2	18.6	4.6	2.6
FLAGLER	942	704	138	33	6	61	79.9	15.7	3.7	0.7
FRANKLIN	125	75	25	6	2	17	69.4	23.1	5.6	1.9
GADSDEN	761	535	79	13	15	119	83.3	12.3	2.0	2.3
GILCHRIST	180	141	23	7	2	7	81.5	13.3	4.0	1.2
GLADES	97	58	26	3	1	9	65.9	29.5	3.4	1.1
GULF	136	85	28	5	0	18	72.0	23.7	4.2	0.0
HAMILTON	188	106	37	5	6	34	68.8	24.0	3.2	3.9
HARDEE	530	290	148	54	16	22	57.1	29.1	10.6	3.1
HENDRY	726	424	173	42	7	80	65.6	26.8	6.5	1.1
HERNANDO	1,600	1,349	171	30	6	44	86.7	11.0	1.9	0.4
HIGHLANDS	1,106	651	298	59	9	89	64.0	29.3	5.8	0.9
HILLSBOROUGH	17,520	13,121	1,949	261	281	1,908	84.0	12.5	1.7	1.8
HOLMES	213	106	21	10	2	74	76.3	15.1	7.2	1.4
INDIAN RIVER	1,410	978	280	57	16	79	73.5	21.0	4.3	1.2
JACKSON	596	342	68	16	4	166	79.5	15.8	3.7	0.9
JEFFERSON	176	129	13	1	1	32	89.6	9.0	0.7	0.7
LAFAYETTE	87	65	14	3	2	3	77.4	16.7	3.6	2.4
LAKE	3,448	2,577	478	89	36	268	81.0	15.0	2.8	1.1
LEE	7,497	5,192	1,561	346	96	302	72.2	21.7	4.8	1.3
LEON	3,271	2,489	312	58	39	373	85.9	10.8	2.0	1.3
LEVY	488	358	96	12	6	16	75.8	20.3	2.5	1.3
LIBERTY	111	83	8	2	2	16	87.4	8.4	2.1	2.1
MADISON	254	179	22	2	0	51	88.2	10.8	1.0	0.0
MANATEE	4,139	2,706	1,046	259	56	72	66.5	25.7	6.4	1.4
MARION	3,611	2,245	893	222	62	189	65.6	26.1	6.5	1.8
MARTIN	1,399	754	438	88	48	71	56.8	33.0	6.6	3.6
MONROE	720	425	120	20	25	130	72.0	20.3	3.4	4.2
NASSAU	813	573	88	21	6	125	83.3	12.8	3.1	0.9
OKALOOSA	2,788	2,068	443	139	37	101	77.0	16.5	5.2	1.4
OKEECHOBEE	623	405	152	23	9	34	68.8	25.8	3.9	1.5
ORANGE	16,966	12,377	1,983	343	434	1,829	81.8	13.1	2.3	2.9
OSCEOLA	3,959	2,384	396	61	55	1,063	82.3	13.7	2.1	1.9
PALM BEACH	15,702	9,380	2,895	1,089	239	2,099	69.0	21.3	8.0	1.8
PASCO	5,237	3,854	717	107	76	483	81.1	15.1	2.3	1.6
PINELLAS	9,541	6,575	1,536	296	140	994	76.9	18.0	3.5	1.6
POLK	8,290	4,732	2,393	555	186	424	60.2	30.4	7.1	2.4
PUTNAM	1,072	631	205	40	22	174	70.3	22.8	4.5	2.4
SAINT JOHNS	1,770	1,302	206	24	4	234	84.8	13.4	1.6	0.3
SAINT LUCIE	3,534	2,328	893	129	90	94	67.7	26.0	3.8	2.6
SANTA ROSA	1,863	1,495	227	49	23	69	83.3	12.7	2.7	1.3
SARASOTA	3,163	2,495	467	98	40	63	80.5	15.1	3.2	1.3
SEMINOLE	4,821	3,512	647	148	58	456	80.5	14.8	3.4	1.3
SUMTER	523	359	72	8	5	79	80.9	16.2	1.8	1.1
SUWANNEE	500	356	96	21	4	23	74.6	20.1	4.4	0.8
TAYLOR	262	205	28	1	2	26	86.9	11.9	0.4	0.8
UNION	171	125	31	4	2	9	77.2	19.1	2.5	1.2
VOLUSIA	5,263	3,838	943	191	90	201	75.8	18.6	3.8	1.8
WAKULLA	307	240	17	4	0	46	92.0	6.5	1.5	0.0
WALTON	693	510	101	40	6	36	77.6	15.4	6.1	0.9
WASHINGTON	261	117	42	27	3	72	61.9	22.2	14.3	1.6

1. Starting in 2004, "trimester prenatal care began" is calculated as the time elapsed from the date of the last menstrual period to the date of the first prenatal care visit. Prior to 2004, these data were obtained by direct question that noted the trimester the mother began prenatal care. Consequently, these data are not comparable to data from prior years.

2. Births with unknown information as to when prenatal care began are excluded from the denominator.

TABLE B-7 (Cont.): RESIDENT LIVE BIRTHS TO WHITE MOTHERS BY TRIMESTER
 PRENATAL CARE BEGAN, BY COUNTY, FLORIDA, 2006

	TRIMESTER PRENATAL CARE BEGAN ¹						% CARE BEGAN BY TRIMESTER ²			
	TOTAL	1ST	2ND	3RD	NONE	UNK	1ST	2ND	3RD	NONE
FLORIDA	174,147	125,770	25,473	5,496	2,425	14,983	79.0	16.0	3.5	1.5
ALACHUA	1,736	1,398	224	31	18	65	83.7	13.4	1.9	1.1
BAKER	340	265	49	6	9	11	80.5	14.9	1.8	2.7
BAY	1,864	1,267	320	94	27	156	74.2	18.7	5.5	1.6
BRADFORD	290	208	60	6	1	15	75.6	21.8	2.2	0.4
BREVARD	4,514	3,478	593	99	45	299	82.5	14.1	2.3	1.1
BROWARD	13,504	9,943	1,517	394	240	1,410	82.2	12.5	3.3	2.0
CALHOUN	156	104	18	5	2	27	80.6	14.0	3.9	1.6
CHARLOTTE	1,080	740	232	63	19	26	70.2	22.0	6.0	1.8
CITRUS	1,049	732	230	34	11	42	72.7	22.8	3.4	1.1
CLAY	1,945	1,480	327	45	22	71	79.0	17.4	2.4	1.2
COLLIER	3,814	2,190	1,035	283	45	261	61.6	29.1	8.0	1.3
COLUMBIA	667	490	98	27	29	23	76.1	15.2	4.2	4.5
MIAMI-DADE	24,630	19,012	2,495	380	264	2,479	85.8	11.3	1.7	1.2
DESOTO	435	263	117	34	5	16	62.8	27.9	8.1	1.2
DIXIE	171	119	37	6	3	6	72.1	22.4	3.6	1.8
DUVAL	7,968	5,893	1,101	207	168	599	80.0	14.9	2.8	2.3
ESCAMBIA	2,860	2,141	426	116	45	132	78.5	15.6	4.3	1.6
FLAGLER	787	603	106	24	3	51	81.9	14.4	3.3	0.4
FRANKLIN	113	65	23	6	2	17	67.7	24.0	6.3	2.1
GADSDEN	294	227	13	5	3	46	91.5	5.2	2.0	1.2
GILCHRIST	170	133	22	6	2	7	81.6	13.5	3.7	1.2
GLADES	77	48	21	1	1	6	67.6	29.6	1.4	1.4
GULF	110	71	20	4	0	15	74.7	21.1	4.2	0.0
HAMILTON	128	66	24	4	2	32	68.8	25.0	4.2	2.1
HARDEE	506	275	145	50	15	21	56.7	29.9	10.3	3.1
HENDRY	616	373	147	33	6	57	66.7	26.3	5.9	1.1
HERNANDO	1,436	1,230	143	23	4	36	87.9	10.2	1.6	0.3
HIGHLANDS	888	531	242	48	7	60	64.1	29.2	5.8	0.8
HILLSBOROUGH	13,110	10,073	1,405	185	175	1,272	85.1	11.9	1.6	1.5
HOLMES	201	98	19	8	2	74	77.2	15.0	6.3	1.6
INDIAN RIVER	1,159	822	222	35	12	68	75.3	20.3	3.2	1.1
JACKSON	427	234	44	11	2	136	80.4	15.1	3.8	0.7
JEFFERSON	99	75	5	0	1	18	92.6	6.2	0.0	1.2
LAFAYETTE	76	57	12	3	1	3	78.1	16.4	4.1	1.4
LAKE	2,875	2,183	382	67	30	213	82.0	14.4	2.5	1.1
LEE	6,386	4,498	1,271	287	79	251	73.3	20.7	4.7	1.3
LEON	1,733	1,435	117	18	13	150	90.7	7.4	1.1	0.8
LEVY	432	315	87	9	6	15	75.5	20.9	2.2	1.4
LIBERTY	98	75	4	2	2	15	90.4	4.8	2.4	2.4
MADISON	144	101	7	1	0	35	92.7	6.4	0.9	0.0
MANATEE	3,398	2,234	861	202	41	60	66.9	25.8	6.1	1.2
MARION	2,753	1,776	634	159	40	144	68.1	24.3	6.1	1.5
MARTIN	1,029	649	251	48	23	58	66.8	25.8	4.9	2.4
MONROE	615	377	96	15	19	108	74.4	18.9	3.0	3.7
NASSAU	739	521	80	20	6	112	83.1	12.8	3.2	1.0
OKALOOSA	2,288	1,728	338	114	26	82	78.3	15.3	5.2	1.2
OKEECHOBEE	558	359	136	22	9	32	68.3	25.9	4.2	1.7
ORANGE	11,425	8,648	1,106	175	242	1,254	85.0	10.9	1.7	2.4
OSCEOLA	3,316	2,014	324	42	40	896	83.2	13.4	1.7	1.7
PALM BEACH	11,038	6,929	1,831	749	156	1,373	71.7	18.9	7.7	1.6
PASCO	4,710	3,499	626	100	65	420	81.6	14.6	2.3	1.5
PINELLAS	7,155	5,199	1,053	200	86	617	79.5	16.1	3.1	1.3
POLK	6,468	3,854	1,766	394	126	328	62.8	28.8	6.4	2.1
PUTNAM	796	485	157	27	11	116	71.3	23.1	4.0	1.6
SAINT JOHNS	1,537	1,174	163	14	3	183	86.7	12.0	1.0	0.2
SAINT LUCIE	2,525	1,748	583	79	45	70	71.2	23.7	3.2	1.8
SANTA ROSA	1,698	1,368	200	42	20	68	83.9	12.3	2.6	1.2
SARASOTA	2,766	2,223	379	80	30	54	82.0	14.0	2.9	1.1
SEMINOLE	3,800	2,836	468	99	30	367	82.6	13.6	2.9	0.9
SUMTER	426	287	57	7	4	71	80.8	16.1	2.0	1.1
SUWANNEE	417	305	77	18	2	15	75.9	19.2	4.5	0.5
TAYLOR	197	159	18	1	2	17	88.3	10.0	0.6	1.1
UNION	147	111	25	3	1	7	79.3	17.9	2.1	0.7
VOLUSIA	4,330	3,194	745	166	69	156	76.5	17.8	4.0	1.7
WAKULLA	271	211	17	2	0	41	91.7	7.4	0.9	0.0
WALTON	634	473	89	36	5	31	78.4	14.8	6.0	0.8
WASHINGTON	202	91	32	21	1	57	62.8	22.1	14.5	0.7

1. Starting in 2004, "trimester prenatal care began" is calculated as the time elapsed from the date of the last menstrual period to the date of the first prenatal care visit. Prior to 2004, these data were obtained by direct question that noted the trimester the mother began prenatal care. Consequently, these data are not comparable to data from prior years.

2. Births with unknown information as to when prenatal care began are excluded from the denominator.

TABLE B-7 (Cont.): RESIDENT LIVE BIRTHS TO BLACK MOTHERS BY TRIMESTER
 PRENATAL CARE BEGAN, BY COUNTY, FLORIDA, 2006

	TRIMESTER PRENATAL CARE BEGAN ¹						% CARE BEGAN BY TRIMESTER ²			
	TOTAL	1ST	2ND	3RD	NONE	UNK	1ST	2ND	3RD	NONE
FLORIDA	50,808	30,808	10,448	2,217	1,484	5,851	68.5	23.2	4.9	3.3
ALACHUA	863	533	202	37	10	81	68.2	25.8	4.7	1.3
BAKER	44	25	11	1	3	4	62.5	27.5	2.5	7.5
BAY	337	194	67	18	5	53	68.3	23.6	6.3	1.8
BRADFORD	60	37	15	1	0	7	69.8	28.3	1.9	0.0
BREVARD	763	486	172	36	22	47	67.9	24.0	5.0	3.1
BROWARD	8,183	5,044	1,509	369	254	1,007	70.3	21.0	5.1	3.5
CALHOUN	19	14	1	0	2	2	82.4	5.9	0.0	11.8
CHARLOTTE	78	46	18	8	3	3	61.3	24.0	10.7	4.0
CITRUS	46	37	7	1	0	1	82.2	15.6	2.2	0.0
CLAY	272	171	69	11	8	13	66.0	26.6	4.2	3.1
COLLIER	417	210	149	26	6	26	53.7	38.1	6.6	1.5
COLUMBIA	169	116	36	4	3	10	73.0	22.6	2.5	1.9
MIAMI-DADE	8,282	5,268	1,485	227	218	1,084	73.2	20.6	3.2	3.0
DESOTO	48	22	17	6	2	1	46.8	36.2	12.8	4.3
DIXIE	11	6	4	0	1	0	54.5	36.4	0.0	9.1
DUVAL	4,810	2,807	1,015	213	201	574	66.3	24.0	5.0	4.7
ESCAMBIA	1,389	859	332	69	62	67	65.0	25.1	5.2	4.7
FLAGLER	109	68	26	6	2	7	66.7	25.5	5.9	2.0
FRANKLIN	8	6	2	0	0	0	75.0	25.0	0.0	0.0
GADSDEN	460	304	66	8	11	71	78.1	17.0	2.1	2.8
GILCHRIST	7	5	1	1	0	0	71.4	14.3	14.3	0.0
GLADES	11	5	4	1	0	1	50.0	40.0	10.0	0.0
GULF	21	11	7	0	0	3	61.1	38.9	0.0	0.0
HAMILTON	56	38	12	1	3	2	70.4	22.2	1.9	5.6
HARDEE	17	11	2	2	1	1	68.8	12.5	12.5	6.3
HENDRY	92	40	25	6	1	20	55.6	34.7	8.3	1.4
HERNANDO	104	71	20	5	2	6	72.4	20.4	5.1	2.0
HIGHLANDS	175	92	46	11	2	24	60.9	30.5	7.3	1.3
HILLSBOROUGH	3,397	2,309	468	68	86	466	78.8	16.0	2.3	2.9
HOLMES	6	5	1	0	0	0	83.3	16.7	0.0	0.0
INDIAN RIVER	205	128	46	18	4	9	65.3	23.5	9.2	2.0
JACKSON	156	97	23	5	1	30	77.0	18.3	4.0	0.8
JEFFERSON	75	53	8	1	0	13	85.5	12.9	1.6	0.0
LAFAYETTE	8	6	1	0	1	0	75.0	12.5	0.0	12.5
LAKE	396	251	75	17	5	48	72.1	21.6	4.9	1.4
LEE	912	546	254	48	17	47	63.1	29.4	5.5	2.0
LEON	1,336	905	181	34	25	191	79.0	15.8	3.0	2.2
LEVY	47	36	7	3	0	1	78.3	15.2	6.5	0.0
LIBERTY	11	7	3	0	0	1	70.0	30.0	0.0	0.0
MADISON	109	77	15	1	0	16	82.8	16.1	1.1	0.0
MANATEE	521	329	139	36	8	9	64.3	27.1	7.0	1.6
MARION	683	358	213	53	21	38	55.5	33.0	8.2	3.3
MARTIN	124	54	51	7	6	6	45.8	43.2	5.9	5.1
MONROE	71	30	18	4	4	15	53.6	32.1	7.1	7.1
NASSAU	52	34	5	1	0	12	85.0	12.5	2.5	0.0
OKALOOSA	293	193	65	13	10	12	68.7	23.1	4.6	3.6
OKEECHOBEE	38	28	7	1	0	2	77.8	19.4	2.8	0.0
ORANGE	4,180	2,690	757	154	167	412	71.4	20.1	4.1	4.4
OSCEOLA	414	225	56	12	11	110	74.0	18.4	3.9	3.6
PALM BEACH	3,940	1,970	958	302	77	633	59.6	29.0	9.1	2.3
PASCO	251	165	44	4	6	32	75.3	20.1	1.8	2.7
PINELLAS	1,716	932	374	72	42	296	65.6	26.3	5.1	3.0
POLK	1,561	727	553	142	56	83	49.2	37.4	9.6	3.8
PUTNAM	261	140	43	11	11	56	68.3	21.0	5.4	5.4
SAINT JOHNS	150	68	34	8	1	39	61.3	30.6	7.2	0.9
SAINT LUCIE	851	479	265	44	42	21	57.7	31.9	5.3	5.1
SANTA ROSA	85	68	14	2	1	0	80.0	16.5	2.4	1.2
SARASOTA	282	189	68	11	8	6	68.5	24.6	4.0	2.9
SEMINOLE	702	434	150	43	26	49	66.5	23.0	6.6	4.0
SUMTER	85	66	12	0	1	6	83.5	15.2	0.0	1.3
SUWANNEE	70	42	17	3	1	7	66.7	27.0	4.8	1.6
TAYLOR	60	42	10	0	0	8	80.8	19.2	0.0	0.0
UNION	23	13	6	1	1	2	61.9	28.6	4.8	4.8
VOLUSIA	776	528	170	20	19	39	71.6	23.1	2.7	2.6
WAKULLA	31	25	0	2	0	4	92.6	0.0	7.4	0.0
WALTON	33	17	8	3	1	4	58.6	27.6	10.3	3.4
WASHINGTON	45	16	9	5	2	13	50.0	28.1	15.6	6.3

1. Starting in 2004, "trimester prenatal care began" is calculated as the time elapsed from the date of the last menstrual period to the date of the first prenatal care visit. Prior to 2004, these data were obtained by direct question that noted the trimester the mother began prenatal care. Consequently, these data are not comparable to data from prior years.

2. Births with unknown information as to when prenatal care began are excluded from the denominator.

TABLE B-7 (Cont.): RESIDENT LIVE BIRTHS TO OTHER MOTHERS BY TRIMESTER
 PRENATAL CARE BEGAN, BY COUNTY, FLORIDA, 2006

	TRIMESTER PRENATAL CARE BEGAN ¹						% CARE BEGAN BY TRIMESTER ²			
	TOTAL	1ST	2ND	3RD	NONE	UNK	1ST	2ND	3RD	NONE
FLORIDA	11,889	8,373	1,757	404	186	1,169	78.1	16.4	3.8	1.7
ALACHUA	238	194	34	6	1	3	82.6	14.5	2.6	0.4
BAKER	10	6	3	1	0	0	60.0	30.0	10.0	0.0
BAY	157	101	33	7	3	13	70.1	22.9	4.9	2.1
BRADFORD	9	7	2	0	0	0	77.8	22.2	0.0	0.0
BREVARD	330	249	39	11	6	25	81.6	12.8	3.6	2.0
BROWARD	1,652	1,151	223	56	27	195	79.0	15.3	3.8	1.9
CALHOUN	5	4	1	0	0	0	80.0	20.0	0.0	0.0
CHARLOTTE	44	35	7	1	1	0	79.5	15.9	2.3	2.3
CITRUS	40	34	4	2	0	0	85.0	10.0	5.0	0.0
CLAY	142	99	33	1	3	6	72.8	24.3	0.7	2.2
COLLIER	62	43	11	2	2	4	74.1	19.0	3.4	3.4
COLUMBIA	20	14	4	1	0	1	73.7	21.1	5.3	0.0
MIAMI-DADE	782	586	84	16	6	90	84.7	12.1	2.3	0.9
DESOTO	6	3	1	2	0	0	50.0	16.7	33.3	0.0
DIXIE	2	1	1	0	0	0	50.0	50.0	0.0	0.0
DUVAL	904	653	139	26	15	71	78.4	16.7	3.1	1.8
ESCAMBIA	227	164	36	10	3	14	77.0	16.9	4.7	1.4
FLAGLER	46	33	6	3	1	3	76.7	14.0	7.0	2.3
FRANKLIN	3	3	0	0	0	0	100.0	0.0	0.0	0.0
GADSDEN	7	4	0	0	1	2	80.0	0.0	0.0	20.0
GILCHRIST	3	3	0	0	0	0	100.0	0.0	0.0	0.0
GLADES	9	5	1	1	0	2	71.4	14.3	14.3	0.0
GULF	4	3	0	1	0	0	75.0	0.0	25.0	0.0
HAMILTON	4	2	1	0	1	0	50.0	25.0	0.0	25.0
HARDEE	7	4	1	2	0	0	57.1	14.3	28.6	0.0
HENDRY	18	11	1	3	0	3	73.3	6.7	20.0	0.0
HERNANDO	59	47	8	2	0	2	82.5	14.0	3.5	0.0
HIGHLANDS	43	28	10	0	0	5	73.7	26.3	0.0	0.0
HILLSBOROUGH	997	733	75	8	19	162	87.8	9.0	1.0	2.3
HOLMES	6	3	1	2	0	0	50.0	16.7	33.3	0.0
INDIAN RIVER	46	28	12	4	0	2	63.6	27.3	9.1	0.0
JACKSON	13	11	1	0	1	0	84.6	7.7	0.0	7.7
JEFFERSON	1	1	0	0	0	0	100.0	0.0	0.0	0.0
LAFAYETTE	3	2	1	0	0	0	66.7	33.3	0.0	0.0
LAKE	176	143	21	5	1	6	84.1	12.4	2.9	0.6
LEE	197	147	36	10	0	4	76.2	18.7	5.2	0.0
LEON	192	146	14	5	1	26	88.0	8.4	3.0	0.6
LEVY	9	7	2	0	0	0	77.8	22.2	0.0	0.0
LIBERTY	2	1	1	0	0	0	50.0	50.0	0.0	0.0
MADISON	1	1	0	0	0	0	100.0	0.0	0.0	0.0
MANATEE	218	143	45	21	7	2	66.2	20.8	9.7	3.2
MARION	175	111	46	10	1	7	66.1	27.4	6.0	0.6
MARTIN	245	51	136	33	19	6	21.3	56.9	13.8	7.9
MONROE	34	18	6	1	2	7	66.7	22.2	3.7	7.4
NASSAU	22	18	3	0	0	1	85.7	14.3	0.0	0.0
OKALOOSA	206	147	39	12	1	7	73.9	19.6	6.0	0.5
OKEECHOBEE	27	18	9	0	0	0	66.7	33.3	0.0	0.0
ORANGE	1,354	1,035	119	14	25	161	86.8	10.0	1.2	2.1
OSCEOLA	228	145	16	7	4	56	84.3	9.3	4.1	2.3
PALM BEACH	717	476	106	38	6	91	76.0	16.9	6.1	1.0
PASCO	274	189	47	3	4	31	77.8	19.3	1.2	1.6
PINELLAS	660	442	108	23	11	76	75.7	18.5	3.9	1.9
POLK	258	151	73	19	2	13	61.6	29.8	7.8	0.8
PUTNAM	14	6	5	1	0	2	50.0	41.7	8.3	0.0
SAINT JOHNS	83	60	9	2	0	12	84.5	12.7	2.8	0.0
SAINT LUCIE	156	101	44	6	3	2	65.6	28.6	3.9	1.9
SANTA ROSA	79	59	12	5	2	1	75.6	15.4	6.4	2.6
SARASOTA	115	83	20	7	2	3	74.1	17.9	6.3	1.8
SEMINOLE	318	242	29	6	2	39	86.7	10.4	2.2	0.7
SUMTER	12	6	3	1	0	2	60.0	30.0	10.0	0.0
SUWANNEE	13	9	2	0	1	1	75.0	16.7	0.0	8.3
TAYLOR	5	4	0	0	0	1	100.0	0.0	0.0	0.0
UNION	1	1	0	0	0	0	100.0	0.0	0.0	0.0
VOLUSIA	156	115	28	5	2	6	76.7	18.7	3.3	1.3
WAKULLA	5	4	0	0	0	1	100.0	0.0	0.0	0.0
WALTON	24	19	4	1	0	0	79.2	16.7	4.2	0.0
WASHINGTON	13	10	0	1	0	2	90.9	0.0	9.1	0.0

1. Starting in 2004, "trimester prenatal care began" is calculated as the time elapsed from the date of the last menstrual period to the date of the first prenatal care visit. Prior to 2004, these data were obtained by direct question that noted the trimester the mother began prenatal care. Consequently, these data are not comparable to data from prior years.

2. Births with unknown information as to when prenatal care began are excluded from the denominator.

TABLE B-8: RESIDENT LIVE BIRTHS TO UNWED MOTHERS, BY AGE OF MOTHER, BY COUNTY, FLORIDA, 2006

	TOTAL	<13	13	14	15	16	17	18	19	20-24	25-29	30-34	35-44	45+	UNK
FLORIDA	105,770	12	54	277	1,008	2,331	4,214	6,336	8,257	39,984	23,900	11,970	7,339	82	6
ALACHUA	1,178	0	1	5	12	27	48	73	90	532	234	92	64	0	0
BAKER	173	0	0	0	3	6	12	14	20	74	32	9	3	0	0
BAY	1,034	0	0	4	11	25	40	81	88	439	208	93	45	0	0
BRADFORD	173	0	0	0	3	5	10	11	21	68	39	6	10	0	0
BREVARD	2,373	0	0	2	17	54	104	160	204	946	534	207	142	3	0
BROWARD	9,493	0	2	18	98	158	315	481	611	3,127	2,350	1,358	967	6	2
CALHOUN	70	0	0	0	0	0	5	3	4	32	19	6	1	0	0
CHARLOTTE	556	0	0	2	4	6	20	28	49	237	126	54	29	1	0
CITRUS	545	0	0	1	3	15	25	36	56	226	112	39	30	2	0
CLAY	810	0	0	0	5	19	35	55	94	346	149	58	47	2	0
COLLIER	2,086	1	0	7	22	42	81	111	145	762	472	294	149	0	0
COLUMBIA	418	0	0	1	5	6	25	33	42	170	89	33	14	0	0
MIAMI-DADE	15,889	0	5	35	145	321	501	699	1,037	5,265	3,809	2,430	1,619	23	0
DESOTO	288	0	0	0	3	9	18	17	33	108	59	25	16	0	0
DIXIE	85	0	0	0	1	2	4	5	9	45	11	5	3	0	0
DUVAL	6,156	0	6	19	43	136	247	414	505	2,570	1,370	566	280	0	0
ESCAMBIA	2,175	1	0	9	26	60	85	136	191	893	491	183	98	2	0
FLAGLER	362	0	0	1	1	3	17	22	21	159	77	35	26	0	0
FRANKLIN	53	0	0	0	0	2	1	7	7	18	16	1	1	0	0
GADSDEN	495	0	2	4	4	18	20	36	48	190	114	40	19	0	0
GILCHRIST	75	0	0	0	1	0	8	5	6	37	12	2	4	0	0
GLADES	56	0	0	0	0	3	6	5	1	20	15	1	5	0	0
GULF	59	0	0	0	0	1	0	3	6	17	22	8	2	0	0
HAMILTON	105	0	0	0	2	6	5	8	9	41	21	10	3	0	0
HARDEE	270	0	0	2	4	9	15	14	30	97	67	17	15	0	0
HENDRY	417	0	0	2	7	20	30	32	30	153	78	46	19	0	0
HERNANDO	671	0	0	3	4	8	33	50	49	294	124	66	40	0	0
HIGHLANDS	592	0	1	0	5	9	30	45	63	240	115	55	28	1	0
HILLSBOROUGH	7,941	1	2	25	72	197	356	494	699	3,046	1,768	831	446	4	0
HOLMES	82	0	0	0	1	2	5	7	7	39	13	5	3	0	0
INDIAN RIVER	649	0	0	2	8	15	20	39	55	266	143	63	38	0	0
JACKSON	296	0	0	1	5	4	9	23	24	128	70	22	10	0	0
JEFFERSON	85	0	0	0	1	2	3	8	13	33	17	8	0	0	0
LAFAYETTE	27	0	0	1	1	2	0	3	1	7	8	3	1	0	0
LAKE	1,415	0	0	6	19	43	65	101	127	565	279	141	69	0	0
LEE	3,499	0	6	15	40	99	134	213	294	1,317	771	405	203	2	0
LEON	1,452	0	0	4	18	19	42	81	101	650	329	147	60	1	0
LEVY	233	0	0	0	7	8	5	14	22	107	37	22	11	0	0
LIBERTY	52	0	0	1	1	1	1	6	9	20	6	4	3	0	0
MADISON	136	0	0	0	0	7	10	6	8	59	32	9	5	0	0
MANATEE	2,067	2	1	5	26	48	97	137	172	824	443	184	127	1	0
MARION	1,827	0	0	2	21	45	75	119	168	751	380	169	96	1	0
MARTIN	627	0	2	1	2	16	25	38	55	218	156	72	41	0	1
MONROE	261	0	0	1	0	3	10	14	15	86	66	42	24	0	0
NASSAU	309	0	0	0	1	9	22	23	23	124	67	24	16	0	0
OKALOOSA	985	0	0	4	6	9	40	63	87	396	252	86	42	0	0
OKEECHOBEE	329	0	0	1	2	11	18	17	33	139	68	29	11	0	0
ORANGE	7,536	2	6	14	62	139	306	467	598	2,822	1,783	828	504	5	0
OSCEOLA	1,856	0	2	2	17	38	73	98	167	695	439	192	132	1	0
PALM BEACH	6,730	1	7	17	68	144	269	374	419	2,413	1,549	893	564	12	0
PASCO	1,899	0	2	7	21	42	75	146	166	740	410	180	105	3	2
PINELLAS	4,512	0	2	12	44	113	174	271	343	1,725	1,009	505	312	2	0
POLK	4,186	2	4	11	51	106	222	320	330	1,699	846	377	215	3	0
PUTNAM	621	0	0	4	6	24	30	42	52	262	135	44	21	1	0
SAINT JOHNS	538	0	0	1	2	16	27	30	46	223	109	53	30	1	0
SAINT LUCIE	1,653	0	0	5	10	44	77	112	139	626	357	169	111	2	1
SANTA ROSA	566	0	0	1	5	10	30	36	51	237	128	44	23	1	0
SARASOTA	1,274	1	1	2	11	25	52	76	101	452	289	164	98	2	0
SEMINOLE	1,733	0	0	6	13	28	61	104	131	660	412	192	126	0	0
SUMTER	304	0	0	1	3	19	7	23	36	128	46	27	14	0	0
SUWANNEE	243	0	0	3	5	6	11	19	20	106	47	20	6	0	0
TAYLOR	144	0	0	1	4	5	9	12	8	64	26	10	5	0	0
UNION	87	0	0	0	1	1	3	9	8	38	19	4	4	0	0
VOLUSIA	2,445	1	2	6	20	54	92	168	207	1,008	513	223	151	0	0
WAKULLA	115	0	0	0	1	0	4	7	15	56	23	3	6	0	0
WALTON	276	0	0	0	3	5	11	22	26	103	63	26	17	0	0
WASHINGTON	113	0	0	0	0	2	3	9	12	44	26	10	7	0	0

TABLE B-8 (Cont.): RESIDENT LIVE BIRTHS TO UNWED WHITE MOTHERS, BY AGE OF MOTHER, BY COUNTY, FLORIDA, 2006

	TOTAL	<13	13	14	15	16	17	18	19	20-24	25-29	30-34	35-44	45+	UNK
FLORIDA	67,305	7	23	134	557	1,355	2,549	3,927	5,243	25,219	15,268	7,851	5,110	59	3
ALACHUA	456	0	0	1	3	6	10	31	30	209	92	42	32	0	0
BAKER	128	0	0	0	1	6	10	11	13	55	25	5	2	0	0
BAY	687	0	0	2	4	17	25	59	64	294	127	64	31	0	0
BRADFORD	127	0	0	0	3	4	5	8	18	50	27	5	7	0	0
BREVARD	1,719	0	0	1	12	32	68	119	147	689	388	155	105	3	0
BROWARD	4,138	0	0	3	29	51	130	192	260	1,305	1,042	626	496	4	0
CALHOUN	52	0	0	0	0	0	3	2	4	23	15	4	1	0	0
CHARLOTTE	495	0	0	2	4	5	19	25	43	216	111	46	23	1	0
CITRUS	495	0	0	1	3	14	22	33	55	209	99	31	26	2	0
CLAY	638	0	0	0	3	16	27	46	73	278	111	41	41	2	0
COLLIER	1,814	1	0	6	19	38	72	100	129	671	409	243	126	0	0
COLUMBIA	279	0	0	1	3	4	12	20	28	120	61	19	11	0	0
MIAMI-DADE	9,797	0	2	16	81	170	276	379	550	3,038	2,423	1,668	1,181	13	0
DESOTO	240	0	0	0	1	9	16	14	24	92	52	19	13	0	0
DIXIE	77	0	0	0	1	2	4	5	9	38	10	5	3	0	0
DUVAL	2,611	0	1	5	11	39	99	153	209	1,104	611	248	131	0	0
ESCAMBIA	1,019	0	0	2	8	24	30	58	95	416	223	106	55	2	0
FLAGLER	276	0	0	0	1	2	10	18	15	125	59	26	20	0	0
FRANKLIN	46	0	0	0	0	0	1	6	7	14	16	1	1	0	0
GADSDEN	116	0	0	0	1	5	6	6	12	36	30	13	7	0	0
GILCHRIST	70	0	0	0	1	0	8	4	6	35	11	2	3	0	0
GLADES	41	0	0	0	0	2	4	4	1	16	10	1	3	0	0
GULF	41	0	0	0	0	1	0	3	5	13	12	6	1	0	0
HAMILTON	56	0	0	0	1	3	2	5	8	21	9	5	2	0	0
HARDEE	253	0	0	1	4	9	13	14	30	88	64	17	13	0	0
HENDRY	335	0	0	2	7	19	23	28	23	124	53	41	15	0	0
HERNANDO	577	0	0	1	4	7	29	36	46	258	102	60	34	0	0
HIGHLANDS	434	0	1	0	3	7	21	35	49	176	79	40	23	0	0
HILLSBOROUGH	5,325	1	2	17	50	127	238	328	466	1,999	1,184	595	315	3	0
HOLMES	77	0	0	0	1	2	5	7	7	35	13	4	3	0	0
INDIAN RIVER	475	0	0	0	6	12	16	28	36	195	107	46	29	0	0
JACKSON	161	0	0	0	2	1	3	15	9	79	36	11	5	0	0
JEFFERSON	29	0	0	0	0	1	1	2	7	12	4	2	0	0	0
LAFAYETTE	19	0	0	1	1	2	0	3	0	4	5	2	1	0	0
LAKE	1,100	0	0	5	15	29	46	80	100	440	215	114	56	0	0
LEE	2,801	0	4	11	28	77	111	176	226	1,085	605	318	158	2	0
LEON	410	0	0	1	4	4	11	28	24	190	84	38	26	0	0
LEVY	190	0	0	0	7	5	5	13	19	87	29	16	9	0	0
LIBERTY	44	0	0	1	1	1	1	6	9	15	6	3	1	0	0
MADISON	53	0	0	0	0	1	3	4	4	22	15	2	2	0	0
MANATEE	1,554	2	1	4	20	37	73	103	130	611	338	138	96	1	0
MARION	1,239	0	0	1	9	29	47	81	116	511	260	105	79	1	0
MARTIN	398	0	2	1	1	8	13	19	36	131	102	50	35	0	0
MONROE	209	0	0	1	0	3	10	9	11	71	53	32	19	0	0
NASSAU	264	0	0	0	1	9	20	21	21	100	58	20	14	0	0
OKALOOSA	746	0	0	0	4	9	29	44	68	309	192	55	36	0	0
OKEECHOBEE	284	0	0	1	1	9	16	14	25	124	58	26	10	0	0
ORANGE	4,375	0	1	4	29	73	169	259	353	1,616	1,042	505	321	3	0
OSCEOLA	1,551	0	1	2	17	28	54	84	142	584	370	158	110	1	0
PALM BEACH	4,089	0	1	9	34	76	157	199	244	1,442	974	569	376	8	0
PASCO	1,723	0	2	6	19	41	67	133	148	667	377	161	97	3	2
PINELLAS	2,876	0	1	2	18	54	81	146	204	1,118	680	329	241	2	0
POLK	2,909	2	2	9	29	79	149	228	243	1,156	588	264	159	1	0
PUTNAM	401	0	0	2	4	13	17	27	32	174	82	33	16	1	0
SAINT JOHNS	407	0	0	0	2	10	17	20	33	175	82	42	25	1	0
SAINT LUCIE	1,048	0	0	2	6	22	42	63	92	399	227	114	78	2	1
SANTA ROSA	496	0	0	0	3	9	27	33	43	211	109	39	21	1	0
SARASOTA	1,022	1	0	2	9	14	39	57	82	360	241	132	83	2	0
SEMINOLE	1,205	0	0	2	9	16	33	76	97	436	299	133	104	0	0
SUMTER	225	0	0	0	1	13	4	17	30	95	34	20	11	0	0
SUWANNEE	182	0	0	1	4	5	6	19	16	81	30	15	5	0	0
TAYLOR	91	0	0	1	0	3	7	7	5	41	17	5	5	0	0
UNION	67	0	0	0	1	1	3	6	5	28	17	4	2	0	0
VOLUSIA	1,824	0	2	4	9	33	67	124	168	737	377	174	129	0	0
WAKULLA	98	0	0	0	1	0	3	6	11	50	18	3	6	0	0
WALTON	235	0	0	0	2	5	11	21	20	83	52	26	15	0	0
WASHINGTON	78	0	0	0	0	2	3	6	8	31	16	9	3	0	0

TABLE B-8 (Cont.): RESIDENT LIVE BIRTHS TO UNWED BLACK MOTHERS, BY AGE OF MOTHER, BY COUNTY, FLORIDA, 2006

	TOTAL	<13	13	14	15	16	17	18	19	20-24	25-29	30-34	35-44	45+	UNK
FLORIDA	35,133	5	29	135	427	904	1,527	2,233	2,789	13,633	7,810	3,679	1,941	21	0
ALACHUA	688	0	1	4	8	20	37	41	56	311	133	48	29	0	0
BAKER	38	0	0	0	2	0	1	2	7	17	5	3	1	0	0
BAY	254	0	0	0	6	5	12	17	14	107	63	23	7	0	0
BRADFORD	44	0	0	0	0	1	5	3	3	18	11	0	3	0	0
BREVARD	530	0	0	1	4	17	32	35	49	206	120	38	28	0	0
BROWARD	4,988	0	2	15	68	106	181	276	330	1,696	1,214	673	425	2	0
CALHOUN	13	0	0	0	0	0	1	0	0	7	4	1	0	0	0
CHARLOTTE	47	0	0	0	0	0	1	2	5	13	14	7	5	0	0
CITRUS	33	0	0	0	0	0	3	2	0	12	11	2	3	0	0
CLAY	136	0	0	0	1	3	6	7	17	57	30	11	4	0	0
COLLIER	253	0	0	1	3	4	9	10	15	88	54	47	22	0	0
COLUMBIA	133	0	0	0	2	2	13	13	12	48	27	13	3	0	0
MIAMI-DADE	5,891	0	2	19	64	146	219	312	475	2,164	1,328	738	414	10	0
DESOTO	45	0	0	0	2	0	2	3	9	14	7	5	3	0	0
DIXIE	7	0	0	0	0	0	0	0	0	6	1	0	0	0	0
DUVAL	3,325	0	5	12	30	92	134	245	284	1,388	708	299	128	0	0
ESCAMBIA	1,084	1	0	7	18	33	51	74	89	444	255	73	39	0	0
FLAGLER	71	0	0	1	0	1	4	4	6	28	13	8	6	0	0
FRANKLIN	6	0	0	0	0	2	0	1	0	3	0	0	0	0	0
GADSDEN	374	0	2	4	3	13	14	29	36	154	82	26	11	0	0
GILCHRIST	4	0	0	0	0	0	0	1	0	2	1	0	0	0	0
GLADES	9	0	0	0	0	0	0	0	0	4	4	0	1	0	0
GULF	16	0	0	0	0	0	0	0	1	3	10	1	1	0	0
HAMILTON	46	0	0	0	1	2	2	3	1	19	12	5	1	0	0
HARDEE	15	0	0	0	0	0	2	0	0	8	3	0	2	0	0
HENDRY	70	0	0	0	0	1	4	3	6	26	23	4	3	0	0
HERNANDO	74	0	0	2	0	1	3	13	3	26	18	5	3	0	0
HIGHLANDS	141	0	0	0	2	1	7	10	10	58	33	15	5	0	0
HILLSBOROUGH	2,392	0	0	7	21	65	111	154	217	971	537	202	107	0	0
HOLMES	3	0	0	0	0	0	0	0	0	3	0	0	0	0	0
INDIAN RIVER	158	0	0	2	2	2	4	10	19	62	31	17	9	0	0
JACKSON	126	0	0	1	1	3	6	7	13	45	34	11	5	0	0
JEFFERSON	55	0	0	0	1	1	2	6	6	21	13	5	0	0	0
LAFAYETTE	6	0	0	0	0	0	0	0	1	2	2	1	0	0	0
LAKE	272	0	0	1	2	13	16	20	23	110	57	21	9	0	0
LEE	634	0	2	4	12	20	22	34	64	211	151	76	38	0	0
LEON	990	0	0	3	14	15	29	52	75	439	231	100	31	1	0
LEVY	39	0	0	0	0	3	0	1	3	16	8	6	2	0	0
LIBERTY	7	0	0	0	0	0	0	0	0	4	0	1	2	0	0
MADISON	83	0	0	0	0	6	7	2	4	37	17	7	3	0	0
MANATEE	410	0	0	1	6	9	19	28	34	176	82	36	19	0	0
MARION	522	0	0	1	10	14	21	35	45	224	105	51	16	0	0
MARTIN	89	0	0	0	0	4	4	9	10	38	12	9	3	0	0
MONROE	41	0	0	0	0	0	0	5	3	11	11	7	4	0	0
NASSAU	39	0	0	0	0	0	1	1	2	21	9	3	2	0	0
OKALOOSA	176	0	0	3	0	0	10	13	16	64	43	23	4	0	0
OKEECHOBEE	32	0	0	0	1	0	0	3	6	8	10	3	1	0	0
ORANGE	2,803	2	4	10	32	61	127	187	228	1,096	629	281	144	2	0
OSCEOLA	236	0	1	0	0	7	16	9	19	93	44	27	20	0	0
PALM BEACH	2,497	1	6	8	32	65	108	166	174	927	542	296	168	4	0
PASCO	115	0	0	1	2	0	5	10	13	50	17	11	6	0	0
PINELLAS	1,401	0	1	9	25	53	78	112	121	545	267	133	57	0	0
POLK	1,192	0	2	2	22	26	68	88	80	512	242	101	47	2	0
PUTNAM	215	0	0	2	2	11	12	15	20	86	51	11	5	0	0
SAINT JOHNS	116	0	0	1	0	5	10	10	12	45	24	6	3	0	0
SAINT LUCIE	560	0	0	3	4	18	34	47	43	218	114	51	28	0	0
SANTA ROSA	47	0	0	1	1	1	1	3	5	19	12	3	1	0	0
SARASOTA	222	0	1	0	2	11	12	18	16	81	44	26	11	0	0
SEMINOLE	477	0	0	4	4	11	27	26	28	207	102	48	20	0	0
SUMTER	73	0	0	1	2	6	3	6	5	30	11	7	2	0	0
SUWANNEE	53	0	0	2	1	1	3	0	4	21	16	4	1	0	0
TAYLOR	50	0	0	0	4	2	2	3	3	22	9	5	0	0	0
UNION	20	0	0	0	0	0	0	3	3	10	2	0	2	0	0
VOLUSIA	576	1	0	2	9	21	25	41	36	251	126	43	21	0	0
WAKULLA	15	0	0	0	0	0	1	1	3	6	4	0	0	0	0
WALTON	26	0	0	0	1	0	0	0	4	13	8	0	0	0	0
WASHINGTON	29	0	0	0	0	0	0	2	3	11	9	1	3	0	0

TABLE B-8 (Cont.): RESIDENT LIVE BIRTHS TO UNWED OTHER MOTHERS, BY AGE OF MOTHER, BY COUNTY, FLORIDA, 2006

	TOTAL	<13	13	14	15	16	17	18	19	20-24	25-29	30-34	35-44	45+	UNK
FLORIDA	3,208	0	2	6	23	69	135	169	217	1,086	799	422	276	2	2
ALACHUA	34	0	0	0	1	1	1	1	4	12	9	2	3	0	0
BAKER	6	0	0	0	0	0	1	1	0	2	2	0	0	0	0
BAY	53	0	0	1	1	1	3	3	6	16	14	4	4	0	0
BRADFORD	2	0	0	0	0	0	0	0	0	0	1	1	0	0	0
BREVARD	122	0	0	0	1	5	4	6	7	51	26	13	9	0	0
BROWARD	334	0	0	0	0	1	2	11	18	114	89	54	44	0	1
CALHOUN	5	0	0	0	0	0	1	1	0	2	0	1	0	0	0
CHARLOTTE	14	0	0	0	0	1	0	1	1	8	1	1	1	0	0
CITRUS	16	0	0	0	0	1	0	1	1	5	2	5	1	0	0
CLAY	36	0	0	0	1	0	2	2	4	11	8	6	2	0	0
COLLIER	19	0	0	0	0	0	0	1	1	3	9	4	1	0	0
COLUMBIA	5	0	0	0	0	0	0	0	2	1	1	1	0	0	0
MIAMI-DADE	189	0	1	0	0	5	6	7	12	59	55	22	22	0	0
DESOTO	3	0	0	0	0	0	0	0	0	2	0	1	0	0	0
DIXIE	1	0	0	0	0	0	0	0	0	1	0	0	0	0	0
DUVAL	218	0	0	2	2	5	14	16	12	78	50	19	20	0	0
ESCAMBIA	71	0	0	0	0	2	4	4	7	33	13	4	4	0	0
FLAGLER	15	0	0	0	0	0	3	0	0	6	5	1	0	0	0
FRANKLIN	1	0	0	0	0	0	0	0	0	1	0	0	0	0	0
GADSDEN	5	0	0	0	0	0	0	1	0	0	2	1	1	0	0
GILCHRIST	1	0	0	0	0	0	0	0	0	0	0	0	1	0	0
GLADES	6	0	0	0	0	1	2	1	0	0	1	0	1	0	0
GULF	2	0	0	0	0	0	0	0	0	1	0	1	0	0	0
HAMILTON	3	0	0	0	0	1	1	0	0	1	0	0	0	0	0
HARDEE	2	0	0	1	0	0	0	0	0	1	0	0	0	0	0
HENDRY	12	0	0	0	0	0	3	1	1	3	2	1	1	0	0
HERNANDO	20	0	0	0	0	0	1	1	0	10	4	1	3	0	0
HIGHLANDS	17	0	0	0	0	1	2	0	4	6	3	0	0	1	0
HILLSBOROUGH	218	0	0	1	1	5	7	12	16	74	45	32	24	1	0
HOLMES	2	0	0	0	0	0	0	0	0	1	0	1	0	0	0
INDIAN RIVER	16	0	0	0	0	1	0	1	0	9	5	0	0	0	0
JACKSON	9	0	0	0	2	0	0	1	2	4	0	0	0	0	0
JEFFERSON	1	0	0	0	0	0	0	0	0	0	0	1	0	0	0
LAFAYETTE	2	0	0	0	0	0	0	0	0	1	1	0	0	0	0
LAKE	43	0	0	0	2	1	3	1	4	15	7	6	4	0	0
LEE	62	0	0	0	0	2	1	2	4	20	15	11	7	0	0
LEON	48	0	0	0	0	0	2	1	2	20	12	9	2	0	0
LEVY	4	0	0	0	0	0	0	0	0	4	0	0	0	0	0
LIBERTY	1	0	0	0	0	0	0	0	0	1	0	0	0	0	0
MADISON	0	0	0	0	0	0	0	0	0	0	0	0	0	0	0
MANATEE	102	0	0	0	0	2	5	6	8	37	22	10	12	0	0
MARION	66	0	0	0	2	2	7	3	7	16	15	13	1	0	0
MARTIN	140	0	0	0	1	4	8	10	9	49	42	13	3	0	1
MONROE	11	0	0	0	0	0	0	0	1	4	2	3	1	0	0
NASSAU	6	0	0	0	0	0	1	1	0	3	0	1	0	0	0
OKALOOSA	62	0	0	0	2	0	1	6	3	23	17	8	2	0	0
OKEECHOBEE	13	0	0	0	0	2	2	0	2	7	0	0	0	0	0
ORANGE	356	0	1	0	1	5	9	21	17	110	111	42	39	0	0
OSCEOLA	69	0	0	0	0	3	3	5	6	18	25	7	2	0	0
PALM BEACH	141	0	0	0	2	3	4	9	1	44	33	26	19	0	0
PASCO	60	0	0	0	0	1	3	3	5	22	16	8	2	0	0
PINELLAS	230	0	0	1	1	6	15	13	18	61	60	41	14	0	0
POLK	84	0	0	0	0	1	5	4	7	31	15	12	9	0	0
PUTNAM	5	0	0	0	0	0	1	0	0	2	2	0	0	0	0
SAINT JOHNS	15	0	0	0	0	1	0	0	1	3	3	5	2	0	0
SAINT LUCIE	44	0	0	0	0	4	1	2	4	9	15	4	5	0	0
SANTA ROSA	22	0	0	0	1	0	2	0	3	7	7	2	0	0	0
SARASOTA	30	0	0	0	0	0	1	1	3	11	4	6	4	0	0
SEMINOLE	50	0	0	0	0	1	1	2	6	16	11	11	2	0	0
SUMTER	6	0	0	0	0	0	0	0	1	3	1	0	1	0	0
SUWANNEE	8	0	0	0	0	0	2	0	0	4	1	1	0	0	0
TAYLOR	3	0	0	0	0	0	0	2	0	1	0	0	0	0	0
UNION	0	0	0	0	0	0	0	0	0	0	0	0	0	0	0
VOLUSIA	45	0	0	0	2	0	0	3	3	20	10	6	1	0	0
WAKULLA	2	0	0	0	0	0	0	0	1	0	1	0	0	0	0
WALTON	14	0	0	0	0	0	0	1	2	7	3	0	1	0	0
WASHINGTON	5	0	0	0	0	0	0	0	1	2	1	0	1	0	0

TABLE B-9: RESIDENT LIVE BIRTHS BY MONTH, BY COUNTY, FLORIDA, 2006

	TOTAL	JAN	FEB	MAR	APR	MAY	JUN	JUL	AUG	SEP	OCT	NOV	DEC
FLORIDA	237,166	19,288	17,956	19,541	17,594	18,819	19,063	19,750	21,640	21,399	21,010	20,199	20,907
ALACHUA	2,837	218	189	238	225	219	220	258	263	244	254	261	248
BAKER	395	32	30	44	29	25	29	24	47	28	45	29	33
BAY	2,449	164	177	193	206	208	191	231	213	227	221	192	226
BRADFORD	359	28	21	24	27	32	26	31	34	37	32	33	34
BREVARD	5,610	446	441	504	400	418	424	456	512	498	540	459	512
BROWARD	23,434	1,953	1,833	1,960	1,713	1,822	1,827	2,017	2,119	2,060	2,087	2,009	2,034
CALHOUN	180	16	10	22	10	7	17	18	22	14	16	10	18
CHARLOTTE	1,202	93	94	107	89	94	95	112	118	106	97	93	104
CITRUS	1,136	99	85	107	74	99	80	100	101	95	89	97	110
CLAY	2,359	165	180	213	177	210	191	195	205	198	222	202	201
COLLIER	4,294	366	331	373	292	344	371	351	382	386	397	364	337
COLUMBIA	857	68	75	74	67	62	71	73	64	67	76	72	88
MIAMI-DADE	33,739	2,764	2,579	2,818	2,423	2,682	2,710	2,797	3,083	3,089	2,957	2,882	2,955
DESOTO	489	43	53	42	28	32	36	39	42	46	37	49	42
DIXIE	184	15	9	23	15	10	16	13	15	17	15	16	20
DUVAL	13,687	1,153	1,053	1,136	1,026	1,127	1,132	1,134	1,219	1,256	1,226	1,083	1,142
ESCAMBIA	4,478	369	321	335	316	368	386	358	399	429	406	389	402
FLAGLER	942	72	65	67	57	78	72	76	102	95	97	76	85
FRANKLIN	125	11	6	10	6	13	13	8	12	14	9	13	10
GADSDEN	761	63	60	65	50	55	68	75	57	81	63	66	58
GILCHRIST	180	13	12	14	11	10	11	21	20	23	16	16	13
GLADES	97	9	9	17	3	4	3	11	8	12	4	8	9
GULF	136	10	13	5	8	6	14	11	17	21	13	10	8
HAMILTON	188	8	13	22	15	17	11	21	19	26	18	8	10
HARDEE	530	49	33	42	38	53	49	43	45	35	44	55	44
HENDRY	726	61	59	68	43	52	54	65	65	59	64	59	77
HERNANDO	1,600	131	110	132	113	126	139	133	148	144	142	123	159
HIGHLANDS	1,106	100	88	71	84	75	79	98	113	96	90	111	101
HILLSBOROUGH	17,520	1,337	1,336	1,445	1,272	1,440	1,411	1,431	1,576	1,587	1,578	1,522	1,585
HOLMES	213	18	18	10	12	15	18	15	18	22	22	19	26
INDIAN RIVER	1,410	115	120	108	100	113	122	107	132	118	130	120	125
JACKSON	596	55	43	43	65	65	28	61	50	54	34	52	46
JEFFERSON	176	13	14	10	15	22	5	22	15	21	14	15	10
LAFAYETTE	87	4	8	7	10	8	3	7	7	7	10	7	9
LAKE	3,448	281	251	297	259	267	227	298	357	317	302	293	299
LEE	7,497	558	542	576	561	600	620	625	680	722	665	626	722
LEON	3,271	258	254	265	249	243	258	275	300	319	303	282	265
LEVY	488	31	43	33	37	35	38	35	46	44	61	45	40
LIBERTY	111	6	7	9	8	11	13	14	10	13	6	8	6
MADISON	254	22	21	19	17	15	19	20	25	21	26	22	27
MANATEE	4,139	326	309	328	311	327	350	359	358	364	395	354	358
MARION	3,611	330	269	278	283	264	279	258	348	322	321	350	309
MARTIN	1,399	128	94	100	112	96	129	121	134	128	114	122	121
MONROE	720	48	48	58	50	59	60	62	70	58	79	74	54
NASSAU	813	75	66	67	57	47	74	58	63	81	77	64	84
OKALOOSA	2,788	228	214	243	218	225	243	239	250	237	235	230	226
OKEECHOBEE	623	57	46	53	45	55	56	49	55	54	47	57	49
ORANGE	16,966	1,381	1,293	1,366	1,288	1,315	1,413	1,400	1,541	1,506	1,481	1,411	1,571
OSCEOLA	3,959	335	294	307	286	317	301	327	373	362	322	356	379
PALM BEACH	15,702	1,357	1,126	1,329	1,182	1,275	1,308	1,297	1,379	1,379	1,429	1,326	1,315
PASCO	5,237	439	371	454	369	424	465	437	459	482	416	446	475
PINELLAS	9,541	753	750	777	769	758	766	759	883	792	861	845	828
POLK	8,290	653	650	663	611	641	660	726	768	739	714	745	720
PUTNAM	1,072	71	68	84	82	94	81	83	117	91	93	93	115
SAINT JOHNS	1,770	145	138	154	145	127	135	139	168	169	145	156	149
SAINT LUCIE	3,534	241	290	283	262	279	243	307	345	358	322	308	296
SANTA ROSA	1,863	140	139	153	150	135	167	153	174	177	152	159	164
SARASOTA	3,163	258	227	241	234	253	278	255	310	271	285	277	274
SEMINOLE	4,821	430	365	408	395	387	380	367	462	439	410	365	413
SUMTER	523	43	36	49	32	53	45	42	36	56	49	31	51
SUWANNEE	500	34	40	29	31	38	32	52	54	55	35	53	47
TAYLOR	262	28	18	22	25	19	13	20	26	22	21	25	23
UNION	171	15	14	9	16	12	12	17	21	16	13	16	10
VOLUSIA	5,263	433	394	450	399	435	390	430	462	476	455	429	510
WAKULLA	307	28	24	24	23	16	19	26	31	36	26	25	29
WALTON	693	64	48	48	46	65	39	58	72	57	62	63	71
WASHINGTON	261	30	16	16	21	19	22	28	19	23	21	22	24

TABLE B-10: RESIDENT LIVE BIRTHS BY MOTHER'S EDUCATION*, BY COUNTY, FLORIDA, 2006

	HIGHEST LEVEL/DEGREE OF EDUCATION COMPLETED									
	TOTAL	< 9TH GRADE	9TH-12TH NO DIPLOMA	HIGH SCHOOL DIPLOMA	SOME COLLEGE	ASSOCIATE DEGREE	BACHELOR DEGREE	MASTER DEGREE	DOCTORATE	UNK
FLORIDA	237,166	14,694	35,165	73,906	41,351	20,707	35,535	11,418	2,929	1,461
ALACHUA	2,837	53	367	652	538	229	573	277	146	2
BAKER	395	22	74	151	75	29	29	13	1	1
BAY	2,449	86	399	828	576	167	268	90	14	21
BRADFORD	359	10	72	148	81	27	16	5	0	0
BREVARD	5,610	149	832	1,482	1,342	626	848	263	53	15
BROWARD	23,434	948	2,526	6,922	4,203	2,289	4,029	1,601	387	529
CALHOUN	180	8	28	72	39	8	21	3	0	1
CHARLOTTE	1,202	19	195	445	260	102	139	37	4	1
CITRUS	1,136	23	230	472	205	88	90	25	2	1
CLAY	2,359	58	298	784	509	239	348	97	21	5
COLLIER	4,294	974	638	1,260	551	246	465	121	36	3
COLUMBIA	857	32	185	317	170	78	46	22	7	0
MIAMI-DADE	33,739	1,997	3,907	11,605	4,576	3,537	5,507	1,947	540	123
DESOTO	489	114	152	158	39	16	7	2	0	1
DIXIE	184	12	47	88	21	12	2	1	0	1
DUVAL	13,687	514	1,934	4,525	2,858	1,042	1,956	582	175	101
ESCAMBIA	4,478	105	843	1,788	584	389	586	130	33	20
FLAGLER	942	21	122	303	230	96	127	37	5	1
FRANKLIN	125	4	29	52	19	5	10	2	1	3
GADSDEN	761	73	168	273	135	39	53	15	2	3
GILCHRIST	180	12	33	67	38	12	13	3	2	0
GLADES	97	10	24	44	7	4	8	0	0	0
GULF	136	1	23	49	28	15	14	4	2	0
HAMILTON	188	32	42	70	19	8	13	3	0	1
HARDEE	530	144	129	160	59	15	16	6	0	1
HENDRY	726	163	194	250	45	41	25	5	0	3
HERNANDO	1,600	23	210	679	304	212	137	26	6	3
HIGHLANDS	1,106	133	251	344	192	71	82	25	7	1
HILLSBOROUGH	17,520	1,328	2,895	4,564	3,257	1,291	2,902	915	268	100
HOLMES	213	8	47	90	51	3	10	3	0	1
INDIAN RIVER	1,410	116	287	431	244	112	160	41	17	2
JACKSON	596	21	96	228	137	38	53	22	1	0
JEFFERSON	176	3	25	83	37	12	14	1	0	1
LAFAYETTE	87	16	14	31	13	6	3	4	0	0
LAKE	3,448	189	667	1,102	595	281	472	118	13	11
LEE	7,497	917	1,262	2,620	892	638	886	234	35	13
LEON	3,271	63	294	686	732	273	811	286	110	16
LEVY	488	37	104	186	90	39	25	6	1	0
LIBERTY	111	10	17	50	15	9	4	5	0	1
MADISON	254	4	52	93	55	19	21	8	1	1
MANATEE	4,139	620	868	1,121	614	269	448	165	30	4
MARION	3,611	163	686	1,303	770	272	297	91	27	2
MARTIN	1,399	296	165	365	188	116	180	66	19	4
MONROE	720	31	82	227	151	71	108	43	5	2
NASSAU	813	31	111	287	180	76	94	23	9	2
OKALOOSA	2,788	86	282	901	798	211	385	102	15	8
OKEECHOBEE	623	95	149	225	80	44	24	3	1	2
ORANGE	16,966	816	2,607	4,873	2,896	1,642	2,931	943	183	75
OSCEOLA	3,959	136	629	1,450	744	397	470	116	11	6
PALM BEACH	15,702	1,616	2,266	4,060	2,458	1,222	2,747	891	270	172
PASCO	5,237	192	801	1,443	1,066	488	916	263	50	18
PINELLAS	9,541	220	1,248	3,294	1,625	872	1,587	466	129	100
POLK	8,290	832	1,909	2,664	1,406	489	761	181	34	14
PUTNAM	1,072	111	272	412	160	58	46	11	1	1
SAINT JOHNS	1,770	19	183	384	318	155	507	144	53	7
SAINT LUCIE	3,534	304	606	1,278	580	323	323	95	17	8
SANTA ROSA	1,863	30	241	634	319	184	330	95	25	5
SARASOTA	3,163	148	483	967	611	270	478	158	45	3
SEMINOLE	4,821	107	516	1,208	953	475	1,145	338	68	11
SUMTER	523	41	131	195	84	29	23	4	3	13
SUWANNEE	500	50	123	190	69	40	23	5	0	0
TAYLOR	262	10	55	123	41	12	16	4	1	0
UNION	171	4	31	69	41	11	10	3	2	0
VOLUSIA	5,263	210	811	1,641	1,126	528	724	184	32	7
WAKULLA	307	7	33	114	66	30	49	5	3	0
WALTON	693	55	108	227	117	51	96	30	6	3
WASHINGTON	261	10	54	97	64	9	22	4	0	1

* Starting in 2004, "mother's education" is measured according to the highest level/degree completed, instead of highest grade completed.

TABLE B-10 (Cont.): WHITE RESIDENT LIVE BIRTHS BY MOTHER'S EDUCATION*, BY COUNTY, FLORIDA, 2006

	TOTAL	HIGHEST LEVEL/DEGREE OF EDUCATION COMPLETED									
		< 9TH GRADE	9TH-12TH NO DIPLOMA	HIGH SCHOOL DIPLOMA	SOME COLLEGE	ASSOCIATE DEGREE	BACHELOR DEGREE	MASTER DEGREE	DOCTORATE	UNK	
FLORIDA	174,147	12,721	23,551	50,555	29,800	15,971	29,178	9,232	2,346	793	
ALACHUA	1,736	37	143	321	300	161	452	211	109	2	
BAKER	340	22	61	126	65	26	26	13	1	0	
BAY	1,864	61	280	608	452	135	232	77	9	10	
BRADFORD	290	9	59	110	69	25	14	4	0	0	
BREVARD	4,514	125	585	1,147	1,098	533	748	221	45	12	
BROWARD	13,504	638	1,073	3,592	2,347	1,360	2,876	1,127	300	191	
CALHOUN	156	8	24	65	31	6	19	3	0	0	
CHARLOTTE	1,080	17	181	401	230	92	123	32	4	0	
CITRUS	1,049	22	215	437	192	82	78	21	2	0	
CLAY	1,945	53	246	648	406	207	283	83	16	3	
COLLIER	3,814	934	531	1,051	485	221	444	114	33	1	
COLUMBIA	667	29	134	233	137	69	39	20	6	0	
MIAMI-DADE	24,630	1,685	2,368	7,608	3,133	2,826	4,749	1,707	478	76	
DESOTO	435	112	136	128	34	16	7	1	0	1	
DIXIE	171	12	43	81	20	12	2	1	0	0	
DUVAL	7,968	369	929	2,320	1,625	694	1,442	419	121	49	
ESCAMBIA	2,860	81	435	1,004	418	286	485	114	26	11	
FLAGLER	787	15	95	253	194	84	110	32	4	0	
FRANKLIN	113	4	25	47	17	5	9	2	1	3	
GADSDEN	294	62	49	92	40	14	28	6	1	2	
GILCHRIST	170	11	31	65	34	11	13	3	2	0	
GLADES	77	10	19	33	3	4	8	0	0	0	
GULF	110	1	18	40	22	12	11	4	2	0	
HAMILTON	128	27	28	34	16	8	11	3	0	1	
HARDEE	506	142	122	148	56	15	16	6	0	1	
HENDRY	616	159	161	198	33	38	20	4	0	3	
HERNANDO	1,436	19	190	607	276	196	119	24	4	1	
HIGHLANDS	888	127	187	269	151	60	67	21	5	1	
HILLSBOROUGH	13,110	1,240	2,073	3,192	2,314	1,002	2,306	707	209	67	
HOLMES	201	8	44	83	49	3	10	3	0	1	
INDIAN RIVER	1,159	105	228	321	215	94	140	37	17	2	
JACKSON	427	16	63	154	102	30	43	19	0	0	
JEFFERSON	99	1	8	47	20	10	11	1	0	1	
LAFAYETTE	76	16	11	25	12	5	3	4	0	0	
LAKE	2,875	182	552	877	505	238	405	98	10	8	
LEE	6,386	874	1,028	2,109	764	544	804	221	32	10	
LEON	1,733	42	96	322	275	153	576	184	77	8	
LEVY	432	36	92	158	78	36	25	6	1	0	
LIBERTY	98	10	17	44	10	8	4	4	0	1	
MADISON	144	3	22	43	34	15	17	8	1	1	
MANATEE	3,398	555	689	859	496	214	407	147	27	4	
MARION	2,753	141	501	964	606	204	238	71	27	1	
MARTIN	1,029	108	123	286	160	106	168	62	16	0	
MONROE	615	30	59	188	128	64	103	38	5	0	
NASSAU	739	28	102	255	164	69	90	21	8	2	
OKALOOSA	2,288	79	225	738	619	185	334	89	14	5	
OKEECHOBEE	558	95	127	194	74	39	24	2	1	2	
ORANGE	11,425	648	1,571	2,945	1,941	1,150	2,253	735	129	53	
OSCEOLA	3,316	125	534	1,232	595	331	398	86	10	5	
PALM BEACH	11,038	1,428	1,306	2,346	1,705	885	2,301	726	220	121	
PASCO	4,710	181	738	1,314	980	424	800	227	33	13	
PINELLAS	7,155	200	794	2,290	1,261	698	1,330	407	111	64	
POLK	6,468	771	1,446	1,963	1,083	391	633	146	29	6	
PUTNAM	796	101	181	290	129	47	40	7	0	1	
SAINT JOHNS	1,537	16	135	317	283	142	468	127	44	5	
SAINT LUCIE	2,525	272	401	837	408	254	263	73	12	5	
SANTA ROSA	1,698	25	227	569	286	163	313	91	20	4	
SARASOTA	2,766	140	382	828	531	249	449	145	39	3	
SEMINOLE	3,800	97	362	918	755	409	940	262	50	7	
SUMTER	426	38	107	147	70	24	22	4	2	12	
SUWANNEE	417	43	105	156	54	35	19	5	0	0	
TAYLOR	197	6	35	90	34	11	16	4	1	0	
UNION	147	4	25	55	38	10	10	3	2	0	
VOLUSIA	4,330	196	610	1,355	919	448	621	154	21	6	
WAKULLA	271	7	30	100	58	27	43	3	3	0	
WALTON	634	53	92	201	109	48	94	29	6	2	
WASHINGTON	202	9	39	75	47	8	20	3	0	1	

* Starting in 2004, "mother's education" is measured according to the highest level/degree completed, instead of highest grade completed.

TABLE B-10 (Cont.): BLACK RESIDENT LIVE BIRTHS BY MOTHER'S EDUCATION*, BY COUNTY, FLORIDA, 2006

	TOTAL	HIGHEST LEVEL/DEGREE OF EDUCATION COMPLETED									
		< 9TH GRADE	9TH-12TH NO DIPLOMA	HIGH SCHOOL DIPLOMA	SOME COLLEGE	ASSOCIATE DEGREE	BACHELOR DEGREE	MASTER DEGREE	DOCTORATE	UNK	
FLORIDA	50,808	1,388	10,545	20,340	9,584	3,638	3,458	1,117	254	484	
ALACHUA	863	12	215	306	219	47	44	15	5	0	
BAKER	44	0	11	21	9	2	1	0	0	0	
BAY	337	3	78	152	74	16	7	4	0	3	
BRADFORD	60	1	12	32	12	2	0	1	0	0	
BREVARD	763	15	210	261	168	58	32	15	3	1	
BROWARD	8,183	265	1,345	2,894	1,602	768	706	274	51	278	
CALHOUN	19	0	2	6	8	2	1	0	0	0	
CHARLOTTE	78	2	10	28	20	8	8	1	0	1	
CITRUS	46	0	9	22	6	0	7	2	0	0	
CLAY	272	4	37	105	65	20	29	8	3	1	
COLLIER	417	39	95	187	58	25	11	1	0	1	
COLUMBIA	169	3	47	76	28	8	5	1	1	0	
MIAMI-DADE	8,282	287	1,497	3,808	1,332	614	528	154	36	26	
DESOTO	48	1	16	25	5	0	0	1	0	0	
DIXIE	11	0	4	6	1	0	0	0	0	0	
DUVAL	4,810	117	945	1,971	1,042	266	303	97	26	43	
ESCAMBIA	1,389	20	377	705	130	78	61	7	5	6	
FLAGLER	109	4	21	40	25	5	9	4	0	1	
FRANKLIN	8	0	3	4	1	0	0	0	0	0	
GADSDEN	460	10	118	179	93	25	24	9	1	1	
GILCHRIST	7	0	2	1	3	1	0	0	0	0	
GLADES	11	0	1	9	1	0	0	0	0	0	
GULF	21	0	3	9	5	3	1	0	0	0	
HAMILTON	56	2	14	35	3	0	2	0	0	0	
HARDEE	17	2	4	8	3	0	0	0	0	0	
HENDRY	92	1	27	47	11	3	3	0	0	0	
HERNANDO	104	4	17	47	20	6	8	1	0	1	
HIGHLANDS	175	4	56	67	34	7	6	1	0	0	
HILLSBOROUGH	3,397	70	757	1,164	793	211	286	82	16	18	
HOLMES	6	0	2	3	1	0	0	0	0	0	
INDIAN RIVER	205	4	52	95	26	14	12	2	0	0	
JACKSON	156	2	33	72	31	5	9	3	1	0	
JEFFERSON	75	2	17	35	16	2	3	0	0	0	
LAFAYETTE	8	0	2	5	0	1	0	0	0	0	
LAKE	396	5	98	169	64	19	30	9	0	2	
LEE	912	36	212	443	99	75	35	10	0	2	
LEON	1,336	19	183	342	432	110	165	60	18	7	
LEVY	47	0	11	25	8	3	0	0	0	0	
LIBERTY	11	0	0	5	5	1	0	0	0	0	
MADISON	109	1	30	49	21	4	4	0	0	0	
MANATEE	521	12	149	211	90	41	10	6	2	0	
MARION	683	8	165	289	132	44	34	10	0	1	
MARTIN	124	3	26	61	20	7	4	1	2	0	
MONROE	71	1	18	26	13	5	3	3	0	2	
NASSAU	52	1	7	23	13	6	1	0	1	0	
OKALOOSA	293	2	39	111	104	11	17	8	1	0	
OKEECHOBEE	38	0	7	23	5	3	0	0	0	0	
ORANGE	4,180	131	912	1,598	745	354	315	94	20	11	
OSCEOLA	414	6	71	146	99	42	35	14	1	0	
PALM BEACH	3,940	174	903	1,561	639	270	233	87	27	46	
PASCO	251	4	38	60	51	28	40	20	8	2	
PINELLAS	1,716	9	385	777	262	123	106	26	7	21	
POLK	1,561	39	423	640	276	80	78	20	1	4	
PUTNAM	261	10	90	117	31	7	3	2	1	0	
SAINT JOHNS	150	1	45	57	28	4	12	1	1	1	
SAINT LUCIE	851	21	180	390	149	51	45	12	2	1	
SANTA ROSA	85	3	7	38	16	12	6	2	1	0	
SARASOTA	282	5	85	103	58	12	13	5	1	0	
SEMINOLE	702	6	142	238	150	48	84	27	7	0	
SUMTER	85	1	24	43	10	5	1	0	0	1	
SUWANNEE	70	3	16	30	14	5	2	0	0	0	
TAYLOR	60	4	17	31	7	1	0	0	0	0	
UNION	23	0	6	14	2	1	0	0	0	0	
VOLUSIA	776	9	188	248	172	66	72	15	5	1	
WAKULLA	31	0	3	13	6	3	4	2	0	0	
WALTON	33	0	12	16	5	0	0	0	0	0	
WASHINGTON	45	0	14	18	13	0	0	0	0	0	

* Starting in 2004, "mother's education" is measured according to the highest level/degree completed, instead of highest grade completed.

TABLE B-10 (Cont.): OTHER RESIDENT LIVE BIRTHS BY MOTHER'S EDUCATION*, BY COUNTY, FLORIDA, 2006

	HIGHEST LEVEL/DEGREE OF EDUCATION COMPLETED										
	TOTAL	9TH-12TH		HIGH	SOME COLLEGE	ASSOCIATE DEGREE	BACHELOR DEGREE	MASTER DEGREE	DOCTORATE	UNK	
		< 9TH GRADE	NO DIPLOMA	SCHOOL DIPLOMA							
FLORIDA	11,889	562	1,036	2,946	1,912	1,080	2,868	1,059	325	101	
ALACHUA	238	4	9	25	19	21	77	51	32	0	
BAKER	10	0	2	4	1	1	2	0	0	0	
BAY	157	7	24	51	29	11	22	7	4	2	
BRADFORD	9	0	1	6	0	0	2	0	0	0	
BREVARD	330	8	37	73	76	35	68	27	5	1	
BROWARD	1,652	40	99	413	233	156	438	198	36	39	
CALHOUN	5	0	2	1	0	0	1	0	0	1	
CHARLOTTE	44	0	4	16	10	2	8	4	0	0	
CITRUS	40	1	6	13	6	6	5	2	0	1	
CLAY	142	1	15	31	38	12	36	6	2	1	
COLLIER	62	1	12	22	8	0	10	6	3	0	
COLUMBIA	20	0	4	7	5	1	2	1	0	0	
MIAMI-DADE	782	25	42	181	106	93	220	84	25	6	
DESOTO	6	1	0	5	0	0	0	0	0	0	
DIXIE	2	0	0	1	0	0	0	0	0	1	
DUVAL	904	28	60	234	191	82	210	66	28	5	
ESCAMBIA	227	4	31	79	36	25	40	8	2	2	
FLAGLER	46	2	6	10	11	7	8	1	1	0	
FRANKLIN	3	0	1	0	1	0	1	0	0	0	
GADSDEN	7	1	1	2	2	0	1	0	0	0	
GILCHRIST	3	1	0	1	1	0	0	0	0	0	
GLADES	9	0	4	2	3	0	0	0	0	0	
GULF	4	0	1	0	1	0	2	0	0	0	
HAMILTON	4	3	0	1	0	0	0	0	0	0	
HARDEE	7	0	3	4	0	0	0	0	0	0	
HENDRY	18	3	6	5	1	0	2	1	0	0	
HERNANDO	59	0	3	24	8	10	10	1	2	1	
HIGHLANDS	43	2	8	8	7	4	9	3	2	0	
HILLSBOROUGH	997	17	65	207	149	77	309	124	41	8	
HOLMES	6	0	1	4	1	0	0	0	0	0	
INDIAN RIVER	46	7	7	15	3	4	8	2	0	0	
JACKSON	13	3	0	2	4	3	1	0	0	0	
JEFFERSON	1	0	0	1	0	0	0	0	0	0	
LAFAYETTE	3	0	1	1	1	0	0	0	0	0	
LAKE	176	2	17	55	26	24	37	11	3	1	
LEE	197	7	22	66	29	19	47	3	3	1	
LEON	192	2	11	19	24	10	69	41	15	1	
LEVY	9	1	1	3	4	0	0	0	0	0	
LIBERTY	2	0	0	1	0	0	0	1	0	0	
MADISON	1	0	0	1	0	0	0	0	0	0	
MANATEE	218	52	30	51	27	14	31	12	1	0	
MARION	175	14	20	50	32	24	25	10	0	0	
MARTIN	245	185	16	18	8	3	8	3	1	3	
MONROE	34	0	5	13	10	2	2	2	0	0	
NASSAU	22	2	2	9	3	1	3	2	0	0	
OKALOOSA	206	5	18	52	75	15	34	5	0	2	
OKEECHOBEE	27	0	15	8	1	2	0	1	0	0	
ORANGE	1,354	37	124	330	209	138	362	114	34	6	
OSCEOLA	228	5	24	72	50	24	37	16	0	0	
PALM BEACH	717	14	55	152	114	66	213	78	23	2	
PASCO	274	7	25	69	35	35	76	16	9	2	
PINELLAS	660	11	69	225	101	50	150	33	11	10	
POLK	258	22	40	61	47	18	50	15	4	1	
PUTNAM	14	0	1	4	0	4	3	2	0	0	
SAINT JOHNS	83	2	3	10	7	9	27	16	8	1	
SAINT LUCIE	156	11	25	51	23	18	15	10	3	0	
SANTA ROSA	79	2	7	27	17	9	11	2	4	0	
SARASOTA	115	3	16	36	22	9	16	8	5	0	
SEMINOLE	318	4	12	52	48	18	121	49	11	3	
SUMTER	12	2	0	5	4	0	0	0	1	0	
SUWANNEE	13	4	2	4	1	0	2	0	0	0	
TAYLOR	5	0	3	2	0	0	0	0	0	0	
UNION	1	0	0	0	1	0	0	0	0	0	
VOLUSIA	156	5	13	37	35	14	31	15	6	0	
WAKULLA	5	0	0	1	2	0	2	0	0	0	
WALTON	24	2	4	9	3	3	2	1	0	0	
WASHINGTON	13	1	1	4	3	1	2	1	0	0	

* Starting in 2004, "mother's education" is measured according to the highest level/degree completed, instead of highest grade completed.

TABLE B-11: RESIDENT LIVE BIRTHS TO MOTHERS UNDER 15 YEARS OF AGE FOR SELECTED INDICATORS,
BY COUNTY, FLORIDA, 2006

	TOTAL	UNWED	BIRTHWEIGHT		THIRD TRIMESTER OR NO PRENATAL CARE*	ONE OR MORE PREVIOUS LIVE BIRTHS
			UNDER 1,500 GRAMS	UNDER 2,500 GRAMS		
FLORIDA	353	343	14	60	56	5
ALACHUA	7	6	1	1	0	0
BAKER	0	0	0	0	0	0
BAY	4	4	0	1	0	0
BRADFORD	0	0	0	0	0	0
BREVARD	2	2	0	0	0	0
BROWARD	20	20	0	5	4	1
CALHOUN	0	0	0	0	0	0
CHARLOTTE	2	2	0	0	0	0
CITRUS	1	1	0	0	0	0
CLAY	0	0	0	0	0	0
COLLIER	8	8	2	2	2	0
COLUMBIA	1	1	0	0	1	0
MIAMI-DADE	42	40	2	9	1	1
DESOTO	0	0	0	0	0	0
DIXIE	0	0	0	0	0	0
DUVAL	25	25	1	2	7	0
ESCAMBIA	10	10	0	0	1	1
FLAGLER	1	1	0	0	1	0
FRANKLIN	0	0	0	0	0	0
GADSDEN	7	6	0	3	1	0
GILCHRIST	0	0	0	0	0	0
GLADES	0	0	0	0	0	0
GULF	0	0	0	0	0	0
HAMILTON	0	0	0	0	0	0
HARDEE	2	2	0	0	0	0
HENDRY	2	2	0	0	1	0
HERNANDO	3	3	0	0	1	0
HIGHLANDS	1	1	0	0	0	0
HILLSBOROUGH	30	28	0	6	2	0
HOLMES	1	0	0	0	0	0
INDIAN RIVER	2	2	0	0	0	0
JACKSON	1	1	0	0	1	0
JEFFERSON	0	0	0	0	0	0
LAFAYETTE	1	1	0	0	1	0
LAKE	6	6	0	1	2	0
LEE	21	21	0	4	3	1
LEON	4	4	0	1	0	0
LEVY	0	0	0	0	0	0
LIBERTY	1	1	0	1	1	0
MADISON	0	0	0	0	0	0
MANATEE	8	8	0	0	1	0
MARION	2	2	0	0	0	0
MARTIN	3	3	0	0	1	0
MONROE	1	1	0	0	0	0
NASSAU	0	0	0	0	0	0
OKALOOSA	5	4	1	2	2	0
OKEECHOBEE	1	1	0	1	1	0
ORANGE	22	22	0	2	8	0
OSCEOLA	4	4	0	0	0	0
PALM BEACH	26	25	2	8	4	0
PASCO	9	9	1	2	2	0
PINELLAS	14	14	0	2	1	1
POLK	17	17	2	3	5	0
PUTNAM	4	4	2	2	0	0
SAINT JOHNS	2	1	0	1	0	0
SAINT LUCIE	5	5	0	0	0	0
SANTA ROSA	1	1	0	0	0	0
SARASOTA	4	4	0	0	0	0
SEMINOLE	6	6	0	0	0	0
SUMTER	1	1	0	0	0	0
SUWANNEE	3	3	0	0	1	0
TAYLOR	1	1	0	0	0	0
UNION	0	0	0	0	0	0
VOLUSIA	9	9	0	1	0	0
WAKULLA	0	0	0	0	0	0
WALTON	0	0	0	0	0	0
WASHINGTON	0	0	0	0	0	0

* Starting in 2004, "trimester prenatal care began" is calculated as the time elapsed from the date of the last menstrual period to the date of the first prenatal care visit. Prior to 2004, these data were obtained by direct question that noted the trimester the mother began prenatal care. Consequently, these data are not comparable to data from prior years.

TABLE B-12: RESIDENT LIVE BIRTHS TO MOTHERS 15 THROUGH 19 YEARS OF AGE FOR SELECTED INDICATORS, AND AGE-SPECIFIC BIRTH RATES PER 1,000 FEMALES, BY COUNTY, FLORIDA, 2006

	TOTAL	UNWED		BIRTHWEIGHT				THIRD TRIMESTER OR		ONE OR MORE		AGE-SPECIFIC BIRTH RATE	POPULATION 15-19 FEMALES
				UNDER 1,500 GRAMS		UNDER 2,500 GRAMS		NO PRENATAL CARE		PREVIOUS LIVE BIRTHS			
				NUMBER	%	NUMBER	%	NUMBER ¹	% ²	NUMBER	%		
FLORIDA	25,507	22,146	86.8	501	2.0	2,715	10.6	2,136	9.4	4,636	18.2	43.5	585,832
ALACHUA	283	250	88.3	6	2.1	27	9.5	11	4.4	55	19.4	23.4	12,089
BAKER	76	55	72.4	4	5.3	10	13.2	6	8.2	23	30.3	86.8	876
BAY	320	245	76.6	7	2.2	30	9.4	24	8.1	72	22.5	65.9	4,859
BRADFORD	60	50	83.3	2	3.3	7	11.7	2	3.6	11	18.3	73.3	819
BREVARD	602	539	89.5	25	4.2	77	12.8	35	6.4	91	15.1	35.1	17,137
BROWARD	1,835	1,663	90.6	44	2.4	185	10.1	196	12.3	289	15.7	34.1	53,835
CALHOUN	20	12	60.0	2	10.0	3	15.0	0	0.0	8	40.0	44.2	453
CHARLOTTE	126	107	84.9	1	0.8	11	8.7	13	10.5	18	14.3	33.7	3,736
CITRUS	161	135	83.9	5	3.1	14	8.7	10	6.3	19	11.8	47.8	3,371
CLAY	248	208	83.9	5	2.0	29	11.7	15	6.3	37	14.9	35.7	6,953
COLLIER	482	401	83.2	11	2.3	49	10.2	65	14.7	105	21.8	56.1	8,597
COLUMBIA	148	111	75.0	5	3.4	13	8.8	15	10.7	22	14.9	70.5	2,099
MIAMI-DADE	3,017	2,703	89.6	59	2.0	319	10.6	213	8.3	507	16.8	36.0	83,762
DESOTO	99	80	80.8	0	0.0	8	8.1	13	13.8	23	23.2	101.3	977
DIXIE	28	21	75.0	0	0.0	0	0.0	0	0.0	7	25.0	59.3	472
DUVAL	1,547	1,345	86.9	33	2.1	167	10.8	138	10.3	282	18.2	51.2	30,221
ESCAMBIA	595	498	83.7	12	2.0	74	12.4	71	12.6	96	16.1	48.7	12,230
FLAGLER	78	64	82.1	0	0.0	9	11.5	6	8.3	9	11.5	30.8	2,529
FRANKLIN	20	17	85.0	0	0.0	2	10.0	1	5.6	3	15.0	61.2	327
GADSDEN	133	126	94.7	6	4.5	22	16.5	6	5.6	32	24.1	80.4	1,654
GILCHRIST	27	20	74.1	0	0.0	3	11.1	3	11.5	6	22.2	50.0	540
GLADES	22	15	68.2	0	0.0	0	0.0	2	10.0	1	4.5	69.6	316
GULF	15	10	66.7	0	0.0	1	6.7	2	16.7	4	26.7	32.1	467
HAMILTON	36	30	83.3	1	2.8	1	2.8	5	15.6	9	25.0	84.3	427
HARDEE	95	72	75.8	3	3.2	12	12.6	17	18.7	27	28.4	101.1	940
HENDRY	144	119	82.6	2	1.4	15	10.4	11	8.3	27	18.8	94.7	1,521
HERNANDO	167	144	86.2	3	1.8	15	9.0	3	1.8	25	15.0	39.1	4,276
HIGHLANDS	169	152	89.9	1	0.6	18	10.7	16	10.4	27	16.0	68.3	2,476
HILLSBOROUGH	2,048	1,818	88.8	34	1.7	226	11.0	110	6.1	408	19.9	50.9	40,240
HOLMES	39	22	56.4	2	5.1	5	12.8	5	17.2	7	17.9	61.3	636
INDIAN RIVER	163	137	84.0	4	2.5	14	8.6	14	9.3	31	19.0	44.3	3,676
JACKSON	83	65	78.3	1	1.2	6	7.2	4	5.6	15	18.1	59.1	1,404
JEFFERSON	32	27	84.4	0	0.0	4	12.5	0	0.0	6	18.8	70.2	456
LAFAYETTE	13	7	53.8	1	7.7	3	23.1	1	8.3	2	15.4	59.9	217
LAKE	426	355	83.3	8	1.9	44	10.3	16	4.3	69	16.2	57.1	7,460
LEE	929	780	84.0	7	0.8	83	8.9	85	9.6	203	21.9	59.0	15,750
LEON	287	261	90.9	11	3.8	43	15.0	20	8.4	53	18.5	19.8	14,481
LEVY	67	56	83.6	1	1.5	9	13.4	5	7.7	6	9.0	50.7	1,321
LIBERTY	18	18	100.0	1	5.6	3	16.7	2	14.3	5	27.8	77.3	233
MADISON	36	31	86.1	0	0.0	4	11.1	0	0.0	2	5.6	51.2	703
MANATEE	549	480	87.4	6	1.1	46	8.4	49	9.1	128	23.3	64.9	8,460
MARION	505	428	84.8	10	2.0	59	11.7	44	9.1	98	19.4	53.2	9,487
MARTIN	157	136	86.6	3	1.9	18	11.5	21	14.2	29	18.5	43.5	3,609
MONROE	50	42	84.0	2	4.0	5	10.0	3	7.5	4	8.0	25.5	1,960
NASSAU	94	78	83.0	0	0.0	7	7.4	7	8.8	19	20.2	40.5	2,319
OKALOOSA	278	205	73.7	3	1.1	28	10.1	17	6.5	32	11.5	45.3	6,143
OKEECHOBEE	108	81	75.0	3	2.8	10	9.3	8	7.6	26	24.1	83.7	1,291
ORANGE	1,749	1,572	89.9	41	2.3	221	12.6	151	9.9	330	18.9	45.2	38,679
OSCEOLA	462	393	85.1	4	0.9	38	8.2	23	7.3	73	15.8	47.5	9,725
PALM BEACH	1,418	1,274	89.8	33	2.3	182	12.8	178	15.1	279	19.7	37.7	37,606
PASCO	534	450	84.3	11	2.1	61	11.4	34	7.0	93	17.4	44.5	12,003
PINELLAS	1,041	945	90.8	14	1.3	114	11.0	76	8.8	190	18.3	41.2	25,268
POLK	1,208	1,029	85.2	29	2.4	114	9.4	134	11.7	253	20.9	66.6	18,130
PUTNAM	181	154	85.1	2	1.1	20	11.0	9	6.2	32	17.7	73.3	2,468
SAINT JOHNS	143	121	84.6	1	0.7	16	11.2	2	1.8	23	16.1	26.7	5,346
SAINT LUCIE	435	382	87.8	6	1.4	45	10.3	58	13.6	82	18.9	52.7	8,262
SANTA ROSA	176	132	75.0	0	0.0	18	10.2	12	7.0	31	17.6	35.4	4,975
SARASOTA	296	265	89.5	1	0.3	19	6.4	24	8.2	41	13.9	34.6	8,562
SEMINOLE	387	337	87.1	11	2.8	42	10.9	40	10.9	58	15.0	27.7	13,972
SUMTER	109	88	80.7	2	1.8	13	11.9	4	4.6	22	20.2	62.1	1,755
SUWANNEE	87	61	70.1	1	1.1	3	3.4	6	7.6	13	14.9	73.2	1,188
TAYLOR	43	38	88.4	1	2.3	7	16.3	1	2.5	3	7.0	62.3	690
UNION	30	22	73.3	0	0.0	2	6.7	1	3.4	8	26.7	70.9	423
VOLUSIA	616	541	87.8	9	1.5	45	7.3	54	9.1	98	15.9	39.3	15,677
WAKULLA	35	27	77.1	1	2.9	4	11.4	0	0.0	1	2.9	38.1	919
WALTON	80	67	83.8	0	0.0	10	12.5	9	11.7	15	18.8	48.0	1,667
WASHINGTON	37	26	70.3	0	0.0	3	8.1	9	30.0	12	32.4	52.0	712

1. Starting in 2004, "trimester prenatal care began" is calculated as the time elapsed from the date of the last menstrual period to the date of the first prenatal care visit. Prior to 2004, these data were obtained by direct question that noted the trimester the mother began prenatal care. Consequently, these data are not comparable to data from prior years.

2. Births with unknown information as to when prenatal care began are excluded from the denominator.

