

# **Fetal and Infant Deaths**

## FETAL AND INFANT DEATHS

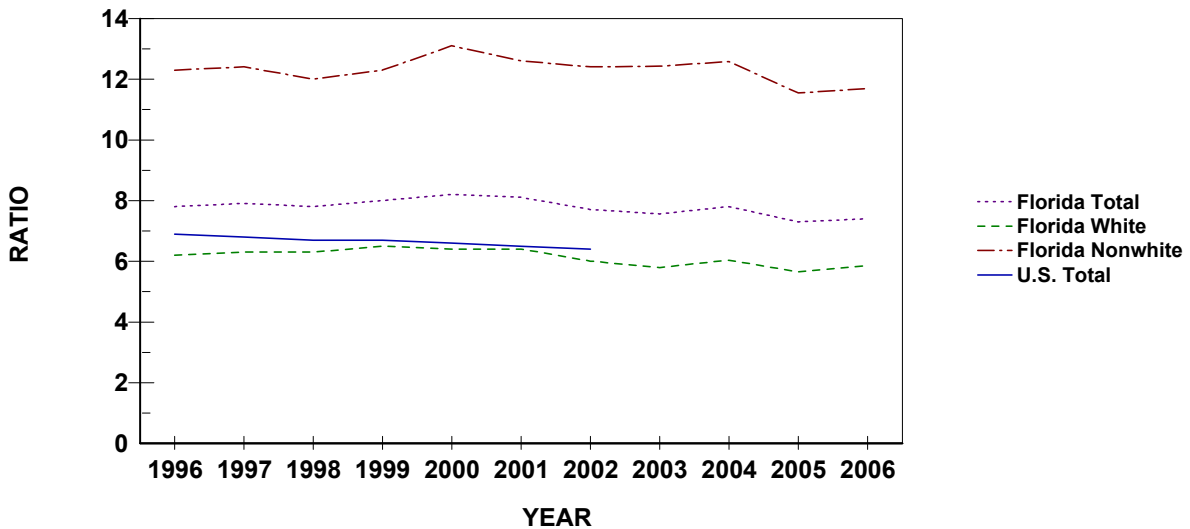
- The number of resident fetal deaths (stillbirths occurring at 20 or more weeks of gestation) increased from 1,650 fetal deaths in 2005 to 1,756 fetal deaths in 2006. Also, the ratio of resident fetal deaths slightly increased from 7.3 per 1,000 live births in 2005 to 7.4 per 1,000 live births in 2006.
- Resident fetal deaths increased among Whites and Nonwhites from 2005 to 2006.
- Of the 1,756 Florida resident fetal deaths, 15.8 percent occurred to mothers residing in Miami-Dade County.
- Of all resident fetal deaths; 67.3 percent were to mothers of Non-Hispanic and Non-Haitian origin, 25.4 percent were to mothers of Hispanic origin, and 5.9 percent were to mothers of Haitian origin and 1.4 percent were to mothers whose ethnicity was unknown.
- About one of every 11 resident fetal deaths occurred to a mother who was 18 years old or younger.
- In 2006, both the overall number and rate of resident neonatal deaths (under 28 days) increased.
- The neonatal death rate increased to 4.7 per 1,000 live births in 2006 after remaining at 4.5 for two consecutive years. This represents less than half the rate of 1980 (9.7 per 1,000 live births).
- The Nonwhite neonatal death rate (7.8 per 1,000 live births) is more than twice the White rate (3.6 per 1,000 live births).
- During the five year period 2002 through 2006, the resident infant mortality rate reached 7.5 per 1,000 live births in 2002 and 2003, then decreased to 7.0 in 2004, and then increased to 7.2 in 2005. In 2006, the rate remained at 7.2 per 1,000 live births.
- The resident infant mortality rate has dropped 25.1 percent since 1990 and is about half the rate of 1980.
- Of all resident infant deaths; 72.2 percent were to infants of Non-Hispanic and Non-Haitian origin, 23.3 percent were to infants of Hispanic origin, 3.9 percent were to infants of Haitian origin and 0.6 percent to infants whose ethnicity was unknown.
- Of the total resident deaths occurring within the first year of life, 65.5 percent were less than 28 days old. Furthermore, 36.2 percent were less than one day old.
- The leading causes of resident infant deaths in 2006 were perinatal period conditions, congenital anomalies, unintentional injuries (accidents), and sudden infant death syndrome. These causes accounted for 80.2 percent of all resident infant deaths.
- Of Black mothers, 75.6 percent had a high school diploma or greater level of education, compared to 78.7 percent of White mothers and 85.7 percent of mothers of Other Races.

**CHART F-1: RESIDENT FETAL DEATHS AND RATIOS PER 1,000 LIVE BIRTHS,  
BY RACE OF MOTHER, FLORIDA AND UNITED STATES TOTAL,  
CENSUS YEARS 1920-1990 AND 1996-2006**

YEAR	NUMBER OF FETAL DEATHS - FL			RATIOS - FL			RATIO - U.S.
	TOTAL	WHITE	NONWHITE	TOTAL	WHITE	NONWHITE	TOTAL
1920 <sup>1</sup>	1,287	595	692	65.9	43.9	115.4	NA
1930 <sup>1</sup>	1,754	746	1,008	65.0	40.1	120.1	NA
1940	1,415	683	732	42.0	28.7	74.0	NA
1950	1,443	757	868	22.4	16.6	36.7	18.8
1960	1,846	1,043	803	16.0	12.4	25.7	15.8
1970	1,701	1,064	637	14.8	12.2	22.6	14.0
1980	1,355	847	491	10.3	8.7	14.3	9.1
1990	1,811	1,071	720	9.1	7.2	14.6	7.5
1996	1,478	885	577	7.8	6.2	12.3	6.9
1997	1,523	910	600	7.9	6.3	12.4	6.8
1998	1,520	912	594	7.8	6.3	12.0	6.7
1999	1,579	953	619	8.0	6.5	12.3	6.7
2000	1,675	954	704	8.2	6.4	13.1	6.6
2001	1,668	972	678	8.1	6.4	12.6	6.5
2002	1,591	920	657	7.7	6.0	12.4	6.4
2003	1,604	912	678	7.6	5.8	12.4	NA
2004	1,701	966	723	7.8	6.0	12.6	NA
2005	1,650	938	688	7.3	5.6	11.5	NA
2006	1,756	1,020	733	7.4	5.9	11.7	NA

1. Only recorded data are available.

**GRAPH F-1: RESIDENT FETAL DEATH RATIOS PER 1,000 LIVE BIRTHS, BY RACE OF MOTHER,  
FLORIDA, AND UNITED STATES TOTAL, 1996-2006**

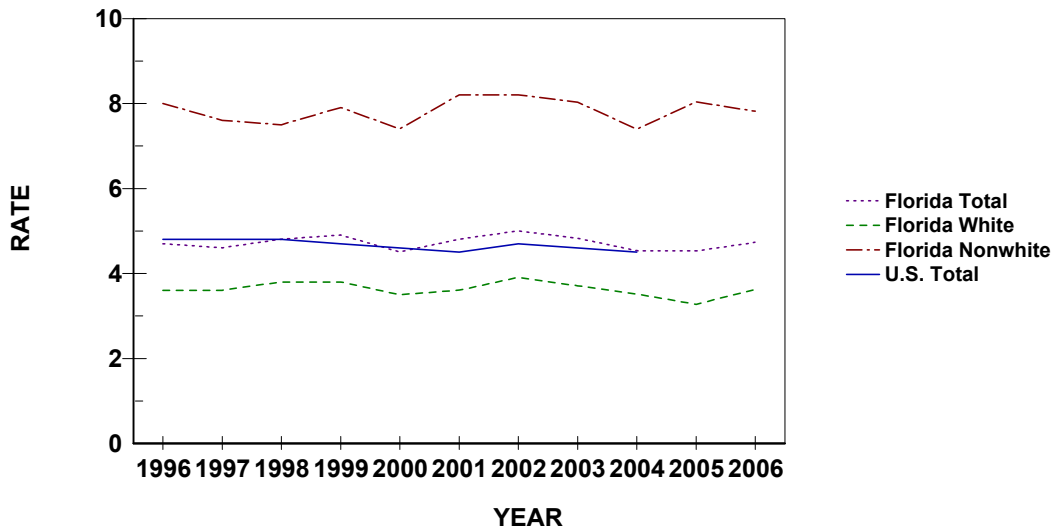


**CHART F-2: RESIDENT NEONATAL DEATHS AND RATES PER 1,000 LIVE BIRTHS,  
BY RACE, FLORIDA AND UNITED STATES TOTAL,  
CENSUS YEARS 1920-1990 AND 1996-2006**

YEAR	NUMBER OF NEONATAL DEATHS - FL			RATES - FL <sup>1</sup>			RATE - U.S.
	TOTAL	WHITE	NONWHITE	TOTAL	WHITE	NONWHITE	TOTAL
1920	NA	NA	NA	NA	NA	NA	NA
1930	NA	NA	NA	NA	NA	NA	NA
1940	1,142	662	480	33.9	27.8	48.5	28.8
1950	1,551	975	576	24.1	21.3	30.8	20.5
1960	2,404	1,531	873	20.8	18.1	28.0	18.7
1970	1,848	1,198	648	16.1	13.8	23.0	15.1
1980	1,282	791	490	9.7	8.1	14.2	8.5
1990	1,227	742	484	6.2	5.0	9.8	5.8
1996	895	517	377	4.7	3.6	8.0	4.8
1997	889	518	370	4.6	3.6	7.6	4.8
1998	933	559	371	4.8	3.8	7.5	4.8
1999	962	559	401	4.9	3.8	7.9	4.7
2000	925	526	397	4.5	3.5	7.4	4.6
2001	980	539	440	4.8	3.6	8.2	4.5
2002	1,032	596	436	5.0	3.9	8.2	4.7
2003	1,025	584	438	4.8	3.7	8.0	4.6
2004	989	563	425	4.5	3.5	7.4	4.5
2005	1,024	544	479	4.5	3.3	8.0	NA
2006	1,122	630	490	4.7	3.6	7.8	NA

1. Rates based on neonatal deaths by race of decedent, live births by race of mother.

**GRAPH F-2: RESIDENT NEONATAL DEATH RATES PER 1,000 LIVE BIRTHS, BY RACE,  
FLORIDA AND UNITED STATES TOTAL, 1996-2006**



**CHART F-3: RESIDENT INFANT DEATHS AND RATES PER 1,000 LIVE BIRTHS, BY RACE, FLORIDA AND UNITED STATES TOTAL, CENSUS YEARS 1920-1990 AND 1996-2006**

YEAR	NUMBER OF INFANT DEATHS - FL			RATES - FL <sup>2</sup>			RATE - U.S.
	TOTAL	WHITE	NONWHITE	TOTAL	WHITE	NONWHITE	TOTAL
1920 <sup>1</sup>	1,835	1,031	804	93.9	76.1	134.0	NA
1930 <sup>1</sup>	1,729	928	801	64.1	49.9	95.4	NA
1940	1,812	1,052	760	53.8	44.2	76.8	47.0
1950	2,078	1,225	853	32.3	26.8	45.7	29.2
1960	3,431	1,992	1,439	29.7	23.6	46.1	26.0
1970	2,466	1,537	927	21.4	17.7	32.9	20.0
1980	1,915	1,135	779	14.5	11.7	22.7	12.6
1990	1,909	1,121	786	9.6	7.5	16.0	9.2
1996	1,405	821	583	7.4	5.8	12.4	7.3
1997	1,358	805	552	7.1	5.6	11.4	7.2
1998	1,415	850	562	7.2	5.8	11.4	7.2
1999	1,442	815	625	7.3	5.6	12.4	7.1
2000	1,423	810	611	7.0	5.4	11.4	6.9
2001	1,495	839	655	7.3	5.5	12.3	6.8
2002	1,548	892	656	7.5	5.9	12.4	7.0
2003	1,584	907	674	7.5	5.8	12.4	6.9
2004	1,536	876	659	7.0	5.5	11.5	6.8
2005	1,626	882	743	7.2	5.3	12.5	6.8 <sup>3</sup>
2006	1,713	974	737	7.2	5.6	11.8	6.6 <sup>3</sup>

1. Only recorded data are available

2. Rates based on neonatal deaths by race of decedent, live births by race of mother

3. Provisional data.

**GRAPH F-3: RESIDENT INFANT DEATH RATES PER 1,000 LIVE BIRTHS, BY RACE, FLORIDA AND UNITED STATES TOTAL, 1996-2006**

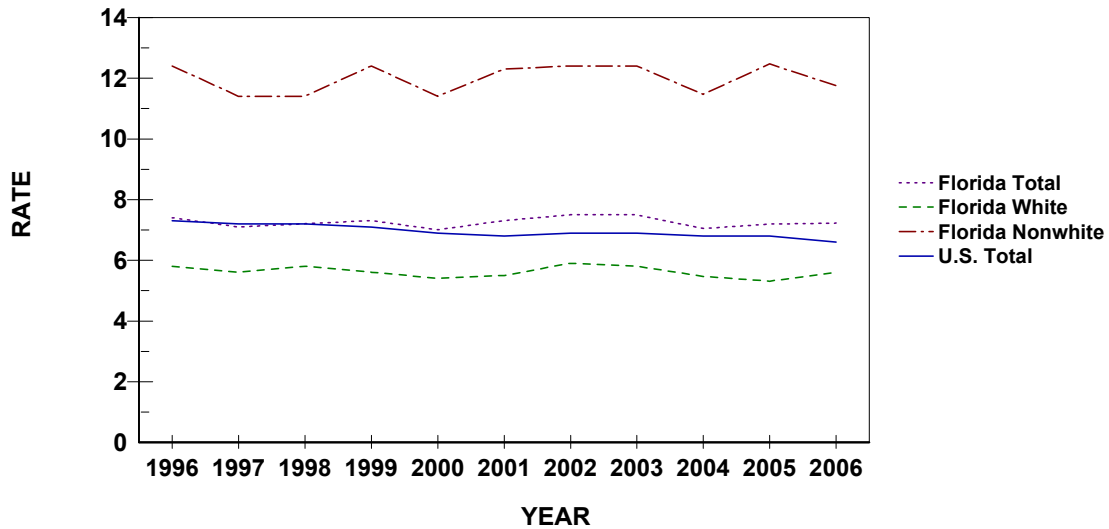


TABLE F-1: RESIDENT AND RECORDED FETAL DEATHS (OF 20 OR MORE WEEKS GESTATION) AND RATIOS PER 1,000 LIVE BIRTHS, BY RACE OF MOTHER, BY COUNTY, FLORIDA, 2006

	RESIDENT FETAL DEATHS							RATIOS		
	NUMBERS						TOTAL	WHITE	NONWHITE	
	TOTAL	WHITE	NONWHITE			UNK				
		TOTAL	BLACK	OTHER						
FLORIDA	1,756	1,020	733	650	83	3	7.4	5.9	11.7	
ALACHUA	15	9	6	6	0	0	5.3	5.2	5.5	
BAKER	5	4	1	1	0	0	12.7	11.8	18.5	
BAY	13	8	5	4	1	0	5.3	4.3	10.1	
BRADFORD	1	0	1	1	0	0	2.8	0.0	14.5	
BREVARD	51	30	21	19	2	0	9.1	6.7	19.2	
BROWARD	195	79	116	102	14	0	8.3	5.9	11.8	
CALHOUN	2	1	1	1	0	0	11.1	6.4	41.7	
CHARLOTTE	5	5	0	0	0	0	4.2	4.6	0.0	
CITRUS	8	8	0	0	0	0	7.1	7.7	0.0	
CLAY	11	11	0	0	0	0	4.7	5.6	0.0	
COLLIER	27	20	6	5	1	1	6.3	5.3	12.5	
COLUMBIA	3	2	1	1	0	0	3.5	3.0	5.3	
MIAMI-DADE	278	166	112	106	6	0	8.2	6.7	12.4	
DESOTO	2	1	1	0	1	0	4.1	2.3	18.5	
DIXIE	0	0	0	0	0	0	0.0	0.0	0.0	
DUVAL	99	40	58	53	5	1	7.3	5.1	10.2	
ESCAMBIA	36	18	18	17	1	0	8.1	6.3	11.2	
FLAGLER	8	5	3	3	0	0	8.5	6.4	19.4	
FRANKLIN	0	0	0	0	0	0	0.0	0.0	0.0	
GADSDEN	16	5	11	11	0	0	21.1	17.0	23.7	
GILCHRIST	0	0	0	0	0	0	0.0	0.0	0.0	
GLADES	2	2	0	0	0	0	20.8	26.0	0.0	
GULF	1	0	1	1	0	0	7.4	0.0	40.0	
HAMILTON	1	0	1	1	0	0	5.3	0.0	16.7	
HARDEE	5	5	0	0	0	0	9.5	9.9	0.0	
HENDRY	6	5	1	1	0	0	8.3	8.1	9.0	
HERNANDO	15	9	6	6	0	0	9.4	6.3	37.0	
HIGHLANDS	11	8	3	2	1	0	10.0	9.0	13.8	
HILLSBOROUGH	127	79	47	41	6	1	7.3	6.0	10.7	
HOLMES	1	1	0	0	0	0	4.7	5.0	0.0	
INDIAN RIVER	7	6	1	1	0	0	5.0	5.2	4.0	
JACKSON	5	3	2	1	1	0	8.4	7.0	11.8	
JEFFERSON	0	0	0	0	0	0	0.0	0.0	0.0	
LAFAYETTE	0	0	0	0	0	0	0.0	0.0	0.0	
LAKE	20	14	6	5	1	0	5.8	4.9	10.5	
LEE	48	40	8	7	1	0	6.4	6.3	7.2	
LEON	27	9	18	17	1	0	8.3	5.2	11.8	
LEVY	3	3	0	0	0	0	6.2	7.0	0.0	
LIBERTY	3	3	0	0	0	0	27.0	30.6	0.0	
MADISON	1	0	1	1	0	0	4.0	0.0	9.1	
MANATEE	25	19	6	5	1	0	6.1	5.6	8.1	
MARION	32	20	12	11	1	0	8.9	7.3	14.0	
MARTIN	10	9	1	1	0	0	7.2	8.7	2.7	
MONROE	7	6	1	1	0	0	9.7	9.8	9.5	
NASSAU	3	3	0	0	0	0	3.7	4.1	0.0	
OKALOOSA	15	10	5	4	1	0	5.4	4.4	10.0	
OKEECHOBEE	6	6	0	0	0	0	9.6	10.8	0.0	
ORANGE	135	62	73	56	17	0	8.0	5.4	13.2	
OSCEOLA	30	23	7	5	2	0	7.6	7.0	11.0	
PALM BEACH	153	80	73	63	10	0	9.8	7.3	15.7	
PASCO	19	16	3	3	0	0	3.6	3.4	5.7	
PINELLAS	53	33	20	17	3	0	5.6	4.6	8.5	
POLK	56	29	27	25	2	0	6.8	4.5	14.8	
PUTNAM	7	4	3	3	0	0	6.5	5.0	10.9	
SAINT JOHNS	8	7	1	1	0	0	4.5	4.6	4.3	
SAINT LUCIE	25	13	12	12	0	0	7.1	5.1	11.9	
SANTA ROSA	9	8	1	0	1	0	4.8	4.7	6.1	
SARASOTA	29	24	5	5	0	0	9.2	8.7	12.7	
SEMINOLE	19	12	7	6	1	0	3.9	3.2	6.9	
SUMTER	7	5	2	2	0	0	13.4	11.8	20.6	
SUWANNEE	7	6	1	0	1	0	14.0	14.4	12.0	
TAYLOR	2	2	0	0	0	0	7.7	10.3	0.0	
UNION	1	1	0	0	0	0	5.8	6.8	0.0	
VOLUSIA	34	19	15	14	1	0	6.5	4.4	16.1	
WAKULLA	3	2	1	1	0	0	9.7	7.4	27.8	
WALTON	2	2	0	0	0	0	2.9	3.2	0.0	
WASHINGTON	1	0	1	1	0	0	3.8	0.0	17.5	

TABLE F-1 (Cont.): RESIDENT AND RECORDED FETAL DEATHS (OF 20 OR MORE WEEKS GESTATION) AND RATIOS PER 1,000 LIVE BIRTHS, BY RACE OF MOTHER, BY COUNTY, FLORIDA, 2006

	RECORDED FETAL DEATHS							RATIOS		
	NUMBERS		NONWHITE				UNK	TOTAL	WHITE	NONWHITE
	TOTAL	WHITE	TOTAL	BLACK	OTHER					
FLORIDA	1,784	1,037	743	657	86	4	7.5	5.9	11.8	
ALACHUA	51	37	14	12	2	0	8.4	8.3	8.7	
BAKER	0	0	0	0	0	0	0.0	0.0	0.0	
BAY	17	9	8	6	2	0	5.5	3.8	13.9	
BRADFORD	1	0	1	1	0	0	500.0	0.0	----	
BREVARD	47	26	21	19	2	0	8.5	5.8	19.7	
BROWARD	215	82	133	119	14	0	8.7	6.0	12.1	
CALHOUN	0	0	0	0	0	0	0.0	0.0	----	
CHARLOTTE	6	4	2	1	1	0	4.9	3.7	14.0	
CITRUS	9	9	0	0	0	0	8.6	9.3	0.0	
CLAY	7	7	0	0	0	0	3.3	4.0	0.0	
COLLIER	29	22	7	6	1	0	6.4	5.5	14.6	
COLUMBIA	4	2	2	2	0	0	5.1	3.7	8.3	
MIAMI-DADE	267	170	96	90	6	1	8.5	7.2	12.4	
DESOTO	3	3	0	0	0	0	4.6	4.9	0.0	
DIXIE	0	0	0	0	0	0	----	----	----	
DUVAL	119	57	61	56	5	1	7.5	5.7	10.3	
ESCAMBIA	49	28	21	18	3	0	7.9	6.3	12.0	
FLAGLER	0	0	0	0	0	0	0.0	0.0	0.0	
FRANKLIN	0	0	0	0	0	0	0.0	0.0	----	
GADSDEN	0	0	0	0	0	0	0.0	0.0	0.0	
GILCHRIST	0	0	0	0	0	0	----	----	----	
GLADES	0	0	0	0	0	0	----	----	----	
GULF	0	0	0	0	0	0	----	----	----	
HAMILTON	0	0	0	0	0	0	0.0	0.0	----	
HARDEE	0	0	0	0	0	0	0.0	0.0	0.0	
HENDRY	0	0	0	0	0	0	0.0	0.0	0.0	
HERNANDO	12	8	4	4	0	0	6.7	4.9	23.4	
HIGHLANDS	16	12	3	3	0	1	10.2	9.3	11.0	
HILLSBOROUGH	145	90	54	48	6	1	7.3	5.9	11.4	
HOLMES	0	0	0	0	0	0	0.0	0.0	----	
INDIAN RIVER	7	6	1	1	0	0	5.3	5.5	4.2	
JACKSON	6	4	2	1	1	0	10.2	9.6	11.6	
JEFFERSON	0	0	0	0	0	0	0.0	0.0	----	
LAFAYETTE	0	0	0	0	0	0	----	----	----	
LAKE	19	13	6	6	0	0	6.1	5.1	10.8	
LEE	53	46	7	6	1	0	6.7	6.7	6.2	
LEON	50	18	32	31	1	0	9.5	6.2	13.7	
LEVY	0	0	0	0	0	0	0.0	0.0	----	
LIBERTY	0	0	0	0	0	0	0.0	----	0.0	
MADISON	0	0	0	0	0	0	0.0	----	0.0	
MANATEE	20	17	3	2	1	0	5.9	6.0	5.1	
MARION	14	8	6	6	0	0	4.7	3.6	8.4	
MARTIN	16	13	3	3	0	0	7.2	7.4	6.5	
MONROE	1	1	0	0	0	0	1.9	2.3	0.0	
NASSAU	1	1	0	0	0	0	2.1	2.5	0.0	
OKALOOSA	13	8	5	4	1	0	4.0	2.9	8.9	
OKEECHOBEE	0	0	0	0	0	0	0.0	0.0	0.0	
ORANGE	174	91	83	61	22	0	8.3	6.2	13.4	
OSCEOLA	26	20	6	4	2	0	6.2	5.7	8.7	
PALM BEACH	163	86	77	67	10	0	9.0	6.7	14.8	
PASCO	4	3	1	1	0	0	2.2	1.9	5.5	
PINELLAS	62	41	21	18	3	0	5.5	4.6	8.4	
POLK	47	23	24	23	1	0	6.8	4.3	15.3	
PUTNAM	3	2	1	1	0	0	5.2	5.1	5.5	
SAINT JOHNS	6	4	2	2	0	0	5.1	4.1	10.6	
SAINT LUCIE	15	8	7	7	0	0	6.4	5.1	9.0	
SANTA ROSA	3	3	0	0	0	0	7.6	8.3	0.0	
SARASOTA	34	27	7	7	0	0	9.2	8.5	13.1	
SEMINOLE	19	12	7	7	0	0	5.3	4.2	9.3	
SUMTER	0	0	0	0	0	0	----	----	----	
SUWANNEE	0	0	0	0	0	0	0.0	0.0	0.0	
TAYLOR	1	1	0	0	0	0	1,000.0	1,000.0	----	
UNION	0	0	0	0	0	0	0.0	0.0	----	
VOLUSIA	30	15	15	14	1	0	6.5	4.0	17.1	
WAKULLA	0	0	0	0	0	0	0.0	0.0	----	
WALTON	0	0	0	0	0	0	0.0	0.0	0.0	
WASHINGTON	0	0	0	0	0	0	0.0	0.0	----	

TABLE F-2: RESIDENT FETAL DEATHS BY HISPANIC OR HAITIAN ORIGIN OF MOTHER, BY COUNTY, FLORIDA, 2006

	TOTAL	HISPANIC ORIGIN							HAITIAN	NON-HISPANIC/HAITIAN	UNK
		TOTAL HISPANIC	MEXICAN	PUERTO RICAN	CUBAN	CENTRAL/SOUTH AMERICAN	OTHER/UNK HISPANIC				
FLORIDA	1,756	446	124	89	71	117	45	103	1,182	25	
ALACHUA	15	1	0	0	0	1	0	0	14	0	
BAKER	5	0	0	0	0	0	0	0	5	0	
BAY	13	2	0	0	0	1	1	0	11	0	
BRADFORD	1	0	0	0	0	0	0	0	1	0	
BREVARD	51	4	0	1	0	2	1	1	46	0	
BROWARD	195	46	5	8	8	18	7	28	118	3	
CALHOUN	2	0	0	0	0	0	0	0	2	0	
CHARLOTTE	5	1	1	0	0	0	0	0	4	0	
CITRUS	8	0	0	0	0	0	0	0	8	0	
CLAY	11	0	0	0	0	0	0	0	11	0	
COLLIER	27	14	10	0	0	4	0	4	9	0	
COLUMBIA	3	0	0	0	0	0	0	0	3	0	
MIAMI-DADE	278	135	6	17	43	50	19	32	102	9	
DESOTO	2	1	1	0	0	0	0	0	1	0	
DIXIE	0	0	0	0	0	0	0	0	0	0	
DUVAL	99	9	2	4	0	1	2	0	90	0	
ESCAMBIA	36	2	0	0	0	1	1	0	34	0	
FLAGLER	8	2	0	1	0	0	1	0	6	0	
FRANKLIN	0	0	0	0	0	0	0	0	0	0	
GADSDEN	16	4	3	0	0	1	0	0	12	0	
GILCHRIST	0	0	0	0	0	0	0	0	0	0	
GLADES	2	1	1	0	0	0	0	0	1	0	
GULF	1	0	0	0	0	0	0	0	1	0	
HAMILTON	1	0	0	0	0	0	0	0	1	0	
HARDEE	5	4	4	0	0	0	0	0	1	0	
HENDRY	6	4	4	0	0	0	0	0	2	0	
HERNANDO	15	1	1	0	0	0	0	0	14	0	
HIGHLANDS	11	4	3	1	0	0	0	0	7	0	
HILLSBOROUGH	127	37	14	6	9	5	3	2	86	2	
HOLMES	1	0	0	0	0	0	0	0	1	0	
INDIAN RIVER	7	1	1	0	0	0	0	0	6	0	
JACKSON	5	0	0	0	0	0	0	0	5	0	
JEFFERSON	0	0	0	0	0	0	0	0	0	0	
LAFAYETTE	0	0	0	0	0	0	0	0	0	0	
LAKE	20	2	1	0	0	1	0	0	18	0	
LEE	48	12	8	1	2	1	0	1	34	1	
LEON	27	0	0	0	0	0	0	0	27	0	
LEVY	3	0	0	0	0	0	0	0	3	0	
LIBERTY	3	0	0	0	0	0	0	0	3	0	
MADISON	1	0	0	0	0	0	0	0	1	0	
MANATEE	25	7	5	1	0	1	0	2	16	0	
MARION	32	7	3	2	1	1	0	0	25	0	
MARTIN	10	6	3	1	0	2	0	0	4	0	
MONROE	7	3	0	2	0	1	0	0	4	0	
NASSAU	3	0	0	0	0	0	0	0	3	0	
OKALOOSA	15	1	1	0	0	0	0	0	14	0	
OKEECHOBEE	6	3	2	1	0	0	0	0	3	0	
ORANGE	135	37	7	19	0	7	4	9	87	2	
OSCEOLA	30	14	1	11	0	2	0	1	14	1	
PALM BEACH	153	37	8	6	5	14	4	17	93	6	
PASCO	19	0	0	0	0	0	0	1	18	0	
PINELLAS	53	8	5	2	1	0	0	0	45	0	
POLK	56	12	10	2	0	0	0	1	43	0	
PUTNAM	7	0	0	0	0	0	0	0	7	0	
SAINT JOHNS	8	0	0	0	0	0	0	0	8	0	
SAINT LUCIE	25	3	1	0	0	0	2	4	18	0	
SANTA ROSA	9	1	1	0	0	0	0	0	8	0	
SARASOTA	29	7	3	0	2	2	0	0	22	0	
SEMINOLE	19	6	3	2	0	1	0	0	12	1	
SUMTER	7	1	1	0	0	0	0	0	6	0	
SUWANNEE	7	2	2	0	0	0	0	0	5	0	
TAYLOR	2	0	0	0	0	0	0	0	2	0	
UNION	1	0	0	0	0	0	0	0	1	0	
VOLUSIA	34	3	2	1	0	0	0	0	31	0	
WAKULLA	3	0	0	0	0	0	0	0	3	0	
WALTON	2	1	1	0	0	0	0	0	1	0	
WASHINGTON	1	0	0	0	0	0	0	0	1	0	



TABLE F-3: RESIDENT FETAL DEATHS BY AGE OF MOTHER, BY COUNTY, FLORIDA, 2006

	TOTAL	AGE OF MOTHER													
		<13	13	14	15	16	17	18	19	20-24	25-29	30-34	35-44	45+	UNK
FLORIDA	1,756	0	2	5	8	27	49	69	80	446	408	339	300	6	17
ALACHUA	15	0	0	0	0	0	1	1	1	4	3	1	4	0	0
BAKER	5	0	0	0	0	0	0	0	0	3	1	1	0	0	0
BAY	13	0	0	0	0	0	0	2	1	5	3	1	1	0	0
BRADFORD	1	0	0	0	0	0	0	0	0	0	1	0	0	0	0
BREVARD	51	0	1	1	1	0	2	0	3	9	16	15	3	0	0
BROWARD	195	0	0	1	0	0	4	6	4	39	42	44	43	4	8
CALHOUN	2	0	0	0	0	1	0	0	0	1	0	0	0	0	0
CHARLOTTE	5	0	0	0	0	0	0	0	0	1	2	1	1	0	0
CITRUS	8	0	0	0	0	0	0	0	0	2	4	0	2	0	0
CLAY	11	0	0	0	0	0	1	0	0	5	1	3	1	0	0
COLLIER	27	0	0	0	0	0	1	4	1	5	5	5	5	0	1
COLUMBIA	3	0	0	0	0	0	0	0	0	2	1	0	0	0	0
MIAMI-DADE	278	0	0	1	1	5	3	11	10	64	56	67	59	1	0
DESOTO	2	0	0	0	0	0	0	0	1	0	0	0	1	0	0
DIXIE	0	0	0	0	0	0	0	0	0	0	0	0	0	0	0
DUVAL	99	0	1	0	0	1	2	1	8	33	22	18	13	0	0
ESCAMBIA	36	0	0	0	0	1	0	2	2	13	8	6	4	0	0
FLAGLER	8	0	0	0	0	0	0	0	0	2	0	2	4	0	0
FRANKLIN	0	0	0	0	0	0	0	0	0	0	0	0	0	0	0
GADSDEN	16	0	0	1	0	2	1	3	0	3	4	1	1	0	0
GILCHRIST	0	0	0	0	0	0	0	0	0	0	0	0	0	0	0
GLADES	2	0	0	0	0	0	0	0	0	0	0	0	2	0	0
GULF	1	0	0	0	0	0	0	0	0	1	0	0	0	0	0
HAMILTON	1	0	0	0	0	0	0	0	1	0	0	0	0	0	0
HARDEE	5	0	0	0	0	0	1	0	1	1	2	0	0	0	0
HENDRY	6	0	0	0	1	1	1	0	0	2	1	0	0	0	0
HERNANDO	15	0	0	0	0	0	0	0	2	4	5	2	2	0	0
HIGHLANDS	11	0	0	0	0	2	0	0	0	3	4	1	1	0	0
HILLSBOROUGH	127	0	0	1	2	1	6	8	6	35	25	21	22	0	0
HOLMES	1	0	0	0	0	0	0	0	0	0	0	0	1	0	0
INDIAN RIVER	7	0	0	0	0	0	0	0	1	1	2	2	1	0	0
JACKSON	5	0	0	0	1	0	0	0	1	1	0	0	2	0	0
JEFFERSON	0	0	0	0	0	0	0	0	0	0	0	0	0	0	0
LAFAYETTE	0	0	0	0	0	0	0	0	0	0	0	0	0	0	0
LAKE	20	0	0	0	0	1	0	0	2	6	2	4	5	0	0
LEE	48	0	0	0	0	0	2	0	1	14	12	13	6	0	0
LEON	27	0	0	0	0	1	0	1	1	9	7	6	2	0	0
LEVY	3	0	0	0	0	1	0	0	0	2	0	0	0	0	0
LIBERTY	3	0	0	0	0	0	0	0	1	2	0	0	0	0	0
MADISON	1	0	0	0	0	0	0	0	0	1	0	0	0	0	0
MANATEE	25	0	0	0	0	1	0	2	0	6	5	7	4	0	0
MARION	32	0	0	0	0	0	0	3	0	10	8	6	5	0	0
MARTIN	10	0	0	0	0	0	0	0	0	2	4	3	1	0	0
MONROE	7	0	0	0	0	0	0	3	0	0	1	3	0	0	0
NASSAU	3	0	0	0	0	0	0	1	1	1	0	0	0	0	0
OKALOOSA	15	0	0	0	0	1	0	0	1	3	6	2	2	0	0
OKEECHOBEE	6	0	0	0	0	0	1	0	0	2	1	0	2	0	0
ORANGE	135	0	0	0	0	3	8	6	5	28	35	23	23	1	3
OSCEOLA	30	0	0	0	0	1	2	2	1	10	9	1	4	0	0
PALM BEACH	153	0	0	0	1	1	6	5	9	28	33	32	34	0	4
PASCO	19	0	0	0	1	0	0	0	0	7	4	2	5	0	0
PINELLAS	53	0	0	0	0	2	1	2	3	16	11	10	8	0	0
POLK	56	0	0	0	0	1	1	3	2	10	20	10	9	0	0
PUTNAM	7	0	0	0	0	0	1	0	1	1	2	1	1	0	0
SAINT JOHNS	8	0	0	0	0	0	0	0	0	4	2	2	0	0	0
SAINT LUCIE	25	0	0	0	0	0	0	1	0	6	7	8	3	0	0
SANTA ROSA	9	0	0	0	0	0	0	0	1	4	3	1	0	0	0
SARASOTA	29	0	0	0	0	0	0	0	0	10	4	7	8	0	0
SEMINOLE	19	0	0	0	0	0	2	0	3	5	4	3	2	0	0
SUMTER	7	0	0	0	0	0	1	0	1	0	4	1	0	0	0
SUWANNEE	7	0	0	0	0	0	1	0	0	3	2	1	0	0	0
TAYLOR	2	0	0	0	0	0	0	0	0	1	0	0	1	0	0
UNION	1	0	0	0	0	0	0	0	0	1	0	0	0	0	0
VOLUSIA	34	0	0	0	0	0	0	1	4	13	12	2	2	0	0
WAKULLA	3	0	0	0	0	0	0	1	0	1	1	0	0	0	0
WALTON	2	0	0	0	0	0	0	0	0	0	1	0	0	0	1
WASHINGTON	1	0	0	0	0	0	0	0	0	1	0	0	0	0	0

TABLE F-4: RESIDENT AND RECORDED NEONATAL DEATHS (UNDER 28 DAYS) AND RATES PER 1,000 LIVE BIRTHS, BY RACE, BY COUNTY, FLORIDA, 2006

	RESIDENT NEONATAL DEATHS							RATES*		
	TOTAL	WHITE	NUMBERS				UNK	TOTAL	WHITE	NONWHITE
			TOTAL	BLACK	OTHER	NONWHITE				
FLORIDA	1,122	630	490	436	54	2	4.7	3.6	7.8	
ALACHUA	26	14	12	9	3	0	9.2	8.1	10.9	
BAKER	3	2	1	1	0	0	7.6	5.9	18.5	
BAY	17	10	7	7	0	0	6.9	5.4	14.2	
BRADFORD	0	0	0	0	0	0	0.0	0.0	0.0	
BREVARD	28	21	7	6	1	0	5.0	4.7	6.4	
BROWARD	96	34	62	55	7	0	4.1	2.5	6.3	
CALHOUN	0	0	0	0	0	0	0.0	0.0	0.0	
CHARLOTTE	2	2	0	0	0	0	1.7	1.9	0.0	
CITRUS	3	2	1	1	0	0	2.6	1.9	11.6	
CLAY	7	4	3	1	2	0	3.0	2.1	7.2	
COLLIER	17	12	5	5	0	0	4.0	3.1	10.4	
COLUMBIA	7	5	2	2	0	0	8.2	7.5	10.6	
MIAMI-DADE	141	79	61	58	3	1	4.2	3.2	6.7	
DESOTO	2	1	1	1	0	0	4.1	2.3	18.5	
DIXIE	0	0	0	0	0	0	0.0	0.0	0.0	
DUVAL	82	36	46	37	9	0	6.0	4.5	8.1	
ESCAMBIA	20	10	10	10	0	0	4.5	3.5	6.2	
FLAGLER	5	2	3	3	0	0	5.3	2.5	19.4	
FRANKLIN	1	1	0	0	0	0	8.0	8.8	0.0	
GADSDEN	7	2	5	5	0	0	9.2	6.8	10.7	
GILCHRIST	0	0	0	0	0	0	0.0	0.0	0.0	
GLADES	0	0	0	0	0	0	0.0	0.0	0.0	
GULF	0	0	0	0	0	0	0.0	0.0	0.0	
HAMILTON	2	1	1	1	0	0	10.6	7.8	16.7	
HARDEE	2	2	0	0	0	0	3.8	4.0	0.0	
HENDRY	4	2	2	2	0	0	5.5	3.2	18.2	
HERNANDO	7	5	2	2	0	0	4.4	3.5	12.3	
HIGHLANDS	9	4	5	5	0	0	8.1	4.5	22.9	
HILLSBOROUGH	100	58	42	36	6	0	5.7	4.4	9.6	
HOLMES	4	4	0	0	0	0	18.8	19.9	0.0	
INDIAN RIVER	6	6	0	0	0	0	4.3	5.2	0.0	
JACKSON	5	2	3	3	0	0	8.4	4.7	17.8	
JEFFERSON	1	0	1	1	0	0	5.7	0.0	13.2	
LAFAYETTE	0	0	0	0	0	0	0.0	0.0	0.0	
LAKE	13	7	6	4	2	0	3.8	2.4	10.5	
LEE	33	24	9	9	0	0	4.4	3.8	8.1	
LEON	21	4	17	17	0	0	6.4	2.3	11.1	
LEVY	4	3	1	1	0	0	8.2	6.9	17.9	
LIBERTY	0	0	0	0	0	0	0.0	0.0	0.0	
MADISON	1	0	1	1	0	0	3.9	0.0	9.1	
MANATEE	17	12	5	4	1	0	4.1	3.5	6.8	
MARION	24	15	9	9	0	0	6.6	5.4	10.5	
MARTIN	4	3	0	0	0	1	2.9	2.9	0.0	
MONROE	6	5	1	1	0	0	8.3	8.1	9.5	
NASSAU	4	3	1	1	0	0	4.9	4.1	13.5	
OKALOOSA	8	4	4	3	1	0	2.9	1.7	8.0	
OKEECHOBEE	2	2	0	0	0	0	3.2	3.6	0.0	
ORANGE	94	55	39	36	3	0	5.5	4.8	7.0	
OSCEOLA	21	15	6	5	1	0	5.3	4.5	9.3	
PALM BEACH	57	34	23	19	4	0	3.6	3.1	4.9	
PASCO	26	21	5	4	1	0	5.0	4.5	9.5	
PINELLAS	57	22	35	29	6	0	6.0	3.1	14.7	
POLK	39	21	18	16	2	0	4.7	3.2	9.9	
PUTNAM	6	3	3	3	0	0	5.6	3.8	10.9	
SAINT JOHNS	4	4	0	0	0	0	2.3	2.6	0.0	
SAINT LUCIE	15	8	7	6	1	0	4.2	3.2	7.0	
SANTA ROSA	10	9	1	1	0	0	5.4	5.3	6.1	
SARASOTA	4	3	1	1	0	0	1.3	1.1	2.5	
SEMINOLE	18	7	11	11	0	0	3.7	1.8	10.8	
SUMTER	2	1	1	1	0	0	3.8	2.3	10.3	
SUWANNEE	4	3	1	0	1	0	8.0	7.2	12.0	
TAYLOR	2	2	0	0	0	0	7.6	10.2	0.0	
UNION	0	0	0	0	0	0	0.0	0.0	0.0	
VOLUSIA	18	15	3	3	0	0	3.4	3.5	3.2	
WAKULLA	1	1	0	0	0	0	3.3	3.7	0.0	
WALTON	3	3	0	0	0	0	4.3	4.7	0.0	
WASHINGTON	0	0	0	0	0	0	0.0	0.0	0.0	

\*Rates based on neonatal deaths by race of decedent, live births by race of mother.

TABLE F-4 (Cont.): RESIDENT AND RECORDED NEONATAL DEATHS (UNDER 28 DAYS) AND RATES PER 1,000 LIVE BIRTHS, BY RACE, BY COUNTY, FLORIDA, 2006

	RECORDED NEONATAL DEATHS						RATES*		
	TOTAL	WHITE	NUMBERS			UNK	TOTAL	WHITE	NONWHITE
			TOTAL	BLACK	OTHER				
FLORIDA	1,142	646	495	440	55	1	4.8	3.7	7.9
ALACHUA	76	47	29	26	3	0	12.5	10.5	17.9
BAKER	0	0	0	0	0	0	0.0	0.0	0.0
BAY	16	11	5	5	0	0	5.2	4.6	8.7
BRADFORD	0	0	0	0	0	0	0.0	0.0	----
BREVARD	14	11	3	2	1	0	2.5	2.5	2.8
BROWARD	102	36	66	56	10	0	4.1	2.6	6.0
CALHOUN	0	0	0	0	0	0	0.0	0.0	----
CHARLOTTE	1	1	0	0	0	0	0.8	0.9	0.0
CITRUS	0	0	0	0	0	0	0.0	0.0	0.0
CLAY	3	1	2	1	1	0	1.4	0.6	5.0
COLLIER	9	5	4	4	0	0	2.0	1.2	8.4
COLUMBIA	5	2	3	3	0	0	6.4	3.7	12.4
MIAMI-DADE	155	90	64	60	4	1	4.9	3.8	8.3
DESOTO	1	0	1	1	0	0	1.5	0.0	20.0
DIXIE	0	0	0	0	0	0	----	----	----
DUVAL	107	54	53	43	10	0	6.7	5.4	8.9
ESCAMBIA	38	25	13	12	1	0	6.1	5.6	7.4
FLAGLER	0	0	0	0	0	0	0.0	0.0	0.0
FRANKLIN	0	0	0	0	0	0	0.0	0.0	----
GADSDEN	0	0	0	0	0	0	0.0	0.0	0.0
GILCHRIST	0	0	0	0	0	0	----	----	----
GLADES	0	0	0	0	0	0	----	----	----
GULF	0	0	0	0	0	0	----	----	----
HAMILTON	1	1	0	0	0	0	333.3	333.3	----
HARDEE	0	0	0	0	0	0	0.0	0.0	0.0
HENDRY	0	0	0	0	0	0	0.0	0.0	0.0
HERNANDO	3	2	1	1	0	0	1.7	1.2	5.8
HIGHLANDS	8	5	3	3	0	0	5.1	3.9	11.0
HILLSBOROUGH	128	81	47	40	7	0	6.4	5.3	9.9
HOLMES	0	0	0	0	0	0	0.0	0.0	----
INDIAN RIVER	3	2	1	1	0	0	2.3	1.8	4.2
JACKSON	4	1	3	3	0	0	6.8	2.4	17.4
JEFFERSON	0	0	0	0	0	0	0.0	0.0	----
LAFAYETTE	0	0	0	0	0	0	----	----	----
LAKE	2	1	1	0	1	0	0.6	0.4	1.8
LEE	40	31	9	9	0	0	5.0	4.5	8.0
LEON	30	7	23	23	0	0	5.7	2.4	9.9
LEVY	0	0	0	0	0	0	0.0	0.0	----
LIBERTY	0	0	0	0	0	0	0.0	----	0.0
MADISON	0	0	0	0	0	0	0.0	----	0.0
MANATEE	4	2	2	2	0	0	1.2	0.7	3.4
MARION	3	2	1	1	0	0	1.0	0.9	1.4
MARTIN	0	0	0	0	0	0	0.0	0.0	0.0
MONROE	1	1	0	0	0	0	1.9	2.3	0.0
NASSAU	1	1	0	0	0	0	2.1	2.5	0.0
OKALOOSA	5	3	2	2	0	0	1.5	1.1	3.6
OKEECHOBEE	0	0	0	0	0	0	0.0	0.0	0.0
ORANGE	162	101	61	56	5	0	7.7	6.8	9.8
OSCEOLA	7	4	3	3	0	0	1.7	1.1	4.4
PALM BEACH	68	42	26	24	2	0	3.8	3.3	5.0
PASCO	5	3	2	2	0	0	2.8	1.9	11.0
PINELLAS	81	43	38	31	7	0	7.1	4.9	15.2
POLK	23	8	15	13	2	0	3.3	1.5	9.6
PUTNAM	2	0	2	2	0	0	3.5	0.0	11.0
SAINT JOHNS	0	0	0	0	0	0	0.0	0.0	0.0
SAINT LUCIE	4	2	2	2	0	0	1.7	1.3	2.6
SANTA ROSA	0	0	0	0	0	0	0.0	0.0	0.0
SARASOTA	10	7	3	3	0	0	2.7	2.2	5.6
SEMINOLE	7	2	5	5	0	0	2.0	0.7	6.6
SUMTER	0	0	0	0	0	0	----	----	----
SUWANNEE	2	1	1	0	1	0	400.0	333.3	500.0
TAYLOR	1	1	0	0	0	0	1,000.0	1,000.0	----
UNION	0	0	0	0	0	0	0.0	0.0	----
VOLUSIA	10	9	1	1	0	0	2.2	2.4	1.1
WAKULLA	0	0	0	0	0	0	0.0	0.0	----
WALTON	0	0	0	0	0	0	0.0	0.0	0.0
WASHINGTON	0	0	0	0	0	0	0.0	0.0	----

\*Rates based on neonatal deaths by race of decedent, live births by race of mother.

TABLE F-5: RESIDENT AND RECORDED INFANT DEATHS (UNDER 1 YEAR) AND RATES PER 1,000 LIVE BIRTHS, BY RACE, BY COUNTY, FLORIDA, 2006

	RESIDENT INFANT DEATHS							RATES*		
	TOTAL	WHITE	NUMBERS				UNK	TOTAL	WHITE	NONWHITE
			TOTAL	BLACK	OTHER	NONWHITE				
FLORIDA	1,713	974	737	653	84	2	7.2	5.6	11.8	
ALACHUA	30	15	15	11	4	0	10.6	8.6	13.6	
BAKER	6	5	1	1	0	0	15.2	14.7	18.5	
BAY	27	18	9	9	0	0	11.0	9.7	18.2	
BRADFORD	1	0	1	0	1	0	2.8	0.0	14.5	
BREVARD	45	34	11	10	1	0	8.0	7.5	10.1	
BROWARD	147	49	98	91	7	0	6.3	3.6	10.0	
CALHOUN	1	1	0	0	0	0	5.6	6.4	0.0	
CHARLOTTE	2	2	0	0	0	0	1.7	1.9	0.0	
CITRUS	7	5	2	2	0	0	6.2	4.8	23.3	
CLAY	11	8	3	1	2	0	4.7	4.1	7.2	
COLLIER	28	22	6	6	0	0	6.5	5.8	12.5	
COLUMBIA	8	5	3	3	0	0	9.3	7.5	15.9	
MIAMI-DADE	218	116	101	95	6	1	6.5	4.7	11.1	
DESOTO	6	3	3	3	0	0	12.3	6.9	55.6	
DIXIE	0	0	0	0	0	0	0.0	0.0	0.0	
DUVAL	130	57	73	61	12	0	9.5	7.2	12.8	
ESCAMBIA	36	19	17	16	1	0	8.0	6.6	10.5	
FLAGLER	7	3	4	4	0	0	7.4	3.8	25.8	
FRANKLIN	1	1	0	0	0	0	8.0	8.8	0.0	
GADSDEN	9	3	6	6	0	0	11.8	10.2	12.8	
GILCHRIST	0	0	0	0	0	0	0.0	0.0	0.0	
GLADES	0	0	0	0	0	0	0.0	0.0	0.0	
GULF	0	0	0	0	0	0	0.0	0.0	0.0	
HAMILTON	2	1	1	1	0	0	10.6	7.8	16.7	
HARDEE	5	5	0	0	0	0	9.4	9.9	0.0	
HENDRY	4	2	2	2	0	0	5.5	3.2	18.2	
HERNANDO	11	9	2	2	0	0	6.9	6.3	12.3	
HIGHLANDS	11	5	6	6	0	0	9.9	5.6	27.5	
HILLSBOROUGH	137	81	56	48	8	0	7.8	6.2	12.7	
HOLMES	5	5	0	0	0	0	23.5	24.9	0.0	
INDIAN RIVER	6	6	0	0	0	0	4.3	5.2	0.0	
JACKSON	7	4	3	3	0	0	11.7	9.4	17.8	
JEFFERSON	1	0	1	1	0	0	5.7	0.0	13.2	
LAFAYETTE	1	1	0	0	0	0	11.5	13.2	0.0	
LAKE	19	9	10	8	2	0	5.5	3.1	17.5	
LEE	52	36	16	13	3	0	6.9	5.6	14.4	
LEON	27	7	20	20	0	0	8.3	4.0	13.1	
LEVY	6	4	2	1	1	0	12.3	9.3	35.7	
LIBERTY	0	0	0	0	0	0	0.0	0.0	0.0	
MADISON	2	1	1	1	0	0	7.9	6.9	9.1	
MANATEE	26	20	6	5	1	0	6.3	5.9	8.1	
MARION	39	26	13	13	0	0	10.8	9.4	15.2	
MARTIN	7	5	1	1	0	1	5.0	4.9	2.7	
MONROE	6	5	1	1	0	0	8.3	8.1	9.5	
NASSAU	4	3	1	1	0	0	4.9	4.1	13.5	
OKALOOSA	15	11	4	3	1	0	5.4	4.8	8.0	
OKEECHOBEE	3	2	1	1	0	0	4.8	3.6	15.4	
ORANGE	144	76	68	61	7	0	8.5	6.7	12.3	
OSCEOLA	32	23	9	7	2	0	8.1	6.9	14.0	
PALM BEACH	87	55	32	28	4	0	5.5	5.0	6.9	
PASCO	35	29	6	4	2	0	6.7	6.2	11.4	
PINELLAS	82	39	43	36	7	0	8.6	5.5	18.1	
POLK	55	31	24	21	3	0	6.6	4.8	13.2	
PUTNAM	11	5	6	6	0	0	10.3	6.3	21.8	
SAINT JOHNS	5	5	0	0	0	0	2.8	3.3	0.0	
SAINT LUCIE	27	14	13	12	1	0	7.6	5.5	12.9	
SANTA ROSA	17	14	3	1	2	0	9.1	8.2	18.3	
SARASOTA	13	8	5	4	1	0	4.1	2.9	12.6	
SEMINOLE	33	13	20	17	3	0	6.8	3.4	19.6	
SUMTER	3	2	1	1	0	0	5.7	4.7	10.3	
SUWANNEE	5	4	1	0	1	0	10.0	9.6	12.0	
TAYLOR	3	3	0	0	0	0	11.5	15.2	0.0	
UNION	0	0	0	0	0	0	0.0	0.0	0.0	
VOLUSIA	36	30	6	5	1	0	6.8	6.9	6.4	
WAKULLA	1	1	0	0	0	0	3.3	3.7	0.0	
WALTON	7	7	0	0	0	0	10.1	11.0	0.0	
WASHINGTON	1	1	0	0	0	0	3.8	5.0	0.0	

\*Rates based on infant deaths by race of decedent, live births by race of mother.

TABLE F-5 (Cont.): RESIDENT AND RECORDED INFANT DEATHS (UNDER 1 YEAR) AND RATES PER 1,000 LIVE BIRTHS, BY RACE, BY COUNTY, FLORIDA, 2006

	RECORDED INFANT DEATHS						RATES*		
	TOTAL	WHITE	NUMBERS			UNK	TOTAL	WHITE	NONWHITE
			TOTAL	BLACK	OTHER				
FLORIDA	1,743	994	747	660	87	2	7.3	5.7	11.9
ALACHUA	96	58	38	34	4	0	15.8	13.0	23.5
BAKER	3	3	0	0	0	0	1,000.0	3,000.0	0.0
BAY	22	16	6	6	0	0	7.2	6.7	10.4
BRADFORD	1	0	1	0	1	0	500.0	0.0	----
BREVARD	21	17	4	3	1	0	3.8	3.8	3.8
BROWARD	145	48	97	85	12	0	5.8	3.5	8.8
CALHOUN	0	0	0	0	0	0	0.0	0.0	----
CHARLOTTE	1	1	0	0	0	0	0.8	0.9	0.0
CITRUS	3	2	1	1	0	0	2.9	2.1	13.5
CLAY	7	5	2	1	1	0	3.3	2.9	5.0
COLLIER	18	13	5	5	0	0	4.0	3.2	10.4
COLUMBIA	6	2	4	4	0	0	7.7	3.7	16.6
MIAMI-DADE	260	145	114	109	5	1	8.3	6.1	14.7
DESOTO	3	1	2	2	0	0	4.6	1.6	40.0
DIXIE	0	0	0	0	0	0	----	----	----
DUVAL	163	80	83	69	14	0	10.3	8.0	14.0
ESCAMBIA	61	40	20	17	3	1	9.8	9.0	11.5
FLAGLER	1	1	0	0	0	0	200.0	250.0	0.0
FRANKLIN	0	0	0	0	0	0	0.0	0.0	----
GADSDEN	0	0	0	0	0	0	0.0	0.0	0.0
GILCHRIST	0	0	0	0	0	0	----	----	----
GLADES	0	0	0	0	0	0	----	----	----
GULF	0	0	0	0	0	0	----	----	----
HAMILTON	1	1	0	0	0	0	333.3	333.3	----
HARDEE	3	3	0	0	0	0	1,000.0	1,500.0	0.0
HENDRY	0	0	0	0	0	0	0.0	0.0	0.0
HERNANDO	6	5	1	1	0	0	3.4	3.1	5.8
HIGHLANDS	10	6	4	4	0	0	6.4	4.6	14.7
HILLSBOROUGH	176	112	64	53	11	0	8.8	7.4	13.5
HOLMES	1	1	0	0	0	0	500.0	500.0	----
INDIAN RIVER	3	2	1	1	0	0	2.3	1.8	4.2
JACKSON	5	2	3	3	0	0	8.5	4.8	17.4
JEFFERSON	0	0	0	0	0	0	0.0	0.0	----
LAFAYETTE	0	0	0	0	0	0	----	----	----
LAKE	3	1	2	1	1	0	1.0	0.4	3.6
LEE	52	38	14	12	2	0	6.5	5.6	12.4
LEON	40	12	28	28	0	0	7.6	4.1	12.0
LEVY	1	0	1	0	1	0	333.3	0.0	----
LIBERTY	0	0	0	0	0	0	0.0	----	0.0
MADISON	0	0	0	0	0	0	0.0	----	0.0
MANATEE	7	5	2	2	0	0	2.1	1.8	3.4
MARION	12	10	2	2	0	0	4.1	4.5	2.8
MARTIN	3	3	0	0	0	0	1.4	1.7	0.0
MONROE	1	1	0	0	0	0	1.9	2.3	0.0
NASSAU	1	1	0	0	0	0	2.1	2.5	0.0
OKALOOSA	11	9	2	2	0	0	3.3	3.3	3.6
OKEECHOBEE	1	0	1	1	0	0	166.7	0.0	250.0
ORANGE	237	134	103	92	11	0	11.3	9.1	16.6
OSCEOLA	13	9	4	4	0	0	3.1	2.6	5.8
PALM BEACH	95	59	36	34	2	0	5.3	4.6	6.9
PASCO	13	10	3	2	1	0	7.2	6.2	16.5
PINELLAS	121	71	50	41	9	0	10.7	8.0	20.0
POLK	35	14	21	18	3	0	5.1	2.6	13.4
PUTNAM	6	2	4	4	0	0	10.4	5.1	22.0
SAINT JOHNS	0	0	0	0	0	0	0.0	0.0	0.0
SAINT LUCIE	9	5	4	4	0	0	3.8	3.2	5.1
SANTA ROSA	4	3	1	0	1	0	10.1	8.3	28.6
SARASOTA	17	11	6	6	0	0	4.6	3.5	11.2
SEMINOLE	16	6	10	8	2	0	4.5	2.1	13.3
SUMTER	0	0	0	0	0	0	----	----	----
SUWANNEE	3	2	1	0	1	0	600.0	666.7	500.0
TAYLOR	2	2	0	0	0	0	2,000.0	2,000.0	----
UNION	0	0	0	0	0	0	0.0	0.0	----
VOLUSIA	20	18	2	1	1	0	4.4	4.9	2.3
WAKULLA	0	0	0	0	0	0	0.0	0.0	----
WALTON	4	4	0	0	0	0	363.6	444.4	0.0
WASHINGTON	0	0	0	0	0	0	0.0	0.0	----

\*Rates based on infant deaths by race of decedent, live births by race of mother.

TABLE F-6: RESIDENT INFANT DEATHS BY HISPANIC OR HAITIAN ORIGIN, BY COUNTY, FLORIDA, 2006

	TOTAL	HISPANIC ORIGIN								NON-HISPANIC/HAITIAN	UNK
		TOTAL HISPANIC	MEXICAN	PUERTO RICAN	CUBAN	CENTRAL/SOUTH AMERICAN	OTHER/UNK HISPANIC	HAITIAN			
FLORIDA	1,713	399	109	102	64	60	64	67	1,236	11	
ALACHUA	30	5	1	4	0	0	0	0	25	0	
BAKER	6	0	0	0	0	0	0	0	6	0	
BAY	27	1	1	0	0	0	0	0	26	0	
BRADFORD	1	0	0	0	0	0	0	0	1	0	
BREVARD	45	6	1	5	0	0	0	0	39	0	
BROWARD	147	22	2	1	5	3	11	14	108	3	
CALHOUN	1	0	0	0	0	0	0	0	1	0	
CHARLOTTE	2	0	0	0	0	0	0	0	2	0	
CITRUS	7	0	0	0	0	0	0	0	7	0	
CLAY	11	0	0	0	0	0	0	0	9	2	
COLLIER	28	16	12	1	2	1	0	3	9	0	
COLUMBIA	8	1	1	0	0	0	0	0	7	0	
MIAMI-DADE	218	102	2	9	41	27	23	14	98	4	
DESOTO	6	1	1	0	0	0	0	0	5	0	
DIXIE	0	0	0	0	0	0	0	0	0	0	
DUVAL	130	9	5	1	0	2	1	4	117	0	
ESCAMBIA	36	0	0	0	0	0	0	0	36	0	
FLAGLER	7	0	0	0	0	0	0	0	7	0	
FRANKLIN	1	0	0	0	0	0	0	0	1	0	
GADSDEN	9	2	2	0	0	0	0	0	7	0	
GILCHRIST	0	0	0	0	0	0	0	0	0	0	
GLADES	0	0	0	0	0	0	0	0	0	0	
GULF	0	0	0	0	0	0	0	0	0	0	
HAMILTON	2	0	0	0	0	0	0	0	2	0	
HARDEE	5	5	4	0	1	0	0	0	0	0	
HENDRY	4	2	2	0	0	0	0	0	2	0	
HERNANDO	11	1	0	1	0	0	0	0	10	0	
HIGHLANDS	11	1	0	1	0	0	0	0	10	0	
HILLSBOROUGH	137	35	12	14	2	4	3	1	101	0	
HOLMES	5	0	0	0	0	0	0	0	5	0	
INDIAN RIVER	6	3	3	0	0	0	0	0	3	0	
JACKSON	7	0	0	0	0	0	0	0	7	0	
JEFFERSON	1	0	0	0	0	0	0	0	1	0	
LAFAYETTE	1	0	0	0	0	0	0	0	1	0	
LAKE	19	3	2	1	0	0	0	1	15	0	
LEE	52	23	9	4	5	2	3	2	27	0	
LEON	27	0	0	0	0	0	0	0	27	0	
LEVY	6	2	2	0	0	0	0	0	3	1	
LIBERTY	0	0	0	0	0	0	0	0	0	0	
MADISON	2	0	0	0	0	0	0	0	2	0	
MANATEE	26	8	6	1	0	0	1	0	18	0	
MARION	39	2	2	0	0	0	0	0	37	0	
MARTIN	7	4	2	0	0	0	2	0	3	0	
MONROE	6	0	0	0	0	0	0	0	6	0	
NASSAU	4	0	0	0	0	0	0	0	4	0	
OKALOOSA	15	2	1	0	0	0	1	0	13	0	
OKEECHOBEE	3	0	0	0	0	0	0	0	3	0	
ORANGE	144	41	9	25	1	2	4	12	91	0	
OSCEOLA	32	19	3	14	0	0	2	2	11	0	
PALM BEACH	87	32	5	6	5	10	6	10	45	0	
PASCO	35	8	4	2	1	1	0	0	27	0	
PINELLAS	82	11	3	2	0	3	3	2	69	0	
POLK	55	8	5	2	0	0	1	0	47	0	
PUTNAM	11	1	1	0	0	0	0	0	10	0	
SAINT JOHNS	5	0	0	0	0	0	0	0	5	0	
SAINT LUCIE	27	4	1	0	1	2	0	2	20	1	
SANTA ROSA	17	0	0	0	0	0	0	0	17	0	
SARASOTA	13	4	1	1	0	1	1	0	9	0	
SEMINOLE	33	4	1	3	0	0	0	0	29	0	
SUMTER	3	1	1	0	0	0	0	0	2	0	
SUWANNEE	5	1	0	0	0	0	1	0	4	0	
TAYLOR	3	1	0	0	0	1	0	0	2	0	
UNION	0	0	0	0	0	0	0	0	0	0	
VOLUSIA	36	7	2	4	0	1	0	0	29	0	
WAKULLA	1	0	0	0	0	0	0	0	1	0	
WALTON	7	0	0	0	0	0	0	0	7	0	
WASHINGTON	1	1	0	0	0	0	1	0	0	0	

TABLE F-7: RESIDENT INFANT, NEONATAL AND POST-NEONATAL DEATHS FROM SELECTED CAUSES\* BY RACE, FLORIDA, 2006

	TOTAL			POST NEO- NATAL	WHITE			POST NEO- NATAL
	NEONATAL		INFANT		NEONATAL		INFANT	
	<1 DAY	1-27 DAYS			<1 DAY	1-27 DAYS		
TOTAL	1,713	620	502	591	974	324	306	344
Intestinal Infectious Disease	1	0	0	1	1	0	0	1
Diarrhea & Gastroenteritis--Infectious Origin	1	0	0	1	0	0	0	0
Tuberculosis	0	0	0	0	0	0	0	0
Tetanus	0	0	0	0	0	0	0	0
Diphtheria	0	0	0	0	0	0	0	0
Whooping Cough	1	0	0	1	1	0	0	1
Meningococcal Infection	1	0	0	1	1	0	0	1
Septicemia	15	0	3	12	6	0	1	5
Congenital Syphilis	0	0	0	0	0	0	0	0
Gonococcal Infection	0	0	0	0	0	0	0	0
Acute Poliomyelitis	0	0	0	0	0	0	0	0
Varicella (Chicken Pox)	0	0	0	0	0	0	0	0
Measles	0	0	0	0	0	0	0	0
HIV Disease	0	0	0	0	0	0	0	0
Mumps	0	0	0	0	0	0	0	0
Other & Unspec Viral Diseases	9	0	4	5	5	0	3	2
Candidiasis	1	0	0	1	1	0	0	1
Malaria	0	0	0	0	0	0	0	0
Pneumocystosis	0	0	0	0	0	0	0	0
Other & Unspecified Infectious & Parasitic Diseases	3	0	1	2	3	0	1	2
Hodgkins Disease & Non-Hodgkins Lymphomas	0	0	0	0	0	0	0	0
Leukemia	1	0	0	1	0	0	0	0
Other & Unspecified Malignant Neoplasm	2	0	0	2	2	0	0	2
In Situ/Benign/Malignant Neoplasms Uncert/Unk Behavior	4	1	2	1	3	1	1	1
Anemias	3	0	0	3	1	0	0	1
Blood, Blood-Forming, Hemorrhagic Diseases	6	0	3	3	1	0	1	0
Disorders Involving Immune Mechanism	2	0	0	2	2	0	0	2
Short Stature	0	0	0	0	0	0	0	0
Nutritional Deficiencies	0	0	0	0	0	0	0	0
Cystic Fibrosis	0	0	0	0	0	0	0	0
Fluid/Electrolyte/Acid-Base/Volume Depletion Disorders	3	0	3	0	2	0	2	0
Other Endocrine, Nutritional, Metabolic Diseases	16	0	6	10	8	0	4	4
Meningitis	3	0	0	3	1	0	0	1
Infantile Spinal Muscular Atrophy, Type 1 (Werdnig-Hoffman)	0	0	0	0	0	0	0	0
Infantile Cerebral Palsy	0	0	0	0	0	0	0	0
Anoxic Brain Damage	5	0	0	5	3	0	0	3
Other Nervous System Diseases	13	1	1	11	8	1	1	6
Ear & Mastoid Process Diseases	0	0	0	0	0	0	0	0
Pulmonary Heart/Circulation Diseases	7	0	0	7	1	0	0	1
Pericarditis, Endocarditis, Myocarditis	0	0	0	0	0	0	0	0
Cardiomyopathy	7	0	5	2	5	0	3	2
Cardiac Arrest	0	0	0	0	0	0	0	0
Cerebrovascular Diseases	10	0	0	10	5	0	0	5
Other Circulatory System Diseases	10	1	2	7	7	1	2	4
Acute Upper Respiratory Infections	1	0	0	1	1	0	0	1
Influenza	2	0	0	2	2	0	0	2
Pneumonia	21	0	1	20	11	0	1	10

TABLE F-7 (Cont.): RESIDENT INFANT, NEONATAL AND POST-NEONATAL DEATHS FROM SELECTED CAUSES\*, BY RACE, FLORIDA, 2006

	TOTAL				POST NEO- NATAL	WHITE			
	NEONATAL			INFANT		NEONATAL			POST NEO- NATAL
	INFANT	<1 DAY	1-27 DAYS			INFANT	<1 DAY	1-27 DAYS	
Acute Bronchitis & Acute Bronchiolitis	0	0	0	0	0	0	0	0	
Bronchitis, Chronic & Unspecified	2	0	1	1	1	0	1	0	
Asthma	1	0	0	1	0	0	0	0	
Pneumonitis Due to Solids & Liquids	0	0	0	0	0	0	0	0	
Other & Unspecified Respiratory System Diseases	32	2	1	29	18	1	0	17	
Gastritis, Duodenitis, Noninfective Enteritis/Colitis	20	0	2	18	5	0	0	5	
Hernia Abdom Cavity & Intestinal Obstruct W/O Hernia	7	2	1	4	6	2	1	3	
Other & Unspec Digestive System Disease	17	2	2	13	4	1	1	2	
Renal Failure & Other Kidney Disorders	10	1	4	5	7	1	2	4	
Other & Unspec Genitourinary System Dis	3	0	1	2	2	0	1	1	
<b>PERINATAL PERIOD CONDITIONS</b>	<b>849</b>	<b>498</b>	<b>308</b>	<b>43</b>	<b>432</b>	<b>236</b>	<b>177</b>	<b>19</b>	
Maternal Hypertensive Disorders	4	4	0	0	1	1	0	0	
Maternal Conditions Unrelated Present Pregnancy	3	2	1	0	3	2	1	0	
Incompetent Cervix	23	23	0	0	11	11	0	0	
Premature Rupture of Membranes	40	40	0	0	22	22	0	0	
Multiple Pregnancy	34	29	5	0	19	14	5	0	
Maternal Complications of Pregnancy	16	13	3	0	9	7	2	0	
Placenta Complications	23	17	6	0	8	5	3	0	
Cord Complications	2	2	0	0	2	2	0	0	
Chorioamnionitis	29	29	0	0	14	14	0	0	
Other & Unspecified Membrane Abnormalities	0	0	0	0	0	0	0	0	
Other Complications of Labor & Delivery	6	6	0	0	5	5	0	0	
Noxious Influences Via Placenta or Breast Milk	1	0	1	0	0	0	0	0	
Slow Fetal Growth & Fetal Malnutrition	8	3	4	1	5	2	3	0	
Extreme Low Birth Weight or Extreme Immaturity	204	176	21	7	94	78	12	4	
Other Low Birth Weight or Preterm	69	64	3	2	33	32	0	1	
Long Gestation & High Birth Weight	0	0	0	0	0	0	0	0	
Birth Trauma	1	0	1	0	1	0	1	0	
Intrauterine Hypoxia	8	5	3	0	3	2	1	0	
Birth Asphyxia	7	1	5	1	4	1	3	0	
Respiratory Distress	54	13	41	0	32	6	26	0	
Congenital Pneumonia	1	0	1	0	1	0	1	0	
Neonatal Aspiration Syndromes	4	2	2	0	3	1	2	0	
Interstitial Emphysema & Related Conditions	12	2	10	0	7	2	5	0	
Pulmonary Hemorrhage	9	2	7	0	4	0	4	0	
Chronic Respiratory Disease	19	0	0	19	7	0	0	7	
Atelectasis	27	14	12	1	14	7	6	1	
Other Respiratory Conditions	2	0	2	0	2	0	2	0	
Bacterial Sepsis	60	10	46	4	31	2	26	3	
Omphalitis With or Without Hemorrhage	0	0	0	0	0	0	0	0	
All Other Infections	15	5	6	4	7	3	2	2	
Neonatal Hemorrhage	40	5	35	0	21	1	20	0	
Hemorrhagic Disease of Newborn	0	0	0	0	0	0	0	0	
Hemolytic Dis Due to Isoimmunization/Perinat Jaundice	1	0	1	0	1	0	1	0	
Hematological Disorders	7	1	5	1	4	1	3	0	
Diabetes Mellitus, Maternal or Neonatal	1	1	0	0	1	1	0	0	
Necrotizing Enterocolitis	33	0	32	1	17	0	17	0	
Hydrops Fetalis Not Due To Hemolytic Dis	7	5	2	0	6	4	2	0	
Other Perinatal Conditions	79	24	53	2	40	10	29	1	



TABLE F-7 (Cont.): RESIDENT INFANT, NEONATAL AND POST-NEONATAL DEATHS FROM SELECTED CAUSES\*, BY RACE, FLORIDA, 2006

	TOTAL			POST NEO- NATAL	WHITE			POST NEO- NATAL
	NEONATAL		INFANT		NEONATAL		INFANT	
	<1 DAY	1-27 DAYS			<1 DAY	1-27 DAYS		
CONGENITAL / CHROMOSOMAL ANOMALIES	331	102	118	111	218	72	78	68
Anencephaly & Similar Anomalies	17	11	5	1	12	8	3	1
Congenital Hydrocephalus	6	2	0	4	4	1	0	3
Spina Bifida	2	2	0	0	2	2	0	0
Other Cong Malf Nervous System	21	8	5	8	15	6	4	5
Congenital Malf of Heart	74	10	30	34	48	7	18	23
Other Congenital Malf of Circulatory Sys	25	1	15	9	17	0	12	5
Congenital Malf of Respiratory Sys	20	12	6	2	15	8	5	2
Congenital Anomalies of Digestive Sys	8	1	1	6	5	1	1	3
Congenital Malf of Genitourinary Sys	26	17	5	4	18	12	4	2
Congenital Malf of Musculoskeletal Sys	34	7	16	11	27	6	13	8
Downs Syndrome	5	1	2	2	3	1	1	1
Edwards Syndrome	37	10	15	12	19	6	8	5
Patau Syndrome	15	6	6	3	8	5	3	0
Other Congenital Malf	26	10	7	9	16	8	4	4
Other Chromosomal Abnorm	15	4	5	6	9	1	2	6
Sudden Infant Death Syndrome	94	0	9	85	63	0	6	57
Symptoms, Signs, Abn Clinical/Lab Findings	81	7	13	61	54	5	8	41
All Other Diseases	2	0	0	2	2	0	0	2
Unint Inj: Motor Vehicle	4	0	0	4	3	0	0	3
Unint Inj: Other & Unspecified Transport	0	0	0	0	0	0	0	0
Unint Inj: Falls	5	0	1	4	3	0	1	2
Unint Inj: Firearms Discharge	0	0	0	0	0	0	0	0
Unint Inj: Drowning & Submersion	8	0	0	8	7	0	0	7
Unint Inj: Suffocation & Strangulation in Bed	52	0	8	44	33	0	8	25
Unint Inj: Other Suffocation & Strangulation	16	0	1	15	13	0	1	12
Unint Inj: Inhale/Ingest--Respiratory Tract Obstruction	6	0	0	6	5	0	0	5
Unint Inj: Smoke, Fire, Flames Exposure	3	0	0	3	2	0	0	2
Unint Inj: Poisoning & Noxious Substance Exposure	2	0	1	1	2	0	1	1
Unint Inj: Other & Unspecified	3	0	0	3	1	0	0	1
Homicide: Hanging, Strangulation, Suffocation	2	0	0	2	2	0	0	2
Homicide: Firearms Discharge	0	0	0	0	0	0	0	0
Homicide: Neglect, Abandonment, Maltreatment	3	3	0	0	3	3	0	0
Homicide: Other & Unspecified Means	12	0	0	12	7	0	0	7
Medical & Surgical Care Complications	0	0	0	0	0	0	0	0
Other External Causes	0	0	0	0	0	0	0	0

\* ICD-10 codes associated with each cause of death group are presented on pages (xiv-xvi).

TABLE F-7 (Cont.): RESIDENT INFANT, NEONATAL AND POST-NEONATAL DEATHS FROM SELECTED CAUSES\*,  
BY RACE, FLORIDA, 2006

	BLACK			POST NEO- NATAL	OTHER			POST NEO- NATAL
	NEONATAL		INFANT		NEONATAL		INFANT	
	<1 DAY	1-27 DAYS			<1 DAY	1-27 DAYS		
<b>TOTAL</b>	<b>653</b>	<b>261</b>	<b>175</b>	<b>217</b>	<b>84</b>	<b>34</b>	<b>20</b>	<b>30</b>
Intestinal Infectious Disease	0	0	0	0	0	0	0	0
Diarrhea & Gastroenteritis--Infectious Origin	1	0	0	1	0	0	0	0
Tuberculosis	0	0	0	0	0	0	0	0
Tetanus	0	0	0	0	0	0	0	0
Diphtheria	0	0	0	0	0	0	0	0
Whooping Cough	0	0	0	0	0	0	0	0
Meningococcal Infection	0	0	0	0	0	0	0	0
Septicemia	9	0	2	7	0	0	0	0
Congenital Syphilis	0	0	0	0	0	0	0	0
Gonococcal Infection	0	0	0	0	0	0	0	0
Acute Poliomyelitis	0	0	0	0	0	0	0	0
Varicella (Chicken Pox)	0	0	0	0	0	0	0	0
Measles	0	0	0	0	0	0	0	0
HIV Disease	0	0	0	0	0	0	0	0
Mumps	0	0	0	0	0	0	0	0
Other & Unspec Viral Diseases	4	0	1	3	0	0	0	0
Candidiasis	0	0	0	0	0	0	0	0
Malaria	0	0	0	0	0	0	0	0
Pneumocystosis	0	0	0	0	0	0	0	0
Other & Unspecified Infectious & Parasitic Diseases	0	0	0	0	0	0	0	0
Hodgkins Disease & Non-Hodgkins Lymphomas	0	0	0	0	0	0	0	0
Leukemia	0	0	0	0	1	0	0	1
Other & Unspecified Malignant Neoplasm	0	0	0	0	0	0	0	0
In Situ/Benign/Malignant Neoplasms Uncert/Unk Behavior	1	0	1	0	0	0	0	0
Anemias	1	0	0	1	1	0	0	1
Blood, Blood-Forming, Hemorrhagic Diseases	4	0	1	3	1	0	1	0
Disorders Involving Immune Mechanism	0	0	0	0	0	0	0	0
Short Stature	0	0	0	0	0	0	0	0
Nutritional Deficiencies	0	0	0	0	0	0	0	0
Cystic Fibrosis	0	0	0	0	0	0	0	0
Fluid/Electrolyte/Acid-Base/Volume Depletion Disorders	0	0	0	0	1	0	1	0
Other Endocrine, Nutritional, Metabolic Diseases	7	0	2	5	1	0	0	1
Meningitis	2	0	0	2	0	0	0	0
Infantile Spinal Muscular Atrophy, Type 1 (Werdnig-Hoffman)	0	0	0	0	0	0	0	0
Infantile Cerebral Palsy	0	0	0	0	0	0	0	0
Anoxic Brain Damage	2	0	0	2	0	0	0	0
Other Nervous System Diseases	3	0	0	3	2	0	0	2
Ear & Mastoid Process Diseases	0	0	0	0	0	0	0	0
Pulmonary Heart/Circulation Diseases	6	0	0	6	0	0	0	0
Pericarditis, Endocarditis, Myocarditis	0	0	0	0	0	0	0	0
Cardiomyopathy	2	0	2	0	0	0	0	0
Cardiac Arrest	0	0	0	0	0	0	0	0
Cerebrovascular Diseases	5	0	0	5	0	0	0	0
Other Circulatory System Diseases	3	0	0	3	0	0	0	0
Acute Upper Respiratory Infections	0	0	0	0	0	0	0	0
Influenza	0	0	0	0	0	0	0	0
Pneumonia	9	0	0	9	1	0	0	1

TABLE F-7 (Cont.): RESIDENT INFANT, NEONATAL AND POST-NEONATAL DEATHS FROM SELECTED CAUSES\*,  
BY RACE, FLORIDA, 2006

	BLACK			POST NEO- NATAL	OTHER			POST NEO- NATAL
	NEONATAL		INFANT		NEONATAL		INFANT	
	<1 DAY	1-27 DAYS			<1 DAY	1-27 DAYS		
Acute Bronchitis & Acute Bronchiolitis	0	0	0	0	0	0	0	0
Bronchitis, Chronic & Unspecified	1	0	0	1	0	0	0	0
Asthma	1	0	0	1	0	0	0	0
Pneumonitis Due to Solids & Liquids	0	0	0	0	0	0	0	0
Other & Unspecified Respiratory System Diseases	12	1	1	10	2	0	0	2
Gastritis, Duodenitis, Noninfective Enteritis/Colitis	15	0	2	13	0	0	0	0
Hernia Abdom Cavity & Intestinal Obstruct W/O Hernia	1	0	0	1	0	0	0	0
Other & Unspec Digestive System Disease	13	1	1	11	0	0	0	0
Renal Failure & Other Kidney Disorders	3	0	2	1	0	0	0	0
Other & Unspec Genitourinary System Dis	0	0	0	0	1	0	0	1
<b>PERINATAL PERIOD CONDITIONS</b>	<b>371</b>	<b>232</b>	<b>119</b>	<b>20</b>	<b>45</b>	<b>30</b>	<b>11</b>	<b>4</b>
Maternal Hypertensive Disorders	3	3	0	0	0	0	0	0
Maternal Conditions Unrelated Present Pregnancy	0	0	0	0	0	0	0	0
Incompetent Cervix	12	12	0	0	0	0	0	0
Premature Rupture of Membranes	15	15	0	0	3	3	0	0
Multiple Pregnancy	15	15	0	0	0	0	0	0
Maternal Complications of Pregnancy	5	4	1	0	2	2	0	0
Placenta Complications	15	12	3	0	0	0	0	0
Cord Complications	0	0	0	0	0	0	0	0
Chorioamnionitis	15	15	0	0	0	0	0	0
Other & Unspecified Membrane Abnormalities	0	0	0	0	0	0	0	0
Other Complications of Labor & Delivery	1	1	0	0	0	0	0	0
Noxious Influences Via Placenta or Breast Milk	1	0	1	0	0	0	0	0
Slow Fetal Growth & Fetal Malnutrition	2	1	0	1	1	0	1	0
Extreme Low Birth Weight or Extreme Immaturity	94	85	7	2	16	13	2	1
Other Low Birth Weight or Preterm	34	30	3	1	2	2	0	0
Long Gestation & High Birth Weight	0	0	0	0	0	0	0	0
Birth Trauma	0	0	0	0	0	0	0	0
Intrauterine Hypoxia	4	2	2	0	1	1	0	0
Birth Asphyxia	3	0	2	1	0	0	0	0
Respiratory Distress	18	5	13	0	4	2	2	0
Congenital Pneumonia	0	0	0	0	0	0	0	0
Neonatal Aspiration Syndromes	1	1	0	0	0	0	0	0
Interstitial Emphysema & Related Conditions	4	0	4	0	0	0	0	0
Pulmonary Hemorrhage	4	2	2	0	1	0	1	0
Chronic Respiratory Disease	10	0	0	10	2	0	0	2
Atelectasis	11	5	6	0	2	2	0	0
Other Respiratory Conditions	0	0	0	0	0	0	0	0
Bacterial Sepsis	26	8	18	0	3	0	2	1
Omphalitis With or Without Hemorrhage	0	0	0	0	0	0	0	0
All Other Infections	8	2	4	2	0	0	0	0
Neonatal Hemorrhage	17	3	14	0	2	1	1	0
Hemorrhagic Disease of Newborn	0	0	0	0	0	0	0	0
Hemolytic Dis Due to Isoimmunization/Perinat Jaundice	0	0	0	0	0	0	0	0
Hematological Disorders	3	0	2	1	0	0	0	0
Diabetes Mellitus, Maternal or Neonatal	0	0	0	0	0	0	0	0
Necrotizing Enterocolitis	15	0	14	1	1	0	1	0
Hydrops Fetalis Not Due To Hemolytic Dis	1	1	0	0	0	0	0	0

TABLE F-7 (Cont.): RESIDENT INFANT, NEONATAL AND POST-NEONATAL DEATHS FROM SELECTED CAUSES\*, BY RACE, FLORIDA, 2006

	BLACK			POST NEO- NATAL	OTHER			POST NEO- NATAL
	NEONATAL		INFANT		NEONATAL		INFANT	
	<1 DAY	1-27 DAYS			<1 DAY	1-27 DAYS		
Other Perinatal Conditions	34	10	23	1	5	4	1	0
<b>CONGENITAL / CHROMOSOMAL ANOMALIES</b>	<b>99</b>	<b>25</b>	<b>33</b>	<b>41</b>	<b>13</b>	<b>4</b>	<b>7</b>	<b>2</b>
Anencephaly & Similar Anomalies	1	0	1	0	4	3	1	0
Congenital Hydrocephalus	2	1	0	1	0	0	0	0
Spina Bifida	0	0	0	0	0	0	0	0
Other Cong Malf Nervous System	6	2	1	3	0	0	0	0
Congenital Malf of Heart	22	2	9	11	4	1	3	0
Other Congenital Malf of Circulatory Sys	8	1	3	4	0	0	0	0
Congenital Malf of Respiratory Sys	5	4	1	0	0	0	0	0
Congenital Anomalies of Digestive Sys	3	0	0	3	0	0	0	0
Congenital Malf of Genitourinary Sys	6	4	0	2	1	0	1	0
Congenital Malf of Musculoskeletal Sys	7	1	3	3	0	0	0	0
Downs Syndrome	2	0	1	1	0	0	0	0
Edwards Syndrome	17	4	6	7	1	0	1	0
Patau Syndrome	5	1	2	2	2	0	1	1
Other Congenital Malf	9	2	3	4	1	0	0	1
Other Chromosomal Abnorm	6	3	3	0	0	0	0	0
Sudden Infant Death Syndrome	27	0	3	24	4	0	0	4
Symptoms, Signs, Abn Clinical/Lab Findings	22	2	5	15	5	0	0	5
All Other Diseases	0	0	0	0	0	0	0	0
Unint Inj: Motor Vehicle	1	0	0	1	0	0	0	0
Unint Inj: Other & Unspecified Transport	0	0	0	0	0	0	0	0
Unint Inj: Falls	2	0	0	2	0	0	0	0
Unint Inj: Firearms Discharge	0	0	0	0	0	0	0	0
Unint Inj: Drowning & Submersion	1	0	0	1	0	0	0	0
Unint Inj: Suffocation & Strangulation in Bed	16	0	0	16	3	0	0	3
Unint Inj: Other Suffocation & Strangulation	3	0	0	3	0	0	0	0
Unint Inj: Inhale/Ingest--Respiratory Tract Obstruction	1	0	0	1	0	0	0	0
Unint Inj: Smoke, Fire, Flames Exposure	0	0	0	0	1	0	0	1
Unint Inj: Poisoning & Noxious Substance Exposure	0	0	0	0	0	0	0	0
Unint Inj: Other & Unspecified	2	0	0	2	0	0	0	0
Homicide: Hanging, Strangulation, Suffocation	0	0	0	0	0	0	0	0
Homicide: Firearms Discharge	0	0	0	0	0	0	0	0
Homicide: Neglect, Abandonment, Maltreatment	0	0	0	0	0	0	0	0
Homicide: Other & Unspecified Means	3	0	0	3	2	0	0	2
Medical & Surgical Care Complications	0	0	0	0	0	0	0	0
Other External Causes	0	0	0	0	0	0	0	0

\* ICD-10 codes associated with each cause of death group are presented on pages (xiv-xvi).