

Marriages and Dissolutions of Marriage

MARRIAGES AND DISSOLUTIONS OF MARRIAGE

- The number of marriage ceremonies remained about the same between 2005 (158,192 marriages) and 2006 (158,167 marriages).
- The marriage rate per 1,000 persons has decreased each year since 2001 to 8.6 in 2006. The rate has decreased 15.7 percent since 1996.
- May was the most popular month for marriages with 16,338 marriages performed.
- After decreasing for two consecutive years, the number of dissolutions of marriage increased to a record high of 85,955 in 2006.
- Between 1980 and 2005, the dissolution rate had declined 35.6 percent. In 2006, this rate increased to 4.7 per 1,000 persons.
- Of the 85,955 dissolutions of marriage in 2006, over half (58.4 percent) did not affect any minor children.
- The mean duration of a marriage resulting in a 2006 dissolution was 10.1 years.
- The marriage rate in Florida is more than 1.8 times the dissolution rate.

CHART M-1: MARRIAGES AND DISSOLUTIONS OF MARRIAGE, AND RATES PER 1,000 POPULATION, FLORIDA AND UNITED STATES, CENSUS YEARS 1920-1990 AND 1996-2006

YEAR	MARRIAGES			DISSOLUTIONS ¹		
	FLORIDA		U.S. RATE	FLORIDA		U.S. RATE
	NUMBER	RATE		NUMBER	RATE	
1920	NA	NA	12.0	NA	NA	1.6
1930	17,147	11.7	9.2	3,262	2.5	1.6
1940	32,709	17.1	12.1	11,061	5.8	2.0
1950	27,588	9.8	11.1	17,845	6.3	2.6
1960	39,315	7.9	8.5	19,326	3.9	2.2
1970	69,249	10.1	10.6	37,506	5.5	3.5
1980	108,344	11.0	10.6	71,578	7.3	5.2
1990	141,816	10.9	9.8	81,119	6.2	4.7
1996	150,599	10.2	8.8 ²	77,750	5.3	4.3 ²
1997	158,783	10.6	8.9 ²	82,161	5.5	4.3 ²
1998	141,344	9.2	8.5 ²	80,466	5.3	4.3 ²
1999	136,403	8.7	8.5 ²	80,983	5.2	4.1 ²
2000	145,300	9.0	8.7 ²	81,439	5.1	4.2 ²
2001	153,298	9.3	8.2 ²	85,259	5.2	4.0 ²
2002	157,554	9.4	7.8 ²	85,181	5.1	4.0 ²
2003	153,023	8.9	7.7 ²	85,367	5.0	3.8 ²
2004	154,453	8.8	7.8 ²	83,306	4.7	3.7 ²
2005	158,192	8.8	7.6 ²	81,287	4.5	3.6 ²
2006	158,167	8.6	7.3 ²	85,955	4.7	3.6 ²

¹ Includes divorces and annulments.

² Provisional data.

GRAPH M-1: MARRIAGES AND DISSOLUTIONS OF MARRIAGE RATES PER 1,000 POPULATION, FLORIDA AND UNITED STATES, 1996-2006

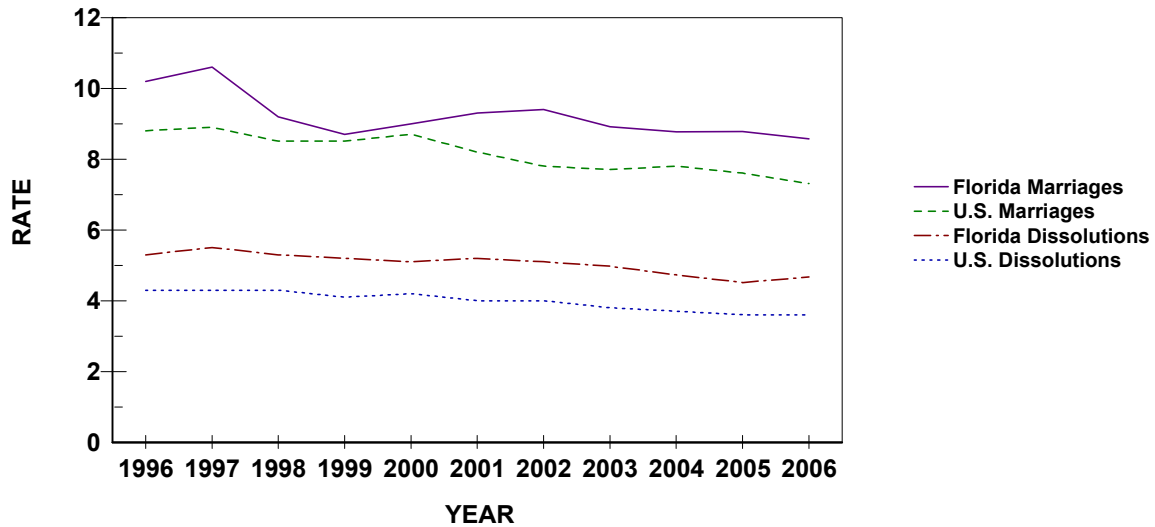


TABLE M-1: MARRIAGES PERFORMED BY MONTH, BY COUNTY OF ISSUANCE, FLORIDA, 2006

	TOTAL	JAN	FEB	MAR	APR	MAY	JUN	JUL	AUG	SEP	OCT	NOV	DEC
FLORIDA	158,167	9,577	12,763	14,615	15,258	16,338	14,628	13,367	10,828	11,235	13,119	13,002	13,437
ALACHUA	1,782	91	131	147	196	200	144	160	136	125	156	143	153
BAKER	270	22	24	25	25	19	25	21	29	25	19	17	19
BAY	2,223	114	148	183	223	254	248	252	139	215	190	143	114
BRADFORD	260	15	20	17	23	27	23	29	19	29	28	14	16
BREVARD	4,196	226	310	391	414	444	425	330	294	290	326	380	366
BROWARD	15,226	1,038	1,319	1,462	1,455	1,504	1,299	1,244	1,069	1,043	1,181	1,224	1,388
CALHOUN	137	15	12	11	10	14	6	16	7	9	14	11	12
CHARLOTTE	1,029	65	78	106	112	103	93	86	65	72	76	92	81
CITRUS	883	68	59	83	101	75	80	73	57	73	85	67	62
CLAY	1,408	70	93	111	140	174	132	146	111	106	121	101	103
COLLIER	3,131	201	238	283	329	331	260	255	189	183	252	309	301
COLUMBIA	550	8	54	45	49	67	56	47	45	42	42	51	44
MIAMI-DADE	25,632	1,863	2,302	2,348	2,351	2,446	2,137	1,956	1,871	1,775	1,978	2,184	2,421
DESOTO	215	10	23	17	17	22	18	22	23	9	16	15	23
DIXIE	114	2	13	9	10	9	11	9	8	9	15	10	9
DUVAL	6,298	310	453	602	664	632	602	556	462	504	540	495	478
ESCAMBIA	3,070	148	224	295	257	347	327	283	240	254	292	188	215
FLAGLER	620	39	37	49	59	56	61	60	48	45	48	60	58
FRANKLIN	160	7	5	11	18	17	22	17	10	16	21	9	7
GADSDEN	288	19	23	24	29	21	33	35	18	20	28	21	17
GILCHRIST	175	9	17	14	13	19	18	16	13	10	17	8	21
GLADES	78	4	9	6	8	5	10	7	5	6	9	3	6
GULF	167	6	12	12	17	22	22	25	14	13	10	10	4
HAMILTON	136	6	10	13	16	13	14	12	6	17	11	8	10
HARDEE	207	15	16	25	15	14	26	11	11	20	18	15	21
HENDRY	286	22	27	28	24	27	32	22	22	15	19	23	25
HERNANDO	930	54	79	79	99	91	89	88	53	66	98	72	62
HIGHLANDS	670	33	69	63	50	53	65	55	37	55	53	60	77
HILLSBOROUGH	9,795	572	810	970	919	1,032	903	773	613	729	816	822	836
HOLMES	161	15	13	12	16	12	14	16	12	14	17	11	9
INDIAN RIVER	1,006	50	99	113	94	95	88	105	81	51	68	71	91
JACKSON	340	25	27	35	29	31	40	32	20	29	23	21	28
JEFFERSON	92	6	5	7	7	9	8	8	6	10	10	7	9
LAFAYETTE	66	3	6	6	6	5	7	8	2	4	6	4	9
LAKE	2,388	133	170	230	252	232	232	183	159	199	209	182	207
LEE	4,537	270	361	379	455	525	475	348	266	259	369	421	409
LEON	1,896	109	133	177	178	233	181	172	141	141	156	114	161
LEVY	220	10	15	16	19	23	25	23	14	19	14	17	25
LIBERTY	49	0	5	4	4	6	5	4	7	4	3	5	2
MADISON	203	6	13	13	33	19	14	20	20	15	19	11	20
MANATEE	2,027	108	155	193	206	220	197	168	127	137	177	160	179
MARION	2,182	97	195	205	192	218	220	205	160	144	187	182	177
MARTIN	910	65	79	69	100	114	89	68	54	44	79	60	89
MONROE	2,814	183	240	243	302	380	306	214	167	127	180	219	253
NASSAU	666	24	36	51	70	87	76	68	37	55	59	52	51
OKALOOSA	2,970	120	164	239	280	365	347	331	229	273	263	179	180
OKEECHOBEE	288	16	33	30	24	21	24	36	18	15	19	27	25
ORANGE	10,846	657	851	1,008	998	1,101	985	939	785	777	934	933	878
OSCEOLA	4,616	264	357	357	424	443	410	393	343	355	496	375	399
PALM BEACH	9,036	620	785	873	871	943	829	736	632	518	680	730	819
PASCO	2,675	173	216	251	273	263	199	210	173	220	246	234	217
PINELLAS	7,351	404	579	734	719	816	657	611	439	491	652	686	563
POLK	3,926	256	310	402	375	367	381	374	227	284	305	309	336
PUTNAM	565	44	61	53	46	53	57	49	39	38	42	38	45
SAINT JOHNS	1,529	79	87	125	171	164	147	151	100	111	138	137	119
SAINT LUCIE	1,553	88	148	160	142	134	159	126	88	111	112	140	145
SANTA ROSA	946	42	71	60	94	110	106	89	68	84	79	68	75
SARASOTA	2,954	169	209	275	336	333	289	242	172	176	250	266	237
SEMINOLE	3,236	195	262	331	305	337	251	270	193	247	282	282	281
SUMTER	305	22	27	31	29	26	31	20	18	18	31	31	21
SUWANNEE	257	16	17	31	27	19	21	26	21	21	16	20	22
TAYLOR	179	10	16	10	17	15	12	21	16	13	17	12	20
UNION	137	4	9	13	9	8	25	13	11	13	10	12	10
VOLUSIA	3,770	206	307	355	352	368	356	353	259	291	299	329	295
WAKULLA	186	7	20	17	20	26	19	4	14	13	21	12	13
WALTON	1,159	17	51	66	121	159	154	112	79	119	151	74	56
WASHINGTON	190	12	16	12	19	20	11	13	17	20	21	16	13

TABLE M-2: MARRIAGES BY RACE OF GROOM AND BRIDE, FLORIDA, 2006

RACE OF GROOM	RACE OF BRIDE										
	TOTAL	WHITE	BLACK	AMERICAN INDIAN	CHINESE	JAPANESE	HAWAIIAN	FILIPINO	OTHER ASIAN/PAC ISL	OTHER ENTRIES	UNK
TOTAL	158,167	122,027	20,678	403	48	10	32	89	3,228	11,268	384
WHITE	121,742	115,610	1,566	267	31	6	28	71	1,690	2,289	184
BLACK	22,578	3,158	18,630	36	0	2	1	2	136	584	29
AMERICAN INDIAN	423	297	21	79	0	1	0	1	14	10	0
CHINESE	24	8	0	0	12	0	0	0	2	2	0
JAPANESE	5	3	0	0	0	1	0	0	0	1	0
HAWAIIAN	17	14	0	0	0	0	3	0	0	0	0
FILIPINO	32	12	4	0	0	0	0	12	2	2	0
OTH ASIAN/PAC ISL	2,123	708	45	7	2	0	0	1	1,322	38	0
OTHER ENTRIES	10,896	2,079	400	14	3	0	0	2	56	8,336	6
UNK	327	138	12	0	0	0	0	0	6	6	165

TABLE M-3: DISSOLUTIONS* OF MARRIAGE BY DURATION OF MARRIAGE IN YEARS AND NUMBER OF MINOR CHILDREN AFFECTED, FLORIDA, 2006

DURATION IN YEARS	NUMBER OF MINOR CHILDREN AFFECTED								
	TOTAL	NONE	ONE	TWO	THREE	FOUR	FIVE	SIX+	UNK
TOTAL	85,955	50,223	16,473	11,563	3,100	537	93	48	3,918
<1	3,167	2,808	137	56	14	1	2	2	147
1	5,661	4,834	487	106	17	4	1	0	212
2	6,284	4,932	893	174	33	6	1	3	242
3	6,875	5,070	1,155	323	47	4	0	0	276
4	6,562	4,558	1,231	415	72	13	1	1	271
5-9	22,072	12,119	5,055	3,335	678	103	17	9	756
10-14	12,088	4,747	2,770	3,050	978	158	31	10	344
15-19	7,668	2,359	1,776	2,322	799	160	26	13	213
20-24	4,996	2,359	1,349	876	210	47	5	3	147
25-29	2,723	1,957	455	180	41	6	2	2	80
30-34	1,365	1,159	98	30	8	2	1	0	67
35-39	716	647	22	9	7	0	0	0	31
40>	699	638	9	8	2	2	0	0	40
UNK	5,079	2,036	1,036	679	194	31	6	5	1,092

*Includes divorces and annulments.

TABLE M-4: DISSOLUTIONS* OF MARRIAGE BY MONTH, BY COUNTY, FLORIDA, 2006

	TOTAL	JAN	FEB	MAR	APR	MAY	JUN	JUL	AUG	SEP	OCT	NOV	DEC
FLORIDA	85,955	6,305	6,465	7,752	6,892	7,730	7,590	6,834	7,841	7,302	7,498	6,948	6,797
ALACHUA	841	55	58	68	52	78	72	81	90	65	88	50	84
BAKER	128	12	6	10	9	14	23	7	12	8	7	11	9
BAY	893	73	79	96	81	65	87	62	78	76	88	67	41
BRADFORD	124	0	11	8	0	13	14	16	20	8	9	16	9
BREVARD	1,445	130	116	120	98	147	155	109	125	118	107	118	102
BROWARD	10,160	696	706	878	779	893	939	1,180	951	764	978	648	748
CALHOUN	60	3	3	3	3	13	7	6	10	1	4	4	3
CHARLOTTE	590	53	66	44	47	45	69	48	52	46	41	36	43
CITRUS	529	45	37	56	48	45	65	44	43	35	33	40	38
CLAY	837	51	64	70	55	95	79	62	98	66	64	62	71
COLLIER	1,304	109	97	133	105	127	137	100	95	83	128	85	105
COLUMBIA	296	36	27	30	1	25	20	20	32	25	40	23	17
MIAMI-DADE	15,243	1,003	1,086	1,475	1,363	1,430	1,200	1,016	1,199	1,534	1,377	1,415	1,145
DESOTO	150	12	11	13	8	12	11	14	16	16	13	13	11
DIXIE	62	8	4	2	4	9	10	11	1	0	5	4	4
DUVAL	4,436	314	384	416	336	460	353	378	456	306	364	318	351
ESCAMBIA	1,303	116	97	123	99	125	121	108	107	106	115	97	89
FLAGLER	354	22	20	29	30	31	32	25	39	29	28	25	44
FRANKLIN	43	2	3	1	4	5	6	9	3	4	1	3	2
GADSDEN	165	8	19	12	12	17	20	13	14	13	8	19	10
GILCHRIST	72	5	9	11	6	3	7	3	3	4	9	6	6
GLADES	25	1	2	5	0	1	2	1	0	3	4	2	4
GULF	58	4	5	6	11	7	4	3	3	5	5	3	2
HAMILTON	54	2	0	5	0	2	7	5	8	5	7	8	5
HARDEE	97	3	8	13	7	9	14	8	9	5	5	7	9
HENDRY	116	11	7	8	6	8	9	0	20	13	13	8	13
HERNANDO	480	32	23	35	19	50	27	35	51	49	57	51	51
HIGHLANDS	355	16	23	26	27	39	30	20	35	42	38	22	37
HILLSBOROUGH	5,850	444	435	464	480	469	541	436	567	546	507	468	493
HOLMES	95	6	6	15	8	7	5	9	7	8	7	6	11
INDIAN RIVER	524	47	44	38	37	38	37	40	33	53	59	55	43
JACKSON	216	14	17	15	18	8	29	20	23	15	23	22	12
JEFFERSON	46	2	8	8	5	0	2	4	8	1	1	6	1
LAFAYETTE	30	1	2	5	5	2	4	1	2	0	1	2	5
LAKE	1,022	55	56	79	101	98	104	66	82	85	109	92	95
LEE	2,307	133	163	205	191	147	223	260	235	176	202	204	168
LEON	802	67	41	97	47	60	67	68	77	64	66	88	60
LEVY	159	10	13	15	11	14	12	12	17	10	16	15	14
LIBERTY	42	6	5	1	4	3	5	3	5	2	2	2	4
MADISON	85	7	3	10	6	6	10	4	10	5	8	4	12
MANATEE	1,057	87	88	96	83	116	77	83	106	85	83	89	64
MARION	1,336	90	107	117	91	133	123	130	94	116	104	126	105
MARTIN	589	23	72	68	67	46	47	26	46	59	42	54	39
MONROE	442	31	26	54	26	57	36	31	35	25	29	48	44
NASSAU	319	30	29	32	23	38	29	31	30	27	23	14	13
OKALOOSA	1,304	119	92	127	100	136	104	100	154	77	92	104	99
OKEECHOBEE	164	17	22	3	12	22	21	7	7	17	14	16	6
ORANGE	5,663	581	453	477	514	428	501	298	630	467	438	419	457
OSCEOLA	1,509	109	110	123	111	127	115	114	147	113	150	129	161
PALM BEACH	5,540	397	451	476	439	518	502	386	443	606	419	491	412
PASCO	1,660	94	125	135	114	158	162	160	170	141	126	131	144
PINELLAS	3,718	274	298	371	287	337	291	272	369	301	344	306	268
POLK	2,361	176	219	208	184	183	216	175	194	217	210	141	238
PUTNAM	251	18	14	26	13	20	9	30	24	31	22	21	23
SAINT JOHNS	671	69	48	76	58	44	43	53	52	48	43	62	75
SAINT LUCIE	954	74	66	67	102	75	86	85	76	45	99	91	88
SANTA ROSA	597	33	39	56	46	56	52	47	64	45	58	50	51
SARASOTA	1,560	126	123	127	126	191	106	116	164	102	135	103	141
SEMINOLE	1,698	111	93	169	141	137	174	125	161	118	164	156	148
SUMTER	170	6	9	18	15	15	20	10	19	14	11	16	17
SUWANNEE	131	9	10	18	7	11	10	10	10	13	10	13	10
TAYLOR	97	6	7	8	12	4	10	14	9	5	8	8	6
UNION	46	0	3	7	1	7	3	4	5	3	4	4	5
VOLUSIA	2,270	175	163	213	169	193	263	197	154	196	189	181	177
WAKULLA	112	8	16	4	0	19	5	8	14	4	8	17	9
WALTON	263	19	15	22	16	30	25	15	21	27	26	24	23
WASHINGTON	75	9	3	6	12	9	1	0	7	6	10	9	3

*Includes divorces and annulments.