

# **Fetal and Infant Deaths**

## FETAL AND INFANT DEATHS

- The number of resident fetal deaths (stillbirths occurring at 20 or more weeks of gestation) increased from 1,756 in 2006 to 1,840 in 2007. The ratio of resident fetal deaths to resident live births also increased from 7.4 per 1,000 live births to 7.7 per 1,000 live births during the same time period.
- Between 2006 and 2007, resident fetal deaths increased among Whites and Nonwhites from 1,020 to 1,042 and 733 to 792, respectively.
- Of all resident fetal deaths in 2007, 68.1 percent were to mothers of Non-Hispanic and Non-Haitian origin, 23.4 percent were to mothers of Hispanic origin, 5.7 percent were to mothers of Haitian origin and 2.8 percent were to mothers whose ethnicity was unknown.
- In 2007, about one of every 13 resident fetal deaths occurred to a mother who was 18 years old or younger.
- In 2007, the overall number of resident neonatal deaths (under 28 days of age) was 1,062. This represents a decrease of 60 neonatal deaths from 2006.
- The neonatal death rate decreased from 4.7 per 1,000 live births in 2006 to 4.4 per 1,000 live births in 2007. The 2007 rate represents less than half the rate of 1980 (9.7 per 1,000 live births).
- In 2007, the Nonwhite neonatal death rate (7.6 per 1,000 live births) is more than twice the White rate (3.3 per 1,000 live births).
- During the six year period 2002 through 2007, the resident infant mortality rate reached 7.5 per 1,000 live births in 2002 and 2003, then decreased to 7.0 in 2004, and then increased to 7.2 in 2005 and remained at 7.2 in 2006. In 2007, the rate decreased to 7.1 per 1,000 live births.
- The 2007 resident infant mortality rate has dropped 26.0 percent since 1990 and is currently about half the rate of 1980.
- In 2007, resident infant deaths among Non-Hispanic and Non-Haitian origin accounted for 68.9 percent of all resident infant deaths. Among other ethnic groups, infants of Hispanic origin represented 26.1 percent, infants of Haitian origin represented 4.7 percent and 0.4 percent occurred to infants whose ethnicity was unknown.
- Among all resident infant deaths during 2007, 62.9 percent were neonatal deaths (occurring before infants were 28 days old). Furthermore, 39.0 percent of infant deaths occurred to infants who were less than one day old.
- The leading causes of resident infant deaths in 2007 were perinatal period conditions, congenital anomalies, unintentional injuries, and sudden infant death syndrome. These causes accounted for 79.0 percent of all resident infant deaths.

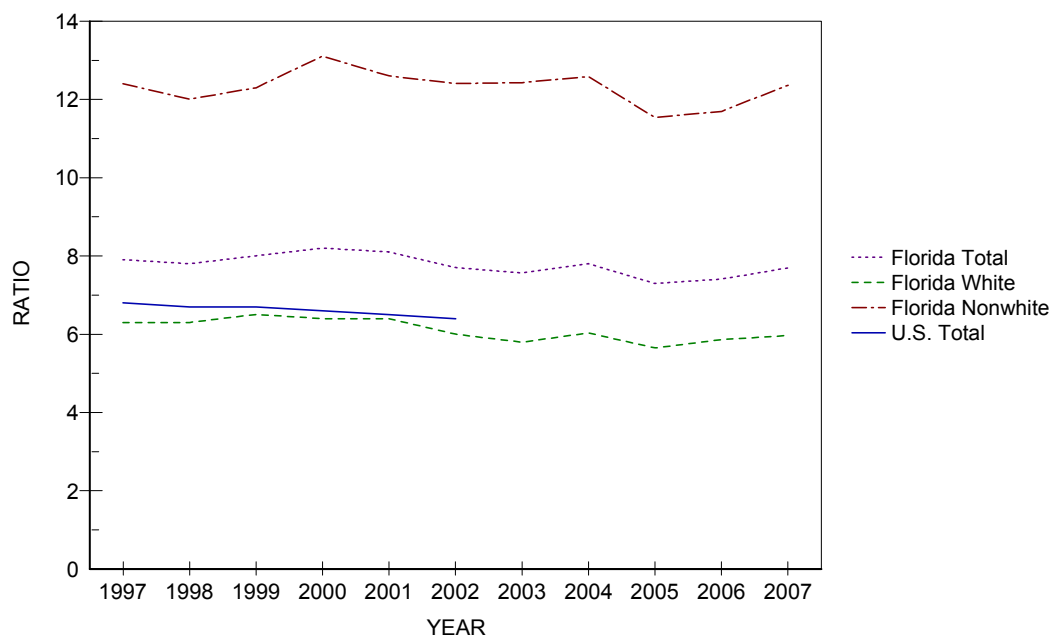
**CHART F-1: RESIDENT FETAL DEATHS AND RATIOS PER 1,000 LIVE BIRTHS,  
BY RACE, FLORIDA AND UNITED STATES TOTAL,  
CENSUS YEARS 1920-1990 AND 1997-2007**

YEAR	NUMBER OF FETAL DEATHS - FL <sup>2</sup>			RATIOS - FL			RATIO - U.S.
	TOTAL	WHITE	NONWHITE	TOTAL	WHITE	NONWHITE	TOTAL
1920 <sup>1</sup>	1,287	595	692	65.9	43.9	115.4	NA
1930 <sup>1</sup>	1,754	746	1,008	65.0	40.1	120.1	NA
1940	1,415	683	732	42.0	28.7	74.0	NA
1950	1,443	757	868	22.4	16.6	36.7	18.8
1960	1,846	1,043	803	16.0	12.4	25.7	15.8
1970	1,701	1,034	615	14.8	11.9	21.8	14.0
1980	1,355	847	491	10.3	8.7	14.3	9.1
1990	1,811	1,071	720	9.1	7.2	14.6	7.5
1997	1,523	910	600	7.9	6.3	12.4	6.8
1998	1,520	912	594	7.8	6.3	12.0	6.7
1999	1,579	953	619	8.0	6.5	12.3	6.7
2000	1,675	954	704	8.2	6.4	13.1	6.6
2001	1,668	972	678	8.1	6.4	12.6	6.5
2002	1,591	920	657	7.7	6.0	12.4	6.4
2003	1,604	912	678	7.6	5.8	12.4	NA
2004	1,701	966	723	7.8	6.0	12.6	NA
2005	1,650	938	688	7.3	5.6	11.5	NA
2006	1,756	1,020	733	7.4	5.9	11.7	NA
2007	1,840	1,042	792	7.7	6.0	12.4	NA

1. Only recorded data are available.

2. Data from 1920-1960 are based on the race of the child. Data from 1970 to present are based on the race of the mother.

**GRAPH F-1: RESIDENT FETAL DEATH RATIOS PER 1,000 LIVE BIRTHS, BY RACE OF MOTHER,  
FLORIDA, AND UNITED STATES TOTAL, 1997-2007**

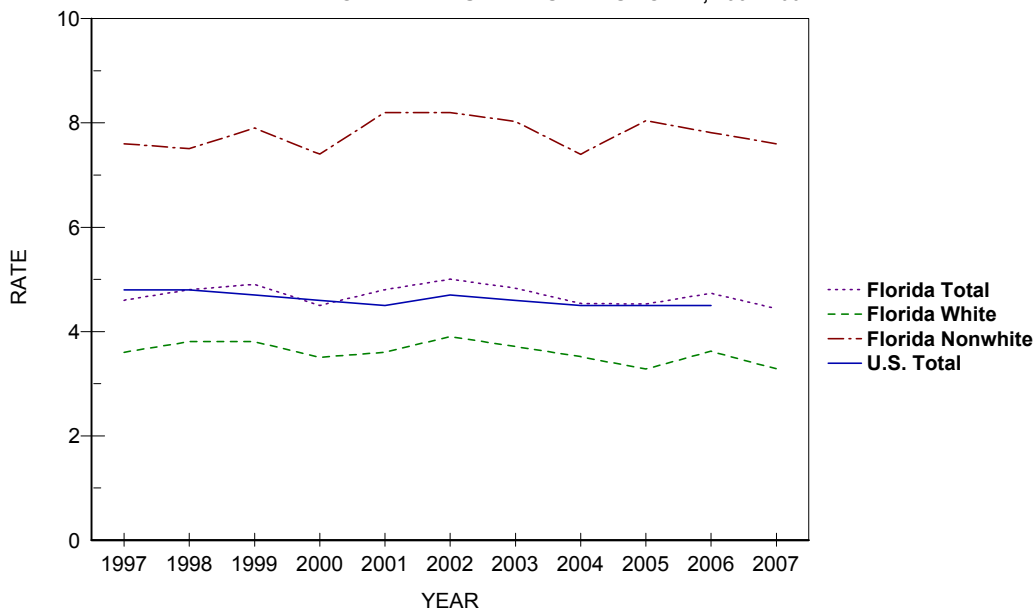


**CHART F-2: RESIDENT NEONATAL DEATHS AND RATES PER 1,000 LIVE BIRTHS, BY RACE, FLORIDA AND UNITED STATES TOTAL, CENSUS YEARS 1940-1990 AND 1997-2007**

YEAR	NUMBER OF NEONATAL DEATHS - FL			RATES - FL <sup>1</sup>			RATE - U.S.
	TOTAL	WHITE	NONWHITE	TOTAL	WHITE	NONWHITE	TOTAL
1940	1,142	662	480	33.9	27.8	48.5	28.8
1950	1,551	975	576	24.1	21.3	30.8	20.5
1960	2,404	1,531	873	20.8	18.1	28.0	18.7
1970	1,848	1,198	648	16.1	13.8	23.0	15.1
1980	1,282	791	490	9.7	8.1	14.2	8.5
1990	1,227	742	484	6.2	5.0	9.8	5.8
1997	889	518	370	4.6	3.6	7.6	4.8
1998	933	559	371	4.8	3.8	7.5	4.8
1999	962	559	401	4.9	3.8	7.9	4.7
2000	925	526	397	4.5	3.5	7.4	4.6
2001	980	539	440	4.8	3.6	8.2	4.5
2002	1,032	596	436	5.0	3.9	8.2	4.7
2003	1,025	584	438	4.8	3.7	8.0	4.6
2004	989	563	425	4.5	3.5	7.4	4.5
2005	1,024	544	479	4.5	3.3	8.0	4.5
2006	1,122	630	490	4.7	3.6	7.8	4.5 <sup>2</sup>
2007	1,062	573	487	4.4	3.3	7.6	NA

1. Rates based on neonatal deaths by race of decedent, 1940-1960 live births based on race of child, 1970 to present live births based on race of mother.  
 2. Preliminary data.

**GRAPH F-2: RESIDENT NEONATAL DEATH RATES PER 1,000 LIVE BIRTHS, BY RACE, FLORIDA AND UNITED STATES TOTAL, 1997-2007**



**CHART F-3: RESIDENT INFANT DEATHS AND RATES PER 1,000 LIVE BIRTHS, BY RACE, FLORIDA AND UNITED STATES TOTAL, CENSUS YEARS 1920-1990 AND 1997-2007**

YEAR	NUMBER OF INFANT DEATHS - FL			RATES - FL <sup>2</sup>			RATE - U.S.
	TOTAL	WHITE	NONWHITE	TOTAL	WHITE	NONWHITE	TOTAL
1920 <sup>1</sup>	1,835	1,031	804	93.9	76.1	134.0	NA
1930 <sup>1</sup>	1,729	928	801	64.1	49.9	95.4	NA
1940	1,812	1,052	760	53.8	44.2	76.8	47.0
1950	2,078	1,225	853	32.3	26.8	45.7	29.2
1960	3,431	1,992	1,439	29.7	23.6	46.1	26.0
1970	2,470	1,538	930	21.5	17.7	33.0	20.0
1980	1,918	1,137	780	14.6	11.7	22.7	12.6
1990	1,912	1,123	787	9.6	7.5	16.0	9.2
1997	1,358	805	552	7.1	5.6	11.4	7.2
1998	1,415	850	562	7.2	5.8	11.4	7.2
1999	1,442	815	625	7.3	5.6	12.4	7.1
2000	1,423	810	611	7.0	5.4	11.4	6.9
2001	1,495	839	655	7.3	5.5	12.3	6.8
2002	1,548	892	656	7.5	5.9	12.4	7.0
2003	1,584	907	674	7.5	5.8	12.4	6.9
2004	1,536	876	659	7.0	5.5	11.5	6.8
2005	1,626	882	743	7.2	5.3	12.5	6.9
2006	1,713	974	737	7.2	5.6	11.8	6.7 <sup>3</sup>
2007	1,689	906	781	7.1	5.2	12.2	6.6 <sup>4</sup>

1. Only recorded data are available.

2. Rates based on neonatal deaths by race of decedent, 1920-1960 live births based on race of child, 1970 to present live births based on race of mother.

3. Preliminary data.

4. Provisional data.

**GRAPH F-3: RESIDENT INFANT DEATH RATES PER 1,000 LIVE BIRTHS, BY RACE, FLORIDA AND UNITED STATES TOTAL, 1997-2007**

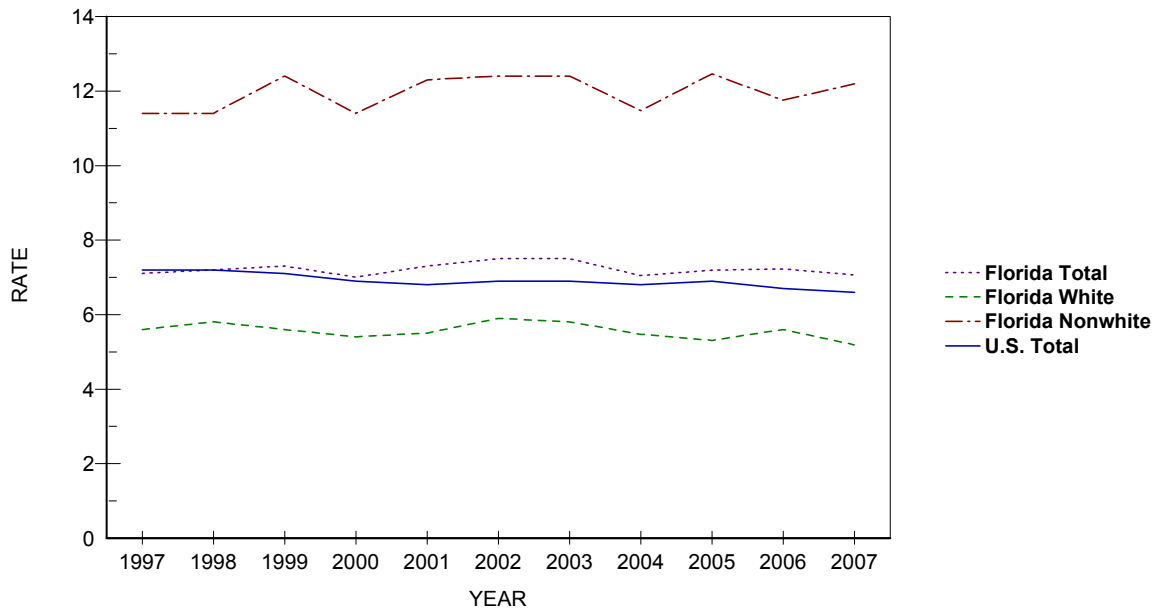


TABLE F-1: RESIDENT AND RECORDED FETAL DEATHS (OF 20 OR MORE WEEKS GESTATION) AND RATIOS PER 1,000 LIVE BIRTHS, BY RACE OF MOTHER, BY COUNTY, FLORIDA, 2007

	RESIDENT FETAL DEATHS						RATIOS		
	NUMBERS						TOTAL	WHITE	NONWHITE
	TOTAL	WHITE	NONWHITE			UNK			
		TOTAL	BLACK	OTHER					
FLORIDA	1,840	1,042	792	720	72	6	7.7	6.0	12.4
ALACHUA	18	11	7	7	0	0	6.3	6.4	6.1
BAKER	2	1	1	1	0	0	4.7	2.7	17.2
BAY	17	11	5	5	0	1	7.6	6.3	12.2
BRADFORD	4	1	3	3	0	0	11.1	3.6	37.5
BREVARD	42	27	15	13	2	0	7.3	6.0	12.4
BROWARD	196	72	124	114	10	0	8.5	5.5	13.1
CALHOUN	0	0	0	0	0	0	0.0	0.0	0.0
CHARLOTTE	6	5	1	1	0	0	5.0	4.7	7.2
CITRUS	6	6	0	0	0	0	5.1	5.5	0.0
CLAY	15	9	6	6	0	0	6.2	4.4	17.0
COLLIER	32	27	5	5	0	0	7.8	7.6	9.7
COLUMBIA	6	4	2	2	0	0	6.6	5.7	9.3
MIAMI-DADE	272	139	130	122	8	3	7.9	5.5	14.2
DEOTO	5	3	2	2	0	0	10.4	6.9	40.0
DIXIE	0	0	0	0	0	0	0.0	0.0	0.0
DUVAL	109	42	67	62	5	0	7.9	5.3	11.4
ESCAMBIA	34	15	19	19	0	0	8.0	5.5	12.3
FLAGLER	2	2	0	0	0	0	2.0	2.4	0.0
FRANKLIN	1	1	0	0	0	0	8.0	10.0	0.0
GADSDEN	5	0	5	5	0	0	6.6	0.0	11.0
GILCHRIST	1	1	0	0	0	0	5.0	5.3	0.0
GLADES	0	0	0	0	0	0	0.0	0.0	0.0
GULF	1	1	0	0	0	0	7.2	8.2	0.0
HAMILTON	1	0	1	1	0	0	5.7	0.0	16.7
HARDEE	8	8	0	0	0	0	15.3	16.5	0.0
HENDRY	10	6	4	3	1	0	12.9	9.2	33.9
HERNANDO	16	13	3	3	0	0	9.7	8.9	16.2
HIGHLANDS	13	10	3	3	0	0	11.3	11.0	12.3
HILLSBOROUGH	125	78	47	39	8	0	6.9	5.9	10.0
HOLMES	1	1	0	0	0	0	4.5	4.8	0.0
INDIAN RIVER	7	4	3	3	0	0	4.9	3.5	10.9
JACKSON	4	3	1	1	0	0	6.5	6.6	6.3
JEFFERSON	0	0	0	0	0	0	0.0	0.0	0.0
LAFAYETTE	1	1	0	0	0	0	10.4	11.9	0.0
LAKE	29	21	8	8	0	0	8.1	7.1	13.2
LEE	65	45	20	18	2	0	8.5	7.0	17.3
LEON	31	9	22	20	2	0	9.3	5.1	14.0
LEVY	3	2	1	1	0	0	6.2	4.8	13.7
LIBERTY	1	0	1	1	0	0	8.6	0.0	66.7
MADISON	0	0	0	0	0	0	0.0	0.0	0.0
MANATEE	11	8	3	3	0	0	2.7	2.4	3.8
MARION	33	20	13	11	2	0	8.9	7.0	15.5
MARTIN	8	5	3	1	2	0	6.1	5.3	8.5
MONROE	4	4	0	0	0	0	4.9	5.7	0.0
NASSAU	6	5	1	0	1	0	7.6	7.0	13.3
OKALOOSA	17	12	5	2	3	0	6.1	5.3	10.0
OKEECHOBEE	2	2	0	0	0	0	3.1	3.5	0.0
ORANGE	163	87	75	69	6	1	9.7	7.8	13.1
OSCEOLA	35	25	9	8	1	1	8.3	6.9	14.6
PALM BEACH	137	63	74	69	5	0	8.7	5.9	14.8
PASCO	26	21	5	2	3	0	4.7	4.2	8.9
PINELLAS	64	43	21	19	2	0	6.8	6.1	9.0
POLK	67	45	22	18	4	0	7.8	6.8	11.3
PUTNAM	14	10	4	4	0	0	13.0	12.4	14.7
SAINT JOHNS	12	10	2	2	0	0	6.5	6.3	7.5
SAINT LUCIE	20	13	7	7	0	0	5.5	5.1	6.4
SANTA ROSA	16	13	3	3	0	0	8.5	7.6	16.8
SARASOTA	39	30	9	8	1	0	11.8	10.6	19.4
SEMINOLE	36	24	12	8	4	0	7.5	6.4	12.1
SUMTER	4	3	1	1	0	0	7.5	6.9	10.4
SUWANNEE	3	1	2	2	0	0	5.6	2.2	26.3
TAYLOR	5	1	4	4	0	0	18.2	4.8	62.5
UNION	1	1	0	0	0	0	5.7	6.7	0.0
VOLUSIA	26	16	10	10	0	0	4.8	3.7	9.6
WAKULLA	0	0	0	0	0	0	0.0	0.0	0.0
WALTON	1	0	1	1	0	0	1.5	0.0	14.7
WASHINGTON	1	1	0	0	0	0	3.5	4.2	0.0

TABLE F-1 (Cont.): RESIDENT AND RECORDED FETAL DEATHS (OF 20 OR MORE WEEKS GESTATION) AND RATIOS PER 1,000 LIVE BIRTHS, BY RACE OF MOTHER, BY COUNTY, FLORIDA, 2007

	RECORDED FETAL DEATHS						RATIOS		
	NUMBERS								
	TOTAL	WHITE	NONWHITE			UNK	TOTAL	WHITE	NONWHITE
		TOTAL	BLACK	OTHER					
FLORIDA	1,883	1,063	813	740	73	7	7.9	6.1	12.7
ALACHUA	46	28	18	18	0	0	7.2	6.1	10.1
BAKER	0	0	0	0	0	0	0.0	0.0	0.0
BAY	18	12	5	5	0	1	6.4	5.3	10.6
BRADFORD	0	0	0	0	0	0	0.0	0.0	0.0
BREVARD	37	23	14	12	2	0	6.5	5.1	12.0
BROWARD	219	84	135	122	13	0	8.8	6.1	12.6
CALHOUN	0	0	0	0	0	0	0.0	0.0	0.0
CHARLOTTE	8	7	1	1	0	0	5.9	5.9	5.6
CITRUS	5	5	0	0	0	0	4.9	5.2	0.0
CLAY	14	10	4	3	1	0	6.7	5.9	10.3
COLLIER	32	27	5	5	0	0	7.5	7.2	9.7
COLUMBIA	6	3	3	3	0	0	9.3	6.9	14.6
MIAMI-DADE	263	134	126	119	7	3	8.3	5.6	16.3
DESOTO	6	4	2	2	0	0	10.0	7.2	47.6
DIXIE	0	0	0	0	0	0	0.0	----	0.0
DUVAL	127	54	72	67	5	1	7.9	5.4	11.8
ESCAMBIA	49	27	22	22	0	0	8.2	6.3	12.9
FLAGLER	0	0	0	0	0	0	0.0	0.0	0.0
FRANKLIN	0	0	0	0	0	0	0.0	0.0	----
GADSDEN	0	0	0	0	0	0	0.0	0.0	0.0
GILCHRIST	0	0	0	0	0	0	----	----	----
GLADES	0	0	0	0	0	0	----	----	----
GULF	0	0	0	0	0	0	----	----	----
HAMILTON	0	0	0	0	0	0	----	----	----
HARDEE	0	0	0	0	0	0	0.0	0.0	----
HENDRY	0	0	0	0	0	0	0.0	0.0	0.0
HERNANDO	19	15	4	4	0	0	9.9	8.7	21.7
HIGHLANDS	14	11	3	3	0	0	8.7	8.4	10.0
HILLSBOROUGH	145	93	52	41	11	0	7.1	6.1	10.3
HOLMES	0	0	0	0	0	0	0.0	----	0.0
INDIAN RIVER	9	5	4	4	0	0	7.0	4.9	15.1
JACKSON	5	4	1	1	0	0	8.3	9.2	5.9
JEFFERSON	0	0	0	0	0	0	0.0	0.0	----
LAFAYETTE	0	0	0	0	0	0	----	----	----
LAKE	20	14	6	6	0	0	6.0	5.2	9.7
LEE	68	48	20	18	2	0	8.3	6.9	16.6
LEON	43	12	31	29	2	0	8.0	4.0	13.0
LEVY	0	0	0	0	0	0	0.0	0.0	----
LIBERTY	0	0	0	0	0	0	0.0	0.0	----
MADISON	0	0	0	0	0	0	0.0	0.0	0.0
MANATEE	6	4	2	2	0	0	1.7	1.4	3.0
MARION	24	12	12	10	2	0	7.8	5.0	17.6
MARTIN	15	9	6	4	2	0	6.9	5.3	12.4
MONROE	2	1	1	1	0	0	3.4	2.0	11.8
NASSAU	3	3	0	0	0	0	7.6	9.3	0.0
OKALOOSA	19	13	6	3	3	0	6.1	5.0	11.2
OKEECHOBEE	0	0	0	0	0	0	0.0	0.0	----
ORANGE	221	130	89	81	8	2	10.5	8.9	13.9
OSCEOLA	34	22	12	10	2	0	8.1	6.2	18.8
PALM BEACH	153	73	80	75	5	0	8.6	5.9	14.6
PASCO	8	7	1	1	0	0	4.7	4.7	5.3
PINELLAS	80	57	23	21	2	0	7.0	6.4	9.3
POLK	55	35	20	17	3	0	7.5	6.2	11.9
PUTNAM	9	7	2	2	0	0	16.3	18.1	12.0
SAINT JOHNS	4	3	1	1	0	0	3.1	2.8	4.7
SAINT LUCIE	11	8	3	3	0	0	4.5	5.1	3.4
SANTA ROSA	1	1	0	0	0	0	2.8	3.0	0.0
SARASOTA	44	34	10	9	1	0	12.1	11.0	18.6
SEMINOLE	16	8	8	6	2	0	4.3	2.7	10.2
SUMTER	2	1	1	1	0	0	1,000.0	500.0	----
SUWANNEE	0	0	0	0	0	0	0.0	0.0	0.0
TAYLOR	1	0	1	1	0	0	125.0	0.0	333.3
UNION	0	0	0	0	0	0	----	----	----
VOLUSIA	22	15	7	7	0	0	4.7	4.0	7.3
WAKULLA	0	0	0	0	0	0	----	----	----
WALTON	0	0	0	0	0	0	0.0	0.0	0.0
WASHINGTON	0	0	0	0	0	0	0.0	0.0	----

TABLE F-2: RESIDENT FETAL DEATHS BY HISPANIC OR HAITIAN ORIGIN OF MOTHER, BY COUNTY, FLORIDA, 2007

	TOTAL	HISPANIC ORIGIN							HAITIAN	NON-HISPANIC/HAITIAN	UNK
		TOTAL HISPANIC	MEXICAN	PUERTO RICAN	CUBAN	CENTRAL/SOUTH AMERICAN	OTHER/UNK HISPANIC				
FLORIDA	1,840	430	121	99	59	117	34	105	1,253	52	
ALACHUA	18	1	0	1	0	0	0	0	17	0	
BAKER	2	0	0	0	0	0	0	0	2	0	
BAY	17	1	1	0	0	0	0	0	16	0	
BRADFORD	4	0	0	0	0	0	0	0	4	0	
BREVARD	42	1	0	0	0	1	0	0	39	2	
BROWARD	196	31	1	7	6	16	1	22	134	9	
CALHOUN	0	0	0	0	0	0	0	0	0	0	
CHARLOTTE	6	2	2	0	0	0	0	1	3	0	
CITRUS	6	1	0	1	0	0	0	0	5	0	
CLAY	15	0	0	0	0	0	0	0	15	0	
COLLIER	32	24	16	1	0	7	0	2	6	0	
COLUMBIA	6	0	0	0	0	0	0	0	5	1	
MIAMI-DADE	272	117	10	12	36	48	11	25	103	27	
DESOTO	5	2	2	0	0	0	0	0	3	0	
DIXIE	0	0	0	0	0	0	0	0	0	0	
DUVAL	109	8	3	4	0	1	0	4	96	1	
ESCAMBIA	34	1	0	0	0	1	0	0	33	0	
FLAGLER	2	1	1	0	0	0	0	0	1	0	
FRANKLIN	1	0	0	0	0	0	0	0	1	0	
GADSDEN	5	0	0	0	0	0	0	0	5	0	
GILCHRIST	1	1	1	0	0	0	0	0	0	0	
GLADES	0	0	0	0	0	0	0	0	0	0	
GULF	1	0	0	0	0	0	0	0	1	0	
HAMILTON	1	0	0	0	0	0	0	0	1	0	
HARDEE	8	6	6	0	0	0	0	0	2	0	
HENDRY	10	4	3	1	0	0	0	0	5	1	
HERNANDO	16	2	0	2	0	0	0	0	14	0	
HIGHLANDS	13	1	0	1	0	0	0	0	12	0	
HILLSBOROUGH	125	34	13	11	3	6	1	4	87	0	
HOLMES	1	0	0	0	0	0	0	0	1	0	
INDIAN RIVER	7	1	1	0	0	0	0	0	6	0	
JACKSON	4	0	0	0	0	0	0	0	4	0	
JEFFERSON	0	0	0	0	0	0	0	0	0	0	
LAFAYETTE	1	0	0	0	0	0	0	0	1	0	
LAKE	29	4	2	2	0	0	0	1	24	0	
LEE	65	20	7	0	4	4	5	3	41	1	
LEON	31	2	2	0	0	0	0	0	29	0	
LEVY	3	2	2	0	0	0	0	0	1	0	
LIBERTY	1	0	0	0	0	0	0	0	1	0	
MADISON	0	0	0	0	0	0	0	0	0	0	
MANATEE	11	3	2	0	0	1	0	1	7	0	
MARION	33	5	1	3	0	1	0	1	27	0	
MARTIN	8	6	4	0	0	2	0	0	2	0	
MONROE	4	3	0	0	3	0	0	0	0	1	
NASSAU	6	0	0	0	0	0	0	0	6	0	
OKALOOSA	17	2	1	0	0	1	0	0	15	0	
OKEECHOBEE	2	0	0	0	0	0	0	0	2	0	
ORANGE	163	45	11	20	1	7	6	13	100	5	
OSCEOLA	35	17	2	10	1	2	2	0	17	1	
PALM BEACH	137	29	6	5	1	13	4	23	85	0	
PASCO	26	4	2	2	0	0	0	0	22	0	
PINELLAS	64	6	2	1	1	1	1	0	58	0	
POLK	67	13	7	6	0	0	0	1	51	2	
PUTNAM	14	2	2	0	0	0	0	0	12	0	
SAINT JOHNS	12	2	0	1	1	0	0	0	10	0	
SAINT LUCIE	20	3	1	1	0	0	1	2	15	0	
SANTA ROSA	16	1	0	1	0	0	0	0	15	0	
SARASOTA	39	10	3	1	2	3	1	0	29	0	
SEMINOLE	36	9	1	5	0	2	1	2	24	1	
SUMTER	4	2	2	0	0	0	0	0	2	0	
SUWANNEE	3	0	0	0	0	0	0	0	3	0	
TAYLOR	5	0	0	0	0	0	0	0	5	0	
UNION	1	0	0	0	0	0	0	0	1	0	
VOLUSIA	26	1	1	0	0	0	0	0	25	0	
WAKULLA	0	0	0	0	0	0	0	0	0	0	
WALTON	1	0	0	0	0	0	0	0	1	0	
WASHINGTON	1	0	0	0	0	0	0	0	1	0	



TABLE F-3: RESIDENT FETAL DEATHS BY AGE OF MOTHER, BY COUNTY, FLORIDA, 2007

	TOTAL	AGE OF MOTHER													
		<13	13	14	15	16	17	18	19	20-24	25-29	30-34	35-44	45+	UNK
FLORIDA	1,840	0	1	7	15	28	37	51	79	442	444	410	294	9	23
ALACHUA	18	0	0	0	0	0	0	0	1	5	6	3	2	0	1
BAKER	2	0	0	0	0	0	0	0	0	1	0	0	1	0	0
BAY	17	0	0	0	0	1	2	0	2	4	3	3	2	0	0
BRADFORD	4	0	0	0	0	0	0	0	0	0	1	3	0	0	0
BREVARD	42	0	0	0	0	0	0	0	3	12	9	12	5	0	1
BROWARD	196	0	0	2	2	3	4	4	12	30	39	51	41	2	6
CALHOUN	0	0	0	0	0	0	0	0	0	0	0	0	0	0	0
CHARLOTTE	6	0	0	0	0	1	0	0	0	2	2	0	1	0	0
CITRUS	6	0	0	0	0	0	0	0	0	3	2	0	1	0	0
CLAY	15	0	0	0	0	1	0	0	0	5	1	6	2	0	0
COLLIER	32	0	0	0	0	0	1	0	0	12	7	6	5	1	0
COLUMBIA	6	0	0	0	0	0	0	0	0	2	2	1	1	0	0
MIAMI-DADE	272	0	0	3	2	2	6	7	9	67	64	63	41	0	8
DESOTO	5	0	0	0	0	0	0	0	0	1	2	1	1	0	0
DIXIE	0	0	0	0	0	0	0	0	0	0	0	0	0	0	0
DUVAL	109	0	0	0	0	3	6	3	2	28	30	18	17	0	2
ESCAMBIA	34	0	0	0	1	1	0	5	1	12	9	4	1	0	0
FLAGLER	2	0	0	0	0	0	0	0	0	1	0	0	0	1	0
FRANKLIN	1	0	0	0	0	0	0	0	0	0	1	0	0	0	0
GADSDEN	5	0	0	0	0	0	0	0	0	1	1	2	1	0	0
GILCHRIST	1	0	0	0	0	0	0	0	0	0	0	0	1	0	0
GLADES	0	0	0	0	0	0	0	0	0	0	0	0	0	0	0
GULF	1	0	0	0	0	0	0	0	0	1	0	0	0	0	0
HAMILTON	1	0	0	1	0	0	0	0	0	0	0	0	0	0	0
HARDEE	8	0	0	0	0	0	0	0	0	4	1	1	2	0	0
HENDRY	10	0	0	0	0	0	0	1	0	3	5	0	1	0	0
HERNANDO	16	0	0	0	0	0	1	2	2	3	3	2	1	1	1
HIGHLANDS	13	0	0	0	1	0	0	0	0	5	2	5	0	0	0
HILLSBOROUGH	125	0	0	0	1	1	2	3	5	26	30	31	24	1	1
HOLMES	1	0	0	0	0	0	0	0	0	0	0	0	1	0	0
INDIAN RIVER	7	0	0	0	0	0	0	0	1	1	2	3	0	0	0
JACKSON	4	0	0	0	0	1	0	0	0	0	1	2	0	0	0
JEFFERSON	0	0	0	0	0	0	0	0	0	0	0	0	0	0	0
LAFAYETTE	1	0	0	0	0	0	0	0	0	1	0	0	0	0	0
LAKE	29	0	1	0	0	0	0	1	1	6	12	5	3	0	0
LEE	65	0	0	0	0	0	1	3	3	19	14	12	13	0	0
LEON	31	0	0	0	1	1	0	1	2	10	4	8	4	0	0
LEVY	3	0	0	0	0	0	0	0	0	3	0	0	0	0	0
LIBERTY	1	0	0	0	0	0	0	0	0	1	0	0	0	0	0
MADISON	0	0	0	0	0	0	0	0	0	0	0	0	0	0	0
MANATEE	11	0	0	0	0	0	0	1	1	4	1	3	1	0	0
MARION	33	0	0	0	0	0	0	1	2	13	11	2	4	0	0
MARTIN	8	0	0	0	0	1	0	1	0	2	2	2	0	0	0
MONROE	4	0	0	0	0	0	0	0	0	2	1	1	0	0	0
NASSAU	6	0	0	0	0	0	0	2	0	1	0	1	2	0	0
OKALOOSA	17	0	0	0	0	0	0	0	1	7	6	1	2	0	0
OKEECHOBEE	2	0	0	0	0	0	0	0	0	2	0	0	0	0	0
ORANGE	163	0	0	0	2	3	4	7	11	34	31	46	19	3	3
OSCEOLA	35	0	0	0	1	1	1	0	0	12	11	5	4	0	0
PALM BEACH	137	0	0	0	0	3	5	1	7	25	35	34	27	0	0
PASCO	26	0	0	0	0	0	0	0	3	5	10	3	5	0	0
PINELLAS	64	0	0	0	1	0	2	1	3	18	22	7	10	0	0
POLK	67	0	0	0	2	0	2	4	4	14	11	20	10	0	0
PUTNAM	14	0	0	0	0	0	0	1	1	8	2	2	0	0	0
SAINT JOHNS	12	0	0	0	0	0	0	0	1	2	3	3	3	0	0
SAINT LUCIE	20	0	0	0	0	1	0	0	1	3	4	6	5	0	0
SANTA ROSA	16	0	0	0	0	0	0	0	0	7	4	0	5	0	0
SARASOTA	39	0	0	1	0	1	0	0	0	5	12	12	8	0	0
SEMINOLE	36	0	0	0	0	2	0	1	0	3	9	11	10	0	0
SUMTER	4	0	0	0	0	0	0	0	0	1	2	0	1	0	0
SUWANNEE	3	0	0	0	0	0	0	0	0	1	1	1	0	0	0
TAYLOR	5	0	0	0	0	0	0	0	0	0	2	2	1	0	0
UNION	1	0	0	0	0	0	0	0	0	1	0	0	0	0	0
VOLUSIA	26	0	0	0	1	1	0	1	0	3	11	5	4	0	0
WAKULLA	0	0	0	0	0	0	0	0	0	0	0	0	0	0	0
WALTON	1	0	0	0	0	0	0	0	0	0	0	1	0	0	0
WASHINGTON	1	0	0	0	0	0	0	0	0	0	0	0	1	0	0

TABLE F-4: RESIDENT AND RECORDED NEONATAL DEATHS (UNDER 28 DAYS) AND RATES PER 1,000 LIVE BIRTHS, BY RACE, BY COUNTY, FLORIDA, 2007

	RESIDENT NEONATAL DEATHS							RATES*		
	TOTAL	WHITE	NUMBERS			UNK	TOTAL	WHITE	NONWHITE	
			TOTAL	BLACK	OTHER					
FLORIDA	1,062	573	487	422	65	2	4.4	3.3	7.6	
ALACHUA	16	4	12	10	2	0	5.6	2.3	10.5	
BAKER	1	1	0	0	0	0	2.3	2.7	0.0	
BAY	4	4	0	0	0	0	1.8	2.3	0.0	
BRADFORD	4	2	2	2	0	0	11.1	7.1	25.0	
BREVARD	23	15	8	8	0	0	4.0	3.3	6.6	
BROWARD	92	28	64	57	7	0	4.0	2.1	6.8	
CALHOUN	1	1	0	0	0	0	5.7	6.6	0.0	
CHARLOTTE	3	3	0	0	0	0	2.5	2.8	0.0	
CITRUS	5	3	2	1	1	0	4.2	2.7	24.4	
CLAY	7	4	3	3	0	0	2.9	1.9	8.5	
COLLIER	15	10	4	4	0	1	3.7	2.8	7.7	
COLUMBIA	10	7	3	3	0	0	11.0	10.0	14.0	
MIAMI-DADE	132	66	66	61	5	0	3.8	2.6	7.2	
DESOTO	1	1	0	0	0	0	2.1	2.3	0.0	
DIXIE	1	1	0	0	0	0	5.4	6.0	0.0	
DUVAL	80	38	42	37	5	0	5.8	4.8	7.1	
ESCAMBIA	16	7	9	8	1	0	3.8	2.6	5.8	
FLAGLER	3	1	2	2	0	0	3.0	1.2	12.3	
FRANKLIN	0	0	0	0	0	0	0.0	0.0	0.0	
GADSDEN	7	3	4	4	0	0	9.2	9.8	8.8	
GILCHRIST	1	1	0	0	0	0	5.0	5.3	0.0	
GLADES	1	0	1	1	0	0	10.1	0.0	38.5	
GULF	1	0	1	1	0	0	7.2	0.0	66.7	
HAMILTON	3	1	2	2	0	0	17.2	8.8	33.3	
HARDEE	5	5	0	0	0	0	9.5	10.3	0.0	
HENDRY	6	5	1	1	0	0	7.7	7.6	8.5	
HERNANDO	7	7	0	0	0	0	4.2	4.8	0.0	
HIGHLANDS	0	0	0	0	0	0	0.0	0.0	0.0	
HILLSBOROUGH	104	53	50	37	13	1	5.8	4.0	10.6	
HOLMES	0	0	0	0	0	0	0.0	0.0	0.0	
INDIAN RIVER	9	4	5	5	0	0	6.3	3.5	18.1	
JACKSON	1	1	0	0	0	0	1.6	2.2	0.0	
JEFFERSON	0	0	0	0	0	0	0.0	0.0	0.0	
LAFAYETTE	0	0	0	0	0	0	0.0	0.0	0.0	
LAKE	24	20	4	2	2	0	6.7	6.8	6.6	
LEE	38	27	11	11	0	0	5.0	4.2	9.5	
LEON	22	8	14	11	3	0	6.6	4.6	8.9	
LEVY	1	1	0	0	0	0	2.1	2.4	0.0	
LIBERTY	0	0	0	0	0	0	0.0	0.0	0.0	
MADISON	0	0	0	0	0	0	0.0	0.0	0.0	
MANATEE	26	17	9	7	2	0	6.3	5.1	11.5	
MARION	19	13	6	5	1	0	5.1	4.6	7.1	
MARTIN	7	5	2	2	0	0	5.4	5.3	5.7	
MONROE	2	2	0	0	0	0	2.5	2.8	0.0	
NASSAU	4	3	1	0	1	0	5.1	4.2	13.3	
OKALOOSA	13	11	2	0	2	0	4.7	4.8	4.0	
OKEECHOBEE	3	1	2	2	0	0	4.7	1.7	29.4	
ORANGE	76	28	48	44	4	0	4.5	2.5	8.4	
OSCEOLA	21	15	6	5	1	0	5.0	4.2	9.7	
PALM BEACH	60	31	29	29	0	0	3.8	2.9	5.8	
PASCO	20	15	5	2	3	0	3.6	3.0	8.9	
PINELLAS	46	27	19	15	4	0	4.9	3.8	8.2	
POLK	42	26	16	14	2	0	4.9	3.9	8.2	
PUTNAM	1	1	0	0	0	0	0.9	1.2	0.0	
SAINT JOHNS	6	4	2	2	0	0	3.2	2.5	7.5	
SAINT LUCIE	11	6	5	4	1	0	3.0	2.4	4.6	
SANTA ROSA	8	5	3	2	1	0	4.2	2.9	16.8	
SARASOTA	4	3	1	1	0	0	1.2	1.1	2.2	
SEMINOLE	18	7	11	9	2	0	3.8	1.9	11.1	
SUMTER	1	0	1	1	0	0	1.9	0.0	10.4	
SUWANNEE	6	3	3	3	0	0	11.3	6.6	39.5	
TAYLOR	2	0	2	1	1	0	7.3	0.0	31.3	
UNION	3	3	0	0	0	0	17.0	20.0	0.0	
VOLUSIA	17	14	3	2	1	0	3.1	3.2	2.9	
WAKULLA	0	0	0	0	0	0	0.0	0.0	0.0	
WALTON	2	1	1	1	0	0	3.1	1.7	14.7	
WASHINGTON	0	0	0	0	0	0	0.0	0.0	0.0	

\*Rates based on neonatal deaths by race of decedent, live births by race of mother.

TABLE F-4 (Cont.): RESIDENT AND RECORDED NEONATAL DEATHS (UNDER 28 DAYS) AND RATES PER 1,000 LIVE BIRTHS, BY RACE, BY COUNTY, FLORIDA, 2007

	RECORDED NEONATAL DEATHS						RATES*		
	TOTAL	WHITE	NUMBERS			UNK	TOTAL	WHITE	NONWHITE
			TOTAL	BLACK	OTHER				
FLORIDA	1,079	584	494	429	65	1	4.5	3.3	7.7
ALACHUA	70	38	32	27	5	0	11.0	8.3	18.0
BAKER	0	0	0	0	0	0	0.0	0.0	0.0
BAY	2	2	0	0	0	0	0.7	0.9	0.0
BRADFORD	0	0	0	0	0	0	0.0	0.0	0.0
BREVARD	14	10	4	4	0	0	2.5	2.2	3.4
BROWARD	93	26	67	59	8	0	3.7	1.9	6.3
CALHOUN	0	0	0	0	0	0	0.0	0.0	0.0
CHARLOTTE	0	0	0	0	0	0	0.0	0.0	0.0
CITRUS	2	2	0	0	0	0	1.9	2.1	0.0
CLAY	4	2	2	1	1	0	1.9	1.2	5.2
COLLIER	6	3	3	3	0	0	1.4	0.8	5.8
COLUMBIA	2	1	1	1	0	0	3.1	2.3	4.9
MIAMI-DADE	150	86	64	61	3	0	4.7	3.6	8.3
DESOTO	1	1	0	0	0	0	1.7	1.8	0.0
DIXIE	0	0	0	0	0	0	0.0	----	0.0
DUVAL	96	49	47	42	5	0	5.9	4.9	7.7
ESCAMBIA	35	19	16	12	4	0	5.8	4.4	9.4
FLAGLER	1	0	1	1	0	0	83.3	0.0	500.0
FRANKLIN	0	0	0	0	0	0	0.0	0.0	----
GADSDEN	0	0	0	0	0	0	0.0	0.0	0.0
GILCHRIST	0	0	0	0	0	0	----	----	----
GLADES	0	0	0	0	0	0	----	----	----
GULF	0	0	0	0	0	0	----	----	----
HAMILTON	0	0	0	0	0	0	----	----	----
HARDEE	1	1	0	0	0	0	333.3	333.3	----
HENDRY	0	0	0	0	0	0	0.0	0.0	0.0
HERNANDO	2	2	0	0	0	0	1.0	1.2	0.0
HIGHLANDS	0	0	0	0	0	0	0.0	0.0	0.0
HILLSBOROUGH	135	76	58	45	13	1	6.6	5.0	11.5
HOLMES	0	0	0	0	0	0	0.0	----	0.0
INDIAN RIVER	6	4	2	2	0	0	4.6	3.9	7.5
JACKSON	0	0	0	0	0	0	0.0	0.0	0.0
JEFFERSON	0	0	0	0	0	0	0.0	0.0	----
LAFAYETTE	0	0	0	0	0	0	----	----	----
LAKE	5	5	0	0	0	0	1.5	1.9	0.0
LEE	42	29	13	13	0	0	5.1	4.1	10.8
LEON	28	11	17	15	2	0	5.2	3.7	7.2
LEVY	0	0	0	0	0	0	0.0	0.0	----
LIBERTY	0	0	0	0	0	0	0.0	0.0	----
MADISON	0	0	0	0	0	0	0.0	0.0	0.0
MANATEE	4	3	1	0	1	0	1.1	1.1	1.5
MARION	1	0	1	1	0	0	0.3	0.0	1.5
MARTIN	4	3	1	1	0	0	1.8	1.8	2.1
MONROE	1	1	0	0	0	0	1.7	2.0	0.0
NASSAU	0	0	0	0	0	0	0.0	0.0	0.0
OKALOOSA	8	8	0	0	0	0	2.6	3.1	0.0
OKEECHOBEE	0	0	0	0	0	0	0.0	0.0	----
ORANGE	156	80	76	68	8	0	7.4	5.5	11.9
OSCEOLA	6	4	2	1	1	0	1.4	1.1	3.1
PALM BEACH	77	39	38	37	1	0	4.3	3.2	6.9
PASCO	4	3	1	0	1	0	2.4	2.0	5.3
PINELLAS	73	45	28	20	8	0	6.4	5.1	11.3
POLK	21	12	9	8	1	0	2.9	2.1	5.4
PUTNAM	0	0	0	0	0	0	0.0	0.0	0.0
SAINT JOHNS	4	3	1	1	0	0	3.1	2.8	4.7
SAINT LUCIE	2	0	2	1	1	0	0.8	0.0	2.3
SANTA ROSA	1	1	0	0	0	0	2.8	3.0	0.0
SARASOTA	9	8	1	1	0	0	2.5	2.6	1.9
SEMINOLE	6	3	3	3	0	0	1.6	1.0	3.8
SUMTER	0	0	0	0	0	0	0.0	0.0	----
SUWANNEE	1	0	1	1	0	0	250.0	0.0	1,000.0
TAYLOR	1	0	1	0	1	0	125.0	0.0	333.3
UNION	1	1	0	0	0	0	----	----	----
VOLUSIA	4	3	1	0	1	0	0.9	0.8	1.0
WAKULLA	0	0	0	0	0	0	----	----	----
WALTON	0	0	0	0	0	0	0.0	0.0	0.0
WASHINGTON	0	0	0	0	0	0	0.0	0.0	----

\*Rates based on neonatal deaths by race of decedent, live births by race of mother.

TABLE F-5: RESIDENT AND RECORDED INFANT DEATHS (UNDER 1 YEAR) AND RATES PER 1,000 LIVE BIRTHS, BY RACE, BY COUNTY, FLORIDA, 2007

	RESIDENT INFANT DEATHS						RATES*		
	TOTAL	WHITE	NUMBERS			UNK	TOTAL	WHITE	NONWHITE
			TOTAL	BLACK	OTHER				
FLORIDA	1,689	906	781	689	92	2	7.1	5.2	12.2
ALACHUA	25	6	19	17	2	0	8.8	3.5	16.6
BAKER	3	3	0	0	0	0	7.0	8.1	0.0
BAY	8	7	1	1	0	0	3.6	4.0	2.4
BRADFORD	5	3	2	2	0	0	13.9	10.7	25.0
BREVARD	38	22	16	16	0	0	6.6	4.9	13.2
BROWARD	130	39	91	81	10	0	5.7	3.0	9.6
CALHOUN	3	2	1	1	0	0	17.0	13.2	41.7
CHARLOTTE	7	6	1	1	0	0	5.8	5.7	7.2
CITRUS	6	4	2	1	1	0	5.1	3.7	24.4
CLAY	11	8	3	3	0	0	4.5	3.9	8.5
COLLIER	24	18	5	5	0	1	5.9	5.0	9.7
COLUMBIA	15	12	3	3	0	0	16.5	17.2	14.0
MIAMI-DADE	214	105	109	103	6	0	6.2	4.2	11.9
DESOTO	1	1	0	0	0	0	2.1	2.3	0.0
DIXIE	2	2	0	0	0	0	10.8	11.9	0.0
DUVAL	124	53	71	64	7	0	9.0	6.7	12.1
ESCAMBIA	31	13	18	15	3	0	7.3	4.8	11.7
FLAGLER	4	2	2	2	0	0	4.0	2.4	12.3
FRANKLIN	0	0	0	0	0	0	0.0	0.0	0.0
GADSDEN	10	4	6	6	0	0	13.2	13.1	13.2
GILCHRIST	1	1	0	0	0	0	5.0	5.3	0.0
GLADES	1	0	1	1	0	0	10.1	0.0	38.5
GULF	1	0	1	1	0	0	7.2	0.0	66.7
HAMILTON	4	1	3	3	0	0	23.0	8.8	50.0
HARDEE	7	7	0	0	0	0	13.4	14.4	0.0
HENDRY	9	7	2	2	0	0	11.6	10.7	16.9
HERNANDO	12	10	2	1	1	0	7.3	6.8	10.8
HIGHLANDS	6	3	3	3	0	0	5.2	3.3	12.3
HILLSBOROUGH	153	77	75	58	17	1	8.5	5.8	15.9
HOLMES	1	1	0	0	0	0	4.5	4.8	0.0
INDIAN RIVER	13	8	5	5	0	0	9.1	7.0	18.1
JACKSON	3	2	1	1	0	0	4.9	4.4	6.3
JEFFERSON	0	0	0	0	0	0	0.0	0.0	0.0
LAFAYETTE	0	0	0	0	0	0	0.0	0.0	0.0
LAKE	34	27	7	4	3	0	9.5	9.1	11.5
LEE	56	39	17	17	0	0	7.3	6.0	14.7
LEON	30	10	20	17	3	0	9.0	5.7	12.7
LEVY	2	2	0	0	0	0	4.1	4.8	0.0
LIBERTY	0	0	0	0	0	0	0.0	0.0	0.0
MADISON	0	0	0	0	0	0	0.0	0.0	0.0
MANATEE	36	25	11	9	2	0	8.7	7.5	14.0
MARION	30	22	8	7	1	0	8.1	7.7	9.5
MARTIN	11	7	4	4	0	0	8.4	7.4	11.4
MONROE	2	2	0	0	0	0	2.5	2.8	0.0
NASSAU	6	4	2	1	1	0	7.6	5.6	26.7
OKALOOSA	25	18	7	5	2	0	9.0	7.9	14.0
OKEECHOBEE	4	1	3	3	0	0	6.2	1.7	44.1
ORANGE	120	51	69	61	8	0	7.1	4.6	12.1
OSCEOLA	30	22	8	7	1	0	7.1	6.1	13.0
PALM BEACH	102	45	57	55	2	0	6.5	4.2	11.4
PASCO	33	26	7	3	4	0	6.0	5.2	12.5
PINELLAS	69	39	30	26	4	0	7.3	5.5	12.9
POLK	75	46	29	26	3	0	8.8	7.0	14.9
PUTNAM	5	4	1	1	0	0	4.6	5.0	3.7
SAINT JOHNS	10	7	3	3	0	0	5.4	4.4	11.3
SAINT LUCIE	24	11	13	12	1	0	6.6	4.3	12.0
SANTA ROSA	14	10	4	2	2	0	7.4	5.9	22.3
SARASOTA	8	7	1	1	0	0	2.4	2.5	2.2
SEMINOLE	28	13	15	12	3	0	5.9	3.4	15.1
SUMTER	2	1	1	1	0	0	3.8	2.3	10.4
SUWANNEE	7	4	3	3	0	0	13.1	8.8	39.5
TAYLOR	2	0	2	1	1	0	7.3	0.0	31.3
UNION	4	4	0	0	0	0	22.7	26.7	0.0
VOLUSIA	43	29	14	10	4	0	7.9	6.6	13.5
WAKULLA	1	1	0	0	0	0	3.5	4.0	0.0
WALTON	3	2	1	1	0	0	4.6	3.4	14.7
WASHINGTON	0	0	0	0	0	0	0.0	0.0	0.0

\*Rates based on infant deaths by race of decedent, live births by race of mother.

TABLE F-5 (Cont.): RESIDENT AND RECORDED INFANT DEATHS (UNDER 1 YEAR) AND RATES PER 1,000 LIVE BIRTHS, BY RACE, BY COUNTY, FLORIDA, 2007

	RECORDED INFANT DEATHS						RATES*		
	TOTAL	WHITE	NUMBERS			UNK	TOTAL	WHITE	NONWHITE
			TOTAL	BLACK	OTHER				
FLORIDA	1,715	918	796	704	92	1	7.2	5.3	12.4
ALACHUA	95	52	43	37	6	0	14.9	11.3	24.2
BAKER	2	2	0	0	0	0	1,000.0	2,000.0	0.0
BAY	4	3	1	1	0	0	1.4	1.3	2.1
BRADFORD	1	1	0	0	0	0	500.0	1,000.0	0.0
BREVARD	20	15	5	5	0	0	3.5	3.3	4.3
BROWARD	136	36	100	89	11	0	5.5	2.6	9.3
CALHOUN	1	1	0	0	0	0	250.0	333.3	0.0
CHARLOTTE	1	1	0	0	0	0	0.7	0.8	0.0
CITRUS	3	3	0	0	0	0	2.9	3.1	0.0
CLAY	7	5	2	1	1	0	3.4	2.9	5.2
COLLIER	11	8	3	3	0	0	2.6	2.1	5.8
COLUMBIA	5	3	2	2	0	0	7.8	6.9	9.7
MIAMI-DADE	246	137	109	104	5	0	7.8	5.7	14.1
DESOTO	1	1	0	0	0	0	1.7	1.8	0.0
DIXIE	0	0	0	0	0	0	0.0	----	0.0
DUVAL	145	67	78	71	7	0	9.0	6.6	12.8
ESCAMBIA	60	32	28	22	6	0	10.0	7.4	16.5
FLAGLER	2	1	1	1	0	0	166.7	111.1	500.0
FRANKLIN	0	0	0	0	0	0	0.0	0.0	----
GADSDEN	1	0	1	1	0	0	250.0	0.0	500.0
GILCHRIST	0	0	0	0	0	0	----	----	----
GLADES	0	0	0	0	0	0	----	----	----
GULF	0	0	0	0	0	0	----	----	----
HAMILTON	1	0	1	1	0	0	----	----	----
HARDEE	3	2	1	1	0	0	1,000.0	666.7	----
HENDRY	2	1	1	1	0	0	500.0	1,000.0	333.3
HERNANDO	3	2	1	0	1	0	1.6	1.2	5.4
HIGHLANDS	5	3	2	2	0	0	3.1	2.3	6.6
HILLSBOROUGH	196	109	86	69	17	1	9.6	7.1	17.0
HOLMES	1	1	0	0	0	0	1,000.0	----	0.0
INDIAN RIVER	7	5	2	2	0	0	5.4	4.9	7.5
JACKSON	0	0	0	0	0	0	0.0	0.0	0.0
JEFFERSON	0	0	0	0	0	0	0.0	0.0	----
LAFAYETTE	0	0	0	0	0	0	----	----	----
LAKE	9	8	1	0	1	0	2.7	3.0	1.6
LEE	55	39	16	16	0	0	6.7	5.6	13.3
LEON	41	15	26	24	2	0	7.6	5.0	10.9
LEVY	1	0	1	1	0	0	250.0	0.0	----
LIBERTY	0	0	0	0	0	0	0.0	0.0	----
MADISON	0	0	0	0	0	0	0.0	0.0	0.0
MANATEE	8	5	3	2	1	0	2.3	1.8	4.5
MARION	8	6	2	2	0	0	2.6	2.5	2.9
MARTIN	6	5	1	1	0	0	2.8	3.0	2.1
MONROE	1	1	0	0	0	0	1.7	2.0	0.0
NASSAU	0	0	0	0	0	0	0.0	0.0	0.0
OKALOOSA	11	9	2	2	0	0	3.5	3.5	3.7
OKEECHOBEE	1	0	1	1	0	0	83.3	0.0	----
ORANGE	235	120	115	102	13	0	11.2	8.2	18.0
OSCEOLA	13	9	4	3	1	0	3.1	2.5	6.3
PALM BEACH	122	55	67	64	3	0	6.9	4.5	12.2
PASCO	11	8	3	1	2	0	6.5	5.3	15.9
PINELLAS	116	72	44	36	8	0	10.2	8.1	17.7
POLK	41	25	16	14	2	0	5.6	4.5	9.5
PUTNAM	2	2	0	0	0	0	3.6	5.2	0.0
SAINT JOHNS	6	4	2	2	0	0	4.7	3.7	9.5
SAINT LUCIE	11	3	8	7	1	0	4.5	1.9	9.0
SANTA ROSA	6	6	0	0	0	0	16.7	18.3	0.0
SARASOTA	13	12	1	1	0	0	3.6	3.9	1.9
SEMINOLE	11	6	5	5	0	0	3.0	2.0	6.4
SUMTER	2	1	1	1	0	0	1,000.0	500.0	----
SUWANNEE	1	0	1	1	0	0	250.0	0.0	1,000.0
TAYLOR	1	0	1	0	1	0	125.0	0.0	333.3
UNION	2	2	0	0	0	0	----	----	----
VOLUSIA	20	12	8	5	3	0	4.3	3.2	8.3
WAKULLA	0	0	0	0	0	0	----	----	----
WALTON	1	1	0	0	0	0	6.1	6.6	0.0
WASHINGTON	1	1	0	0	0	0	1,000.0	1,000.0	----

\*Rates based on infant deaths by race of decedent, live births by race of mother.

TABLE F-6: RESIDENT INFANT DEATHS BY HISPANIC OR HAITIAN ORIGIN, BY COUNTY, FLORIDA, 2007

	TOTAL	HISPANIC ORIGIN							HAITIAN	NON-HISPANIC/HAITIAN	UNK
		TOTAL HISPANIC	MEXICAN	PUERTO RICAN	CUBAN	CENTRAL/SOUTH AMERICAN	OTHER/UNK HISPANIC				
FLORIDA	1,689	440	124	119	59	66	72	80	1,163	6	
ALACHUA	25	1	1	0	0	0	0	0	24	0	
BAKER	3	0	0	0	0	0	0	0	3	0	
BAY	8	0	0	0	0	0	0	0	8	0	
BRADFORD	5	0	0	0	0	0	0	0	5	0	
BREVARD	38	7	2	4	0	0	1	1	30	0	
BROWARD	130	31	4	6	2	10	9	13	86	0	
CALHOUN	3	0	0	0	0	0	0	0	3	0	
CHARLOTTE	7	1	0	0	0	1	0	0	6	0	
CITRUS	6	0	0	0	0	0	0	0	6	0	
CLAY	11	2	0	1	0	0	1	0	9	0	
COLLIER	24	10	5	0	2	2	1	4	9	1	
COLUMBIA	15	0	0	0	0	0	0	0	15	0	
MIAMI-DADE	214	91	6	14	33	17	21	15	104	4	
DESOTO	1	0	0	0	0	0	0	0	1	0	
DIXIE	2	0	0	0	0	0	0	0	2	0	
DUVAL	124	19	3	7	1	3	5	0	105	0	
ESCAMBIA	31	1	0	0	0	0	1	0	30	0	
FLAGLER	4	0	0	0	0	0	0	0	4	0	
FRANKLIN	0	0	0	0	0	0	0	0	0	0	
GADSDEN	10	2	1	0	0	1	0	0	8	0	
GILCHRIST	1	0	0	0	0	0	0	0	1	0	
GLADES	1	0	0	0	0	0	0	0	1	0	
GULF	1	0	0	0	0	0	0	0	1	0	
HAMILTON	4	0	0	0	0	0	0	0	4	0	
HARDEE	7	6	6	0	0	0	0	0	1	0	
HENDRY	9	5	5	0	0	0	0	0	4	0	
HERNANDO	12	2	0	2	0	0	0	0	10	0	
HIGHLANDS	6	1	0	1	0	0	0	0	5	0	
HILLSBOROUGH	153	53	12	19	6	10	6	4	96	0	
HOLMES	1	0	0	0	0	0	0	0	1	0	
INDIAN RIVER	13	2	2	0	0	0	0	0	11	0	
JACKSON	3	0	0	0	0	0	0	0	3	0	
JEFFERSON	0	0	0	0	0	0	0	0	0	0	
LAFAYETTE	0	0	0	0	0	0	0	0	0	0	
LAKE	34	12	3	5	1	2	1	0	22	0	
LEE	56	24	11	3	1	4	5	5	27	0	
LEON	30	2	1	0	0	0	1	0	28	0	
LEVY	2	0	0	0	0	0	0	0	2	0	
LIBERTY	0	0	0	0	0	0	0	0	0	0	
MADISON	0	0	0	0	0	0	0	0	0	0	
MANATEE	36	13	10	1	0	0	2	0	23	0	
MARION	30	6	0	3	1	0	2	1	22	1	
MARTIN	11	0	0	0	0	0	0	1	10	0	
MONROE	2	2	1	0	1	0	0	0	0	0	
NASSAU	6	0	0	0	0	0	0	0	6	0	
OKALOOSA	25	4	2	2	0	0	0	0	21	0	
OKEECHOBEE	4	0	0	0	0	0	0	0	4	0	
ORANGE	120	32	9	12	3	4	4	13	75	0	
OSCEOLA	30	21	2	17	0	0	2	1	8	0	
PALM BEACH	102	28	8	5	4	9	2	16	58	0	
PASCO	33	4	2	1	0	0	1	0	29	0	
PINELLAS	69	10	4	4	1	0	1	0	59	0	
POLK	75	22	12	5	2	0	3	2	51	0	
PUTNAM	5	2	1	0	0	0	1	0	3	0	
SAINT JOHNS	10	0	0	0	0	0	0	0	10	0	
SAINT LUCIE	24	2	1	0	0	1	0	3	19	0	
SANTA ROSA	14	2	1	1	0	0	0	0	12	0	
SARASOTA	8	2	2	0	0	0	0	1	5	0	
SEMINOLE	28	4	1	1	1	0	1	0	24	0	
SUMTER	2	0	0	0	0	0	0	0	2	0	
SUWANNEE	7	2	2	0	0	0	0	0	5	0	
TAYLOR	2	0	0	0	0	0	0	0	2	0	
UNION	4	0	0	0	0	0	0	0	4	0	
VOLUSIA	43	12	4	5	0	2	1	0	31	0	
WAKULLA	1	0	0	0	0	0	0	0	1	0	
WALTON	3	0	0	0	0	0	0	0	3	0	
WASHINGTON	0	0	0	0	0	0	0	0	0	0	

TABLE F-7: RESIDENT INFANT, NEONATAL AND POST-NEONATAL DEATHS FROM SELECTED CAUSES\* BY RACE, FLORIDA, 2007

	TOTAL			POST NEO- NATAL	WHITE			POST NEO- NATAL
	NEONATAL		INFANT		NEONATAL		INFANT	
	<1 DAY	1-27 DAYS			<1 DAY	1-27 DAYS		
TOTAL	1,689	658	404	627	906	334	239	333
Intestinal Infectious Disease	1	0	0	1	1	0	0	1
Diarrhea & Gastroenteritis--Infectious Origin	0	0	0	0	0	0	0	0
Tuberculosis	1	0	0	1	1	0	0	1
Tetanus	0	0	0	0	0	0	0	0
Diphtheria	0	0	0	0	0	0	0	0
Whooping Cough	0	0	0	0	0	0	0	0
Meningococcal Infection	0	0	0	0	0	0	0	0
Septicemia	26	0	0	26	13	0	0	13
Congenital Syphilis	2	1	1	0	1	1	0	0
Gonococcal Infection	0	0	0	0	0	0	0	0
Acute Poliomyelitis	0	0	0	0	0	0	0	0
Varicella (Chicken Pox)	0	0	0	0	0	0	0	0
Measles	0	0	0	0	0	0	0	0
HIV Disease	1	0	0	1	0	0	0	0
Mumps	0	0	0	0	0	0	0	0
Other & Unspec Viral Diseases	3	0	2	1	2	0	1	1
Candidiasis	1	0	0	1	0	0	0	0
Malaria	0	0	0	0	0	0	0	0
Pneumocystosis	0	0	0	0	0	0	0	0
Other & Unspecified Infectious & Parasitic Diseases	3	0	0	3	2	0	0	2
Hodgkins Disease & Non-Hodgkins Lymphomas	0	0	0	0	0	0	0	0
Leukemia	0	0	0	0	0	0	0	0
Other & Unspecified Malignant Neoplasm	4	0	0	4	4	0	0	4
In Situ/Benign/Malignant Neoplasms Uncert/Unk Behavior	1	0	0	1	1	0	0	1
Anemias	2	0	0	2	0	0	0	0
Blood, Blood-Forming, Hemorrhagic Diseases	11	2	2	7	8	2	0	6
Disorders Involving Immune Mechanism	0	0	0	0	0	0	0	0
Short Stature	0	0	0	0	0	0	0	0
Nutritional Deficiencies	0	0	0	0	0	0	0	0
Cystic Fibrosis	2	0	0	2	1	0	0	1
Fluid/Electrolyte/Acid-Base/Volume Depletion Disorders	5	0	2	3	2	0	1	1
Other Endocrine, Nutritional, Metabolic Diseases	15	0	5	10	10	0	3	7
Meningitis	5	0	1	4	4	0	0	4
Infantile Spinal Muscular Atrophy, Type 1 (Werdnig-Hoffman)	1	0	0	1	1	0	0	1
Infantile Cerebral Palsy	0	0	0	0	0	0	0	0
Anoxic Brain Damage	4	0	0	4	2	0	0	2
Other Nervous System Diseases	9	0	0	9	6	0	0	6
Ear & Mastoid Process Diseases	0	0	0	0	0	0	0	0
Pulmonary Heart/Circulation Diseases	8	0	1	7	4	0	1	3
Pericarditis, Endocarditis, Myocarditis	2	0	0	2	0	0	0	0
Cardiomyopathy	13	2	2	9	4	0	0	4
Cardiac Arrest	1	0	0	1	0	0	0	0
Cerebrovascular Diseases	8	0	0	8	5	0	0	5
Other Circulatory System Diseases	10	0	1	9	3	0	1	2
Acute Upper Respiratory Infections	2	0	0	2	0	0	0	0
Influenza	0	0	0	0	0	0	0	0

TABLE F-7 (Cont.): RESIDENT INFANT, NEONATAL AND POST-NEONATAL DEATHS FROM SELECTED CAUSES\*, BY RACE, FLORIDA, 2007

	TOTAL			POST NEO- NATAL	WHITE			POST NEO- NATAL
	NEONATAL		INFANT		NEONATAL		INFANT	
	<1 DAY	1-27 DAYS			<1 DAY	1-27 DAYS		
Pneumonia	11	0	0	11	3	0	0	3
Acute Bronchitis & Acute Bronchiolitis	1	0	0	1	0	0	0	0
Bronchitis, Chronic & Unspecified	2	0	0	2	1	0	0	1
Asthma	0	0	0	0	0	0	0	0
Pneumonitis Due to Solids & Liquids	1	0	0	1	1	0	0	1
Other & Unspecified Respiratory System Diseases	27	0	0	27	13	0	0	13
Gastritis, Duodenitis, Noninfective Enteritis/Colitis	26	2	2	22	8	2	0	6
Hernia Abdom Cavity & Intestinal Obstruct W/O Hernia	3	0	1	2	2	0	1	1
Other & Unspec Digestive System Disease	8	1	0	7	2	0	0	2
Renal Failure & Other Kidney Disorders	9	0	3	6	5	0	2	3
Other & Unspec Genitourinary System Dis	4	0	0	4	2	0	0	2
<b>PERINATAL PERIOD CONDITIONS</b>	<b>799</b>	<b>521</b>	<b>243</b>	<b>35</b>	<b>407</b>	<b>244</b>	<b>148</b>	<b>15</b>
Maternal Hypertensive Disorders	8	6	2	0	5	3	2	0
Maternal Conditions Unrelated Present Pregnancy	8	5	3	0	6	3	3	0
Incompetent Cervix	32	32	0	0	14	14	0	0
Premature Rupture of Membranes	50	48	2	0	26	25	1	0
Multiple Pregnancy	50	49	1	0	27	26	1	0
Maternal Complications of Pregnancy	10	9	1	0	6	5	1	0
Placenta Complications	19	15	4	0	11	10	1	0
Cord Complications	0	0	0	0	0	0	0	0
Chorioamnionitis	47	45	2	0	19	18	1	0
Other & Unspecified Membrane Abnormalities	0	0	0	0	0	0	0	0
Other Complications of Labor & Delivery	6	6	0	0	3	3	0	0
Noxious Influences Via Placenta or Breast Milk	1	1	0	0	1	1	0	0
Slow Fetal Growth & Fetal Malnutrition	8	3	5	0	3	0	3	0
Extreme Low Birth Weight or Extreme Immaturity	177	152	22	3	81	70	10	1
Other Low Birth Weight or Preterm	67	64	1	2	31	29	1	1
Long Gestation & High Birth Weight	0	0	0	0	0	0	0	0
Birth Trauma	2	0	2	0	1	0	1	0
Intrauterine Hypoxia	4	2	2	0	1	0	1	0
Birth Asphyxia	16	3	12	1	16	3	12	1
Respiratory Distress	40	19	21	0	14	6	8	0
Congenital Pneumonia	1	0	0	1	0	0	0	0
Neonatal Aspiration Syndromes	1	0	1	0	0	0	0	0
Interstitial Emphysema & Related Conditions	4	1	3	0	1	1	0	0
Pulmonary Hemorrhage	14	2	12	0	6	1	5	0
Chronic Respiratory Disease	17	1	1	15	6	0	0	6
Atelectasis	13	9	3	1	6	4	1	1
Other Respiratory Conditions	0	0	0	0	0	0	0	0
Bacterial Sepsis	53	8	42	3	29	1	27	1
Omphalitis With or Without Hemorrhage	0	0	0	0	0	0	0	0
All Other Infections	8	4	2	2	2	2	0	0
Neonatal Hemorrhage	35	1	34	0	27	0	27	0
Hemorrhagic Disease of Newborn	0	0	0	0	0	0	0	0
Hemolytic Dis Due to Isoimmunization/Perinat Jaundice	0	0	0	0	0	0	0	0
Hematological Disorders	4	0	4	0	4	0	4	0
Diabetes Mellitus, Maternal or Neonatal	1	1	0	0	0	0	0	0
Necrotizing Enterocolitis	25	0	23	2	15	0	14	1



TABLE F-7 (Cont.): RESIDENT INFANT, NEONATAL AND POST-NEONATAL DEATHS FROM SELECTED CAUSES\*, BY RACE, FLORIDA, 2007

	TOTAL			POST NEO- NATAL	WHITE			POST NEO- NATAL
	NEONATAL		INFANT		NEONATAL		INFANT	
	<1 DAY	1-27 DAYS			<1 DAY	1-27 DAYS		
Hydrops Fetalis Not Due To Hemolytic Dis	8	3	5	0	6	2	4	0
Other Perinatal Conditions	70	32	33	5	40	17	20	3
<b>CONGENITAL / CHROMOSOMAL ANOMALIES</b>	<b>341</b>	<b>120</b>	<b>112</b>	<b>109</b>	<b>212</b>	<b>78</b>	<b>68</b>	<b>66</b>
Anencephaly & Similar Anomalies	17	15	2	0	9	8	1	0
Congenital Hydrocephalus	6	2	2	2	4	1	1	2
Spina Bifida	0	0	0	0	0	0	0	0
Other Cong Malf Nervous System	21	6	6	9	15	3	5	7
Congenital Malf of Heart	78	12	28	38	58	12	21	25
Other Congenital Malf of Circulatory Sys	23	0	18	5	13	0	10	3
Congenital Malf of Respiratory Sys	18	13	4	1	12	9	2	1
Congenital Anomalies of Digestive Sys	8	0	0	8	2	0	0	2
Congenital Malf of Genitourinary Sys	26	20	3	3	16	13	1	2
Congenital Malf of Musculoskeletal Sys	30	8	13	9	18	5	7	6
Downs Syndrome	5	2	1	2	4	1	1	2
Edwards Syndrome	42	9	16	17	21	6	9	6
Patau Syndrome	14	4	7	3	12	4	6	2
Other Congenital Malf	36	24	4	8	21	13	2	6
Other Chromosomal Abnorm	17	5	8	4	7	3	2	2
Sudden Infant Death Syndrome	81	0	5	76	39	0	2	37
Symptoms, Signs, Abn Clinical/Lab Findings	94	4	12	78	57	3	7	47
All Other Diseases	0	0	0	0	0	0	0	0
Unint Inj: Motor Vehicle	7	2	0	5	5	2	0	3
Unint Inj: Other & Unspecified Transport	1	0	0	1	0	0	0	0
Unint Inj: Falls	2	0	0	2	0	0	0	0
Unint Inj: Firearms Discharge	0	0	0	0	0	0	0	0
Unint Inj: Drowning & Submersion	6	0	0	6	4	0	0	4
Unint Inj: Suffocation & Strangulation in Bed	66	0	7	59	35	0	3	32
Unint Inj: Other Suffocation & Strangulation	16	0	1	15	9	0	1	8
Unint Inj: Inhale/Ingest--Respiratory Tract Obstruction	6	0	0	6	5	0	0	5
Unint Inj: Smoke, Fire, Flames Exposure	2	0	0	2	1	0	0	1
Unint Inj: Poisoning & Noxious Substance Exposure	2	1	1	0	0	0	0	0
Unint Inj: Other & Unspecified	6	0	0	6	2	0	0	2
Homicide: Hanging, Strangulation, Suffocation	2	0	0	2	1	0	0	1
Homicide: Firearms Discharge	1	0	0	1	0	0	0	0
Homicide: Neglect, Abandonment, Maltreatment	3	0	0	3	3	0	0	3
Homicide: Other & Unspecified Means	16	1	0	15	11	1	0	10
Medical & Surgical Care Complications	3	1	0	2	2	1	0	1
Other External Causes	2	0	0	2	1	0	0	1

\* ICD-10 codes associated with each cause of death group are presented on pages (xiv-xvi).

TABLE F-7 (Cont.): RESIDENT INFANT, NEONATAL AND POST-NEONATAL DEATHS FROM SELECTED CAUSES\*, BY RACE, FLORIDA, 2007

	BLACK			POST NEO- NATAL	OTHER			POST NEO- NATAL
	NEONATAL		INFANT		NEONATAL		INFANT	
	<1 DAY	1-27 DAYS			<1 DAY	1-27 DAYS		
TOTAL	689	276	146	267	92	46	19	27
Intestinal Infectious Disease	0	0	0	0	0	0	0	0
Diarrhea & Gastroenteritis--Infectious Origin	0	0	0	0	0	0	0	0
Tuberculosis	0	0	0	0	0	0	0	0
Tetanus	0	0	0	0	0	0	0	0
Diphtheria	0	0	0	0	0	0	0	0
Whooping Cough	0	0	0	0	0	0	0	0
Meningococcal Infection	0	0	0	0	0	0	0	0
Septicemia	11	0	0	11	2	0	0	2
Congenital Syphilis	1	0	1	0	0	0	0	0
Gonococcal Infection	0	0	0	0	0	0	0	0
Acute Poliomyelitis	0	0	0	0	0	0	0	0
Varicella (Chicken Pox)	0	0	0	0	0	0	0	0
Measles	0	0	0	0	0	0	0	0
HIV Disease	1	0	0	1	0	0	0	0
Mumps	0	0	0	0	0	0	0	0
Other & Unspec Viral Diseases	1	0	1	0	0	0	0	0
Candidiasis	1	0	0	1	0	0	0	0
Malaria	0	0	0	0	0	0	0	0
Pneumocystosis	0	0	0	0	0	0	0	0
Other & Unspecified Infectious & Parasitic Diseases	1	0	0	1	0	0	0	0
Hodgkins Disease & Non-Hodgkins Lymphomas	0	0	0	0	0	0	0	0
Leukemia	0	0	0	0	0	0	0	0
Other & Unspecified Malignant Neoplasm	0	0	0	0	0	0	0	0
In Situ/Benign/Malignant Neoplasms Uncert/Unk Behavior	0	0	0	0	0	0	0	0
Anemias	1	0	0	1	1	0	0	1
Blood, Blood-Forming, Hemorrhagic Diseases	2	0	1	1	1	0	1	0
Disorders Involving Immune Mechanism	0	0	0	0	0	0	0	0
Short Stature	0	0	0	0	0	0	0	0
Nutritional Deficiencies	0	0	0	0	0	0	0	0
Cystic Fibrosis	1	0	0	1	0	0	0	0
Fluid/Electrolyte/Acid-Base/Volume Depletion Disorders	3	0	1	2	0	0	0	0
Other Endocrine, Nutritional, Metabolic Diseases	4	0	1	3	1	0	1	0
Meningitis	1	0	1	0	0	0	0	0
Infantile Spinal Muscular Atrophy, Type 1 (Werdnig-Hoffman)	0	0	0	0	0	0	0	0
Infantile Cerebral Palsy	0	0	0	0	0	0	0	0
Anoxic Brain Damage	2	0	0	2	0	0	0	0
Other Nervous System Diseases	2	0	0	2	1	0	0	1
Ear & Mastoid Process Diseases	0	0	0	0	0	0	0	0
Pulmonary Heart/Circulation Diseases	3	0	0	3	1	0	0	1
Pericarditis, Endocarditis, Myocarditis	2	0	0	2	0	0	0	0
Cardiomyopathy	8	1	2	5	1	1	0	0
Cardiac Arrest	1	0	0	1	0	0	0	0
Cerebrovascular Diseases	3	0	0	3	0	0	0	0
Other Circulatory System Diseases	7	0	0	7	0	0	0	0
Acute Upper Respiratory Infections	2	0	0	2	0	0	0	0
Influenza	0	0	0	0	0	0	0	0

TABLE F-7 (Cont.): RESIDENT INFANT, NEONATAL AND POST-NEONATAL DEATHS FROM SELECTED CAUSES\*,  
BY RACE, FLORIDA, 2007

	BLACK			POST NEO-	OTHER			POST NEO-
	NEONATAL		INFANT		NEONATAL		INFANT	
	<1 DAY	1-27 DAYS			<1 DAY	1-27 DAYS		
Pneumonia	8	0	0	8	0	0	0	0
Acute Bronchitis & Acute Bronchiolitis	1	0	0	1	0	0	0	0
Bronchitis, Chronic & Unspecified	1	0	0	1	0	0	0	0
Asthma	0	0	0	0	0	0	0	0
Pneumonitis Due to Solids & Liquids	0	0	0	0	0	0	0	0
Other & Unspecified Respiratory System Diseases	13	0	0	13	1	0	0	1
Gastritis, Duodenitis, Noninfective Enteritis/Colitis	17	0	2	15	1	0	0	1
Hernia Abdom Cavity & Intestinal Obstruct W/O Hernia	1	0	0	1	0	0	0	0
Other & Unspec Digestive System Disease	5	1	0	4	1	0	0	1
Renal Failure & Other Kidney Disorders	4	0	1	3	0	0	0	0
Other & Unspec Genitourinary System Dis	2	0	0	2	0	0	0	0
<b>PERINATAL PERIOD CONDITIONS</b>	<b>342</b>	<b>238</b>	<b>85</b>	<b>19</b>	<b>48</b>	<b>37</b>	<b>10</b>	<b>1</b>
Maternal Hypertensive Disorders	3	3	0	0	0	0	0	0
Maternal Conditions Unrelated Present Pregnancy	2	2	0	0	0	0	0	0
Incompetent Cervix	15	15	0	0	3	3	0	0
Premature Rupture of Membranes	22	21	1	0	2	2	0	0
Multiple Pregnancy	21	21	0	0	2	2	0	0
Maternal Complications of Pregnancy	4	4	0	0	0	0	0	0
Placenta Complications	8	5	3	0	0	0	0	0
Cord Complications	0	0	0	0	0	0	0	0
Chorioamnionitis	26	25	1	0	2	2	0	0
Other & Unspecified Membrane Abnormalities	0	0	0	0	0	0	0	0
Other Complications of Labor & Delivery	2	2	0	0	1	1	0	0
Noxious Influences Via Placenta or Breast Milk	0	0	0	0	0	0	0	0
Slow Fetal Growth & Fetal Malnutrition	4	2	2	0	1	1	0	0
Extreme Low Birth Weight or Extreme Immaturity	83	70	11	2	13	12	1	0
Other Low Birth Weight or Preterm	28	27	0	1	7	7	0	0
Long Gestation & High Birth Weight	0	0	0	0	0	0	0	0
Birth Trauma	1	0	1	0	0	0	0	0
Intrauterine Hypoxia	1	0	1	0	2	2	0	0
Birth Asphyxia	0	0	0	0	0	0	0	0
Respiratory Distress	22	12	10	0	4	1	3	0
Congenital Pneumonia	1	0	0	1	0	0	0	0
Neonatal Aspiration Syndromes	1	0	1	0	0	0	0	0
Interstitial Emphysema & Related Conditions	3	0	3	0	0	0	0	0
Pulmonary Hemorrhage	7	1	6	0	1	0	1	0
Chronic Respiratory Disease	10	1	1	8	1	0	0	1
Atelectasis	7	5	2	0	0	0	0	0
Other Respiratory Conditions	0	0	0	0	0	0	0	0
Bacterial Sepsis	22	6	14	2	2	1	1	0
Omphalitis With or Without Hemorrhage	0	0	0	0	0	0	0	0
All Other Infections	3	0	1	2	3	2	1	0
Neonatal Hemorrhage	8	1	7	0	0	0	0	0
Hemorrhagic Disease of Newborn	0	0	0	0	0	0	0	0
Hemolytic Dis Due to Isoimmunization/Perinat Jaundice	0	0	0	0	0	0	0	0
Hematological Disorders	0	0	0	0	0	0	0	0
Diabetes Mellitus, Maternal or Neonatal	1	1	0	0	0	0	0	0
Necrotizing Enterocolitis	9	0	8	1	1	0	1	0

TABLE F-7 (Cont.): RESIDENT INFANT, NEONATAL AND POST-NEONATAL DEATHS FROM SELECTED CAUSES\*, BY RACE, FLORIDA, 2007

	BLACK			POST NEO- NATAL	OTHER			POST NEO- NATAL
	NEONATAL		INFANT		NEONATAL		INFANT	
	<1 DAY	1-27 DAYS			<1 DAY	1-27 DAYS		
Hydrops Fetalis Not Due To Hemolytic Dis	1	1	0	0	1	0	1	0
Other Perinatal Conditions	27	13	12	2	2	1	1	0
<b>CONGENITAL / CHROMOSOMAL ANOMALIES</b>	<b>114</b>	<b>34</b>	<b>38</b>	<b>42</b>	<b>15</b>	<b>8</b>	<b>6</b>	<b>1</b>
Anencephaly & Similar Anomalies	7	6	1	0	1	1	0	0
Congenital Hydrocephalus	0	0	0	0	2	1	1	0
Spina Bifida	0	0	0	0	0	0	0	0
Other Cong Malf Nervous System	6	3	1	2	0	0	0	0
Congenital Malf of Heart	18	0	6	12	2	0	1	1
Other Congenital Malf of Circulatory Sys	8	0	6	2	2	0	2	0
Congenital Malf of Respiratory Sys	4	3	1	0	2	1	1	0
Congenital Anomalies of Digestive Sys	6	0	0	6	0	0	0	0
Congenital Malf of Genitourinary Sys	9	6	2	1	1	1	0	0
Congenital Malf of Musculoskeletal Sys	11	2	6	3	1	1	0	0
Downs Syndrome	1	1	0	0	0	0	0	0
Edwards Syndrome	18	1	6	11	3	2	1	0
Patau Syndrome	2	0	1	1	0	0	0	0
Other Congenital Malf	14	10	2	2	1	1	0	0
Other Chromosomal Abnorm	10	2	6	2	0	0	0	0
Sudden Infant Death Syndrome	34	0	2	32	8	0	1	7
Symptoms, Signs, Abn Clinical/Lab Findings	33	1	5	27	4	0	0	4
All Other Diseases	0	0	0	0	0	0	0	0
Unint Inj: Motor Vehicle	2	0	0	2	0	0	0	0
Unint Inj: Other & Unspecified Transport	1	0	0	1	0	0	0	0
Unint Inj: Falls	1	0	0	1	1	0	0	1
Unint Inj: Firearms Discharge	0	0	0	0	0	0	0	0
Unint Inj: Drowning & Submersion	2	0	0	2	0	0	0	0
Unint Inj: Suffocation & Strangulation in Bed	30	0	4	26	1	0	0	1
Unint Inj: Other Suffocation & Strangulation	5	0	0	5	2	0	0	2
Unint Inj: Inhale/Ingest--Respiratory Tract Obstruction	1	0	0	1	0	0	0	0
Unint Inj: Smoke, Fire, Flames Exposure	0	0	0	0	1	0	0	1
Unint Inj: Poisoning & Noxious Substance Exposure	2	1	1	0	0	0	0	0
Unint Inj: Other & Unspecified	4	0	0	4	0	0	0	0
Homicide: Hanging, Strangulation, Suffocation	0	0	0	0	1	0	0	1
Homicide: Firearms Discharge	1	0	0	1	0	0	0	0
Homicide: Neglect, Abandonment, Maltreatment	0	0	0	0	0	0	0	0
Homicide: Other & Unspecified Means	5	0	0	5	0	0	0	0
Medical & Surgical Care Complications	1	0	0	1	0	0	0	0
Other External Causes	1	0	0	1	0	0	0	0

\* ICD-10 codes associated with each cause of death group are presented on pages (xiv-xvi).