

Marriages and Dissolutions of Marriage

MARRIAGES AND DISSOLUTIONS OF MARRIAGE

- The number of marriage ceremonies decreased between 2006 (158,167 marriages) and 2007 (155,998 marriages). This represents a 1.4 percent decrease in the number of marriages.
- The marriage rate per 1,000 population has decreased each year since 2001 to 8.3 in 2007. The rate has decreased 21.7 percent since 1997.
- July was the most popular month for marriages with 15,534 marriages performed. The most popular date of marriage in 2007 was 7/7/07 (3,725 marriages performed) and the second most popular date was 2/14/07 (1,617 marriages performed).
- The 2007 marriage rate (8.3 per 1,000 population) in Florida is more than 1.8 times the 2007 dissolution rate (4.5 per 1,000 population).
- Of the 84,386 dissolutions of marriage in 2007, over half (56.2 percent) did not affect any minor children.
- The mean duration of a marriage resulting in a 2007 dissolution was 10.2 years.

**CHART M-1: MARRIAGES AND DISSOLUTIONS OF MARRIAGE,
AND RATES PER 1,000 POPULATION, FLORIDA AND UNITED
STATES, CENSUS YEARS 1920-1990 AND 1997-2007**

YEAR	MARRIAGES			DISSOLUTIONS ¹		
	FLORIDA		U.S.	FLORIDA		U.S.
	NUMBER	RATE	RATE	NUMBER	RATE	RATE
1920	NA	NA	12.0	NA	NA	1.6
1930	17,147	11.7	9.2	3,262	2.5	1.6
1940	32,709	17.1	12.1	11,061	5.8	2.0
1950	27,588	9.8	11.1	17,845	6.3	2.6
1960	39,315	7.9	8.5	19,326	3.9	2.2
1970	69,249	10.1	10.6	37,506	5.5	3.5
1980	108,344	11.0	10.6	71,578	7.3	5.2
1990	141,816	10.9	9.8	81,119	6.2	4.7
1997	158,783	10.6	8.9 ²	82,161	5.5	4.3 ²
1998	141,344	9.2	8.5 ²	80,466	5.3	4.3 ²
1999	136,403	8.7	8.5 ²	80,983	5.2	4.1 ²
2000	145,300	9.0	8.7 ²	81,439	5.1	4.2 ²
2001	153,298	9.3	8.2 ²	85,259	5.2	4.0 ²
2002	157,554	9.4	7.8 ²	85,181	5.1	4.0 ²
2003	153,023	8.9	7.7 ²	85,367	5.0	3.8 ²
2004	154,453	8.8	7.8 ²	83,306	4.7	3.7 ²
2005	158,192	8.8	7.6 ²	81,287	4.5	3.6 ²
2006	158,167	8.6	7.4 ²	85,955	4.7	3.7 ²
2007	155,998	8.3	7.3 ²	84,386	4.5	3.6 ²

¹ Includes divorces and annulments.
² Provisional data.

**GRAPH M-1: MARRIAGES AND DISSOLUTIONS OF MARRIAGE RATES PER 1,000 POPULATION,
FLORIDA AND UNITED STATES, 1997-2007**

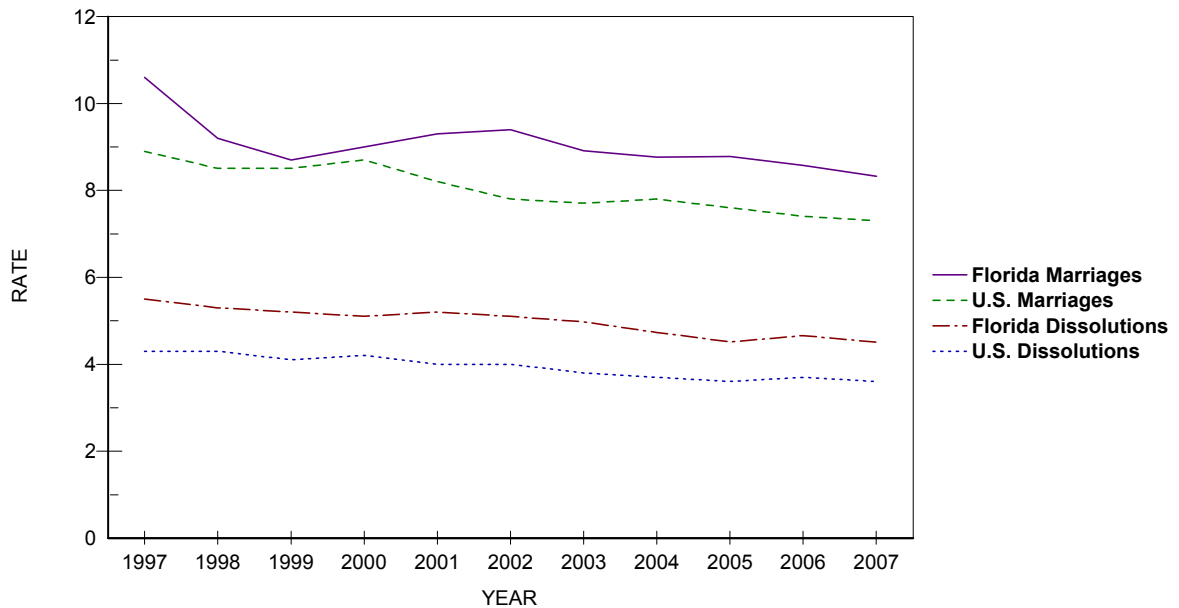


TABLE M-1: MARRIAGES PERFORMED BY MONTH, BY COUNTY OF ISSUANCE, FLORIDA, 2007

	TOTAL	JAN	FEB	MAR	APR	MAY	JUN	JUL	AUG	SEP	OCT	NOV	DEC
FLORIDA	155,998	9,402	12,122	15,249	14,386	14,671	14,516	15,534	11,042	11,348	12,824	12,382	12,522
ALACHUA	1,855	88	112	180	170	206	225	172	129	120	156	138	159
BAKER	238	16	20	24	26	22	16	22	12	21	19	21	19
BAY	2,220	87	123	182	180	226	256	273	192	204	234	156	107
BRADFORD	239	6	24	17	22	28	28	22	19	16	16	17	24
BREVARD	4,362	258	355	418	408	388	426	434	346	284	324	353	368
BROWARD	14,944	1,050	1,241	1,456	1,293	1,310	1,265	1,465	1,057	1,074	1,159	1,246	1,328
CALHOUN	93	5	6	9	10	8	15	11	4	5	6	6	8
CHARLOTTE	1,023	60	73	103	111	101	88	96	58	71	88	78	96
CITRUS	868	43	69	92	100	59	79	78	67	52	83	71	75
CLAY	1,416	80	102	137	144	127	149	119	95	100	114	121	128
COLLIER	3,147	207	252	301	294	313	269	302	198	221	260	255	275
COLUMBIA	523	36	47	55	50	36	45	48	44	45	38	42	37
MIAMI-DADE	24,548	1,694	2,038	2,350	2,165	2,130	2,106	2,375	1,830	1,797	1,859	1,979	2,225
DESOTO	225	12	19	15	21	25	15	27	15	11	18	32	15
DIXIE	125	10	13	10	9	12	20	12	11	4	10	6	8
DUVAL	6,061	317	445	619	583	572	563	618	447	491	503	448	455
ESCAMBIA	3,124	138	225	261	284	301	325	346	264	268	266	233	213
FLAGLER	548	42	32	56	48	54	51	58	22	40	57	41	47
FRANKLIN	199	4	10	10	21	26	19	24	13	24	23	18	7
GADSDEN	268	14	36	31	23	34	20	24	18	19	12	13	24
GILCHRIST	132	9	6	14	19	12	8	10	12	8	12	16	6
GLADES	85	8	4	2	9	6	10	11	9	10	3	5	8
GULF	169	12	9	8	11	23	18	24	10	14	18	9	13
HAMILTON	127	10	8	8	13	12	18	17	4	8	11	7	11
HARDEE	191	14	19	16	20	17	11	18	15	9	10	23	19
HENDRY	269	17	33	35	24	22	31	25	12	13	12	28	17
HERNANDO	914	50	71	79	94	83	84	101	56	56	85	72	83
HIGHLANDS	612	41	59	64	54	54	62	68	38	35	38	52	47
HILLSBOROUGH	9,421	547	782	1,022	849	878	879	924	632	673	767	711	757
HOLMES	191	13	17	24	22	18	13	16	10	13	20	14	11
INDIAN RIVER	911	60	71	98	95	88	80	80	68	51	80	62	78
JACKSON	341	17	25	20	33	29	41	31	22	39	33	26	25
JEFFERSON	109	3	6	12	13	9	12	10	6	8	13	11	6
LAFAYETTE	84	2	8	8	9	10	7	11	7	9	4	5	4
LAKE	2,476	159	176	243	231	237	232	229	157	194	232	192	194
LEE	4,534	286	361	420	498	452	397	431	289	307	373	381	339
LEON	1,868	105	127	231	174	206	188	180	125	133	147	135	117
LEVY	237	14	15	22	23	29	25	26	16	11	15	15	26
LIBERTY	65	3	8	4	6	6	6	10	8	4	6	1	3
MADISON	148	8	8	13	13	18	17	10	9	14	20	10	8
MANATEE	1,993	116	158	210	215	170	179	189	126	145	174	158	153
MARION	2,250	117	190	240	205	192	204	221	168	165	182	176	190
MARTIN	898	53	75	110	77	86	85	71	54	63	80	74	70
MONROE	2,882	192	228	283	311	344	270	268	187	141	192	247	219
NASSAU	675	29	25	65	63	79	82	83	49	53	53	50	44
OKALOOSA	2,954	110	141	234	258	302	361	373	274	267	273	187	174
OKEECHOBEE	260	19	35	27	11	18	21	30	14	22	22	17	24
ORANGE	10,551	684	853	1,030	971	995	931	950	791	726	912	860	848
OSCEOLA	4,592	279	308	425	429	446	405	452	313	377	417	371	370
PALM BEACH	8,912	620	723	907	816	862	825	894	642	578	670	687	688
PASCO	2,616	158	195	250	228	242	235	268	162	203	218	249	208
PINELLAS	7,347	371	536	726	702	747	691	715	496	539	699	613	512
POLK	4,025	239	351	412	325	311	398	441	306	296	329	304	313
PUTNAM	519	33	45	59	43	55	41	60	26	39	44	26	48
SAINT JOHNS	1,589	71	89	152	160	177	180	170	83	138	133	127	109
SAINT LUCIE	1,619	79	129	189	161	152	161	173	88	120	110	106	151
SANTA ROSA	1,057	47	56	95	86	105	120	123	78	101	107	71	68
SARASOTA	2,877	157	230	257	294	296	261	301	178	173	239	269	222
SEMINOLE	3,210	178	262	330	285	304	304	303	214	237	264	270	259
SUMTER	308	19	25	26	23	37	25	28	20	19	28	25	33
SUWANNEE	274	15	20	30	22	23	36	23	17	14	21	30	23
TAYLOR	154	6	11	20	18	15	23	9	4	14	7	16	11
UNION	129	6	10	10	10	9	14	21	5	11	10	8	15
VOLUSIA	3,660	206	291	369	338	303	334	420	243	249	321	282	304
WAKULLA	207	15	10	22	18	16	19	23	11	16	16	22	19
WALTON	1,373	30	56	82	133	187	180	150	129	155	149	74	48
WASHINGTON	157	8	15	20	12	11	12	17	18	11	10	14	9

TABLE M-2: MARRIAGES BY RACE OF GROOM AND BRIDE, FLORIDA, 2007

RACE OF GROOM	RACE OF BRIDE										
	TOTAL	WHITE	BLACK	AMERICAN INDIAN	CHINESE	JAPANESE	HAWAIIAN	FILIPINO	OTHER ASIAN/PAC ISL	OTHER ENTRIES	UNK
TOTAL	155,998	120,806	20,245	408	38	9	30	96	3,447	10,677	242
WHITE	120,471	114,205	1,594	264	22	7	26	66	1,817	2,368	102
BLACK	22,295	3,352	18,123	36	0	2	0	10	153	604	15
AMERICAN INDIAN	444	294	35	92	0	0	0	0	13	10	0
CHINESE	17	2	0	0	13	0	0	0	1	1	0
JAPANESE	1	0	0	0	0	0	0	0	0	1	0
HAWAIIAN	22	19	1	0	0	0	2	0	0	0	0
FILIPINO	27	11	0	0	0	0	0	15	0	1	0
OTH ASIAN/PAC ISL	2,237	711	68	5	0	0	0	2	1,415	34	2
OTHER ENTRIES	10,245	2,107	416	11	2	0	2	3	47	7,654	3
UNK	239	105	8	0	1	0	0	0	1	4	120

TABLE M-3: DISSOLUTIONS* OF MARRIAGE BY DURATION OF MARRIAGE IN YEARS AND NUMBER OF MINOR CHILDREN AFFECTED, FLORIDA, 2007

DURATION IN YEARS	NUMBER OF MINOR CHILDREN AFFECTED								
	TOTAL**	NONE	ONE	TWO	THREE	FOUR	FIVE	SIX+	UNK
TOTAL	84,386	47,467	16,636	11,776	3,129	590	116	47	4,625
<1	3,118	2,643	173	54	26	2	0	0	220
1	5,477	4,437	501	109	11	6	1	0	412
2	6,182	4,599	906	227	43	8	1	3	395
3	6,283	4,400	1,126	322	51	9	0	3	372
4	6,361	4,217	1,204	458	61	11	4	0	406
5-9	21,783	11,236	5,194	3,335	758	124	22	7	1,107
10-14	12,255	4,513	2,886	3,215	924	181	33	13	490
15-19	7,520	2,291	1,707	2,268	781	159	29	13	272
20-24	4,960	2,202	1,335	897	232	41	16	2	235
25-29	2,820	1,905	504	191	31	8	3	1	177
30-34	1,301	1,082	118	24	4	0	0	0	73
35-39	774	669	20	15	4	3	0	0	63
40+	604	521	13	10	4	1	0	0	55
UNK	4,948	2,752	949	651	199	37	7	5	348

*Includes divorces and annulments.

**Due to reporting problems, data for the last few months of the year are incomplete.

TABLE M-4: DISSOLUTIONS* OF MARRIAGE BY MONTH, BY COUNTY, FLORIDA, 2007

	TOTAL	JAN	FEB	MAR	APR	MAY	JUN	JUL	AUG	SEP	OCT	NOV	DEC
FLORIDA**	84,386	7,126	6,774	7,766	7,066	7,506	7,252	7,027	7,981	6,547	7,702	5,619	6,020
ALACHUA	914	46	69	89	91	76	84	115	86	66	67	56	69
BAKER	118	7	8	7	10	18	6	6	14	12	8	15	7
BAY	950	73	90	88	81	81	85	85	91	54	92	79	51
BRADFORD	164	5	17	24	17	8	11	13	12	16	14	12	15
BREVARD	2,304	218	213	186	192	171	202	185	209	187	176	191	174
BROWARD	9,032	883	741	878	730	658	750	789	1,020	644	758	622	559
CALHOUN	76	1	3	8	5	5	14	2	12	5	8	8	5
CHARLOTTE	514	43	37	33	61	48	48	41	45	49	42	28	39
CITRUS	563	39	43	44	56	47	38	47	42	57	44	51	55
CLAY	810	53	71	55	81	71	51	63	70	60	72	71	92
COLLIER	1,383	106	88	102	115	128	137	116	133	123	133	107	95
COLUMBIA	332	17	35	38	24	23	30	32	34	30	31	23	15
MIAMI-DADE**	13,822	1,437	1,215	1,472	1,051	1,321	1,271	1,254	1,342	1,224	1,305	55	875
DESOTO	142	10	13	22	11	19	14	7	10	8	20	5	3
DIXIE	81	4	8	10	1	3	17	12	9	0	8	3	6
DUVAL	4,363	338	309	385	411	382	342	364	425	325	379	314	389
ESCAMBIA	1,259	116	70	108	135	104	109	131	127	50	118	110	81
FLAGLER	323	29	22	24	23	33	17	35	37	11	33	19	40
FRANKLIN	50	1	5	7	3	5	4	3	4	5	6	5	2
GADSDEN	175	21	7	13	15	23	11	10	16	11	14	22	12
GILCHRIST	99	9	11	8	14	5	5	9	7	9	10	10	2
GLADES	25	1	2	2	2	4	0	2	0	1	2	8	1
GULF	54	6	2	4	3	1	7	8	7	7	5	4	0
HAMILTON	52	5	2	5	4	3	6	5	1	7	7	4	3
HARDEE	98	3	9	9	6	8	11	7	14	7	10	7	7
HENDRY	97	6	5	5	11	11	10	7	18	7	6	0	11
HERNANDO	607	31	36	56	56	76	48	48	56	39	71	43	47
HIGHLANDS	347	24	32	36	24	24	22	34	26	21	44	33	27
HILLSBOROUGH	5,718	515	436	460	485	415	513	472	432	505	562	450	473
HOLMES	88	4	15	9	8	7	8	9	4	3	6	9	6
INDIAN RIVER	572	45	45	46	25	37	46	47	60	62	57	41	61
JACKSON	222	14	24	18	13	25	17	9	42	9	18	12	21
JEFFERSON	41	3	2	7	5	1	1	4	1	1	1	8	7
LAFAYETTE	34	3	3	3	4	2	5	4	5	0	1	2	2
LAKE	968	87	84	100	67	92	89	66	100	66	100	58	59
LEE	2,378	205	200	228	193	206	221	188	215	176	196	199	151
LEON	971	71	66	68	90	113	82	43	108	93	112	56	69
LEVY	177	14	7	16	21	14	17	6	16	18	15	20	13
LIBERTY	32	4	1	1	1	5	3	0	6	2	4	2	3
MADISON	65	4	8	15	1	3	4	5	9	7	1	4	4
MANATEE	967	78	88	72	85	94	80	68	112	51	80	83	76
MARION	1,404	107	107	113	108	127	118	141	108	113	143	116	103
MARTIN	435	42	49	42	29	24	3	48	34	57	31	37	39
MONROE	568	40	32	49	58	54	36	48	63	56	44	35	53
NASSAU	322	30	13	33	32	33	22	32	31	20	27	25	24
OKALOOSA	1,406	105	86	136	125	133	145	101	131	94	132	116	102
OKECHOBEE	197	25	7	19	14	5	27	11	10	26	18	27	8
ORANGE	5,038	317	379	448	437	520	382	395	482	395	537	356	390
OSCEOLA	1,999	129	202	183	166	170	170	155	161	137	204	186	136
PALM BEACH	5,422	480	433	497	451	562	461	417	475	347	423	498	378
PASCO	1,675	138	121	147	114	146	170	116	154	147	131	153	138
PINELLAS	3,539	276	305	315	332	304	307	280	319	270	328	269	234
POLK	2,362	155	240	190	162	255	243	176	199	171	230	192	149
PUTNAM	272	20	18	24	30	24	25	19	24	34	16	24	14
SAINT JOHNS	705	36	75	54	60	76	58	53	87	43	70	60	33
SAINT LUCIE	980	62	43	97	92	72	87	106	87	65	87	88	94
SANTA ROSA	635	40	43	64	51	48	64	37	64	55	79	45	45
SARASOTA	1,509	126	118	124	120	122	125	121	139	136	123	138	117
SEMINOLE	1,696	142	128	177	154	141	113	139	145	134	172	146	105
SUMTER	193	11	13	17	10	24	19	16	14	20	22	12	15
SUWANNEE	152	12	8	18	9	14	5	12	15	20	19	8	12
TAYLOR	101	8	6	5	10	10	13	10	11	7	7	4	10
UNION	55	9	0	5	7	3	4	9	0	5	7	2	4
VOLUSIA	2,259	198	166	210	212	220	178	195	204	144	176	195	161
WAKULLA	139	11	15	7	21	14	15	7	15	7	10	8	9
WALTON	256	24	22	17	26	25	18	25	25	13	21	25	15
WASHINGTON	80	4	3	14	5	10	8	7	7	3	9	5	5

*Includes divorces and annulments.

**Due to reporting problems, data for the last few months of the year are incomplete.