

Population

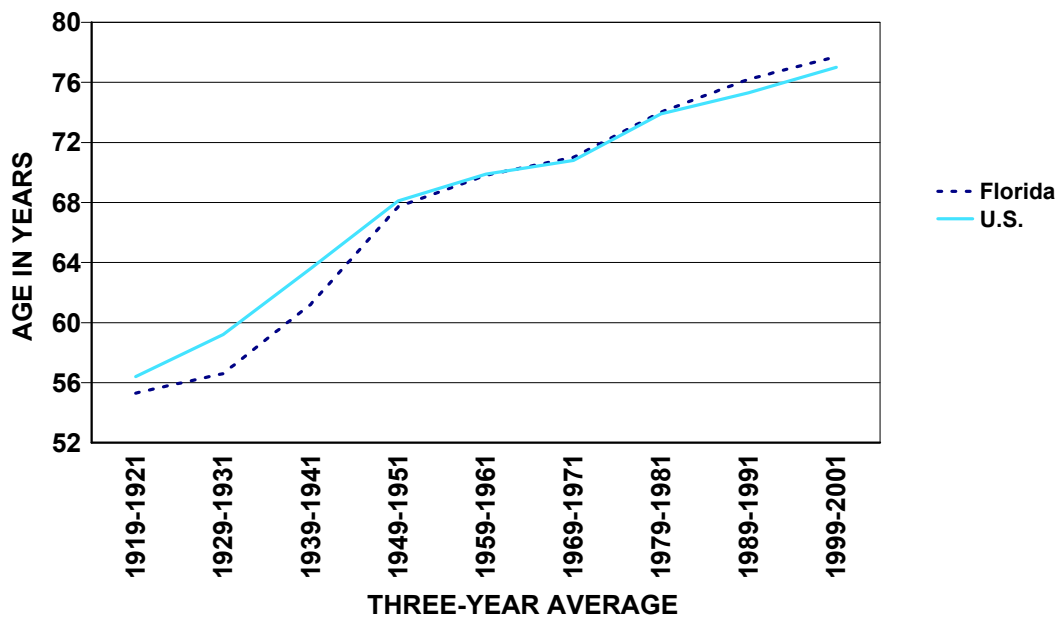
POPULATION

- Midyear population estimates have been used as the basis for population-based rate calculations. Based on the 2000 US Census of Population, population estimates for 1991 through 2002 underestimated the Nonwhite population and have been adjusted accordingly. Unlike past decennial censuses, the race question on the 2000 census permitted persons to declare all race groups reflected in their heritage rather than limiting person to single race responses. As a result, shifts occurred from the traditional White-only and Black-only categories to a Multiple-race category. The National Center for Health Statistics developed a "bridging" methodology allowing for the re-assignment of multiple-race responses into single-race responses so present population estimates could be compared with previous estimates. The midyear estimates from 2003 through 2007 used in this report reflect the adjustments described above.
- In 2007, Florida's population rose to a record high of 18,731,287. This represents a 1.6 percent increase from the 2006 population of 18,440,700.
- The population has risen 43.8 percent since 1990 and 90.4 percent since 1980. It has more than doubled (273 percent) since 1970 and more than tripled (374 percent) since 1960.
- In 2007, Whites accounted for 80.6 percent of the population and Nonwhite accounted for 19.4 percent of the population.
- Increases in the population occurred for both Whites and Nonwhites. White males increased by 1.3 percent and White females increased by 1.2 percent. Nonwhite males and Nonwhite females each increased by 3.2 and 2.9 percent, respectively.
- Floridians aged 65 years and older made up 17.1 percent of the population. Those aged 14 years and younger comprised 18.4 percent of the population.
- The number of persons 75 years old or older was 1,634,965 or 8.7 percent of the population.
- A person born in Florida in 2007 can expect to live 79.9 years. This value increased slightly from 79.4 years in 2006.
- Life expectancy increased from 2006 to 2007 for each of the four race-gender categories of White males (increased from 77.0 years to 77.5 years), White females (increased from 83.0 years to 83.4 years), Nonwhite males (increased from 73.7 years to 74.0 years), and Nonwhite females (increased from 79.4 years to 80.5 years). As in previous years, White females continue to have the longest life expectancy at 83.4 years while Nonwhite males have the shortest life expectancy at 74.0 years.

**CHART P-1: YEARS OF LIFE EXPECTANCY AT BIRTH, BY RACE AND GENDER,
FOR FLORIDA RESIDENTS AND UNITED STATES TOTAL,
SELECTED YEARS 1919-1991 AND 2002-2007**

YEAR	FLORIDA					U.S. TOTAL
	TOTAL	WHITE		NONWHITE		
		MALE	FEMALE	MALE	FEMALE	
1919-1921	55.3	57.3	60.6	NA	NA	56.4
1929-1931	56.6	59.3	64.2	45.4	48.9	59.2
1939-1941	61.2	62.4	68.8	49.4	54.4	63.6
1949-1951	67.7	66.7	74.0	56.5	62.2	68.1
1959-1961	69.8	68.4	76.2	60.4	65.9	69.9
1969-1971	71.0	68.4	76.8	59.3	67.9	70.8
1979-1981	74.0	71.1	78.9	63.8	72.4	73.9
1989-1991	76.2	73.5	80.9	66.2	75.3	75.3
2002	78.2	75.9	81.7	71.9	77.7	77.3
2003	78.3	75.9	81.9	72.0	77.8	77.5
2004	79.0	76.9	82.4	73.0	78.5	77.8
2005	78.9	76.5	82.5	72.8	78.9	77.8
2006	79.4	77.0	83.0	73.7	79.4	78.1 ¹
2007	79.9	77.5	83.4	74.0	80.5	NA

**GRAPH P-1: YEARS OF LIFE EXPECTANCY AT BIRTH, FLORIDA AND
UNITED STATES, 1919-2001**



**CHART P-2: NATURAL INCREASE* IN POPULATION,
BY RACE, FLORIDA 1997-2007**

YEAR	TOTAL	WHITE	NONWHITE
1997	38,474	6,867	31,701
1998	38,404	5,928	32,493
1999	34,841	2,026	32,824
2000	41,191	5,341	35,882
2001	38,619	2,909	35,402
2002	37,878	3,182	34,377
2003	43,784	7,879	35,674
2004	49,681	10,917	38,391
2005	55,919	16,079	39,505
2006	67,801	25,153	42,352
2007	71,412	27,292	43,704

*Resident Live Births minus Resident Deaths.

**GRAPH P-2: PERCENT DISTRIBUTION OF RACE-SPECIFIC POPULATION
BY AGE GROUPS, FLORIDA, 2007**

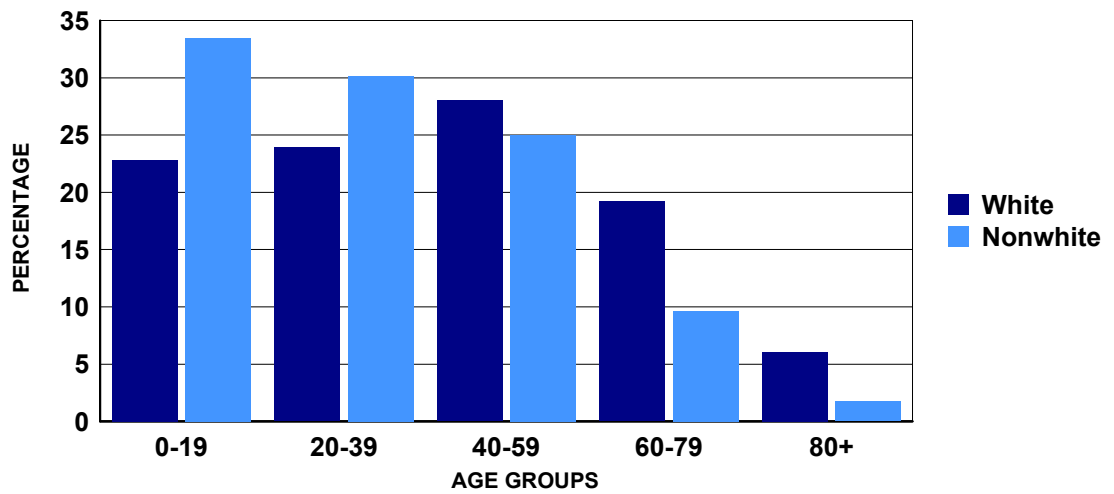


CHART P-3: RESIDENT MIDYEAR POPULATION ESTIMATES, BY AGE, RACE AND GENDER, FLORIDA, 2007

AGE GROUP	WHITE				NONWHITE		
	TOTAL	TOTAL	MALE	FEMALE	TOTAL	MALE	FEMALE
TOTAL	18,731,287	15,091,817	7,417,190	7,674,627	3,639,470	1,756,341	1,883,129
<1 ¹	237,174	173,659	89,103	84,556	63,515	32,317	31,198
1-4 ²	880,237	642,297	326,327	315,970	237,940	120,903	117,037
5-9	1,148,165	852,548	436,153	416,395	295,617	150,132	145,485
10-14	1,182,691	878,962	451,545	427,417	303,729	154,400	149,329
15-19	1,215,013	898,181	459,848	438,333	316,832	160,804	156,028
20-24	1,208,156	897,237	459,607	437,630	310,919	159,110	151,809
25-29	1,139,141	865,888	447,823	418,065	273,253	135,819	137,434
30-34	1,142,160	885,565	457,696	427,869	256,595	122,562	134,033
35-39	1,219,643	962,292	492,648	469,644	257,351	123,249	134,102
40-44	1,332,793	1,070,565	541,653	528,912	262,228	124,750	137,478
45-49	1,363,934	1,109,441	553,461	555,980	254,493	118,935	135,558
50-54	1,273,158	1,053,124	517,122	536,002	220,034	100,661	119,373
55-59	1,167,361	993,218	480,160	513,058	174,143	79,036	95,107
60-64	1,011,400	882,321	417,278	465,043	129,079	58,004	71,075
65-69	840,164	744,359	345,897	398,462	95,805	42,507	53,298
70-74	735,132	662,370	303,967	358,403	72,762	31,158	41,604
75-79	656,814	604,732	270,343	334,389	52,082	20,700	31,382
80-84	517,945	484,391	205,929	278,462	33,554	12,261	21,293
85+	460,206	430,667	160,630	270,037	29,539	9,033	20,506

Source: The Florida Legislature, Office of Economic and Demographic Research, July 1 estimates or births and infant deaths from the Bureau of Vital Statistics.

1. The < 1 age group estimate is the sum of persons < 1 in each county. When the number of resident births minus resident infant deaths in a county exceeds the 0-4 age group estimate from the Office of Economic and Demographic Research, then the county's <1 age group estimate is 1/5 of the 0-4 age group from the Office of Economic and Demographic Research. Otherwise, the county's <1 age group estimate is the number of resident births minus the number of resident infant deaths from the Bureau of Vital Statistics.

2. The 1-4 age group for each county is the Office of Economic and Demographic Research 0-4 age group estimate minus the <1 age group estimate.

**CHART P-4: RESIDENT MIDYEAR POPULATION ESTIMATES, BY RACE AND GENDER,
FLORIDA, 1950, 1960, 1970, 1980, AND 1988 - 2007**

YEAR	TOTAL	WHITE			NONWHITE		
		TOTAL	MALE	FEMALE	TOTAL	MALE	FEMALE
1950	2,821,000	2,208,200	1,093,400	1,114,800	612,800	298,100	314,700
1960	5,003,200	4,109,000	2,021,861	2,087,139	894,200	439,117	455,083
1970	6,851,168	5,775,400	2,791,845	2,983,555	1,075,768	515,580	560,188
1980	9,840,309	8,389,968	4,031,868	4,358,100	1,450,341	688,173	762,168
1988	12,307,006	10,457,575	5,065,283	5,392,292	1,849,431	881,528	967,903
1989	12,638,537	10,727,690	5,201,481	5,526,209	1,910,847	911,336	999,511
1990	13,028,995	11,040,436	5,358,366	5,682,070	1,988,559	949,381	1,039,178
1991	13,323,537	11,241,619	5,464,814	5,776,805	2,081,918	995,538	1,086,380
1992	13,551,240	11,394,887	5,544,527	5,850,360	2,156,353	1,032,848	1,123,505
1993	13,803,005	11,566,432	5,628,837	5,937,595	2,236,573	1,071,579	1,164,994
1994	14,120,488	11,791,929	5,741,676	6,050,253	2,328,559	1,116,739	1,211,820
1995	14,405,455	11,995,367	5,846,164	6,149,203	2,410,088	1,156,288	1,253,800
1996	14,701,288	12,205,330	5,957,258	6,248,072	2,495,958	1,198,212	1,297,746
1997	15,011,692	12,422,254	6,070,358	6,351,896	2,589,438	1,243,061	1,346,377
1998	15,309,939	12,633,341	6,177,496	6,455,845	2,676,598	1,284,870	1,391,728
1999	15,679,603	12,903,840	6,313,637	6,590,203	2,775,763	1,333,783	1,441,980
2000	16,074,763	13,200,518	6,461,066	6,739,452	2,874,245	1,382,504	1,491,741
2001	16,412,225	13,448,485	6,583,357	6,865,128	2,963,740	1,426,611	1,537,129
2002	16,772,046	13,728,022	6,716,136	7,011,886	3,044,024	1,465,491	1,578,533
2003	17,164,199	14,053,405	6,876,867	7,176,537	3,110,793	1,497,840	1,612,952
2004	17,613,368	14,390,040	7,067,458	7,322,582	3,223,328	1,557,668	1,665,660
2005	18,018,497	14,581,665	7,159,531	7,422,134	3,436,832	1,656,097	1,780,735
2006	18,440,700	14,909,913	7,322,678	7,587,235	3,530,787	1,701,978	1,828,809
2007	18,731,287	15,091,817	7,417,190	7,674,627	3,639,470	1,756,341	1,883,129

Source: The Florida Legislature, Office of Economic and Demographic Research, July 1, estimate.

**CHART P-5: RESIDENT MIDYEAR POPULATION ESTIMATES, BY AGE GROUPS,
FLORIDA, 1950, 1960, 1970, 1980, AND 1988 - 2007**

YEAR	AGE GROUP											
	TOTAL	<1 ¹	1-4 ²	5-14	15-24	25-34	35-44	45-54	55-64	65-74	75-84	85+
1950	2,821,000	57,300	238,500	442,700	402,100	448,500	419,600	330,100	240,400	170,200	63,137	8,463
1960	5,003,200	110,882	431,405	935,118	644,065	630,714	656,774	562,536	468,696	395,413	142,581	25,016
1970	6,851,168	112,644	391,729	1,251,059	1,093,338	768,900	748,346	767,772	713,958	656,231	289,759	57,432
1980	9,840,309	129,893	448,557	1,310,351	1,630,632	1,438,555	1,051,361	994,915	1,131,187	1,067,585	517,689	119,584
1988	12,307,006	182,047	626,274	1,470,148	1,672,365	2,033,423	1,652,154	1,189,755	1,253,180	1,305,260	733,456	188,944
1989	12,638,537	190,982	652,184	1,514,772	1,670,513	2,081,725	1,732,307	1,242,837	1,256,498	1,336,112	762,356	198,251
1990	13,028,995	197,234	687,430	1,577,347	1,679,321	2,125,870	1,830,009	1,291,371	1,266,366	1,372,242	792,709	209,096
1991	13,323,537	191,991	729,264	1,660,517	1,654,275	2,145,514	1,917,622	1,340,186	1,251,841	1,391,490	816,227	224,610
1992	13,551,240	189,845	742,005	1,700,728	1,657,920	2,145,468	1,959,550	1,427,626	1,248,175	1,409,516	834,864	235,543
1993	13,803,005	190,799	754,919	1,763,752	1,664,800	2,129,966	2,021,357	1,490,623	1,247,843	1,433,272	856,301	249,373
1994	14,120,488	189,006	758,528	1,823,222	1,688,009	2,129,987	2,098,672	1,570,953	1,266,249	1,451,927	881,634	262,301
1995	14,405,455	187,132	748,835	1,876,511	1,709,090	2,125,881	2,176,563	1,650,994	1,286,878	1,463,428	906,789	273,354
1996	14,701,288	187,933	738,822	1,925,408	1,736,529	2,118,987	2,251,266	1,733,377	1,314,581	1,470,070	939,150	285,165
1997	15,011,692	190,946	733,182	1,968,856	1,782,923	2,103,482	2,321,998	1,817,926	1,365,920	1,465,328	964,172	296,959
1998	15,309,939	194,149	729,527	2,009,851	1,833,426	2,078,343	2,382,246	1,893,110	1,438,765	1,456,934	984,061	309,527
1999	15,679,603	195,521	737,783	2,057,884	1,893,078	2,071,054	2,445,284	1,995,809	1,508,272	1,445,428	1,006,711	322,779
2000	16,074,763	202,607	751,933	2,094,766	1,961,818	2,086,402	2,488,959	2,090,243	1,579,582	1,455,587	1,029,871	332,995
2001	16,412,225	204,305	786,149	2,106,099	2,038,948	2,083,688	2,482,002	2,169,523	1,672,611	1,472,120	1,055,706	341,074
2002	16,772,046	204,032	780,511	2,116,375	2,086,353	2,074,277	2,497,593	2,277,098	1,770,220	1,502,313	1,096,483	366,791
2003	17,164,199	210,910	808,880	2,169,089	2,142,348	2,126,715	2,553,743	2,320,209	1,807,740	1,535,939	1,118,895	369,727
2004	17,613,368	216,414	838,415	2,214,881	2,287,106	2,110,238	2,529,264	2,452,003	1,963,416	1,466,073	1,101,325	434,233
2005	18,018,497	224,553	852,314	2,275,772	2,334,592	2,176,924	2,575,152	2,513,917	2,002,872	1,481,723	1,162,886	417,792
2006	18,440,700	235,429	862,395	2,305,379	2,380,124	2,234,288	2,566,137	2,585,537	2,104,924	1,544,713	1,177,829	443,945
2007	18,731,287	237,174	880,237	2,330,856	2,423,169	2,281,301	2,552,436	2,637,092	2,178,761	1,575,296	1,174,759	460,206

Source: The Florida Legislature, Office of Economic and Demographic Research, July 1 estimates or births and infant deaths from the Bureau of Vital Statistics.

1. The < 1 age group estimate is the sum of persons < 1 in each county. When the number of resident births minus resident infant deaths in a county exceeds the 0-4 age group estimate from the Office of Economic and Demographic Research, then the county's <1 age group estimate is 1/5 of the 0-4 age group from the Office of Economic and Demographic Research. Otherwise, the county's <1 age group estimate is the number of resident births minus the number of resident infant deaths from the Bureau of Vital Statistics.

2.The 1-4 age group for each county is the Office of Economic and Demographic Research 0-4 age group estimate minus the <1 age group estimate.

TABLE P-1: RESIDENT MIDYEAR POPULATION ESTIMATES, BY RACE AND COUNTY, FLORIDA, 2007

	TOTAL	WHITE	NONWHITE
FLORIDA	18,731,287	15,091,817	3,639,470
ALACHUA	248,183	184,800	63,383
BAKER	25,692	21,881	3,811
BAY	167,881	142,661	25,220
BRADFORD	29,131	22,406	6,725
BREVARD	553,481	485,548	67,933
BROWARD	1,767,538	1,246,147	521,391
CALHOUN	14,545	11,751	2,794
CHARLOTTE	165,061	152,478	12,583
CITRUS	140,652	134,293	6,359
CLAY	186,014	162,387	23,627
COLLIER	335,235	309,675	25,560
COLUMBIA	65,658	53,200	12,458
MIAMI-DADE	2,466,645	1,867,053	599,592
DESOTO	34,086	29,077	5,009
DIXIE	15,826	14,267	1,559
DUVAL	900,608	578,005	322,603
ESCAMBIA	311,701	228,705	82,996
FLAGLER	94,199	81,384	12,815
FRANKLIN	12,257	10,226	2,031
GADSDEN	49,630	20,896	28,734
GILCHRIST	17,171	15,425	1,746
GLADES	11,113	9,257	1,856
GULF	16,875	13,166	3,709
HAMILTON	14,725	9,152	5,573
HARDEE	27,574	24,548	3,026
HENDRY	39,846	33,887	5,959
HERNANDO	163,035	152,812	10,223
HIGHLANDS	98,987	87,041	11,946
HILLSBOROUGH	1,197,312	943,077	254,235
HOLMES	19,432	17,575	1,857
INDIAN RIVER	140,469	125,594	14,875
JACKSON	50,482	35,922	14,560
JEFFERSON	14,513	9,170	5,343
LAFAYETTE	8,273	6,700	1,573
LAKE	288,078	257,009	31,069
LEE	620,778	560,296	60,482
LEON	272,938	173,935	99,003
LEVY	40,219	35,512	4,707
LIBERTY	7,763	5,973	1,790
MADISON	19,960	11,922	8,038
MANATEE	317,395	282,641	34,754
MARION	326,791	282,813	43,978
MARTIN	143,914	133,467	10,447
MONROE	78,729	72,914	5,815
NASSAU	69,745	63,938	5,807
OKALOOSA	197,164	166,828	30,336
OKEECHOBEE	39,038	34,863	4,175
ORANGE	1,109,714	806,365	303,349
OSCEOLA	267,510	227,654	39,856
PALM BEACH	1,295,586	1,044,922	250,664
PASCO	435,913	409,779	26,134
PINELLAS	942,911	806,795	136,116
POLK	583,315	483,962	99,353
PUTNAM	74,816	61,270	13,546
SAINT JOHNS	175,521	161,805	13,716
SAINT LUCIE	273,868	222,347	51,521
SANTA ROSA	142,094	130,378	11,716
SARASOTA	388,641	365,747	22,894
SEMINOLE	426,364	358,373	67,991
SUMTER	90,996	79,920	11,076
SUWANNEE	39,816	34,868	4,948
TAYLOR	22,721	17,760	4,961
UNION	15,865	12,052	3,813
VOLUSIA	508,468	447,754	60,714
WAKULLA	29,632	25,938	3,694
WALTON	57,318	51,997	5,321
WASHINGTON	23,876	19,854	4,022