

Fetal and Infant Deaths

FETAL AND INFANT DEATHS

- The number of resident fetal deaths (stillbirths occurring at 20 or more weeks of gestation) decreased from 1,840 in 2007 to 1,688 in 2008. The ratio of resident fetal deaths to resident live births also decreased from 7.7 per 1,000 live births to 7.3 per 1,000 live births during the same time period.
- Between 2007 and 2008, resident fetal deaths decreased among Whites and Nonwhites from 1,042 to 951 and 792 to 725, respectively.
- Of all resident fetal deaths in 2008, 66.5 percent were to mothers of Non-Hispanic and Non-Haitian origin, 24.4 percent were to mothers of Hispanic origin, 7.1 percent were to mothers of Haitian origin and 2.0 percent were to mothers whose ethnicity was unknown.
- The neonatal death rate increased from 4.4 per 1,000 live births in 2007 to 4.6 per 1,000 live births in 2008. This rate has fluctuated very little from 4.8 per 1,000 live births in 1998. The 2008 rate represents less than half the rate of 1980 (9.7 per 1,000 live births).
- In 2008, the Nonwhite neonatal death rate (7.4 per 1,000 live births) is more than twice the White rate (3.5 per 1,000 live births). The Nonwhite rate decreased from 7.6 per 1,000 live births in 2007, while the White rate increased from 3.3 per 1,000 live births in 2007.
- Florida's 2008 infant mortality rate is 7.2 per 1,000 live births. Over time, these rates show that no significant difference has occurred in recent years. From 1998 to 2008, the resident infant mortality rate has only slightly fluctuated between a low of 7.0 per 1,000 live births to a high of 7.5 per 1,000 live births. The 2008 resident infant mortality rate has dropped 25.0 percent since 1990 and is currently about half the rate of 1980.
- The resident infant mortality rate increased slightly from 7.1 per 1,000 live births in 2007 to 7.2 per 1,000 live births in 2008. Further analysis shows this slight increase in the total rate is due to an increase in the White infant mortality rate from 5.2 per 1,000 live births in 2007 to 5.5 per 1,000 live births in 2008. The infant mortality rate among Nonwhites actually declined from 12.2 per 1,000 live births in 2007 to 11.8 per 1,000 live births in 2008.
- In 2008, resident infant deaths among Non-Hispanic and Non-Haitian origin accounted for 72.5 percent of all resident infant deaths. Among other ethnic groups, infants of Hispanic origin represented 22.7 percent, infants of Haitian origin represented 4.0 percent and 0.8 percent occurred to infants whose ethnicity was unknown.
- Among all resident infant deaths during 2008, 63.7 percent were neonatal deaths (occurring before infants were 28 days old). Furthermore, 37.1 percent of infant deaths occurred to infants who were less than one day old.
- The leading causes of resident infant deaths in 2008 were perinatal period conditions, congenital/chromosomal anomalies, unintentional injuries (accidents), and sudden infant death syndrome. These causes accounted for 81.6 percent of all resident infant deaths.

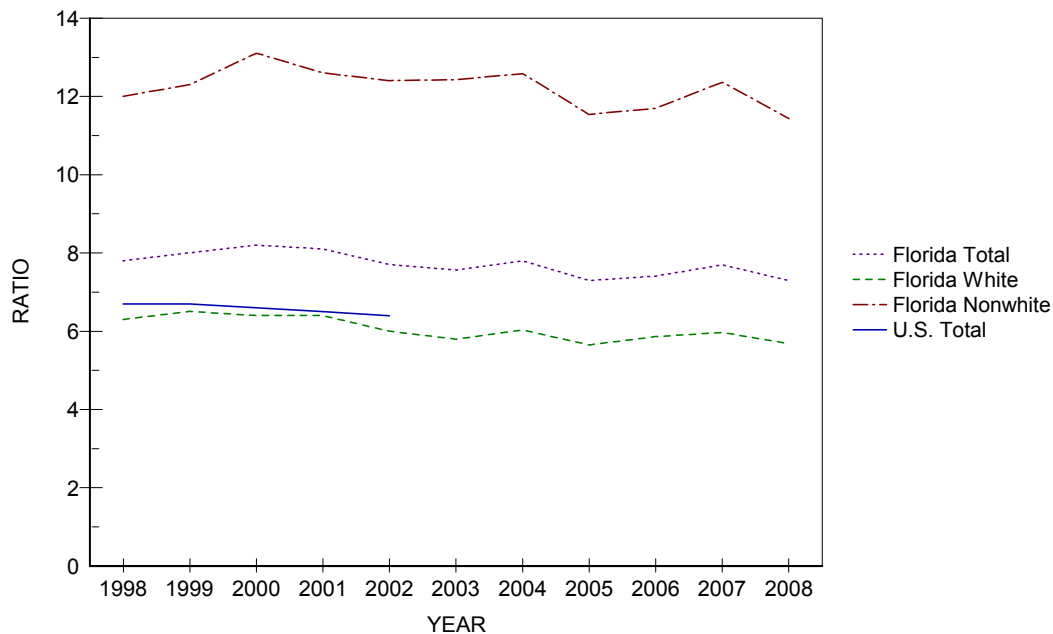
**CHART F-1: RESIDENT FETAL DEATHS AND RATIOS PER 1,000 LIVE BIRTHS,
BY RACE, FLORIDA AND UNITED STATES TOTAL,
CENSUS YEARS 1920-1990 AND 1998-2008**

YEAR	NUMBER OF FETAL DEATHS - FL ²			RATIOS - FL			RATIO - U.S.
	TOTAL	WHITE	NONWHITE	TOTAL	WHITE	NONWHITE	TOTAL
1920 ¹	1,287	595	692	65.9	43.9	115.4	NA
1930 ¹	1,754	746	1,008	65.0	40.1	120.1	NA
1940	1,415	683	732	42.0	28.7	74.0	NA
1950	1,443	757	868	22.4	16.6	36.7	18.8
1960	1,846	1,043	803	16.0	12.4	25.7	15.8
1970	1,701	1,034	615	14.8	11.9	21.8	14.0
1980	1,355	847	491	10.3	8.7	14.3	9.1
1990	1,811	1,071	720	9.1	7.2	14.6	7.5
1998	1,520	912	594	7.8	6.3	12.0	6.7
1999	1,579	953	619	8.0	6.5	12.3	6.7
2000	1,675	954	704	8.2	6.4	13.1	6.6
2001	1,668	972	678	8.1	6.4	12.6	6.5
2002	1,591	920	657	7.7	6.0	12.4	6.4
2003	1,604	912	678	7.6	5.8	12.4	NA
2004	1,701	966	723	7.8	6.0	12.6	NA
2005	1,650	938	688	7.3	5.6	11.5	NA
2006	1,756	1,020	733	7.4	5.9	11.7	NA
2007	1,840	1,042	792	7.7	6.0	12.4	NA
2008	1,688	951	725	7.3	5.7	11.4	NA

1. Only recorded data are available.

2. Data from 1920-1960 are based on the race of the child. Data from 1970 to present are based on the race of the mother.

**GRAPH F-1: RESIDENT FETAL DEATH RATIOS PER 1,000 LIVE BIRTHS, BY RACE OF MOTHER,
FLORIDA, AND UNITED STATES TOTAL, 1998-2008**



**CHART F-2: RESIDENT NEONATAL DEATHS AND RATES PER 1,000 LIVE BIRTHS,
BY RACE, FLORIDA AND UNITED STATES TOTAL,
CENSUS YEARS 1940-1990 AND 1998-2008**

YEAR	NUMBER OF NEONATAL DEATHS - FL			RATES - FL ¹			RATE - U.S.
	TOTAL	WHITE	NONWHITE	TOTAL	WHITE	NONWHITE	TOTAL
1940	1,142	662	480	33.9	27.8	48.5	28.8
1950	1,551	975	576	24.1	21.3	30.8	20.5
1960	2,404	1,531	873	20.8	18.1	28.0	18.7
1970	1,848	1,198	648	16.1	13.8	23.0	15.1
1980	1,282	791	490	9.7	8.1	14.2	8.5
1990	1,227	742	484	6.2	5.0	9.8	5.8
1998	933	559	371	4.8	3.8	7.5	4.8
1999	962	559	401	4.9	3.8	7.9	4.7
2000	925	526	397	4.5	3.5	7.4	4.6
2001	980	539	440	4.8	3.6	8.2	4.5
2002	1,032	596	436	5.0	3.9	8.2	4.7
2003	1,025	584	438	4.8	3.7	8.0	4.6
2004	989	563	425	4.5	3.5	7.4	4.5
2005	1,024	544	479	4.5	3.3	8.0	4.5
2006	1,122	630	490	4.7	3.6	7.8	4.5
2007	1,062	573	487	4.4	3.3	7.6	NA
2008	1,061	592	467	4.6	3.5	7.4	NA

¹. Rates based on neonatal deaths by race of decedent, 1940-1960 live births based on race of child, 1970 to present live births based on race of mother.

**GRAPH F-2: RESIDENT NEONATAL DEATH RATES PER 1,000 LIVE BIRTHS, BY RACE,
FLORIDA AND UNITED STATES TOTAL, 1998-2008**

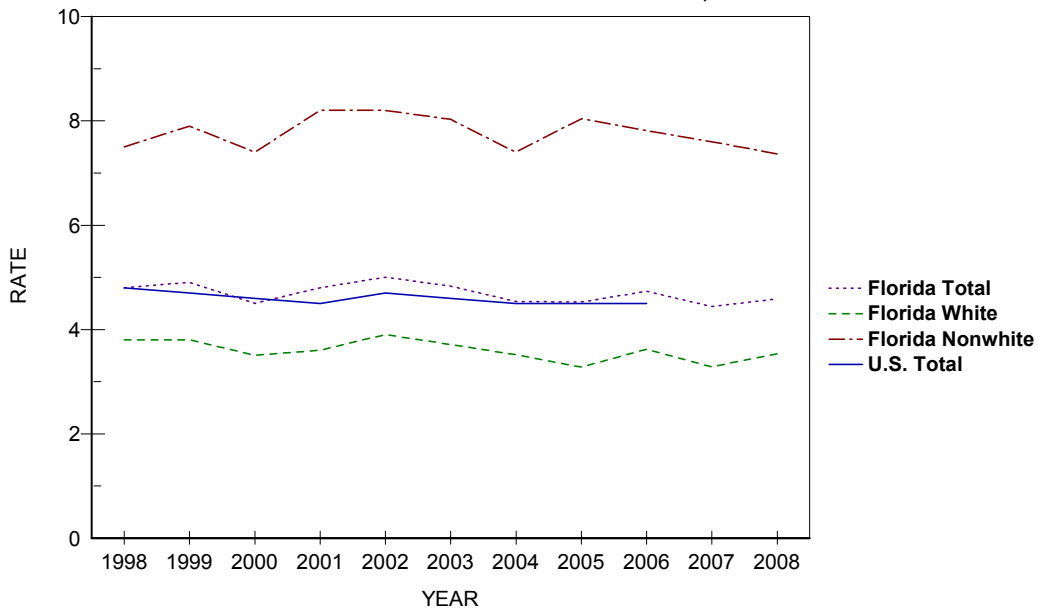


CHART F-3: RESIDENT INFANT DEATHS AND RATES PER 1,000 LIVE BIRTHS, BY RACE, FLORIDA AND UNITED STATES TOTAL, CENSUS YEARS 1920-1990 AND 1998-2008

YEAR	NUMBER OF INFANT DEATHS - FL			RATES - FL ²			RATE - U.S.
	TOTAL	WHITE	NONWHITE	TOTAL	WHITE	NONWHITE	TOTAL
1920 ¹	1,835	1,031	804	93.9	76.1	134.0	NA
1930 ¹	1,729	928	801	64.1	49.9	95.4	NA
1940	1,812	1,052	760	53.8	44.2	76.8	47.0
1950	2,078	1,225	853	32.3	26.8	45.7	29.2
1960	3,431	1,992	1,439	29.7	23.6	46.1	26.0
1970	2,470	1,538	930	21.5	17.7	33.0	20.0
1980	1,918	1,137	780	14.6	11.7	22.7	12.6
1990	1,912	1,123	787	9.6	7.5	16.0	9.2
1998	1,415	850	562	7.2	5.8	11.4	7.2
1999	1,442	815	625	7.3	5.6	12.4	7.1
2000	1,423	810	611	7.0	5.4	11.4	6.9
2001	1,495	839	655	7.3	5.5	12.3	6.8
2002	1,548	892	656	7.5	5.9	12.4	7.0
2003	1,584	907	674	7.5	5.8	12.4	6.9
2004	1,536	876	659	7.0	5.5	11.5	6.8
2005	1,626	882	743	7.2	5.3	12.5	6.9
2006	1,713	974	737	7.2	5.6	11.8	6.7
2007	1,689	906	781	7.1	5.2	12.2	6.6 ³
2008	1,667	914	751	7.2	5.5	11.8	6.5 ⁴

1. Only recorded data are available.

2. Rates based on neonatal deaths by race of decedent, 1920-1960 live births based on race of child, 1970 to present live births based on race of mother.

3. Preliminary data.

4. Provisional data.

GRAPH F-3: RESIDENT INFANT DEATH RATES PER 1,000 LIVE BIRTHS, BY RACE, FLORIDA AND UNITED STATES TOTAL, 1998-2008

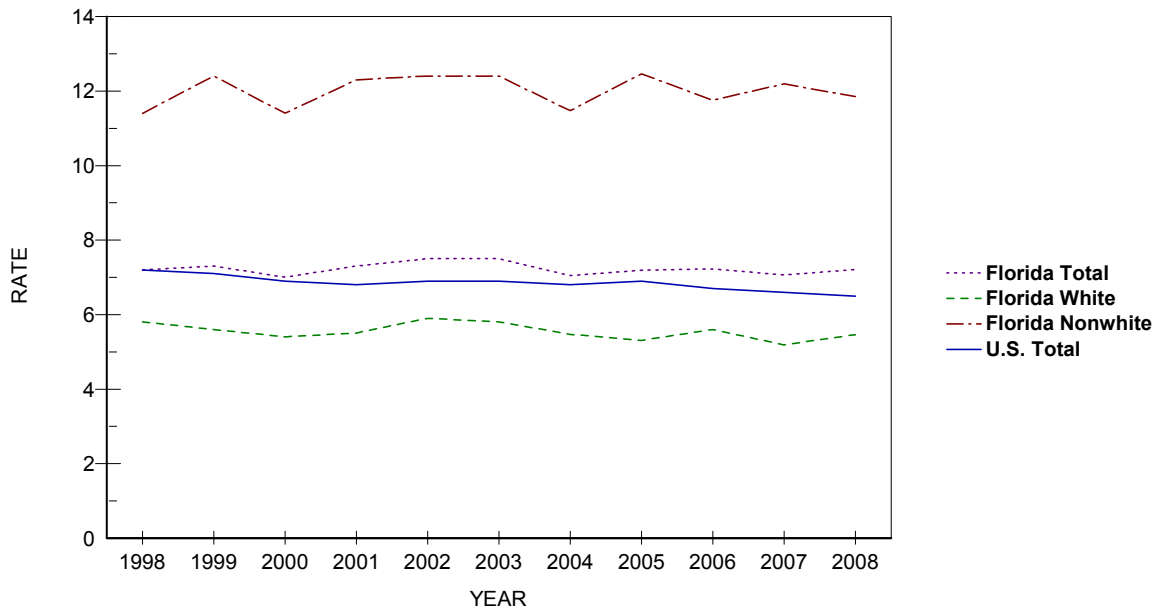


TABLE F-1: RESIDENT AND RECORDED FETAL DEATHS (OF 20 OR MORE WEEKS GESTATION) AND RATIOS PER 1,000 LIVE BIRTHS, BY RACE OF MOTHER, BY COUNTY, FLORIDA, 2008

RESIDENT FETAL DEATHS

	NUMBERS						RATIOS		
	TOTAL	WHITE	NONWHITE			UNK	TOTAL	WHITE	NONWHITE
			TOTAL	BLACK	OTHER				
FLORIDA	1,688	951	725	681	44	12	7.3	5.7	11.4
ALACHUA	21	7	14	14	0	0	7.0	3.8	12.2
BAKER	1	0	1	0	1	0	2.5	0.0	16.4
BAY	23	14	9	8	1	0	9.7	7.7	18.7
BRADFORD	5	1	4	4	0	0	13.9	3.5	54.1
BREVARD	42	31	11	10	1	0	7.7	7.2	9.6
BROWARD	181	63	117	110	7	1	8.1	5.1	12.3
CALHOUN	0	0	0	0	0	0	0.0	0.0	0.0
CHARLOTTE	9	8	1	1	0	0	7.4	7.5	6.6
CITRUS	4	4	0	0	0	0	3.6	3.9	0.0
CLAY	8	7	1	0	1	0	3.5	3.7	2.7
COLLIER	28	13	15	13	2	0	7.5	4.0	28.8
COLUMBIA	3	2	1	1	0	0	3.4	2.9	5.5
MIAMI-DADE	250	128	115	109	6	7	7.4	5.2	12.8
DESOTO	3	3	0	0	0	0	6.4	7.5	0.0
DIXIE	3	3	0	0	0	0	17.3	19.0	0.0
DUVAL	104	37	67	67	0	0	7.7	4.8	11.8
ESCAMBIA	43	25	18	18	0	0	10.3	9.2	12.1
FLAGLER	3	1	2	2	0	0	3.3	1.4	10.6
FRANKLIN	1	1	0	0	0	0	8.5	9.4	0.0
GADSDEN	7	2	5	5	0	0	9.5	7.2	11.0
GILCHRIST	2	2	0	0	0	0	10.1	10.9	0.0
GLADES	1	1	0	0	0	0	11.5	15.9	0.0
GULF	0	0	0	0	0	0	0.0	0.0	0.0
HAMILTON	1	1	0	0	0	0	6.1	10.1	0.0
HARDEE	4	4	0	0	0	0	7.8	8.5	0.0
HENDRY	7	2	5	4	1	0	10.1	3.5	41.3
HERNANDO	15	13	2	2	0	0	9.5	9.1	13.1
HIGHLANDS	5	5	0	0	0	0	4.8	6.1	0.0
HILLSBOROUGH	132	79	53	51	2	0	7.6	6.2	11.3
HOLMES	0	0	0	0	0	0	0.0	0.0	0.0
INDIAN RIVER	9	6	3	3	0	0	6.6	5.5	10.4
JACKSON	6	3	3	2	1	0	10.1	7.3	16.7
JEFFERSON	0	0	0	0	0	0	0.0	0.0	0.0
LAFAYETTE	0	0	0	0	0	0	0.0	0.0	0.0
LAKE	18	15	3	3	0	0	5.4	5.5	4.7
LEE	50	39	11	11	0	0	7.0	6.6	9.3
LEON	26	13	13	13	0	0	8.1	7.9	8.4
LEVY	3	3	0	0	0	0	6.3	7.3	0.0
LIBERTY	2	2	0	0	0	0	20.4	21.7	0.0
MADISON	3	1	2	2	0	0	12.8	9.5	15.4
MANATEE	21	16	5	5	0	0	5.4	5.1	7.0
MARION	23	16	7	6	1	0	6.2	5.6	8.6
MARTIN	13	9	4	4	0	0	10.2	9.6	11.9
MONROE	5	2	2	1	1	1	7.0	3.1	24.7
NASSAU	4	4	0	0	0	0	4.9	5.3	0.0
OKALOOSA	11	6	5	5	0	0	4.2	2.8	10.3
OKEECHOBEE	4	3	1	1	0	0	7.5	6.5	14.7
ORANGE	132	68	64	60	4	0	8.0	6.3	11.2
OSCEOLA	26	21	5	5	0	0	6.4	6.2	7.8
PALM BEACH	105	42	61	59	2	2	6.9	4.1	12.3
PASCO	24	19	4	3	1	1	4.5	4.0	7.3
PINELLAS	64	43	21	18	3	0	7.0	6.4	8.7
POLK	56	35	21	20	1	0	7.1	5.8	11.0
PUTNAM	8	5	3	3	0	0	7.9	6.5	12.4
SAINT JOHNS	12	10	2	2	0	0	6.7	6.5	8.4
SAINT LUCIE	21	7	14	12	2	0	6.2	3.0	13.4
SANTA ROSA	12	10	2	1	1	0	6.5	6.0	10.8
SARASOTA	20	17	3	3	0	0	6.6	6.5	7.3
SEMINOLE	39	31	8	6	2	0	8.4	8.5	8.0
SUMTER	2	2	0	0	0	0	3.8	4.7	0.0
SUWANNEE	4	4	0	0	0	0	7.4	8.5	0.0
TAYLOR	4	3	1	1	0	0	13.4	13.8	12.5
UNION	3	3	0	0	0	0	16.0	19.0	0.0
VOLUSIA	44	30	14	12	2	0	8.4	7.0	14.1
WAKULLA	1	1	0	0	0	0	2.8	3.3	0.0
WALTON	2	1	1	0	1	0	2.7	1.5	14.9
WASHINGTON	4	3	1	1	0	0	13.9	12.6	21.3

TABLE F-1 (Cont.): RESIDENT AND RECORDED FETAL DEATHS (OF 20 OR MORE WEEKS GESTATION) AND RATIOS PER 1,000 LIVE BIRTHS, BY RACE OF MOTHER, BY COUNTY, FLORIDA, 2008

RECORDED FETAL DEATHS

	NUMBERS						RATIOS		
	TOTAL	WHITE	NONWHITE			UNK	TOTAL	WHITE	NONWHITE
			TOTAL	BLACK	OTHER				
FLORIDA	1,717	968	735	689	46	14	7.4	5.8	11.6
ALACHUA	62	39	23	23	0	0	9.5	8.2	13.3
BAKER	0	0	0	0	0	0	0.0	0.0	0.0
BAY	24	13	11	10	1	0	8.4	5.8	19.7
BRADFORD	0	0	0	0	0	0	0.0	0.0	0.0
BREVARD	38	27	11	10	1	0	7.1	6.4	9.8
BROWARD	227	82	143	135	8	2	9.3	6.2	13.2
CALHOUN	0	0	0	0	0	0	0.0	0.0	----
CHARLOTTE	7	6	1	1	0	0	5.2	5.1	5.3
CITRUS	2	2	0	0	0	0	2.0	2.2	0.0
CLAY	8	3	5	4	1	0	3.6	1.7	11.2
COLLIER	28	14	14	12	2	0	6.9	4.0	26.7
COLUMBIA	3	2	1	1	0	0	4.4	4.0	5.3
MIAMI-DADE	219	115	96	91	5	8	7.1	4.9	12.9
DESOTO	3	3	0	0	0	0	5.3	5.9	0.0
DIXIE	0	0	0	0	0	0	----	----	----
DUVAL	108	47	61	61	0	0	6.9	4.8	10.5
ESCAMBIA	51	30	21	20	1	0	8.6	7.1	12.7
FLAGLER	1	1	0	0	0	0	111.1	142.9	0.0
FRANKLIN	1	1	0	0	0	0	250.0	250.0	----
GADSDEN	0	0	0	0	0	0	0.0	0.0	0.0
GILCHRIST	0	0	0	0	0	0	0.0	0.0	----
GLADES	0	0	0	0	0	0	----	----	----
GULF	0	0	0	0	0	0	----	----	----
HAMILTON	0	0	0	0	0	0	0.0	0.0	----
HARDEE	0	0	0	0	0	0	0.0	0.0	----
HENDRY	0	0	0	0	0	0	0.0	0.0	----
HERNANDO	12	11	1	1	0	0	6.5	6.6	6.3
HIGHLANDS	6	6	0	0	0	0	4.2	5.3	0.0
HILLSBOROUGH	151	94	56	54	2	1	7.7	6.4	11.1
HOLMES	0	0	0	0	0	0	0.0	0.0	----
INDIAN RIVER	8	5	3	3	0	0	6.5	5.2	11.2
JACKSON	10	7	3	2	1	0	16.1	15.6	17.1
JEFFERSON	0	0	0	0	0	0	0.0	0.0	----
LAFAYETTE	0	0	0	0	0	0	----	----	----
LAKE	14	12	2	2	0	0	4.8	5.1	3.5
LEE	55	42	13	12	1	0	7.3	6.7	10.6
LEON	39	18	21	21	0	0	7.4	6.2	8.9
LEVY	0	0	0	0	0	0	0.0	0.0	----
LIBERTY	0	0	0	0	0	0	----	----	----
MADISON	0	0	0	0	0	0	0.0	----	0.0
MANATEE	18	15	3	3	0	0	5.6	5.7	5.2
MARION	15	11	4	3	1	0	5.1	4.8	6.2
MARTIN	13	8	5	4	1	0	6.1	4.8	10.9
MONROE	3	1	2	1	1	0	5.9	2.3	26.3
NASSAU	4	3	1	1	0	0	9.5	8.2	19.2
OKALOOSA	10	6	4	4	0	0	3.7	2.7	8.0
OKEECHOBEE	1	1	0	0	0	0	90.9	100.0	0.0
ORANGE	175	102	73	68	5	0	8.3	7.0	11.3
OSCEOLA	23	17	6	5	1	0	5.9	5.2	9.4
PALM BEACH	121	52	67	65	2	2	7.1	4.5	12.3
PASCO	13	13	0	0	0	0	7.4	8.3	0.0
PINELLAS	74	51	23	18	5	0	6.8	6.1	9.0
POLK	48	31	17	16	1	0	7.1	6.0	10.4
PUTNAM	3	0	3	3	0	0	5.9	0.0	18.5
SAINT JOHNS	10	8	2	1	1	0	8.8	8.5	9.8
SAINT LUCIE	16	3	13	12	1	0	7.3	2.2	15.6
SANTA ROSA	6	5	0	0	0	1	18.0	16.8	0.0
SARASOTA	22	17	5	4	1	0	6.4	5.8	9.6
SEMINOLE	25	18	7	5	2	0	7.0	6.5	9.1
SUMTER	0	0	0	0	0	0	0.0	0.0	----
SUWANNEE	1	1	0	0	0	0	200.0	200.0	----
TAYLOR	0	0	0	0	0	0	0.0	0.0	0.0
UNION	0	0	0	0	0	0	0.0	----	0.0
VOLUSIA	36	23	13	13	0	0	7.9	6.4	13.8
WAKULLA	0	0	0	0	0	0	0.0	----	0.0
WALTON	3	2	1	0	1	0	4.5	3.3	19.6
WASHINGTON	0	0	0	0	0	0	0.0	0.0	----

TABLE F-2: RESIDENT FETAL DEATHS BY HISPANIC OR HAITIAN ORIGIN OF MOTHER, BY COUNTY, FLORIDA, 2008

	TOTAL	HISPANIC ORIGIN								NON-HISPANIC/HAITIAN	UNK
		TOTAL HISPANIC	MEXICAN	PUERTO RICAN	CUBAN	CENTRAL/SOUTH AMERICAN	OTHER/UNK HISPANIC	HAITIAN			
FLORIDA	1,688	411	101	101	68	123	18	120	1,123	34	
ALACHUA	21	1	0	1	0	0	0	0	20	0	
BAKER	1	0	0	0	0	0	0	0	1	0	
BAY	23	5	4	0	0	1	0	0	18	0	
BRADFORD	5	0	0	0	0	0	0	0	5	0	
BREVARD	42	5	1	4	0	0	0	2	34	1	
BROWARD	181	34	3	6	5	19	1	26	116	5	
CALHOUN	0	0	0	0	0	0	0	0	0	0	
CHARLOTTE	9	1	1	0	0	0	0	0	8	0	
CITRUS	4	0	0	0	0	0	0	0	4	0	
CLAY	8	2	0	1	1	0	0	0	6	0	
COLLIER	28	12	4	0	1	6	1	9	7	0	
COLUMBIA	3	0	0	0	0	0	0	0	3	0	
MIAMI-DADE	250	118	7	8	49	48	6	32	86	14	
DESOTO	3	3	3	0	0	0	0	0	0	0	
DIXIE	3	0	0	0	0	0	0	0	3	0	
DUVAL	104	6	2	2	0	1	1	2	95	1	
ESCAMBIA	43	1	0	0	0	1	0	1	41	0	
FLAGLER	3	0	0	0	0	0	0	0	3	0	
FRANKLIN	1	0	0	0	0	0	0	0	1	0	
GADSDEN	7	0	0	0	0	0	0	0	7	0	
GILCHRIST	2	0	0	0	0	0	0	0	2	0	
GLADES	1	0	0	0	0	0	0	0	1	0	
GULF	0	0	0	0	0	0	0	0	0	0	
HAMILTON	1	0	0	0	0	0	0	0	1	0	
HARDEE	4	2	2	0	0	0	0	0	2	0	
HENDRY	7	2	2	0	0	0	0	0	5	0	
HERNANDO	15	3	0	3	0	0	0	0	12	0	
HIGHLANDS	5	2	0	2	0	0	0	0	3	0	
HILLSBOROUGH	132	41	14	11	4	6	6	3	86	2	
HOLMES	0	0	0	0	0	0	0	0	0	0	
INDIAN RIVER	9	1	1	0	0	0	0	0	8	0	
JACKSON	6	0	0	0	0	0	0	0	6	0	
JEFFERSON	0	0	0	0	0	0	0	0	0	0	
LAFAYETTE	0	0	0	0	0	0	0	0	0	0	
LAKE	18	5	3	1	0	1	0	0	13	0	
LEE	50	15	9	3	0	3	0	3	32	0	
LEON	26	1	1	0	0	0	0	0	25	0	
LEVY	3	1	0	1	0	0	0	0	2	0	
LIBERTY	2	0	0	0	0	0	0	0	2	0	
MADISON	3	1	1	0	0	0	0	0	2	0	
MANATEE	21	6	3	1	2	0	0	2	13	0	
MARION	23	3	2	0	0	1	0	0	20	0	
MARTIN	13	3	0	0	0	3	0	0	10	0	
MONROE	5	2	0	0	1	1	0	2	0	1	
NASSAU	4	0	0	0	0	0	0	0	4	0	
OKALOOSA	11	0	0	0	0	0	0	0	11	0	
OKEECHOBEE	4	0	0	0	0	0	0	0	4	0	
ORANGE	132	40	6	22	0	10	2	9	82	1	
OSCEOLA	26	15	1	13	0	1	0	0	11	0	
PALM BEACH	105	23	8	2	1	11	1	23	54	5	
PASCO	24	6	2	3	0	1	0	0	15	3	
PINELLAS	64	9	3	2	3	1	0	2	53	0	
POLK	56	13	8	4	1	0	0	1	42	0	
PUTNAM	8	0	0	0	0	0	0	0	8	0	
SAINT JOHNS	12	0	0	0	0	0	0	0	12	0	
SAINT LUCIE	21	4	1	1	0	2	0	3	14	0	
SANTA ROSA	12	1	0	0	0	1	0	0	11	0	
SARASOTA	20	6	4	0	0	2	0	0	14	0	
SEMINOLE	39	11	0	9	0	2	0	0	28	0	
SUMTER	2	0	0	0	0	0	0	0	2	0	
SUWANNEE	4	1	1	0	0	0	0	0	3	0	
TAYLOR	4	0	0	0	0	0	0	0	4	0	
UNION	3	0	0	0	0	0	0	0	3	0	
VOLUSIA	44	4	3	1	0	0	0	0	40	0	
WAKULLA	1	0	0	0	0	0	0	0	1	0	
WALTON	2	2	1	0	0	1	0	0	0	0	
WASHINGTON	4	0	0	0	0	0	0	0	4	0	

TABLE F-3: RESIDENT FETAL DEATHS BY AGE OF MOTHER, BY COUNTY, FLORIDA, 2008

	TOTAL	AGE OF MOTHER													
		<13	13	14	15	16	17	18	19	20-24	25-29	30-34	35-44	45+	UNK
FLORIDA	1,688	0	1	3	10	26	38	63	66	405	419	350	274	4	29
ALACHUA	21	0	0	0	1	0	0	2	2	4	7	4	1	0	0
BAKER	1	0	0	0	0	0	0	0	0	1	0	0	0	0	0
BAY	23	0	0	0	0	0	0	1	1	7	7	4	3	0	0
BRADFORD	5	0	0	0	0	0	1	0	0	2	0	2	0	0	0
BREVARD	42	0	0	0	0	0	0	2	1	12	9	6	11	0	1
BROWARD	181	0	0	1	1	3	0	6	5	37	32	50	36	1	9
CALHOUN	0	0	0	0	0	0	0	0	0	0	0	0	0	0	0
CHARLOTTE	9	0	0	0	0	0	0	0	0	3	0	4	2	0	0
CITRUS	4	0	0	0	0	0	0	0	0	1	2	0	1	0	0
CLAY	8	0	0	0	0	1	2	1	0	0	3	1	0	0	0
COLLIER	28	0	0	0	0	0	2	0	1	4	7	9	5	0	0
COLUMBIA	3	0	0	0	0	0	0	0	0	1	1	1	0	0	0
MIAMI-DADE	250	0	0	0	0	4	6	10	5	57	51	58	53	0	6
DESOTO	3	0	0	0	0	0	0	1	0	1	0	1	0	0	0
DIXIE	3	0	0	0	0	0	1	0	0	1	1	0	0	0	0
DUVAL	104	0	0	0	0	1	5	3	4	33	26	23	8	0	1
ESCAMBIA	43	0	0	1	0	0	1	1	2	16	12	6	4	0	0
FLAGLER	3	0	0	0	0	0	0	0	0	0	2	0	1	0	0
FRANKLIN	1	0	0	0	0	0	0	0	0	1	0	0	0	0	0
GADSDEN	7	0	0	0	0	0	1	0	0	2	2	0	2	0	0
GILCHRIST	2	0	0	0	0	0	0	0	1	0	1	0	0	0	0
GLADES	1	0	0	0	0	0	0	0	0	0	0	1	0	0	0
GULF	0	0	0	0	0	0	0	0	0	0	0	0	0	0	0
HAMILTON	1	0	0	0	0	0	0	0	0	1	0	0	0	0	0
HARDEE	4	0	0	0	0	0	0	1	1	0	0	1	1	0	0
HENDRY	7	0	0	0	0	0	0	0	3	1	2	1	0	0	0
HERNANDO	15	0	0	0	0	1	0	1	1	4	2	4	2	0	0
HIGHLANDS	5	0	0	0	0	0	0	0	0	0	3	2	0	0	0
HILLSBOROUGH	132	0	0	0	1	2	2	3	4	28	38	31	22	0	1
HOLMES	0	0	0	0	0	0	0	0	0	0	0	0	0	0	0
INDIAN RIVER	9	0	0	0	0	0	0	0	1	2	4	1	1	0	0
JACKSON	6	0	0	0	0	0	0	1	0	1	2	1	1	0	0
JEFFERSON	0	0	0	0	0	0	0	0	0	0	0	0	0	0	0
LAFAYETTE	0	0	0	0	0	0	0	0	0	0	0	0	0	0	0
LAKE	18	0	0	0	0	0	0	0	0	5	6	4	3	0	0
LEE	50	0	0	0	2	0	0	2	5	7	12	12	10	0	0
LEON	26	0	0	0	0	0	0	1	0	4	14	3	4	0	0
LEVY	3	0	0	0	0	0	0	1	0	0	2	0	0	0	0
LIBERTY	2	0	0	0	0	0	0	0	0	1	0	1	0	0	0
MADISON	3	0	0	0	0	1	0	0	0	1	0	0	1	0	0
MANATEE	21	0	0	0	0	2	0	1	0	5	6	5	2	0	0
MARION	23	0	0	0	0	1	0	1	0	6	13	1	1	0	0
MARTIN	13	0	0	0	0	0	0	0	0	1	9	0	2	1	0
MONROE	5	0	0	0	0	0	0	0	0	1	2	0	1	0	1
NASSAU	4	0	0	0	0	0	0	0	0	2	0	1	1	0	0
OKALOOSA	11	0	0	0	0	0	0	1	0	3	1	4	2	0	0
OKEECHOBEE	4	0	0	0	0	0	0	0	0	1	1	2	0	0	0
ORANGE	132	0	0	1	1	2	3	5	4	28	32	28	22	0	6
OSCEOLA	26	0	0	0	2	0	0	0	2	11	5	4	2	0	0
PALM BEACH	105	0	0	0	0	3	4	7	7	25	17	21	20	0	1
PASCO	24	0	0	0	0	0	0	0	0	6	6	3	8	1	0
PINELLAS	64	0	0	0	0	1	2	0	1	22	21	7	10	0	0
POLK	56	0	0	0	1	1	3	3	7	15	19	5	2	0	0
PUTNAM	8	0	0	0	0	0	1	0	0	3	2	2	0	0	0
SAINT JOHNS	12	0	0	0	0	0	1	1	2	3	2	3	0	0	0
SAINT LUCIE	21	0	1	0	0	0	0	0	1	6	6	5	1	0	1
SANTA ROSA	12	0	0	0	0	0	0	2	1	2	4	1	2	0	0
SARASOTA	20	0	0	0	0	1	0	0	0	4	3	4	7	1	0
SEMINOLE	39	0	0	0	0	1	1	0	0	9	5	14	8	0	1
SUMTER	2	0	0	0	0	0	0	0	0	0	1	0	1	0	0
SUWANNEE	4	0	0	0	0	0	0	0	0	0	1	3	0	0	0
TAYLOR	4	0	0	0	0	0	0	0	0	0	4	0	0	0	0
UNION	3	0	0	0	0	0	0	0	0	1	1	0	1	0	0
VOLUSIA	44	0	0	0	0	0	2	4	4	11	9	6	8	0	0
WAKULLA	1	0	0	0	0	0	0	0	0	0	1	0	0	0	0
WALTON	2	0	0	0	0	0	0	0	0	1	0	0	1	0	0
WASHINGTON	4	0	0	0	1	1	0	1	0	1	0	0	0	0	0

TABLE F-4: RESIDENT AND RECORDED NEONATAL DEATHS (UNDER 28 DAYS) AND RATES PER 1,000 LIVE BIRTHS, BY RACE, BY COUNTY, FLORIDA, 2008

	RESIDENT NEONATAL DEATHS							RATES*		
	TOTAL	WHITE	NUMBERS			UNK	TOTAL	WHITE	NONWHITE	
			TOTAL	BLACK	OTHER					
FLORIDA	1,061	592	467	402	65	2	4.6	3.5	7.4	
ALACHUA	12	8	4	4	0	0	4.0	4.4	3.5	
BAKER	0	0	0	0	0	0	0.0	0.0	0.0	
BAY	13	9	4	3	1	0	5.5	4.9	8.3	
BRADFORD	2	2	0	0	0	0	5.6	7.0	0.0	
BREVARD	28	18	10	7	3	0	5.1	4.2	8.7	
BROWARD	74	36	38	34	4	0	3.3	2.9	4.0	
CALHOUN	1	1	0	0	0	0	6.1	6.8	0.0	
CHARLOTTE	4	2	2	2	0	0	3.3	1.9	13.2	
CITRUS	4	4	0	0	0	0	3.6	3.9	0.0	
CLAY	15	7	8	5	3	0	6.6	3.7	21.9	
COLLIER	20	15	5	4	1	0	5.4	4.7	9.6	
COLUMBIA	7	3	4	4	0	0	7.9	4.3	22.0	
MIAMI-DADE	99	61	38	35	3	0	2.9	2.5	4.2	
DESOTO	1	1	0	0	0	0	2.1	2.5	0.0	
DIXIE	1	1	0	0	0	0	5.8	6.3	0.0	
DUVAL	86	32	54	46	8	0	6.4	4.1	9.5	
ESCAMBIA	26	12	14	11	3	0	6.2	4.4	9.4	
FLAGLER	4	2	2	1	1	0	4.4	2.8	10.6	
FRANKLIN	0	0	0	0	0	0	0.0	0.0	0.0	
GADSDEN	6	2	4	4	0	0	8.2	7.2	8.8	
GILCHRIST	0	0	0	0	0	0	0.0	0.0	0.0	
GLADES	0	0	0	0	0	0	0.0	0.0	0.0	
GULF	2	2	0	0	0	0	14.3	16.9	0.0	
HAMILTON	2	0	2	2	0	0	12.3	0.0	31.3	
HARDEE	1	1	0	0	0	0	2.0	2.1	0.0	
HENDRY	1	1	0	0	0	0	1.4	1.7	0.0	
HERNANDO	6	3	3	3	0	0	3.8	2.1	19.6	
HIGHLANDS	3	2	1	1	0	0	2.9	2.4	4.6	
HILLSBOROUGH	103	53	50	44	6	0	5.9	4.2	10.7	
HOLMES	0	0	0	0	0	0	0.0	0.0	0.0	
INDIAN RIVER	9	9	0	0	0	0	6.6	8.3	0.0	
JACKSON	1	1	0	0	0	0	1.7	2.4	0.0	
JEFFERSON	0	0	0	0	0	0	0.0	0.0	0.0	
LAFAYETTE	1	1	0	0	0	0	10.1	10.5	0.0	
LAKE	19	14	5	4	1	0	5.7	5.2	7.9	
LEE	28	17	11	11	0	0	3.9	2.9	9.3	
LEON	9	3	6	5	1	0	2.8	1.8	3.9	
LEVY	3	2	1	1	0	0	6.3	4.9	14.7	
LIBERTY	1	1	0	0	0	0	10.2	10.9	0.0	
MADISON	2	1	1	1	0	0	8.5	9.5	7.7	
MANATEE	19	14	5	4	1	0	4.9	4.4	7.0	
MARION	22	11	11	9	2	0	6.0	3.8	13.5	
MARTIN	2	2	0	0	0	0	1.6	2.1	0.0	
MONROE	2	2	0	0	0	0	2.8	3.1	0.0	
NASSAU	2	1	1	1	0	0	2.4	1.3	15.2	
OKALOOSA	14	8	6	3	3	0	5.3	3.7	12.4	
OKEECHOBEE	2	2	0	0	0	0	3.8	4.3	0.0	
ORANGE	99	34	63	54	9	2	6.0	3.1	11.0	
OSCEOLA	36	27	9	5	4	0	8.9	7.9	14.0	
PALM BEACH	49	25	24	24	0	0	3.2	2.4	4.8	
PASCO	20	18	2	2	0	0	3.8	3.8	3.6	
PINELLAS	62	34	28	23	5	0	6.8	5.1	11.6	
POLK	39	22	17	14	3	0	4.9	3.7	8.9	
PUTNAM	3	2	1	1	0	0	3.0	2.6	4.1	
SAINT JOHNS	6	5	1	1	0	0	3.4	3.2	4.2	
SAINT LUCIE	11	6	5	5	0	0	3.3	2.6	4.8	
SANTA ROSA	7	6	1	0	1	0	3.8	3.6	5.4	
SARASOTA	8	5	3	2	1	0	2.6	1.9	7.3	
SEMINOLE	20	15	5	4	1	0	4.3	4.1	5.0	
SUMTER	3	2	1	1	0	0	5.8	4.7	10.2	
SUWANNEE	3	2	1	1	0	0	5.5	4.2	13.9	
TAYLOR	1	0	1	1	0	0	3.3	0.0	12.5	
UNION	2	0	2	2	0	0	10.7	0.0	69.0	
VOLUSIA	30	20	10	10	0	0	5.7	4.7	10.1	
WAKULLA	3	1	2	2	0	0	8.5	3.3	39.2	
WALTON	1	0	1	1	0	0	1.3	0.0	14.9	
WASHINGTON	1	1	0	0	0	0	3.5	4.2	0.0	

*Rates based on neonatal deaths by race of decedent, live births by race of mother.

TABLE F-4 (Cont.): RESIDENT AND RECORDED NEONATAL DEATHS (UNDER 28 DAYS) AND RATES PER 1,000 LIVE BIRTHS, BY RACE, BY COUNTY, FLORIDA, 2008

	RECORDED NEONATAL DEATHS						RATES*		
	TOTAL	WHITE	NUMBERS			UNK	TOTAL	WHITE	NONWHITE
			TOTAL	BLACK	OTHER				
FLORIDA	1,087	609	476	412	64	2	4.7	3.6	7.5
ALACHUA	66	41	25	24	1	0	10.1	8.6	14.4
BAKER	0	0	0	0	0	0	0.0	0.0	0.0
BAY	9	8	1	1	0	0	3.2	3.6	1.8
BRADFORD	0	0	0	0	0	0	0.0	0.0	0.0
BREVARD	13	8	5	5	0	0	2.4	1.9	4.4
BROWARD	79	39	40	37	3	0	3.2	2.9	3.7
CALHOUN	0	0	0	0	0	0	0.0	0.0	----
CHARLOTTE	1	0	1	1	0	0	0.7	0.0	5.3
CITRUS	3	3	0	0	0	0	3.0	3.3	0.0
CLAY	4	3	1	1	0	0	1.8	1.7	2.2
COLLIER	14	11	3	2	1	0	3.5	3.1	5.7
COLUMBIA	3	0	3	3	0	0	4.4	0.0	16.0
MIAMI-DADE	105	65	40	36	4	0	3.4	2.8	5.4
DESOTO	0	0	0	0	0	0	0.0	0.0	0.0
DIXIE	0	0	0	0	0	0	----	----	----
DUVAL	114	47	67	56	11	0	7.3	4.8	11.6
ESCAMBIA	41	21	20	17	3	0	6.9	4.9	12.1
FLAGLER	0	0	0	0	0	0	0.0	0.0	0.0
FRANKLIN	0	0	0	0	0	0	0.0	0.0	----
GADSDEN	0	0	0	0	0	0	0.0	0.0	0.0
GILCHRIST	0	0	0	0	0	0	0.0	0.0	----
GLADES	0	0	0	0	0	0	----	----	----
GULF	0	0	0	0	0	0	----	----	----
HAMILTON	1	0	1	1	0	0	1,000.0	0.0	----
HARDEE	0	0	0	0	0	0	0.0	0.0	----
HENDRY	0	0	0	0	0	0	0.0	0.0	----
HERNANDO	2	2	0	0	0	0	1.1	1.2	0.0
HIGHLANDS	4	4	0	0	0	0	2.8	3.5	0.0
HILLSBOROUGH	140	78	62	53	9	0	7.1	5.3	12.3
HOLMES	0	0	0	0	0	0	0.0	0.0	----
INDIAN RIVER	7	6	1	1	0	0	5.7	6.2	3.7
JACKSON	1	1	0	0	0	0	1.6	2.2	0.0
JEFFERSON	0	0	0	0	0	0	0.0	0.0	----
LAFAYETTE	0	0	0	0	0	0	----	----	----
LAKE	6	5	1	0	1	0	2.0	2.1	1.7
LEE	33	20	13	13	0	0	4.4	3.2	10.6
LEON	21	6	15	14	1	0	4.0	2.1	6.3
LEVY	0	0	0	0	0	0	0.0	0.0	----
LIBERTY	0	0	0	0	0	0	----	----	----
MADISON	0	0	0	0	0	0	0.0	----	0.0
MANATEE	7	6	1	1	0	0	2.2	2.3	1.7
MARION	1	0	1	0	1	0	0.3	0.0	1.5
MARTIN	0	0	0	0	0	0	0.0	0.0	0.0
MONROE	1	1	0	0	0	0	2.0	2.3	0.0
NASSAU	0	0	0	0	0	0	0.0	0.0	0.0
OKALOOSA	5	4	1	1	0	0	1.9	1.8	2.0
OKEECHOBEE	1	1	0	0	0	0	90.9	100.0	0.0
ORANGE	204	109	93	78	15	2	9.7	7.5	14.3
OSCEOLA	7	6	1	0	1	0	1.8	1.8	1.6
PALM BEACH	56	30	26	25	1	0	3.3	2.6	4.8
PASCO	3	3	0	0	0	0	1.7	1.9	0.0
PINELLAS	90	54	36	28	8	0	8.3	6.5	14.1
POLK	13	5	8	7	1	0	1.9	1.0	4.9
PUTNAM	0	0	0	0	0	0	0.0	0.0	0.0
SAINT JOHNS	1	1	0	0	0	0	0.9	1.1	0.0
SAINT LUCIE	1	1	0	0	0	0	0.5	0.7	0.0
SANTA ROSA	4	3	1	0	1	0	12.0	10.1	27.8
SARASOTA	7	5	2	2	0	0	2.0	1.7	3.8
SEMINOLE	8	4	4	3	1	0	2.2	1.4	5.2
SUMTER	0	0	0	0	0	0	0.0	0.0	----
SUWANNEE	0	0	0	0	0	0	0.0	0.0	----
TAYLOR	0	0	0	0	0	0	0.0	0.0	0.0
UNION	0	0	0	0	0	0	0.0	----	0.0
VOLUSIA	9	7	2	2	0	0	2.0	1.9	2.1
WAKULLA	1	1	0	0	0	0	1,000.0	----	0.0
WALTON	1	0	1	0	1	0	1.5	0.0	19.6
WASHINGTON	0	0	0	0	0	0	0.0	0.0	----

*Rates based on neonatal deaths by race of decedent, live births by race of mother.

TABLE F-5: RESIDENT AND RECORDED INFANT DEATHS (UNDER 1 YEAR) AND RATES PER 1,000 LIVE BIRTHS, BY RACE, BY COUNTY, FLORIDA, 2008

	RESIDENT INFANT DEATHS						RATES*		
	TOTAL	WHITE	NUMBERS			UNK	TOTAL	WHITE	NONWHITE
			TOTAL	BLACK	OTHER				
FLORIDA	1,667	914	751	661	90	2	7.2	5.5	11.8
ALACHUA	17	12	5	5	0	0	5.7	6.6	4.3
BAKER	1	1	0	0	0	0	2.5	3.0	0.0
BAY	21	14	7	5	2	0	8.9	7.7	14.6
BRADFORD	4	4	0	0	0	0	11.1	14.0	0.0
BREVARD	34	22	12	9	3	0	6.2	5.1	10.4
BROWARD	130	59	71	65	6	0	5.8	4.7	7.5
CALHOUN	3	1	2	2	0	0	18.2	6.8	117.6
CHARLOTTE	8	4	4	4	0	0	6.6	3.8	26.3
CITRUS	6	6	0	0	0	0	5.4	5.8	0.0
CLAY	20	11	9	6	3	0	8.8	5.8	24.7
COLLIER	24	17	7	6	1	0	6.4	5.3	13.5
COLUMBIA	11	6	5	5	0	0	12.5	8.6	27.5
MIAMI-DADE	174	97	77	72	5	0	5.2	3.9	8.6
DESOTO	2	1	1	1	0	0	4.3	2.5	14.3
DIXIE	1	1	0	0	0	0	5.8	6.3	0.0
DUVAL	131	55	76	65	11	0	9.7	7.1	13.4
ESCAMBIA	44	20	24	20	4	0	10.5	7.4	16.1
FLAGLER	5	2	3	2	1	0	5.6	2.8	15.9
FRANKLIN	1	1	0	0	0	0	8.5	9.4	0.0
GADSDEN	10	3	7	7	0	0	13.6	10.8	15.4
GILCHRIST	0	0	0	0	0	0	0.0	0.0	0.0
GLADES	0	0	0	0	0	0	0.0	0.0	0.0
GULF	2	2	0	0	0	0	14.3	16.9	0.0
HAMILTON	4	0	4	4	0	0	24.5	0.0	62.5
HARDEE	4	4	0	0	0	0	7.8	8.5	0.0
HENDRY	3	2	1	1	0	0	4.3	3.5	8.3
HERNANDO	9	5	4	4	0	0	5.7	3.5	26.1
HIGHLANDS	4	2	2	2	0	0	3.8	2.4	9.1
HILLSBOROUGH	139	71	68	61	7	0	8.0	5.6	14.5
HOLMES	2	2	0	0	0	0	9.5	9.9	0.0
INDIAN RIVER	11	10	1	1	0	0	8.0	9.2	3.5
JACKSON	3	1	2	2	0	0	5.1	2.4	11.1
JEFFERSON	0	0	0	0	0	0	0.0	0.0	0.0
LAFAYETTE	1	1	0	0	0	0	10.1	10.5	0.0
LAKE	29	22	7	6	1	0	8.6	8.1	11.1
LEE	42	25	17	16	1	0	5.9	4.2	14.3
LEON	24	7	17	15	2	0	7.5	4.3	11.0
LEVY	6	3	3	3	0	0	12.5	7.3	44.1
LIBERTY	2	2	0	0	0	0	20.4	21.7	0.0
MADISON	4	2	2	2	0	0	17.0	19.0	15.4
MANATEE	31	22	9	8	1	0	8.0	6.9	12.6
MARION	36	18	18	15	3	0	9.8	6.3	22.2
MARTIN	3	3	0	0	0	0	2.3	3.2	0.0
MONROE	4	4	0	0	0	0	5.6	6.3	0.0
NASSAU	3	2	1	1	0	0	3.7	2.7	15.2
OKALOOSA	23	13	10	7	3	0	8.7	6.0	20.6
OKEECHOBEE	4	4	0	0	0	0	7.5	8.6	0.0
ORANGE	150	59	89	78	11	2	9.1	5.4	15.5
OSCEOLA	43	33	10	6	4	0	10.6	9.7	15.6
PALM BEACH	84	45	39	38	1	0	5.5	4.4	7.9
PASCO	32	29	3	3	0	0	6.0	6.1	5.5
PINELLAS	85	44	41	32	9	0	9.3	6.5	17.0
POLK	59	37	22	18	4	0	7.5	6.2	11.6
PUTNAM	8	4	4	3	1	0	7.9	5.2	16.6
SAINT JOHNS	11	9	2	1	1	0	6.2	5.8	8.4
SAINT LUCIE	22	10	12	12	0	0	6.5	4.3	11.5
SANTA ROSA	9	7	2	0	2	0	4.9	4.2	10.8
SARASOTA	14	8	6	4	2	0	4.6	3.1	14.5
SEMINOLE	29	18	11	10	1	0	6.2	4.9	11.0
SUMTER	4	2	2	2	0	0	7.7	4.7	20.4
SUWANNEE	9	6	3	3	0	0	16.5	12.7	41.7
TAYLOR	3	1	2	2	0	0	10.0	4.6	25.0
UNION	2	0	2	2	0	0	10.7	0.0	69.0
VOLUSIA	51	31	20	20	0	0	9.7	7.3	20.1
WAKULLA	4	2	2	2	0	0	11.3	6.6	39.2
WALTON	6	4	2	2	0	0	8.1	5.9	29.9
WASHINGTON	2	1	1	1	0	0	6.9	4.2	21.3

*Rates based on infant deaths by race of decedent, live births by race of mother.

TABLE F-5 (Cont.): RESIDENT AND RECORDED INFANT DEATHS (UNDER 1 YEAR) AND RATES PER 1,000 LIVE BIRTHS, BY RACE, BY COUNTY, FLORIDA, 2008

	RECORDED INFANT DEATHS						RATES*		
	TOTAL	WHITE	NUMBERS			UNK	TOTAL	WHITE	NONWHITE
			TOTAL	BLACK	OTHER				
FLORIDA	1,711	939	770	680	90	2	7.4	5.6	12.1
ALACHUA	99	59	40	38	2	0	15.2	12.4	23.1
BAKER	1	1	0	0	0	0	200.0	333.3	0.0
BAY	13	11	2	1	1	0	4.6	4.9	3.6
BRADFORD	2	2	0	0	0	0	400.0	666.7	0.0
BREVARD	18	11	7	7	0	0	3.3	2.6	6.2
BROWARD	136	62	74	69	5	0	5.6	4.7	6.8
CALHOUN	1	0	1	1	0	0	1,000.0	0.0	----
CHARLOTTE	3	1	2	2	0	0	2.2	0.9	10.5
CITRUS	4	4	0	0	0	0	4.0	4.4	0.0
CLAY	9	8	1	1	0	0	4.0	4.5	2.2
COLLIER	17	13	4	3	1	0	4.2	3.7	7.6
COLUMBIA	5	2	3	3	0	0	7.3	4.0	16.0
MIAMI-DADE	201	112	89	82	7	0	6.5	4.8	11.9
DESOTO	1	0	1	1	0	0	1.8	0.0	16.4
DIXIE	0	0	0	0	0	0	----	----	----
DUVAL	171	77	94	78	16	0	11.0	7.9	16.2
ESCAMBIA	69	33	36	32	4	0	11.7	7.8	21.8
FLAGLER	0	0	0	0	0	0	0.0	0.0	0.0
FRANKLIN	0	0	0	0	0	0	0.0	0.0	----
GADSDEN	1	0	1	1	0	0	250.0	0.0	500.0
GILCHRIST	0	0	0	0	0	0	0.0	0.0	----
GLADES	0	0	0	0	0	0	----	----	----
GULF	0	0	0	0	0	0	----	----	----
HAMILTON	2	0	2	2	0	0	2,000.0	0.0	----
HARDEE	3	3	0	0	0	0	3,000.0	3,000.0	----
HENDRY	0	0	0	0	0	0	0.0	0.0	----
HERNANDO	4	3	1	1	0	0	2.2	1.8	6.3
HIGHLANDS	4	4	0	0	0	0	2.8	3.5	0.0
HILLSBOROUGH	187	105	82	72	10	0	9.5	7.2	16.2
HOLMES	2	2	0	0	0	0	2,000.0	2,000.0	----
INDIAN RIVER	8	6	2	2	0	0	6.5	6.2	7.5
JACKSON	1	1	0	0	0	0	1.6	2.2	0.0
JEFFERSON	0	0	0	0	0	0	0.0	0.0	----
LAFAYETTE	0	0	0	0	0	0	----	----	----
LAKE	14	11	3	2	1	0	4.8	4.6	5.2
LEE	47	30	17	16	1	0	6.3	4.8	13.9
LEON	36	11	25	23	2	0	6.8	3.8	10.5
LEVY	1	1	0	0	0	0	250.0	250.0	----
LIBERTY	1	1	0	0	0	0	----	----	----
MADISON	1	1	0	0	0	0	1,000.0	----	0.0
MANATEE	11	9	2	2	0	0	3.4	3.4	3.5
MARION	8	3	5	4	1	0	2.7	1.3	7.7
MARTIN	0	0	0	0	0	0	0.0	0.0	0.0
MONROE	1	1	0	0	0	0	2.0	2.3	0.0
NASSAU	2	2	0	0	0	0	4.8	5.5	0.0
OKALOOSA	12	7	5	5	0	0	4.5	3.2	10.0
OKEECHOBEE	2	2	0	0	0	0	181.8	200.0	0.0
ORANGE	274	144	128	111	17	2	13.1	9.9	19.8
OSCEOLA	14	13	1	0	1	0	3.6	4.0	1.6
PALM BEACH	87	45	42	40	2	0	5.1	3.9	7.7
PASCO	11	11	0	0	0	0	6.2	7.0	0.0
PINELLAS	136	77	59	46	13	0	12.5	9.2	23.2
POLK	24	12	12	10	2	0	3.5	2.3	7.3
PUTNAM	3	1	2	2	0	0	5.9	2.9	12.3
SAINT JOHNS	3	3	0	0	0	0	2.6	3.2	0.0
SAINT LUCIE	5	2	3	3	0	0	2.3	1.5	3.6
SANTA ROSA	5	3	2	0	2	0	15.0	10.1	55.6
SARASOTA	10	6	4	4	0	0	2.9	2.0	7.6
SEMINOLE	12	5	7	6	1	0	3.4	1.8	9.1
SUMTER	0	0	0	0	0	0	0.0	0.0	----
SUWANNEE	5	3	2	2	0	0	1,000.0	600.0	----
TAYLOR	1	1	0	0	0	0	166.7	333.3	0.0
UNION	1	0	1	1	0	0	1,000.0	----	1,000.0
VOLUSIA	19	12	7	7	0	0	4.2	3.3	7.4
WAKULLA	1	1	0	0	0	0	1,000.0	----	0.0
WALTON	2	1	1	0	1	0	3.0	1.6	19.6
WASHINGTON	0	0	0	0	0	0	0.0	0.0	----

*Rates based on infant deaths by race of decedent, live births by race of mother.

TABLE F-6: RESIDENT INFANT DEATHS BY HISPANIC OR HAITIAN ORIGIN, BY COUNTY, FLORIDA, 2008

	TOTAL	HISPANIC ORIGIN							HAITIAN	NON-HISPANIC/HAITIAN	UNK
		TOTAL HISPANIC	MEXICAN	PUERTO RICAN	CUBAN	CENTRAL/SOUTH AMERICAN	OTHER/UNK HISPANIC				
FLORIDA	1,667	379	101	109	56	60	53	67	1,208	13	
ALACHUA	17	2	2	0	0	0	0	0	15	0	
BAKER	1	0	0	0	0	0	0	0	1	0	
BAY	21	1	0	0	0	0	1	0	20	0	
BRADFORD	4	0	0	0	0	0	0	0	4	0	
BREVARD	34	4	1	3	0	0	0	0	30	0	
BROWARD	130	30	3	8	4	5	10	14	85	1	
CALHOUN	3	0	0	0	0	0	0	0	3	0	
CHARLOTTE	8	0	0	0	0	0	0	1	7	0	
CITRUS	6	0	0	0	0	0	0	0	6	0	
CLAY	20	4	1	2	0	0	1	0	16	0	
COLLIER	24	11	7	0	1	1	2	4	9	0	
COLUMBIA	11	1	0	1	0	0	0	0	10	0	
MIAMI-DADE	174	85	12	8	35	20	10	8	78	3	
DESOTO	2	0	0	0	0	0	0	0	2	0	
DIXIE	1	0	0	0	0	0	0	0	1	0	
DUVAL	131	10	2	4	0	2	2	1	119	1	
ESCAMBIA	44	4	2	2	0	0	0	0	40	0	
FLAGLER	5	0	0	0	0	0	0	0	5	0	
FRANKLIN	1	0	0	0	0	0	0	0	1	0	
GADSDEN	10	2	0	0	0	1	1	0	8	0	
GILCHRIST	0	0	0	0	0	0	0	0	0	0	
GLADES	0	0	0	0	0	0	0	0	0	0	
GULF	2	0	0	0	0	0	0	0	2	0	
HAMILTON	4	0	0	0	0	0	0	0	4	0	
HARDEE	4	1	1	0	0	0	0	0	3	0	
HENDRY	3	0	0	0	0	0	0	0	3	0	
HERNANDO	9	1	0	1	0	0	0	0	8	0	
HIGHLANDS	4	2	1	1	0	0	0	0	2	0	
HILLSBOROUGH	139	37	6	19	5	4	3	3	97	2	
HOLMES	2	0	0	0	0	0	0	0	2	0	
INDIAN RIVER	11	4	4	0	0	0	0	0	7	0	
JACKSON	3	0	0	0	0	0	0	0	3	0	
JEFFERSON	0	0	0	0	0	0	0	0	0	0	
LAFAYETTE	1	0	0	0	0	0	0	0	1	0	
LAKE	29	4	4	0	0	0	0	1	24	0	
LEE	42	16	5	6	1	3	1	3	22	1	
LEON	24	0	0	0	0	0	0	0	24	0	
LEVY	6	0	0	0	0	0	0	0	6	0	
LIBERTY	2	0	0	0	0	0	0	0	2	0	
MADISON	4	0	0	0	0	0	0	0	4	0	
MANATEE	31	10	8	2	0	0	0	0	21	0	
MARION	36	2	1	0	0	1	0	0	34	0	
MARTIN	3	1	0	0	0	1	0	0	2	0	
MONROE	4	2	0	0	2	0	0	0	1	1	
NASSAU	3	0	0	0	0	0	0	0	3	0	
OKALOOSA	23	3	1	0	0	0	2	0	19	1	
OKEECHOBEE	4	1	0	0	0	1	0	0	3	0	
ORANGE	150	38	9	17	2	6	4	16	95	1	
OSCEOLA	43	23	4	14	1	2	2	1	19	0	
PALM BEACH	84	25	6	3	1	8	7	10	48	1	
PASCO	32	2	1	0	0	0	1	0	30	0	
PINELLAS	85	10	4	4	1	1	0	0	75	0	
POLK	59	14	8	5	0	1	0	3	41	1	
PUTNAM	8	1	0	1	0	0	0	0	7	0	
SAINT JOHNS	11	0	0	0	0	0	0	0	11	0	
SAINT LUCIE	22	5	3	0	1	1	0	2	15	0	
SANTA ROSA	9	1	1	0	0	0	0	0	8	0	
SARASOTA	14	5	0	0	2	0	3	0	9	0	
SEMINOLE	29	5	0	3	0	1	1	0	24	0	
SUMTER	4	1	1	0	0	0	0	0	3	0	
SUWANNEE	9	0	0	0	0	0	0	0	9	0	
TAYLOR	3	0	0	0	0	0	0	0	3	0	
UNION	2	2	0	0	0	0	2	0	0	0	
VOLUSIA	51	8	2	5	0	1	0	0	43	0	
WAKULLA	4	0	0	0	0	0	0	0	4	0	
WALTON	6	1	1	0	0	0	0	0	5	0	
WASHINGTON	2	0	0	0	0	0	0	0	2	0	

TABLE F-7: RESIDENT INFANT, NEONATAL AND POST-NEONATAL DEATHS FROM SELECTED CAUSES* BY RACE, FLORIDA, 2008

	TOTAL			POST NEO- NATAL	WHITE			POST NEO- NATAL
	NEONATAL		INFANT		NEONATAL		INFANT	
	<1 DAY	1-27 DAYS			<1 DAY	1-27 DAYS		
TOTAL	1,667	619	442	606	914	332	260	322
Intestinal Infectious Disease	2	0	0	2	0	0	0	0
Diarrhea & Gastroenteritis--Infectious Origin	0	0	0	0	0	0	0	0
Tuberculosis	0	0	0	0	0	0	0	0
Tetanus	0	0	0	0	0	0	0	0
Diphtheria	0	0	0	0	0	0	0	0
Whooping Cough	2	0	1	1	2	0	1	1
Meningococcal Infection	1	0	1	0	1	0	1	0
Septicemia	24	0	1	23	13	0	1	12
Congenital Syphilis	0	0	0	0	0	0	0	0
Gonococcal Infection	0	0	0	0	0	0	0	0
Acute Poliomyelitis	0	0	0	0	0	0	0	0
Varicella (Chicken Pox)	0	0	0	0	0	0	0	0
Measles	0	0	0	0	0	0	0	0
HIV Disease	0	0	0	0	0	0	0	0
Mumps	0	0	0	0	0	0	0	0
Other & Unspec Viral Diseases	6	0	3	3	3	0	2	1
Candidiasis	1	0	0	1	0	0	0	0
Malaria	0	0	0	0	0	0	0	0
Pneumocystosis	0	0	0	0	0	0	0	0
Other & Unspecified Infectious & Parasitic Diseases	2	0	0	2	0	0	0	0
Hodgkins Disease & Non-Hodgkins Lymphomas	0	0	0	0	0	0	0	0
Leukemia	4	0	0	4	2	0	0	2
Other & Unspecified Malignant Neoplasm	1	0	0	1	1	0	0	1
In Situ/Benign/Malignant Neoplasms Uncert/Unk Behavior	5	2	1	2	3	1	0	2
Anemias	0	0	0	0	0	0	0	0
Blood, Blood-Forming, Hemorrhagic Diseases	3	0	0	3	2	0	0	2
Disorders Involving Immune Mechanism	1	0	0	1	0	0	0	0
Short Stature	0	0	0	0	0	0	0	0
Nutritional Deficiencies	0	0	0	0	0	0	0	0
Cystic Fibrosis	0	0	0	0	0	0	0	0
Fluid/Electrolyte/Acid-Base/Volume Depletion Disorders	6	0	1	5	1	0	0	1
Other Endocrine, Nutritional, Metabolic Diseases	9	0	1	8	3	0	1	2
Meningitis	5	0	1	4	3	0	1	2
Infantile Spinal Muscular Atrophy, Type 1 (Werdnig-Hoffman)	0	0	0	0	0	0	0	0
Infantile Cerebral Palsy	0	0	0	0	0	0	0	0
Anoxic Brain Damage	2	0	0	2	0	0	0	0
Other Nervous System Diseases	12	0	0	12	8	0	0	8
Ear & Mastoid Process Diseases	0	0	0	0	0	0	0	0
Pulmonary Heart/Circulation Diseases	6	0	0	6	5	0	0	5
Pericarditis, Endocarditis, Myocarditis	1	0	0	1	0	0	0	0
Cardiomyopathy	11	0	5	6	7	0	2	5
Cardiac Arrest	2	0	0	2	2	0	0	2
Cerebrovascular Diseases	8	0	0	8	2	0	0	2
Other Circulatory System Diseases	14	0	0	14	8	0	0	8
Acute Upper Respiratory Infections	0	0	0	0	0	0	0	0
Influenza	1	0	0	1	0	0	0	0
Pneumonia	9	0	0	9	2	0	0	2

TABLE F-7 (Cont.): RESIDENT INFANT, NEONATAL AND POST-NEONATAL DEATHS FROM SELECTED CAUSES*, BY RACE, FLORIDA, 2008

	TOTAL			POST NEO- NATAL	WHITE			POST NEO- NATAL
	NEONATAL		INFANT		NEONATAL		INFANT	
	<1 DAY	1-27 DAYS			<1 DAY	1-27 DAYS		
Acute Bronchitis & Acute Bronchiolitis	2	0	0	2	1	0	0	1
Bronchitis, Chronic & Unspecified	0	0	0	0	0	0	0	0
Asthma	1	0	0	1	1	0	0	1
Pneumonitis Due to Solids & Liquids	1	0	0	1	0	0	0	0
Other & Unspecified Respiratory System Diseases	16	0	1	15	9	0	1	8
Gastritis, Duodenitis, Noninfective Enteritis/Colitis	35	1	0	34	17	1	0	16
Hernia Abdom Cavity & Intestinal Obstruct W/O Hernia	0	0	0	0	0	0	0	0
Other & Unspec Digestive System Disease	9	0	2	7	2	0	0	2
Renal Failure & Other Kidney Disorders	15	0	7	8	7	0	5	2
Other & Unspec Genitourinary System Dis	2	0	1	1	1	0	1	0
PERINATAL PERIOD CONDITIONS	842	508	290	44	431	255	157	19
Maternal Hypertensive Disorders	3	3	0	0	2	2	0	0
Maternal Conditions Unrelated Present Pregnancy	1	1	0	0	0	0	0	0
Incompetent Cervix	26	26	0	0	9	9	0	0
Premature Rupture of Membranes	62	57	5	0	33	31	2	0
Multiple Pregnancy	42	37	4	1	22	17	4	1
Maternal Complications of Pregnancy	12	10	2	0	9	7	2	0
Placenta Complications	25	18	7	0	11	8	3	0
Cord Complications	2	2	0	0	1	1	0	0
Chorioamnionitis	40	37	3	0	18	16	2	0
Other & Unspecified Membrane Abnormalities	0	0	0	0	0	0	0	0
Other Complications of Labor & Delivery	6	5	1	0	2	1	1	0
Noxious Influences Via Placenta or Breast Milk	2	1	0	1	2	1	0	1
Slow Fetal Growth & Fetal Malnutrition	6	1	4	1	3	0	2	1
Extreme Low Birth Weight or Extreme Immaturity	185	168	12	5	91	82	8	1
Other Low Birth Weight or Preterm	59	48	8	3	30	23	4	3
Long Gestation & High Birth Weight	0	0	0	0	0	0	0	0
Birth Trauma	0	0	0	0	0	0	0	0
Intrauterine Hypoxia	17	5	11	1	7	4	2	1
Birth Asphyxia	11	4	7	0	7	2	5	0
Respiratory Distress	41	11	29	1	22	7	14	1
Congenital Pneumonia	4	2	2	0	2	1	1	0
Neonatal Aspiration Syndromes	2	2	0	0	0	0	0	0
Interstitial Emphysema & Related Conditions	7	3	4	0	6	2	4	0
Pulmonary Hemorrhage	11	0	11	0	5	0	5	0
Chronic Respiratory Disease	21	0	3	18	6	0	2	4
Atelectasis	27	20	7	0	20	16	4	0
Other Respiratory Conditions	3	1	2	0	2	1	1	0
Bacterial Sepsis	56	8	47	1	28	1	27	0
Omphalitis With or Without Hemorrhage	0	0	0	0	0	0	0	0
All Other Infections	9	2	7	0	3	0	3	0
Neonatal Hemorrhage	38	2	36	0	23	2	21	0
Hemorrhagic Disease of Newborn	1	0	1	0	0	0	0	0
Hemolytic Dis Due to Isoimmunization/Perinat Jaundice	0	0	0	0	0	0	0	0
Hematological Disorders	4	1	2	1	4	1	2	1
Diabetes Mellitus, Maternal or Neonatal	1	0	0	1	1	0	0	1
Necrotizing Enterocolitis	35	0	29	6	17	0	13	4
Hydrops Fetalis Not Due To Hemolytic Dis	6	3	3	0	3	1	2	0

TABLE F-7 (Cont.): RESIDENT INFANT, NEONATAL AND POST-NEONATAL DEATHS FROM SELECTED CAUSES*, BY RACE, FLORIDA, 2008

	TOTAL			POST NEO- NATAL	WHITE			POST NEO- NATAL
	NEONATAL		INFANT		NEONATAL		INFANT	
	<1 DAY	1-27 DAYS			<1 DAY	1-27 DAYS		
Other Perinatal Conditions	77	30	43	4	42	19	23	0
CONGENITAL / CHROMOSOMAL ANOMALIES	312	102	106	104	212	71	72	69
Anencephaly & Similar Anomalies	19	13	6	0	15	11	4	0
Congenital Hydrocephalus	9	3	3	3	5	3	0	2
Spina Bifida	2	1	0	1	1	1	0	0
Other Cong Malf Nervous System	19	7	4	8	14	5	3	6
Congenital Malf of Heart	63	6	25	32	41	6	16	19
Other Congenital Malf of Circulatory Sys	15	0	9	6	13	0	8	5
Congenital Malf of Respiratory Sys	23	16	4	3	16	10	4	2
Congenital Anomalies of Digestive Sys	7	0	1	6	5	0	0	5
Congenital Malf of Genitourinary Sys	21	11	6	4	12	6	4	2
Congenital Malf of Musculoskeletal Sys	35	11	10	14	21	7	5	9
Downs Syndrome	6	1	1	4	3	0	0	3
Edwards Syndrome	35	7	18	10	28	6	14	8
Patau Syndrome	11	2	8	1	7	2	5	0
Other Congenital Malf	31	19	3	9	20	12	2	6
Other Chromosomal Abnorm	16	5	8	3	11	2	7	2
Sudden Infant Death Syndrome	80	0	6	74	39	0	4	35
Symptoms, Signs, Abn Clinical/Lab Findings	58	2	4	52	30	1	1	28
All Other Diseases	2	2	0	0	1	1	0	0
Unint Inj: Motor Vehicle	7	0	0	7	5	0	0	5
Unint Inj: Other & Unspecified Transport	0	0	0	0	0	0	0	0
Unint Inj: Falls	2	0	0	2	1	0	0	1
Unint Inj: Firearms Discharge	0	0	0	0	0	0	0	0
Unint Inj: Drowning & Submersion	5	0	0	5	3	0	0	3
Unint Inj: Suffocation & Strangulation in Bed	75	0	7	68	48	0	7	41
Unint Inj: Other Suffocation & Strangulation	29	0	2	27	18	0	2	16
Unint Inj: Inhale/Ingest--Respiratory Tract Obstruction	3	0	0	3	1	0	0	1
Unint Inj: Smoke, Fire, Flames Exposure	1	0	0	1	0	0	0	0
Unint Inj: Poisoning & Noxious Substance Exposure	1	0	0	1	0	0	0	0
Unint Inj: Other & Unspecified	3	0	1	2	2	0	1	1
Homicide: Hanging, Strangulation, Suffocation	1	1	0	0	1	1	0	0
Homicide: Firearms Discharge	1	0	0	1	0	0	0	0
Homicide: Neglect, Abandonment, Maltreatment	6	0	0	6	4	0	0	4
Homicide: Other & Unspecified Means	14	0	0	14	6	0	0	6
Medical & Surgical Care Complications	2	1	0	1	2	1	0	1
Other External Causes	4	0	0	4	4	0	0	4

* ICD-10 codes associated with each cause of death group are presented on pages (xiv-xvi).

TABLE F-7 (Cont.): RESIDENT INFANT, NEONATAL AND POST-NEONATAL DEATHS FROM SELECTED CAUSES*,
BY RACE, FLORIDA, 2008

	BLACK			POST NEO- NATAL	OTHER			POST NEO- NATAL
	NEONATAL		INFANT		NEONATAL		INFANT	
	<1 DAY	1-27 DAYS			<1 DAY	1-27 DAYS		
TOTAL	661	240	162	259	90	45	20	25
Intestinal Infectious Disease	2	0	0	2	0	0	0	0
Diarrhea & Gastroenteritis--Infectious Origin	0	0	0	0	0	0	0	0
Tuberculosis	0	0	0	0	0	0	0	0
Tetanus	0	0	0	0	0	0	0	0
Diphtheria	0	0	0	0	0	0	0	0
Whooping Cough	0	0	0	0	0	0	0	0
Meningococcal Infection	0	0	0	0	0	0	0	0
Septicemia	11	0	0	11	0	0	0	0
Congenital Syphilis	0	0	0	0	0	0	0	0
Gonococcal Infection	0	0	0	0	0	0	0	0
Acute Poliomyelitis	0	0	0	0	0	0	0	0
Varicella (Chicken Pox)	0	0	0	0	0	0	0	0
Measles	0	0	0	0	0	0	0	0
HIV Disease	0	0	0	0	0	0	0	0
Mumps	0	0	0	0	0	0	0	0
Other & Unspec Viral Diseases	3	0	1	2	0	0	0	0
Candidiasis	0	0	0	0	1	0	0	1
Malaria	0	0	0	0	0	0	0	0
Pneumocystosis	0	0	0	0	0	0	0	0
Other & Unspecified Infectious & Parasitic Diseases	2	0	0	2	0	0	0	0
Hodgkins Disease & Non-Hodgkins Lymphomas	0	0	0	0	0	0	0	0
Leukemia	2	0	0	2	0	0	0	0
Other & Unspecified Malignant Neoplasm	0	0	0	0	0	0	0	0
In Situ/Benign/Malignant Neoplasms Uncert/Unk Behavior	2	1	1	0	0	0	0	0
Anemias	0	0	0	0	0	0	0	0
Blood, Blood-Forming, Hemorrhagic Diseases	1	0	0	1	0	0	0	0
Disorders Involving Immune Mechanism	1	0	0	1	0	0	0	0
Short Stature	0	0	0	0	0	0	0	0
Nutritional Deficiencies	0	0	0	0	0	0	0	0
Cystic Fibrosis	0	0	0	0	0	0	0	0
Fluid/Electrolyte/Acid-Base/Volume Depletion Disorders	5	0	1	4	0	0	0	0
Other Endocrine, Nutritional, Metabolic Diseases	6	0	0	6	0	0	0	0
Meningitis	2	0	0	2	0	0	0	0
Infantile Spinal Muscular Atrophy, Type 1 (Werdnig-Hoffman)	0	0	0	0	0	0	0	0
Infantile Cerebral Palsy	0	0	0	0	0	0	0	0
Anoxic Brain Damage	2	0	0	2	0	0	0	0
Other Nervous System Diseases	3	0	0	3	1	0	0	1
Ear & Mastoid Process Diseases	0	0	0	0	0	0	0	0
Pulmonary Heart/Circulation Diseases	1	0	0	1	0	0	0	0
Pericarditis, Endocarditis, Myocarditis	1	0	0	1	0	0	0	0
Cardiomyopathy	3	0	2	1	1	0	1	0
Cardiac Arrest	0	0	0	0	0	0	0	0
Cerebrovascular Diseases	5	0	0	5	1	0	0	1
Other Circulatory System Diseases	5	0	0	5	1	0	0	1
Acute Upper Respiratory Infections	0	0	0	0	0	0	0	0
Influenza	1	0	0	1	0	0	0	0
Pneumonia	7	0	0	7	0	0	0	0

TABLE F-7 (Cont.): RESIDENT INFANT, NEONATAL AND POST-NEONATAL DEATHS FROM SELECTED CAUSES*,
BY RACE, FLORIDA, 2008

	BLACK			POST NEO-	OTHER			POST NEO-
	NEONATAL		INFANT		NEONATAL		INFANT	
	<1 DAY	1-27 DAYS			<1 DAY	1-27 DAYS		
Acute Bronchitis & Acute Bronchiolitis	1	0	0	1	0	0	0	0
Bronchitis, Chronic & Unspecified	0	0	0	0	0	0	0	0
Asthma	0	0	0	0	0	0	0	0
Pneumonitis Due to Solids & Liquids	1	0	0	1	0	0	0	0
Other & Unspecified Respiratory System Diseases	7	0	0	7	0	0	0	0
Gastritis, Duodenitis, Noninfective Enteritis/Colitis	17	0	0	17	1	0	0	1
Hernia Abdom Cavity & Intestinal Obstruct W/O Hernia	0	0	0	0	0	0	0	0
Other & Unspec Digestive System Disease	5	0	1	4	2	0	1	1
Renal Failure & Other Kidney Disorders	8	0	2	6	0	0	0	0
Other & Unspec Genitourinary System Dis	1	0	0	1	0	0	0	0
PERINATAL PERIOD CONDITIONS	358	214	122	22	51	37	11	3
Maternal Hypertensive Disorders	1	1	0	0	0	0	0	0
Maternal Conditions Unrelated Present Pregnancy	1	1	0	0	0	0	0	0
Incompetent Cervix	17	17	0	0	0	0	0	0
Premature Rupture of Membranes	28	25	3	0	1	1	0	0
Multiple Pregnancy	16	16	0	0	4	4	0	0
Maternal Complications of Pregnancy	3	3	0	0	0	0	0	0
Placenta Complications	11	7	4	0	3	3	0	0
Cord Complications	1	1	0	0	0	0	0	0
Chorioamnionitis	19	18	1	0	2	2	0	0
Other & Unspecified Membrane Abnormalities	0	0	0	0	0	0	0	0
Other Complications of Labor & Delivery	4	4	0	0	0	0	0	0
Noxious Influences Via Placenta or Breast Milk	0	0	0	0	0	0	0	0
Slow Fetal Growth & Fetal Malnutrition	2	0	2	0	1	1	0	0
Extreme Low Birth Weight or Extreme Immaturity	81	73	4	4	12	12	0	0
Other Low Birth Weight or Preterm	26	22	4	0	3	3	0	0
Long Gestation & High Birth Weight	0	0	0	0	0	0	0	0
Birth Trauma	0	0	0	0	0	0	0	0
Intrauterine Hypoxia	9	1	8	0	1	0	1	0
Birth Asphyxia	3	2	1	0	1	0	1	0
Respiratory Distress	14	1	13	0	5	3	2	0
Congenital Pneumonia	2	1	1	0	0	0	0	0
Neonatal Aspiration Syndromes	2	2	0	0	0	0	0	0
Interstitial Emphysema & Related Conditions	1	1	0	0	0	0	0	0
Pulmonary Hemorrhage	5	0	5	0	1	0	1	0
Chronic Respiratory Disease	13	0	1	12	2	0	0	2
Atelectasis	6	3	3	0	1	1	0	0
Other Respiratory Conditions	1	0	1	0	0	0	0	0
Bacterial Sepsis	22	4	17	1	6	3	3	0
Omphalitis With or Without Hemorrhage	0	0	0	0	0	0	0	0
All Other Infections	6	2	4	0	0	0	0	0
Neonatal Hemorrhage	15	0	15	0	0	0	0	0
Hemorrhagic Disease of Newborn	1	0	1	0	0	0	0	0
Hemolytic Dis Due to Isoimmunization/Perinat Jaundice	0	0	0	0	0	0	0	0
Hematological Disorders	0	0	0	0	0	0	0	0
Diabetes Mellitus, Maternal or Neonatal	0	0	0	0	0	0	0	0
Necrotizing Enterocolitis	17	0	15	2	1	0	1	0
Hydrops Fetalis Not Due To Hemolytic Dis	2	1	1	0	1	1	0	0

TABLE F-7 (Cont.): RESIDENT INFANT, NEONATAL AND POST-NEONATAL DEATHS FROM SELECTED CAUSES*,
BY RACE, FLORIDA, 2008

	BLACK			POST NEO- NATAL	OTHER			POST NEO- NATAL
	NEONATAL		INFANT		NEONATAL		INFANT	
	<1 DAY	1-27 DAYS			<1 DAY	1-27 DAYS		
Other Perinatal Conditions	29	8	18	3	6	3	2	1
CONGENITAL / CHROMOSOMAL ANOMALIES	82	23	27	32	18	8	7	3
Anencephaly & Similar Anomalies	4	2	2	0	0	0	0	0
Congenital Hydrocephalus	4	0	3	1	0	0	0	0
Spina Bifida	1	0	0	1	0	0	0	0
Other Cong Malf Nervous System	4	2	1	1	1	0	0	1
Congenital Malf of Heart	17	0	5	12	5	0	4	1
Other Congenital Malf of Circulatory Sys	2	0	1	1	0	0	0	0
Congenital Malf of Respiratory Sys	4	3	0	1	3	3	0	0
Congenital Anomalies of Digestive Sys	2	0	1	1	0	0	0	0
Congenital Malf of Genitourinary Sys	7	3	2	2	2	2	0	0
Congenital Malf of Musculoskeletal Sys	13	4	4	5	1	0	1	0
Downs Syndrome	2	1	1	0	1	0	0	1
Edwards Syndrome	4	0	2	2	3	1	2	0
Patau Syndrome	4	0	3	1	0	0	0	0
Other Congenital Malf	9	5	1	3	2	2	0	0
Other Chromosomal Abnorm	5	3	1	1	0	0	0	0
Sudden Infant Death Syndrome	34	0	2	32	7	0	0	7
Symptoms, Signs, Abn Clinical/Lab Findings	28	1	3	24	0	0	0	0
All Other Diseases	1	1	0	0	0	0	0	0
Unint Inj: Motor Vehicle	2	0	0	2	0	0	0	0
Unint Inj: Other & Unspecified Transport	0	0	0	0	0	0	0	0
Unint Inj: Falls	1	0	0	1	0	0	0	0
Unint Inj: Firearms Discharge	0	0	0	0	0	0	0	0
Unint Inj: Drowning & Submersion	1	0	0	1	1	0	0	1
Unint Inj: Suffocation & Strangulation in Bed	26	0	0	26	1	0	0	1
Unint Inj: Other Suffocation & Strangulation	9	0	0	9	2	0	0	2
Unint Inj: Inhale/Ingest--Respiratory Tract Obstruction	2	0	0	2	0	0	0	0
Unint Inj: Smoke, Fire, Flames Exposure	1	0	0	1	0	0	0	0
Unint Inj: Poisoning & Noxious Substance Exposure	1	0	0	1	0	0	0	0
Unint Inj: Other & Unspecified	1	0	0	1	0	0	0	0
Homicide: Hanging, Strangulation, Suffocation	0	0	0	0	0	0	0	0
Homicide: Firearms Discharge	1	0	0	1	0	0	0	0
Homicide: Neglect, Abandonment, Maltreatment	2	0	0	2	0	0	0	0
Homicide: Other & Unspecified Means	6	0	0	6	2	0	0	2
Medical & Surgical Care Complications	0	0	0	0	0	0	0	0
Other External Causes	0	0	0	0	0	0	0	0

* ICD-10 codes associated with each cause of death group are presented on pages (xiv-xvi).