

# **Marriages and Dissolutions of Marriage**

## MARRIAGES AND DISSOLUTIONS OF MARRIAGE

- The number of marriage ceremonies decreased between 2007 (155,998 marriages) and 2008 (147,888 marriages). This represents a 5.2 percent decrease in the number of marriages.
- The marriage rate per 1,000 population has decreased each year since 2001 to 7.9 in 2008. The rate has decreased 14.1 percent since 1998.
- May was the most popular month for marriages with 15,047 marriages performed. The most popular date of marriage in 2008 was 8/8/08 (2,091 marriages performed) and the second most popular date was 2/14/08 (1,826 marriages performed).
- The 2008 marriage rate (7.9 per 1,000 population) in Florida is more than 1.9 times the 2008 dissolution rate (4.2 per 1,000 population).
- Of the 79,868 dissolutions of marriage in 2008, over half (55.2 percent) did not affect any minor children.
- The mean duration of a marriage resulting in a 2008 dissolution was 7.9 years.

**CHART M-1: MARRIAGES AND DISSOLUTIONS OF MARRIAGE, AND RATES PER 1,000 POPULATION, FLORIDA AND UNITED STATES, CENSUS YEARS 1920-1990 AND 1998-2008**

YEAR	MARRIAGES			DISSOLUTIONS <sup>1</sup>		
	FLORIDA		U.S. RATE	FLORIDA		U.S. RATE
	NUMBER	RATE		NUMBER	RATE	
1920	NA	NA	12.0	NA	NA	1.6
1930	17,147	11.7	9.2	3,262	2.5	1.6
1940	32,709	17.1	12.1	11,061	5.8	2.0
1950	27,588	9.8	11.1	17,845	6.3	2.6
1960	39,315	7.9	8.5	19,326	3.9	2.2
1970	69,249	10.1	10.6	37,506	5.5	3.5
1980	108,344	11.0	10.6	71,578	7.3	5.2
1990	141,816	10.9	9.8	81,119	6.2	4.7
1998	141,344	9.2	8.5 <sup>2</sup>	80,466	5.3	4.3 <sup>2</sup>
1999	136,403	8.7	8.5 <sup>2</sup>	80,983	5.2	4.1 <sup>2</sup>
2000	145,300	9.0	8.7 <sup>2</sup>	81,439	5.1	4.2 <sup>2</sup>
2001	153,298	9.3	8.2 <sup>2</sup>	85,259	5.2	4.0 <sup>2</sup>
2002	157,554	9.4	7.8 <sup>2</sup>	85,181	5.1	4.0 <sup>2</sup>
2003	153,023	8.9	7.7 <sup>2</sup>	85,367	5.0	3.8 <sup>2</sup>
2004	154,453	8.8	7.8 <sup>2</sup>	83,306	4.7	3.7 <sup>2</sup>
2005	158,192	8.8	7.6 <sup>2</sup>	81,287	4.5	3.6 <sup>2</sup>
2006	158,167	8.6	7.4 <sup>2</sup>	85,955	4.7	3.7 <sup>2</sup>
2007	155,998	8.3	7.3 <sup>2</sup>	84,386	4.5	3.6 <sup>2</sup>
2008	147,888	7.9	7.1 <sup>2</sup>	79,868	4.2	3.5 <sup>2</sup>

<sup>1</sup> Includes divorces and annulments.

<sup>2</sup> Provisional data.

**GRAPH M-1: MARRIAGES AND DISSOLUTIONS OF MARRIAGE RATES PER 1,000 POPULATION, FLORIDA AND UNITED STATES, 1998-2008**

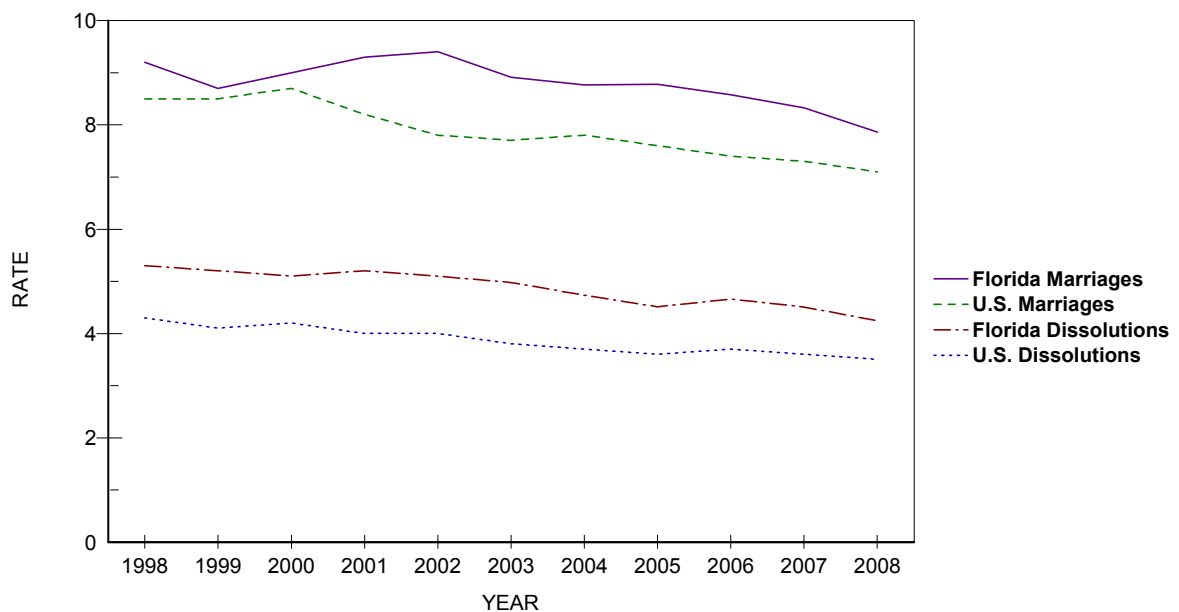


TABLE M-1: MARRIAGES PERFORMED BY MONTH, BY COUNTY OF ISSUANCE, FLORIDA, 2008

	TOTAL	JAN	FEB	MAR	APR	MAY	JUN	JUL	AUG	SEP	OCT	NOV	DEC
FLORIDA	147,888	8,503	12,346	13,755	13,761	15,047	13,971	11,662	12,585	9,926	12,412	12,456	11,464
ALACHUA	1,733	104	107	172	173	188	178	140	151	111	147	134	128
BAKER	240	11	26	20	16	19	33	18	21	18	18	26	14
BAY	2,198	90	137	148	198	246	314	227	233	195	174	119	117
BRADFORD	221	17	21	22	20	23	21	16	21	10	21	18	11
BREVARD	4,251	216	362	394	383	407	384	339	364	301	367	372	362
BROWARD	13,867	920	1,238	1,364	1,254	1,332	1,252	1,079	1,184	884	1,070	1,192	1,098
CALHOUN	113	4	8	11	12	10	12	10	10	5	9	8	14
CHARLOTTE	966	59	84	88	96	93	99	59	67	67	79	106	69
CITRUS	801	36	74	77	85	67	80	66	64	41	61	66	84
CLAY	1,296	62	94	118	126	110	118	120	108	105	118	116	101
COLLIER	2,904	191	207	250	290	330	301	190	235	165	240	262	243
COLUMBIA	519	21	41	50	56	33	54	48	48	44	48	39	37
MIAMI-DADE	23,270	1,668	2,208	2,160	2,116	2,193	1,907	1,783	1,883	1,538	1,812	1,964	2,038
DESOTO	159	11	10	13	14	21	21	13	8	10	12	15	11
DIXIE	131	3	17	14	16	11	13	14	8	13	7	12	3
DUVAL	5,904	289	479	553	526	595	595	458	499	431	540	501	438
ESCAMBIA	3,221	128	225	264	294	363	331	305	341	244	271	248	207
FLAGLER	529	25	48	48	47	58	46	42	51	28	57	40	39
FRANKLIN	160	3	5	11	16	21	10	20	18	18	17	13	8
GADSDEN	248	9	32	23	22	28	15	23	26	23	18	17	12
GILCHRIST	153	7	13	18	16	11	11	17	14	9	13	12	12
GLADES	65	3	6	7	6	5	9	4	7	3	8	4	3
GULF	191	2	7	13	17	28	22	22	15	19	15	15	16
HAMILTON	126	4	14	10	6	12	18	11	14	8	12	8	9
HARDEE	207	15	19	17	18	28	27	13	10	8	18	18	16
HENDRY	211	16	14	25	13	19	20	19	24	13	14	19	15
HERNANDO	895	45	84	87	73	85	83	67	58	50	92	89	82
HIGHLANDS	592	29	45	56	56	69	60	46	63	36	42	47	43
HILLSBOROUGH	9,125	499	780	894	889	925	836	678	736	627	748	784	729
HOLMES	168	8	10	20	13	22	20	11	17	14	5	17	11
INDIAN RIVER	850	58	83	86	76	97	71	63	72	46	66	80	52
JACKSON	319	18	29	30	34	31	32	34	17	32	29	26	7
JEFFERSON	97	1	7	11	17	9	9	3	10	8	9	8	5
LAFAYETTE	64	4	3	2	8	4	9	5	6	5	5	2	11
LAKE	2,727	137	212	239	238	266	248	185	256	180	269	237	260
LEE	4,318	234	352	383	466	438	417	300	338	286	351	405	348
LEON	1,843	94	116	179	178	202	182	156	184	93	179	155	125
LEVY	221	16	23	19	23	19	24	10	20	17	18	19	13
LIBERTY	52	4	3	4	5	5	4	4	6	2	4	5	6
MADISON	146	8	11	15	13	20	10	13	10	12	7	13	14
MANATEE	1,904	107	158	195	173	229	163	164	139	106	169	157	144
MARION	1,925	98	174	176	178	184	170	143	170	139	161	167	165
MARTIN	851	45	79	88	95	96	75	56	80	40	69	63	65
MONROE	2,722	159	264	245	263	311	296	210	173	142	224	223	212
NASSAU	682	27	32	53	81	84	63	57	62	55	83	52	33
OKALOOSA	3,040	122	146	204	258	398	396	314	331	261	274	183	153
OKEECHOBEE	257	11	26	21	15	29	35	23	16	17	22	23	19
ORANGE	9,686	589	745	948	901	946	846	758	824	683	848	836	762
OSCEOLA	4,135	242	338	394	380	378	384	362	354	328	365	309	301
PALM BEACH	8,128	558	737	791	738	798	708	635	675	501	611	717	659
PASCO	2,622	147	235	245	259	254	235	186	242	158	212	236	213
PINELLAS	6,839	344	566	638	624	745	668	525	592	397	624	603	513
POLK	3,850	220	353	369	337	373	348	315	341	226	325	323	320
PUTNAM	553	26	57	47	42	53	52	45	42	43	43	47	56
SAINT JOHNS	1,576	80	99	136	167	202	148	107	144	110	143	133	107
SAINT LUCIE	1,463	92	143	148	148	143	148	113	108	102	100	118	100
SANTA ROSA	1,129	41	58	78	97	145	131	97	130	92	107	85	68
SARASOTA	2,640	127	206	246	271	295	281	192	198	155	254	241	174
SEMINOLE	2,953	167	263	307	259	290	256	209	236	210	257	279	220
SUMTER	341	17	31	29	26	20	33	37	30	21	29	32	36
SUWANNEE	236	17	18	29	19	17	22	11	20	18	25	21	19
TAYLOR	175	10	12	21	16	14	18	15	15	17	17	9	11
UNION	109	3	15	9	10	12	7	7	14	8	8	6	10
VOLUSIA	3,226	148	280	317	322	328	344	272	262	209	272	251	221
WAKULLA	212	8	13	23	17	27	17	16	21	20	24	13	13
WALTON	1,416	25	37	74	133	218	213	146	144	140	151	85	50
WASHINGTON	117	4	7	9	7	15	18	16	5	9	5	13	9

**TABLE M-2: MARRIAGES BY RACE OF GROOM AND BRIDE, FLORIDA, 2008**

RACE OF GROOM	RACE OF BRIDE										
	TOTAL	WHITE	BLACK	AMERICAN INDIAN	CHINESE	JAPANESE	HAWAIIAN	FILIPINO	OTHER ASIAN/PAC ISL	OTHER ENTRIES	UNK
TOTAL	147,888	114,956	18,942	458	40	13	27	83	3,232	9,954	183
WHITE	114,548	108,578	1,473	277	23	4	25	63	1,712	2,324	69
BLACK	21,086	3,235	17,021	45	1	1	1	6	138	624	14
AMERICAN INDIAN	433	290	24	96	0	0	0	0	10	12	1
CHINESE	23	7	0	0	14	0	0	0	0	2	0
JAPANESE	6	3	0	0	0	2	0	0	0	1	0
HAWAIIAN	21	19	0	1	0	0	0	0	0	1	0
FILIPINO	22	7	2	0	0	1	0	10	0	2	0
OTH ASIAN/PAC ISL	2,069	667	36	11	1	0	0	1	1,313	38	2
OTHER ENTRIES	9,513	2,087	380	28	1	5	1	3	59	6,948	1
UNK	167	63	6	0	0	0	0	0	0	2	96

**TABLE M-3: DISSOLUTIONS\* OF MARRIAGE BY DURATION OF MARRIAGE IN YEARS AND NUMBER OF MINOR CHILDREN AFFECTED, FLORIDA, 2008**

DURATION IN YEARS	NUMBER OF MINOR CHILDREN AFFECTED								
	TOTAL	NONE	ONE	TWO	THREE	FOUR	FIVE	SIX+	UNK
TOTAL	79,868	44,086	15,824	11,322	3,066	518	102	51	4,899
<1	2,745	2,336	130	50	14	3	0	0	212
1	5,239	4,123	535	129	17	5	1	0	429
2	5,940	4,300	868	229	41	7	1	0	494
3	5,913	3,980	1,148	335	46	5	1	0	398
4	5,785	3,690	1,156	492	75	9	0	1	362
5-9	20,978	10,802	4,857	3,231	678	102	20	10	1,278
10-14	11,750	4,324	2,621	3,101	983	178	39	8	496
15-19	7,234	2,110	1,720	2,174	760	143	26	17	284
20-24	4,789	2,121	1,336	801	241	33	12	4	241
25-29	2,709	1,784	495	174	44	9	1	3	199
30-34	1,264	1,020	103	22	7	0	0	0	112
35-39	690	595	29	9	2	0	0	0	55
40+	627	526	12	8	4	0	1	0	76
UNK	4,205	2,375	814	567	154	24	0	8	263

\*Includes divorces and annulments.

TABLE M-4: DISSOLUTIONS\* OF MARRIAGE BY MONTH, BY COUNTY, FLORIDA, 2008

	TOTAL	JAN	FEB	MAR	APR	MAY	JUN	JUL	AUG	SEP	OCT	NOV	DEC
FLORIDA	79,868	6,390	6,994	6,748	7,133	6,788	6,831	7,490	5,592	7,205	7,101	5,493	6,103
ALACHUA	858	74	67	57	67	82	82	74	68	88	72	54	73
BAKER	156	12	15	15	8	16	13	19	9	13	17	4	15
BAY	880	76	66	80	81	65	74	89	76	90	65	50	68
BRADFORD	155	12	9	11	23	12	12	12	7	9	18	17	13
BREVARD	2,257	161	206	176	203	200	206	228	123	208	187	161	198
BROWARD	7,556	734	718	696	817	469	593	998	519	688	512	361	451
CALHOUN	60	4	6	9	4	6	6	4	0	8	3	5	5
CHARLOTTE	559	43	34	47	64	46	35	54	46	43	50	36	61
CITRUS	526	24	53	47	45	39	46	50	38	56	55	34	39
CLAY	827	44	57	73	69	88	63	78	60	82	82	62	69
COLLIER	1,316	112	117	119	134	115	102	110	101	125	117	81	83
COLUMBIA	351	37	33	20	18	31	27	32	19	24	26	24	60
MIAMI-DADE	13,116	972	1,205	1,062	1,111	972	1,028	1,285	771	1,379	1,334	1,131	866
DESOTO	135	12	12	2	8	21	6	15	14	5	17	5	18
DIXIE	73	1	1	14	10	9	7	6	5	8	7	4	1
DUVAL	3,791	292	360	319	305	291	402	286	248	308	384	272	324
ESCAMBIA	1,282	107	125	105	104	118	107	128	100	70	108	89	121
FLAGLER	310	35	10	35	35	29	29	16	21	36	22	17	25
FRANKLIN	49	5	6	7	4	3	4	4	4	1	6	2	3
GADSDEN	180	11	16	15	13	25	7	22	11	25	9	15	11
GILCHRIST	91	6	6	10	10	9	8	8	9	4	8	10	3
GLADES	34	3	0	1	8	2	3	4	0	5	1	1	6
GULF	45	6	2	6	1	4	3	4	4	4	4	3	4
HAMILTON	63	6	8	6	5	5	5	4	6	5	8	2	3
HARDEE	88	4	3	8	13	9	5	9	6	7	11	8	5
HENDRY	107	4	7	4	11	8	4	11	15	7	17	5	14
HERNANDO	584	46	32	69	39	59	41	63	45	43	55	43	49
HIGHLANDS	336	36	30	30	20	31	46	37	29	22	22	19	14
HILLSBOROUGH	5,747	411	594	495	484	502	530	425	423	570	488	414	411
HOLMES	108	11	5	6	12	13	2	7	9	14	9	12	8
INDIAN RIVER	570	42	44	43	66	46	45	47	33	62	47	31	64
JACKSON	242	18	19	25	31	24	19	23	16	18	12	17	20
JEFFERSON	44	4	7	5	3	1	5	4	3	4	6	0	2
LAFAYETTE	37	3	3	1	6	5	5	1	3	3	2	3	2
LAKE	1,067	84	88	66	108	106	95	99	95	94	80	62	90
LEE	2,417	206	179	182	217	211	202	232	209	193	232	183	171
LEON	881	75	68	63	105	86	84	69	68	67	74	56	66
LEVY	169	11	15	10	15	13	20	16	18	16	13	10	12
LIBERTY	30	3	3	4	4	3	1	0	4	1	0	4	3
MADISON	83	1	5	12	7	10	13	6	1	8	5	7	8
MANATEE	944	72	86	81	102	59	97	99	68	80	66	64	70
MARION	1,311	86	98	105	109	145	113	119	114	83	121	102	116
MARTIN	459	47	32	30	42	46	31	43	32	42	44	32	38
MONROE	484	37	48	41	45	51	33	46	28	50	16	28	61
NASSAU	335	28	35	27	37	23	35	29	17	32	28	27	17
OKALOOSA	1,313	104	97	111	96	155	122	107	109	82	143	84	103
OKEECHOBEE	161	10	16	18	5	24	9	5	18	19	16	11	10
ORANGE	4,888	401	433	489	370	362	427	509	213	537	410	334	403
OSCEOLA	1,743	128	156	122	153	172	198	156	123	139	156	122	118
PALM BEACH	5,044	423	437	395	447	475	432	431	435	406	492	298	373
PASCO	1,626	118	142	127	140	148	114	117	161	125	143	125	166
PINELLAS	3,466	283	290	295	342	338	317	286	253	277	334	211	240
POLK	2,344	188	204	235	188	211	212	174	173	203	194	142	220
PUTNAM	322	20	23	35	35	32	29	23	9	30	33	28	25
SAINT JOHNS	684	69	62	56	62	47	76	59	54	66	57	40	36
SAINT LUCIE	794	75	57	55	70	71	62	85	28	77	62	78	74
SANTA ROSA	600	25	59	50	57	66	52	39	51	45	53	45	58
SARASOTA	1,482	152	88	119	108	144	130	167	85	115	147	108	119
SEMINOLE	1,601	138	123	137	147	141	115	135	125	130	144	110	156
SUMTER	196	15	24	12	14	23	15	22	16	15	19	12	9
SUWANNEE	169	16	25	21	13	18	7	20	9	12	13	4	11
TAYLOR	93	8	8	6	7	11	8	11	10	4	11	6	3
UNION	54	0	3	5	6	1	10	5	6	7	3	6	2
VOLUSIA	2,144	171	186	178	213	200	169	178	169	184	182	130	184
WAKULLA	138	7	9	12	9	23	11	12	15	14	4	13	9
WALTON	227	16	19	21	22	14	16	30	24	12	23	13	17
WASHINGTON	66	5	0	10	6	4	6	4	11	6	2	6	6

\*Includes divorces and annulments.

TABLE M-5: DISSOLUTIONS\* OF MARRIAGE BY NUMBER OF MINOR CHILDREN AFFECTED, BY COUNTY, FLORIDA, 2008

	TOTAL	NONE	ONE	TWO	THREE	FOUR	FIVE	SIX	SEVEN	EIGHT+	UNK
FLORIDA	79,868	44,086	15,824	11,322	3,066	518	102	30	5	16	4,899
ALACHUA	858	475	191	144	39	8	0	0	0	0	1
BAKER	156	74	31	26	9	2	0	0	0	0	14
BAY	880	542	176	121	36	4	1	0	0	0	0
BRADFORD	155	67	39	22	7	0	1	0	0	0	19
BREVARD	2,257	1,265	483	384	109	12	4	0	0	0	0
BROWARD	7,556	4,696	1,473	1,003	238	31	10	2	0	1	102
CALHOUN	60	27	21	10	2	0	0	0	0	0	0
CHARLOTTE	559	321	120	86	21	6	2	0	0	0	3
CITRUS	526	312	122	67	20	4	1	0	0	0	0
CLAY	827	400	229	137	46	6	0	1	0	0	8
COLLIER	1,316	828	230	190	54	12	0	0	0	1	1
COLUMBIA	351	116	64	44	19	2	0	0	0	0	106
MIAMI-DADE	13,116	8,815	2,322	1,435	350	51	13	4	1	1	124
DESOTO	135	82	26	20	6	0	0	0	0	0	1
DIXIE	73	40	22	5	5	0	0	0	0	0	1
DUVAL	3,791	2,152	846	596	148	26	1	1	0	5	16
ESCAMBIA	1,282	696	299	197	56	10	3	2	0	0	19
FLAGLER	310	114	62	35	11	2	1	0	0	0	85
FRANKLIN	49	19	9	7	4	1	1	0	0	0	8
GADSDEN	180	104	29	26	9	2	0	0	0	0	10
GILCHRIST	91	27	5	0	0	0	0	0	0	0	59
GLADES	34	20	5	4	1	0	0	0	0	0	4
GULF	45	23	8	10	3	1	0	0	0	0	0
HAMILTON	63	36	9	12	4	0	0	0	0	0	2
HARDEE	88	43	25	10	2	3	0	0	0	0	5
HENDRY	107	38	21	15	2	2	1	0	0	0	28
HERNANDO	584	221	104	74	24	9	0	0	1	0	151
HIGHLANDS	336	198	68	45	15	4	0	0	0	0	6
HILLSBOROUGH	5,747	3,235	1,273	916	220	43	7	2	0	1	50
HOLMES	108	73	20	9	5	1	0	0	0	0	0
INDIAN RIVER	570	302	121	91	25	4	0	0	0	0	27
JACKSON	242	118	62	40	14	2	0	0	0	0	6
JEFFERSON	44	20	3	3	1	1	1	0	1	0	14
LAFAYETTE	37	21	6	6	1	2	0	0	0	0	1
LAKE	1,067	465	213	178	51	13	4	0	0	1	142
LEE	2,417	1,475	430	369	113	23	5	2	0	0	0
LEON	881	502	186	146	37	4	3	0	0	0	3
LEVY	169	81	34	27	7	0	2	0	0	0	18
LIBERTY	30	13	8	7	2	0	0	0	0	0	0
MADISON	83	23	15	10	3	1	0	1	0	0	30
MANATEE	944	567	176	143	43	11	1	1	0	1	1
MARION	1,311	757	262	191	90	7	2	2	0	0	0
MARTIN	459	240	89	75	28	2	0	0	0	0	25
MONROE	484	329	70	56	17	2	0	0	0	0	10
NASSAU	335	190	72	51	20	2	0	0	0	0	0
OKALOOSA	1,313	793	281	190	36	5	4	0	0	0	4
OKEECHOBEE	161	93	28	21	7	0	1	0	0	0	11
ORANGE	4,888	2,776	999	725	184	35	11	2	1	2	153
OSCEOLA	1,743	1,140	292	223	75	9	4	0	0	0	0
PALM BEACH	5,044	372	881	630	181	34	1	0	0	1	2,944
PASCO	1,626	780	349	257	75	13	0	1	1	0	150
PINELLAS	3,466	2,065	688	479	117	16	2	0	0	0	99
POLK	2,344	1,325	469	399	119	23	5	3	0	0	1
PUTNAM	322	175	72	43	17	6	0	1	0	0	8
SAINT JOHNS	684	348	132	144	39	4	0	0	0	0	17
SAINT LUCIE	794	434	162	139	35	3	1	1	0	0	19
SANTA ROSA	600	230	120	97	21	6	0	0	0	0	126
SARASOTA	1,482	903	286	206	62	8	3	2	0	0	12
SEMINOLE	1,601	771	351	273	67	17	1	1	0	0	120
SUMTER	196	134	25	26	7	3	0	0	0	0	1
SUWANNEE	169	88	37	29	9	2	0	0	0	0	4
TAYLOR	93	51	18	16	4	1	0	0	0	0	3
UNION	54	29	15	9	1	0	0	0	0	0	0
VOLUSIA	2,144	1,157	453	311	77	16	5	1	0	2	122
WAKULLA	138	75	29	26	4	0	0	0	0	0	4
WALTON	227	150	43	24	9	1	0	0	0	0	0
WASHINGTON	66	35	15	12	3	0	0	0	0	0	1

\*Includes divorces and annulments.