

Live Births

LIVE BIRTHS

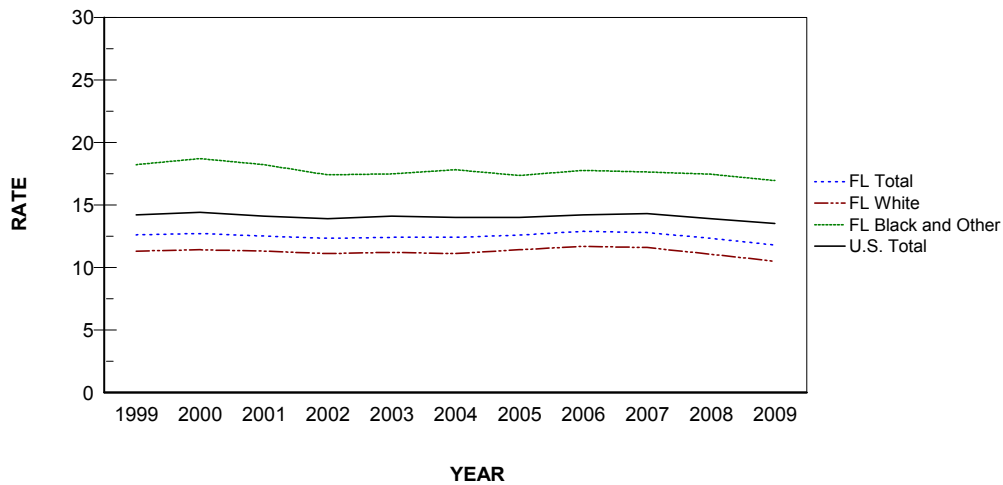
- From 1996 through 2001 Florida's resident live births increased each year, reaching a plateau at 205,800 in 2001. In 2002, the number dropped slightly, but increases resumed from 2003 to a record high of 239,120 resident live births in 2007. In 2009, the number of resident live births decreased for the second consecutive year to 221,391.
- In 2009, Florida experienced a birth rate of 11.8 births per 1,000 population. This is a decrease of 4.1% from the 2008 rate of 12.3 per 1,000 population.
- In 2009, the resident birth rate for Whites was 10.5 births per 1,000 population and 16.9 births per 1,000 population for Black and Other Races.
- Both the number and percentage of resident births to mothers aged 18 and under decreased between 2008 and 2009. The number decreased from 14,608 to 12,925 and percent from 6.3 to 5.8.
- The percentage of births to resident Black and Other Race mothers of 18 years or younger (8.3 percent) was 1.7 times higher than the percentage for White mothers (4.9 percent).
- Between 2008 and 2009, the percentage of resident live births with birthweights less than 2,500 grams (5 lbs. 8.2 oz.) decreased slightly to 8.7 percent. The percentage of resident live births with birthweights less than 1,500 grams (3 lbs. 4.9 oz.) also decreased slightly from 2008 to 2009 at 1.6 percent. The percentage of resident live births with birthweights of 4,000 grams (8 lbs. 13.1 oz.) and heavier was unchanged at 6.4 percent, from 2008 to 2009.
- About 24 out of every 50 resident live births (47.7 percent) were to an unwed mother. For Blacks, about seven out of every ten births (71.5 percent) were to unwed mothers. Among White mothers, about two out of every five births (41.5 percent) were to unwed mothers. Among mothers of Other Races, approximately seven out of every twenty-five live births (28.5 percent) were to unwed mothers.
- Of the live births to unwed mothers, 11.4 percent were to women 18 years old and younger.
- Mothers of Hispanic origin accounted for 28.0 percent of the resident live births.
- Eighty-two percent of the resident live births to Black and Other Race mothers were to Black mothers. Black mothers accounted for 22.8 percent of the total resident live births.
- Of the resident live births, 98.8 percent occurred in hospitals. Physicians were attendants in 88.7 percent of those hospital births.

**CHART B-1: RESIDENT LIVE BIRTHS AND RATES PER 1,000 POPULATION,
BY RACE, FLORIDA AND UNITED STATES TOTAL,
CENSUS YEARS 1920-1990 AND 1999-2009**

YEAR	NUMBER OF BIRTHS -FL ²			RATES - FL			RATE-U.S.
	TOTAL	WHITE	BLACK & OTHER	TOTAL	WHITE	BLACK & OTHER	TOTAL
1920 ¹	19,540	13,541	5,999	19.7	20.6	17.9	27.7
1930 ¹	26,991	18,596	8,395	18.3	17.9	19.3	21.3
1940	33,696	23,805	9,891	17.6	17.0	19.1	19.4
1950	64,370	45,699	18,671	22.8	20.7	30.5	24.1
1960	115,610	84,402	31,208	23.1	20.6	34.9	23.7
1970	115,113	86,941	28,153	16.8	15.1	26.2	18.4
1980	131,811	97,402	34,386	13.4	11.6	23.7	15.9
1990	199,146	149,743	49,265	15.3	13.6	24.8	16.7
1999	196,963	146,329	50,473	12.6	11.3	18.2	14.2
2000	204,030	150,115	53,622	12.7	11.4	18.7	14.4
2001	205,800	151,623	53,827	12.5	11.3	18.2	14.1
2002	205,580	152,127	53,071	12.3	11.1	17.4	13.9
2003	212,243	157,402	54,566	12.4	11.2	17.5	14.1
2004	218,045	160,132	57,477	12.4	11.1	17.8	14.0
2005	226,219	166,181	59,608	12.6	11.4	17.3	14.0
2006	237,166	174,147	62,697	12.9	11.7	17.8	14.2
2007	239,120	174,597	64,090	12.8	11.6	17.6	14.3
2008	231,417	167,487	63,411	12.3	11.0	17.4	13.9 ³
2009	221,391	159,186	61,565	11.8	10.5	16.9	13.5 ⁴

1. Only recorded data are available.
2. Data from 1920-1960 are based on the race of the child. Data from 1970 to present are based on the race of the mother.
3. Preliminary data.
4. Provisional data.

GRAPH B-1: RESIDENT LIVE BIRTH RATES PER 1,000 POPULATION, BY RACE OF MOTHER, FLORIDA AND UNITED STATES TOTAL, 1999-2009



**CHART B-2: RESIDENT LIVE BIRTHS TO MOTHERS 18 YEARS AND UNDER,
BY SINGLE YEARS OF AGE, AND PERCENT OF TOTAL BIRTHS,
BY RACE OF MOTHER, FLORIDA, 1970, 1975, 1980, 1985, 1990, 1995, 2000 AND 2005-2009**

YEAR	AGE OF MOTHER							18 YEARS & UNDER	
	<13	13	14	15	16	17	18	NUMBER	PERCENT
TOTAL									
1970	26	107	503	1,463	3,107	4,887	6,808	16,901	14.7
1975	20	145	647	1,798	3,369	4,936	6,482	17,397	16.5
1980	21	98	509	1,537	2,913	4,429	6,299	15,806	12.0
1985	16	105	549	1,407	2,709	4,348	6,139	15,273	9.3
1990	31	138	591	1,661	3,148	5,193	7,544	18,306	9.2
1995	20	128	588	1,583	3,236	5,166	6,971	17,692	9.4
2000	24	95	412	1,213	2,702	4,730	7,094	16,270	8.0
2005	15	59	341	1,036	2,428	4,126	6,797	14,802	6.5
2006	12	55	286	1,038	2,485	4,612	7,267	15,755	6.6
2007	9	63	304	1,021	2,591	4,507	7,281	15,776	6.6
2008	10	58	288	899	2,146	4,241	6,966	14,608	6.3
2009	6	42	214	803	1,895	3,610	6,355	12,925	5.8
WHITE									
1970	3	19	155	524	1,553	3,004	4,463	9,721	11.2
1975	5	34	207	693	1,651	2,868	4,078	9,536	12.2
1980	5	24	128	581	1,370	2,434	3,887	8,429	8.7
1985	4	26	168	600	1,439	2,537	3,744	8,518	6.9
1990	8	37	201	693	1,571	2,976	4,636	10,122	6.8
1995	9	32	230	801	1,801	3,124	4,451	10,448	7.4
2000	6	43	167	625	1,512	2,863	4,463	9,679	6.4
2005	7	26	161	567	1,468	2,643	4,452	9,324	5.6
2006	7	24	143	584	1,501	2,918	4,781	9,958	5.7
2007	4	29	140	584	1,547	2,829	4,701	9,834	5.6
2008	4	24	135	478	1,263	2,638	4,452	8,994	5.4
2009	1	14	100	425	1,081	2,204	3,966	7,791	4.9
BLACK AND OTHER									
1970	23	88	348	939	1,554	1,882	2,345	7,179	25.5
1975	15	111	439	1,104	1,717	2,068	2,403	7,857	28.5
1980	16	74	380	956	1,543	1,994	2,412	7,375	21.4
1985	12	79	381	807	1,269	1,811	2,394	6,753	16.7
1990	23	101	390	967	1,574	2,212	2,905	8,172	16.6
1995	11	96	358	782	1,431	2,038	2,519	7,235	15.5
2000	18	52	244	588	1,185	1,862	2,628	6,577	12.3
2005	8	33	180	466	958	1,479	2,332	5,456	9.2
2006	5	31	141	453	980	1,691	2,478	5,779	9.2
2007	5	34	162	436	1,041	1,667	2,570	5,915	9.2
2008	6	34	153	420	882	1,593	2,498	5,586	8.8
2009	5	28	113	376	807	1,398	2,376	5,103	8.3

**CHART B-3: PERCENT OF RESIDENT LIVE BIRTHS FOR SELECTED BIRTHWEIGHT GROUPS,
BY RACE OF MOTHER AND GENDER OF CHILD, FLORIDA, 1970, 1980, 1990, 2000 AND 1999-2009**

**VERY LOW BIRTHWEIGHT:
LESS THAN 1,500 GRAMS**

**LOW BIRTHWEIGHT:
LESS THAN 2,500 GRAMS**

YEAR	VERY LOW BIRTHWEIGHT: LESS THAN 1,500 GRAMS					LOW BIRTHWEIGHT: LESS THAN 2,500 GRAMS				
	TOTAL	WHITE		BLACK & OTHER		TOTAL	WHITE		BLACK & OTHER	
		MALE	FEMALE	MALE	FEMALE		MALE	FEMALE	MALE	FEMALE
1970	1.3	0.9	0.9	2.4	2.4	8.5	6.4	7.5	11.9	14.5
1980	1.4	1.0	0.9	2.5	2.5	7.6	5.6	6.5	11.3	12.9
1990	1.5	1.0	1.0	2.7	2.8	7.4	5.5	6.3	11.2	13.1
1999	1.6	1.2	1.3	2.7	2.9	8.2	6.4	7.5	10.7	13.1
2000	1.5	1.2	1.1	2.6	2.7	8.0	6.2	7.0	10.9	12.8
2001	1.6	1.2	1.2	2.6	2.9	8.2	6.3	7.3	10.8	13.1
2002	1.6	1.2	1.2	2.9	2.8	8.4	6.6	7.7	11.0	13.4
2003	1.6	1.2	1.1	2.6	2.8	8.5	6.5	7.7	11.1	14.0
2004	1.6	1.1	1.2	2.7	2.9	8.6	6.6	7.9	11.2	13.4
2005	1.6	1.2	1.2	2.7	2.9	8.8	6.7	8.0	11.4	14.0
2006	1.6	1.2	1.2	2.6	2.9	8.7	6.8	8.0	11.1	14.0
2007	1.6	1.2	1.2	2.6	2.9	8.7	6.7	7.8	11.4	13.8
2008	1.7	1.2	1.3	2.6	2.9	8.8	6.8	8.0	11.5	13.7
2009	1.6	1.1	1.2	2.6	2.9	8.7	6.6	7.8	11.3	14.0

**CHART B-4: RESIDENT LIVE BIRTHS TO UNWED MOTHERS
AND PERCENT OF TOTAL LIVE BIRTHS, BY RACE,
FLORIDA AND UNITED STATES TOTAL, CENSUS YEARS 1920-1990 AND 1999-2009**

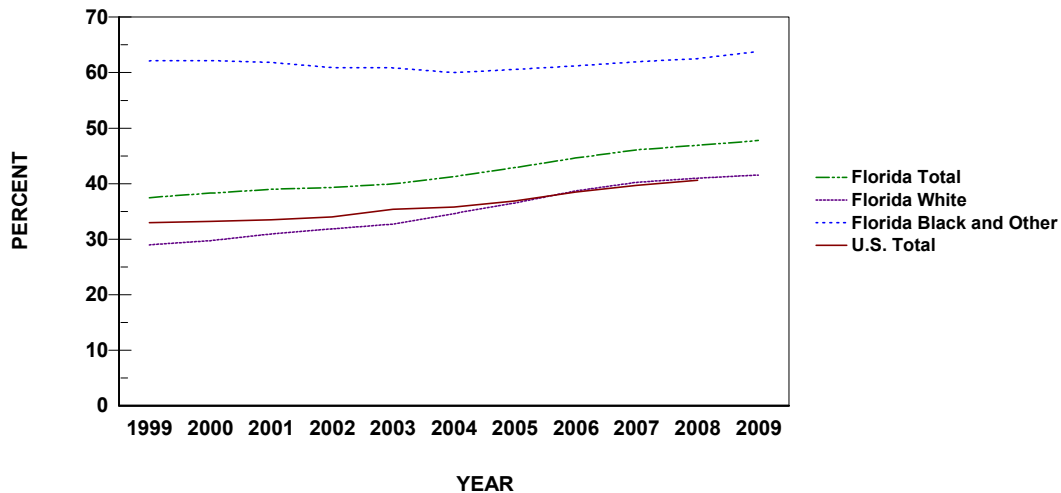
YEAR	NUMBER OF BIRTHS ²			PERCENT - FL			PERCENT-U.S.
	TOTAL	WHITE	BLACK & OTHER	TOTAL	WHITE	BLACK & OTHER	TOTAL
1920 ¹	754	125	629	3.9	0.9	10.5	NA
1930 ¹	1,467	277	1,190	5.4	1.5	14.2	NA
1940	2,075	358	1,717	6.2	1.5	17.4	3.8
1950	5,134	805	4,329	8.0	1.8	23.2	4.0
1960	11,042	2,321	8,721	9.6	2.8	27.9	5.3
1970	17,264	5,679	11,581	15.0	6.5	41.1	10.7
1980	30,156	10,295	19,860	22.9	10.6	57.8	20.3
1990	63,126	31,276	31,802	31.7	20.9	64.6	28.0
1999	73,785	42,398	31,335	37.5	29.0	62.1	33.0
2000	78,026	44,616	33,334	38.2	29.7	62.2	33.2
2001	80,209	46,846	33,266	39.0	30.9	61.8	33.5
2002	80,833	48,400	32,326	39.3	31.8	60.9	34.0
2003	84,733	51,482	33,178	39.9	32.7	60.8	34.6
2004	89,976	55,381	34,469	41.3	34.6	60.0	35.8
2005	96,895	60,665	36,101	42.8	36.5	60.6	36.9
2006	105,770	67,305	38,341	44.6	38.6	61.2	38.5
2007	110,160	70,251	39,698	46.1	40.2	61.9	39.7
2008	108,484	68,583	39,639	46.9	40.9	62.5	40.6 ³
2009	105,654	66,080	39,266	47.7	41.5	63.8	NA

1. Only recorded data are available.

2. Data from 1920-1960 are based on the race of the child. Data from 1970 to present are based on the race of the mother.

3. Preliminary data.

**GRAPH B-2: PERCENT OF RESIDENT LIVE BIRTHS TO UNWED MOTHERS,
BY RACE OF MOTHER, FLORIDA AND UNITED STATES TOTAL, 1999-2009**



**CHART B-5: RESIDENT LIVE BIRTHS TO UNWED MOTHERS AND PERCENT
BY AGE AND RACE OF MOTHER, FLORIDA, 1999 AND 2009**

AGE OF MOTHER	WHITE				BLACK AND OTHER			
	1999		2009		1999		2009	
	NUMBER	PERCENT	NUMBER	PERCENT	NUMBER	PERCENT	NUMBER	PERCENT
TOTAL	42,398	29.0	66,080	41.5	31,335	62.1	39,266	63.8
10-14	230	93.1	115	100.0	295	99.3	146	100.0
15	614	90.2	414	97.4	637	99.4	375	99.7
16	1,355	86.1	1,005	93.0	1,144	98.5	806	99.9
17	2,374	80.8	2,008	91.1	1,718	97.4	1,386	99.1
18	3,309	74.4	3,476	87.6	2,356	94.8	2,327	97.9
19	3,957	66.7	4,880	80.8	2,962	90.7	3,134	95.4
20-24	14,590	43.5	23,902	62.1	11,916	76.5	14,813	83.6
25-29	8,174	20.3	16,267	36.0	5,861	48.8	9,311	56.7
30-34	4,651	13.3	8,474	22.9	2,791	34.9	4,453	39.1
35-44	3,111	14.4	5,440	22.4	1,640	31.4	2,489	33.0
45+	27	17.4	99	29.7	11	23.4	25	24.3
UNK	6	28.6	0	0.0	4	36.4	1	100.0

TABLE B-1: RESIDENT AND RECORDED LIVE BIRTHS AND BIRTH RATES PER 1,000 POPULATION, BY RACE OF MOTHER, BY COUNTY, FLORIDA, 2009

	RESIDENT LIVE BIRTHS						RATES		
	NUMBERS						TOTAL	WHITE	BLACK & OTHER
	TOTAL	WHITE	BLACK & OTHER			UNK			
		TOTAL	BLACK	OTHER	UNK				
FLORIDA	221,391	159,186	61,565	50,559	11,006	640	11.8	10.5	16.9
ALACHUA	2,925	1,714	1,211	957	254	0	11.5	9.0	18.6
BAKER	378	338	40	36	4	0	14.5	15.3	10.1
BAY	2,310	1,788	453	307	146	69	13.6	12.3	18.0
BRADFORD	322	245	77	74	3	0	11.1	11.1	11.0
BREVARD	5,172	4,129	1,039	768	271	4	9.3	8.5	14.6
BROWARD	21,394	11,727	9,310	8,026	1,284	357	12.2	9.5	18.1
CALHOUN	176	152	24	21	3	0	12.3	13.0	9.1
CHARLOTTE	991	856	133	81	52	2	6.0	5.6	9.9
CITRUS	1,091	1,024	67	40	27	0	7.6	7.4	10.5
CLAY	2,208	1,819	387	277	110	2	11.9	11.2	16.7
COLLIER	3,537	3,030	507	415	92	0	10.6	9.9	19.9
COLUMBIA	860	665	195	180	15	0	12.8	12.3	14.7
MIAMI-DADE	32,341	23,537	8,758	8,052	706	46	13.1	12.4	15.3
DESOTO	452	405	47	45	2	0	13.0	13.6	9.1
DIXIE	197	178	19	16	3	0	12.3	12.4	10.8
DUVAL	13,176	7,474	5,667	4,714	953	35	14.5	12.9	17.3
ESCAMBIA	4,166	2,625	1,541	1,323	218	0	13.2	11.4	18.3
FLAGLER	869	727	139	106	33	3	9.1	8.8	11.0
FRANKLIN	128	112	14	12	2	2	10.3	10.8	6.7
GADSDEN	692	251	439	431	8	2	13.5	11.7	14.7
GILCHRIST	188	175	13	8	5	0	10.7	11.0	8.5
GLADES	88	68	20	15	5	0	7.6	7.1	10.3
GULF	138	115	21	18	3	2	8.2	8.7	5.8
HAMILTON	185	117	68	65	3	0	12.5	13.1	11.6
HARDEE	485	444	41	27	14	0	17.1	17.7	12.3
HENDRY	667	580	87	68	19	0	15.9	16.2	14.0
HERNANDO	1,613	1,449	156	107	49	8	9.7	9.3	14.2
HIGHLANDS	1,011	802	209	172	37	0	10.0	9.0	17.6
HILLSBOROUGH	16,729	12,006	4,704	3,720	984	19	13.9	12.7	18.1
HOLMES	225	216	8	2	6	1	11.3	11.9	4.5
INDIAN RIVER	1,278	1,028	250	210	40	0	9.0	8.1	16.6
JACKSON	548	374	174	160	14	0	10.2	10.0	10.6
JEFFERSON	155	75	80	76	4	0	10.5	8.2	14.4
LAFAYETTE	77	67	10	10	0	0	8.6	9.6	5.0
LAKE	3,121	2,551	569	408	161	1	10.7	9.7	18.7
LEE	6,596	5,534	1,061	897	164	1	10.6	9.9	17.3
LEON	3,122	1,590	1,520	1,337	183	12	11.3	8.9	15.8
LEVY	445	374	71	60	11	0	10.8	10.3	14.5
LIBERTY	86	79	7	7	0	0	10.0	12.2	3.4
MADISON	229	110	119	115	4	0	11.3	9.2	14.2
MANATEE	3,658	3,008	649	529	120	1	11.5	10.6	18.0
MARION	3,584	2,775	808	676	132	1	10.8	9.7	17.9
MARTIN	1,163	837	325	120	205	1	8.1	6.3	29.4
MONROE	707	620	87	60	27	0	9.4	8.9	16.4
NASSAU	778	709	67	52	15	2	10.6	10.5	11.0
OKALOOSA	2,651	2,119	529	313	216	3	13.5	12.7	17.6
OKEECHOBEE	564	503	61	34	27	0	14.1	14.1	13.9
ORANGE	15,393	10,006	5,380	4,032	1,348	7	13.8	12.4	17.5
OSCEOLA	3,863	3,264	598	397	201	1	13.9	13.9	13.7
PALM BEACH	14,177	9,422	4,733	4,049	684	22	11.0	9.1	18.9
PASCO	4,945	4,408	527	299	228	10	11.3	10.7	20.8
PINELLAS	8,772	6,541	2,221	1,631	590	10	9.4	8.2	16.7
POLK	7,735	5,925	1,808	1,511	297	2	13.2	12.2	18.1
PUTNAM	971	722	249	236	13	0	13.0	11.8	18.5
SAINT JOHNS	1,791	1,526	259	155	104	6	9.6	8.9	17.9
SAINT LUCIE	3,142	2,177	963	838	125	2	11.4	9.8	18.4
SANTA ROSA	1,835	1,676	159	85	74	0	12.6	12.6	12.7
SARASOTA	2,931	2,508	423	293	130	0	7.5	6.8	17.8
SEMINOLE	4,470	3,498	972	657	315	0	10.5	9.8	14.8
SUMTER	483	374	108	99	9	1	5.0	4.5	8.5
SUWANNEE	484	404	80	73	7	0	11.5	11.2	13.3
TAYLOR	285	219	66	63	3	0	12.0	12.2	11.5
UNION	155	127	28	27	1	0	9.6	10.6	6.7
VOLUSIA	5,099	4,054	1,043	836	207	2	10.0	9.1	16.6
WAKULLA	317	272	45	43	2	0	9.9	9.8	11.0
WALTON	659	622	37	22	15	0	11.4	11.8	7.2
WASHINGTON	263	216	46	38	8	1	10.3	10.2	10.3

TABLE B-1 (Cont.): RESIDENT AND RECORDED LIVE BIRTHS AND BIRTH RATES PER 1,000 POPULATION, BY RACE OF MOTHER, BY COUNTY, FLORIDA, 2009

	RECORDED LIVE BIRTHS						RATES		
	NUMBERS						TOTAL	WHITE	BLACK & OTHER
	TOTAL	WHITE	BLACK & OTHER			UNK			
		TOTAL	BLACK	OTHER					
FLORIDA	221,634	159,334	61,643	50,629	11,014	657	11.8	10.5	16.9
ALACHUA	6,158	4,381	1,776	1,451	325	1	24.2	23.1	27.2
BAKER	4	4	0	0	0	0	0.2	0.2	0.0
BAY	2,796	2,211	509	349	160	76	16.5	15.3	20.2
BRADFORD	1	0	1	1	0	0	0.0	0.0	0.1
BREVARD	5,117	4,083	1,031	759	272	3	9.2	8.4	14.5
BROWARD	23,504	12,559	10,575	9,269	1,306	370	13.4	10.2	20.6
CALHOUN	1	1	0	0	0	0	0.1	0.1	0.0
CHARLOTTE	1,157	988	169	109	60	0	7.0	6.5	12.5
CITRUS	985	917	68	42	26	0	6.8	6.7	10.7
CLAY	2,278	1,775	503	411	92	0	12.3	10.9	21.7
COLLIER	3,804	3,289	515	417	98	0	11.5	10.7	20.2
COLUMBIA	669	462	206	195	11	1	10.0	8.6	15.6
MIAMI-DADE	29,389	22,130	7,213	6,598	615	46	11.9	11.6	12.6
DESOTO	612	554	57	51	6	1	17.5	18.7	11.0
DIXIE	0	0	0	0	0	0	0.0	0.0	0.0
DUVAL	15,064	9,250	5,768	4,700	1,068	46	16.6	15.9	17.6
ESCAMBIA	5,825	4,130	1,693	1,414	279	2	18.5	17.9	20.1
FLAGLER	10	8	2	2	0	0	0.1	0.1	0.2
FRANKLIN	1	1	0	0	0	0	0.1	0.1	0.0
GADSDEN	5	2	3	3	0	0	0.1	0.1	0.1
GILCHRIST	0	0	0	0	0	0	0.0	0.0	0.0
GLADES	1	0	1	0	1	0	0.1	0.0	0.5
GULF	0	0	0	0	0	0	0.0	0.0	0.0
HAMILTON	4	3	1	1	0	0	0.3	0.3	0.2
HARDEE	3	3	0	0	0	0	0.1	0.1	0.0
HENDRY	3	3	0	0	0	0	0.1	0.1	0.0
HERNANDO	1,807	1,651	144	103	41	12	10.8	10.6	13.1
HIGHLANDS	1,400	1,149	251	192	59	0	13.9	12.9	21.2
HILLSBOROUGH	18,998	13,891	5,081	4,001	1,080	26	15.8	14.7	19.6
HOLMES	2	1	1	0	1	0	0.1	0.1	0.6
INDIAN RIVER	1,171	932	239	204	35	0	8.3	7.3	15.9
JACKSON	598	430	168	151	17	0	11.1	11.5	10.2
JEFFERSON	0	0	0	0	0	0	0.0	0.0	0.0
LAFAYETTE	0	0	0	0	0	0	0.0	0.0	0.0
LAKE	2,660	2,134	526	399	127	0	9.1	8.1	17.3
LEE	6,962	5,883	1,077	912	165	2	11.2	10.5	17.6
LEON	5,055	2,740	2,300	2,095	205	15	18.4	15.3	23.9
LEVY	4	3	1	1	0	0	0.1	0.1	0.2
LIBERTY	0	0	0	0	0	0	0.0	0.0	0.0
MADISON	2	1	1	1	0	0	0.1	0.1	0.1
MANATEE	3,044	2,521	523	437	86	0	9.5	8.9	14.5
MARION	2,907	2,246	660	556	104	1	8.8	7.9	14.7
MARTIN	1,988	1,557	430	193	237	1	13.8	11.7	38.9
MONROE	549	471	78	52	26	0	7.3	6.7	14.7
NASSAU	427	367	58	47	11	2	5.8	5.4	9.5
OKALOOSA	2,602	2,096	505	292	213	1	13.2	12.6	16.8
OKEECHOBEE	9	8	1	1	0	0	0.2	0.2	0.2
ORANGE	19,826	13,697	6,119	4,531	1,588	10	17.8	17.0	19.9
OSCEOLA	3,624	3,005	618	353	265	1	13.0	12.8	14.1
PALM BEACH	16,151	10,829	5,304	4,512	792	18	12.5	10.4	21.2
PASCO	1,743	1,550	193	114	79	0	4.0	3.8	7.6
PINELLAS	10,351	7,963	2,376	1,701	675	12	11.1	10.0	17.9
POLK	6,569	5,025	1,542	1,295	247	2	11.2	10.4	15.4
PUTNAM	451	288	163	154	9	0	6.0	4.7	12.1
SAINT JOHNS	1,176	977	198	160	38	1	6.3	5.7	13.7
SAINT LUCIE	2,050	1,308	742	663	79	0	7.5	5.9	14.2
SANTA ROSA	309	278	31	21	10	0	2.1	2.1	2.5
SARASOTA	3,245	2,756	489	345	144	0	8.3	7.5	20.5
SEMINOLE	3,259	2,539	718	558	160	2	7.7	7.1	11.0
SUMTER	6	3	3	1	2	0	0.1	0.0	0.2
SUWANNEE	2	1	1	1	0	0	0.0	0.0	0.2
TAYLOR	2	0	2	2	0	0	0.1	0.0	0.3
UNION	5	3	2	2	0	0	0.3	0.3	0.5
VOLUSIA	4,531	3,579	947	773	174	5	8.9	8.0	15.1
WAKULLA	0	0	0	0	0	0	0.0	0.0	0.0
WALTON	757	698	59	33	26	0	13.0	13.2	11.5
WASHINGTON	0	0	0	0	0	0	0.0	0.0	0.0

TABLE B-2: RESIDENT LIVE BIRTHS BY HISPANIC OR HAITIAN ORIGIN OF MOTHER, BY COUNTY, FLORIDA, 2009

	HISPANIC ORIGIN									
	TOTAL	HISPANIC ORIGIN				CENTRAL/ SOUTH AMERICAN	OTHER/ UNK HISPANIC	HAITIAN	NON- HISPANIC/ HAITIAN	
		TOTAL HISPANIC	MEXICAN	PUERTO RICAN	CUBAN				HAITIAN	UNK
FLORIDA	221,391	61,986	14,544	11,721	11,332	21,022	3,367	7,903	150,192	1,310
ALACHUA	2,925	243	52	67	31	86	7	9	2,671	2
BAKER	378	12	6	3	0	1	2	0	366	0
BAY	2,310	146	60	39	9	20	18	1	1,922	241
BRADFORD	322	7	4	2	1	0	0	0	315	0
BREVARD	5,172	599	117	200	54	179	49	57	4,513	3
BROWARD	21,394	6,465	614	1,031	824	3,532	464	2,079	12,780	70
CALHOUN	176	6	3	1	1	1	0	0	166	4
CHARLOTTE	991	118	24	41	19	27	7	22	850	1
CITRUS	1,091	103	27	41	12	14	9	0	986	2
CLAY	2,208	189	48	67	9	49	16	25	1,992	2
COLLIER	3,537	1,736	964	73	205	452	42	318	1,464	19
COLUMBIA	860	51	20	9	13	8	1	0	809	0
MIAMI-DADE	32,341	19,545	991	1,176	7,687	8,829	862	1,813	10,783	200
DESOTO	452	202	191	1	0	8	2	0	250	0
DIXIE	197	8	5	1	0	2	0	0	189	0
DUVAL	13,176	1,288	377	363	103	365	80	99	11,773	16
ESCAMBIA	4,166	230	115	41	13	50	11	4	3,932	0
FLAGLER	869	105	11	33	16	33	12	8	754	2
FRANKLIN	128	9	4	1	0	4	0	0	111	8
GADSDEN	692	128	85	3	1	37	2	1	559	4
GILCHRIST	188	16	5	0	3	8	0	0	172	0
GLADES	88	24	19	0	1	3	1	1	60	3
GULF	138	4	2	1	0	1	0	0	121	13
HAMILTON	185	43	38	1	1	3	0	0	141	1
HARDEE	485	274	269	1	2	0	2	2	209	0
HENDRY	667	344	250	15	17	34	28	0	294	29
HERNANDO	1,613	189	25	105	14	23	22	2	1,401	21
HIGHLANDS	1,011	304	185	81	17	15	6	9	696	2
HILLSBOROUGH	16,729	5,210	1,764	1,531	705	947	263	185	11,019	315
HOLMES	225	5	2	2	0	0	1	0	215	5
INDIAN RIVER	1,278	294	207	23	10	50	4	21	962	1
JACKSON	548	26	17	2	1	3	3	0	518	4
JEFFERSON	155	4	3	0	0	1	0	0	151	0
LAFAYETTE	77	13	13	0	0	0	0	0	64	0
LAKE	3,121	607	248	196	35	105	23	24	2,488	2
LEE	6,596	2,017	779	279	224	527	208	213	4,293	73
LEON	3,122	156	64	30	15	43	4	17	2,937	12
LEVY	445	33	17	10	1	5	0	0	412	0
LIBERTY	86	10	7	1	0	2	0	0	75	1
MADISON	229	10	8	0	0	2	0	1	218	0
MANATEE	3,658	1,135	767	99	26	231	12	51	2,469	3
MARION	3,584	521	182	180	35	110	14	11	3,051	1
MARTIN	1,163	244	127	38	8	70	1	8	908	3
MONROE	707	220	31	13	103	70	3	24	463	0
NASSAU	778	30	16	5	2	7	0	0	745	3
OKALOOSA	2,651	291	121	59	10	88	13	1	2,354	5
OKEECHOBEE	564	217	186	5	3	18	5	0	346	1
ORANGE	15,393	4,660	864	2,091	205	1,075	425	893	9,827	13
OSCEOLA	3,863	1,990	181	1,147	74	389	199	65	1,807	1
PALM BEACH	14,177	4,394	1,065	538	424	2,193	174	1,525	8,237	21
PASCO	4,945	795	260	269	58	160	48	23	4,001	126
PINELLAS	8,772	1,121	565	259	73	187	37	13	7,617	21
POLK	7,735	2,021	1,215	410	80	226	90	142	5,562	10
PUTNAM	971	146	103	33	4	5	1	1	823	1
SAINT JOHNS	1,791	104	32	41	2	20	9	4	1,678	5
SAINT LUCIE	3,142	752	305	146	45	210	46	179	2,206	5
SANTA ROSA	1,835	73	41	18	3	8	3	0	1,762	0
SARASOTA	2,931	477	237	57	49	113	21	23	2,430	1
SEMINOLE	4,470	953	139	465	41	231	77	19	3,497	1
SUMTER	483	54	45	5	0	2	2	0	429	0
SUWANNEE	484	69	51	2	4	11	1	0	415	0
TAYLOR	285	0	0	0	0	0	0	0	285	0
UNION	155	5	1	2	0	2	0	0	150	0
VOLUSIA	5,099	837	308	356	35	108	30	9	4,241	12
WAKULLA	317	8	4	2	0	2	0	1	308	0
WALTON	659	65	44	3	1	15	2	0	590	4
WASHINGTON	263	9	7	0	1	1	0	0	240	14

**TABLE B-3: RESIDENT LIVE BIRTHS FOR INCORPORATED CITIES OF 2,400 OR MORE POPULATION,
BY RACE OF MOTHER, BY COUNTY, FLORIDA, 2009**

	TOTAL	WHITE	BLACK	AMER INDIAN	CHINESE	JAPANESE	HAWAIIAN	FILIPINO	OTHER ASIAN/ PAC ISL	MULTI - RACE & OTHER	UNK
FLORIDA	221,391	159,186	50,559	464	830	149	38	1,251	4,244	4,030	640
ALACHUA	2,925	1,714	957	2	46	2	0	19	125	60	0
ALACHUA	113	75	31	0	1	0	0	0	5	1	0
GAINESVILLE	1,891	926	763	1	37	1	0	16	106	41	0
HIGH SPRINGS	71	55	14	0	0	0	0	1	0	1	0
NEWBERRY	88	71	11	0	1	0	0	1	0	4	0
BALANCE OF COUNTY	762	587	138	1	7	1	0	1	14	13	0
BAKER	378	338	36	0	0	0	0	1	2	1	0
MACCLENNY	73	65	8	0	0	0	0	0	0	0	0
BALANCE OF COUNTY	305	273	28	0	0	0	0	1	2	1	0
BAY	2,310	1,788	307	20	5	3	2	7	40	69	69
CALLAWAY	22	20	2	0	0	0	0	0	0	0	0
LYNN HAVEN	220	173	21	3	1	0	0	0	6	9	7
PANAMA CITY	1,183	814	251	10	3	1	0	5	24	33	42
PANAMA CITY BEACH	349	305	13	3	1	0	0	0	7	11	9
PARKER	5	5	0	0	0	0	0	0	0	0	0
SPRINGFIELD	6	3	1	0	0	0	0	0	0	1	1
BALANCE OF COUNTY	525	468	19	4	0	2	2	2	3	15	10
BRADFORD	322	245	74	0	0	0	0	1	0	2	0
STARKE	105	56	47	0	0	0	0	0	0	2	0
BALANCE OF COUNTY	217	189	27	0	0	0	0	1	0	0	0
BREVARD	5,172	4,129	768	6	26	2	0	26	88	123	4
CAPE CANAVERAL	64	60	0	0	0	0	0	0	1	3	0
COCOA	513	359	137	0	0	0	0	2	6	8	1
COCOA BEACH	82	79	1	0	1	0	0	0	0	1	0
INDIALANTIC	44	40	0	0	0	0	0	0	1	3	0
INDIAN HARBOUR BEACH	32	27	0	0	0	0	0	1	1	3	0
MALABAR	23	20	1	0	0	0	0	0	0	2	0
MELBOURNE	1,045	838	140	0	10	0	0	4	20	32	1
MELBOURNE BEACH	26	26	0	0	0	0	0	0	0	0	0
PALM BAY	1,255	928	266	4	2	0	0	3	16	35	1
ROCKLEDGE	331	266	46	0	2	2	0	2	7	6	0
SATELLITE BEACH	79	71	4	0	0	0	0	0	3	1	0
TITUSVILLE	525	408	101	0	1	0	0	3	3	9	0
WEST MELBOURNE	124	103	8	0	2	0	0	1	8	2	0
BALANCE OF COUNTY	1,029	904	64	2	8	0	0	10	22	18	1
BROWARD	21,394	11,727	8,026	26	119	14	1	81	620	423	357
COCONUT CREEK	522	366	90	0	10	0	0	2	26	6	22
COOPER CITY	204	171	16	1	3	0	0	1	7	5	0
CORAL SPRINGS	1,385	836	360	1	17	0	0	3	56	30	82
DANIA BEACH	212	122	78	1	2	1	0	1	1	6	0
DAVIE	851	700	94	3	6	1	0	1	26	18	2
DEERFIELD BEACH	620	348	235	0	1	0	0	2	11	11	12
FORT LAUDERDALE	2,941	1,357	1,471	2	5	1	0	9	34	41	21
HALLANDALE	331	210	106	0	0	0	0	1	4	8	2
HOLLYWOOD	2,130	1,439	556	14	4	1	0	7	56	52	1
LAUDERDALE BY THE SEA	21	18	2	0	0	0	0	0	0	0	1
LAUDERDALE LAKES	464	33	427	0	0	0	0	0	3	0	1
LAUDERHILL	867	108	723	0	2	0	0	1	8	18	7
LIGHTHOUSE POINT	65	60	3	0	0	0	0	0	1	1	0
MARGATE	642	337	222	0	4	0	0	2	34	12	31
MIRAMAR	1,655	724	764	0	17	1	0	17	79	51	2
NORTH LAUDERDALE	644	193	397	0	2	1	0	2	15	11	23
OAKLAND PARK	380	206	155	0	3	0	0	0	6	5	5
PARKLAND	166	138	15	0	4	0	0	3	4	1	1
PEMBROKE PARK	37	11	26	0	0	0	0	0	0	0	0
PEMBROKE PINES	1,659	1,089	412	4	11	2	0	12	83	44	2
PLANTATION	990	632	271	0	14	1	1	1	37	29	4
POMPANO BEACH	1,592	781	684	0	5	1	0	3	17	22	79
SOUTHWEST RANCHES	52	44	7	0	0	0	0	0	0	1	0
SUNRISE	1,061	520	446	0	4	1	0	5	50	21	14
TAMARAC	630	328	219	0	1	1	0	4	25	13	39
WEST PARK	119	49	66	0	0	0	0	1	1	2	0

**TABLE B-3 (Cont.): RESIDENT LIVE BIRTHS FOR INCORPORATED CITIES OF 2,400 OR MORE
POPULATION, BY RACE OF MOTHER, BY COUNTY, FLORIDA, 2009**

	TOTAL	WHITE	BLACK	AMER INDIAN	CHINESE	JAPANESE	HAWAIIAN	FILIPINO	OTHER ASIAN/ PAC ISL	MULTI - RACE & OTHER	UNK
BROWARD (Cont.)											
WESTON	563	487	25	0	3	2	0	2	30	11	3
WILTON MANORS	49	31	17	0	0	0	0	0	0	0	1
BALANCE OF COUNTY	542	389	139	0	1	0	0	1	6	4	2
CALHOUN											
BLOUNTSTOWN	50	33	16	1	0	0	0	0	0	0	0
BALANCE OF COUNTY	126	119	5	0	0	0	0	0	1	1	0
CHARLOTTE											
PUNTA GORDA	120	95	11	1	1	0	0	0	4	7	1
BALANCE OF COUNTY	871	761	70	4	2	0	0	5	9	19	1
CITRUS											
CRYSTAL RIVER	40	39	1	0	0	0	0	0	0	0	0
INVERNESS	141	127	9	0	0	0	0	1	1	3	0
BALANCE OF COUNTY	910	858	30	3	0	1	0	3	6	9	0
CLAY											
GREEN COVE SPRINGS	118	93	20	1	0	0	1	0	1	2	0
ORANGE PARK	444	326	79	0	1	2	0	8	11	15	2
BALANCE OF COUNTY	1,646	1,400	178	1	5	1	3	15	21	22	0
COLLIER											
NAPLES	357	288	56	1	0	1	0	0	6	5	0
BALANCE OF COUNTY	3,180	2,742	359	10	6	1	0	11	23	28	0
COLUMBIA											
LAKE CITY	420	263	146	0	1	0	0	2	5	3	0
BALANCE OF COUNTY	440	402	34	0	0	0	0	1	1	2	0
MIAMI-DADE											
AVENTURA	389	357	14	0	3	1	0	2	5	7	0
BAL HARBOUR	32	29	2	0	0	0	0	0	0	1	0
BAY HARBOR ISLANDS	48	47	1	0	0	0	0	0	0	0	0
BISCAYNE PARK	19	16	3	0	0	0	0	0	0	0	0
CORAL GABLES	208	195	4	0	1	0	0	2	5	1	0
CUTLER BAY	48	39	9	0	0	0	0	0	0	0	0
DORAL	307	281	5	0	3	1	0	0	10	6	1
EL PORTAL	8	7	0	0	0	0	0	0	0	1	0
FLORIDA CITY	124	87	37	0	0	0	0	0	0	0	0
HIALEAH	2,774	2,627	102	0	4	0	0	3	13	23	2
HIALEAH GARDENS	133	123	7	0	0	0	0	0	2	1	0
HOMESTEAD	1,130	895	219	0	0	0	0	4	9	3	0
KEY BISCAYNE	104	102	0	0	1	0	0	0	0	1	0
MIAMI	12,886	7,866	4,746	1	36	4	1	25	113	86	8
MIAMI BEACH	791	729	28	0	3	3	0	4	11	10	3
MIAMI GARDENS	953	284	656	0	0	1	0	1	2	9	0
MIAMI LAKES	336	301	21	0	2	1	0	2	7	1	1
MIAMI SHORES	90	70	15	0	0	0	0	2	2	1	0
MIAMI SPRINGS	88	84	3	0	0	0	0	0	1	0	0
NORTH BAY VILLAGE	63	55	0	0	2	1	0	1	3	1	0
NORTH MIAMI	644	244	382	0	0	0	0	5	4	9	0
NORTH MIAMI BEACH	570	287	260	0	5	0	0	2	7	9	0
OPA-LOCKA	386	150	231	0	0	0	0	1	0	2	2
PINECREST	13	11	0	0	1	0	0	0	1	0	0
PALMETTO BAY	23	20	2	0	0	0	0	0	0	0	1
SOUTH MIAMI	14	11	3	0	0	0	0	0	0	0	0
SUNNY ISLES BEACH	99	86	8	0	1	0	0	0	2	2	0
SURFSIDE	53	51	1	0	0	0	0	0	1	0	0
VIRGINIA GARDENS	9	9	0	0	0	0	0	0	0	0	0
WEST MIAMI	1	1	0	0	0	0	0	0	0	0	0
BALANCE OF COUNTY	9,998	8,473	1,293	13	21	7	1	30	61	71	28
DESOTO											
ARCADIA	234	197	35	0	0	0	0	0	1	1	0
BALANCE OF COUNTY	218	208	10	0	0	0	0	0	0	0	0
DIXIE											
	197	178	16	0	0	0	0	0	0	3	0

**TABLE B-3 (Cont.): RESIDENT LIVE BIRTHS FOR INCORPORATED CITIES OF 2,400 OR MORE
POPULATION, BY RACE OF MOTHER, BY COUNTY, FLORIDA, 2009**

	TOTAL	WHITE	BLACK	AMER INDIAN	CHINESE	JAPANESE	HAWAIIAN	FILIPINO	OTHER ASIAN/ PAC ISL	MULTI - RACE & OTHER	UNK
DUVAL	13,176	7,474	4,714	16	42	10	4	222	382	277	35
ATLANTIC BEACH	309	227	62	1	1	0	0	5	5	8	0
BALDWIN	37	33	3	0	0	0	0	1	0	0	0
JACKSONVILLE	12,529	6,947	4,631	14	39	10	4	210	374	265	35
JACKSONVILLE BEACH	244	218	17	0	2	0	0	2	2	3	0
NEPTUNE BEACH	57	49	1	1	0	0	0	4	1	1	0
ESCAMBIA	4,166	2,625	1,323	14	5	4	2	36	63	94	0
CENTURY	24	10	13	1	0	0	0	0	0	0	0
PENSACOLA	1,159	623	480	2	0	2	1	9	20	22	0
BALANCE OF COUNTY	2,983	1,992	830	11	5	2	1	27	43	72	0
FLAGLER	869	727	106	3	0	0	0	3	10	17	3
BUNNELL	66	47	19	0	0	0	0	0	0	0	0
FLAGLER BEACH	28	27	0	0	0	0	0	0	0	1	0
PALM COAST	679	575	75	3	0	0	0	2	9	12	3
BALANCE OF COUNTY	96	78	12	0	0	0	0	1	1	4	0
FRANKLIN	128	112	12	0	0	0	0	1	0	1	2
APALACHICOLA	41	28	11	0	0	0	0	0	0	0	2
BALANCE OF COUNTY	87	84	1	0	0	0	0	1	0	1	0
GADSDEN	692	251	431	0	3	0	0	0	1	4	2
CHATTAHOOCHEE	45	11	33	0	1	0	0	0	0	0	0
GRETNA	22	4	18	0	0	0	0	0	0	0	0
HAVANA	55	23	32	0	0	0	0	0	0	0	0
QUINCY	261	91	165	0	2	0	0	0	1	1	1
BALANCE OF COUNTY	309	122	183	0	0	0	0	0	0	3	1
GILCHRIST	188	175	8	3	0	0	0	0	0	2	0
GLADES	88	68	15	3	0	0	0	0	0	2	0
GULF	138	115	18	1	0	0	0	0	0	2	2
PORT ST JOE	40	28	12	0	0	0	0	0	0	0	0
BALANCE OF COUNTY	98	87	6	1	0	0	0	0	0	2	2
HAMILTON	185	117	65	1	0	0	0	0	0	2	0
HARDEE	485	444	27	0	1	0	2	4	5	2	0
BOWLING GREEN	60	54	5	0	0	0	0	0	1	0	0
WAUCHULA	175	155	13	0	0	0	2	3	1	1	0
BALANCE OF COUNTY	250	235	9	0	1	0	0	1	3	1	0
HENDRY	667	580	68	13	0	0	0	5	0	1	0
CLEWISTON	139	98	28	8	0	0	0	4	0	1	0
LABELLE	191	182	9	0	0	0	0	0	0	0	0
BALANCE OF COUNTY	337	300	31	5	0	0	0	1	0	0	0
HERNANDO	1,613	1,449	107	0	4	1	0	8	13	23	8
BROOKSVILLE	212	166	40	0	0	0	0	2	1	3	0
BALANCE OF COUNTY	1,401	1,283	67	0	4	1	0	6	12	20	8
HIGHLANDS	1,011	802	172	4	1	0	0	5	7	20	0
AVON PARK	192	140	51	0	0	0	0	0	0	1	0
SEBRING	339	257	61	4	1	0	0	2	4	10	0
BALANCE OF COUNTY	480	405	60	0	0	0	0	3	3	9	0
HILLSBOROUGH	16,729	12,006	3,720	19	72	15	5	114	460	299	19
PLANT CITY	553	462	71	0	1	0	0	1	7	11	0
TAMPA	9,238	5,852	2,837	12	34	7	5	51	254	175	11
TEMPLE TERRACE	65	41	18	0	1	0	0	0	4	1	0
BALANCE OF COUNTY	6,873	5,651	794	7	36	8	0	62	195	112	8
HOLMES	225	216	2	1	0	0	0	2	0	3	1
BONIFAY	54	49	1	0	0	0	0	2	0	2	0
BALANCE OF COUNTY	171	167	1	1	0	0	0	0	0	1	1
INDIAN RIVER	1,278	1,028	210	0	3	0	0	5	13	19	0
FELLSMERE	103	99	3	0	0	0	0	0	0	1	0

**TABLE B-3 (Cont.): RESIDENT LIVE BIRTHS FOR INCORPORATED CITIES OF 2,400 OR MORE
POPULATION, BY RACE OF MOTHER, BY COUNTY, FLORIDA, 2009**

	TOTAL	WHITE	BLACK	AMER INDIAN	CHINESE	JAPANESE	HAWAIIAN	FILIPINO	OTHER ASIAN/ PAC ISL	MULTI - RACE & OTHER	UNK
INDIAN RIVER (Cont.)											
SEBASTIAN	152	129	17	0	0	0	0	2	1	3	0
VERO BEACH	254	209	33	0	1	0	0	0	7	4	0
BALANCE OF COUNTY	769	591	157	0	2	0	0	3	5	11	0
JACKSON											
GRACEVILLE	28	18	10	0	0	0	0	0	0	0	0
MARIANNA	138	59	71	1	0	0	0	1	2	4	0
BALANCE OF COUNTY	382	297	79	1	0	0	0	0	0	5	0
JEFFERSON											
MONTICELLO	82	28	53	0	0	0	0	0	0	1	0
BALANCE OF COUNTY	73	47	23	1	0	0	0	1	0	1	0
LAFAYETTE											
	77	67	10	0	0	0	0	0	0	0	0
LAKE											
CLERMONT	628	483	88	0	3	0	0	4	22	27	1
EUSTIS	283	220	54	0	1	0	0	1	0	7	0
FRUITLAND PARK	92	79	6	0	0	0	0	1	1	5	0
GROVELAND	139	111	16	0	0	0	0	1	2	9	0
LADY LAKE	120	95	21	0	1	0	0	0	3	0	0
LEESBURG	429	285	118	2	3	0	0	1	10	10	0
MASCOTTE	98	90	4	0	0	0	0	0	4	0	0
MINNEOLA	134	113	15	0	0	0	0	0	5	1	0
MOUNT DORA	184	142	34	0	1	0	0	1	3	3	0
TAVARES	136	113	16	0	1	0	0	2	1	3	0
UMATILLA	54	53	1	0	0	0	0	0	0	0	0
BALANCE OF COUNTY	824	767	35	3	1	0	0	1	3	14	0
LEE											
BONITA SPRINGS	243	238	1	0	0	0	0	0	2	2	0
CAPE CORAL	1,623	1,484	96	2	5	1	1	9	12	13	0
FORT MYERS	1,416	973	413	1	1	0	0	1	14	13	0
FORT MYERS BEACH	23	23	0	0	0	0	0	0	0	0	0
SANIBEL	12	8	1	0	0	0	0	1	1	1	0
BALANCE OF COUNTY	3,279	2,808	386	7	11	1	0	6	41	18	1
LEON											
TALLAHASSEE	2,457	1,130	1,153	0	36	2	0	3	75	48	10
BALANCE OF COUNTY	665	460	184	0	3	1	0	1	6	8	2
LEVY											
WILLISTON	62	40	20	0	0	0	0	0	0	2	0
BALANCE OF COUNTY	383	334	40	2	0	0	0	0	2	5	0
LIBERTY											
	86	79	7	0	0	0	0	0	0	0	0
MADISON											
MADISON	106	30	74	0	1	0	0	0	0	1	0
BALANCE OF COUNTY	123	80	41	0	0	0	0	0	1	1	0
MANATEE											
BRADENTON	1,088	878	168	4	4	1	0	4	15	14	0
BRADENTON BEACH	2	2	0	0	0	0	0	0	0	0	0
HOLMES BEACH	4	4	0	0	0	0	0	0	0	0	0
LONGBOAT KEY	1	1	0	0	0	0	0	0	0	0	0
PALMETTO	213	166	47	0	0	0	0	0	0	0	0
BALANCE OF COUNTY	2,350	1,957	314	5	4	3	0	7	29	30	1
MARION											
BELLEVUE	112	105	5	0	0	0	0	1	0	1	0
OCALA	1,117	710	356	2	7	1	0	2	16	23	0
BALANCE OF COUNTY	2,355	1,960	315	2	4	0	0	9	20	44	1
MARTIN											
PORT SAINT LUCIE	5	4	1	0	0	0	0	0	0	0	0
STUART	275	210	40	14	0	0	0	0	4	7	0
BALANCE OF COUNTY	883	623	79	152	2	0	0	0	10	16	1

**TABLE B-3 (Cont.): RESIDENT LIVE BIRTHS FOR INCORPORATED CITIES OF 2,400 OR MORE
POPULATION, BY RACE OF MOTHER, BY COUNTY, FLORIDA, 2009**

	TOTAL	WHITE	BLACK	AMER INDIAN	CHINESE	JAPANESE	HAWAIIAN	FILIPINO	OTHER ASIAN/ PAC ISL	MULTI - RACE & OTHER	UNK
MONROE	707	620	60	0	2	2	1	3	10	9	0
ISLAMORADA	5	5	0	0	0	0	0	0	0	0	0
KEY WEST	391	319	50	0	2	2	1	1	10	6	0
MARATHON	66	60	3	0	0	0	0	1	0	2	0
BALANCE OF COUNTY	245	236	7	0	0	0	0	1	0	1	0
NASSAU	778	709	52	0	0	0	1	5	2	7	2
FERNANDINA BEACH	170	145	20	0	0	0	0	1	0	3	1
HILLIARD	51	47	3	0	0	0	0	1	0	0	0
BALANCE OF COUNTY	557	517	29	0	0	0	1	3	2	4	1
OKALOOSA	2,651	2,119	313	3	3	7	1	42	40	120	3
CRESTVIEW	498	369	86	0	0	1	0	13	7	21	1
DESTIN	164	144	6	0	1	1	0	4	1	7	0
FORT WALTON BEACH	472	361	68	1	0	1	1	7	10	21	2
MARY ESTHER	160	123	17	1	0	0	0	4	2	13	0
NICEVILLE	226	199	14	0	0	0	0	3	2	8	0
VALPARAISO	34	30	2	0	0	0	0	1	0	1	0
BALANCE OF COUNTY	1,097	893	120	1	2	4	0	10	18	49	0
OKEECHOBEE	564	503	34	14	0	0	0	1	3	9	0
OKEECHOBEE	363	322	23	8	0	0	0	1	2	7	0
BALANCE OF COUNTY	201	181	11	6	0	0	0	0	1	2	0
ORANGE	15,393	10,006	4,032	5	106	11	1	143	494	588	7
APOPKA	1,081	822	211	0	4	0	0	0	27	17	0
BELLE ISLE	9	9	0	0	0	0	0	0	0	0	0
EATONVILLE	12	0	12	0	0	0	0	0	0	0	0
MAITLAND	117	80	28	0	1	0	0	1	7	0	0
OCOEE	523	385	75	0	3	0	0	2	27	29	2
ORLANDO	11,522	7,030	3,464	2	73	10	1	116	359	462	5
WINDERMERE	247	189	14	1	6	0	0	5	24	8	0
WINTER GARDEN	610	474	81	0	4	0	0	4	17	30	0
WINTER PARK	445	363	51	0	6	0	0	5	10	10	0
BALANCE OF COUNTY	827	654	96	2	9	1	0	10	23	32	0
OSCEOLA	3,863	3,264	397	5	11	0	0	15	60	110	1
KISSIMMEE	1,924	1,593	227	1	7	0	0	6	33	56	1
ST CLOUD	495	452	21	1	1	0	0	2	4	14	0
BALANCE OF COUNTY	1,444	1,219	149	3	3	0	0	7	23	40	0
PALM BEACH	14,177	9,422	4,049	11	61	9	2	46	289	266	22
BELLE GLADE	405	163	241	0	0	0	0	0	1	0	0
BOCA RATON	1,225	990	123	2	14	3	0	4	44	36	9
BOYNTON BEACH	1,254	676	512	2	2	0	0	3	35	24	0
DELRAY BEACH	770	429	294	0	5	1	0	3	28	9	1
GREENACRES	269	205	58	0	0	0	0	0	4	2	0
HIGHLAND BEACH	9	9	0	0	0	0	0	0	0	0	0
HYPOLUXO	29	22	6	0	0	0	0	0	0	1	0
JUNO BEACH	13	11	0	0	0	0	0	0	1	1	0
JUPITER	603	551	23	2	3	0	0	0	8	12	4
LAKE CLARKE SHORES	3	3	0	0	0	0	0	0	0	0	0
LAKE PARK	155	68	80	0	0	1	0	0	3	3	0
LAKE WORTH	1,571	1,153	352	0	3	0	0	10	24	28	1
LANTANA	304	194	101	0	1	0	0	1	3	4	0
NORTH PALM BEACH	87	73	6	0	1	0	0	1	3	2	1
PAHOKEE	105	35	70	0	0	0	0	0	0	0	0
PALM BEACH	31	30	0	0	0	0	0	0	1	0	0
PALM BEACH GARDENS	552	442	68	0	10	1	0	3	15	13	0
PALM SPRINGS	158	125	24	0	0	0	0	2	2	5	0
RIVIERA BEACH	469	70	388	0	0	0	0	0	5	5	1
ROYAL PALM BEACH	427	306	93	0	1	0	0	3	14	8	2
SOUTH BAY	48	22	26	0	0	0	0	0	0	0	0
TEQUESTA	44	38	3	1	1	0	0	0	0	1	0
WELLINGTON	494	386	71	1	1	2	0	3	13	17	0
WEST PALM BEACH	3,493	2,174	1,195	2	6	0	0	9	49	56	2
BALANCE OF COUNTY	1,659	1,247	315	1	13	1	2	4	36	39	1
PASCO	4,945	4,408	299	4	18	1	2	35	97	71	10

**TABLE B-3 (Cont.): RESIDENT LIVE BIRTHS FOR INCORPORATED CITIES OF 2,400 OR MORE
POPULATION, BY RACE OF MOTHER, BY COUNTY, FLORIDA, 2009**

	TOTAL	WHITE	BLACK	AMER INDIAN	CHINESE	JAPANESE	HAWAIIAN	FILIPINO	OTHER ASIAN/ PAC ISL	MULTI - RACE & OTHER	UNK
PASCO (Cont.)											
DADE CITY	152	124	27	0	0	0	0	0	0	1	0
NEW PORT RICHEY	592	553	14	0	1	0	1	7	10	6	0
PORT RICHEY	254	242	5	1	0	0	0	2	0	4	0
ZEPHYRHILLS	202	177	16	0	1	0	0	3	2	3	0
BALANCE OF COUNTY	3,745	3,312	237	3	16	1	1	23	85	57	10
PINELLAS											
BELLEAIR	10	9	0	0	1	0	0	0	0	0	0
BELLEAIR BLUFFS	10	9	0	0	0	0	0	1	0	0	0
CLEARWATER	1,757	1,398	275	0	7	0	0	17	33	26	1
DUNEDIN	261	228	20	0	0	0	0	3	6	4	0
GULFPORT	91	66	19	0	0	0	0	0	4	1	1
INDIAN ROCKS BEACH	26	22	1	0	0	0	0	1	0	2	0
KENNETH CITY	37	27	5	0	0	0	0	1	4	0	0
LARGO	921	752	103	2	2	0	0	6	41	15	0
MADEIRA BEACH	19	17	1	0	0	0	0	0	1	0	0
OLDSMAR	171	145	5	0	1	1	0	1	17	1	0
PINELLAS PARK	483	403	25	1	0	0	0	5	41	7	1
REDINGTON SHORES	5	4	0	0	1	0	0	0	0	0	0
SAFETY HARBOR	122	107	11	0	0	0	0	0	2	2	0
SEMINOLE	325	300	11	0	0	0	0	5	2	6	1
SOUTH PASADENA	16	15	0	0	1	0	0	0	0	0	0
ST PETERSBURG	3,242	1,913	1,067	5	10	4	0	29	113	96	5
ST PETERSBURG BEACH	23	21	0	0	0	0	0	1	0	0	1
TARPON SPRINGS	229	183	33	0	2	1	0	2	5	3	0
TREASURE ISLAND	17	16	0	0	0	0	0	0	1	0	0
BALANCE OF COUNTY	1,007	906	55	1	6	2	0	7	19	11	0
POLK											
AUBURNDALE	258	224	31	0	1	0	0	0	1	1	0
BARTOW	282	194	80	0	0	0	0	0	5	3	0
DUNDEE	56	41	13	0	0	0	0	2	0	0	0
EAGLE LAKE	46	39	6	0	0	0	0	0	1	0	0
FORT MEADE	92	73	17	0	0	0	0	0	1	1	0
FROSTPROOF	71	65	3	0	0	0	0	0	0	3	0
HAINES CITY	399	309	79	0	0	1	0	3	1	6	0
LAKE ALFRED	79	56	19	2	0	0	0	0	0	2	0
LAKE WALES	225	143	74	0	1	0	0	0	3	4	0
LAKELAND	1,671	1,137	446	2	5	1	0	6	42	31	1
MULBERRY	96	79	14	0	0	0	0	1	1	1	0
WINTER HAVEN	890	580	271	2	3	0	1	4	9	20	0
BALANCE OF COUNTY	3,570	2,985	458	4	7	4	0	19	40	52	1
PUTNAM											
PALATKA	242	98	142	0	0	0	0	0	0	2	0
BALANCE OF COUNTY	729	624	94	0	0	0	0	1	4	6	0
SAINT JOHNS											
ST AUGUSTINE	729	599	82	2	2	0	1	6	16	19	2
ST AUGUSTINE BEACH	2	2	0	0	0	0	0	0	0	0	0
BALANCE OF COUNTY	1,060	925	73	3	4	1	0	10	24	16	4
SAINT LUCIE											
FORT PIERCE	763	386	364	1	1	0	0	1	3	7	0
PORT ST LUCIE	1,900	1,452	347	4	9	1	0	16	27	43	1
BALANCE OF COUNTY	479	339	127	2	1	0	0	1	5	3	1
SANTA ROSA											
GULF BREEZE	45	44	1	0	0	0	0	0	0	0	0
MILTON	231	202	20	1	0	0	0	3	0	5	0
BALANCE OF COUNTY	1,559	1,430	64	4	3	2	1	8	18	29	0
SARASOTA											
LONGBOAT KEY	4	4	0	0	0	0	0	0	0	0	0
NORTH PORT	271	235	21	0	0	0	0	2	8	5	0
SARASOTA	490	376	95	1	1	0	0	1	4	12	0
VENICE	54	50	1	0	0	0	0	0	3	0	0
BALANCE OF COUNTY	2,112	1,843	176	3	10	2	1	16	27	34	0

TABLE B-3 (Cont.): RESIDENT LIVE BIRTHS FOR INCORPORATED CITIES OF 2,400 OR MORE
POPULATION, BY RACE OF MOTHER, BY COUNTY, FLORIDA, 2009

	TOTAL	WHITE	BLACK	AMER INDIAN	CHINESE	JAPANESE	HAWAIIAN	FILIPINO	OTHER ASIAN/ PAC ISL	MULTI - RACE & OTHER	UNK
SEMINOLE	4,470	3,498	657	5	20	11	1	21	151	106	0
ALTAMONTE SPRINGS	678	515	117	0	2	1	0	5	18	20	0
CASSELBERRY	392	338	30	2	2	0	0	1	12	7	0
LAKE MARY	326	259	30	0	3	2	0	5	21	6	0
LONGWOOD	366	310	26	0	2	1	0	0	18	9	0
MAITLAND	15	15	0	0	0	0	0	0	0	0	0
OVIEDO	547	448	46	0	5	1	1	2	24	20	0
SANFORD	1,157	736	348	2	4	4	0	2	39	22	0
WINTER SPRINGS	349	305	27	1	1	1	0	1	7	6	0
BALANCE OF COUNTY	640	572	33	0	1	1	0	5	12	16	0
SUMTER	483	374	99	0	0	0	0	2	2	5	1
BUSHNELL	58	51	6	0	0	0	0	0	1	0	0
WILDWOOD	103	50	52	0	0	0	0	0	0	1	0
BALANCE OF COUNTY	322	273	41	0	0	0	0	2	1	4	1
SUWANNEE	484	404	73	1	1	0	0	1	4	0	0
LIVE OAK	192	131	57	1	0	0	0	1	2	0	0
BALANCE OF COUNTY	292	273	16	0	1	0	0	0	2	0	0
TAYLOR	285	219	63	0	1	0	0	0	0	2	0
PERRY	150	90	57	0	1	0	0	0	0	2	0
BALANCE OF COUNTY	135	129	6	0	0	0	0	0	0	0	0
UNION	155	127	27	1	0	0	0	0	0	0	0
VOLUSIA	5,099	4,054	836	6	12	2	2	25	71	89	2
DAYTONA BEACH	899	447	404	2	1	0	0	7	15	22	1
DAYTONA BEACH SHORES	5	4	0	0	0	0	0	0	0	1	0
DEBARY	163	146	10	0	1	0	0	0	4	2	0
DELAND	652	490	139	0	0	1	0	1	11	10	0
DELTONA	961	810	103	0	3	1	0	7	12	25	0
EDGEWATER	213	203	6	1	0	0	0	0	0	3	0
HOLLY HILL	152	114	32	0	0	0	0	0	1	4	1
LAKE HELEN	21	16	3	1	0	0	0	0	1	0	0
NEW SMYRNA BEACH	239	203	29	0	0	0	0	1	3	3	0
ORANGE CITY	235	205	23	0	1	0	0	3	2	1	0
ORMOND BEACH	434	391	16	1	2	0	1	4	10	9	0
PIERSON	53	51	2	0	0	0	0	0	0	0	0
PONCE INLET	11	11	0	0	0	0	0	0	0	0	0
PORT ORANGE	519	480	22	1	3	0	0	1	8	4	0
SOUTH DAYTONA	130	103	24	0	0	0	0	1	0	2	0
BALANCE OF COUNTY	412	380	23	0	1	0	1	0	4	3	0
WAKULLA	317	272	43	0	0	0	0	1	0	1	0
WALTON	659	622	22	1	0	0	0	2	4	8	0
DEFUNIAK SPRINGS	116	103	10	0	0	0	0	0	1	2	0
BALANCE OF COUNTY	543	519	12	1	0	0	0	2	3	6	0
WASHINGTON	263	216	38	1	0	0	0	1	1	5	1
CHIPLEY	85	64	20	0	0	0	0	0	1	0	0
BALANCE OF COUNTY	178	152	18	1	0	0	0	1	0	5	1

TABLE B-4: RESIDENT LIVE BIRTHS BY TYPE OF PLACE OF DELIVERY AND ATTENDANT, BY COUNTY, FLORIDA, 2009

	TOTAL	HOSPITAL			BIRTHING CENTER			OTHER NAMED PLACE 1,347	UNK 4
		PHYSICIAN 193,974	MIDWIFE 23,997	OTHER/ UNKNOWN 688	PHYSICIAN 46	MIDWIFE 1,310	OTHER/ UNKNOWN 25		
FLORIDA	221,391	193,974	23,997	688	46	1,310	25	1,347	4
ALACHUA	2,925	2,475	356	17	0	48	0	29	0
BAKER	378	327	43	3	0	1	0	4	0
BAY	2,310	2,017	288	1	0	0	0	4	0
BRADFORD	322	280	35	2	0	3	0	2	0
BREVARD	5,172	4,941	170	13	0	5	0	42	1
BROWARD	21,394	18,383	2,682	76	19	83	22	129	0
CALHOUN	176	159	14	0	0	2	0	1	0
CHARLOTTE	991	850	118	13	0	3	0	7	0
CITRUS	1,091	1,042	28	1	0	4	0	16	0
CLAY	2,208	1,873	307	13	0	8	0	7	0
COLLIER	3,537	3,420	33	31	0	37	0	16	0
COLUMBIA	860	687	144	2	0	5	0	22	0
MIAMI-DADE	32,341	31,278	668	27	12	215	3	138	0
DESOTO	452	439	12	1	0	0	0	0	0
DIXIE	197	174	17	2	1	2	0	1	0
DUVAL	13,176	11,881	1,111	32	1	68	0	83	0
ESCAMBIA	4,166	3,885	253	7	0	0	0	21	0
FLAGLER	869	731	122	4	0	2	0	10	0
FRANKLIN	128	104	22	1	0	1	0	0	0
GADSDEN	692	485	187	11	0	1	0	8	0
GILCHRIST	188	161	20	3	0	2	0	2	0
GLADES	88	64	21	1	0	1	0	1	0
GULF	138	122	16	0	0	0	0	0	0
HAMILTON	185	151	29	0	0	0	0	5	0
HARDEE	485	474	7	0	0	1	0	3	0
HENDRY	667	439	221	2	0	0	0	5	0
HERNANDO	1,613	1,241	356	1	0	10	0	5	0
HIGHLANDS	1,011	993	7	4	0	3	0	4	0
HILLSBOROUGH	16,729	15,406	1,101	46	2	102	0	72	0
HOLMES	225	219	4	0	0	0	0	2	0
INDIAN RIVER	1,278	1,027	243	2	0	0	0	6	0
JACKSON	548	532	13	2	0	0	0	1	0
JEFFERSON	155	122	32	0	0	0	0	1	0
LAFAYETTE	77	65	10	1	0	1	0	0	0
LAKE	3,121	2,682	386	15	0	25	0	13	0
LEE	6,596	4,473	2,007	25	0	75	0	16	0
LEON	3,122	2,413	594	40	0	39	0	36	0
LEVY	445	399	39	2	0	1	0	4	0
LIBERTY	86	66	15	0	0	4	0	1	0
MADISON	229	155	62	5	0	3	0	4	0
MANATEE	3,658	3,372	244	1	1	21	0	19	0
MARION	3,584	2,438	1,094	16	0	9	0	27	0
MARTIN	1,163	566	577	1	0	1	0	18	0
MONROE	707	634	53	10	1	3	0	6	0
NASSAU	778	683	86	2	0	3	0	4	0
OKALOOSA	2,651	2,583	53	6	0	2	0	7	0
OKEECHOBEE	564	464	96	1	0	0	0	3	0
ORANGE	15,393	14,320	786	76	0	129	0	82	0
OSCEOLA	3,863	3,642	174	23	0	6	0	18	0
PALM BEACH	14,177	11,420	2,628	16	0	16	0	97	0
PASCO	4,945	4,406	461	14	2	36	0	26	0
PINELLAS	8,772	6,723	1,874	16	0	102	0	57	0
POLK	7,735	6,039	1,570	19	2	63	0	42	0
PUTNAM	971	840	119	3	0	4	0	5	0
SAINT JOHNS	1,791	1,491	263	4	0	8	0	25	0
SAINT LUCIE	3,142	2,294	801	9	1	1	0	36	0
SANTA ROSA	1,835	1,739	80	2	0	0	0	14	0
SARASOTA	2,931	2,597	267	3	1	22	0	41	0
SEMINOLE	4,470	4,010	326	27	3	73	0	31	0
SUMTER	483	461	15	1	0	0	0	6	0
SUWANNEE	484	401	78	1	0	2	0	2	0
TAYLOR	285	222	58	2	0	2	0	1	0
UNION	155	123	24	1	0	1	0	6	0
VOLUSIA	5,099	4,617	374	15	0	47	0	46	0
WAKULLA	317	256	54	3	0	4	0	0	0
WALTON	659	649	3	4	0	0	0	3	0
WASHINGTON	263	242	21	0	0	0	0	0	0

TABLE B-5: RESIDENT LIVE BIRTHS BY BIRTHWEIGHT, BY COUNTY, FLORIDA, 2009

	TOTAL	BIRTHWEIGHT IN GRAMS										LESS THAN 1500 GRAMS		LESS THAN 2500 GRAMS	
		<500	500-999	1000-1499	1500-1999	2000-2499	2500-2999	3000-3499	3500-3999	4000+	UNK	NUMBER	%	NUMBER	%
FLORIDA	221,391	425	1,377	1,742	3,622	12,131	43,282	89,654	54,963	14,177	18	3,544	1.6	19,297	8.7
ALACHUA	2,925	11	29	22	45	167	565	1,099	772	214	1	62	2.1	274	9.4
BAKER	378	0	2	2	11	17	63	150	94	39	0	4	1.1	32	8.5
BAY	2,310	5	8	17	25	130	440	949	584	150	2	30	1.3	185	8.0
BRADFORD	322	2	3	2	4	27	72	115	74	23	0	7	2.2	38	11.8
BREVARD	5,172	13	23	29	64	269	1,009	2,082	1,318	365	0	65	1.3	398	7.7
BROWARD	21,394	39	181	204	378	1,276	4,549	8,765	4,840	1,160	2	424	2.0	2,078	9.7
CALHOUN	176	0	0	1	3	10	34	70	50	8	0	1	0.6	14	8.0
CHARLOTTE	991	0	1	4	13	47	223	397	257	49	0	5	0.5	65	6.6
CITRUS	1,091	3	2	4	11	54	196	418	311	92	0	9	0.8	74	6.8
CLAY	2,208	1	11	18	33	124	406	889	590	136	0	30	1.4	187	8.5
COLLIER	3,537	9	21	18	45	161	639	1,480	943	221	0	48	1.4	254	7.2
COLUMBIA	860	2	4	9	15	47	142	331	224	86	0	15	1.7	77	9.0
MIAMI-DADE	32,341	60	241	289	523	1,785	6,503	13,415	7,710	1,814	1	590	1.8	2,898	9.0
DESOTO	452	0	0	3	7	22	96	183	107	34	0	3	0.7	32	7.1
DIXIE	197	0	0	1	2	5	37	81	56	15	0	1	0.5	8	4.1
DUVAL	13,176	30	87	137	247	789	2,650	5,122	3,207	905	2	254	1.9	1,290	9.8
ESCAMBIA	4,166	8	23	28	77	271	840	1,671	1,003	245	0	59	1.4	407	9.8
FLAGLER	869	1	8	5	5	42	162	357	240	49	0	14	1.6	61	7.0
FRANKLIN	128	0	0	2	5	6	25	53	25	12	0	2	1.6	13	10.2
GADSDEN	692	2	7	5	16	49	158	268	154	33	0	14	2.0	79	11.4
GILCHRIST	188	0	1	0	3	7	39	67	52	19	0	1	0.5	11	5.9
GLADES	88	0	1	0	2	3	15	40	22	5	0	1	1.1	6	6.8
GULF	138	0	1	2	0	4	33	52	39	7	0	3	2.2	7	5.1
HAMILTON	185	2	0	0	2	11	43	76	43	8	0	2	1.1	15	8.1
HARDEE	485	0	1	2	10	20	92	211	126	23	0	3	0.6	33	6.8
HENDRY	667	0	3	7	9	35	124	280	171	37	1	10	1.5	54	8.1
HERNANDO	1,613	2	5	14	33	93	316	676	377	97	0	21	1.3	147	9.1
HIGHLANDS	1,011	3	6	9	10	54	194	401	248	85	1	18	1.8	82	8.1
HILLSBOROUGH	16,729	54	100	128	258	892	3,340	6,720	4,169	1,068	0	282	1.7	1,432	8.6
HOLMES	225	0	1	2	2	10	39	102	54	15	0	3	1.3	15	6.7
INDIAN RIVER	1,278	2	5	8	22	55	219	503	353	111	0	15	1.2	92	7.2
JACKSON	548	0	4	5	14	29	129	224	122	21	0	9	1.6	52	9.5
JEFFERSON	155	1	1	2	3	7	34	67	33	7	0	4	2.6	14	9.0
LAFAYETTE	77	0	0	0	2	4	11	35	18	7	0	0	0.0	6	7.8
LAKE	3,121	2	6	14	58	172	599	1,295	755	220	0	22	0.7	252	8.1
LEE	6,596	11	32	46	103	322	1,257	2,771	1,627	426	1	89	1.3	514	7.8
LEON	3,122	9	21	29	57	186	593	1,240	766	220	1	59	1.9	302	9.7
LEVY	445	0	1	4	7	21	86	180	114	32	0	5	1.1	33	7.4
LIBERTY	86	0	1	1	2	5	17	38	15	7	0	2	2.3	9	10.5
MADISON	229	0	1	2	7	16	56	83	50	14	0	3	1.3	26	11.4
MANATEE	3,658	3	19	29	47	179	602	1,479	996	304	0	51	1.4	277	7.6
MARION	3,584	5	13	32	51	177	635	1,403	972	295	1	50	1.4	278	7.8
MARTIN	1,163	1	4	4	13	69	203	480	307	82	0	9	0.8	91	7.8
MONROE	707	0	4	2	7	32	139	285	185	53	0	6	0.8	45	6.4
NASSAU	778	1	5	5	18	46	138	317	199	48	1	11	1.4	75	9.6
OKALOOSA	2,651	4	7	17	40	158	470	1,080	661	214	0	28	1.1	226	8.5
OKEECHOBEE	564	0	4	6	4	31	100	222	140	57	0	10	1.8	45	8.0
ORANGE	15,393	34	101	129	269	895	3,136	6,211	3,743	874	1	264	1.7	1,428	9.3
OSCEOLA	3,863	6	17	30	60	200	768	1,577	983	222	0	53	1.4	313	8.1
PALM BEACH	14,177	18	114	113	246	833	2,955	5,881	3,282	734	1	245	1.7	1,324	9.3
PASCO	4,945	12	13	32	97	262	912	2,006	1,270	341	0	57	1.2	416	8.4
PINELLAS	8,772	21	51	59	134	441	1,630	3,526	2,260	650	0	131	1.5	706	8.0
POLK	7,735	15	52	61	137	397	1,380	3,061	2,056	575	1	128	1.7	662	8.6
PUTNAM	971	1	11	10	23	47	189	387	227	76	0	22	2.3	92	9.5
SAINT JOHNS	1,791	3	9	12	22	72	280	708	541	144	0	24	1.3	118	6.6
SAINT LUCIE	3,142	2	25	21	54	154	616	1,244	802	223	1	48	1.5	256	8.1
SANTA ROSA	1,835	2	4	11	22	97	294	709	549	147	0	17	0.9	136	7.4
SARASOTA	2,931	3	12	15	37	131	491	1,184	837	221	0	30	1.0	198	6.8
SEMINOLE	4,470	14	28	23	71	247	789	1,799	1,198	301	0	65	1.5	383	8.6
SUMTER	483	0	3	2	6	33	116	189	106	28	0	5	1.0	44	9.1
SUWANNEE	484	1	0	4	13	25	80	196	131	34	0	5	1.0	43	8.9
TAYLOR	285	0	1	3	0	18	62	111	72	18	0	4	1.4	22	7.7
UNION	155	0	0	0	4	8	36	54	39	14	0	0	0.0	12	7.7
VOLUSIA	5,099	4	28	41	93	263	942	2,032	1,343	353	0	73	1.4	429	8.4
WAKULLA	317	0	1	0	5	24	51	129	82	25	0	1	0.3	30	9.5
WALTON	659	1	6	2	7	34	129	270	170	40	0	9	1.4	50	7.6
WASHINGTON	263	2	3	3	5	7	54	110	63	16	0	8	3.0	20	7.6

TABLE B-5 (Cont.): RESIDENT LIVE BIRTHS TO WHITE MOTHERS BY BIRTHWEIGHT, BY COUNTY, FLORIDA, 2009

	TOTAL	BIRTHWEIGHT IN GRAMS										LESS THAN 1500 GRAMS		LESS THAN 2500 GRAMS	
		<500	500- 999	1000- 1499	1500- 1999	2000- 2499	2500- 2999	3000- 3499	3500- 3999	4000+	UNK	NUMBER	%	NUMBER	%
FLORIDA	159,186	204	666	962	2,211	7,427	27,616	64,721	43,624	11,746	9	1,832	1.2	11,470	7.2
ALACHUA	1,714	6	14	10	22	85	256	604	550	167	0	30	1.8	137	8.0
BAKER	338	0	2	2	9	16	50	136	86	37	0	4	1.2	29	8.6
BAY	1,788	3	5	9	20	95	321	727	474	133	1	17	1.0	132	7.4
BRADFORD	245	0	1	2	1	18	48	89	65	21	0	3	1.2	22	9.0
BREVARD	4,129	7	15	21	43	191	737	1,666	1,136	313	0	43	1.0	277	6.7
BROWARD	11,727	19	68	70	150	556	2,133	4,892	3,096	741	2	157	1.3	863	7.4
CALHOUN	152	0	0	1	3	3	28	62	47	8	0	1	0.7	7	4.6
CHARLOTTE	856	0	1	2	9	37	185	349	226	47	0	3	0.4	49	5.7
CITRUS	1,024	3	1	4	9	49	174	391	302	91	0	8	0.8	66	6.4
CLAY	1,819	1	9	13	25	91	310	742	508	120	0	23	1.3	139	7.6
COLLIER	3,030	6	13	14	36	128	535	1,268	833	197	0	33	1.1	197	6.5
COLUMBIA	665	2	4	8	12	30	96	246	188	79	0	14	2.1	56	8.4
MIAMI-DADE	23,537	35	116	158	327	1,099	4,304	9,904	6,121	1,472	1	309	1.3	1,735	7.4
DESOTO	405	0	0	2	7	18	78	164	102	34	0	2	0.5	27	6.7
DIXIE	178	0	0	1	2	5	30	77	50	13	0	1	0.6	8	4.5
DUVAL	7,474	10	30	53	109	372	1,200	2,880	2,147	672	1	93	1.2	574	7.7
ESCAMBIA	2,625	2	8	12	39	141	450	1,035	749	189	0	22	0.8	202	7.7
FLAGLER	727	0	6	4	3	33	135	292	211	43	0	10	1.4	46	6.3
FRANKLIN	112	0	0	2	5	4	22	44	23	12	0	2	1.8	11	9.8
GADSDEN	251	1	2	2	2	19	32	91	84	18	0	5	2.0	26	10.4
GILCHRIST	175	0	1	0	1	6	35	62	51	19	0	1	0.6	8	4.6
GLADES	68	0	1	0	2	3	10	29	19	4	0	1	1.5	6	8.8
GULF	115	0	1	2	0	2	27	44	33	6	0	3	2.6	5	4.3
HAMILTON	117	0	0	0	0	7	23	47	35	5	0	0	0.0	7	6.0
HARDEE	444	0	1	2	7	16	84	195	117	22	0	3	0.7	26	5.9
HENDRY	580	0	2	6	7	28	99	244	156	37	1	8	1.4	43	7.4
HERNANDO	1,449	2	3	13	31	79	274	609	345	93	0	18	1.2	128	8.8
HIGHLANDS	802	3	4	5	6	35	140	319	210	80	0	12	1.5	53	6.6
HILLSBOROUGH	12,006	26	44	81	167	539	2,132	4,789	3,316	912	0	151	1.3	857	7.1
HOLMES	216	0	1	2	2	10	37	100	52	12	0	3	1.4	15	6.9
INDIAN RIVER	1,028	1	4	4	12	30	163	400	314	100	0	9	0.9	51	5.0
JACKSON	374	0	0	3	6	17	76	149	105	18	0	3	0.8	26	7.0
JEFFERSON	75	1	1	0	0	1	14	31	20	7	0	2	2.7	3	4.0
LAFAYETTE	67	0	0	0	2	4	11	29	15	6	0	0	0.0	6	9.0
LAKE	2,551	1	5	12	45	121	443	1,063	658	203	0	18	0.7	184	7.2
LEE	5,534	4	26	34	83	242	984	2,335	1,451	374	1	64	1.2	389	7.0
LEON	1,590	2	5	11	25	66	224	607	486	164	0	18	1.1	109	6.9
LEVY	374	0	0	2	6	16	67	152	101	30	0	2	0.5	24	6.4
LIBERTY	79	0	0	0	2	4	15	36	15	7	0	0	0.0	6	7.6
MADISON	110	0	1	0	2	5	16	38	38	10	0	1	0.9	8	7.3
MANATEE	3,008	1	12	21	38	135	446	1,215	872	268	0	34	1.1	207	6.9
MARION	2,775	5	7	23	27	115	431	1,092	808	267	0	35	1.3	177	6.4
MARTIN	837	0	1	2	11	46	134	328	245	70	0	3	0.4	60	7.2
MONROE	620	0	4	2	6	24	124	248	163	49	0	6	1.0	36	5.8
NASSAU	709	0	4	5	16	40	121	291	190	42	0	9	1.3	65	9.2
OKALOOSA	2,119	2	4	13	30	113	347	865	570	175	0	19	0.9	162	7.6
OKEECHOBEE	503	0	3	5	4	26	90	197	127	51	0	8	1.6	38	7.6
ORANGE	10,006	14	44	52	150	485	1,749	4,075	2,744	693	0	110	1.1	745	7.4
OSCEOLA	3,264	3	10	22	48	162	616	1,331	873	199	0	35	1.1	245	7.5
PALM BEACH	9,422	5	52	51	129	447	1,757	3,975	2,430	575	1	108	1.1	684	7.3
PASCO	4,408	10	10	24	82	228	792	1,780	1,167	315	0	44	1.0	354	8.0
PINELLAS	6,541	5	23	35	88	280	1,040	2,656	1,843	571	0	63	1.0	431	6.6
POLK	5,925	7	30	40	82	253	944	2,362	1,720	486	1	77	1.3	412	7.0
PUTNAM	722	0	5	7	18	25	134	286	186	61	0	12	1.7	55	7.6
SAINT JOHNS	1,526	2	6	11	18	59	218	600	483	129	0	19	1.2	96	6.3
SAINT LUCIE	2,177	1	11	7	30	89	358	872	621	188	0	19	0.9	138	6.3
SANTA ROSA	1,676	2	2	9	20	83	259	648	519	134	0	13	0.8	116	6.9
SARASOTA	2,508	0	6	11	27	109	391	1,013	744	207	0	17	0.7	153	6.1
SEMINOLE	3,498	9	16	17	48	171	567	1,399	1,005	266	0	42	1.2	261	7.5
SUMTER	374	0	2	0	4	22	74	154	92	26	0	2	0.5	28	7.5
SUWANNEE	404	0	0	3	11	21	59	162	118	30	0	3	0.7	35	8.7
TAYLOR	219	0	1	1	0	11	39	90	61	16	0	2	0.9	13	5.9
UNION	127	0	0	0	3	8	27	40	37	12	0	0	0.0	11	8.7
VOLUSIA	4,054	2	11	31	66	195	682	1,607	1,148	312	0	44	1.1	305	7.5
WAKULLA	272	0	1	0	3	18	42	107	76	25	0	1	0.4	22	8.1
WALTON	622	1	5	1	6	32	115	257	165	40	0	7	1.1	45	7.2
WASHINGTON	216	0	1	1	5	6	39	95	55	14	0	2	0.9	13	6.0

TABLE B-5 (Cont.): RESIDENT LIVE BIRTHS TO BLACK MOTHERS BY BIRTHWEIGHT, BY COUNTY, FLORIDA, 2009

	BIRTHWEIGHT IN GRAMS											LESS THAN 1500 GRAMS		LESS THAN 2500 GRAMS	
	TOTAL	<500	500- 999	1000- 1499	1500- 1999	2000- 2499	2500- 2999	3000- 3499	3500- 3999	4000+	UNK	NUMBER	%	NUMBER	%
FLORIDA	50,559	201	649	714	1,233	3,991	13,051	20,097	8,778	1,842	3	1,564	3.1	6,788	13.4
ALACHUA	957	5	14	11	20	72	272	376	155	31	1	30	3.1	122	12.7
BAKER	36	0	0	0	2	0	12	14	6	2	0	0	0.0	2	5.6
BAY	307	2	2	7	2	23	82	127	56	6	0	11	3.6	36	11.7
BRADFORD	74	2	2	0	3	9	23	25	8	2	0	4	5.4	16	21.6
BREVARD	768	6	7	7	17	63	209	310	116	33	0	20	2.6	100	13.0
BROWARD	8,026	17	108	124	206	613	2,018	3,198	1,406	336	0	249	3.1	1,068	13.3
CALHOUN	21	0	0	0	0	6	5	8	2	0	0	0	0.0	6	28.6
CHARLOTTE	81	0	0	2	2	6	25	28	17	1	0	2	2.5	10	12.3
CITRUS	40	0	1	0	2	4	15	14	4	0	0	1	2.5	7	17.5
CLAY	277	0	2	4	7	27	70	105	55	7	0	6	2.2	40	14.4
COLLIER	415	3	7	4	7	27	82	176	88	21	0	14	3.4	48	11.6
COLUMBIA	180	0	0	1	2	15	44	79	34	5	0	1	0.6	18	10.0
MIAMI-DADE	8,052	23	119	127	187	636	2,040	3,183	1,426	311	0	269	3.3	1,092	13.6
DESOTO	45	0	0	1	0	4	17	19	4	0	0	1	2.2	5	11.1
DIXIE	16	0	0	0	0	0	5	4	5	2	0	0	0.0	0	0.0
DUVAL	4,714	18	57	73	123	352	1,231	1,826	850	184	0	148	3.1	623	13.2
ESCAMBIA	1,323	6	15	16	37	120	349	530	209	41	0	37	2.8	194	14.7
FLAGLER	106	0	2	1	2	8	23	49	17	4	0	3	2.8	13	12.3
FRANKLIN	12	0	0	0	0	2	3	6	1	0	0	0	0.0	2	16.7
GADSDEN	431	1	5	3	14	30	125	176	63	14	0	9	2.1	53	12.3
GILCHRIST	8	0	0	0	2	1	2	3	0	0	0	0	0.0	3	37.5
GLADES	15	0	0	0	0	0	3	9	2	1	0	0	0.0	0	0.0
GULF	18	0	0	0	0	2	4	6	5	1	0	0	0.0	2	11.1
HAMILTON	65	2	0	0	2	4	20	29	6	2	0	2	3.1	8	12.3
HARDEE	27	0	0	0	3	1	3	14	5	1	0	0	0.0	4	14.8
HENDRY	68	0	1	1	1	7	23	25	10	0	0	2	2.9	10	14.7
HERNANDO	107	0	1	1	1	8	33	46	14	3	0	2	1.9	11	10.3
HIGHLANDS	172	0	2	3	3	18	44	70	30	2	0	5	2.9	26	15.1
HILLSBOROUGH	3,720	27	45	42	70	297	986	1,504	631	118	0	114	3.1	481	12.9
HOLMES	2	0	0	0	0	0	0	1	0	1	0	0	0.0	0	0.0
INDIAN RIVER	210	1	1	4	10	19	47	90	31	7	0	6	2.9	35	16.7
JACKSON	160	0	4	1	8	12	48	69	17	1	0	5	3.1	25	15.6
JEFFERSON	76	0	0	2	3	6	20	33	12	0	0	2	2.6	11	14.5
LAFAYETTE	10	0	0	0	0	0	0	6	3	1	0	0	0.0	0	0.0
LAKE	408	1	0	2	9	36	120	165	66	9	0	3	0.7	48	11.8
LEE	897	6	5	12	18	69	237	366	141	43	0	23	2.6	110	12.3
LEON	1,337	6	16	18	29	103	323	555	236	50	1	40	3.0	172	12.9
LEVY	60	0	1	0	1	5	16	25	11	1	0	1	1.7	7	11.7
LIBERTY	7	0	1	1	0	1	2	2	0	0	0	2	28.6	3	42.9
MADISON	115	0	0	2	5	11	40	42	11	4	0	2	1.7	18	15.7
MANATEE	529	1	7	7	8	40	136	215	90	25	0	15	2.8	63	11.9
MARION	676	0	6	9	22	56	178	253	131	21	0	15	2.2	93	13.8
MARTIN	120	1	2	2	1	10	18	55	25	6	0	5	4.2	16	13.3
MONROE	60	0	0	0	1	5	10	26	17	1	0	0	0.0	6	10.0
NASSAU	52	1	1	0	1	6	13	22	5	3	0	2	3.8	9	17.3
OKALOOSA	313	2	3	2	8	28	81	129	39	21	0	7	2.2	43	13.7
ORKEECHOBEE	34	0	1	1	0	4	9	12	4	3	0	2	5.9	6	17.6
ORANGE	4,032	20	44	68	97	329	1,067	1,579	711	117	0	132	3.3	558	13.8
OSCEOLA	397	2	7	8	4	28	105	161	73	9	0	17	4.3	49	12.3
PALM BEACH	4,049	11	58	60	104	349	1,030	1,617	692	128	0	129	3.2	582	14.4
PASCO	299	2	2	8	11	14	68	127	52	15	0	12	4.0	37	12.4
PINELLAS	1,631	15	27	20	40	125	441	628	288	47	0	62	3.8	227	13.9
POLK	1,511	6	19	20	49	124	362	581	277	73	0	45	3.0	218	14.4
PUTNAM	236	1	6	3	5	22	52	95	39	13	0	10	4.2	37	15.7
SAINT JOHNS	155	1	1	1	4	9	38	64	32	5	0	3	1.9	16	10.3
SAINT LUCIE	838	1	13	12	19	60	231	313	155	33	1	26	3.1	105	12.5
SANTA ROSA	85	0	2	0	1	8	23	32	16	3	0	2	2.4	11	12.9
SARASOTA	293	3	3	4	6	15	71	119	64	8	0	10	3.4	31	10.6
SEMINOLE	657	5	11	4	20	51	152	271	119	24	0	20	3.0	91	13.9
SUMTER	99	0	1	1	2	10	40	32	12	1	0	2	2.0	14	14.1
SUWANNEE	73	1	0	1	2	4	20	31	10	4	0	2	2.7	8	11.0
TAYLOR	63	0	0	2	0	7	23	19	10	2	0	2	3.2	9	14.3
UNION	27	0	0	0	1	0	9	14	1	2	0	0	0.0	1	3.7
VOLUSIA	836	1	15	8	25	58	211	341	145	32	0	24	2.9	107	12.8
WAKULLA	43	0	0	0	2	6	8	21	6	0	0	0	0.0	8	18.6
WALTON	22	0	0	1	0	2	8	7	4	0	0	1	4.5	3	13.6
WASHINGTON	38	1	2	2	0	1	13	13	5	1	0	5	13.2	6	15.8

TABLE B-5 (Cont.): RESIDENT LIVE BIRTHS TO OTHER MOTHERS BY BIRTHWEIGHT, BY COUNTY, FLORIDA, 2009

	TOTAL	BIRTHWEIGHT IN GRAMS										LESS THAN 1500 GRAMS		LESS THAN 2500 GRAMS	
		<500	500- 999	1000- 1499	1500- 1999	2000- 2499	2500- 2999	3000- 3499	3500- 3999	4000+	UNK	NUMBER	%	NUMBER	%
FLORIDA	11,006	17	57	61	172	673	2,504	4,568	2,399	551	4	135	1.2	980	8.9
ALACHUA	254	0	1	1	3	10	37	119	67	16	0	2	0.8	15	5.9
BAKER	4	0	0	0	0	1	1	0	2	0	0	0	0.0	1	25.0
BAY	146	0	0	1	2	9	23	66	37	7	1	1	0.7	12	8.2
BRADFORD	3	0	0	0	0	0	1	1	1	0	0	0	0.0	0	0.0
BREVARD	271	0	0	1	4	15	63	105	65	18	0	1	0.4	20	7.4
BROWARD	1,284	1	4	7	18	91	326	528	246	63	0	12	0.9	121	9.4
CALHOUN	3	0	0	0	0	1	1	0	1	0	0	0	0.0	1	33.3
CHARLOTTE	52	0	0	0	2	4	13	19	13	1	0	0	0.0	6	11.5
CITRUS	27	0	0	0	0	1	7	13	5	1	0	0	0.0	1	3.7
CLAY	110	0	0	0	1	6	26	42	26	9	0	0	0.0	7	6.4
COLLIER	92	0	1	0	2	6	22	36	22	3	0	1	1.1	9	9.8
COLUMBIA	15	0	0	0	1	2	2	6	2	2	0	0	0.0	3	20.0
MIAMI-DADE	706	2	4	4	9	42	153	312	153	27	0	10	1.4	61	8.6
DESOTO	2	0	0	0	0	0	1	0	1	0	0	0	0.0	0	0.0
DIXIE	3	0	0	0	0	0	2	0	1	0	0	0	0.0	0	0.0
DUVAL	953	2	0	11	15	59	216	399	204	46	1	13	1.4	87	9.1
ESCAMBIA	218	0	0	0	1	10	41	106	45	15	0	0	0.0	11	5.0
FLAGLER	33	1	0	0	0	1	4	14	12	1	0	1	3.0	2	6.1
FRANKLIN	2	0	0	0	0	0	0	2	0	0	0	0	0.0	0	0.0
GADSDEN	8	0	0	0	0	0	1	1	5	1	0	0	0.0	0	0.0
GILCHRIST	5	0	0	0	0	0	2	2	1	0	0	0	0.0	0	0.0
GLADES	5	0	0	0	0	0	2	2	1	0	0	0	0.0	0	0.0
GULF	3	0	0	0	0	0	2	1	0	0	0	0	0.0	0	0.0
HAMILTON	3	0	0	0	0	0	0	0	2	1	0	0	0.0	0	0.0
HARDEE	14	0	0	0	0	3	5	2	4	0	0	0	0.0	3	21.4
HENDRY	19	0	0	0	1	0	2	11	5	0	0	0	0.0	1	5.3
HERNANDO	49	0	1	0	1	5	9	18	14	1	0	1	2.0	7	14.3
HIGHLANDS	37	0	0	1	1	1	10	12	8	3	1	1	2.7	3	8.1
HILLSBOROUGH	984	0	11	5	20	55	220	417	218	38	0	16	1.6	91	9.2
HOLMES	6	0	0	0	0	0	2	1	2	1	0	0	0.0	0	0.0
INDIAN RIVER	40	0	0	0	0	6	9	13	8	4	0	0	0.0	6	15.0
JACKSON	14	0	0	1	0	0	5	6	0	2	0	1	7.1	1	7.1
JEFFERSON	4	0	0	0	0	0	0	3	1	0	0	0	0.0	0	0.0
LAFAYETTE	0	0	0	0	0	0	0	0	0	0	0	0	0.0	0	0.0
LAKE	161	0	1	0	4	15	36	67	30	8	0	1	0.6	20	12.4
LEE	164	1	1	0	2	11	36	69	35	9	0	2	1.2	15	9.1
LEON	183	1	0	0	3	16	45	71	41	6	0	1	0.5	20	10.9
LEVY	11	0	0	2	0	0	3	3	2	1	0	2	18.2	2	18.2
LIBERTY	0	0	0	0	0	0	0	0	0	0	0	0	0.0	0	0.0
MADISON	4	0	0	0	0	0	0	3	1	0	0	0	0.0	0	0.0
MANATEE	120	1	0	1	1	4	20	49	33	11	0	2	1.7	7	5.8
MARION	132	0	0	0	2	6	26	57	33	7	1	0	0.0	8	6.1
MARTIN	205	0	1	0	1	13	51	96	37	6	0	1	0.5	15	7.3
MONROE	27	0	0	0	0	3	5	11	5	3	0	0	0.0	3	11.1
NASSAU	15	0	0	0	1	0	4	4	3	3	0	0	0.0	1	6.7
OKALOOSA	216	0	0	2	2	17	42	83	52	18	0	2	0.9	21	9.7
ORKEECHOBEE	27	0	0	0	0	1	1	13	9	3	0	0	0.0	1	3.7
ORANGE	1,348	0	13	9	22	79	318	556	287	64	0	22	1.6	123	9.1
OSCEOLA	201	1	0	0	8	10	47	84	37	14	0	1	0.5	19	9.5
PALM BEACH	684	2	4	1	13	36	167	280	153	28	0	7	1.0	56	8.2
PASCO	228	0	1	0	4	19	50	94	50	10	0	1	0.4	24	10.5
PINELLAS	590	1	1	4	6	36	145	239	126	32	0	6	1.0	48	8.1
POLK	297	2	3	1	6	20	72	118	59	16	0	6	2.0	32	10.8
PUTNAM	13	0	0	0	0	0	3	6	2	2	0	0	0.0	0	0.0
SAINT JOHNS	104	0	2	0	0	4	24	41	23	10	0	2	1.9	6	5.8
SAINT LUCIE	125	0	1	2	5	5	27	57	26	2	0	3	2.4	13	10.4
SANTA ROSA	74	0	0	2	1	6	12	29	14	10	0	2	2.7	9	12.2
SARASOTA	130	0	3	0	4	7	29	52	29	6	0	3	2.3	14	10.8
SEMINOLE	315	0	1	2	3	25	70	129	74	11	0	3	1.0	31	9.8
SUMTER	9	0	0	1	0	1	1	3	2	1	0	1	11.1	2	22.2
SUWANNEE	7	0	0	0	0	0	1	3	3	0	0	0	0.0	0	0.0
TAYLOR	3	0	0	0	0	0	0	2	1	0	0	0	0.0	0	0.0
UNION	1	0	0	0	0	0	0	0	1	0	0	0	0.0	0	0.0
VOLUSIA	207	1	2	2	2	10	49	82	50	9	0	5	2.4	17	8.2
WAKULLA	2	0	0	0	0	0	1	1	0	0	0	0	0.0	0	0.0
WALTON	15	0	1	0	1	0	6	6	1	0	0	1	6.7	2	13.3
WASHINGTON	8	1	0	0	0	0	1	2	3	1	0	1	12.5	1	12.5

TABLE B-6: RESIDENT LIVE BIRTHS BY AGE OF MOTHER, BY COUNTY, FLORIDA, 2009

	TOTAL	<13	13	14	15	16	17	18	19	20-24	25-29	30-34	35-44	45+	UNK
FLORIDA	221,391	6	42	214	803	1,895	3,610	6,355	9,353	56,379	61,783	48,613	31,896	436	6
ALACHUA	2,925	0	0	4	13	38	47	76	125	728	843	684	365	2	0
BAKER	378	0	0	1	3	3	11	12	23	129	108	61	27	0	0
BAY	2,310	0	1	3	8	25	44	100	130	767	641	377	213	1	0
BRADFORD	322	0	0	0	2	1	5	11	24	106	88	56	29	0	0
BREVARD	5,172	0	0	4	14	36	66	130	190	1,390	1,561	1,068	702	11	0
BROWARD	21,394	0	4	20	54	126	237	448	643	4,400	5,702	5,499	4,192	68	1
CALHOUN	176	0	0	0	1	0	3	7	14	65	57	18	11	0	0
CHARLOTTE	991	0	0	0	6	11	23	31	49	276	285	197	113	0	0
CITRUS	1,091	0	0	0	3	11	24	38	73	374	313	158	97	0	0
CLAY	2,208	0	0	3	8	20	33	58	101	606	664	465	247	3	0
COLLIER	3,537	0	0	0	13	30	57	95	140	871	949	791	583	8	0
COLUMBIA	860	0	0	2	5	7	20	41	66	290	238	136	55	0	0
MIAMI-DADE	32,341	1	5	23	96	229	410	758	1,120	7,024	8,704	7,992	5,884	92	3
DESOTO	452	0	0	2	4	11	15	22	14	153	131	63	37	0	0
DIXIE	197	0	0	0	2	4	4	10	9	90	46	24	8	0	0
DUVAL	13,176	0	4	14	52	113	214	372	582	3,776	3,900	2,676	1,454	19	0
ESCAMBIA	4,166	0	0	4	22	56	104	152	253	1,359	1,117	704	387	8	0
FLAGLER	869	0	0	2	2	6	14	27	39	188	272	197	121	1	0
FRANKLIN	128	0	0	0	0	0	5	8	8	52	34	17	4	0	0
GADSDEN	692	1	1	2	5	11	21	31	43	235	182	104	56	0	0
GILCHRIST	188	0	0	0	0	1	2	7	11	67	58	29	12	1	0
GLADES	88	0	0	0	0	3	4	3	11	29	27	7	4	0	0
GULF	138	0	0	0	0	1	4	3	16	38	36	25	15	0	0
HAMILTON	185	0	0	0	1	6	6	12	10	77	45	22	6	0	0
HARDEE	485	0	0	1	9	10	19	22	32	160	121	76	35	0	0
HENDRY	667	0	0	0	5	17	15	36	35	220	164	111	63	1	0
HERNANDO	1,613	0	0	1	3	5	28	45	80	433	480	336	201	1	0
HIGHLANDS	1,011	0	0	2	2	8	18	28	62	353	284	161	91	2	0
HILLSBOROUGH	16,729	1	5	19	67	178	298	534	746	4,220	4,716	3,677	2,244	24	0
HOLMES	225	0	0	1	0	3	6	9	20	89	58	20	19	0	0
INDIAN RIVER	1,278	0	0	1	5	11	34	36	57	388	347	241	155	3	0
JACKSON	548	0	1	1	3	2	17	27	33	205	156	76	27	0	0
JEFFERSON	155	0	0	0	1	2	1	6	11	50	39	28	17	0	0
LAFAYETTE	77	0	0	0	0	3	0	1	5	34	23	8	3	0	0
LAKE	3,121	0	1	4	13	34	56	104	168	881	861	610	382	7	0
LEE	6,596	0	1	7	20	63	121	189	285	1,718	1,955	1,392	835	10	0
LEON	3,122	0	2	5	6	23	45	75	115	797	969	711	366	8	0
LEVY	445	0	0	1	0	4	14	15	38	133	126	77	36	1	0
LIBERTY	86	0	0	0	0	0	0	3	7	30	25	12	9	0	0
MADISON	229	0	1	0	0	2	2	18	14	89	59	31	13	0	0
MANATEE	3,658	0	0	6	21	40	81	146	187	999	977	734	459	8	0
MARION	3,584	0	1	4	15	44	97	150	212	1,143	983	567	366	2	0
MARTIN	1,163	0	1	1	5	9	26	40	40	255	324	261	198	3	0
MONROE	707	0	0	0	1	0	7	18	25	169	214	154	117	2	0
NASSAU	778	0	0	1	4	5	10	37	39	212	226	161	82	1	0
OKALOOSA	2,651	0	0	2	4	12	34	81	94	838	822	490	270	4	0
OKEECHOBEE	564	0	0	1	5	7	24	24	42	180	152	79	50	0	0
ORANGE	15,393	0	4	18	61	147	251	391	592	3,677	4,203	3,697	2,330	22	0
OSCEOLA	3,863	0	1	6	14	27	56	124	188	1,082	1,064	794	506	1	0
PALM BEACH	14,177	2	3	10	50	105	184	335	507	3,011	3,761	3,547	2,618	44	0
PASCO	4,945	0	0	1	13	31	81	131	195	1,163	1,467	1,192	663	8	0
PINELLAS	8,772	0	1	5	31	82	162	277	346	2,211	2,430	1,923	1,290	14	0
POLK	7,735	1	2	9	41	79	164	338	460	2,385	2,155	1,317	775	7	2
PUTNAM	971	0	1	1	4	20	30	43	61	331	263	137	79	1	0
SAINT JOHNS	1,791	0	0	1	11	12	25	29	54	331	501	475	345	7	0
SAINT LUCIE	3,142	0	0	3	12	27	52	100	152	885	876	604	428	3	0
SANTA ROSA	1,835	0	1	2	2	20	27	39	76	556	525	367	219	1	0
SARASOTA	2,931	0	0	4	12	18	37	81	105	686	869	624	486	9	0
SEMINOLE	4,470	0	0	3	13	30	66	96	154	983	1,310	1,149	652	14	0
SUMTER	483	0	0	0	4	2	14	28	41	166	129	60	37	2	0
SUWANNEE	484	0	1	0	5	5	10	21	33	171	135	60	43	0	0
TAYLOR	285	0	0	1	3	4	12	12	21	113	78	25	16	0	0
UNION	155	0	0	1	1	3	2	9	7	50	48	25	9	0	0
VOLUSIA	5,099	0	0	7	19	39	86	157	249	1,472	1,483	980	598	9	0
WAKULLA	317	0	0	0	0	4	6	12	12	81	97	78	27	0	0
WALTON	659	0	0	0	2	5	10	20	31	200	200	116	74	1	0
WASHINGTON	263	0	0	0	1	4	6	13	20	97	60	33	28	1	0

TABLE B-6 (Cont.): RESIDENT LIVE BIRTHS TO WHITE MOTHERS, BY AGE OF MOTHER,
BY COUNTY, FLORIDA, 2009

	TOTAL	<13	13	14	15	16	17	18	19	20-24	25-29	30-34	35-44	45+	UNK
FLORIDA	159,186	1	14	100	425	1,081	2,204	3,966	6,037	38,508	45,191	37,077	24,246	333	3
ALACHUA	1,714	0	0	0	3	6	16	28	51	356	535	456	262	1	0
BAKER	338	0	0	1	2	2	11	10	20	115	99	54	24	0	0
BAY	1,788	0	0	2	3	18	36	82	94	586	510	301	156	0	0
BRADFORD	245	0	0	0	2	1	2	9	18	76	71	43	23	0	0
BREVARD	4,129	0	0	1	7	20	44	94	139	1,091	1,269	885	570	9	0
BROWARD	11,727	0	1	6	14	38	83	170	266	1,990	3,082	3,406	2,624	47	0
CALHOUN	152	0	0	0	1	0	2	6	13	58	48	16	8	0	0
CHARLOTTE	856	0	0	0	5	9	21	27	38	241	255	165	95	0	0
CITRUS	1,024	0	0	0	2	8	24	37	64	352	300	149	88	0	0
CLAY	1,819	0	0	2	5	18	27	44	72	507	555	386	200	3	0
COLLIER	3,030	0	0	0	12	25	51	85	122	762	827	674	466	6	0
COLUMBIA	665	0	0	1	4	6	12	32	48	218	197	105	42	0	0
MIAMI-DADE	23,537	0	2	7	49	110	225	418	686	4,534	6,317	6,345	4,768	74	2
DESOTO	405	0	0	2	4	10	13	18	10	136	120	59	33	0	0
DIXIE	178	0	0	0	2	4	3	8	8	79	45	23	6	0	0
DUVAL	7,474	0	0	2	15	38	84	150	246	1,944	2,288	1,736	958	13	0
ESCAMBIA	2,625	0	0	0	12	24	46	67	142	811	739	513	263	8	0
FLAGLER	727	0	0	0	1	6	10	18	32	149	233	167	110	1	0
FRANKLIN	112	0	0	0	0	0	4	7	8	42	31	16	4	0	0
GADSDEN	251	0	0	1	2	2	5	10	10	81	61	54	25	0	0
GILCHRIST	175	0	0	0	0	1	2	7	10	60	53	29	12	1	0
GLADES	68	0	0	0	0	3	2	3	8	23	21	6	2	0	0
GULF	115	0	0	0	0	1	4	2	15	31	30	23	9	0	0
HAMILTON	117	0	0	0	0	4	2	5	8	47	31	16	4	0	0
HARDEE	444	0	0	1	8	9	17	21	28	146	115	68	31	0	0
HENDRY	580	0	0	0	1	14	11	30	33	196	147	93	54	1	0
HERNANDO	1,449	0	0	1	3	5	25	40	69	393	429	302	181	1	0
HIGHLANDS	802	0	0	1	1	7	14	25	49	276	227	132	70	0	0
HILLSBOROUGH	12,006	0	1	8	31	103	162	330	490	2,871	3,431	2,834	1,729	16	0
HOLMES	216	0	0	1	0	3	6	8	20	86	53	20	19	0	0
INDIAN RIVER	1,028	0	0	1	2	9	26	26	40	297	291	209	125	2	0
JACKSON	374	0	0	0	1	1	9	13	24	142	106	58	20	0	0
JEFFERSON	75	0	0	0	1	0	1	2	6	19	16	21	9	0	0
LAFAYETTE	67	0	0	0	0	3	0	0	3	33	17	8	3	0	0
LAKE	2,551	0	1	4	9	25	41	77	128	711	732	495	322	6	0
LEE	5,534	0	1	4	14	46	93	149	218	1,429	1,679	1,195	697	9	0
LEON	1,590	0	0	1	1	3	12	17	34	297	531	446	242	6	0
LEVY	374	0	0	0	0	2	12	11	35	112	103	66	32	1	0
LIBERTY	79	0	0	0	0	0	0	2	6	27	24	12	8	0	0
MADISON	110	0	0	0	0	0	1	8	6	38	34	18	5	0	0
MANATEE	3,008	0	0	5	19	31	57	101	137	810	823	622	397	6	0
MARION	2,775	0	1	3	9	27	71	101	164	877	773	447	300	2	0
MARTIN	837	0	0	1	1	6	10	22	23	163	240	212	157	2	0
MONROE	620	0	0	0	1	0	5	16	21	150	188	136	101	2	0
NASSAU	709	0	0	0	3	5	10	33	34	193	208	150	72	1	0
OKALOOSA	2,119	0	0	1	3	8	24	63	68	668	656	406	218	4	0
OKEECHOBEE	503	0	0	1	4	5	24	20	36	159	140	71	43	0	0
ORANGE	10,006	0	2	7	29	76	144	216	329	2,241	2,784	2,590	1,579	9	0
OSCEOLA	3,264	0	1	5	9	21	46	105	166	933	907	656	414	1	0
PALM BEACH	9,422	0	1	7	21	60	112	172	277	1,780	2,485	2,585	1,889	33	0
PASCO	4,408	0	0	1	10	30	77	119	181	1,054	1,312	1,042	576	6	0
PINELLAS	6,541	0	0	4	16	41	80	171	195	1,506	1,892	1,562	1,062	12	0
POLK	5,925	1	1	5	35	55	123	247	340	1,849	1,661	1,001	600	6	1
PUTNAM	722	0	1	0	1	13	17	28	43	251	195	111	61	1	0
SAINT JOHNS	1,526	0	0	1	4	9	19	22	34	287	432	411	300	7	0
SAINT LUCIE	2,177	0	0	2	2	17	27	55	87	588	654	444	299	2	0
SANTA ROSA	1,676	0	1	2	2	18	25	34	71	503	485	333	201	1	0
SARASOTA	2,508	0	0	2	11	6	28	64	86	563	763	542	435	8	0
SEMINOLE	3,498	0	0	1	6	15	42	67	109	726	1,031	950	538	13	0
SUMTER	374	0	0	0	1	1	8	15	33	126	109	52	28	1	0
SUWANNEE	404	0	0	0	5	5	5	17	26	145	113	52	36	0	0
TAYLOR	219	0	0	0	2	4	9	9	16	88	63	17	11	0	0
UNION	127	0	0	1	1	2	2	8	6	37	39	23	8	0	0
VOLUSIA	4,054	0	0	4	10	30	58	127	181	1,088	1,227	826	495	8	0
WAKULLA	272	0	0	0	0	4	5	8	8	67	88	71	21	0	0
WALTON	622	0	0	0	2	5	10	18	29	186	189	110	72	1	0
WASHINGTON	216	0	0	0	1	3	4	10	15	80	52	25	25	1	0

TABLE B-6 (Cont.): RESIDENT LIVE BIRTHS TO BLACK MOTHERS, BY AGE OF MOTHER,
BY COUNTY, FLORIDA, 2009

	TOTAL	<13	13	14	15	16	17	18	19	20-24	25-29	30-34	35-44	45+	UNK
FLORIDA	50,559	5	24	104	352	757	1,296	2,196	2,994	15,863	13,203	8,215	5,464	85	1
ALACHUA	957	0	0	3	10	30	29	46	67	355	238	123	55	1	0
BAKER	36	0	0	0	1	0	0	2	3	14	9	5	2	0	0
BAY	307	0	0	1	3	6	6	15	23	117	76	40	20	0	0
BRADFORD	74	0	0	0	0	0	3	2	6	30	16	12	5	0	0
BREVARD	768	0	0	3	6	15	20	30	42	253	197	115	86	1	0
BROWARD	8,026	0	3	13	39	81	145	252	343	2,170	2,126	1,600	1,235	19	0
CALHOUN	21	0	0	0	0	0	1	1	1	7	7	2	2	0	0
CHARLOTTE	81	0	0	0	1	2	2	2	5	27	14	17	11	0	0
CITRUS	40	0	0	0	1	2	0	0	8	16	7	3	3	0	0
CLAY	277	0	0	1	3	2	6	10	20	81	80	53	21	0	0
COLLIER	415	0	0	0	1	5	5	10	13	90	98	95	96	2	0
COLUMBIA	180	0	0	1	1	1	8	9	18	68	37	28	9	0	0
MIAMI-DADE	8,052	1	3	16	46	116	180	334	422	2,389	2,191	1,391	946	17	0
DESOTO	45	0	0	0	0	1	2	3	4	17	11	3	4	0	0
DIXIE	16	0	0	0	0	0	1	2	1	10	1	0	1	0	0
DUVAL	4,714	0	4	12	36	71	122	207	302	1,649	1,299	659	347	6	0
ESCAMBIA	1,323	0	0	3	10	32	52	79	106	487	319	144	91	0	0
FLAGLER	106	0	0	1	1	0	3	8	6	32	30	19	6	0	0
FRANKLIN	12	0	0	0	0	0	1	1	0	7	2	1	0	0	0
GADSDEN	431	1	1	1	3	9	15	21	33	150	119	50	28	0	0
GILCHRIST	8	0	0	0	0	0	0	0	1	5	2	0	0	0	0
GLADES	15	0	0	0	0	0	1	0	2	5	5	1	1	0	0
GULF	18	0	0	0	0	0	0	1	0	5	5	1	6	0	0
HAMILTON	65	0	0	0	1	2	3	6	2	29	14	6	2	0	0
HARDEE	27	0	0	0	1	0	2	1	2	12	3	3	3	0	0
HENDRY	68	0	0	0	3	2	4	6	2	20	14	12	5	0	0
HERNANDO	107	0	0	0	0	0	3	4	8	28	32	22	10	0	0
HIGHLANDS	172	0	0	1	1	1	2	0	11	69	51	19	15	2	0
HILLSBOROUGH	3,720	1	4	10	35	71	119	198	229	1,221	972	546	308	6	0
HOLMES	2	0	0	0	0	0	0	0	0	1	1	0	0	0	0
INDIAN RIVER	210	0	0	0	3	2	8	8	16	82	44	23	23	1	0
JACKSON	160	0	1	1	1	1	8	12	7	59	48	15	7	0	0
JEFFERSON	76	0	0	0	0	2	0	4	5	30	22	6	7	0	0
LAFAYETTE	10	0	0	0	0	0	0	1	2	1	6	0	0	0	0
LAKE	408	0	0	0	3	8	13	21	32	136	92	67	36	0	0
LEE	897	0	0	3	6	17	27	37	57	269	220	148	113	0	0
LEON	1,337	0	2	4	5	18	33	55	79	471	388	201	80	1	0
LEVY	60	0	0	1	0	2	2	4	3	19	19	8	2	0	0
LIBERTY	7	0	0	0	0	0	0	1	1	3	1	0	1	0	0
MADISON	115	0	1	0	0	2	1	10	8	50	24	13	6	0	0
MANATEE	529	0	0	1	2	7	23	41	48	171	119	73	42	2	0
MARION	676	0	0	1	5	17	25	44	41	230	180	88	45	0	0
MARTIN	120	0	0	0	1	2	8	9	11	39	17	12	20	1	0
MONROE	60	0	0	0	0	0	2	2	4	11	18	9	14	0	0
NASSAU	52	0	0	0	0	0	0	4	5	14	14	7	8	0	0
OKALOOSA	313	0	0	0	0	4	6	15	16	116	94	46	16	0	0
OKEECHOBEE	34	0	0	0	0	2	0	2	4	13	6	3	4	0	0
ORANGE	4,032	0	1	11	29	66	97	160	234	1,218	1,034	710	466	6	0
OSCEOLA	397	0	0	1	5	4	8	14	20	105	98	80	62	0	0
PALM BEACH	4,049	2	2	3	29	43	70	160	221	1,125	1,070	741	573	10	0
PASCO	299	0	0	0	1	0	3	11	11	71	94	67	39	2	0
PINELLAS	1,631	0	1	0	14	37	74	93	138	577	367	202	126	2	0
POLK	1,511	0	0	3	6	21	38	79	104	490	399	238	131	1	1
PUTNAM	236	0	0	1	3	7	13	14	17	78	61	24	18	0	0
SAINT JOHNS	155	0	0	0	7	3	4	7	18	33	41	29	13	0	0
SAINT LUCIE	838	0	0	1	10	10	24	40	61	276	184	124	107	1	0
SANTA ROSA	85	0	0	0	0	1	2	2	3	28	22	16	11	0	0
SARASOTA	293	0	0	2	1	9	9	14	15	96	78	41	27	1	0
SEMINOLE	657	0	0	2	6	14	21	26	42	216	177	102	50	1	0
SUMTER	99	0	0	0	3	1	6	13	8	34	19	5	9	1	0
SUWANNEE	73	0	1	0	0	0	4	4	7	23	20	7	7	0	0
TAYLOR	63	0	0	1	1	0	3	3	5	24	15	7	4	0	0
UNION	27	0	0	0	0	1	0	1	1	13	8	2	1	0	0
VOLUSIA	836	0	0	2	7	6	26	25	58	331	197	116	67	1	0
WAKULLA	43	0	0	0	0	0	1	4	4	13	8	7	6	0	0
WALTON	22	0	0	0	0	0	0	2	1	11	4	3	1	0	0
WASHINGTON	38	0	0	0	0	1	2	3	5	14	6	5	2	0	0

TABLE B-6 (Cont.): RESIDENT LIVE BIRTHS TO OTHER MOTHERS, BY AGE OF MOTHER,
BY COUNTY, FLORIDA, 2009

	TOTAL	<13	13	14	15	16	17	18	19	20-24	25-29	30-34	35-44	45+	UNK
FLORIDA	11,006	0	4	9	24	50	102	180	292	1,852	3,216	3,187	2,072	18	0
ALACHUA	254	0	0	1	0	2	2	2	7	17	70	105	48	0	0
BAKER	4	0	0	0	0	1	0	0	0	0	0	2	1	0	0
BAY	146	0	1	0	1	1	2	3	8	41	35	29	24	1	0
BRADFORD	3	0	0	0	0	0	0	0	0	0	1	1	1	0	0
BREVARD	271	0	0	0	1	1	2	6	9	45	95	67	44	1	0
BROWARD	1,284	0	0	0	1	2	4	16	18	158	386	417	280	2	0
CALHOUN	3	0	0	0	0	0	0	0	0	0	2	0	1	0	0
CHARLOTTE	52	0	0	0	0	0	0	2	6	8	15	15	6	0	0
CITRUS	27	0	0	0	0	1	0	1	1	6	6	6	6	0	0
CLAY	110	0	0	0	0	0	0	4	8	18	28	26	26	0	0
COLLIER	92	0	0	0	0	0	1	0	5	19	24	22	21	0	0
COLUMBIA	15	0	0	0	0	0	0	0	0	4	4	3	4	0	0
MIAMI-DADE	706	0	0	0	1	2	5	6	12	91	186	244	158	1	0
DESOTO	2	0	0	0	0	0	0	1	0	0	0	1	0	0	0
DIXIE	3	0	0	0	0	0	0	0	0	1	0	1	1	0	0
DUVAL	953	0	0	0	1	3	6	14	33	176	304	274	142	0	0
ESCAMBIA	218	0	0	1	0	0	6	6	5	61	59	47	33	0	0
FLAGLER	33	0	0	1	0	0	1	1	1	5	9	10	5	0	0
FRANKLIN	2	0	0	0	0	0	0	0	0	1	1	0	0	0	0
GADSDEN	8	0	0	0	0	0	1	0	0	4	1	0	2	0	0
GILCHRIST	5	0	0	0	0	0	0	0	0	2	3	0	0	0	0
GLADES	5	0	0	0	0	0	1	0	1	1	1	0	1	0	0
GULF	3	0	0	0	0	0	0	0	1	1	0	1	0	0	0
HAMILTON	3	0	0	0	0	0	1	1	0	1	0	0	0	0	0
HARDEE	14	0	0	0	0	1	0	0	2	2	3	5	1	0	0
HENDRY	19	0	0	0	1	1	0	0	0	4	3	6	4	0	0
HERNANDO	49	0	0	0	0	0	0	1	2	10	16	11	9	0	0
HIGHLANDS	37	0	0	0	0	0	2	3	2	8	6	10	6	0	0
HILLSBOROUGH	984	0	0	1	1	4	16	6	27	122	310	292	203	2	0
HOLMES	6	0	0	0	0	0	0	1	0	2	3	0	0	0	0
INDIAN RIVER	40	0	0	0	0	0	0	2	1	9	12	9	7	0	0
JACKSON	14	0	0	0	1	0	0	2	2	4	2	3	0	0	0
JEFFERSON	4	0	0	0	0	0	0	0	0	1	1	1	1	0	0
LAFAYETTE	0	0	0	0	0	0	0	0	0	0	0	0	0	0	0
LAKE	161	0	0	0	1	1	2	6	8	34	37	47	24	1	0
LEE	164	0	0	0	0	0	1	3	9	20	56	49	25	1	0
LEON	183	0	0	0	0	2	0	2	1	27	47	62	41	1	0
LEVY	11	0	0	0	0	0	0	0	0	2	4	3	2	0	0
LIBERTY	0	0	0	0	0	0	0	0	0	0	0	0	0	0	0
MADISON	4	0	0	0	0	0	0	0	0	1	1	0	2	0	0
MANATEE	120	0	0	0	0	2	1	4	2	18	35	39	19	0	0
MARION	132	0	0	0	1	0	1	5	7	36	30	31	21	0	0
MARTIN	205	0	1	0	3	1	8	9	6	53	67	36	21	0	0
MONROE	27	0	0	0	0	0	0	0	0	8	8	9	2	0	0
NASSAU	15	0	0	1	1	0	0	0	0	5	4	3	1	0	0
OKALOOSA	216	0	0	1	1	0	4	3	10	53	71	37	36	0	0
OKEECHOBEE	27	0	0	0	1	0	0	2	2	8	6	5	3	0	0
ORANGE	1,348	0	1	0	3	5	10	15	29	215	384	396	283	7	0
OSCEOLA	201	0	0	0	0	2	2	5	2	43	59	58	30	0	0
PALM BEACH	684	0	0	0	0	2	2	3	9	100	201	217	149	1	0
PASCO	228	0	0	0	2	1	1	1	2	36	60	79	46	0	0
PINELLAS	590	0	0	1	1	4	8	13	11	126	169	157	100	0	0
POLK	297	0	1	1	0	3	3	12	16	45	95	77	44	0	0
PUTNAM	13	0	0	0	0	0	0	1	1	2	7	2	0	0	0
SAINT JOHNS	104	0	0	0	0	0	2	0	2	11	26	33	30	0	0
SAINT LUCIE	125	0	0	0	0	0	1	4	4	21	38	35	22	0	0
SANTA ROSA	74	0	0	0	0	1	0	3	2	25	18	18	7	0	0
SARASOTA	130	0	0	0	0	3	0	3	4	27	28	41	24	0	0
SEMINOLE	315	0	0	0	1	1	3	3	3	41	102	97	64	0	0
SUMTER	9	0	0	0	0	0	0	0	0	6	1	2	0	0	0
SUWANNEE	7	0	0	0	0	0	1	0	0	3	2	1	0	0	0
TAYLOR	3	0	0	0	0	0	0	0	0	1	0	1	1	0	0
UNION	1	0	0	0	0	0	0	0	0	0	1	0	0	0	0
VOLUSIA	207	0	0	1	1	3	2	5	9	53	59	38	36	0	0
WAKULLA	2	0	0	0	0	0	0	0	0	1	1	0	0	0	0
WALTON	15	0	0	0	0	0	0	0	1	3	7	3	1	0	0
WASHINGTON	8	0	0	0	0	0	0	0	0	2	2	3	1	0	0

TABLE B-7: RESIDENT LIVE BIRTHS BY TRIMESTER PRENATAL CARE BEGAN, BY COUNTY, FLORIDA, 2009

	TRIMESTER PRENATAL CARE BEGAN ¹						% CARE BEGAN BY TRIMESTER ²			
	TOTAL	1ST	2ND	3RD	NONE	UNK	1ST	2ND	3RD	NONE
FLORIDA	221,391	154,752	33,051	6,575	3,315	23,698	78.3	16.7	3.3	1.7
ALACHUA	2,925	2,101	534	93	35	162	76.0	19.3	3.4	1.3
BAKER	378	261	84	7	7	19	72.7	23.4	1.9	1.9
BAY	2,310	1,450	395	95	28	342	73.7	20.1	4.8	1.4
BRADFORD	322	217	68	10	8	19	71.6	22.4	3.3	2.6
BREVARD	5,172	3,953	761	115	52	291	81.0	15.6	2.4	1.1
BROWARD	21,394	14,203	2,794	654	398	3,345	78.7	15.5	3.6	2.2
CALHOUN	176	114	24	5	1	32	79.2	16.7	3.5	0.7
CHARLOTTE	991	716	203	28	10	34	74.8	21.2	2.9	1.0
CITRUS	1,091	736	235	38	5	77	72.6	23.2	3.7	0.5
CLAY	2,208	1,616	372	75	22	123	77.5	17.8	3.6	1.1
COLLIER	3,537	2,147	907	237	33	213	64.6	27.3	7.1	1.0
COLUMBIA	860	544	218	42	26	30	65.5	26.3	5.1	3.1
MIAMI-DADE	32,341	22,024	3,013	472	389	6,443	85.0	11.6	1.8	1.5
DESOTO	452	293	109	22	4	24	68.5	25.5	5.1	0.9
DIXIE	197	133	43	9	0	12	71.9	23.2	4.9	0.0
DUVAL	13,176	8,368	2,453	415	336	1,604	72.3	21.2	3.6	2.9
ESCAMBIA	4,166	3,201	707	120	40	98	78.7	17.4	2.9	1.0
FLAGLER	869	633	117	30	5	84	80.6	14.9	3.8	0.6
FRANKLIN	128	83	27	4	0	14	72.8	23.7	3.5	0.0
GADSDEN	692	515	73	8	8	88	85.3	12.1	1.3	1.3
GILCHRIST	188	143	32	7	1	5	78.1	17.5	3.8	0.5
GLADES	88	58	20	1	1	8	72.5	25.0	1.3	1.3
GULF	138	101	18	3	0	16	82.8	14.8	2.5	0.0
HAMILTON	185	92	56	17	13	7	51.7	31.5	9.6	7.3
HARDEE	485	280	137	38	11	19	60.1	29.4	8.2	2.4
HENDRY	667	408	146	29	9	75	68.9	24.7	4.9	1.5
HERNANDO	1,613	1,297	194	24	13	85	84.9	12.7	1.6	0.9
HIGHLANDS	1,011	689	205	42	10	65	72.8	21.7	4.4	1.1
HILLSBOROUGH	16,729	12,122	1,626	250	233	2,498	85.2	11.4	1.8	1.6
HOLMES	225	126	35	7	0	57	75.0	20.8	4.2	0.0
INDIAN RIVER	1,278	822	309	47	15	85	68.9	25.9	3.9	1.3
JACKSON	548	338	70	16	0	124	79.7	16.5	3.8	0.0
JEFFERSON	155	116	16	0	1	22	87.2	12.0	0.0	0.8
LAFAYETTE	77	57	11	3	3	3	77.0	14.9	4.1	4.1
LAKE	3,121	2,382	492	85	37	125	79.5	16.4	2.8	1.2
LEE	6,596	4,335	1,181	254	60	766	74.4	20.3	4.4	1.0
LEON	3,122	2,396	246	44	29	407	88.3	9.1	1.6	1.1
LEVY	445	342	63	14	3	23	81.0	14.9	3.3	0.7
LIBERTY	86	65	6	2	1	12	87.8	8.1	2.7	1.4
MADISON	229	179	23	2	3	22	86.5	11.1	1.0	1.4
MANATEE	3,658	2,398	899	241	29	91	67.2	25.2	6.8	0.8
MARION	3,584	2,254	902	191	52	185	66.3	26.5	5.6	1.5
MARTIN	1,163	812	241	45	16	49	72.9	21.6	4.0	1.4
MONROE	707	576	85	4	7	35	85.7	12.6	0.6	1.0
NASSAU	778	563	93	9	10	103	83.4	13.8	1.3	1.5
OKALOOSA	2,651	2,011	403	119	20	98	78.8	15.8	4.7	0.8
OKEECHOBEE	564	366	137	17	6	38	69.6	26.0	3.2	1.1
ORANGE	15,393	12,019	1,619	266	459	1,030	83.7	11.3	1.9	3.2
OSCEOLA	3,863	2,914	452	87	62	348	82.9	12.9	2.5	1.8
PALM BEACH	14,177	9,189	2,406	769	168	1,645	73.3	19.2	6.1	1.3
PASCO	4,945	3,532	782	136	48	447	78.5	17.4	3.0	1.1
PINELLAS	8,772	6,478	1,601	258	106	329	76.7	19.0	3.1	1.3
POLK	7,735	4,978	1,829	421	113	394	67.8	24.9	5.7	1.5
PUTNAM	971	549	206	30	33	153	67.1	25.2	3.7	4.0
SAINT JOHNS	1,791	1,345	193	35	12	206	84.9	12.2	2.2	0.8
SAINT LUCIE	3,142	2,180	692	94	64	112	71.9	22.8	3.1	2.1
SANTA ROSA	1,835	1,517	217	36	8	57	85.3	12.2	2.0	0.4
SARASOTA	2,931	2,341	412	73	22	83	82.2	14.5	2.6	0.8
SEMINOLE	4,470	3,403	530	133	121	283	81.3	12.7	3.2	2.9
SUMTER	483	359	75	12	5	32	79.6	16.6	2.7	1.1
SUWANNEE	484	297	132	28	6	21	64.1	28.5	6.0	1.3
TAYLOR	285	204	31	2	2	46	85.4	13.0	0.8	0.8
UNION	155	105	35	6	2	7	70.9	23.6	4.1	1.4
VOLUSIA	5,099	3,736	885	161	81	236	76.8	18.2	3.3	1.7
WAKULLA	317	264	21	1	2	29	91.7	7.3	0.3	0.7
WALTON	659	499	87	28	2	43	81.0	14.1	4.5	0.3
WASHINGTON	263	148	48	4	3	60	72.9	23.6	2.0	1.5

1. Starting in 2004, "trimester prenatal care began" is calculated as the time elapsed from the date of the last menstrual period to the date of the first prenatal care visit. Prior to 2004, these data were obtained by direct question that noted the trimester the mother began prenatal care. Consequently, these data are not comparable to data from prior years.

2. Births with unknown information as to when prenatal care began are excluded from the denominator.

TABLE B-7 (Cont.): RESIDENT LIVE BIRTHS TO WHITE MOTHERS BY TRIMESTER
 PRENATAL CARE BEGAN, BY COUNTY, FLORIDA, 2009

	TRIMESTER PRENATAL CARE BEGAN ¹						% CARE BEGAN BY TRIMESTER ²			
	TOTAL	1ST	2ND	3RD	NONE	UNK	1ST	2ND	3RD	NONE
FLORIDA	159,186	115,342	21,577	4,269	1,839	16,159	80.6	15.1	3.0	1.3
ALACHUA	1,714	1,331	252	41	10	80	81.5	15.4	2.5	0.6
BAKER	338	238	75	5	3	17	74.1	23.4	1.6	0.9
BAY	1,788	1,161	298	69	16	244	75.2	19.3	4.5	1.0
BRADFORD	245	172	48	6	4	15	74.8	20.9	2.6	1.7
BREVARD	4,129	3,235	550	75	40	229	82.9	14.1	1.9	1.0
BROWARD	11,727	8,469	1,191	255	143	1,669	84.2	11.8	2.5	1.4
CALHOUN	152	97	23	4	1	27	77.6	18.4	3.2	0.8
CHARLOTTE	856	629	168	21	9	29	76.1	20.3	2.5	1.1
CITRUS	1,024	703	214	34	3	70	73.7	22.4	3.6	0.3
CLAY	1,819	1,361	289	59	15	95	78.9	16.8	3.4	0.9
COLLIER	3,030	1,882	758	189	28	173	65.9	26.5	6.6	1.0
COLUMBIA	665	439	155	34	19	18	67.9	24.0	5.3	2.9
MIAMI-DADE	23,537	16,499	1,717	276	189	4,856	88.3	9.2	1.5	1.0
DESOTO	405	260	96	22	4	23	68.1	25.1	5.8	1.0
DIXIE	178	121	37	9	0	11	72.5	22.2	5.4	0.0
DUVAL	7,474	5,133	1,203	202	128	808	77.0	18.0	3.0	1.9
ESCAMBIA	2,625	2,136	351	61	20	57	83.2	13.7	2.4	0.8
FLAGLER	727	547	93	17	5	65	82.6	14.0	2.6	0.8
FRANKLIN	112	77	19	4	0	12	77.0	19.0	4.0	0.0
GADSDEN	251	191	24	2	4	30	86.4	10.9	0.9	1.8
GILCHRIST	175	134	29	6	1	5	78.8	17.1	3.5	0.6
GLADES	68	41	18	1	1	7	67.2	29.5	1.6	1.6
GULF	115	89	12	2	0	12	86.4	11.7	1.9	0.0
HAMILTON	117	59	32	14	8	4	52.2	28.3	12.4	7.1
HARDEE	444	254	131	35	8	16	59.3	30.6	8.2	1.9
HENDRY	580	352	135	25	5	63	68.1	26.1	4.8	1.0
HERNANDO	1,449	1,178	163	21	12	75	85.7	11.9	1.5	0.9
HIGHLANDS	802	549	163	31	9	50	73.0	21.7	4.1	1.2
HILLSBOROUGH	12,006	8,904	1,056	170	147	1,729	86.6	10.3	1.7	1.4
HOLMES	216	118	34	7	0	57	74.2	21.4	4.4	0.0
INDIAN RIVER	1,028	689	233	33	9	64	71.5	24.2	3.4	0.9
JACKSON	374	218	44	12	0	100	79.6	16.1	4.4	0.0
JEFFERSON	75	60	5	0	0	10	92.3	7.7	0.0	0.0
LAFAYETTE	67	50	9	3	3	2	76.9	13.8	4.6	4.6
LAKE	2,551	1,996	365	67	22	101	81.5	14.9	2.7	0.9
LEE	5,534	3,687	946	201	46	654	75.6	19.4	4.1	0.9
LEON	1,590	1,322	84	10	9	165	92.8	5.9	0.7	0.6
LEVY	374	289	48	13	3	21	81.9	13.6	3.7	0.8
LIBERTY	79	59	6	2	0	12	88.1	9.0	3.0	0.0
MADISON	110	84	14	1	2	9	83.2	13.9	1.0	2.0
MANATEE	3,008	1,989	728	187	22	82	68.0	24.9	6.4	0.8
MARION	2,775	1,781	668	151	30	145	67.7	25.4	5.7	1.1
MARTIN	837	619	147	26	12	33	77.0	18.3	3.2	1.5
MONROE	620	506	70	3	6	35	86.5	12.0	0.5	1.0
NASSAU	709	518	83	9	8	91	83.8	13.4	1.5	1.3
OKALOOSA	2,119	1,633	312	84	14	76	79.9	15.3	4.1	0.7
OKEECHOBEE	503	328	124	16	4	31	69.5	26.3	3.4	0.8
ORANGE	10,006	8,112	840	133	261	660	86.8	9.0	1.4	2.8
OSCEOLA	3,264	2,478	372	71	50	293	83.4	12.5	2.4	1.7
PALM BEACH	9,422	6,362	1,445	482	106	1,027	75.8	17.2	5.7	1.3
PASCO	4,408	3,173	690	123	38	384	78.9	17.1	3.1	0.9
PINELLAS	6,541	5,062	1,032	161	50	236	80.3	16.4	2.6	0.8
POLK	5,925	3,947	1,323	299	78	278	69.9	23.4	5.3	1.4
PUTNAM	722	422	154	24	24	98	67.6	24.7	3.8	3.8
SAINT JOHNS	1,526	1,163	160	28	9	166	85.5	11.8	2.1	0.7
SAINT LUCIE	2,177	1,580	430	61	38	68	74.9	20.4	2.9	1.8
SANTA ROSA	1,676	1,389	194	33	7	53	85.6	12.0	2.0	0.4
SARASOTA	2,508	2,028	335	64	14	67	83.1	13.7	2.6	0.6
SEMINOLE	3,498	2,732	384	92	74	216	83.2	11.7	2.8	2.3
SUMTER	374	282	56	9	2	25	80.8	16.0	2.6	0.6
SUWANNEE	404	256	102	22	5	19	66.5	26.5	5.7	1.3
TAYLOR	219	158	25	2	2	32	84.5	13.4	1.1	1.1
UNION	127	94	22	5	1	5	77.0	18.0	4.1	0.8
VOLUSIA	4,054	3,050	653	110	53	188	78.9	16.9	2.8	1.4
WAKULLA	272	226	16	1	1	28	92.6	6.6	0.4	0.4
WALTON	622	474	80	26	2	40	81.4	13.7	4.5	0.3
WASHINGTON	216	121	36	4	0	55	75.2	22.4	2.5	0.0

1. Starting in 2004, "trimester prenatal care began" is calculated as the time elapsed from the date of the last menstrual period to the date of the first prenatal care visit. Prior to 2004, these data were obtained by direct question that noted the trimester the mother began prenatal care. Consequently, these data are not comparable to data from prior years.

2. Births with unknown information as to when prenatal care began are excluded from the denominator.

TABLE B-7 (Cont.): RESIDENT LIVE BIRTHS TO BLACK MOTHERS BY TRIMESTER
 PRENATAL CARE BEGAN, BY COUNTY, FLORIDA, 2009

	TRIMESTER PRENATAL CARE BEGAN ¹						% CARE BEGAN BY TRIMESTER ²			
	TOTAL	1ST	2ND	3RD	NONE	UNK	1ST	2ND	3RD	NONE
FLORIDA	50,559	31,204	9,926	1,983	1,290	6,156	70.3	22.4	4.5	2.9
ALACHUA	957	574	246	43	23	71	64.8	27.8	4.9	2.6
BAKER	36	22	8	2	3	1	62.9	22.9	5.7	8.6
BAY	307	164	60	16	10	57	65.6	24.0	6.4	4.0
BRADFORD	74	44	18	4	4	4	62.9	25.7	5.7	5.7
BREVARD	768	504	170	32	11	51	70.3	23.7	4.5	1.5
BROWARD	8,026	4,724	1,454	368	221	1,259	69.8	21.5	5.4	3.3
CALHOUN	21	15	1	1	0	4	88.2	5.9	5.9	0.0
CHARLOTTE	81	51	23	3	1	3	65.4	29.5	3.8	1.3
CITRUS	40	16	15	3	2	4	44.4	41.7	8.3	5.6
CLAY	277	177	62	14	6	18	68.3	23.9	5.4	2.3
COLLIER	415	215	126	35	4	35	56.6	33.2	9.2	1.1
COLUMBIA	180	98	56	8	6	12	58.3	33.3	4.8	3.6
MIAMI-DADE	8,052	5,000	1,238	182	194	1,438	75.6	18.7	2.8	2.9
DESOTO	45	33	11	0	0	1	75.0	25.0	0.0	0.0
DIXIE	16	9	6	0	0	1	60.0	40.0	0.0	0.0
DUVAL	4,714	2,578	1,106	190	193	647	63.4	27.2	4.7	4.7
ESCAMBIA	1,323	890	324	52	20	37	69.2	25.2	4.0	1.6
FLAGLER	106	62	19	10	0	15	68.1	20.9	11.0	0.0
FRANKLIN	12	4	7	0	0	1	36.4	63.6	0.0	0.0
GADSDEN	431	316	49	6	4	56	84.3	13.1	1.6	1.1
GILCHRIST	8	4	3	1	0	0	50.0	37.5	12.5	0.0
GLADES	15	14	0	0	0	1	100.0	0.0	0.0	0.0
GULF	18	11	4	1	0	2	68.8	25.0	6.3	0.0
HAMILTON	65	32	22	3	5	3	51.6	35.5	4.8	8.1
HARDEE	27	16	5	1	3	2	64.0	20.0	4.0	12.0
HENDRY	68	44	10	3	3	8	73.3	16.7	5.0	5.0
HERNANDO	107	75	21	1	1	9	76.5	21.4	1.0	1.0
HIGHLANDS	172	116	34	9	1	12	72.5	21.3	5.6	0.6
HILLSBOROUGH	3,720	2,493	488	69	77	593	79.7	15.6	2.2	2.5
HOLMES	2	1	1	0	0	0	50.0	50.0	0.0	0.0
INDIAN RIVER	210	106	67	13	5	19	55.5	35.1	6.8	2.6
JACKSON	160	111	23	4	0	22	80.4	16.7	2.9	0.0
JEFFERSON	76	53	11	0	1	11	81.5	16.9	0.0	1.5
LAFAYETTE	10	7	2	0	0	1	77.8	22.2	0.0	0.0
LAKE	408	271	91	13	14	19	69.7	23.4	3.3	3.6
LEE	897	540	206	48	12	91	67.0	25.6	6.0	1.5
LEON	1,337	913	151	31	20	222	81.9	13.5	2.8	1.8
LEVY	60	46	11	1	0	2	79.3	19.0	1.7	0.0
LIBERTY	7	6	0	0	1	0	85.7	0.0	0.0	14.3
MADISON	115	92	8	1	1	13	90.2	7.8	1.0	1.0
MANATEE	529	319	150	47	6	7	61.1	28.7	9.0	1.1
MARION	676	393	202	30	20	31	60.9	31.3	4.7	3.1
MARTIN	120	82	22	8	1	7	72.6	19.5	7.1	0.9
MONROE	60	45	14	1	0	0	75.0	23.3	1.7	0.0
NASSAU	52	35	6	0	1	10	83.3	14.3	0.0	2.4
OKALOOSA	313	210	63	21	5	14	70.2	21.1	7.0	1.7
OKEECHOBEE	34	21	7	1	1	4	70.0	23.3	3.3	3.3
ORANGE	4,032	2,843	639	108	151	291	76.0	17.1	2.9	4.0
OSCEOLA	397	275	56	12	9	45	78.1	15.9	3.4	2.6
PALM BEACH	4,049	2,319	871	256	56	547	66.2	24.9	7.3	1.6
PASCO	299	189	60	8	6	36	71.9	22.8	3.0	2.3
PINELLAS	1,631	991	453	77	43	67	63.4	29.0	4.9	2.7
POLK	1,511	833	435	107	35	101	59.1	30.9	7.6	2.5
PUTNAM	236	121	49	6	8	52	65.8	26.6	3.3	4.3
SAINT JOHNS	155	99	23	5	2	26	76.7	17.8	3.9	1.6
SAINT LUCIE	838	507	244	27	24	36	63.2	30.4	3.4	3.0
SANTA ROSA	85	64	15	2	1	3	78.0	18.3	2.4	1.2
SARASOTA	293	212	57	7	8	9	74.6	20.1	2.5	2.8
SEMINOLE	657	424	117	37	33	46	69.4	19.1	6.1	5.4
SUMTER	99	70	17	3	2	7	76.1	18.5	3.3	2.2
SUWANNEE	73	39	25	6	1	2	54.9	35.2	8.5	1.4
TAYLOR	63	43	6	0	0	14	87.8	12.2	0.0	0.0
UNION	27	10	13	1	1	2	40.0	52.0	4.0	4.0
VOLUSIA	836	532	200	43	23	38	66.7	25.1	5.4	2.9
WAKULLA	43	36	5	0	1	1	85.7	11.9	0.0	2.4
WALTON	22	13	5	1	0	3	68.4	26.3	5.3	0.0
WASHINGTON	38	21	11	0	2	4	61.8	32.4	0.0	5.9

1. Starting in 2004, "trimester prenatal care began" is calculated as the time elapsed from the date of the last menstrual period to the date of the first prenatal care visit. Prior to 2004, these data were obtained by direct question that noted the trimester the mother began prenatal care. Consequently, these data are not comparable to data from prior years.

2. Births with unknown information as to when prenatal care began are excluded from the denominator.

TABLE B-7 (Cont.): RESIDENT LIVE BIRTHS TO OTHER MOTHERS BY TRIMESTER
 PRENATAL CARE BEGAN, BY COUNTY, FLORIDA, 2009

	TRIMESTER PRENATAL CARE BEGAN ¹						% CARE BEGAN BY TRIMESTER ²			
	TOTAL	1ST	2ND	3RD	NONE	UNK	1ST	2ND	3RD	NONE
FLORIDA	11,006	7,935	1,505	312	172	1,082	80.0	15.2	3.1	1.7
ALACHUA	254	196	36	9	2	11	80.7	14.8	3.7	0.8
BAKER	4	1	1	0	1	1	33.3	33.3	0.0	33.3
BAY	146	85	24	7	0	30	73.3	20.7	6.0	0.0
BRADFORD	3	1	2	0	0	0	33.3	66.7	0.0	0.0
BREVARD	271	210	41	8	1	11	80.8	15.8	3.1	0.4
BROWARD	1,284	902	134	28	25	195	82.8	12.3	2.6	2.3
CALHOUN	3	2	0	0	0	1	100.0	0.0	0.0	0.0
CHARLOTTE	52	36	11	4	0	1	70.6	21.6	7.8	0.0
CITRUS	27	17	6	1	0	3	70.8	25.0	4.2	0.0
CLAY	110	78	20	2	1	9	77.2	19.8	2.0	1.0
COLLIER	92	50	23	13	1	5	57.5	26.4	14.9	1.1
COLUMBIA	15	7	7	0	1	0	46.7	46.7	0.0	6.7
MIAMI-DADE	706	505	57	13	6	125	86.9	9.8	2.2	1.0
DESOTO	2	0	2	0	0	0	0.0	100.0	0.0	0.0
DIXIE	3	3	0	0	0	0	100.0	0.0	0.0	0.0
DUVAL	953	628	142	23	14	146	77.8	17.6	2.9	1.7
ESCAMBIA	218	175	32	7	0	4	81.8	15.0	3.3	0.0
FLAGLER	33	22	4	3	0	4	75.9	13.8	10.3	0.0
FRANKLIN	2	1	0	0	0	1	100.0	0.0	0.0	0.0
GADSDEN	8	6	0	0	0	2	100.0	0.0	0.0	0.0
GILCHRIST	5	5	0	0	0	0	100.0	0.0	0.0	0.0
GLADES	5	3	2	0	0	0	60.0	40.0	0.0	0.0
GULF	3	1	0	0	0	2	100.0	0.0	0.0	0.0
HAMILTON	3	1	2	0	0	0	33.3	66.7	0.0	0.0
HARDEE	14	10	1	2	0	1	76.9	7.7	15.4	0.0
HENDRY	19	12	1	1	1	4	80.0	6.7	6.7	6.7
HERNANDO	49	38	9	1	0	1	79.2	18.8	2.1	0.0
HIGHLANDS	37	24	8	2	0	3	70.6	23.5	5.9	0.0
HILLSBOROUGH	984	719	82	11	9	163	87.6	10.0	1.3	1.1
HOLMES	6	6	0	0	0	0	100.0	0.0	0.0	0.0
INDIAN RIVER	40	27	9	1	1	2	71.1	23.7	2.6	2.6
JACKSON	14	9	3	0	0	2	75.0	25.0	0.0	0.0
JEFFERSON	4	3	0	0	0	1	100.0	0.0	0.0	0.0
LAFAYETTE	0	0	0	0	0	0	0.0	0.0	0.0	0.0
LAKE	161	114	36	5	1	5	73.1	23.1	3.2	0.6
LEE	164	107	29	5	2	21	74.8	20.3	3.5	1.4
LEON	183	153	10	1	0	19	93.3	6.1	0.6	0.0
LEVY	11	7	4	0	0	0	63.6	36.4	0.0	0.0
LIBERTY	0	0	0	0	0	0	0.0	0.0	0.0	0.0
MADISON	4	3	1	0	0	0	75.0	25.0	0.0	0.0
MANATEE	120	89	21	7	1	2	75.4	17.8	5.9	0.8
MARION	132	79	32	10	2	9	64.2	26.0	8.1	1.6
MARTIN	205	110	72	11	3	9	56.1	36.7	5.6	1.5
MONROE	27	25	1	0	1	0	92.6	3.7	0.0	3.7
NASSAU	15	9	4	0	0	2	69.2	30.8	0.0	0.0
OKALOOSA	216	165	28	14	1	8	79.3	13.5	6.7	0.5
OKEECHOBEE	27	17	6	0	1	3	70.8	25.0	0.0	4.2
ORANGE	1,348	1,061	140	25	47	75	83.3	11.0	2.0	3.7
OSCEOLA	201	160	24	4	3	10	83.8	12.6	2.1	1.6
PALM BEACH	684	498	89	31	5	61	79.9	14.3	5.0	0.8
PASCO	228	163	32	4	4	25	80.3	15.8	2.0	2.0
PINELLAS	590	418	115	20	13	24	73.9	20.3	3.5	2.3
POLK	297	198	71	15	0	13	69.7	25.0	5.3	0.0
PUTNAM	13	6	3	0	1	3	60.0	30.0	0.0	10.0
SAINT JOHNS	104	77	10	2	1	14	85.6	11.1	2.2	1.1
SAINT LUCIE	125	93	18	6	2	6	78.2	15.1	5.0	1.7
SANTA ROSA	74	64	8	1	0	1	87.7	11.0	1.4	0.0
SARASOTA	130	101	20	2	0	7	82.1	16.3	1.6	0.0
SEMINOLE	315	247	29	4	14	21	84.0	9.9	1.4	4.8
SUMTER	9	6	2	0	1	0	66.7	22.2	0.0	11.1
SUWANNEE	7	2	5	0	0	0	28.6	71.4	0.0	0.0
TAYLOR	3	3	0	0	0	0	100.0	0.0	0.0	0.0
UNION	1	1	0	0	0	0	100.0	0.0	0.0	0.0
VOLUSIA	207	154	31	8	5	9	77.8	15.7	4.0	2.5
WAKULLA	2	2	0	0	0	0	100.0	0.0	0.0	0.0
WALTON	15	12	2	1	0	0	80.0	13.3	6.7	0.0
WASHINGTON	8	6	0	0	1	1	85.7	0.0	0.0	14.3

1. Starting in 2004, "trimester prenatal care began" is calculated as the time elapsed from the date of the last menstrual period to the date of the first prenatal care visit. Prior to 2004, these data were obtained by direct question that noted the trimester the mother began prenatal care. Consequently, these data are not comparable to data from prior years.

2. Births with unknown information as to when prenatal care began are excluded from the denominator.

TABLE B-8: RESIDENT LIVE BIRTHS TO UNWED MOTHERS, BY AGE OF MOTHER, BY COUNTY, FLORIDA, 2009

	TOTAL	<13	13	14	15	16	17	18	19	20-24	25-29	30-34	35-44	45+	UNK
FLORIDA	105,654	6	42	214	791	1,818	3,401	5,812	8,040	38,823	25,654	12,974	7,953	124	2
ALACHUA	1,311	0	0	4	13	36	43	71	109	534	313	132	56	0	0
BAKER	162	0	0	1	3	2	8	11	20	72	31	10	4	0	0
BAY	1,077	0	1	3	8	23	38	80	108	457	220	88	51	0	0
BRADFORD	176	0	0	0	2	1	5	8	21	73	36	17	13	0	0
BREVARD	2,251	0	0	4	14	35	62	122	160	904	542	242	165	1	0
BROWARD	9,504	0	4	20	53	123	231	419	582	3,243	2,381	1,452	982	13	1
CALHOUN	79	0	0	0	1	0	2	6	10	33	22	1	4	0	0
CHARLOTTE	505	0	0	0	6	11	21	29	43	187	120	58	30	0	0
CITRUS	558	0	0	0	3	10	22	33	63	228	119	46	34	0	0
CLAY	870	0	0	3	8	19	32	52	81	355	207	77	36	0	0
COLLIER	1,717	0	0	0	12	29	52	84	114	566	424	262	172	2	0
COLUMBIA	464	0	0	2	4	6	18	35	54	189	93	51	12	0	0
MIAMI-DADE	16,362	1	5	23	94	217	383	702	982	5,210	4,254	2,590	1,851	50	0
DESOTO	280	0	0	2	4	11	14	19	13	108	73	21	15	0	0
DIXIE	96	0	0	0	2	3	3	8	7	53	13	4	3	0	0
DUVAL	6,333	0	4	14	51	112	206	345	511	2,534	1,578	645	330	3	0
ESCAMBIA	2,180	0	0	4	22	56	101	143	211	889	450	195	107	2	0
FLAGLER	381	0	0	2	2	5	12	24	35	123	95	56	26	1	0
FRANKLIN	68	0	0	0	0	0	4	5	5	25	18	10	1	0	0
GADSDEN	480	1	1	2	5	11	21	30	37	191	119	47	15	0	0
GILCHRIST	85	0	0	0	0	1	2	6	8	35	19	9	5	0	0
GLADES	53	0	0	0	0	3	3	3	8	22	10	3	1	0	0
GULF	64	0	0	0	0	1	4	3	11	20	13	6	6	0	0
HAMILTON	122	0	0	0	1	6	4	11	8	56	27	8	1	0	0
HARDEE	266	0	0	1	8	10	16	15	23	101	55	22	15	0	0
HENDRY	403	0	0	0	5	17	15	33	30	152	76	50	25	0	0
HERNANDO	750	0	0	1	3	4	28	43	71	296	179	87	38	0	0
HIGHLANDS	533	0	0	2	2	8	17	25	50	226	120	61	22	0	0
HILLSBOROUGH	8,239	1	5	19	67	172	280	487	653	3,033	2,036	969	511	6	0
HOLMES	109	0	0	1	0	3	3	6	16	46	23	5	6	0	0
INDIAN RIVER	605	0	0	1	5	11	31	31	49	255	126	68	28	0	0
JACKSON	308	0	1	1	3	2	15	24	21	140	74	19	8	0	0
JEFFERSON	88	0	0	0	1	2	1	6	9	41	19	5	4	0	0
LAFAYETTE	34	0	0	0	0	3	0	1	3	15	10	1	1	0	0
LAKE	1,398	0	1	4	13	30	51	100	138	568	309	124	57	3	0
LEE	3,206	0	1	7	20	62	112	179	248	1,150	826	391	209	1	0
LEON	1,466	0	2	5	6	22	44	72	106	606	377	156	68	2	0
LEVY	214	0	0	1	0	4	13	13	32	79	43	19	10	0	0
LIBERTY	42	0	0	0	0	0	0	3	7	16	12	3	1	0	0
MADISON	142	0	1	0	0	2	2	16	14	63	26	13	5	0	0
MANATEE	1,843	0	0	6	21	40	78	133	155	671	409	204	122	4	0
MARION	1,959	0	1	4	14	40	91	134	171	775	430	188	110	1	0
MARTIN	540	0	1	1	5	8	24	36	34	177	144	70	39	1	0
MONROE	325	0	0	0	1	0	7	17	21	101	93	48	37	0	0
NASSAU	302	0	0	1	4	4	8	32	32	116	56	35	14	0	0
OKALOOSA	1,003	0	0	2	4	9	30	66	68	431	231	102	59	1	0
OKEECHOBEE	340	0	0	1	5	7	22	23	36	119	69	33	25	0	0
ORANGE	7,185	0	4	18	61	141	247	364	525	2,615	1,747	929	530	4	0
OSCEOLA	1,905	0	1	6	14	27	53	114	156	735	432	237	130	0	0
PALM BEACH	6,481	2	3	10	50	102	174	316	455	2,182	1,670	885	621	11	0
PASCO	1,959	0	0	1	12	30	74	113	161	751	485	207	123	2	0
PINELLAS	4,488	0	1	5	31	77	159	255	317	1,628	1,138	557	315	5	0
POLK	4,033	1	2	9	39	74	154	304	389	1,573	871	398	215	3	1
PUTNAM	574	0	1	1	4	20	28	39	52	221	135	43	30	0	0
SAINT JOHNS	558	0	0	1	11	11	24	28	49	206	130	56	42	0	0
SAINT LUCIE	1,535	0	0	3	12	26	48	93	126	615	352	164	96	0	0
SANTA ROSA	615	0	1	2	2	19	25	36	54	270	109	58	38	1	0
SARASOTA	1,302	0	0	4	12	18	36	72	87	452	334	159	126	2	0
SEMINOLE	1,764	0	0	3	13	28	64	83	133	684	436	203	116	1	0
SUMTER	263	0	0	0	4	2	12	25	34	108	52	17	9	0	0
SUWANNEE	257	0	1	0	5	5	9	18	22	103	58	20	16	0	0
TAYLOR	179	0	0	1	3	4	10	12	16	75	39	13	6	0	0
UNION	79	0	0	1	1	3	2	8	6	29	16	9	4	0	0
VOLUSIA	2,611	0	0	7	18	38	81	146	220	1,044	622	271	161	3	0
WAKULLA	121	0	0	0	0	3	6	12	11	49	23	12	5	0	0
WALTON	269	0	0	0	2	5	9	17	21	116	55	22	22	0	0
WASHINGTON	126	0	0	0	1	4	6	10	14	62	14	6	8	1	0

TABLE B-8 (Cont.): RESIDENT LIVE BIRTHS TO UNWED WHITE MOTHERS, BY AGE OF MOTHER, BY COUNTY, FLORIDA, 2009

	TOTAL	<13	13	14	15	16	17	18	19	20-24	25-29	30-34	35-44	45+	UNK
FLORIDA	66,080	1	14	100	414	1,005	2,008	3,476	4,880	23,902	16,267	8,474	5,440	99	0
ALACHUA	515	0	0	0	3	4	13	25	39	213	130	57	31	0	0
BAKER	132	0	0	1	2	1	8	9	17	58	26	6	4	0	0
BAY	758	0	0	2	3	16	30	62	76	326	149	58	36	0	0
BRADFORD	112	0	0	0	2	1	2	6	15	44	25	9	8	0	0
BREVARD	1,621	0	0	1	7	19	40	86	115	653	391	177	131	1	0
BROWARD	3,908	0	1	6	13	35	78	155	216	1,280	1,007	646	463	8	0
CALHOUN	62	0	0	0	1	0	1	5	9	28	14	1	3	0	0
CHARLOTTE	430	0	0	0	5	9	19	25	34	161	107	44	26	0	0
CITRUS	515	0	0	0	2	7	22	32	54	209	115	44	30	0	0
CLAY	668	0	0	2	5	17	26	39	58	281	158	52	30	0	0
COLLIER	1,457	0	0	0	11	24	46	75	98	484	366	219	132	2	0
COLUMBIA	313	0	0	1	3	5	10	26	38	126	66	29	9	0	0
MIAMI-DADE	10,332	0	2	7	47	98	198	367	562	3,045	2,730	1,819	1,415	42	0
DESDOTO	239	0	0	2	4	10	12	15	9	92	62	20	13	0	0
DIXIE	80	0	0	0	2	3	2	6	6	43	13	3	2	0	0
DUVAL	2,643	0	0	2	14	37	78	128	192	1,045	692	293	160	2	0
ESCAMBIA	1,031	0	0	0	12	24	43	58	105	422	206	99	60	2	0
FLAGLER	290	0	0	0	1	5	8	16	28	88	75	44	24	1	0
FRANKLIN	55	0	0	0	0	0	3	4	5	17	16	9	1	0	0
GADSDEN	123	0	0	1	2	2	5	10	6	53	22	17	5	0	0
GILCHRIST	74	0	0	0	0	1	2	6	7	29	15	9	5	0	0
GLADES	39	0	0	0	0	3	1	3	7	17	6	2	0	0	0
GULF	51	0	0	0	0	1	4	2	10	16	9	5	4	0	0
HAMILTON	61	0	0	0	0	4	0	4	6	27	15	5	0	0	0
HARDEE	235	0	0	1	7	9	14	14	19	89	51	18	13	0	0
HENDRY	336	0	0	0	1	14	11	27	28	129	62	43	21	0	0
HERNANDO	658	0	0	1	3	4	25	38	60	264	154	74	35	0	0
HIGHLANDS	383	0	0	1	1	7	13	22	38	162	77	47	15	0	0
HILLSBOROUGH	5,191	0	1	8	31	97	147	288	410	1,872	1,324	658	351	4	0
HOLMES	107	0	0	1	0	3	3	6	16	44	23	5	6	0	0
INDIAN RIVER	438	0	0	1	2	9	23	21	32	183	96	52	19	0	0
JACKSON	159	0	0	0	1	1	7	10	13	82	32	10	3	0	0
JEFFERSON	22	0	0	0	1	0	1	2	4	10	1	2	1	0	0
LAFAYETTE	25	0	0	0	0	3	0	0	1	14	5	1	1	0	0
LAKE	1,061	0	1	4	9	21	36	73	99	434	247	89	45	3	0
LEE	2,529	0	1	4	14	45	86	140	185	896	663	323	171	1	0
LEON	425	0	0	1	1	2	11	14	26	179	112	49	28	2	0
LEVY	165	0	0	0	0	2	11	9	29	61	27	16	10	0	0
LIBERTY	36	0	0	0	0	0	0	2	6	13	11	3	1	0	0
MADISON	47	0	0	0	0	0	1	6	6	21	9	4	0	0	0
MANATEE	1,393	0	0	5	19	31	54	88	109	499	322	158	105	3	0
MARION	1,385	0	1	3	8	24	65	85	126	550	306	135	81	1	0
MARTIN	326	0	0	1	1	5	9	20	19	109	92	46	23	1	0
MONROE	280	0	0	0	1	0	5	15	17	90	78	44	30	0	0
NASSAU	261	0	0	0	3	4	8	28	27	99	48	32	12	0	0
OKALOOSA	731	0	0	1	3	5	20	50	47	321	166	77	40	1	0
OKEECHOBEE	297	0	0	1	4	5	22	19	30	101	64	30	21	0	0
ORANGE	4,063	0	2	7	29	70	141	191	278	1,476	996	560	310	3	0
OSCEOLA	1,605	0	1	5	9	21	43	96	134	628	377	192	99	0	0
PALM BEACH	3,668	0	1	7	21	57	104	156	236	1,179	959	542	399	7	0
PASCO	1,736	0	0	1	9	29	70	101	148	665	431	178	103	1	0
PINELLAS	2,875	0	0	4	16	36	77	150	169	1,013	791	392	222	5	0
POLK	2,783	1	1	5	33	50	113	215	272	1,103	578	259	151	2	0
PUTNAM	369	0	1	0	1	13	15	24	35	148	87	29	16	0	0
SAINT JOHNS	428	0	0	1	4	8	18	21	30	170	97	41	38	0	0
SAINT LUCIE	913	0	0	2	2	16	23	49	62	367	231	103	58	0	0
SANTA ROSA	545	0	1	2	2	17	23	31	52	236	96	50	34	1	0
SARASOTA	1,017	0	0	2	11	6	27	56	69	344	264	126	110	2	0
SEMINOLE	1,221	0	0	1	6	13	40	55	89	468	305	148	95	1	0
SUMTER	174	0	0	0	1	1	6	12	26	72	38	11	7	0	0
SUWANNEE	193	0	0	0	5	5	4	14	15	81	43	14	12	0	0
TAYLOR	116	0	0	0	2	4	7	9	11	51	25	6	1	0	0
UNION	59	0	0	1	1	2	2	7	6	18	12	7	3	0	0
VOLUSIA	1,858	0	0	4	10	29	53	116	153	708	463	197	123	2	0
WAKULLA	91	0	0	0	0	3	5	8	7	35	20	9	4	0	0
WALTON	243	0	0	0	2	5	9	15	19	103	51	19	20	0	0
WASHINGTON	93	0	0	0	1	3	4	7	9	46	12	3	7	1	0

TABLE B-8 (Cont.): RESIDENT LIVE BIRTHS TO UNWED BLACK MOTHERS, BY AGE OF MOTHER, BY COUNTY, FLORIDA, 2009

	TOTAL	<13	13	14	15	16	17	18	19	20-24	25-29	30-34	35-44	45+	UNK
FLORIDA	36,133	5	24	104	351	756	1,290	2,164	2,892	13,755	8,539	4,037	2,191	24	1
ALACHUA	758	0	0	3	10	30	29	44	66	311	173	69	23	0	0
BAKER	29	0	0	0	1	0	0	2	3	14	5	4	0	0	0
BAY	228	0	0	1	3	6	6	15	20	99	49	22	7	0	0
BRADFORD	63	0	0	0	0	0	3	2	6	29	11	7	5	0	0
BREVARD	548	0	0	3	6	15	20	30	39	224	125	53	33	0	0
BROWARD	5,112	0	3	13	39	81	145	245	336	1,832	1,240	713	460	5	0
CALHOUN	16	0	0	0	0	0	1	1	1	5	7	0	1	0	0
CHARLOTTE	51	0	0	0	1	2	2	2	5	20	7	9	3	0	0
CITRUS	32	0	0	0	1	2	0	0	8	15	3	2	1	0	0
CLAY	173	0	0	1	3	2	6	10	16	63	44	24	4	0	0
COLLIER	224	0	0	0	1	5	5	9	11	69	49	41	34	0	0
COLUMBIA	147	0	0	1	1	1	8	9	16	60	27	21	3	0	0
MIAMI-DADE	5,840	1	3	16	46	116	180	330	409	2,107	1,475	733	416	8	0
DESOTO	40	0	0	0	0	1	2	3	4	16	11	1	2	0	0
DIXIE	14	0	0	0	0	0	1	2	1	10	0	0	0	0	0
DUVAL	3,417	0	4	12	36	71	121	204	290	1,386	816	324	152	1	0
ESCAMBIA	1,072	0	0	3	10	32	52	79	101	436	228	88	43	0	0
FLAGLER	77	0	0	1	1	0	3	7	6	30	15	12	2	0	0
FRANKLIN	10	0	0	0	0	0	1	1	0	5	2	1	0	0	0
GADSDEN	352	1	1	1	3	9	15	20	31	135	96	30	10	0	0
GILCHRIST	7	0	0	0	0	0	0	0	1	5	1	0	0	0	0
GLADES	12	0	0	0	0	0	1	0	1	5	4	1	0	0	0
GULF	10	0	0	0	0	0	0	1	0	2	4	1	2	0	0
HAMILTON	58	0	0	0	1	2	3	6	2	28	12	3	1	0	0
HARDEE	24	0	0	0	1	0	2	1	2	10	3	3	2	0	0
HENDRY	56	0	0	0	3	2	4	6	2	20	12	6	1	0	0
HERNANDO	71	0	0	0	0	0	3	4	8	24	20	9	3	0	0
HIGHLANDS	131	0	0	1	1	1	2	0	10	58	41	11	6	0	0
HILLSBOROUGH	2,816	1	4	10	35	71	119	194	222	1,086	652	288	133	1	0
HOLMES	0	0	0	0	0	0	0	0	0	0	0	0	0	0	0
INDIAN RIVER	155	0	0	0	3	2	8	8	16	67	28	14	9	0	0
JACKSON	139	0	1	1	1	1	8	12	6	55	42	7	5	0	0
JEFFERSON	64	0	0	0	0	2	0	4	5	30	17	3	3	0	0
LAFAYETTE	9	0	0	0	0	0	0	1	2	1	5	0	0	0	0
LAKE	281	0	0	0	3	8	13	21	31	115	52	26	12	0	0
LEE	632	0	0	3	6	17	25	37	55	244	148	61	36	0	0
LEON	1,004	0	2	4	5	18	33	55	78	409	259	107	34	0	0
LEVY	46	0	0	1	0	2	2	4	3	16	15	3	0	0	0
LIBERTY	6	0	0	0	0	0	0	1	1	3	1	0	0	0	0
MADISON	93	0	1	0	0	2	1	10	8	41	17	9	4	0	0
MANATEE	417	0	0	1	2	7	23	41	45	160	78	44	15	1	0
MARION	518	0	0	1	5	16	25	44	39	199	117	49	23	0	0
MARTIN	93	0	0	0	1	2	8	9	11	35	15	6	6	0	0
MONROE	36	0	0	0	0	0	2	2	4	9	10	2	7	0	0
NASSAU	33	0	0	0	0	0	0	4	5	13	6	3	2	0	0
OKALOOSA	203	0	0	0	0	4	6	15	14	84	49	20	11	0	0
OKEECHOBEE	29	0	0	0	0	2	0	2	4	12	4	2	3	0	0
ORANGE	2,780	0	1	11	29	66	96	159	224	1,033	663	319	178	1	0
OSCEOLA	242	0	0	1	5	4	8	13	20	86	44	36	25	0	0
PALM BEACH	2,654	2	2	3	29	43	68	157	212	944	667	320	203	4	0
PASCO	158	0	0	0	1	0	3	11	10	61	43	17	11	1	0
PINELLAS	1,381	0	1	0	14	37	74	92	137	530	288	135	73	0	0
POLK	1,141	0	0	3	6	21	38	77	102	442	269	126	55	1	1
PUTNAM	199	0	0	1	3	7	13	14	16	71	46	14	14	0	0
SAINT JOHNS	110	0	0	0	7	3	4	7	18	28	27	13	3	0	0
SAINT LUCIE	573	0	0	1	10	10	24	39	61	232	107	56	33	0	0
SANTA ROSA	44	0	0	0	0	1	2	2	2	20	9	5	3	0	0
SARASOTA	236	0	0	2	1	9	9	14	15	92	56	26	12	0	0
SEMINOLE	484	0	0	2	6	14	21	26	41	190	120	47	17	0	0
SUMTER	82	0	0	0	3	1	6	13	8	32	14	3	2	0	0
SUWANNEE	61	0	1	0	0	0	4	4	7	21	14	6	4	0	0
TAYLOR	62	0	0	1	1	0	3	3	5	24	14	7	4	0	0
UNION	20	0	0	0	0	1	0	1	0	11	4	2	1	0	0
VOLUSIA	665	0	0	2	6	6	26	25	58	300	144	65	32	1	0
WAKULLA	29	0	0	0	0	0	1	4	4	13	3	3	1	0	0
WALTON	18	0	0	0	0	0	0	2	1	10	2	2	1	0	0
WASHINGTON	31	0	0	0	0	1	2	3	5	14	2	3	1	0	0

TABLE B-8 (Cont.): RESIDENT LIVE BIRTHS TO UNWED OTHER MOTHERS, BY AGE OF MOTHER, BY COUNTY, FLORIDA, 2009

	TOTAL	<13	13	14	15	16	17	18	19	20-24	25-29	30-34	35-44	45+	UNK
FLORIDA	3,133	0	4	9	24	50	96	163	242	1,058	772	416	298	1	0
ALACHUA	38	0	0	1	0	2	1	2	4	10	10	6	2	0	0
BAKER	1	0	0	0	0	1	0	0	0	0	0	0	0	0	0
BAY	54	0	1	0	1	1	2	3	7	19	12	6	2	0	0
BRADFORD	1	0	0	0	0	0	0	0	0	0	0	1	0	0	0
BREVARD	80	0	0	0	1	1	2	6	6	26	26	12	0	0	0
BROWARD	293	0	0	0	1	2	4	13	17	74	78	58	46	0	0
CALHOUN	1	0	0	0	0	0	0	0	0	0	1	0	0	0	0
CHARLOTTE	23	0	0	0	0	0	0	2	4	6	5	5	1	0	0
CITRUS	11	0	0	0	0	1	0	1	1	4	1	0	3	0	0
CLAY	28	0	0	0	0	0	0	3	6	11	5	1	2	0	0
COLLIER	36	0	0	0	0	0	1	0	5	13	9	2	6	0	0
COLUMBIA	4	0	0	0	0	0	0	0	0	3	0	1	0	0	0
MIAMI-DADE	176	0	0	0	1	2	5	5	11	51	46	35	20	0	0
DESOTO	1	0	0	0	0	0	0	1	0	0	0	0	0	0	0
DIXIE	2	0	0	0	0	0	0	0	0	0	0	1	1	0	0
DUVAL	259	0	0	0	1	3	5	12	28	98	69	26	17	0	0
ESCAMBIA	77	0	0	1	0	0	6	6	5	31	16	8	4	0	0
FLAGLER	12	0	0	1	0	0	1	1	1	3	5	0	0	0	0
FRANKLIN	1	0	0	0	0	0	0	0	0	1	0	0	0	0	0
GADSDEN	5	0	0	0	0	0	1	0	0	3	1	0	0	0	0
GILCHRIST	4	0	0	0	0	0	0	0	0	1	3	0	0	0	0
GLADES	2	0	0	0	0	0	1	0	0	0	0	0	1	0	0
GULF	2	0	0	0	0	0	0	0	1	1	0	0	0	0	0
HAMILTON	3	0	0	0	0	0	1	1	0	1	0	0	0	0	0
HARDEE	7	0	0	0	0	1	0	0	2	2	1	1	0	0	0
HENDRY	11	0	0	0	1	1	0	0	0	3	2	1	3	0	0
HERNANDO	18	0	0	0	0	0	0	1	2	6	5	4	0	0	0
HIGHLANDS	19	0	0	0	0	0	2	3	2	6	2	3	1	0	0
HILLSBOROUGH	220	0	0	1	1	4	13	5	21	71	57	21	25	1	0
HOLMES	2	0	0	0	0	0	0	0	0	2	0	0	0	0	0
INDIAN RIVER	12	0	0	0	0	0	0	2	1	5	2	2	0	0	0
JACKSON	10	0	0	0	1	0	0	2	2	3	0	2	0	0	0
JEFFERSON	2	0	0	0	0	0	0	0	0	1	1	0	0	0	0
LAFAYETTE	0	0	0	0	0	0	0	0	0	0	0	0	0	0	0
LAKE	56	0	0	0	1	1	2	6	8	19	10	9	0	0	0
LEE	44	0	0	0	0	0	1	2	7	10	15	7	2	0	0
LEON	31	0	0	0	0	2	0	2	1	16	5	0	5	0	0
LEVY	3	0	0	0	0	0	0	0	0	2	1	0	0	0	0
LIBERTY	0	0	0	0	0	0	0	0	0	0	0	0	0	0	0
MADISON	2	0	0	0	0	0	0	0	0	1	0	0	1	0	0
MANATEE	33	0	0	0	0	2	1	4	1	12	9	2	2	0	0
MARION	56	0	0	0	1	0	1	5	6	26	7	4	6	0	0
MARTIN	121	0	1	0	3	1	7	7	4	33	37	18	10	0	0
MONROE	9	0	0	0	0	0	0	0	0	2	5	2	0	0	0
NASSAU	8	0	0	1	1	0	0	0	0	4	2	0	0	0	0
OKALOOSA	68	0	0	1	1	0	4	1	7	25	16	5	8	0	0
OKEECHOBEE	14	0	0	0	1	0	0	2	2	6	1	1	1	0	0
ORANGE	342	0	1	0	3	5	10	14	23	106	88	50	42	0	0
OSCEOLA	57	0	0	0	0	2	2	5	2	20	11	9	6	0	0
PALM BEACH	153	0	0	0	0	2	2	3	7	55	43	22	19	0	0
PASCO	61	0	0	0	2	1	1	1	2	23	11	11	9	0	0
PINELLAS	230	0	0	1	1	4	8	13	10	84	59	30	20	0	0
POLK	108	0	1	1	0	3	3	12	15	27	24	13	9	0	0
PUTNAM	6	0	0	0	0	0	0	1	1	2	2	0	0	0	0
SAINT JOHNS	20	0	0	0	0	0	2	0	1	8	6	2	1	0	0
SAINT LUCIE	48	0	0	0	0	0	1	4	3	16	14	5	5	0	0
SANTA ROSA	26	0	0	0	0	1	0	3	0	14	4	3	1	0	0
SARASOTA	49	0	0	0	0	3	0	2	3	16	14	7	4	0	0
SEMINOLE	59	0	0	0	1	1	3	2	3	26	11	8	4	0	0
SUMTER	6	0	0	0	0	0	0	0	0	4	0	2	0	0	0
SUWANNEE	3	0	0	0	0	0	1	0	0	1	1	0	0	0	0
TAYLOR	1	0	0	0	0	0	0	0	0	0	0	0	1	0	0
UNION	0	0	0	0	0	0	0	0	0	0	0	0	0	0	0
VOLUSIA	86	0	0	1	1	3	2	5	8	36	15	9	6	0	0
WAKULLA	1	0	0	0	0	0	0	0	0	1	0	0	0	0	0
WALTON	8	0	0	0	0	0	0	0	1	3	2	1	1	0	0
WASHINGTON	1	0	0	0	0	0	0	0	0	1	0	0	0	0	0

TABLE B-9: RESIDENT LIVE BIRTHS BY MONTH, BY COUNTY, FLORIDA, 2009

	TOTAL	JAN	FEB	MAR	APR	MAY	JUN	JUL	AUG	SEP	OCT	NOV	DEC
FLORIDA	221,391	18,328	17,302	18,802	17,762	17,889	17,785	19,118	19,184	19,425	18,944	17,693	19,159
ALACHUA	2,925	235	227	267	229	226	264	246	236	234	256	241	264
BAKER	378	32	29	35	35	34	22	26	30	38	32	31	34
BAY	2,310	186	169	186	180	185	229	215	216	182	206	177	179
BRADFORD	322	24	27	24	19	28	28	32	28	28	30	17	37
BREVARD	5,172	401	379	462	425	429	413	456	436	469	418	418	466
BROWARD	21,394	1,714	1,732	1,866	1,681	1,688	1,748	1,834	1,848	1,839	1,862	1,717	1,865
CALHOUN	176	19	24	12	13	14	14	12	15	16	11	10	16
CHARLOTTE	991	69	82	76	83	84	75	76	96	85	92	84	89
CITRUS	1,091	88	86	92	72	80	90	94	102	90	98	100	99
CLAY	2,208	161	181	160	180	179	171	177	211	191	209	193	195
COLLIER	3,537	288	283	289	300	300	263	285	288	333	285	291	332
COLUMBIA	860	63	73	70	72	60	73	75	76	86	68	72	72
MIAMI-DADE	32,341	2,660	2,527	2,755	2,523	2,631	2,577	2,818	2,732	2,837	2,756	2,688	2,837
DESOTO	452	33	33	41	34	31	36	31	32	36	41	57	47
DIXIE	197	17	9	17	14	21	18	24	15	21	15	14	12
DUVAL	13,176	1,090	1,050	1,113	1,029	1,136	1,073	1,194	1,123	1,151	1,126	1,022	1,069
ESCAMBIA	4,166	320	270	369	337	364	342	368	409	362	349	335	341
FLAGLER	869	80	69	72	72	61	69	84	74	70	72	67	79
FRANKLIN	128	10	14	9	14	11	6	11	8	12	9	10	14
GADSDEN	692	53	58	61	53	65	55	55	68	57	57	44	66
GILCHRIST	188	15	20	11	13	19	12	12	13	19	23	14	17
GLADES	88	7	5	10	9	7	5	4	8	8	10	9	6
GULF	138	21	6	14	7	6	11	9	12	14	14	11	13
HAMILTON	185	13	17	18	14	15	12	18	18	20	10	14	16
HARDEE	485	40	44	42	42	36	37	53	43	32	43	41	32
HENDRY	667	63	49	71	52	42	45	51	61	50	53	73	57
HERNANDO	1,613	130	134	122	135	131	141	128	133	151	135	120	153
HIGHLANDS	1,011	88	62	89	87	80	77	76	98	76	93	98	87
HILLSBOROUGH	16,729	1,399	1,332	1,420	1,338	1,354	1,372	1,436	1,446	1,451	1,404	1,307	1,470
HOLMES	225	18	12	15	19	23	23	25	17	16	19	19	19
INDIAN RIVER	1,278	109	105	109	110	102	110	104	106	110	117	84	112
JACKSON	548	42	42	53	38	46	42	37	61	53	43	44	47
JEFFERSON	155	13	9	15	16	15	11	12	15	12	15	10	12
LAFAYETTE	77	6	9	3	4	14	8	4	10	2	8	3	6
LAKE	3,121	252	220	273	270	224	251	269	280	268	301	248	265
LEE	6,596	519	481	554	520	523	514	607	602	595	585	539	557
LEON	3,122	294	249	260	246	231	259	262	269	275	252	230	295
LEVY	445	35	36	26	42	29	37	37	45	43	35	37	43
LIBERTY	86	6	9	6	4	9	5	11	12	6	8	5	5
MADISON	229	24	14	23	20	24	15	17	18	13	26	14	21
MANATEE	3,658	312	298	340	291	270	317	305	331	330	306	272	286
MARION	3,584	305	261	300	277	292	296	316	309	333	298	283	314
MARTIN	1,163	100	81	100	104	91	87	95	104	112	95	108	86
MONROE	707	66	54	55	63	49	66	63	42	70	59	63	57
NASSAU	778	49	53	52	82	74	49	72	82	75	59	61	70
OKALOOSA	2,651	211	202	230	198	238	214	257	244	228	234	177	218
OKEECHOBEE	564	61	48	38	55	34	51	49	44	55	40	40	49
ORANGE	15,393	1,317	1,193	1,273	1,287	1,262	1,218	1,339	1,346	1,292	1,274	1,256	1,336
OSCEOLA	3,863	334	297	375	321	284	299	367	330	325	334	267	330
PALM BEACH	14,177	1,201	1,158	1,175	1,081	1,111	1,114	1,162	1,226	1,267	1,227	1,163	1,292
PASCO	4,945	394	409	438	391	393	399	416	421	433	437	402	412
PINELLAS	8,772	721	666	750	697	707	715	719	748	834	784	702	729
POLK	7,735	658	567	648	636	640	607	686	661	672	682	606	672
PUTNAM	971	91	75	87	84	85	59	85	92	88	72	72	81
SAINT JOHNS	1,791	154	149	148	159	163	142	163	137	140	146	130	160
SAINT LUCIE	3,142	262	231	260	237	275	245	277	272	292	287	264	240
SANTA ROSA	1,835	147	152	136	151	162	157	177	150	155	155	136	157
SARASOTA	2,931	240	233	242	247	218	232	270	242	261	259	229	258
SEMINOLE	4,470	388	383	357	373	355	353	375	424	391	377	332	362
SUMTER	483	46	38	37	48	46	39	43	35	46	42	32	31
SUWANNEE	484	34	41	43	42	38	41	32	52	40	45	31	45
TAYLOR	285	27	12	22	32	20	20	22	29	26	20	26	29
UNION	155	10	8	16	11	15	9	21	9	15	15	16	10
VOLUSIA	5,099	420	416	442	433	413	378	409	434	462	405	426	461
WAKULLA	317	27	20	27	28	23	31	37	30	25	26	24	19
WALTON	659	70	45	64	53	48	54	46	46	72	55	41	65
WASHINGTON	263	28	23	28	20	14	20	20	24	19	19	17	31

TABLE B-10: RESIDENT LIVE BIRTHS BY MOTHER'S EDUCATION*, BY COUNTY, FLORIDA, 2009

	HIGHEST LEVEL/DEGREE OF EDUCATION COMPLETED									
	TOTAL	< 9TH GRADE	9TH-12TH NO DIPLOMA	HIGH SCHOOL DIPLOMA	SOME COLLEGE	ASSOCIATE DEGREE	BACHELOR DEGREE	MASTER DEGREE	DOCTORATE	UNK
FLORIDA	221,391	10,316	30,975	69,574	41,414	19,543	33,630	11,540	3,215	1,184
ALACHUA	2,925	54	348	653	555	248	561	316	187	3
BAKER	378	16	68	154	60	39	29	10	1	1
BAY	2,310	73	392	746	492	182	277	105	19	24
BRADFORD	322	6	62	139	59	34	16	5	1	0
BREVARD	5,172	130	624	1,315	1,295	617	826	284	68	13
BROWARD	21,394	498	2,461	6,238	4,319	1,960	3,775	1,532	415	196
CALHOUN	176	4	20	75	34	17	16	6	0	4
CHARLOTTE	991	14	154	345	225	96	111	39	5	2
CITRUS	1,091	19	200	440	246	73	79	26	6	2
CLAY	2,208	51	265	738	514	196	327	88	19	10
COLLIER	3,537	542	512	1,141	488	231	418	159	43	3
COLUMBIA	860	32	168	354	150	69	63	19	4	1
MIAMI-DADE	32,341	1,322	3,748	11,544	5,239	3,049	4,877	1,719	562	281
DESOTO	452	116	116	128	57	19	10	3	1	2
DIXIE	197	10	40	95	31	10	9	2	0	0
DUVAL	13,176	471	1,766	4,269	2,737	1,010	2,038	627	224	34
ESCAMBIA	4,166	73	743	1,754	519	379	518	134	42	4
FLAGLER	869	5	90	256	228	105	136	34	10	5
FRANKLIN	128	10	23	53	25	5	8	1	0	3
GADSDEN	692	57	166	232	132	27	47	18	4	9
GILCHRIST	188	10	32	60	43	24	16	0	3	0
GLADES	88	10	21	34	7	8	8	0	0	0
GULF	138	5	16	53	41	10	7	4	1	1
HAMILTON	185	34	40	78	21	3	6	2	0	1
HARDEE	485	146	106	132	44	27	23	6	0	1
HENDRY	667	135	148	234	57	35	36	7	1	14
HERNANDO	1,613	12	182	672	364	172	147	44	6	14
HIGHLANDS	1,011	80	209	339	196	74	85	22	5	1
HILLSBOROUGH	16,729	938	2,587	4,561	3,221	1,197	2,808	1,007	304	106
HOLMES	225	8	54	95	39	7	15	6	1	0
INDIAN RIVER	1,278	63	228	447	234	97	150	46	13	0
JACKSON	548	22	92	210	132	24	42	23	1	2
JEFFERSON	155	3	27	55	34	9	20	3	2	2
LAFAYETTE	77	8	10	26	15	6	12	0	0	0
LAKE	3,121	107	532	991	607	302	393	152	32	5
LEE	6,596	504	1,043	2,226	930	671	839	248	47	88
LEON	3,122	46	308	632	726	212	780	274	92	52
LEVY	445	23	92	171	76	45	25	11	1	1
LIBERTY	86	4	10	47	10	5	8	2	0	0
MADISON	229	7	56	86	45	12	14	6	0	3
MANATEE	3,658	403	786	1,024	534	272	448	154	35	2
MARION	3,584	119	684	1,263	822	265	316	78	32	5
MARTIN	1,163	214	143	291	152	89	182	53	26	13
MONROE	707	38	80	231	144	72	102	35	5	0
NASSAU	778	26	108	265	155	77	104	32	9	2
OKALOOSA	2,651	53	281	854	721	229	371	108	31	3
OKEECHOBEE	564	82	155	168	85	37	25	7	1	4
ORANGE	15,393	518	2,079	4,490	2,702	1,548	2,818	1,001	220	17
OSCEOLA	3,863	108	506	1,392	737	411	561	123	19	6
PALM BEACH	14,177	1,268	2,002	3,651	2,446	1,174	2,396	860	271	109
PASCO	4,945	132	691	1,315	1,070	467	895	305	50	20
PINELLAS	8,772	274	981	3,064	1,615	894	1,376	424	119	25
POLK	7,735	667	1,656	2,405	1,391	535	831	200	42	8
PUTNAM	971	73	219	379	170	63	49	13	2	3
SAINT JOHNS	1,791	31	173	361	359	142	502	173	48	2
SAINT LUCIE	3,142	187	432	1,283	470	313	316	113	17	11
SANTA ROSA	1,835	15	197	653	324	199	327	94	24	2
SARASOTA	2,931	73	356	944	655	244	475	150	31	3
SEMINOLE	4,470	78	429	1,101	942	463	982	398	68	9
SUMTER	483	27	100	203	93	27	26	4	1	2
SUWANNEE	484	47	97	198	70	33	30	8	0	1
TAYLOR	285	5	53	143	49	11	17	2	0	5
UNION	155	5	27	65	32	13	9	3	1	0
VOLUSIA	5,099	162	759	1,546	1,158	573	682	158	38	23
WAKULLA	317	3	49	103	61	28	59	10	0	4
WALTON	659	22	94	214	140	45	110	27	4	3
WASHINGTON	263	11	60	109	42	5	24	9	0	3

* Starting in 2004, "mother's education" is measured according to the highest level/degree completed, instead of highest grade completed.

TABLE B-10 (Cont.): WHITE RESIDENT LIVE BIRTHS BY MOTHER'S EDUCATION*, BY COUNTY, FLORIDA, 2009

	TOTAL	HIGHEST LEVEL/DEGREE OF EDUCATION COMPLETED								
		< 9TH GRADE	9TH-12TH NO DIPLOMA	HIGH SCHOOL DIPLOMA	SOME COLLEGE	ASSOCIATE DEGREE	BACHELOR DEGREE	MASTER DEGREE	DOCTORATE	UNK
FLORIDA	159,186	8,889	19,712	46,495	29,323	14,945	27,360	9,158	2,540	764
ALACHUA	1,714	40	108	281	303	187	423	231	139	2
BAKER	338	16	56	140	51	37	27	10	0	1
BAY	1,788	58	287	553	388	142	240	91	14	15
BRADFORD	245	6	44	95	49	32	13	5	1	0
BREVARD	4,129	109	435	1,015	1,038	512	723	234	53	10
BROWARD	11,727	330	930	2,953	2,317	1,110	2,643	1,053	311	80
CALHOUN	152	4	17	63	29	16	14	5	0	4
CHARLOTTE	856	11	136	295	191	84	100	35	3	1
CITRUS	1,024	18	183	413	230	72	76	25	5	2
CLAY	1,819	43	213	601	417	167	279	74	16	9
COLLIER	3,030	520	430	909	416	187	383	143	39	3
COLUMBIA	665	30	120	260	118	58	57	18	3	1
MIAMI-DADE	23,537	1,093	2,212	7,750	3,684	2,426	4,185	1,482	479	226
DESOTO	405	114	102	106	51	16	10	3	1	2
DIXIE	178	10	35	83	29	10	9	2	0	0
DUVAL	7,474	335	776	2,054	1,547	648	1,495	435	163	21
ESCAMBIA	2,625	54	369	960	376	288	427	116	32	3
FLAGLER	727	5	60	212	195	91	121	30	8	5
FRANKLIN	112	10	17	47	25	5	7	1	0	0
GADSDEN	251	48	58	59	42	9	21	6	3	5
GILCHRIST	175	10	28	59	37	22	16	0	3	0
GLADES	68	10	17	23	5	6	7	0	0	0
GULF	115	5	14	42	36	7	6	4	1	0
HAMILTON	117	33	21	39	12	3	6	2	0	1
HARDEE	444	144	95	114	38	26	20	6	0	1
HENDRY	580	133	124	193	51	30	30	6	1	12
HERNANDO	1,449	12	162	601	328	160	131	41	4	10
HIGHLANDS	802	76	162	254	147	63	74	21	4	1
HILLSBOROUGH	12,006	858	1,729	3,052	2,238	881	2,213	745	230	60
HOLMES	216	8	53	91	38	7	12	6	1	0
INDIAN RIVER	1,028	61	180	331	185	83	137	40	11	0
JACKSON	374	19	60	137	86	16	33	22	1	0
JEFFERSON	75	2	10	20	18	5	14	3	2	1
LAFAYETTE	67	8	10	18	14	6	11	0	0	0
LAKE	2,551	101	405	804	504	251	334	125	23	4
LEE	5,534	482	822	1,761	804	568	758	224	41	74
LEON	1,590	30	93	235	284	124	550	182	71	21
LEVY	374	21	76	142	60	40	23	10	1	1
LIBERTY	79	4	8	42	10	5	8	2	0	0
MADISON	110	4	19	37	25	8	10	5	0	2
MANATEE	3,008	395	611	775	428	226	402	138	31	2
MARION	2,775	106	534	933	628	216	267	62	26	3
MARTIN	837	66	93	218	131	82	169	46	22	10
MONROE	620	32	59	200	127	67	96	34	5	0
NASSAU	709	23	99	233	142	74	99	30	8	1
OKALOOSA	2,119	51	205	659	579	190	314	90	29	2
OKEECHOBEE	503	82	139	145	73	33	21	5	1	4
ORANGE	10,006	420	1,151	2,599	1,698	1,073	2,156	745	157	7
OSCEOLA	3,264	99	433	1,203	610	337	468	97	13	4
PALM BEACH	9,422	1,089	1,038	2,060	1,516	802	1,936	714	218	49
PASCO	4,408	126	627	1,197	963	421	778	240	38	18
PINELLAS	6,541	262	593	2,060	1,227	741	1,175	368	100	15
POLK	5,925	614	1,224	1,731	1,067	418	675	156	36	4
PUTNAM	722	64	154	249	140	60	42	10	2	1
SAINT JOHNS	1,526	23	131	287	308	133	452	149	41	2
SAINT LUCIE	2,177	164	266	828	317	245	248	84	14	11
SANTA ROSA	1,676	14	180	589	293	181	306	91	20	2
SARASOTA	2,508	60	270	782	579	223	426	138	27	3
SEMINOLE	3,498	64	298	826	731	386	819	317	51	6
SUMTER	374	22	66	148	83	24	24	4	1	2
SUWANNEE	404	46	82	155	58	31	25	7	0	0
TAYLOR	219	3	32	112	38	11	17	2	0	4
UNION	127	3	21	52	27	12	9	2	1	0
VOLUSIA	4,054	144	547	1,213	902	473	590	136	30	19
WAKULLA	272	3	40	84	54	26	52	9	0	4
WALTON	622	22	84	200	133	41	108	27	4	3
WASHINGTON	216	11	49	86	35	3	22	8	0	2

* Starting in 2004, "mother's education" is measured according to the highest level/degree completed, instead of highest grade completed.

TABLE B-10 (Cont.): BLACK RESIDENT LIVE BIRTHS BY MOTHER'S EDUCATION*, BY COUNTY, FLORIDA, 2009

	TOTAL	HIGHEST LEVEL/DEGREE OF EDUCATION COMPLETED									
		< 9TH GRADE	9TH-12TH NO DIPLOMA	HIGH SCHOOL DIPLOMA	SOME COLLEGE	ASSOCIATE DEGREE	BACHELOR DEGREE	MASTER DEGREE	DOCTORATE	UNK	
FLORIDA	50,559	1,052	10,197	20,362	10,178	3,596	3,456	1,169	263	286	
ALACHUA	957	12	231	348	236	48	55	21	5	1	
BAKER	36	0	11	14	9	1	1	0	0	0	
BAY	307	2	68	135	58	21	9	8	0	6	
BRADFORD	74	0	18	43	8	2	3	0	0	0	
BREVARD	768	17	165	248	201	68	48	17	3	1	
BROWARD	8,026	136	1,342	2,921	1,731	716	756	292	60	72	
CALHOUN	21	0	2	12	4	1	2	0	0	0	
CHARLOTTE	81	2	11	34	19	7	6	1	0	1	
CITRUS	40	0	10	20	8	0	2	0	0	0	
CLAY	277	5	44	111	65	19	24	7	2	0	
COLLIER	415	20	77	199	59	36	19	3	2	0	
COLUMBIA	180	2	46	88	30	10	3	1	0	0	
MIAMI-DADE	8,052	217	1,499	3,617	1,463	546	488	158	36	28	
DESOTO	45	2	13	22	6	2	0	0	0	0	
DIXIE	16	0	5	11	0	0	0	0	0	0	
DUVAL	4,714	116	924	1,965	1,014	282	287	91	25	10	
ESCAMBIA	1,323	12	348	716	114	73	47	9	3	1	
FLAGLER	106	0	23	34	26	13	7	2	1	0	
FRANKLIN	12	0	5	6	0	0	0	0	0	1	
GADSDEN	431	7	106	170	88	18	26	12	1	3	
GILCHRIST	8	0	2	1	3	2	0	0	0	0	
GLADES	15	0	2	10	1	1	1	0	0	0	
GULF	18	0	1	9	5	2	0	0	0	1	
HAMILTON	65	1	18	37	9	0	0	0	0	0	
HARDEE	27	2	5	15	3	1	1	0	0	0	
HENDRY	68	1	19	35	4	4	2	1	0	2	
HERNANDO	107	0	14	51	24	9	6	0	2	1	
HIGHLANDS	172	4	42	72	40	8	6	0	0	0	
HILLSBOROUGH	3,720	64	785	1,331	832	256	291	108	25	28	
HOLMES	2	0	0	2	0	0	0	0	0	0	
INDIAN RIVER	210	1	45	101	43	10	5	3	2	0	
JACKSON	160	2	30	71	42	6	7	1	0	1	
JEFFERSON	76	1	17	33	15	4	5	0	0	1	
LAFAYETTE	10	0	0	8	1	0	1	0	0	0	
LAKE	408	1	103	148	69	38	31	15	3	0	
LEE	897	22	199	417	105	88	44	7	2	13	
LEON	1,337	14	211	369	417	80	159	51	8	28	
LEVY	60	2	16	25	14	2	1	0	0	0	
LIBERTY	7	0	2	5	0	0	0	0	0	0	
MADISON	115	3	37	46	20	4	3	1	0	1	
MANATEE	529	5	158	219	87	39	14	6	1	0	
MARION	676	7	140	282	166	43	29	8	1	0	
MARTIN	120	1	34	51	19	4	5	2	1	3	
MONROE	60	5	17	23	11	3	1	0	0	0	
NASSAU	52	1	7	28	10	1	3	1	1	0	
OKALOOSA	313	0	54	122	87	15	26	8	1	0	
OKEECHOBEE	34	0	8	16	7	1	1	1	0	0	
ORANGE	4,032	68	822	1,581	788	332	302	110	23	6	
OSCEOLA	397	4	56	126	94	54	46	12	3	2	
PALM BEACH	4,049	166	908	1,464	807	294	262	69	28	51	
PASCO	299	6	42	75	62	28	49	30	6	1	
PINELLAS	1,631	5	327	799	301	98	80	11	3	7	
POLK	1,511	41	390	623	266	82	79	24	2	4	
PUTNAM	236	9	60	126	28	3	5	3	0	2	
SAINT JOHNS	155	6	37	57	29	4	15	6	1	0	
SAINT LUCIE	838	20	152	415	125	59	46	20	1	0	
SANTA ROSA	85	1	9	35	18	9	7	3	3	0	
SARASOTA	293	7	69	127	61	10	12	5	2	0	
SEMINOLE	657	8	124	222	161	46	64	27	2	3	
SUMTER	99	4	33	50	8	3	1	0	0	0	
SUWANNEE	73	1	11	43	11	2	3	1	0	1	
TAYLOR	63	2	20	30	10	0	0	0	0	1	
UNION	27	2	6	12	5	1	0	1	0	0	
VOLUSIA	836	14	185	279	211	82	49	9	4	3	
WAKULLA	43	0	9	17	7	2	7	1	0	0	
WALTON	22	0	9	8	3	2	0	0	0	0	
WASHINGTON	38	0	9	21	5	1	0	1	0	1	

* Starting in 2004, "mother's education" is measured according to the highest level/degree completed, instead of highest grade completed.

TABLE B-10 (Cont.): OTHER RESIDENT LIVE BIRTHS BY MOTHER'S EDUCATION*, BY COUNTY, FLORIDA, 2009

	TOTAL	HIGHEST LEVEL/DEGREE OF EDUCATION COMPLETED									
		< 9TH GRADE	9TH-12TH NO DIPLOMA	HIGH SCHOOL DIPLOMA	SOME COLLEGE	ASSOCIATE DEGREE	BACHELOR DEGREE	MASTER DEGREE	DOCTORATE	UNK	
FLORIDA	11,006	354	938	2,559	1,788	965	2,756	1,192	407	47	
ALACHUA	254	2	9	24	16	13	83	64	43	0	
BAKER	4	0	1	0	0	1	1	0	1	0	
BAY	146	7	23	45	29	14	20	6	2	0	
BRADFORD	3	0	0	1	2	0	0	0	0	0	
BREVARD	271	4	23	52	55	37	55	33	12	0	
BROWARD	1,284	22	91	264	198	116	363	178	44	8	
CALHOUN	3	0	1	0	1	0	0	1	0	0	
CHARLOTTE	52	1	7	15	15	5	5	3	1	0	
CITRUS	27	1	7	7	8	1	1	1	1	0	
CLAY	110	3	8	25	31	10	24	7	1	1	
COLLIER	92	2	5	33	13	8	16	13	2	0	
COLUMBIA	15	0	2	6	2	1	3	0	1	0	
MIAMI-DADE	706	12	37	171	84	73	195	74	46	14	
DESOTO	2	0	1	0	0	1	0	0	0	0	
DIXIE	3	0	0	1	2	0	0	0	0	0	
DUVAL	953	17	62	242	168	77	249	100	36	2	
ESCAMBIA	218	7	26	78	29	18	44	9	7	0	
FLAGLER	33	0	5	10	6	1	8	2	1	0	
FRANKLIN	2	0	1	0	0	0	1	0	0	0	
GADSDEN	8	0	2	3	2	0	0	0	0	1	
GILCHRIST	5	0	2	0	3	0	0	0	0	0	
GLADES	5	0	2	1	1	1	0	0	0	0	
GULF	3	0	0	2	0	0	1	0	0	0	
HAMILTON	3	0	1	2	0	0	0	0	0	0	
HARDEE	14	0	6	3	3	0	2	0	0	0	
HENDRY	19	1	5	6	2	1	4	0	0	0	
HERNANDO	49	0	5	16	12	3	8	3	0	2	
HIGHLANDS	37	0	5	13	9	3	5	1	1	0	
HILLSBOROUGH	984	16	72	173	151	60	302	154	49	7	
HOLMES	6	0	1	1	1	0	3	0	0	0	
INDIAN RIVER	40	1	3	15	6	4	8	3	0	0	
JACKSON	14	1	2	2	4	2	2	0	0	1	
JEFFERSON	4	0	0	2	1	0	1	0	0	0	
LAFAYETTE	0	0	0	0	0	0	0	0	0	0	
LAKE	161	5	24	39	34	13	28	12	6	0	
LEE	164	0	22	47	21	15	37	17	4	1	
LEON	183	2	4	27	21	8	66	41	13	1	
LEVY	11	0	0	4	2	3	1	1	0	0	
LIBERTY	0	0	0	0	0	0	0	0	0	0	
MADISON	4	0	0	3	0	0	1	0	0	0	
MANATEE	120	3	17	30	19	7	31	10	3	0	
MARION	132	6	10	48	28	6	20	8	5	1	
MARTIN	205	147	16	22	2	2	8	5	3	0	
MONROE	27	1	4	8	6	2	5	1	0	0	
NASSAU	15	2	2	4	2	2	2	1	0	0	
OKALOOSA	216	2	21	73	54	24	31	10	1	0	
OKEECHOBEE	27	0	8	7	5	3	3	1	0	0	
ORANGE	1,348	30	106	310	216	143	359	143	40	1	
OSCEOLA	201	5	17	62	33	20	47	14	3	0	
PALM BEACH	684	13	55	124	118	76	195	76	25	2	
PASCO	228	0	21	41	43	17	64	35	6	1	
PINELLAS	590	7	61	199	86	54	120	45	16	2	
POLK	297	12	42	51	58	34	77	19	4	0	
PUTNAM	13	0	5	4	2	0	2	0	0	0	
SAINT JOHNS	104	2	5	15	21	5	33	17	6	0	
SAINT LUCIE	125	3	14	38	28	9	22	9	2	0	
SANTA ROSA	74	0	8	29	13	9	14	0	1	0	
SARASOTA	130	6	17	35	15	11	37	7	2	0	
SEMINOLE	315	6	7	53	50	31	99	54	15	0	
SUMTER	9	1	1	4	2	0	1	0	0	0	
SUWANNEE	7	0	4	0	1	0	2	0	0	0	
TAYLOR	3	0	1	1	1	0	0	0	0	0	
UNION	1	0	0	1	0	0	0	0	0	0	
VOLUSIA	207	4	25	54	45	18	43	13	4	1	
WAKULLA	2	0	0	2	0	0	0	0	0	0	
WALTON	15	0	1	6	4	2	2	0	0	0	
WASHINGTON	8	0	2	2	1	1	2	0	0	0	

* Starting in 2004, "mother's education" is measured according to the highest level/degree completed, instead of highest grade completed.

TABLE B-11: RESIDENT LIVE BIRTHS TO MOTHERS UNDER 15 YEARS OF AGE FOR SELECTED INDICATORS,
BY COUNTY, FLORIDA, 2009

	TOTAL	UNWED	BIRTHWEIGHT		THIRD TRIMESTER OR NO PRENATAL CARE*	ONE OR MORE PREVIOUS LIVE BIRTHS
			UNDER 1,500 GRAMS	UNDER 2,500 GRAMS		
FLORIDA	262	262	5	23	37	2
ALACHUA	4	4	0	1	1	0
BAKER	1	1	0	0	0	0
BAY	4	4	0	0	1	0
BRADFORD	0	0	0	0	0	0
BREVARD	4	4	0	0	0	0
BROWARD	24	24	0	4	4	0
CALHOUN	0	0	0	0	0	0
CHARLOTTE	0	0	0	0	0	0
CITRUS	0	0	0	0	0	0
CLAY	3	3	0	0	0	0
COLLIER	0	0	0	0	0	0
COLUMBIA	2	2	0	0	0	0
MIAMI-DADE	29	29	2	2	4	0
DESOTO	2	2	0	0	0	0
DIXIE	0	0	0	0	0	0
DUVAL	18	18	0	1	5	0
ESCAMBIA	4	4	0	0	1	0
FLAGLER	2	2	0	0	0	0
FRANKLIN	0	0	0	0	0	0
GADSDEN	4	4	0	1	0	0
GILCHRIST	0	0	0	0	0	0
GLADES	0	0	0	0	0	0
GULF	0	0	0	0	0	0
HAMILTON	0	0	0	0	0	0
HARDEE	1	1	0	0	0	1
HENDRY	0	0	0	0	0	0
HERNANDO	1	1	0	0	0	0
HIGHLANDS	2	2	0	0	0	0
HILLSBOROUGH	25	25	0	2	1	0
HOLMES	1	1	0	0	0	0
INDIAN RIVER	1	1	0	0	1	0
JACKSON	2	2	0	0	0	0
JEFFERSON	0	0	0	0	0	0
LAFAYETTE	0	0	0	0	0	0
LAKE	5	5	0	1	1	0
LEE	8	8	0	0	0	0
LEON	7	7	1	2	3	0
LEVY	1	1	0	1	0	0
LIBERTY	0	0	0	0	0	0
MADISON	1	1	0	0	0	0
MANATEE	6	6	1	1	2	1
MARION	5	5	0	0	2	0
MARTIN	2	2	0	0	0	0
MONROE	0	0	0	0	0	0
NASSAU	1	1	0	0	0	0
OKALOOSA	2	2	0	0	0	0
OKEECHOBEE	1	1	0	0	0	0
ORANGE	22	22	0	5	2	0
OSCEOLA	7	7	0	0	0	0
PALM BEACH	15	15	0	0	3	0
PASCO	1	1	0	0	1	0
PINELLAS	6	6	0	0	1	0
POLK	12	12	0	1	1	0
PUTNAM	2	2	0	0	0	0
SAINT JOHNS	1	1	0	0	0	0
SAINT LUCIE	3	3	0	0	0	0
SANTA ROSA	3	3	0	0	0	0
SARASOTA	4	4	1	1	1	0
SEMINOLE	3	3	0	0	0	0
SUMTER	0	0	0	0	0	0
SUWANNEE	1	1	0	0	0	0
TAYLOR	1	1	0	0	0	0
UNION	1	1	0	0	0	0
VOLUSIA	7	7	0	0	2	0
WAKULLA	0	0	0	0	0	0
WALTON	0	0	0	0	0	0
WASHINGTON	0	0	0	0	0	0

* Starting in 2004, "trimester prenatal care began" is calculated as the time elapsed from the date of the last menstrual period to the date of the first prenatal care visit. Prior to 2004, these data were obtained by direct question that noted the trimester the mother began prenatal care. Consequently, these data are not comparable to data from prior years.

TABLE B-12: RESIDENT LIVE BIRTHS TO MOTHERS 15 THROUGH 19 YEARS OF AGE FOR SELECTED INDICATORS,
AND AGE-SPECIFIC BIRTH RATES PER 1,000 FEMALES, BY COUNTY, FLORIDA, 2009

	TOTAL	UNWED		BIRTHWEIGHT				THIRD		ONE OR MORE		AGE-SPECIFIC BIRTH RATE	POPULATION 15-19 FEMALES
				UNDER 1,500 GRAMS		UNDER 2,500 GRAMS		TRIMESTER OR NO PRENATAL CARE		PREVIOUS LIVE BIRTHS			
				NUMBER	%	NUMBER	%	NUMBER ¹	% ²	NUMBER	%		
FLORIDA	22,016	19,862	90.2	376	1.7	2,289	10.4	1,621	8.4	4,163	18.9	37.4	588,376
ALACHUA	299	272	91.0	8	2.7	41	13.7	24	8.7	71	23.7	25.2	11,886
BAKER	52	44	84.6	2	3.8	5	9.6	2	3.9	6	11.5	63.0	825
BAY	307	257	83.7	3	1.0	27	8.8	14	5.6	55	17.9	64.6	4,749
BRADFORD	43	37	86.0	1	2.3	6	14.0	0	0.0	7	16.3	54.9	783
BREVARD	436	393	90.1	5	1.1	33	7.6	19	4.8	87	20.0	25.8	16,896
BROWARD	1,508	1,408	93.4	25	1.7	181	12.0	156	12.9	251	16.6	28.2	53,392
CALHOUN	25	19	76.0	1	4.0	3	12.0	1	4.3	5	20.0	55.2	453
CHARLOTTE	120	110	91.7	1	0.8	12	10.0	7	6.0	18	15.0	32.0	3,748
CITRUS	149	131	87.9	1	0.7	10	6.7	5	3.6	21	14.1	44.4	3,355
CLAY	220	192	87.3	2	0.9	16	7.3	15	7.4	36	16.4	30.9	7,110
COLLIER	335	291	86.9	5	1.5	25	7.5	39	12.3	61	18.2	38.2	8,769
COLUMBIA	139	117	84.2	5	3.6	25	18.0	12	9.0	25	18.0	66.6	2,087
MIAMI-DADE	2,613	2,378	91.0	56	2.1	305	11.7	125	6.3	494	18.9	31.5	82,854
DESOTO	66	61	92.4	0	0.0	6	9.1	3	5.0	8	12.1	64.1	1,030
DIXIE	29	23	79.3	0	0.0	1	3.4	1	3.7	3	10.3	62.5	464
DUVAL	1,333	1,225	91.9	31	2.3	162	12.2	123	10.7	257	19.3	44.0	30,297
ESCAMBIA	587	533	90.8	12	2.0	74	12.6	27	4.7	130	22.1	49.0	11,989
FLAGLER	88	78	88.6	2	2.3	10	11.4	8	10.3	19	21.6	33.2	2,652
FRANKLIN	21	14	66.7	0	0.0	1	4.8	1	6.3	1	4.8	73.9	284
GADSDEN	111	104	93.7	3	2.7	13	11.7	2	2.1	26	23.4	67.6	1,642
GILCHRIST	21	17	81.0	0	0.0	3	14.3	2	9.5	5	23.8	40.2	523
GLADES	21	17	81.0	0	0.0	0	0.0	1	5.6	2	9.5	62.3	337
GULF	24	19	79.2	1	4.2	2	8.3	0	0.0	3	12.5	53.0	453
HAMILTON	35	30	85.7	0	0.0	2	5.7	5	14.7	10	28.6	82.0	427
HARDEE	92	72	78.3	2	2.2	9	9.8	9	10.0	19	20.7	94.6	973
HENDRY	108	100	92.6	0	0.0	8	7.4	7	7.5	23	21.3	67.9	1,590
HERNANDO	161	149	92.5	1	0.6	13	8.1	7	4.7	25	15.5	35.6	4,517
HIGHLANDS	118	102	86.4	1	0.8	10	8.5	9	8.3	27	22.9	46.5	2,535
HILLSBOROUGH	1,823	1,659	91.0	31	1.7	196	10.8	100	6.8	373	20.5	44.4	41,104
HOLMES	38	28	73.7	2	5.3	3	7.9	0	0.0	15	39.5	59.4	640
INDIAN RIVER	143	127	88.8	2	1.4	15	10.5	9	6.8	18	12.6	38.1	3,751
JACKSON	82	65	79.3	3	3.7	10	12.2	3	4.2	14	17.1	56.1	1,461
JEFFERSON	21	19	90.5	1	4.8	1	4.8	1	6.3	6	28.6	48.7	431
LAFAYETTE	9	7	77.8	0	0.0	0	0.0	1	11.1	2	22.2	41.7	216
LAKE	375	332	88.5	4	1.1	26	6.9	27	7.5	70	18.7	48.7	7,699
LEE	678	621	91.6	8	1.2	65	9.6	53	8.7	152	22.4	41.9	16,173
LEON	264	250	94.7	5	1.9	33	12.5	14	6.4	45	17.0	18.8	14,041
LEVY	71	62	87.3	0	0.0	5	7.0	2	3.1	13	18.3	53.4	1,330
LIBERTY	10	10	100.0	1	10.0	1	10.0	1	12.5	2	20.0	40.0	250
MADISON	36	34	94.4	0	0.0	6	16.7	1	3.4	8	22.2	56.6	636
MANATEE	475	427	89.9	3	0.6	30	6.3	59	12.7	108	22.7	55.5	8,552
MARION	518	450	86.9	7	1.4	49	9.5	49	9.9	112	21.6	54.4	9,522
MARTIN	120	107	89.2	3	2.5	16	13.3	13	11.0	25	20.8	33.1	3,629
MONROE	51	46	90.2	2	3.9	6	11.8	3	6.1	8	15.7	28.2	1,808
NASSAU	95	80	84.2	0	0.0	14	14.7	2	2.4	19	20.0	40.4	2,349
OKALOOSA	225	177	78.7	3	1.3	19	8.4	19	8.9	40	17.8	37.7	5,964
OKEECHOBEE	102	93	91.2	2	2.0	9	8.8	3	3.2	20	19.6	75.0	1,360
ORANGE	1,442	1,338	92.8	24	1.7	150	10.4	112	8.5	266	18.4	36.3	39,761
OSCEOLA	409	364	89.0	6	1.5	40	9.8	26	7.1	62	15.2	38.5	10,618
PALM BEACH	1,181	1,097	92.9	20	1.7	130	11.0	121	12.0	235	19.9	31.4	37,664
PASCO	451	390	86.5	4	0.9	32	7.1	42	10.3	75	16.6	35.4	12,745
PINELLAS	898	839	93.4	16	1.8	95	10.6	60	6.9	164	18.3	36.8	24,385
POLK	1,082	960	88.7	19	1.8	117	10.8	114	11.3	202	18.7	59.3	18,234
PUTNAM	158	143	90.5	4	2.5	13	8.2	11	8.6	36	22.8	66.9	2,363
SAINT JOHNS	131	123	93.9	3	2.3	14	10.7	5	4.8	17	13.0	22.4	5,852
SAINT LUCIE	343	305	88.9	6	1.7	40	11.7	30	9.0	72	21.0	40.7	8,427
SANTA ROSA	164	136	82.9	3	1.8	16	9.8	11	7.0	20	12.2	33.6	4,885
SARASOTA	253	225	88.9	1	0.4	20	7.9	17	7.0	37	14.6	28.6	8,841
SEMINOLE	359	321	89.4	5	1.4	34	9.5	42	12.3	63	17.5	25.9	13,876
SUMTER	89	77	86.5	2	2.2	8	9.0	1	1.2	20	22.5	44.6	1,997
SUWANNEE	74	59	79.7	0	0.0	5	6.8	7	10.0	17	23.0	62.5	1,184
TAYLOR	52	45	86.5	2	3.8	6	11.5	0	0.0	8	15.4	75.7	687
UNION	22	20	90.9	0	0.0	2	9.1	1	4.8	2	9.1	50.1	439
VOLUSIA	550	503	91.5	10	1.8	45	8.2	30	5.7	100	18.2	35.6	15,449
WAKULLA	34	32	94.1	0	0.0	3	8.8	2	8.0	2	5.9	35.2	967
WALTON	68	54	79.4	2	2.9	5	7.4	2	3.0	10	14.7	40.7	1,670
WASHINGTON	44	35	79.5	4	9.1	6	13.6	2	5.1	9	20.5	55.3	796

1. Starting in 2004, "Trimester prenatal care began" is calculated as the time elapsed from the date of the last menstrual period to the date of the first prenatal care visit. Prior to 2004, these data were obtained by direct question that noted the trimester the mother began prenatal care. Consequently, these data are not comparable to data from prior years.

2. Births with unknown information as to when prenatal care began are excluded from the denominator.

