

Fetal and Infant Deaths

FETAL AND INFANT DEATHS

- The number of resident fetal deaths (stillbirths occurring at 20 or more weeks of gestation) decreased from 1,688 in 2008 to 1,569 in 2009. The ratio of resident fetal deaths to resident live births also decreased from 7.3 per 1,000 live births to 7.1 per 1,000 live births during the same time period.
- Between 2008 and 2009, resident fetal deaths decreased among Whites, and Black and Other Race from 951 to 904 and 725 to 655, respectively.
- Of all resident fetal deaths in 2009, 62.0 percent were to mothers of Non-Hispanic and Non-Haitian origin, 23.2 percent were to mothers of Hispanic origin, 6.1 percent were to mothers of Haitian origin and 2.8 percent were to mothers whose ethnicity was unknown.
- The neonatal death rate decreased from 4.6 per 1,000 live births in 2008 to 4.5 per 1,000 live births in 2009. This rate has fluctuated very little from 4.9 per 1,000 live births in 1999. The 2009 rate represents less than half the rate of 1980 (9.7 per 1,000 live births).
- In 2009, the Black and Other Race neonatal death rate (7.8 per 1,000 live births) is more than twice the White rate (3.2 per 1,000 live births). The Black and Other Race rate increased from 7.4 per 1,000 live births in 2008, while the White rate decreased from 3.5 per 1,000 live births in 2008.
- Florida's 2009 infant mortality rate is 6.9 per 1,000 live births. This is a record low for the state rate. From 1999 to 2008, the resident infant mortality rate has only slightly fluctuated between a low of 7.0 per 1,000 live births to a high of 7.5 per 1,000 live births. The 2009 resident infant mortality rate has dropped 28.1 percent since 1990 and is currently about half the rate of 1980.
- The resident infant mortality rate decreased slightly from 7.2 per 1,000 live births in 2008 to 6.9 per 1,000 live births in 2009. Further analysis shows this slight decrease in the total rate is due to a decrease in the White infant mortality rate from 5.5 per 1,000 live births in 2008 to 4.9 per 1,000 live births in 2009. The infant mortality rate among Black and Other Race actually increased from 11.8 per 1,000 live births in 2008 to 12.1 per 1,000 live births in 2009.
- In 2009, resident infant deaths among Non-Hispanic and Non-Haitian origin accounted for 71.7 percent of all resident infant deaths. Among other ethnic groups, infants of Hispanic origin represented 22.5 percent, infants of Haitian origin represented 5.2 percent and 0.6 percent occurred to infants whose ethnicity was unknown.
- Among all resident infant deaths during 2009, 65.2 percent were neonatal deaths (occurring before infants were 28 days old). Furthermore, 39.5 percent of infant deaths occurred to infants who were less than one day old.
- The top four leading causes of resident infant deaths in 2009 were 1) Perinatal Period Conditions, 2) Congenital Malformations, 3) Unintentional Injuries (Accidents), and 4) Sudden Infant Death Syndrome (SIDS). These causes accounted for 82.4 percent of all resident infant deaths.

**CHART F-1: RESIDENT FETAL DEATHS AND RATIOS PER 1,000 LIVE BIRTHS,
BY RACE, FLORIDA AND UNITED STATES TOTAL,
CENSUS YEARS 1920-1990 AND 1999-2009**

YEAR	NUMBER OF FETAL DEATHS - FL ²			RATIOS - FL			RATIO - U.S.
	TOTAL	WHITE	BLACK & OTHER	TOTAL	WHITE	BLACK & OTHER	TOTAL
1920 ¹	1,287	595	692	65.9	43.9	115.4	NA
1930 ¹	1,754	746	1,008	65.0	40.1	120.1	NA
1940	1,415	683	732	42.0	28.7	74.0	NA
1950	1,443	757	868	22.4	16.6	36.7	18.8
1960	1,846	1,043	803	16.0	12.4	25.7	15.8
1970	1,701	1,034	615	14.8	11.9	21.8	14.0
1980	1,355	847	491	10.3	8.7	14.3	9.1
1990	1,811	1,071	720	9.1	7.2	14.6	7.5
1999	1,579	953	619	8.0	6.5	12.3	6.7
2000	1,675	954	704	8.2	6.4	13.1	6.6
2001	1,668	972	678	8.1	6.4	12.6	6.5
2002	1,591	920	657	7.7	6.0	12.4	6.4
2003	1,604	912	678	7.6	5.8	12.4	6.2
2004	1,701	966	723	7.8	6.0	12.6	6.2
2005	1,650	938	688	7.3	5.6	11.5	6.2
2006	1,756	1,020	733	7.4	5.9	11.7	NA
2007	1,840	1,042	792	7.7	6.0	12.4	NA
2008	1,688	951	725	7.3	5.7	11.4	NA
2009	1,569	904	655	7.1	5.7	10.6	NA

1. Only recorded data are available.

2. Data from 1920-1960 are based on the race of the child. Data from 1970 to present are based on the race of the mother.

**GRAPH F-1: RESIDENT FETAL DEATH RATIOS PER 1,000 LIVE BIRTHS, BY RACE OF MOTHER,
FLORIDA, AND UNITED STATES TOTAL, 1999-2009**

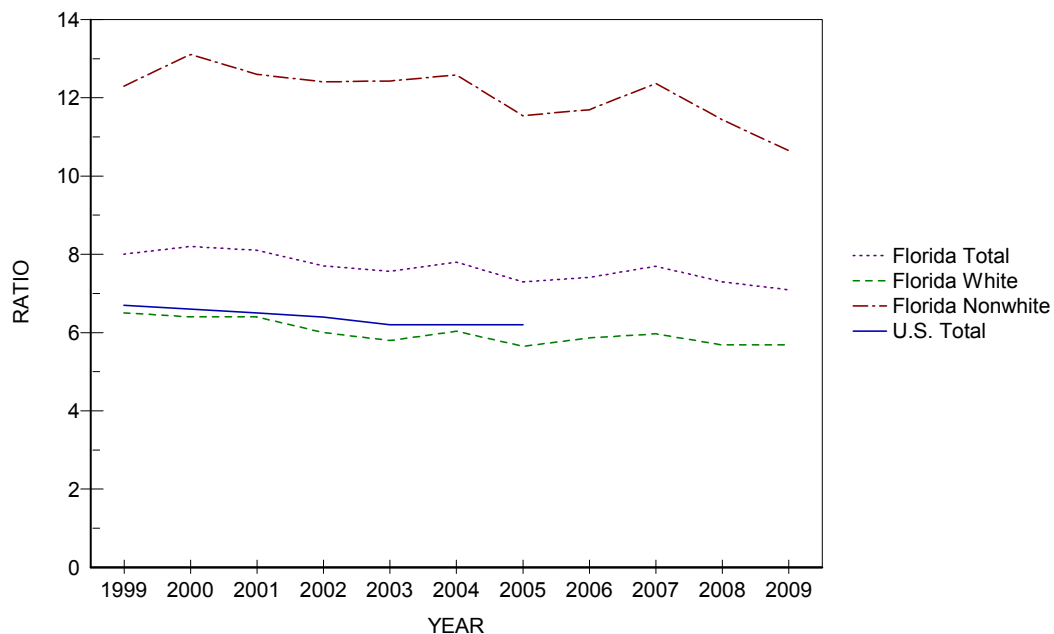


CHART F-2: RESIDENT NEONATAL DEATHS AND RATES PER 1,000 LIVE BIRTHS, BY RACE, FLORIDA AND UNITED STATES TOTAL, CENSUS YEARS 1940-1990 AND 1999-2009

YEAR	NUMBER OF NEONATAL DEATHS - FL			RATES - FL ¹			RATE - U.S.
	TOTAL	WHITE	BLACK & OTHER	TOTAL	WHITE	BLACK & OTHER	TOTAL
1940	1,142	662	480	33.9	27.8	48.5	28.8
1950	1,551	975	576	24.1	21.3	30.8	20.5
1960	2,404	1,531	873	20.8	18.1	28.0	18.7
1970	1,848	1,198	648	16.1	13.8	23.0	15.1
1980	1,282	791	490	9.7	8.1	14.2	8.5
1990	1,227	742	484	6.2	5.0	9.8	5.8
1999	962	559	401	4.9	3.8	7.9	4.7
2000	925	526	397	4.5	3.5	7.4	4.6
2001	980	539	440	4.8	3.6	8.2	4.5
2002	1,032	596	436	5.0	3.9	8.2	4.7
2003	1,025	584	438	4.8	3.7	8.0	4.6
2004	989	563	425	4.5	3.5	7.4	4.5
2005	1,024	544	479	4.5	3.3	8.0	4.5
2006	1,122	630	490	4.7	3.6	7.8	4.5
2007	1,062	573	487	4.4	3.3	7.6	4.4
2008	1,061	592	467	4.6	3.5	7.4	NA
2009	995	512	480	4.5	3.2	7.8	NA

1. Rates based on neonatal deaths by race of decedent, 1940-1960 live births based on race of child, 1970 to present live births based on race of mother.

GRAPH F-2: RESIDENT NEONATAL DEATH RATES PER 1,000 LIVE BIRTHS, BY RACE, FLORIDA AND UNITED STATES TOTAL, 1999-2009

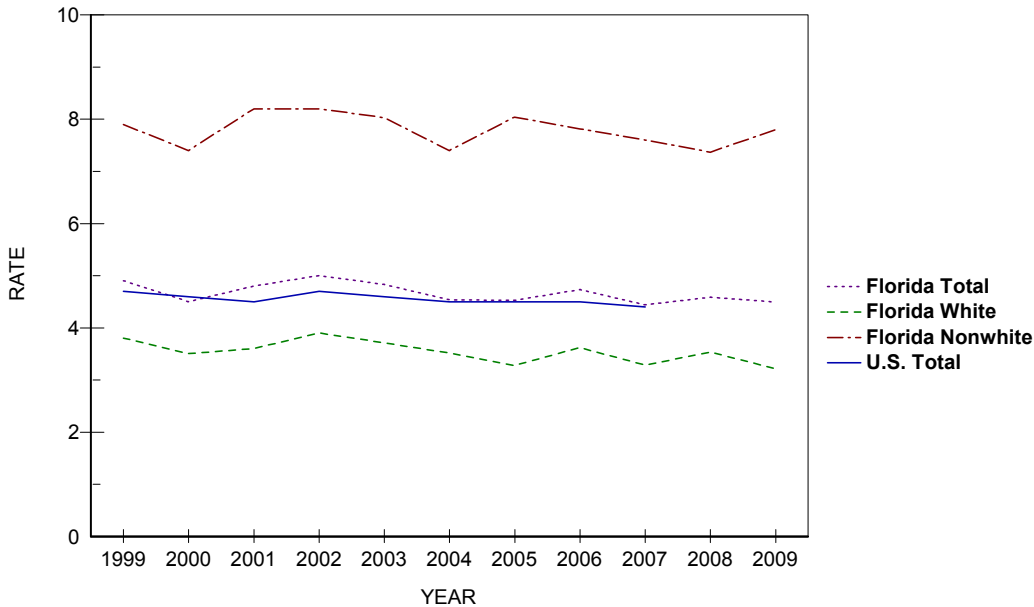


CHART F-3: RESIDENT INFANT DEATHS AND RATES PER 1,000 LIVE BIRTHS, BY RACE, FLORIDA AND UNITED STATES TOTAL, CENSUS YEARS 1920-1990 AND 1999-2009

YEAR	NUMBER OF INFANT DEATHS - FL			RATES - FL ²			RATE - U.S.
	TOTAL	WHITE	BLACK & OTHER	TOTAL	WHITE	BLACK & OTHER	TOTAL
1920 ¹	1,835	1,031	804	93.9	76.1	134.0	NA
1930 ¹	1,729	928	801	64.1	49.9	95.4	NA
1940	1,812	1,052	760	53.8	44.2	76.8	47.0
1950	2,078	1,225	853	32.3	26.8	45.7	29.2
1960	3,431	1,992	1,439	29.7	23.6	46.1	26.0
1970	2,470	1,538	930	21.5	17.7	33.0	20.0
1980	1,918	1,137	780	14.6	11.7	22.7	12.6
1990	1,912	1,123	787	9.6	7.5	16.0	9.2
1999	1,442	815	625	7.3	5.6	12.4	7.1
2000	1,423	810	611	7.0	5.4	11.4	6.9
2001	1,495	839	655	7.3	5.5	12.3	6.8
2002	1,548	892	656	7.5	5.9	12.4	7.0
2003	1,584	907	674	7.5	5.8	12.4	6.9
2004	1,536	876	659	7.0	5.5	11.5	6.8
2005	1,626	882	743	7.2	5.3	12.5	6.9
2006	1,713	974	737	7.2	5.6	11.8	6.7
2007	1,689	906	781	7.1	5.2	12.2	6.8
2008	1,667	914	751	7.2	5.5	11.8	6.5 ³
2009	1,525	780	742	6.9	4.9	12.1	6.3 ⁴

1. Only recorded data are available.

2. Rates based on neonatal deaths by race of decedent, 1920-1960 live births based on race of child, 1970 to present live births based on race of mother.

3. Preliminary data.

4. Provisional data.

GRAPH F-3: RESIDENT INFANT DEATH RATES PER 1,000 LIVE BIRTHS, BY RACE, FLORIDA AND UNITED STATES TOTAL, 1999-2009

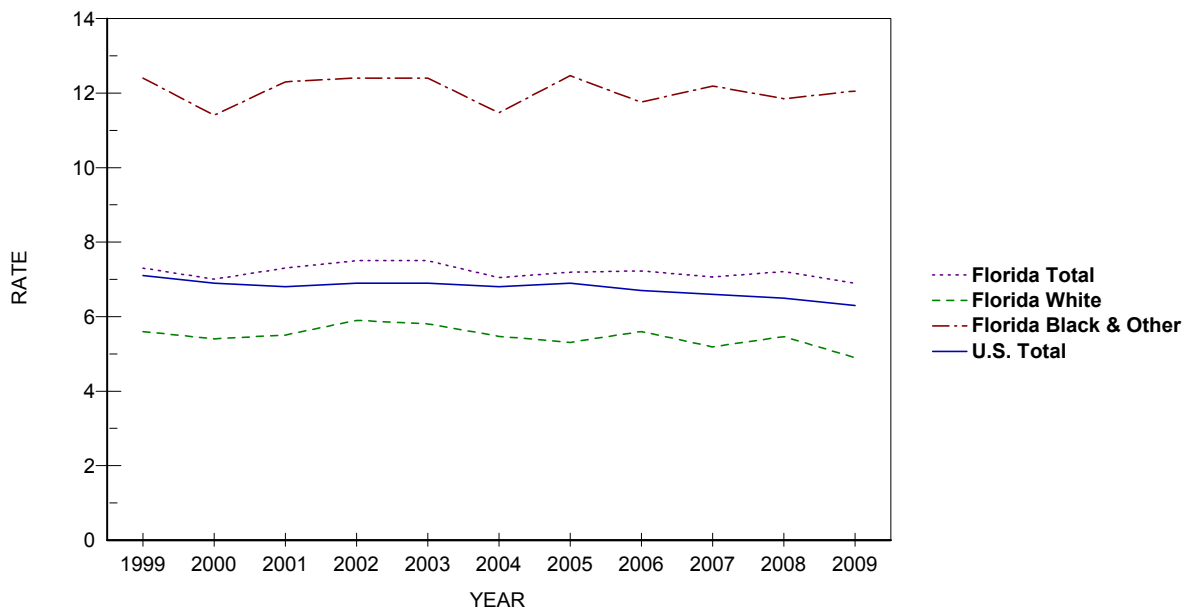


TABLE F-1: RESIDENT AND RECORDED FETAL DEATHS (OF 20 OR MORE WEEKS GESTATION) AND RATIOS PER 1,000 LIVE BIRTHS, BY RACE OF MOTHER, BY COUNTY, FLORIDA, 2009

	RESIDENT FETAL DEATHS						RATIOS		
	NUMBERS						TOTAL	WHITE	BLACK & OTHER
	TOTAL	WHITE	BLACK AND OTHER			UNK			
		TOTAL	BLACK	OTHER					
FLORIDA	1,569	904	655	592	63	10	7.1	5.7	10.6
ALACHUA	21	12	9	8	1	0	7.2	7.0	7.4
BAKER	1	1	0	0	0	0	2.6	3.0	0.0
BAY	21	16	5	4	1	0	9.1	8.9	11.0
BRADFORD	7	5	2	2	0	0	21.7	20.4	26.0
BREVARD	31	22	9	9	0	0	6.0	5.3	8.7
BROWARD	176	70	103	94	9	3	8.2	6.0	11.1
CALHOUN	0	0	0	0	0	0	0.0	0.0	0.0
CHARLOTTE	7	7	0	0	0	0	7.1	8.2	0.0
CITRUS	7	5	2	2	0	0	6.4	4.9	29.9
CLAY	12	8	4	3	1	0	5.4	4.4	10.3
COLLIER	19	16	3	3	0	0	5.4	5.3	5.9
COLUMBIA	5	3	2	2	0	0	5.8	4.5	10.3
MIAMI-DADE	247	136	109	100	9	2	7.6	5.8	12.4
DESOTO	1	1	0	0	0	0	2.2	2.5	0.0
DIXIE	1	1	0	0	0	0	5.1	5.6	0.0
DUVAL	104	50	53	53	0	1	7.9	6.7	9.4
ESCAMBIA	32	8	24	23	1	0	7.7	3.0	15.6
FLAGLER	9	8	1	1	0	0	10.4	11.0	7.2
FRANKLIN	2	2	0	0	0	0	15.6	17.9	0.0
GADSDEN	8	1	7	6	1	0	11.6	4.0	15.9
GILCHRIST	1	1	0	0	0	0	5.3	5.7	0.0
GLADES	0	0	0	0	0	0	0.0	0.0	0.0
GULF	0	0	0	0	0	0	0.0	0.0	0.0
HAMILTON	1	1	0	0	0	0	5.4	8.5	0.0
HARDEE	3	3	0	0	0	0	6.2	6.8	0.0
HENDRY	5	3	2	2	0	0	7.5	5.2	23.0
HERNANDO	10	9	1	1	0	0	6.2	6.2	6.4
HIGHLANDS	5	4	1	0	1	0	4.9	5.0	4.8
HILLSBOROUGH	115	70	44	40	4	1	6.9	5.8	9.4
HOLMES	1	1	0	0	0	0	4.4	4.6	0.0
INDIAN RIVER	6	6	0	0	0	0	4.7	5.8	0.0
JACKSON	1	0	1	1	0	0	1.8	0.0	5.7
JEFFERSON	0	0	0	0	0	0	0.0	0.0	0.0
LAFAYETTE	0	0	0	0	0	0	0.0	0.0	0.0
LAKE	12	9	3	2	1	0	3.8	3.5	5.3
LEE	29	20	9	9	0	0	4.4	3.6	8.5
LEON	21	7	14	14	0	0	6.7	4.4	9.2
LEVY	3	1	2	2	0	0	6.7	2.7	28.2
LIBERTY	0	0	0	0	0	0	0.0	0.0	0.0
MADISON	2	0	2	2	0	0	8.7	0.0	16.8
MANATEE	30	24	6	5	1	0	8.2	8.0	9.2
MARION	23	15	8	7	1	0	6.4	5.4	9.9
MARTIN	7	6	1	1	0	0	6.0	7.2	3.1
MONROE	5	3	2	1	1	0	7.1	4.8	23.0
NASSAU	3	3	0	0	0	0	3.9	4.2	0.0
OKALOOSA	9	7	2	1	1	0	3.4	3.3	3.8
OKEECHOBEE	4	3	1	1	0	0	7.1	6.0	16.4
ORANGE	122	60	62	51	11	0	7.9	6.0	11.5
OSCEOLA	22	19	3	1	2	0	5.7	5.8	5.0
PALM BEACH	106	41	64	55	9	1	7.5	4.4	13.5
PASCO	27	22	5	5	0	0	5.5	5.0	9.5
PINELLAS	65	44	21	19	2	0	7.4	6.7	9.5
POLK	62	39	22	22	0	1	8.0	6.6	12.2
PUTNAM	6	4	2	2	0	0	6.2	5.5	8.0
SAINT JOHNS	10	7	3	3	0	0	5.6	4.6	11.6
SAINT LUCIE	24	14	10	9	1	0	7.6	6.4	10.4
SANTA ROSA	15	15	0	0	0	0	8.2	8.9	0.0
SARASOTA	25	19	6	5	1	0	8.5	7.6	14.2
SEMINOLE	29	18	10	8	2	1	6.5	5.1	10.3
SUMTER	4	4	0	0	0	0	8.3	10.7	0.0
SUWANNEE	1	1	0	0	0	0	2.1	2.5	0.0
TAYLOR	2	1	1	1	0	0	7.0	4.6	15.2
UNION	0	0	0	0	0	0	0.0	0.0	0.0
VOLUSIA	35	23	12	10	2	0	6.9	5.7	11.5
WAKULLA	1	0	1	1	0	0	3.2	0.0	22.2
WALTON	4	4	0	0	0	0	6.1	6.4	0.0
WASHINGTON	2	1	1	1	0	0	7.6	4.6	21.7

TABLE F-1 (Cont.): RESIDENT AND RECORDED FETAL DEATHS (OF 20 OR MORE WEEKS GESTATION) AND RATIOS PER 1,000 LIVE BIRTHS, BY RACE OF MOTHER, BY COUNTY, FLORIDA, 2009

	RECORDED FETAL DEATHS						RATIOS		
	NUMBERS						TOTAL	WHITE	BLACK & OTHER
	TOTAL	WHITE	BLACK AND OTHER			UNK			
		TOTAL	BLACK	OTHER					
FLORIDA	1,599	922	667	602	65	10	7.2	5.8	10.8
ALACHUA	50	33	17	16	1	0	8.1	7.5	9.6
BAKER	0	0	0	0	0	0	0.0	0.0	----
BAY	26	21	5	4	1	0	9.3	9.5	9.8
BRADFORD	0	0	0	0	0	0	0.0	----	0.0
BREVARD	24	16	8	8	0	0	4.7	3.9	7.8
BROWARD	209	78	127	115	12	4	8.9	6.2	12.0
CALHOUN	0	0	0	0	0	0	0.0	0.0	----
CHARLOTTE	10	10	0	0	0	0	8.6	10.1	0.0
CITRUS	7	5	2	2	0	0	7.1	5.5	29.4
CLAY	15	7	8	7	1	0	6.6	3.9	15.9
COLLIER	19	16	3	3	0	0	5.0	4.9	5.8
COLUMBIA	2	1	1	1	0	0	3.0	2.2	4.9
MIAMI-DADE	232	135	95	84	11	2	7.9	6.1	13.2
DESDOTO	0	0	0	0	0	0	0.0	0.0	0.0
DIXIE	0	0	0	0	0	0	----	----	----
DUVAL	108	57	50	50	0	1	7.2	6.2	8.7
ESCAMBIA	48	24	24	23	1	0	8.2	5.8	14.2
FLAGLER	1	1	0	0	0	0	100.0	125.0	0.0
FRANKLIN	0	0	0	0	0	0	0.0	0.0	----
GADSDEN	0	0	0	0	0	0	0.0	0.0	0.0
GILCHRIST	0	0	0	0	0	0	----	----	----
GLADES	0	0	0	0	0	0	0.0	----	0.0
GULF	0	0	0	0	0	0	----	----	----
HAMILTON	0	0	0	0	0	0	0.0	0.0	0.0
HARDEE	0	0	0	0	0	0	0.0	0.0	----
HENDRY	0	0	0	0	0	0	0.0	0.0	----
HERNANDO	10	10	0	0	0	0	5.5	6.1	0.0
HIGHLANDS	9	8	1	0	1	0	6.4	7.0	4.0
HILLSBOROUGH	136	89	46	42	4	1	7.2	6.4	9.1
HOLMES	0	0	0	0	0	0	0.0	0.0	0.0
INDIAN RIVER	4	4	0	0	0	0	3.4	4.3	0.0
JACKSON	3	1	2	2	0	0	5.0	2.3	11.9
JEFFERSON	0	0	0	0	0	0	----	----	----
LAFAYETTE	0	0	0	0	0	0	----	----	----
LAKE	9	7	2	1	1	0	3.4	3.3	3.8
LEE	32	23	9	9	0	0	4.6	3.9	8.4
LEON	33	9	24	23	1	0	6.5	3.3	10.4
LEVY	0	0	0	0	0	0	0.0	0.0	0.0
LIBERTY	0	0	0	0	0	0	----	----	----
MADISON	0	0	0	0	0	0	0.0	0.0	0.0
MANATEE	26	21	5	4	1	0	8.5	8.3	9.6
MARION	10	6	4	3	1	0	3.4	2.7	6.1
MARTIN	11	9	2	1	1	0	5.5	5.8	4.7
MONROE	5	3	2	1	1	0	9.1	6.4	25.6
NASSAU	0	0	0	0	0	0	0.0	0.0	0.0
OKALOOSA	10	8	2	1	1	0	3.8	3.8	4.0
OKEECHOBEE	0	0	0	0	0	0	0.0	0.0	0.0
ORANGE	165	97	67	55	12	1	8.3	7.1	10.9
OSCEOLA	17	12	5	4	1	0	4.7	4.0	8.1
PALM BEACH	122	50	71	64	7	1	7.6	4.6	13.4
PASCO	7	5	2	2	0	0	4.0	3.2	10.4
PINELLAS	73	50	23	21	2	0	7.1	6.3	9.7
POLK	41	24	17	17	0	0	6.2	4.8	11.0
PUTNAM	4	3	1	1	0	0	8.9	10.4	6.1
SAINT JOHNS	9	6	3	3	0	0	7.7	6.1	15.2
SAINT LUCIE	15	8	7	7	0	0	7.3	6.1	9.4
SANTA ROSA	1	1	0	0	0	0	3.2	3.6	0.0
SARASOTA	29	21	8	7	1	0	8.9	7.6	16.4
SEMINOLE	23	14	9	8	1	0	7.1	5.5	12.5
SUMTER	0	0	0	0	0	0	0.0	0.0	0.0
SUWANNEE	0	0	0	0	0	0	0.0	0.0	0.0
TAYLOR	0	0	0	0	0	0	0.0	----	0.0
UNION	0	0	0	0	0	0	0.0	0.0	0.0
VOLUSIA	38	25	13	11	2	0	8.4	7.0	13.7
WAKULLA	0	0	0	0	0	0	----	----	----
WALTON	5	4	1	1	0	0	6.6	5.7	16.9
WASHINGTON	1	0	1	1	0	0	----	----	----

TABLE F-2: RESIDENT FETAL DEATHS BY HISPANIC OR HAITIAN ORIGIN OF MOTHER, BY COUNTY, FLORIDA, 2009

	TOTAL	HISPANIC ORIGIN								NON-HISPANIC/HAITIAN	UNK
		TOTAL HISPANIC	MEXICAN	PUERTO RICAN	CUBAN	CENTRAL/SOUTH AMERICAN	OTHER/UNK HISPANIC	HAITIAN			
FLORIDA	1,569	387	105	71	62	132	17	101	1,035	46	
ALACHUA	21	1	0	0	0	1	0	0	20	0	
BAKER	1	0	0	0	0	0	0	0	1	0	
BAY	21	3	2	0	0	1	0	0	18	0	
BRADFORD	7	0	0	0	0	0	0	0	7	0	
BREVARD	31	4	1	2	0	1	0	0	27	0	
BROWARD	176	39	7	4	3	24	1	30	101	6	
CALHOUN	0	0	0	0	0	0	0	0	0	0	
CHARLOTTE	7	1	0	0	0	1	0	0	6	0	
CITRUS	7	0	0	0	0	0	0	0	7	0	
CLAY	12	2	0	0	0	1	1	0	10	0	
COLLIER	19	8	6	0	0	2	0	2	9	0	
COLUMBIA	5	1	1	0	0	0	0	0	4	0	
MIAMI-DADE	247	118	7	8	48	52	3	25	85	19	
DESOTO	1	0	0	0	0	0	0	0	1	0	
DIXIE	1	0	0	0	0	0	0	0	1	0	
DUVAL	104	8	2	0	1	5	0	0	95	1	
ESCAMBIA	32	2	1	0	0	1	0	0	30	0	
FLAGLER	9	2	2	0	0	0	0	0	7	0	
FRANKLIN	2	0	0	0	0	0	0	0	2	0	
GADSDEN	8	1	0	0	0	1	0	0	7	0	
GILCHRIST	1	0	0	0	0	0	0	0	1	0	
GLADES	0	0	0	0	0	0	0	0	0	0	
GULF	0	0	0	0	0	0	0	0	0	0	
HAMILTON	1	0	0	0	0	0	0	0	1	0	
HARDEE	3	2	2	0	0	0	0	0	1	0	
HENDRY	5	2	2	0	0	0	0	0	3	0	
HERNANDO	10	2	1	1	0	0	0	0	8	0	
HIGHLANDS	5	2	2	0	0	0	0	0	3	0	
HILLSBOROUGH	115	31	13	11	2	4	1	2	75	7	
HOLMES	1	0	0	0	0	0	0	0	1	0	
INDIAN RIVER	6	2	2	0	0	0	0	0	4	0	
JACKSON	1	0	0	0	0	0	0	0	1	0	
JEFFERSON	0	0	0	0	0	0	0	0	0	0	
LAFAYETTE	0	0	0	0	0	0	0	0	0	0	
LAKE	12	2	2	0	0	0	0	0	10	0	
LEE	29	10	4	3	0	3	0	6	13	0	
LEON	21	1	1	0	0	0	0	0	20	0	
LEVY	3	1	1	0	0	0	0	0	2	0	
LIBERTY	0	0	0	0	0	0	0	0	0	0	
MADISON	2	0	0	0	0	0	0	0	2	0	
MANATEE	30	13	10	3	0	0	0	1	16	0	
MARION	23	0	0	0	0	0	0	0	23	0	
MARTIN	7	2	1	0	0	1	0	0	5	0	
MONROE	5	0	0	0	0	0	0	0	5	0	
NASSAU	3	0	0	0	0	0	0	0	3	0	
OKALOOSA	9	0	0	0	0	0	0	0	9	0	
OKEECHOBEE	4	1	1	0	0	0	0	0	3	0	
ORANGE	122	32	4	13	1	11	3	9	79	2	
OSCEOLA	22	12	4	7	0	1	0	0	8	2	
PALM BEACH	106	26	3	7	4	10	2	21	56	3	
PASCO	27	3	1	1	0	0	1	0	24	0	
PINELLAS	65	8	2	2	1	1	2	0	57	0	
POLK	62	19	8	6	1	3	1	1	38	4	
PUTNAM	6	1	1	0	0	0	0	0	5	0	
SAINT JOHNS	10	0	0	0	0	0	0	0	10	0	
SAINT LUCIE	24	6	3	0	0	3	0	4	14	0	
SANTA ROSA	15	0	0	0	0	0	0	0	15	0	
SARASOTA	25	6	2	1	0	3	0	0	19	0	
SEMINOLE	29	4	1	2	0	1	0	0	23	2	
SUMTER	4	0	0	0	0	0	0	0	4	0	
SUWANNEE	1	0	0	0	0	0	0	0	1	0	
TAYLOR	2	0	0	0	0	0	0	0	2	0	
UNION	0	0	0	0	0	0	0	0	0	0	
VOLUSIA	35	9	5	0	1	1	2	0	26	0	
WAKULLA	1	0	0	0	0	0	0	0	1	0	
WALTON	4	0	0	0	0	0	0	0	4	0	
WASHINGTON	2	0	0	0	0	0	0	0	2	0	

TABLE F-3: RESIDENT FETAL DEATHS BY AGE OF MOTHER, BY COUNTY, FLORIDA, 2009

	TOTAL	AGE OF MOTHER													
		<13	13	14	15	16	17	18	19	20-24	25-29	30-34	35-44	45+	UNK
FLORIDA	1,569	0	1	3	7	20	29	50	62	372	396	326	285	3	15
ALACHUA	21	0	0	0	1	0	0	0	1	3	6	6	4	0	0
BAKER	1	0	0	0	0	0	0	0	0	1	0	0	0	0	0
BAY	21	0	0	0	0	0	1	1	0	6	7	2	4	0	0
BRADFORD	7	0	0	0	0	0	0	0	0	3	2	2	0	0	0
BREVARD	31	0	0	0	0	0	0	1	0	9	7	7	7	0	0
BROWARD	176	0	0	0	1	3	2	5	5	47	34	36	39	1	3
CALHOUN	0	0	0	0	0	0	0	0	0	0	0	0	0	0	0
CHARLOTTE	7	0	0	0	0	0	0	0	0	5	1	1	0	0	0
CITRUS	7	0	0	0	0	0	0	0	1	2	1	1	2	0	0
CLAY	12	0	0	0	0	0	0	0	0	5	4	3	0	0	0
COLLIER	19	0	0	0	0	0	1	0	0	3	7	4	4	0	0
COLUMBIA	5	0	0	0	0	0	0	0	1	0	4	0	0	0	0
MIAMI-DADE	247	0	0	0	0	4	4	6	9	40	58	58	61	1	6
DESOTO	1	0	0	0	0	0	0	0	0	0	0	1	0	0	0
DIXIE	1	0	0	0	0	0	0	0	1	0	0	0	0	0	0
DUVAL	104	0	0	0	0	0	3	6	5	22	30	17	19	0	2
ESCAMBIA	32	0	0	0	0	1	1	3	3	13	6	3	2	0	0
FLAGLER	9	0	0	0	0	1	0	0	0	4	4	0	0	0	0
FRANKLIN	2	0	0	0	0	0	0	0	0	1	1	0	0	0	0
GADSDEN	8	0	0	1	0	0	0	0	1	1	4	0	1	0	0
GILCHRIST	1	0	0	0	0	0	0	0	0	0	0	1	0	0	0
GLADES	0	0	0	0	0	0	0	0	0	0	0	0	0	0	0
GULF	0	0	0	0	0	0	0	0	0	0	0	0	0	0	0
HAMILTON	1	0	0	0	0	0	0	0	0	1	0	0	0	0	0
HARDEE	3	0	0	0	0	0	0	0	0	2	0	0	1	0	0
HENDRY	5	0	0	0	0	0	0	1	0	1	2	1	0	0	0
HERNANDO	10	0	0	0	0	0	0	1	1	2	2	2	2	0	0
HIGHLANDS	5	0	0	0	0	0	1	0	0	1	1	2	0	0	0
HILLSBOROUGH	115	0	1	0	0	1	2	3	4	27	32	27	18	0	0
HOLMES	1	0	0	0	0	0	0	0	0	1	0	0	0	0	0
INDIAN RIVER	6	0	0	0	1	0	0	0	0	1	1	3	0	0	0
JACKSON	1	0	0	0	0	0	0	0	0	0	0	1	0	0	0
JEFFERSON	0	0	0	0	0	0	0	0	0	0	0	0	0	0	0
LAFAYETTE	0	0	0	0	0	0	0	0	0	0	0	0	0	0	0
LAKE	12	0	0	0	0	0	1	0	1	2	3	2	3	0	0
LEE	29	0	0	0	0	2	0	1	1	11	3	5	6	0	0
LEON	21	0	0	0	0	0	1	0	1	8	7	2	2	0	0
LEVY	3	0	0	0	0	0	0	0	0	0	3	0	0	0	0
LIBERTY	0	0	0	0	0	0	0	0	0	0	0	0	0	0	0
MADISON	2	0	0	0	0	0	0	0	0	1	1	0	0	0	0
MANATEE	30	0	0	0	0	2	2	2	0	9	5	5	4	1	0
MARION	23	0	0	0	0	1	1	1	2	6	4	4	4	0	0
MARTIN	7	0	0	0	0	0	0	0	0	1	4	0	1	0	1
MONROE	5	0	0	0	0	0	1	0	0	1	1	2	0	0	0
NASSAU	3	0	0	0	0	0	0	0	0	1	0	1	1	0	0
OKALOOSA	9	0	0	0	0	0	0	0	0	1	2	2	4	0	0
OKEECHOBEE	4	0	0	0	0	1	0	1	0	1	1	0	0	0	0
ORANGE	122	0	0	1	0	0	0	4	4	29	30	28	25	0	1
OSCEOLA	22	0	0	0	0	0	0	0	0	7	9	1	5	0	0
PALM BEACH	106	0	0	0	0	1	2	1	5	21	34	25	17	0	0
PASCO	27	0	0	0	1	0	0	0	2	5	1	13	5	0	0
PINELLAS	65	0	0	1	1	0	1	2	5	16	15	13	11	0	0
POLK	62	0	0	0	1	1	2	4	4	16	16	9	8	0	1
PUTNAM	6	0	0	0	0	0	0	0	0	4	2	0	0	0	0
SAINT JOHNS	10	0	0	0	0	0	0	0	0	4	4	0	2	0	0
SAINT LUCIE	24	0	0	0	0	0	0	2	1	6	7	5	3	0	0
SANTA ROSA	15	0	0	0	0	0	0	0	1	3	6	4	1	0	0
SARASOTA	25	0	0	0	0	1	0	0	0	3	5	9	7	0	0
SEMINOLE	29	0	0	0	1	0	1	0	1	4	9	7	6	0	0
SUMTER	4	0	0	0	0	0	0	0	0	0	1	2	0	0	1
SUWANNEE	1	0	0	0	0	0	0	0	0	0	0	1	0	0	0
TAYLOR	2	0	0	0	0	0	1	0	1	0	0	0	0	0	0
UNION	0	0	0	0	0	0	0	0	0	0	0	0	0	0	0
VOLUSIA	35	0	0	0	0	1	1	5	1	10	7	5	5	0	0
WAKULLA	1	0	0	0	0	0	0	0	0	0	1	0	0	0	0
WALTON	4	0	0	0	0	0	0	0	0	0	1	2	1	0	0
WASHINGTON	2	0	0	0	0	0	0	0	0	1	0	1	0	0	0

TABLE F-4: RESIDENT AND RECORDED NEONATAL DEATHS (UNDER 28 DAYS) AND RATES PER 1,000 LIVE BIRTHS, BY RACE, BY COUNTY, FLORIDA, 2009

	RESIDENT NEONATAL DEATHS						RATES*		
	TOTAL	WHITE	NUMBERS			UNK	TOTAL	WHITE	BLACK & OTHER
			TOTAL	BLACK	OTHER				
FLORIDA	995	512	480	438	42	3	4.5	3.2	7.8
ALACHUA	20	10	10	9	1	0	6.8	5.8	8.3
BAKER	4	4	0	0	0	0	10.6	11.8	0.0
BAY	7	4	3	3	0	0	3.0	2.2	6.6
BRADFORD	3	1	2	2	0	0	9.3	4.1	26.0
BREVARD	22	14	8	7	1	0	4.3	3.4	7.7
BROWARD	86	36	50	46	4	0	4.0	3.1	5.4
CALHOUN	0	0	0	0	0	0	0.0	0.0	0.0
CHARLOTTE	2	2	0	0	0	0	2.0	2.3	0.0
CITRUS	4	2	2	1	1	0	3.7	2.0	29.9
CLAY	6	4	2	2	0	0	2.7	2.2	5.2
COLLIER	17	13	4	4	0	0	4.8	4.3	7.9
COLUMBIA	5	5	0	0	0	0	5.8	7.5	0.0
MIAMI-DADE	120	58	60	55	5	2	3.7	2.5	6.9
DESOTO	1	1	0	0	0	0	2.2	2.5	0.0
DIXIE	0	0	0	0	0	0	0.0	0.0	0.0
DUVAL	75	27	48	45	3	0	5.7	3.6	8.5
ESCAMBIA	25	10	15	14	1	0	6.0	3.8	9.7
FLAGLER	4	3	1	1	0	0	4.6	4.1	7.2
FRANKLIN	0	0	0	0	0	0	0.0	0.0	0.0
GADSDEN	2	2	0	0	0	0	2.9	8.0	0.0
GILCHRIST	2	2	0	0	0	0	10.6	11.4	0.0
GLADES	0	0	0	0	0	0	0.0	0.0	0.0
GULF	0	0	0	0	0	0	0.0	0.0	0.0
HAMILTON	2	0	2	2	0	0	10.8	0.0	29.4
HARDEE	2	1	1	1	0	0	4.1	2.3	24.4
HENDRY	3	3	0	0	0	0	4.5	5.2	0.0
HERNANDO	5	4	1	1	0	0	3.1	2.8	6.4
HIGHLANDS	7	5	2	2	0	0	6.9	6.2	9.6
HILLSBOROUGH	112	50	61	56	5	1	6.7	4.2	13.0
HOLMES	1	1	0	0	0	0	4.4	4.6	0.0
INDIAN RIVER	4	2	2	2	0	0	3.1	1.9	8.0
JACKSON	4	1	3	3	0	0	7.3	2.7	17.2
JEFFERSON	3	2	1	1	0	0	19.4	26.7	12.5
LAFAYETTE	0	0	0	0	0	0	0.0	0.0	0.0
LAKE	7	5	2	1	1	0	2.2	2.0	3.5
LEE	29	15	14	12	2	0	4.4	2.7	13.2
LEON	20	9	11	10	1	0	6.4	5.7	7.2
LEVY	1	1	0	0	0	0	2.2	2.7	0.0
LIBERTY	1	0	1	1	0	0	11.6	0.0	142.9
MADISON	1	1	0	0	0	0	4.4	9.1	0.0
MANATEE	17	10	7	5	2	0	4.6	3.3	10.8
MARION	16	8	8	7	1	0	4.5	2.9	9.9
MARTIN	4	1	3	2	1	0	3.4	1.2	9.2
MONROE	2	2	0	0	0	0	2.8	3.2	0.0
NASSAU	5	3	2	2	0	0	6.4	4.2	29.9
OKALOOSA	11	8	3	3	0	0	4.1	3.8	5.7
OKEECHOBEE	1	0	1	1	0	0	1.8	0.0	16.4
ORANGE	70	31	39	37	2	0	4.5	3.1	7.2
OSCEOLA	15	9	6	3	3	0	3.9	2.8	10.0
PALM BEACH	62	31	31	30	1	0	4.4	3.3	6.5
PASCO	19	16	3	3	0	0	3.8	3.6	5.7
PINELLAS	46	20	26	25	1	0	5.2	3.1	11.7
POLK	33	24	9	8	1	0	4.3	4.1	5.0
PUTNAM	6	4	2	2	0	0	6.2	5.5	8.0
SAINT JOHNS	7	6	1	1	0	0	3.9	3.9	3.9
SAINT LUCIE	14	6	8	8	0	0	4.5	2.8	8.3
SANTA ROSA	4	4	0	0	0	0	2.2	2.4	0.0
SARASOTA	10	6	4	4	0	0	3.4	2.4	9.5
SEMINOLE	22	11	11	8	3	0	4.9	3.1	11.3
SUMTER	0	0	0	0	0	0	0.0	0.0	0.0
SUWANNEE	1	0	1	1	0	0	2.1	0.0	12.5
TAYLOR	2	1	1	1	0	0	7.0	4.6	15.2
UNION	0	0	0	0	0	0	0.0	0.0	0.0
VOLUSIA	13	6	7	5	2	0	2.5	1.5	6.7
WAKULLA	3	3	0	0	0	0	9.5	11.0	0.0
WALTON	3	3	0	0	0	0	4.6	4.8	0.0
WASHINGTON	2	1	1	1	0	0	7.6	4.6	21.7

*Rates based on neonatal deaths by race of decedent, live births by race of mother.

TABLE F-4 (Cont.): RESIDENT AND RECORDED NEONATAL DEATHS (UNDER 28 DAYS) AND RATES PER 1,000 LIVE BIRTHS, BY RACE, BY COUNTY, FLORIDA, 2009

	RECORDED NEONATAL DEATHS						RATES*		
	TOTAL	WHITE	NUMBERS			UNK	TOTAL	WHITE	BLACK & OTHER
			TOTAL	BLACK	OTHER				
FLORIDA	1,011	514	494	451	43	3	4.6	3.2	8.0
ALACHUA	58	37	21	19	2	0	9.4	8.4	11.8
BAKER	2	2	0	0	0	0	500.0	500.0	----
BAY	7	3	4	4	0	0	2.5	1.4	7.9
BRADFORD	0	0	0	0	0	0	0.0	----	0.0
BREVARD	15	9	6	5	1	0	2.9	2.2	5.8
BROWARD	93	34	59	54	5	0	4.0	2.7	5.6
CALHOUN	0	0	0	0	0	0	0.0	0.0	----
CHARLOTTE	3	1	2	2	0	0	2.6	1.0	11.8
CITRUS	2	0	2	1	1	0	2.0	0.0	29.4
CLAY	3	1	2	2	0	0	1.3	0.6	4.0
COLLIER	10	8	2	2	0	0	2.6	2.4	3.9
COLUMBIA	1	1	0	0	0	0	1.5	2.2	0.0
MIAMI-DADE	138	66	70	64	6	2	4.7	3.0	9.7
DESOTO	0	0	0	0	0	0	0.0	0.0	0.0
DIXIE	0	0	0	0	0	0	----	----	----
DUVAL	97	41	56	53	3	0	6.4	4.4	9.7
ESCAMBIA	39	21	18	17	1	0	6.7	5.1	10.6
FLAGLER	0	0	0	0	0	0	0.0	0.0	0.0
FRANKLIN	0	0	0	0	0	0	0.0	0.0	----
GADSDEN	0	0	0	0	0	0	0.0	0.0	0.0
GILCHRIST	0	0	0	0	0	0	----	----	----
GLADES	0	0	0	0	0	0	0.0	----	0.0
GULF	0	0	0	0	0	0	----	----	----
HAMILTON	0	0	0	0	0	0	0.0	0.0	0.0
HARDEE	0	0	0	0	0	0	0.0	0.0	----
HENDRY	1	1	0	0	0	0	333.3	333.3	----
HERNANDO	2	1	1	1	0	0	1.1	0.6	6.9
HIGHLANDS	5	4	1	1	0	0	3.6	3.5	4.0
HILLSBOROUGH	141	76	64	59	5	1	7.4	5.5	12.6
HOLMES	0	0	0	0	0	0	0.0	0.0	0.0
INDIAN RIVER	5	1	4	4	0	0	4.3	1.1	16.7
JACKSON	1	0	1	1	0	0	1.7	0.0	6.0
JEFFERSON	1	0	1	1	0	0	----	----	----
LAFAYETTE	0	0	0	0	0	0	----	----	----
LAKE	1	1	0	0	0	0	0.4	0.5	0.0
LEE	26	14	12	10	2	0	3.7	2.4	11.1
LEON	29	18	11	11	0	0	5.7	6.6	4.8
LEVY	0	0	0	0	0	0	0.0	0.0	0.0
LIBERTY	0	0	0	0	0	0	----	----	----
MADISON	0	0	0	0	0	0	0.0	0.0	0.0
MANATEE	6	4	2	1	1	0	2.0	1.6	3.8
MARION	3	0	3	3	0	0	1.0	0.0	4.5
MARTIN	0	0	0	0	0	0	0.0	0.0	0.0
MONROE	1	1	0	0	0	0	1.8	2.1	0.0
NASSAU	1	1	0	0	0	0	2.3	2.7	0.0
OKALOOSA	3	3	0	0	0	0	1.2	1.4	0.0
OKEECHOBEE	0	0	0	0	0	0	0.0	0.0	0.0
ORANGE	129	68	61	51	10	0	6.5	5.0	10.0
OSCEOLA	0	0	0	0	0	0	0.0	0.0	0.0
PALM BEACH	69	39	30	29	1	0	4.3	3.6	5.7
PASCO	1	1	0	0	0	0	0.6	0.6	0.0
PINELLAS	69	34	35	33	2	0	6.7	4.3	14.7
POLK	16	8	8	7	1	0	2.4	1.6	5.2
PUTNAM	1	0	1	1	0	0	2.2	0.0	6.1
SAINT JOHNS	3	3	0	0	0	0	2.6	3.1	0.0
SAINT LUCIE	5	1	4	4	0	0	2.4	0.8	5.4
SANTA ROSA	0	0	0	0	0	0	0.0	0.0	0.0
SARASOTA	7	5	2	2	0	0	2.2	1.8	4.1
SEMINOLE	10	3	7	6	1	0	3.1	1.2	9.7
SUMTER	0	0	0	0	0	0	0.0	0.0	0.0
SUWANNEE	0	0	0	0	0	0	0.0	0.0	0.0
TAYLOR	1	0	1	1	0	0	500.0	----	500.0
UNION	0	0	0	0	0	0	0.0	0.0	0.0
VOLUSIA	3	1	2	1	1	0	0.7	0.3	2.1
WAKULLA	0	0	0	0	0	0	----	----	----
WALTON	3	2	1	1	0	0	4.0	2.9	16.9
WASHINGTON	0	0	0	0	0	0	----	----	----

*Rates based on neonatal deaths by race of decedent, live births by race of mother.

TABLE F-5: RESIDENT AND RECORDED INFANT DEATHS (UNDER 1 YEAR) AND RATES PER 1,000 LIVE BIRTHS, BY RACE, BY COUNTY, FLORIDA, 2009

	RESIDENT INFANT DEATHS						RATES*		
	NUMBERS						TOTAL	WHITE	BLACK & OTHER
	TOTAL	WHITE	BLACK AND OTHER			UNK			
		TOTAL	BLACK	OTHER					
FLORIDA	1,525	780	742	667	75	3	6.9	4.9	12.1
ALACHUA	31	12	19	16	3	0	10.6	7.0	15.7
BAKER	7	7	0	0	0	0	18.5	20.7	0.0
BAY	17	10	7	6	1	0	7.4	5.6	15.5
BRADFORD	4	1	3	3	0	0	12.4	4.1	39.0
BREVARD	36	21	15	13	2	0	7.0	5.1	14.4
BROWARD	129	54	75	70	5	0	6.0	4.6	8.1
CALHOUN	0	0	0	0	0	0	0.0	0.0	0.0
CHARLOTTE	4	4	0	0	0	0	4.0	4.7	0.0
CITRUS	6	4	2	1	1	0	5.5	3.9	29.9
CLAY	9	7	2	2	0	0	4.1	3.8	5.2
COLLIER	26	18	8	8	0	0	7.4	5.9	15.8
COLUMBIA	6	6	0	0	0	0	7.0	9.0	0.0
MIAMI-DADE	188	92	94	88	6	2	5.8	3.9	10.7
DESOTO	2	2	0	0	0	0	4.4	4.9	0.0
DIXIE	0	0	0	0	0	0	0.0	0.0	0.0
DUVAL	111	41	70	64	6	0	8.4	5.5	12.4
ESCAMBIA	41	16	25	21	4	0	9.8	6.1	16.2
FLAGLER	4	3	1	1	0	0	4.6	4.1	7.2
FRANKLIN	0	0	0	0	0	0	0.0	0.0	0.0
GADSDEN	6	2	4	4	0	0	8.7	8.0	9.1
GILCHRIST	2	2	0	0	0	0	10.6	11.4	0.0
GLADES	0	0	0	0	0	0	0.0	0.0	0.0
GULF	0	0	0	0	0	0	0.0	0.0	0.0
HAMILTON	3	0	3	3	0	0	16.2	0.0	44.1
HARDEE	3	2	1	1	0	0	6.2	4.5	24.4
HENDRY	6	5	1	1	0	0	9.0	8.6	11.5
HERNANDO	8	6	2	1	1	0	5.0	4.1	12.8
HIGHLANDS	12	8	4	2	2	0	11.9	10.0	19.1
HILLSBOROUGH	159	66	92	81	11	1	9.5	5.5	19.6
HOLMES	1	1	0	0	0	0	4.4	4.6	0.0
INDIAN RIVER	6	4	2	2	0	0	4.7	3.9	8.0
JACKSON	7	2	5	5	0	0	12.8	5.3	28.7
JEFFERSON	3	2	1	1	0	0	19.4	26.7	12.5
LAFAYETTE	0	0	0	0	0	0	0.0	0.0	0.0
LAKE	16	12	4	2	2	0	5.1	4.7	7.0
LEE	35	21	14	12	2	0	5.3	3.8	13.2
LEON	24	10	14	13	1	0	7.7	6.3	9.2
LEVY	1	1	0	0	0	0	2.2	2.7	0.0
LIBERTY	1	0	1	1	0	0	11.6	0.0	142.9
MADISON	1	1	0	0	0	0	4.4	9.1	0.0
MANATEE	36	21	15	12	3	0	9.8	7.0	23.1
MARION	24	13	11	10	1	0	6.7	4.7	13.6
MARTIN	4	1	3	2	1	0	3.4	1.2	9.2
MONROE	4	3	1	1	0	0	5.7	4.8	11.5
NASSAU	8	6	2	2	0	0	10.3	8.5	29.9
OKALOOSA	20	13	7	7	0	0	7.5	6.1	13.2
OKEECHOBEE	2	0	2	2	0	0	3.5	0.0	32.8
ORANGE	94	41	53	49	4	0	6.1	4.1	9.9
OSCEOLA	24	14	10	7	3	0	6.2	4.3	16.7
PALM BEACH	87	42	45	44	1	0	6.1	4.5	9.5
PASCO	26	22	4	4	0	0	5.3	5.0	7.6
PINELLAS	73	35	38	34	4	0	8.3	5.4	17.1
POLK	62	41	21	19	2	0	8.0	6.9	11.6
PUTNAM	10	6	4	4	0	0	10.3	8.3	16.1
SAINT JOHNS	10	8	2	1	1	0	5.6	5.2	7.7
SAINT LUCIE	22	9	13	12	1	0	7.0	4.1	13.5
SANTA ROSA	7	6	1	1	0	0	3.8	3.6	6.3
SARASOTA	17	12	5	4	1	0	5.8	4.8	11.8
SEMINOLE	31	15	16	12	4	0	6.9	4.3	16.5
SUMTER	4	2	2	2	0	0	8.3	5.3	18.5
SUWANNEE	3	2	1	1	0	0	6.2	5.0	12.5
TAYLOR	2	1	1	1	0	0	7.0	4.6	15.2
UNION	0	0	0	0	0	0	0.0	0.0	0.0
VOLUSIA	27	13	14	12	2	0	5.3	3.2	13.4
WAKULLA	4	3	1	1	0	0	12.6	11.0	22.2
WALTON	6	6	0	0	0	0	9.1	9.6	0.0
WASHINGTON	2	1	1	1	0	0	7.6	4.6	21.7

*Rates based on infant deaths by race of decedent, live births by race of mother.

TABLE F-5 (Cont.): RESIDENT AND RECORDED INFANT DEATHS (UNDER 1 YEAR) AND RATES PER 1,000 LIVE BIRTHS, BY RACE, BY COUNTY, FLORIDA, 2009

	RECORDED INFANT DEATHS						RATES*		
	NUMBERS						TOTAL	WHITE	BLACK & OTHER
	TOTAL	WHITE	BLACK AND OTHER			UNK			
		TOTAL	BLACK	OTHER					
FLORIDA	1,545	779	763	685	78	3	7.0	4.9	12.4
ALACHUA	81	46	35	31	4	0	13.2	10.5	19.7
BAKER	3	3	0	0	0	0	750.0	750.0	----
BAY	14	7	7	7	0	0	5.0	3.2	13.8
BRADFORD	0	0	0	0	0	0	0.0	----	0.0
BREVARD	23	13	10	9	1	0	4.5	3.2	9.7
BROWARD	132	49	83	77	6	0	5.6	3.9	7.8
CALHOUN	0	0	0	0	0	0	0.0	0.0	----
CHARLOTTE	5	3	2	2	0	0	4.3	3.0	11.8
CITRUS	3	1	2	1	1	0	3.0	1.1	29.4
CLAY	6	3	3	3	0	0	2.6	1.7	6.0
COLLIER	15	13	2	2	0	0	3.9	4.0	3.9
COLUMBIA	2	2	0	0	0	0	3.0	4.3	0.0
MIAMI-DADE	227	108	117	109	8	2	7.7	4.9	16.2
DESOTO	0	0	0	0	0	0	0.0	0.0	0.0
DIXIE	0	0	0	0	0	0	----	----	----
DUVAL	137	59	78	72	6	0	9.1	6.4	13.5
ESCAMBIA	64	32	32	26	6	0	11.0	7.7	18.9
FLAGLER	0	0	0	0	0	0	0.0	0.0	0.0
FRANKLIN	0	0	0	0	0	0	0.0	0.0	----
GADSDEN	1	0	1	1	0	0	200.0	0.0	333.3
GILCHRIST	0	0	0	0	0	0	----	----	----
GLADES	0	0	0	0	0	0	0.0	----	0.0
GULF	0	0	0	0	0	0	----	----	----
HAMILTON	0	0	0	0	0	0	0.0	0.0	0.0
HARDEE	1	1	0	0	0	0	333.3	333.3	----
HENDRY	2	2	0	0	0	0	666.7	666.7	----
HERNANDO	5	3	2	1	1	0	2.8	1.8	13.9
HIGHLANDS	9	7	2	1	1	0	6.4	6.1	8.0
HILLSBOROUGH	199	102	96	84	12	1	10.5	7.3	18.9
HOLMES	0	0	0	0	0	0	0.0	0.0	0.0
INDIAN RIVER	7	3	4	4	0	0	6.0	3.2	16.7
JACKSON	4	1	3	3	0	0	6.7	2.3	17.9
JEFFERSON	1	0	1	1	0	0	----	----	----
LAFAYETTE	0	0	0	0	0	0	----	----	----
LAKE	7	5	2	1	1	0	2.6	2.3	3.8
LEE	34	20	14	12	2	0	4.9	3.4	13.0
LEON	38	20	18	18	0	0	7.5	7.3	7.8
LEVY	0	0	0	0	0	0	0.0	0.0	0.0
LIBERTY	0	0	0	0	0	0	----	----	----
MADISON	0	0	0	0	0	0	0.0	0.0	0.0
MANATEE	12	6	6	5	1	0	3.9	2.4	11.5
MARION	7	2	5	5	0	0	2.4	0.9	7.6
MARTIN	0	0	0	0	0	0	0.0	0.0	0.0
MONROE	2	1	1	1	0	0	3.6	2.1	12.8
NASSAU	3	3	0	0	0	0	7.0	8.2	0.0
OKALOOSA	9	7	2	2	0	0	3.5	3.3	4.0
OKEECHOBEE	1	0	1	1	0	0	111.1	0.0	1,000.0
ORANGE	186	95	91	77	14	0	9.4	6.9	14.9
OSCEOLA	6	4	2	2	0	0	1.7	1.3	3.2
PALM BEACH	90	48	42	41	1	0	5.6	4.4	7.9
PASCO	4	3	1	1	0	0	2.3	1.9	5.2
PINELLAS	114	59	55	48	7	0	11.0	7.4	23.1
POLK	26	14	12	10	2	0	4.0	2.8	7.8
PUTNAM	4	2	2	2	0	0	8.9	6.9	12.3
SAINT JOHNS	4	4	0	0	0	0	3.4	4.1	0.0
SAINT LUCIE	9	2	7	6	1	0	4.4	1.5	9.4
SANTA ROSA	2	1	1	1	0	0	6.5	3.6	32.3
SARASOTA	11	8	3	2	1	0	3.4	2.9	6.1
SEMINOLE	13	4	9	8	1	0	4.0	1.6	12.5
SUMTER	2	2	0	0	0	0	333.3	666.7	0.0
SUWANNEE	2	2	0	0	0	0	1,000.0	2,000.0	0.0
TAYLOR	1	0	1	1	0	0	500.0	----	500.0
UNION	0	0	0	0	0	0	0.0	0.0	0.0
VOLUSIA	14	7	7	6	1	0	3.1	2.0	7.4
WAKULLA	0	0	0	0	0	0	----	----	----
WALTON	3	2	1	1	0	0	4.0	2.9	16.9
WASHINGTON	0	0	0	0	0	0	----	----	----

*Rates based on infant deaths by race of decedent, live births by race of mother.

TABLE F-6: RESIDENT INFANT DEATHS BY HISPANIC OR HAITIAN ORIGIN, BY COUNTY, FLORIDA, 2009

	TOTAL	HISPANIC ORIGIN								NON-HISPANIC/HAITIAN	UNK
		TOTAL HISPANIC	MEXICAN	PUERTO RICAN	CUBAN	CENTRAL/SOUTH AMERICAN	OTHER/UNK HISPANIC	HAITIAN			
FLORIDA	1,525	343	87	92	56	53	55	79	1,094	9	
ALACHUA	31	1	1	0	0	0	0	0	30	0	
BAKER	7	0	0	0	0	0	0	0	7	0	
BAY	17	0	0	0	0	0	0	0	17	0	
BRADFORD	4	0	0	0	0	0	0	0	4	0	
BREVARD	36	1	0	0	0	0	1	2	33	0	
BROWARD	129	37	9	4	5	11	8	15	77	0	
CALHOUN	0	0	0	0	0	0	0	0	0	0	
CHARLOTTE	4	2	0	1	1	0	0	0	2	0	
CITRUS	6	2	1	1	0	0	0	0	4	0	
CLAY	9	1	0	1	0	0	0	0	8	0	
COLLIER	26	7	6	0	0	0	1	7	11	1	
COLUMBIA	6	1	0	0	1	0	0	0	5	0	
MIAMI-DADE	188	87	2	8	34	16	27	17	79	5	
DESOTO	2	1	1	0	0	0	0	0	1	0	
DIXIE	0	0	0	0	0	0	0	0	0	0	
DUVAL	111	8	2	3	0	1	2	1	102	0	
ESCAMBIA	41	2	1	1	0	0	0	0	39	0	
FLAGLER	4	1	0	0	0	1	0	0	3	0	
FRANKLIN	0	0	0	0	0	0	0	0	0	0	
GADSDEN	6	0	0	0	0	0	0	0	6	0	
GILCHRIST	2	0	0	0	0	0	0	0	2	0	
GLADES	0	0	0	0	0	0	0	0	0	0	
GULF	0	0	0	0	0	0	0	0	0	0	
HAMILTON	3	0	0	0	0	0	0	0	3	0	
HARDEE	3	2	2	0	0	0	0	0	1	0	
HENDRY	6	2	2	0	0	0	0	0	4	0	
HERNANDO	8	0	0	0	0	0	0	0	8	0	
HIGHLANDS	12	4	3	0	1	0	0	0	8	0	
HILLSBOROUGH	159	45	15	15	5	5	5	1	113	0	
HOLMES	1	0	0	0	0	0	0	0	1	0	
INDIAN RIVER	6	1	1	0	0	0	0	0	5	0	
JACKSON	7	1	1	0	0	0	0	0	6	0	
JEFFERSON	3	0	0	0	0	0	0	0	3	0	
LAFAYETTE	0	0	0	0	0	0	0	0	0	0	
LAKE	16	2	1	1	0	0	0	0	14	0	
LEE	35	8	2	2	2	1	1	4	23	0	
LEON	24	1	0	1	0	0	0	0	23	0	
LEVY	1	0	0	0	0	0	0	0	1	0	
LIBERTY	1	0	0	0	0	0	0	0	1	0	
MADISON	1	1	1	0	0	0	0	0	0	0	
MANATEE	36	6	6	0	0	0	0	0	30	0	
MARION	24	4	1	0	2	1	0	0	20	0	
MARTIN	4	0	0	0	0	0	0	0	4	0	
MONROE	4	2	1	0	1	0	0	0	2	0	
NASSAU	8	1	0	0	0	0	1	0	7	0	
OKALOOSA	20	2	0	1	0	0	1	0	18	0	
OKEECHOBEE	2	0	0	0	0	0	0	0	2	0	
ORANGE	94	24	2	15	0	3	4	7	63	0	
OSCEOLA	24	11	1	10	0	0	0	1	11	1	
PALM BEACH	87	22	5	5	3	7	2	16	49	0	
PASCO	26	8	3	2	0	3	0	0	18	0	
PINELLAS	73	11	8	2	1	0	0	1	61	0	
POLK	62	15	7	8	0	0	0	5	41	1	
PUTNAM	10	0	0	0	0	0	0	0	10	0	
SAINT JOHNS	10	0	0	0	0	0	0	0	10	0	
SAINT LUCIE	22	4	0	3	0	1	0	1	17	0	
SANTA ROSA	7	0	0	0	0	0	0	0	7	0	
SARASOTA	17	3	1	1	0	1	0	1	13	0	
SEMINOLE	31	7	0	5	0	0	2	0	24	0	
SUMTER	4	1	0	1	0	0	0	0	3	0	
SUWANNEE	3	1	0	0	0	1	0	0	2	0	
TAYLOR	2	0	0	0	0	0	0	0	2	0	
UNION	0	0	0	0	0	0	0	0	0	0	
VOLUSIA	27	2	0	1	0	1	0	0	24	1	
WAKULLA	4	1	1	0	0	0	0	0	3	0	
WALTON	6	0	0	0	0	0	0	0	6	0	
WASHINGTON	2	0	0	0	0	0	0	0	2	0	

TABLE F-7: RESIDENT INFANT, NEONATAL AND POST-NEONATAL DEATHS FROM SELECTED CAUSES* BY RACE, FLORIDA, 2009

	TOTAL			POST NEO- NATAL	WHITE			POST NEO- NATAL
	NEONATAL		INFANT		NEONATAL		INFANT	
	<1 DAY	1-27 DAYS			<1 DAY	1-27 DAYS		
TOTAL	1,525	603	392	530	780	306	206	268
Intestinal Infectious Disease	3	0	0	3	1	0	0	1
Diarrhea & Gastroenteritis--Infectious Origin	31	0	1	30	9	0	1	8
Tuberculosis	0	0	0	0	0	0	0	0
Tetanus	0	0	0	0	0	0	0	0
Diphtheria	0	0	0	0	0	0	0	0
Whooping Cough	0	0	0	0	0	0	0	0
Meningococcal Infection	0	0	0	0	0	0	0	0
Septicemia	18	0	0	18	10	0	0	10
Congenital Syphilis	0	0	0	0	0	0	0	0
Gonococcal Infection	0	0	0	0	0	0	0	0
Acute Poliomyelitis	0	0	0	0	0	0	0	0
Varicella (Chicken Pox)	0	0	0	0	0	0	0	0
Measles	0	0	0	0	0	0	0	0
HIV Disease	0	0	0	0	0	0	0	0
Mumps	0	0	0	0	0	0	0	0
Other & Unspec Viral Diseases	12	0	5	7	6	0	2	4
Candidiasis	0	0	0	0	0	0	0	0
Malaria	0	0	0	0	0	0	0	0
Pneumocystosis	0	0	0	0	0	0	0	0
Other & Unspecified Infectious & Parasitic Diseases	3	0	0	3	1	0	0	1
Hodgkins Disease & Non-Hodgkins Lymphomas	0	0	0	0	0	0	0	0
Leukemia	1	0	0	1	0	0	0	0
Other & Unspecified Malignant Neoplasm	1	0	1	0	1	0	1	0
In Situ/Benign/Malignant Neoplasms Uncert/Unk Behavior	4	0	0	4	4	0	0	4
Anemias	2	0	1	1	1	0	0	1
Blood, Blood-Forming, Hemorrhagic Diseases	5	1	2	2	2	0	1	1
Disorders Involving Immune Mechanism	1	0	0	1	0	0	0	0
Short Stature	0	0	0	0	0	0	0	0
Nutritional Deficiencies	0	0	0	0	0	0	0	0
Cystic Fibrosis	0	0	0	0	0	0	0	0
Fluid/Electrolyte/Acid-Base/Volume Depletion Disorders	2	0	1	1	2	0	1	1
Other Endocrine, Nutritional, Metabolic Diseases	5	0	0	5	3	0	0	3
Meningitis	2	0	0	2	1	0	0	1
Infantile Spinal Muscular Atrophy, Type 1 (Werdnig-Hoffman)	1	0	0	1	1	0	0	1
Infantile Cerebral Palsy	0	0	0	0	0	0	0	0
Anoxic Brain Damage	3	0	0	3	1	0	0	1
Other Nervous System Diseases	12	0	2	10	7	0	1	6
Ear & Mastoid Process Diseases	0	0	0	0	0	0	0	0
Pulmonary Heart/Circulation Diseases	6	0	0	6	2	0	0	2
Pericarditis, Endocarditis, Myocarditis	0	0	0	0	0	0	0	0
Cardiomyopathy	7	0	0	7	4	0	0	4
Cardiac Arrest	3	0	0	3	1	0	0	1
Cerebrovascular Diseases	9	0	0	9	6	0	0	6
Other Circulatory System Diseases	12	0	3	9	7	0	3	4
Acute Upper Respiratory Infections	0	0	0	0	0	0	0	0
Influenza	2	0	0	2	1	0	0	1
Pneumonia	10	0	0	10	5	0	0	5

TABLE F-7 (Cont.): RESIDENT INFANT, NEONATAL AND POST-NEONATAL DEATHS FROM SELECTED CAUSES*, BY RACE, FLORIDA, 2009

	TOTAL			POST NEO-	WHITE			POST NEO-
	NEONATAL		INFANT		NEONATAL		INFANT	
	<1 DAY	1-27 DAYS			<1 DAY	1-27 DAYS		
Acute Bronchitis & Acute Bronchiolitis	2	0	0	2	1	0	0	1
Bronchitis, Chronic & Unspecified	2	0	0	2	1	0	0	1
Asthma	1	0	0	1	0	0	0	0
Pneumonitis Due to Solids & Liquids	0	0	0	0	0	0	0	0
Other & Unspecified Respiratory System Diseases	13	0	0	13	6	0	0	6
Gastritis, Duodenitis, Noninfective Enteritis/Colitis	2	0	1	1	1	0	1	0
Hernia Abdom Cavity & Intestinal Obstruct W/O Hernia	2	0	0	2	1	0	0	1
Other & Unspec Digestive System Disease	6	0	2	4	5	0	2	3
Renal Failure & Other Kidney Disorders	6	0	3	3	2	0	2	0
Other & Unspec Genitourinary System Dis	1	0	0	1	1	0	0	1
PERINATAL PERIOD CONDITIONS	765	499	234	32	365	241	110	14
Maternal Hypertensive Disorders	9	9	0	0	4	4	0	0
Maternal Conditions Unrelated Present Pregnancy	6	4	2	0	2	2	0	0
Incompetent Cervix	29	29	0	0	20	20	0	0
Premature Rupture of Membranes	49	48	1	0	25	24	1	0
Multiple Pregnancy	42	37	5	0	30	25	5	0
Maternal Complications of Pregnancy	14	13	1	0	8	8	0	0
Placenta Complications	28	24	4	0	16	13	3	0
Cord Complications	6	2	4	0	6	2	4	0
Chorioamnionitis	36	36	0	0	12	12	0	0
Other & Unspecified Membrane Abnormalities	0	0	0	0	0	0	0	0
Other Complications of Labor & Delivery	3	3	0	0	0	0	0	0
Noxious Influences Via Placenta or Breast Milk	2	1	1	0	1	1	0	0
Slow Fetal Growth & Fetal Malnutrition	8	4	1	3	3	1	0	2
Extreme Low Birth Weight or Extreme Immaturity	176	156	16	4	76	71	5	0
Other Low Birth Weight or Preterm	53	49	3	1	22	21	1	0
Long Gestation & High Birth Weight	0	0	0	0	0	0	0	0
Birth Trauma	1	0	1	0	1	0	1	0
Intrauterine Hypoxia	10	5	5	0	6	2	4	0
Birth Asphyxia	9	5	3	1	4	2	2	0
Respiratory Distress	28	10	18	0	12	4	8	0
Congenital Pneumonia	2	0	2	0	1	0	1	0
Neonatal Aspiration Syndromes	2	0	2	0	0	0	0	0
Interstitial Emphysema & Related Conditions	6	2	4	0	3	0	3	0
Pulmonary Hemorrhage	3	1	2	0	0	0	0	0
Chronic Respiratory Disease	12	0	1	11	5	0	0	5
Atelectasis	19	11	8	0	9	6	3	0
Other Respiratory Conditions	4	0	2	2	2	0	0	2
Bacterial Sepsis	54	6	48	0	22	2	20	0
Omphalitis With or Without Hemorrhage	0	0	0	0	0	0	0	0
All Other Infections	13	3	9	1	7	1	5	1
Neonatal Hemorrhage	28	4	23	1	11	1	10	0
Hemorrhagic Disease of Newborn	0	0	0	0	0	0	0	0
Hemolytic Dis Due to Isoimmunization/Perinat Jaundice	0	0	0	0	0	0	0	0
Hematological Disorders	6	3	3	0	4	2	2	0
Diabetes Mellitus, Maternal or Neonatal	1	1	0	0	0	0	0	0
Necrotizing Enterocolitis	26	0	23	3	10	0	9	1
Hydrops Fetalis Not Due To Hemolytic Dis	14	7	7	0	12	7	5	0

TABLE F-7 (Cont.): RESIDENT INFANT, NEONATAL AND POST-NEONATAL DEATHS FROM SELECTED CAUSES*,
BY RACE, FLORIDA, 2009

	TOTAL			POST NEO- NATAL	WHITE			POST NEO- NATAL
	NEONATAL		INFANT		NEONATAL		INFANT	
	<1 DAY	1-27 DAYS			<1 DAY	1-27 DAYS		
Other Perinatal Conditions	66	26	35	5	31	10	18	3
CONGENITAL / CHROMOSOMAL ANOMALIES	301	99	108	94	180	63	63	54
Anencephaly & Similar Anomalies	14	11	3	0	12	10	2	0
Congenital Hydrocephalus	8	1	4	3	4	0	2	2
Spina Bifida	0	0	0	0	0	0	0	0
Other Cong Malf Nervous System	17	6	5	6	10	2	3	5
Congenital Malf of Heart	64	5	24	35	39	2	15	22
Other Congenital Malf of Circulatory Sys	11	0	8	3	7	0	5	2
Congenital Malf of Respiratory Sys	22	13	3	6	13	9	2	2
Congenital Anomalies of Digestive Sys	5	0	2	3	3	0	1	2
Congenital Malf of Genitourinary Sys	28	15	11	2	20	10	9	1
Congenital Malf of Musculoskeletal Sys	36	13	12	11	19	7	6	6
Downs Syndrome	7	2	2	3	5	2	1	2
Edwards Syndrome	26	6	15	5	15	4	9	2
Pataus Syndrome	17	7	6	4	9	6	2	1
Other Congenital Malf	37	17	10	10	19	10	4	5
Other Chromosomal Abnorm	9	3	3	3	5	1	2	2
Sudden Infant Death Syndrome	70	1	8	61	41	1	5	35
Symptoms, Signs, Abn Clinical/Lab Findings	49	2	7	40	26	0	3	23
All Other Diseases	0	0	0	0	0	0	0	0
Unint Inj: Motor Vehicle	7	0	0	7	4	0	0	4
Unint Inj: Other & Unspecified Transport	1	0	0	1	0	0	0	0
Unint Inj: Falls	2	0	0	2	2	0	0	2
Unint Inj: Firearms Discharge	0	0	0	0	0	0	0	0
Unint Inj: Drowning & Submersion	5	0	0	5	3	0	0	3
Unint Inj: Suffocation & Strangulation in Bed	73	0	8	65	34	0	6	28
Unint Inj: Other Suffocation & Strangulation	20	1	2	17	9	1	1	7
Unint Inj: Inhale/Ingest--Respiratory Tract Obstruction	2	0	0	2	1	0	0	1
Unint Inj: Smoke, Fire, Flames Exposure	2	0	0	2	1	0	0	1
Unint Inj: Poisoning & Noxious Substance Exposure	1	0	0	1	1	0	0	1
Unint Inj: Other & Unspecified	7	0	0	7	4	0	0	4
Homicide: Hanging, Strangulation, Suffocation	0	0	0	0	0	0	0	0
Homicide: Firearms Discharge	1	0	0	1	1	0	0	1
Homicide: Neglect, Abandonment, Maltreatment	6	0	0	6	2	0	0	2
Homicide: Other & Unspecified Means	14	0	1	13	7	0	1	6
Medical & Surgical Care Complications	3	0	1	2	2	0	1	1
Other External Causes	6	0	1	5	3	0	1	2

* ICD-10 codes associated with each cause of death group are presented on pages (xiv-xvi).

TABLE F-7 (Cont.): RESIDENT INFANT, NEONATAL AND POST-NEONATAL DEATHS FROM SELECTED CAUSES*,
BY RACE, FLORIDA, 2009

	BLACK			POST NEO- NATAL	OTHER			POST NEO- NATAL
	NEONATAL		INFANT		NEONATAL		INFANT	
	<1 DAY	1-27 DAYS			<1 DAY	1-27 DAYS		
TOTAL	667	271	167	229	75	24	18	33
Intestinal Infectious Disease	2	0	0	2	0	0	0	0
Diarrhea & Gastroenteritis--Infectious Origin	21	0	0	21	1	0	0	1
Tuberculosis	0	0	0	0	0	0	0	0
Tetanus	0	0	0	0	0	0	0	0
Diphtheria	0	0	0	0	0	0	0	0
Whooping Cough	0	0	0	0	0	0	0	0
Meningococcal Infection	0	0	0	0	0	0	0	0
Septicemia	8	0	0	8	0	0	0	0
Congenital Syphilis	0	0	0	0	0	0	0	0
Gonococcal Infection	0	0	0	0	0	0	0	0
Acute Poliomyelitis	0	0	0	0	0	0	0	0
Varicella (Chicken Pox)	0	0	0	0	0	0	0	0
Measles	0	0	0	0	0	0	0	0
HIV Disease	0	0	0	0	0	0	0	0
Mumps	0	0	0	0	0	0	0	0
Other & Unspec Viral Diseases	4	0	2	2	2	0	1	1
Candidiasis	0	0	0	0	0	0	0	0
Malaria	0	0	0	0	0	0	0	0
Pneumocystosis	0	0	0	0	0	0	0	0
Other & Unspecified Infectious & Parasitic Diseases	2	0	0	2	0	0	0	0
Hodgkins Disease & Non-Hodgkins Lymphomas	0	0	0	0	0	0	0	0
Leukemia	1	0	0	1	0	0	0	0
Other & Unspecified Malignant Neoplasm	0	0	0	0	0	0	0	0
In Situ/Benign/Malignant Neoplasms Uncert/Unk Behavior	0	0	0	0	0	0	0	0
Anemias	1	0	1	0	0	0	0	0
Blood, Blood-Forming, Hemorrhagic Diseases	3	1	1	1	0	0	0	0
Disorders Involving Immune Mechanism	1	0	0	1	0	0	0	0
Short Stature	0	0	0	0	0	0	0	0
Nutritional Deficiencies	0	0	0	0	0	0	0	0
Cystic Fibrosis	0	0	0	0	0	0	0	0
Fluid/Electrolyte/Acid-Base/Volume Depletion Disorders	0	0	0	0	0	0	0	0
Other Endocrine, Nutritional, Metabolic Diseases	1	0	0	1	1	0	0	1
Meningitis	1	0	0	1	0	0	0	0
Infantile Spinal Muscular Atrophy, Type 1 (Werdnig-Hoffman)	0	0	0	0	0	0	0	0
Infantile Cerebral Palsy	0	0	0	0	0	0	0	0
Anoxic Brain Damage	1	0	0	1	1	0	0	1
Other Nervous System Diseases	5	0	1	4	0	0	0	0
Ear & Mastoid Process Diseases	0	0	0	0	0	0	0	0
Pulmonary Heart/Circulation Diseases	3	0	0	3	1	0	0	1
Pericarditis, Endocarditis, Myocarditis	0	0	0	0	0	0	0	0
Cardiomyopathy	2	0	0	2	1	0	0	1
Cardiac Arrest	2	0	0	2	0	0	0	0
Cerebrovascular Diseases	3	0	0	3	0	0	0	0
Other Circulatory System Diseases	5	0	0	5	0	0	0	0
Acute Upper Respiratory Infections	0	0	0	0	0	0	0	0
Influenza	1	0	0	1	0	0	0	0
Pneumonia	5	0	0	5	0	0	0	0

TABLE F-7 (Cont.): RESIDENT INFANT, NEONATAL AND POST-NEONATAL DEATHS FROM SELECTED CAUSES*,
BY RACE, FLORIDA, 2009

	BLACK			POST NEO-	OTHER			POST NEO-
	NEONATAL		INFANT		NEONATAL		INFANT	
	<1 DAY	1-27 DAYS			<1 DAY	1-27 DAYS		
Acute Bronchitis & Acute Bronchiolitis	0	0	0	0	1	0	0	1
Bronchitis, Chronic & Unspecified	1	0	0	1	0	0	0	0
Asthma	1	0	0	1	0	0	0	0
Pneumonitis Due to Solids & Liquids	0	0	0	0	0	0	0	0
Other & Unspecified Respiratory System Diseases	4	0	0	4	3	0	0	3
Gastritis, Duodenitis, Noninfective Enteritis/Colitis	1	0	0	1	0	0	0	0
Hernia Abdom Cavity & Intestinal Obstruct W/O Hernia	1	0	0	1	0	0	0	0
Other & Unspec Digestive System Disease	1	0	0	1	0	0	0	0
Renal Failure & Other Kidney Disorders	4	0	1	3	0	0	0	0
Other & Unspec Genitourinary System Dis	0	0	0	0	0	0	0	0
PERINATAL PERIOD CONDITIONS	362	237	111	14	35	19	12	4
Maternal Hypertensive Disorders	5	5	0	0	0	0	0	0
Maternal Conditions Unrelated Present Pregnancy	3	2	1	0	1	0	1	0
Incompetent Cervix	8	8	0	0	1	1	0	0
Premature Rupture of Membranes	22	22	0	0	2	2	0	0
Multiple Pregnancy	12	12	0	0	0	0	0	0
Maternal Complications of Pregnancy	6	5	1	0	0	0	0	0
Placenta Complications	11	10	1	0	1	1	0	0
Cord Complications	0	0	0	0	0	0	0	0
Chorioamnionitis	23	23	0	0	1	1	0	0
Other & Unspecified Membrane Abnormalities	0	0	0	0	0	0	0	0
Other Complications of Labor & Delivery	3	3	0	0	0	0	0	0
Noxious Influences Via Placenta or Breast Milk	1	0	1	0	0	0	0	0
Slow Fetal Growth & Fetal Malnutrition	4	2	1	1	1	1	0	0
Extreme Low Birth Weight or Extreme Immaturity	89	75	11	3	11	10	0	1
Other Low Birth Weight or Preterm	30	27	2	1	1	1	0	0
Long Gestation & High Birth Weight	0	0	0	0	0	0	0	0
Birth Trauma	0	0	0	0	0	0	0	0
Intrauterine Hypoxia	3	3	0	0	1	0	1	0
Birth Asphyxia	5	3	1	1	0	0	0	0
Respiratory Distress	16	6	10	0	0	0	0	0
Congenital Pneumonia	1	0	1	0	0	0	0	0
Neonatal Aspiration Syndromes	2	0	2	0	0	0	0	0
Interstitial Emphysema & Related Conditions	3	2	1	0	0	0	0	0
Pulmonary Hemorrhage	2	1	1	0	1	0	1	0
Chronic Respiratory Disease	5	0	0	5	2	0	1	1
Atelectasis	8	4	4	0	2	1	1	0
Other Respiratory Conditions	1	0	1	0	1	0	1	0
Bacterial Sepsis	29	4	25	0	2	0	2	0
Omphalitis With or Without Hemorrhage	0	0	0	0	0	0	0	0
All Other Infections	4	2	2	0	2	0	2	0
Neonatal Hemorrhage	14	2	12	0	3	1	1	1
Hemorrhagic Disease of Newborn	0	0	0	0	0	0	0	0
Hemolytic Dis Due to Isoimmunization/Perinat Jaundice	0	0	0	0	0	0	0	0
Hematological Disorders	2	1	1	0	0	0	0	0
Diabetes Mellitus, Maternal or Neonatal	1	1	0	0	0	0	0	0
Necrotizing Enterocolitis	15	0	14	1	1	0	0	1
Hydrops Fetalis Not Due To Hemolytic Dis	1	0	1	0	1	0	1	0

TABLE F-7 (Cont.): RESIDENT INFANT, NEONATAL AND POST-NEONATAL DEATHS FROM SELECTED CAUSES*,
BY RACE, FLORIDA, 2009

	BLACK			POST NEO- NATAL	OTHER			POST NEO- NATAL
	NEONATAL		INFANT		NEONATAL		INFANT	
	<1 DAY	1-27 DAYS			<1 DAY	1-27 DAYS		
Other Perinatal Conditions	33	14	17	2	0	0	0	0
CONGENITAL / CHROMOSOMAL ANOMALIES	109	31	41	37	12	5	4	3
Anencephaly & Similar Anomalies	2	1	1	0	0	0	0	0
Congenital Hydrocephalus	3	0	2	1	1	1	0	0
Spina Bifida	0	0	0	0	0	0	0	0
Other Cong Malf Nervous System	7	4	2	1	0	0	0	0
Congenital Malf of Heart	24	2	9	13	1	1	0	0
Other Congenital Malf of Circulatory Sys	4	0	3	1	0	0	0	0
Congenital Malf of Respiratory Sys	7	2	1	4	2	2	0	0
Congenital Anomalies of Digestive Sys	1	0	0	1	1	0	1	0
Congenital Malf of Genitourinary Sys	8	5	2	1	0	0	0	0
Congenital Malf of Musculoskeletal Sys	15	5	6	4	2	1	0	1
Downs Syndrome	2	0	1	1	0	0	0	0
Edwards Syndrome	9	2	5	2	2	0	1	1
Patau Syndrome	8	1	4	3	0	0	0	0
Other Congenital Malf	15	7	4	4	3	0	2	1
Other Chromosomal Abnorm	4	2	1	1	0	0	0	0
Sudden Infant Death Syndrome	27	0	3	24	2	0	0	2
Symptoms, Signs, Abn Clinical/Lab Findings	21	2	3	16	2	0	1	1
All Other Diseases	0	0	0	0	0	0	0	0
Unint Inj: Motor Vehicle	2	0	0	2	1	0	0	1
Unint Inj: Other & Unspecified Transport	1	0	0	1	0	0	0	0
Unint Inj: Falls	0	0	0	0	0	0	0	0
Unint Inj: Firearms Discharge	0	0	0	0	0	0	0	0
Unint Inj: Drowning & Submersion	1	0	0	1	1	0	0	1
Unint Inj: Suffocation & Strangulation in Bed	32	0	2	30	7	0	0	7
Unint Inj: Other Suffocation & Strangulation	9	0	1	8	2	0	0	2
Unint Inj: Inhale/Ingest--Respiratory Tract Obstruction	1	0	0	1	0	0	0	0
Unint Inj: Smoke, Fire, Flames Exposure	1	0	0	1	0	0	0	0
Unint Inj: Poisoning & Noxious Substance Exposure	0	0	0	0	0	0	0	0
Unint Inj: Other & Unspecified	3	0	0	3	0	0	0	0
Homicide: Hanging, Strangulation, Suffocation	0	0	0	0	0	0	0	0
Homicide: Firearms Discharge	0	0	0	0	0	0	0	0
Homicide: Neglect, Abandonment, Maltreatment	4	0	0	4	0	0	0	0
Homicide: Other & Unspecified Means	5	0	0	5	2	0	0	2
Medical & Surgical Care Complications	1	0	0	1	0	0	0	0
Other External Causes	3	0	0	3	0	0	0	0

* ICD-10 codes associated with each cause of death group are presented on pages (xiv-xvi).