

# **Marriages and Dissolutions of Marriage**

## MARRIAGES AND DISSOLUTIONS OF MARRIAGE

- The number of marriage ceremonies decreased between 2008 (147,888 marriages) and 2009 (139,127 marriages). This represents a 5.9 percent decrease in the number of marriages.
- The marriage rate per 1,000 population has decreased each year since 2002 to 7.4 in 2009. The rate has decreased 21.3 percent since 1999.
- May was the most popular month for marriages with 14,276 marriages performed. The most popular date of marriage in 2009 was 2/14/2009 (2,286 marriages performed) and the second most popular date was 10/10/09 (1,450 marriages performed).
- The 2009 marriage rate (7.4 per 1,000 population) in Florida is 1.8 times the 2009 dissolution rate (4.2 per 1,000 population).
- Of the 78,752 dissolutions of marriage in 2009, over half (56.8 percent) did not affect any minor children.
- The mean duration of a marriage resulting in a 2009 dissolution was 10.1 years.

**CHART M-1: MARRIAGES AND DISSOLUTIONS OF MARRIAGE, AND RATES PER 1,000 POPULATION, FLORIDA AND UNITED STATES, CENSUS YEARS 1920-1990 AND 1999-2009**

YEAR	MARRIAGES			DISSOLUTIONS <sup>1</sup>		
	FLORIDA		U.S. RATE	FLORIDA		U.S. RATE
	NUMBER	RATE		NUMBER	RATE	
1920	NA	NA	12.0	NA	NA	1.6
1930	17,147	11.7	9.2	3,262	2.5	1.6
1940	32,709	17.1	12.1	11,061	5.8	2.0
1950	27,588	9.8	11.1	17,845	6.3	2.6
1960	39,315	7.9	8.5	19,326	3.9	2.2
1970	69,249	10.1	10.6	37,506	5.5	3.5
1980	108,344	11.0	10.6	71,578	7.3	5.2
1990	141,816	10.9	9.8	81,119	6.2	4.7
1999	136,403	8.7	8.5 <sup>2</sup>	80,983	5.2	4.1 <sup>2</sup>
2000	145,300	9.0	8.7 <sup>2</sup>	81,439	5.1	4.2 <sup>2</sup>
2001	153,298	9.3	8.2 <sup>2</sup>	85,259	5.2	4.0 <sup>2</sup>
2002	157,554	9.4	7.8 <sup>2</sup>	85,181	5.1	4.0 <sup>2</sup>
2003	153,023	8.9	7.7 <sup>2</sup>	85,367	5.0	3.8 <sup>2</sup>
2004	154,453	8.8	7.8 <sup>2</sup>	83,306	4.7	3.7 <sup>2</sup>
2005	158,192	8.8	7.6 <sup>2</sup>	81,287	4.5	3.6 <sup>2</sup>
2006	158,167	8.6	7.4 <sup>2</sup>	85,955	4.7	3.7 <sup>2</sup>
2007	155,998	8.3	7.3 <sup>2</sup>	84,386	4.5	3.6 <sup>2</sup>
2008	147,888	7.9	7.1 <sup>2</sup>	79,868	4.2	3.5 <sup>2</sup>
2009	139,127	7.4	6.8 <sup>2</sup>	78,752	4.2	3.4 <sup>2</sup>

<sup>1</sup> Includes divorces and annulments.  
<sup>2</sup> Provisional data.

**GRAPH M-1: MARRIAGES AND DISSOLUTIONS OF MARRIAGE RATES PER 1,000 POPULATION, FLORIDA AND UNITED STATES, 1999-2009**

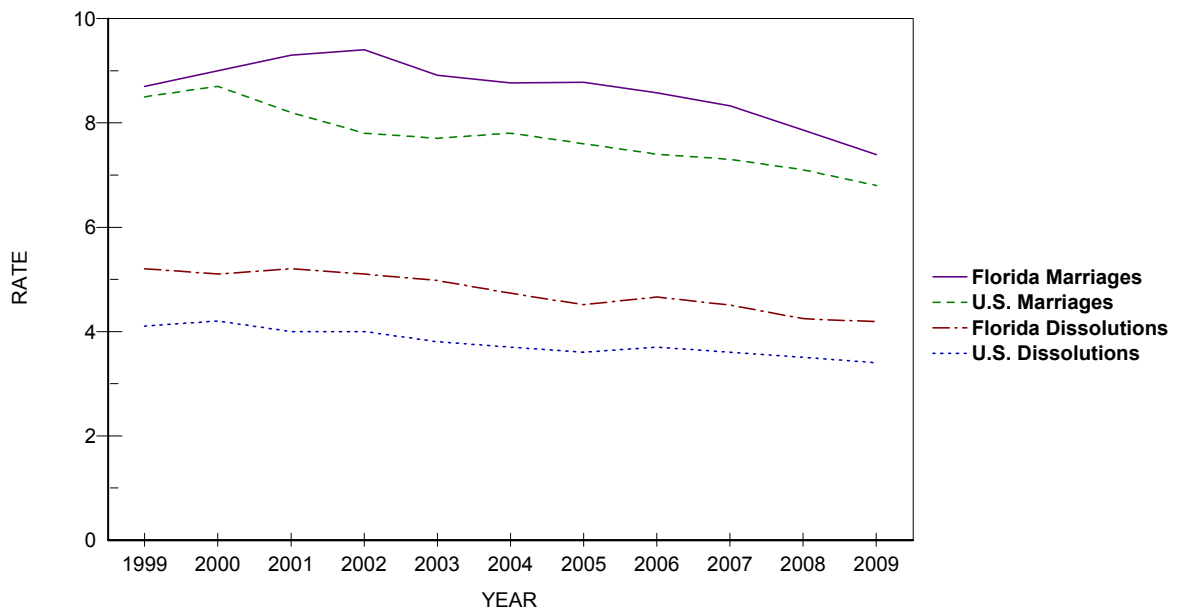


TABLE M-1: MARRIAGES PERFORMED BY MONTH, BY COUNTY OF ISSUANCE, FLORIDA, 2009

	TOTAL	JAN	FEB	MAR	APR	MAY	JUN	JUL	AUG	SEP	OCT	NOV	DEC
FLORIDA	139,127	8,860	11,406	12,479	12,616	14,276	12,575	11,585	10,419	10,360	12,530	11,083	10,938
ALACHUA	1,605	88	118	137	148	194	150	124	148	109	153	103	133
BAKER	236	11	29	19	19	26	17	20	22	16	24	18	15
BAY	2,245	93	116	162	159	260	276	253	205	221	233	137	130
BRADFORD	238	13	14	25	23	29	18	25	16	23	11	23	18
BREVARD	4,059	251	338	360	406	399	409	322	277	286	382	326	303
BROWARD	12,872	905	1,109	1,189	1,127	1,206	1,116	1,043	988	923	1,022	1,098	1,146
CALHOUN	108	6	11	6	8	11	8	8	5	9	14	11	11
CHARLOTTE	908	54	79	85	109	86	76	71	61	53	85	71	78
CITRUS	768	50	75	53	77	67	60	55	70	54	72	60	75
CLAY	1,245	76	99	122	112	126	122	118	100	94	119	74	83
COLLIER	2,709	191	202	211	264	295	268	203	163	172	273	249	218
COLUMBIA	485	27	35	51	49	41	40	40	40	46	37	39	40
MIAMI-DADE	21,195	1,517	1,862	1,946	1,807	2,026	1,783	1,790	1,686	1,526	1,708	1,677	1,867
DESOTO	161	14	18	13	13	11	16	14	15	14	9	11	13
DIXIE	119	4	7	15	13	9	17	9	7	11	10	6	11
DUVAL	5,599	325	469	489	559	565	481	438	448	400	588	436	401
ESCAMBIA	3,196	167	224	254	324	371	325	300	294	238	277	220	202
FLAGLER	533	27	36	58	43	52	39	33	53	51	52	36	53
FRANKLIN	178	4	7	18	17	29	17	26	18	13	13	7	9
GADSDEN	265	15	23	20	17	29	27	32	19	15	27	19	22
GILCHRIST	142	2	12	17	8	17	14	11	11	11	13	13	13
GLADES	54	2	9	2	4	5	7	7	6	4	1	4	3
GULF	189	5	13	19	11	19	29	22	14	12	26	8	11
HAMILTON	124	3	10	9	11	13	13	11	8	12	13	14	7
HARDEE	173	22	17	14	16	18	24	12	7	8	13	9	13
HENDRY	193	13	26	11	10	23	16	11	15	14	17	18	19
HERNANDO	900	51	96	78	62	89	76	82	67	59	97	59	84
HIGHLANDS	555	44	59	54	51	43	46	51	40	30	44	47	46
HILLSBOROUGH	8,458	566	744	778	763	855	707	712	594	636	741	722	640
HOLMES	164	7	14	12	19	15	16	17	7	22	12	14	9
INDIAN RIVER	885	56	67	80	77	97	95	74	65	66	84	59	65
JACKSON	332	29	16	29	30	35	43	32	31	19	25	23	20
JEFFERSON	89	3	4	10	12	11	8	7	6	8	7	8	5
LAFAYETTE	42	2	4	4	7	4	4	1	4	2	3	1	6
LAKE	2,713	155	200	237	232	265	252	250	187	221	280	220	214
LEE	4,072	287	368	357	418	401	351	321	254	284	342	358	331
LEON	1,756	100	125	176	142	223	163	119	135	138	188	117	130
LEVY	224	14	23	20	19	27	20	12	12	20	23	15	19
LIBERTY	50	2	6	4	1	1	5	6	4	3	7	4	7
MADISON	126	7	6	16	11	10	9	16	9	11	10	13	8
MANATEE	1,839	109	139	196	168	185	160	160	133	123	173	163	130
MARION	1,893	109	172	168	163	186	163	175	157	153	172	137	138
MARTIN	810	52	60	65	79	97	65	67	63	40	78	77	67
MONROE	2,663	169	206	230	263	342	299	235	143	126	206	238	206
NASSAU	728	33	37	50	75	103	71	61	51	62	81	59	45
OKALOOSA	2,913	145	154	201	224	343	374	301	264	302	297	170	138
OKEECHOBEE	290	32	26	37	23	23	29	23	16	16	22	23	20
ORANGE	9,036	615	724	882	822	879	700	713	646	697	853	751	754
OSCEOLA	3,570	257	324	327	308	339	277	316	281	302	303	264	272
PALM BEACH	7,621	550	693	766	614	772	647	551	528	535	646	660	659
PASCO	2,285	163	225	208	231	203	184	197	153	152	213	160	196
PINELLAS	6,570	367	486	581	639	724	606	499	443	521	656	537	511
POLK	3,581	218	354	339	344	334	301	299	247	256	317	292	280
PUTNAM	443	35	32	52	37	52	29	34	49	35	30	33	25
SAINT JOHNS	1,425	73	80	139	156	171	133	119	112	109	123	114	96
SAINT LUCIE	1,387	87	129	115	124	141	145	101	126	101	108	118	92
SANTA ROSA	1,101	53	66	84	88	131	127	114	100	111	105	61	61
SARASOTA	2,620	144	181	226	265	337	258	219	154	183	239	212	202
SEMINOLE	2,531	166	212	220	237	235	211	191	176	176	251	260	196
SUMTER	310	24	28	24	34	28	22	24	19	28	27	22	30
SUWANNEE	223	8	20	17	20	24	15	20	17	17	22	21	22
TAYLOR	136	7	14	12	17	15	11	11	10	9	11	10	9
UNION	137	5	14	14	5	13	12	10	13	18	9	13	11
VOLUSIA	3,210	191	290	259	306	334	309	258	250	236	303	247	227
WAKULLA	180	10	7	16	15	20	16	14	13	17	27	12	13
WALTON	1,539	24	38	76	149	228	236	166	138	170	195	70	49
WASHINGTON	121	6	5	15	12	14	12	9	6	11	8	12	11

TABLE M-2: MARRIAGES BY RACE OF GROOM AND BRIDE, FLORIDA, 2009

RACE OF GROOM	RACE OF BRIDE										
	TOTAL	WHITE	BLACK	AMERICAN INDIAN	CHINESE	JAPANESE	HAWAIIAN	FILIPINO	OTHER ASIAN/PAC ISL	OTHER ENTRIES	UNK
TOTAL	139,127	107,135	18,631	421	41	9	24	95	3,244	9,238	289
WHITE	106,916	100,966	1,436	282	31	7	20	80	1,672	2,338	84
BLACK	20,721	3,126	16,726	38	0	0	0	4	172	643	12
AMERICAN INDIAN	402	282	19	77	0	0	0	2	16	6	0
CHINESE	14	3	0	0	8	0	0	0	1	2	0
JAPANESE	3	3	0	0	0	0	0	0	0	0	0
HAWAIIAN	16	11	1	0	0	0	3	0	1	0	0
FILIPINO	26	14	3	0	0	0	0	6	1	2	0
OTH ASIAN/PAC ISL	2,071	660	39	6	2	1	0	1	1,324	36	2
OTHER ENTRIES	8,671	1,980	398	18	0	1	1	2	55	6,207	9
UNK	287	90	9	0	0	0	0	0	2	4	182

TABLE M-3: DISSOLUTIONS\* OF MARRIAGE BY DURATION OF MARRIAGE IN YEARS AND NUMBER OF MINOR CHILDREN AFFECTED, FLORIDA, 2009

DURATION IN YEARS	NUMBER OF MINOR CHILDREN AFFECTED								
	TOTAL	NONE	ONE	TWO	THREE	FOUR	FIVE	SIX+	UNK
TOTAL	78,752	44,760	15,070	10,937	2,920	558	122	40	4,345
<1	2,402	2,038	107	51	16	3	0	0	187
1	4,803	3,847	448	120	25	2	4	0	357
2	5,819	4,321	835	211	36	6	2	1	407
3	6,028	4,209	1,045	313	41	4	2	1	413
4	6,007	3,977	1,137	402	63	9	1	4	414
5-9	21,197	11,563	4,657	3,047	643	102	21	6	1,158
10-14	11,451	4,230	2,662	2,995	909	162	27	9	457
15-19	7,156	2,184	1,586	2,164	799	164	47	14	198
20-24	4,642	2,077	1,201	874	187	57	10	2	234
25-29	2,528	1,718	451	156	40	8	0	2	153
30-34	1,255	1,040	103	26	6	1	1	0	78
35-39	677	594	16	7	0	2	0	1	57
40+	560	478	8	8	2	1	0	0	63
UNK	4,227	2,484	814	563	153	37	7	0	169

\*Includes divorces and annulments.

TABLE M-4: DISSOLUTIONS\* OF MARRIAGE BY MONTH, BY COUNTY, FLORIDA, 2009

	TOTAL	JAN	FEB	MAR	APR	MAY	JUN	JUL	AUG	SEP	OCT	NOV	DEC
FLORIDA	78,752	5,598	5,959	6,551	7,352	6,753	7,096	6,996	6,468	6,913	6,780	5,861	6,425
ALACHUA	804	42	65	57	91	94	74	61	74	53	65	67	61
BAKER	110	6	7	14	15	13	10	6	9	8	11	5	6
BAY	878	81	56	68	86	71	95	51	65	84	80	53	88
BRADFORD	133	5	14	12	9	13	11	14	9	7	16	10	13
BREVARD	2,176	158	169	192	163	218	195	180	177	188	212	169	155
BROWARD	7,923	467	420	655	1,234	797	791	799	535	655	575	489	506
CALHOUN	64	4	2	3	3	8	11	5	5	7	6	3	7
CHARLOTTE	495	32	62	37	56	42	50	40	19	37	52	34	34
CITRUS	546	38	44	58	48	35	61	38	48	58	37	31	50
CLAY	717	53	63	71	69	55	42	79	62	55	57	59	52
COLLIER	1,076	55	85	85	101	96	113	64	116	77	92	110	82
COLUMBIA	321	30	23	31	29	24	30	24	30	19	31	25	25
MIAMI-DADE	13,739	956	1,139	1,105	1,331	1,142	1,279	1,187	1,188	1,271	1,097	1,023	1,021
DESOTO	141	11	5	15	19	7	16	17	9	6	12	8	16
DIXIE	59	8	4	0	3	7	1	7	3	9	3	7	7
DUVAL	3,773	291	293	370	310	309	389	292	295	338	343	267	276
ESCAMBIA	1,250	87	84	95	101	96	116	106	111	133	109	91	121
FLAGLER	346	24	46	27	29	21	39	32	17	29	21	25	36
FRANKLIN	43	1	6	5	6	2	2	2	3	5	7	4	0
GADSDEN	166	20	17	11	18	11	15	17	17	12	12	12	4
GILCHRIST	77	2	8	7	6	8	2	11	11	5	3	5	9
GLADES	20	1	2	0	6	1	3	3	1	0	0	1	2
GULF	48	4	7	3	6	0	4	6	2	2	3	6	5
HAMILTON	46	5	4	3	5	2	0	5	2	6	8	3	3
HARDEE	74	1	3	3	12	4	6	4	15	4	6	6	10
HENDRY	113	8	9	6	11	14	4	9	11	5	9	15	12
HERNANDO	612	48	57	38	56	56	48	51	51	54	49	57	47
HIGHLANDS	280	28	19	6	23	21	20	35	20	32	29	25	22
HILLSBOROUGH	5,340	329	371	531	400	429	507	457	354	537	381	513	531
HOLMES	94	3	5	10	13	11	9	4	10	7	11	5	6
INDIAN RIVER	519	32	29	37	46	55	51	34	63	41	37	42	52
JACKSON	207	11	13	21	13	19	13	29	21	15	11	21	20
JEFFERSON	46	2	4	2	2	4	6	3	2	7	7	4	3
LAFAYETTE	27	1	4	2	0	5	2	1	2	1	4	2	3
LAKE	1,073	79	75	98	87	94	84	104	87	87	94	90	94
LEE	2,614	259	186	185	242	213	247	188	219	207	260	179	229
LEON	876	78	76	79	114	60	81	90	56	97	79	49	17
LEVY	191	12	11	12	13	16	15	35	11	19	18	10	19
LIBERTY	20	4	0	1	4	3	0	2	0	1	1	2	2
MADISON	58	5	2	3	6	7	2	9	7	1	6	2	8
MANATEE	936	55	67	71	71	51	82	111	74	99	98	72	85
MARION	1,143	87	89	93	107	109	92	90	105	85	87	74	125
MARTIN	480	46	34	40	45	44	33	41	34	40	35	44	44
MONROE	414	29	23	39	39	34	26	28	46	39	35	48	28
NASSAU	348	31	15	38	24	32	28	33	29	30	31	29	28
OKALOOSA	1,102	85	87	102	77	78	92	112	89	99	114	83	84
OKECHOBEE	153	9	13	2	18	15	12	20	8	14	15	9	18
ORANGE	4,865	306	447	381	340	347	401	477	479	480	426	416	365
OSCEOLA	1,635	124	127	161	121	133	139	158	129	94	195	89	165
PALM BEACH	4,588	338	331	380	337	451	433	392	377	423	459	290	377
PASCO	1,703	154	127	126	127	168	178	144	148	139	151	114	127
PINELLAS	3,376	237	264	274	295	272	285	332	294	295	300	241	287
POLK	2,352	158	172	161	181	166	192	217	260	217	241	172	215
PUTNAM	341	12	39	26	42	28	22	40	23	18	35	30	26
SAINT JOHNS	739	75	69	69	55	55	62	40	74	55	56	55	74
SAINT LUCIE	952	80	60	87	89	81	54	100	49	92	66	63	131
SANTA ROSA	580	29	48	34	48	75	45	43	59	59	58	58	24
SARASOTA	1,379	117	110	133	115	106	101	127	99	118	132	101	120
SEMINOLE	1,637	128	107	129	153	168	115	133	116	117	137	134	200
SUMTER	206	12	18	23	20	21	29	17	12	15	17	11	11
SUWANNEE	156	9	19	9	22	10	8	12	8	15	19	3	22
TAYLOR	79	7	8	12	9	6	3	5	7	3	12	1	6
UNION	54	6	1	3	4	4	16	1	3	0	7	0	9
VOLUSIA	1,986	151	161	160	181	166	175	177	168	162	175	156	154
WAKULLA	141	12	6	19	15	20	12	12	9	3	4	13	16
WALTON	245	14	22	17	24	22	16	25	22	18	18	22	25
WASHINGTON	67	6	6	4	7	8	1	8	10	5	3	4	5

\*Includes divorces and annulments.

TABLE M-5: DISSOLUTIONS\* OF MARRIAGE BY NUMBER OF MINOR CHILDREN AFFECTED, BY COUNTY,  
FLORIDA, 2009

	TOTAL	NONE	ONE	TWO	THREE	FOUR	FIVE	SIX	SEVEN	EIGHT+	UNK
FLORIDA	78,752	44,760	15,070	10,937	2,920	558	122	27	8	5	4,345
ALACHUA	804	495	147	119	40	3	0	0	0	0	0
BAKER	110	49	27	20	6	3	0	0	0	0	5
BAY	878	523	181	125	39	6	2	1	0	0	1
BRADFORD	133	68	35	22	5	3	0	0	0	0	0
BREVARD	2,176	1,254	479	327	90	23	2	0	0	0	1
BROWARD	7,923	5,109	1,399	1,003	214	54	9	2	0	0	133
CALHOUN	64	37	14	11	0	1	0	0	0	0	1
CHARLOTTE	495	281	99	77	23	4	2	0	0	0	9
CITRUS	546	330	100	79	27	8	2	0	0	0	0
CLAY	717	370	161	122	44	9	0	0	0	0	11
COLLIER	1,076	646	215	160	40	10	5	0	0	0	0
COLUMBIA	321	140	53	53	18	5	1	0	0	0	51
MIAMI-DADE	13,739	9,144	2,141	1,302	309	43	11	2	2	0	785
DESOTO	141	75	34	25	6	1	0	0	0	0	0
DIXIE	59	30	12	10	4	2	0	0	0	0	1
DUVAL	3,773	2,173	813	572	158	33	7	1	0	0	16
ESCAMBIA	1,250	713	248	194	55	11	1	0	0	0	28
FLAGLER	346	144	53	39	19	5	3	0	1	0	82
FRANKLIN	43	8	11	10	1	0	0	0	0	0	13
GADSDEN	166	103	27	28	5	2	0	0	0	0	1
GILCHRIST	77	31	19	11	0	0	0	0	0	0	16
GLADES	20	12	5	1	1	0	0	0	0	0	1
GULF	48	30	10	5	3	0	0	0	0	0	0
HAMILTON	46	30	6	7	3	0	0	0	0	0	0
HARDEE	74	37	19	12	1	1	0	0	0	0	4
HENDRY	113	60	18	18	10	0	0	0	0	0	7
HERNANDO	612	263	140	94	36	5	4	0	0	0	70
HIGHLANDS	280	184	40	35	20	1	0	0	0	0	0
HILLSBOROUGH	5,340	3,153	1,129	796	192	47	6	3	1	1	12
HOLMES	94	40	19	25	8	1	0	0	0	0	1
INDIAN RIVER	519	269	123	93	21	2	0	0	0	0	11
JACKSON	207	101	46	48	10	1	1	0	0	0	0
JEFFERSON	46	22	10	7	1	0	0	0	0	0	6
LAFAYETTE	27	11	11	4	1	0	0	0	0	0	0
LAKE	1,073	517	214	177	48	15	2	0	0	0	100
LEE	2,614	1,613	494	349	127	24	4	3	0	0	0
LEON	876	447	213	134	45	6	1	0	1	1	28
LEVY	191	84	46	27	16	2	0	3	0	0	13
LIBERTY	20	7	7	3	3	0	0	0	0	0	0
MADISON	58	31	9	12	2	2	0	0	0	0	2
MANATEE	936	565	148	150	51	17	4	1	0	0	0
MARION	1,143	664	229	184	53	11	1	0	0	1	0
MARTIN	480	267	95	98	11	3	3	0	1	0	2
MONROE	414	290	61	45	8	1	0	0	0	0	9
NASSAU	348	199	70	60	13	1	1	0	0	0	4
OKALOOSA	1,102	660	221	156	52	5	0	0	1	0	7
OKEECHOBEE	153	90	36	17	7	2	0	0	0	0	1
ORANGE	4,865	2,876	994	659	186	30	9	2	1	1	107
OSCEOLA	1,635	1,016	278	200	57	8	1	0	0	0	75
PALM BEACH	4,588	485	833	641	165	27	4	0	0	0	2,433
PASCO	1,703	918	356	328	81	16	2	0	0	1	1
PINELLAS	3,376	2,090	654	454	112	13	4	0	0	0	49
POLK	2,352	1,334	487	392	102	24	9	2	0	0	2
PUTNAM	341	175	77	65	11	6	3	2	0	0	2
SAINT JOHNS	739	417	155	121	36	1	3	0	0	0	6
SAINT LUCIE	952	500	204	171	44	8	1	0	0	0	24
SANTA ROSA	580	314	122	104	30	7	3	0	0	0	0
SARASOTA	1,379	864	247	192	56	15	1	0	0	0	4
SEMINOLE	1,637	762	336	297	80	10	4	1	0	0	147
SUMTER	206	129	41	23	8	3	1	1	0	0	0
SUWANNEE	156	83	33	30	9	0	0	0	0	0	1
TAYLOR	79	50	14	7	5	2	0	0	0	0	1
UNION	54	29	13	9	3	0	0	0	0	0	0
VOLUSIA	1,986	1,090	435	314	71	12	2	3	0	0	59
WAKULLA	141	69	39	24	5	1	1	0	0	0	2
WALTON	245	151	46	33	11	2	2	0	0	0	0
WASHINGTON	67	39	19	7	2	0	0	0	0	0	0

\*Includes divorces and annulments.

