

Marriages and Dissolutions of Marriage

MARRIAGES AND DISSOLUTIONS OF MARRIAGE

- The number of marriage ceremonies declined for the fifth year in a row. Between 2009 (139,127 marriages) and 2010 (137,250 marriages), the number of marriages decreased by 1.3 percent.
- The marriage rate per 1,000 population has been declining since 2002 when it was 9.4 per 1,000 population to 7.3 per 1,000 population in 2010. Since 2002, the rate has decreased 22.3 percent.
- October was the most popular month for marriages with 14,734 marriages performed. The most popular date of marriage in 2010 was 10/10/10 with 2,396 marriages performed. Valentine's Day, February 14th was the 11th most popular day for marriages with 1,242 marriages performed.
- The 2010 marriage rate (7.3 per 1,000 population) in Florida 1.7 times the 2010 dissolution rate (4.4. per 1,000 population).
- Of the 83,342 dissolutions of marriage in 2010, over half (53.4 percent) did not affect any minor children.
- The mean duration of a marriage resulting in a 2010 dissolution was 10.3 years.

**CHART M-1: MARRIAGES AND DISSOLUTIONS OF MARRIAGE,
AND RATES PER 1,000 POPULATION, FLORIDA AND UNITED
STATES, CENSUS YEARS 1920-1990 AND 2000-2010**

YEAR	MARRIAGES			DISSOLUTIONS ¹		
	FLORIDA		U.S.	FLORIDA		U.S.
	NUMBER	RATE	RATE	NUMBER	RATE	RATE
1920	NA	NA	12.0	NA	NA	1.6
1930	17,147	11.7	9.2	3,262	2.5	1.6
1940	32,709	17.1	12.1	11,061	5.8	2.0
1950	27,588	9.8	11.1	17,845	6.3	2.6
1960	39,315	7.9	8.5	19,326	3.9	2.2
1970	69,249	10.1	10.6	37,506	5.5	3.5
1980	108,344	11.0	10.6	71,578	7.3	5.2
1990	141,816	10.9	9.8	81,119	6.2	4.7
2000	145,300	9.0	8.7 ²	81,439	5.1	4.2 ²
2001	153,298	9.3	8.2 ²	85,259	5.2	4.0 ²
2002	157,554	9.4	7.8 ²	85,181	5.1	4.0 ²
2003	153,023	8.9	7.7 ²	85,367	5.0	3.8 ²
2004	154,453	8.8	7.8 ²	83,306	4.7	3.7 ²
2005	158,192	8.8	7.6 ²	81,287	4.5	3.6 ²
2006	158,167	8.6	7.4 ²	85,955	4.7	3.7 ²
2007	155,998	8.3	7.3 ²	84,386	4.5	3.6 ²
2008	147,888	7.9	7.1 ²	79,868	4.2	3.5 ²
2009	139,127	7.4	6.8 ²	78,752	4.2	3.4 ²
2010	137,250	7.3	NA	83,342	4.4	NA

¹ Includes divorces and annulments.
² Provisional data.

**GRAPH M-1: MARRIAGES AND DISSOLUTIONS OF MARRIAGE RATES PER 1,000 POPULATION,
FLORIDA AND UNITED STATES, 2000-2010**

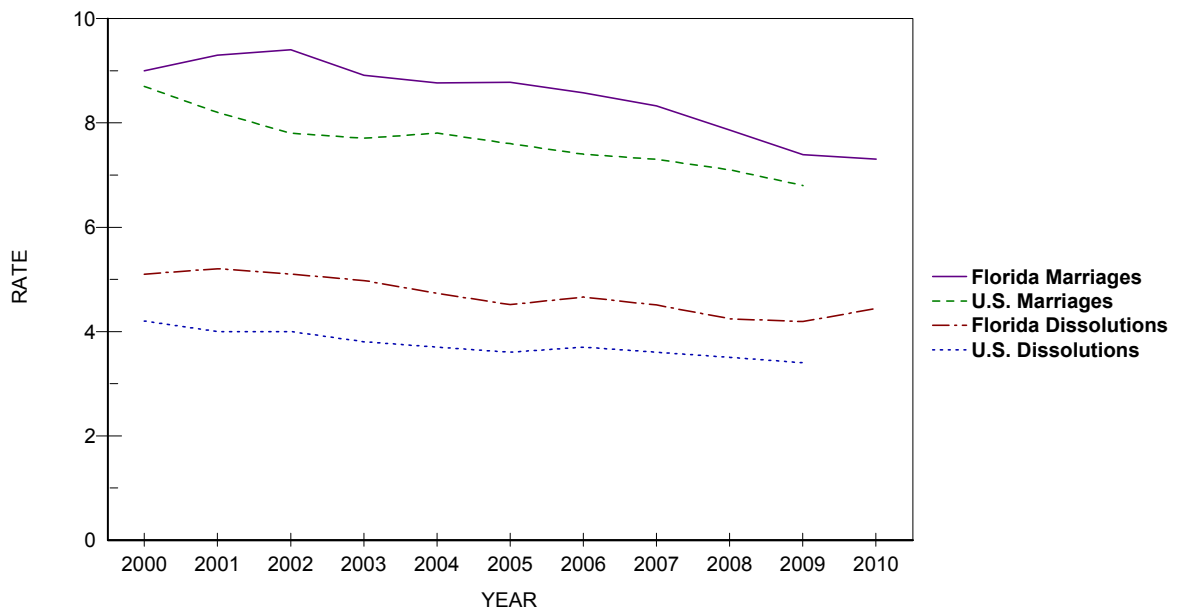


TABLE M-1: MARRIAGES PERFORMED BY MONTH, BY COUNTY OF ISSUANCE, FLORIDA, 2010

	TOTAL	JAN	FEB	MAR	APR	MAY	JUN	JUL	AUG	SEP	OCT	NOV	DEC
FLORIDA	137,250	8,008	10,377	12,560	12,988	13,812	12,401	11,661	9,712	9,523	14,734	10,777	10,697
ALACHUA	1,619	107	125	156	154	176	128	149	116	102	167	120	119
BAKER	198	11	16	22	20	19	13	23	13	15	20	15	11
BAY	2,152	84	122	110	196	266	282	235	162	178	263	125	129
BRADFORD	186	13	10	11	14	21	14	20	11	14	21	23	14
BREVARD	4,299	226	292	372	423	442	382	366	295	290	532	354	325
BROWARD	12,826	847	1,061	1,164	1,217	1,105	1,058	1,106	959	882	1,279	1,053	1,095
CALHOUN	118	10	8	11	13	11	8	12	8	10	14	7	6
CHARLOTTE	899	66	78	82	79	94	74	81	60	49	89	76	71
CITRUS	727	29	61	74	75	70	62	59	52	48	72	61	64
CLAY	1,246	72	70	114	129	140	116	106	89	74	153	77	106
COLLIER	2,627	155	202	228	268	295	238	202	139	143	295	221	241
COLUMBIA	486	31	27	46	51	40	47	48	40	44	52	30	30
MIAMI-DADE	20,361	1,415	1,701	1,923	1,803	1,852	1,653	1,715	1,577	1,441	1,803	1,686	1,792
DESOTO	174	11	14	22	17	21	10	14	8	9	17	11	20
DIXIE	89	7	6	11	9	7	13	4	4	6	8	10	4
DUVAL	5,583	292	431	499	555	566	491	472	408	448	565	431	425
ESCAMBIA	3,077	127	185	276	297	342	304	302	235	249	361	195	204
FLAGLER	492	25	37	49	43	54	51	49	38	31	58	27	30
FRANKLIN	169	2	8	12	13	26	18	29	8	15	20	8	10
GADSDEN	222	14	24	26	17	28	12	20	11	17	18	18	17
GILCHRIST	224	11	8	12	29	25	27	18	21	19	29	10	15
GLADES	59	5	8	6	8	5	3	4	4	5	5	2	4
GULF	191	6	14	7	24	29	29	20	8	22	18	7	7
HAMILTON	117	12	8	14	8	14	11	10	9	9	10	8	4
HARDEE	173	9	10	23	21	15	17	15	15	8	19	12	9
HENDRY	205	15	19	22	11	17	27	25	9	14	12	12	22
HERNANDO	845	44	68	86	78	90	79	66	51	47	108	65	63
HIGHLANDS	564	38	54	68	55	45	52	39	43	37	46	49	38
HILLSBOROUGH	8,360	445	607	782	837	846	703	673	567	538	961	737	664
HOLMES	184	13	13	13	10	19	20	20	6	19	21	16	14
INDIAN RIVER	873	44	63	76	74	84	81	85	62	55	107	62	80
JACKSON	324	8	25	30	28	30	42	28	23	25	37	26	22
JEFFERSON	93	4	9	12	9	8	11	9	8	5	11	3	4
LAFAYETTE	59	2	5	5	6	10	4	5	3	2	9	4	4
LAKE	2,639	141	184	206	262	253	281	197	181	208	333	214	179
LEE	4,193	277	327	379	419	451	363	339	247	235	438	367	351
LEON	1,825	86	129	173	162	212	161	165	123	144	209	132	129
LEVY	174	8	13	14	22	14	16	13	19	9	18	10	18
LIBERTY	42	2	1	5	1	4	3	3	5	6	4	3	5
MADISON	129	3	13	12	13	8	13	13	8	12	19	8	7
MANATEE	1,787	87	127	175	175	199	158	158	124	124	187	133	140
MARION	1,863	118	168	178	187	156	139	157	124	143	194	131	168
MARTIN	825	46	55	76	87	96	78	57	53	46	92	78	61
MONROE	2,740	180	219	226	262	325	309	204	181	160	259	195	220
NASSAU	688	33	24	56	65	81	86	63	53	50	91	34	52
OKALOOSA	2,944	102	152	196	284	379	387	333	222	238	337	171	143
OKEECHOBEE	256	19	28	24	16	19	29	26	15	21	20	17	22
ORANGE	8,818	555	674	886	794	849	720	674	629	624	972	763	678
OSCEOLA	3,488	203	243	297	336	331	321	277	285	306	357	268	264
PALM BEACH	7,648	500	629	738	697	732	692	615	490	464	807	645	639
PASCO	2,286	144	196	221	201	205	190	168	161	152	269	197	182
PINELLAS	6,622	341	433	651	630	733	649	491	451	421	835	491	496
POLK	3,463	180	319	338	310	297	306	339	245	215	387	252	275
PUTNAM	451	30	43	43	55	42	30	40	28	29	53	25	33
SAINT JOHNS	1,370	60	67	116	126	151	131	142	102	104	174	116	81
SAINT LUCIE	1,359	90	127	126	145	123	99	130	100	95	127	101	96
SANTA ROSA	1,030	47	57	86	108	131	120	97	66	86	112	69	51
SARASOTA	2,529	157	161	237	271	282	238	190	161	155	290	202	185
SEMINOLE	2,601	173	212	257	248	252	222	197	165	169	293	213	200
SUMTER	301	16	29	28	22	31	21	21	27	28	31	18	29
SUWANNEE	229	8	20	18	19	20	20	24	18	14	26	21	21
TAYLOR	149	11	14	19	18	15	10	19	9	10	6	8	10
UNION	137	5	9	11	14	18	15	9	12	15	10	9	10
VOLUSIA	3,066	143	231	283	286	301	280	309	219	204	347	229	234
WAKULLA	204	8	18	26	18	27	14	18	15	11	19	22	8
WALTON	1,434	33	47	88	132	248	213	131	103	143	199	62	35
WASHINGTON	139	2	19	7	12	15	7	13	9	12	19	12	12

TABLE M-2: MARRIAGES BY RACE OF GROOM AND BRIDE, FLORIDA, 2010

RACE OF GROOM	RACE OF BRIDE										
	TOTAL	WHITE	BLACK	AMERICAN INDIAN	CHINESE	JAPANESE	HAWAIIAN	FILIPINO	OTHER ASIAN/PAC ISL	OTHER ENTRIES	UNK
TOTAL	137,250	106,494	18,415	462	43	12	31	146	3,055	8,195	397
WHITE	106,000	100,321	1,390	287	21	8	26	103	1,613	2,125	106
BLACK	20,432	3,025	16,590	34	1	2	1	10	132	622	15
AMERICAN INDIAN	457	301	13	118	1	0	1	1	9	12	1
CHINESE	33	11	1	0	19	0	0	1	1	0	0
JAPANESE	6	6	0	0	0	0	0	0	0	0	0
HAWAIIAN	18	12	2	0	0	0	2	0	1	1	0
FILIPINO	60	26	4	0	0	0	0	27	1	2	0
OTH ASIAN/PAC ISL	2,011	681	47	12	0	0	0	1	1,228	37	5
OTHER ENTRIES	7,841	2,004	357	11	1	2	1	3	66	5,390	6
UNK	392	107	11	0	0	0	0	0	4	6	264

TABLE M-3: DISSOLUTIONS* OF MARRIAGE BY DURATION OF MARRIAGE IN YEARS AND NUMBER OF MINOR CHILDREN AFFECTED, FLORIDA, 2010

DURATION IN YEARS	NUMBER OF MINOR CHILDREN AFFECTED								
	TOTAL	NONE	ONE	TWO	THREE	FOUR	FIVE	SIX+	UNK
TOTAL	83,342	44,465	16,151	11,594	3,060	639	104	54	7,275
<1	2,221	1,815	112	52	14	3	0	0	225
1	4,743	3,552	490	106	25	6	1	1	562
2	5,854	4,093	856	195	37	10	0	1	662
3	6,657	4,375	1,143	366	50	4	1	2	716
4	6,791	4,157	1,259	485	81	9	4	0	796
5-9	22,719	11,559	5,036	3,262	667	123	22	11	2,039
10-14	12,468	4,402	2,884	3,229	1,019	203	34	7	690
15-19	7,683	2,256	1,759	2,309	771	190	26	21	351
20-24	5,246	2,289	1,388	929	224	56	11	5	344
25-29	3,005	1,978	523	195	33	8	2	0	266
30-34	1,409	1,127	99	30	7	1	0	1	144
35-39	715	586	21	16	8	1	1	0	82
40+	683	582	12	13	1	2	0	0	73
UNK	3,148	1,694	569	407	123	23	2	5	325

*Includes divorces and annulments.

TABLE M-4: DISSOLUTIONS* OF MARRIAGE BY MONTH, BY COUNTY, FLORIDA, 2010

	TOTAL	JAN	FEB	MAR	APR	MAY	JUN	JUL	AUG	SEP	OCT	NOV	DEC
FLORIDA	83,342	6,139	5,934	7,577	6,861	6,401	7,847	7,079	7,602	6,883	7,082	6,744	7,193
ALACHUA	782	50	45	57	73	74	78	63	80	54	60	77	71
BAKER	135	14	9	16	13	11	5	8	15	13	12	11	8
BAY	899	65	63	83	86	64	77	63	95	73	91	69	70
BRADFORD	182	9	12	2	20	21	15	18	27	13	9	11	25
BREVARD	2,223	151	183	219	215	141	215	159	207	192	185	192	164
BROWARD	8,256	743	526	537	477	529	638	1,235	835	467	729	626	914
CALHOUN	69	7	3	10	8	3	6	2	9	3	8	2	8
CHARLOTTE	502	43	44	39	46	32	60	38	29	33	45	52	41
CITRUS	528	39	36	63	35	38	56	50	50	39	49	40	33
CLAY	883	72	53	131	72	58	74	58	64	91	48	85	77
COLLIER	1,158	78	75	125	101	100	112	105	123	89	95	96	59
COLUMBIA	356	13	31	22	25	29	31	34	42	27	30	38	34
MIAMI-DADE	13,937	1,029	1,037	1,523	1,156	1,057	1,581	910	1,252	1,219	1,101	1,098	974
DESOTO	146	12	12	15	15	9	18	12	7	14	11	7	14
DIXIE	76	6	8	6	9	10	7	6	1	7	4	8	4
DUVAL	4,246	269	322	341	373	334	325	399	362	386	330	389	416
ESCAMBIA	1,284	108	104	106	106	98	113	91	120	118	106	88	126
FLAGLER	310	19	15	39	18	34	33	28	21	18	20	19	46
FRANKLIN	55	3	1	1	3	10	6	3	5	8	9	4	2
GADSDEN	180	15	17	15	18	20	13	9	26	12	13	18	4
GILCHRIST	89	4	7	7	8	4	7	7	11	11	6	6	11
GLADES	32	1	3	4	5	3	2	1	5	2	1	2	3
GULF	55	4	3	4	3	5	6	8	6	3	4	3	6
HAMILTON	39	5	6	3	5	4	3	0	5	5	1	0	2
HARDEE	115	5	7	14	5	9	22	9	4	9	16	8	7
HENDRY	111	7	8	9	16	8	13	10	11	4	6	10	9
HERNANDO	653	36	49	39	55	54	67	59	45	49	96	40	64
HIGHLANDS	307	25	21	36	24	17	35	21	31	35	22	9	31
HILLSBOROUGH	5,639	377	379	587	548	410	592	306	429	544	599	472	396
HOLMES	90	3	6	12	3	7	11	3	10	7	15	8	5
INDIAN RIVER	614	52	44	58	54	30	60	37	54	55	63	56	51
JACKSON	183	11	18	13	5	16	29	19	22	12	5	19	14
JEFFERSON	49	5	4	5	4	3	6	3	3	0	3	7	6
LAFAYETTE	39	3	4	5	2	4	0	3	6	3	3	5	1
LAKE	1,131	68	77	100	101	104	90	91	122	86	101	105	86
LEE	2,631	205	188	256	218	254	214	257	216	240	230	185	168
LEON	911	13	28	66	105	86	103	71	94	88	94	54	109
LEVY	176	15	13	10	14	22	20	12	11	10	15	12	22
LIBERTY	45	1	4	2	3	9	3	6	3	6	1	3	4
MADISON	65	6	4	10	8	9	4	6	5	5	5	1	2
MANATEE	1,077	71	70	82	86	98	77	85	104	87	64	123	130
MARION	1,469	76	103	138	135	120	136	127	104	144	117	125	144
MARTIN	525	32	37	40	49	60	37	49	53	40	23	60	45
MONROE	502	49	29	33	40	29	64	43	46	37	31	47	54
NASSAU	316	10	20	29	30	30	34	36	20	21	28	12	46
OKALOOSA	1,227	76	97	114	109	83	126	92	119	95	118	71	127
OKEECHOBEE	119	7	3	13	6	7	11	6	9	14	6	27	10
ORANGE	5,468	424	430	471	399	456	479	478	454	486	466	436	489
OSCEOLA	1,676	148	120	192	174	122	175	123	179	107	129	101	106
PALM BEACH	5,152	372	357	444	360	369	521	430	489	437	507	447	419
PASCO	1,839	135	147	184	111	159	171	116	180	144	197	141	154
PINELLAS	3,358	271	242	280	296	249	281	260	319	281	278	238	363
POLK	2,281	175	150	187	204	179	231	241	185	192	154	184	199
PUTNAM	327	27	14	25	46	28	28	28	27	10	29	16	49
SAINT JOHNS	791	66	53	75	67	62	51	55	98	79	71	52	62
SAINT LUCIE	1,008	48	83	91	53	107	72	98	82	117	58	111	88
SANTA ROSA	712	59	50	59	74	30	61	62	84	49	79	43	62
SARASOTA	1,403	141	96	109	125	95	107	121	133	113	113	116	134
SEMINOLE	1,758	125	146	137	163	150	151	150	157	120	124	164	171
SUMTER	229	9	21	30	15	8	27	18	23	13	13	31	21
SUWANNEE	159	11	4	14	13	12	14	20	12	15	17	11	16
TAYLOR	84	7	9	7	5	4	4	5	4	9	8	14	8
UNION	72	8	4	5	4	3	7	7	8	8	12	6	0
VOLUSIA	2,153	174	145	181	197	187	188	172	195	189	170	187	168
WAKULLA	163	9	17	16	16	4	19	20	16	9	6	16	15
WALTON	244	18	16	22	19	20	16	16	39	17	19	21	21
WASHINGTON	49	0	2	9	10	0	9	1	0	0	4	9	5

*Includes divorces and annulments.

TABLE M-5: DISSOLUTIONS* OF MARRIAGE BY NUMBER OF MINOR CHILDREN AFFECTED, BY COUNTY, FLORIDA, 2010

	TOTAL	NONE	ONE	TWO	THREE	FOUR	FIVE	SIX	SEVEN	EIGHT+	UNK
FLORIDA	83,342	44,465	16,151	11,594	3,060	639	104	38	11	5	7,275
ALACHUA	782	476	167	100	26	10	2	1	0	0	0
BAKER	135	74	28	23	9	0	1	0	0	0	0
BAY	899	543	193	119	35	7	2	0	0	0	0
BRADFORD	182	85	37	40	13	3	0	0	0	0	4
BREVARD	2,223	1,296	452	349	101	22	1	1	0	0	1
BROWARD	8,256	2,229	1,421	958	247	51	6	3	1	1	3,339
CALHOUN	69	43	9	11	4	2	0	0	0	0	0
CHARLOTTE	502	265	120	79	28	3	1	1	0	0	5
CITRUS	528	327	109	76	13	3	0	0	0	0	0
CLAY	883	430	220	143	52	17	1	1	0	0	19
COLLIER	1,158	698	228	170	47	9	3	1	1	0	1
COLUMBIA	356	230	65	46	9	2	0	0	1	0	3
MIAMI-DADE	13,937	9,698	2,292	1,484	303	58	4	6	1	0	91
DESOTO	146	81	36	22	5	1	1	0	0	0	0
DIXIE	76	41	21	10	4	0	0	0	0	0	0
DUVAL	4,246	2,405	944	649	199	34	4	2	1	0	8
ESCAMBIA	1,284	694	292	188	43	8	1	1	1	0	56
FLAGLER	310	131	51	45	15	2	0	0	1	1	64
FRANKLIN	55	1	15	11	2	0	0	0	0	0	26
GADSDEN	180	104	38	28	8	2	0	0	0	0	0
GILCHRIST	89	52	18	11	7	1	0	0	0	0	0
GLADES	32	17	9	2	0	4	0	0	0	0	0
GULF	55	29	17	6	3	0	0	0	0	0	0
HAMILTON	39	23	8	6	0	1	1	0	0	0	0
HARDEE	115	55	18	26	7	3	0	0	0	0	6
HENDRY	111	71	14	17	8	1	0	0	0	0	0
HERNANDO	653	316	151	101	31	11	2	0	0	0	41
HIGHLANDS	307	180	63	47	11	5	1	0	0	0	0
HILLSBOROUGH	5,639	3,388	1,108	827	224	43	10	1	0	0	38
HOLMES	90	45	16	23	3	2	0	0	0	1	0
INDIAN RIVER	614	348	131	93	23	8	3	0	0	0	8
JACKSON	183	90	39	41	12	0	0	0	0	0	1
JEFFERSON	49	29	7	4	3	0	0	0	0	0	6
LAFAYETTE	39	24	7	7	1	0	0	0	0	0	0
LAKE	1,131	548	245	192	58	10	5	0	0	1	72
LEE	2,631	1,626	514	374	90	22	4	1	0	0	0
LEON	911	451	194	151	30	13	1	2	0	0	69
LEVY	176	97	33	27	8	1	1	0	0	0	9
LIBERTY	45	23	9	9	3	1	0	0	0	0	0
MADISON	65	28	12	10	0	1	0	0	0	0	14
MANATEE	1,077	625	202	180	44	15	1	1	0	0	9
MARION	1,469	881	301	215	57	11	1	1	2	0	0
MARTIN	525	294	104	89	28	5	2	0	0	1	2
MONROE	502	346	66	55	17	2	0	0	0	0	16
NASSAU	316	182	55	55	21	1	1	0	0	0	1
OKALOOSA	1,227	778	234	172	29	11	2	0	0	0	1
OKEECHOBEE	119	72	28	11	6	1	1	0	0	0	0
ORANGE	5,468	3,314	1,070	747	208	48	5	1	0	0	75
OSCEOLA	1,676	1,120	268	210	62	12	1	1	0	0	2
PALM BEACH	5,152	375	978	730	204	26	3	1	0	0	2,835
PASCO	1,839	992	423	313	84	14	8	0	0	0	5
PINELLAS	3,358	2,162	662	404	108	19	2	0	0	0	1
POLK	2,281	1,261	466	417	103	25	5	3	0	0	1
PUTNAM	327	183	76	46	13	1	2	0	0	0	6
SAINT JOHNS	791	383	176	183	29	12	1	1	0	0	6
SAINT LUCIE	1,008	551	232	162	48	10	3	1	0	0	1
SANTA ROSA	712	372	183	119	30	8	0	0	0	0	0
SARASOTA	1,403	916	229	195	48	11	1	0	1	0	2
SEMINOLE	1,758	696	394	308	81	16	5	5	0	0	253
SUMTER	229	143	42	36	7	0	0	1	0	0	0
SUWANNEE	159	95	28	21	12	2	0	0	0	0	1
TAYLOR	84	37	20	20	4	1	0	0	0	0	2
UNION	72	36	16	12	7	0	1	0	0	0	0
VOLUSIA	2,153	1,101	462	296	99	26	4	1	1	0	163
WAKULLA	163	81	32	25	13	1	0	0	0	0	11
WALTON	244	146	46	42	10	0	0	0	0	0	0
WASHINGTON	49	32	7	6	3	0	0	0	0	0	1

*Includes divorces and annulments.

