

Live Births

LIVE BIRTHS

- Since 1920, Florida's resident live births have increased. The largest increase was between 1980 and 1990, when births increased from 131,811 to 199,146. Between 2000 and 2010, births increased from 204,030 to 214,519. Further analysis of this decade shows gains in the number of births until 2007, when the highest number (239,120) was reached. In 2011, the number of resident live births decreased for the fourth consecutive year to 213,237.
- In 2011, Florida experienced a birth rate of 11.3 births per 1,000 population. This is a decrease of 0.9 percent from the 2010 rate of 11.4 per 1,000 population.
- In 2011, the resident birth rate for Whites was 10.2 births per 1,000 population and 14.9 births per 1,000 population for Black and Other Races.
- Both the number and percentage of resident births to mothers aged 18 and under decreased between 2010 and 2011. The number decreased from 11,114 to 9,757 and the percent from 5.2 to 4.6.
- The percentage of births to resident Black and Other Race mothers of 18 years or younger (6.5 percent) was 1.7 times higher than the percentage for White mothers (3.8 percent).
- Between 2010 and 2011, the percentage of resident live births with birthweights less than 2,500 grams (5 lbs. 8.2 oz.) was unchanged at 8.7 percent. The percentage of resident live births with birthweights less than 1,500 grams (3 lbs. 4.9 oz.) also was unchanged from 2010 to 2011 at 1.6 percent. The percentage of resident live births with birthweights of 4,000 grams (8 lbs. 13.1 oz.) and heavier was 6.6 percent in 2011, just slightly increased from 6.5 percent in 2010.
- About 10 out of every 21 resident live births (47.6 percent) were to an unwed mother. For Blacks, about five out of every six births (80.8 percent) were to unwed mothers. Among White mothers, about five out of every twelve births (41.6 percent) were to unwed mothers. Among mothers of Other Races, approximately two out of every seven live births (29.2 percent) were to unwed mothers.
- Of the live births to unwed mothers, 9.1 percent were to women 18 years old and younger.
- Mothers of Hispanic origin accounted for 27.5 percent of the resident live births.
- Eighty-one percent of the resident live births to Black and Other Race mothers were to Black mothers. Black mothers accounted for 22.9 percent of the total resident live births.
- Of the resident live births, 98.3 percent occurred in hospitals. Physicians attended 87.3 percent of the hospital births.

**CHART B-1: RESIDENT LIVE BIRTHS AND RATES PER 1,000 POPULATION,
BY RACE, FLORIDA AND UNITED STATES TOTAL,
CENSUS YEARS 1920-2000 AND 2001-2011**

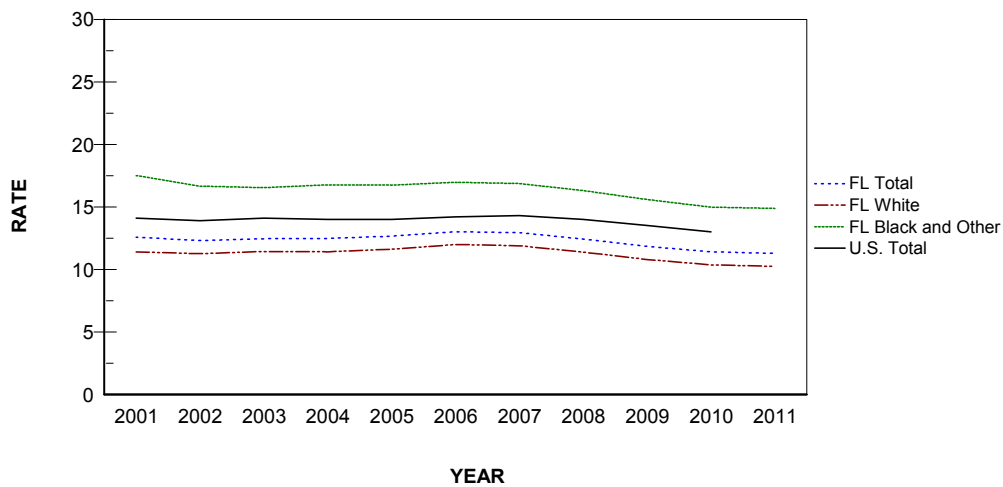
YEAR	NUMBER OF BIRTHS -FL ²			RATES - FL			RATE-U.S.
	TOTAL	WHITE	BLACK & OTHER	TOTAL	WHITE	BLACK & OTHER	TOTAL
1920 ¹	19,540	13,541	5,999	19.7	20.6	17.9	27.7
1930 ¹	26,991	18,596	8,395	18.3	17.9	19.3	21.3
1940	33,696	23,805	9,891	17.6	17.0	19.1	19.4
1950	64,370	45,699	18,671	22.8	20.7	30.5	24.1
1960	115,610	84,402	31,208	23.1	20.6	34.9	23.7
1970	115,113	86,941	28,153	16.8	15.1	26.2	18.4
1980	131,811	97,402	34,386	13.4	11.6	23.7	15.9
1990	199,146	149,743	49,265	15.3	13.6	24.8	16.7
2000	204,030	150,115	53,622	12.7	11.4	18.7	14.4
2001	205,800	151,623	53,827	12.6	11.4	17.5	14.1
2002	205,580	152,127	53,071	12.3	11.2	16.7	13.9
2003	212,243	157,402	54,566	12.4	11.4	16.5	14.1
2004	218,045	160,132	57,477	12.5	11.4	16.8	14.0
2005	226,219	166,181	59,608	12.7	11.6	16.7	14.0
2006	237,166	174,147	62,697	13.0	12.0	17.0	14.2
2007	239,120	174,597	64,090	12.9	11.9	16.8	14.3
2008	231,417	167,487	63,411	12.4	11.4	16.3	14.0
2009	221,391	159,186	61,565	11.8	10.8	15.6	13.5
2010	214,519	153,480	59,905	11.4	10.4	15.0	13.0 ³
2011	213,237	152,007	60,461	11.3	10.2	14.9	NA

1. Only recorded data are available.

2. Data from 1920-1960 are based on the race of the child. Data from 1970 to present are based on the race of the mother.

3. Preliminary data.

GRAPH B-1: RESIDENT LIVE BIRTH RATES PER 1,000 POPULATION, BY RACE OF MOTHER, FLORIDA AND UNITED STATES TOTAL, 2001-2011



**CHART B-2: RESIDENT LIVE BIRTHS TO MOTHERS 18 YEARS AND UNDER,
BY SINGLE YEARS OF AGE, AND PERCENT OF TOTAL BIRTHS,
BY RACE OF MOTHER, FLORIDA, 1970, 1975, 1980, 1985, 1990, 1995, 2000, 2005, AND 2007-2011**

YEAR	AGE OF MOTHER							18 YEARS & UNDER	
	<13	13	14	15	16	17	18	NUMBER	PERCENT
TOTAL									
1970	26	107	503	1,463	3,107	4,887	6,808	16,901	14.7
1975	20	145	647	1,798	3,369	4,936	6,482	17,397	16.5
1980	21	98	509	1,537	2,913	4,429	6,299	15,806	12.0
1985	16	105	549	1,407	2,709	4,348	6,139	15,273	9.3
1990	31	138	591	1,661	3,148	5,193	7,544	18,306	9.2
1995	20	128	588	1,583	3,236	5,166	6,971	17,692	9.4
2000	24	95	412	1,213	2,702	4,730	7,094	16,270	8.0
2005	15	59	341	1,036	2,428	4,126	6,797	14,802	6.5
2007	9	63	304	1,021	2,591	4,507	7,281	15,776	6.6
2008	10	58	288	899	2,146	4,241	6,966	14,608	6.3
2009	6	42	214	803	1,895	3,610	6,355	12,925	5.8
2010	6	54	190	660	1,567	3,171	5,466	11,114	5.2
2011	2	34	158	552	1,422	2,749	4,840	9,757	4.6
WHITE									
1970	3	19	155	524	1,553	3,004	4,463	9,721	11.2
1975	5	34	207	693	1,651	2,868	4,078	9,536	12.2
1980	5	24	128	581	1,370	2,434	3,887	8,429	8.7
1985	4	26	168	600	1,439	2,537	3,744	8,518	6.9
1990	8	37	201	693	1,571	2,976	4,636	10,122	6.8
1995	9	32	230	801	1,801	3,124	4,451	10,448	7.4
2000	6	43	167	625	1,512	2,863	4,463	9,679	6.4
2005	7	26	161	567	1,468	2,643	4,452	9,324	5.6
2007	4	29	140	584	1,547	2,829	4,701	9,834	5.6
2008	4	24	135	478	1,263	2,638	4,452	8,994	5.4
2009	1	14	100	425	1,081	2,204	3,966	7,791	4.9
2010	4	24	103	346	915	1,930	3,363	6,685	4.4
2011	2	15	84	295	835	1,597	2,970	5,798	3.8
BLACK AND OTHER									
1970	23	88	348	939	1,554	1,882	2,345	7,179	25.5
1975	15	111	439	1,104	1,717	2,068	2,403	7,857	28.5
1980	16	74	380	956	1,543	1,994	2,412	7,375	21.4
1985	12	79	381	807	1,269	1,811	2,394	6,753	16.7
1990	23	101	390	967	1,574	2,212	2,905	8,172	16.6
1995	11	96	358	782	1,431	2,038	2,519	7,235	15.5
2000	18	52	244	588	1,185	1,862	2,628	6,577	12.3
2005	8	33	180	466	958	1,479	2,332	5,456	9.2
2007	5	34	162	436	1,041	1,667	2,570	5,915	9.2
2008	6	34	153	420	882	1,593	2,498	5,586	8.8
2009	5	28	113	376	807	1,398	2,376	5,103	8.3
2010	2	30	85	308	645	1,220	2,079	4,369	7.3
2011	0	19	72	254	582	1,145	1,854	3,926	6.5

**CHART B-3: PERCENT OF RESIDENT LIVE BIRTHS FOR SELECTED BIRTHWEIGHT GROUPS,
BY RACE OF MOTHER AND GENDER OF CHILD, FLORIDA, 1970, 1980, 1990, 2000, AND 2001-2011**

YEAR	VERY LOW BIRTHWEIGHT: LESS THAN 1,500 GRAMS					LOW BIRTHWEIGHT: LESS THAN 2,500 GRAMS				
	TOTAL	WHITE		BLACK & OTHER		TOTAL	WHITE		BLACK & OTHER	
		MALE	FEMALE	MALE	FEMALE		MALE	FEMALE	MALE	FEMALE
1970	1.3	0.9	0.9	2.4	2.4	8.5	6.4	7.5	11.9	14.5
1980	1.4	1.0	0.9	2.5	2.5	7.6	5.6	6.5	11.3	12.9
1990	1.5	1.0	1.0	2.7	2.8	7.4	5.5	6.3	11.2	13.1
2000	1.5	1.2	1.1	2.6	2.7	8.0	6.2	7.0	10.9	12.8
2001	1.6	1.2	1.2	2.6	2.9	8.2	6.3	7.3	10.8	13.1
2002	1.6	1.2	1.2	2.9	2.8	8.4	6.6	7.7	11.0	13.4
2003	1.6	1.2	1.1	2.6	2.8	8.5	6.5	7.7	11.1	14.0
2004	1.6	1.1	1.2	2.7	2.9	8.6	6.6	7.9	11.2	13.4
2005	1.6	1.2	1.2	2.7	2.9	8.8	6.7	8.0	11.4	14.0
2006	1.6	1.2	1.2	2.6	2.9	8.7	6.8	8.0	11.1	14.0
2007	1.6	1.2	1.2	2.6	2.9	8.7	6.7	7.8	11.4	13.8
2008	1.7	1.2	1.3	2.6	2.9	8.8	6.8	8.0	11.5	13.7
2009	1.6	1.1	1.2	2.6	2.9	8.7	6.6	7.8	11.3	14.0
2010	1.6	1.3	1.2	2.6	2.8	8.7	6.6	7.7	11.8	14.0
2011	1.6	1.1	1.2	2.7	2.8	8.7	6.6	8.1	11.5	13.1

**CHART B-4: RESIDENT LIVE BIRTHS TO UNWED MOTHERS
AND PERCENT OF TOTAL LIVE BIRTHS, BY RACE,
FLORIDA AND UNITED STATES TOTAL, CENSUS YEARS 1920-2000 AND 2001-2011**

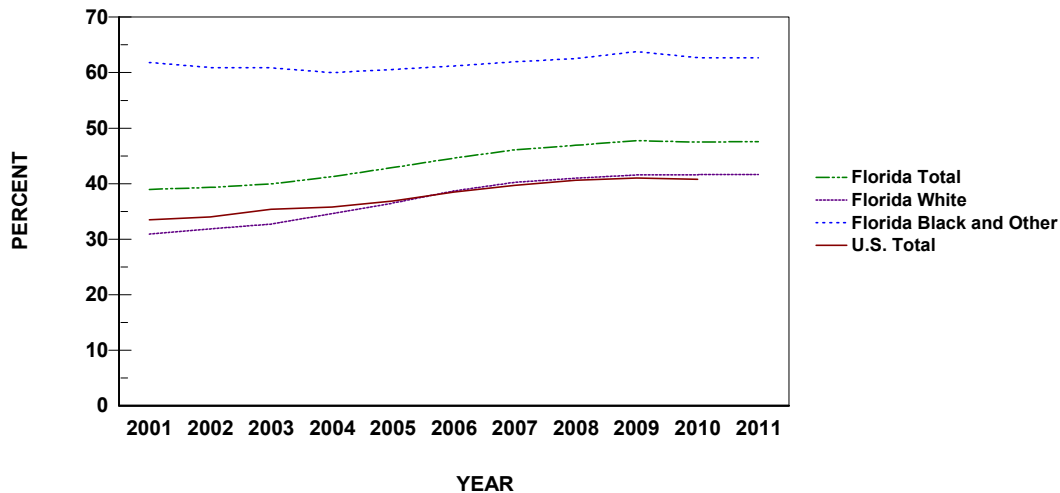
YEAR	NUMBER OF BIRTHS ²			PERCENT - FL			PERCENT-U.S.
	TOTAL	WHITE	BLACK & OTHER	TOTAL	WHITE	BLACK & OTHER	TOTAL
1920 ¹	754	125	629	3.9	0.9	10.5	NA
1930 ¹	1,467	277	1,190	5.4	1.5	14.2	NA
1940	2,075	358	1,717	6.2	1.5	17.4	3.8
1950	5,134	805	4,329	8.0	1.8	23.2	4.0
1960	11,042	2,321	8,721	9.6	2.8	27.9	5.3
1970	17,264	5,679	11,581	15.0	6.5	41.1	10.7
1980	30,156	10,295	19,860	22.9	10.6	57.8	20.3
1990	63,126	31,276	31,802	31.7	20.9	64.6	28.0
2000	78,026	44,616	33,334	38.2	29.7	62.2	33.2
2001	80,209	46,846	33,266	39.0	30.9	61.8	33.5
2002	80,833	48,400	32,326	39.3	31.8	60.9	34.0
2003	84,733	51,482	33,178	39.9	32.7	60.8	34.6
2004	89,976	55,381	34,469	41.3	34.6	60.0	35.8
2005	96,895	60,665	36,101	42.8	36.5	60.6	36.9
2006	105,770	67,305	38,341	44.6	38.6	61.2	38.5
2007	110,160	70,251	39,698	46.1	40.2	61.9	39.7
2008	108,484	68,583	39,639	46.9	40.9	62.5	40.6
2009	105,654	66,080	39,266	47.7	41.5	63.8	41.0
2010	101,810	63,796	37,525	47.5	41.6	62.6	40.8 ³
2011	101,466	63,266	37,887	47.6	41.6	62.7	NA

1. Only recorded data are available.

2. Data from 1920-1960 are based on the race of the child. Data from 1970 to present are based on the race of the mother.

3. Preliminary data.

**GRAPH B-2: PERCENT OF RESIDENT LIVE BIRTHS TO UNWED MOTHERS,
BY RACE OF MOTHER, FLORIDA AND UNITED STATES TOTAL, 2001-2011**



**CHART B-5: RESIDENT LIVE BIRTHS TO UNWED MOTHERS AND PERCENT
BY AGE AND RACE OF MOTHER, FLORIDA, 2001 AND 2011**

AGE OF MOTHER	WHITE				BLACK AND OTHER			
	2001		2011		2001		2011	
	NUMBER	PERCENT	NUMBER	PERCENT	NUMBER	PERCENT	NUMBER	PERCENT
TOTAL	46,846	30.9	63,266	41.6	33,266	61.8	37,887	62.7
10-14	191	93.6	97	96.0	300	99.3	91	100.0
15	495	90.0	290	98.3	556	99.8	254	100.0
16	1,200	84.2	801	95.9	1,073	99.0	577	99.1
17	2,131	79.8	1,497	93.7	1,662	97.0	1,135	99.1
18	3,370	77.2	2,650	89.2	2,405	95.6	1,816	98.0
19	4,155	68.6	3,993	83.8	2,962	91.2	2,661	95.8
20-24	17,142	47.7	22,651	65.1	12,880	77.4	14,390	84.4
25-29	9,201	23.0	16,035	36.5	6,373	49.7	9,369	58.3
30-34	5,434	14.6	9,365	24.4	3,146	35.1	4,966	40.0
35-44	3,491	15.2	5,792	24.2	1,882	31.9	2,599	32.1
45+	30	15.5	93	30.5	22	33.8	22	20.6
UNK	6	85.7	2	10.5	5	100.0	7	63.6

TABLE B-1: RESIDENT AND RECORDED LIVE BIRTHS AND BIRTH RATES PER 1,000 POPULATION, BY RACE OF MOTHER, BY COUNTY, FLORIDA, 2011

	RESIDENT LIVE BIRTHS						RATES		
	NUMBERS						TOTAL	WHITE	BLACK & OTHER
	TOTAL	WHITE	BLACK & OTHER			UNK			
		TOTAL	BLACK	OTHER					
FLORIDA	213,237	152,007	60,461	48,838	11,623	769	11.3	10.2	14.9
ALACHUA	2,960	1,795	1,164	903	261	1	12.0	10.2	16.4
BAKER	341	300	41	38	3	0	12.7	13.3	9.4
BAY	2,156	1,648	448	272	176	60	12.7	11.7	15.6
BRADFORD	324	257	67	62	5	0	11.3	11.7	9.9
BREVARD	5,178	4,133	1,041	745	296	4	9.5	9.0	12.3
BROWARD	21,075	11,510	9,478	8,099	1,379	87	12.0	9.8	16.2
CALHOUN	151	137	14	12	2	0	10.3	11.4	5.2
CHARLOTTE	987	857	130	87	43	0	6.1	5.9	9.0
CITRUS	1,085	995	90	46	44	0	7.7	7.5	10.1
CLAY	2,093	1,724	359	227	132	10	10.9	10.8	11.1
COLLIER	3,197	2,734	462	373	89	1	9.9	9.3	14.6
COLUMBIA	770	600	170	158	12	0	11.4	11.3	11.7
MIAMI-DADE	31,349	22,731	8,498	7,745	753	120	12.4	11.6	15.0
DESOTO	387	331	56	48	8	0	11.2	11.4	10.0
DIXIE	150	137	13	12	1	0	9.1	9.4	7.2
DUVAL	12,402	6,889	5,431	4,392	1,039	82	14.3	12.7	16.9
ESCAMBIA	3,836	2,432	1,402	1,153	249	2	12.8	11.6	15.6
FLAGLER	787	627	150	108	42	10	8.1	7.7	9.6
FRANKLIN	100	90	10	7	3	0	8.7	9.4	5.1
GADSDEN	595	236	357	349	8	2	12.4	11.6	12.8
GILCHRIST	179	164	15	10	5	0	10.5	10.5	10.9
GLADES	73	65	8	5	3	0	5.7	6.4	3.1
GULF	138	118	17	16	1	3	8.7	9.5	5.0
HAMILTON	155	108	47	41	6	0	10.5	11.7	8.5
HARDEE	390	361	29	17	12	0	14.1	14.7	9.2
HENDRY	615	493	122	102	20	0	15.8	15.6	16.7
HERNANDO	1,552	1,379	170	118	52	3	9.0	8.7	11.0
HIGHLANDS	920	719	201	168	33	0	9.3	8.4	14.8
HILLSBOROUGH	16,456	11,782	4,648	3,638	1,010	26	13.3	12.5	15.5
HOLMES	191	181	10	4	6	0	9.6	10.1	5.1
INDIAN RIVER	1,277	779	286	244	42	212	9.2	6.4	16.6
JACKSON	464	327	137	130	7	0	9.3	9.3	9.2
JEFFERSON	126	73	53	52	1	0	8.6	8.1	9.5
LAFAYETTE	85	77	8	6	2	0	9.8	10.8	4.9
LAKE	2,944	2,340	597	437	160	7	9.8	9.2	13.5
LEE	6,270	5,146	1,118	913	205	6	10.0	9.4	14.4
LEON	3,053	1,624	1,423	1,262	161	6	11.0	9.2	14.2
LEVY	380	332	48	43	5	0	9.3	9.3	9.2
LIBERTY	89	79	10	9	1	0	10.7	12.1	5.5
MADISON	214	107	107	104	3	0	11.1	9.3	13.6
MANATEE	3,362	2,611	749	484	265	2	10.3	9.2	17.4
MARION	3,353	2,564	788	668	120	1	10.1	9.2	14.5
MARTIN	1,185	1,005	175	120	55	5	8.1	7.6	12.7
MONROE	720	607	112	77	35	1	9.9	9.3	16.0
NASSAU	760	704	55	39	16	1	10.3	10.6	7.6
OKALOOSA	2,637	2,164	472	265	207	1	14.5	14.4	15.0
OKEECHOBEE	532	476	55	29	26	1	13.3	13.6	11.4
ORANGE	15,392	9,723	5,652	4,267	1,385	17	13.3	12.0	16.3
OSCEOLA	3,775	3,141	628	409	219	6	13.7	14.1	11.9
PALM BEACH	13,797	9,163	4,627	3,861	766	7	10.4	8.9	15.4
PASCO	4,699	4,138	549	295	254	12	10.1	9.8	12.2
PINELLAS	8,289	6,243	2,034	1,438	596	12	9.0	8.1	13.7
POLK	7,197	5,510	1,683	1,397	286	4	11.9	11.3	14.2
PUTNAM	840	610	229	205	24	1	11.4	10.2	15.8
SAINT JOHNS	1,811	1,575	225	125	100	11	9.3	9.1	11.4
SAINT LUCIE	2,995	2,005	981	837	144	9	10.7	9.4	14.7
SANTA ROSA	1,858	1,662	196	95	101	0	11.9	12.1	10.6
SARASOTA	2,943	2,507	428	295	133	8	7.7	7.1	13.9
SEMINOLE	4,441	3,364	1,072	714	358	5	10.4	9.7	13.7
SUMTER	427	345	81	63	18	1	4.4	4.0	7.2
SUWANNEE	484	401	82	78	4	1	11.1	10.8	12.6
TAYLOR	242	186	56	52	4	0	10.8	10.9	10.3
UNION	170	152	18	17	1	0	11.0	13.1	4.7
VOLUSIA	4,654	3,698	936	737	199	20	9.4	8.8	12.7
WAKULLA	305	264	40	38	2	1	9.9	10.4	7.2
WALTON	630	581	49	34	15	0	11.3	11.7	8.4
WASHINGTON	237	184	53	43	10	0	9.6	9.3	11.1

TABLE B-1 (Cont.): RESIDENT AND RECORDED LIVE BIRTHS AND BIRTH RATES PER 1,000 POPULATION, BY RACE OF MOTHER, BY COUNTY, FLORIDA, 2011

	RECORDED LIVE BIRTHS							RATES		
	NUMBERS						UNK	TOTAL	WHITE	BLACK & OTHER
	TOTAL	WHITE	BLACK & OTHER							
			TOTAL	BLACK	OTHER					
FLORIDA	213,714	152,419	60,545	48,879	11,666	750	11.3	10.3	14.9	
ALACHUA	5,844	4,239	1,602	1,287	315	3	23.6	24.0	22.6	
BAKER	4	3	1	1	0	0	0.1	0.1	0.2	
BAY	2,581	2,011	506	323	183	64	15.2	14.3	17.7	
BRADFORD	3	3	0	0	0	0	0.1	0.1	0.0	
BREVARD	5,129	4,103	1,022	729	293	4	9.4	8.9	12.0	
BROWARD	23,110	12,472	10,554	9,191	1,363	84	13.2	10.7	18.1	
CALHOUN	2	2	0	0	0	0	0.1	0.2	0.0	
CHARLOTTE	1,163	997	166	120	46	0	7.2	6.8	11.5	
CITRUS	906	826	79	36	43	1	6.4	6.3	8.8	
CLAY	2,195	1,712	483	355	128	0	11.5	10.8	15.0	
COLLIER	3,470	2,998	471	381	90	1	10.7	10.2	14.8	
COLUMBIA	736	505	231	221	10	0	10.9	9.5	15.9	
MIAMI-DADE	28,305	21,203	6,986	6,349	637	116	11.2	10.9	12.3	
DESOTO	450	405	45	33	12	0	13.0	13.9	8.0	
DIXIE	0	0	0	0	0	0	0.0	0.0	0.0	
DUVAL	14,122	8,549	5,473	4,352	1,121	100	16.3	15.7	17.0	
ESCAMBIA	5,503	3,956	1,545	1,218	327	2	18.4	18.8	17.2	
FLAGLER	20	17	3	2	1	0	0.2	0.2	0.2	
FRANKLIN	1	0	1	1	0	0	0.1	0.0	0.5	
GADSDEN	5	2	3	2	1	0	0.1	0.1	0.1	
GILCHRIST	0	0	0	0	0	0	0.0	0.0	0.0	
GLADES	0	0	0	0	0	0	0.0	0.0	0.0	
GULF	0	0	0	0	0	0	0.0	0.0	0.0	
HAMILTON	2	2	0	0	0	0	0.1	0.2	0.0	
HARDEE	4	4	0	0	0	0	0.1	0.2	0.0	
HENDRY	3	3	0	0	0	0	0.1	0.1	0.0	
HERNANDO	1,765	1,585	177	117	60	3	10.2	10.0	11.5	
HIGHLANDS	1,283	1,049	234	189	45	0	13.0	12.3	17.3	
HILLSBOROUGH	18,661	13,634	4,996	3,902	1,094	31	15.0	14.5	16.6	
HOLMES	0	0	0	0	0	0	0.0	0.0	0.0	
INDIAN RIVER	1,117	649	250	211	39	218	8.0	5.3	14.5	
JACKSON	518	363	155	140	15	0	10.4	10.4	10.4	
JEFFERSON	1	1	0	0	0	0	0.1	0.1	0.0	
LAFAYETTE	1	1	0	0	0	0	0.1	0.1	0.0	
LAKE	2,698	2,124	567	418	149	7	9.0	8.3	12.8	
LEE	6,449	5,317	1,128	916	212	4	10.3	9.7	14.5	
LEON	4,752	2,685	2,058	1,875	183	9	17.2	15.2	20.5	
LEVY	6	6	0	0	0	0	0.1	0.2	0.0	
LIBERTY	1	1	0	0	0	0	0.1	0.2	0.0	
MADISON	0	0	0	0	0	0	0.0	0.0	0.0	
MANATEE	2,811	2,155	654	389	265	2	8.6	7.6	15.2	
MARION	2,667	2,036	631	537	94	0	8.0	7.3	11.6	
MARTIN	1,767	1,486	275	183	92	6	12.0	11.2	20.0	
MONROE	537	440	97	65	32	0	7.4	6.7	13.9	
NASSAU	492	433	57	46	11	2	6.7	6.5	7.9	
OKALOOSA	2,454	1,969	484	264	220	1	13.5	13.1	15.4	
OKEECHOBEE	4	4	0	0	0	0	0.1	0.1	0.0	
ORANGE	19,564	13,143	6,406	4,769	1,637	15	16.9	16.2	18.4	
OSCEOLA	3,645	3,043	601	352	249	1	13.2	13.7	11.3	
PALM BEACH	16,118	10,764	5,346	4,390	956	8	12.1	10.5	17.8	
PASCO	1,402	1,236	162	92	70	4	3.0	2.9	3.6	
PINELLAS	10,030	7,778	2,238	1,525	713	14	10.9	10.1	15.0	
POLK	6,073	4,612	1,458	1,200	258	3	10.0	9.5	12.3	
PUTNAM	424	285	139	128	11	0	5.7	4.8	9.6	
SAINT JOHNS	1,126	925	201	143	58	0	5.8	5.3	10.2	
SAINT LUCIE	2,149	1,349	798	705	93	2	7.7	6.3	12.0	
SANTA ROSA	355	311	44	29	15	0	2.3	2.3	2.4	
SARASOTA	3,206	2,717	482	362	120	7	8.4	7.7	15.6	
SEMINOLE	2,975	2,206	758	565	193	11	7.0	6.4	9.7	
SUMTER	0	0	0	0	0	0	0.0	0.0	0.0	
SUWANNEE	5	5	0	0	0	0	0.1	0.1	0.0	
TAYLOR	3	1	2	2	0	0	0.1	0.1	0.4	
UNION	0	0	0	0	0	0	0.0	0.0	0.0	
VOLUSIA	4,203	3,256	920	731	189	27	8.5	7.7	12.5	
WAKULLA	2	2	0	0	0	0	0.1	0.1	0.0	
WALTON	892	836	56	33	23	0	16.0	16.8	9.6	
WASHINGTON	0	0	0	0	0	0	0.0	0.0	0.0	

TABLE B-2: RESIDENT LIVE BIRTHS BY HISPANIC OR HAITIAN ORIGIN OF MOTHER, BY COUNTY, FLORIDA, 2011

	HISPANIC ORIGIN									
	TOTAL	TOTAL				OTHER/ UNK		NON- HISPANIC/ HAITIAN		UNK
		HISPANIC	MEXICAN	PUERTO RICAN	CUBAN	HISPANIC	HAITIAN	HAITIAN	UNK	
FLORIDA	213,237	58,630	12,542	11,555	11,631	22,902	8,003	145,430	1,174	
ALACHUA	2,960	245	56	63	30	96	5	2,706	4	
BAKER	341	4	0	2	0	2	0	337	0	
BAY	2,156	131	55	43	5	28	1	2,012	12	
BRADFORD	324	5	2	3	0	0	0	319	0	
BREVARD	5,178	582	136	219	44	183	40	4,552	4	
BROWARD	21,075	6,298	587	968	917	3,826	2,203	12,443	131	
CALHOUN	151	7	5	1	0	1	0	143	1	
CHARLOTTE	987	78	17	30	13	18	18	891	0	
CITRUS	1,085	75	18	34	9	14	0	1,010	0	
CLAY	2,093	182	51	51	12	68	16	1,894	1	
COLLIER	3,197	1,451	724	96	196	435	280	1,450	16	
COLUMBIA	770	32	15	4	3	10	1	737	0	
MIAMI-DADE	31,349	18,951	951	1,104	7,740	9,156	1,855	9,936	607	
DESOTO	387	161	147	3	1	10	0	226	0	
DIXIE	150	4	1	1	0	2	0	146	0	
DUVAL	12,402	1,085	280	325	104	376	91	11,208	18	
ESCAMBIA	3,836	194	88	37	14	55	6	3,630	6	
FLAGLER	787	81	13	33	16	19	8	692	6	
FRANKLIN	100	5	2	0	0	3	0	94	1	
GADSDEN	595	95	76	1	0	18	1	491	8	
GILCHRIST	179	19	9	1	1	8	0	160	0	
GLADES	73	31	16	4	3	8	0	42	0	
GULF	138	5	3	1	1	0	0	133	0	
HAMILTON	155	32	22	0	2	8	0	122	1	
HARDEE	390	224	216	3	1	4	1	165	0	
HENDRY	615	333	237	27	21	48	1	264	17	
HERNANDO	1,552	181	27	103	22	29	0	1,367	4	
HIGHLANDS	920	265	150	67	30	18	7	648	0	
HILLSBOROUGH	16,456	4,835	1,556	1,410	823	1,046	163	11,425	33	
HOLMES	191	2	1	0	0	1	0	189	0	
INDIAN RIVER	1,277	253	168	25	10	50	23	1,001	0	
JACKSON	464	14	8	2	1	3	0	450	0	
JEFFERSON	126	4	1	0	0	3	0	122	0	
LAFAYETTE	85	14	13	0	0	1	0	71	0	
LAKE	2,944	524	229	169	30	96	17	2,391	12	
LEE	6,270	1,834	689	337	230	578	225	4,136	75	
LEON	3,053	137	57	22	14	44	18	2,885	13	
LEVY	380	36	22	7	1	6	0	344	0	
LIBERTY	89	3	3	0	0	0	0	86	0	
MADISON	214	12	9	0	1	2	0	202	0	
MANATEE	3,362	988	673	77	19	219	53	2,319	2	
MARION	3,353	522	164	198	34	126	4	2,826	1	
MARTIN	1,185	384	113	30	8	233	8	787	6	
MONROE	720	200	33	6	83	78	39	475	6	
NASSAU	760	41	15	10	5	11	0	717	2	
OKALOOSA	2,637	245	113	48	7	77	1	2,383	8	
OKEECHOBEE	532	183	154	7	2	20	2	347	0	
ORANGE	15,392	4,603	705	2,116	245	1,537	922	9,839	28	
OSCEOLA	3,775	1,955	147	1,194	83	531	73	1,741	6	
PALM BEACH	13,797	4,159	913	561	429	2,256	1,545	8,071	22	
PASCO	4,699	755	214	283	79	179	11	3,922	11	
PINELLAS	8,289	1,104	470	297	80	257	16	7,157	12	
POLK	7,197	1,815	1,041	459	66	249	112	5,254	16	
PUTNAM	840	145	97	40	1	7	0	694	1	
SAINT JOHNS	1,811	97	22	29	13	33	3	1,709	2	
SAINT LUCIE	2,995	633	241	132	44	216	184	2,172	6	
SANTA ROSA	1,858	99	43	24	7	25	1	1,756	2	
SARASOTA	2,943	454	219	60	42	133	16	2,470	3	
SEMINOLE	4,441	894	110	427	53	304	28	3,508	11	
SUMTER	427	65	47	11	2	5	0	361	1	
SUWANNEE	484	60	40	3	8	9	0	423	1	
TAYLOR	242	3	2	0	1	0	0	238	1	
UNION	170	8	4	2	0	2	0	162	0	
VOLUSIA	4,654	726	256	339	23	108	5	3,873	50	
WAKULLA	305	2	1	0	0	1	0	302	1	
WALTON	630	55	39	2	2	12	0	571	4	
WASHINGTON	237	10	6	3	0	1	0	226	1	

**TABLE B-3: RESIDENT LIVE BIRTHS FOR INCORPORATED CITIES OF 2,400 OR MORE POPULATION,
BY RACE OF MOTHER, BY COUNTY, FLORIDA, 2011**

	TOTAL	WHITE	BLACK	AMER INDIAN	CHINESE	JAPANESE	HAWAIIAN	FILIPINO	OTHER ASIAN/ PAC ISL	MULTI - RACE & OTHER	UNK
FLORIDA	213,236	152,006	48,838	324	792	165	34	1,210	4,340	4,758	769
ALACHUA	2,960	1,795	903	4	55	7	0	18	107	70	1
ALACHUA	107	74	27	0	0	0	0	1	2	3	0
GAINESVILLE	1,988	1,025	743	3	50	6	0	16	89	55	1
HIGH SPRINGS	68	58	8	1	0	0	0	0	0	1	0
NEWBERRY	99	88	5	0	1	0	0	0	4	1	0
BALANCE OF COUNTY	698	550	120	0	4	1	0	1	12	10	0
BAKER	340	299	38	0	0	0	0	1	0	2	0
MACCLENNY	75	65	9	0	0	0	0	1	0	0	0
BALANCE OF COUNTY	265	234	29	0	0	0	0	0	0	2	0
BAY	2,156	1,648	272	8	9	3	0	15	37	104	60
CALLAWAY	32	22	4	2	0	0	0	0	1	1	2
LYNN HAVEN	195	165	13	0	1	1	0	0	3	7	5
PANAMA CITY	1,103	740	231	4	4	1	0	10	25	58	30
PANAMA CITY BEACH	331	283	8	1	3	0	0	2	2	20	12
PARKER	6	4	1	0	1	0	0	0	0	0	0
SPRINGFIELD	9	8	1	0	0	0	0	0	0	0	0
BALANCE OF COUNTY	480	426	14	1	0	1	0	3	6	18	11
BRADFORD	324	257	62	0	0	0	0	0	1	4	0
STARKE	114	78	34	0	0	0	0	0	0	2	0
BALANCE OF COUNTY	210	179	28	0	0	0	0	0	1	2	0
BREVARD	5,178	4,133	745	11	28	5	0	37	80	135	4
CAPE CANAVERAL	92	86	3	0	0	0	0	1	2	0	0
COCOA	424	273	136	0	0	0	0	3	1	10	1
COCOA BEACH	65	60	0	0	1	0	0	0	1	3	0
INDIALANTIC	66	61	0	0	1	0	0	0	2	2	0
INDIAN HARBOUR BEACH	43	39	0	0	0	0	0	1	3	0	0
MALABAR	7	7	0	0	0	0	0	0	0	0	0
MELBOURNE	1,127	905	142	3	8	1	0	10	27	30	1
MELBOURNE BEACH	40	37	1	0	0	0	0	0	1	1	0
PALM BAY	1,154	884	210	4	6	2	0	3	9	36	0
ROCKLEDGE	336	256	56	1	1	1	0	2	10	9	0
SATELLITE BEACH	118	114	1	0	1	0	0	1	1	0	0
TITUSVILLE	552	421	107	2	1	0	0	1	5	13	2
WEST MELBOURNE	197	162	8	0	5	0	0	3	10	9	0
BALANCE OF COUNTY	957	828	81	1	4	1	0	12	8	22	0
BROWARD	21,075	11,510	8,099	48	102	16	2	99	603	509	87
COCONUT CREEK	549	363	125	1	6	0	0	3	24	23	4
COOPER CITY	239	199	17	0	2	1	0	0	14	5	1
CORAL SPRINGS	1,407	870	406	1	13	2	1	12	54	32	16
DANIA BEACH	197	125	62	1	1	0	0	0	8	0	0
DAVIE	772	635	76	7	4	1	0	3	32	12	2
DEERFIELD BEACH	571	339	202	0	2	0	0	5	8	11	4
FORT LAUDERDALE	2,958	1,401	1,466	5	4	2	0	7	26	44	3
HALLANDALE	341	228	99	1	1	0	0	0	4	6	2
HOLLYWOOD	1,941	1,290	517	14	5	1	0	6	61	40	7
LAUDERDALE BY THE SEA	23	23	0	0	0	0	0	0	0	0	0
LAUDERDALE LAKES	514	30	469	0	0	0	0	2	6	7	0
LAUDERHILL	886	118	726	0	2	0	0	4	11	24	1
LIGHTHOUSE POINT	69	61	3	0	1	0	0	1	3	0	0
MARGATE	585	328	216	2	4	0	0	1	15	16	3
MIRAMAR	1,619	678	772	4	21	2	0	14	54	72	2
NORTH LAUDERDALE	635	170	432	0	0	0	0	2	9	18	4
OAKLAND PARK	369	198	155	1	1	0	0	1	7	3	3
PARKLAND	174	144	11	0	4	1	0	0	9	4	1
PEMBROKE PARK	30	6	24	0	0	0	0	0	0	0	0
PEMBROKE PINES	1,590	1,052	379	5	6	1	0	12	81	48	6
PLANTATION	998	636	252	1	7	1	1	10	51	37	2
POMPANO BEACH	1,585	777	741	1	1	1	0	2	19	31	12
SOUTHWEST RANCHES	58	46	7	0	1	0	0	0	0	4	0
SUNRISE	1,005	511	417	0	6	0	0	4	34	30	3
TAMARAC	663	362	249	2	3	2	0	2	24	14	5
WEST PARK	145	47	91	0	0	0	0	0	3	4	0

**TABLE B-3 (Cont.): RESIDENT LIVE BIRTHS FOR INCORPORATED CITIES OF 2,400 OR MORE
POPULATION, BY RACE OF MOTHER, BY COUNTY, FLORIDA, 2011**

	TOTAL	WHITE	BLACK	AMER INDIAN	CHINESE	JAPANESE	HAWAIIAN	FILIPINO	OTHER ASIAN/ PAC ISL	MULTI - RACE & OTHER	UNK
BROWARD (Cont.)											
WESTON	532	450	24	0	5	1	0	4	34	14	0
WILTON MANORS	57	34	20	0	0	0	0	0	3	0	0
BALANCE OF COUNTY	563	389	141	2	2	0	0	4	9	10	6
CALHOUN											
BLOUNTSTOWN	40	29	9	0	0	0	0	0	0	2	0
BALANCE OF COUNTY	111	108	3	0	0	0	0	0	0	0	0
CHARLOTTE											
PUNTA GORDA	94	79	9	0	0	0	0	0	4	2	0
BALANCE OF COUNTY	893	778	78	3	1	0	0	5	11	17	0
CITRUS											
CRYSTAL RIVER	81	75	5	0	0	0	0	0	0	1	0
INVERNESS	170	154	8	0	0	0	0	3	1	4	0
BALANCE OF COUNTY	834	766	33	3	1	0	0	7	9	15	0
CLAY											
GREEN COVE SPRINGS	55	43	6	0	0	1	0	0	0	4	1
ORANGE PARK	350	264	56	0	0	0	0	8	4	12	6
BALANCE OF COUNTY	1,688	1,417	165	1	2	3	1	19	19	58	3
COLLIER											
MARCO ISLAND	2	2	0	0	0	0	0	0	0	0	0
NAPLES	262	216	37	1	0	1	0	1	4	2	0
BALANCE OF COUNTY	2,933	2,516	336	11	5	1	0	5	33	25	1
COLUMBIA											
LAKE CITY	396	273	114	0	1	0	0	0	3	5	0
BALANCE OF COUNTY	374	327	44	0	0	0	0	1	0	2	0
MIAMI-DADE											
AVENTURA	373	339	19	0	2	0	0	2	4	7	0
BAL HARBOUR	24	22	0	0	0	0	0	0	1	1	0
BAY HARBOR ISLANDS	53	51	1	0	0	0	0	0	0	1	0
BISCAYNE PARK	21	16	5	0	0	0	0	0	0	0	0
CORAL GABLES	156	144	3	0	1	1	0	1	2	2	2
CUTLER BAY	49	38	11	0	0	0	0	0	0	0	0
DORAL	304	275	7	0	3	0	0	1	9	9	0
EL PORTAL	20	14	6	0	0	0	0	0	0	0	0
FLORIDA CITY	91	66	23	0	0	0	0	0	0	2	0
HIALEAH	2,639	2,508	92	1	5	0	0	1	14	18	0
HIALEAH GARDENS	122	118	1	0	0	0	0	0	2	1	0
HOMESTEAD	1,041	801	220	0	0	0	0	2	8	10	0
KEY BISCAYNE	66	63	1	0	1	0	0	0	1	0	0
MIAMI	11,397	6,843	4,272	3	32	8	0	28	101	88	22
MIAMI BEACH	897	822	37	0	4	2	0	4	16	10	2
MIAMI GARDENS	874	267	582	0	1	0	0	2	7	13	2
MIAMI LAKES	297	253	34	0	1	1	0	1	3	4	0
MIAMI SHORES	94	70	18	0	0	0	0	0	3	3	0
MIAMI SPRINGS	100	97	2	0	0	0	0	1	0	0	0
NORTH BAY VILLAGE	69	62	1	0	0	0	0	1	3	2	0
NORTH MIAMI	518	158	345	0	1	0	0	2	6	5	1
NORTH MIAMI BEACH	568	290	258	0	4	0	0	3	6	6	1
OPA-LOCKA	294	107	182	0	0	0	0	0	0	4	1
PINECREST	10	10	0	0	0	0	0	0	0	0	0
PALMETTO BAY	17	14	3	0	0	0	0	0	0	0	0
SOUTH MIAMI	9	6	3	0	0	0	0	0	0	0	0
SUNNY ISLES BEACH	133	122	4	0	0	0	0	1	2	4	0
SURFSIDE	61	59	1	0	0	0	0	0	0	1	0
SWEETWATER	1	1	0	0	0	0	0	0	0	0	0
VIRGINIA GARDENS	12	11	1	0	0	0	0	0	0	0	0
WEST MIAMI	6	6	0	0	0	0	0	0	0	0	0
BALANCE OF COUNTY	11,033	9,078	1,613	16	22	7	0	26	89	93	89
DESOTO											
ARCADIA	212	177	32	0	0	0	0	0	1	2	0
BALANCE OF COUNTY	175	154	16	0	0	0	0	3	1	1	0

**TABLE B-3 (Cont.): RESIDENT LIVE BIRTHS FOR INCORPORATED CITIES OF 2,400 OR MORE
POPULATION, BY RACE OF MOTHER, BY COUNTY, FLORIDA, 2011**

	TOTAL	WHITE	BLACK	AMER INDIAN	CHINESE	JAPANESE	HAWAIIAN	FILIPINO	OTHER ASIAN/ PAC ISL	MULTI - RACE & OTHER	UNK
DIXIE	150	137	12	0	0	0	0	0	0	1	0
DUVAL	12,402	6,889	4,392	22	44	5	1	197	430	340	82
ATLANTIC BEACH	268	210	34	0	2	0	0	13	0	9	0
BALDWIN	17	15	2	0	0	0	0	0	0	0	0
JACKSONVILLE	11,843	6,413	4,347	21	42	5	1	181	429	324	80
JACKSONVILLE BEACH	218	198	9	0	0	0	0	3	1	6	1
NEPTUNE BEACH	56	53	0	1	0	0	0	0	0	1	1
ESCAMBIA	3,836	2,432	1,153	9	13	11	1	32	64	119	2
CENTURY	20	11	8	0	0	0	0	0	0	1	0
PENSACOLA	1,517	817	603	3	6	6	0	11	29	41	1
BALANCE OF COUNTY	2,299	1,604	542	6	7	5	1	21	35	77	1
FLAGLER	787	627	108	2	1	0	0	3	15	21	10
BUNNELL	57	41	14	0	0	0	0	1	0	0	1
FLAGLER BEACH	26	23	0	0	0	0	0	0	2	0	1
PALM COAST	618	496	83	1	1	0	0	2	10	18	7
BALANCE OF COUNTY	86	67	11	1	0	0	0	0	3	3	1
FRANKLIN	100	90	7	0	0	0	0	0	1	2	0
APALACHICOLA	28	20	7	0	0	0	0	0	1	0	0
BALANCE OF COUNTY	72	70	0	0	0	0	0	0	0	2	0
GADSDEN	595	236	349	0	1	0	0	2	3	2	2
CHATTAHOOCHEE	34	13	21	0	0	0	0	0	0	0	0
GRETNA	15	5	10	0	0	0	0	0	0	0	0
HAVANA	40	16	23	0	0	0	0	0	1	0	0
QUINCY	203	63	135	0	0	0	0	1	2	1	1
BALANCE OF COUNTY	303	139	160	0	1	0	0	1	0	1	1
GILCHRIST	179	164	10	0	0	0	0	2	1	2	0
GLADES	73	65	5	2	0	0	0	0	1	0	0
GULF	138	118	16	0	0	0	0	0	0	1	3
PORT ST JOE	46	34	10	0	0	0	0	0	0	0	2
BALANCE OF COUNTY	92	84	6	0	0	0	0	0	0	1	1
HAMILTON	155	108	41	0	0	0	0	0	1	5	0
HARDEE	390	361	17	3	0	0	0	0	4	5	0
BOWLING GREEN	58	52	3	0	0	0	0	0	1	2	0
WAUCHULA	138	126	7	2	0	0	0	0	0	3	0
BALANCE OF COUNTY	194	183	7	1	0	0	0	0	3	0	0
HENDRY	615	493	102	13	2	0	0	2	2	1	0
CLEWISTON	115	70	36	6	2	0	0	1	0	0	0
LABELLE	161	151	8	0	0	0	0	0	1	1	0
BALANCE OF COUNTY	339	272	58	7	0	0	0	1	1	0	0
HERNANDO	1,552	1,379	118	3	2	1	0	6	11	29	3
BROOKSVILLE	216	163	50	0	0	0	0	0	2	1	0
BALANCE OF COUNTY	1,336	1,216	68	3	2	1	0	6	9	28	3
HIGHLANDS	920	719	168	1	0	0	0	8	10	14	0
AVON PARK	190	133	53	0	0	0	0	0	0	4	0
SEBRING	318	242	53	1	0	0	0	6	9	7	0
BALANCE OF COUNTY	412	344	62	0	0	0	0	2	1	3	0
HILLSBOROUGH	16,456	11,782	3,638	22	68	15	6	91	528	280	26
PLANT CITY	491	423	58	2	0	1	0	0	2	5	0
TAMPA	9,163	5,923	2,675	8	39	9	5	40	304	148	12
TEMPLE TERRACE	81	54	14	0	2	0	0	1	5	3	2
BALANCE OF COUNTY	6,721	5,382	891	12	27	5	1	50	217	124	12
HOLMES	191	181	4	1	0	0	0	0	2	3	0
BONIFAY	52	47	3	0	0	0	0	0	2	0	0
BALANCE OF COUNTY	139	134	1	1	0	0	0	0	0	3	0

TABLE B-3 (Cont.): RESIDENT LIVE BIRTHS FOR INCORPORATED CITIES OF 2,400 OR MORE
POPULATION, BY RACE OF MOTHER, BY COUNTY, FLORIDA, 2011

	TOTAL	WHITE	BLACK	AMER INDIAN	CHINESE	JAPANESE	HAWAIIAN	FILIPINO	OTHER ASIAN/ PAC ISL	MULTI - RACE & OTHER	UNK
INDIAN RIVER	1,277	779	244	2	3	0	1	4	17	15	212
FELLSMERE	113	26	4	0	0	0	0	0	0	0	83
INDIAN RIVER SHORES	2	2	0	0	0	0	0	0	0	0	0
SEBASTIAN	150	121	13	0	0	0	0	1	1	3	11
VERO BEACH	225	148	50	0	0	0	0	1	3	1	22
BALANCE OF COUNTY	787	482	177	2	3	0	1	2	13	11	96
JACKSON	464	327	130	0	1	0	0	0	1	5	0
GRACEVILLE	29	21	8	0	0	0	0	0	0	0	0
MARIANNA	103	49	51	0	1	0	0	0	0	2	0
BALANCE OF COUNTY	332	257	71	0	0	0	0	0	1	3	0
JEFFERSON	126	73	52	0	0	0	0	0	0	1	0
MONTICELLO	62	29	32	0	0	0	0	0	0	1	0
BALANCE OF COUNTY	64	44	20	0	0	0	0	0	0	0	0
LAFAYETTE	85	77	6	0	0	0	0	0	2	0	0
LAKE	2,944	2,340	437	4	11	0	1	16	42	86	7
CLERMONT	636	497	88	0	3	0	0	6	5	33	4
EUSTIS	258	183	63	2	2	0	0	2	3	3	0
FRUITLAND PARK	73	63	4	0	0	0	0	0	3	3	0
GROVELAND	118	88	20	0	0	0	0	2	4	3	1
LADY LAKE	87	74	7	0	0	0	0	0	1	5	0
LEESBURG	451	302	130	0	1	0	1	1	12	4	0
MASCOTTE	75	65	6	0	0	0	0	0	2	2	0
MINNEOLA	120	104	7	0	1	0	0	0	0	8	0
MOUNT DORA	182	137	37	0	2	0	0	2	1	3	0
TAVARES	123	90	26	0	0	0	0	0	2	5	0
UMATILLA	55	50	1	1	0	0	0	1	0	0	2
BALANCE OF COUNTY	766	687	48	1	2	0	0	2	9	17	0
LEE	6,270	5,146	913	11	10	2	0	14	62	106	6
BONITA SPRINGS	199	195	0	0	0	0	0	0	0	4	0
CAPE CORAL	1,504	1,366	90	2	4	0	0	5	10	24	3
FORT MYERS	1,055	645	372	2	1	0	0	1	13	20	1
FORT MYERS BEACH	24	24	0	0	0	0	0	0	0	0	0
SANIBEL	10	10	0	0	0	0	0	0	0	0	0
BALANCE OF COUNTY	3,478	2,906	451	7	5	2	0	8	39	58	2
LEON	3,053	1,624	1,262	1	17	2	0	6	68	67	6
TALLAHASSEE	2,564	1,289	1,129	1	13	2	0	4	61	60	5
BALANCE OF COUNTY	489	335	133	0	4	0	0	2	7	7	1
LEVY	380	332	43	0	0	0	0	0	1	4	0
WILLISTON	53	37	15	0	0	0	0	0	0	1	0
BALANCE OF COUNTY	327	295	28	0	0	0	0	0	1	3	0
LIBERTY	89	79	9	0	0	0	0	0	1	0	0
MADISON	214	107	104	0	0	0	0	0	0	3	0
MADISON	76	17	59	0	0	0	0	0	0	0	0
BALANCE OF COUNTY	138	90	45	0	0	0	0	0	0	3	0
MANATEE	3,362	2,611	484	0	7	4	1	15	40	198	2
BRADENTON	1,279	957	206	0	2	0	0	8	14	92	0
HOLMES BEACH	4	4	0	0	0	0	0	0	0	0	0
LONGBOAT KEY	1	1	0	0	0	0	0	0	0	0	0
PALMETTO	197	159	30	0	0	0	1	2	0	5	0
BALANCE OF COUNTY	1,881	1,490	248	0	5	4	0	5	26	101	2
MARION	3,353	2,564	668	7	8	1	0	14	34	56	1
BELLEVIEW	90	77	11	0	0	0	0	0	1	1	0
OCALA	1,047	652	340	4	5	0	0	7	18	20	1
BALANCE OF COUNTY	2,216	1,835	317	3	3	1	0	7	15	35	0
MARTIN	1,185	1,005	120	3	3	1	0	4	13	31	5
STUART	287	227	48	0	1	0	0	1	2	7	1
BALANCE OF COUNTY	898	778	72	3	2	1	0	3	11	24	4

TABLE B-3 (Cont.): RESIDENT LIVE BIRTHS FOR INCORPORATED CITIES OF 2,400 OR MORE
POPULATION, BY RACE OF MOTHER, BY COUNTY, FLORIDA, 2011

	TOTAL	WHITE	BLACK	AMER INDIAN	CHINESE	JAPANESE	HAWAIIAN	FILIPINO	OTHER ASIAN/ PAC ISL	MULTI - RACE & OTHER	UNK
MONROE	720	607	77	1	2	3	0	4	16	9	1
ISLAMORADA	9	9	0	0	0	0	0	0	0	0	0
KEY WEST	386	307	60	1	2	1	0	4	7	4	0
MARATHON	71	60	4	0	0	1	0	0	4	2	0
BALANCE OF COUNTY	254	231	13	0	0	1	0	0	5	3	1
NASSAU	760	704	39	0	1	0	0	2	5	8	1
FERNANDINA BEACH	144	126	12	0	1	0	0	1	3	1	0
HILLIARD	59	58	0	0	0	0	0	0	0	1	0
BALANCE OF COUNTY	557	520	27	0	0	0	0	1	2	6	1
OKALOOSA	2,637	2,164	265	4	6	4	1	30	38	124	1
CRESTVIEW	573	452	81	0	1	2	0	7	9	21	0
DESTIN	163	149	2	0	1	0	0	2	1	8	0
FORT WALTON BEACH	488	357	71	1	0	1	0	8	12	38	0
MARY ESTHER	112	98	6	0	0	0	0	2	1	5	0
NICEVILLE	298	280	6	1	0	0	0	1	3	7	0
VALPARAISO	31	27	0	0	0	0	0	0	1	3	0
BALANCE OF COUNTY	972	801	99	2	4	1	1	10	11	42	1
OKEECHOBEE	532	476	29	15	0	0	0	1	4	6	1
OKEECHOBEE	294	262	18	5	0	0	0	1	4	4	0
BALANCE OF COUNTY	238	214	11	10	0	0	0	0	0	2	1
ORANGE	15,392	9,723	4,267	15	91	21	6	116	534	602	17
APOPKA	924	678	194	0	1	0	0	7	25	18	1
BELLE ISLE	22	19	1	0	1	0	0	1	0	0	0
EATONVILLE	5	0	5	0	0	0	0	0	0	0	0
MAITLAND	109	85	19	0	0	0	0	1	2	2	0
OCOEE	481	333	97	0	2	1	0	4	20	23	1
ORLANDO	11,598	6,872	3,645	13	67	15	6	81	407	483	9
WINDERMERE	280	220	20	0	2	2	0	0	27	9	0
WINTER GARDEN	549	406	87	0	8	0	0	6	15	26	1
WINTER PARK	445	359	52	0	3	0	0	3	13	14	1
BALANCE OF COUNTY	979	751	147	2	7	3	0	13	25	27	4
OSCEOLA	3,775	3,141	409	4	14	2	4	22	62	111	6
KISSIMMEE	1,916	1,566	233	3	2	0	2	12	32	63	3
ST CLOUD	469	435	23	0	1	0	1	0	1	7	1
BALANCE OF COUNTY	1,390	1,140	153	1	11	2	1	10	29	41	2
PALM BEACH	13,797	9,163	3,861	6	70	10	1	69	308	302	7
BELLE GLADE	357	149	203	0	1	0	0	2	2	0	0
BOCA RATON	1,264	1,023	121	0	16	3	1	2	34	63	1
BOYNTON BEACH	1,303	740	487	1	3	1	0	5	40	26	0
DELRAY BEACH	712	366	307	0	2	0	0	1	24	12	0
GREENACRES	390	288	82	1	1	0	0	2	7	9	0
HIGHLAND BEACH	7	7	0	0	0	0	0	0	0	0	0
HYPOLUXO	13	11	2	0	0	0	0	0	0	0	0
JUNO BEACH	18	17	0	0	1	0	0	0	0	0	0
JUPITER	646	581	27	0	4	1	0	4	18	11	0
LAKE CLARKE SHORES	6	6	0	0	0	0	0	0	0	0	0
LAKE PARK	156	56	92	0	1	1	0	0	3	3	0
LAKE WORTH	1,560	1,178	320	1	4	0	0	9	20	28	0
LANTANA	288	170	106	0	0	0	0	3	3	6	0
NORTH PALM BEACH	101	88	5	0	1	0	0	1	3	3	0
PAHOKEE	130	42	88	0	0	0	0	0	0	0	0
PALM BEACH	38	32	3	0	0	0	0	0	1	1	1
PALM BEACH GARDENS	552	440	62	0	8	0	0	5	25	11	1
PALM SPRINGS	151	114	27	0	0	0	0	0	4	6	0
RIVIERA BEACH	413	79	322	0	2	0	0	0	7	3	0
ROYAL PALM BEACH	387	272	87	0	4	1	0	5	12	6	0
SOUTH BAY	59	23	35	0	0	0	0	0	1	0	0
TEQUESTA	49	44	5	0	0	0	0	0	0	0	0
WELLINGTON	490	375	74	1	6	0	0	5	20	9	0
WEST PALM BEACH	3,320	2,012	1,151	2	7	1	0	17	52	78	0
BALANCE OF COUNTY	1,387	1,050	255	0	9	2	0	8	32	27	4
PASCO	4,699	4,138	295	3	17	1	1	39	105	88	12

**TABLE B-3 (Cont.): RESIDENT LIVE BIRTHS FOR INCORPORATED CITIES OF 2,400 OR MORE
POPULATION, BY RACE OF MOTHER, BY COUNTY, FLORIDA, 2011**

	TOTAL	WHITE	BLACK	AMER INDIAN	CHINESE	JAPANESE	HAWAIIAN	FILIPINO	OTHER ASIAN/ PAC ISL	MULTI - RACE & OTHER	UNK
PASCO (Cont.)											
DADE CITY	150	127	18	1	0	0	0	0	1	3	0
NEW PORT RICHEY	640	570	25	0	1	1	1	4	16	21	1
PORT RICHEY	318	284	21	0	0	0	0	0	4	9	0
ZEPHYRHILLS	131	115	11	1	0	0	0	2	1	1	0
BALANCE OF COUNTY	3,460	3,042	220	1	16	0	0	33	83	54	11
PINELLAS											
BELLEAIR	13	9	0	0	1	0	0	0	0	2	1
BELLEAIR BLUFFS	7	7	0	0	0	0	0	0	0	0	0
CLEARWATER	1,701	1,364	231	3	4	1	1	16	44	32	5
DUNEDIN	274	249	14	0	0	0	0	0	7	4	0
GULFPORT	87	68	11	0	0	0	0	3	3	2	0
INDIAN ROCKS BEACH	21	19	0	0	0	0	0	0	1	1	0
KENNETH CITY	38	28	6	0	0	0	0	0	3	1	0
LARGO	872	730	86	0	0	0	0	7	24	24	1
MADEIRA BEACH	20	20	0	0	0	0	0	0	0	0	0
OLDSMAR	159	136	15	0	0	1	0	1	5	1	0
PINELLAS PARK	466	371	30	0	1	1	1	4	36	22	0
REDINGTON SHORES	6	6	0	0	0	0	0	0	0	0	0
SAFETY HARBOR	104	92	7	0	0	0	0	0	5	0	0
SEMINOLE	310	288	2	0	2	0	0	5	7	6	0
SOUTH PASADENA	15	15	0	0	0	0	0	0	0	0	0
ST PETERSBURG	3,059	1,836	968	8	12	3	0	6	109	112	5
ST PETERSBURG BEACH	37	37	0	0	0	0	0	0	0	0	0
TARPON SPRINGS	205	171	23	0	3	0	0	3	2	3	0
TREASURE ISLAND	17	17	0	0	0	0	0	0	0	0	0
BALANCE OF COUNTY	878	780	45	3	5	1	0	9	18	17	0
POLK											
AUBURNDALE	206	172	30	1	0	0	0	1	0	2	0
BARTOW	235	158	73	0	0	0	0	0	2	2	0
DUNDEE	35	28	6	0	0	0	0	0	1	0	0
EAGLE LAKE	36	32	2	0	0	0	0	0	2	0	0
FORT MEADE	77	61	15	0	0	0	0	0	0	1	0
FROSTPROOF	57	52	4	0	0	0	1	0	0	0	0
HAINES CITY	372	288	74	0	0	0	0	1	2	7	0
LAKE ALFRED	65	43	18	0	0	0	0	0	1	2	1
LAKE WALES	241	159	75	0	1	0	0	0	0	6	0
LAKELAND	1,574	1,072	405	5	5	1	0	10	35	39	2
MULBERRY	102	86	15	0	0	0	0	0	0	1	0
WINTER HAVEN	777	492	247	1	3	0	0	7	10	17	0
BALANCE OF COUNTY	3,420	2,867	433	4	5	1	0	10	27	72	1
PUTNAM											
PALATKA	215	84	122	0	0	0	0	1	4	4	0
BALANCE OF COUNTY	625	526	83	0	1	0	0	0	2	12	1
SAINT JOHNS											
ST AUGUSTINE	606	491	76	1	3	0	0	3	9	16	7
ST AUGUSTINE BEACH	3	3	0	0	0	0	0	0	0	0	0
BALANCE OF COUNTY	1,202	1,081	49	3	6	0	0	6	22	31	4
SAINT LUCIE											
FORT PIERCE	923	468	438	1	1	0	0	0	6	7	2
PORT ST LUCIE	1,774	1,299	350	2	12	1	2	11	42	52	3
BALANCE OF COUNTY	298	238	49	1	0	0	0	0	4	2	4
SANTA ROSA											
GULF BREEZE	114	100	7	0	0	0	0	1	4	2	0
MILTON	267	234	21	1	0	0	0	2	3	6	0
BALANCE OF COUNTY	1,477	1,328	67	7	4	2	1	17	14	37	0
SARASOTA											
LONGBOAT KEY	2	2	0	0	0	0	0	0	0	0	0
NORTH PORT	193	179	8	0	0	0	0	1	2	3	0
SARASOTA	977	768	151	1	2	1	1	8	13	30	2
VENICE	113	109	0	0	0	0	0	1	1	2	0
BALANCE OF COUNTY	1,658	1,449	136	3	5	1	0	8	22	28	6

**TABLE B-3 (Cont.): RESIDENT LIVE BIRTHS FOR INCORPORATED CITIES OF 2,400 OR MORE
POPULATION, BY RACE OF MOTHER, BY COUNTY, FLORIDA, 2011**

	TOTAL	WHITE	BLACK	AMER INDIAN	CHINESE	JAPANESE	HAWAIIAN	FILIPINO	OTHER ASIAN/ PAC ISL	MULTI - RACE & OTHER	UNK
SEMINOLE	4,441	3,364	714	5	28	9	0	41	152	123	5
ALTAMONTE SPRINGS	654	477	137	2	2	0	0	5	11	20	0
CASSELBERRY	414	345	42	0	1	1	0	5	11	8	1
LAKE MARY	336	246	44	0	5	1	0	4	26	10	0
LONGWOOD	355	315	18	0	0	3	0	1	11	7	0
MAITLAND	38	30	5	0	1	0	0	2	0	0	0
OVIEDO	534	439	40	0	8	1	0	3	25	17	1
SANFORD	1,084	662	334	1	5	0	0	8	41	32	1
WINTER SPRINGS	338	284	29	0	2	1	0	6	6	9	1
BALANCE OF COUNTY	688	566	65	2	4	2	0	7	21	20	1
SUMTER	427	345	63	1	0	0	0	2	5	10	1
BUSHNELL	58	47	7	0	0	0	0	0	1	3	0
WILDWOOD	89	54	31	0	0	0	0	1	1	2	0
BALANCE OF COUNTY	280	244	25	1	0	0	0	1	3	5	1
SUWANNEE	484	401	78	0	0	0	0	1	2	1	1
LIVE OAK	145	90	54	0	0	0	0	1	0	0	0
BALANCE OF COUNTY	339	311	24	0	0	0	0	0	2	1	1
TAYLOR	242	186	52	1	0	0	0	0	1	2	0
PERRY	121	80	40	0	0	0	0	0	1	0	0
BALANCE OF COUNTY	121	106	12	1	0	0	0	0	0	2	0
UNION	170	152	17	0	0	0	0	0	0	1	0
VOLUSIA	4,654	3,698	737	6	13	3	0	24	64	89	20
DAYTONA BEACH	832	431	364	3	3	0	0	2	11	15	3
DAYTONA BEACH SHORES	5	4	1	0	0	0	0	0	0	0	0
DEBARY	124	111	2	1	1	0	0	2	3	4	0
DELAND	606	460	117	0	1	1	0	3	7	17	0
DELTONA	897	766	93	0	1	0	0	3	9	19	6
EDGEWATER	215	203	5	2	0	0	0	0	4	1	0
HOLLY HILL	125	89	33	0	0	0	0	0	0	2	1
LAKE HELEN	25	22	3	0	0	0	0	0	0	0	0
NEW SMYRNA BEACH	228	202	16	0	0	0	0	3	3	4	0
ORANGE CITY	176	160	9	0	0	0	0	1	2	3	1
ORMOND BEACH	423	367	30	0	2	0	0	3	9	8	4
PIERSON	44	41	1	0	0	0	0	0	0	1	1
PONCE INLET	14	14	0	0	0	0	0	0	0	0	0
PORT ORANGE	428	379	21	0	3	0	0	4	11	7	3
SOUTH DAYTONA	116	93	19	0	0	0	0	1	2	1	0
BALANCE OF COUNTY	396	356	23	0	2	2	0	2	3	7	1
WAKULLA	305	264	38	0	0	0	0	0	0	2	1
WALTON	630	581	34	2	1	0	0	3	2	7	0
DEFUNIAK SPRINGS	113	92	20	0	0	0	0	0	0	1	0
BALANCE OF COUNTY	517	489	14	2	1	0	0	3	2	6	0
WASHINGTON	237	184	43	0	1	0	0	0	1	8	0
CHIPLEY	70	44	19	0	1	0	0	0	0	6	0
BALANCE OF COUNTY	167	140	24	0	0	0	0	0	1	2	0

TABLE B-4: RESIDENT LIVE BIRTHS BY TYPE OF PLACE OF DELIVERY AND ATTENDANT, BY COUNTY, FLORIDA, 2011

	TOTAL	HOSPITAL			BIRTHING CENTER			OTHER NAMED PLACE	UNK
		PHYSICIAN	MIDWIFE	OTHER/ UNKNOWN	PHYSICIAN	MIDWIFE	OTHER/ UNKNOWN		
FLORIDA	213,237	186,151	22,687	735	29	1,451	2	2,124	58
ALACHUA	2,960	2,478	380	9	0	35	0	58	0
BAKER	341	310	24	2	0	2	0	3	0
BAY	2,156	1,894	250	0	0	0	0	12	0
BRADFORD	324	266	53	2	0	0	0	3	0
BREVARD	5,178	4,925	173	17	0	13	0	50	0
BROWARD	21,075	18,558	2,171	59	20	116	0	144	7
CALHOUN	151	130	11	1	0	2	0	7	0
CHARLOTTE	987	891	64	12	0	9	0	11	0
CITRUS	1,085	1,016	42	1	0	9	0	17	0
CLAY	2,093	1,766	302	2	0	12	0	11	0
COLLIER	3,197	3,023	28	72	0	45	0	28	1
COLUMBIA	770	623	122	4	0	4	0	17	0
MIAMI-DADE	31,349	30,327	589	16	8	206	0	194	9
DESOTO	387	371	10	0	0	1	0	5	0
DIXIE	150	132	16	1	0	0	0	1	0
DUVAL	12,402	11,440	715	63	0	73	1	108	2
ESCAMBIA	3,836	3,558	219	3	0	1	0	52	3
FLAGLER	787	680	84	1	0	1	0	21	0
FRANKLIN	100	92	7	0	0	0	0	1	0
GADSDEN	595	469	103	9	0	4	0	10	0
GILCHRIST	179	146	28	0	0	4	0	1	0
GLADES	73	67	6	0	0	0	0	0	0
GULF	138	124	13	0	0	0	0	1	0
HAMILTON	155	127	16	0	0	0	0	12	0
HARDEE	390	377	9	0	0	0	0	4	0
HENDRY	615	480	128	2	0	1	0	4	0
HERNANDO	1,552	1,108	425	5	0	11	0	3	0
HIGHLANDS	920	909	3	1	0	0	0	7	0
HILLSBOROUGH	16,456	14,802	1,372	41	0	111	0	124	6
HOLMES	191	156	6	0	0	2	0	27	0
INDIAN RIVER	1,277	937	322	0	0	0	0	18	0
JACKSON	464	361	20	1	0	1	0	81	0
JEFFERSON	126	91	30	2	0	0	0	3	0
LAFAYETTE	85	76	6	0	0	0	0	3	0
LAKE	2,944	2,596	284	23	0	20	0	21	0
LEE	6,270	4,555	1,565	39	0	80	0	30	1
LEON	3,053	2,398	539	15	0	39	0	62	0
LEVY	380	333	38	1	0	0	0	8	0
LIBERTY	89	74	11	0	0	0	0	4	0
MADISON	214	150	50	0	0	0	0	14	0
MANATEE	3,362	3,195	99	3	0	26	0	37	2
MARION	3,353	2,400	874	21	0	10	0	48	0
MARTIN	1,185	590	580	0	0	1	0	14	0
MONROE	720	655	47	3	0	7	0	8	0
NASSAU	760	667	82	1	0	3	0	7	0
OKALOOSA	2,637	2,523	60	8	0	1	0	45	0
OKEECHOBEE	532	433	93	1	0	1	0	4	0
ORANGE	15,392	13,455	1,527	114	0	160	0	131	5
OSCEOLA	3,775	3,449	239	47	0	15	0	23	2
PALM BEACH	13,797	10,761	2,856	26	1	8	0	137	8
PASCO	4,699	4,106	516	12	0	36	0	29	0
PINELLAS	8,289	6,429	1,661	6	0	133	0	60	0
POLK	7,197	5,886	1,184	20	0	40	0	63	4
PUTNAM	840	692	135	1	0	4	0	8	0
SAINT JOHNS	1,811	1,508	250	10	0	10	1	30	2
SAINT LUCIE	2,995	2,140	802	8	0	0	0	43	2
SANTA ROSA	1,858	1,743	80	5	0	2	0	28	0
SARASOTA	2,943	2,793	40	2	0	56	0	50	2
SEMINOLE	4,441	3,670	596	24	0	90	0	61	0
SUMTER	427	398	21	1	0	4	0	2	1
SUWANNEE	484	406	58	6	0	3	0	11	0
TAYLOR	242	198	40	2	0	0	0	2	0
UNION	170	145	24	0	0	0	0	1	0
VOLUSIA	4,654	4,028	515	6	0	37	0	68	0
WAKULLA	305	242	59	1	0	1	0	2	0
WALTON	630	614	4	3	0	1	0	7	1
WASHINGTON	237	201	11	0	0	0	0	25	0

TABLE B-5: RESIDENT LIVE BIRTHS BY BIRTHWEIGHT, BY COUNTY, FLORIDA, 2011

	TOTAL	BIRTHWEIGHT IN GRAMS										LESS THAN 1500 GRAMS		LESS THAN 2500 GRAMS	
		<500	500- 999	1000- 1499	1500- 1999	2000- 2499	2500- 2999	3000- 3499	3500- 3999	4000+	UNK	NUMBER	%	NUMBER	%
FLORIDA	213,237	411	1,389	1,633	3,608	11,517	41,624	85,420	53,531	14,065	39	3,433	1.6	18,558	8.7
ALACHUA	2,960	7	14	28	47	161	511	1,142	804	246	0	49	1.7	257	8.7
BAKER	341	0	1	2	11	24	62	120	104	17	0	3	0.9	38	11.1
BAY	2,156	2	14	21	37	126	405	884	526	141	0	37	1.7	200	9.3
BRADFORD	324	0	1	3	8	16	77	118	74	27	0	4	1.2	28	8.6
BREVARD	5,178	9	21	23	78	239	962	2,030	1,440	376	0	53	1.0	370	7.1
BROWARD	21,075	44	191	196	378	1,153	4,294	8,598	5,002	1,211	8	431	2.0	1,962	9.3
CALHOUN	151	0	0	1	3	8	30	65	37	7	0	1	0.7	12	7.9
CHARLOTTE	987	1	4	10	8	53	214	408	238	51	0	15	1.5	76	7.7
CITRUS	1,085	3	5	7	14	45	194	453	285	79	0	15	1.4	74	6.8
CLAY	2,093	2	17	14	28	107	404	810	546	165	0	33	1.6	168	8.0
COLLIER	3,197	5	19	24	45	155	544	1,309	884	212	0	48	1.5	248	7.8
COLUMBIA	770	0	2	0	13	36	134	296	226	63	0	2	0.3	51	6.6
MIAMI-DADE	31,349	46	236	238	556	1,647	6,268	12,898	7,577	1,876	7	520	1.7	2,723	8.7
DESOTO	387	0	2	3	6	21	78	162	85	30	0	5	1.3	32	8.3
DIXIE	150	0	1	0	3	6	28	57	38	17	0	1	0.7	10	6.7
DUVAL	12,402	37	65	90	218	710	2,503	4,858	3,076	844	1	192	1.5	1,120	9.0
ESCAMBIA	3,836	7	27	37	70	253	810	1,460	939	233	0	71	1.9	394	10.3
FLAGLER	787	1	3	5	15	46	147	296	210	64	0	9	1.1	70	8.9
FRANKLIN	100	0	2	2	0	3	22	41	23	7	0	4	4.0	7	7.0
GADSDEN	595	3	2	6	12	39	148	241	113	31	0	11	1.8	62	10.4
GILCHRIST	179	0	2	1	1	6	28	73	53	15	0	3	1.7	10	5.6
GLADES	73	0	0	0	0	7	13	29	16	8	0	0	0.0	7	9.6
GULF	138	1	1	2	3	9	22	58	33	9	0	4	2.9	16	11.6
HAMILTON	155	1	0	0	3	11	40	56	36	8	0	1	0.6	15	9.7
HARDEE	390	0	3	1	6	16	73	165	99	27	0	4	1.0	26	6.7
HENDRY	615	0	1	8	14	47	138	225	139	43	0	9	1.5	70	11.4
HERNANDO	1,552	2	13	7	29	85	295	623	394	104	0	22	1.4	136	8.8
HIGHLANDS	920	1	3	8	16	53	199	385	205	50	0	12	1.3	81	8.8
HILLSBOROUGH	16,456	50	103	117	294	980	3,181	6,612	4,069	1,048	2	270	1.6	1,544	9.4
HOLMES	191	0	2	0	2	12	45	71	49	10	0	2	1.0	16	8.4
INDIAN RIVER	1,277	4	10	9	19	80	221	497	332	105	0	23	1.8	122	9.6
JACKSON	464	2	4	2	4	38	111	192	93	18	0	8	1.7	50	10.8
JEFFERSON	126	0	0	0	2	7	22	59	28	8	0	0	0.0	9	7.1
LAFAYETTE	85	0	1	3	1	3	13	30	27	7	0	4	4.7	8	9.4
LAKE	2,944	4	16	20	43	171	539	1,207	711	233	0	40	1.4	254	8.6
LEE	6,270	19	34	48	102	294	1,197	2,489	1,630	456	1	101	1.6	497	7.9
LEON	3,053	5	32	23	68	185	638	1,187	718	197	0	60	2.0	313	10.3
LEVY	380	0	5	6	8	16	67	151	80	47	0	11	2.9	35	9.2
LIBERTY	89	2	0	1	1	3	19	38	24	1	0	3	3.4	7	7.9
MADISON	214	0	4	3	6	16	41	83	45	15	1	7	3.3	29	13.6
MANATEE	3,362	9	23	21	61	166	597	1,318	899	267	1	53	1.6	280	8.3
MARION	3,353	5	21	21	44	170	648	1,258	910	276	0	47	1.4	261	7.8
MARTIN	1,185	1	8	6	14	64	207	478	323	83	1	15	1.3	93	7.8
MONROE	720	1	5	5	12	29	121	306	194	47	0	11	1.5	52	7.2
NASSAU	760	2	5	2	10	36	148	314	192	51	0	9	1.2	55	7.2
OKALOOSA	2,637	1	8	18	49	131	489	1,056	734	151	0	27	1.0	207	7.8
ORKEECHOBEE	532	0	1	3	7	31	88	209	153	40	0	4	0.8	42	7.9
ORANGE	15,392	41	105	122	258	837	3,178	6,181	3,710	956	4	268	1.7	1,363	8.9
OSCEOLA	3,775	4	19	34	58	205	737	1,542	958	216	2	57	1.5	320	8.5
PALM BEACH	13,797	18	108	110	240	775	2,796	5,771	3,243	730	6	236	1.7	1,251	9.1
PASCO	4,699	8	21	46	76	226	893	1,875	1,203	351	0	75	1.6	377	8.0
PINELLAS	8,289	13	46	69	141	458	1,512	3,147	2,264	639	0	128	1.5	727	8.8
POLK	7,197	14	45	48	124	317	1,382	2,805	1,943	518	1	107	1.5	548	7.6
PUTNAM	840	3	3	8	16	53	188	339	183	47	0	14	1.7	83	9.9
SAINT JOHNS	1,811	1	5	12	29	61	289	738	514	161	1	18	1.0	108	6.0
SAINT LUCIE	2,995	4	17	12	49	161	593	1,216	746	196	1	33	1.1	243	8.1
SANTA ROSA	1,858	4	7	10	19	101	336	719	522	140	0	21	1.1	141	7.6
SARASOTA	2,943	5	9	19	42	161	533	1,116	807	250	1	33	1.1	236	8.0
SEMINOLE	4,441	8	23	45	75	255	792	1,733	1,139	371	0	76	1.7	406	9.1
SUMTER	427	0	3	4	3	22	91	179	108	16	1	7	1.6	32	7.5
SUWANNEE	484	1	3	2	12	27	87	186	133	33	0	6	1.2	45	9.3
TAYLOR	242	2	0	4	8	8	38	100	65	17	0	6	2.5	22	9.1
UNION	170	0	0	0	2	9	29	69	44	17	0	0	0.0	11	6.5
VOLUSIA	4,654	6	37	35	71	255	886	1,830	1,238	296	0	78	1.7	404	8.7
WAKULLA	305	1	0	1	4	16	49	123	80	31	0	2	0.7	22	7.2
WALTON	630	1	5	5	9	39	120	245	159	47	0	11	1.7	59	9.4
WASHINGTON	237	0	1	2	3	17	57	87	58	12	0	3	1.3	23	9.7

TABLE B-5 (Cont.): RESIDENT LIVE BIRTHS TO WHITE MOTHERS BY BIRTHWEIGHT, BY COUNTY, FLORIDA, 2011

	TOTAL	BIRTHWEIGHT IN GRAMS										LESS THAN 1500 GRAMS		LESS THAN 2500 GRAMS	
		<500	500- 999	1000- 1499	1500- 1999	2000- 2499	2500- 2999	3000- 3499	3500- 3999	4000+	UNK	NUMBER	%	NUMBER	%
FLORIDA	152,007	177	707	890	2,227	7,084	26,362	60,800	42,151	11,607	2	1,774	1.2	11,085	7.3
ALACHUA	1,795	6	4	12	18	80	235	666	571	203	0	22	1.2	120	6.7
BAKER	300	0	1	2	10	20	50	108	95	14	0	3	1.0	33	11.0
BAY	1,648	0	12	16	22	89	279	681	423	126	0	28	1.7	139	8.4
BRADFORD	257	0	1	3	5	11	52	95	67	23	0	4	1.6	20	7.8
BREVARD	4,133	5	17	12	59	168	688	1,613	1,241	330	0	34	0.8	261	6.3
BROWARD	11,510	16	52	69	168	502	2,058	4,708	3,175	761	1	137	1.2	807	7.0
CALHOUN	137	0	0	1	2	8	23	59	37	7	0	1	0.7	11	8.0
CHARLOTTE	857	0	3	8	5	42	174	368	210	47	0	11	1.3	58	6.8
CITRUS	995	1	3	6	13	39	176	409	272	76	0	10	1.0	62	6.2
CLAY	1,724	2	14	10	22	82	322	663	466	143	0	26	1.5	130	7.5
COLLIER	2,734	4	13	15	37	128	450	1,113	784	190	0	32	1.2	197	7.2
COLUMBIA	600	0	1	0	8	27	89	230	190	55	0	1	0.2	36	6.0
MIAMI-DADE	22,731	19	135	141	339	1,026	4,060	9,472	6,023	1,516	0	295	1.3	1,660	7.3
DESOTO	331	0	1	2	3	14	71	134	78	28	0	3	0.9	20	6.0
DIXIE	137	0	1	0	3	6	23	53	34	17	0	1	0.7	10	7.3
DUVAL	6,889	9	15	29	91	299	1,101	2,653	2,078	614	0	53	0.8	443	6.4
ESCAMBIA	2,432	5	8	18	32	129	428	928	697	187	0	31	1.3	192	7.9
FLAGLER	627	0	3	3	11	36	111	228	178	57	0	6	1.0	53	8.5
FRANKLIN	90	0	2	0	0	3	21	35	22	7	0	2	2.2	5	5.6
GADSDEN	236	0	1	2	4	8	50	101	54	16	0	3	1.3	15	6.4
GILCHRIST	164	0	1	1	1	6	22	69	50	14	0	2	1.2	9	5.5
GLADES	65	0	0	0	0	7	9	26	15	8	0	0	0.0	7	10.8
GULF	118	1	1	2	2	8	15	49	31	9	0	4	3.4	14	11.9
HAMILTON	108	1	0	0	2	5	25	40	27	8	0	1	0.9	8	7.4
HARDEE	361	0	3	1	6	16	65	151	94	25	0	4	1.1	26	7.2
HENDRY	493	0	1	6	11	32	97	188	120	38	0	7	1.4	50	10.1
HERNANDO	1,379	1	9	7	25	75	249	554	360	99	0	17	1.2	117	8.5
HIGHLANDS	719	0	2	4	13	41	130	308	174	47	0	6	0.8	60	8.3
HILLSBOROUGH	11,782	20	57	62	186	593	2,022	4,728	3,224	890	0	139	1.2	918	7.8
HOLMES	181	0	2	0	1	11	43	67	47	10	0	2	1.1	14	7.7
INDIAN RIVER	779	3	4	7	13	44	128	285	217	78	0	14	1.8	71	9.1
JACKSON	327	2	2	1	1	22	65	143	74	17	0	5	1.5	28	8.6
JEFFERSON	73	0	0	0	0	5	9	34	17	8	0	0	0.0	5	6.8
LAFAYETTE	77	0	1	3	1	3	11	27	24	7	0	4	5.2	8	10.4
LAKE	2,340	2	12	13	36	115	396	957	596	213	0	27	1.2	178	7.6
LEE	5,146	10	27	33	81	226	913	2,043	1,401	412	0	70	1.4	377	7.3
LEON	1,624	1	8	10	22	64	256	640	472	151	0	19	1.2	105	6.5
LEVY	332	0	3	2	5	13	58	134	73	44	0	5	1.5	23	6.9
LIBERTY	79	0	0	1	1	2	16	35	23	1	0	1	1.3	4	5.1
MADISON	107	0	0	2	4	2	16	43	26	13	1	2	1.9	8	7.5
MANATEE	2,611	3	14	15	43	122	414	1,023	743	234	0	32	1.2	197	7.5
MARION	2,564	3	14	13	29	111	435	942	768	249	0	30	1.2	170	6.6
MARTIN	1,005	0	4	6	12	53	156	405	293	76	0	10	1.0	75	7.5
MONROE	607	0	5	4	8	23	99	262	165	41	0	9	1.5	40	6.6
NASSAU	704	2	5	2	9	33	137	288	180	48	0	9	1.3	51	7.2
OKALOOSA	2,164	0	5	12	36	99	376	867	642	127	0	17	0.8	152	7.0
OKEECHOBEE	476	0	0	2	7	26	79	183	145	34	0	2	0.4	35	7.4
ORANGE	9,723	18	40	53	137	433	1,791	3,863	2,643	745	0	111	1.1	681	7.0
OSCEOLA	3,141	2	15	27	51	156	584	1,291	822	193	0	44	1.4	251	8.0
PALM BEACH	9,163	2	48	42	146	445	1,647	3,850	2,415	568	0	92	1.0	683	7.5
PASCO	4,138	7	19	37	62	202	747	1,649	1,097	318	0	63	1.5	327	7.9
PINELLAS	6,243	3	26	32	91	319	980	2,357	1,882	553	0	61	1.0	471	7.5
POLK	5,510	6	28	33	89	212	963	2,113	1,610	456	0	67	1.2	368	6.7
PUTNAM	610	1	2	3	10	38	128	250	136	42	0	6	1.0	54	8.9
SAINT JOHNS	1,575	1	4	9	25	48	236	637	469	146	0	14	0.9	87	5.5
SAINT LUCIE	2,005	0	8	5	20	92	347	813	566	154	0	13	0.6	125	6.2
SANTA ROSA	1,662	4	5	9	18	88	297	635	474	132	0	18	1.1	124	7.5
SARASOTA	2,507	4	7	15	33	128	410	957	718	235	0	26	1.0	187	7.5
SEMINOLE	3,364	5	15	31	51	156	532	1,280	974	320	0	51	1.5	258	7.7
SUMTER	345	0	1	3	3	15	65	150	93	15	0	4	1.2	22	6.4
SUWANNEE	401	1	1	2	9	20	64	158	117	29	0	4	1.0	33	8.2
TAYLOR	186	1	0	2	5	5	24	79	53	17	0	3	1.6	13	7.0
UNION	152	0	0	0	2	9	25	59	41	16	0	0	0.0	11	7.2
VOLUSIA	3,698	4	15	23	53	191	631	1,448	1,065	268	0	42	1.1	286	7.7
WAKULLA	264	1	0	1	3	12	38	106	75	28	0	2	0.8	17	6.4
WALTON	581	1	5	5	9	31	110	227	151	42	0	11	1.9	51	8.8
WASHINGTON	184	0	1	0	3	10	39	66	53	12	0	1	0.5	14	7.6

TABLE B-5 (Cont.): RESIDENT LIVE BIRTHS TO BLACK MOTHERS BY BIRTHWEIGHT, BY COUNTY, FLORIDA, 2011

	BIRTHWEIGHT IN GRAMS											LESS THAN 1500 GRAMS		LESS THAN 2500 GRAMS	
	TOTAL	<500	500- 999	1000- 1499	1500- 1999	2000- 2499	2500- 2999	3000- 3499	3500- 3999	4000+	UNK	NUMBER	%	NUMBER	%
FLORIDA	48,838	212	622	652	1,191	3,752	12,559	19,414	8,585	1,849	2	1,486	3.0	6,429	13.2
ALACHUA	903	1	10	16	29	70	222	359	166	30	0	27	3.0	126	14.0
BAKER	38	0	0	0	1	4	12	10	8	3	0	0	0.0	5	13.2
BAY	272	2	2	4	8	23	81	101	42	9	0	8	2.9	39	14.3
BRADFORD	62	0	0	0	3	3	25	21	7	3	0	0	0.0	6	9.7
BREVARD	745	4	4	8	15	59	209	294	126	26	0	16	2.1	90	12.1
BROWARD	8,099	23	131	112	186	556	1,918	3,273	1,516	384	0	266	3.3	1,008	12.4
CALHOUN	12	0	0	0	1	0	7	4	0	0	0	0	0.0	1	8.3
CHARLOTTE	87	1	0	0	3	7	25	26	21	4	0	1	1.1	11	12.6
CITRUS	46	2	1	1	1	3	10	22	5	1	0	4	8.7	8	17.4
CLAY	227	0	3	3	2	18	55	83	52	11	0	6	2.6	26	11.5
COLLIER	373	1	6	8	5	23	75	152	84	19	0	15	4.0	43	11.5
COLUMBIA	158	0	1	0	5	9	44	61	31	7	0	1	0.6	15	9.5
MIAMI-DADE	7,745	26	98	93	202	583	2,003	3,064	1,347	328	1	217	2.8	1,002	12.9
DESOTO	48	0	1	1	3	7	7	22	6	1	0	2	4.2	12	25.0
DIXIE	12	0	0	0	0	0	4	4	4	0	0	0	0.0	0	0.0
DUVAL	4,392	21	44	50	106	353	1,172	1,740	742	164	0	115	2.6	574	13.1
ESCAMBIA	1,153	2	14	17	35	110	324	439	180	32	0	33	2.9	178	15.4
FLAGLER	108	1	0	1	3	8	23	46	22	4	0	2	1.9	13	12.0
FRANKLIN	7	0	0	0	0	0	0	6	1	0	0	0	0.0	0	0.0
GADSDEN	349	3	1	4	8	31	98	135	54	15	0	8	2.3	47	13.5
GILCHRIST	10	0	1	0	0	0	3	4	2	0	0	1	10.0	1	10.0
GLADES	5	0	0	0	0	0	1	3	1	0	0	0	0.0	0	0.0
GULF	16	0	0	0	1	1	7	6	1	0	0	0	0.0	2	12.5
HAMILTON	41	0	0	0	1	6	14	13	7	0	0	0	0.0	7	17.1
HARDEE	17	0	0	0	0	0	5	9	2	1	0	0	0.0	0	0.0
HENDRY	102	0	0	2	3	15	37	31	11	3	0	2	2.0	20	19.6
HERNANDO	118	1	3	0	4	6	32	46	23	3	0	4	3.4	14	11.9
HIGHLANDS	168	1	1	4	2	9	63	63	24	1	0	6	3.6	17	10.1
HILLSBOROUGH	3,638	29	43	49	98	314	931	1,442	613	119	0	121	3.3	533	14.7
HOLMES	4	0	0	0	1	0	1	2	0	0	0	0	0.0	1	25.0
INDIAN RIVER	244	1	6	2	6	24	58	89	47	11	0	9	3.7	39	16.0
JACKSON	130	0	2	1	3	16	42	46	19	1	0	3	2.3	22	16.9
JEFFERSON	52	0	0	0	2	2	13	25	10	0	0	0	0.0	4	7.7
LAFAYETTE	6	0	0	0	0	0	1	2	3	0	0	0	0.0	0	0.0
LAKE	437	2	4	6	7	47	99	182	78	12	0	12	2.7	66	15.1
LEE	913	7	7	15	20	61	242	345	185	31	0	29	3.2	110	12.0
LEON	1,262	4	23	13	44	114	343	469	212	40	0	40	3.2	198	15.7
LEVY	43	0	2	4	3	3	9	15	4	3	0	6	14.0	12	27.9
LIBERTY	9	2	0	0	0	1	3	2	1	0	0	2	22.2	3	33.3
MADISON	104	0	4	1	2	14	25	38	18	2	0	5	4.8	21	20.2
MANATEE	484	6	9	5	15	29	130	189	87	13	1	20	4.1	64	13.2
MARION	668	2	6	6	15	54	180	269	113	23	0	14	2.1	83	12.4
MARTIN	120	1	4	0	1	9	38	50	12	5	0	5	4.2	15	12.5
MONROE	77	0	0	1	4	4	16	29	19	4	0	1	1.3	9	11.7
NASSAU	39	0	0	0	1	2	9	16	8	3	0	0	0.0	3	7.7
OKALOOSA	265	1	2	4	10	23	70	102	43	10	0	7	2.6	40	15.1
ORKEECHOBEE	29	0	1	0	0	3	6	16	2	1	0	1	3.4	4	13.8
ORANGE	4,267	22	53	65	99	326	1,076	1,735	744	147	0	140	3.3	565	13.2
OSCEOLA	409	2	2	7	6	31	98	166	81	16	0	11	2.7	48	11.7
PALM BEACH	3,861	15	54	61	79	287	958	1,589	686	132	0	130	3.4	496	12.8
PASCO	295	1	1	4	6	14	87	116	53	13	0	6	2.0	26	8.8
PINELLAS	1,438	9	19	29	39	111	394	542	238	57	0	57	4.0	207	14.4
POLK	1,397	8	15	14	29	94	362	561	264	50	0	37	2.6	160	11.5
PUTNAM	205	2	1	4	6	14	55	79	40	4	0	7	3.4	27	13.2
SAINT JOHNS	125	0	1	2	2	11	29	53	22	5	0	3	2.4	16	12.8
SAINT LUCIE	837	2	7	7	21	62	213	348	147	30	0	16	1.9	99	11.8
SANTA ROSA	95	0	1	0	1	6	22	45	19	1	0	1	1.1	8	8.4
SARASOTA	295	1	2	3	7	21	87	109	58	7	0	6	2.0	34	11.5
SEMINOLE	714	3	8	12	15	72	187	291	99	27	0	23	3.2	110	15.4
SUMTER	63	0	2	0	0	6	21	23	10	1	0	2	3.2	8	12.7
SUWANNEE	78	0	2	0	3	7	22	25	15	4	0	2	2.6	12	15.4
TAYLOR	52	1	0	2	3	3	13	20	10	0	0	3	5.8	9	17.3
UNION	17	0	0	0	0	0	4	9	3	1	0	0	0.0	0	0.0
VOLUSIA	737	2	20	9	15	45	204	293	126	23	0	31	4.2	91	12.3
WAKULLA	38	0	0	0	1	4	11	17	3	2	0	0	0.0	5	13.2
WALTON	34	0	0	0	0	8	8	12	4	2	0	0	0.0	8	23.5
WASHINGTON	43	0	0	2	0	6	15	16	4	0	0	2	4.7	8	18.6

TABLE B-5 (Cont.): RESIDENT LIVE BIRTHS TO OTHER MOTHERS BY BIRTHWEIGHT, BY COUNTY, FLORIDA, 2011

	TOTAL	BIRTHWEIGHT IN GRAMS										LESS THAN 1500 GRAMS		LESS THAN 2500 GRAMS	
		<500	500- 999	1000- 1499	1500- 1999	2000- 2499	2500- 2999	3000- 3499	3500- 3999	4000+	UNK	NUMBER	%	NUMBER	%
FLORIDA	11,623	12	57	87	182	646	2,578	4,891	2,599	571	0	156	1.3	984	8.5
ALACHUA	261	0	0	0	0	11	53	117	67	13	0	0	0.0	11	4.2
BAKER	3	0	0	0	0	0	0	2	1	0	0	0	0.0	0	0.0
BAY	176	0	0	1	6	10	32	73	49	5	0	1	0.6	17	9.7
BRADFORD	5	0	0	0	0	2	0	2	0	1	0	0	0.0	2	40.0
BREVARD	296	0	0	3	4	12	65	120	72	20	0	3	1.0	19	6.4
BROWARD	1,379	1	8	14	24	87	308	578	294	65	0	23	1.7	134	9.7
CALHOUN	2	0	0	0	0	0	0	2	0	0	0	0	0.0	0	0.0
CHARLOTTE	43	0	1	2	0	4	15	14	7	0	0	3	7.0	7	16.3
CITRUS	44	0	1	0	0	3	8	22	8	2	0	1	2.3	4	9.1
CLAY	132	0	0	1	4	7	25	61	24	10	0	1	0.8	12	9.1
COLLIER	89	0	0	1	3	4	19	43	16	3	0	1	1.1	8	9.0
COLUMBIA	12	0	0	0	0	0	1	5	5	1	0	0	0.0	0	0.0
MIAMI-DADE	753	0	2	4	13	35	178	318	176	27	0	6	0.8	54	7.2
DESOTO	8	0	0	0	0	0	0	6	1	1	0	0	0.0	0	0.0
DIXIE	1	0	0	0	0	0	1	0	0	0	0	0	0.0	0	0.0
DUVAL	1,039	7	6	11	19	55	213	433	233	62	0	24	2.3	98	9.4
ESCAMBIA	249	0	5	2	3	14	57	93	61	14	0	7	2.8	24	9.6
FLAGLER	42	0	0	1	1	2	11	18	8	1	0	1	2.4	4	9.5
FRANKLIN	3	0	0	2	0	0	1	0	0	0	0	2	66.7	2	66.7
GADSDEN	8	0	0	0	0	0	0	4	4	0	0	0	0.0	0	0.0
GILCHRIST	5	0	0	0	0	0	3	0	1	1	0	0	0.0	0	0.0
GLADES	3	0	0	0	0	0	3	0	0	0	0	0	0.0	0	0.0
GULF	1	0	0	0	0	0	0	1	0	0	0	0	0.0	0	0.0
HAMILTON	6	0	0	0	0	0	1	3	2	0	0	0	0.0	0	0.0
HARDEE	12	0	0	0	0	0	3	5	3	1	0	0	0.0	0	0.0
HENDRY	20	0	0	0	0	0	4	6	8	2	0	0	0.0	0	0.0
HERNANDO	52	0	1	0	0	4	14	21	10	2	0	1	1.9	5	9.6
HIGHLANDS	33	0	0	0	1	3	6	14	7	2	0	0	0.0	4	12.1
HILLSBOROUGH	1,010	1	2	5	9	73	225	434	223	38	0	8	0.8	90	8.9
HOLMES	6	0	0	0	0	1	1	2	2	0	0	0	0.0	1	16.7
INDIAN RIVER	42	0	0	0	0	3	8	17	13	1	0	0	0.0	3	7.1
JACKSON	7	0	0	0	0	0	4	3	0	0	0	0	0.0	0	0.0
JEFFERSON	1	0	0	0	0	0	0	0	1	0	0	0	0.0	0	0.0
LAFAYETTE	2	0	0	0	0	0	1	1	0	0	0	0	0.0	0	0.0
LAKE	160	0	0	1	0	7	43	66	35	8	0	1	0.6	8	5.0
LEE	205	0	0	0	1	7	42	99	43	13	0	0	0.0	8	3.9
LEON	161	0	1	0	2	7	37	75	33	6	0	1	0.6	10	6.2
LEVY	5	0	0	0	0	0	0	2	3	0	0	0	0.0	0	0.0
LIBERTY	1	0	0	0	0	0	0	1	0	0	0	0	0.0	0	0.0
MADISON	3	0	0	0	0	0	0	2	1	0	0	0	0.0	0	0.0
MANATEE	265	0	0	1	3	15	52	106	69	19	0	1	0.4	19	7.2
MARION	120	0	0	2	0	5	33	47	29	4	0	2	1.7	7	5.8
MARTIN	55	0	0	0	1	1	12	21	18	2	0	0	0.0	2	3.6
MONROE	35	0	0	0	0	2	6	15	10	2	0	0	0.0	2	5.7
NASSAU	16	0	0	0	0	1	2	10	3	0	0	0	0.0	1	6.3
OKALOOSA	207	0	1	2	3	9	43	87	48	14	0	3	1.4	15	7.2
ORKEECHOBEE	26	0	0	1	0	2	3	9	6	5	0	1	3.8	3	11.5
ORANGE	1,385	1	12	4	22	78	311	576	317	64	0	17	1.2	117	8.4
OSCEOLA	219	0	2	0	1	16	54	84	55	7	0	2	0.9	19	8.7
PALM BEACH	766	1	6	7	15	43	190	332	142	30	0	14	1.8	72	9.4
PASCO	254	0	1	3	7	10	58	106	49	20	0	4	1.6	21	8.3
PINELLAS	596	0	1	8	11	26	135	247	139	29	0	9	1.5	46	7.7
POLK	286	0	2	1	6	11	56	130	69	11	0	3	1.0	20	7.0
PUTNAM	24	0	0	1	0	1	5	10	6	1	0	1	4.2	2	8.3
SAINT JOHNS	100	0	0	1	2	2	22	44	21	8	0	1	1.0	5	5.0
SAINT LUCIE	144	1	2	0	7	6	32	52	33	11	0	3	2.1	16	11.1
SANTA ROSA	101	0	1	1	0	7	17	39	29	7	0	2	2.0	9	8.9
SARASOTA	133	0	0	1	2	12	36	48	27	7	0	1	0.8	15	11.3
SEMINOLE	358	0	0	2	9	27	73	162	62	23	0	2	0.6	38	10.6
SUMTER	18	0	0	1	0	1	5	6	5	0	0	1	5.6	2	11.1
SUWANNEE	4	0	0	0	0	0	1	3	0	0	0	0	0.0	0	0.0
TAYLOR	4	0	0	0	0	0	1	1	2	0	0	0	0.0	0	0.0
UNION	1	0	0	0	0	0	0	1	0	0	0	0	0.0	0	0.0
VOLUSIA	199	0	2	3	3	19	44	81	43	4	0	5	2.5	27	13.6
WAKULLA	2	0	0	0	0	0	0	0	1	1	0	0	0.0	0	0.0
WALTON	15	0	0	0	0	0	2	6	4	3	0	0	0.0	0	0.0
WASHINGTON	10	0	0	0	0	1	3	5	1	0	0	0	0.0	1	10.0

TABLE B-6: RESIDENT LIVE BIRTHS BY AGE OF MOTHER, BY COUNTY, FLORIDA, 2011

	TOTAL	<13	13	14	15	16	17	18	19	20-24	25-29	30-34	35-44	45+	UNK
FLORIDA	213,237	2	34	158	552	1,422	2,749	4,840	7,563	52,032	60,256	51,007	32,175	414	33
ALACHUA	2,960	0	0	3	8	13	45	61	91	721	830	801	380	7	0
BAKER	341	0	0	0	0	5	4	16	17	130	97	55	17	0	0
BAY	2,156	0	0	2	12	13	29	72	99	703	644	387	193	2	0
BRADFORD	324	0	0	0	0	4	5	15	13	122	88	52	25	0	0
BREVARD	5,178	0	1	3	9	33	67	124	173	1,295	1,559	1,227	680	6	1
BROWARD	21,075	0	3	15	36	115	203	365	512	4,025	5,732	5,812	4,201	54	2
CALHOUN	151	0	0	0	0	1	4	6	10	53	42	20	15	0	0
CHARLOTTE	987	0	0	1	2	2	20	31	53	284	281	195	113	3	2
CITRUS	1,085	0	0	2	8	7	22	25	66	360	296	198	98	2	1
CLAY	2,093	0	0	1	9	14	19	50	83	555	611	490	258	3	0
COLLIER	3,197	0	3	0	8	20	35	73	82	751	878	793	548	6	0
COLUMBIA	770	0	0	0	5	9	5	22	50	261	237	126	54	1	0
MIAMI-DADE	31,349	0	6	18	68	174	298	544	890	6,634	8,467	8,024	6,138	82	6
DESOTO	387	0	0	0	2	5	5	15	20	129	108	64	39	0	0
DIXIE	150	0	0	0	1	3	4	5	7	57	39	21	13	0	0
DUVAL	12,402	0	2	3	33	73	163	298	454	3,307	3,720	2,818	1,509	20	2
ESCAMBIA	3,836	0	1	4	9	31	57	122	196	1,183	1,135	714	382	2	0
FLAGLER	787	0	0	1	3	8	11	20	27	177	213	196	128	3	0
FRANKLIN	100	0	0	0	2	1	4	4	10	37	26	11	5	0	0
GADSDEN	595	0	1	1	1	6	14	12	38	180	197	98	47	0	0
GILCHRIST	179	0	0	0	0	4	3	2	14	56	60	30	10	0	0
GLADES	73	0	0	0	0	2	3	1	7	23	24	9	3	1	0
GULF	138	0	0	0	1	0	3	5	8	48	37	26	10	0	0
HAMILTON	155	0	0	0	1	3	4	8	13	49	41	19	17	0	0
HARDEE	390	0	0	0	3	6	11	18	23	118	110	60	40	1	0
HENDRY	615	0	0	0	0	7	17	24	29	206	152	104	73	3	0
HERNANDO	1,552	0	1	0	7	14	20	45	78	442	436	316	191	1	1
HIGHLANDS	920	0	0	3	2	5	17	30	58	297	282	148	77	1	0
HILLSBOROUGH	16,456	1	0	19	53	107	244	406	645	4,061	4,601	3,978	2,309	32	0
HOLMES	191	0	0	1	2	2	2	6	9	83	46	29	11	0	0
INDIAN RIVER	1,277	0	0	1	2	11	20	30	56	342	386	284	143	2	0
JACKSON	464	0	0	0	0	3	1	18	25	183	137	63	34	0	0
JEFFERSON	126	0	0	0	1	4	1	2	4	40	34	20	20	0	0
LAFAYETTE	85	0	0	0	0	1	1	1	4	25	18	23	12	0	0
LAKE	2,944	0	0	0	6	39	41	75	132	817	838	611	382	3	0
LEE	6,270	0	1	5	19	57	80	127	259	1,581	1,776	1,464	895	5	1
LEON	3,053	0	2	2	5	10	29	60	104	784	896	769	383	8	1
LEVY	380	0	0	1	0	4	7	15	16	121	117	73	26	0	0
LIBERTY	89	0	0	0	0	0	1	3	3	37	24	12	9	0	0
MADISON	214	0	0	0	2	0	3	6	9	82	62	31	19	0	0
MANATEE	3,362	0	3	3	14	29	62	97	127	891	938	732	455	10	1
MARION	3,353	0	0	5	11	26	62	98	154	1,083	945	619	341	7	2
MARTIN	1,185	0	0	1	3	5	23	29	36	278	344	280	181	5	0
MONROE	720	0	0	0	1	4	4	6	13	166	216	170	137	3	0
NASSAU	760	0	0	0	2	5	10	17	41	202	245	173	65	0	0
OKALOOSA	2,637	0	0	3	3	17	22	51	97	751	878	547	266	2	0
OKEECHOBEE	532	0	1	0	2	4	15	19	33	164	141	102	50	1	0
ORANGE	15,392	0	2	10	39	110	205	349	520	3,540	4,168	4,017	2,406	22	4
OSCEOLA	3,775	0	0	4	12	26	52	90	144	1,061	1,080	784	515	7	0
PALM BEACH	13,797	1	4	14	30	82	154	274	380	2,830	3,686	3,699	2,601	40	2
PASCO	4,699	0	0	0	8	26	54	112	181	1,108	1,361	1,202	639	8	0
PINELLAS	8,289	0	1	10	22	53	115	186	304	1,939	2,400	2,028	1,217	12	2
POLK	7,197	0	0	9	34	61	143	229	316	2,151	2,158	1,339	749	8	0
PUTNAM	840	0	0	2	1	13	24	42	64	276	225	128	65	0	0
SAINT JOHNS	1,811	0	0	1	1	3	12	33	48	308	537	542	321	4	1
SAINT LUCIE	2,995	0	0	2	10	22	41	68	132	741	895	696	383	4	1
SANTA ROSA	1,858	0	0	0	3	5	30	46	62	462	621	426	202	1	0
SARASOTA	2,943	0	1	1	6	35	37	60	82	705	788	724	496	8	0
SEMINOLE	4,441	0	0	1	9	25	48	71	136	885	1,278	1,211	761	14	2
SUMTER	427	0	0	0	0	7	8	14	34	154	112	72	26	0	0
SUWANNEE	484	0	0	1	2	3	12	20	16	173	140	72	45	0	0
TAYLOR	242	0	0	0	1	3	8	9	14	93	70	33	11	0	0
UNION	170	0	0	1	1	0	2	9	12	46	55	31	13	0	0
VOLUSIA	4,654	0	1	3	10	35	71	118	192	1,303	1,341	981	589	9	1
WAKULLA	305	0	0	0	0	0	4	3	10	82	107	70	29	0	0
WALTON	630	0	0	0	4	3	8	10	17	191	185	126	85	1	0
WASHINGTON	237	0	0	1	3	4	1	18	11	87	65	29	18	0	0

TABLE B-6 (Cont.): RESIDENT LIVE BIRTHS TO WHITE MOTHERS, BY AGE OF MOTHER,
BY COUNTY, FLORIDA, 2011

	TOTAL	<13	13	14	15	16	17	18	19	20-24	25-29	30-34	35-44	45+	UNK
FLORIDA	152,007	2	15	84	295	835	1,597	2,970	4,763	34,788	43,974	38,408	23,952	305	19
ALACHUA	1,795	0	0	1	2	1	16	28	29	340	539	556	277	6	0
BAKER	300	0	0	0	0	4	2	15	16	115	87	47	14	0	0
BAY	1,648	0	0	2	6	8	16	56	70	539	507	297	145	2	0
BRADFORD	257	0	0	0	0	3	3	15	12	91	73	41	19	0	0
BREVARD	4,133	0	0	1	2	21	42	96	124	971	1,293	1,030	547	6	0
BROWARD	11,510	0	0	4	10	39	64	129	198	1,828	3,125	3,512	2,571	29	1
CALHOUN	137	0	0	0	0	1	2	6	9	47	39	20	13	0	0
CHARLOTTE	857	0	0	1	1	2	15	23	49	247	250	168	98	3	0
CITRUS	995	0	0	1	7	7	20	22	62	340	269	181	83	2	1
CLAY	1,724	0	0	1	6	12	17	46	66	444	522	403	205	2	0
COLLIER	2,734	0	2	0	7	20	30	65	67	643	769	675	452	4	0
COLUMBIA	600	0	0	0	3	5	3	18	38	192	187	106	47	1	0
MIAMI-DADE	22,731	0	1	10	27	87	162	293	501	4,219	6,202	6,321	4,839	65	4
DESOTO	331	0	0	0	0	4	5	14	15	103	100	57	33	0	0
DIXIE	137	0	0	0	1	3	4	5	5	55	36	17	11	0	0
DUVAL	6,889	0	0	0	11	25	50	100	169	1,612	2,177	1,803	930	12	0
ESCAMBIA	2,432	0	0	2	2	14	30	63	81	692	766	503	278	1	0
FLAGLER	627	0	0	1	1	4	9	12	20	138	176	152	112	2	0
FRANKLIN	90	0	0	0	2	1	4	4	8	32	24	11	4	0	0
GADSDEN	236	0	1	1	0	2	4	4	7	59	89	45	24	0	0
GILCHRIST	164	0	0	0	0	3	3	1	13	52	54	28	10	0	0
GLADES	65	0	0	0	0	1	3	1	6	20	23	7	3	1	0
GULF	118	0	0	0	1	0	3	2	8	42	34	20	8	0	0
HAMILTON	108	0	0	0	0	1	2	2	9	35	33	13	13	0	0
HARDEE	361	0	0	0	3	6	11	17	21	104	103	58	37	1	0
HENDRY	493	0	0	0	0	5	12	23	21	158	122	89	60	3	0
HERNANDO	1,379	0	1	0	5	12	17	35	71	396	386	286	169	1	0
HIGHLANDS	719	0	0	3	1	3	15	22	49	229	224	106	66	1	0
HILLSBOROUGH	11,782	1	0	11	28	70	149	243	404	2,754	3,320	3,028	1,752	22	0
HOLMES	181	0	0	1	2	1	2	6	9	80	45	27	8	0	0
INDIAN RIVER	779	0	0	0	1	6	8	17	30	188	241	191	95	2	0
JACKSON	327	0	0	0	0	2	0	15	20	119	99	45	27	0	0
JEFFERSON	73	0	0	0	0	1	1	2	3	19	17	16	14	0	0
LAFAYETTE	77	0	0	0	0	1	1	1	4	21	16	23	10	0	0
LAKE	2,340	0	0	0	4	25	34	54	102	630	691	497	302	1	0
LEE	5,146	0	1	1	11	38	52	92	212	1,235	1,521	1,230	748	4	1
LEON	1,624	0	1	0	2	2	8	21	29	279	511	520	247	4	0
LEVY	332	0	0	0	0	3	5	10	15	110	102	65	22	0	0
LIBERTY	79	0	0	0	0	0	1	3	3	32	21	10	9	0	0
MADISON	107	0	0	0	1	0	1	2	5	36	35	18	9	0	0
MANATEE	2,611	0	3	2	8	19	40	71	93	658	754	589	366	8	0
MARION	2,564	0	0	2	7	17	43	59	120	806	738	491	272	7	2
MARTIN	1,005	0	0	1	3	4	14	22	27	213	302	254	161	4	0
MONROE	607	0	0	0	0	4	3	4	10	135	195	144	109	3	0
NASSAU	704	0	0	0	2	5	7	16	39	189	227	160	59	0	0
OKALOOSA	2,164	0	0	3	2	11	16	41	83	594	735	461	216	2	0
OKEECHOBEE	476	0	1	0	2	4	15	18	29	146	129	88	43	1	0
ORANGE	9,723	0	0	5	18	55	93	175	263	2,104	2,681	2,727	1,585	15	2
OSCEOLA	3,141	0	0	2	9	25	41	80	131	909	898	638	403	5	0
PALM BEACH	9,163	1	3	10	16	43	81	149	220	1,643	2,438	2,659	1,869	30	1
PASCO	4,138	0	0	0	8	24	49	95	157	996	1,215	1,045	545	4	0
PINELLAS	6,243	0	1	4	10	33	56	116	192	1,312	1,880	1,636	991	10	2
POLK	5,510	0	0	7	28	45	104	176	233	1,618	1,692	1,047	554	6	0
PUTNAM	610	0	0	0	0	8	16	34	43	199	163	98	49	0	0
SAINT JOHNS	1,575	0	0	1	1	1	8	24	35	252	485	487	276	4	1
SAINT LUCIE	2,005	0	0	2	5	12	20	33	75	467	637	491	262	0	1
SANTA ROSA	1,662	0	0	0	3	5	27	35	55	416	557	382	181	1	0
SARASOTA	2,507	0	0	0	6	23	21	48	62	580	691	641	428	7	0
SEMINOLE	3,364	0	0	1	3	16	26	43	84	638	978	962	597	14	2
SUMTER	345	0	0	0	0	7	5	11	25	129	87	61	20	0	0
SUWANNEE	401	0	0	1	1	3	10	13	13	136	121	61	42	0	0
TAYLOR	186	0	0	0	1	3	7	8	11	71	56	20	9	0	0
UNION	152	0	0	1	1	0	2	7	10	39	51	29	12	0	0
VOLUSIA	3,698	0	0	1	8	19	54	84	143	980	1,116	812	472	8	1
WAKULLA	264	0	0	0	0	0	4	3	7	66	97	61	26	0	0
WALTON	581	0	0	0	4	3	8	10	17	173	171	117	77	1	0
WASHINGTON	184	0	0	0	2	3	1	12	6	70	52	23	15	0	0

TABLE B-6 (Cont.): RESIDENT LIVE BIRTHS TO BLACK MOTHERS, BY AGE OF MOTHER,
BY COUNTY, FLORIDA, 2011

	TOTAL	<13	13	14	15	16	17	18	19	20-24	25-29	30-34	35-44	45+	UNK
FLORIDA	48,838	0	17	65	233	530	1,046	1,703	2,543	15,236	12,862	8,903	5,614	80	6
ALACHUA	903	0	0	2	5	12	28	33	58	348	226	137	54	0	0
BAKER	38	0	0	0	0	0	2	1	1	14	10	7	3	0	0
BAY	272	0	0	0	5	2	13	12	13	96	65	42	24	0	0
BRADFORD	62	0	0	0	0	1	2	0	1	27	14	11	6	0	0
BREVARD	745	0	1	1	6	9	23	25	40	263	179	122	75	0	1
BROWARD	8,099	0	3	10	26	72	133	228	299	2,016	2,173	1,824	1,293	22	0
CALHOUN	12	0	0	0	0	0	2	0	1	5	2	0	2	0	0
CHARLOTTE	87	0	0	0	1	0	3	8	4	25	22	17	7	0	0
CITRUS	46	0	0	0	0	0	2	0	3	15	16	8	2	0	0
CLAY	227	0	0	0	3	1	1	3	13	76	58	42	30	0	0
COLLIER	373	0	0	0	0	0	5	7	14	92	93	88	72	2	0
COLUMBIA	158	0	0	0	2	4	2	4	12	66	46	16	6	0	0
MIAMI-DADE	7,745	0	5	8	41	86	132	246	379	2,293	2,045	1,439	1,058	12	1
DESOTO	48	0	0	0	2	1	0	1	5	24	5	6	4	0	0
DIXIE	12	0	0	0	0	0	0	0	2	2	3	4	1	0	0
DUVAL	4,392	0	2	3	19	43	107	175	260	1,519	1,207	679	370	7	1
ESCAMBIA	1,153	0	1	1	7	16	25	51	105	428	294	157	67	1	0
FLAGLER	108	0	0	0	1	4	2	6	6	30	24	25	9	1	0
FRANKLIN	7	0	0	0	0	0	0	0	2	3	1	0	1	0	0
GADSDEN	349	0	0	0	1	4	10	8	31	120	105	50	20	0	0
GILCHRIST	10	0	0	0	0	1	0	1	1	3	4	0	0	0	0
GLADES	5	0	0	0	0	1	0	0	1	2	0	1	0	0	0
GULF	16	0	0	0	0	0	0	3	0	5	3	3	2	0	0
HAMILTON	41	0	0	0	1	2	2	5	3	14	5	6	3	0	0
HARDEE	17	0	0	0	0	0	0	0	1	8	6	1	1	0	0
HENDRY	102	0	0	0	0	1	4	1	7	45	26	13	5	0	0
HERNANDO	118	0	0	0	1	1	1	7	5	38	32	20	13	0	0
HIGHLANDS	168	0	0	0	1	2	2	8	8	62	49	29	7	0	0
HILLSBOROUGH	3,638	0	0	8	23	35	88	158	226	1,173	976	604	340	7	0
HOLMES	4	0	0	0	0	0	0	0	0	2	1	1	0	0	0
INDIAN RIVER	244	0	0	0	0	1	7	7	16	88	70	38	17	0	0
JACKSON	130	0	0	0	0	1	0	3	5	60	37	17	7	0	0
JEFFERSON	52	0	0	0	1	3	0	0	1	20	17	4	6	0	0
LAFAYETTE	6	0	0	0	0	0	0	0	0	2	2	0	2	0	0
LAKE	437	0	0	0	2	11	6	19	28	155	106	67	42	1	0
LEE	913	0	0	3	7	19	25	33	40	307	204	169	105	1	0
LEON	1,262	0	1	2	3	8	19	37	75	475	343	195	101	2	1
LEVY	43	0	0	1	0	1	1	4	1	11	14	7	3	0	0
LIBERTY	9	0	0	0	0	0	0	0	0	4	3	2	0	0	0
MADISON	104	0	0	0	0	0	2	4	4	45	27	12	10	0	0
MANATEE	484	0	0	1	5	10	20	21	29	188	111	63	35	1	0
MARION	668	0	0	3	4	7	17	36	31	247	175	99	49	0	0
MARTIN	120	0	0	0	0	0	5	7	8	52	27	13	8	0	0
MONROE	77	0	0	0	1	0	1	2	2	21	13	20	17	0	0
NASSAU	39	0	0	0	0	0	3	1	2	12	13	8	0	0	0
OKALOOSA	265	0	0	0	1	4	4	5	10	100	80	41	20	0	0
OKEECHOBEE	29	0	0	0	0	0	0	1	2	10	6	6	4	0	0
ORANGE	4,267	0	2	3	19	48	100	159	229	1,255	1,075	845	525	6	1
OSCEOLA	409	0	0	1	3	1	9	8	10	102	117	86	71	1	0
PALM BEACH	3,861	0	1	4	14	37	68	119	151	1,088	1,054	785	531	8	1
PASCO	295	0	0	0	0	2	3	6	18	63	84	80	36	3	0
PINELLAS	1,438	0	0	6	10	19	50	58	95	518	357	218	106	1	0
POLK	1,397	0	0	2	6	15	33	47	77	472	390	215	138	2	0
PUTNAM	205	0	0	2	0	5	7	8	17	72	56	25	13	0	0
SAINT JOHNS	125	0	0	0	0	1	3	7	10	44	29	21	10	0	0
SAINT LUCIE	837	0	0	0	5	10	18	33	54	258	211	158	89	1	0
SANTA ROSA	95	0	0	0	0	0	2	5	5	27	33	15	8	0	0
SARASOTA	295	0	1	1	0	11	14	12	16	102	66	51	21	0	0
SEMINOLE	714	0	0	0	4	8	20	24	42	214	194	126	82	0	0
SUMTER	63	0	0	0	0	0	2	3	8	24	17	8	1	0	0
SUWANNEE	78	0	0	0	1	0	2	6	3	36	18	9	3	0	0
TAYLOR	52	0	0	0	0	0	1	1	3	22	14	10	1	0	0
UNION	17	0	0	0	0	0	0	2	1	7	4	2	1	0	0
VOLUSIA	737	0	0	2	1	10	15	29	41	274	181	115	68	1	0
WAKULLA	38	0	0	0	0	0	0	0	3	16	7	9	3	0	0
WALTON	34	0	0	0	0	0	0	0	0	15	7	7	5	0	0
WASHINGTON	43	0	0	1	1	0	0	5	5	16	10	4	1	0	0

TABLE B-6 (Cont.): RESIDENT LIVE BIRTHS TO OTHER MOTHERS, BY AGE OF MOTHER,
BY COUNTY, FLORIDA, 2011

	TOTAL	<13	13	14	15	16	17	18	19	20-24	25-29	30-34	35-44	45+	UNK
FLORIDA	11,623	0	2	7	21	52	99	151	235	1,815	3,207	3,508	2,494	27	5
ALACHUA	261	0	0	0	1	0	1	0	4	32	65	108	49	1	0
BAKER	3	0	0	0	0	1	0	0	0	1	0	1	0	0	0
BAY	176	0	0	0	1	3	0	3	11	44	54	41	19	0	0
BRADFORD	5	0	0	0	0	0	0	0	0	4	1	0	0	0	0
BREVARD	296	0	0	1	1	2	2	3	8	60	87	74	58	0	0
BROWARD	1,379	0	0	1	0	4	6	7	14	162	407	452	323	3	0
CALHOUN	2	0	0	0	0	0	0	0	0	1	1	0	0	0	0
CHARLOTTE	43	0	0	0	0	0	2	0	0	12	9	10	8	0	2
CITRUS	44	0	0	1	1	0	0	3	1	5	11	9	13	0	0
CLAY	132	0	0	0	0	1	1	1	4	32	31	40	21	1	0
COLLIER	89	0	1	0	0	0	0	1	1	16	16	30	24	0	0
COLUMBIA	12	0	0	0	0	0	0	0	0	3	4	4	1	0	0
MIAMI-DADE	753	0	0	0	0	1	3	3	9	92	190	230	220	4	1
DESOTO	8	0	0	0	0	0	0	0	0	2	3	1	2	0	0
DIXIE	1	0	0	0	0	0	0	0	0	0	0	0	1	0	0
DUVAL	1,039	0	0	0	2	5	5	19	23	162	313	310	199	1	0
ESCAMBIA	249	0	0	1	0	1	2	8	9	62	75	54	37	0	0
FLAGLER	42	0	0	0	1	0	0	2	0	7	11	14	7	0	0
FRANKLIN	3	0	0	0	0	0	0	0	0	2	1	0	0	0	0
GADSDEN	8	0	0	0	0	0	0	0	0	1	2	3	2	0	0
GILCHRIST	5	0	0	0	0	0	0	0	0	1	2	2	0	0	0
GLADES	3	0	0	0	0	0	0	0	0	1	1	1	0	0	0
GULF	1	0	0	0	0	0	0	0	0	1	0	0	0	0	0
HAMILTON	6	0	0	0	0	0	0	1	1	0	3	0	1	0	0
HARDEE	12	0	0	0	0	0	0	1	1	6	1	1	2	0	0
HENDRY	20	0	0	0	0	1	1	0	1	3	4	2	8	0	0
HERNANDO	52	0	0	0	1	1	2	3	2	8	17	10	7	0	1
HIGHLANDS	33	0	0	0	0	0	0	0	1	6	9	13	4	0	0
HILLSBOROUGH	1,010	0	0	0	2	2	7	4	15	130	294	340	213	3	0
HOLMES	6	0	0	0	0	1	0	0	0	1	0	1	3	0	0
INDIAN RIVER	42	0	0	0	0	0	2	1	4	7	10	14	4	0	0
JACKSON	7	0	0	0	0	0	1	0	0	4	1	1	0	0	0
JEFFERSON	1	0	0	0	0	0	0	0	0	1	0	0	0	0	0
LAFAYETTE	2	0	0	0	0	0	0	0	0	2	0	0	0	0	0
LAKE	160	0	0	0	0	3	1	2	2	31	39	45	36	1	0
LEE	205	0	0	1	1	0	3	2	7	37	51	65	38	0	0
LEON	161	0	0	0	0	0	2	2	0	29	40	51	35	2	0
LEVY	5	0	0	0	0	0	1	1	0	0	1	1	1	0	0
LIBERTY	1	0	0	0	0	0	0	0	0	1	0	0	0	0	0
MADISON	3	0	0	0	1	0	0	0	0	1	0	1	0	0	0
MANATEE	265	0	0	0	1	0	2	5	5	45	73	80	53	1	0
MARION	120	0	0	0	0	2	2	3	3	30	32	28	20	0	0
MARTIN	55	0	0	0	0	1	4	0	1	10	14	13	12	0	0
MONROE	35	0	0	0	0	0	0	0	1	10	7	6	11	0	0
NASSAU	16	0	0	0	0	0	0	0	0	1	4	5	6	0	0
OKALOOSA	207	0	0	0	0	2	2	5	4	56	63	45	30	0	0
OKEECHOBEE	26	0	0	0	0	0	0	0	2	7	6	8	3	0	0
ORANGE	1,385	0	0	1	2	7	11	15	28	179	410	440	290	1	1
OSCEOLA	219	0	0	1	0	0	2	2	2	47	65	60	39	1	0
PALM BEACH	766	0	0	0	0	2	5	6	9	96	193	254	199	2	0
PASCO	254	0	0	0	0	0	2	10	5	44	59	75	58	1	0
PINELLAS	596	0	0	0	2	1	9	11	17	108	157	172	118	1	0
POLK	286	0	0	0	0	1	6	6	5	60	76	76	56	0	0
PUTNAM	24	0	0	0	1	0	1	0	4	5	6	4	3	0	0
SAINT JOHNS	100	0	0	0	0	1	1	2	3	11	21	28	33	0	0
SAINT LUCIE	144	0	0	0	0	0	3	2	3	14	44	45	30	3	0
SANTA ROSA	101	0	0	0	0	0	1	6	2	19	31	29	13	0	0
SARASOTA	133	0	0	0	0	1	2	0	3	21	30	29	46	1	0
SEMINOLE	358	0	0	0	2	1	2	4	10	32	105	121	81	0	0
SUMTER	18	0	0	0	0	0	1	0	1	1	7	3	5	0	0
SUWANNEE	4	0	0	0	0	0	0	1	0	1	0	2	0	0	0
TAYLOR	4	0	0	0	0	0	0	0	0	0	0	3	1	0	0
UNION	1	0	0	0	0	0	0	0	1	0	0	0	0	0	0
VOLUSIA	199	0	1	0	1	6	1	5	8	44	38	49	46	0	0
WAKULLA	2	0	0	0	0	0	0	0	0	0	2	0	0	0	0
WALTON	15	0	0	0	0	0	0	0	0	3	7	2	3	0	0
WASHINGTON	10	0	0	0	0	1	0	1	0	1	3	2	2	0	0

TABLE B-7: RESIDENT LIVE BIRTHS BY TRIMESTER PRENATAL CARE BEGAN, BY COUNTY, FLORIDA, 2011

	TRIMESTER PRENATAL CARE BEGAN ¹						% CARE BEGAN BY TRIMESTER ²			
	TOTAL	1ST	2ND	3RD	NONE	UNK	1ST	2ND	3RD	NONE
FLORIDA	213,237	154,294	29,357	5,978	2,565	21,043	80.3	15.3	3.1	1.3
ALACHUA	2,960	2,198	499	117	7	139	77.9	17.7	4.1	0.2
BAKER	341	226	65	12	3	35	73.9	21.2	3.9	1.0
BAY	2,156	1,358	416	137	16	229	70.5	21.6	7.1	0.8
BRADFORD	324	217	67	16	0	24	72.3	22.3	5.3	0.0
BREVARD	5,178	4,075	674	122	69	238	82.5	13.6	2.5	1.4
BROWARD	21,075	14,254	2,785	579	315	3,142	79.5	15.5	3.2	1.8
CALHOUN	151	102	23	8	2	16	75.6	17.0	5.9	1.5
CHARLOTTE	987	702	173	50	13	49	74.8	18.4	5.3	1.4
CITRUS	1,085	753	206	41	10	75	74.6	20.4	4.1	1.0
CLAY	2,093	1,402	344	103	18	226	75.1	18.4	5.5	1.0
COLLIER	3,197	1,896	750	158	20	373	67.1	26.6	5.6	0.7
COLUMBIA	770	529	167	24	18	32	71.7	22.6	3.3	2.4
MIAMI-DADE	31,349	23,379	2,622	444	304	4,600	87.4	9.8	1.7	1.1
DESOTO	387	236	74	27	3	47	69.4	21.8	7.9	0.9
DIXIE	150	96	36	7	0	11	69.1	25.9	5.0	0.0
DUVAL	12,402	8,307	2,124	345	228	1,398	75.5	19.3	3.1	2.1
ESCAMBIA	3,836	2,823	584	113	44	272	79.2	16.4	3.2	1.2
FLAGLER	787	618	83	18	8	60	85.0	11.4	2.5	1.1
FRANKLIN	100	65	15	6	1	13	74.7	17.2	6.9	1.1
GADSDEN	595	414	60	12	9	100	83.6	12.1	2.4	1.8
GILCHRIST	179	124	31	11	1	12	74.3	18.6	6.6	0.6
GLADES	73	47	18	3	0	5	69.1	26.5	4.4	0.0
GULF	138	86	29	9	0	14	69.4	23.4	7.3	0.0
HAMILTON	155	96	41	6	1	11	66.7	28.5	4.2	0.7
HARDEE	390	223	106	28	6	27	61.4	29.2	7.7	1.7
HENDRY	615	375	161	23	8	48	66.1	28.4	4.1	1.4
HERNANDO	1,552	1,194	159	36	8	155	85.5	11.4	2.6	0.6
HIGHLANDS	920	624	223	37	6	30	70.1	25.1	4.2	0.7
HILLSBOROUGH	16,456	12,790	1,275	206	152	2,033	88.7	8.8	1.4	1.1
HOLMES	191	96	43	8	0	44	65.3	29.3	5.4	0.0
INDIAN RIVER	1,277	895	252	31	19	80	74.8	21.1	2.6	1.6
JACKSON	464	284	55	10	2	113	80.9	15.7	2.8	0.6
JEFFERSON	126	86	13	3	3	21	81.9	12.4	2.9	2.9
LAFAYETTE	85	62	14	4	1	4	76.5	17.3	4.9	1.2
LAKE	2,944	2,344	381	48	22	149	83.9	13.6	1.7	0.8
LEE	6,270	4,490	1,181	214	77	308	75.3	19.8	3.6	1.3
LEON	3,053	2,285	221	47	26	474	88.6	8.6	1.8	1.0
LEVY	380	259	67	20	4	30	74.0	19.1	5.7	1.1
LIBERTY	89	72	5	1	0	11	92.3	6.4	1.3	0.0
MADISON	214	155	19	2	5	33	85.6	10.5	1.1	2.8
MANATEE	3,362	2,404	644	178	36	100	73.7	19.7	5.5	1.1
MARION	3,353	2,001	894	202	40	216	63.8	28.5	6.4	1.3
MARTIN	1,185	818	254	54	11	48	71.9	22.3	4.7	1.0
MONROE	720	586	77	20	7	30	84.9	11.2	2.9	1.0
NASSAU	760	565	59	9	12	115	87.6	9.1	1.4	1.9
OKALOOSA	2,637	1,832	458	171	25	151	73.7	18.4	6.9	1.0
OKEECHOBEE	532	356	137	19	4	16	69.0	26.6	3.7	0.8
ORANGE	15,392	11,951	1,673	291	250	1,227	84.4	11.8	2.1	1.8
OSCEOLA	3,775	2,673	424	82	81	515	82.0	13.0	2.5	2.5
PALM BEACH	13,797	9,804	2,194	663	125	1,011	76.7	17.2	5.2	1.0
PASCO	4,699	3,555	600	99	45	400	82.7	14.0	2.3	1.0
PINELLAS	8,289	6,156	1,300	252	134	447	78.5	16.6	3.2	1.7
POLK	7,197	5,081	1,377	269	91	379	74.5	20.2	3.9	1.3
PUTNAM	840	516	161	34	19	110	70.7	22.1	4.7	2.6
SAINT JOHNS	1,811	1,377	153	40	14	227	86.9	9.7	2.5	0.9
SAINT LUCIE	2,995	2,064	697	84	66	84	70.9	23.9	2.9	2.3
SANTA ROSA	1,858	1,440	245	57	7	109	82.3	14.0	3.3	0.4
SARASOTA	2,943	2,090	463	97	33	260	77.9	17.3	3.6	1.2
SEMINOLE	4,441	3,601	445	82	42	271	86.4	10.7	2.0	1.0
SUMTER	427	324	63	5	5	30	81.6	15.9	1.3	1.3
SUWANNEE	484	337	95	23	7	22	72.9	20.6	5.0	1.5
TAYLOR	242	169	23	3	0	47	86.7	11.8	1.5	0.0
UNION	170	115	39	9	1	6	70.1	23.8	5.5	0.6
VOLUSIA	4,654	3,371	678	119	74	412	79.5	16.0	2.8	1.7
WAKULLA	305	243	21	1	0	40	91.7	7.9	0.4	0.0
WALTON	630	485	79	21	5	40	82.2	13.4	3.6	0.8
WASHINGTON	237	139	43	8	1	46	72.8	22.5	4.2	0.5

1. Starting in 2004, "trimester prenatal care began" is calculated as the time elapsed from the date of the last menstrual period to the date of the first prenatal care visit. Prior to 2004, these data were obtained by direct question that noted the trimester the mother began prenatal care. Consequently, these data are not comparable to data from prior years.

2. Births with unknown information as to when prenatal care began are excluded from the denominator.

TABLE B-7 (Cont.): RESIDENT LIVE BIRTHS TO WHITE MOTHERS BY TRIMESTER
 PRENATAL CARE BEGAN, BY COUNTY, FLORIDA, 2011

	TRIMESTER PRENATAL CARE BEGAN ¹						% CARE BEGAN BY TRIMESTER ²			
	TOTAL	1ST	2ND	3RD	NONE	UNK	1ST	2ND	3RD	NONE
FLORIDA	152,007	113,712	18,998	3,886	1,462	13,949	82.4	13.8	2.8	1.1
ALACHUA	1,795	1,431	247	52	4	61	82.5	14.2	3.0	0.2
BAKER	300	205	49	12	1	33	76.8	18.4	4.5	0.4
BAY	1,648	1,085	287	99	9	168	73.3	19.4	6.7	0.6
BRADFORD	257	176	52	12	0	17	73.3	21.7	5.0	0.0
BREVARD	4,133	3,321	491	83	46	192	84.3	12.5	2.1	1.2
BROWARD	11,510	8,163	1,238	300	106	1,703	83.2	12.6	3.1	1.1
CALHOUN	137	94	18	8	2	15	77.0	14.8	6.6	1.6
CHARLOTTE	857	622	143	37	10	45	76.6	17.6	4.6	1.2
CITRUS	995	699	184	35	9	68	75.4	19.8	3.8	1.0
CLAY	1,724	1,178	264	86	16	180	76.3	17.1	5.6	1.0
COLLIER	2,734	1,668	630	124	17	295	68.4	25.8	5.1	0.7
COLUMBIA	600	424	116	18	17	25	73.7	20.2	3.1	3.0
MIAMI-DADE	22,731	17,559	1,565	285	159	3,163	89.7	8.0	1.5	0.8
DESOTO	331	203	65	25	2	36	68.8	22.0	8.5	0.7
DIXIE	137	86	35	6	0	10	67.7	27.6	4.7	0.0
DUVAL	6,889	4,970	969	164	106	680	80.0	15.6	2.6	1.7
ESCAMBIA	2,432	1,921	294	53	12	152	84.3	12.9	2.3	0.5
FLAGLER	627	506	53	14	5	49	87.5	9.2	2.4	0.9
FRANKLIN	90	63	10	5	1	11	79.7	12.7	6.3	1.3
GADSDEN	236	180	22	2	2	30	87.4	10.7	1.0	1.0
GILCHRIST	164	111	31	10	1	11	72.5	20.3	6.5	0.7
GLADES	65	41	17	3	0	4	67.2	27.9	4.9	0.0
GULF	118	74	24	9	0	11	69.2	22.4	8.4	0.0
HAMILTON	108	66	28	5	1	8	66.0	28.0	5.0	1.0
HARDEE	361	207	96	27	4	27	62.0	28.7	8.1	1.2
HENDRY	493	293	143	15	6	36	64.1	31.3	3.3	1.3
HERNANDO	1,379	1,071	135	30	8	135	86.1	10.9	2.4	0.6
HIGHLANDS	719	497	158	31	4	29	72.0	22.9	4.5	0.6
HILLSBOROUGH	11,782	9,279	866	140	90	1,407	89.4	8.3	1.3	0.9
HOLMES	181	91	39	8	0	43	65.9	28.3	5.8	0.0
INDIAN RIVER	779	602	117	11	5	44	81.9	15.9	1.5	0.7
JACKSON	327	195	33	5	2	92	83.0	14.0	2.1	0.9
JEFFERSON	73	49	5	2	1	16	86.0	8.8	3.5	1.8
LAFAYETTE	77	59	11	4	1	2	78.7	14.7	5.3	1.3
LAKE	2,340	1,865	296	38	13	128	84.3	13.4	1.7	0.6
LEE	5,146	3,738	941	164	52	251	76.4	19.2	3.4	1.1
LEON	1,624	1,313	85	15	10	201	92.3	6.0	1.1	0.7
LEVY	332	226	58	19	4	25	73.6	18.9	6.2	1.3
LIBERTY	79	64	5	1	0	9	91.4	7.1	1.4	0.0
MADISON	107	81	6	0	2	18	91.0	6.7	0.0	2.2
MANATEE	2,611	1,910	467	125	26	83	75.6	18.5	4.9	1.0
MARION	2,564	1,576	642	149	31	166	65.7	26.8	6.2	1.3
MARTIN	1,005	715	204	43	4	39	74.0	21.1	4.5	0.4
MONROE	607	505	55	15	7	25	86.8	9.5	2.6	1.2
NASSAU	704	529	52	9	11	103	88.0	8.7	1.5	1.8
OKALOOSA	2,164	1,538	368	119	19	120	75.2	18.0	5.8	0.9
OKEECHOBEE	476	322	122	16	4	12	69.4	26.3	3.4	0.9
ORANGE	9,723	7,910	873	132	121	687	87.5	9.7	1.5	1.3
OSCEOLA	3,141	2,249	347	57	66	422	82.7	12.8	2.1	2.4
PALM BEACH	9,163	6,728	1,347	399	78	611	78.7	15.8	4.7	0.9
PASCO	4,138	3,143	530	81	41	343	82.8	14.0	2.1	1.1
PINELLAS	6,243	4,835	852	162	93	301	81.4	14.3	2.7	1.6
POLK	5,510	4,003	985	190	58	274	76.5	18.8	3.6	1.1
PUTNAM	610	380	114	27	11	78	71.4	21.4	5.1	2.1
SAINT JOHNS	1,575	1,219	122	35	10	189	88.0	8.8	2.5	0.7
SAINT LUCIE	2,005	1,446	420	49	33	57	74.2	21.6	2.5	1.7
SANTA ROSA	1,662	1,301	208	51	4	98	83.2	13.3	3.3	0.3
SARASOTA	2,507	1,811	375	76	29	216	79.0	16.4	3.3	1.3
SEMINOLE	3,364	2,810	290	48	20	196	88.7	9.2	1.5	0.6
SUMTER	345	258	53	4	4	26	80.9	16.6	1.3	1.3
SUWANNEE	401	287	75	18	6	15	74.4	19.4	4.7	1.6
TAYLOR	186	130	18	2	0	36	86.7	12.0	1.3	0.0
UNION	152	105	33	9	0	5	71.4	22.4	6.1	0.0
VOLUSIA	3,698	2,744	505	89	54	306	80.9	14.9	2.6	1.6
WAKULLA	264	214	17	1	0	32	92.2	7.3	0.4	0.0
WALTON	581	449	73	17	3	39	82.8	13.5	3.1	0.6
WASHINGTON	184	115	25	6	0	38	78.8	17.1	4.1	0.0

1. Starting in 2004, "trimester prenatal care began" is calculated as the time elapsed from the date of the last menstrual period to the date of the first prenatal care visit. Prior to 2004, these data were obtained by direct question that noted the trimester the mother began prenatal care. Consequently, these data are not comparable to data from prior years.

2. Births with unknown information as to when prenatal care began are excluded from the denominator.

TABLE B-7 (Cont.): RESIDENT LIVE BIRTHS TO BLACK MOTHERS BY TRIMESTER
 PRENATAL CARE BEGAN, BY COUNTY, FLORIDA, 2011

	TRIMESTER PRENATAL CARE BEGAN ¹						% CARE BEGAN BY TRIMESTER ²			
	TOTAL	1ST	2ND	3RD	NONE	UNK	1ST	2ND	3RD	NONE
FLORIDA	48,838	31,669	8,724	1,669	962	5,814	73.6	20.3	3.9	2.2
ALACHUA	903	574	207	50	3	69	68.8	24.8	6.0	0.4
BAKER	38	18	16	0	2	2	50.0	44.4	0.0	5.6
BAY	272	154	64	18	4	32	64.2	26.7	7.5	1.7
BRADFORD	62	39	13	3	0	7	70.9	23.6	5.5	0.0
BREVARD	745	508	144	36	19	38	71.9	20.4	5.1	2.7
BROWARD	8,099	5,091	1,377	243	191	1,197	73.8	20.0	3.5	2.8
CALHOUN	12	6	5	0	0	1	54.5	45.5	0.0	0.0
CHARLOTTE	87	56	18	9	3	1	65.1	20.9	10.5	3.5
CITRUS	46	26	14	3	0	3	60.5	32.6	7.0	0.0
CLAY	227	135	52	13	2	25	66.8	25.7	6.4	1.0
COLLIER	373	177	104	27	3	62	56.9	33.4	8.7	1.0
COLUMBIA	158	96	48	6	1	7	63.6	31.8	4.0	0.7
MIAMI-DADE	7,745	5,179	994	143	140	1,289	80.2	15.4	2.2	2.2
DESOTO	48	29	6	2	0	11	78.4	16.2	5.4	0.0
DIXIE	12	10	1	0	0	1	90.9	9.1	0.0	0.0
DUVAL	4,392	2,592	1,003	147	108	542	67.3	26.1	3.8	2.8
ESCAMBIA	1,153	725	247	49	30	102	69.0	23.5	4.7	2.9
FLAGLER	108	76	21	3	0	8	76.0	21.0	3.0	0.0
FRANKLIN	7	0	4	1	0	2	0.0	80.0	20.0	0.0
GADSDEN	349	229	37	9	7	67	81.2	13.1	3.2	2.5
GILCHRIST	10	8	0	1	0	1	88.9	0.0	11.1	0.0
GLADES	5	4	1	0	0	0	80.0	20.0	0.0	0.0
GULF	16	10	3	0	0	3	76.9	23.1	0.0	0.0
HAMILTON	41	28	10	1	0	2	71.8	25.6	2.6	0.0
HARDEE	17	9	6	1	1	0	52.9	35.3	5.9	5.9
HENDRY	102	68	14	7	2	11	74.7	15.4	7.7	2.2
HERNANDO	118	82	18	4	0	14	78.8	17.3	3.8	0.0
HIGHLANDS	168	101	61	3	2	1	60.5	36.5	1.8	1.2
HILLSBOROUGH	3,638	2,669	358	50	49	512	85.4	11.5	1.6	1.6
HOLMES	4	3	1	0	0	0	75.0	25.0	0.0	0.0
INDIAN RIVER	244	132	72	12	9	19	58.7	32.0	5.3	4.0
JACKSON	130	84	21	5	0	20	76.4	19.1	4.5	0.0
JEFFERSON	52	36	8	1	2	5	76.6	17.0	2.1	4.3
LAFAYETTE	6	1	3	0	0	2	25.0	75.0	0.0	0.0
LAKE	437	343	64	7	7	16	81.5	15.2	1.7	1.7
LEE	913	597	211	37	23	45	68.8	24.3	4.3	2.6
LEON	1,262	851	127	29	15	240	83.3	12.4	2.8	1.5
LEVY	43	30	8	1	0	4	76.9	20.5	2.6	0.0
LIBERTY	9	7	0	0	0	2	100.0	0.0	0.0	0.0
MADISON	104	71	13	2	3	15	79.8	14.6	2.2	3.4
MANATEE	484	312	120	32	8	12	66.1	25.4	6.8	1.7
MARION	668	354	218	44	5	47	57.0	35.1	7.1	0.8
MARTIN	120	73	30	6	6	5	63.5	26.1	5.2	5.2
MONROE	77	54	16	3	0	4	74.0	21.9	4.1	0.0
NASSAU	39	23	6	0	1	9	76.7	20.0	0.0	3.3
OKALOOSA	265	169	54	27	4	11	66.5	21.3	10.6	1.6
OKEECHOBEE	29	14	11	1	0	3	53.8	42.3	3.8	0.0
ORANGE	4,267	2,930	666	135	114	422	76.2	17.3	3.5	3.0
OSCEOLA	409	278	52	14	9	56	78.8	14.7	4.0	2.5
PALM BEACH	3,861	2,502	739	221	47	352	71.3	21.1	6.3	1.3
PASCO	295	214	43	12	2	24	79.0	15.9	4.4	0.7
PINELLAS	1,438	882	348	60	30	118	66.8	26.4	4.5	2.3
POLK	1,397	861	346	68	29	93	66.0	26.5	5.2	2.2
PUTNAM	205	120	43	5	7	30	68.6	24.6	2.9	4.0
SAINT JOHNS	125	79	15	4	4	23	77.5	14.7	3.9	3.9
SAINT LUCIE	837	506	243	33	31	24	62.2	29.9	4.1	3.8
SANTA ROSA	95	62	21	6	0	6	69.7	23.6	6.7	0.0
SARASOTA	295	185	67	15	2	26	68.8	24.9	5.6	0.7
SEMINOLE	714	505	109	26	19	55	76.6	16.5	3.9	2.9
SUMTER	63	52	8	1	0	2	85.2	13.1	1.6	0.0
SUWANNEE	78	47	20	3	1	7	66.2	28.2	4.2	1.4
TAYLOR	52	35	5	1	0	11	85.4	12.2	2.4	0.0
UNION	17	9	6	0	1	1	56.3	37.5	0.0	6.3
VOLUSIA	737	479	140	24	14	80	72.9	21.3	3.7	2.1
WAKULLA	38	28	4	0	0	6	87.5	12.5	0.0	0.0
WALTON	34	24	4	3	2	1	72.7	12.1	9.1	6.1
WASHINGTON	43	18	16	2	0	7	50.0	44.4	5.6	0.0

1. Starting in 2004, "trimester prenatal care began" is calculated as the time elapsed from the date of the last menstrual period to the date of the first prenatal care visit. Prior to 2004, these data were obtained by direct question that noted the trimester the mother began prenatal care. Consequently, these data are not comparable to data from prior years.

2. Births with unknown information as to when prenatal care began are excluded from the denominator.

TABLE B-7 (Cont.): RESIDENT LIVE BIRTHS TO OTHER MOTHERS BY TRIMESTER
 PRENATAL CARE BEGAN, BY COUNTY, FLORIDA, 2011

	TRIMESTER PRENATAL CARE BEGAN ¹						% CARE BEGAN BY TRIMESTER ²			
	TOTAL	1ST	2ND	3RD	NONE	UNK	1ST	2ND	3RD	NONE
FLORIDA	11,623	8,473	1,526	405	119	1,100	80.5	14.5	3.8	1.1
ALACHUA	261	192	45	15	0	9	76.2	17.9	6.0	0.0
BAKER	3	3	0	0	0	0	100.0	0.0	0.0	0.0
BAY	176	93	46	17	1	19	59.2	29.3	10.8	0.6
BRADFORD	5	2	2	1	0	0	40.0	40.0	20.0	0.0
BREVARD	296	243	38	3	4	8	84.4	13.2	1.0	1.4
BROWARD	1,379	957	159	33	13	217	82.4	13.7	2.8	1.1
CALHOUN	2	2	0	0	0	0	100.0	0.0	0.0	0.0
CHARLOTTE	43	24	12	4	0	3	60.0	30.0	10.0	0.0
CITRUS	44	28	8	3	1	4	70.0	20.0	7.5	2.5
CLAY	132	81	28	4	0	19	71.7	24.8	3.5	0.0
COLLIER	89	50	16	7	0	16	68.5	21.9	9.6	0.0
COLUMBIA	12	9	3	0	0	0	75.0	25.0	0.0	0.0
MIAMI-DADE	753	559	63	16	3	112	87.2	9.8	2.5	0.5
DESOTO	8	4	3	0	1	0	50.0	37.5	0.0	12.5
DIXIE	1	0	0	1	0	0	0.0	0.0	100.0	0.0
DUVAL	1,039	700	148	34	14	143	78.1	16.5	3.8	1.6
ESCAMBIA	249	177	41	11	2	18	76.6	17.7	4.8	0.9
FLAGLER	42	30	7	1	2	2	75.0	17.5	2.5	5.0
FRANKLIN	3	2	1	0	0	0	66.7	33.3	0.0	0.0
GADSDEN	8	5	1	1	0	1	71.4	14.3	14.3	0.0
GILCHRIST	5	5	0	0	0	0	100.0	0.0	0.0	0.0
GLADES	3	2	0	0	0	1	100.0	0.0	0.0	0.0
GULF	1	0	1	0	0	0	0.0	100.0	0.0	0.0
HAMILTON	6	2	3	0	0	1	40.0	60.0	0.0	0.0
HARDEE	12	7	4	0	1	0	58.3	33.3	0.0	8.3
HENDRY	20	14	4	1	0	1	73.7	21.1	5.3	0.0
HERNANDO	52	39	6	2	0	5	83.0	12.8	4.3	0.0
HIGHLANDS	33	26	4	3	0	0	78.8	12.1	9.1	0.0
HILLSBOROUGH	1,010	830	49	15	9	107	91.9	5.4	1.7	1.0
HOLMES	6	2	3	0	0	1	40.0	60.0	0.0	0.0
INDIAN RIVER	42	24	14	1	1	2	60.0	35.0	2.5	2.5
JACKSON	7	5	1	0	0	1	83.3	16.7	0.0	0.0
JEFFERSON	1	1	0	0	0	0	100.0	0.0	0.0	0.0
LAFAYETTE	2	2	0	0	0	0	100.0	0.0	0.0	0.0
LAKE	160	132	19	3	2	4	84.6	12.2	1.9	1.3
LEE	205	150	29	13	2	11	77.3	14.9	6.7	1.0
LEON	161	120	8	2	1	30	91.6	6.1	1.5	0.8
LEVY	5	3	1	0	0	1	75.0	25.0	0.0	0.0
LIBERTY	1	1	0	0	0	0	100.0	0.0	0.0	0.0
MADISON	3	3	0	0	0	0	100.0	0.0	0.0	0.0
MANATEE	265	181	57	21	2	4	69.3	21.8	8.0	0.8
MARION	120	71	33	9	4	3	60.7	28.2	7.7	3.4
MARTIN	55	29	18	4	1	3	55.8	34.6	7.7	1.9
MONROE	35	27	6	2	0	0	77.1	17.1	5.7	0.0
NASSAU	16	13	1	0	0	2	92.9	7.1	0.0	0.0
OKALOOSA	207	125	36	25	2	19	66.5	19.1	13.3	1.1
OKEECHOBEE	26	19	4	2	0	1	76.0	16.0	8.0	0.0
ORANGE	1,385	1,106	132	24	15	108	86.6	10.3	1.9	1.2
OSCEOLA	219	145	24	11	5	34	78.4	13.0	5.9	2.7
PALM BEACH	766	573	108	43	0	42	79.1	14.9	5.9	0.0
PASCO	254	192	27	6	2	27	84.6	11.9	2.6	0.9
PINELLAS	596	430	98	30	11	27	75.6	17.2	5.3	1.9
POLK	286	215	45	11	4	11	78.2	16.4	4.0	1.5
PUTNAM	24	16	3	2	1	2	72.7	13.6	9.1	4.5
SAINT JOHNS	100	70	16	1	0	13	80.5	18.4	1.1	0.0
SAINT LUCIE	144	109	33	1	0	1	76.2	23.1	0.7	0.0
SANTA ROSA	101	77	16	0	3	5	80.2	16.7	0.0	3.1
SARASOTA	133	89	20	6	2	16	76.1	17.1	5.1	1.7
SEMINOLE	358	284	45	7	3	19	83.8	13.3	2.1	0.9
SUMTER	18	14	2	0	1	1	82.4	11.8	0.0	5.9
SUWANNEE	4	2	0	2	0	0	50.0	0.0	50.0	0.0
TAYLOR	4	4	0	0	0	0	100.0	0.0	0.0	0.0
UNION	1	1	0	0	0	0	100.0	0.0	0.0	0.0
VOLUSIA	199	133	31	6	5	24	76.0	17.7	3.4	2.9
WAKULLA	2	1	0	0	0	1	100.0	0.0	0.0	0.0
WALTON	15	12	2	1	0	0	80.0	13.3	6.7	0.0
WASHINGTON	10	6	2	0	1	1	66.7	22.2	0.0	11.1

1. Starting in 2004, "trimester prenatal care began" is calculated as the time elapsed from the date of the last menstrual period to the date of the first prenatal care visit. Prior to 2004, these data were obtained by direct question that noted the trimester the mother began prenatal care. Consequently, these data are not comparable to data from prior years.

2. Births with unknown information as to when prenatal care began are excluded from the denominator.

TABLE B-8: RESIDENT LIVE BIRTHS TO UNWED MOTHERS, BY AGE OF MOTHER, BY COUNTY, FLORIDA, 2011

	TOTAL	<13	13	14	15	16	17	18	19	20-24	25-29	30-34	35-44	45+	UNK
FLORIDA	101,466	2	34	154	547	1,382	2,638	4,481	6,673	37,147	25,485	14,381	8,417	115	10
ALACHUA	1,281	0	0	3	8	13	44	59	82	537	298	166	69	2	0
BAKER	161	0	0	0	0	5	4	14	12	81	32	11	2	0	0
BAY	1,014	0	0	2	12	13	28	64	86	445	209	96	58	1	0
BRADFORD	191	0	0	0	0	2	5	14	11	88	36	21	14	0	0
BREVARD	2,391	0	1	3	9	32	65	121	149	912	612	321	165	1	0
BROWARD	9,430	0	3	15	36	114	195	345	468	2,963	2,563	1,653	1,063	12	0
CALHOUN	72	0	0	0	0	1	4	3	7	28	17	8	4	0	0
CHARLOTTE	512	0	0	1	2	2	20	31	43	205	116	61	30	1	0
CITRUS	554	0	0	2	8	7	22	21	59	234	111	63	26	1	0
CLAY	820	0	0	1	9	13	18	44	68	332	173	114	48	0	0
COLLIER	1,510	0	3	0	8	19	32	68	70	519	369	260	161	1	0
COLUMBIA	392	0	0	0	4	6	4	17	39	165	103	38	16	0	0
MIAMI-DADE	15,817	0	6	17	68	172	288	507	789	5,036	4,297	2,657	1,945	33	2
DESOTO	243	0	0	0	2	5	4	14	17	101	52	29	19	0	0
DIXIE	74	0	0	0	1	2	4	4	6	31	14	7	5	0	0
DUVAL	5,892	0	2	3	32	71	163	275	411	2,339	1,516	732	344	3	1
ESCAMBIA	1,903	0	1	4	9	29	54	111	171	778	442	213	90	1	0
FLAGLER	360	0	0	1	3	8	11	19	22	124	87	64	21	0	0
FRANKLIN	53	0	0	0	1	1	3	4	9	18	11	5	1	0	0
GADSDEN	406	0	1	1	1	5	14	12	34	146	122	53	17	0	0
GILCHRIST	87	0	0	0	0	4	3	2	10	35	17	15	1	0	0
GLADES	39	0	0	0	0	2	2	1	2	15	12	4	1	0	0
GULF	62	0	0	0	1	0	3	5	6	29	6	10	2	0	0
HAMILTON	100	0	0	0	1	3	3	6	12	36	19	11	9	0	0
HARDEE	211	0	0	0	3	5	11	16	16	78	47	21	14	0	0
HENDRY	398	0	0	0	0	7	17	23	20	148	89	58	36	0	0
HERNANDO	788	0	1	0	7	14	20	44	65	327	168	85	56	0	1
HIGHLANDS	495	0	0	3	2	4	15	29	45	197	123	48	28	1	0
HILLSBOROUGH	7,965	1	0	19	53	107	233	370	580	2,993	1,951	1,085	566	7	0
HOLMES	91	0	0	1	2	2	2	3	7	44	19	9	2	0	0
INDIAN RIVER	612	0	0	1	2	11	18	30	49	243	147	71	40	0	0
JACKSON	256	0	0	0	0	3	1	16	21	124	57	24	10	0	0
JEFFERSON	68	0	0	0	1	4	1	2	4	32	14	8	2	0	0
LAFAYETTE	32	0	0	0	0	1	1	1	2	13	5	5	4	0	0
LAKE	1,355	0	0	0	6	39	38	67	114	537	312	146	95	1	0
LEE	3,098	0	1	5	19	57	77	117	227	1,164	757	427	244	2	1
LEON	1,431	0	2	2	5	10	29	59	98	604	360	176	82	3	1
LEVY	208	0	0	1	0	4	7	13	13	78	56	30	6	0	0
LIBERTY	50	0	0	0	0	0	0	3	2	26	10	5	4	0	0
MADISON	133	0	0	0	2	0	3	6	8	60	34	13	7	0	0
MANATEE	1,749	0	3	3	14	29	60	89	115	655	422	229	125	4	1
MARION	1,812	0	0	4	10	25	58	85	133	754	433	215	92	3	0
MARTIN	582	0	0	1	3	5	23	25	30	198	168	82	46	1	0
MONROE	297	0	0	0	1	3	4	5	12	96	75	56	44	1	0
NASSAU	274	0	0	0	2	5	10	16	32	112	52	30	15	0	0
OKALOOSA	919	0	0	3	3	16	19	44	74	354	232	117	57	0	0
OKEECHOBEE	315	0	1	0	2	3	15	18	26	121	73	39	17	0	0
ORANGE	7,207	0	2	9	39	108	199	336	476	2,645	1,743	1,053	588	6	3
OSCEOLA	1,873	0	0	4	11	24	47	84	122	744	450	235	151	1	0
PALM BEACH	6,326	1	4	14	30	79	147	260	351	2,138	1,648	1,015	634	5	0
PASCO	1,978	0	0	0	8	26	51	110	161	774	470	251	127	0	0
PINELLAS	4,136	0	1	10	22	53	113	169	277	1,482	1,091	585	324	9	0
POLK	3,740	0	0	9	34	56	137	205	283	1,468	920	410	217	1	0
PUTNAM	496	0	0	2	1	12	22	37	55	180	110	52	25	0	0
SAINT JOHNS	556	0	0	1	1	3	12	27	42	205	151	68	46	0	0
SAINT LUCIE	1,458	0	0	2	10	21	37	65	113	565	356	194	94	1	0
SANTA ROSA	578	0	0	0	3	4	27	41	54	232	115	64	37	1	0
SARASOTA	1,285	0	1	1	6	35	35	56	68	472	295	196	117	3	0
SEMINOLE	1,673	0	0	1	9	25	47	66	123	633	419	203	143	4	0
SUMTER	236	0	0	0	0	7	7	10	31	91	56	24	10	0	0
SUWANNEE	266	0	0	0	2	3	12	18	15	108	64	30	14	0	0
TAYLOR	126	0	0	0	1	3	7	7	13	52	26	15	2	0	0
UNION	81	0	0	1	1	0	1	9	10	25	18	9	7	0	0
VOLUSIA	2,425	0	1	3	10	33	69	111	169	958	595	320	151	5	0
WAKULLA	125	0	0	0	0	0	4	2	10	51	33	20	5	0	0
WALTON	268	0	0	0	4	3	8	8	14	119	61	32	19	0	0
WASHINGTON	126	0	0	1	3	4	1	18	10	49	26	11	3	0	0

TABLE B-8 (Cont.): RESIDENT LIVE BIRTHS TO UNWED WHITE MOTHERS, BY AGE OF MOTHER, BY COUNTY, FLORIDA, 2011

	TOTAL	<13	13	14	15	16	17	18	19	20-24	25-29	30-34	35-44	45+	UNK
FLORIDA	63,266	2	15	80	290	801	1,497	2,650	3,993	22,651	16,035	9,365	5,792	93	2
ALACHUA	523	0	0	1	2	1	15	26	21	209	128	82	36	2	0
BAKER	132	0	0	0	0	4	2	13	11	67	25	8	2	0	0
BAY	707	0	0	2	6	8	15	49	60	313	147	66	40	1	0
BRADFORD	134	0	0	0	0	1	3	14	10	59	24	15	8	0	0
BREVARD	1,711	0	0	1	2	21	40	94	103	643	455	229	122	1	0
BROWARD	3,963	0	0	4	10	39	59	118	167	1,179	1,109	733	538	7	0
CALHOUN	62	0	0	0	0	1	2	3	6	22	16	8	4	0	0
CHARLOTTE	431	0	0	1	1	2	15	23	39	174	100	49	26	1	0
CITRUS	499	0	0	1	7	7	20	18	55	216	94	56	24	1	0
CLAY	650	0	0	1	6	11	16	40	53	252	138	94	39	0	0
COLLIER	1,286	0	2	0	7	19	27	60	55	435	316	218	146	1	0
COLUMBIA	261	0	0	0	2	2	2	13	27	102	71	29	13	0	0
MIAMI-DADE	10,031	0	1	9	27	85	153	262	414	2,937	2,816	1,854	1,446	27	0
DESOTO	193	0	0	0	0	4	4	13	12	75	46	25	14	0	0
DIXIE	63	0	0	0	1	2	4	4	4	29	12	4	3	0	0
DUVAL	2,386	0	0	0	10	23	50	83	139	918	644	341	176	2	0
ESCAMBIA	874	0	0	2	2	12	27	53	64	364	206	100	44	0	0
FLAGLER	271	0	0	1	1	4	9	11	17	96	69	45	18	0	0
FRANKLIN	43	0	0	0	1	1	3	4	7	13	9	5	0	0	0
GADSDEN	118	0	1	1	0	1	4	4	4	36	42	17	8	0	0
GILCHRIST	75	0	0	0	0	3	3	1	9	31	12	15	1	0	0
GLADES	33	0	0	0	0	1	2	1	1	12	12	3	1	0	0
GULF	47	0	0	0	1	0	3	2	6	25	4	6	0	0	0
HAMILTON	60	0	0	0	0	1	1	1	8	23	15	6	5	0	0
HARDEE	192	0	0	0	3	5	11	15	15	67	43	20	13	0	0
HENDRY	297	0	0	0	0	5	12	22	12	105	64	46	31	0	0
HERNANDO	682	0	1	0	5	12	17	34	60	284	145	74	50	0	0
HIGHLANDS	359	0	0	3	1	2	13	21	39	141	83	30	25	1	0
HILLSBOROUGH	5,058	1	0	11	28	70	140	209	349	1,874	1,237	736	396	7	0
HOLMES	85	0	0	1	2	1	2	3	7	42	18	8	1	0	0
INDIAN RIVER	308	0	0	0	1	6	7	17	24	129	68	36	20	0	0
JACKSON	141	0	0	0	0	2	0	13	16	68	25	11	6	0	0
JEFFERSON	26	0	0	0	0	1	1	2	3	11	3	5	0	0	0
LAFAYETTE	28	0	0	0	0	1	1	1	2	11	3	5	4	0	0
LAKE	996	0	0	0	4	25	31	46	84	392	234	107	73	0	0
LEE	2,371	0	1	1	11	38	49	83	181	877	596	343	189	1	1
LEON	422	0	1	0	2	2	8	21	25	147	114	72	29	1	0
LEVY	169	0	0	0	0	3	5	8	12	67	44	26	4	0	0
LIBERTY	41	0	0	0	0	0	0	3	2	22	7	3	4	0	0
MADISON	44	0	0	0	1	0	1	2	4	17	12	5	2	0	0
MANATEE	1,230	0	3	2	8	19	38	63	82	450	300	168	94	3	0
MARION	1,240	0	0	1	6	16	39	47	100	509	295	159	65	3	0
MARTIN	448	0	0	1	3	4	14	19	21	140	140	66	39	1	0
MONROE	241	0	0	0	0	3	3	3	10	76	67	46	32	1	0
NASSAU	245	0	0	0	2	5	7	15	31	99	45	26	15	0	0
OKALOOSA	701	0	0	3	2	10	14	36	61	255	180	92	48	0	0
OKEECHOBEE	278	0	1	0	2	3	15	17	22	107	64	33	14	0	0
ORANGE	3,951	0	0	4	18	54	88	164	230	1,449	989	598	352	4	1
OSCEOLA	1,572	0	0	2	8	23	36	74	111	633	360	200	124	1	0
PALM BEACH	3,650	1	3	10	16	41	74	136	197	1,165	936	637	429	5	0
PASCO	1,751	0	0	0	8	24	46	93	139	697	414	217	113	0	0
PINELLAS	2,701	0	1	4	10	33	54	100	168	922	757	406	238	8	0
POLK	2,603	0	0	7	28	41	98	153	202	1,009	627	283	154	1	0
PUTNAM	323	0	0	0	0	7	14	29	34	117	68	34	20	0	0
SAINT JOHNS	435	0	0	1	1	1	8	18	29	157	120	60	40	0	0
SAINT LUCIE	848	0	0	2	5	11	17	30	58	326	213	125	61	0	0
SANTA ROSA	493	0	0	0	3	4	24	30	48	202	96	54	31	1	0
SARASOTA	988	0	0	0	6	23	19	44	50	362	233	156	92	3	0
SEMINOLE	1,092	0	0	1	3	16	25	39	73	423	267	134	107	4	0
SUMTER	177	0	0	0	0	7	5	7	22	71	40	18	7	0	0
SUWANNEE	196	0	0	0	1	3	10	11	12	74	49	23	13	0	0
TAYLOR	82	0	0	0	1	3	6	6	10	32	15	7	2	0	0
UNION	66	0	0	1	1	0	1	7	8	19	15	8	6	0	0
VOLUSIA	1,768	0	0	1	8	18	52	77	122	698	445	231	111	5	0
WAKULLA	92	0	0	0	0	0	4	2	7	36	24	14	5	0	0
WALTON	238	0	0	0	4	3	8	8	14	104	53	27	17	0	0
WASHINGTON	82	0	0	0	2	3	1	12	5	34	17	6	2	0	0

TABLE B-8 (Cont.): RESIDENT LIVE BIRTHS TO UNWED BLACK MOTHERS, BY AGE OF MOTHER, BY COUNTY, FLORIDA, 2011

	TOTAL	<13	13	14	15	16	17	18	19	20-24	25-29	30-34	35-44	45+	UNK
FLORIDA	34,657	0	17	65	233	528	1,041	1,681	2,467	13,351	8,597	4,437	2,217	19	4
ALACHUA	721	0	0	2	5	12	28	33	58	314	161	77	31	0	0
BAKER	28	0	0	0	0	0	2	1	1	14	7	3	0	0	0
BAY	203	0	0	0	5	2	13	12	13	84	42	21	11	0	0
BRADFORD	53	0	0	0	0	1	2	0	1	26	11	6	6	0	0
BREVARD	584	0	1	1	6	9	23	25	39	233	136	80	31	0	0
BROWARD	5,082	0	3	10	26	72	132	221	287	1,684	1,348	839	456	4	0
CALHOUN	9	0	0	0	0	0	2	0	1	5	1	0	0	0	0
CHARLOTTE	65	0	0	0	1	0	3	8	4	21	14	11	3	0	0
CITRUS	38	0	0	0	0	0	2	0	3	14	14	5	0	0	0
CLAY	125	0	0	0	3	1	1	3	11	60	29	12	5	0	0
COLLIER	191	0	0	0	0	0	5	7	14	71	45	37	12	0	0
COLUMBIA	126	0	0	0	2	4	2	4	12	61	30	9	2	0	0
MIAMI-DADE	5,563	0	5	8	41	86	131	241	368	2,043	1,418	758	458	5	1
DESOTO	45	0	0	0	2	1	0	1	5	24	4	4	4	0	0
DIXIE	10	0	0	0	0	0	0	0	2	2	2	3	1	0	0
DUVAL	3,229	0	2	3	19	43	107	172	251	1,331	795	349	155	1	1
ESCAMBIA	942	0	1	1	7	16	25	51	102	379	217	103	39	1	0
FLAGLER	65	0	0	0	1	4	2	6	5	21	13	11	2	0	0
FRANKLIN	7	0	0	0	0	0	0	0	2	3	1	0	1	0	0
GADSDEN	284	0	0	0	1	4	10	8	30	110	78	35	8	0	0
GILCHRIST	10	0	0	0	0	1	0	1	1	3	4	0	0	0	0
GLADES	5	0	0	0	0	1	0	0	1	2	0	1	0	0	0
GULF	13	0	0	0	0	0	0	3	0	3	2	3	2	0	0
HAMILTON	37	0	0	0	1	2	2	5	3	13	3	5	3	0	0
HARDEE	13	0	0	0	0	0	0	0	0	8	4	1	0	0	0
HENDRY	90	0	0	0	0	1	4	1	7	41	23	12	1	0	0
HERNANDO	83	0	0	0	1	1	1	7	5	37	15	11	5	0	0
HIGHLANDS	129	0	0	0	1	2	2	8	6	53	38	16	3	0	0
HILLSBOROUGH	2,709	0	0	8	23	35	87	157	221	1,049	670	313	146	0	0
HOLMES	4	0	0	0	0	0	0	0	0	2	1	1	0	0	0
INDIAN RIVER	188	0	0	0	0	1	7	7	16	81	49	19	8	0	0
JACKSON	111	0	0	0	0	1	0	3	5	54	31	13	4	0	0
JEFFERSON	41	0	0	0	1	3	0	0	1	20	11	3	2	0	0
LAFAYETTE	4	0	0	0	0	0	0	0	0	2	2	0	0	0	0
LAKE	305	0	0	0	2	11	6	19	28	127	68	30	13	1	0
LEE	653	0	0	3	7	19	25	32	40	260	145	76	45	1	0
LEON	975	0	1	2	3	8	19	37	73	440	237	101	51	2	1
LEVY	37	0	0	1	0	1	1	4	1	11	12	4	2	0	0
LIBERTY	9	0	0	0	0	0	0	0	0	4	3	2	0	0	0
MADISON	88	0	0	0	0	0	2	4	4	43	22	8	5	0	0
MANATEE	396	0	0	1	5	10	20	21	29	171	88	35	15	1	0
MARION	522	0	0	3	4	7	17	35	31	224	125	52	24	0	0
MARTIN	100	0	0	0	0	0	5	6	8	48	20	10	3	0	0
MONROE	49	0	0	0	1	0	1	2	1	17	7	10	10	0	0
NASSAU	26	0	0	0	0	0	3	1	1	12	6	3	0	0	0
OKALOOSA	156	0	0	0	1	4	3	4	9	76	40	13	6	0	0
OKEECHOBEE	19	0	0	0	0	0	0	1	2	7	4	4	1	0	0
ORANGE	2,904	0	2	3	19	48	99	158	222	1,096	669	385	200	2	1
OSCEOLA	240	0	0	1	3	1	9	8	9	82	79	27	21	0	0
PALM BEACH	2,502	0	1	4	14	36	68	119	145	925	665	348	177	0	0
PASCO	161	0	0	0	0	2	3	6	18	54	43	27	8	0	0
PINELLAS	1,211	0	0	6	10	19	50	58	93	484	282	146	63	0	0
POLK	1,048	0	0	2	6	14	33	47	77	421	277	114	57	0	0
PUTNAM	157	0	0	2	0	5	7	8	17	60	39	14	5	0	0
SAINT JOHNS	93	0	0	0	0	1	3	7	10	40	23	5	4	0	0
SAINT LUCIE	568	0	0	0	5	10	18	33	52	228	127	63	31	1	0
SANTA ROSA	54	0	0	0	0	0	2	5	4	21	14	4	4	0	0
SARASOTA	245	0	1	1	0	11	14	12	14	96	53	30	13	0	0
SEMINOLE	497	0	0	0	4	8	20	23	41	186	130	58	27	0	0
SUMTER	50	0	0	0	0	0	2	3	8	20	12	4	1	0	0
SUWANNEE	68	0	0	0	1	0	2	6	3	33	15	7	1	0	0
TAYLOR	43	0	0	0	0	0	1	1	3	20	11	7	0	0	0
UNION	14	0	0	0	0	0	0	2	1	6	3	1	1	0	0
VOLUSIA	566	0	0	2	1	10	15	29	40	230	139	73	27	0	0
WAKULLA	30	0	0	0	0	0	0	0	3	15	6	6	0	0	0
WALTON	25	0	0	0	0	0	0	0	0	12	6	5	2	0	0
WASHINGTON	38	0	0	1	1	0	0	5	5	14	8	3	1	0	0

TABLE B-8 (Cont.): RESIDENT LIVE BIRTHS TO UNWED OTHER MOTHERS, BY AGE OF MOTHER, BY COUNTY, FLORIDA, 2011

	TOTAL	<13	13	14	15	16	17	18	19	20-24	25-29	30-34	35-44	45+	UNK
FLORIDA	3,230	0	2	7	21	49	94	135	194	1,039	772	529	382	3	3
ALACHUA	37	0	0	0	1	0	1	0	3	14	9	7	2	0	0
BAKER	1	0	0	0	0	1	0	0	0	0	0	0	0	0	0
BAY	69	0	0	0	1	3	0	3	8	30	12	8	4	0	0
BRADFORD	4	0	0	0	0	0	0	0	0	3	1	0	0	0	0
BREVARD	94	0	0	1	1	2	2	2	6	35	21	12	12	0	0
BROWARD	350	0	0	1	0	3	4	5	13	91	95	72	65	1	0
CALHOUN	1	0	0	0	0	0	0	0	0	1	0	0	0	0	0
CHARLOTTE	16	0	0	0	0	0	2	0	0	10	2	1	1	0	0
CITRUS	17	0	0	1	1	0	0	3	1	4	3	2	2	0	0
CLAY	42	0	0	0	0	1	1	1	4	18	6	7	4	0	0
COLLIER	32	0	1	0	0	0	0	1	1	13	8	5	3	0	0
COLUMBIA	5	0	0	0	0	0	0	0	0	2	2	0	1	0	0
MIAMI-DADE	174	0	0	0	0	1	3	2	6	36	50	36	38	1	1
DESOTO	5	0	0	0	0	0	0	0	0	2	2	0	1	0	0
DIXIE	1	0	0	0	0	0	0	0	0	0	0	0	1	0	0
DUVAL	250	0	0	0	2	5	5	16	19	84	68	38	13	0	0
ESCAMBIA	85	0	0	1	0	1	2	7	4	34	19	10	7	0	0
FLAGLER	18	0	0	0	1	0	0	2	0	5	4	5	1	0	0
FRANKLIN	3	0	0	0	0	0	0	0	0	2	1	0	0	0	0
GADSDEN	3	0	0	0	0	0	0	0	0	0	1	1	1	0	0
GILCHRIST	2	0	0	0	0	0	0	0	0	1	1	0	0	0	0
GLADES	1	0	0	0	0	0	0	0	0	1	0	0	0	0	0
GULF	1	0	0	0	0	0	0	0	0	1	0	0	0	0	0
HAMILTON	3	0	0	0	0	0	0	0	1	0	1	0	1	0	0
HARDEE	6	0	0	0	0	0	0	1	1	3	0	0	1	0	0
HENDRY	11	0	0	0	0	1	1	0	1	2	2	0	4	0	0
HERNANDO	22	0	0	0	1	1	2	3	0	6	7	0	1	0	1
HIGHLANDS	7	0	0	0	0	0	0	0	0	3	2	2	0	0	0
HILLSBOROUGH	192	0	0	0	2	2	6	3	10	67	43	36	23	0	0
HOLMES	2	0	0	0	0	1	0	0	0	0	0	0	1	0	0
INDIAN RIVER	19	0	0	0	0	0	2	1	4	3	3	4	2	0	0
JACKSON	4	0	0	0	0	0	1	0	0	2	1	0	0	0	0
JEFFERSON	1	0	0	0	0	0	0	0	0	1	0	0	0	0	0
LAFAYETTE	0	0	0	0	0	0	0	0	0	0	0	0	0	0	0
LAKE	54	0	0	0	0	3	1	2	2	18	10	9	9	0	0
LEE	73	0	0	1	1	0	3	2	6	26	16	8	10	0	0
LEON	32	0	0	0	0	0	2	1	0	16	9	2	2	0	0
LEVY	2	0	0	0	0	0	1	1	0	0	0	0	0	0	0
LIBERTY	0	0	0	0	0	0	0	0	0	0	0	0	0	0	0
MADISON	1	0	0	0	1	0	0	0	0	0	0	0	0	0	0
MANATEE	121	0	0	0	1	0	2	5	4	34	34	26	15	0	0
MARION	49	0	0	0	0	2	2	3	2	21	13	3	3	0	0
MARTIN	32	0	0	0	0	1	4	0	1	8	8	6	4	0	0
MONROE	7	0	0	0	0	0	0	0	1	3	1	0	2	0	0
NASSAU	3	0	0	0	0	0	0	0	0	1	1	1	0	0	0
OKALOOSA	62	0	0	0	0	2	2	4	4	23	12	12	3	0	0
OKEECHOBEE	18	0	0	0	0	0	0	0	2	7	5	2	2	0	0
ORANGE	346	0	0	1	2	6	11	14	24	99	84	68	36	0	1
OSCEOLA	59	0	0	1	0	0	2	2	1	28	11	8	6	0	0
PALM BEACH	174	0	0	0	0	2	5	5	9	48	47	30	28	0	0
PASCO	60	0	0	0	0	0	2	10	3	21	12	6	6	0	0
PINELLAS	219	0	0	0	2	1	9	10	16	76	49	32	23	1	0
POLK	89	0	0	0	0	1	6	5	4	38	16	13	6	0	0
PUTNAM	15	0	0	0	1	0	1	0	4	3	3	3	0	0	0
SAINT JOHNS	27	0	0	0	0	1	1	2	3	7	8	3	2	0	0
SAINT LUCIE	40	0	0	0	0	0	2	2	3	10	15	6	2	0	0
SANTA ROSA	31	0	0	0	0	0	1	6	2	9	5	6	2	0	0
SARASOTA	50	0	0	0	0	1	2	0	3	14	9	9	12	0	0
SEMINOLE	82	0	0	0	2	1	2	4	9	23	22	11	8	0	0
SUMTER	9	0	0	0	0	0	0	0	1	0	4	2	2	0	0
SUWANNEE	2	0	0	0	0	0	0	1	0	1	0	0	0	0	0
TAYLOR	1	0	0	0	0	0	0	0	0	0	0	1	0	0	0
UNION	1	0	0	0	0	0	0	0	1	0	0	0	0	0	0
VOLUSIA	80	0	1	0	1	5	1	5	7	27	9	14	10	0	0
WAKULLA	2	0	0	0	0	0	0	0	0	0	2	0	0	0	0
WALTON	5	0	0	0	0	0	0	0	0	3	2	0	0	0	0
WASHINGTON	6	0	0	0	0	1	0	1	0	1	1	2	0	0	0

TABLE B-9: RESIDENT LIVE BIRTHS BY MONTH, BY COUNTY, FLORIDA, 2011

	TOTAL	JAN	FEB	MAR	APR	MAY	JUN	JUL	AUG	SEP	OCT	NOV	DEC
FLORIDA	213,237	17,709	16,198	17,270	16,339	16,758	17,265	18,274	19,315	19,172	18,325	18,137	18,475
ALACHUA	2,960	259	195	220	256	236	218	258	291	265	242	263	257
BAKER	341	30	26	27	30	28	28	13	33	28	29	40	29
BAY	2,156	159	161	173	172	146	163	201	218	198	205	176	184
BRADFORD	324	23	19	27	24	18	30	33	33	27	39	26	25
BREVARD	5,178	388	423	427	385	396	415	437	482	509	455	443	418
BROWARD	21,075	1,704	1,583	1,647	1,716	1,713	1,748	1,757	1,812	1,873	1,835	1,845	1,842
CALHOUN	151	8	6	7	11	13	12	13	20	11	22	15	13
CHARLOTTE	987	90	72	76	88	66	84	76	103	82	82	96	72
CITRUS	1,085	102	81	93	69	94	77	98	93	104	84	105	85
CLAY	2,093	165	175	168	162	141	173	182	196	193	180	167	191
COLLIER	3,197	272	242	251	236	259	256	259	286	301	261	288	286
COLUMBIA	770	71	63	64	63	53	51	57	79	58	79	69	63
MIAMI-DADE	31,349	2,623	2,346	2,517	2,478	2,413	2,494	2,623	2,844	2,844	2,715	2,682	2,770
DESOTO	387	33	34	39	21	28	31	33	43	32	33	29	31
DIXIE	150	18	14	12	11	11	12	10	12	9	15	13	13
DUVAL	12,402	1,030	986	1,024	969	930	1,058	1,052	1,057	1,066	1,067	1,081	1,082
ESCAMBIA	3,836	325	311	325	271	294	293	356	324	362	326	313	336
FLAGLER	787	60	60	43	63	70	54	72	68	79	70	73	75
FRANKLIN	100	10	9	9	9	8	5	8	9	6	12	8	7
GADSDEN	595	52	42	52	44	35	53	60	63	54	47	43	50
GILCHRIST	179	15	13	8	12	18	13	14	28	14	14	16	14
GLADES	73	8	4	4	6	5	10	4	10	5	6	7	4
GULF	138	13	11	10	14	14	6	13	11	10	17	10	9
HAMILTON	155	15	14	8	14	10	17	11	10	16	14	15	11
HARDEE	390	27	33	27	27	40	18	37	32	45	38	32	34
HENDRY	615	59	57	44	43	60	60	40	46	53	44	54	55
HERNANDO	1,552	152	122	113	121	109	146	114	154	139	110	137	135
HIGHLANDS	920	81	75	85	71	62	66	81	89	78	66	77	89
HILLSBOROUGH	16,456	1,344	1,296	1,357	1,256	1,276	1,357	1,465	1,454	1,452	1,434	1,413	1,352
HOLMES	191	17	13	17	11	16	14	16	20	18	15	18	16
INDIAN RIVER	1,277	112	90	112	101	111	111	106	134	103	98	99	100
JACKSON	464	35	22	28	37	41	38	34	46	53	36	39	55
JEFFERSON	126	16	10	7	10	8	10	11	12	8	8	15	11
LAFAYETTE	85	4	6	9	4	4	7	9	10	8	7	7	10
LAKE	2,944	233	225	228	236	250	229	257	277	243	230	257	279
LEE	6,270	511	487	520	452	475	526	557	604	572	536	515	515
LEON	3,053	275	223	254	232	264	228	256	274	232	264	271	280
LEVY	380	28	31	28	29	29	32	37	36	26	31	31	42
LIBERTY	89	10	1	6	10	9	8	5	8	7	10	3	12
MADISON	214	18	13	11	21	19	17	19	19	20	24	18	15
MANATEE	3,362	266	238	267	270	279	273	282	299	298	295	312	283
MARION	3,353	278	271	278	230	263	242	313	306	332	258	280	302
MARTIN	1,185	91	88	106	82	105	86	113	104	116	94	107	93
MONROE	720	52	57	64	63	63	45	67	57	69	57	57	69
NASSAU	760	62	60	65	67	60	76	62	64	52	83	53	56
OKALOOSA	2,637	213	215	216	201	203	226	210	227	231	228	236	231
OKEECHOBEE	532	47	56	31	45	45	36	48	42	55	44	43	40
ORANGE	15,392	1,257	1,167	1,190	1,144	1,251	1,215	1,370	1,440	1,360	1,304	1,346	1,348
OSCEOLA	3,775	316	290	298	265	283	333	306	341	358	318	338	329
PALM BEACH	13,797	1,189	1,045	1,115	1,017	1,078	1,060	1,151	1,282	1,263	1,175	1,155	1,267
PASCO	4,699	399	319	398	360	371	403	404	411	433	447	356	398
PINELLAS	8,289	687	655	728	596	674	738	700	720	756	703	645	687
POLK	7,197	591	512	573	539	581	590	657	633	663	622	620	616
PUTNAM	840	66	76	65	65	73	78	59	66	77	71	77	67
SAINT JOHNS	1,811	151	146	157	132	157	143	154	160	150	150	131	180
SAINT LUCIE	2,995	275	214	251	231	225	229	264	264	301	268	214	259
SANTA ROSA	1,858	161	129	161	137	153	152	165	160	175	182	139	144
SARASOTA	2,943	249	220	248	257	220	200	248	289	265	252	253	242
SEMINOLE	4,441	397	307	377	346	362	369	409	430	370	340	368	366
SUMTER	427	34	26	38	39	38	29	38	47	41	30	40	27
SUWANNEE	484	37	43	47	26	41	28	49	37	47	62	24	43
TAYLOR	242	26	14	8	17	18	16	22	26	24	24	24	23
UNION	170	9	14	15	16	16	12	16	19	10	21	11	11
VOLUSIA	4,654	382	342	403	331	335	405	387	436	408	406	395	424
WAKULLA	305	26	29	24	24	27	31	26	29	27	22	17	23
WALTON	630	38	53	53	42	43	56	45	68	63	53	63	53
WASHINGTON	237	14	17	17	11	22	26	24	18	25	16	23	24

TABLE B-10: RESIDENT LIVE BIRTHS BY MOTHER'S EDUCATION*, BY COUNTY, FLORIDA, 2011

	HIGHEST LEVEL/DEGREE OF EDUCATION COMPLETED									
	TOTAL	< 9TH GRADE	9TH-12TH NO DIPLOMA	HIGH SCHOOL DIPLOMA	SOME COLLEGE	ASSOCIATE DEGREE	BACHELOR DEGREE	MASTER DEGREE	DOCTORATE	UNK
FLORIDA	213,237	7,951	26,137	66,479	40,259	20,201	35,179	12,478	3,443	1,110
ALACHUA	2,960	27	278	619	599	302	575	363	196	1
BAKER	341	9	47	126	89	39	26	4	0	1
BAY	2,156	55	321	650	514	228	270	86	18	14
BRADFORD	324	9	49	143	62	32	21	7	1	0
BREVARD	5,178	112	587	1,271	1,290	680	832	325	66	15
BROWARD	21,075	455	2,160	5,949	4,097	2,129	3,977	1,614	435	259
CALHOUN	151	6	19	70	27	11	13	5	0	0
CHARLOTTE	987	8	117	379	255	85	100	32	9	2
CITRUS	1,085	19	191	412	248	97	91	24	3	0
CLAY	2,093	29	180	687	508	219	332	101	26	11
COLLIER	3,197	411	374	1,021	471	234	466	179	39	2
COLUMBIA	770	17	117	298	190	67	60	16	5	0
MIAMI-DADE	31,349	1,385	2,956	10,874	4,556	3,446	5,535	1,918	611	68
DESOTO	387	73	98	130	54	22	7	1	0	2
DIXIE	150	4	30	68	22	15	9	2	0	0
DUVAL	12,402	378	1,489	3,770	2,611	995	2,204	697	207	51
ESCAMBIA	3,836	42	558	1,574	495	425	558	136	43	5
FLAGLER	787	8	88	220	209	110	110	34	6	2
FRANKLIN	100	5	25	38	19	2	6	3	0	2
GADSDEN	595	41	123	200	119	30	51	22	2	7
GILCHRIST	179	11	20	73	36	20	18	1	0	0
GLADES	73	10	15	29	12	2	4	1	0	0
GULF	138	3	18	49	36	15	14	2	1	0
HAMILTON	155	19	39	65	20	7	3	2	0	0
HARDEE	390	76	86	130	50	17	23	7	1	0
HENDRY	615	89	137	258	56	32	29	9	4	1
HERNANDO	1,552	15	216	559	329	206	157	51	8	11
HIGHLANDS	920	62	181	328	187	52	91	17	2	0
HILLSBOROUGH	16,456	362	2,264	5,880	2,751	962	2,777	1,068	324	68
HOLMES	191	4	30	78	44	21	12	2	0	0
INDIAN RIVER	1,277	33	221	453	236	107	163	48	13	3
JACKSON	464	9	74	171	96	50	48	13	1	2
JEFFERSON	126	4	18	35	35	11	13	5	0	5
LAFAYETTE	85	8	9	35	23	2	4	3	0	1
LAKE	2,944	87	406	967	568	319	412	153	16	16
LEE	6,270	405	894	2,184	980	664	771	271	52	49
LEON	3,053	36	277	584	707	205	816	294	84	50
LEVY	380	13	62	158	87	29	21	7	3	0
LIBERTY	89	2	6	40	26	3	7	3	0	2
MADISON	214	9	39	73	49	23	17	2	0	2
MANATEE	3,362	275	680	957	556	271	441	131	38	13
MARION	3,353	106	565	1,087	899	273	306	92	25	0
MARTIN	1,185	149	130	303	153	123	183	73	15	56
MONROE	720	21	54	219	170	76	141	33	4	2
NASSAU	760	21	73	212	197	75	131	36	14	1
OKALOOSA	2,637	41	236	747	710	273	465	124	35	6
OKEECHOBEE	532	49	108	201	85	47	33	6	1	2
ORANGE	15,392	445	1,836	4,411	2,841	1,453	3,023	1,043	273	67
OSCEOLA	3,775	82	435	1,362	744	427	550	146	22	7
PALM BEACH	13,797	1,136	1,629	3,588	2,453	1,283	2,429	955	299	25
PASCO	4,699	92	576	1,338	1,004	454	838	324	57	16
PINELLAS	8,289	180	932	2,415	1,850	654	1,517	501	155	85
POLK	7,197	492	1,363	2,380	1,317	564	813	218	39	11
PUTNAM	840	68	175	347	147	49	38	11	4	1
SAINT JOHNS	1,811	12	93	406	321	165	553	184	73	4
SAINT LUCIE	2,995	111	416	1,182	443	354	323	115	23	28
SANTA ROSA	1,858	17	179	589	325	222	390	113	21	2
SARASOTA	2,943	51	404	924	545	375	403	159	33	49
SEMINOLE	4,441	48	333	1,012	942	512	1,075	415	73	31
SUMTER	427	25	84	168	90	19	29	7	0	5
SUWANNEE	484	24	106	178	110	35	23	8	0	0
TAYLOR	242	0	42	89	60	17	20	3	4	7
UNION	170	3	15	73	60	6	10	3	0	0
VOLUSIA	4,654	125	699	1,255	1,204	459	630	204	47	31
WAKULLA	305	2	21	92	81	27	58	15	4	5
WALTON	630	18	87	215	131	51	92	26	7	3
WASHINGTON	237	8	44	79	56	22	22	4	1	1

* Starting in 2004, "mother's education" is measured according to the highest level/degree completed, instead of highest grade completed.

TABLE B-10 (Cont.): WHITE RESIDENT LIVE BIRTHS BY MOTHER'S EDUCATION*, BY COUNTY, FLORIDA, 2011

	HIGHEST LEVEL/DEGREE OF EDUCATION COMPLETED										
	TOTAL	9TH-12TH		HIGH	SOME COLLEGE	ASSOCIATE DEGREE	BACHELOR DEGREE	MASTER DEGREE	DOCTORATE	UNK	
		GRADE	DIPLOMA	SCHOOL DIPLOMA							
FLORIDA	152,007	6,793	16,416	43,735	28,268	15,188	28,448	9,801	2,705	653	
ALACHUA	1,795	16	96	263	334	240	444	268	133	1	
BAKER	300	8	41	108	78	38	24	3	0	0	
BAY	1,648	33	232	482	404	175	227	71	16	8	
BRADFORD	257	7	38	113	48	25	18	7	1	0	
BREVARD	4,133	96	402	953	1,046	574	714	280	56	12	
BROWARD	11,510	325	812	2,851	2,114	1,119	2,759	1,077	325	128	
CALHOUN	137	5	16	66	25	10	10	5	0	0	
CHARLOTTE	857	7	96	335	222	77	87	24	9	0	
CITRUS	995	17	172	378	232	90	84	19	3	0	
CLAY	1,724	23	155	572	425	169	274	82	16	8	
COLLIER	2,734	390	318	812	394	194	424	167	33	2	
COLUMBIA	600	12	81	221	149	63	58	12	4	0	
MIAMI-DADE	22,731	1,216	1,748	6,866	3,227	2,724	4,752	1,639	529	30	
DESOTO	331	69	85	107	42	19	6	1	0	2	
DIXIE	137	3	28	62	18	15	9	2	0	0	
DUVAL	6,889	254	568	1,788	1,427	611	1,597	461	156	27	
ESCAMBIA	2,432	29	268	856	346	318	458	118	37	2	
FLAGLER	627	5	63	164	175	86	100	28	5	1	
FRANKLIN	90	4	23	34	16	2	6	3	0	2	
GADSDEN	236	36	42	66	39	11	29	10	0	3	
GILCHRIST	164	11	18	64	34	20	16	1	0	0	
GLADES	65	10	11	26	11	2	4	1	0	0	
GULF	118	3	14	41	31	13	13	2	1	0	
HAMILTON	108	17	20	45	17	4	3	2	0	0	
HARDEE	361	75	83	116	42	14	23	7	1	0	
HENDRY	493	89	114	189	37	28	23	8	4	1	
HERNANDO	1,379	14	190	497	292	181	142	48	8	7	
HIGHLANDS	719	59	147	242	136	43	75	16	1	0	
HILLSBOROUGH	11,782	319	1,603	3,949	1,927	695	2,212	792	243	42	
HOLMES	181	4	28	74	41	20	12	2	0	0	
INDIAN RIVER	779	5	89	248	163	74	143	44	11	2	
JACKSON	327	8	52	106	61	42	44	11	1	2	
JEFFERSON	73	2	8	17	17	7	13	5	0	4	
LAFAYETTE	77	8	8	31	21	1	4	3	0	1	
LAKE	2,340	77	315	765	434	255	337	131	15	11	
LEE	5,146	372	681	1,669	846	561	704	236	43	34	
LEON	1,624	24	86	244	300	114	560	210	62	24	
LEVY	332	11	47	140	79	25	21	6	3	0	
LIBERTY	79	2	6	36	21	2	7	3	0	2	
MADISON	107	8	13	32	22	17	13	1	0	1	
MANATEE	2,611	230	514	674	438	222	374	118	33	8	
MARION	2,564	92	410	820	678	220	250	71	23	0	
MARTIN	1,005	141	96	232	131	112	169	69	12	43	
MONROE	607	19	40	174	146	68	124	31	4	1	
NASSAU	704	20	66	194	187	72	120	32	13	0	
OKALOOSA	2,164	36	180	592	584	230	397	106	34	5	
OKEECHOBEE	476	49	103	174	71	41	29	6	1	2	
ORANGE	9,723	353	894	2,518	1,739	980	2,267	750	189	33	
OSCEOLA	3,141	75	373	1,142	607	344	458	121	16	5	
PALM BEACH	9,163	985	862	1,975	1,538	876	1,944	742	227	14	
PASCO	4,138	84	517	1,169	908	420	712	276	41	11	
PINELLAS	6,243	148	608	1,681	1,352	523	1,314	436	130	51	
POLK	5,510	448	1,024	1,696	990	470	669	176	30	7	
PUTNAM	610	59	128	245	104	37	28	5	4	0	
SAINT JOHNS	1,575	9	63	334	285	150	503	162	66	3	
SAINT LUCIE	2,005	98	228	748	298	257	254	89	15	18	
SANTA ROSA	1,662	15	157	526	272	206	362	102	20	2	
SARASOTA	2,507	43	311	761	461	351	369	147	29	35	
SEMINOLE	3,364	35	200	738	722	392	886	322	47	22	
SUMTER	345	21	65	137	73	17	23	5	0	4	
SUWANNEE	401	23	84	147	90	31	19	7	0	0	
TAYLOR	186	0	27	66	50	14	16	2	4	7	
UNION	152	3	13	60	57	6	10	3	0	0	
VOLUSIA	3,698	108	508	969	960	379	541	176	40	17	
WAKULLA	264	2	16	82	66	24	55	11	4	4	
WALTON	581	17	78	197	121	48	86	25	6	3	
WASHINGTON	184	7	32	54	45	20	20	4	1	1	

* Starting in 2004, "mother's education" is measured according to the highest level/degree completed, instead of highest grade completed.

TABLE B-10 (Cont.): BLACK RESIDENT LIVE BIRTHS BY MOTHER'S EDUCATION*, BY COUNTY, FLORIDA, 2011

	HIGHEST LEVEL/DEGREE OF EDUCATION COMPLETED										
	TOTAL	9TH-12TH		HIGH	SOME COLLEGE	ASSOCIATE DEGREE	BACHELOR DEGREE	MASTER DEGREE	DOCTORATE	UNK	
		GRADE	DIPLOMA	SCHOOL DIPLOMA							
FLORIDA	48,838	808	8,722	19,747	10,109	3,847	3,638	1,388	299	280	
ALACHUA	903	9	176	339	240	47	54	24	14	0	
BAKER	38	1	5	18	10	1	1	1	0	1	
BAY	272	8	51	98	64	29	12	7	0	3	
BRADFORD	62	2	11	28	11	7	3	0	0	0	
BREVARD	745	10	156	256	189	71	42	17	1	3	
BROWARD	8,099	102	1,270	2,747	1,782	863	841	353	59	82	
CALHOUN	12	0	3	4	2	1	2	0	0	0	
CHARLOTTE	87	0	18	30	28	4	2	3	0	2	
CITRUS	46	0	11	22	9	3	0	1	0	0	
CLAY	227	3	17	82	55	28	26	11	3	2	
COLLIER	373	17	46	189	60	31	24	3	3	0	
COLUMBIA	158	4	34	74	37	4	2	2	1	0	
MIAMI-DADE	7,745	152	1,156	3,807	1,242	630	515	181	38	24	
DESOTO	48	3	12	20	11	2	0	0	0	0	
DIXIE	12	0	2	6	4	0	0	0	0	0	
DUVAL	4,392	88	836	1,711	1,020	287	303	114	18	15	
ESCAMBIA	1,153	11	267	622	114	75	46	13	4	1	
FLAGLER	108	2	19	38	24	16	5	3	0	1	
FRANKLIN	7	0	2	4	1	0	0	0	0	0	
GADSDEN	349	2	80	133	79	19	20	12	1	3	
GILCHRIST	10	0	2	7	1	0	0	0	0	0	
GLADES	5	0	2	2	1	0	0	0	0	0	
GULF	16	0	3	7	4	2	0	0	0	0	
HAMILTON	41	1	17	18	3	2	0	0	0	0	
HARDEE	17	0	0	10	5	2	0	0	0	0	
HENDRY	102	0	20	58	15	3	5	1	0	0	
HERNANDO	118	1	22	43	27	15	7	1	0	2	
HIGHLANDS	168	2	32	75	46	7	6	0	0	0	
HILLSBOROUGH	3,638	32	620	1,687	677	206	280	91	27	18	
HOLMES	4	0	1	2	1	0	0	0	0	0	
INDIAN RIVER	244	1	52	116	50	16	8	0	0	1	
JACKSON	130	1	19	64	32	8	4	2	0	0	
JEFFERSON	52	2	10	17	18	4	0	0	0	1	
LAFAYETTE	6	0	1	4	1	0	0	0	0	0	
LAKE	437	4	73	166	107	43	33	9	0	2	
LEE	913	26	188	453	106	77	36	15	4	8	
LEON	1,262	10	184	320	387	86	186	52	15	22	
LEVY	43	2	14	17	8	2	0	0	0	0	
LIBERTY	9	0	0	4	5	0	0	0	0	0	
MADISON	104	1	25	39	27	6	4	1	0	1	
MANATEE	484	6	120	214	89	32	14	4	1	4	
MARION	668	10	141	234	192	47	29	14	1	0	
MARTIN	120	0	22	59	15	9	9	2	1	3	
MONROE	77	2	13	35	16	5	5	1	0	0	
NASSAU	39	0	5	16	9	3	5	1	0	0	
OKALOOSA	265	3	37	96	72	21	25	11	0	0	
OKEECHOBEE	29	0	2	11	12	3	1	0	0	0	
ORANGE	4,267	66	850	1,586	894	329	345	145	34	18	
OSCEOLA	409	3	48	150	98	49	45	14	2	0	
PALM BEACH	3,861	132	719	1,460	807	333	270	105	31	4	
PASCO	295	3	41	92	56	16	58	20	9	0	
PINELLAS	1,438	11	267	583	390	67	68	22	7	23	
POLK	1,397	34	308	604	270	75	71	27	5	3	
PUTNAM	205	8	42	95	38	11	7	3	0	1	
SAINT JOHNS	125	1	28	55	20	5	9	6	1	0	
SAINT LUCIE	837	6	177	385	110	79	51	17	6	6	
SANTA ROSA	95	0	12	33	26	6	10	7	1	0	
SARASOTA	295	4	84	117	54	13	9	5	0	9	
SEMINOLE	714	7	109	223	165	77	74	43	10	6	
SUMTER	63	3	17	27	12	0	3	1	0	0	
SUWANNEE	78	1	22	30	18	4	2	1	0	0	
TAYLOR	52	0	15	22	10	3	2	0	0	0	
UNION	17	0	1	13	3	0	0	0	0	0	
VOLUSIA	737	10	161	222	203	57	54	18	2	10	
WAKULLA	38	0	5	10	13	2	3	4	0	1	
WALTON	34	0	9	16	5	3	1	0	0	0	
WASHINGTON	43	1	9	22	9	1	1	0	0	0	

* Starting in 2004, "mother's education" is measured according to the highest level/degree completed, instead of highest grade completed.

TABLE B-10 (Cont.): OTHER RESIDENT LIVE BIRTHS BY MOTHER'S EDUCATION*, BY COUNTY, FLORIDA, 2011

	TOTAL	HIGHEST LEVEL/DEGREE OF EDUCATION COMPLETED									
		< 9TH GRADE	9TH-12TH NO DIPLOMA	HIGH SCHOOL DIPLOMA	SOME COLLEGE	ASSOCIATE DEGREE	BACHELOR DEGREE	MASTER DEGREE	DOCTORATE	UNK	
FLORIDA	11,623	303	877	2,805	1,791	1,098	2,995	1,263	428	63	
ALACHUA	261	2	6	17	25	15	76	71	49	0	
BAKER	3	0	1	0	1	0	1	0	0	0	
BAY	176	8	24	55	33	19	27	7	2	1	
BRADFORD	5	0	0	2	3	0	0	0	0	0	
BREVARD	296	6	27	61	55	35	76	28	8	0	
BROWARD	1,379	26	70	333	194	144	367	182	49	14	
CALHOUN	2	1	0	0	0	0	1	0	0	0	
CHARLOTTE	43	1	3	14	5	4	11	5	0	0	
CITRUS	44	2	8	12	7	4	7	4	0	0	
CLAY	132	3	8	31	27	21	26	8	7	1	
COLLIER	89	3	10	20	17	9	18	9	3	0	
COLUMBIA	12	1	2	3	4	0	0	2	0	0	
MIAMI-DADE	753	15	49	173	73	73	239	90	41	0	
DESOTO	8	1	1	3	1	1	1	0	0	0	
DIXIE	1	1	0	0	0	0	0	0	0	0	
DUVAL	1,039	36	82	244	152	86	283	119	32	5	
ESCAMBIA	249	2	23	96	35	32	54	5	2	0	
FLAGLER	42	1	4	13	9	6	5	3	1	0	
FRANKLIN	3	1	0	0	2	0	0	0	0	0	
GADSDEN	8	3	1	1	1	0	1	0	1	0	
GILCHRIST	5	0	0	2	1	0	2	0	0	0	
GLADES	3	0	2	1	0	0	0	0	0	0	
GULF	1	0	0	1	0	0	0	0	0	0	
HAMILTON	6	1	2	2	0	1	0	0	0	0	
HARDEE	12	1	3	4	3	1	0	0	0	0	
HENDRY	20	0	3	11	4	1	1	0	0	0	
HERNANDO	52	0	4	19	9	10	8	2	0	0	
HIGHLANDS	33	1	2	11	5	2	10	1	1	0	
HILLSBOROUGH	1,010	7	38	243	144	58	282	182	53	3	
HOLMES	6	0	1	2	2	1	0	0	0	0	
INDIAN RIVER	42	1	6	17	4	5	7	2	0	0	
JACKSON	7	0	3	1	3	0	0	0	0	0	
JEFFERSON	1	0	0	1	0	0	0	0	0	0	
LAFAYETTE	2	0	0	0	1	1	0	0	0	0	
LAKE	160	5	18	35	27	19	41	13	1	1	
LEE	205	7	25	62	28	24	31	20	5	3	
LEON	161	2	6	19	19	5	69	31	7	3	
LEVY	5	0	1	1	0	2	0	1	0	0	
LIBERTY	1	0	0	0	0	1	0	0	0	0	
MADISON	3	0	1	2	0	0	0	0	0	0	
MANATEE	265	39	46	69	29	17	52	9	4	0	
MARION	120	3	14	33	29	6	27	7	1	0	
MARTIN	55	7	11	12	7	2	5	2	2	7	
MONROE	35	0	1	10	8	3	12	1	0	0	
NASSAU	16	1	2	2	1	0	6	3	1	0	
OKALOOSA	207	2	19	58	54	22	43	7	1	1	
OKEECHOBEE	26	0	3	15	2	3	3	0	0	0	
ORANGE	1,385	26	92	306	205	140	411	147	50	8	
OSCEOLA	219	4	13	69	37	34	47	11	4	0	
PALM BEACH	766	19	48	153	108	73	215	108	41	1	
PASCO	254	5	18	75	37	18	66	27	7	1	
PINELLAS	596	21	54	147	108	63	134	42	17	10	
POLK	286	10	30	79	56	19	73	15	4	0	
PUTNAM	24	1	5	7	5	1	2	3	0	0	
SAINT JOHNS	100	2	2	16	15	10	35	14	6	0	
SAINT LUCIE	144	7	10	48	34	18	16	9	2	0	
SANTA ROSA	101	2	10	30	27	10	18	4	0	0	
SARASOTA	133	3	9	44	28	11	24	7	4	3	
SEMINOLE	358	6	23	50	55	42	115	50	16	1	
SUMTER	18	1	2	4	5	2	3	1	0	0	
SUWANNEE	4	0	0	1	1	0	2	0	0	0	
TAYLOR	4	0	0	1	0	0	2	1	0	0	
UNION	1	0	1	0	0	0	0	0	0	0	
VOLUSIA	199	5	27	59	38	22	34	9	5	0	
WAKULLA	2	0	0	0	1	1	0	0	0	0	
WALTON	15	1	0	2	5	0	5	1	1	0	
WASHINGTON	10	0	3	3	2	1	1	0	0	0	

* Starting in 2004, "mother's education" is measured according to the highest level/degree completed, instead of highest grade completed.

TABLE B-11: RESIDENT LIVE BIRTHS TO MOTHERS UNDER 15 YEARS OF AGE FOR SELECTED INDICATORS,
BY COUNTY, FLORIDA, 2011

	TOTAL	UNWED	BIRTHWEIGHT		THIRD TRIMESTER OR NO PRENATAL CARE*	ONE OR MORE PREVIOUS LIVE BIRTHS
			UNDER 1,500 GRAMS	UNDER 2,500 GRAMS		
FLORIDA	194	190	8	23	25	5
ALACHUA	3	3	0	0	0	0
BAKER	0	0	0	0	0	0
BAY	2	2	0	0	0	0
BRADFORD	0	0	0	0	0	0
BREVARD	4	4	0	1	0	0
BROWARD	18	18	2	3	2	0
CALHOUN	0	0	0	0	0	0
CHARLOTTE	1	1	0	0	0	0
CITRUS	2	2	0	0	0	0
CLAY	1	1	0	0	0	0
COLLIER	3	3	0	1	0	0
COLUMBIA	0	0	0	0	0	0
MIAMI-DADE	24	23	2	6	1	1
DESOTO	0	0	0	0	0	0
DIXIE	0	0	0	0	0	0
DUVAL	5	5	0	0	1	0
ESCAMBIA	5	5	0	0	0	0
FLAGLER	1	1	0	1	1	0
FRANKLIN	0	0	0	0	0	0
GADSDEN	2	2	0	0	0	0
GILCHRIST	0	0	0	0	0	0
GLADES	0	0	0	0	0	0
GULF	0	0	0	0	0	0
HAMILTON	0	0	0	0	0	0
HARDEE	0	0	0	0	0	0
HENDRY	0	0	0	0	0	0
HERNANDO	1	1	0	0	1	0
HIGHLANDS	3	3	0	1	0	0
HILLSBOROUGH	20	20	0	1	4	0
HOLMES	1	1	1	1	0	0
INDIAN RIVER	1	1	0	0	0	0
JACKSON	0	0	0	0	0	0
JEFFERSON	0	0	0	0	0	0
LAFAYETTE	0	0	0	0	0	0
LAKE	0	0	0	0	0	0
LEE	6	6	0	0	1	1
LEON	4	4	0	1	0	0
LEVY	1	1	0	0	0	0
LIBERTY	0	0	0	0	0	0
MADISON	0	0	0	0	0	0
MANATEE	6	6	0	1	0	0
MARION	5	4	0	0	2	0
MARTIN	1	1	0	0	0	0
MONROE	0	0	0	0	0	0
NASSAU	0	0	0	0	0	0
OKALOOSA	3	3	0	0	0	0
OKEECHOBEE	1	1	0	0	0	0
ORANGE	12	11	0	2	3	1
OSCEOLA	4	4	0	0	1	1
PALM BEACH	19	19	0	1	5	0
PASCO	0	0	0	0	0	0
PINELLAS	11	11	3	3	2	0
POLK	9	9	0	0	0	1
PUTNAM	2	2	0	0	0	0
SAINT JOHNS	1	1	0	0	0	0
SAINT LUCIE	2	2	0	0	0	0
SANTA ROSA	0	0	0	0	0	0
SARASOTA	2	2	0	0	0	0
SEMINOLE	1	1	0	0	0	0
SUMTER	0	0	0	0	0	0
SUWANNEE	1	0	0	0	0	0
TAYLOR	0	0	0	0	0	0
UNION	1	1	0	0	0	0
VOLUSIA	4	4	0	0	1	0
WAKULLA	0	0	0	0	0	0
WALTON	0	0	0	0	0	0
WASHINGTON	1	1	0	0	0	0

* Starting in 2004, "trimester prenatal care began" is calculated as the time elapsed from the date of the last menstrual period to the date of the first prenatal care visit. Prior to 2004, these data were obtained by direct question that noted the trimester the mother began prenatal care. Consequently, these data are not comparable to data from prior years.

TABLE B-12: RESIDENT LIVE BIRTHS TO MOTHERS 15 THROUGH 19 YEARS OF AGE FOR SELECTED INDICATORS, AND AGE-SPECIFIC BIRTH RATES PER 1,000 FEMALES, BY COUNTY, FLORIDA, 2011

	TOTAL		BIRTHWEIGHT						THIRD TRIMESTER OR NO PRENATAL CARE		ONE OR MORE PREVIOUS LIVE BIRTHS		AGE-SPECIFIC BIRTH RATE	POPULATION 15-19 FEMALES
			UNWED		UNDER 1,500 GRAMS		UNDER 2,500 GRAMS		NUMBER ¹	% ²	NUMBER	%		
			NUMBER	%	NUMBER	%	NUMBER	%						
FLORIDA	17,126	15,721	91.8	325	1.9	1,742	10.2	1,117	7.3	2,988	17.4	29.1	588,009	
ALACHUA	218	206	94.5	6	2.8	34	15.6	20	9.9	43	19.7	17.4	12,529	
BAKER	42	35	83.3	0	0.0	6	14.3	1	2.6	10	23.8	49.0	858	
BAY	225	203	90.2	4	1.8	22	9.8	20	10.4	40	17.8	43.1	5,217	
BRADFORD	37	32	86.5	0	0.0	4	10.8	2	5.6	7	18.9	51.7	716	
BREVARD	406	376	92.6	4	1.0	35	8.6	22	5.7	44	10.8	25.6	15,844	
BROWARD	1,231	1,158	94.1	32	2.6	137	11.1	94	9.2	223	18.1	22.6	54,374	
CALHOUN	21	15	71.4	0	0.0	2	9.5	1	5.0	5	23.8	49.6	423	
CHARLOTTE	108	98	90.7	2	1.9	6	5.6	6	5.8	15	13.9	31.7	3,402	
CITRUS	128	117	91.4	4	3.1	13	10.2	9	7.5	18	14.1	38.9	3,292	
CLAY	175	152	86.9	4	2.3	13	7.4	16	10.6	22	12.6	24.7	7,080	
COLLIER	218	197	90.4	4	1.8	15	6.9	15	7.9	26	11.9	26.3	8,276	
COLUMBIA	91	70	76.9	0	0.0	9	9.9	6	6.9	16	17.6	45.8	1,986	
MIAMI-DADE	1,974	1,824	92.4	42	2.1	218	11.0	84	5.1	355	18.0	24.4	80,877	
DESOTO	47	42	89.4	2	4.3	6	12.8	3	7.7	12	25.5	49.7	945	
DIXIE	20	17	85.0	1	5.0	3	15.0	0	0.0	3	15.0	50.4	397	
DUVAL	1,021	952	93.2	15	1.5	116	11.4	97	10.9	193	18.9	35.8	28,517	
ESCAMBIA	415	374	90.1	10	2.4	48	11.6	24	6.3	82	19.8	39.7	10,465	
FLAGLER	69	63	91.3	0	0.0	7	10.1	4	6.0	7	10.1	26.1	2,648	
FRANKLIN	21	18	85.7	0	0.0	2	9.5	3	16.7	7	33.3	84.7	248	
GADSDEN	71	66	93.0	2	2.8	11	15.5	4	6.6	24	33.8	46.1	1,540	
GILCHRIST	23	19	82.6	0	0.0	1	4.3	2	8.7	4	17.4	45.1	510	
GLADES	13	7	53.8	0	0.0	3	23.1	2	20.0	3	23.1	46.1	282	
GULF	17	15	88.2	1	5.9	1	5.9	0	0.0	3	17.6	49.3	345	
HAMILTON	29	25	86.2	0	0.0	4	13.8	0	0.0	4	13.8	75.9	382	
HARDEE	61	51	83.6	1	1.6	7	11.5	5	9.1	14	23.0	66.7	914	
HENDRY	77	67	87.0	0	0.0	7	9.1	6	8.0	11	14.3	55.1	1,397	
HERNANDO	164	150	91.5	1	0.6	10	6.1	6	4.3	18	11.0	34.3	4,775	
HIGHLANDS	112	95	84.8	3	2.7	10	8.9	5	4.5	18	16.1	47.0	2,385	
HILLSBOROUGH	1,455	1,343	92.3	38	2.6	177	12.2	62	5.0	286	19.7	34.0	42,827	
HOLMES	21	16	76.2	1	4.8	2	9.5	1	6.7	2	9.5	37.1	566	
INDIAN RIVER	119	110	92.4	1	0.8	17	14.3	7	6.5	21	17.6	33.0	3,603	
JACKSON	47	41	87.2	0	0.0	5	10.6	2	4.8	13	27.7	32.6	1,440	
JEFFERSON	12	12	100.0	0	0.0	1	8.3	1	11.1	0	0.0	33.3	360	
LAFAYETTE	7	5	71.4	1	14.3	1	14.3	1	14.3	0	0.0	32.9	213	
LAKE	293	264	90.1	5	1.7	23	7.8	11	3.9	40	13.7	35.6	8,240	
LEE	542	497	91.7	9	1.7	55	10.1	41	8.0	78	14.4	31.8	17,057	
LEON	208	201	96.6	4	1.9	26	12.5	17	11.0	36	17.3	14.1	14,770	
LEVY	42	37	88.1	3	7.1	4	9.5	4	10.8	8	19.0	35.2	1,192	
LIBERTY	7	5	71.4	0	0.0	0	0.0	0	0.0	1	14.3	35.0	200	
MADISON	20	19	95.0	1	5.0	2	10.0	0	0.0	1	5.0	34.6	578	
MANATEE	329	307	93.3	5	1.5	32	9.7	21	6.5	88	26.7	37.3	8,824	
MARION	351	311	88.6	5	1.4	35	10.0	28	8.5	73	20.8	39.3	8,942	
MARTIN	96	86	89.6	4	4.2	10	10.4	9	9.5	19	19.8	26.1	3,676	
MONROE	28	25	89.3	2	7.1	5	17.9	3	11.5	2	7.1	19.0	1,470	
NASSAU	75	65	86.7	2	2.7	5	6.7	2	3.4	14	18.7	33.4	2,244	
OKALOOSA	190	156	82.1	1	0.5	14	7.4	16	9.0	31	16.3	34.5	5,513	
OKEECHOBEE	73	64	87.7	0	0.0	7	9.6	4	5.6	10	13.7	58.1	1,257	
ORANGE	1,223	1,158	94.7	22	1.8	134	11.0	86	8.0	221	18.1	28.4	43,078	
OSCEOLA	324	288	88.9	3	0.9	23	7.1	17	6.0	47	14.5	31.9	10,143	
PALM BEACH	920	867	94.2	22	2.4	99	10.8	74	8.8	187	20.3	24.2	38,089	
PASCO	381	356	93.4	6	1.6	26	6.8	24	6.9	48	12.6	28.6	13,310	
PINELLAS	680	634	93.2	10	1.5	62	9.1	56	8.8	108	15.9	28.3	24,044	
POLK	783	715	91.3	15	1.9	56	7.2	54	7.2	144	18.4	40.6	19,272	
PUTNAM	144	127	88.2	1	0.7	13	9.0	8	6.8	24	16.7	65.3	2,205	
SAINT JOHNS	97	85	87.6	1	1.0	6	6.2	5	6.4	16	16.5	15.4	6,287	
SAINT LUCIE	273	246	90.1	2	0.7	32	11.7	20	7.4	49	17.9	32.6	8,381	
SANTA ROSA	146	129	88.4	4	2.7	15	10.3	12	9.2	17	11.6	28.6	5,098	
SARASOTA	220	200	90.9	5	2.3	24	10.9	16	8.1	32	14.5	25.3	8,707	
SEMINOLE	289	270	93.4	4	1.4	21	7.3	21	7.9	36	12.5	19.4	14,884	
SUMTER	63	55	87.3	2	3.2	4	6.3	3	5.0	9	14.3	53.2	1,184	
SUWANNEE	53	50	94.3	1	1.9	5	9.4	5	10.2	6	11.3	41.7	1,270	
TAYLOR	35	31	88.6	0	0.0	3	8.6	0	0.0	3	8.6	58.5	598	
UNION	24	21	87.5	0	0.0	3	12.5	1	4.2	7	29.2	61.9	388	
VOLUSIA	426	392	92.0	4	0.9	33	7.7	25	6.6	70	16.4	29.5	14,455	
WAKULLA	17	16	94.1	1	5.9	1	5.9	0	0.0	1	5.9	18.6	912	
WALTON	42	37	88.1	1	2.4	3	7.1	2	5.0	7	16.7	29.7	1,413	
WASHINGTON	37	36	97.3	1	2.7	8	21.6	1	3.2	6	16.2	53.2	695	

1. Starting in 2004, "trimester prenatal care began" is calculated as the time elapsed from the date of the last menstrual period to the date of the first prenatal care visit. Prior to 2004, these data were obtained by direct question that noted the trimester the mother began prenatal care. Consequently, these data are not comparable to data from prior years.

2. Births with unknown information as to when prenatal care began are excluded from the denominator.

