

# **Marriages and Dissolutions of Marriage**

## MARRIAGES AND DISSOLUTIONS OF MARRIAGE

- The number of marriage ceremonies increased in 2011 to 140,900 marriages from 137,250 marriages in 2010, representing a 2.7% increase. This increase was preceded by five years of decline in the number of marriages.
- The marriage rate declined between 2002 when it was 9.4 per 1,000 population and 2010 when it was 7.3 per 1,000 population. In 2011, the marriage rate increased slightly to 7.4 per 1,000 population.
- November was the most popular month for marriages with 14,153 marriages performed. The most popular date of marriage in 2011 was 11/11/11 with 3,510 marriages performed. Valentine's Day, February 14<sup>th</sup> and 9/10/11 tied as the second most popular wedding days with 1,585 marriages performed on each of these days.
- The 2011 marriage rate (7.4 per 1,000 population) in Florida was 1.6 times the 2011 dissolution rate (4.5 per 1,000 population).
- Of the 84,785 dissolutions of marriage in 2011, over half (54.5 percent) did not affect any minor children.
- The average duration of a marriage resulting in dissolution during 2011 was 10.2 years.

**CHART M-1: MARRIAGES AND DISSOLUTIONS OF MARRIAGE,  
AND RATES PER 1,000 POPULATION, FLORIDA AND UNITED  
STATES, CENSUS YEARS 1920-1990 AND 2001-2011**

YEAR	MARRIAGES			DISSOLUTIONS <sup>1</sup>		
	FLORIDA		U.S. RATE	FLORIDA		U.S. RATE
	NUMBER	RATE		NUMBER	RATE	
1920	NA	NA	12.0	NA	NA	1.6
1930	17,147	11.7	9.2	3,262	2.5	1.6
1940	32,709	17.1	12.1	11,061	5.8	2.0
1950	27,588	9.8	11.1	17,845	6.3	2.6
1960	39,315	7.9	8.5	19,326	3.9	2.2
1970	69,249	10.1	10.6	37,506	5.5	3.5
1980	108,344	11.0	10.6	71,578	7.3	5.2
1990	141,816	10.9	9.8	81,119	6.2	4.7
2000	145,300	9.0	8.7 <sup>2</sup>	81,439	5.1	4.2 <sup>2</sup>
2001	153,298	9.4	8.2 <sup>2</sup>	85,259	5.2	4.0 <sup>2</sup>
2002	157,554	9.4	7.8 <sup>2</sup>	85,181	5.1	4.0 <sup>2</sup>
2003	153,023	9.0	7.7 <sup>2</sup>	85,367	5.0	3.8 <sup>2</sup>
2004	154,453	8.8	7.8 <sup>2</sup>	83,306	4.8	3.7 <sup>2</sup>
2005	158,192	8.8	7.6 <sup>2</sup>	81,287	4.5	3.6 <sup>2</sup>
2006	158,167	8.7	7.4 <sup>2</sup>	85,955	4.7	3.7 <sup>2</sup>
2007	155,998	8.4	7.3 <sup>2</sup>	84,386	4.6	3.6 <sup>2</sup>
2008	147,888	7.9	7.1 <sup>2</sup>	79,868	4.3	3.5 <sup>2</sup>
2009	139,127	7.4	6.8 <sup>2</sup>	78,752	4.2	3.4 <sup>2</sup>
2010	137,250	7.3	NA	83,342	4.4	NA
2011	140,900	7.4	NA	84,785	4.5	NA

<sup>1</sup> Includes divorces and annulments.  
<sup>2</sup> Provisional data.

**GRAPH M-1: MARRIAGES AND DISSOLUTIONS OF MARRIAGE RATES PER 1,000 POPULATION,  
FLORIDA AND UNITED STATES, 2001-2011**

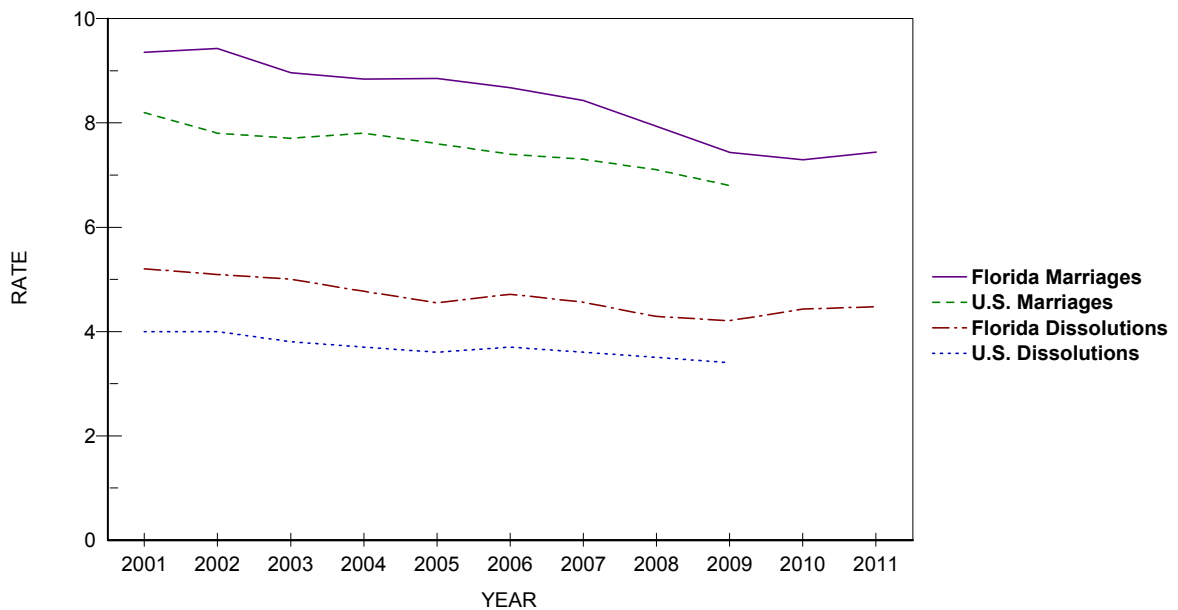


TABLE M-1: MARRIAGES PERFORMED BY MONTH, BY COUNTY OF ISSUANCE, FLORIDA, 2011

	TOTAL	JAN	FEB	MAR	APR	MAY	JUN	JUL	AUG	SEP	OCT	NOV	DEC
FLORIDA	140,900	8,004	10,143	12,577	13,568	13,629	12,410	11,734	9,410	11,062	13,002	14,153	11,208
ALACHUA	1,675	91	108	167	156	184	150	151	108	120	161	145	134
BAKER	212	9	16	14	19	20	17	20	18	19	20	20	20
BAY	2,450	87	135	158	217	277	297	277	191	255	257	182	117
BRADFORD	242	13	11	24	19	17	19	24	17	28	28	23	19
BREVARD	4,278	218	250	364	407	394	406	365	281	352	418	449	374
BROWARD	13,060	899	1,104	1,203	1,151	1,169	1,067	1,020	882	976	1,048	1,356	1,185
CALHOUN	103	3	12	10	8	1	10	8	8	16	9	7	11
CHARLOTTE	944	44	65	95	117	100	68	73	42	65	93	106	76
CITRUS	719	40	46	77	68	74	56	48	38	58	74	83	57
CLAY	1,289	60	72	110	135	137	108	117	80	99	139	127	105
COLLIER	2,803	154	172	259	256	300	224	215	180	167	292	326	258
COLUMBIA	485	20	41	46	47	40	40	41	39	38	44	52	37
MIAMI-DADE	20,560	1,466	1,651	1,852	1,851	1,800	1,686	1,644	1,542	1,576	1,635	1,977	1,880
DESOTO	181	12	11	17	16	16	17	20	11	14	17	22	8
DIXIE	95	4	5	9	14	5	8	13	5	6	11	9	6
DUVAL	5,696	289	367	495	626	568	494	474	372	494	554	536	427
ESCAMBIA	3,420	124	208	289	349	363	352	335	258	297	347	293	205
FLAGLER	505	27	29	45	54	44	38	39	32	36	54	59	48
FRANKLIN	160	5	6	9	21	18	17	21	12	14	20	13	4
GADSDEN	195	16	17	19	14	15	21	12	8	19	21	21	12
GILCHRIST	260	14	11	20	23	26	33	34	17	20	21	24	17
GLADES	57	5	3	8	4	5	7	7	7	3	4	3	1
GULF	180	4	8	15	20	19	25	20	8	18	22	13	8
HAMILTON	120	6	5	16	9	11	15	10	5	8	10	19	6
HARDEE	159	16	10	15	20	12	15	12	9	7	10	15	18
HENDRY	207	16	18	26	25	19	13	20	16	12	13	20	9
HERNANDO	900	35	58	100	91	96	76	72	55	59	84	114	60
HIGHLANDS	539	25	50	44	52	47	57	38	39	45	47	56	39
HILLSBOROUGH	8,522	476	633	832	944	767	656	699	535	655	810	848	667
HOLMES	165	9	9	16	18	18	16	20	10	18	11	10	10
INDIAN RIVER	876	58	56	79	85	91	85	67	54	62	75	91	73
JACKSON	323	16	22	32	30	33	31	32	24	20	33	30	20
JEFFERSON	95	5	8	11	13	6	8	7	7	10	11	4	5
LAFAYETTE	52	2	5	5	3	12	5	2	1	7	4	4	2
LAKE	2,510	141	152	197	253	243	193	190	176	206	260	292	207
LEE	4,143	233	323	360	378	409	332	299	235	308	413	518	335
LEON	1,732	63	123	149	174	176	171	138	109	128	200	156	145
LEVY	221	10	16	25	30	20	17	18	18	17	16	21	13
LIBERTY	52	2	8	6	4	3	2	3	4	6	8	4	2
MADISON	141	1	15	19	24	9	9	11	10	8	16	8	11
MANATEE	1,834	128	126	153	164	177	165	139	118	130	197	205	132
MARION	1,947	102	168	163	175	186	129	175	119	145	191	206	188
MARTIN	868	51	49	96	75	83	71	70	55	68	73	115	62
MONROE	3,284	172	198	279	311	377	434	290	169	204	246	355	249
NASSAU	761	23	30	55	89	86	69	74	48	77	90	77	43
OKALOOSA	3,193	116	149	204	281	344	419	372	285	348	307	233	135
OKEECHOBEE	224	11	17	19	28	27	18	23	8	11	17	23	22
ORANGE	9,244	533	771	849	845	861	721	725	632	719	903	929	756
OSCEOLA	3,501	227	266	290	314	342	291	282	245	324	321	310	289
PALM BEACH	7,730	496	609	748	759	754	634	595	492	519	669	794	661
PASCO	2,247	133	165	223	254	183	194	181	116	177	218	231	172
PINELLAS	6,758	325	486	570	669	730	593	555	398	515	680	736	501
POLK	3,352	190	273	331	337	283	291	288	209	284	247	351	268
PUTNAM	468	27	38	44	47	55	41	34	37	34	33	38	40
SAINT JOHNS	1,433	73	71	114	153	151	129	131	91	108	147	148	117
SAINT LUCIE	1,442	88	132	146	137	140	121	110	107	93	115	130	123
SANTA ROSA	1,029	55	46	87	95	110	113	97	76	92	102	94	62
SARASOTA	2,689	148	169	213	284	291	258	205	152	185	269	313	202
SEMINOLE	2,655	142	171	263	257	244	242	203	155	208	270	296	204
SUMTER	325	13	29	35	39	22	24	30	18	32	31	29	23
SUWANNEE	226	11	20	22	17	22	25	18	10	20	21	21	19
TAYLOR	144	7	14	19	14	11	13	12	12	11	16	8	7
UNION	132	6	11	18	10	9	15	10	11	12	9	10	11
VOLUSIA	3,119	167	225	286	287	323	294	282	219	239	262	318	217
WAKULLA	170	11	6	15	20	16	13	15	19	18	16	11	10
WALTON	1,641	28	40	83	145	219	212	184	135	214	227	102	52
WASHINGTON	158	3	5	15	17	19	20	18	11	9	15	14	12

TABLE M-2: MARRIAGES BY RACE OF GROOM AND BRIDE, FLORIDA, 2011

RACE OF GROOM	RACE OF BRIDE										
	TOTAL	WHITE	BLACK	AMERICAN INDIAN	CHINESE	JAPANESE	HAWAIIAN	FILIPINO	OTHER ASIAN/PAC ISL	OTHER ENTRIES	UNK
TOTAL	140,900	109,603	18,863	323	46	12	18	140	3,244	8,287	364
WHITE	108,837	103,033	1,448	230	33	10	12	102	1,676	2,206	87
BLACK	21,242	3,419	16,925	31	1	1	1	12	130	703	19
AMERICAN INDIAN	328	241	19	51	0	0	0	0	10	7	0
CHINESE	19	6	0	0	11	0	0	0	2	0	0
JAPANESE	3	3	0	0	0	0	0	0	0	0	0
HAWAIIAN	21	18	0	0	0	0	2	0	0	1	0
FILIPINO	66	40	1	0	1	1	0	19	2	2	0
OTH ASIAN/PAC ISL	2,118	661	51	3	0	0	0	2	1,355	42	4
OTHER ENTRIES	7,910	2,090	408	8	0	0	3	4	67	5,325	5
UNK	356	92	11	0	0	0	0	1	2	1	249

TABLE M-3: DISSOLUTIONS\* OF MARRIAGE BY DURATION OF MARRIAGE IN YEARS AND NUMBER OF MINOR CHILDREN AFFECTED, FLORIDA, 2011

DURATION IN YEARS	NUMBER OF MINOR CHILDREN AFFECTED								
	TOTAL	NONE	ONE	TWO	THREE	FOUR	FIVE	SIX+	UNK
TOTAL	84,785	46,227	16,402	12,051	3,230	638	115	34	6,088
<1	2,203	1,812	110	57	9	2	1	0	212
1	4,435	3,472	418	118	27	5	2	1	392
2	5,532	3,971	853	202	36	3	2	1	464
3	6,471	4,382	1,164	316	39	4	0	0	566
4	6,501	4,162	1,242	473	74	16	5	0	529
5-9	23,551	12,429	5,162	3,418	728	127	24	7	1,656
10-14	13,647	5,046	3,115	3,517	1,044	221	30	10	664
15-19	8,438	2,701	1,821	2,465	890	192	35	9	325
20-24	5,742	2,606	1,510	996	272	47	9	4	298
25-29	3,226	2,183	504	211	32	9	5	1	281
30-34	1,651	1,322	137	33	7	2	0	1	149
35-39	778	663	16	11	6	0	0	0	82
40+	714	623	13	9	2	1	1	0	65
UNK	1,896	855	337	225	64	9	1	0	405

\*Includes divorces and annulments.

TABLE M-4: DISSOLUTIONS\* OF MARRIAGE BY MONTH, BY COUNTY, FLORIDA, 2011

	TOTAL	JAN	FEB	MAR	APR	MAY	JUN	JUL	AUG	SEP	OCT	NOV	DEC
FLORIDA	84,785	6,185	6,956	7,606	7,236	8,094	8,022	6,029	7,413	6,769	7,159	6,634	6,682
ALACHUA	817	49	49	74	63	92	66	58	74	62	82	77	71
BAKER	106	4	5	13	22	7	9	11	12	3	8	4	8
BAY	812	70	95	85	58	72	106	50	81	61	72	62	0
BRADFORD	136	10	14	20	13	12	17	7	6	14	10	6	7
BREVARD	2,384	194	199	230	210	162	247	144	228	175	194	195	206
BROWARD	7,529	545	714	650	703	897	543	161	762	408	793	442	911
CALHOUN	72	3	4	8	10	8	4	7	6	5	5	5	7
CHARLOTTE	624	38	49	52	66	55	34	57	55	49	61	51	57
CITRUS	604	40	52	51	48	68	67	37	56	51	31	51	52
CLAY	991	88	88	98	88	83	102	56	90	85	88	59	66
COLLIER	1,184	93	94	77	97	121	94	85	126	107	105	86	99
COLUMBIA	376	18	30	39	33	40	25	38	33	38	30	20	32
MIAMI-DADE	14,526	1,001	1,135	1,427	1,322	1,397	1,521	1,117	1,245	1,112	1,199	1,177	873
DESOTO	122	8	7	7	10	16	9	9	13	9	11	11	12
DIXIE	80	7	0	9	2	6	12	4	1	11	9	8	11
DUVAL	4,581	354	386	376	386	366	413	352	398	349	417	433	351
ESCAMBIA	1,272	89	133	84	108	83	150	125	92	104	120	93	91
FLAGLER	394	14	13	44	26	51	41	38	28	41	44	30	24
FRANKLIN	54	1	2	7	6	3	6	2	4	12	4	3	4
GADSDEN	172	12	12	13	10	18	11	21	17	13	22	4	19
GILCHRIST	74	5	6	10	7	6	6	3	9	8	5	1	8
GLADES	26	0	4	3	5	5	7	1	1	0	0	0	0
GULF	52	5	5	5	1	8	3	4	4	1	3	8	5
HAMILTON	50	0	2	8	4	5	7	3	3	4	6	2	6
HARDEE	110	11	6	10	14	9	11	6	15	9	4	7	8
HENDRY	110	7	9	11	4	5	12	7	17	10	10	8	10
HERNANDO	599	36	42	71	38	63	39	52	52	55	64	38	49
HIGHLANDS	344	23	20	29	30	33	36	30	39	33	22	24	25
HILLSBOROUGH	6,117	515	540	530	464	788	807	275	482	378	452	435	451
HOLMES	91	9	10	11	7	4	9	7	9	4	8	10	3
INDIAN RIVER	515	27	36	41	45	61	38	42	45	42	41	49	48
JACKSON	220	23	11	19	15	20	39	23	19	22	11	10	8
JEFFERSON	45	4	4	2	4	2	4	4	6	4	3	6	2
LAFAYETTE	37	4	2	4	2	2	5	2	6	2	4	2	2
LAKE	1,137	83	65	87	119	86	115	97	77	99	100	106	103
LEE	2,754	238	221	249	202	257	230	225	305	237	205	197	188
LEON	940	65	83	78	73	64	95	101	101	87	55	74	64
LEVY	156	7	9	22	15	11	18	16	14	13	11	5	15
LIBERTY	37	3	3	4	6	1	2	6	4	2	5	1	0
MADISON	65	8	4	3	6	5	8	7	5	6	7	2	4
MANATEE	984	100	68	78	101	72	113	54	91	88	74	73	72
MARION	1,521	65	137	120	139	129	158	132	112	164	113	109	143
MARTIN	546	41	21	58	50	47	46	44	40	39	57	34	69
MONROE	879	41	32	82	71	92	76	69	101	77	73	92	73
NASSAU	345	22	31	36	22	36	20	37	16	24	35	31	35
OKALOOSA	1,161	91	129	83	112	119	102	97	93	97	57	107	74
OKECHOBEE	128	14	10	10	11	16	9	14	1	12	11	9	11
ORANGE	5,410	365	464	493	435	486	431	423	418	485	494	439	477
OSCEOLA	1,320	103	140	113	82	145	96	130	77	104	110	101	119
PALM BEACH	5,293	374	493	463	469	410	514	300	495	492	438	442	403
PASCO	1,713	146	122	110	146	164	161	177	127	146	151	130	133
PINELLAS	3,155	210	247	261	285	259	277	272	266	292	253	270	263
POLK	2,556	205	175	259	191	189	217	187	254	235	225	210	209
PUTNAM	328	13	24	23	47	27	53	18	26	22	18	25	32
SAINT JOHNS	773	49	67	66	55	86	67	64	72	74	81	49	43
SAINT LUCIE	1,110	108	44	124	112	103	77	91	74	91	88	114	84
SANTA ROSA	764	48	75	56	68	69	63	75	55	61	61	57	76
SARASOTA	1,443	116	139	154	101	117	139	116	117	134	102	97	111
SEMINOLE	1,800	122	137	146	163	214	161	133	123	149	165	141	146
SUMTER	211	16	13	24	17	15	19	15	19	11	15	27	20
SUWANNEE	167	13	10	14	9	18	16	12	20	22	10	16	7
TAYLOR	89	7	8	9	10	8	5	6	9	8	4	12	3
UNION	68	6	11	8	9	6	4	2	3	4	5	10	0
VOLUSIA	2,210	171	158	207	145	231	176	233	191	171	174	202	151
WAKULLA	167	8	12	14	14	17	23	16	24	12	5	13	9
WALTON	253	18	23	24	26	24	24	21	27	18	14	16	18
WASHINGTON	76	2	3	10	4	3	7	1	22	12	5	6	1

\*Includes divorces and annulments.

TABLE M-5: DISSOLUTIONS\* OF MARRIAGE BY NUMBER OF MINOR CHILDREN AFFECTED, BY COUNTY, FLORIDA, 2011

	TOTAL	NONE	ONE	TWO	THREE	FOUR	FIVE	SIX	SEVEN	EIGHT+	UNK
FLORIDA	84,785	46,227	16,402	12,051	3,230	638	115	25	5	4	6,088
ALACHUA	817	480	185	109	34	6	2	0	0	0	1
BAKER	106	64	20	14	4	4	0	0	0	0	0
BAY	812	485	163	127	35	0	1	1	0	0	0
BRADFORD	136	55	37	19	8	1	0	0	0	0	16
BREVARD	2,384	1,352	477	419	111	20	4	1	0	0	0
BROWARD	7,529	3,521	1,272	949	226	40	0	3	0	0	1,518
CALHOUN	72	38	17	14	1	1	0	0	0	0	1
CHARLOTTE	624	255	132	99	34	12	2	0	0	0	90
CITRUS	604	356	116	89	28	8	0	1	0	0	6
CLAY	991	439	224	227	59	11	1	1	0	0	29
COLLIER	1,184	719	210	176	58	13	3	1	0	0	4
COLUMBIA	376	201	91	59	18	2	0	0	0	0	5
MIAMI-DADE	14,526	10,049	2,469	1,564	369	62	8	2	1	1	1
DESOTO	122	67	23	26	3	2	1	0	0	0	0
DIXIE	80	41	24	11	3	0	0	0	0	0	1
DUVAL	4,581	2,497	1,081	725	219	45	8	1	0	0	5
ESCAMBIA	1,272	696	284	166	52	12	4	0	1	0	57
FLAGLER	394	113	58	49	10	3	0	0	0	0	161
FRANKLIN	54	0	11	4	4	0	0	0	0	0	35
GADSDEN	172	102	35	23	10	2	0	0	0	0	0
GILCHRIST	74	33	13	15	7	0	0	0	0	0	6
GLADES	26	20	3	3	0	0	0	0	0	0	0
GULF	52	29	11	7	4	1	0	0	0	0	0
HAMILTON	50	23	12	9	4	1	0	0	0	0	1
HARDEE	110	23	14	22	13	1	2	0	0	0	35
HENDRY	110	49	33	17	7	4	0	0	0	0	0
HERNANDO	599	302	112	105	31	4	1	0	0	0	44
HIGHLANDS	344	194	75	54	19	2	0	0	0	0	0
HILLSBOROUGH	6,117	3,429	1,262	942	273	49	15	3	0	0	144
HOLMES	91	52	22	14	2	1	0	0	0	0	0
INDIAN RIVER	515	317	98	75	23	2	0	0	0	0	0
JACKSON	220	135	44	31	7	2	0	0	0	0	1
JEFFERSON	45	17	6	5	1	0	0	0	0	0	16
LAFAYETTE	37	29	4	3	0	1	0	0	0	0	0
LAKE	1,137	497	239	178	49	7	2	0	0	0	165
LEE	2,754	1,774	486	366	106	17	4	0	0	0	1
LEON	940	468	188	147	29	15	4	0	0	0	89
LEVY	156	75	32	23	11	0	0	0	0	0	15
LIBERTY	37	21	7	6	3	0	0	0	0	0	0
MADISON	65	11	12	10	2	1	0	0	0	0	29
MANATEE	984	535	213	174	44	8	2	2	0	0	6
MARION	1,521	888	327	219	72	13	1	0	0	0	1
MARTIN	546	300	109	96	24	8	4	1	0	0	4
MONROE	879	653	122	67	23	6	1	0	0	0	7
NASSAU	345	193	77	58	9	4	0	0	0	0	4
OKALOOSA	1,161	677	263	157	55	7	1	0	0	0	1
OKEECHOBEE	128	73	23	22	8	1	1	0	0	0	0
ORANGE	5,410	3,307	1,067	784	193	38	8	0	1	0	12
OSCEOLA	1,320	824	272	175	41	6	1	0	0	0	1
PALM BEACH	5,293	415	983	735	167	35	4	0	0	1	2,953
PASCO	1,713	976	338	293	80	18	3	0	0	0	5
PINELLAS	3,155	2,026	581	437	91	18	0	2	0	0	0
POLK	2,556	1,494	490	419	112	27	9	1	0	0	4
PUTNAM	328	168	70	55	21	4	1	0	0	0	9
SAINT JOHNS	773	371	190	146	49	8	3	0	0	0	6
SAINT LUCIE	1,110	582	228	179	55	9	1	1	0	0	55
SANTA ROSA	764	408	159	142	39	11	4	1	0	0	0
SARASOTA	1,443	921	266	189	53	8	0	0	0	0	6
SEMINOLE	1,800	809	389	304	82	17	3	1	0	0	195
SUMTER	211	152	29	21	9	0	0	0	0	0	0
SUWANNEE	167	90	30	38	6	2	0	1	0	0	0
TAYLOR	89	36	23	18	6	1	1	0	0	0	4
UNION	68	38	10	11	4	3	2	0	0	0	0
VOLUSIA	2,210	1,013	421	317	87	31	2	1	2	2	334
WAKULLA	167	78	43	34	8	3	0	0	0	0	1
WALTON	253	140	63	40	10	0	0	0	0	0	0
WASHINGTON	76	32	14	20	5	0	1	0	0	0	4

\*Includes divorces and annulments.

