

# Live Births

## LIVE BIRTHS

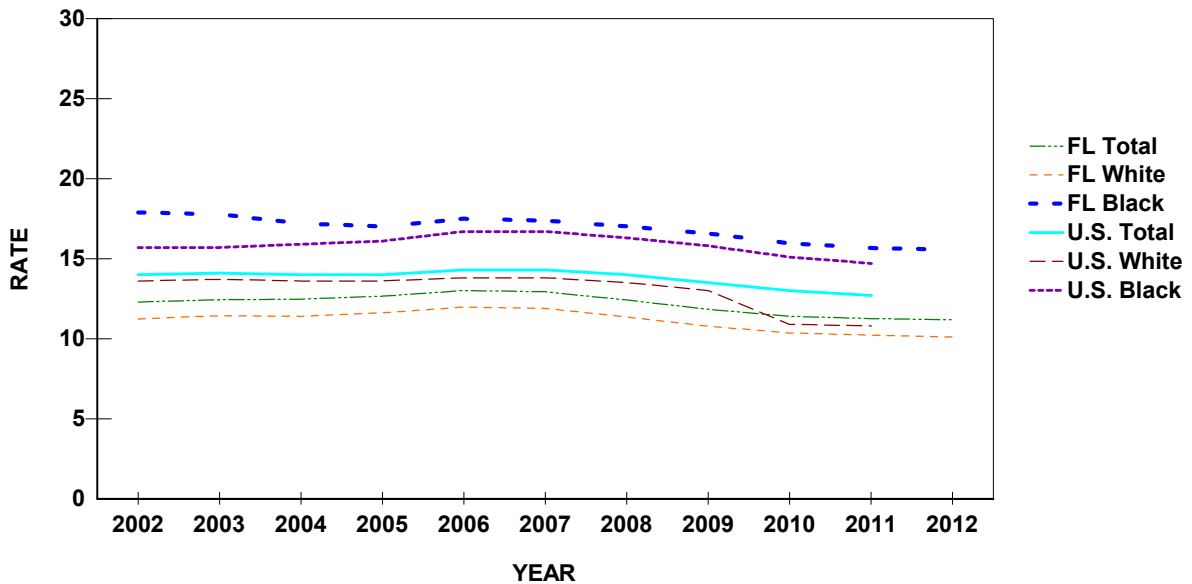
- Since 1970, Florida's resident live births have increased. The largest increase was between 1980 and 1990, when births increased from 131,811 to 199,146. Between 2000 and 2010, births increased from 204,030 to 214,519. Further analysis of this decade shows gains in the number of births until 2007, when the highest number (239,120) was reached. In 2012, the number of resident live births decreased for the fifth consecutive year to 212,954.
- In 2012, Florida experienced a birth rate of 11.2 births per 1,000 population. This is a decrease of 0.9 percent from the 2011 rate of 11.3.
- In 2012, the resident birth rate for whites was 10.1 births per 1,000 population and 15.6 births per 1,000 population for blacks.
- Both the number and percentage of resident births to mothers aged 18 and under decreased between 2011 and 2012. The number decreased from 9,757 to 8,885 and the percent from 4.6 to 4.2.
- Comparing the percentage of resident births to mothers of 18 years or younger by race, the percent for black mothers (6.3 percent) is 1.8 times higher than the percent for white mothers (3.6 percent).
- Between 2011 and 2012, the percent of resident live births with birthweights less than 2,500 grams (5 lbs. 8.2 oz.) decreased from 8.7 to 8.6. The percent of resident live births with birthweights less than 1,500 grams (3 lbs. 4.9 oz.) was unchanged from 2011 to 2012 at 1.6. The percent of resident live births with birthweights of 4,000 grams (8 lbs. 13.1 oz.) and heavier was 6.9 in 2012, an increase from 6.6 in 2011.
- About 12 out of every 25 resident live births (48.0 percent) were to unwed mothers. For blacks, about twelve out of every seventeen births (70.7 percent) were to unwed mothers. Among whites, about eight out of every nineteen births (42.1 percent) were to unwed mothers. Among other races, approximately five out of every seventeen live births (29.7 percent) were to unwed mothers.
- Of the live births to unwed mothers, 8.1 percent were to women 18 years old and younger.
- Mothers of Hispanic origin accounted for 27.1 percent of the resident live births.
- The majority of infants born during 2012 had a white mother (70.8 percent of Florida's total resident live births). Twenty-three percent had a black mother and the mother of 5.8 percent were of other race.
- Of the resident live births, 98.1 percent occurred in hospitals. Physicians attended 89.1 percent of the hospital births.

**CHART B-1: RESIDENT LIVE BIRTHS AND RATES PER 1,000 POPULATION, BY RACE, FLORIDA AND UNITED STATES, CENSUS YEARS 1970-2000 AND 2002-2012**

YEAR	NUMBER OF BIRTHS -FL <sup>1</sup>				RATES - FL			RATES-U.S.		
	TOTAL	WHITE	BLACK	OTHER	TOTAL	WHITE	BLACK	TOTAL	WHITE	BLACK
1970	115,113	86,941	27,567	586	16.8	15.1	26.3	18.4	17.4	25.1
1980	131,810	97,401	33,127	1,259	13.4	11.6	24.2	15.9	14.9	22.5
1990	199,146	149,743	46,353	2,912	15.3	13.6	25.9	16.7	15.8	21.7
2000	204,030	150,115	47,271	6,351	12.7	11.4	19.0	14.4	13.9	17.0
2002	205,580	152,127	46,123	6,948	12.3	11.2	17.9	14.0	13.6	15.7
2003	212,243	157,402	47,117	7,449	12.4	11.4	17.8	14.1	13.7	15.7
2004	218,045	160,132	46,998	10,479	12.5	11.4	17.2	14.0	13.6	15.9
2005	226,219	166,181	47,957	11,651	12.7	11.6	17.0	14.0	13.6	16.1
2006	237,166	174,147	50,808	11,889	13.0	12.0	17.5	14.3	13.8	16.7
2007	239,120	174,597	51,587	12,503	12.9	11.9	17.4	14.3	13.8	16.7
2008	231,417	167,487	51,362	12,049	12.4	11.4	17.0	14.0	13.5	16.3
2009	221,391	159,186	50,559	11,006	11.8	10.8	16.6	13.5	13.0	15.8
2010	214,519	153,480	49,189	10,716	11.4	10.4	16.0	13.0	10.9	15.1
2011	213,237	152,007	48,838	11,623	11.3	10.2	15.7	12.7 <sup>2</sup>	10.8 <sup>2</sup>	14.7 <sup>2</sup>
2012	212,954	150,866	48,992	12,335	11.2	10.1	15.6	NA	NA	NA

1. Data are based on the race of the mother.  
2. Preliminary data.

**GRAPH B-1: RESIDENT LIVE BIRTH RATES PER 1,000 POPULATION, BY RACE OF MOTHER, FLORIDA AND UNITED STATES, 2002-2012**



**CHART B-2: RESIDENT LIVE BIRTHS TO MOTHERS 18 YEARS AND UNDER,  
BY SINGLE YEARS OF AGE, AND PERCENT OF TOTAL BIRTHS,  
BY RACE OF MOTHER, FLORIDA, 1970, 1975, 1980, 1985, 1990, 1995, 2000, 2005, AND 2008-2012**

YEAR	AGE OF MOTHER							18 YEARS & UNDER	
	< 13	13	14	15	16	17	18	NUMBER	PERCENT
<b>TOTAL</b>									
1970	26	107	503	1,463	3,107	4,887	6,808	16,901	14.7
1975	20	145	647	1,798	3,369	4,936	6,482	17,397	16.5
1980	21	98	509	1,537	2,913	4,429	6,299	15,806	12.0
1985	16	105	549	1,407	2,709	4,348	6,139	15,273	9.3
1990	31	138	591	1,661	3,148	5,193	7,544	18,306	9.2
1995	20	128	588	1,583	3,236	5,166	6,971	17,692	9.4
2000	24	95	412	1,213	2,702	4,730	7,094	16,270	8.0
2005	15	59	341	1,036	2,428	4,126	6,797	14,802	6.5
2008	10	58	288	899	2,146	4,241	6,966	14,608	6.3
2009	6	42	214	803	1,895	3,610	6,355	12,925	5.8
2010	6	54	190	660	1,567	3,171	5,466	11,114	5.2
2011	2	34	158	552	1,422	2,749	4,840	9,757	4.6
2012	6	32	154	497	1,274	2,448	4,474	8,885	4.2
<b>WHITE</b>									
1970	3	19	155	524	1,553	3,004	4,463	9,721	11.2
1975	5	34	207	693	1,651	2,868	4,078	9,536	12.2
1980	5	24	128	581	1,370	2,434	3,887	8,429	8.7
1985	4	26	168	600	1,439	2,537	3,744	8,518	6.9
1990	8	37	201	693	1,571	2,976	4,636	10,122	6.8
1995	9	32	230	801	1,801	3,124	4,451	10,448	7.4
2000	6	43	167	625	1,512	2,863	4,463	9,679	6.4
2005	7	26	161	567	1,468	2,643	4,452	9,324	5.6
2008	4	24	135	478	1,263	2,638	4,452	8,994	5.4
2009	1	14	100	425	1,081	2,204	3,966	7,791	4.9
2010	4	24	103	346	915	1,930	3,363	6,685	4.4
2011	2	15	84	295	835	1,597	2,970	5,798	3.8
2012	3	14	78	261	763	1,516	2,815	5,450	3.6
<b>BLACK</b>									
1970	22	88	348	939	1,552	1,873	2,331	7,153	25.9
1975	15	111	439	1,101	1,711	2,057	2,387	7,821	29.4
1980	16	74	379	954	1,533	1,986	2,389	7,331	22.1
1985	12	78	379	799	1,259	1,796	2,368	6,691	17.3
1990	22	101	387	953	1,552	2,166	2,847	8,028	17.3
1995	10	96	353	761	1,399	1,973	2,446	7,038	16.7
2000	18	50	238	576	1,148	1,798	2,525	6,353	13.4
2005	8	33	169	426	884	1,354	2,121	4,995	10.4
2008	5	33	145	385	817	1,449	2,287	5,121	10.0
2009	5	24	104	352	757	1,296	2,196	4,734	9.4
2010	2	27	81	282	597	1,144	1,910	4,043	8.2
2011	0	17	65	233	530	1,046	1,703	3,594	7.4
2012	3	17	73	218	452	835	1,485	3,083	6.3
<b>OTHER</b>									
1970	1	0	0	0	2	9	14	26	4.4
1975	0	0	0	3	6	11	16	36	3.9
1980	0	0	1	2	10	8	23	44	3.5
1985	0	1	2	8	10	15	26	62	3.5
1990	1	0	3	14	22	46	58	144	4.9
1995	1	0	5	21	32	65	73	197	4.4
2000	0	2	6	12	37	64	103	224	3.5
2005	0	0	11	40	74	125	211	461	4.0
2008	1	1	8	35	65	144	211	465	3.9
2009	0	4	9	24	50	102	180	369	3.4
2010	0	3	4	26	48	76	169	326	3.0
2011	0	2	7	21	52	99	151	332	2.9
2012	0	1	3	15	54	91	155	319	2.6

**CHART B-3: PERCENT OF RESIDENT LIVE BIRTHS FOR SELECTED BIRTHWEIGHT GROUPS,  
BY RACE OF MOTHER AND GENDER OF CHILD, FLORIDA, 1970, 1980, 1990, 2000, AND 2002-2012**

**VERY LOW BIRTHWEIGHT:  
LESS THAN 1,500 GRAMS**

**LOW BIRTHWEIGHT:  
LESS THAN 2,500 GRAMS**

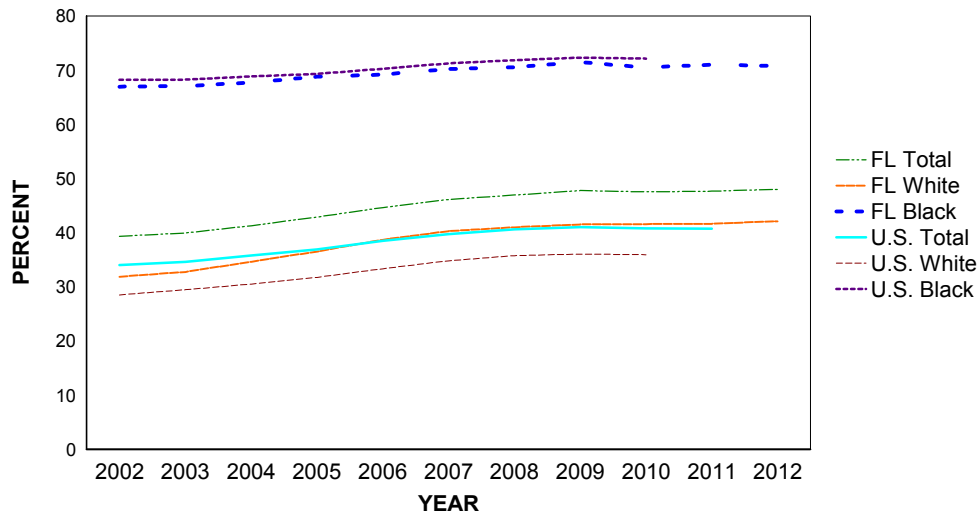
YEAR	WHITE			BLACK		OTHER		TOTAL	WHITE			BLACK		OTHER	
	TOTAL	MALE	FEMALE	MALE	FEMALE	MALE	FEMALE		MALE	FEMALE	MALE	FEMALE	MALE	FEMALE	
1970	1.3	0.9	0.9	2.4	2.4	8.5	10.4	8.5	6.4	7.5	12.0	14.6	1.6	1.8	
1980	1.4	1.0	0.9	2.6	2.6	3.8	5.9	7.6	5.6	6.5	11.6	13.1	0.6	0.7	
1990	1.5	1.0	1.0	2.8	2.9	7.3	7.2	7.4	5.5	6.3	11.5	13.4	0.9	1.1	
2000	1.5	1.2	1.1	2.8	2.9	7.4	8.8	8.0	6.2	7.0	11.4	13.3	1.2	1.1	
2002	1.6	1.2	1.2	3.1	3.1	8.3	8.3	8.4	6.6	7.7	11.4	14.1	1.2	1.2	
2003	1.6	1.2	1.1	2.9	2.9	7.2	9.6	8.5	6.5	7.7	11.8	14.6	1.0	1.8	
2004	1.6	1.1	1.2	3.0	3.2	8.0	9.7	8.6	6.6	7.9	11.9	14.3	1.3	1.4	
2005	1.6	1.2	1.2	3.0	3.2	7.9	9.7	8.8	6.7	8.0	12.2	15.0	1.3	1.5	
2006	1.6	1.2	1.2	3.0	3.2	7.7	9.6	8.7	6.8	8.0	11.9	15.0	1.2	1.3	
2007	1.6	1.2	1.2	3.0	3.3	7.2	9.2	8.7	6.7	7.8	12.4	15.0	1.3	1.5	
2008	1.7	1.2	1.3	2.9	3.1	8.0	9.0	8.8	6.8	8.0	12.3	14.8	1.3	1.6	
2009	1.6	1.1	1.2	2.9	3.3	8.1	9.8	8.7	6.6	7.8	12.0	14.9	1.2	1.3	
2010	1.6	1.3	1.2	2.8	3.2	8.2	9.6	8.7	6.6	7.7	12.5	14.9	1.4	1.2	
2011	1.6	1.1	1.2	2.9	3.1	8.6	8.3	8.7	6.6	8.1	12.2	14.1	1.5	1.1	
2012	1.6	1.2	1.2	2.8	2.9	7.7	9.0	8.6	6.8	7.7	11.7	14.0	1.2	1.3	

**CHART B-4: RESIDENT LIVE BIRTHS TO UNWED MOTHERS AND PERCENT OF TOTAL LIVE BIRTHS, BY RACE, FLORIDA AND UNITED STATES, CENSUS YEARS 1920-2000 AND 2002-2012**

YEAR	NUMBER OF BIRTHS <sup>1</sup>				PERCENT - FL				PERCENT-U.S.		
	TOTAL	WHITE	BLACK	OTHER	TOTAL	WHITE	BLACK	OTHER	TOTAL	WHITE	BLACK
1970	17,264	5,679	11,554	27	15.0	6.5	41.9	4.6	10.7	5.7	37.6
1980	30,156	10,295	19,778	82	22.9	10.6	59.7	6.5	18.4	11.0	55.2
1990	63,126	31,276	31,360	442	31.7	20.9	67.7	15.2	28.0	20.4	66.5
2000	78,026	44,616	31,934	1,400	38.2	29.7	67.6	22.0	33.2	27.1	68.5
2002	80,833	48,400	30,873	1,453	39.3	31.8	66.9	20.9	34.0	28.5	68.2
2003	84,733	51,482	31,584	1,594	39.9	32.7	67.0	21.4	34.6	29.4	68.2
2004	89,976	55,381	31,799	2,670	41.3	34.6	67.7	25.5	35.8	30.5	68.8
2005	96,895	60,665	32,972	3,129	42.8	36.5	68.8	26.9	36.9	31.7	69.3
2006	105,770	67,305	35,133	3,208	44.6	38.6	69.1	27.0	38.5	33.3	70.2
2007	110,160	70,251	36,197	3,501	46.1	40.2	70.2	28.0	39.7	34.8	71.2
2008	108,484	68,583	36,227	3,412	46.9	40.9	70.5	28.3	40.6	35.7	71.8
2009	105,654	66,080	36,133	3,133	47.7	41.5	71.5	28.5	41.0	36.0	72.3
2010	101,810	63,796	34,658	2,867	47.5	41.6	70.5	26.8	40.8	35.9	72.1
2011	101,466	63,266	34,657	3,230	47.6	41.6	71.0	27.8	40.7 <sup>2</sup>	NA	NA
2012	102,135	63,507	34,654	3,665	48.0	42.1	70.7	29.7	NA	NA	NA

1. Data are based on the race of the mother.  
2. Preliminary data.

**GRAPH B-2: PERCENT OF RESIDENT LIVE BIRTHS TO UNWED MOTHERS, BY RACE OF MOTHER, FLORIDA AND UNITED STATES, 2002-2012**



**CHART B-5: RESIDENT LIVE BIRTHS TO UNWED MOTHERS AND PERCENT  
BY AGE AND RACE OF MOTHER, FLORIDA, 2002 AND 2012**

AGE OF MOTHER	WHITE				BLACK				OTHER			
	2002		2012		2002		2012		2002		2012	
	NUMBER	%	NUMBER	%	NUMBER	%	NUMBER	%	NUMBER	%	NUMBER	%
<b>TOTAL</b>	<b>48,400</b>	<b>31.8</b>	<b>63,507</b>	<b>42.1</b>	<b>30,873</b>	<b>66.9</b>	<b>34,654</b>	<b>70.7</b>	<b>1,453</b>	<b>20.9</b>	<b>3,665</b>	<b>29.7</b>
10-14	168	94.4	93	97.9	237	98.8	93	100.0	2	100.0	3	75.0
15	517	91.8	257	98.5	454	99.8	218	100.0	13	86.7	15	100.0
16	1,180	87.2	722	94.6	923	99.0	450	99.6	29	93.5	53	98.1
17	2,091	81.1	1,396	92.1	1,408	98.0	832	99.6	48	80.0	86	94.5
18	3,270	77.6	2,502	88.9	2,189	96.4	1,464	98.6	68	79.1	140	90.3
19	4,217	70.2	3,797	83.6	2,777	92.5	2,340	96.9	84	63.6	228	80.9
20-24	17,879	49.4	22,269	65.9	11,979	80.2	13,330	88.1	529	42.2	1,169	57.8
25-29	9,817	24.5	16,770	38.0	6,088	56.5	8,752	66.9	324	15.7	942	27.3
30-34	5,502	14.6	9,811	25.2	3,058	41.9	4,742	50.5	226	10.7	630	16.6
35-44	3,712	16.0	5,805	24.5	1,738	36.9	2,408	41.4	128	11.0	397	16.3
45+	39	17.1	83	27.3	18	30.0	23	29.1	0	0.0	2	6.1
UNK	8	33.3	2	28.6	4	57.1	2	100.0	2	33.3	0	0.0

% = Percent

TABLE B-1: RESIDENT AND RECORDED LIVE BIRTHS AND BIRTH RATES PER 1,000 POPULATION, BY RACE OF MOTHER, BY COUNTY, FLORIDA, 2012

RESIDENT LIVE BIRTHS

	NUMBERS					RATES		
	TOTAL	WHITE	BLACK	OTHER	UNK	TOTAL	WHITE	BLACK
FLORIDA	212,954	150,866	48,992	12,335	761	11.2	10.1	15.6
ALACHUA	2,879	1,748	851	279	1	11.6	9.9	16.9
BAKER	341	294	44	3	0	12.6	13.0	11.3
BAY	2,300	1,766	328	162	44	13.5	12.5	17.1
BRADFORD	317	245	68	4	0	11.1	11.1	11.6
BREVARD	4,978	3,879	739	353	7	9.1	8.4	12.7
BROWARD	21,169	11,447	8,271	1,399	52	12.1	9.9	16.9
CALHOUN	148	130	14	4	0	10.0	10.8	6.6
CHARLOTTE	1,036	905	81	50	0	6.4	6.2	8.2
CITRUS	1,040	951	46	42	1	7.4	7.2	10.5
CLAY	2,077	1,697	237	136	7	10.8	10.6	11.7
COLLIER	3,148	2,691	393	63	1	9.6	9.1	17.4
COLUMBIA	773	601	156	15	1	11.4	11.3	12.8
MIAMI-DADE	30,479	22,046	7,542	757	134	12.0	11.2	15.4
DESOTO	366	312	54	0	0	10.6	10.7	12.1
DIXIE	161	151	6	4	0	9.8	10.2	4.4
DUVAL	12,456	6,787	4,528	1,093	48	14.4	12.5	17.5
ESCAMBIA	3,929	2,529	1,176	222	2	13.1	12.1	16.7
FLAGLER	802	641	106	49	6	8.2	7.8	8.9
FRANKLIN	109	99	5	3	2	9.4	10.2	3.1
GADSDEN	526	197	317	12	0	10.6	9.3	11.7
GILCHRIST	207	194	11	2	0	12.1	12.3	11.6
GLADES	69	57	8	4	0	5.4	5.5	5.3
GULF	118	106	7	3	2	7.5	8.5	2.4
HAMILTON	138	89	46	3	0	9.3	9.4	9.3
HARDEE	392	357	21	12	2	14.2	14.6	10.1
HENDRY	591	494	74	23	0	15.3	15.7	13.8
HERNANDO	1,387	1,211	114	58	4	7.9	7.6	11.5
HIGHLANDS	907	714	148	45	0	9.2	8.4	14.8
HILLSBOROUGH	16,404	11,775	3,590	1,012	27	13.1	12.4	16.4
HOLMES	191	174	10	7	0	9.6	9.7	7.8
INDIAN RIVER	1,247	768	232	37	210	8.9	6.3	17.3
JACKSON	501	334	142	25	0	10.0	9.5	10.5
JEFFERSON	139	79	57	3	0	9.5	8.7	10.9
LAFAYETTE	72	64	6	2	0	8.4	8.9	4.6
LAKE	3,052	2,426	445	178	3	10.1	9.5	14.0
LEE	6,401	5,177	906	311	7	10.1	9.3	16.0
LEON	3,007	1,593	1,208	203	3	10.8	9.0	14.1
LEVY	379	330	45	4	0	9.3	9.2	11.1
LIBERTY	66	62	4	0	0	7.7	9.2	2.7
MADISON	212	112	97	3	0	10.9	9.8	12.9
MANATEE	3,429	2,688	449	289	3	10.4	9.4	14.6
MARION	3,267	2,470	652	143	2	9.8	8.9	15.1
MARTIN	1,126	957	93	75	1	7.6	7.2	11.0
MONROE	709	604	82	20	3	9.8	9.3	17.8
NASSAU	753	678	57	18	0	10.1	10.1	11.1
OKALOOSA	2,600	2,078	283	232	7	14.2	13.8	15.7
OKEECHOBEE	524	458	31	35	0	13.1	13.0	9.3
ORANGE	15,729	9,978	4,223	1,516	12	13.4	12.2	16.6
OSCEOLA	3,825	3,157	435	231	2	13.6	13.9	12.1
PALM BEACH	13,936	9,108	4,028	789	11	10.5	8.8	16.9
PASCO	4,736	4,198	279	250	9	10.0	9.9	11.5
PINELLAS	8,446	6,304	1,472	616	54	9.2	8.2	14.9
POLK	7,257	5,462	1,434	350	11	11.9	11.1	15.2
PUTNAM	819	611	177	25	6	11.1	10.3	14.4
SAINT JOHNS	1,896	1,640	148	94	14	9.6	9.3	12.6
SAINT LUCIE	2,950	1,956	843	142	9	10.4	9.0	15.2
SANTA ROSA	1,859	1,679	81	95	4	11.7	12.1	8.1
SARASOTA	2,912	2,444	281	185	2	7.6	6.9	14.7
SEMINOLE	4,415	3,368	703	335	9	10.3	9.7	13.8
SUMTER	467	365	88	14	0	4.7	4.1	9.1
SUWANNEE	445	370	62	11	2	10.0	9.8	11.3
TAYLOR	221	168	47	6	0	9.8	9.8	10.0
UNION	179	149	24	5	1	11.6	12.8	6.9
VOLUSIA	4,706	3,668	775	233	30	9.5	8.7	14.2
WAKULLA	333	286	43	4	0	10.7	11.2	9.3
WALTON	666	599	38	25	4	11.8	11.9	10.7
WASHINGTON	229	187	30	12	0	9.3	9.4	8.3



TABLE B-1 (Cont.): RESIDENT AND RECORDED LIVE BIRTHS AND BIRTH RATES PER 1,000 POPULATION, BY RACE OF MOTHER, BY COUNTY, FLORIDA, 2012

	RECORDED LIVE BIRTHS					RECORDED LIVE BIRTHS		
	NUMBERS					RATES		
	TOTAL	WHITE	BLACK	OTHER	UNK	TOTAL	WHITE	BLACK
FLORIDA	213,403	151,215	49,068	12,369	751	11.2	10.1	15.6
ALACHUA	5,639	4,066	1,229	338	6	22.7	23.1	24.3
BAKER	2	1	1	0	0	0.1	0.0	0.3
BAY	2,764	2,175	357	182	50	16.3	15.4	18.6
BRADFORD	3	2	1	0	0	0.1	0.1	0.2
BREVARD	4,909	3,843	709	351	6	9.0	8.3	12.2
BROWARD	23,009	12,289	9,274	1,408	38	13.1	10.6	19.0
CALHOUN	2	2	0	0	0	0.1	0.2	0.0
CHARLOTTE	1,190	1,020	112	58	0	7.4	7.0	11.3
CITRUS	917	837	43	37	0	6.5	6.3	9.8
CLAY	2,159	1,607	412	138	2	11.2	10.0	20.4
COLLIER	3,397	2,925	406	66	0	10.4	9.9	18.0
COLUMBIA	812	571	217	21	3	12.0	10.7	17.8
MIAMI-DADE	27,587	20,642	6,179	629	137	10.9	10.5	12.6
DESOTO	435	385	45	5	0	12.6	13.2	10.1
DIXIE	1	1	0	0	0	0.1	0.1	0.0
DUVAL	14,113	8,471	4,429	1,145	68	16.3	15.6	17.1
ESCAMBIA	5,473	3,913	1,268	288	4	18.2	18.7	18.0
FLAGLER	7	5	1	1	0	0.1	0.1	0.1
FRANKLIN	0	0	0	0	0	0.0	0.0	0.0
GADSDEN	5	4	1	0	0	0.1	0.2	0.0
GILCHRIST	2	2	0	0	0	0.1	0.1	0.0
GLADES	0	0	0	0	0	0.0	0.0	0.0
GULF	1	1	0	0	0	0.1	0.1	0.0
HAMILTON	0	0	0	0	0	0.0	0.0	0.0
HARDEE	1	1	0	0	0	0.0	0.0	0.0
HENDRY	0	0	0	0	0	0.0	0.0	0.0
HERNANDO	1,710	1,530	110	68	2	9.8	9.6	11.1
HIGHLANDS	1,197	971	165	59	2	12.1	11.4	16.5
HILLSBOROUGH	18,545	13,571	3,853	1,088	33	14.8	14.3	17.6
HOLMES	1	1	0	0	0	0.1	0.1	0.0
INDIAN RIVER	1,125	667	204	40	214	8.0	5.5	15.2
JACKSON	461	303	132	26	0	9.2	8.6	9.8
JEFFERSON	0	0	0	0	0	0.0	0.0	0.0
LAFAYETTE	0	0	0	0	0	0.0	0.0	0.0
LAKE	2,749	2,157	438	150	4	9.1	8.4	13.7
LEE	6,597	5,361	903	326	7	10.4	9.6	15.9
LEON	4,656	2,604	1,812	238	2	16.8	14.7	21.2
LEVY	3	3	0	0	0	0.1	0.1	0.0
LIBERTY	0	0	0	0	0	0.0	0.0	0.0
MADISON	1	1	0	0	0	0.1	0.1	0.0
MANATEE	2,829	2,170	375	284	0	8.6	7.6	12.2
MARION	2,523	1,887	525	111	0	7.5	6.8	12.1
MARTIN	1,687	1,422	161	101	3	11.5	10.7	19.0
MONROE	510	423	70	15	2	7.1	6.5	15.2
NASSAU	564	482	64	18	0	7.6	7.2	12.5
OKALOOSA	2,467	1,949	270	236	12	13.5	12.9	15.0
OKEECHOBEE	9	4	2	3	0	0.2	0.1	0.6
ORANGE	20,081	13,526	4,733	1,814	8	17.1	16.5	18.6
OSCEOLA	3,725	3,058	407	257	3	13.2	13.5	11.3
PALM BEACH	16,317	10,728	4,612	967	10	12.2	10.4	19.3
PASCO	1,715	1,496	117	100	2	3.6	3.5	4.8
PINELLAS	9,918	7,646	1,512	697	63	10.8	9.9	15.3
POLK	5,992	4,459	1,224	302	7	9.8	9.1	13.0
PUTNAM	468	319	131	13	5	6.3	5.4	10.6
SAINT JOHNS	1,196	985	152	57	2	6.1	5.6	12.9
SAINT LUCIE	2,175	1,369	695	108	3	7.7	6.3	12.5
SANTA ROSA	401	361	22	17	1	2.5	2.6	2.2
SARASOTA	3,197	2,695	332	168	2	8.3	7.6	17.4
SEMINOLE	3,077	2,293	575	191	18	7.2	6.6	11.3
SUMTER	1	0	0	1	0	0.0	0.0	0.0
SUWANNEE	5	3	2	0	0	0.1	0.1	0.4
TAYLOR	1	0	1	0	0	0.0	0.0	0.2
UNION	2	1	1	0	0	0.1	0.1	0.3
VOLUSIA	4,140	3,163	741	205	31	8.3	7.5	13.6
WAKULLA	2	2	0	0	0	0.1	0.1	0.0
WALTON	927	842	42	42	1	16.5	16.8	11.8
WASHINGTON	1	0	1	0	0	0.0	0.0	0.3

TABLE B-2: RESIDENT LIVE BIRTHS BY HISPANIC OR HAITIAN ORIGIN OF MOTHER,  
BY COUNTY, FLORIDA, 2012

	NUMBERS									RATE
	HISPANIC ORIGIN									
	TOTAL	HISPANIC			OTHER/ UNK		NON-HISPANIC/ HAITIAN		TOTAL	
	HISPANIC	MEXICAN	PUERTO RICAN	CUBAN	HISPANIC	HAITIAN	HAITIAN	UNK	HISPANIC	
FLORIDA	212,954	57,798	12,396	11,817	11,497	22,088	8,080	145,542	1,534	13.1
ALACHUA	2,879	213	46	59	26	82	9	2,655	2	9.6
BAKER	341	1	0	0	0	1	0	340	0	1.7
BAY	2,300	150	66	54	7	23	3	2,138	9	17.6
BRADFORD	317	7	4	2	0	1	0	310	0	6.4
BREVARD	4,978	549	118	215	44	172	47	4,376	6	11.7
BROWARD	21,169	6,152	509	1,005	874	3,764	2,303	12,631	83	13.3
CALHOUN	148	4	3	0	0	1	0	144	0	4.9
CHARLOTTE	1,036	77	25	27	9	16	15	943	1	7.8
CITRUS	1,040	71	12	36	7	16	1	964	4	10.7
CLAY	2,077	188	55	64	17	52	16	1,868	5	12.1
COLLIER	3,148	1,459	781	76	212	390	306	1,379	4	16.7
COLUMBIA	773	40	16	6	6	12	0	733	0	11.8
MIAMI-DADE	30,479	18,076	904	1,044	7,575	8,553	1,879	9,412	1,112	10.9
DESOTO	366	150	138	4	0	8	1	214	1	13.9
DIXIE	161	2	1	1	0	0	0	159	0	3.4
DUVAL	12,456	1,129	261	339	118	411	100	11,204	23	16.2
ESCAMBIA	3,929	218	110	33	10	65	1	3,702	8	13.8
FLAGLER	802	102	15	40	16	31	2	690	8	11.2
FRANKLIN	109	6	1	0	0	5	0	103	0	10.3
GADSDEN	526	98	70	3	1	24	0	427	1	19.4
GILCHRIST	207	17	9	0	2	6	0	189	1	18.4
GLADES	69	17	8	3	1	5	0	52	0	5.8
GULF	118	3	1	1	0	1	0	114	1	4.1
HAMILTON	138	25	21	0	0	4	0	113	0	17.7
HARDEE	392	227	213	2	1	11	4	159	2	18.8
HENDRY	591	342	252	23	25	42	1	248	0	17.6
HERNANDO	1,387	175	17	99	20	39	1	1,208	3	9.1
HIGHLANDS	907	240	138	69	15	18	11	656	0	13.4
HILLSBOROUGH	16,404	4,750	1,553	1,402	765	1,030	157	11,476	21	14.9
HOLMES	191	4	3	0	0	1	0	187	0	7.7
INDIAN RIVER	1,247	248	174	19	8	47	18	981	0	15.0
JACKSON	501	19	11	4	1	3	0	480	2	7.8
JEFFERSON	139	1	1	0	0	0	0	137	1	1.8
LAFAYETTE	72	9	7	0	0	2	0	62	1	8.4
LAKE	3,052	552	229	198	22	103	12	2,487	1	14.0
LEE	6,401	1,901	661	377	250	613	235	4,255	10	15.6
LEON	3,007	148	39	24	24	61	12	2,842	5	8.8
LEVY	379	27	13	6	2	6	0	352	0	8.3
LIBERTY	66	1	1	0	0	0	0	65	0	1.9
MADISON	212	8	4	1	2	1	1	203	0	8.2
MANATEE	3,429	1,012	655	115	31	211	44	2,367	6	19.7
MARION	3,267	489	160	186	27	116	6	2,766	6	13.0
MARTIN	1,126	360	114	40	8	198	9	756	1	19.1
MONROE	709	218	32	17	93	76	28	458	5	13.9
NASSAU	753	32	13	6	2	11	0	721	0	11.6
OKALOOSA	2,600	272	120	53	4	95	0	2,323	5	20.7
OKEECHOBEE	524	188	162	8	4	14	0	335	1	18.9
ORANGE	15,729	4,700	698	2,251	241	1,510	763	10,252	14	14.5
OSCEOLA	3,825	1,990	143	1,259	76	512	72	1,762	1	15.0
PALM BEACH	13,936	4,180	915	549	490	2,226	1,615	8,114	27	15.7
PASCO	4,736	756	228	256	88	184	8	3,966	6	13.1
PINELLAS	8,446	1,064	465	300	82	217	22	7,305	55	13.3
POLK	7,257	1,820	1,066	468	67	219	147	5,276	14	16.1
PUTNAM	819	143	100	34	5	4	0	675	1	20.7
SAINT JOHNS	1,896	109	16	33	4	56	2	1,783	2	9.6
SAINT LUCIE	2,950	611	242	126	41	202	166	2,162	11	12.7
SANTA ROSA	1,859	107	46	23	8	30	0	1,751	1	13.6
SARASOTA	2,912	458	216	57	54	131	21	2,424	9	14.2
SEMINOLE	4,415	939	118	453	57	311	33	3,435	8	12.2
SUMTER	467	70	51	12	1	6	0	397	0	11.1
SUWANNEE	445	55	35	6	8	6	0	388	2	13.1
TAYLOR	221	4	3	0	1	0	0	217	0	4.8
UNION	179	4	1	2	0	1	0	174	1	4.8
VOLUSIA	4,706	722	251	316	44	111	8	3,936	40	12.7
WAKULLA	333	7	2	4	0	1	0	326	0	6.2
WALTON	666	75	49	6	0	20	0	589	2	23.4
WASHINGTON	229	4	4	0	0	0	1	223	1	5.2

**TABLE B-3: RESIDENT LIVE BIRTHS FOR INCORPORATED CITIES OF 2,400 OR MORE POPULATION,  
BY RACE OF MOTHER, BY COUNTY, FLORIDA, 2012**

	TOTAL	WHITE	BLACK	AMER INDIAN	CHINESE	JAPANESE	HAWAIIAN	FILIPINO	OTHER ASIAN/ PAC ISL	MULTI - RACE & OTHER	UNK
<b>FLORIDA</b>	<b>212,954</b>	<b>150,866</b>	<b>48,992</b>	<b>303</b>	<b>874</b>	<b>159</b>	<b>38</b>	<b>1,191</b>	<b>4,252</b>	<b>5,518</b>	<b>761</b>
<b>ALACHUA</b>	<b>2,879</b>	<b>1,748</b>	<b>851</b>	<b>3</b>	<b>52</b>	<b>3</b>	<b>0</b>	<b>19</b>	<b>118</b>	<b>84</b>	<b>1</b>
ALACHUA	99	62	33	0	0	0	0	0	2	2	0
GAINESVILLE	1,884	1,012	643	2	49	3	0	16	98	61	0
HIGH SPRINGS	52	43	9	0	0	0	0	0	0	0	0
NEWBERRY	106	82	17	0	1	0	0	1	5	0	0
BALANCE OF COUNTY	738	549	149	1	2	0	0	2	13	21	1
<b>BAKER</b>	<b>341</b>	<b>294</b>	<b>44</b>	<b>1</b>	<b>0</b>	<b>0</b>	<b>0</b>	<b>0</b>	<b>1</b>	<b>1</b>	<b>0</b>
MACCLENNY	68	62	5	0	0	0	0	0	1	0	0
BALANCE OF COUNTY	273	232	39	1	0	0	0	0	0	1	0
<b>BAY</b>	<b>2,300</b>	<b>1,766</b>	<b>328</b>	<b>7</b>	<b>7</b>	<b>2</b>	<b>2</b>	<b>15</b>	<b>33</b>	<b>96</b>	<b>44</b>
CALLAWAY	35	29	4	0	0	0	0	0	0	2	0
LYNN HAVEN	214	179	20	1	1	0	0	1	2	7	3
PANAMA CITY	1,204	832	263	2	4	0	2	7	18	51	25
PANAMA CITY BEACH	305	260	10	0	0	1	0	3	7	16	8
PARKER	7	5	2	0	0	0	0	0	0	0	0
SPRINGFIELD	6	3	3	0	0	0	0	0	0	0	0
BALANCE OF COUNTY	529	458	26	4	2	1	0	4	6	20	8
<b>BRADFORD</b>	<b>317</b>	<b>245</b>	<b>68</b>	<b>1</b>	<b>0</b>	<b>0</b>	<b>0</b>	<b>2</b>	<b>0</b>	<b>1</b>	<b>0</b>
STARKE	103	64	38	0	0	0	0	1	0	0	0
BALANCE OF COUNTY	214	181	30	1	0	0	0	1	0	1	0
<b>BREVARD</b>	<b>4,978</b>	<b>3,879</b>	<b>739</b>	<b>6</b>	<b>26</b>	<b>3</b>	<b>1</b>	<b>39</b>	<b>86</b>	<b>192</b>	<b>7</b>
CAPE CANAVERAL	64	55	3	0	0	0	0	1	1	4	0
COCOA	481	318	133	1	1	0	0	1	2	21	4
COCOA BEACH	54	51	0	0	0	0	0	0	0	3	0
INDIALANTIC	90	82	0	0	1	0	0	0	5	2	0
INDIAN HARBOUR BEACH	55	53	0	0	0	0	0	1	0	1	0
MALABAR	15	15	0	0	0	0	0	0	0	0	0
MELBOURNE	1,075	855	122	1	10	1	1	10	29	46	0
MELBOURNE BEACH	33	29	0	0	0	1	0	0	1	2	0
PALM BAY	1,152	862	220	2	2	0	0	7	14	45	0
ROCKLEDGE	336	241	69	0	1	1	0	6	6	12	0
SATELLITE BEACH	100	95	3	0	0	0	0	0	0	2	0
TITUSVILLE	494	357	94	0	4	0	0	3	10	25	1
WEST MELBOURNE	179	140	15	1	2	0	0	3	8	10	0
BALANCE OF COUNTY	850	726	80	1	5	0	0	7	10	19	2
<b>BROWARD</b>	<b>21,169</b>	<b>11,447</b>	<b>8,271</b>	<b>48</b>	<b>121</b>	<b>19</b>	<b>1</b>	<b>93</b>	<b>578</b>	<b>539</b>	<b>52</b>
COCONUT CREEK	561	378	133	0	4	1	0	3	25	16	1
COOPER CITY	257	211	14	0	6	0	0	2	12	11	1
CORAL SPRINGS	1,343	811	406	2	18	4	0	7	58	35	2
DANIA BEACH	205	113	84	1	1	1	0	0	4	1	0
DAVIE	889	722	95	0	11	2	0	4	21	30	4
DEERFIELD BEACH	595	348	219	0	1	0	0	3	12	12	0
FORT LAUDERDALE	2,801	1,290	1,426	1	5	2	0	9	30	35	3
HALLANDALE	395	275	114	0	1	1	0	1	2	1	0
HOLLYWOOD	2,019	1,374	517	22	7	3	0	6	50	36	4
LAUDERDALE BY THE SEA	19	17	2	0	0	0	0	0	0	0	0
LAUDERDALE LAKES	494	22	457	0	1	0	0	0	6	8	0
LAUDERHILL	918	103	782	0	2	1	0	1	10	16	3
LIGHTHOUSE POINT	59	58	0	0	0	0	0	1	0	0	0
MARGATE	569	301	224	1	4	0	0	3	20	14	2
MIRAMAR	1,580	677	746	1	15	1	0	10	62	62	6
NORTH LAUDERDALE	668	180	442	0	0	0	0	3	17	25	1
OAKLAND PARK	389	202	166	0	1	0	1	2	10	7	0
PARKLAND	172	128	15	0	2	1	0	3	10	13	0
PEMBROKE PARK	36	8	26	0	0	0	0	0	2	0	0
PEMBROKE PINES	1,572	996	392	13	12	0	0	10	69	77	3
PLANTATION	984	634	254	4	8	2	0	8	41	29	4
POMPANO BEACH	1,551	752	755	0	0	0	0	3	16	22	3
SOUTHWEST RANCHES	43	37	1	0	1	0	0	0	2	2	0
SUNRISE	1,128	582	461	1	6	0	0	8	30	38	2
TAMARAC	613	315	253	0	2	0	0	2	22	19	0
WEST PARK	131	36	92	0	0	0	0	0	1	2	0

**TABLE B-3 (Cont.): RESIDENT LIVE BIRTHS FOR INCORPORATED CITIES OF 2,400 OR MORE  
POPULATION, BY RACE OF MOTHER, BY COUNTY, FLORIDA, 2012**

	TOTAL	WHITE	BLACK	AMER INDIAN	CHINESE	JAPANESE	HAWAIIAN	FILIPINO	OTHER ASIAN/ PAC ISL	MULTI - RACE & OTHER	UNK
<b>BROWARD (Cont.)</b>											
WESTON	488	409	21	1	10	0	0	3	28	15	1
WILTON MANORS	59	31	25	0	0	0	0	0	2	1	0
BALANCE OF COUNTY	631	437	149	1	3	0	0	1	16	12	12
<b>CALHOUN</b>											
BLOUNTSTOWN	46	33	12	0	0	0	0	0	0	1	0
BALANCE OF COUNTY	102	97	2	1	0	0	0	0	0	2	0
<b>CHARLOTTE</b>											
PUNTA GORDA	82	73	5	1	0	0	0	0	1	2	0
BALANCE OF COUNTY	954	832	76	3	3	1	0	7	14	18	0
<b>CITRUS</b>											
CRYSTAL RIVER	39	37	2	0	0	0	0	0	0	0	0
INVERNESS	140	122	11	0	1	0	0	1	2	3	0
BALANCE OF COUNTY	861	792	33	1	0	1	0	5	12	16	1
<b>CLAY</b>											
GREEN COVE SPRINGS	56	49	5	0	0	0	0	0	1	1	0
ORANGE PARK	305	219	56	0	1	1	0	8	5	14	1
BALANCE OF COUNTY	1,716	1,429	176	1	1	3	0	16	24	60	6
<b>COLLIER</b>											
MARCO ISLAND	4	4	0	0	0	0	0	0	0	0	0
NAPLES	341	290	37	0	0	1	0	2	6	5	0
BALANCE OF COUNTY	2,803	2,397	356	7	3	1	0	4	26	8	1
<b>COLUMBIA</b>											
LAKE CITY	348	224	116	0	0	0	0	3	1	4	0
BALANCE OF COUNTY	425	377	40	1	0	0	0	0	0	6	1
<b>MIAMI-DADE</b>											
AVENTURA	396	368	17	0	2	0	0	3	4	2	0
BAL HARBOUR	39	36	1	0	0	1	0	0	1	0	0
BAY HARBOR ISLANDS	59	57	1	0	0	0	0	0	0	1	0
BISCAYNE PARK	29	22	5	0	0	0	0	1	1	0	0
CORAL GABLES	162	153	3	0	1	1	0	0	3	0	1
CUTLER BAY	60	50	8	0	0	0	0	1	0	1	0
DORAL	286	272	3	0	0	0	0	0	7	4	0
EL PORTAL	11	7	2	0	0	0	0	0	1	1	0
FLORIDA CITY	87	64	23	0	0	0	0	0	0	0	0
HIALEAH	2,440	2,313	81	1	5	0	0	5	7	27	1
HIALEAH GARDENS	97	97	0	0	0	0	0	0	0	0	0
HOMESTEAD	999	762	223	0	1	1	0	0	3	5	4
KEY BISCAYNE	70	67	1	0	0	0	0	0	2	0	0
MIAMI	11,433	6,767	4,365	1	39	4	2	31	110	101	13
MIAMI BEACH	931	872	25	0	3	2	0	7	15	7	0
MIAMI GARDENS	1,032	305	702	0	0	0	0	1	11	13	0
MIAMI LAKES	247	219	22	0	0	0	0	1	1	4	0
MIAMI SHORES	77	49	21	0	1	0	0	3	2	1	0
MIAMI SPRINGS	72	67	2	0	1	0	0	1	0	1	0
NORTH BAY VILLAGE	73	66	3	0	0	0	0	1	0	1	2
NORTH MIAMI	600	186	396	1	2	0	0	3	5	6	1
NORTH MIAMI BEACH	574	297	250	0	6	0	0	4	8	8	1
OPA-LOCKA	285	102	180	0	0	0	0	0	0	3	0
PINECREST	5	5	0	0	0	0	0	0	0	0	0
PALMETTO BAY	21	19	1	0	0	0	0	0	0	1	0
SOUTH MIAMI	7	4	2	0	0	0	0	0	0	1	0
SUNNY ISLES BEACH	261	248	6	0	1	0	0	0	1	5	0
SURFSIDE	62	60	1	0	0	0	0	0	0	1	0
SWEETWATER	1	1	0	0	0	0	0	0	0	0	0
VIRGINIA GARDENS	13	13	0	0	0	0	0	0	0	0	0
WEST MIAMI	3	3	0	0	0	0	0	0	0	0	0
BALANCE OF COUNTY	10,047	8,495	1,198	3	47	11	1	32	62	87	111
<b>DESOTO</b>											
ARCADIA	177	141	36	0	0	0	0	0	0	0	0
BALANCE OF COUNTY	189	171	18	0	0	0	0	0	0	0	0

**TABLE B-3 (Cont.): RESIDENT LIVE BIRTHS FOR INCORPORATED CITIES OF 2,400 OR MORE  
POPULATION, BY RACE OF MOTHER, BY COUNTY, FLORIDA, 2012**

	TOTAL	WHITE	BLACK	AMER INDIAN	CHINESE	JAPANESE	HAWAIIAN	FILIPINO	OTHER ASIAN/ PAC ISL	MULTI - RACE & OTHER	UNK
<b>DIXIE</b>	161	151	6	0	0	0	0	0	0	4	0
<b>DUVAL</b>	12,456	6,787	4,528	18	41	10	1	173	423	427	48
ATLANTIC BEACH	273	223	29	2	0	0	0	4	4	10	1
BALDWIN	27	23	4	0	0	0	0	0	0	0	0
JACKSONVILLE	11,854	6,260	4,487	15	41	10	1	168	415	410	47
JACKSONVILLE BEACH	246	227	8	1	0	0	0	1	3	6	0
NEPTUNE BEACH	56	54	0	0	0	0	0	0	1	1	0
<b>ESCAMBIA</b>	3,929	2,529	1,176	14	5	5	1	31	54	112	2
CENTURY	17	10	7	0	0	0	0	0	0	0	0
PENSACOLA	1,516	806	627	3	3	0	1	13	22	40	1
BALANCE OF COUNTY	2,396	1,713	542	11	2	5	0	18	32	72	1
<b>FLAGLER</b>	802	641	106	2	4	1	0	5	8	29	6
BUNNELL	48	34	9	0	0	0	0	0	0	3	2
FLAGLER BEACH	35	32	1	0	1	0	0	0	0	1	0
PALM COAST	619	491	87	2	3	1	0	4	7	21	3
BALANCE OF COUNTY	100	84	9	0	0	0	0	1	1	4	1
<b>FRANKLIN</b>	109	99	5	1	0	0	0	0	0	2	2
APALACHICOLA	34	26	5	0	0	0	0	0	0	1	2
BALANCE OF COUNTY	75	73	0	1	0	0	0	0	0	1	0
<b>GADSDEN</b>	526	197	317	0	0	0	0	0	2	10	0
CHATTAHOOCHEE	28	9	19	0	0	0	0	0	0	0	0
GRETNA	17	1	16	0	0	0	0	0	0	0	0
HAVANA	40	20	19	0	0	0	0	0	1	0	0
QUINCY	180	51	122	0	0	0	0	0	0	7	0
BALANCE OF COUNTY	261	116	141	0	0	0	0	0	1	3	0
<b>GILCHRIST</b>	207	194	11	0	0	0	0	1	0	1	0
<b>GLADES</b>	69	57	8	2	0	0	0	0	1	1	0
<b>GULF</b>	118	106	7	0	0	0	0	0	1	2	2
PORT ST JOE	30	24	5	0	0	0	0	0	0	0	1
BALANCE OF COUNTY	88	82	2	0	0	0	0	0	1	2	1
<b>HAMILTON</b>	138	89	46	0	0	0	0	0	1	2	0
<b>HARDEE</b>	392	357	21	0	0	0	0	1	1	10	2
BOWLING GREEN	54	48	5	0	0	0	0	0	0	1	0
WAUCHULA	133	111	12	0	0	0	0	1	0	7	2
BALANCE OF COUNTY	205	198	4	0	0	0	0	0	1	2	0
<b>HENDRY</b>	591	494	74	20	0	0	0	1	0	2	0
CLEWISTON	53	39	11	2	0	0	0	1	0	0	0
LABELLE	144	136	8	0	0	0	0	0	0	0	0
BALANCE OF COUNTY	394	319	55	18	0	0	0	0	0	2	0
<b>HERNANDO</b>	1,387	1,211	114	2	2	0	1	7	16	30	4
BROOKSVILLE	182	148	32	0	0	0	0	1	0	1	0
BALANCE OF COUNTY	1,205	1,063	82	2	2	0	1	6	16	29	4
<b>HIGHLANDS</b>	907	714	148	3	2	0	0	10	12	18	0
AVON PARK	180	118	52	0	0	0	0	2	2	6	0
SEBRING	331	257	55	0	1	0	0	3	7	8	0
BALANCE OF COUNTY	396	339	41	3	1	0	0	5	3	4	0
<b>HILLSBOROUGH</b>	16,404	11,775	3,590	15	81	13	3	80	507	313	27
PLANT CITY	357	308	35	1	1	0	0	0	5	7	0
TAMPA	9,177	5,966	2,627	7	48	6	2	42	306	156	17
TEMPLE TERRACE	92	56	22	0	3	0	0	0	7	3	1
BALANCE OF COUNTY	6,778	5,445	906	7	29	7	1	38	189	147	9
<b>HOLMES</b>	191	174	10	0	0	0	0	1	0	6	0
BONIFAY	50	38	9	0	0	0	0	1	0	2	0
BALANCE OF COUNTY	141	136	1	0	0	0	0	0	0	4	0

TABLE B-3 (Cont.): RESIDENT LIVE BIRTHS FOR INCORPORATED CITIES OF 2,400 OR MORE  
POPULATION, BY RACE OF MOTHER, BY COUNTY, FLORIDA, 2012

	TOTAL	WHITE	BLACK	AMER INDIAN	CHINESE	JAPANESE	HAWAIIAN	FILIPINO	OTHER ASIAN/ PAC ISL	MULTI - RACE & OTHER	UNK
<b>INDIAN RIVER</b>	1,247	768	232	0	1	0	0	5	17	14	210
FELLSMERE	103	18	6	0	0	0	0	0	0	0	79
SEBASTIAN	146	123	12	0	0	0	0	1	2	0	8
VERO BEACH	265	186	46	0	0	0	0	1	4	5	23
BALANCE OF COUNTY	733	441	168	0	1	0	0	3	11	9	100
<b>JACKSON</b>	501	334	142	2	0	0	0	2	4	17	0
GRACEVILLE	19	11	8	0	0	0	0	0	0	0	0
MARIANNA	109	46	56	0	0	0	0	2	1	4	0
BALANCE OF COUNTY	373	277	78	2	0	0	0	0	3	13	0
<b>JEFFERSON</b>	139	79	57	0	0	0	0	0	1	2	0
MONTICELLO	57	23	34	0	0	0	0	0	0	0	0
BALANCE OF COUNTY	82	56	23	0	0	0	0	0	1	2	0
<b>LAFAYETTE</b>	72	64	6	0	0	0	0	0	2	0	0
<b>LAKE</b>	3,052	2,426	445	5	10	0	0	10	39	114	3
CLERMONT	639	492	77	1	5	0	0	1	14	49	0
EUSTIS	284	212	60	1	0	0	0	0	3	8	0
FRUITLAND PARK	76	62	9	0	0	0	0	0	3	2	0
GROVELAND	145	112	25	0	0	0	0	0	2	6	0
LADY LAKE	94	76	9	0	1	0	0	1	2	5	0
LEESBURG	456	302	135	0	1	0	0	1	4	13	0
MASCOTTE	82	71	7	0	0	0	0	0	0	3	1
MINNEOLA	135	110	13	0	0	0	0	0	1	11	0
MOUNT DORA	216	161	45	2	1	0	0	2	2	3	0
TAVARES	123	98	19	0	2	0	0	1	0	3	0
UMATILLA	61	57	2	0	0	0	0	1	0	1	0
BALANCE OF COUNTY	741	673	44	1	0	0	0	3	8	10	2
<b>LEE</b>	6,401	5,177	906	4	11	1	0	25	85	185	7
BONITA SPRINGS	189	184	2	0	0	0	0	0	1	2	0
CAPE CORAL	1,452	1,313	66	0	3	0	0	10	22	36	2
FORT MYERS	1,177	695	417	0	0	0	0	2	12	49	2
FORT MYERS BEACH	15	15	0	0	0	0	0	0	0	0	0
SANIBEL	9	9	0	0	0	0	0	0	0	0	0
BALANCE OF COUNTY	3,559	2,961	421	4	8	1	0	13	50	98	3
<b>LEON</b>	3,007	1,593	1,208	2	28	1	0	5	86	81	3
TALLAHASSEE	2,483	1,216	1,082	1	27	1	0	3	77	73	3
BALANCE OF COUNTY	524	377	126	1	1	0	0	2	9	8	0
<b>LEVY</b>	379	330	45	2	0	0	0	0	0	2	0
WILLISTON	46	32	14	0	0	0	0	0	0	0	0
BALANCE OF COUNTY	333	298	31	2	0	0	0	0	0	2	0
<b>LIBERTY</b>	66	62	4	0	0	0	0	0	0	0	0
<b>MADISON</b>	212	112	97	0	0	0	0	0	0	3	0
MADISON	75	14	61	0	0	0	0	0	0	0	0
BALANCE OF COUNTY	137	98	36	0	0	0	0	0	0	3	0
<b>MANATEE</b>	3,429	2,688	449	3	4	3	0	11	43	225	3
BRADENTON	1,214	898	194	1	1	3	0	2	16	98	1
BRADENTON BEACH	2	1	0	0	0	0	0	0	0	1	0
HOLMES BEACH	7	6	0	0	0	0	0	0	0	1	0
PALMETTO	180	141	29	0	0	0	0	1	1	7	1
BALANCE OF COUNTY	2,026	1,642	226	2	3	0	0	8	26	118	1
<b>MARION</b>	3,267	2,470	652	3	10	1	1	16	47	65	2
BELLEVIEW	60	56	4	0	0	0	0	0	0	0	0
OCALA	1,064	676	329	0	5	0	0	8	18	27	1
BALANCE OF COUNTY	2,143	1,738	319	3	5	1	1	8	29	38	1
<b>MARTIN</b>	1,126	957	93	0	3	0	1	0	19	52	1
PORT SAINT LUCIE	5	4	1	0	0	0	0	0	0	0	0
STUART	326	267	43	0	2	0	0	0	6	8	0
BALANCE OF COUNTY	795	686	49	0	1	0	1	0	13	44	1

**TABLE B-3 (Cont.): RESIDENT LIVE BIRTHS FOR INCORPORATED CITIES OF 2,400 OR MORE  
POPULATION, BY RACE OF MOTHER, BY COUNTY, FLORIDA, 2012**

	TOTAL	WHITE	BLACK	AMER INDIAN	CHINESE	JAPANESE	HAWAIIAN	FILIPINO	OTHER ASIAN/ PAC ISL	MULTI - RACE & OTHER	UNK
<b>MONROE</b>	<b>709</b>	<b>604</b>	<b>82</b>	<b>0</b>	<b>2</b>	<b>0</b>	<b>0</b>	<b>4</b>	<b>8</b>	<b>6</b>	<b>3</b>
ISLAMORADA	5	5	0	0	0	0	0	0	0	0	0
KEY WEST	346	272	60	0	1	0	0	2	6	2	3
MARATHON	22	20	2	0	0	0	0	0	0	0	0
BALANCE OF COUNTY	336	307	20	0	1	0	0	2	2	4	0
<b>NASSAU</b>	<b>753</b>	<b>678</b>	<b>57</b>	<b>1</b>	<b>1</b>	<b>0</b>	<b>0</b>	<b>4</b>	<b>4</b>	<b>8</b>	<b>0</b>
FERNANDINA BEACH	155	124	23	0	0	0	0	1	2	5	0
HILLIARD	59	54	4	0	0	0	0	0	1	0	0
BALANCE OF COUNTY	539	500	30	1	1	0	0	3	1	3	0
<b>OKALOOSA</b>	<b>2,600</b>	<b>2,078</b>	<b>283</b>	<b>2</b>	<b>6</b>	<b>5</b>	<b>1</b>	<b>50</b>	<b>40</b>	<b>128</b>	<b>7</b>
CRESTVIEW	551	415	90	0	2	0	0	6	5	30	3
DESTIN	168	152	5	0	1	0	0	3	2	5	0
FORT WALTON BEACH	433	311	65	1	0	2	0	17	10	26	1
MARY ESTHER	127	96	10	0	1	0	0	7	2	10	1
NICEVILLE	299	255	15	1	0	1	0	5	3	19	0
VALPARAISO	38	36	1	0	0	0	0	0	0	1	0
BALANCE OF COUNTY	984	813	97	0	2	2	1	12	18	37	2
<b>OKEECHOBEE</b>	<b>524</b>	<b>458</b>	<b>31</b>	<b>16</b>	<b>0</b>	<b>0</b>	<b>0</b>	<b>3</b>	<b>3</b>	<b>13</b>	<b>0</b>
OKEECHOBEE	370	322	29	6	0	0	0	2	2	9	0
BALANCE OF COUNTY	154	136	2	10	0	0	0	1	1	4	0
<b>ORANGE</b>	<b>15,729</b>	<b>9,978</b>	<b>4,223</b>	<b>22</b>	<b>118</b>	<b>19</b>	<b>9</b>	<b>124</b>	<b>511</b>	<b>713</b>	<b>12</b>
APOPKA	1,000	748	195	1	6	1	0	6	12	31	0
BELLE ISLE	36	31	3	0	1	0	0	0	1	0	0
EATONVILLE	8	2	6	0	0	0	0	0	0	0	0
MAITLAND	148	103	33	0	2	0	0	2	3	5	0
OCOEE	475	344	92	1	3	0	0	3	8	24	0
ORLANDO	11,842	7,010	3,620	16	88	14	9	86	406	584	9
WINDERMERE	319	250	18	1	5	3	0	5	26	11	0
WINTER GARDEN	603	464	88	1	6	0	0	5	16	23	0
WINTER PARK	522	423	64	1	1	0	0	6	11	16	0
BALANCE OF COUNTY	776	603	104	1	6	1	0	11	28	19	3
<b>OSCEOLA</b>	<b>3,825</b>	<b>3,157</b>	<b>435</b>	<b>3</b>	<b>10</b>	<b>1</b>	<b>1</b>	<b>21</b>	<b>73</b>	<b>122</b>	<b>2</b>
KISSIMMEE	2,018	1,628	258	1	4	0	0	8	36	82	1
ST CLOUD	506	449	34	0	2	1	0	2	8	10	0
BALANCE OF COUNTY	1,301	1,080	143	2	4	0	1	11	29	30	1
<b>PALM BEACH</b>	<b>13,936</b>	<b>9,108</b>	<b>4,028</b>	<b>4</b>	<b>76</b>	<b>13</b>	<b>4</b>	<b>62</b>	<b>298</b>	<b>332</b>	<b>11</b>
BELLE GLADE	320	145	174	0	0	0	0	0	0	0	1
BOCA RATON	1,297	1,047	140	0	14	4	1	6	41	42	2
BOYNTON BEACH	1,295	726	487	1	7	1	0	9	34	29	1
DELRAY BEACH	714	339	339	0	7	0	0	2	20	7	0
GREENACRES	384	284	74	0	6	1	0	3	6	9	1
HIGHLAND BEACH	2	2	0	0	0	0	0	0	0	0	0
HYPOLUXO	19	14	4	0	0	0	0	0	1	0	0
JUNO BEACH	12	11	0	0	0	0	0	0	1	0	0
JUPITER	647	600	19	1	2	0	0	2	11	12	0
LAKE CLARKE SHORES	4	4	0	0	0	0	0	0	0	0	0
LAKE PARK	155	43	104	0	0	0	0	1	3	4	0
LAKE WORTH	1,591	1,112	412	1	7	0	1	7	27	24	0
LANTANA	261	177	74	0	0	0	0	3	2	5	0
NORTH PALM BEACH	104	91	5	0	0	0	0	0	3	4	1
PAHOKEE	132	34	97	0	0	0	0	0	0	1	0
PALM BEACH	25	23	1	0	0	0	0	0	0	1	0
PALM BEACH GARDENS	582	461	61	0	7	3	0	2	20	28	0
PALM SPRINGS	170	140	26	0	0	0	0	0	1	3	0
RIVIERA BEACH	426	59	349	0	0	0	0	0	3	15	0
ROYAL PALM BEACH	386	266	85	0	2	0	0	6	14	13	0
SOUTH BAY	37	11	26	0	0	0	0	0	0	0	0
TEQUESTA	56	49	2	0	0	0	0	0	3	2	0
WELLINGTON	464	349	74	0	5	1	0	3	27	5	0
WEST PALM BEACH	3,371	1,995	1,212	0	10	1	1	12	53	86	1
BALANCE OF COUNTY	1,482	1,126	263	1	9	2	1	6	28	42	4
<b>PASCO</b>	<b>4,736</b>	<b>4,198</b>	<b>279</b>	<b>5</b>	<b>12</b>	<b>5</b>	<b>2</b>	<b>32</b>	<b>100</b>	<b>94</b>	<b>9</b>

**TABLE B-3 (Cont.): RESIDENT LIVE BIRTHS FOR INCORPORATED CITIES OF 2,400 OR MORE  
POPULATION, BY RACE OF MOTHER, BY COUNTY, FLORIDA, 2012**

	TOTAL	WHITE	BLACK	AMER INDIAN	CHINESE	JAPANESE	HAWAIIAN	FILIPINO	OTHER ASIAN/ PAC ISL	MULTI - RACE & OTHER	UNK
<b>PASCO (Cont.)</b>											
DADE CITY	126	105	19	0	0	0	0	1	1	0	0
NEW PORT RICHEY	649	594	23	0	3	0	0	0	14	14	1
PORT RICHEY	314	282	10	0	0	0	0	4	5	12	1
ZEPHYRHILLS	162	143	11	0	0	0	0	3	2	3	0
BALANCE OF COUNTY	3,485	3,074	216	5	9	5	2	24	78	65	7
<b>PINELLAS</b>											
BELLEAIR	14	14	0	0	0	0	0	0	0	0	0
BELLEAIR BLUFFS	7	7	0	0	0	0	0	0	0	0	0
CLEARWATER	1,708	1,352	251	0	5	0	1	10	50	32	7
DUNEDIN	269	242	8	0	0	0	1	1	6	11	0
GULFPORT	63	47	8	0	0	0	0	1	1	3	3
INDIAN ROCKS BEACH	20	17	0	0	0	1	0	0	0	0	2
KENNETH CITY	48	34	8	0	0	0	0	0	4	1	1
LARGO	871	729	89	0	7	0	0	3	26	16	1
MADEIRA BEACH	12	10	0	0	0	0	0	0	1	0	1
OLDSMAR	144	116	11	0	1	0	0	0	12	3	1
PINELLAS PARK	488	387	33	0	2	0	0	11	38	15	2
REDINGTON SHORES	4	3	1	0	0	0	0	0	0	0	0
SAFETY HARBOR	106	95	4	0	1	0	0	2	1	3	0
SEMINOLE	351	322	7	0	2	0	0	4	7	6	3
SOUTH PASADENA	14	9	1	0	0	1	0	1	1	1	0
ST PETERSBURG	3,156	1,920	955	8	12	1	0	15	91	121	33
ST PETERSBURG BEACH	34	30	1	0	0	0	0	0	1	2	0
TARPON SPRINGS	226	174	40	1	1	0	0	2	3	5	0
TREASURE ISLAND	18	18	0	0	0	0	0	0	0	0	0
BALANCE OF COUNTY	893	778	55	0	2	2	0	11	27	18	0
<b>POLK</b>											
AUBURNDALE	227	184	34	2	1	0	0	0	2	4	0
BARTOW	240	162	69	1	1	0	0	0	3	4	0
DUNDEE	37	25	11	0	0	0	0	0	0	1	0
EAGLE LAKE	40	31	7	0	0	0	0	0	2	0	0
FORT MEADE	67	54	11	0	1	0	0	0	0	1	0
FROSTPROOF	50	46	3	0	0	0	0	0	1	0	0
HAINES CITY	365	267	69	1	1	0	0	0	4	21	2
LAKE ALFRED	54	39	13	0	1	0	0	0	0	1	0
LAKE WALES	249	165	79	0	0	0	0	3	0	2	0
LAKELAND	1,427	971	371	8	3	0	0	13	19	41	1
MULBERRY	89	76	9	0	1	0	0	0	1	2	0
WINTER HAVEN	837	527	274	1	2	0	0	3	9	20	1
BALANCE OF COUNTY	3,575	2,915	484	7	6	3	1	12	39	101	7
<b>PUTNAM</b>											
PALATKA	234	110	118	0	0	0	0	1	0	5	0
BALANCE OF COUNTY	585	501	59	1	1	1	1	1	3	11	6
<b>SAINT JOHNS</b>											
ST AUGUSTINE	575	467	79	1	1	0	0	2	10	12	3
ST AUGUSTINE BEACH	2	2	0	0	0	0	0	0	0	0	0
BALANCE OF COUNTY	1,319	1,171	69	1	7	0	0	6	24	30	11
<b>SAINT LUCIE</b>											
FORT PIERCE	942	474	444	1	1	0	0	3	2	14	3
PORT ST LUCIE	1,768	1,305	351	3	4	0	0	12	36	53	4
BALANCE OF COUNTY	240	177	48	1	1	0	0	1	3	7	2
<b>SANTA ROSA</b>											
GULF BREEZE	69	61	3	0	0	0	0	1	2	2	0
MILTON	217	190	15	1	1	0	0	0	0	9	1
BALANCE OF COUNTY	1,573	1,428	63	3	2	3	1	8	18	44	3
<b>SARASOTA</b>											
LONGBOAT KEY	2	0	0	0	0	1	0	0	1	0	0
NORTH PORT	196	177	9	0	1	0	0	2	1	6	0
SARASOTA	852	642	153	1	1	0	0	3	12	38	2
VENICE	83	72	3	0	1	0	0	0	0	7	0
BALANCE OF COUNTY	1,779	1,553	116	1	7	0	0	12	31	59	0



TABLE B-3 (Cont.): RESIDENT LIVE BIRTHS FOR INCORPORATED CITIES OF 2,400 OR MORE  
POPULATION, BY RACE OF MOTHER, BY COUNTY, FLORIDA, 2012

	TOTAL	WHITE	BLACK	AMER INDIAN	CHINESE	JAPANESE	HAWAIIAN	FILIPINO	OTHER ASIAN/ PAC ISL	MULTI - RACE & OTHER	UNK
<b>SEMINOLE</b>	4,415	3,368	703	7	28	11	0	28	116	145	9
ALTAMONTE SPRINGS	684	490	137	2	2	0	0	6	17	29	1
CASSELBERRY	421	346	45	0	4	2	0	4	10	10	0
LAKE MARY	320	264	30	1	1	0	0	2	9	13	0
LONGWOOD	345	295	13	1	2	1	0	2	11	20	0
MAITLAND	46	40	5	0	1	0	0	0	0	0	0
OVIEDO	589	496	43	1	7	2	0	2	25	12	1
SANFORD	1,053	643	330	0	6	4	0	5	21	39	5
WINTER SPRINGS	366	309	34	0	0	2	0	2	10	9	0
BALANCE OF COUNTY	591	485	66	2	5	0	0	5	13	13	2
<b>SUMTER</b>	467	365	88	0	0	0	0	0	4	10	0
BUSHNELL	45	36	6	0	0	0	0	0	3	0	0
WILDWOOD	119	64	50	0	0	0	0	0	0	5	0
BALANCE OF COUNTY	303	265	32	0	0	0	0	0	1	5	0
<b>SUWANNEE</b>	445	370	62	1	0	0	0	2	7	1	2
LIVE OAK	111	66	38	0	0	0	0	0	4	1	2
BALANCE OF COUNTY	334	304	24	1	0	0	0	2	3	0	0
<b>TAYLOR</b>	221	168	47	0	0	0	0	0	4	2	0
PERRY	118	68	44	0	0	0	0	0	4	2	0
BALANCE OF COUNTY	103	100	3	0	0	0	0	0	0	0	0
<b>UNION</b>	179	149	24	1	0	0	0	0	0	4	1
<b>VOLUSIA</b>	4,706	3,668	775	8	16	1	1	20	63	124	30
DAYTONA BEACH	886	443	394	3	4	0	0	4	10	24	4
DAYTONA BEACH SHORES	7	5	0	0	0	0	0	1	1	0	0
DEBARY	155	136	10	0	0	0	0	2	3	3	1
DELAND	576	463	85	0	0	0	0	2	7	16	3
DELTONA	878	739	94	2	3	1	0	1	9	27	2
EDGEWATER	214	206	4	0	0	0	0	0	0	4	0
HOLLY HILL	154	109	36	0	0	0	0	1	2	6	0
LAKE HELEN	21	18	3	0	0	0	0	0	0	0	0
NEW SMYRNA BEACH	224	198	12	1	1	0	0	0	7	4	1
ORANGE CITY	155	130	16	1	1	0	0	1	0	6	0
ORMOND BEACH	354	297	31	0	2	0	0	2	11	8	3
PIERSON	27	25	0	0	0	0	0	0	0	0	2
PONCE INLET	6	5	0	0	0	0	0	0	0	1	0
PORT ORANGE	447	393	27	0	4	0	0	1	10	9	3
SOUTH DAYTONA	121	92	24	0	0	0	0	1	1	3	0
BALANCE OF COUNTY	481	409	39	1	1	0	1	4	2	13	11
<b>WAKULLA</b>	333	286	43	0	1	0	0	0	0	3	0
<b>WALTON</b>	666	599	38	3	0	0	0	4	7	11	4
DEFUNIAK SPRINGS	105	86	17	0	0	0	0	0	0	2	0
BALANCE OF COUNTY	561	513	21	3	0	0	0	4	7	9	4
<b>WASHINGTON</b>	229	187	30	2	0	1	0	1	1	7	0
CHIPLEY	55	37	14	0	0	0	0	0	1	3	0
BALANCE OF COUNTY	174	150	16	2	0	1	0	1	0	4	0

TABLE B-4: RESIDENT LIVE BIRTHS BY TYPE OF PLACE OF DELIVERY AND ATTENDANT, BY COUNTY, FLORIDA, 2012

	TOTAL	HOSPITAL			BIRTHING CENTER			OTHER NAMED PLACE	UNK
		PHYSICIAN	MIDWIFE	OTHER/ UNKNOWN	PHYSICIAN	MIDWIFE	OTHER/ UNKNOWN		
FLORIDA	212,954	186,211	22,032	655	1	1,604	2	2,189	260
ALACHUA	2,879	2,449	350	9	0	23	0	47	1
BAKER	341	288	49	1	0	2	0	0	1
BAY	2,300	2,084	195	0	0	0	0	15	6
BRADFORD	317	259	56	0	0	1	0	1	0
BREVARD	4,978	4,746	125	23	0	9	0	69	6
BROWARD	21,169	18,569	2,209	50	0	134	1	186	20
CALHOUN	148	130	10	0	0	0	0	7	1
CHARLOTTE	1,036	954	51	16	0	5	0	10	0
CITRUS	1,040	991	29	1	0	2	0	17	0
CLAY	2,077	1,764	276	5	0	11	0	16	5
COLLIER	3,148	3,051	31	3	1	40	0	21	1
COLUMBIA	773	619	115	8	0	3	0	27	1
MIAMI-DADE	30,479	29,386	633	21	0	225	0	198	16
DESOTO	366	351	10	1	0	1	0	2	1
DIXIE	161	143	16	0	0	0	0	2	0
DUVAL	12,456	11,386	832	59	0	69	0	89	21
ESCAMBIA	3,929	3,664	195	4	0	5	0	54	7
FLAGLER	802	722	68	3	0	1	0	7	1
FRANKLIN	109	90	17	1	0	0	0	1	0
GADSDEN	526	424	94	2	0	0	1	5	0
GILCHRIST	207	176	21	2	0	5	0	3	0
GLADES	69	59	9	0	0	1	0	0	0
GULF	118	111	6	0	0	0	0	0	1
HAMILTON	138	106	18	1	0	0	0	2	11
HARDEE	392	383	1	1	0	0	0	7	0
HENDRY	591	447	140	0	0	3	0	1	0
HERNANDO	1,387	1,002	351	11	0	8	0	15	0
HIGHLANDS	907	896	6	0	0	0	0	3	2
HILLSBOROUGH	16,404	14,550	1,503	50	0	130	0	151	20
HOLMES	191	155	4	1	0	0	0	30	1
INDIAN RIVER	1,247	1,019	195	0	0	0	0	32	1
JACKSON	501	394	22	0	0	2	0	76	7
JEFFERSON	139	103	33	0	0	1	0	1	1
LAFAYETTE	72	66	6	0	0	0	0	0	0
LAKE	3,052	2,845	139	16	0	28	0	21	3
LEE	6,401	4,608	1,639	28	0	88	0	28	10
LEON	3,007	2,388	529	7	0	41	0	40	2
LEVY	379	324	45	2	0	3	0	5	0
LIBERTY	66	57	8	0	0	0	0	1	0
MADISON	212	128	57	0	0	2	0	2	23
MANATEE	3,429	3,175	169	2	0	40	0	39	4
MARION	3,267	2,533	653	11	0	11	0	57	2
MARTIN	1,126	560	543	0	0	0	0	18	5
MONROE	709	607	71	11	0	5	0	12	3
NASSAU	753	657	82	0	0	5	0	7	2
OKALOOSA	2,600	2,472	68	4	0	21	0	32	3
OKEECHOBEE	524	373	146	0	0	0	0	2	3
ORANGE	15,729	13,955	1,327	126	0	164	0	149	8
OSCEOLA	3,825	3,423	323	22	0	18	0	34	5
PALM BEACH	13,936	11,111	2,662	19	0	26	0	109	9
PASCO	4,736	4,080	533	13	0	64	0	43	3
PINELLAS	8,446	6,523	1,687	25	0	130	0	76	5
POLK	7,257	6,172	944	19	0	46	0	68	8
PUTNAM	819	710	92	3	0	5	0	8	1
SAINT JOHNS	1,896	1,556	263	14	0	20	0	37	6
SAINT LUCIE	2,950	2,072	828	5	0	1	0	41	3
SANTA ROSA	1,859	1,745	87	2	0	4	0	17	4
SARASOTA	2,912	2,745	51	4	0	53	0	53	6
SEMINOLE	4,415	3,495	738	25	0	86	0	71	0
SUMTER	467	445	14	3	0	2	0	2	1
SUWANNEE	445	379	58	2	0	3	0	0	3
TAYLOR	221	194	23	1	0	1	0	2	0
UNION	179	151	24	2	0	0	0	2	0
VOLUSIA	4,706	4,089	476	9	0	50	0	76	6
WAKULLA	333	259	66	1	0	4	0	3	0
WALTON	666	649	0	6	0	2	0	9	0
WASHINGTON	229	189	10	0	0	0	0	30	0

TABLE B-5: RESIDENT LIVE BIRTHS BY BIRTHWEIGHT, BY COUNTY, FLORIDA, 2012

	TOTAL	BIRTHWEIGHT IN GRAMS										LESS THAN 1500 GRAMS		LESS THAN 2500 GRAMS	
		<500	500- 999	1000- 1499	1500- 1999	2000- 2499	2500- 2999	3000- 3499	3500- 3999	4000+	UNK	NUMBER	%	NUMBER	%
FLORIDA	212,954	375	1,310	1,730	3,532	11,344	40,880	85,049	54,085	14,617	32	3,415	1.6	18,291	8.6
ALACHUA	2,879	8	31	25	50	145	519	1,119	782	200	0	64	2.2	259	9.0
BAKER	341	2	3	1	1	13	72	149	80	20	0	6	1.8	20	5.9
BAY	2,300	3	11	17	33	108	444	905	610	169	0	31	1.3	172	7.5
BRADFORD	317	2	3	10	7	25	71	112	75	12	0	15	4.7	47	14.8
BREVARD	4,978	10	27	36	79	244	938	1,960	1,330	352	2	73	1.5	396	8.0
BROWARD	21,169	24	184	182	342	1,221	4,267	8,758	4,914	1,274	3	390	1.8	1,953	9.2
CALHOUN	148	0	1	0	2	5	32	62	36	10	0	1	0.7	8	5.4
CHARLOTTE	1,036	1	2	10	20	60	215	421	256	51	0	13	1.3	93	9.0
CITRUS	1,040	0	3	5	14	45	203	398	289	82	1	8	0.8	67	6.4
CLAY	2,077	4	11	16	37	101	382	783	587	156	0	31	1.5	169	8.1
COLLIER	3,148	2	16	25	52	112	559	1,267	874	240	1	43	1.4	207	6.6
COLUMBIA	773	4	4	9	18	40	135	303	196	64	0	17	2.2	75	9.7
MIAMI-DADE	30,479	44	213	245	539	1,642	5,958	12,493	7,524	1,816	5	502	1.6	2,683	8.8
DESOTO	366	1	1	1	3	15	58	150	106	31	0	3	0.8	21	5.7
DIXIE	161	0	3	0	2	11	23	71	41	10	0	3	1.9	16	9.9
DUVAL	12,456	33	122	119	220	728	2,393	4,849	3,096	896	0	274	2.2	1,222	9.8
ESCAMBIA	3,929	7	19	26	82	268	810	1,567	895	255	0	52	1.3	402	10.2
FLAGLER	802	0	5	2	6	43	132	326	230	58	0	7	0.9	56	7.0
FRANKLIN	109	1	0	0	2	10	21	40	29	6	0	1	0.9	13	11.9
GADSDEN	526	2	7	4	13	30	138	200	103	29	0	13	2.5	56	10.6
GILCHRIST	207	1	0	2	1	10	36	77	60	20	0	3	1.4	14	6.8
GLADES	69	0	0	0	0	3	13	27	18	8	0	0	0.0	3	4.3
GULF	118	0	2	0	1	4	27	38	36	10	0	2	1.7	7	5.9
HAMILTON	138	0	0	1	3	6	35	65	20	8	0	1	0.7	10	7.2
HARDEE	392	1	0	2	3	27	83	160	95	21	0	3	0.8	33	8.4
HENDRY	591	1	2	3	5	27	108	247	163	35	0	6	1.0	38	6.4
HERNANDO	1,387	4	4	9	24	68	259	530	367	122	0	17	1.2	109	7.9
HIGHLANDS	907	2	5	11	15	48	193	357	208	68	0	18	2.0	81	8.9
HILLSBOROUGH	16,404	44	79	146	281	891	3,140	6,563	4,127	1,128	5	269	1.6	1,441	8.8
HOLMES	191	0	0	0	3	6	41	92	42	7	0	0	0.0	9	4.7
INDIAN RIVER	1,247	4	5	7	19	75	202	517	331	87	0	16	1.3	110	8.8
JACKSON	501	0	4	7	7	27	119	205	104	28	0	11	2.2	45	9.0
JEFFERSON	139	1	1	3	2	10	27	51	34	10	0	5	3.6	17	12.2
LAFAYETTE	72	0	0	0	2	5	14	34	15	2	0	0	0.0	7	9.7
LAKE	3,052	5	15	26	63	165	576	1,195	787	220	0	46	1.5	274	9.0
LEE	6,401	11	44	56	119	319	1,207	2,561	1,638	445	1	111	1.7	549	8.6
LEON	3,007	12	18	32	38	180	591	1,186	728	221	1	62	2.1	280	9.3
LEVY	379	2	1	1	1	14	78	153	99	30	0	4	1.1	19	5.0
LIBERTY	66	0	0	0	1	1	11	24	20	9	0	0	0.0	2	3.0
MADISON	212	2	0	2	4	14	46	86	43	15	0	4	1.9	22	10.4
MANATEE	3,429	7	22	21	43	166	625	1,312	957	276	0	50	1.5	259	7.6
MARION	3,267	1	19	24	57	157	645	1,307	835	222	0	44	1.3	258	7.9
MARTIN	1,126	0	7	9	12	54	199	469	300	76	0	16	1.4	82	7.3
MONROE	709	1	5	4	10	24	119	291	216	39	0	10	1.4	44	6.2
NASSAU	753	1	5	7	13	28	135	308	206	50	0	13	1.7	54	7.2
OKALOOSA	2,600	4	11	15	26	141	489	1,038	690	186	0	30	1.2	197	7.6
ORKEECHOBEE	524	0	0	5	8	31	89	208	137	46	0	5	1.0	44	8.4
ORANGE	15,729	40	101	136	243	805	3,208	6,266	3,838	1,090	2	277	1.8	1,325	8.4
OSCEOLA	3,825	7	13	28	64	209	752	1,487	997	268	0	48	1.3	321	8.4
PALM BEACH	13,936	18	73	116	256	766	2,833	5,687	3,416	769	2	207	1.5	1,229	8.8
PASCO	4,736	5	15	34	73	262	869	1,857	1,270	351	0	54	1.1	389	8.2
PINELLAS	8,446	20	42	69	133	478	1,520	3,267	2,260	656	1	131	1.6	742	8.8
POLK	7,257	9	47	61	119	355	1,306	2,830	1,936	593	1	117	1.6	591	8.1
PUTNAM	819	1	4	3	12	57	156	343	187	54	2	8	1.0	77	9.4
SAINT JOHNS	1,896	0	6	15	21	82	322	690	566	193	1	21	1.1	124	6.5
SAINT LUCIE	2,950	2	28	22	70	178	554	1,112	789	195	0	52	1.8	300	10.2
SANTA ROSA	1,859	1	3	11	32	94	300	745	532	141	0	15	0.8	141	7.6
SARASOTA	2,912	5	9	17	45	118	481	1,147	830	260	0	31	1.1	194	6.7
SEMINOLE	4,415	9	23	32	68	208	760	1,758	1,199	358	0	64	1.4	340	7.7
SUMTER	467	0	0	7	5	21	92	208	95	39	0	7	1.5	33	7.1
SUWANNEE	445	2	0	1	3	25	88	174	127	25	0	3	0.7	31	7.0
TAYLOR	221	0	0	5	5	17	37	81	53	23	0	5	2.3	27	12.2
UNION	179	2	1	3	2	11	42	59	38	21	0	6	3.4	19	10.6
VOLUSIA	4,706	2	23	38	82	221	865	1,818	1,280	374	3	63	1.3	366	7.8
WAKULLA	333	0	3	0	4	19	66	117	96	27	1	3	0.9	26	7.8
WALTON	666	0	2	6	7	38	109	284	175	45	0	8	1.2	53	8.0
WASHINGTON	229	0	2	0	5	13	41	84	70	14	0	2	0.9	20	8.7

TABLE B-5 (Cont.): RESIDENT LIVE BIRTHS TO WHITE MOTHERS BY BIRTHWEIGHT, BY COUNTY, FLORIDA, 2012

	TOTAL	BIRTHWEIGHT IN GRAMS										LESS THAN 1500 GRAMS		LESS THAN 2500 GRAMS	
		<500	500- 999	1000- 1499	1500- 1999	2000- 2499	2500- 2999	3000- 3499	3500- 3999	4000+	UNK	NUMBER	%	NUMBER	%
FLORIDA	150,866	187	628	1,020	2,144	6,939	25,684	60,123	42,241	11,887	13	1,835	1.2	10,918	7.2
ALACHUA	1,748	5	11	13	24	73	241	660	560	161	0	29	1.7	126	7.2
BAKER	294	2	2	1	1	11	58	125	75	19	0	5	1.7	17	5.8
BAY	1,766	3	6	11	22	74	307	697	505	141	0	20	1.1	116	6.6
BRADFORD	245	1	3	9	7	15	51	86	63	10	0	13	5.3	35	14.3
BREVARD	3,879	7	18	24	56	174	682	1,496	1,112	309	1	49	1.3	279	7.2
BROWARD	11,447	5	53	75	156	542	1,967	4,804	3,015	830	0	133	1.2	831	7.3
CALHOUN	130	0	1	0	2	3	25	54	35	10	0	1	0.8	6	4.6
CHARLOTTE	905	0	2	9	17	53	183	359	234	48	0	11	1.2	81	9.0
CITRUS	951	0	3	2	11	43	180	362	272	77	1	5	0.5	59	6.2
CLAY	1,697	2	9	13	33	78	284	636	499	143	0	24	1.4	135	8.0
COLLIER	2,691	1	15	19	43	90	443	1,091	780	209	0	35	1.3	168	6.2
COLUMBIA	601	3	1	8	8	28	100	227	167	59	0	12	2.0	48	8.0
MIAMI-DADE	22,046	21	104	143	333	1,004	3,847	9,167	5,955	1,471	1	268	1.2	1,605	7.3
DESOTO	312	0	1	0	1	10	46	127	98	29	0	1	0.3	12	3.8
DIXIE	151	0	3	0	2	11	23	64	38	10	0	3	2.0	16	10.6
DUVAL	6,787	9	36	41	99	330	1,075	2,552	2,013	632	0	86	1.3	515	7.6
ESCAMBIA	2,529	3	6	15	47	150	440	995	679	194	0	24	0.9	221	8.7
FLAGLER	641	0	4	2	4	29	91	263	202	46	0	6	0.9	39	6.1
FRANKLIN	99	1	0	0	2	8	21	37	24	6	0	1	1.0	11	11.1
GADSDEN	197	1	4	0	6	7	36	77	51	15	0	5	2.5	18	9.1
GILCHRIST	194	1	0	2	0	10	35	72	55	19	0	3	1.5	13	6.7
GLADES	57	0	0	0	0	3	9	24	14	7	0	0	0.0	3	5.3
GULF	106	0	2	0	1	3	25	33	34	8	0	2	1.9	6	5.7
HAMILTON	89	0	0	1	1	4	17	42	19	5	0	1	1.1	6	6.7
HARDEE	357	1	0	2	2	25	74	147	86	20	0	3	0.8	30	8.4
HENDRY	494	1	1	1	5	22	76	217	141	30	0	3	0.6	30	6.1
HERNANDO	1,211	2	2	8	22	62	216	454	330	115	0	12	1.0	96	7.9
HIGHLANDS	714	1	5	6	12	40	134	276	180	60	0	12	1.7	64	9.0
HILLSBOROUGH	11,775	29	49	97	167	547	1,995	4,708	3,245	933	5	175	1.5	889	7.5
HOLMES	174	0	0	0	3	6	36	81	41	7	0	0	0.0	9	5.2
INDIAN RIVER	768	0	1	3	9	40	106	314	227	68	0	4	0.5	53	6.9
JACKSON	334	0	0	2	5	15	71	139	78	24	0	2	0.6	22	6.6
JEFFERSON	79	0	0	2	2	4	12	27	23	9	0	2	2.5	8	10.1
LAFAYETTE	64	0	0	0	1	4	12	30	15	2	0	0	0.0	5	7.8
LAKE	2,426	0	8	19	43	119	431	933	677	196	0	27	1.1	189	7.8
LEE	5,177	6	26	34	91	216	905	2,099	1,402	398	0	66	1.3	373	7.2
LEON	1,593	4	7	13	13	63	233	609	488	163	0	24	1.5	100	6.3
LEVY	330	1	1	1	1	8	66	134	90	28	0	3	0.9	12	3.6
LIBERTY	62	0	0	0	1	1	10	22	20	8	0	0	0.0	2	3.2
MADISON	112	1	0	0	2	4	15	49	31	10	0	1	0.9	7	6.3
MANATEE	2,688	5	16	16	30	120	453	1,026	782	240	0	37	1.4	187	7.0
MARION	2,470	1	7	18	42	99	426	971	707	199	0	26	1.1	167	6.8
MARTIN	957	0	4	8	10	46	158	392	271	68	0	12	1.3	68	7.1
MONROE	604	0	3	4	7	18	92	255	189	36	0	7	1.2	32	5.3
NASSAU	678	0	5	6	11	21	117	276	195	47	0	11	1.6	43	6.3
OKALOOSA	2,078	4	5	10	16	106	353	829	594	161	0	19	0.9	141	6.8
OKEECHOBEE	458	0	0	4	6	27	78	178	127	38	0	4	0.9	37	8.1
ORANGE	9,978	17	48	71	123	423	1,769	3,981	2,735	811	0	136	1.4	682	6.8
OSCEOLA	3,157	7	6	26	48	169	602	1,208	848	243	0	39	1.2	256	8.1
PALM BEACH	9,108	9	26	52	127	402	1,612	3,761	2,516	603	0	87	1.0	616	6.8
PASCO	4,198	4	11	27	65	230	731	1,636	1,163	331	0	42	1.0	337	8.0
PINELLAS	6,304	10	23	47	87	312	976	2,418	1,880	551	0	80	1.3	479	7.6
POLK	5,462	3	31	38	75	260	896	2,114	1,555	490	0	72	1.3	407	7.5
PUTNAM	611	1	2	2	9	42	100	256	151	46	2	5	0.8	56	9.2
SAINT JOHNS	1,640	0	4	13	19	63	272	588	506	174	1	17	1.0	99	6.0
SAINT LUCIE	1,956	1	12	10	44	92	304	748	589	156	0	23	1.2	159	8.1
SANTA ROSA	1,679	1	3	11	28	82	262	673	492	127	0	15	0.9	125	7.4
SARASOTA	2,444	3	6	13	28	94	375	954	732	239	0	22	0.9	144	5.9
SEMINOLE	3,368	6	13	21	47	140	545	1,312	980	304	0	40	1.2	227	6.7
SUMTER	365	0	0	6	2	16	65	157	83	36	0	6	1.6	24	6.6
SUWANNEE	370	2	0	1	3	20	70	137	112	25	0	3	0.8	26	7.0
TAYLOR	168	0	0	4	2	12	23	65	43	19	0	4	2.4	18	10.7
UNION	149	1	1	1	2	8	31	51	34	20	0	3	2.0	13	8.7
VOLUSIA	3,668	1	14	30	48	150	625	1,416	1,070	312	2	45	1.2	243	6.6
WAKULLA	286	0	0	0	3	14	55	105	84	25	0	0	0.0	17	5.9
WALTON	599	0	2	5	4	33	90	253	168	44	0	7	1.2	44	7.3
WASHINGTON	187	0	2	0	3	11	25	74	60	12	0	2	1.1	16	8.6

TABLE B-5 (Cont.): RESIDENT LIVE BIRTHS TO BLACK MOTHERS BY BIRTHWEIGHT, BY COUNTY, FLORIDA, 2012

	BIRTHWEIGHT IN GRAMS											LESS THAN 1500 GRAMS		LESS THAN 2500 GRAMS	
	TOTAL	<500	500- 999	1000- 1499	1500- 1999	2000- 2499	2500- 2999	3000- 3499	3500- 3999	4000+	UNK	NUMBER	%	NUMBER	%
FLORIDA	48,992	162	620	623	1,189	3,685	12,299	19,484	8,893	2,034	3	1,405	2.9	6,279	12.8
ALACHUA	851	3	19	10	19	57	216	350	152	25	0	32	3.8	108	12.7
BAKER	44	0	1	0	0	2	14	22	5	0	0	1	2.3	3	6.8
BAY	328	0	5	5	7	30	97	121	51	12	0	10	3.0	47	14.3
BRADFORD	68	1	0	1	0	10	19	25	11	1	0	2	2.9	12	17.6
BREVARD	739	2	5	11	18	54	180	306	142	21	0	18	2.4	90	12.2
BROWARD	8,271	19	123	93	168	583	1,958	3,362	1,581	384	0	235	2.8	986	11.9
CALHOUN	14	0	0	0	0	2	5	6	1	0	0	0	0.0	2	14.3
CHARLOTTE	81	1	0	1	2	4	23	36	11	3	0	2	2.5	8	9.9
CITRUS	46	0	0	3	1	2	12	19	8	1	0	3	6.5	6	13.0
CLAY	237	2	2	2	3	15	69	87	46	11	0	6	2.5	24	10.1
COLLIER	393	1	1	6	7	19	99	153	80	27	0	8	2.0	34	8.7
COLUMBIA	156	1	3	1	10	10	32	66	28	5	0	5	3.2	25	16.0
MIAMI-DADE	7,542	20	102	97	191	580	1,924	2,957	1,372	299	0	219	2.9	990	13.1
DESOTO	54	1	0	1	2	5	12	23	8	2	0	2	3.7	9	16.7
DIXIE	6	0	0	0	0	0	0	4	2	0	0	0	0.0	0	0.0
DUVAL	4,528	21	83	65	103	327	1,097	1,802	826	204	0	169	3.7	599	13.2
ESCAMBIA	1,176	4	13	10	33	109	311	482	168	46	0	27	2.3	169	14.4
FLAGLER	106	0	0	0	2	9	28	43	16	8	0	0	0.0	11	10.4
FRANKLIN	5	0	0	0	0	1	0	3	1	0	0	0	0.0	1	20.0
GADSDEN	317	1	3	4	7	22	98	119	50	13	0	8	2.5	37	11.7
GILCHRIST	11	0	0	0	1	0	1	5	4	0	0	0	0.0	1	9.1
GLADES	8	0	0	0	0	0	3	1	4	0	0	0	0.0	0	0.0
GULF	7	0	0	0	0	1	1	2	2	1	0	0	0.0	1	14.3
HAMILTON	46	0	0	0	2	2	17	21	1	3	0	0	0.0	4	8.7
HARDEE	21	0	0	0	1	1	6	7	5	1	0	0	0.0	2	9.5
HENDRY	74	0	1	2	0	5	30	23	12	1	0	3	4.1	8	10.8
HERNANDO	114	2	2	1	2	3	32	50	19	3	0	5	4.4	10	8.8
HIGHLANDS	148	0	0	5	3	6	52	58	17	7	0	5	3.4	14	9.5
HILLSBOROUGH	3,590	11	29	43	99	282	895	1,447	633	151	0	83	2.3	464	12.9
HOLMES	10	0	0	0	0	0	4	5	1	0	0	0	0.0	0	0.0
INDIAN RIVER	232	4	4	3	10	23	55	96	33	4	0	11	4.7	44	19.0
JACKSON	142	0	4	4	2	11	45	51	22	3	0	8	5.6	21	14.8
JEFFERSON	57	1	1	1	0	6	14	24	9	1	0	3	5.3	9	15.8
LAFAYETTE	6	0	0	0	1	1	1	3	0	0	0	0	0.0	2	33.3
LAKE	445	3	7	6	16	31	114	177	78	13	0	16	3.6	63	14.2
LEE	906	5	17	21	25	81	229	337	159	32	0	43	4.7	149	16.4
LEON	1,208	7	9	15	23	112	310	484	203	44	1	31	2.6	166	13.7
LEVY	45	1	0	0	0	4	11	19	8	2	0	1	2.2	5	11.1
LIBERTY	4	0	0	0	0	0	1	2	0	1	0	0	0.0	0	0.0
MADISON	97	1	0	2	2	10	30	36	12	4	0	3	3.1	15	15.5
MANATEE	449	1	4	5	11	31	115	175	92	15	0	10	2.2	52	11.6
MARION	652	0	9	6	15	52	182	278	93	17	0	15	2.3	82	12.6
MARTIN	93	0	3	1	2	5	25	40	10	7	0	4	4.3	11	11.8
MONROE	82	1	2	0	1	6	23	28	20	1	0	3	3.7	10	12.2
NASSAU	57	0	0	1	2	6	13	25	8	2	0	1	1.8	9	15.8
OKALOOSA	283	0	5	4	7	22	76	113	49	7	0	9	3.2	38	13.4
ORKEECHOBEE	31	0	0	1	2	4	4	15	4	1	0	1	3.2	7	22.6
ORANGE	4,223	19	45	54	90	315	1,085	1,649	770	196	0	118	2.8	523	12.4
OSCEOLA	435	0	5	2	8	21	88	181	109	21	0	7	1.6	36	8.3
PALM BEACH	4,028	9	41	60	115	306	1,059	1,564	732	142	0	110	2.7	531	13.2
PASCO	279	0	2	3	5	13	72	116	56	12	0	5	1.8	23	8.2
PINELLAS	1,472	9	13	14	36	134	367	583	252	64	0	36	2.4	206	14.0
POLK	1,434	4	16	21	38	80	328	567	302	77	1	41	2.9	159	11.1
PUTNAM	177	0	2	1	3	12	51	72	29	7	0	3	1.7	18	10.2
SAINT JOHNS	148	0	1	2	2	13	32	54	33	11	0	3	2.0	18	12.2
SAINT LUCIE	843	1	15	11	22	77	221	314	156	26	0	27	3.2	126	14.9
SANTA ROSA	81	0	0	0	3	7	17	31	18	5	0	0	0.0	10	12.3
SARASOTA	281	2	3	3	12	20	65	109	55	12	0	8	2.8	40	14.2
SEMINOLE	703	2	9	8	15	55	145	304	139	26	0	19	2.7	89	12.7
SUMTER	88	0	0	1	3	5	24	44	8	3	0	1	1.1	9	10.2
SUWANNEE	62	0	0	0	0	5	17	33	7	0	0	0	0.0	5	8.1
TAYLOR	47	0	0	1	3	5	13	14	9	2	0	1	2.1	9	19.1
UNION	24	1	0	2	0	2	8	8	2	1	0	3	12.5	5	20.8
VOLUSIA	775	1	8	8	29	59	187	298	141	44	0	17	2.2	105	13.5
WAKULLA	43	0	3	0	1	5	10	11	10	2	1	3	7.0	9	20.9
WALTON	38	0	0	1	2	3	13	17	2	0	0	1	2.6	6	15.8
WASHINGTON	30	0	0	0	2	2	13	7	6	0	0	0	0.0	4	13.3

TABLE B-5 (Cont.): RESIDENT LIVE BIRTHS TO OTHER MOTHERS BY BIRTHWEIGHT, BY COUNTY, FLORIDA, 2012

	BIRTHWEIGHT IN GRAMS											LESS THAN 1500 GRAMS		LESS THAN 2500 GRAMS	
	TOTAL	<500	500- 999	1000- 1499	1500- 1999	2000- 2499	2500- 2999	3000- 3499	3500- 3999	4000+	UNK	NUMBER	%	NUMBER	%
FLORIDA	12,335	17	57	81	190	682	2,776	5,135	2,757	640	0	155	1.3	1,027	8.3
ALACHUA	279	0	1	2	7	15	61	109	70	14	0	3	1.1	25	9.0
BAKER	3	0	0	0	0	0	0	2	0	1	0	0	0.0	0	0.0
BAY	162	0	0	1	3	4	29	67	45	13	0	1	0.6	8	4.9
BRADFORD	4	0	0	0	0	0	1	1	1	1	0	0	0.0	0	0.0
BREVARD	353	0	4	1	5	16	75	155	76	21	0	5	1.4	26	7.4
BROWARD	1,399	0	8	14	16	91	334	569	309	58	0	22	1.6	129	9.2
CALHOUN	4	0	0	0	0	0	2	2	0	0	0	0	0.0	0	0.0
CHARLOTTE	50	0	0	0	1	3	9	26	11	0	0	0	0.0	4	8.0
CITRUS	42	0	0	0	2	0	11	17	9	3	0	0	0.0	2	4.8
CLAY	136	0	0	1	1	7	27	59	40	1	0	1	0.7	9	6.6
COLLIER	63	0	0	0	2	3	17	23	14	4	0	0	0.0	5	7.9
COLUMBIA	15	0	0	0	0	2	3	9	1	0	0	0	0.0	2	13.3
MIAMI-DADE	757	1	5	3	14	48	160	324	166	36	0	9	1.2	71	9.4
DESOTO	0	0	0	0	0	0	0	0	0	0	0	0	0.0	0	0.0
DIXIE	4	0	0	0	0	0	0	3	1	0	0	0	0.0	0	0.0
DUVAL	1,093	2	3	11	16	69	211	480	244	57	0	16	1.5	101	9.2
ESCAMBIA	222	0	0	1	2	9	59	89	47	15	0	1	0.5	12	5.4
FLAGLER	49	0	1	0	0	5	13	17	11	2	0	1	2.0	6	12.2
FRANKLIN	3	0	0	0	0	1	0	0	2	0	0	0	0.0	1	33.3
GADSDEN	12	0	0	0	0	1	4	4	2	1	0	0	0.0	1	8.3
GILCHRIST	2	0	0	0	0	0	0	0	1	1	0	0	0.0	0	0.0
GLADES	4	0	0	0	0	0	1	2	0	1	0	0	0.0	0	0.0
GULF	3	0	0	0	0	0	0	2	0	1	0	0	0.0	0	0.0
HAMILTON	3	0	0	0	0	0	1	2	0	0	0	0	0.0	0	0.0
HARDEE	12	0	0	0	0	1	3	4	4	0	0	0	0.0	1	8.3
HENDRY	23	0	0	0	0	0	2	7	10	4	0	0	0.0	0	0.0
HERNANDO	58	0	0	0	0	3	9	25	18	3	0	0	0.0	3	5.2
HIGHLANDS	45	1	0	0	0	2	7	23	11	1	0	1	2.2	3	6.7
HILLSBOROUGH	1,012	1	0	6	15	61	249	397	240	43	0	7	0.7	83	8.2
HOLMES	7	0	0	0	0	0	1	6	0	0	0	0	0.0	0	0.0
INDIAN RIVER	37	0	0	0	0	5	12	11	7	2	0	0	0.0	5	13.5
JACKSON	25	0	0	1	0	1	3	15	4	1	0	1	4.0	2	8.0
JEFFERSON	3	0	0	0	0	0	1	0	2	0	0	0	0.0	0	0.0
LAFAYETTE	2	0	0	0	0	0	1	1	0	0	0	0	0.0	0	0.0
LAKE	178	2	0	1	4	15	31	83	31	11	0	3	1.7	22	12.4
LEE	311	0	1	1	3	22	71	123	75	15	0	2	0.6	27	8.7
LEON	203	0	2	4	2	5	47	92	37	14	0	6	3.0	13	6.4
LEVY	4	0	0	0	0	2	1	0	1	0	0	0	0.0	2	50.0
LIBERTY	0	0	0	0	0	0	0	0	0	0	0	0	0.0	0	0.0
MADISON	3	0	0	0	0	0	1	1	0	1	0	0	0.0	0	0.0
MANATEE	289	1	2	0	2	15	57	109	83	20	0	3	1.0	20	6.9
MARION	143	0	3	0	0	6	37	56	35	6	0	3	2.1	9	6.3
MARTIN	75	0	0	0	0	3	15	37	19	1	0	0	0.0	3	4.0
MONROE	20	0	0	0	2	0	4	7	5	2	0	0	0.0	2	10.0
NASSAU	18	1	0	0	0	1	5	7	3	1	0	1	5.6	2	11.1
OKALOOSA	232	0	1	1	3	13	58	92	46	18	0	2	0.9	18	7.8
ORKEECHOBEE	35	0	0	0	0	0	7	15	6	7	0	0	0.0	0	0.0
ORANGE	1,516	4	8	11	30	67	353	630	330	83	0	23	1.5	120	7.9
OSCEOLA	231	0	2	0	7	19	62	97	40	4	0	2	0.9	28	12.1
PALM BEACH	789	0	6	4	14	57	161	358	165	24	0	10	1.3	81	10.3
PASCO	250	1	2	4	3	16	65	103	48	8	0	7	2.8	26	10.4
PINELLAS	616	1	5	7	9	29	170	246	116	33	0	13	2.1	51	8.3
POLK	350	1	0	2	6	15	82	143	76	25	0	3	0.9	24	6.9
PUTNAM	25	0	0	0	0	3	4	11	6	1	0	0	0.0	3	12.0
SAINT JOHNS	94	0	0	0	0	4	17	43	25	5	0	0	0.0	4	4.3
SAINT LUCIE	142	0	1	1	4	7	28	47	41	13	0	2	1.4	13	9.2
SANTA ROSA	95	0	0	0	1	5	20	40	20	9	0	0	0.0	6	6.3
SARASOTA	185	0	0	1	5	4	40	84	42	9	0	1	0.5	10	5.4
SEMINOLE	335	1	1	3	6	13	68	140	76	27	0	5	1.5	24	7.2
SUMTER	14	0	0	0	0	0	3	7	4	0	0	0	0.0	0	0.0
SUWANNEE	11	0	0	0	0	0	1	4	6	0	0	0	0.0	0	0.0
TAYLOR	6	0	0	0	0	0	1	2	1	2	0	0	0.0	0	0.0
UNION	5	0	0	0	0	1	3	0	1	0	0	0	0.0	1	20.0
VOLUSIA	233	0	1	0	4	11	50	89	64	14	0	1	0.4	16	6.9
WAKULLA	4	0	0	0	0	0	1	1	2	0	0	0	0.0	0	0.0
WALTON	25	0	0	0	1	2	4	14	3	1	0	0	0.0	3	12.0
WASHINGTON	12	0	0	0	0	0	3	3	4	2	0	0	0.0	0	0.0

TABLE B-6: RESIDENT LIVE BIRTHS BY AGE OF MOTHER, BY COUNTY, FLORIDA, 2012

	TOTAL	<13	13	14	15	16	17	18	19	20-24	25-29	30-34	35-44	45+	UNK
FLORIDA	212,954	6	32	154	497	1,274	2,448	4,474	7,257	51,073	60,931	52,307	32,073	417	11
ALACHUA	2,879	0	0	1	4	13	21	51	102	665	839	782	397	4	0
BAKER	341	0	0	0	1	2	7	20	11	130	105	43	22	0	0
BAY	2,300	0	0	4	6	17	30	76	118	753	664	436	196	0	0
BRADFORD	317	0	0	1	0	4	6	13	12	107	94	61	19	0	0
BREVARD	4,978	0	0	4	13	25	48	101	142	1,253	1,489	1,242	650	11	0
BROWARD	21,169	1	4	12	41	106	163	289	503	4,022	5,836	5,986	4,151	55	0
CALHOUN	148	0	0	0	0	0	2	9	12	57	37	18	12	1	0
CHARLOTTE	1,036	0	0	1	3	5	10	27	50	309	301	212	117	1	0
CITRUS	1,040	0	0	0	1	11	24	37	58	340	294	186	89	0	0
CLAY	2,077	0	0	3	5	15	24	49	72	520	625	501	262	1	0
COLLIER	3,148	0	0	4	12	14	30	62	80	682	889	813	546	16	0
COLUMBIA	773	0	0	0	2	7	10	23	32	227	267	141	63	1	0
MIAMI-DADE	30,479	1	3	18	49	149	276	453	758	6,161	8,282	8,215	6,041	70	3
DESOTO	366	0	0	0	0	5	6	17	22	121	91	76	28	0	0
DIXIE	161	0	0	0	0	0	3	6	12	72	46	17	4	1	0
DUVAL	12,456	1	1	7	25	74	138	268	458	3,269	3,792	2,891	1,514	17	1
ESCAMBIA	3,929	1	0	4	12	35	54	115	190	1,185	1,210	749	371	3	0
FLAGLER	802	0	0	0	5	4	12	24	29	217	210	196	105	0	0
FRANKLIN	109	0	0	0	0	2	0	5	7	41	23	18	13	0	0
GADSDEN	526	0	1	0	2	5	15	19	27	173	143	97	43	1	0
GILCHRIST	207	0	0	0	0	0	4	9	4	69	57	39	24	1	0
GLADES	69	0	0	0	1	0	1	1	3	30	17	11	5	0	0
GULF	118	0	0	0	1	0	2	3	5	38	41	14	14	0	0
HAMILTON	138	0	0	0	0	3	0	6	9	50	38	22	9	1	0
HARDEE	392	0	1	0	2	3	18	12	25	122	113	65	30	1	0
HENDRY	591	0	0	0	2	6	17	28	34	190	147	106	61	0	0
HERNANDO	1,387	0	0	0	2	6	12	29	54	432	414	280	158	0	0
HIGHLANDS	907	0	0	0	6	6	17	29	37	292	264	166	88	2	0
HILLSBOROUGH	16,404	1	5	7	53	109	232	402	633	3,979	4,564	4,042	2,357	20	0
HOLMES	191	0	0	0	2	2	4	7	11	74	54	28	9	0	0
INDIAN RIVER	1,247	0	0	2	7	14	18	33	48	302	388	262	171	2	0
JACKSON	501	0	0	0	2	3	8	21	27	186	137	85	32	0	0
JEFFERSON	139	0	0	0	0	0	2	2	8	45	37	26	19	0	0
LAFAYETTE	72	0	0	0	0	1	0	3	3	27	16	14	8	0	0
LAKE	3,052	0	0	3	12	20	48	71	128	847	870	638	404	11	0
LEE	6,401	0	1	3	16	45	80	159	255	1,590	1,902	1,476	858	16	0
LEON	3,007	0	1	2	8	11	29	36	92	736	918	767	401	5	1
LEVY	379	0	0	0	1	3	5	19	20	131	116	61	23	0	0
LIBERTY	66	0	0	0	2	0	3	6	5	19	21	8	2	0	0
MADISON	212	0	0	0	3	3	4	9	9	67	66	28	23	0	0
MANATEE	3,429	0	0	5	14	43	64	112	152	854	961	825	392	6	1
MARION	3,267	0	1	3	7	18	51	89	175	1,012	928	638	339	5	1
MARTIN	1,126	0	0	0	2	4	7	17	40	257	350	278	168	3	0
MONROE	709	0	0	0	0	2	5	17	13	165	206	178	123	0	0
NASSAU	753	0	0	0	0	4	10	21	29	215	225	173	74	2	0
OKALOOSA	2,600	0	0	0	5	7	31	43	93	754	848	551	265	2	1
OKEECHOBEE	524	0	0	0	2	6	6	17	27	188	133	101	43	1	0
ORANGE	15,729	0	1	13	35	92	155	332	508	3,522	4,451	4,070	2,512	38	0
OSCEOLA	3,825	0	1	0	11	22	55	90	151	1,090	1,095	782	522	6	0
PALM BEACH	13,936	1	4	10	29	67	124	251	370	2,742	3,787	3,739	2,767	44	1
PASCO	4,736	0	0	4	17	30	44	103	168	1,132	1,405	1,178	645	10	0
PINELLAS	8,446	0	3	11	18	49	111	171	311	1,979	2,434	2,123	1,218	17	1
POLK	7,257	0	2	9	18	79	127	189	313	2,158	2,161	1,457	738	6	0
PUTNAM	819	0	1	2	1	14	20	31	48	282	236	134	50	0	0
SAINT JOHN'S	1,896	0	0	0	3	2	7	28	57	326	511	602	351	9	0
SAINT LUCIE	2,950	0	0	2	4	18	41	70	112	785	867	629	420	2	0
SANTA ROSA	1,859	0	0	0	3	8	26	44	67	464	615	442	186	3	1
SARASOTA	2,912	0	0	3	3	13	34	45	91	623	818	808	468	6	0
SEMINOLE	4,415	0	1	5	8	15	37	61	113	891	1,286	1,299	695	4	0
SUMTER	467	0	0	0	3	4	8	20	33	166	127	73	33	0	0
SUWANNEE	445	0	1	1	2	5	9	11	24	164	129	64	34	1	0
TAYLOR	221	0	0	2	0	4	7	11	13	92	50	28	14	0	0
UNION	179	0	0	1	0	1	3	5	13	60	53	33	10	0	0
VOLUSIA	4,706	0	0	5	10	29	66	105	179	1,313	1,432	1,023	535	9	0
WAKULLA	333	0	0	0	0	2	3	11	10	86	107	78	36	0	0
WALTON	666	0	0	2	0	6	12	16	24	149	227	148	80	2	0
WASHINGTON	229	0	0	0	1	2	2	15	18	71	71	34	15	0	0

TABLE B-6 (Cont.): RESIDENT LIVE BIRTHS TO WHITE MOTHERS, BY AGE OF MOTHER,  
BY COUNTY, FLORIDA, 2012

	TOTAL	<13	13	14	15	16	17	18	19	20-24	25-29	30-34	35-44	45+	UNK
FLORIDA	150,866	3	14	78	261	763	1,516	2,815	4,543	33,776	44,181	38,932	23,673	304	7
ALACHUA	1,748	0	0	1	0	5	7	18	44	328	530	527	286	2	0
BAKER	294	0	0	0	0	1	6	17	10	111	91	38	20	0	0
BAY	1,766	0	0	1	3	10	22	54	93	575	515	341	152	0	0
BRADFORD	245	0	0	0	0	2	3	8	7	80	79	53	13	0	0
BREVARD	3,879	0	0	2	10	19	34	75	93	925	1,193	1,014	504	10	0
BROWARD	11,447	0	0	5	8	39	63	99	197	1,839	3,144	3,536	2,480	37	0
CALHOUN	130	0	0	0	0	0	2	6	12	47	35	16	11	1	0
CHARLOTTE	905	0	0	1	2	3	10	24	47	264	268	186	99	1	0
CITRUS	951	0	0	0	0	11	24	33	54	318	271	160	80	0	0
CLAY	1,697	0	0	2	5	13	21	40	58	402	525	421	209	1	0
COLLIER	2,691	0	0	4	9	10	24	55	63	585	782	711	436	12	0
COLUMBIA	601	0	0	0	1	4	5	17	21	166	221	120	45	1	0
MIAMI-DADE	22,046	1	2	5	22	77	143	239	406	3,884	6,023	6,414	4,773	54	3
DESOTO	312	0	0	0	0	5	5	15	17	101	77	67	25	0	0
DIXIE	151	0	0	0	0	0	3	6	12	66	42	17	4	1	0
DUVAL	6,787	0	0	4	8	28	51	98	173	1,553	2,137	1,800	925	10	0
ESCAMBIA	2,529	0	0	2	2	18	27	64	114	672	826	533	268	3	0
FLAGLER	641	0	0	0	4	3	7	18	21	168	168	161	91	0	0
FRANKLIN	99	0	0	0	0	2	0	4	6	39	21	15	12	0	0
GADSDEN	197	0	0	0	1	3	2	4	9	49	70	44	15	0	0
GILCHRIST	194	0	0	0	0	0	4	8	3	64	54	37	24	0	0
GLADES	57	0	0	0	1	0	0	1	2	26	15	8	4	0	0
GULF	106	0	0	0	1	0	1	3	4	35	38	13	11	0	0
HAMILTON	89	0	0	0	0	3	0	3	7	29	24	15	8	0	0
HARDEE	357	0	1	0	2	3	18	12	19	113	101	57	30	1	0
HENDRY	494	0	0	0	2	5	15	24	25	156	128	88	51	0	0
HERNANDO	1,211	0	0	0	2	6	12	25	42	373	377	241	133	0	0
HIGHLANDS	714	0	0	0	5	4	13	20	31	232	221	122	65	1	0
HILLSBOROUGH	11,775	1	3	4	30	72	155	260	404	2,607	3,360	3,025	1,838	16	0
HOLMES	174	0	0	0	2	2	3	7	10	68	50	23	9	0	0
INDIAN RIVER	768	0	0	0	5	4	9	20	27	172	246	165	118	2	0
JACKSON	334	0	0	0	1	1	4	13	19	121	99	54	22	0	0
JEFFERSON	79	0	0	0	0	0	1	1	3	25	23	16	10	0	0
LAFAYETTE	64	0	0	0	0	1	0	3	3	21	14	14	8	0	0
LAKE	2,426	0	0	3	6	18	39	49	90	651	722	518	323	7	0
LEE	5,177	0	0	2	8	33	54	107	198	1,264	1,588	1,229	682	12	0
LEON	1,593	0	0	0	1	2	7	16	36	247	533	497	254	0	0
LEVY	330	0	0	0	0	3	1	18	16	110	106	55	21	0	0
LIBERTY	62	0	0	0	2	0	3	6	3	18	20	8	2	0	0
MADISON	112	0	0	0	0	2	2	5	5	28	35	19	16	0	0
MANATEE	2,688	0	0	3	12	36	47	85	109	638	766	674	312	5	1
MARION	2,470	0	0	3	5	11	43	60	127	743	701	499	274	3	1
MARTIN	957	0	0	0	2	2	5	15	32	209	304	239	146	3	0
MONROE	604	0	0	0	0	1	5	13	13	134	172	154	112	0	0
NASSAU	678	0	0	0	0	3	8	17	28	187	208	157	68	2	0
OKALOOSA	2,078	0	0	0	4	2	21	28	65	583	714	436	223	1	1
OKEECHOBEE	458	0	0	0	1	5	5	14	22	166	121	88	35	1	0
ORANGE	9,978	0	1	6	13	42	87	191	277	2,035	2,891	2,746	1,669	20	0
OSCEOLA	3,157	0	1	0	9	17	48	81	127	907	925	620	418	4	0
PALM BEACH	9,108	1	1	2	11	37	62	147	194	1,603	2,485	2,646	1,887	31	1
PASCO	4,198	0	0	4	16	27	39	89	148	1,027	1,267	1,018	554	9	0
PINELLAS	6,304	0	2	7	9	26	65	107	185	1,321	1,862	1,715	989	16	0
POLK	5,462	0	1	5	11	55	91	127	234	1,578	1,669	1,141	546	4	0
PUTNAM	611	0	0	0	1	10	14	23	33	207	182	101	40	0	0
SAINT JOHNS	1,640	0	0	0	2	1	5	19	47	259	446	536	317	8	0
SAINT LUCIE	1,956	0	0	1	4	8	20	41	65	476	617	440	282	2	0
SANTA ROSA	1,679	0	0	0	2	8	25	41	55	423	566	392	164	3	0
SARASOTA	2,444	0	0	1	1	8	24	35	71	507	713	678	400	6	0
SEMINOLE	3,368	0	1	1	5	10	19	37	75	628	995	1,040	554	3	0
SUMTER	365	0	0	0	2	4	5	17	25	125	100	62	25	0	0
SUWANNEE	370	0	1	1	2	4	9	8	16	135	110	56	27	1	0
TAYLOR	168	0	0	1	0	3	5	9	9	68	44	21	8	0	0
UNION	149	0	0	1	0	1	2	4	9	49	49	26	8	0	0
VOLUSIA	3,668	0	0	4	6	21	47	76	126	976	1,138	839	427	8	0
WAKULLA	286	0	0	0	0	2	3	11	10	70	98	64	28	0	0
WALTON	599	0	0	2	0	6	10	13	23	131	206	137	69	2	0
WASHINGTON	187	0	0	0	0	1	2	12	14	58	59	28	13	0	0



TABLE B-6 (Cont.): RESIDENT LIVE BIRTHS TO BLACK MOTHERS, BY AGE OF MOTHER,  
BY COUNTY, FLORIDA, 2012

	TOTAL	<13	13	14	15	16	17	18	19	20-24	25-29	30-34	35-44	45+	UNK
FLORIDA	48,992	3	17	73	218	452	835	1,485	2,416	15,126	13,089	9,382	5,815	79	2
ALACHUA	851	0	0	0	3	7	13	30	55	316	226	141	58	2	0
BAKER	44	0	0	0	1	0	1	3	1	18	13	5	2	0	0
BAY	328	0	0	2	0	6	5	18	18	115	90	50	24	0	0
BRADFORD	68	0	0	1	0	2	3	5	5	27	14	7	4	0	0
BREVARD	739	0	0	2	2	5	10	22	38	249	191	141	78	1	0
BROWARD	8,271	1	4	7	33	64	97	179	290	2,031	2,284	1,951	1,321	9	0
CALHOUN	14	0	0	0	0	0	0	2	0	9	0	2	1	0	0
CHARLOTTE	81	0	0	0	1	2	0	3	1	31	18	16	9	0	0
CITRUS	46	0	0	0	1	0	0	3	3	11	11	13	4	0	0
CLAY	237	0	0	1	0	1	2	4	10	87	66	35	31	0	0
COLLIER	393	0	0	0	2	3	5	6	13	85	92	89	95	3	0
COLUMBIA	156	0	0	0	1	3	5	6	10	58	44	15	14	0	0
MIAMI-DADE	7,542	0	1	12	27	72	131	209	342	2,178	2,017	1,507	1,033	13	0
DESOTO	54	0	0	0	0	0	1	2	5	20	14	9	3	0	0
DIXIE	6	0	0	0	0	0	0	0	0	4	2	0	0	0	0
DUVAL	4,528	1	1	3	16	43	82	158	257	1,509	1,297	743	413	5	0
ESCAMBIA	1,176	1	0	2	10	15	23	46	69	463	317	160	70	0	0
FLAGLER	106	0	0	0	1	1	4	2	7	32	28	19	12	0	0
FRANKLIN	5	0	0	0	0	0	0	0	1	1	1	2	0	0	0
GADSDEN	317	0	1	0	1	2	12	15	18	120	71	51	26	0	0
GILCHRIST	11	0	0	0	0	0	0	1	1	5	2	1	0	1	0
GLADES	8	0	0	0	0	0	0	0	1	3	1	3	0	0	0
GULF	7	0	0	0	0	0	1	0	0	3	1	1	1	0	0
HAMILTON	46	0	0	0	0	0	0	3	2	20	13	6	1	1	0
HARDEE	21	0	0	0	0	0	0	0	2	5	8	6	0	0	0
HENDRY	74	0	0	0	0	1	2	2	6	30	15	11	7	0	0
HERNANDO	114	0	0	0	0	0	0	3	10	47	22	21	11	0	0
HIGHLANDS	148	0	0	0	1	2	3	9	5	48	31	34	15	0	0
HILLSBOROUGH	3,590	0	2	3	22	35	74	135	212	1,233	916	638	316	4	0
HOLMES	10	0	0	0	0	0	1	0	0	4	2	3	0	0	0
INDIAN RIVER	232	0	0	2	0	2	6	5	14	81	71	30	21	0	0
JACKSON	142	0	0	0	1	1	1	8	6	55	36	25	9	0	0
JEFFERSON	57	0	0	0	0	0	1	1	4	19	13	10	9	0	0
LAFAYETTE	6	0	0	0	0	0	0	0	0	4	2	0	0	0	0
LAKE	445	0	0	0	5	1	8	18	32	168	100	70	42	1	0
LEE	906	0	0	1	8	10	23	46	48	273	226	170	97	4	0
LEON	1,208	0	1	2	7	7	21	20	51	453	329	212	103	1	1
LEVY	45	0	0	0	1	0	4	0	4	20	10	4	2	0	0
LIBERTY	4	0	0	0	0	0	0	0	2	1	1	0	0	0	0
MADISON	97	0	0	0	3	1	2	4	4	38	29	9	7	0	0
MANATEE	449	0	0	2	2	6	11	21	33	157	121	69	26	1	0
MARION	652	0	1	0	2	7	8	26	40	238	187	98	45	0	0
MARTIN	93	0	0	0	0	0	0	2	5	34	26	13	13	0	0
MONROE	82	0	0	0	0	1	0	4	0	23	28	17	9	0	0
NASSAU	57	0	0	0	0	1	2	4	1	23	11	11	4	0	0
OKALOOSA	283	0	0	0	1	3	8	11	17	100	69	56	17	1	0
OKEECHOBEE	31	0	0	0	1	0	0	1	2	12	7	7	1	0	0
ORANGE	4,223	0	0	7	22	44	59	121	197	1,260	1,117	849	533	14	0
OSCEOLA	435	0	0	0	0	5	5	9	21	121	104	102	67	1	0
PALM BEACH	4,028	0	3	8	18	30	60	102	169	1,036	1,085	835	670	12	0
PASCO	279	0	0	0	0	2	2	7	12	68	80	68	40	0	0
PINELLAS	1,472	0	1	4	8	21	36	51	112	546	376	218	98	0	1
POLK	1,434	0	1	4	7	17	32	51	71	497	396	225	131	2	0
PUTNAM	177	0	1	2	0	3	4	7	13	66	48	25	8	0	0
SAINT JOHNS	148	0	0	0	1	1	2	8	7	53	39	23	13	1	0
SAINT LUCIE	843	0	0	1	0	9	21	23	43	281	214	149	102	0	0
SANTA ROSA	81	0	0	0	0	0	0	3	9	20	18	21	10	0	0
SARASOTA	281	0	0	2	2	3	9	9	18	93	60	66	19	0	0
SEMINOLE	703	0	0	3	3	4	15	22	30	205	198	148	74	1	0
SUMTER	88	0	0	0	1	0	2	3	8	37	23	7	7	0	0
SUWANNEE	62	0	0	0	0	1	0	2	8	27	14	6	4	0	0
TAYLOR	47	0	0	1	0	1	2	2	4	22	4	6	5	0	0
UNION	24	0	0	0	0	0	0	1	2	8	4	7	2	0	0
VOLUSIA	775	0	0	1	3	6	15	22	43	286	210	124	64	1	0
WAKULLA	43	0	0	0	0	0	0	0	0	15	8	12	8	0	0
WALTON	38	0	0	0	0	0	1	2	1	14	11	5	4	0	0
WASHINGTON	30	0	0	0	0	1	0	3	3	9	7	5	2	0	0

TABLE B-6 (Cont.): RESIDENT LIVE BIRTHS TO OTHER MOTHERS, BY AGE OF MOTHER,  
BY COUNTY, FLORIDA, 2012

	TOTAL	<13	13	14	15	16	17	18	19	20-24	25-29	30-34	35-44	45+	UNK
FLORIDA	12,335	0	1	3	15	54	91	155	282	2,022	3,449	3,792	2,437	33	1
ALACHUA	279	0	0	0	1	1	1	3	3	20	83	114	53	0	0
BAKER	3	0	0	0	0	1	0	0	0	1	1	0	0	0	0
BAY	162	0	0	1	2	1	3	3	7	42	46	41	16	0	0
BRADFORD	4	0	0	0	0	0	0	0	0	0	1	1	2	0	0
BREVARD	353	0	0	0	1	1	4	4	11	78	102	86	66	0	0
BROWARD	1,399	0	0	0	0	3	3	10	15	147	396	484	332	9	0
CALHOUN	4	0	0	0	0	0	0	1	0	1	2	0	0	0	0
CHARLOTTE	50	0	0	0	0	0	0	0	2	14	15	10	9	0	0
CITRUS	42	0	0	0	0	0	0	1	1	11	12	12	5	0	0
CLAY	136	0	0	0	0	1	1	4	4	30	32	44	20	0	0
COLLIER	63	0	0	0	1	1	1	1	4	12	15	13	14	1	0
COLUMBIA	15	0	0	0	0	0	0	0	1	3	2	6	3	0	0
MIAMI-DADE	757	0	0	1	0	0	2	4	7	79	211	259	191	3	0
DESOTO	0	0	0	0	0	0	0	0	0	0	0	0	0	0	0
DIXIE	4	0	0	0	0	0	0	0	0	2	2	0	0	0	0
DUVAL	1,093	0	0	0	1	3	5	11	28	195	343	337	168	2	0
ESCAMBIA	222	0	0	0	0	2	4	5	7	49	66	56	33	0	0
FLAGLER	49	0	0	0	0	0	1	3	1	16	11	15	2	0	0
FRANKLIN	3	0	0	0	0	0	0	1	0	1	1	0	0	0	0
GADSDEN	12	0	0	0	0	0	1	0	0	4	2	2	2	1	0
GILCHRIST	2	0	0	0	0	0	0	0	0	0	1	1	0	0	0
GLADES	4	0	0	0	0	0	1	0	0	1	1	0	1	0	0
GULF	3	0	0	0	0	0	0	0	1	0	1	0	1	0	0
HAMILTON	3	0	0	0	0	0	0	0	0	1	1	1	0	0	0
HARDEE	12	0	0	0	0	0	0	0	2	4	4	2	0	0	0
HENDRY	23	0	0	0	0	0	0	2	3	4	4	7	3	0	0
HERNANDO	58	0	0	0	0	0	0	1	2	11	14	16	14	0	0
HIGHLANDS	45	0	0	0	0	0	1	0	1	12	12	10	8	1	0
HILLSBOROUGH	1,012	0	0	0	1	2	3	7	17	132	283	370	197	0	0
HOLMES	7	0	0	0	0	0	0	0	1	2	2	2	0	0	0
INDIAN RIVER	37	0	0	0	0	3	0	0	1	6	9	11	7	0	0
JACKSON	25	0	0	0	0	1	3	0	2	10	2	6	1	0	0
JEFFERSON	3	0	0	0	0	0	0	0	1	1	1	0	0	0	0
LAFAYETTE	2	0	0	0	0	0	0	0	0	2	0	0	0	0	0
LAKE	178	0	0	0	1	1	1	4	6	27	48	48	39	3	0
LEE	311	0	1	0	0	2	3	6	9	50	86	76	78	0	0
LEON	203	0	0	0	0	2	1	0	5	34	56	57	44	4	0
LEVY	4	0	0	0	0	0	0	1	0	1	0	2	0	0	0
LIBERTY	0	0	0	0	0	0	0	0	0	0	0	0	0	0	0
MADISON	3	0	0	0	0	0	0	0	0	1	2	0	0	0	0
MANATEE	289	0	0	0	0	1	6	6	10	59	73	82	52	0	0
MARION	143	0	0	0	0	0	0	3	8	31	38	41	20	2	0
MARTIN	75	0	0	0	0	2	2	0	3	14	20	25	9	0	0
MONROE	20	0	0	0	0	0	0	0	0	8	5	5	2	0	0
NASSAU	18	0	0	0	0	0	0	0	0	5	6	5	2	0	0
OKALOOSA	232	0	0	0	0	2	2	4	11	71	64	54	24	0	0
OKEECHOBEE	35	0	0	0	0	1	1	2	3	10	5	6	7	0	0
ORANGE	1,516	0	0	0	0	6	9	20	32	224	440	473	308	4	0
OSCEOLA	231	0	0	0	2	0	2	0	3	62	65	59	37	1	0
PALM BEACH	789	0	0	0	0	0	2	2	6	102	215	254	207	1	0
PASCO	250	0	0	0	1	1	3	7	8	35	55	89	51	0	0
PINELLAS	616	0	0	0	1	2	10	12	13	106	177	176	118	1	0
POLK	350	0	0	0	0	7	4	11	8	80	93	87	60	0	0
PUTNAM	25	0	0	0	0	1	2	1	2	9	4	4	2	0	0
SAINT JOHNS	94	0	0	0	0	0	0	1	3	13	23	35	19	0	0
SAINT LUCIE	142	0	0	0	0	1	0	5	4	28	32	38	34	0	0
SANTA ROSA	95	0	0	0	1	0	1	0	3	20	30	29	10	0	1
SARASOTA	185	0	0	0	0	2	1	1	2	23	45	63	48	0	0
SEMINOLE	335	0	0	1	0	1	2	2	8	57	90	109	65	0	0
SUMTER	14	0	0	0	0	0	1	0	0	4	4	4	1	0	0
SUWANNEE	11	0	0	0	0	0	0	1	0	2	4	1	3	0	0
TAYLOR	6	0	0	0	0	0	0	0	0	2	2	1	1	0	0
UNION	5	0	0	0	0	0	1	0	2	2	0	0	0	0	0
VOLUSIA	233	0	0	0	1	2	3	5	10	42	73	55	42	0	0
WAKULLA	4	0	0	0	0	0	0	0	0	1	1	2	0	0	0
WALTON	25	0	0	0	0	0	0	0	0	4	10	5	6	0	0
WASHINGTON	12	0	0	0	1	0	0	0	1	4	5	1	0	0	0

TABLE B-7: RESIDENT LIVE BIRTHS BY TRIMESTER PRENATAL CARE BEGAN, BY COUNTY, FLORIDA, 2012

	TRIMESTER PRENATAL CARE BEGAN <sup>1</sup>						% CARE BEGAN BY TRIMESTER <sup>2</sup>			
	TOTAL	1ST	2ND	3RD	NONE	UNK	1ST	2ND	3RD	NONE
FLORIDA	212,954	159,307	30,247	6,675	2,868	13,857	80.0	15.2	3.4	1.4
ALACHUA	2,879	2,117	460	156	31	115	76.6	16.6	5.6	1.1
BAKER	341	239	48	15	6	33	77.6	15.6	4.9	1.9
BAY	2,300	1,360	393	156	12	379	70.8	20.5	8.1	0.6
BRADFORD	317	230	61	10	0	16	76.4	20.3	3.3	0.0
BREVARD	4,978	3,816	709	148	54	251	80.7	15.0	3.1	1.1
BROWARD	21,169	15,349	2,976	696	368	1,780	79.2	15.3	3.6	1.9
CALHOUN	148	93	27	7	0	21	73.2	21.3	5.5	0.0
CHARLOTTE	1,036	735	187	45	11	58	75.2	19.1	4.6	1.1
CITRUS	1,040	719	210	57	7	47	72.4	21.1	5.7	0.7
CLAY	2,077	1,542	271	71	35	158	80.4	14.1	3.7	1.8
COLLIER	3,148	1,985	771	199	26	167	66.6	25.9	6.7	0.9
COLUMBIA	773	518	168	34	26	27	69.4	22.5	4.6	3.5
MIAMI-DADE	30,479	25,475	2,770	522	297	1,415	87.7	9.5	1.8	1.0
DESOTO	366	235	75	33	4	19	67.7	21.6	9.5	1.2
DIXIE	161	107	34	8	3	9	70.4	22.4	5.3	2.0
DUVAL	12,456	8,537	2,245	419	287	968	74.3	19.5	3.6	2.5
ESCAMBIA	3,929	2,725	594	132	27	451	78.3	17.1	3.8	0.8
FLAGLER	802	606	81	18	5	92	85.4	11.4	2.5	0.7
FRANKLIN	109	61	27	2	1	18	67.0	29.7	2.2	1.1
GADSDEN	526	324	87	18	6	91	74.5	20.0	4.1	1.4
GILCHRIST	207	155	31	12	3	6	77.1	15.4	6.0	1.5
GLADES	69	52	10	1	3	3	78.8	15.2	1.5	4.5
GULF	118	79	18	5	0	16	77.5	17.6	4.9	0.0
HAMILTON	138	88	29	7	5	9	68.2	22.5	5.4	3.9
HARDEE	392	231	111	30	8	12	60.8	29.2	7.9	2.1
HENDRY	591	416	120	24	7	24	73.4	21.2	4.2	1.2
HERNANDO	1,387	1,070	144	23	20	130	85.1	11.5	1.8	1.6
HIGHLANDS	907	571	264	34	10	28	65.0	30.0	3.9	1.1
HILLSBOROUGH	16,404	14,331	1,344	209	168	352	89.3	8.4	1.3	1.0
HOLMES	191	106	35	5	3	42	71.1	23.5	3.4	2.0
INDIAN RIVER	1,247	910	195	60	14	68	77.2	16.5	5.1	1.2
JACKSON	501	314	50	16	4	117	81.8	13.0	4.2	1.0
JEFFERSON	139	94	17	2	0	26	83.2	15.0	1.8	0.0
LAFAYETTE	72	58	13	0	0	1	81.7	18.3	0.0	0.0
LAKE	3,052	2,403	364	67	32	186	83.8	12.7	2.3	1.1
LEE	6,401	4,389	1,471	265	67	209	70.9	23.8	4.3	1.1
LEON	3,007	2,117	340	91	14	445	82.6	13.3	3.6	0.5
LEVY	379	283	57	18	6	15	77.7	15.7	4.9	1.6
LIBERTY	66	44	9	2	0	11	80.0	16.4	3.6	0.0
MADISON	212	139	23	4	1	45	83.2	13.8	2.4	0.6
MANATEE	3,429	2,334	738	190	32	135	70.9	22.4	5.8	1.0
MARION	3,267	2,043	812	180	29	203	66.7	26.5	5.9	0.9
MARTIN	1,126	755	258	51	17	45	69.8	23.9	4.7	1.6
MONROE	709	572	89	12	12	24	83.5	13.0	1.8	1.8
NASSAU	753	558	79	9	12	95	84.8	12.0	1.4	1.8
OKALOOSA	2,600	1,843	407	161	23	166	75.7	16.7	6.6	0.9
OKEECHOBEE	524	351	124	25	9	15	69.0	24.4	4.9	1.8
ORANGE	15,729	12,305	1,761	265	333	1,065	83.9	12.0	1.8	2.3
OSCEOLA	3,825	2,760	532	91	97	345	79.3	15.3	2.6	2.8
PALM BEACH	13,936	9,820	2,240	767	126	983	75.8	17.3	5.9	1.0
PASCO	4,736	3,730	612	107	58	229	82.8	13.6	2.4	1.3
PINELLAS	8,446	6,179	1,166	221	164	716	79.9	15.1	2.9	2.1
POLK	7,257	4,990	1,440	318	112	397	72.7	21.0	4.6	1.6
PUTNAM	819	550	141	43	8	77	74.1	19.0	5.8	1.1
SAINT JOHNS	1,896	1,461	213	40	14	168	84.5	12.3	2.3	0.8
SAINT LUCIE	2,950	2,095	591	101	77	86	73.1	20.6	3.5	2.7
SANTA ROSA	1,859	1,435	222	49	3	150	84.0	13.0	2.9	0.2
SARASOTA	2,912	2,109	484	105	29	185	77.3	17.7	3.9	1.1
SEMINOLE	4,415	3,615	449	95	38	218	86.1	10.7	2.3	0.9
SUMTER	467	365	64	7	4	27	83.0	14.5	1.6	0.9
SUWANNEE	445	317	83	30	5	10	72.9	19.1	6.9	1.1
TAYLOR	221	134	32	10	1	44	75.7	18.1	5.6	0.6
UNION	179	126	35	9	3	6	72.8	20.2	5.2	1.7
VOLUSIA	4,706	3,393	663	130	86	434	79.4	15.5	3.0	2.0
WAKULLA	333	238	35	11	1	48	83.5	12.3	3.9	0.4
WALTON	666	490	88	21	4	63	81.3	14.6	3.5	0.7
WASHINGTON	229	110	50	6	0	63	66.3	30.1	3.6	0.0

1. Starting in 2004, "trimester prenatal care began" is calculated as the time elapsed from the date of the last menstrual period to the date of the first prenatal care visit. Prior to 2004, these data were obtained by direct question that noted the trimester the mother began prenatal care. Consequently, these data are not comparable to data from prior years.

2. Births with unknown information as to when prenatal care began are excluded from the denominator.

TABLE B-7 (Cont.): RESIDENT LIVE BIRTHS TO WHITE MOTHERS BY TRIMESTER  
 PRENATAL CARE BEGAN, BY COUNTY, FLORIDA, 2012

	TRIMESTER PRENATAL CARE BEGAN <sup>1</sup>						% CARE BEGAN BY TRIMESTER <sup>2</sup>			
	TOTAL	1ST	2ND	3RD	NONE	UNK	1ST	2ND	3RD	NONE
FLORIDA	150,866	116,546	19,442	4,317	1,630	8,931	82.1	13.7	3.0	1.1
ALACHUA	1,748	1,361	231	82	14	60	80.6	13.7	4.9	0.8
BAKER	294	204	42	13	6	29	77.0	15.8	4.9	2.3
BAY	1,766	1,076	278	119	7	286	72.7	18.8	8.0	0.5
BRADFORD	245	178	48	5	0	14	77.1	20.8	2.2	0.0
BREVARD	3,879	3,055	500	101	36	187	82.7	13.5	2.7	1.0
BROWARD	11,447	8,879	1,258	313	140	857	83.8	11.9	3.0	1.3
CALHOUN	130	81	23	7	0	19	73.0	20.7	6.3	0.0
CHARLOTTE	905	649	162	35	8	51	76.0	19.0	4.1	0.9
CITRUS	951	659	190	52	7	43	72.6	20.9	5.7	0.8
CLAY	1,697	1,278	225	48	26	120	81.0	14.3	3.0	1.6
COLLIER	2,691	1,739	633	164	18	137	68.1	24.8	6.4	0.7
COLUMBIA	601	408	126	24	24	19	70.1	21.6	4.1	4.1
MIAMI-DADE	22,046	19,038	1,679	350	132	847	89.8	7.9	1.7	0.6
DESOTO	312	200	65	27	3	17	67.8	22.0	9.2	1.0
DIXIE	151	103	30	8	3	7	71.5	20.8	5.6	2.1
DUVAL	6,787	4,980	997	196	128	486	79.0	15.8	3.1	2.0
ESCAMBIA	2,529	1,878	306	65	13	267	83.0	13.5	2.9	0.6
FLAGLER	641	492	62	9	4	74	86.8	10.9	1.6	0.7
FRANKLIN	99	58	23	1	1	16	69.9	27.7	1.2	1.2
GADSDEN	197	124	30	11	1	31	74.7	18.1	6.6	0.6
GILCHRIST	194	149	25	12	3	5	78.8	13.2	6.3	1.6
GLADES	57	47	7	0	1	2	85.5	12.7	0.0	1.8
GULF	106	69	17	4	0	16	76.7	18.9	4.4	0.0
HAMILTON	89	51	23	5	4	6	61.4	27.7	6.0	4.8
HARDEE	357	209	102	27	7	12	60.6	29.6	7.8	2.0
HENDRY	494	346	107	19	5	17	72.5	22.4	4.0	1.0
HERNANDO	1,211	943	122	20	16	110	85.6	11.1	1.8	1.5
HIGHLANDS	714	461	197	24	7	25	66.9	28.6	3.5	1.0
HILLSBOROUGH	11,775	10,348	922	154	116	235	89.7	8.0	1.3	1.0
HOLMES	174	96	29	5	3	41	72.2	21.8	3.8	2.3
INDIAN RIVER	768	586	93	33	8	48	81.4	12.9	4.6	1.1
JACKSON	334	201	31	9	2	91	82.7	12.8	3.7	0.8
JEFFERSON	79	58	7	2	0	12	86.6	10.4	3.0	0.0
LAFAYETTE	64	50	13	0	0	1	79.4	20.6	0.0	0.0
LAKE	2,426	1,948	262	52	21	143	85.3	11.5	2.3	0.9
LEE	5,177	3,621	1,144	196	54	162	72.2	22.8	3.9	1.1
LEON	1,593	1,234	122	42	3	192	88.1	8.7	3.0	0.2
LEVY	330	251	47	16	5	11	78.7	14.7	5.0	1.6
LIBERTY	62	42	7	2	0	11	82.4	13.7	3.9	0.0
MADISON	112	76	11	2	1	22	84.4	12.2	2.2	1.1
MANATEE	2,688	1,877	533	138	27	113	72.9	20.7	5.4	1.0
MARION	2,470	1,577	583	132	25	153	68.1	25.2	5.7	1.1
MARTIN	957	658	214	39	14	32	71.1	23.1	4.2	1.5
MONROE	604	497	74	9	7	17	84.7	12.6	1.5	1.2
NASSAU	678	511	66	6	11	84	86.0	11.1	1.0	1.9
OKALOOSA	2,078	1,500	314	114	16	134	77.2	16.2	5.9	0.8
OKEECHOBEE	458	311	109	22	7	9	69.3	24.3	4.9	1.6
ORANGE	9,978	8,077	1,000	147	148	606	86.2	10.7	1.6	1.6
OSCEOLA	3,157	2,315	413	67	84	278	80.4	14.3	2.3	2.9
PALM BEACH	9,108	6,643	1,346	447	68	604	78.1	15.8	5.3	0.8
PASCO	4,198	3,322	527	92	50	207	83.2	13.2	2.3	1.3
PINELLAS	6,304	4,829	749	148	102	476	82.9	12.9	2.5	1.8
POLK	5,462	3,866	1,016	224	76	280	74.6	19.6	4.3	1.5
PUTNAM	611	413	103	33	3	59	74.8	18.7	6.0	0.5
SAINT JOHNS	1,640	1,301	170	32	10	127	86.0	11.2	2.1	0.7
SAINT LUCIE	1,956	1,476	336	60	36	48	77.4	17.6	3.1	1.9
SANTA ROSA	1,679	1,305	194	42	3	135	84.5	12.6	2.7	0.2
SARASOTA	2,444	1,782	397	88	24	153	77.8	17.3	3.8	1.0
SEMINOLE	3,368	2,831	311	57	20	149	87.9	9.7	1.8	0.6
SUMTER	365	283	51	5	3	23	82.7	14.9	1.5	0.9
SUWANNEE	370	278	59	21	4	8	76.8	16.3	5.8	1.1
TAYLOR	168	104	19	9	1	35	78.2	14.3	6.8	0.8
UNION	149	110	26	7	2	4	75.9	17.9	4.8	1.4
VOLUSIA	3,668	2,713	488	94	59	314	80.9	14.5	2.8	1.8
WAKULLA	286	204	35	7	0	40	82.9	14.2	2.8	0.0
WALTON	599	444	76	18	3	58	82.1	14.0	3.3	0.6
WASHINGTON	187	89	37	5	0	56	67.9	28.2	3.8	0.0

1. Starting in 2004, "trimester prenatal care began" is calculated as the time elapsed from the date of the last menstrual period to the date of the first prenatal care visit. Prior to 2004, these data were obtained by direct question that noted the trimester the mother began prenatal care. Consequently, these data are not comparable to data from prior years.

2. Births with unknown information as to when prenatal care began are excluded from the denominator.

TABLE B-7 (Cont.): RESIDENT LIVE BIRTHS TO BLACK MOTHERS BY TRIMESTER  
 PRENATAL CARE BEGAN, BY COUNTY, FLORIDA, 2012

	TRIMESTER PRENATAL CARE BEGAN <sup>1</sup>						% CARE BEGAN BY TRIMESTER <sup>2</sup>			
	TOTAL	1ST	2ND	3RD	NONE	UNK	1ST	2ND	3RD	NONE
FLORIDA	48,992	33,009	9,006	1,890	1,089	3,998	73.4	20.0	4.2	2.4
ALACHUA	851	545	189	58	15	44	67.5	23.4	7.2	1.9
BAKER	44	32	6	2	0	4	80.0	15.0	5.0	0.0
BAY	328	173	69	30	2	54	63.1	25.2	10.9	0.7
BRADFORD	68	48	13	5	0	2	72.7	19.7	7.6	0.0
BREVARD	739	504	144	31	17	43	72.4	20.7	4.5	2.4
BROWARD	8,271	5,360	1,543	338	210	820	71.9	20.7	4.5	2.8
CALHOUN	14	9	3	0	0	2	75.0	25.0	0.0	0.0
CHARLOTTE	81	58	12	5	1	5	76.3	15.8	6.6	1.3
CITRUS	46	29	10	4	0	3	67.4	23.3	9.3	0.0
CLAY	237	158	37	16	5	21	73.1	17.1	7.4	2.3
COLLIER	393	207	123	29	7	27	56.6	33.6	7.9	1.9
COLUMBIA	156	98	39	9	2	8	66.2	26.4	6.1	1.4
MIAMI-DADE	7,542	5,691	1,022	149	158	522	81.1	14.6	2.1	2.3
DESOTO	54	35	10	6	1	2	67.3	19.2	11.5	1.9
DIXIE	6	2	3	0	0	1	40.0	60.0	0.0	0.0
DUVAL	4,528	2,765	1,065	189	144	365	66.4	25.6	4.5	3.5
ESCAMBIA	1,176	691	248	59	13	165	68.3	24.5	5.8	1.3
FLAGLER	106	78	13	4	0	11	82.1	13.7	4.2	0.0
FRANKLIN	5	1	2	0	0	2	33.3	66.7	0.0	0.0
GADSDEN	317	192	57	7	3	58	74.1	22.0	2.7	1.2
GILCHRIST	11	5	5	0	0	1	50.0	50.0	0.0	0.0
GLADES	8	4	2	0	1	1	57.1	28.6	0.0	14.3
GULF	7	5	1	1	0	0	71.4	14.3	14.3	0.0
HAMILTON	46	35	6	1	1	3	81.4	14.0	2.3	2.3
HARDEE	21	11	8	1	1	0	52.4	38.1	4.8	4.8
HENDRY	74	52	11	4	2	5	75.4	15.9	5.8	2.9
HERNANDO	114	76	14	2	4	18	79.2	14.6	2.1	4.2
HIGHLANDS	148	81	54	7	3	3	55.9	37.2	4.8	2.1
HILLSBOROUGH	3,590	3,056	356	43	46	89	87.3	10.2	1.2	1.3
HOLMES	10	6	4	0	0	0	60.0	40.0	0.0	0.0
INDIAN RIVER	232	142	59	15	5	11	64.3	26.7	6.8	2.3
JACKSON	142	98	18	5	2	19	79.7	14.6	4.1	1.6
JEFFERSON	57	33	10	0	0	14	76.7	23.3	0.0	0.0
LAFAYETTE	6	6	0	0	0	0	100.0	0.0	0.0	0.0
LAKE	445	324	69	11	7	34	78.8	16.8	2.7	1.7
LEE	906	566	248	46	9	37	65.1	28.5	5.3	1.0
LEON	1,208	738	194	43	11	222	74.8	19.7	4.4	1.1
LEVY	45	29	10	2	1	3	69.0	23.8	4.8	2.4
LIBERTY	4	2	2	0	0	0	50.0	50.0	0.0	0.0
MADISON	97	61	12	2	0	22	81.3	16.0	2.7	0.0
MANATEE	449	268	131	31	4	15	61.8	30.2	7.1	0.9
MARION	652	359	207	39	3	44	59.0	34.0	6.4	0.5
MARTIN	93	50	23	7	2	11	61.0	28.0	8.5	2.4
MONROE	82	58	15	2	2	5	75.3	19.5	2.6	2.6
NASSAU	57	38	8	3	1	7	76.0	16.0	6.0	2.0
OKALOOSA	283	179	58	25	5	16	67.0	21.7	9.4	1.9
OKEECHOBEE	31	20	5	1	2	3	71.4	17.9	3.6	7.1
ORANGE	4,223	3,002	619	97	162	343	77.4	16.0	2.5	4.2
OSCEOLA	435	284	75	17	8	51	74.0	19.5	4.4	2.1
PALM BEACH	4,028	2,594	786	266	55	327	70.1	21.2	7.2	1.5
PASCO	279	210	48	9	2	10	78.1	17.8	3.3	0.7
PINELLAS	1,472	877	311	53	48	183	68.0	24.1	4.1	3.7
POLK	1,434	880	357	74	29	94	65.7	26.6	5.5	2.2
PUTNAM	177	122	32	8	5	10	73.1	19.2	4.8	3.0
SAINT JOHNS	148	81	32	5	4	26	66.4	26.2	4.1	3.3
SAINT LUCIE	843	519	215	37	40	32	64.0	26.5	4.6	4.9
SANTA ROSA	81	59	16	2	0	4	76.6	20.8	2.6	0.0
SARASOTA	281	193	55	13	5	15	72.6	20.7	4.9	1.9
SEMINOLE	703	501	109	30	17	46	76.3	16.6	4.6	2.6
SUMTER	88	71	10	2	1	4	84.5	11.9	2.4	1.2
SUWANNEE	62	33	20	6	1	2	55.0	33.3	10.0	1.7
TAYLOR	47	26	12	0	0	9	68.4	31.6	0.0	0.0
UNION	24	12	7	2	1	2	54.5	31.8	9.1	4.5
VOLUSIA	775	491	146	31	20	87	71.4	21.2	4.5	2.9
WAKULLA	43	31	0	4	1	7	86.1	0.0	11.1	2.8
WALTON	38	28	7	1	0	2	77.8	19.4	2.8	0.0
WASHINGTON	30	16	11	1	0	2	57.1	39.3	3.6	0.0

1. Starting in 2004, "trimester prenatal care began" is calculated as the time elapsed from the date of the last menstrual period to the date of the first prenatal care visit. Prior to 2004, these data were obtained by direct question that noted the trimester the mother began prenatal care. Consequently, these data are not comparable to data from prior years.

2. Births with unknown information as to when prenatal care began are excluded from the denominator.

TABLE B-7 (Cont.): RESIDENT LIVE BIRTHS TO OTHER MOTHERS BY TRIMESTER  
 PRENATAL CARE BEGAN, BY COUNTY, FLORIDA, 2012

	TRIMESTER PRENATAL CARE BEGAN <sup>1</sup>						% CARE BEGAN BY TRIMESTER <sup>2</sup>			
	TOTAL	1ST	2ND	3RD	NONE	UNK	1ST	2ND	3RD	NONE
FLORIDA	12,335	9,230	1,692	440	141	832	80.2	14.7	3.8	1.2
ALACHUA	279	211	39	16	2	11	78.7	14.6	6.0	0.7
BAKER	3	3	0	0	0	0	100.0	0.0	0.0	0.0
BAY	162	85	35	5	3	34	66.4	27.3	3.9	2.3
BRADFORD	4	4	0	0	0	0	100.0	0.0	0.0	0.0
BREVARD	353	254	64	15	1	19	76.0	19.2	4.5	0.3
BROWARD	1,399	1,072	170	44	17	96	82.3	13.0	3.4	1.3
CALHOUN	4	3	1	0	0	0	75.0	25.0	0.0	0.0
CHARLOTTE	50	28	13	5	2	2	58.3	27.1	10.4	4.2
CITRUS	42	30	10	1	0	1	73.2	24.4	2.4	0.0
CLAY	136	103	8	7	4	14	84.4	6.6	5.7	3.3
COLLIER	63	39	15	6	1	2	63.9	24.6	9.8	1.6
COLUMBIA	15	12	2	1	0	0	80.0	13.3	6.7	0.0
MIAMI-DADE	757	628	65	21	6	37	87.2	9.0	2.9	0.8
DESOTO	0	0	0	0	0	0	0.0	0.0	0.0	0.0
DIXIE	4	2	1	0	0	1	66.7	33.3	0.0	0.0
DUVAL	1,093	759	177	33	14	110	77.2	18.0	3.4	1.4
ESCAMBIA	222	156	39	7	1	19	76.8	19.2	3.4	0.5
FLAGLER	49	32	6	5	1	5	72.7	13.6	11.4	2.3
FRANKLIN	3	2	0	1	0	0	66.7	0.0	33.3	0.0
GADSDEN	12	8	0	0	2	2	80.0	0.0	0.0	20.0
GILCHRIST	2	1	1	0	0	0	50.0	50.0	0.0	0.0
GLADES	4	1	1	1	1	0	25.0	25.0	25.0	25.0
GULF	3	3	0	0	0	0	100.0	0.0	0.0	0.0
HAMILTON	3	2	0	1	0	0	66.7	0.0	33.3	0.0
HARDEE	12	9	1	2	0	0	75.0	8.3	16.7	0.0
HENDRY	23	18	2	1	0	2	85.7	9.5	4.8	0.0
HERNANDO	58	49	6	1	0	2	87.5	10.7	1.8	0.0
HIGHLANDS	45	29	13	3	0	0	64.4	28.9	6.7	0.0
HILLSBOROUGH	1,012	911	62	12	6	21	91.9	6.3	1.2	0.6
HOLMES	7	4	2	0	0	1	66.7	33.3	0.0	0.0
INDIAN RIVER	37	28	6	1	1	1	77.8	16.7	2.8	2.8
JACKSON	25	15	1	2	0	7	83.3	5.6	11.1	0.0
JEFFERSON	3	3	0	0	0	0	100.0	0.0	0.0	0.0
LAFAYETTE	2	2	0	0	0	0	100.0	0.0	0.0	0.0
LAKE	178	129	33	4	4	8	75.9	19.4	2.4	2.4
LEE	311	200	77	23	4	7	65.8	25.3	7.6	1.3
LEON	203	143	24	6	0	30	82.7	13.9	3.5	0.0
LEVY	4	3	0	0	0	1	100.0	0.0	0.0	0.0
LIBERTY	0	0	0	0	0	0	0.0	0.0	0.0	0.0
MADISON	3	2	0	0	0	1	100.0	0.0	0.0	0.0
MANATEE	289	187	73	21	1	7	66.3	25.9	7.4	0.4
MARION	143	106	22	8	1	6	77.4	16.1	5.8	0.7
MARTIN	75	47	20	5	1	2	64.4	27.4	6.8	1.4
MONROE	20	15	0	1	3	1	78.9	0.0	5.3	15.8
NASSAU	18	9	5	0	0	4	64.3	35.7	0.0	0.0
OKALOOSA	232	158	35	21	2	16	73.1	16.2	9.7	0.9
OKEECHOBEE	35	20	10	2	0	3	62.5	31.3	6.3	0.0
ORANGE	1,516	1,222	141	21	23	109	86.9	10.0	1.5	1.6
OSCEOLA	231	159	44	7	5	16	74.0	20.5	3.3	2.3
PALM BEACH	789	578	108	54	2	47	77.9	14.6	7.3	0.3
PASCO	250	193	35	6	4	12	81.1	14.7	2.5	1.7
PINELLAS	616	446	94	17	13	46	78.2	16.5	3.0	2.3
POLK	350	238	65	19	7	21	72.3	19.8	5.8	2.1
PUTNAM	25	15	5	2	0	3	68.2	22.7	9.1	0.0
SAINT JOHNS	94	66	10	3	0	15	83.5	12.7	3.8	0.0
SAINT LUCIE	142	94	38	4	1	5	68.6	27.7	2.9	0.7
SANTA ROSA	95	69	12	3	0	11	82.1	14.3	3.6	0.0
SARASOTA	185	133	31	4	0	17	79.2	18.5	2.4	0.0
SEMINOLE	335	278	29	7	1	20	88.3	9.2	2.2	0.3
SUMTER	14	11	3	0	0	0	78.6	21.4	0.0	0.0
SUWANNEE	11	5	3	3	0	0	45.5	27.3	27.3	0.0
TAYLOR	6	4	1	1	0	0	66.7	16.7	16.7	0.0
UNION	5	4	1	0	0	0	80.0	20.0	0.0	0.0
VOLUSIA	233	167	26	5	7	28	81.5	12.7	2.4	3.4
WAKULLA	4	3	0	0	0	1	100.0	0.0	0.0	0.0
WALTON	25	15	5	2	0	3	68.2	22.7	9.1	0.0
WASHINGTON	12	5	2	0	0	5	71.4	28.6	0.0	0.0

1. Starting in 2004, "trimester prenatal care began" is calculated as the time elapsed from the date of the last menstrual period to the date of the first prenatal care visit. Prior to 2004, these data were obtained by direct question that noted the trimester the mother began prenatal care. Consequently, these data are not comparable to data from prior years.

2. Births with unknown information as to when prenatal care began are excluded from the denominator.

TABLE B-8: RESIDENT LIVE BIRTHS TO UNWED MOTHERS, BY AGE OF MOTHER, BY COUNTY, FLORIDA, 2012

	TOTAL	<13	13	14	15	16	17	18	19	20-24	25-29	30-34	35-44	45+	UNK
FLORIDA	102,135	6	32	151	493	1,230	2,320	4,122	6,378	36,857	26,544	15,242	8,647	108	5
ALACHUA	1,241	0	0	1	4	13	21	51	97	497	319	178	59	1	0
BAKER	170	0	0	0	1	2	7	16	9	76	39	14	6	0	0
BAY	1,107	0	0	4	6	17	28	71	102	463	245	124	47	0	0
BRADFORD	169	0	0	1	0	4	6	12	12	68	35	25	6	0	0
BREVARD	2,267	0	0	4	13	24	45	94	125	881	591	316	172	2	0
BROWARD	9,627	1	4	12	41	104	160	274	456	3,008	2,661	1,790	1,100	16	0
CALHOUN	73	0	0	0	0	0	2	7	8	33	15	4	4	0	0
CHARLOTTE	552	0	0	1	3	4	10	25	48	218	142	72	28	1	0
CITRUS	546	0	0	0	1	11	22	35	48	223	119	66	21	0	0
CLAY	796	0	0	3	5	13	23	45	57	311	189	107	43	0	0
COLLIER	1,437	0	0	4	11	13	26	57	73	470	376	247	156	4	0
COLUMBIA	404	0	0	0	2	7	8	20	27	147	132	42	18	1	0
MIAMI-DADE	15,299	1	3	17	49	144	260	423	672	4,712	4,215	2,777	1,996	29	1
DESOTO	215	0	0	0	0	5	5	14	18	86	47	29	11	0	0
DIXIE	86	0	0	0	0	0	3	5	7	47	22	1	1	0	0
DUVAL	6,060	1	1	7	25	71	134	255	398	2,362	1,616	817	371	1	1
ESCAMBIA	2,009	1	0	4	12	34	52	104	161	813	509	223	94	2	0
FLAGLER	383	0	0	0	5	4	12	24	26	153	86	45	28	0	0
FRANKLIN	59	0	0	0	0	2	0	3	5	25	15	4	5	0	0
GADSDEN	348	0	1	0	2	5	14	18	25	143	77	49	14	0	0
GILCHRIST	90	0	0	0	0	0	4	6	4	37	16	13	10	0	0
GLADES	45	0	0	0	1	0	1	1	3	22	8	5	4	0	0
GULF	66	0	0	0	1	0	2	3	4	30	17	5	4	0	0
HAMILTON	85	0	0	0	0	2	0	4	8	35	22	12	2	0	0
HARDEE	227	0	1	0	2	3	14	11	20	83	52	32	9	0	0
HENDRY	363	0	0	0	2	5	17	22	30	132	75	54	26	0	0
HERNANDO	695	0	0	0	2	5	10	27	51	297	173	71	59	0	0
HIGHLANDS	497	0	0	0	6	6	16	28	32	207	116	59	26	1	0
HILLSBOROUGH	8,031	1	5	7	53	108	221	373	559	2,991	2,008	1,083	618	4	0
HOLMES	88	0	0	0	2	2	3	6	10	38	17	7	3	0	0
INDIAN RIVER	641	0	0	2	7	14	18	29	39	232	169	82	48	1	0
JACKSON	271	0	0	0	2	3	8	21	21	117	55	33	11	0	0
JEFFERSON	82	0	0	0	0	0	2	2	8	34	20	9	7	0	0
LAFAYETTE	36	0	0	0	0	1	0	1	2	17	6	5	4	0	0
LAKE	1,406	0	0	3	12	18	46	67	108	579	339	160	72	2	0
LEE	3,247	0	1	3	15	44	75	150	228	1,132	866	469	259	5	0
LEON	1,403	0	1	2	8	11	29	35	83	585	353	207	88	0	1
LEVY	199	0	0	0	1	3	5	16	16	80	53	18	7	0	0
LIBERTY	34	0	0	0	2	0	3	3	5	10	9	1	1	0	0
MADISON	126	0	0	0	3	3	4	8	7	49	35	9	8	0	0
MANATEE	1,782	0	0	4	14	43	61	103	127	613	454	248	113	2	0
MARION	1,747	0	1	3	7	17	47	81	143	731	410	206	100	1	0
MARTIN	531	0	0	0	2	4	6	15	39	192	149	79	43	2	0
MONROE	317	0	0	0	0	2	4	16	12	104	82	61	36	0	0
NASSAU	301	0	0	0	0	4	9	16	27	134	65	30	16	0	0
OKALOOSA	874	0	0	0	5	6	29	37	62	342	221	117	54	0	1
OKEECHOBEE	313	0	0	0	2	6	5	16	21	141	66	45	11	0	0
ORANGE	7,261	0	1	13	35	87	145	298	453	2,671	1,860	1,085	604	9	0
OSCEOLA	1,933	0	1	0	11	22	50	85	135	782	449	259	137	2	0
PALM BEACH	6,402	1	4	9	29	64	120	233	343	2,062	1,725	1,066	739	7	0
PASCO	2,108	0	0	4	17	27	43	97	151	788	550	292	136	3	0
PINELLAS	4,275	0	3	11	18	49	110	164	286	1,527	1,157	634	311	4	1
POLK	3,859	0	2	9	17	76	118	170	269	1,537	949	479	232	1	0
PUTNAM	479	0	1	2	1	13	20	27	43	190	106	61	15	0	0
SAINT JOHNS	545	0	0	0	3	2	7	28	50	213	116	72	51	3	0
SAINT LUCIE	1,500	0	0	2	4	17	40	64	104	573	392	194	110	0	0
SANTA ROSA	621	0	0	0	3	7	23	38	56	221	143	91	39	0	0
SARASOTA	1,312	0	0	3	3	13	33	39	77	443	362	229	109	1	0
SEMINOLE	1,709	0	1	5	8	15	36	57	104	639	452	277	115	0	0
SUMTER	281	0	0	0	3	4	7	19	23	116	70	28	11	0	0
SUWANNEE	231	0	1	1	1	4	7	8	21	102	51	26	9	0	0
TAYLOR	136	0	0	2	0	4	6	9	13	62	22	10	8	0	0
UNION	81	0	0	1	0	1	3	4	6	34	15	12	5	0	0
VOLUSIA	2,520	0	0	5	10	28	59	100	158	989	682	325	161	3	0
WAKULLA	125	0	0	0	0	2	3	7	9	51	32	12	9	0	0
WALTON	293	0	0	2	0	6	11	12	19	108	79	34	22	0	0
WASHINGTON	114	0	0	0	1	2	2	13	15	46	25	6	4	0	0

TABLE B-8 (Cont.): RESIDENT LIVE BIRTHS TO UNWED WHITE MOTHERS, BY AGE OF MOTHER, BY COUNTY, FLORIDA, 2012

	TOTAL	<13	13	14	15	16	17	18	19	20-24	25-29	30-34	35-44	45+	UNK
FLORIDA	63,507	3	14	76	257	722	1,396	2,502	3,797	22,269	16,770	9,811	5,805	83	2
ALACHUA	546	0	0	1	0	5	7	18	39	209	154	80	32	1	0
BAKER	126	0	0	0	0	1	6	13	8	57	25	11	5	0	0
BAY	763	0	0	1	3	10	20	49	77	330	158	87	28	0	0
BRADFORD	108	0	0	0	0	2	3	7	7	42	24	19	4	0	0
BREVARD	1,598	0	0	2	10	18	31	68	79	625	423	222	119	1	0
BROWARD	4,111	0	0	5	8	37	60	87	168	1,223	1,145	824	542	12	0
CALHOUN	62	0	0	0	0	0	2	5	8	25	14	4	4	0	0
CHARLOTTE	473	0	0	1	2	3	10	22	45	180	124	61	24	1	0
CITRUS	495	0	0	0	0	11	22	31	45	208	102	57	19	0	0
CLAY	599	0	0	2	5	11	20	36	44	222	144	85	30	0	0
COLLIER	1,205	0	0	4	8	9	20	50	58	397	319	210	127	3	0
COLUMBIA	279	0	0	0	1	4	3	14	17	92	100	35	12	1	0
MIAMI-DADE	9,681	1	2	5	22	72	129	213	330	2,725	2,737	1,944	1,480	20	1
DESOTO	167	0	0	0	0	5	4	12	13	67	34	23	9	0	0
DIXIE	78	0	0	0	0	0	3	5	7	42	19	1	1	0	0
DUVAL	2,401	0	0	4	8	25	48	88	135	923	646	362	162	0	0
ESCAMBIA	946	0	0	2	2	17	25	53	89	365	236	109	46	2	0
FLAGLER	282	0	0	0	4	3	7	18	18	114	62	32	24	0	0
FRANKLIN	54	0	0	0	0	2	0	3	4	23	13	4	5	0	0
GADSDEN	93	0	0	0	1	3	2	3	8	33	25	16	2	0	0
GILCHRIST	83	0	0	0	0	0	4	5	3	34	15	12	10	0	0
GLADES	34	0	0	0	1	0	0	1	2	18	7	2	3	0	0
GULF	57	0	0	0	1	0	1	3	3	27	14	5	3	0	0
HAMILTON	43	0	0	0	0	2	0	1	6	14	9	10	1	0	0
HARDEE	204	0	1	0	2	3	14	11	15	76	44	29	9	0	0
HENDRY	279	0	0	0	2	4	15	18	21	98	60	39	22	0	0
HERNANDO	587	0	0	0	2	5	10	23	39	247	156	57	48	0	0
HIGHLANDS	359	0	0	0	5	4	12	19	26	151	90	34	17	1	0
HILLSBOROUGH	5,152	1	3	4	30	71	144	236	342	1,807	1,335	722	453	4	0
HOLMES	77	0	0	0	2	2	2	6	9	34	14	5	3	0	0
INDIAN RIVER	358	0	0	0	5	4	9	17	20	134	95	46	27	1	0
JACKSON	146	0	0	0	1	1	4	13	13	61	28	19	6	0	0
JEFFERSON	31	0	0	0	0	0	1	1	3	15	8	2	1	0	0
LAFAYETTE	30	0	0	0	0	1	0	1	2	12	5	5	4	0	0
LAKE	998	0	0	3	6	16	37	45	73	407	247	105	57	2	0
LEE	2,465	0	0	2	7	32	49	99	175	849	689	361	199	3	0
LEON	447	0	0	0	1	2	7	15	32	153	119	88	30	0	0
LEVY	157	0	0	0	0	3	1	15	13	60	44	15	6	0	0
LIBERTY	30	0	0	0	2	0	3	3	3	9	8	1	1	0	0
MADISON	41	0	0	0	0	2	2	4	4	14	9	4	2	0	0
MANATEE	1,269	0	0	2	12	36	45	76	86	428	311	185	87	1	0
MARION	1,193	0	0	3	5	10	39	53	99	494	271	140	78	1	0
MARTIN	427	0	0	0	2	2	4	13	32	154	121	63	34	2	0
MONROE	263	0	0	0	0	1	4	12	12	84	65	53	32	0	0
NASSAU	252	0	0	0	0	3	7	13	26	109	53	26	15	0	0
OKALOOSA	630	0	0	0	4	2	19	25	39	244	170	84	42	0	1
OKEECHOBEE	267	0	0	0	1	5	4	13	16	122	57	39	10	0	0
ORANGE	4,025	0	1	6	13	37	78	167	232	1,457	1,060	608	360	6	0
OSCEOLA	1,591	0	1	0	9	17	43	76	112	642	381	201	107	2	0
PALM BEACH	3,680	1	1	1	11	34	58	131	170	1,110	1,048	638	471	6	0
PASCO	1,881	0	0	4	16	24	38	83	132	707	498	261	115	3	0
PINELLAS	2,789	0	2	7	9	26	64	101	161	942	786	463	224	4	0
POLK	2,589	0	1	5	10	52	82	108	195	1,022	631	326	156	1	0
PUTNAM	316	0	0	0	1	9	14	19	28	126	69	39	11	0	0
SAINT JOHNS	414	0	0	0	2	1	5	19	40	156	87	58	44	2	0
SAINT LUCIE	847	0	0	1	4	7	19	36	58	307	229	122	64	0	0
SANTA ROSA	546	0	0	0	2	7	23	35	45	197	128	76	33	0	0
SARASOTA	1,009	0	0	1	1	8	23	29	58	340	298	158	92	1	0
SEMINOLE	1,113	0	1	1	5	10	18	33	66	420	291	188	80	0	0
SUMTER	204	0	0	0	2	4	4	16	16	82	50	22	8	0	0
SUWANNEE	179	0	1	1	1	3	7	5	13	80	40	20	8	0	0
TAYLOR	94	0	0	1	0	3	4	7	9	43	18	5	4	0	0
UNION	58	0	0	1	0	1	2	3	3	25	11	8	4	0	0
VOLUSIA	1,788	0	0	4	6	21	41	71	108	690	485	239	121	2	0
WAKULLA	103	0	0	0	0	2	3	7	9	38	27	10	7	0	0
WALTON	249	0	0	2	0	6	9	10	18	93	67	28	16	0	0
WASHINGTON	83	0	0	0	0	1	2	10	11	34	17	4	4	0	0



TABLE B-8 (Cont.): RESIDENT LIVE BIRTHS TO UNWED BLACK MOTHERS, BY AGE OF MOTHER, BY COUNTY, FLORIDA, 2012

	TOTAL	<13	13	14	15	16	17	18	19	20-24	25-29	30-34	35-44	45+	UNK
FLORIDA	34,654	3	17	73	218	450	832	1,464	2,340	13,330	8,752	4,742	2,408	23	2
ALACHUA	666	0	0	0	3	7	13	30	55	279	161	92	26	0	0
BAKER	41	0	0	0	1	0	1	3	1	18	13	3	1	0	0
BAY	257	0	0	2	0	6	5	18	18	95	67	30	16	0	0
BRADFORD	60	0	0	1	0	2	3	5	5	26	11	5	2	0	0
BREVARD	554	0	0	2	2	5	10	22	37	220	136	83	36	1	0
BROWARD	5,154	1	4	7	33	64	97	176	280	1,699	1,399	886	504	4	0
CALHOUN	10	0	0	0	0	0	0	2	0	8	0	0	0	0	0
CHARLOTTE	54	0	0	0	1	1	0	3	1	27	11	6	4	0	0
CITRUS	35	0	0	0	1	0	0	3	3	10	10	6	2	0	0
CLAY	150	0	0	1	0	1	2	4	10	69	41	13	9	0	0
COLLIER	203	0	0	0	2	3	5	6	12	66	48	34	26	1	0
COLUMBIA	122	0	0	0	1	3	5	6	10	53	31	7	6	0	0
MIAMI-DADE	5,396	0	1	12	27	72	130	206	334	1,936	1,408	788	473	9	0
DESOTO	48	0	0	0	0	0	1	2	5	19	13	6	2	0	0
DIXIE	6	0	0	0	0	0	0	0	0	4	2	0	0	0	0
DUVAL	3,360	1	1	3	16	43	81	156	242	1,326	898	412	181	0	0
ESCAMBIA	979	1	0	2	10	15	23	46	68	418	245	107	44	0	0
FLAGLER	70	0	0	0	1	1	4	2	7	23	18	10	4	0	0
FRANKLIN	3	0	0	0	0	0	0	0	1	1	1	0	0	0	0
GADSDEN	251	0	1	0	1	2	12	15	17	107	52	32	12	0	0
GILCHRIST	7	0	0	0	0	0	0	1	1	3	1	1	0	0	0
GLADES	8	0	0	0	0	0	0	0	1	3	1	3	0	0	0
GULF	6	0	0	0	0	0	1	0	0	3	1	0	1	0	0
HAMILTON	41	0	0	0	0	0	0	3	2	20	13	2	1	0	0
HARDEE	13	0	0	0	0	0	0	0	1	5	5	2	0	0	0
HENDRY	67	0	0	0	0	1	2	2	6	30	12	11	3	0	0
HERNANDO	85	0	0	0	0	0	0	3	10	42	13	10	7	0	0
HIGHLANDS	120	0	0	0	1	2	3	9	5	46	24	22	8	0	0
HILLSBOROUGH	2,677	0	2	3	22	35	74	133	205	1,112	622	328	141	0	0
HOLMES	7	0	0	0	0	0	1	0	0	3	2	1	0	0	0
INDIAN RIVER	174	0	0	2	0	2	6	5	14	71	50	13	11	0	0
JACKSON	111	0	0	0	1	1	1	8	6	50	26	13	5	0	0
JEFFERSON	48	0	0	0	0	0	1	1	4	18	11	7	6	0	0
LAFAYETTE	5	0	0	0	0	0	0	0	0	4	1	0	0	0	0
LAKE	342	0	0	0	5	1	8	18	31	153	72	42	12	0	0
LEE	658	0	0	1	8	10	23	45	45	245	147	88	44	2	0
LEON	909	0	1	2	7	7	21	20	50	411	224	115	50	0	1
LEVY	40	0	0	0	1	0	4	0	3	20	9	2	1	0	0
LIBERTY	4	0	0	0	0	0	0	0	2	1	1	0	0	0	0
MADISON	83	0	0	0	3	1	2	4	3	34	25	5	6	0	0
MANATEE	368	0	0	2	2	6	11	21	33	147	97	39	9	1	0
MARION	500	0	1	0	2	7	8	26	37	216	130	56	17	0	0
MARTIN	70	0	0	0	0	0	0	2	5	30	19	9	5	0	0
MONROE	48	0	0	0	0	1	0	4	0	18	15	6	4	0	0
NASSAU	41	0	0	0	0	1	2	3	1	20	9	4	1	0	0
OKALOOSA	172	0	0	0	1	2	8	9	14	73	36	22	7	0	0
OKEECHOBEE	25	0	0	0	1	0	0	1	2	11	6	4	0	0	0
ORANGE	2,831	0	0	7	22	44	58	117	192	1,092	698	404	195	2	0
OSCEOLA	261	0	0	0	0	5	5	9	20	102	56	41	23	0	0
PALM BEACH	2,525	0	3	8	18	30	60	100	166	895	624	383	237	1	0
PASCO	152	0	0	0	0	2	2	7	12	58	36	20	15	0	0
PINELLAS	1,235	0	1	4	8	21	36	51	112	508	300	134	59	0	1
POLK	1,108	0	1	4	7	17	32	51	66	456	286	125	63	0	0
PUTNAM	146	0	1	2	0	3	4	7	13	61	36	16	3	0	0
SAINT JOHNS	111	0	0	0	1	1	2	8	7	49	26	11	5	1	0
SAINT LUCIE	594	0	0	1	0	9	21	22	42	250	149	63	37	0	0
SANTA ROSA	50	0	0	0	0	0	0	3	9	14	10	10	4	0	0
SARASOTA	229	0	0	2	2	3	9	9	17	88	45	46	8	0	0
SEMINOLE	497	0	0	3	3	4	15	22	30	187	132	73	28	0	0
SUMTER	74	0	0	0	1	0	2	3	7	33	20	5	3	0	0
SUWANNEE	45	0	0	0	0	1	0	2	8	20	9	4	1	0	0
TAYLOR	41	0	0	1	0	1	2	2	4	19	4	4	4	0	0
UNION	18	0	0	0	0	0	0	1	2	6	4	4	1	0	0
VOLUSIA	611	0	0	1	3	6	15	22	42	265	160	66	30	1	0
WAKULLA	21	0	0	0	0	0	0	0	0	12	5	2	2	0	0
WALTON	31	0	0	0	0	0	1	2	1	12	8	4	3	0	0
WASHINGTON	25	0	0	0	0	1	0	3	3	9	7	2	0	0	0

TABLE B-8 (Cont.): RESIDENT LIVE BIRTHS TO UNWED OTHER MOTHERS, BY AGE OF MOTHER, BY COUNTY, FLORIDA, 2012

	TOTAL	<13	13	14	15	16	17	18	19	20-24	25-29	30-34	35-44	45+	UNK
FLORIDA	3,665	0	1	2	15	53	86	140	228	1,169	942	630	397	2	0
ALACHUA	28	0	0	0	1	1	1	3	3	8	4	6	1	0	0
BAKER	3	0	0	0	0	1	0	0	0	1	1	0	0	0	0
BAY	64	0	0	1	2	1	3	3	7	25	13	6	3	0	0
BRADFORD	1	0	0	0	0	0	0	0	0	0	0	1	0	0	0
BREVARD	112	0	0	0	1	1	4	4	9	36	31	10	16	0	0
BROWARD	346	0	0	0	0	3	3	10	8	84	112	76	50	0	0
CALHOUN	1	0	0	0	0	0	0	0	0	0	1	0	0	0	0
CHARLOTTE	25	0	0	0	0	0	0	0	2	11	7	5	0	0	0
CITRUS	16	0	0	0	0	0	0	1	0	5	7	3	0	0	0
CLAY	46	0	0	0	0	1	1	4	3	20	4	9	4	0	0
COLLIER	29	0	0	0	1	1	1	1	3	7	9	3	3	0	0
COLUMBIA	3	0	0	0	0	0	0	0	0	2	1	0	0	0	0
MIAMI-DADE	179	0	0	0	0	0	1	4	5	39	59	38	33	0	0
DESOTO	0	0	0	0	0	0	0	0	0	0	0	0	0	0	0
DIXIE	2	0	0	0	0	0	0	0	0	1	1	0	0	0	0
DUVAL	279	0	0	0	1	3	5	10	21	105	64	42	27	1	0
ESCAMBIA	83	0	0	0	0	2	4	5	4	29	28	7	4	0	0
FLAGLER	26	0	0	0	0	0	1	3	1	15	4	2	0	0	0
FRANKLIN	2	0	0	0	0	0	0	0	0	1	1	0	0	0	0
GADSDEN	4	0	0	0	0	0	0	0	0	3	0	1	0	0	0
GILCHRIST	0	0	0	0	0	0	0	0	0	0	0	0	0	0	0
GLADES	3	0	0	0	0	0	1	0	0	1	0	0	1	0	0
GULF	2	0	0	0	0	0	0	0	1	0	1	0	0	0	0
HAMILTON	1	0	0	0	0	0	0	0	0	1	0	0	0	0	0
HARDEE	8	0	0	0	0	0	0	0	2	2	3	1	0	0	0
HENDRY	17	0	0	0	0	0	0	2	3	4	3	4	1	0	0
HERNANDO	23	0	0	0	0	0	0	1	2	8	4	4	4	0	0
HIGHLANDS	18	0	0	0	0	0	1	0	1	10	2	3	1	0	0
HILLSBOROUGH	194	0	0	0	1	2	3	4	12	69	49	30	24	0	0
HOLMES	4	0	0	0	0	0	0	0	1	1	1	1	0	0	0
INDIAN RIVER	16	0	0	0	0	3	0	0	1	5	4	1	2	0	0
JACKSON	14	0	0	0	0	1	3	0	2	6	1	1	0	0	0
JEFFERSON	3	0	0	0	0	0	0	0	1	1	1	0	0	0	0
LAFAYETTE	1	0	0	0	0	0	0	0	0	1	0	0	0	0	0
LAKE	64	0	0	0	1	1	1	4	4	18	20	12	3	0	0
LEE	120	0	1	0	0	2	3	6	8	35	29	20	16	0	0
LEON	46	0	0	0	0	2	1	0	1	20	10	4	8	0	0
LEVY	2	0	0	0	0	0	0	1	0	0	0	1	0	0	0
LIBERTY	0	0	0	0	0	0	0	0	0	0	0	0	0	0	0
MADISON	2	0	0	0	0	0	0	0	0	1	1	0	0	0	0
MANATEE	144	0	0	0	0	1	5	6	8	38	46	24	16	0	0
MARION	53	0	0	0	0	0	0	2	7	21	8	10	5	0	0
MARTIN	34	0	0	0	0	2	2	0	2	8	9	7	4	0	0
MONROE	6	0	0	0	0	0	0	0	0	2	2	2	0	0	0
NASSAU	8	0	0	0	0	0	0	0	0	5	3	0	0	0	0
OKALOOSA	72	0	0	0	0	2	2	3	9	25	15	11	5	0	0
OKEECHOBEE	21	0	0	0	0	1	1	2	3	8	3	2	1	0	0
ORANGE	401	0	0	0	0	6	9	14	27	121	101	73	49	1	0
OSCEOLA	80	0	0	0	2	0	2	0	3	38	11	17	7	0	0
PALM BEACH	194	0	0	0	0	0	2	2	6	57	51	45	31	0	0
PASCO	71	0	0	0	1	1	3	7	7	21	15	10	6	0	0
PINELLAS	230	0	0	0	1	2	10	11	12	74	65	33	22	0	0
POLK	156	0	0	0	0	7	4	11	8	57	30	27	12	0	0
PUTNAM	13	0	0	0	0	1	2	1	2	3	1	2	1	0	0
SAINT JOHNS	18	0	0	0	0	0	0	1	3	7	3	3	1	0	0
SAINT LUCIE	55	0	0	0	0	1	0	5	4	16	13	7	9	0	0
SANTA ROSA	24	0	0	0	1	0	0	0	2	10	5	5	1	0	0
SARASOTA	73	0	0	0	0	2	1	1	2	15	19	24	9	0	0
SEMINOLE	93	0	0	1	0	1	2	2	8	31	26	16	6	0	0
SUMTER	3	0	0	0	0	0	1	0	0	1	0	1	0	0	0
SUWANNEE	5	0	0	0	0	0	0	1	0	2	1	1	0	0	0
TAYLOR	1	0	0	0	0	0	0	0	0	0	0	1	0	0	0
UNION	4	0	0	0	0	0	1	0	1	2	0	0	0	0	0
VOLUSIA	102	0	0	0	1	1	2	5	8	25	34	17	9	0	0
WAKULLA	1	0	0	0	0	0	0	0	0	1	0	0	0	0	0
WALTON	10	0	0	0	0	0	0	0	0	3	4	1	2	0	0
WASHINGTON	6	0	0	0	1	0	0	0	1	3	1	0	0	0	0

TABLE B-9: RESIDENT LIVE BIRTHS BY MONTH, BY COUNTY, FLORIDA, 2012

	TOTAL	JAN	FEB	MAR	APR	MAY	JUN	JUL	AUG	SEP	OCT	NOV	DEC
FLORIDA	212,954	17,445	16,741	17,493	16,373	17,113	16,976	18,047	19,004	18,637	19,212	17,738	18,175
ALACHUA	2,879	232	231	234	262	210	253	253	258	252	223	214	257
BAKER	341	28	34	32	26	36	17	31	35	26	26	31	19
BAY	2,300	189	177	162	193	188	191	189	193	200	239	183	196
BRADFORD	317	30	19	30	16	23	27	24	29	33	32	32	22
BREVARD	4,978	384	398	410	360	429	387	425	443	454	463	409	416
BROWARD	21,169	1,790	1,621	1,704	1,569	1,756	1,746	1,795	1,825	1,874	1,957	1,734	1,798
CALHOUN	148	8	10	9	15	16	15	12	13	9	12	12	17
CHARLOTTE	1,036	87	82	75	76	79	86	111	110	82	89	78	81
CITRUS	1,040	92	89	76	70	85	84	79	77	100	101	91	96
CLAY	2,077	153	171	165	158	179	148	169	205	209	182	166	172
COLLIER	3,148	255	250	271	250	250	232	249	284	276	292	264	275
COLUMBIA	773	64	70	65	75	55	48	61	69	62	69	63	72
MIAMI-DADE	30,479	2,429	2,472	2,491	2,332	2,433	2,471	2,578	2,682	2,598	2,801	2,561	2,631
DESOTO	366	34	22	32	25	40	29	30	29	24	31	35	35
DIXIE	161	10	11	7	8	6	17	14	13	17	23	15	20
DUVAL	12,456	1,015	1,007	1,000	956	1,008	987	1,074	1,080	1,051	1,170	1,045	1,063
ESCAMBIA	3,929	354	297	346	290	328	309	326	332	322	335	315	375
FLAGLER	802	76	64	78	62	67	88	63	66	59	70	55	54
FRANKLIN	109	7	15	5	11	6	10	7	9	7	12	9	11
GADSDEN	526	43	40	42	48	50	41	51	42	38	38	45	48
GILCHRIST	207	21	12	18	11	17	10	20	22	27	12	13	24
GLADES	69	5	5	9	6	6	7	2	6	6	3	5	9
GULF	118	14	13	9	2	15	8	17	6	5	9	12	8
HAMILTON	138	13	15	12	16	9	7	13	18	10	11	9	5
HARDEE	392	33	27	35	39	31	25	29	30	33	46	28	36
HENDRY	591	42	43	52	42	55	49	39	59	48	64	61	37
HERNANDO	1,387	110	87	126	105	112	106	124	118	136	133	119	111
HIGHLANDS	907	58	89	76	62	77	60	80	99	70	92	70	74
HILLSBOROUGH	16,404	1,340	1,332	1,349	1,289	1,279	1,268	1,394	1,498	1,432	1,482	1,356	1,385
HOLMES	191	17	6	15	15	19	18	17	14	15	15	20	20
INDIAN RIVER	1,247	125	87	102	103	84	105	107	114	106	105	101	108
JACKSON	501	40	40	42	38	41	30	46	40	41	45	50	48
JEFFERSON	139	8	11	11	8	9	12	19	8	12	12	13	16
LAFAYETTE	72	4	9	1	4	7	4	6	11	7	6	7	6
LAKE	3,052	240	240	281	218	242	231	282	274	258	260	268	258
LEE	6,401	507	514	548	473	537	517	494	582	563	564	536	566
LEON	3,007	261	222	251	242	205	229	260	254	270	247	301	265
LEVY	379	36	31	40	21	35	27	29	30	38	31	27	34
LIBERTY	66	4	8	6	6	3	5	5	5	7	3	10	4
MADISON	212	13	14	21	15	17	24	17	19	20	14	22	16
MANATEE	3,429	300	263	322	249	267	262	302	309	285	294	292	284
MARION	3,267	261	260	256	274	263	284	255	273	317	286	268	270
MARTIN	1,126	103	67	73	100	79	84	100	125	96	112	98	89
MONROE	709	52	50	71	56	70	40	62	69	62	63	60	54
NASSAU	753	62	59	68	62	52	59	62	67	74	72	69	47
OKALOOSA	2,600	202	198	236	221	208	235	233	221	211	217	208	210
OKEECHOBEE	524	48	46	43	39	33	54	38	46	40	44	37	56
ORANGE	15,729	1,251	1,183	1,286	1,232	1,297	1,227	1,299	1,385	1,434	1,413	1,328	1,394
OSCEOLA	3,825	302	289	299	282	287	333	352	376	343	309	331	322
PALM BEACH	13,936	1,187	1,116	1,167	1,036	1,148	1,064	1,151	1,263	1,197	1,282	1,146	1,179
PASCO	4,736	415	346	405	341	344	390	421	453	414	398	397	412
PINELLAS	8,446	696	683	692	649	681	671	723	756	732	756	707	700
POLK	7,257	593	605	569	568	540	558	597	631	654	669	613	660
PUTNAM	819	69	59	70	70	65	76	73	62	86	63	69	57
SAINT JOHNS	1,896	139	131	149	147	165	154	179	183	174	184	139	152
SAINT LUCIE	2,950	279	230	234	240	240	249	253	236	248	253	247	241
SANTA ROSA	1,859	143	159	142	147	158	127	176	194	179	155	141	138
SARASOTA	2,912	246	244	242	205	237	242	273	242	250	275	229	227
SEMINOLE	4,415	320	324	358	365	359	373	369	411	410	371	380	375
SUMTER	467	42	35	28	44	30	34	34	50	50	47	33	40
SUWANNEE	445	36	35	32	38	29	46	29	33	49	37	38	43
TAYLOR	221	19	20	25	17	15	14	18	28	23	9	19	14
UNION	179	10	16	12	12	18	9	15	23	15	20	14	15
VOLUSIA	4,706	393	350	383	364	379	355	400	446	386	454	388	408
WAKULLA	333	36	28	20	28	30	24	25	34	27	22	36	23
WALTON	666	53	45	52	46	61	58	48	60	71	69	49	54
WASHINGTON	229	15	15	21	24	13	24	19	26	13	19	17	23

TABLE B-10: RESIDENT LIVE BIRTHS BY MOTHER'S EDUCATION\*, BY COUNTY, FLORIDA, 2012

	HIGHEST LEVEL/DEGREE OF EDUCATION COMPLETED									
	TOTAL	< 9TH GRADE	9TH-12TH NO DIPLOMA	HIGH SCHOOL DIPLOMA	SOME COLLEGE	ASSOCIATE DEGREE	BACHELOR DEGREE	MASTER DEGREE	DOCTORATE	UNK
FLORIDA	212,954	7,380	25,029	65,908	40,699	20,456	35,399	13,146	3,636	1,301
ALACHUA	2,879	26	274	587	605	277	590	334	183	3
BAKER	341	9	55	125	84	29	29	8	1	1
BAY	2,300	61	335	709	592	184	262	86	17	54
BRADFORD	317	2	53	129	68	32	26	6	1	0
BREVARD	4,978	102	503	1,224	1,243	655	837	334	62	18
BROWARD	21,169	446	2,081	5,866	4,145	2,153	4,107	1,747	468	156
CALHOUN	148	4	21	56	31	18	15	1	1	1
CHARLOTTE	1,036	18	119	381	258	101	112	35	7	5
CITRUS	1,040	14	163	397	260	84	87	26	7	2
CLAY	2,077	19	199	613	527	235	329	123	14	18
COLLIER	3,148	364	354	1,073	461	248	446	163	33	6
COLUMBIA	773	25	134	272	203	62	56	19	2	0
MIAMI-DADE	30,479	1,187	2,649	10,561	4,396	3,359	5,304	2,254	668	101
DESOTO	366	66	94	129	38	21	13	4	0	1
DIXIE	161	4	35	70	34	10	7	1	0	0
DUVAL	12,456	365	1,503	3,730	2,757	1,029	2,062	696	228	86
ESCAMBIA	3,929	56	533	1,680	447	422	553	196	36	6
FLAGLER	802	8	82	208	227	110	120	33	7	7
FRANKLIN	109	7	14	41	26	5	7	5	0	4
GADSDEN	526	47	109	161	99	35	34	17	4	20
GILCHRIST	207	9	34	76	50	19	12	6	1	0
GLADES	69	4	11	31	7	11	4	0	0	1
GULF	118	4	8	41	39	7	13	5	0	1
HAMILTON	138	15	27	50	29	10	4	3	0	0
HARDEE	392	66	104	134	46	17	15	4	2	4
HENDRY	591	60	147	249	60	36	27	5	1	6
HERNANDO	1,387	11	163	511	332	183	135	34	7	11
HIGHLANDS	907	42	188	355	154	60	80	23	4	1
HILLSBOROUGH	16,404	412	2,212	5,476	2,836	1,071	2,879	1,110	323	85
HOLMES	191	13	35	66	34	17	17	7	2	0
INDIAN RIVER	1,247	45	182	462	241	102	157	42	13	3
JACKSON	501	11	79	177	111	58	45	19	0	1
JEFFERSON	139	3	27	38	38	11	13	8	0	1
LAFAYETTE	72	2	11	28	16	8	7	0	0	0
LAKE	3,052	79	414	1,011	680	280	420	130	24	14
LEE	6,401	319	859	2,460	945	671	820	217	42	68
LEON	3,007	39	277	502	701	286	709	318	128	47
LEVY	379	16	66	155	84	25	25	7	1	0
LIBERTY	66	2	14	21	13	8	7	0	0	1
MADISON	212	5	35	78	51	11	21	4	3	4
MANATEE	3,429	276	627	1,015	591	263	446	149	52	10
MARION	3,267	87	531	1,054	844	283	340	98	28	2
MARTIN	1,126	119	136	282	147	108	207	55	13	59
MONROE	709	26	53	222	149	77	127	42	5	8
NASSAU	753	18	72	215	200	85	114	38	8	3
OKALOOSA	2,600	38	198	779	740	262	420	132	26	5
OKEECHOBEE	524	37	118	196	88	33	32	12	2	6
ORANGE	15,729	419	1,755	4,503	2,915	1,480	3,082	1,195	280	100
OSCEOLA	3,825	93	398	1,410	757	456	551	136	21	3
PALM BEACH	13,936	1,128	1,649	3,500	2,481	1,262	2,630	934	319	33
PASCO	4,736	77	593	1,338	997	470	913	271	58	19
PINELLAS	8,446	167	951	2,373	1,782	736	1,547	561	197	132
POLK	7,257	439	1,314	2,376	1,498	541	777	248	46	18
PUTNAM	819	67	173	318	139	59	43	11	3	6
SAINT JOHNS	1,896	10	91	393	380	172	599	178	64	9
SAINT LUCIE	2,950	99	373	1,086	537	346	330	119	23	37
SANTA ROSA	1,859	17	158	618	293	255	383	99	30	6
SARASOTA	2,912	42	292	1,002	529	385	422	170	37	33
SEMINOLE	4,415	62	301	984	967	471	1,135	398	75	22
SUMTER	467	17	98	200	86	32	25	5	3	1
SUWANNEE	445	21	103	170	86	36	25	4	0	0
TAYLOR	221	2	36	102	46	19	9	5	1	1
UNION	179	5	23	75	47	16	11	2	0	0
VOLUSIA	4,706	95	641	1,353	1,160	550	632	199	39	37
WAKULLA	333	6	21	101	99	29	51	17	4	5
WALTON	666	20	80	219	127	58	122	29	9	2
WASHINGTON	229	6	40	89	45	12	20	9	2	6

\* Starting in 2004, "mother's education" is measured according to the highest level/degree completed, instead of highest grade completed.

TABLE B-10 (Cont.): WHITE RESIDENT LIVE BIRTHS BY MOTHER'S EDUCATION\*, BY COUNTY, FLORIDA, 2012

	TOTAL	HIGHEST LEVEL/DEGREE OF EDUCATION COMPLETED									
		< 9TH GRADE	9TH-12TH NO DIPLOMA	HIGH SCHOOL DIPLOMA	SOME COLLEGE	ASSOCIATE DEGREE	BACHELOR DEGREE	MASTER DEGREE	DOCTORATE	UNK	
FLORIDA	150,866	6,091	15,730	43,271	28,193	15,420	28,361	10,282	2,759	759	
ALACHUA	1,748	20	114	253	344	204	447	240	124	2	
BAKER	294	9	48	100	72	26	29	8	1	1	
BAY	1,766	42	234	538	454	152	226	71	14	35	
BRADFORD	245	1	30	103	52	29	23	6	1	0	
BREVARD	3,879	76	353	879	982	524	716	290	48	11	
BROWARD	11,447	297	778	2,701	2,130	1,210	2,785	1,139	321	86	
CALHOUN	130	4	16	49	26	18	14	1	1	1	
CHARLOTTE	905	13	106	334	220	91	98	33	6	4	
CITRUS	951	14	148	369	238	78	76	24	3	1	
CLAY	1,697	17	165	501	423	191	270	107	9	14	
COLLIER	2,691	347	285	861	393	204	413	154	30	4	
COLUMBIA	601	22	92	206	163	54	46	16	2	0	
MIAMI-DADE	22,046	1,007	1,516	6,738	3,087	2,622	4,489	1,949	567	71	
DESOTO	312	64	84	100	33	16	11	4	0	0	
DIXIE	151	4	32	68	31	8	7	1	0	0	
DUVAL	6,787	240	604	1,730	1,442	624	1,470	468	169	40	
ESCAMBIA	2,529	30	277	961	293	311	457	171	27	2	
FLAGLER	641	8	57	164	186	92	99	26	7	2	
FRANKLIN	99	5	12	38	24	5	6	5	0	4	
GADSDEN	197	38	31	57	26	10	19	5	3	8	
GILCHRIST	194	9	31	70	48	17	12	6	1	0	
GLADES	57	4	10	23	5	10	4	0	0	1	
GULF	106	4	7	38	33	7	11	5	0	1	
HAMILTON	89	15	12	28	18	10	4	2	0	0	
HARDEE	357	65	98	116	41	14	15	4	2	2	
HENDRY	494	58	129	194	47	29	25	5	1	6	
HERNANDO	1,211	7	141	448	296	162	115	25	7	10	
HIGHLANDS	714	40	150	264	123	48	65	20	4	0	
HILLSBOROUGH	11,775	371	1,550	3,678	1,977	818	2,254	847	232	48	
HOLMES	174	11	32	60	31	15	16	7	2	0	
INDIAN RIVER	768	5	75	261	163	83	131	37	12	1	
JACKSON	334	8	53	112	68	38	38	17	0	0	
JEFFERSON	79	3	13	20	18	9	13	3	0	0	
LAFAYETTE	64	2	10	26	11	8	7	0	0	0	
LAKE	2,426	68	323	782	535	228	360	104	17	9	
LEE	5,177	290	658	1,839	779	591	730	202	35	53	
LEON	1,593	24	85	218	289	174	492	209	91	11	
LEVY	330	15	52	135	73	24	24	6	1	0	
LIBERTY	62	2	12	20	12	8	7	0	0	1	
MADISON	112	4	15	35	26	8	17	4	2	1	
MANATEE	2,688	202	478	753	451	228	397	127	44	8	
MARION	2,470	77	401	753	610	244	278	86	19	2	
MARTIN	957	106	108	233	124	95	188	53	12	38	
MONROE	604	20	38	181	129	71	115	40	5	5	
NASSAU	678	18	64	189	181	77	106	33	7	3	
OKALOOSA	2,078	32	149	604	572	221	363	109	23	5	
OKEECHOBEE	458	35	99	169	79	29	30	9	2	6	
ORANGE	9,978	321	898	2,620	1,755	991	2,315	850	178	50	
OSCEOLA	3,157	88	337	1,163	623	380	436	110	17	3	
PALM BEACH	9,108	937	859	1,904	1,529	846	2,073	702	242	16	
PASCO	4,198	76	532	1,212	875	426	800	218	46	13	
PINELLAS	6,304	140	621	1,641	1,290	601	1,311	480	164	56	
POLK	5,462	396	956	1,684	1,140	410	645	188	34	9	
PUTNAM	611	60	126	216	104	50	38	10	3	4	
SAINT JOHNS	1,640	5	62	308	340	153	541	168	54	9	
SAINT LUCIE	1,956	70	233	667	367	239	244	89	19	28	
SANTA ROSA	1,679	17	145	551	258	224	359	92	27	6	
SARASOTA	2,444	33	209	825	455	340	376	154	30	22	
SEMINOLE	3,368	46	180	699	726	384	937	325	52	19	
SUMTER	365	16	80	144	68	29	20	5	2	1	
SUWANNEE	370	19	84	136	71	33	23	4	0	0	
TAYLOR	168	1	29	73	33	18	8	4	1	1	
UNION	149	5	19	58	39	16	10	2	0	0	
VOLUSIA	3,668	79	464	1,025	921	456	526	154	27	16	
WAKULLA	286	6	19	85	86	26	46	12	2	4	
WALTON	599	17	71	192	115	53	115	29	6	1	
WASHINGTON	187	6	30	68	39	10	20	8	2	4	

\* Starting in 2004, "mother's education" is measured according to the highest level/degree completed, instead of highest grade completed.

TABLE B-10 (Cont.): BLACK RESIDENT LIVE BIRTHS BY MOTHER'S EDUCATION\*, BY COUNTY, FLORIDA, 2012

	HIGHEST LEVEL/DEGREE OF EDUCATION COMPLETED										
	TOTAL	9TH-12TH		HIGH	SOME COLLEGE	ASSOCIATE DEGREE	BACHELOR DEGREE	MASTER DEGREE	DOCTORATE	UNK	
		< 9TH GRADE	NO DIPLOMA	SCHOOL DIPLOMA							
FLORIDA	48,992	850	8,301	19,498	10,387	3,906	3,874	1,518	313	345	
ALACHUA	851	6	150	309	237	57	58	26	7	1	
BAKER	44	0	6	24	11	3	0	0	0	0	
BAY	328	7	64	118	92	16	12	8	0	11	
BRADFORD	68	1	23	25	16	3	0	0	0	0	
BREVARD	739	7	124	254	198	87	48	16	2	3	
BROWARD	8,271	124	1,225	2,861	1,826	803	901	402	70	59	
CALHOUN	14	0	5	4	4	0	1	0	0	0	
CHARLOTTE	81	3	6	34	23	7	7	0	0	1	
CITRUS	46	0	11	18	11	3	2	0	1	0	
CLAY	237	1	25	75	74	26	24	10	1	1	
COLLIER	393	16	59	192	60	40	20	5	0	1	
COLUMBIA	156	2	40	61	36	8	6	3	0	0	
MIAMI-DADE	7,542	158	1,105	3,646	1,209	646	530	185	48	15	
DESOTO	54	2	10	29	5	5	2	0	0	1	
DIXIE	6	0	1	2	2	1	0	0	0	0	
DUVAL	4,528	68	829	1,714	1,115	312	310	123	24	33	
ESCAMBIA	1,176	19	240	633	126	82	51	17	4	4	
FLAGLER	106	0	20	29	25	13	10	7	0	2	
FRANKLIN	5	0	1	2	1	0	1	0	0	0	
GADSDEN	317	9	75	101	73	24	14	11	1	9	
GILCHRIST	11	0	3	6	2	0	0	0	0	0	
GLADES	8	0	0	6	2	0	0	0	0	0	
GULF	7	0	1	1	4	0	1	0	0	0	
HAMILTON	46	0	14	21	11	0	0	0	0	0	
HARDEE	21	1	2	15	3	0	0	0	0	0	
HENDRY	74	1	13	42	12	6	0	0	0	0	
HERNANDO	114	1	16	48	23	12	8	5	0	1	
HIGHLANDS	148	1	32	79	21	10	4	0	0	1	
HILLSBOROUGH	3,590	25	617	1,592	723	189	305	96	24	19	
HOLMES	10	1	3	4	2	0	0	0	0	0	
INDIAN RIVER	232	0	41	113	46	15	13	2	0	2	
JACKSON	142	1	19	59	39	17	4	2	0	1	
JEFFERSON	57	0	13	18	19	2	0	4	0	1	
LAFAYETTE	6	0	1	2	3	0	0	0	0	0	
LAKE	445	8	77	170	109	31	30	16	1	3	
LEE	906	14	157	514	109	57	43	3	2	7	
LEON	1,208	11	181	261	381	106	160	60	17	31	
LEVY	45	1	13	19	11	1	0	0	0	0	
LIBERTY	4	0	2	1	1	0	0	0	0	0	
MADISON	97	1	19	42	24	3	4	0	1	3	
MANATEE	449	4	108	188	101	19	15	11	1	2	
MARION	652	4	115	257	198	32	35	8	3	0	
MARTIN	93	1	17	37	15	11	5	1	0	6	
MONROE	82	4	14	36	16	4	6	1	0	1	
NASSAU	57	0	8	18	14	8	5	4	0	0	
OKALOOSA	283	3	35	104	82	24	22	13	0	0	
OKEECHOBEE	31	0	8	16	4	1	0	2	0	0	
ORANGE	4,223	70	765	1,540	916	337	372	158	30	35	
OSCEOLA	435	3	42	180	90	45	59	15	1	0	
PALM BEACH	4,028	172	749	1,420	834	353	342	112	35	11	
PASCO	279	0	36	71	68	25	50	22	7	0	
PINELLAS	1,472	18	278	562	365	82	81	29	6	51	
POLK	1,434	31	309	586	296	97	67	39	5	4	
PUTNAM	177	3	42	88	32	8	2	1	0	1	
SAINT JOHNS	148	3	25	67	23	7	16	4	3	0	
SAINT LUCIE	843	21	127	376	145	87	61	19	1	6	
SANTA ROSA	81	0	7	31	16	16	7	2	2	0	
SARASOTA	281	4	69	119	44	26	10	4	1	4	
SEMINOLE	703	7	98	226	183	62	85	32	9	1	
SUMTER	88	1	18	48	15	2	4	0	0	0	
SUWANNEE	62	0	16	29	14	3	0	0	0	0	
TAYLOR	47	1	7	25	12	1	0	1	0	0	
UNION	24	0	4	14	5	0	1	0	0	0	
VOLUSIA	775	10	146	265	186	65	55	34	4	10	
WAKULLA	43	0	1	15	13	2	5	5	1	1	
WALTON	38	1	6	18	9	3	0	0	1	0	
WASHINGTON	30	0	8	17	2	1	0	0	0	2	

\* Starting in 2004, "mother's education" is measured according to the highest level/degree completed, instead of highest grade completed.

TABLE B-10 (Cont.): OTHER RESIDENT LIVE BIRTHS BY MOTHER'S EDUCATION\*, BY COUNTY, FLORIDA, 2012

	HIGHEST LEVEL/DEGREE OF EDUCATION COMPLETED										
	TOTAL	9TH-12TH		HIGH	SOME COLLEGE	ASSOCIATE DEGREE	BACHELOR DEGREE	MASTER DEGREE	DOCTORATE	UNK	
		< 9TH GRADE	NO DIPLOMA	SCHOOL DIPLOMA							
FLORIDA	12,335	373	896	2,960	2,010	1,095	3,044	1,311	546	100	
ALACHUA	279	0	9	25	24	16	85	68	52	0	
BAKER	3	0	1	1	1	0	0	0	0	0	
BAY	162	6	28	43	36	13	21	6	3	6	
BRADFORD	4	0	0	1	0	0	3	0	0	0	
BREVARD	353	17	25	90	62	44	73	28	12	2	
BROWARD	1,399	25	75	299	180	137	411	198	72	2	
CALHOUN	4	0	0	3	1	0	0	0	0	0	
CHARLOTTE	50	2	7	13	15	3	7	2	1	0	
CITRUS	42	0	4	10	11	3	9	2	3	0	
CLAY	136	1	9	37	27	17	35	6	4	0	
COLLIER	63	1	10	20	8	4	13	4	3	0	
COLUMBIA	15	1	2	4	4	0	4	0	0	0	
MIAMI-DADE	757	22	24	151	89	82	235	107	47	0	
DESOTO	0	0	0	0	0	0	0	0	0	0	
DIXIE	4	0	2	0	1	1	0	0	0	0	
DUVAL	1,093	56	70	270	191	90	273	101	35	7	
ESCAMBIA	222	7	15	85	28	29	45	8	5	0	
FLAGLER	49	0	5	13	15	4	11	0	0	1	
FRANKLIN	3	1	0	1	1	0	0	0	0	0	
GADSDEN	12	0	3	3	0	1	1	1	0	3	
GILCHRIST	2	0	0	0	0	2	0	0	0	0	
GLADES	4	0	1	2	0	1	0	0	0	0	
GULF	3	0	0	0	2	0	1	0	0	0	
HAMILTON	3	0	1	1	0	0	0	1	0	0	
HARDEE	12	0	4	3	2	3	0	0	0	0	
HENDRY	23	1	5	13	1	1	2	0	0	0	
HERNANDO	58	3	6	13	12	8	12	4	0	0	
HIGHLANDS	45	1	6	12	10	2	11	3	0	0	
HILLSBOROUGH	1,012	14	43	203	133	63	313	165	65	13	
HOLMES	7	1	0	2	1	2	1	0	0	0	
INDIAN RIVER	37	0	4	20	5	1	5	2	0	0	
JACKSON	25	2	7	6	4	3	3	0	0	0	
JEFFERSON	3	0	1	0	1	0	0	1	0	0	
LAFAYETTE	2	0	0	0	2	0	0	0	0	0	
LAKE	178	3	13	58	36	21	30	10	6	1	
LEE	311	15	43	105	57	23	46	12	5	5	
LEON	203	4	11	23	31	6	56	49	20	3	
LEVY	4	0	1	1	0	0	1	1	0	0	
LIBERTY	0	0	0	0	0	0	0	0	0	0	
MADISON	3	0	1	1	1	0	0	0	0	0	
MANATEE	289	70	41	74	38	16	33	10	7	0	
MARION	143	5	15	44	36	7	26	4	6	0	
MARTIN	75	12	11	12	8	2	14	1	1	14	
MONROE	20	2	1	5	4	2	5	1	0	0	
NASSAU	18	0	0	8	5	0	3	1	1	0	
OKALOOSA	232	3	14	69	84	16	34	9	3	0	
OKEECHOBEE	35	2	11	11	5	3	2	1	0	0	
ORANGE	1,516	28	92	340	244	152	393	187	72	8	
OSCEOLA	231	2	19	67	42	31	56	11	3	0	
PALM BEACH	789	18	40	175	117	63	213	120	42	1	
PASCO	250	1	25	52	53	19	61	31	5	3	
PINELLAS	616	9	49	160	112	50	141	50	26	19	
POLK	350	12	47	104	60	34	64	21	7	1	
PUTNAM	25	1	5	12	3	1	3	0	0	0	
SAINT JOHNS	94	2	4	16	13	10	39	6	4	0	
SAINT LUCIE	142	5	12	42	25	20	24	10	3	1	
SANTA ROSA	95	0	6	33	18	15	17	5	1	0	
SARASOTA	185	5	14	57	30	19	36	12	6	6	
SEMINOLE	335	7	21	57	57	24	113	40	14	2	
SUMTER	14	0	0	8	3	1	1	0	1	0	
SUWANNEE	11	1	2	5	1	0	2	0	0	0	
TAYLOR	6	0	0	4	1	0	1	0	0	0	
UNION	5	0	0	2	3	0	0	0	0	0	
VOLUSIA	233	4	26	58	49	26	49	11	8	2	
WAKULLA	4	0	1	1	0	1	0	0	1	0	
WALTON	25	1	2	8	3	2	7	0	2	0	
WASHINGTON	12	0	2	4	4	1	0	1	0	0	

\* Starting in 2004, "mother's education" is measured according to the highest level/degree completed, instead of highest grade completed.

TABLE B-11: RESIDENT LIVE BIRTHS TO MOTHERS UNDER 15 YEARS OF AGE FOR SELECTED INDICATORS,  
BY COUNTY, FLORIDA, 2012

	TOTAL	UNWED	BIRTHWEIGHT		THIRD TRIMESTER OR NO PRENATAL CARE*	ONE OR MORE PREVIOUS LIVE BIRTHS
			UNDER 1,500 GRAMS	UNDER 2,500 GRAMS		
FLORIDA	192	189	7	26	29	2
ALACHUA	1	1	0	0	0	0
BAKER	0	0	0	0	0	0
BAY	4	4	0	0	0	0
BRADFORD	1	1	0	0	0	0
BREVARD	4	4	0	0	3	0
BROWARD	17	17	2	2	1	0
CALHOUN	0	0	0	0	0	0
CHARLOTTE	1	1	0	0	0	0
CITRUS	0	0	0	0	0	0
CLAY	3	3	0	0	1	0
COLLIER	4	4	0	0	1	0
COLUMBIA	0	0	0	0	0	0
MIAMI-DADE	22	21	1	4	3	0
DESOTO	0	0	0	0	0	0
DIXIE	0	0	0	0	0	0
DUVAL	9	9	0	0	1	0
ESCAMBIA	5	5	0	1	0	0
FLAGLER	0	0	0	0	0	0
FRANKLIN	0	0	0	0	0	0
GADSDEN	1	1	0	0	0	0
GILCHRIST	0	0	0	0	0	0
GLADES	0	0	0	0	0	0
GULF	0	0	0	0	0	0
HAMILTON	0	0	0	0	0	0
HARDEE	1	1	0	0	0	0
HENDRY	0	0	0	0	0	0
HERNANDO	0	0	0	0	0	0
HIGHLANDS	0	0	0	0	0	0
HILLSBOROUGH	13	13	1	3	1	1
HOLMES	0	0	0	0	0	0
INDIAN RIVER	2	2	0	0	1	0
JACKSON	0	0	0	0	0	0
JEFFERSON	0	0	0	0	0	0
LAFAYETTE	0	0	0	0	0	0
LAKE	3	3	0	0	0	0
LEE	4	4	0	0	0	0
LEON	3	3	0	2	0	0
LEVY	0	0	0	0	0	0
LIBERTY	0	0	0	0	0	0
MADISON	0	0	0	0	0	0
MANATEE	5	4	0	0	0	1
MARION	4	4	0	0	0	0
MARTIN	0	0	0	0	0	0
MONROE	0	0	0	0	0	0
NASSAU	0	0	0	0	0	0
OKALOOSA	0	0	0	0	0	0
OKEECHOBEE	0	0	0	0	0	0
ORANGE	14	14	0	2	2	0
OSCEOLA	1	1	0	0	0	0
PALM BEACH	15	14	2	5	3	0
PASCO	4	4	0	1	2	0
PINELLAS	14	14	0	1	3	0
POLK	11	11	0	1	2	0
PUTNAM	3	3	1	2	2	0
SAINT JOHNS	0	0	0	0	0	0
SAINT LUCIE	2	2	0	0	1	0
SANTA ROSA	0	0	0	0	0	0
SARASOTA	3	3	0	1	1	0
SEMINOLE	6	6	0	1	0	0
SUMTER	0	0	0	0	0	0
SUWANNEE	2	2	0	0	0	0
TAYLOR	2	2	0	0	0	0
UNION	1	1	0	0	0	0
VOLUSIA	5	5	0	0	1	0
WAKULLA	0	0	0	0	0	0
WALTON	2	2	0	0	0	0
WASHINGTON	0	0	0	0	0	0

\* Starting in 2004, "trimester prenatal care began" is calculated as the time elapsed from the date of the last menstrual period to the date of the first prenatal care visit. Prior to 2004, these data were obtained by direct question that noted the trimester the mother began prenatal care. Consequently, these data are not comparable to data from prior years.



TABLE B-12: RESIDENT LIVE BIRTHS TO MOTHERS 15 THROUGH 19 YEARS OF AGE FOR SELECTED INDICATORS, AND AGE-SPECIFIC BIRTH RATES PER 1,000 FEMALES, BY COUNTY, FLORIDA, 2012

	TOTAL	UNWED		BIRTHWEIGHT				THIRD TRIMESTER OR NO PRENATAL CARE		ONE OR MORE PREVIOUS LIVE BIRTHS		AGE-SPECIFIC BIRTH RATE	POPULATION 15-19 FEMALES
				UNDER 1,500 GRAMS		UNDER 2,500 GRAMS		NUMBER <sup>1</sup>	% <sup>2</sup>	NUMBER	%		
				NUMBER	%	NUMBER	%						
FLORIDA	15,950	14,543	91.2	293	1.8	1,595	10.0	1,130	7.7	2,693	16.9	27.2	586,777
ALACHUA	191	186	97.4	4	2.1	21	11.0	25	13.9	43	22.5	15.1	12,684
BAKER	41	35	85.4	1	2.4	3	7.3	8	22.9	13	31.7	48.3	848
BAY	247	224	90.7	6	2.4	21	8.5	18	9.0	42	17.0	47.9	5,156
BRADFORD	35	34	97.1	1	2.9	3	8.6	4	11.4	4	11.4	49.4	708
BREVARD	329	301	91.5	4	1.2	27	8.2	23	7.3	51	15.5	21.2	15,506
BROWARD	1,102	1,035	93.9	22	2.0	106	9.6	90	9.2	186	16.9	20.3	54,175
CALHOUN	23	17	73.9	1	4.3	2	8.7	2	11.1	5	21.7	55.3	416
CHARLOTTE	95	90	94.7	1	1.1	10	10.5	8	9.1	14	14.7	28.6	3,324
CITRUS	131	117	89.3	1	0.8	8	6.1	7	5.5	15	11.5	40.9	3,203
CLAY	165	143	86.7	3	1.8	16	9.7	12	8.1	22	13.3	23.6	6,998
COLLIER	198	180	90.9	2	1.0	18	9.1	22	11.6	25	12.6	23.6	8,402
COLUMBIA	74	64	86.5	1	1.4	13	17.6	4	5.6	10	13.5	38.0	1,949
MIAMI-DADE	1,685	1,548	91.9	26	1.5	176	10.4	92	5.9	268	15.9	21.0	80,422
DEOTO	50	42	84.0	1	2.0	4	8.0	7	14.9	9	18.0	51.5	970
DIXIE	21	15	71.4	2	9.5	3	14.3	3	15.8	3	14.3	52.4	401
DUVAL	963	883	91.7	30	3.1	119	12.4	96	11.0	158	16.4	34.0	28,363
ESCAMBIA	406	363	89.4	5	1.2	50	12.3	26	7.4	77	19.0	39.6	10,244
FLAGLER	74	71	95.9	2	2.7	8	10.8	4	6.6	12	16.2	27.8	2,661
FRANKLIN	14	10	71.4	0	0.0	4	28.6	1	7.7	2	14.3	56.5	248
GADSDEN	68	64	94.1	1	1.5	10	14.7	2	3.8	14	20.6	45.5	1,495
GILCHRIST	17	14	82.4	0	0.0	0	0.0	1	6.7	1	5.9	34.0	500
GLADES	6	6	100.0	0	0.0	0	0.0	1	20.0	1	16.7	20.1	298
GULF	11	10	90.9	0	0.0	1	9.1	0	0.0	1	9.1	31.7	347
HAMILTON	18	14	77.8	0	0.0	1	5.6	1	5.6	4	22.2	46.9	384
HARDEE	60	50	83.3	0	0.0	4	6.7	4	7.1	14	23.3	65.7	913
HENDRY	87	76	87.4	1	1.1	7	8.0	4	4.8	17	19.5	61.1	1,424
HERNANDO	103	95	92.2	1	1.0	11	10.7	6	6.4	10	9.7	21.6	4,759
HIGHLANDS	95	88	92.6	0	0.0	10	10.5	6	6.6	12	12.6	40.4	2,351
HILLSBOROUGH	1,429	1,314	92.0	23	1.6	158	11.1	59	4.2	286	20.0	33.2	43,055
HOLMES	26	23	88.5	0	0.0	2	7.7	2	9.5	3	11.5	47.0	553
INDIAN RIVER	120	107	89.2	0	0.0	14	11.7	11	9.5	20	16.7	33.4	3,590
JACKSON	61	55	90.2	1	1.6	3	4.9	2	3.6	7	11.5	44.8	1,362
JEFFERSON	12	12	100.0	0	0.0	2	16.7	0	0.0	2	16.7	33.9	354
LAFAYETTE	7	4	57.1	0	0.0	0	0.0	0	0.0	2	28.6	31.4	223
LAKE	279	251	90.0	6	2.2	27	9.7	11	4.3	47	16.8	34.0	8,216
LEE	555	512	92.3	19	3.4	66	11.9	36	6.7	91	16.4	32.2	17,229
LEON	176	166	94.3	9	5.1	28	15.9	7	5.0	26	14.8	11.7	14,981
LEVY	48	41	85.4	1	2.1	3	6.3	3	6.8	7	14.6	41.2	1,165
LIBERTY	16	13	81.3	0	0.0	1	6.3	1	7.1	1	6.3	78.0	205
MADISON	28	25	89.3	1	3.6	5	17.9	1	4.3	3	10.7	51.1	548
MANATEE	385	348	90.4	9	2.3	23	6.0	32	8.6	70	18.2	42.9	8,977
MARION	340	295	86.8	5	1.5	26	7.6	27	8.7	56	16.5	38.6	8,800
MARTIN	70	66	94.3	2	2.9	6	8.6	5	7.4	12	17.1	19.0	3,682
MONROE	37	34	91.9	1	2.7	3	8.1	4	11.1	3	8.1	25.3	1,464
NASSAU	64	56	87.5	0	0.0	9	14.1	5	9.6	13	20.3	28.6	2,234
OKALOOSA	179	139	77.7	4	2.2	14	7.8	19	11.5	27	15.1	32.6	5,483
OKEECHOBEE	58	50	86.2	1	1.7	4	6.9	5	8.9	15	25.9	46.9	1,237
ORANGE	1,122	1,018	90.7	22	2.0	124	11.1	98	9.6	215	19.2	25.9	43,368
OSCEOLA	329	303	92.1	4	1.2	28	8.5	21	7.3	49	14.9	31.9	10,305
PALM BEACH	841	789	93.8	16	1.9	77	9.2	76	10.0	157	18.7	22.1	38,113
PASCO	362	335	92.5	6	1.7	33	9.1	23	6.8	56	15.5	27.1	13,375
PINELLAS	660	627	95.0	6	0.9	60	9.1	42	7.2	115	17.4	27.9	23,644
POLK	726	650	89.5	10	1.4	71	9.8	48	7.0	116	16.0	37.8	19,206
PUTNAM	114	104	91.2	3	2.6	15	13.2	9	8.7	23	20.2	52.7	2,164
SAINT JOHNS	97	90	92.8	2	2.1	8	8.2	3	3.6	18	18.6	15.2	6,366
SAINT LUCIE	245	229	93.5	10	4.1	26	10.6	29	12.3	46	18.8	29.2	8,391
SANTA ROSA	148	127	85.8	0	0.0	12	8.1	5	3.6	15	10.1	29.2	5,066
SARASOTA	186	165	88.7	1	0.5	15	8.1	15	8.5	24	12.9	21.5	8,667
SEMINOLE	234	220	94.0	1	0.4	22	9.4	10	4.5	38	16.2	15.8	14,829
SUMTER	68	56	82.4	2	2.9	2	2.9	2	3.2	15	22.1	57.4	1,185
SUWANNEE	51	41	80.4	0	0.0	4	7.8	2	3.9	6	11.8	40.7	1,254
TAYLOR	35	32	91.4	0	0.0	5	14.3	1	3.4	4	11.4	59.8	585
UNION	22	14	63.6	0	0.0	3	13.6	3	13.6	3	13.6	57.3	384
VOLUSIA	389	355	91.3	9	2.3	30	7.7	30	8.5	48	12.3	27.1	14,378
WAKULLA	26	21	80.8	0	0.0	2	7.7	0	0.0	3	11.5	29.0	896
WALTON	58	48	82.8	2	3.4	3	5.2	5	9.6	9	15.5	41.3	1,404
WASHINGTON	38	33	86.8	1	2.6	5	13.2	1	3.1	9	23.7	55.1	690

1. Starting in 2004, "Trimester prenatal care began" is calculated as the time elapsed from the date of the last menstrual period to the date of the first prenatal care visit. Prior to 2004, these data were obtained by direct question that noted the trimester the mother began prenatal care. Consequently, these data are not comparable to data from prior years.

2. Births with unknown information as to when prenatal care began are excluded from the denominator.

