

Marriages and Dissolutions of Marriage

MARRIAGES AND DISSOLUTIONS OF MARRIAGE

- **The number of marriages decreased between 2012 (140,467 marriages) and 2013 (137,127 marriages). This represents a 2.4 percent decrease in the number of marriages.**
- **The marriage rate per 1,000 population has decreased since 2012 to 7.1 in 2013.**
- **March was the most popular month for marriage with 13,532 marriages performed. The most popular day to be wed in 2013 was Thursday, 2/14/2013 with 1,475 marriages. In past years the “trifecta” dates like 7/7/07 and 9/10/12 were popular. This was not the case in 2013. Tuesday, 11/12/13 was the 19th most popular day.**
- **The 2013 marriage rate (7.1 per 1,000 population) in Florida is 1.7 times the 2013 dissolution rate (4.2 per 1,000 population).**
- **Of the 80,619 dissolutions of marriage in 2013, over half (54.8 percent) did not affect any minor children.**
- **The mean duration of marriage resulting in a 2013 dissolution was 10 years.**
- **The average length of dissolved marriages in 2013 was 10.65 years.**

**CHART M-1: MARRIAGES AND DISSOLUTIONS OF MARRIAGE,
AND RATES PER 1,000 POPULATION, FLORIDA AND UNITED
STATES, CENSUS YEARS 1920-1990 AND 2003-2013**

YEAR	MARRIAGES			DISSOLUTIONS ¹		
	FLORIDA		U.S.	FLORIDA		U.S.
	NUMBER	RATE	RATE	NUMBER	RATE	RATE
1920	NA	NA	12.0	NA	NA	1.6
1930	17,147	11.7	9.2	3,262	2.5	1.6
1940	32,709	17.1	12.1	11,061	5.8	2.0
1950	27,588	9.8	11.1	17,845	6.3	2.6
1960	39,315	7.9	8.5	19,326	3.9	2.2
1970	70,244	10.3	10.6	37,556	5.5	3.5
1980	108,344	11.0	10.6	71,590	7.3	5.2
1990	141,816	10.9	9.8	81,122	6.2	4.7
2000	145,300	9.0	8.7 ²	81,493	5.1	4.2 ²
2003	153,023	9.0	7.7 ²	85,367	5.0	3.8 ²
2004	154,453	8.8	7.8 ²	83,306	4.8	3.7 ²
2005	158,192	8.8	7.6 ²	81,287	4.5	3.6 ²
2006	158,167	8.7	7.4 ²	85,955	4.7	3.7 ²
2007	155,998	8.4	7.3 ²	84,386	4.6	3.6 ²
2008	147,888	7.9	7.1 ²	79,868	4.3	3.5 ²
2009	139,127	7.4	6.8 ²	78,752	4.2	3.4 ²
2010	137,250	7.3	NA	83,342	4.4	NA
2011	140,900	7.4	NA	84,785	4.5	NA
2012	140,467	7.4	NA	81,490	4.3	NA
2013	137,127	7.1	NA	80,619	4.2	NA

¹ Includes divorces and annulments.
² Provisional data.

**GRAPH M-1: MARRIAGES AND DISSOLUTIONS OF MARRIAGE RATES PER 1,000 POPULATION,
FLORIDA AND UNITED STATES, 2003-2013**

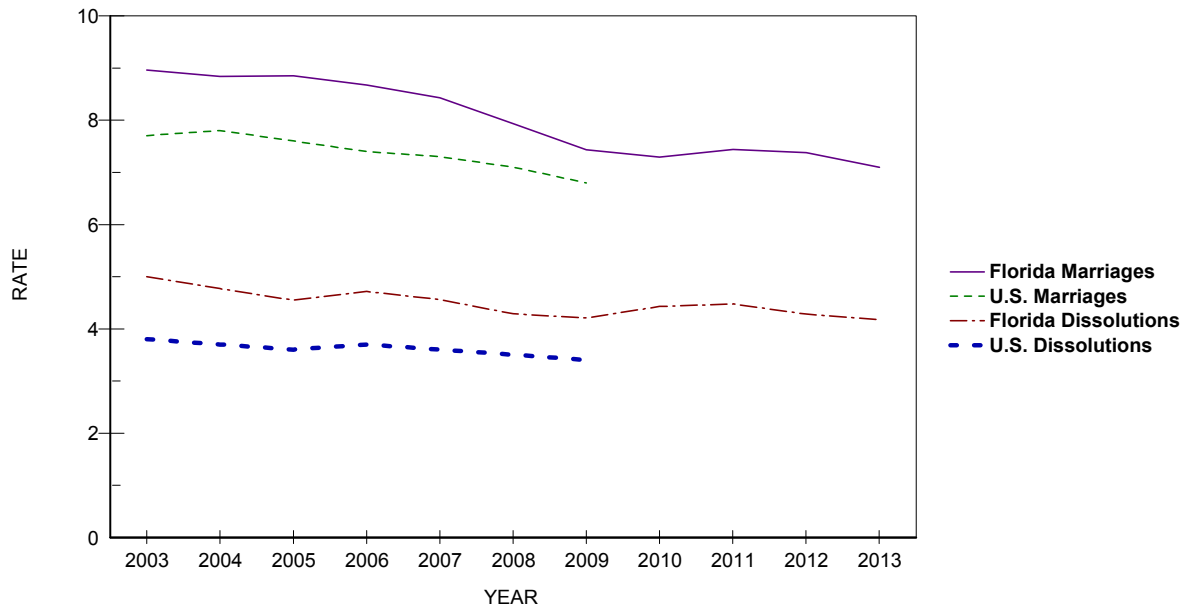


TABLE M-1: MARRIAGES PERFORMED BY MONTH, BY COUNTY OF ISSUANCE, FLORIDA, 2013

	TOTAL	JAN	FEB	MAR	APR	MAY	JUN	JUL	AUG	SEP	OCT	NOV	DEC
FLORIDA	137,127	7,320	9,761	13,532	12,938	12,828	12,707	10,662	10,174	10,027	12,465	13,115	11,598
ALACHUA	1,625	62	117	166	155	172	154	113	131	136	153	138	128
BAKER	209	7	13	15	28	31	31	10	10	15	20	18	11
BAY	2,351	88	94	170	200	242	314	255	210	226	221	182	149
BRADFORD	208	10	14	25	17	15	24	13	18	12	24	19	17
BREVARD	4,212	207	288	402	425	407	413	330	297	282	396	415	350
BROWARD	12,246	797	955	1,229	1,078	1,070	1,041	923	898	868	947	1,207	1,233
CALHOUN	95	5	7	8	9	7	16	5	5	14	12	5	2
CHARLOTTE	930	55	80	102	107	74	79	71	63	58	64	97	80
CITRUS	710	25	61	82	67	55	60	40	45	59	66	88	62
CLAY	1,362	61	88	154	121	114	124	103	104	121	121	146	105
COLLIER	2,675	162	176	248	280	260	247	179	197	175	254	254	243
COLUMBIA	473	19	31	44	44	39	44	41	35	40	43	51	42
MIAMI-DADE	18,815	1,295	1,538	1,769	1,631	1,627	1,541	1,388	1,507	1,358	1,515	1,789	1,857
DESOTO	199	10	24	35	20	15	11	9	11	12	20	20	12
DIXIE	109	3	10	16	9	8	13	10	9	4	13	9	5
DUVAL	5,985	290	433	639	611	589	554	428	436	461	569	520	455
ESCAMBIA	3,417	137	201	325	323	322	415	335	284	275	343	236	221
FLAGLER	568	24	31	51	41	58	58	42	41	36	63	65	58
FRANKLIN	174	3	8	9	20	18	23	23	11	22	18	11	8
GADSDEN	196	7	11	16	19	20	18	18	21	22	13	23	8
GILCHRIST	216	11	10	24	20	24	23	14	12	16	21	23	18
GLADES	42	2	6	2	1	6	4	2	2	3	3	6	5
GULF	200	3	8	12	21	23	25	14	21	25	24	16	8
HAMILTON	99	2	7	10	15	7	14	5	8	7	11	7	6
HARDEE	162	8	17	20	21	13	17	15	6	10	5	21	9
HENDRY	215	15	16	17	24	20	25	15	18	13	17	17	18
HERNANDO	860	41	63	92	87	74	85	66	55	61	87	87	62
HIGHLANDS	486	19	48	52	42	43	50	40	34	29	44	45	40
HILLSBOROUGH	8,403	432	647	891	774	736	734	665	568	577	768	894	717
HOLMES	134	7	6	8	12	16	17	10	12	8	11	16	11
INDIAN RIVER	882	58	63	98	83	97	79	73	59	53	86	65	68
JACKSON	310	11	16	35	36	28	28	28	23	27	24	32	22
JEFFERSON	89	6	5	11	10	8	10	10	7	5	9	7	1
LAFAYETTE	48	1	4	7	3	4	2	0	2	6	10	5	4
LAKE	2,875	117	177	286	275	279	269	225	208	227	288	301	223
LEE	4,263	256	338	413	393	420	376	339	274	253	388	423	390
LEON	1,652	80	89	176	151	172	164	127	119	119	168	144	143
LEVY	186	10	13	27	20	11	14	21	18	13	11	17	11
LIBERTY	49	1	3	7	4	6	2	8	4	6	0	7	1
MADISON	122	5	12	16	17	7	8	16	9	8	10	8	6
MANATEE	1,925	79	151	175	216	191	195	142	124	139	181	169	163
MARION	1,911	93	132	212	158	159	170	155	140	157	170	175	190
MARTIN	900	40	86	94	102	87	79	58	63	56	81	85	69
MONROE	2,774	159	229	218	325	309	306	198	194	131	201	261	243
NASSAU	733	27	27	66	72	63	90	58	58	68	81	75	48
OKALOOSA	3,080	94	130	272	272	370	408	312	306	303	311	183	119
OKEECHOBEE	223	13	17	14	24	26	22	15	16	16	17	22	21
ORANGE	8,973	536	628	897	857	803	728	623	708	663	852	898	780
OSCEOLA	3,285	168	261	308	302	301	288	257	253	263	310	288	286
PALM BEACH	7,789	446	604	804	697	733	716	597	519	511	641	824	697
PASCO	2,299	117	155	249	239	205	193	172	151	156	222	225	215
PINELLAS	6,651	321	427	640	641	677	592	542	461	435	716	732	467
POLK	3,461	196	266	408	300	268	298	273	247	244	317	351	293
PUTNAM	399	15	30	45	28	36	44	37	36	26	31	40	31
SAINT JOHNS	1,477	63	88	150	140	166	126	116	114	115	142	142	115
SAINT LUCIE	1,440	98	124	167	135	104	119	114	108	105	113	132	121
SANTA ROSA	958	40	52	92	95	111	110	91	64	65	92	75	71
SARASOTA	2,561	126	154	226	285	243	241	186	171	169	264	274	222
SEMINOLE	2,540	123	155	282	231	225	208	162	213	190	265	256	230
SUMTER	330	17	18	31	33	36	28	22	32	24	29	30	30
SUWANNEE	210	13	18	23	22	16	23	18	11	19	18	18	11
TAYLOR	153	4	14	15	17	12	15	13	13	8	15	15	12
UNION	132	6	8	18	14	11	10	13	8	13	9	10	12
VOLUSIA	3,098	131	197	286	315	270	310	269	218	258	293	276	275
WAKULLA	198	9	12	20	23	27	13	10	14	17	26	16	11
WALTON	1,621	29	41	95	161	224	228	166	131	202	193	101	50
WASHINGTON	154	5	9	16	20	18	21	14	9	12	15	8	7

TABLE M-2: MARRIAGES BY RACE OF GROOM AND BRIDE, FLORIDA, 2013

RACE OF GROOM	RACE OF BRIDE										
	TOTAL	WHITE	BLACK	AMERICAN INDIAN	CHINESE	JAPANESE	HAWAIIAN	FILIPINO	OTHER ASIAN/PAC ISL	OTHER ENTRIES	UNK
TOTAL	137,127	107,782	18,119	311	51	14	24	124	3,172	7,317	427
WHITE	107,089	101,286	1,530	239	32	11	16	99	1,615	2,193	185
BLACK	20,396	3,370	16,144	24	4	1	1	6	147	688	66
AMERICAN INDIAN	314	254	13	33	0	0	0	0	8	5	1
CHINESE	26	12	1	0	10	0	0	1	1	1	0
JAPANESE	5	4	0	0	0	1	0	0	0	0	0
HAWAIIAN	19	12	1	0	0	1	4	1	0	0	0
FILIPINO	49	35	1	0	1	0	0	12	0	0	0
OTH ASIAN/PAC ISL	2,130	683	45	9	1	0	2	2	1,332	53	15
OTHER ENTRIES	6,911	2,074	381	5	3	0	1	3	67	4,376	31
UNK	188	52	3	1	0	0	0	0	2	1	129

TABLE M-3: DISSOLUTIONS* OF MARRIAGE BY DURATION OF MARRIAGE IN YEARS AND NUMBER OF MINOR CHILDREN AFFECTED, FLORIDA, 2013

DURATION IN YEARS	NUMBER OF MINOR CHILDREN AFFECTED								
	TOTAL	NONE	ONE	TWO	THREE	FOUR	FIVE	SIX+	UNK
TOTAL	80,619	44,204	15,299	10,643	2,929	595	96	50	6,803
<1	2,032	1,670	96	39	14	3	0	0	210
1	3,986	3,131	384	76	15	5	1	0	374
2	4,788	3,426	684	173	22	7	0	0	476
3	5,564	3,750	919	276	47	12	1	2	557
4	5,863	3,709	1,136	414	78	6	2	1	517
5-9	21,724	11,455	4,817	2,969	610	119	15	5	1,734
10-14	12,914	5,053	2,863	2,994	940	202	30	13	819
15-19	8,164	2,755	1,797	2,198	778	158	31	11	436
20-24	5,526	2,587	1,357	928	255	41	8	5	345
25-29	3,424	2,253	583	182	44	11	3	2	346
30-34	1,751	1,385	142	19	9	5	0	1	190
35-39	756	638	18	5	0	0	0	0	95
40+	827	724	10	7	1	1	0	0	84
UNK	3,300	1,668	493	363	116	25	5	10	620

*Includes divorces and annulments.

TABLE M-4: DISSOLUTIONS* OF MARRIAGE BY MONTH, BY COUNTY, FLORIDA, 2013

	TOTAL	JAN	FEB	MAR	APR	MAY	JUN	JUL	AUG	SEP	OCT	NOV	DEC
FLORIDA	80,619	6,343	6,192	6,586	7,416	6,879	6,542	7,068	7,066	6,816	7,224	6,086	6,401
ALACHUA	958	39	58	86	111	67	89	86	51	78	49	98	146
BAKER	112	5	7	10	10	8	14	7	9	10	12	7	13
BAY	897	57	88	37	87	95	86	77	75	68	89	61	77
BRADFORD	133	3	14	10	9	14	11	10	9	14	13	8	18
BREVARD	2,150	166	169	183	221	163	196	195	191	165	167	184	150
BROWARD	8,195	696	627	897	517	544	598	809	851	822	643	583	608
CALHOUN	59	4	6	3	10	2	3	9	4	2	5	5	6
CHARLOTTE	554	39	38	36	56	49	29	45	43	66	63	37	53
CITRUS	504	47	45	19	54	65	36	45	36	32	53	41	31
CLAY	844	66	65	62	72	90	64	79	69	48	92	70	67
COLLIER	1,240	85	95	76	128	102	112	112	97	128	110	92	103
COLUMBIA	295	20	19	23	26	30	17	21	33	19	25	22	40
MIAMI-DADE	12,947	969	1,036	905	1,218	1,054	1,198	1,145	1,095	1,242	1,194	901	990
DESOTO	103	9	4	6	15	8	5	7	11	8	7	12	11
DIXIE	83	3	11	6	7	7	7	4	9	6	11	6	6
DUVAL	4,088	306	350	320	350	381	238	477	285	321	435	312	313
ESCAMBIA	1,158	99	87	101	99	103	134	103	118	104	50	68	92
FLAGLER	331	33	19	21	28	34	29	25	25	33	29	29	26
FRANKLIN	49	2	4	3	2	4	5	5	3	5	8	4	4
GADSDEN	152	13	10	10	15	9	13	6	14	16	19	15	12
GILCHRIST	98	6	8	10	6	9	15	10	5	8	12	4	5
GLADES	27	0	7	3	2	2	1	0	3	4	3	1	1
GULF	64	9	6	1	6	1	8	7	4	2	4	10	6
HAMILTON	59	3	3	10	6	6	4	5	6	8	3	4	1
HARDEE	80	11	6	6	7	5	9	4	6	7	6	6	7
HENDRY	123	7	5	10	14	8	18	11	13	8	7	13	9
HERNANDO	586	36	35	39	68	59	41	54	33	58	59	47	57
HIGHLANDS	308	21	20	26	29	30	29	15	35	24	22	26	31
HILLSBOROUGH	5,058	457	431	429	482	471	442	418	394	382	418	363	371
HOLMES	100	7	5	8	10	10	16	15	3	4	5	3	14
INDIAN RIVER	532	46	37	46	54	35	36	66	45	41	49	43	34
JACKSON	176	26	10	10	21	14	15	17	10	13	18	13	9
JEFFERSON	27	2	1	3	1	1	3	5	3	3	1	2	2
LAFAYETTE	44	5	3	1	5	4	2	5	6	3	3	3	4
LAKE	1,028	71	77	91	107	93	59	121	82	77	95	83	72
LEE	3,041	247	201	271	311	245	240	266	305	220	302	203	230
LEON	961	71	84	93	87	96	65	85	88	65	85	48	94
LEVY	139	6	17	17	3	17	14	17	13	4	5	16	10
LIBERTY	31	2	2	2	4	1	3	0	1	1	0	1	14
MADISON	66	3	7	5	14	4	4	4	3	9	6	3	4
MANATEE	1,034	100	65	63	111	85	89	90	24	136	106	91	74
MARION	1,265	62	50	70	110	143	83	138	151	105	113	118	122
MARTIN	575	48	47	60	60	47	42	31	60	44	65	28	43
MONROE	921	65	97	85	94	74	106	112	95	33	54	37	69
NASSAU	300	20	29	27	26	24	24	28	40	29	32	3	18
OKALOOSA	1,131	77	72	92	86	94	113	80	116	98	103	107	93
OKECHOBEE	150	18	8	18	3	23	21	3	20	8	8	9	11
ORANGE	4,563	400	345	410	561	360	289	145	415	370	464	473	331
OSCEOLA	1,805	143	125	187	177	146	126	139	109	94	175	196	188
PALM BEACH	5,139	404	434	331	486	506	394	437	496	402	476	384	389
PASCO	1,641	137	95	155	112	140	144	154	111	160	156	141	136
PINELLAS	3,375	251	226	214	358	282	321	308	285	282	314	240	294
POLK	2,374	184	171	207	170	182	197	190	226	198	267	185	197
PUTNAM	295	9	39	26	28	24	22	44	14	25	30	16	18
SAINT JOHNS	795	73	65	72	73	89	72	56	57	76	48	62	52
SAINT LUCIE	934	84	64	61	87	89	87	92	67	83	66	59	95
SANTA ROSA	764	65	61	71	56	74	30	70	51	73	65	68	80
SARASOTA	1,443	136	109	115	114	114	88	176	272	80	88	77	74
SEMINOLE	1,682	118	98	164	155	164	156	138	162	126	151	111	139
SUMTER	202	14	22	16	16	17	20	13	26	10	9	21	18
SUWANNEE	176	9	11	19	15	16	15	24	8	25	10	12	12
TAYLOR	88	5	10	6	6	14	9	6	7	10	6	3	6
UNION	46	2	3	7	3	7	5	1	6	4	3	3	2
VOLUSIA	2,032	176	191	176	194	181	149	157	118	182	179	150	179
WAKULLA	106	22	10	7	8	9	9	6	5	9	9	12	0
WALTON	300	22	25	26	26	26	18	29	29	20	41	25	13
WASHINGTON	83	2	3	6	9	9	5	9	10	6	9	8	7

*Includes divorces and annulments.

TABLE M-5: DISSOLUTIONS* OF MARRIAGE BY NUMBER OF MINOR CHILDREN AFFECTED, BY COUNTY, FLORIDA, 2013

	TOTAL	NONE	ONE	TWO	THREE	FOUR	FIVE	SIX	SEVEN	EIGHT+	UNK
FLORIDA	80,619	44,204	15,299	10,643	2,929	595	96	31	8	11	6,803
ALACHUA	958	557	210	144	33	8	2	1	0	1	2
BAKER	112	66	20	16	6	2	0	0	0	0	2
BAY	897	535	199	119	40	4	0	0	0	0	0
BRADFORD	133	76	28	18	8	1	0	0	0	0	2
BREVARD	2,150	1,225	452	343	104	22	3	0	0	0	1
BROWARD	8,195	4,194	1,333	896	234	40	1	1	2	1	1,493
CALHOUN	59	35	10	9	5	0	0	0	0	0	0
CHARLOTTE	554	514	21	12	6	1	0	0	0	0	0
CITRUS	504	318	101	63	19	2	1	0	0	0	0
CLAY	844	399	212	145	50	10	3	1	0	0	24
COLLIER	1,240	771	239	170	44	12	3	0	0	0	1
COLUMBIA	295	168	65	46	13	3	0	0	0	0	0
MIAMI-DADE	12,947	9,000	2,289	1,298	290	62	6	0	2	0	0
DESOTO	103	50	24	23	5	0	1	0	0	0	0
DIXIE	83	61	7	9	3	2	0	0	0	0	1
DUVAL	4,088	2,261	861	612	171	44	4	0	1	4	130
ESCAMBIA	1,158	668	251	168	60	8	1	1	0	0	1
FLAGLER	331	114	62	45	8	3	0	1	1	1	96
FRANKLIN	49	0	9	8	6	0	0	0	0	0	26
GADSDEN	152	103	21	21	7	0	0	0	0	0	0
GILCHRIST	98	61	19	10	7	1	0	0	0	0	0
GLADES	27	16	5	2	3	0	1	0	0	0	0
GULF	64	38	12	9	4	1	0	0	0	0	0
HAMILTON	59	38	13	7	1	0	0	0	0	0	0
HARDEE	80	38	19	18	3	1	0	0	0	0	1
HENDRY	123	61	27	22	10	1	0	1	0	0	1
HERNANDO	586	326	123	86	34	7	1	0	0	0	9
HIGHLANDS	308	195	57	44	10	1	0	1	0	0	0
HILLSBOROUGH	5,058	2,937	1,004	729	217	46	9	4	0	0	112
HOLMES	100	47	20	25	6	2	0	0	0	0	0
INDIAN RIVER	532	331	99	83	15	3	1	0	0	0	0
JACKSON	176	95	43	28	9	1	0	0	0	0	0
JEFFERSON	27	20	4	3	0	0	0	0	0	0	0
LAFAYETTE	44	23	9	9	2	1	0	0	0	0	0
LAKE	1,028	428	201	148	48	15	2	2	0	0	184
LEE	3,041	1,995	522	371	105	32	8	1	0	0	7
LEON	961	411	206	140	36	11	5	1	0	0	151
LEVY	139	75	34	20	8	1	0	0	0	0	1
LIBERTY	31	17	6	7	1	0	0	0	0	0	0
MADISON	66	17	17	11	1	3	0	0	0	0	17
MANATEE	1,034	566	235	162	58	6	3	1	0	0	3
MARION	1,265	704	287	195	65	6	0	3	0	0	5
MARTIN	575	358	95	87	27	5	1	2	0	0	0
MONROE	921	703	114	69	14	1	0	0	0	0	20
NASSAU	300	169	58	53	15	1	3	0	0	0	1
OKALOOSA	1,131	665	234	184	37	10	1	0	0	0	0
OKEECHOBEE	150	89	24	24	11	2	0	0	0	0	0
ORANGE	4,563	2,926	793	597	173	43	11	1	1	1	17
OSCEOLA	1,805	1,121	357	236	77	11	2	0	0	0	1
PALM BEACH	5,139	500	946	671	174	29	2	4	0	1	2,812
PASCO	1,641	907	347	278	86	11	5	1	0	1	5
PINELLAS	3,375	2,177	641	439	90	19	2	1	0	0	6
POLK	2,374	1,319	516	369	120	32	3	0	0	0	15
PUTNAM	295	187	50	39	13	4	1	0	1	0	0
SAINT JOHNS	795	451	167	137	36	3	0	1	0	0	0
SAINT LUCIE	934	562	212	120	33	4	1	0	0	1	1
SANTA ROSA	764	399	176	144	34	9	0	1	0	0	1
SARASOTA	1,443	998	224	172	45	3	1	0	0	0	0
SEMINOLE	1,682	445	375	277	71	10	0	0	0	0	504
SUMTER	202	131	29	31	9	2	0	0	0	0	0
SUWANNEE	176	88	44	28	13	1	1	0	0	0	1
TAYLOR	88	46	20	11	2	3	0	0	0	0	6
UNION	46	24	9	9	2	2	0	0	0	0	0
VOLUSIA	2,032	90	404	301	66	24	5	0	0	0	1,142
WAKULLA	106	59	22	19	6	0	0	0	0	0	0
WALTON	300	186	53	41	16	3	0	1	0	0	0
WASHINGTON	83	50	13	13	4	0	2	0	0	0	1

*Includes divorces and annulments.

